

MB 148



MICROFILMED

JAN 8 1965

No 148

$R = E + W$

$Y = N + S$

THIS BOOK INDEXED 2-14-62

IBM 10.87

PICKUP N. 61+00 - W. Side

989

1.85

11.74

8

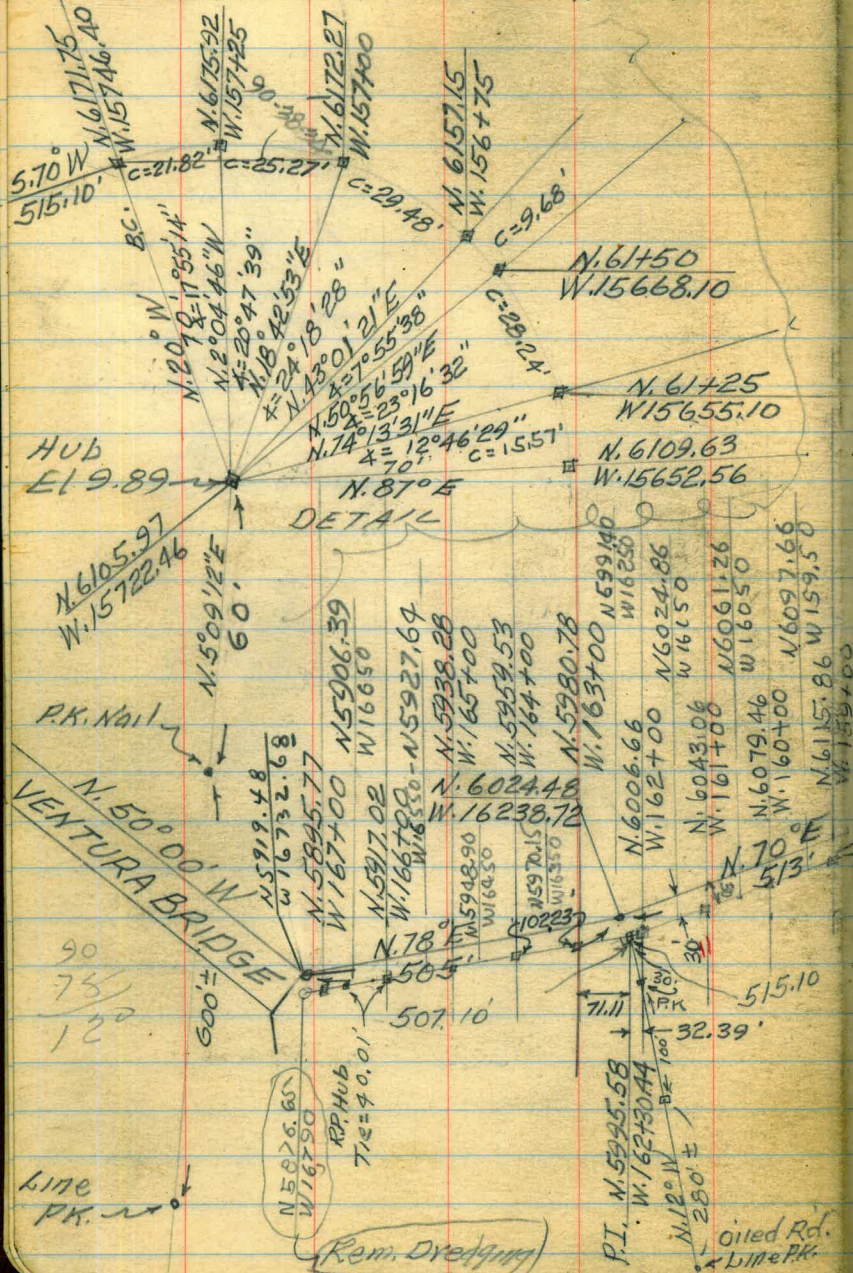
3.74

11.74

5.74

6.00

BASELINE FOR SOUNDING'S DANA BASIN & VICINITY
V.O. 64501

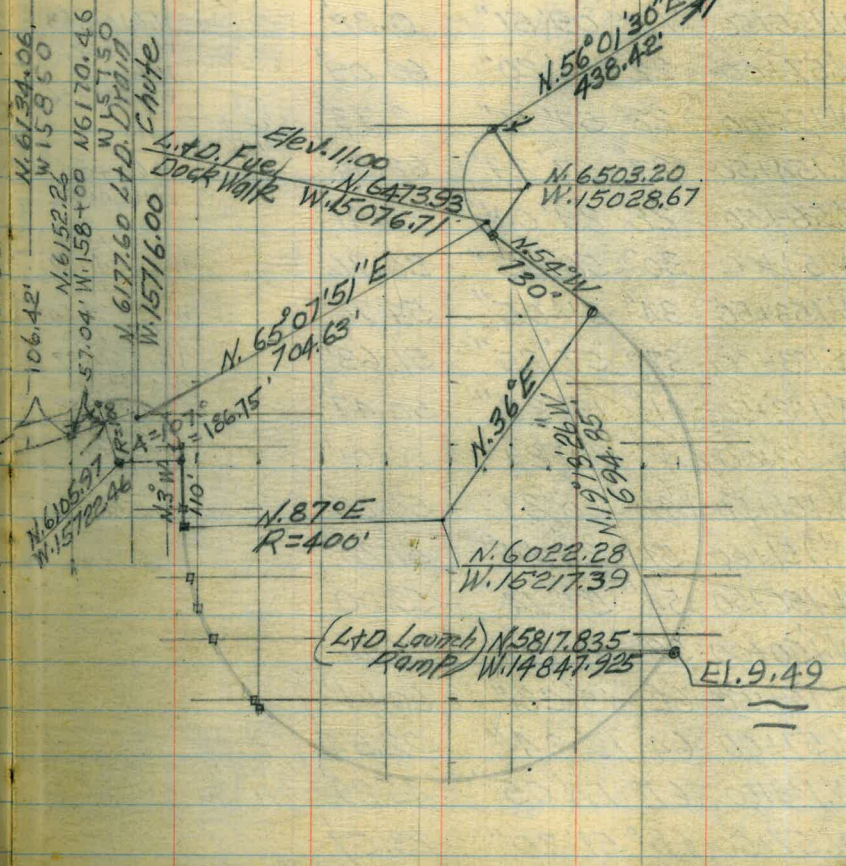


Ref. F.B. $\frac{97+123}{26} \frac{138}{1+76}$
35+47-
-69=RIP-RAF

Ref FB 139

Re-sound Lease Area

Stamped
Elmore
Hecht
Borris



BASELINE CONTD.

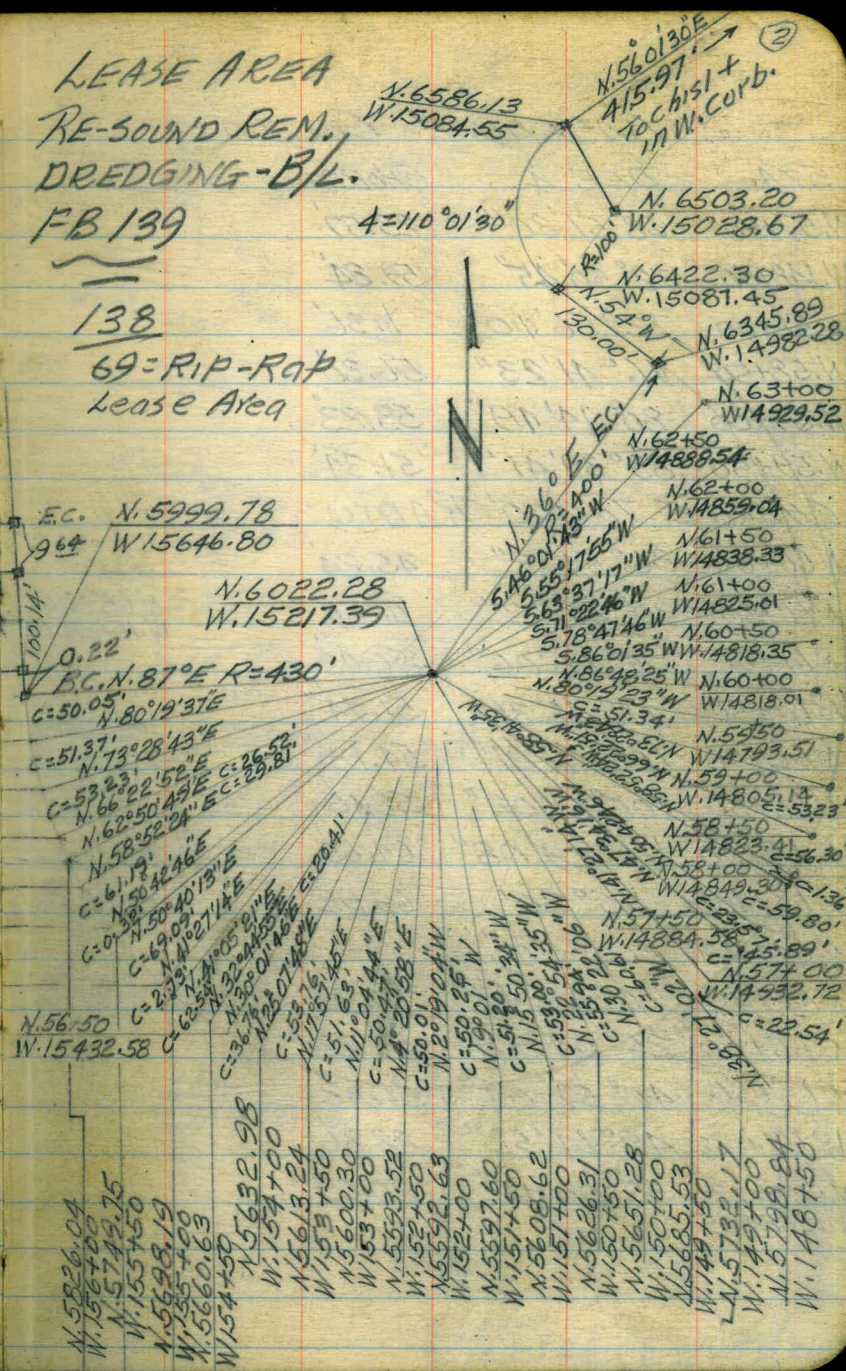
STA.	DEF. A	CHORD
B.C.		
N.59+50	0° 0' 00"	50.05'
N.59+00	3° 20' 11"	51.37'
N.58+50	6° 45' 38"	53.23'
W.156+00	12° 04' 34"	26.52'
N.58+00	14° 03' 46"	29.81'
N.57+50	18° 08' 35"	61.19'
W.155+50	18° 09' 51"	0.32'
N.57+00	22° 46' 20"	60.09'
W.155+00	22° 57' 16"	2.73'
W.154+50	27° 07' 29"	62.54'
N.56+50	28° 29' 04"	20.41'
W.154+00	30° 56' 03"	36.76'
W.153+50	34° 31' 05"	53.76'
W.153+00	37° 57' 35"	51.63'
W.152+50	41° 19' 28"	50.47'
W.152+00	44° 39' 29"	50.01'
W.151+50	48° 00' 27"	50.25'
W.151+00	51° 25' 14"	51.20"
W.150+50	54° 57' 14"	53.00'
W.150+00	58° 41' 00"	55.94'
W.149+50	62° 43' 28"	60.61'
N.57+00	64° 13' 34"	22.54'
W.149+00	67° 17' 05"	45.89'
N.57+50	68° 51' 20"	23.57'

FROM B.C.
0 MIN. R. TURN W.149
- 11° 50' 11" RT

(Cont'd Pg. 3)

LEASE AREA
RE-SOUND REM.
DREDGING-B/L.
FB 139

138
69=RIP-RAP
Lease Area

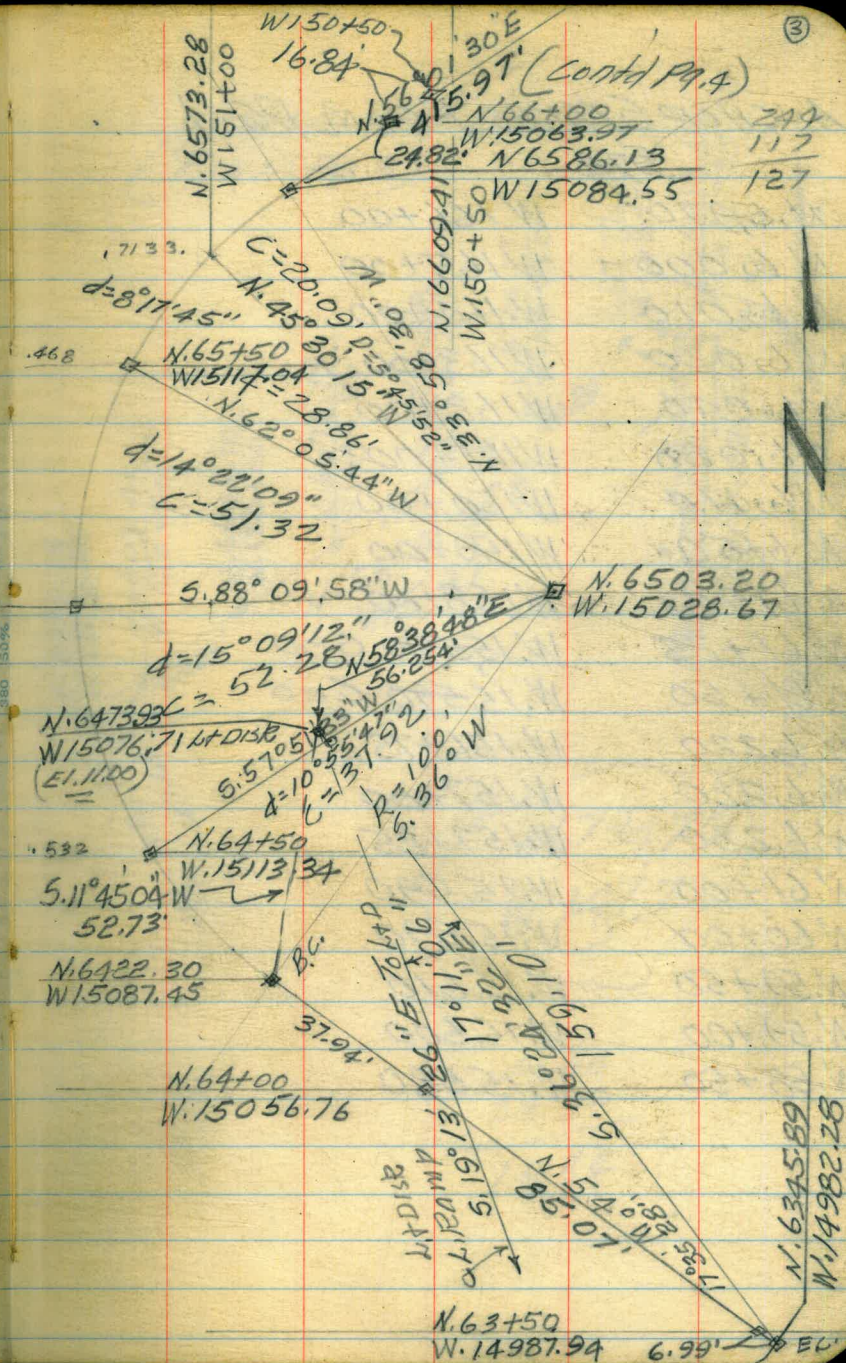


BASELINE CONT'D

STA.	DEF. Δ	CHORD
N.57+50	68° 51' 20"	23.57'
W.148+50	72° 50' 45"	59.84'
N.58+00	72° 56' 10"	1.36'
N.58+50	76° 41' 23"	56.30'
N.59+00	80° 14' 19"	53.23'
N.59+50	83° 39' 41"	51.34'

CHANGE TO 400' RADIUS

N.60+00	86° 54' 12"	45.24'
N.60+50	90° 29' 12"	50.00'
N.61+00	94° 06' 06"	50.44'
N.61+50	97° 48' 36"	51.74'
N.62+00	101° 41' 21"	54.12'
N.62+50	105° 51' 02"	58.05'
N.63+00	110° 29' 08"	64.65'
N.63+45.89	115° 30'	69.92'
N.64+22.30	10° 00'"	
N.64+50	10° 55' 47"	37.92'
N.65+00	26° 04' 58"	52.28'
N.65+50	40° 57' 07"	51.32'
W.151+00	49° 14' 52"	28.86'
N.6586.13	55° 00' 45"	20.09'
W.15084.55		



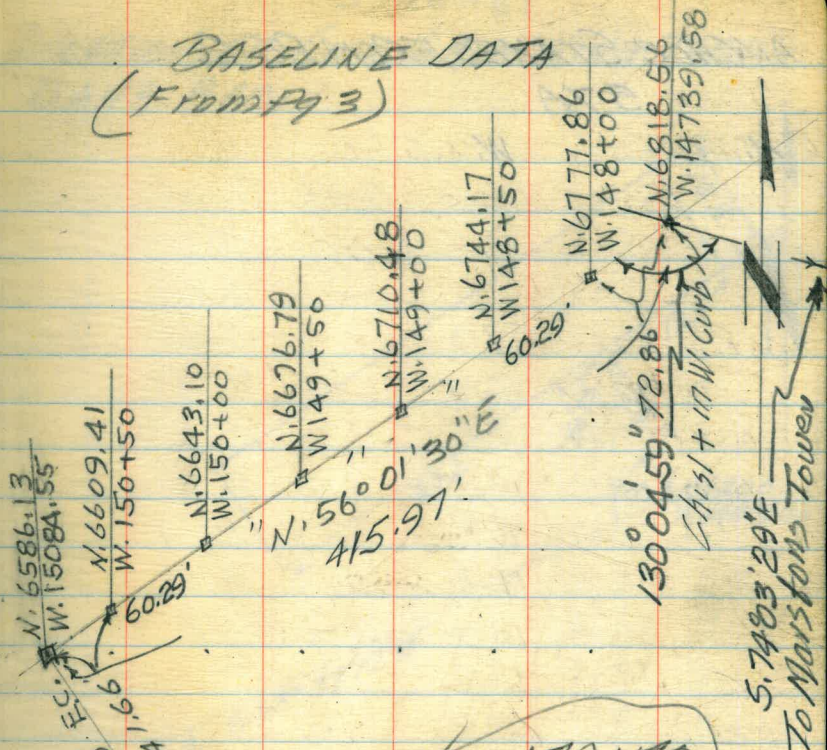
299
117
127

ANCHOR STAKES FROM PG. 1

STA

N 5,970	W 166+00
N 6,000	W 165+00
N 6,010	W 164+00
N 6,020	W 163+00
N 6,040	W 162+00
N 6,080	W 161+00
N 6,110	W 160+00
N. 6,150	W 159+00
N. 6,190	W 158+00
N. 6,1+25	W. 15,590 600
N. 6,1+50	W. 15,590 600
N. 6,220	W. 156+75
N. 6,220	W. 157+00
N. 6,220	W. 157+25
N. 6,1+00	W. 15,590
N 60+00	W. 15,590
N. 59+50	W. 15,610
N. 59+00	W. 15,600
N. 58+50	W. 15,580

BASELINE DATA
(FROM PG 3)



N 6794.70
W 147.75

41.66
24.82

16.84

5.7483' 29"E
To Marston's Tower

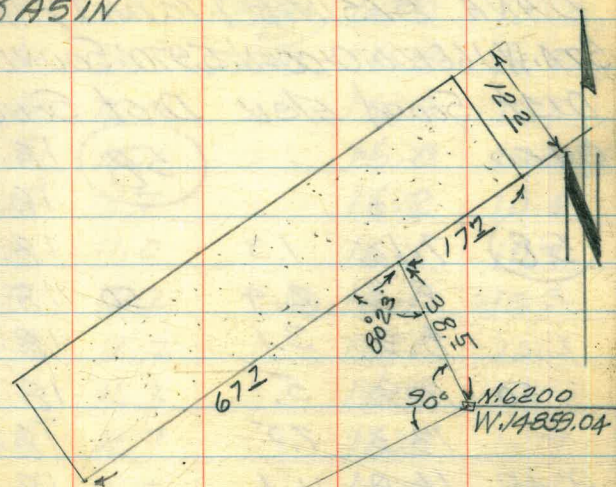
ANCHOR STAKES FROM PG. 2
57A

N.

W.

3-16-61

LOCATION OF CONC. LAUNCHING RAMP
DANA BASIN



Radial \rightarrow 5.63° 37' 17\"

3-17-61

SOUNDINGS FOR REMEDIAL DREDGING

DANA BASIN & VICINITY W.O. 64501

STA. W. 166+00; 0+00=N. 5,970; SOUND NORTH

	DIST	SOUND	ELEV	DIST	SOUND	ELEV
0+00				(58)	18.1	12.3
					18.2	12.4
(58)	7.1	1.3			18.0	12.2
	8.2	2.4	50		18.0	12.2
	8.9	3.1			18.0	12.2
50	10.9	5.1			18.0	12.2
	13.3	7.5			18.0	12.2
9:45	16.9	11.1			18.0	12.2
	18.9	13.1	3+00		17.9	12.1
	19.7	13.9			17.7	11.9
1+00	19.7	13.9			17.1	11.3
	19.1	13.3			17.1	11.3
	19.0	13.2			16.8	11.0
	19.0	13.2	50		16.8	11.0
	18.8	13.0			16.9	11.1
50	18.6	12.8			16.6	10.8
	18.9	13.1			16.6	10.8
	18.9	13.1			15.6	9.8
	18.7	12.9	4+00		15.3	9.5
	18.3	12.5			15.8	10.0
2+00	18.5	12.7			15.9	10.1
	18.0	12.2			16.1	10.3

STA. W. 166+00-NORTH

	DIST	SOUND	ELEV	DIST	SOUND	ELEV
	(158)	15.9	10.1	(58)	16.0	10.2
	50	16.3	10.5	7+00	16.0	10.2
		16.2	10.4		16.0	10.2
		16.2	10.4		16.0	10.2
		16.5	10.7		16.2	10.4
		16.8	11.0		16.1	10.3
5+00	17.0	11.2		50	16.1	10.3
	17.0	11.2			16.1	10.3
	17.1	11.3			16.9	11.1
9:50	17.5	11.7			16.5	10.7
	17.5	11.7			16.3	10.5
50	17.9	12.1		8+00	16.9	11.1
	17.6	11.8			16.2	10.4
	16.9	11.1			15.8	10.0
	17.0	11.2			15.5	9.7
	16.6	10.8			15.1	9.3
6+00	16.1	10.3		50	15.1	9.3
	16.1	10.3			15.0	9.2
	15.8	10.0			15.0	9.2
	16.0	10.2			15.0	9.2
	15.8	10.0			15.1	9.3
50	16.5	10.7		9+00	15.3	9.5
	16.0	10.2			15.3	9.5
	16.0	10.2			15.7	9.9
	16.2	10.4			15.4	9.6

STA. W. 166+00 - NORTH					
DIST	SOUND	ELEV	DIST	SOUND	ELEV
(57)	16.0	10.3	(57)	14.9	9.2
50	16.0	10.3	12+00	14.9	9.2
	16.3	10.6		14.9	9.2
	16.9	11.2		14.9	9.2
	16.8	11.1		14.6	8.9
	16.8	11.1		14.6	8.9
10+00	16.9	11.2	50	14.4	8.7
	17.1	11.4		14.7	9.0
9:55	17.0	11.3		14.5	8.8
-	17.0	11.3		14.8	9.1
	17.3	11.6		15.0	9.3
50	17.0	11.3	13+00	14.8	9.1
	16.6	10.9		14.9	9.2
	16.0	10.3		14.3	8.6
	15.3	9.6		14.0	8.3
	15.4	9.7		14.0	8.3
11+00	15.3	9.6	50	13.8	8.1
	15.1	9.4		13.0	7.3
	15.2	9.5		12.9	7.2
	15.0	9.3		12.1	6.4
	15.1	9.4		12.0	6.3
50	15.2	9.5	14+00	11.2	5.5
	15.0	9.3		10.6	4.9
	15.0	9.3		9.8	4.3
	15.0	9.3		9.9	3.3
	14.9	9.2	50	7.6	2.2
				7.5	1.9
				7.3	1.6

3-17-61					
STA. W. 165+00: 0+00 = N. 6,000. SOUND NORTH					
DIST	SOUND	ELEV	DIST	SOUND	ELEV
0+00			(5.5)	15.7	10.2
(56)	7.2	1.6	50	15.7	10.2
	7.8	2.2		15.7	10.2
	7.8	2.2		16.0	10.5
	8.4	2.8		16.2	10.7
50	12.7	7.1		16.2	10.7
	16.3	10.7	3+00	16.3	10.8
10:10	18.2	12.6		16.2	10.7
-	19.0	13.4		16.5	11.0
	18.4	12.8		16.5	11.0
1+00	17.7	12.1		16.8	11.3
	17.8	12.2	50	16.9	11.4
	17.6	12.0		17.0	11.5
	17.5	11.9		17.0	11.5
	17.3	11.7		16.9	11.4
50	17.1	11.5		17.3	11.8
	17.3	11.7	4+00	17.5	12.0
	17.0	11.4		17.5	12.0
	16.6	11.0	10:15	17.5	12.0
	16.2	10.6	-	17.4	11.9
2+00	15.9	10.3		17.3	11.8
	15.8	10.2	50	17.3	11.8
	15.5	9.9		17.3	11.8
	15.8	10.2		17.3	11.8

3-17-61

STA. W. 165+00-NORTH

DIST	Sound	Elev	DIST	Sound	Elev
(53)	17.2	11.7	(53)	15.6	10.1
	16.9	11.4		15.5	10.0
5+00	16.9	11.4	50	14.8	9.3
	16.7	11.2		15.3	9.8
	16.7	11.2		15.0	9.5
	16.5	11.0		14.8	9.3
	17.0	11.5		15.1	9.6
50	16.8	11.3	8+00	15.0	9.5
	16.8	11.3		14.8	9.3
	16.5	11.0		14.9	9.4
	16.8	11.3		14.6	9.1
	16.3	10.8		14.9	9.4
6+00	16.6	11.1	50	14.4	8.9
	16.0	10.5		15.3	9.8
	16.5	11.0		14.7	9.2
	16.1	10.6		15.0	9.5
	16.0	10.5		15.2	9.7
50	16.1	10.6	9+00	14.6	9.1
	16.1	10.6		15.5	10.0
	16.3	10.8		15.0	9.5
	16.5	11.0		15.7	10.2
	16.3	10.8		15.6	10.1
7+00	16.2	10.7	50	15.9	10.4
	16.4	10.9		16.1	10.6
	15.8	10.3		16.4	10.9

STA. W. 165+00-NORTH

⑧

DIST	Sound	Elev	DIST	Sound	Elev
(55)	16.1	10.6	(54)	14.6	9.2
	16.3	10.8		13.2	7.8
10+00	15.3	9.8	50	12.3	6.9
	15.5	10.0		11.0	5.6
10,20	15.4	9.9		9.8	4.4
	15.2	9.7		8.5	3.1
	15.5	10.0		7.6	2.2
50	15.3	9.8	13+00	7.7	2.3
	15.4	9.9		7.3	1.9
	15.6	10.1		7.5	2.1
	15.5	10.0		6.9	1.5
	15.4	9.9		7.1	1.7
11+00	15.3	9.8	50	6.8	1.4
	15.5	10.0		7.0	1.6
	15.2	9.7	10,25	6.6	1.2
	15.4	9.9		6.3	0.9
	15.4	9.9		6.0	0.6
50	15.3	9.8	14+00	5.2	10.1
	15.5	10.0		5.0	10.9
	15.1	9.6			
	15.4	9.9			
	15.1	9.6			
12+00	15.2	9.7			
	15.4	9.9			
	15.4	9.9			

3-17-61

STA. W. 164+00 - 0+00 = N. 6, 010; SOUND NORTH

Dist	Sound	Elev	Dist	Sound	Elev
0+00			(51)	15.4	10.3
(5.1)	5.3	0.2	50	15.6	10.5
	6.5	1.4		15.3	10.2
	6.9	1.8		15.3	10.2
	7.0	1.9		15.3	10.2
50	7.0	1.9		15.6	10.5
	7.6	2.5	3+00	15.7	10.6
10:45	10.7	5.6		15.8	10.7
	12.7	7.6		15.9	10.8
	14.8	9.7		15.9	10.8
1+00	15.9	10.8		16.0	10.9
	16.0	10.9	50	16.1	11.0
	16.1	11.0		16.9	11.8
	16.0	10.9		16.5	11.4
	15.8	10.7		16.5	11.4
50	15.4	10.3		16.3	11.2
	15.2	10.1	4+00	16.0	10.9
	14.7	9.6		16.0	10.9
	15.7	10.6		16.7	11.6
	16.3	11.2		16.2	11.1
2+00	16.6	11.5		16.7	11.6
	15.9	10.8	50	16.9	11.8
	15.5	10.4		16.8	11.7
	15.4	10.3		17.0	11.9

9

STA. W. 164+00 - NORTH

Dist	Sound	Elev	Dist	Sound	Elev
(50)	16.7	11.7	(50)	15.2	10.2
	17.0	12.0		14.8	9.8
5+00	17.1	12.1	50	14.9	9.9
	17.2	12.2		14.9	9.9
	17.1	12.1	10:50	15.0	10.0
	17.3	12.3		14.7	9.7
	17.0	12.0		15.1	10.1
50	17.2	12.2	8+00	15.0	10.0
	17.1	12.1		14.3	9.3
	17.0	12.0		15.0	10.0
	17.0	12.0		14.6	9.6
	16.6	11.6		14.6	9.6
6+00	16.7	11.7	50	14.6	9.6
	16.3	11.3		14.6	9.6
	15.8	10.8		15.0	10.0
	15.2	10.2		15.0	10.0
	14.8	9.8		14.8	9.8
50	14.1	9.1	9+00	15.0	10.0
	14.5	9.5		14.6	9.6
	14.3	9.3		15.3	10.3
	15.0	10.0		14.7	9.7
	14.9	9.9		15.0	10.0
7+00	14.5	9.5	50	15.7	10.7
	15.3	10.3		15.0	10.0
	14.7	9.7		14.6	9.6

STATION 164+00-NORTH 3-17-61

DIST	Sound	Elev	DIST	Sound	Elev
(50)	14.4	9.4	(50)	9.4	4.4
	14.4	9.4		8.1	3.1
10+00	14.6	9.6	50	8.1	3.1
	14.3	9.3		7.2	2.2
10:55	14.7	9.7		6.9	1.9
<u> </u>	14.5	9.5		6.6	1.6
	14.7	9.7		6.2	1.2
50	14.3	9.3	13+00	6.0	1.0
	14.6	9.6		6.0	1.0
	14.2	9.2		5.9	0.9
	14.3	9.3		5.8	0.8
	14.2	9.2			
11+00	14.1	9.1			
	14.0	9.0			
	13.9	8.9			
	14.0	9.0			
	14.1	9.1			
50	14.2	9.2			
	14.5	9.5			
	14.9	9.9			
	14.9	9.9			
	14.3	9.3			
12+00	12.8	7.8			
	11.3	6.3			
	9.9	4.9			

(10)

3-17-61

STATION 163+00/0+00-N6,020-SOUND NORTH

DIST	Sound	Elev	DIST	Sound	Elev
0+00			(2.7)	12.2	9.5
(28)	3.0	0.2	50	12.1	9.4
	5.2	2.4		11.7	9.0
	5.6	2.8		11.4	8.7
	4.4	1.6		11.2	8.5
50	4.5	1.7		11.6	8.9
	4.3	1.5	3+00	11.2	8.5
12:40	4.4	1.6		11.0	8.3
<u> </u>	4.3	1.5		12.2	9.5
	4.5	1.7		13.4	10.7
1+00	4.4	1.6		13.8	11.1
	8.5	5.7	50	13.7	11.0
	10.7	7.9		13.3	10.6
	12.8	10.0		13.4	10.7
	13.4	10.6		13.3	10.6
50	13.6	10.8		13.5	10.8
	13.8	11.0	4+00	13.4	10.7
	13.7	10.9		12.9	10.2
	13.4	10.6	12:45	13.5	10.8
	13.1	10.3	<u> </u>	13.3	10.6
2+00	12.8	10.0		13.3	10.6
	12.4	9.6	50	13.3	10.6
	12.0	9.2		13.4	10.7
	12.0	9.2		13.6	10.9

3-17-61

STA. W. 163+00 - NORTH

Dist	Sound	Elev	Dist	Sound	Elev
(27)	13.7	11.0	(26)	12.5	9.9
	13.5	10.8		12.5	9.9
5+00	13.6	10.9	50	12.5	9.9
	13.5	10.8		12.6	10.0
	13.5	10.8		12.6	10.0
	13.4	10.7		12.8	10.2
	13.3	10.6		12.9	10.3
50	13.4	10.7	8+00	12.7	10.1
	12.6	9.9		12.9	10.3
	11.0	8.3		12.8	10.2
	10.8	8.1		13.0	10.4
	10.2	7.5		13.1	10.5
6+00	10.5	7.8	50	13.0	10.4
	11.0	8.3		13.2	10.6
	12.2	9.5	12:50	13.1	10.5
	12.4	9.7		13.3	10.7
	12.5	9.8		13.1	10.5
50	12.1	9.4	9+00	13.5	10.9
	12.3	9.6		13.0	10.4
	12.4	9.7		13.0	10.4
	12.6	9.9		11.8	9.2
	12.5	9.8		11.2	8.6
7+00	12.3	9.6	50	11.0	8.4
	12.5	9.8		11.0	8.4
	12.5	9.8		11.2	8.6

①

STA. W. 163+00 - NORTH

Dist	Sound	Elev	Dist	Sound	Elev
(26)	11.2	8.6	(26)	4.6	2.0
	11.5	8.9		4.6	2.0
10+00	11.6	9.0	50	4.0	1.4
	11.7	9.1		4.0	1.4
	11.7	9.1		4.0	1.4
	11.9	9.3		3.5	0.9
	11.8	9.2		3.2	0.6
50	11.8	9.2	13+00	2.5	+0.1
	11.9	9.3			
	11.6	9.0			
	11.6	9.0			
	11.5	8.9			
11+00	11.9	9.3			
	12.0	9.4			
	11.9	9.3			
	10.6	8.0			
	10.4	7.8			
50	10.6	8.0			
	10.5	7.9			
	10.3	7.7			
	9.7	7.1			
	7.3	4.7			
12+00	7.0	4.4			
	5.7	3.1			
	5.3	2.7			

3-17-61

STA. W. 162+00 TO 160+00 = N. 6,040' SOUND NORTH

	DIST	SOUND	ELEV	DIST	SOUND	ELEV
	0+00			(13) 50	10.8	9.5
(14)		3.9	2.5		10.5	9.2
		4.3	2.9		10.0	8.7
		3.3	1.9		9.5	8.2
50		3.0	1.6		8.9	7.6
		2.7	1.3	3+00	9.1	7.8
<u>1:40</u>		2.3	0.9		9.7	8.4
		2.0	0.6		10.1	8.8
		1.9	0.5		10.2	8.9
1+00		2.0	0.6		9.9	8.6
		2.2	0.8	50	10.0	8.7
		5.1	3.7		9.6	8.3
		8.5	7.1		9.6	8.3
		10.4	9.0		9.4	8.1
50		11.9	10.5		9.8	8.5
		12.7	11.3	4+00	9.9	8.6
		13.0	11.6		10.8	9.5
		12.9	11.5		12.0	10.7
		13.0	11.6	<u>1:45</u>	12.1	10.8
2+00		12.8	11.4		12.2	10.9
		12.1	10.7	50	12.1	10.8
		11.9	10.5		12.1	10.8
		11.5	10.1		12.0	10.7

STA. W. 162+00 - NORTH

	DIST	SOUND	ELEV	DIST	SOUND	ELEV
	(12) 12.0		10.8	(12) 11.0		9.8
	12.3		11.1	11.0		9.8
5+00	12.3		11.1	50	11.0	9.8
	12.3		11.1		11.0	9.8
	12.4		11.2		11.0	9.8
	12.1		10.9		11.0	9.8
	12.0		10.8		11.0	9.8
50	11.6		10.4	8+00	11.0	9.8
	10.2		9.0		11.5	10.3
	10.2		9.0		11.2	10.0
	10.2		9.0		11.3	10.1
	10.2		9.0		11.0	9.8
6+00	10.2		9.0	50	10.2	9.0
	10.2		9.0		10.1	8.9
	10.2		9.0		10.0	8.8
	10.2		9.0		10.1	8.9
	10.2		9.0		10.4	9.2
50	10.2		9.0	9+00	10.7	9.5
	10.8		9.6		10.8	9.6
<u>1:50</u>	10.1		8.9		11.5	10.3
	10.6		9.4		11.1	9.9
	10.4		9.2		11.3	10.1
9+00	10.5		9.3	50	11.9	10.7
	11.0		9.8		11.3	10.1
	10.9		9.7		11.4	10.2

STA. W. 162+00 - NORTH 3-17-61

Dist	Sound	Elev	Dist	Sound	Elev
(11)	11.5	10.4	(11)	3.0	1.9
	11.4	10.3		2.9	1.8
10+00	11.6	10.5	50	2.0	0.9
	11.7	10.6		1.8	0.7
	11.0	9.9			
	11.0	9.9			
	10.9	9.8			
50	10.7	9.6			
	9.4	8.3			
	9.3	8.2			
	9.3	8.2			
	9.3	8.2			
11+00	9.1	8.0			
	9.1	8.0			
<u>11:55</u>	9.0	7.9			
	8.7	7.6			
	8.0	6.9			
50	7.3	6.2			
	6.5	5.4			
	5.2	4.1			
	4.9	3.8			
	4.7	3.6			
12+00	4.0	2.9			
	3.9	2.8			
	3.2	2.1			

3-17-61

STA. W. 161+00:0+00=N 6,080: SOUND NORTH

Dist	Sound	Elev	Dist	Sound	Elev
0+00			(0.7)	10.5	9.8
(08)			50	9.9	9.2
	2.6	1.8		9.7	9.0
	1.9	1.1		9.5	8.8
	1.6	0.8		9.3	8.6
50	1.6	0.8		9.4	8.7
	1.6	0.8	3+00	9.4	8.7
<u>2:10</u>	1.7	0.9		9.3	8.6
	1.9	1.1		9.6	8.9
	1.9	1.1		9.5	8.8
1+00	2.0	1.2		9.4	8.7
	2.5	1.7	50	9.5	8.8
	6.1	5.3		9.3	8.6
	8.1	7.3		9.0	8.3
	10.2	9.4		9.1	8.4
50	11.0	10.2		9.9	9.2
	11.9	11.1	4+00	9.9	9.2
	12.3	11.5		10.0	9.3
	12.8	12.0	<u>2:15</u>	9.7	9.0
	12.9	12.1		9.1	8.4
2+00	12.6	11.8		9.5	8.8
	12.0	11.2	50	8.9	8.2
	11.3	10.5		9.0	8.3
	11.0	10.2		9.2	8.5

3-17-61

STA. W. 161+00-NORTH

Dist	Sound	Elev	Dist	Sound	Elev
(107)	9.9	9.2	(107)	11.0	10.3
	12.0	11.3		10.9	10.2
5+00	12.1	11.4	50	10.4	9.7
	12.1	11.4		9.9	9.2
	11.7	11.0		9.4	8.7
	11.1	10.4		9.4	8.7
	10.7	10.0		9.6	8.9
50	10.8	10.1	8+00	9.5	8.8
	10.8	10.1		9.7	9.0
	11.2	10.5		9.7	9.0
	11.3	10.6		9.7	9.0
	11.3	10.6		9.9	9.2
6+00	11.4	10.7	50	9.9	9.2
	11.2	10.5		9.9	9.2
	11.2	10.5		10.0	9.3
	11.1	10.4		10.1	9.4
	11.0	10.3		10.2	9.5
50	11.5	10.8	9+00	10.1	9.4
	11.0	10.3		10.0	9.3
	10.9	10.2	2:20	10.0	9.3
	10.8	10.1		10.0	9.3
	11.0	10.3		10.0	9.3
7+00	11.0	10.3	50	9.8	9.1
	10.9	10.2		9.4	8.7
	10.6	9.9		9.1	8.4

STA. W. 161+00-NORTH

Dist	Sound	Elev	Dist	Sound	Elev
(106)	8.7	8.1	1.2	0.6	
	9.0	8.4			
10+00	8.6	8.0			
	8.6	8.0			
	9.0	8.4			
	8.8	8.2			
	9.5	8.9			
50	10.0	9.4			
	10.2	9.6			
	10.1	9.5			
	10.0	9.4			
	9.5	8.9			
11+00	8.7	8.1			
	7.0	6.4			
	5.5	4.9			
	4.4	3.8			
	4.0	3.4			
50	3.8	3.2			
	3.7	3.1			
	3.6	3.0			
	3.7	3.1			
	3.6	3.0			
12+00	2.8	2.2			
	3.0	2.4			
	2.0	1.4			

3-17-61

STA. W. 160+00 TO 100 = N 6.110, SOUND NORTH

Dist	Sound	Elev	Dist	Sound	Elev
0+00			(05)	11.3	10.8
(05)			50	10.6	10.1
	1.0	0.5		10.1	9.6
	0.7	0.2		10.0	9.5
	1.2	0.7		9.7	9.2
50	1.2	0.7		9.6	9.1
	1.1	0.6	3+00	9.6	9.1
2:30	1.0	0.5		9.5	9.0
	1.2	0.7		9.5	9.0
	1.4	0.9		9.2	8.7
1+00	1.4	0.9		9.0	8.5
	1.5	1.0	50	9.0	8.5
	1.7	1.2		8.8	8.3
	5.0	4.5		8.7	8.2
	7.0	6.5		8.3	7.8
50	8.4	7.9		8.1	7.6
	9.5	9.0	4+00	8.0	7.5
	10.0	9.5		8.0	7.5
	10.7	10.2		8.1	7.6
	11.1	10.6		7.9	7.4
2+00	11.7	11.2		8.0	7.5
	11.9	11.4	50	8.3	7.8
	12.2	11.7		8.1	7.6
	12.0	11.5		8.2	7.7

STA. W. 160+00 - NORTH

Dist	Sound	Elev	Dist	Sound	Elev
(104)	8.4	8.0	(104)	9.0	8.6
	8.2	7.8		9.3	8.9
5+00	8.0	7.6	50	9.7	9.3
	7.9	7.5		9.8	9.4
2:35	8.0	7.6		9.6	9.2
	7.9	7.5		9.6	9.2
	7.9	7.5		9.7	9.3
50	7.9	7.5	8+00	9.5	9.1
	7.9	7.5		9.5	9.1
	7.9	7.5		9.4	9.0
	7.8	7.4		9.3	8.9
	7.9	7.5		9.2	8.8
6+00	8.0	7.6	50	9.5	9.1
	7.9	7.5		9.6	9.2
	7.9	7.5		9.7	9.3
	8.0	7.6		9.9	9.5
	8.0	7.6		10.0	9.6
50	8.0	7.6	9+00	9.9	9.5
	8.0	7.6		10.1	9.7
	7.9	7.5		10.6	10.2
	7.7	7.3		10.4	10.0
	7.9	7.5		10.8	10.4
7+00	8.2	7.8	50	11.0	10.6
	7.7	7.3		10.5	10.1
	8.5	8.1		9.8	9.4

STA. W. 160+00 - NORTH 3-17-61

DIST	Sound	Elev	(Dist Sound)	Elev
(0.3)	8.9	8.6		
	8.7	8.4		
10+00	9.0	8.7	50	
	8.9	8.6		
21.40	9.1	8.8		
	9.5	9.2		
	9.5	9.2		
50	9.1	8.8	13+00	
	9.0	8.7		
	8.0	7.7		
	7.1	6.8		
	6.1	5.8		
11+00	4.8	4.5		
	4.2	3.9		
	3.8	3.5		
	3.6	3.3		
	3.4	3.1		
50	3.0	2.7		
	2.8	2.5		
	2.9	2.6		
	2.6	2.3		
	2.0	1.7		
12+00	2.0	1.7		
	1.4	1.1		

BEGIN 3/20/61

(76)

STA. W. 159+00.0+00 = N 6,150; SOUND NORTH					
DIST	Sound	Elev	DIST	Sound	Elev
0+00			(3.8)	14.6	10.8
(38)			50	14.7	10.9
10.40	2.5	+1.3		14.1	10.3
	3.4	+0.4		14.0	10.2
	4.1	0.3		14.0	10.2
50	4.5	0.7		13.8	10.0
	4.2	0.4	3+00	13.1	9.3
	4.5	0.7		13.0	9.2
	4.2	0.4		12.8	9.0
	4.7	0.9		11.2	7.4
1+00	4.8	1.0		11.2	7.4
	5.1	1.3	50	11.9	8.1
	8.4	4.6		12.1	8.3
	9.6	5.8		12.1	8.3
	10.9	7.1		12.4	8.6
50	12.5	8.7	10.45	12.3	8.5
	13.6	9.8	4+00	12.1	8.3
	14.7	10.9		12.2	8.4
	14.8	11.0		12.2	8.4
	14.5	10.7		12.1	8.3
2+00	14.2	10.4		12.0	8.2
	14.0	10.2	50	12.0	8.2
	14.1	10.3		12.1	8.3
	14.2	10.4		11.5	7.7

3/20/61

STATION 159+00-NORTH

Dist	Sound	Elev	Dist	Sound	Elev
(38)	11.1	7.3	(39)	13.5	9.6
	11.9	8.1		14.0	10.1
5+00	12.0	8.2	50	14.1	10.2
	11.9	8.1		14.2	10.3
	11.8	8.0		14.6	10.7
	12.0	8.2		14.8	10.9
	12.0	8.2		14.9	11.0
50	12.0	8.2	8+00	14.9	11.0
	11.9	8.1		14.9	11.0
	12.0	8.2		15.0	11.1
	12.0	8.2		15.0	11.1
	11.8	8.0		15.0	11.1
6+00	11.6	7.8	50	15.0	11.1
	11.9	8.1		15.0	11.1
	12.0	8.2		15.0	11.1
	12.2	8.4		14.4	10.5
	12.7	8.9		14.2	10.3
50	12.7	8.9	9+00	14.0	10.1
	12.2	8.4		13.2	9.3
	12.1	8.3		12.8	8.9
	12.5	8.7		12.3	8.4
	12.1	8.3		12.9	9.0
7+00	12.1	8.3	50	13.6	9.7
	12.4	8.6		13.7	9.8
	12.8	9.0		13.7	9.8

3/20/61

STATION 159+00-NORTH

Dist	Sound	Elev	Dist	Sound	Elev
(39)	13.7	9.8	(39)	4.0	0.1
	13.9	10.0			
10+00	13.2	9.3	50		
	12.6	8.7			
	12.4	8.5			
	12.0	8.1			
	11.3	7.4			
50	10.6	6.7	13+00		
	10.0	6.1			
	8.2	4.3			
	7.5	3.6			
10:50	6.9	3.0			
11+00	7.5	3.6	50		
	7.0	3.1			
	7.0	3.1			
	7.0	3.1			
	7.0	3.1			
50	6.2	2.3	14+00		
	6.1	2.2			
	6.1	2.2			
	5.9	2.0			
	5.6	1.7			
12+00	6.0	2.1			
	5.3	1.4			
	4.0	0.1			

SHORE WLY
TIERRA DEL
FUERGO

3/20/61

STA. W. 158+00, 0+00 = N. 6, 190' SOUND NORTH

	DIST	SOUND	ELEV	DIST	SOUND	ELEV
				(35)	16.8	12.9
0+00				50	16.4	12.5
1/100						
(35)	3.2	+0.7			16.1	12.2
	3.5	+0.4			15.3	11.4
	4.2	0.3			14.3	10.4
50	4.6	0.7			13.8	9.9
	4.8	0.9	3+00		13.3	9.4
	4.7	0.8			12.7	8.8
	4.7	0.8			11.4	7.5
	4.6	0.7			11.2	7.3
1+00	4.8	0.9			12.1	8.2
	8.2	4.3	50		14.0	10.1
	10.1	6.2			12.8	8.9
	11.3	7.4			12.8	8.9
	12.4	8.5			12.9	9.0
50	13.0	9.1			12.7	8.8
	14.0	10.1	4+00		12.4	8.5
	13.8	9.9			12.2	8.3
	14.8	10.9			12.3	8.4
	14.8	10.9			12.5	8.6
2+00	15.2	11.3			12.8	8.9
	16.1	12.2	50		12.5	8.6
	16.3	12.4			12.9	9.0
	16.5	12.6			12.4	8.5

3/20/61

(28)

STA. W. 158+00 - NORTH

	DIST	SOUND	ELEV	DIST	SOUND	ELEV
	(35)	12.7	8.8	(24)	12.9	8.9
		12.5	8.6		12.8	8.8
5+00		12.7	8.8	50	12.4	8.4
		12.3	8.4		12.2	8.2
		12.4	8.5		12.2	8.2
		12.1	8.2		12.3	8.4
		12.2	8.3		12.5	8.5
50	11.8	7.9	8+00		12.5	8.5
		12.0			12.9	8.9
		11.5	7.6		12.7	8.7
		11.8	7.9		12.8	8.8
11:05	11.6	7.7			12.4	8.4
6+00	11.8	7.9	50		11.8	7.8
		12.0			11.3	7.3
		12.0	8.1		11.4	7.4
		11.6	7.7		11.7	7.7
		11.4	7.5		11.8	7.8
50	10.5	6.6	9+00		11.9	7.9
		10.8	6.9		12.4	8.4
		10.9	7.0		12.9	8.9
		11.2	7.3		13.4	9.4
		11.8	7.9	11:10	13.9	9.9
7+00	12.4	8.5	50		13.2	9.2
		12.5	8.6		13.3	9.3
		12.7	8.8		13.0	9.0

3/20/61

29

STA. W. 158+00 - NORTH

Dist	Sound	Elev	Dist	Sound	Elev
11:10	12.5	8.5	(AD)	5.8	1.8
(AD)	11.6	7.6		5.5	1.5
10+00	11.4	7.4	50	5.4	1.4
	11.0	7.0		5.2	1.2
	10.0	6.0		5.0	1.0
	10.0	6.0		5.1	1.1
	9.1	5.1		4.9	0.9
50	9.2	5.2	13+00	4.5	0.5
	7.8	3.8		4.8	0.8
	8.1	4.1		4.5	0.5
	7.5	3.5		4.1	0.1
	7.8	3.8	11:15	4.1	0.1
11+00	7.3	3.3	50	3.9	+0.1
	7.0	3.0		4.0	0.0
	7.0	3.0		3.3	+0.7
	6.9	2.9		3.4	+0.6
	7.0	3.0		3.2	+0.8
50	6.9	2.9	14+00	2.7	+1.3
	6.5	2.5		2.2	+1.8
	6.8	2.8		2.0	+2.0
	6.2	2.2		1.0	+3.0
	6.1	2.1	Cove w/ly TIERRA		
12+00	5.8	1.8	DEL FUEGO		
	5.7	1.7			
	5.4	1.4			

STA. W. 157+25; 0+00=N. 6220; SOUND NORTH

Dist	Sound	Elev	Dist	Sound	Elev
0+00			(AD)	17.1	13.1
11:25			50	17.0	13.0
(AD)	4.0	0.0		16.4	12.4
	5.7	1.7		15.9	11.9
	5.0	1.0		14.9	10.9
50	4.9	0.9		14.2	10.2
	4.7	0.7	3+00	13.9	9.9
	4.9	0.9			
	7.0	3.0			
	9.8	5.8			
1+00	11.0	7.0			
	12.1	8.1			
	12.6	8.6			
	13.0	9.0			
	13.0	9.0			
50	14.0	10.0			
	14.9	10.9			
	15.9	11.9			
	16.8	12.8			
	17.0	13.0			
2+00	17.2	13.2			
	17.9	13.9			
	17.8	13.8			
	17.5	13.5			

3/20/61

STA. W. 157+00: 0+00 = N. 6,220; SOUND NORTH

Dist	Sound	Elev	Dist	Sound	Elev
0+00			(AD)	17.8	13.8
11:30			50	17.7	13.7
(AD)	6.5	2.5		17.0	13.0
	5.5	1.5		16.9	12.9
	5.2	1.2		16.2	12.2
50	5.0	1.0		15.6	11.6
	5.2	1.2	3+00	14.9	10.9
	5.0	1.0		14.2	10.2
	7.8	3.8		13.5	9.5
	10.4	6.4		12.9	8.9
1+00	11.8	7.8		12.4	8.4
	12.3	8.3	50	12.0	8.0
	12.9	8.9		12.0	8.0
	13.0	9.0		12.0	8.0
	13.2	9.2		12.0	8.0
50	13.8	9.8		12.0	8.0
	14.0	10.0	4+00	11.4	7.4
	15.0	11.0		11.9	7.9
	16.0	12.0		12.0	8.0
	16.5	12.5		12.1	8.1
2+00	17.0	13.0		12.1	8.1
	17.0	13.0	50	12.4	8.4
	17.6	13.6		12.5	8.5
	17.6	13.6		12.5	8.5

3/20/61

(20)

STA. W. 157+00 - NORTH

Dist	Sound	Elev	Dist	Sound	Elev
(AD)	12.3	8.3	(AD)	12.1	8.1
	12.4	8.4		12.0	8.0
5+00	12.1	8.1	50	12.0	8.0
	12.1	8.1		12.5	8.5
	12.2	8.2	11:35	12.3	8.3
	12.0	8.0		12.3	8.3
	12.0	8.0		12.9	8.9
50	11.8	7.8	8+00	12.7	8.7
	11.8	7.8		12.2	8.2
	11.9	7.9		12.8	8.8
	11.6	7.6		12.5	8.5
	11.9	7.9		12.4	8.4
6+00	12.0	8.0	50	12.3	8.3
	12.4	8.4		12.6	8.6
	12.3	8.3		12.1	8.1
	12.3	8.3		12.3	8.3
	12.3	8.3		12.5	8.5
50	12.6	8.6	9+00	13.0	9.0
	12.7	8.7		13.1	9.1
	12.2	8.2		13.1	9.1
	12.6	8.6		13.0	9.0
	12.9	8.9		13.0	9.0
7+00	12.6	8.6	50	12.1	8.1
	12.4	8.4		12.0	8.0
	12.3	8.3		12.5	8.5

3/20/61

STA. W. 157+00 - NORTH

DIST	Sound	Elev	DIST	Sound	Elev
(40)	12.8	8.8	(40)	5.0	1.0
	12.6	8.6		6.0	2.0
10+00	12.7	8.7	50	5.5	1.5
	12.8	8.8		5.2	1.2
	13.0	9.0		5.5	1.5
	12.8	8.8		5.3	1.3
	12.9	8.9		5.2	1.2
50	12.5	8.5	13+00	5.3	1.3
	12.9	8.9		5.2	1.2
	12.5	8.5		5.0	1.0
	12.0	8.0		5.2	1.2
	11.8	7.8		5.0	1.0
11+00	11.8	7.8	50	4.8	0.8
	10.8	6.8		4.7	0.7
	8.8	4.8		4.7	0.7
	7.3	3.3		4.1	0.1
	6.9	2.9	11+40	3.9	+0.1
50	6.6	2.6	14+00	3.5	+0.5
	6.5	2.5		3.0	+1.0
	6.2	2.2		2.1	+1.9
	6.7	2.7		1.7	+2.3
	6.3	2.3		1.0	+3.0
12+00	6.0	2.0	50	0.8	+3.2
	6.8	2.8	Cove	Wly T.D.F.	
	6.2	2.2			

3/20/61

(21)

STA. W. 156+75; 0+00 = N 6 22 20 - Sound NORTH

DIST	Sound	ELEV	DIST	Sound	ELEV
0			(39)	17.9	14.0
12.55	4.6	0.7	50	17.2	13.8
(39)	6.3	2.4		17.5	13.6
	6.2	2.3		17.0	13.1
	5.0	1.1		16.6	12.7
50	4.8	0.9	11+00	16.3	12.4
	4.7	0.8	3+00	15.4	11.5
	4.7	0.8			
	8.3	4.4			
	10.2	6.3			
14+00	11.5	7.6			
	12.6	8.7			
	12.4	8.5			
	12.9	9.0			
	13.2	9.3			
50	14.1	10.2			
	14.5	10.6			
	14.7	10.8			
	15.0	11.1			
	15.4	11.5			
2+00	15.9	12.0			
	16.8	12.9			
	17.3	13.4			
	17.8	13.9			

3/20/61

Sound

STAW 156+50; 0+00-N 6190 - NORTH

DIST	SOUND	ELEV	DIST	SOUND	ELEV
0+00			(38)	16.8	13.0
1+05			+50	17.0	13.2
(3.8)				17.6	13.8
	2.8	11.0		17.8	14.0
	6.5	2.7		17.7	13.9
50	6.6	2.8		17.6	13.8
	4.7	0.9	3+00	17.5	13.7
	4.5	0.7			
	4.4	0.6			
	4.6	0.8			
1+00	5.3	1.5			
	7.5	3.7			
	10.0	6.2			
	11.4	7.6			
	12.1	8.3			
50	12.5	8.7			
	12.9	9.1			
	13.7	9.9			
	14.1	10.3			
	14.3	10.5			
2+00	14.7	10.9			
	15.0	11.2			
	15.4	11.6			
	16.2	12.4			

22

STAW 156+00; 0+00-N 6150 - Sound NORTH

DIST	SOUND	ELEV	DIST	SOUND	ELEV
0			(38)	12.8	9.0
1+10			50	13.1	9.3
(3.8)				13.5	9.7
	5.1	1.3		14.1	10.3
	5.2	1.4		14.4	10.6
50	4.0	0.2		15.1	11.3
	3.8	0.0	3+00	15.8	12.0
	4.0	0.2		15.8	12.0
	4.1	0.3		16.0	12.2
	4.2	0.4		16.1	12.3
1+00	4.0	0.2		15.5	11.7
	4.2	0.4	50	15.3	11.5
	5.3	1.5		15.2	11.4
	8.5	4.7		15.0	11.2
	10.8	7.0		14.5	10.7
50	11.4	7.6		14.1	10.3
	11.6	7.8	4+00	14.1	10.3
	11.8	8.0		14.1	10.3
	11.8	8.0		14.0	10.2
1+15	11.9	8.1		13.2	9.4
2+00	11.8	8.0		12.8	9.0
	12.2	8.4	50	12.1	8.3
	12.1	8.3		12.0	8.2
	12.5	8.7		11.5	7.7

STA W 156400 CONT NORTH

	DIST	SOUND	ELEV	DIST	SOUND	ELEV
D	(3.6)	10.8	7.2	(36)	11.0	7.4
0		11.0	7.4		11.0	7.4
1	5400	11.0	7.4	+50	11.0	7.4
		12.1	8.5		11.2	7.6
		11.8	8.2		11.3	7.7
		12.2	8.6		11.4	7.8
		12.2	8.6		12.0	8.4
	50	12.3	8.7	8400	12.0	8.4
		12.3	8.7		11.8	8.2
		12.1	8.5		11.8	8.2
		12.4	8.8		11.4	7.8
1		12.1	8.5		11.4	7.8
	6400	12.0	8.4	50	11.4	7.8
		11.5	7.9		12.1	8.5
		11.1	7.5		12.1	8.5
		10.8	7.2		12.0	8.4
		10.8	7.2		12.4	8.8
	50	10.8	7.2	9400	12.0	8.4
		10.4	6.8		11.9	8.3
		10.8	7.2		12.0	8.4
		11.1	7.5		12.0	8.4
2	1120	11.8	8.2		11.9	8.3
	7400	12.0	8.4	50	12.1	8.5
		11.8	8.2		12.1	8.5
		11.8	8.2		12.3	8.7

STA W 156400 CONT NORTH

23

	DIST	SOUND	ELEV	DIST	SOUND	ELEV
	(35)	12.5	9.0	(35)	12.0	8.5
		12.1	8.6		12.0	8.5
	10400	11.9	8.4	50	11.4	7.9
		12.1	8.6		11.3	7.8
		12.2	8.7		11.2	7.7
		12.3	8.8		11.0	7.5
		12.4	8.9		11.1	7.6
	50	12.8	9.3	13400	11.2	7.7
		12.8	9.3		11.2	7.7
		12.8	9.3		11.5	8.0
		13.1	9.6		11.9	8.4
		12.8	9.3		11.5	8.0
	11400	12.9	9.4	50	11.5	8.0
		12.9	9.4		10.8	7.3
		13.0	9.5		10.5	7.0
		12.9	9.4		10.6	7.1
	1125	12.9	9.4		10.5	7.0
	50	13.1	9.6	14400	10.2	6.7
		13.0	9.5		10.3	6.8
		12.8	9.3		9.1	5.6
		13.1	9.6		8.5	5.0
		13.0	9.5		7.1	3.6
	12400	12.5	9.0	50	3.5	0.0
		12.4	8.9		4.1	0.6
		12.4	8.9		3.3	+0.2
		12.4	8.9		3.4	+0.1
					3.0	+0.5
					2.5	+1.0

3/20/61

STA W 155+50; 0+00 = N 5800. SOUND NORTH

DIST	SOUND	ELEV	DIST	SOUND	ELEV
0+00			134	3.0	+0.4
1,35			50	3.1	+0.3
3.5				3.0	+0.4
				2.8	+0.6
				3.0	+0.4
50				3.0	+0.4
	1.5	+2.0	3+00	3.3	+0.1
	2.2	+1.3		3.3	+0.1
	2.1	+1.4		3.4	0.0
	2.1	+1.4		4.5	1.1
1+00	2.3	+1.2		4.5	1.1
	2.4	+1.1	50	4.1	0.7
	2.7	+0.8		3.2	+0.2
	2.6	+0.9		3.2	+0.2
	2.5	+1.0		3.3	+0.1
50	2.5	+1.0		3.3	+0.1
	2.3	+1.2	4+00	3.5	0.1
	2.6	+0.9	1:40	3.4	0.0
	2.7	+0.8		3.3	+0.1
	3.0	+0.5		3.6	0.2
2+00	3.6	0.1		4.1	0.7
	3.5	0.0	50	6.5	3.1
	3.2	+0.3		10.0	6.6
	3.2	+0.3		11.3	7.9

3/20/61

2TH W 155+50 CONT NORTH

(24)

DIST	SOUND	ELEV	DIST	SOUND	ELEV
134	11.6	8.2			
	11.0	7.6			
5+00	11.0	7.6			
	11.2	7.8			
	11.0	7.6			
	11.0	7.6			
	11.0	7.6			
50	11.5	8.1			
	11.3	7.9			
	11.6	8.2			
	11.6	8.2			
	11.8	8.4			
6+00	12.0	8.6			
	12.4	9.0			
	12.6	9.2			
	12.8	9.4			
	13.1	9.7			
50	13.1	9.7			

3/20/61

STA W 155+00 CONT NORTH 25

STA W 155+00; 0+00 = N 5740 SOUND NORTH

DIST	SOUND	ELEV	DIST	SOUND	ELEV	DIST	SOUND	ELEV	DIST	SOUND	ELEV
			(33)	6.5	3.2	(33)	11.1	7.8	1155	12.8	9.6
0+00							11.1	7.8	(32)	13.0	9.8
(33)			50	6.2	2.9	5+00	11.3	8.0	50	13.0	9.8
			1:50	5.3	2.0		11.3	8.0		13.0	9.8
				4.9	1.6		11.4	8.1		13.0	9.8
1:45	2.3	+1.0		5.0	1.7		12.0	8.7		13.2	10.0
50	2.0	+1.3		3.0	+0.3		12.0	8.7		13.4	10.2
	1.8	+1.5	3+00	4.8	1.5	50	11.8	8.5	8+00	14.1	10.9
	2.0	+1.3		5.0	1.7		11.7	8.4		14.2	11.0
	2.3	+1.0		3.0	+0.3		11.5	8.2		14.1	10.9
	2.5	+0.8		3.0	+0.3		11.3	8.0		14.0	10.8
1400	2.3	+1.0		3.0	+0.3		11.4	8.1		13.5	10.3
	2.0	+1.3	50	3.5	0.2	6+00	11.1	7.8	50	13.0	9.8
	2.5	+0.8		3.8	0.5		11.4	8.1		12.7	9.5
	2.8	+0.5		3.9	0.6		11.2	7.9		12.5	9.3
	2.9	+0.9		4.0	0.7		11.2	7.9		12.5	9.3
50	2.7	+0.6		3.8	0.5		11.3	8.0		12.6	9.4
	2.7	+0.6	4+00	4.0	0.7	50	11.4	8.1	9+00	12.8	9.6
	3.5	0.2		3.8	0.5		11.8	8.5		12.7	9.5
	3.0	+0.3		4.0	0.7		11.5	8.2		12.5	9.3
1400	4.0	0.7		4.1	0.8		11.4	8.1		12.4	9.2
2+00	2.5	+0.8		6.2	2.9		11.8	8.5		12.3	9.1
	2.8	+0.5	50	7.8	4.5	7+00	11.7	8.4	50	12.5	9.3
	4.9	1.6		9.8	6.5		12.0	8.7		12.5	9.3
	6.3	3.0		10.4	7.1		12.3	9.0		12.4	9.2

STA W155+00 CONT NORTH

DIST	SOUND	ELEV	DIST	SOUND	ELEV
32	12.3	9.1	32	12.1	8.9
	12.2	9.0		12.1	8.9
10+00	12.0	8.8	+50	12.0	8.8
	12.0	8.8		12.0	8.8
	12.0	8.8		11.7	8.5
	12.1	8.9		11.2	8.0
	12.1	8.9	2:00	11.1	7.9
50	12.0	8.8	13+00	11.1	7.9
	11.8	8.6		11.4	8.2
	11.8	8.6		11.3	8.1
	11.9	8.7		12.0	8.8
	11.4	8.2		11.8	8.6
11+00	11.4	8.2	50	12.0	8.8
	11.8	8.6		11.3	8.1
	11.3	8.1		11.4	8.2
	11.2	8.0		11.4	8.2
	11.3	8.1		11.3	8.1
50	10.8	7.6	14+00	11.5	8.3
	10.6	7.4		11.3	8.1
	10.5	7.3		11.2	8.0
	10.7	7.5		11.0	7.8
	11.0	7.8		10.9	7.7
12+00	12.3	9.1	+50	11.0	7.8
	11.8	8.6		11.0	7.8
	12.1	8.9		11.4	8.2

STA W155+00 CONT NORTH

26

DIST	SOUND	ELEV	DIST	SOUND	ELEV
32	11.5	8.3	31	11.1	8.0
	11.6	8.4		11.3	8.2
15+00	11.5	8.3	50	11.4	8.3
	11.5	8.3		12.0	8.9
	11.3	8.1		12.3	9.2
	11.3	8.1		11.4	8.3
	11.6	8.4		10.8	7.7
50	11.5	8.3	18+00	10.2	7.1
	11.4	8.2	2:05	9.9	6.8
	12.0	8.8		10.0	6.9
	11.8	8.6		9.4	6.3
	11.4	8.2		9.3	6.2
16+00	12.0	8.8	50	9.5	6.4
	12.0	8.8		10.3	7.2
	11.9	8.7		7.5	4.4
	12.1	8.9		3.0	+0.1
	12.0	8.8		2.5	+0.6
50	12.1	8.9	19+00	2.0	+1.1
	12.2	9.0		1.9	+1.2
	12.0	8.8		1.8	+1.3
	12.0	8.8		1.1	+2.0
	12.0	8.8		1.0	+2.1
17+00	11.8	8.6	COVE WILY TDF		
	11.0	7.8			
	11.4	8.2			

3/20/61

STA W 154+00; 0+00=N 5670 Sound North

DIST	SOUND	ELEV	DIST	SOUND	ELEV
			(30)	11.7	8.7
0+00			50	11.6	8.6
2:25				11.6	8.6
(30)	2.2	+0.8		11.5	8.5
	2.0	+1.0		11.5	8.5
50	2.4	+0.6		11.3	8.3
	2.1	+0.9	3+00	11.1	8.1
	2.2	+0.8		11.1	8.1
	2.0	+1.0		11.2	8.2
	3.0	0.0		11.5	8.5
1+00	6.1	3.1		11.4	8.4
	8.5	5.5	50	11.2	8.2
	9.4	6.4		11.5	8.5
	9.7	6.7		11.6	8.6
	9.7	6.7		12.0	9.0
50	10.0	7.0		11.8	8.8
	10.3	7.3	4+00	11.0	8.0
	10.5	7.5		11.2	8.2
	11.0	8.0		11.1	8.1
	11.1	8.1		11.1	8.1
2+00	11.3	8.3		11.1	8.1
	11.5	8.5	50	11.0	8.0
	11.7	8.7		11.0	8.0
	11.4	8.4		11.0	8.0

STA W 154+00 CONT NORTH 127

DIST	SOUND	ELEV	DIST	SOUND	ELEV
(30)	11.2	8.2	(30)	9.9	6.9
2:30	11.7	8.7		10.2	7.2
5+00	11.7	8.7	50	10.8	7.8
	11.2	8.2		11.0	8.0
	11.2	8.2		11.5	8.5
	11.2	8.2		11.3	8.3
	11.2	8.2		11.3	8.3
50	11.5	8.5	8+00	11.4	8.4
	11.4	8.4		11.5	8.5
	11.4	8.4		11.8	8.8
	11.1	8.1		11.8	8.8
	11.6	8.6		11.8	8.8
6+00	11.5	8.5	+50	12.0	9.0
	12.0	9.0		12.4	9.4
	11.8	8.8		12.9	9.9
	10.9	7.9		12.9	9.9
	10.7	7.7		13.3	10.3
50	10.8	7.8	9+00	13.7	10.7
	10.5	7.5		13.8	10.8
	10.1	7.1		13.6	10.6
	10.0	7.0		13.2	10.2
	9.7	6.7		13.3	10.3
7+00	9.5	6.5	+50	13.5	10.5
	9.5	6.5		13.5	10.5
	9.4	6.4		13.5	10.5

STA W15400 CONT NORTH

SNT	SOUND	ELEV	DIST	SOUND	ELEV
30	13.4	10.4	29	11.0	8.1
	13.2	10.2		11.4	8.5
10+00	12.8	9.8	+50	11.1	8.2
	12.3	9.3		11.5	8.6
	11.9	8.9		11.3	8.4
	11.7	8.7		11.8	8.9
	11.5	8.5	2:35	11.3	8.4
50	11.2	8.2	13+00	11.5	8.6
	11.1	8.1		11.7	8.8
	10.8	7.8		11.6	8.7
	10.7	7.7		11.6	8.7
	11.0	8.0		11.6	8.7
11+00	10.9	7.9	50	11.1	8.2
	10.9	7.9		11.3	8.4
	10.9	7.9		11.1	8.2
	11.0	8.0		11.2	8.3
	11.2	8.2		11.2	8.3
50	11.5	8.5	14+00	11.2	8.3
	11.7	8.7		11.3	8.4
	11.8	8.8		10.8	7.9
	11.8	8.8		11.0	8.1
	11.4	8.4		10.5	7.6
12+00	11.4	8.4	50	10.6	7.7
	11.6	8.6		11.2	8.3
	11.5	8.5		11.3	8.4

STA W15400 CONT NORTH (28)

DIST	SOUND	ELEV	DIST	SOUND	ELEV
28	10.9	8.1	27	10.5	7.8
	11.0	8.2		10.9	8.2
15+00	10.9	8.1	50	10.3	7.6
	11.0	8.2		9.7	7.0
	10.7	7.9		9.3	6.6
	10.3	7.5		9.0	6.3
	10.1	7.3		9.0	6.3
50	10.0	7.2	18+00	9.5	6.8
	10.3	7.5		9.5	6.8
	10.5	7.7		9.8	7.1
	10.6	7.8		10.4	7.7
2:40	11.0	8.2		11.2	8.5
16+00	11.3	8.5	50	11.7	9.0
	11.4	8.6		10.8	8.1
	10.8	8.0		9.8	7.1
	11.0	8.2		8.2	5.5
	10.4	7.6		7.3	4.6
50	10.3	7.5	19+00	6.4	3.7
	10.7	7.9		6.3	3.6
	10.5	7.7		3.8	1.1
	10.6	7.8		3.2	0.5
	10.9	8.1		3.2	0.5
17+00	10.7	7.9	50	2.6	+0.1
	10.7	7.9	2:45	2.0	+0.7
	10.6	7.8			

3/20/61

STATION 153400 CONT NORTH

129

STATION 153400 0400-N			5630 - SOUND NORTH			STATION 153400 CONT NORTH					
DIST	SOUND	ELEV	DIST	SOUND	ELEV	DIST	SOUND	ELEV	DIST	SOUND	ELEV
			(25)	11.4	8.9	(25)	10.7	8.2	(29)	11.0	8.6
0400			50	11.4	8.9	5400	10.4	7.9		11.4	9.0
(25)				11.4	8.9		10.0	7.5	50	11.4	9.0
				11.4	8.9		10.0	7.5		10.7	8.3
				11.3	8.8		9.9	7.4		10.4	8.0
3:05	1.2	+1.3		11.3	8.8	3:10	9.9	7.4		10.3	7.9
50	1.0	+1.5		11.5	9.0		9.9	7.4		10.3	7.9
	1.3	+1.2	3400	11.4	8.9	50	9.7	7.2	8400	9.7	7.3
	1.2	+1.3		11.3	8.8		10.0	7.5		9.6	7.2
	2.2	+0.3		11.2	8.7		10.2	7.7		9.4	7.0
	5.6	3.1		11.0	8.5		10.3	7.8		9.7	7.3
1400	8.2	5.7	5	10.8	8.3		10.3	7.8		10.1	7.7
	9.3	6.8	50	10.3	7.8	6400	10.1	7.6	50	10.0	7.6
	10.0	7.5		10.0	7.5		10.1	7.6		10.0	7.6
	10.2	7.7		9.6	7.1		10.5	8.0	3:15	11.8	9.4
	10.2	7.7		9.7	7.2		10.9	8.4	3:20	12.0	9.6
50	10.3	7.8		9.5	7.0		11.0	8.5	(24)	12.3	9.9
	10.6	8.1	4400	9.4	6.9	50	11.0	8.5	9400	12.3	9.9
	10.4	7.9		9.3	6.8		11.0	8.5		10.2	7.8
	10.7	8.2		9.3	6.8		10.8	8.3		10.5	8.1
	10.9	8.4		9.5	7.0		10.7	8.2		10.6	8.2
2400	11.0	8.5		9.8	7.3		10.3	7.8		11.4	9.0
	11.2	8.7	50	10.0	7.5	7400	10.3	7.8	50	11.2	8.8
	11.3	8.8		10.3	7.8		10.3	7.8		11.3	8.9
	11.3	8.8		10.8	8.3		10.5	8.0		11.3	8.9

STAW 153700 CONT NORTH

DIST	SOUND	ELEV	DIST	SOUND	ELEV
24	11.4	9.0	23	9.9	7.6
	11.7	9.3		10.1	7.8
10400	11.8	9.4	450	9.8	7.5
	12.3	9.9		10.1	7.8
	12.8	10.4		10.4	8.1
	13.1	10.7		10.5	8.2
	13.0	10.6		10.7	8.4
50	13.3	10.9	13400	10.9	8.6
	12.8	10.4		10.6	8.3
	12.6	10.2		11.2	8.9
	12.6	10.2		10.8	8.5
	12.0	9.6		10.9	8.6
11400	11.5	9.1	50	11.3	9.0
	11.5	9.1		11.2	8.9
	10.8	8.4		11.4	9.1
	10.8	8.4		11.3	9.0
	10.6	8.2		11.2	8.9
50	10.3	7.9	14400	11.5	9.2
	10.0	7.6		11.4	9.1
	10.2	7.8		11.5	9.2
	9.8	7.4		11.8	9.5
	9.9	7.5	3,25	11.5	9.2
12400	10.2	7.8	50	11.9	9.6
	10.0	7.6		11.4	9.1
	9.9	7.5		10.8	8.5

STAW 153700 CONT NORTH (30)

DIST	SOUND	ELEV	DIST	SOUND	ELEV
23	11.7	9.4	22	10.3	8.1
	11.0	8.7		10.8	8.6
15400	11.2	8.9	50	10.7	8.5
	11.4	9.1		10.8	8.6
	11.1	8.8		10.8	8.6
	11.4	9.1		10.5	8.3
	11.0	8.7		9.9	7.7
50	11.6	9.3	18400	9.7	7.5
	11.1	8.8		7.8	5.6
	11.4	9.1		5.9	3.7
	11.3	9.0		4.2	2.0
	10.9	8.6		4.1	1.9
16400	11.0	8.7	50	4.0	1.8
	10.6	8.3	3,30	4.7	2.5
	10.5	8.2			
	10.5	8.2			
	10.1	7.8			
50	10.0	7.7			
	9.8	7.5			
	9.4	7.1			
	9.4	7.1			
	9.0	6.7			
17400	9.3	7.0			
	9.9	7.6			
	9.8	7.5			

STA W/52+00; 0+00 = N5620 - SOUND NORTH						STA W/52+00 CONT NORTH					
DIST	SOUND	ELEV	DIST	SOUND	ELEV	DIST	SOUND	ELEV	DIST	SOUND	ELEV
						Anchor Red	10.0	7.8	(2.4)	10.2	7.8
0+00			(22)	9.6	7.4	9:25	10.3	8.1		10.2	7.8
(2.1)			50	9.5	7.3	5+00	10.2	8.0	50	9.9	7.5
				9.5	7.3	(2.2)	10.1	7.9		9.2	6.8
9:25	0.5	+1.6		9.7	7.5		10.0	7.8		8.8	6.4
	1.4	+0.7		9.7	7.5		9.9	7.7	✓	8.1	5.7
50	1.5	+0.6		9.6	7.4		9.8	7.6		8.0	5.6
	1.3	+0.8	3+00	9.6	7.4	50	9.8	7.6	8+00	7.7	5.3
	1.7	+0.4		9.7	7.5		9.9	7.7		7.4	5.0
	4.0	1.9		9.8	7.6		10.0	7.8		6.8	4.4
	5.7	3.6		10.1	7.9	9:40	10.0	7.8	✓	6.6	4.2
1+00	7.9	5.8		10.2	8.0	(2.3)	10.4	8.1		5.7	3.3
11	8.8	6.7	50	10.0	7.8	6+00	10.3	8.0	50	5.2	2.8
	9.4	7.3		10.1	7.9		10.2	7.9		4.2	1.8
	10.0	7.9		10.3	8.1		10.0	7.7		5.0	2.6
	10.2	8.1		10.2	8.0	9:45	10.0	7.7	✓	4.2	1.8
50	10.4	8.3		10.0	7.8	(2.3)	10.2	7.9		4.1	1.7
	10.5	8.4	4+00	9.8	7.6	50	10.4	8.1	9+00	4.2	1.8
	10.4	8.3		9.7	7.5		10.7	8.4		3.8	1.4
	10.3	8.2		9.9	7.7		10.6	8.3		4.2	1.8
	10.0	7.9	9:30	9.9	7.7	✓	10.6	8.3		5.1	2.7
2+00	9.7	7.6		10.1	7.9		10.5	8.2	9:50	6.7	4.3
1	9.5	7.4	50	10.1	7.9	7+00	10.4	8.1	50	7.6	5.2
	9.5	7.4		10.1	7.9		10.4	8.1		8.2	5.8
	9.5	7.4		10.1	7.9		10.4	8.1		8.7	6.3

STA W 152+00 CONT NORTH
3-21-61

STA W 152+00 CONT NORTH

(32)

DIST	SOUND	ELEV	DIST	SOUND	ELEV	DIST	SOUND	ELEV	DIST	SOUND	ELEV
(24)	9.4	7.0	(24)	10.3	7.9	(25)	11.7	9.2	(25)	11.5	9.0
	9.8	7.4		10.3	7.9		11.7	9.2		11.9	9.4
10+00	9.8	7.4	13+00	9.5	7.1	50	11.6	9.1	18+00	12.2	9.7
	10.3	7.9		9.8	7.4		11.6	9.1		12.4	9.9
	10.5	8.1		9.9	7.5		11.4	8.9		12.1	9.6
	11.0	8.6		9.8	7.4		11.5	9.0		11.0	8.5
	11.5	9.1		9.4	7.0		11.5	9.0		10.0	7.5
50	11.6	9.2	50	9.7	7.3	16+00	11.5	9.0	50	7.7	5.2
	12.0	9.6		9.4	7.0		12.1	9.6		5.4	2.9
	12.6	10.2		9.6	7.2		12.1	9.6		4.6	2.1
	12.7	10.3		9.7	7.3		12.4	9.9		4.4	1.9
	12.7	10.3		9.7	7.3		12.0	9.5	10+00	4.5	2.0
11+00	12.8	10.4	14+00	9.8	7.4	50	12.4	9.9	19+00	5.3	2.8
	12.7	10.3		9.7	7.3		12.2	9.7		6.1	3.6
	12.4	10.0		10.0	7.6		12.5	10.0		4.0	1.5
	12.0	9.6		10.3	7.9		12.5	10.0	wcy	T.O.F.	
	11.8	9.4		9.9	7.5		12.3	9.8			
50	11.6	9.2	50	9.9	7.5	17+00	12.3	9.8	50		
	11.3	8.9		10.5	8.1		11.8	9.3			
	10.9	8.5		11.3	8.9		11.8	9.3			
	10.8	8.4		11.4	9.0		11.3	8.8			
	10.2	7.8	9+55	10.9	8.5		11.3	8.8			
12+00	10.2	7.8	15+00	11.2	8.8	50	11.2	8.7			
	10.0	7.6		11.6	9.2		10.9	8.4			
	10.9	8.5		11.6	9.2		11.5	9.0			

3-21-61

STA W151400; 0700 = N. 5640 - SOUND NORTH

DIST	SOUND	ELEV	DIST	SOUND	ELEV
0700			(27)	10.2	7.5
(27)			50	10.3	7.6
				10.4	7.7
				10.4	7.7
10:25	1.4	+1.3		10.6	7.9
50	2.0	+0.7		11.1	8.4
	1.8	+0.9	3400	11.2	8.5
	1.8	+0.9		11.1	8.4
	1.8	+0.9		11.0	8.3
	1.6	+1.1		11.0	8.3
1400	3.0	0.3		11.1	8.4
	7.5	4.8	50	11.1	8.4
	9.1	6.4		11.0	8.3
	9.9	7.2		11.0	8.3
	10.3	7.6		10.9	8.2
50	10.4	7.7		10.8	8.1
	10.4	7.7	4400	10.1	7.4
	10.7	8.0		10.4	7.7
	11.0	8.3		10.9	8.2
	11.1	8.4		11.0	8.3
2400	11.0	8.3	10:30	10.3	7.6
	11.1	8.4	50	10.3	7.6
	10.8	8.1		10.4	7.7
	10.5	7.8		10.4	7.7

STA W151400 CONT NORTH

(33)

DIST	SOUND	ELEV	DIST	SOUND	ELEV
(28)	10.8	8.0	(29)	3.8	0.9
10:30	10.5	7.7		3.8	0.9
5400	10.6	7.8	450	3.3	0.4
10:40	10.7	7.9		2.0	+0.9
ANCH	10.5	7.7			
	10.6	7.8			
	10.3	7.5			
50	10.0	7.2			
	10.4	7.6			
	10.0	7.2			
	10.0	7.2			
	9.8	7.0			
	9.8	7.0			
6400	9.5	6.7			
	9.7	6.9			
	9.0	6.2			
10:45	8.4	5.5			
ANCH	7.7	4.8			
50	(29)	6.7			
10:50	4.5	1.6			
	4.6	1.7			
	4.3	1.4			
7400	4.0	1.1			
	3.9	1.0			
	3.8	0.9			

See Page 35

3-21-61

STA W150+00; 0+00 = N 5690 - Sound North

STA W150+00 CONT

134

	DIST	SOUND	ELEV	DIST	SOUND	ELEV	DIST	SOUND	ELEV
				(3)	10.5	7.4	(3.2)	10.1	6.9
0+00				50	10.9	7.6	5+00	9.8	6.6
(31)					10.8	7.7	11+10	9.2	6.0
					10.6	7.5	11+15	8.5	5.3
11:00	2.3	+0.8			10.5	7.4	anchor	7.8	4.6
50	2.0	+1.1			10.5	7.4		5.4	2.2
	2.4	+0.7	3+00		11.0	7.9	50	3.9	0.7
	2.8	+0.3			11.1	8.0		3.6	0.4
	2.8	+0.3			11.1	8.0		3.2	0.0
	2.4	+0.7			11.0	7.9		3.2	0.0
1+00	2.0	+1.1			11.1	8.0		3.0	+0.2
	2.0	+1.1	50		11.0	7.9	6+00	2.8	+0.4
	2.3	+0.8			11.1	8.0		2.4	+0.8
	4.1	1.0			10.8	7.7		2.4	+0.8
	6.1	3.0	11+05		11.4	8.3		2.3	+0.9
50	7.1	4.0			11.0	7.9		2.2	+1.0
	8.3	5.2	4+00		11.2	8.1	50		
	9.0	5.9			10.9	7.8		SHORE	
	10.1	7.0			11.0	7.9			
	10.1	7.0			10.8	7.7			
2+00	10.2	7.1			10.9	7.8			
	10.1	7.0	50		10.6	7.5	7+00		
	10.6	7.5			10.4	7.3			
	10.7	7.6			10.0	6.9			

See page 36

See page 33

STAW 151+00; 0+00 = N6580-Sound North

DIST	SOUND	ELEV	DIST	SOUND	ELEV
0+00			1.5	9.6	8.1
1.5			50	9.8	8.3
				10.0	8.5
				10.1	8.6
9:35				10.0	8.5
50	4.0	2.5		10.0	8.5
	3.5	2.0	3+00	10.0	8.5
	3.0	1.5		10.3	8.8
	3.1	1.6		10.6	9.1
	5.1	3.6		10.6	9.1
1+00	6.2	4.7		10.0	8.5
	6.4	4.9	50	9.0	7.5
	7.4	5.9		9.5	8.0
	8.0	6.5		9.8	8.3
	9.0	7.5		9.9	8.4
20	9.7	8.2		10.0	8.5
	10.0	8.5	4+00	9.7	8.2
	10.0	8.5		9.3	7.8
	10.0	8.5		9.0	7.5
	10.4	8.9		8.7	7.2
2+00	10.4	8.9		8.7	7.2
	10.0	8.5	50	8.8	7.3
	9.7	8.2		9.9	8.4
	9.2	7.7		10.0	8.5

DIST	SOUND	ELEV	DIST	SOUND	ELEV
1.5	10.0	8.5	1.5	12.0	10.5
	9.2	7.7		12.2	10.7
5+00	9.2	7.7	50	12.1	10.6
	9.8	8.3		12.1	10.6
	9.9	8.4		12.0	10.5
	9.3	7.8		12.0	10.5
	10.0	8.5		11.8	10.3
50	10.0	8.5	8+00	11.8	10.3
	9.8	8.3		11.0	9.5
	9.1	7.6		9.7	8.2
	8.8	7.3		8.8	7.0
9:40	9.6	8.1		6.9	5.4
6+00	9.6	8.1	50	5.2	3.7
	9.2	7.7		3.8	2.3
	9.9	8.4		3.1	1.6
	11.1	9.6		3.0	1.5
	11.6	10.1		2.9	1.4
50	11.0	9.5	9+00	3.4	1.9
	11.0	9.5		2.3	0.8
	11.2	9.7	SHORE WLY TDF		
	11.1	9.6			
	10.6	9.1			
7+00	10.9	9.4			
	11.0	9.5			
	11.1	9.6			

3-22-61
See page 34 DANA BASIN

STA W 150+00; 0+00 = N 6670			SOUND NORTH		
DIST	SOUND	ELEV	DIST	SOUND	ELEV
0+00			16	10.7	9.1
16			50	10.7	9.1
				10.7	9.1
				10.7	9.1
9:50	3.4	1.8		10.5	8.9
50	4.7	3.1		10.1	8.5
	3.3	1.7	3+00	10.2	8.6
	3.1	1.5		10.1	8.5
	3.2	1.6		10.1	8.5
	5.1	3.5		9.8	8.2
1+00	6.4	4.8		9.9	8.3
	7.2	5.6	50	9.5	7.9
	8.0	6.4		9.8	8.2
	8.8	7.2		9.5	7.9
	8.8	7.2		9.0	7.4
50	9.4	7.8		9.2	7.6
	9.4	7.8	4+00	9.0	7.4
	9.5	7.9		9.5	7.9
	9.0	7.4		9.8	8.2
	9.0	7.4		10.2	8.6
2+00	9.4	7.8		10.8	9.2
	9.9	8.3	20	11.1	9.5
	10.3	8.7		11.3	9.7
	10.4	8.8		10.9	9.3

STA W 150+00 POINT NORTH (36)
DANA BASIN

DIST	SOUND	ELEV	DIST	SOUND	ELEV
16	10.1	8.5	16	11.0	9.4
	10.0	8.4		10.4	8.8
5+00	10.0	8.4	50	9.5	7.9
	10.0	8.4		8.0	6.4
	9.8	8.2		6.9	5.3
	9.4	7.8		4.7	3.1
	9.3	7.7		3.2	1.6
50	9.4	7.8	8+00	2.8	1.2
	9.4	7.8		2.8	1.2
	9.7	8.1		2.8	1.2
	9.5	7.9		3.0	1.4
	9.5	7.9			
6+00	9.6	8.0	50		
	10.6	9.0			
	10.3	8.7			
	10.2	8.6			
	11.0	9.4			
50	10.8	9.2	9+00		
	10.7	9.1			
	10.5	8.9			
	11.1	9.5			
9:55	11.6	10.0			
7+00	11.5	9.9	50		
	11.0	9.4			
	11.0	9.4			

3-22-61
DANA BASIN

STAW 149400; 0700 = N6730 SOUND NORTH

DIST	SOUND	ELEV	DIST	SOUND	ELEV
0700			(1.7)	12.8	11.1
(16)			50	12.8	11.1
				12.4	10.7
				12.2	10.5
10:00	3.9	2.3		12.3	10.6
50	3.4	1.8		12.0	10.3
	3.2	1.6	3400	12.0	10.3
	3.3	1.7		11.8	10.1
	3.0	1.4		11.3	9.6
	3.3	1.7		11.0	9.3
1400	3.9	2.3	10:05	11.0	9.3
	4.9	3.3	50	11.0	9.3
	7.2	5.6		10.5	8.8
	8.1	6.5		10.2	8.5
	9.1	7.5		10.8	9.1
50	9.4	7.8		11.4	9.7
	10.4	8.8	4400	11.3	9.6
	11.2	9.6		11.3	9.6
	11.3	9.7		11.2	9.5
	12.2	10.6		11.3	9.6
.2400	12.4	10.8		10.9	9.2
	13.0	11.4	50	10.0	8.3
	12.9	11.3		10.0	8.3
	12.9	11.3		10.4	8.7

DANA BASIN
STAW 149400 CONT NORTH (37)

DIST	SOUND	ELEV	DIST	SOUND	ELEV
(17)	12.0	10.3	(1.7)	8.9	7.2
	12.8	11.1		8.0	6.3
5400	12.7	11.0	50	6.0	4.3
	12.8	11.1		4.0	2.3
	13.0	11.3		2.8	1.1
	12.8	11.1		2.7	1.0
	12.8	11.1	10:10	2.2	0.5
50	13.1	11.4	8400	1.8	0.1
	13.0	11.3		Shore way TDF	
	12.9	11.2			
	13.3	11.6			
	13.9	12.2			
6400	13.2	11.5	50		
	13.3	11.6			
	14.3	12.6			
	13.3	11.6			
	13.0	11.3			
50	13.1	11.4	9400		
	13.2	11.5			
	12.5	10.8			
	11.7	10.0			
	11.8	10.1			
7400	11.0	9.3			
	9.2	7.5			
	8.9	7.2			

3-22-61
DANA BASIN

STA W 148+00 CONT NORTH (38)
DANA BASIN

STA W 148+00; 0+00 = N6690 SOUND NORTH

DIST SOUND ELEV DIST SOUND ELEV

DIST SOUND ELEV DIST SOUND ELEV

0+00

(17) 15.1 13.4

(17)

50 15.0 13.3

5+00

50

14.6 12.9

14.2 12.5

10:15 ROCKS 2.1 0.4 14.9 13.2

50 4.0 2.3 14.3 12.6

3.0 1.3 3+00 13.8 12.1

50

8+00

3.0 1.3 14.7 13.0

4.2 2.5 14.9 13.2

6.1 4.4 14.0 12.3

1+00 8.0 6.3 14.1 12.4

10.1 8.4 50 15.6 13.9

6+00

50

11.3 9.6 15.0 13.3

12.7 11.0 14.0 12.3

13.3 11.6 BRIDGE

50 13.9 12.2

14.9 13.2 4+00

50

9+00

14.8 13.1

14.6 12.9

14.9 13.2

2+00 15.2 13.6

15.2 13.6 50

7+00

50

14.8 13.1

14.6 12.9

UNDER 50' W 148+00
ST BRIDGE

DANA BASIN
3-22-61

DANA BASIN - 3-22-61

139

STAN 57+00; 0+00 = W14980 - SOUND WEST

STAN 57+50; 0+00 = W14920 -

SOUND
WEST

	DIST	SOUND	ELEV	DIST	SOUND	ELEV
	0+00			(20)	3.1	1.1
	10:45			50	2.7	0.7
	(19)		15.00		2.1	0.1
					2.2	0.2
					2.1	0.1
	50				1.3	+0.7
				3+00	1.4	+0.6
		1.5	+0.4		1.0	+1.0
		1.2	+0.7		1.0	+1.0
		1.1	+0.8		0.8	+1.2
1	1+00	1.0	+0.9		0.8	+1.2
		1.0	+0.9	50	0.4	+1.6
		0.9	+1.0		0.4	+1.6
		1.0	+0.9		0.5	+1.5
		1.0	+0.9		0.6	+1.4
	50	1.1	+0.8		0.7	+1.3
		1.3	+0.6	4+00	0.7	+1.3
		1.1	+0.8		0.8	+1.2
		1.3	+0.6	10:55	1.0	+1.0
		2.0	0.1			
2	2+00	3.1	1.2	Shore		
		4.3	2.4	50		
	10:50	4.4	2.5			
		4.2	2.3			

	DIST	SOUND	ELEV	DIST	SOUND	ELEV
	0+00			(21)	9.7	7.6
				50	9.8	7.7
				11:00	10.1	8.0
					10.0	7.9
					10.0	7.9
	50	1.0	+1.0		10.0	7.9
				3+00	9.9	7.8
		1.0	+1.0		9.7	7.6
		1.3	+0.7		9.2	7.1
		1.5	+0.5		8.7	6.6
	1+00	1.7	+0.3		8.4	6.3
		1.7	+0.3	50	8.4	6.3
		1.4	+0.6		9.0	6.9
		1.3	+0.7		9.2	7.1
		1.5	+0.5		9.1	7.0
	50	1.5	+0.5	11:05	9.0	6.9
		2.0	0.0	4+00	8.5	6.4
		5.1	3.1		8.0	5.9
		8.1	6.1		7.2	5.1
		9.1	7.1		6.0	3.9
	2+00	9.2	7.2		4.0	1.9
		9.1	7.1	50	4.0	1.9
		9.4	7.4		3.7	1.6
		9.7	7.7		2.8	0.7

3TA N 57+50 CONT WEST

DIST SOUND ELEV

(2.1)	1.4	+0.7
	1.2	+0.8
5+00	1.0	+1.1
	1.0	+1.1
	1.8	+0.3
	1.5	+0.6
	1.6	+0.5

+50

Shore

DANA BASIN - 3-22-68

140

SOUND

WEST

STAN 58+00, 0+00-W14,950

DIST SOUND ELEV DIST SOUND ELEV

0+00			(2.2)	10.5	8.3
1120			50	10.3	8.1
(2.2)	1.1	+1.1		10.2	8.0
	1.3	+0.9		10.1	7.9
	1.5	+0.7		10.0	7.8
50	1.6	+0.6		9.9	7.7
	1.9	+0.3	3+00	10.0	7.8
	2.0	+0.2		10.2	8.0
	4.8	2.6		10.5	8.3
	8.0	5.8		10.4	8.2
1+00	8.9	6.7		10.1	7.9
	9.8	7.6	50	10.1	7.9
	10.0	7.8		10.0	7.8
	10.0	7.8		10.2	8.0
	10.0	7.8		10.1	7.9
50	10.0	7.8		10.0	7.8
	10.1	7.9	4+00	10.0	7.8
	10.3	8.1		10.0	7.8
	10.4	8.2		9.8	7.6
	10.4	8.2		9.4	7.2
2+00	10.3	8.1		9.1	6.9
	10.6	8.4	50	8.8	6.6
	10.8	8.6		8.2	6.0
	10.5	8.3		7.2	5.0

3-22-61

STAN 58+00 CONT WEST

DIST	SOUND	ELEV	DIST	SOUND	ELEV
(22)	5.0	2.8			
	1.4	+0.7			
5400	1.3	+0.8			
	1.3	+0.8			
	1.1	+1.1			
	1.2	+1.0			
	1.0	+1.2			
+50	0.6	+1.6			
	0.0	+2.2			

Shore

6+00

50

7+00

DANA BAIN 3-22-61

(4)

Sound

WEST

DIST	SOUND	ELEV	DIST	SOUND	ELEV
STAN 58+50; 0+00 = W 14 910					
(23)	10.1	7.8			
0+00			50	9.9	7.6
(23)					
11:30	0.3	+2.0		9.8	7.5
	1.7	+0.6		9.6	7.3
	2.3	0.0		9.4	7.1
50	2.4	0.1		9.6	7.3
	3.6	1.3	3+00	9.7	7.4
	5.0	2.7		9.6	7.3
	6.7	4.4		9.7	7.4
	8.5	6.2		9.6	7.3
1+00	9.9	7.6		9.8	7.5
	10.3	8.0	50	10.2	7.9
	10.3	8.0		10.4	8.1
	10.3	8.0		10.5	8.2
	10.2	7.9		10.8	8.5
50	10.1	7.8	11:35	10.8	8.5
	10.1	7.8	4+00	10.8	8.5
	10.1	7.8		10.7	8.4
	10.1	7.8		10.8	8.5
	10.1	7.8		10.6	8.3
2+00	10.6	8.3		10.5	8.2
	10.3	8.0	50	10.4	8.1
	10.2	7.9		10.3	8.0
	10.1	7.8		10.2	7.9

STA N 58+50 CONT WEST

DIST SOUND ELEV

(23)	10.1	7.8
	10.0	7.7
5+00	9.9	7.6
	9.7	7.4
	9.3	7.0
	8.5	6.2
	7.8	5.5
+50	6.6	4.3
	2.7	0.4
	1.3	+1.0
	1.2	+1.1
	1.2	+1.1
6+00	1.3	+1.0
	1.1	+1.2
	1.0	+1.3
	0.9	+1.4

+50

DANA BASIN - 3-22-61

(142)
SOUND
WEST

STA N 59+00; 6+00 = W 14840

DIST SOUND ELEV DIST SOUND ELEV

0+00			(24)	10.9	8.5
(124)			50	10.5	8.1
			50	10.0	7.6
11:45			50	10.0	7.6
			50	10.2	7.8
+50			50	10.3	7.9
	0.0	+2.4	2+00	10.5	8.1
	1.3	+1.1		10.8	8.4
	2.7	0.3		10.7	8.3
	4.0	1.6		10.9	8.5
1+00	5.0	2.6		10.7	8.3
	6.1	3.7	50	10.7	7.7
	6.4	4.0		10.0	7.6
	7.8	5.4		10.0	7.6
	9.0	6.6	11:50	10.0	7.6
+50	9.9	7.3		10.2	7.8
	9.8	7.4	4+00	10.3	7.9
	10.1	7.7		10.4	8.0
	10.4	8.0		10.5	8.1
	10.7	8.3		10.6	8.2
2+00	11.0	8.6		11.1	8.7
	11.1	8.7	50	11.2	8.8
	10.9	8.5		11.3	8.9
	11.0	8.6		11.3	8.9

STAN 59 + 60 CONT WEST

DIST	SOUND	ELEV	DIST	SOUND	ELEV
(24)	11.7	9.3	Shore -		
	11.6	9.2			
5+00	11.5	9.1	+50		
	11.6	9.2			
	11.4	9.0			
	11.3	8.9			
	11.2	8.8			
50	11.0	8.6			
	11.0	8.6			
	10.5	8.1			
	10.4	8.0			
	10.2	7.8			
6+00	10.1	7.7			
	9.7	7.3			
	9.3	6.9			
	8.7	6.3			
	7.8	5.4			
+50	4.7	2.3			
	1.8	+0.6			
	1.8	+0.6			
	1.7	+0.7			
	1.5	+0.9			
7+00	1.4	+1.0			
	1.6	+0.8			
	1.7	+0.7			

DANA BASIN - 3-22-61

14.3

STAN 59 + 50: 0+00 = W. 14,820						SOUND WEST	
DIST	SOUND	ELEV	DIST	SOUND	ELEV	DIST	ELEV
0+00						(29)	8.4
						50	8.4
							8.3
							8.3
							8.2
			50	1.0	+1.9		8.0
				1.1	+1.8	3+00	8.0
			1:10	1.2	+1.7		8.2
				2.2	+0.7		8.3
				2.7	+0.2		8.4
			1+00	5.3	2.4		8.4
				8.1	5.2	50	8.2
				9.6	6.7		8.3
				9.8	6.9		8.3
				9.9	7.0		8.4
			50	10.1	7.2		7.8
				10.3	7.4	4+00	7.9
				10.7	7.8		7.8
				10.8	7.9	1:15	8.1
				11.0	8.1		8.3
			2+00	11.0	8.1		8.3
				11.0	8.1	50	8.3
				11.1	8.2		8.5
				11.0	8.1		8.8

3-22-61

STA. N. 59+50 - WEST

Dist	Sound	Elev	Dist	Sound	Elev
(30)	11.6	8.6	(30)	2.1	+0.9
	11.7	8.7		2.2	+0.8
5+00	12.0	9.0	50	3.0	0.0
	12.0	9.0		3.0	0.0
	11.8	8.8			
	11.5	8.5			
	11.4	8.4			
50	11.3	8.3			
	11.3	8.3			
	11.4	8.4			
1:20	11.3	8.3			
	11.2	8.2			
6+00	11.0	8.0			
	11.0	8.0			
	10.6	7.6			
	10.3	7.3			
	10.1	7.1			
50	9.7	6.7			
	9.0	6.0			
	7.8	4.8			
	4.0	1.0			
	2.3	+0.7			
7+00	2.3	+0.7			
	2.2	+0.8			
	2.2	+0.8			

#4

3-22-61

5TA. N. 60+00:0+00 = W/4830			SOUND WEST		
Dist	Sound	Elev	Dist	Sound	Elev
0+00			(30)	10.6	7.6
(30)			50	11.1	8.1
	0.6	+2.4		11.0	8.0
	1.0	+2.0		11.0	8.0
	1.6	+1.4		11.1	8.1
50	2.0	+1.0		11.1	8.1
	2.1	+0.9	3+00	11.0	8.0
1:25	2.8	+0.2		11.1	8.1
	3.0	0.0		11.0	8.0
	7.4	4.4	1:30	11.0	8.0
1+00	9.6	6.6		11.0	8.0
	10.0	7.0	50	11.1	8.1
	10.2	7.2		11.0	8.0
	10.6	7.6		11.0	8.0
	10.9	7.9		10.9	7.9
50	10.9	7.9		10.9	7.9
	11.1	8.1	4+00	11.0	8.0
	11.0	8.0		11.1	8.1
	11.0	8.0		11.0	8.0
	10.9	7.9		10.7	7.7
2+00	10.8	7.8		10.6	7.6
	10.6	7.6	50	10.6	7.6
	10.8	7.8		11.0	8.0
	10.6	7.6		11.2	8.2

STA. N. 60+00 - WEST

DIST	SOUND	ELEV	DIST	SOUND	ELEV
(30)	12.0	9.0	(30)	2.6	+0.4
	12.0	9.0		3.4	0.4
5+00	11.9	8.9	50	2.2	+0.8
	11.8	8.8			
	11.9	8.9			
	11.7	8.7			
	11.6	8.6			
50	11.6	8.6			
	11.5	8.5			
	11.1	8.1			
	11.2	8.2			
	11.1	8.1			
6+00	11.0	8.0			
	10.9	7.9			
	10.6	7.6			
	10.2	7.2			
	9.8	6.8			
50	9.1	7.1			
	7.8	4.8			
	4.0	1.0			
	2.6	+0.4			
	2.6	+0.4			
7+00	2.6	+0.4			
	2.5	+0.5			
	2.6	+0.4			

3-22-61

(45)

STA. N. 61+00, 0+00 = W. / 4830 ; SOUND WEST

DIST	SOUND	ELEV	DIST	SOUND	ELEV
0+00			(3)	11.2	8.1
(13)			50	11.3	8.2
	0.0	+3.1		11.0	7.9
	1.0	+2.1		10.8	7.7
	1.5	+1.6		10.7	7.6
50	2.1	+1.0		10.7	7.6
	2.4	+0.7	3+00	11.0	7.9
1+00	2.6	+0.5		11.1	8.0
	3.2	0.1		11.2	8.1
	7.0	3.9		10.9	7.8
1+00	8.7	5.6			
	10.7	7.6	50		
	10.7	7.6			
	10.3	7.2			
	11.0	7.9			
50	10.4	7.3			
	10.6	7.5	4+00		
	10.7	7.6			
	10.7	7.6			
	10.8	7.7			
2+00	10.5	7.4			
	11.0	7.9	50		
	11.3	8.2			
	11.6	8.4			

3-22-61

STAN. 62+00; 0+00 = W. 14,880 SOUND WEST

Dist	Sound	Elev	Dist	Sound	Elev
0+00			(3)	11.0	7.9
(3)			50	10.9	7.8
	0.0	+3.1		10.5	7.4
	0.5	+2.6		10.4	7.3
	0.8	+2.3		10.3	7.2
50	1.0	+2.1		10.7	7.6
	2.7	+0.4	3+00	10.8	7.7
<u>11.45</u>	2.7	+0.4		10.7	7.6
	3.0	+0.1		10.8	7.7
	3.2	0.1		11.1	8.0
1+00	5.1	2.0		11.1	8.0
	8.0	4.9	50	11.2	8.1
	8.2	5.1			
	9.0	5.9			
<u>150</u>	9.9	6.8	14880		
50	10.0	6.9	350		
	10.1	7.0	15230		
	10.2	7.1			
	9.9	6.8			
	10.0	6.9			
2+00	10.2	7.1			
	10.2	7.1			
<u>2:00</u>	10.4	7.3			
	10.6	7.5			

3-22-61

46

STAN. 63+00; 0+00 = W. 14,960 SOUND WEST

Dist	Sound	Elev	Dist	Sound	Elev
0+00			(32)	11.3	8.1
			50	11.3	8.1
(32)	1.7	+1.5		11.4	8.2
	2.2	+1.0		11.1	7.9
	2.5	+0.7		11.0	7.8
50	2.7	+0.5		11.0	7.8
	3.2	0.0	3+00	10.9	7.7
<u>2:05</u>	3.4	0.2		11.0	7.8
	3.6	0.4		11.2	8.0
	3.8	0.6		10.7	7.5
1+00	3.9	0.7		10.9	7.7
	4.1	0.9	50	10.7	7.5
	4.4	1.2		11.0	7.8
	4.7	1.5		11.1	7.9
	7.0	3.8		10.6	7.4
50	8.8	5.6		10.8	7.6
	9.1	5.9	4+00	11.2	8.0
	9.8	6.6			
	10.1	6.9			
	10.9	7.7			
2+00	10.8	7.6			
	10.9	7.7			
<u>2:10</u>	10.6	7.4			
	11.0	7.8			

3-22-61

STAN. 64+00; 0+00 = W. 15,050 ; SOUND WEST

Dist	Sound	Elev	Dist	Sound	Elev
0+00			(32)	11.0	7.8
(32)			50	11.2	8.0
				11.0	7.8
	0.5	+2.7		10.9	7.7
	1.2	+2.0		10.7	7.5
50	2.1	+1.1		10.2	7.0
	3.1	+0.1	3+00	9.7	6.5
2:20	3.6	0.4		9.8	6.6
	3.9	0.7		9.6	6.4
	4.1	0.9		9.7	6.5
1+00	4.5	1.3		9.7	6.5
	4.8	1.6	50	10.2	7.0
	4.9	1.7		10.7	7.5
	6.4	3.2		11.1	7.9
	8.2	5.0		11.4	8.2
50	9.3	6.1		11.6	8.4
	9.8	6.6	4+00	11.6	8.4
	10.2	7.0			
	10.7	7.5			
	10.9	7.7			
2+00	11.1	7.9			
	11.7	8.5			
	11.9	8.7			
	11.5	8.3			

3-22-61

47.

STAN. 64+50; 0+00 = W. 15,110 ; SOUND WEST

Dist	Sound	Elev	Dist	Sound	Elev
0+00			(32)	10.9	7.7
			50	10.9	7.7
				11.2	8.0
	0.7	+2.5		11.4	8.2
	3.0	+0.2		11.7	8.5
50	3.8	0.6		11.7	8.5
	4.3	1.1	3+00	11.8	8.6
2:30	4.7	1.5		12.0	8.8
	5.0	1.8			
	7.8	4.6			
1+00	8.2	5.0			
	9.0	5.8			
	9.2	6.0			
	9.7	6.5			
	10.0	6.8			
50	10.0	6.8			
	10.3	7.1			
	10.4	7.2			
	10.3	7.1			
	10.0	6.8			
2+00	10.0	6.8			
	10.2	7.0			
	10.4	7.2			
	10.7	7.5			

3-22-61

STAN. 65+00: 0+00 = W. 15,140 SOUND WEST

DIST	SOUND	ELEV	DIST	SOUND	ELEV
0+00			(32)	12.9	9.7
(32)			50	13.0	9.8
	2.6	+0.6		13.3	10.1
	3.8	0.6		14.0	10.8
	4.1	0.9		14.7	11.5
50	4.8	1.6		15.0	11.8
	5.2	2.0	3+00	15.2	12.0
<u>2+00</u>	8.3	5.1			
	9.9	6.7			
	10.2	7.0			
1+00	10.8	7.6			
	10.9	7.7			
	10.9	7.7			
	10.6	7.4			
	10.9	7.7			
50	11.0	7.8			
	11.1	7.9			
	11.5	8.3			
	11.5	8.3			
	12.1	8.9			
2+00	12.7	9.5			
	12.8	9.6			
	12.6	9.4			
	12.5	9.3			

48

STAN. 65+50: 0+00 = W. 15,120 SOUND WEST

DIST	SOUND	ELEV	DIST	SOUND	ELEV
0+00			(32)	12.7	9.5
(32)			50	12.6	9.4
				13.0	9.8
	5.1	1.9		13.4	10.2
	6.2	3.0		14.0	10.8
50	4.8	1.6		14.0	10.8
	4.6	1.4	3+00	14.7	11.5
<u>2+50</u>	4.9	1.7		15.0	11.8
	6.5	2.3		15.6	12.4
	8.7	5.5			
1+00	9.7	6.5			
	10.1	6.9			
	10.9	7.7			
	10.9	7.7			
	11.0	7.8			
50	11.1	7.9			
	11.5	8.3			
	11.8	8.6			
	11.9	8.7			
	12.0	8.8			
2+00	12.3	9.1			
	12.8	9.6			
	12.9	9.7			
	13.0	9.8			

3-22-61

STA. N. 66+00.0+00=W 15,080 SOUND WEST

Dist Sound Elev Dist Sound Elev

0+00

32

32

50

13.5 10.3

13.8 10.6

13.9 10.7

13.9 10.7

13.8 10.6

13.9 10.7

13.5 10.3

3+00

2:55

7.3

9.2

1+00

9.5

10.1

10.3

10.7

11.2

11.4

11.6

11.8

12.1

12.1

12.0

12.2

12.7

13.0

1.2 +2.0

4.8 +1.6

6.0 2.8

5.1 1.9

5.0 1.8

7.3 4.1

9.2 6.0

9.5 6.3

10.1 6.9

10.3 7.1

10.7 7.5

11.2 8.0

11.4 8.2

11.6 8.4

11.8 8.6

12.1 8.9

12.1 8.9

12.0 8.8

12.2 9.0

12.7 9.5

13.0 9.8

3-22-61

STA. N. 61+00.0+00=W 15,590 SOUND EAST

Dist Sound Elev Dist Sound Elev

0+00

32

32

50

3.8 0.6

4.3 1.2

3.1 +0.1

3.2 0.0

3.1 +0.1

3.0 +0.2

3.1 +0.1

3.2 0.0

3.4 0.2

8.1 4.9

10.0 6.8

10.6 7.4

11.0 7.8

11.4 8.2

11.7 8.5

11.7 8.5

12.0 8.8

12.1 8.9

11.9 8.7

12.0 8.8

12.0 8.8

12.0 8.8

2+00

11.9

12.0

12.0

12.0

12.0

12.0

12.0 8.8

12.5 9.3

11.6 8.4

11.3 8.1

11.4 8.2

11.8 8.6

11.8 8.6

3+00 11.8 8.6

3+00 11.8 8.6

3+00 11.8 8.6

3+00 11.8 8.6

3+00 11.8 8.6

3+00 11.8 8.6

3+00 11.8 8.6

3+00 11.8 8.6

3+00 11.8 8.6

3+00 11.8 8.6

3+00 11.8 8.6

3+00 11.8 8.6

3+00 11.8 8.6

3+00 11.8 8.6

3+00 11.8 8.6

3+00 11.8 8.6

3+00 11.8 8.6

3+00 11.8 8.6

3+00 11.8 8.6

3+00 11.8 8.6

3+00 11.8 8.6

3+00 11.8 8.6

49

3-22-61

STA. N. 61+25; 0+00=W. 15,500 SOUND EAST

Dist	Sound	Elev	Dist	Sound	Elev
0+00			(32)	11.4	8.2
(32)			50	11.3	8.1
	4.9	1.7		11.2	8.0
	4.7	1.5		11.1	7.9
	4.3	1.1		11.0	7.8
50	3.8	0.6		11.0	7.8
3:20	3.3	0.1	3+00	10.7	7.5
<u>3.5</u>	3.5	0.3			
	3.5	0.3			
	3.5	0.3			
1+00	3.9	0.7			
	7.9	4.7			
	10.3	7.1			
	11.0	7.8			
	11.4	8.2			
50	11.4	8.2			
	11.7	8.5			
	11.7	8.5			
	11.3	8.1			
	11.8	8.6			
2+00	11.6	8.4			
	12.0	8.8			
	12.0	8.8			
	11.7	8.5			

(50)

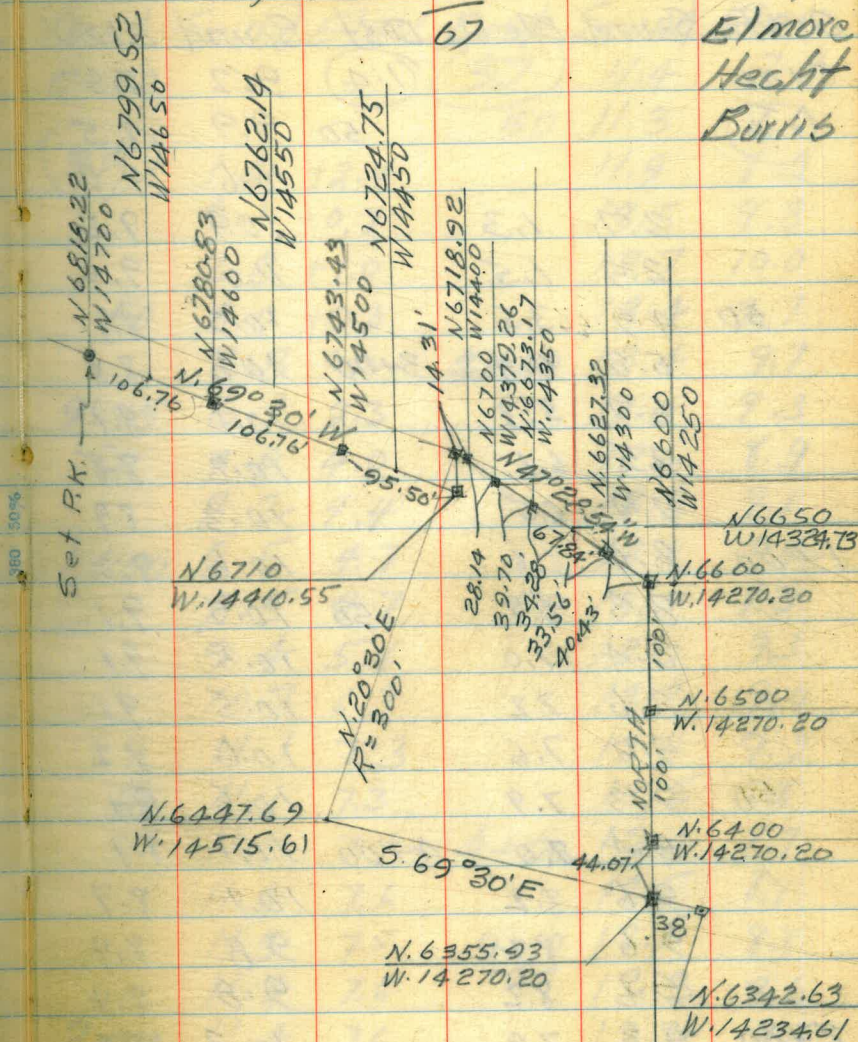
STA. N. 61+50; 0+00=W. 15,600 SOUND EAST

Dist	Sound	Elev	Dist	Sound	Elev
0+00			(32)	11.6	8.4
(32)			50	11.1	7.9
	4.3	1.1		10.1	6.9
	4.5	1.3		10.0	6.8
	3.1	+0.7		10.4	7.2
50	3.3	0.1		10.2	7.0
	4.4	1.2	3+00	10.8	7.6
3:25	4.9	1.7		10.8	7.6
<u>4.3</u>	4.3	1.1		10.8	7.6
	3.8	0.6		10.9	7.7
1+00	3.8	0.6		11.0	7.8
	4.0	0.8	50	11.4	8.2
	8.0	4.8			
	10.0	6.8			
	10.8	7.6			
50	11.2	8.0			
	11.9	8.7			
	12.0	8.8			
	11.6	8.4			
	12.0	8.8			
2+00	12.3	9.1			
	12.4	9.2			
	11.8	8.6			
	11.8	8.6			

BASELINE LAYOUT FOR REMEDIAL
DREDGING PEREZ COVE

4-28-61
Ref. FB. 138
67

Stamp
Elmore
Hecht
Burtis



SOUNDINGS FOR REMEDIAL
DREDGING. 4-25-61

STA. N. 64+00; 0+00 = W. 14, 220' SOUND EAST

Dist	Sound	Elev	Dist	Sound	Elev
0+00			(1.4)	9.2	7.8
(1.4)			50	9.9	8.5
				10.6	9.2
	2.7	1.3		10.9	9.5
	2.9	1.5		11.0	9.6
50	4.9	3.5		10.3	8.9
	5.8	4.4	3+00	10.2	8.8
	6.7	5.3		10.1	8.7
	7.5	6.1		10.2	8.8
	7.9	6.5		10.3	8.9
1+00	8.0	6.6		10.6	9.2
	8.3	6.9	50	10.5	9.1
	8.4	7.0		10.5	9.1
	8.6	7.2		10.5	9.1
	9.0	7.6		10.6	9.2
50	9.3	7.9		10.5	9.1
	9.4	8.0	4+00	10.1	8.7
	9.6	8.2		10.1	8.7
	9.6	8.2		9.8	8.4
	9.6	8.2		9.8	8.4
2+00	9.3	7.9		10.3	8.9
	9.1	7.7	50	11.0	9.6
	9.0	7.6			
	9.0	7.6			

4-28-61

152

STA. N. 65+00; 0+00 = W. 14, 220' SOUND EAST

Dist	Sound	Elev	Dist	Sound	Elev
0+00			(3.7)	11.4	7.7
			50	11.3	7.6
			(3.8)	1.4	+2.4
				3.1	+0.7
				2.8	+1.0
50			50	3.0	+0.8
				3.8	0.0
			3+00	13.4	9.7
			9:35	6.1	2.3
			~	7.8	4.0
				8.2	4.4
1+00			1+00	8.5	4.7
				8.5	4.7
			50	13.0	9.3
				9.4	5.6
				10.7	6.9
				11.1	7.3
50			50	11.1	7.3
				11.2	7.4
			4+00	12.4	8.7
				11.4	7.6
				11.3	7.5
			9:40	12.5	8.8
			~	12.3	8.6
2+00			2+00	11.4	7.6
				11.4	7.6
			50	12.0	8.3
				11.6	7.8
				11.5	7.7

4-25-61

STA. N. 66+00; CHOO = W. 14260; SOUND EAST

DIST	Sound	Elev	DIST	Sound	Elev
0+00			1.5	9.8	8.3
1.5			50	9.5	8.0
				9.4	7.9
2.0	-0.5			9.1	7.6
1.0	+0.5			9.2	7.7
50	0.5	+1.0		9.1	7.6
	0.3	+1.2	3+00	9.2	7.7
	0.3	+1.2		9.2	7.7
	0.5	+1.0		9.1	7.6
	0.7	+0.8		9.0	7.5
1+00	1.6	-0.1		10.0	8.5
	4.0	-2.5	50	11.2	9.7
	5.2	3.7		11.8	10.3
	7.8	6.3		11.7	10.2
	9.1	7.6		11.3	9.8
50	9.3	7.8		11.2	9.7
	9.6	8.1	4+00	11.0	9.5
	9.6	8.1		11.0	9.5
	9.6	8.1		11.0	9.5
	9.6	8.1		10.1	8.6
2+00	9.6	8.1		10.3	8.8
	9.8	8.3	50	10.6	9.1
	9.5	8.0		10.8	9.3
	9.8	8.3			

53

4-28-61

STA. W. 142+50; CHOO = N. 6600; SOUND NORTH

DIST	Sound	Elev	DIST	Sound	Elev
0+00			3.6	12.0	8.4
3.6			50	12.0	8.4
	0.5	+3.1		12.0	8.4
	4.0	0.4		12.1	8.5
	3.1	+0.5		12.2	8.6
50	3.0	+0.6		12.0	8.4
	2.9	+0.7	3+00	12.4	8.8
9:45	2.9	+0.7		12.9	9.3
	2.9	+0.7		12.7	9.1
	3.2	+0.4		12.3	8.7
1+00	4.0	-0.4		12.1	8.5
	6.5	2.9	50	12.4	8.8
	7.8	4.2		12.6	9.0
	7.9	4.3		12.5	8.9
	8.6	5.0		12.4	8.8
50	9.0	5.4		12.4	8.8
	9.4	5.8	4+00	12.4	8.8
	9.4	5.8		12.5	8.9
	10.2	6.6	9:50	12.6	9.0
	11.4	7.8		12.6	9.0
2+00	11.8	8.2		12.9	9.3
	11.9	8.3	50	12.3	8.7
	11.9	8.3			
	11.9	8.3			

4-28-61

STA. W. 143+00; 0+00=N. 6, 670; SOUND NORTH

DIST	SOUND	ELEV	DIST	SOUND	ELEV
0+00	0.2	+3.3	(34)	11.4	8.0
(33)	3.2	+0.3	50	11.5	8.1
	5.0	1.5		11.7	8.3
	4.1	0.6		11.8	8.4
	3.0	+0.5		11.9	8.5
50	3.3	+0.2		11.9	8.5
	3.5	0.0	3+00	12.0	8.6
9:55	6.3	2.8		12.0	8.6
	7.6	4.1		12.0	8.6
	8.3	5.0		11.9	8.5
1+00	8.7	5.2		11.9	8.5
	9.2	5.7	50	12.0	8.6
	9.4	5.9		12.1	8.7
	9.5	6.0		12.0	8.6
	9.1	5.6	10:00	12.0	8.6
50	9.6	6.1		12.0	8.6
	11.8	8.3	4+00	12.2	8.8
	11.4	7.9		12.1	8.7
	11.5	8.0		12.1	8.7
	11.5	8.0		12.0	8.6
2+00	11.6	8.1		12.0	8.6
	11.6	8.1	50	12.0	8.6
	11.6	8.1			
	11.7	8.2			

64

STA. W. 143+50; 0+00=N. 6, 700; SOUND NORTH

DIST	SOUND	ELEV	DIST	SOUND	ELEV
0+00			(33)	12.0	8.7
(33)	4.0	0.7	50	11.8	8.5
	5.5	2.3		11.8	8.5
	5.8	2.5		11.6	8.3
	6.0	2.7		11.6	8.3
50	5.3	2.0		11.9	8.6
	3.6	0.3	3+00	11.8	8.5
10:05	6.8	3.5		11.9	8.6
	7.0	3.7		11.8	8.5
	7.2	3.9		11.2	7.9
1+00	7.8	4.5		11.2	7.9
	9.0	5.7	50	11.2	7.9
	9.0	5.7		11.7	8.4
	9.6	6.3		11.7	8.4
	9.9	6.6		11.9	8.6
50	11.5	8.2		12.0	8.7
	11.8	8.5	4+00	12.0	8.7
	12.0	8.7		12.0	8.7
	12.0	8.7		11.9	8.6
	12.0	8.7		11.6	8.3
2+00	12.0	8.7		11.7	8.4
	12.0	8.7	50	11.8	8.5
	12.0	8.7			
	12.0	8.7			

4-28-61

STA. N. 67400 = 0+00 = W. 14350; SOUND EAST

Dist Sound Elev Dist Sound Elev

Time	Dist	Sound	Elev	Dist	Sound	Elev
0400	(31)	0.7	+2.4	(3)	11.3	8.2
		2.8	+0.3	50	11.1	8.0
		5.3	2.2		11.2	8.1
		5.0	1.9		11.5	8.4
		5.0	1.9		11.3	8.2
50		5.0	1.9		11.2	8.1
		2.7	+0.4	3+00	11.2	8.1
10:15		2.4	+0.7		11.0	7.9
		2.5	+0.6		11.0	7.9
		2.6	+0.5		11.0	7.9
1400		2.9	+0.2		11.2	8.1
		4.2	1.1	50	11.2	8.1
		5.8	2.7		11.0	7.9
		7.1	4.0		11.0	7.9
		7.9	4.8		10.9	7.8
50		7.7	4.6		10.9	7.8
		8.7	5.6	4+00	10.8	7.7
		10.4	7.3		10.9	7.8
		10.9	7.8		10.8	7.7
		11.0	7.9		11.5	8.4
2+00		11.2	8.1		12.1	9.0
		11.3	8.2	50	12.4	9.3
		11.3	8.2			
		11.3	8.2			

(55)

STA. W. 144+00 = 0+00 = N. 6730; SOUND NORTH

Dist Sound Elev Dist Sound Elev

Time	Dist	Sound	Elev	Dist	Sound	Elev
0400		1.3	+1.7	(30)	11.3	8.3
	(30)	4.8	-1.8	50	11.6	8.6
		6.1	3.1		11.4	8.4
		6.1	3.1		11.2	8.2
		4.9	1.9		11.2	8.2
50		4.2	1.2		11.2	8.2
		6.8	3.8	3+00	11.5	8.5
10:25		8.1	5.1		11.5	8.5
		8.7	5.7		11.6	8.6
		9.2	6.2		11.8	8.8
1400		9.4	6.4		11.9	8.9
		9.6	6.6	50	11.7	8.7
		9.9	6.9		11.8	8.8
		9.9	6.9		11.5	8.5
		11.0	8.0		11.7	8.7
50		11.2	8.2		11.7	8.7
		11.5	8.5	4+00	11.7	8.7
		11.4	8.4		11.7	8.7
		11.4	8.4		11.8	8.8
		11.5	8.5		11.4	8.4
2+00		11.5	8.5		11.6	8.6
		11.4	8.4	50	11.6	8.6
		11.5	8.5			
		11.8	8.8			

4-28-61

STA. W. 145+00; CHOO = N. 6,770; SOUND NORTH

DIST	Sound	Elev	DIST	Sound	Elev
0+00			(25)	11.6	8.7
(29)	1.0 + 1.9		50	11.7	8.8
	2.9	0.0		11.7	8.8
	3.2	0.3		11.7	8.8
	5.2	2.3		11.8	8.9
50	6.4	3.5		11.6	8.7
	7.6	4.7	3+00	11.6	8.7
10:35	8.5	5.6		11.7	8.8
	9.8	5.9		11.7	8.8
	10.6	7.7		11.7	8.8
1+00	10.5	7.6		11.6	8.7
	10.4	7.5	50	11.7	8.8
	10.4	7.5		11.7	8.8
	10.5	7.6		11.7	8.8
	10.5	7.6		11.7	8.8
50	10.5	7.6		11.4	8.5
	10.7	7.8	4+00	11.4	8.5
	10.9	8.0		11.4	8.5
	11.3	8.4		11.2	8.3
	11.4	8.5		11.2	8.3
2+00	11.6	8.5		11.3	8.4
	11.5	8.6	50	11.4	8.5
	11.5	8.6			
	11.7	8.8			

(56)

STA. W. 146+00; CHOO = N. 6810; SOUND NORTH

DIST	Sound	Elev	DIST	Sound	Elev
0+00			(27)	12.4	9.7
(27)	3.2	0.5	50	12.4	9.7
	5.0	2.3		12.0	9.3
	5.0	2.3		12.0	9.3
	3.8	1.1		11.3	8.6
50	5.2	2.5		11.3	8.6
	7.2	4.5	3+00	11.5	8.8
10:45	9.0	6.3		11.0	8.3
	10.8	8.1		11.1	8.4
	11.6	8.9		11.1	8.4
1+00	12.2	9.5		11.1	8.4
	12.5	9.8	50	11.0	8.3
	12.6	9.9		10.8	8.1
	12.9	10.2		11.0	8.3
	12.9	10.2		11.3	8.6
50	13.0	10.3		11.2	8.5
	13.0	10.3	4+00	11.2	8.5
	13.0	10.3		11.2	8.5
	13.0	10.3		11.2	8.5
	13.0	10.3		11.3	8.6
2+00	13.0	10.3		11.6	8.9
	12.6	9.9	50	11.9	9.2
	12.7	9.5			
	12.3	9.6			

4-28-61

STA. W 107+00; 0+00=N. 6850; SOUND BIRTH

DIST	Sound	Elev	DIST	Sound	Elev
0+00	1.0	+1.5	(25)	13.2	10.7
(25)	2.0	+0.5	50	12.3	9.8
	2.8	-0.3		12.5	10.0
	4.9	2.4		12.5	10.0
	6.6	4.1		12.4	9.9
50	7.5	5.0		12.7	10.2
	9.2	6.7	3+00	12.7	10.2
10:55	10.3	7.8		12.3	9.8
~	11.1	8.6		12.2	9.7
	11.8	9.3		11.9	9.4
1+00	11.8	9.3		11.6	9.1
	13.8	11.3	50	11.9	9.4
	15.0	12.5		11.8	9.3
	15.1	12.6		12.4	9.9
	14.4	11.9		12.9	10.4
50	14.6	12.1		12.5	10.0
	15.2	12.7	4+00	12.5	10.0
	14.6	12.1		12.4	9.9
	13.6	11.1		12.4	9.9
	13.5	11.0		13.0	10.5
2+00	13.7	11.2		13.4	10.9
	12.8	10.3	50	13.3	10.8
	12.8	10.3			
	13.1	10.6			

(37)

BASELINE LAYOUT FOR REMEDIAL
DREDGING CONTROL ELY TIERRA
DEL FUEGO W.O. 64098

N80+50 - W 14520	
N80 - W 14550	
N79+50 - W 14580	524.6
N79 - W 14610	486
	4800
N78+50 - W 14650	
N78 - W 14680	
N77+50 - W 14710	560.9
N77 - W 14740	
N76+50 - W 14770	625.5
N76 - W 14810	455
	580
	722.5
	657.8
	47
	90.1
	20

CAUSEWAY
N. 7686.55
W. 14854.21

89-59-60
32-52-18
557-07.42E

759.8
87.1
819.4
494
770

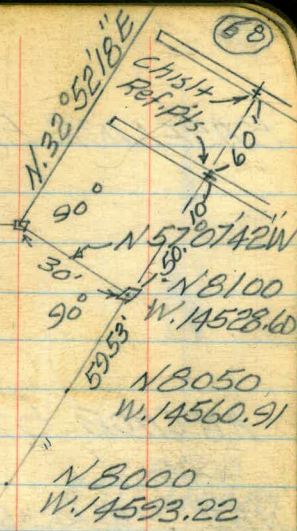
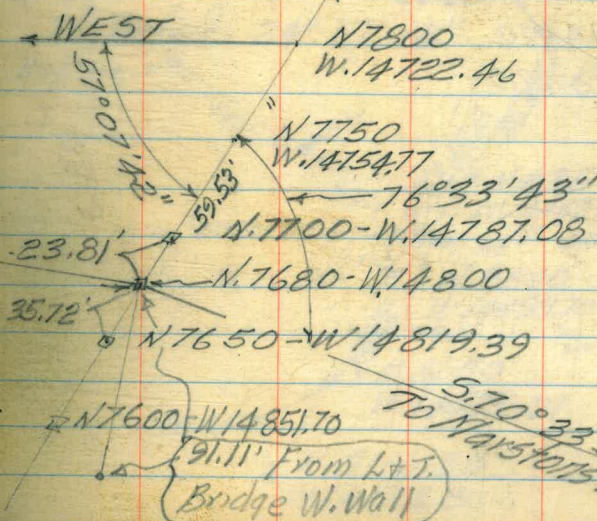
Stamped
Elmore
Hecht

Ref. F.B. 126
62
5-11-61

N. 8116.28
W. 14553.80

NOTE:

For Soundings After
Dredging, See F.B. 156
27



N. 7900
W. 14657.84

N. 7850
W. 14690.15

N. 7800
W. 14722.46

N. 7750
W. 14754.77

N. 7700 - W. 14787.08

N. 7680 - W. 14800

N. 7650 - W. 14819.39

N. 7600 - W. 14851.70

91.11' From Lt. T.
Bridge W. Wall

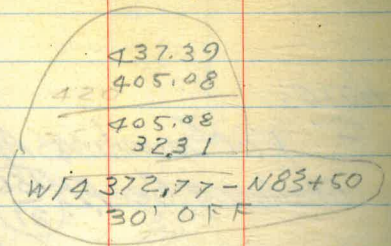
5.70° 33' 59\"/>

BASELINE ELY TIERRA CONT'D.

+50 50'
 84 - 56'
 +50 57'
 N83 = 55'

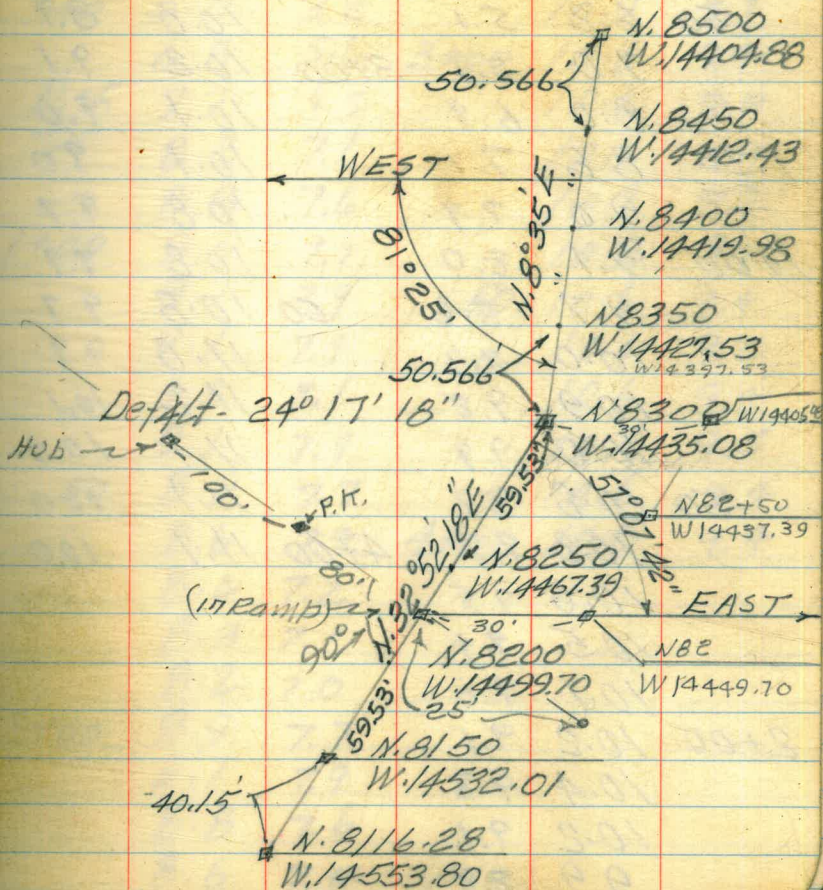
ANCHOR STAKES

- N85 - W14,360
- N84+50 - W14,360
- N84 - W14,350
- N83+50 - W14,350
- N83 - W14,350 14400
- N82+50 - W14,380 14420
- N82 - W14420
- N81+50 - W14470
- N81 - W14480



14,499.70
 30
 449.70

533
 6
 07



SOUNDINGS FOR REMEDIAL DREDGING
ELY. TIERRA DEL FUEGO W.O. 64098

STA. N. 76+00; OH00 = W. 14,810; SOUND EAST

DIST	Sound	Elev	DIST	Sound	Elev
0+00			(1.1)	10.0	8.9
(1.1)			50	10.0	8.9
	1.6	0.5		10.0	8.9
	4.1	3.0		10.0	8.9
	5.0	3.9		9.6	8.5
50	6.2	5.1		10.0	8.9
	7.0	5.9	3+00	10.2	9.1
	8.0	6.9		10.1	9.0
1:30	8.8	7.7		10.1	9.0
	9.0	7.9		10.8	9.7
1+00	9.1	8.0		10.8	9.7
	9.7	8.6	50	10.8	9.7
	10.0	8.9		11.0	9.9
	10.9	9.8		11.2	10.1
	11.0	9.9		11.1	10.0
50	10.8	9.7		11.1	10.0
	10.8	9.7	4+00	11.1	10.0
	10.6	9.5			
	10.5	9.4			
	10.1	9.0			
2+00	10.2	9.1			
	10.4	9.3			
	10.2	9.1			
	9.9	8.8			

NOTE: See FB (56) For Soundings After
Rem. Dredging (27) 5-11-61 (60)

STA. N. 76+50; OH00 = W. 14,770; SOUND EAST

DIST	Sound	Elev	DIST	Sound	Elev
0+00			(1.2)	8.7	7.5
(1.2)	0.4	10.8	50	9.9	8.7
	4.2	3.0		10.9	9.7
	4.6	3.4		10.9	9.7
	3.8	2.6		10.9	9.7
50	5.0	3.8		10.9	9.7
	6.8	5.6	3+00	10.6	9.4
1:35	7.7	6.5		10.1	8.9
	8.3	7.1		10.1	8.9
	8.8	7.6		10.1	8.9
1+00	8.9	7.7		10.3	9.1
	9.1	7.9	50	10.6	9.4
	9.1	7.9		10.4	9.2
	9.3	8.1		10.6	9.4
	9.1	7.9		10.7	9.5
50	8.9	7.7		10.6	9.4
	8.6	7.4	4+00	10.6	9.4
	8.4	7.2			
	8.3	7.1			
	8.2	7.0			
2+00	8.9	7.7			
	9.1	7.9			
	8.8	7.6			
	8.6	7.4			

5-11-61

STA. N. 77+00; O.H. 00=W. 14,740; SOUND EAST

Dist Sound Elev Dist Sound Elev

Dist	Sound	Elev	Dist	Sound	Elev
0+00			(14)	10.7	9.3
(14)	0.6	10.8	50	10.7	9.3
	4.2	2.8		10.6	9.2
	5.0	3.6		10.6	9.2
	4.4	3.0		10.3	8.9
50	2.9	1.5		10.1	8.7
	3.0	1.6	3+00	9.6	8.2
1+10	3.9	2.5		9.6	8.2
<u>2</u>	5.6	4.2		9.6	8.2
	6.7	5.3		10.0	8.6
1+00	7.2	5.8		10.3	8.9
	7.8	6.4	50	10.3	8.9
	8.5	7.1		10.6	9.2
	9.0	7.6		10.6	9.2
	9.1	7.7		10.6	9.2
50	10.0	8.6		10.6	9.2
	10.4	9.0	4+00	11.0	9.6
	10.6	9.2			
	10.6	9.2			
	10.6	9.2			
2+00	10.4	9.0			
	10.5	9.1			
	10.4	9.0			
	10.5	9.1			

(61)

STA. N. 77+50; O.H. 00=W. 14,710; SOUND EAST

Dist Sound Elev Dist Sound Elev

Dist	Sound	Elev	Dist	Sound	Elev
0+00			(14)	10.6	9.2
(14)	0.2	11.2	50	10.6	9.2
	4.3	2.9		10.4	9.0
	3.4	2.0		10.5	9.1
	3.1	1.7		10.5	9.1
50	2.6	1.2		10.7	9.3
	2.8	1.4	3+00	10.9	9.5
1+00	2.9	1.5		11.0	9.6
<u>2</u>	4.2	2.8		10.9	9.5
	5.9	4.5		11.0	9.6
1+00	8.0	6.6		11.1	9.7
	10.0	8.6	50	11.1	9.7
	10.2	8.8		11.1	9.7
	10.0	8.6		11.1	9.7
	10.0	8.6		11.1	9.7
50	10.4	9.0		11.1	9.7
	10.8	9.4	4+00	11.1	9.7
	10.8	9.4			
	10.7	9.3			
	10.8	9.4			
2+00	10.9	9.5			
	10.7	9.3			
	10.4	9.0			
	10.6	9.2			

5-12-61

STA. N. 78+00; 0+00=W. 14,680; SOUND EAST

	Dist	Sound	Elev	Dist	Sound	Elev
0+00				(28)	11.9	9.1
(28)	1.0	11.8		50	11.8	9.0
	5.0	2.2			11.9	9.1
	4.4	1.6			11.9	9.1
	4.0	1.2			12.2	9.4
50	4.0	1.2			12.1	9.3
	3.9	1.1	3+00		12.0	9.2
11:35	3.7	0.9				
	6.0	3.2				
	8.6	5.8				
1+00	10.7	7.9				
	11.6	8.8	50			
	11.6	8.8				
	11.6	8.8				
	11.7	8.9				
50	11.6	8.8				
	11.5	8.7	4+00			
	12.0	9.2				
	12.0	9.2				
	12.0	9.2				
2+00	12.0	9.2				
	12.1	9.3				
	12.0	9.2				
	11.9	9.1				

(62)

STA. N. 78+50; 0+00=W. 14,650; SOUND EAST

	Dist	Sound	Elev	Dist	Sound	Elev
0+00				(29)	13.4	10.5
(29)	0.2	+2.7		50	13.0	10.1
	4.5	1.6			12.6	9.7
	5.0	2.1			12.1	9.2
	4.0	1.1			12.1	9.2
50	3.8	0.9			12.1	9.2
	3.7	0.8	3+00		12.4	9.5
11:25	3.8	0.9				
	4.0	1.1				
	6.3	3.4				
1+00	9.0	6.1				
	11.2	8.3	50			
	12.1	9.2				
	12.2	9.3				
	12.6	9.7				
50	12.5	9.6				
	12.5	9.6	4+00			
	12.4	9.5				
	12.2	9.3				
	13.0	10.1				
2+00	13.4	10.5				
	13.9	11.0				
	13.9	11.0				
	13.8	10.9				

5-12-61

STA. N. 79+00: 0+00 = W. 14, 610' SOUND EAST

Dist Sound Elev Dist Sound Elev

Time	Dist	Sound	Elev	Dist	Sound	Elev
0+00				(3)	12.9	9.8
(3)	4.2	1.1		50	12.7	9.6
	5.7	2.6			12.5	9.4
	3.6	0.5			12.4	9.3
	3.9	0.8			12.4	9.3
50	4.4	1.3			12.3	9.2
	4.8	1.7	3+00		12.3	9.2
11:15	4.5	1.4				
<u>11:15</u>	4.1	1.0				
	7.2	4.1				
1+00	9.0	5.9				
	9.1	6.0				
	10.9	7.8				
	13.3	10.2				
	13.2	10.1				
50	13.1	10.0				
	13.0	9.9				
	13.0	9.9				
	12.9	9.8				
	13.0	9.9				
2+00	13.0	9.9				
	12.9	7.8				
	13.0	9.9				
	13.1	10.0				

(63)

STA. N. 79+50: 0+00 = W. 14, 580' SOUND EAST

Dist Sound Elev Dist Sound Elev

Time	Dist	Sound	Elev	Dist	Sound	Elev
0+00				(32)	13.8	10.6
(32)	1.0	+2.2		50	13.9	10.7
	5.3	2.1			13.8	10.6
	4.5	1.3			12.4	9.2
	3.8	0.6			12.6	9.4
50	3.5	0.3			12.8	9.6
	3.5	0.3	3+00		13.0	9.8
11:10	3.9	0.7				
<u>11:10</u>	3.9	0.7				
	3.8	0.6				
1+00	7.3	4.1				
	8.7	5.5				
	11.9	8.7				
	12.9	9.7				
	13.0	9.8				
50	13.0	9.8				
	13.0	9.8				
	13.0	9.8				
	13.0	9.8				
	13.3	10.1				
2+00	13.7	10.5				
	13.9	10.7				
	13.9	10.7				
	13.9	10.7				

5-12-61

STA. N. 80+00; 0+00 = W/4, 550; SOUND EAST

	DIST	SOUND	ELEV	DIST	SOUND	ELEV
0+00				(35)	14.1	10.6
(35)	0.0	+3.5		50	14.2	10.7
	4.1	0.6			13.7	10.2
	4.1	0.6			13.8	10.3
	3.6	0.1			13.6	10.1
50	3.5	0.0			13.3	9.8
	3.6	0.1	3+00		13.0	9.5
10:55	3.6	0.1				
	3.7		ON B/E; See P969			
	3.7		0.5 FOR 500			
1+00	5.0		1. Normal TO B/C			
	8.3	4.8				
	10.5	7.0				
	11.1	7.6				
	11.9	8.4				
50	12.4	8.9				
	12.8	9.3				
	13.1	9.6				
	13.7	10.2				
	13.9	10.4				
2+00	14.0	10.5				
	14.0	10.5				
	14.0	10.5				
	14.0	10.5				

64

STA. N. 80+50; 0+00 = W/4, 520; SOUND EAST

	DIST	SOUND	ELEV	DIST	SOUND	ELEV
0+00				(36)	12.7	9.1
(36)				50	12.7	9.1
	3.6	0.0			12.8	9.2
	4.7	1.1			13.0	9.4
	4.0	0.4			13.0	9.4
50	3.3	+0.3			13.1	9.5
	3.2	+0.4	3+00		13.1	9.5
10:45	3.5	+0.1				
	3.4	+0.2				
	3.5	+0.1				
1+00	3.7	0.1				
	3.8	0.2				
	4.3	0.7				
	6.6	3.0				
	9.0	5.4				
50	9.9	6.3				
	11.2	7.6				
	12.9	9.3				
	13.5	9.9				
	13.9	10.3				
2+00	14.0	10.4				
	13.9	10.3				
	13.2	9.6				
	12.8	9.2				

5-12-61

57A.N.81+00.0+00=W14.480			SOUND EAST		
DIST	Sound	Elev	DIST	Sound	Elev
0+00			(37)	13.0	9.3
(37)	2.2	+1.5	50	13.0	9.3
	3.7	0.0		13.0	9.3
	3.7	0.0		12.8	9.1
	4.6	0.9		12.6	8.9
50	4.7	1.0		12.6	8.9
	5.4	1.7	3+00	12.6	8.9
10:40	5.6	1.9			
	4.8	1.1			
	4.4	0.7			
1+00	4.1	0.4			
	4.4	0.7			
	6.0	2.3			
Outboard	7.3	3.6			
(End of Rock)	9.2	5.5			
50	10.6	6.9			
	11.2	7.5			
	11.8	8.1			
	12.1	8.4			
	12.2	8.5			
2+00	12.3	8.6			
	12.5	8.8			
	12.8	9.1			
	13.0	9.3			

(65)

5-12-61

57A.N.81+50.0+00=W14.470			SOUND EAST		
DIST	Sound	Elev	DIST	Sound	Elev
0+00			(4.5)	13.0	8.5
			50	13.0	8.5
				13.1	8.6
	0.3	+4.2		13.0	8.5
	1.7	+2.8		13.0	8.5
50	2.8	+1.7		12.9	8.4
	3.6	+0.9	3+00	12.8	8.3
9:25	4.9	0.4			
	5.4	0.9			
	6.6	2.1			
1+00	7.0	2.5			
	7.1	2.6	50		
	7.2	2.7			
	5.4	0.9			
	5.5	1.0			
50	6.4	1.9			
	8.3	3.8	4+00		
	9.4	4.9			
	10.4	5.9			
	11.2	6.7			
2+00	11.9	7.4			
	12.1	7.6			
	12.3	7.8			
	12.5	8.0			

5-12-61

STA. N. 82+00: 0+00 = W. 14420 SOUND EAST

Dist Sound Elev Dist Sound Elev

Dist	Sound	Elev	Dist	Sound	Elev
0+00			(44)	12.8	8.4
(44)	1.8	+2.6	50	12.7	8.3
	2.6	+1.8		12.7	8.3
	3.7	+0.7		12.6	8.2
	4.0	+0.4		12.6	8.2
50	5.7	1.3		12.7	8.3
	6.9	2.5	3+00	12.6	8.2
9:35	7.0	2.6			
	7.2	2.8			
	5.4	1.0			
1+00	5.5	1.1			
	5.6	1.2			
	8.6	4.2			
	9.7	5.3			
	10.5	6.1			
50	11.8	7.4			
	12.0	7.6			
	12.3	7.9			
	12.3	7.9			
	12.7	8.3			
2+00	13.1	8.7			
	13.1	8.7			
	13.1	8.7			
	13.0	8.6			

(66)

STA. N. 82+50: 0+00 = W. 14420 SOUND EAST

Dist Sound Elev Dist Sound Elev

Dist	Sound	Elev	Dist	Sound	Elev
0+00			(42)	12.4	8.2
(42)	0.5	+3.7	50	12.5	8.3
	1.4	+2.8		12.6	8.4
	1.8	+2.4		12.3	8.1
	1.9	+2.3		12.3	8.1
50	2.0	+2.2		12.3	8.1
	2.1	+2.1	3+00	12.6	8.4
9:50	2.2	+2.0		12.2	8.0
	2.5	+1.7		12.1	7.9
	2.4	+1.8		12.0	7.8
1+00	2.9	+1.3		12.0	7.8
	3.0	+1.2	50	12.4	8.2
	3.3	+0.9		12.1	7.9
	4.3	0.1		12.5	8.3
	8.1	3.9		12.5	8.3
50	10.0	5.8		12.7	8.5
	11.0	6.8	4+00	12.7	8.5
	11.6	7.4			
	11.9	7.7			
	12.2	8.0			
2+00	12.8	8.6			
	12.8	8.6			
	13.0	8.8			
	12.9	8.7			

5-12-61

STA. N. 83+00; 0+00 = W/4+00; SOUND EAST

Dist	Sound	Elev	Dist	Sound	Elev
0+00	0.2	+3.9	(4)	12.9	8.8
(4)	0.6	+3.5	50	12.8	8.7
	0.4	+3.7		12.6	8.5
	0.4	+3.7		12.5	8.4
	0.9	+3.2		12.4	8.3
50	0.8	+3.3		12.5	8.4
	1.1	+3.0	3+00	12.0	7.9
10+00	1.3	+2.8		11.6	7.5
	1.4	+2.7		11.8	7.7
	1.7	+2.4		11.8	7.7
1+00	2.2	+1.9		12.0	7.9
	3.6	+0.5	50	12.1	8.0
	5.2	1.1		12.2	8.1
	9.0	4.9		12.4	8.3
	10.4	6.3		12.5	8.4
50	11.0	6.9		12.6	8.5
	11.5	7.4	4+00	12.6	8.5
	11.7	7.6			
	11.8	7.7			
	12.3	8.2			
2+00	12.7	8.6			
	12.6	8.5			
	12.6	8.5			
	12.9	8.8			

5-12-61

STA. N. 83+50; 0+00 = W/4+350; SOUND EAST

Dist	Sound	Elev	Dist	Sound	Elev
0+00			(40)	12.6	8.6
(40)	0.0	+4.0	50	12.4	8.4
	0.2	+3.8		12.0	8.0
	0.6	+3.4		11.3	7.3
	1.0	+3.0		11.6	7.6
50	2.2	+1.8		11.9	7.9
	3.8	+0.2	3+00	11.9	7.9
10+10	6.5	2.5		12.2	8.2
	8.9	4.9		12.5	8.5
	10.2	6.2		12.7	8.7
1+00	11.1	7.1		13.0	9.0
	11.2	7.2	50	13.0	9.0
	11.5	7.5		12.8	8.8
	11.8	7.8		12.8	8.8
	12.0	8.0		12.9	8.9
50	12.2	8.2		12.9	8.9
	12.3	8.3	4+00	13.1	9.1
	13.0	9.0			
	13.1	9.1			
	13.2	9.2			
2+00	13.2	9.2			
	13.0	9.0			
	13.0	9.0			
	12.8	8.8			

(67)

5-12-61

STA. N. 84+00; 0+00 = W 1/4, 350' SOUND EAST

	Dist	Sound	Elev	Dist	Sound	Elev
0+00				(240)	12.6	8.6
(140)				50	12.4	8.9
					12.1	8.1
	0.8	+3.2			12.0	8.0
	2.0	+2.0			12.2	8.2
50	3.2	+0.8			12.4	8.4
	5.3	1.3	3+00		12.5	8.5
10:15	7.9	3.9			12.8	8.8
~	9.3	5.3			13.3	9.3
	10.0	6.0			13.5	9.5
1+00	10.7	6.7			13.6	9.6
	10.9	6.9	50		13.4	9.4
	11.2	7.2			13.2	9.2
	11.8	7.8			13.3	9.3
	12.3	8.3			13.3	9.3
50	12.3	8.3			13.4	9.4
	12.5	8.5	4+00		13.3	9.3
	12.5	8.5				
	12.7	8.7				
	12.8	8.8				
2+00	12.9	8.9				
	12.6	8.6				
	12.7	8.7				
	12.6	8.6				

(68)

STA. N. 84+50; 0+00 = W 1/4, 360' SOUND EAST

	Dist	Sound	Elev	Dist	Sound	Elev
0+00				(39)	13.1	9.2
(39)				50	13.1	9.2
					13.0	9.1
	0.7	+3.2			12.5	8.6
	1.9	+2.0			12.8	8.9
50	3.1	+0.8			12.9	9.0
	5.1	1.2	3+00		12.9	9.0
10:25	8.0	4.1				
~	9.2	5.3				
	10.0	6.1				
1+00	10.8	6.9				
	11.1	7.2				
	11.5	7.6				
	11.9	8.0				
	11.9	8.0				
50	12.0	8.1				
	12.9	9.0				
	13.0	9.1				
	13.0	9.1				
	13.1	9.2				
2+00	13.2	9.3				
	13.5	9.6				
	13.5	9.6				
	13.3	9.4				

5-12-61

STA. N. 85+00; 0+00 = W 14360; SOUND EAST

Dist	Sound	Elev	Dist	Sound	Elev
0+00			(38)	13.4	9.6
(38)			50	13.3	9.5
	0.2	+3.6		13.0	9.2
	1.4	+2.4		12.9	9.1
	2.5	+1.3		12.5	8.7
50	3.4	+0.4		12.6	8.8
	6.3	2.5	3+00	12.6	8.8
10:30	8.7	4.9			
	9.9	6.1			
	10.5	6.7			
1+00	11.2	7.4			
	11.5	7.7	50		
	11.8	8.0			
	12.0	8.2			
	12.1	8.3			
50	12.2	8.4			
	12.5	8.7	4+00		
	13.0	9.2			
	13.2	9.4			
	13.4	9.6			
2+00	13.2	9.4			
	13.3	9.5			
	13.5	9.7			
	13.5	9.7			

5-12-61

(69)

STA. N. 80+00; 0+00 = 40' ELY OF B/L; SOUND S. 570 TARE

Dist	Sound	Elev	Dist	Sound	Elev
0+00			(34)	12.3	8.9
(34)			50	12.5	9.1
	1.8	+1.6		12.6	9.2
	4.4	1.0		12.5	9.1
	3.8	0.4		12.6	9.2
	3.5	0.1		12.6	9.2
50	3.6	0.2		12.4	9.0
	3.7	0.3	3+00		
11:00	3.9	0.5			
	6.3	2.9			
	8.3	4.9			
1+00	11.9	8.5			
	13.2	9.8			
	13.0	9.6			
	13.0	9.6			
	13.1	9.7			
50	13.3	9.9			
	13.4	10.0			
	13.6	10.2			
	13.2	9.8			
	13.2	9.8			
2+00	13.1	9.7			
	12.7	9.3			
	12.6	9.2			
	12.4	9.0			

5-12-61

STA. N. 17400:0400 = 40' ELY OF FB/L SOUND STORAGE

Dist	Sound	Elev	Dist	Sound	Elev
0+00			(13)	9.8	8.5
(13)	1.0	+0.3	50	9.8	8.5
	6.0	4.7		9.8	8.5
	6.0	4.7		10.8	9.5
	3.8	2.5		10.7	9.4
50	6.0	4.7		10.2	8.9
	7.6	6.3	3+00	10.6	9.3
<u>11.5</u>	8.2	6.9			
	9.0	7.7			
	9.3	8.0			
1+00	9.6	8.3			
	9.9	8.6			
	10.0	8.7			
	10.0	8.7			
	10.1	8.8			
50	10.1	8.8			
	10.1	8.8			
	10.8	9.5			
	10.6	9.3			
	10.4	9.1			
2+00	10.1	8.8			
	10.0	8.7			
	10.2	8.9			
	10.1	8.8			

CROSS SECTIONS & SOUNDINGS FOR (70)
RIP-RAP PEREZ COVE THROUGH
LEASE AREA W.O. 64501

STA. W. 133+00:0400 = N. 5935.44
5-17-61

STA.	Elev.	FB. 138 87
B.M.	10.88	Christi Con.
0	14.2	Base N.W. Cor. Gas Pump Western Co.
5.36	15.7	
N 34	13.6	
N 52	4.5	

STA. W. 133+00:0400 = N. 5970 ; SOUND NORTH

Dist	Sound	Elev	Dist	Sound	Elev
0+00			(27)	12.7	10.0
			5-18-61	11.3	8.6
				10.7	8.0
(27)				11.9	9.2
	0.4	+2.3	2+00	11.9	9.2
50	1.4	+1.3		11.2	8.5
	2.5	+0.2		11.5	8.8
10:55	5.6	2.9		11.5	8.8
	10.0	7.3		11.0	8.3
	11.1	8.4	50	11.2	8.5
1+00	10.9	8.2		11.0	8.3
	11.0	8.3		10.9	8.2
	11.2	8.5		11.1	8.4
	11.5	8.8		11.2	8.5
	12.1	9.4	3+00	11.4	8.7
50	12.5	9.8			

5-17-61

STA. W. 133+50, 0+00 = N. 5916.08

STA.	Elev.
0	13.4
5.50	15.5
N 20	13.5
N 33	6.2
N 45	4.6

STA. W. 133+50, 0+00 = N. 5950; SOUND NORTH

Dist Sound Elev Dist Sound Elev

0+00 5-18-61 (28) 12.5

2+00 12.1

11.2

11.7

11.8

11.9

50 11.4

11.3

13.2

13.1

12.8

3+00 12.2

12.6 9.8

12.1

12.1

50 12.3

12.1

12.1

12.0

(71)

STA. W. 134+00, 0+00 = N. 5896.72

STA.	ELEV.
0	14.0
N. 7	14.3
N. 10	7.1
N. 35	5.4
5.50	15.0

STA. W. 134+00, 0+00 = N. 5930; SOUND NORTH

Dist Sound Elev Dist Sound Elev

0+00 (29) 12.0

2+00 12.0

(29) 0.1 +2.8 12.2

1.4 +1.5 12.1

2.7 +0.2 12.3

50 5.6 2.7 11.8

9.0 6.1 50 12.0

11:10 9.9 7.0 12.1

12.2 9.3 12.0

12.5 9.6 12.2

1+00 12.1 9.2 12.1

12.5 9.6 3+00 12.3

12.6 9.7

12.4 9.5

12.4 9.5

50 12.5

12.5

12.3

12.3

5-17-61

STA. W. 134+50; 0+00 = N. 5877.36

STA.	ELEV.
0	6.2
N. 30	4.0
5.5	7.0
5.18	12.8
5.75	15.3

STA. W. 134+50; 0+00 = N. 5890; SOUND NORTH

Dist Sound Elev Dist Sound Elev

0+00			(30)	12.8
(30)	5-18-61			12.9
				12.7
	0.4	+2.6	2+00	12.5
	0.5	+2.5		12.3
50	0.9	+2.1		12.2
	2.0	+1.0		12.2
11:20	3.1	0.1		12.2
	8.9	5.9	50	12.2
	13.4	10.4		12.1
1+00	13.4	10.4		12.3
	13.2	10.2		12.3
	13.2	10.2		12.1
	13.0	10.0	3+00	12.0
	13.0	10.0		
50	12.9	9.9		
	13.0	10.0		

STA. W. 135+00; 0+00 = N. 5858

STA.	ELEV.
0	5.6
N. 20	4.3
5.20	6.9
5.30	13.1
5.75	15.2

STA. W. 135+00; 0+00 = N. 5890; SOUND NORTH

Dist Sound Elev Dist Sound Elev

0+00			(30)	12.7
(3.0)				12.8
	0.1	+2.9		13.0
	1.3	+1.7	2+00	12.8
	3.4	0.4		12.7
50	9.2	6.2		12.5
	12.4	9.4		12.6
11:25	13.2	10.2		12.7
	13.5	10.5	50	12.8
	13.7	10.7		12.8
1+00	13.7	10.7		13.0
	13.6	10.6		12.9
	13.2			12.8
	12.5		3+00	12.5
	12.8			
50	12.8			
	12.8			

5-17-61

STA. W. 135+50; 0+00 = N. 5.834.20

STA	ELEV.
0	5.7
N 20	4.3
5.28	7.8
5.44	13.7
5.95	16.0

STA. W. 135+50; 0+00 = N. 5.820 : SOUND NORTH

Dist Sound Elev Dist Sound Elev

0+00 5-18-61 (32) 13.7

13.2

13.4

2+00 13.1

13.1

13.3

50

0.2 +3.0

13.6

1.1 +2.1

13.7

11:35 2.0 +1.2

50

13.8

3.8 0.6

13.8

1+00 10.0 6.8

13.5

11.4 8.2

13.3

12.4 9.2

13.2

13.5 10.3

3+00

13.5

14.0

50 13.9

14.0

NOTE: There is a Bar to be removed at this Sec (73)

STA. W. 136+00; 0+00 = N. 5.814.47 / Av. 8' x 25' Long To N.

STA	ELEV
0	5.3
N. 15	4.4
5.20	6.7
5.46	10.4
5.53	13.5
5.100	15.9

STA. W. 136+00; 0+00 = N. 5.850 : SOUND NORTH

Dist Sound Elev Dist Sound Elev

0+00 0.3 +2.9 (32) 13.2

(32) 0.6 +2.6 13.0

1.6 +1.6 13.0

3.7 0.5 2+00 12.9

9.4 6.2 13.2

50 12.2 9.0 13.1

12.8 9.6 13.1

11:40 12.9 13.3

13.0 50 13.2

13.0 13.2

1+00 13.0 13.1

13.1 13.4

13.4 13.3

13.9 3+00 13.5

13.6

50 13.0

13.0

5-17-61

STA. W. 136+50; 0+00 = N. 5814.47

STA.	ELEV.
0	5.3
N 10	4.0
5.32	9.2
5.37	10.7
5.55	11.3
5.62	14.8
5.100	15.4

STA. W. 136+50; 0+00 = N. 5780; SOUND NORTH

Dist Sound Elev Dist Sound Elev

0+00	5-18-61	(37)	14.0
(37)		(37)	14.0
			14.1
		2+00	13.9
	0.8	+2.9	13.9
50	1.1	+2.6	13.9
	1.7	+2.0	13.9
1:00	2.4	+1.3	13.9
<u> </u>	3.7	0.0	50 13.8
	9.8	6.1	13.8
1+00	12.1	8.4	13.8
	13.6	9.9	13.4
	13.3		13.7
	13.5		3+00 13.8
	13.5		
50	13.9		
	13.9		

(74)

STA. W. 137+00; 0+00 = N. 5786.02

STA.	ELEV.
0	5.3
N. 3	5.2
N. 3	4.6
5.54	10.9
5.57	12.2
5.76	12.5
5.815	14.4
5.125	15.9

STA. W. 137+00; 0+00 = N. 5770; SOUND NORTH

Dist Sound Elev Dist Sound Elev

0+00		(37)	13.7
(37)		(37)	13.6
			13.6
	0.3	+3.4	2+00 13.7
	1.0	+2.7	13.4
50	1.6	+2.1	13.4
	2.3	+1.4	13.2
1:05	2.8	+0.9	13.1
<u> </u>	3.4	+0.3	50 13.3
	4.7	1.0	13.3
1+00	10.9	7.2	13.5
	14.1	10.4	13.6
	13.9		13.6
	13.4		3+00 13.6
	13.6		
50	13.6		
	13.8		

5-17-61

STA. W. 137+50; 0+00 = N. 5776.90

STA.	ELEV.
0	4.7
N.2	3.7
5.16	7.0
5.93	14.2
5.130	15.2

STA. W. 137+50; 0+00 = N. 5760; SOUND NORTH

Dist Sound Elev Dist Sound Elev

Dist	Sound	Elev	Dist	Sound	Elev
0+00			(37)	13.4	
(37)	5-18-61		(37)	13.4	
				13.3	
0.5	+3.2		2+00	13.3	
1.1	+2.6			13.0	
50	1.5	+2.2		12.5	
	2.3	+1.4		13.0	
<u>11/10</u>	3.4	+0.3		13.0	
	6.0	2.3	50	13.0	
	9.6	5.9		13.0	
1+00	10.9	7.2		13.0	
	12.2	8.5		13.0	
	13.9	10.2		13.4	
	13.8		3+00	13.3	
	13.8				
50	13.8				
	13.7				

(75)

STA. W. 138+00; 0+00 = N. 5771.01

STA.	ELEV.
0	3.8
56	4.8
56	5.4
516	6.7
564	11.4
5100	14.7
5125	14.0

STA. W. 138+00; 0+00 = N. 5750; SOUND NORTH

Dist Sound Elev Dist Sound Elev

Dist	Sound	Elev	Dist	Sound	Elev
0+00			(37)	12.5	
(37)			(37)	12.8	
				13.3	
1.2	+2.5		2+00	13.6	
2.0	+1.7			13.6	
50	2.4	+1.3		13.5	
	3.1	+0.6		13.7	
<u>11/15</u>	6.3	2.6		13.3	
	9.2	5.5	50	13.3	
	11.1	7.4		13.5	
1+00	11.6	7.9		13.5	
	11.8	8.1		13.4	
	11.8	8.1		13.4	
	12.0	8.3	3+00	13.0	
	12.0	8.3			
50	12.1	8.4			
	12.1				

5-17-61

STA. W. 138+50; 0+00 = N. 5768.28

STA.	ELEV.
0	4.5
5.2	5.3
5.10	6.6
5.85	14.0
5.110	14.4

STA. W. 138+50; 0+00 = N. 5750; SOUND NORTH

DIST	SOUND	ELEV	DIST	SOUND	ELEV
0+00			(3)	11.8	
(3.7)	5-18-61			11.8	
				11.8	
	1.1	+2.6	2+00	11.5	
	2.5	+1.2		11.5	
50	3.8	0.1		11.4	
	5.9	2.2		11.8	
1+20	9.0	5.3		11.5	
	11.0	7.3	50	11.3	
	12.0	8.3		12.0	
1+00	12.2	8.5		12.3	
	12.6	8.9		12.9	
	12.9			13.1	
	12.1		3+00	13.4	
	12.0				
50	11.9				
	11.9				

(76)

STA. W. 139+00; 0+00 = N. 5768.70

STA.	ELEV.
0	5.4
N. 2	5.4
N. 2	3.4
5.20	6.9
5.96	14.5
5.125	13.8

STA. W. 139+00; 0+00 = N. 5750; SOUND NORTH

DIST	SOUND	ELEV	DIST	SOUND	ELEV
0+00			(3)	12.1	
(3.7)				12.0	
				11.9	
	1.0	+2.7	2+00	11.8	
	2.6	+1.1		11.8	
50	4.3	0.6		12.1	
	8.9	5.2		12.4	
1+25	11.3	7.6		12.6	
	11.6	7.9	50	12.3	
	12.0	8.3		12.4	
1+00	12.3	8.6		12.6	
	11.9			12.5	
	12.0			12.5	
	11.6		3+00	12.7	
	11.8				
50	12.0				
	12.0				

5-17-61
 STA. W. 139+50; 0+00=N. 5776.02

STA.	ELEV.
0	3.4
5.18	5.8
5.26	6.5
5.94	14.0
5.120	13.1

STA. W. 139+50; 0+00=N. 5750; SOUND NORTH
 Dist Sound Elev Dist Sound Elev

0+00					
(3.8)	5-18-61	(38)	12.1		
			11.8		
			11.8		
	0.9	+2.9	2+00	11.9	
	1.9	+1.9		11.9	
50	3.1	+0.7		12.0	
	5.3	1.5		12.1	
1:35	8.5	4.7		12.0	
-	10.8	7.0	50	12.0	
	12.1	8.3		12.2	
1+00	12.3	8.5		12.1	
	12.2	8.4		12.2	
	12.0	8.2		12.3	
	11.8	8.0	3+00	12.3	
	12.0	8.2			
50	12.0	8.2			
	12.1	8.3			

STA. W. 140+00; 0+00=N. 5795

STA.	ELEV.
5.10	3.7
5.19	5.5
5.35	6.5
5.95	13.1
5.125	13.2

STA. W. 140+00; 0+00=N. 5770; SOUND NORTH
 Dist Sound Elev Dist Sound Elev

0+00					
(38)			(38)	12.5	
				12.2	
	0.8	+3.0		12.4	
	2.4	+1.4	2+00	12.3	
	3.2	+0.6		12.3	
50	3.7	+0.1		12.5	
	5.4	1.6		12.7	
	8.3	4.5		12.8	
1:40	10.1	6.3	50	12.7	
-	11.2	7.4		12.7	
1+00	11.7	7.9		12.7	
	11.9	8.1		12.8	
	12.1	8.3		12.8	
	12.0	8.2	3+00	12.8	
	12.1	8.3			
50	12.3				
	12.3				

5-17-61

STA. W. 140+50; 0+00 = N. 5802.61

STA.	ELEV.
0	5.3
N. 5	4.2
5.76	12.5
5.110	13.3

STA. W. 140+50; 0+00 = N. 5780 SOUND NORTH

Dist Sound Elev Dist Sound Elev

Dist	Sound	Elev	Dist	Sound	Elev
0+00	5-18-61	(38) 11.9			
(38)		11.8			
		11.9			
0.0		2+00 12.0			
1.5		12.2			
50 2.6		12.1			
3.3		12.2			
1:45 4.0		12.3			
4.7		50 12.4			
6.0		12.5			
1+00 8.1		12.4			
8.3		12.6			
9.0		12.6			
9.9		3+00 12.4			
11.4					
50 11.9					
11.9					

STA. W. 141+00; 0+00 = N. 5810.22

STA.	ELEV.
0	9.4
5.39	12.7
5.80	13.3
N. 30	5.6
N. 40	4.2

STA. W. 141+00; 0+00 = N. 5840 SOUND NORTH

Dist Sound Elev Dist Sound Elev

Dist	Sound	Elev	Dist	Sound	Elev
0+00		(38) 12.0			
(38)		11.8			
		11.7			
0.5		2+00 11.9			
2.2		11.9			
3.1		12.0			
50 3.6		12.2			
4.0		12.4			
1:50 4.5		50 12.5			
5.9		12.4			
7.3		12.6			
1+00 6.9		12.7			
7.7		12.6			
7.5		3+00 12.6			
8.2					
10.0					
50 11.5					
11.6					

IMPROVED TABLES AND INFORMATION

HORIZONTAL STADIA CORRECTIONS

2°-00' — 0.1	21°-00' — 12.8	33°-00' — 29.7
3°-00' — 0.3	21°-30' — 13.4	33°-15' — 30.1
4°-00' — 0.5	22°-00' — 14.0	33°-30' — 30.5
5°-00' — 0.8	22°-30' — 14.7	33°-45' — 30.9
6°-00' — 1.1	23°-00' — 15.3	34°-00' — 31.3
7°-00' — 1.5	23°-30' — 15.9	34°-15' — 31.7
8°-00' — 1.9	24°-00' — 16.5	34°-30' — 32.1
9°-00' — 2.5	24°-30' — 17.2	34°-45' — 32.5
10°-00' — 3.0	25°-00' — 17.9	35°-00' — 32.9
10°-30' — 3.3	25°-30' — 18.6	35°-15' — 33.3
11°-00' — 3.6	26°-00' — 19.2	35°-30' — 33.7
11°-30' — 4.0	26°-30' — 19.9	35°-45' — 34.1
12°-00' — 4.3	27°-00' — 20.6	36°-00' — 34.6
12°-30' — 4.7	27°-30' — 21.3	36°-15' — 35.0
13°-00' — 5.1	28°-00' — 22.0	36°-30' — 35.4
13°-30' — 5.5	28°-30' — 22.8	36°-45' — 35.8
14°-00' — 5.9	29°-00' — 23.5	37°-00' — 36.2
14°-30' — 6.3	29°-30' — 24.3	37°-15' — 36.6
15°-00' — 6.7	30°-00' — 25.0	37°-30' — 37.1
15°-30' — 7.2	30°-15' — 25.4	37°-45' — 37.5
16°-00' — 7.6	30°-30' — 25.8	38°-00' — 37.9
16°-30' — 8.1	30°-45' — 26.2	38°-15' — 38.3
17°-00' — 8.5	31°-00' — 26.5	38°-30' — 38.7
17°-30' — 9.0	31°-15' — 26.9	38°-45' — 39.1
18°-00' — 9.5	31°-30' — 27.3	39°-00' — 39.6
18°-30' — 10.1	31°-45' — 27.7	39°-15' — 40.0
19°-00' — 10.6	32°-00' — 28.1	39°-30' — 40.5
19°-30' — 11.2	32°-15' — 28.5	
20°-00' — 11.7	32°-30' — 28.9	
20°-30' — 12.3	32°-45' — 29.3	

Chains to Feet

1	66
2	132
3	198
4	264
5	330
6	396
7	462
8	528
9	594
10	660

Feet to Chains

100	1.515
200	3.030
300	4.545
400	6.060
500	7.575
600	9.090
700	10.606
800	12.121
900	13.636
1,000	15.151

W118 6890
 W119 6920
 120 6950
 121 6970
 122 6990
 123 6980
 124 7000
 125 7000
 126 6990
 127 6990
 128 6990
 129 7010
 130 7000
 131 7010
 132 7070 - Comp 4-28-61 - Foth.
 133 7140
 134 5930
 135 5890
 136 5850
 137 5820
 138 5800
 N59-14140
 N60 14180
 61 14190
 62 14190
 63 14230
 64 14220
 65 14220
 66 14260

