

MISSION BAY

69



WILSON'S

FIELD BOOK

W.S.P.



N 7000
W 4000

**Our Leather Bound Engineers Note Books
are carried in the following rulings:**

- No. 380 LEVEL BOOK.** Left and Right Hand Page
the same as Left Hand Page
of this Book.
- No. 382 FIELD BOOK.** Left Hand Page as in this
Book, Right Hand Page 4x4
to the inch, Center Line Red.
- No. 384 MINING TRANSIT
BOOK.** Left Hand Page as in this
Book, Right Hand Page 8x8
to the inch, Center Line Red.
- No. 385 FIELD BOOK.** Left Hand Page as in this
Book, Right Hand Page 8 ver-
tical and 4 horizontal lines to
the inch, Center Line Red.

We also carry the Note Books listed above,
bound in extra strong Fabri-Hide (otherwise
the same quality of book,) which can be fur-
nished at a somewhat lower price.

In ordering Fabri-Hide covered books, add
the letter "F" to catalog number.

THE FREDERICK POST CO.

ENGINEERING and DRAFTING SUPPLIES

P. O. Box 803

CHICAGO

MICROFILMED

JAN 7 1965

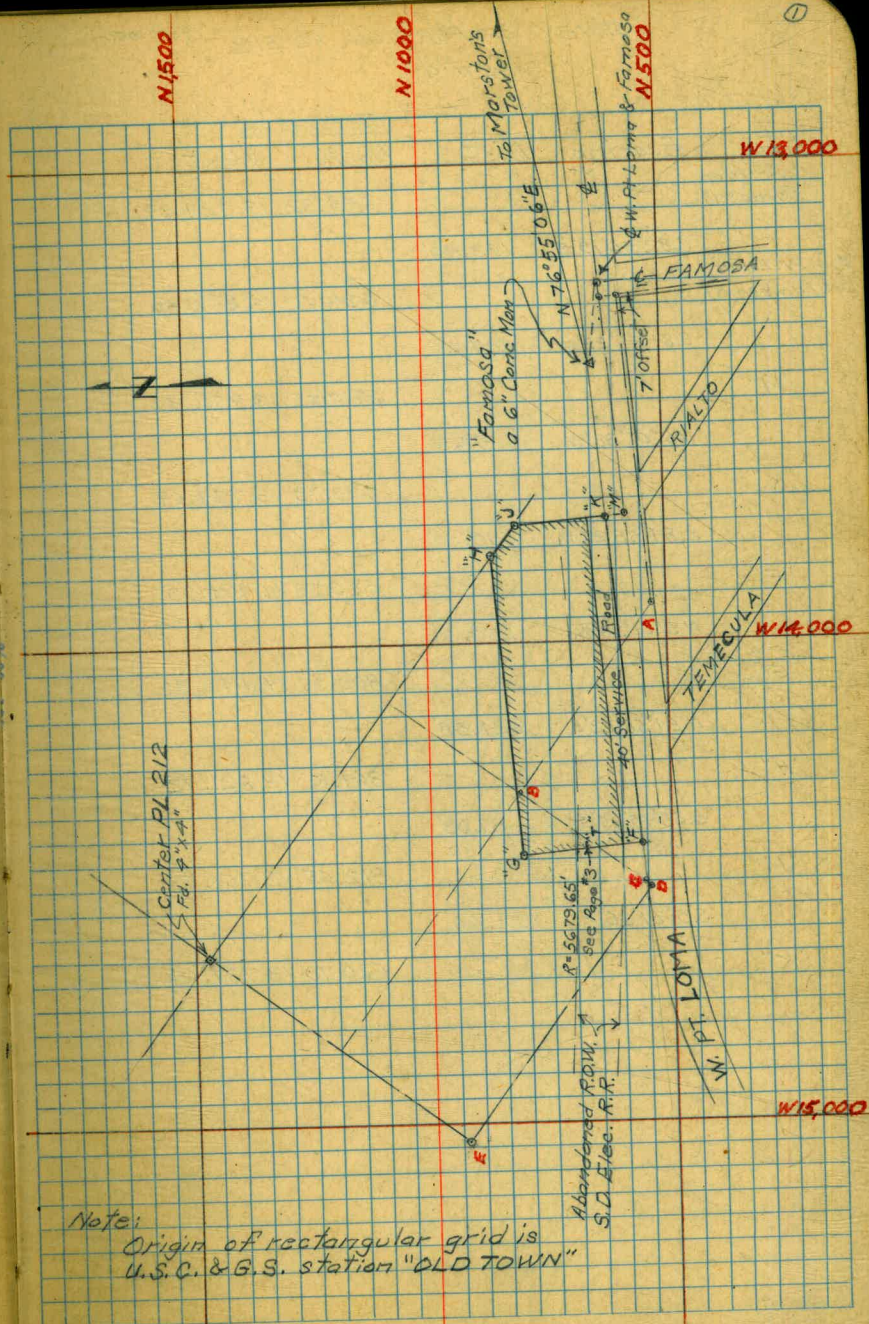
MADE IN U. S. A.

Sept 1950

SURVEY OF A PORTION OF P.L. 212
NLY SIDE OF W. PT. LOMA BLVD.

Sta.	Bearing	Dist.	Coordinates	
			North	West
"Famosa" Conc. Man			644.32	13,424.94
	S. 82° 56' 13" E.	173.40'		
E Famosa St. and E. W. Pt Loma Blvd.			623.00	13,252.86
	S. 84° 58' 22" W.	28.15'		
E W. Pt Loma Blvd. 7' OFF WLY Famosa			620.53	13,280.90
	S. 0° 51' 22" W.	33.17'		
7' OFF SLY. W. Pt Loma 7' OFF WLY. Famosa			587.37	13,281.40
	S. 84° 58' 22" W.	643.87'		
"A"			530.95	13,922.79
	N. 53° 48' 08" W.	480.34'		
"B"			814.62	14,310.42
	S. 36° 14' 52" W.	324.04'		
"C" PI WITH NLY W. PT LOMA BLVD.			553.29	14,502.01
	S. 36° 14' 52" W.	5.73'		
"D"			548.69	14,505.40
	N. 53° 53' 08" W.	659.05'		
"E"			937.11	15,037.81
	N. 36° 13' 05" E	660.04'		
Center of P.L. 212			1,469.61	14,647.82

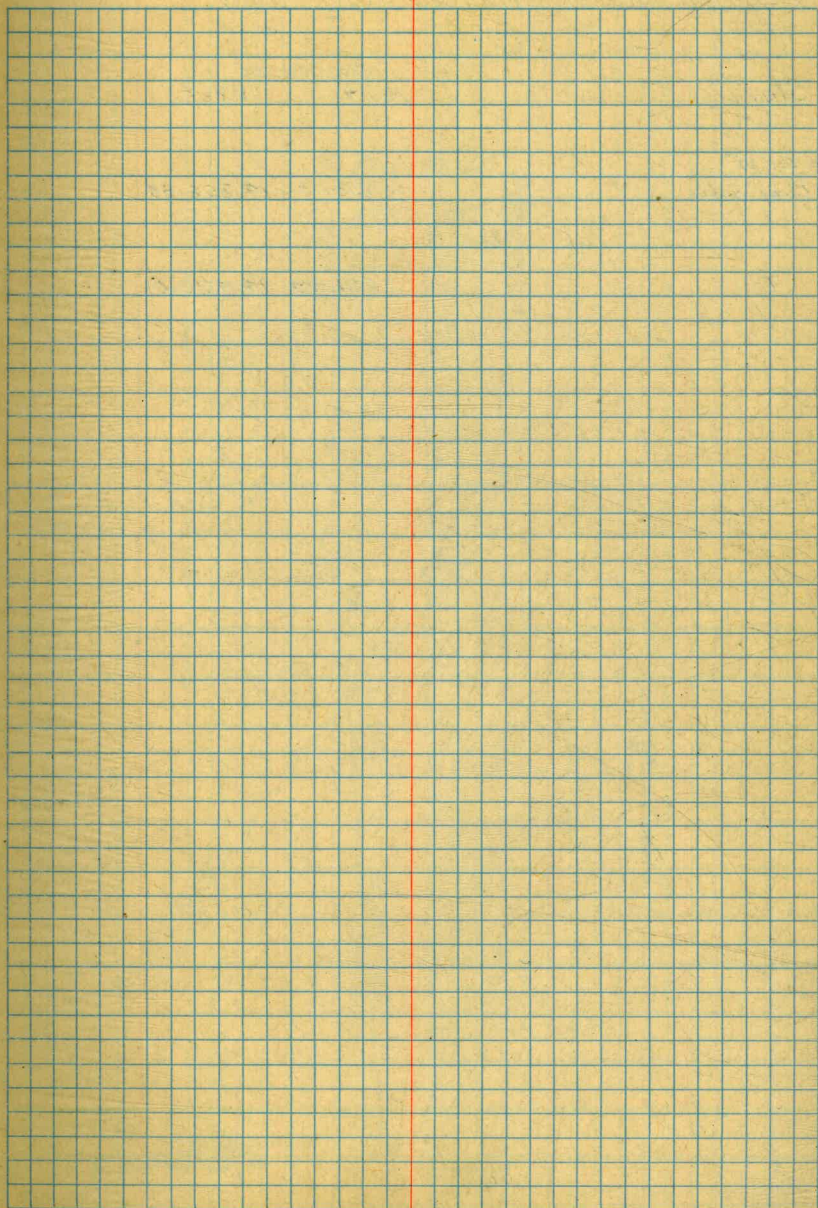
Cont'd Page 2



Note:
Origin of rectangular grid is
U.S.C. & G.S. station "OLD TOWN"

Cont'd

Sta	Bearing	Dist.	Coordinates	
			North	West
Conc. Mon "Famosa"			644.32	13,424.94
	S.82°56'19"E	173.40'		
R.W. Pt. Loma & Famosa St.			623.00	13,252.86
	S.84°58'22"W	480.13'		
"M"			580.95	13,731.14
	N.5°01'38"W	40.00'		
"K"			620.79	13,734.64
	S.84°58'22"W	690.00'		
"F"			560.33	14,421.99
	N.5°01'38"W	250.00'		
"G"			809.37	14,443.90
	N.84°58'22"E	624.58'		
"H"			864.10	13,821.72
	S.53°45'35"E	87.03'		
"J"			812.65	13,751.53
	S.5°01'38"E	192.60'		
"K"			620.79	13,734.64

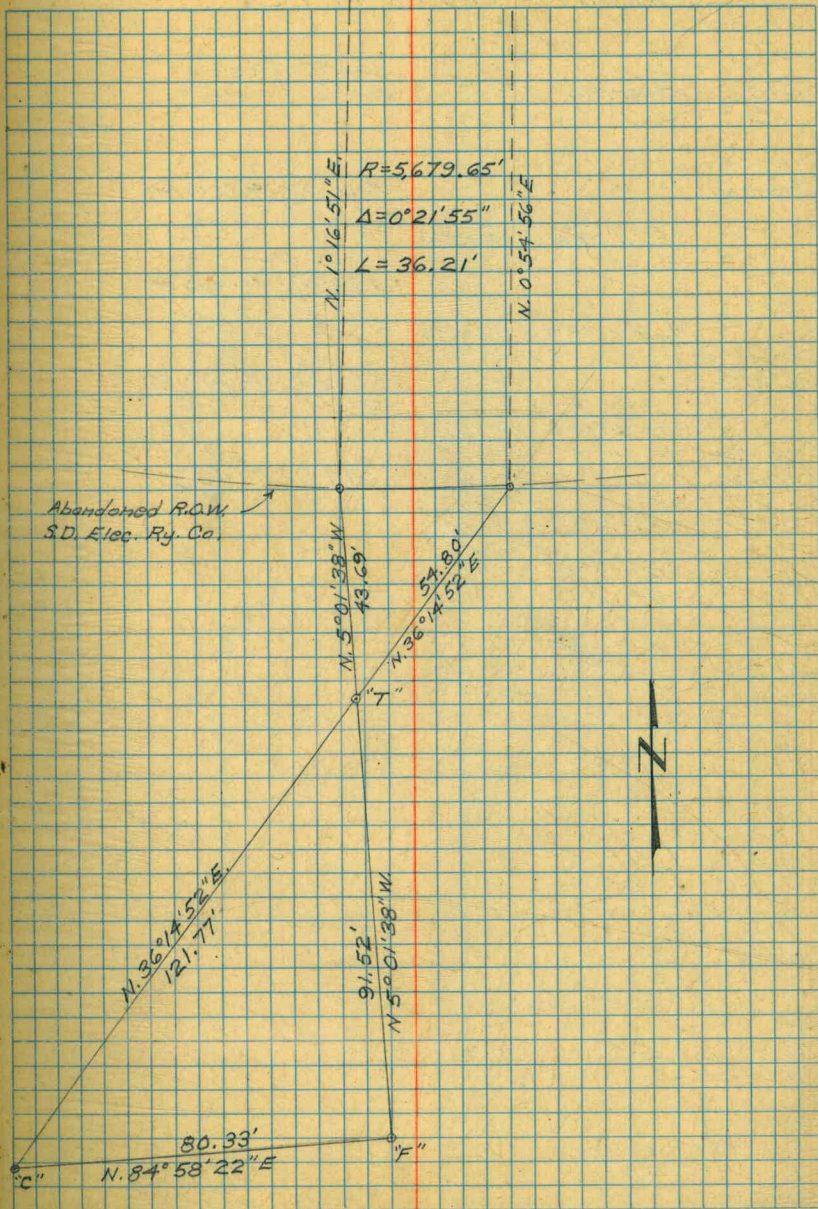


SURVEY OF PORTION PL 212 Cont'd

Sept 1950

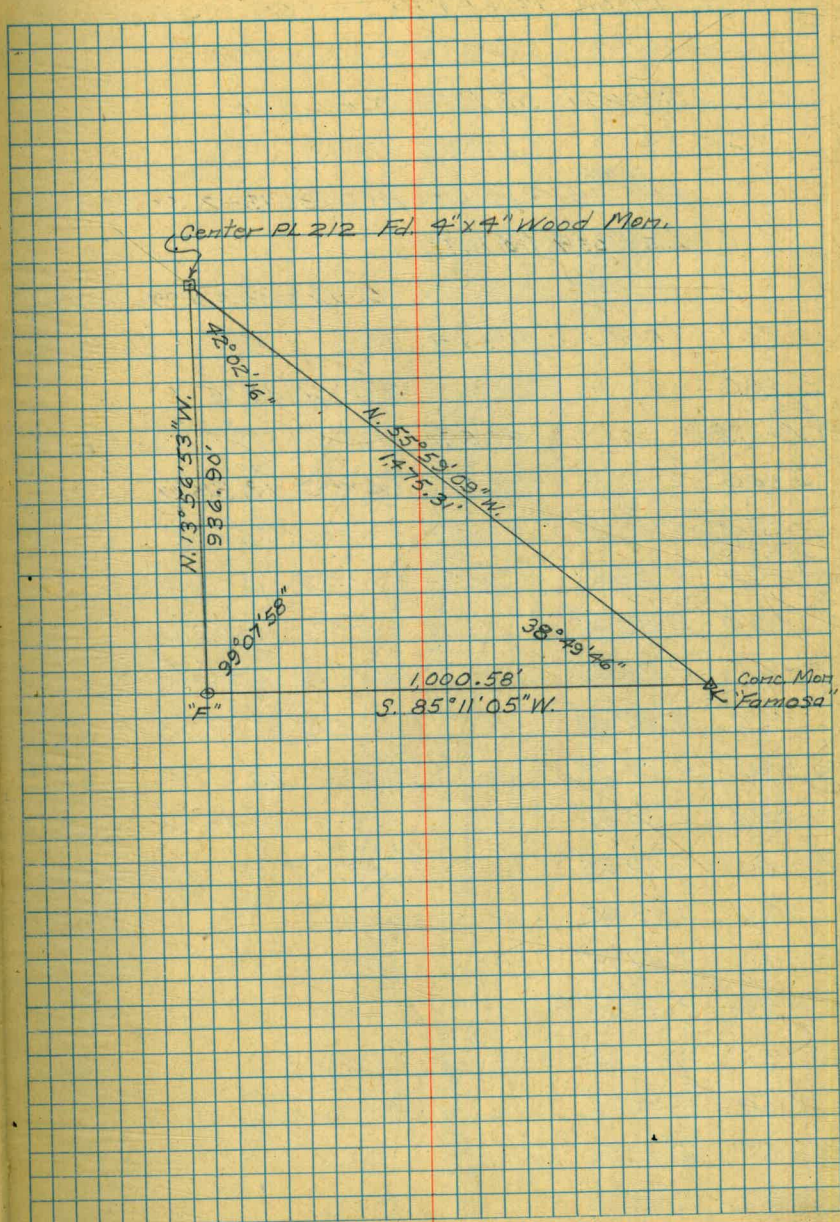
PORTION OF ABANDONED R.R. R.O.W.

Sta.	Coordinates	
	North	West
Center of 5,679.65' Radius	6,373.19	14,306.89
"T"	651.49	14,430.01



LOCATION OF CENTER PL 212

Sta.	Bearing	Dist.	Coordinates	
			North	West
Cont. Mon "Famosa"			644.32	13,424.99
	S. 85° 11' 05" W.	1000.58'		
"F"			560.33	14,421.99
	N. 13° 56' 53" W.	936.90'		
Center of PL 212			1,462.61	14,647.82
	S. 55° 59' 09" E.	1,475.31'		
Cont. Mon "Famosa"			644.32	13,424.99



LOCATION OF DRAINAGE DITCH CONTD

CURVEDATA

$R = 500' \Delta = 26^{\circ}11'45''$

$L = 228.60 \quad T = 116.33 \quad d = 3.4377468$

Sta	Def \angle	Chord	Elev.
B.C.R. 28+40.49			17.50
+50	$0^{\circ}32'42''$	9.51	17.51
+75	$1^{\circ}58'38''$	25.00	17.26
29+00	$3^{\circ}24'35''$	"	17.19
+25	$4^{\circ}50'31''$	"	16.74
+50	$6^{\circ}16'28''$	"	16.16
+75	$7^{\circ}42'25''$	"	15.74
30+00	$9^{\circ}08'21''$	"	15.36
+25	$10^{\circ}34'18''$	"	14.88
+50	$12^{\circ}00'15''$	25.00	14.17
E.C. +69.09	$13^{\circ}05'52''$	19.09	14.12
31+00		30.91	13.80
+50		50.00	13.45
End +85.		35.00	13.54

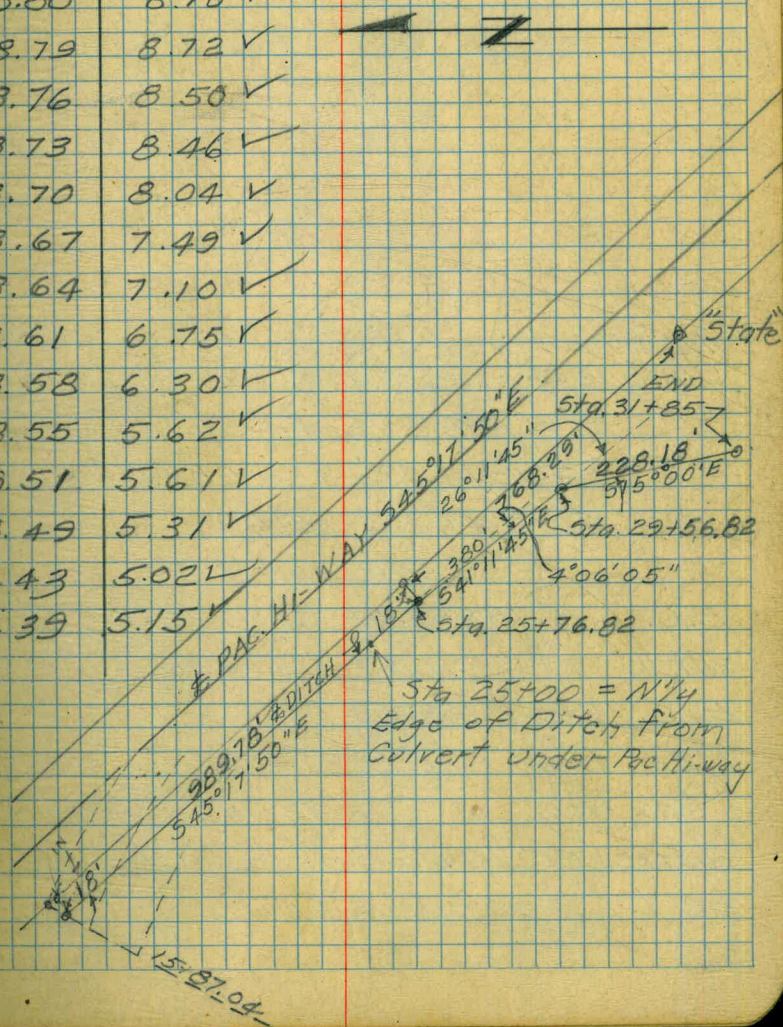
29+56.82	29+56.82
1+16.33	1+16.33
28+40.49	30+73.15

5 Aug, 1952

Revised Ditch & Run Curve T.A.S.

NOTE: See Sketch Pg. 7

Grade	Cut
8.80	8.70 ✓
8.79	8.72 ✓
8.76	8.50 ✓
8.73	8.46 ✓
8.70	8.04 ✓
8.67	7.49 ✓
8.64	7.10 ✓
8.61	6.75 ✓
8.58	6.30 ✓
8.55	5.62 ✓
8.51	5.61 ✓
8.49	5.31 ✓
8.43	5.02 ✓
8.39	5.15 ✓



Watson
SissonShorey
Sherry

Grades

4 Jun 52

For Drainage Ditch Along W'ly Side of
Pac Hi-Way Near DeAnza Point Fill

Sta	+ H.I.	-	Elev	Grade
BM			12.00	Conc Mark State

8.06 20.06

31+85 6.44 13.62 8.39

31+50 6.55 13.51 8.43

31+00 6.19 13.87 8.49

30+50 5.42 14.64 8.55

30+00 4.53 15.53 8.61

29+56⁸² 3.47 16.59 8.66

29+50 3.38 16.68 8.67

29+00 2.74 17.32 8.73

28+50 2.54 17.52 8.79

4.36 21.88

28+00 4.69 17.19 8.85

27+50 5.22 16.66 8.91

27+00 5.45 16.43 8.97

26+50 5.45 16.43 9.03

26+00 5.80 16.08 9.09

25+76⁸² 5.93 15.95 9.12

25+50 6.24 15.64 9.15

25+25 5.19 16.69 9.18

24+75 5.69 16.19 9.24

24+50 5.56 16.32 9.27

24+00 6.24 15.64 9.33

5.60 21.24

Cut or Fill

Grade = 0.12 %

C 5.23

C 5.08

C 5.38

C 6.09

C 6.92

C 7.93

C 8.01

C 8.59

C 8.73

C 9.24

C 7.75

C 7.46

C 7.40

C 6.99

C 6.83

C 6.49

C 7.51

C 6.95

C 7.05

C 6.31

GRADES
Poc. Hi. Way Ditch Cont'd

7 JUN 52

(10)

Cut or Fill

Sta	+	H.I.	-	Elev.	Grade	
		21.24				
23+50			6.03	15.21	9.39	C 5.82
23+00			6.21	15.03	9.45	C 5.58
22+50			6.44	14.80	9.51	C 5.29
22+00			5.16	16.08	9.57	C 6.51
21+50			4.69	16.55	9.63	C 6.92
21+00			4.64	16.60	9.69	C 6.91
20+50			4.60	16.64	9.75	C 6.89
20+00			4.74	16.50	9.81	C 6.69
19+50			4.76	16.48	9.87	C 6.61
	5.81	22.29				
19+00			6.08	16.21	9.93	C 6.28
18+50			4.31	17.98	9.99	C 7.99
18+00			6.26	16.03	10.05	C 5.98
17+77 ⁰⁹			5.35	16.94	10.08	C 6.86
17+50			4.86	17.43	10.11	C 7.32
17+00			5.74	16.55	10.17	C 6.38
16+50			6.70	15.59	10.23	C 5.36
16+00			7.40	14.89	10.29	C 4.60
15+87 ⁰⁹			7.25	15.04	10.30	C 4.74
15+50			7.65	14.64	10.35	C 4.29
	1.38	16.02	16.02			
15+00			1.64	14.38	10.41	C 3.97
14+50			2.57	13.45	10.47	C 2.98

Pac. Hi-Way. GRADES
Drainage Ditch Cont'd

Sta	+	H.I.	-	Elev.	Grade
		16.02			
14+00		3.63	12.39	10.53	
13+50		4.28	11.74	10.59	
13+00		4.56	11.46	10.65	
12+50		3.96	12.06	10.71	
12+00		5.20	10.82	10.77	
	4.69	15.51			
11+50		5.57	9.94	10.83	
11+00		5.42	10.09	10.89	
10+50		5.56	9.95	10.95	
10+00		4.86	10.65	11.01	
9+50		5.41	10.10	11.07	
9+00		5.69	9.82	11.13	
8+50		5.48	10.03	11.19	
8+00		5.16	10.35	11.25	
	4.62	14.97			
7+50		4.55	10.42	11.31	
7+00		4.43	10.54	11.37	
6+50		4.01	10.96	11.43	
6+00		4.36	10.61	11.49	
5+50		3.99	10.98	11.55	
5+00		4.11	10.86	11.61	
4+50		3.86	11.11	11.67	

Cut or Fill.

C 1.86	
C 1.15	
C 0.81	
C 1.35	APPROX Grade
C 0.05	8" of Fill
F 0.89	0.2' above Ground
F 0.80	0.3' above Ground
F 1.00	0.2' above Ground
F 0.36	1.0' above Ground
F 0.97	0.5' above Ground
F 1.31	Ground
F 1.16	Ground
F 0.90	Ground
F 0.89	"
F 0.83	"
F 0.77	"
F 0.88	"
F 0.57	"
F 0.75	"
F 0.56	"

Grades

4 Jun 52

Pac Hi-Way Drainage Ditch Cont'd

Sta	+	H.I.	-	Elev.	Grade
4+00		14.97	3.47	11.50	11.73
	4.70	16.20			
3+50			4.59	11.61	11.79
3+00			4.89	11.31	11.85
2+67 ⁸⁷			5.99	10.21	11.91
2+00			5.02	11.18	11.97
4+00 T.P.			4.70	11.50	11.97
	3.56	15.06			
8+00 T.P.			4.70	10.36	
	5.23	15.59			
12+00 T.P.			4.78	10.81	
	5.79	16.60			
15+50 T.P.			1.97	14.63	
	7.05	21.68			
19+50 T.P.			5.20	16.78	
	4.60	21.08			
24+00 T.P.			5.43	15.65	
	5.77	21.42			
28+50 T.P.			3.89	17.53	
	3.36	20.89			
BM State			8.88	12.01	

Cut or
Fill

F0.23

F0.18

F0.54

F1.70

F0.79

F0.7

(12)

11.85
54
11.31

SANITARY FILL

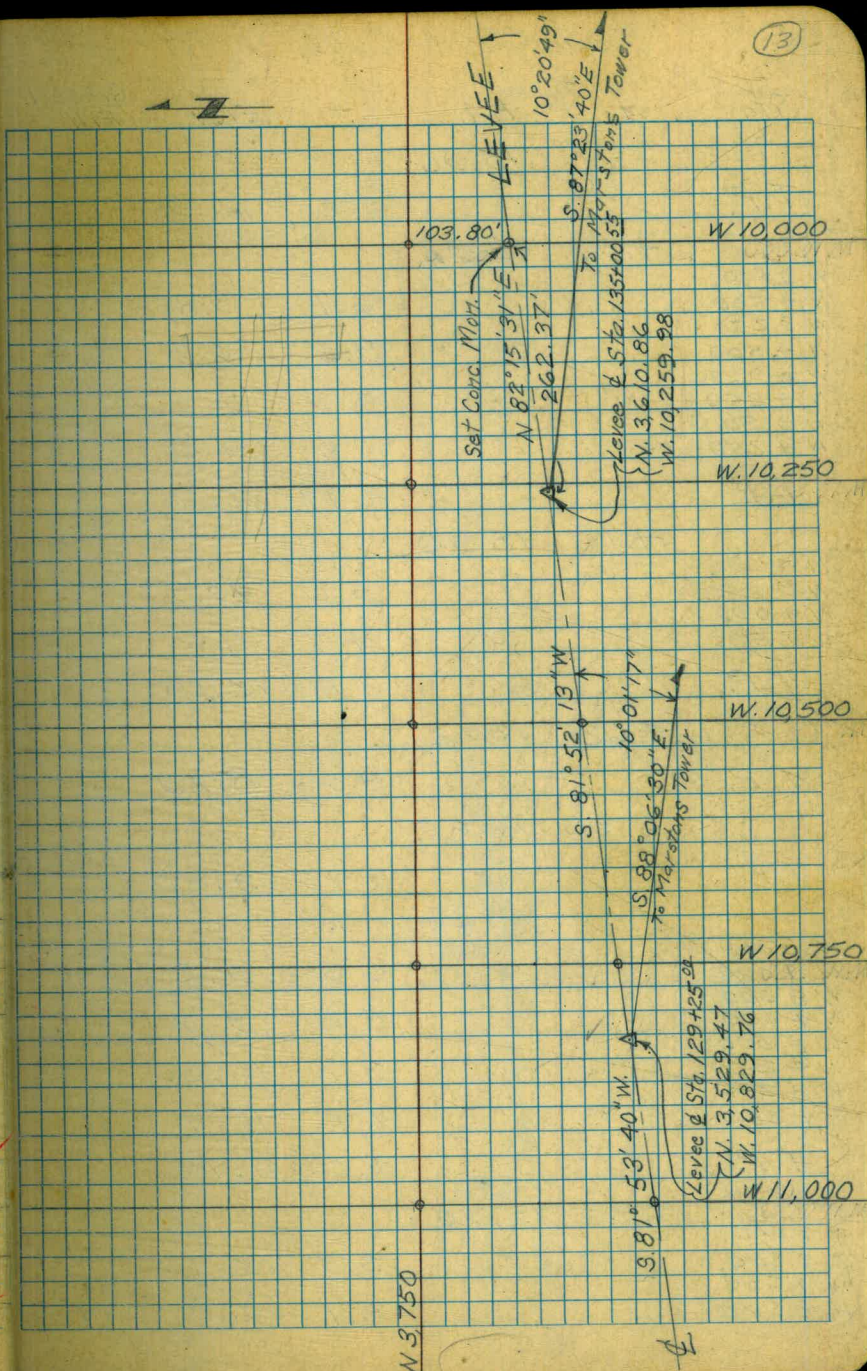
1, July 52

North of Floodway Between Midway Dr & Hwy 101
Layout & Grades Proj. # 20988

Stakes to be set on each 250' Grid Station

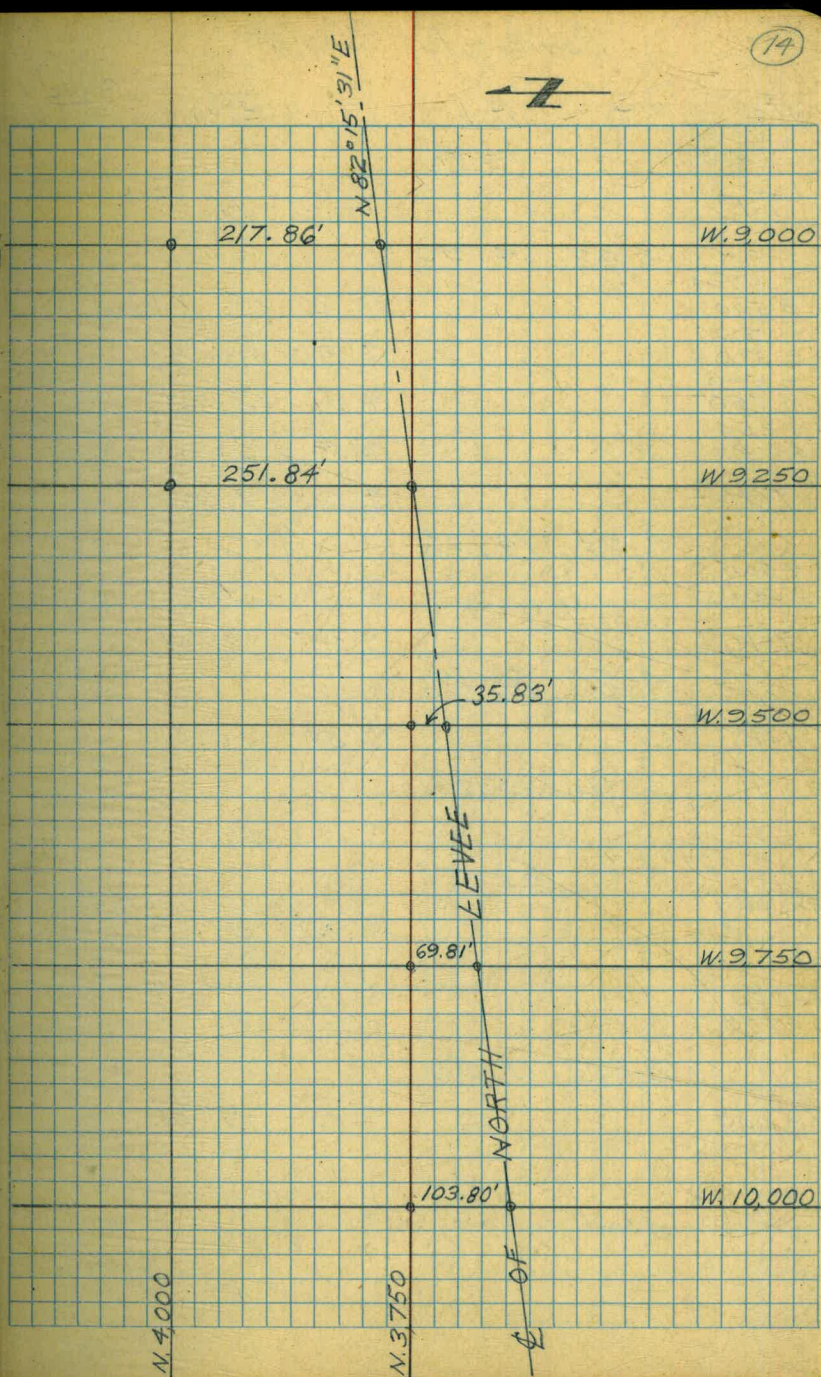
Datum is U.S.C. & G.S. Mean Lower Low Water

Sta	+	H.I.	-	Elev.	Grade Fill
T.B.M.				9.87	
	10.32	20.19			
B.M. ^{Cont.} Mort			0.70	19.49	W 10,000 & Levee
	0.74	20.23			
T.B.M.			10.36	9.87	
	4.30	14.17			
W 9,750					20.0
N 3,750			3.5	10.7	9.3
W 10,000					19.0 ✓
N 3,750			5.8	8.4	10.6
W 10,000					18.0 ✓
N 4,000			2.6	11.6	6.4
W 3,750					18.0 ✓
N 4,000			4.5	9.7	8.3
T.P.			1.38	12.79	
	3.17	15.96			
W 10,000					16.0 ✓
N 4,250			6.3	9.7	6.3 ✓
W 10,000					14.9 ✓
N 4,500			7.1	8.9	5.4 ✓
W 9,750					15.7 ✓
N 4,500			6.1	9.9	5.8 ✓
W 9,750					17.0 ✓
N 4,250			1.8	14.2	2.8 ✓



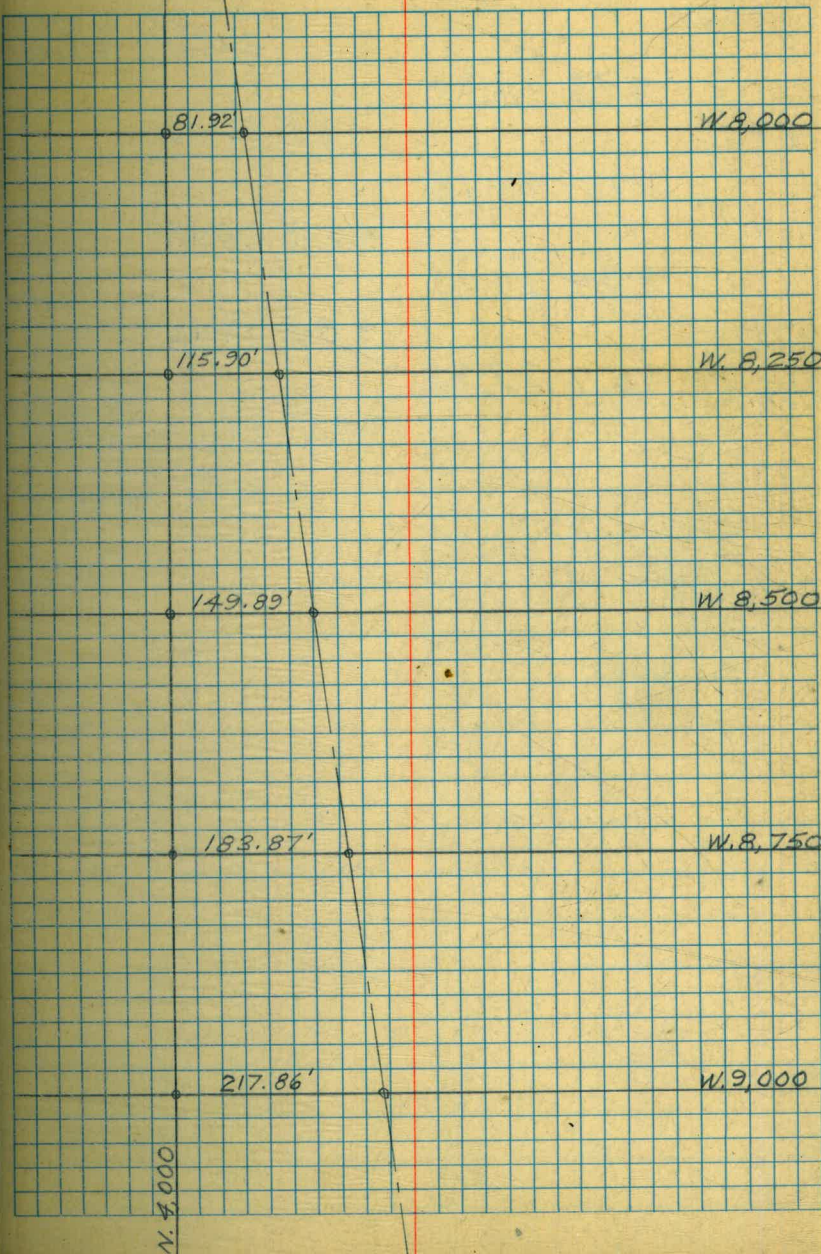
Sanitary Fill Cont'd

Sta	+	H.I.	-	Elev.	Grade & Fill
		15.96			
T.P.			5.01	10.95	
	4.97	15.92			
W 9,500					19.5
N 7,500			6.1	9.8	9.7 ✓
W 9,250					20.2
N 7,500			9.6	6.3	13.9 ✓
W 9,250					21.7 ✓
N 7,250			5.7	10.2	11.5
W 9,500					20.8
N 7,250			1.9	14.0	6.8 ✓
T.P.			4.17	11.75	
	4.15	15.90			
N 4,000					18.6 ✓
W 9,250			5.0	10.9	7.7 ✓
N 4,000					17.9 ✓
W 9,500			4.7	11.2	6.7 ✓
T.P.			3.80	12.10	
	4.62	16.72			
T.P.			8.43	8.29	
	6.36	14.65			
T.P.			5.15	9.50	
	5.99	15.49			
W 8,250					20.5 ✓
N 4,000			6.3	9.2	11.3
W 8,000					20.5 ✓
N 4,000			5.8	9.7	10.8 ✓
W 8,000					18.5
N 4,250			3.7	11.8	6.7 ✓
W 8,250					18.5 ✓
N 4,250			4.1	11.4	7.1 ✓
T.P.			4.01	11.48	
	4.48	15.96			
W 8,000					15.6 ✓
N 4,500			3.9	12.1	3.5
W 8,250					18.0 ✓
N 4,500			5.1	10.9	7.1



Sanitary Fill Cont'd.

Sta.	+	H.I.	-	Elev	Grade Fill
		15.96			
T.P.			4.45	11.51	
	3.39	14.90			
N. 4,250					20.9 ✓
W. 8,500			5.2	9.7	11.2 ✓
N. 4,500					20.7 ✓
W. 8,500			4.2	10.7	10.0 ✓
N. 4,500					20.3 ✓
W. 8,750			4.91	9.99	10.3 ✓
N. 4,250					21.5 ✓
W. 8,750			5.4	9.5	12.0 ✓
T.P.			4.91	9.99	
	4.97	14.96			
N 4500					20.0 ✓
W 9,000			5.9	9.1	10.9 ✓
T.P.			5.45	9.51	
	4.80	14.31			
T.P.			4.31	10.00	
	5.16	15.16			
T.P.			0.50	14.66	
	7.91	22.57			
Cornic Mon			2.42	20.15	W 8,000 & Levee
N 4250				9.50	
W 8750					
	2.02	11.52			
N 4250					22.0
W 9,000			6.2	5.3	16.7



Sanitary Fill Cont'd.

(16)

STA. CON. MON.	+	H.I.	-	ELEV.	W. 8,000 LEVEE
	4.73	24.88		20.15	
T.P.			4.85	20.03	W 7000
	4.75	24.78			
T.P.			4.59	20.19	
	3.84	24.03			
T.P.			4.87	19.16	
CON. MON.	4.57	23.73			W 7250
			4.27	19.46	W. 10,000 LEVEE
				(19.49)	
				(CORRECT ELEVATION)	

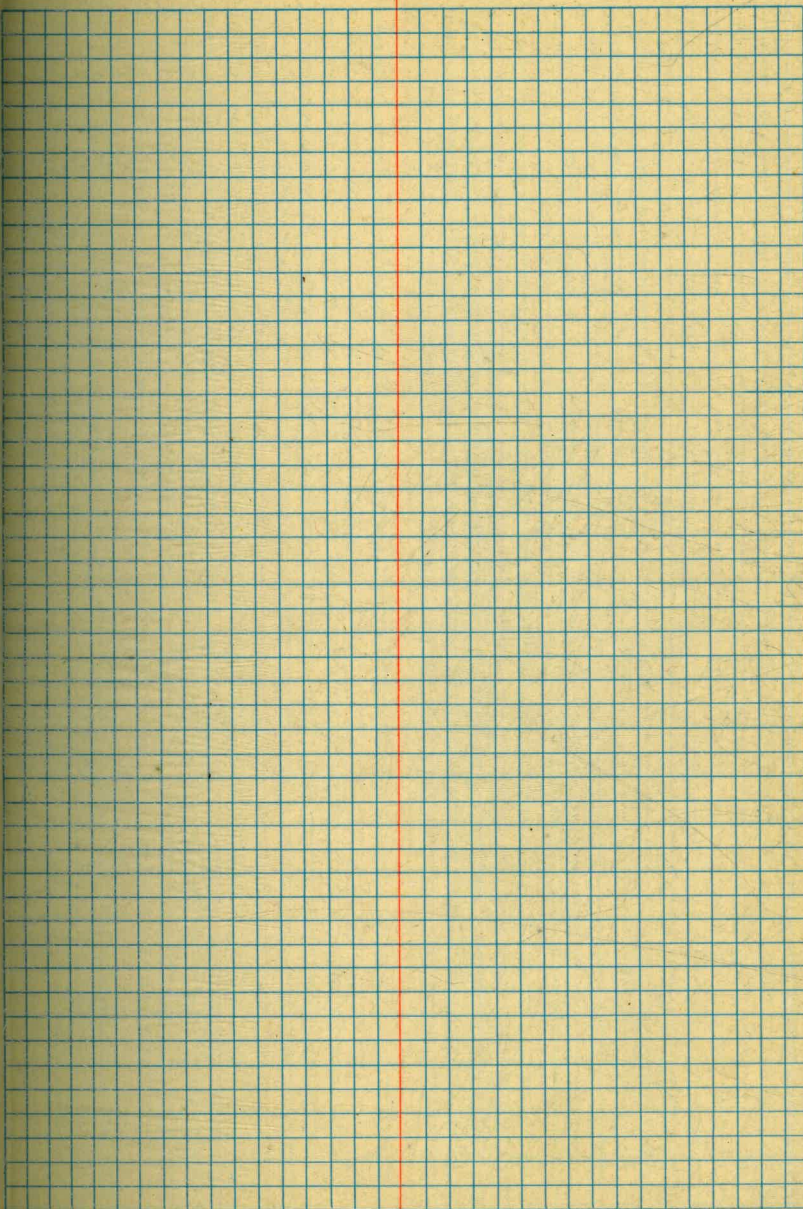
W. 7500

W. 7750

W. 8000

Sanitary Fill Contd.

(17)

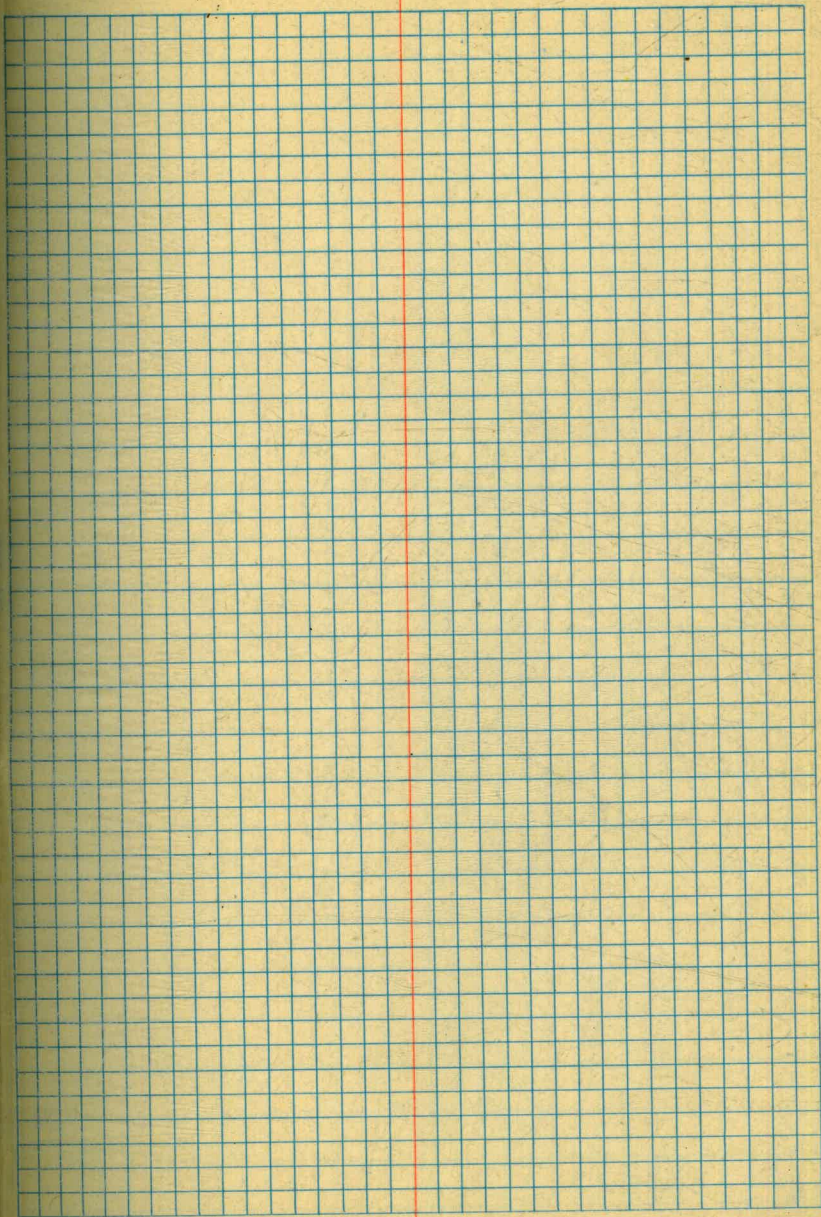


Sanitary Fill Cont'd

(18)

Sanitary Fill Cont'd.

(19)



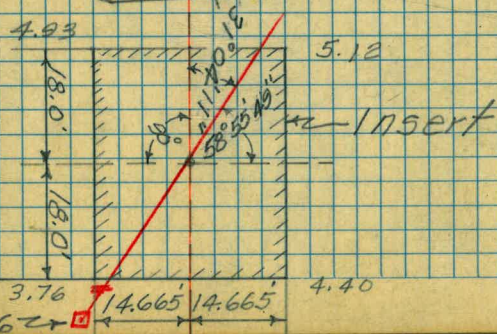
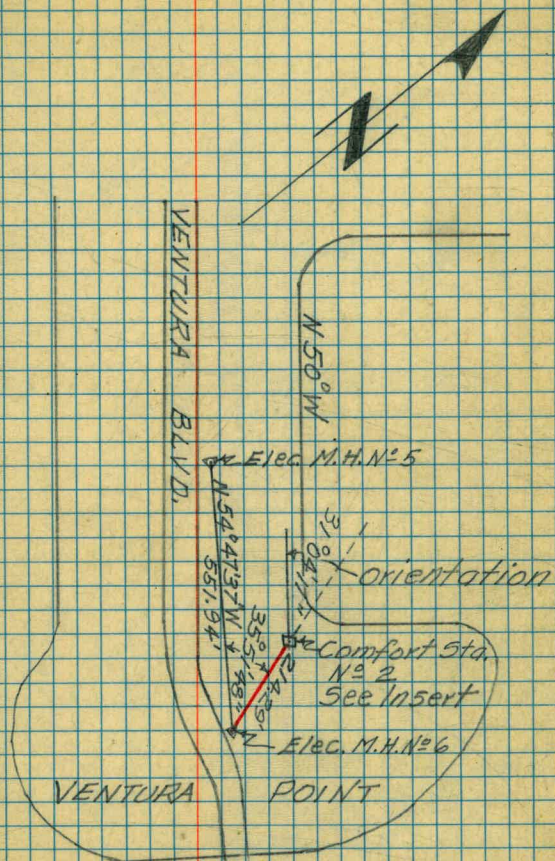
Sanitary Fill Cont'd.

20

LOCATION OF COMFORT
STATION N^o 2 VENTURA PT.

8-7-52 T.A. Stamper

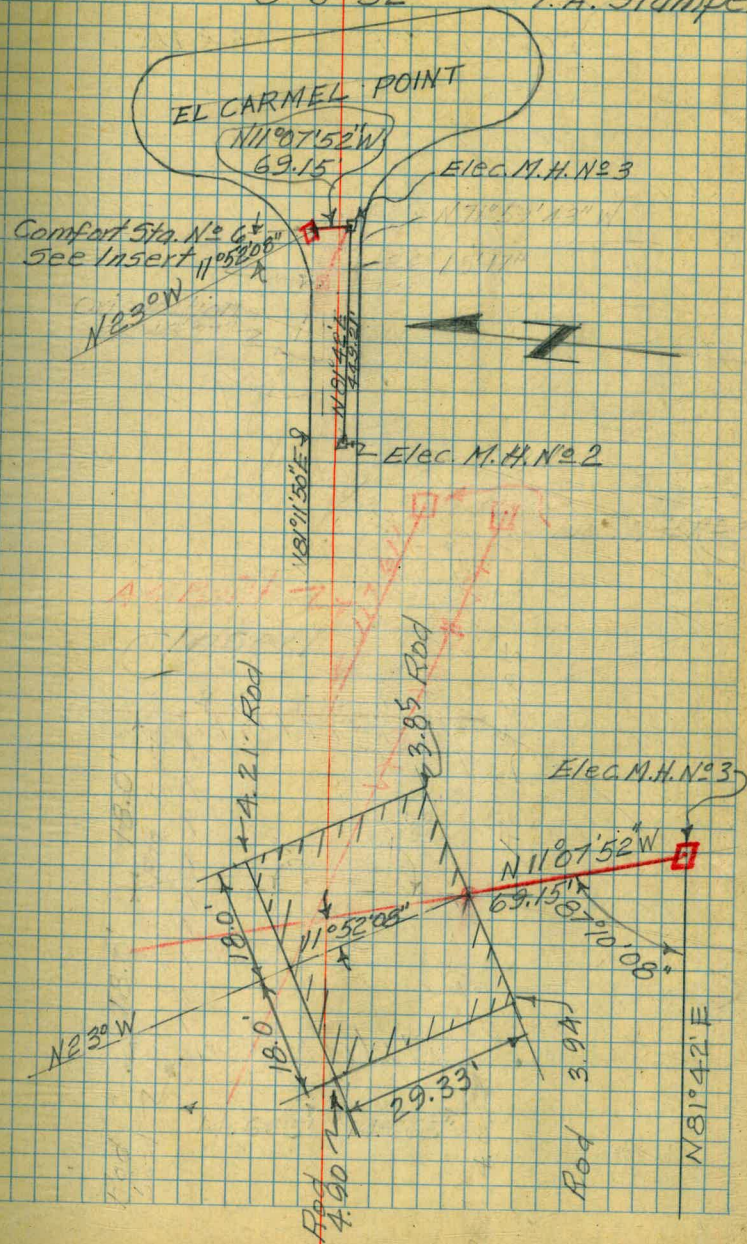
(21)



LOCATION OF COMFORT
STATION N^o 6 ELCARMEI PT.

8-6-52

T.A. Stamper



LOCATION & PROFILE OF ENTRANCE TO TIERRA DEL FUEGO ISLAND WEST HALF.

Sta	+ H.L.	-	Elev.	RMKS.
B.M.			10.94	U.S.C. 468 M.L.L.W.

Note: Levels taken with direct reading Rod

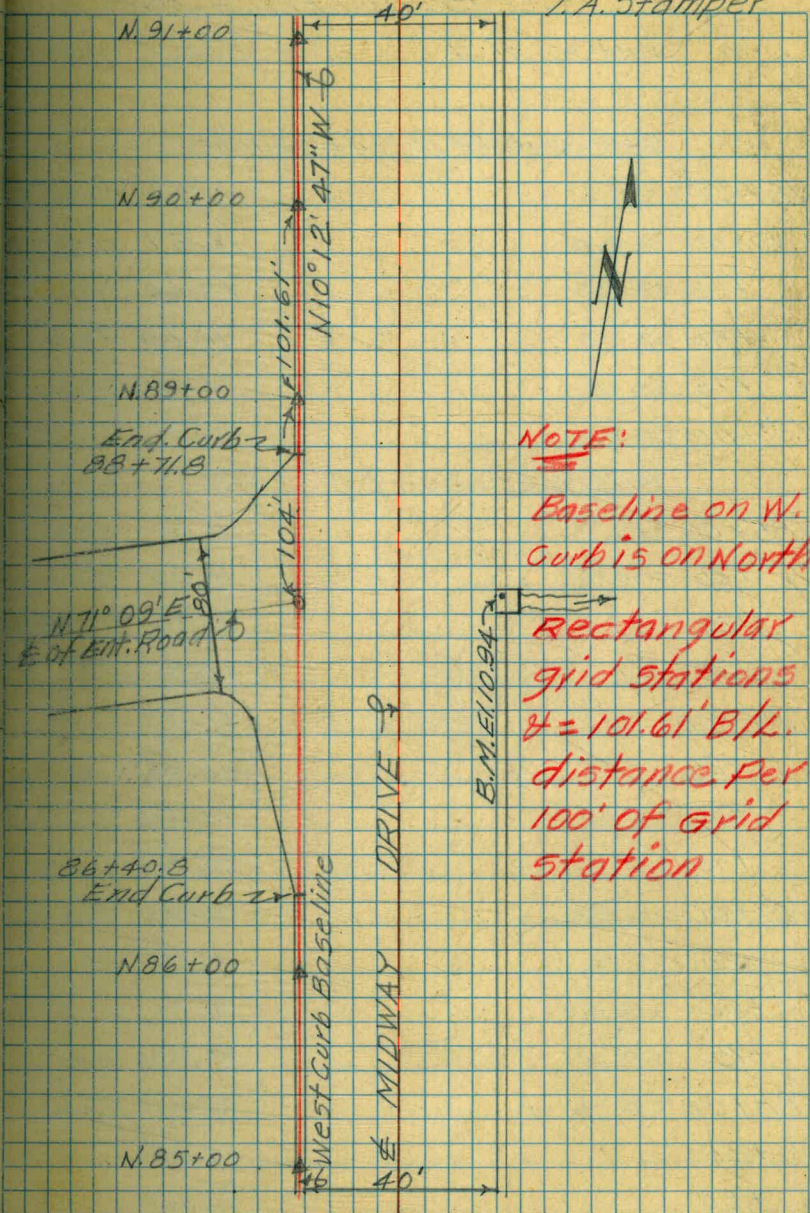
PROFILE ALONG W. GUTTER

Beginning at Sta. N. 85+00 thence Nly.

N. 85+00			10.72	
+25			10.72	
+50			10.70	
+75			10.65	
N. 86+00			10.60	
+25			10.60	
+50			10.57	
+75			10.45	
N. 87+00			10.41	
+25			10.39	
+50			10.38	
+75			10.31	
N. 88+00			10.25	
+25			10.29	
+50			10.40	
+75			10.40	
N. 89+00			10.42	
+25			10.47	
+50			10.50	

8-14-52

T.A. Stamper



ENTRANCE TO TIERRA PROFILE CONT

Sta	+ H.L.	- Elev.
-----	--------	---------

West Gutter Profile Cont'd.

N.89+75		10.54
N.90+00		10.57
+25		10.60
+50		10.65
+75		10.66
N.91+00		10.70

PROFILE ALONG & MIDWAY

N.85+00		11.10
+25		11.05
+50		11.02
+75		10.97
N.86+00		10.97
+25		10.95
+50		10.89
+75		10.84
N.87+00		10.80
+25		10.75
+50		10.75
+75		10.63
N.88+00		10.53
+25		10.55
+50		10.63

8-14-52

(25)

ENTRANCE PROFILE CONT'D.

Sta	+ H.L.	- Elev.
-----	--------	---------

& MIDWAY PROFILE CONT'D.

N.88+75		10.65
N.89+00		10.66
+25		10.75
+50		10.78
+75		10.78
N.90+00		10.83
+25		11.00
+50		11.00
+75		11.07
N.91+00		11.15

LOW POINT WEST OF WEST GUTTER
PROFILE

Sta	Dist. W. of Gutter	Elev.
N.87+00	2.5	10.36
+25	2.5	10.33
+50	2.5	10.30
+75	2.5	10.31
N.88+00	2.0	10.25
+25	2.0	10.25
+50	1.0	10.37

CROSS SECTIONS OF TIERRA DEL FUEGO ISLAND W/ 1/2 HALF FOR DRAINAGE & LANDSCAPING BASELINE PROFILE

8-15-52

T. Stamper

Inst. Berger
No 15818

R. Sisson
A. Sherry
R. Shorey

Sta.	+	H.I.	-	Elev.
B.M.				11.22 ✓ N9000 W151325
	6.02	17.24		
			4.51	13.73 N9000 W15300
			4.41	12.83 N9000 W15400
			4.24	13.00 N9000 W15500
T.P.			4.01	13.23 N9000 W15600
	4.69	17.92		
			4.88	13.04 N9000 W15700
			4.58	13.34 N9000 W15800
			4.80	13.12 N9000 W15900
T.P.			4.59	13.33 N9000 W16000
	4.27	17.60		
			4.57	13.03 N9000 W16100
			3.99	13.61 N9000 W16200
			4.61	12.99 N8900 W16200
			4.83	12.77 N8800 W16200
T.P.			2.15	15.45
	2.64	18.09		
			4.42	13.67 N9100 W16200
			4.38	13.71 N9200 W16200
T.P.			4.45	13.64 N9300 W16200
	7.25	20.89		

Top Fire Plug Approx N8750; W16190

BASELINE PROFILE CONTD.

8-15-52

Sta	+	H.I.	-	ELEV.	
		20.89			N9400
			7.27	13.62	W16200
					N9500
			7.17	13.72	W16200
					N9500
			5.56	15.33	W16300
					N9500
			4.46	16.43	W16400
					N9500
			5.26	15.63	W16500
					N9500
			5.31	15.58	W16600
					N9500
T.P.			5.33	15.56	W16700
	5.90	21.46			
					N9500
			5.69	15.77	W16800
					N9500
			6.73	14.73	W16900
					N9500
			7.83	13.63	W17000
					N9400
			4.58	16.88	W16700
					N9300
			5.09	16.37	W16700
					N9200
			4.43	17.03	W16700
					N9100
			5.24	16.22	W16700
					N9000
T.P.			7.08	14.38	W16700
	4.53	18.91			
					N8900
			3.19	15.72	W16700
					N8800
			2.74	16.17	W16700
B.M.			3.71	15.20	15.21
					N8700
			4.27	14.64	W16700
					N8600
			5.48	13.43	W16700
					N

W. Cor Barbeque Pit. Top Lead Plug.

BASELINE PROFILE CONTD

8-15-52

Sta.	+ H.I.	- Elev.	
	18.91		
TP.		6.43 12.48	N8700 W16200
	3.74 16.22		
		4.35 11.87	N8600 W16200
		3.48 12.74	N8500 W16200
		3.57 12.65	N8400 W16200
		4.09 12.13	N8300 W16200
		6.02 10.20	N8200 W16200
		6.55 9.67	N8100 W16200
B.M.		4.95 11.27	11.27
	4.90 16.17		
		5.78 10.39	N8000 W16200
		4.08 12.09	N7900 W16200
		4.17 12.00	N7850 W16200
		3.74 12.43	N7800 W16200
		2.18 13.99	N7700 W16200
		1.68 14.49	N7600 W16200
B.M.		2.93 13.24	13.24 N7500
		2.22 13.95	W16200 N7400
		3.09 13.08	W16200 N7350
		3.30 12.87	W16300 N7350
		2.16 14.01	W16400 N7350
		3.55 12.62	W16500 N7350
		4.37 11.80	W16100

Top West Base Flag Pole @ W. End of
Medel Yacht Pool Copper Nails.

Top Cox. Non Center 400' Radius SWLY
Tierra Del Fuego Island

BASELINE PROFILE CONT'D.

8-15-52

Sta	+ H.I.	- Elev.
	16.17	
		N7850
	3.46	12.71 W16000
		N7850
T.P.	2.35	13.82 W15900
	5.44	19.26
		N7850
	4.78	14.48 W15800
		N7850
	4.43	14.83 W15700
		N7850
	4.26	15.00 W15600
		N7850
	4.71	14.55 W15500
		N7850
	5.69	13.57 W15400
B.M.	5.22	14.04 14.03
B.M.		10.835
	4.870	15.705
		N7700
	4.790	10.915 W14898.25
		N7800
	4.725	10.980 W14916.30
		N7900
	4.648	11.057 W14934.32
		N8000
	4.585	11.120 W14952.34
		N8100
T.P.	4.410	11.295 W14970.95
	5.415	16.710
		N8200
	5.255	11.455 W14988.37
		N8300
	5.252	11.458 W15006.39
		N8400
	5.320	11.390 W15024.90
		N8500
T.P.	5.330	11.380 W15042.42
	3.820	15.200

7850
250

Top Water Vault N.H. @ South Center of Model Yacht Pool

U.S.C. & G.S. B.M. Causeway on East Curb Midway & Approx. 100' N. of N. End of S. Causeway Bridge 5th Disk.

BASELINE PROFILE CONTD

8-15-52

Sta	+ H.I	-	Elev.
	15.200		
	3.925	11.275	
	4.165	11.035	
	3.980	11.220	
	4.213	10.987	

N8600
W15066.4
N8700
W15078.85
N8800
W15096.4
N8900
W15114.8
N9000
W15132.8
EAST CURB
Top. Inlet

CAUSEWAY BASELINE COORDS.

N9100	W15150.52
N9200	W15168.53
N9300	W15186.55
N9400	W15204.57
N9500	W15222.58
N9600	W15240.60
N9700	W15258.61
N9800	W15276.63
N7600	W14880.27

8-15-52

CROSS SECTIONS OF
TIERRA DEL FUEGO ISLAND
FOR DRAINAGE & LANDSCAPING

STA. N. 78+00; 0+00 = W14,916.30

West curb Baseline

Sta.	+	H.I.	-	Elev.
B.M.				10.98
	4.91	15.89		

N78+00
W14916.30

Top W. Curb. Causeway

W 34			3.6	12.3
W 81			3.5	12.4
W 145			3.4	12.5
W 200			2.9	13.0
W 258			2.8	13.1
W 308			2.7	13.2
W 364			2.6	13.3
W 422			2.6	13.3
W 481			3.7	12.2

PX

TIERRA CROSS-SECS. CONTD.

8-15-52

STA. N. 77+00 0+00 = W14,898.29

Sta.	+	H. I.	-	Elev.
B.M.				10.91

5.01 15.92

W 451		6.0	9.9	Px
W 411		4.1	11.8	
W 383		3.1	12.8	
W 340		2.9	13.0	
W 285		3.1	12.8	
W 230		2.8	13.1	
W 182		3.0	12.9	
W 125		3.3	12.6	
W 70		3.5	12.4	

Top W. Corb Causeway N 77+00

TIERRA CROSS SEC'S CONT'D.

8-15-52

STA W 150+00; 0+00 = N 7,850

Sta.	+	H.I.	-	Elev.	
B.M.				10.98	N 7,850 W 14916.5
	6.76	17.74			
0			5.4	12.3	PX
5 55			5.3	12.4	
5 100			5.5	12.2	
5 155			5.5	12.2	
5 205			4.8	12.9	
5 258			4.6	13.1	
5 280			5.5	12.2	
5 305			8.0	9.7	

STA W 153+00; 0+00 = N 7,850

T.B.M.				Elev.	
				13.62	N 7,850 W 15240
	5.18	18.80			
0			5.2	13.6	PX
5 50			5.4	13.4	
5 105			6.0	12.8	
5 156			5.8	13.0	
5 208			6.2	12.6	
5 260			6.6	12.2	
5 285			7.1	11.7	
5 290			11.4	7.4	Wash.
5 297			12.8	6.0	

TIERRA CROSS SEC'S CONTD

8-15-52

STA. W151+00; 0+00 = N 7,850'

Sta	+	H.I.	-	Elev.
B.M.				10.98
	6.26		17.24	
0			5.2	12.00
5 62			5.3	11.9
5 114			5.3	11.9
5 168			5.3	11.9
5 222			5.4	11.8
5 274			5.3	11.9
5 306			5.6	11.6
5 332			8.0	9.2

N 78+00
W14216.30

Top W. Curd. Causeway

P1

STA W. 152+00 0+00 = N. 7,850

B.M.				Elev.
	7.82		18.80	
5 343			7.8	11.0
5 302			5.7	13.1
5 257			5.9	12.9
5 203			5.5	13.3
5 153			5.6	13.2
5 106			5.9	12.9
5 60			5.7	13.1
0			5.0	13.8
TP.			5.18	13.62

N 78+00
W14216.30

PX

Top 2x2" Hub Sta

TIERRA CROSS SEC'S. CONTD.

8-15-52

STA. W. 154+00; 0+00=N 7850

Sta	+ H.I.	-	Elev.
T.B.M.			14.55
	3.99	18.54	

Top of 2x2" Hub

5 121		13.5	5.0	PX
3 80		9.5	9.0	
5 48		6.1	12.4	
3 0		5.0	13.4	

STA. W. 155+00; 0+00=N 7850

T.B.M.			15.00
	4.46	19.46	

0		5.1	14.4	PX
5 38		5.4	14.1	
5 63		10.3	9.2	
N 51		5.4	14.1	
N 103		6.9	12.6	
N 147		10.9	8.6	

STA W. 156+00; 0+00=N 7850

T.B.M.			14.83
	5.03	19.86	

N 151		11.9	8.0	PX
N 108		8.0	11.9	
N 80		6.2	13.7	
N 40		5.4	14.5	
0		4.9	15.0	
5 57		6.0	13.9	
5 84		11.8	8.1	

TIERRA CROSS SEC'S CONT'D.

8-15-52

STA. W. 157+00; 0+00 = N7850

Sta	+	H.I.	-	Elev
T.B.M.				14.98
	5.29	19.77		

N7850
W158+00

S102			11.8	8.0	PX
S76			6.2	13.6	
S40			5.1	14.7	
0			5.0	14.8	
N54			6.2	13.6	
N105			7.3	12.5	
N148			11.5	8.3	

STA. W. 158+00; 0+00 = N7850

T.B.M.				13.82
	5.47	19.27		

N7850
W159+00

N.148			11.2	8.1	PX
N108			7.0	12.3	
N60			5.7	13.6	
0			4.8	14.5	
S47			5.1	14.2	
S86			6.0	13.3	
S135			11.8	7.5	

TIERRA CROSS SEC'S CONT'D.

8-15-52

STA. W. 159+00; 0+00 = N 1850

Sta.	+	H.I.	-	Elev	
T.B.M.				12.71	N 1850 W 160+00
	5.89	18.60			
S 503			11.3	7.3	PX
S 438			7.1	11.5	
S 365			5.3	13.3	
S 315			5.5	13.1	
S 258			5.3	13.3	
S 205			6.1	12.5	
S 172			6.2	12.4	
S 120			5.9	12.7	
S 69			5.0	13.6	
0			4.8	13.8	
N 53			5.5	13.1	
N 108			7.3	11.3	
N 145			10.6	8.0	

TIERRA CROSS SEC'S CONT'D.

8-15-52

STA W. 160+00; 0+00 = N7850

Sta	+	H.I	-	Elev.	
T.B.M.				11.80	N7850 W161+00
	6.12	17.92			
N. 143			9.9	8.0	PX
N. 105			6.6	11.3	
N. 60			5.4	12.5	
0			5.2	12.7	

NOTE: This Sec. South for End Sec's Only

5380			4.9	13.0	
5422			4.9	13.0	
5462			5.4	12.5	
5502			8.0	9.9	
5540			11.8	6.1	

TIERRA CROSS SEC'S CONTD.

8-15-52

STA. W161+00; 0+00 = N7850

Sta	+	H.I.	-	Elev.
T.B.M.				12.00
	4.84	16.84		

N7850
W162+00

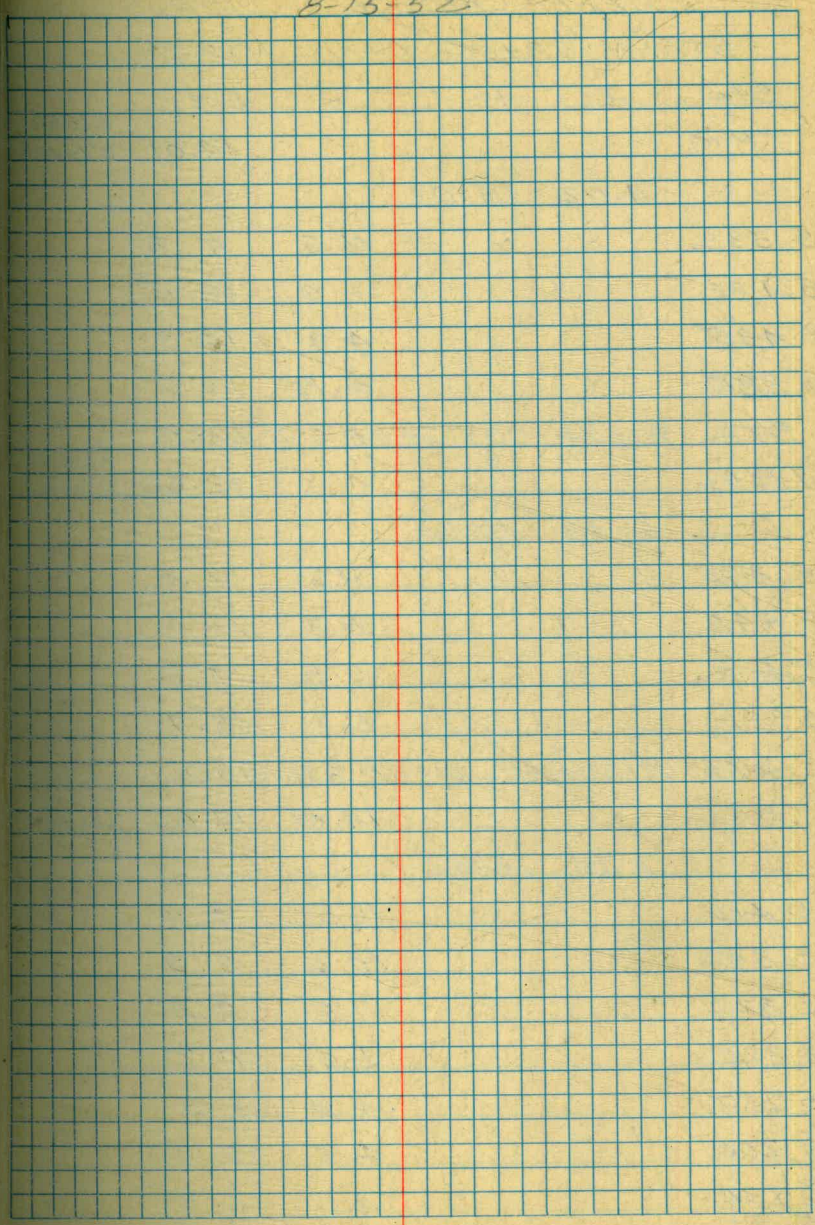
S 552			10.7	6.1	PX
S 510			6.8	10.0	
S 478			4.0	12.8	
S 421			3.7	13.1	
0			5.0	11.8	
N. 49			4.9	11.9	
N. 95			5.1	11.7	
N. 112			6.2	10.6	
N. 140			8.9	7.9	

STA W.162+00; 0+00 = N7850

T.B.M.	4.45	17.32		12.87
--------	------	-------	--	-------

N7850
W163+00

S. 548			11.0	6.3	PX
S. 508			6.9	10.4	
S. 472			4.7	12.6	
S 424			4.7	13.1	
S 362			3.6	13.7	
0			5.3	12.0	✓
N 48			5.2	12.1	
N 100			5.5	11.8	
N 150			7.0	10.3	
N 200			7.5	9.8	
N 250			7.6	9.7	
N 301			7.6	9.7	
N 350			7.2	10.1	
N 400			5.6	11.7	



8-15-52

TIERRA CROSS SEC'S. CONT'D.

STA. W163+00; 0+00 = N7850

Sta	+	H. I.	-	Elev	
T.B.M.				14.01	N7850 W164+00
	4.02	18.03			

5 532			12.2	5.8	
5 482			6.0	12.0	
5 435			4.7	13.3	
5 385			4.3	13.7	

STA. W.164+00; 0+00 = N7850

T.B.M.			12.62		N7850 W165+00
	6.43	19.05			

5 485			11.6	7.4	PX
5 448			8.3	10.7	
5 408			5.8	13.2	
5 338			5.3	13.7	

STA. W165+00; 0+00 = N7850

T.B.M.			14.01	12.62	N7850 W164+00
	3.70	16.32			

5 416			11.8	4.5	PX
5 392			10.4	5.9	
5 372			7.5	8.8	
5 322			5.0	11.3	
5 257			4.4	11.9	
5 202			4.3	12.0	
5 134			4.1	12.2	
5 71			4.6	11.7	
0			5.1	11.2	

TIERRA CROSS SEC'S CONT'D

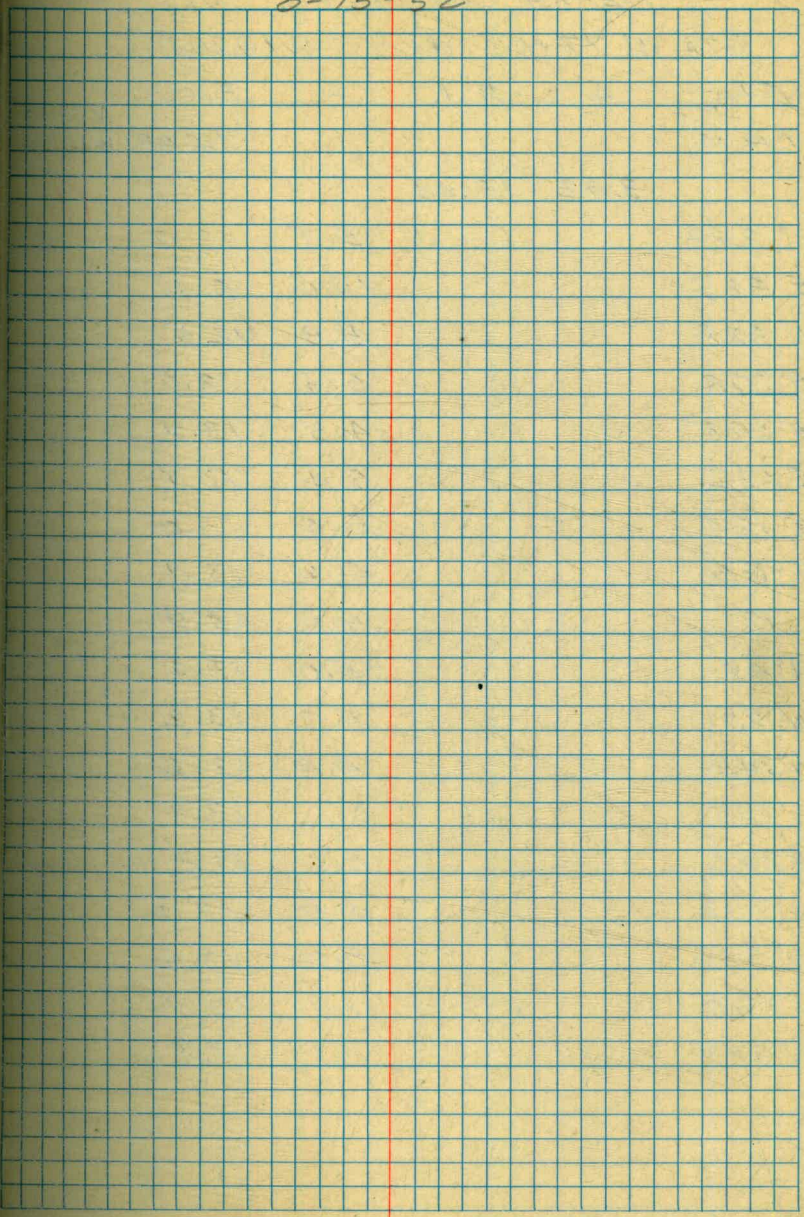
8-15-52

STA N78+00; 0+00 = W16200

Sta	+	H.I.	-	Elev
T.B.M.				13.99
	3.53	17.52		
0			5.1	12.4
E 62			4.9	12.6
E 105			4.8	12.7
E 160			4.6	12.9
E 208			4.2	13.3
E 262			4.2	13.3
W 49			5.7	11.8
W 110			5.4	12.1
W 172			4.7	12.8
W 234			3.8	13.7
W 297			4.5	13.0
W 384			8.3	9.2

N77+00
W16200

PK



TIERRA CROSS SEC'S CONTD

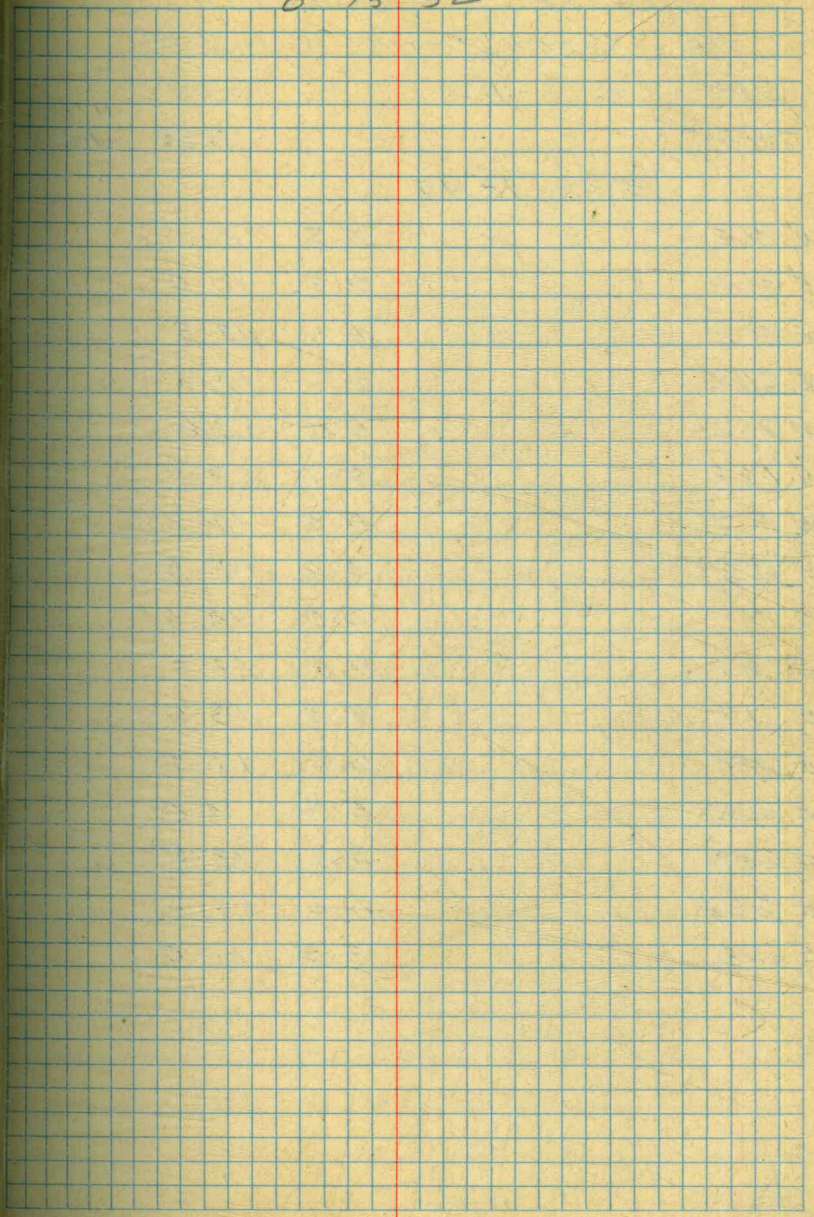
8-15-52

STA. N. 77+00; 0+00 = W16200

Sta	+	H.I.	-	Elev.
T.B.M.				14.99
	3.92	18.41		
E 298			5.7	12.7
E 365			10.0	8.4
E 328			5.9	12.5
E 278			5.4	13.0
E 225			4.5	13.9
E 172			5.4	13.0
E 124			5.4	13.0
E 65			4.6	13.8
0			4.5	13.9
W 48			5.0	13.4
W 98			5.2	13.2
W 148			4.8	13.6
W 195			5.1	13.3
W 243			4.6	13.8
W 292			4.8	13.6
W 336			5.0	13.4
W 380			7.7	10.7
W 388			11.1	7.3

N76+00
W16200

PX



TIERRA CROSS SEC'S CONT'D

8-15-52

STA. N76+00; 0+00 = W16,200

STA	+	H.I	-	Elev	
T.B.M.				13.99	N76+00 W16200
	5.46	19.45			
W 362			11.5	8.0	PX
W 360			9.5	10.0	
W 309			6.1	13.3	
W 262			6.1	13.3	
W 212			5.8	13.6	
W 162			5.7	13.7	
W 115			5.2	14.2	
W 59			4.9	14.5	
0			5.0	14.4	
E 57			5.5	14.0	
E 117			5.9	13.6	
E 180			6.1	13.3	
E 235			5.5	14.0	
E 285			5.8	13.6	
E 324			7.2	12.2	
E 378			13.5	6.0	

TIERRA CROSS SEC'S. CONT'D.

8-18-52

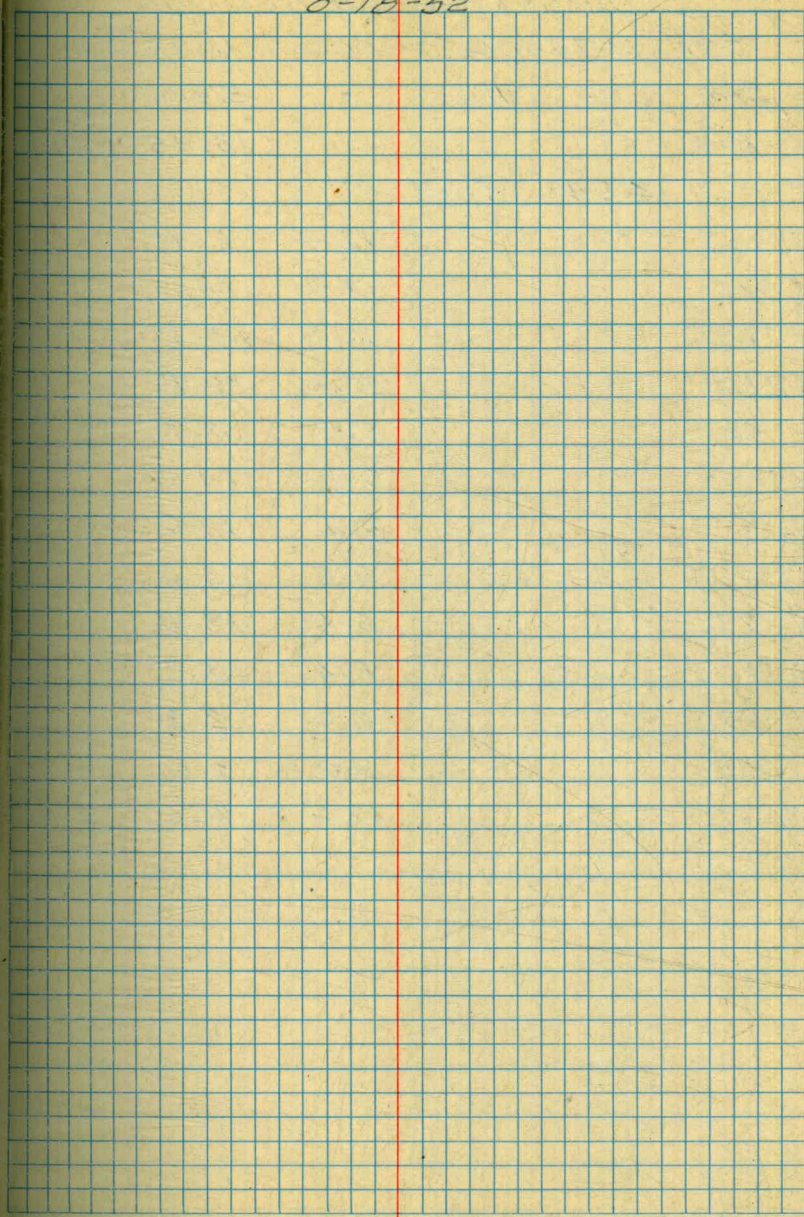
5.0

STA. N. 75+00; 0+00 = W16200

Sta.	+	H.I.	-	Elev.
T.B.M.				14.49
	4.38	18.87		
W325			11.1	7.8
W312			8.0	10.9
W268			5.9	13.0
W212			5.2	13.7
W160			5.1	13.8
W105			5.1	14.8
W50			4.4	14.5
0			5.0	13.9
E45			5.6	13.3
E97			5.8	13.1
E150			6.0	12.9
E205			5.6	13.3
E260			5.3	13.6
E313			5.8	13.1
E345			7.3	11.6
E382			11.5	7.4

N76+00
W16200

PX



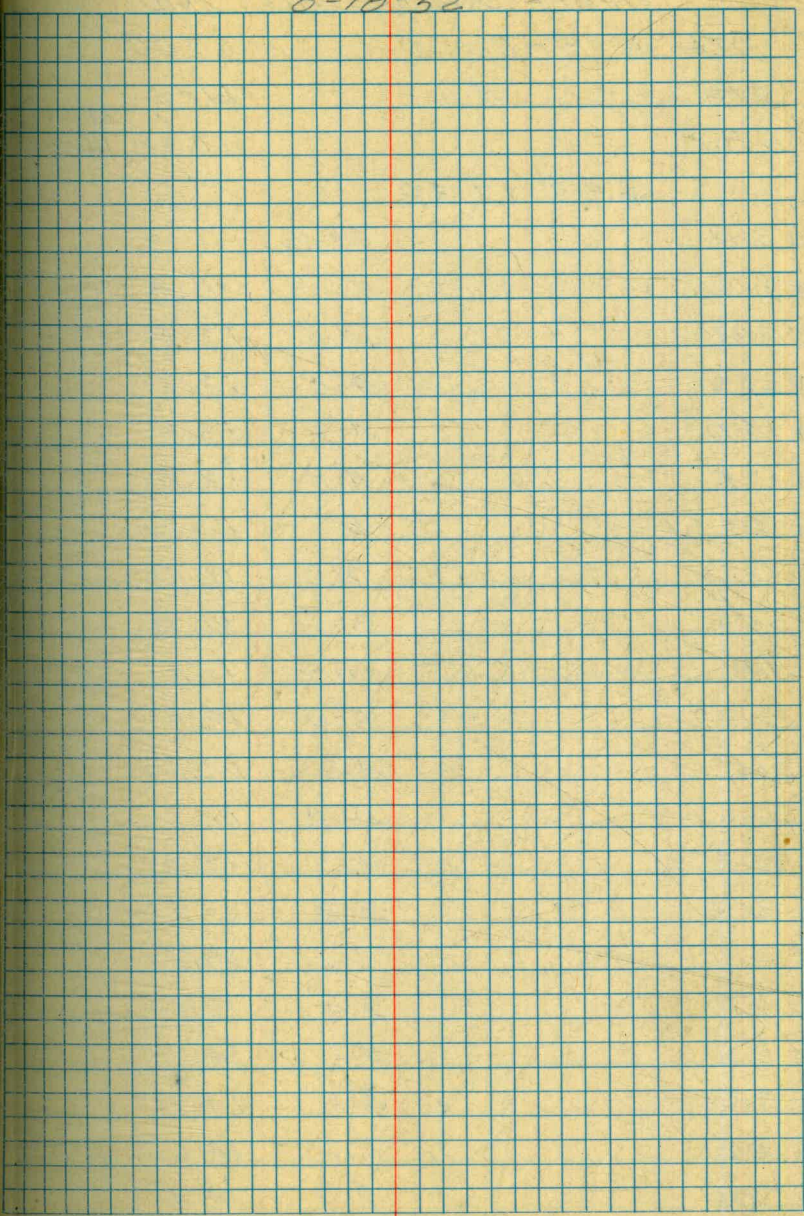
TIERRA CROSS SECTIONS CONTD.

8-18-52

STA. N. 74+00; 0+00 = V16200

Sta.	+	H.I.	-	Elev.
T.B.M.				13.95
	4.64	18.59		
E362			12.0	6.6
E315			7.9	10.7
E262			6.0	12.6
E210			5.8	12.8
E156			5.5	13.1
E110			5.6	13.0
E65			5.4	13.2
0			5.6	13.0
W 52			5.6	13.0
W110			5.4	13.2
W167			6.3	12.3
W220			9.0	9.6
W270			12.6	6.0

PX



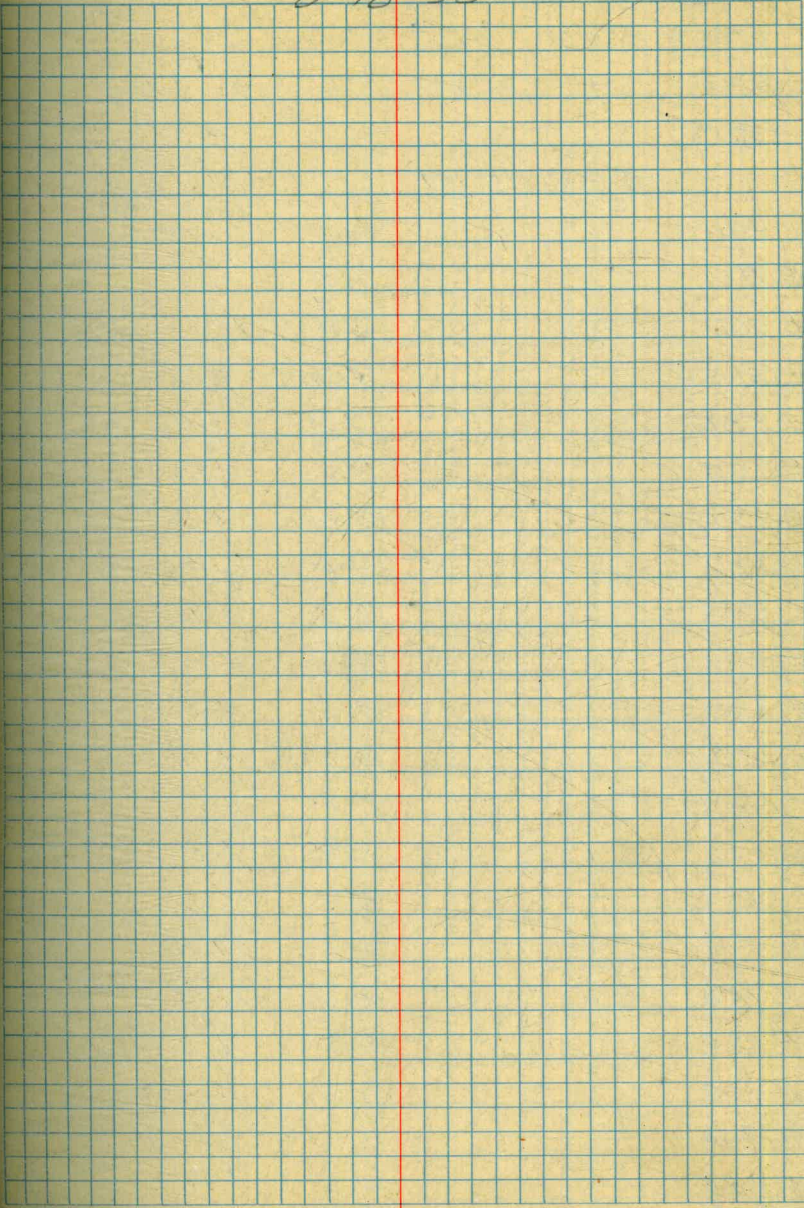
TIERRA CROSS SECTIONS CONTD.

8-18-52

STA.	N 79 + 00; 0 + 00 = W16200			
Sta	+	H.I.	-	Elev.
T.B.M.				10.39
	6.95	17.34		
W365			10.2	7.1
W322			6.5	10.8
W290			4.8	12.5
W235			4.0	13.3
W180			4.0	13.3
W128			4.3	13.0
W70			5.1	12.2
0			5.3	12.0
E50			5.5	11.8
E108			5.5	11.8
E160			5.0	12.3
E210			4.5	12.8
E260			4.4	12.9
E305			4.3	13.0
E364			3.8	13.5
E420			3.6	13.7
E470			3.4	13.9
E530			3.1	14.2
E585			3.1	14.2
E640			2.7	14.6
E700			2.9	14.4
E760			3.5	13.8

N80+06
W16200

PX

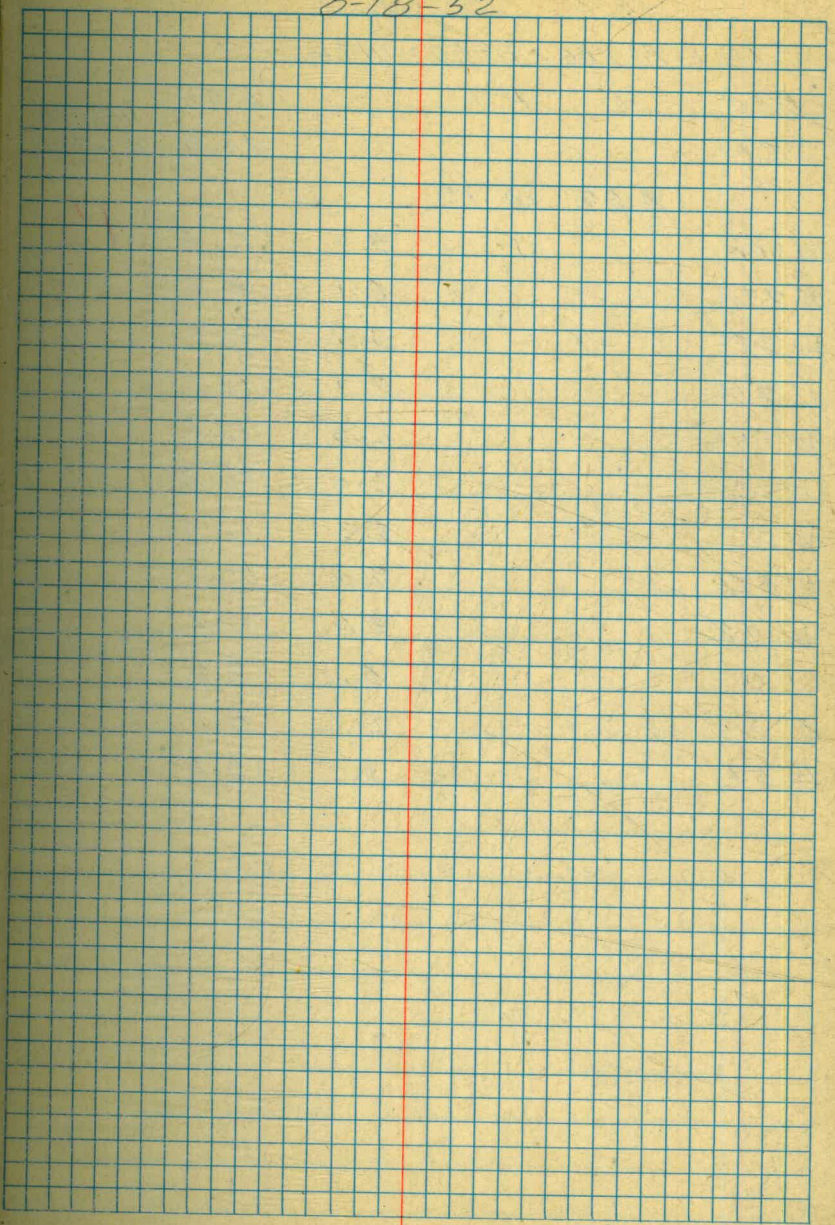


TIERRA CROSS SECTIONS CONTD

8-18-52

STA.	N. 80+00	0+00	= W 16, 200	
Sta	+	H.I.	-	Elev
T.B.M.				9.67
	5.84	15.51		
E 766			6.5	9.0
E 710			6.8	8.7
E 660			6.9	8.6
E 605			7.3	8.2
E 550			7.0	8.5
E 500			7.0	8.5
E 450			7.2	8.3
E 395			7.0	8.5
E 340			7.9	7.6
E 290			8.1	7.4
E 230			8.5	7.0
E 172			8.7	6.8
E 120			8.7	6.8
E 62			7.9	7.5
0			5.2	10.3
W 42			4.1	11.4
W 100			4.1	11.4
W 150			3.6	11.9
W 192			2.7	12.8
W 248			3.0	12.5
W 285			4.5	11.0
W 320			6.8	8.7
W 340			9.8	5.7

PK



8-18-52

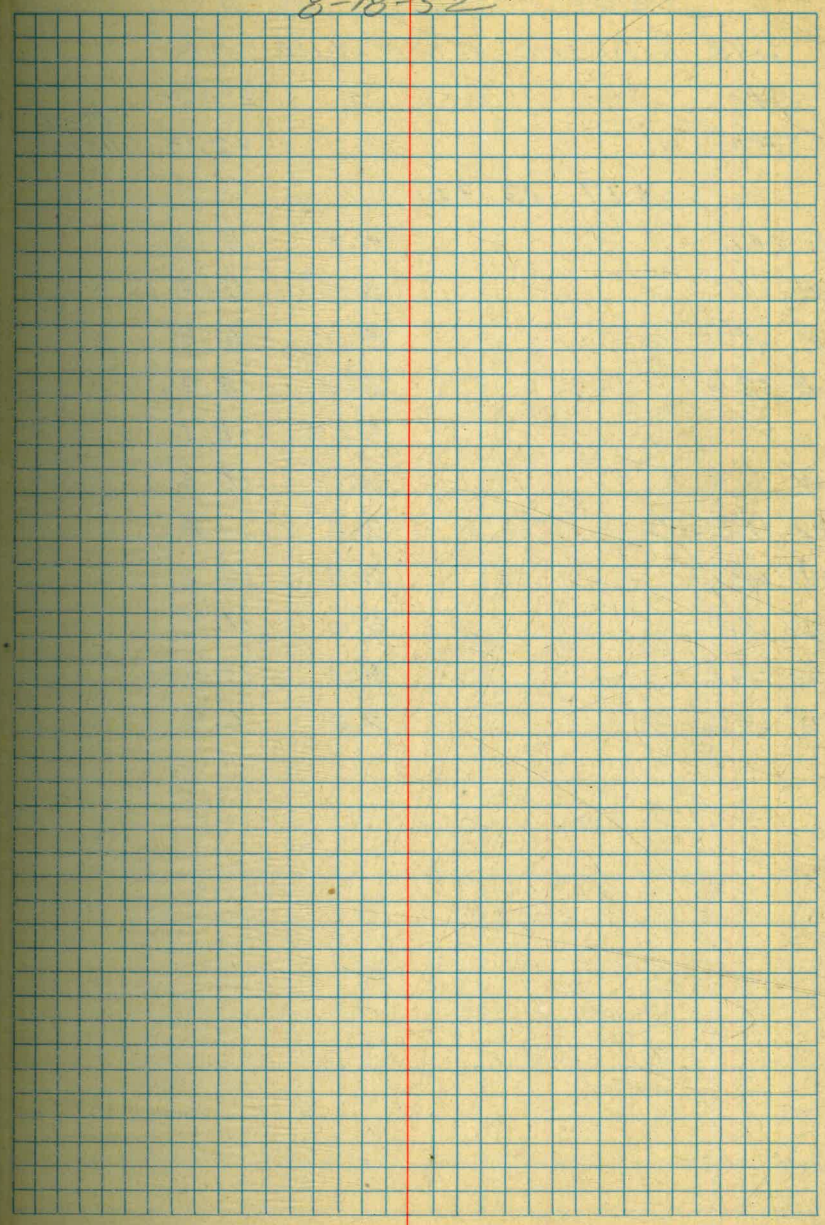
STA N. 81+00; 0+00 = W16200

STA + H.1 - Elev. N82+00

T.B.M. 10.20 W16200

4.55 14.75

W300	9.2	5.5	PK
W 278	6.1	8.6	
W242	3.4	11.3	
W 210	2.7	12.0	
W156	2.5	12.2	
W136	2.4	12.3	
W125	3.3	11.4	
W82	3.4	11.3	
W 42	3.6	11.1	
0	5.1	9.6	
E 23	6.6	8.1	
E 51	9.1	5.6	



TIERRA CROSS SEC'S CONTD.

8-18-52

STA. N. 82+00; 0+00 - W16 200

Sta	+	H.1	-	Elev.
TBM				12.13
	3.17	15.30		
E 166			9.9	5.4
E 110			9.5	5.8
E 65			8.4	6.9
E 32			6.4	8.9
0			5.2	10.1
W 53			4.9	10.4
W 112			3.5	11.8
W 165			3.3	12.0
W 210			3.6	11.7
W 242			5.3	10.0
W 272			9.0	6.3

PX

N 83+00
W 16200

TIERRA CROSS SEC'S. CONTD.

8-18-52

STA. NB3+00; 0+00 = W16200

Sta	+ H.I	-	Elev
T.B.M.			12.65
	4.89	17.54	
W 299		12.1	5.4
W 257		7.1	10.4
W 210		5.5	12.0
W 160		5.4	12.1
W 105		5.4	12.1
W 58		5.2	12.3
D		5.5	12.0
E 50		5.3	12.2
E 100		5.1	12.4
E 160		5.1	12.4
E 212		5.4	12.1
E 268		5.6	11.9
E 325		5.9	11.6
E 382		6.0	11.5
E 446		6.2	11.3
E 500		6.1	11.4
E 560		6.2	11.3
E 610		6.0	11.5
E 670		6.3	11.2
E 720		6.2	11.3
E 780		6.4	11.1

PX

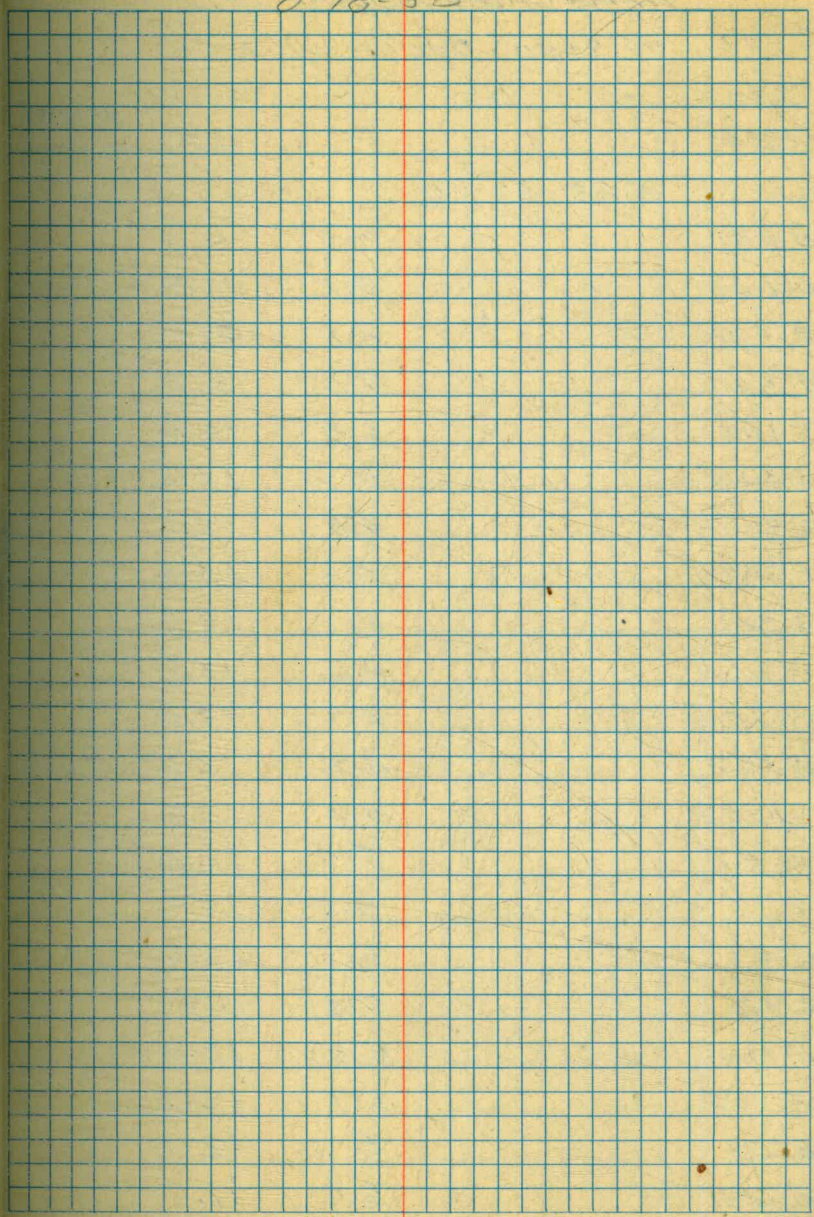
NB4+00
W16200

TIERRA CROSS SECTIONS CONTD.

8-18-52

STA.	NB4+00; 0+00 = W16200		Elev.
Sta	+	H.I	-
T.B.M.			12.74
	5.39	18.13	
E780		6.0	12.1
E720		6.2	11.9
E670		6.0	12.1
E620		6.3	11.8
E570		6.9	11.2
E520		6.7	11.4
E470		6.8	11.3
E415		6.6	11.5
E360		6.5	11.6
E310		6.4	11.7
E260		6.5	11.6
E210		6.3	11.8
E160		5.9	12.2
E112		6.2	11.9
E65		6.1	12.0
0		5.5	12.6
W 50		5.4	12.7
W 100		5.5	12.6
W 153		5.2	12.9
W 200		5.0	13.1
W 370		12.3	5.8
W 250		5.4	12.7
W 286		5.9	12.2
W 312		8.9	9.2

PX



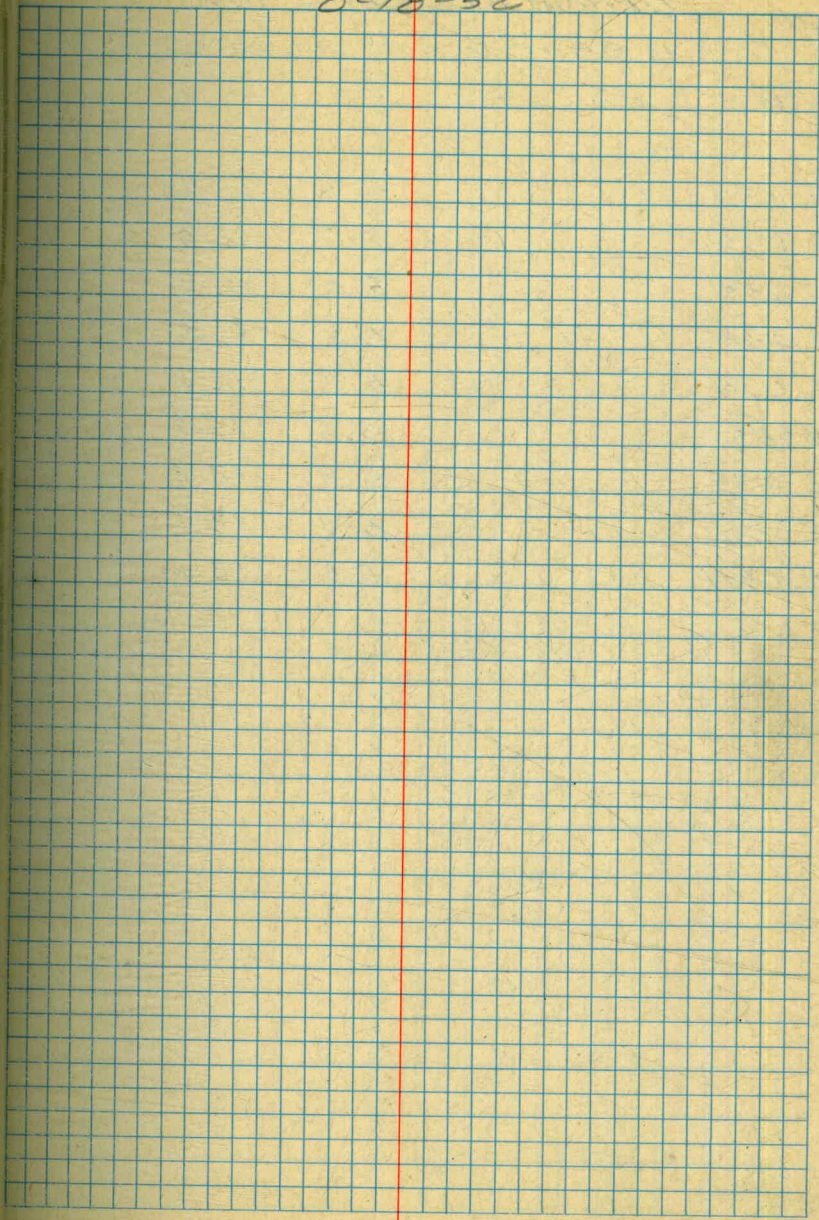
TIERRA CROSS SECTIONS CONT'D.

8-18-52

53

STA.	N 85+00; 0+00. = W 16200		
Sta	+	H. I	- Elev.
T.B.M.			11.87
	5.83	17.70	
W 682		11.7	6.0
W 640		9.8	7.9
W 588		8.8	8.9
W 540		7.8	9.9
W 490		6.8	10.9
W 445		5.5	12.2
W 396		4.6	13.1
W 350		4.3	13.4
W 300		4.1	13.6
W 250		4.2	13.5
W 200		4.7	13.0
W 150		4.9	12.8
W 100		4.9	12.8
W 46		5.5	12.2
D		5.0	12.7
E 43		5.5	12.2
E 92		5.8	11.9
E 140		5.3	12.4
E 190		5.7	12.0
E 233		5.6	12.1
E 285		6.0	11.7

PX



TIERRA CROSS SECS. CONTD.

8-18-52

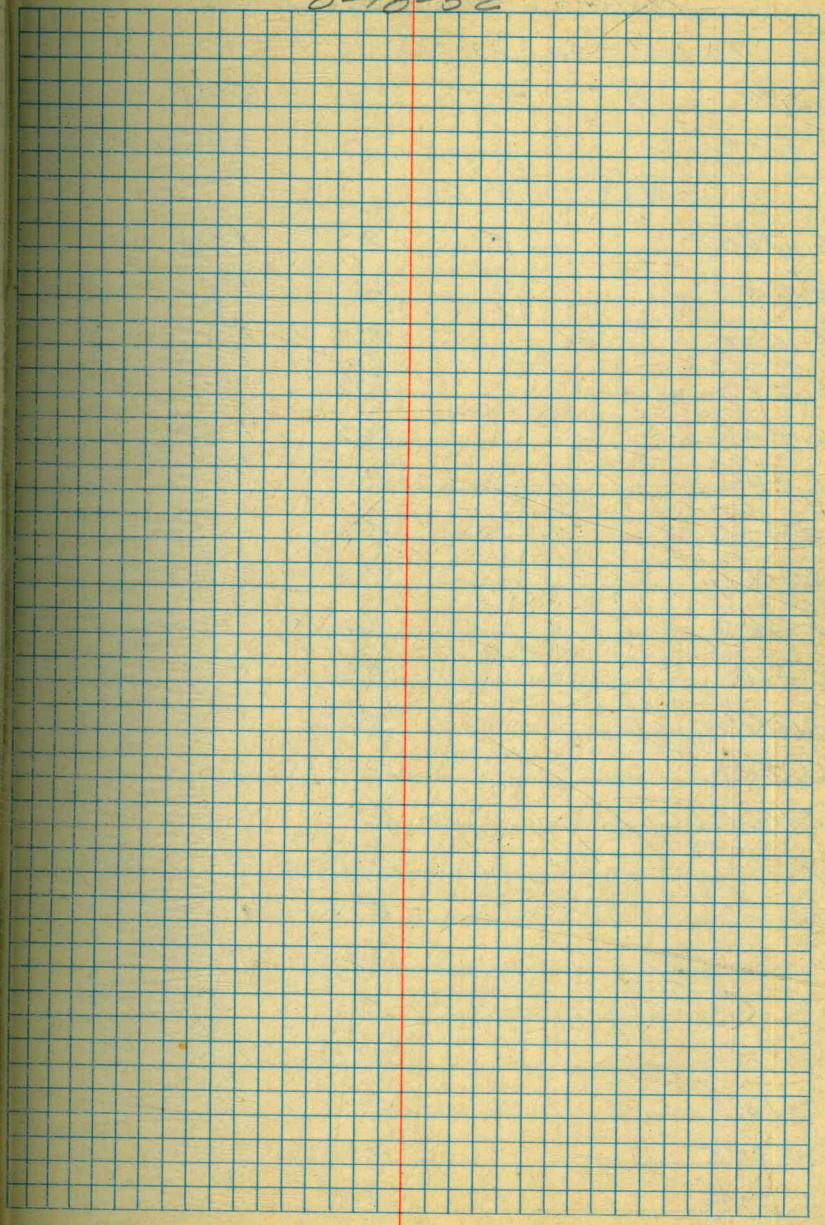
STA N 85+00 CONTD: 0+00=W 16200

Sta + H. 1 - Elev

17.70

PX

E 330		5.5	12.2
E 385		5.3	12.4
E 435		5.4	12.3
E 488		5.8	11.9
E 535		5.5	12.2
E 585		5.5	12.2
E 635		5.3	12.4
E 685		5.4	12.3
E 740		5.6	12.1



TIERRA CROSS SEC'S CONTO.

STA. N86+00; 0+00 = W16200

Sta	+	H.I	-	Elev	N87+00 W16200
T.B.M.				12.48	
	462	17.10			
E 740			3.5	13.6	PX
E 680			3.6	13.5	
E 640			3.7	13.4	
E 590			3.8	13.3	
E 545			4.5	12.6	
E 495			4.3	12.8	
E 450			4.6	12.5	
E 410			4.8	12.3	
E 360			4.9	12.2	
E 310			5.1	12.0	
E 260			4.9	12.2	
E 210			5.1	12.0	
E 160			5.2	11.9	
E 115			5.5	11.6	
E 65			5.2	11.9	
0			5.2	11.9	
W 52			4.3	12.8	
W 102			4.0	13.1	
W 153			3.8	13.3	
W 205			3.2	13.9	
W 258			3.0	14.1	
W 310			2.6	14.5	

8-18-52

TIERRA CROSS SEC'S. CONTD.

STAN 87+00; 0+00 = W16200

Sta	+	H.1	-	Elev	
TBM				12.77	N88+00 W16200
	5.05	17.82			
W 328			3.1	14.7	PX
W 278			4.1	13.7	
W 228			4.0	13.8	
W 173			4.0	13.8	
W 122			4.6	13.2	
W 72			5.0	12.8	
0			5.4	12.4	
E 50			6.1	11.7	
E 100			6.0	11.8	
E 158			5.2	12.6	
E 208			4.8	13.0	
E 260			4.5	13.3	
E 310			4.8	13.0	
E 370			4.4	13.4	
E 415			4.2	13.6	
E 470			3.7	14.1	
E 525			3.5	14.3	
E 580			3.2	14.6	
E 630			3.2	14.6	
E 690			2.9	14.9	
E 740			3.1	14.7	

8-18-52

(55)

TIERRA CROSS SECS. CONT'D.

8-18-52

STA. N88400; 0100 = W16200

Sta	+	H.I	-	Elev
T.B.M.				12.99
	5.36	18.35		
E 730			3.3	15.0
E 680			3.0	15.3
E 630			3.5	14.8
E 585			4.3	14.0
E 540			4.2	14.1
E 490			4.6	13.7
E 440			5.1	13.2
E 390			5.8	12.5
E 330			6.2	12.1
E 280			6.4	12.0
E 220			6.2	12.1
E 160			6.1	12.2
E 113			6.0	12.3
E 63			5.7	12.6
0			5.5	12.8
W 56			5.5	12.8
W 105			5.3	13.0
W 150			5.5	12.8
W 198			5.4	13.0
W 245			4.4	14.0
W 290			4.2	14.1

N89100
W16200

PY

TIERRA CROSS SEC'S CONTD.

8-18-52

(57)

STA	N 89+00; 0+00 = W16200			
Sta	+	H.1	-	Elev
TBM	4.88	18.49		13.61
				N90+00 W16200
W 305			4.9	13.5
W 260			5.2	13.3
W 210			5.2	13.3
W 160			5.5	13.0
W 115			5.7	12.8
W 68			5.7	12.8
0			5.5	13.0
E 46			5.6	12.9
E 95			5.5	13.0
E 143			5.3	13.2
E 195			6.3	12.2
E 250			6.5	12.0
E 300			6.6	11.9
E 350			6.4	12.1
E 410			6.0	12.5
E 450			5.6	12.9
E 500			5.4	13.1
E 545			4.6	13.9
E 600			4.2	14.3
E 650			4.4	14.1
E 700			4.2	14.3
E 745			4.4	14.1

PX

TIERRA CROSS SEC'S CONT'D.

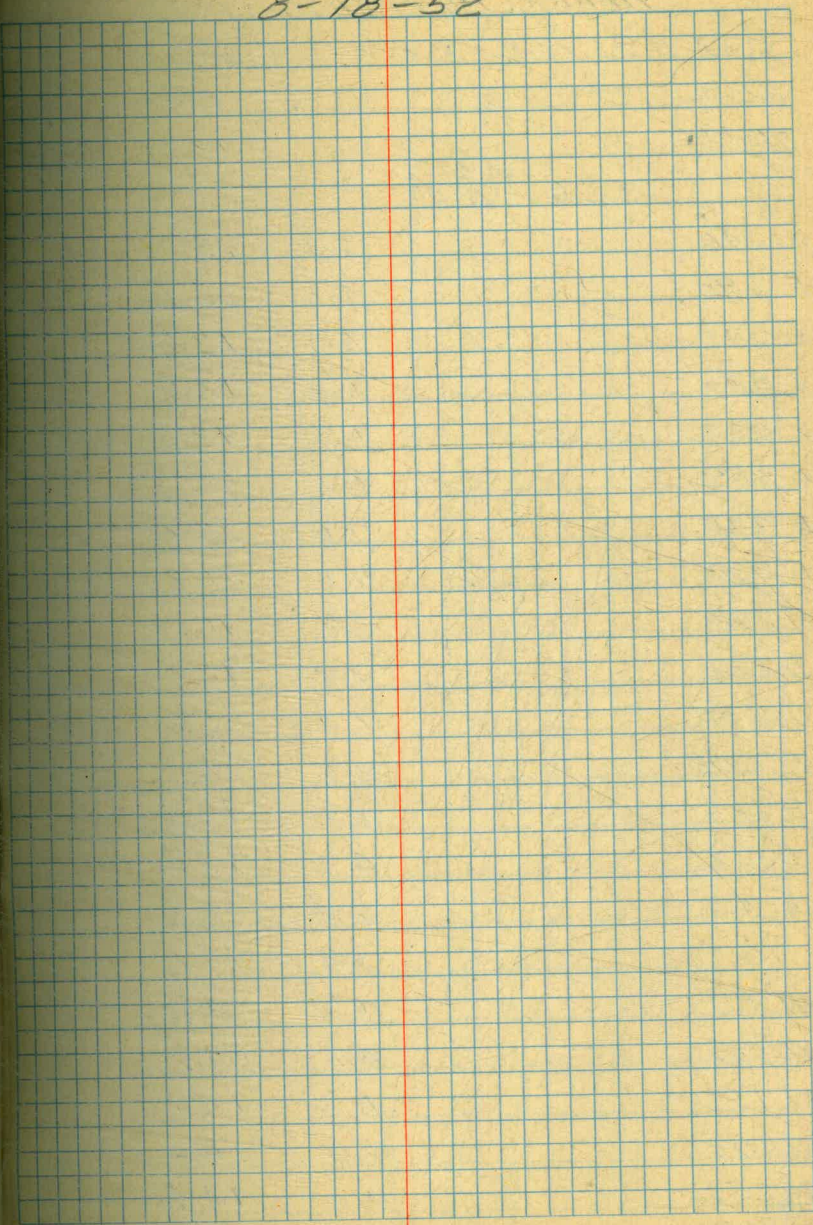
8-18-52

STA N90+00; 0+00 = W16200

Sta	+	H.1	-	Elev
TBM		19.0		13.67
	5.29	18.96		
E 730			6.1	12.9
E 700			6.1	12.9
E 650			6.0	13.0
E 600			6.0	13.0
E 550			5.7	13.3
E 500			6.0	13.0
E 450			5.8	13.2
E 400			5.8	13.2
E 350			5.9	13.1
E 300			6.0	13.0
E 250			6.0	13.0
E 200			5.9	13.1
E 150			5.6	13.4
E 100			6.1	12.9
E 50			5.9	13.1
0			5.5	13.5
W 50			5.4	13.6
W 100			5.4	13.6
W 150			5.5	13.5
W 200			5.6	13.4
W 250			5.5	13.5
W 300			5.6	13.4

N91+00
W16200

PX



TIERRA CROSS SEC'S CONT'D.

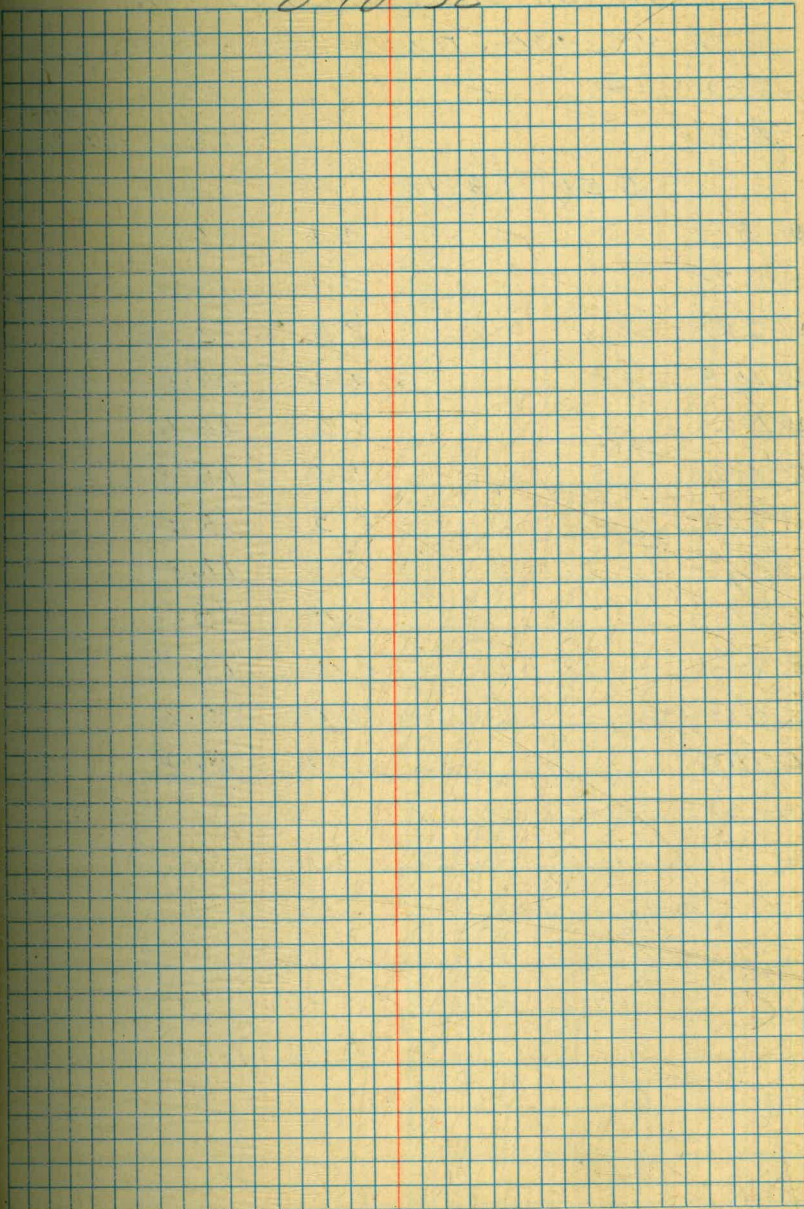
B-18-52

STA. N91+00; 0+00 = W16200

Sta	+	H.I.	-	Elev.
T.B.M.		19.0		13.71
	5.26	18.97		

N92400
W16200

E 740		5.9	13.1	PK
E 690		6.8	12.2	
E 640		6.4	12.6	
E 590		6.4	12.6	
E 530		6.5	12.5	
E 485		6.7	12.3	
E 440		7.0	12.0	
E 390		7.7	11.3	
E 340		7.9	11.1	
E 300		7.7	11.3	
E 250		7.4	11.6	
E 205		6.7	12.3	
E 165		6.5	12.5	
E 112		6.3	12.7	
E 55		6.1	12.9	
0		5.4	13.6	
W 50		4.2	14.8	
W 103		4.1	14.9	
W 153		4.3	14.7	
W 203		4.6	14.4	
W 253		4.4	14.6	
W 303		4.6	14.4	



TIERRA CROSS SECTIONS CONT'D.

8-18-52

STA. N92+00; 0+00 = W16,200

Sta	+	H.I	-	Elev.
T.B.M.				13.67
	5.51	19.18		

N92+00
W16,200

W 320		4.1	15.1	PX
W 270		4.1	15.1	
W 220		3.8	15.4	
W 163		3.4	15.8	
W 112		3.6	15.6	
W 60		4.0	15.2	
W 20		5.3	13.9	
0		5.5	13.7	
E 30		6.0	13.2	
E 62		6.0	13.2	
E 110		10.0	9.2	
E 150		13.8	5.4	

TIERRA CROSS SECTIONS CONT'D.

8-18-52

(6)

STA. N 93+00; 0+00 = W16200

Sta	+	H.1	-	Elev.
T.B.M.				13.62
	5.51	19.13		
E 86			14.0	5.1
E 41			7.7	11.4
0			5.5	13.6
W 56			4.4	14.7
W 110			3.5	15.6
W 153			3.4	15.7
W 200			3.2	15.9
W 254			3.0	16.1
W 300			2.6	16.5

N 94+00
W16200

PX

STA N 94+00; 0+00 = W16200

T.B.M.	5.14	18.78		Elev.
				13.64
W 353			1.6	17.2
W 305			2.0	16.8
W 253			2.4	16.6
W 208			3.1	15.7
W 153			3.1	15.7
W 103			3.7	15.1
W 53			4.7	14.1
0			5.2	13.6
E 16			5.4	13.4
E 42			8.0	10.8
E 70			11.9	6.9

N 93+00
W16200

PX

TIERRA CROSS SECTIONS CONT'D.

STA N. 95+00; 0+00 = W16200

Sta	+	H.I.	-	Elev.
T.B.M.				13.62
	5.27	18.89		

E 70		12.4	6.5	PK
E 50		9.9	9.0	
E 24		5.9	13.0	
* 0		5.2	13.7	
W 43		4.4	14.5	
W 96		3.9	15.0	
W 142		2.9	16.0	
W 200		2.5	16.4	
W 258		3.3	15.6	
W 310		3.2	15.7	

STA. N96+00; 0+00 = W16200

T.B.M.				
				13.72
	4.75	18.47		

W 766		11.3	7.2	PK
W 750		8.2	10.3	
W 700		5.8	12.7	
W 650		5.5	13.0	
W 610		4.7	13.8	
W 570		4.2	14.3	
W 520		4.5	14.0	
W 470		4.4	14.1	
W 410		4.3	14.2	

8-18-52

STA. N96+00 CONT'D.

Sta	+	H.I.	-	Elev.	PK
		18.47			
W 360			4.2	14.3	
W 310			4.2	14.3	
W 260			4.1	14.4	
W 210			3.8	14.7	
W 160			3.5	15.0	
W 110			4.0	14.5	
W 56			4.0	14.5	
W 20			4.5	14.0	
0			5.1	13.4	
E 13			5.7	12.8	
E 50			9.9	8.6	
E 83			12.3	6.2	
W 33			5.3	13.2	
W 71			9.0	9.5	
W 88			12.4	6.1	

TIERRA CROSS SECTIONS CONT'D.

8-18-52

STA W163+00; 0+00 = N9500

Sta	+	H.I.	-	Elev.
T.B.M.				16.43
	4.37	20.80		

N9500
W164+00

N 203			14.0	6.8	PX
N 193			12.3	8.5	
N 190			10.3	10.5	
N 153			6.9	13.9	
N 103			6.4	14.4	
N 53			6.0	14.8	
0			5.5	15.3	

STA. W164+00; 0+00 = N 9500

T.B.M.				15.33
	6.50	21.83		

N9500
W163+00

N 200			13.6	8.2	PX
N 195			12.1	9.7	
N 160			8.2	13.6	
N 113			7.3	14.5	
N 80			6.9	14.9	
N 45			5.7	16.1	
0			5.5	16.3	

TIERRA CROSS SECTIONS CONT'D.

STA. W. 165+00; 0+00 = N. 9,500

Sta	+	H.I.	-	Elev.	
T.B.M.				16.43	N9500 W164+00

4.50 20.93

N 206 13.8 7.1

N 196 12.2 8.7

N 193 11.0 9.9

N 156 7.2 13.7

N 110 6.6 14.3

N 80 6.5 14.4

N 43 5.8 15.1

0 5.3 15.6

STA W166+00; 0+00 = N9,500

T.B.M.				Elev.	
				15.63	N9500 W165+00

5.27 20.90

N 203 14.0 6.9

N 176 11.4 9.5

N 170 9.3 11.6

N 144 7.7 13.2

N 103 7.0 13.9

N. 50 6.7 14.2

N 26 6.9 14.0

N 22 6.0 14.9

0 5.4 15.5

8-18-52

64

TIERRA CROSS SECTIONS CONT'D.

8-18-52

STA. N 167+00; 0+00 = N 9,500

Sta	+ H.I	- Elev.
T.B.M.		15.58

5.30 20.88

N 193	13.6	7.3	PX
N 183	12.1	8.8	
N 180	10.9	10.0	
N 148	7.7	13.2	
N 106	7.0	13.9	
N 54	6.0	14.9	
N 26	5.5	15.4	
0	5.4	15.5	

STA. W 168+00; 0+00 = N 9,500

T.B.M.		15.56
--------	--	-------

5.56 21.12

N 171	13.6	7.5	PX
N 164	12.5	8.6	
N 161	11.0	10.1	
N 129	7.5	13.6	
N 92	6.8	14.3	
N 57	6.5	14.6	
N 29	6.2	14.9	
0	5.4	15.7	

TIERRA CROSS SECTIONS CONT'D.

8-18-52

STA W169+00; 0+00 = N9.500

Sta.	+	H. I	-	Elev.
T.B.M.				15.77

N9500
W168+00

4.50 20.27

N 138		13.1	7.2
N 130		11.7	8.6
N 128		10.3	10.0
N 96		7.1	13.2
N 75		6.7	13.6
N 68		5.8	14.5
N 54		5.7	14.6
N 48		6.4	13.9
0		5.6	14.7

PT

STA W170+00; 0+00 = N9.500

T.B.M.				14.73
--------	--	--	--	-------

N9500
W169+00

4.04 18.77

N 88		12.5	6.3
N 76		10.4	8.4
N 72		8.4	10.4
N 43		6.2	12.6
N 6		5.1	13.7
593		5.5	13.3

PT

TIERRA CROSS SECTIONS CONT'D.

STA. N86+00; 0+00 = W. 16,700

Sta	+	H.I	-	Elev.	
T.B.M.				14.64	NB7+00 W16,700
	4.26	18.90			
W345			12.1	6.8	2X
W303			9.0	9.9	
W253			7.3	11.6	
W222			6.0	12.9	
W156			6.1	12.8	
W102			5.8	13.1	
W47			5.5	13.4	
0			5.5	13.4	
E52			5.1	13.8	
E100			5.1	13.8	
E160			5.4	13.5	
E					

8-18-52

(67)

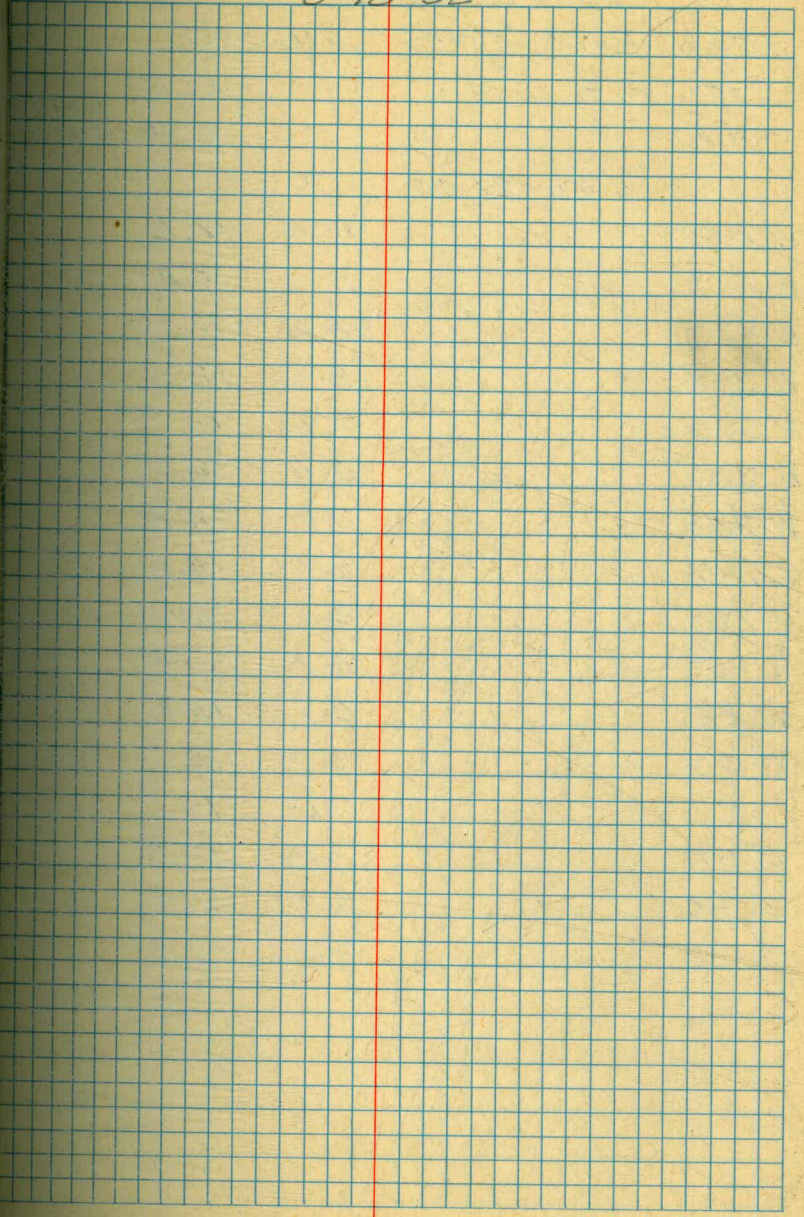
TIERRA CROSS SECTIONS CONT'D.

8-18-52

STA. N. 87+00'S 0+00 = W16, 700

Sta	+	Dist	-	Elev.
T.B.M.				16.17
	3.94	20.11		
E 188			5.9	14.2
E 138			5.0	15.1
E 78			5.5	14.6
E 36			5.7	14.4
0			5.2	14.9
W 45			5.2	14.9
W 93			5.8	14.3
W 126			6.1	14.0
W 190			6.2	13.9
W 240			6.4	13.7
W 305			7.4	12.7
W 343			7.4	12.7
W 372			8.9	11.2
W 405			10.4	9.7
W 450			13.7	6.4

PA



TIERRA CROSS SEC'S CONTD.

STA. N 88+00 : 0+00 = W 16+00

Sta.	+	H.L.	-	ELEV.
T.B.M.				15.72
	5.68	21.40		
W 492			13.2	8.2
W 462			10.6	10.8
W 423			9.6	11.8
W 392			8.5	12.9
W 343			7.3	14.1
W 310			6.6	14.8
W 255			7.0	14.4
W 208			6.9	14.5
W 180			5.8	15.6
W 130			6.0	15.4
W 85			5.7	15.7
W 43			5.3	16.1
0			5.3	16.1
E 50			5.6	15.5
E 95			6.5	15.9
E 146			6.9	14.5

8-18-52

5-3

(69)

TIERRA CROSS SECTIONS CONT'D

STAN 89+00; 0+00 = W16,700

Sta	+	H.1	-	Elev.
TBM				14.38
	6.70	21.08		
E 156			7.5	13.6
E 110			7.1	14.0
E 56			6.3	14.8
0			5.5	15.6
W 50			5.0	16.1
W 100			4.9	16.2
W 153			5.0	16.1
W 203			5.2	15.9
W 253			5.1	16.0
W 300			5.6	15.5
W 353			6.1	15.0
W 402			6.8	14.3
W 453			8.0	13.1
W 473			8.0	13.1
W 520			11.6	9.5
W 542			13.9	7.2

8-19-52

(70)

TIERRA CROSS SEC'S (CONT'D)

STA. N 90+00 ; 0+00 = W 16,700

Sta	+	H.I.	-	Elev.
T.B.M.				16.22 ^{N 91+00} W 16,700
	3.48	19.70		
W 546			12.2	7.5 PX
W 498			7.7	12.0
W 450			6.3	13.4
W 402			5.3	14.4
W 353			4.6	15.1
W 306			3.6	16.1
W 255			3.6	16.1
W 200			3.5	16.2
W 153			3.7	16.0
W 102			4.1	15.6
W 52			4.7	15.0
0			5.4	14.3
E 50			6.1	13.6
E 100			6.1	13.6
E 153			6.4	13.3

8-19-52

(71)

TIERRA CROSS SECS. CONT'D.

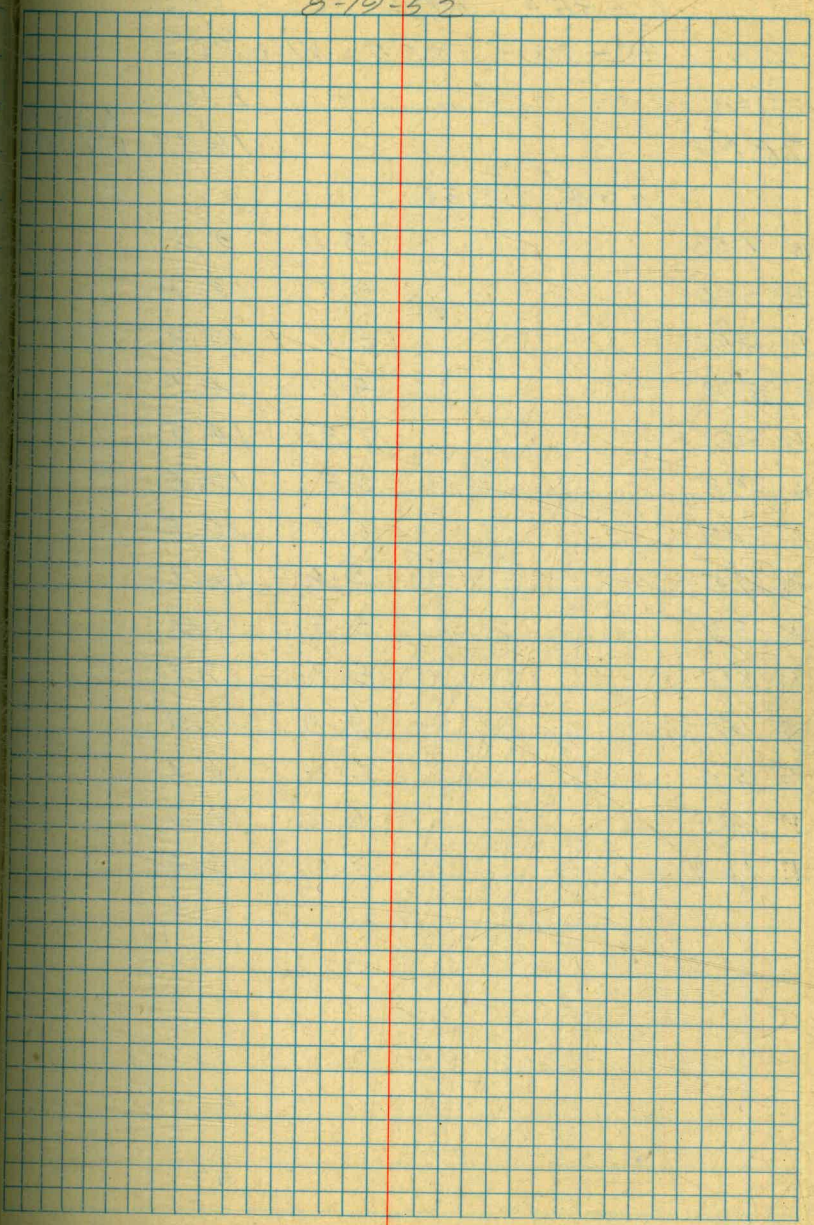
STA. N. 91+00; 0+00 = W. 16.700

8-19-52

Sta.	+	H.I.	-	Elev.
T.B.M.				17.03
	4.54	21.57		
E 172			7.0	14.6
E 122			7.0	14.6
E 68			6.0	15.6
0			5.4	16.2
W 52			4.9	16.7
W 106			4.8	16.8
W 160			4.3	17.3
W 210			4.8	16.8
W 263			5.5	16.1
W 312			5.9	15.7
W 370			7.5	14.1
W 422			7.6	14.0
W 475			8.7	12.9
W 502			9.0	12.6
W 560			12.7	8.9

N 92+00
W 16700

PK



TIERRA CROSS SEC'S CONTD.

8-19-52

STA. N. 92+00; 0+00 = W16,700

Sta	+	H.I.	-	Elev.
IBM,				16.37
	5.93	22.30		
W 555		13.0	9.3	
W 500		9.5	12.8	
W 468		9.0	13.3	
W 394		8.2	14.1	
W 342		7.8	14.5	
W 293		6.5	15.8	
W 240		6.1	16.2	
W 185		5.6	16.7	
W 135		5.3	17.0	
W 70		5.2	17.1	
# 0		5.3	17.0	
E 54		5.6	16.7	
E 105		6.6	15.7	
E 164		7.1	15.2	

N. 93+00
W16,700

A

8-19-52

TIERRA CROSS SECS CONTD.

STA. N. 93+00; 0+00 = W16,700

Sta.	+	H.I.	-	Elev.
T.B.M.				16.88
	4.78	21.66		
E 170			5.2	16.5
E 120			5.3	16.4
E 66			5.7	16.0
0			5.4	16.3
W 50			5.3	16.4
W 100			4.9	16.8
W 150			5.4	16.3
W 222			4.9	16.8
W 270			5.8	15.9
W 322			6.3	15.4
W 373			7.5	14.2
W 430			9.1	12.6
W 455			9.4	12.3
W 480			9.9	11.8
W 518			12.7	9.0
W 520			13.7	8.0

N. 94+00
W16,700

PK

TIERRA CROSS SECS CONTD.

8-19-52

STA N. 94+00; 0+00 = W16,700

Sta.	+	H.I.	-	Elev.
T.B.M.				15.56
	6.69	22.25		

N. 95+00
W16,700

W 464		12.9	9.3	PX
W 425		9.9	12.3	
W 400		9.3	13.0	
W 374		9.2	13.0	
W 324		7.9	14.3	
W 270		7.5	14.7	
W 222		6.9	15.3	
W 170		6.5	15.7	
W 120		6.3	16.0	
W 66		5.7	16.5	
0		5.4	16.8	
E 50		5.1	17.1	
E 100		4.8	17.4	
E 161		5.2	17.0	

TIERRA CROSS SECTIONS CONT'D.

8-19-52

STA. N. 95400; 0+00 = W 16,700

Sta.	+	H.I.	-	Elev.
T.B.M.				16.88

N9400
W16700

3.93 20.81

E 160 4.9 15.9 PX

E 100 5.3 15.5

E 50 5.6 15.2

0 5.4 15.4

W 50 5.0 15.8

W 100 5.1 15.7

W 136 5.6 15.2

W 190 6.0 14.8

W 243 6.4 14.4

W 292 7.6 13.2

W 300 7.2 13.6

W 342 8.3 12.5

W 389 10.0 10.8

W 391 12.0 8.8

Contd in M.B.F.B. No 80

LOCATION OF FENCE AT MODEL

YACHT POOL ON TIERRA ISLAND

A @ N 8,400; W 15,300 Zero Azim = North

Sta Dist Azim

1 65.5' 206°00'

2 57.5' 179°00'

3 65.5' 162°00'

4 83.0' 152°50'

5 102.5' 151°30'

6 130.5' 155°35'

7 122.8' 164°50'

A @ N 8,000; W 15,250 AZ North

1 126' 342°30'

2 73.7' 193°40'

3 71.8' 176°50'

4 99.3' 178°00'

5 104.9' 199°45'

6 116.4' 217°05'

7 124.3' 213°25'

8 147.2' 205°30'

9-11-52

T. Stampel

A. Sherry

R. Shaver

NOTE: This Fence is made of approx 12"

Pile Butts spc approx 10' c.c. # About

2 1/2' High with 8-strand Galv. Wire (Cable) 6" belted top

N.W. End of Fence

B.C. on Fence approx 50' Radius

NOTE: Distances measured with chain to center of posts.

Fence Cor

Fence Cor where Fence runs South

Flagpole #

Fence Corner where Fence Bears East

" " " " " South

" " " " " West

4 ft. in Fence continues West

End of Fence on this Line

Beginning of Fence - Bears South

End of Fence 2' N. of Transformer Fence

IMPROVED TABLES AND INFORMATION

HORIZONTAL STADIA CORRECTIONS

2°-00' — 0.1	21°-00' — 12.8	33°-00' — 29.7
3°-00' — 0.3	21°-30' — 13.4	33°-15' — 30.1
4°-00' — 0.5	22°-00' — 14.0	33°-30' — 30.5
5°-00' — 0.8	22°-30' — 14.7	33°-45' — 30.9
6°-00' — 1.1	23°-00' — 15.3	34°-00' — 31.3
7°-00' — 1.5	23°-30' — 15.9	34°-15' — 31.7
8°-00' — 1.9	24°-00' — 16.5	34°-30' — 32.1
9°-00' — 2.5	24°-30' — 17.2	34°-45' — 32.5
10°-00' — 3.0	25°-00' — 17.9	35°-00' — 32.9
10°-30' — 3.3	25°-30' — 18.6	35°-15' — 33.3
11°-00' — 3.6	26°-00' — 19.2	35°-30' — 33.7
11°-30' — 4.0	26°-30' — 19.9	35°-45' — 34.1
12°-00' — 4.3	27°-00' — 20.6	36°-00' — 34.6
12°-30' — 4.7	27°-30' — 21.3	36°-15' — 35.0
13°-00' — 5.1	28°-00' — 22.0	36°-30' — 35.4
13°-30' — 5.5	28°-30' — 22.8	36°-45' — 35.8
14°-00' — 5.9	29°-00' — 23.5	37°-00' — 36.2
14°-30' — 6.3	29°-30' — 24.3	37°-15' — 36.6
15°-00' — 6.7	30°-00' — 25.0	37°-30' — 37.1
15°-30' — 7.2	30°-15' — 25.4	37°-45' — 37.5
16°-00' — 7.6	30°-30' — 25.8	38°-00' — 37.9
16°-30' — 8.1	30°-45' — 26.2	38°-15' — 38.3
17°-00' — 8.5	31°-00' — 26.5	38°-30' — 38.7
17°-30' — 9.0	31°-15' — 26.9	38°-45' — 39.1
18°-00' — 9.5	31°-30' — 27.3	39°-00' — 39.6
18°-30' — 10.1	31°-45' — 27.7	39°-15' — 40.0
19°-00' — 10.6	32°-00' — 28.1	39°-30' — 40.5
19°-30' — 11.2	32°-15' — 28.5	
20°-00' — 11.7	32°-30' — 28.9	
20°-30' — 12.3	32°-45' — 29.3	

Chains to Feet

1	66
2	132
3	198
4	264
5	330
6	396
7	462
8	528
9	594
10	660

Feet to Chains

100	1.515
200	3.030
300	4.545
400	6.060
500	7.575
600	9.090
700	10.606
800	12.121
900	13.636
1,000	15.151

67.87

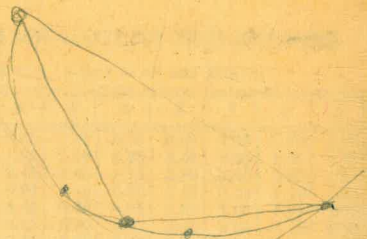
23

44.87

37.82

37.04

.78



Coaster 11.39



$$15+87^{04} = Fd\ 15+87^{82}$$

$$25+76^{82} = Fd.\ 25+77^{12}$$