

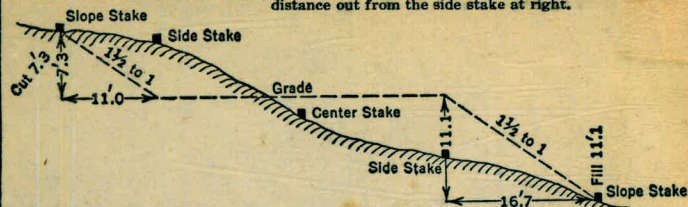
MISSION BAY

71

DISTANCES FROM SIDE STAKES FOR CROSS-SECTIONING

Roadway of any Width. Side Slopes 1 1/2 to 1.

In the figure below: opposite 7 under "Cut or Fill" and under .3 read 11.0, the distance out from the side stake at left. Also, opposite 11 under "Cut or Fill" and under .1 read 16.7, the distance out from the side stake at right.



Cut or Fill	Distance out from Side or Shoulder Stake										Cut or Fill
	0	.1	.2	.3	.4	.5	.6	.7	.8	.9	
0	0.0	0.2	0.3	0.5	0.6	0.8	0.9	1.1	1.2	1.4	0
1	1.5	1.7	1.8	2.0	2.1	2.3	2.4	2.6	2.7	2.9	1
2	3.0	3.2	3.3	3.5	3.6	3.8	3.9	4.1	4.2	4.4	2
3	4.5	4.7	4.8	5.0	5.1	5.3	5.4	5.6	5.7	5.9	3
4	6.0	6.2	6.3	6.5	6.6	6.8	6.9	7.1	7.2	7.4	4
5	7.5	7.7	7.8	8.0	8.1	8.3	8.4	8.6	8.7	8.9	5
6	9.0	9.2	9.3	9.5	9.6	9.8	9.9	10.1	10.2	10.4	6
7	10.5	10.7	10.8	11.0	11.1	11.3	11.4	11.6	11.7	11.9	7
8	12.0	12.2	12.3	12.5	12.6	12.8	12.9	13.1	13.2	13.4	8
9	13.5	13.7	13.8	14.0	14.1	14.3	14.4	14.6	14.7	14.9	9
10	15.0	15.2	15.3	15.5	15.6	15.8	15.9	16.1	16.2	16.4	10
11	16.5	16.7	16.8	17.0	17.1	17.3	17.4	17.6	17.7	17.9	11
12	18.0	18.2	18.3	18.5	18.6	18.8	18.9	19.1	19.2	19.4	12
13	19.5	19.7	19.8	20.0	20.1	20.3	20.4	20.6	20.7	20.9	13
14	21.0	21.2	21.3	21.5	21.6	21.8	21.9	22.1	22.2	22.4	14
15	22.5	22.7	22.8	23.0	23.1	23.3	23.4	23.6	23.7	23.9	15
16	24.0	24.2	24.3	24.5	24.6	24.8	24.9	25.1	25.2	25.4	16
17	25.5	25.7	25.8	26.0	26.1	26.3	26.4	26.6	26.7	26.9	17
18	27.0	27.2	27.3	27.5	27.6	27.8	27.9	28.1	28.2	28.4	18
19	28.5	28.7	28.8	29.0	29.1	29.3	29.4	29.6	29.7	29.9	19
20	30.0	30.2	30.3	30.5	30.6	30.8	30.9	31.1	31.2	31.4	20
21	31.5	31.7	31.8	32.0	32.1	32.3	32.4	32.6	32.7	32.9	21
22	33.0	33.2	33.3	33.5	33.6	33.8	33.9	34.1	34.2	34.4	22
23	34.5	34.7	34.8	35.0	35.1	35.3	35.4	35.6	35.7	35.9	23
24	36.0	36.2	36.3	36.5	36.6	36.8	36.9	37.1	37.2	37.4	24
25	37.5	37.7	37.8	38.0	38.1	38.3	38.4	38.6	38.7	38.9	25
26	39.0	39.2	39.3	39.5	39.6	39.8	39.9	40.1	40.2	40.4	26
27	40.5	40.7	40.8	41.0	41.1	41.3	41.4	41.6	41.7	41.9	27
28	42.0	42.2	42.3	42.5	42.6	42.8	42.9	43.1	43.2	43.4	28
29	43.5	43.7	43.8	44.0	44.1	44.3	44.4	44.6	44.7	44.9	29
30	45.0	45.2	45.3	45.5	45.6	45.8	45.9	46.1	46.2	46.4	30
31	46.5	46.7	46.8	47.0	47.1	47.3	47.4	47.6	47.7	47.9	31
32	48.0	48.2	48.3	48.5	48.6	48.8	48.9	49.1	49.2	49.4	32
33	49.5	49.7	49.8	50.0	50.1	50.3	50.4	50.6	50.7	50.9	33
34	51.0	51.2	51.3	51.5	51.6	51.8	51.9	52.1	52.2	52.4	34
35	52.5	52.7	52.8	53.0	53.1	53.3	53.4	53.6	53.7	53.9	35
36	54.0	54.2	54.3	54.5	54.6	54.8	54.9	55.1	55.2	55.4	36
37	55.5	55.7	55.8	56.0	56.1	56.3	56.4	56.6	56.7	56.9	37
38	57.0	57.2	57.3	57.5	57.6	57.8	57.9	58.1	58.2	58.4	38
39	58.5	58.7	58.8	59.0	59.1	59.3	59.4	59.6	59.7	59.9	39
40	60.0	60.2	60.3	60.5	60.6	60.8	60.9	61.1	61.2	61.4	40

KEUFFEL & ESSER CO., N. Y.

Book No. 71

E 40 780

MICROFILMED

JAN 7 1965

The paper in this book is 373A
is made of 50% high grade rag stock
with a WATER RESISTING surface sizing.

43-

179 39 60

43-22-35

136 37 25

68-18-42

53 47 60

N 10-12-30 W

43-35-30

179 60

43-36

136.24'

68°-12'

111°48'

180°00'

MICROFILMED

JAN 7 1982

MADE IN THE U.S.A.
A MADE OF 50% HIGH STRENGTH FIBER
WITH A WATER RESISTANT SURFACE

INDEX

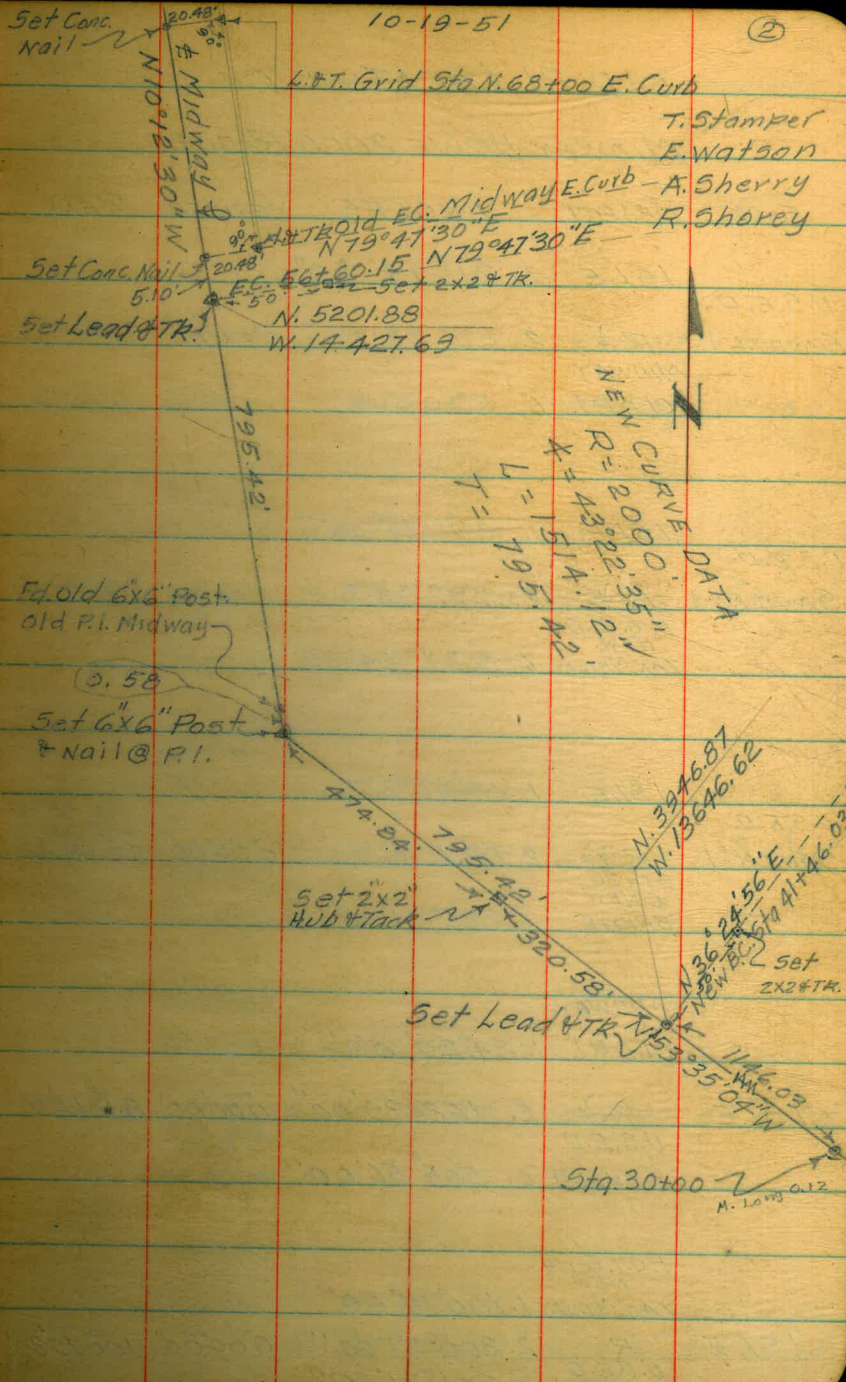
<u>Page</u>	<u>Location & Curve Data Proposed New</u>	<u>Date</u>
✓ 2	Alignment Midway Drive & Sunset	10-19-51
✓ 3-5	Triangulation Old P.I. & Control Points for New Alignment Midway	10-24-51

LOCATION OF PROPOSED NEW
ALIGNMENT CONTROLS FOR
MIDWAY DRIVE - SUNSET CLIFFS
& VENTURA BLVD'S.

CURVE DATA

$d = .85943670$

Sta	Defl	Chord	Sta	Defl	Chord
BC. Pt. 41+46.03	0°		49+00	10°48'00"	50.00
42+00	0°46'22"	53.97	+50	11°30'58"	"
+50	1°29'23"	50.00	50+00	12°13'56"	"
43+00	2°12'20"	"	+50	12°56'54"	"
+50	2°55'18"	"	51+00	13°39'53"	"
44+00	3°38'16"	"	+50	14°22'51"	"
+50	4°21'14"	"	52+00	15°05'49"	"
45+00	5°04'13"	"	+50	15°48'47"	"
+50	5°47'11"	"	53+00	16°31'46"	"
46+00	6°30'10"	"	+50	17°14'44"	"
+50	7°13'08"	"	54+00	17°57'43"	"
47+00	7°56'06"	"	+50	18°40'41"	"
+50	8°39'04"	"	55+00	19°23'39"	"
48+00	9°22'02"	"	+50	20°06'37"	"
+50	10°05'01"	50.00	56+00	20°49'36"	50.00
			EC + 60.15	21°41'75"	60.15



OLD P.I. LOCATION ON

10-24-51

③

MIDWAY DRIVE 2000' RADIUS

T. Stamper
E. Watson
A. Sherry
R. Shorey

STA. OBJECT ANGLES VERNIER MEAN

U.S.E.D.
ISLE 1. 31° 44' 30"
SANDN°1 RY 2. 63° 28' 40" 0° 00' 00" 31° 44' 20"
MIDWAY
OLD P.I. 6. 190° 26'

Visibility - Fair

STA OBJECT ANGLES VERNIER MEAN

U.S.E.D.
ISLE 1. 39° 34' 15"
SANDN°1 RY 2. 79° 08' 0° 00' 00" 39° 34' 05"
P.O.T.S. NEW.
TAN. MIDWAY 6. 237° 24' 30"

STA 30
& NEW BR.
MIDWAY DR. 1. 112° 26' 00"

ISLE RY 2. 224° 52' 00" 0° 00' 00" 112° 25' 55"
U.S.E.D.
SANDN°1 6. 674° 35' 30"

U.S.E.D.
ISLE 1. 48° 50' 30"
SANDN°1 RY 2. 97° 41' 00" 0° 00' 00" 48° 50' 45"
STA 30 & NEW BRIDGE
6. 293° 04' 00"

STA 30
& NEW BR.
MIDWAY DR.

NEW
P.I. 1. 12° 17' 00"
RY 2. 24° 35' 00" 0° 00' 00" 12° 17' 30"
OLD TEC.
MIDWAY 6. 73° 45' 00"

MIDWAY

OLD P.I. 1. 84° 20' 00"

MARSTON'S

TOWER 1. 49° 01' 00"

ISLE RY 2. 168° 39' 00" 0° 00' 00" 84° 19' 20"
U.S.E.D.
SANDN°1 6. 505° 56' 00"

ISLE RY 2. 98° 02' 00" 0° 00' 00" 49° 01' 00"
P.O.T.S. NEW
TAN. MIDWAY

P.O.T. SOUTH
NEW

TAN. MIDWAY 1. 100° 14' 00"

MARSTON'S

TOWER 1. 64° 55' 00"

ISLE R 2. 200° 27' 00" 0° 00' 00" 100° 13' 30"
U.S.E.D.
SANDN°1 6. 601° 21' 00"

ISLE RY 2. 129° 50' 30" 0° 00' 00" 64° 55' 15"
OLD P.I.
MIDWAY

TRIANGULATION CONTD.

10-25-51

(4)

STA	OBJECT	ANGLES	VERNIER	MEAN
	BRIDGE STA 30	1. 48° 37' 30"		
15 LE	R	2. 97° 14' 45"	0° 00' 00"	48° 37' 30"
	PIER B SUNSET BR	6. 291° 45' 00"		
	PIER NO 8 SUNSET BR	1. 60° 38' 00"		
BRIDGE STA 30	R	2. 121° 15' 00"	0° 00' 00"	60° 37' 45"
	15 LE	6. 363° 46' 30"		
	15 LE	1. 70° 44' 30" ^{15"}		
PIER NO 8 SUNSET BRIDGE	R	2. 141° 28' 30" ^{28' 00"}	0° 00' 00"	70° 44' 20"
	STA 30 & MIDWAY DR. BRIDGE	6. 424° 25' 00"		
	U.S.E.D. SAND NO 1	1. 18° 43' 30"		
MIDWAY NEW BRIDGE STA 30	R	2. 37° 26' 00"	0° 00' 00"	18° 43' 05"
	15 LE	6. 112° 18' 30"		
	NEW P.I. MIDWAY	1. 8° 35' 00"		
MIDWAY BRIDGE STA 30	R	2. 17° 10' 30"	8° 35' 10"	
	15 LE	6. 51° 31' 00"		

STA	OBJECT	ANGLES	VERNIER	MEAN
	MARSTONS TOWER	1. 163° 21' 00"		
STA 30	R	2. 326° 42' 00"	0° 00' 00"	163° 21' 00"
	6x6 CONC MON & N. JEWEE & W. WALK MIDWAY			
	U.S.E.D. SAND NO 1	1. 40° 12' 00"		
	P.O.T. NEW MIDWAY	R	2. 80° 25' 00"	0° 00' 00" 40° 12' 17"
	15 LE	6. 241° 13' 45"		
	U.S.E.D. SAND NO 1	1. 19° 25' 00"		
	P.O.T. NEW MIDWAY	R	2. 38° 50' 00"	0° 00' 00" 19° 24' 50"
	NEW P.I. MIDWAY	6. 116° 29' 00"		
	P.O.T. MIDWAY	1. 15° 55'		
	15 LE NEW P.I.	R	2. 31° 49' 30"	0° 00' 00" 15° 54' 30"
	MIDWAY	6. 95° 27' 00"		
	NEW P.I. MIDWAY	1. 84° 18' 45"		
	15 LE	R	2. 168° 38' 30"	0° 00' 00" 84° 19' 15"
	U.S.E.D. SAND 1	6. 505° 55' 30"		

TRIANGULATION-CONTD

10-25-51

⑤

STA	OBJECT	ANGLES	VERNIER	MEAN
	ISLE	1. 31° 45' 30"		
U.S.E.D.				
SAND NO 1	R 7	2. 63° 31' 45"	0° 00' 00"	31° 45' 45"
	NEW P.I.			
	MIDWAY	6. 190° 34' 30"		
	NEW P.I.			
	MIDWAY	1. 20° 47' 30"		
R.O.T.	R 7	2. 41° 35' 00"	0° 00' 00"	20° 47' 20"
	ISLE	6. 124° 44' 00"		

TIES TO MIDWAY - SUNSET

CLIFFS BLVD. & VENTURA BLVD

STA	OBJECT	ANGLES	MEAN
	STABO		
	MIDWAY	1. 83° 01'	
73.60'S.E.			
P.O.T. STAN	R ↘	2. 166° 02' 00"	0° 00' 00" 83° 01' 00"
	↳ PIER B		
	SUNSET BR.	6. 498° 06' 00"	
	P.I. ↖	4 = 20° 43' 10" L = 730.25'	
	VENTURA	1. 97° 34' 00"	
↳ MIDWAY			
VENTURA BLVD	R ↘	2. 195° 08' 00"	0° 00' 00" 97° 34' 20"
	EC. STA		
	56+60.15	6. 585° 26' 00"	

N. 5276.58
W. 75765.36

59+80.27
N 19° 16' 28" E

EC.

VENTURA BLVD
570° 43' 30" E
1175.22

EC. STA. 63+58.53
R=150'
L=370353
L=97.04'
T=50.28

11-8-51

⑥

T. Stamper
E. Watson
A. Sherry
R. Shorey

↳ MIDWAY DRIVE
N 10° 12' 30" W



N. 5201.88
W. 14427.69

EC. STA. 56+60.15 N 19° 41' 30" E

11-16-61

NOTE: This Sec OK.

M.O.B.S. N. Sta. 54+100 to rd
New alignment

Ed. old Hub Tack 0.7 S. of theoretical

B.C. (old.)

582
20.9

(N 1225.39')

(6+66) = E.B.C.

NOTE: This Sec Revised
See k. leaf notes
C-17, 11-16-61

NEW P.I.

92 ← OK.

N. 3946.87
W. 13646.62
90°



CROSS SECTIONS OF MIDWAY

11-2-51

①
 T. Stamper
 E. Watson
 A. Sherry
 R. Shorey

DRIVE ALONG NEW ALIGNMENT

NOTE: Elev's Refer to
 U.S.C. & G.S. M.L.L.W.

STA	+	H.I.	-	ELEV.	CITY DATUM	
B.M.				27.04	18.03	6x6" CONC. MAN. & WEST WALK MIDWAY
	0.75	27.79				4" & NORTH LEVE FLOOD CHANNEL
& PROFILE						
30+00			0.31	27.48	18.47	Top Center dividing Strip
31+00			2.83	24.96	15.95	" " " "
32+00			5.98	21.81	12.80	" " " "
T.P.						
33+00			9.72	18.07	9.06	" " " "
	1.18	19.25				
34+00			4.84	14.41	5.40	
35+00			7.07	12.18	3.17	
36+00			8.07	11.18	2.17	
B.M.					1.73	
			8.51	10.74	10.72	Top Conc. Nail S.W. Cor. H ₂ O Vault Box E. Side
	4.44	15.16				Midway @ N. End of North Approach
37+00			4.76	10.40	1.39	
38+00			4.79	10.37	1.36	
39+00			4.44	10.72	1.71	
40+00			4.23	10.93	1.92	
41+00			4.13	11.03	2.02	
T.P.						

MIDWAY NEW & PROFILE CONTD.

11-2-51

(8)

STA	+	H.I.	-	ELEV.	CITY Datum
	4.79	15.82			
B.C. Pt. 41+46.03			4.70	11.12	2.11
42+00			4.89	10.93	1.92
+50			4.83	10.99	1.98
43+00			4.88	10.94	1.93
+50			4.93	10.89	1.88
44+00			4.97	10.85	1.84
+50			5.04	10.78	1.77
45+00			5.13	10.69	1.68
T.P. +50			5.22	10.60	1.59
	4.11	14.71			
46+00			4.11	10.60	1.59
+50			4.07	10.64	1.63
47+00			4.08	10.63	1.62
+50			4.19	10.52	1.51
48+00			4.27	10.44	1.43
+50			4.37	10.34	1.33
49+00			4.44	10.27	1.26
+50			4.38	10.33	1.32

MIDWAY NEW & PROFILE CONTD

11-2-51

9

STA	+	H. I.	-	ELEV.	CITY DATUM
		14.71			
T.P. 50+00			4.36	10.35	1.34
	6.27	16.62			
+50			6.23	10.39	1.38
51+00			6.15	10.47	1.46
+50			6.10	10.52	1.51
52+00			6.03	10.59	1.58
+50			6.05	10.57	1.56
53+00			6.09	10.53	1.52
+50			5.93	10.69	1.68
54+00			5.93	10.69	1.68
+50			5.85	10.77	1.76
55+00			5.86	10.76	1.75
B.M.			4.00	12.62	12.61
	2.89	15.50			
B.M.			4.24	11.26	11.25
				Side Sta	
55+50			4.66	10.84	9.93
					on West side Midway opposite Sta. 58+00
56+00			4.52	10.98	9.91
E.C. +60.15			4.55	10.95	9.94

"A ISLE" Top Center H₂O Vault M.H. Approx &

NLY. Triangular Island @ + Ventura & Midway

Top Lead Plug N.E. Cor. Elec. M.H. N^o

MIDWAY NEW & PROFILE CONTD

11-2-51

(10)

STA	+	H.I.	-	ELEV	CITY DATUM
		15.50			
57+00			4.56	10.94	1.93
+50			4.68	10.82	1.81
58+00			4.69	10.81	1.80
T.P.					
59+00			4.81	10.69	1.68
	4.90	15.59			
60+00			5.09	10.50	1.49
61+00			5.11	10.48	1.47
62+00			5.21	10.38	1.37
63+00			5.14	10.45	1.44
T.P.					
64+00			5.05	10.54	1.53
	5.34	15.88			
B.M.			4.05	11.83	2.82 side shot
65+00			5.33	10.55	1.54 Top Lead Plug N.E. Cor. Elec M.H. N ^o on West side Midway opposite sta. 64+00
66+00			5.20	10.68	1.67
67+00			5.12	10.76	1.75
T.P.					
68+00			5.03	10.85	1.84
	5.36	16.21			

MIDWAY NEW & PROFILE CONTD.

11-2-51

(11)

STA	+	H.I.	-	ELEV.	CITY DATUM
		16.21			
69+00			5.21	11.00	1.99
70+00			5.44	10.77	1.76
71+00			5.47	10.74	1.73
72+00			5.56	10.65	1.64
73+00			3.15	13.06	4.05
73+16'			2.17	14.04	5.03
					South End of South Causeway Bridge
B.M.			3.76	12.45	3.44
					Grid Sta. N. 68+00 E. Curb Baseline
			5.14	11.07	2.06
					Grid Sta. N. 66+00 " " "
B.M.			4.55	11.66	2.65
					Side Sht. Top Lead Plug N.E. Cor. Elec. M.H. West
					Side Midway of South End S. Causeway Br.
T.P.			4.95	14.26	2.25
	4.70	15.96			STA + H.I. - ELEV.
					16.42
B.M.			4.11	11.85	2.84
					See Pg 11
					B.M.
					5.14 11.28
					ELEC. M.H. See Pg. 9
T.P.			5.18	10.78	1.77
					B.M.
					3.79 12.63
	4.83	15.61			12.61
					Δ 15.61
T.P.			4.69	10.92	1.91
	5.50	16.42			

CROSS SECTIONS MIDWAY

11-2-51

(2)

DRIVE - NEW ALIGNMENT

STA	+	H.I.	-	ELEV.	CITY DATUM
B.M.				18.47	± STA
				27.48	30+00
	5.69	33.17			
	STA 30+00				
LT. 2'		6.20	26.97	17.96	W. Profile
LT. 26		6.41	26.76	17.75	W. Gutter
LT. 26		5.50	27.67	18.66	TOP W. CURB
LT. 32		5.44	27.63	18.62	" " W. Edge Sidewalk
RT. 2'		6.20	26.97	17.96	E. Profile
RT. 26		6.48	26.69	17.68	E. Gutter
RT. 26		5.66	27.51	18.50	TOP E. CURB
RT. 32		5.65	27.52	18.51	E. Edge TOP E. Shoulder
RT. 29		5.65	27.52	18.51	TOP H ₂ O M.H.
⁵⁶ RT. 43		12.5	20.7	11.69	Pl. on Slope
RT. 63		23.7	9.5	0.49	Top Slope
RT. 75		23.6	9.6	0.59	

STA. 31+00
MIDWAY CROSS SECS. CONTD

11-2-51

(13)

STA	H.I.	ELEV.	CITY DATUM ± STA	
B.M.		24.96	31+00	
	5.68 30.64			
LT 2'	6.16	24.48	15.47	W. Profile
RT 2'	6.18	24.46	15.45	E. Profile
LT 26	6.40	24.24	15.23	W. Gutter
LT 26	5.63	25.01	16.00	W. Top W. Curb
LT 32	5.46	25.2	16.19	Top W. Shldr
LT 42	11.4	19.2	10.19	
LT 49	15.7	14.9	5.89	W. Toe Slope on N. Levee
LT 75	14.0	16.6	7.59	Slope of N. Levee
RT 26	6.29	24.35	15.34	E. Gutter
RT 26	5.52	25.12	16.11	Top E. Curb
RT 32	5.5	25.1	16.09	Top E. Shldr.
RT 44	14.1	13.1	17.5	8.49 Foot Slope
RT 57	21.7	8.9	-0.11	Toe "
RT 75	22.1	8.5	-0.51	

MIDWAY CROSS SEC'S CONTR

11-2-51

①4

STA	+	H.I.	-	ELEV.	CITY DATUM
B.M.				12.80	STA 32
		15.50		21.81	4. Med C
	5.70	27.51			
STA 32+00					
LT 2'			6.19	21.32	12.31 W. Profile
RT 2'			6.13	21.38	12.37 E. Profile
LT 26			6.52	20.99	11.98 W. Gutter
LT 26			5.65	21.86	12.85 Top W. Curb
LT 32			5.6	21.9	12.84 " " S.ldr.
LT 44	8.7		12.3	15.2	6.19
LT 54			17.3	10.2	1.19 Top W. Slope
LT 75			17.8	9.7	0.69
RT 26			6.39	21.12	12.11 E. Gutter
RT 26			5.61	21.90	12.89 Top E. Curb
RT 32			5.5	22.0	12.99 Top E. S.ldr.
RT 44	8.0		12.1	15.4	6.39
RT 54			18.3	9.2	0.19 Top E. Slope
RT 75			18.3	9.2	0.19

MIDWAY DRIVE X-SEC'S CONTD

11-5-51

(15)

STA.	+	H.L.	-	ELEV.	
B.M.	5.63	23.70		18.07	± STA 33+00
		STA. 33+00			
LT 2'			6.08	17.62	
RT 2'			6.10	17.60	
LT 26			6.39	17.31	W. Gutter
LT 26			5.53	18.17	Top W. Curb
LT 32'			5.5	18.2	" " Solid
LT 44			12.2	11.5	
LT 48			14.0	9.7	
LT 75			14.1	9.6	
R 26			6.32	17.38	E. Gutter
R 26			5.53	18.17	Top E. Curb
R 32			5.6	18.1	Top E. Solid
R 43			11.4	12.3	
R 48			14.1	9.6	
R 60			14.2	9.5	
R 75			14.0	9.7	

MIDWAY CROSS SEC'S. CONTD

11-5-51

16

STA	+ H.I.	-	ELEV.	# STA
B.M.			14.41	34+00
	20.07			
	5.66	19.07		
STA 34+00				
LT. 2		6.15	13.92 12.92	
LT. 26		6.35	13.72 12.72	
LT. 26		5.58	14.43 13.43	
LT. 32		5.5	14.6 13.6	
LT. 43		10.2	9.9 8.9	
LT. 90		10.3	9.8 8.8	
RT. 2		6.15	13.92 12.92	
RT. 26		6.35	13.72 12.72	
RT. 26		5.54	14.53 13.53	
RT. 31		5.5	14.6 13.6	
RT. 43		10.3	9.8 8.8	
RT. 62		10.2	9.9 8.9	
RT. 91		9.6	10.5 9.5	

W. Profile

W. Gutter

Top W. Curb

Top W. Shldr.

Top W. Slope

E. Profile

E. Gutter

Top E. Curb

Top E. Shldr.

Top Slope

MIDWAY CROSS SEC'S CONTD.

11-5-51

17

STA	+	H.I	-	ELEV.	± STA
B.M.	5.71	17.89		12.18	35700

STA 35+00

LT 2		6.21		11.68	W. Profile
LT 26		6.49		11.40	W. Gutter
LT 26		5.68		12.21	Top W. Curb
LT 32		5.7		12.2	Top W. Shldr
LT 38		6.6		11.3	
LT 41		8.0		9.9	Toe W. Slope
LT 79		8.2		9.7	
RT 2		6.22		11.67	E. Profile
RT 26		6.45		11.44	E. Gutter
RT 26		5.65		12.24	Top E. Curb
RT 38		5.5		12.4	Top E. Shldr
RT 45		6.8		11.1	
RT 79		7.9		10.0	

MIDWAY CROSS SEC'S. CONTD

11-5-51

(18)

STA	+	H.I.	-	ELEV.	# STA
B.M.	5.66	16.84		11.18	36+00

STA 36+00

RT 2'		6.16	10.68	E Profile
LT. 2'		6.14	10.70	West Profile
LT. 26		6.47	10.37	West Gutter
LT 26		5.64	11.20	Top West Curb
LT. 32		5.8	11.0	Top " Shoulder
LT. 40		7.3	9.5	
LT. 74		7.5	9.3	
LT 105		7.6	9.2	
RT 26		6.39	10.45	East Gutter
RT 26		5.64	11.20	Top East Curb
RT 30		5.7	11.1	
RT 42		6.7	10.1	
RT. 79		7.0	9.8	

STA 36+40

0		6.23	10.61	E Profile @ N. End Med Strip
RT 26				End East Curb

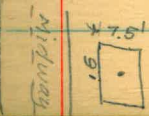
STA 37+00
MIDWAY CROSS SEC'S. CONTD

11-5-51

(19)

STA	+	H.I.	-	ELEV.	± STA	
B.M.	5.66	16.06		10.40	37+00	
0			5.66	10.40		New ±
RT 26			5.96	10.10		E. Edge Paving
LT 24			6.25	9.81		W. Edge Paving
LT. 68			6.5	9.6		
LT. 113			6.8	9.3		
RT. 79			6.4	9.7		
	36+40					
RT. 26			5.70	10.36		E. Gutter
RT. 26			4.98	11.08		Top N. End Curb
	36+48					
LT 26			5.84	10.22		W. Gutter
LT. 26			4.98	11.08		Top N. End West Curb
	36+82					
0			5.70	10.36		
LT. 26			6.16	9.90		W. Edge Paving & drainage A.C. Ditch 10' wide
LT 39			6.80	9.26		W. End A.C. Apron.
	36+71					
RT. 39			5.30	10.76		± Top H ₂ O Vault

36+44 Rod	ELEV.	TOP
RT 30.5	5.27	10.79
RT 31.5	4.61	11.45
36+54		
RT 28	5.84	10.22
36+69		
RT 33	5.20	10.86



STA 38+00
MIDWAY CROSS SEC'S CONTD

11-5-51

(20)

STA	+	H.I.	-	ELEV.	# STA
B.M.	5.66	1.6.03		10.37	38+00
LT. 23			6.06	9.97	W. Edge Paving
LT. 39			6.0	10.0	
LT. 52			5.4	10.6	
LT. 54			6.0	10.0	
LT. 91			6.5	9.5	
RT. 26			5.98	10.05	E. Edge Paving @ old Detour Road
RT. 38			6.20	9.83	E. Edge " Detour Road
RT. 84			6.1	9.9	

STA 39+00
MIDWAY CROSS SEC'S CONTD

11-5-51

(21)

STA	+	H.I.	-	ELEV.	# STA	
B.M.	5.67	16.39		10.72	39+00	
LT. 21			5.95	10.44		W. Edge Paving
LT. 36			5.8	10.6		
LT 42			6.5	9.9		
LT 89			6.5	9.9		
RT. 25			6.12	10.27		E. Edge Paving
RT 31			5.8	10.6		
RT 76			6.8	9.6		
RT 100			6.6	9.8		

STA 39+24

RT. 50'

2" Dia Pine Tree

STA 39+30

RT 24.5

6.08 10.31

E. GUTTER

RT 24.5

5.49 10.90

Top E. Curb

STA 39+74

RT. 50'

2" Dia Pine Tree

STA 40+00

11-5-51

(22)

MIDWAY DRIVE X-SEC CONTD

STA	+	H.I.	-	ELEV.	
B.M.	5.68	16.61		10.93	4.57 40+00
LT. 20			5.90	10.71	1.70 W Edge Paving
LT. 23			5.6	11.0	
LT. 36			5.8	10.8	
LT. 38			6.4	10.2	
LT. 100			6.5	10.1	
RT 24			6.20	10.41	E. Gutter
RT 29			5.58	11.03	E. Top Curb
RT 28			5.6	11.0	
RT 36			6.5	10.1	
RT 50			6.8	9.8	TREE LINE
RT 104			7.0	9.6	

STA 40+26

RT 50 2" DIA PINE TREE

STA 41+00

11-5-51

(23)

MIDWAY CROSS SEC'S CONTD

STA	+ 4.1	-	ELEV.		
B.M.	5.58	16.61	11.03	± STA	41+00
LT 18.5		5.88	10.73	1.71	West Edge Paving
LT 35		5.6	11.0		Top Topsoil Shldr
LT 37		6.1	10.5		Sand
LT 105		6.6	10.0		
RT 23		6.10	10.51		East Gutter
RT 23		5.44	11.17		Top East Curb
RT 31		5.5	11.1		Top Rd. Shldr
RT 36		6.1	10.5		Top
RT 49		6.7	9.9		TREE LINE
RT 107		6.9	9.7		

STA 40+75

RT 49

2" Pine Tree

STA 41+25

RT 49

2" Pine Tree

11-5-51

B.C. RT. STA 41+46.03

STA	+	H.I.	-	ELEV.	↳ STA
B.M.	5.63	16.75		11.12	B.C.
LT. 18			5.85	10.90	
LT. 35			5.3	11.4	
LT. 37			5.9	10.8	
LT 105			6.6	10.1	
RT. 23			6.20	10.55	
RT. 23			5.57	11.18	
RT. 31			5.8	11.0	
RT. 38			7.2	9.5	
RT 105			7.2	9.5	

West Edge Paving

East Gutter

Top Post Corb

STA 41+76

RT50

2" Dia Tree (Pine)

STA 41+69

RT. 17.5

6.06 10.69

↳ Top H₂O M.H.

STA 42+00

11-5-51

(25)

MIDWAY CROSS SEC'S CONTD

STA	+	H.I.	-	ELEV.	
B.M.	5.64	16.57		10.93	1.92 4.51 42+00
LT. 16.5			5.75	10.82	1.81 West Edge Paving
LT. 33			4.8	11.8	
LT. 36			4.7	11.9	
LT. 100			5.5	11.1	
RT. 23.5			6.15	10.42	East Gutter
RT. 23.5			5.60	10.97	Top East Curb
RT. 33			5.6	11.0	
RT. 38			6.9	9.7	
RT. 93			6.7	9.9	

STA 43+00

11-5-51

MIDWAY CROSS SEC'S. CONTD

STA	+	H.I.	-	ELEV.	
				1.93	43+00
B.M.	5.65	16.59		10.94	43+00
LT. 17			5.67	10.92	1.91 West Edge Paving
LT. 29			5.3	11.3	2.2
LT. 35			6.1	10.5	
LT. 56			6.4	10.2	
LT. 102			5.4	11.2	
RT. 23			6.26	10.33	East Gutter
RT. 23			5.63	10.96	Top East Curb
RT. 32			5.8	10.8	
RT. 36			7.0	9.6	
RT. 95			6.9	9.7	

STA 42+79

RT 47

2" Dia Pine Tree

STA 43+30

RT 47

2" Dia Pine Tree

STA 43+23

RT. 25

Road Sign La Jolla & Mission Beach

STA 44+00

11-5-51

(27)

MIDWAY CROSS SEC'S CONTD.

STA	+	H.I.	-	ELEV.	
B.M.	5.61	16.46		10.85	± STA 44+00
LT. 16			5.73	10.73	1.72 West Gutter
LT. 40			6.1	10.4	
LT. 83			5.0	11.5	
LT. 114			5.2	11.3	
RT. 23			6.26	10.20	East Gutter
RT. 23			5.62	10.84	Top East Curb
RT. 32			6.0	10.5	
RT. 36			6.7	9.8	
RT. 47			6.9	9.6	
RT. 106			6.5	10.0	
STA 43+82					
RT. 47					2" Dia Pine Tree
STA 44+25					
LT. 17			5.67	10.79	W. Gutter
LT. 17			5.01	11.45	Top W. Curb @ South End Curb
STA 44+33					
RT. 47					2" Dia Pine Tree

STA 45+00

11-6-51

(28)

MIDWAY CROSS SEC'S. CONTD

STA	+	H.I.	-	ELEV.	
				1.68	± STA
B.M.	5.67	16.36		10.69	45+00
LT. 17			5.67	10.69	1.68 West Gutter
LT. 17			5.04	11.32	Top West Curb
LT. 26			4.9	11.5	
LT. 34			6.0	10.4	
LT. 94			6.9	9.5	
RT. 23			6.30	10.06	East Gutter
RT. 23			5.67	10.69	Top East Curb
RT. 30			6.1	10.3	
RT. 34			6.8	9.6	
RT. 47			7.0	9.4	
RT. 100			6.5	9.9	

STA 44+85

RT. 47

3" Dia Pine Tree

STA 45+36

RT. 47

2" Dia Pine Tree

STA. 46+00

11-6-51

(29)

MIDWAY CROSS SEC'S. CONT'D.

STA	+	H.I.	-	ELEV.	# STA
B.M.	5.69	16.29		10.60	46+00
LT. 17			5.60	10.69	1.68 West Gutter
LT. 17			4.93	11.36	Top West Curb
LT. 27			5.4	10.9	
LT. 40			7.6	8.7	
LT. 47			7.4	8.9	
LT. 53			6.3	10.0	
LT. 90			6.9	9.4	
LT. 115			7.3	9.0	
RT 23			6.39	9.90	East Gutter
RT 23			5.78	10.51	Top East Curb
RT 31			5.8	10.5	
RT 35			6.6	9.7	
RT 93			6.4	9.9	

STA 45+99

LT. 17' BC. Curb Ret. & LT. R=15'

STA 45+98

LT 19

Electrolit No 4540

STA 45+87

RT. 47

2" Dia Pine Tree

STA 46+38

RT 47

2" Dia Pine Tree

STA 47+00

11-6-51

MIDWAY CROSS SEC'S CONT'D.

STA.	+	H.I.	-	ELEV.
B.M.	5.66	16.29		10.63
LT 23			5.83	10.46
LT. 29			6.1	10.2
LT. 58			6.8	9.5
LT. 65			10.4	5.9
LT 80			10.8	5.5
RT. 22.5			6.49	9.80
RT. 22.5			5.94	10.35
RT 30			5.9	10.4
RT 34			6.9	9.4
RT 100			6.4	9.9

West Edge Paving

East Gutter

Top East Curb

STA 46+89

RT 47

2" Dia Pine Trees

STA 46+12.5

LT. 23 5.51 10.78

Gutter @ End Curb Ret.

LT. 23 4.83 11.46

Top Curb @ N.W. End Curb Ret.

RT 47

STA 47+40

2" Dia Pine Trees

STA 48+00

11-6-51

MIDWAY CROSS SEC'S CONT'D

STA	+	H.I.	-	ELEV.	# STA	
B.M.	5.66	16.10		1.43 10.44	48+00	
LT. 34			6.04	10.06	1.06	West Edge Paving
LT. 56			6.4	9.7		
LT. 63			10.3	5.8		Top
LT. 75			14.5	1.6		Slough
LT. 90			14.0	2.1		"
LT 100			11.0	5.1		
LT 110			11.0	5.1		
RT 22			6.49	9.61		East Gutter
RT 22			5.87	10.23		Top East Curb
RT 30			6.0	10.1		
RT 34			6.6	9.5		
RT 106			6.0	10.1		

STA 47+86

RT. 24						# Electrical No 4591
RT 48	STA 47+91					2" Dia Pine Tree
RT 48	STA 48+43					" " " "
LT 2'	STA 47+82					6.1' wide A.C. Basin

STA 49+00

11-6-51

MIDWAY CROSS SEC'S. CONTD

STA	+	H.I.	-	ELEV.	
B.M.	5.69	15.96		10.27	± STA 49+00
LT 40.5			6.06	9.90	-0.89 West Edge Paving
LT 66			6.4	9.6	
LT 73			9.9	6.1	
LT 79			10.6	5.4	
RT 22			6.52	9.32	East Gutter
RT 22			5.84	10.12	Top East Curb
RT 30			5.6	10.4	
RT 34			6.6	9.4	
RT 100			6.6	9.4	

STA 48+94

RT 48

3" dia Pine Tree

STA 49+45

RT 48

" " "

STA 49+07

RT 22

6.76 9.20

Gutter line @ ± Curb Outlet Drain 6' Wide x 0.5

STA 48+99

Opening

LT 3

± S. End Traffic Island

STA 49+44

LT 53

1. Electrician No 4542

STA. 50+00

11-6-51

MIDWAY CROSS SEC'S CONTD

STA	+	H.I.	-	ELEV.	
B.M.	5.69	16.04		10.35	1.34 # STA 50+00
LT. 2.8			5.66	10.38	1.37 East Profile
LT. 7			5.60	10.44	West Profile
LT. 42.5			6.27	9.97	0.76 West Edge Paving
LT. 68			6.3	9.7	
LT. 75			10.7	5.3	
LT. 116			10.8	5.2	
RT. 21.5			6.47	9.57	0.56 East Gutter
RT. 21.5			5.83	10.21	Top East Curb
RT. 32			5.9	10.1	
RT. 36			6.6	9.4	
RT. 106			6.3	9.7	

STA 49+95

RT 48

2" Dia Pine Tree

STA 50+47

RT 48

2" Dia Pine Tree

STA 50+70

RT 23.5

to Electrolier N^o 4543

STA 51+00

11-6-51

34

MIDWAY CROSS SEC'S. CONTD

STA	+	H.I.	-	ELEV.	# STA
B.M.	5.64	16.11		10.47	51+00
LT. 10.5			5.60	10.51	
LT. 11			5.14	10.97	
LT. 14			5.11	11.00	
LT. 14.5			5.61	10.50	
LT. 52			6.36	9.75	
LT. 62			5.9	10.2	
LT. 76			6.5	9.6	
LT. 85			9.9	6.2	
LT. 128			10.9	5.2	
RT. 21.5			6.45	9.66	
RT. 21.5			5.81	10.30	
RT. 30			6.1	10.0	
RT. 48			6.1	10.0	
RT. 98			6.5	9.6	
RT. 48		STA 50+97			
RT. 48		STA 51+49			
RT. 48		STA 50+60			
LT. 80			9.84	6.27	

East Profile

Top Curb

Top Curb

West Profile

West Edge Paving

East Gutter

Top East Curb

STA. 50+60

RT 52

6.65

Top Grate Curb
Inlet C.B.

2" DIA Pine Tree

outlet 18" Storm Drain

STA 53+00

11-6-51

36

MIDWAY CROSS SEC'S CONTD

STA	+	H.I.	-	ELEV.		
B.M.	5.67	16.20		10.53	1.57	# STA 53+00
LT. 29.5			5.41	10.72	1.70	East Profile @ Center Island dividing str
LT. 33.5			5.97	10.23	1.25	West Profile @ " "
LT 59			5.42	10.78		Gutter East Side Island
LT 59			4.91	11.29		Top Curb " "
LT. 127			3.86	12.34		Top " West " "
LT 127			4.34	11.86		Gutter
LT. 162			5.08	11.12		West Edge Paving
RT. 21			6.40	9.80	0.71	East Gutter
RT 21			5.76	10.44		Top East Curb
RT. 36			5.8	10.4		
^{TR} RT. 46			6.2	10.0		
RT 100			6.3	9.9		
STA. 53+53						
RT. 46						2" Dia Pine Tree
STA 53+03						
RT. 46						2" Dia Pine Tree
STA 52+80						
RT. 17.5			6.27	9.93		6" Gate Valve
RT. 16.5			6.25	9.95		6" " "

STA 54+00

11-6-51

MIDWAY CROSS SEC'S CONTD.

STA	+	H.I.	-	ELEV.		
B.M.	5.68	16.37		10.69	1.68	54100
LT. 3.8			5.64	10.73	1.77	East Profile @ Traffic Island
LT 4'			5.12	11.25		Top Curb E. Side " "
LT 28.5			4.87	11.50		" " W. Side " "
LT 29			5.39	10.98		Gutter " " " "
LT 85.5			4.78	11.59		East End Gutter
LT 86			4.27	12.13		Top Curb @ East End & Ventura Bluff
RT 20			6.44	9.93	0.99	East Gutter
RT 20			5.75	10.62	1.61	Top East Curb
RT 28			6.2	10.2		
RT 33			7.1	9.3		
RT 100			6.7	9.7		
RT 46		STA. 54+03				2" Dia Pine Tree
RT 22		STA 54+01				& Stop Light
RT 22		STA 54+49				Electrician. N ^o 4531
RT 46		STA 54+54				2" Dia Pine Tree

STA 56+00

11-6-51

(39)

MIDWAY CROSS SEC'S CONTD

STA	+	H. I.	-	ELEV.	± STA	
B.M.	5.64	16.62		10.98	56+00	
LT. 14			5.62	11.00		East Profile of Dividing Island
LT. 14			5.16	11.46		Top Curb " " "
LT. 23.5			5.58	11.04		Top Curb " " " W. Side
LT. 23.5			6.04	10.58	1.57	Gutter West Side P. West Edge Paving
LT. 56.5			5.55	11.07	1.01	
LT. 68			5.5	11.1		
LT. 86			4.4	12.2		
RT. 20			6.45	10.77		East Gutter
RT. 20			5.86	10.76		Top East Curb
RT. 31			5.9	10.7		
RT. 46			6.8	9.8		
RT. 107			7.2	9.4		

STA 56+09

RT. 46

2" Dia. Pine Tree

STA 56+48

RT. 46

2" Dia. Pine Tree

E.C. STA. 56+60.15

11-6-51

(40)

MIDWAY CROSS SEC'S CONT'D

STA	+	H.I.	-	ELEV.	± STA
B.M.	5.70	16.65		10.95	E.C.
LT. 8			5.64	11.01	East Profile @ ± Dividing Island
LT. 8			5.19	11.46	Top Curb
LT. 12			5.21	11.44	Top Curb
LT. 12			5.75	10.90	Gutter
LT. 38.5			5.67	10.98	West Edge Parking
LT. 51			5.4	11.2	2.19
LT. 69			4.5	12.1	
LT. 96			4.4	12.2	
RT. 20			6.49	10.16	East Gutter
RT. 20			5.85	10.80	Top East Curb
RT. 32			6.0	10.6	
RT. 36			6.7	9.9	
RT. 98			7.3	9.3	

STA 56+70.7

RT. 22

Electroliner N^o 4553

STA 56+96

RT. 46

2" Dia. Pine Tree

STA 57+00

11-7-51

(71)

MIDWAY CROSS SEC'S CONTD

STA.	+	H.I.	-	ELEV.	± STA	
B.M.	5.66	16.60		1.93 70.94	± STA 57+00	
LT 30			5.93	10.67	1.66	West Edge Paving
LT 40			5.6	11.0		
LT 59			4.8	11.8		
LT 59			4.33	12.27		Top Trans. Conc. Pad 1.5' South of North End
LT 74			4.37	12.23		" " " " 1.0' South " " "
LT 108			4.5	12.1		15' wide x 20' Long
RT 20			6.44	10.16		East Gutter
RT 20			5.80	10.80		Top East Curb
RT 31			5.2	11.4	2.39	
RT 37			6.7	9.9		
RT 110			7.0	9.6		
RT 46		STA 57+46				2" Dia Pine Tree
		STA 56+95				
RT 46						2" Dia Pine Tree
LT 5		STA 56+91.5				Top Paving @ N. End of Dividing Island
			5.59	11.01		

11-7-51

STA 58+00

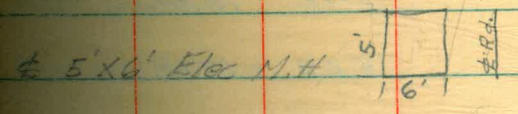
MIDWAY CROSS SEC'S CONTD.

STA	T	H.I.	ELEV.	± STA
B.M.	5.66	16.47	10.81	58+00
LT 20.5			5.98	10.49
LT 32			5.4	11.1
LT 65			5.2	11.3
LT 99			5.2	11.3

West Edge Paving

STA 58+10.5

LT 51.5



STA 58+19

LT 44.5

Paved Pole

STA 58+43

LT 22

Electricies NO 9559

STA 58+15.5

LT 20

6.02 10.45

W. GUTTER

LT 20

5.39 11.08

TOP W. CURB & South End of CURB

RT 20

6.35 10.12

EAST GUTTER

RT 20

5.73 10.74

TOP EAST CURB

RT 30

6.0 10.5

RT 100

6.7 9.8

STA 58+98

2" Dia Pine Tree

RT 46

STA 58+48

" " " "

RT 46

STA 59+00

11-7-51

MIDWAY CROSS SEC'S. CONTD.

STA	+	H.I.	-	ELEV.	± STA	
B.M.	5.68	16.37		1.68 10.69	59+00	
LT 20			6.02	10.35	1.34	West Gutter
LT 20			5.48	10.89		Top West Curb
LT 48			5.1	11.3		
LT 95			4.8	11.6		
RT 20			6.34	10.03	100	East Gutter
RT 20			5.69	10.68		Top East Curb
RT 28			5.7	10.7		
RT 30			6.2	10.2		
RT 63			6.6	9.8		
RT 100			6.4	10.0		

STA 58+97

RT 46

2" Dia Pine Tree

STA 59+46

RT 46

2" Dia Pine Tree

STA 60+00

11-7-51

(44)

MIDWAY CROSS SEC'S CONTD.

STA	+	H.I.	-	ELEV.	± STA	
B.M.	5.67	16.17		10.50	60+00	
LT 20			5.90	10.27	1.28	West GUTTER
LT 20			5.29	10.88		Top West Curb
LT 55			4.7	11.5		
LT 106			4.7	11.4		
RT 20			6.15	10.02	1.01	East GUTTER
RT 20			5.59	10.63		Top East Curb
RT 30			5.5	10.7		
RT 33			6.0	10.2		
RT 70			6.0	10.2		
RT 110			6.0	10.2		
RT 96		STA 61+49				2" Dia Pine Tree
RT 46		STA 59+94				2" Dia Pine Tree
RT 22		STA 59+74				Light Pole N ^o 45B1 (old Lighting)

STA 61+00

11-7-57

MIDWAY CROSS SEC'S CONTD

STA	+	H.I.	-	ELEV.	
B.M.	5.66	16.14		1.41 10.48	± STA 61+00
LT 20			6.02	10.12	West GUTTER
LT 20			5.39	10.75	TOP West CURB
LT 55			4.5	11.6	
LT 80			4.8	11.3	
LT 110			4.5	11.6	
RT 20			6.21	9.93	East GUTTER
RT 20			5.52	10.62	TOP East CURB
RT 29			4.8	11.3	
RT 31			5.5	10.6	
RT 46			5.4	10.7	
RT 104			5.5	10.6	
			STA 60+90		
RT 46			2" Dia Pine Tree		
			STA 61+43		
RT 46			" " " "		
			STA 61+25		
RT 22			1' x 1.5' CONC Box Over Old Light Location (Removed) Pole		
			STA 60+50		
LT 25.5			" " " " " "		

STA 62+00

11-7-51

MIDWAY CROSS SEC'S CONTD.

STA	+	H.L.	-	ELEV.	
B.M.	5.68	16.06		10.38	± STA 62+00
LT 20			6.10	9.96	West Cutter
LT 20			5.44	10.62	Top West Curb
LT 25.5					Light Pole No 4584 (old type)
LT 52			4.7	11.4	
LT 82			4.3	11.8	
LT 110			4.1	12.0	
RT 20			6.14	9.92	East Cutter
RT 20			5.46	10.60	Top East Curb
RT 44			5.6	10.5	
RT 70			5.4	10.7	
RT 88			5.2	10.9	

STA 62+09.2

LT 20			6.32	9.74	Top Gates @ Curb Inlet 3.5' wide x 0.5 Deep
RT 20			6.29	9.77	" " " " " "

STA 61+83

LT 48					Power Pole
RT 44					2" Dia Pine Tree
RT 44					" " " "

STA. 63+00

11-7-51

(47)

MIDWAY CROSS SEC'S CONTO

STA	+	H.I.	-	ELEV.	± STA
B.M.	5.70	16.15		^{1.44} 10.45	63+00
LT 20			6.12	10.03	West Gutter
LT 20			5.43	10.72	Top West Curb
LT 41			4.6	11.6	
LT 82			4.6	11.6	
LT 110			4.3	11.9	
RT 20			6.12	10.03	East Gutter
RT 20			5.45	10.70	Top East Curb
RT 26			5.5	10.7	
RT 29			5.8	10.4	
RT 45			5.6	10.6	
RT 75			5.6	10.6	
RT 118			5.7	10.5	

STA 62+92

RT 45

2" Dia Pine Tree

STA 63+39

RT 45

" " " "

STA 62+75

RT 22

1' x 1.5 Conc Box Over old Lt Pole location

STA 63+10

RT 23.5

± 5190 Post (Pl. Loma, Ocean & Mission Beach)

STA 64+00

11-7-51

MIDWAY CROSS SEC'S CONTD

STA	+	H.I.	-	ELEV.	± STA
B.M.	5.59	16.13		1.53 10.59	64+00
LT 20			6.00	10.13	
LT 20			5.35	10.78	
LT 34			4.5	11.6	
LT 50			4.4	11.7	
LT 98			4.3	11.8	
RT 20			6.03	10.10	
RT 20			5.34	10.79	
RT 30			5.6	10.5	
RT 46			5.9	10.2	
RT 73			5.6	10.5	
RT 109			5.6	10.5	

STA 64+10.5

LT 41

4' 5" x 6' Elec Manhole

STA 63+50

LT 26

2' 1" x 1.5' CONC BOX Over Old LT Pole Location

RT 46

STA 63+91

2" Dia Pine Tree

RT 46

STA 69+

" " " "

RT 22

STA 64+24

Light Pole No 4587

STA 65+00

11-7-51

(49)

MIDWAY CROSS SEC'S CONTD

STA	+	H. I.	-	ELEV.	± STA	
B.M.	5.63	16.18		10.55	65+00	
LT30			5.98	10.20		West Gutter
LT20			5.31	10.87		Top West Curb
LT25.5						+ 1' x 1.5 CONC. Box Over Old Lt Pole Location
LT48			4.2	12.0		
LT85			4.2	12.0		
LT103			4.5	11.7		
RT20			5.95	10.23		East Gutter
RT20			5.33	10.85		Top East Curb
RT28			5.2	11.0		
RT34			6.1	10.1		
RT68			5.8	10.4		
RT101			6.1	10.1		

STA 64+91

RT46

2" Dia Pine Tree

RT46

STA 63+38

" " " "

RT25

STA 65+44

"No Peddling" Sign Post

LT47

STA 65+50

Power Pole

STA 66+00

11-7-51

MIDWAY DRIVE X-SECS CONTO

NOTE: From Sta. 66+00 NLY

East Side Area is Covered with

Topsoil

STA	+ H.I	-	ELEV.	± STA
B.M.	5.67	16.35	10.68	66+00
LT. 20		6.03	10.32	
LT 23.5		5.84	10.51	
LT 23.5		5.19	11.16	
LT 54		4.8	11.6	
LT 89		4.7	11.6	
LT. 105		4.8	11.6	
RT 20		6.04	10.31	
RT 20		5.42	10.93	
RT 30		5.4	11.0	
RT. 77		6.1	10.3	
RT. 128		6.4	10.0	
RT 46				
RT 20		6.05	10.30	
RT 20		5.40	10.95	
LT 20				
LT. 20		5.90	10.45	
LT 20		5.43	10.92	
LT 25.5				

West Gutter

Gutter

Top Curve P.O.C.

STA 65+74.5

RT 77 1'x1.5' Conc Box Over Old LT Pole Location

East Gutter

Top East Curb

2" Pine Tree

Break in Curb Gutter spot

Top Curb @ Break R 30' wide opening to North

P.O.C. Curb Road 40' Ent. To Danga Landing

Gutter @ Center Island Ent. To Danga Landing

Top Curb " " " " " "

Light Pole No 4590 " " " " " "

STA 67+00

11-7-51

(51)

MIDWAY CROSS SEC'S CONTD

STA	+	H.I.	-	ELEV.	# STA
B.M.	5.66	16.42		10.76	67+00
LT20			6.04	10.38	
LT23.5			5.89	10.33	
LT23.5			5.33	11.09	
LT47			4.7	11.7	
LT84			4.3	12.1	
RT20			6.07	10.35	
RT20			5.40	11.02	
RT29			5.1	12.3	
RT32			5.7	10.7	
RT65			6.1	10.3	
RT100			6.0	10.4	

West Gutter Midway

Curb Gutter Ent To Dana Landing

Top Curb P.O.C. Ent To Dana Landing

East Gutter

Top East Curb

NOTE: For Entrance to Dana Landing

Details See Mission Bay Map No 2.4.196.1

STA 67+22.7

LT20

BC Curb Radius ^{40'} Ent To Dana Landing

STA 68+00

11-7-51

MIDWAY CROSS SEC'S CONTD

STA	+	H.I.	-	ELEV.	ESTD
B.M.	5.62	16.47		10.85	68+00
LT 20			5.93	10.54	
LT 20			5.95	11.12	
LT 26					
LT 44			4.6	11.9	
LT 76			4.9	11.6	
RT 20			5.95	10.52	
RT 20			5.31	11.16	
RT 28			5.3	11.2	
RT 33			6.5	10.0	
RT 46			6.5	10.0	
RT 56			6.0	10.5	
RT 100			5.7	10.8	

West Gutter
 Top West Curb
 # Water Meter No 4592

East Gutter
 Top East Curb

STA 67+61

RT 46
 RT 46

STA 68+09

2" Dia Pine Tree
 " " " "

STA 69+00

11-7-51

MIDWAY CROSS SEC'S CONTD

STA	T	H.V	-	ELEV.	
B.M.	5.62	16.62		1.99 11.00	± STA 69+00
LT 20			6.04	10.58	West Gutter
LT 20			5.44	11.18	Top West Curb
LT 32			5.0	11.6	STA 68+72
LT 41			4.9	11.7	RT 22 ± Light Pole No. 1593
LT 60			5.3	11.3	
RT 20			5.99	10.63	East Gutter
RT 20			5.40	11.22	Top East Curb
RT 28			5.4	11.2	
RT 34			6.3	10.3	
RT 61			6.0	10.6	
RT 100			6.4	10.2	
RT 46		STA 69+06			2" Dia Pine Trees
RT 46		STA 68+57			" " " "
LT 22		STA 69+55.5			± Row Pile Gd. Rail Continuous 5' cc. To Bridge
LT 47		STA 69+08			Power Pole
LT 23		STA 68+70			± Water Meter Box
LT 25.5		STA 69+49.5			± 1x1.5 Conc. Box Over old Lt Pole Location

11-7-51

STA 70+00

MIDWAY CROSS SEC'S CONTD

STA	+	H.I.	-	ELEV.	# STA
B.M.	5.66	16.43		10.77	70+00
LT 20			5.91	10.52	
LT 20			5.32	11.11	
LT 24			4.9	11.5	
LT 47			4.5	11.9	
LT 70			5.00	11.43	
RT 20			5.96	10.47	1.46
RT 20			5.33	11.10	
RT 32			5.4	11.0	
RT 46			5.9	10.5	
RT 71			5.8	10.6	
RT. 103			5.7	10.7	

West Gutter

Top West Curb

East Edge Paving Dang Landing Parking Area

STA 69+57

RT 46

2" Dia Pine Tree

STA 70+07

RT 46

" " " "

STA 70+29

RT. 22

1' x 1.5 Conc Box over old Lt. Pole (Removed)

STA 71400

11-7-51

(55)

MIDWAY CROSS SEC'S CONTD

STA	+	4.1	-	ELEV.	
B.M.	5.62	16.36		10.74	± STA 71400
LT 20				5.89 10.47	West Gutter
LT 20				5.27 11.09	Top West Curb
LT 33				4.3 12.1	
LT 49				4.3 12.1	
LT 93				4.2 12.2	
RT 20				5.90 10.46	± 1.45 East Gutter
RT 20				5.28 11.08	Top East Curb
RT 33				5.1 11.3	
RT 38				5.8 10.6	
RT 58				6.2 10.2	
RT 105				6.2 10.2	
RT 46					STA 70+59 2" Dia Pine Tree
RT 46					STA 71+09 " " " "
					STA 70+99
LT 255					± Light Pole No 4596

STA 72+00

11-7-51

MIDWAY CROSS SEC'S CONTD

STA	+	H.I	-	ELEV.	
B.M.	5.64	16.29		10.65	1.64 #STA 72+00
LT 20			5.93	10.36	West Gutter
LT 20			5.31	10.98	Top West Curb
LT 38			4.5	11.8	
LT 80			4.5	11.8	RT 18
LT 106			4.7	11.6	RT 175
RT 20			6.09	10.20	119 East Gutter
RT 20			5.44	10.85	TOP East Curb
RT 31			5.3	11.0	
RT 92			6.4	9.9	
STA 71+59					
RT 46					2" Dia Pine Tree
RT 46					" " " "
RT 22					1' x 1.5' Conc. Box Over Old LT Pole Location
STA 72+08.5					
LT 20			5.96	10.33	1.37 # Gutter @ Curb Outlet 6' wide x 0.5 deep
RT 20			6.28	10.01	1.00 " " " " " " " "

STA 72+43

5.63 10.66
STA 72+50.5

Water M.H

5.46 10.83

6" # Gate Valve

STA 73+00

MIDWAY CROSS SEC'S CONTD

STA	+ H. I.	-	ELEV.	± STA
B.M.	5.63	18.69	13.06	73+00
LT 20		5.90	12.79	
LT 20		5.50	13.19	
LT 27		5.4	13.3	
LT 31		5.7	13.0	
LT 40		8.00	10.69	
RT 20		5.93	12.76	
RT 20		5.28	13.41	
RT 26		6.00	12.69	
RT 35		8.00	10.69	

West Gutter
 Top West Curb
 Top West Wing Wall S. End
 East Gutter
 Top East Curb
 Top East Wing Wall

STA 72+82

LT 25.5
 LT 25.5

STA 72+43

Power Pole
 1x1.5 CONC. Box Over Old Light Pole location

11-7-51

STA 73+16.4

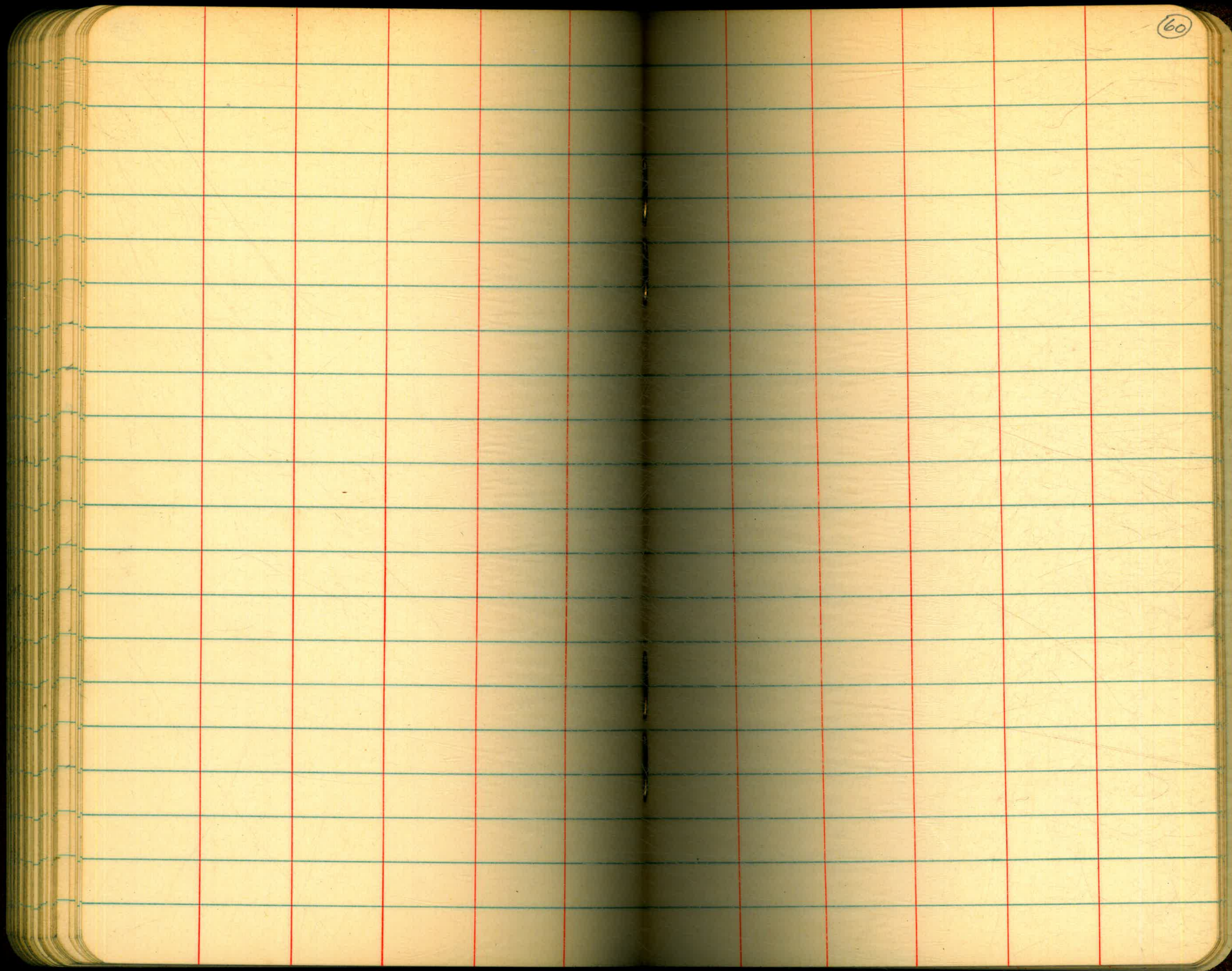
11-7-51

(58)

MIDWAY CROSS SEC'S. CONTD.

STA	+	H.I.	-	ELEV.	
B.M.	5.63	18.69		13.06	73+00
LT 20			4.97	13.72	West Gutter @ South End S. Bridge
LT 20			4.17	14.52	Top West Curb " " " "
RT 20			4.81	13.88	East Gutter @ South End S. Bridge
RT 20			3.97	14.72	Top East Curb " " " "

The image shows an open notebook with two facing pages. The pages are cream-colored and feature light blue horizontal ruling. Each page is divided into two columns by two vertical red margin lines. The notebook has rounded corners and a dark cover is visible around the edges. The pages are blank, with no writing or markings other than the page number '59' in the top right corner of the right page.



2.5' N. N. Face



$$\sec = \frac{c}{a}$$

$$\frac{b^2}{a^2}$$

$$1 - \frac{a^2}{c^2}$$

$\frac{C}{A}$

$\sin C$

$\sin A$

$$\frac{(A+B)}{b}$$

$-(A+B)$

ed by the
s = 319.4 ft.
s 5° 10' =
ft.
nus slope
With the
e follow-
959 = .0041.

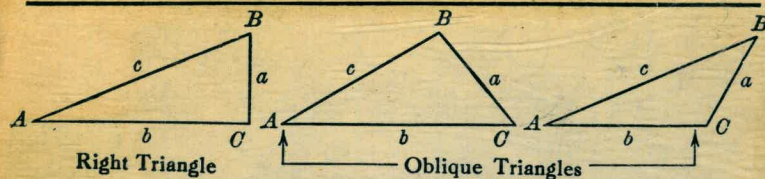
slope dist-
ise = 14 ft.,
02.28 ft.

IN U. S. A.

16.06 From 7400 to Bridge

12.07 Grid Sta. 6800 N.

TRIGONOMETRIC FORMULÆ



Solution of Right Triangles

For Angle A. $\sin = \frac{a}{c}$, $\cos = \frac{b}{c}$, $\tan = \frac{a}{b}$, $\cot = \frac{b}{a}$, $\sec = \frac{c}{b}$, $\operatorname{cosec} = \frac{c}{a}$

Given	Required	Formulas
a, b	A, B, c	$\tan A = \frac{a}{b} = \cot B$, $c = \sqrt{a^2 + b^2} = a \sqrt{1 + \frac{b^2}{a^2}}$
a, c	A, B, b	$\sin A = \frac{a}{c} = \cos B$, $b = \sqrt{(c+a)(c-a)} = c \sqrt{1 - \frac{a^2}{c^2}}$
A, a	B, b, c	$B = 90^\circ - A$, $b = a \cot A$, $c = \frac{a}{\sin A}$
A, b	B, a, c	$B = 90^\circ - A$, $a = b \tan A$, $c = \frac{b}{\cos A}$
A, c	B, a, b	$B = 90^\circ - A$, $a = c \sin A$, $b = c \cos A$

Solution of Oblique Triangles

Given	Required	Formulas
A, B, a	b, c, C	$b = \frac{a \sin B}{\sin A}$, $C = 180^\circ - (A + B)$, $c = \frac{a \sin C}{\sin A}$
A, a, b	B, c, C	$\sin B = \frac{b \sin A}{a}$, $C = 180^\circ - (A + B)$, $c = \frac{a \sin C}{\sin A}$
a, b, C	A, B, c	$A + B = 180^\circ - C$, $\tan \frac{1}{2}(A - B) = \frac{(a - b) \tan \frac{1}{2}(A + B)}{a + b}$, $c = \frac{a \sin C}{\sin A}$
a, b, c	A, B, C	$s = \frac{a + b + c}{2}$, $\sin \frac{1}{2}A = \sqrt{\frac{(s - b)(s - c)}{bc}}$, $\sin \frac{1}{2}B = \sqrt{\frac{(s - a)(s - c)}{ac}}$, $C = 180^\circ - (A + B)$
a, b, c	Area	$s = \frac{a + b + c}{2}$, $\text{area} = \sqrt{s(s - a)(s - b)(s - c)}$
A, b, c	Area	$\text{area} = \frac{bc \sin A}{2}$
A, B, C, a	Area	$\text{area} = \frac{a^2 \sin B \sin C}{2 \sin A}$

REDUCTION TO HORIZONTAL

Horizontal distance = Slope distance multiplied by the cosine of the vertical angle. Thus: slope distance = 319.4 ft. Vert. angle = $5^\circ 10'$. From Table, Page IX. $\cos 5^\circ 10' = .9959$. Horizontal distance = $319.4 \times .9959 = 318.09$ ft.
Horizontal distance also = Slope distance minus slope distance times (1 - cosine of vertical angle). With the same figures as in the preceding example, the following result is obtained. $\cos 5^\circ 10' = .9959$. $1 - .9959 = .0041$. $319.4 \times .0041 = 1.31$. $319.4 - 1.31 = 318.09$ ft.
When the rise is known, the horizontal distance is approximately:—the slope distance less the square of the rise divided by twice the slope distance. Thus: rise = 14 ft., slope distance = 302.6 ft. Horizontal distance = $302.6 - \frac{14 \times 14}{2 \times 302.6} = 302.6 - 0.32 = 302.28$ ft.

