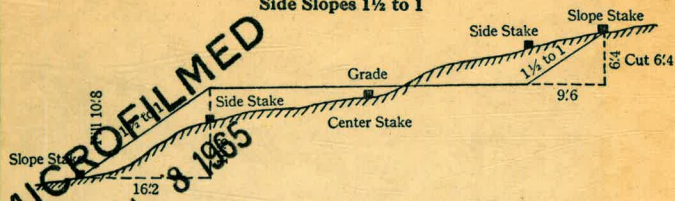


MISSION BAY

57

DISTANCES FROM SIDE STAKES FOR CROSS-SECTIONING
 Roadway of any Width
 Side Slopes 1½ to 1



In the figure above Opposite 6 under "Cut or Fill" and under .4 read 9'6" the distance from the side stake to the slope stake at right. Opposite 10 under "Cut or Fill" and under .8 read 16'2", the distance from the side stake to the slope stake at the left.

Cut or Fill	Distance out from Side or Shoulder Stake										Cut or Fill
	0	.1	.2	.3	.4	.5	.6	.7	.8	.9	
0	0.0	0.2	0.3	0.5	0.6	0.8	0.9	1.1	1.2	1.4	0
1	1.5	1.7	1.8	2.0	2.1	2.3	2.4	2.6	2.7	2.9	1
2	3.0	3.2	3.3	3.5	3.6	3.8	3.9	4.1	4.2	4.4	2
3	4.5	4.7	4.8	5.0	5.1	5.3	5.4	5.6	5.7	5.9	3
4	6.0	6.2	6.3	6.5	6.6	6.8	6.9	7.1	7.2	7.4	4
5	7.5	7.7	7.8	8.0	8.1	8.3	8.4	8.6	8.7	8.9	5
6	9.0	9.2	9.3	9.5	9.6	9.8	9.9	10.1	10.2	10.4	6
7	10.5	10.7	10.8	11.0	11.1	11.3	11.4	11.6	11.7	11.9	7
8	12.0	12.2	12.3	12.5	12.6	12.8	12.9	13.1	13.2	13.4	8
9	13.5	13.7	13.8	14.0	14.1	14.3	14.4	14.6	14.7	14.9	9
10	15.0	15.2	15.3	15.5	15.6	15.8	15.9	16.1	16.2	16.4	10
11	16.5	16.7	16.8	17.0	17.1	17.3	17.4	17.6	17.7	17.9	11
12	18.0	18.2	18.3	18.5	18.6	18.8	18.9	19.1	19.2	19.4	12
13	19.5	19.7	19.8	20.0	20.1	20.3	20.4	20.6	20.7	20.9	13
14	21.0	21.2	21.3	21.5	21.6	21.8	21.9	22.1	22.2	22.4	14
15	22.5	22.7	22.8	23.0	23.1	23.3	23.4	23.6	23.7	23.9	15
16	24.0	24.2	24.3	24.5	24.6	24.8	24.9	25.1	25.2	25.4	16
17	25.5	25.7	25.8	26.0	26.1	26.3	26.4	26.6	26.7	26.9	17
18	27.0	27.2	27.3	27.5	27.6	27.8	27.9	28.1	28.2	28.4	18
19	28.5	28.7	28.8	29.0	29.1	29.3	29.4	29.6	29.7	29.9	19
20	30.0	30.2	30.3	30.5	30.6	30.8	30.9	31.1	31.2	31.4	20
21	31.5	31.7	31.8	32.0	32.1	32.3	32.4	32.6	32.7	32.9	21
22	33.0	33.2	33.3	33.5	33.6	33.8	33.9	34.1	34.2	34.4	22
23	34.5	34.7	34.8	35.0	35.1	35.3	35.4	35.6	35.7	35.9	23
24	36.0	36.2	36.3	36.5	36.6	36.8	36.9	37.1	37.2	37.4	24
25	37.5	37.7	37.8	38.0	38.1	38.3	38.4	38.6	38.7	38.9	25
26	39.0	39.2	39.3	39.5	39.6	39.8	39.9	40.1	40.2	40.4	26
27	40.5	40.7	40.8	41.0	41.1	41.3	41.4	41.6	41.7	41.9	27
28	42.0	42.2	42.3	42.5	42.6	42.8	42.9	43.1	43.2	43.4	28
29	43.5	43.7	43.8	44.0	44.1	44.3	44.4	44.6	44.7	44.9	29
30	45.0	45.2	45.3	45.5	45.6	45.8	45.9	46.1	46.2	46.4	30
31	46.5	46.7	46.8	47.0	47.1	47.3	47.4	47.6	47.7	47.9	31
32	48.0	48.2	48.3	48.5	48.6	48.8	48.9	49.1	49.2	49.4	32
33	49.5	49.7	49.8	50.0	50.1	50.3	50.4	50.6	50.7	50.9	33
34	51.0	51.2	51.3	51.5	51.6	51.8	51.9	52.1	52.2	52.4	34
35	52.5	52.7	52.8	53.0	53.1	53.3	53.4	53.6	53.7	53.9	35
36	54.0	54.2	54.3	54.5	54.6	54.8	54.9	55.1	55.2	55.4	36
37	55.5	55.7	55.8	56.0	56.1	56.3	56.4	56.6	56.7	56.9	37
38	57.0	57.2	57.3	57.5	57.6	57.8	57.9	58.1	58.2	58.4	38
39	58.5	58.7	58.8	59.0	59.1	59.3	59.4	59.6	59.7	59.9	39
40	60.0	60.2	60.3	60.5	60.6	60.8	60.9	61.1	61.2	61.4	40

EUGENE DIETZGEN CO.

Miss M. Bay No 87-A

Property of _____

Address _____

Phone _____

This Field Book is manufactured of a High Grade 50% Rag Paper having a WATER RESISTING SURFACE, and is sewed with Bing Special Enamel Waterproof thread.

Made in U. S. A.

PAGES	INDEX	DATE
3-	CHECK DREDGED CHANNEL QUIVERA BASIN	8-8-56
1-3	TRIANGULATION TIES FOR SOUNDING QUIVERA BASIN	3-01-56
4-20	SOUNDINGS QUIVERA BASIN AREA	
21-	BASELINE FOR SOUNDINGS WLY. VENTURA BRIDGE	3-08-56
22- 30	SOUNDINGS WLY OF VENTURA BRIDGE	3-08-56
31- 44	CROSS SECTION ELY $\frac{1}{2}$ TIERRA DEL FUEGO	6-15-56
45-78	SOUNDINGS ELY $\frac{1}{2}$ TIERRA DEL FUEGO ISLAND	

Contd. 17 M.B. F.B. N^o 89

TRIANGULATION TIES FOR SOUNDINGS

QUIVERA BASIN MISSION BAY.

W.O. 65402

Sta object Angles Mean

Hub S14 Side			
Access Rd.	Ent. Quivera Basin	1. 23° 08' 00"	
P.I. To Lease	R. ↓	2. 46° 16' 00"	23° 07' 55"
Quivera Basin	Hub N14 Side Ent.	6. 138° 47' 30"	
	Quivera Basin		
Access Rd. P.I.			
Hub N Side Ent.		1. 113° 16' 30"	
Quivera Basin	R. ↓	2. 226° 33' 00"	113° 16' 30"
	Hub S14 Side Ent.	6. 679° 39' 00"	
	Quivera Basin		
Hub N14 Ent To			
Quivera Basin	Access Rd P.I.	1. 43° 35' 30"	
Hub S14 Ent.			
Quivera Basin	R. ↓	2. 87° 11' 00"	43° 35' 35"
	Access Rd P.I.	6. 261° 33' 30"	

3-01-56

Stamper
Huffman
Blunt
Kelley

N. 5246.61

W. 16.078.63

"2x2" Hub. P.I.

Access Rd

N. 4636.81

W. 17076.39

"2x2" Hub Quivera
Basin Lease
Bdy

(809'25")
N. 8° 09' 38" W
666.22"

72° 09' 38"

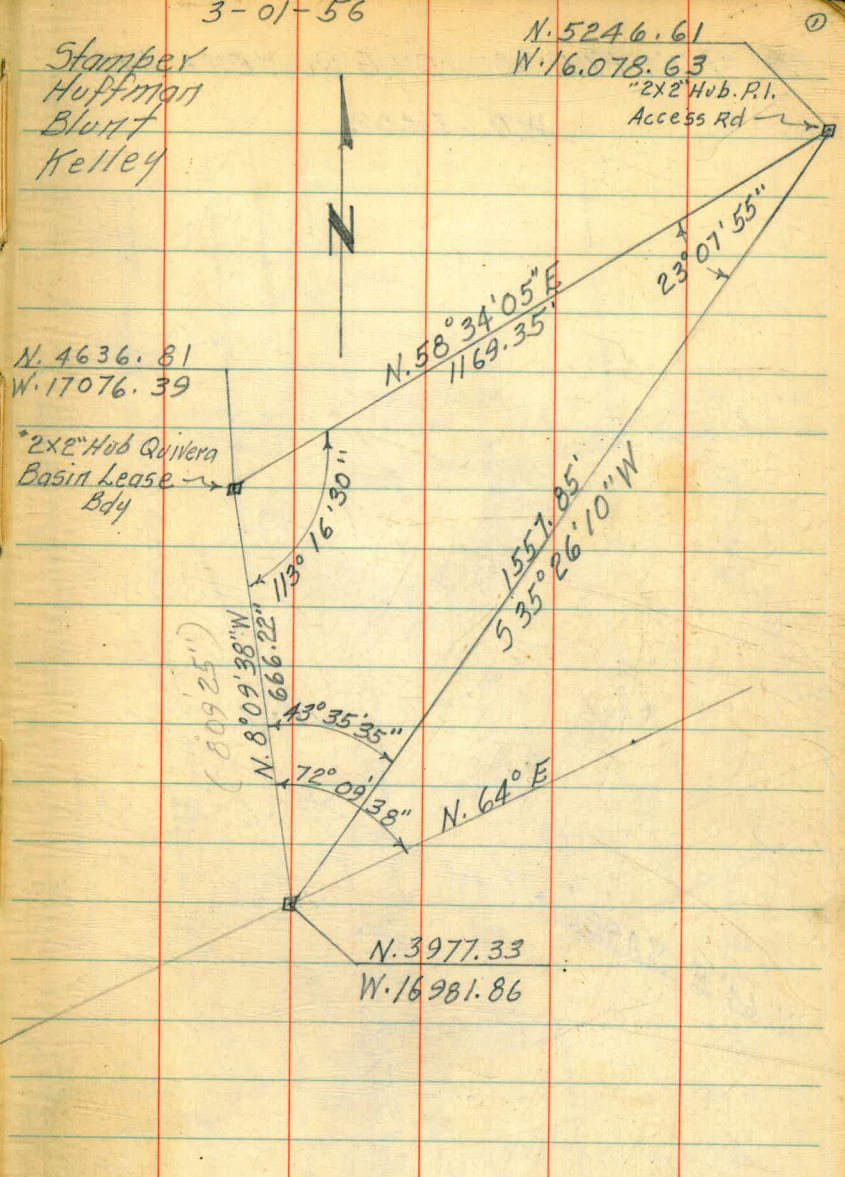
N. 3977.33

W. 16981.86

N. 58° 34' 05" E
1169.35"

130° 16' 30"
1557.85"
535° 26' 10" W

23° 07' 55"



BASELINE FOR SOUNDING QUIVERA BASIN

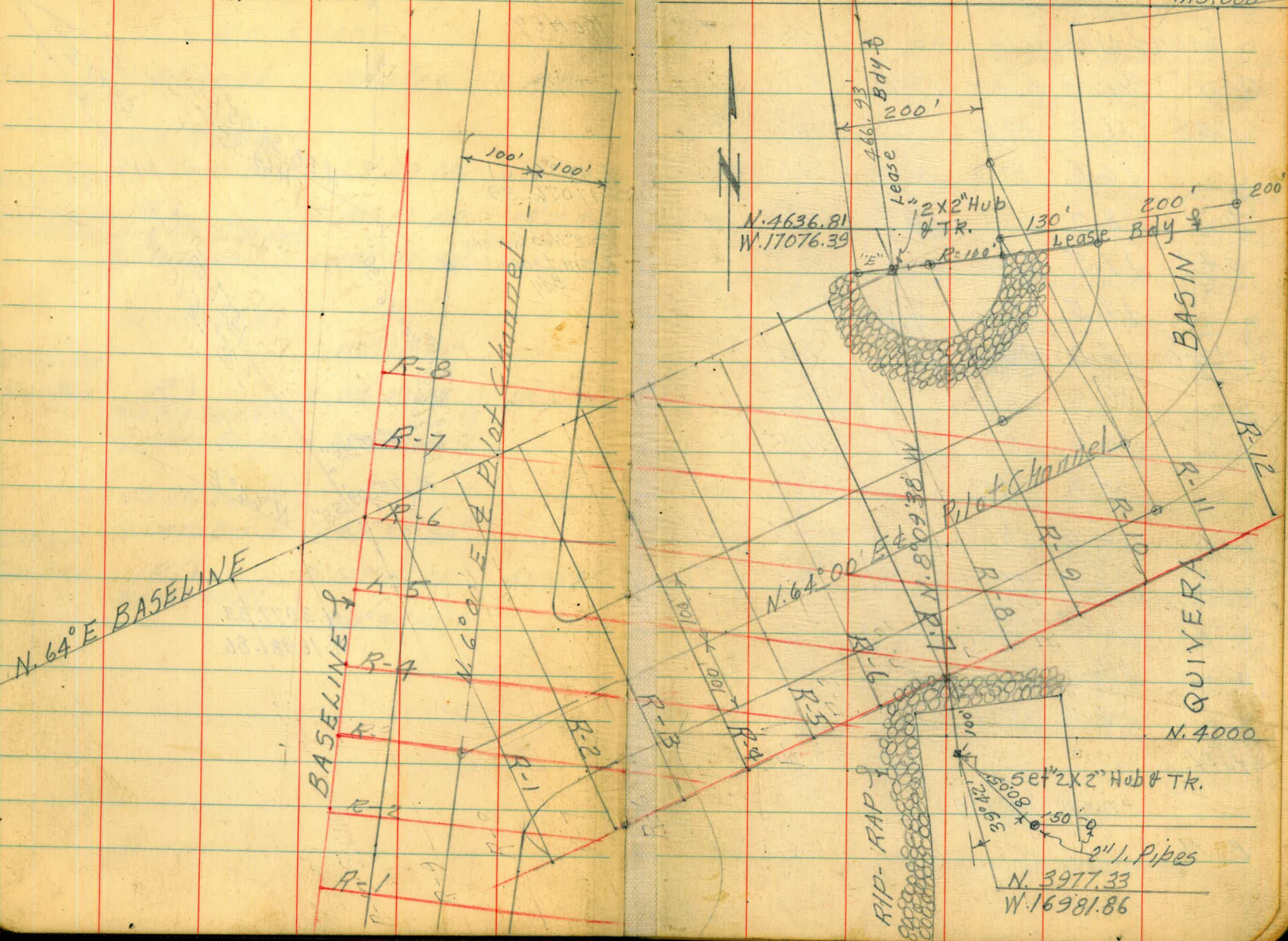
N.O. 65402

T.A. Stampfer

3-01-56

N. 5,000

W. 17000



8-08-56

CHECK ON CHANNEL DREDGED IN QUIVERA
BASIN BY SHELLMAKER CO WO 64010

Sound Westerly Along & Channel

Dist	Sound	Elev	Dist	Sound	Elev.
1+50	16.3	12.0		18.0	13.7
	16.6	12.3	3+00	19.5	15.2
<u>4.3</u>	18.0	13.7	<u>4.3</u>	17.3	13.0
<u>9.47</u>	17.5	13.2		15.3	11.0
	17.5	13.2	<u>9.50</u>	16.7	12.4
2+00	17.0	12.7		18.0	13.7
	15.6	11.3	50	16.0	11.7
	15.0	10.7		21.5	17.2
	15.0	10.7		21.0	16.7
	15.0	10.7		19.7	15.4
50	15.0	10.7		19.6	15.3
	16.5	12.2	4+00	17.5	13.2
	17.0	12.7			
	14.4	10.1			
Tide staff.			-6.29	8.00	
	+0.54	14.29			
B. M.				13.75	

CROSS SECTION OF DREDGED CHANNEL. ③

SOUND - SLY TO NLY. Profile 50' Wly End.

Dist	Sound	Elev.	Dist	Sound	Elev.
0+00	10.5	6.1	0+00	8.3	3.9
	13.2	8.9	<u>10.06</u>	10.0	5.4
<u>4.4</u>	16.0	11.6		12.0	7.4
<u>9.55</u>	16.2	11.8		13.0	8.4
	17.0	12.6		13.0	8.4
<u>50</u>	17.2	12.8	50	12.8	8.2
	18.3	13.9		17.4	12.8
	18.0	13.6	<u>4.6</u>	15.1	10.5
	7.0	2.6		15.0	10.4
	4.7	0.3		15.6	11.0
1+00	7.0	2.6	1+00	17.0	12.4
Profile Approx & Est.				17.0	12.4
				16.0	11.4
				10.0	5.4
				6.5	0.9
			50	5.2	0.6

Top

Top F. Hyd. Quivera Basin Lease Area
(See G-361-1)

R-1 NORTH
 0+00 = B/L. W. OF PLOT CHANNEL SOUND S.E.

Stapfe
 Huffm

Schell Kelley 3-02-56
 Blunt

R-1 NORTH			Stapfe Huffm			Schell Kelley 3-02-56 Blunt			②		
DIST	SOUND	ELEV	DIST	SOUND	ELEV	DIST	SOUND	ELEV	DIST	SOUND	ELEV
				13.1	10.7		11.0	8.6	11:20	6.0	
				14.0	11.6	4+00	9.5	7.1			
0+00	4.0	1.6	2+00	14.8	12.4		8.8	6.4			
11:08	4.0	1.6	11:12	15.3	12.9		8.2	5.8			
	3.9	1.5		16.5	14.1	(2.4)	7.7	5.3			
(2.4)	4.2	1.8		15.0	12.6		7.3	4.9	50		
	4.0	1.6	(2.4)	15.3	12.9	50	7.3	4.9			
50	4.0	1.6	50	16.0	13.6		6.8	4.4			
	3.8	1.4		15.1	12.7		6.7	4.3			
	4.2	1.8		15.2	12.8		5.8	3.4			
	4.0	1.6		15.0	12.6		5.7	3.3			
	3.9	1.5		14.8	12.4	5+00	5.6	3.2			
1+00	3.9	1.5	3+00	14.5	12.1		6.0	3.6			
	4.1	1.7		14.0	11.6		6.0	3.5			
	4.8	2.4		13.9	11.5		5.5	3.0			
	5.8	3.4		13.1	10.7	(2.5)	5.7	3.2			
	8.2	5.8		12.8	10.4	50	5.1	2.6			
50	9.3	6.9	50	12.2	9.8		5.5	3.0			
	11.0	8.6		11.9	9.5		5.7	3.2			
	13.2	10.8		11.2	8.8		5.7	3.2			

R-2-NORTH

0+00 = B/L ON W. SIDE PILOT
CHANNEL SOUND S.E.

	DIST	SOUND	ELEV	DIST	SOUND	ELEV
0+00	3.5	0.9		10.1	7.5	
	3.5	0.9	2+00	12.0	9.4	
11:27	4.0	1.4		14.0	11.4	
	3.8	1.2		13.8	11.2	
	3.8	1.2		15.0	12.4	
50	3.2	0.6		15.5	12.9	
	3.8	1.2	50	16.7	14.1	
(2.6)	3.5	0.9		17.1	14.5	
	3.2	0.6		16.0	13.4	
	3.2	0.6	11:33	16.2	13.6	
1+00	3.0	0.4		16.5	13.9	
	3.5	0.9	3+00	16.6	14.0	
11:30	3.3	0.7		16.8	14.2	
	4.0	1.4	(2.6)	16.3	13.7	
	3.8	1.2		16.2	13.6	
50	3.5	0.9		15.8	13.2	
	4.0	1.4	50	15.0	12.4	
	7.0	4.4		14.2	11.6	
	9.0	6.4		13.9	11.3	

3-02-56

⑤

	DIST	SOUND	ELEV	DIST	SOUND	ELEV
	13.0	10.4		4.1	1.5	
	12.2	9.6	11:38 6+00	4.0	1.4	
4+00	11.2	8.6				
	10.5	7.9				
	9.7	7.1				
	9.0	6.4				
(2.6)	8.0	5.4				
50	7.3	4.7				
	7.0	4.4				
	6.3	3.7				
	6.0	3.4				
11:35	6.0	3.4				
5+00	6.0	3.4				
	5.5	2.9				
	5.1	2.5				
	4.7	2.1				
	4.5	1.9				
50	4.6	2.0				
	5.0	2.4				
	5.3	2.7				
	4.0	1.4				

R-3-NORTH
 0+00 = B/L W. OF PILOT CHANNEL

SOUND S.E					
Dist	Sound	Elev.	Dist	Sound	Elev
0+00	3.5	0.9		6.0	3.4
	3.5	0.9	2+00	8.0	5.4
	3.5	0.9		10.0	7.4
11:45	3.4	0.8		11.3	8.7
	3.5	0.9	11:48	12.3	9.7
50	3.5	0.9		13.3	10.7
	3.5	0.9	50	13.8	11.2
	3.5	0.9		14.2	11.6
(2.6)	3.0	0.4		15.0	12.4
	3.5	0.9		16.5	13.9
1+00	3.0	0.4		17.7	15.1
	3.2	0.6	3+00	17.5	14.9
	3.0	0.4		16.8	14.2
	3.0	0.4		17.0	14.4
	3.2	0.6		17.8	15.2
50	3.0	0.4		18.0	15.4
	3.5	0.9	50	17.7	15.1
	3.2	0.6		17.0	14.4
	3.5	0.9		16.3	13.7

3-02-56 ©

Dist	Sound	Elev	Dist	Sound	Elev
	15.5	12.8		3.8	1.1
	15.4	12.7	6+00	3.0	0.3
4+00	14.2	11.5			
11:50	12.3	9.6			
	11.0	8.3			
	10.0	7.3			
	8.5	5.8			
50	7.0	4.3			
	7.0	4.3			
(2.7)	6.4	3.7			
	6.3	3.6			
	6.2	3.5			
5+00	5.4	2.7			
	5.5	2.8			
	5.0	2.3			
	5.0	2.3			
	3.5	0.8			
50	3.2	0.5			
	3.4	0.7			
	3.5	0.8			
	3.7	1.0			

R-7 NORTH

0+00 = B/L W. OF PILOT CHANNEL

SOUND S. E

Dist	Sound	Elev	Dist	Sound	Elev
0+00	1.3	+1.7		7.8	4.8
	1.3	+1.7	2+00	9.0	6.0
	1.4	+1.6		10.0	7.0
(3.0)	1.5	+1.5	1:15	11.0	8.0
	1.7	+1.3		12.0	9.0
0+50	1.8	+1.2		12.5	9.5
	2.0	+1.0	50	12.5	9.5
1:12	2.7	+0.3		13.0	10.0
	3.0	0.0	(3.0)	13.5	10.5
	4.0	1.0		14.5	11.5
1+00	4.8	1.8		14.0	11.0
	5.0	2.0	3+00	15.0	12.0
	6.5	3.5		14.0	11.0
	6.6	3.6		14.0	11.0
	7.0	4.0		13.9	10.9
50	7.0	4.0		13.8	10.8
	7.1	4.1	50	13.8	10.8
	7.8	4.8		14.0	11.0
	7.8	4.8		13.8	10.8

Dist	Sound	Elev	Dist	Sound	Elev
	13.5	10.5		5.2	2.2
	13.3	10.3	6+00	4.8	1.8
4+00	13.0	10.0		4.5	1.5
	12.5	9.5		4.5	
	12.1	9.1		4.5	
1:18	12.7	9.7	1:20	4.5	
	12.5	9.5	50	4.5	
50	12.1	9.1		4.5	1.5
	11.0	8.0		4.3	1.3
(3.0)	10.0	7.0		4.2	1.2
	8.5	5.5		4.0	1.0
	7.2	4.2	7+00	4.0	1.0
5+00	6.3	3.3		4.3	1.3
	5.5	2.5		4.0	1.0
	4.9	1.9		4.1	1.1
	4.4	1.4		3.5	0.5
	5.3	2.3	50	3.7	0.7
50	5.5	2.5		3.7	0.7
	6.0	3.0		3.6	0.6
	6.6	3.6		3.2	0.2
	6.3	3.3		3.2	0.2

R-7-NORTH

Dist Sound Elev

8+00 4.0 1.0

3.4 0.4

3.3 0.3

3.0 0.0

3.2 0.2

50 3.1 0.1

1:24 3.0 0.0

3.0 0.0

(3.0) 3.1 0.1

2.8 +0.2

9+00 2.8 +0.2

2.8 +0.2

2.8 +0.2

2.7 +0.3

2.7 +0.3

50 2.7 +0.3

2.5 +0.5

2.4 +0.6

2.0 +1.0

2.0 +1.0

10+00 1.8 +1.2

R-8-NORTH

0+00 = B/L W OF PLOT

CHANNEL SOUND SE.

Dist	Sound	Elev	Dist	Sound	Elev
0+00	2.0	+1.0		8.5	5.5
	2.0	+1.0	2+00	8.8	5.8
	2.0	+1.0		9.0	6.0
(3.0)	3.5	0.5		10.0	7.0
	4.0	1.0		11.2	8.2
50	4.0	1.0		10.5	7.5
	4.0	1.0	50	11.0	8.0
<u>1.35</u>	5.0	2.0		12.1	9.1
	6.0	3.0		13.5	10.5
	6.1	3.1		13.2	10.2
1+00	6.2	3.2		14.0	11.0
	7.1	4.1	3+00	13.5	10.5
	6.3	3.3		14.8	11.0
	6.2	3.2		14.0	11.0
	6.8	3.8		14.2	11.2
50	7.4	4.4		14.0	11.0
	7.5	4.5	50	13.8	10.8
	7.5	4.5		13.8	10.8
	8.2	5.2		13.7	10.7

3-02-56

③

Dist	Sound	Elev	Dist	Sound	Elev
	13.5	10.5		3.8	0.8
	13.2	10.2	6+00	4.0	1.0
4+00	13.3	10.3		4.0	1.0
	12.8	9.8		3.5	0.5
<u>1.38</u>	12.7	9.7		3.7	0.7
	11.8	8.8		3.8	0.8
	11.8	8.8	50	3.5	0.5
50	11.3	8.3		4.0	1.0
	10.0	7.0	1A3	4.2	1.2
(3.0)	9.2	6.2		4.1	1.1
	7.7	4.2		4.8	1.8
	5.3	2.3	7+00	4.8	1.8
5+00	4.8	1.8		4.1	1.1
	4.5	1.5		4.8	1.8
	4.8	1.8		6.0	3.0
	4.2	1.2		7.0	4.0
	4.8	1.8	50	9.0	6.0
50	4.5	1.5		9.3	6.3
	4.8	1.8		10.0	7.0
	4.3	1.3		11.4	8.4
	4.0	1.0		11.8	8.8

R-8-NORTH					
DIST	Sound	Elev	DIST	Sound	Elev
8+00	11.8	8.8		5.0	2.0
	12.0	9.0		2.5	+0.5
	11.0	8.0		2.5	+0.5
	11.0	8.0	1:50	2.5	+0.5
	11.0	8.0	50	2.4	+0.6
50	10.8	7.8			
	10.8	7.8			
(3.0)	10.5	7.5			
	11.5	8.5			
	12.3	9.3			
9+00	12.0	9.0			
	11.5	8.5			
1:48	11.0	8.0			
	12.0	9.0			
	12.0	9.0			
50	11.0	8.0			
	10.5	7.5			
	10.3	7.3			
	9.8	6.8			
	8.0	5.0			
10+00	6.0	3.0			

R-6 NORTH 3-05-56 ⑩					
0400 = B/L W. OF PLOT CHANNEL					
SOUND SE					
DIST	Sound	Elev	DIST	Sound	Elev
0+00	1.0	+0.8		6.8	5.1
	1.0		2+00	9.0	7.3
	1.0			9.5	7.8
	1.0		9:25	10.5	8.8
9:20				10.2	8.5
50			(1.7)	11.0	9.3
			50	11.5	9.8
(1.8)				13.0	11.3
				12.2	10.5
				12.2	10.5
1+00	1.0			12.3	10.6
	1.0		3+00	11.5	9.8
	1.0	+0.8		11.7	10.0
	1.5	+0.3		12.1	10.4
	1.6	+0.2		12.2	10.5
50	3.0	1.2		12.7	11.0
	5.5	3.7	50	12.1	10.4
	5.5	3.7		12.7	11.0
	6.0	4.2		13.0	11.3

R-6 NORTH

Dist	Sound	Elev	Dist	Sound	Elev
	12.7	11.0			
	12.5	10.8	6+50	2.3	0.6
9+00	13.0	11.3		2.5	0.8
	13.0	11.3		2.5	0.8
(1.7)	12.5	10.8		2.5	0.8
<u>930</u>	12.0	10.3		2.5	0.8
	12.0	10.3	50	2.5	0.8
50	11.5	9.8		2.0	0.3
	10.5	8.8		2.0	
	9.2	7.5	(1.7)	2.0	
	6.5	4.8		2.0	
	6.5	4.8	7+00	2.0	
5+00	6.2	4.5		2.0	
	4.5	2.8		2.0	
	3.5	1.8	(1.6)	2.0	
	3.5	1.8		2.0	
	3.0	1.3	50	2.0	
50	2.0	0.3		2.0	0.3
	2.5	0.8	<u>935</u>	1.8	0.1
	3.0	1.3		2.0	0.3
	2.0	0.3		1.5	+0.2

Dist	Sound	Elev
8+00	1.4	+0.2
	1.5	+0.1
	1.5	+0.1
	1.3	+0.3
	1.5	+0.1
50	1.3	+0.3
	1.5	+0.1
(1.6)	1.5	
	1.5	
	1.5	
9+00	1.5	
	1.5	+0.1
	1.4	+0.2
	1.5	+0.1
	1.3	+0.3
50	1.2	+0.4

R-5-NORTH 3-05-56

0400 = B/LW. OF PILOT CHANNEL

SOUND S.E

DIST SOUND ELEV DIST SOUND ELEV

0+00 1.0 +0.4 7.5 6.1

2+00 9.5 8.1

953 9.2 7.8

10.5 9.1

10.5 9.1

50 (1.4) 10.1 8.7

50 10.3 8.9

(1.4) 11.0 9.6

9.55 11.0 9.6

1.0 +0.4 11.0 9.6

1+00 0.5 +0.9 11.7 10.3

3+00 12.0 10.6

12.0 10.6

12.1 10.7

0.5 12.1 10.7

50 0.5 12.2 10.8

0.5 +0.9 50 13.0 11.6

1.5 0.1 13.7 12.3

3.0 1.6 13.5 12.1

(12)

DIST SOUND ELEV DIST SOUND ELEV

14.0 12.6 2.5 1.1

14.2 12.8 6+00 2.5

4+00 14.0 12.6 2.5

13.0 11.6 2.5

13.4 12.0 2.5 1.1

13.2 11.8 3.0 1.6

12.1 11.7 50 3.0 1.6

50 10.2 8.8 1005 2.5 1.1

7.0 5.6 2.5 1.1

(1.4) 6.0 4.6 2.5 1.1

5.0 3.6 2.5 1.1

3.5 2.1 7+00 3.0 1.6

5+00 2.5 1.1 3.0 1.6

2.5 1.1 (1.4) 2.5 1.1

10+00 2.2 0.8 2.5 1.1

2.5 2.5 1.1

2.5 50 2.2 0.8

50 2.5 2.0 0.6

2.5 1.5 0.1

2.5 1.5 0.1

2.5 0.8 1.4 0.0

8+00 1.4 0.0

R-8 NW 3-07-56

0+00 = B/L S. SIDE ENT PILOT
CHANNEL

Dist	Sound	ELEV.	Dist	Sound	ELEV.
0+00	4.0	+0.3		4.5	0.2
	4.0	+0.3	2+00	4.5	0.2
	4.0	+0.3		5.0	0.7
	4.5	0.2		5.3	1.0
(4.3)	4.4	0.1	5th	6.0	1.7
50	4.5	0.2		7.1	2.8
	4.2	+0.1	50	12.8	8.5
7:05	4.3	0.0		13.0	8.7
	4.2	+0.1	(4.3)	13.1	8.8
	4.3	0.0		13.8	9.5
1+00	4.2	+0.1		14.5	10.2
	5.0	0.7	3+00	14.5	10.2
	4.5	0.2	<u>7:10</u>	13.8	9.5
	4.5	0.2		9.5	5.2
	4.5	0.2		7.0	2.7
50	4.3	0.2		5.5	1.2
	4.7	0.4	50	4.7	0.4
	4.3	0.0		4.7	0.4
	4.8	0.5		4.7	0.4

R-7 NW

0+00 = B L. SIDE PILOT CHAN. (14)

Dist	Sound	ELEV.	Dist	Sound	ELEV.
0+00	4.5	0.2	2+00	4.5	0.2
	4.5	0.2		4.7	0.4
	4.7	0.4		5.1	0.8
<u>7:15</u>	5.1	0.8	(4.3)	4.7	0.4
	4.7	0.4		5.0	0.7
50	5.0	0.7	50	5.0	0.7
	5.1	0.8	5th	7.20	5.0
(4.3)	4.8	0.5		6.0	1.7
	5.1	0.8		6.0	1.7
	5.2	0.9		10.0	5.7
1+00	5.0	0.7	3+00	12.8	8.5
	4.8	0.5		12.0	7.7
	4.8	0.5		9.7	5.4
	5.1	0.8		7.5	3.2
	5.1	0.8		7.0	2.7
50	5.1	0.8	50	6.0	1.7
	5.1	0.8		5.7	1.4
	5.1	0.8		5.5	1.2
	5.0	0.7		5.1	0.8
	4.5	0.2		5.1	0.8
			4+00	5.0	0.7

R-6 N W

0+00 = S. SIDE PILOT CHANNEL

Dist	Sound	Elev.	Dist	Sound	Elev.
0+00	5.0	0.7	2+00	5.0	0.9
	5.0	0.7		4.8	0.7
	5.0	0.7		5.1	1.0
	5.5	1.2		4.8	0.7
<u>7.35</u>	4.8	0.5		5.0	0.9
50	5.0	0.7	50	5.2	1.1
	5.0	0.7		4.5	0.4
(4.1)	6.5	2.4	(4.1)	5.0	0.9
	5.5	1.4		4.5	0.4
	5.5	1.4	stk.	4.5	0.4
1+00	5.7	1.6	3+00	5.0	0.9
	5.4	1.3		5.0	0.9
	5.7	1.6		6.0	1.9
	5.5	1.4		7.0	2.9
	6.0	1.9	<u>7.40</u>	7.0	2.9
50	5.2	1.1	50	6.5	2.4
	5.0	0.9		6.0	1.9
	5.5	1.4		6.0	1.9
	5.2	1.1		6.0	1.9
	5.3	1.2		5.5	1.4
			4+00	6.0	1.9

R-5-N.W. 3-07-56

(15)

0+00 = B/L S. SIDE PILOT CHANNEL

Dist	Sound	Elev.	Dist	Sound	Elev.
0+00	5.5	1.4	2+00	5.2	1.2
	5.5	1.4		5.0	1.0
<u>7.45</u>	5.5	1.4		4.7	0.7
	5.5	1.4	<u>7.50</u>	4.2	0.2
	5.3	1.2		4.5	0.5
50	5.0	0.9	50	5.0	1.0
	5.7	1.6		4.7	0.7
(4.0)	6.0	2.0	(4.0)	5.1	1.1
	5.6	1.6		7.1	3.1
	5.2	1.2		9.0	5.0
1+00	5.0	1.0	3+00	8.0	4.0
	5.2	1.2		7.0	3.0
	5.5	1.5	stk.	9.0	5.0
	6.0	2.0		10.0	6.0
	5.0	1.0		10.0	6.0
50	5.3	1.3	50	10.5	6.5
	4.6	0.6		11.0	7.0
	5.0	1.0		11.2	7.2
	5.0	1.0		11.8	7.8
	5.2	1.2		12.5	8.5
			4+00	13.0	9.0

Last str R-5-N.W.
20' S. S. Edge
Channel

Dist	Sound	Elev.	Dist	Sound
	12.7	8.7		
	13.0	9.0		
(3.9)	12.7	8.8		
7.57	13.5	9.6		
50	13.5	9.6		
	14.0	10.1		
	14.0	10.9		
	13.2	9.3		
	14.0	10.1		
5700	14.0	10.1		

R-3-N W 3-07-56 (16)

0+00 = B/L. S. SIDE PILOT CHANNEL					
Dist	Sound	Elev	Dist	Sound	Elev
0+00	7.0	3.2	2+00	18.0	14.2
	7.0	3.2			
8:05	7.2	3.4			
	7.5	3.7			
	7.7	3.9			
50	8.0	4.2	50		
	8.8	5.0			
(3.8)	9.5	5.7			
	10.5	6.7			
	11.4	7.6			
1+00	12.3	8.5			
	13.8	10.0			
	15.5	11.7			
	16.3	12.5			
	16.3	12.5			
50	16.3	12.5			
	17.0	13.2			
	18.5	14.7			
	18.3	14.5			
	17.5	13.7			

R-4 - NW
0+00 = B/L S. SIDE PLOT CHANNEL

Dist	Sound	Elev	Dist	Sound	Elev
0+00	4.7	1.3		8.7	5.3
	4.7	1.3	2+00	10.5	7.1
	4.7	1.3		12.0	8.6
<u>8:30</u>	4.5	1.1	<u>8:33</u>	14.0	10.6
	5.6	2.2		14.0	10.6
56	5.0	1.6	(3.4)	14.1	10.7
	5.7	2.3	50	14.8	11.4
(3.4)	5.7	2.3		15.0	11.6
	5.3	1.9	<u>8:35</u>	15.0	11.6
	5.5	1.1		15.0	11.6
1+00	5.7	2.3		14.3	10.9
	5.2	1.8	3+00	13.5	10.1
	5.0	1.6		14.0	10.6
	5.1	1.7		14.0	10.6
	5.4	2.0		14.0	10.6
50	6.2	2.8	Lite	14.7	11.3
	7.0	3.6	50	14.0	10.6
	7.5	4.1	<u>8:38</u>	14.0	10.6
	8.2	4.8		14.0	10.6
				14.0	10.6
			4+00	13.7	10.3

R-9 NW 3-07-56 (17)
0+00 = B/L S. SIDE PLOT CHANNEL

Dist	Sound	Elev	Dist	Sound	Elev
0+00	2.2	+1.0	2+00	5.0	1.9 5.0
	2.2	+1.0	2+00	7.5	4.4
<u>8:45</u>	2.2	+1.0	<u>8:50</u>	10.2	7.1
	2.6	+0.6		11.3	8.2
	2.6	+0.6		11.3	8.2
50	2.6	+0.6	50	11.5	8.4
	3.0	+0.2	50	11.1	8.0
(3.2)	3.0	+0.2		11.0	7.9
	2.5	+0.7	(3.1)	11.0	7.9
	3.0	+0.2		11.3	8.2
1+00	3.0		3+00	10.2	7.1
	3.0		3+00	5.0	1.9
	3.0			3.3	0.2
	3.0			3.0	+0.1
	3.0	+0.2	<u>8:53</u>	3.0	+0.1
50	2.5	+0.7	50	2.5	+0.6
50	3.0	+0.2		2.5	+0.6
	3.5	0.3			
	3.5	0.3			
	4.0	0.8			

R-10-NW 3-08-56

0+00 = B/L S. SIDE PILOT CHANNEL					
Dist	Sound	Elev	Dist	Sound	Elev
0+00	1.5	+2.0	2+00	11.3	7.8
	1.5	+2.0		12.0	8.5
	2.0	+1.5		12.4	8.9
<u>9.10</u>	2.0			12.4	8.9
	2.0		<u>9.15</u>	12.5	9.0
50	2.0	+1.5	50	12.7	9.2
(3.3)	2.2	+1.3		12.1	8.6
	2.2	+1.3	(3.5)	11.5	8.0
	2.4	+1.1		12.0	8.5
	2.4	+1.1		11.7	8.2
1+00	2.8	+0.7	3+00	10.7	7.2
	2.8	+0.7		6.5	3.0
	3.0	+0.5		3.0	+0.5
	3.0	+0.5		3.0	+0.5
	3.2	+0.3		2.7	+0.8
50	3.2	+0.3	50	2.5	+1.0
	3.3	+0.2		2.5	+1.0
	3.7	0.2		2.3	+1.2
	3.8	0.3		2.2	+1.3
	7.2	3.7		2.2	+1.3
			4+00	2.0	+1.5

R-11 N.W.

(18)

0+00 = B/L S. SIDE PILOT CHANNEL					
Dist	Sound	Elev	Dist	Sound	Elev
0+00			2+00	12.1	8.9
			<u>9.30</u>	12.3	9.1
	0.2	+3.0		12.2	9.0
<u>9.27</u>	1.0	+2.2		12.5	9.3
	1.5	+1.7		12.5	9.3
50	1.5		50	12.4	9.2
	1.5		(3.2)	12.2	9.0
(3.2)	1.5	+1.7		11.8	8.6
	1.7	+1.5		12.0	8.8
	2.0	+1.2		12.0	8.8
1+00	2.2	+1.0	3+00	11.9	8.7
	2.2	+1.0		12.6	9.4
	2.2	+1.0		12.0	8.8
	2.5	+0.7		11.5	8.3
	2.5	+0.7		12.0	8.8
50	2.7	+0.5	50	11.7	8.5
	2.8	+0.4		11.6	8.4
	8.5	5.3		10.8	7.6
	10.7	7.5		9.8	6.6
	11.7	8.5		6.8	3.6

R-1 N.W.

Dist Sound Elev

Dist	Sound	Elev
4+00	4.5	1.4
	1.8	+1.3
	1.8	+1.3
(3.1)	1.7	+1.4
	1.5	+1.6
50	1.5	+1.6
	1.3	+1.8
	1.3	+1.8
<u>9:35</u>	1.2	+1.9
	1.2	+1.9
5+00	1.2	+1.9
	1.2	+1.9
	1.0	+2.1

R-12 N.W. 3-08-56 (19)

0+00 = B/L S. SIDE PILOT CHANNEL

Dist Sound Elev Dist Sound Elev

Dist	Sound	Elev	Dist	Sound	Elev
0+00			2+00	12.0	9.1
				12.0	9.1
			(29)	12.4	9.5
(3.0)			<u>9.45</u>	12.4	9.5
				12.5	9.6
50			50	12.5	9.6
				12.5	9.6
				12.5	9.6
	0.0	+3.0		12.3	9.4
	0.5	+2.5		12.2	9.3
1+00	0.8	+2.2	3+00	12.7	9.8
	0.9	+2.1		12.5	9.6
<u>9:43</u>	1.0	+2.0		13.0	9.1
	1.2	+1.8		13.2	9.3
	2.8	+0.2		13.0	9.1
50	7.5	4.5	50	12.8	8.9
	10.0	7.0		12.1	8.2
	11.0	8.0		12.2	8.3
	11.8	8.8		12.2	8.3
	12.0	9.0		12.0	8.1

E-12 NW

Dist	Sound	Elev	Dist	Sound	Elev
4+00	12.0	9.2		11.3	8.5
	13.0	10.2		11.0	8.2
	13.0	10.2		9.0	6.2
<u>9.48</u>	13.1	10.3		6.2	3.4
	13.2	10.4	50	0.0	+2.8
50	12.3	9.5			
	12.0	9.2			
(2.8)	12.0	9.2			
	12.0	9.2			
	12.3	9.5			
5+00	12.5	9.7			
	12.5	9.7			
	12.6	9.8			
	13.1	10.3			
	12.5	9.7			
50	12.2	9.4			
	13.0	10.2			
	12.5	9.7			
	12.5	9.7			
	12.4	9.6			
6+00	11.8	9.0			

BASELINE FOR SOUNDING SECTIONS
WLY OF VENTURA BLVD BRIDGE

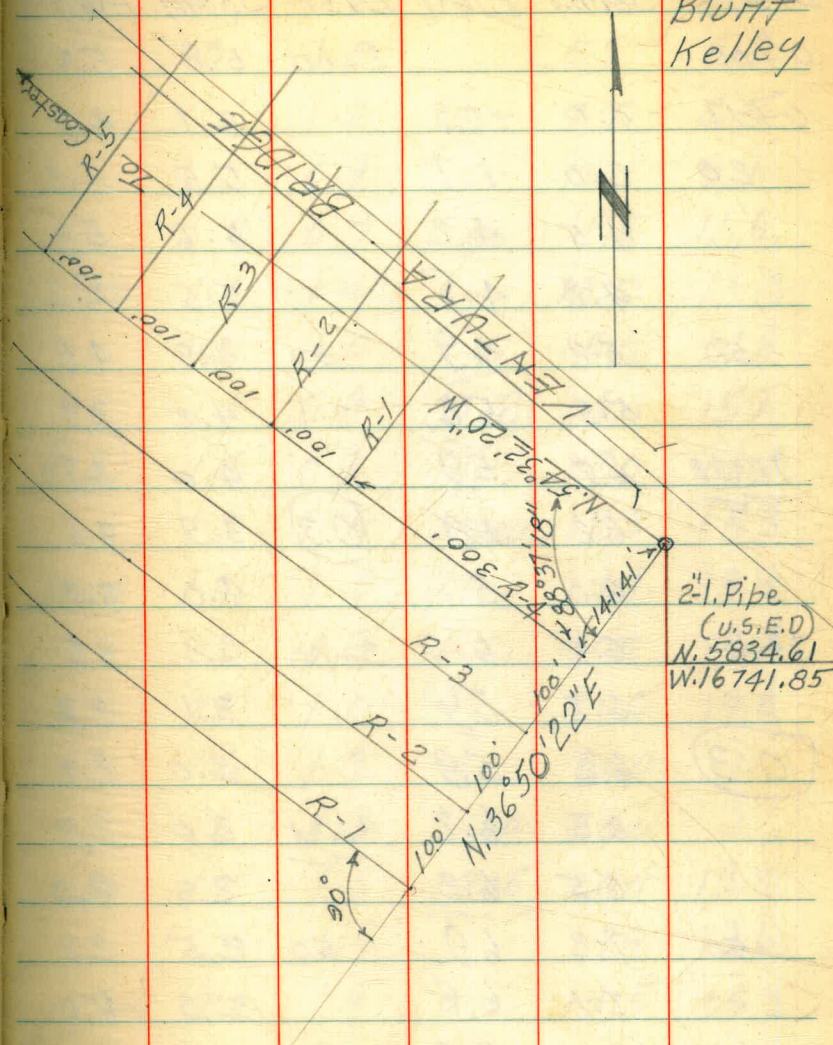
W.O. 65402

INDEXED

JUN 27 1955

3-08-56

(2)
Stamper
Huffman
Blunt
Kelley



R-4 - N.W. 3-08-56

0+00 = 80' N. OF S. SHORE B/L SOUND N.W.

Dist	Sound	Elev	Dist	Sound	Elev
0+00			2+00	5.8	5.5
0+14	0.0	+0.3		5.1	4.8
20	2.0	1.7		5.5	5.2
	4.5	4.2		5.6	5.3
	4.8	4.5		5.5	5.2
50	5.2	4.9	50	4.8	4.5
	5.5	5.2		4.2	3.9
<u>12:33</u>	6.2	5.9		4.0	3.7
	6.2	5.9	(0.3)	3.9	3.6
	6.0	5.7		4.0	3.7
1+00	6.3	6.0	3+00	3.8	3.5
	6.2	5.9		3.1	2.8
(0.3)	6.2	5.9		3.0	2.7
	6.5	6.2	<u>12:38</u>	3.0	2.7
	6.5	6.2		2.3	2.0
50	7.2	6.9	50	2.5	2.2
	7.1	6.8		2.3	2.0
	6.1	5.8		1.9	1.6
	6.2	5.9		1.5	1.2
	6.0	5.7		1.5	1.2

R-4 N.W.

Dist	Sound	Elev	Dist	Sound	Elev
4+00	1.4	1.1		4.5	4.3
	1.3	1.0		5.5	5.3
	1.5	1.2		7.7	7.5
	1.2	0.9		10.1	9.9
	1.2	0.9	50	11.8	11.6
50	1.3	1.0		13.5	13.3
	1.3	1.0		15.0	14.8
	1.1	0.8	(0.2)	16.1	15.9
(0.3)	1.2	0.9		17.0	16.8
	1.3	1.0	7+00	18.5	18.3
5+00	1.3	1.0		19.1	18.9
	1.2	0.9		20.0	19.8
	1.3	1.0		20.0	19.8
	1.6	1.3		20.0	
	1.6	1.3	50	20.0	
50	1.8	1.5	<u>12:45</u>	20.0	19.8
	2.0	1.7		19.8	19.6
<u>12:42</u>	2.2	1.9		19.5	19.3
	2.5	2.2		19.0	18.8
	2.8	2.5	8+00	18.5	18.3
6+00	3.5	3.2			

(22)

R-3 N.W. 3-08-56

0+00 = 50' N. OF S. SHORE B/L SOUND N.W.

Dist	Sound	Elev	Dist	Sound	Elev
0+00			2+00	4.8	4.6
				4.3	4.1
0+25	0.0	+0.2		4.2	4.0
	1.2	1.0		5.0	4.8
<u>12.55</u>	3.0	2.8	(0.2)	4.8	4.6
50	3.5	3.3	50	4.0	3.8
	4.0	3.8	<u>1.00</u>	4.5	4.3
	4.5	4.3		4.2	4.0
(0.2)	5.0	4.8		3.8	3.6
	4.5	4.3		3.5	3.3
1+00	5.0	4.8	3+00	3.5	3.3
	5.0	4.8		3.2	3.0
	5.1	4.9		3.0	2.8
	5.0	4.8		2.5	2.3
	5.1	4.9		2.5	2.3
50	5.2	5.0	50	2.5	2.3
	4.7	4.5		2.6	2.4
	4.7	4.5		2.7	2.5
	5.0	4.8		2.0	1.8
	5.1	4.9		2.0	1.8

R-3 N.W.

(23)

Dist	Sound	Elev	Dist	Sound	Elev
4+00	2.2	2.0		2.8	2.6
	2.0	1.8		3.8	3.6
	1.8	1.6	1104	3.7	3.5
	1.7	1.5		5.0	4.8
	2.0	1.8	50	4.3	4.1
50	1.5	1.3		5.2	5.0
	1.5	1.3	(0.2)	5.8	5.6
(0.2)	1.6	1.4		6.3	6.1
	1.2	1.0		7.7	7.5
	1.2	1.0	7+00	8.7	8.5
5+00	1.2			10.2	10.0
	1.2			11.5	11.3
	1.2			12.2	12.0
	1.2			13.0	12.8
	1.2	1.0	50	14.0	13.8
50	1.3	1.1		14.7	14.5
	1.6	1.4		15.0	14.8
	1.5	1.3		15.8	15.6
	2.0	1.8		16.0	15.8
	2.0	1.8	8+00	16.5	16.3
6+00	2.3	2.1			

R-2 NW 3-08-56

0+00 = 40' N. OF S. SHORE B/L SOUND N.W.

Dist	Sound	Elev	Dist	Sound	Elev
0+00			2+00	3.5	3.4
0+17	0.0	+0.2		3.2	3.1
	1.5	1.3		3.6	3.5
<u>1:20</u>	2.5	2.3		3.7	3.6
	3.0	2.8	(0.1)	3.2	3.1
50	3.2	3.0	50	3.0	2.9
	3.2	3.0		3.0	2.9
(0.2)	3.2	3.0	<u>1:25</u>	3.2	3.1
	3.6	3.4		2.8	2.7
	4.0	3.8		2.5	2.4
1+00	3.6	3.4	3+00	2.5	2.4
	4.0	3.8		2.3	2.2
	3.7	3.5		2.2	2.1
	4.5	4.3		2.2	2.1
	3.5	3.3		2.0	1.9
50	3.7	3.5	50	2.2	2.1
	4.0	3.8		2.3	2.2
	4.7	3.5		2.2	2.1
	4.0	3.8		1.8	1.7
	3.5	3.3		1.5	1.4

R-2 N.W.

(24)

Dist	Sound	Elev	Dist	Sound	Elev
4+00	2.0	1.9		4.7	4.6
	1.8	1.7		5.8	5.7
	1.3	1.2		5.2	5.1
	1.3	1.2	<u>1:30</u>	5.8	5.7
	1.3	1.2	50	6.8	6.7
50	1.4	1.3		8.0	7.9
	1.6	1.5	(0.1)	7.8	7.7
(0.1)	1.5	1.4		7.5	7.4
	1.3	1.2		8.2	8.1
	1.5	1.4	7+00	8.0	7.9
5+00	1.5	1.4		8.2	8.1
	1.2	1.1		8.5	8.4
<u>1:27</u>	1.2	1.1		9.0	8.9
	2.0	1.9		9.0	8.9
	1.8	1.7	50	9.5	9.4
50	2.0	1.9		10.2	10.1
	2.1	2.0		10.7	10.6
	2.0	1.9		11.3	11.2
	2.3	2.2		12.0	11.9
	3.4	3.3	8+00	12.8	12.7
6+00	4.0	3.9		13.3	13.2

R-1 NW 3-08-56

0+00 = S. SHORE B/L SOUND NW.

Dist	Sound	Elev	Dist	Sound	Elev
0+00			2+00	3.0	2.8
				3.0	2.8
				3.2	3.0
(0.2)				3.3	3.1
0+40	0.0	+0.2		3.1	2.9
50	1.5	1.3	50	2.8	2.6
	2.0	1.8		3.2	3.0
<u>1.43</u>	2.8	2.6	(0.2)	3.0	2.8
	3.0	2.8		3.0	2.8
	3.0	2.8	<u>1.46</u>	2.8	2.6
1+00	3.5	3.3	3+00	3.0	2.8
	3.5	3.3		3.0	2.8
	3.7	3.5		3.0	2.8
	4.0	3.8		2.8	2.6
	3.2	3.0		2.0	1.8
50	3.2	3.0	50	2.0	1.8
	3.4	3.2		1.5	1.3
	3.3	3.1		1.6	1.4
	3.3	3.1		1.8	1.6
	3.0	2.8		1.5	1.3

R-1 N.W.

(25)

Dist	Sound	Elev	Dist	Sound	Elev
4+00	1.5	1.3		6.0	5.8
	1.8	1.6		6.2	6.0
	1.3	1.1		6.3	6.1
	1.3	1.1		6.8	6.6
	1.3	1.1	50	6.8	6.6
50	1.2	1.0		7.0	6.8
(0.2)	1.3	1.1		7.0	
	1.3	1.1	(0.2)	7.0	
	1.2	1.0		7.0	6.8
<u>1.48</u>	1.2	1.0	7+00	7.5	7.3
5+00	1.3	1.1		7.8	7.6
	1.7	1.5		8.1	7.9
	1.4	1.2		8.0	7.8
	1.0	0.8		8.3	8.1
	1.7	1.5	50	8.2	8.0
50	3.5	3.3		9.3	9.1
	3.0	2.8		9.8	9.6
	3.0	2.8	<u>1.53</u>	10.0	9.8
	3.1	2.9		9.8	9.6
	4.2	3.0	8+00	10.0	9.8
6+00	5.1	4.9		10.0	9.8

R-1 N.W.

DIST	Sound	Elev
	10.4	8.2
	10.8	8.6
(10.2)	11.0	10.8
50	11.3	11.1
	11.5	11.3
<u>155</u>	12.0	11.8
	12.6	12.4
	12.4	12.2
9+00	12.6	12.4

R-1 END SEC. 3-08-56

(20)

0+00 = 300' N.W. OF S. SHORE B/L

SOUND ELY

DIST	Sound	Elev	DIST	Sound	Elev
0+00	4.8	4.5		9.0	8.7
<u>2.03</u>	5.2	4.9	2+00	10.0	9.7
	6.0	5.7	Bridge 205	11.3	11.0
(0.3)	5.5	5.2		11.0	10.7
	5.5	5.2		10.5	10.2
50	6.0	5.7		10.0	9.7
	6.3	6.0	Bridge 50	9.0	8.7
	5.8	5.5	(0.3)	6.0	5.7
	6.2	5.9		5.1	4.8
	6.2	5.9		5.5	5.2
1+00	6.3	6.0		5.7	5.4
	6.3	6.0	3+00	4.8	4.5
	7.0	6.7		5.1	4.8
	6.8	6.5		5.0	4.7
	7.1	6.8		6.0	5.7
50	7.4	7.1		5.3	5.0
	7.4	7.1	50	5.0	4.7
	7.4	7.1		4.4	4.1
	8.0	7.7			

R-2 END SECTION

0+00 = 400' N. S. SHORE B/L SOUND ELY

Dist	Sound	Elev	Dist	Sound	Elev
0+00	3.0	2.6	2+00	6.0	5.6
	3.0	2.6		6.8	6.4
	3.0	2.6		7.8	7.4
<u>2+13</u>	2.7	2.3		7.0	6.6
	3.0	2.6	(0.4)	7.5	7.1
50	3.0	2.6	50	7.5	7.1
	2.8	2.4	E. END	6.5	6.1
(0.4)	2.8	2.4		5.0	4.6
	2.9	2.5	<u>2+18</u>	4.2	3.8
	2.6	2.2		3.6	3.2
1+00	2.4	2.0	3+00	2.8	2.4
	2.8	2.4		2.2	1.8
	2.3	1.9		3.0	2.6
	3.0	2.6		3.0	2.6
	2.5	2.1		3.0	2.6
50	2.3	1.9	50	2.8	2.4
	2.2	1.8		2.8	2.4
	2.6	2.2		3.0	2.6
	3.2	2.8		3.0	2.6
	4.4	4.0		2.8	2.4
			4+00	3.0	2.6

R-3 END SECTION

(27)

0+00 = 500' N. S. SHORE B/L SOUND ELY

Dist	Sound	Elev	Dist	Sound	Elev
0+00	1.5	1.1	2+00	3.8	3.4
	1.6	1.2		5.1	4.7
	1.5	1.1	BY 245	5.5	5.1
2+23	1.8	1.4	(0.4)	6.0	5.6
	1.8	1.4		6.2	5.8
50	1.5	1.1	50	6.1	5.7
	2.0	1.6		6.1	5.7
(0.4)	2.0	1.6	2+27	5.5	5.0
	1.4	1.0		4.5	4.0
	1.8	1.4		4.0	3.5
1+00	1.5	1.1	3+00	4.5	4.0
	1.7	1.3		5.0	4.5
	1.8	1.4	(0.5)	5.0	4.5
	1.8	1.4		5.0	4.5
50	1.7	1.3		4.6	4.1
50	2.0	1.6	50	4.9	4.4
	2.0	1.6		4.0	3.5
	1.8	1.4		4.3	3.8
	3.0	2.6		5.0	4.5
				5.0	4.5
			4+00	4.3	4.0

R-3 END SECTION 3-08-56

DIST	Sound	Elev	DIST	Sound	Elev
	5.4	4.9		6.0	5.5
	6.0	5.5		6.8	6.3
	5.3	4.8		5.8	5.3
	5.4	4.9	50	6.3	5.8
50	4.8	4.3		6.0	5.5
	4.8	4.3	(0.5)	7.0	6.5
	4.7	4.2		6.5	6.0
(0.5)	6.0	5.5		6.0	5.5
	6.5	6.0	7+00	6.0	5.5
5+00	7.0	6.5			
	7.0	6.5			
	7.0	6.5			
2:30	7.1	6.6			
	7.0	6.5			
50	6.5	6.0			
	5.8	5.3			
	5.3	4.8			
	5.1	4.6			
	5.3	4.8			
6+00	6.2	5.7			
	5.5	5.0			

R-4 - END SECTION

(28)

0+00 = 600' N. S. SHORE B/L SOUND ELY					
DIST	Sound	Elev	DIST	Sound	Elev
0+00	1.5	0.9	2+00	9.2	8.6
	1.5	0.9		11.0	10.4
2:38	1.5	0.9	2+200@ Bridge	13.5	12.9
	1.5	0.9		10.7	10.1
	1.5	0.9	(0.6)	13.5	12.9
50	1.3	0.7	50	12.4	11.8
	1.5	0.9		12.3	11.7
	1.4	0.8	2:40	10.8	10.2
(0.6)	1.3	0.7		8.0	7.4
	1.3	0.7		7.2	6.6
1+00	1.2	0.6	3+00	8.0	7.4
	1.5	0.9		8.1	7.5
	1.5	0.9		9.0	8.4
	2.0	1.4		9.2	8.6
	3.0	2.4		9.8	9.2
50	4.0	3.4	50	10.0	9.4
	5.0	4.4		10.0	9.4
	6.0	5.4		10.2	9.6
	7.0	6.4		10.8	10.2
	8.0	7.4		10.2	9.6
			4+00	9.7	9.1

R-5 END SECTION

0+00 = 700' N. OF S. SHORE B/C SOUND ELY					
DIST	SOUND	ELEV	DIST	SOUND	ELEV
0+00	4.5	3.8	2+00	20.2	19.5
	5.5	4.8		22.0	21.3
	7.0	6.3		23.3	22.6
<u>2.50</u>	8.0	7.3	(2+25) Bridge	24.2	23.5
	8.8	8.1		24.5	23.8
50	9.7	9.0	50	24.3	23.6
	11.0	10.3		24.5	23.8
(0.7)	12.0	11.3		24.2	23.5
	13.0	12.3	(0.7)	24.0	23.3
	14.0	13.3		23.5	22.8
1+00	14.5	13.8	3+00	23.0	22.3
	16.0	15.3		22.5	21.8
	17.0	16.3		22.0	21.3
	17.5	16.8	<u>2:56</u>	21.0	20.3
	18.1	17.4		20.5	20.8
50	18.8	18.1	50	19.8	19.1
	19.1	18.4		19.0	18.7
	20.0	19.3		18.3	17.6
	20.5	19.8		17.5	16.8
	21.0	20.3		16.2	15.5
			4+00	15.7	15.0

SECTION ACROSS 3-08-56 (29)

ENTRANCE CHANNEL 0+00 = B.C.					
MON @ INNER CREST OF N. LEVEE					
SOUND N 8° 09' 38" W 0+00 = 5' N. OF MON.					
DIST	SOUND	ELEV	DIST	SOUND	ELEV
0+00				22.8	21.6
				23.0	21.8
(1.2)			2+00	23.2	22.0
			<u>3:30</u>	24.5	23.3
			<u>3:28</u>	25.0	23.8
50			(1.2)	25.5	24.3
	7.5	6.3		25.5	24.3
	8.2	7.0	50	25.8	24.6
	13.0	11.8		25.6	24.4
	16.5	15.3		22.8	21.6
1+00	20.0	18.8		22.0	20.8
	21.5	20.3		22.0	20.8
	21.5	20.3	3+00	22.0	20.8
	22.2	21.0		22.0	20.8
	22.5	21.3		22.3	21.1
50	22.5	21.3		22.3	21.1
	22.5	21.3		22.5	21.3
	22.8	21.6	50	22.3	21.1

ENT. CHANNEL SEC. 3-08-56

(30)

DIST	SOUND	ELEV	DIST	SOUND	ELEV	DIST	SOUND	ELEV.
	22.0	20.7		25.5	24.1		21.5	20.0
<u>3.35</u>	21.5	20.2		24.5	24.1		21.5	20.0
	21.0	19.7	(1.4)	24.0	22.6	8+00	20.5	20.0
	21.0	19.7	6+00	23.2	21.8		20.5	20.0
4+00	21.0	19.7	<u>3.40</u>	22.4	21.0	(1.5)	18.5	17.0
	21.5	20.2		22.0	20.6		17.0	15.5
	21.5	20.2		21.5	20.1		14.5	13.0
(1.3)	21.2	19.9		21.3	19.9	50	12.8	11.3
	21.3	20.0	50	20.8	19.4		10.0	8.5
50	21.5	20.2		20.3	18.9		7.5	6.0
	21.8	20.5		20.0	18.6	<u>3.47</u>	7.0	5.5
	23.0	21.7		20.1	18.7		6.0	4.5
	22.7	21.4		19.9	18.5	9+00	5.5	4.0
	23.0	21.7	7+00	20.1	18.7			
5+00	23.0	21.7		20.1	18.7			
<u>3.38</u>	23.0	21.7		20.8	19.4			
	24.0	22.7		21.0	19.6			
	24.5	23.2	<u>3.43</u>	21.0	19.6			
	25.2	23.9	50	20.2	18.8			
50	26.0	24.7		20.5	19.1			
	25.5	24.2		21.0	19.6			

BASELINE FOR CROSS SECTIONS OF ELY HALF
OF TIERRA DEL FUEGO ISLAND W.O. 64724

NOTE: Sections are taken on
Grid Sta's.; N.77+00 = N.7,700

Set Chrisl
17. E. Curb

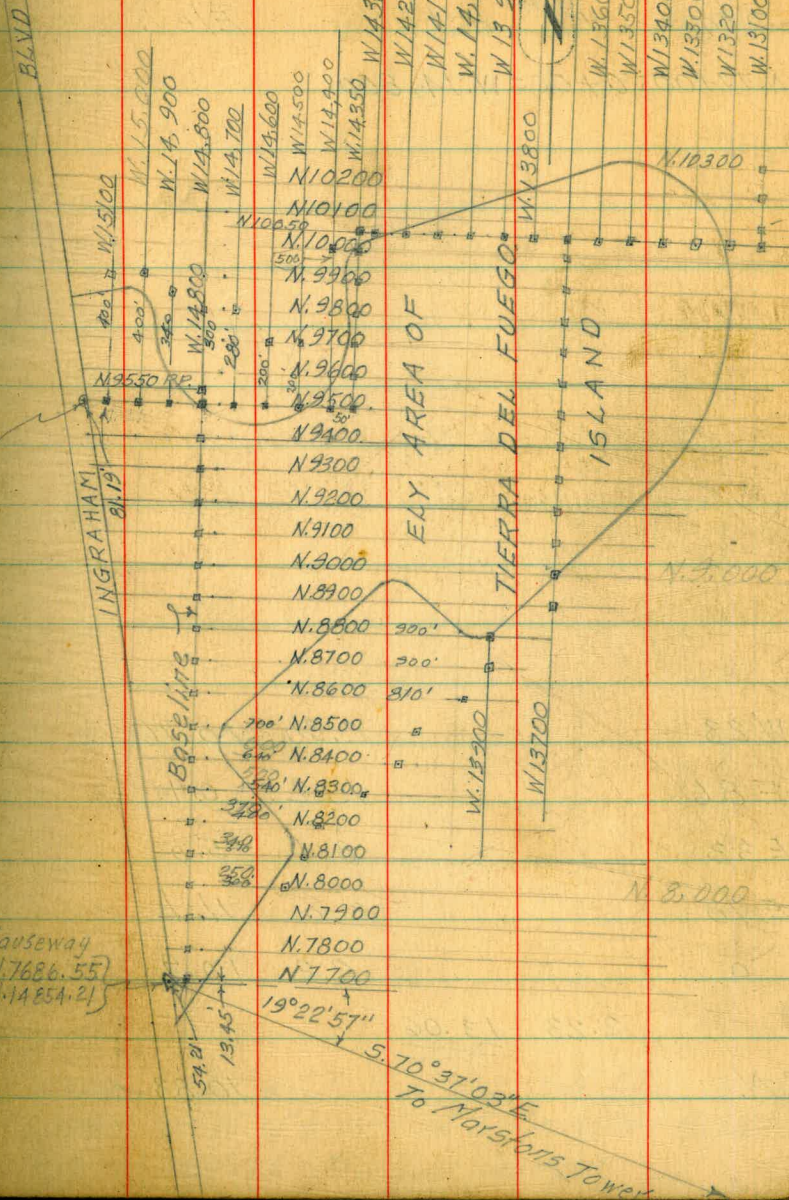
To Coaster $5.88^{\circ}06'54''W$

Causeway
N.7686.55
W.14854.21

FOR X-Section found
4-17-59 - see FB 113-1

(31)

T. A. Stamer



CROSS SECTION ELY HALF OF TIERRA DEL FUEGO

ISLAND FOR DISPOSAL AREA W.D. 64724

Sta + H.I - Elev.

N. 77+00; 0+00 = W. 14,800

W 23 2.30 10.76

E 86 13.2 -0.1

E 33 8.1 5.0

E 18 2.0 11.1

0 2.2 10.9

2.23 13.06

B.M. 10.83

Causeway U.S.C. & G.S. B.M. No. 1 Std. Disk in E. Cb.
 Approx. 100' N. of N. End of S. Causeway Bridge
 F.B.M.B. No. 25-26 M.L.L.W. Datum

6-12-56

(32)
 Stamped
 Huffman
 Blunt
 Kelley

Top E. Curb

Plotted Roll 22-A

N. 78+00; 0+00 = W. 14,800

Sta	+	H.I	-	Elev
		13.06		
0			2.2	10.9
E 82			2.0	11.1
E 100			4.5	8.6
E 173			13.3	-0.2
W 74 ⁵			2.18	10.88

TOP
CB.

N. 79+00; 0+00 = W. 14,800

0			2.3	10.8
E 100			1.4	11.7
E 160			1.6	11.5
E 200			8.0	5.1
E 244			13.3	-0.2
W. 92 ⁵			2.05	11.01

TOP
CB.6-12-56 Plotted Roll ⁽³³⁾ 22-A

N. 80+00; 0+00 = W. 14,800

Sta	+	H.I	F	Elev
		13.06		
0			2.7	10.4
E 100			2.6	10.5
E 200			2.0	11.1
E 234			2.1	11.1
E 300			11.8	1.3
*E 310			13.1	0.0
W. 100			1.5	11.6
W 113			1.95	11.11
TR.			2.74	10.32

@ H=0

TOP CB.

TOP Hub

N. 80+00 B/L

2.98 13.30

cont. Book 89 Pg 7

N 81+00 ; 0+00 = W. 14,800

Sta	+	H.I	-	Elev
		13.30		

0			3.8	9.5
E 100			3.3	10.0
E 125			3.0	10.3
E 200			3.0	10.3
E 300			2.9	10.4
E 305			3.1	10.2 Top
* E 375			13.2	0.1
W 36			3.5	9.8
W 56			2.7	10.6
W 100			1.8	11.5
W 130			2.00	11.30 Top Ch

6-12-56 Plotted Roll (34)

N 82+00 ; 0+00 = W. 14,800

22-A

Sta	+	H.I	-	Elev
		13.30		

0			3.9	9.4
E 100			3.8	9.5
E 200			3.3	10.0
E 300			2.1	11.2
E 323			3.0	10.3 Top
E 353			7.1	6.2
* E 400			11.5	1.8
E 411			13.2	0.1 @ H ₂ O
W 100			2.1	11.2
W 148			1.90	11.40 Top Ch

6-12-56 Plotted Roll 22-A ⁽³⁵⁾

N. 83+00; 0+00 = W. 14,800

N. 84+00; 0+00 = W. 14,800

Sta	+	H.I	-	Elev
		13.30		
0			3.8	9.5
E 100			2.6	10.7
E 200			2.4	10.9
E 230			2.4	10.9 Top
E 291			11.2	2.1
E 300			11.8	1.5
E 400			11.9	1.4
*E 500			11.3	2.0
E 538			13.0	0.3 @ H ₂ O
W. 100			2.5	10.8
W. 164			1.80	11.50 Top b.

Sta	+	H.I	-	Elev
		13.30		
0			3.4	9.9
E 100			2.9	10.4
E 148			1.3	12.0 Top
E 196			10.2	3.1
E 200			10.7	2.6
E 300			11.9	1.4
E 400			11.2	2.1
E 500			9.7	3.6
E 570			9.0	4.3
*E 600			10.7	2.6
E 639			12.8	0.5 @ H ₂ O
W. 100			3.0	10.3
W. 184			1.80	11.50 Top Cb

N. 85+00; 0+00 = W. 14,800

Sta	+	H.I	-	Elev	
		13.30			
0			4.1	9.2	
E 100			4.0	9.3	
E 146			2.3	11.0	Top
E 200			9.6	3.7	
E 220			11.3	2.0	
E 300			10.9	2.4	
E 400			9.8	3.5	
E 500			9.4	3.9	
E 600			9.3	4.0	
E 655			8.7	4.6	
E 700			12.5	0.8	
W. 100			3.7	9.6	
W. 203			1.90	11.40	Top cb.

6-12-56 Plotted Roll 22-⁽³⁰⁾A

N. 86+00; 0+00 = W. 14,800

Sta	+	H.I	-	Elev	
		13.30			
0			5.0	8.3	
E 100			5.9	7.4	
E 200			4.2	9.1	
E 252			3.5	9.8	Top
E 300			8.5	4.8	
E 326			10.1	3.2	Toe
E 400			9.7	3.6	
E 500			9.5	3.8	
E 600			9.4	3.9	
E 700			9.6	3.7	
E 775			9.6	3.7	
E 800			10.6	2.7	
E 834			12.2	1.1	@ H ₂ O
W. 100			3.6	9.7	
W. 200			1.8	11.5	
W. 220			2.00	11.30	Top cb.

(cont. M.B. 89 P. 34)

N.87+00; 0+00=W.14,800

Sta	+	H.I	-	Elev
		13.30		
0			5.8	7.5
E 100			6.8	6.5
E 200			6.8	6.5
E 300			6.4	6.9
E 304			6.1	7.2
E 321			4.3	9.0
E 379			10.2	3.1
E 400			10.1	3.2
E 500			9.7	3.6
E 600			9.7	3.6
E 700			9.4	3.9
E 800			9.2	4.1
E 862			9.8	3.5
E 900			10.9	2.4
E 928			11.8	1.5 @ H ₂ O
W. 100			3.0	10.3 X
W. 200			2.0	11.3
W. 239			2.20	11.10 Top Ch.
TP			4.60	8.70 Top Hub 88+00 Bl.
	4.55	13.25		

6-12-56 Plotted Roll 22-⁽³⁷⁾

N.88+00; 0+00=W.14,800

Sta	+	H.I	-	Elev
0		13.25	4.55	8.7
E 75			4.9	8.3
E 78			6.3	7.0
E 100			6.5	6.7
E 200			7.0	6.2
E 300			7.0	6.2
E 400			6.4	6.8
E 430			3.8	9.4
E 500			10.2	3.0
E 600			10.8	2.4
E 700			10.1	3.1
E 800			9.0	4.2
E 900			7.6	5.6
E 1000			8.7	4.5
E 1040			11.2	2.0
W 100			4.4	8.8
W 200			2.8	10.4
W 258			2.30	10.95 Top Ch.

cont M.B. 89 Pg 25

N. 89+00; 0+00 = W. 14,800

Sta	+	H. I	-	Elev
0		13.25	5.5	7.7
E 100			5.8	7.4
E 200			6.9	6.3
E 300			7.5	5.7
E 400			7.0	6.2
E 500			6.3	7.0
E 520			4.7	8.5
E 582			8.8	4.4
E 600			9.7	3.5
E 683			9.0	4.2
E 700			7.7	5.5
E 730			4.5	8.7
E 747			7.1	6.1
E 800			7.1	6.1
E 900			7.2	6.0
E 1000			5.9	7.3
E 1020			7.7	5.5
E 1100			10.0	3.2
E 1130			10.6	2.6
W. 100			4.1	9.1
W. 200			2.9	10.3
W. 274			2.15	11.10 Top Ch.

6-12-56 Plotted Roll 22-A (38)

N 90+00; 0+00 = W. 14,800

Sta	+	H. I	-	Elev
0		13.25	4.9	8.3
E 100			5.0	8.2
E 107			3.8	9.4
E 200			6.4	6.8
E 300			7.5	5.7
E 400			8.3	5.0
E 500			8.0	5.2
E 600			7.3	6.0
E 700			7.0	6.2
E 800			7.1	6.1
E 900			7.0	6.2
E 1000			7.5	5.7
* E 1100			7.6	5.6
* E 1200			9.8	3.4
E 1216			10.3	3.0
W. 100			3.9	9.3
W. 200			3.3	10.0
W. 293			2.00	11.25 Top Ch.

(Cont. M.B.)

6-12-56

N. 91+00; 0+00 = W. 14,800

Sta	+	H.I	-	Elev
0		13.25	5.6	7.6
E 100			5.5	7.7
E 200			6.7	6.5
E 300			8.5	4.7
E 400			8.7	4.5
E 500			9.0	4.2
E 600			7.9	5.3
E 700			6.5	6.7
E 800			7.7	5.5
E 900			9.0	4.2
E 1000			8.5	4.7
E 1100			9.2	3.0 * see 9100 p. 72
W. 100			5.1	8.1
W. 200			2.9	10.3
W. 300			1.6	
W. 310			1.80	11.45 Top ch.

TP. 5.45 7.80 Top Hub
91+00 Bl.

5.05 12.85

6-15-56

N. 92+00; 0+00 = W. 14,800

192+00 - P. 71
Plotted Roll 22-A

(39)

Sta	+	H.I	-	Elev.
0		12.85	5.6	7.2
E 100			6.3	6.5
E 200			6.8	6.0
E 300			8.0	4.8
E 400			8.3	4.5
E 500			8.7	4.1
E 600			8.9	4.0
E 700			8.7	4.1
E 800			8.6	4.2
E 900			9.3	3.5
E 1000			9.5	3.3
E 1100			9.3	3.5
W. 100			3.8	9.0
W. 200			3.5	9.3
W. 300			0.8	12.0
W. 327			1.40	11.45

cont MB. P

N. 93+00; 0+00 = W. 14,800

Sta	+	H.I	-	Elev
0		12.85	5.9	7.0
E100			6.5	6.3
E200			7.4	5.4
E300			7.9	5.0
E400			8.3	4.5
E500			8.8	4.0
E600			9.2	3.6
E700			9.7	3.1
E800			10.8	2.0
E900			10.5	2.3
E1000			9.6	3.2
E1100			9.5	3.3
W100			5.1	7.7
W200			3.5	9.3
W300			0.9	12.0
W347			1.20	11.65 Top Cb

6-15-56 Plotted Roll 22-A (40)

N. 94+00; 0+00 = W. 14800

Sta	+	H.I	-	Elev
0		12.85	6.5	6.3
E100			6.6	6.2
E200			7.1	5.7
E300			7.0	5.8
E400			8.3	4.5
E500			9.1	3.7
E600			10.4	2.4
W100			5.8	7.0
W200			4.6	8.2
W300			1.2	11.6
W364			1.10	11.75 Top Cb

(cont Pg. 67)

6-15-56

(N 96+00 Pg. 93)

N 95+00; 0+00 = W 14.800

Sta	+	H.I	-	Elev
0		12.85	6.1	6.7
E 100			6.2	6.6
E 200			6.1	6.7
E 300			6.6	6.2
E 400			7.6	5.2
E 500			9.4	3.4
W. 100			4.4	8.4
W 200			3.6	9.2
W. 300			2.4	10.6
W. 381			0.90	11.95 Top ch.

Plotted Roll 22-A (4)

W 151+00; 0+00 = N. 9.500

Sta	+	H.I	-	Elev
0		12.85	2.4	10.6
N 100			2.3	10.5
N 200			2.4	10.6
N 300			2.7	10.1
N 368			3.8	9.0
N 390			7.6	5.2
N 400			8.1	4.7
N 495			10.7	2.1
W. 150+00; 0+00 = N. 9.500				Plotted Roll 22-A
0			3.6	9.2
N. 100			3.8	9.0
N. 200			3.9	9.0
N. 300			2.7	10.1
N. 373			4.3	8.5
N. 388			7.6	5.2
N 400			8.9	4.0
N 415			10.1	2.7

6-15-56

W. 149+00; 0+00 = N. 9,500

Sta	+	H. I	-	Elev
0		12.85	4.4	8.4
N. 100			3.3	9.5
N. 175			3.2	9.6
N. 200			5.6	7.2
N. 257			7.8	5.0
N. 300			8.4	4.4
N. 357			10.0	2.8

W. 148+00; 0+00 = N. 9,500 Plotted Roll 22-A

0		6.1	6.7
N. 68		4.4	8.4
N. 100		8.3	4.5
N. 117		9.7	3.1
N. 200		10.1	2.7
N. 300		10.5	2.3
N. 400		11.6	1.2

(12)

W. 147+00; 0+00 = N. 9,500

Sta	+	H. I	-	Elev.
0		12.85	6.2	6.6
N. 18			5.1	7.7
N. 60			9.5	3.3
N. 100			10.0	2.8
N. 200			10.3	2.5
N. 300			10.9	2.0

W. 146+00; 0+00 = N. 9,500 Plotted Roll 22-A

0		6.1	6.7
N. 6		6.1	6.7
N. 100		9.9	3.0
N. 200		10.1	2.8

6-15-56

W. 145+00; 0+00 = N. 9,500

Sta	+	H.I	-	Elev
0		12.85	6.6	6.2
N. 30			6.1	6.7
N. 100			10.1	2.7
N. 200			10.8	2.0
W. 144+00; 0+00 = N. 9,500 Plotted Roll 22-A				
0			7.6	5.2
N. 100			7.0	5.8
N. 200			9.3	3.5
N. 300			9.4	3.4
N. 400			9.8	3.0
N. 500			11.2	1.6

Plotted Roll 22-A (43)

N. 96+00; 0+00 = W. 14,350

Sta	+	H.I	-	Elev
0		12.85	7.4	5.4
W. 50			6.9	6.0
W. 95			7.7	5.1
W. 100			8.1	4.7
W. 200			9.9	3.0
E. 60			10.0	2.8

N. 97+00; 0+00 = W. 14,350

0			8.0	4.8
W. 100			10.6	2.2
E. 100			10.3	2.5

N. 98+00; 0+00 = W. 14,350 Plotted Roll 22-A

0			7.9	5.0
W. 60			10.6	2.2
E. 60			8.0	4.8
E. 100			10.1	2.7

N. 99+00; 0+00 = W. 14,350

0			7.9	5.0
W. 80			11.1	1.7
E. 35			7.5	5.3
E. 75			10.3	2.5

6-15-56

N100+00; 0+00 = W 14, 3.50

Plotted
Roll 22-A

Sta	+	H.I	-	Elev
		12.85		
0			8.5	4.3
W. 50			11.9	1.0
E 100			10.0	2.8
E 200			11.1	1.7

W. 143+50; 0+00 = N 10, 0.50

0			10.0	2.8
N. 30			11.0	1.8

W 143+00; 0+00 = N. 10, 0.50

0			8.6	4.2
N. 60			10.6	2.0
S. 100			8.3	4.5
S. 200			8.3	4.5

W. 142+00; 0+00 = N 10, 0.50

0			8.3	4.5
N. 100			11.0	1.8
S. 50			11.0	1.8

W. 141+00; 0+00 = N 10, 0.50

Sta	+	H.I	-	Elev
		12.85		
0			9.1	3.7
N. 40			8.4	4.4
N. 100			10.3	2.5
S. 30			11.0	1.8

W. 140+00; 0+00 = N. 10, 0.50

S. 50			10.5	2.3
0			10.0	2.8
N. 30			10.2	2.6

N. 70

			8.5	4.3
N. 100			9.3	3.5
N. 140			11.0	1.8

W 139+00; 0+00 = N 10, 0.50

0			10.0	2.8
N. 50			10.3	2.5
S. 100			10.6	2.2
T.P.			4.45	8.40

7.85 16.25

T.P.			4.80	11.45
------	--	--	------	-------

5.00 16.45

B.M.

5.62 10.83

Starting Bench

10.83

(44)

6-19-56 Plotted Roll 22-A

W/141+00; 0+00 = N 10050 SOUND NORTH

Dist	Sound	Elev	Dist	Sound	Elev
------	-------	------	------	-------	------

1+00	1.3	+2.7	3+00		
------	-----	------	------	--	--

	2.0	+2.0			
--	-----	------	--	--	--

	3.0	+1.0			
--	-----	------	--	--	--

* 9:20	3.2	+0.8			
--------	-----	------	--	--	--

	3.2	+0.8			
--	-----	------	--	--	--

50	3.3	+0.7			
----	-----	------	--	--	--

	3.2	+0.8			
--	-----	------	--	--	--

(4.0)	3.2	+0.8			
-------	-----	------	--	--	--

	3.3	+0.7			
--	-----	------	--	--	--

	3.0	+1.0			
--	-----	------	--	--	--

2+00	3.3	+0.7			
------	-----	------	--	--	--

	4.0	0.0			
--	-----	-----	--	--	--

	7.2	3.2			
--	-----	-----	--	--	--

	11.2	7.2			
--	------	-----	--	--	--

	12.5	8.5			
--	------	-----	--	--	--

50	12.5	8.5			
----	------	-----	--	--	--

	12.5	8.5			
--	------	-----	--	--	--

	13.0	9.0			
--	------	-----	--	--	--

	13.0	9.0			
--	------	-----	--	--	--

(46)

W/140+00; 0+00 = N 10050 SOUND NORTH

Dist	Sound	Elev	Dist	Sound	Elev
------	-------	------	------	-------	------

1+50	2.5	+1.4			
------	-----	------	--	--	--

	2.5	+1.4			
--	-----	------	--	--	--

	2.2	+1.7			
--	-----	------	--	--	--

9:25	2.3	+1.6			
------	-----	------	--	--	--

	2.2	+1.7			
--	-----	------	--	--	--

2+00	2.2	+1.7			
------	-----	------	--	--	--

	2.4	+1.5			
--	-----	------	--	--	--

(3.9)	2.8	+1.1			
-------	-----	------	--	--	--

	2.9	+1.0			
--	-----	------	--	--	--

	3.5	+0.4			
--	-----	------	--	--	--

50	5.0	1.1			
----	-----	-----	--	--	--

	10.2	6.3			
--	------	-----	--	--	--

	11.8	7.9			
--	------	-----	--	--	--

	12.6	8.7			
--	------	-----	--	--	--

	13.0	9.1			
--	------	-----	--	--	--

3+00	13.0	9.1			
------	------	-----	--	--	--

	13.1	9.2			
--	------	-----	--	--	--

Plotted Roll 22-A

W/39+00; 0+00 = N/10050 SOUND NORTH			W/38+00; 0+00 = N/10050 SOUND NORTH		
Dist	Sound	Elev	Dist	Sound	Elev
0+50	1.5	+2.4	50	2.3	+1.6
	1.6	+2.3		2.5	+1.4
	2.0	+1.9	9:34	3.0	+0.9
9:32	1.8	+2.1		3.6	+0.3
	1.7	+2.2	(3.9)	6.8	2.9
1+00	2.0	+1.9	3+00	11.0	7.1
	2.0	+1.9		12.3	8.4
(3.9)	2.0	+1.9		12.6	8.7
	1.8	+2.1		12.5	8.6
	1.8	+2.1		12.4	8.5
50	2.0	+1.9	50	12.8	8.9
	2.0	+1.9			
	2.0	+1.9			
	2.0	+1.9			
	2.0	+1.9			
2+00	2.0	+1.9			
	2.1	+1.8			
	2.0	+1.9			
	2.2	+1.7			
	2.2	+1.7			

6-19-56

(17)

W/38+00; 0+00 = N/10050 SOUND NORTH			W/38+00; 0+00 = N/10050 SOUND NORTH		
Dist	Sound	Elev	Dist	Sound	Elev
0+00	1.5	+2.4	2+00	1.7	+2.2
	1.6	+2.3		1.8	+2.1
9:40	1.5	+2.4		1.9	+2.0
	1.6	+2.3		1.9	+2.0
	1.5	+2.4		2.0	+1.9
50	1.6	+2.3	50	2.0	+1.9
	1.8	+2.1		2.2	+1.7
(3.9)	1.7	+2.2		2.2	+1.7
	1.8	+2.1	(3.9)	2.1	+1.8
	1.5	+2.4		2.3	+1.6
1+00	1.7	+2.2	3+00	2.8	+1.1
	1.8	+2.1		3.5	+0.4
	1.7	+2.2		6.0	2.1
	1.6	+2.3		10.5	6.6
	1.5	+2.4		12.0	8.1
50	1.7	+2.2	50	12.5	8.6
	1.6	+2.3	9:45	12.8	8.9
	1.8	+2.1		12.8	8.9
	1.7	+2.2		13.0	9.1
	1.7	+2.2		13.0	9.1
			4+00	13.1	9.2

6-19-56 Plotted Roll 22-A

W137+00; 0+00 = N10050 SOUND NORTH

Dist	Sound	Elev	Dist	Sound	Elev
0+00	1.3	+2.5	2+00	1.9	+1.9
	1.2	+2.6		2.0	+1.8
	1.2	+2.6		2.0	+1.8
<u>9:50</u>	1.4	+2.4	<u>9:52</u>	1.8	+2.0
	1.2	+2.6		1.7	+2.1
50	1.3	+2.5	50	1.8	+2.0
	1.2	+2.6	(3.8)	2.0	+1.8
(3.8)	1.2	+2.6		2.2	+1.6
	1.3	+2.5		2.0	+1.8
	1.5	+2.3		2.0	+1.8
1+00	1.5	+2.3	3+00	2.0	+1.8
	1.3	+2.5		2.0	+1.8
	1.4	+2.4		2.3	+1.5
	1.3	+2.5		3.0	+0.8
	1.4	+2.4		3.7	+0.1
50	1.5	+2.3	50	6.2	2.4
	1.4	+2.4		11.0	7.2
	1.5	+2.3		12.1	8.3
	1.8	+2.0		12.6	8.8
	1.6	+2.2		12.2	8.4
			4+00	12.1	8.3

(48)

W136+00; 0+00 = N10050 SOUND NORTH

Dist	Sound	Elev	Dist	Sound	Elev
0+00	0.7	+3.1	2+00	1.5	+2.3
	0.8	+3.0		1.7	+2.1
	0.8	+3.0		1.6	+2.2
<u>10:00</u>	0.9	+2.9		1.5	+2.3
	0.8	+3.0		1.8	+2.0
50	0.7	+3.1	50	1.8	+2.0
	1.0	+2.8		1.8	+2.0
(3.8)	0.9	+2.9	(3.8)	1.6	+2.2
	0.9	+2.9		2.0	+1.8
	1.0	+2.8		2.0	+1.8
1+00	0.9	+2.9	3+00	2.0	+1.8
	1.0	+2.8		2.0	+1.8
	1.0	+2.8		2.0	+1.8
	1.2	+2.6		2.1	+1.7
	1.2	+2.6	10:03	2.2	+1.6
50	1.2	+2.6	50	2.1	+1.7
	1.2	+2.6		2.8	+1.0
	1.6	+2.2		3.4	+0.4
	1.3	+2.5		4.0	0.2
	1.4	+2.4		7.3	3.5

6-19-56

W 136+00 SOUND NORTH

Dist Sound Elev

4+00 11.7 8.0

12.4 8.7

(3.7) 12.5 8.8

12.5 8.8

10.05 12.5 8.8

50 12.5 8.8

Plotted Roll 22-A

(49)

W 135+00; 0+00 = N 100.50 SOUND NORTH

Dist Sound Elev Dist Sound Elev

0+00 0.7 +3.0 2+00 1.4 +2.2

1.0 +2.7 1.5 +2.1

10+00 1.0 +2.7 1.4 +2.2

1.0 +2.7 10+15 1.5 +2.1

1.0 +2.7 1.5 +2.1

50 0.8 +2.9 50 1.5 +2.1

(3.7) 0.9 +2.8 (3.6) 1.7 +1.9

0.5 +3.2 1.8 +1.8

0.9 +2.8 2.0 +1.6

0.9 +2.8 2.1 +1.5

1+00 1.0 +2.7 3+00 2.1 +1.5

1.0 +2.7 2.1 +1.5

1.0 +2.7 2.2 +1.4

1.2 +2.5 2.1 +1.5

1.0 +2.7 2.5 +1.1

50 1.1 +2.6 50 2.3 +1.3

1.2 +2.5 2.4 +1.2

1.1 +2.6 2.3 +1.3

1.2 +2.5 2.8 +0.8

1.5 +2.2 3.2 +0.4

W 135700 SOUND NORTH

Dist	Sound	Elev
4+00	4.0	0.4
	4.6	1.0
	8.0	4.4
<u>10:18</u>	11.0	7.4
<u>12.5</u>	8.9	
50	12.6	9.0
(3.6)	12.7	9.1
	12.5	8.9
	12.5	8.9
	12.3	9.9
5+00	12.5	8.9

6-19-56 (50)

W 134400: 0400 - N 10050 SOUND NORTH

Dist	Sound	Elev	Dist	Sound	Elev
0+00	0.4	+3.2	2+00	1.5	+2.1
	0.3	+3.3		1.6	+2.0
	0.3	+3.3		1.7	+1.9
<u>10:25</u>	0.4	+3.2		1.7	+1.9
<u>0.5</u>	+3.1	(3.6)		1.8	+1.8
50	0.6	+3.0	50	1.9	+1.7
	1.1	+2.5		2.0	+1.6
(3.6)	0.6	+3.0		2.2	+1.4
	0.6	+3.0	<u>10:27</u>	2.5	+1.1
	0.6	+3.0		2.4	+1.2
1+00	1.0	+2.6	3+00	2.0	+1.6
	1.0	+2.6		2.0	+1.6
	1.0	+2.6		2.1	+1.5
	1.0	+2.6		2.7	+0.9
	1.0	+2.6		3.0	+0.6
50	1.1	+2.5	50	3.5	+0.1
	1.1	+2.5		4.5	0.9
	1.0	+2.6		5.0	1.4
	1.4	+2.2		5.4	1.8
	1.4	+2.2		5.5	1.9

W134+00 SOUND NORTH

Dist Sound Elev

4+00 5.8 2.2

6.0 2.4

6.6 3.0

(3.6) 9.1 5.5

11.0 7.4

50 11.5 7.9

11.5 7.9

~~10.33~~ 11.7 8.1

~~11.5~~ 11.5 7.9

11.8 8.2

5+00 12.0 8.4

6-19-56 (Photo) Toll 22A

(5)

W133+00:0+00 = N10050 SOUND NORTH

Dist Sound Elev Dist Sound Elev

0+00 3.0 +0.5 2+00 4.3 0.8

3.0 +0.5 4.0 0.5

~~10.38~~ 3.0 +0.5 4.0 0.5

~~3.0~~ 3.0 +0.5 4.1 0.6

3.2 +0.3 4.2 0.7

50 3.1 +0.4 50 4.0 0.5

(3.5) 3.5 0.0 (3.5) 4.8 1.3

3.5 0.0 5.0 1.5

3.7 0.2 5.5 2.0

3.5 0.0 5.5 2.0

1+00 3.8 0.3 3+00 5.8 2.3

3.8 0.3 5.8 2.3

3.8 0.3 5.7 2.2

~~10.40~~ 3.7 0.2 ~~10.43~~ 5.5 2.0

~~4.0~~ 4.0 0.5 5.5 2.0

50 3.9 0.4 50 5.0 1.5

3.8 0.3 4.8 1.3

4.1 0.6 4.8 1.3

4.2 0.7 5.0 1.5

4.0 0.5 6.0 2.5

W 133+00 SOUND NORTH

Dist Sound Elev

4+00 8.2 4.7

11.0 7.5

10:45 12.5 9.0

12.2 8.7

12.4 8.9

50 12.8 9.3

(3.5) 13.0 9.5

13.0 9.5

13.2 9.7

13.5 10.0

5+00 13.2 9.8

6-19-56

(52)

W 132+00; 0+00 - N 100 50 SOUND NORTH

Dist Sound Elev Dist Sound Elev

0+00 3.5 0.1 2+00 7.7 4.3

3.7 0.3 10:55 7.2 3.8

10:52 4.0 0.6 7.1 3.7

4.0 0.6 6.3 2.9

4.1 0.7 6.3 2.9

50 4.5 1.1 50 6.0 2.6

4.7 1.3 5.0 1.6

(3.4) 4.8 1.4 (3.4) 4.3 0.9

4.8 1.4 3.7 0.3

5.1 1.7 3.6 0.2

1+00 5.5 2.1 3+00 3.3 +0.1

5.7 2.3 3.0 +0.4

6.3 2.9 3.1 +0.3

6.5 3.1 3.1 +0.3

6.7 3.3 3.7 0.3

50 7.0 3.6 50 6.8 3.4

7.3 3.9 10.2 6.8

7.5 4.1 11.5 8.1

7.8 4.4 12.0 8.6

7.8 4.4 12.4 9.0

4+00 12.6 9.2

Plotted Roll 22-A
 W131+00.0+00=N10050 SOUND NORTH

Dist	Sound	Elev	Dist	Sound	Elev
0+00	4.5	1.2	2+00	1.0	+2.3
<u>11:03</u>	4.5	1.2		1.1	+2.2
	4.7	1.4		1.2	+2.1
	4.8	1.5		1.5	+1.8
	4.8	1.5	(33)	2.8	+0.5
50	4.8	1.5	50	3.0	+0.3
(3.3)	4.0	0.7	<u>11:08</u>	4.0	0.7
	3.5	0.2		7.8	4.5
	3.1	+0.2		10.1	6.8
	2.5	+0.8		10.8	7.5
1+00	2.0	+1.3	3+00	12.0	8.7
	1.8	+1.5		12.8	9.5
	1.2	+2.1		12.8	9.5
	0.8	+2.5		12.8	9.5
	0.9	+2.4		12.8	9.5
50	0.9	+2.4	50	12.7	9.4
	1.0	+2.3			
	0.8	+2.5			
	1.0	+2.3			
	1.0	+2.3			

6-19-56 Plotted Roll 22-A (53)

N100+50; 0+00=W13,100 SOUND EAST

Dist	Sound	Elev	Dist	Sound	Elev
0+00			2+00		
<u>11:13</u>	4.1	0.8			
	4.1	0.8			
	4.2	0.9			
	4.0	0.7			
50	3.7	0.4	50		
	3.1	+0.2			
	5.1	1.8	(33)		
	8.8	5.5			
	11.0	7.7			
1+00	11.5	8.2			
	12.0	8.7			
	12.0	8.7			
	11.8	8.5			
	11.2	7.9			
50	11.0	7.7	50		

Plotted Roll 22-A

N103+00; 0+00 = W13,100 SOUND EAST

Dist Sound Elev Dist Sound

0+00 2.5 +0.6

3.2 0.1

6.5 3.4

1135 9.4 6.310.5 7.4

50 11.5 8.4

11.5 8.4

(3.1) 12.0 8.9

12.1 9.0

12.1 9.0

1+00 12.3 9.2 W.13,000

6-19-56 Plotted Roll 22-A (52)

N102+00; 0+00 = W13,100 SOUND EAST

Dist Sound Elev Dist Sound Elev

0+00 0.6 +2.4

0.6 +2.4

0.5 +2.5

1138 0.5 +2.5

0.6 +2.4

50 0.7 +2.3

1.4 +1.6

(3.0) 2.1 +0.9

3.0 0.0

8.1 5.1

1+00 10.0 7.0

10.5 7.5

11.5 8.5

11.3 8.3

11.7 8.7

50 12.0 9.0

12.0 9.0

1140 12.0 9.013,100
170

12930

6-19-56 Plotted Roll 22-A

N101+00; 0+00 = W/3,100 SOUND EAST

Dist Sound Elev Dist Sound Elev

0+00 4.1 1.1 2+00 12.0 9.0

4.0 1.0 W. 12,900

1143 3.2 0.2

2.8 +0.2

1.8 +1.2

50 1.3 +1.7

1.5 +1.5

(3.0) 2.0 +1.0

3.0 0.0

4.5 1.5

1+00 8.0 5.0

9.4 6.4

9.5 6.5

10.1 7.1

11.0 8.0

50 10.8 7.8

11.0 8.0

11.3 8.3

11.6 8.6

12.0 9.0

6-21-56 Plotted Roll 22-A (55)

N100+00; 0+00 = W/3,700 SOUND EAST

Dist Sound Elev Dist Sound Elev

0+00 1.1 +2.8 2+00 0.9 +3.0

8:53 1.1 +2.8 0.9 +3.0

1.2 +2.7 0.8 +3.1

1.0 +2.9 1.0 +2.9

1.0 +2.9 0.8 +3.1

50 1.0 +2.9 50 0.6 +3.3

1.0 +2.9 0.8 +3.1

(3.9) 1.2 +2.7 (3.9) 0.8 +3.1

1.2 +2.7 0.8 +3.1

1.2 +2.7 0.9 +3.0

1+00 1.0 +2.9 3+00 0.7 +3.2

1.0 +2.9 0.6 +3.3

1.2 +2.7 0.7 +3.2

1.2 +2.7 0.6 +3.3

1.2 +2.7 0.8 +3.1

50 1.2 +2.7 50 0.8 +3.1

8:53 1.0 +2.9 1.2 +2.7

1.0 +2.9 1.6 +2.3

1.0 +2.9 2.0 +1.9

0.9 +3.0 2.2 +1.7

N100+00 SOUND EAST				
Dist	Sound	Elev	Dist	Elev
4+00	2.7	+1.3	5.2	1.2
	3.0	+1.0	5.1	1.1
	3.5	+0.5	5.0	1.0
	3.8	+0.2	5.0	1.0
(4.0)	4.0	0.0	50	5.2 1.2
50	4.2	0.2	5.4	1.4
	4.1	0.1	(4.0)	8.1 4.1
	4.1	0.1	11.8	7.8
<u>9:00</u>	4.5	0.5	13.5	9.5
	4.5	0.5	7+00	13.7 9.7
5+00	4.3	0.3	13.7	9.7
	4.2	0.2	13.5	9.5
	4.3	0.3	<u>9:05</u>	13.4 9.4
	4.2	0.2	13.2	9.2
	4.8	0.8	50	13.1 9.1
50	4.2	0.2	W12950	
	4.0	0.0		
	4.0	0.0		
	4.2	0.2		
	5.1	1.1		
6+00	5.5	1.5		

N100+00; SOUND WEST 6-21-56 (56)				
Dist	Sound	Elev	Dist	Elev
0+00			1.3	+2.8
	1.5	+2.5	1.7	+2.4
	1.5	+2.5	<u>9:15</u>	1.7 +2.4
<u>9:12</u>	1.7	+2.3	1.3	+2.8
	1.7	+2.3	50	1.3 +2.8
50	1.8	+2.2	1.6	+2.5
	1.8	+2.2	(4.1)	2.0 +2.1
(4.0)	1.8	+2.2	2.0	+2.1
	1.9	+2.1	2.0	+2.1
	2.0	+2.0	3+00	1.8 +2.3
1+00	1.9	+2.1	1.8	+2.3
	2.0	+2.0	2.0	+2.1
	2.0	+2.0	2.0	+2.1
	2.0	+2.0	2.0	+2.1
	2.0	+2.0	50	2.3 +1.8
50	2.1	+1.9	2.8	+1.3
	2.1	+1.9	2.9	+1.2
	2.0	+2.0	2.9	+1.2
	1.7	+2.3	2.8	+1.3
	1.5	+2.5	4+00	3.0 +1.1
2+00	1.4	+2.6	3.0	+1.1

N 100+00 SOUND WEST

Dist Sound Elev

2.9 +1.3

2.6 +1.6

2.5 +1.7

50 2.9 +1.3

2.9 +1.3

(F.2) 2.4 +1.8

2.3 +1.9

2.4 +1.8

5+00 2.2 +2.0

1.8 +2.4

9:18 1.2 +3.0

1.8 +2.4

1.5 +2.7

50 1.0 +2.2

6+00

6-21-56

11:20, 17

(57)

N 99+00; 0+00 = W 13,700 SOUND EAST

Dist Sound Elev Dist Sound Elev

0+00 2.2 +2.0 2+00 2.1 +2.1

2.2 +2.0 2.2 +2.0

9:27 2.2 +2.0 2.1 +2.1

2.3 +1.9 (A.2) 2.0 +2.2

2.5 +1.7 2.0 +2.2

50 2.1 +2.1 50 1.8 +2.4

2.1 +2.1 2.0 +2.2

(A.2) 2.2 +2.0 1.7 +2.5

2.1 +2.1 1.4 +2.8

2.2 +2.0 1.3 +2.9

1+00 2.2 +2.0 3+00 1.5 +2.7

2.1 +2.1 1.4 +2.8

2.1 +2.1 9:30 1.4 +2.8

2.2 +2.0 1.3 +2.9

2.2 +2.0 1.2 +3.0

50 2.3 +1.9 50 1.3 +2.9

2.4 +1.8 1.4 +2.8

2.3 +1.9 1.3 +2.9

2.3 +1.9 1.5 +2.7

2.1 +2.1 2.2 +2.0

N 99+00 SOUND EAST

Dist	Sound	Elev	Dist	Sound	Elev
4+00	2.0	+2.3		4.0	+0.3
	2.3	+2.0		4.2	+0.1
	2.6	+1.7	(43)	4.2	+0.1
(43)	2.8	+1.5		4.5	0.2
	3.2	+1.1	50	5.5	1.2
50	3.3	+1.0	<u>9.35</u>	6.1	1.8
	4.0	+0.3		8.0	3.7
	3.8	+0.5		12.0	7.7
	4.0	+0.3		13.7	9.4
	3.8	+0.5	7+00	14.0	9.7
5+00	4.3	0.0		14.0	9.7
	4.5	0.2		14.0	9.7
	4.4	0.1		14.5	10.2
	4.3	0.0		14.7	10.4
<u>9.33</u>	4.0	+0.3	7+50	14.5	10.2
50	3.8	+0.5			
	4.5	0.2			
	6.0	1.7			
	4.2	+0.1			
	3.7	+0.4			
6+00	3.8	+0.5			

(cont'd MB. 89, P. 15) W12950

N 99+00 SOUND WEST 6-21-56 (58)

Dist	Sound	Elev	Dist	Sound	Elev
0+00				4.0	+0.3
	2.2	+2.1	<u>9.45</u>	3.8	+0.5
<u>9.43</u>	2.0	+2.3		3.8	+0.5
	2.2	+2.1	(PB)	3.8	+0.5
	2.3	+2.0	50	4.0	+0.3
50	2.2	+2.1		4.2	+0.1
	2.4	+1.9		4.2	+0.1
	2.5	+1.8		4.2	+0.1
(43)	2.4	+1.9		4.3	0.0
	2.6	+1.7	3+00	4.5	0.2
1+00	2.7	+1.6		4.6	0.3
	2.8	+1.5		4.8	0.5
	2.8	+1.5		4.8	0.5
	2.7	+1.6		4.9	0.6
	2.8	+1.5	50	4.7	0.4
50	3.0	+1.3		4.7	0.4
	3.0	+1.3		4.8	0.5
	3.1	+1.2		4.8	0.5
	3.2	+1.1		4.9	0.6
	3.3	+1.0	4+00	4.8	0.5
2+00	3.5	+0.8		4.8	0.5

N99+00 SOUND WEST

Dist	Sound	Elev	Dist	Sound	Elev
	4.3	+0.1			
<u>9:48</u>	4.0	+0.4			
	3.8	+0.6			
<u>50</u>	3.6	+0.8			
	3.5	+0.9			
	3.8	+0.6			
<u>AA</u>	4.0	+0.4			
	4.0	+0.4			
<u>5+00</u>	4.0	+0.4			
	4.0	+0.4			
	4.0	+0.4			
<u>9:50</u>	4.1	+0.3			
	4.0	+0.4			
<u>50</u>	3.0	+1.4			
	2.8	+1.6			
	2.0	+2.4			
	1.8	+2.6			
<u>6+00</u>					

6-21-56 Potted Roll 22-A (39)

N98+00; 0+00 = W/3,700 SOUND EAST

Dist	Sound	Elev	Dist	Sound	Elev
0+00	4.5	0.1	2+00	4.3	+0.1
	4.5	0.1		4.3	+0.1
<u>10:00</u>	4.7	0.3		4.4	0.0
	4.8	0.4		4.0	+0.4
	4.8	0.4		4.0	+0.4
50	4.6	0.2	50	4.3	+0.1
	4.5	0.1		4.2	+0.2
<u>AA</u>	4.7	0.3		4.2	+0.2
	4.8	0.4		4.0	+0.4
	4.7	0.3		4.1	+0.3
1+00	4.5	0.1	3+00	4.1	+0.3
	4.5	0.1		4.0	+0.4
	4.4	0.0	<u>10:03</u>	4.0	+0.4
	4.4	0.0		3.8	+0.6
	4.6	0.2		3.5	+0.9
50	4.5	0.1	50	3.0	+1.4
	4.6	0.2		2.8	+1.6
	4.4	0.0		2.5	+1.9
	4.3	+0.1		2.6	+1.8
	4.4	0.0		2.5	+1.9

N98+00 SOUND EAST					
Dist	Sound	Elev	Dist	Sound	Elev
4+00	2.5	+1.9		3.0	+1.4
	2.6	+1.8		3.0	+1.4
	2.5	+1.9		2.8	+1.6
	2.6	+1.8		2.8	+1.6
	2.8	+1.6	50	2.8	+1.6
50	2.7	+1.7		3.5	+0.9
	2.8	+1.6	(4.4)	4.8	0.4
(4.4)	3.6	+0.8		9.2	4.8
	4.2	+0.2		12.3	7.9
	4.4	0.0	7+00	13.0	8.6
5+00	4.6	0.2		13.1	8.7
	4.5	0.1		13.4	9.0
	4.2	+0.2	1000	13.5	9.1
10:05	5.0	0.6	5	13.8	9.4
	4.0	+0.4	50	13.8	9.4
50	2.8	+1.6		13.8	9.4
	3.0	+1.4			
	3.1	+1.3			
	3.1	+1.3			
	3.5	+0.9			
6+00	3.2	+1.2			

N98+00; SOUND WEST			6-21-56 (60)		
Dist	Sound	Elev	Dist	Sound	Elev
0+00	4.3			4.8	0.5
10:13	4.3	+0.1		5.0	0.7
	4.4	0.0		5.0	
	4.4	0.0		5.0	
	4.3	+0.1	50	5.0	
50	4.4	0.0		5.0	
	4.5	0.1		5.0	0.7
(4.4)	4.5	0.1	(4.3)	4.8	0.5
	4.6	0.2		4.6	0.3
10:15	4.4	0.0	3+00	4.3	0.0
1+00	4.5	0.1		4.0	+0.3
	4.4	0.0	10:16	3.8	+0.5
	4.3	+0.1		3.6	+0.7
	4.2	+0.2		3.2	+1.1
	4.1	+0.3	50	2.8	+1.5
50	4.2	+0.2		3.0	+1.3
	4.4	0.0		3.1	+1.2
	4.3	+0.1		3.0	+1.3
	4.5	0.1		2.7	+1.6
	4.5	0.1	4+00	2.8	+1.5
2+00	4.6	0.2		2.6	+1.7

WI 2950
Cont'd MB89, Pg. 13

N 98+00 SOUND EAST WEST

Dist	Sound	Elev	Dist	Sound	Elev
	2.8	+1.5			
	2.7	+1.6			
10:20	2.5	+1.8			
<u>50</u>	2.5	+1.8			
50	2.7	+1.6			
	2.2	+1.1			
(4.3)	2.2	+1.1			
	2.6	+1.7			
5700	2.5	+1.8			
5400	3.0	+1.3			
	2.8	+1.5			
	2.6	+1.7			
	2.4	+1.9			
50	2.0	+2.3			
5+60 50	1.5	+2.8	W13,150		
13,700					
550					
150					
6+00					
6+00					

6-21-56

(6)

N 97+00; 0+00 = W 13,700 SOUND EAST

Dist	Sound	Elev	Dist	Sound	Elev
0+00	4.3	0.0	3+00	4.3	0.0
	4.5	0.2		3.8	+0.5
10:27	4.8	0.5		4.2	+0.1
<u>50</u>	4.7	0.4		4.0	+0.3
	4.5	0.2		3.7	+0.6
50	4.6	0.3	50	3.8	+0.5
	4.8	0.5		4.1	+0.2
(4.3)	4.8	0.5	(4.3)	3.8	+0.5
	4.8	0.5		4.2	+0.1
	4.8	0.5		4.0	+0.3
1+00	4.6	0.3	3+00	4.2	+0.1
	4.5	0.2		4.2	+0.1
	4.5	0.2	10:30	4.0	+0.3
	4.5	0.2	<u>50</u>	3.2	+1.1
	4.6	0.3		3.3	+1.0
50	4.5	0.2	50	3.0	+1.3
	4.3	0.0		2.7	+1.6
	4.3	0.0		2.3	+2.0
	4.2	+0.1		2.0	+2.3
	4.4	0.1		1.8	+2.5

N. 97+00 SOUND EAST					
Dist	Sound	Elev	Dist	Sound	Elev
4+00	1.6	+2.6		1.7	+2.5
	1.8	+2.4		1.6	+2.6
	1.5	+2.7		1.7	+2.5
	1.5	+2.7		2.0	+2.2
	1.5	+2.7	50	3.0	+1.2
50	1.5	+2.7		4.0	+0.2
	1.4	+2.8	(4.2)	5.5	1.3
(4.2)	1.2	+3.0		9.8	5.6
	1.2	+3.0		12.5	8.3
	1.5	+2.7	7+00	12.8	8.6
5+00	1.2	+3.0		12.5	8.3
	1.3	+2.9		12.3	8.3
	1.4	+2.8	1035	12.4	8.2
	1.3	+2.9	20	13.0	8.8
	1.2	+3.0	50	13.2	9.0
50	1.3	+2.9			W12950
	1.4	+2.8			
1033	1.4	+2.8			
2	1.5	+2.7			
	1.5	+2.7			
6+00	1.8	+2.4			

N 97+00; SOUND WEST			6-21-56 (62)		
Dist	Sound	Elev	Dist	Sound	Elev
0+00				2.5	+1.6
	4.2	0.0		2.4	+1.7
1041	4.0	+0.2		2.1	+2.0
3.7	+0.5			1.8	+2.3
3.7	+0.5		50	2.2	+1.9
50	3.5	+0.7		2.5	+1.6
	3.5	+0.7		2.4	+1.7
	3.5	+0.7	(4.1)	2.3	+1.8
(4.2)	3.2	+1.0		2.6	+1.5
	3.2	+1.0	3+00	2.5	+1.6
1+00	3.2	+1.0		2.3	+1.8
	2.7	+1.5		2.0	+2.1
	2.7	+1.5		2.0	+2.1
	2.3	+1.9	1045	1.8	+2.3
	1.8	+2.4	50	2.2	+1.9
50	2.0	+2.2		2.0	+2.1
	1.8	+2.4		2.1	+2.0
	2.0	+2.2		2.0	+2.1
	2.5	+1.7		2.0	+2.1
	2.6	+1.6	4+00	2.0	+2.1
2+00	2.5	+1.7		1.7	+2.4

N. 97+00 SOUND WEST

Dist	Sound	Elev	Dist	Sound	Elev
	1.8	+2.3			
(A.1)	2.0	+2.1			
	2.0	+2.1			
50	1.8	+2.3			
	1.8	+2.3			
<u>10:47</u>	1.8	+2.3			
	2.3	+1.8			
	2.5	+1.6			
5+00	2.1	+2.0			
	2.2	+1.9			
	2.2	+1.9			
	2.2	+1.9			
	2.0	+2.1			
50	1.7	+2.4			
6+00					

6-21-56 Plotted Roll 22-A (63)

N. 96+00; 0+00 = W. 13,700 SOUND EAST					
Dist	Sound	Elev	Dist	Sound	Elev
0+00	2.1	+2.0	2+00	2.2	+1.8
	2.1	+2.0		2.2	+1.8
<u>10:55</u>	2.2	+1.9		2.1	+1.9
	2.3	+1.8		2.2	+1.8
	2.0	+2.1		2.0	+2.0
50	2.1	+2.0	50	2.0	+2.0
	2.2	+1.9		2.1	+1.9
(B.1)	2.3	+1.8	(A.2)	2.7	+1.3
	2.3	+1.8		3.0	+1.0
	2.2	+1.9		3.5	+0.5
1+00	2.2	+1.9	3+00	3.6	+0.4
	2.2	+1.9		3.4	+0.6
	2.5	+1.6		3.0	+1.0
	2.3	+1.8	<u>10:58</u>	3.2	+0.8
	2.4	+1.7		3.6	+0.5
50	2.3	+1.8	50	3.2	+0.8
	2.3	+1.8		2.8	+1.2
	2.2	+1.9		2.7	+1.3
	2.4	+1.7		2.6	+1.4
	2.3	+1.8		2.2	+1.8

N. 96+00 SOUND EAST					
Dist	Sound	Elev	Dist	Sound	Elev
4+00	2.0	+2.0		1.6	+2.4
	1.8	+2.2		2.0	+2.0
	1.3	+2.7		2.7	+1.3
	1.1	+2.9		3.0	+1.0
	1.0	+3.0	50	3.9	+0.1
50	1.0	+3.0		4.7	0.7
	1.0	+3.0		4.8	0.8
(1.0)	1.1	+2.9	(4.0)	8.0	4.0
	1.1	+2.9		11.1	7.1
	0.9	+3.1	7+00	13.0	9.0
5+00	1.1	+2.9		13.8	9.8
	1.1	+2.9		14.0	10.0
	1.2	+2.8		14.4	10.4
<u>11:02</u>	1.2	+2.6	<u>11:05</u>	14.0	10.0
	1.3	+2.7	50	14.2	10.2
50	1.1	+2.9			
	1.1	+2.9			
	1.2	+2.8			
	1.1	+2.9			
	1.3	+2.7			
6+00	1.4	+2.6			

(Cont'd MB 89, Pg 16)

W/1295

N. 96+00; SOUND WEST 6-21-56 (6)					
Dist	Sound	Elev	Dist	Sound	Elev
0+00				1.6	+2.3
	2.0	+2.0	<u>11:18</u>	1.0	+2.9
<u>11:22</u>	2.0			1.1	+2.8
	2.0			1.1	
	2.0		50	1.1	
50	2.0			1.1	+2.8
	2.0			1.5	+2.4
(4.0)	2.0		(3.9)	1.9	+2.0
	2.0	+2.0		1.9	+2.0
	1.9	+2.1	3+00	1.9	+2.0
1+00	1.9	+2.1		1.8	+2.1
	1.9	+2.1	<u>11:20</u>	2.0	+1.9
	2.1	+1.9		1.9	+2.0
	2.1	+1.9		1.5	+2.4
	1.8	+2.2	50	1.4	+2.5
50	1.9	+2.1		1.0	+2.9
	1.5	+2.5		1.2	+2.7
	1.4	+2.6		1.1	+2.8
	1.2	+2.8		1.0	+2.9
	1.2	+2.8	4+00	1.0	+2.9
2+00	1.7	+2.3		1.2	+2.7

N. 96+00; SOUND WEST.

Dist	Sound	Elev	Dist	Sound	Elev
------	-------	------	------	-------	------

	1.6	+2.2			
	1.7	+2.1			
	2.0	+1.8			
50	1.9	+1.9			
	1.5	+2.3			
	1.4	+2.4			
<u>11:23</u>	1.3	+2.5			
	1.4	+2.4			
5+00	1.5	+2.3			
(3.8)	1.7	+2.1			
	1.8	+2.0			
	1.6	+2.2			
	1.5	+2.3			
50	1.5	+2.3			
	1.6	+2.2			
	1.3	+2.5			
	1.0	+2.8			
	1.6				

6-21-56 Plotted Fall 22-A (65)

N. 95+00; 0+00=W 13,700 SOUND EAST

Dist	Sound	Elev	Dist	Sound	Elev
------	-------	------	------	-------	------

0+00	1.8	+2.0	2+00	1.9	+1.9
	1.8	+2.0		2.0	+1.8
<u>11:30</u>	1.8	+2.0		2.0	+1.8
	1.6	+2.2		1.9	+1.9
	1.7	+2.1		1.9	+1.9
50	1.8	+2.0	50	1.7	+2.1
	1.9	+1.9		1.9	+1.9
(3.8)	1.9	}	(3.8)	1.8	+2.0
	1.9	}		1.7	+2.1
	1.9	+1.9		1.6	+2.2
1+00	2.0	+1.8	3+00	1.7	+2.1
	1.9	+1.9		1.8	+2.0
	1.9	+1.9		1.9	+1.9
	2.0	+1.8		1.8	+2.0
	2.0	+1.8		1.8	+2.0
50	1.9	+1.9	50	1.8	+2.0
	1.9	+1.9		2.1	+1.7
	1.9	}	<u>11:33</u>	2.3	+1.5
	1.9	}		2.3	+1.3
	1.9	+1.9		2.6	+1.2

N 95+00 SOUND EAST			6-21-56		
Dist	Sound	Elev	Dist	Sound	Elev
4+00	2.6	+1.1		4.2	0.5
	2.5	+1.2		4.7	1.0
	2.6	+1.1		5.0	1.3
	2.4	+1.3		5.1	1.4
(3.7)	2.3	+1.4	50	5.1	1.4
50	2.5	+1.2		4.6	0.9
	2.5	+1.2		4.6	0.9
	2.6	+1.1	(3.7)	3.8	0.1
	1.7	+2.0		3.7	0.0
<u>11:35</u>	1.4	+2.3	7+00	3.3	+0.4
5+00	1.3	+2.4		3.1	+0.6
	1.1	+2.6		3.1	+0.6
	1.0	+2.7	<u>11:38</u>	4.1	0.4
	1.1	+2.6		4.1	0.4
	1.0	+2.7	50	5.1	1.4
50	1.1	+2.6		6.8	3.1
	2.1	+1.6		8.0	4.3
	2.6	+1.1		8.1	4.4
	3.0	+0.7		6.8	3.1
	3.5	+0.2	8+00	4.8	1.1
6+00	4.0	0.3		4.5	0.8
				3.7	0.0
				3.7	0.0

N 95+00; SOUND EAST			(66)		
Dist	Sound	Elev	Dist	Sound	Elev
0+00	3.0	+0.7			
50	2.9	+0.8			
	3.0	+0.7			
	2.7	+1.0			
11:40	2.9	+0.8	50		
<u>50</u>	3.0	+0.7			
9+00	3.1	+0.6			
	3.1	+0.6			
(3.7)	6.5	2.8			
	10.3	6.6			
4+00	12.2	8.5			
50	12.5	8.8			
	12.7	9.0			
	12.3	8.6			
	12.5	8.8			
50	12.7	9.0			
10+00	12.5	8.8	W12700		

N 95+00; SOUND WEST Plotted Roll 22-A

Dist	Sound	Elev	Dist	Sound	Elev
0+00		+2.0		1.1	+2.5
	1.5	+2.1		1.0	+2.6
	1.3	+2.1		1.0	+2.6
<u>11:52</u>	1.5	+2.1		0.9	+2.9
<u>50</u>	1.6	+2.0	50	0.7	+2.9
	1.7	+1.9		0.8	+2.8
	1.7	+1.9		1.0	+2.6
(3.6)	1.6	+2.0	(3.6)	0.8	+2.8
	1.5	+2.1		1.1	+2.5
	1.5	+2.1	3+00	1.1	+2.3
1+00	1.4	+2.2		0.9	+2.7
	1.3	+2.3	<u>11:57</u>	0.9	+2.7
	1.2	+2.4		1.0	+2.6
	1.2	+2.4		0.7	+2.9
	1.5	+2.1	50	0.6	+3.0
50	1.6	+2.0			
	1.7	+1.9			
	1.7	+1.9			
	1.6	+2.0			
	1.7	+1.9	4+00		
2+00	1.4	+2.2			

6-22-56 Plotted Roll 22-A EAST (67)

N 94+00; 0+00=W 13,700 SOUND WEST

Dist	Sound	Elev	Dist	Sound	Elev
0+00	0.6	+3.2	2+00	2.0	+1.8
<u>9:18</u>	0.5	+3.3		2.1	+1.7
<u>50</u>	0.6	+3.2		2.2	+1.6
(3.8)	0.6	+3.2	(3.8)	2.5	+1.3
	0.6	+3.2		2.4	+1.4
50	0.5	+3.3	50	2.4	+1.4
	0.6	+3.2		2.8	+1.0
	0.6	+3.2		2.4	+1.4
	0.6	+3.2	<u>9:25</u>	2.3	+1.5
	0.6	+3.2	<u>50</u>	2.8	+1.0
1+00	0.7	+3.1	3+00	2.6	+1.2
	1.0	+2.8		2.7	+1.1
	1.0	+2.8		2.3	+1.5
	1.0	+2.8		2.0	+1.8
<u>9:20</u>	1.2	+2.6		2.0	+1.8
<u>50</u>	1.3	+2.5	50	1.8	+2.0
	1.5	+2.3		2.0	+1.8
	1.6	+2.2		2.0	+1.8
	1.8	+2.0		2.0	+1.8
	2.0	+1.8		2.0	+1.8

N. 94+00; 0+00 = W13.700. SOUND EAST

Dist	Sound	Elev	Dist	Sound	Elev
4+00	2.1	+1.8		5.2	1.3
	2.2	+1.7		5.2	1.3
<u>9:27</u>	2.3	+1.6		5.0	1.1
<u>---</u>	2.4	+1.5		4.8	0.9
	2.2	+1.7	50	4.3	0.4
50	2.2	+1.7		4.0	0.1
	2.2	+1.7	(3.9)	3.6	+0.3
(3.9)	2.2	+1.7		3.2	+0.7
	2.5	+1.4		3.2	+0.7
	2.7	+1.2	7+00	3.1	+0.8
5+00	2.8	+1.1		3.4	+0.5
	3.0	+0.9		4.0	0.1
	3.2	+0.7		4.4	0.5
	3.8	+0.1		4.8	0.9
	4.0	0.1	50	5.0	1.1
50	4.1	0.2		5.2	1.3
	4.2	0.3		5.5	1.6
	4.8	0.9	<u>9:30</u>	4.8	0.9
	5.0	1.1	<u>---</u>	4.4	0.5
	5.0	1.1	8+00	3.8	+0.1
6+00	5.1	1.2		3.1	+0.8

N. 94+00 SOUND EAST 6-22-56 (68)

Dist	Sound	Elev	Dist	Sound	Elev
	3.0	+0.9			
	2.8	+1.1			
	2.7	+1.2			
50	2.8	+1.1			
	2.8	+1.1			
(3.9)	2.3	+1.6			
	2.7	+1.2			
	2.4	+1.5			
9+00	3.8	+0.1			
	6.0	2.1			
	9.0	5.1			
	11.0	7.1			
	12.2	8.3			
50	14.0	10.1			
	14.1	10.2			
	14.1	10.2			
<u>9:35</u>	14.5	10.6			
<u>---</u>	14.1	10.2			
10+00	14.0	10.1	W12700		

N. 94+00; SOUND WEST. Plotted

Dist	Sound	Elev	Dist	Sound	Elev
0+00 = W13700				1.8	+2.4
	1.0	+3.2		1.9	+2.3
	1.1	+3.1		1.8	+2.4
<u>10:08</u>	1.2	+3.0		1.8	+2.4
	1.4	+2.8	50	1.7	+2.5
50	1.2	+3.0		1.9	+2.3
	1.3	+2.9		1.6	+2.6
	1.3	+2.9	(4.2)	1.8	+2.4
(4.2)	1.3	+2.9		1.4	+2.8
	1.4	+2.8	3+00	1.3	+2.9
1+00	1.5	+2.7		1.4	+2.8
	1.4	+2.8	<u>10:13</u>	1.3	+2.9
	1.5	+2.7		1.2	+3.0
	1.5	+2.7		0.9	+3.3
	1.5	+2.7	50	1.0	+3.2
50	1.5	+2.7		1.0	+3.2
<u>10:10</u>	1.7	+2.5		0.8	+3.4
	1.8	+2.4		1.0	+3.2
	1.9	+2.3		1.1	+3.1
	1.8	+2.4	4+00	0.9	+3.3
2+00	1.8	+2.4		1.0	+3.2
				1.0	+3.2
				0.8	+3.4

6-22-56 (59)

N. 93+00; 0+00 = W. 13,700 SOUND EAST

Dist	Sound	Elev	Dist	Sound	Elev
0+00	0.5	+3.5	2+00	0.5	+3.5
	0.5	+3.5		0.5	+3.5
	0.5	+3.5		0.5	+3.5
(4.0)	0.5	+3.5		0.6	+3.4
	0.5	+3.5		0.6	+3.4
50	0.4	+3.6	50	0.7	+3.3
	0.4	+3.6	(4.0)	1.0	+3.0
<u>9:47</u>	0.4	+3.6		1.0	+3.0
	0.4	+3.6		1.2	+2.8
	0.5	+3.5		1.4	+2.6
1+00	0.4	+3.6	3+00	1.4	+2.6
	0.4	+3.6	<u>9:50</u>	2.0	+2.0
	0.4	+3.6		3.0	+1.0
	0.4	+3.6		3.5	+0.5
	0.5	+3.5		4.5	0.5
50	0.5	+3.5	50	5.1	1.1
	0.5	+3.5		5.0	1.0
	0.5	+3.5		4.5	0.5
	0.4	+3.6		4.0	0.0
	0.5	+3.5		3.2	+1.8

N 93+00 SOUND EAST 6-22-56					
Dist	Sound	Elev	Dist	Sound	Elev
4+00	3.0	+1.1		4.8	0.7
	2.8	+1.3	<u>9.55</u>	4.3	0.2
	3.0	+1.1		3.8	+0.3
	3.8	+0.3		3.8	+0.3
	4.5	0.4	50	3.7	+0.4
50	5.0	0.9		3.8	+0.3
	5.1	1.0	(4.1)	3.9	+0.2
(4.1)	5.5	1.4		4.0	+0.1
	5.5	1.4		4.1	0.0
	5.5	1.4	7+00	4.5	0.4
5+00	6.1	2.0		4.8	0.7
<u>9.53</u>	6.0	1.9		4.8	0.7
	6.5	2.4		4.7	0.6
	6.8	2.7		4.2	0.1
	6.8	2.7	50	3.8	+0.3
50	6.8	2.7		3.5	+0.6
	6.6	2.5		3.2	+0.9
	6.5	2.4		3.1	+1.0
	6.1	2.0		3.1	+1.0
	5.8	1.7	8+00	3.1	+1.0
6+00	5.2	1.1		3.0	+1.1

N 93+00 SOUND EAST. (70)					
Dist	Sound	Elev	Dist	Sound	Elev
	2.9	+1.2			
	3.0	+1.1			
	3.0	+1.1			
50	3.1	+1.0			
	3.2	+0.9			
<u>9.58</u>	5.0	0.9			
	7.1	3.0			
	9.0	4.9			
9+00	9.8	5.7			
	11.0	6.9			
(4.1)	13.2	9.1			
¹³⁷⁰⁰ _{9.70}	13.5	9.4			
⁷³⁰	14.0	9.9			
50	14.1	10.0			
	14.0	9.9			
	13.6	9.3	W12730		
10+00					

6-22-56 Plotted Roll 22-A
 N. 92+00: 0+00 = W. 13,700 SOUND EAST

Dist	Sound	Elev	Dist	Sound	Elev
0+00	0.7	+3.5	2+00	0.7	+3.5
	0.6	+3.6		0.6	+3.6
<u>1023</u>	0.5	+3.7		0.6	+3.6
	0.6	+3.6		0.7	+3.5
	0.4	+3.8	(4.2)	0.5	+3.7
50	0.4	+3.8	50	0.7	+3.5
	0.4	+3.8	<u>1026</u>	0.8	+3.4
(4.2)	0.5	+3.7		0.7	+3.5
	0.6	+3.6		1.0	+3.2
	0.5	+3.7		1.0	+3.2
1+00	0.4	+3.8	3+00	1.2	+3.0
	0.4	+3.8		1.5	+2.7
	0.6	+3.6		1.7	+2.5
	0.5	+3.7		3.0	+1.2
	0.6	+3.6		3.5	+1.7
50	0.5	+3.7	50	4.5	0.3
	0.4	+3.8		4.5	0.3
	0.5	+3.7		4.5	0.3
	0.7	+3.5		5.3	1.1
	0.5	+3.7		5.8	1.6

(71)

N. 92+00		SOUND EAST			
Dist	Sound	Elev	Dist	Sound	Elev
4+00	6.2	2.0		4.0	+0.2
	6.3	2.1		4.0	+0.2
	6.7	2.5	(4.2)	4.0	+0.2
(4.2)	6.8	2.6		3.8	+0.4
	7.4	3.2	50	3.7	+0.5
50	7.3	3.1		4.0	+0.2
<u>1030</u>	7.2	3.0	<u>1033</u>	3.8	+0.4
	7.2	3.0		3.8	+0.4
	7.6	3.4		3.7	+0.5
	8.0	3.8	7+00	3.5	+0.7
5+00	8.0	3.8		3.8	+0.4
	7.9	3.7		3.8	+0.4
	7.3	3.1		3.5	+0.7
	6.8	2.6		3.3	+0.9
	6.3	2.1	50	3.0	+1.2
50	6.2	2.0		3.1	+1.1
	5.4	1.2		3.1	
	4.8	0.6		3.1	
	4.5	0.3		3.1	+1.1
	4.2	0.0	8+00	3.2	+1.0
6+00	4.1	+0.1		3.2	+1.0

N. 92+00; SOUND EAST					
Dist	Sound	Elev	Dist	Sound	Elev
	3.2	+1.0		11.7	7.5
	3.4	+0.8		12.0	7.8
(4.2)	4.0	+0.2	50	12.0	7.8
50	4.5	0.3	(4.2)	12.6	8.4
10:35	4.0	+0.2		13.2	9.0
<u>4.2</u>	4.2	0.0	<u>1038</u>	13.8	9.6
	4.3	0.1	<u>11</u>	13.8	9.6
	5.5	1.3	11+00	13.8	9.6
9+00	6.5	2.3	W12600		
	5.6	1.4			
	6.6	2.4			
	5.7	1.5			
	6.2	2.0			
50	5.2	1.0			
	7.0	2.8			
	6.2	2.0			
	8.0	3.8			
	9.8	5.6			
10+00	10.2	6.0			
	11.0	6.9			
	11.1	6.9			

6-22-56 (P)					
N. 91+00; 0+00 = W. 13,700 SOUND EAST					
Dist	Sound	Elev	Dist	Sound	Elev
0+00	0.0	+4.1	* 2+00	1.3	+2.8
	0.1	+4.0		0.8	+3.3
	0.2	+3.9		1.0	+3.1
10:53	0.3	+3.8	(4.1)	0.7	+3.4
	0.4	+3.7		1.0	+3.1
50	0.4	5	50	1.6	+2.5
(4.1)	0.4			2.5	+1.6
	0.4	+3.7	<u>10:58</u>	3.0	+1.1
	0.5	+3.6		3.5	+0.6
	0.4	+3.7		4.1	0.0
1+00	0.5	+3.6	3+00	5.0	0.9
	0.5	+3.6		5.6	1.5
	0.4	+3.7		6.8	2.7
	0.4	+3.7		7.2	3.1
	0.5	+3.6		8.0	3.9
50	0.5	+3.6	50	8.0	3.9
	0.6	+3.5		8.0	3.9
	0.7	+3.4		8.2	4.1
	1.0	+3.1		8.4	4.3
	1.0	+3.1		8.4	4.3

N. 91+00; SOUND EAST			6-22-56		
Dist	Sound	Elev	Dist	Sound	Elev
4+00	8.0	3.9		4.2	0.1
	8.5	4.4		4.0	+0.1
<u>11:02</u>	9.0	4.9	(4.1)	4.0	
	9.0	4.9		4.0	
	8.5	4.4	50	4.0	
50	8.5	4.4	<u>11:05</u>	4.0	+0.1
	8.0	3.9		4.1	0.0
(4.1)	7.7	3.6		4.0	+0.1
	7.3	3.2		3.8	+0.3
	6.8	2.7	7+00	4.0	+0.1
5+00	6.5	2.4		3.8	+0.3
	6.2	2.1		3.1	+1.0
	5.7	1.6		3.2	+0.9
	5.4	1.3		3.2	+0.9
	4.8	0.7	50	3.3	+0.8
50	4.8	0.7		3.2	+0.9
	4.5	0.4		3.2	+0.9
	4.3	0.2		3.5	+0.6
	4.2	0.1		3.8	+0.3
	4.5	0.4	8+00	3.8	+0.3
6+00	4.4	0.3		3.7	+0.4

N. 91+00; SOUND EAST			(73)		
Dist	Sound	Elev	Dist	Sound	Elev
	4.0	+0.1		13.0	8.9
	3.8	+0.3	(4.1)	15.0	10.9
	4.0	+0.1	50	15.0	10.9
50	4.0	+0.1	<u>11:10</u>	14.2	10.1
	4.0	+0.1		14.2	10.1
(4.1)	4.2	0.1	10+80	14.8	10.7
	4.2	0.1			
	4.0	0.9			
9+00	5.0	0.9			13700
	4.2	0.1			1080
					12.620
<u>11:08</u>	4.3	0.2			
	4.5	0.4			
	4.2	0.1			
50	7.0	2.9			
	8.4	4.3			
	9.3	5.2			
	9.5	5.4			
	10.0	5.9			
10+00	10.0	5.9			
	11.5	7.4			
	11.8	7.7			

6-22-56

N. 90+00; 0+00 = W. 13.700; SOUND EAST

Dist	Sound	Elev	Dist	Sound	Elev
0+00			2+00	5.8	1.9

Plotted Roll 22-A

				6.5	2.6
				7.0	3.1

(4.0)			<u>11:25</u>	7.2	3.3
-------	--	--	--------------	-----	-----

				7.5	3.6
--	--	--	--	-----	-----

50	0.0	+4.0	50	7.7	3.8
----	-----	------	----	-----	-----

	0.2	+3.8		8.0	4.1
--	-----	------	--	-----	-----

<u>11:23</u>	0.3	+3.7	(3.9)	8.3	4.4
--------------	-----	------	-------	-----	-----

	0.3	+3.7		8.5	4.6
--	-----	------	--	-----	-----

	0.5	+3.5		8.5	4.6
--	-----	------	--	-----	-----

* 1+00	0.6	+3.6	3+00	8.1	4.2
--------	-----	------	------	-----	-----

	1.0	+3.0		8.0	4.1
--	-----	------	--	-----	-----

	1.4	+2.6		7.8	3.9
--	-----	------	--	-----	-----

	1.6	+2.4		8.0	4.1
--	-----	------	--	-----	-----

	2.0	+2.0		8.0	4.1
--	-----	------	--	-----	-----

50	2.5	+1.5	50	7.4	3.5
----	-----	------	----	-----	-----

	3.0	+1.0*		7.5	3.6
--	-----	-------	--	-----	-----

	3.2	+0.8		8.0	4.1
--	-----	------	--	-----	-----

	4.1	0.1		7.5	3.6
--	-----	-----	--	-----	-----

	5.0	1.0		7.3	3.4
--	-----	-----	--	-----	-----

N. 90+00; SOUND EAST

(74)

Dist	Sound	Elev	Dist	Sound	Elev
------	-------	------	------	-------	------

4+00	7.0	3.1		4.3	0.4
------	-----	-----	--	-----	-----

	7.1	3.2		4.5	0.6
--	-----	-----	--	-----	-----

	7.1	3.2		4.4	0.5
--	-----	-----	--	-----	-----

	7.0	3.1		4.4	0.5
--	-----	-----	--	-----	-----

	6.7	2.8	50	4.5	0.6
--	-----	-----	----	-----	-----

50	6.8	2.9		4.8	0.9
----	-----	-----	--	-----	-----

	6.5	2.6	(3.9)	4.8	0.9
--	-----	-----	-------	-----	-----

(3.9)	6.0	2.1		4.8	0.9
-------	-----	-----	--	-----	-----

	5.3	1.4		4.7	0.8
--	-----	-----	--	-----	-----

	5.2	1.3	7+00	4.9	1.0
--	-----	-----	------	-----	-----

5+00	5.0	1.1	<u>11:33</u>	4.6	0.7
------	-----	-----	--------------	-----	-----

<u>11:30</u>	5.0	1.1		4.8	0.9
--------------	-----	-----	--	-----	-----

	5.0	1.1		4.9	1.0
--	-----	-----	--	-----	-----

	4.8	0.9		5.0	1.1
--	-----	-----	--	-----	-----

	4.8	0.9	50	4.7	0.8
--	-----	-----	----	-----	-----

50	4.9	1.0		4.0	0.1
----	-----	-----	--	-----	-----

	4.8	0.9		4.0	0.1
--	-----	-----	--	-----	-----

	4.6	0.7		3.8	+0.1
--	-----	-----	--	-----	------

	4.7	0.8		4.0	0.1
--	-----	-----	--	-----	-----

	4.4	0.5	8+00	3.8	+0.1
--	-----	-----	------	-----	------

6+00	4.5	0.6		3.7	+0.2
------	-----	-----	--	-----	------

N 90+00; SOUND EAST					
DIST	Sound	Elev	DIST	Sound	Elev
	3.8	+0.1			
	3.8	+0.1			
	4.0	0.1	50		
50	4.2	0.3			
(39)	4.5	0.6			
	4.4	0.5			
<u>11:35</u>	4.5	0.6			
	5.5	1.6 =	11+00		
9+00	6.5	2.6			
	11.0	7.1			
	16.5	12.6			
	18.0	14.1			
	17.5	13.6			
50	15.0	10.1			
	16.5	12.6			
9+70	17.0	13.1	W12,730		
10+00					

6-22-56 (15)					
N. 89+00; 0+00 = W. 13,700 SOUND EAST					
DIST	Sound	Elev	DIST	Sound	Elev
* 0+00	0.6	+3.2	2+00	8.5	4.7
	0.6	+3.2	<u>11:50</u>	8.8	5.0
	1.0	+2.8	<u>2</u>	8.8	5.0
<u>11:48</u>	1.4	+2.4		9.0	5.2
	1.8	+2.0		9.0	5.2
50	2.1	+1.7	50	8.8	5.0
	2.8	+1.0	(38)	8.5	4.7
(38)	4.0	0.2		8.0	4.2
	4.2	0.4		8.2	4.4
	5.1	1.3		8.3	4.5
1+00	6.0	2.2	3+00	8.3	4.5
	7.4	3.6		8.0	4.2
	8.0	4.2		7.8	4.0
	9.0	5.2		7.5	3.7
	9.0	5.2		7.5	
50	9.0	5.2	50	7.5	
	8.5	4.7		7.5	3.7
	8.5	4.7		7.1	3.3
	8.3	4.5		7.1	3.3
	8.1	4.3		7.0	3.2

N. 89+00; SOUND EAST 6-22-56

Dist	Sound	Elev	Dist	Sound	Elev
4+00	7.0	3.3		5.8	2.1
	7.1	3.4		6.0	2.3
	7.2	3.5		6.0	2.3
	7.1	3.4		5.6	1.9
(3.7)	7.0	3.3	50	5.6	1.9
50	6.5	2.8		6.0	2.3
	6.2	2.5	(3.7)	6.0	2
	6.0	2.3		6.0	2
	6.5	2.8		6.0	2.3
<u>11:55</u>	6.1	2.4	7+00	5.8	2.1
5+00	6.1	}	<u>11:57</u>	6.0	2.3
	6.1	}		6.0	2.3
	6.1	}		6.1	2.4
	6.1	2.4		6.1	2.4
	6.2	2.5	50	6.0	2.3
50	6.0	2.3		6.5	2.8
	5.7	2.0		7.8	4.1
	5.7	2.0		8.8	5.1
	5.5	1.8		9.3	5.6
	5.6	1.9	8+00	10.6	7.1
6+00	5.3	1.6		11.0	7.3

(76)
N 89+00; SOUND EAST

Dist	Sound	Elev
	11.0	7.3
12:00	12.0	8.3
	12.5	8.8
50	12.5	8.8
	10.5	6.8
(3.7)	12.1	8.4
	13.2	9.5
	14.5	10.8
9+00	14.0	10.3

W12800

6-26-56 Plotted Roll 22-A
 N. 88+00; 0+00 = W. 13,900 SOUND EAST

Dist	Sound	Elev	Dist	Sound	Elev
0+00			2+00	7.0	3.0
			(4.0)	8.0	4.0
				9.5	5.5
				10.5	6.5
				11.0	7.0
50			50	11.0	7.0
				11.0	7.0
				11.1	7.1
				11.0	7.0
				11.0	7.0
1+00			3+00	10.8	6.8
1+13	0.0	+4.0		10.3	6.3
(4.0)	0.8	+3.2		10.5	6.5
<u>2:20</u>	1.6	+2.4		10.8	6.8
	2.0	+2.0		10.3	6.3
50	2.8	+1.2	50	10.8	6.8
	3.2	+0.8		10.8	6.8
	4.0	0.0		10.6	6.6
	5.5	1.5		10.2	6.2
	6.2	2.2		10.2	6.2

N 88+00; SOUND EAST. (7)

Dist	Sound	Elev	Dist	Sound	Elev
4+00	10.0	6.0		7.1	3.2
	10.0	6.0	(3.9)	6.8	2.9
(4.0)	9.8	5.8		7.2	3.3
	9.8	5.8		7.0	3.1
	9.7	5.7	50	7.0	3.1
50	9.3	5.3		7.0	3.1
<u>2:25</u>	8.8	4.8		6.8	2.9
	8.3	4.3		7.2	3.3
	9.0	5.0		7.3	3.4
	8.7	4.7	7+00	7.2	3.3
5+00	8.5	4.5		7.0	3.1
	8.0	4.0		7.5	3.6
	7.6	3.6	<u>2:30</u>	7.4	3.5
	7.5	3.5		7.6	3.7
	7.5	3.5	50	8.0	4.1
50	7.3	3.3		8.3	4.4
	7.0	3.0		8.0	4.1
	7.0			8.0	4.1
	7.0			8.3	4.4
	7.0	3.0	8+00	8.5	4.6
6+00	6.8	2.8		8.0	4.1

N. 88+00; SOUND EAST

Contd. in M.B.F.B. No 89

5.

(78)

	Dist	Sound	Elev	Dist	Sound	Elev
(3.9)	9.0	5.1				
	9.2	5.3				
	10.0	6.1				
50	11.0	7.1				
	12.2	8.3				
	12.2	8.3				
	12.5	8.6				
	13.0	9.1				
9+00	12.8	8.9				
	12.5	8.6				
	12.4	8.5				
	12.8	8.9				
<u>2:35</u>	13.0	9.1				
<u>50</u>	13.5	9.6				
	12.8	8.9				
	13.4	9.5				
	13.7	9.8				
	14.2	10.3				
10+00	14.1	10.2	W12900			

13-13

12.49-30

12.72-30

12.49-30

0° 23' 00

SH
SH'