

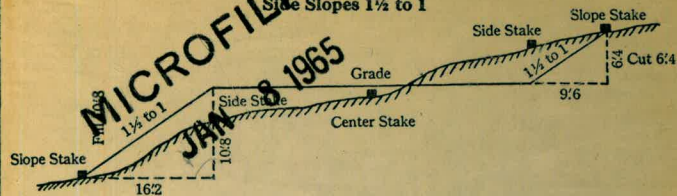
88

MISSION

BAY

DISTANCES FROM SIDE STAKES FOR CROSS-SECTIONING

Roads of any Width
Side Slopes 1½ to 1



In the figure above: Opposite 6 under "Cut or Fill" and under .4 read 9/6 the distance from the side stake to the slope stake at right. Opposite 10 under "Cut or Fill" and under .8 read 16.2, the distance from the side stake to the slope stake at the left.

Cut or Fill	Distance out from Side or Shoulder Stake										Cut or Fill
	0	.1	.2	.3	.4	.5	.6	.7	.8	.9	
0	0.0	0.2	0.3	0.5	0.6	0.8	0.9	1.1	1.2	1.4	0
1	1.5	1.7	1.8	2.0	2.1	2.3	2.4	2.6	2.7	2.9	1
2	3.0	3.2	3.3	3.5	3.6	3.8	3.9	4.1	4.2	4.4	2
3	4.5	4.7	4.8	5.0	5.1	5.3	5.4	5.6	5.7	5.9	3
4	6.0	6.2	6.3	6.5	6.6	6.8	6.9	7.1	7.2	7.4	4
5	7.5	7.7	7.8	8.0	8.1	8.3	8.4	8.6	8.7	8.9	5
6	9.0	9.2	9.3	9.5	9.6	9.8	9.9	10.1	10.2	10.4	6
7	10.5	10.7	10.8	11.0	11.1	11.3	11.4	11.6	11.7	11.9	7
8	12.0	12.2	12.3	12.5	12.6	12.8	12.9	13.1	13.2	13.4	8
9	13.5	13.7	13.8	14.0	14.1	14.3	14.4	14.6	14.7	14.9	9
10	15.0	15.2	15.3	15.5	15.6	15.8	15.9	16.1	16.2	16.4	10
11	16.5	16.7	16.8	17.0	17.1	17.3	17.4	17.6	17.7	17.9	11
12	18.0	18.2	18.3	18.5	18.6	18.8	18.9	19.1	19.2	19.4	12
13	19.5	19.7	19.8	20.0	20.1	20.3	20.4	20.6	20.7	20.9	13
14	21.0	21.2	21.3	21.5	21.6	21.8	21.9	22.1	22.2	22.4	14
15	22.5	22.7	22.8	23.0	23.1	23.3	23.4	23.6	23.7	23.9	15
16	24.0	24.2	24.3	24.5	24.6	24.8	24.9	25.1	25.2	25.4	16
17	25.5	25.7	25.8	26.0	26.1	26.3	26.4	26.6	26.7	26.9	17
18	27.0	27.2	27.3	27.5	27.6	27.8	27.9	28.1	28.2	28.4	18
19	28.5	28.7	28.8	29.0	29.1	29.3	29.4	29.6	29.7	29.9	19
20	30.0	30.2	30.3	30.5	30.6	30.8	30.9	31.1	31.2	31.4	20
21	31.5	31.7	31.8	32.0	32.1	32.3	32.4	32.6	32.7	32.9	21
22	33.0	33.2	33.3	33.5	33.6	33.8	33.9	34.1	34.2	34.4	22
23	34.5	34.7	34.8	35.0	35.1	35.3	35.4	35.6	35.7	35.9	23
24	36.0	36.2	36.3	36.5	36.6	36.8	36.9	37.1	37.2	37.4	24
25	37.5	37.7	37.8	38.0	38.1	38.3	38.4	38.6	38.7	38.9	25
26	39.0	39.2	39.3	39.5	39.6	39.8	39.9	40.1	40.2	40.4	26
27	40.5	40.7	40.8	41.0	41.1	41.3	41.4	41.6	41.7	41.9	27
28	42.0	42.2	42.3	42.5	42.6	42.8	42.9	43.1	43.2	43.4	28
29	43.5	43.7	43.8	44.0	44.1	44.3	44.4	44.6	44.7	44.9	29
30	45.0	45.2	45.3	45.5	45.6	45.8	45.9	46.1	46.2	46.4	30
31	46.5	46.7	46.8	47.0	47.1	47.3	47.4	47.6	47.7	47.9	31
32	48.0	48.2	48.3	48.5	48.6	48.8	48.9	49.1	49.2	49.4	32
33	49.5	49.7	49.8	50.0	50.1	50.3	50.4	50.6	50.7	50.9	33
34	51.0	51.2	51.3	51.5	51.6	51.8	51.9	52.1	52.2	52.4	34
35	52.5	52.7	52.8	53.0	53.1	53.3	53.4	53.6	53.7	53.9	35
36	54.0	54.2	54.3	54.5	54.6	54.8	54.9	55.1	55.2	55.4	36
37	55.5	55.7	55.8	56.0	56.1	56.3	56.4	56.6	56.7	56.9	37
38	57.0	57.2	57.3	57.5	57.6	57.8	57.9	58.1	58.2	58.4	38
39	58.5	58.7	58.8	59.0	59.1	59.3	59.4	59.6	59.7	59.9	39
40	60.0	60.2	60.3	60.5	60.6	60.8	60.9	61.1	61.2	61.4	40

EUGENE DIETZGEN CO.

M. B. No 88

Handwritten scribbles and numbers, including "150" and "300".

Property of _____

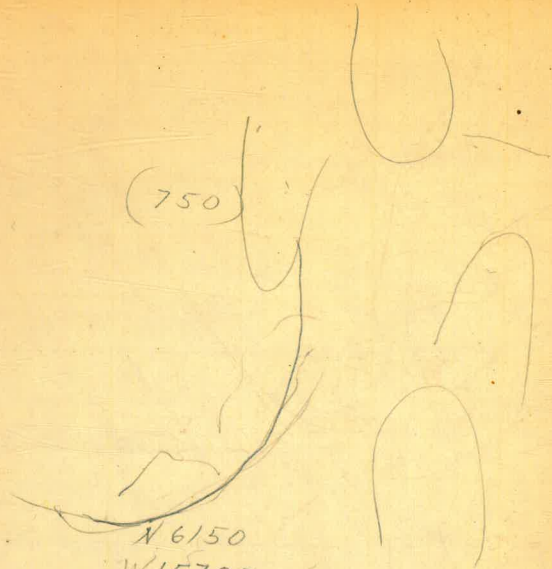
Address _____

Phone _____

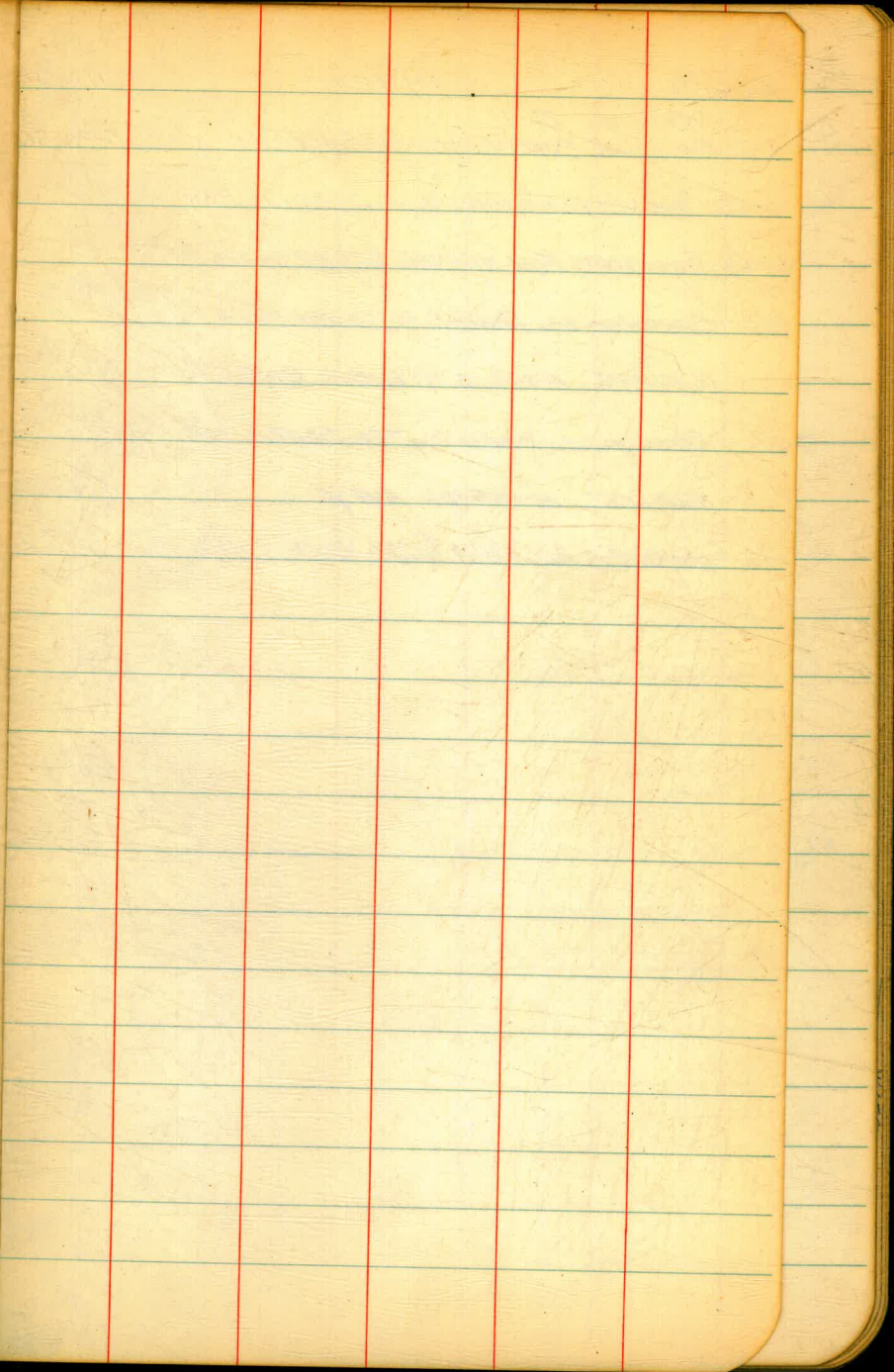
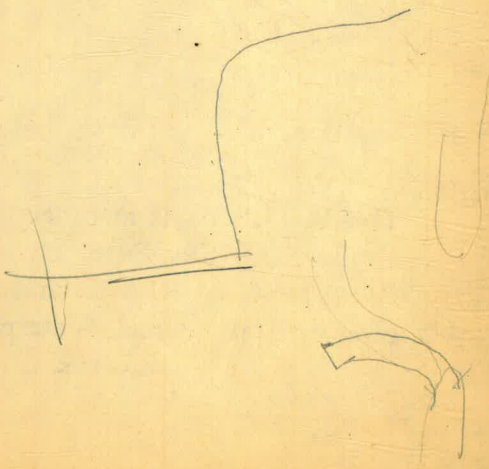
This Field Book is manufactured of a High Grade 50% Rag Paper having a WATER RESISTING SURFACE, and is sewed with Bing Special Enamel Waterproof thread.

Made in U. S. A.

(750)

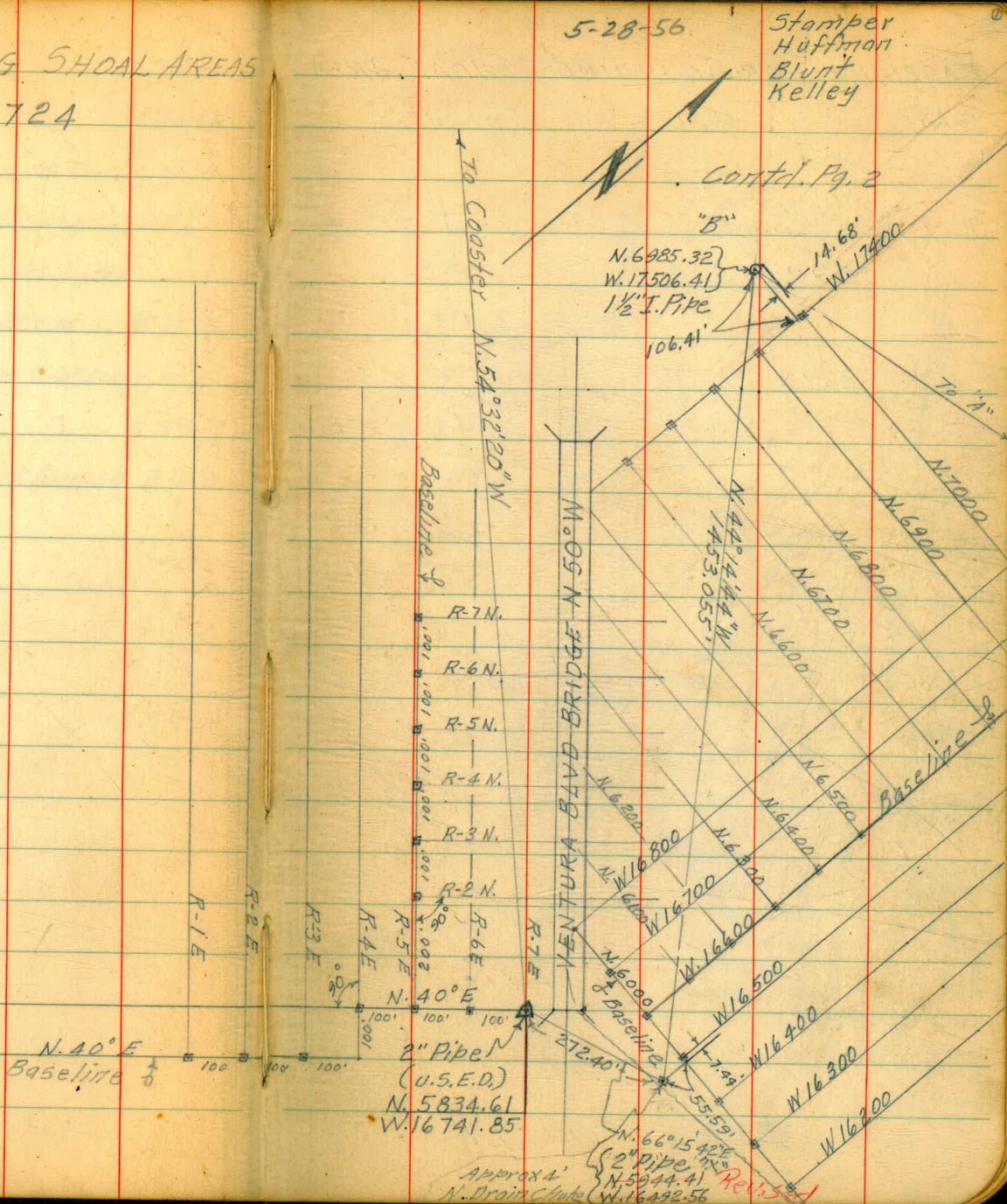


X 6150
W 15700
B.M. 9.23



PAGES	INDEX	DATE
1-2	MISSION BAY BASELINE FOR SOUNDINGS SHOAL AREA	5-28-56
3-63	SOUNDINGS SHOAL AREA MISSION BAY	6-07-56
64-65	SOUNDINGS FOR MARINE EXPERTS ONLY	3-8-57
66	SOUNDINGS PARALLEL TO VENTURA BLVD BRIDGE FOR EROSION CHECK	8-29-57
67	SOUNDINGS PARALLEL TO SOUTH CAUSEWAY BRIDGE MISSION BAY	8-29-57
76	SOUNDINGS ELY. & WLY. SIDES VENTURA BRIDGE	9-10-59

BASELINE FOR SOUNDING SHOAL AREAS
MISSION BAY W.O. 64724



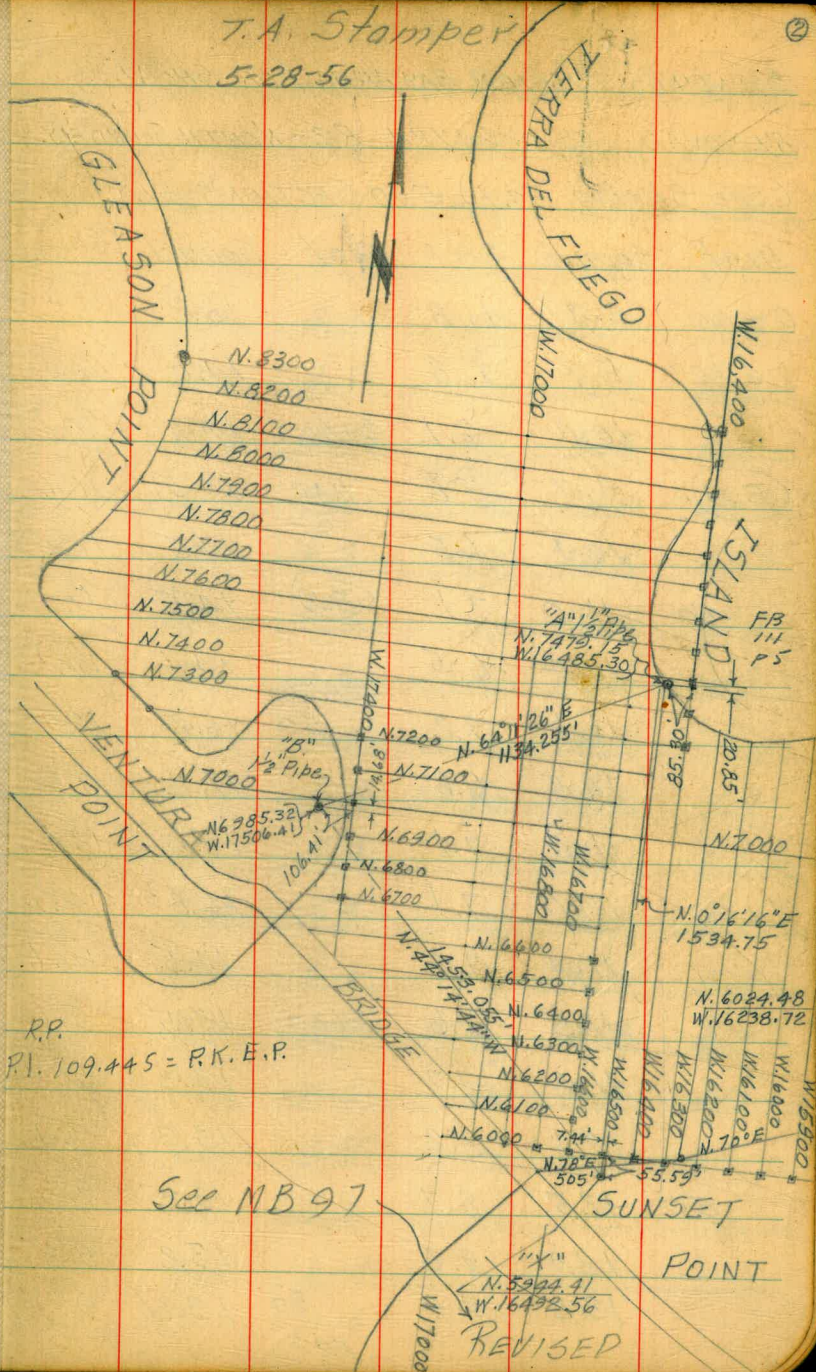
BASELINE FOR SOUNDINGS SHOAL AREA

Sta + H.I - Elev

Sta	H.I	Elev	Notes
B.M.	Dam Basin Lt. K. Sta. Cb. L. Pump	9.23	U.S. CGCS M.L.L.W.
	5.93	15.16	
TP		8.53	6.63
	2.73	9.36	
		5.36	4.00 Tide Staff
TP		2.73	6.63
	9.29	15.93	
B.M.		6.70	9.23 9.23

Contd. From Pg. 1

T.A. Stamper
5-28-56



R.P.
R.I. 109.445 = R.K.E.P.

See NB 97

REVISED

SOUNDINGS MISSION BAY AREA FOR SHOAL

REMOVAL W.O. 64724 R-2 - NORTH SOUND ELY. ^{N 40° E}

(See Sketch Pg. 1) END SECTION'S ELY.

Dist	Sound	Elev.	Dist	Sound	Elev.
0+00	5.7	1.8		13.8	9.9
<u>1.37</u>	5.7	1.8		14.0	10.1
	10.0	6.1	2+00	14.3	10.4
(3.9)	9.7	5.8	<u>1.40</u>	14.5	10.6
	10.4	6.5		14.5	10.6
50	11.0	7.1	(3.9)	14.5	10.6
	10.4	6.5		14.6	10.7
	11.1	7.2	@ Bridge 50	16.8	12.9
	10.5	6.6		17.2	13.3
	11.0	7.1		17.0	13.1
1+00	11.0	7.1		16.8	12.9
	11.4	7.5		14.5	10.6
	11.5	7.6	3+00	13.5	9.6
	11.6	7.7		13.3	9.4
	12.1	8.2		13.3	9.4
50	12.5	8.7		13.2	9.3
	12.9	9.0		13.2	9.3
	13.3	9.4	50	13.8	9.9

1.43

5-28-56

Stamper
Huffman
Blunt
Kelley
(see Sketch Pg. 1)

③

R-3 N 50° W; SOUND N 40° E

Dist	Sound	Elev.	Dist	Sound	Elev.
0+00	8.2	4.3	2+00	10.8	6.9
<u>1.47</u>	8.2	4.3		11.0	7.1
	7.8	3.9	<u>1.50</u>	11.7	7.8
(3.9)	8.0	4.1		12.1	8.2
	8.8	4.9		12.8	8.9
50	8.5	4.6	@ Bridge 50	14.0	10.1
	8.8	4.9	(3.9)	14.5	10.6
	9.1	5.2		14.0	10.1
	8.5	4.6		13.8	9.9
	9.1	5.2		14.1	10.2
1+00	9.8	5.9	3+00	11.2	7.3
	9.8	5.9		9.5	5.6
	9.2	5.3		9.8	5.9
	10.0	6.1		9.3	5.4
	9.8	5.9	<u>1.54</u>	8.8	4.9
50	10.1	6.2	50	8.8	4.9
	10.0	6.1			
	10.2	6.3			
	10.3	6.4			
	10.5	6.6			

R 4 N 50° W; SOUND N. 40° E (see sketch P. 1)

Dist	Sound	Elev	Dist	Sound	Elev.
0+00	6.0	2.1	2+00	5.5	1.6
<u>1.57</u>	6.0	2.1		5.8	1.9
	6.7	2.8	<u>2.00</u>	6.1	2.2
(3.9)	6.0	2.1		7.2	3.3
	6.5	2.6	(3.9)	8.5	4.6
			@ bridge		
50	6.2	2.3	50	10.0	6.1
	6.3	2.4		11.0	7.1
	6.2	2.3		10.5	6.6
	6.1	2.2		10.7	6.8
	6.2	2.3	bridge	10.8	6.9
1+00	6.1	2.2	3+00	10.2	6.3
	6.5	2.6		8.8	4.9
	6.0	2.1		8.2	4.3
	6.0	2.1		7.8	3.9
	5.5	1.6		7.2	3.3
50	5.5	1.6	<u>2.03</u>		
			50	6.6	2.7
	6.0	2.1			
	6.0	2.1			
	5.8	1.9			
	5.8	1.9			

5-28-56

R 5 N 50° W; SOUND N. 40° E

Dist	Sound	Elev	Dist	Sound	Elev
0+00	5.2	1.3	2+00	4.7	0.8
<u>2.05</u>	5.0	1.1		5.1	1.2
	5.3	1.4		5.1	1.2
(3.9)	5.1	1.2	(3.9)	6.0	2.1
	5.0	1.1		8.0	4.1
50	5.0	1.1	@ Br.		
			50	8.7	4.8
	5.0	1.1		9.0	5.1
	5.1	1.2		9.0	5.1
	5.2	1.3	<u>2.08</u>	9.2	5.3
	5.1	1.2		9.7	5.8
1+00	5.0	1.1	3+00	9.3	5.4
	5.0	1.1		8.2	4.3
	4.8	0.9	(3.8)	7.8	3.9
	5.3	1.4		7.3	3.5
	5.1	1.2		8.2	4.3
50	4.5	0.6	50	8.0	4.1
	5.0	1.1			
	5.0	1.1			
	4.8	0.9			
	4.9	1.0			

R6 N.50°W; SOUND N.40°E (See Sketch Pg. 1)

Dist.	Sound	Elev	Dist.	Sound	Elev	
0+00	5.0	1.2	2+00	10.0	6.2	
<u>2:13</u>	5.0	1.2		10.9	7.1	
<u>2</u>	4.5	0.7		11.8	8.0	
	4.7	0.9		12.8	9.0	
	4.8	1.0		13.5	9.7	
50	4.9	1.1	By.	50	15.0	11.2
(3.8)	4.8	1.0		14.0	10.2	
	4.9	1.1	(3.8)	16.0	12.2	
	5.1	1.3		15.3	11.5	
	4.8	1.0	By.	15.0	11.2	
1+00	5.0	1.2	3+00	14.0	10.2	
	4.8	1.0		11.3	7.5	
	4.9	1.1		11.0	7.2	
	4.8	1.0		11.5	7.7	
	4.7	0.9	<u>2:18</u>	11.5	7.7	
50	5.1	1.3	<u>2</u>	50	12.0	8.2
	6.0	2.2				
<u>2:15</u>	7.0	3.2				
<u>2</u>	8.0	4.2				
	9.2	5.4				

5-28-56

(5)

Dist	Sound	Elev	Dist	Sound	Elev	
0+00	^{B/L} 9.0	5.2	2+00	24.1	20.3	
<u>2:30</u>	9.8	6.0		24.2	20.4	
<u>2</u>	10.5	6.7		25.5	21.7	
(3.8)	11.7	7.9	(3.8)	25.5	21.7	
	13.2	9.4		26.2	22.4	
50	15.0	11.2	50	27.0	23.2	
	16.5	12.7		27.3	23.5	
	17.3	13.5		27.8	24.0	
	18.2	14.4		27.5	23.7	
	19.0	15.2		27.2	23.4	
1+00	19.8	16.0	3+00	27.0	23.2	
	20.5	16.7		26.8	23.0	
	21.3	17.5		26.7	22.9	
	22.0	18.2		26.5	22.7	
	22.0	18.2	<u>2:37</u>	25.7	21.9	
50	23.0	19.2	<u>2</u>	50	25.0	21.2
	23.4	19.6				
	23.0	19.2				
	23.5	19.7				
	23.5	19.7				

RTE. N. 40° E.; SOUND N. 50° W. (See Sketch Pg. 1)

0+00 = 50' N. OF SOUTH SHORE B/L.

Dist Sound Elev Dist Sound Elev

0+00 5.8 2.1

2.52 0.0 +3.7 2+00 5.7 2.0

1.5 +2.2 5.5 1.8

(3.7) 4.0 0.3 5.7 2.0

5.0 1.3 (3.7) 5.7 2.0

50 5.5 1.8 5.5 1.8

5.7 1.9 50 5.6 1.9

6.0 2.3 5.5 1.8

6.1 2.4 5.3 1.6

6.0 2.3 5.3 1.6

1+00 6.0 2.3 5.6 1.9

6.0 2.3 3+00 5.5 1.8

6.2 2.5 2.55 5.6 1.9

6.0 2.3 5.5 1.8

6.0 2.3 5.5 1.8

50 6.0 2.3 5.3 1.6

5.7 2.0 50 5.7 2.0

6.0 2.3 6.0 2.3

5.6 1.9 6.0 2.3

RTE B/L

5-28-56

©

Dist Sound Elev Dist Sound Elev

6.8 3.1 12.0 8.3

6.5 2.8 6+00 12.0 8.3

4+00 7.0 3.3 11.8 8.1

7.3 3.6 11.3 7.6

2.57 7.0 3.3 (3.7) 10.6 6.9

7.5 3.8 11.0 7.3

7.5 3.8 50 11.0 7.3

50 7.3 3.6 11.1 7.4

(3.7) 7.3 3.6 11.3 7.6

7.5 3.8 12.0 8.3

8.0 4.3 11.8 8.1

8.5 4.8 7+00 11.1 7.4

5+00 9.0 5.3 11.0 7.3

8.5 4.8 11.0

8.0 4.3 11.0

8.3 4.6 11.0

9.5 5.8 50 11.0 7.3

50 9.8 6.1 11.2 7.5

10.7 7.0 11.5 7.8

11.0 7.3 12.0 8.3

11.6 7.9 13.0 9.3

R1 - E B/L					
DIST	Sound	Elev	DIST	Sound	Elev
8+00	12.8	8.1		14.0	10.3
<u>3.00</u>	13.2	9.5		14.0	10.3
	14.0	10.3		13.8	10.1
	13.3	9.6		13.6	9.9
	13.5	9.8	50	13.5	9.8
50	13.6	9.9		13.5	9.8
(3.7)	13.8	10.1		13.3	9.6
	14.0	10.3	(3.7)	13.2	9.5
	14.1	10.4		12.8	9.1
	14.5	10.8	11+00	12.7	9.0
9+00	14.3	10.6		12.8	9.1
	14.3	10.6		13.0	9.3
	14.4	10.7		12.6	8.9
	14.7	11.0		11.8	8.1
	14.5	10.8	50	12.0	8.3
50	14.4	10.7		12.0	8.3
	14.2	10.5		11.3	7.6
	14.3	10.6	<u>3.05</u>	10.8	7.1
	14.1	10.4		10.8	7.1
	14.0	10.3	12+00	13.0	9.3
10+00	14.0	10.3			

5-28-56					
R2 - N. 40° E; SOUND N. 50° W (See Sketch Pg. 1)					
0+00 = 80' N. OF SOUTH SHORE B/L.					
DIST	Sound	Elev	DIST	Sound	Elev
0+00	0.0	+3.6		6.3	2.7
<u>3.17</u>	1.0	+2.6	2+00	6.0	2.4
	3.2	+0.4		5.8	2.2
(3.6)	5.0	1.4	(3.6)	5.5	1.9
	5.5	1.9		6.0	2.4
50	6.0	2.4	<u>3.20</u>	5.7	2.1
	6.1	2.5	50	5.2	1.6
	6.2	2.6		5.8	2.2
	6.3	2.7		5.5	1.9
	6.8	3.2		5.2	1.6
1+00	6.6	3.0		5.3	1.7
	6.7	3.1	3+00	5.5	1.9
	6.6	3.0		5.4	1.8
	6.5	2.9		5.4	1.8
	6.2	2.6		5.1	1.5
50	6.3	2.7		5.5	1.9
	6.4	2.8	50	5.3	1.7
	6.3	2.7		5.1	1.5
	6.1	2.5		5.0	1.4

R2-N.40°E B/L					
Dist	Sound	Elev	Dist	Sound	Elev
	5.2	1.6		10.0	6.4
	5.0	1.4	6+00	11.0	7.4
4+00	5.0	1.4		10.5	6.9
	5.0	}		11.0	7.4
	5.0		(3.6)	10.5	6.9
	5.0	1.4		10.3	6.7
<u>3.23</u>	5.1	1.5	50	10.5	6.9
<u>50</u>	4.5	0.9	<u>3.25</u>	10.5	6.9
	4.8	1.2		10.5	6.9
(3.6)	4.8	1.2		10.3	6.7
	4.8	1.2		11.0	7.4
	5.0	1.4	7+00	10.5	6.9
5+00	5.5	1.9		10.8	7.2
	6.0	2.4		11.5	7.9
	6.3	2.7		12.0	8.4
	6.5	2.9		12.3	8.7
	7.0	3.4	50	12.8	9.2
50	7.5	3.9		13.0	9.4
	7.2	3.6		12.5	8.9
	8.0	4.4		11.8	8.2
	8.3	4.7		12.0	8.4

R2 N40°E B/L 5-28-56 (8)					
Dist	Sound	Elev	Dist	Sound	Elev
8+00	12.0	8.4		15.1	11.5
	12.2	8.6		15.1	11.5
	12.8	9.2		15.0	11.4
	13.0	9.4		14.7	11.1
	13.3	9.7	50	14.0	10.4
50	13.5	9.9		13.6	10.0
(3.6)	14.0	10.4	(3.6)	13.1	9.5
	14.7	11.1		12.7	9.1
	15.4	11.8	<u>3.30</u>	12.7	9.1
	16.0	12.4	11+00	12.8	9.2
9+00	16.0	12.4		12.3	8.7
	16.0	12.4		12.5	8.9
	16.2	12.6		12.0	8.4
	16.3	12.7		11.0	7.4
	16.2	12.6	50	11.0	7.4
50	16.2	12.6		11.0	7.4
	16.0	12.4		12.0	8.4
	16.0	12.4		11.0	7.4
	15.8	12.2		10.3	6.7
	15.3	11.7	12+00	10.5	6.9
10+00	15.2	11.6			

R3 N. 40° E; SOUND N. 50° W (see sketch Pg. 1)

0+00 = 110' N. OF SOUTH SHORE B/L.

Dist	Sound	Elev	Dist	Sound	Elev
0+00				4.4	2.9
0+08	0.0	11.5	2+00	4.5	3.0
<u>9123</u>	2.5	1.0		4.5	3.0
	4.0	2.5		4.5	3.0
(7.5)	4.5	3.0		4.2	2.7
50	4.8	3.3	(1.5)	4.2	2.7
	5.0	3.5	50	4.1	2.6
	5.0	3.5		4.0	2.5
	5.0	3.5		3.7	2.2
	4.9	3.4		4.0	2.5
1+00	5.0	3.5		3.9	2.4
	5.2	3.7	3+00	3.9	2.4
	4.8	3.3		3.8	2.3
	4.9	3.4		3.7	2.2
	4.7	3.2		3.5	2.0
50	5.1	3.6		3.3	1.8
	5.1	3.6	50	3.3	1.8
	4.8	3.3		3.2	1.7
	4.5	3.0		3.1	1.6

R3 N40°E B/L 5-29-56 ©

Dist	Sound	Elev	Dist	Sound	Elev
	3.1	1.6		6.0	4.5
	3.0	1.5	6+00	6.2	4.7
4+00	3.0	1.5		6.0	4.5
	3.0	1.5	<u>9:30</u>	6.3	4.8
(1.5)	3.1	1.6		7.0	5.5
	2.8	1.3	(1.5)	7.1	5.6
	2.8		50	8.0	6.5
50	2.8			9.0	7.5
	2.8	1.3		9.9	8.4
<u>9:28</u>	2.7	1.2		10.5	9.0
	2.8	1.3		9.5	8.0
	2.8	1.3	7+00	10.0	8.5
5+00	2.7	1.2		10.3	8.8
	2.5	1.0		9.8	8.3
	2.5	1.0		10.0	8.5
	2.7	1.2		10.3	8.8
	2.8	1.3	50	11.0	9.5
50	2.7	1.2		11.2	9.7
	2.5	1.0		11.5	10.0
	3.0	1.5		12.0	10.5
	3.0	1.5		12.9	11.4

R3 N. 40° E B/L					
Dist	Sound	Elev	Dist	Sound	Elev
8+00	13.2	11.6		12.8	11.2
	14.0	12.4		12.2	10.6
	14.6	13.0		11.7	10.1
	15.0	13.4	(1.6)	11.1	9.5
<u>9:33</u>	15.0	13.4	50	10.2	8.6
50	15.2	13.6		10.5	8.9
	15.5	13.9		10.2	8.6
(1.6)	15.5	13.9	<u>9:36</u>	9.8	8.2
	15.5	13.9		10.3	8.7
	15.6	14.0	11+00	10.4	8.8
9+00	15.8	14.2		10.3	8.7
	15.8	14.2		10.0	8.4
	15.5	13.9		9.8	8.2
	15.2	13.6		9.8	8.2
	15.0	13.4	50	10.0	8.4
50	14.8	13.2		8.0	6.4
	14.5	12.9	11+70	6.0	6.4
	14.2	12.6			
	14.0	12.4			
	13.5	11.9			
10+00	13.1	11.6			

5-29-56 (10)					
R4 N. 40° E; SOUND N. 50° W (See Sketch Pg. 1)					
0+00 = 30' N. OF SOUTH SHORE B/L					
Dist	Sound	Elev	Dist	Sound	Elev
0+00				6.0	4.2
<u>9:52</u>	0.0	+1.7	2+00	5.5	3.7
	2.7	1.0		6.0	4.2
(1.7)	4.1	2.4		5.7	3.9
	4.9	3.2	(1.8)	5.3	3.5
50	5.3	3.6		5.0	3.2
	5.3	3.6	50	5.1	3.3
	6.0	4.3		5.0	3.2
	6.0	4.3	<u>9:55</u>	5.0	3.2
	5.9	4.2		4.6	2.8
1+00	5.9	4.2		4.3	2.5
	6.1	4.4	3+00	4.2	2.4
	6.0	4.3		4.5	2.7
	5.7	4.0		4.0	2.2
	6.0	4.3		4.1	2.3
50	6.1	4.4		3.8	2.0
	6.1	4.4	50	3.8	2.0
	6.1	4.4		4.0	2.2
	6.0	4.3		4.0	2.2

R 4 N. 40° E B/L					
Dist	Sound	Elev	Dist	Sound	Elev
	3.8	2.0		3.3	1.5
	3.5	1.7	6+00	3.5	1.7
4+00	3.5	}		4.0	2.2
	3.5			4.5	2.7
	3.5			5.2	2.4
(1.8)	3.5	1.7		6.1	4.3
	3.2	1.4	50	6.8	5.0
50	3.2	1.4		7.0	5.2
	3.2	1.4	(1.8)	7.4	5.6
	3.0	1.2		7.8	6.0
	2.9	1.1		8.2	6.4
	2.9	1.1	7+00	9.0	7.2
5+00	3.0	1.2		10.0	8.2
<u>9.57</u>	3.0	1.2		11.0	9.2
	3.1	1.3		12.5	10.7
	3.1	1.3	<u>10.00</u>	13.7	11.9
	3.1	1.3	<u>50</u>	15.0	13.2
50	3.1	1.3		15.6	13.8
	3.2	1.4		16.5	14.7
	3.2	1.4		17.0	15.2
	3.3	1.5		17.7	15.9

R 4 N. 40° E B/L 5-29-56 (11)					
Dist	Sound	Elev	Dist	Sound	Elev
8+00	18.0	16.1		10.0	8.1
	18.2	16.3		9.5	7.7
	18.5	16.6	(1.9)	10.0	8.1
	19.0	17.1		10.0	8.1
	19.0	17.1	50	10.2	8.3
50	19.0	17.1		8.6	6.7
	19.1	17.2	10+70	7.3	5.4
(1.9)	19.0	17.1			
	19.0	17.1			
	18.0	16.1	11+00		
9+00	17.3	15.4			
<u>10.03</u>	17.2	15.3			
	16.6	14.7			
	16.0	14.1			
	15.8	13.9			
50	15.1	13.2			
	14.5	12.6			
	13.5	11.6			
	12.8	10.9			
	11.5	9.6			
10+00	11.0	9.1			

R5 N40°E; SOUND N40°^{50°}W (See Sketch Pg. 1)

0+00 = 0.0' N. OF SOUTH SHORE B/L

Dist	Sound	Elev	Dist	Sound	Elev
0+00				8.3	6.1
			2+00	8.0	5.8
				8.5	6.3
				8.0	5.8
			(2.2)	8.0	5.8
50				7.5	5.3
	0.0	+2.2	50	7.0	4.8
	2.0	+0.2		6.8	4.6
<u>10:40</u>	4.5	2.3		7.1	4.9
	6.0	3.8		6.8	4.6
1+00	6.4	4.2		6.8	4.6
	6.5	4.3	3+00	6.7	4.5
(2.2)	6.8	4.6		6.2	4.0
	7.0	4.8		6.0	3.8
	7.5	5.3		6.0	3.8
50	7.5	5.3		5.8	3.6
	8.0	5.8	50	5.6	3.4
	7.8	5.6		5.3	3.1
	7.8	5.6		5.0	2.8

R5 N40°E B/L 5-29-56 (12)

Dist	Sound	Elev	Dist	Sound	Elev
	5.0	2.7		3.2	0.9
	4.8	2.5	6+00	3.5	1.2
4+00	5.0	2.7		3.6	1.3
	4.7	2.4		3.8	1.5
	4.3	2.0		3.9	1.6
(2.3)	4.4	2.1	(2.3)	4.2	1.9
	4.5	2.2	50	4.3	2.0
50	4.3	2.0		4.5	2.2
<u>10:45</u>	4.1	1.8		5.5	3.2
	4.2	1.9		5.9	3.6
	4.0	1.7		6.8	4.5
	4.0	1.7	7+00	8.0	5.4
5+00	4.0	1.7		9.9	7.5
	3.8	1.5	(2.4)	11.5	9.1
	3.8	1.5	<u>10:48</u>	14.0	11.6
	3.5	1.2		16.0	13.6
	3.5	1.2	50	17.7	15.3
50	3.2	0.9		18.4	16.0
	3.2	0.9		20.5	18.1
	3.2	0.9		21.8	19.4
	3.2	0.9		22.0	19.6

R5 N.40°E B/L					
Dist	Sound	Elev	Dist	Sound	Elev
8+00	22.0	19.6		12.8	10.4
	22.0	19.6		12.0	9.6
	22.1	19.7	(24)	10.5	8.1
(24)	22.1	19.7		9.0	6.6
	22.3	19.9	50	9.0	6.6
50	22.2	19.8		8.0	5.6
	22.0	19.6		7.0	4.6
<u>10:55</u>	21.0	18.6		5.0	2.6
	21.0	18.6			
	21.0	18.6	11+00		
9+00	20.0	17.6			
	19.7	17.3			
	19.3	16.9			
	18.7	16.3			
	17.8	15.4			
50	17.0	14.6			
	16.0	13.6			
	15.0	12.6			
	14.0	11.6			
	13.3	10.9			
10+00	13.0	10.6			

5-29-56 (13)					
R6 N.40°E; SOUND N.50°W (See Sketch Pg.1)					
0+00 = 70' N. OF SOUTH SHORE B/L					
Dist	Sound	Elev	Dist	Sound	Elev
0+00				9.2	6.5
0+08	0.0	+2.7	2+00	8.8	6.1
<u>11:15</u>	1.8	+0.9		8.2	5.5
	3.5	0.8		8.7	5.4
	6.0	3.3		8.8	6.1
50	8.1	5.4	(27)	8.2	5.5
	8.8	6.1	50	7.8	5.1
(27)	9.2	6.5		7.2	4.5
	9.5	6.8		6.8	4.1
	9.5	6.8		6.8	4.1
1+00	9.7	7.0		6.0	3.3
	9.8	7.1	3+00	5.7	3.0
	10.0	7.3		5.3	2.6
	10.1	7.4		4.9	2.2
	10.3	7.6		5.0	2.3
50	9.8	7.1	<u>11:20</u>	5.0	2.3
	9.9	7.2	50	4.8	2.1
	9.9	7.2		4.6	1.9
	9.5	6.8		4.3	1.6

R6 N. 40° E B/L					
Dist.	Sound	Elev	Dist	Sound	Elev
	3.8	1.0		7.8	5.0
	4.2	1.4	6+00	10.0	7.2
4+00	4.2	1.4		13.0	10.2
	4.0	1.2		16.0	13.2
	3.7	0.9		18.4	15.6
(2.8)	4.0	1.2		19.2	16.4
	4.0	1.2	50	21.0	18.2
50	3.9	1.1		21.3	18.5
	3.9	1.1	(2.8)	22.0	19.2
	4.0	1.2		22.2	19.4
	3.7	0.9		22.5	19.7
	3.3	0.5	7+00	23.5	20.7
5+00	3.4	0.6		23.5	20.7
	3.6	0.8	<u>11.25</u>	22.3	19.5
	3.8	1.0		22.9	19.5
<u>11.23</u>	3.6	0.8		23.0	20.2
	4.0	1.2	50	23.0	20.2
50	3.9	1.1		22.5	19.7
	4.3	1.5		22.0	19.2
	5.0	2.2		22.0	19.2
	6.0	3.2		21.3	18.5

R6 N. 40° E B/L 5-29-56 (14)					
Dist	Sound	Elev	Dist	Sound	Elev
8+00	20.5	17.7			
	20.5	}			
	20.5				
	20.5				
(2.8)	20.5			50	
50	20.5	17.7			
	20.0	17.2			
	18.5	15.7			
<u>11.28</u>	17.8	15.0			
	16.8	14.0	11+00		
9+00	15.3	12.5			
	14.8	12.0			
	13.8	11.0			
	13.0	10.2			
	12.0	9.2			
50	7.2	4.4			
	5.6	2.8			
	3.0	0.2			
10+00					

5-29-56

R7 N. 40° E; SOUND N. 50° W (See Sketch Pg. 1.)

0+00 = 80 N. OF SOUTH SHORE B/L

DIST	SOUND	ELEV	DIST	SOUND	ELEV
0+00				12.0	9.0
<u>11:44</u>	0.0	+3.0	2+00	10.8	7.8
	1.6	+1.4		10.5	7.5
	3.8	0.8		9.8	6.8
	8.8	5.8		9.2	6.2
50	11.3	8.3	(3.0)	9.2	6.2
	11.8	8.8	50	8.1	5.1
(3.0)	13.0	10.0		7.3	4.3
	13.0	10.0		6.8	3.8
	14.2	11.2		6.2	3.2
1+00	14.8	11.8		5.8	2.8
	13.5	10.5	3+00	5.2	2.2
	13.0	10.0		4.9	1.9
	13.2	10.2		5.0	2.0
	13.0	10.0		5.0	2.0
50	13.5	10.5	11:48	4.8	1.8
	13.2	10.2	50	4.7	1.7
	13.2	10.2		4.8	1.8
	12.0	9.0		4.9	1.9

R7 N. 40° E B/L.

(15)

DIST	SOUND	ELEV	DIST	SOUND	ELEV
	4.9	1.9		18.1	15.1
	4.8	1.8	6+00	21.0	18.0
4+00	4.5	1.5		22.0	19.0
	4.2	1.2		23.0	20.0
	4.0	1.0	(3.0)	23.0	20.0
	3.6	0.6		23.2	20.2
(3.0)	3.8	0.8	50	24.0	21.0
50	3.8	0.8		24.5	21.5
	3.8	0.8		24.5	21.4 24.4
	3.7	0.7	(3.1)	24.8	21.7 24.7
	3.8	0.8		24.0	20.9
	3.5	0.5	7+00	24.2	21.1
5+00	4.0	1.0		23.8	20.7
	7.0	4.0		25.0	21.9
	9.5	6.5	11:55	25.0	21.9
	9.8	6.8		24.0	20.9
	9.2	6.2	50	23.3	20.2
50	10.0	7.0		23.0	19.9
11:52	11.2	8.2		22.2	19.1
	14.0	11.0		22.3	19.2
	16.2	13.2		22.0	18.9

R7 N.40°E B/L 5-29-56

Dist Sound Elev Dist Sound Elev

8+00 21.8 18.7

21.0 17.9

11:57 20.2 17.1

19.3 16.2

18.2 15.1 50

50 17.8 14.7

(3.1) 17.2 14.1

17.1 14.0

16.2 13.1

15.1 12.0 11+00

9+00 14.5 11.4

13.0 9.9

11.5 8.4

9.5 6.4

11:58 6.3 3.2

50 3.5 0.4

9+60 2.0 +1.1

10+00

5-29-56

(16)

N.60+00; 0+00 = W. 16,600 SOUND WEST.

Dist Sound Elev Dist Sound Elev

0+00 2.8 +0.9 2+00 15.1 11.4

1:00 3.1 +0.6

3.1 +0.6

3.2 +0.5

(3.7) 4.0 0.3

50 4.2 0.5

4.5 0.8

5.5 1.8

9.0 5.3

10.0 6.3

1+00 10.0 6.3

11.5 7.8

12.0 8.3

13.1 9.4

13.5 9.8

50 14.0 10.3

15.0 11.3

14.5 10.8

14.8 11.1

14.9 11.2

6-01-56

N. 61+00; 0+00 = W. 16,600; SOUND WEST

Dist	Sound	Elev	Dist	Sound	Elev
0+00	11.8	10.4	2+00	9.2	7.8
<u>9:56</u>	11.5	10.1		9.2	7.8
	11.5	10.1		8.8	7.4
(1.4)	12.2	10.8		8.2	6.8
	12.2	10.8		8.8	7.4
50	12.0	10.6	50	8.3	6.9
	11.5	10.1		8.8	7.4
	11.0	9.6		8.0	6.6
	10.8	9.4		8.8	7.4
	11.8	10.4	<u>10:00</u>	9.2	7.8
1+00	11.3	9.9	3+00	11.1	9.7
	11.0	9.6			
	10.8	9.4			
	10.3	8.9			
	10.0	8.6			
50	9.5	8.1			
	9.5	8.1			
	9.5	8.1			
	9.3	7.9			
	9.0	7.6			

6-01-56 (17)

N. 62+00; 0+00 = W. 16,600 SOUND WEST.

Dist	Sound	Elev	Dist	Sound	Elev
0+00	8.3	6.9	2+00	6.8	5.4
<u>9:43</u>	8.5	7.1		6.8	5.4
	8.2	6.8		5.5	4.1
(1.4)	8.5	7.1		5.0	3.6
	9.1	7.7		5.0	3.6
50	9.0	7.6	50	5.5	4.1
	9.0	7.6		4.8	3.4
	9.2	7.8	(1.4)	3.8	2.4
	10.2	8.8		4.7	3.3
	10.6	9.2		4.8	3.4
1+00	12.0	10.6	3+00	4.3	2.9
	11.3	9.9		4.0	2.6
	10.8	9.4		3.5	2.1
<u>9:45</u>	9.8	8.4		3.8	2.4
	9.1	7.7		4.0	2.6
50	8.0	6.6	50	4.3	2.9
	8.2	6.8		4.5	3.1
	8.9	7.5		5.0	3.6
	8.8	7.4		5.2	3.8
	7.8	6.4	4+00	5.3	3.9
				5.9	4.5
				6.2	4.8

N. 63+00; 0+00 = W. 16,600 SOUND WEST

Dist	Sound	Elev	Dist	Sound	Elev
0+00	7.5	3.7	2+00	5.1	1.3
<u>1107</u>	7.5	3.7		5.1	1.3
	7.1	3.3		4.5	0.7
	7.0	3.2		7.0	3.2
	6.6	2.8		7.0	3.2
50	6.1	2.3	50	6.2	2.4
	5.5	1.7		10.5	6.7
(3.8)	7.2	3.4	(3.8)	12.5	8.7
	5.4	1.6		9.5	5.7
	7.5	3.7		9.0	5.2
1+00	9.0	5.2	3+00	8.5	4.7
	9.0	5.2		7.5	3.7
	7.0	3.2	<u>1.13</u>	7.3	3.5
	5.5	1.7		7.2	3.4
<u>1.10</u>	5.5	1.7		6.8	3.0
50	5.0	1.2	50	7.0	3.2
	4.5	0.7		6.8	3.0
	7.0	3.2		7.2	3.4
	4.0	0.2		7.2	3.4
	4.5	0.7		7.1	3.3

N. 63+00 5-29-56

(28)

Dist	Sound	Elev	Dist	Sound	Elev
4+00	7.2	3.4			
	7.5	3.7			
	8.0	4.2			
	7.8	4.0			
<u>115</u>	7.8	4.0			
50	7.8	4.0			
	8.0	4.2			
(3.8)	7.5	3.7			
	8.2	4.4			
	8.5	4.7			
5+00	8.5	4.7			
	9.8	6.0			
	10.0	6.2			
	10.1	6.3			
	14.5	10.7			

N. 64+00; 0+00 = W. 16,600 SOUND WEST

Dist	Sound	Elev	Dist	Sound	Elev
0+00	8.0	4.2	2+00	11.0	7.2
<u>1:22</u>	8.0	4.2	<u>1:25</u>	10.0	6.2
	8.0	4.2		10.2	6.4
	7.5	3.7		11.0	7.2
(3.8)	7.1	3.3	(3.8)	11.0	}
50	7.0	3.2	50	11.0	}
	7.0	3.2		11.0	7.2
	7.1	3.3		10.2	6.8
	7.3	3.5		10.1	6.7
	7.1	3.3		10.0	6.2
1+00	6.8	3.0	3+00	9.8	6.0
	6.6	2.8		9.8	6.0
	6.2	2.4		9.2	5.4
	5.8	2.0		9.0	5.2
	5.8	2.0		9.5	5.7
50	7.0	3.2	50	9.8	6.0
	11.0	7.2		9.9	6.1
	12.0	8.2		10.5	6.7
	12.5	8.7		11.5	7.7
	12.0	9.2		12.5	9.7

N. 64+00 5-29-56 (19)

Dist	Sound	Elev	Dist	Sound	Elev
4+00	13.0	9.2		25.5	21.7
<u>1:28</u>	14.0	10.2		25.5	21.7
	12.8	9.0	(3.8)	25.0	21.2
	13.5	9.7		25.0	21.2
	12.0	8.2	50	25.5	21.7
50	11.3	7.5		26.0	22.2
	13.2	9.4	<u>1:34</u>	25.8	22.0
(3.8)	13.8	10.0			
	15.5	11.7			
	16.1	12.3			
5+00	16.1	12.3			
	16.0	12.2			
	17.0	13.2			
	19.2	15.4			
	21.0	17.2			
50	22.0	18.2			
<u>1:32</u>	23.0	19.2			
	24.0	20.2			
	24.0	20.2			
	25.0	21.2			
6+00	25.5	21.7			

N. 65+00; 0+00 = W. 16, 600, SOUND WEST.

Dist.	Sound	Elev	Dist.	Sound	Elev
0+00	8.0	4.2	2+00	10.8	7.0
<u>1.57</u>	8.0	4.2	<u>2:00</u>	10.2	6.4
	7.0	3.2		9.8	6.0
	7.0	3.2		9.0	5.2
	7.2	3.4		8.0	4.2
50	8.1	4.3	50	8.1	4.3
	9.9	6.1		10.0	6.2
<u>3.8</u>	11.5	7.7	<u>3.8</u>	9.2	5.4
	13.5	9.7		10.5	6.7
	14.0	10.2		11.1	7.3
1+00	14.0	10.2	3+00	11.1	7.3
	13.5	9.7		11.4	7.6
	12.5	8.7		11.0	7.2
	12.0	8.2		11.0	7.2
	12.0	8.2		12.0	8.2
50	10.5	6.7	50	12.8	9.0
	10.1	6.3		13.5	9.7
	9.8	6.0		14.0	10.2
	9.8	6.0		15.0	11.2
	10.2	6.4		15.1	11.3

N. 65+00 5-29-56 20

Dist	Sound	Elev	Dist	Sound	Elev
4+00	15.5	11.7		19.6	15.7
	16.1	12.3		19.5	15.6
	16.3	12.5		19.2	15.3
	16.3	12.5		19.5	15.6
	17.5	13.7	50	19.5	15.6
50	17.6	13.8		19.8	15.9
	17.0	13.2	<u>2:07</u>	19.8	15.9
<u>3.8</u>	17.2	13.4		19.8	15.9
	18.0	14.2		19.9	16.0
	18.0	14.2	7+00	19.0	15.1
5+00	17.4	13.6	<u>3.9</u>	19.1	15.2
<u>2:05</u>	17.0	13.2		19.2	15.3
	17.0	13.2		18.3	14.4
	18.0	14.2		18.0	14.1
	18.2	14.4	50	18.0	14.1
50	18.3	14.5		17.5	13.6
	19.0	15.2		18.0	14.1
	19.0	15.2		17.5	13.6
	19.5	15.7	<u>2:10</u>	17.5	13.6
	19.1	15.3	8+00	16.3	12.4
6+00	19.5	15.7		17.0	13.1
				17.5	13.6

N. 66+00; 0+00 = W. 16, 600, SOUND WEST.

Dist	Sound	Elev	Dist.	Sound	Elev
0+00	6.5	2.6	2+00	12.0	8.1
2:25	6.5	2.6		11.0	7.1
	6.2	2.3		11.0	7.1
	6.0	2.1		11.0	7.1
	6.5	2.6		10.5	6.6
50	6.5	2.6	50	12.0	8.1
	5.5	1.6	2:30	12.0	8.1
(3.9)	6.2	2.3		12.5	8.6
	6.8	2.9	(3.9)	12.5	8.6
	6.5	2.6		14.0	10.1
1+00	7.0	3.1	3+00	15.0	11.1
	7.8	3.9		14.8	10.9
	8.5	4.6		14.5	10.6
	8.5	4.6		16.0	12.1
	9.5	5.6		17.0	13.1
50	10.5	6.6	50	15.3	11.4
	11.0	7.1		16.0	12.1
	11.0	7.1		16.5	12.6
	10.5	6.6		16.5	12.6
	10.0	6.1		16.5	12.6

N. 66+00 5-29-56 (2)

Dist	Sound	Elev	Dist	Sound	Elev
4+00	16.0	12.1		18.0	14.1
	16.2	12.3		17.8	12.9
	15.5	12.6		17.2	13.3
	15.0	12.1		16.8	12.9
	16.1	12.2	50	17.0	13.1
50	15.8	11.9		16.2	12.3
	15.5	11.6	(3.9)	15.8	11.9
(3.9)	15.7	11.8		14.8	10.9
	16.0	12.1		13.2	9.3
	15.8	11.9	7+00	11.3	7.4
5+00	15.8	11.9		10.5	6.6
	17.0	13.1		11.0	7.1
	16.8	12.9		11.0	7.1
2:33	17.1	13.2		11.0	
	17.0	13.1	50	11.0	
50	17.5	13.6		11.0	
	18.0	14.1		11.0	7.1
	18.0	14.1		10.9	7.0
	18.5	14.6		10.7	6.8
	18.0	14.1	8+00	10.2	6.3
6+00	18.0	14.1		10.6	6.7

N. 66+00

Dist	Sound	
	9.5	5.6
<u>2:38</u>	10.5	6.6
	8.0	4.1
50	3.5	+0.4
(3.9)	2.2	+1.7

9+00

5-29-56

23

N. 67+00; 0+00 = W 17,400			SOUND EAST		
Dist	Sound	Elev	Dist	Sound	Elev
0+00	3.5	+0.3	2+00	15.2	11.4
<u>3:13</u>	5.7	1.9		15.1	11.3
	8.1	4.3		15.0	11.2
	9.2	5.4		15.0	11.2
	10.5	6.7		16.0	12.2
50	11.0	7.2	50	15.0	11.2
	11.2	7.4		16.0	12.2
(3.8)	11.8	8.0	(3.8)	16.0	12.2
	12.1	8.3		15.5	11.7
	12.5	8.7		15.3	11.5
1+00	13.0	9.2	3+00	15.0	11.2
	14.8	11.0		15.5	11.7
	15.0	11.2		15.0	11.2
	15.0	11.2		15.0	11.2
	14.8	11.0		14.1	10.3
50	14.8	11.0	50	15.0	11.2
	14.8	11.0	<u>3:18</u>	14.5	10.7
	14.8	11.0		15.3	11.5
	15.1	11.3		16.0	12.2
	15.5	11.7		16.0	12.2

N. 67+00. 5-29-56			Dist Sound Elev		
4+00	14.8	11.0		12.0	8.2
	15.2	11.4		12.0	8.2
	16.0	12.2		11.7	7.9
(3.8)	15.8	12.0		11.0	7.2
	15.5	11.7	50	11.5	7.7
50	15.0	11.2		10.7	6.9
	14.8	11.0	(3.8)	11.0	7.2
	15.2	11.4		11.0	7.2
<u>3:20</u>	15.3	11.5		11.0	7.2
	16.0	12.2	7+00	10.3	6.5
5+00	15.5	11.7		10.8	7.0
	15.0	11.2		11.2	7.4
	14.6	10.8		11.4	7.6
	14.0	10.2		12.4	8.6
	13.0	9.2	50	13.0	9.2
50	13.5	9.7		13.2	9.4
	13.7	9.9		12.5	8.7
	13.3	9.5		10.0	6.2
	13.5	9.7		8.5	4.7
	13.1	9.3	8+00	8.0	4.2
6+00	12.8	9.0			

6-01-56			N. 68+00; 0+00 = W. 17,400			SOUND EAST		
Dist	Sound	Elev	Dist	Sound	Elev	Dist	Sound	Elev
0+00			2+00	14.5	13.1			
			<u>1010</u>	14.3	12.9			
				13.0	11.6			
				12.1	10.7			
<u>10:07</u>	0.0	+1.4		10.8	9.4			
50	2.0	0.6	50	10.1	8.7			
	3.0	1.6		9.2	7.8			
(1.4)	6.1	4.7	(1.4)	9.2	7.8			
	7.8	6.4		10.0	8.6			
	8.8	7.4		12.3	10.9			
1+00	9.2	7.8	3+00	13.0	11.6			
	10.0	8.6		13.0	11.6			
	10.5	9.1		13.1	11.7			
	11.0	9.6		12.8	11.4			
	11.2	9.8		12.0	10.6			
50	11.8	10.4	50	11.5	10.1			
	12.0	10.6		11.2	9.8			
	12.0	10.6		10.2	8.8			
	12.8	11.4		9.3	7.9			
	13.3	11.9		9.2	7.8			

N. 68+00					
Dist	Sound	Elev	Dist	Sound	Elev
4+00	10.1	8.7		11.5	10.1
	11.5	10.1		11.2	9.8
	12.1	10.7		10.5	9.1
	12.5	11.1		9.3	7.9
	13.0	11.6	50	10.0	8.6
50	12.8	11.4		9.3	7.9
	12.0	10.6		9.5	8.1
(1.4)	12.5	11.1		9.4	8.0
	13.0	11.6		8.8	7.4
	11.8	10.4	7+00	7.8	6.4
5+00	13.0	11.6		7.5	6.1
	13.5	12.1	(1.4)	8.5	7.1
	12.8	11.4		8.2	6.8
	13.2	11.8		9.2	7.8
	13.0	11.6	50	9.0	7.6
4+50	12.0	10.6		7.2	5.8
<u>10.15</u>	12.0	10.6	<u>1020</u>	7.5	6.1
	12.2	10.8		8.0	6.6
	12.5	11.1		9.5	8.1
	11.5	10.1	8+00	10.0	8.6
6+00	12.0	10.6			

6-01-56						(2)
N. 69+00; 0+00 = W. 13,400 SOUND EAST						
Dist	Sound	Elev	Dist	Sound	Elev	
0+00			2+00	15.0	13.6	
				16.0	14.6	
				15.0	13.6	
				14.2	12.7	
			(1.5)	13.1	11.6	
50			50	12.2	10.7	
0+65	0.0	+1.4		11.8	10.3	
<u>10.30</u>	1.3	+0.1		11.0	9.5	
	3.0	1.6		10.0	8.5	
	5.3	3.9		10.0	8.5	
1+00	7.0	5.6	3+00	9.8	8.3	
	8.0	6.6		8.5	7.0	
(1.4)	9.2	7.8		7.5	6.0	
	9.8	8.4	(1.5)	8.0	6.5	
	10.3	8.9		8.3	6.8	
50	11.0	9.6	50	9.3	7.8	
	12.0	10.6	<u>10.35</u>	10.0	8.5	
	12.2	10.8	<u>E</u>	10.0	8.5	
	13.1	11.7		8.5	7.0	
	14.0	12.6		9.0	7.5	

N. 69+00					
Dist	Sound	Elev	Dist	Sound	Elev
4+00	8.0	6.5		11.0	9.5
	9.8	8.3		10.8	9.3
	11.0	9.5		10.4	8.9
	10.8	9.3		10.0	8.5
	10.3	8.8	50	9.3	7.8
50	11.0	9.5		10.5	9.0
	9.5	8.0	(7.5)	10.8	9.3
(1.5)	10.0	8.5		10.5	9.0
	10.0	8.5		10.3	8.8
	10.2	8.7	7+00	9.5	8.0
5+00	11.0	9.5		10.0	8.5
	11.8	10.3		9.8	8.3
<u>10:37</u>	11.3	9.8	<u>10:40</u>	9.5	8.0
	11.1	9.6		9.0	7.5
	11.5	10.0	50	8.5	7.0
50	12.0	10.5		8.0	6.5
	10.2	8.7		7.5	6.0
	10.4	8.9		7.0	5.5
	10.2	8.7		5.4	3.9
	11.0	9.5	8+00	6.0	4.5
6+00	11.0	9.5			

(25)

6-01-56

N. 70+00; 0+00 = W. 17,400

SOUND EAST					
Dist	Sound	Elev	Dist	Sound	Elev
0+00			2+00	14.0	12.5
				14.0	12.5
<u>10:50</u>				13.8	12.3
			(1.5)	13.5	12.0
(1.5)				13.0	11.5
50			50	12.5	11.0
				13.0	11.5
0+75	0.0	+1.5	<u>10:55</u>	13.3	11.8
	1.3	+0.2		12.8	11.3
	3.5	2.0		13.2	11.7
1+00	6.2	4.7	3+00	12.5	11.0
	7.5	6.0		11.8	10.3
	8.5	7.0		11.5	10.0
	9.8	8.3		11.3	9.8
	10.8	9.3		11.0	9.5
50	11.2	9.7	50	10.2	8.7
	12.0	10.5		9.8	8.3
	12.2	10.7		9.4	7.9
	13.5	12.0		9.2	7.7
	14.0	12.5		9.5	8.0

N. 70+00					
Dist	Sound	Elev	Dist	Sound	Elev
4+00	11.0	9.4		8.3	6.7
	10.3	8.7		6.5	4.9
	9.5	7.9		9.0	7.4
<u>10.57</u>	9.1	7.5		11.0	9.4
	9.0	7.4	50	10.5	8.9
50	8.8	7.2		8.3	6.7
	9.6	8.0	(1.6)	6.5	4.9
(1.6)	10.0	8.4		6.8	5.2
	10.5	8.9		6.8	5.2
	10.0	8.4	7+00	7.0	5.4
5+00	10.3	8.7		8.3	6.7
	9.8	8.2		7.5	5.9
	9.0	7.4		7.3	5.7
	9.5	7.9		10.0	8.4
	10.0	8.4	50	10.5	8.9
50	10.0	8.4		8.2	6.6
	10.3	8.7		10.0	8.4
	10.2	8.6		8.0	6.4
	10.0	8.4		7.0	5.4
	9.8	8.2	8+00	5.2	3.6
6+00	9.2	7.6			

6-01-56 (26)

N. 71+00; 0+00 = W. 17, 400			SOUND EAST		
Dist	Sound	Elev	Dist	Sound	Elev
0+00			2+00	13.2	11.5
				13.2	
				13.2	
			(1.7)	13.2	
				13.2	11.5
50			50	13.3	11.6
				12.8	11.1
	0.5	+1.2	<u>11.22</u>	11.8	10.1
<u>11.18</u>	2.5	0.8		12.4	10.7
	7.0	5.3		12.8	11.1
1+00	8.0	6.3	3+00	11.5	9.8
	9.3	7.6		11.0	9.3
(1.7)	10.2	8.5		11.8	10.1
	11.3	9.6		12.0	10.3
	12.2	10.5		10.5	8.8
50	12.8	11.1	50	10.2	8.5
	13.0	11.3		10.0	8.3
	13.4	11.7		10.2	8.5
	14.0	12.3		9.3	7.6
	14.0	12.3		9.5	7.8

N. 71+00					
Dist	Sound	Elev	Dist	Sound	Elev
4+00	9.8	8.1		11.2	9.4
	9.3	7.6		10.2	8.4
	9.0	7.3		8.2	6.4
	9.0	7.3		8.2	6.4
<u>11:25</u>	9.0	7.3	50	8.0	6.2
50	8.8	7.1		8.0	6.2
	8.5	6.8		8.0	6.2
(7.7)	8.5	6.8	(7.8)	7.8	7.0
	10.0	8.3		7.8	7.0
	12.0	10.3	7+00	7.8	7.0
5+00	11.0	9.3		7.2	5.4
	10.5	8.8	(11:30)	7.0	5.2
	9.8	8.1		7.1	5.3
	9.0	7.3		7.5	5.7
	8.5	6.8	50	7.7	5.9
50	8.7	7.0		7.8	6.0
	6.2	4.5		7.5	5.7
	8.0	6.3		7.5	5.7
	8.0	6.3		7.5	5.7
	8.0	6.3	8+00	7.8	6.0
6+00	10.1	8.4			

6-01-56 (27)

N. 72+00; 0+00 = W. 17.400					
SOUND EAST					
Dist	Sound	Elev	Dist	Sound	Elev
0+00			2+00	13.7	11.8
				13.8	11.9
<u>11:40</u>				13.8	11.9
			(1.9)	13.4	11.5
(P.8)	0.0	+1.8		13.2	11.3
50	1.5	+0.3	50	13.0	11.1
	6.2	4.4		11.7	9.8
	9.0	7.2	<u>11:45</u>	11.0	9.1
	10.0	8.2		10.2	8.2
	11.0	9.2		10.0	8.1
1+00	12.2	10.4	3+00	10.1	8.2
	13.0	11.2		10.1	8.2
	13.5	11.7		10.3	8.4
	13.5	11.7		9.8	7.9
	13.5	11.7		10.1	8.2
50	13.8	12.0	50	10.0	8.1
	13.2	11.4		9.7	7.8
	13.2	11.4		9.5	7.6
	13.8	12.0		9.0	7.1
	14.0	12.2		8.0	6.1

N72+00			6-01-56		
DIST	Sound	Elev	DIST	Sound	Elev
4+00	7.5	5.6		6.2	4.3
	8.5	6.6		6.5	4.6
	9.0	7.1	<u>11:50</u>	7.0	5.1
(7.9)	7.5	5.6	50	7.3	5.4
	7.5	5.6	50	8.0	6.1
50	6.5	4.6	(1.9)	8.3	6.4
	7.0	5.1		8.5	6.6
	7.1	5.2		8.5	6.6
<u>11:48</u>	7.2	5.3		8.5	6.6
	6.0	4.1	7+00	8.5	6.6
5+00	6.0	4.1		8.6	6.7
	7.0	5.1		8.3	6.4
	7.0	5.1		8.0	6.1
	8.5	6.6		8.0	}
	7.5	5.6	50	8.0	}
50	11.3	9.4		8.0	6.1
	10.5	8.6		7.8	5.9
	9.8	7.9		8.0	6.1
	10.5	8.6	<u>11:54</u>	7.8	5.9
	8.3	6.4	8+00	7.5	5.6
6+00	6.5	4.6			

6-01-56					
W166+00; 0+00 = N. 6000 SOUND NORTH					
DIST	Sound	Elev	DIST	Sound	Elev
0+00	2.0	+0.8	2+00	10.0	7.2
<u>1:10</u>	2.5	+0.3		10.0	7.2
	4.0	1.2		10.1	7.3
(2.8)	11.0	8.2		10.0	7.2
	12.5	9.7		9.8	7.0
50	13.7	10.9	50	8.8	6.0
	14.0	11.2	<u>1:13</u>	5.1	2.3
	14.0	11.2		5.1	2.3
	14.0	11.2	(2.8)	6.5	3.7
	13.5	10.7		6.2	3.4
1+00	13.0	10.2	3+00	7.0	4.2
	13.0	10.2		6.5	3.7
	12.7	9.9		5.8	3.0
	12.0	9.2		5.8	3.0
	11.5	8.7		6.0	3.2
50	11.5	8.7	50	6.1	3.3
	11.2	8.4		6.4	3.6
	10.8	8.0		6.8	4.0
	9.5	6.7		7.0	4.2
	9.0	6.2		7.0	4.2

W. 166+0 0 6-01-56

Dist	Sound	Elev	Dist	Sound	Elev
4+00	7.1	4.3		6.1	3.2
<u>1.15</u>	7.4	4.6		5.8	2.9
	7.5	4.7		5.8	}
	7.5	4.7		5.8	
	7.8	5.0	50	5.8	2.9
50	8.4	5.6		6.0	3.1
	7.8	5.0		6.8	3.9
(28)	7.5	4.7	(2.9)	6.0	3.1
	7.5	4.7		6.0	3.1
	7.3	4.5	7+00	9.1	6.2
5+00	7.2	4.4		11.1	8.2
	7.5	4.7		10.2	7.3
	7.6	4.8		10.0	7.1
	7.0	4.2	11.20	9.5	6.6
	5.4	2.6	<u>50</u>	8.0	5.1
50	5.6	2.8		7.5	4.6
	6.1	3.3		10.0	7.1
	6.1	3.3		9.2	6.3
	5.8	3.0		10.0	7.1
	5.6	2.8	8+00	11.5	8.6
6+00	5.7	2.9		9.8	6.9

W. 166+00 (29)

Dist	Sound	Elev	Dist	Sound	Elev
	10.0	7.1		7.3	4.4
<u>11.22</u>	10.0	7.1	<u>1.25</u>	7.7	4.8
	9.5	6.6	<u>50</u>	8.5	5.6
50	8.5	5.6		8.8	5.9
	7.0	4.1		9.0	6.1
(29)	6.0	3.1	(2.9)	9.0	}
	6.8	3.9		9.0	
	7.5	4.6	11+00	9.0	}
9+00	7.6	4.7		9.0	
	7.6	4.7		8.8	5.9
	8.0	5.1		8.1	5.3
	9.0	6.1		8.2	5.3
	9.0	6.1	50	8.2	}
50	9.5	6.6		8.2	
	6.5	3.6		8.2	5.3
	6.2	3.3		8.5	5.6
	6.0	3.1		8.5	}
	6.5	3.6	12+00	8.5	
10+00	6.2	3.3		8.5	}
	7.5	4.6		8.5	
	7.7	4.8		9.5	6.6

Dist	Sound	Elev	Dist	Sound	Elev
	9.8	6.8	50	3.1	
50	9.8	6.8		2.8	
	9.4	6.4	(3.0)	2.2	
(3.0)	9.5	6.5		1.9	
	9.4	6.4	<u>1:33</u>	1.9	
	9.5	6.3	15+00	1.5	
13+00	9.2	6.2	SOUND SOUTH		
	9.5	6.3			
	9.8	6.8	0-10	1.8	
	10.0	7.0	0-20	1.0	
	10.1	7.1			
50	10.1	7.1			
	10.1	7.1			
<u>1:30</u>	10.3	7.3			
	10.2	7.2			
	10.0	7.0			
14+00	8.5	5.5			
	8.0	5.0			
	7.5	4.5			
	5.0	2.0			
	5.2	2.2			

6-01-56					
W.165+00; 0+00 = N.6,000 SOUND NORTH					
Dist	Sound	Elev	Dist	Sound	Elev
0+00	0.5	+2.6	2+00	11.8	8.6
	6.0	+2.1		11.5	8.3
<u>1:43</u>	2.0	+1.1		11.7	8.5
	2.8	+0.3		11.5	8.3
	4.0	0.9		11.7	8.5
50	8.5	5.4	50	11.7	8.5
(3.1)	12.0	8.9	(3.2)	11.5	8.3
	14.0	10.9		11.5	8.3
	14.4	11.3		11.0	7.8
	14.4	11.2	<u>1:48</u>	11.2	8.0
1+00	14.3	11.2	3+00	11.0	7.8
	13.8	10.7		8.5	5.3
	13.8	10.7		9.0	5.8
	13.6	10.5		9.0	5.8
	13.4	10.3		8.8	5.6
50	13.2	10.1	50	8.5	5.3
	13.0	9.9		8.7	5.5
	12.3	9.2		8.8	5.6
	12.5	9.4		9.0	5.8
	12.1	9.0		8.5	5.3

W. 165+00			6-01-56		
Dist	Sound	Elev	Dist	Sound	Elev
4+00	8.5	5.3		7.3	4.1
	8.3	5.1	<u>1:55</u>	7.3	4.1
	7.8	4.6		7.2	4.0
<u>1:52</u>	8.0	4.8		7.0	3.8
	8.0	4.8	50	7.0	3.8
50	8.2	5.0		8.0	4.8
	8.5	5.3	(3.2)	9.0	5.8
(3.2)	8.5	5.3		9.8	6.6
	8.5	5.3		10.5	7.3
	9.0	5.8	7+00	10.2	7.0
5+00	8.8	5.6		10.2	7.0
	9.5	6.3		10.0	6.8
	10.0	6.8		9.5	6.3
	10.4	7.2		9.0	5.8
	10.1	6.9	50	7.8	4.6
50	10.1	6.9		6.5	3.3
	9.0	5.8		9.0	5.8
	8.5	5.3		9.0	5.8
	7.8	4.6		8.0	4.8
	7.5	4.3	8+00	7.0	3.8
6+00	7.5	4.3		7.0	3.8

W. 165+00			6-01-56		
Dist	Sound	Elev	Dist	Sound	Elev
	7.5	4.2		10.3	6.9
	8.5	5.2		10.2	6.8
	11.8	8.5	50	10.0	6.6
50	11.5	8.2		9.5	6.1
	10.0	6.7		9.0	5.6
(3.3)	8.5	5.2		9.0	5.6
<u>2:00</u>	7.3	4.0		9.5	6.1
	6.8	3.5	11+00	9.5	6.1
9+00	7.1	3.8		9.6	6.2
	8.0	4.7	(3.4)	9.8	6.4
	8.5	5.2		9.5	6.1
	8.5	5.2		9.2	5.8
	8.8	5.5	50	9.0	5.6
50	9.0	5.7		9.0	5.6
	9.2	5.9	<u>2:03</u>	8.8	5.4
	9.8	6.5		9.8	6.4
	8.0	4.7		10.0	6.6
	7.1	3.8	12+00	10.0	
10+00	7.8	4.5		10.0	
	9.2	5.9		10.0	6.6
	10.2	6.9		9.7	6.3

W. 165700		
Dist	Sound	Elev
	9.5	6.1
50	9.8	6.4
	10.4	7.0
	10.5	7.1
(3.4)	10.0	6.6
	9.2	5.8
13+00	7.0	3.6
	5.8	2.4
	5.0	1.6
2.08	3.5	0.1
	3.0	+0.4
50	2.2	+1.2
	2.0	+1.4
	1.5	+1.9
13+80	1.3	+1.1

W. 16-01-56			(32)		
W. 164+00; 2+00 = N. 6,000. SOUND NORTH					
Dist	Sound	Elev	Dist	Sound	Elev
0+00			2+00	13.1	9.3
0+18	0.0	+3.7	2+40	13.0	9.2
	0.4	+3.3		12.8	9.0
2.35				12.8	9.0
2.30	1.2	+2.5			
	2.0	+1.7	(3.8)	12.7	8.9
50	2.5	+1.2	50	12.4	8.6
(3.7)	3.5	+0.2		11.0	7.2
	6.5	2.8		12.0	8.2
	10.5	6.8		12.0	8.2
	11.8	8.1		12.5	8.7
1+00	12.1	8.4	3+00	12.7	8.9
2.38	12.7	9.0		12.5	8.7
	14.5	10.8		12.5	8.7
	14.8	11.1		12.5	8.7
	14.5	10.8		12.7	8.9
50	15.0	11.3	50	13.2	9.4
	14.5	10.8		13.2	9.4
	14.1	10.4		11.8	8.0
	13.8	10.1		11.8	8.0
	13.5	9.8		11.8	8.0

W. 164+00			W. 164+00			6-01-56			33		
Dist	Sound	Elev	Dist	Sound	Elev	Dist	Sound	Elev	Dist	Sound	Elev
4+00	12.0	8.2		10.8	7.0		9.2	5.3		10.8	6.9
<u>2.42</u>	12.1	8.3	<u>2.42</u>	8.5	4.7		9.3	5.4		11.0	7.1
	11.7	7.9		8.0	4.2		9.0	5.1	50	11.0	7.1
	11.2	7.4		8.0	4.2	50	8.1	4.2	<u>2.55</u>	10.8	6.9
	11.0	7.2	50	8.0	4.2		7.8	2.9		10.7	6.8
50	10.8	7.0		8.1	4.3		6.3	2.4		10.4	6.5
(3.8)	11.1	7.3		8.1	4.3	(3.9)	6.8	2.9	(3.9)	10.0	6.1
	11.5	7.7	(3.8)	8.5	4.7		10.0	6.1	11+00	10.0	6.1
	11.5	7.7		9.5	5.7	9+00	9.9	6.0		10.1	6.2
	11.8	8.0	7+00	9.8	6.0		9.5	5.6		11.0	7.1
5+00	11.5	7.7		9.5	5.7		7.5	3.6		10.7	6.8
	11.1	7.3		9.5	5.7		8.5	4.6		10.5	6.6
	10.5	6.7		9.5	5.7	<u>2.53</u>	9.5	5.6	50	10.2	6.3
	10.2	6.4		9.8	6.0	50	9.5	5.7		10.1	6.2
	10.5	6.7	50	9.5	5.7		9.8	5.9		10.2	6.3
50	11.0	7.2		9.0	5.2		10.1	6.2		10.0	6.1
	11.2	7.4		8.8	5.0		10.3	6.4		9.7	5.8
	11.5	7.7	<u>2.50</u>	8.2	4.4		11.1	7.2	12+00	9.5	5.6
	11.4	7.6		8.4	4.6	10+00	11.4	7.5		9.7	5.8
	11.5	7.7	8+00	9.1	5.3		11.2	7.3		9.8	5.9
6+00	11.1	7.3		9.7	5.9		11.2	7.3		9.8	5.9

W. 164+00		
Dist	Sound	Elev
	9.5	5.6
50	9.0	5.1
	7.0	3.1
(3.9)	4.0	0.1
	3.0	+0.9
	2.5	+1.4
13+00	1.8	+2.1
	1.5	+2.4
	1.0	+2.9

6-01-56			34		
W. 163+00; 0+00 = N 6,000,			SOUND NORTH		
Dist	Sound	Elev	Dist	Sound	Elev
0+00			2+00	15.1	10.0
				14.7	10.6
				14.0	9.9
(4.1)				13.7	9.6
	0.0	+4.1	(4.1)	13.2	9.1
50	1.2	+2.9	50	13.0	8.9
<u>3.7</u>	2.2	+1.9		12.7	8.6
	3.0	+1.1		12.2	8.1
	3.8	+0.3	<u>3.20</u>	12.1	8.0
	6.0	1.9	<u>2</u>	12.3	8.2
1+00	10.0	5.9	3+00	12.0	7.9
	11.8	7.7		12.2	8.1
	13.0	8.9		12.0	7.9
	14.0	9.9		13.4	9.3
	14.8	10.7		14.0	9.9
50	15.1	11.0	50	14.0	9.9
	15.2	11.1		13.9	9.8
	15.2	11.1		14.0	9.9
	15.2	11.1		13.7	9.6
	15.4	11.3		13.5	9.4

W. 163+00					
Dist	Sound	Elev	Dist	Sound	Elev
4+00	13.2	9.0		12.0	7.8
	12.1	7.9		12.0	7.8
	12.0	7.8		11.8	7.6
	13.0	8.8		11.5	7.3
	13.0	8.8	50	11.4	7.2
50	12.8	8.6		11.5	7.3
<u>3:24</u>	11.8	7.6		11.8	7.6
	11.5	7.3	(4.2)	11.5	7.3
(4.2)	11.0	6.8		11.2	7.0
	11.2	7.0	7+00	11.5	7.3
5+00	11.2	7.0		12.0	7.8
	11.0	6.8		12.0	7.8
	11.1	6.9		12.0	7.8
	10.8	6.6		11.5	7.3
	10.8	6.6	50	11.3	7.1
50	10.7	6.5	<u>3:28</u>	11.2	7.0
	11.1	6.9		11.2	7.0
	12.0	7.8		11.0	6.8
	12.2	8.0		10.8	6.6
	12.3	8.1	8+00	11.2	7.0
6+00	12.4	8.2		12.0	7.8

W. 163+00 6-01-56 (35)					
Dist	Sound	Elev	Dist	Sound	Elev
	12.0	7.8		13.0	8.7
	12.0	7.8		12.5	8.2
(4.2)	11.2	7.0	50	12.1	7.8
50	11.0	6.8		12.0	7.7
	11.0			12.3	8.0
<u>3:30</u>	11.0			12.2	7.9
	11.0			12.0	7.7
	11.0		11+00	11.8	7.5
9+00	11.0	6.8		11.5	7.2
	11.2	7.0		12.0	7.7
	11.3	7.1	(4.3)	12.0	7.7
	11.4	7.2		12.0	7.7
	11.5	7.3	50	12.1	7.8
50	12.0	7.8	<u>3:35</u>	12.2	7.9
	12.1	7.9		12.8	8.5
	12.3	8.1		13.0	8.7
	12.1	7.9		13.0	8.7
	12.8	8.6	12+00	12.0	7.7
10+00	12.5	8.3		10.0	5.7
	12.4	8.2		7.5	3.2
	12.8	8.6		4.8	0.5
			12+50	4.0	+0.3
				3.0	+1.3

6-04-56

W. 162+00; 0+00 = N. 6070 SOUND NORTH					
Dist	Sound	Elev	Dist	Sound	Elev
0+00			2+00	13.2	10.4
<u>9:25</u>	0.0	+2.8		12.6	9.8
	0.5	+2.3		12.1	9.3
(2.8)	1.6	+1.2	(2.8)	11.3	8.5
	2.8	0.0		11.2	8.4
50	5.0	2.2	50	11.1	8.3
	7.2	4.4		11.5	8.7
	9.1	6.3	<u>9:30</u>	11.7	8.9
	10.0	7.2		11.5	8.7
	10.5	7.7		11.3	8.5
1+00	11.8	9.0	3+00	12.0	9.2
	12.8	10.0		11.9	9.1
	13.5	10.7		11.3	8.5
	13.7	10.9		11.2	8.4
	14.5	11.7		11.5	8.7
50	14.4	11.6	50	11.2	8.4
	14.4	11.6		11.5	8.7
	14.2	11.4		11.2	8.4
	13.9	11.1		10.2	7.4
	13.5	10.7		10.0	7.2

(36)

W. 162+00

Dist	Sound	Elev	Dist	Sound	Elev
4+00	9.8	7.1		9.8	7.1
	9.8	7.1		9.3	6.6
	10.0	7.3		9.5	6.8
	10.0	7.3		9.8	7.1
	9.8	7.1	50	10.0	7.3
50	9.8	7.1		11.0	8.3
	9.8	7.1		11.5	8.8
(2.7)	9.5	6.8	(2.7)	11.5	8.8
	9.8	6.1		11.3	8.7
	9.8	6.1	7+00	11.0	8.4
5+00	9.8	6.1		11.0	8.4
	10.0	7.3	(2.6)	10.8	8.2
	10.1	7.4		10.2	7.6
<u>9:35</u>	10.2	7.5		10.8	8.2
	10.8	8.1	50	11.0	8.4
50	11.0	8.3		10.9	8.3
	11.0	8.3		10.5	7.9
	10.9	8.2		10.5	7.9
	10.2	7.5	<u>9:38</u>	9.2	6.6
	10.2	7.5	8+00	8.3	5.7
6+00	10.2	7.5		8.3	5.7

W. 162+00			6-04-56		
Dist	Sound	Elev	Dist	Sound	Elev
	8.3	5.7		11.5	8.9
	8.3	5.7		11.2	8.6
(2.6)	9.0	6.4	50	10.8	8.2
50	9.1	6.5		10.5	7.9
	9.8	7.2		10.5	7.9
<u>9:40</u>	10.1	7.5	(2.6)	10.5	7.9
	10.1	7.5		10.8	8.2
	10.1	7.5	11+00	11.0	8.4
9+00	10.1	7.5		10.3	7.7
	10.2	7.6		9.2	6.6
	10.7	8.1		8.3	5.7
	11.0	8.4		6.3	3.7
	11.0	8.4	50	4.5	1.9
50	11.2	8.6	<u>9:45</u>	2.8	+0.8
	11.3	8.7			
	11.4	8.8			
	11.3	8.7			
	11.2	8.6	12+00		
10+00	11.2	8.6			
	11.3	8.7			
	11.3	8.7			

W. 161+00; 0+00 = N. 6, 100, SOUND NORTH					
Dist	Sound	Elev	Dist	Sound	Elev
0+00			2+00	15.2	12.7
				13.8	11.3
0+24	0.0	+2.5		13.2	10.7
<u>10:03</u>	0.5	+2.0	(2.5)	11.8	9.3
	1.4	+1.1		11.2	8.7
50	2.0	+0.5	50	11.3	8.8
	3.0	0.5		12.0	9.5
(2.5)	7.0	4.5		12.2	9.7
	8.5	6.0		12.8	10.3
	9.5	7.0		12.8	10.3
1+00	11.5	9.0	3+00	12.3	9.8
<u>10:05</u>	13.0	10.5		11.8	9.3
	13.8	11.3		11.8	9.3
	15.2	12.7		11.8	9.3
	15.5	13.0		11.0	8.5
50	16.0	13.5	50	11.0	8.5
	16.0	13.5		10.7	8.2
	15.8	13.3		10.5	8.0
	15.8	13.3		12.0	9.5
	15.5	13.0		12.2	9.7

W. 161+00					
Dist	Sound	Elev	Dist	Sound	Elev
4+00	11.6	9.4		11.4	9.0
	11.2	8.8		11.8	9.4
<u>10:10</u>	11.0	8.6		11.8	9.4
	11.2	8.8	(24)	11.8	9.4
	11.7	9.3	50	11.8	9.4
50	11.0	8.6		10.5	8.1
	11.5	9.1		10.0	7.6
(24)	11.8	9.4	<u>10:15</u>	9.5	7.1
	11.2	8.8		9.5	
	11.5	9.1	7+00	9.5	
5+00	11.2	8.8		9.5	
	11.2	8.8		9.5	7.1
	11.8	9.4		10.0	7.6
	11.5	9.1		10.8	8.4
	11.4	9.0	50	11.0	8.6
50	11.2	8.8		11.0	8.6
	11.0	8.6		11.1	8.7
	11.5	9.1		11.1	8.7
	11.5	9.1		10.8	8.4
	11.5	9.1	8+00	10.5	8.1
6+00	11.2	8.8		10.0	7.6

W. 161+00			6-04-56		
Dist	Sound	Elev	Dist	Sound	Elev
	9.8	7.5		12.5	10.2
	9.8			12.8	10.5
	9.8		50	13.0	10.7
50	9.8	7.5		12.5	10.2
	9.7	7.4	(23)	11.2	8.9
(23)	9.4	7.1		9.4	7.1
	9.5	7.2		9.0	6.7
	8.8	6.5	11+00	8.0	5.7
9+00	9.0	6.7		6.5	4.2
	9.2	6.9		4.6	2.3
	9.7	7.4		2.8	0.5
	10.5	8.2	<u>10:23</u>	1.5	+0.8
	11.0	8.7	50		
50	11.5	9.2			
<u>10:20</u>	11.5	9.2			
	11.7	9.4			
	11.2	8.9			
	11.0	8.7			
10+00	11.0	8.7			
	11.0	8.7			
	11.3	9.0			

W. 160+00; 0+00 = N. 61.50 SOUND NORTH

Dist	Sound	Elev	Dist	Sound	Elev
0+00			2+00	13.9	11.8
0+15	0.0	+2.1		13.1	11.0
	0.3	+1.8		12.2	10.1
<u>11:03</u>	1.2	+0.9		11.8	9.7
	1.8	+0.3		11.5	9.4
50	3.0	0.9	50	10.8	8.7
(2.1)	5.0	2.9		11.0	8.9
	7.8	5.7	(2.1)	11.2	9.1
<u>11:05</u>	9.0	6.9		11.0	8.9
	10.0	7.9		11.0	
1+00	10.7	8.6	3+00	11.0	
	11.0	8.9		11.0	
	11.2	9.1		11.0	8.9
	11.8	9.7		10.8	8.7
	12.8	10.7		10.7	8.6
50	13.3	11.2	50	10.4	8.3
	13.8	11.7		10.3	8.2
	14.0	11.9		10.2	8.1
	14.2	12.1		10.0	7.9
	14.0	11.9		9.8	7.7

W. 160+00 6-04-56 (39)

Dist	Sound	Elev	Dist	Sound	Elev
4+00	10.0	8.0		10.0	8.0
	10.2	8.2		9.5	7.5
	10.5	8.3		9.3	7.3
	10.7	8.7		9.0	7.0
	10.0	8.0	50	9.3	7.3
50	10.0	2		10.5	8.5
	10.0		(2.0)	10.8	8.8
(2.0)	10.0	8.0		10.4	8.4
	10.0	8.0		10.2	8.2
	10.0	8.0	7+00	10.2	8.2
5+00	9.8	7.8	<u>11:15</u>	10.8	8.4
	10.0	8.0		10.4	8.4
	9.7	7.7		10.0	8.0
	9.7	7.7		9.8	7.8
<u>11:13</u>	9.7	7.7	50	9.4	7.4
50	9.4	7.4		9.2	7.2
	9.4	7.4		9.3	7.3
	9.6	7.6		9.2	7.2
	9.8	7.8		8.8	6.8
	10.0	8.0	8+00	9.2	7.2
6+00	10.3	8.3		10.0	8.0

W. 160+00					
Dist	Sound	Elev	Dist	Sound	Elev
	10.1	8.1	<u>11:20</u>	10.2	8.2
	9.7	7.7		8.8	6.8
	9.3	7.3	.50	8.0	6.0
50	9.4	7.4		7.0	5.0
	9.8	7.8	(2.0)	5.5	3.5
(2.0)	9.8	7.8		4.8	2.8
	9.6	7.6	<u>11:23</u>	2.5	0.5
	9.8	7.8	11+00	1.5	+0.5
9+00	9.8	7.8			
	9.8	7.8			
<u>11:18</u>	9.4	7.4			
	10.5	8.5			
	10.6	8.6			
50	10.2	8.2			
	10.2	8.2			
	11.0	9.0			
	11.5	9.5			
	11.5	9.5			
10+00	11.5	9.5			
	11.8	9.8			
	11.2	9.2			

6-04-56					
W. 159+00; 0+00 = N 6.200 SOUND NORTH					
Dist	Sound	Elev	Dist	Sound	Elev
0+00	0.0	+1.9	2+00	12.2	10.3
<u>11:40</u>	0.5	+1.4		12.3	10.4
	1.2	+0.7		12.2	10.3
(1.9)	2.2	0.3		12.2	10.3
	5.2	3.3		11.8	9.9
50	7.3	5.4	50	11.4	9.5
	7.8	5.9		10.5	8.6
	8.5	6.6	(1.9)	10.1	8.2
	9.2	7.3		9.9	8.0
	9.8	7.9		9.5	7.6
1+00	11.0	9.1	3+00	10.0	8.1
	12.1	10.2		10.1	8.2
	13.0	11.1		10.1	8.2
	13.2	11.3		10.5	8.6
	13.0	11.1		10.5	8.6
50	13.0	11.1	50	10.3	8.4
	12.5	10.6		10.1	8.2
	12.2	10.4		10.0	8.1
	12.1	10.3		10.2	8.3
	12.1	10.3		10.2	8.3

W. 159+00					
Dist	Sound	Elev	Dist	Sound	Elev
4+00	10.1	8.3		10.5	8.7
	9.8	8.0		10.5	8.7
	9.1	7.3		10.8	9.0
	9.3	7.5		11.0	9.2
	9.7	7.9	50	10.8	9.0
50	10.0	8.2		11.0	9.2
	9.7	7.9	(1.8)	11.0	9.2
(1.8)	9.5	7.7		11.0	9.2
	10.0	8.2		9.7	6.9
	10.0	8.2	7+00	9.2	6.4
5+00	10.0	8.2		9.3	6.5
	9.8	8.0	<u>11.50</u>	9.2	6.4
	9.9	8.1		9.0	6.2
	10.1	8.3		9.1	6.3
	10.1	8.3	50	9.1	6.3
50	10.2	8.4		9.2	6.4
<u>11.48</u>	10.5	8.7		9.1	6.3
	11.0	9.2		9.8	8.0
	10.6	8.8		9.8	8.0
	10.2	8.4	8+00	9.5	7.7
6+00	10.1	8.3		9.5	7.7

W. 159+00 6-04-56					
Dist	Sound	Elev	Dist	Sound	Elev
	9.5	7.9		6.2	4.4
	9.4	7.8	(1.8)	4.8	3.0
	9.4	7.8	50	3.0	1.2
50	9.8	8.0		1.8	0.0
	9.4	7.6		1.0	+0.8
	10.0	8.2			
	(1.8)	10.5	8.7		
	11.5	9.7	11+00		
9+00	11.8	10.0			
	11.6	9.8			
	11.8	10.0			
	11.3	9.5			
<u>11.53</u>	11.0	9.2			
50	10.8	9.0			
	10.1	8.3			
	10.2	8.4			
	10.1	8.3			
	9.8	8.0			
10+00	8.0	6.2			
	7.0	5.2			
	7.0	5.2			

6-04-56

N. 73+00; 0+00 = W. 16, 400, SOUND WEST

Dist	Sound	Elev	Dist	Sound	Elev
0+00	0.0	+2.2	2+00	8.5	6.2
	0.8	+1.4		8.5	6.2
<u>1:15</u>	0.8	+1.4		8.5	6.2
	0.8	+1.4		9.5	7.2
	1.1	+1.1		9.8	7.5
50	1.3	+0.9	50	9.5	7.2
	2.0	+0.2		9.3	7.0
(2.2)	3.0	0.8	(2.3)	9.5	7.2
	3.3	1.1		9.7	7.4
	4.3	2.1		9.7	7.4
1+00	5.2	3.0	3+00	9.4	7.1
	6.2	4.0		9.0	6.7
	7.2	5.0	1:20	9.1	6.8
	8.0	5.8		9.1	6.8
	8.8	6.6		10.5	8.2
50	9.0	6.8	50	10.2	7.9
	9.1	6.9		10.5	8.2
	9.0	6.8		10.5	8.2
	9.0			10.1	7.8
	9.0			8.8	6.5

N. 73+00

Dist	Sound	Elev	Dist	Sound	Elev
4+00	8.5	6.2		9.0	6.7
	6.8	4.5	1:25	8.3	6.0
	7.8	5.5		7.0	4.7
	7.7	5.4		7.3	5.0
	7.5	5.2	50	7.2	4.9
50	7.3	5.0		8.0	5.7
(2.3)	7.5	5.2	(2.3)	8.0	5.7
	8.0	5.7		7.8	5.5
	8.5	6.2		9.5	7.2
	8.5	6.2	7+00	9.5	7.2
5+00	8.1	5.8		9.3	7.0
	7.0	4.7		9.1	6.8
	7.5	5.2		9.3	7.0
	8.5	6.2		10.0	7.7
	6.5	4.2	50	10.1	7.8
50	5.4	3.1		10.8	8.5
	6.0	3.7		11.0	8.7
	7.8	5.5		11.8	9.5
	7.0	4.7		11.3	9.0
	7.0	4.7	8+00	11.3	9.0
6+00	8.0	5.7		11.8	9.5

N. 73+00		
Dist	Sound	Elev
	12.0	9.7
	13.1	10.8
	13.1	10.8
50	15.0	12.7
	14.0	11.7
	14.1	11.8
(2.3)	13.2	10.9
	13.5	11.2
9+00	14.0	11.7
	13.5	11.2
	13.1	10.8
	13.0	10.7
	12.8	10.5
50	12.7	10.4
1.28	11.8	9.5
1.28	11.0	8.7
	10.3	8.0
	8.0	5.7
10+00	5.5	3.2
	2.8	0.5
	2.5	0.2

6-04-56			N. 74+00; 0+00 = W. 16,500 SOUND WEST		
Dist	Sound	Elev	Dist	Sound	Elev
0+00			2+00	12.0	9.5
+10				12.0	9.5
+20	0.0	+2.5		12.0	9.5
+30	0.5	+2.0	11.52	11.8	9.3
+40			11.52	11.7	9.2
1.48	1.0	+1.5			
50	1.3	+1.2	50	10.8	8.3
(2.5)	1.5	+1.0		10.7	8.2
	2.5	0.0	(2.5)	10.3	7.8
	3.2	0.7		11.0	8.5
	5.0	2.5		11.0	8.5
1+00	7.1	4.6	3+00	11.0	8.5
	9.0	6.5		10.5	8.0
	11.0	8.5		9.5	7.0
	12.0	9.5		9.0	6.5
	12.0	9.5		9.3	6.8
50	12.3	9.8	50	8.2	5.7
	12.2	9.7		9.0	6.5
	12.7	10.2		8.5	6.0
	12.2	9.7		9.5	7.0
	12.3	9.8		9.0	6.5

N. 74+00			6-04-56		
Dist	Sound	Elev	Dist	Sound	Elev
4+00	8.5	5.9		8.2	5.6
<u>1155</u>	8.1	5.5		8.1	5.5
	8.0	5.4		9.1	6.5
	9.0	6.4		8.7	6.1
	9.3	6.7	50	7.0	4.4
50	6.5	3.9		7.3	4.7
	6.5	3.9		7.2	4.6
(2.6)	6.5	3.9	(2.6)	7.5	4.9
	6.2	3.6		7.8	5.2
	6.5	3.9	7+00	8.0	5.4
5+00	7.2	4.6		8.1	5.5
	8.1	5.5		9.5	6.9
	8.0	5.4		8.8	6.2
	8.0	5.4		8.8	6.2
	8.3	5.7	50	9.5	6.9
50	10.0	7.4		11.0	8.4
	10.5	7.9		11.0	8.4
	10.5	7.9		11.0	8.4
	10.5	7.9	<u>2:00</u>	11.5	8.9
	10.0	7.4	8+00	11.7	9.1
6+00	9.0	6.4		12.0	9.4

N. 74+00			(44)		
Dist	Sound	Elev	Dist	Sound	Elev
	12.5	9.9		3.1	0.4
	12.7	10.1		3.0	0.3
	12.5	9.9	50	2.5	+0.2
50	14.0	11.4		2.5	+0.2
	14.8	12.2		2.4	+0.3
(2.6)	14.8	12.2	<u>2:03</u>	2.3	+0.4
	14.7	12.1	<u>2.0</u>	2.0	+0.7
	15.0	12.4	11+00	2.0	+0.7
9+00	15.2	12.6		2.1	+0.6
	15.1	12.5	(2.7)	2.2	+0.5
	15.0	12.4		2.5	+0.2
	14.8	12.2		3.0	0.3
	13.7	11.1	50	3.5	0.8
50	13.0	10.4		3.7	1.0
	11.9	9.3		4.7	2.0
	10.3	7.7		5.0	2.3
	8.0	5.4		6.0	3.3
	6.0	3.4	12+00	8.2	5.5
10+00	4.7	2.1		8.2	5.5
	3.8	1.2		9.5	6.8
	3.0	0.4		10.0	7.3

N 74+00 6-04-56

DIST	Sound	Elev	DIST	Sound	Elev
	9.5	6.7	50	12.8	10.0
50	9.3	6.5		13.0	10.2
	9.5	6.7		13.0	10.2
<u>2.07</u>	11.2	9.4		12.7	9.9
	11.5	9.7	(2.8)	12.5	9.7
	12.2	9.4	15+00	12.5	9.7
13+00	12.5	9.7		12.0	9.2
	12.5	9.7	<u>2.12</u>	12.0	9.2
(2.8)	11.3	8.5		11.5	8.7
	10.1	7.3		10.7	7.9
	10.0	7.2	50	10.0	7.2
50	10.0	7.2		10.0	7.2
	9.7	6.9		9.5	6.7
	9.5	6.7		7.8	5.0
	9.5	6.7		6.2	3.4
	10.0	7.2	16+00	4.0	1.2
14+00	10.5	7.7		2.2	+0.6
	11.2	8.4		1.7	+1.1
	11.0	8.2			
	11.0	8.2			
	12.0	9.2			

N. 75+00; 0+00 = W. 16,550 SOUND WEST					
DIST	Sound	Elev	DIST	Sound	Elev
0+00			2+00	12.1	9.0
				11.9	8.8
	0.0	+3.0		11.6	8.5
<u>2.33</u>	0.5	+2.5	(3.1)	11.4	8.3
	1.1	+1.9		11.7	8.6
50	1.5	+1.5	50	11.2	8.1
	2.4	+0.6		11.4	8.3
(3.0)	3.4	0.4		12.0	8.9
	5.5	2.5		11.4	8.3
	6.5	3.5	<u>2.37</u>	11.5	8.4
17+00	8.1	5.1	3+00	11.2	8.1
	9.8	6.8		10.5	7.4
	11.9	8.9		9.2	6.1
	12.7	9.7		8.7	5.6
	13.4	10.4		9.0	5.9
50	14.4	11.4	50	9.4	6.3
	14.7	11.7		10.0	6.9
	14.2	11.2		9.1	6.0
	14.0	11.0		8.0	4.9
	13.9	10.9		8.0	4.9

N 75+00			6-04+56		
Dist	Sound	Elev	Dist	Sound	Elev
4+00	8.1	5.0		9.4	6.2
	8.1	5.0		8.0	4.8
	8.0	4.9		7.4	4.2
	7.2	4.1		7.5	4.3
	6.9	3.8	50	6.2	3.0
50	7.0	3.9		5.9	2.7
	6.8	3.7		5.8	2.6
	7.2	4.1	(3.2)	6.9	3.7
(3.1)	7.1	4.0		6.0	2.8
	6.9	3.8	7+00	6.5	3.3
5+00	8.9	5.8		6.7	3.5
	7.6	4.5		4.7	1.5
	7.9	4.8	<u>2.45</u>	6.0	2.8
	8.0	4.9		8.2	5.0
	10.0	6.9	50	9.5	4.3
50	12.7	9.6		8.4	5.2
<u>2.42</u>	12.7	9.6		7.9	4.7
	11.5	8.4		7.8	4.6
	10.0	6.9		7.9	4.7
	9.7	6.6	8+00	6.9	3.7
6+00	10.0	6.9		7.6	4.4

N. 75+00			48		
Dist	Sound	Elev	Dist	Sound	Elev
	7.2	4.0		9.1	5.9
	6.8	3.6	<u>2.50</u>	8.9	5.7
	7.0	3.8	50	8.5	5.3
✓ 50	7.0	3.8		8.8	5.6
	7.1	3.9	(3.2)	9.1	5.9
	7.0	3.8		9.5	6.3
(3.2)	8.4	5.2		8.9	5.7
	11.9	8.7	11+00	9.5	6.3
9+00	15.0	11.8		9.7	6.5
<u>2.47</u>	15.2	12.0		11.0	9.8
	14.0	10.8		12.7	9.5
	13.9	10.7		13.1	9.9
	13.6	10.4	50	14.0	10.8
50	14.7	11.5		13.8	10.6
	15.1	11.9		13.9	10.7
	14.8	11.6		12.9	9.7
	12.3	9.1		13.0	9.8
	12.7	9.5	12+00	12.9	9.7
10+00	12.9	9.7		13.0	9.8
	10.0	6.8		12.2	9.0
	9.7	6.5		12.0	8.8

N. 75+00			6-04-56		
Dist	Sound	Elev	Dist	Sound	Elev
	12.2	8.9	50	11.2	7.8
50	12.9	9.6		11.9	8.5
	13.3	10.0		12.0	8.6
(3.3)	13.0	9.7		12.2	8.8
	13.0	9.7		12.2	8.8
	12.5	9.2	14+00 15+00	12.1	8.7
13+00	10.9	7.6		12.2	8.8
	9.2	5.9	(3.4)	12.3	8.9
2.55	9.7	6.4		11.9	8.5
2	9.7	6.4		11.7	8.3
	9.7	6.4	50	11.6	8.2
50	9.8	6.5		11.4	8.0
	9.9	6.6		11.0	7.6
	10.3	7.0	3.00	10.0	6.6
	10.9	7.6		10.0	6.6
	11.3	8.0	15+00 16+00	9.2	5.8
14+00	11.5	8.2		9.1	5.7
	11.1	7.8		9.4	6.0
	10.7	7.4		8.4	5.0
	11.0	7.7		7.0	3.6
	11.0	7.7	50	6.0	2.6

N. 75+00		
Dist	Sound	Elev
	5.6	2.2
	5.0	1.6
	3.0	+0.4
	2.1	+1.3
17+00 16+00	1.0	+3.4

6-06-56

N76+00; 0+00 = N. 16,580 SOUND WEST

Dist	Sound	Elev	Dist	Sound	Elev
0+00			2+00	13.5	9.8
				13.1	9.4
(3.7)	0.0	+3.7		11.8	8.1
<u>10:03</u>	1.0	+2.7		11.3	7.6
	1.5	+2.2	(3.7)	12.0	8.3
50	2.2	+1.5	50	12.2	8.5
	2.7	+1.0		10.5	6.8
	3.2	+0.5		11.5	7.8
	4.5	0.8	<u>10:07</u>	9.0	5.3
	6.0	2.3		9.0	5.3
<u>1+00</u>	7.5	3.8	3+00	9.1	5.4
	9.5	5.8		9.8	6.1
	12.1	8.4		10.2	6.5
	14.0	10.3		10.8	7.1
	14.6	10.9		10.5	6.8
50	14.8	11.1	50	10.2	6.5
	15.1	11.4		10.0	6.3
	15.3	11.6		10.5	6.8
	15.0	11.3		10.5	6.8
	14.1	10.7		10.1	6.4

N. 76+00

Dist	Sound	Elev	Dist	Sound	Elev
4+00	10.3	6.6		7.5	3.8
	8.8	5.1		7.7	4.0
	9.0	5.3		7.6	3.9
	9.1	5.4		7.0	3.3
(3.7)	9.2	5.5	50	8.8	5.1
50	9.2	5.5		9.0	5.3
<u>10:10</u>	9.5	5.8		10.1	6.4
	8.5	4.8	(3.7)	10.7	7.0
	8.0	4.3		11.2	7.5
	8.2	4.5	7+00	11.0	7.3
5+00	9.0	5.3		10.0	6.3
	9.0	5.3	<u>10:15</u>	9.0	5.3
	9.2	5.5		8.5	4.8
	9.0	5.3		9.0	5.3
	7.5	3.8	50	9.2	5.5
50	9.0	5.3		9.8	6.1
	10.1	6.4		9.2	5.5
	11.0	7.3		9.0	5.3
	10.0	6.3		8.7	5.0
	6.1	2.4	8+00	8.7	5.0
6+00	7.8	4.1		8.2	4.5

(78)

N76+00			6-06-56		
Dist	Sound	Elev	Dist	Sound	Elev
	8.8	5.1		12.1	8.4
	8.8	5.1		12.0	8.3
	8.3	4.6	50	11.5	7.8
50	8.5	4.8		11.8	8.1
	8.7	5.0		12.0	8.3
	9.0	5.3		12.1	8.4
(3.7)	8.8	4.1	(3.7)	11.6	7.9
	8.5	4.8	11+00	11.2	7.5
9+00	8.5	4.8		12.0	8.3
	8.5	4.8	<u>10.22</u>	13.0	9.3
<u>10.78</u>	9.2	5.5		13.8	10.1
	10.0	6.3		13.8	10.1
	10.1	6.4	50	13.5	9.8
50	10.5	6.8		13.2	9.5
	10.1	6.6		13.1	9.4
	10.4	6.7		13.1	9.4
	11.1	7.4		13.0	9.3
	11.8	8.1	12+00	12.2	8.5
10+00	12.1	8.4		12.2	8.5
	12.0	8.3		12.3	8.6
	12.5	8.8		12.2	8.5

N76+00			93		
Dist	Sound	Elev	Dist	Sound	Elev
	12.1	8.5	50	12.0	8.4
50	12.2	8.6		12.1	8.5
	12.8	9.2		11.8	8.2
(3.6)	13.1	9.5	(3.6)	11.6	8.0
	13.3	9.7		12.0	8.4
<u>10.25</u>	13.1	9.5	15+00	11.8	8.2
13+00	11.5	7.9	<u>10.28</u>	12.5	8.9
	11.3	7.7		12.2	8.6
	11.5	7.9		12.0	8.4
	11.8	8.2		12.0	8.4
	12.5	8.9	50	11.7	8.1
50	12.2	8.6		11.3	7.7
	12.7	9.1		11.3	7.7
	12.7	9.1		11.1	7.5
	12.4	8.8		11.1	7.5
	12.2	8.6	16+00	11.2	7.6
14+00	12.0	8.4		11.2	7.6
	12.0	8.4		11.2	7.6
	11.8	8.2		10.0	6.4
	11.3	7.7		8.5	4.9
	11.5	7.9	50	7.8	4.2
				6.8	3.2
				4.8	1.2
				3.0	+0.6

6-06-56

N 77+00; 0+00 = W. 16,600 SOUND WEST

Dist	Sound	Elev	Dist	Sound	Elev
0+00			2+00	12.5	9.0
				10.9	7.4
0+26	0.0	+3.5		11.0	7.5
<u>10:47</u>	0.3	+3.2		11.2	7.7
	1.0	+2.3	(3.5)	11.2	7.7
50	1.7	+1.8	50	11.0	7.5
	2.0	+1.5		11.2	7.7
(3.5)	2.6	+0.9		12.3	8.8
	3.5	0.0	<u>10:50</u>	11.9	8.4
	6.1	2.6		12.0	8.5
1+00	7.1	3.6	3+00	11.7	8.2
	8.2	4.7		11.2	7.7
	10.1	6.6		10.5	7.0
	11.2	7.7		10.2	6.7
	12.2	8.7		10.0	6.5
50	12.9	9.4	50	9.3	5.8
	12.9	9.4		10.0	6.5
	13.0	9.5		10.2	6.7
	13.0	9.5		10.0	6.5
	13.0	9.5		10.1	6.6

N. 77+00

Dist	Sound	Elev	Dist	Sound	Elev
4+00	9.2	5.8		9.1	5.7
	9.5	6.1	10:56	9.2	5.8
	9.7	6.3		9.7	6.3
(3.4)	9.8	6.4	(3.4)	10.0	6.6
10:53	8.7	5.3	50	10.0	6.6
50	9.5	6.1		10.0	6.6
	9.6	6.2		9.6	6.2
	9.5	6.1		10.0	6.6
	8.2	4.8		10.1	6.7
	8.4	5.0	7+00	10.0	6.6
5+00	9.1	5.7		9.2	5.8
	9.7	6.3		9.4	6.0
	9.9	6.5		9.5	6.1
	10.0	6.6		9.7	6.3
	10.0	6.6	50	9.7	6.3
50	9.3	5.9		9.7	6.3
	9.3	5.9		9.8	6.4
	10.0	6.6		10.0	6.6
	9.9	6.5		10.5	7.1
	8.5	5.1	8+00	11.7	8.3
6+00	8.7	5.3		12.0	8.6

N. 77+00			6-06-56		
Dist	Sound	Elev	Dist	Sound	Elev
	12.5	9.1		11.6	8.2
	12.4	9.0		12.0	8.6
	11.5	8.1	50	11.3	7.9
50	10.0	6.6		10.9	7.5
	10.0	6.6		10.7	7.3
(3.4)	9.8	6.4	(3.4)	10.4	7.0
	9.7	6.3		11.0	7.6
	9.6	6.2	11+00	11.1	7.7
9+00	9.5	6.1		11.1	7.7
	8.9	5.5		11.1	7.7
<u>11:00</u>	8.5	5.1		11.2	7.8
	8.7	5.3		12.1	8.7
	8.7	5.3	50	13.0	9.6
50	9.0	5.6	<u>11:03</u>	13.1	9.7
	9.5	6.1		13.1	9.7
	10.0	6.6		13.0	9.6
	10.2	6.8		13.0	
	10.3	6.9	12+00	13.0	
10+00	10.7	7.3		13.0	9.6
	11.1	7.7		12.5	9.1
	11.2	8.8		12.2	8.8

N. 77+00			6-06-56		
Dist	Sound	Elev	Dist	Sound	Elev
	11.5	8.2	50	10.7	7.4
50	11.7	8.4		10.8	7.5
	11.9	8.6		10.8	7.5
(3.3)	11.4	8.1	(3.3)	10.8	7.5
<u>11:06</u>	11.7	8.4		10.1	6.8
	11.9	8.6	15+00	10.0	6.7
13+00	12.4	9.1		10.0	6.7
	12.1	8.8		10.1	6.8
	11.9	8.6		10.2	6.9
	12.0	8.7		10.0	6.7
	12.2	8.9	50	8.7	5.4
50	12.1	8.8	<u>11:10</u>	8.4	5.1
	12.2	8.9		7.2	3.9
	12.3	9.0		5.6	2.3
	12.3	9.0		3.7	0.4
	12.3	9.0	16+00	2.0	+1.3
14+00	12.2	8.9		1.7	+1.6
	12.0	8.7			
	11.9	8.6			
	11.7	8.4			
	10.9	7.6			

6-06-56

N. 78+00; 0+00 = W. 16,600 SOUND WEST					
Dist	Sound	Elev	Dist	Sound	Elev
0+00			2+00	10.0	7.0
				10.0	7.0
0+28	0.0	+3.1	(3.0)	11.0	8.0
<u>11:30</u>	0.1	+3.0		10.5	7.5
	0.7	+2.4		9.7	6.7
50	1.0	+2.1	50	11.7	8.7
(3.1)	1.5	+1.6	<u>11:35</u>	11.5	8.5
	2.0	+1.1		8.5	5.5
	2.7	+0.4		10.1	7.1
	4.0	0.9		10.2	7.2
1+00	5.7	2.6	3+00	9.3	6.3
	6.5	3.4		10.2	7.2
	7.8	4.7		11.0	8.0
	9.5	6.4		10.0	7.0
	9.7	6.6		9.5	6.5
50	10.0	6.9	50	9.7	6.7
	9.0	5.9		9.5	6.5
	8.0	4.9		9.5	6.5
	9.0	5.9		8.7	5.7
	9.1	6.0		10.2	7.2

N. 78+00

Dist	Sound	Elev	Dist	Sound	Elev
4+00	9.8	6.8		9.7	6.7
	10.0	7.0		9.5	6.5
(3.0)	10.1	7.1	<u>11:42</u>	9.0	6.0
	10.2	7.2		9.0	}
	10.3	7.3	50	9.0	}
50	10.2	7.2	(3.0)	9.0	6.0
	10.4	7.4		9.8	6.8
	9.5	6.5		10.1	7.1
<u>11:40</u>	9.0	6.0		10.7	7.7
	9.0	6.0	7+00	11.0	8.0
5+00	8.4	5.4		10.7	7.7
	8.5	5.5		11.0	8.0
	9.0	6.0		10.5	7.5
	9.0	6.0		10.5	7.5
	9.4	6.4	50	10.3	7.3
50	9.4	6.4		10.2	7.2
	9.1	6.1		10.1	7.1
	8.8	5.8		10.2	7.2
	9.0	6.0		10.0	7.0
	10.0	7.0	8+00	10.0	7.0
6+00	10.0	7.0		10.0	7.0

N78+00 6-06-56			N78+00			N78+00		
Dist	Sound	Elev	Dist	Sound	Elev	Dist	Sound	Elev
	10.1	7.1		10.1	7.2		10.2	7.3
(3.0)	10.0	7.0		10.1	7.2	50	10.2	7.3
	9.8	6.8	50	10.5	7.6	11:32	10.0	7.1
50	10.1	7.1		11.0	8.1		10.3	7.4
	10.5	7.5		11.5	8.6	(2.9)	10.6	7.7
11:45	10.3	7.3	(2.9)	11.6	8.7		11.0	8.1
	10.3	7.3		11.7	8.8	13+00	11.0	8.1
	10.1	7.1	11+00	11.8	8.9		11.0	8.1
9+00	9.8	6.8		11.8	8.9		11.2	8.3
	11.0	8.0		11.6	8.7		11.1	8.2
	10.8	7.8		11.0	8.1		11.5	8.6
	10.7	7.7	11:50	11.0	8.1	50	11.5	8.6
	10.2	7.2	50	11.0	8.1		11.1	8.2
50	10.0	7.0		11.0	8.1		10.8	7.9
	9.0	6.0		10.2	7.3		10.6	7.7
	8.5	5.5		10.0	7.1		10.5	7.6
	8.6	5.6		10.0	7.1	14+00	10.5	7.6
	9.0	6.0	12+00	9.8	6.9		10.0	7.1
10+00	9.5	6.5		10.0	7.1		11.0	8.1
	10.0	7.0		10.0	7.1		11.2	8.3
	10.2	7.2		10.1	7.2		11.2	8.3

6-06-56
N79+00; D+00 = W. 16. 590 SOUND WEST

Dist	Sound	Elev	Dist	Sound	Elev
0+00			2+00	8.0	5.8
				7.7	5.5
1.18				7.2	5.0
<u>0+35</u>	0.0	+2.2		7.2	5.0
	0.5	+1.7		7.3	5.1
50	1.5	+0.7	50	8.5	8.3
(2.2)	1.9	+0.3		10.1	7.9
	2.8	0.6	(2.2)	11.2	9.0
	4.8	2.6		11.2	9.0
	5.1	2.9		10.9	8.7
1+00	5.5	3.3	3+00	10.3	8.1
	6.0	3.8		9.7	7.5
	6.7	4.5		8.5	6.3
	7.1	3.9		8.3	6.1
	7.7	5.5		8.3	6.1
50	8.5	6.3	50	8.5	6.3
	8.6	6.4		8.7	6.5
<u>1:17</u>	8.2	6.0	<u>1:20</u>	7.9	7.7
	8.0	5.8		8.6	6.4
	8.2	6.0		9.0	6.8

N. 79+00

Dist	Sound	Elev	Dist	Sound	Elev
4+00	9.1	6.9		9.1	6.9
	9.8	7.6		9.0	6.8
	10.3	8.1		8.9	6.7
	10.2	8.0		8.6	6.4
	10.5	8.3	50	8.4	6.2
50	10.3	8.1		8.4	6.2
	10.2	8.0		8.2	6.0
(2.2)	10.1	7.9	(2.2)	8.0	5.8
	10.0	7.8		7.8	5.6
	8.0	5.8	7+00	7.5	5.3
5+00	8.1	5.9	<u>1:25</u>	7.5	5.3
	7.0	4.8		8.2	8.0
<u>1:23</u>	8.0	5.8		10.5	8.3
	8.7	6.5		9.5	7.3
	7.8	5.6	50	7.9	5.7
50	7.7	5.5		9.2	7.0
	7.9	5.7		8.5	6.3
	7.9	5.7		8.0	5.8
	7.9	5.7		7.6	5.4
	8.4	6.2	8+00	7.5	5.3
6+00	9.1	6.9		7.6	5.4

N. 79+00			6-06-56		
Dist	Sound	Elev	Dist	Sound	Elev
	8.0	5.8		10.1	7.9
	8.3	6.1		10.2	8.0
	8.3	6.1	50	10.3	8.1
50	8.5	6.3		10.4	8.2
	8.9	6.7		10.7	8.5
(2.2)	9.2	7.0		10.6	8.4
	9.2	7.0		10.8	8.6
	9.1	6.9	11+00	11.0	8.9
9+00	8.6	6.4		11.1	8.9
	8.1	5.9	(2.2)	10.9	8.7
	7.0	4.8		11.0	8.8
	9.1	6.9		10.8	8.6
	10.7	8.5	50	10.7	8.5
50	10.8	8.6		10.4	8.2
	9.9	7.7		10.6	8.4
<u>1:30</u>	9.3	7.1	<u>1:33</u>	10.7	8.5
	9.4	7.2		10.3	8.1
	8.7	6.5	12+00	10.4	8.2
10+00	8.0	5.8		10.4	8.2
	8.8	6.6		10.5	8.3
	9.4	7.2		10.1	7.9

N. 79+00			(55)		
Dist	Sound	Elev	Dist	Sound	Elev
	10.1	7.9	50	3.0	0.8
50	10.0	7.8		2.0	+0.2
	10.0			1.4	+0.8
	10.0				
	10.0	7.8			
	10.2	8.0	15+00		
13+00	10.7	8.5			
	11.0	8.8			
(2.2)	10.7	8.5			
	10.1	7.9			
	10.0	7.8			
50	9.9	7.7			
	9.2	7.0			
<u>1:35</u>	9.3	7.1			
	9.2	7.0			
	9.1	6.9			
14+00	9.0	6.8			
	9.0	6.8			
	8.7	6.5			
	8.0	5.8			
	5.3	3,			

6-06-56

N. 80+00; 0+00 = W. 16,540 SOUND WEST

Dist Sound Elev Dist Sound Elev

0+00 2+00 8.0 5.8

1.55 8.5 6.3

9.0 6.8

9.0 6.8

0+43 0.0 +2.2 9.5 7.3

50 0.5 +1.7 50 11.0 8.8

1.50 1.5 +0.7 (2.2) 12.0 9.8

2.0 +0.2 12.2 10.0

3.0 0.8 12.4 10.2

4.0 1.2 11.5 9.3

1+00 4.5 2.3 3+00 10.0 7.8

5.0 2.8 10.0 7.8

5.2 3.0 9.5 7.3

6.0 3.8 9.0 6.8

6.2 4.0 8.7 7.5

50 6.5 4.3 50 9.5 7.3

7.5 5.3 9.5 7.3

8.0 5.8 9.0 6.8

8.0 5.8 8.8 6.6

8.0 5.8 8.2 6.0

N. 80+00

Dist Sound Elev Dist Sound Elev

4+00 8.5 6.2 8.0 5.7

10.0 7.7 8.2 5.9

(2.3) 9.8 7.5 7.8 5.5

9.2 6.9 7.8 5.3

9.0 6.7 50 8.0 5.7

50 9.3 7.0 8.2 5.9

2.00 9.1 6.8 (2.3) 8.0 5.7

9.0 6.7 8.0 5.7

8.7 6.4 8.0 5.7

9.0 6.7 7+00 8.5 6.2

5+00 9.0 6.7 8.4 6.1

8.3 6.0 2:03 8.8 6.5

8.3 6.0 8.8

8.5 6.2 8.8

8.6 6.3 50 8.8 6.5

50 8.0 5.7 8.5 6.2

8.0 5.7 8.0 5.7

7.5 5.2 8.0 5.7

7.7 5.4 7.8 5.5

7.8 5.5 8+00 7.8 5.5

6+00 8.0 5.7 7.8 5.5

N. 80+00		6-06-56	
Dist	Sound/Elev	Dist	Sound/Elev
	7.8 5.5		8.5 6.2
	7.6 5.3		8.8 6.5
	7.8 5.5	50	9.0 6.7
50	8.0 5.7		9.2 6.9
	8.2 5.9		9.0 6.7
<u>2:07</u>	8.2 5.9		9.0 6.7
	8.5 6.2		9.0 6.7
	8.5 6.2	11+00	9.2 6.9
9+00	8.9 6.6		9.3 7.0
(2.3)	9.2 6.9	(2.3)	10.5 8.2
	9.5 7.2		10.1 7.8
	9.6 7.3	2:10	10.3 8.0
	10.0 7.7	<u>50</u>	10.3 8.0
50	9.8 7.5		11.0 8.8
	9.2 6.9		11.1 8.8
	8.8 6.5		11.0 8.7
	8.4 6.1		11.3 9.0
	8.5 6.2	12+00	11.7 9.4
10+00	8.8 6.5		11.5 9.2
	8.8 6.5		11.3 9.0
	9.0 6.7		11.0 8.7

N. 80+00			
Dist	Sound/Elev	Dist	Sound/Elev
	11.0 8.7	50	3.5 1.2
50	10.8 8.5		3.0 0.7
	10.7 8.4		1.5 +0.8
	10.7 8.4		
(2.3)	10.5 8.2		
	10.1 7.8	15+00	
13+00	10.0 7.7		
	9.8 7.5		
	9.5 7.2		
	9.8 7.5		
	9.5 7.2	50	
50	9.3 7.0		
	9.2 6.9		
	7.5 5.2		
	7.5 5.2		
<u>2:15</u>	8.0 5.7	16+00	
17+00	8.5 6.2		
	8.2 5.9		
	7.5 5.2		
	7.0 4.7		
	5.7 3.4		

6-06-56

N. 81+00; 0+00 = W. 16, 520, SOUND WEST

Dist	Sound	Elev	Dist	Sound	Elev
0+00			2+00	9.5	7.1
			<u>2:35</u>	9.1	6.7
0+25	0.0	+2.4		10.0	7.6
<u>2:32</u>	0.6	+1.8	(2.4)	9.7	7.3
50	2.0	+0.4	50	9.7	7.3
50	3.4	1.0	50	9.8	7.4
(2.4)	4.7	2.3		9.8	7.4
	5.2	2.8		9.3	6.9
	5.9	3.5		9.2	6.8
	6.6	4.2		9.1	6.7
1+00	6.7	4.3	3+00	8.9	6.5
	6.7	4.3		9.1	6.7
	7.1	4.7		10.6	8.2
	7.1	4.7		11.9	9.3
	7.8	5.4		12.0	9.6
50	8.1	5.7	50	11.9	9.5
	8.4	6.0		11.5	9.1
	8.5	6.1		9.7	7.3
	8.9	6.5		9.1	6.7
	9.2	6.8		8.9	6.5

N. 81+00

(58)

Dist	Sound	Elev	Dist	Sound	Elev
4+00	9.0	6.5		8.3	5.8
	9.0	6.5		8.7	6.2
	8.8	6.3	(2.5)	8.3	5.8
(2.5)	8.8	6.3		8.1	5.6
	8.9	6.4	50	8.1	5.6
50	8.9	6.4		7.8	5.3
<u>2:40</u>	8.5	6.0		7.9	5.4
	9.4	6.9		7.8	5.3
	9.6	7.1		7.9	5.4
	9.6	7.1	7+00	8.0	5.5
5+00	8.8	6.3	<u>2:45</u>	8.3	5.8
	8.2	5.7		8.3	5.8
	7.2	4.7		8.6	6.1
	7.3	4.8		8.2	5.7
	7.3	4.8	50	8.3	5.8
50	7.3	4.8		8.3	5.8
	7.2	4.7		8.4	5.9
	7.3	4.8		8.2	5.7
	8.1	5.6		8.4	5.9
	8.1	5.6	8+00	8.2	5.7
6+00	8.1	5.6		7.9	7.4

N. 81+00			6-06-56		
Dist	Sound	Elev	Dist	Sound	Elev
	8.0	5.5		9.1	6.5
(2.5)	8.2	5.7		9.7	7.1
	8.2	5.7	50	9.7	7.1
50	8.3	5.8		9.8	7.2
	8.2	5.7	(2.6)	8.9	6.3
	8.4	5.9		8.9	6.3
<u>2:50</u>	8.3	5.8		9.2	6.6
	8.4	5.9	11+00	9.5	6.9
9+00	8.5	6.0		10.0	7.4
	8.6	6.1	<u>2.55</u>	9.9	7.3
	8.7	6.2		10.1	7.5
	8.8	6.3		9.8	7.2
	8.6	6.1	50	9.8	7.2
50	9.0	6.5		10.2	7.6
	9.0	6.5		11.0	8.4
	8.9	6.4		10.8	8.2
	9.0	6.5		11.6	9.0
	9.1	6.6	12+00	11.3	8.7
10+00	9.6	7.1		12.1	9.5
	8.8	6.3		12.1	9.5
	8.8	6.3		12.3	9.7

N. 81+00			59		
Dist	Sound	Elev	Dist	Sound	Elev
	12.3	9.7	50	1.9	+0.7
50	12.3	9.7		1.3	+1.3
	11.3	8.7			
(2.6)	10.0	7.4			
	10.0	7.4			
	10.0	7.4	15+00		
13+00	10.8	8.2			
<u>3:00</u>	10.8	8.2			
	10.5	7.9			
	10.6	8.0			
	10.1	7.5	50		
50	10.2	7.6			
	10.3	7.7			
	10.4	7.8			
	9.7	7.1			
	9.0	6.4	16+00		
14+00	9.0	6.4			
	8.3	5.7			
	7.5	3.9			
	5.6	3.0			
	3.0	0.4			

6-06-56

N. 82+00; 0+00 = W. 16,500, SOUND WEST

Dist	Sound	Elev	Dist	Sound	Elev
0+00			2+00	11.0	8.1
			<u>3:20</u>	11.2	8.3
0+23	0.0	+2.9		11.2	8.3
<u>3:17</u>	0.6	+2.3	(2.9)	11.3	8.4
	1.7	+1.2		10.5	7.6
50	3.3	0.4	50	10.3	7.4
(2.9)	5.0	2.1		10.0	7.1
	5.5	2.6		10.0	7.1
	6.8	3.9		9.8	6.9
	7.0	4.1		9.5	6.6
1+00	7.0	4.1	3+00	9.5	6.6
	7.0	4.1		9.5	6.6
	8.5	5.6		9.5	6.6
	8.5	5.6		9.0	6.1
	8.7	5.8		8.8	5.9
50	9.0	6.1	50	8.5	5.6
	9.0	6.1		8.7	5.8
<u>3:20</u>	9.0	6.1		9.1	6.2
	10.0	7.1		10.0	7.1
	10.3	7.4		10.5	7.6

N. 82+00

Dist	Sound	Elev	Dist	Sound	Elev
4+00	10.8	7.9		10.5	7.5
	10.8	7.9		10.0	7.0
	10.8	7.9		9.5	6.5
<u>3:25</u>	10.3	7.4		10.3	7.3
	10.3	7.4	50	10.0	7.0
50	10.7	7.8		9.8	6.8
(2.9)	10.8	7.9		9.1	6.1
	10.3	7.4	(3.0)	9.5	6.5
	10.5	7.6		8.1	5.1
	10.5	7.6	7+00	8.2	5.2
5+00	10.5	7.6		8.3	5.3
	10.5	7.6		8.5	5.5
	10.5	7.6		9.0	6.0
	10.0	7.1		8.9	5.9
	9.5	6.6	50	8.7	5.7
50	9.2	6.3	<u>3:28</u>	8.6	5.6
	9.2	6.3		8.8	5.8
	9.5	6.6		9.0	6.0
	8.8	5.9		8.5	5.5
	8.8	5.9	8+00	8.8	5.8
6+00	10.0	7.1		9.5	6.5

N. 82+00			6-06-56		
Dist	Sound	Elev	Dist	Sound	Elev
	8.5	5.5		9.1	6.1
	8.5	5.5		9.2	6.2
	8.5	5.5	50	9.4	6.4
50	9.2	6.2		9.2	6.2
	9.5	6.5		9.1	6.1
(3.0)	10.0	7.0	(3.0)	9.2	6.2
	10.0	7.0		9.5	6.5
	9.8	6.8	11+00	9.6	6.6
9+00	9.4	6.4		9.5	6.5
<u>3.30</u>	9.2	6.2		9.5	6.5
	9.3	6.3		9.5	6.5
	9.4	6.4		9.8	6.8
	9.2	6.2	50	9.8	6.8
50	9.0	6.0		9.5	6.5
	9.0	6.0		9.5	6.5
	9.0			9.8	6.8
	9.0		<u>3.33</u>	10.0	7.0
	9.0	6.0	12+00	10.3	7.3
10+00	9.2	6.2		10.2	7.2
	9.2	6.2		10.2	7.2
	9.3	6.3		11.0	8.0

N. 82+00			①		
Dist	Sound	Elev	Dist	Sound	Elev
	11.5	8.4	50	3.0	+0.1
50	12.0	8.9		1.8	+1.3
	12.0	8.9		1.2	+1.9
	12.0	8.9			
(3.1)	12.1	9.0			
	12.0	8.9	15+00		
13+00	12.0	8.9			
	12.0	8.9			
	12.0	8.9			
	12.2	9.1			
	12.8	9.7	50		
50	12.5	9.4			
<u>3.35</u>	12.3	9.2			
	12.0	8.9			
	11.5	8.4			
	11.8	8.7	16+00		
14+00	12.2	9.1			
	10.7	7.6			
	9.5	6.4			
	7.5	4.4			
	5.4	2.3			

6-07-56

N. 83+00; 0+00 = W. 16, 510, SOUND WEST					
Dist	Sound	Elev	Dist	Sound	Elev
0+00			2+00	11.2	7.2
	0.0	+4.0		11.5	7.5
<u>10:28</u>	0.5	+3.5	(9.0)	11.5	7.5
	1.0	+3.0		11.8	7.8
	1.5	+2.5		11.2	7.2
50	2.5	+1.5	50	11.0	7.0
(4.0)	3.4	+0.6	<u>10:35</u>	10.8	6.8
	4.8	0.8		10.5	6.5
	6.0	2.0		10.6	6.6
	6.8	2.8		11.0	7.0
1+00	7.3	3.3	3+00	11.0	7.0
	8.2	4.2		11.0	7.0
	9.0	5.0		11.0	7.0
<u>10:30</u>	10.0	6.0		10.7	6.7
	11.2	7.2		10.8	6.8
50	12.0	8.0	50	11.0	7.0
	12.1	8.1		10.8	6.8
	12.0	8.0		11.2	7.2
	11.5	7.5		11.2	7.2
	11.0	7.0		11.5	7.5

N. 83+00

Dist	Sound	Elev	Dist	Sound	Elev
4+00	12.0	8.1		10.0	6.1
	12.1	8.2		11.5	7.6
	12.3	8.4		12.5	8.6
	12.8	8.9		12.3	8.4
	13.0	9.1	50	12.5	8.6
50	13.0	9.1		12.3	8.4
	13.3	9.4		12.2	8.3
(39)	12.8	8.9	(39)	12.1	8.2
	12.0	8.1		12.2	8.3
	11.7	7.6	7+00	10.6	6.7
5+00	10.8	6.9		10.4	6.5
	11.2	7.3		11.0	7.1
	11.1	7.2		10.4	6.5
<u>10:38</u>	11.0	7.1	<u>10:43</u>	10.0	6.1
	10.5	6.6	50	9.1	5.2
50	10.0	6.1		8.7	4.8
	10.5	6.6		7.5	3.6
	10.4	6.5		8.1	4.2
	10.1	6.2		9.0	5.1
	10.1	6.2	8+00	8.8	4.9
6+00	10.1	6.2		9.5	5.6

N. 83+00					
Dist	Sound	Elev	Dist	Sound	Elev
	9.6	5.7		11.2	7.3
	10.0	6.1		11.3	7.4
	10.6	6.7	50	11.3	7.4
50	9.8	5.9		11.2	7.3
<u>10.45</u>	9.1	5.2		11.1	7.2
	10.2	6.3	(3.9)	11.0	7.1
(3.9)	10.8	6.9		11.0	7.1
	10.1	6.2	11+00	10.8	6.9
9+00	10.0	6.1		10.0	6.1
	10.7	6.8		10.0	6.1
	11.5	7.6		10.1	6.2
	11.5	7.6	<u>10.50</u>	11.0	7.1
	11.0	7.1	50	11.2	7.3
50	11.0	7.1		11.5	7.6
	10.8	6.9		11.5	7.6
	10.8	6.9		11.5	7.6
	10.5	6.6		11.0	7.1
	11.0	7.1	12+00	11.0	7.1
10+00	11.0	}		11.2	7.3
	11.0	}		11.5	7.6
	11.0	7.1		12.0	8.1

N. 83+00			6-07-56		
Dist	Sound	Elev	Dist	Sound	Elev
	12.5	8.6	50	2.5	+1.4
50	12.7	8.8		1.8	+2.1
	12.7	8.8			
	12.8	8.9			
	12.8	8.9			
	13.0	9.1			
13+00	13.1	9.2			
(3.9)	13.0	9.1			
	13.6	9.7			
	13.6	9.7			
	13.3	9.4			
50	13.0	9.1			
<u>10.53</u>	13.0	9.1			
	13.0	9.1			
	13.3	9.4			
	13.0	9.1			
14+00	12.0	8.1			
	10.8	6.9			
	9.0	5.1			
	5.0	1.1			
	3.5	+0.4			

3-8-57

SOUNDINGS DANA BASIN MISSION BAY

W.O. 64010.

W 14,900; 0+00 = N. 67,00; SOUND NORTH

Sta	+	H.I.	-	Elev
B. M.				12.54
	2.94	15.48		
0			6.8	8.7
57			5.0	10.5
525			4.0	11.5
N 5			8.7	6.8
N 30			11.6	3.9
N 65			12.6	2.9
N 88			13.5	2.0

11 AM,
Water

0+00 = N 6700; SOUND NORTH

Dist	SOUND	Elev	Dist	SOUND	Elev
0+90				10.7	8.6
1+00	1.0	+1.1		10.4	8.3
(2.1)	1.4	+0.7		10.2	8.1
<u>11:10</u>	1.9	+0.2		10.6	8.5
	4.5	2.4	2+00	11.3	9.2
	7.8	5.7		11.9	9.8
50	10.8	8.7		11.4	9.3

NOTE: These Controls Set by
Stadia & are for
Marine Experts only

Not To be Plotted for x-sec's

Chis 10 NW Curb Parking Area

Dana Basin

N 6700 CONTD NORTH

Dist	SOUND	Elev	Dist	SOUND	Elev
		12.3			10.2
		12.2			10.1
50	12.3	10.2			
		12.0			9.9
		12.3			10.2
		12.7			10.6
		13.1			11.0
3+00	12.8	10.7			

3-8-57

N 6.150; 0+00 = W 15,700

Sta	+ H.I.	-	Elev
B.M.			9.23
	4.07	1330	
0		3.0	10.3
E 50		3.3	10.0
E 86		5.8	7.5
E 100		6.4	6.9
E 139		8.6	4.7
E 150		11.5	1.8

10:45
HoD

0+00 = W 15,700; SOUND EAST

Dist	Sound	Elev	Dist	Sound	Elev
1+50			50	10.3	8.2
	2.8	0.7		10.6	8.5
(2.1)	6.8	4.7		10.7	8.6
	8.5	6.4		10.7	8.6
	9.3	7.2		10.7	8.6
2+00	9.7	7.6	3+00	10.8	8.7
	10.0	7.9		10.9	8.8
	10.1	8.0		11.0	8.9
	10.4	8.3		11.1	9.0
	10.3	8.2		11.2	9.1

(Marine X-Perts Only)

(MB81-12)

L. & T. Sly Ch. Launching Wly. Cor. Data Basin

N 6.150 CONTD EAST

Dist	Sound	Elev	Dist	Sound	Elev
50	11.2	9.1			
	10.2	8.1			
	9.4	7.3			
	9.3	7.2			
	9.3	7.2			
4+00	9.4	7.3			

NOTE:

An "X" is a has been; & a
Spurt is a drip under
pressure

W.O. 64010

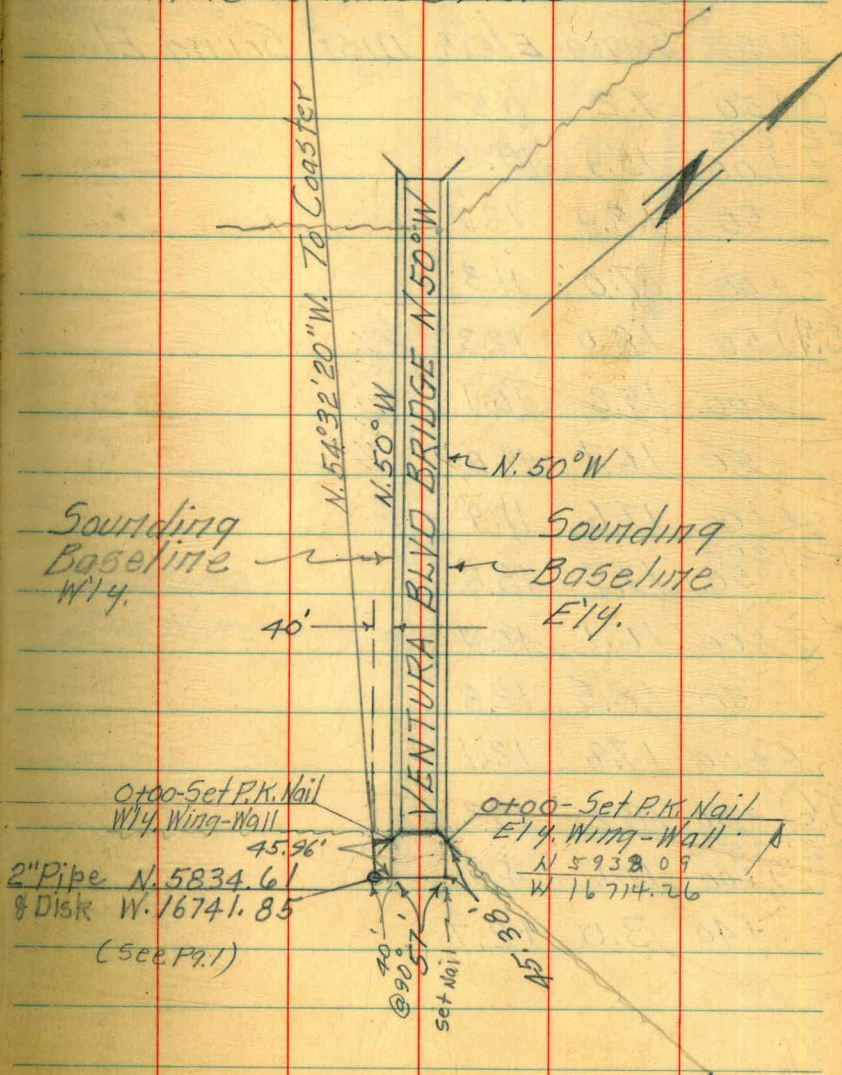
SOUNDINGS PARALLEL TO VENTURA
BLVD BRIDGE FOR EROSION CHECK

0+00 = (See Sketch)

Dist	Sound	Elev.	Dist	Sound	Elev.
0+20	0.0	+6.1	9+00	20.8	14.8
(6.1) +50	4.0	+2.1	$\frac{2:10}{50}$	15.0	9.0
1+00	17.0	10.9	10+00	5.8	+0.2
$\frac{2:00}{50}$	17.8	11.7	(6.0)		
2+00	18.8	12.7			
50	15.5	9.4			
3+00	14.5	8.4			
50	11.5	5.4			
4+00	10.0	3.9			
50	9.7	3.6			
5+00	9.7	3.6			
$\frac{2:05}{50}$	13.2	7.1			
6+00	18.1	12.0			
50	28.6	22.5			
7+00	28.0	21.9			
50	28.9	22.8			
8+00	26.8	20.7			
50	25.0	18.9			

N 5894.22
W 16751.350+00-Set P.K. Nail
W/4 Wing-Wall
45.96'
2" Pipe N. 5834.61
& Disk W. 16741.85
(See P. 1)0+00-Set P.K. Nail
E/4 Wing-Wall
N 5938.09
W 16714.26

8-29-57

NOTE: Elev's above MLLW
Preceded by Plus Sign
all others are Mirus Elev'sStampel
Blunt
Elmore
Wentworth

W.O. 64-010
 SOUNDINGS PARALLEL TO SOUTH
 CAUSEWAY BRIDGE MISSION BAY

0+00 - (See Sketch)

Dist Sound Elev. Dist Sound Elev

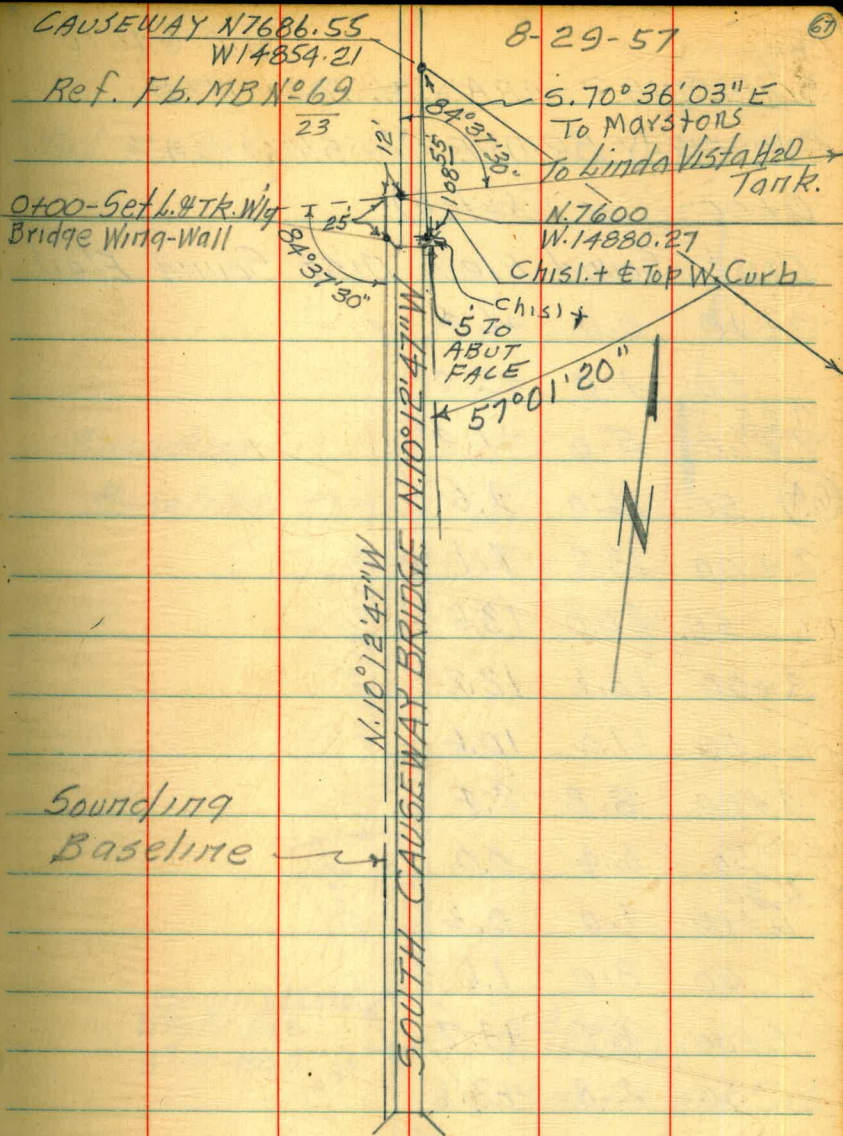
0+50	7.2	1.5
=2127=		
7+00	15.9	10.2
50	18.9	13.2
2+00	17.0	11.3
(5.7) 50	18.0	12.3
3+00	15.8	10.1
50	16.7	11.0
4+00	17.6	11.9
=21302=		
50	19.5	13.8
5+00	16.1	10.4
50	18.5	12.8
6+00	17.8	12.1
(5.6) +50	18.9	13.2
=2135=		
7+00	10.6	4.9
+40	3.0	+2.7

CAUSEWAY N7686.55
 W14854.21

Ref. Fb. MB N° 69

8-29-57

0+00 - Set L. & TR. Wtg
 Bridge Wing-Wall



Sounding
 Baseline

W.O. 64010

SOUNDINGS PARALLEL TO NORTH

CAUSEWAY BRIDGE MISSION BAY

0+00 (See Sketch)

Dist Sound Elev Dist Sound Elev

0+40 0.0 +6.4

50 1.0 +5.4

$\frac{1.25}{7+00}$ 5.0 +1.4

(6.4) 50 16.0 9.6

2+00 13.5 7.1

50 20.0 13.6

3+00 18.6 12.2

50 17.0 10.6

4+00 8.8 2.4

50 6.4 0.0

$\frac{1.30}{5+00}$ 7.0 0.6

50 8.0 1.6

6+00 4.7 +1.7

50 2.8 +3.6

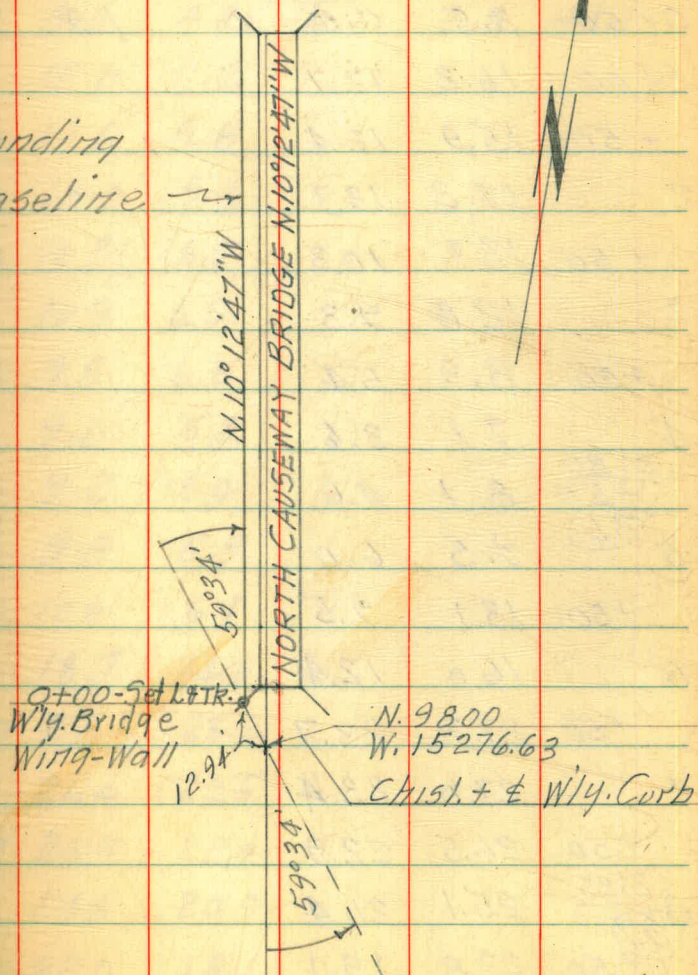
8-29-57

Ref. F.B.N. 69, Pg. 30

Stamper
Blunt
Elmore
Wentworth

Sounding

Baseline



9-19-57 W.O. 64010

SOUNDINGS 11 TO VENTURA BRIDGE WLY
SIDE FOR EROSION CHECK (see Pg. 66)

Dist	Sound	Elev	Dist	Sound	Elev
(2:25) (3.5)			+50	12.1	8.4
0+50	3.5	0.0	10	1.9	+1.8
1+00	16.2	12.7			
+50	15.9	12.4			
2	17.2	13.7			
+50	13.8	10.3			
3	12.8	9.3			
+50	8.9	5.4			
4	7.1	3.6			
<u>2:30</u> +50	8.1	4.6			
5 (3.6)	9.5	6.0			
+50	13.1	9.5			
6	16.0	12.4			
+50	27.3	23.7			
7	27.0	23.4			
+50	26.5	22.9			
<u>2:35</u> 8 (3.7)	25.1	21.4			
+50	22.8	19.1			
9	18.2	14.5			

9-19-57

SOUNDINGS 11 TO VENTURA BLVD ELY.
SIDE; (see Sketch) = 0+00

Dist	Sound	Elev	Dist	Sound	Elev
<u>2:50</u> (3.8)			+50	10.6	6.7
0+15	0.0	+3.8	(3.9) 10	2.8	+1.1
+50	8.0	4.2			
1+00	15.0	11.2			
+50	13.6	9.8			
2+00	13.0	9.2			
+50	10.3	6.5			
3+00	10.3	6.5			
+50	9.8	6.0			
4+00	9.0	5.2			
(3.9) +50	9.2	5.4			
<u>2:55</u> 5	9.8	5.9			
+50	10.0	6.1			
6	18.7	14.8			
+50	27.1	23.2			
7	26.4	22.5			
+50	25.9	22.0			
8	24.8	20.9			
+50	22.0	18.1			
9	18.7	14.8			

11-27-57

SOUNDINGS // TO SOUTH CAUSEWAY BRIDGE
(FOR 0+00; See Sketch Pg. 67)

Dist	Sound	Elev	Dist	Sound	Elev
(33) 0+50	4.8	0.5			
1+00	15.0	10.7			
<u>3:00</u> +50	17.0	12.7			
2+00	15.8	11.5			
+50	16.9	12.6			
3+00	14.5	10.2			
50	17.2	12.9			
4+00	16.3	12.0			
50	17.2	12.9			
5+00	15.7	11.4			
50	17.7	13.4			
6+00	17.4	13.1			
<u>3:05</u> 50	17.2	12.9			
7+00	7.4	3.1			
+40	0.6	+3.7			

11-30-57

SOUNDINGS // TOWLY SIDE OF VENTURA
BRIDGE (FOR 0+00 See B/L Pg. 66)

Dist	Sound	Elev	Dist	Sound	Elev
0+00			(33)	15.2	11.9
(33)			2+00	16.8	13.5
			<u>10:05</u>	15.8	12.5
	0.6	+2.7		16.2	12.9
<u>9:58</u>	1.9	+1.4		15.1	11.8
50	2.4	+0.9		15.0	11.7
	3.3	0.0	50	13.1	9.8
	7.5	4.2		12.9	9.6
<u>10:00</u>	10.5	7.2		11.9	8.6
	12.6	9.3		13.1	9.8
1+00	14.4	11.1		12.0	8.7
	16.8	13.5	3+00	12.0	8.7
	17.2	13.9		11.6	8.3
	16.7	13.4		11.1	7.8
	15.9	12.6		10.0	6.7
50	15.3	12.0		9.9	6.6
	16.4	13.1	50	10.4	7.1
	16.1	12.8		10.3	7.0
	16.5	13.2		10.1	6.8

SOUNDINGS WLY SIDE VENTURA BRIDGE

DIST	Sound	Elev	DIST	Sound	Elev
(3.3)	9.7	6.4	(33)	4.8	
	11.4	8.1		12.3	9.0
4+00	11.6	8.3	6+00	14.4	11.1
	12.9	9.6		18.9	15.6
	11.9	8.6		21.0	17.7
	11.3	8.0		24.4	21.1
<u>10/10</u>	10.1	6.8	<u>10/15</u>	25.8	22.5
50	10.8	7.5	50	27.0	23.7
	10.0	6.7		26.8	23.5
	11.5	8.2		27.0	23.7
	10.7	7.4		26.3	23.0
	10.7	7.4		26.4	23.1
5+00	10.5	7.2	7+00	25.8	22.5
	10.9	7.6		26.5	23.2
	11.4	8.1		26.0	22.7
	11.5	8.2		26.1	22.8
	10.8	7.5		25.5	22.2
50	11.2	7.9	50	25.7	22.4
	13.6	10.3		25.0	21.7
	12.3	9.0		24.4	21.1
	12.8	9.5		24.4	21.1

WLY SIDE BRIDGE CONTD 11-30-57 ⑩

DIST	Sound	Elev	DIST	Sound	Elev
(33)			(33)		
	24.2	20.9		4.3	1.0
8+00	23.6	20.3	10+00	1.3	+2.0
	24.0	20.7			
	23.5	20.2			
	23.6	20.3			
<u>10/20</u>	22.9	19.6			
50	22.2	18.9	50		
	21.4	18.1			
	20.9	17.6			
	20.0	16.7			
	19.0	15.7			
9+00	17.3	14.0			
	17.0	13.7			
	15.3	12.0			
	14.0	10.7			
	15.0	11.7			
50	12.1	8.8			
	11.1	7.8			
	10.5	7.2			
	7.7	4.4			

11-30-57

SOUNDINGS // TO ELY SIDE VENTURA BRIDGE
(For 0+00 Sta. See B/L P. 9.66)

Dist	Sound	Elev	Dist	Sound	Elev
0+20	0.1	+3.2	(33) 50	9.8	
(33) 50	7.3	4.0	10+00	2.8	
1+00	13.9	10.6			
10.30 50	13.2	9.9			
2+00	13.3	10.0			
50	11.3	8.0			
3+00	10.7	7.4			
50	9.2	5.9			
4+00	8.8	5.5			
50	8.2	4.9			
5+00	9.9	6.6			
10.35 50	12.0	8.7			
6+00	16.4	13.1			
(36) 50	27.2	23.9			
7+00	25.7	22.4			
50	25.7	22.4			
8+00	24.2	20.9			
50	23.0	19.7			
9+00	18.4	15.1			

11-30-57

(72)

SOUNDINGS // TO N. CAUSEWAY BRIDGE
(For 0+00 See Sketch P. 9.68)

Dist	Sound	Elev
0+80	0.3	+3.0
1+00	1.5	+1.8
11.45 50	13.0	9.7
2+00	13.8	10.5
50	16.6	13.3
3+00	15.8	12.5
50	11.6	8.3
4+00	6.3	3.0
50	3.8	0.5
5+00	3.4	0.1
50	5.0	1.7
6+00	1.3	+2.0
40	0.1	+3.2

11-30-57

SOUNDINGS 11 TO VENTURA BRIDGE 100' WLY
OF WLY B/L. (See Sketch P 966) @ 90° TO DICO

Dist	Sound	Elev	Dist	Sound	Elev
0+00			(33)	24.3	21.0
(33)	0.7	+2.6	2+00	24.2	20.9
10.55	4.1	0.8		23.9	20.6
	5.6	2.3		23.7	20.4
	7.4	4.1		23.9	20.6
50	9.8	6.5		24.1	20.8
	10.7	7.4	50	23.8	20.5
	13.2	9.9		24.0	20.7
	18.1	14.8		24.1	20.8
	23.0	19.7		24.0	20.7
1+00	23.0	19.7		24.0	20.7
	23.7	20.4	3+00	25.4	22.1
	23.7	20.4		25.5	22.2
	23.8	20.5		25.8	22.5
	23.8	20.5		26.1	22.8
50	23.8	20.5		26.1	22.8
	23.8	20.5	50	25.9	22.6
	24.2	20.9		25.8	22.5
	24.4	21.1		25.8	22.5

11 & 100' WLY CONTD

11-30-57

(23)

Dist	Sound	Elev	Dist	Sound	Elev
(33)	25.7	22.4	(33)	25.3	22.0
	26.1	22.8	6+00	25.5	22.2
4+00	25.9	22.6		25.1	21.8
	25.1	21.8		25.2	21.9
	25.3	22.0		25.2	21.9
	25.3	22.0		25.8	22.5
10+00	25.3	22.0	50	24.9	21.6
50	25.1	21.8		24.2	20.9
	25.1	21.8		24.8	21.5
	25.0	21.7		24.8	21.5
	28.4	25.1		25.0	21.7
	29.0	25.7	7+00	25.2	21.9
5+00	28.4	25.1		25.0	21.7
	27.5	24.2		25.4	22.1
	27.3	24.0		25.3	22.0
	27.3	24.0		25.3	22.0
	28.1	24.8	50	24.8	21.5
50	27.9	24.6		24.9	21.6
	27.9	24.6		24.8	21.5
	27.8	24.5		23.8	20.5
	25.4	22.1		23.5	20.2

SOUNDING 11 8100' WLY VENTURA BRIDGE

DIST SOUND ELEV 11-30-57

8+00 23.3 20.0

(3.3) 22.8 19.5

11.05 22.4 19.1

22.0 18.7

22.0 18.7

50 21.4 18.1

21.2 17.9

20.9 17.6

20.7 17.4

19.9 16.6

9+00 19.4 16.1

18.1 14.8

17.5 14.2

16.2 12.9

15.0 11.7

50 13.2 9.9

12.2 8.9

10.7 7.4

8.9 5.6

5.0 1.7

10+00 3.0 +0.3

0.9 +2.4

3-10-58

SOUNDINGS WLY. SIDE VENTURA BRIDGE

0+00 = B/L. (See Sketch Pg. 66)

Dist Sound Elev Dist Sound Elev

(23) 0+00			50	11.0	8.5
--------------	--	--	----	------	-----

<u>10:00</u> 50	3.2	0.9	10+00	1.4	+1.1
--------------------	-----	-----	-------	-----	------

1+00	13.9	11.6			
------	------	------	--	--	--

50	14.9	12.6			
----	------	------	--	--	--

2+00	16.1	13.8			
------	------	------	--	--	--

50	13.0	10.7			
----	------	------	--	--	--

3+00	11.4	9.1			
------	------	-----	--	--	--

50	9.9	7.6			
----	-----	-----	--	--	--

4+00	12.2	9.9			
------	------	-----	--	--	--

50	10.3	8.0			
----	------	-----	--	--	--

5+00	10.9	8.5			
------	------	-----	--	--	--

<u>10:05</u> (24) 50	13.0	10.6			
-------------------------	------	------	--	--	--

6+00	19.0	16.6			
------	------	------	--	--	--

50	26.7	24.3			
----	------	------	--	--	--

7+00	25.5	23.1			
------	------	------	--	--	--

50	24.8	22.4			
----	------	------	--	--	--

8+00	24.0	21.5			
------	------	------	--	--	--

<u>10:10</u> (25) 50	21.2	18.7			
-------------------------	------	------	--	--	--

9+00	16.5	14.0			
------	------	------	--	--	--

3-10-58

(25)

SOUNDINGS ELY. SIDE VENTURA BRIDGE

0+00 = B/L. (See Sketch Pg. 66)

Dist Sound Elev Dist Sound Elev

(26) 0+00			50	9.8	7.0
--------------	--	--	----	-----	-----

<u>10:20</u> 50	7.0	4.4	10+00	2.3	+0.5
--------------------	-----	-----	-------	-----	------

1+00	13.1	10.5			
------	------	------	--	--	--

50	12.6	10.0			
----	------	------	--	--	--

2+00	12.8	10.2			
------	------	------	--	--	--

50	10.7	8.1			
----	------	-----	--	--	--

3+00	10.4	7.8			
------	------	-----	--	--	--

50	9.1	6.5			
----	-----	-----	--	--	--

4+00	9.0	6.7			
------	-----	-----	--	--	--

<u>10:25</u> (27) 50	9.8	7.1			
-------------------------	-----	-----	--	--	--

5+00	11.1	8.4			
------	------	-----	--	--	--

50	12.2	9.5			
----	------	-----	--	--	--

6+00	14.4	11.7			
------	------	------	--	--	--

50	25.0	22.3			
----	------	------	--	--	--

7+00	25.0	22.3			
------	------	------	--	--	--

50	25.0	22.2			
----	------	------	--	--	--

(28) 8+00	24.0	21.2			
--------------	------	------	--	--	--

<u>10:30</u> 50	21.9	19.1			
--------------------	------	------	--	--	--

9+00	17.7	14.9			
------	------	------	--	--	--

9-10-59 Stampel Standley
Blunt Hecht
SOUNDINGS WLY SIDE OF VENTURA BRIDGE

0+00 = B/L. (See Sketch Pg. 66)

Dist Sound Elev Dist Sound Elev

0+10 = Abutment face SOUND N. 50° W

0+50 5.6 2.2^v 50 12.0 8.6^v

1+00 17.0 13.6^v 10+00 5.2 1.8^v

^{10:32}
50 16.5 13.1^v

2+00 18.2 14.8^v

(34) 50 15.7 12.3^v

3+00 16.2 12.8^v

^{10:35}
50 14.0 10.6^v

4+00 16.5 13.1^v

50 16.5 13.1^v

5+00 13.0 9.6^v

50 16.7 13.3^v

6+00 22.6 19.2^v

^{10:40}
50 24.5 21.1^v

7+00 24.9 21.5^v

50 25.2 21.8^v

8+00 24.0 20.6^v

50 21.6 18.2^v

9+00 17.7 14.3^v

9-10-59 W.O. 21902 (76)
SOUNDINGS ELY SIDE OF VENTURA BRIDGE

0+00 = B/L. See Sketch Pg. 66

Dist Sound Elev Dist Sound Elev

0+11 = Abutment face SOUND N. 50° W

0+50 2.4 +1.0^v 50 13.2 9.8^v

1+00 16.0 12.6^v ^{10:20}
10:00 10.0 6.6^v

^{10:10}
50 19.6 16.2^v

2+00 15.5 12.1^v

(39) 50 17.3 13.9^v

3+00 17.4 14.0^v

50 17.4 14.0^v

4+00 18.6 15.2^v

50 19.7 16.3^v

5+00 19.0 15.6^v

^{10:15}
50 19.1 15.7^v

6+00 17.2 13.8^v

50 21.1 17.7^v

7+00 22.0 18.6^v

50 22.2 18.8^v

8+00 22.1 18.7^v

50 20.0 16.6^v

9+00 18.9 15.5^v

The image shows an open notebook with two facing pages. Both pages are cream-colored and feature light blue horizontal ruling. Each page is divided into two columns by a vertical red margin line. The notebook is bound in the center, and the pages appear slightly aged. There is a small handwritten number '7' in the top right corner of the right page. The entire notebook is set against a solid black background.

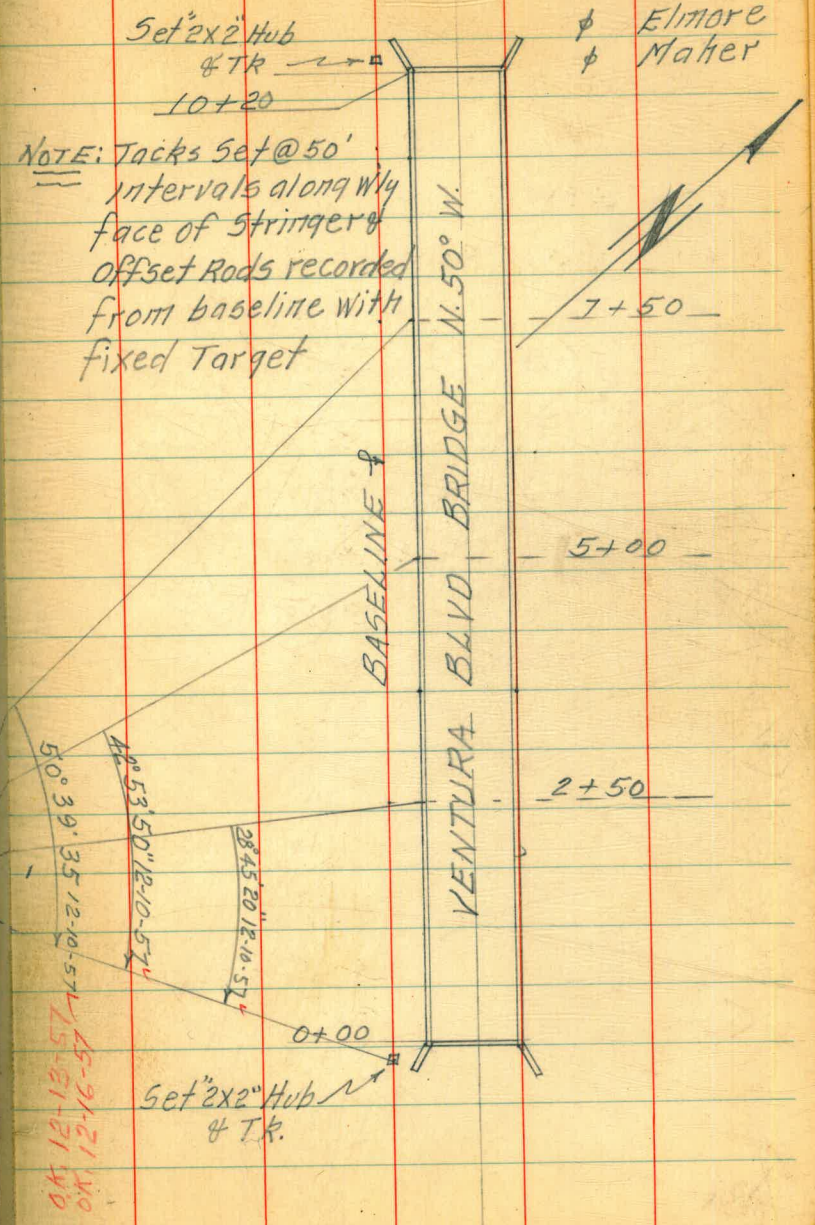
CHECK ON STABILITY OF VENTURA BRIDGE

	W.O. 64010		
12-10-57	12-13-57	12-16-57	
Sta.	Rod	Rod	Rod
10+20	3.65	3.65	3.65
10+00	3.72	3.72	3.73
50	3.70	3.70	3.70
9+00	3.88	3.88	3.88
50	3.66	3.66	3.65
8+00	3.63	3.63	3.65
50	3.89	3.89	3.87
7+00	4.24	4.26	4.26
50	4.43	4.43	4.41
6+00	4.42	4.44	4.44
50	3.88	3.88	3.89
5+00	3.77	3.77	3.77
50	3.85	3.85	3.86
4+00	3.91	3.91	3.90
50	3.55	3.57	3.54
3+00	3.41	3.43	3.43
50	3.38	3.39	3.38
2+00	3.54	3.56	3.54
50	3.47	3.49	3.48
1+00	3.36	3.40	3.39
50	3.53	3.55	3.54
0+00	3.61	3.61	3.61

Set 2x2 Hub & TR
(Random Point)

12-10-57

Stampex
Blunt
Elmore
Mather



50° 39' 35" 12-10-57
45-31-21 1/10
40

45° 53' 50" 12-10-57

38° 45' 20" 12-10-57

13.75 - F. Hyd.

77 = W, 16, 600

78 = " "

79 = " 16 590

80 = " 16 540

81 = " 16 520

82 = " 16 500

83 = " 16 510

20 330

2 770

17, 560

10 70

7 70