

5

24

John W. Darr  
Danvers, Mass  
L. 1885

5

DIETZGEN  
TRADE MARK



ENGINEERS  
LEVEL BOOK  
No. 410



W124

#5

# EUGENE DIETZGEN CO.

DRAWING MATERIALS, MATHEMATICAL and  
SURVEYING INSTRUMENTS

Chicago New York San Francisco New Orleans Pittsburg Toronto

Distances from center line to slope stake for Cross-Sectioning  
Roadway 16 feet wide. Slope 1 on 1.  
For Single Track Embankment.

**MICROFILMED**

H	0	.1	.2	.3	.4	.5	.6	.7	.8	.9	H
0	8.0	8.1	8.2	8.3	8.4	8.5	8.6	8.7	8.8	8.9	0
1	9.0	9.1	9.2	9.3	9.4	9.5	9.6	9.7	9.8	9.9	1
2	10.0	10.1	10.2	10.3	10.4	10.5	10.6	10.7	10.8	10.9	2
3	11.0	11.1	11.2	11.3	11.4	11.5	11.6	11.7	11.8	11.9	3
4	12.0	12.1	12.2	12.3	12.4	12.5	12.6	12.7	12.8	12.9	4
5	13.0	13.1	13.2	13.3	13.4	13.5	13.6	13.7	13.8	13.9	5
6	14.0	14.1	14.2	14.3	14.4	14.5	14.6	14.7	14.8	14.9	6
7	15.0	15.1	15.2	15.3	15.4	15.5	15.6	15.7	15.8	15.9	7
8	16.0	16.1	16.2	16.3	16.4	16.5	16.6	16.7	16.8	16.9	8
9	17.0	17.1	17.2	17.3	17.4	17.5	17.6	17.7	17.8	17.9	9
10	18.0	18.1	18.2	18.3	18.4	18.5	18.6	18.7	18.8	18.9	10
11	19.0	19.1	19.2	19.3	19.4	19.5	19.6	19.7	19.8	19.9	11
12	20.0	20.1	20.2	20.3	20.4	20.5	20.6	20.7	20.8	20.9	12
13	21.0	21.1	21.2	21.3	21.4	21.5	21.6	21.7	21.8	21.9	13
14	22.0	22.1	22.2	22.3	22.4	22.5	22.6	22.7	22.8	22.9	14
15	23.0	23.1	23.2	23.3	23.4	23.5	23.6	23.7	23.8	23.9	15
16	24.0	24.1	24.2	24.3	24.4	24.5	24.6	24.7	24.8	24.9	16
17	25.0	25.1	25.2	25.3	25.4	25.5	25.6	25.7	25.8	25.9	17
18	26.0	26.1	26.2	26.3	26.4	26.5	26.6	26.7	26.8	26.9	18
19	27.0	27.1	27.2	27.3	27.4	27.5	27.6	27.7	27.8	27.9	19
20	28.0	28.1	28.2	28.3	28.4	28.5	28.6	28.7	28.8	28.9	20
21	29.0	29.1	29.2	29.3	29.4	29.5	29.6	29.7	29.8	29.9	21
22	30.0	30.1	30.2	30.3	30.4	30.5	30.6	30.7	30.8	30.9	22
23	31.0	31.1	31.2	31.3	31.4	31.5	31.6	31.7	31.8	31.9	23
24	32.0	32.1	32.2	32.3	32.4	32.5	32.6	32.7	32.8	32.9	24
25	33.0	33.1	33.2	33.3	33.4	33.5	33.6	33.7	33.8	33.9	25
26	34.0	34.1	34.2	34.3	34.4	34.5	34.6	34.7	34.8	34.9	26
27	35.0	35.1	35.2	35.3	35.4	35.5	35.6	35.7	35.8	35.9	27
28	36.0	36.1	36.2	36.3	36.4	36.5	36.6	36.7	36.8	36.9	28
29	37.0	37.1	37.2	37.3	37.4	37.5	37.6	37.7	37.8	37.9	29
30	38.0	38.1	38.2	38.3	38.4	38.5	38.6	38.7	38.8	38.9	30
31	39.0	39.1	39.2	39.3	39.4	39.5	39.6	39.7	39.8	39.9	31
32	40.0	40.1	40.2	40.3	40.4	40.5	40.6	40.7	40.8	40.9	32
33	41.0	41.1	41.2	41.3	41.4	41.5	41.6	41.7	41.8	41.9	33
34	42.0	42.1	42.2	42.3	42.4	42.5	42.6	42.7	42.8	42.9	34
35	43.0	43.1	43.2	43.3	43.4	43.5	43.6	43.7	43.8	43.9	35
36	44.0	44.1	44.2	44.3	44.4	44.5	44.6	44.7	44.8	44.9	36
37	45.0	45.1	45.2	45.3	45.4	45.5	45.6	45.7	45.8	45.9	37
38	46.0	46.1	46.2	46.3	46.4	46.5	46.6	46.7	46.8	46.9	38
39	47.0	47.1	47.2	47.3	47.4	47.5	47.6	47.7	47.8	47.9	39
40	48.0	48.1	48.2	48.3	48.4	48.5	48.6	48.7	48.8	48.9	40

**Example**—If point is 22.6 ft. above grade, how far should it be from center line to be a slope stake point? Ans. from Table 30.6. For same slopes but other widths of roadbed, correct above figures by one-half difference in width of roadbed; thus in example above, for 20 ft. roadbed distance will be  $30.6 + (20 - 16) \div 2$  or 2 ft. added to 30.6 = 32.6. For slopes of 1 on 1 1/2 see inside of back cover.

Copyright, 1914, by Eugene Dietzgen Co.

108  
178  
136  
24  
152  
11

# Index

Elevations Coord. Points Fisher	1-8
Check Elevations Coord. Points Johnson	8-15
Profile East Dam Tangent	15-19
Check Levels East Tangent Sub	20
Elevations B Line - East Tangent	21-23
Elevations Coord PPs 14 and 16	23
Elevations Coord PPs 275-300-325	24-25
<del>See Page 29</del>	
" " " " " "	26
Check Elevations Coord. PPs 275-300-325	27
Levels for Foreman's Bunkhouse	28
Final Elevations Coord. Points 275-300-325	29-30
Elevation Points - Miscellaneous	31-37
Elev on Coord - Point 250 Radius - 50-38	33
Check Elev on Coord points + BM 54 Line	34
Check on Coord Point West Side Canyon	35-38
Elevation Coordinates Pts	39
Levels up Cottonwood + Pine Creek Canyons	40-47
	43-45
Check Levels - RT Abut <u>Void</u>	46

Chi

H

0

1

2

3

4

5

6

7

8

9

10

11

12

13

14

15

16

17

18

19

20

21

22

23

24

25

26

27

28

29

30

31

32

33

34

35

36

37

38

39

40

Ex  
to be a  
of road  
example  
30.6 = 3

Check Levels Rt Abut, 47-48

Final Elev, on West Tangent. 49

Check Levels Flight Abutment 49-

Levels up Cotton wood to 1700 50

10/30/19.

# Elevations Coord Points

Fisher  
Ketchum.

Iron Pit Top of Boulder.			
B.M. 60'S. Blksmith Shop Edge of Road			
5.48	1631.81	1626.33	
0-00 R 300	5.68	1626.13	
0-00 R 429	1.23	1630.58	
Stake for Cement House Top of Rock 15' NE. 4-425 B.M.	12.34	1619.77	
11.04		1620.77	
T.P.	12.45	1619.36	
B.S. 0.18		1619.54	
T.P. 2			
4-455	3.65	1615.89	
Knocked out			
T.P.	12.95	1606.59	
4-455 0.92		1616.91	
6-480	1.79	1615.32	
T.P.	12.13	1604.68	
B.S. 0.36		1605.04	
8-450	3.22	1601.82	
10-442	8.48	1596.58	
4-350	1.84	1603.20	
T.P.	12.78	1592.26	
B.S. 1.53		1593.79	

HI  
1593.79

C-8	12.82		1580.97
#5			
T.P.	12.58		1581.21
B.S. 0.39			1581.60
C-10	7.33		1574.27
BM+T.P.			
Nail in Stump	2.08		1579.52
Continued Page 2 - Check Levels -			
BM+T.P.	12.64	1892.64	1580.00
check on old T.P.	10.93		1581.71
T.P.	1.01		1591.63
B.S. 10.06		1601.69	
check on old T.P.	8.95		1592.74
T.P.	0.94		1600.75
B.S. 12.43		1613.18	
check on old T.P.	7.99		1605.19
T.P.	12.8		1611.90
check on old T.P.	8.57	1620.47	
4-445	4.07		1616.40
T.P.	0.60		1619.87
B.S. 12.05		1631.44	
5.12			1626.32

Levels Continued -							2
BM+T.P. Nail in stump	0.54	1580.06	1579.52	B.S.	3.14	1545.87	1542.73
10-315 on Rock T.P.	6.32		1573.74	C-19	3.0	9.76	1536.11
	12.75		1567.31	C-18		4.27	1541.60
	0.34	1567.65		16-309		6.30	1539.57
C-12	3.59		1564.06	T.P.		12.81	1533.06
T.P.	12.57		1555.08	B.S.	1.48		1534.54
Oct 31-1919 -		Fisher Ketchum.		18-303		5.16	1529.38
B.S.	0.29	1555.37	1555.08	C 20		5.19	1529.35
14-312	3.55		1551.52	C 21		11.87	1522.67
C-14	2.39		1552.98	B 24		9.35	1525.19
C-16	9.24		1546.13	T.P.		12.68	1521.86
B-20	10.26		1545.11	B.S.	0.30		1522.16
T.P.	12.64	mixt Pop B.S.	1542.73	C-22		6.30	1515.86
(8M.) T.P.	12.23	<del>12.23</del> 1567.81	1555.08	20-312		6.58	1515.58
B-18	9.54		1557.77	22-324		11.07	1511.09
T.P.	0.37		1566.94	T.P.		12.58	1509.58
B.S.	12.96	1579.90		B.S.	0.29		1509.87
B 14 T.P.	1.34		1578.56	24-321.2		7.12	1502.72
	12.10	1590.66		C.24		7.87	1502.00
12-437	2.36		1578.30	C 23		2.73	1507.14

		1509.87		38-300	1.98	1476.61	1474.63
B-26	6.03		1503.84	C-36	10.05		1466.56
Topo + Sticks				C-38	6.21		1470.40
T.P.	12.94		1496.93	B-36	10.67		1465.94
B.S.	2.09	1499.02		B-38	6.32		1470.29
26-366	7.30		1491.74	Nail			
C-25	2.64		1496.38	T.P.	0.00		1476.61
C-26	5.95		1493.07	B.S.	11.68	1488.29	
B-28	10.57		1488.45	90-300	8.01		1480.28
T.P.				(T.P.)			
C-27	12.91		1486.11	92-300	0.01		1488.28
B.S.	2.29	1489.40		C-40	10.11		1478.18
C-28	8.72		1479.68	T.P.			
27-357	8.81		1479.59	92-300	<del>11.68</del> 0.01		1488.28
on Rock				B.S.	11.53	1499.91	
T.P.	12.91		1475.49	44-300	3.09		1496.72
B.S.	1.12	1476.61		T.P.	0.51		1499.30
C-29	5.17		1471.44	C-42	9.72		1490.09
B-30	4.28		1472.33	B-44	9.91		1490.90
P.I.				B.S.	11.04	1510.34	1499.30
B-34	10.89		1465.72	46-300	3.03		1507.21
34-300	9.78		1466.83	C-44	12.66		1497.68
34 274.14	9.57		1467.04	C-46	9.74		1505.60
36-300	9.11		1467.50				

		1510.39	
B-46 (on Rock)	7.67		1502.67
T.P.*	0.60		1509.74
B.S. 12.74		1522.48	
49-300	6.12		1516.36
C-48	5.73		1516.75
Nail in Stump Entrance Tunnel	0.00		1522.48
B.S. 12.25		1534.73	
B-52	1.84		1532.89
B-50	12.06		1522.67
50-300	10.28		1524.45
B.M. Nail in Stump			
T.P.	0.01		1539.72
on Rock			
T.P.* 10.31		1520.05	1509.74
B-48	9.27		1510.78
B-38 12.29		1482.58	1470.29
B-40	8.74		1473.74
(42)			
B-44	1.97		1480.61
1	<del>0.5</del>		

OR



11/19  
Fisher  
Ketchum

Elevations Coord Points

5

Nail in Stump			44-300	3.16	1499.86	1496.70
BM 2.44	1537.16	1534.72	42-300	11.57		1488.29
B-52	4.27	1532.79	C-42	9.75		1490.78
T.P.	13.02	1524.14	B-44 Stump	9.46		1490.40
B.S. 0.70	1524.84		T.P.	12.19		1487.67
Nail in Stump north of Tunnel			B.S. 0.61		1488.28	
BM	2.36	1522.48	C-40	10.09		1478.19
B-50	2.17	1522.67	40-300	7.97		1480.31
B-48	12.06	1512.78	old turn Nail in tree	11.66		1476.62
C-50	2.15	1522.69	Nail in tree	12.92		1475.36
C-48	8.09	1516.75	T.P.			
50-300	0.40	1524.44	B.S. 0.27		1475.63	
48-300	8.47	1516.37	B-40	1.77		1473.86
On Rock T.P.	12.62	1512.22	B-38	5.32		1470.31
B.S. 0.64	1512.86		B-36	9.68		1465.95
46-300	5.55	1527.29	B-34	9.52		1466.11
old turn	3.12	1509.74	B-30	3.28		1472.35
C-46	7.27	1505.49	C-38	5.21		1470.42
B-46	10.19	1502.67	C-36	9.05		1466.58
Nail in Plug-core drill		1499.91	C.P.I.	9.88		1465.75
T.P.	12.95		C-29	4.17		1471.46
B.S. -0.05	1499.86					

		1475.63	Point on Rock			6	
Old top of Pt	0.15		1475.48	T.P.	12.88	1512.15	1499.27
38-300	0.98		1474.65	B-32x2	9.39		0.24 1492.76
36-300	8.11		1467.52	C-24	10.14		0.01 1492.01
34-300	8.78		1466.85	C-23 on foot	9.99		1407.16
34-274-14 Point on Rock	8.56		1467.07	T.P.	0.54		1511.61
T.P.	0.15		1475.98	B.S.	12.72	1524.33	
B.S.	11.44	1486.92		20-312	8.76		1515.57
C-28	7.23		1479.69	C-22	8.48		1515.85
B-28				C-21 on Rock	1.67		1522.66
27-357	7.32		1479.60	T.P.	0.83		1523.50
T.P.	0.34		1486.88	B.S.	12.23	1535.78	
	12.85	1499.43		C-20	6.36		1529.37
26-366	7.69		1491.74	T.P.	0.59		1535.14
C-26	6.35		1493.08	B.S.	12.65	1547.79	
C-25	3.04		1496.39	C-19	11.69		1536.10
Old TP Top of Stake Point on Rock	2.48		1496.95	C-18	6.17		1541.62
T.P.	0.16		1499.77	T.P. C-16	1.64		1546.15
Old TP Top of Stake	1.40	1498.35	1496.95	B.S.	12.91	1559.06	
C-27	12.22		1486.73	C-14 FOR T.P.	6.06		1553.00
					0.73		1558.33

	B.S.	12.98	1572.31	1558.33
38	C-12	7.20		1565.11 (9)
	P.O.R.			
38	T.P.	0.63		1570.68
34	B.S.	12.77	1583.45	
34	C-10	9.16		1574.29
	P.O.R.			1581.0
T	C-8	2.45		(1584.0)
B	B.M.	3.91		1579.54
C	T.P.	0.00		1583.45
B	B.S.	9.86	1593.31	
	on stump			
27	B.M.	2.40		1590.91
T	T.P.	0.00		1593.31
		12.50	1605.81	
26		0.74		1605.07
C		11.64	1616.71	
C	4-455	0.82		1615.89
o/a Top P.O.R.		9.45	1625.34	
	T.P.	0.01		1625.33
o/a Top	B.S.	6.33	1631.66	
C	60' S of Blacksmith Shop B.M.	5.33		1626.33

Check Levels. Pointson Dam site-

38 B.M. 5.72 1632.05 1626.33

36 0-330 5.89 1626.16

39 0-429 1.49 1630.56

34 T.P. 0.36 1631.69

~~Void~~

on cable way Stake

1.71 1633.70

10.97

Johnson - Level

Nov. 8th

Harris BM.

Elev Coord Points

60.5 B.S. 527 1631.00

1626<sup>33</sup>

31 80-330 5.44 2616

nail knocked down lower

32 00-429 1.04 3036

33 T.P. 12.99 1618.6

34 0.65 19.26

4-455 3.33 15.93

6-480 3.90 15.36

T.P. 12.44 1606.82

8-450 3.24 1610.10

4-350 6.85 03.25

T.P. 11.52<sup>5</sup> 98.58

on bench  
of mixing plant

200<sup>5</sup> 1600<sup>58</sup>

10-442 3.99 96<sup>59</sup>

12-437 12.21

T.P. 11.89 88.69

0.27 88.96

9.38 79.58

0,0.37 79.95

~~83.35~~

615 73.80

~~8.15~~ 77.18

10-315

Check Levels

Johnson

Ketchum

9

+

~~5.27~~ 1626.33

12.99 5,127

12.44 0.65

11.52 3.28

11.89 2.00

9.38 0.27

0.37

58.22

1638.17

58.22

79.95 ✓

# check of Coord Points

	C10	79.95	5.62	74.33
3	B16		11.16	68.79
3		0.13	68.92	
3	B18		11.05	57.87
34	C12		4.78	64.14
	12-315		7.14	61.78
	TP		11.92	57.01
		0.47	57.48	
B	14-319		5.59	51.89
2	C-14		4.47	53.05
	C-16		11.27	46.21
		1.70	47.91	
2	B20		2.73	45.18
	B22		13.11	34.80
	C18		6.23	41.68
0	C19		11.75	36.16
1	16-309		8.26	39.65
	TP		12.97	34.94
C		0.85	35.79	
	Keel 18-303		6.31	29.48
	11-11 over mail		6.33	29.46

11.16	1579.95	10
11.91	0.13	
11.27	0.47	
12.97	1.70	
<u>47.31</u>	<u>0.85</u>	
	1583.10	
	<u>47.31</u>	
	1535.79 ✓	

B16	10.44	79.23	68.79
B14		0.57 1/2	78.66

- 0.46

- 53

# Check Levels - Coord Points

1535.79

3	C 20	634	29.45
3	C 21	13.04	22.75
3	B 24	10.51	25.28
34	T.P.	13.04	22.75

0.24 1522.99

	C 22	7.04	15.95
	20-312	7.32	15.67
2	22-324	11.81	1511.18

1.01 1512.19

2	24-321 <sup>2</sup>	9.33	1502.86
	C-23	4.94	07.25
2	B-26	8.24	03.95
	T.P.	12.83	1499.36

0.00 1499.36

70	26-366	7.53	91.83
	C-25	2.88	96.48
	C-24	6.18	93.18
	C 27	13.13	86.23
	B 28	10.80	88.56

13.04	1535.79
11.81	0.24
12.83	1.01
10.80	0.00
<u>48.48</u>	<u>1537.04</u>
	48.48
	<u>88.56</u> ✓

-61

-68

-76

Check Levels - Coord Points

B28 8856

1.01<sup>14</sup> 89.57

-87

C28 9.77 79.80

27-357 9.85 79.72

T.P. Nail  
in  
Skidway 12.50 77.07

0.12 77.19

-9.1

34-274<sup>14</sup> 10.01 146.718

Top  
Wd 9.65 67.54

212  
147.61  
146.73

34-300 10.22 66.97

36-300 9.56 67.63

38-300 2.41 74.78

C-38 6.66 70.53

C-36 10.50 66.69

C-29 3.61 71.58

P.1 11.33 65.86

B-34 10.96 66.23

D-36 11.12 66.07

B-38 6.77 70.42

B-40 3.22 73.97

T.P. 1.75 75.44



# Check Levels - Coord Points

9.57 1585.01

75.44

-7.6

C-40	6.71	78.30
40-300	4.59	80.42
B-30	12.52	72.49
B-42	4.25	80.76
T.P.	1.06	83.95

1212 96.07

-7.9

B-44	5.54	90.53
C-42	5.82	90.25
42-300	7.65	88.42
T.P.	0.45	95.62

1235 1607.97

-7.1

44-300	11.03	96.96
46-300	0.53	07.44
C-44	10.16	97.81
B-46	5.18	02.79
T.P.	1.48	06.49

1198 18.47

-6.5

C-46	12.78	05.69
48-300	1.99	16.48

# Check Levels Cond Points

-62

	8.99	25.47		16.48
50-300			0.91	24.56
C-48			8.61	16.86
C-50			2.67	22.80
B-48			12.57	12.90
B-50			2.69	22.78
T.P.			0.08	25.39

-54

B.M.	12.65	38.04		
Nail in Stump			3.21	34.83
B 52			5.05	32.99
T.P.			0.44	37.68

34.72

	9.03	46.63		
B 54			1.33	45.30

TP	9.23	46.83		37.60
P.T.			5.11	40.72
TP			1.35	45.98

01.16.8

14-319	13.12	58.60		
			6.675	51.925
			12.95	45.65

6.86 52.51

45.65

1208 1540.43

Marked  
1540.33

Harris near lower  
B.M. dante

1476.70

496 81.66

T.P.

975 71.91

Center  
of wire

453 76.44

068 75.76

Nail in  
Shed

7.29 83.05

6.16 76.95

old class  
77.07

Harris  
B.M.

734 60.81

10735  
1446.12  
1553.47

14+319

8.97 51.84

5189

Checking Inst

By Polt

548

L iron

5515

1 measure rod  
and find graduations  
in error as follows

Mark  
ft Should be

1. 1.001

2 2.002

3 3.0025

4 4.0025

5 5.003

6 6.003

7 7.003

8 8.003

9 9.005

10 10.007

11 11.0075

12 12.0075

13 13.009

Fisher  
Bub-

Nov-14 Profile East Dam  
Tangent

Nail in stump  
B.M.

+  
7.12 1541.85 1534.73

C-52 15.69 1524.16

5+15 18.0 1523.9

5+20 17.0 1524.9

5+22 14.2 1527.7

+24 13.4 1528.5

+25 11.2 1538.7

+28 11.4 1530.5

+33 9.7 1532.2

+35 7.7 1534.2

C-54 7.61 1534.24

5+43 6.7 1535.2

5+43 -0.7 1542.6

+48 1.4 1540.5

+52 0.2 1541.

T.P. 2.57 1539.28

13.44 1552.72

Top of Hub

on Hub.

on stake 8' R - 5+48

See Check Levels  
pages 29-30

1552.72

<del>C-58</del>		<del>7.69</del>	<del>1545.08</del>
<del>5+70</del>		<del>4.3</del>	<del>1548.4</del>
<del>TP</del>		<del>1.34</del>	<del>1551.35</del>
<del>B.S.</del>	<del>13.51</del>	<del>1564.89</del>	
<del>C-58</del>		<del>11.09</del>	<del>1553.80</del>
<del>5+84</del>		<del>5.7</del>	<del>1556.2</del>
<del>TP</del>		<del>6.0</del>	<del>1558.9</del>
<del>C-60</del>		<del>1.02</del>	<del>1563.87</del>
	<del>14.60</del>	<del>1578.47</del>	
<del>6+17</del>		<del>6.0</del>	<del>1572.5</del>
<del>C-62</del>		<del>5.48</del>	<del>1572.99</del>
<del>6+27</del>		<del>1.9</del>	<del>1576.6</del>
<del>T.P.</del>		<del>1.31</del>	<del>1577.16</del>
<del>B.S.</del>	<del>15.30</del>	<del>1592.46</del>	
<del>6+34</del>		<del>13.7</del>	<del>1578.7</del>
<del>C-64</del>		<del>10.89</del>	<del>1581.57</del>
<del>6+48</del>		<del>7.2</del>	<del>1585.3</del>
<del>T.P.</del>		<del>0.89</del>	<del>1591.57</del>
<del>C-66</del>			
<del>B.S.</del>	<del>15.75</del>	<del>1607.02</del>	

See Check Levels Page 29-30

on Hub

Rock 2' L 5+73

Hub -

Hub

Top of Rock 6+25

1607.02

	15.27	21.39		
5+69			10.8	1596.2
+71			86	1598.4
+74			81	1598.9
C-68			4.82	1603.20
5+82			3.2	1603.8
T.P.			0.90	1606.12
Nov 15-1919				
	15.27	21.39		
6+89			13.3	
C-70			7.06	1323
			0.31	21.08
	15.07	36.15		
7+12			15.5	
C-72			10.71	
7+29			4.7	
7+33-69			4.75	
7+35			4.4	
7+37			1.3	
			1.27	

SEE CHECK  
LEVELS PAGE

29-30

8" - R of 6+85

on Hub

on Hub

on Hub

~~1636.15~~

T.P.  
C-74

~~0.14 1636.01~~

On Hub

~~15.33 51.34~~

C-75

~~9.53 41.81~~

B.M.

~~8.70 50.64~~

See Page 29-30

~~See check  
levels page  
70~~

11/15/19

Bub  
Fisher

## Check Levels East Tang

	+	211	-	ELE
Nail in Stump	669	1541.42		1534.73
8m				
C52 Top hub			1526	2616
C54 Hub			718	3424
Peg 8'R 5+48	1544	54.73	213	39.29
C56 Nail in R.			976	44.97
C58 Hub	1559	69.56	076	53.97
C60 Nail in hub			551	64.05
Rock 6' C70	1545	83.47	154	68.02
C62 - hub			1029	73.18
C64 hub TP	1593	97.69	1.71	81.76
C66 - hub			593	91.76
TP Top Casing	1574	1613.13	030	97.39
C68 - hub			1074	02.39
TP Peg 8'R 6+85			782	1605.31
Rock 20' C70	1387	263.6	064	12.49
C70 hub			1283	13.53
C72 R hub	1394	385.7	1.73	24.63
C-7+33 <sup>69</sup> hub			798	30.59
C 74 hub			337	35.20

See Page 29-30

## Check Levels Cont

20

		1638.57		
TP stump 3'R 7+43	1284	50.65	076	1637.81
C75 hub Peg + Witness			9.66	409.9
8m online about 7+60 from Cableway = 4988			0.81	1649.84

~~OT P.P.S.~~



Nov. 17-1919  
Fisher  
Bvb

Levels - B line - East Tangent  
+ HI -

Nail in Stump

B.M.	14.81	1579.54	1534.73
B-54			4.33 1545.21
T.P.			0.31 1579.23
B.S	13.19	1562.52	
B-56-450			12.18 1550.34
B-58-450			2.99 1559.53
T.P.			0.30 1562.22
B.S	15.13	1577.45	
B-60-450			9.04 1568.41
T.P.			0.36 1577.09
	15.78	1592.87	
B-62-450			13.44 1579.43
B-64-450			4.23 1588.64
T.P.			0.62 1592.25
	15.92	1608.17	
B-66-450			4.61 1603.56
T.P.			0.79 1607.38
	13.59	1620.77	
B-68-450			3.29 1617.48

stump - on C line 5+73

Hvb

Hvb

Peg 5+75 on B line 3' Right

Rock 2' ~~R~~ 6+17-

Hvb

Nail -

on Rock 4'L - 64-450

Nail in Rock

8' R - 6+70 - Stump

Nail in Rock -

B" Line

1620.77

TP

0.67 1620-10

Rock - 6+85 - 3' Ref line -

15.84 1635.94

B-70 450

11.91 162403

Hub

T.P.

1515 4953 1.56 163438

580 55.01 032 4921

B77-450 hub

457 1650.44

Bm Hub + Witness 7+60 Face Dam

518 49.83

164984 - (OR)

4980

EE

12/3/19  
Fisher  
Bub

Elev - for R.P. points 16-14 -

23

B-18- 10.13 1578.89 1568.76

B-14 0.27 1578.62

16-446.17 ✓ 11.11 1567.78

Nail in Rock

14-417.92 ✓ 3.91 1574.98

C-14 12.24 1565.23 1552.99

14-350.42 ✓ 8.53 1556.70

12-6-19

Fisher  
Ketchum

## - Elevations Coord Point

Station	Grade	+	HI	-	Elev.					
					62-325			9.30	1582.57	
					62- <del>300</del> <sup>275</sup>			12.20	1579.67	
C-54		12.85	1542.09		1534.24	64-275		3.39	1588.48	
52-300				10.73	1536.36	64-325	12.48	1604.03	0.32	1591.55
54-300				6.67	1540.42	66-275	10.90	1611.30	3.63	1600.40
TP on stump				0.75	1546.34		12.27	1623.47	0.10	1611.20
		12.32	1558.66			68-275		8.68	1614.79	
56-300				7.25	1551.41	68-325		10.98	1612.49	
C-58				4.69	1559.99	70-325	12.64	1635.63	0.48	1622.99
on Rock		12.99	1571.35	0.30	1558.36	72-325		2.16	1633.47	
58-300				10.59	1560.76	72-275		2.38	1633.25	
60-275				3.55	1567.80	70-275		12.79	1622.84	
60-250				3.15	1568.20	C-72		11.06	1624.57	
TP Hub about		10.17	1581.23	0.29	1571.06				24.59	
60300				9.73	1571.50					
60+325				9.99	1571.24					
C-62				8.06	1573.17					
stump		10.65	1591.87	0.01	1581.22					
64-325				0.32	1591.55					

see Page 29-30

1591.87

24

Error - .06

12/6/19

Fisher  
Welchum

Check Elev-Coord Point

gal + HI - EI

C-72 11.065 1635.69 24.63

70-325 0.44 1623.45 12.65 16230.4

old T.P. 12.23 1611.25

T.P. 0.50  
649.5 1611.41 12.575 1610.94

66-325 0.07 1601.05 10.43 1600.97

64-325 11.085 1590.97

C-66 10.91 1590.14

See page 29-30

Fisher  
 Bub  
 12/17/19 Elevation Coord - Points  
 275-300 - 325' Lines Points  
 +

Nail in Stump  
 B.M.

11.21	1545.74	1534.73	✓
9.60	1536.34	68-275	
5.53	1540.41	68-325	
12.66	1557.01	1.59	1544.35
5.61	1551.40	72-275	
13.28	1569.63	0.66	1556.35
8.88	1560.75	72-325	
1.84	1567.79	70-325	
1.43	1568.20	6-75	
15.18	1582.97	7.84	1567.79
11.46	1571.51	B.M. Peg - Witness	7460
11.72	1571.25		
13.93	1593.61	3.29	1579.68
5.12	88.49		
11.02	82.59		
15.17	1606.74	2.04	1591.57
4.16	02.58		
6.31	00.43		
2.33			
14.72	1619.13	2.32	1604.41

See page 29-30

1619.13<sup>5</sup>

4.31	1614.82		
6.62	12.51		
0.46	1618.67		
11.33	82.86		
0.90	33.29		
0.70	33.49		
11.18	230.1		
14.78	1648.21	0.76	133.43
9.51	1650.46	7.26	1640.95
9.67	1649.79		
	(1649.84)		
	Error = -0.5		

✓

12/17/19  
 12 Bub  
 Fisher.

Check Levels of  
 325 + 275 line - Points

12/17/19

+ 241 - E16

1649.80 = Corrected E16  
 2/5/20 7460

B.M. Peg + N.W. 7+60	067	50.51		<del>1649.84</del>
	124	36.05	1570	34.81
70-325	1352	36.58	1299	23.06
72-325			304	33.54
72-275			324	33.34
70-275	113	24.03	1368	22.90
68-275			917	14.86
68-325			1148	12.55
P.	085	10.78	14.10	09.93
66-325			816	02.62
66-275			1031	00.47
P.	290	99.87	1381	96.97
64-325			826	91.61
64-275	077	89.30	1134	88.53
62-275			958	79.72
62-325			667	82.63
P.	042	74.60	1512	74.18
60-325			830	71.30

See page 29-30

60-300		305	71.55
60-275		676	67.84
60-250		635	68.25
58-300		1380	60.80
P.	036	6106	1390
56-300		961	51.45
	064	4701	1469
54-300		655	40.46
52-300		1062	36.39
Nail in Stump B.M.		1224	34.77

.04 High - Elev.

34.73

2/1/20

Sub.  
Fisher.  
Howard.

Levels 4 mans Sunhouse.

SW Cor 2' South = Grade

433 1704.33

Assumed  
1700.00

E West 32' F 0.4' = 0' - 1/2" 437 1699.6

NW Cor 2' North F 1.41' = 1' - 5" 574 98.59

North line 8'E F 4.91' = 4' - 11" 924 95.09

NE Cor 2' N F 9.71' = 9' - 8 1/2" 1404 90.29

E East 32' F 7.82' = 7' - 9 3/8" 1215 92.18

SE 2' S F 7.91' = 7' - 11" 1224 92.09

South line 8'E F 7.64' = 7' - 7 3/4" 1197 92.36

20 X 64'



Fisher  
Howard

Final  
Check Levels Coord. Points  
C Line East Tangent 275-300-325-Lines

29

2/5/20

Nail in Stump  
B.M.

11.14 1545.87 1534.73

C-54 11.64 34.23

T.P. Nail

C-56 13.02<sup>Ⓟ</sup> 58.03 0.86 45.01

C-58 4.07 53.96

Peg on line  
About C-59

13.08 70.82 0.29 57.74

C-60 6.77 64.03

Peg TP  
C61-5' R.

14.49<sup>5</sup> 84.46 0.85 69.97

C-62 11.30 73.16

C-64 2.73 81.73

Stump-8'A  
C64

12.22 95.24 1.44 93.02

C-66 3.51 91.73

T.P. Peg  
64+15 3'A

13.59 1608.45 0.38 94.86

C-68 6.08 02.37

TP Rock

12.70 19.81 1.34<sup>33.5</sup> 07.11

C-70 6.31 13.50

TP. Rock 15.09 34.34 0.56 19.25

C-72 9.75 24.59

C-72-13.69 3.79 30.55

Final Elev-Coord Points - Last tangent  
 325-275  
 +300'

30

1634.34

1593.41

Peg-72-13- T.P. 11R	13.37	47.05	0.66	33.68
C-74 T.P.			11.88	35.07
C-75	9.45	50.41	6.09	40.96
Peg + Wit-7460 (B.M.)			0.61-1647.80	
Peg + Wit 7460 B.M.	0.61	1650.41		49.80
C 74	0.51	35.68	15.24	35.17
70-325	12.80	35.82	12.66	23.02
72-325			2.32	33.50
72-275			2.52	33.30
70-275			12.97	22.85
70-325	0.47	23.49		23.02
68-325			10.97	1.25
68-275			8.67	14.82
2-R. Peg T.P. 67-325	0.73	08.45	15.77	07.72
66-325			5.87	02.57
66-275 T.P. Peg 325 4403-	0.59	93.40	15.63	92.82

64-325	1.84	91.57
64-275	4.92	88.49
62-325	10.81	82.59
62-275	13.73	79.68
stump T.P.	0.73	79.80
60-325	8.55	71.25
60-300	8.30	71.50
60-250	11.59	68.21
60-275	12.01	67.79
peg T.P.	0.41	64.49
stump	0.25	49.00
stump B.M.		14.27

Correct BM Elev

1434	79.07
64.49	15.72
49.00	15.74
34.73	34.73
(error 0.01)	34.72
54-300	8.58
52-300	12.66
64.49	
58-300	3.73
56-300	13.08
1560.76	
1551.41	

5/3/20

Fisher

Mixer.

Elev. Card Points

31

B-14	12.24	1590.86		1578.62		78.62
14-417.22			15.87	1574.99	err 2.01	12.24
Nail in Rock				1574.99		90.86
14-436.28			15.89	74.97		199
Nail in Rock						88.87
14-495.10	13.05	1601.92	1.99	88.77		1305
Nail in Rock						01.92
12-502.09			1.12	1600.90		
Nail in Rock						
12-437			13.57	88.35		
Nail in Rock						
12-426.32			14.59	87.33		
P.O. P.				96.55	err 10.03	
10-442			5.37	46.58		
on Rock						
T.P.	1.64	89.20	14.36	87.56		
B-14 -			10.58	78.62		
14-436.28	2.28	77.24	14.24	74.98		
16-446.17			9.45	67.79	err 0.01	
Hub -				67.79		
B-16			8.50	68.74		
				68.76		
B-18	5.47	1563.28		1557.81		
-Hub-						
18-488.2			2.21	1561.07		

5/3/20

Fisher  
Mixer.

## Elev. Coord Points

32

B-20	8.36	1553.47	1545 <sup>11</sup>	B-42	10.09	1490.72	80.64
<sup>Hub</sup> 20-504.89		3.78	49.69	42 P.R. (about 6.24)		4.71	76.01
<sup>Hub</sup> 22-497.40		10.86	42.61	B-44		0.32	1490.41 <sup>(20)</sup>
<sup>Hub</sup> B-22	14.5	36.18	1534.73	Nail 42-434 <sup>28</sup>	9.56	1501.26	1491.70
<sup>P.R.</sup> B-24		10.98	25.20	Nail 42-420 <sup>12</sup>		14.24	87.02
<sup>Hub</sup> 24-505.41	0.74	30.08	6.84	44- <sup>about</sup> 670		0.44	1500.82
<sup>P.R.</sup> 26-R.P.		1.77	28.31				
B-26	11.05	14.90	1503.75	Nail in Stump B.M.	3.66	1538.34	1534.73
<sup>Hub</sup> 26-471.90		4.48	10.42	New B.M. Nail in Stump		0.62	37.77
28-481.22		10.33	03.57	SE. 11 <sup>1</sup> / <sub>2</sub> of 468 <sup>52</sup>			
28-R.P.				52-468 <sup>11</sup>		5.56	32.93
				50-300		13.96	24.43
B-38	12.42	1482.72	1472.30	6/3/20 (20)			
38-480.41 ✓		5.16	77.56	50-300	4.46	28.89	24.43
(Nail) (about 4.82) ✓		4.66	78.06	48-250		2.66	26.23 -
<sup>P.R.</sup> about 40-674-0 ✓		6.93	76.69	46-250		8.90	19.99 ✓
B-42		2.08	80.64	44-250	4.06	17.26	1577 13.11

Fisher  
Mistler  
June 3/1920

Elevations on  
Coordinate Points 250 P.M.

18.74

42-250				40-219.10		5.64	13.10		
42-250				42-217.11		4.16	14.58		
44-250	5.75	1886	1513.11	44-218.92		0.93	17.81		
42-250			11.71	07.15	T.P. Rock	12.58	28.85	2.47	16.27
44-218.92			1.06	1517.70	46-250		8.87	19.98	
42-217.11			4.30	14.56			2.63	26.22	
40-219.10			5.77	13.09	50-300 BM. in string	12-77	37.20	44.2	24.43
38-229.54			9.41	09.45	BM.		2.48	34.72	
T.P. Rock	0.87	1504.14	1559	03.27					
40-250			7.89	96.25					
38-250			12.67	91.47					

Check Levels Back

38-250	12.67	04.16	1491.49						
40-250			7.89	97.27					
T.P. Rock	15.45	118.74	0.87	03.29					
42-250			11.57	07.17					
44-250			5.63	13.11					
38-229.54			9.28	09.46					

Fisher  
Mixer

## Check Elev on Coord Points

34

Pin in Boulder  
60' S. Old Blacksmith Shop

B.M. 5.65 1631.98 1626.33

Top of Nail 0.87 17.11 15.74 16.24

Top Nail

Near Motor House to Mixer 0.69 1602.10 15.70 1601.41

Nail  
on Brace  
for concrete chute  
Nail in Stump 2.05 84.87 14.28 87.82

10.32 79.55

Nail in Rock

12-426 32

2.57 87.30 87.33 - Low 0.03

Nail in Concrete

Chute - #4 0.27 75.04 15.10 74.77

C-12 11.09 63.95 1565.12

TP - on Rock 1.30 61.41 14.93 60.11

Hub

14-319 9.59 51.82 51.84 Low 0.02

C-14

SW cor. concrete Tower

8.43 52.98 Low 0.01

B.M. Nail in Rock 15.20 46.21

T.P. on Stake 3.42 51.59 13.24 48.17

TP on Rock 0.63 37.43 14.79 36.80

18-303 8.08 29.35 29.40

B-22 2.72 34.71

B.M. Nail in  
stump - 54 Lime

2.68 34.75 High - 0.03

24-505 8.11 29.32 Low 0.04

B-24 12.25 25.17 1525.20 Low 0.02

60' 506 Old Blacksmith Shop  
Pin in Boulder

B.M. - 5.73 32 0.6 1626 33

T.P. 5.66 23.15 14.57 1617.49

014 TP 6.91 16 24

6-480 7.79 15 36

TP 0.27 99.15 14 24 08.91

8-450

160185

Top of Sewer <sup>concrete</sup> joint 1142

10-442 1262 96.56

6/5/20

## Check Elev of Loose Points

36

Fisher - A  
 Mixer - Not  
 60 S. of Blacksmith Shop.  
 Pin in Boulder

## West side Canyon

BM.	5.34	1631.64	1626.33	B-18	64.41	6.61	57.80
TP							
Nail 1.	0.86	17.08	15.44	14.20	18-488°	3.33	61.08 <sup>out</sup>
6-480.			1.73	15.35	20-50489	14.71	47.70
B-450			15.22	01.86	14-35042	7.68	56.73
Nail Near Motor House							
TP-Nail	2.14	03.54	15.68	01.70	14-319	12.53	51.88
Nail - Top Concrete							
End of 4" Iron Pipe			5.79	97.75	TP	2.75	58.07
10-447			6.99	76.55	SW Cor. Concrete Truss #1	14.05	50.32
10-442					BM	6.83	46.24
12-437°	2.22	70.57	15.19	88.35	C-18	11.46	41.61 <sup>✓</sup>
12-42632			3.25	87.32	B-20	7.95	45.12 <sup>✓</sup>
Nail in Rock							
14 - about 73			1.70	88.87	20-50489	3.37	49.74 <sup>out</sup>
14-43625			15.61	74.96	Anchor Bolt for	11.94	41.67
14-41792		err 0.01	15.58	74.99	TP	1.25	1539.35
TP	2.89	77.85	15.61	74.96	B-22	4.62	74.73 <sup>✓</sup>
16-4467			10.06	67.79	B-24	14.18	25.17
Nail in Stump							
BM (about 16-468)			4.95	79.70	24-50484	10.03	29.32
Hut.			8.43	69.42	18-303	9.99	29.36
about 12-340			6.97	70.88	BM Nail in stump	4.61	34.74
Nail in stump					54 Line		
BM about 12-330			3.10	74.75	TP	1.91	261.2
Nail in stump					about 24-432	15.14	24.21
Old TP					BM Nail	0.37	25.75
TP	1.59	64.41	15.03	62.82			



		26.12		
TP				
26-	2.27	12.69	15.70	10.42
B-26			8.84	15.03 85
B-28-1			8.11	15.03 58
TP Peg	0.68	14.98.00	15.37	14.97.32
B 28			9.56	8.84
TP peg	0.74	83.46	15.28	82.72
B-30			11.10	72.36
on stump Near B-30			11.73	71.73
BM.				
B-38	<del>0.50</del>	<del>71.11</del>	13.17	70.29

on stump  
Mar 8-30

## Check Levels -

BM	11.73	83.46		1471.73
TP peg	15.16	97.88	0.74	92.72
TP peg	15.70	13.02	0.56	97.32
	15.15	25.56	2.61	10.41
	14.40	39.14	0.82	24.74
B.M.			13.40	25.74
TP.	14.84	52.94	1.04	38.10
Nail in stump about 17-410			1.99	50.75
TP.			2.64	50.30
TP peg	13.66	66.33	0.27	52.47
TP			3.53	52.80
C 14			13.35	52.95
on stump chute.				
TP	15.11	80.46	0.98	65.35
TP 14			5.69	74.77
10-315			6.73	73.73
Nail in stump				
BM	15.49	95.05	0.90	79.56
TP.	13.58	07.33	1.30	93.75
check on House to Mixer.			15.93	01.40
-TP-	13.21	19.65	0.89	06.44

check Levels - Coord Points

1965

14.68 32.14 2.19 17.46

BM - Iron Pin

60'-s- of Old Blksmith Shop

5.83 1626.31

Low

error 0.2

1626.33

B

a

N

6/21/20

## El. Coord Points

37

12-437 11.32 99.66 1588.34

10-446<sup>58</sup> 1.93 1577.73

Nail.

12-455<sup>79</sup> 12.36 87.3014-495<sup>14</sup> 10.80 88.56

B.M. about

16-465 5.65 1579.55 1573.90

16-490<sup>09</sup> 0.60 78.9516-~~446~~<sup>44</sup> 8.73 708214-455<sup>79</sup> 1.40 78.1516-446<sup>12</sup> 10.76 68.79B-20 7.05 1552.16 1545<sup>12</sup>20-421<sup>21</sup> 10.45 41.71

20-505 2.56 49.60

22-497<sup>40</sup> 9.55 42.61

B-22 6.46 41.19 1534.73

24-505 11.79 29.40

8/10/20  
Bob  
Fisher  
Mixer

Levels up Cottonwood  
Canyon-

BM. Near 8-30	0.24	1471.77		1471.73
T.P.	6.90	75.73	3.14	68.83
TP	5.06	77.68	3.10	72.62
T.P.	4.55	80.30	2.23	75.45
TP.	5.94	83.63	2.61	77.69
TP.	4.62	85.77	2.48	81.15
TP	5.07	87.64	3.20	82.51
TP	6.75	91.56	2.83	84.81
x under creek TP.	5.75	95.71	1.60	89.96
T.P.	6.88	1500.44	2.15	93.56
Time Creek Bridge	19.94	1508.58	1.80	91.64
	15.26	20.79	3.05	05.53
Skye Valley Bridge across Conduit	4.87	22.83	2.83	17.96
	3.07	23.70	2.20	20.63
Sitting Basin	8.19	28.19	3.70	20.00
TP.	4.70	30.40	2.49	25.70
TP.	4.41	31.46	3.35	27.05
TP.	3.18	32.74	1.90	29.56

530.6  
71  
2524

41.33  
1427

		32.74		
TP	9.49	42.16	0.07	32.67
TP	7.63	43.95	5.84	36.32
TP	5.60	47.85	1.70	42.25
cross stream	6.63	49.43	5.05	42.80
TP	7.95	55.31	2.17	47.26
TP	6.35	40.45	1.14	54.01
TP	3.55	61.24	2.76	57.69
TP	8.94	68.25	1.93	59.31
BM Nail in Bridge	56.17		5.25	63.50

Top of Bridge Elev = 1564.50 <sup>2021</sup>  
 Bottom " " Elev = 1561.30 <sup>3</sup>

Bridge 1.7 ft higher  
 Bridge 1.5 ft lower

Place red flags -  
 at 1461. - on Sand  
 Storage # 2.

8/14/20

B.C.

Pine Creek

Pine Creek

Bridge

Trestle Pine Creek

T.P.

## Levels up - Pine Creek

42

8.68 1507.32 1498.64

15.46 19.50 3.28 04.04

5.28 22.34 2.44 17.06

5.57 23.48 4.43 17.91

5.14 23.79 4.83 18.65

6.22 25.88 4.83 18.96

5.04 26.50 4.42 21.46

6.71 33.01 0.20 26.30

Top of  
Pine Creek Dam

0.87 27.17 4.83 28.15 ✓

T.P. 6.30 38.32 0.99 32.02

T.P. 12.97 49.51 1.78 36.54 ✓

T.P. 12.30 56.30 5.51 44.00

T.P. 5.14 59.86 2.58 53.72

7.75 65.79 1.82 57.04

3.86 60.93

11/9/20

Fisher  
Davis  
Nail in  
BM Bridge  
Cottonwood Crossing

## Levels up - Cottonwood

43

9.04 1572.04 1563.00

Nail 10.20 81.64 1.10 70.94

T.P. 3.26 81.63 3.27 78.37

7.13 84.17 5.39 76.24

9.11 90.06 3.22 80.95

5.81 92.71 3.15 86.90

7.21 99.70 0.22 92.49 xx

8.36 1607.12 0.94 95.76

BM  
Nail in Tree

1.34 06.78

5.33 10.50 1.95 05.17

6.39 13.06 4.03 06.47

5.60 16.62 2.04 11.02

Hub with  
Nail BM

9.62 1607.00

T.P. 12.97 29.05 0.54 16.08

2.05 1627.0

Hut with Nail Stake	4.54	1611.54		1607.00
TP on Rock	10.00	1618.99	2.55	1508.99
TP Top of Salazar Dam	11.79	30.43	0.35	18.64
			3.95	26.48
TP	12.68	40.20	2.91	27.52
E. Road- TP	7.32	39.84	7.68	32.52
Nail in Tree BM			4.78	35.06
Bridge across creek			1.42	38.42

1638.42



12/22/20

Fisher

Mixer

Nail in stump

16-438  
B.M.

Levels 60

		1573.93		1572.90			
1.03.5		1574.93		1573.90		14-436.25	
		61.10		60.95			
T.P. on foot	0.12	62.10	12.95	61.98		14-417.92	
18-438.09			7.12	54.98		14-455.79	
T.P.	1.10	49.88	12.32	49.78			
		50.88					
	0.87	38.95	11.80	38.05			
E. Turn		39.95		37.05			
0+20.05			8.91	40.99			
				41.97			
	0.115	27.06	12.00	26.95			
		28.06		27.95			
Nail			18.37	18.69			
Top of Dam							
T.P.	2.46	18.66	12.86	14.20			
Nail in concrete							
B.M. 6" outside - front face			10.20	06.46			

10.20 16.66 06.46

12.98 27.18 2.46 14.20

11.845 59.79 0.23 26.95

11.63 49.71 0.715 38.08

11.37 60.15 0.93 48.78

12.69 72.24 0.605 59.55

d.J. PR

11.25 60.99

7.54 77.64 2.14 70.10

4.83 72.81

45

77.64

2.76 74.88  
1574.96

2.74 74.90

0.58 76.06

2-7-21

Fisher  
Mixer

## Levels for Benches West Tangent

BM Iron Pin Set in Boulder

Barrettdam Datum

40' South Conveyor #2

1626.33

B.M. 7.415 33.745 1626.33

Nail 25' North  
of Cement House Extension  
T.P.

9.105 42.485 0.365 33.380

8' North of Steelrack -

Blacksmith Shop (T.P.) 1.015 38.150 5.350 37.135

Stake 13' North of

Steelrack-Blacksmith Shop 1.025 26.185 13.04 25.110

Nail in Stump

BM 8.145 167.990

Near Route 35 - East

Blacksmith Shop (T.P.) 0.950 14.750 12.335 13.800

(T.P.) 2.72 04.705 12.565 02.185

Nail in Rock  
Near Sewer Line (T.P.)

1.74 94.575 12.10 92.805

Nail in Rock (T.P.)

Nail 12-455 79 1.20 83.415 12.33 81 2.15

B.M. Nail in Stump

16-468 10.41 73005

error of 0.10

See Page

47+48 -

46

BM Nail in Stump

16-468 10.41 7341 73.00

12.37 91.04

on chute

12.38 95.78 0.01 93.40

Nail in rock

50 yards of Mixers 11.745 058.60 1.665 94.115

Stake 20' east of  
B.M.

12.15 16.825 10.85 04.77.5

9.905 26.830 000 16.925

6.32 30.86 1.29 24.54

5.425 36.43

See Page  
47 + 48

1/8/44

Hub  
Fisher  
Mixer

Check Levels for Rt Abut.

	795	1634.28		162633
P	865	39.91	302	163126
P	039	28.75	1155	28.36
B.M.	184	19.67	1082	161783
			603	13.60
P	129	10.51	1045	09.24
P	126	07.99	978	00.83
P	225	90.83	1191	90.88
P	372	82.19	1186	78.47
B.M.	1097	83.81	935	72.84
P	1035	91.70	746	81.85
P	1111	160.58	123	90.47
P	1167	122.7	098	160.80
P	1272	43.58	141	10.86
P	1210	35.81	037	33.41
P	257	37.83	075	34.86
P	117	32.43	597	31.76
B.M.			610	162633

Nail in Bulkhead at wire storage  
 Point on Rock  
 Nail in stump 20' E of N End B Shop  
 Eds TP.  
 Point of Rock  
 12-502<sup>09</sup>  
 Rock  
 Rock  
 Nail in oak stump near 16 (~~425~~)  
 Hub RP Outlet Tower 468  
 Nail in Rock  
 Nail in stump about 8-440  
 " " Brace Cement Platform near Tower RP  
 " " Joist Cement Platform  
 " " Footing about Road Level  
 " " Bulkhead at wire storage

(3)

✓

2/8/21

Bob  
Fishes  
Mittles

## Check Levels Rt Abot.

	059	16.97	16.76	33
P	2.41	17.13	12.70	14.77
P	2.95	07.65	12.63	04.70
P	0.77	95.79	12.63	95.02
P	0.35	83.46	12.88	82.91
P. BM			12.30	70.96
P			1.81	81.45
10-350			6.29	76.97

✓

45

Bm Iron Pin

Nail in Rock

Rock

Nail in stake

Top Bolt.

Nail in stamp near r line (12-330) N.E. of tower Hart

Hub on E Tower R.P.

Hub with witness. 10-350

8-10-21  
Sub  
Fisher  
Mixer

Final Elevations on West Tange

B.M.	7.63	1580.57	1572.94
16-446 <sup>12</sup>			12.75 67.82
14-455 <sup>29</sup>			3.38 77.17
14-436 <sup>28</sup>			5.63 74.94
14-417 <sup>22</sup>			5.55 75.02
16-490 <sup>09</sup>			2.58 77.99
B.M.	0.18	1573.12	1572.94
18-470 <sup>25</sup>			11.55 61.57
18-488			12.01 61.11
18-502 <sup>17</sup>			8.17 64.95
T.P.	0.45	60.92	12.65 60.47
18-438 <sup>09</sup>			6.80 54.12
T.P.			
18-411 <sup>19</sup>	1.77	50.07	12.62 48.30
T.P.	1.80	42.91	8.96 41.11
Ball of Pipe.			9.99 33.02
B.M. TP Top of Pipe	0.91	34.31	9.51 33.40
B.M.			10.13 24.18
B.M.			10.01 24.30

B.M. Nail in Stump about 16-468-  
 16-446<sup>12</sup> Nail in Rock  
 14-455<sup>29</sup> Hub-  
 14-436.28 + in rock - ~~Roller foot nail~~  
 14-417<sup>22</sup> + on Rocks.  
 16-490.09 Nail in Rock  
 18-470<sup>25</sup> Nail in Rock  
 18-488.0 Hub  
 18-502<sup>17</sup> Nail in Rocks  
 on Rock.  
 18-438<sup>09</sup> Hub  
 18-411<sup>19</sup> Hub T.P.  
 0+20<sup>08</sup> Hub of Tunnel T.P.  
 TP west side Top of Pipe Outlet Gallery  
 Nail Center of Fillet S.W. Cor.  
 Nail Center of Fillet N.W. Cor.

Transferred  
Book 8 Page 6.

✓

1-11-21

Fisher  
Mixer

Check Levels Rt Abutment

12-502<sup>09</sup> 0.73 1601.56 1600.83

14-495<sup>60</sup> 12.65 1588.91

10-446<sup>58</sup> 3.79 1597.77

RP. & Tower  
~~1587~~ 10.78 92.23 1581.45

12-437 385 88.38

12-455<sup>79</sup> 4.89 87.34

12-426<sup>30</sup> 4.88 87.85

TP 9.86 1610.56 1600.70

8-450 8.67 1601.89

TP 533 16.29 1610.96

6-470<sup>65</sup> 0.91  
0.92 15.38

12-502<sup>09</sup> Nail in Rock

14-495<sup>60</sup> Nail in Rock

Ent Steel Pipe  
Concrete Sewer Joint

Hub

12-437 - Nail in Rock

12-455<sup>79</sup> - Nail in Rock

Nail in Stump about 8-440

Hub

Nail in Brace Landing Platform near RP & Tower

6-470.65 Hub

Transferred  
Book 8 - Page 6

4/18/21

Levels up Cottonwood  
to Elev. 1675 + 1700

944	1647.86		1638.42
1288	1659.81	0.93	46.93
927	68.66	0.42	59.39
888	1676.61	0.93	67.73
		1.67	1675.00
1080	83.26	4.15	77.46
1305	86.47	0.04	83.22
			1702.77
		+6.50	1697.97
	1707.18		9
1137	97.18	-0.46	85.81
	1717.21		1706.02
1119	1707.4	1.16	96.02
	1729.52		1716.83
1269	1719.52	0.38	1706.83
			1722.95
		6.57	1712.95
739	79.85		77.46
503	81.93	2.95	76.90
542	85.25	2.10	79.83
448	77.62	14.11	73.14
950	80.87	6.35	71.37
1044	80.81	10.50	70.37

1675

Top Cm. Bridge crossing conduit. below Salazar.

299 N side Road. below falls.

on Fence.

Nail in Fence Post along Road across from Salazar.

TP across creek

on Fence post Salazar Canal

Salazar's Floor.

TP nail

Nail in ground.

TP nail

Stake on Point above Salazar Barr.

TP across Creek

P. on Bank

P. on Bank

P Top Rock in Creek Bottom

P Small Rock

P Top Rock Creek Bottom

4/18/21  
Bob  
Fisher

Levels Up Cotton Wood River

168081

543	80.89	535	75.46	TP Top Rock
1135	86.13	611	74.78	TP Rock Creek Bottom
		1113	167500	Hub in Creek Bottom Flagged
1109	93.02	420	81.93	TP Rock
600	96.85	217	90.85	TP along Road 10 am
		+315	1700 <sup>00</sup>	Flag on Water Station End of flume

---

412	94.97		90.85	
443	93.55	585	89.12	TP Top Stump
636	99.48	043	93.12	TP Nail
575	1702.50	273	96.75	
087	1690.54	1283	1689.67	
741	84.75	1320	77.34	
		965	75.10	Nail in Fence Post set at 1675 <sup>00</sup>
168	76.68		75 <sup>00</sup>	
210	69.77	901	67.67	
424	62.01	1200	57.77	
072	50.60	1213	49.88	Bottom Fence Post near Falls



4/18/21

Bob  
Fisher

Levels up Cottonwood River

1650.60

537 47.47 8.50 1642.10

Top Stump on North Side Road

6/3/21

905 1638.42

Ⓟ

Stand Level.

Nail in  
Fence Post.

1300 1664.88 1649.88

P. 1300 75.68 0.70 67.68

1300 88.68 00 75.68

1300 1700.88 0.80 87.88

4/21/21  
Bub  
Sugar  
mittor

Check Levels Lt. About

B.M. Nail  
in Stump <sup>18</sup>468

0.82 1573.76<sup>1</sup> 1572.94<sup>✓</sup>

0.77 1561.87<sup>1</sup> 12.66 1561.10<sup>✓</sup>

(18-438)<sup>29</sup>

7.76 1554.11<sup>✓</sup>

P. Nail in Rock

Hub - c18-438<sup>29</sup> marked 1554.12<sup>✓</sup>

5.41 1554.26 13.02 1548.85<sup>✓</sup>

Top Nail 2+70

7.22 1559.76 1.72 1552.54<sup>✓</sup>

P. Rear Frons

58-450

0.26 1559.50<sup>✓</sup>

P. Hub

56-450

9.46 1550.30<sup>✓</sup>

56-325

5.81 53.25<sup>✓</sup>

Hub

12.38 1571.88 1559.50<sup>✓</sup>

11.78 83.24 0.42 77.46<sup>✓</sup>

Nail in Rock

13.03 95.11 1.16 82.08<sup>✓</sup>

" " Top Boulder 29, about 62-470

B64-450

6.63 88.48<sup>✓</sup>

64-428<sup>92</sup>

9.05 86.06<sup>✓</sup>

11.21 1605.96<sup>✓</sup> 0.36 94.75<sup>✓</sup>

Top stump

66-439<sup>86</sup>

10.55 95.41<sup>✓</sup>

Hub

66-450

2.57 1603.39<sup>✓</sup>

Nail Top Rock

68-411<sup>96</sup>

5.36 1600.60<sup>✓</sup>

4/21/21

Bob  
Kistner  
Fisher

## Check Levels Lt Abut.

		1605.96 <sup>✓</sup>				
	1270	1617.68	098	1604.98	TP Nail in Rock	
	1219	28.59	178	16.40	TP Nail Top Boulder on Clife	
68-450			1107	17.52	Nail in Rock	
70-450			453	1624.06 <sup>✓</sup>	Hub	✓
	1253	40.45	067	27.92 <sup>✓</sup>	TP Nail in Stump	
	1094	50.55	084	39.61 <sup>✓</sup>	TP Nail in Crack of large Boulder about 72-360	
			069	49.86 <sup>✓</sup>	BM Hub + stake about 7+60 "C"	
<hr/>						
	009	1649.95		1649.86	BM Hub + Witness 7+60 "C"	✓
	068	1638.01	126 <sup>✓</sup>	1637.33	Nail in D.G.	
	097	16.34	1264	1625.37	Top Pt about 72-365	
70-325	1180	34.88	326	1623.08	Hub	✓
72-325			132 <sup>✓</sup>	33.56 <sup>✓</sup>	Hub	✓
72-275			151	33.37 <sup>✓</sup>	"	✓
70-275	105	23.88 <sup>✓</sup>	1205	22.83 <sup>✓</sup>	TP 10 AM	✓
68-275			898	14.90 <sup>✓</sup>	Hub	✓
68-325	030	13.90	1128	12.60	Hub	✓
68-360			501	1607.89 <sup>✓</sup>	Hub	✓

4/21/21  
Bob  
Fisher  
1st Inter

Check Levels Lt About

161290

66-325		10.24	1602.66	Hub	
66-275	2.11	1602.62	12.39	1600.51	✓
64-325		10.99	1591.63		✓
66-360		4.07	1598.55	"	✓
	180	1591.27	12.15	1590.47	TP Peg
64-275		3.70	1588.57	Hub	✓
62-325		9.63	1582.64	"	✓
	1.24	806.3	12.88	1579.39	Top Stamp
60-300		9.05	71.58	Hub	✓
62-275		0.87	79.76	Hub	✓
60-250	3.89	1572.18	12.34	68.29	Hub
60-275		4.35	67.83	Hub	✓
58-325	0.43	62.54	10.07	62.11	Hub
56-325	1.66	55.61	8.59	1553.95	Hub - 1553.95 (OK) 2/13
	8.8	1558.82	5.61	1550.00	PORT FORMS
	11.49	69.76	0.55	1558.27	Top Rock
16-446 <sup>17</sup>	7.56	75.39	1.93	67.83	TP Nail in Rock
B.M.		2.44	1572.95	BM Nail in Oak Stamp	(72 1/2)

Painted Elevation  
Stakes - 4-22-21

At C 6+30 Sight C 50 for zero Az Rt.

6+25	2.83	37.80	1539.97
Topog Form R.C.	20.1	17-0	2.9 34.9
	25.7	6-30	2.9 34.9
Form	34.7	316-30	3.0 34.8
R.C.	27.9	2880	2.9 34.9
Average Elev.			5.3 32.5
Elev of Lift			9.1 28.7
On Co Path T.P.	11.30		0.48 37.32

At C 6+00 Sight 6+35 for zero Az Rt

Prod 3.6-45 T.P.	11.30	48.62	3732
45-55	44.7	358-45	
50-55	46.0	358-15	
45	40.4	354-30	
50	38.0	349-30	
55-50	40.5	351-30	
45-50	36.1	351-30	
45-50	33.2	351-45	

Platted  
4/22/21

45-50	28.6	347-45
45	25.9	344-0
50	26.4	339-30
45-50-55	19.0	334-15
45-50	13.2	306-0
45	13.7	283-0
50	15.9	283-0
45	14.4	2620
50	16.4	262-0

C 2+70

10.18 59.03

1548.85

2+18 to 2+72

10.7 48.3

9.30 49.7

8.40 50.6

7.5 51.5

9.1 49.9

10.6 48.4

10.6 48.4

8.3 50.7

7.1 51.9

8.6 50.4

9.3 49.7

10.3 48.7

2+93 to 2+18

4.7 54.3

44 54.6

47 54.3

49 54.1

Average Elev 54.3

543

546

543

541

54.3

4/23/21

Dub  
Fisher

## Check Levels H About.

Bm	105	157399	157294	Nail in oak Stump. on 16 line.		
T.P. 1+99 <sup>43</sup> - 35310	0.23	61.34	1288	61.11	Nail in Rock	
Nail	0.20	55.24	6.30	55.04	Nail in concrete lift. 1+99 <sup>43</sup>	x
1+85 <sup>62</sup> - 35310			0.23	55.01	" " " " 1+85 <sup>62</sup>	x
1+83 <sup>93</sup> - 34540			10.17	45.07	" " " " 1+83 <sup>93</sup>	x
1+97 <sup>29</sup> - 34540	0.01	45.07	10.18	45.06	" " " " 1+97 <sup>29</sup>	x
1+97 <sup>19</sup> - 33770			10.05	35.02	" " " " 1+97 <sup>19</sup>	x
1+81 <sup>88</sup> - 33770			10.02	35.05	" " " " 1+81 <sup>88</sup>	x
1+97 <sup>19</sup> - 33770	0.89	35.91		35.02	" " " " 1+97 <sup>19</sup>	x
	0.72	32.16	447	31.44	Nail in form	
34 - 382 <sup>36</sup>			2.37	29.79	Nail in 4 <sup>th</sup> lift C. wall on 34 line	
50 - 250			5.36	26.80	Hub	x
46 - 250	0.73	1520.81	1208	1520.08	"	x
44 - 250			7.66	13.15	"	x
P.	2.05	1510.26	1260	1508.21	Nail in Rock	x
42 - 250			2.99	07.27	" " "	x
P.			11.73	1498.53	Bolt in Ground	
34 - 369 <sup>58</sup>			11.67	1498.59	Nail in 2 <sup>nd</sup> lift Curtain Wall on 34 line	

4/23/21

Bob

Fisher

## Check Levels Lt Abut.

151026

34-375 2E

1.38 1508.88

Nail in Concrete 3<sup>rd</sup> lift Curtain Wall-34- +

P.

313 1501.66 1498.53

Bolt in Ground.

40-250

5.23 1496.43

Hub

f

38-250

9.97 1491.69

x on Rock

f

P.

143 91.80 1129 1490.37

Nail in Rock

P.

12.24 79.56

Nail in Hopper Platform #2 Tower

x

34-363 5L

3.01 88.79

Nail in lift #1 C. Wall on 34-line

x

P.

0.55 80.11 79.56

Nail in Hopper Platform #2 Tower

34-274.14

12.94 67.17

x on Rock 34-274.14

(67.05)

P.

1.00 73.91 7.20 72.91

Top of Plum Rock 2<sup>nd</sup> lift in dam 72.52

about 24-250

B.N.

9.06 64.85

Nail in Rock Rt Abut. Downstream Face Dam 64.73

P.

143.4 85.78 0.45 73.46

" in Post set in Concrete

P.

85.5 93.62 0.71 85.07

Top Rock

P.

11.00 1503.68 0.94 92.68

Nail in Rock

P.

1213 1518.29 0.52 1504.16

" " "

P.

1259 1528.22 0.66 1518.63

Peg in Back



4/23/21

Bub

Fisher

Check Levels Lt About

152722 ✓

50-250

0.38 1526.84

Error 04 high

(2680) \*

0.38 1527.18

1526.80

48-250

0.86 1526.32

Hub

X

50-250

1232 1539.12

1526.80 ✓

X

52-250

1154 49.99

0.67 38.45

Hub

X

TP

1135 59.73

2.11 47.88

Nail in Ground

P.

752 1565.13

1.62 57.61

Bolt in Ground

56-325

11.18 1553.95 ✓

Hub

155395 Error 00 ✓

5/25/21 Flags set along Road  
at EIC 1700 00

Sub  
Fishd.  
Witter.

1714 50.14 1638<sup>00</sup>

R Rock 1165 61.79 00 50.14

TP Log 1781 74.14 0.48 61.31

TP Teq 1143 85.30 0.05 74.07

R STUMP 1709 94.57 2.82 82.48

R NE Cor Culvert Top 2' planking 6.31 88.26

10.81 99.07

About 100' West of Culvert  
Flag on West Side Road +.93 1700

TP Rock 9.10 1707.99 0.18 98.89

R At Flag #3. 10.31 1709.63 8.67 99.32

Hob. at " #6 6/3/21 11.80 1713.03 8.40 1701.23

R Rock Flag #7 12.80 1713.73 12.60 1700.43

R Rock " #8 10.43 1710.74 12.72 1700.51

R Rock " 11.50 1710.44 11.80 1698.94

11/17/21  
Bryson  
Fisher

# LEVELS FOR RESER VOIR Clearing to EL-1607

Sta	+	+	-	EL
B.M.	8.80	1571.80		1563.00
T.P.	11.20	1582.30	0.70	1571.10
T.P.	13.00	1594.80	0.50	1581.80
T.P.	12.20	1607.00	0.00	1594.80
T.P.	11.50	1593.30	<del>1.20</del>	1581.80
T.P.	11.60	1603.70	1.20	1592.10
T.P.	7.20	1610.90	.00	1603.70
1607			3.90	1607.00

12/3/21

	1.10	1628.1		1627.0
TP	12.3	29.3	11.1	1627.0
	5.7	<del>23.0</del>	12.0	1627.3
	12.2	26.5	8.7	14.3
TP	4.1	18.3	12.3	14.2
	12.0	21.5	8.8	09.5
	11.9	20.4	13.0	08.5
	6.2	13.5	13.1	07.3
	3.9	09.9	7.5	06.0

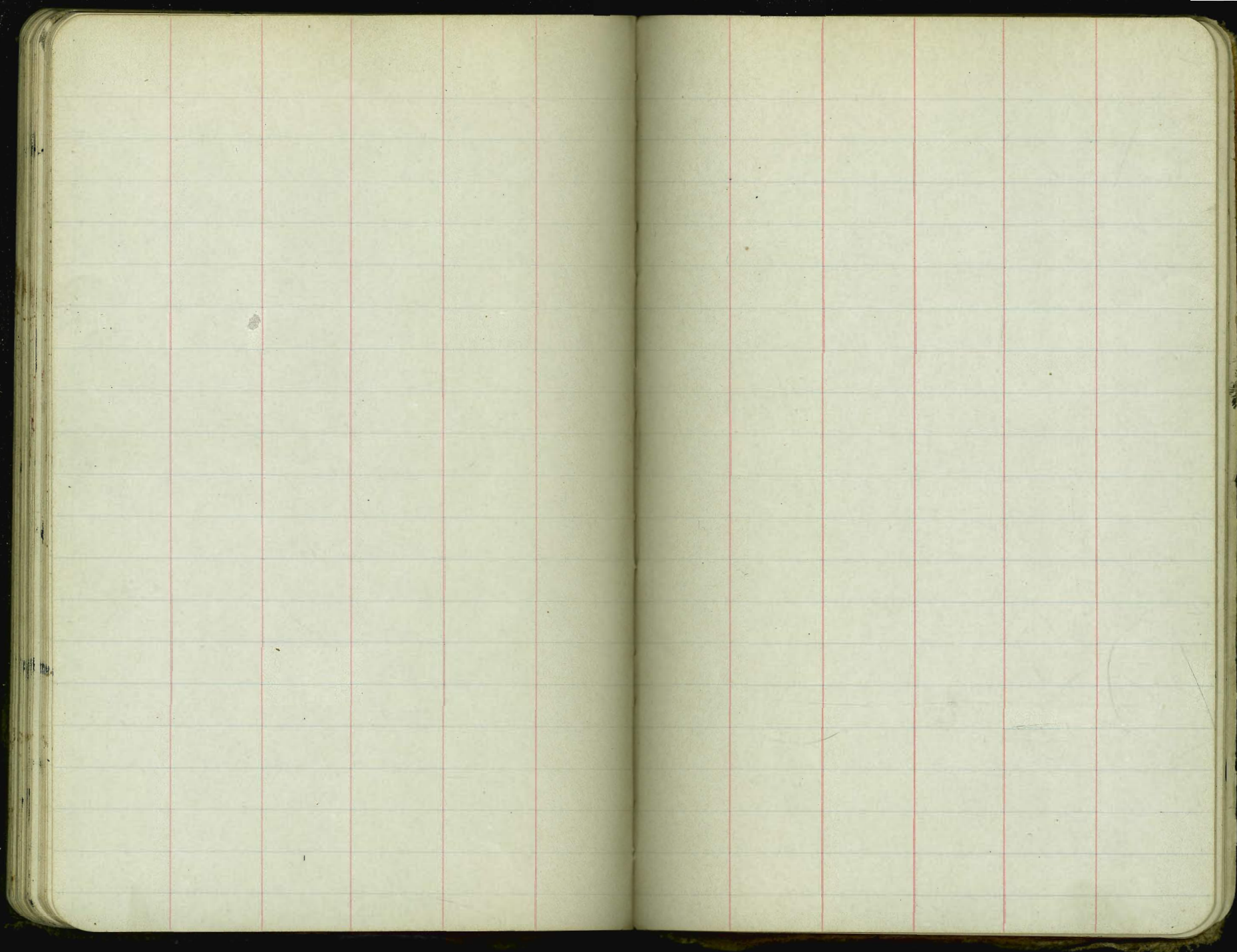
Flags set on Cont. EL 1607

Nail on bridge hauling road

Peg

Peg

		09.9		
TP	1.5	06.6	4.8	05.1
	12.0	05.6	13.0	93.6
	1.3	98.2	8.7	96.9
	4.6	00.3	2.5	95.7
	4.2	97.4	7.1	93.2
	7.1	96.0	10.5	86.9
	11.4	02.5	4.9	91.1
+	1.1	99.6	4.0	98.5
	0.70	87.2	13.1	86.5
	2.8	77.5	12.5	74.9



2443

442

---

2885

1258

---

1627

247

---

1874

563

---

1311

1045

---

329

87

---

496

1267

---

9149

Miscellaneous - Points  
Placed since Original - Stakes -

B.M.

Nail in Stump about 10-340	1579.55
Nail Top Concrete Joint End Inn pipe - 10-447	1597.75
Nail in Stump about 12-330	1570.88
Nail in Stump about 16-468	1572.90
nail in Stump about 17-410	1550.96
Nails in Rock about 4' West SW for Tower 1	1546.24
Nail in Rock 24-432	1525.75
Nail in Stump Near B30	1471.73
B.M. Rock - 5.0' S E of Sump -	1452.98

Damsite Reference Points and Benchmarks

Lew. B.

Elev 1626<sup>33</sup>

Harris Benchmark, Iron Pin set in

Top boulder 60' S of old Blacksmith's Shop

00-330 1626<sup>16</sup> ) C0 ) 0-429 1630<sup>56</sup>

2 - C2

4 - 350 1603<sup>26</sup> ) C4 ) 4-455 1615<sup>92</sup>

6 - C6 ) 6-480 1615<sup>35</sup>

8 - C8 1581<sup>00</sup> 8-450 1601<sup>85</sup>

10 - 315 1573<sup>77</sup> ) C10 1574<sup>30</sup> ) 10-442 1596<sup>58</sup>

12 - 315 1561<sup>72</sup> ) C12 1565<sup>12</sup> ) 12-437 1588<sup>34</sup>

14 - 319 1551<sup>84</sup> ) C14 1552<sup>99</sup> ) B14 1578<sup>62</sup>  
~~1574<sup>72</sup>~~

14-350 1556.70 ) 14-412<sup>92</sup> 1574.95

16-309 1539<sup>58</sup> ) C16 1546<sup>14</sup> ) B16 1568<sup>76</sup>

16-446<sup>1</sup> 1567.78

18-303 1529<sup>40</sup> ) C18 1541<sup>61</sup> ) B18 1557<sup>81</sup>

19		C 19	1536 <sup>11</sup>	
20-312	1515 <sup>59</sup>	C 20	1529 <sup>37</sup>	B-20 1545 <sup>11</sup>
		C 21	1522 <sup>67</sup>	
22-321 <sup>32</sup>	1511 <sup>09</sup>	C 22	1515 <sup>86</sup>	B-22 1534 <sup>73</sup>
		C 23	1507 <sup>16</sup>	
24-321 <sup>2</sup>	1502 <sup>77</sup>	C 24	1502 <sup>02</sup>	B-24 1525 <sup>20</sup>
		C 25	1496 <sup>39</sup>	
26-366	1491 <sup>72</sup>	C 26	1493 <sup>08</sup>	B-26 1503 <sup>85</sup>
27-357	1479 <sup>60</sup>	C 27	1486 <sup>13</sup>	
28		C 28	1479 <sup>69</sup>	B-28 1488 <sup>45</sup>
		C 29	1471 <sup>46</sup>	
30		C 30		B-30 1472 <sup>35</sup> <u>1472<sup>36</sup></u>
32		C 32		B-32 1472 <sup>12</sup>
Top Wall	1467 <sup>41</sup>			
34-274 <sup>14</sup>	1467 <sup>05</sup>	C 34		B-34 1466 <sup>10</sup> 34-300
36-300	1467 <sup>50</sup>	C 36	1466 <sup>56</sup>	B 36 1466 <sup>94</sup>
38-300	1474 <sup>66</sup>	C 38	1470 <sup>41</sup>	B 38 1470 <sup>30</sup>

32 - 171.36

34 115.66



40-300 1480<sup>30</sup> C 40 1478<sup>19</sup> B 40 1473<sup>85</sup>

42-300 1488<sup>29</sup> C 42 1490<sup>13</sup> B 42 1480<sup>64</sup>

44-300 1496<sup>84</sup> C 44 1497<sup>69</sup> B 44 1490<sup>41</sup>

46-300 1507<sup>33</sup> C 46 1505<sup>59</sup> B 46 1502<sup>68</sup>

48-300 1516<sup>37</sup> C 48 1516<sup>75</sup> B 48 1512<sup>78</sup>

50-300 1524<sup>46</sup> C 50 1522<sup>70</sup> B 50 1522<sup>67</sup>

52-300 1536<sup>34</sup> C 52 1526.16 B 52 1532<sup>59</sup>

Nail in Sump.

B.M. 1534<sup>73</sup>

54-300 1540<sup>42</sup> C-54 1534.24 B 54 1545.20

56-300 1551<sup>41</sup> C-56 1545.01 B-56 1550.34

C-

58-300 1560.76 C-58 1553.96 B-58 1559.53

60-300 1571.50 C-60 1564.03 B-60-450 1568.41

60-325 1571.25

62-325 1582.58 C-62 1573.16 B-62 1579.43

64-325 1591.57 C-64 1581.73 B-64 1588.64

66-325 1602.58 C-66 1591.73 B-66 1603.56

68-325 1612.52 C-68 1602.37 B-68 1617.48

70-325 1623.02 C-70 1613.50 B 70 1624.03

72-325 1633.50

60-275 1567.32 C-72 1624.59

62-275 1579.68

64-275 1588.42 C-74 1635.07 B-74 1650.44

66-275 1600.42 C 75 40.9.6

68-275 1614.82 C-74 3369 1630.55

70-275 1622.85

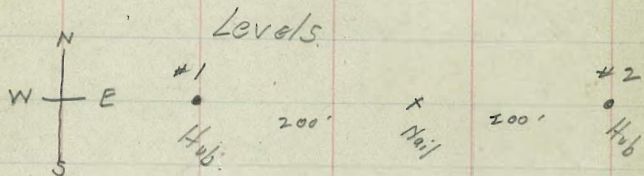
72-275 1633.20 B.M. 1649.80

450' (checked)

7460-

Adjustment B & B Transit # 11248

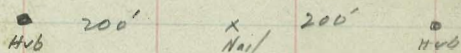
Jan. 2 1920



#2	8748
#1	1900
	diff in El Pegs = 6.848
#1	5012
	<u>11.860</u>

Adjustment of B & B Transit # 11248

Feb. 21 1921



#1	0.24
#2	6.26
Diff in Elev of Pegs	6.02

859  
164  
 6.95  
468  
 227  
11.63

0326  
 89  
042315 34.73  
 3.66  
10.952  
 4020  
4.932  
 49  
1521 4.43

10942  
6021  
 4922

626  
024  
 6.02 Diff.  
 5

1081  
979.5  
 601.5

"P" Line Elevations

Cableway Line Elevations

0-301=  
0+10

0+10 1618.65

0+32 1627.85

0+89.08 1650.00

2+00 1686.21

2+60 1713.72

3+00 1731.26

3+26.2 1742.24

15+25  
Quarry Road

B.M. ~~1751.61~~

West

0-446.6  
0+00 1739.20

1+75 1707.05

2+00 1715.89

2+50 1739.25

3+00 1760.48

B.M.  
Nail in Rock 1764.33

East

0+00  
50-380? 0+00 1524.51

1+00 1561.51

2+00 1618.81

2+38.45 1649.52

3+00 1685.42

3+29.72 1704.52

3+76.33 1739.82

4+25 1764.43

Elev.

B.M. = Iron Pin Top of Boulder

60' South Blacksmith Shop edge of Road 1626.33

RL 17189

92.10  
14.25  
87.85

68.76  
10.13  
0.4257  
12.671  
91.682

15.7126  
17.214  
9.982  
7.27  
11.43

16.204  
1.2345  
162.58  
1610.90  
1611.40  
64.42  
1610.71  
5.777

75.04  
79.54109  
63.195  
74  
57  
7  
14.0097  
12.114

