

Topography
No. 1

6

DEZGEN

ENGINEERS
LEVEL BOOK

No. 410

W125

134

EUGENE DIETZGEN CO.

DRAWING MATERIALS, MATHEMATICAL and
SURVEYING INSTRUMENTS

Chicago New York San Francisco New Orleans Pittsburg Toronto

MICROFILMED

Distances from Center of Roadway for Cross-Sectioning
Roadway 16 feet wide. Side Slopes 1 on 1.
For Single Track Embankment.

JAN 8 1900

H	0	.1	.2	.3	.4	.5	.6	.7	.8	.9	H
0	8.0	8.1	8.2	8.3	8.4	8.5	8.6	8.7	8.8	8.9	0
1	9.0	9.1	9.2	9.3	9.4	9.5	9.6	9.7	9.8	9.9	1
2	10.0	10.1	10.2	10.3	10.4	10.5	10.6	10.7	10.8	10.9	2
3	11.0	11.1	11.2	11.3	11.4	11.5	11.6	11.7	11.8	11.9	3
4	12.0	12.1	12.2	12.3	12.4	12.5	12.6	12.7	12.8	12.9	4
5	13.0	13.1	13.2	13.3	13.4	13.5	13.6	13.7	13.8	13.9	5
6	14.0	14.1	14.2	14.3	14.4	14.5	14.6	14.7	14.8	14.9	6
7	15.0	15.1	15.2	15.3	15.4	15.5	15.6	15.7	15.8	15.9	7
8	16.0	16.1	16.2	16.3	16.4	16.5	16.6	16.7	16.8	16.9	8
9	17.0	17.1	17.2	17.3	17.4	17.5	17.6	17.7	17.8	17.9	9
10	18.0	18.1	18.2	18.3	18.4	18.5	18.6	18.7	18.8	18.9	10
11	19.0	19.1	19.2	19.3	19.4	19.5	19.6	19.7	19.8	19.9	11
12	20.0	20.1	20.2	20.3	20.4	20.5	20.6	20.7	20.8	20.9	12
13	21.0	21.1	21.2	21.3	21.4	21.5	21.6	21.7	21.8	21.9	13
14	22.0	22.1	22.2	22.3	22.4	22.5	22.6	22.7	22.8	22.9	14
15	23.0	23.1	23.2	23.3	23.4	23.5	23.6	23.7	23.8	23.9	15
16	24.0	24.1	24.2	24.3	24.4	24.5	24.6	24.7	24.8	24.9	16
17	25.0	25.1	25.2	25.3	25.4	25.5	25.6	25.7	25.8	25.9	17
18	26.0	26.1	26.2	26.3	26.4	26.5	26.6	26.7	26.8	26.9	18
19	27.0	27.1	27.2	27.3	27.4	27.5	27.6	27.7	27.8	27.9	19
20	28.0	28.1	28.2	28.3	28.4	28.5	28.6	28.7	28.8	28.9	20
21	29.0	29.1	29.2	29.3	29.4	29.5	29.6	29.7	29.8	29.9	21
22	30.0	30.1	30.2	30.3	30.4	30.5	30.6	30.7	30.8	30.9	22
23	31.0	31.1	31.2	31.3	31.4	31.5	31.6	31.7	31.8	31.9	23
24	32.0	32.1	32.2	32.3	32.4	32.5	32.6	32.7	32.8	32.9	24
25	33.0	33.1	33.2	33.3	33.4	33.5	33.6	33.7	33.8	33.9	25
26	34.0	34.1	34.2	34.3	34.4	34.5	34.6	34.7	34.8	34.9	26
27	35.0	35.1	35.2	35.3	35.4	35.5	35.6	35.7	35.8	35.9	27
28	36.0	36.1	36.2	36.3	36.4	36.5	36.6	36.7	36.8	36.9	28
29	37.0	37.1	37.2	37.3	37.4	37.5	37.6	37.7	37.8	37.9	29
30	38.0	38.1	38.2	38.3	38.4	38.5	38.6	38.7	38.8	38.9	30
31	39.0	39.1	39.2	39.3	39.4	39.5	39.6	39.7	39.8	39.9	31
32	40.0	40.1	40.2	40.3	40.4	40.5	40.6	40.7	40.8	40.9	32
33	41.0	41.1	41.2	41.3	41.4	41.5	41.6	41.7	41.8	41.9	33
34	42.0	42.1	42.2	42.3	42.4	42.5	42.6	42.7	42.8	42.9	34
35	43.0	43.1	43.2	43.3	43.4	43.5	43.6	43.7	43.8	43.9	35
36	44.0	44.1	44.2	44.3	44.4	44.5	44.6	44.7	44.8	44.9	36
37	45.0	45.1	45.2	45.3	45.4	45.5	45.6	45.7	45.8	45.9	37
38	46.0	46.1	46.2	46.3	46.4	46.5	46.6	46.7	46.8	46.9	38
39	47.0	47.1	47.2	47.3	47.4	47.5	47.6	47.7	47.8	47.9	39
40	48.0	48.1	48.2	48.3	48.4	48.5	48.6	48.7	48.8	48.9	40

Example—If point is 22.6 ft. above grade, how far should it be from center line to be a slope stake point? Ans. from Table 30.6. For same slopes but other widths of roadbed, correct above figures by one-half difference in width of roadbed; thus in example above, for 20 ft. roadbed distance will be $30.6 + (20 - 16) \times 2$ or 2 ft. added to $30.6 = 32.6$. For slopes of 1 on $1\frac{1}{2}$ see inside of back cover.

Copyright, 1914, by Eugene Dietzgen Co.

#6

Filled

5460

3060
10-20
8 x 50

Index Contours

Occupy 0-28	1635-30	1
" 00	1625-20	1
" 4-455	1615-10-5	2
" C-4	1605-1600-1595	2
" C-4	1595	3
" C-6	1590-1585	3
" C-8	1580-1575-1570	4
" C-8	1570	5
" C-10	1565	5
" B-14	1565-70-75-80	6
" B-18	1560-55-50	6
" C-12	1560-55	7
" C-16	1550	7
" C-16	1550-45-40	8
" C-16	1540-35-RC-45	9
" 12-315	1560-55	10
" 14-319	1550-1545	10
" 14-319	1545-RC-1550	11
" 16-309	1540-35-30	11
" Auxil Pt 61 st from C-20	1530-25-20	12
" B-22	1530-25	13
" B-24	1520-15	13
" B-24	1515	14
" C-24	1490-95-1500	14
" C-24	1500	15
" Auxil Pt 24-4192	1500-05	15
" " 24-4190	1510	16
" Conduit Notes		16
" Sections in Bottom 300 To B-Line Between 38-28 -		17
" C-38	1470	18
" B-22	1515-10	18
" 26-366	1485-90-95	19
" 22-321 ³²	1500-1505	20
" Auxil Pt from 22-321 ³²	1495-90	20
" 40-300	1475-80 1485	21
" 40-300	1475-80	22
" 34-300	1470-	22
" 34-300	1470-1465	23

Index -

	Contours	
Occupy	1465-1460	23
Auxil Pt 862 from 34-300	1460	24
" " " " " "	1475-1480 1485	24
Test for Stadia Wires	1475-1480	25
Occupy B-42	1485	26
" C-40	1490-1495	27
" 42-393 36	1490	28
" 42-393 36	1460	29
Auxil Pt 862 from 34-300	1460-1455	29
" " " " " "	1460-1455	30
" " " " " "	1465-1460	31
Occupy 34-274 12	1470-75	31
" 40-300	1475	31
" 40-300	1480-85-90	32
" 42-300	1490	32
" 42-300	1500	33
" 46-383 05	1500-05-10	33
" 46-383 05	1510	34
" 46-383 05	1498	35
Auxil Pt 142 from 46-383 05	1495	35
" " " " " "	1515	36
Occupy 50-380 2	1515-20	36
" 50-380 2	1510-20	37
" 50-438 21	1525	38
" C-54	1525-1530	38
" C-54	1535-1540	39
" C-56	1540-1545	40
" C-56	1545-50	41
" C-58	1550	41
" C-58	1555-60	42
" C-60	1565	42
" 60-450	1570-75	43
" 62-450	1575-80-85	43
" 62-450	1565	44
" C-60	1585	44
" C-66	1585-90	44
" C-66	1595	45
" B-66-450	1595-1600	45
" B-66-450	1605-10	46
" C-70	1605-10-15	46
" C-70	1620	47
" C-72	1620-25	47
" C-72	1630-35-40	48
Auxil 352-30-34-27 from 34-274 12	1470-75	48
" " " " " "	1480	49
" " " " " "	1485-90	50
Auxil 193 04 - 67 14 from 34-118 46	1490	50
" " " " " "	1550-45	51
void occupy 14-350 42	1550-1545	51-52
" 14-350 42	1540-355	53
" 20-421 19	1530	54
" B-22	1520	54
" 22-4148		54

Index

	Contour	Page
Occupy	22-4148	55
" 22-4148	1520-1515-1510	55
Auxil Pt from C-20	1520	56
Occupy 22-321 39	1525-1520	56
" 16-309	1515	56
Auxil Pt from 34-274 12	1540-1545	57
" " " " " "	1500-1505	58
" " " " " "	1505-1510	59
Auxil Pt from Auxil Pt from 34-274 12	1495-90-85	59
Occupy C-16	1540-35	60
Occupy 22-321.39	1510-15-20	61
Occupy 22-414.8	1520	61
Occupy C-68	1590-95-1600	62
Occupy C-70	1605-10-15	62
Occupy C-72	1620	62
Occupy C-7+38 69	16-30-1635	62-63
Occupy C-75	1635-40-45	63-64
Alignment of Test Drift		65
Tie top face Old wiser wall to 34 Line		66
Tie Spoil Track to 34 Line		66
Section in Bottom for Monthly Est (Jan 1920)		67
Section in Bottom for Monthly Est - Jan 1920		67-71
Sections in Bottom for Monthly Est Feb 1920		73-75
Contours for Class 3 - Excav		72
not Platted		

Instrument Correction for Stadia
P 17-

77
78

Harris
BM.

4.53 1630.86

1626³³

00-429

812 1630.61

C
00

2.76 1628.19

1.40 1632.01

10.63 1638.73

1625^{rod}

Set up on 00

Setup on 0-28 (400)
1635

For T.C. 18 is 270°

3.73	25'	19°30'	
1635	30.2	29	19°30'
"	1	90°	
"	15.1	185°	
"	31.9	183°30'	
"	17.1	247°	
"	28°	223 1/4	
"	39.8	210°30'	
"	42.8	205 3/4	
"	64.1	205°	
"	95.2	206°30'	

1630	41	219° ✓	
"	29°	27	246 1/4 ✓
"	22°	21	255° ✓
"	25°	24	275 1/4 ✓
"	31.9	30	304 3/4 ✓
"	33.9	32	318 3/4 ✓
"	41.8	40	320 1/2 ✓
"	47.8	46	328° ✓
"	37.8	36	347° ✓
"	39.8	38	358 1/2 ✓
"	58.6	57	7 1/2° ✓
"	52.7	51	18 1/4° ✓

miss again 20°

1630	8.77	84	210 3/4 ✓
"	8.02	79	209 3/4 ✓
"	67.5	66	209 3/4 ✓
"	56.4	55	212 3/4 ✓

1638.73

1

1625^{rod}

add 76.7

7.01

75

201°30' ✓

12.0

80.3

81 350° ✓

65

195°30' ✓

76.3

77 351° ✓

52.7

191 3/4 ✓

74.3

75 352° ✓

35.9

191° ✓

71.3

72 349° ✓

14

200 3/4 ✓

59.6

60 341 3/4 ✓

6

205 1/4 ✓

41.8

42 338 ✓

7.5

307 ✓

27

336 1/2 ✓

16.0

341° ✓

22

326 ✓

26

353 3/4 ✓

13.0

293 1/2 ✓

42

347 1/4° ✓

13.0

232 1/2 ✓

46

349° ✓

26

209 ✓

51

347 3/4 ✓

49

199 ✓

67

353 3/4 ✓

58 1/2

200 1/2 ✓

69

358 ✓

66

202 3/4 ✓

71

359 ✓

69

207 1/2 ✓

72

356 3/4 ✓

on 00-530
5.84

70.4
69 80

12.69 1619.32

Set. up 4-455

T.P.	065	1619.97		1619.32
PT 70 4-330		0° 0' ✓	1610	
5.0	127 ⁶	10° 0' ✓	49	
1615	112 ⁸	8° 10' ✓	10.0	49° 0' ✓
	107 ⁰	9° 30' ✓		36° 0' ✓
	196 ⁰	8° 30' ✓		34° 30' ✓
	84 ²	13° 30' ✓		26° 30' ✓
	67 ⁴	18° 30' ✓		20° 45' ✓
	57 ²	23° 45' ✓		17° 0' ✓
	41 ⁸	31° 0' ✓		11° 40' ✓
	31 ⁹	39° 0' ✓		8° 30' ✓
	26 ⁰	58° 30' ✓		7° 40' ✓
Rock + Dust	16	69° 30' ✓		4° 30' ✓
Rock	13	79° 1/2' ✓		5° 30' ✓
Rock	8 1/2	72° 0' ✓		6° 0' ✓
Rock	1 1/2	346° ✓		
		275° 0'		
Rock	10.0	291° 30' ✓		3° 10' ✓
Rock	6.2	312° ✓		1° 30' ✓
"	8	333° 30' ✓		1° 45' ✓
				3° 0' ✓

				-1605-
Rod	15.0	494	70	4° 30' ✓
		521	53	9° 30' ✓
			31	12° 0' ✓
			20.5	14° 15' ✓
Rock + Dust		161	14	8° 15' ✓
Rock		181	18	351° 45' ✓
		136	13.5	6° 30' ✓
		E1.		
T.P.		1343	130654	
at C4		38	2-00	+ 20' 17"
Rod		-1.51		
MI		1605.03		
1605		431	44	184° 30' ✓
00		453	45	191° ✓
rock		462	46.2	198° ✓
"		481	49	198° 30' ✓
1600		497	50	209° 15' ✓
Rock 5.0		461	47	208° 30' ✓
Rock		462	47	198° ✓
"			42	198° ✓
			85	1595-
		843	85	354° 15' ✓
		803	81	351° 45' ✓
		243	75	35120 ✓

Set up on C4
H.I. 160509

cont
1595

10.0	55.6	56	345.00	✓
1595	37.8	38	343.0	✓
	330	26	350	✓
	15.1	15	320	✓
	9.1	9	263	✓
	8	8	235	✓
	11.6	11.5	237.0	✓
	20.2	20.5	208.30	✓
Soil & Rock	33.9	34	203	✓
Rock	37.8	38	205	✓
Rock	42.1	43	213	✓
	43.1	44	213.45	✓
	49.6	50	221.15	✓ Rock
	53.0	53.5	226.15	✓ soil + rock
	54.6	55	226.45	✓
	60.2	61	234.0	✓
	67.5	68	235.15	✓
T.P. 160509	12.80	12.80	1592.23	✓
	1.74	1.74	1593.97	✓

Set up on C6
cont 1590

H.I. 159397

4.0	59.2	60	236.15	✓	
1590	55.1	40	55.5	238.30	✓
	50.1	51	233.50	✓	
	45.4	46	229.0	✓	
	43.1	44	225.20	✓	
	41.8	42	215.30	✓	
	35.4	35.5	213.30	✓	
	35.8	36.0	215.45	✓	
	34.8	35	220	✓	
	31.9	32	216.30	✓	
		29	213.15	✓	
		29.5	202.30	✓	
		25	209.0	✓	
		20	198	✓	
		28.5	197.15	✓	
		26.0	188	✓	
		13.0	179.30	✓	
		6.0	170.30	✓	
		7.6	128.15	✓	

1590

4.0	6.3	122.0	✓	
	2.7	176.0	✓	
	14.1	146	355.30	✓
	27.5	357.30	✓	
	36.8	37.0	353.30	✓
	45.2	46.0	355.30	✓
	52.1	52.5	354.0	✓
Boulder	62.5	63.0	355.30	✓
"	65.5	66.0	353.50	✓
"	67.5	68.0	356.0	✓
"	82.3	83	357.45	✓

90 1585

86.2	87	353.0	✓
75.2	76	345.30	✓
54.2	54.5	342.30	✓
40.2	41	336.30	✓
27.2	27.5	329.30	✓
	10.4	280.30	✓
	5.7	258.0	✓

-1585-

9.0	6.8	224	✓	
	11.4	243	✓	
	16.0	224	✓	
Dirt	22.5	222	✓	
Rock	28	222	✓	
Dirt	30.5	221	✓	
Rock	34	34.5	227.30	✓
	34.8	35.0	232.10	✓
	44.1	45.0	246.50	✓
	49.2	49.5	248.30	✓
	50.1	51.0	248	✓
	51.7	52.0	250	✓
	53.2	54.0	248.40	✓
	52.6	53.0	245.15	✓
	55.6	56.0	243.15	✓
	62.5	63.0	242	✓
	64.5	65.0	244.30	✓
	64.0	64.5	246	✓
	67.4	68.0	248	✓

Occupancy	C-8-		Rod 15.52		
Rod 1552	57 ²		Cont. 1570	62 ⁸	
1590	56.6	321.40	Rock	62.3	257-0
Boulder	56 ⁰			64 ³	
	55.4	320.0	Rock	63.8	259-30
Bulkin	55 ⁸			67 ¹	
	55.2	318-20	Rock	66.7	255-00
	53.4			67 ⁹	
Bulkin	52.8	318-15	Rock	67.5	251-0
	53 ⁸			68 ²	
Bulkin	53.2	318-10	Rock	67.8	250-15
	40 ²			67 ⁴	
	39.4	313-10	Rock	67.0	250-15
	28 ⁷			67 ²	
	27.8	286-30	Rock	66.8	248-15
R + Soil	29 ⁹			65 ⁵	
	28.8	260-40	Rock	65.0	245-40
	34 ⁷			70 ⁹	
Rock	33.8	259-30	Rock	70.5	244-15
	36 ⁸			74 ³	
Rock	36.0	257-40	Rock	74.0	244-30
	40 ⁸				
Rock	40.0	256-30			
	41 ⁸		Occupancy C-10		
Rock	41-0	261-30	Sight 2 - 10-315		
	42 ²		for 000-		
Rock	41.4	262-40			
	43 ⁷				
Rock	43.0	261-00	5.36 1579.10 1673.74		
	42 ⁷				
Rock	42-0	259-50	Rod 14.1		
	49 ¹		Cont 1565	101.0	357-15
Rock	48.4	254-40	Rock	100.7	357-30
	50 ⁰				
Rock	49.3	253-50	Rock	99.2	356-0
	53 ³			85 ²	
Rock	52.7	256-15	Rock	85.0	347-40
	61 ⁰			81 ⁴	
Rock	60.5	256-50	Rock	81.2	348-15

	1565		Cont 1565		
	78 ³			37.1	
Rock	78.0	344-50	Rock	32.2	249-20
	71 ⁶			33 ⁵	
Rock	71.2	340-40	Rock	32.6	253-20
	69 ⁹			37 ⁸	
Rock	69.5	340-15	Rock	37.0	254-40
	67 ⁰			40 ⁶	
Rock	67.2	338-20	Rock	39.8	254-20
	61 ⁹			42 ⁹	
Rock	61.4	334-0	Rock	42.2	253.40
	57 ⁶			43 ¹	
Rock	57.0	329-50	Rock	42.4	256-0
	56 ⁰			45 ⁷	
Rock	55.4	331-20	Rock	45.0	257-20
	53 ⁴			47 ⁷	
Rock	53.0	329-20	Rock	47.0	257-20
	50 ⁹			51 ⁶	
Soil + R.	50.3	329-30	Rock	51.0	250-30
	46 ¹			51 ³	
Rock	45.4	327-20	Rock	50.7	244-30
	41 ²			53 ⁶	
Rock	40.4	330-50	Rock	52.8	243-40
	33 ³			56 ⁵	
Rock	32.4	323-50	Rock	56.0	244-10
	20 ⁴				
	19 ⁴	308-40			
	18 ²				
Soil + Rock	17.2	266-15			
	23 ³				
Rock	22.3	258-50			
	24 ⁴				
"	23.4	254-50			
	27 ²				
"	26.2	254-40			
	28 ⁹				
"	28.0	256-15			
	28 ⁹				
"	28.0	251-0			

Plotted 11/21/19

Occupy B-14
 Sight B-16 for 00-00
 AZ Right
 Rod 10.06 1581.06
 AZ 2.5 1578.56 R+soil
 1565 32.9 1578.56 R+soil
 31.7 63-30 ✓ Rock
 30.8 29.9 56-50 ✓ Rock
 232 22.7 48-20 ✓ Rock
 23.2 22.2 34-20 ✓ Rock
 23.6 22.6 28-30 ✓ R+Soil
 28.1 27.8 22-20 ✓ Rock
 26.4 25.4 17-20 ✓ R+Soil
 29.9 29.0 1.0 ✓
 Rod 11.06 24.2
 1579 23.2 346-50
 18.8 17.7 10-30 ✓
 15.1 14.6 52-20 ✓ R+Soil
 25.7 24.7 63-20 ✓
 Rod 6.06 18.8
 Center 1575 17.7 76-0 ✓
 13.9 12.8 71-45 ✓
 8.0 65-40 ✓
 16.4 15.3 335-20 ✓

Occupy B-14
 Rod 1.06 14.2
 Cont 1580 13.1 297.30 ✓
 6.0 164-15 ✓
 8.0 134-0 ✓ Rock
 11.2 10-0 122.30 ✓ Rock
 17.1 16-0 119-30 ✓ Rock
 18.4 17.3 119-30 ✓ Rock

Plotted 11/21/19.

Occupy B-1.8
 Sight C-18 for 0-00
 Rod 7.57 1555
 Contour 1555 52.6
 4.8 1562.57 1557.77 R 52.0 29-30 ✓
 Rod 2.57 49.2 ✓
 4.8 1562.57 1557.77 R 48.5 33-40 ✓
 Contour 1560 6.0 155-20 ✓ R 52.1 ✓
 12.5 51-30 ✓ R 51.5 27-50 ✓
 11.3 20.0 46-20 ✓ R 47.9 ✓
 21.0 47.2 29-15 ✓ R
 33.7 45.7 ✓
 R+Soil 32.8 94.0 ✓ Soil+R 45.0 32-70 ✓
 34.9 41.6 ✓
 R 34.0 39-30 ✓ 40.8 30-50 ✓
 36.6 25.2 ✓
 R 35.8 38-20 ✓ 24.2 14-50 ✓
 38.8 15.3 ✓
 R 38.0 38-30 ✓ 19.2 2-95 ✓
 39.2 8.0 238-30 ✓
 R 38.7 40-20 ✓ Rod 12.57
 43.0 16.5
 R 42.3 36-40 ✓ Contour 1550 15.4 251-30 ✓
 45.2 15.9
 R 44.5 39-30 ✓ 14.8 287-0 ✓
 46.1 17.4
 R 45.4 37-40 ✓ 16.3 324-10 ✓
 46.5 21.8
 R 45.8 36-20 ✓ 20.8 337-0 ✓
 47.2 22.4
 R 46.5 33-30 ✓ 22.4 349-50 ✓
 49.2 39.8
 R 48.5 32-50 ✓ 39.0 3-30 ✓
 49.2 47.7
 R 48.8 33-0 ✓ Soil+R 47.0 17-50 ✓
 53.6 50.8
 R 53.0 32-30 ✓ Rock 50.2 20-0 ✓
 52.2
 Rock 51.6 25-30 ✓
 55.2
 Rock 54.6 25-30 ✓

Occupancy Sta C-12

				30.7		
Sight C-16-for 0-00				298	73-50	
AZ Right			R+soil	37.6	74-15	
				40.8		
T 4.45	1568.61	1564.16	R	40.0	72-30	
Rod-8.61	26.6			50.9		
1560	25.6	344-0	R	50.3	76-0	
	24.0			53.1		
Rock	23.0	337-15	R	52.5	75-15	
	23.6			55.6		
Rock	22.6	340-50	R	55.0	72-45	
	17.4			56.8		
R	16.5	336-0	R	56.2	74-0	
	13.3			58.1		
R	12.2	345-0	R	57.5	72-50	
	13.8			59.8		
R	12.7	354-0	R	59.3	72-30	
	11.5			67.0		
R	10.3	358-50	R	66.6	74-15	
	10.2					
R+soil	9.0	352-0				
	8.0	12-40	Com four 1555	67.6		
	6.5	12-40	Rod-1361 1555	67.2	72-30	
	7.5	61-30		66.4		
	10.9			66.0	72-45	
	9.7	67-15		65.3		
	10.7			64.8	71-30	
	9.5	61-0		59.5		
	8.0	43-45		59.0	69-30	
	19.8			56.8		
	18.5	61-0		56.2	67-40	
	27.2			55.4		
	26.3	72-15	RC	55.0	67-40	
				54.6		
				54.0	66-0	
				58.1		
				57.5	63-0	

AT C-12

1555				59.2		
R.C.	59.0	60-0	R	32.9		
	59.1			32.0	345-0	
RC	58.6	61-30	R	35.4		
	51.1			34.5	344-30	
R	50.5	63-40	C			
	50.2					
R	49.5	67-0				
	47.2					
R	47.0	68-0				
	47.4					
R	46.7	62-45				
	43.2					
R	43-0	60-30				
	44.7					
R	44-0	64-15				
	38.3					
R+soil	37.5	63-15				
	21.0					
R	20.0	43-30				
	15.2					
R+soil	14.6	11-0	R+soil			
	19.1					
R	18.0	40	R			
	18.2	353-0				
R	17.2	72-0	R			
	20.4					
R	19.4	352-0				
	20.0					
R	19.0	348-30				
	23.5					
R	22.5	350-30				
	24.1					
R	23.1	345-0				
	26.2					
R	25.2	346-30				
	29.4					
R	28.5	346-45				

Occupancy C-16

Sight B-16 for 180-0

T 4.55	1550.76	1546.21				
	0.76					
R	7.5	152-40				
	10.4					
R	9.4	134-45				
	11.2					
R	10.3	93-0				
	13.1					
R	11.9	102-30				
	15.3					
R+soil	14.2	80-0				
	17.2					
R	16.4	78-15				
	16.2					
R	15.6	66-30				
	20.4					
R	19.4	49-15				
	22.9					
R	21.9	46-45				
	23.0					
T	22.0	36-00				
	28.0					
R	27.1	29-30				
	33.2					
R+soil	32.8	27-0				
	34.2					
R	33.8	24-0				

Occupy C-16		Rod 576 1545			
Rod 76	39.6		22.2		
1550	38.8	20-01	21.2	15-00	
Rock	40.8				
	40.0	16-15	8.7	20-30	
A	42.0				
	41.2	18-30	8.0	36-30	
	46.9				
R	46.2	18-45	2.5	301-40	
	49.7				
A	49.0	15-45	7.5	263-45	R+soil
	50.6		17.6		
A	50.0	12-15	16.5	262-40	R+soil
	48.0		23.3		
A	47.3	130-0	22.3	258-15	R
	46.0		27.0		
A	45.3	9-30	26.0	256-30	R
	47.7		28.8		
R	47.0	7-15	26.8	252-15	R
	53.2		28.7		
A	52.6	7-15	27.8	252-15	R
<u>Rod 576 Soil</u>	<u>55.2</u>		<u>30.8</u>		
1545	54.6	6-30	29.9	254-30	R
	51.0		33.9		
R	51.0	5-15	33.0	253-45	R
	47.7		33.9		
R	47.0	3-30	33.0	249-0	R+soil
	46.3		49.6		
R	45.6	5-30	48.9	237-15	R
	42.7		52.2		
R	42.0	6-50	51.6	233-0	R
	43.0				
A	42.3	9-0		Contour East of B-20	
	37.8				
A	37.0	8-15		Rod 10.76 Contour 1540	
	36.0		79.1		
R+soil	35.2	12-30	78.8	228-15	
	26.0		68.6		
	25.0	17-15	68.2	230-30	

Rod 10.76		Rod 10.76		15	
Contour	1540				
	64.5			19.5	
	64.0	232.45	1540	18.4	10-0
	58.1			25.5	
R+soil	57.5	236-45		24.8	359-30
	58.5			27.5	
A	58.0	240-15		26.5	358-30
	57.3			33.2	
	56.7	244-0		33-0	2-45
	53.6			37.6	
	53.0	245-0	R+soil	36.3	3-30
	53.6			38.3	
	53.0	248-0		37.5	10-0
	47.1			42.0	
	47.0	253-0		41.2	10-0
	38.8			46.7	
	38.0	257-15		46-0	357-30
	35.8			45.9	
	35.0	258-30		45.2	356-30
	30.4			50.3	354-45
	29.5	267-30		49.6	348
	26.0			52.6	
	25.0	267-15		52.0	357-0
	23.8			53.9	
	22.8	278-0		53.0	356-15
	24.0			57.6	
	23.0	278-0		57.0	356-15
	18.5			60.5	
R+soil	17.4	284-45		60.0	357-0
	14.1			62.5	
	13.0	301-15		62.0	356-30
	16.1			72.4	
R+soil	15.0	317-30		72.0	359-0
	18.5			79.3	
Rock	17.4	328-0		79.0	359-0
	18.1			79.3	
Rock	17.0	344-0		79.0	0-0
	17.4			87.0	
Rocksoil	16.3	345-15		86.8	359-30

Occupy C - 16

Contour 1540

Rod 10.76

	85 ²		
R.C.	85.0	357-15	
	81 ⁸		
RC	81.6	358-0 [✓]	
	79 ¹		
RC	78.8	358-15 [✓]	
	73 ³		
RC	73.0	357-45 [✓]	
	69 ⁴		
RC	69.0	357-15 [✓]	
	68 ⁴		
RC	68.0	356-0 [✓]	
	70 ⁴		
RC	70.0	353-1 [✓]	
	75 ³		
RC	75.0	352-0 [✓]	
	77 ³	350-30	
RC	77.0	(349-30 [✓])	
	86 ³		
RC	86.3	353-45	
Rod 576			
1545	77		
	77 ²		
RC	77.0	357-15 [✓]	
	73 ²		
RC	73.0	358-0 [✓]	
	68 ⁴		
RC	68.0	357-0 [✓]	
	71 ⁴		
RC	71.0	355-0 [✓]	
	75 ³		
RC	75.0	356-0 [✓]	
top of Rock			
4.5	70 ⁴	357.0	

Occupy - C-16

Contour 1535

Rod 1576	95 ⁵		
1535	95.4	358-45	
	91 ¹		
RC	91.0	355-30	
	89 ¹		
RC	89.0	355-15	
	87 ²		
RC	87.0	353-0 [✓]	
	85 ²		
RC	85.0	351-0 [✓]	
	82 ²		
RC	82.0	349-15	
	71 ⁴		
RC	71.0	352-30	
	68 ¹		
RC	67.7	350-30	
	67 ⁶		
RC	67.2	349-15	
	60 ⁵		
RC	60.0	349-0 [✓]	
	56 ⁶		
RC	56.0	346-50	
	58 ⁷		
RC	58.2	344-30	
	56 ⁶		
RC	56.0	343-45	
	54 ⁹		
RC	54.3	345-20	
	50 ²		
RC	55.6	346-50 [✓]	
	47 ⁰		
RC	46.3	349-0 [✓]	
	45 ²		
RC	44.5	345-20 [✓]	
	42 ⁸		
RC	42.0	347-0 [✓]	
	41 ⁸		
RC	41.0	348-0 [✓]	

R+soil

	10 ²		
	39.2	347-30 [✓]	R
	38 ⁸		
	38.0	345-30 [✓]	A
	28 ⁵		
	27.6	346-0 [✓]	A
	27 ⁰		
	26.0	347-40 [✓]	R
	23 ⁶		
	22.6	346-20 [✓]	R
	23 ⁵		
	22.5	341.45 [✓]	R+soil
	30 ⁵		
R+soil	29.6	336-40 [✓]	
	30 ⁶		
Rock	29.7	332-0 [✓]	
	20 ⁵		
A	19.5	321-30 [✓]	B-22 2 1/2 N
	18 ⁶		
A	17.5	318-0 [✓]	
	25 ⁵		
R	24.5	290-0 [✓]	
	29 ²		
R	28.3	275-30 [✓]	
	32 ¹		
R	31.2	275-15 [✓]	
	33 ⁹		
A	33.0	270.45 [✓]	
	38 ¹		
R	37.3	265-0 [✓]	
	39 ⁸		
R	39.0	261-0 [✓]	
	41 ⁸		
R	41.0	261-30 [✓]	
	46 ⁷		
R	46.0	260.0 [✓]	
	53 ⁸		
R	53.0	251.0 [✓]	
	53 ⁸		
R	53.2	245-30 [✓]	

58¹

57.6 244-30[✓]

61⁰

60.5 242.45[✓]

62⁰

61.5 243-0[✓]

64²

64.0 243-15[✓]

68²

67.8 240-30[✓]

47⁴

67 237-50[✓]

70⁴

70 237-15[✓]

82²

82 234-15[✓]

89¹

89 233-30[✓]

Nov 10 - 1919

Fisher
BUS
Ketchum.

Platted 11/21/19

Rocks 45.5 115-45

Occupy 12-315

Sight 16-309 for

0-00 - AZ - R

+ 4.48
14-219 1566.30 1551.82 R

Note) Add

Do not add. found Dist

0.5 add to all measurements

Rod 6.30

156.9

Rock

R

R

R

Rock

R

R

R

R

R

R

Rock

Rod 11.9
15.55

Rock

R

R

R

R

R

R

R

R

R

R

R

R

R

R

R

44.0

43.5 109.15

37.2

36.7 107.50

35.6

35.1 104.30

37.3

36.8 104.0

36.5

36.0 100.20

33.5

33.0 99.0

40.3

39.8 99.30

31.5

31.0 102.30

31.2

30.7 105.0

28.5

28.0 95.30

17.5

17.0 74.30

17.2

16.8 70.30

11.2

10.8 32.0

10.0

9.5 3.45

12.8

12.3 337.30

19.5

19.0 332.30

22.4

21.9 310.45

Note - Did not Plat.

10

Rock

checkshot 28.9 307-15

Occupy 14-319

Sight 10-315 for

0-00 - AZ R

+
515 1556.97 1551.82 R

Rod 6.97

1550-

Rock

Rock

R

R

R

R

R

R

R

R

R

R

R

R

R

R

R

R

R

R

R

R

R

R

R

R

R

R

R

4.9
4.4 222-15

6.3
5.8 243-0

9.6
9.1 244-15

10.6
10.1 260-15

10.2
9.6 273-45

19.2
19.0 287-30

40.4
39.9 301-30

46.5
46.0 311-0

50.8
50.3 311-30

54.5
54.0 310-0

63.8
63.3 343-45

66.0
65.5 304-30

64.9
64.4 306-30

58.2
58.0 307-15

44.9
44.7 298

46.4
45.9 294-30

37.5
37.0 286-45

31.0
30.5 280-15

22.9
22.4 263-40

22.4

4.9

4.4 222-15

6.3

5.8 243-0

9.6

9.1 244-15

10.6

10.1 260-15

10.2

9.6 273-45

19.2

19.0 287-30

40.4

39.9 301-30

46.5

46.0 311-0

50.8

50.3 311-30

54.5

54.0 310-0

63.8

63.3 343-45

66.0

65.5 304-30

64.9

64.4 306-30

58.2

58.0 307-15

44.9

44.7 298

46.4

45.9 294-30

37.5

37.0 286-45

31.0

30.5 280-15

22.9

22.4 263-40

22.4

AT-C-20-sight	(1530) 62.5	Rock	62-0	0-10
18-303-Measured	66.5	R.	66.0	3-20
61.4. Set auxilx point	66.0	R	65.5	1-30
Set in Auxilx Point	69.4	R	68.9	2-0
Sight C-20 for 0-00	70.0	R	69.5	5-15
A 2 - Rt.	Rod 9.1			
Add 0.5 To All	1525			
	70.3	Rock	69.8	6-45
+ 4.71	66.5			
10-303 1534.09 1529.38	66.0	R	66.0	7-20
Rd. 4.1	64.0	R	63.5	5-30
Contour 1530	54.9	R	54.4	3-45
Rock	5.8	R	46.8	357-20
	12.5			
M	12-0	R+soil	41.5	358-0
	17.8			
R	17.3		30.2	348-30
	21.2		29.7	
R+soil	21.2	A+soil	19.2	344-30
	30.5		11.0	
	30-0	Rock	10.5	7-30
	37.0		7.2	
	36.5	R	6-7	27-30
	41.2		6.6	
	41-0	R	6.1	49-45
	46.0		6.6	
Rock+soil	45.5	R	6.1	97-0
	48.5		10.4	
Rock	48-0	R	9.9	103-0
	52.6		14.5	
	52.1		14-0	136-30

occupy Auxilx Point	1525			
18.5	18.5	Rock	43.5	
150	140-50	R	43-0	166-0
23.4			38.4	
22.9	157-0	R	37.9	163-0
26.0			27.0	
25.5	163-0	R	26.5	154-30
27.5			16.0	
29.0	161-20	B	15.5	132-30
34.4			119.5	
34.1	166-20	B	10.0	92-30
46.4			9.6	
45.9	176-15	R	9.1	76-40
50.4			15.3	
49.9	183-40	R	14.8	33-40
55.0			16.5	
54.5	183-45	R+soil	16.0	21-30
58.3			20.0	
57.8	182-15		19.5	8-45
58.5			24.3	
58.0	181-10		23.8	9-15
57.5			24.5	
57-0	181-40		24.0	4-45
74.1			31.2	
73.6	184-40	Rock+soil	31-0	3-10
			39.8	
Rod 14.1		R	39.3	10-30
1520			44.2	
74.1			44.0	7-20
73.6	184-40	R	47.6	
57.5			47.1	10-0
67.0	181-40	R	50.0	
62.5			49.5	9-30
62.0	181-30	R	55.1	
57.5			54.6	10-30
57.0	179-15	R	64.0	
51.2			63.5	12-0
51.2	179-0	R	75.3	
49.5			74.8	13-30
49.0	174-45	R		

Nov 10 1919

Add 0.5 to all Dist.

Occupy B-22

Sight. C-22 for 0-00

AZ - Right

1435 1539.54 1525.19

Rod 9.54

1530 16.6

Soil 16.1 250-15

10.7

10.2 257-15

8.7

8-2 322-40

11.4

Rock and 10.9 2-50

Rock and 17.2 12-10

27.0

Rock 26.5 18-0

27.0

Rock 26.5 21-30

32.2

A 32.2 20-45

34.6

A 34.1 14-45

50.4

Rock check shot 49.9 15-10

Rod 14.54

1525

48.5

check shot 48.0 12-45

34.4

Rock 33.9 12-0

22.0

Rock 21.5 5-45

17.6

Rock 17.1 357-20

17.6

Rock 17.1 349-15

18.3

17.8 330-20

18.6 327-45

18.1 324.5

20.1

19.6 321.20

22.9

22.1 302.4

23.5

23.0 263.45

Occupy B-24

Sight. C-24

for 0-0 - AZ Right

7.8 1529.99 1525.19

Rod 10.02

1520

14.0

Rock 13.5 221-0

13.5

R 13.0 239-30

12.5

R 12-0 270-45

11.6

R 11.1 312-30

12.5

R 12-0 337-0

15.0

R 14.5 357-45

17.4

16.9 349-25

23.4

22.9 -9-45

21.4

20.9 28-65

B-24 13
Contour - 1515

Rod 15-0

50.5

Rock 50.0 12-45

47.8

A 47.3 12-30

50.5

50-0 7-45

42.0

R 40-5 11-0

39.5

R 39.3 23-20

40.2

R 39.7 27-40

40.4

A 39.9 33-15

35.4

R 34.9 37-15

26.0

face of Tennell North 25.5 30-30

23.5

R 23-0 25-15

25.0

R 24.5 8-45

22.2

R 22.2 357-45

19.4

R 19.1 352-0

18.5

R 18-0 340-0

15.0

R 14.5 323-45

16.0

R 15.5 274-0

17.6

A 17.1 270-0

18.4

A 17.9 263-0

18.5

A 18-0 256-15

24.5

24.0 41-15

27.5

27-0 42-45

32.4

R 31.9 38-30

35.0

R 34.5 38-45

42.8

R 42.3 32-45

42.4

R 41.9 28-30

51.0

check. Rock 50.5 25-30

(1520)

44.4

RC 44-1 26-30

46.5

RC 46-0 26-15

49.4

Rock RC 47.0 18-15

41.0

RC 40.5 18-15

41.0

RC 40.5 25-10

Top of Rock

-6.63

45.7 24-0

(E 1523.36)

face of Booth
Tunnel

face of Tennell
North

occupy
B-24-
Rod 15a
Contour 1515
Rock

22.5
22-0 238-0
19.3
18.8 219-45
Conduit-Tunnel
do face

Rod 16.3
1480
Rock 30.3
29.8 322-0
38.0
37.5 327-30
41.0
40.5 331-15
40.0
39.5 340-15
42.0
41.5 347-0
43.3
42.7 347-45

Set on C-24
Sight 24-3213 for
0-00 - AZ R-

Add 0.5 Ball Dist
+ 4.25 1506.27 1502.02

Rod 16-3
Contour 1490

(1490)
77.2
76.7 220-0
71.9
71.4 220-30
62.3
62.0 218-40
52.5
52 218-30
49.4
48.9 232-15
37.7
37.2 243-30
27.2
26.7 254-45
24.5
24.0 268-0
22.0
21.5 289-15
18.8
18.1 310-0

Rock 45.5
45.0 355-15
49.5
49.0 0-45
52.0
51.5 359-30
54.5
54.0 359-15
55.2
54.8 0-40
58.5
58.0 0-30

(1495)
Rod 11.3
1485
Rock 58.5
58.0 0-30
59.3
58.8 1-40
56.3
55.8 1-15
54.0
53.5 1-30
50.9
50.4 0-00

Road

21113
1495

50.7
Rock 50.2 20-0
52.2
51.8 3-10
50.0
49.5 7-0
48.0
47.5 7-45
48.0
47.5 10-0
43.4
42.9 5-0
38.5
38.0 1-30
36.7
36.2 352-45
34.1
33.6 345-45
32.3
31.8 336-45
24.7
24.2 330-0
19.3
18.8 320-45
11.5
11.0 312-15
11.6
11.1 273-15
16.6
16.1 269-30
16.8
16.3 255-45
22.4
21.9 251-0
26.5
26.0 243-45
35.8
36.2 236-45
36.3

Soil

36.5
36-0 235-40
38.5
38-0 231-30
42.5
42-0 238-30
42.4
41.9 227-15
44.7
44.2 215-30
43.0
42.5 211-10
44.4
43.9 209-15
47.3
46.8 207-50
53.5
53.0 211-0
59.0
58.5 211-30
70.6
70.1 215-20

Rod 6.3

(1500)
73.5
73.0 209-50
61.3
60.8 207-15
56.3
55.8 206-15
53.4
52.9 204-0
51.9
51.4 205.30
42.9
42.4 207-0
36.3
35.8 200-0

Orthogonal

Orthogonal

10/19

Futer
Sub
Ketchum

occupy C-24-

1500

soil

$\frac{34.5}{34.0}$ 202-40 Set on C-24
 $\frac{36.2}{35.8}$ 216-15 Sight B-24 -
 $\frac{36.0}{35.5}$ 225-30 Measured 19-d
 $\frac{22.9}{22.1}$ 234-00 Set Awt. point
 $\frac{17.2}{16.7}$ 227-15
 $\frac{6.0}{5.5}$ 224-00 Occupy Awt. Point
 $\frac{3.3}{2.8}$ 273-05 19' from C-24 - Sight

Rock soil

$\frac{8.2}{8.2}$ 33.70 24-321.3 for

Rock

$\frac{12.2}{11.8}$ 323-45 0-00 - AZ Right.

Rock

$\frac{17.1}{16.6}$ 344-15 + JH

Rock

$\frac{27.1}{26.6}$ 352-40 12.57 1514.59 1502.02

Rock

$\frac{30.3}{29.8}$ 358-30 Rod 14.6

Rock

$\frac{34.2}{34.2}$ 0-45 1500 -

check shot
 Rock $\frac{54.2}{53.7}$ 0-15
 Rock $\frac{56.2}{55.8}$ 4-15
 Rock $\frac{56.9}{56.4}$ 7-0
 Rock $\frac{62.0}{62.1}$ 9-30
 Rock $\frac{66.2}{65.8}$ 9-30
 Rock $\frac{71.2}{70.7}$ 9-0

H1
151459

15

1505

Rock $\frac{75.5}{75.0}$ 6-15
 Rock $\frac{76.0}{75.5}$ 7-15
 Rock $\frac{77.9}{77.4}$ 6-15
 Rock $\frac{77.1}{76.6}$ 5-30
 Rock $\frac{80.4}{79.9}$ 4-15
 Rock $\frac{78.7}{78.2}$ 0-30
 Contour (1505) -
 Rod 9.6
 Rock $\frac{84.4}{83.9}$ 7-30
 Rock $\frac{86.2}{85.8}$ 11-0
 Rock $\frac{70.0}{69.5}$ 14-0
 Rock $\frac{63.8}{62.8}$ 16-45
 Rock $\frac{61.6}{61.1}$ 16-45
 Rock $\frac{56.7}{56.2}$ 14-45
 Rock $\frac{52.6}{52.1}$ 11-0
 Rock $\frac{49.4}{48.9}$ 6-0
 Rock $\frac{44.6}{44.1}$ 6-00
 Rock $\frac{39.6}{39.1}$ 3-45
 Rock $\frac{39.2}{39.0}$ 4-15
 Rock $\frac{35.0}{34.5}$ 1-00
 Rock $\frac{32.2}{31.8}$ 358-45
 Rock $\frac{30.9}{30.4}$ 60-0
 Soil $\frac{22.1}{21.6}$ 12-30
 " $\frac{20.2}{19.7}$ 15-15
 " $\frac{14.3}{13.8}$ 11-0
 " $\frac{7.9}{7.4}$ 327-0
 " $\frac{9.9}{9.4}$ 276-45
 " $\frac{14.6}{14.1}$ 235-15
 Rock soil $\frac{13.9}{13.4}$ 229-45
 Rock $\frac{15.5}{15.0}$ 225-40
 " $\frac{15.3}{15.0}$ 213-30
 " $\frac{21.0}{20.5}$ 218-0
 " $\frac{28.2}{27.8}$ 221-20
 " $\frac{38.7}{38.2}$ 211-0
 " $\frac{43.5}{43.0}$ 209-30
 Rock $\frac{50.4}{49.9}$ 212-0

Set on 191 from 6-24 - HI 1514.59

Rod 4.6 (Contour 1510) Tunnel

Rock	58.2		215	
	57.7	207.45 ✓	21.0	114-50 ✓
	56.3		27.4	
	55.8	206-30 ✓	26.9	104-30 ✓
	49.9		gap -	90-15 ✓
	49.4	208-30 ✓	17.6	
	46.0		17.1	96-15 ✓
	45.5	205-15 ✓	12.5	
	41.4		12.0	103-30 ✓
	40.9	208-10 ✓	9.6	
	37.4		9.1	83-30 ✓
	36.9	211-0 ✓	9.3	
	29.5		8.8	60-30 ✓
	29.0	205-0 ✓	10.0	
	26.1		9.5	37-45 ✓
	25.6	206-0 ✓	11.5	
	24.9		11.0	38-30 ✓
	24.4	211-0 ✓	13.6	
	21.2		13.1	30-30 ✓
	20.7	209-10 ✓		
	19.3			
	18.8	213.45 ✓		
	15.0			
	14.5	212.45 ✓		
	14.4			
	13.9	198-30 ✓		
	9.5			
	9.0	192-30 ✓		
	11.1			
	10.6	160-30 ✓		
	14.1			
Rock	13.6	147-45 ✓		
Tunnel	15.5			
Face North	15.1	137-30 ✓		
	gap -			
	22.1			
	21.6	133.15 ✓		

Note correct measurement

Top of wall

East Side	15.0	EI=08.61
Top of wall	R=5.95 ✓	136-15 ✓
North	13.4	EI=08.39
	R=6.2 ✓	117-10 ✓
	15.9	EI=08.39
	R=6.3 ✓	104-45 ✓
Top Contour	19.7	EI=08.37
Postal South	R=6.27 ✓	96-40 ✓

Bottom Wall Correct Chain

1504.48	10.11	20.2 ✓	98-0 ✓
1504.29	10.30	17.5 ✓	108-30 ✓

1514.59

16

1514.45	✓		
10.14	16.8	124-45 ✓	
Tunnel Postal			
North		Bottom Contour ✓	
1504.33			
10.26	15.7	135.30 ✓	

Contour 1510 Cont.

Add 0.5 - (?) add

	15.4		
Rock	14.9	47-0 ✓	
	19.2		
Rock	18.8	45.45 ✓	
	20.8		
Rock	20.3	42.50 ✓	
	25.2		
Rock	25.2	34-15 ✓	
	28.2		
	27.8	28-0 ✓	
	29.2		
	28.7	32-0 ✓	
	32.2		
Rock soil	31.7	28-30 ✓	
	33.5		
Rock soil	33.0	24-0 ✓	
	45.2		
Rock soil	44.7	19-30 ✓	
	53.532		
Rock soil	35.4	22-30 ✓	
	65.2		
Rock soil	65.2	22.45 ✓	
	67.5		
Rock	67.0	20-0 ✓	
	88.4		
	88.1	11-30 ✓	

Nov 11/1919

Fisher R. Notes
Sub
Ketchum
Johnson

Elevations - Sections in Bottom -

Occupied C-38

Sighted 38-30 for

0-00 AZ Rt.

† 8.52 1475.08 1466.56

Set stakes in 38-

at 2+75-3+25

3+50-3+75 & 4+25

1475.1
Sections in Bottom

between 38-+28-

38-28-300 73.7 70.5 68.6 68.3 66.9 66.7 66.0 65.5
1.4 4.6 6.5 6.8 8.2 8.4 9.1 9.3
38-300 6 4 15 1.8 3.3 3.7 4.8

65.0 64.8 66.6 67.8
10.1 10.3 9.5 7.3
60 75 89 9.3

38-28-325 66.8 65.8 65.1 66.3 66.1 66.6 67.1 69.0 70.7
(Rock) 8.3 9.3 10.0 8.8 9.0 8.5 8.0 6.1 4.2
8.9 7.5 6.0 4.7 3.0 2.5 1.3 6.0 0.0

38-350-00 69.6 68.3 66.8 67.2 66.5 66.5 66.1 66.2
5.5 6.8 7.3 7.9 8.6 8.6 9.0 9.9
2.0 4 9 16 24 41 55 75
68.7 6.4 8.4 6.4
82 85
Cathod Rock

1475 L

17

Bottom Rock

72.1 71.1 70.4 69.9 66.7 65.4 65.4 66.2
3.0 4.0 4.7 5.2 8.4 9.7 9.7 8.9
95 93 90 76 78 63 45 92

8.5 8.6 8.1 8.0 6.2 5.1
30 18 15 8 4 20

66.6 66.5 67.0 67.1 68.9 70.4

C-38 71.8 69.8 66.7 65.8 65.0 65.7 66.6
35-400 3.3 5.3 8.4 9.3 10.1 9.4 9.5
72.5 81 74 65 49 39 29

66.6 67.2 69.3 70.3

8.5 7.9 5.8 4.8

38-425- 70.4 69.7 66.7 66.3 65.5 65.4 66.2 66.8
4.7 5.4 8.4 8.8 9.6 9.7 8.9 8.3
86.5 83 78 63 45 37 30 14
6.8 6.8 5.3
6.3 5.3
9 0

B-28 70.3 70.2 69.2 66.7 66.0 66.0 66.1 67.2

B-38-00 4.8 4.9 5.9 8.2 9.1 9.1 9.0 7.9

00 3 6 11 18 33 46 63

6.1 5.1 3.3 3.6
7.7 84.5 8.7 91.9 - Toe of Slope

69.0 70.0 71.8 72.5

Nov 11-1919

Johnson T
Bub - Hatchum Chan -
Fisher

Topog - Bottom

Contour (1470)

Occupy C-38-	41.9		
	41.1	0-30	
Sight--38-300 for	43.1		
	43.2	359-0	
0-00 AZ-RT	56.5		
	56.0	359-0	
Add 0.5 to Dist	64.5		
	64.0	2-45	
+ 8.52 1475.05 1466.56	80.3		
Rod 5.1	79.8	2-0	
1470-0	99.4		
Add-0.5 to Dist	99.1	3-45	
	63.2		
	62.8	178-30	✓
	55.3		
	54.8	177-0	✓
	46.9		
R+soil	46-9	180-0	✓
	33.2		
R	32.7	174-30	✓
	31.4		
R-Soil	30.9	181-10	✓
	17.1		
	17.2	179-0	✓
	10.2		
Boulder	9.7	163-0	✓
	9.0		
boulder	8.5	131-15	✓
	3.8		
soil	3.3	146-0	✓
	4.5		
	4.0	48-0	✓
	20.0		
	19.5	10-30	✓
	24.2		
	23.7	1-0	✓
	33.5		
	33-0	357-30	✓

11/11/19

Johnson T
Bub - Hatchum Chan -
Fisher

18

Set on B-22 - Sight

(1515)

22-324 - Set Auxlx	Resoil	58.2	11-50	✓
		61.5		
Point-14.8 ft from	Rock	61-0	7-45	✓
		68.7		
C-22 = 414.8	R	68.2	14-50	✓
		78.6		
Set on Auxlx point	R	78.1	14-10	✓
		86.4		
Sight 22-324 for 0-00	R	85.9	6-0	✓
		97.5		
Add-0.5	R	97-0	8-20	✓
		9.83	1525.69	
		15-15.86		
Rod 10.7				
Contour 1515	(Contour 1515)			
		8.1		
		7.6	333-0	✓
		14.2		
Rock		13.7	356-30	✓
		17.5		
		17-0	359-0	✓
		19.1		
		18.6	357-0	✓
		21.0		
		20-5	1-30	✓
		28.0		
		27.5	13-0	✓
		32.4		
		31.9	13-0	✓
		36.1		
		35.6	17-20	✓
		40.3		
		39.8	15-40	✓
		44.9		
Soil R		44.4	16-20	✓
		55.2		
		54.7	13-50	✓
	check	81.7		
	shot R	81.5	1-0	✓
		106.9		
		107-0	9-0	✓
		115.8		
		116-0	7-55	✓
		114.88		
		118.5	8-30	✓
		1510		
		118.8		
		119-0	5-55	✓
		109.9		
		110-0	4-05	✓
		104.4		
		104.5	3-0	✓
		96.5	359-15	✓
		92.6		
		92-5	358-0	✓
		89.6		
		89.5	358-45	✓
		88.8		
		88.7	1-0	✓

Nov 11-1919

Tobacco R
Bub I
Fishes lakes
Ketchikan

Seton 26-366	Rock	21.3	213- 50
Sight 180' to B-26	R	21.2	205-0
	R	20.2	205-0
	R	18.4	197-40
Add Focal Dist ^{Eight less} than 80'	R	17.5	2
C-25-	R	19.4	
0.17 1496-45 149638	R	18.3	192-0
	R	17.4	
Contour (1485)	R	16.5	192-30
Rod 11.5	R	18.4	
1485	R	17.5	198-0
Fill	R	16.9	
	R	15.8	180-10
	R	11.0	198-30
	R	7.7	295-0
	R	10.0	315-45
	R	9.4	358-15
	R	14-0	5-0
	R	16-0	14-20
Rock & fill	R	19.4	29-30
	R	24.5	34-15
	R	24.3	29-15
	R	26.3	30-30
	R	29.1	23-50
	R	32.0	23-0

Rod 11.5	Contour (1485)	Rock	33.0	19-10	X
		R	34.8	19-0	X
		over Hang	35.5	15-0	✓
		R	42.9	14-10	X
		over Hang	49.8	14-15	X
		R	57.1		
		R	56.5	14-30	
		rod 65	57.1		
		over Hang	56.5	14-30	✓
		Contour 1490	49.8	14-15	✓
		Chained	42.9	14-10	✓
		R	38.8	15-0	✓
		R	36.6		
		R	35.8	14-15	✓
		check shot	32.5-33.4	25-30	
			30-0 30.9	32-0	
		Rod 1.5	30.9		
		Contour 1495	30.0	32-0	
		check	37.1		
		R	36.3	19-10	
		R	41.3		
		R	40.5	15-40	

Nov 11-1919

Johansen, T.
Bub
Fisher - Kulesh
Ketokum - Chua

22-32139

Set on 2 - 519 ft

B-22- for 180°

Add Local Dist.

24-3212

12.65 151.542 1502.77

1500 - Contour (1500)

Rod 15.4

checkshot
Rock 23.0
22-0 219-30

R 22.2
21.2 231-45

R 21.2
20.2 249-45

R 17.1
16-0 257-0

R 14.1
13.6 254-0

R 13.4
12.3 255-0

R 11.2
10.0 260-30

R 15.8
14.7 260-0

R 20.4
19-4 265-30

R 17.1
16-0 280-15

R 15.6
14.5 296-0

R 14.6
13.5 314-45

R 13.6
12.5 321-30

(Contour 1500)

11.7
10.5 336-0

18.3
17.2 0-90

25.3
24.3 6-15

29.2
28.3 9-45

(Contour 1505)

Rod 10.4
28.9
28.0 12-40

23.5
22.5 7-0

16.4
15-3 2-40

13.7
12.6 3-40

Correct Dist
6.0 3-47

R- 4.2 295-30

R 7.5 211-30

R 12.1 195-0

check
R point 15.7 202-30

20

Contour 1495

22-32139
Set on 22-324

Az-350-42- for

Distance of 16.90' ft

for Auxil point.

Occupy - Auxil point

321.39
Sight 22-~~324~~ for 180°

Add Focus Dist.

1.35 1504.15 1502.77

Rod 9.2

1495
25.8
24.8 232-95

Bottom of
cliff 25.7
24.7 234-0

25.2
24.5 233-45

Total Cliff
El 1492.1
12.1 244-30

Total Cliff
11.9 14.4 El 192.3
256-30

20.0
18.9 236-35

16.1
15.0 237-0

Total Cliff
11.8 13.8 El 192.4
259-30

13.0
11.8 243-0

12.2
11.1 250-0

Total Cliff

9.6

Cliff

contour

vertical

11.0'

Rod 14.2

31.9

Rock

31-0

30.9

30-0

27.9

27-0

27.2

26.3

24.7

23.7

23.5

22.5

19.1

18-0

17.1

16-0

17.4

16.3

16.6

15.5

Connects with cliff shots.

7.4 262-0

10.2 276-0

9.0 300-0

7.3 300-0

7.6 300-0

9.3 -20-40

18.6 39-30

17.5 46-0

25.7 46-0

Contour (1490)

31-0 34-0

30-0 32-20

27-0 31-15

26.3 32-45

23.7 29-30

22.5 25-30

18-0 24-15

17-1 27-0

16-0 31-30

15.5 37-30

Note Some shots are taken on 80 + 85
 where marked 85 is that contour -

Add Focal Dist. Contour 1480

Occupancy	40-300 Sight	Rock	119.7	85-40
C-40-	for 180- for	R	117.8	84-50
AZ	RT	R	118.8	82-30
5.37	1485 67 1480-30	edge of cliff contour 1485	122.2	53-00
27-357		edge of cliff 1485	122.5	53-00
		edge of cliff 1485	124.7	50-55
6075	120-0 107-40	edge of cliff 1485	125.0	50-55
Red 5.67	contour (1480)	contour 1485	119.5	79-45
1480			119.8	79-45
Rock			126.0	
A			126.3	79-0
R			126.7	
R			127.0	75-40
R			123.2	73-30
R			123.5	72-30
R			123.2	
R			123.5	71-30
R			126.7	
R			127.0	69-0
R			128.7	
R			128.5	66-20
R			128.8	
R			129.2	63-0
R			132.4	
R			133.0	59-15
vertical 11'0			144.4	
R			145.0	56-30
vertical 8.0			147.9	
R			143.4	
R			144.0	58-0
R			139.0	
R			139.5	59-30

1485 Add Focal Dist

Contour 1485

Rock	140.0	60-25
Rock	140.5	60-25
Rock	137.0	
Rock	137.5	63-20
Rock	133.1	
Rock	133.5	64-30
R	136.5	
R	137.0	66-50
R	131.6	
R	132.0	68-0
R	131.1	
R	131.5	68-45
R	127.0	70-45
R	127.3	
R	125.0	
R	125.3	73-40
vertical 10'	130.6	
R	131.0	74-50
Red 10.7	Contour 1475	
Edge of Cliff	125.7	
R	126.0	63-30
R	118.9	
R	119.2	66-40
R	115.8	
R	116.0	70-0
R	112.8	
R	113.0	73-30
R	109.9	
R	110.0	75-0
R	117.2	
R	117.4	79-10
R	112.8	
R	113.0	83-25
R	110.4	
R	110.5	89-25
R	112.8	
R	113.0	91-20

21

Contour 1475

Rock	116.2	94-30
Rock	116.5	94-30
Rock	118.8	
R	119.0	98-0
R	120.2	
R	120.5	99-50
R	120.3	
R	121.0	100-45
R	118.7	
R	119.0	101-30
R	120.2	
R	120.6	102-30
R	117.2	
R	117.5	103-30
R	112.2	
R	112.5	105-30
R	113.9	
R	113.7	106-0
R	115.3	
R	115.5	108-10
R	116.3	
R	116.5	109-15
R	120.2	
R	120.5	111-10
R	119.2	
R	119.5	112-30
R	128.3	
R	128.7	114-0
R	131.6	
R	132.0	116-45
R	128.6	
R	129-	117-10
R	131.6	
R	132.0	119-0
R	132.1	
R	132.5	119-30
R	132.6	
R	133.0	119-55

Add focal Dist

A 40-300		Rod 5.7 Contour 1480	
Pod 10.7	1475-0	1839	185-0 139-05
Contour	130.6	182.9	
R	131.0 120-45	184-0	138-30
R	137.5 122-40	174-0	
R	138-0 132-42	175-0	134-30
R	135.5 136-0	168.4	169-0 134-10
R	136-0 123-10	156.8	
R	6 yds - Over Hang -	157.5	131-05
R	135.2 135.5 124-40	153.2	154-0 128-10
R	139.5 140-0 124-50	150.8	151-5 126-50
R	140.5 141-0 125-45	142.4	143-0 124-30
R	139.5 140-0 126-40	140.5	123-30
R	143.4 144-0 127-15	137.0	137.5 124-30
R	151.3 152-0 131-10	138.5	139-0 122-45
R	152.8 153-5 133-10	130.6	131-0 121-15
R	160.9 161.7 136-30	132.6	133-0 120-0
R	167.6 168.5 137-0	132.6	133-0 119-30
R	174.5 175-5 137-55	131.6	132-0 119-0
R	178.5 179.5 138-50	136.2	136.7 117-40
R	183.9 185 140-15	135.5	136-0 115-20
R		136.8	136-3 114-0
R		129.6	130-0 112-15

1475

Soil Rock

1472-10
Set on 34-300 - (23)

Set on 34-300 - sight		Rod 2.1 - 1470 -	
C-34 - for 180 - Az R	76.5	76.5	138-25
Add Focal Dist	74.5	74.5	136-50
T526 1472.10 1466.84	68.4	68.4	136-50
Rod 2.1	67.7	67.7	132-30
Soil	70.0	70.0	130-0
"	67.4	67.4	128-10
"	68.7	68.7	124-20
"	66.5	66.5	120-45
"	68.3	68.3	117-50
"	65.8	65.8	112-40
"	61.8	61.8	110-25
"	63.0	63.0	107-50
"	60.5	60.5	103-0
"	60.8	60.8	96-45
"	61.9	61.9	91-10
"	61.6	61.6	89-45
"	67.4	67.4	86-0
"	63.3	63.3	81-10
Soil + Rock	59.5	59.5	79-0

Section 34-300			Contours 1465		
Rod 2.1 - 1470			Rod 7.1		
Concrete	60.4 59.9 75-05 ✓		Rock	38.3 37.8 57-40 ✓	
concrete	58.9 58.4 74-20 ✓		R	37.3 36.8 56-15 ✓	
concrete	59.0 58.5 73-30 ✓		R	38.8 38-3 54-0 ✓	
concrete	61.7 61.2 73-50 ✓		Rock	35.7 35.2 50-50 ✓	
Rock	62.3 61.8 72-30 ✓		R	35.5 35-0 41-50 ✓	
cliff	65.4		R	31.7 31.2 36-15 ✓	
R	65-0 65-0		R	31.7 31.2 36-15 ✓	
Rod 7.1	Add 0.5 1465		Concrete	27.0 26.5 31-45 ✓	
Rock	60.6 60.1 68-40 ✓		Concrete	25.5 25-0 33-0 ✓	
Rock	60.5 60-0 67-10 ✓		Rock	30.0 29.5 20-0 ✓	
concrete	57.5 57-0 67-10 ✓		Rock	32.9 32-4 19-0 ✓	
concrete	53.5 53-0 70-30 ✓		Rock	30.1 29.6 19-20 ✓	
face of weir	53.5 53-0 70-30 ✓		R	34.5 34-0 19-35 ✓	
concrete	50.5 50-0 74-20 ✓		R	36.8 36-4 24-25 ✓	
Rock and	55.3 54.8 77-10 ✓		R	43.0 42.5 19-15 ✓	
Sand	52.9 52.4 77-45 ✓		R	44.5 44-0 16-30 ✓	
Sand	46.0 45.5 79-0 ✓		R	45.8 45-3 17-15 ✓	
Sand	31.0 30.5 68-20 ✓		R	49.8 49-3 17-30 ✓	
concrete + Sand	31.5 31-0 56-0 ✓		R	54.5 54-0 19-20 ✓	
concrete	35.9 35.4 62-10 ✓		R	58.5 58-0 18-40 ✓	

Section - 34-300			(1465) 23		
Contours 1465			1465		
Rock	51.0 60.5 16-45		67.4 67	266° 50'	
Rock	66.0 65.5 18-35		66.4 66	268° 40'	
			68.4 68	273° 15'	
			75.5 75.2	274° 45'	
level TP	1072 1461.38		80.2 80	277° 15'	
Setting auxill. Pt. on old engine Base			79.2 79	279° 20'	
	86.2 ft. 49° 24'		81.2 81	279° 50'	
TP 566			78.3 78	283° 0'	
HI 1467.04		Good also for 1460 Contour	80.2 80	287° 15'	
Plate - set 180° on 34-300			85.2 85	286° 30'	
Contour 1465 Rod 2.1			87.1 87	290° 15'	
1465 Rock	54.5 55.1 239° 10'		90.1 90	292° 20'	
	59.7 59.2 242° ✓		91.1 91.0	293° 45'	
	62.3 61.8 238° 30'		77.7 77.5	287° 15'	
	65.5 65 236° ✓	1460 Rod 7.0	75.2 77.2 75	286° 15'	
	68.4 68 238° ✓		75.2 75	283° 50'	
	66.5 66 241° 40'		76.2 76	281° 20'	
	71.4 71 244° 50'		73.0 72	281°	
	67.7 67 255° 10'		73.8 73.6	279° 10'	
	70.8 70 260° 15'		67.2 67	274° 15'	
	65.9 65.4 266° 50'				

Add HI (1.0)

At Aux. Pt

1460
 Stadia
 67.1
 66.7 272°30' ✓
 66.0
 65.6 269°30' ✓
 59.7
 59.2 266°20' ✓
 61.5
 61.0 264°
 59.2
 58.7 260°30' ✓

Cont. Page 29

Cont - 5 Pages - over -

29.56
 30.86
 54.5
 55.8

Nov 14

Set on 3-38

24

Test for Stadia Wires
 Cor. Recorded
 Dist. Dist.
 AV

38-425	30.79	^{29.5} 30.0	29.9	29.95	-1.5%
C-35	55.79	^{54.5} 55.2	55.1	55.15	1.18
38-375	80.79	^{79.5} 80.3	80.4	80.35	1.06
38-350	105.79	^{104.5} 105.5	106.0	^{106.2} 106.1	1.6
38-325	130.79	^{129.5} 131.1	131.0	131.05	1.18
38-300	155.79	^{154.5} 156.1	156.4	156.25	1.12
38-275	180.79	^{179.5} 182.0	182.3	182.15	1.45

7 909

To Stadia Readings 1.3
 subtract 1.3% & add 1.3'

Nov 12-1919

Johnson
Bub
Fisher
Kochum

B-42-

Occupy - B-42

			28.9	
Sight	B-34 - Deflection		28.4	161-30 ✓
			23.5	
	AZ 84°-16'		23-0	161-0 ✓
			22.3 8	
	Add 0.5 To Dist		21.8	153-0 ✓
			19.7	
12-14	145.99	1473.85	17-2	152-40 ✓
			18.2	
Rtd 11-0			17.7	131-25 ✓
			15.7	
1475	46.7		15.2	129-0 ✓
	46.2	99-0 ✓		
RC	42.4		16.1	
Rok	41.9	100-30 ✓	15.6	119-20 ✓
	38.9		16.0	
RC	38-4	106-50 ✓	15.5	104-40 ✓
	41.6		14.5	
RC	41-1	108-50 ✓	14.0	97-30 ✓
	45.7		18.0	
RC	45.2	105-30 ✓	17.5	89-30 ✓
1475-	42.2		18.0	
Rok	41.7	122-15 ✓	17.5	83-45 ✓
	30.4		19.0	
	29.9	119-30 ✓	18.5	61-30 ✓
	27.0		20.9	
	26.5	133-15 ✓	20.4	61-20 ✓
	31.3		22.3	
	30.8	136-20 ✓	21.8	59-0 ✓
	38.5		24.0	
	38-0	138-45 ✓	23.5	65-30 ✓
	40.3		29.8	
	39.8	162-30 ✓	29.3	62-30 ✓
	38.4		36.1	
	37.9	162-10 ✓	35.6	55-40 ✓
	33.0		34.3	
	32.5	151-15 ✓	33.8	52-0 ✓
	31.5		38.5	
	31-0	161-15 ✓	38.0	47-30 ✓

Occupy B-42

B-42-

25

Rd 11.0	contour 14.75			
	40.0			57
Rok	39.5	49-0 ✓	A	5.2
	41.0			33-0 ✓
R	40.5	47-30 ✓	R	5.9
	39.9			5.4
R	39.4	42-0 ✓	R	10.1
	44.5			9.6
	44.0			99-0 ✓
R	39.4	37-45 ✓		15.1
	46.5			14.6
R	46-0	39-35 ✓		12.9
	44.4			12.4
R	43-9	41-30 ✓		8.5
	47.5			8-0
R	47.0	44-40 ✓		14.8-15 ✓
	57.0			10.5
R	50.5	42-0 ✓	ad 1.0	10-0
	52.5		14.85	12.9
R	52-0	38-45 ✓		12.4
				253-30 ✓
				13
				9.5
				9.0
				253-30 ✓
				6.9
Rod 6.0	Contour 14.80		R+soil	6.4
	26.3			262.0 ✓
R.C.	25.8	52-15		8.5
	30.2			8.0
RC	29.7	57-15	soil	281-30 ✓
	25.4			9.1
RC	24.7	59-45	R+soil	8.6
	26.8			316-0 ✓
1480	26.3	48-45 ✓	R	8.9
	25.0			8.7
Rok	24.5	53-0 ✓	R	12.1
	20.7			11.6
R	20.2	58-30 ✓	R	12.5
	19.0			12.0
Rok	18.5	53-40 ✓	R	17.1
	12.1			16.6
	11.6	58-30 ✓		43-10 ✓
	6.7			
	6.2	47-0 ✓		

Winton (1475) Nov. 12-1919 C-40

Seton C-40 Sight 1475

41-300 = 0-00 AZ	1475	soil	41.5	41-0	15-30
Add 0.5	"	"	53.3	52.8	12-30
+ 1249	1472.89	1470-40	57.1	56.6	9-0
Red 7.7			64.8	64.3	10-40
1475.			72.5	72-0	3-45
check shot	20.0		79.0	78-5	2-20
rock	19.5	142-10	Bouldy	81.5	81-0
Rock	13.4	142-0	Bouldy	85.9	85.4
A	14.4	127-30	Bouldy	89.1	88.6
A	13.9	120-40	Bouldy	100.5	100-0
R	13.5	120-40	Bouldy	148.0	147.0
R	7.3	124-0	soil	99.5	99-0
R	6.8	100-0	Red 2.9	96.5	96-0
R	6.1	85-0	1480	77.0	76.5
R	6.8	85-0	soil	69.3	68.8
R	6.3	85-0	soil	60.9	60.4
R	6.1	70-0	"	58.3	58-0
R	9.5	70-0	"	55.4	54.9
R	7.0	75-30	"	45.4	44.9
R	12.1	65-40	Bouldy		
R	11.6	65-40	Bouldy		
R+soil	12.7	42-20	Bouldy		
soil	12.2	42-20	Bouldy		
soil	19.4	36-30	Bouldy		
#	18.9	36-30	Bouldy		
	29.1	23-0	Bouldy		
	28.6	23-0	Bouldy		
	39.5	12-40	"		
	39-0	12-40	"		

1480

C-40

26

soil	31.9	31-40	351-40	1480	22.1	182-45
	29.8	29.3	346-46		Correct Diet	
	16.1	15.6	344	1480	23.0	188-0
	8.2	7.7	16-0	Bouldy	25.3	192-20
Boulder	5.3	4.8	15-30	R	29.0	191-45
Boulder	7.7	7.2	354-0	A	34.4	186-30
	6.1	5.6	325-0	R	35.6	191-15
soil	3.9	3.4	300-0	R	37.0	192-20
soil	8.8	8.3	219-30	R	38.4	190-10
Rock	7.1	6.6	179-0	check shot	40.6	181
	12.8	12.3	156-30	R	40.6	182-10
	12.3	11.8	150-0			
1480	9.2	8.7	152-0	R.C		
	11.5	11-0	142-0	R.C		
	9.6	9.1	138-0	R.C		
	14.2	13.7	142-30	Rock		
	17.5	17-0	142-0	R		
	17.4	16.9	155-30	R		
	17.6	17.1	184-0	R		

Nov 12

(Contour 1485)

Set on C-42 - Sight

			244		
42-300 for 1800°	R.C.		23.9	14815	
Set Auxil Point 6.647	Type Boulder E		1487.3		
from C-42 = 3193.36	Soil		25.6 25.1	14950	
Set on Auxil - pt 3193.36	Soil		16.3 15.8	159.0 129.0	
Sight 42-300 for 0-0	Side R		10.9 10.4	179.40	
	R		8.3 7.8	153.0	
6.98 B-44		1497.39	4.8 4.3	149041	
Rod 12.4	A	(1485)	5.8 5.3	82.0	
Add 0.5	A		5.5 5.0	46.30	
Chuck shot			7.2 6.7		
Rock	A	50.6	5.0	166-15	
Boulders		46.5	9.5		
R	R	46.0	9.0	170-0	
R	R	40.7	14.0		
R	R	40.2	13.5	167-10	
R	R	37.8	15.3		
R	R	37.3	14.8	170-45	
R	R	32.8	16.1		
R	R	32.3	15.6	166-0	
R	R	31.0	18.0		
R	R	30.5	17.5	155-30	
R	R	27.4	19.9		
R	R	26.9	20.0	168-0	
R.C. (1485)	R	28.2	27.5		
R.C.	R	27.7	27.0	158-10	
R.C.	R	28.3	31.6		
R.C.	R	27.8	31.1	152-50	
R.C.	A	28.0	32.5		
			32.0	146-40	

Occupy 42 - 393 36 - 27

Contour 1485

1485

Arks			35.6						
R		13-20	35.1	✓	Rods	99.7	5-20	33	✓
R		7-20	36.1	✓	Rod 74	1490			
R		7-30	40.9	✓	R	101.5			
R		5-30	40.4	✓	R	101.0		0-14	✓
R		5-15	42.5	✓	R	99.3			
R		4-20	41.7	✓	R	98.8		359-35	✓
R		4-20	47.1	✓	R	95.9			
R		8-15	46.6	✓	R	95.4		0-05	✓
R		6-45	49.1	✓	R	87.3			
R		4-20	48.6	✓	R	86.8		356-10	✓
R		4-20	53.8	✓	R	81.8			
R		6-45	53.3	✓	R	81.3		356-0	✓
R		4-20	58.3	✓	R	80.3			
R		4-20	57.8	✓	R	79.8		354-35	✓
R		2-40	58.5	✓	R	72.2			
R		2-40	58.0	✓	R	71.7		354-35	✓
R		359-25	61.2	✓	R	67.1			
R		359-45	60.7	✓	R	66.6		355-10	✓
R		1-15	70.3	✓	R	62.5			
R		359-0	69.8	✓	R	62.0		358-35	✓
R		2-10	74.2	✓	R	56.1			
R		4-22	73.7	✓	R	55.6		356-30	✓
R		5-25	77.2	✓	R	52.4			
R		2-10	76.7	✓	R	51.9		359-10	✓
R		4-22	78.9	✓	R	49.1			
R		5-25	78.4	✓	R	48.6		357-30	✓
R		2-10	90.7	✓	R	45.4			
R		4-22	90.2	✓	R	44.9		357-30	✓
R		5-25	91.4	✓	R	43.1			
R		5-25	90.9	✓	R	42.6		356-0	✓
R		5-15	94.3	✓	R	38.5			
R		2-55	93.5	✓	R	38.0		355-25	✓
R		2-55	95.4	✓	R	37.4			
R		2-55	94.9	✓	R	36.9		352-10	✓
R		2-55	96.6	✓	R	30.6			
R		2-55	96.1	✓	R	30.1		349-10	✓

At 42-393,36 Occupy 42-393-36

add	1490	1497.39	add	05
	29.7			11.3
R.C.	29.2	0-25	Rocks	10.8 245-0
R.C.	32.8	358-20	"	15.2 225-15
R.C.	34.4	1-40	"	19.5 231-0
R.C.	31.1	4-50	contn	14.90
Top rock 4	30.9			11.0
R.C.	30.4	0-40	R.C.	10.5 229-0
1490	27.1			8.5
	26.6	353-30	R.C.	8.0 259-0
	22.8			3.3
	22.3	344-50	R.C.	2.8 50-0
	20.1			7.5
	19.6	349-10	R.C.	7.0 350-0
	16.1			8.9
	15.6	341-45	R.C.	8.4 1-0
	17.9			11.2
	17.4	333-30	R.C.	10.7 355-0
	15.1			12.7
	14.6	325-40	R.C.	12.2 343-0
	15.0			14.0
	14.5	332-0	R.C.	13.5 354-0
	11.8			15.4
	10.6	338-20	R.C.	14.9 1-30
	8.5			14.2
	8.0	330-0	R.C.	13.7 9-30
	8.3			12.3
	7.8	318-0	R.C.	11.8 21.45
	9.2			9.9
	8.7	302-30	R.C.	9.1 18-15
	10.6	295-0		7.2
	10.1	29.5	R.C.	6.8 52-40
	11.0			5.2
	10.5	287-0	R.C.	4.8 44-10
	11.0			5.2
	10.5	264-30	R.C.	4.7 81

1497.39 Occupy - 393 36

1490	42	7	1490	44	28
R.C.	3.8	89°50	1490	44.2	193°10
R.C.	4.3	126°30		48.2	191°
R.C.	9.5	204°30		49.0	194°10
Top Rod	8.1			50.0	
Boulder	3.2	242°30		49.5	196°40
"	9.2			52.6	
"	4.7	0.0		52.1	195°20
"	3.3	6.8		56.0	
end of RC	14.2	6.3	9°	55.5	197°10
"	3.6	13.7	0°0'	64.2	
"	13.5	27.2		63.8	198°30
1490	9.4	26.8	219°45	67.1	
		27.2		66.6	200°50
		26.7	211°30		
		28.8			
		28.3	210°30		
		28.2			
		27.7	199°50		
Note	29.5	29	189°20		
	31.1	30.6	192°15		
	30.5	30	184°10		
	34.3	33.8	182°15		
	39.2	38.8	169°		
	42.5	43	177°45		
	45.5	45	181°0		
	42	41.5	189°15		
	44.2	43.8	188°30		
				44.1	
				44.2	193°10
				48.2	191°
				49.0	194°10
				48.5	196°40
				50.0	195°20
				52.6	197°10
				52.1	198°30
				56.0	200°50
				55.5	
				64.2	
				63.8	
				67.1	
				66.6	
				68.0	
				67.5	205°
				63.6	204°30
				63.1	203°15
				62.6	205°
				62.1	205°50
				63.6	210°
				62.1	216°50
				62.6	210°
				58.3	216°30
				57.8	215°
				50.6	
				50.1	
				43.1	
				42.6	
				38.1	
				37.6	
				31.8	
				31.3	
				33.8	
				33.3	
				34.2	
				34.2	
				33.7	
				33.2	

353.05 - 14.8 Hot
 Aux Point 46
 Patted
 7 Pages Over

Platted 7 Pages Over

Occupancy - 42-393 36

1490	35 ⁵ / ₂ 35 ⁰	228°	1490	48 ² / ₂ 47 ⁷ / ₂	353°
Rock	32 ⁷ / ₂ 32 ² / ₂	233°50	Rock	50 ⁶ / ₂ 50 ¹ / ₂	348°45
"	28 ³ / ₈ 27 ⁸ / ₈	234°50	"	55 ⁹ / ₄ 55 ⁴ / ₄	348°15
"	26 ⁸ / ₃ 26 ³ / ₃	240°30	"	59 ³ / ₂ 58 ⁷ / ₂	350°30
"	22 ⁹ / ₄ 22 ⁴ / ₄	238°50	"	68 ² / ₂ 67 ⁷ / ₂	350°10
"	22 ¹ / ₂ 21 ⁶ / ₂	250°10	"	73 ⁰ / ₅ 72 ⁵ / ₅	349°20
"	20 ⁴ / ₂ 19 ⁹ / ₂	252°10	"	76 ⁷ / ₂ 76 ² / ₂	352°20
"	19 ¹ / ₂ 18 ⁶ / ₂	255°45	"	79 ¹ / ₂ 78 ⁶ / ₂	350°45
"	18 ⁹ / ₂ 18 ⁴ / ₂	269°40	"	81 ⁵ / ₂ 81	350°30
"	20 ² / ₂ 19 ⁷ / ₂	281°20	"	84 ⁷ / ₂ 84 ² / ₂	350°
"	17 ³ / ₈ 16 ⁸ / ₈	285°10	"	94 ⁰ / ₅ 93 ⁵ / ₅	352°10
"	20 ⁷ / ₂ 20 ² / ₂	315°50	"		
"	26 ⁶ / ₁ 26 ¹ / ₁	322°10	"		
"	28 ⁴ / ₂ 27 ⁹ / ₂	333°10	"		
"	31 ⁷ / ₂ 31 ² / ₂	332°	"		
"	33 ⁶ / ₁ 33 ¹ / ₁	337°10	"		
"	39 ¹ / ₂ 38 ⁶ / ₂	343°	"		
"	41 ¹ / ₂ 40 ⁶ / ₂	346°	"		
"	44 ¹ / ₂ 43 ⁶ / ₂	353°	"		
"	45 ² / ₂ 44 ⁷ / ₂	354°30	"		

Platted - 7 Pages Over

Setup at Aux Pt
S 49° 24' W 86.2 feet 29
from 34-300

Sight 180 on 34-300		53 ¹ / ₂	
		52 ⁵ / ₂	173°10'
		57 ³ / ₂	
		56 ⁶ / ₂	192°
	concrete	60 ² / ₂	
		59 ⁸ / ₂	188°30'
		54 ¹ / ₂	
		53 ⁵ / ₂	190°30'
		52 ⁷ / ₂	
		52 ¹ / ₂	188°40'
		50 ¹ / ₂	
		49 ⁴ / ₂	185°50'
		50 ⁶ / ₂	
		49 ² / ₂	183°10'
		49 ⁸ / ₂	
	coner	49 ¹ / ₂	179°40'
		46 ⁴ / ₂	
		46 ² / ₂	175°15'
		47 ¹ / ₂	
		46 ⁴ / ₂	172°40'
		40 ⁸ / ₂	
		40	162°50'
		35 ⁵ / ₂	
		34 ⁶ / ₂	151°40'
		32 ³ / ₂	
		31 ⁴ / ₂	147°40'
		32 ² / ₂	
		31 ³ / ₂	145°40'
		30 ⁷ / ₂	
		29 ⁸ / ₂	142°50'
		23 ³ / ₂	
		22 ³ / ₂	136°50'
		21 ⁶ / ₂	
		20 ⁶ / ₂	131°15'
		20 ² / ₂	
		19 ² / ₂	132°30'
	Note	7.0 Under cut.	

TP. 1461.38
1460 rock

Stad F+1

1460 Top Cliff
9.5 Higher
1455 Higher
Cliff
13.0 Higher
Cliff
12.5 Higher

Rod 6.66
1460

Correct
D. 15

Aux. Pt S 49° 24' W - 86 ± ft
from 34-810

19.3	138° 15'	1455	43	324° 40'
19.2	142°		36°	
18.7	165° 15'		35 2	317°
12.7	175° 50'		31 1	315° 20'
9.4	237° 15'		30 8	
8.2	292° 20'		22 2	314°
12.8	332° 30'		21 2	
18.8	322° 45'		Correct	324° 30'
23°			16 8	
22	319°		13 9	329°
30			12 2	324°
29.7	318° 10'		11 2	280° 15'
38			12 9	251° 20'
37 2	320° 40'		13 5	225° 40'
42 9			15 8	213° 40'
42 2	324° 40'		16 5	197° 15'
47 2			18 5	188° 45'
46 3	326° 30'		20 5	182°
54 6	328°		21 3	142°
60			29 1	143° 15'
59 5	329° 10'		30 8	149° 45'
66 1			36 2	159° 20'
56 3	331° 30'		45	172° 40'

Platd - 11-23-19

1455 Rod 11.7

59 2	327° 50'		48 8	181° 30'
55 2				
54 6	325° 10'			
49 2				
49 2	326°			

Aux. Pt S 49° 24' W - 86 ± ft from 34-310

1455	49	184° 40'	1455	49	184° 40'
	49 2	188° 10'		51	192°
	51	192°		49 4	195°
	47 8	202°		52 1	207° 45'
	47 1	208° 40'		40 5	214° 30'
	38 5	226°		42 8	236° 30'
	46 5	238° 15'		50	236° 13'
	54	239° 20'		54	239° 20'
	57	239° 0'		53	245°
	51 8	254° 50'		51 9	260° 40'
	57 7	262° 10'		57 0	266° 45'
	47 3	190°			

Stadia add corrections (30)

Level T.P. 1466.66

New HI = 65.67

Edge Rod Sand 156

50.4 Sand 153

50.7 150

50.9 14.8

50.9 14.8

51.5 14.2

51.6 14.1

52.0 13.7

51.8 13.9

52.2 13.5

52.3 13.4

52.1 13.6

602	
59 8	273°
65 8	
65 4	275° 50'
66 4	
66	281° 30'
69 2	
69 5	287° 30'
78 9	
78 6	287° 40'
1403	
1452 63	
1304	

65.7		Correct		+ from		occupy 34-27419	
Avix 49224-8624		Stadia		1470		880	
Elev - 34-200		87.8		Rod 1.9		620 ✓	
52.1	13.6	49	184°50'	1470	95.2	570 ✓	
53.0	12.7	32	154°0'	"	105.2	52°50' ✓	
52.4	13.3	28	146°40'	"	116.8	50° ✓	
52.2	13.5	21	143°10'	"	117.0	67° ✓	
51.8	13.9	21	182°40'	"	83.2	70°50' ✓	
51.3	14.4	15	217°30'	"	79.2	73°10' ✓	
51.0	14.7	13	251°20'	"	78.1		
51.2	14.5	12	274°10'	"	81.2		
50.9	14.8	35	309°15'	1465	81.1		
50.5	15.2	45	306°20'		77.2		
50.7	15.0	55	315°10'		77.0		
49.3	15.4	71	321°		72.4		

Setup at 34-27414
Sight. 0° on center curve.
4.87

1471.92		Stadia	
1465	172	111.8	48°15'
	103	93.1	48°50' ✓
	93	85.0	52°40' ✓
	84		58°10' ✓

Platted
4/23/19

Platted 4/23/19

Nov-13-1919 Fisher 31
B.6
100 ft run

occupy 40-300 Sight		1470		76.9		43-15 ✓	
c-40 for 180 - Az R.		RC		76.4		45 ✓	
10.65		1485.31		70.8		45-0 ✓	
35-300		1474.66		70.3		46-0 ✓	
Add 15.3		0.5		68.0		49-15 ✓	
1470		RC		65.5		49-15 ✓	
20.1		88-50 ✓		64.5		49-15 ✓	
19.6		RC		61.0		50-15 ✓	
28.5		53-45 ✓		60.5		49-40 ✓	
31.2		RC		59.0		49-40 ✓	
30.9		57-45 ✓		57.1		46-10 ✓	
38.9		RC		56.6		43-0 ✓	
35.4		53-10 ✓		61.1		40-30 ✓	
42.5		RC		60.6		43-45 ✓	
42.0		53-50 ✓		65.1		49-45 ✓	
46.0		30		64.6		49-45 ✓	
45.5		52-50 ✓		64.9		50-10 ✓	
44.3		12.8		64.4		50-10 ✓	
43.8		47-45 ✓		60.5		50-10 ✓	
53.0		12-0		60.0		50-10 ✓	
52.5		47-50 ✓		73.3		50-10 ✓	
59.0		36-30 ✓		1475		50-10 ✓	
61.2		35.0 ✓		-1475		50-10 ✓	
63.2		33.50 ✓		69.1		32-0 ✓	
68.0		34-10 ✓		58.5		31-10 ✓	
67.5		40-15 ✓		58.0		36-15 ✓	
78.1		42-50 ✓		54.3		36-30 ✓	
74.0		41-0 ✓		77.8		36-30 ✓	
73.6		43-45 ✓		47.3		41-0 ✓	

40-300-

Rod 5.3	45 ^z					
1475	44.7	45-45 ✓	Set on	42-300-51951		
"	41 ^z					
"	41.4	47-0 ✓	C-42	for 180-AZ R ^z		
"	44 ^z					
Rock	44.2	51-0 ✓	13.07	1493.37	148030	
"	42 ^z		Rd-			
"	42.2	53-10 ✓	13.14			
"	40 ^z					
"	40.2	52-0 ✓	1480	15.7	97-0 ^l	
"	40 ^z			21 ^z		
"	39.5	50-20 ✓		21.0	47.0 ^l	
"	39 ^z			28 ^z		
"	38.7	49-40 ✓	Ar soil	28.0	46-20 ^l	
"	39 ^z			29 ^z		
"	39.1	43-45 ✓	Rock	29.0	43-10 ✓	
"	38 ^z			38 ^z		
"	38.3	44-0 ✓	"	37.8	41-0 ✓	
"	38 ^z			41 ^z		
"	38.4	38-10 ✓	"	40.6	45-45 ✓	
"	37 ^z			44 ^z		
"	36.8	39-20 ✓	"	44.0	48-0 ✓	
"	31 ^z			43 ^z		
"	30.7	40-15 ✓	"	42.8	43-10 ✓	
"	31 ^z			46 ^z		
R & soil	30.9	33-10 ✓	"	46.3	43-30 ✓	
"	17 ^z			46 ^z		
soil	17.2	50-0 ✓	"	46.1	46-40 ✓	
check shot	14 ^z			50 ^z		
"	14.4	40-15 ✓	"	49.8	47-50 ✓	
"				51 ^z		
"				50.8		
"				44.30	44-30 ✓	Top of Rock
"				57 ^z		
"				57-4	40-75 ✓	Anton 1455
"				58 ^z		
"				58.4	35-45 ✓	
"				65 ^z		
"				65.4	34-50 ✓	
"				65 ^z		
"				65.6	35-30 ✓	

Plotted 11/20/19

add 0.5 to Dist

1485 8.4

Occupied 42-300-

32

66 ^z		10.7	
66.4	34° 20' ✓	10.2	58-0 ✓
60.4		8 ^z	
69.9	33° ✓	7.7	52-50 ✓
57 ^z		5.9	
56.7	32-50 ✓	5.4	53-20 ✓
57 ^z		9 ^z	
57.2	35-20 ✓	8.8	76-35 ✓
50 ^z			
50.1	38-40 ✓		
46.4		Rod 34	5.3
45.9	34-40 ✓	1490	4.8
41.5			2.0
41-0	31-0 ✓		1.5
35 ^z			7.2
34.8	27-40 ✓		6.7
29 ^z			10.4
29.2	29-45 ✓		9.9
24 ^z			13 ^z
23-10	38-10 ✓		13.0
1485			14 ^z
R.C.	39.1		13.7
	38.6	34-30 ✓	7.0
R.C.	44.5		15 ^z
	44.0	39-15 ✓	15.0
R.C.	42.1		22 ^z
	41.6	44-40 ✓	21.6
R.C.	37.9		22.5
	37.4	37-0 ✓	22.0
Top of Rock	39.8		25.4
6.10	39.3	40-10	24.9
	23.0		31.3
Anton 1455	22.5	33-0 ✓	30.8
	16.0		36.8
	15.5	37-50 ✓	36.3
	12.6		40.9
	12.1	42-45 ✓	40.4
	12.1		42.8
	11.6	52-15 ✓	42.3

Occupancy - 42-300-

1490
3.7

47.1
46.6 26-0 ✓
52.2
51.7 24-40 ✓
56.1 55.6
55.4 31-0 ✓
59.5
59.3 32-40 ✓
61.2
60.8 30-15 ✓
60.5
60.1 27-30 ✓
57.2
57.2 24-20 ✓
60.9
60.4 26-0 ✓
64.2
64.0 27-0 ✓
70.2
70.0 26-15 ✓
70.3
69.8 25-15 ✓
75.2
74.8 25-15 ✓

face of cliff

Set up on 46 and
measure 169.5 toward
center of curve.
set pt 46-383.05
3-

Setup at
46-383.05
Sight to 46-300
00° azimuth

9.22 1514.81 1505.59
rod
1481
add 0.5
1500
Cond. 73.5
73.0 176° 30'
Soil 67.5
67.0 170° 30'
61.5
61.0 166° 15'
49.5
49.0 163° 30'
41.9
41.4 164° 15'
soil 37.5
Rock 37.0 167° 50'
Correct 35.5 167° 45'
32.5 169°
30.1 174° 40'
28.7 171-45'
28.2 164° 45'
26.6 165° 30'
28.0 158° 10'
27.1 156° 40'
27.2 153°
25.7 147° 15'

21.1 141° 10'
21.7 139° 40'
24.3 140° 45'
23.7 133° 20'
22.3 133° 45'
22.4 128° 10'
25.2 123° 50'
23.2 120° 40'
16.9 101° 40'
15.3 83° 10'
18.9 98° 40'
20.2 88° 30'
21.5 76° 45'
19.2 71° 30'
19.1 57° 20'
21.2 53° 50'
23.3 50° 45'
23.5 47° 45'
27.6 36° 10'
28.5 29° 50'

1/24/19 Platted

33.8 26° 15'
36.6 20° 30'
45.5 15°
49.6 14° 50'
53.7 17° 35'
57.6 27° 10'
55.9 13-45
18-45
61.5 12°
67.5 10° 10'
82.3
Rock 82.3
Rock 7° 20'
92.1 8° 10'
98.0
Rock 98.0
Checks 97.5 10° 45'
104.1 11° 10'
108.4 8°
109.5 11° 45'
111.6 14° 10'
114.6 12° 50'
117.3 13° 20'
119.7 14° 40'
124.3 14° 50'

Corrected Stadia.

Corrected
Stadia

Occupancy 46-383 05

1500	R 14.8	126 ⁶ ✓	13° 50' ✓	1505	R 9.8	133 ⁸ ✓	12° ✓
		130 ⁶ ✓	13° 50' ✓			131 ⁶ ✓	10° 20' ✓
		130 ⁶ ✓	13° 40' ✓			127 ¹ ✓	10° 45' ✓
		135 ⁵ ✓	12° 20' ✓			122 ⁵ ✓	12° 10' ✓
		138 ³ ✓	12° 40' ✓			121 ⁷ ✓	10° 20' ✓
		146 ⁴ ✓	14° 20' ✓			110 ⁹ ✓	9° 20' ✓
		155 ⁹ ✓	15° 20' ✓			104 ⁹ ✓	8° 45' ✓
		136 ⁵ ✓	16° 30' ✓			100 ² ✓	6° ✓
		161 ² ✓	17° 30' ✓			89 ³ ✓	2° 30' ✓
		166 ⁶ ✓	17° 45' ✓			72 ⁸ ✓	10° 45' ✓
		167 ² ✓	15° 50' ✓			59 ⁷ ✓	4° 30' ✓
		165 ¹ ✓	15° 45' ✓			46 ³ ✓	8° ✓
		165 ¹ ✓	16° 40' ✓			45 ³ ✓	11° 30' ✓
		161 ² ✓	16° 40' ✓			38 ³ ✓	11° 50' ✓
		157 ¹ ✓	15° 40' ✓			29 ⁷ ✓	14° 40' ✓
		160 ² ✓	14° 30' ✓			26 ³ ✓	22° 10' ✓
		158 ² ✓	13° 40' ✓			26 ⁴ ✓	21° 45' ✓
		147 ⁴ ✓	11° 15' ✓			24 ¹ ✓	24° 10' ✓
		141 ⁴ ✓	10° 15' ✓			21 ⁰ ✓	21° 45' ✓
		136 ¹ ✓	11° 45' ✓			12 ⁸ ✓	37° ✓

11/24/19 P. H. H.

Face
Cliff

1505 R 9.8

Rock

Rock
Soil

Corrected
Chap'n
89

Occupancy 46-383 05

Corrected
dum
Dist

34

1305	9.8	121 ¹ ✓		1510	R 4.8	59 ⁴ ✓	180° 40' ✓
		47 ⁵⁰ ✓	47° 50' ✓			49 ³ ✓	179° 20' ✓
		15 ⁵ ✓	65° 45' ✓			43 ⁵ ✓	182° ✓
		15 ³ ✓	83° 15' ✓			37 ⁴ ✓	195° ✓
		15 ⁴ ✓	104° 50' ✓			28 ⁴ ✓	199° 30' ✓
		19 ⁷ ✓	107° 30' ✓			26 ⁸ ✓	214° 45' ✓
		19 ² ✓	126° 10' ✓			23 ⁵ ✓	210° 40' ✓
		15 ⁵ ✓	131° 10' ✓			21 ⁴ ✓	222° 50' ✓
		18 ⁰ ✓	135° 20' ✓			19 ⁹ ✓	217° ✓
		17 ⁵ ✓	173° 45' ✓			17 ⁷ ✓	218° 30' ✓
		25 ³ ✓	201° ✓			14 ⁰ ✓	219° 30' ✓
		30 ⁸ ✓	188° 10' ✓			8 ³ ✓	201° 40' ✓
		35 ⁹ ✓	187° ✓			6 ⁷ ✓	18° ✓
		44 ³ ✓	173° ✓			11 ² ✓	12° ✓
		53 ¹ ✓	171° 20' ✓			13 ⁰ ✓	358° ✓
		60 ² ✓	173° 30' ✓			6 ⁵ ✓	72° 30' ✓
		66 ² ✓	177° 30' ✓			8 ⁹ ✓	82° 20' ✓
		70 ² ✓	183° 20' ✓			9 ⁸ ✓	101° 20' ✓
		71 ⁹ ✓	187° 20' ✓			5 ⁵ ✓	88° ✓
						7 ¹ ✓	77° 20' ✓

Platted.
11/24/19

Rock
Soil

Rock
Soil

IRC

top
Doubt

Occupancy - 46-383 05

1510	R	45	26	8	357° 30'				
	rs		45	4	356° 45'	Rock	144.2	9-0	
	Rock		61	6	355°	"	148.4	8-30	
	Boulder		62	5	357° 30'	"	149.0	9-10	
			65	6	356° 45'	"	162.2	10-40	
	S		67	0	355°	Total Cliff	171.1	12-30	
	Syl		82	6	357°	Robot	163.2		
	"		86	3	357°	Rock	164.0	13-30	
	"		91	2	359°	Total/Rock	162.2		
	"		97	7	359° 20'		163.0	14-50	

Add Focal Dist.

			104.5		2-45				
			104.0		10				
			112.0		5-0				
			113.2		5-45				
			124.7		6-45				
	Rock		126.6		8-20				
			127.0		8-20				
			131.6		7-50				
			132.0		7-50				
			135.5		7-10				
			136.0		7-35				
			142.0		7-30				

Plotted 11/24/19

Fisher 11/12/19
Bob
Kubium

35

Set on 46-383 05

						Rock	19.6		
						Rock	19.1	175-20	
						"	16.5	177-45	
						"	16.0	163-10	
						"	15.6	159-15	
						"	15.1	157-50	
						"	11.4	135-15	
						"	10.9		
						"	11.6		
						"	11.1		
						"	10.1		
						"	9.6		

Sight 46-300 for
AZ - Turn 118° 50' for
14.80' for Aux Point
Set on Aux Point
14.80' from 46-383 05
Sight 46-300 for
0-00 AZ -
Add 0-5

Foreup for shot -

Set on Aux point
17-80 from 46-383 15

5.00	1520.59	1505.59	4.58	1520.47	1515.59
			Rad 14.5	6.5	95-30
			149.5	6.0	
			Rock	8.4	90-0
				7.9	
				10.4	75-45
				9.9	
				15.9	45-45
				15.5	
				18.0	32-50
				18.5	
				25.2	34-45
				24.7	
				27.5	27-15
				27.0	
				35.5	25-0
				35.0	
				41.5	25-40
				41.0	

Prop 15-5

1495

20

46.0 45.5	29-30 ✓	ank	110.1 110-0	15-40
46.9 46-4	26-15 ✓	"	113.2 113-0	16-15 ✓
46.5 46-0	24-0 ✓	"	117.2 117-0	17-0 ✓
52.5 52-0	18-40 ✓	"	117.7 117-5	17-40 ✓
57.7 57.2	18-45 ✓	"	118.2 118-0	16-50 ✓
64.5 64-0	14-15 ✓	"	123.3 123-0	17-30 ✓
68.6 68.1	12-45 ✓	"	127.3 127-0	18-15 ✓
72.5 72-0	14-0 ✓	"	135.4 135-0	17-45 ✓
75.2 74.7	13-50 ✓	"	138.5 138-0	17-0 ✓
77.2 76.7	11-45 ✓	"	144.6 144-0	19-0 ✓
82.1 81.6	11-30 ✓	"	151.7 151-0	20-10 ✓
90.1 89.6	10-40 ✓	"	153.7 ^{153.5} 153-0	20-45 ✓
97.5 97-0	13-45 ✓	"	154.8 ^{154.6} 155-0	21-30 ✓
Add Focal Dist		"	162.2 163-0	22-10 ✓
102-0			165.1 166-0	21-45 ✓
102.0	15-0 ✓	Edge of Cliff	168.1 169-0	22-15 ✓
103.6 103.5	14-15 ✓			
108.1 108-0	14-45 ✓			
110.1 110-0				

Set on 50-380 $\frac{3}{4}$

Which is Tableway line

Sight 50-300 ft

R2 - 0.0

5.94 1528.64 1522.70

Add 0.5

Rod 1364

72.5	
72.0	173-45 ✓
67.8	
67.3	172-0 ✓
58.5	
58.0	160-25 ✓
56.3	
55-8	157-30 ✓
67.3	
66.8	147-0 ✓
57.2	
56.7	143-0 ✓
55.2	
54.7	145-45 ✓
49.5	
49.0	146-0 ✓

R2 rod

Fisher
806
Metcum

Nov 14-1919

37

Occupy 50-380 ³	1515	29.4	28.9	77-15
Sight. 50-300 for 0.00		35.5	35.0	47-45
Add 0.5 to Dist.		38.2	37.7	41-15
+ 6.15	1528.85	52.2	51.7	24-45
Rod 13.85		75.4	74.9	14-15
1515		93.2	92.7	11-15
Rock	49.5			
	48.9			139-40
	47.9			
	47-4			136-50
	45.5			
	45.0			136-40
	43.5			
	43.0			133-40
	36.7			
	36.2			133-10
	35.8			
	35.3			138-10
	34.6			
	34.1			144-0
	30.9			
	30.4			141-10
	30.5			
	30.0			126-0
	26.0			
	25.5			128-40
	25.5			
Rock	25.0			124-0
	23.3			
at soil	22.8			127-40
	20.8			
	20.7			117-0
	23.2			
	22.7			107.0

Stadia from here

occupy 50-380 ³	1520	17.5	17.0	45-30
R. Cont.	181.5	8.5	8.0	110-0
"	182.5	20.6	20.1	156-30
"	180.0	37.0	36.5	161-15
"	181.0			
"	177.5			
"	172.5			
"	172.0			
"	173.0			
Rod 885	181.0	32.2	31.7	150-20
1520 R	182.0	27.7	27.2	143-30
" R	176.1	30.3	29.8	144-0
" "	177.0			
" "	171.1			
" "	172.0			
" "	179.1			
" "	180.0			
" "	156.0			
" "	150.8			
" "	147.3			
" "	148.0			
" "	144.35			
" "	144.0			
" "	139.9			
" "	140.5			
" "	121.3			
Soil	122.0			
" "	100.5			
" "	100.5			
Chain	92.7			
Soil	71.6			
" "	70.3			
" "	69.8			
" "	43.3			
" "	42.8			

Ring C.

Top Rock

Rock

Rock

"

"

Rock+S

Soil

South Side Tunnel

Rod 78

1520

1520

"

"

Soil

54.7

54.2

Occupy 50-3803

H1
152885

Rod 12.44 1510

1520
Floor Tunnel Rod 11.2 E1 17.15

Soil	39.2	101-0
	38.7	
	29.7	111-15
	29.2	
	31.1	119-40
	30.6	
	35.0	
	34.5	124-40

At B 50 Sight 0 for 2m
Set Autil Point 1758
dist. on E Drift.

Tunnel Portal 30.5 252-28

B48-7966 H1=22.44 12.78

→ At Autil Point
50-438.74 Sight
① for Zero AZ Rt.

1520 Rod 244 Add 0.5

Tunnel/5 side	4.1	322-0
	3.6	41-0
Vertical - 74	17.2	
	16.7	262-40
Vertical 14°	29.6	
Tunnel portal	28.5	257-40
Vertical 13°	29.7	
	29.2	247-15
Vertical 7.0	18.0	
	17.5	243-40
Vertical 6°	10.9	
	10.4	239-0
	5.4	
	4.9	151-30
	19.2	
	18.7	162-15

Rod 12.44
1510
chukabot 44.0
43.5 93-0

38

Occupy C-54-Sight

C-50 for 90°

Add 0.5

Rod 12.89 1637.05 1526.16

Rod 14.1

1525

R.C.	60.7	
	60.2	109.95
RC	57.5	
	57.0	108-20
RC	57.7	
	57.2	104-40
RC	63.6	
	63.1	102-10
RC	63.9	
	63.4	105-30
Top of Rock	59.602	
	13.3	108-0
1525		

Soil	*70.2	
	69.7	149-50
	63.1	
	62.6	144-50
Tunnel cut	55.3	
gap	54.8	145-35
Tunnel cut	49.1	
	48.6	137-15
Soil	43.9	
	43.4	127-15
	33.6	
	33.1	115-15
	21.7	
	21.2	97-45

Boulder	19.3	
	18.8	84-0
	18.1	
	17.6	80-0
	18.3	
	17.8	79-10
At Soil	21.2	
	20.7	69-30
Soil	33.1	
	32.6	65-0
	39.9	
	39.4	68-30
	47.3	
	46.8	57-30
	56.9	
	56.4	47-0
	71.0	
	70.5	37-30
	91.9	
	91.4	25-50
Add Focal Dist		
	105.9	
	106-0	21-15
	122.7	
	123-0	18-30
	143.4	
	144-0	18-0
West Cr	145.4	
of well	146-0	15-0
	155.3	
East Cr	156-0	16-0
	157.3	
in of well	158-0	18-0
	158.2	
SE Cr	159-0	20-0
	164.2	
	165-0	20-15

1525

26.6

Rod 14-1	167.1			184.0	
	168.0	21-15	RC	185.0	21-30
	169.7			183.0	
	170.6	20-20	Rock	184.0	20-15
	169.6				
	170.5	20-45	Rod 8.9		Add Focal Dist
	171.1				
	172.0	20-15	1530		
	175.0			182.0	
	176.0	21-30	RC	183.0	17-0
	180.0			182.0	
	181.0	18-0	RC	183.0	17-45
	181.0			183.0	
	182.0	19-0	RC	184.0	18-45
	185.0			182.0	
	186.0	19-15	RC	183.0	18-45
				180.0	
Occupancy C-54			RC	181.0	17-30
Sight C-50 for 900			Top of Rock	182.0	
			1530	183.0	18-35
AZ-				178.0	
			RC	179.0	15-0
				180.5	
			RC	181.5	18-45
4.7	1638.94	1634.24	RC	179.0	
Rod 13-9				175.0	
-1525-			RC	176.0	19-40
				175.0	
Add focal Dist.			RC	176.0	18-45
			Top of Rock	178.0	
RC	193.4	19-40	7.6	179.0	19-20
	181.0				
RC	182.0	19-20	Rod 9		
	184.0		Rock	177.0	
RC	181.0	20-30	1530	178.0	14-40
	182.0			173.0	
RC	183.0	21-10	R	174.0	17-30

	172.1			66.3	
At soil	173.0	17-20	soil	65.8	28-15
	169.7			55.7	
soil	170.6	15-10		55.2	33-45
	158.7			54.3	
"	159.5	15-15		53.8	33-45
	157.0			39.9	
"	158.0	15-20		44.4	27-45
	153.3			26.5	
"	154.0	14-30		26.0	40-45
	148.4			19.5	
"	149.0	14-0		19.0	44-40
	144.4			18.3	
"	145.0	13-30	Boulder	17.8	54-15
	141.3			14.7	
At soil	141.8	13-0		14.2	60-15
	137.5			12.9	
R	138.0	13-15		12.4	57-0
	134.5			13.0	
R	135.0	12-20		12.5	63-40
	129.6			10.5	
R	130.0	14-20		10.3	74-0
	125.6			12.9	
R	125.8	14-10		12.4	87-15
	124.7			14.3	
R	125.0	13-30		13.8	85-30
	122.7			15.5	
R soil	123.0	15-0		15.0	89-0
	120.7			13.9	
soil	121.0	14-30	R soil	13.4	96-40
	111.8			19.7	
soil	112.0	14-30	soil	19.2	124-20
				25.6	
				25.1	129-40
				33.3	
soil	92.9	18-00	soil	32.8	140-10
	92.4		Boulder	34.5	
	80.0			34.0	139-15
"	79.5	23-15			

Rod 8.9

1530

	37.9		52.5		
Boulder	37.4	148-45 ✓	Soil	52.0	142-20 ✓
	36.9		50.7		
R + soil	36.4	145-0 ✓	Boulder	50.2	139-40 ✓
	37.3		48.8		
R + soil	36.8	147-20 ✓	-	48.3	135-40 ✓
Soil	40.2		45.6		
Boulder	39.7	148-15 ✓	Soil	45.1	136-0 ✓
Top of Tunnel	43.9		44.5		
Cut	43.4	149-05	Boulder	44.0	130-0 ✓
			44.0		
gap -		155-40	-	43.5	128-50 ✓
Top of Cut	54.3		42.7		
	53.8	155-20 ✓	R + soil	41.7	130-40 ✓
	68.3		29.4		
Soil	67.8	158-0 ✓	R + soil	28.9	119-30 ✓
			22.8		
			Rock	22.1	106-30 ✓
			20.8		
Occupy C 56 - Sight			19.9		104-10 ✓
			17.9		
C-50 for 90°			17.7		96-30 ✓
			16.5		
Add 0.5 Chem Dist			R + soil	16.0	87-40 ✓
			16.9		
4.53	49.50	44.97	Soil	16.4	74-30 ✓
			28.1		
Rod 14.5		15-35 ✓	-	27.6	58-0 ✓
			31.3		
			30.8		52-15 ✓
	77.7		41.3		
15-35	77.2	152-15 ✓	-	40.8	47-30 ✓
	70.9		54.3		
	70.4	150-45 ✓	-	53.8	40-10 ✓
	61.5		70.4		
	61.0	148-20 ✓	-	67.9	27-30 ✓
	54.1		87.3		
	53.6	148-15 ✓	80.8		23-30 ✓

Rod 14.3

1535

					112.8
				85.7	122.5
Soil	85.2	23-0 ✓	Soil	122.8	15-50 ✓
	94.5			112.8	
	94.0	26-30 ✓		113.0	11-20
Add Focal Dist				105.9	
	107.9			106.0	10-30
Soil	108.0	22-40 ✓		97.6	13-15 ✓
	118.8				
Soil	119.0	20-20 ✓			
	130.6				
R + soil	131.0	19-10 ✓		Add 0.5	
	134.6			92.8	
R	135.0	21-0 ✓	Soil	91.9	15-0 ✓
	135.5			88.3	
R	136.0	20-45 ✓		87.8	15-30 ✓
	135.9			85.0	
R	136.4	18-45 ✓		84.5	18-0 ✓
	142.0			72.0	
R	142.5	18-30 ✓		71.5	21-50 ✓
	144.4			55.2	
R + Soil	145.0	17-15 ✓		54.7	26-10 ✓
	165.1			34.8	
Soil	166.0	17-45 ✓		34.3	32-40 ✓
	186.0			21.9	
Soil	187.0	18-30 ✓		21.4	32-40 ✓
				13.3	
Rod 9.3	154.0		R + Soil	12.8	45-10 ✓
	200.8			14.2	
Soil	202.0	14-45	Rock	13.7	57-30 ✓
	179			11.0	
Soil	180.0	14-30 ✓		10.5	70-15 ✓
	166.1			9.0	
	167.0	14-0		8.5	70-30 ✓
	150.3			11.4	
	151.0	13-45 ✓		10.9	85-30 ✓
	132.6			12.2	
	133.0	15-10 ✓		11.7	91-10 ✓

40

Rod 9-3
1540

4950

Occupied C-56

Rock	16.2	23 972	56.7
	15.7	88-40	56.2
Rock	20.0	106-30	1545
	19.5	1545	1545
A soil	17.5	116-10	37.7
	17.0	Soil	37.2
soil	20.3	116-10	166-10
	19.8	135-20	20.5
	38.5	20-0	165-15
	38-0	150-0	5.4
	45.7	R soil	4.9
Boulders	45-2	158-30	2.3
	56.5	R	2-0
	56-0	157-0	1.5
	58.5	R	1.0
	58-0	159-30	6.7
	72.5	Soil	6.2
	69-0	160-0	356-11
			19.7
			19.2
			4-0
			38.5
Rod 4.3	1545		38.0
			14-40
1545		Soil	57.1
			56.6
			14-10
R soil	62.9		78.2
	62.4	169-0	77.7
			10-30
R-	58.5		95.0
	58-0	169-0	94.5
			9-30
	59.1		
	58.6	167-0	108.0
			1
	54.2		Focal Dist
RC	53.7	165-15	
			107.9
R.C.	53.3		108.0
	52.8	161-30	7-15
	58.3		
RC.	57.8	160-0	
	59.3		
R.C.	58.8	164-10	
R.C.	57.0		
	56.5	164-0	

Plotted 11/25/19

41

Occupied C-58 Sight

	101.6	13-15
C-50-for 90-0	101.6	101-6
	96.7	
	96.7	14-30
	91.1	
	91-0	14-30
		Add 0.5
		Chain Distance
		17.7
		77.2
		17-40
	110.9	
	111-0	18-0
	129.6	
	130-0	16-0
	148.4	
	149-0	15-0
	157.3	
	158-0	17-30
	176.5	
	177.5	17-0
Rod 8.6	-15.50-	
	181.0	
	183-0	13-30
	171.0	
	172-0	9-30
	152.3	
	153-0	10-45
	136.5	
	137-0	12-45
	120.3	
	120.6	14-10
	109.1	
	109.6	14-10

Nov-18-1919 Fisher
846
Ketchum

- 1555 -

Occuppy C-58- Sight
C-50 for 90°

+
4.63 58.60 53.97 ~~4.63~~
Add 0.5 -

Red 8.6 1550
Boulder 16.0 155 140-0
" 18.0 175 136-0
" 20.1 19.6 137-30
" 22.1 216 142-30
Rozal 23.1 22.6 148-45
Soil 31.4 30.9 149-45
" 47.2 46.7 155-30
" 70.1 69.6 160-45

Occuppy C-60 Sight
C-50 for 90°

Add 0.5
4.45 1568.50 64.05
Red 135 -1555 -
Soil 64.2 63.7 150-0
56.5 56.0 147-15

41.9
41.4 139-45
30.5
30.0 135-15
27.5
27.0 138-15
31.3
30.8 122-20
30.2
29.7 118-0
28.1
27.6 117-15
23.6
23.1 106-15
19.5
19.0 108-45
19.7
19.2 74-30
32.2
31.7 50-0
51.1
50.6 37-30
63.8
63.3 32-0
82.5
82.0 25-0
Add Focal Dist
103.0
103.0 19-0
111.9
112.0 16-0
131.6
132.0 12-15
139.7
140.2 12-15
134.5
140.0 9-45

1555

Soil 151.8 8-10
152.5 152.5 soil
151.3 11-10
152.0 152.0
152.3 12-45
153.0 12-45
161.2 30
162.0 12-50
175.0
176.0 13-50

Add Focal Dist

8.5 1560 Rozal
Soil 172.5
173.5 9-0
169.1
170.0 7-45
151.3
152.0 7-30
145.4
146.0 6-0
139.0
139.5 6-30
130.6
131.0 7-10
119.7
120.0 8-15
100.6
100.6 13-0
86.2
86.0 16-30
Add 0.5
66.9
66.4 20-30
59.2
58.7 23-30

1560 42
38.5
38-0 28-20
32.6
32.1 30-0
17.2
16.7 38-10
14.7
14.2 29-30
7.5
7.0 63-30
5.1
4.6 100-0
9.1
8.6 119-30
14.7
14.2 146-10
13.5
13.0 127-10
15.8
15.3 108-40
18.7
18.2 114-10
20.3
19.8 113-45
23.2
22.7 127-40
19.5
19.0 146-40
24.7
24.2 143-0
27.3
26.8 146-45
27.9
27.4 140-30
30.5
30.0 140-40
32.1
31.6 147-0
44.2
43.7 155-0

P/6 H/d. 11-25-19

11/18/19

Rod 8.5

1560

Soil 60.5
60.0 159-30

occupy B-60-450

Sight B-72-450 for 270°

4.79 1573.20 1568.41

Rod 8.20 1565

Add 0.5

Soil 10.9
10.4 124-0 ✓" 10.5
10.0 54-15 ✓Rts soil 19.7
19.2 14.0Rock 23.0
22.5 15-30 ✓" 35.2
34.7 350-15 ✓" 39.2
38.7 350-45" 40.7
40.2 355-45 ✓" 42.0
41.5 356-10 ✓" 46.8
46.3 355-20 ✓Rts soil 49.1
48.6 357-15 ✓

Add Focal Dist

104.7
104.8 5-45 ✓124.7
125.0 6-40 ✓144.4
145.0 5-10 ✓161.9
162.7 3-40 ✓176
177.0 2-20200.7
202.0 1-15 ✓

Plotted 11/25/19

11/18/19

43

occupy B-62-450-

Sight B-72-450 for 270° Rock 49.7
49.2 11-15 ✓" 48.3
47.8 13-10 ✓4.7 74.90 79.43 " 46.2
45.7 11-45 ✓" 44.4
43.9 12-30Rod 8.9 1570 " 38.6
38.1 10-0 ✓Add Focal Dist 32.7
32.2 15-45 ✓Soil 192.0
193.0 5-0 ✓" 182.0
183.0 5-40 ✓ Rts soil 26.9
26.4 26-30 ✓" 173.0
174.0 6-15 ✓ Soil 22.1
21.6 42-40 ✓" 167.1
168.0 7-15 ✓ " 20.7
20.2 62-30 ✓" 151.3
152.0 9-30 ✓ " 22.4
21.9 105-15 ✓" 135.5
136.0 11-10 ✓ Rod 9.9 1575" 115.8
116.0 11-30 ✓ Rock Add 0.5
Soil 10.7
10.2 115-30 ✓" 101.8
101.8 11-30 ✓ Boulder 11.4
10.9 101-45Chain Distance
Add 0.5 Rock 8.3
7.8 81-0 ✓" 88.5
88.0 12-10 ✓ " 9.5
9.0 47-45 ✓" 70.8
70.3 11-40 ✓ " 17.7
17.2 15-30 ✓Rts soil 57.2
56.7 9-40 ✓ " 22.4
21.9 8-45 ✓Rock 55.2
54.7 10-40 ✓ " 24.6
24.1 10-30 ✓

Add 0.5 Rod 9.9 157.5 Occupy 62-450

Rock	25.7 25.2	8-15 ✓	soil	145.4 146.0	5-0
"	30.1 29.6	354-45 ✓	"	153.3 156.0	3-40
"	34.6 29.4	355-40 ✓	"	157.3 158.0	5-0
"	38.5 38.0	350-30 ✓	"	163.2 164.0	4-10
"	41.5 41.0	352-30 ✓	"	163.7 164.5	2-40 ✓
"	46.8 46.3	358-15 ✓	"	166.5 167.0	2-30 ✓
"	50.6 50.1	358-20 ✓	"	169.5 170.0	3-30 ✓
Rt soil	56.1 55.5	2-0 ✓	"	188.5 189.5	2-50
Soil	65.7 65.2	2-10 ✓	Rod 4.9	158.0	
"	66.1 85.6	5-30 ✓	soil	191.0 192.0	359-40 ✓
"	88.2 87.7	6-20 ✓	"	163.2 164.0	1-15 ✓
Add Focal Dist 99.2				159.2	
Boulders	99.2	6-45 ✓	"	160.0	1-0 ✓
"	100.2 100.2	7-45 ✓	"	152.0 153.0	2-0 ✓
"	105.7 105.8	7-45 ✓	"	143.9 144.5	2-45 ✓
"	106.1 106.2	7-0 ✓	"	132.0 133.4	2-50 ✓
Soil	117.6 117.8	6-50 ✓	"	119.7 120.0	2-15 ✓
"	129.7 130.0	6-30 ✓	"	108.0 108.0	2-40 ✓
"	137.5 138-0	5-45 ✓	Add	0.5	0-00
"	145.4 146.0	5-40 ✓	"	89.7 89.2	0-00

11/18/19

44

Occupy 62-450

Occupy C-60

soil	72.0 71.5	350-10 ✓	Sight	6-50 for 90°
"	65.0 64.5	353-15 ✓	"	
"	55.1 54.6	348-40 ✓	4.1	68.15 64.05
Rt soil	51.1 50.6	347-0 ✓		Add 0.5
Rock	46.1 45.6	339-10 ✓	3.2	15.65
"	39.9 39.4	341-30 ✓		
"	31.6 31.1	341-40 ✓	R.C.	17.9 17.4 133-40 ✓
"	30.5 30.0	351-40 ✓	A.C.	19.0 18.5 132-45 ✓
"	27.5 27.0	354-10 ✓	R.C.	18.2 17.7 138-30 ✓
"	26.5 26.0	347-30 ✓	Tip of Rock 3.0	18.4 17.9 136-0
"	17.9 17.4	346-15 ✓		Occupy C-66 Sight
"	4.5 4.0	336-45 ✓		C-50 for 90° - A =
"	2.0 1.5	17-0 ✓		-Add 0.5-
"	3.1 2.6	185-0 ✓	4.84	96.60 91.76
Rod 0.0.	158.5			
R.C.	29.5 29.0	342-20 ✓	Rod 11.6	158.5
R.C.	31.3 30.8	344.0 ✓	Rock	60.1 59.6 154-40 ✓
R.C.	29.7 29.2	348.0 ✓	"	46.7 46.2 148-40 ✓
Tip of Rock E115863	30.5 30.0	343-45 ✓	"	38.3 37.9 142-20 ✓

Occupancy C-66-

Rod 11.5 158.5

11/18/19

Fisher
Bv6
Ketchum

	32.0		421		
Rock	31.5	138-30	41.6	36-30	
"	33.6		36.3		
"	33-1	135-20	47.9	33-10	
"	30.9		47-4		
"	30.4	132-15	56.5	30-20	
"	29.3		56-0		
"	28.8	137-45	70.3	26-45	
"	20.5		69.8		
"	20.0	136-10	77.5	23-45	
"	19.0		77-0		
"	18.5	135-0	83.2	26-0	
"	18.6		83.0		
"	18.1	132-30	96.0	24-0	
"	20.3		96-0		
"	19.8	132-0	107.9	20-40	
"	2.15		108-0		
"	21.0	130-0	110.9	16-15	
"	18.0		111.0		
"	17-5	129-0	113.8	16-10	
"	16.3		114.0		
"	15.8	136-45	118.3	17-45	
"	12.3		118.5		
"	11.8	142-30	137.5	13-0	
"	10.5		138.0		
Rock Soil	10.0	121-0	159.0		
Soil	14.4				
"	13.9	76-30	159.0		
"	18.7				
"	18.2	64-30	98.0	13-40	
"	20.0		98.0		
"	19.5	57-30	84.2	16-0	
"	24.8		84.0		
"	24.3	52-40			
"	26.2				
"	25.7	47-0	Add 0.5		
"	31.0		69.9		
"	30.5	47-0	69.4	18-20	
"			60.3		
"			59.8	20-50	

Plotted 11/25/19

F 45

	1590				
Soil	47.5	22-40			Occupancy B-66-450
	47.0				
Soil	35.5	24-30			Sight B-72 for 270°
"	35.0				
"	28.1	25-10			3.74 1607.30 1603.56
"	27.6				
"	24.9	28-10			Rod 12.3 - 1595 -
"	24.4				Chain distances.
Soil	3.9	52-0			Add 0.5
"	3.4				
At soil	3.5	133-40			Rock 17.0 129-30
"	3.0				16.5
Rock	11.3	185-30			14.8 11-0
"	10.8				14.3
"	17.5	165-20			17.0 104-30
"	17.0				16.5
"	22.5	156-40			14.5 94-15
"	22.0				14.0
"	27.0	154-0			12.9 89-50
"	26.5				12.4
"	31.0	146-40			10.3 58-30
"	30.5				9.8
"	32.7	156-10			12.4 53-45
"	32.2				11.9
"	44.5	156-45			12.3 36-45
"	44.0				11.8
"	51.3	157-15			11.4 29-30
"	50.8				10.9
"	53.7	160-10			18.7 7-30
"	53.2				18.2
"	60.0	160-0			27.5 85°
"	59.5				27.3
"					29.4 344-45
"					28.9
"					33.7 344-45
"					33.2
"					40.5 346-
"					40.0
"					43.6 351-30
"					43.1

11/18/19		Chain dist. Addos		Occupancy		13-66-450	
R=17.3	H1=160730						
1595	45.5	356-0	✓	1600	54.2	343-30	✓
Rock + S	50.1	354-45	✓	R+Soil	49.4	344	✓
Soil	49.6	356-40	✓	Rock	48.9	348-20	✓
"	57.5	359-30	✓	"	49.3	349	✓
"	57.0	0°-10'	✓	"	48.8	345-45	✓
"	62.3	2°-45'	✓	"	45.9	342-40	✓
"	61.8	3°-15'	✓	"	45.4	344-10	✓
"	70.2	5°-30'	✓	"	43.5	339-30	✓
"	69.7			"	43.0	334	✓
"	70.7			"	42.9	333	✓
"	70.2			"	42.4	329	✓
"	81.5			"	38.9	327-15	✓
"	81.0			"	38.4	328-15	✓
"	96.5			"	35.5	327-15	✓
"	96.0			"	35.0	328-15	✓
Stadia							
1595	114.5	60-30	✓	"	34.1	327-15	✓
"	115	60-0	✓	"	33.6	327-15	✓
"	139.5			"	41.0	327-15	✓
"	140			"	40.5	327-15	✓
"	154.3			"	39.2	327-15	✓
"	155			"	38.7	327-15	✓
1600	100.0	00	✓	"	34.3	327-15	✓
1600	100	00	✓	"	33.8	327-15	✓
1600	96.0	00	✓	"	33.0	327-15	✓
1600	96	00	✓	"	32.5	327-15	✓
1600	87.1	357-30	✓	"	27.2	327-15	✓
"	77.2	355	✓	"	26.7	327-15	✓
"	76.7	351-10	✓	"	21.2	327-15	✓
"	70.2	349	✓	"	20.7	327-15	✓
"	69.7			"	11.6	327-15	✓
"	70.3			"	1.1	327-15	✓
"	69.8			"	6.5	327-15	✓

11/19/19		Chain Dist Add-05		Fisher		46	
Occupancy	C-70	Sight		Contour	-1605-		
C-50 for	90°	AZ		Rock	12.5	118-0	✓
14.2	1617.73	13.53		"	12.0	84-40	✓
12.7	-	1605-		R+Soil	16.0	75-0	✓
Rock	72.3	147°0	✓	Soil	15.5	62-30	✓
"	71.8	147-15	✓	"	15.7	48-30	✓
"	66.5	147-15	✓	"	15.2	43-20	✓
"	66.0	145-40	✓	"	17.3	35-30	✓
"	58.4	144-30	✓	"	16.8	32-45	✓
"	57.9	144-0	✓	"	21.5	48-30	✓
"	51.4	141-30	✓	"	21.0	43-20	✓
"	50.9	144-0	✓	"	28.5	35-30	✓
"	44.8	141-30	✓	"	39.2	30-45	✓
"	44.3	144-0	✓	"	38.7	30-45	✓
"	35.5	144-15	✓	"	49.5	30-45	✓
"	35.0	144-15	✓	"	49.0	30-45	✓
"	35.3	144-15	✓	"	62.3	30-45	✓
"	34.8	144-15	✓	"	61.8	30-45	✓
"	27.1	141-30	✓	"	70.4	19-30	✓
"	26.6	144-15	✓	"	69.9	19-30	✓
"	21.0	147-30	✓	"	60.9	20-30	✓
"	20.5	147-30	✓	"	60.4	20-30	✓
"	25.2	149-0	✓	"	52.5	22-0	✓
"	24.7	149-0	✓	"	52.0	22-0	✓
"	23.4	142-30	✓	"	52.1	22-0	✓
"	22.9	142-30	✓	"	51.6	25-15	✓
"	22.0	138-15	✓	"	50.5	25-15	✓
"	21.5	138-15	✓	"	50.0	24-45	✓
"	18.7	137-15	✓	"	50.5	24-45	✓
"	18.2	137-15	✓	"	50.0	22-0	✓
"	14.9	139-30	✓	"	37.5	22-0	✓
"	14.4	139-30	✓	"	37.3	21-30	✓
"	14.1	131-0	✓	"	27.6	21-30	✓
"	13.6	131-0	✓	"	23.1	23-10	✓
"	13.6	133-15	✓	"	20.1	23-10	✓
"	13.6	133-15	✓	"	19.6	22-10	✓

Occupy E-70-

7.7	1.610				
R soil	13.5	27-10	Rank	53.9	154-10
	13-0			53.4	
Rock	10.0	52-30	"	55.9	153-10
	9.5			55.4	
	6.5	62-0	"	54.5	150-30
	6.0			54.0	
	5.6	54-10	"	55.5	148-15
	5.1			55.0	
	8.6			58.4	
	8.1	125-0	"	57.9	151-30
	9.2			61.2	
	8.7	134-10	"	60.7	151-30
	7.4			63.9	
	6.9	145-30	"	63.4	153-0
	10.0			70.4	
	9.5	155-10	"	69.9	155-0
	11.8				
	17.3	168-10	rod 2.7	-	1615-
	15.5			67.3	
	15.0	172-45	"	66.8	160-0
	20.3			58.5	
	19.8	166-0	"	58-0	157-0
	20.0			55.2	
	19.5	162-45	"	54.7	155-0
	27.0			49.1	
	26.5	161-30	"	48.6	158-30
	33.7			44.6	
	33-2	158-10	"	44.1	163-0
	37.5			41.4	
	37-0	155-0	"	40.9	166-0
	39.9			27.6	
	39.4	151-30	"	27.1	175-0
	44.2			25.2	
	43.7	153-15	"	24.7	173-0
	46.5			21.7	
	46-0	151-10	"	21.2	170-0
	50.9			18.4	
	50.4	148-45	"	17.9	201-15

Occupy E-72-Sight

Rank	10.4	205-15	C-50 for 90° - A2		
	9.9				
	11.0	190-45	Chain Dist add 0.5		
	3.4				
	3.9	199-0	74.4	1629.0	
	3.4			1628.0	24.63
	4.2				
	3.7	339-30			
	6.2				
	5.7	357-0	24.9.0		1620
	6.8				
	6.3	24-0	Rock	76.7	
	11.4			76.2	152-0
R soil	10.9	2-30		66.3	
	18.4			65.8	149-40
soil	17.9	358-0		62.2	
	25.5			61.7	149-30
	25.0	2-45		61.1	
	36.7			60.6	147-20
	36.2	7-0		56.5	
				56.0	144-30
12.7	16.05			55.5	
				55.0	145-40
	24.0			55.6	
RL	23.5	108-20		55.1	150-30
	21.0			48.4	
RL	20.5	107-45		47.9	152-30
	22.9			43.5	
RL	22.4	105-15		43.0	153-30
tip of Rock	23.2			38.3	
11.8	22.7	108-30		37.8	153-10
				36.3	
				35.8	150-50
	26.5			32.2	
RL	26.0	116-45		31.7	150-20
	24.9			31.7	
RL	24.4	114-45		31.2	154-45
	26.5			21.8	
RL	26.0	111-15		21.3	165-30
Tip of Rock	25.5				
12.3	25.0	112-45			

occupy C-72

Rod 9.0	-1620-	Rod 4.0	1625
rock	19.1 18.6	157-45 ✓	Soil 17.3 16.8 5-30 ✓
"	16.3 15.8	158-30 ✓	" 5.9 5.4 351-30 ✓
"	12.5 12.0	142-30 ✓	" 0.0 0.0
"	9.5 9.0	106-45 ✓	" 3.5 3.0 182-0 ✓
"	8.3 7.8	81-15 ✓	Rock 13.0 12.5 184-30 ✓
"	11.3 10.8	72-45 ✓	Rock 19.1 18.6 184-0 ✓
"	10.8 10.3	54-15 ✓	" 27.3 26.8 176-30 ✓
"	14.0 13.5	39-10 ✓	" 31.8 31.3 168-40 ✓
"	18.9 18.4	34-0 ✓	" 43.4 42.9 160-15 ✓
Rock and soil	18.8 19.3	27-45 ✓	" 57.3 56.8 160-30 ✓
soil	24.0 23.5	26-0 ✓	" 60.0 59.5 156-0 ✓
"	32.7 32.2	21-30 ✓	
"	43.2 42.7	22-20 ✓	

Chain Dist add 0.5
occupy C-74 Sight

Rod 4.0	1625	C-50 for 90° Az
Soil	26.3 25.8	1-30 ✓ + 4.75 39.95 35.20
"	19.9 19.4	4-0 ✓ Rod 10.0 -16.30-
"	19.5 19.0	10-30 ✓ soil 19.5 19.0 38-30 ✓
"	20.9 20.4	14-10 ✓ " 12.9 12.4 49-0 ✓
"	19.4 18.9	14-15 ✓ " 11.9 11.4 53-0 ✓

Rod 10.0	1630	
Soil	11.5 11.0 107-0 ✓	Rock 26.4 25.9 193-30 ✓
soil	17.3 16.8 140-30 ✓	" 28.0 27.5 195-30 ✓
Rock	17.1 16.6 157-0 ✓	" 26.5 26.0 202-0 ✓
Rock	23.5 23.0 162-0 ✓	" 21.0 20.5 208-0 ✓
Rod 5.0	1635	" 18.2 17.7 216-30 ✓
Rock	23.7 23.2 178-30 ✓	" 11.8 11.3 221-0 ✓
"	22.6 22.1 186-0 ✓	" 8.5 8.0 246-10 ✓
"	19.3 18.8 187-0 ✓	" 8.1 7.6 296-0 ✓
"	13.6 13.1 185-30 ✓	" 8.5 8.0 326-0 ✓
Rock and soil	8.5 8.0 183-0 ✓	
soil	2.0 1.5 168-0 ✓	
Rock	5.0 4.5 20-0 ✓	
Rock	10.9 10.4 35-0 ✓	

Rod 0-00	1640
rock	26.5 26.0 173-0 ✓
"	26.4 25.9 178-0 ✓
"	30.1 29.6 181-0 ✓
"	29.8 29.3 187-40 ✓
"	27.5 27.2 188-0 ✓

Nov-29-1919

Fisher
Bvb

	Rock	Contour	
Set on 34-274-14	5.0	5.0	262-40
sight-center for 0-0-	correct dist	75.5	195-0
turn 352-30 for	cont Dist	5.5	260-0
34.77 ft - Set Auxil Point	Rock	10.4	
	Rock	9.2	240-0
		17.3	
		16.2	197-40
Set on Auxil Point		22.0	
		21-0	203-30
34.77 ft from 34-274-14		24.4	
		23.4	200-10
sight 34-274-14 for		25.2	
		24.2	196-45
0-0- Az Right		29.3	
		28.4	194-15
		29.4	
		28.5	195-45
27-357		33.1	
7.38 1480.98 1479.60		32.2	199-0
Rad-11-0 Contour-1470-		33.4	
		32.5	196-45
		35.7	
		34.5	195-40
Add Focal Dist		36.8	
Rock	17.9	16.8	8-15
	14.5	13.4	357-15
	9.8	8.6	348-30
cont Dist	10.1	8.9	326-20
Cont Dist	7.4	6.2	315-20
		41.4	
		40.6	202-20
		44.8	
		44.0	202-15
		48.5	
		47.8	201-20
		58.2	
		57.6	214-20

Add Focal Dist — 1475 — 49

Rad 6-0 Contour-1475- Rad 6-0	Rock	Contour	
1475	63.3	62.8	205-40
	58.5	58.0	202-10
	55.3	54.7	196-40
	46.1	45.4	197-40
	43.7	43.0	192-0
	38.9	38.2	180-20
	30.3	29.4	180-40
	29.9	29.0	189-0
	27.1	26.2	191-15
	24.1	23.2	194-40
	25.0	24.0	180-15
	24.0	23.8	186-20
	25.3	24.3	181-45
	19.9	18.8	188-15
	22.4	21.4	194-15
	22.8	21.8	201-40
	19.6	18.8	195-30
	16.5	15.4	177-45
	16.6	15.5	175-40
	16.4	15.3	159-40
	12.7	11.5	160-30
	13.8	12.6	164-15
	15.1	14.0	176-0
	16.7	15.6	175-15
	16.1	15.0	164-40
	4.0	4.0	204-10
	6.0	6.0	317-40
	5.0	5.0	347-0
	10.4	9.2	37-15
	14.1	13.0	38-0
	12.7	11.5	29-0
	15.4	14.3	22-50
	15.1	14.0	18-40
	17.3	16.2	14-0

			Add 1.0		
	21.3			39.6	
Add 1.0 1480	20.3	32-15'	14.80	38.7	177-50'
	19.7			45.7	
"	18.6	34-40'		45.0	177-0'
	19.0			48.7	
	17.9	39-15'		48.0	177-10'
	16.4		Boulder	50.6	
	15.3	46-0'	vertical	50-0	176-15'
	14.1		11.0		
	13.0	40-30'	Boulder	48.7	
			vertical	48.0	182-15'
			10.0		
	10.2		Boulder	48.9	
	9.0	45-0'	vertical 8.0'	48.2	187-0'
			Boulder	54.1	
Concrt Dist	4.5	89-0'	vertical	53.4	186-10'
Stake	8.6		8.5	54.5	
	7.4	124-15'		53.8	190-0'
cliff 13.0'	12.1				
Height	11.8	122-45'			
	18.6			1450.95	
Cliff 20 High	17.5	129-30'			
	25.1		-0.48	1480.50	
Rock	24.1	136-0'	T.P.	1850	
	29.7				
	28.7	145-0'			
	28.6				
	27.6	149-15'			Set on 34-118-66
	23.5				
	22.5	160-30'			Sight 34-300 for 180-
	21.3				
	20.3	162-40'			Turn 193°04' for 67.14
	18.9				
	17.8	178-10'			Set Axiel Point -
	24.6				
	23.6	178-20'			
	29.7				
	28.8	171-0'			
	35.8				
	35.0	177-0'			

Occupy Axiel Point		1455			
from 34-118-66-		R.C.	29.6		
			28.7		181-30'
Sight 34-118-66		R.C.	24.4		
			23.4		184-30'
for 0-0-A2		R.C.	20.9		
			19.8		177-0'
			21.3		
Add Focal Dist		R.C.	20.2		169-10'
			31.9		
13.45	1493.95	1480.50	R.C.	31.0	164-40'
			34.1		
Add 9.2	9.6		R.C.	33.2	167-30'
	8.5	34-40'			
1485	9.8				
Rock	7.7	60-30	Add 5.0		-14 90-
	8.0				
	6.8	68-10'	R.C.	24.2	
				23.2	170-10'
	13.3			24.0	
	12.2	108-0'	R.C.	23.0	174-0'
	10.9			22.7	
	9.8	126-30'	R.C.	21.7	170-15'
	7.5		4' Boulder	23.5	
	6.3	179-20'	3.5	22.5	172-30'
	4.3				
	3.0	202-15'	and 6.0		1490
	13.4			27.0	
	12.3	216-0'	14 90	36.2	187-40'
	15.3		30'	31.6	
	14.2	209-45'		30.8	192-15'
	24.0		vertical	30.0	
	23.0	203, 45'	15.2'	29.1	202-45'
	28.0			26.0	
	27.0	193-0'	Rock	25.0	202-40'
	33.2			24.0	
	32.3	189-40'		23.0	223-0'
	36.8			21.8	
	36.0	184-30'		20.8	218.0'
vertical	43.6			21.3	
15'	42.8	174-50'		20.3	225-45'

Red 4.0 149395
 1490
 Rock 14.1
 14.0 229-10 ✓
 11.7
 10.5 260-30 ✓
 7.5
 6.3 315-15 ✓

R.C. correct
 1490 5.3 32-30 ✓
 sliding
 R.C. 10.3 36-30 ✓
 8.6
 R.C. 6.8 64-30 ✓
 correct
 R.C. 6.2 63-0 ✓
 91.29
 top 5.7 43-30

1490-
 R.C. 7.8
 6.6 97-0 ✓
 9.7
 A.C. 8.5 105-0 ✓
 11.0
 R.C. 9.8 123-20 ✓
 7.6
 R.C. 6.4 158-30 ✓
 correct
 R.C. 5.0 167-15 ✓
 top 924
 1.6 7.5
 6.3 157.45

Dec 1-1919
 Fisher
 sub -
 Ketchum

51

Occupancy C-14 - Sight

Center for 00 Sat

R.P. 49.58 =

14 - 350.42

+11.49 1557.63 1546.14
 C-16-

14-350.44 -0.94 1556.69

Occupancy 14 - 350.42

Sight Center for 00

+8.63 1560.47 1551.84

Add 0.5 to Dist.

Red 10.0 Center 1550

46.7
 Rock 46.2 5-30 ✓

40.6
 40.1 0-20 ✓

40.2 353-0 ✓

39.7 355- ✓

38.5
 38.0 353-50 ✓

39.0
 38.5 356-30 ✓

38.9
 33.4 353.20 ✓

34.0
 33.5 348-0 ✓

30.5
 30.0 342-0 ✓

Rock

—1550—
 26.1
 25.6 341-30 ✓
 22.2
 21.7 335-20 ✓
 22.5
 22.0 332-30
 21.5
 21.0 328-0
 18.5
 18.0 335-0
 11.2
 10.7 319-40
 11.5
 11.0 311-45
 14.2
 13.5 311-10
 12.0
 11.5 289.0
 10.6
 10.1 286-10
 11.2
 10.8 278-15
 13.2
 12.7 290-30
 15.5
 15.0 288-20
 17.2
 16.7 283-15
 15.9
 15.4 262-30
 14.6
 14.1 254-45
 11.9
 11.4 262-0
 11.1
 10.6 268-15
 10.4
 9.9 265-45

Used 10% Red
 Void - should be 10.5

checkshot

12/1/19
 occupy - 14-350-42

Rod 10.0	1550	Rod-150	-1545-
	8.1		
Rock	7.6 264.5	soil Rock	61.8 211-20
"	8.3 250-20	"	55.0 205-45
"	9.6 231-10	soil	48.1 199-30
"	11.9 221-10	soil	45.0 199-15
"	13.7 227-20		39.3 202-50
"	13.4 211-40		29.0 205-50
R+soil	18.5 201-00	Prokand	21.7 217-40
soil	29.0 192-0		19.6 225-40
"	41.5 156-0		20.0 233-15
"	45.0 154-0		15.8 247-45
"	47.3 186-0		18.2 249-50
Rock & soil	52.4 188-10		18.3 255-15
	50.2 190-0		19.6 264-45
	52.4 190-45		17.6 292-45
	57.9 191-50	check shot	18.0 290-15
	58.1 195-30		22.5 301-45
	61.2 196-30		26.0 306-40
	62.5 201-10		31-0 316-45
			36.0 325-30

Void - Used 10.0 Rod
 Should be 10.5

- 1545- occupy - 14-350-42

Rock	38.2 330-30		
"	39.1 329-0	2	12° 49'
"	42.0 330-0	Dist	69.22
"	40.2 338-15		(OK)
"	39.1 337-15	22-R-	324-0
"	40.0 343-50		78.61
"	51.0 352-0		Should be
"	60.6 1-0		22-321*39
soil	71.6 8-0		
Rod 10.0	1550		
R C	37.2 344-50		
R C	38.3 337-30		
R C	34.4 335-50		
R.C.	33.6 343-45		
Top	34.9 339-45		

12/1/19

Fisher
Bub
Ketchum

Occupancy 14-350,42

Sight Center for 0-0

Add 0.5 to Rock

8.82 1560.66 1551.84

Rod 10.66

15.50 53.6 8-0 ✓

Rock 41.6 41.1 359-0 ✓

41.9 41.4 356-20 ✓

40.7 40.2 352-30 ✓

38.4 37.9 354-10 ✓

34.4 33.9 352-50 ✓

34.2 33.7 347-20 ✓

30.0 29.5 339-0 ✓

24.1 23.6 337-0 ✓

21.7 21.2 328-0 ✓

19.7 19.2 333-0 ✓

13.2 12.7 322-20 ✓

13.2 12.7 314-40 ✓

14.6 14.1 310-30 ✓

Rock 12.3 11.8 291-30 ✓

13.9 13.4 290-10 ✓

15.5 15.0 289-0 ✓

16.5 16.0 284-30 ✓

16.7 16.2 261-0 ✓

14.7 14.2 252-40 ✓

11.1 10.6 267-40 ✓

9.4 8.9 264-20 ✓

9.9 9.4 239-0 ✓

12.5 12.0 223-50 ✓

15.3 14.8 227-0 ✓

14.5 14.0 216-50 ✓

14.7 14.2 208-0 ✓

18.5 18.0 204-30 ✓

20.0 19.5 198-30 ✓

27.2 26.7 196-20 ✓

32.6 32.1 191-20 ✓

33.5 33.0 188-15 ✓

41.5 41.0 187-30 ✓

Occupancy 14-350-42

Soil 45.5 45.0 184-0 ✓ Soil 21.8 21.3 218-15 ✓

46.9 46.4 186-40 R+soil 20.7 20.2 226-0 ✓

51.3 50.8 187-20 ✓ Rock 20.9 20.4 236-0 ✓

50.5 50.0 190-10 ✓ Rock 17.0 16.5 246-30 ✓

52.2 51.7 191-0 ✓ " 18.8 18.3 249-30 ✓

56.0 55.5 190-30 ✓ " 19.7 19.2 260-0 ✓

58.5 58.0 192-0 ✓ " 20.8 20.3 264-30 ✓

59.1 58.6 196-10 ✓ " 18.9 18.4 275-30 ✓

61.0 60.5 196-50 ✓ check shot 18.0 17.5 290-0 ✓

61.5 61.0 201-0 ✓ " 22.8 22.3 302-15 ✓

70.4 69.9 206-30 ✓ Rock 27.3 26.8 304-15 ✓

Rod 15.66 15 45 32.1 31.6 317-50 ✓

Soil 61.3 60.8 210-30 ✓ 37.1 36.6 325-15 ✓

54.2 53.7 206-30 ✓ " 38.3 37.8 329-15 ✓

49.7 49.2 200-15 ✓ " 38.6 38.1 327-0 ✓

48.1 47.6 203-00 ✓ " 43.1 42.6 329-30 ✓

42.6 42.1 203-0 ✓ " 43.2 42.7 333-15 ✓

40.2 39.7 204-0 ✓ " 41.9 41.4 337-40 ✓

28.7 28.2 209-30 ✓ " 39.5 39.0 338-45 ✓

Rod 1566 occupy - 14-352-42 Rod 646 1540
 Rock 44.5
 1545 44.0 346-30 RT soil 16.4 200-30
 " 52.5 150
 " 52.0 352-15 Rock 14.5 212-40
 " 57.5 12.2
 " 58.5 358-15 " 11.7 225-0
 " 64.9 6.3
 " 64.4 3-15 " 5.8 234-45
 vertical Down 71.5
 7.0 71-0 7-15 " 7.5
 " 7.0 245-0
 " 5.8
 " 5.3 298-5
 " 7.5
 " 7.0 0-45
 " 10.7
 " 10.2 18-30

Add 0.5
Occupy B-20

Sight 20-312 for

0-0 -

Measure - 34.60

set Auxil Point =

20-421-19 -

Occupy 20-421-19

Sight Center for 0-0

Add 0.5 to Dist

+ 11.73
B-22 -

1546.46 1534.73

Rod 646 - 1540 -

1540 - 37.9 200-30

soil 29.3 288 197-15

11.5 -15 35 -
 15.35
 Rock 14.7 3-45
 " 13.6
 " 13.1 4-45
 " 12.8
 " 12.3 353-15
 " 10.5 317-30
 " 10.1
 " 9.6 268-10
 " 8.4
 " 7.9 241-0
 " 11.8
 " 10.5 241-30
 " 13.9
 " 13.4 230-0
 " 16.5
 " 16.0 224-45
 " 16.7
 " 16.2 230-45

Occupy 20-421-19

18.5 19.5
 18.0 234-0 RT soil 19.0 11-30
 22.5 25.7
 22-0 225-0 Rock 25.2 16-30
 23.3 29.5
 22.8 222-15 " 29.0 21-10
 22.6 32.7
 RT soil 22.1 214-0 " 32.2 19-30
 28.0 34.9
 27.5 211-15 " 34.4 14-0
 34.0 41.7
 33.5 209-30 " 41.2 14-10
 42.3 50.0
 41.8 213-30 check shot 49.5 14-35

1-2-19

Fisher
Bub
Ketchum

Add 0.5

Occupy - B-22

Sight Center for 0-0 0-22 - = 22-414.8

+ 14.0

Rod 9.2

1530

Soil

"

"

14.2
 13.7 252-45 110.17 1526.03 1515.86
 9.8
 9.3 293-15 Rod 6.03 6.1 217-50
 10.2
 9.7 354-30 1520 2.5 206-45
 13.5
 13.0 8-15 " 4.7 186-30

1586
1011
2603

54

Occupy - B-22 - Sight

Center 0-0 - Set Auxil.

Point 14.8 from

Occupy Auxil Point

Add 0.5

Rod 6.03
1520

occupy - 22-4148

	5.7		14.8	
Rock	5.2	167-45	14.3	190-20
	14.1			
	13.6	180-45	15.10 = 1.5 East	
	16.0			
	15.5	189-45		
	18.4		Vertical 10.0	
	17.9	191-30	8.0' down of	9.5
	19.7			182-48
	19.2	188-30	Ditch	
	20.9		9.1	
	20.4	191-30	4 Ditch	185-30
	20.5		Vertical 7.3	
	20.0	194-0	Bottom Ditch	6.8
	22.5		Vertical 7.1	
	22-0	195-30	6.7 to	6.6
	24.2		down	
	23.7	206-10	Top of Concrete Wall	

Rod 11.03

	21.8		Vertical 6.8	
15.15	21.3	210-45	6.5	210-30
			down	7.5
	20.1		8.0	
Turned face North	19.6	204-25	7.5	220-30
			8.3	
Vertical 11.0	19.8		7.8	240-0
	20.3		13.0	
vertical 11.0	19.8	201-45	12.5	266-0
	17.7		vertical 15.5	
	17.2	196-20	9.0' down	15.0
			vertical 11.4	
London 15 10-15 East			5.0' down	10.9
			vertical 11.5	
Vertical 8' below bottom			5.0'	11.0
15.8	16.3		vertical 9.8	
	15.8	197-15	4.0	9.3
			8.6	318-45
1510 1/2 ft east			9.1	328-15
Vertical 8' below				

-Auxil. Point-

Occupy 22-414 8

Rod 6.03

Rocky

188

18.3 333-30

1520 6.2
5.7 217-5017.3
16.8 326-45

Rock

7.9
7.4 254-2014.7
14.2 317-457.5
7.0 278-3012.3
11.8 307-08.7
8.2 321-010.2
9.7 280-102.5
33.0 337-306.9
6.4 276-303.5
3.0 22-306.3
5.8 245-50

Occupy-C-20

Sight 18-303-

Measured-61.4

R+soil

7.5
7.0 198-40

Set. Auxil Point-

Soil

9.4
8.9 185-45Occupy ^{Auxil} Point-

Rod 14.2-1520

61.4 from C-20-

Soil

14.2
13.7 174-15

Measured-37.07

R+soil

18.3
17.8 166-0To 18-303-³⁰³⁻

Rock

22.2
21.7 165-30

+483 1534.23 1529.40

Rock

20.5
20.0 194-0

Rod 9.2

25.6
25.1 341-30

Rock

18.4
17.9 203-0

1525

21.5
21.0 337-20

Rock

15.7
15.2 214-4510.6
10.1 257-2011.7
11.2 274-1516.3
15.8 311-0

Rod 142

1520

22.3
21.8 326-3030.7
30.2 335-1039.5
39.1 341-30

39.1

Occupy 22-321 ³⁹

Sight C-22 for 180-

-0.35
20-312

Rod 9.7

1515-

Rock

-

-

-

-

-

-

-

-

1515.97 1515.59

Add 0.5

36.9

36.4 30-30

29.6
29.1 35-20

26.9

26.4 36-20

23.3

22.8 41-20

19.2

18.7 52-20

15.7

15.2 64-0

14.2

13.7 81-30

11.9

11.4 94-30

12.0

11.5 124-30

11.8

11.3 139-20

Rocky

15.0
14.5 157-3019.0
18.5 163-019.2
23.7 165-4029.0
28.5 167-3031.7
31.2 166-3035.9
35.4 163-10

Occupy C-16- Sight

C-8-Turn 90°

Set- T.P. At-

L 19°52'

Cosine

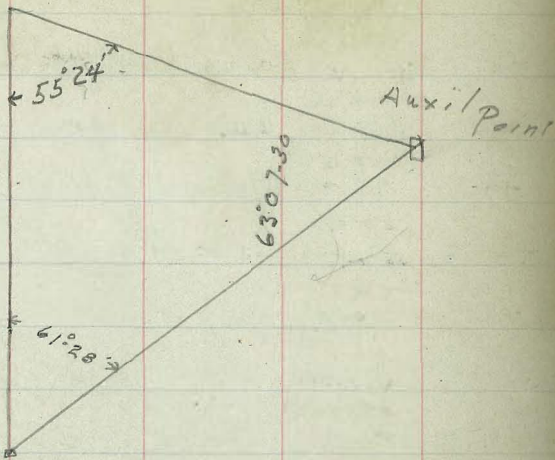
Dist 49.09

Occupy 16-309 - Rock 76
 Sight C-16 for 1802 - 7.1 175-0 ✓
 Turn 225-0 - 11.7 187-0 ✓
 Measured 13.64 Set 18.3 201-30 ✓
 Auxil Point 17.8 201-30 ✓
 23.5 23.0 201-30 ✓
 31.9 31.4 207-45 ✓
 38.7 38.2 207-15 ✓
 Set on Auxil Point 39.6 202-15 ✓
 13.64' from 16-309 39.1 205-10 ✓
 Sight C-16 for 43.2 213-45 ✓
 0-0-0 47.0 207-30 ✓
 + 1.22 56.0 208-30 ✓
 16-14 1547.36 1546.14 60.5 212-15 ✓
 Rod 124 #65.2 64.7 1540
 15.35 24.6 18-10 ✓ Rod 74 1540
 Rock 24.1 16.8 73.7 221-15 ✓
 15.5 15.5 29-15 ✓ Rock 73.2 233-15 ✓
 16.6 14.6 25-40 ✓ 66.5 66.0 234-0 ✓
 11 11.31 10.8 26.45 ✓ 62.5 62.0 232-0 ✓
 15 35 10.5 10.0 80-30 ✓ 62.5 62.0 231-0 ✓
 7.3 6.8 136-30 ✓ 53.5 53.0 229-45 ✓
 5.5 5.0 167-15 ✓ 53.4 52.9

Rock 50.9 227-40 ✓ Rock 31.6 1-40 ✓
 52.4 44.2 31-1 35.9 1-40 ✓
 43.7 224-10 ✓ 35.4 35.4 359-15 ✓
 38.5 38.0 224-30 ✓ 35.0 35.0 357-30 ✓
 33.1 32.6 223-30 ✓ 40.0 39.5 354-45 ✓
 24.5 24.0 230-0 ✓
 20.7 20.2 231-0 ✓ 1540 R.C. 14.5 14.0 3-0 ✓
 20.4 19.9 229-50 ✓ R.C. 13.2 12.7 355-30 ✓
 17.1 16.6 227-40 ✓ R.C. 3.7 3.2 303-45 ✓
 10.6 10.1 229-30 ✓ R.C. 3.6 3.1 217-45 ✓
 7.3 6.8 228-30 ✓ R.C. 5.5 5.0 153-15 ✓
 6.0 5.5 264-30 ✓ R.C. 8.6 8.1 61-30 ✓
 7.3 6.8 306-40 ✓ Rod 2.4 1545
 5.2 4.7 297-45 ✓
 16.6 16.0 357-15 ✓ R.C. 4.5 4.0 319.50 ✓
 19.1 18.6 357-15 ✓ R.C. 5.5 5.0 0-30 ✓
 21.3 20.8 355-45 ✓ R.C. 10.7 10.2 5-30 ✓
 23.7 23.7 R.C. 12.9 12.4 357-40 ✓
 24.2 23.7 358-45 ✓
 26.0 25.5 357-45 ✓ top of rock 11.0 10.5 353-50 ✓
 1.1

34-118-66

110°-49'



Add 0.5

Set on Auxil/Point

Sight 34-274-14 for

0-0-

+14.74 1511.58
34-300

Rod 11.6

1500- 10.2 5-40 ✓

Rock 12.5 344-40 ✓

14.1 329-0 ✓

13.6 321-30 ✓

12.7 325-30 ✓

20.7 323-10 ✓

20.2 26.2 25.7

Rock 26.5 26.3 326-30 ✓

30.0 29.5 26.1 322-50 ✓

30.5 30.0 320-0 ✓

Vertical 34.7 34.2 320-30 ✓

10' above 34.2 320-30 ✓

Vertical 29.38.7 38.2 319-45 ✓

Vertical 43.2 42.8 321-0 ✓

13.0 43.2 321-0 ✓

1500 28.9 38.4 331-0 ✓

25.1 24.6 331-0 ✓

R.C. 24.8 24.3 328-15 ✓

28.5 28.0 329-45 ✓

15-11.6
~~1496.84~~

58

Rod 6.6

1500 22.8 R.C. 22.3 331-45 1505

18.5 R.C. 17.0 326-15 ✓ Rock

18.4 R.C. 17.9 338-45 ✓

Top Rock 19.2 9.9 18.7 332-30 ✓

1501.7 1500

40.9 R.C. 40.4 324-30 ✓ Vertical

42.9 R.C. 42.4 322-0 ✓ Vertical

44.9 R.C. 44.4 323-30 ✓ Vertical

43.5 R.C. 43.0 325-0 ✓ Vertical

Top 43.5 101.7 43.0 324-10 ✓ Vertical

9.0 23.2 22.7 311-30 ✓

9.0 19.9 19.4 308-10 ✓

Vertical 45.7 45.2 321-45 ✓

52.3 51.8 322-0 ✓

57.6 57.1 325-10 ✓

64.8 64.3 324-30 ✓

65.9 65.7 324-30 ✓

69.6 69.1 324-20 ✓

69.6 69.1 324-20

67.7 67.2 322-40 ✓

64.7 65.2 64.7 322-40 ✓

63.5 63.0 323-10 ✓

45.7 45.2 321-45 ✓

43.2 42.8 321-0 ✓

38.7 38.2 319-45 ✓

34.7 34.2 320-30 ✓

30.1 29.6 315-45 ✓

23.2 22.7 311-30 ✓

19.9 19.4 308-10 ✓

13.8 13.3 300-45 ✓

13.3 12.8 309-30 ✓

10.3 9.8 309-30 ✓

13.2 12.7 315-45 ✓

14.1 13.6 330-0 ✓

5.5 5.0 50-45 ✓

1505

Occupy Auxil Point from
 Rod 6, 634-274-14- 15.11.6
 1525

RC	21.2	313.45	Point 44.91 from
RC	20.7	308.0	Auxil Point - Sight
RC	15.5	315.20	34+274 14 for 0-0
RC	14.5	311.30	
Top of Rock	15.2		
4.5	14.7	311.30	0.25 1596.23 1495.98

Rod 1.6	15.10	1495	34.2	121.45
	4.1		33.7	
Vertical	3.6	227.0	20.3	120.0
Vertical	8.6		19.8	120.0
Vertical	15.0	290.0	15.4	132.45
Vertical	19.9		14.9	
15.0	19.4	308.10	11.2	129.0

See 1505

51.	6.4	217.15	7.5	
1503.6	5.9		7.0	134.0
			7.3	
			6.8	162.15
			6.1	
			5.6	170.0
			6.4	
			5.9	185.0
			5.8	
			5.3	203.0
			4.0	
			3.5	239.0
			3.5	
			3.0	269.30
			2.5	
			7.0	296.0
			2.6	
			7.1	280.15
			21.5	
			21.0	302.15

Bottom 10' Cliff

Set Auxil Point

333.17' Measured

44.91 1511.58

-15.60

T.P

1495.98

+ 0.25 1596.23

Rod 1.2	1495	Rock	25.0	296.0	Vertical 32 Down	1475	33.6	112-30
			31.5	302.15	Vertical 8.0 110mm		27.8	101-30
			31.0		vertical		27.3	
					Down 8.0		23.3	92-45
Rod 62		Rock	27.3	312.15	Vertical		20.2	83-0
			26.8		8.0		19.7	
			24.3	311.15	vertical		16.0	60-30
			23.8		9.0		15.5	
			20.5	314.40			15.9	49-15
			23.0				15.4	
			20.5	314.15			15.2	27-30
			20.0				14.7	
			20.1	311.0			14.5	24-0
			19.6				14.0	
			14.5	318.30			15.3	6-15
			14.0				14.8	
			6.9	334.20			19.1	34-0
			6.4				18.6	
			3.7	8-0			19.6	331-30
			3.2				19.1	
			6.5	62-30			24.8	322-45
			6.0				24.3	
			11.5	74-30			30.0	323-45
			10.6				29.5	
			13.0	77-15			31.5	322-45
			12.5				31.0	
			16.5	83-30			37.7	322-10
			16.0				37.2	
			19.5	92-0			44.0	317-45
			19.0				43.5	
			25.9	99.15			42.0	309.0
			25.4				41.5	
			27.5	105.45			44.7	310-15
			27.0				44.2	
			34.0	112.30			1' West Vertical	10'
			33.6					

12/3/19

Fisher
Bub
Ketchum.

1540

Soil

Occupy C-16-Sight
West end of Dam for
90°—

+4.75

1550.89 1546.4

R+Soil

Rock

Add 0.5 to Dist.

Rod 10.9

1540-

Rock

1540

R+Soil

Soil

189

18.4 0-45

23.5

23.0 359-15

27.6

27.1 356-30

37.3

36.8 1-0

38.4

37.9 358-15

42.0

41.5 358-0

46.5

46.0 355-30

46.3

45.8 354-40

68.5

68.0 346-45

65.0

64.5 345-45

59.5

59.0 345-10

59.1

58.6 343-10

59.8

59.3 342-0

57.4

56.9 340-30

55.7

55.2 341-30

56.3

55.8 343-30

48.0

47.5 346.0

46.5

46.0 342-40

1535

44.0

43.5 342-45

42.3

41.8 345-0

41.9

41.4 344-40

39.5

39.0 345-50

34.3

33.8 344-0

28.0

27.5 343-15

27.1

26.6 345-40

21.1

20.6 336-15

21.3

20.8 332-30

20.9

20.4 317-40

22.0

19.5 315-0

22.1

21.6 299-30

25.9

25.4 288-0

29.1

28.6 274-0

32.3

31.8 272-10

32.5

32.0 273-0

33.5

33.0 268-10

37.9

37.4 263-45

Add 0.5

Occup 22-321.39

Sight B-22 for 180

10.13

157889

156876

+ 0.27
20-312 - 1515.86 1515.59

Pod 0.9

1515 36.7 32-30 ✓

1515 - ~~43.0~~ 33-30

1515 42.5 33-40 ✓

1520 4' west

1515 48.4 34-15 ✓

1520 - 3" west

45.4 34-30 ✓

1520 - 6" west

1515 51.6 32-30 ✓

1520 2.5' West

1510 50.2 29-0 ✓

1510 45.4 28-0 ✓

1510 43.0 29-30 ✓

1510 41-0 27-30 ✓

1510 34.1 24-30 ✓

12/4/19
Fisher
Bub

Notes transferred from } Stamp + Plant
Layout. ⁶¹

-1520-

Occup 22-414.8 soil 56.4 20-0

Sight 22-321 ~~39~~ soil 59.7 19-30

for 0-0 Rock + soil 62.8 17-10

Add 0.5 to all Dist Rock 67.5 13-45

HI Rock 78.8 11-10

+ 9.54

c-22 1525.40 1515.86

Pod 5.4

1520 15.2 26-45

Rock 20.3 22-40

" 27.1 24-15

" 29.4 28-0

1520 " 29.8 24-30

" 33.2 23-15

" 35.5 26-10

" 39.5 20-0

" 46.5 23-0

" 48.2 25-30

Rock + soil 51.7 23-45

soil 55.6 22-20

12-15-19

Bub - Fisher

Occupy C-68

Sight C-50 for 90°

+ 14.99

C-68

1606.75 1591.76

Add Focal Dist

Rod 16.8

73.1
72.7 34-40

15 90

88.1
88.0 29-10

"

115.4
115.6 21-0126.7
127.0 17-10

15 95

127.6
Rod 11.8 128-0 13-10108.9
109.0 17-1591.5
91.4 22-073.8
73.5 26-45

Rod 6.8

67.4
16 00 67.0 19-5082.2
82.0 17-45105.4
105.5 13-016 00 122.0
Rod 6.8 122.3 10-15

Occupy C-70

Sight C-50 for 90°

Add Focal Dist

+ 4.43
1617.95 1613.53

Rod 13.2

125.7
126.0 16-15105.9
106.0 19-4088.8
88.7 23-3067.4
67.0 29-15Rod 8.0 49.7
161 0 49.0 21-45Soil 49.7
Boulder 49.0 24-1051.6
Boulder 50.9 25-1552.0
Boulder 51.4 22-3067.2
Soil 66.5 19-3090.1
90.0 16-0110.4
110.5 14-40

62

Occupy C-70

Rod 3.2 107.9
1615 108.0 10-45Soil 103.9
104.0 9-30103.2
103.2 7-15100.0
100.0 7-1598.0
98.0 9-2088.1
88.0 11-3082.5
82.3 10-45Soil 58.3
57.5 12-049.2
Boulder 48.5 11-043.7
43.0 12-4042.9
42.2 10-45

Occupy C-72

Sight C-50 for 90°

Add Focal Dist

+ 4.64 1628.27 1624.63

Rod 9.27 40.0 21-15

16 20 21-15 39.2

Soil 57.6 21-45

57.0 21-30

72.7
Soil 72.3 20-15

Occupy C-72

Rod 9.3 82.2
16.20 82.0 18-15Soil 95.4
95.3 16-30Rod 4.3 77.3
16.25 77.0 12-15Soil 61.3
60.8 12-3048.5
47.8 19-035.2
34.3 3-5025.8
24.8 1-15

Occupy C-7+33 69

Sight C-50 for 90°

+ 5.23
1635.82 1630.59Rod 5.8 61.5
16.30 61.2 154-20Soil 50.3
49.6 160-044.5
43.8 159-1038.3
37.5 160-3033.2
32.4 163-1530.5
29.6 166-15

Add Focal Dist

Occupancy C-7+3369-				
Rod 5.8	28.7		Rod 0.8	34.7
1630	27.8	173-0	1635	33.8 172-0
	25.7			39.6
Rock	24.7	173-45	Rock	38.8 168-10
	22.6			43.7
	21.6	178-30		43.0 169-0
	16.0			49.2
	14.9	177-50		48.5 166-15
	14.9			52.2
	13.8	162-10		51.6 160-30
	8.0			57.6
	6.8	17-45		57.0 157-30
	16.3			62.9
	15.2	17-40		62.5 156-30
	26.6			
	25.6	10-0	Occupancy C-75	
	31.4			
	30.5	11-40	Sight C-50-for 90°	
	31.8			
	30.9	9-45	+5.18 1446.17 1640.99	
	34.3		Rod 6.2	
	33.4	11-45	1640	Add Focal Dist
	40.0			
	39.2	19-0	Rock	69.6
	45.2			69.2 146-30
	44.5	16-0		67.6
	45.7			67.0 148-10
R&S soil	45.0	14-15		60.5
	55.6			60.0 149-40
soil	55.0	14-45		56.1
	69.4			55.5 153-0
soil	69.0	15-30		56.1
				55.5 155-40
Rod 0.8				50.3
1635				49.6 156-20
	27.2			46.2
	26.0	178-30		45.5 153-30
	30.1			44.9
	29.2	179-0		44.2 151-20

1640

	43.2			
Rock	42.5	150-40	1640	8.7
	36.6			7.5 30-30
	35.8	153-45	rr	15.5
	34.8			14.4 21-40
	34.0	152-20	rr	17.7
	29.7			16.6 22-15
	28.8	153-20	rr	20.2
	29.2			19.0 14-45
	28.3	157-15	rr	28.4
				27.5 9-20
			rr	34.8
				34.0 11-0
				39.2
				38.4 15-0

Sub 12/17/19
Fisher

Occupancy C-75

Sight C-50 for 90°			Rod 12	
Add Focal Dist				35.0 353-45
HI			1645	34.2 16-15
+5.0				26.5
	1645.99	1640.99	Rock	25.5 355-0
			rr	19.1
Rod 11.2				18.0 349-0
				9.0
1635	51.6		rr	7.8 321-30
Rock	51.0	30-30		12.1
"	42.9			11.0 210-30
"	42.2	36-15		23.0
"	37.3			22.0 199-0
"	36.5	31-30		24.0
"	26.2			23.2 194-45
"	25.2	32-30		29.9
"	23.5			29.0 185-45
"	22.5	39-0		40.3
"	20.3			39.5 166-30
"	19.2	42-30		37.3
"	18.9			36.5 162-30
"	17.8	47-50		33.4
"	19.4			32.5 159-45
"	18.3	60-0		

Plotted 12/19/19

Occupancy C-75

Add Fossil Dint.

Rod 1.2

39.8

1645

39.0

154-30 ✓

41.0

40.2

161-15 ✓

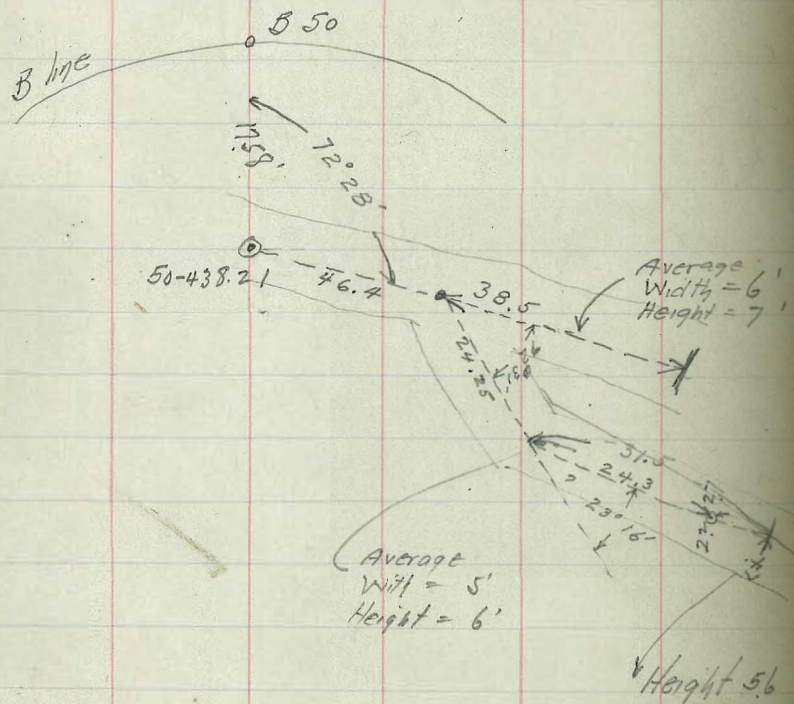
46.5

45.8

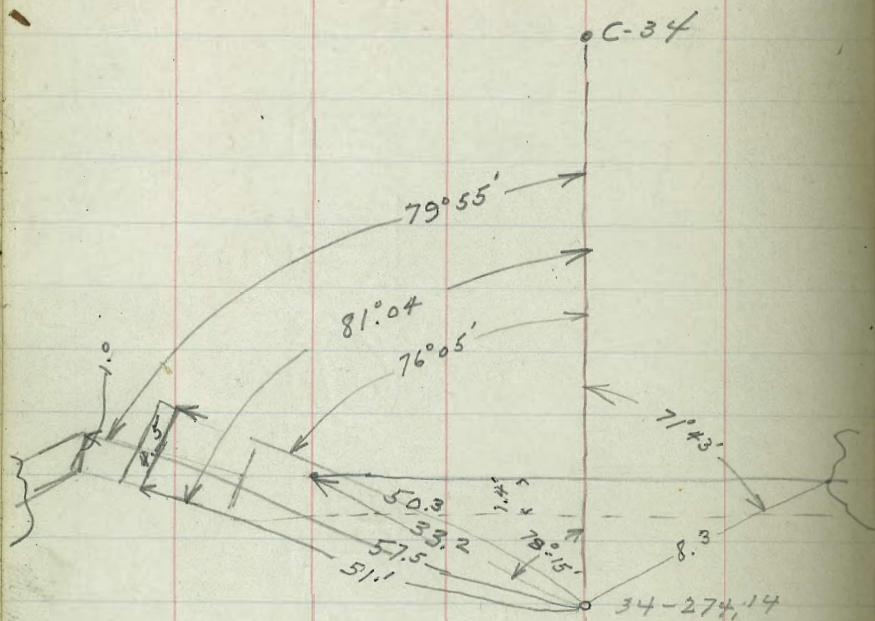
162-45 ✓

12/18/19

Sub
Fisher Alignment of Test Drift

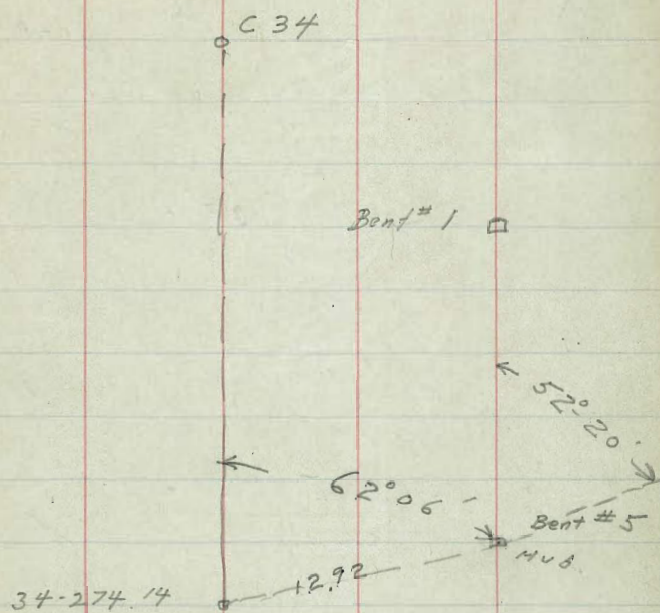


Tie Top Face Old Wier Wall
to 34-line



66

Tie to Spoil Track to 34 line



Bub
Fisher
Howard
1-30-20

Sections in Bottom for Monthly
Estimate Jan. 1920

Capred - 500000
Page 142

Occupy C-38 - Sight

B-40 - Dmt 430

147

1/31/20

Bill
Parker
Howard

Sections in Bottom for Monthly
Estimate Jan 1920

38 line

B-38 4.5 74.80 1470.30

425 5.0 69.8

419 5.0 69.8

408 12.7 62.1

400 12.5 62.3

376 12.0 62.8

370 8.0 66.8

350 7.3 67.5

Copied - See Book 9
Page 1 + 2

40 line

375 9.0 65.8

380 11.0 63.8

392 12.5 62.3

400 12.2 62.6

403 13.1 61.7

TP 4.9 75.3 4.4 70.4

42+03 line

375 ✓ 2.0 73.3

1-31-20

42+03 line

69

753

396.		56	69.7	
395		1.0	74.3	
401		2.0	73.3	
TP.	14.0	87.3	2.0	73.3
364		00.	87.3	
40-365		80	79.3	
42+13-406		2.0	85.3	
40-413		4.8	82.5	
40-406		7.5	79.8	

Copied - see Book 9
see page 142

B-38- 1.11 1471.41 147030

440 line = 00 Gross.

435- line - 38 = 00 running West.

38-425		1.5	69.9
425-5'	✓	4.4	67.0

~~15~~
0

1-31-20

70

1471 41

425-10'	8.8	62.6
425-20	10.4	61.0
425-60'	10.7	60.7
425-73'	9.2	62.2
425-73	5.0	66.4
425-86'	0.5	70.9
400-87	+ 0.5	71.9
400-82	6.1	65.3
400-73	6.5	64.9
400-73	9.2	62.2
400-65,	10.7	60.7
375-65'	11.3	60.1
375-72	9.4	62.0
375-72	6.3	65.1
375-83	6.2	65.2
375-84	1.4	70.0

Copied - See Book 9
Page 142

350 Last Line - Extra

121-20

375-00

375-14

375-20

400-00

400-10'

C 430-

22820

38-300

00 -

1

10

17

21

33

36

50

K. Stone

64

Copied-See Book 9-Page 142

Copied-see Book 9-Page 3708

1471.41

8.1 63.3

9.3 62.1

10.6 60.8

8.9 62.5

9.5 61.6

access = 000 00

Feb Est

72.64

300 Line

74.7

0.9 71.7

3.9 68.7

4.1 68.5

6.2 66.4

6.9 65.7

8.7 63.9

11.9 60.7

12.2 60.4

Feb Est.

72.64

71

72

74.8

79.

83

87

9.9

12.3 60.3

60.90

10.6 62.0

7.0 65.6

5.8 66.8

4.8 67.8

13' more = 287 = 0.0

Copied Book 9

2-26-20

Bub
Fisher

Occupy C-48 - Sight 48-300

for 0.00

48-300 5.16 1521.42

Add 0.5 to Dist.

Rod 6.42 -1515-

Top Class 4 -

5.5	337-30
5.0	22-30
8.1	322-15
7.6	37-45
12.0	339-50
11.5	20-10
15.5	20-0
15.0	358-0
24.5	0-45
24-0	359-15
34.0	6-20
33.5	353-40
44.0	8-0
43.5	352-0
52.0	359-45
51.5	0-15

35.0	24-45
34.5	335-15
32.5	38-0
32.0	322-0
18.5	52-45
18.0	307-15
4.5	57-20
4.0	302-40

Rod 1142 -1510-

62.0	5-15
61.5	354-45
56.5	10-0
56.0	350-0
49.5	9-30
49.0	350-30
42.5	9-0
42.0	351.0
36.5	18-0
36.0	342-0

42-300

ROIR

42 336.6

42-340

42-343

Feb Est.

1.55 90.14

1488-29 ✓

196 98.18 ✓

2.7 87.4

9.7 80.4 ✓

Copied
Book 9. Page 3
768

72

2-27-20

73

Hub
Fisher.

Levels for -

Elev for Estimate - Feb 1920

1502.06

42-350

0.41

1488.70

1488.29

44-414.49

10.53

91.53 ✓

44-408

10.4

91.70 ✓

42-336.6

0.52

58.18

44-407

17.4

84.71 ✓

42-341

1.8

86.9

42-342

10.0

78.7

B-46

9.98

1512.66

1502.68 ✓

42-345

10.7

78.0

Hub.

46-432.22

2.94

09.72

Nail

46-414.04

8.96

03.70 ✓

40-342

10.5

78.2

46-408

10.4

02.31 ✓

348

13.0

75.7

46-408

15.0

97.7 ✓

364

25.0

63.7

46-396

16.7

96.0

2-28-20

46-343

8.2

09.5 ✓

B-44

3.92

1494.33

1490.41

46-347

9.6

03.1 ✓

P.O.R.

40-414.53

11.39

82.94

46+15 = 0.0 section

40-407

15.0

79.3

Nail in Rock

44-329.39

11.80

00.86 ✓

Hub

42-412.57

8.29

86.04

44-332

13.9

98.8 ✓

42-410

8.7

85.6

44-335

14.0

98.7 ✓

B-44

11.65

1502.06

1490.41

44-339

19.0

93.7 ✓

Nail

42-442.57

10.36

91.70

44-345

19.0

93.7 ✓

44-345

see page 72

31.0

91.7

Copied Book 9
Page 3 to 8

Copied Book 9
Page 3 to 8

2-27-20

74

Bob
Fisher

1920 Feb Est

8000

	9.70	80.00	1470.00	42-348		21	77.9 ✓
38-417		11.0	69.0 ✓		65	86.00 ✓	650 79.50 ✓
38-410		17.0	63.0 ✓				
38-390		17.4	62.6 x	44-406		3.0	83.0 ✓
38-377		17.0	63.0 x	44-390	Drop Ele.	7.8	78.2 ✓
38-370		13.0	67.0 x	44-375	on 44	7.0	79.0 ✓
38-350		12.3	67.7 ✓	44-360	7 ft.	8.0	78.0 ✓
				44-347		5.0	81.0 ✓
40-404		17.3	62.7 ✓	44-342		0.0	86.0 ✓
40-404			72.7 ✓	44-342		1.0	91.0 ✓
40-390		17.0	63.0 ✓		12.0	95.6	2.4 83.6 ✓
40-370		15.3	64.7 ✓				
40-366		14.2	65.5 ✓	46-393 ✓		0.0	95.6 ✓
40-350		7.2	72.7	46-390 ✓		5.6	90.0 ✓
42- ⁴⁰¹ 399		13.0	67.0 ✓	46-380		2.0	93.6 ✓
42-390		13.0	67.0 ✓	46-375	90	5.0	90.6 ✓
42-370		11.0	69.0 ✓	46-365	25	0.0	95.6 ✓
42-355		6.4	73.6 ✓				

Copied Book 9
See page 370 & 8

Copied Book 9
See page 370 & 8

Drop Ele.
on 44
7 ft.

2-28-20

Hub

Fisher.

75

1475.22

B-40-

1.37

1475.22

1473.85

76

7.2

68.0

Hub

38-425

x

5.77

1469.45

84

4.6

70.6

38-350

x

7.49

1467.73

96

2.8

72.4

P.O.R.

28-350

3.67

71.55

76

2.7

Hub

28-375

3.88

1471.34

38-425

4.53

73.98

1469.45

1475.2

455.79 Line

42.5 line

3

5.4

69.8

80

7.0

69.0

8

6.8

68.4

77

8.0

66.0

10

8.2

67.0

75

9.6

64.4

14

8.8

66.4

73

9.6

64.4

23

9.0

66.2

73
Flume

11.2

62.8

35

11.3

63.9

66.5
Flume

11.15

62.8

47

10.6

64.6

66.5

9.2

64.8

Flume

66

10.8

64.4

61

9.2

64.8

Flume

68

11.9

63.3

60

10.4

63.6

73

11.7

63.3

38

10.4

63.6

75

✓

10.5

64.7

15

✓

11.2

62.8

Copied See Book 9
Page 3708

Copied See Book 9
Page 3708

1473-98

425' Line

9	10.1	64.0
6	7.7	66.3
38-425 0.0	4.53	69.45

400' Line

38-400 0-00	11.4	62.6
25	10.8	63.2
49	10.6	63.4
50	9.3	64.7
58	9.4	64.6
65 Flume	10.2	63.8
65 Flume	11.4	62.6
72.3	11.6	62.4
75	9.5	64.2
83	8.2	65.8
89	2.1	71.9

Copied See Book 9
Page 3 to 8

5.25 1476.59

375' Line

28-375

11471.34

375' Line

76

375 76.59

38-375 0-0	13.4	63.2
12	13.8	62.8
32	13.7	62.9
51	14.2	62.4
66 Flume	13.7	62.9
66 Flume	14.3	62.3
73	14.5	62.1
73	14.7	61.9
75	14.8	61.8
81	12.3	64.3
85	9.3	66.3
91	6.0	70.6
94	5.25	71.34

Copied - See Book 9
Page 3 to 8

350' Line 76.6

35-350
0-00

27	9.2	67.4
41	10.5	66.1
48	13.5	63.1
76.53	14.7	61.9

Page	Flare	Distance	Flare	Distance
76.59				
65.3	17-18'	14.7	61.9	
72		14.4	62.2	
72		13.8	62.8	
73		13.8	62.8	
74		11.3	65.3	
77		11.2	65.4	
78		9.4	67.2	
85		7.7	68.9	
87.3				
28-350			71.55	
38-425	4.62	1474.07	1469.45	✓
400				
28-325		10.3.3	63.74	
28-300		13.17	60.90	
28-325	8.90	72.64	63.74	✓
		325 line		
23		4.6	68.0	
33		7.5	65.1	
41		6.2	66.4	

Copied Book 9
 Page 3 to 8

Distance	Correct for Distance	Instrument Correction for Stadia
0		
12	+ 1.2	142
19	+ 1.1	150
27	+ 1.0	158
35	+ 0.9	165
42	+ 0.8	173
50	+ 0.7	181
58	+ 0.6	
65	+ 0.5	72.64
73	+ 0.4	
81	+ 0.3	
88	+ 0.2	
96	+ 0.1	
104	0-00	
111	- 0.1	
119	- 0.2	
127	- 0.3	
135	- 0.4	
142	- 0.5	

48	6.2	66.4
50	10.1	62.5
57	11.7	60.4
64	12.2	60.4
74	11.6	61.0
76	9.6	63.0
8.1		63.74
95	8.6	64.0
97	6.4	66.2
90	4.0	68.6
91	2.2	70.4

Copied Book 9
 Page: 3-8

See page 71-

B Ms

B.M.	Iron Pin in Rock 60's B.S. 890P	162633
00-300		1626.16
00-429	Nail	1630.56
4-455		1615.92
6-480		1615.35
8-450		1601.85
10-442		1596.58
12-437		1588.34
B-14		1578.56
B-16		1568.76
B-18		1557.81
B-20		1545.11
B-22		1534.73
B-24		1525.19
B-26		1503.84
B-28		1488.45
B-30		1472.33
B-32		
B-34		1465.72

78

B-36		4-350	1603.20
B-38		6-315	66.07
B-40		8-315	70.42
B-42		10-315	1573.74
B-44		12-315	
B-46		14-319	1551.82
B-48		16-309	1539.57
B-50		18-303	1529.38
B-52		20-312	1515.58
B-54		22-324	1511.09
		24-321 ²	1502.72
		26-366	1491.72
		27-357	1479.59
C-8	1580.97	C-20	1529.35
C-10	1574.27	C-21	1522.67
C-12	1564.06	C-22	1515.86
C-14	1552.98	C-23	1507.14
C-16	1546.13	C-24	1502.00
C-18	1541.60	C-25	1496.38
C-19	1536.11	C-26	1493.07

C-27	1486.11	50-300	1524.45
C-28	1479.68		
C-29	1471.44		
C-36	1466.56		
C-38	1470.40		
C-40	1478.18		
C-42	1490.09		
C-44	1497.68		
C-46	1505.60		
C-48	1516.75		
C-50	1522.69		
34-300	1466.53		
34-274.14	1467.04		
36-300	1467.50		
38-300	1474.63		
41-300	1480.28		
42-300	1485.28		
44-300	1496.72		
46-300	1507.21		
48-300	1516.36		

- H
- 0
- 1
- 2
- 3
- 4
- 5
- 6
- 7
- 8
- 9
- 10
- 11
- 12
- 13
- 14
- 15
- 16
- 17
- 18
- 19
- 20
- 21
- 22
- 23
- 24
- 25
- 26
- 27
- 28
- 29
- 30
- 31
- 32
- 33
- 34
- 35
- 36
- 37
- 38
- 39
- 40

line to
lths of
sample
=43.9.

