

//

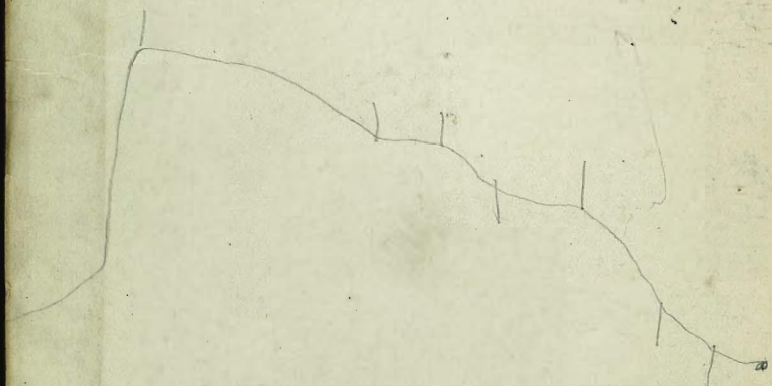
BARRETT DAM

DIARY BOOK

380

W128

MICROFILMED



Index

see RC 2
Page 15

New Right of Way through Grigsby Ranch	1-4
Right of Way through M. Ortega ^{Property}	5
Sections "El Capitan" - location of Core Hole -	8-13
Location of Water Hydrant - ^{Hauling Road}	15
Location of Tank - ^{Walkers} Hauling Road above Camp	16
Profile up cottonwood River for Sand Deposit ^{Profile}	17-20
Sand Hauling Road P. C. Plum ^{North}	21
Water Station Cottonwood Canyon ^{to P. C. Plum}	22 ✓
Stations on Sand Hauling Road	23 ✓
Levels for Grades on Sand H. Rd.	24

Elevations on Road
 Stadia Through Wilbur Grigsbys Ranch
 Dist.

Vol 2

on Road.			2915.4		2915.4
BS 00 #1	91	.02	1801.2		1800.00
FS \square #1	270	765	14.45	86	2906.80
BS \square #3	314		29.25	5.0	2909.45
M.S.		At \square 3			2907.45
BS Creek	273			17.0	2902.5
BS "	245			12.7	873
BS West Band	177			7.0	2901.8
	00			5.0	866
BS \square #4	73	12.60	2926.42	0.63	2909.5
			1811.22		2909.5
					2913.82
BS \square #5	114				2909.5
M.S.		At #5			2909.5
\square #6	45				2913.82
				1.2	2909.5
					2909.5
M.S.		At #4 New line			2909.5
\square 3		8.90	2918.40		2909.5
\square 1 Fence	220			13.2	2909.5
	185			0.7	2909.5

New Right of Way
H Line Road

2920.2
H1=5-1885.00
Set on E Morena Road. Sta 00.

Morena Road

165+63
Station

3.70

Q1 640 2892.10

11.3

2908.9
93.7

6+40. H1=998

At \square 1
5.1 29120
98.8

2908.9
93.7

\square 2 10+95 455 LRT 29°10' Vert L=+2

H1 48 29.6

At \square 2

2924.8
809.6
2924.8
809.6

\square 3 15+05 410. LRT 14° Vert 10-48'

H1 46 42.2
27.0

At #3 Δ LRT.

2937.6
822.4

\square 4 17+15 210 LRT 41°26' + 3°20'

H1 49 54.7
34.5

At \square 4

2949.8
34.6
2949.8
34.6

Junction Roads
Houser Marson 3355
1640 LRT 32°35' +0-55'

2975.8
60.6

173+83 Johnson

125 29105

28980

6+40 Dull

Elevation Tie

1.6

2908.9

Grigsbys Ranch

Mag Course Difficult

N 13 1/2 W

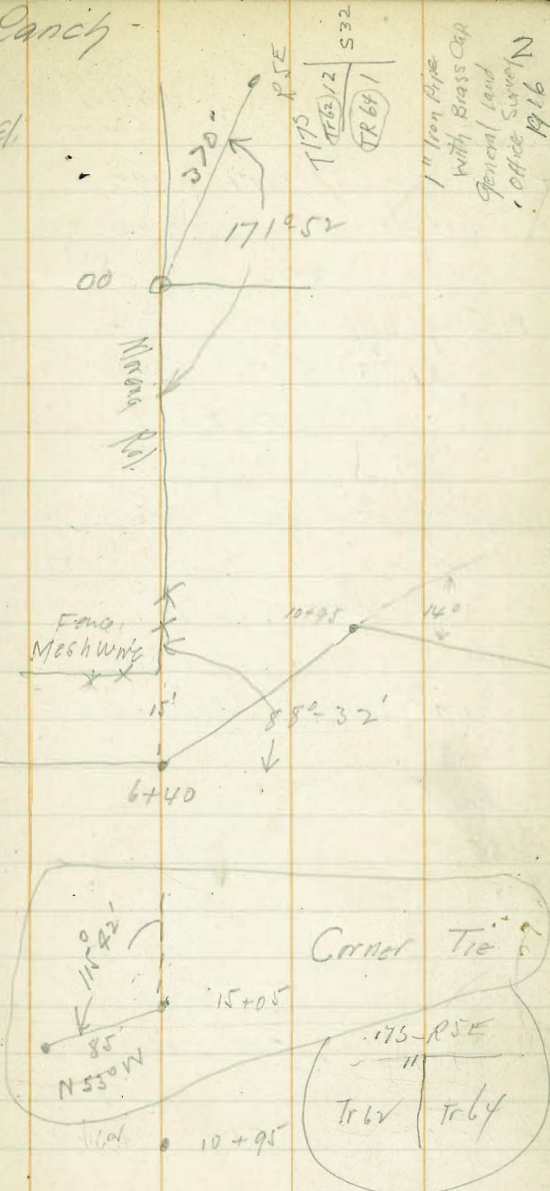
S 77° 30' W

S 47° 45' W + 1585

S 61° 45' W + 12.8

N 76° 30' W + 12.2

S 70° 30' W + 26.0



1" Iron Pipe
With Brass Cap
General Land
Office Survey
1916

175
TR 62/2
TR 64/1
S 32

4/8/20

Stebbins.
Bull
FisherAccepted Survey Right of
Way thro Wilbur Grigsby Ranch.

HI 249 = 29.201

H Line.

29152

Note. No Variation set off.

Set on Moreng Rd. at Entrance to
W Grigsby Ranch turn $89^{\circ}01'$ Lt for
1st tangent Mag Course N 14° W.

Sta 15 Lt 15 R.

00

89°01'

15.2

S76° W

2920.1

0+42

Fence line

7.5

12.6

1+00

10.0

10.1

2+00

13.7

06.4

TP Peg 25' Lt Sta 3

685

12.80

14.15

2905.95

3+00

6.6

06.2

6+42² LH

3+02

7.2

05.6

Bank East.

3+85

11.5

01.3

4+00

11.9

00.9

E. Creek

4+50

9.6

03.2

4+60

6.0

06.8

Bank West

5+00

5.2

07.6

6+00

5.2

07.6

6+42² LH TP

5.1

13.76

4.14

08.66

Hub.

HI = 5.1 = 1376

6+42² LH

28°31'

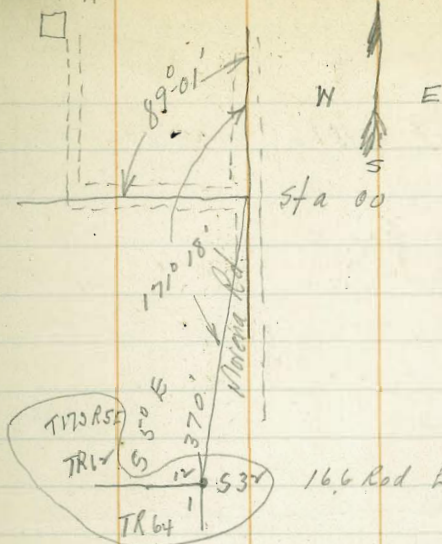
S 48°30' W

7+00

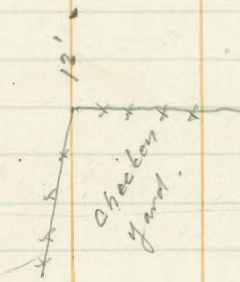
3.2

10.6

Ranch House



16.6 Rod El. = 2903.5



3

4/8/20

L5 Lt L5 Rt

291376

1535 28.81 0.30 1346

8+00 13.9 14.9

8+50 11.8 17.0

9+00 11.1 17.7

10+00 8.4 20.4

10+60 5.5 23.3

~~10+898 L Rt 4.8 24.0~~

H1=4.8 = 28.81

~~10+898 L Rt.~~

13°45'

56°15'W

~~11+00 4.5 24.3~~~~7.60 2.5 26.3~~~~Top 11+00 1.90 26.91~~~~12 2.5 26.3~~

Top 12+00 14.3 41.21 1.90 26.91 ✓

13 12.6 28.6

13+40 12.4 28.8

14 9.2 32.0

14+96 L Rt. 4.45 36.76

10+80 L Rt.

23°27'

57°45'W

Top old Stair 11.56 38.47 26.91

-10+80 15.38 23.09

Hub

11+00 13.8 24.7 ✓

210 - 7°R + 3°5'

N 60 89°

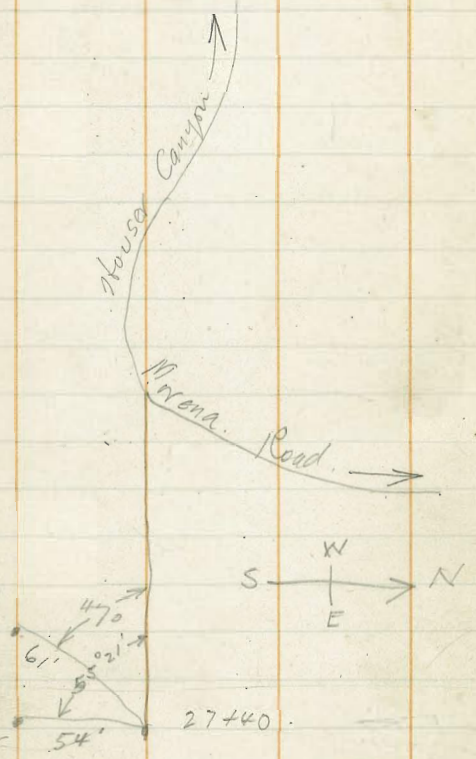
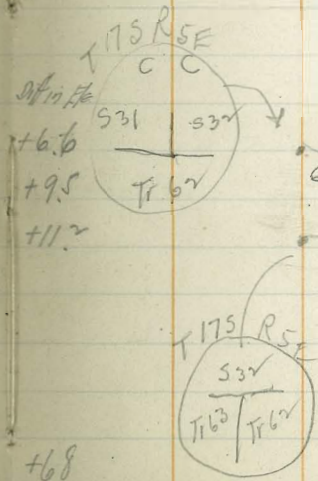
10195

4/8/20
Stebbins
Fisher
Mixer

Right of Way
Location of Roadway Thru M. Ortega
Property 3847

17+60			10.8	27.7
17+00			10.4	28.1
13+00			8.0	30.5
+50			6.4	32.1
+85	1330	48.47	330	35.17
14+00			1300	35.5
15+00			5.8	42.7
15+41 Pat			4.8	43.7
16+00			3.5	45.0
R.	485	51.69	11.3	46.84
17+00			4.7	47.0
18+00			4.8	46.9
19+00 Pat Ground.			36.6	48.03
Top Witness 19+00 Pat	4.1	51.97	38.2	47.87
20			6.5	45.5
HI=41.5197		at 8+19		
23+20	420	+0°54'	10.0	48.6
25+20	620	+0°53'	10.0	51.5
27+40	840	+0°46'	6.0	57.2
HI=48	62.00	At 27+40		57.2
27+75	55	00	3.8	58.2
Fence				
29+00	160	00	3.1	58.9
31+00	360	+1°5'	4.8	64.0
Fence				
33+50	610	+1°42'	4.8	75.3
Road	665			75.0
34+05				

571-300



at 17+60
+6.6
+9.5
+11.2

+6.8
+181

North.

6

T-185 R5E

5-4	53
<hr/>	
59	510

1916

1/4
<hr/>
53
510
1916

3	2
<hr/>	
10	11

1916

6/23/20 Sections El Capatan
 Dam site No. 1

Sub
 Head
 H1=48 H2=104.8

100.0
 Set on #3 Core Drill Hole

Sight #1 Hole for Base MCN 71° 30' E

#	Dist	Angle	Angle	Notes	MCN
#1	160'	00°	00°	42 Rod	
#7	165'	17° 40' Rt.	00	20 Rod	
#6	166'	17° Lt.	00	17 R	
#5	90'	25° 13' Lt.	00	28 R	
#2	80'	1°-10' Rt.	00	40 R	
#4	88'	28° 17' Rt.	00	50 R	MCN 71° E
□ #1	96'	0° 37' Lt.	00	38 Rod	101.0

H1=4.5
 El 105.5

At □ #1 Sight #3 Rod 101.0

100° 17' Rt. for line North. N 90° W

P	43	100° 17'	00	48 R	
P	90	"	+12° 53'	45 R	
P + Hole #15	123	99° 40' Rt.	+18° 57'	45 R	N 10° W
X on Rock	129	123° 35' Rt.	+8° 43'	45 R	N 14° 30' E
□ #2 Tunnel	134	122° - Rt.	+7° 24'	45 R	N 13° E
□ #3 P	207	100° 17'	+20° 25'	45 R	N 90° W
P Stream	48	79° 43' Lt.	00	48 R	S 9° E
P Stake + Nail	103	79° 35' Lt.	+13° 58'	45	S 7° E
P + □ #4	123	79° 43' Lt.	+12° 56'	45	S 9° E

(El. = 585° - Tunnel Floor)

H1=48 H2=127.9

Set on □ #2 Sight □ #1 118.1

48 127.9

118.1

112' deep for Zero Angle
 Tunnel Portal A

30'	162° 30' Rt.	00	48	N 5° 30' W
-----	--------------	----	----	------------

(El. = 585° - Tunnel Floor)

30	48	118.1
----	----	-------

241
 Diff in 8
 Corrected Dist. Ele E/B
 Assumed Ele of #3 Hole = 100.00

Dist	Dist	Dist	Dist	Dist	Dist	Dist	Dist
104.8	104.8	160	-4.2	100.6	165	-2.0	102.8
		166	-1.7	103.1	90	-2.8	102.0
		80	-4.0	100.8	88	-5.0	99.8
45	105.5	96	-3.8	101.0			

H1=48
H1=122.9

At \square #2 Sight \square #1 for zero angle ^{118.1}
#8 248' 27°34' Lt +2°40' 4.8' S16°E

H1=48 H1=134.4
67' dup. At Hole #8 Sight \square #2 for zero ^{129.6}
Tunnel Portal \square 50' 189°15' Lt. 00. 2.6 R. S25°E

H1=3.7 H1=131.4 At \square #4 Sight #1 for 00° Angle ^{N90°W}
P. Edge Road. 10' 180° Rt. 00 4.9 R. S9°E
P. 30' 180° +15°30' 3.7 R. "
P. 81' " +25°4' 5.0 R. "
 \square #5 131' " +28°40' 3.7 R. "

H1=4.4 H1=178.5 At \square #5 Sight #1 for 00 Angle ^{174.4}
Hole #9 62' 72°34' Rt 00 -2.0 N62°30'E
P 22' 180° +20°15' 4.4
P 80' 180° +19°24' 4.4
P + \square #6 150' 180° +19°28' 4.4 S10°E

H1=4.3 H1=225.7 At \square #6 Sight \square #1 for 00 Angle ^{221.4}
Hole #10 94' 37°21' Rt -14°6' 4.3 N27°30'E
" #11 62' 97°07' Rt 00 5.7 N87°E

H1=4.2 H1=225.6 6/24/20 At \square #6 Sight \square #1 for 00 Angle ^{221.4}
Hole #12 66' 187°47' Rt +21°28' 4.2 S2°E
P. 136' 180° +23° 4.2
 \square #7 195' 180° +24°50' 12.0 S10°E

H1. Correct Dist. Diff. in El. Ele.
122.9 248 +11.5 129.6

48 134.4
50 -2.6 131.8

3.7 131.4
10 -4.9 126.5
28 +7.7 135.4
66 +31.0 157.4
112 +46.7 174.4

4.4 178.8
62 -2.0 176.8
19.4 +7.1 181.5
71.0 +25.0 199.4
133.0 +47.0 221.4

4.3 225.7
88.0 -22.3 199.1
62.0 -5.7 220.0

4.2 225.6
57.0 +22.4 243.8
108.0 +49.0 270.4
160.0 +74.2 287.8

H1=44
H1=292.2
6/24/20

Dist

V

R

Elev

2878

At #7 Sight #1 for Zero Angle

	Dist	V	R	Elev
Flume	10'	180°	00	3.5 R
Hole 13	71'	60°35'4"	00	7.0 R N70°30'W
P	14'	180°	00	4.2 R
P	20'	180°	00	00
P	70'	180	+17°0'	4.4

□ # 8. 85' 185°24' Rt +14°28' 4.4 S40-30'E

H1=45
H1=312.8

At □ # 8 Sight □ # 7 for Zero Angle

308.3

	Dist	V	R	Elev
Hole # 14	54'	45°55'4"	00	5.4 R N50°W
P	45'	180°	+20°	4.5 R

H1=46
H1=173.1

At □ # 3 Sight □ # 1 for Zero Angle

168.5

	Dist	V	R	Elev
P	16'	180°	+15°40'	4.6 R N9°W
Hole # 16-P	31'	185°18' Rt +16°30'	4.6	N4°30'W
Hole # 17-P	108'	179°10' Rt +13°25'	4.6	N10°W
□ # 9	110'	180°	+13°25'	4.6 N9°W

H1=48
H1=198.1

At □ # 9 Sight □ # 1 for Zero Angle

193.3

	Dist	V	R	Elev
Hole # 18-P	82'	173°40' Rt +10°57'	4.8	N12°30'W
P	107'	180°	+12°15'	4.8
□ # 10-P	134'	180°	+13°23'	4.8

Hole # 19

10

H.I.

Correct Dist.

Diff in Elev

Elev

44

292.2

2878

10.0 -3.5 288.7

71.0 -7.0 285.2

14.0 -4.2 288.0

20.0 00 292.2

64.0 +19.6 307.4

80.0 +20.5 308.3

45

312.8

308.3

54.0 -5.4 307.4

40.0 +14.4 322.7

182

46

173.1

168.5

15.0 +4.2 172.7

28.0 +8.4 176.9

102.0 +24.4 192.9

104.0 +24.8 193.3

256

48

198.1

193.3

78.0 +15.1 208.4

102.0 +22.2 215.5

127.0 +30.0 223.3

6/24/20
 H.I. 846
 Head H.I. = 228.0
 H.I. = 4.7
 At #10 Sight #1 for Zero Angle
 Hole #19 ✓ 35' 149°51' RT 00 7.2 RA (H.I. 846)

F/L	P	Dist	Angle	Corr	Dist
	P	53'	180°	00	00 Rd
Hole	P	187'	180°	+11°39'	4.7
P	P	236'	180°	+13°-18'	4.7
P	P	291'	180°	+15°40'	4.7
P	P	343'	180°	+17°11'	4.7

□ #11 Tie to Lower Site
 H.I. = 4.6 H.I. = 104.6
 At Hole #3 Sight Hole #1
 for Zero Azimuth Right. N 72° E
 H.I. = 252
 Hole #11 Creek Bottom 191°18' 00 6.3 583°W

H.I. = 4.4 H.I. = 102.7
 At #11 Sight Hole #3 for
 Zero Az Right. 983
 Hole #12 ✓ 1018' 225°34' 00 91 N 52°45'

H.I. = 4.0 H.I. = 97.6
 At #12 Sight #11 for 00 Az RT 936
 Hole #13 ✓ 720 131°26' 00 7.6 R 579°W

H.I. = 4.0 H.I. = 94.0
 At #13 Sight #12 for 00 Az RT 900
 Hole #14 ✓ 277 131°16' 00 0.5 530°W

H.I.	Corrected Dist.	Diff. Elev.	Elev.
4.7	✓ 35.0	- 7.2	✓ 220.8
	✓ 53.0	- 0.0	228.0
	✓ 180.0	+ 36.7	260.0
	✓ 220.0	+ 52.8	276.1
	✓ 270.0	+ 75.8	299.1
	✓ 313.0	+ 96.0	319.3
4.6	104.6		100.0 ✓
	✓ 252.0	- 6.3	98.3 ✓
4.4	102.7		98.3
	✓ 1018.0	- 9.1	936
4.0	97.6		936 ✓
	✓ 720.0	- 7.6	900
4.0	94.0		900 ✓
	✓ 277.0	- 0.5	93.5

6/24/20

Sub
Head.

HI = 98.1

HI = 46

At \square #14 Sight \square #13 for 00 Az Rk ^{93.5}Profile North
P.

319°18'

N110°W

1+90

Bottom Boulder 190' " 00 00 R

P 1+55 155' " 00 65 R

P 1+22 122' " 00 90 R

P " " 38 " 00 92 R

P 0+00 00 " 00 46

Profile South

P 0+21 21 139°18' 00 43

P 0+62 62 " 00 69

P Top Bank 68' " +8°57' 46

P 1+67 169 " +6°19' 80 R

HI = 44 HI = 97.9

At \square #14 Sight \square #13 for 00 Az Rk ^{93.5}P 1+51 \square #15 153 139°18' +7°13' 90 R S11°E

P Right 2+07 240 319°18' +7°07' 44

P " 2+61 271 " +11° 44

" 2+94 310 " +13°40' 44

" 3+20 345 " +15-16' 44

" 3+58 387 " +15-52' 44

" 3+82 425 " +18°22' 44

" 4+21 480 " +20°57' 44

P 4+68 \square #16 " Rock 548 " +22°45' 44

HI

Corrected
DistDiff.
in Elev

Elev

46

98.1

93.5

190

0.0

98.1 ✓

155.0

-6.5

91.6 ✓

122.0

-9.0

89.1 ✓

38.0

-7.2

88.9 ✓

00

-4.6

93.5 ✓

21.0

-4.3

93.8 ✓

62.0

-6.9

91.2 ✓

66.0

+10.4

103.9

167.0

+18.4

108.5

Note Road 4' less dist.

44

97.9

93.5

151.0

+17.0

107.9 ✓

237.0

+29.4

122.9 ✓

261.0

+50.8

144.3 ✓

294.0

+71.0

164.5 ✓

320.0

+87.5

181.0 ✓

358.0

+102.0

195.5 ✓

382.0

+127.0

220.5 ✓

421.0

+158.0

251.5 ✓

468.0

+195.0

288.5 ✓

12

HI = 293.6

HI = 5.1

On Rock

288.5

At \square # 16 Sight \square # 14 for 200 Az R
 P 4+9 25 180° +10° 53' 5.1
 P 5+5 90 180° +14° 02' 5.1

HI = 4.3

HI = 112.2

1079

At \square # 15 Sight \square # 14 for 200 Az R
 1+5 2+10
 \square # 17 65.0 180° +17° 47' 4.3 S 110° 30' E

2+10

HI = 51.3

1269

At \square # 17 Sight \square # 15 for 00 Az R

2+50
 HI = 4.4
 P 4.8.0 180° +23° 20' 4.4
 2+6 67' 180° +28° 25' 4.4
 3+0 120' 180° +28° 32' 4.4
 3+5 \square # 18 193' 180° +31° 18' 4.4 S 120° E

3+5

HI = 216.5

2124

At \square # 18 Sight \square # 14 for 00 Az R

3+8 42 180° +25° 48' 4.4
 3+9 53' 180° +29° 30' 4.4
 4+4 119' 180° +25° 41' 4.4
 4+8 175' 180° +27° 56' 4.4
 4+9 Plume 180' 180° +27° 17' 4.4

51 293.6

288.5 13

HI.	Corrected Dist.	Diff. in Elev.	Elev.
	24.0	+4.6	293.1
	84.0	+21.3	309.8

43	112.2		1079 ✓
	59.0	+19.0	1269 ✓

44	131.3		1269
----	-------	--	------

	40.0	+17.4	144.3
	52.0	+28.0	154.9 ✓
	92.0	+50.3	177.2
	142.0	+85.5	212.4

44	216.8		2124
----	-------	--	------

	34.0	+16.4	228.8
	40.0	+22.7	235.1 ✓
	97.0	+46.5	258.9 ✓
	137.0	+72.2	284.6 ✓
	142.0	+73.2	285.6 ✓

G

H

L

P

P

-

P

S

P

H

P

H

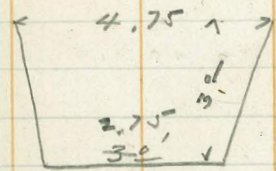
L

P

At Sta 0+99.30 Sight 00
for Zero Az Pt.

00		
0+54	54.0	1-43 358-17
	29.3	5-30 581-50
	13.3	20-16 ✓
	6.0	80-34 ✓
	22.7	147-0
	41.0	150-43
	55.0	150-30
	100.0	148-41

Top of Conduit	4.67	0.00
Grade on Tree	4.87	0.2
Elev Road	13.97	approx 9.3



0150' Red 6.6

10/1/20
 Bub
 Fisher

Elev. for - Pipe leading to
 Hauling Road Tank.

16

Point on Rock B.M.	12.60	112.60		100.00
7. on Rock 82' High - Tank - stake T.P. at T.P. Creek Bot.	119.00		1.6	111.00
T.P.	12.98	119.79	5.79	106.81
T.P. Stake.	10.95	27.35	3.39	116.40
T.P.	9.06	29.75	6.66	20.69
Bot Creek			2.6	
T.P.	6.46	36.03	0.19	29.57
Point on Rock B.M.			2.56	33.47
Sta 00			7.03	129.0
B.M. T.P.	0.25	133.72		133.47
Δ L 0+83 on bank. T.P.	5.35	306.3	5.7	128.0
ART 2+50			7.6	25.28

6+90

8+70.

870' Pipe -

- 25' of 4" Pipe -

10/17/20
Cromwell
Fisher

Profile up Cottonwood River -
For Sand Deposit

Pine Creek Bend
Fresno Pine Creek

17

B-38	9.33	1479.63	1470.30	
U.S. Face Dam 0+00 Bottom of Pipe			12.25	67.31
Water Level Sump			12.92	66.71
1+00			11.5	68.1
2+00			12.5	67.1
3+00			12.8	66.8
4+00			12.3	67.3
T.P.	2.87	7462	7.88	71.75
5+00			6.7	67.9
6+00			5.7	68.9
7+00			5.0	69.6
8+00			4.0	70.6
9+00			3.5	71.1
10+00			2.9	71.7
11+00			2.2	72.4
Stake T.P.	9.03	8186	1.79	72.53
12+00			8.9	73.0
13			8.3	73.5
14+00			7.6	74.3
15+00			7.0	74.8
Stake T.P.	4.80	80.34	6.32	75.54
16+00			5.1	75.2
17+00			4.5	75.8

1480 34

18+00		3.9	76.4	✓	
19+00		3.3	77.0	✓	
Road 19+20					
20+00		2.9	77.4	✓	
21+00		2.3	78.1	✓	
Top of Stake TP	5.50	84.95	1.89	78.45	✓
22+00		5.4	79.6	✓	
23+00		4.9	79.1	✓	
24+00		4.4	79.6	✓	
25+00		3.6	80.4	✓	
Northside Run opposite Sta 24+00		1.90	82.05	✓	
26+00		3.3	80.7	✓	
TP Top of Stake	4.60	85.87	2.68	81.27	✓
27+00		4.4	81.5	✓	
28+00		3.65	82.2	✓	
Top of Stake 28+00	4.58	87.27	3.18	82.69	✓
29+00		4.4	82.9	✓	
30+00		3.6	83.7	✓	
BM Top of Rock 30+70		1.85	86.42	✓	
31+00		3.1	84.2	✓	
32+00		2.5	84.8	✓	
Top of Stake 32+00	4.33	89.37	2.23	85.04	✓
33+00		4.5	84.9	✓	
Water Line 33+00		4.9	84.5	✓	

89.27

150232

34+00			4.4	85.0
Water level				
34+25			4.67	84.70
35+00			4.2	85.2
36+00			3.7	85.7
pt. of beds				
36+90			2.75	86.62
37+00			2.4	86.9
38+00			1.5	87.9
TP	4.20	93.15	0.42	88.75
39+00			5.2	88.0
40+00			4.6	88.6
41+00			4.1	89.1
42+00			3.6	89.6
43+00			3.0	90.2
44+00			2.4	90.7
Top of slate				
44+00	6.87	98.12	1.90	91.25
45+00			5.7	92.4
46+00			5.0	93.1
47+00			4.4	93.9
48+00			3.7	94.4
49+00			3.4	94.7
Top of slate				
50+00			2.7	95.4
Top of slate				
50+00	5.59	150232	2.39	95.73
51+00			5.4	95.9
52+00			4.6	96.7
53+00			4.2	97.1

BM Bndg
Nail Pincrak
54+00

2.53 1499.79

1501.32

B.M. Pine Creek

Budge - Nail

2.53 1498.79

54+00

4.0 97.3

55+00

3.1 98.2

56+00

2.6 98.7

10 ft stake

56+00

7.05 1526.09

2.28 1499.04

57+00

6.7 99.4

58+00

5.9 1500.2

59+00

4.8 1501.3

B.M.

Flume Crossing

6.03 1510.33

1.89 1504.20

60+00

9.3 00.9

61+00

8.6 01.6

62+00

8.3 01.9

6/16/21

Bryson
Fisher
Mixer

Sand hauling road Location from flume upstream.

21

- 0+00 = ♀ Flume at present road xing Bottom stringers of flume are 70" above pres. road.
- 2+65 ♀ Proposed Culvert. Creek Crossing.
- 5+30 ♀ " " " " Crossing to left bank of stream.
- 12+00 Alignment changed from old road
- 16+65 Proposed Culvert new stream xing Crossing over to island.
- 17+45 Back on old location on island.
- 22+00 Sand deposit right channel starts.
- 25+00 v v Left v
- 27+00 End of island + beginning of wide channel deposit.

6/17/21

Underwood Truck = 8.0

Hemme " = 9.0

Hoist on Truck is always higher
than Cab-

6/24/21
Fisher
Kingston

22

Top of Pipe
Top of water. 8.40
160' upstream length of pipe - - 8.90

260' - Bottom of conduit 8.4

7/8/71

Bob
Fisher

Sand Hauling Road.
L. #8 Crusher = 0+00

Begin Grade

Sta 4 = 5' South of North Line Garage.

6+50 - Garbage Box

9+15 - Boulder at sharp Turn.

11+60 Horseshoe Turn at oil barrels

16+00 = main Road at Junction

19+80 = Rock Point at turn into spring Canyon

34+75 = E Spring Canyon - Pipe at Spring

38+40 Junction main Rd & Campo Branch

42+51 = W. Line Geo. Hendrix House

44+80 = E Line Kuykendalls House

47 = E Line Dam South

48 = E " " north

50+35 = E Drain - north of Kuykendalls.

56+58 E Conduit on Bridge

60 Beginning Fill South Side Wilson Creek Crossing

70+20 Timber Dam across Reservoir

77 = Junction Pine Creek Road + Campo Road, West Side

77+70 E Bridge over Pine Creek

80+55 Junction New Pine Cr. Road + Campo Rd. East Side

85+15 E Pine Creek Flume

87+80 E Culvert #1

90+47 E " #2

101+70 E " #3

105+00 Beginning Sand Pit

7/8/21
 Sub
 Fishol

Levels Road from Wilson
 Creek South - Hand Level.

24

Water Level Reservoir	12.0	1506.5		149402	41+85	13.0	61.4	5.6	16484
60+00 Center Rd.			11.00	1505.0 95.0	40+90	13.0	69.8	5.6	558
59	13.00	1513.4 18.3	5.6	1500.4 08.0	39+90	13.0	76.2	5.6	632
58+24	10.3	181	5.6	07.8	39+00			5.6	70.6
57+76			5.6	12.5	38+40	Trenches - 5th Grade		2.3	1673.9
56+56 1/2 Bridge over Conduit	12.00	26.4	5.0	13.1 13.3					✓
55+55	13.00	33.5	5.6	20.5					
54+87	13.00	40.9	5.6	27.9					
54+3	13.00	48.3	5.6	35.3					
53+73	13.15	55.4	5.6	42.7					
53+00	13.00	62.8	5.6	49.8					
52+140	13.00	70.2	5.6	57.2					
51+70	13.00	77.6	5.6	64.6					
51+00	8.0	80.0	5.6	72.0					
50+35	13.0	87.4	5.6	74.4					
49+31	13.0	94.8	5.6	81.8					
48+55	13.0	102.2	5.6	89.2					
47+95	13.0	1609.6	5.6	96.6					
47+38	13.0	1617.0	5.6	1607.0					
46+32	13.0	1624.4	5.6	1611.4					
Flora Kuykendall's House			0.0	1624.0					1621
45+29	13.00	1631.8	5.6	1618.8					
44+34	13.0	1639.2	5.6	1626.2					
43+52	13.0	1646.6	5.6	1633.6					
42+78	13.0	1654.0	5.6	1641.0					

1654.0

1621

46

51

List of B M - continued - from page 71 -

Nail in Stump 10-340	1579.55
Nail Concrete joint End Iron Pipe sewer ¹⁰⁻⁴⁴⁷	1597.75
Nail Stump about 12-330	1570.88
Nail in Stump about 16-468	1573.90
Nail in Stump about 17-410	1550.96
Nail in Rock - 4' West of SW. Concrete Tower #1	1546.24
Nail in Rock 24-432	1525.75
Nail in Stump near B-30	1471.73

Reference Points

Nail in Rock	60-	
12-426.33	1587.33	62-
Nail in Rock	1588.35	64
12-437	1588.35	66
12-502.09	1600.80	68
14-436.26	1574.97	70
Nail in Rock about	1588.87	72
14-473	1588.87	74
^{Hv6}	1561.07	76
18-488	1561.07	78
^{Hv6}	1549.69	
20-504.89	1549.69	
^{Hv6}	1542.61	
22-497.40	1542.61	
24-505.41	1529.34	
26-709	1528.31	
^{Hv6} about	1510.42	
26-471	1510.42	
28-487	1503.81	
38-480.41	1477.56	
Nail about	1478.06	
38-482	1478.06	
^{MR} about	1476.69	
40-637.4	1476.69	
Nail about	1486.0	
42-624	1486.0	
42-420.12	1487.02	
42-434.02	1491.70	
about	1500.82	
44-6190	1500.82	
^{new BM}	37.79	
Nail in Stump	37.79	
52-468.4	32.83	
46-338	1481.42	
56		
58		

Reference Points.

Coordinate Points	Elevation	Coordinate Points	Elevation	Coordinate Points	Elevation
<u>"B" LINE 455.29</u>					
14	1578.62	58	1559.53	64	1588.49
16	1568.76	60	1568.41	66	1600.42
18	1557.81	62	1579.43	68	1614.82
20	1545.11	64	1588.64	70	1622.85
22	1534.73	66	1603.56	72	1633.30
24	1525.20	68	1617.48		
26	1503.85	70	1624.03	<u>"300" LINE</u>	
28	1488.45	74	1650.44	38	1474.66
30	1472.35			40	1480.30
32				42	1488.29
34		East Tangent		44	1496.84
		<u>325" LINE</u>			
36		60	1571.25	46	1507.33
38	1470.30	62	1582.59	48	1516.37
40	1473.85	64	1591.57	50	1524.46
42	1480.64	66	1602.58	52	1536.34
44	1490.41	68	1612.52	54	1540.42
46	1502.68	70	1623.02	56	1551.41
48	1512.78	72	1633.50	58	1560.76
50	1522.67			60	1571.50
52	1532.89				
54	1545.20	East Tangent		<u>250 LINE</u>	
"B" Line East Tangent	450	<u>275 LINE</u>		38	
56	1550.34	60	1567.79	40	
		62	1579.68		

Coordinate Points	Elevation	Coordinate Points	Elevation	Coordinate Points	Elevation
<u>250 Line</u>					
10-442	1596.58	40-414.53	1482.94		
42	12-315	1561.72	42-336.6	1488.18	
44	12-437	1588.34	42-412.67	1486.04	
46	14-319	1551.84	42-434.22	1491.70	
48	14-350.42	1556.70	44-329.39	1500.86	
50	14-417.92	1574.98	44-414.49	1491.53	
52	16-309.0	1539.58	46-432.22	1509.72	
54	16-446.17	1567.78	46-414.04	1503.70	
56	18-303	1529.40			
58	20-312	1515.59	<u>"P" LINE</u>		
60	1568.21	21-0	00-301	1618.65	
			0+00		
		22-321.9	1511.09	0+32	1627.85
<u>Miscellaneous</u>					
		24-321.2	1502.77	0+89.08	1650.00
00-330	1626.16	26-366	1491.72	2+00	1686.21
00-429	1630.55	27-357	1479.60	Iron pins in Bank	
		28-300	1460.90	2+08-5.5	1696.61
				stump on Line	
		28-325	1463.74	1+85.0	1679.42
		28-350	1471.55	2+33.6	1703.13
4-350	1603.26	28-375	1471.34	<u>- West -</u>	
4-455	1615.92	28-500		<u>Cableway Line</u>	
6		28-600		00-446.6	
				0+00	1631.70
6-480	1615.35	Top of Wall	1467.41	1+00	1675.60
8		34-274.14	1467.05	1+75	1707.05
8-450	1601.85	38-350	1467.73	2+00	1715.89
10-315	1573.77	38-425	1467.45	2+50	1739.25

LIST OF B.Ms.

Harris B.M.	Iron Pin set into top of Boulder 60'	
U.S.G.S.	South of Old Blacksmith Shop Barnett Datum	1626.33
Top of Wall - Dam		1467.41
Old Engine Base W.S. Canyon		1467.38
Nail in Stump C-52-C54 - 15' North		1534.73
Hub - about C 7+60 with With		1649.80
Iron Pin Set in Boulder 2+08 P Line 5's		1696.61
Nail in Rock West Cableway 30' N of 3+00		1764.33

See page 69

See page 69

For continued List of B.M.

Reference Points			
Coordinate Points	Elevation	Coordinate Points	Elevation
Cableway Line		2+38.73	1649.52
West		3+00	1685.42
3+00	1760.48	3+29.73	1704.52
B.M. 30' N		3+76.33	1739.82
3+00	1764.33	4+25	1766.43

Cableway Line
East

{ 50 - 380.3	1524.51
0+00	
1+00	1561.51
2+00	1618.81

DIRECTIONS FOR USE OF TABLES

TABLE No. 1.

Distance of slope stake from side or shoulder stake for any width roadway, slope 1 1/2 to 1. If ground is nearly level, the cut or fill at side stake is located by the double entry method in left column and top row. The number in body of table in same row and column gives distance level estimate the difference in elevation between the side stake and slope stake by this amount if cut, elevate if fill. Add this amount to cut, subtract if fill. Set up rod at side stake and sight should cut target. If it does not make the slight adjustment necessary.

TABLE No. 2.

To find Tangent and External for curve of any other degree, divide by degree of curve and add correction found in column of corrections. Degree of curve with a given I may be found by dividing tangent (or external), opposite I by given tangent (or external). The distance from a point on the tangent to the curve is very nearly the square of the tangent length divided by twice the radius.

