

12

Final Topography

BARRETT DAM
LEVEL BOOK

380

W129

MICROFILMED

Page 70 = Contractor Jones

Index

	Page	
At B-38 - Contour 1465-60	1	
Auxil A from B-38 - 1455-50	1	
Auxil B from B-38 - 1455-50-45	2	
Auxil Pt from C-28 - 1470-65-60	2	
At C 28 - 1455-50-45	3	
At C 31 - Contour 1440 - Elev Bottom Cliff Trench	4	
At C 31 - " 1440 - 35-30	5	
At 40-391 ²⁸ 1445-50-55	5-6	
check Topog - Auxil A+B from B-38	7	
At 34 - 425 ⁵⁴ - 1444	8	
Location Groat Holes - 123		
At 28-340 ⁰¹ - 1460-1455	8-9	
At Auxil Point from 28-340 ⁰¹ 1450-1445	9	
Location Groat Holes - 45-6	10	
At Auxil Point from "B" 26 - 1450-05-10-15	10-11	
Auxil Point #1 from B-28-1485-1490-1495	11-12	
Auxil Point #2 from B-28 - 1480-1475	12	
Auxil Point #3 from B-28-1460-65-70	13	
Auxil Point #4 from B-28-1450-55-60-65	13-14	
Auxil Point from 42-420 ¹² - 1470-75-80-85	15	
At 40-391 ²⁸ - 1445-50-55-60	17	
At C-44 - 1470-75	17	
At Auxil Pt from C 44 1460-65	18	
At C 46 - 1480-85	18	
At 44-422 1485-90-95	19	
At ⁴² 420 ¹² 1480	19	
At Auxil Pt from C 46 - 149	20	

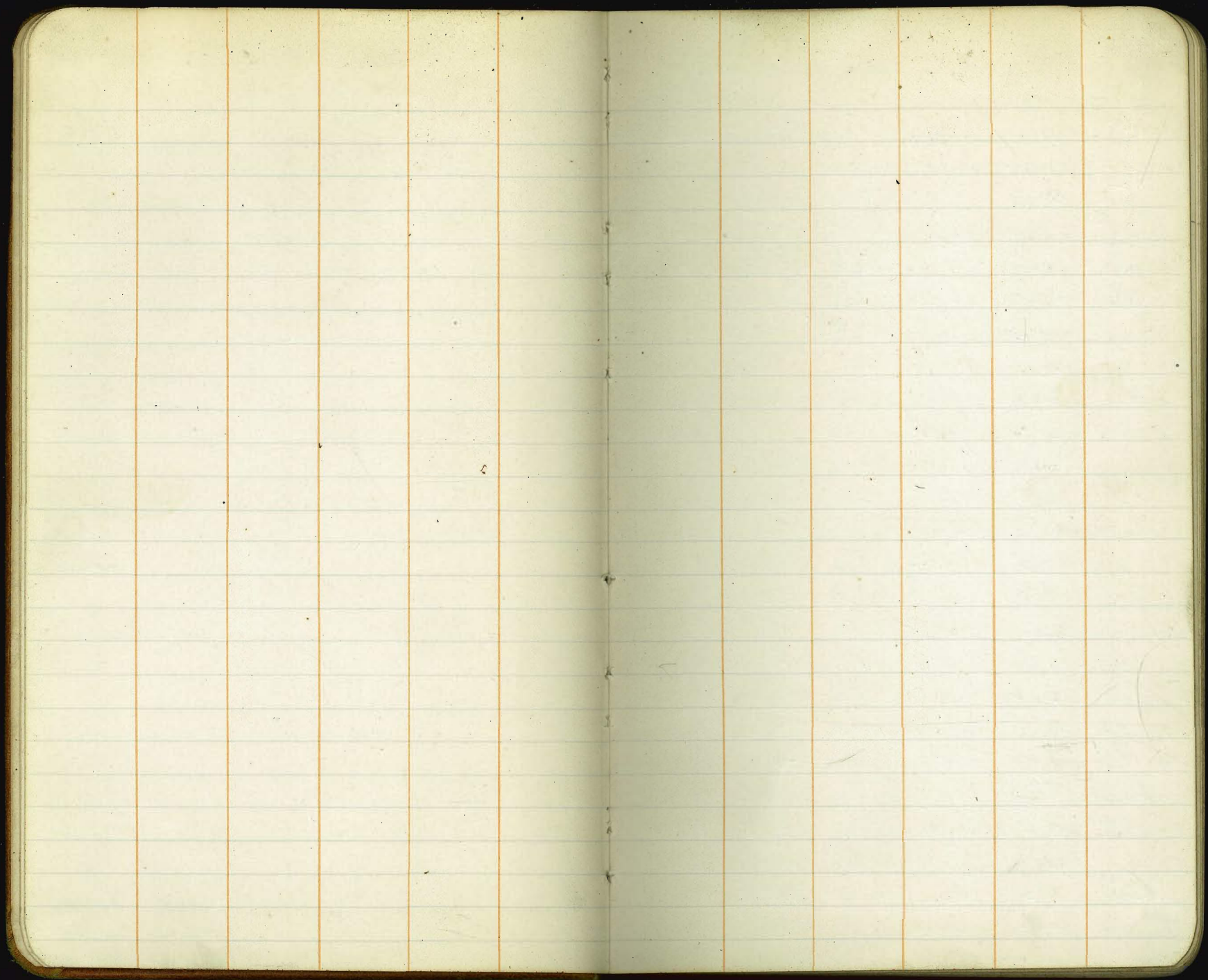
Index	Page
At 46-338 - 1475-80-85	21
At Auxil Pt from 34-274-141465-70-75	22
At 38-250 - 1490-85-90	23
At 28-340 ^{el} 1455-60-65	23-24
At Auxil A" from B-28-1470-75-80	24-25
At Auxil from 28-340 ^{el} 1470-75	25-
At 28-340 ^{el} - 1465	26
At Auxil Point from 22-272 ⁷⁵ - 1480-85-90 ⁹⁵	26
At 18-303 - 1520-25-30	27
At Auxil C ³ from 28-340 ^{el} 1445	28
At Concrete Topog	28 + 29
At 28-340 ^{el} Contour 1460	29-30
At Auxil Pt from 28-340 ^{el} - 1450-1445	30-31
At Auxil Pt B" from 28-340 ^{el} 1440-1460	33
At Auxil Pt from 28-340 ^{el} 1470	34
At Auxil A from 28-340 ^{el} 1445-1450	35
At Auxil B" from 28-340 ^{el} 1444	35
At 18-36540 - 1520-25-30	36
At Auxil A" from 18-365-40 - 1515	36
At Auxil B" from 18-365-40 1495-1500-1525	37-38
At 40-391 ²⁸ - 1445-50-55	39
At Auxil A" from 38-425-1450-1455	39-40
At Auxil B" from 38-425-1445-40-35	40-41
At Auxil C" from 38-425 - 1430-35	42
At Auxil Pt from 28-340 ^{el} 1475-80	43
At Auxil C" from 18-365,40 1505-10-15	43

Note - Auxil Pt to be used for downstream
— Excav —

Auxil Pt on Concrete Base West side Canyon	44
Auxil from C 44 - 1450-55-60	45
At Auxil B" from 38-425 - 1440-45	47
At Auxil D" from 38-425 - 1428-30-35	48
At Auxil D" from 38-425 ^{Elev. Bottom.} 1425 - Excav.	49
Concrete Topog	50
Location Contract Joint + Well	
July Est. Concrete - July -	51
Concrete Topog Est. July	
Concrete "Topog" Est. July	52
Concrete Topog At-C 31 - Fillet -	53
" " At 31-430 - Fillet	53
" " At 28-340 ^{el} Forms -	54
At-31-430 - Fillet + Form -	54
At 30-431 ²³ Fillet	54
At Auxil Pt from 31-430 - Fillet - V.S. Face	55
AIC 34 - Fillet.	56
At Auxil from 28-340 ^{el} Fillet + Forms	57
At Auxil from C 42 Forms	57
At C-36 - Fillet + Form	58
Check Location of Forms	59
Location of Forms - Concrete Topog	60
	61
	62
At Auxil Pt from 30-282 ⁴⁰ ^{Final Contour} 1460	63
At 30-282-46 - Final Contours 1460-65-70	64

Page

71



6/28-20

Bub.
Fisher
Mixer
H¹ = 1474.65

Final Topog

Occupy B38 - Sight 38-250 for 00 Az Pt.

9.65		4.35	1474.65	1470.30	
Rod	1465		Rod	1465	
1465	36.5 ✓ 0°-00 ✓	36.5 ✓	77.3 ✓	78.15 ✓	
65	37. ✓ 1°-30 ✓	1465	78.0 ✓	74-30 ✓	
65	36.0 ✓ 4°-35 ✓	65	84.5 ✓	70-30 ✓	
"	34.6 ✓ 12-45 ✓	65	85.5 ✓	67-15 ✓	
"	33.5 ✓ 12-30 ✓	"	90.5 ✓	65-30 ✓	
"	24.9 ✓ 25-30 ✓	"	91.5 ✓	66°-0 ✓	
"	25.0 ✓ 36-0 ✓	"	96.5 ✓	63-40 ✓	
"	24.6 ✓ 41-45 ✓				
"	21.7 ✓ 44-15 ✓	Rod 14.65	1460		
"	22.5 ✓ 48-15 ✓	1460	92.0 ✓	64°-45 ✓	
"	17.0 ✓ 53-45 ✓	60	87.0 ✓	60-30 ✓	
"	22.5 ✓ 82-35 ✓	60	83.9 ✓	62-50 ✓	
"	28.0 ✓ 92-45 ✓	"	67.0 ✓	78-10 ✓	
"	31.9 ✓ 109-0 ✓	"	59.5 ✓	84-45 ✓	
"	40.1 ✓ 111-0 ✓	"	53.9 ✓	94-30 ✓	
"	56.5 ✓ 101-30 ✓	"	36.4 ✓	100-40 ✓	
"	55.8 ✓ 94-0 ✓	"	31.0 ✓	91-30 ✓	
Direction Cor Flume + Dam	69.5 ✓ 110-30 ✓	"	32.5 ✓	90-15 ✓	
Direction S End Dam	27.1 ✓ 144-0 ✓	"	29.5 ✓	80-0 ✓	
	gap-	"	29.0 ✓	67-0 ✓	
N Side Flume	75.5 ✓ 106-0 ✓	"	23.5 ✓	39-50 ✓	
Mid Point Flume	73.0 ✓	"	31.5 ✓	33-40 ✓	
	72.5 ✓ 81.45 ✓	"			

Final Topog

(Auxil Point from B-38)

Rod 7.3

(1455)

Rod 14.65	- 1460 -	1455	6.5 ✓	126-45 ✓
	38.5 ✓ 30-0 ✓	"	12.1 ✓	134-30 ✓
	36.5 ✓ 20-30 ✓	"	21.3 ✓	127-0 ✓
	33.5 ✓ 13-45 ✓	"	31.5 ✓	120-15 ✓
Auxil Pt.	42.72 93°	"	36.7 ✓	113-0 ✓
	Set on Auxil ^A from B38 Sight	"	39.9 ✓	107-10 ✓
	B-38 for Zero Az Pt. E160.60	"	44.9 ✓	110-15 ✓
	1.66R H1=68.26	"	44.3 ✓	115-0 ✓
B-38 14.65	1474.65 1470-30	"	47.3 ✓	119-40 ✓
	- 14.05 60.60	"	51.3 ✓	119-10 ✓
	Occupy - Auxil Point	"	54.9 ✓	121-10 ✓
	from B-38 - Sight			
B-38 - for 00 Az - Right.	R14.3	1450	- 1450 -	
1.66	1462.26 60-60	"	54.9 ✓	121-10 ✓
Rod 7.3	1455	"	52.0 ✓	119-0 ✓
		"	49.3 ✓	105-15 ✓
1455	40.1 ✓ 62-45 ✓	"	40.5 ✓	99-0 ✓
"	33.3 ✓ 58-30 ✓	"	37.5 ✓	102-15 ✓
"	21.7 ✓ 59-10 ✓	"	30.5 ✓	105-30 ✓
"	15.1 ✓ 49-40 ✓	"	26.8 ✓	103-30 ✓
"	13.7 ✓ 53-30 ✓	"	23.9 ✓	108-20 ✓
"	9.7 ✓ 37-15 ✓	"	22.8 ✓	115-0 ✓
"	6.3 ✓ 49-30 ✓	"	15.3 ✓	113-45 ✓
"	7.8 ✓ 54-45 ✓	(?)	9.4 ✓	97-15 ✓
"	10.7 ✓ 109-20 ✓	"	15.6 ✓	74-40 ✓

#1 1462.26

H1=5812
At Auxil B Sight Auxil A
for 00 Az RT
+412 H1=5812 5400

2

R 12.3

(Auxil Point from B-38)
H1 1462.26

At Auxil Pt from Auxil

1450

26.5 ✓ 77-40 ✓ Rod +4.12 58.12 5400

1445 16.5 ✓ 262-10 ✓

"

28.3 ✓ 81.0 ✓ 1445 17.0 ✓ 281.50 ✓

1445 19.0 ✓ 255-40 ✓

"

31.5 ✓ 81.0 ✓ R 13.1
1445 17.0 ✓ 281.50 ✓

1445 20.9 ✓ 259-15 ✓

Sump SW Cr

-22.3 R E1 1440
130.0 ✓ 84-15 ✓ 1445 13.5 ✓ 276.45 ✓

Top wier
Wall 8m 487 72.28

1467.41 ✓

" NW Cr

32.8 ✓ 90-10 ✓ 1445 13.5 ✓ 276.45 ✓

TP Rock

14.41 57.87

" NE Cr

26.0 ✓ 97-0 ✓ 45+50 12.8 ✓ 284.75 ✓

Occurly C-28 - Sight

Auxil from C-28

" SE Cr

24.1 ✓ 91-00 ✓ 1450 12.5 ✓ 284.75 ✓

C46 - for 00 - Az Right

14.55

1450

1450 45+50 11.5 ✓ 285.45 ✓

Auxil Pt 2541, 192° 37'

R 2.3

1465 26.0 ✓ 327.45 ✓

"

38.5 ✓ 71-20 ✓ 1450 11.5 ✓ 285.45 ✓

H1723 At Auxil from C28 Sight 1467.41

" 19.5 ✓ 321.0 ✓

"

38.8 ✓ 67-30 ✓ 45+50 10.5 ✓ 277.45 ✓

8m +487 1472.28 1467.41

" 17.4 ✓ 315-30 ✓

"

41.8 ✓ 68-0 ✓ 1450 11.5 ✓ 285.45 ✓

R 2.3

" 9.2 ✓ 313-15 ✓

Auxil B

31.8 ✓ 64° 26' 1445 9.0 ✓ 267-30 ✓

1470 1470

" 5.7 ✓ 72-15 ✓

P.T.

-8.26 E1 1454.00 45+50 11.1 ✓ 225-10 ✓

70 9.4 ✓ 99.45 ✓

" 10.7 ✓ 85-45 ✓

+417 H1 1458.17

H1 1458.17

1454.00 45+50 11.3 ✓ 214-10 ✓

70 8.3 ✓ 123-20 ✓

At Auxil B Sight Auxil A for
00 Az RT

1450 11.3 ✓ 214-10 ✓

70 13.9 ✓ 167-50 ✓

Rod 12.3 1460

R = 13.2

1450 13.5 ✓ 206-15 ✓

70+75 10.7 ✓ 191-0 ✓

1460 13.6 ✓ 71-0 ✓

1445

1445 14.7 ✓ 195-40 ✓

70+75 7.1 ✓ 242-0 ✓

" 11.1 ✓ 67-15 ✓

"

9.3 ✓ 291-30 ✓ 1445 14.0 ✓ 162-10 ✓

1470 8.3 ✓ 285-15 ✓

" 18.0 ✓ 325-45 ✓

"

9.7 ✓ 300-45 ✓ 1445 19.3 ✓ 163-0 ✓

1470 15.0 ✓ 306-0 ✓

" 18.8 ✓ 331-0 ✓

"

17.0
+6.5 ✓ 321-45 ✓ gap -

1470 29.0 ✓ 322-15 ✓

" 21.8 ✓ 331-0 ✓

"

19.3 ✓ 301-10 ✓ 1445 14.2 ✓ 265 ✓

1470 29.0 ✓ 322-15 ✓

" 23.8 ✓ 334-45 ✓

"

16.5 ✓ 295-30 ✓ " 15.2 ✓ 259-30 ✓

H1 7228

At Avail Pt from
C-28

R 12.28
60+65 30.0 328-301

R 4.2
1450 30.0 317-154

T.P. Rock
+0.52 58.39 57.87

50 29.4 319-454

C-28 917 49.22

50 22.8 311-154

704.79 H1 5420

50 14.5 303-404

50 12.0 298-454

50 10.0 302-154

H1=498
H1=5420 occupy C28-Sight

50 8.8 319-104

C-46 for 00 - Az Right

50 3.3 318-154

C28 +498 5420 49.22

50 3.2 305-04

50 2.5 197-454

50 4.7 164-454

50 4.3 95-204

1455 22.6 151-154

50 7.0 106-404

55 17.1 164-304

50 12.0 135-454

55 10.8 177-304

50 21.5 134-04

55 11.8 180-404

50 25.1 92-304

55 7.0 233-504

50 35.0 76-454

55 7.3 270-04

50 46.0 67-304

55 14.0 284-04

Red 1455

55 15.3 297-404

1455 46.9 68-04

55 23.0 311-154

55 38.2 76-04

55 31.4 316-444

55 34.9 90-454

⁴⁹⁸
H1 5420

At C28

R+0.8
1455

31.7 84-154

34.3 96-154

23.3 108-204

9.2 R
1445

52.0 40-154

45

44.5 48-454

45

38.2 54-304

45

32.9 59-454

45

33.3 64-04

45

28.0 69-454

45

29.2 74-454

"

32.1 78-04

"

24.8 90-454

"

21.2 115-454

"

20.1 120-454

"

16.1 124-04

"

13.2 116-104

"

11.2 117-104

"

7.5 71-04

"

11.5 22-154

"

10.0 73-04

"

11.9 344-304

H1=5420

At C28

R 9.2
1445

17.1 336-454

" 13.1 308-454

" 17.5 308-304

" 24.9 316-404

" 27.7 321-304

" 32.1 320-04

" 32.2 323-454

" 34.6 322-454

" 38.7 323-454

" 41.0 326-404

connect them up

6/29/20

Bub
Fisher
Mixer

HI = 54.01

Occupy C-28 Sight

C-46 for 0-0 Az Right R140
1440 21.6 100-46X

Red +4.79 54.01 C28 49.22 1440 18.7 65-15X

40 26.0 48-15X

40 31.3 33-0X

40 35.8 21-30X

R140 1440 48.5 330-15X 40 41.2 27-15X

" 45.7 331-15X 40 47.0 28-15X

" 45.3 329-15X 40 51.0 29-15X

" 41.3 328-15X TP Rock red -15.43 El 38.58

" 40.3 327-50 Deflections for 400-Radius

" 37.9 330-30 c29 10' 12-10

" 36.4 337-0 c30 11-27

" 34.0 343-0 c31 30 10-44

" 18.4 341-0 c32 40 10-01

" 17.7 8-15X HI = 42.41

" 15.3 22-45X Occupy C-31 Sight

" 11.6 30-30X C-46 for 00 Az Right

" 10.8 60-45X

" 10.3 78-30X Red +3.83 42.41 38.58

" 12.5 90-0X Elev Bottom of off

" 20.3 117-15X Trench

" 20.5 110-45X El. 38.3 Dist 43.6 145-0

El. 37.3 51 40.6 141-30

#I. 42.4

37.2

52

35.9

65

36.0

6.4

35.3

7.1

35.0

7.4

33.9

8.8

32.4

10.0

28.3

7.1

38.3

14.1

27.9

14.5

27.4

15.0

25.3

14.1

30.0

12.4

30.2

11.7

R7.4 1435

1435

"

"

"

"

"

"

"

At C31 - Sight C-46

for 00 Az Rt.

HI = 42.41

R7.4

1435

37.1

33.4

25.0

17.4

11.1

9.7

10.5

10.2

16.0

21.3

26.3

33.4

42.0

48.0

"

"

"

"

"

"

"

"

"

"

"

"

"

139.0

135.30

130.40

127.0

106.30

54.15

48.80

36.30

5-20

0-15

356-30

351-30

349-30

346-30

"

"

"

"

"

"

"

"

"

"

"

"

"

4.2

5.3

6.3

7.7

11.1

12.6

13.4

19.6

19.9

25.2

29.3

30.1

30.9

35.6

37.1

38.5

37.7

40.1

42.2

44.3

50.4

50.5

"

"

"

"

"

11-0

23-30

54-15

82-0

106-3

83-15

61-30

63-30

55-0

59-30

60-45

55-15

48-45

50-15

46-45

45-45

40-20

35-30

30-15

25-0

21-45

15-45

"

"

"

"

"

H1 = 4241

At C-31 Sight C-46
for 00 Az Rt

Rad			Rad 2.4	14 35-		
12.4	-	1430	1435	52.3	340-0	✓
1430	38.4	7-30	1435	55.4	342-0	✓
1430	31.5	9-45	"	56.6	346-45	✓
1430	25.4	6-40	"	60.0	346-50	✓
"	21.8	10-10	"	60.4	347-45	✓
"	24.3	19-0	"	59.3	350-20	✓
"	24.4	23-10	"	58.6	357-0	✓
"	21.0	25-30	"	59.4	359-30	✓
"	17.9	22-0	"	57.8	0-45	✓
"	13.6	48-45	"	52.5	7-15	✓
"	11.3	46-30	"	54.5	8-10	✓
"	9.0	350-20	"	51.0	13-45	✓
"	13.3	347-15	"	connect them up		
"	14.7	351-15	Rad 2.4	- 1440 -		
"	16.9	345-15	1440	38.2	57-0	✓
"	20.3	354-45	1440	40.8	50-20	✓
"	34.6	349-30	1440	41.1	41-40	✓
"	36.6	347-20	1440	44-0	31-0	✓
"	41.4	349-45	"	46.0	29-10	✓
"	32.0	357-30	"	49.0	27-45	✓
"	40.6	356-20	"	50.9	23-10	✓
"	41.2	359-40	"	53.6	19-10	✓
"	38.4	2-45	"	52.5	16-10	✓
	connect up		"	61-0	11-15	✓

At C31 Sight C46
for 00 Az Rt.

H1 = 4241

Rad						
1440	62.8	8-20	1440	64.9	4-10	✓
"	61.5	0-40	"	60.0	357-20	✓
"	70.4	351-15	"	76.9	348-45	✓
"	74.4	347-15	"	72.8	345-30	✓
Vertical 10'	68.7	346-45	1440	63.2	344-30	✓
"	59.2	341-0	"	56.0	340-0	✓
"	54.9	338-45	"	50.6	338-15	✓
"	46.9	336-30	"	43.7	331-0	✓
connect up			"	connect up		
"	16.5	97-10	"	20.2	94-20	✓
"	20.7	100-30	"	20.7	100-30	✓
"	15.0	148-45	"	16.5	147-30	✓
"	19.3	141-20	"	19.3	141-20	✓
Vert 50 up	24.5	135-45	"	29.0	134-10	✓
Vert 50 up	29.0	134-10	"	33.6	122-30	✓
connect up			"	connect up		

occupy C 40 Sight
Center for 00 Az Rt.

40-391.28 8.72

H1 = 5816

occupy 40-391.28
Sight Center for 00

Az Right

18.94 58.16 49.22

R13.2

1445 34.3 65.20

1445 28.0 66.30

1445 26.8 63.45

1445 22.0 62.30

" 18.5 56.15

" 12.7 54.30

" 10.7 66.10

" 8.6 56.15

" 9.0 83.45

" 10.9 93.45

" 16.5 97.10

" 20.2 94.20

" 20.7 100.30

" 15.0 148.45

" 16.5 147.30

" 19.3 141.20

Vert 50 up 24.5 135.45

Vert 50 up 29.0 134.10

33.6 122.30

connect up

H₁ = 58¹⁶ At 40-39/28

R82			R37		
			1455	14.0	20-15
			1455	12.6	4-45
1450	35.5	126-40	"	7.8	315-10
1450	34.4	131-20	"	5.1	297-30
1450	31.8	132-30	"	7.0	286-45
"	20.5	143-10	"	6.2	276-0
"	22.5	143-10	"	2.8	242-30
"	18.3	146-0	"	10.1	228-15
"	18.1	155-40	"	11.2	207-10
"	9.5	175-20	"	10.1	182-10
"	7.0	110-30	"	14.2	154-15
"	6.5	97-45			
"	4.2	30-0			
"	7.6	27-40			
"	10.0	39-20			
"	12.7	30-10			
"	17.4	50-30			
"	31.3	59-45			
"	39.3	59-45			

R37		
1455	30.9	54-30
"	24.2	53-40
"	17.0	27-45

6/30/20-
Fisher
Mixer.

Check Topog 6

Check on 1450 Contour:
AT Auxil A from B-38 - Sight
B-38 for Zero - Az Right

Auxil B	8.17	62.17	54.00
Rid 8.17			
HZ. 62.2			
1450	31.5	81-0	
"	28.7	92-0	
"	27.7	75-0	
"	22.8	75-30	
"	14.4	81-10	
"	19.3	90-45	
"	18.8	97-15	
"	15.3	88-45	
"	12.3	106-15	
"	13.7	113-0	
"	25.0	105-10	
TP.			8.47 53.70

see Page

7/3/20

Bob
Fisher
Mixer

Check Topog

HI 74.86

At B 38 Sight Center
for 00 Az Rt

A' 42.72 93°-0

BM. 3.13 74.86 1471.73

Rock
T.P. 1.96 62.53 14.29 60.57T.P. S.E. of
BM. Sump 9.55 52.98

Auxil B' 8.56 53.97

Auxil B' 31.92 64°26'

HI=58.35 At Auxil B Sight Auxil A for 00 Az Rt

5.37 58.35 52.98

Sump
S.E. Cor 11.67 290-40 ✓ Top 8.9
Bot 15.8 42.6S.W. Cor 14.6 286-50 ✓ Top 8.8
Bot 17.3 41.1N.W. Cor 17.4 306-30 ✓ Top 8.5
Bot 16.6 41.8N.E. Cor 15.0 314-35 ✓ Top 8.6
Bot 16.6 41.8Rod 34
1455 11.3 159-30 ✓

" 8.6 166-15 ✓

" 5.5 149-15 ✓

" 4.6 90-15 ✓

Rod 84
1450 12.0 158-15 ✓

" 11.5 168-45 ✓

" 12.8 179-15 ✓

HI=58.35 Check Topog

7

Rod 84

At Auxil B Sight Auxil A
for 00 Az Rt

1450 11.1 193-0 ✓ Rod 8.4

" 9.1 198-15 ✓ 1450 32.5 268-10 ✓

" 8.9 225-15 ✓ 1450 34.1 270-20 ✓

" 6.5 239-35 ✓ 1450 39.1 269-20 ✓

" 7.3 270-0 ✓ Rod 13.4

" 8.1 270-0 ✓

" 7.6 279-30 ✓ 1445 31.6 266-50 ✓

" 9.6 296-15 ✓ " 27.2 263-50 ✓

" 8.1 306-50 ✓ " 25.2 264.0 ✓

" 17.3 346-0 ✓ " 21.3 260-50 ✓

" 17.3 328-20 ✓ " 20.0 255-45 ✓

" 19.2 329-10 ✓ " 19.0 260-15 ✓

" 18.9 337-35 ✓ " 16.8 264-45 ✓

" 21.1 345-30 ✓ " 15.0 261-20 ✓

" 23.3 342-30 ✓ " 14.4 266-30 ✓

" 23.5 322-20 ✓ " 14.1 273.45 ✓

" 23.0 312-15 ✓ " 15.7 280-0 ✓

" 20.5 309-15 ✓ " 16.9 291.30 ✓

" 20.2 308-15 ✓ " 18.7 306-45 ✓

" 21.5 280-30 ✓ " 17.1 319-20 ✓

" 23.4 265-30 ✓ " 15.2 323-45 ✓

" 24.7 264-30 ✓ " 9.5 305-30 ✓

" 25.3 265-40 ✓ " 10.3 297-0 ✓

" 27.1 268-35 ✓ " 9.8 291-30 ✓

" 29.0 267-40 ✓ " 10.2 265-30 ✓

7/3/20

AT Auxil 'B'
HI 58.4

Rod 134

14.45	11.5	238-0 ✓
"	10.2	214-0 ✓
"	13.0	207-15 ✓
14.7	193-15 ✓	
14.3	166-15 ✓	
15.5	161-0 ✓	
0		

HI 53.8 AT 34-425 #4 Sight Center for 00 Az Rt.

52' SE Sump
B.M.

0.78 53.74 1452.98

Rod 138

14.40	27.5	298-50 ✓	15.5	315-0 ✓
	26.0	292.45 ✓	14.8	319-45 ✓
	24.2	303-20 ✓	12.1	320-50 ✓
	24.0	303.0 ✓	8.3	335-40 ✓
	23.2	303.0 ✓	4.0	345-50 ✓
	23.3	304.45 ✓	3.9	29-0 ✓
	20.6	312-35 ✓	6.1	21-35 ✓
	20.2	311-20 ✓	8.3	19-30 ✓
	19.1	309-45 ✓	11.6	19-30 ✓
	18.1	302-45 ✓	11.4	31-30 ✓

Plotted 7/3/20

HI 53.8

Rod 138

11.1 39-0

15.9 50-30

check - 18.1 57-25

7/3/20

Sub
Finer
MixtureHI 44.51 Location of Grout Holes -
Occ by C-30 - Sight C46 for 00 Az Rt

TP Rock

5.93 49.51

38.58

#1 27.3 131-39

#2 11.1 70-44

#3 26.7 8-08

8.2	36.3 ✓
Depth 21"	15.3 ✓
9.4	35.1 ✓
Depth 21"	5.4 ✓
15.3	29.2 ✓

HI 66.41

28-340.01
Occupy 28-345.96 - Sight Center 0-0 Az-Rt

B.M.

HI 66.4

13.43 66.41

1452.98

Rod 6.4

Rod 6.4

14.60 6.8 39-35 14.60 16.0 195-40 ✓

" 5.7 347-15 " 16.8 193-00 ✓

" 3.4 341.0 ✓ " 15.2 189-35 ✓

" 5.0 263-45 " 16.4 185-35 ✓

" 8.3 260-15 " 17.7 187-15 ✓

" 8.7 233-40 " 21.3 177-50 ✓

" 9.8 207-50 " 21.8 173-0 ✓

" 14.0 206-35 " 25.3 169-30 ✓

Plotted 7/3/20

8

HI 6641. At ~~28-35996~~ ²⁸⁻³⁴⁰⁰¹ 7/3/20

Rod 64
 1460 23.7 146-35 ✓
 " 18.7 138-45 ✓
 " 18.8 130-0 ✓
 " 21.0 124-10 ✓
 " 26.0 125-30 ✓
 " 31.4 138-40 ✓
 " 32.9 146-10 ✓

Rod 11.4

1455 15.5 200-15 ✓
 " 12.9 232-45 ✓
 " 12.6 243-45 ✓
 " 15.5 270-0 ✓
 " 12.5 284-35 ✓
 " 14.1 294-15 ✓
 " 11.7 328-10 ✓
 " 10.1 338-45 ✓

Plotted 7/12/20

TP ²⁰ East of ~~28-35996~~ ³⁴⁰⁰¹ 12.79 53.62

Aux 1 Pt. 27.12 260°-0

Sight ~~28-35996~~ ³⁴⁰⁰¹ for zero Az Right.

HI 55.66 2.04 1455.66 745 3.62

Rod 5.7 19.0 313-0 ✓
 1450 9.3 301-30 ✓

HI 5566 At Auxil from ~~28-35996~~ ⁹ 28-34001

1450 12.8 273-10 ✓
 " 15.3 229-45 ✓
 " 7.9 210-45 ✓
 " 6.9 144-10 ✓
 " 6.0 85-45 ✓
 " 13.6 56-45 ✓
 " 13.6 45-45 ✓
 " 14.9 40-20 ✓
 " 18.8 38-10 ✓
 " 19.2 34-45 ✓
 " 26.5 43-0 ✓

Rod 10.7

1445 23.3 69-20 ✓
 " 20.9 73-45 ✓
 " 13.4 111-0 ✓
 " 22.0 148-10 ✓
 " 23.0 157-10 ✓
 #19.6 162-0 ✓
 15.5 163-40 ✓
 13.8 179-30 ✓
 20.0 210-30 ✓
 20.5 226-10 ✓
 #18.1 231-0 ✓

Plotted 7/12/20

7/7/20

Bob
Fisher
MixerGrout Hole #4
At C 31 - Sight C 46 for Zero Az Pt.

TP on Rock 356 42.14 38.58

Hole #4 44.3 50-58' 9.58 32.56

Depth - 21.0' 11.6

Platted 7/7/20

7/9/20

At C 31 - Sight C 46 - for 00

TP on Rock 369 42.27 38.58

Hole #5 40-18' 68.8 1.6 40.7

Hole #6

10' 7' ^{grout hole}
C 42
41
40.391

10

7/11/20

Bob
Fisher
Mixer

7.95 1503.80 1503.85

At B-26 Sight Center for Zero Az Pt.

Auxil Pt 17.0 38.17

#2 1514.17

At Auxil Pt Sight B-26 for Zero Az Right

B-26 10.32 1514.17 1503.85

Rod 142

1500 12.3 ✓ 19-0 ✓

" 10.6 ✓ 34-0 ✓

95-00 10.0 ✓ 65-50 ✓

1500 7.8 ✓ 123-20 ✓

1500 8.0 ✓ 123-0 ✓

95 9.2 ✓ 120-45 ✓

95-00 13.7 ✓ 143-30 ✓

90 16.7 ✓ 143-30 ✓

1500 25.8 ✓ 167-50 ✓

95 25.8 ✓ 167-45 ✓

95-00 33.1 ✓ 166-45 ✓

1500 39.0 ✓ 162-30 ✓

" 42.6 ✓ 166-30 ✓

" 44.0 ✓ 170-20 ✓

" 47.0 ✓ 169-15 ✓

" 53.1 ✓ 170-20 ✓

Platted 7/9/20

1514.2

At Auxil Pt from B26 sight

Rod 9.2

150.5	57.3 ✓ 56.8	172-10 ✓	gap	
"	57.3 ✓ ^{57.8}	173-45 ✓ 1510	32.7 ✓	189-50 ✓
"	48.8 ✓	170-15 ✓ "	30.3 ✓	185-40 ✓
"	47.8 ✓	170-0 ✓ "	30.0 ✓	182-15 ✓
"	45.6 ✓	171-0 ✓ "	33.3 ✓	179-00 ✓
"	43.8 ✓	170-40 ✓ "	34.2 ✓	180-30 ✓
"	38.5	171-30 ✓ "	39.8 ✓	176-0 ✓
"	36.2 ✓	174-0 ✓ "	42.0 ✓	174-15 ✓
"	33.3	170-0 ✓ "	45.3 ✓	174-0 ✓
"	25.0 ✓	176-10 ✓ "	46.8 ✓	170-45 ✓
"	20.0 ✓	172-0 ✓ "	49.1 ✓	170-30 ✓
"	18.1 ✓	172-45 ✓ "	51.5 ✓	174-0 ✓
"	10.0 ✓	165-30 ✓ "	51.3 ✓	175-30 ✓
"	7.5 ✓	145-15 ✓		
"	5.8 ✓	115-15 ✓	40.8	
"	7.5 ✓	69-20 ✓	1515	50.0 48.0 ✓
				48.0 ✓
				44.0 ✓
4.2				48.0 ✓
				44.0 ✓
1510	23	106.0 ✓		177-15 ✓
"	5.3 ✓	134-45 ✓		176-30 ✓
"	13.0 ✓	175-15 ✓		179-20 ✓
"	17.3 ✓	173-50 ✓		183-0 ✓
"	20.3 ✓	190-20 ✓		183-0 ✓
				187-20 ✓
				191-15 ✓
				197-20 ✓
				199-15 ✓

11

At B28 sight 28-4812 for 1802 Az Right

#1
Auxil Pt 19.95 52-26'#2
Auxil Pt 19.45 348-14'

At Auxil Pt #1 from B28 - Sight B28 for Zero Az Pt.

#3
HI 97.8

9.32 149 7.7 7 1488.45

Rod 2.8

At Auxil Pt #1 from B-28

1495	8.6	189-45 ✓		
"	11.7	184-0 ✓	Rod 7.8	
"	13.3	184-35 ✓	1490	4.8 54-45 ✓
"	16.2	180-10 ✓	1490	7.2 14-10 ✓
"	19.1	178-10 ✓	Rod 12.8	
"	24.1	175-20 ✓	1485	12.9 46-35 ✓
				19.2 72-0 ✓
				14.8 92-45 ✓
				13.0 102-0 ✓
				16.3 113-45 ✓
				17.2 126-45 ✓
1490	39.0	169-40 ✓		
"	37.3	172-35 ✓		
"	20.6	163-35 ✓		
"	13.5	161-0 ✓		
"	10.0	138-20 ✓	85-90	26.6 168-35 ✓
"	5.0	116-35 ✓	85	29.6 28.7 170-30 ✓
"	6.2	78-20 ✓	90	29.7 169-45 ✓

HI 151417

AT Auxil Pt #1 from B-28 - Sight B28 for 00-AZ RT

1485	40.6	168-20
1490	40.0	168-20
1485	38-0	168-0 ✓ (?)
1490	38-0	170-0 ✓ (?)

B-28-	0.34	1488.79	1488.45
Auxil #2		6.29	82.50

At Auxil #2 from B-28 - Sight B28 for 180-0 AZ RT.

Rod 5.1			82.50
HI 87.6	5.1	1487.60	1487.50

Rod 7.6
1480 47.0 73-40 ✓
47.5 49.5

AT Auxil #2 from B-28
Rod 7.6

1480	46.9	74-45 ✓	1480	14.5	59-0 ✓
"	41.5	77-45 ✓	1480	13.5	50-35 ✓
"	39.2	77-40 ✓	"	8.3	8-20 ✓
"	36.0	80-30 ✓	"	7.0	335-20 ✓
"	29.3	76-30 ✓	"	4.0	277-30 ✓
"	23.9	70-30 ✓	"	5.0	234-10 ✓
"	23.5	66-10 ✓			
"	19.3	60-35 ✓			

At Auxil Pt #2 from B28 - Sight B28 for 180 AZ - RT.

Auxil #2	5.1	97.6	82.50
Rod 5.1			
HI 87.6			
Rod 12.6	11.3	263-45 ✓	
1475	13.5	308-0 ✓	
"	12.0	343-40 ✓	
"	13.0	352-50 ✓	
"	16.1	6-45 ✓	
"	13.9	36-30 ✓	
"	17.8	48-30 ✓	
"	19.2	54-45 ✓	
"	23.8	57-15 ✓	
"	28.9	65-15 ✓	
"	30.7	67-30 ✓	
"	33.5	72-45 ✓	
"	41.5	73-0 ✓	
"	47.5	72-0 ✓	
"	46.5	61-50 ✓	

7/8/20

Sub
Fisher

Mixer.

At B 28 - Sight Center for Zero Az Right

Auxil Pt 28.35 324°-18

HI 78.76

Near B-30

B.M.

AT Auxil Pt from B-28 - Sight B-28 - Zero Az Pt.

7.03 1478.76 1471.73

Rod 88

Rod

1470	30.9	278-30	13.8		
"	27.3	277-30	14.65	12.6	145-30
"	24.0	267-10	"	10.1	166-45
"	20.9	260-30	"	8.8	171-40
"	19.0	253-10	"	12.3	210-0
"	16.5	247-45	"	16.1	226-45
"	13.5	242-15	"	12.5	240-15
"	13.5	232-25	"	20.3	251-10
"	11.0	238-30	"	22.0	252-15
"	7.1	229-20	"	23.0	256-15
"	7.1	221-10			
"	5.8	204-20	Rod 188		
"	8.1	173-20	14.60	23.1	254-0
"	7.1	148-10	"	27.5	249-15
"	9.9	112-30	"	19.8	244-25
"	13.7	80-10	"	18.1	228-15
"	19.8	80-20	"	17.7	221-0
				16.8	214-30
				16.9	211-0
				14.0	206-0

13

At B 38 - Sight Center for Zero Az Right

Auxil Pt. 33x18 26°-45'

#4

At Auxil Pt Sight B-38 for Zero - Az Rt.

TP. on Rock	5.76	1466.36	1460.60
rod 164			
		Rod 114	
1450	18.0	227-15	1455 26.9 96-10
	14.6	223-10	" 26.6 98-45
	14.2	209-0	" 22.2 93-0
	13.0	203-10	" 19.5 99-30
	11.4	205-0	" 18.9 103-20
	10.5	199-45	" 14.3 104-45
	8.6	200-30	" 12.2 103-0
	6.7	191-0	" 7.3 143-0
	7.6	175-15	" 6.7 156-0
	7.3	158-45	" 6.6 166-30
	9.7	139-35	" 7.2 177-45
	13.4	123-30	" 6.5 193-0
	13.1	116-0	" 9.5 205-0
	16.7	111-15	" 7.0 223-10
	19.3	107-30	" 7.5 240-30
	24.1	105-0	" 10.8 260-20
	25.4	102-30	

At Auxil Point from B-38 - Sight B-38 - Zero Az Pt.

Rod
HI 1466²

Rod-64		
1460	4.0	293-0
"	6.8	202-15 ✓
"	6.6	155-45 ✓
"	6.9	149-0 ✓
"	9.2	88-0 ✓
"	12.5	102-45 ✓
"	14.3	104-15 ✓
"	19.2	99-10 ✓
"	20.3	90-0 ✓

Rod 14

65-60		
1465	35.2	99-30 ✓
"	20.2	90-30 ✓
"	16.7	88-0 ✓
"	9.8	93-0 ✓
"	9.1	68-15 ✓
"	5.4	58-15 ✓

At 38-425 - Sight Center for Zero Az Pt.

HI 7364

B-38	3.34	1473.64	1470.30
38-425			4.64 1469.0
Rod 3.6			
1470	6.7	186-15 ✓	
"	3.0	235-30 ✓	
"	2.0	282-30 ✓	
"	5.8	333-50 ✓	
"	7.7	327-0 ✓	
"	9.3	330-0 ✓	
Top of Cliff			
70	11.3	333-0 ✓	
70	15.3	327-15 ✓	
"	20.8	326-15 ✓	
"	24.8	321-10 ✓	

7/9/20

At 42-420.12 Sight Center Zero Az Right.

Auxil Pt. 14.96 52°-27

42-420.12 27.6 89.78 1487.02

Auxil Pt. 8.86 80.92

Rod 4.88 At Auxil Pt Sight 42-420.12 for Zero Az Right.
HI 485.60

Auxil Pt 4.65 85.60 1470.92

Rod 15.6

1470 ✓ 13.2 195-30 Rod 10.6 1475 7.5 79-30 ✓

" 10.8 181-20 " 6.0 121-0 ✓

" 9.4 171-45 " 6.4 152-10 ✓

" 7.1 157-30 " 6.5 163-20 ✓

" 6.8 126-0 ✓ " 8.5 183-30 ✓

" 7.1 76-30 " 11.4 205-0 ✓

" 9.9 62-45 " 14.4 210-30 ✓

" 12.3 66-15 " 17.4 215-0 ✓

" 12.1 74-30

Rod 5.6

Rod 10.6 1480 13.0 217-0 ✓

1475 15.0 52-20 8.9 190-30 ✓

" 14.3 62-45 ✓ 7.8 226-30 ✓

" 12.0 58-30 ✓ 7.8 182-15 ✓

9.9 64-30 ✓ 7.9 164-45 ✓

HI 85.6

5.6 At Auxil. from 42-420.12

1480 3.8 130-30 ✓

" 4.4 75-10 ✓ 1485 17.5 37-30 ✓

" 2.1 47-20 ✓ " 13.9 34-45 ✓

" 2.9 26-30 ✓ " 14.1 22-40 ✓

" 4.9 50-45 ✓ " 11.8 27-30 ✓

" 5.4 58-45 ✓ " 9.7 43-15 ✓

" 8.1 57-15 ✓ " 8.6 30-50 ✓

" 8.4 49-40 ✓ " 8.7 14-30 ✓

" 11.5 50-30 ✓

" 14.2 57-30 ✓ " 7.7 6-30 ✓

" 14.7 45-0 ✓ " 9.9 335-45 ✓

" 15.2 41-0 ✓ " 10.0 339-15 ✓

" 15.9 40-0 ✓ " 9.4 317-30 ✓

" 17.8 37-0 ✓ " 11.1 294-0 ✓

" 22.6 47-45 ✓

" 25.2 46-45 ✓ 1485 RC 8.6 314-0 ✓

" 30.6 45-45 ✓ RC 9.1 297-0 ✓

" RC 8.2 276-45 ✓

" RC 6.0 260-0 ✓

" RC 3.9 262-0 ✓

" RC 3.0 290-0 ✓

" RC 4.0 317-0 ✓

" RC 20.8 40-0 ✓

" 23.0 35-30 ✓

" 21.1 31-30 ✓

15

7/9/20

Vind - See Page -

16

At - 44 - 422° Sight Center - Zero Az Right.

HI 763

42-4 2012

Rod 16.3

1480

14.6

6-15

1490

4.8

64-45

10.7

349-15

79

47-45

13.4

328-45

7.4

24-0

16.8

328-45

6.1

19-45

17.1

326-30

8.5

335-30

20.8

315-0

11.8

326-15

23.5

312-0

15.1

328-10

23.9

310-30

16.7

323-0

17.7

317-10

Rod 11.3

1485

23.9

307-15

23.3

312-30

23.8

318-45

90

310-40

23.1

313-45

22.5

304-45

21.4

305-35

Top of cliff 9' higher

16.9

325-35

Rod 1.3

15.6

327-15

1495

22.8

304-45

14.4

331-0

19.4

303-25

13.1

329-0

17.9

305-30

11.1

341-15

16.7

306-0

12.5

0000

15.9

311-40

12.5

11-0

13.5

308-00

12.8

17-10

12.8

318-30

1495

11.5

325-10

11.9

304-45

10.8

274-30

7.0

281-30

5.7

222-15

See page 19 for
Corrected Elev.

7/10/20

Bub
F. S. Dor

Final Topog

Maxter At 40-39/28S1/2 ht center for Zero Az Pt.

HI 57.9

50 SE Gr Sump
B.M. Top of Rock

4.95 57.93 52.98

Rod 12-9

144.5

vert 9.0

144.5

14.4

19.6

20.3

24.5

28.3

30.2

33.8

149.15

146.15

140.15

135.40

134.0

132.10

125.10

Rod
2.9

145.5

1460

+2.0

1460

1460

4.9

224.0

16.5

13.8

12.2

11.7

13.1

13.1

13.1

13.1

13.1

13.1

13.1

13.1

13.1

13.1

13.1

13.1

13.1

13.1

13.1

13.1

13.1

13.1

13.1

13.1

13.1

13.1

13.1

7/10/20

HI 1478.25

19

At C 44 - Sight C-250 for Zero Az Pt.

T.P. on Rock

3.81

1478.25

1474.44

Rod 8.3

1470

22.8

97-30 ✓

20.1

95-0 ✓

13.0

86-15 ✓

10.7

66-45 ✓

13.8

52-0 ✓

13.7

46-45 ✓

Rod 33

1475

30.3

355-10 ✓

28.9

350-0 ✓

26.5

344-10 ✓

9.4

317-30 ✓

9.3

281-10 ✓

5.9

251-10 ✓

7.7

215-10 ✓

6.1

175-35 ✓

10.7

125-30 ✓

17.7

127-30 ✓

Auxil Pt.

1648

732.57 -

on Rock

T.P.

12.80 1465.45

7/10/20

See Bottom Page (17)

7/10/20

18

+1 87.6

Rod 4.48 At Auxil Pt from C 44 Sight C 44 for Zero Az Rt.
HI 69.9about 44-385
FP. on Rock. C. 46 - Sight 46-250 for Zero Az Right.

TP. on Rock. 4.48 69.93 1465.45

Rod 99 1460	25.8	209.40	Rod 49 1465	15.1	213-0
"	21.3	211-15	1465	18.5	214-45
"	15.4	208-45	1465 24.5	24.5	210-45
"	11.0	207-15 ✓			
"	7.3	204-0 ✓			
"	9.2	192-0 ✓			
"	8.4	154-0 ✓			
"	14.3	157-20 ✓			
"	17.7	159-15 ✓			
"	22.8	147-45 ✓			
"	32.30	155-30 ✓			
"	39.8	156-20 ✓			

Rod 4.9

1465	7.8	144-30 ✓
"	2.5	128-30 ✓
"	2.5	161-15 ✓
"	1.0	318-40 ✓
"	4.0	241-0 ✓
"	7.8	228-30 ✓
"	9.3	221-0 ✓
"	12.3	215-15 ✓

7.5
1480

1480

"

"

"

"

"

"

"

"

"

"

"

"

"

"

"

"

"

"

"

"

"

"

"

"

"

"

"

"

"

13.15 82.59 1474.44

12.8
12.3 118-0 Rod 2.6
1485 49.5 353-45

9.1 130-20 ✓ 45.7 355-0

7.7 108-0 ✓ 41.5 351-0 ✓

6.1 95-45 ✓ 39.7 345-45 ✓

6.4 82-15 ✓ 36.2 347-15 ✓

3.2 48-0 ✓ 34.1 342-30 ✓

7.3 34-15 ✓ 31.2 343-0 ✓

13.7 6-0 ✓ 26.4 338-15 ✓

19.0 349-15 ✓ 23.4 339-0 ✓

24.4 355-30 ✓ 17.1 337-0 ✓

28.9 7-40 ✓ 11.4 340-10 ✓

36.8 6-15 10.8 326-30 ✓

39.7 12-0 ✓ 6.2 344-30 ✓

44.5 11-15 ✓ 8.2 270-0 ✓

51.0 5-45 ✓ Vert 202
1485 6.5 230-10 ✓56.6 1-15 ✓ Vert 170
1485 7.8 191-45 ✓

60.2 4-15 1485 13.5 118-0 ✓

65.1 2-15

67.0 4-15

(1)

7/14/20

Bob
Fisher
Mixer

Check Final Topog -

19

At 44-422° Sight Center for 00 Az. Pt.				1495	13.7	311-30		
HI 9294				"	15.8	312-0		
42-420 ¹²	10x92	1497.94	1487.02	"	17.7	300-0		
				"	23.4	304-45		
Rod 12.9		Rod 7.9						
1485-	25.4	61-0	1490	12.3	320-10			
"	21.7	68-40	"	16.3	325-15			Rod 43 91.3
"	21-0	67-50	"	14.6	331-30			
"	20.7	59-50	"	12.5	333-30			At 42-420 ¹² Sight Center for Zero Az. Right
"	16.7	55-20	"	11-0	338-30			RA 11.32 4.3 1491.32 1487.02
"	13.7	52-45	"	9.6	339-45	1480	32.6	296-35
"	13.2	42-45	"	11.6	359-0		28.8	292-15
"	16.6	43-45	"	8.3	46-30		25.5	293-30
"	14.1	19-10	"	6.8	53-30		23.4	306-0
"	13.2	17-30	"	8.6	69-0		21.8	308-30
"	15-0	7-30	"	12.3	65-0		18.3	314-30
"	11-0	344-75	"	14.4	78-45		11.2	331-15
"	13-0	331-15	"	16.4	91-0		11.6	345-30
"	17.1	327-45	"	19.5	93-50		14.0	353-30
							12.1	10-0
							11.1	18-30
							11.3	19-30
							13.3	31-30
							11.3	35-30
							17.3	46-30
Face of Cliff		Rod 2.9						
Rod 7.9		1495		4.0	193-75			
1490	23.4	304-45	"	3.6	278-15			
"	24.5	310-0	"	8.3	317-0			
"	23.3	313-45	"	10.8	328-0			
"	18.6	318-20	"	12.7	327-0			

6/14/20

Bob
Fisher
Mixer

AT C 46 - Sight Center for Zero Az Right

Auxil/Pt	45.38	344.56		
about 44-335 TP Rock		13.19	1487.63	1474.44
46-338		11.50	92.92	6,21 1481.42
Auxil/Pt			4.7	1488.22

Rod 4.7

92.92

At Auxil Pt Sight C-46 for Zero Az At

4.70	1492.92	1488.22
------	---------	---------

Rod 2.9

14.90

vertical
162

Rod 2.9

14.90

52.0 ✓	4-0 ✓	17.0	189-30 ✓
44.5 ✓	11-30 ✓	21.0	189-20 ✓
149.0 348 ✓	19-30 ✓	21.8	194-15 ✓
31.7 ✓	22-45 ✓	26.9	189-30 ✓
26.5 ✓	27-15 ✓	33.6	192-45 ✓
24.8 ✓	25-0 ✓	41-0	206-30 ✓
21-0 ✓	27-15 ✓	42.7	204-30 ✓
15-2 ✓	32-15 ✓	45.1	206-30 ✓
13.4 ✓	27-15 ✓	45.2	208-15 ✓
5.0	59-0 ✓	49.3	212-0 ✓
2.3 ✓	67-45 ✓	53.3	218-45 ✓
2.7 ✓	123-30 ✓	58.3 ^{59.0}	216-15 ✓
3.4	211-0 ✓	67.5	219-15 ✓
6.5	195-40 ✓	68.9	223-0 ✓
12.2	171-30 ✓	71.5	222-0 ✓

20

At Auxil Pt. from C 46

Rod 2.9

14.90

78.0	222-45
81.3	222-50
84.0	222-45

7/15/20

Bub
Fisher
Mixer.

Rod 5.08 At 46-338 - Sight Center for Zero Az Rt.

HI 86.5

46-338 5.08 1486.50 1481.42

Rod 6.5

1485

13.9 202-45 ✓

Rod 6.5

15.8 209.0 ✓

1480

31.5 10-15 ✓

12.9 222-45 ✓

25.4 8-15 ✓

14.1 233-45 ✓

24.8 11-15 ✓

14.4 243-15 ✓

22.0 9-0 ✓

16.6 247-45 ✓

20.1 3-0 ✓

14.5 258-0 ✓

19.5 5-30 ✓

12.6 277-20 ✓

17.0 2-45 ✓

9.2 310-0 ✓

13.3 7-20 ✓

12.4 325-30 ✓

7.1 10-15 ✓

15.1 326-0 ✓

dusk

2.5 42-45 ✓

22.0 0-45 ✓

27.8 2-15 ✓

Rod 11.5

40.4 17-35 ✓

check

1475

35.0 152-10 ✓

43.4 23-15 ✓

35.8 141-30 ✓

43.3 25-15 ✓

21.6 140-0 ✓

21.5 129-0 ✓

18.0 113-10 ✓

23.2 106-30 ✓

23.4 102-15 ✓

24.4 98-0 ✓

Rod 6.5

1480

39.2 28-45 ✓

38.1 26-0 ✓

39.4 17-45 ✓

32.0 8-30 ✓

21

Rod 11.5

1475

21.3 91-0 ✓

19.4 75-0 ✓

17.1 78-30 ✓

15.8 66-30 ✓

13.4 54-45 ✓

16.2 46-15 ✓

20.4 31-15 ✓

22.7 24-10 ✓

23.0 20-0 ✓

26.2 21-30 ✓

36.7 23-15 ✓

36.7 26-30 ✓

38.0 30-0 ✓

43.5 31-0 ✓

75-80

1475

58.3 30-0 ✓

65.5 31-30 ✓

70.5 31-45 ✓

78.5 31-45 ✓

81-0 31-10 ✓

87.7 31-35 ✓

89.5 32-0 ✓

36.4 30-0 ✓

dusk
75

21.0k

7/15/20

22

At 34-274¹⁴ Sight C34 for ZeroAuxil Pt 29.94 34°-03'

Rod 6.24

HI 73.3

34-274¹⁴At Auxil Pt. Sight 34-274¹⁴ for Zero Az Pt

6.24 73.29 1467.05

Rod 3.3

1470

38.8 358-30 ✓ Rod 3.3 54.5 1470 54.3 237-10

" 39.7 353-30 ✓ 56.0 56.5 233-30 ✓

" 33.3 351-0 ✓ 64.0 227-10 ✓

30.7 347-30 ✓ 66.4 221-45 ✓

27.3 342-30 ✓ 67.3 66.8 215-30 ✓

27.3 337-30 ✓

23.3 331-15 ✓ Rod 8.3 1485

28.4 324-30 ✓ 1465 63.0 213-0 ✓

29.0 316-45 ✓ 63.5 219-0 ✓

31.7 311-15 ✓ 58.2 222-30 ✓

31.7 305-20 ✓ 58.1 224-30 ✓

33-3 282-15 ✓ 56.5 226-30 ✓

33.6 270-45 ✓ 55.3 230-0 ✓

35.6 263-15 ✓ 55.0 232-30 ✓

39.4 250-0 ✓ 51.2 235- ✓

41.8 249-0 ✓ 52.1 236-30 ✓

46-0 245-0 ✓ 42.1 46 246-0 ✓

47.1 244-45 ✓ 35.3 250-45 ✓

1465 30.8 262-10 ✓

" 26.2 278-0 ✓

" 24.7 286-0 ✓

" 26.4 296-0 ✓

" 27.1 302-30 ✓

" 25.9 307-0 ✓

Rod 1.7

1475

33.8 304-45 ✓

" 34.2 313-0 ✓

" 29.7 317 ✓

7/17/20

Sub

Filter

Mixer

3.95

Rod 4.7

95.4

38-250

3.95

4.1

75.42

Rod 5.4

1490

20.0

1490

30.5

" 34.5

" 38.8

" 41.9

" 45.8

add 0.5 to Dist.

At 38-250 - Sight Center for 00° Az Right

3.95
4.1 75.42

1491.42

20.0

221.0 ✓

30.5 222.0 ✓

34.5 219-10 ✓

38.8 220-15 ✓

41.9 222-15 ✓

45.8 221.45 ✓

At 38-250 - Sight Center for Zero AZ Right.

Rod 4.1 95.4

AZ ~~95.4~~

Rod 10.4

104	46.4	219-30	1485	10.4	160-0
1485	44.5	222-0	1485	13.9	142-45
1480	44.5	220-0	1485	11.3	126-0
480	44.9	217-10	1485	9.7	124-30
85	42.0	216-30	1485	8.7	133-30
80	42.6	216-0			
85	39.9	218-0	1480	9.9	123-15
85	38.5	217-15		13.2	129-15
85	38.0	218-45		14.4	144-0
80	36.7	216-15		14.9	153-15
80	34.0	217-0		17.3	156-0
85	29.8	212-15		17.4	164-45
85	27.6	211-30		15.9	168-45
80	30.4	210-30		15.8	175-15
80	27.5	210-30		16.8	177-0
85	30.4	211-15		15.5	182-15
85	15.4	213-0		16.2	194-15
80	22.3	212-0			
80	19.7	212-15			
85	15.7	204-45			
85	12.8	202-45			
88	12.3	189-15			
85	11.9	181-15			
85	12.5	173-45			

Connect them up

HI 665

At 28-340-01 - Sight Center for 0-0-AZ Rt.

20 East of
TP 5340.01

52 12.90 1466.52 1453.62

Rod 11.5

14.55	25.7	173-30	Rod 15	14.65	32.3	132-30
	25.5	165-15			30.9	122-15
	28.5	160-45			29.2	117-0
	29.0	157-15			27.9	107-45
	32.0	157-30			25.0	96-0
	39.4	162-30			25.7	85-0
	41.6	163-0			31.0	87-30
					29.5	77-0
Rod 6.5						
1460	42.9	162-15			31.5	68-0
1465	43.9	162-15			38.9	61-30
1460	41.5	161-10			30.1	54-20
	39.3	159-45			32.8	52-15
	37.5	153-45			38.8	46-0
	33.0	147-0			48.0	32-45
	32.4	138-15			55.0	31-0
					58.9	27-30
Rod 1.5						
1465	44.2	162-15			61.9	26-15
	42.0	155-15			66.3	24-45
	40.6	153-45			66.8	23-0
	39.8	150-0				
	37.8	143-0				
	36.5	139-30				

23

HI 86.52

At 28-340-01 Sight Center Zero - Az Right

Rod 1460 6.5	36.3	33-30 ✓
"	43.5	27-0 ✓
"	43.6	23-0 ✓
"	47.9	21-20 ✓
"	55.9	21-0 ✓
"	65.0	21-10 ✓
"	66-0	22-30 ✓
"	69.2	22-0 ✓
"	70.8	21-0 ✓
"	72.8	19-30 ✓
"	74-0	17-0 ✓

PLATED 7/17/20
Sub.

T.P. BM.

0.61 65.91

At B-28 Sight Center Zero Az Rt.

Auxil/Pt. A' 86.15 23°-25'

B 28 5.63 1494 08

1488.95

Auxil/Pt. A''

12.46 81.62

Rd 5.1

HI 86.72

24

At Auxil A'' from B-28 - Sight 28 for 0 - Az Rt.

Auxil Pt. 5.1 1486.72 1481.62

Rod 67	1480	26.5 ✓	344-15 ✓	11.9 ✓	57-0 ✓
"	"	21.3 ✓	346-0 ✓	13.6 ✓	48-0 ✓
"	"	17.2 20.2 ✓	346-30 ✓	15.9 ✓	43-15 ✓
"	"	19.4 ✓	344-15 ✓	15.4 15.4 ✓	33-45 ✓
"	"	12.8 ✓	344-45 ✓	18.0 ✓	32-45 31-45 ✓
"	"	9.5 ✓	351-45 ✓	19.0 ✓	27-15 ✓
"	"	7.0 ✓	55-0 ✓	19.8 ✓	9-15 ✓
"	"	7.0 ✓	107-45 ✓	18.9 ✓	357-30 ✓
"	"	9.5 ✓	146-30 ✓	20.5 ✓	353-0 ✓
"	"	17.4 ✓	154-0 ✓	24.9 24.9 ✓	350-30 ✓
"	"	18.7 ✓	157-30 ✓	28-0 ✓	346-30 ✓
"	"	21.5 ✓	159-0 ✓		
"	"	23.6 ✓	160-30 ✓		
"	"	28.3 ✓	163-30 ✓		

Rod 11.7

1475

31.0 ✓	155-0 ✓
30.5 30.5 ✓	155-30 ✓
26.9 ✓	153-0 ✓
26.1 ✓	147-0 ✓
17.5 ✓	137-45 ✓
14.5 ✓	122-15 ✓
11.6 ✓	96-45 ✓
10.3 ✓	89-30 ✓
9.3 ✓	

7/19/20

25

Rad 4.34
85.96

AT Auxil ~~A~~ from 8-28 Sight B28 for Zero Az Pt.

4.34 85.96

1481.62

Rad 16°

1470

30.2 / 349-30 /

29.7

25.3

24.8 / 352-30 /

22.9 / 2-0 /

22.0 / 7-0 /

19.7 / 39-0 /

19.4 / 40-45 /

17.3 / 41-0 /

15.1 / 49-0 /

13.0 / 57-15 /

10.3 / 93-30 /

11.5 / 116-15 /

17.7 / 135-15 /

21.5 / 140-45 /

24.3 / 140-15 /

29.0 / 142-0 /

33.8 / 141-0 /

33.5 / 142-30 /

32.7 / 153-30 /

Auxil B 21.02 194-27

AT 28-340° Sight Center for Zero Az Pt.

Auxil Pt. 50.48 53°26'

HE 77.4

(See page 24)

TP. BM.

114.5 1477.36

1465.91

Rad 74

Rad 24

1470

30.5 / 105-0 /

1475

12.5 314-30

27.9 / 105-15 /

"

8.8 311-0

27.5 / 107-0 /

"

4.2 266-0

24.1 / 106-0 /

"

3.2 189-00

16.3 / 101-30 /

"

6.2 167-45

9.0 / 102-30 /

"

12.2 141-45

6.0 / 52-45 /

"

15.4 134-45

5.0 / 349-0 /

"

20.9 130-45

1475 10.6 / 315-10 /

"

25.4 120-30

" 12.8 / 315-0 /

"

28.5 114-30

" 16.1 / 319-0 /

"

32.4 114-15

" 21.8 / 311-45 /

"

35.2 110-05

" 30.3 / 308-0 /

"

40-0 114-30

" 41.0 111-45

"

Rad 24

1475 31.3 / 308-0 /

" 24.5 / 303-45 /

" 22.0 / 306-0 /

" 18-0 / 309-45 /

7/17/20

At 22-272.76 Sight 34-272.76 too
Zero Az Pt.

Auxil Point - 1341 238-23

7/18/20

~~Fisher~~
Mixer

At 28-340⁰¹ Sight Center Zero Az Pt.

HI 66.53

30° E of
TP 340-01

12.91 1466.53 1453.62

Rod. 15

1465 67.5 ✓ 23-0 ✓
~~73-0~~ 67.5
" 74.3 ✓ 21-30 ✓
" 80.5 ✓ 21-0 ✓
" 83-0 ✓ 20-30 ✓
" 87.5 ✓ 20-30 ✓

7/17/20

Sub
Fisher
Mixer

— See opposite Page —
At Auxil from 22-272.76 sight 34-274.14
for Zero Az Right

HI 96.8

Auxil A

From B-2B

15.18 1496.80 1481.62

Auxil Pt

4.56 92.24

Rod 16.8

			Rod 11.8		
1480	9.7	16-45	✓ 1485	10.2	317-45 ✓
"	11.2	353-15	"	9.2	332-45 ✓
"	10.1	335-45	"	7.8	342-30 ✓
"	10.7	324-30	"	7.7	3-30 ✓
"	10.4	317-0	"	7.0	14-0 ✓
"	7.8	289-40	"	7.9	35-20 ✓
"	12.5	281-0	"	7.8	71-0 ✓
	24.9	273-0			
	29.0	278-45	Rod 16.8	9.9	105-30 ✓
80	32.0	271-0	1490	9.7	96-15 ✓
	31.0	270-0		7.0	90-0 ✓
Rod 11.8				5.5	98-45 ✓
1485	31.0	270-0		3.4	70-15 ✓
1485	27.4	271-0		3.7	34-15 ✓
"	22.2	272-15		4.5	27-10 ✓
"	15.5	275-20		6.9	296-30 ✓
"	9.1	271-45		6.7	288-30 ✓
"	9.5	270-30		3.5	269-30 ✓
"	7.6	288-10		5.9	263-30 ✓
"	8.5	292-15		4.7	207-0 ✓

26

7/17/20

HI 96^{ft} At Avvil from 22-27270 - Sight 3427412
For Zero Az Pt.

Rod 65

1490 12-0 268-15 ✓

" 18.5 268-0 ✓

Rod 1.8

1495 17.3 267-45 ✓

" 10.3 266-0 ✓

" 9.0 264-45 ✓

" 6.9 266-30 ✓

" 4.3 204-30 ✓

Rod 505 At 18-303 - Sight Center for Zero Az Pt

1534.45

Rod 105 5.05 1534.45 1529.40

Rod 105

1535 18.6 177-35

Rod 95

25.0 ✓ 20.0 185-20

" ✓ 17.2 211-45

" ✓ 16.2 220-30

" ✓ 14.4 227-15

" ✓ 13.3 238-15

Rod 45

1530 ✓ 6.0 217-30

" ✓ 6.9 197-45

" ✓ 7.3 199-45

" ✓ 11.7 188-0

" ✓ 13.4 181-30

" ✓ 14.2 173-15

" ✓ 19.2 179-45

Rod

14.5

15.2 ✓ 21.1 222.45

" ✓ 29.6 212-15

35.7 209-15

27

7/27/20

See Page 50

"A"

At Auxil Pt. from 28-340° Sight 1834021 for

Zero Az Right

C Auxil Pt.

50.0' 159.52

At Auxil "C" from 28-340° Sight

Auxil "A" for Zero Az Pt.

#1 14452

3.55 1447.77 44.42

1445 23.7 210.0

19.0 211.0

17.4 207.0

15.6 208.30

15.5 216.30

11.6 225.10

8.1 233.0

2.5 295.30

At-28-340-01 Sight Center for
Zero - Az. Right

20' East of
28-340-01

12.40 66.02 1453.62
HI 4.2 67.52

concrete
Top of

7.1 58.7

Top of Fille H

Form
Back Contact

22.3 178-45 ✓ 7.3 58.7

R.C. 15.0 202-45 ✓ 7.1 58.9

R.C. 12.8 213-45 ✓ 7.4 58.6

R.C. 12.4 253-15 ✓ 7.2 58.8

Face F. 13.9 257-30 ✓ 7.2 58.8

Bottom 13.9 257-30 ✓ 12.8 53.2

Final Topog.
At-28-340-01 Sight Center for Zero Az. Rt.

#at 4.2
HI 66.02

12.40 66.02 1453.62

4.2 61.8

Rod 62

R.C.

14.60 5.0 43-45 ✓

R.C. 10.1 58-30 ✓

" 13.5 44-0 ✓

" 12.5 44-0 ✓

" 17.9 34-40 ✓

" 18.0 46-0 ✓

" 15.9 50-30 ✓

" 17.8 59-30 ✓

16.6 65-30 ✓

14.1 62-45 ✓

14.0 71-0 ✓

13.4 89-30 ✓

10.2 100-45 ✓

13.0 117-50 ✓

11.8 121-0 ✓

16.5 127-30 ✓

17.4 139-0 ✓

21.5 143-30 ✓

26.6 144-15 ✓

Cornered then up

14.0 156-0 3.7 67.3

12.5 105-48 3.7 67.3

Rod 42

HI 66⁰³ At 340 0L

Rod 60

R.C.

1460	20.0	17-30 ✓	55.0	2-45 ✓
"	23.7	8-40 ✓	54.5	1-0 ✓
"	26.8	4-0 ✓	54.2	1-0 ✓
"	27.9	6-0 ✓	50.8	357-30 ✓
"	25.6	10-45 ✓	56.5	347-15 ✓
"	25.7	26-0 ✓	58.5	344-30 ✓
		vert 924	58.5	342-45 ✓
		vert 920	58.0	340-20 ✓
		vert 60 up	57.9	339-0 ✓
		vert 60 up	56.7	335-0 ✓
		vert 60 up	54.4	330-30 ✓
		vert 60 up	55.9	325-0 ✓
		vert 60 up	56.3	322-0 ✓
		vert 60 up	56.3	316-30 ✓
		vert 60 up	56.0	314-10 ✓
		vert 60 up	58.5	312-45 ✓

Rod 110

1455	9.3	355-20 ✓	54.4	330-30 ✓
"	8.8	352-0 ✓	55.9	325-0 ✓
"	11.7	338-0 ✓	56.3	322-0 ✓
"	13.5	342-0 ✓	56.3	316-30 ✓
"	19.6	352-45 ✓	56.0	314-10 ✓
"	19.7	352-0 ✓	58.5	312-45 ✓
"	24.2	358-15 ✓		
"	27.5	2-45 ✓		
"	28.5	358-15 ✓	Rod 60	
"	35.2	2-45 ✓	1460	64.9 315-45 ✓
"	35.2	359-45 ✓		62.3 315-30 ✓
"	37.3	5-30 ✓		61.3 317-0 ✓
"	39.5	16-15 ✓		
"	49.9	15-0 ✓		
"	49.9	10-15 ✓		
"	52.4	8-15 ✓		

Vertical Shots - on 1455 (gap)

			59.4	343-15 ✓
			57.9	344-15 ✓

30

Rod 60

1460

56.7	345-30 ✓
57.5	347-45 ✓
60.1	348-30 ✓
64.5	347-45 ✓

Rod

HI 55.2

20' East

28-340

28-340

At Annex Pt. from 28-340 of Sight

28-340 of for Zero Az Right

2.17 55.79 1453 62

Rod 58

Rod 5.8

1450

"

"

"

"

"

"

"

"

"

"

"

"

"

"

"

"

"

"

"

"

37.7	304-15 ✓
42.2	308-15 ✓
44.7	308-45 ✓
51.4	304-45 ✓
59.3	313 45 314-15 ✓
59.7	312-45 ✓
58.0	295-45 ✓
58.9	292-20 ✓
57.9	288-45 ✓
54.7	285-0 ✓
54.1	282-15 ✓
50.5	281-15 ✓
50.2	273-45 ✓
49.0	266-45 ✓
43.1	261-30 ✓

8/4/20

HI 5579 At Auxil Pt. from 340°

31

Rod 58

1450 44.2 256-45

Rod 108

1445 32.5 295-10

Rod 108

29.3 301-30

1445 43.3 257-45 25.7 295-00

" 42.0 260-00 20.7 303-15

" 46.8 266-15 15.3 280-00

" 47.5 269-00 17.8 266-15

" 48.5 271-30 17.7 260-30

" 46.8 277-45 17.5 234-30

" 49.5 279-15 20.5 225-00

" 52.5 282-00 20.2 210-15

" 52.5 283-15 16.0 190-20

" 56.5 286-30 16.5 184-00

" 57.4 289-30 15.6 167-30

" 57.0 294-00 16.7 162-00

" 56.9 299-00 20.0 157-30

" 58.3 307-00 23.4 150-15

" 54.0 305-30

" 49.4 308-10

" 49.5 305-30

" 42.3 297-15

" 38.7 298-30

" 36.6 294-30

Between

28-34 Bandal lines

1440-1460 =

40 yds - Overhang

8/5/20

Dab
Fisher

At Auxil Pt from 28-340 ^o Sight
28-340 ^o for Zero Az - Rt

HI 55.91

2.29 55.91

1453.62

Rod 10.9

1445

25.5 295-15

"

28.5 300-30

"

31.4 294-15

37.2 294-15

38.7 299-30

40.8 295-30

Rod 5.9

1450

41.4 306-45

"

38.0 304-30

"

33.0 304-30

"

28.5 309-30

"

27.1 306-30

7/5/20

32

At 28-340 ^o Sight Center for Zero Az Right

"B"

Auxil Pt

30.10

321°-47'

20' East

28-340 ^o

4.89 58.51

53.62

T.P.

11.71

97.10

At Auxil "B" from 28-340 ^o Sight
28-340 ^o for Zero Az Right

T.P.

3.05 1450.15

47.10

See Next Page

At Auxil 'B' from 28-340⁰¹ - Sight 340⁰¹
for Zero Az - Right

HI 50.15

TP	3.05	1450.15	47.10	45.01
Red 5.1				
40-45	32.5	157-30		
40-45	29.2	153-30		
40-45	25.8	158-0		
40-45	25.9	166-30		
50	20.9	163-30		
40-45-50	26.4	171-0		
40-45-50-60	26.6	175-30		
45	24.0	182-15		
50-55-60	25.5	182-15		
40-45	21.4			

9/5/20

At Auxil 'B' from 28-340⁰¹ - Sight
for Zero Az - Right

TP	3.05	1450.15	47.10	45.01
Red 5.1				
14.45				
40-45-50	32.8	156-45	60	27.1
40-45-50	28.3	153-30	40-45	25.3
40-45-50	25.6	158-0	50	26.3
40-45-50	26.0	166-30	55	27.3
55	27.0	166-30	60	28.3
40-45-50-60	26.3	175-15	40-45-50	26.9
40-45	24.6	181-30	55	29.9
50-55-60	26.1	181-30	60	30.9
40-45	21.4	189-30	50-55	29.2
50-55-60	26.4	189-30	60	32.2
40-45-50	23.6	196-30	45-50	29.2
55	24.1	196-30	55-60	33.2
60	24.6	196-30	40	26.0
40-45	25.7	202-0	45	27.3
50	26.7	202-0	50	29.3
55	27.7	202-0	55	32.3
60	28.7	202-0	60	33.3

8/5/20

Bub
Fisher
MixerAt- 28-340-01 Sight Center Zero
Az Rt.

Auxil Pt.	41.79	41.45		
20' East 28-340 el		12.65	66.27	53.62
T.P.			4.61	61.66

At Auxil Pt. from 28-340 el Sight
340 el for Zero Az Right

T.P.	7.90	69.56	61.66
28-340 el		7.87	61.69

Rod
+ 0.5

1470	22.0	151-0 ✓
"	24.3	150-30 ✓
"	25.9	144-0 ✓
"	33.1	137-0 ✓
"	38-4	139-15 ✓

Flashed 8/5/20

8/6/20

Bub
Fisher
Mixer

AT Auxil "A" from 28-340° of Sight

Rod 5.1 28-340° for Zero Az Rt

HI 56.42

20' East

of 28-340° of

2.85 1456.47

1453.62

Rod 11.5

add 0.5

5.1 51.4

144.5

^{41.8}
41.3

297-0 ✓

"

^{49.6}
49.1

305-45 ✓

"

^{48.0}
47.5

308-50 ✓

^{52.5}
52.0

306-30 ✓

^{57.9}
57.4

306-15 ✓

Rod 6.5

add 0.5

1450

^{59.3}
58.8

313-15 ✓

Vest 6.2

^{51.9}
51.4

315-0 ✓

"

^{48.2}
47.7

312-30 ✓

"

^{45.0}
44.5

309-30 ✓

"

^{40.5}
40.0

305-45 ✓

Plotted 8/6/20

8/6/20

35

At Auxil B from 28-340° of

Sight 28-340° for Zero Az Right

2.94 50.04

144210

Rod 10.2

1440

^{37.1}
36.6

99-45 ✓

"

32.9

107-0 ✓

"

30.2

104-30 ✓

"

24.5

103-30 ✓

"

22.3

109-15 ✓

"

14.9

97-15 ✓

13.9

79-45 ✓

9.5

83-0 ✓

14.5

110-45 ✓

10.5

146-45 ✓

10.5

168-0 ✓

8.7

184-15 ✓

^{11.3}
10.8

192-10 ✓

14.0

213-30 ✓

16.3

²¹⁵
215-15 ✓

18.0

224-45 ✓

21.5

237-30 ✓

25.0

226-0 ✓

Vest 14.2
14.4

28.6

217-45 ✓

Plotted 8/6/20

8/7/20

Bub
Fisher
MixerAt ~~30~~ 18-303 - chained 62.4~~57~~ 18-365.40 -At 18-365.40 Sight Center for
Zero AZ Right.

C-20 3.51 1532.88 1529.37

Rod 2.9

1530 42.5 1-0 ✓ Rod 12.9

" 39.9 4-20 ✓ 15 East (during) 1420 32.7 328-10

" 36.9 3-0 ✓ " 36.1 331-30

" 37.4 12-15 ✓ " 40.1 335-45

" 30.6 14-30 ✓

" 23.2 15-0 ✓ T.P. rod 15.30 1517.58

Auxil "A" 22.70 241-40

Rod 7.9

1525 31.3 352-0 ✓ Auxil "B" 33.28 257-50

" 26.4 340-15 ✓

" 19.1 328-0 ✓

Rod 12.9

Mog. 1520 12.9 309-15 ✓

Cherry 18.5 316-30 ✓

OK. 20.1 326-30 ✓

" 23.3 326-0 ✓

" 29.5 323-45 ✓

Plotted
8/7/20

8/7/20

36

At Auxil "A" from 18-365-40 - Sight
18-365-40 - for Zero AZ Rt.T.P. 3.90 21.48 1517.58
Elev. Pt. 4.2 17.3
Rod 65

1815 21.0 312-0

rod 5.0 25.6 309-30

rod 5.0 up 31.5 307-30 ✓

rod 5.0 up 34.2 301-30

1415 37.8 298-15

1510 38.3 297-45

1810 34.4 297-30

1810 30.3 297-0

1810 28.1 294-30

1810 24.5 293-20

1810 19.5 301-45

T.P. ~~14.69~~ 14.69 1506.79

8/7/20

At Auxil "B" from 18-365-40 Sight
18-365-40 for Zero Az Right.

HI 150864

about 22-40
BM.TP

185 08.64 1506.79

4.5 04.1

Rod 3.6

Rod 136

1505	20.3	302-30	1495	32.5	284-0
"	23.5	297-45	"	38.5	287-45
"	28.3	298-0	"	42.4	287-45
	32.4	299-0	"	44.3	284-15
	37.5	297-45	"	49.5	287-30

Rod 86

1500	37.0	291-0
"	33.3	292-15
"	30.4	292-45
"	26.5	293-15
"	26.3	297-15
"	22.4	297-45

136

1495	22.4	286-30
"	25.9	285-0
"	26.5	283-15
	28.5	283-30
	30.5	284-40

7/7/20

At Auxil "B" from B-28 Sight Auxil "A"
for Zero Az. Pt.

HI 9235

Auxil "A" 10.73 92.35 1491.62

Rod 2.4 178 4.6 87.8
rod 5.0
1490 17.3

20.5-0 Rod 74 checked 8/29/20

19.3 199-30 1485 4 167-30

rod 5.0 up 21.7 195-40 48.3 165-15

23.6 190-30 46.3 165-45

26.4 175-30 rod 7.2 down 40.9 167-0

27.3 176-20 rod 7.2 down 38.3 165-15

28.5 171-45 rod 5.0 down 33.7 164-30

30.9 168-30 30.4 165-0

33.3 167-30 28.8 165-45

40.0 39.2 171-45 23.7 165-30

41.1 170-15 16.4 187-20

46.5 166-20 12.9 194-0

rod + 26 6.8 177-45

1495 47.0 167-30 5.6 151-15

1495 38.5 175-45 4.5 151-45

1495 37.0 181-40 5.5 111-30

~~39.5 166-0 5.2 96-0~~

2.30 10-30

4.8 7-30

9.6 338-45

14.1 356-0

Rod 74

1485	17.4	349-0	Rod 24 1490	5.4	338-0 ✓
"	18.0	350-0		8.0	261-15
"	22.5	351-15 ✓			
"	22.8	354-30 ✓			
"	28.7	357-30 ✓			
"	41.8	349-15 ✓			
"	42.0	352-40 ✓			
"	45.8	353-0 ✓			
"	47.5	352-30 ✓			
"	54.5	344-0 ✓			
"	57.2	341-15 ✓			

Rod 24

1490	57.4	340-0 ✓			
"	51.8	339-20 ✓			
?	48.5	333-15 -			
?	43.6	338-15 ✓ 335-15 ✓			
"	39.1	340-15 -			
"	30.0	340-30 ✓			
"	23.3	337-30 ✓			
"	20.9	339-40 ✓			
"	14.1	332-30 ✓			
"	11.0	337-20 ✓			
"	9.6	340-0 ✓			

8/14/20

Bub
Fisher
Mixer

Final Topog

BM 20' East
28-340 al

5.01 1458.63 1453.62

Nail

1st-76 1442.57

TP

4.79 1453.84

At 40-391 2E Sight Center for 00 Az Pt

HI 58.03

TP

4.19 58.03 53.84

Rod 130

Rod 80

14 45 14.7 54-45 ✓ 21.4 43-10 ✓

" 15.4 54-20 ✓ 17.0 50-15 ✓

" 19.2 55-50 ✓ 13-0 29-0 ✓

21.7 61-30 ✓ 10.1 38-0 ✓

23.1 64-0 ✓

Cor. Forms - 29.5 63-15 ✓ Rod 30 10.2 2-15 ✓

30.6 60-30 ✓ 1455 14.4 22-30 ✓

31.1 54-0 ✓ " 19.0 27-45 ✓

Rod 80 " 19.9 36-0 ✓

" 21.7 40-0 ✓

1450 30.5 31-30 ✓ " 24.3 36-45 ✓

" 26.5 35-30 ✓ " 25.7 35-0 ✓

28.6 32-0 ✓

8/21/20

Bub
Fisher
Mixer

39

At - 38-425 - Sight Center Zero Az Pt

"A"

Auxil/Pt. 57.60 350-23'

At Auxil/Pt. Sight - 38-425 - for Zero Az Pt.

HI 4.7

63.89

10.91 1463.89 ✓ 1452.95

4.70 59.19

1/200 of Form

5.3

R.C.

4.8

12 0 ✓

Aux 90

Elev

check

Cor Form

33.4 ✓ 18-45 ✓

Cor-Form

32.0 ✓ 45-10 ✓

Vert 40

R.C.

34.2 ✓ 61-30 ✓

Rod 89

145.5

7.5 ✓ 326-0 ✓ Rod 89

" 6.5 ✓ 269-15 ✓ 1455

" 5.9 ✓ 234-30 ✓

" 5.8 ✓ 217-20 ✓

1455 3.8 ✓ 203-0 ✓

" 10.7 ✓ 161-15 ✓

" 14.6 ✓ 173-30 ✓

" 27.0 ✓ 174-30 ✓

" 24.9 ✓ 170-30 ✓

" 25.9 ✓ 147-45 ✓

check again

7.8 56.1 ✓
7.0 56.9 ✓
6.2 57.7 ✓
7.0 56.9 ✓
3.9 60.0 ✓
29.5 ✓ 191-45 ✓
31.5 ✓ 190-15 ✓
38.5 ✓ 196-15 ✓
45.8 ✓ 201-30 ✓
45.5 ✓ 196-40 ✓
51.9 ✓ 196-45 ✓
57.9 ✓ 199-30 ✓
61.5 ✓ 198-30 ✓
62.0 ✓ 198-45 ✓

8/21/20

#I 63.89

Rod 13.9

1450

58.0 ✓ 200-0 ✓
 52.0 ✓ 198-15 ✓
 45.9 ✓ 197-45 ✓
 46.1 ✓ 203-0 ✓
 41.1 ✓ ~~203-0 ✓~~
 37.6 ✓ 199-0 ✓
 34.8 ✓ 201-0 ✓
 29.5 ✓ 198-15 ✓
 28.0 ✓ 197-30 ✓
 18.9 ✓ 196-30 ✓
 16.1 ✓ 187-10 ✓
 13.3 ✓ 208-10 ✓
 10.6 ✓ 224-15 ✓
 8.2 ✓ 224-30 ✓
 7.4 ✓ 259-0 ✓
 7.0 ✓ 305-0 ✓
 7.2 ✓ 324-30 ✓

on rock
 T.P.
 Auxil B
 Auxil Pt. 29.78 206-16

15.25 48.64

40

HI 443
49.24Rock
T.P.

At Auxil B Sight Auxil A for Zero Az Rt

0.61 49.25

48.64

4.43 44.82

Rod 42
1045

~~39~~ 40-0 ✓ 330-15 ✓ Rod 9.2
 " 32.0 ✓ 336-30 ✓ 1440 35.9 ✓ 199-0 ✓
 " 27.4 ✓ 341-10 ✓ " 33.0 ✓ 199-0 ✓
 " 26.5 ✓ 344-30 ✓ " 25.6 ✓ 191-30 ✓
 " 23.9 ✓ 340-45 ✓ " 20.9 ✓ 184-0 ✓
 " 21.3 ✓ 349-30 ✓ " 15.4 ✓ 189-15 ✓
 X " 20.0 ✓ 351-15 ✓ " 11.8 ✓ 189-15 ✓
 " 16.3 ✓ 327-45 ✓ " 10.6 ✓ 181-0 ✓
 " 13.8 ✓ 332-15 ✓ " 7.7 ✓ 188-45 ✓
 " 12.0 ✓ 00-0 ✓ 4.1 ✓ 214-15 ✓
 " 9.8 ✓ 3-30 ✓ 6.8 ✓ 256-30 ✓
 " 8.3 ✓ 356-0 ✓ 5.1 ✓ 272-0 ✓
 " 5.7 ✓ 27-40 ✓ 7.9 ✓ 311-30 ✓
 " 3.3 ✓ 46-20 ✓ 9.4 ✓ 307-45 ✓
 vert + 52 44 ✓ 89-0 ✓ 11.4 ✓ 306-15 ✓
 1445 2.2 ✓ 116-0 ✓ 16.7 ✓ 311-45 ✓
 " 9.2 ✓ 176-10 ✓ 18.0 ✓ 319-30 ✓
 " 14.0 ✓ 174-0 ✓ 26.1 ✓ 314-15 ✓
 " 18.3 ✓ 169-16 ✓ 28.0 ✓ 320-30 ✓
 " 21.9 ✓ 175-45 ✓ 27.8 ✓ 328-45 ✓
 " 24.0 ✓ 177-15 ✓ 32.5 ✓ 345-30 ✓
 " 27.0 ✓ 177-15 ✓ 34.8 ✓ 325-45 ✓

8/21/20

R	At Auxil B" from 3F-425	
Rod 92		
1440	33.4 ✓ 308-40 ✓	
	36.6 ✓ 308-30 ✓	
R.C. ^{counts}	37.8 ✓ 312-10 ✓	
Rod 142		Rod 142
1435	49.5 ✓ 282-15 ✓	1435 95.1 ✓ 217-0 ✓
"	48.5 ✓ 284-30 ✓	" 10.7 ✓ 202-45 ✓
"	42.1 ✓ 289-30 ✓	" 12.7 ✓ 193-30 ✓
"	42.3 ✓ 294-0 ✓	" 14.5 ✓ 193-30 ✓
	39.3 ✓ 293-45 ✓	" 16.3 ✓ 203-45 ✓
	38.0 ✓ 295-15 ✓	" 22.3 ✓ 200-15 ✓
	35.1 ✓ 293-45 ✓	" 24.5 ✓ 205-0 ✓
	31.8 ✓ 293-0 ✓	" 29.2 ✓ 204-15 ✓
	23.5 ✓ 290-30 ✓	" 35.1 ✓ 206-30 ✓
	23.4 ✓ 293-15 ✓	" 39.3 ✓ 203-40 ✓
	17.0 ✓ 305-30 ✓	" 42.1 ✓ 205-35 ✓
	13.9 ✓ 304-0 ✓	" 44.3 ✓ 203-15 ✓
	11.7 ✓ 300-15 ✓	" 46.2 ✓ 208-0 ✓
	10.8 ✓ 304-0 ✓	
	9.4 ✓ 304-0 ✓	
	8.5 ✓ 295-0 ✓	
	6.4 ✓ 278-30 ✓	
	7.3 ✓ 256-0 ✓	
	6.5 ✓ 246-15 ✓	

R.M.
8/21/20

(From 3F-425)

41

At Auxil B" Sight Auxil A" for Zero Az. R.

T.P.	0.73	49.37	48.64
28.340 ✓		246-31	
Rod 14.4			
1435	48.9 ✓	280-15 ✓	
"	44.5 ✓	276-0 ✓	
"	40.1 ✓	268-45 ✓	
"	41.0 ✓	261-15 ✓	
"	39.4 ✓	258-0 ✓	
"	35.0 ✓	253-45 ✓	
Rod 94			
1440	37.5 ✓	253-15 ✓	
"	42.7 ✓	259-45 ✓	
"	43.1 ✓	266-0 ✓	
"	47.0 ✓	276-15 ✓	
"	50.7 ✓	279-45 ✓	
"	51.7 ✓	277-30 ✓	
Auxil C"	31.45 ✓	241-19 ✓	
T.P.			12.70 36.67 ✓

Jul-

(From 38-425)

At Auxil C Sight Auxil B - for zero

Az 84

42

HI 41

33.54

T.P.

- 3.13 33.54 ✓ 36.67

Rod 3.5

114.1 29.44

1430	2850	133-30		
"	22.6	145-0	(430)	30.2 286-0
"	19.4	141-30	=	26.9 295-0
"	15.3	136-0	-	22.9 315-30
"	11-0	121-0		19.2 319-15
"	8.0	111-30	"	24.0 335-45
"	4.8	115-0	"	23.4 342-15
"	2.9	102-15	"	16.8 351-0
"	2.5	159-45	"	19.6 8-15
"	4.5	185-0	"	20.9 14-15
"	6.2 5.2	226-45	"	19.7 26-30
"	3.0	255-0	"	16.7 64-45
"	5.6	277-40	"	23.6 100-0
"	11.3	265-15	"	24.8 113-15
"	11.5	258-45	"	29.5 112-15
"	15.6	266-30	"	32.5 114-30
"	24.5	268-15	"	35.4 115-25
"	31.2	263-0	"	37.7 122-45
"	31.6	269-0		
"	31.2	275-0		
"	33.9	279-0		

+15	8.2 ✓	254-15 ✓
1435	7.6	208-45 ✓
"	5.4	181-15 ✓
"	4.8	153-15 ✓
"	5.1	146-45 ✓
"	11.5	150-30 ✓
"	18.5	152-30 ✓
"	21.6	148-0 ✓
"	23.5	147-45 ✓
"	25.8	141-45 ✓
"	27.3	140-0 ✓
"	31.4	137-10 ✓
"	32.5	
TK5	33.4	113-20 ✓
1435	38.9	119-0 ✓
1435	39.1	122-45 ✓
1430	37.4	123-0 ✓
30-35	48.0	126-0 ✓
int 70	54.4	124-15 ✓
30-35	54.8	127-0 ✓
int 70	54.8	131-30 ✓
30	54.5	134-15 ✓
int 70	51.5	135-15 ✓
30	49.4	137-0 ✓

8/25/20 see page 25 for Auxil Pt

Sub
Fisher
Mixer

platted 8/26/20

At Auxil Pt from -28-340 el
Sight 28-340 el for Zero Az Pt.

Gallery.
2779.26

9.90 1478.13 1468.23

Rod 31	1475-	33.4	317-30	Rod +1.9	30.9	117-01
"		30.8	313-30	1480	23.5	127-01
"		26.3	317-10		21.3	137-15
"		25.2	308-45		16-01	141-15
		22.9	311-01		11.2	151-30
vert +52		22.1	306-10		6.5	168-20
1475		13.0	304-31		3.2	193-30
1475		8.4	303-30		6.0	248-30
vert +70		3.6	242-01		9.2	295-01
		3.1	194-30		15.9	302-15
		6.8	157-45		21.1	305-15
		12.3	142-40		26.9	305-30
		18.8	129-30		31.8	305-45
		25.6	121-01		35.6	310-15
		25.8	116-01		37.7	310
		34.6	110-01			
		139.0	113-01			
		142.2	111-01			

8/25/20
Sub
Fisher
Mixer

platted 8/26/20

43

At 18-365.40 Sight Center Zero Az Pt

Auxil Pt. "C" 36.51 254-251

At Auxil Pt. "C" Sight -365.40 for Zero Az Pt

TPBM

HE

Rod 3.6

1505-

"

81.8

84.5

75.3

74.8

73.0

69.5

64.2

60.3

Rod 8.6

1500

Top of cliff

Top of cliff

Top of cliff

Top of cliff

Top of cliff

Top of cliff

Top of cliff

1.78	1508.57	1506.79
47.8	302-30	4.7 03.9
49.5	303-30	58.3 578 292-45
54.5	300-15	56.5 293-30
63.5	297-30	52.7 296-15
66.9	298-0	
72.5	297-01	
74.0	295-01	+14 79.7 297-45
75.3	293-15	1510 75.5 297-30
83.0	293-40	73-0 299-45
		vert +52 67.3 301-30
		vert +80 62.5 301-45
		vert 62 59.3 302-15
		51.9 303-30
		1 1/2 vert 46.0 304-45
		1500 1545 420 305-45
		1.5 vert

8/26/20

Bub
Fisher
Mixer

see page 25 - 37. checkup (90)

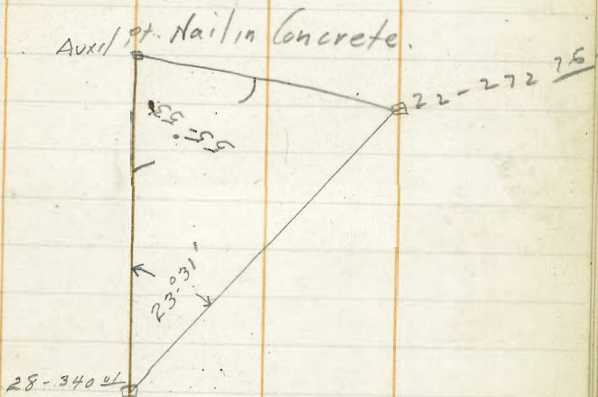
At Auxil B' from B-28 Sight Auxil A'
for Zero Az - Rt

Auxil A' 10.63 92.25 1481.62

At-28-340 \perp Sight Center for Zero Az Rt

Nail Concrete

Auxil Pt. 15-31 90.25



8/27/20

Bub
Fisher

Final Topog

Mixer

At C-44 Sight Center Zero Az Pt

Auxil Pt 54.30 62°-08'

At Auxil Pt Sight C-44 for Zero Az Pt

20'50"
TP BM 28340L

7.47 1461.09 1453.62

Cor Form. 24.0 291-15 ✓

Cor form. 25.3 267-06 ✓

Average Elev. 1.5 59.6

Check
Dist

Cor Form 40.1 244-30 (9)

Cor Form. 15.8 201-10 Rod 1.1 1460 40.2 90-30 ✓

43.3 ✓ 95-15 ✓

44.6 103-30 ✓

Rod 1.1 20.4 0-45 ✓ 48.7 ✓ 111-00 ✓

1460 17.6 19-30 ✓

7.0 27-0 Rod 61

16.2 70-30 ✓ 1455 34.4 93-45 ✓

15.8 85-15 ✓ 29.5 96-30 ✓

23.3 89-0 ✓ 22.3 92-45 ✓

30.1 85-45 ✓ 13.9 95-0 ✓

33.3 ✓ 90-30 ✓ 9.4 105-0 ✓

36.5 ✓ 91-30 ✓ 6.6 109-45 ✓

HI 61.09

45

Pin 39-415

Auxil B 120°-21

1455 7.0 122-40 ✓

1455 4.5
5.3 152-0 ✓T.P.
Rod 11.1

12.44 78.65

1450 ✓ 5.9 ✓ 172-0 ✓

10.8 ✓ 137-30 ✓

13.4 ✓ 132-0 ✓

16.1 118-10 ✓

18.4 120-15 ✓

19.1 118-30 ✓

21.7 116-0 ✓

21.1 107-30

25.4 104-0

29.2 110-0

35.8 112-45

42.2 116-30

46.5 115-45

49.0 119-0

53.5 117-50

rot + 10° 54.5 114-20

+ 11° 59.4 114-30

62.4 115-20 (9)

V 9° 65.7 116-45

67.0 117-45

8/27/20

Bob
Fisher
Milton

Vond

At Auxil Pt B from 38-425.
Sight Auxil Pt from C44 - for
Zero Az. Pt

BM	P.				
		0.95	49x69		48.64
Rod 2.7					
1445	33.7	353-50	1445	14.4	178-30
vent + 7°	33.2				
1445	28.9	351-45		16.8	175-20
"	25.5	351-30		21.3	169-45
"	23.0	354-10		23.4	169-30
"	19.5	358-10	vent + 5	25.8	170-45
"	17.8	358-45		28.5	175-0
"	16.5	1°-0		31.0	175-30
"	13.5	359-45			
"	15.8	12-15	Rod 7.7		
"	15.5	19-0	1440	44.3	799-45
"	11.5	9-30		43.8	198-30
"	9.3	19-10		41.5	198-15
"	7.0	11-0		40-0	197-45
"	5.7	54-30		36.5	198-30
"	4.7	77-30		33.1	190-15
"	4.8	132-45		26.6	172-45
"	7.9	159-0		23.5	172-45
"	11.5	176-0		22.3	172-15
"	13.4	179-0		19.8	

see page 47

46

Vond

7.7	15.1	178-45
1440	12.4	183-0
"	10.2	189-30
"	5.5	197-30
"	5.9	188-30
"	3.6	206-30
"	4.6	267-30
"	5.1	297-45
"	7.3	321-30
"	10.1	333-10
"	16.4	330-0
"	16.3	334-45
"	22.5	329-40
"	23.5	336-15
"	37.5	334-45
"	37.7	317-30

see page 47

At Auxil "B" from 38-425- Sight
Auxil from C44 for Zero An Rt

Red 46

T.P. BM.

0.95 49.59 48.64

Red 9.6

1440

38.2	317-45	22.5	189-15
36.0	316-30	32.9	205-15
33.2	314-10	35.5	198-45
36.5	334-30	41.3	198-15
28.5	336-0	41.1	198-45
27.1	319-0	46.0	202-15
18.2	328-15		
17.3	318-30	Red 4.6	
10.7	311-20	1445	41.5 196-40
8.6	315-0	39.0	194-40
7.6	318-0	38.8	193-15
5.0	292-45	34.8	189-0
7.1	262-20	31.8	183-30
4.2	225-30	30-2	179-30
8.0	204-45	31.2	176-0
9.8	188-30	27.9	175-45
10.8	191-15	28.3	169-30
13.2	187-45	14.8	179-30
14.0	179-30	9.2	183-15
18.5	179-15	4.2	163-40
19.9	186-30	3.5	95-45

1445	4.8	81-45
	5.8	33-30
	8.2	10-15
	10.4	8-15
	12.7	4-7-15
	10.0	338-10
	12.5	333-30
	13.1	348-0
	15.4	338-30
	17.4	339-30
	19.6	357-30
	21.0	354-30
	23.8	343-45
	28.7	344-30
	32.2	342-0
Corrected	39.4	336-0

Auxil "D" 18750 258-16

T.P.

12.92 36.67

Red 9.0

Seepage - 47 for Auxil Pt

At Auxil "D" from 38-425 -
Sight Auxil "B" for Zero AZ RT

	-2.48	34.19	✓	36.67	
+ 0.8					
14.35	13.6	272-0	Red 42		
	14.6	300-10	134.30	36.2	119-0
	14.3	307-30	"	34.3	117-10
	13.2	319-0	"	33.3	114-30
	14.2	325	"	33.6	111-0
	14.1	332-0	"	29.2	108-0
	12-0	333-30	"	26.8	99-0
	11.9	349-30	"	20.4	97-0
	11.0	12-0	"	18.2	91-0
	14.9	38-30	"	17.9	77-10
	17.5	47-30	"	11.8	44-30
	14.9	60-45	"	10-0	35-45
	18.4	75-0	"	3.0	18-30
	19.9	86-15	"	7.1	310-30
	22.7	91-30	"	9.3	282-0
	27.0	93-30	"	11.2	265-15
	28.6	98-0	"	13.4	270-0
	32.7	98-0	"	15.4	262-0
	34.1	96-0	"	17.3	250-0
	38.6	101-30	"	21.6	250-15
Check shot	36.5	112-30	"		

48

2nd 62	14.28	22.6	223-0	✓
"	"	19.4	238-0	✓
"	"	19.2	249-0	✓
"	"	15.5	224-45	✓
"	"	9.9	225-0	✓
"	"	7.9	190-0	✓
"	"	13.0	103-0	✓
"	"	16.8	106-0	✓
"	"	20.3	97-45	✓
"	"	30.0	115-10	✓
"	"	32.5	114-45	✓
"	"	34.5	118-0	✓
"	"	37.9	118-45	✓
"	"	39.5	116-40	✓
"	"	47.4	122-30	✓
	9th			
Wat + 70	51.0		132-45	✓
	44.5		130-0	✓
	41.2		129-15	✓
	37.5		131-15	✓
	34.3		137-15	✓
	22.1		129-0	✓
	14.8		135-15	✓
	15.0		154	✓

Arcl 52

1428

17.9 / 158-0 /

"

17.4 / 168-0 /

"

12.9 / 164-15 /

"

11.0 / 177-0 /

"

12.9 / 184-30 /

6/25/40
Bus
Fisher
Mixer

Final Topog -

At Auxil "D" Sight Auxil "B"
for Zero - Az RT

3.22 ^{1433.45}
~~1437.89~~

1436.67

Elev - in Bottom -

19.0 / 222-0 /	6.1	27.4 /
9.5 / 183-30 /	6.1	27.4 /
12.3 / 127-30 /	6.7	27.1 /
24.0 / 125-30 /	6.4	27.1 /
28.5 / 177-30 /	7.6	25.9 /
39.7 / 126-30 /	7.8	25.6 /
40.7 / 126-15 /	11.0	22.5 /
44.0 / 126-10 /	12.0	21.5 /
47 / 128-0 /	9.0	24.5 /
56.5 / 125-0 /	9.8	23.7 /

1433-45

58.3 / 127-45 / 10.7 23.3 /

rat + 132 67.0 / 127-0 / 9.6 23.9 /

Red 55

rat 70 65.0 / 129-0 / 9.7 24.1 /

rat 82 67.3 / 128-0 / 8.9 24.6 /

1428
rat 100 65.8 / 122-0 / 5.5 28.0 /

1428
rat 60 59.8 / 122-30 /

1428
rat 60 54.3 / 122-30 /

Red 5.5
1428 47.8 / 123-10 /

gap

1428 48.0 / 131-30 /

rat 82 54.4 / 132-20 /

rat 100 59.0 / 131-30 /

85

1425 48.3 / 128-0 /

rat 82 65.8 / 123-30 / 51.7 / 127-30 /

60.5 / 124-10 / 55.7 / 129-45 /

rat 90 54.3 / 122-30 / VENT 44 60.3 / 131-45 /

1425- 47.0 / 124-30 /

44.4 / 123-0 /

41.0 / 123-30 / Bottom of Hole

41.0 / 128-10 / Elev. - 1412

44.5 / 129-10 /

47.7 / 130-0 /

7/27/20

Burb
Fisher
Mixer

Concrete Topog

Contraction Joint

At Auxil "B" from B-38 - Sight

Auxil "A" for Zero Az Right.

B.M. Top of Rock
5' SE. of Sump

5.59 58.57 1452.99

Contraction Joint

N. End of Form 31.28 262-50

1 39.0 240-0

19.0 39.6

Well

NE Cor 37.2 237-30

NW Cor 40.8 241-45

SE Cor. 40.4 232-10

SE Cor 43.9 236-35

AT Auxil "A" from 28-340^{el}Sight 28-340^{el} for Zero Az Rt.

B.M. 2.79 1456.41 5362

End of form 52.5 167-0 19.5 45.9

Top of form 49.0 162-40 10.6 45.8

Top of 13.5 42.9

Bottom of form 18.6 37.8

Contraction joint 2.77 143-20

30

HI 56.41

El. Concrete Top form	22.7	129.15	10.7	45.7
Bottom			18.3	38.1

Concrete Rock Contacts	13.6	125-10	10.7	45.7
	19.7	112-30	10.8	45.6

"B" Auxil Pt.	11.6	95-10	10.7	45.7
50'	50'	159°-52'		
T.P.			11.99	44.42

At Auxil "B" Sight Auxil "A" for Zero Az Right

HI 48²

T.P. 3.55 47.97 44.42

Line # 1

00 24.2 ~~45~~ 6.3 41.7 ✓

18 27.6 61-0 6.0 42.0 ✓

25 33.7 74-30 7.7 40.3 ✓

Contraction Joint 37.4 80-20 8.3 39.7 ✓

El. Bottom Form 50.5 92-15 10.1 37.9 ✓

Line # 2

42 40.8 113-10 8.6 39.4 ✓

16 14.9 100-50 5.6 42.4 ✓

00 4.0 355-0 5.5 42.5 ✓

HI 4297

Concrete Topog

Line # 3

0V	15.4	217-30	3.9	44.1 30
21	22.3	169-40	4.6	43.4
36	38.7	149-30	5.5	42.5

Line # 4

26	44.0	174-45	5.0	43.0
18	39.1	182-30	4.6	43.4
18	33.3	196-45	3.5	44.5
00	31.7	211-0	3.6	44.4

Dist between Points

1-2	20'
2-3	21.3
3-4	17.0
00-	3-0'

7/31/20
Eub
Fisher
Mxter.

51

At 28-340^o Sight Center for O O Az ~~71~~ ²⁴

20' East of
TP 540.01
HI 4.7
HI 66.5

Top of Form
3 Contact

Dist	Az	Vert	Red	Elev.
12.85	1466.47		14.53	62
			HI 4.7	61.8

Dist	Az	Vert	Red	Elev.
10-0	88-15		6.75	59.52

- Section 5 -

1 -

51.0	119-0	15.0	51.5
72.	142-15	15.4	51.1
		17.2	49.3
90.0	149.0	18.3	48.2

5

ca firm

38.0	128-30	14.5	52.0
50.	142-15	16.5	50.0
60.	149-45	16.0	50.5
71.0	154.0	15.2	51.3
80.	158-00	16.9	49.2
		18.6	

Section 6

78.0	166-0	16.6	49.9
64.0	166-15	15.4	51.2
45.0	161-45	16.7	49.8

Raq
HI 6647

Concrete Topog.

52

Section 6

	32.0	149.0	13.7	52.8
circ of forms	13.5	105.45	13.7	52.8

Section 7

	25.0	185.0	11.4	55.1
	48.0	182.30	14.5	52.0
	60.0	182.0	15.4	51.1

~~14.2~~

~~8~~

	55.0	198.15	14.2	52.3
	40.0	196.15	13.2	53.3
	31.0	198.15	12.6	53.9

22.5 # ofipper used during
July 1920-

8/4/20

Bob
Fisher
Mixer

Concrete Topog

HI 65.47 At C 31 - Sight C 46 for Zero Az R.

29-4102 6.29 65.47 59.18

Fillet

18.75 314.20 13.1 52.4

R. Contact 19.0 249.0 6.6 58.9

19.0 249.0 8.8 57.7

17.6 257.0 12.8 52.7

R.C. 18.3 267.0 12.9 52.6

R.C. 19.6 274.45 13.2 52.3

R.C. 23.8 278.45 13.2 52.3

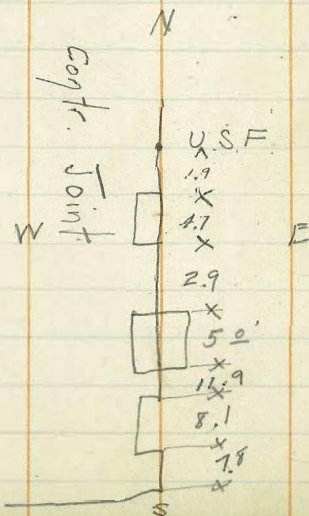
R.C. 25.0 287.30 13.2 52.3

R.C. 23.9 292.0 13.3 52.2

R.C.F.F. 24.8 295.0 13.4 52.1

8/5/20

Elev 65.5



8/5/20

Bob
Fisher
Mixer.

Concrete Topog

53

At 31 - 430 2 Sight B 38 for

Zero Az R.

and 46
HI 65.89

4.60 65.89 1461.29

Fillet

r.h. of form

R.C.

Bottom Form

R.C.

U.S.F.

Bottom Form

Top

R.C.

R.C.

R.C.

R.C.

R.C.

R.C.

R.C.

R.C.

R.C.

R.C.

End Form

R.C.

24.9 155.30 2.2 63.7

24.9 155.30 6.9 59.0

26.0 143.25 6.7 59.2

26.2 142.30 2.3 63.6

R.C. 23.2 149.30 6.8 59.1

R.C. 21.65 146.30 6.9 59.0

R.C. 21.0 147.30 6.9 59.0

R.C. 20.1 144.45 7.0 58.9

R.C. 17.9 144.45 6.9 59.0

R.C. 12.0 129.30 7.3 58.6

R.C. 12.0 120.0 7.0 58.9

8/6/20

Bub
Fisher
Mixer.

Concrete Topog

At 28-340° Sight Center for Zero Az Pt

Rod 4.5

H.I. 66.2

L	4.5	66.19		61.69
A in form	27.9	141-15		
R.C. - F.F.	33.7	134-10	0.7 5.7	65.5 60.5

Plotted 8/6/20

8/13/20

Bub
Fisher
Mixer.

Transferred from Book #14

At 30-431-23 Sight Center for Zero Az Pt.

31-430	14.57	75.86		1461.29
--------	-------	-------	--	---------

Face Dam

Cov Fillet	22.24	16.32	9.2	66.9
------------	-------	-------	-----	------

R.C. Form	17.9	34-15	9.9	66.0
-----------	------	-------	-----	------

R.C.	21.9	42-30	9.8	66.1
------	------	-------	-----	------

Bottom Fillet

R.C.	27.1	52-45	9.5	66.4
------	------	-------	-----	------

Face of Dam

Cov Fillet	31.3	45-50	9.3	66.6
------------	------	-------	-----	------

8/14/20

Bub
Fisher
Mixer.

Concrete Topog

54

At 31-430 - Sight B-38 for Zero Az Pt

Auxil Pt 19.13 64-38 ✓

At Auxil Pt from 31-430 - Sight 31-430 - Zero Az Pt

H.I. 52.99

Fillet

50 SE

Sump:

4.49	57.47	1452.98
------	-------	---------

Top Form

4.6	167-0	10.5	47.0 ✓
-----	-------	------	--------

Bot Form

4.6	167-0	18.5	39.0 ✓
-----	-------	------	--------

Top Form

29.7 ✓	131-15	10.5	47.0 ✓
--------	--------	------	--------

Bot Form

29.7	131-15	17.5	40.0 ✓
------	--------	------	--------

8/14/20

At 30-431-23 Sight Center Zero Az Pt.

H.I. 75.68

3.95	75.68	1471.73
------	-------	---------

F-Dam

Cov Form	31.2	45-20	6.4	69.3
----------	------	-------	-----	------

Package Blk

Fillet	7.2	68
--------	-----	----

34.6	65-40	7.2	68.5
------	-------	-----	------

8/20/20
Fisher
Mixer

Concrete Topog.

At 31-430 Sight Center Zero Az Pt.
Fillet + Construction Joint:

Auxil/Pt 69.11 300-00

R.C.	28-0 ✓	222-15 ✓	11.2	48.8
			4.2	55.8 ✓
R.C.	32.1	216-15 ✓	4.2	55.8 ✓

At Auxil - Sight 31-430 for Zero Az Pt

BM 50'

7.01 59.99 452.95

Rev Pt. 47.1 55.28 ✓

Cor. West F.D. Form	47.0	348-50 ✓	6.8	53.2 ✓
Cor Forms	18.3	38-20 ✓	7.2	52.7 ✓
R.C.F.	18.3	52-50 ✓	7.2	52.5 ✓
RC	16.0	57-40 ✓	7.2	52.5 ✓
RC	14.6	72-45 ✓	7.3	52.7 ✓
RC	16.1	86-50 ✓	7.4	52.6 ✓
RC	16.0	111-50 ✓	7.0	53.0 ✓

end of FD - Form	17.1	123-30 ✓	7.0	53.0
			4.6	55.4 ✓
R.C Form	19.5	126-0 ✓	7.0	53.0
			4.7	55.3 ✓
RC	23.0	147-45 ✓	3.1	56.9 ✓
end of Form	28.2	166-0	3.6	57.4
Cor. of Form	19.0	155-45 ✓	3.1	56.9 ✓
Cor Construction Joint	8.6	154-0 ✓	4.9	55.1 ✓
Construction Joint	26.1	226-0 ✓	4.3	55.7 ✓
Cor Form	21.4	245-45 ✓	4.2	55.8 ✓

8/21/20
Bob
Fisher
Mixer

Concrete Topog

Concrete F.illet

At C 344 Sight Center for Zero Az Pt

	2.50	6.2.48		52.98
	13.5	182-15	9.5	53.0
	20.5	222-45	9.5	53.0
B Form	26.9	234-30	9.6	52.9
+ vert 6.5				
RC	31.9	236-45	9.6	52.9
+ vert 3.0	32.1	242-0	9.7	52.8
RC	34.7	246-20	9.8	52.7
RC	38.8	246-45	9.6	52.9
RC	43.3	251-45	9.3	53.2
vert				
+160	47.7	235-50	9.1	53.4
cc Form	49.3	259.30	4.6	57.9
con. Form	45.8	259.45	4.6	57.9

Plat Hed Spk

8/28/20

Bob
Fisher
Mixer

Concrete Topog

Elev for August Est

34216
Inspection Alley

D 0 =
D.S.F.

D 0 =
D.S.F.

00 = D.S.F.

20
20
20
10

433 71.70 67.37
contraction Joint = 0-0

0.4

Section #1

C-02	00	C-02	C-10	0.0
00	162	30	364	448

Section #2

F04	F03	C09	C16
00	118	29.3	47.0

Section 3

C-20	C20	C19	1.9	C08	C03
56-	430	380	17	140	00

00 section =

Copied - Concrete Estimate
Book # 13 Page 2

9/10/20
Fisher
Mixer

Concrete Topog
Line of Forms

At Auxil from 28-340° Slight
28-340° for Zero Az Rt.

B.M. 20: East of 28-340°	2.30	1455.92	1453.62	
Bottom Form.	50.21	255°-01	13.6	42.3
Top Form	49.7	256-30	4.5	51.4
Bottom	56.3	241-45	11.6	44.3
Top Filling	56.3	241-45	8.3	47.6
Top of form	56.3	241-45	4.3	51.6
R.C. Form	58.3	243-15	10.4	45.5
Filling Top Form	58.3	243-15	8.4	47.5
R.C. E Form	65.0	232-45	8.2	47.7
E. Form.	66.2	231-40	4.2	51.7
E.F. R.C.	49.9	277-45	3.7	52.2
Cor Form	43.0	291-0	13.7	42.2
Bottom Form	3		31.8	24.0
Form R.C.	57.5	314-20	5.6	50.3
E.F. R.C.	63.6	319-15		56.7

Platted 9/10/20

57

Concrete Topog
Location of Forms

At Auxil Pt from C 44 Slight
C-42 for Zero Az Rt.

8-38	2.16	1472.36	1470.30
Top of form			
R.C.	42.0	108.0	10.7
Bottom Form			10.7
R.C.	36.5	109.30	16.0
E of Form			11.6
Center to Center	8.8	204-45	DM. 17.0
Dist 1.5 from center.			55.4

9/21/20
 Bu b
 Fisher
 Mixer.

Location of Forms
 Concrete Topog-

At C-36 Sight C 18 for zero

outlet gallery AZ Right

0+24 6.79 73.34 1466.55

concrete contact
 Top Form

23.3 261.40 5.8 67.5

13.0

12.1

12.1

11.7

10.9

5/59.8

11.9

Both Form

23.3 261.40 12.8 60.5

Top Form 73.0 262.1 5.8 67.5

Both forms 73 262.1 10.7 62.6

Average Elev. Fillet

11.9 61.4
 11.7 ~~61.6~~

Both Form

Cor Form 74.0 265.0 4.6 60.2

60.2

59.3

59.5

58.5

58.1

5/295.6

59.1

Both

Cor. Form 85.2 272.15 4.6 59.3

Cor Form

Both Form 88.9 285.45 4.3 59.5

13.8 58.5

5.3 58.5

14.8 58.1

11.2 58.1

15.2 58.1

295.0

302.50

104.5 304.30

check Elev.

B-38- 3.05 1473.35 1470.30

9/24/20
Fisher
Mxter.

Check on Location of Forms —

At 30-282.46 Sight 30-390 for
zero AZ Rt.

30-282.46 4.80 68.39 63.59

cor Form	21.0 ✓	10°-15 ✓
	19.0 ✓	
R.C.	46.0	46-20 ✓
R.C.	30.9 ✓	53-0 ✓
R.C.	67.2 ✓	70-30 ✓

Plotted 9/24/20

9/28/20

Fisher
MixerConcrete Topog
Location of Forms

2.00 1468.55 1466.55

26.7 / 28-45' 5.3 63.3

27.6 / 27-10' 0.2 68.4

22.4 / 6-00' 5.2 63.4

23.5 / 5-40' 0.3 68.3

22-4 / ~~5-00~~ 1.7 66.9

22-4 / 6-00' 2.2 66.3

33.3 / 317-15' 2.5 66.1

P.C. 51.5 / 301-0'

P.C. 32.0 / 290-30' 10.2 58.4

19.5 / 340-30' 10.0 58.6

21.0 / 9-40' 10.6 58.0

Fillet elev. Area 9.0 = 59.6-

Plotted 9/28/20

Average Elev. =

59.6-

9/29/20

Fisher
MixerConcrete Topog
Location of Forms

60

At C 28 Sight. Center for Zero Az Pt.

B-38 3.78 1474.08 1470.30

45.F. 26.0 109.45 4.5 69.6

Gr Form Top. 26.0 109-45 0.7 73.4

P.C. 34.1 121-15 5.1 69.0

34.1 121-15 11 73.0

Average 9/29/20 69.0
Plotted

10.3

9.8

7.0

8.1

7.9

145.1

9.05

9/24/20
Fishes
Mixed

Final Contours -

63

A1. 30-282.46 Sight 30-390 for Zero
A2 Rt. -

Auxil Pt. 86.0 70°-04'

At Auxil Pt Sight 30-282.46 for Zero
A2 Rt.

30-282.46 3.10 1466.69 1468.59

Rod 67

1460 19.0 / 35-45 / 57.5 / 130-0 /

13.5 / 11-45 /

14.5 / 19-30 /

Elev curve

10.7 56.0

12.0 / 33-15 /

12.5 / 45-30 /

13.3 / 67-15 /

13.0 / 112-30 /

17.5 / 131-15 /

24.0 / 130-0 /

28.7 / 127-30 /

30.8 / 125-20 /

34.5 / 120-0 /

42.0 / 117-30 /

48.8 / 122-30 /

52.0 / 120-0 /

56.4 / 119-15 /

9/25/30

Fisher

Mixer.

At 30 - 282.46 Sight - 30 - 890 ft

Zero A2 Right.

30 - 282.46

4.45 68.04

1463.59

Rod 1.0

1460

55.0

87.5

333-10 ✓

51.5

302-30 ✓

82.2

331-0 ✓

54.0

304-30 ✓

77.5

328-10 ✓

59.0

306-30 ✓

69.5

324-10 ✓

56.5

312-30 ✓

63.0

322-0 ✓

57.3

313-40 ✓

62.0

320-40 ✓

65.2

313-0 ✓

56.0

316-10 ✓

68.7

313.0 ✓

50.5

314-15 ✓

70.5

315-45 ✓

44.0

306-15 ✓

73.2

315-45 ✓

40.7

300-30 ✓

70.2

320-40 ✓

38.8

295-20 ✓

73.0

324-20 ✓

37.6

298-0 ✓

78.0

326-0 ✓

34.3

276-20 ✓

84.7

325-25 ✓

34.3

276-20 ✓

89.2

332-0 ✓

Rod 3.0

1460

42.8

264-30 ✓

1470

73.0

324-20 ✓

41.5

271-0 ✓

72.5

322-0 ✓

45.0

282-30 ✓

78.5

312-45 ✓

44.7

292-30 ✓

67.5

305-20 ✓

47.3

296-0 ✓

62.5

299-30 ✓

49.0

294-10 ✓

66.8

305-45 ✓

Elevations of Coordinate Points

Reference Points.

station	Elev.	station	Elev.
455 ⁷⁹ = B Line		64	1588.64
Tangent 12		66	1603.56
Tangent 14		68	1617.48
Tangent 16		70	1624.03
18	1557.81	74	1650.44
20	1545.11		
22	1534.73	B.M. 15 North 652-56 Nail in Stump. Hub w. 74 with about C. 7+60	1534.73 out
24	1525.20		1649.50
26	1503.85	East Tangent	
28	1488.45	325 Line	
30	1472.35	60	1571.25
38	1470.30	62	1582.59
40	1473.85	64	1591.57
42	1480.64	66	1602.58
44	1450.71 1459.94	68	1612.52
46	1502.68	70	1623.02
48	1512.78	72	1633.50
50	1522.67		
52-468" =	1532.83	300 Line	
450 = B Line -		50	1524.46
56	1550.34	52	1536.34
58	1559.53	54	1540.42
60	1568.41	56	1551.41
62	1579.43	58	1560.76
		60	1571.50

Elevations of Coordinate Points

Reference Points.

station	Elev.	Miscellaneous Points
275 Line		station - Elev.
60	1567.79	0 0
62	1579.68	0 0
64	1588.49	2
66	1600.42	2
68	1614.82	4
70	1622.85	4-350 1603.26
72	1633.30	4-455 1615.92
		4
250 Line		6
38	1491.47	6-480 1615.35
40	1496.25	6
42	1507.15	6
44	1513.11	8
46	1519.99	8-450 1601.85
48	1526.28	8
50		8
52		10-
54		10-315 1573.77
56		10-442 1596.55
58		10-446 ⁵⁸
60	1568.21	10-

Elevations of Co-ordinate

Reference Points

Miscellaneous.		Miscellaneous.	
Station	Elev.	Station	Elev.
12-315	1561.72	20-505	1549.60
12-340 ¹³	1569.42	20-	
12-426 ³²	1587.32	22	
12-437 ²	1588.34	22-409 ²	
12-502 ⁰⁹	1600.80	22-497 ⁴⁰	1542.61
14		22	
14-319	1551.84	24	
14-350 ⁴²	1556.70	24	
14-417 ⁹²	1574.98	24-505 ⁰	
14-436 ²⁸	1574.96	24-800	ton Rack
14-495 ¹⁰	1588.87	26	
14-		26-471 ⁹²	1510.42
16-464 ⁴⁴		26-500	Ref point. across conduit. ton Rack
16-309	1539.58	26	
16-333 ⁹⁰	1569.42	28-340	
16-446 ¹⁷	1567.28 (?)	28-481 ¹²	1503.57
16-490.09		28-	
18		28-	
18-303	1529.40	30	
18-488	1561.08	30	
18		32	
20		32	
20-421.21		34-118 ⁶⁶	

Elevation of Co-ordinate

66

Reference Points

Miscellaneous.		Miscellaneous.	
Station	Elev	Station	Elev.
34-274 ¹⁴	1467.05	46-432 ²²	1509.72
34-425 ⁸⁴		46-	
34-477 ⁸²	P.I.	48	
38-229 ⁵⁴	1509.45	48-416 ⁰⁵	
38-480 ⁴¹	1477.56	48	
38		48	
38		Center of Curve	
40-219 ¹⁰	1513.09	50-000	
40-413 ⁵³	1482.94	50-56 ⁴¹	
40-674	Reference Point.	50-171 ³⁶	
40		50	
42-217 ¹¹	1514.56	50	
42-412 ⁶⁷	1486.04	50	
42-420 ¹²	1487.02	52	
42-434 ⁰²	1491.70	52-468 ¹¹	1532.83
42-624	1576.04 Ref point	52	
42		54	
44-218.90	1517.20	54	
44-414 ⁴⁹	1491.53	54	
44-670	Reference Point.	56	
44		56	
46-338 ⁰	1481.42	58	
46-414 ⁰⁴	1503.70	58	

Reference Points small
points above 50
600 - to 800 -

Coordinate

66

Miscellaneous

60-

60-

62-

62-

62-

62-

62-

66

68

68

70

70

72

72

67

List of B.M.s

Harris B.M.
U.S.G.S. (?)

Iron Pin Set in Boulder
60' South Old Blacksmith Shop. Barrett Datum 1626.33

Nail in Stump 10-340 1579.58

Nail in Stump 12-330 1570.88

Nail 10-446 ^{End of Steel pipe -} 52 - Concrete Joint Sewer pipe 1597.75

Nail in Stump about 16-468 1573.90

Nail in Stump about 17-410 1550.96

On Top Rock near Concrete Tower #1 1546.24

Nail in Rock. about 24-432 1525.75

Nail in Stump near B-30 1471.73

Nail in Stump S.E. 11° of 52-468 1537.77

out Nail in Stump C-54 52-15' North 1534.73

Hub about C-7+60 with witness 1649.80

out Top of Natl - Canyon 1467.41

Old engine Base West side Canyon 1461.38

Nail in Rock - West cableway ^{30" North} 3+50 1764.33

out Nail in 2' x 8" North side Tunnel Plume 1650.27

Top of Rock. 50' S.E. of Sump 1452.98

T.B. Rock - 44-38.5 1474.44

T.P. Rock 20' East of 28-340 1453.62

Coffee

July 26 11 1/4 "

29 11 1/4 "

732	12
48	12
5	10
	128
	<u>1468</u>
	177

34	57	116
	233	54
	17	170

94
<u>46</u>
14. 10.36 88.5

1 1/2

5.7
<u>98</u>
104.5