

FIELD BOOK

335

W141

**MICROFILMED**

JAN 8 1963



1-54  
68  
x6

Index		Page
Traverse of 160 Contour		1-60
• Elevations & Contours on "Head's Hill"		61
" 8 "	on Henderson's Hill	63
" 8 "	on Dam Site # 1	65

1

550°08'E 299.0

11

536°41'E 84.2

10

N88°44'E 130.4

9

575°45'E 111.3

8

566°21'E 147.6

7

571°38'E 137.6

6

561°55'E 157.3

5

559°19'E 109.9

4

N88°34'E 96.3

3

588°55'E 194.6

2

N75°45'E 126.7

1

N47°01'E 138.4

0+00

25

S87°36'E 208.5

24

N71°39'E 112.2

23

N43°01'E 215.6

22

N59°50'E 203.4

21

N50°29'E 132.9

20

N54°35'E 280.0

19

N59°33'E 64.4

18

N84°31'E 122.8

17

N88°56'E 165.5

16

S58°04'E 106.9

15

S40°50'E 73.4

14

S49°49'E 143.6

13

S47°51'E 176.3

38

N11°52'E 435.1

37

N19°52'E 195.8

26

N30°26'E 150.2

35

N30°38'E 69.2

34

N55°35'E 410.3

33

N66°48'E 66.8

32

N75°01'E 122.3

31

N56°40'E 115.6 7

30

N80°37'E 143.7

29

570°41'E 211.7

28

552°26'E 133.7

27

N73°47'E 130.5

26

N83°22'E 79.3

51

N65°28 E 79.9

50

580°46 E 178.0

49

577°21 E 69.8

48

542°38 E 47.9

47

N79°37 E 57.9

46

N71°42 W 46.3

45

N41°27 W 131.7

44

N36°30 W 64.3

43

N36°00 E 156.9

42

N43°35 E 199.8

41

N9°56 E 150.3

40

N32°45 E 249.2

39

N4°51 E 222.2

64  
N79°12'E 213.8

63  
S46°53'E 85.1

62  
S36°26'E 114.8

61  
N54°16'E 113.1

60  
N35°48'E 277.3

59  
N58°37'E 212.0

58  
N45°54'E 160.8

57  
N83°59'E 229.5

56  
N49°04'E 315.3

55  
N70°48'E 354.9

54  
N81°59'E 89.1

53  
S64°42'E 132.8

52  
S48°28'E 116.7



77

S70°38'E 88.1

76

S5°05'W 168.6

75

S43°22'E 175.5

74

S16°30'E 64.3

73

S7°09'W 119.3

72

S45°01'E 66.4

71

N25°41'E 134.7

70

N9°07'E 287.2

69

N23°04'E 107.3

68

N59°01'E 159.0

67

N88°21'E 73.5

66

S78°22'E 164.5

65

N77°25'E 216.8

90

N43°07E 65.2

89

N50°51E 60.1

88

N12°16E 113.3

87

N75°35W 130.9

86

N9°04W 183.7

85

N75°51W 196.9

84

N8°16W 60.5

83

N6°49E 325.4

82

N75°43E 75.8

81

N87°57E 86.2

80

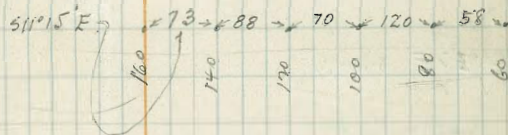
S60°54E 177.3

79

S58°05E 80.2

78

S57°51E 134.8



103

N 25° 47' W 230.7

104

N 27° 25' W 240.0

101

N 7° 25' E 89.3

100

N 21° 32' E 178.3

99

S 81° 11' E 147.6

98

N 2° 29' E 116.0

97

N 11° 31' E 201.9

96

N 17° 12' E 84.6

95

N 21° 43' E 97.7

94

N 34° 22' E 240.6

93

N 27° 19' E 181.5

92

N 17° 37' W 112.8

91

N 23° 51' W 80.2

27  
27  
37

8

570° E

64° 63° 147° 127° 45°

160 140 120 101 100 80

401 445

124

274

111

165

38 34 39 54 581.56 E

160 140 120 100 80

116

N31°49'W 212.5

115

N30°35'E 194.0

114

N42°05'W 185.8

113

N64°36'W 267.4

112

N71°56'W 111.6

111

N49°25'W 118.0

110

N3°44'E 92.5

109

N33°31'W 165.1

108

N22°23'W 52.0

107

N1°07'E 239.8

106

N17°52'W 189.3

105

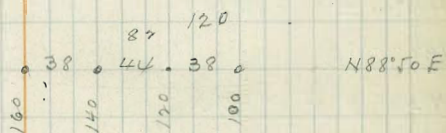
N10°22'W 299.4

104

N25°11'W 391.6

N82°E • 179 • 65 • 177 • 116 •  
 160 140 120 100 80  
 124 321 437

129  
 N11°21'W 147.0  
 128  
 N3°18'E 218.8  
 127  
 N10°10'E 124.8  
 126  
 N18°15'E 97.4  
 125  
 N2°04'W 198.8  
 124  
 N1°18'W 165.5  
 123  
 N4°10'E 189.9  
 122  
 N1°56'E 133.9  
 121  
 N2°04'E 226.0  
 120  
 N7°22'E 198.4  
 119  
 N8°33'E 157.0  
 118  
 N17°15'E 290.9  
 117  
 N10°48'E 291.6



140

N8°17'E 58.7

141

N17°53'E ✓ 174.8

140

N3°43'E ✓ 154.5

139

N8°43'E ✓ 252.0

138

N14°36'E ✓ 114.4

137

N11°41'E ✓ 148.0

136

N33°38'E ✓ 47.8

135

N64°14'E ✓ 151.6

134

N55°50'E ✓ 153.3

133

N28°39'W ✓ 116.8

132

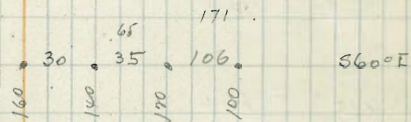
N15°41'W ✓ 94.6

131

N37°19'W ✓ 98.9

130

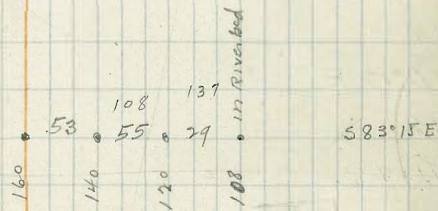
N7°20'W 126.0



155  
 N14°43 W 139.3  
 154  
 N0°31 E 57.1  
 153  
 N15°29 W 210.2  
 152  
 N15°07 E 231.2  
 151  
 N35°31 E 181.2  
 150  
 N6°48 E 166.1  
 149  
 N7°00 E 71.9  
 148  
 N14°01 E 86.6  
 147  
 N33°54 E 93.0  
 146  
 N26°15 E 111.2  
 145  
 N12°55 E 122.7  
 144  
 N16°35 E 98.9  
 143  
 N5°39 E 112.1

160  
 29  
 140  
 51  
 30  
 120  
 31  
 100  
 88  
 700 slope  
 564° E

168  
 N7°57 E 88.9  
 167  
 N3°41 W 78.2  
 166  
 N0°55 E 113.5  
 165  
 N2°02 E 188.0  
 164  
 N11°11 E 97.2  
 163  
 N22°44 W 106.2  
 162  
 N25°08 W 58.0  
 161  
 N6°31 E 158.1  
 160  
 N17°47 W 118.1  
 159  
 N3°58 E 170.9  
 158  
 N22°18 E 45.0  
 157  
 N4°51 W 146.8  
 156  
 N27°35 W 64.4

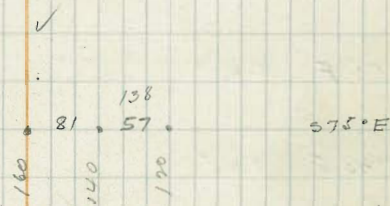
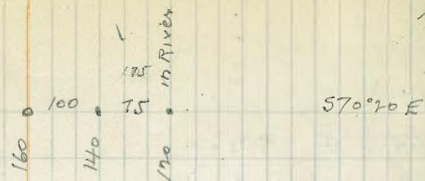




From Oct 28-1924

14

181	
N32°48'E	171.2
180	
N11°21'E	151.6
179	
N57°21'E	143.5
178	
N7°14'E	124.5
177	
N22°31'W	131.4
176	
N12°46'E	196.5
175	
N20°37'E	293.8
174	
N58°45'E	206.8
173	
N0°12'E	88.3
172	
N13°43'W	110.0
171	
N3°01'E	140.5
170	
N6°29'W	110.1
169	
N10°55'E	96.6



X

194  
N55°28E 233.1

193  
N37°02E 217.9

192  
N38°17E 175.9

191  
N11°54E 144.4

190  
N9°50E 139.5

189  
N24°20E 193.4

188  
N41°55E 174.9

187  
N62°30E 93.5

186  
N53°24E 166.8

185  
N27°57E 204.2

184  
N14°25E 103.7

183  
N28°55E 127.5

182  
N36°30E 325.7

207  
 N0°26 E 205.6  
 206  
 N23°14 E 155.0  
 205  
 N34°30 E 815.1  
 204  
 N1°54 E 114.6  
 203  
 N4°55 W 175.2  
 202  
 N28°52 E 206.9  
 201  
 N7°40 E 136.7  
 200  
 N4°46 W 54.3  
 199  
 N4°41 E 53.8  
 198  
 N12°35 E 94.7  
 197  
 N9°54 E 246.3  
 196  
 N8°31 W 148.4  
 195  
 N67°56 E 97.4

217° 552°15 E  
 140

103° 20° 581° E  
 140 123 Teodile

169 21° 31° 580° E  
 140 129 Teodile

169 37 43° 547°30 E  
 140 124 Watering Teodile

210  
N34°57 E 161.3

219  
N32°48 E 152.1

218  
N12°36 E 152.2

217  
N0°27 W 115.6

216  
N4°50 E 51.0

215  
N12°26 E 199.6

214  
N16°53 E 83.1

213  
North 89.6

212  
N13°06 W 104.9

211  
N5°14 W 66.4

210  
N5°54 E 79.7

209  
N0°57 W 296.6

208  
N7°21 W 186.6

223  
N25°51 E 91.8

222  
N44°37 E 117.8

221  
N50°15 E 83.3

220  
N65°29 E 86.0

219  
N65°54 E 105.6

218  
N37°31 E 101.3

217  
N22°45 E 214.2

216  
N6°13 E 77.7

215  
N11°41 E 114.7

214  
N24°03 E 56.0

213  
N19°19 E 89.7

212  
N19°25 E 42.1

211  
N24°17 E 43.8

246  
 568° 30 W 102.7  
 245  
 558° 10 W 93.6  
 244  
 566° 25 W 75.6  
 243  
 528° 47 W 169.3  
 242  
 51° 50 W 65.6  
 241  
 B17 =  
 546° 32 E 214.3  
 240  
 589° 18 E 345.0  
 239  
 N 83° 31 E 203.9  
 0+00  
 238 =  
 N 47° 27 E 300.0  
 237  
 N 12° 39 E 99.0  
 236  
 N 58° 50 E 184.9  
 235  
 N 40° 39 E 32.7  
 234  
 N 27° 27 E 93.9

38  
 550° 06 E 32.65  
 B7  
 586° 22 E 321.6  
 B6  
 N 72° 24 E 168.6  
 B5  
 N 71° 27' 30 E 574.6  
 B4  
 N 46° 47 E 313.9  
 B3  
 N 53° 11' 30 E 74.95  
 B2  
 N 42° 07 E 311.1  
 B1  
 N 49° 53' 20 E 273.9  
 238 = 0+00  
 B100

19  
 " B17 = Sta. 241 (160' contour)  
 544° 59 W 105.2  
 " B16  
 562° 11 W 180.45  
 " B15  
 549° 51 W 222.0  
 " B14  
 539° 44 W 229.9  
 " B13  
 524° 07 W 169.9  
 " B12  
 530° 29 W 212.25  
 " B11  
 532° 40 W 118.65  
 " B10  
 579° 27 W 251.65  
 " B9  
 529° 58 W 32.65  
 " B8

259

S34°45'E 155.5

258

S3°30'E 97.9

257

S3°11'E 98.4

256

S33°14'W 146.5

255

S33°39'W 93.6

254

S54°37'W 114.3 ✓

253

S77°30'W 176.4

252

S50°38'W 162.4

251

C7 =  
S45°44'W 126.3

250 = C1

S76°10'W 157.4

249

S56°43'W 115.9

248

S79°42'W 121.9

247

S75°07'W 125.7

C7 = Sta 256 (160' Center line)

N161°45'W 186.7

C6

N16°25'W 126.4

C5

S70°29'W 68.1

C4

S27°34'W 68.9

C3

S34°07'E 127.7

C2

S46°06'E 179.8

Sta 250 = C1

274

519°38 W 132.5

271

517°17 W 164.6

270

514°50 W 112.9

269

510°31 W 361.6

268

516°04 W 182.4

267

549°45 W 196.3

266

525°28 W 159.8

265

517°20 W 235.3

264

540°14 E 266.3

263

523°47 E 168.5

262

553°33 E 212.0

261

529°20 E 289.3

260

532°45 E 286.1



285  
50° 03' W 168.4

284  
54° 04' W 104.5

283  
534° 14' W 64.4

282  
548° 14' W 53.1

281  
549° 17' W 177.9

280  
551° 21' W 79.9

279  
N 80° 28' W 82.0

278  
N 78° 01' W 184.2

277  
545° 46' W 245.7

276  
540° 56' W 93.3

275  
537° 54' W 87.3

274  
530° 59' W 92.3

273  
533° 48' W 119.3

27  
60° 25' True slope N 86° 30' W  
160  
140  
120

30  
25° 8' True slope N 90° W  
160  
140  
120

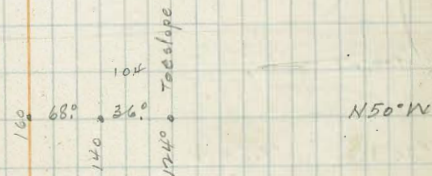
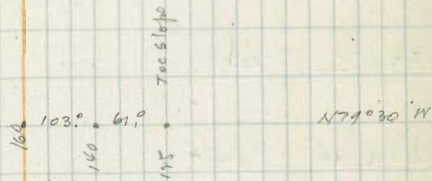


311	
531°51' W	85.6
310	
542°51' W	134.4
309	
544°51' W	66.6
308	
56°47' E	81.3
307	
510°16' W	81.5
306	
537°52' W	149.6
305	
553°48' W	157.9
304	
528°01' W	82.3
303	
519°34' W	36.3
302	
527°03' W	76.0
301	
512°39' E	119.5
300	
55°13' E	170.1
299	
50°36' W	109.0

148 68 94  
 141 140  
 128  
 N 50° W

148 178° 82° 160  
 141 133  
 Two steps  
 N 65° W

324	
50°04' W	101.7
323	
519°49' W	160.7
322	
512°05' W	153.9
321	
58°24' W	177.7
320	
521°53' W	173.3
319	
58°59' W	179.8
318	
53°06' W	189.0
317	
53°38' W	89.5
316	
55°59' E	135.3
315	
525°46' E	208.4
314	
540°56' W	202.2
313	
548°00' W	161.8
312	
542°44' W	157.2



337  
515°31' W 106.2

336  
50°47' W 121.0

335  
520°20' W 136.7

334  
54°30' E 118.8

333  
520°16' W 103.5

332  
515°44' W 143.6

331  
54°17' E 192.9

330  
526°35' E 113.5

329  
54°34' E 64.5

328  
57°06' W 156.0

327  
55°20' W 286.2

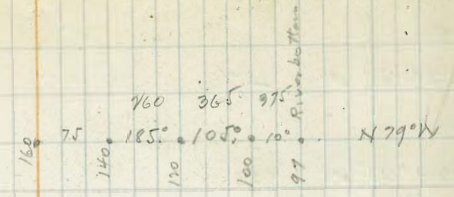
326  
547°22' W 95.4

325  
525°59' W 115.4

160° 170° 200° N66°W  
140 120

160° 65° 105° N84°30'W  
140 120

350  
 57°48'W 43.6  
 349  
 57°05'W 121.1  
 348  
 54°03'W 109.1  
 347  
 55°03'W 53.2  
 346  
 51°38'E 127.4  
 345  
 547°41'W 79.8  
 344  
 522°16'E 106.7  
 343  
 545°59'E 78.1  
 342  
 537°28'E 145.3  
 341  
 516°43'E 104.8  
 340  
 518°19'W 160.2  
 339  
 51°56'W 100.0  
 338  
 512°27'W 78.9



363

549°00 W 45.6

364

569°05 W 113.2

361

558°42 W 72.2

360

55°03 W 29.5

359

540°27 E 63.3

358

551°32 E 55.5

357

529°11 E 49.8

356

54°11 W 65.1

355

543°49 W 51.8

354

585°45 W 180.4

353

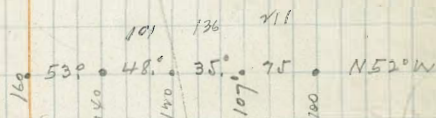
557°31 W 172.7

352

530°26 E 189.9

351

515°47 E 51.7



376

57°35'E 166.8

375

58°25'W 120.5

374

514°20'W 69.8

373

542°55'E 168.2

372

520°01'W 181.0

371

539°28'W 125.8

370

513°20'W 107.8

369

540°36'W 53.6

368

532°30'W 94.0

367

523°46'W 114.8

366

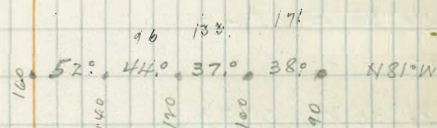
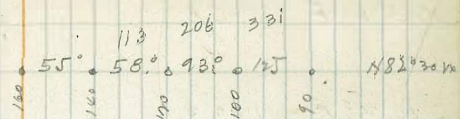
521°17'W 91.2

365

53°27'W 98.8

364

517°46'W 72.8





389  
523°01 E 176.6

388  
510°18 E 123.4

387  
56°01 W 98.6

386  
521°39 W 52.4

385  
526°31 W 227.3

384  
58°05 W 127.7

383  
522°47 W 37.3

382  
544°06 W 150.6

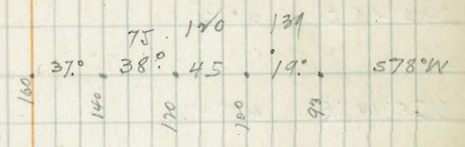
381  
520°26 W 62.2

380  
541°41 E 111.9

379  
510°49 E 158.5

378  
516°01 E 73.9

377  
51°35 W 241.0



402

S 72° 47' E 64.7

401

S 31° 44' E 37.2

400

S 25° 19' E 45.9

399

S 7° 57' W 34.3

398

S 30° 13' W 35.3

397

S 48° 37' W 29.8

396

S 61° 26' W 52.6

395

S 48° 46' W 60.1

394

S 42° 29' E 61.7

393

S 36° 07' E 113.6

392

S 79° 32' E 90.6

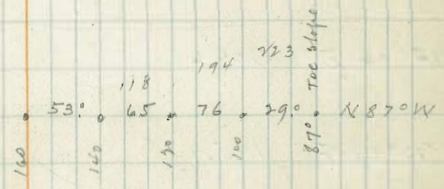
391

S 39° 21' E 43.5

390

S 20° 37' E 125.9

415  
 516°24 W 105.2  
 414  
 550°06 E 89.5  
 413  
 526°25 E 145.4  
 412  
 519°04 E 110.4  
 411  
 59°10 E 218.6  
 410  
 511°22 E 138.8  
 409  
 519°36 E 210.3  
 408  
 514°51 W 99.2  
 407  
 518°12 E 78.8  
 406  
 542°48 E 94.2  
 405  
 522°41 E 55.5  
 404  
 526°58 E 171.3  
 403  
 519°52 E 59.2



448

50°05' E 27.8

421

53°17' W 115.7

426

51°25' W 141.9

425

520°31' W 75.2

424

518°16' E 98.6

423

521°25' E 115.3

422

514°34' E 204.6

421

520°08' E 175.9

420

513°01' W 66.0

419

538°50' W 80.0

418

538°55' E 131.0

417

517°13' E 65.0

416

55°29' W 93.2

	113	176	240	255	
53	60	63	64	15	57.8°W
160	140	120	100	80	75

Tide gauge

441  
 517°45'E 74.9  
 440  
 517°12'W 80.7  
 439  
 550°16'W 195.1  
 438  
 530°52'E 146.8  
 437  
 577°33'E 119.5  
 436  
 515°04'E 44.9  
 435  
 554°24'W 112.2  
 434  
 511°16'E 114.0  
 433  
 52°10'W 121.3  
 432  
 59°04'W 99.8  
 431  
 52°20'E 115.4  
 430  
 56°00'W 63.3  
 429  
 57°22'E 130.9

155  
 9  
 29  
 275

32  
 171  
 207

175

34

569°54'W

133 207 167 275 32 29  
 340 509 782 814 848  
 160 141 120 100 80 74 62  
 The right

4 456  
 5 S 40° 57 E 148.4  
 4 453  
 5 N 35° 55 E 183.4  
 4 452  
 5 N 36° 24 E 71.3  
 4 451  
 5 N 61° 07 E 75.5  
 4 450  
 5 S 68° 43 E 50.8  
 4 449  
 5 S 41° 45 E 83.1  
 4 448  
 5 S 76° 21 E 117.7  
 4 447  
 5 S 33° 57 E 127.2  
 4 446  
 5 S 22° 22 E 80.6  
 4 445  
 5 S 9° 00 W 135.2  
 4 444  
 5 S 68° 00 E 73.1  
 4 443  
 5 S 82° 18 E 52.9  
 4 442  
 5 S 47° 45 E 116.0

467	
N73°04 E	168.6
466	
N68°39 E	89.6
465	
S64°42 E	107.8
464	
S37°35 E	56.5
463	
S31°46 E	98.7
462	
N19°24 E	105.6
461	
N35°25 E	46.9
460	
N86°38 E	79.0
459	
S52°27 E	80.5
458	
S28°33 E	82.8
457	
N57°44 E	109.4
456	
N88°33 E	81.8
455	
S55°30 E	82.7

480	
N 83° 15' E	57.7
479	
N 69° 37' E	64.9
478	
N 77° 27' E	49.6
477	
N 85° 24' E	147.3
476	
S 80° 08' E	34.5
475	
S 68° 38' E	60.4
474	
S 59° 23' E	73.8
473	
S 88° 43' E	90.0
472	
N 67° 23' E	73.4
471	
N 84° 40' E	100.1
470	
S 81° 17' E	144.5
469	
S 79° 46' E	181.6
468	
S 55° 27' E	50.0



493  
 N 82° 56 W 29.4  
 494  
 N 75° 31 W 55.6  
 491  
 N 63° 22 W 37.3  
 490  
 S 89° 36 W 70.9  
 489  
 N 82° 03 W 77.8  
 488  
 S 79° 02 W 85.2  
 487  
 S 78° 48 W 139.7  
 486  
 S 87° 36 W 106.5  
 485  
 D5 =  
 S 8° 26 E 110.7  
 484 = D°  
 S 87° 05 E 142.9  
 483  
 S 86° 09 E 60.7  
 482  
 N 88° 12 E 28.9  
 481  
 S 75° 24 E 130.4

Courses Conform to E-S Fork

D5 =  
 485 Sta.  
 S 56° 40' W 78.76  
 D4  
 N 56° 58' W 98.58  
 D3  
 S 32° 25' W 60°  
 D2  
 S 73° 20 E 114.44  
 D1  
 S 67° 17 E 96.147  
 Sta. 484 = D°

Fly Line

506  
 576°14' W 68.6  
 505  
 N87°42' W 101.8  
 504  
 N88°33' W 73.0  
 503  
 N83°36' W 45.0  
 502  
 563°53' W 74.4  
 501  
 586°28' W 28.0  
 500  
 N78°01' W 46.3  
 499  
 N84°36' W 75.1  
 498  
 589°48' W 91.7  
 497  
 572°16' W 54.4  
 496  
 N78°20' W 30.8  
 495  
 555°19' W 83.3  
 494  
 527°21' W 43.5

519  
N 34° 54' W 131.4  
518  
S 39° 28' W 171.8  
517  
S 79° 17' W 99.8  
516  
N 78° 31' W 76.7  
515  
S 81° 24' W 52.2  
514  
S 83° 39' W 66.8  
513  
N 82° 59' W 78.3  
512  
N 54° 39' W 94.3  
511  
S 56° 46' W 53.9  
510  
S 21° 32' W 53.3  
509  
S 27° 27' W 68.6  
508  
S 41° 43' W 50.4  
507  
S 54° 13' W 104.3

534

N52°11'W 138.4

531

N32°22'W 114.4

530

N24°41'W 76.3

529

N36°08'W 90.6

528

S31°03'W 157.6

527

S31°06'W 66.9

526

S46°59'W 83.9

525

S60°58'W 99.2

524

N89°30'W 53.0

523

N76°03'W 170.6

522

S55°40'W 240.2

521

N70°49'W 62.8

520

N54°38'W 68.3

545  
 N88°00'W 44.6  
 546  
 S1°00' E 58.2  
 543  
 S48°57'W 98.9  
 544  
 S69°00'W 178.0  
 541  
 S81°25'W 53.1  
 540  
 N70°05'W 53.9  
 539  
 N68°58'W 92.7  
 538  
 S12°09'N 100.5  
 537  
 S24°37'W 168.0  
 536  
 S9°05'W 167.1  
 535  
 S42°29'W 130.3  
 534  
 S10°34'W 158.4  
 533  
 N168°48'W 144.3

N49°18'W • 160 • 130 • 93 • 67 • 128 •  
 143 290 418  
 140 120 100 80

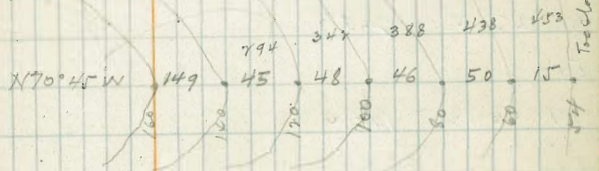
558  
 574°32' W 174.6  
 557  
 587°34' W 91.9  
 556  
 N66°22' W 144.6  
 555  
 564°24' W 80.2  
 554  
 570°14' W 64.7  
 553  
 N83°13' W 115.1  
 552  
 N74°25' W 101.1  
 551  
 566°38' W 63.5  
 550  
 562°41' W 63.4  
 549  
 578°43' W 187.0  
 548  
 549°49' W 126.3  
 547  
 572°40' W 109.6  
 546  
 N84°41' W 109.9

Point N. of location Home N62°15' W

43  
 205 251 291 373  
 113 93 46 40 87  
 160 140 120 100 80 60

571  
 N69° 54 W 113.4  
 570  
 N63° 31 W 70.1  
 569  
 N66° 30 W 82.1  
 568  
 N52° 51 W 45.1  
 567  
 N54° 58 W 97.8  
 566  
 S38° 08 W 83.8  
 565  
 S18° 45 W 87.8  
 564  
 S20° 06 W 151.4  
 563  
 S15° 41 E 93.9  
 562  
 S32° 53 E 94.5  
 561  
 S20° 55 E 110.2  
 560  
 S10° 04 E 78.3  
 559  
 N34° 13 W 51.1

584  
 543° 08' W 135.3  
 583  
 55° 54' E 99.3  
 582  
 533° 26' E 137.3  
 581  
 550° 31' W 78.2  
 580  
 573° 53' W 125.2  
 579  
 562° 57' W 56.6  
 578  
 519° 01' W 120.2  
 577  
 540° 53' W 158.0  
 576  
 50° 07' E 95.8  
 575  
 520° 21' W 200.9  
 574  
 521° 30' W 148.4  
 573  
 517° 20' W 124.1  
 572  
 563° 16' W 98.7





597  
 516°39 W 57.3  
 596  
 56°00 W 119.6  
 595  
 58°27 W 248.7  
 594  
 59°56 W 143.4  
 593  
 50°54 E 165.5  
 592  
 50°43 W 131.1  
 591  
 534°44 W 55.6  
 590  
 541°30 W 68.8  
 589  
 513°43 W 77.7  
 588  
 527°56 E 127.0  
 587  
 522°44 E 89.3  
 586  
 53°13 E 120.3  
 585  
 55°56 W 60.4

597 610  
 516°3 54°33 E 130.8  
 596 609  
 56°00 538°24 W 118.5  
 595 608  
 58°27 537°19 E 139.2  
 594 607  
 59°56 59°16 W 69.2  
 593 606  
 50°54 554°19 W 83.1  
 592 605  
 50°42 50°42 E 150.4  
 591 604  
 534°0 575°55 E 162.2  
 590 603  
 541°2 554°42 E 148.4  
 589 602  
 513°4 571°31 W 57.5  
 588 601  
 527°5 583°21 W 57.3  
 587 600  
 522°4 583°28 W 71.0  
 586 599  
 53°13 570°39 W 110.7  
 585 598  
 55°56 537°53 W 113.4

643  
 528°01 E 267.6  
 644  
 525°13 W 364.6  
 641  
 59°12 W 88.5  
 640  
 554°52 W 138.2  
 619  
 588°29 W 66.4  
 618  
 587°23 W 151.8  
 617  
 545°09 W 93.7  
 616  
 548°52 E 136.6  
 615  
 54°51 W 117.5  
 614  
 512°30 W 77.4  
 613  
 561°23 W 40.5  
 612  
 587°30 W 89.4  
 611  
 520°39 W 113.2

626  
550°37 E 180.0

625  
543°29 E 41.5

624  
513°04 W 105.3

623  
513°38 W 137.9

622  
521°14 W 51.9

621  
N69°18 W 121.8

620  
579°41 W 117.3

619  
513°55 W 127.5

618  
51°02 E 191.4

617  
51°41 E 70.4

616  
N49°27 W 227.4

615  
N46°24 W 107.4

614  
568°21 W 82.4

649	
55°06'E	104.5
648	
525°30'W	123.6
647	
52°03'E	109.7
646	
519°27'W	39.1
645	
563°11'W	53.7
644	
585°08'W	44.8
643	
573°57'W	102.9
642	
589°34'W	92.5
641	
485°08'W	111.7
640	
577°54'W	95.3
639	
51°05'W	91.7
638	
562°51'W	202.0
637	
516°57'E	49.4

662

59° 57' E 86.1

661

519° 58' E 62.0

660

57° 48' W 44.3

659

51° 07' W 66.5

658

53° 26' E 149.4

657

533° 11' E 86.0

656

55° 38' E 61.1

655

50° 53' W 42.3

654

522° 22' W 123.6

653

541° 40' W 91.8

652

545° 54' W 43.7

651

518° 37' W 131.5

650

511° 04' W 127.6

675  
 566°41 W 157.4  
 674  
 537°57 W 98.0  
 673  
 537°03 W 49.4  
 672  
 540°17 W 29.8  
 671  
 580°21 W 55.8  
 670  
 426°59 W 53.4  
 669  
 48°11 W 53.1  
 668  
 N12°28 E 95.4  
 667  
 N3°48 E 25.8  
 666  
 N24°01 E 46.0  
 665  
 562°59 W 62.0  
 664  
 522°19 W 83.6  
 663  
 512°03 W 100.3

688  
N 4° 24' W 118.7

687  
N 6° 52' W 207.3

686  
N 19° 05' W 173.9

685  
N 32° 14' W 96.7

684  
N 19° 29' W 111.5

683  
N 38° 46' E 136.7

682  
N 16° 08' W 78.9

681  
N 19° 07' E 56.5

680  
N 23° 06' E 95.7

679  
N 29° 06' E 38.7

678  
N 45° 34' E 58.0

677  
N 53° 01' E 78.6

676  
N 37° 52' E 90.5



701	
N 70° 33 E	177.7
700	
N 8° 05 W	80.8
699	
N 19° 28 E	64.1
698	
N 15° 35 W	180.4
697	
N 76° 00 W	83.1
696	
N 24° 07 W	271.5
695	
N 70° 48 W	186.2
694	
N 10° 40 E	253.5
693	
N 5° 24 E	107.6
692	
N 15° 17 E	88.6
691	
N 30° 00 E	221.7
690	
N 35° 44 E	149.7
689	
N 19° 19 E	186.8

714	
N47°56' W	94.1
713	
N32°02' W	72.4
712	
N22°38' E	163.0
711	
N6°08' W	91.2
710	
N5°34' E	107.5
709	
N19°56' E	127.8
708	
N46°18' E	81.5
707	
N68°01' W	210.9
706	
N50°56' W	42.1
705	
N6°25' E	94.3
704	
N15°49' E	169.0
703	
N9°29' E	104.8
702	
N1°53' E	89.4

747

N85°22'W 73.0

746

S53°56'W 139.7

745

S64°20'W 82.6

744

S74°37'W 63.6

743

N86°46'W 203.7

742

N84°30'W 115.7

741

N52°00'W 123.5

740

N19°29'W 73.8

719

N5°10'E 54.4

718

N23°47'E 169.4

717

N8°01'W 82.3

716

N15°56'W 118.2

715

N57°58'W 74.9

740  
N 35° 16' W 108.7

739  
N 77° 56' W 107.8

738  
N 58° 56' W 110.6

737  
N 70° 43' W 83.2

736  
N 78° 43' W 57.6

735  
N 70° 01' W 116.9

734  
S 57° 55' W 212.9

733  
S 67° 19' W 99.2

732  
S 71° 59' W 85.8

731  
S 73° 15' W 129.3

730  
S 60° 57' W 43.5

729  
S 79° 54' W 36.0

728  
S 89° 34' W 81.5

753

N45°33'W 124.6

752

N50°56'W 92.6

751

N58°52'W 109.9

750

N70°25'W 116.5

749

N87°08'W 85.0

748

N81°30'W 65.7

747

N62°36'W 143.4

746

N57°02'W 82.9

745

N60°53'W 76.3

744

554°49'W 64.9

743

589°41'W 158.4

742

N64°05'W 110.4

741

N40°54'W 86.2

7 766	
4 N73°34'W	115.1
7 765	
Δ N72°12'W	68.2
7 764	
N N47°01'W	68.6
7 763	
Δ N60°01'W	48.4
7 762	
1 S49°41'W	58.6
7 761	
Δ S67°57'W	57.8
7 760	
Δ West	129.5
7 759	
Δ N80°35'W	70.2
7 758	
Δ N75°00'W	47.8
7 757	
Δ N48°35'W	25.4
7 756	
Δ N58°13'W	54.5
7 755	
Δ N57°02'W	106.4
7 754	
Δ N52°21'W	75.2

N S E W

774

773

772

771

770

769

0+00 160' Contour  
773 = 943 + 59.86 Total Perimeter not including B Line C Line & D Line

N71°28'E 148.8

774

N69°27'E 112.5

771

N1°28'E original / Carried ahead  
N1°20'E = 340.34

770 = 314.1

770

N70°27'E 417.52

769

N71°44'W 183.5

768

N82°28'W 148.1

767

N83°15'W 153.0

797

791

793

799

798

799

44+48.9

37+59.0

30+00

21+69.2

3+10.75

0+00

760



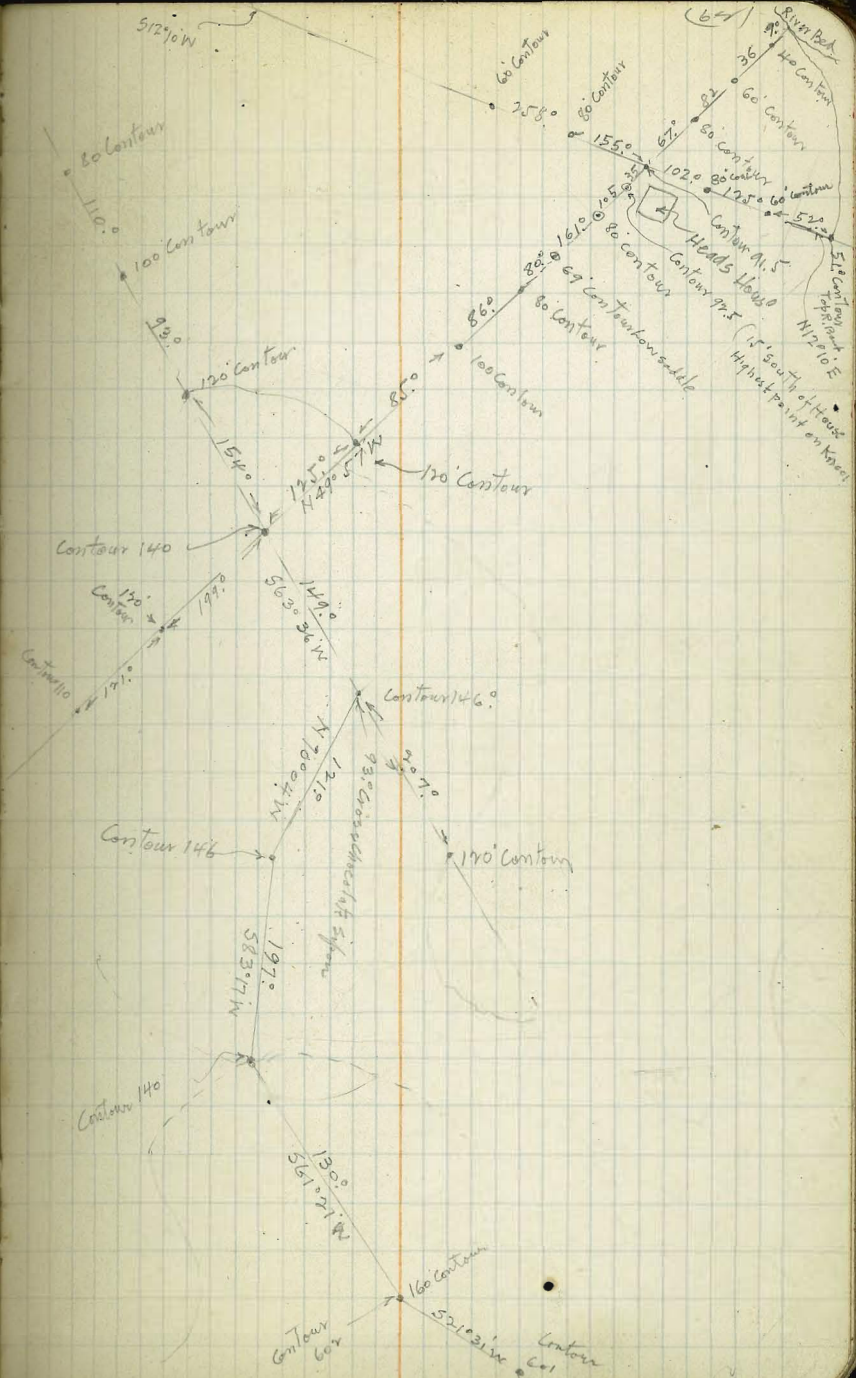
58  
31  
36  
125

53  
14  
27

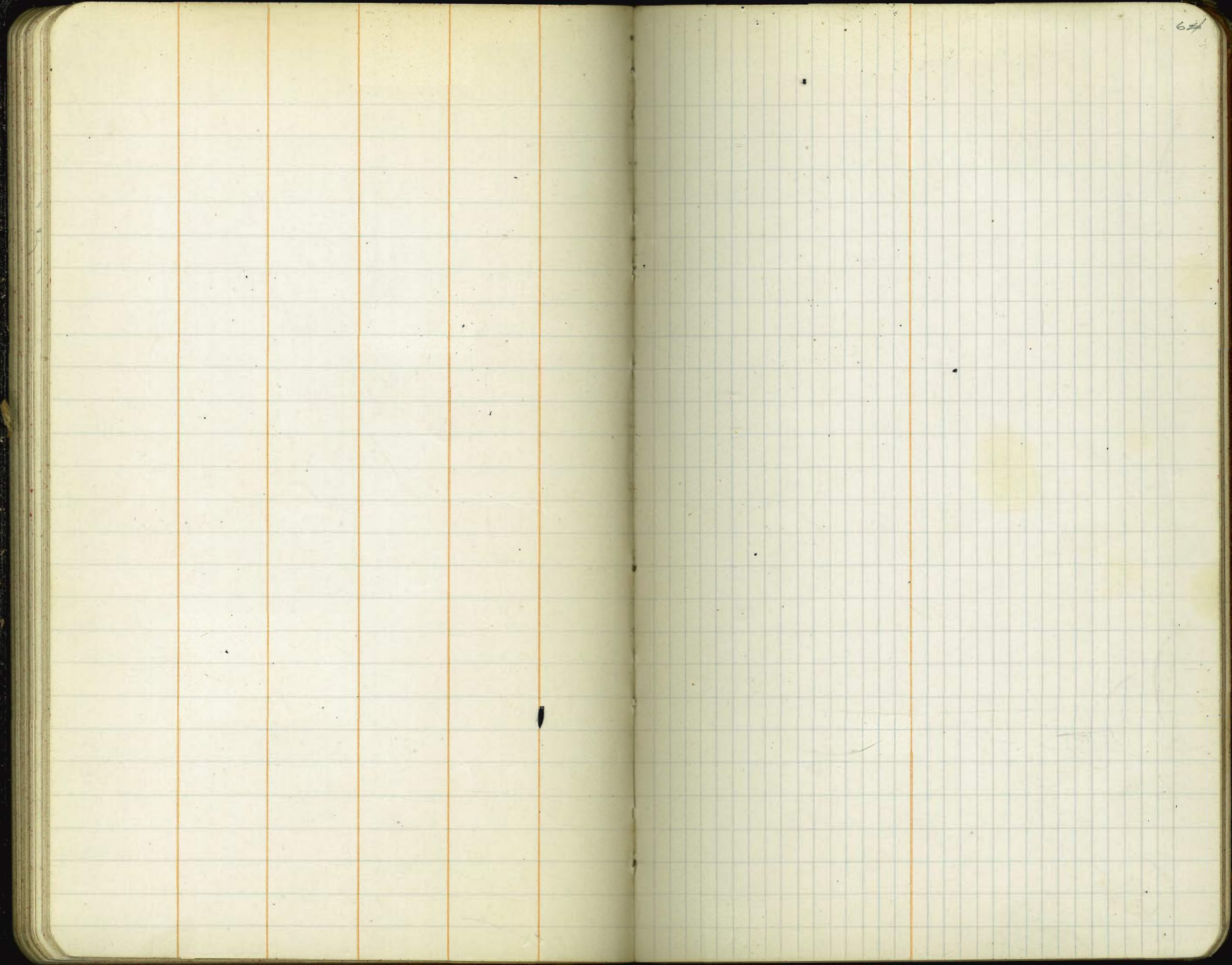
Oct 27 - 1921

William  
Harper  
Hodgson

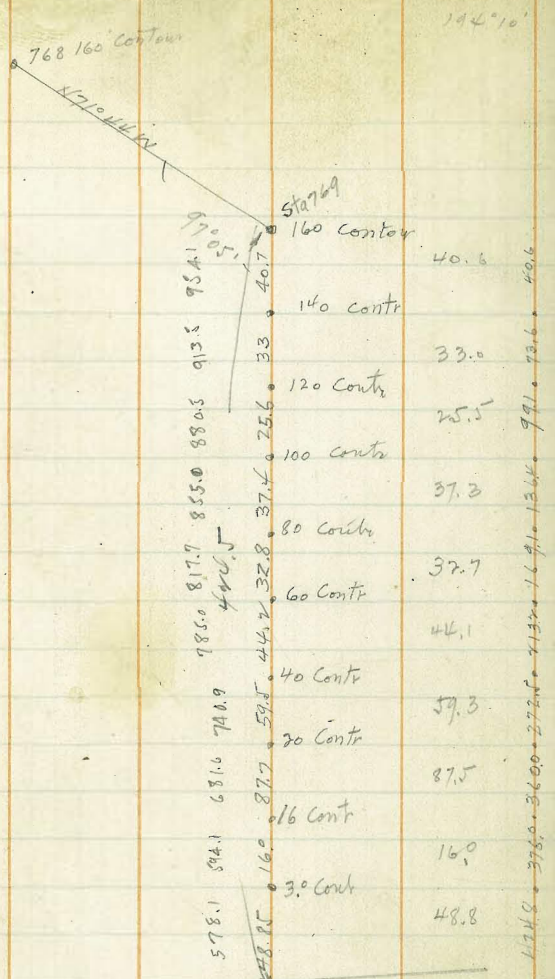
Location & Contours of Island's "Head Hill"





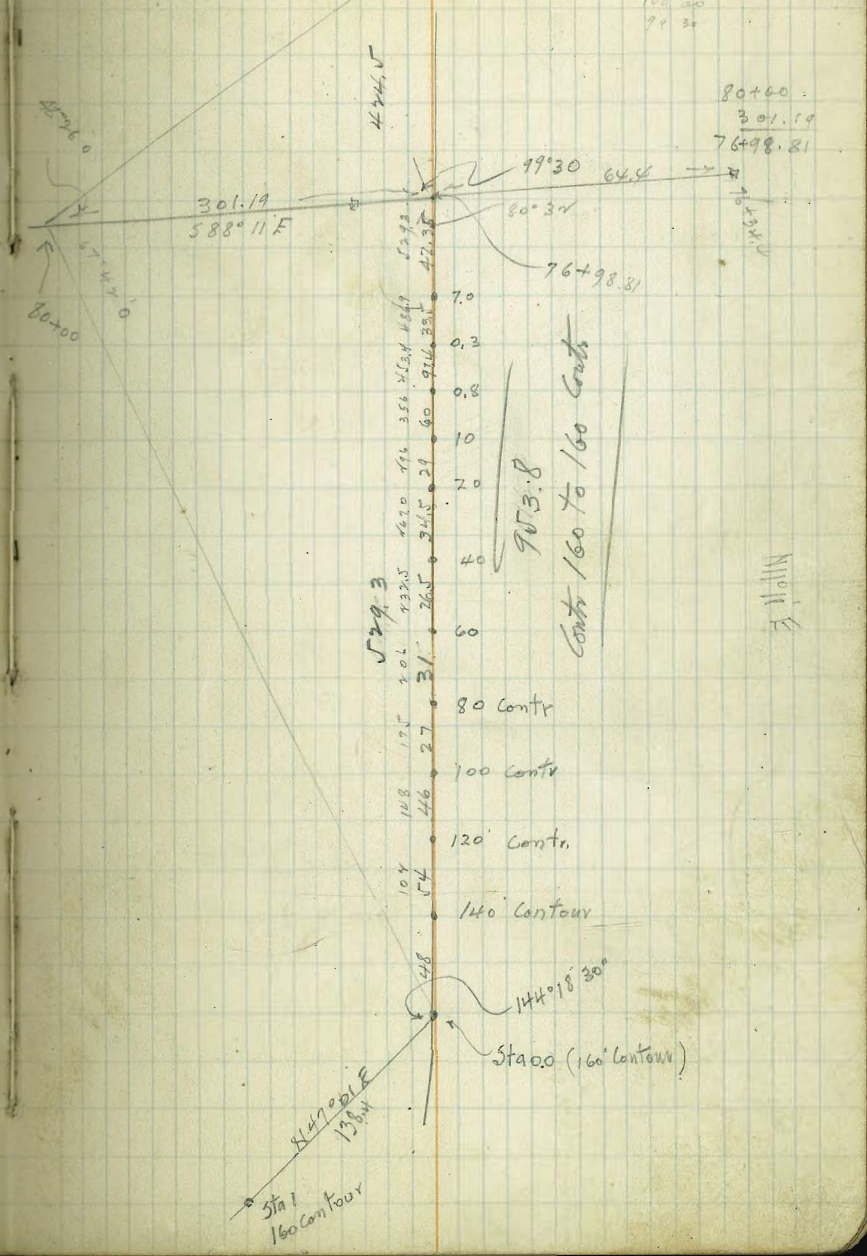


64



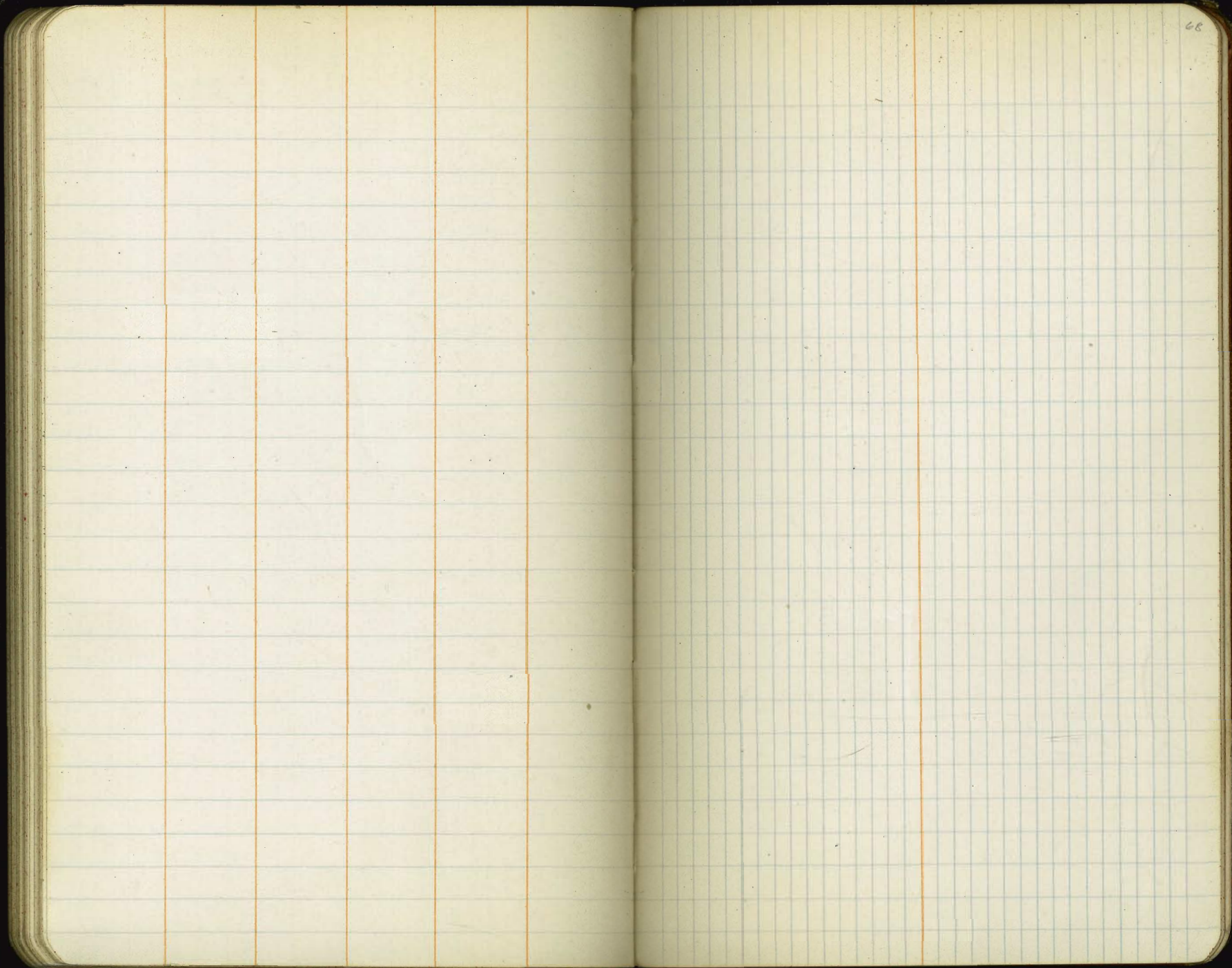
Neto Dam Axis End Contour 1971 76.5 199.0  
 42.26 80.32 718.28  
 135.24 37.57  
 67.42 2.033

#2





	Top. Elev. Bed rock	Total Depth
# 1	511.0	103.0
# 15	554.7	90.0
# 14	504.0	175.0
# 16	552.6	No log
# 13	500.0	95.0
# 3	575.0	170.0
# 5	626.0	253.0
# 11	690.0	177.0
# 6	703.0	229.0
# 7	768.0	227.0
# 9	757.0	349.0
# 8	740.0	266.0
# 10	816.0	160.0
# 12	630.0	189.0









DIRECTIONS FOR USE OF TABLES

TABLE No. 1.

Distance of slope stake from side or shoulder stake for any width roadway, slope  $1\frac{1}{2}$  to 1. If ground is nearly level, the cut or fill at side stake is located by the double entry method in left column and top row. The number in body

**IMPROVED TABLES**

AND

**INFORMATION**

TABLE No. 2.

To find Tangent and External for curve of any other degree, divide by degree of curve and add connection found in column of connections.

Degree of curve with a given  $T$  may be found by dividing tangent (or external) opposite  $T$  by given tangent (or external).

The distance from a point on the tangent to the curve is very nearly the square of the tangent length divided by twice the radius.

13  
11  
9  
33

69  
65  
65  
199

101.3  
9.  
110.3  
13.0  
97.3  
17.3

140  
13.0  
10.4  
37.4

15  
24  
52  
44.2

20  
8  
31.5  
59.5

101.19 to 78+00

76+34.4  
64.4  
76+98.8