

25

FIELD BOOK

MINING
TRANSIT BOOK

384

W157

Note [□] - 1 + 00.09 Line -

MICROFILMED

JAN 8 1965

Index

Deflection - U.S. Face Forms	1
D.S. Face Elev. 1590 - 5+42 - 6+00	2
Elev. Top of Star Drill Hole # 3	3
Upstream face Pts - 0+93 To 2+80	4
D.S.F Pts - elev 1595 - 0+93 - 1+43	4
Upstream face Pts 2+80 - 3+35	5
D.S.F Pts. Elev 1590 - 3+35 - 4+50	6
U.S.F Pts - Elev 1590	7
Elev. of outlet tower Pipet Forms.	8
D.S.F Elev. 1590 - 2+50 - 3+35	8
Toe - Quarry -	9
D.S.F Pts El. 1590 - 4+30 to 5+10	10
D.S.F Pts. El. 1594 - 3+84 ⁸ To 5+10	11
D.S.F Pts. El. 1595 5+20 To 6+00	12
D.S.F Pts. El. 1594 2+48 To 3+30	12
U.S.F Pts. El. 1594 - 1+43 To 1+93	13
Sections for Sand Storage Est.	14 - 17
U + D.S.F Pts - Elev. 1600 - 0+93 To 1+32.8	18
D.S.F Pts Elev 1594 - 3+25 - 3+65	19
D.S.F Pts " 1596 - 1+40 To 1+90	19
U.S.F Pts 4+10 To 5+00	20
D.S.F Pts Elev 1596 - 3+90 to 4+35	20
D.S.F Pts Elev 1594 - 4+40 - 5+00	21
D.S.F Pts Elev 1595 - 3+84 - 4+36	22
D.S.F Pt Elev 1595 - 3+61 - 5+20	23
D.S.F Pts Elev. 1595 6+00 - 7+60	24

MICROFILMED

JAN 8 1982

UNIVERSITY MICROFILMS

D.S.F. Pts - Elev 1600 - 5+51 - 5+99	25
U.S.F. Pts - C28 - C50	26
D.S.F. Pts - El 1598 - 2+46 - 3+26	27
D.S.F. Pts Elev 1598 - 3+83 - 4+80	28
Final Topog Lt Abut 1595	29
U.S.F. Pts - 4+01 - 7+10	30
D.S.F. Pts 6+00 - 6+50 El 1600	31
U.S.F. + diwidewall 5+20 - El 1600	32
D.S.F. Pts 4+80 - 5+20 - El 1598	33
D.S.F. Pts 5+20 - 5+38 El 1600	33
D.S.F. Pts 5+80 - 7+00 Elev 1600	34
D.S.F. Pts 1+90 - 2+40 Elev 1598	34
D.S.F. Pts 0+93 - 2+00 1598 - 1600	35
Piers 9 - 10 - 11	36
D.S.F. 6+00 - 6+50 El. 1605	37
U.S.F. Pts C28 - C50	38
Final Topog 1600 - 1605 Rt Abut.	39
Elev 1598 - Pier 5-6	40
Elev for Rib forms - Overflow 1607	41
" " " " Pier 11+12	42
U.S.F. Pts - 5+90 - 7+00	43
D.S.F. Pts - 5+20 - 7+00 Elev 1605	44
Reset Reservoir Gauge	45
Elev for Rib Forms Piers 1-2-3-4	46
Final Topog - El 1600 - 1605	47
" " El. 1610 - 1615	48

U.S.F. + D.S.F. Elev 1610 - 6+62 - 7+33	49
Final Topog 1530 - 1535 - 1540 Lt Abut.	50
" " 1520 - 25 " "	51
Pier Points - Piers 17 - 24	52
U.S.F. Pts - 6+61 - 7+33	53
Final Contours Lt Abut - 1520 - 1525	54
" " " " 1560 - 1565	55
Pier 17-24 - D.S.F. Pts	56
Elev for Rib Forms Overflow Piers - 17-25	57
Concrete Monthly Est March -	58
Outlet Tower - March Est	62
Concrete Monthly Est March -	63
D.S.F. Pts - El. 1615 - BIK - 6+62 - 7+33	64
Reset Pts - Piers - above 1607	65
Final Topog Lt Abut - El. 1515	66
D.S.F. Pts - El. 1617 - 6+92 - 7+40	67
Final Topog Lt Abut 1520 - 1525	67
" " " " 1530 - 1535 - 1540	68
Size of Derrick	68

Filled

3/5/22

Upstream Face Forms

Ran Intersection of C28

At C28 Sight for -

9925	
10	0-43 ✓
19.85	1-26 ✓
20	
29.78	2-09 ✓
30	
40	2-52 ✓
50	3-35 ✓
60	4-18 ✓
70	5-01 ✓
80	5-44 ✓
90	6-27
100	7-10
110	7-53
120	8-36
130	9-19
140	10-02
150	10-46
160	11-28
170	12-11
180	12-54
190	13-37
200	14-20

3/5/1922

Sub
Fisher.

Block 5+42 to 6+00

2

Up & downstream points

5+93³ Downstream 490 95.34 90.44

5+88³ Downstream 964 85.70 4.20 = 4 - 3⁵/₈"

5+78³ 956 85.78 4.22 = 4 - 2⁹/₈"

5+68³ 958 85.76 4.24 = 4 - 2⁷/₈"

5+58³ 962 85.72 4.28 = 4 - 3³/₈"

5+48³

3/5/1922 Center Joint.



3/7/22
Fisher
Mixer.

4+375
Hub.

Elev. of Hole #3 Star Drill

13.01 1860.21 184720

12.10 72.00 0.31 59.90

6.60 76.00 2.63 69.37

2.20 73.80

514

31.71

514

2657

3

4720
2657
73.80

18738

1747.0

126.8

110

3/7/22 - 116 - 6-30 AM

3/2/22

Upstream Face
0+93 to - C28Ran Intersection of C28 Chained
West10
2+70
20
2+60
30
2+50
40
2+40
50
2+30
60
2+20
70
2+10
80
2+00

1+

1+90

1+80
Iron Pin
#1+43¹⁰

1+40

1+32⁸

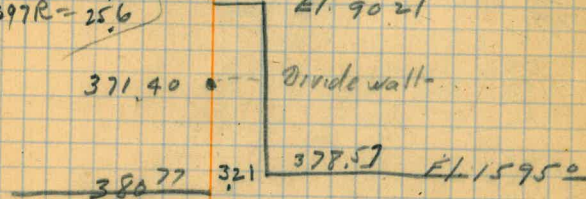
1+30

1+20

1+10

1+00⁰⁹ ✓
1+00
0+94³⁸7.73 95.66 1587.93
D.S.F. - 1595 - G = 378.57
O = 380.77D.S.F.Pt.
EI 1595 - 0+93 - 7+126 4

Iron Pin	773	9566	1587.93
Nail in Form	4.21	4-2 1/2	4.87 90.79
1+00	4.68	4-8 1/4	5.34 90.32
1+10	4.59	4-7 1/8	5.25 90.41
1+20	4.36	4-4 3/8	5.02 90.64
1+30.7	4.37	4-4 1/2	5.03 90.63
1+32 ⁸ offset	4.34	4-4"	5.00 90.66
1+40	4.84	4-10"	5.50 90.16
Nail in Form	3.97	4-11 3/8	4.63 91.03
Nail - R-371X	3.09	3-1 1/8	3.75 91.91
D.S.F. Divide Wall Dist from			5.45 90.21
397R = 25.6			EI. 90.21



Ran Intersection - checked OK

	D.S.F.	EI. 1595	
1+40	1.53	91.99	90.16
1+90	4.98	4-11 3/4	1.97 90.02
1+70	5.09	5-1 1/8	2.08 89.91

3/7/22
Fisher
Mixer

28 to 4 + 355
Cham per strip

overflow - fr 1895. den
1 + 40

1.83	91.99	90.16
5.16	85.81	11.34
	0.81	85.00

5	0-21
15	1-04
25	1-48
35	2-31
45	3-15
55	3-58
65	out. 4-31

At Sta

5

	4-41-25.63	✓
	43A 17.79	
75	5-24-43.42	
85	5-08-11.2	
95	6-52-27.50	
105	7-35-46.79	
115	8-49-04.58	
125	8-53-12.37	
135	9-35-30.16	
145	10-18-48.95	
155	11-02-06.74	

3/9/22
B. G.
Fisher
Minton.

W. S. Face - Elev 1590 -
Overflow Section

1+90.

0.86 1590.88

1590.02

Grade
1590

Check on D.S. Forms

Station	Grade	Distance	Grade	Elev
3435	4.87	4-10 1/2" X	5.75	85.13
3450	4.31	4-3 3/4" X	5.19	85.69
3460	4.52	4-6 1/4" " X	5.40	85.48
3470	4.26	4-3 1/8" " X	5.14	85.74
3480	4.40	4-4 3/4" " X	5.28	85.60
3490	4.27	4-3 1/4" " X	5.15	85.73
4400	4.30	4-3 3/8" " X	5.18	85.70
4410	4.28	4-3 3/8" " X	5.16	85.72
4420	4.135	4-4 1/4" " X	5.23	85.65
4430	4.94	4-11 1/4" " X	5.82	85.06
4440	4.94	4-11 1/4" " X	5.82	85.06
4450	5.99	5-11 7/8" " X	6.87	84.01

Checked H.A.B.

E. 1590 - W. S. Face -

6

377.11 / 4.558
171887
150844

210430
188555
218750
188555
301950
301688

9700
377.11
19.89

1"	4.558
5"	22.790
10"	45.58
20"	1-31
30"	2-17
40"	3-03
50"	3-48
60"	4-34
70"	5-19
80"	6-05
90"	6-50
100"	7-36

7-31.35
2.38
4-1.00

3-9-22
By
Fisher
Mixer

Upstream face
Set 2180 PC by intersection

Sta on 397 R
2+85 0-21

2+95 1-04

3+05 1-48

3+15 2-31

3+25 3-14

3+35 3-58
~~3-06~~ 39

3+35 Set on 3+35 + run 15' IS

3+40 1-04 ✓

3+50 1-48 ✓

3+60 2-31 ✓

3+70 3-15 ✓

3+80 3-58 ✓

4+00 4-41 ✓

4+10 5-28 ✓

4+20 6-08 ✓

4+30 7-35 ✓

4+40 8-18 ✓

4+50 9-01 ✓

4+60 9-45 ✓

4+70 10-28 ✓

4+80 11-04 ✓

checked deflection angle
H. A. B.

3/10/22
Bub
Fisher
mixer
Iron Pin

Outlet Tower Pts

7.84 95.77 1587.93

Center of
Hoop Rump 1595.40

0.67 1595.10

Elev of
Pipe -

3.54 92.23

II. S.F. Pts. 2+50 - 3+25

E1. 1590 -

Iron Pin

7.53 95.46 1587.93

2+50	1590	4.01	4-0 ¹ / ₈ "	9.47	85.99
2+60		3.93	3-11 ¹ / ₈ "	9.39	86.07
2+70		3.81	3-9 ³ / ₄ "	9.27	86.19
2+85		3.70	3-8 ¹ / ₂ "	9.16	86.30
2+95		3.90	3-10 ³ / ₄ "	9.36	86.10
3+05		3.94	3-11 ³ / ₈ "	9.40	86.06
3+15		4.05	4-0 ⁵ / ₈ "	9.51	85.95
3+25		4.54	4-6 ¹ / ₂ "	10.10	85.86

954
9.76
8

HI 96 Toe to Quarry
At 5718 Sight 3+24 for 200

Dist	Az	Ver Ang.	Cor Dist.	Diff.	Elev
165	256-45	00	28	48.2	179.43
169	262-45	00	30	47.5	

254 271-50 + 31-24 9.6

Hole #1
(add 90 to Dist.)
255 271-50 + 31-32 6.55
5.20
4.0

4+744 6.25 49.20

HI = 48 At 4+74.4 Sight 3+24 turn L.H.

Hole #1 270' 100°34' v. angle 30°-07'

253
19
164

310
145
765

135
50

0 4+74.4

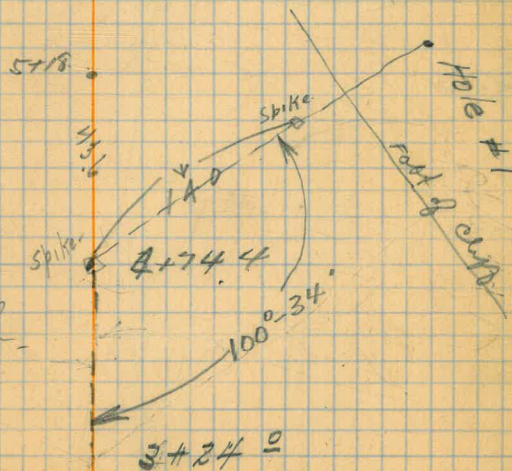
43.6

0 5+18

43.6

3+74.4

Check up
dist + angle.



3/13/22

Bryson
Mikto-
Fisher

D. S Face El. 1590

STA	+	↑	-	El	Gr
5+20 BM	2.57	1592.57		1590.00	
check shot 5+30			2.13	1590.44	1590.44
5+10±			6.13	1586.44	1590.00
5+00			6.67	1585.90	✓
4+90			6.44	1586.13	✓
4+80			6.69	1585.88	✓
4+70			6.18	1586.39	✓
4+50			6.02	1586.55	✓
4+40			6.90	1585.67	✓
4+30			7.30	1585.27	✓

3-14'-30" # Rail U.S.F. 2120-

10

F11' F11''

3.56'	3' 6 ³ / ₄ "
4.10'	4' 1 ¹ / ₄ "
3.87'	3' 10 ¹ / ₂ "
4.12	4' 1 ¹ / ₂ "
3.61	3' 7 ³ / ₈ "
3.45	3' 5 ³ / ₈ "
4.33	4' 4"
4.73	4' 8 ³ / ₄ "

3/13/22
8

II. S Face E/ev 1594 R.
~~1595~~

At C 42 Sight. C 28 for 10-01-30
Turn 90°

5+20 BM	4.35	1594.35	1590.00
5+00 check		8.45	1585.90
4+34		5.24	1589.11 1594.00
4+30		5.13	1589.22 ✓
4+20		4.65	1589.70 ✓
4+10		4.58	1589.77 ✓
4+00		4.29	1590.06 ✓
3+90		4.22	1590.13 ✓
3+84 ⁸ Form		3.11	1591.24 ✓

Def 380.04 R.
Equip. Chord on 380.77 = 9.52'

1' = 4.52'	
10' = 45.22	10' = 45.22
20' = 1°30'45"	5' = 22.61
30' = 2°15'68"	1/4' = 1.13
40' = 3°01'	15.28 = 67.96
50' = 3°46'	10' = 8.96
4.89' = 4'10 ⁵ / ₈ "	1°30'45"
4.78' = 4'9 ³ / ₈ "	2.3941
4.30' = 4'3 ⁵ / ₈ "	10' = 45.22
4.23' = 4'2 ³ / ₄ "	4' = 18.08
3.94' = 3'11 ¹ / ₄ "	63.30
3.87' = 3'10 ¹ / ₂ "	100.3'
2.76' = 2'9 ¹ / ₈ "	

397.00
380.77
16.23-
397.00
380.04
16.96'
2.15.68
23
4.52
180.8

I.S. Face Elev 1595

B1K-5+50 To 6+05

Overflow
5+20

5.56 1595.56 1590.00

5+30 ^{check}

5.12 90.44

4-56 ✓

4-6 3/4 ✓

5+40

5.10 90.46

4.54 ✓

4-6 1/2 ✓

5+50

5.02 90.54

4.46 ✓

4-5 1/2 ✓

5+60

4.98 90.58

4.42 ✓

4-5 1/8 ✓

5+70

5.06 90.50

4.50 ✓

4-~~6~~ ✓

5+80

5.02 90.54

4.46 ✓

4-4-5 1/2 ✓

6+00

5.11 90.45

4.55 ✓

4-6-5 1/8 ✓

marked
3/15/20

I.S. Face - Elev. 1594

B1K-2+43 - 3+30

At C 28 Sight TP West for 15-45.30

Turn 90° - Chain - 16.96 for 380.04 R

At 28-380.04 Sight C 28 for 90°

Iron Pin

Turn - 6.22 94.15 1587.93

10

2+90

0+45.22 ✓

4.43 89.72

4.28 - 4-3 3/8 ✓

20

3+00

1-30.45 ✓

5.23 89.92

5.08 5-1" ✓

30

3+10

2-15.68 ✓

4.47 89.68

4.32 4-3 7/8 ✓

40

3+20

3-01- ✓

4.18 89.97

4.03 4-0 3/8 ✓

45

3+25

3-24

4.15 90.00

4.00 4-00 ✓

28-

10

3-01

4.24 89.91

4.09 4-01 1/8 ✓

2+70

3-11

4.19 89.96

4.04 4-0 1/2 ✓

20

2+60

4.10 90.05

3.95 3-11 3/8 ✓

30

2+50

4.12 90.03

3.97 3-11 5/8 ✓

35

2+45

4.44 89.71

4.29 4-3 1/2 ✓

U.S. Face. Elev 1594

BK - #143 To 1493

Iron Pin

7.77 95.70 1587.93

1450	533	90.37	9400
1460	564	90.06	✓
1470	551	90.19	✓
1480	576	89.94	✓
1490	568	90.02	✓

3.63	3-7 $\frac{1}{2}$ "
3.94	3-11 $\frac{1}{4}$ "
3.81	3-9 $\frac{3}{4}$ "
4.06	4-0 $\frac{3}{4}$ "
3.98	3-11 $\frac{3}{4}$ "

95.70
25

95.52

13

3/14/22
Fisher
Mixer

Sections on Sand Storage Pile

Sect 4 1732	2.15	1732.34	1730.19
Sect 3		2.78	29.56
Sect 2		3.60	28.74
Sect. 1		2.79	29.55

Sections - D + F

- All sand - recovered -

Section 2 -

Sect 3	12.40	42.0	1729.56
- 20		2.7	39.3 ✓
- 15		3.6	38.4 ✓
Sect 2	0.10	28.8	28.7 ✓
00		0.80	28.0 ✓
+ 9		7.0	21.8 ✓
+ 17		9.8	19.0
T.P	00	16.00	12.8 16.0
31		4.3	11.7
45		10.5	05.5
T.P	0.2	1703.7	12.5 03.5
64		5.1	98.6
75		9.7	94.0
69 T.P		12.7	91.0

Section 2 -

14

T.P	0.0	91.00	91.0
92 ✓		5.5	85.5
97 ✓		6.2	84.8
102 ✓		8.2	82.8
107 ✓		8.6	82.4
114 ✓		13.0	78.0
T.P	9.8	83.0	12.8 78.2
130 ✓		7.3	75.7
132		7.5	74.5

Section 3

Sect.	7.7	37.3	1729.6
- 6		6.2	31.1 ✓
14		3.2	34.1 ✓
Sect 3	0.4	30.0	29.6
6		3.0	27.0 ✓
23		12.0	18.0 ✓
T.P	0.1	17.7	12.4 17.6 ✓
33.5		5.3	12.4 ✓
45		11.0	06.7 ✓
T.P	1705.00	12.7	05.0 ✓
58		3.4	01.6 ✓
63		3.4	01.6 ✓
71		7.8	97.2 ✓
80		12.3	92.7
T.P		12.4	92.5

T.P.	0.1	927		1692.6
92			67	86.0 ✓
99			95	83.2 ✓
120			120	81.7
114			130	79.7 ✓
T.P.	0.4	80.5	12.6	50.1 ✓
118			18	98.7 ✓
120			52	75.3 ✓
122			108	69.7 ✓

Section 4

132	0.10	1730.3		1730.19
T.P.	0.1	18.2	12.2	18.1
16			3.0	15.2
46			12.2	06.0
TP	0.0	05.8	12.4	05.8
64			6.5	99.3
71			8.0	97.8 ✓
80			12.6	93.2 ✓
TP	0.10	93.1	12.8	93.0 ✓
92			5.3	87.8 ✓
99			6.2	86.9 ✓
110			11.7	81.4 ✓
TP	0.5	82.1	11.5	81.6 ✓
117			4.4	77.7 ✓
132			8.6	73.5 ✓

Section 5

15

Sect 5 ¹³²	0.1	28.30		1728.23
14			7.8	20.5 ✓
17			9.0	19.3 ✓
27			13.0	15.3 ✓
TP	0.0	15.4	12.9	15.4
39			7.8	07.6 ✓
52			12.8	03.6 ✓
TP	0.5	03.5	12.4	03.0
TP				
70			9.7	83.8 ✓
80 TP	0.1	90.8	12.8	90.7 ✓
92			5.5	85.3 ✓
104			7.4	83.4 ✓
116			11.4	79.4
TP	0.5	80.1	11.2	79.6
132			8.3	71.8 ✓
Nail 10-00	3.34	16.86.24		82.90
TP sub 6-			11.27	74.97 ✓

Sand Storage

Section 6

Sec. 6 173v	0.20	1720.97		1720.77
19			5.8	15.21
25			9.4	10.61
34			11.1	09.91
T.P.	0.70	08.9 13.50	12.8	08.2
46			5.4	03.51
60			11.7	97.21
T.P.	0.60	97.7	11.8	97.1
73			61	91.61
73			¹⁰⁴ 12.4	<u>87.31</u>
79				
T.P.	0.2	85.6	12.3	85.4
92			00	<u>85.61</u>
105			27	82.91
			57	<u>89.71</u>
			7.7	77.9
116			10.5	75.11
132			14.0	71.61
T.P. Sect. 6			10.5	75.11 <u>75.01</u>

Section 7

Sect. 7 132	0.10	1714.30		1714.15
25			7.4	06.91
41			11.5	02.81
44			11.6	02.71
T.P.	0.10	02.1	12.3	02.00
58			5.5	96.61
72			12.9	89.21
92			12.2	89.91

T.P.	03.	90.2		89.9
81			3.4	86.81
87			5.4	84.81
92			10.2	80.01
101			13.4	76.81
124			15.4	74.81
124			16.0	74.21
T.P.	3.0.	80.2	13.0	77.2
132			9.6	70.6
Sec. 6 T.P.			5.1	75.1

75.00ok.

123
33
180

17

Sec 06	Sec - 8 -			
10	0.91	75.88		79.97
00			80	67.91
6			63	69.61
13			5.0	70.91
17			24	73.51
21			25	73.41
28			+ 0.2	76.11
TP	5.0	80.9	00	75.9
34			3.6	79.51

Sec - 9 -
75.9

00			10.8	65.11
13			9.0	66.91
21			6.7	69.21
31			1.0	74.91
TP	5.7	80.6	1.0	74.9
40			2.2	78.41
44			2.4	78.21
52			0.9	79.71

Sec 10
75.9

00			15.0	60.91
6			12.0	63.9
15			10.3	65.6
			12.8	63.1

+ 8 = 00

Bryson
Fisher
& Mixer

Upstream & Downstream

Forms - 0+93.1 East

Iron Pin B.M.	+	↑	-	EI	Grade
	12.13	1600.06		1587.93	1600
0+93			5.09	1594.97	✓
1+00			5.19	1594.87	✓
1+10			4.86	1595.20	✓
1+20			4.74	1595.32	✓
1+25			4.83	1595.23	✓
1+29 ¹ / ₂ Batter line	1429.78		5.15	1594.92	✓
1+32.80 Divide Wall Grade			5.07	1594.99	✓

Fill

5.03 = 5' 0 ³ / ₈ "	✓
5.13 = 5' 1 ⁵ / ₈ "	✓
4.80 = 4' 9 ⁵ / ₈ "	✓
4.68 = 4' 8 ¹ / ₈ "	✓
4.77 = 4' 9 ¹ / ₄ "	✓
5.09 = 5' 1 ¹ / ₈ "	✓
5.01 = 5' 0 ¹ / ₈ "	✓

For Elev. 1600 Wash Wall on 374.50 R

39700
380.72

16.58

18

Final Topog

A + 1+00 02 Sight R.P. East for zero

1600.06

Red 5.1

~~75 95~~ 8.9 340-45 ✓

~~77~~ 12.4 285-10 ✓

1595 14.1 295-0 ✓

" 12.4 276-30 ✓

" 13.0 274-30 ✓

" 13.3 260-0 ✓

" 14.3 254-30 ✓

" 13.3 252-15 ✓

" 14.8 238-0 ✓

" 12.3 232-30 ✓

Elev of Form
5.4

7.8 236-15 ✓

1595 12.1 225.15 ✓

" 13.2 215-30 ✓

Plotted 3-16-21

132.80
29.27

3.53
3.02

.51

3/16/22
 Sub
 washer
 M.I.T.M.

II S. Face Pt
 1594 Overflow

397.00
 380.04
 16.96

5.70
 8.15
 15.50 ✓

D.S.F. - 1595 1/2
 3+25

4.15 1594 15 1590.00

3-
 3+35
 3+45
 3+55
 3+65

4 28 89.87
 4 30 89.85
 4 17 89.98
 4 16 89.99

4.13 - 4-15/16 ✓
 4.15 - 4-1-3/4 ✓
 4.02 - 4-0 1/4 ✓
 4.01 - 4-0 1/8 ✓

checked
 H.R.B.

II S Form Overflow 1596-

Block. 1+325 to 1+93 / Grade

- 15.50 = Measurement from 3.97' Radius -

Iron Pin

12.00 99.93 1587.93

1+40
 1+50
 1+60
 1+70
 1+80
 1+90

1596.00
 5.66 94.27
 5.78 94.15
 5.88 94.05
 5.93 94.00
 5.73 94.20
 5.66 94.27 ✓

1+73 - 1-8 3/4 ✓
 1.85 - 1-10 1/4 X
 1.95 - 1-11 3/8 X
 2.00 - 2-00 X
 1.80 - 1-9 5/8 X
 1.73 - 1-8 3/4 X

checked H.R.B.

3/16/22
Bub
Fisher
Mixer

U.S. Face Pts

At 41-397 sight 28-397 for 9° 18'

10	
20	0-43
25	1-26
30	1-48
40	2-09 ✓
50	2-52 ✓
60	3-35 ✓
70	4-18 ✓
80	5-01 ✓
90	5-44 ✓
52-397	6-27

3/16/22

U.S. Face Elev. 1596

Elev 1594
I.S.F. 3+65

Blk 3+85 to 4+35
6.73 96.72 1589.99

3+90	2.53	94.19	1596.00
3+00	2.82	93.90	✓
4+10	2.86	93.86	✓
4+20	3.11	93.61	✓
4+30	2.98	93.74	✓
4+35	3.00	93.72	✓

Elev 1598
I.S. Face Pts

20

- 15.50 = measurement from 397' Radius -

1-81	-1-9 3/4	✓
2-10	2-1 1/8	✓
2-17	2-1 5/8	✓
2-39	2-4-3/4	✓
2-26	2-3 1/8	✓
2-28	2-3 3/8	✓

See page 22
E.D.F.

3/16/21
Fisher
Mixer

D.S.F. Elev 1594
3+65

4+40

4+50

4+60

4+70

4+80

4+90

5+00

D.S.F. Elev 1594 -

Block - 4+40 - 5+00

6.73 98.72 1589.99

7.41 89.31

6.80 89.92

6.59 90.13

6.71 90.01

6.67 90.05

6.98 89.74

6.51 90.21

4-69 4-8 1/4 ✓

4-08 - 4-1" ✓

3-87 3-10 1/2 ✓

3-99 3-11 7/8 ✓

3-95 3-11 3/8 ✓

4-26 4-3 1/8 ✓

3.79 3-9 1/2 ✓

16.96 = measurement from
397' Radius - 21

OK
8.97

3/17/21

Byb

Fisher 1598 = 16.92

Mixer

From 400' Radius =

Grade for Gauge -

Gauge
16.00

11.99 1599.92

1587.93

6.34 93.58 ✓

93.58

16.00

1577.58

1446.12

131.46

3/10/22
Bud
Fisher
911100

U.S.F. Elev 1598
U.S.F.P.T.S

Elev

4+0903
At 41-397 sight 28-397 for 9-18

4+35 5
20
19.85
25
3+53.15
3+69.33
3+10.33
45.00

1-26
1-52
2-52
3-27

1573.73

see page 20

4+35 3.00 1596.72 1593.72

Grade

3+61.33	1598	2.69	9403	15,9800
3+69.33	"	2.83	93.89	✓
3+83.18	"	2.82	93.90	✓
3+89.18	"	2.50	94.22	✓
3+99.11	"	2.84	93.88	✓
4+09.03	"	3.04	93.68	✓
4+18.95	"	3.29	93.43	✓
4+28.88	"	3.02	93.70	✓
4+35	"	3.11	93.61	✓

3.97 -- 3-11-
4.11
4.10
3.79
4.12
4.32
4.57
4.30
4.39

Check 5+20.05
Check 5+20.

6.70 1590.02
6.84 1589.90

09.03
19.85
89.18
6.00
83.18
89.18
19.85
69.33
8.00
61.33

3/17/22

Bob
Fisher
MixerCheck Levels from Iron Pin
in Rock - Left Abut.

3727 T.P.	11.93	99.86	1587.93	Iron Pin in Rock
	2.11	96.74	94.63	Nail in form

3+61.33	1598		270	94.04	3.96	3-11 ¹ / ₂
3+69.33			2.84	93.90	4.10	= 4-1 ¹ / ₄
3+83.15			2.83	93.99		
3+89.15			2.50	94.24		
3+99.11			2.85	93.69		
4+09.03			3.06	93.68		
4+18.95			3.30	93.44		
4+28.88			3.03	93.71		
4+33.88			3.12	93.62		

Check shot
4+35

B.M.

	3.02	93.72
	2.69	94.05

Air Vent Sta 4+35-397' Radius

4+40	1594		7.43	89.31
4+50	1594		6.82	89.92
5+00	1594		6.53	90.21
T.P. 5+00	9.85	160006	653.	90.21

4-69	4-8 ¹ / ₄	✓
5.08	- 4 1 ¹ / ₄	
3-80	- 3-9 ¹ / ₄	

overflow

5+20	1598		10.16	99.90
Gravity				
5+23.05	1595		10.04	90.02

4.10	= 5 1 ¹ / ₄	
4.98	4-11 ³ / ₄	

3/13/22

806
Picket
Mixed

El. checked from Iron Pine Rd. about.

1600.06

5+30	1595	9.72	90.34
5+40	1595	9.69	90.37
Nail for Divide Wall.	1595		90.73
6		9.43	90.63

rail for E11594-

50-380 04

9.83 1600.04 1590.21

66	1595.00	4.45	4-5 ³ / ₈ "	9.49	90.55
67	"	4.55	4-6 ⁵ / ₈ "	9.59	90.45
68	"	4.35	4-4 ¹ / ₄ "	9.39	90.65
65	"	4.53	4-6 ³ / ₈ "	9.57	90.47
64	"	4.33	4-4"	9.37	90.67
63	"	4.30	4-3 ⁵ / ₈ "	9.34	90.70
62	"	4.22	4-2 ⁵ / ₈ "	9.26	90.78
61	"	4.37	4-4 ³ / ₈ "	9.41	90.53
60	"	4.47	4-5 ⁵ / ₈ "	9.51	90.53

68	1595	95.95	95.95	90.65	
69	"	4.56	4-13 ¹ / ₄ "	5.46	90.42
70	"	4.58	4-7"	5.53	90.42
76 ³	"	4.50	4-5 ³ / ₈ "	5.40	90.50
			4-6"		

24

4.66 - 4-7⁷/₈"4.63 4-7¹/₂"4.27 - 4-3¹/₄"

Note change - Pt. out

5+00-

0.65 } 90.86

1590.21
1589.901595 5.29 - 5-3¹/₂" 1.15 89.71

- 6

89.65

89.77

~~| | |
|----------|------|
| 15.95.00 | |
| 89.65 | |
| 6.35 | = 5- |~~

1.12 90.83

89.71

10.6 89.77

95.00

89.77

5.23

5-2³/₄

5/17/72
Sub
Mixer
Fisher

ISF Pts

5+51-5+97

#50-38004

gravity
1600

9.85 1600.06

1590.21

5+97

4.97 95.091

4.91 4-10 7/8

5+90

4.86 95.20

4.80 4-9 5/8

5+80

4.91 95.65

4.35 4-4 1/4

5+70

4.67 95.39

4.61 4-7 3/8

5+60

4.87 95.19

4.81 4-9 3/4

5+51

4.91 95.15

4.85 4-10 1/4

5+40

1600 gravity - 16.58 -

9750
8042

25

Upstream face Pts

ISF Pts - Elev 1598-00

At 3+69 33-397' Radius Sight 4+09 03 for

2'-52'

TP Nail in
Form

1

4.60

99.23

94.63

3+49.48

1598

0-35

1985

"

1-26

5.07

94.16

30
3+39.06

"

2.09

5.11

94.12

3.84 = 3-10 1/8"

3.88 3-10 1/4"

9700
8305
13.92

3/18/v1
26

Upstream Face Pts

26

Ran Intersection of 28-397 -
Chain West

2+70
10
2+60
20
2+50
30
2+46
34

10	0-43 ✓
20	1-27 ✓
30	2-10 ✓
40	2-53 ✓
3+26	26
76	3-19
3+40	
60	4-20 ✓
3+50	
70	5-03
3+61	
81	5-51 ✓
3+70	
90	6-30 ✓
3+83	
103	7-26 ✓
390	
110	7-56 ✓
4+00	
120	8-40 ✓
4+10	
130	9-23 ✓
140 4+20	10-08 ✓
150	10-50 ✓
160	11-33
170	12-16

3/18/21

Downstream Face -

Elev. 1598

3+27
T.P.

456 99.79

1594.63

Nail in form

2+46 1598

5.20 94.29

3.71

3-8 1/2

2+50

5.22 94.27

3.73

3-8 3/4

2+60

5.48 94.01

3.99

3-11 7/8

2+70

5.69 93.80

4.20

4-2 3/8

2+80

5.16 94.33

3.67

3-8

2+90

4.84 94.65

3.35

3-4 1/4

3+00

5.07 94.42

3.58

3-7"

3+10

4.80 94.67

3.31

3-3 3/4

3+20

5.04 94.45

3.55

3-6 5/8

3+26

5.16 94.33

3.67

3-8" checked P.B.

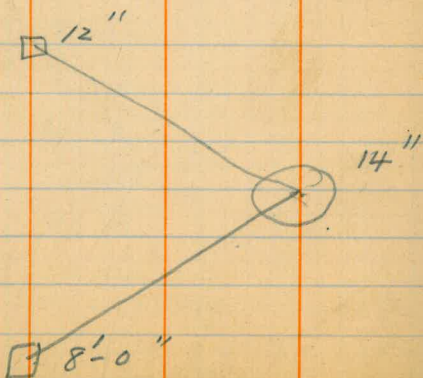
- Elevs for Derrick -

Grade =

-10

-10

+10



3/20/22
Bub
Fisher
Mixer

Upstream Face Pts

At 4+20 - 397' Radius - Sight CSD
for 5-39 Turn

4+30	
10	0-43 ✓
4+40	
20	1-27 ✓
4+50	
30	2-10 ✓
4+60	
40	2-53 ✓
4+70	
50	3-37 ✓
4+80	
60	4-20 ✓
70	5-03
78 ³⁵	5-39 Distance checked OK

Downstream Face Pts

Gravity
SD-380.4

10.25 1600.6 1590.21
EI-1598

3+83	6.48	93.98
3+90	5.81	94.65
4+00	6.18	94.28
4+10	6.28	94.18
4+20	5.70	94.76
4+30	6.15	94.31
4+40	6.22	94.24
4+50	5.79	94.67
4+60	5.36	95.10
4+70	6.42	94.04
4+80	7.46	93.00

3/20/22

Check on Dike Wall

4+80 5.37 98.37 93.00

9.37 94.00

EI. 94.00

397' on
370.36
26.64

4.02	=	4'-0 1/4" ✓
3.35		3'-4 1/4" ✓
3.72		3'-8 3/8" ✓
3.82		3'-9 7/8" ✓
3.24		3'-2 7/8" ✓
3.69		3'-8 1/4" ✓
3.76		3'-9" ✓
3.33		3'-4" ✓
2.90		2'-10 3/4" ✓
3.96		3'-11 1/2" ✓
5.00		5'-00" ✓

3/20/22
Bib
Fisher
Mista

Final Topog - Left Abut.

At 70 - 378.57 Sight 60 - 378.57
for Zero Az Right

5.1 1595.52 1590.42

Rid 0.52

28.2 279-0 ✓

1595.00 23.2 268-0 ✓

17.8 252-30 ✓

12.3 255-15 ✓

11.2 236-45 ✓

12.8 229-0 ✓

8.5 203-30 ✓

7.7 150-30

10.8 103-15

16.9 95-20

16.9 89-0

20.5 89.0

Drunk - Box

Form A. 96 109-0

en 119 44-45

Form en 33.8 13-0

Cont J. 43.9 9-30

en 378 25-30

Platted 3/20/22

87.00

90.0

3/20/22 ✓

29

At 6765.43 Sight 70 - for Zero

22.9 - 5-15 ✓

34.1 - 358-45 ✓

USF. face U 24.4 354-0 ✓

albat 28.4 351-30 ✓

Contours
1595 28.4 351-30 ✓

" 27.7 348-0 ✓

" 20.6 345-0 ✓

Drunk Form ~~99.5~~ 165-30 ✓

Cont J. 10.0 196-30 ✓

Cont J. 10.4 168-30 ✓

5.3 - CC Line ✓

Platted 3/20/22

3/21/20
Dub
Fisher
Mixed

U.S.F.P.'s

At 72-397 Sight RP West Chain

7+10
10

7+02

18

41

6+69

11

6+50

10

6+40

20

6+30

10

6+20

10

6+10

9

6+09

10

28

28

41

57

72

69

65

30

3/21/22
Buck
Fisher
Mixer.

Lift 1600 see page 25 - Block

5+97

5-

6+00 1600

6+10 1600

6+20 1600

6+30 1600

6+40 1600

6+50 1600

□ S. Face Pts

Block

5.33 1600.42

1600

5.53 94.89

5.32 95.10

5.33 95.09

5.23 95.19

5.46 94.96

5.49 94.93

1595.09

5.11 = 5-1 $\frac{1}{4}$ "

4.90 = 4-10 $\frac{7}{8}$ "

4.91 = 4-11"

4.81 = 4-9 $\frac{3}{4}$ "

5.04 = 5-0 $\frac{1}{2}$ "

5.07 = 5-0 $\frac{7}{8}$ "

31

3/22/22
BvB
Fisher
Mixer

Upstream Face Pts.

BIK - 4+86 - 5+

70'

At 4+60 Sight on 3+90 for 5-03'

4+70

10

4+80

20

4+90

30

2-10

3835

2-46

2-53

At C 50 - or 4+98³⁵ 397' - Radius

Sight R P for 15-45-30

3+90

10825

7-49

Chained

5+10

10

5+20

20

30 5+30

30

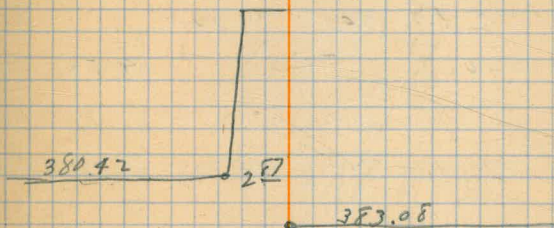
40 5+40

40

32

1600 = Gravity 16.58

1598 - Overflow 13.92



3/22/22
Bulb
Mixer
Fisher
L.H. 1600 Gravity
5+60

D. S. Face Pts.

1598 - 1600

4.22 1599 ~~41~~

1595.19

EI = -1598 -

check 1598 overflow

4+80

4+90 1598

4+98.35

5+00 ✓

5+08.35

5+10 ✓

5+18.05

5+20 ✓

EI 1598
Overflow

6.40 93.01

5.86 93.55

5.49 93.92

5.41 94.50

4.94 94.06

See page 25

4-45 = 4' - 5 1/2"

4-08 = 4' - 11"

4-00 = 4' - 0"

3-94 3.53 = 3' - 6 3/8"

5+22.22

1600

5+28.35 ✓

5+38.35 ✓

EI 1600
Gravity

4.86 94.55

4.61 94.80

4.35 95.06

5-45 = 5' 5 1/2"

5-20 = 5' - 2 3/8" ✓

4-94 = 4' - 11 1/4" ✓

397.00

374.18

22.82

Top Concrete inside
wall

4.54 94.87

Nail at

374.18 Bedrock 1600

4.57 94.94

5.16 - 5' - 2"

Upstream Face Pts

Chained from 6+61 -

6+50

11

6+40

6+30

6+20

6+10

6+02

6+70

6+79

6+90

7+01.59
1.59 miles north

3/22/22

Sub
Fisher
Mixer

D. S. Face Pts 1600

-1600-

5+80

4.53 1600.18

1595.65

6+60

1600

4.89 95.29

4-71 - 4-8 1/2 ✓

6+70

✓

4.88 95.30

4-70 - 4-8 3/8 ✓

6+79

✓

4.94 95.29

4-76 - 4-9 1/8 ✓

6+90

✓

5.22 94.96

5.04 - 5-0 1/2 ✓

7+00

✓

4.75 95.43

4.57 - 4-6 7/8 ✓

5+22.22
El. 1600

check -

5.64 94.54

7+0.6

✓

5.14 95.04

4-96 - 4-11 1/2 ✓

Downstream Face Pts

(see page 19)
aperture lift 1596
1+90.

- Elev 1598 -

5.84 1600.11

1594.27

To 1+29 ~ 7 } check shots

1+70

5.22 94.89

N
3

4.80 95.31 ✓

1+90

1598.00

5.68 94.43

3.57 - 3-6 7/8 ✓

2+00

1598

6.31 93.80

4.20 - 4-2 3/8 ✓

2+10

✓

5.90 94.21

3.79 - 3-9 1/2 ✓

2+20

✓

5.74 94.17

3.83 - 3-10" ✓

2+30

✓

5.77 94.34

3.66 - 3-8" ✓

2+40

✓

6.11 94.00

4.00 - 4-00 ✓

Marked
3/22/22

3/23/22
 Bub
 Fisher
 Mixer

BM. Nail in
 Stump near Blksmith Shop 3.50 21.73 1617.93

TP
 Nail in Rock 0.26 1608.67 13.02 1608.41

12-502⁰⁹
 TP 3.61 1600.24 12.04 1596.63

Check on Elev - Blk. 0+93 to 1+93.

0+93	1600	5.28	94.96
1+00	1600	5.37	94.87
1+10	1600	5.04	95.20
1+20	✓	4.92	95.32
1+29 ²⁷	✓	5.34	94.90

Over flow 1+32.8	1598.00	5.60	94.64
1+40	✓	5.67	94.57
1+50	✓	6.02	94.22
1+60	✓	6.08	94.16
1+70	✓	6.00	94.24
1+80	✓	5.70	94.54
1+90	✓	5.80	94.44
2+00	✓	6.45	93.79

BM

Nail in Rock

Nail in Stud

3.36	-	3	-	4 1/4
3.75	-	3	-	5 1/8
3.78	-	3	-	9 3/8
3.84	-	3	-	10 1/8
3.76	-	3	-	9 1/8
3.76	-	3	-	5 1/2
3.55	-	3	-	6 3/4
4.21	-	4	-	2 1/2

3/23/22
Bub
Fisher
Mixer.

Ran Intersection 28-397 from
West Tangent + RP East Tangent —

At 28-397- chained West —

Per 49
2+66.14
13.86
sum = 82+51.22
28.78

3/24/22 At 28-397- Sight 50-397 for
15°-45-30-

#10 2+91.068
1.068

0-04.

#11 2+95.957
15.957

1-09

95
2+80 00

36

3/23/22
806
Fisher
Mixer

Downstream Face Pts
BIK 6+00 to 6+55

37

5+80		9.39	1605.04	1595.65
check sheet	1600			
6+60	1600			9.75 95.29
6+00	1605			5.67 99.37
6+10	✓			5.36 99.68
6+20	✓			
6+30	✓			5.10 99.94
6+40	✓			5.30 99.74
6+50	✓			5.53 99.51

3/24/22

3/25/22

Bub
Fisher
Mixer

Ran. Intersection of ~~4+98~~^{4+98³⁵} - ~~397~~^{397⁶}

At 4+98³⁵ - Sight P.R. between 2+80 - 4+98³⁵

for 15° 45' 30" Turn.

4+90	8.35	0-35 ✓
4+80	18.35	1-19 ✓
4+70	28.35	2-03 ✓
4+60	38.35	2-46 ✓
4+50	48.25	3-29 ✓
4+40	58	4-13 ✓
4+30	68	4-56 ✓
4+20	78	5-39 ✓
4+10	88	6-23 ✓
4+00	98.35	7-05 ✓
3+90	108.35	7-49 ✓
3+80	118.35	8-32 ✓
3+70	128.35	9-16 ✓
3+60	138.35	9-59 ✓
3+50	148.35	10-42 ✓
3+40	158.35	11-26 ✓
3+30	168.35	12-09 ✓
3+20	178.35	12-52 ✓
3+10	188.35	13-35 ✓
3+00	198.35	14-19 ✓
2+90	2+08 ³⁵	15-02 ✓
2+80	2+19 ³⁵	15-45-30 ✓

3/25/22

Bull
water
PolesNail in Rock
502.09

- Final Contours -

Location of Fillet -

Right About

5.63 1606.75 1600.82

At 1+00.2 397' - Sight RR East.

U.S.F

1

8.8	339-30 ✓	5.7	.008 ✓
15.2	274.15 ✓	Butt - 9.2	9.73 ✓
		5.1	01.4 ✓

256.45	6.6	99.9
--------	-----	------

20.7	249-30 ✓	11.5	95.0
------	----------	------	------

R.C. → 25.5	239-0 ✓	4.8	01.7
-------------	---------	-----	------

22.8	244-30 ✓	10.3 Butt	96.2
------	----------	-----------	------

outline of bench

27.3	237-30 ✓	4.8	01.7
------	----------	-----	------

26.8	232-45 ✓	4.7	01.8
------	----------	-----	------

R.C., End of form	26.2	224-0 ✓	4.4	02.1
----------------------	------	---------	-----	------

Center Joint	8.8	239-45 ✓	Butt - 13.8	92.7
			4.8	01.7

1600 Rod 1.5 1605

Rsd 65

1600	24.9	209-15 ✓	1605	31.5	248-0 ✓
------	------	----------	------	------	---------

"	20.6	214-30 ✓	"	28.7	243-30 ✓
---	------	----------	---	------	----------

"	20.6	223-30 ✓		30.9	222-30 ✓
---	------	----------	--	------	----------

"	25.3	240-0 ✓		31.4	220-0 ✓
---	------	---------	--	------	---------

"	26.5	246-30 ✓		29.6	218-0 ✓
---	------	----------	--	------	---------

"	29.1	248-0 ✓		31.4	211-20 ✓
---	------	---------	--	------	----------

"	29.0	252-30 ✓		37.2	210-0 ✓
---	------	----------	--	------	---------

"	31.8	259-0 ✓		39.0	203-0 ✓
---	------	---------	--	------	---------

39

1605

(65)

3.3,3 201-u

276 208-u

67.6 97.69

Elevation 1598 -

II S. Farm Piers

Lift 1598

1+90

9.79 1604.23

1594.44

Check sheet

1+60

10.06

94.17

1598

6.23

1598.00

Check on Elev of Flunky Buckhouse

~~1+90~~ + elev of Water

1+90

9.15 03.58

94.43

2.8

50.8

00 8
92 2

8.6

Elev of Water 1592.2
11 AM - 3/26/22

3/26/22
Bub.
Fisher

Elev 1607 50

BM

2.90 ± 1620.83 ± 1617.93

BM Nail in Stump near Blacksmith Shop

BM TP

0.23 08.64 12.42 1608.41

Nail in Rock - with witness.

BM T.P.

4.55 1604.14 9.05 1599.59

Nail in Rock -

check

6.14 ± 1598.00

Piers Elev 1607

Radius 395.50

Pier #5 1607

5.25 98.87

9.11 8-1 3/8 ✓

Pier #6 1607

~~5.07~~
5.07 99.07

7.93 7-11 1/8 ✓

Pier #7 1607

5.05 99.09

7.91 7-11" ✓

Pier #8 1607

~~4.47~~
4.47 99.67

7.33 7-4" ✓

Pier #9 1607

4.61 99.53

7.47 7-5 5/8 ✓

Pier #10 1607

5.63 98.51

8.49 8-5 7/8 ✓

Pier #11 1607

6.03 98.11

8.89 8-10 3/4 ✓

Elevations for Ends of
Rib frame Overflow

3/27/22
Bub
Fisher
Mixer

Piers # 12 + 13

42

At 28-397 Sight R.P. East - for
15-45-30 Turn.

Wastside.	
Pier # 12	2-09
3 + 10 546	
& Pier # 12	2-13-30
East side.	
	2-18
West side	
3 + 25 735	3-14
& Pier # 13	3-18
East side	
	3-22

Elev for Rib Forms Overflow Section.

Pier # 10 Page 41 5 73 1603.94 1598.51

Pier # 11 1607 5.83 98.11

Pier # 12 1607 5.45 98.49 $8-51 = 8'-6\frac{1}{8}"$

Pier # 13 1607 4.68 99.26 $7-74 = 7'-9"$

ISF See page

3/27/22
Bat.
Fisher
Moxter

Up stream Face Pts.

43

chain

At. 6+40 ~~chain~~ Sight R.P. East

6+50

10

6+60

6+70

6+80

6+90

7+00

— set pts —

5+53

5+60

5+70

5+80

5+90

7.19

22.57

1615.38

5.57

1617.00

3/29/22
 Bub
 Fisher
 Mixer
 D.S.F.
 Overflow

Downstream fa cepts Gravity Section.

- Elev 1605 -

4.82 1602.82 1598.00

Dividewall
 D.S.F.

1605 - 4.03 98.79

5+22.65 1605 3.98 98.84

5+30 1605 3.36 99.46

5+40 1605 3.08 99.74

5+50 1605 3.15 99.67

5+60 ✓ 3.00 99.82

5+70 ✓ 3.08 99.74

5+80 ✓ 3.36 99.46

5+90 ✓ 2.80 00.00

6+00 ✓ 3.32 99.50

6+10 ✓ 3.19 99.63

6+20 ✓ 3.08 99.74

6+30 ✓ 2.89 99.93

6+40 ✓ 3.09 99.73

6+50 ✓ 3.31 99.51 ✓

6+60 ✓ 3.41 99.41 ✓

6+70 ✓ 3.01 99.81

6+80 ✓ 3.13 99.69

6+90 ✓ 3.28 99.54

7+00 ✓ 3.31 99.51 ✓

(see page 37)

(37)

94

621 6-2 1/2 ✓

6.16 6-1 3/8 ✓

5.54 5-6 1/2 ✓

5.26 5-3 1/8 ✓

5.33 5-4" ✓

5.18 5-2 1/4 ✓

5.26 5-3 1/8 ✓

5.54 5-6 1/2 ✓

4.98 4-11 3/4 ✓

5.50 5-6" ✓

5.37 5-4 1/2 ✓

5.26 5-3 1/8 ✓

5.07 5-0 7/8 ✓

5.27 5-3 1/4 ✓

5.49 5-5 7/8 ✓

5.59 5-7 1/8 ✓

5.19 5-2 1/4 ✓

5.31 5-3 3/4 ✓

5.46 5-5 1/2 ✓

5.49 5-5 7/8 ✓

• 377.36 Fa Elev 1605

2.65 • 382.03

✓

Bryan
Bob
Mixer. 3/28/22

RESETTING RES. GAUGE

BM.	7.425	1607.015	1599.59	BM.	on Rack
Water Surf.			1593.98	Water Surf	@ 7 ⁰⁰ am 3/29 147.87
T.P.	4.565	1599.555	12.025	1594.99	
Wat. Surf.			5.565	1593.99	
Gauge.			11.900	1587.655	Bot. Gauge Res. 6 141.535

Gauge 7⁰⁰ am 147.87

Set Piers # 4-3-2-1-
chained from Pier # 5 - Sta-2+

3/25/22 - Elevations for Rib Forms -
 Elev 1607 - Overflow Section
 - 3955 Radius -

		5.07	1603.07		1598.02
W	check Pier # 5	1607		4.19	98.88
U	Pier # 2 1+61.654	1607		3.32	99.75
				7.25	7-3" ✓
	Pier # 3 1+76.581	1607		3.77	99.08
				7.92	7-11" ✓
	Pier # 4 1+91.508	1607		4.23	98.94
				8.16	8-1 7/8" ✓
	D.S.F. Elev.		5.07	1598.02	

Pier # 1
1+46.727

6.575

39.832
1+~~46~~

7.03

1+ 32.80

		5.73	1603.75		1598.02
	D.S.F.Pts. Pier # 3 check			4.65	99.08

	Pier # 1	1607		4.90	98.83	8.17	8-2" ✓
--	----------	------	--	------	-------	------	--------

		5.41	1603.41		1598.02		
	D.S.F.Pts. check Pier # 1			4.58	98.83		
	1+39.832	1607		3.61	99.80	7.20	7-2 3/8" ✓

3/28/22
Bub
Fisher
Nixter

Final Topog

At 70-397 Sight East for Zero -
Chain

7+3382
3382

U.S.F. Elev 1605
7+00

Rod 44	18.3	61-0	159	1599.51
1600	18.0	52-0 ✓		
✓	9.7	36-0 ✓		
✓	10.0	12-30 ✓		
✓	6.8	6.0 ✓		
✓	2.7	342.45 ✓		

Plotted
3/29/22

At 72-397 Sight RPEast for 00-A2 Right

U.S.F. Lift 1605
7+00

Rod 8.8

1600	22.3	122-0	1605	24.3	104-30 ✓
✓	26.7	117-0 ✓	193	112-30 ✓	
	26.3	117-0 ✓	16.1	107-0 ✓	
	33.0	108-30 ✓	12.4	122-30 ✓	
	41.0	110-30 ✓	1.8	119-0 ✓	
Rod 38	52.0	114-30 ✓	2.5	30-30 ✓	
1605	50.6	113-45 ✓	3.5	346-0 ✓	
✓	42.6	109-30 ✓	5.8	327-30 ✓	
✓	40.0	109-0 ✓	4.0	302-30 ✓	
	35.3	105-0	6.9	283-15 ✓	
	34.3	105.30 ✓	9.8	237-45 ✓	
	30.1	103-0 ✓	17.7	288-30 ✓	

1582
20
5282

47

1608.84

Iron Rods

Firm end of Forest

Rod 7.9 19.0 202-0 ✓

Rod 38

1605 - 22.1 204 ✓

✓ 31.5 204-30 ✓

✓ 36.6 207-0 ✓

Rod 8.8

1601 43.5 203-30 ✓

✓ 34.1 196-30 ✓

✓ 28.5 198-30 ✓

✓ 23.0 199-0 ✓

✓ 20.6 202-30 ✓

16.6 198-0 ✓

11.0 210-0 ✓

TP

3.10 16.0574

3/28/22
 Bub
 Fisher
 Mixed
 see page 47
 TP

Final Topog

At 7+3382 397

9.16 14,90

1605.74

Road 4.9

1615

1610	41.3 2.6	205-0	✓	5	6.0	52-01
✓	34.6	202-30	✓	✓	6.5	301-01
✓	29.2	210-0	✓	✓	5.2	280-01
✓	29.1	214-0	✓	✓	7.3	263-01
✓	18.7	217-0	✓	✓	12.1	225-301
✓	12.9	214-30	✓	✓	19.8	228-301
✓	9.7	218-0	✓		22.1	222-301
✓	4.3	281-30	✓		28.4	220-301
✓	9.2	96-30	✓		29.4	216-01
✓	15.5	117-30	✓		33.2	215-01
✓	20.0	115-30	✓			
✓	24.4	123-0	✓			
✓	27.0	121-0	✓			
	37.7	119-30	✓			

Road 50

1615	36.0	116-0	✓			
✓	31.9	113-0	✓			
✓	23.1	110-0	✓			
✓	19.0	93-0	✓			
✓	19.9	86-0	✓			
✓	17.7	77-30	✓			
✓	15.9	72-0	✓			
✓	9.6	66-0	✓			

Point
 ↑
 (marked)

Vent (14.0)

Vent 9:

3/29/22
Bib
Fisher
Mixer

Set Upstream face Pts

set nails

6+62

6+70

6+80

6+90

7+00

7+10

7+20

7+33^{ft}

-2.11-1105-
6+50-

Downstream Pts

12.45 11.96

99.51

-See page 47

Elev. -1610-

6+62 1610

6+70 ✓

6+80 ✓

6+90 ✓

7+00 ✓

7+10 ✓

7+24 ✓

7+33^{ft} ✓

7.85 04.11 ✓

7.39 04.59 ✓

7.39 04.57 ✓

7.31 04.65 ✓

7.19 04.77 ✓

7.27 04.69 ✓

3.00 08.96 ✓

0.48 11.48 ✓

5.89 5-10 ¹/₄

5.43 5-5 ¹/₈

5.43 5-5 ¹/₈

5.35 5-4 ¹/₈

5.23 5-2 ³/₄

5.31 5-3 ³/₈

1.04 1-0 ¹/₂

C- 1.48

3/29/2

Final Topog Left About

At 72-325 Sight RP North for
200 Az Rt

Abv. / Pt	20.75	240.38	
	4.60	88.76	1638.51

At Auxil Pt sight 72-325 for 200

70-325	9.03	432.11	1623.08
Red 7.1			
16.25	24.4	231-0	
✓	20.0	270-0	✓
✓	16.6	215-30	✓
✓	11.2	207-0	✓
✓	7.0	182-0	✓
Red 12.1	22.2	226	✓
16.20	19.2	226-0	✓
✓	17.7	217-30	✓
✓	13-0	205-0	✓
✓	9.4	186-30	✓
Vent to bottom	12.6	135-30	✓
vent A	12.1	95-30	✓
	15.3	71-0	✓
	27.0	51-0	✓
	33.6	54-45	✓

Platted
3/29/2

70-45
⊙

Auxil Pt ⊙ 72 ⊙ 42278

At Auxil Pt Sight 72-42278 In 200

HL 1525.62

1525

60.3	66-15	1520	58.0	68-30
60.5	61-0		62.5	73-0
57.1	54-30		60.0	75-30
55.5	52-15			
43.7	47-30			
41.5	40-0			
42.4	37-30			
38.2	27-0			
14.9	32-0			
Red 502				
1520 37.3	28.0			
✓ 40.4	34-0			
✓ 40.2	37-30			
✓ 42.5	41-0			
✓ 44.0	47-30			
✓ 55.4	52-0			
✓ 57.1	57-0			
58.8	62-30			

Platted
3/29/2

7+55 =
edge of
cut on
400' Radius

3/29/47
Pub
F. J. Her
Mistov.

U.S.F. Elev 6.33 1604.33 1598.00

see page 20
5+50 1598.00
check shot

4.66 99.67

€ - Pier Points - 397' Radius

At 50-397 - Sight R.P. 28-397 for Zero
Turn -

Pier # 24	
4+89.514	15-07
Pier # 23	
4+79.625	14-03
Pier # 22	
4+59.736	12-58
Pier # 21	
4+44.847	11-54
Pier # 20	
4+29.958	10-49
Pier # 19	
4+15.069	9-45
Pier # 18	
4+00.180	8-40
Pier # 17	
3+85.291	7-36

At 50-397 Sight R.P. 28-397 for 15-45-30

3+70	
128.35	9-16
3+50	
148.35	10-42
3+40	
1+58.35	11-26
2+25.74	
172.61	12-28 check angle -

Distance measured - 14.12 -
Correct Dist = 14.26 - error of .14

933
67

Chamfer

6545
543

933
67

Chamfer

65 45
5.43

6.15 221
4

$$\begin{array}{r} 38 \\ 34 \\ \hline 72 \\ 36 \\ \hline \end{array} \quad \begin{array}{r} 1+30.0 \\ 35.5 \\ \hline 0+94.5 \end{array}$$
$$\begin{array}{r} 31 \\ 34 \\ \hline 65 \\ 325 \end{array}$$

245
21.0

$$\begin{array}{r} 30 \\ 4 \\ \hline +09 \end{array} \quad \begin{array}{r} 300 \\ 245 \\ \hline +05.5 \end{array}$$
$$\begin{array}{r} 27 \\ 33 \\ \hline 60 \end{array}$$
$$\begin{array}{r} 38 \\ 34 \\ \hline 72 \\ 36 \\ \hline \end{array} \quad \begin{array}{r} 40 \\ 34 \\ \hline 74 \\ 31 \end{array}$$

3/29/42
Bub
F. H. Hov
Mistov.

D.S.F Elev 6.33 1604.33 1598.00

see page 44
5+50 ^{1598.00} Check shot 4.66 99.67

E. - Pier Points - 397' Radius

At 50-397 - Sight R.P. 28-397 for Zero
Turn.

Pier # 24	
4+89.514	15-07
Pier # 23	
4+74.625	14-03
Pier # 22	
4+59.736	12-58
Pier # 21	
4+44.847	11-54
Pier # 20	
4+29.958	10-49
Pier # 19	
4+15.069	9-45
Pier # 18	
4+00.180	8-40
Pier # 17	
3+85.291	7-36

At 50-397 Sight R.P. 28-397 for 15-45-30

3+70	
128.35	9-16
3+50	
148.35	10-42
3+40	
1458.35	11-26
3+25.74	
172.61	12-28 Check angle -

Distance measured - 14.12 -
Correct Dist = 1426 - error of .14

3/30/22

Bob
Fisher
Mister

From

6+61

Form

6+70.3 DSE 6+69.2

6+71

6+80

6+90

7+00

7+10

7+20
+ in Rock

7+33.57

U. S. Face Pts Left Abut

Downstream face

12.41

53

53

3/30/22
Sua
Fisher
Mister.

Final Contour Left Abot

54

Stake Top
of Dam

3.7 1628.7 1625.00

Apr 37

At 72-422 ⁷⁸ Sight 72-325 for zero

1825 3.0 324-0 ✓

✓ 8.5 335-0 ✓

✓ 10.2 315-30 ✓

✓ 17.0 310-0 ✓

✓ 25.7 306-0 ✓

Apr 8.7

1620 26.3 308-0 ✓

✓ 19.0 321-0 ✓

13.6 332-0 ✓

8.1 9-0 ✓

7.8 67-0 ✓

3/30/22

3/30 frv

Bill
Factor
Meter

Topog

At C77 Sight R.P. West fr Zero Az Right

7.5 57.36 1649.86

Rod 7.4

16.50 23.7 291-30 ✓

✓ 16.9 296-0 ✓

✓ 7.3 323-30 ✓

✓ 13.5 55-30 ✓

✓ 23.8 74-30 ✓

Rod 2.4

16.55 18.9 88-0 ✓

✓ 15.1 90-0 ✓

✓ 2.3 152-0 ✓

✓ 2.6 278-0 ✓

✓ 6.6 250-30 ✓

✓ 11.0 264-30 ✓

✓ 10.6 273-0 ✓

✓ 20.2 282-0 ✓

Platted

3/30/22

3/30/24
Sub
Fisher
Mixer

Piers- 17- 24

At & Pier #24 - 397' Radius Sight
& pier # 17 for 7-31 Turn 90°

At & Pier #23 ^{397' Radius} Sight & pier #17 for 6-27

At & Pier #22 - 397' Radius Sight & Pier #17 for 5-22

At & Pier #21 - 397' Radius Sight & Pier #17 for 4-18

At & Pier #20 - 397' Radius Sight - 50-397 for 4-56'

At & Pier #19 - 397' Radius - Sight 50-397 for 6-00-30

At & Pier #18 - 397' Radius Sight 50-397 for 7-05

At & Pier #17 - 397' Radius Sight - 50-397 for 8-09-30

At & Pier #16 - 397' Radius Sight 50-397 for 9-13-96

14.82

1-04

3/30/22
Bub
Fisher
Mixer

Elev. of Piers - 17-25 - + Dunde Wall.

1607

5.39 1603.39 1598.00

Pier #	1607				
Pier # 17	✓	3.82	99.57	7-43	7-5/8
Pier # 18	✓	3.87	99.52	7-48	7-5 3/4
Pier # 19	✓	4.01			
Pier #	✓	4.01	99.38	7.62	7-7 3/8
Pier # 20	✓	3.92	99.47	7.53	7-6 3/8
Pier # 21	✓	3.41	99.88	7.02	7-0 1/4
Pier # 22	✓	4.75	98.64	8.36	8-4 1/4
Pier # 23	✓	5.26	98.13	8.87	8-10 3/8
Pier # 24	✓	4.34	99.05	7.95	7-11 3/8
Pier # 25	✓	5.38	98.01	8.99	8-11 7/8
Dunde Wall	✓	4.19	99.20	7.80	7-9 5/8
Dunde Wall	✓	5.395	1598.00		

Check shot 1598 ✓

57

✓ ARB

3/30/22
BWB
Fisher
Mixer

Monthly Est. March 1922
Deductions below 1598 -

Spillway #3
5.39 1603.39 1598.00

Spillway #3

1598
93.1
4.9

9.31

10.7 92.7

10.1 93.3

10.0 93.4

Block #2

6.5 96.9

6.6 96.8

7.0 96.7

Block #2

96.7

1598
96.7
1.3

Spillway #2

9.5 93.9

9.6 93.8

9.5 93.9

Block #1

1598
93.9
4.1

6.9 96.5

6.8 96.6

6.6 96.8

Spillway #1

6
120.3

1598
96.6
1.4

10.7 92.7

10.2 93.2

9.7 93.7

30.6

10.3 93.1

Ave -

1598.00
93.1
4.9

Deduction for Spillways

1895 X 8.2 X 49

$$\frac{21.2 + 16.7}{2} \times \frac{8.0 + 8.4}{2} \times H$$

21.2 8.0
16.7 8.4
37.9 16.4
18.95 8.2

$$\frac{18.1 + 17.0}{2} \times \frac{13.4 + 13.2}{2} \times H$$

18.1 13.4
17.0 13.2
35.1 26.6
17.55 13.3

18.5

$$\frac{20.3 + 17.0}{2} \times \frac{7.7 + 8.3}{2} \times H$$

20.3 7.7
17.0 8.3
37.3 16.0
19.15 8.0
18.65

$$\frac{18.4 + 17.0}{2} \times \frac{15.65 + 13.9}{2} \times H$$

17.7 17.4
17.0 13.9
34.7 31.3
18.4 15.65

18.75 X 9.1 X 4.9

$$\frac{16.6 + 20.9}{2} \times \frac{8.1 + 8.1}{2} \times H$$

16.6 8.1
20.9 8.1
37.5 16.2
18.75 8.1

1492

Concrete Estimate -
March 1922

DS.F.Pts	Sections		
	5.39	1603.39	1598.00
	Section 3+82		400 R=00
00		4.0	99.4 ✓
6		3.7	99.7 ✓
10		4.8	98.6 ✓
16.92		5.3	98.1 ✓
	4+60		
00		4.0	99.4 ✓
6		4.0	99.4 ✓
11		5.4	98.0 ✓
16.92		5.6	97.8 ✓
	4+70		
00		4.0	99.4 ✓
10		4.7	99.0 ✓
13		5.5	97.9 ✓
16.92		5.5	97.9 ✓
	4+40		
00		3.8	99.6 ✓
7		4.1	99.3 ✓
14		5.2	98.2 ✓
16.92		5.3	98.1 ✓
	4+50		
00		4.0	99.4 ✓
8		3.7	99.7 ✓
13		5.2	98.2 ✓
16.92		5.5	97.9 ✓

Platted 3/31/22
Monthly Concrete Section Sheet

1603.9

59

4+60

00	4.9	98.5 ✓
8	4.7	98.7 ✓
16.92	5.2	98.2 ✓
	4+70	
00	5.5	97.9 ✓
8	5.3	98.1 ✓
16.92	5.3	98.1 ✓
	4+80	
00	4.0	99.4 ✓
8	5.0	98.4 ✓
16.92	5.4	98.0 ✓
	5+00	
00	5.0	98.4 ✓
16.92	5.3	98.1 ✓
	5+18.35	
00	4.3	99.1 ✓
16.92	4.3	98.1 ✓

Platted 3/31/22
Monthly Concrete Section

5720 to 6406
Section Block.

5770	3.2	1602.94	99.74
		3.3	99.6
1600.1	2.8	2.7	00.2
		2.5	00.4
		2.7	00.2
		2.4	00.5
1600.2	2.7	3.2	99.7
		3.4	99.5
1599.5	3.4	3.4	99.5
		3.4	99.5
		3.2	99.7
1600.2	2.7	2.6	00.3
		2.7	00.2
		2.9	00.0
1599.9	3.0	3.0	99.9
		3.2	99.7
		3.2	99.7
1599.6	3.3	3.3	99.6
		3.3	99.6
		3.1	99.2
		3.1	99.2
		3.4	99.5
1599.3			
1198.8			
433			

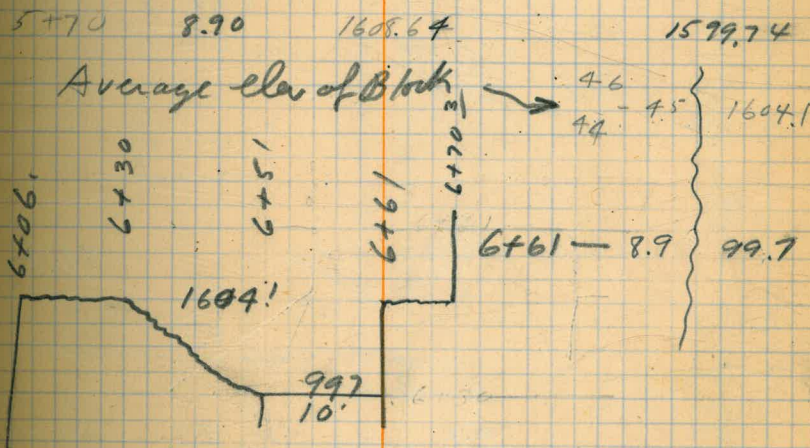
Average Elev = 1599.8

160.1

98 - 8.3		
8.5	9.4	5
18.3	17.7	10
9.2	8.9	15

Deduction for cutting in ditch
 $92 \times 8.9 \times 7.5 =$

Block 6406 - 6470.3



Average Elev Blk. 01937.1432

Sta on 397' Radius — 61

B.M.
Nailin Rock.

6.09 1605.68 1599.59

1601.1

5 | 23.0
 1.8

1600.5

5.2
25.8

1599.6

6.1
18.4

4.6

5.2

6.1
5.3

4.2 1601.5

4.1 01.6

4.1 01.6

5.0 00.7

5.6 00.1

5.6

5.5

4.7

4.8 00.5

5.2

5.3

6.0

7.1

99.6

Sections —

T.P.

4.0 1605.0 4.7 1601.00

40' Radius 1+32.8

00 4.3 00.7 ✓

5 4.4 00.6 ✓

12 5.4 99.6 ✓

18⁹² 6.0 99.0 ✓

1605.00
— 1+42.63 —

4.8 1600.2 ✓

5.3 99.7 ✓

5.8 99.2 ✓

7.0 98.1 ✓

6.0 99.0 ✓

6.3 98.7 ✓

6.6 98.4 ✓

5.7 99.3 ✓

5.9 99.1 ✓

7.0 98.00 ✓

5.0 1600.0 ✓

5.3 99.7 ✓

5.8 99.2 ✓

7.0 99.0 ✓

— 1+42.63 — south Trench

— 1+50 —

— 1+60 —

— 1+80 —

— 1+93.66 — south Trench

2.5 99.1 ✓

2.6 99.0 ✓

3.5 98.1 ✓

2.5 99.1 ✓

2.8 98.8 ✓

3.3 98.3

Platted 3/31/22
Monthly Sheet

Prick 3

2.5 1601.58

1599.08

1601.6

00

2.5

5

2.6

16.92

3.5

00

2.5

5

2.8

16.92

3.3

Section 5
Concrete Estimate March 1922

Per # 5	25	1601.4 ✓	98.88
	— 2+00 —		
00		22	992
8		28	986
16.92		33	98.1 ✓
	— 2+20 —		
00		20	994
8		23	991
12		28	986
16.92		34	980
	— 2+30 —		
00		19	995
6		20	994
11		24	990
16.92		34	980
	— 2+43.6 Contn Joint —		
00		2.8	98.6
6		2.8	98.6
12		30	98.4
16.92		34	98.0

Plotted 3/31/22
Monthly Sheet.

Outlet Tower — 62
1695.28

Top of Form	0.40	1605.3
Top of Concrete	7.9	1600.8
Top of 1/2 Hoop	2.5	1603.2
Top of Inside Step	0.6	1605.1
Top of "r" Gaud	1.2	1604.5
Top of Outside Step	1.3	1604.4
Top of outside gaud	1.25 1.2	1604.25 1604.25
Elev. Saver Valve (top of main)	8.42	97.26

— See Henry's Book for Steel —

Elev of Reinforcing steel

Divide Wall - 5+20 = 1594.00
" " 1+32.8 = 1599.5 -

Sections

D.S.F.

2.9 1600.9
— 2+50 —

1598.0 00

00

2.0 989.1

8

1.2 997.1 169

11

1.2 997.1

16.92

2.4 985.1

— 2+60 —

00

1.4 995.1

8

1.3 996.1

16.92

2.4 985.1

— 2+70 —

00

2.0 989.1

8

1.7 992.1

11

1.7 992.1

16.92

2.7 982.1

— 2+80 —

00

2.4 985.1

8

2.5 984.1

16.92

2.9 982.1

~~2.9~~

— 2+90 —

00

2.0 989.1

5

1.9 990.1

16.92

2.9 980.1

Platted 3/31/22
Monthly Concrete Section Sheets

1600.9
3+00

28 981 ✓

28 98.1 ✓

30 97.9 ✓

25 98.4 ✓

6.0 1600.0
— 3+10 —

98.00

5.5 985 ✓

5.5 985 ✓

5.8 98.2 ✓

3+20

4.7 99.3 ✓

4.7 99.3 ✓

5.0 99.0 ✓

— 3+27.5 —

4.5 99.5 ✓

4.7 99.3 ✓

5.1 98.9 ✓

See page - 59

3/31/22
Bills
Fisher
Mixed

Downstream Face Pts
Elev 1610 Block - 6+10 - 6+20 - 6+71-76-77-78
Elev 1615 ←

D.S.F Pts

Lift 1610 = 13.58 ✓

Lift 1615 = 12.91 ✓

5+70 890 1608.64 1599.74

6+10 1610 4.60 1604.04

6+20 ✓ 4.75 1603.19

T.P. check

6+67 1604.11 955 13.67 4.52 1604.12 ✓

6+71 1615 4.82 08.85

6+80 ✓ 4.67 09.00

6+90 ✓ 4.56 09.11

7+00 ✓ 4.68 08.99

7+10 ✓ 4.75 08.92

7+20 ✓ 4.77 08.90

7+33.57 ✓ 2.35 11.32

Concrete
Eat

Block 6+70³ to R.C.

64

Average for Section
1613.7

48 4.4 4.6 1609.1

43 4.5 4.4 1609.3

46 4.1 4.4 1609.3

596-5-11 1/2 45 4.2 4.4 1609.3

6.11-5-13 3/8 47 4.4 4.6 1609.1

47 4.4 4.6 1609.1

Average Elev. 1609.2 ✓

6.15 6-1 3/4 ✓

6.00 6-00 ✓

5.89 5-10 9/8 ✓

6.01 6-0 1/8 ✓

6.08 6-1" ✓

6.10 6-1 1/4 ✓

3.68 3-8 1/4 ✓

4/2/22
B
Fickel

Elev. 1606 - 1607 for Overflow

Nail in Rock

1606

8.93 1608.52 1599.59

-2.52 1606.00

1.52 1607.00

12.45 12.04

1599.59

6.04 1606.00

Pier # 8

9.32 1609.99 1599.67

1606

2.99

1607

1.99

9/9/22

Chamed from 1439.832 -

4.215

1+44.727

1+46.727

6.895

2.100

1+48.727

5.4635

1+54.190

1+61.654

1+59.654

1+63.654

☒ Pier #1

☒ of opening

☒ Pier #2

Set nail 2' ^{West} from ☒ of Pier #1

Set nail 2' East of ☒ of Pier #1

☒ of Opening between piers 1+2

Set nail 2' West of ☒ pier #2

Set nail 2' East of ☒ pier #2.

7/4/22

Bub
Fisher
Mixer

Final Tipog

A + 7433 - 397

7+10

6+05 1614.97

1608.92

End of Fan

6.8

155-30 ✓

3.2

50

7.9

156-30 ✓

1615

11.4

163-0

✓

13.5

157-0

✓

14.2

243-0

Platted
A/5/22

1617 Grade
Upstream Face Pt Lt About

At 6+80-890' Radius epan

90-450					
6+91.3	From	1.32	25.38	1627.06	
11.3					
6+92	1617	4.16	4'-1 3/8"	12.54	12.84
12					
7+10	1617	4.01	4'-1/8"	12.37	12.99
7+10	✓	3.54	3'-6 1/2"	11.92	13.46
7+20	✓	2.79	2'-9 1/2"	11.17	14.21
7+30	✓	2.60	2'-7 1/4"	10.98	14.40
7+40	✓	2.77	2'-9 1/4"	11.15	14.23

Final Topog

At Axial Pt from 72-42275

2538

1520	34.5	29.0
3' left add 2' on Dist (to 25)		
20	37.0	33.0
2' left = Same Dist	1520	
20	39.2	31.0
20-25	40.7	30-30
1'-left	add 0.14 Dist	
25	43.0	32-30
25	45.7	35-30

70-4500

297

0.77 72-42275

1525	45.8	36-0 ✓
✓	47.5	38-0 ✓
✓	46.9	42-0 ✓
✓	47.2	49-0 ✓
✓	49.8	55-30 ✓
✓	43.0	30-15 ✓
✓	41.0	29-30 ✓
✓	39.0	29-0 ✓
✓	37.0	30-0 ✓

2' left - 3' left - end.

4.1 1 left ✓

1520	34.7	28-45 ✓
✓	37.7	32-45 ✓
✓	40	30-0 ✓
	43.4	36-30 ✓
	45.8	37-30 ✓
	47.5	39-30 ✓
	46.1	43-0 ✓
	47.3	49-0 ✓
	49.3	56-0 ✓
Axial pt	19.72	3-55 ✓
		4-00 ✓

A/6/22
 Bob
 Fisher
 MxH

Final Topog

At Auxil from Auxil Pt. Sight 70-450
 for Zero - Az Right

70-450		1074	3480 ✓	1324 00
Arct 48				
1530	53	233-0 ✓		
✓	8.6	198-0 ✓		
✓	15.0	185-0 ✓		
✓	23.0	183-0 ✓		
✓	33.5	198-30 ✓		
✓	34.0	208-0		
	34.3	209-0 ✓		
	38-0	214-0 ✓		
	41.4	218-0 ✓		
	48.2	219-30 ✓		
1535	49.7	218-0 ✓		
✓	45.7	213-0 ✓		
✓	42.0	211-0 ✓		
✓	35.0	208-0 ✓		
✓	33.7	198-30 ✓		
✓	29.7	191-0 ✓		
30X	23.0	183-0 ✓		
	2.8	171-30 ✓		

Page 50017

25

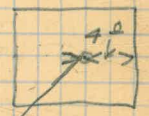
At Auxil from ²⁷⁷ Sight ²⁷⁷ for zero

4.8 - 44.0 39.2

Arct 40				
1640	9.9	355-0 ✓	34.3	343-30 ✓
✓	19.1	339-0 ✓	41.0	338- ✓
✓	24.4	338-30 ✓	43.8	333-0 ✓
✓	32.7	343-0 ✓		



30.5



48.0



B. MS.
Wagon Pig in Rock about ⁴⁰⁰⁰ 1400-430. 158793

~~100~~ 49

Deflection for Curve - 1595 Elev. Overflow

1595 Overflow = 380.77

4.5142

380.77 / 1718.87

152308

195790

190385

154050

152308

74220

1	0 - 4.5142
5	0 - 22.11
10	0 - 45.14.2
20	1 - 30.284
30	2 - 15.426
40	3 - 00.568
50	3 - 45.710
60	4 - 30.852
70	5 - 15.994
80	6 - 01.136
90	6 - 46.278
100	7 - 31.420

Deflection for Curve - 1600

1600 Overflow = 384.84

29.63

DIRECTIONS FOR USE OF TABLES

TABLE No. 1.

Distance of slope stake from side or shoulder stake for any width roadway, slope 1% to 1. If ground is nearly level, the cut or fill at side stake is located by the double entry method in left column and top row. The number in body level estimate the difference in elevation between the side stake and slope stake by this amount if cut, elevate if fill. Add this amount to cut or fill. Set up rod at this point and line of sight should cut target. If it does not make the slight adjustment necessary.

TABLE No. 2.

To find Tangent and External for curve of any other degree, divide by degree of curve and add correction found in column of corrections. Degree of curve with a given L may be found by dividing tangent (or external), opposite L by given tangent (or external). The distance from a point on the tangent to the curve is very nearly the square of the tangent length divided by twice the radius.

Stake at pole - 6477
on Nail

4.892

diff = 1.585

6477

8.062

433
1.585

5.915

4332
1.585

5.917