

W173

361

Index

Measurement of Wash Water Waste	2
J. F. Walker - Phone Work	3
Vacations 1923 - Water Impounding	6
Reservoir Data - Elev. etc.	7
" Available Storage	8
Morena Res. Inspection	13
Lower Otay Filter Research	14, 27
Levels on Otay S.D. Pipe Line	15
Inspection Barrett Res.	16
Zero Contour Equations	16
L. O. Filt. Plant - Meas. of Wash Water	17
Data for L. O. Spillway Bridge	18-20
Data on Gates - Otay Spillway	21
Survey of Schreiber's Acres	22-24
Levels for Tel. Can. Bunkhouse	25
Lyon Valley Levels for Pain & Spring Tank	30
Powers Ranch Water	31
Morena Outlet Tower	34
Levels for P.C. Bridge	35
Notes for Insurance Map of Administration Sta.	39-48
Azimuth at Lyon Valley	51

MICROFILMED

1985

6-19-23

Hours at L.O.

Algal Blank-stone

Synovio strain repair $\frac{2}{10}$ side holes

Synovio & 3 man 5 days permit.

27" influent pump

US 19-20

3 1/2 size

U.O. Skogland pay 25 new channel 50

Teletype from Sigurd Fish Lake telephone

2 man zero 5" x 7" x 52" ditch excav. 4 of pm jr.

Harmon gas at L.O.

Did you visit Jennings & police

Row launch

Boat to ... 29 + 1

Barrett 10

U.O. 5

L.O. 8 + 1

skellas 1

Fish & Hunting Administration

Civil Service List of employees (seniority)

shop work

L.O. Road Sit.

Reports

Springing on boats

Barrow content

Daily Tim Slips

10 day discrepancy Sept

Weekly hydrological

Daily Falls

Daily Chlorin

monthly general

Daily phase hydrological & hydrographic

U.S. Survey 35

U.S. Anna 15

Measurement of Wash Water Waste

Data

Basin: @ level (arbitrary) 042 17x62
 @ top sloping walls 30.75x90
 Elev. top sloping walls (arbitrary) 960

Dimensions:
 7 struts 12" x 34" = 19.8
 7 posts 8" x 8" = 3.1 sq ft.
 1 strut 12" x 18" = 1.5
 well 2'7" x 6'4 1/2" = 16.4
40.9

Area at 960 Elev 2767.5 - 40.9 = 2726.6
 Area @ 042 Elev 1054 - 40.9 = 1013.1
 $\frac{1713.5}{1013.1} = 1.867$ per 100 ft.

Note: posts (3.1 sq ft) entirely submerged at Elev 3.13.

Note: Units 3, 5, 7 stream holes enlarged & beds removed. Units 1, 9 cleaned last year. Units 21, 22, 23, 24 new. Unit 16 new 3 yrs ago.

Note Unit No 8 gaps on Wash water gate
 pressure of effluent at this point 35"
 pressure with pump running 37 1/2"

Q of wash 85,612 gals.

Use fountain 1800 gals per unit per min
 of water wash

6-22-23
 RC. Mueste
 J.Q. Symons

Unit	gate	Inc.	area	air	wash with pump	2 min	2 min
042		1013.1			0.08	950	
1	0.54		574.	24	0.42	415	
096		1113			0.50	1028	
3	0.53		628.	22	0.44	470	
149		1212			0.94	1110	
5	0.48		623.	20	0.46	530	
197		1302			1.40	1196	
7	0.44		580.	18	0.37	455	
241		1382			1.37	1265	
9	0.40		568.	16	0.38	494	
281		1458			2.15	1335	
11	0.32		476.	14	0.35	479	
313		1514			2.50	1400	
13	(out of commission)			12	0.34	487	
					2.84	1464	
15	0.30		463.	10	0.29	432	
343		1570			3.13	1514	
17	0.28		447.	8	0.29	447	
371		1621			3.42	1567	
19	0.27		445.	6	0.25	398	
398		1672			3.67	1614	
21	0.31		527.	4	0.30	493	
429		1730			3.97	1671	
23	0.28		492.	2	0.29	492	
457		1788			4.26	1725	
		<u>415</u>			<u>5823</u>	<u>418</u>	<u>5592</u>

J.F. Walker phone work

new nos	old nos	
191-72	191-73	Moruen Res.
	191-72	Moruen Dam Const.
191-73	191-714	Barrett Res.
192-73		do do
192-74	192-73	L.O. Res. - Mrs. Crowell's
191-74		do do
192-74		L.O. Res. - Mrs. Scott's Hse.
192-711	192-724	Filtration Plant
192-731	192-75	Lauterbachs
192-733	192-711	D.S.
191-713		Lyon Valley
192-715	192-712	T.C.
192-713		Cor wye
191-722	191-722	Hansen Sta
	192-735	Harvey Denting Basin
		R.O. Res. Moody
		R.O. Res. Conquest Hse.
		T.C. Bank hse.
192-721		Jannet Ranch
		Korte
		R.O. Shop
		1 wire to SA
		1 disk to SA

switch

switch

L.O. High @ 0.03946

R.O. Power @ 0.024

Superior Brack sand hauled by Percy Smith @ 4.75 per cu yd.

Quaid
Haley
Swanson } Security Bond.
Moody
Ward
Skogland }

Skogland now 25 drawn to 50

U.O. Toilets

12 boats 12' long 570 1 doz ferro wire rods 754 # 626
1000 40" bands 566 4 rods 678

Available storage any Dec 1 drawn to

Monroe 12

Barnes 14

L.O. 8

L.O. Evap pan better location
Barrett evap (U.O.)

4
core of origin tanks

Monroe Evap pan
Roads, phone, fence, cattle, campers
Windows - good for specimen base,
Development of Ward Flat - well, stoves
table - survey of flat, trees
Oldham to bath?

chillers w/ gate To L.O. fuel open
To S.G. 195
To Bst. 405

no blue stone at drain
water samples
sanitary notices
staple

429 per 1000 gals water = solution

Pumping Sta 1043 gpm 300' head
125 HP motor

Instruction sheet. 320 gpm recommended
480 gpm allowable
max dosage 1 qt per gal - 143 per 1000 gal

450° alum 5-6 days to 10 mg ±

Prints of Bureau & the final gate
and negative of water appropriation

Homeopathic medicine bottles.

Relief prices

2345 Scott

6789 Whittaker

10111213 Bunkerhoff

16171819 Crowell

Crowell vacation 17-31 July

Vacation application blanks

P.O. Filters

Old divisions units 686 strainers 18 side holes $\frac{3}{32}$ "

1915 P.O. units 692

15 top holes $\frac{3}{32}$ "

1922 P.O. " 25 lateral pipes each side

header pipe. 3' long strainers on 4½" str

Chl 150° 27°

alum 60° T @ $\frac{1}{2}$ gpd = 71 per mg.

Case 7½ d

Toilet

mess

Throne (resting)

long gun

fence

Tents

Trunk

Phone.

Book of allocation nos.

Milburn eight drums.

Check P.O. Requisition

Dear campaign Re prints for HHS.

Vacation blanks

Allocation nos.

Cost of Blue stone, alum & chl.

Operating Policy in re gate to Bureau.

2 wooden legs supports at Calif & Tex

Photos & legends to Dr. Mayfield

Barrett re water appropriations with several
million dollars.

Homeopathic vials 3 dr. long style with
corks.

NO Receipts from Spinning.
Books & carbon paper for the
Shogland Reel.

Flowmeter instruction books
chlorine apparatus " "
gama laws 1953

2 Johnsons & Post m?

To Spinning 176 from ~~...~~ 7/2/53

10 yds 1/2 to 1 washed gravel
10 " Bra gravel
40 " Beach Sand

Baromet gage 152.78 = top of construction gage
Anem gage in feet above this.

7-6-23 168.14

Subj man conduit 7-6-23

Concrete bottom rods at Sta 10

Water table Sta nos. Tunnel & lining Tunnel 48

Vacations

Brickhoff	aug 17 - aug 31	
Truwell	✓ July 17 - July 31	
Symons	✓ July 10 - July 25	(15) (29)
Heiman	Aug 6	aug 20
Dunn	Aug 20	Sept 3
Moody	Sept 16	Sept 30
Seth Swanson	Sept 1	Sept 21
Mrs. Swanson	Sept 1	Sept 21
Scott	Sept 17	Oct 1

mouna Datum = 2882[±] U.S. g.S.
 dr. outlet = #1 33[±], #2 43[±], #3
 spillway = old 146 new 155
 top = 1st 150, 2nd 155

Baruth Datum = 1446¹² U.S. g.S.
 dr outlet = '
 spillway =
 top =

W.D. Datum =
 dr outlet =
 spillway =
 top =

R.D. Datum = 347[±] U.S. g.S. (?)
 dr outlet =
 spillway = of dam 484[±] independent
 top = Roadway 492.2 Parapet

Chellas Datum = 390 U.S. g.S.
 dr outlet =
 spillway =
 top =

71[±], #4 99[±], #5 127[±]

3rd 165 Parapet 20" = 1.67' higher in each case

487[±] - Top lower flood gate 490[±] independent 491[±]
496.2

R.D. outlet from top gate 468.7
 453.2
 442.2
 431.3
 420.2
 410.2
 400.2

Reservoirs - available storage 6-21-23

Res ^r	contents	%	%	available	%	%
Morona	10,496	25		6,997	82	
Barrett	13,797	33	44	148	2	41
W.O. + L.O.	17,800	42	56	1388	16	89
	42,093	100	100	8533	100	100

Preliminary - Oct 1 Begin drafts on Barrett to
Level W.O. Basin.

4.0	104.0		100.0	Top section at pump.
4.0	99.0	9.0	95.0	
0.0	86.0	13.0	86.0	
8.0		13.0	73.0	
		<u>35.0</u>		

Top tank 125' at dam pump. dist Nov 4"

Days	Days	Actual
12	7.0	
14	5 6 1/2	1
8	3 3 1/2	8

W.O. 1 Bq. per month until Dec.

Lo 0.0
El Paraiso 3.3
Big Barn 3.0
School Hse 6.0
Barn J 7.3
Barn J 10.4

J. Barnett Property
new owners Smith R. Est. Office
30th & Nat.

Mrs Albright Property

See HNS. on Jerry Barnett property details
#3500

1566 gas at Ketchikan
 Halcyon #103
 House policy
 Duzuma Creek policy
 Status of creek water filings
 Sta. no.

Money bags

Complaint of grub at Bonita

Sewer Report on last Ho lab.

Reputation

UO Toilet pans.
 3 17" x 24" x 18" with drop handles
 on 24" side with heavy lead of 12 gage

3 wash basin from Barrett

Turkey damages 8'

Sanitation

UO Sewer covers discharge from
 3 flush toilets & 2 sinks & 2 tubs
 Kupa's wife & 2 children
 Clubhouse use of party of 4 per week
 afternoon 1 party per week over
 night. During hunting season 3
 parties of 4 per week over night. Duck
 season - hunting season coincide. Tues & Fri
 Sewer outlet ¹⁰⁵⁰ 850 feet from water [→] ~~edge~~ [→] ~~edge~~
 surface discharge stops 850 ft from water
 edge.

Duzuma Condens 7-20-23

Repair of weir not clean open into

Mona Sauteles

oust camp.

at old open cottage

Open

labours

Kitch

W.C. ha

Bath ha

Trin house

parking ground

Swim ha

camp No 1

camp No 2

camp No 3

1 pit

1 pit

1 large pit

2 car pool.

1 car pool.

1 car pool.

(3 pan type

1 pan type

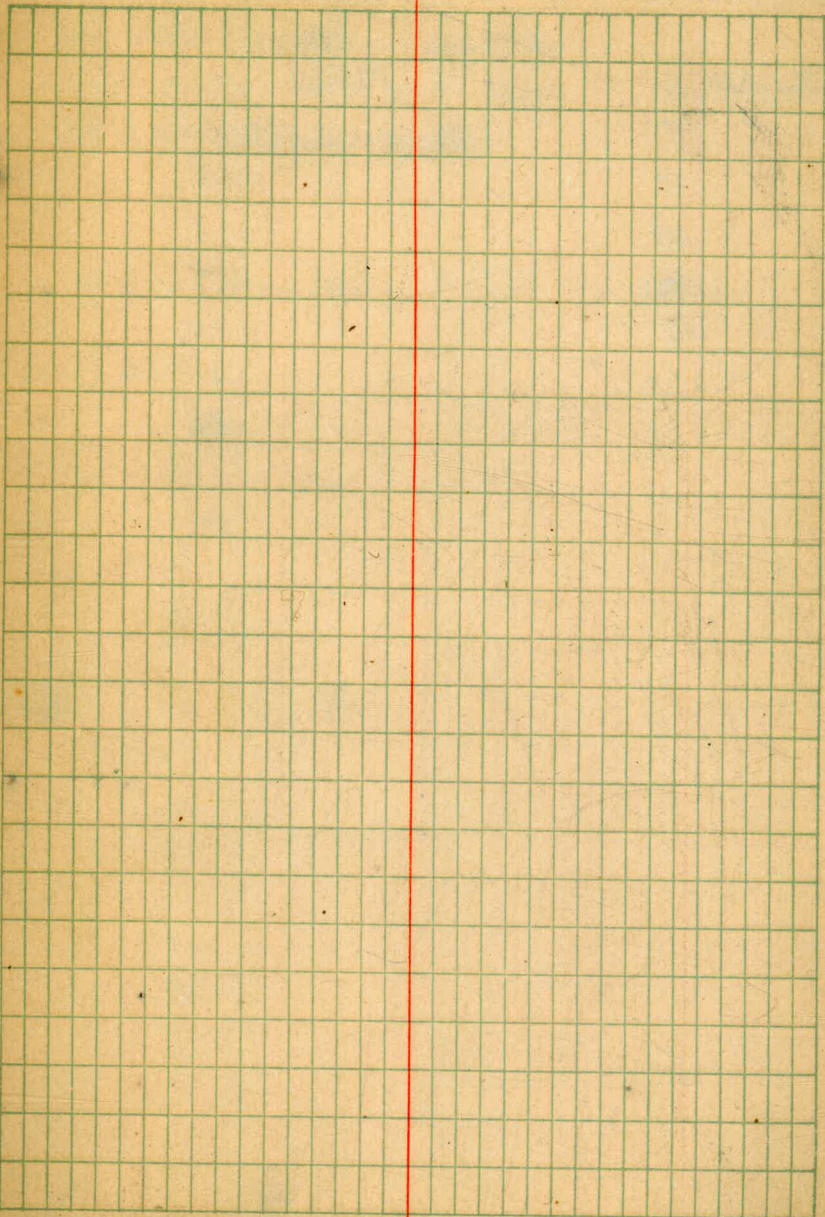
2 pan type

2 pan type

2 pan type

3 pan type

13



7-19-23
Bull heads (make of S. ...)

Flume 6	Flume 12
8	14
9	15
10	17
11	19
12	20
	21
	22

20 77-

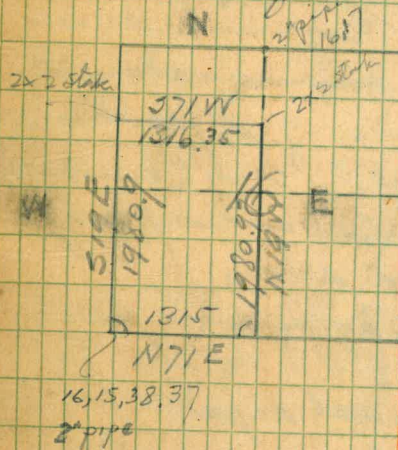
12

1 #	2 d	fine
2 #	3 #	Went down ... #13
3 #	4 #	... #18
4 #	5 #	Brown ...

Megomenos, Trude #31

capitanos, que property about a
... property

Stehingue Property.



Mormon Riv. Expedition 8-3-23
Wrest. ...

General distribution of *Volvox* a
algae of water yielding 3 or 4 organisms.
Five tubes as numerous as this in
cottonwood area.

Sparsely growth of *Potamogeton* along
shores below contraction. Rank
growth of same in cottonwood shallow
area (reported in 13' of water.)

Fuzziness on stems of this plant not
prevalent as in H.O. Fuzziness noticeable
on dead twigs standing in water.

Collected one specimen of a flowering
hollow stemmed plant? Only 2 bundles seen
a white floating film on surface of
the side of cottonwood area.

Hook (Keeps) kept fatter by aquatics on
pasture.

Fish not biting freely with algae.

Toilet locations on shore at prominent
points.

The motor salin factory

One lock attending.

Taste was said good. No odor

Taste cottonwood area most waxy
no odor

Use of outdoor motor during duck season
Taxes will be provided motor in detached
upon nearby hunting ground.

Will first day of season be open at Mormon
& Barrett.

more fuzziness on *Potamogeton* & branch
in Mormon area.

Potamogeton rooted in 19 ft water on
Mormon area.

Blue stem junction. Relation to fish
junction only.

Cost H.O. Fuller gravel 2700 per cu yd.
2-1/2 475 per T = 640 per cu yd.
1 1/2 - 1 490 - = 660 " " "

L.D. Fuller Research

Unit #15

Brookenhoff

R.C. Wueste

8-5-23

Comparison of wash water per 2 min

- 1 with effluent 0.71 - 134 = 0.63
 2 with wash water valve (no pump) 134 - 167 = 0.33
 3 with wash water valve (pump) 167 - 206 = 0.39

	gpm sec	area	Vol.	gal per min
	0.71	1067		
1	0.63		709	2655
	134	1185		
2	0.33		401	1500
	167	1247		
3	0.39		500	1875
	206	1320		

3 rounds during duck season?

opening day at Mouna?

Trail to boat float at Mouna

F.A. Kales, Managing Agent
 Box 5 Richmond, Calif.

B.P. of Mouna Lis. for Succession.

In Mouna	Prohibited Salt
croppies	carp
bass	shiner
perch	chubbs
trout	perch
	sunfish

Levels on Otay-San Diego P.L.
East San Diego 8-29-23

	+	π	-	
	5.91	352.79		FRANCIS Mentone 346.88
			5.66	WPL Mentone
			6.95	EPL ✓ ✓
T.P.			10.12	342.67
	4.69	347.36		
			9.61	WPL Menlo
			8.51	EPL ✓
			7.70	WPL Sierra
			6.67	EPL ✓
T.P.			5.12	342.24
	5.48	347.72		
			6.50	On Pipeline 100'

Ellis-Walker

15

(Wester)
(Haxlar)

	Street Grades
347.13	346.50
345.84	346.40
337.35 [Ⓢ]	338.90
338.85	338.60
340.16	339.80
340.69	339.90
	NPL 341.40
East of E.P.L. of Sierra 341.22	SPL 341.00

Inspection Barrett Reservoir

8.30.23 Wueste-Lockhart-Miller

Taste (near dam) no odor or taste discernable. up lake slightly waxy.

no algae visible with naked eye

X Signs mud going over

Toilets

Dead fish none seen

3rd contour equations

Mason	0 = 28824
Barrett	0 = 144612
Mason	0 = 506.54
HO	0 = 346.65
WO	0 = 477.5
Seventy	0 = 14911
La Mesa	0 = 430.
El Capitan	0 = 600 ±.
Cuyamaca	0 = 4600.
Sutherland	0 = 1925.
Wendell	
Warner	0 = 2750

Data for Ho. Spillway Bridge

9-19-23

Waaste-Logan

	1108	503.28	492.2
A 52		150	501.78
A 53		450	498.78
		1108	493.2
	048	496.68	
			78
	1380	482.88	

~~7 1/2' Spillway
bents~~

~~No Steel~~
3 pc 6x12-16
12 2 x 10-16
1 pole 33
2 21
7 2 x 12-16
1 8x8-21

18

= Elev top piers Independent Spillway
= Δ on S side Road Survey = E Edge Spillway cut
= Wedge spillway cut

= top 8' wall of spillway channel E side (Notes channel
8' deep)

make 6 Brass bushings 5/8" ~~to 3/4"~~ to fit 1/2" round rods on
 Taper end. for
 Spk straight end of one rod to 3/8"
 + 1/16"

L.O. Spillway Bridge

Rails parallel to channel

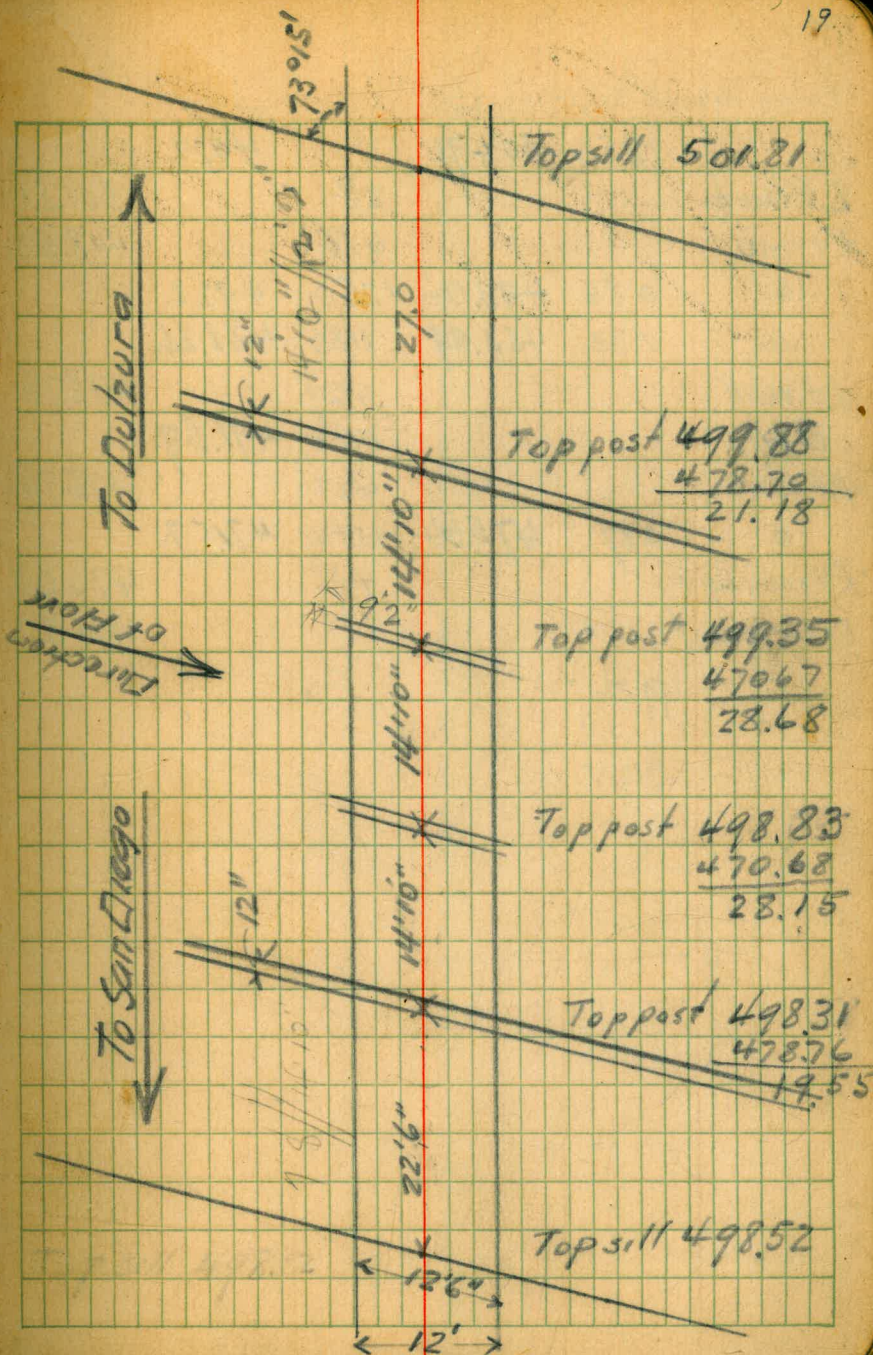
11'6" dist bet of posts on ~~case~~ = 11.50

= 5'9" out from the line = 5.75

Butter 1 in 8 = plus 3/4% for water post

Top post to floor grade 2'4" = 2.33

Total length 94'



	1250	504.70		4922	
Lt. hub			289		501.81
Rt. hub			678		498.52
o	0.86	493.06	1250	4922	
o	1.73	482.99	1180	481.26	
Lt wall			429		478.70
B.M.			1142	471.57	
Rt. Wall			423		478.76
o	397	475.54	1142	471.57	
Rt long bent			486		470.68
Lt long bent			487		470.67
	19.06 ✓		3572 ✓		

Chandler 2 seats up
Friday

Independent Spillway

Gate No.	I Bm.	Stop Pl.	Lnth.	Groove
1	15 8	14 8 $\frac{1}{4}$	5	7
2	15 8 $\frac{1}{2}$	14 8 $\frac{1}{4}$	5	6
3	15 8	14 8	5	6
4	15 8	14 8 $\frac{1}{2}$	5	8 $\frac{1}{2}$
5	15 6 $\frac{1}{2}$	14 6 $\frac{1}{2}$	5	7 $\frac{1}{2}$
6	14 3	13 3	5	7
7	14 5	13 3 $\frac{1}{2}$	5	7
8	14 4 $\frac{1}{2}$	13 3	5	6 $\frac{1}{2}$
9	14 3	13 4	5	7
10	14 4	13 3 $\frac{1}{2}$	5	7
11	14 5	13 5	5	7
12	14 4	13 4	5	6
13	14 3 $\frac{1}{4}$	13 3 $\frac{1}{2}$	5	8
14	14 3	13 3	5	7 $\frac{1}{2}$
15	14 4 $\frac{1}{2}$	13 3 $\frac{1}{2}$	5	7
16	14 4 $\frac{1}{4}$	13 3 $\frac{3}{4}$	5	7

Main Dam Spillway

Gate No.	Stop Ll.	Length	Groove
1	13' 11"	8	5
2	13 8	8	5
3	13 8	8	5
4	13 9	8	4
5	13 9 $\frac{1}{2}$	8	4
6	13 8 $\frac{1}{4}$	8	4
7	13 9 $\frac{1}{2}$	8	4
8	13 9	8	4
9	13 9 $\frac{1}{2}$	8	4
10	13 5 $\frac{1}{2}$	8	4
11	13 10	8	4
12	13 9	9	5
13	13 9 $\frac{1}{4}$	8	5
14	13 9 $\frac{1}{4}$	8	6
15	13 9	8	6
16	13 9 $\frac{1}{4}$	8	6
17	13 10	8	5
18	13 10 $\frac{3}{4}$	8	5

Survey of Schreiber's Acres.

T@ 1				
F.S. on Sec. Cor.	445		North	North
to 2	17.75	49-48	49-48	N50-00E
T@ 2				
B.S. on 1				
to 3	153.7	138-06	544-30E	
to B.T.	91	74-43	N72-30E	
T@ 3				
B.S. on 2				
to 4	196.6	65-28	N63-00E	
to 5	105.8	143-29	S39-10E	
T@ 5				
B.S. on 3				
to 6	154.2	243-31	S60-30W	
to 7	139.4	111-55	S71-00E	
T@ 7				
B.S. on 5				
to 8	148.1	148-12	S34-30E	
to 9	230.9	148-12	S34-30E	
to 10	319.4	148-12	S34-30E	
T@ 9 FS 10				
to 9A	89.2	83°43'	S58°20'W	
T@ 10				
B.S. on 9				
to 11	134.2	124°48'	East	

Old Liatz
Var. plate N11-15E

10-21-23
Woeste 22
Stroyok
Castig
Karsh Duran

hub in ctr of main road alongside gate post

hub in main road
828
1481
2309
154
885

Blazed w.o. 14" dia

hub in 20' Road

65-28 N63-00E

143-29 S39-10E

106
hub in 20' Road.

1240 Road junction

151 hub in 20' Road

235 hub in 20' Road

330 hub in 20' Road

Set
Oak Stake 2" dia in rock mound.

Note all angles are
converse from 10

• next hub. P.C.

M.C.

B.S. 10			
T@ 11		R. 160°28'	
to 12	60°		S 69°30' E
B.S. 11			
T@ 12		R. 145°47'	
to 13	129°E		S 35°35' E
B.S. 12			
T@ 13		L 154°59'	
to 14	84°		S 60°45' E
B.S. 13			
T@ 14		R 114°22'	
to 15			S 4°35' W
to 16	81°E	R 142°47'	S 23°35' W
to 17	66°E	R 66°04'	S 52°55' W
to 18	49°E	R 47°15'	S 71°45' W
B.S. 14			
T@ 16		R 173°55'	
to 19	205°E		S 17°40' E
B.S. 16			
T@ 19		R 93°31'	
to 20	50°		S 69°30' W
B.S. 19			
T@ 20		R 151°14'	
to 21	93°		N 81°05' W

P.C.

2x hubs. P.T. 11-12 = ^{approx.} $\frac{1}{2}$ C. Curve 12 = P.T.

2x hubs. P.T. 10' RT = P.T. of Reverse Curve. 10' LT =
P.C. Curve

2x hubs P.C. Circle ER = 40°

2x hubs = Center of Circle. ER = 40°

2x hubs = P.T. lot line with outside of Circle R=50

2x hubs = Int. lot line & Circle

2x hubs = P.R.C. outside of Circle.

2x hubs on fence line

peg = Pt. on Offset Line S of fence.

2x hubs on fence line.

BS 20			
π @21		R 164°17'	
to 22	2123		N 65°45' W
BS 21			
π @22		R 159°57'	
to 23	105 ^B		N 46° W
BS 22			
π @23		R 160°40'	
to 24	190 ^B		N 26°40' W
BS 23			
π @24		R 129°16'	
to 10	122 ^B		N 26° E
BS 24			
π @10		L 119°48'	
FS 9			
BS 5			
π @7			
to 7 ^A	81 ^B	R 53°45'	S 55°20' W
to 7 ^B	165 ^B		
FS 25	220 ^B	L 141°15'	N 71°35' E
to 26	280 ^B		
BS 7			
π @25		90°00'	
to 25 ^A	110 ^B		S 19°20' E

2x2 hub lot cor

2x2 hub. P.I. Rd

2x2 hub b/w. 2 rocks P.I. Curve to Rt. External = 23^B

peg. on line b/w lots

1" oak stake in rock mon.

2x2 hub P.O.T

2x2 " P.I.

2x2 hub lot cor

Levels for T.C. Bunkhouse

NW Cor.	464	406	4- $\frac{10}{4}$
	412	3.57	3- $\frac{6}{8}$
	346	2.91	2- $\frac{10}{8}$
	289	2.34	2- $\frac{4}{8}$
	239	1.84	1- $\frac{10}{8}$
	184	1.29	1- $\frac{3}{2}$
Topsill	054 $\frac{1}{2}$	0.00	—
"	corrected 063	0.00	—
"	corrected 066	0.00	—
	132 $\frac{1}{2}$	0.78	0- $\frac{9}{8}$
	201	1.46	1- $\frac{5}{2}$
	243	1.88	1- $\frac{10}{8}$
	300	2.45	2- $\frac{5}{8}$
	365	3.10	3- $\frac{1}{4}$
	407	3.52	3- $\frac{6}{4}$
	373	3.18	3- $\frac{2}{4}$
	311	2.56	2- $\frac{6}{8}$
	266	2.11	2- $\frac{1}{8}$
	205	1.50	1- $\frac{6}{8}$
	156	1.01	1- $\frac{1}{8}$
	099	0.44	0- $\frac{5}{4}$
	092	0.37	0- $\frac{4}{2}$
	144	0.89	0- $\frac{10}{8}$
	192	1.37	1- $\frac{4}{2}$

241	186	1- $\frac{10}{8}$	196	141	1- $\frac{4}{8}$
293	238	2- $\frac{4}{8}$	244	189	1- $\frac{10}{8}$
326	271	2- $\frac{8}{2}$	NE Cor 288	233	2-4
294	239	2- $\frac{4}{4}$			
256	201	2- $\frac{1}{8}$			
220	165	1- $\frac{3}{4}$			
177	122	1- $\frac{2}{5}$			
138	081	0- $\frac{9}{4}$			
103	048	0- $\frac{5}{4}$			
111	056	0- $\frac{6}{4}$			
142	087	0- $\frac{10}{2}$			
174	119	1- $\frac{2}{8}$			
214	159	1- $\frac{7}{8}$			
250	195	1- $\frac{11}{8}$			
282	227	2- $\frac{3}{8}$			
286	231	2- $\frac{3}{4}$			
247	192	1- $\frac{11}{4}$			
206	151	1- $\frac{6}{8}$			
169	114	1- $\frac{1}{4}$			
134	079	0- $\frac{9}{2}$			
113	058	0- $\frac{7}{4}$			
100	045	0- $\frac{5}{8}$			
126	071	0- $\frac{8}{2}$			
161	106	1- $\frac{3}{2}$			

Harvey Dam weir
1-23-24 #1 7 $\frac{1}{2}$ " #2 8 $\frac{1}{2}$ "

Wm 7101

on min crest 7.96 7.97 av. 7.96 $\frac{1}{2}$

on gage 1.78 $\frac{1}{2}$ 1.78 $\frac{1}{2}$

6.180

6.20

Settlement of gage = $\frac{0.02}{6.18}$ feet

Distances 2-11-24

Stop	0.0	
ESD	4.2	
Cholera Junct.	6.0	
Old Lamma	8.3	
Morua Dam	67	sets 3 for weir
Morua Dam	68	
Campo Junct	73.2	
Davy	74.6	
Campo	76.1	
Barrick	99.0	
Jama Junct	114.2	
La Mesa Junct.	123.3	
Wm Hall	133.8	
	$\frac{65}{65}$	

Lo. Filters 2-14-24

Unit 13 Sp gr 1.6 13 1/2" defl.

strainer system.

21 strainer system 23 1/2" defl.

2-15-24 Waste Logon.

Unit 21 mercury 18" defl.

filter clean filtering 5 mgd.
strainer system. (circ #HP to WVV gate)

mercury 4 3/8" defl.

filter clean filtering 5 mgd.
total system. (top filter to WVV gate)

mercury 3 1/2" defl.

filter clean filtering 5 mgd.
sand system (top filter to circ #HP gate)

mercury 1 3/4" defl.

washing @ 1000 gpm rate
solid + gravel (top filter to circ #HP gate)

mercury 5 1/4 - 4 1/2 mo 4 3/8"

washing 1000 gpm rate
total system (top filter to WVV gate)

Waste-Lauterbach-Logon.

5 mgd flow

Unit 21 mercury 23 3/4 - 3 1/2" defl. mo. 3 3/8"

washing @ 1000 gpm rate
strainer system (circ #HP to WVV gate)

Unit 13 mercury 22 1/2" defl. mo. 2 3/8"

washing @ 1000 gpm rate
strainer system (circ #HP to WVV gate)

mercury 4 - 4 1/2" defl. mo. 4 1/8"

washing @ 1000 gpm rate
total system (top filter to WVV gate)

mercury 2" defl.

washing @ 1000 gpm rate
sand (top filter to circ #HP gate)

filter clean filtering 5 mgd. 3/4" defl.

sand (top filter to circ #HP gate)

filter clean filtering 5 mgd. 1 3/8" defl.

total (top filter to WVV gate)

filter clean filtering 5 mgd. 5" defl.
strainer system (circ #HP to WVV gate)

Lepic 2-19-24

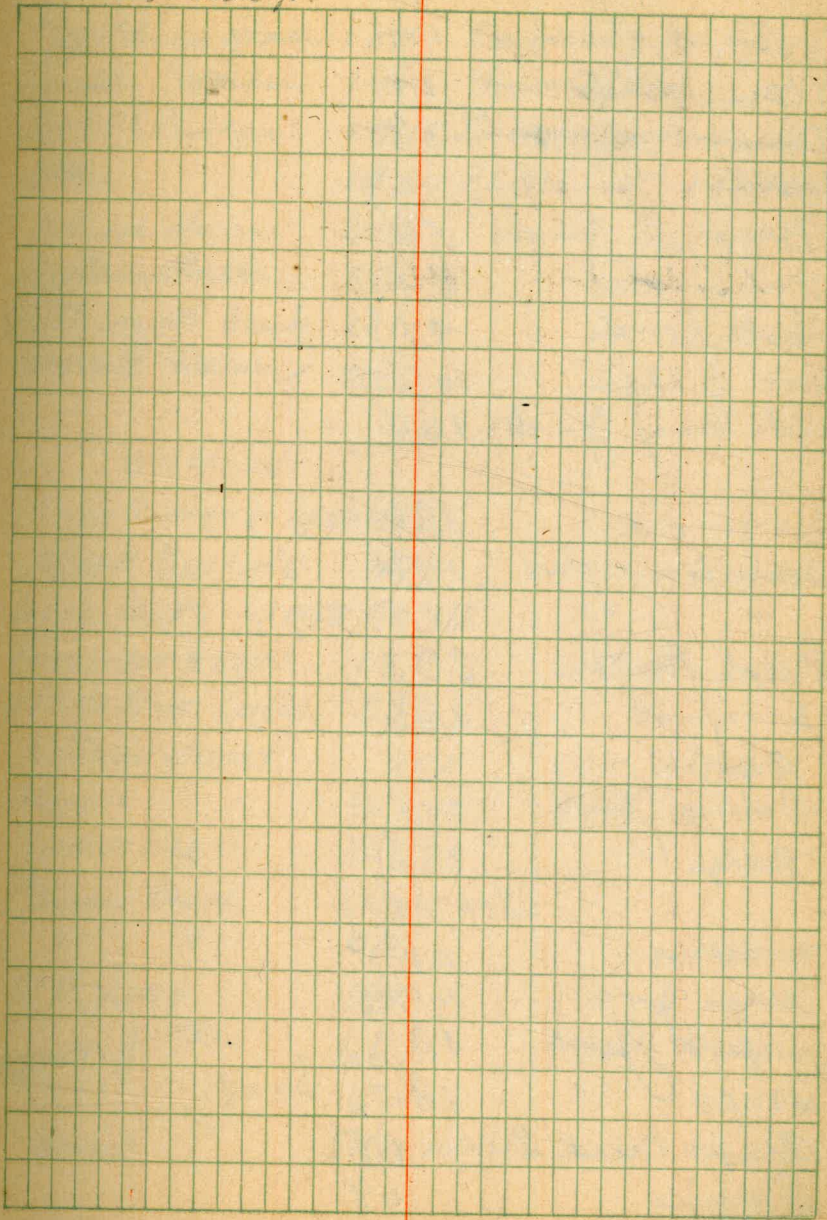
2 acres vineyard & orchard.

2 acre garden patch & alfalfa
round water 10 acre more.

1500 feet up.

HC Ferguson 14th

32 acre ft.



2-29-24

Morena	0.0
Big gate	1.9
Summit	2.9
Hansen Junct.	3.8
Hansen Junct.	4.5
Descanso Junct.	5.4
Summit	8.4
Hook's Ranch	9.7
Hook Bridge	10.5
Steak Honey Junct.	14.4

Summit	18.1
Sam Cameron's	19.4
"	21.0
Ralph Bentons	23.3
Summit	26.3
granite	27.2
Morena Junct.	29.9
Bridge	33.8

3-1-24

Morena	0.0
Alamo Junct.	0.0=5.4
Imperial Junct.	1.3
Alamo	2.8
Alamo Creek Bridge	6.5
Bingville	6.8

3-17-24 29

Peterson	12.0	Charles Res	0.0
Top Peterson grade	13.1	La Mesa Junct.	1.5
Tecate Junct.	14.0	Morena Dam	5.6
Smith Bridge	19.1	La Mesa Junct.	9.3
store	19.6	ESD	10.9
School House	20.6		
Hartouitello	22.0		
Little Snake Creek	23.1		
Barrett Dam	25.7		

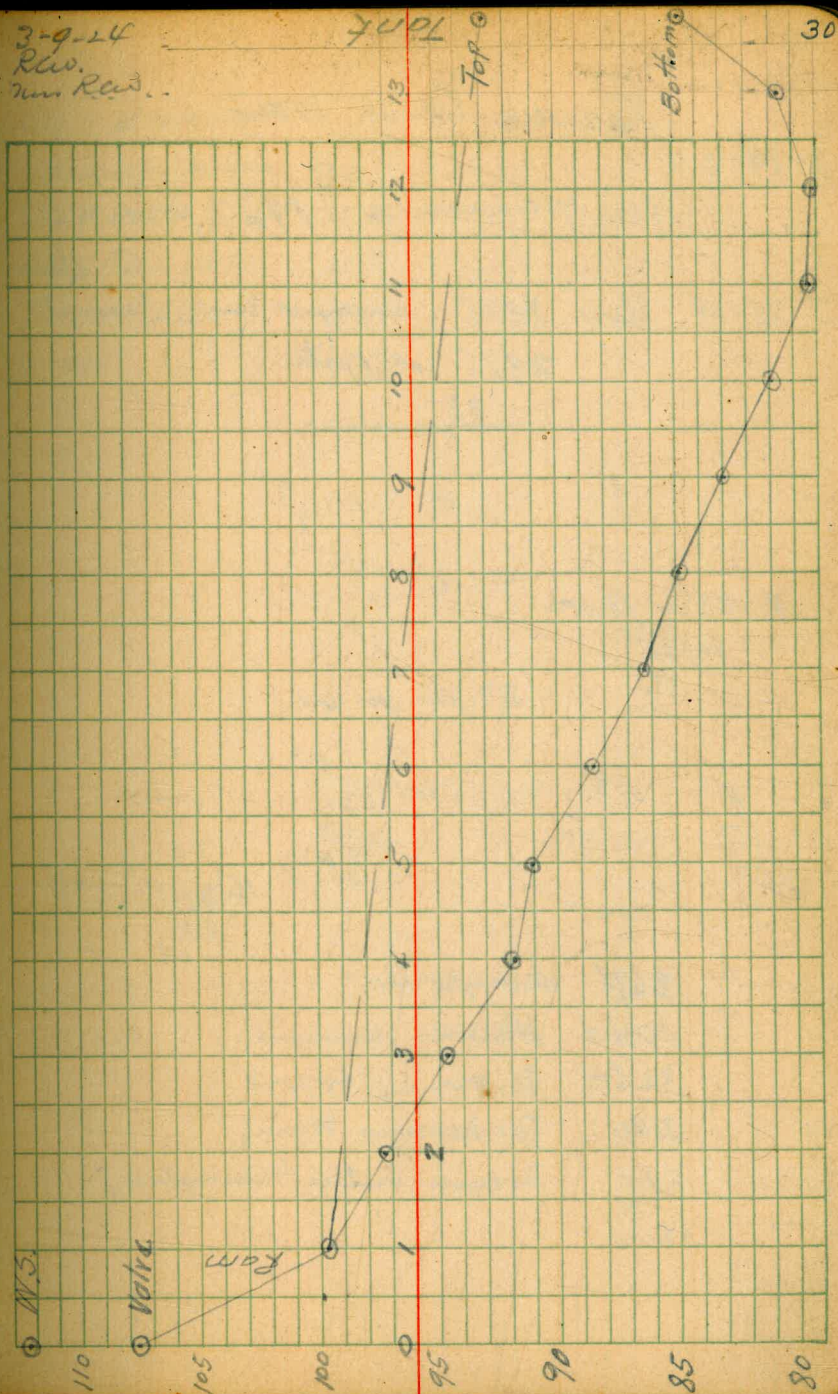
3-14-24

Sam Cameron on gate	4.8
Ralph Bentons	4.9
Live Oaks Sprgs	51.3
Patent begins	52.8
White Star Cafe	53.6
= Road Junct.	
Hi pass	54.7
Indian Res	58.2
Powers Ranch	60.7
" "	61.2
RR Xing	65.3
Hartouitello	66.1
Patent	67.3
Summit	69.2

Lyon Valley Levels for Rain
and Spring Tank P.L.

	+	HI	-	Elev	
	317	103.17		100.00	Hse floor
			336	99.81	lower
0 #1			(332)	99.85	gauge floor
	4.50	104.35			
2			703	97.32	
3			965	94.70	
0 #4			(1244)	91.91	Sedge Road
	3.71	95.62			
5			466	90.96	
6			720	88.42	
7			934	86.78	
8			1068	84.94	
0 #9			(1250)	83.12	
	3.00	86.12			
10			510	81.02	
11			680	79.32	
12			706	79.06	
13			440	81.72	
tank			(133)	84.79	bot. of 8 ft high tank
#1	12.15	112.00		99.85	
#0 (valve)			425	107.75	
	11.25	119.00			
W.S.			670	112.30	

3-9-24
Riv.
Main Road.

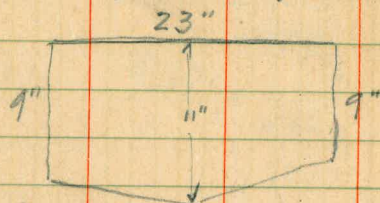


Powers Ranch water

3-14-24

Main transmission 192" wide x 57"

Zerp

B-25-24 Elev 2925 = around elev. dam site
2975 at gate

N = 30' in 13 sec

 $13/30^{2.3}$ $\frac{26}{40} = 2.3$ feet per sec.
$$\begin{array}{r} 9 \\ 11 \\ \hline 20 \\ 20 \\ \hline 40 \end{array}$$

$$\begin{array}{r} 115 \\ 10 \\ \hline 115 \\ 2 \\ \hline 230 \end{array}$$

$$\begin{array}{r} 1.6 \\ 144 \overline{) 230} \\ \underline{144} \\ 860 \\ \underline{864} \end{array}$$

$$\begin{array}{r} 1.6 \\ 15 \overline{) 23.68} \\ \underline{30} \\ 68 \end{array}$$

2675 Shyphrite.

3040 Hausen Summit

3250 Morona Summit

3140 Top Morona Dam

2912 Morona entire (sampled)

$$\begin{array}{r} 150 \\ 15 \\ \hline 165 \\ 30 \\ \hline 195 \\ 10 \\ \hline 3047 \end{array}$$

4-14-24

Jamul Junt	0.0
Lee Valley Junt	4.5
Old Horn oak	4.3
Lyon Valley	9.0
Orwell	15.3

7 Δ

288.65

8 Δ

494.25

3 Δ

664.5

2 Δ

532.15

0+0 Δ

25.35 From SEC. Cor.

9 Δ

474.7

8 Δ

321.7

4 Δ

290.2

6 Δ

342.9

5 Δ

13A

477.5

12A

34
324.2

11A

112.2

10A

175.6

9A

17A

16A

15A

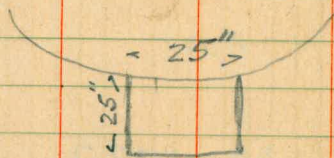
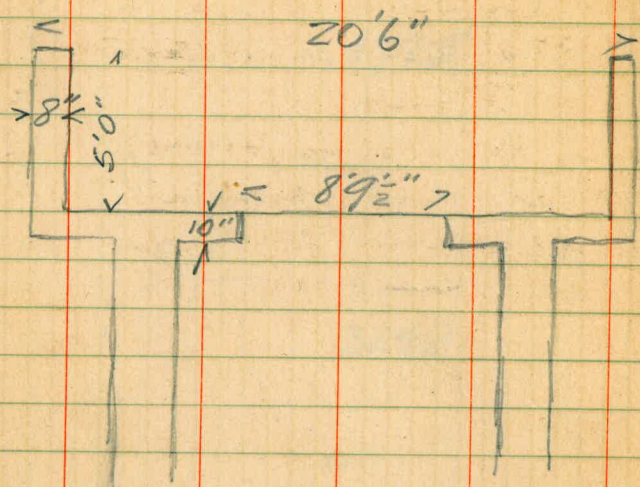
338.6

14A

277.2

13A

Morena Outlet Tower 5-9-24



34

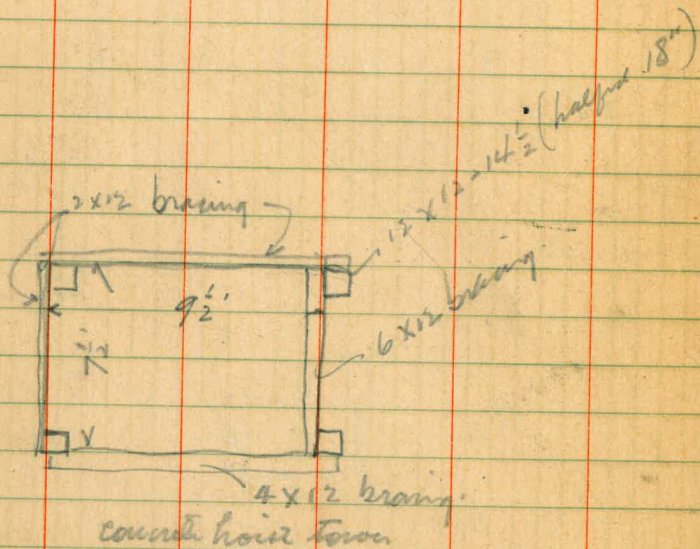
9'4 $\frac{1}{2}$
7
8'9 $\frac{1}{2}$

See Shop painter
on air painting
Design tags, signs, cases, stickers for h.o.
also cards in boats.
Pipe line R.P.J.W. (now joined)
Laws on survey of Morena.
Quaid warrant for Kutzbaugh meals
Gas for Barnett & oil.

Levels for P.C. Bridge

6-7-24

7.48	161.56		154.08
9.67	169.18	2.05	159.51
8.50	176.48	1.20	167.98
9.05	184.66	0.87	175.61
9.63	193.66	0.63	184.03 x
9.92	203.43	0.15	193.51 xx
9.44	212.57	0.30	203.13 xxx
		1.56	



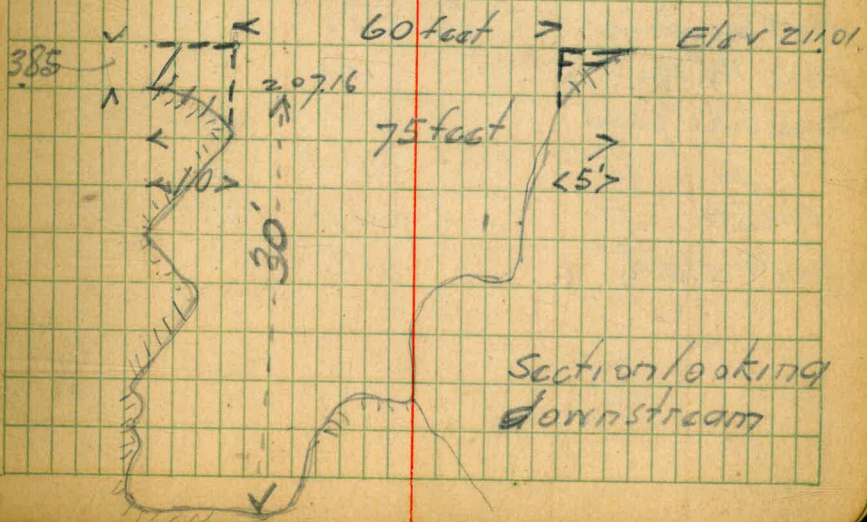
R.G. Wueste
Fred Quaid

113 Barrett Res^t 6-7-24

Res. Gauge 0
= U.S.G.S. 1446.12

156 211.01 = Rt or West Abutment
5.41 207.16 = Lt or East Abutment

Note: span 75' bet Rt and Lt Abutments
By building up with concrete so as to
form sills, span may be shortened 5' on Rt
and 10' on Lt Abutment.



6-28-24

Rd. - Sky Valley Camp

RO 83,771.3 10:30

83,776.4

83,779.8

83,783.1

83,790.7

83,798.7

83,798.7

Morona - Sam Cameron Ranch 12-21-24

Morona	Time 143	0.0	Svenson Ford
Big gate		1.8	1.50
Summit		2.8	1.52
City Road junction to Hansen		3.7	1.55
Desorano Junction		5.3	2.00
Hook Summit		8.2	2.08
Hook Bridge		10.2	2.15
Desorano Junction		14.1	2.26
do		14.3	2.30
Granite		17.1	2.36
Cameron Ranch		19.5	?

20. max

36

Cement Mill Junction

Janielle Ranch

Janielle P.O.

Earl Duran

Sky Valley Road Camp

Itinerary 11-13-24

L.O.	Time	miles
	11:30	14.2
Jones Cr.	11.50	18.1
Harvey's	11.55	19.0
Geopulmont.	12.10	22.7
Deloria	12.20	26.2
Daly Circle	12.25	28.5
Barrett's Junc.	12.35	32.1
Cherry	1.00	39.3
Camptville	1.15	44.4
Campo	1.25	48.2
" Lead	1.40	
Res. Junc.	1.45	49.6
" "	2.15	50.6
Morning	2.00	51.9
Morona	2.15	57.
Morona	3.15	57.0
Barrett's	4.25	81.0
Barrett	4.45	86.9
Campt J.	4.55	89.6
Road Camp	5.15	92.6
" " Junc.	7.30	95.6
L. V. Ranch	7.45	98.8
L. V. Junc.	8.20	107.7
Jamal Junc.	8.38	112.7

L.O.	Time	miles
Jones Crossin's	8:55	117.2
Ch. Junc.	9:15	121.
L.O.	9:30	124.7

11-14-24

L.O.	Time	miles
Babcock Dam	1:05	24.7
Bonita Junc.	1:15	27.6
Bonita	1:20	30.3
Bonita	1:30	33.5
Wade Water	1:35	36.4
W.C.	1:45	39.7
City Hall	2:00	44.1
City Hall	11:10	51.7
W.C.	11:30	56.0
C.V.	11:40	59.3
T.C. Junc.	11:45	60.2
Bonita Junc.	11:55	63.7
L.O. Junc.	12:00	65.6
W.C.	12:05	68.2
W.C.	12:15	69.5

11-15-24

Bonita	10:40	82.7
W.C. via High School	10:55	87.7

~~11-15-24~~~~City Hall~~~~11:55~~~~935~~~~12-7-24~~

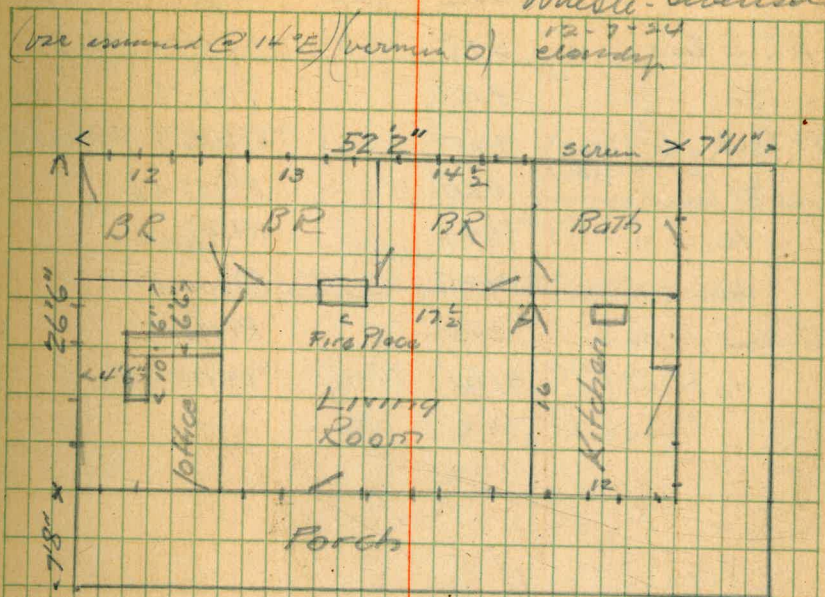
Moorena 255	025
Summit	52
ampo Junction	76
Summit	10.3
Hook King	12.3
Duckman Spgs.	16.0
Laguna Junction	18.9
San Valley Apier	20.2
P.V. Bridge	21.3
Summit	22.6
Quatay	23.1
Good Junction	26.5
Ellis Bridge	27.1
7+ Lejos grade) - end summit.)	31.8
Willows	33.7
Alpin	36.1
El Cajon	49.9
La Mesa	53.8
Junction	54.7
Emmits	59.0
City Hall	64.8

3000
roads 2111

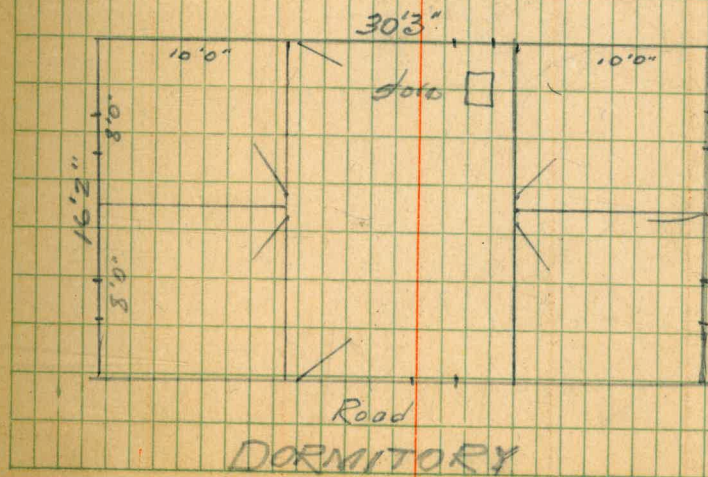
notes for Inuvuut map of
Moose administrative station

	Stake	Defl	Defl	Mag
T on river belt in the road SE of garage oriented North				
to SW cor garage	✓ 039	LT 43-15		N 57-45 W
to SE do	✓ 026	LT 27-15		
to NE do	✓ 087		✓ Rt 5-26	N 8-45 W
Road to S.D.	311		✓ Rt 27-24	N 13-30 E
do	115		✓ Rt 19-25	
NW cor office porch	116		✓ Rt 28-27	
NW cor office bldg	120		✓ Rt 31-55	
SW cor do	075		✓ Rt 49-18	
SW cor office porch	065		✓ Rt 48-58	
SE cor office bldg	095		✓ Rt 60-47	
SE cor office porch	092		✓ Rt 64-54	
NE cor Dormitory	088		✓ Rt 24-42	
NW cor do	078		✓ Rt 133-21	
SW cor do	105		✓ Rt 142-26	
1" Strapping and 2" tin	073		✓ Rt 75-55	
NW cor ladies toilet	175		✓ Rt 87-47	
NW cor Mens toilet	207		✓ Rt 122-12	
Pt on 2" pipe lin	100		✓ Rt 158-09	
do do	210		✓ Rt 175-43	
do do	416		✓ Rt 190-18	
NE cor pump house	426		✓ Rt 190-12	
NW cor do	420		✓ Rt 192-18	
SW cor do	436		✓ Rt 192-57	
2" P.I. to Lake	386		✓ Rt 199-56	

Moose - Swenson

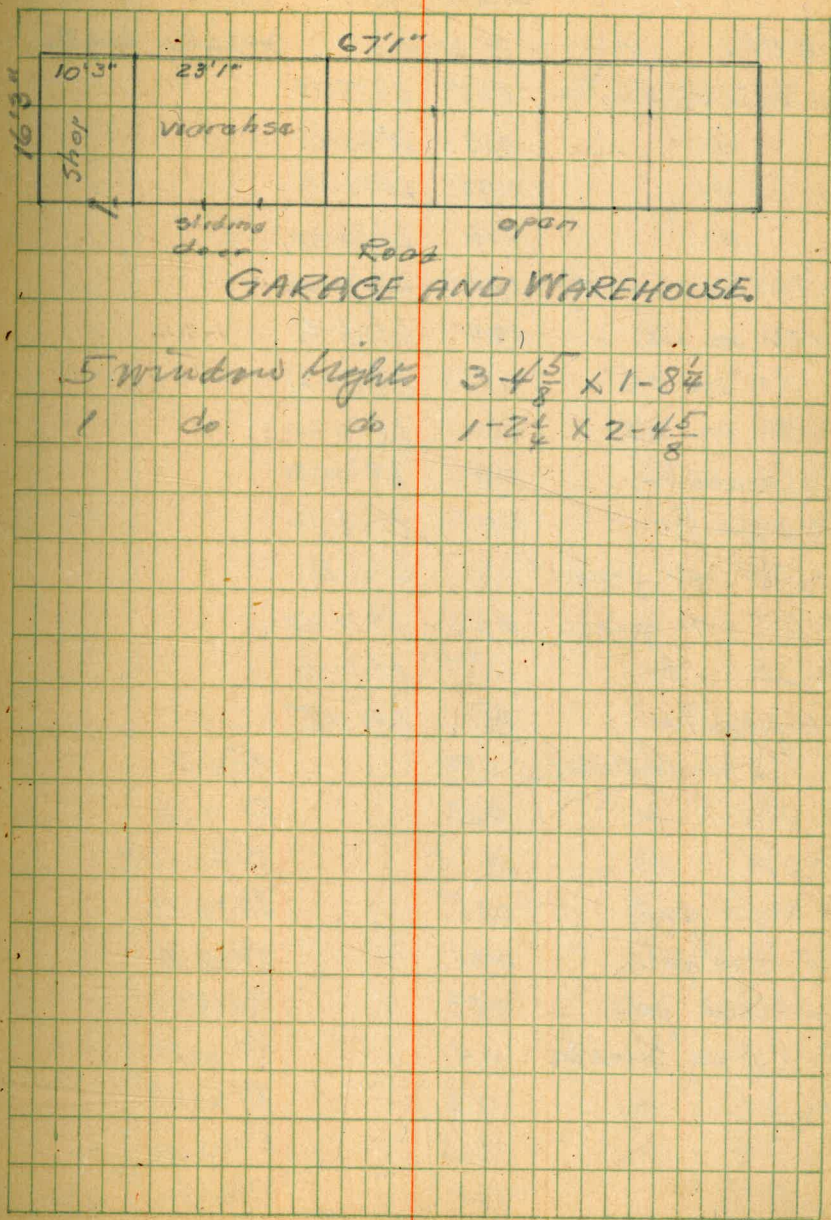


KEEPER'S HOUSE



DORMITORY

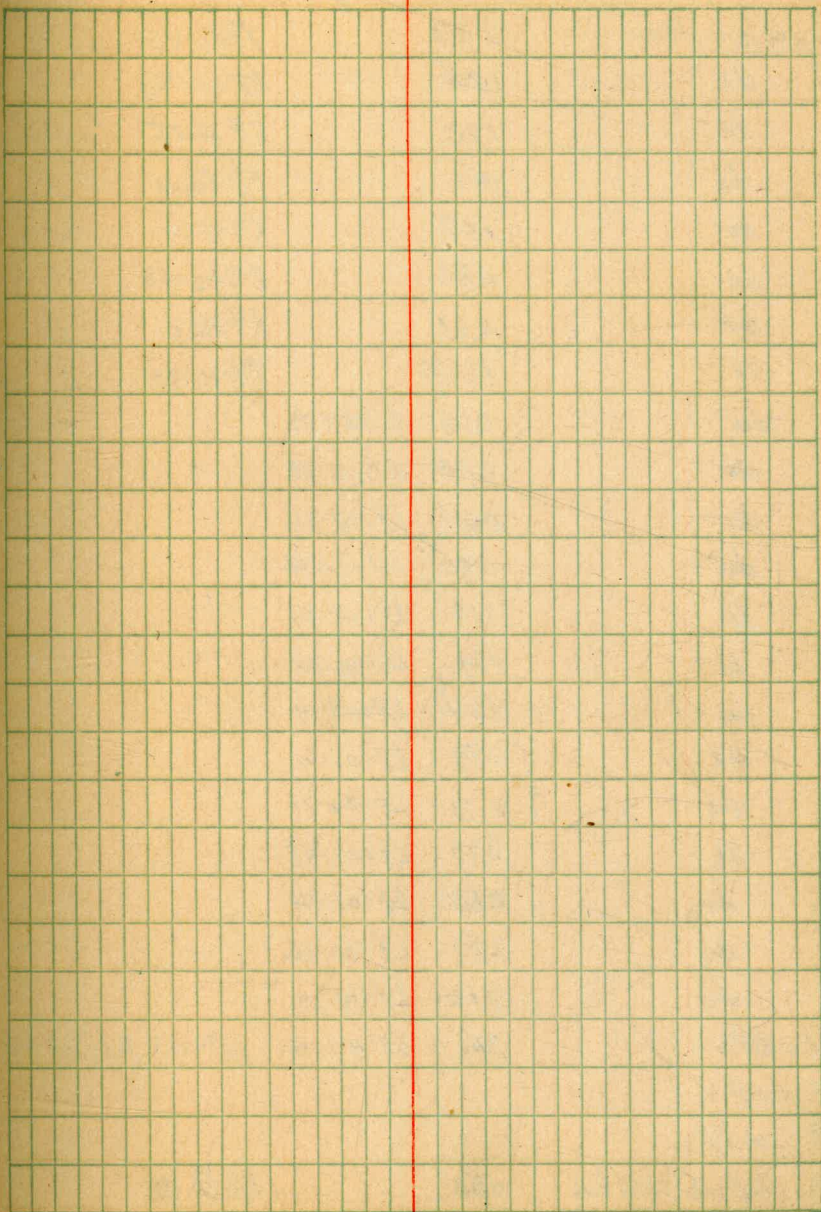
	Station	Dist	Size	Mag.
2 nd P.L. to tank	595		R192-30	S/-30E
do	8.15		R192-32	
W.S. tank (to of near side)	9.45		R191-02	S3-00E
Road to lamp grounds	6.20		R188-52	
do	5.40		R197-26	
do	4.25		R201-25	
to Road to dam	2.45		R193-15	
do and camp	1.01		R188-55	



to RP2	Stadia	Defl	Defl	Mag
BS on RP1				
1 to NW cor brown R	0.74	LT40-14		
2 to SW do	0.65	LT29-51		
3 to cor brown R	0.83	LT23-03		
4 to do	0.78	LT12-11		
5 to do	0.93	LT10-05		
6 to NE cor gum shop	0.77		Rt6-05	
7 to NW do	0.65		Rt6-55	
8 to SW do	0.70		Rt23-11	
9 to light post	0.16		Rt24-20	
10 to main toilet	0.36		Rt39-01	
11 do	0.31		Rt48-16	
12 do	0.36		Rt54-53	
13 to NW cor labio toilet	0.55		Rt122-33	
14 to SE cor do	0.63		Rt110-26	
15 to S gate muddy R	0.89	LT161-16		
16 to N do	1.08	LT136-09		
17 to elect pole	0.62		Rt161-39	
18 to pepper tree	0.89		Rt164-17	
19 do	1.17		Rt170-25	
20 do	1.14		Rt173-13	
21 to Eucalyptus tree (sign)	0.36		Rt117-51	
22 do	0.38		Rt60-42	
to RP3	1.28		Rt37-00 N	
to RP3				
BS on 2	(1.20)			

	Stadia	Defl.	Defl.	mag. in
1 to Eucalyptus tree	0.81		Rt 211-39	
2 Old Road	0.57		Rt 178-28	
3 Old Road to Barn	1.35		Rt 154-04	
4 do	3.69		Rt 161-58	
5 to Eucalyptus tree	1.22		Rt 175-14	
6 do	1.27		Rt 163-22	
7 do.	1.31		Rt 158-19	
8 do.	1.42		Rt 149-24	
9 do.	1.50		Rt 145-30	
10 do	1.49		Rt 135-29	
11 do	1.40		Rt 134-02	
12 do	1.31		Rt 132-11	
13 do	1.04		Rt 124-08	
14 do	0.95		Rt 120-32	
15 do	0.88		Rt 115-02	
16 do	0.64		Rt 90-38	
17 do	0.62		Rt 80-57	
18 do	0.68		Rt 61-35	
19 do	0.95		Rt 42-28	
20 do	1.03		Rt 36-49	
21 do	1.27		Rt 34-18	
22 do	1.59		Rt 2-24	
23 do	1.49		Rt 0-21	
24 do	1.39	Lt 2-32		
25 SE cor BK Nantun	0.96	Lt 8-12		

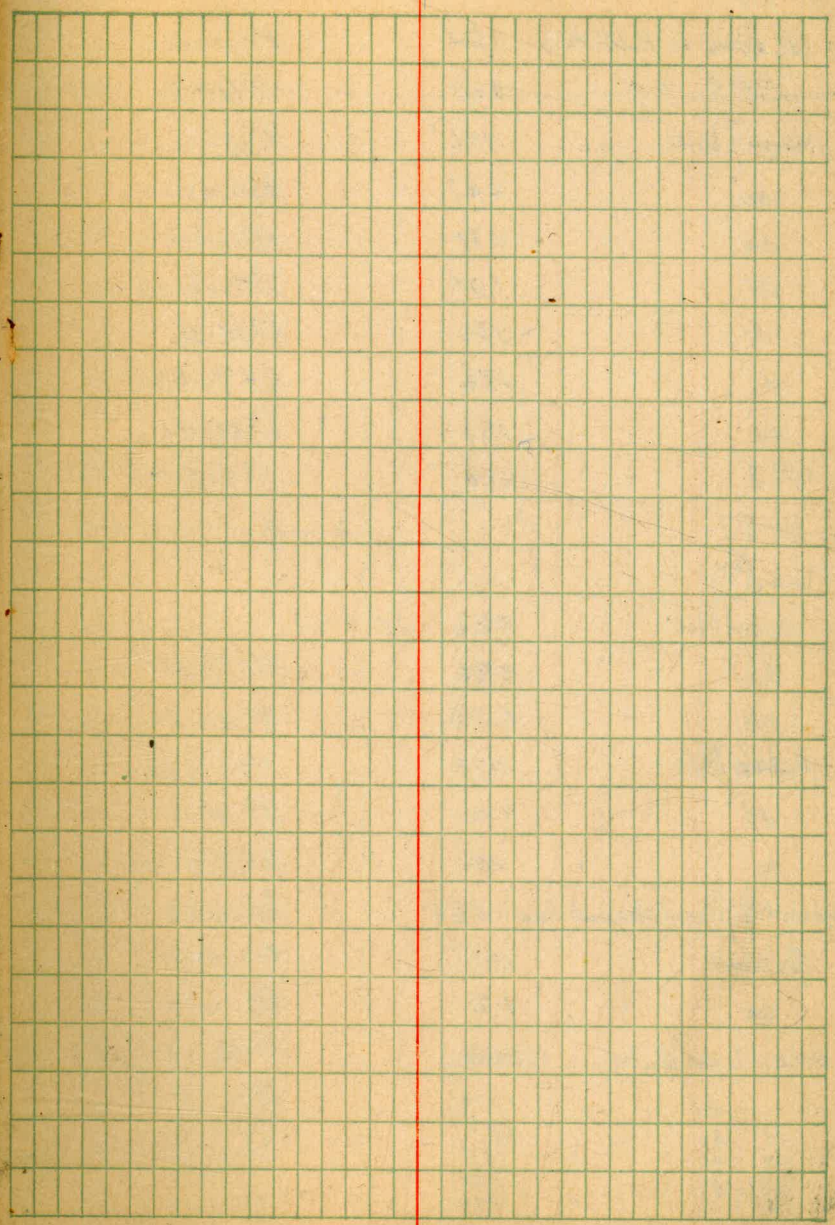
	Station	Defc	Defc	mag. Co.
7 @ 23 RP				
to SW cor Elk marsh	0.66	Lt 14-03		
to NW do	0.72	Lt 23-33		
to RP 4 (ctr road)	2.31		Rt 23-03	N 8-15 E
1 on 2nd B.S. on 3				
1 to Encalyptus tree	0.22	Lt 7-31		
2 do	0.29	Lt 28-10		
3 do	0.58	Lt 1-43		
4 do	0.73		Rt 2-31	
5 do	0.90		Rt 5-17	
6 do	1.24		Rt 8-53	
7 do	2.41		Rt 11-25	
8 SE cor Bluestem Hze	2.93		Rt 15-58	me
9 SW cor do	2.75		Rt 15-47	me
10 NW cor do	2.77		Rt 12-51	
11 group 3 Encalyptus trees	0.38		Rt 182-17	
12 pepper tree	0.72	Lt 145-21		
13 ctr lower road	0.55	Lt 130-20		
14 do	0.77	Lt 121-10		
15 do	1.07	Lt 108-49		
16 do	1.49	Lt 102-59		
17 ctr Road junction	2.03	Lt 103-01		
18 ctr lower road	2.87	Lt 104-35		
to RP 5 (ctr road)	4.32	Lt 101-46		564-00W
1 on 5 B.S. on 4	4.32			
to pepper tree	1.56	Rt 84-37	Rt 84-34	



	Stadia.	Defl.	Defl.
1 ^o to pypen ten	233		Rt 82-43
2 ^o do	194		Rt 83-56
3 ^o do	170		Rt 86-15
4 ^o do	146		Rt 88-21
5 ^o do	108		Rt 91-10
6 ^o do	083		Rt 92-48
7 ^o do	061		Rt 95-01
8 ^o do	033		Rt 100-25
9 do	016	Lt 127-51	
10 do	039	Lt 110-33	
11 do	064	Lt 109-34	
12 do	090	Lt 109-34	
13 do	116	Lt 109-34	
14 do	139	Lt 109-34	
15 do	164	Lt 108-19	
16 do	189	Lt 106-11	
17 do	2.13	Lt 104-21	
18 do	2.37	Lt 102-48	
19 do	2.62	Lt 101-34	
20 do	2.87	Lt 100-26	
21 do	3.10	Lt 99-30	
to R.P. 6	3.46	Lt 97-14	s 68-25W
T @ R.P. 6			
B.S. on R.P. 5			
to NE cor long hse	0.53		Rt 54-13

Road Junction

	Station	Ref	Ref	Remarks
to NW in way here	0.43		Rt 74-06	
to SW do	0.71		Rt 81-40	
to road to 3rd	0.92	Lt 49-19		
to road to hill	1.35	Lt 87-30		
to road to hill	0.30	Lt 97-05		
to poplar tree	1.67		Rt 133-45	
to do	1.87		Rt 128-22	
do	0.20		Rt 151-44	
do	0.43		Rt 171-25	
do	0.68		Rt 177-29	
do	0.93		Rt 180-50	
do	1.17		Rt 181-37	
do	1.52		Rt 183-32	
do	2.02	Lt 163-26		
do	1.77	Lt 161-03		
do	1.52	Lt 158-43		
do	1.27	Lt 157-00		
do	1.02	Lt 155-06		
do	0.78	Lt 150-14		
do	0.53	Lt 143-13		
do	0.33	Lt 125-19		
to R.P. 7	1.37	Lt 165-41		South
to R.P. 7				
on R.P. 6	1.36			
to Pond to Fitter Plant	0.60	Lt 176-27		



7 @ R.P. 7		
to ctr road to Faltt Rd	154	Rt 170-20
to R.P. 8	209	Rt 93-24 N79-5E
to pepper tree	056	Rt 75-54
do	057	Rt 110-16
do	081	Rt 104-00
do	105	Rt 100-22
do	130	Rt 98-26
do	156	Rt 96-42
do	181	Rt 95-41
to R.P. 8	209	Rt 93-24 N79-15E
7 @ R.P. 8		
B.S. on R.P. 7		
to pepper tree	026	Lf 3-38
do	036	Rt 38-46
do	020	Rt 100-36
to palm tree	073	Rt 79-28
do	102	Rt 74-03
do	096	Rt 88-50
point of heart shaped bed	055	Rt 74-33
ctr road	047	Rt 130-44
do	112	Rt 117-20
small evergreen tree	158+62	Rt 130-18
do	154	Rt 126-09
do	144	Rt 123-42
do	157	Rt 121-53
do	109	Rt 124-53
do	175	Rt 120-14
do	179	Rt 125-15

ctr road under phone lines	
----------------------------	--

to RP 8		
to pepper tree	1.97	Rt 147-03
do	1.22	Rt 145-04
to phon phonim	?	Lt 126-22
to R.P. 9	2.27	Rt 155-21 538-30 E
to RP 9		
BS on RP 8		
to pepper tree	0.88	Lt 121-52
do	1.27	Lt 98-48
do	2.05	Lt 80-35
edge tunnel	2.58	Lt 75-51
do	2.33	Lt 79-48
do	2.03	Lt 84-36
do	1.70	Lt 91-52
do	1.35	Lt 103-10
do	1.10	Lt 109-10
do	0.88	Lt 143-51
do	0.87	Rt 177-30
do	1.02	Rt 143-19
do	1.28	Rt 122-34
do	1.54	Rt 112-08
do	2.04	Rt 100-26
do	2.42	Rt 94-20
to group small 2' dia	0.59	Rt 66-53
do 16' dia	0.35	Rt 140-36
to R.P. 1	2.32	Rt 45-10 N 31-20 E

Taxus Pumping
 Safe net yield. Evaporation
 Gravity Enticement of Hand Volume

0-1	128.39	Granule Count Every
1-2	221.80	check

345 four hand horse sleds.

#677 rods.

2 sets for hand saws

~~shim bar~~ ~~see Basin~~

WS pipe

1 20' ridge pole.

Envelopes & stamps for Mrs Swanson

Hopman on hay & work today

Becker man

Davidson

Mrs Swanson

newly tackle

wooly cotton

Ed Low Trip for Wednesday

expensive or pig tools

man for RD

Sprinkler

Transportation for Murphy & Light

1072

Marquez

Ketchum

Bishop

Sarot.

Boar for Williams

corn of BS Mission

grain 57000 amount

6200 ac

moorland trench trip

hay	
telephone pole	5-27-26
telephone wire	cheese line
digging bar	wash basin 12
picks	tudits 12
spine	wash tubs
pitch fork	wash board
Forblom	grind stone
Ironite	3 12" McGill file
Saw hammer	3 hand saw file
Red granite	1 Wagner tool box
Wagon jack	(1 pr bits over sea 4.0-31-26)
meat hook	Kuox can
pick handles	wood saw
powder fuel	chain bits
striking hammers	wire tapers
6 paper bags 200	2 gal salad oil ✓
paper napkins 1000 ✓	2 doz pig iron stand ✓
2 doz dentist chairs ✓	30" ground sugar ✓
2 doz pig tooth pits ✓	2 co solid pitch gal ✓
(Flam sifter)	Lawson ✓
5 gal tin cans ✓	oil 18x18x24 ✓
1 pk onions ✓	100 eggs ✓
5" ground nut tank ✓	20 tanks ✓
	1 front 4 feet

Shovel outfit
 rivets P 1412
 3 5th chains
 nuts & bolts
 bills spoons
 powder, fuel, caps
 battery wire
 2 gas lead bars (Buy)
 compass, jack hammer
 Hackney's tools, dressing hammer, tongs
 ball pen hammer 2 1/2"
 tainters
 Phone poles, wire, insulators
 digger bars
 R.P.L. shovels 25 gal. kerosene
 Pump 2 cs gal gas #6
 gasoline 2 cs gal corn
 Part of medium system water quires
 axle grease
 wagon jacks heavy 6th lamp chimneys
 tainters tool room
 Wash basin
 shovels
 carpenter tools + Shovel knife
 barley, hay + Shovel hammer
 meat + 14" Kelly nippers
 coal + 16" " pickers
 + 14" " rags

man
 blacksmith
 Don White
 Foreland, Rough
 truck
 30" butting of roof
 8 loads wood
 spica nutmeg

P97 Sky Valley Road.

10 T hay		P1385
May vegetables 25		P1396
May meat 50		P1394
May fuel 5		P1399
May Ice 10		P1397
May groceries 250		P1395
Barley 2 T.		P1374
June.		
groceries	350	P1491
meat	100	P1492
Vegetables	50	P1493
Beans	10	P1494
Ice	10	P1523
meat	25	P1524
Wt low co	75	P1510

Requisition Estimate (Monthly)
 meat 100 vegetables 50
 groceries 350 Ice 10

Azimuth at Lyon Valley

5-15-24

Data: Goswami Station lat. $37^{\circ}43'N$; long. $116^{\circ}45'W$; date May 15 1924; local mean time

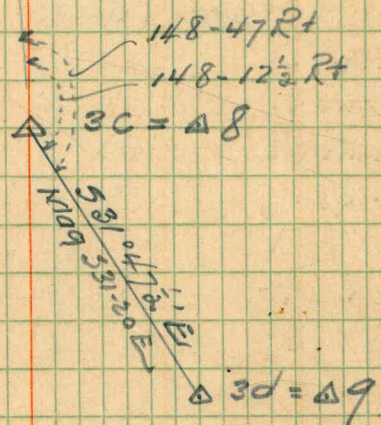
8:15 PM

	h m
M.O. May 1 1924 (long $90^{\circ}W$ Table I)	10-55.8
Change in 14 days ($14 \times 392m$)	- 5488
u.c. May 15 (long $90^{\circ}W$)	10-00.9
Long correction ($26^{\frac{3}{4}} = 15 \times 0.16$)	- 028
u.c. May 15 (long $116^{\circ}45'W$)	10-00.6
Observation	8-15 PM
Mean solar interval after u.c.	10-14.4
Correction to sidereal interval (Table III) +	1.68
Sidereal interval = hour angle	10-16.1

Azimuth from Table IV	$34^{\frac{1}{2}}$
Table IV a (Polaris 1-6-11)	+ 1
azimuth of Polaris	$34^{\frac{1}{2}}$
Polaris $0^{\circ}34^{\frac{1}{2}}$ W of meridian	

Polaris \star N

$0^{\circ}34^{\frac{1}{2}}$



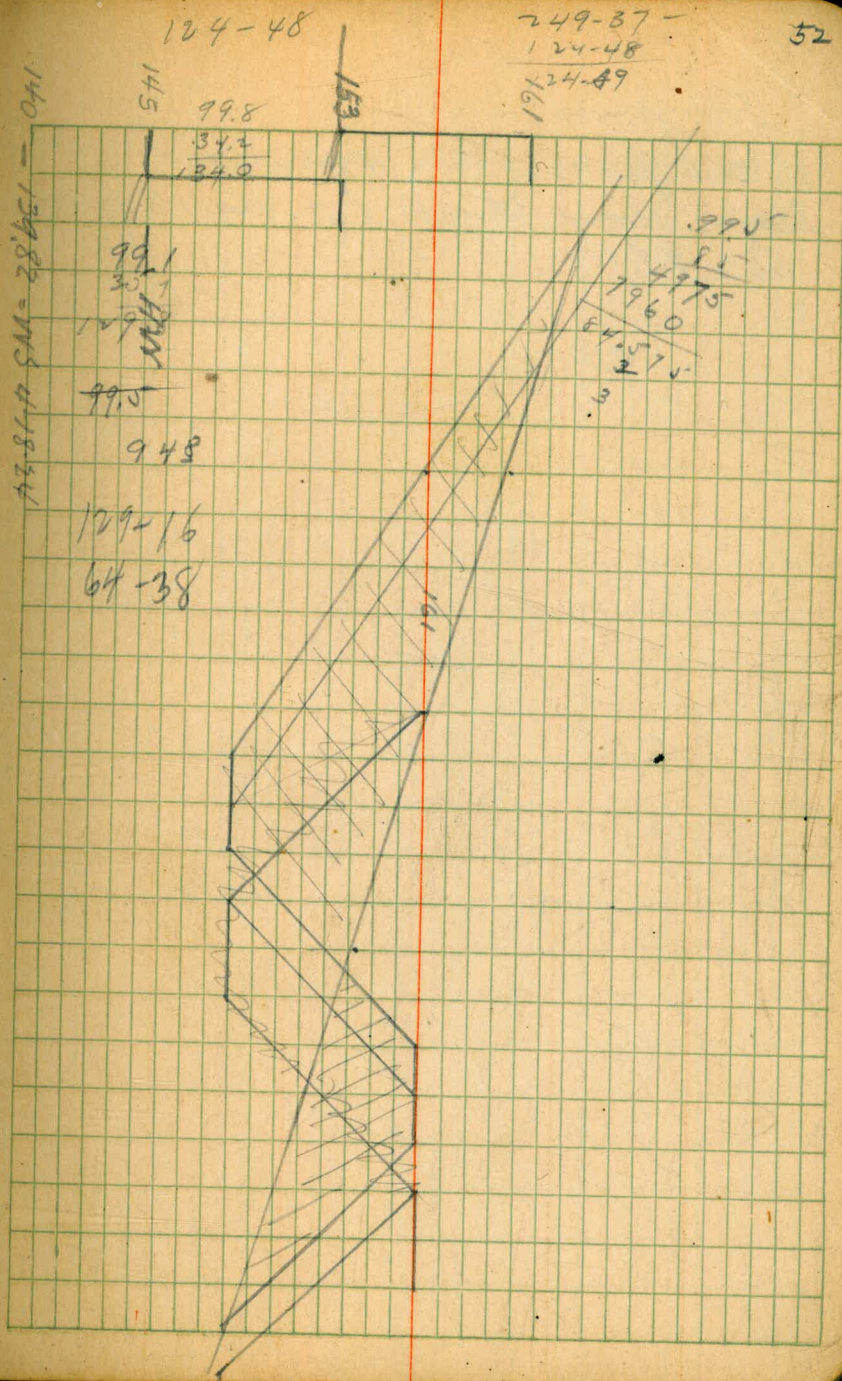
R.O. 139.82 4-18-24
 145.00
 5.18

1 - 25 x 100 x 8
 1 - 50 x 200 x 8

145	935	149.17		139.82
16	1113	159.05	125	147.92
161	646	164.35	116	157.89
A2			335	161.00
A1			0	164.4
B1			150	162.9
B2			435	160.0
C1			08	163.6
C2			335	161.0
C3			64	158.0
B3			65	157.9
A3			61	158.3

26.90
 5.76
 21.18 ✓

5.76



L.D. pump

18" dia pulley x 3 1/2" pump

Engine crank shaft 1 1/2" dia

560 R.P.M

935

Full page ad for Western
guard.

U.D. Water - Physical

7-13-23

surface taste moderately cloudy
few organisms & suspended particles.
Permission for orchestra in town.
How far can we go in advertising program.

Window cards

Debb & Robinson
4 tr & 2 market.

Southern Elect on Broadcasting Fundic.

Agnes Printing Co.

McLoy

Lee Dasher printer
102 & F

East Sanding. Paper 50 inch
East San Diego News 45 inch
1/4 page 5¢ for smaller programs

Robert Trach

Rogers - editor .50
adv.?

Russ .25

Paper lantern .35

9 1/2" x 11" Placards

100 725 + 450 + 50 for red

200 925 + 500 + 50

4x11 Windblown stickers

1000 #15 + 50 for red.

6x9 hand bills holders.

1000 8.50 + 50 for red.

5 3/4 x 8 3/4 page size programs.

2000 - #30 ±

city council on permission to
place signs on lamp posts.

Neibred News.

Community Facts

Luquette News

Imperial News

North park journal

Harry Warner 9th St S side E of City Hall

Beach News ocean Beach .75 inch

Lee Jollen light .75

Lee Jollen journal

Coronado Extension light .75 inch

Union Magazine
Tris - Frank Goldman Sun - Anderson

Lo. water - Physical

7-14-23 uniform taste slightly muddy
 interrupted film of algae - no large
 patches some floating organisms
 suspended matter
 30' depth = 3rd valve down color
 more suspended particles taste
 more pronounced.

Phone
61485

address
Lib Ravell
1028 Sicard

m 3595.

Jm. Sights
1936 3rd St.

H 3563g

John Sensus
4145 Texas.

W.S. Metz
4167 Ohio

Mrs. Butler
4502 Maryland

Phone

Hil 630g

addresses.

L.R. Bradford
3940 Mission ave

m 4164W

Mrs. Kelly (Vermont)

C.S. Moore, Keeper
Box 283 E.S.D.

Hil 3154g
Chas Craig

Mrs. Buchanan
4190 Mississippi St.
E.S.D. corner Mississippi and
2nd St north of New Ave

H 2932W

Norman Bryson
2227 University ave

65118

Fire Bell
1566 State =
State & Cedar.

Mike Groat
P.O. box 374

m 5987.

Brown, cook

m 5310

Mark Cantrell

Distances

Rd. 729	729	38
Wd. yard.	767	04
Wd. Station	771	
El Paraiso gate	776	
Big Barn	782	

Pick up Post Sherman

no 32 7 miles.
#2 pin in wire
#1 1/2 pin in Test.

Important

~~aluminum cement~~

1" Jenkins angle valve section valve
(Carpenter cat Fig 108 no. 6.)

Vacation application blanks

~~terpentine~~

~~selling pack~~

~~solder~~

~~mercuric acid~~

~~1923 Data Book~~

~~Box for dross~~

~~Blue stone for dross~~

~~30 mg palm, 1 ball wire~~

El. Work from

Tables 5'8" dia 4" thick 1'4" overhang

2'9" high

Brackets 1'7 1/2" high 4'7" long @

1'3 1/2" ctr width 12" back triangles

from corner.

Box 11'0" dia

110V Line to bar

59°30' E from pole (15) 81005

367.

99°20' Rf

257

624

Blue Stone

42 bbls on hand = 107 ±

3-13-51 C W Co floor 13 1/2' deep

all bottom paper 1914

oil supports 1914

considerable size 1921 gassing

Proven roofing is flexine paper

Burlap in sides

Forming strainers

Plan 102 of form

Rip map

approximate soil

all records, maps, reports, investigation

map of Driveway Section

Costs notes

Record of Rights

Large size Rand

Water Samples

6-23-23 15 sanitary samples @ central tower
 " " 50' depth " "
 7-9-23 1 Back Meeting Street Row
 " " " " Filling
 1 Back P.L. Trust

Phone nos.

Mrs. Johnson (sister) Smiley
 436949 (Mrs Smiley) 915 1/2 Junesee ave
 Hollywood
 Santa Monica Bld con.

J.S. Waterfield
 301 Grand Bldg
 P.O. Calif.

J.W. Williams
 806 W Pennsylvania
 / Out Wash.
 5 on goldfish d.
 5 on Sutter
 5 on Fallon
 W on Pennsylvania

Phone nos.

addresses

Amory 64862 Mrs. Sanford 3684 Richmond
 Waterman m3915
 HWS H634 2820 Park am
 Capt. Mathews LRM 47-473 Culson apt.
 J.Y. Jewett H1197 J.B. Triffin cott
 Mrs. Waterman 1104 central Bldg.
 m3915 Los Angeles Calif.

Phone to shop
 9th 10th & 11th

P.P. Kissig
 4095 Underwood
 609 Hillman Bldg.
 Los Angeles Calif.

Pen S. Lyette
 36 Cajon route #2

H3014 m

J.Y. Jewett 3935 10th

Mrs. S.W. Stephens
 311 Locust St.
 Berkeley
 Kansas.

KEITH'S RAILROAD CURVE TABLES.

Published by KEUFFEL & ESSER CO., New York.

Entered according to Act of Congress in the year 1883,
by W. Keuffel & H. Esser, in the office of the Librarian of Congress,
in Washington, D. C.

Copyright, 1902, by Keuffel & Esser Co.

HOW TO USE KEITH'S TABLES.

EXAMPLE.

Wanted a Curve with an Ext. of about 12 ft. Angle
of Intersection or I. P. = $23^{\circ} 20'$ to the R. at Station
542+72.

Ext. in Tab. IV opposite $23^{\circ} 20' = 120.87$
 $120.87 \div 12 = 10.07$. Say a 10° Curve.

Tan. in Tab. IV opp. $23^{\circ} 20' = 1183.1$
 $1183.1 \div 10 = 118.31$.

Tab. V correction for A. $23^{\circ} 20'$ for a 10° Cur. = 0.16
 $118.31 + 0.16 = 118.47 =$ corrected Tangent.

(If corrected Ext. is required find in same way)
Ang. $23^{\circ} 20' = 23.33^{\circ} \div 10 = 2.3333 =$ L. C.

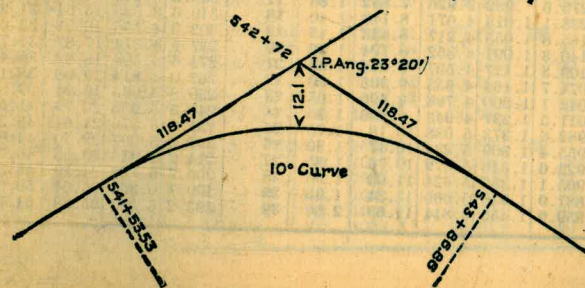
$2^{\circ} 19\frac{1}{2}' =$ def. for sta.	542	I. P. = sta.	542+72
$4^{\circ} 49\frac{1}{2}' =$ " " "	+50	Tan. =	1.18.47
$7^{\circ} 19\frac{1}{2}' =$ " " "	543	B. C. = sta.	541+53.53
$9^{\circ} 49\frac{1}{2}' =$ " " "	+50	L. C. =	2.33.33
$11^{\circ} 40' =$ " " "	543+	E. C. = Sta.	543+86.86
	86.86		

$100 - 53.53 = 46.47 \times 3' (\text{def. for 1 ft. of } 10^{\circ} \text{ Cur.}) = 139.41' =$
 $2^{\circ} 19\frac{1}{2}' =$ def. for sta. 542.

Def. for 50 ft. = $2^{\circ} 30'$ for a 10° Curve.

Def. for 36.86 ft. = $1^{\circ} 50\frac{1}{2}'$ for a 10° Curve.

(These tables are published in Field Books of
KEUFFEL & ESSER CO., New York, N. Y.)



6-19-23 7:45 am 46512 S.D. 2 Keiths
8:30 am Bonita
46534 L.O.
6-20-23 8:00 pm 46559 S.D. 1 Whittaker
6-21-23 46611 R.V.
6-22-23 46662 S.D. 1 Whittaker
6-23-23 46687 L.O. 1 Whittaker
46713 S.D. H.W. Res.
6-24-23 46776 5 gals gas
3 meals
1 Whittaker
6-25-23

7-2 1 Whittaker
7-3 2 Whittaker
7-3 1 Keith

Dand track Syphon 1913 45"
South Fork Syphon 24" 26"
1916 1913

South Fork Fender 36" x 1' 10" 1916
Paper collar only some 36" metal floor

Bent 2' 8" dia

2x3-2' 6" post

3x4-9' sill

4x6 stringer (2)

1x6 beam x 2' 9"

charcoal cut Syphon 30"

Drilling boxes
225 feet

Natural Tangents.

Deg.	0'	10'	20'	30'	40'	50'	Deg.	0'	10'	20'	30'	40'	50'	Deg.
0	0000	0029	0058	0087	0116	0145	89	40	8301	8441	8491	8541	8591	8642
1	0175	0204	0233	0262	0291	0320	88	41	8693	8744	8796	8847	8899	8952
2	0349	0378	0407	0437	0466	0495	87	42	9004	9057	9110	9163	9217	9271
3	0524	0553	0582	0612	0641	0670	86	43	9325	9380	9435	9490	9545	9601
4	0699	0729	0758	0787	0816	0846	85	44	9657	9713	9770	9827	9884	9942
5	0875	0904	0934	0963	0992	1022	84	45	1.0000	1.0058	1.0117	1.0176	1.0235	1.0295
6	1051	1080	1110	1139	1169	1198	83	46	1.0355	1.0416	1.0477	1.0538	1.0599	1.0661
7	1228	1257	1287	1317	1346	1376	82	47	1.0724	1.0786	1.0850	1.0913	1.0977	1.1041
8	1405	1435	1465	1495	1524	1554	81	48	1.1106	1.1171	1.1237	1.1303	1.1369	1.1436
9	1584	1614	1644	1673	1703	1733	80	49	1.1504	1.1571	1.1640	1.1708	1.1778	1.1847
10	1763	1793	1823	1853	1883	1914	79	50	1.1918	1.1988	1.2059	1.2131	1.2203	1.2276
11	1944	1974	2004	2035	2065	2095	78	51	1.2349	1.2423	1.2497	1.2572	1.2647	1.2723
12	2126	2156	2186	2217	2247	2278	77	52	1.2799	1.2876	1.2954	1.3032	1.3111	1.3190
13	2309	2339	2370	2401	2432	2462	76	53	1.3270	1.3351	1.3432	1.3514	1.3597	1.3680
14	2493	2524	2555	2586	2617	2648	75	54	1.3764	1.3848	1.3934	1.4019	1.4106	1.4193
15	2679	2711	2742	2773	2805	2836	74	55	1.4281	1.4370	1.4460	1.4550	1.4641	1.4733
16	2867	2899	2931	2962	2994	3026	73	56	1.4826	1.4919	1.5013	1.5108	1.5204	1.5301
17	3057	3089	3121	3153	3185	3217	72	57	1.5399	1.5497	1.5597	1.5697	1.5798	1.5900
18	3249	3281	3314	3346	3378	3411	71	58	1.6003	1.6107	1.6212	1.6319	1.6426	1.6534
19	3443	3476	3508	3541	3574	3607	70	59	1.6643	1.6753	1.6864	1.6977	1.7090	1.7205
20	3640	3673	3706	3739	3772	3805	69	60	1.7321	1.7437	1.7556	1.7675	1.7797	1.7917
21	3839	3872	3906	3939	3973	4006	68	61	1.8040	1.8165	1.8291	1.8418	1.8546	1.8676
22	4040	4074	4108	4142	4176	4210	67	62	1.8807	1.8940	1.9074	1.9210	1.9347	1.9486
23	4245	4279	4314	4348	4383	4417	66	63	1.9626	1.9768	1.9912	2.0057	2.0204	2.0353
24	4452	4487	4522	4557	4592	4628	65	64	2.0503	2.0655	2.0809	2.0965	2.1123	2.1283
25	4663	4699	4734	4770	4806	4841	64	65	2.1445	2.1609	2.1775	2.1943	2.2113	2.2286
26	4877	4913	4950	4986	5022	5059	63	66	2.2460	2.2637	2.2817	2.2998	2.3183	2.3369
27	5095	5132	5169	5206	5243	5280	62	67	2.3559	2.3750	2.3945	2.4142	2.4342	2.4545
28	5317	5354	5392	5430	5467	5505	61	68	2.4751	2.4960	2.5172	2.5386	2.5605	2.5826
29	5543	5581	5619	5658	5696	5735	60	69	2.6051	2.6279	2.6511	2.6746	2.6985	2.7228
30	5774	5812	5851	5890	5930	5969	59	70	2.7475	2.7725	2.7980	2.8239	2.8502	2.8770
31	6009	6048	6088	6128	6168	6208	58	71	2.9042	2.9319	2.9600	2.9887	3.0178	3.0475
32	6249	6289	6330	6371	6412	6453	57	72	3.0777	3.1084	3.1397	3.1716	3.2041	3.2371
33	6494	6536	6577	6619	6661	6703	56	73	3.2709	3.3052	3.3402	3.3759	3.4124	3.4495
34	6745	6787	6830	6873	6916	6959	55	74	3.4874	3.5261	3.5656	3.6059	3.6470	3.6891
35	7002	7046	7089	7133	7177	7221	54	75	3.7321	3.7760	3.8208	3.8657	3.9136	3.9617
36	7265	7310	7355	7400	7445	7490	53	76	4.0108	4.0611	4.1126	4.1653	4.2193	4.2747
37	7536	7581	7627	7673	7720	7766	52	77	4.3315	4.3897	4.4494	4.5107	4.5736	4.6382
38	7813	7860	7907	7954	8002	8050	51	78	4.7046	4.7729	4.8430	4.9152	4.9894	5.0658
39	8098	8146	8195	8243	8292	8342	50	79	5.1446	5.2257	5.3093	5.3955	5.4845	5.5764
Deg.	60'	50'	40'	30'	20'	10'	Deg.	60'	50'	40'	30'	20'	10'	Deg.

Deg.	0'	10'	20'	30'	40'	50'	Deg.
80	5.6713	5.7694	5.8708	5.9758	6.0844	6.1970	9
81	6.3138	6.4348	6.5606	6.6912	6.8269	6.9682	8
82	7.1154	7.2687	7.4287	7.5958	7.7704	7.9530	7
83	8.1443	8.3450	8.5555	8.7769	9.0098	9.2553	6
84	9.5144	9.7882	10.078	10.385	10.711	11.059	5
85	11.430	11.826	12.250	12.706	13.197	13.727	4
86	14.300	14.924	15.605	16.350	17.169	18.075	3
87	19.081	20.206	21.470	22.903	24.542	26.432	2
88	28.636	31.242	34.368	38.180	42.964	49.104	1
89	57.290	68.750	85.940	114.588	171.885	343.77	0
Deg.	60'	50'	40'	30'	20'	10'	Deg.

Natural Cotangents.

Force over California Fulton Co.

- ③ 1. Route back ⑥ Mike green ⑦
- ③ 2. Miami Hill ③ Z.C. Nason ⑧
- ③ 3. Z.C. Nason ⑧
- ③ 4. Z.C. Nason ④
- ③ 5. Nason ⑧
- ③ 6. Nason ⑧ Collins by day
- ③ 7. Route back ⑨
- ③ 8. Greene ⑧
- 23 9.
- 10.

6 2/8 8 1/4 2-12-24

5 1/11
12 47
12 87
12 93
11 20

5.83
140
23320
983
8.600

325

103.25

100

92.98

4.19

98.77

169

116

0.53

187

271

53

40.1

220

110

41

2

187

176

271

41.74

300

600

150

7

1173

19

312

1151

2669

1325

2

1612670

72

1169

83

252

457 = 1782

5408

184

128

18

100

100

100

100

100

96

96

96

96

96

99.24

96

94

1273.24

1315

41.76

floor 26x22

26x8

26x8

24x8

12x8

26x22

10x8

10x8

572

208

208

192

96

572

80

80

2008

43.5

43.5

14.83

24

1

14.83

16 3/4

18 3/4

18 1/2

18 1/2

2-19-24

2-22-24

14.83

28.67

18 3/4

18 1/2

2-24-24

22.5

76

3

170

90

70

26

2 1/2

5 1/2

2 1/2

20

8

43.5

19.5

29.5

21.0

93.0

21.0
 105.00
 21.00
 197.05
 307.2
 494.25
 492.5
 1000000
 150/15.00
 153
 90
 14315
 327.2
 490.35
 53395 54 1/2 gals
 50
 290
 30
 30' Quarry cut
 4 1/2 403 light Soden
 4 103 est. py
 6 pr. ...
 26 x 40 ...
 10 add ... 12 ...
 496.2
 495
 490.35
 484.26

Mrs. Mary Hapthut
 3120 Superior Ave
 3120

DISTANCES FROM CENTER OF ROADWAY FOR CROSS-SECTIONING.
 ROADWAY 14 FEET WIDE. SIDE SLOPES 1 1/2 TO 1.
 FOR SINGLE TRACK EMBANKMENT.

	0	.1	.2	.3	.4	.5	.6	.7	.8	.9	
0	7.0	7.2	7.3	7.5	7.6	7.8	7.9	8.1	8.2	8.4	0
1	8.5	8.7	8.8	9.0	9.1	9.3	9.4	9.6	9.7	9.9	1
2	10.0	10.2	10.3	10.5	10.6	10.8	10.9	11.1	11.2	11.4	2
3	11.5	11.7	11.8	12.0	12.1	12.3	12.4	12.6	12.7	12.9	3
4	13.0	13.2	13.3	13.5	13.6	13.8	13.9	14.1	14.2	14.4	4
5	14.5	14.7	14.8	15.0	15.1	15.3	15.4	15.6	15.7	15.9	5
6	16.0	16.2	16.3	16.5	16.6	16.8	16.9	17.1	17.2	17.4	6
7	17.5	17.7	17.8	18.0	18.1	18.3	18.4	18.6	18.7	18.9	7
8	19.0	19.2	19.3	19.5	19.6	19.8	19.9	20.1	20.2	20.4	8
9	20.5	20.7	20.8	21.0	21.1	21.3	21.4	21.6	21.7	21.9	9
10	22.0	22.2	22.3	22.5	22.6	22.8	22.9	23.1	23.2	23.4	10
11	23.5	23.7	23.8	24.0	24.1	24.3	24.4	24.6	24.7	24.9	11
12	25.0	25.2	25.3	25.5	25.6	25.8	25.9	26.1	26.2	26.4	12
13	26.5	26.7	26.8	27.0	27.1	27.3	27.4	27.6	27.7	27.9	13
14	28.0	28.2	28.3	28.5	28.6	28.8	28.9	29.1	29.2	29.4	14
15	29.5	29.7	29.8	30.0	30.1	30.3	30.4	30.6	30.7	30.9	15
16	31.0	31.2	31.3	31.5	31.6	31.8	31.9	32.1	32.2	32.4	16
17	32.5	32.7	32.8	33.0	33.1	33.3	33.4	33.6	33.7	33.9	17
18	34.0	34.2	34.3	34.5	34.6	34.8	34.9	35.1	35.2	35.4	18
19	35.5	35.7	35.8	36.0	36.1	36.3	36.4	36.6	36.7	36.9	19
20	37.0	37.2	37.3	37.5	37.6	37.8	37.9	38.1	38.2	38.4	20
21	38.5	38.7	38.8	39.0	39.1	39.3	39.4	39.6	39.7	39.9	21
22	40.0	40.2	40.3	40.5	40.6	40.8	40.9	41.1	41.2	41.4	22
23	41.5	41.7	41.8	42.0	42.1	42.3	42.4	42.6	42.7	42.9	23
24	43.0	43.2	43.3	43.5	43.6	43.8	43.9	44.1	44.2	44.4	24
25	44.5	44.7	44.8	45.0	45.1	45.3	45.4	45.6	45.7	45.9	25
26	46.0	46.2	46.3	46.5	46.6	46.8	46.9	47.1	47.2	47.4	26
27	47.5	47.7	47.8	48.0	48.1	48.3	48.4	48.6	48.7	48.9	27
28	49.0	49.2	49.3	49.5	49.6	49.8	49.9	50.1	50.2	50.4	28
29	50.5	50.7	50.8	51.0	51.1	51.3	51.4	51.6	51.7	51.9	29
30	52.0	52.2	52.3	52.5	52.6	52.8	52.9	53.1	53.2	53.4	30
31	53.5	53.7	53.8	54.0	54.1	54.3	54.4	54.6	54.7	54.9	31
32	55.0	55.2	55.3	55.5	55.6	55.8	55.9	56.1	56.2	56.4	32
33	56.5	56.7	56.8	57.0	57.1	57.3	57.4	57.6	57.7	57.9	33
34	58.0	58.2	58.3	58.5	58.6	58.8	58.9	59.1	59.2	59.4	34
35	59.5	59.7	59.8	60.0	60.1	60.3	60.4	60.6	60.7	60.9	35
36	61.0	61.2	61.3	61.5	61.6	61.8	61.9	62.1	62.2	62.4	36

Calculated by Julien A. Hall, M. Am. Soc. C. E.