

W177

7

160.45

413.25

853-321- TO QUARTZ

N 82° 15' W  $\frac{2022}{\sqrt{}}$  )  $\frac{445}{2}$  LT

AUGUST 34-1924

6-37-00

Line Bet.

100.

32.

87.

127.2

100.

100.

1235

100

100

100

612. 61.25

162. 822.25 to Hat.

1.53

820.72

61.25

59.68

21.53

820.72

496.58

1317.30

Morona 166' Contour  
MICROFILMED Survey

JAN 8 1965

1923-24

N 79-20 E

42030 S 58 1/2 SE

CP 22

CP 22

TS 20

TS 21

TS 21

MICROFILMED

APR 18 8 1952

TS 21

St 17

CP 11

St 13

CP 12

CP 13

TS 14

CP 12

CP 5  
CP 4  
CP 3  
CP 2  
CP 1

CP 9

GP 5 Marble Rock

CP 10

CP 10

CP 10

CP 10

CP 10

CP 11

CP 26

TS 32

CP 25

TS 34

TS 30

CP 28

Triangulation Morena 166-Ft. Corridor

10-17-23

Sta	Distance	L	R	Co	Mag
T@CP1					
FS on CP2	555		0		N48-05
to CP3			33-59		N14-05
to CP4			58-13		N9-35E
to CP6	157.55		63-30		N15-25E
T@CP2					
FS on CP3	401	0	0		N38-10E
to CP4			3-50		N41-55E
to CP5			17-14		N55-29E
to CP12			22-38		N60-25E
to CP13			28-42		N66-20E
to TS 14			29-42		N67-00E
to TS 19			30-39		N67-30E
to CP 10			42-12		N80-30E
to CP 15?			53-92		S88-35
to CP 10			54-57		S88-02
to CP 8			61-11		S80-50E
to CP 7			69-40	?	S71-15E
to CP 6			75-40		S66-20E
to CP 1			95-18	?	S46-40E
to BL Pt	413.25		95-18		S40-40E

End Baseline Lt abutment =  
 End Baseline Rt abutment = Pt on parapet near  
 Rt bank  
 Lt bank  
 Lt bank  
 Lt bank  
 N end Baseline  
 Rt Bank  
 Rt Bank  
 Rt Bank  
 Rt Bank  
 Rt Bank  
 Rt Bank at Point near Sta

Traverse - Morena 166 - Ft. Condon

10-17-23  
S.E. Clynne  
G.P. Hart.

Sta	Rt	Stadia	Lt.	Az	Magn	
T@ 1					N 38-10 E	= CP 3
Bson 0		402		48-30	N 48-30 E	N and Base Line = C.P. 2
to 2		371	✓	41-51	N 42-55 E	
T@ 2						
Bson 1		370		41-51	N 42-55 E	= CP 3
to 3	✓	208		87-24	N 87-50 E	= CP 4
T@ 3						= CP 4
Bson 2		210		87-24	N 88-10 E	
to 4		115	✓	6-17	N 6-50 E	
T@ 4						
BSto 3		115		6-17	N 6-35 E	= CP 4
to 5		162	✓	348-49	N 10-55 W	
T@ 5						
BSto 4		162		348-49	N 10-37 W	
to 6	✓	162		122-18	S 57-10 E	
T@ 6						
Bson 5		161		122-18	S 57-10 E	
to 7		117	✓	114-33	S 65-40 E	
T@ 7						
BSto 6		117		114-33	S 65-30 E	
to 8	✓	310		126-38	S 53-20 E	
T@ 8						= CP 5
BSto 7		310		126-38	S 53-20 E	
to 9		111	✓	355-15	N 4-55 W	

Sta	Rt	Stadia	Lt	Az	Mag Co
T@ 9					
BS on 8		111		355-15	N 4-55 W
To 10		157	✓	341-19	N 18-55 W
T@ 10					
BS on 9		157		341-19	N 18-55 W
to 11	✓	163		8-18	N 8-10 E
T@ 11					
BS on 10		164		8-18	N 8-10 E
to 12		254	✓	318-45	N 41-30 W
T@ 12					
BS on 11		256		318-45	N 41-35 W
to 13	✓	293		26-37	N 26-25 E
T@ 13					
BS on 12		294		26-37	N 26-25 E
to P		95	✓	100-56	S 79-10 E
to 14		198	✓	330-33	N 29-10 W
T@ 14					
BS on 13		199		330-33	N 29-10 W
to 15	✓	143		341-58	N 18-20 W
T@ 15					
BS on 14		144		341-58	N 18-20 W
to 16		196	✓	339-57	N 20-25 N
T@ 16					
BS on 15		195		339-57	N 20-20 W
to 17		380	✓	292-22	N 67-50 W

10-20-23  
S.E. Clyde  
G.P. Hart.

= CP 11

4x4 Post (No Marks)

= CP 11

10-26-23.  
S.E. Clyne  
G.P. Hart.

Sta	Rt	Stadia	Lt	Az	Mag. Co.
T@17					
BS on 16		380		292-40 N 67-45 W	
to 18	✓	222		86-51 N 86-20 E	
T@18					
BS on 17		223		86-51 N 86-25 E	
to 19		153	✓	60-29 N 60-00 E	
T@19					
BS on 18		154		60-29 N 60-05 E	
to 20	o	127	o	60-29 N 60-05 E	
T@20					
BS on 19		127		60-29 N 60-05 E	
to 16	✓	320		202-03 S 21-20 W	
to 21		183	✓	48-50 N 48-20 E	
T@21					
BS on 20		182		48-50 N 48-20 E	
to 22		173	✓	32-39 N 32-05 E	
T@22					
BS on 21		173		32-39 N 32-00 E	
to 23		381	✓	3-24 N 2-50 E	
T@23					
BS on 22		381		3-24 N 2-50 E	
to 24	✓	231		4-31 N 3-50 E	
T@24					
BS on 23		231		4-31 N 3-45 E	
to 26	✓	210		78-52 N 78-10 E	
to 25		237	✓	35-41 N 3-05 W	

Check back across canyon

Check across Canyon

Sta.	Rt	Stadia	Lt	Az.	Mag Co
T@25					
BS on 24		238		357-41 N 3-05 W	
to 26	✓	290		132-16 S 48-25 E	River Bed
T@26					
BS on 25		290		132-16 S 48-25 E	
to 24	✓	210		258-53 S 79-10 W	Check back across Canyon
to 27	✓	199		159-26 S 21-15 E	
T@27					
BS on 26		199		159-26 S 21-10 E	
to 28		250	✓	135-57 S 44-30 E	
T@28					
BS on 27		250		135-57 S 44-30 E	
to 29	✓	183		150-14 S 30-15 E	
T@29					
BS on 28		182		150-14 S 30-15 E	
to 30	✓	318		151-45 S 28-45 E	
T@30					
BS on 29		319		151-45 S 28-50 E	
to 31		212	✓	145-47 S 34-50 E	
T@31					
BS on 30		214		145-47 S 34-50 E	
to 32		123	✓	125-23 S 55-10 E	
T@32					
BS on 31		123		125-23 S 55-10 E	
to 33	✓	125		181-48 S 1-10 W	

10-31-23  
S.E. Clynne  
G.P. Hart



11-2-23

Sta	Rt	Stadia	Lt	Az	Mag Co
T@33					
B5 on 32		125		181-48	S1-10W ✓
to 34		82	✓	117-45	S62-40E
T@34					
B5 on 33		82		117-45	S62-40E
to 35	✓	167		163-50	S16-40E
T@35					
B5 on 34		167		163-50	S16-40E
to 36		154	✓	111-20	S69-20E
T@36					
B5 on 35		154		111-20	S69-20E
to 37	✓	146		149-50	S30-40E
to CP10	✓			194-41	S14-05W
T@37					
B5 on 36		145		149-50	S30-40E
to 38		296	✓	114-56	S65-10E
T@38					
B5 on 37		296		114-56	S65-10E
to 39		294	✓	26-18	N25-40E
T@39					
B5 on 38		293		26-18	N25-35E
to 40	✓	182		177-17	S3-25E
T@40					
B5 on 39		182		177-17	S3-25E
to 41		160	✓	153-54	S26-45E

Check across Lake

11-3-23

Sta	Rt	Stadia	Lt.	Az	Mag Co.
T@40	Repeated	182	✓	357-17	N 3-50 W
B Son 39					
to 41		159	✓	153-51	S 27-00 E
T@41					
B Son 40		159		153-51	N 27-00 W
to 42	✓	204		7-32	S 6-40 W
T@42					
B Son 41		203		7-32	N 6-45 E
to 43		162	✓	143-24	S 37-20 E
T@43					
B Son 42		162		143-24	N 37-25 W
to 44		99	✓	278-33	S 82-10 E
T@44					
B Son 43		99		278-33	S 82-10 E
to 45	✓	77		172-38	S 8-05 E
T@45					
B Son 44		77		172-38	N 8-05 W
to C.P. 5	✓			78-00	S 77-10 W
to 46		36	✓	308-10	S 52-35 E
T@46					
B Son 45		36		308-10	N 52-35 E
to 47	✓	282		110-59	S 69-35 E
T@47					
B Son 46		272		110-59	N 69-50 W
to 48		355	✓	292-49	S 67-50 E

= C.P. 12

11-5-23

Sta	Stadia	Az. Mag. Co.
T@ 48		= CP 13
BS on 47	355	292-49 N 67-55 W
to 49	354 ✓	55-22 N 54-40 E
T@ 49		
BS on 48	353	55-22 S 54-40 W
to 50	310 ✓	228-24 N 52-15 E
T@ 50		
BS on 49	308	<sup>533-10 W</sup> 228-24 S 52-20 W
to 51 ✓	38.6 103	<sup>11 50 N 3 25 W</sup> 158-56 S 21-40 E
T@ 51		
BS on 50	103 ✓	158-56 N 22-00 W
to 52	187	319-22 S 41-25 E
T@ 52		
BS on 51	187	319-22 N 41-25 W
to 53	164 ✓	107-18 S 73-35 E
T@ 53		
BS on 52	163	107-18 N 73-30 W
to 54	179 ✓	226-14 N 45-25 E
T@ 54		
BS on 53	180	226-14 S 45-15 W
to 55 ✓	148	155-34 S 25-10 E
T@ 55		
BS on 54	148	155-34 N 25-20 W
to 56	137 ✓	328-26 S 32-40 E

to BX4 AW stake = 40.85 DA 19° 00'

11-7-23

Sta	Rt	Stadia	Lt	Az	Mag. Co.
T@56					
BS on 55		136		328-26	N 32-45 W
to 57		171	✓	81-03	N 80-35 E
T@57					
BS on 56		171		81-03	N 80-25 W
to 58	97.1	247	N 33-10 E	213-10	N 32-25 E
T@58					
BS on 57		246		213-10	S 32-15 W
to 59		200	N 10-25 E	10-25	N 9-40 E
T@59					
BS on 58		200		10-25	S 9-40 W
to 60		165	N 22-46 W	57-14	N 23-50 W
T@60					
BS on 59		166		757-14	S 23-30 E
to 61	✓	537	N 05-19 E	5-19	N 4-20 E
T@61					
BS on 60		537		5-19	S 4-25 W
to 62		115	S 89-22 E	90-38	S 89-40 W
T@62					
BS on 61		115		90-38	N 89-10 E
to 63	✓	107	N 16-44 E	16-41	N 15-40 E
T@63					
BS on 62		107		16-41	S 15-50 W
to 64		160	S 12-58 E	160-02	N 21-05 W

Near Triangulation Station 14.

97.1 ft.

11-9-23

Sta	Rt.	Stadia	Lt	Az	Mag. Co.
T@64					
BS on 63		160	N 19 38 W	160-02	S 20-50 E
to 65	✓	122		81-11	N 80-15 E
T@65					
BS on 64		122	N 81-11 E	81-11	S 80-15 W
to 66		133	-	209-15	N 28-25 E
T@66					
BS on 65		132	29-15	209-15	S 28-25 W
to 67		136	18-45	18-45	N 17-45 E
T@67					
BS on 66		136	18-45	18-45	S 17-45 W
to 68		205		89-00	S 88-00 W
T@68					
BS on 67		205	89	89-00	N 88-00 E
to 69	✓	105		56-18	N 55-20 E
T@69					
BS on 68		106	56-18	56-18	S 55-15 W
to 70		103	✓	205-41	N 24-40 E
T@70					
BS on 69		103	25-41	205-41	S 44-35 W
to 71		77	✓	1-11	N 00-10 E
T@71					
BS on 70		78	1-11	1-11	S 00-10 W
to 72	✓	106	88-26	268-26	N 87-30 E

131  
61

11-10-23

Sta	Rt	Stadia	Lt	Az	Mag Co
T@72					
BS on 71		106		267-26	S 87-30 W
to 73		124	✓	352-29	N 8-30 W
T@73					
BS on 72		125		352-29	S 8-30 E
to 74		111		173-03	N 8-00 W
T@74					
BS on 73		111		173-03	S 8-00 E
to 75	✓	69		68-31	N 67-35 E
T@75					
BS on 74		69		68-31	S 67-40 W
to 76		227	✓	180-27	N 00-35 W
T@76					
BS on 75		227		180-27	S 00-30 E
to 77		211	✓	347-18	N 13-50 W
T@77					
BS on 76		211		347-18	S 13-50 E
to 78		145	✓	134-34	N 46-20 W
T@78					
BS on 77		144		134-34	S 46-20 E
to 79		509	✓	234-10	S 53-15 W
T@79					
BS on 78		509	✓	234-10	N 53-15 E
to 80		333	✓	187-29	N 6-35 E

Near T520. 84.03 ft.

11-13-23

Sta.	Pt.	Stadia	Lt	Az	Mag. Co.
To 80					
BS on 79		333		187-29	S 6-35 W
To 81		252		350-25	N 10-35 W
To 81					
BS on 80		253		350-25	S 10-30 E
To 82		340		66-19	S 65-20 W
To 82					
BS on 81		340		66-19	N 65-20 E
To 83	✓	279	✓	328-15	N 32-50 W
To 83					
BS on 82		279		328-15	S 32-55 E
To 84		220	✓	149-34	N 31-35 W
To 84					
BS on 83		220		149-34	S 31-35 E
To 85		535	✓	355-40	N 5-25 W
To 85					
BS on 84		535		355-40	S 5-15 E
To 86	✓	315		177-49	N 3-05 W
To 86					
BS on 85		315		177-49	S 3-15 E
To 87		179	✓	308-06	N 53-00 W
To 87					
BS on 86		179		308-06	S 52-55 E
To 88	✓	125		217-51	N 36-50 E

71-16-23.

Sta.	Rt	Stadia	Lt	Az	Mag. Co.
T at 88					
BS on 87		124		217-51	S 36-50 W
to 89		106	✓	75-33	N 15-00 E
T @ 89					
BS on 88		106		15-33	S 15-30 N
to 90		261	✓	108-03	N 74-20 W
T @ 90					
BS on 89		261		108-03	S 72-50 E
to 91	✓	239		60-52	N 60-00 E
T @ 91					
BS on 90		239		60-52	S 59-10 W
to 92		168	✓	230-58	N 50-00 E
T @ 92					
BS on 91		167		230-58	S 49-30 W
to 93		108	✓	73-38	N 1-10 E
T @ 93					
BS on 92		108		73-38	S 1-50 W
to 94		181	✓	121-13	N 61-05 W
T @ 94					
BS on 93		181		121-13	S 59-45 E
to 95	✓	71		47-24	N 46-10 E
T @ 95					
BS on 94		72		47-24	S 46-10 W
to 96		171	✓	227-45	N 46-50 E



Sta.	Rt	Stadia	Lt	Az	Mag. Co.
T@96					
BS on 95		171		227-45	S 46-10 W
to 97		296		357-25	N 3-55 W
T@97					
BS on 96		296		357-28	S 3-40 E
to 98		<sup>327</sup> 333		160-47	<sup>N 35-50 W</sup> N 20-45 W
T@98					
BS on 97		333		160-47	S 20-10 E
to 99		101		297-21	N 63-05 W
T@99					
BS on 98		101		297-21	S 63-35 E
to 100		271		109-33	N 71-55 W
T@100					
BS on 99		271		109-33	S 71-20 E
to Stake	✓	104		113-50	N 2-30 E
to 101		140	✓	255-33	S 76-20 W
T@101					
BS on 100		140		255-33	N 74-50 E
to 102	✓	211		182-14	N 1-00 E
T@102					
BS on 101		211		182-14	S 1-05 W
to 103		320	✓	278-05	N 83-15 W
T@103					
BS on 102		320		278-05	S 82-40 E
to 104		353	✓	78-13	S 77-00 W

11-18-23  
S.E. CIVIC  
G.P. HART

= CP 21

East Taitet = 304-15 S 71-35 E

To CP 22 = 210-152 N 14-30 E

to C. Mon. = 490' 178-112 N 12-25 W

North Taitet = 239-48 N 44-10 E

= 4x4 R.V. Post

11-18-23

Sta	Rt	Stadia	Lt	Az.	Mag. Co.
T@104					
BS on 103		353		78-13	N77-10E
to 105	✓	282		312-50	N48-30W
T@105					
BS on 104		282		312-50	S47-50E
to 106	✓	238		255-26	N74-50E
T@106					
BS on 105		238		255-26	S74-50W
to 107	✓	220		100-11	S80-15E
T@107					
BS on 106		220		100-11	N81-00W
to 108		293	✓	253-30	N72-55E
T@108					
BS on 107		293		253-30	S72-40W
to 109		197	✓	79-42	N79-00E
T@109					
BS on 108		197		79-42	S78-30W
to 110		93	✓	206-03	N25-05E
T@110					
BS on 109		93		206-03	S24-45N
to 111		117	✓	302-50	N59-45W
T@111					
BS on 110		117		302-50	S57-50E
to 112	✓	192		240-44	N59-55E

Sta	Stadia	Az	Mag. Co.
T@112			
BS on 111	192	240-44	S59-15W
to 113	220	328-07	N33-05W
T@113			
BS on 112	220	328-07	S32-45E
to 114	165	184-09	N2-50E
T@114			
BS on 113	165	184-09	S2-30W
to 115	121	111-48	S68-55E
T@115			
BS on 114	121	111-48	N69-40N
to 116	318	232-47	N52-10E
T@116			
BS on 115	318	232-47	S51-40W
to 117	347	359-15	N1-00N
T@117			
BS on 116	347	359-15	S0-50E
to 118	245	92-16	N89-15W
T@118			
BS on 117	238	92-16	N77-00E
to 119	223	54-22	N39-19E
T@119			
BS on 118	224	54-22	S39-05N
to 120	268	192-00	N3-15E

Large Transit, No Declin.

Sta	Pt	Stadio	Lt	Az	Mag. Co.
T@120					
BS on 119		268		192-00	S 3-15 E
to 121		305	✓	7-37	N 7-50 W
T@121					
BS on 120		305		7-37	S 7-45 E
to 122		195	✓	99-51	S 84-35 W
T@122					
BS on 121		195		99-51	N 84-40 E
to 123	✓	132		14-19	N 00-40 W
T@123					
BS on 122		132		14-19	S 00-50 E
to 124	✓	291		240-56	N 51-05 E ✓
T@124					
BS on 123		291		240-56	S 50-35 W
to 125		227	✓	30-38	N 30-35 E
T@125					
BS on 124		227		30-38	S 30-20 W
to 126		221	✓	226-03	N 46-00 E
T@126					
BS on 125		221		226-03	S 45-40 W
to 127		360	✓	39-48	N 29-55 E
T@127					
BS on 126		360		39-48	S 29-25 W
to 128		175	✓	200-55	N 10-50 E

Look for Stake

11-21-23  
S.E. Clyde  
G.P. Hart  
Foy Murphy

Sta	Stadia	Az	Mag. Co.
T@128			
Bson/127	175	200-55	S10-45W
to 129 ✓	178	26-31	N16-35E
T@129			
Bson/128	178	26-31	S16-30W
to 130 ✓	228	225-11	N35-10E
T@130			
Bson/129	228	225-11	S34-45W
to 131 ✓	167	56-18	N56-10E
T@131	167		
Bson/130	167	56-18	S56-00W
to 132 ✓	203	231-37	N41-10E
T@132			
Bson/131	203	231-37	S41-10W
to 133 ✓	191	264-01	N6-05W
T@133			
Bson/132	191	364-01	S6-10E
to 134 ✓	231	244-46	N54-35E
T@134			
Bson/133	231	244-46	S53-50W
to 135 ✓	166	347-19	N23-00W
T@135			
Bson/134	166	347-19	S23-10E
to 136 ✓	107	121-34	N68-45W

11-22-23  
 S.E. Clyne,  
 G.P. Hart,  
 Fay Murphy

11-28-23

Sta	Stadio	Az.	Mag. Cor.
T@136			
BS on 135	107	121-39	S68-35E
to 137	✓ 258	13-45	N3-25E ✓
T@137			
BS on 136	258	13-45	S3-25W
to 138	186 ✓	124-41	N65-30W
T@138			
BS on 137	186	124-41	S65-30E
to 139	301 ✓	292-57	N78-15W
T@139			
BS on 138	301	292-57	S77-15E ✓
to 140	✓ 278	N37-47W	152-13 N38-05W
T@140		26-03	
BS on 139	279	152-13	S38-00E
to 141	✓ 293	N11-44W	348-16 N21-55W
T@141		14-59	
BS on 140	293	348-16	S22-10E
to 142	182	N04-15E	194-15 N3-50E
T@142		14-52	
BS on 141	182	194-15	S3-50W
to 143	400	N10-38W	349-22 N21-00W
T@143		13-52	
BS on 142	400	349-22	S21-10E
to 144	✓ 335	N03-15E	193-15 N1-55E

Sta.	Stadia	AZ	Mag. Co.
T@144			
Bson 143	335	193-15	S 2-00 W
to 145	135	330-03	N 40-40 W
T@145			
Bson 144	135	330-03	S 40-00 E
to 146	403	116-59	N 73-05 W
T@146			
Bson 145	403	116-59	S 73-20 E
to 147	284	351-16	N 9-00 W
T@147			
Bson 146	284	351-16	S 9-00 W
to 148	335	298-12	S 72-15 E
T@148			
Bson 147	335	298-12	N 72-15 W
to 149	265	109-42	S 80-35 E
T@149			
Bson 148	285	109-42	N 80-35 W
to 150	177	285-31	S 85-45 E
T@150			
Bson 149	177	285-31	N 85-45 W
to 151	140	128-01	S 62-20 E
T@151			
Bson 150	140	128-01	N 62-45 W
to 152	305	318-35	S 51-40 E

to Hooks Corner 266-20 S 76-00 W 568 ft.  
 to Sta 149 along Hooks Property  
 86-20, N 75-45 E. Stadia 505 ft.

Mareña River Bed

to 146 = 86-20 - S 76-10 W 505 ft.

Sta	Rt	Stadia	Lt	Az	Mag. Cor.
T@152					
Bson151		305		318-35	N51-50W
to 153		235	✓	124-38 <sub>2</sub>	S65-45E
T@153					
Bson152		235		124-38 <sub>2</sub>	N65-45W
to 154	✓	324		358-57	S11-20E
T@154					
Bson153		324		358-57	N11-20W
to 155		287	✓	155-03 <sub>2</sub>	S35-25E
T@155					
Bson154		287		155-03	N35-10W
to 156		220	✓	309-48 <sub>2</sub>	S60-25E
T@156					
Bson155		220		309-48 <sub>2</sub>	N60-30W
to 157		275	✓	127-06	S63-05E
T@157					
Bson156		275		127-06	N63-05W
to 158	✓	241		331-12	S39-15E
T@158					
Bson157		241		331-12	N38-50W
to 159	✓	304		196-45	S6-25W
T@159					
Bson158		304		196-45	N6-35E
to 160		246	✓	300-34 <sub>2</sub>	S89-50E



Sta	Rt	Stadia	Lt	Az	Mag. Co.
T@160					
Bson 159		248	N 59-29 $\frac{1}{2}$ W	300-34 $\frac{1}{2}$	N 69-35W
to 161	✓	152		185-39	S 4-40E
T@161					
Bson 160		152	S 05-39W	185-39	N 4-40W
to 162		140	N 89-50 $\frac{1}{2}$ E	269-50 $\frac{1}{2}$	N 80-20E
T@162					
Bson 161		140		269-50 $\frac{1}{2}$	S 80-35W
to 163		227	S 04-03 $\frac{1}{2}$ E	175-56 $\frac{1}{2}$	S 14-35E
T@163					
Bson 162		227		175-56 $\frac{1}{2}$	N 14-30W
to 164	✓	162	S 87-30 $\frac{1}{2}$ E	272-29 $\frac{1}{2}$	N 81-50E
T@164					
Bson 163		162		272-29 $\frac{1}{2}$	S 82-05W
to 165		164	N 83-06E	83-06	N 72-00E
T@165					
Bson 164		164		83-06	S 72-25W
to 166	✓	139	S 37-27E	322-33	S 48-30E
T@166					
Bson 165		139		322-33	N 47-50W
to 167		294	S 69-03E	110-57	S 79-15E
T@167					
Bson 166		295		110-57	N 79-35W
to 168		117	S 55-30 $\frac{1}{2}$ E	304-29 $\frac{1}{2}$	S 66-15E

(162-163 N 00-43-00W Reverse  
 179-180 N 59-15-15W Reverse)

= CP 22

92-29 $\frac{1}{2}$

= ST 22

Sta.	Stadia	Lt.	Rt.	Co.	Mag. Co.
T@C.P. 3					
Fson CP 4		0	0		N43-55E
to C.P. 5			17-40		N61-35E
to C.P. 12			18-55		N62-00E
to CP 13			25-09		N69-05E
to TS 14			25-25		N69-25E
to CP 18			38-43		N72-35E
to CP 17			53-37 <sub>2</sub>		S82-20E
to CP 16			53-52 <sub>2</sub>		S82-10E
to CP 15			55-08		S80-58E
to CP 10			58-40 <sub>2</sub>		S77-30E
to CP 8			79-20		S56-45E
to CP 7			105-30 <sub>2</sub>		S49-28E
to CP 6			113-04 <sub>2</sub>		S23-00E
to CP 1			122-36 <sub>2</sub>		S13-25E
to BL Pt.	605		130-12		S5-45E
to CP 2	401		173-18 <sub>2</sub>		S37-20W
T@CP 17					
Fson CP 16		0	0		N83-30W
to CP 3			0-31 <sub>2</sub>		N82-45W
to CP 4			6-35 <sub>2</sub>		N76-50W
to CP 5	12.05		9-23 <sub>2</sub>		N73-50W
to CP 13			11-58 <sub>2</sub>		N79-50W
to Sight 14	47.9	Dep. 22° 0'	53-45 <sub>2</sub>		N29-50W
to TS 14			54-45 <sub>2</sub>		N2-40E
to TS 19			86-08 <sub>2</sub>		N2-40E
to TS 19			112-34 <sub>2</sub>		N29-10E
to CP 18			123-12		N39-55E
to CP 12			41-56 <sub>2</sub>		N41-40W

Point on Base line 413.25 ft from CP 2.

S 24, S 23 W. P. Markings.

4x4 RW Post

Sta	Lt	Rt	Co	Mag Co
T@CP4				
FS on CP5	0	0		N82-10E
to CP18		4-51		N86-45E
to CP17		22-02		S76-05E
to CP16		25-36 <sub>2</sub>		S72-40E
to CP15		31-27		S66-45E
to CP10		37-35		S60-30E
to CP9		60-36		S37-25E
to CP8		77-13 <sub>2</sub>		S20-45E
to CP7		104-18		S6-25W
to CP6		108-07 <sub>2</sub>		S10-10W
to CP1		109-11 <sub>2</sub>		S11-15W
to CP2		139-29		S41-35W
to CP3		142-20		S44-10W
T@CP16				
FS on CP15	0	0		N86-30W
to CP3		3-01 <sub>2</sub>		N82-40W
to CP4		12-25		N73-00W
to CP5		17-41		N67-50W
to CP11		30-46 <sub>2</sub>		N54-45W
to CP12		77-00		N9-00W
to CP13		98-46 <sub>2</sub>		N13-15E
to TS14		122-00		N36-15E
to CP19		134-34 <sub>2</sub>		N48-50E
to CP18		151-35		N65-55E
to CP17		182-15		S83-15E

Sta	Lt	Rt	Co	Mag Co
Λ@CP5				
FS@CP11	0	0		N19-15W
to CP12		82-34		N63-10E
to TS14		90-24		N70-50E
to CP13		90-57		N71-10E
to CP18		106-04		N81-10E
to CP16		131-55		S67-40E
to CP10		151-36 <sub>2</sub>		S47-30E
to CP9		180-02		S19-45E
to CP8		208-02 <sub>2</sub>		S8-40W
to CP7		230-06		S31-00W
to CP6		231-59 <sub>2</sub>		S32-15W
to CP2		253-39 <sub>2</sub>		S54-00W
to CP3		260-45 <sub>2</sub>		S61-00W
to CP4		280-45		S81-15W
to CP15		142-05 <sub>2</sub>		S57-30
Λ@CP11				
FS@CP12	0	0		N87-35E
to CP13		2-30		N89-40E
to CP18		9-00		S84-15E
to CP17		28-18 <sub>2</sub>		S64-00E
to CP16		37-42 <sub>2</sub>		S55-00E
to CP10		56-12 <sub>2</sub>		S36-45E
to CP5		73-02		S19-15E



Sta	Distance	Lt	Rt	Co.	Mag Co
-----	----------	----	----	-----	--------

T@CP7					
FG. on CP6	73.6	0	0	'	561-15W
to CP 2			45-20 <sub>2</sub>	?	N74-50W
to CP 3			87-51 <sub>2</sub>		N31-00W
to CP 4			124-18		N5-20E
to CP 5			149-20 <sub>2</sub>		N30-05E
to CP 12			170-36 <sub>2</sub>		N51-50E
to CP 13			178-26		N58-35E
to TS 14			181-05 <sub>2</sub>		N62-00E
to TS 19			183-08 <sub>2</sub>		N64-00E
to CP 18			195-29 <sub>2</sub>		N76-20E
to CP 8			205-42		N81-15E

T@CP6					
FS on CP1	187.55	0	0		S16-30W
to CP 2			96-51 <sub>2</sub>		N66-40N
to CP 3			140-56		N22-30W
to CP 4			173-38		N10-05E
to CP 5			196-43 <sub>2</sub>		N33-15E
to CP 12			216-21 <sub>2</sub>		N52-48E
to CP 13			224-02 <sub>2</sub>		N60-15E
to CP 7	73.6		225-31		N61-50E
to TS 14			226-37		N62-30E
to TS 19			228-38		N64-50E
to Pt on BL			45-31		

- to Pt #13.25 on B.L. from BP2 same

Point 413.25 from PC 2

12-15-23

	Rt	Stadia	Lt	Az	Mag. Co.
T@168					
B <sub>Son</sub> 167		117	S55-30 <sup>1</sup> / <sub>2</sub> E	304-29	N66-00W
to 169		190	✓	9.8-15	N87-40E
T@169					
B <sub>Son</sub> 168		189	S81-43E	98-15	S87-45W
to 170	✓	132		292-22	S78-10E
T@170					
B <sub>Son</sub> 169		132	S67-38E	292-22	N77-55W
to 171		200		163-59	S26-35E
T@171					
B <sub>Son</sub> 170		200	S16-01E	163-59	S26-30E
to 172	✓	378		326-46 <sub>2</sub>	S43-45E
T@172					
B <sub>Son</sub> 171		379	S33-13 <sup>1</sup> / <sub>2</sub> E	326-46 <sub>2</sub>	N43-40W
to 173		419	✓	132-24	S58-15E
T@173					
B <sub>Son</sub> 172		419	S47-36E	132-24	N58-10W
to 174	✓	223		313-57	S56-50E
T@174					
B <sub>Son</sub> 173		223	S46-03E	313-57	N56-30W
to 175	✓	235	S29-41E	150-9	S41-30E
T@175					
B <sub>Son</sub> 174		235		150-9	N40-20W
to 176		365	S38-54 <sup>1</sup> / <sub>2</sub> E	321-5	S49-30E

12-16-23.

Sta	Lt	Rt	Co.	Mag Co
To CP 18				
FS on CP 17	0	0		S 39-30 W
To CP 16		26-08		S 65-40 W
To CP 15		32-50		S 72-20 W
To CP 10		33-02		S 72-40 W
To CP 8		35-59		S 75-35 W
To CP 7		36-51 <sub>2</sub>		S 76-15 W
To CP 2		39-35 <sub>2</sub>		S 79-20 W
To CP 3		42-25		S 82-00 W
To CP 4		46-13 <sub>2</sub>		S 85-45 W
To CP 5		46-43		S 86-20 W
To CP 11		56-36 <sub>2</sub>		N 83-50 W
To CP 12		63-14 <sub>2</sub>		N 77-15 W
To CP 13		64-48		N 75-20 W
To TS 14		95-39		N 44-45 W
To CP 20		118-47 <sub>2</sub>		N 21-40 W
To TS 19		158-9 <sub>2</sub>		N 17-45 E
To CP 2	414			
FS on CP 3	401	48-30		N 35-40 E
To BL Pt.	413.25	323-15		S 46-10 E

Large Transit



12-19-23

Sta	Lt	Rt	Co	Mag. Co.
T@ CP10				
FS on CP 9	0	0		S45-30W
to CP 8		40-40 <sub>2</sub>		S86-15W
to CP 2		46-12 <sub>2</sub>		N88-05W
to CP 3		56-35 <sub>2</sub>		N77-40W
to CP 4		73-09		N59-15W
to CP 5		86-26 <sub>2</sub>		N47-30W
to CP 11		98-01		N36-15W
to CP 12		160-35		N24-25E
to CP 13		176-44		N42-35E
to TS 14		186-18		N51-45E
to CP 19		192-05 <sub>2</sub>		N57-30E
to CP 18		207-15		N73-00E
to CP 15		209-49		N75-10E

Sta	Lt	Rt	Co	Mag. Co.
T@ BL Pt				
FS on CP 2	413.25	0		N51-10W
to CP 3		41-32 <sub>2</sub>		N9-35W
to CP 4		64-54 <sub>2</sub>		N13-50E
to CP 5		83-57		N32-50E
to CP 12		100-19 <sub>2</sub>		N49-15E
to CP 6 & 7		108-59		N57-45E
to CP 1	141.75	180-00		S51-10E

12-20-23

Sta	Rt	Stadia	Lt.	Az	Mag. Co.
T@176					
BS on 175		365	S38-54 $\frac{1}{2}$ E	324-52	N49-20W
to 177	✓	327		152-36	S37-55E
T@177					
BS on 176		327	S27-24E	152-36	N37-50W
to 178		535	✓	305-16	S65-15E
T@178					
BS on 177		535	S15A-44E	305-16	N65-10W
to 179		346	✓	114-34 <sub>2</sub>	S76-05
T@179					
BS on 178		345	S63.25 $\frac{1}{2}$ E	114-34 <sub>2</sub>	N75-50W
to 180	✓	500		297-27 <sub>2</sub>	S73-15E
T@180				18 <sub>0</sub>	
BS on 179		500	S62-32 $\frac{1}{2}$ E	297-27 <sub>2</sub>	N73-25W
to 181	✓	166		181-20 <sub>2</sub>	S9-40E
T@181					
BS on 180		167	S01-20 $\frac{1}{2}$ W	181-20 <sub>2</sub>	N10-05W
to 182		150	✓	341-47 <sub>2</sub>	S29-45E
T@182					
BS on 181		150	N18-12 $\frac{1}{2}$ W	341-47 <sub>2</sub>	N29-20W
to 183		183	✓	100-42	N59-25E
T@183					
BS on 182		183	N79-18W	100-42	N59-55W
to 184	✓	129		14-45	S4-00W
			S14-45W		

12-21-23

Sta	Pt	Stadia	Lt	Az	Mag Co.
T@184					
Bson 183		128		14-40	N3-40E
to 185		89	✓	153-34	S37-20E
T@185					
Bson 184		89		153-34	N37-15W
to 186		156	✓	313-37	S57-20E
T@186					
Bson 185		157		313-37	N57-25W
to 187	✓	312		165-50	S25-10E
T@187					
Bson 186		312		165-50	N25-10W
to 188		109	✓	278-38	N87-25E
T@188					
Bson 187		109		278-38	S88-05W
to 189	✓	182		181-21	S9-15E
T@189					
Bson 188		182		181-21	N9-10W
to 190		241	✓	252-12	N62-00E
T@190					
Bson 189		241		252-12	S61-55W
to 191	✓	236	S02-26E	137-34	S52-50E
T@191					
Bson 190		236	S02-26E	137-34	N52-50W
to 192		90	✓	293-9 <sub>2</sub>	S77-10E

115 10

12-22-23

Sta	Rt	Stadia	Lt	Az	Mag Co	
T@192				593-09 ✓		= CP 25
Bson 191		90		203-9 <sub>2</sub>	N76-40W	
to 193		306	✓	83-31 <sub>2</sub>	N73-45E	
T@193						
Bson 192		306		83-31 <sub>2</sub>	S73-25W	
to 194		217	✓	149-21	N39-15W	
T@194						
Bson 193		217		149-21	S40-30E	
to 195	✓	258		81-51	N72-00E	
T@195						
Bson 194		258		81-51	S71-40W	
to 196		421	✓	167-02	N22-10W	
to stake		271	✓	189-59	N 0-50E	4x4 R.W. Post
T@196						
Bson 195		422		167-02	S22-20E	
to Stake	✓	200		145-43	S53-40E	
to 197	✓	217		0-53 <sub>2</sub>	N8-25W	
T@197						
Bson 196		217		0-53 <sub>2</sub>	S8-30E	
to 198		258	N62-45 <sup>1</sup> W	117-14 <sub>2</sub>	N72-10W	
T@198						
Bson 197		259		117-14 <sub>2</sub>	S72-15E	
to 199	✓	302	N56-07 <sup>2</sup> E	56-07	N46-40E	
T@199						
Bson 198		302		56-07	S46-40W	
to 200		211	N12-57 <sup>2</sup> E	192-57 <sub>2</sub>	N3-25E	

12-22-23

Sta	Rt	Stadia	Lt	Az	Mag Co.
T@ 200					
BS on 199		211		192-57	S3-25W
to 201	✓	180	S41-14E	138-46	S51-00E
T@ 201					
BS on 200		180		138-46	N50-45W
to 202		460	S71-37E	288-23	S81-15E
T@ 202					
BS on 201		460		288-23	N81-05W
to 203		154	N73-24E	73-24	N63-45E
T@ 203		154			
BS on 202		154	62-13	73-24	S63-45W
to 204		133	N 69-11 E	189-11	N 0-25W
T@ 204					
BS on 203		133	28-20	189-11	S 0-35E
to 205		360	N 19 09 W	340-51	N 28-45W
T@ 205					
BS on 204		360	5-58-30	340-51	S 28-55 E
to 206	✓	251	N 13-10-30 W	166-49	N 12-40 W
T@ 206					
BS on 205		251	70-15-30	166-49	S 12-55 E
to Stake	✓			74-25	S 85-15 E
to 207	✓	273	N 83-26 W	96-34	S 83-10 E
T@ 207					
BS on 206		273	140-36	96-34	N 83-05 W
to Stake	✓	70 1/2		102-35	N 77-00 W
to 208		110 1/2	N 57-10 E	237-10	N 58-30 E

= CP 26

⊗ Sork This Up.

Brass G, L.O. Survey 1921

" " " "

T 175 R 5 E  
 S 7 AP 3  
 TP 74  
 AP 1 AP 2  
 TP 72 TR 73

12-23-23

Sta	Rt	Stadia	Lt	Az	Mag Co
T@ 208					
BS on 207		110½	N 87-10 E	237-10	S 57-30 W
to 209		335	✓	316-19	N 42-15 W
T@ 209			100-50-30		
BS on 208		335	N 43-40 30	316-19	S 49-30 E
to 210	✓	310	43-58	272-21	S 87-15 E
T@ 210					
BS on 209		310	S 87-38-30 E	272-21	N 87-00 W
to 211	✓	243	30-31-30	122-53	S 56-40 E
T@ 211					
BS on 210		243	S 57-07 E	122-53	N 56-50 W
to 212		308	131-09 7	254-2	N 74-20 E
T@ 212					
BS on 211		308	S 74-02 1/2 W	254-2	S 74-45 W
to 213		1.19	S 1-15-30	22-47	N 23-20 E
T@ 213					
BS on 212		119	S 22-47 W	22-47	S 23-15 W
to 214		265½	S 3-4 v	149-05	N 30-25 W
T@ 214					
BS on 213		265½	N 30-55 W	149-05	S 30-40 E
to 215	✓	149	S 9-04 1/2	28-09	N 29-45 E
T@ 215					
BS on 214		149	N 28-00 1/2 E	28-09	S 28-30 W
to 216	✓	93		275-08	S 84-20 E

(X)

(X)

12-28-23

Sta.	Rt	Stadia	Lt	Az	Mag Co
T@216					
B5 on 215		92 $\frac{1}{2}$	N84-51-30 $\frac{1}{2}$	275-08 $\frac{1}{2}$	N84-25W
to 217		417	163 $\frac{0}{2}$	78-10 $\frac{2}{2}$	N78-30E
T@217					
B5 on 216		418	N78-10-30 $\frac{1}{2}$	578-40 $\frac{1}{2}$	N78-40W
to 218		140	✓	23-56 $\frac{2}{2}$	N24-05E
T@218			54-14		
B5 on 217		139 $\frac{1}{2}$	N23-56 $\frac{3}{2}$	528-15 $\frac{1}{2}$	N23-56E
to 219		131	30 $\frac{0}{2}$	173-48 $\frac{2}{2}$	N5-20W
T@219					
B5 on 218		131 $\frac{1}{2}$	06-11-30 $\frac{1}{2}$	573-48 $\frac{2}{2}$	55-40E
to 220		183	✓	321-33	N38-00W
T@220			32-15 $\frac{3}{2}$		
B5 on 219		183	N38-27 $\frac{1}{2}$	521-33	538-05E
to 221	✓	328	133-38	275-11	584-20E
T@221			584-49 $\frac{1}{2}$		
B5 on 220		328	253 $\frac{5}{2}$	275-11	N74-35W
to 222		122	N59-15-30 $\frac{1}{2}$	59-15 $\frac{2}{2}$	N60-05E
T@222			52-06-30		
B5 on 221		122		59-15 $\frac{2}{2}$	559-5 $\frac{1}{2}$
to 223		340	N07-09 $\frac{1}{2}$	187-09	N7-45 $\frac{1}{2}$
T@223			0-30-30		
B5 on 222		340		187-09	57-50W
to 224	✓	274	N06-38-30 $\frac{1}{2}$	6-38 $\frac{2}{2}$	N7-05E

⊗

Turn angle at 217

12-29-23  
S.E. Clyde  
G.P. Hart

Sta	Lt	Rt	Co.	Mag Co
To CP12				
FS on CP13	0	0		582-25E
to CP18		5-9		577-15E
to CP17		40-38 <sub>2</sub>		541-55E
to CP16		73-26 <sub>2</sub>		58-55E
to CP15		101-24		519-00W
to CP10		108-17 <sub>2</sub>		525-45W
to CP 9		113-9 <sub>2</sub>		530-15W
to CP 8		128-48 <sub>2</sub>		546-15W
to CP 7		133-52		551-15W
to CP 2		141-34 <sub>2</sub>		559-00W
to CP 5		145-7		563-00W
to CP 11		169-30 <sub>2</sub>		587-25W
to CP 26		0		
FS on 32		0		160,00E
to TS-31		101-12 <sub>2</sub>		519-45E
to CP 30		120-46		500-30W
to TS 24		168-18 <sub>2</sub>		548-15W

= Sta 203-



Sta	Lt	Rt	Co.	Mag Co.
π@CP13				
FS on TS14		0		N69-35E
to CP18		34-52 <sub>2</sub>		S75-35E
to CP17		80-36 <sub>2</sub>		S30-00E
to CP16		123-23 <sub>2</sub>		S12-45E
to CP15		148-12		S37-40W
to CP10		152-35 <sub>2</sub>		S41-50W
to CP9		153-20 <sub>2</sub>		S42-35W
to CP8		166-24		S55-40W
to CP7		169-54		S58-55W
to CP2		175-48 <sub>2</sub>		S65-00W
to CP3		178-55 <sub>2</sub>		S68-05W
to CP5		181-40		S71-40W
to CP11		200-11 <sub>2</sub>		S88-35W
to CP12		208-10 <sub>2</sub>		N82-35W

π@CP5				N19-0
FS on Sta 9	111	355-15		N19-05W
to CP10	1265	146-45 <sub>2</sub>		S48-45E
to CP8	930	203-12 <sub>2</sub>		S8-45W
to CP3	965	255-54 <sub>2</sub>		S61-15W
to Sta 7	310	306-39		N77-55W

12-30-23  
SE. Clyde  
G.P. Hart

Sta	Stadia	Lt.	Rt.	Co	Mag Co
<b>To CP 6</b>					
FS on BL	252.		0	254-40	561-00 W
to CP 2	551			300-01	N 73-35 W
to CP 3	561			342-31	N 48-40 W
to CP 4	875			18-57	N 4-50 E
to CP 5	1095			44-00	N 30-25 E
to CP 8	418			100-21	N 86-45 E

= Sta 303

<b>To CP 8</b>					
FS on CP 7	418			100-21	S 86-35 W
to CP 2	960			111-33	N 82-55 W
to CP 3	840			136-22	N 57-35 W
to CP 4	911			171-54	N 21-35 W
to CP 5	932			202-00	N 8-00 E
to CP 10	1085			279-47	N 85-30 E
to CP 9	725			316-45	S 57-30 E
to Sta 303	250			329-05	S 45-15 E

<b>To CP 3</b>					
BS on Sta 2	210			230-23	N 27-45 E
to CP 4	538			246-31	N 43-45 E
to CP 5	960			264-12	N 61-15 E
to CP 8	840			325-52	S 56-40 E
to CP 7	560			352-02	S 30-40 E
to CP 6	560			162-36	S 29-55 E
to CP 1	715			559-36	S 23-20 E
to CP 2	400.1			170-10	S 23-25 E
BL	605			180-01	S 13-20 E
				59-50	S 37-15 W
				230-23	S 37-25 W
				227-16	S 6-15 E

1-2-24  
S.E. Clynch  
G.P. Hart

Sta	Rt	Stadia	Lt	Az	Mag Co
T@224					
Bson 223		273	N06-38-30E	6-38	S7-05W
to 225	✓	158	N06- 0-10-30	186-49	N7-25E
T@225					
Bson 224		158	N06-49E	186-49	S7-25W
to 226	✓	111	2-36-30	4-12	N5-00E
T@226					
Bson 225		111	N4-12-30E	4-12	S4-45W
to 227		109	21-19	162-53	N16-25W
T@227					
Bson 226		109	N17-06-30E	162-53	S16-35E
to 228	✓	218	46-16-30	29-10	N29-45E
T@228					
Bson 227		218	N29-10E	29-10	S29-55W
to 229		275	N21-19E	201-19	N21-50E
T@229					
Bson 228		275		201-19	S22-00W
to 230		469	N18-54	10-54	N11-00E
T@230					
Bson 229		469		10-54	S11-25W
to 231	✓	324	S85-05E	274-55	S74-35E
T@231					
Bson 230		324		274-55	N84-40W
to 232	✓	338	S17-43W	197-43	S17-50W

1937

1-3-24.  
S.E. Clynne  
G.P. Hart  
Fay Murphy

Center of Cottonwood River Bed.

Left bank of River

Sta	Rt	Stadia	Lt	Az.	Mag Co.
T@232			S17-43W		
Bson 231		338	11-29	197-43	N17-50E
to 233		245	✓	11-29	S11-35W
T@233			S11-29W		
Bson 232		245		11-29	N12-00E
to 234	✓	177	S15-21W	195-21	S15-40W
T@234					
Bson 233		177	N13-21E	195-21	N15-20E
to 235		195	✓	16-40	S16-45W
T@235					
Bson 234		195	S16-40W	16-40	N16-50E
to 236		233	✓	178-30	S1-20E
T@236					
Bson 235		233	S01-30E	178-30	N1-15W
to 237	✓	371		9-55	S10-00W
T@237				1 30	
Bson 236		371	S09-55W	9-55	N10-05E
to 238		283	S6-02 $\frac{1}{2}$ E	173-56 <sub>2</sub>	S6-05E
T@238					
Bson 237		283	S6-02 $\frac{1}{2}$ E	173-56 <sub>2</sub>	N6-00W
to 239	✓	320	S13-51W	13-54	S13-35W
T@239					
Bson 238		320		13-54	N13-50E
to 240		71	S04-51W	184-51	S4-50W

2167

1-4-24.  
S.E. Dlyne  
G.P. Hart  
Fay Murphy

Sta	Rt	Stadia	Lt	Az	Mag Co
T@240					
BS on 239		70 <sup>1</sup> / <sub>2</sub>	S <sub>04</sub> -S <sub>1</sub> W	184-51	N 4-45 E
to 241		117	✓	307-49	S 52-25 E
T@241					
BS on 240		117	S 52-11 E	307-49	N 52-35 W
to 242	✓	132		211-46 <sub>2</sub>	S 32-00 W
T@242					
BS on 241		132	S 31-46 <sup>1</sup> / <sub>2</sub> W	211-46 <sub>2</sub>	N 31-40 E
to 243		225	✓	19-03 <sub>2</sub>	S 19-25 W
T@243			→ 43		
BS on 242		226	S 19-03 <sup>1</sup> / <sub>2</sub> W	19-03 <sub>2</sub>	N 19-35 E
to TS 32		151 <sup>1</sup> / <sub>2</sub>	S 45-15	148-32	S 31-30 E
to 244		211	S 02-34 <sup>1</sup> / <sub>2</sub> W	182-34 <sub>2</sub>	S 2-45 W
T@244					
BS on 243		211		182-34 <sub>2</sub>	N 2-35 E
to TS 32	DA 10° 50'	151.45 = 148.75		201-23 <sub>2</sub>	N 21-15 E
to 245		121	S 37-36 E	322-24	S 37-35 E
T@245					
BS on 244		121		322-24	N 37-40 W
to 246	✓	138	S 11° 46 E	168-08 <sub>2</sub>	S 11-50 E
T@246					
BS on 245		138		168-08 <sub>2</sub>	N 11-50 W
to 247	✓	200	S 0° 39' W	00-33 <sub>2</sub>	S 00-35 W
T@247					
BS on 246		200		00-33 <sub>2</sub>	N 00-45 E
to 248		295 <sup>-</sup>		185-46 <sub>2</sub>	S 6-00 W

1-7-24  
S.E. Clynne  
G.P. Hart  
Fay Murphy

307-49  
211-46  
96-03

⊗

At Sand Pit

TS<sub>1</sub> 32 "

25-50 Rt

12-25 R

5-07<sup>1</sup>/<sub>2</sub> R

12/5

Sta	Rt	Stadia	Lt	Az	Mag Co
T@248					
BS on 247		295	N 03-46 1/2 E	185-46	N 5-50 E
to 249		147	✓	281-13	S 78-30 E
T@249					
BS on 248		147	S 78-46 1/2 E	281-13	N 78-40 W
to 250	✓	180		190-06	S 10-45 W
T@250					
BS on 249		180	N 10-06 1/2 E	190-06	N 10-20 E
to Stake		90		301-46	S 58-15 E
to 251		273	N 10-55 1/2 W	349-04	S 10-40 E
T@251					
BS on 250		273		349-04	N 10-40 W
to Stake		222	✓	6-26	N 6-30 E
to 252	✓	275	N 26-29 E	26-29	S 26-35 W
T@252					
BS on 251		275		26-29	N 26-40 E
to 253		231	N 16-38 E	196-38	S 20-00 W
T@253					
BS on 252		231		196-38	N 20-00 E
to 254		175	N 11-32 1/2 W	348-27	S 7-20 E
T@254					
BS on 253		175		348-27	N 8-00 W
to 255	✓	245	S 83-46 E	276-14	N 80-10 W
T@255					
BS on 254		245		276-14	S 80-20 E
to 256		235	N 17-51 E	17-01	S 20-50 W

83-54 L

88-53 R

21-02 L

2X3 RR Stake (No Marks)

" " " "

1-10-24  
S, E, Clynno  
G P Hart  
Fay Murphy

Sta	Rt	Stadia	Lt	Az	Mag Co
T@256					
BS on 255		235	N70.1E	12-01	N20-25E
to 257	✓	393		270-50 <sub>2</sub>	N85-45W
T@257					
BS on 256		392	S89-09 <sub>2</sub> E	270-50 <sub>2</sub>	S85-45E
to 258		340	✓	80-14	S83-55W
T@258					
BS on 257		339	N80-14E	80-14	N83-45E
to 259		171	✓	246-49 <sub>2</sub>	S70-25W
T@259					
BS on 258		170	N66-49 <sub>2</sub> E	246-49 <sub>2</sub>	N70-15E
to 260		461	✓	19-58 <sub>2</sub>	S23-55W
T@260			N19-58 <sub>2</sub> E		
BS on 259		461		19-58 <sub>2</sub>	N23-50E
to 261		375	N04-50 <sub>2</sub> E	184-50 <sub>2</sub>	S8-20W
T@261					
BS on 260		375		184-50 <sub>2</sub>	N8-40E
to 262	✓	89	N19-42E	19-42	S23-10W
T@262					
BS on 261		89		19-42	N23-40E
to 263		162	S30-35 <sub>2</sub> E	140-24 <sub>2</sub>	S35-50E
T@263					
BS on 261		162		140-24 <sub>2</sub>	N35-45W
to 264	✓	95	N38-34E	38-34	S42-35W

2223

1-11-24  
S.E. Clynne  
G.P. Hart  
Fay Murphy

to T.S. 31, 145° 02', Sta. 281 H.P.A. 8° 0' = 278.3

Sta	Rt	Stadia	Lt	Az	Mag Co.
T@ 264					
BS on 263		95	N 38-34 E	38-34	N 42-45 E
to 265		195	S 20 36 E	159-24	S 16-50 E
T@ 265					
BS on 264		195		159-24	N 16-40 W
to 266		271	S 28 25 1/2 E	331-342	S 24-40 E
T@ 266					
BS on 265		270		331-342	N 24-25 W
to 267	✓	296	N 36-28 1/2 E	216-282	S 40-25 W
T@ 267					
BS on 266		297		216-282	N 40-05 E
to 268		225	S 28 30 1/2 E	336-272	S 19-45 E
T@ 268					
BS on 267		226		336-272	N 19-35 W
to 269	✓	172	N 51-36 E	231-36	S 55-35 W
T@ 269					
BS on 268		171		231-36	N 55-45 E
to 270		195	N 20-32 E	20-32	S 24-05 W
T@ 270					
BS on 269		195		20-32	N 24-15 E
to 271	✓	131	N 14 39 W	345-21	N 10-30 W
T@ 271					
BS on 270		131		345-21	S 10-45 E
to 272		65	S 88 26 1/2 E	91-332	N 84-30 W

1580

1-11-24  
S.E. Clyric  
G.P. Hart  
Fay. Murphy

151-342

151-272



Sta	Lt	Rt	Co	Mag Co
TS14				
F <sub>S</sub> TS20	0	0		N7-25W
to				
to TS24		29-26 <sub>2</sub>		N22-05E
to CP25		41-17 <sub>2</sub>		N33-40E
to TS32		46-15		N38-30E
to CP30		67-32 <sub>1</sub>		N60-05E
to TS19		77-43 <sub>2</sub>		N69-55E
to TS27		93-05 <sub>2</sub>		N85-35E
to CP17		142-32 189-50		S30-05E S3-10W
to CP16		223-26 <sub>2</sub>		S35-20W
to CP15		236-55		S49-05W
to CP10		238-59 <sub>2</sub>		S51-35W
to CP8		247-02 <sub>2</sub>		S59-40W
to CP7		249-20 <sub>2</sub>		S60-25W
to CP2		253-38 <sub>1</sub>		S65-35W
to CP3		256-01 <sub>2</sub>		S68-25W
to CP13		256-49 <sub>2</sub>		S69-45W
to CP5		257-57		S70-30W
to Sta 57	100.3	Dep 14°30'	158-01	S29-45E
to CP18		142-32		S30-05E

1-14-24  
SE. Clynne  
Rudy Schmoack  
Fax Murphy

= On tallest Island

= " other "

= Sta 193

At Sand Pit, near Sta 244

At Peninsular

with Mag Dec. 14. 18'

Sta	Lt	Rt	Co	Mag Co
TS19				
F5 on CP18	0	0		517-00W
to CP17		11-18		529-30W
to CP16		30-58		547-40W
to CP15		38-37 <sub>2</sub>		554-40W
to CP10		39-42		556-15W
to CP8		44-46 <sub>2</sub>		561-00W
to CP7		46-20		563-35N
to CP2		49-32		565-30N
to TS14		52-40 <sup>412</sup>		568-00W
to TS20		116-04 <sup>042</sup>		N48-00W
to CP21		120-43 <sub>2</sub> <sup>2 4 52</sup>		N40-25W
to CP25		188-24 <sub>2</sub>		N25-50E
to TS24		169-21		N6-30E
to CP26		190-07 <sup>08</sup>		N28-45E
to TS32		196-41 <sup>412</sup>		N33-35E
to CP30		219-04		N55-40E
to TS31				
to CP28		255-12 <sub>2</sub> <sup>13</sup>		587-30E
to TS27		282-16 <sub>2</sub>		560-00E
to CP22				
F5 on 24		0		530-45E
to TS19	(27)	13-27		518-45E
to				
to CP21		45-09 <sub>2</sub>		512-00W

1-16-24  
S.E. Clynne  
Rody Schmock  
Foy Murphy

255-13  
52 40

202-33

18  
2123

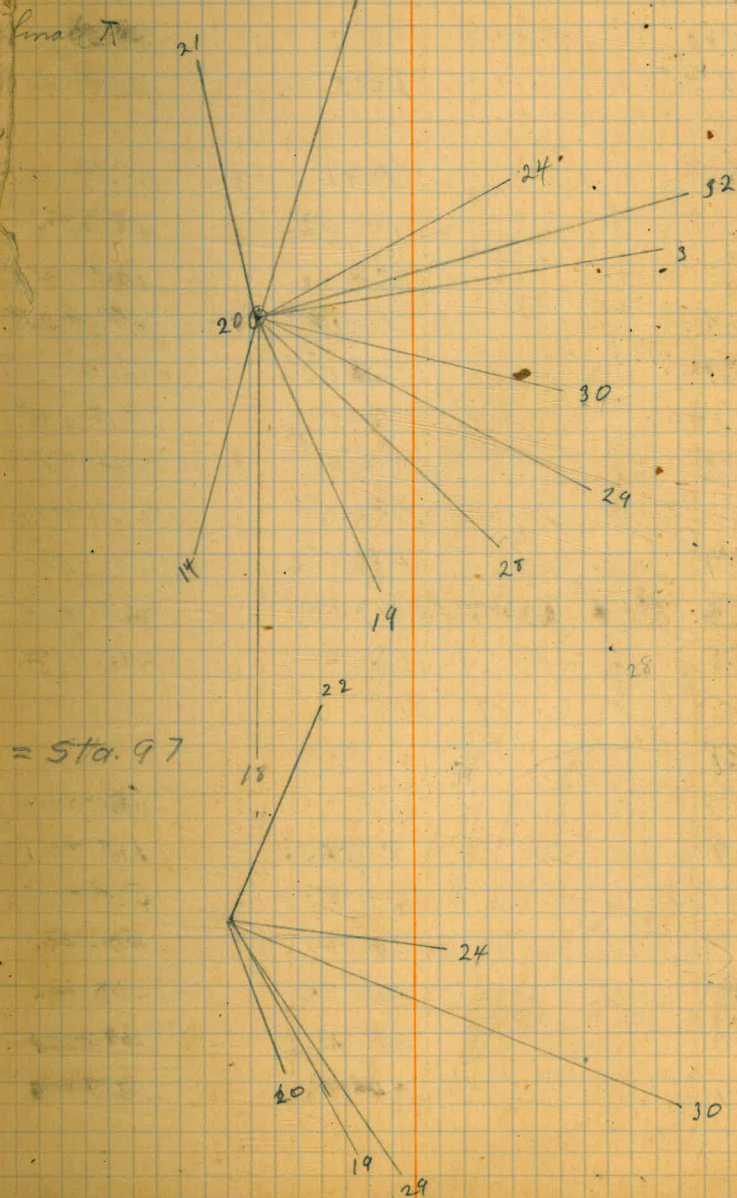
- Sta 163

16<sup>27</sup>

Sta	Lt	Rt	Co	Mag Co
$\pi$ TS20				
FS on CP21	0	0		N 20-35W
to CP22		30-34 <sub>2</sub>		N 4-15W
to TS24		74-19	✓	N 39-50E
to TS 32		86-59 <sub>2</sub>		N 53-05E
to TS 31		93-03 <sub>2</sub>		N 58-00E
to TS 30		116-05 <sub>2</sub>		N 81-00E
to TS 29		130-03 <sub>2</sub>		S 84-50E
to CP 28		145-16 <sub>2</sub>		S 69-55E
to TS 19		168-20 <sub>2</sub>	✓	S 46-30E
to CP 18		192-55		S 22-00E
to TS 14		207-14 <sub>2</sub>	✓	S 7-40E
to Sta 76	90.9	Dep V 22° 25'	50° 39'	N 37-05E
to Sta 75		183-53		S 16-15E

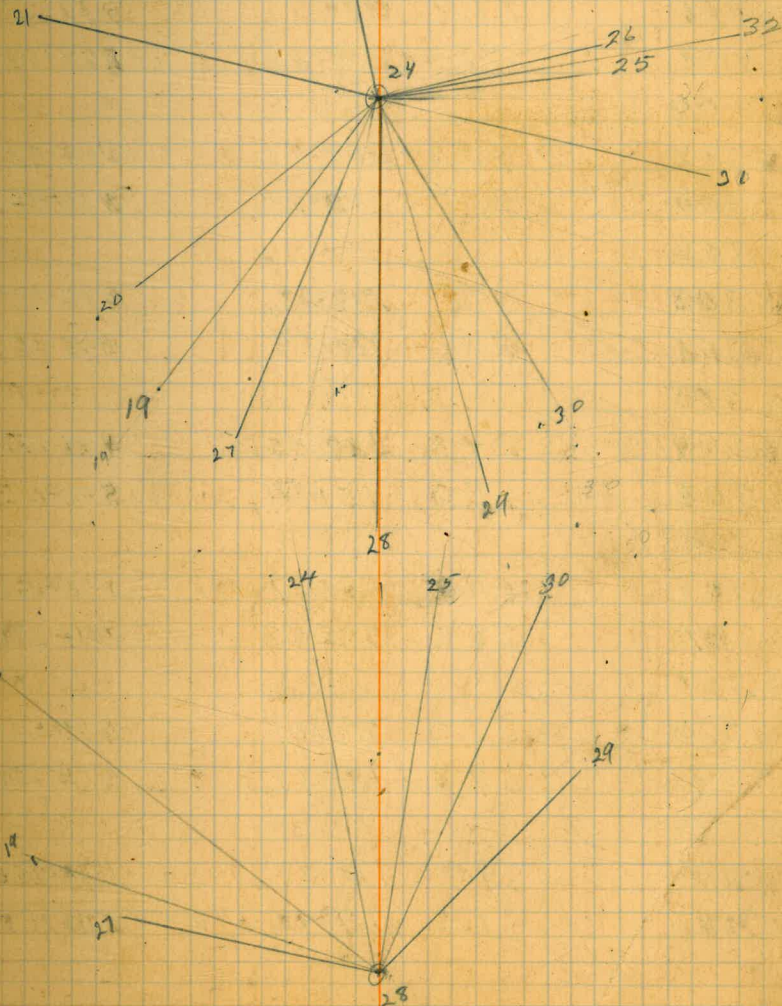
$\pi$ CP21				
FS on CP 22		0		N 13-20E
to TS 24		73-55 <sub>2</sub>		S 89-45E
to TS 30		89-05		S 75-45E
to TS 29		98-39		S 67-35E
to TS 27		123-15		S 41-45E
to TS 19		125-34 <sub>2</sub>		S 40-36E
to TS 20		130-33		S 34-50E

1-18-24  
S. E. Olyne  
Rudy Schrock  
Fay Murphy



Sta	Lt	Ht	Co	Mag Co
TS24				
FC to TS19	P	0		S20-15W
to CP17		9-12		S30-40W
to TS14		15- <sup>3</sup> <sub>17</sub>		S36-20W
to TS20		32-41		S53-50W
to CP21		81-462		N77-20W
to CP22		142-422		N16-00W
to CP26		221-28		N63-05E
to TS32		225-19 <sup>3</sup>		N67-00E
to CP25		228-59 <sub>2</sub>		N70-35E
to CP30		293-30		S28-35E
to TS31		247-0 <sup>1</sup> <sub>2</sub>		N88-50E
to TS29		308-35 <sub>2</sub>		S29-45E
to CP28		323-55 <sub>2</sub>		S28-36E
to TS27		351-56		S16-00E
to CP28				
FS to TS27		0		S84-30W
to TS19		7-45 <sub>2</sub>		N88-00W
to TS20		25-35		N70-00W
to TS24		65-50		N29-05W
to CP25		100-57 <sub>2</sub>		N5-00E
to TS30		108-49 <sub>2</sub>		N13-30E
to TS29		122-00		N25-20E

1-20-24  
S.E. Clynch  
Rudy Schmock  
Fox Murphy



Sta	Rt	Stadia	Lt	Co	Mag Co	
T@301						= CP1
BS on Sta 0		555	325-41		N47-40W	= CP2
to 302	✓	187	29-11	✓	N15-40E	= CP6
T@302						
BS on 301	✓	188	29-11		S17-40W	
to 303	✓	73.6	254-40		N62-00E	= CP7
T@303						
BS on 302	✓	73.6	254-40		S62-35W	
to 304	✓	41.8	100-21 <sub>2</sub>		N87-10E	= CP8
T@304						
BS on 303		41.9	100-21 <sub>2</sub>		S85-30W	
to 305	✓	249	329-03		S45-10E	
T@305						
BS on 304		248	329-03		N45-45W	
to 306	✓	130	151-57		S43-00E	
T@306						
BS on 305		129	151-57		N42-05W	
to 307		362	302-43	✓	S71-20E	
T@307						= CP9
BS on 306		363	302-43		N69-40W	
to 308	✓	98	175-22 <sub>2</sub>		S17-10E	
T@308						
BS on 307		99	175-22 <sub>2</sub>		N17-25X	
to 309		112	301-37 <sub>2</sub>	✓	S71-20E	

2075

1-22-24.  
SE. Clynch,  
Rudy Schmuck,  
Fay Murphy.

Sta	Rt	Stadia	Lt	Az.	Mag Co
T@ 309					
Bson 308		112		301-372	N71-10W
to 310	✓	209		146-582	S46-00E
T@ 310					
Bson 309		209		146-582	N46-25W
to 311	✓	262	1540 2120	335-402	S36-40E
T@ 311					
Bson 310		261		335-402	N37-15W
to 312		110	✓	87-092	N74-45E
T@ 312					
Bson 311		110		87-092	S74-55W
to 313	✓	212	1133 1137	293-392	S80-15E
T@ 313					
Bson 312		212		293-392	N79-45W
to 314		146	✓	340-362	N32-36W
T@ 314					
Bson 313		147		340-362	S32-53E
to 315	✓	135		167-472	N25-35W
T@ 315					
Bson 314		136		167-472	S26-30E
to 316		321	✓	349-032	N24-45W
T@ 316					
Bson 315		320		349-032	S25-05E
to 317	✓	95		171-23	N22-35W

1509

1-31-24  
S. E. Glynne  
Rudy Schmook  
Fax Murphy

= End of Canyon at Camp

Sta	Rt	Stadia	Lt	Az.	Mag. Co
T@317					
BS on 316		94		171-23	S 23-10 E
to 318	✓	188		356-372	N 17-50 E
T@318					
BS on 317		188		356-32	S 11-10 E
to 319	✓	90		205-562	N 12-00 E
T@319					
BS on 318		91		205-48	S 27-50 E
to 320	✓	77		55-31	N 49-15 E
T@320					
BS on 319		77		55-142	S 42-00 W
to 321	✓	285		268-562	N 74-55 E
T@321					
BS on 320		285		268-38	S 75-10 W
to 322	✓	381		106-42	N 79-15 E
T@322					
BS on 321		381		106-222	N 87-13 W
to 323	✓	485		288-49	S 86-05 E
T@323					
BS on 322		485		288-292	N 84-55 W
to 324	✓	148		117-34	S 74-00 E
T@324					
BS on 323		147		117-152	N 75-40 W
to 325	✓	128		317-40	S 55-50 E

1748

2-1-24  
 S.E. Clynch  
 Rudy Schmock  
 Fay Murphy

= CP 10

= CP 15

= CP 16

= CP 16

Sta	Rt	Stadia	Lt	Az	Mag Co
T@325					
Bson 324		127		317-40	N55-45W
to 326		115	✓	108-57	S84-35E
T@326					
Bson 325		115		108-57	N83-15W
to 327		110	✓	283-32	S88-55E
T@327					
Bson 326		111		283-32	N57-30W
to 328	✓	32½		131-47	S62-00E
T@328					
Bson 327	✓	32		131-47	N61-30W
to 329	✓	74½		25-51	S12-10W
T@329					
Bson 328		74½		25-51	N41-30W <sup>E</sup>
to 330		230	✓	113-53	S81-25E
T@330					
Bson 329		230		113-53	N80-15W
to 331		212	✓	275-26	N89-30E
T@331				(584-34E	585-34E
Bson 330		211		275-26	S81-05W
to 332	✓	260		110-42	S83-15E
T@332					
Bson 331		261		110-42	N82-65W
to 333		108	✓	239-50	N44-40E

1161

2-6-24  
S.E. Clyne  
Rudy Schmuck  
Fay Murphy



Sta	Rt	Stadia	Lt	Az	Mag Co.
T@333					
BS on 332	✓	107		239-50	S46-45W
to 334		171		107-03	N87-30E
T@334					
BS on 333		171		101-03	S87-45W
to Post		12.5 <sup>17.55</sup>	✓	31-36	S7-55W
to Stake		42	DA 22°	122-41	N70-55W
to 335	✓	125		164-59	N28-35W
T@335				301-40	S72-10E
BS on 334		126		301-40	N71-10W
to 336		108	✓	107-01	S87-00E
T@336					
BS on 335		108		107-01	N86-40W
to 337	✓	212		288-37	S85-15E
T@337					
BS on 336		213		288-37	N85-25W
to 338	✓	155		128-04	S65-30E
T@338					
BS on 337		155		128-04	N65-40W
to 339		142	✓	283-48	S89-40E
T@339					
BS on 338		142		283-48	S89-40W
to 340	✓	88		113-07	S81-00E
T@340					
BS on 339		88		113-07	N80-00W
to 341	✓	315	1152	307-58	S66-00E

2-8-24  
S.E. Clyne  
Rudy Schmock  
Fay Murphy

=CP17

Round Post 21.6 ft Stake below

S 24, S 23, W.P. Markings 31.65 to 45.00 ft below

4x4 Post = 38.94 ft.

π@TS29

FsonCP28

to TS20

to CP21

to TS24

to CP25 ?

to TS30

π@CP25

FsonTS31

to TS30

to TS29

to CP28

to TS19

to TS24

to Sta 56.35 DA. 12°40'

to B.S 40.45

π@TS32

FsonTS31

to TS24

to CP26

to Sta 244 151.4 1/2 DA. 10°50'

0

68-20<sub>2</sub>

81-24

108-30<sub>2</sub>

140-57<sub>2</sub>

155-13<sub>2</sub>

0

58-47

106-09<sub>2</sub>

128-15<sub>2</sub>

0

28-32<sub>2</sub>

36-24

358-05<sub>2</sub>

S32-30W

N87-45W

N70-15W

N46-10W

N11-30W

N9-00E

S71-45E

S14-20E

S35-50W

S53-15W

S23-15W

S52-35W

S59-30W

S21-25W

to Sta. 398

= Sta 192

Brass Hub G L Survey

1518  
2919  
1916

$\pi$ @CP30

FS on TS 29

To

0

S 2-30W

To TS 27

45-37

S 48-40W

To TS 19

54-23

S 54-20W

To TS 14

57-49

S 60-00W

To TS 20

79-08<sub>2</sub>

S 81-15W

To CP 21

101-37

N 75-50W

To TS 24

118-10

N 59-30W

To CP 25

164-13

N 15-35W

To CP 26

178-39

N 00-45E

TS 31

190-32<sub>2</sub>

N 12-25E

$\pi$ @TS31

FS on CP30

0

S 13-20W

To TS 27

20-19<sub>2</sub>

S 33-55W

To TS 19

26-11

S 38-30W

To TS 14

31-37

S 44-05W

To TS 24

61-10

S 73-55W

To CP 25

94-52<sub>2</sub>

N 72-20W

To CP 22

96-23

N 70-45W

To CP 26

148-32

N 19-20W

To TS 32

190-56<sub>2</sub>

N 22-15E

To Sta 260

DA 10° 136-02<sub>2</sub>

N 31-10W

N 16-05-15E  
10  
32  
10  
50  
37  
2

N 58-5-10E  
8  
26  
27

Sta	Rt	Stadia	Lt	Az.	Mag Co
T@ 341					
Bson 340		315		307-58	N66-00W
to 342	✓	93		143-50	S50-05E
T@ 342					
Bson 341		93		143-50	N50-05W
to 343		203	✓	318-45 <sub>2</sub>	S55-00E
T@ 343					
Bson 342		203		318-45	N55-00W
to 344	✓	189		153-51	S40-05E
T@ 344					
Bson 343		189		153-51	N40-00W
to 345		83	✓	313-31 <sub>2</sub>	S60-20E
T@ 345					
Bson 344		82		313-31 <sub>2</sub>	N60-15W
to 346		175	✓	122-37	S71-30E
T@ 346					
Bson 345		175		122-37	N70-10W
to 347		181	✓	199-19 <sub>2</sub>	N5-15E
T@ 347					
Bson 346		182		199-19 <sub>2</sub>	S5-20W
to 348		192	✓	13-21	N00-20W
T@ 348					
Bson 347		192		13-21	S00-15E
to 349		263		175-53	N17-15W

2-9-24  
S.E. Glyne

End of Horse Shoe Bend

Sta	Rt	Stadia	Lt	Az	Mag Co
T@349					
Bson 348		264		175-53	S17-15E
to 350		130	✓	297-21 <sub>2</sub>	N76-35W
T@350					
Bson 349		129		297-21 <sub>2</sub>	S76-30E
to 351	✓	340		132-05	N61-45W
T@351					
Bson 350		340		132-05	S61-40W
to 352	✓	262		330-22 <sub>2</sub>	N43-45W
T@352					
Bson 351		261		330-22 <sub>2</sub>	S43-00E
to 353	✓	141		168-03	N25-50W
T@353					
Bson 352		142		168-03	S25-45E
to 354	✓	66		41-55 <sub>2</sub>	N29-00E
T@354					
Bson 353		66		41-55	S28-00W
to 355		122	✓	203-31 <sub>2</sub>	N9-40E
T@355					
Bson 354		122		203-31 <sub>2</sub>	S9-45W
to 356	✓	161		39-03	N25-00E
T@356					
Bson 355		160		39-03	S24-50W
to 357	✓	93		276-01 <sub>2</sub>	N81-55E

1484

2-10-24  
S.E. Clyne  
Rudy Schmock  
Fay Murphy

Sta	Rt	Stadia	Lt	Az	Mag Co
T@ 357					
BS on 356		93		276-01 <sub>2</sub>	S 81-55 W
to 358		75	✓	26-22 <sub>2</sub>	N 12-30 E
T@ 358					
BS on 357		75		26-22 <sub>2</sub>	S 12-05 W
to 359		144	✓	130-48 <sub>2</sub>	N 63-13 W
T@ 359					
BS on 358		144		130-48 <sub>2</sub>	S 63-15 E
to 360	✓	188		9-10 <sub>2</sub>	N 4-40 W
T@ 360					
BS on 359		188		9-10 <sub>2</sub>	S 4-45 E
to 361	✓	182		198-25	N 4-50 E
T@ 361					
BS on 360		182		198-25	S 4-25 W
to 362	✓	75		25-24	N 11-20 E
T@ 362					
BS on 361		75		25-24	S 11-20 W
to 363	✓	64		244-35 <sub>2</sub>	N 51-00 E
T@ 363					
BS on 362		64		244-35 <sub>2</sub>	S 50-30 W
to 364	✓	223		72-31 <sub>2</sub>	N 59-00 E
T@ 364					
BS on 363		222		72-31 <sub>2</sub>	S 58-00 W
to 365	✓	278		255-16	N 59-15 E

1043

2-11-24  
S.E. Clyne  
Rudy Schmock  
Fay Murphy

= CP 18

Sta	Rt	Stadia	Lt	Az	Mag Co
T@373					
Bson 372		295		328-57	N45-10W
to 374		153	✓	87-18 <sub>2</sub>	N72-50E
T@374					
Bson 373		152		87-18 <sub>2</sub>	S73-10W
to 375		228	✓	242-47	N48-30E
T@375					
Bson 374		228		242-47	S47-35W
to 376		130	✓	59-21 <sub>2</sub>	N45-25E
T@376					
Bson 375		130		59-21 <sub>2</sub>	S45-10W
to 377	✓	175		268-03	N73-45E
T@377					
Bson 376		175		268-03	S73-55W
to 378	✓	55		106-18 <sub>2</sub>	S87-50E
T@378					
Bson 377		55		106-18 <sub>2</sub>	N87-45W
to 379	✓	235		313-19	S61-00E
T@379					
Bson 378		234		313-19	N60-45W
to post		224	✓	71-52	N57-55E
to 380	✓	320		227-03	S32-50N
T@380					
Bson 379		319		227-03	N33-00E
to 381		215	✓	309-30	S64-50E

18/2

2-16-24  
S.E. Clynch  
Rudy Schmock  
Foy Murphy

S 31 02  
61.39  
N 87-18<sub>2</sub> E

24 31

N 62 47 E

3-25-30

N 59-21<sub>2</sub> E

28-41<sub>2</sub>

N 88-03 E

18-15-30

S 73-41<sub>2</sub> E

27-00-30

S 46 41 E

93-44'

Brass Post. USG Survey

N 47 03 E

97-33

S 50 30 E

WC	S18
S13	S19
S24	R5E
R4E	T17S
	1915





Sta	Rt	Stadia	Lt	Az	Mag Co
T@388					
BSon387		165		71-00	S84-15W
To 389		145	✓	239-51	N72-15E
T@389					
BSon388		145		239-51	S72-45W
To 390		118	✓	11-04	N23-55E
T@390					
BSon389		118		11-04	S24-05W
To 391		197	✓	144-45	N22-25W
T@391					
BSon390		197		144-45	S23-00E
To 392	✓	120		359-09	N11-20E
T@392					
BSon391		120		359-09	S12-00W
To 393		90	✓	154-54	N12-05W
T@393					
BSon392		91		154-54	S12-20E
To 394	✓	120		14-43	N27-10E
T@394					
BSon393		120		14-43	S27-40W
To 395		171	S34°18'	145-41	N21-40W
T@395					
BSon394		171		145-41	S21-50E
To 396	✓	113	N26-08E	26-08	N38-45E

1127

2-23-24

S.E. Clyne

Rudy Schmock

Fay Murphy

N 51° W

S 351° 3

S

34° - 24

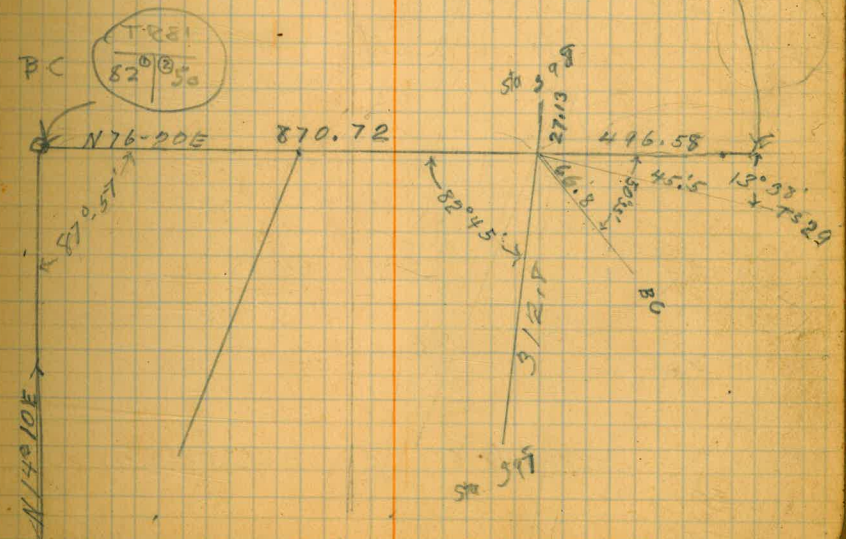
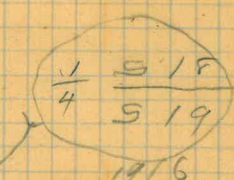
2-25-24

72

Sta	HT	Stadia Lt	Az	Mag Co
T@396				
BS on 395	113	N26-08E	26-08	S38-40W
to 397	133	N24-52E	204-52	N38-15E
T@397				
BS on 396	133	44-22	204-52	S37-50W
to 398	343	N19-29W	340-30	N7-35W
T@398				
BS on 397	342	31-45E	340-30	S6-40E
to T529	✓			286-38 S60-45E
to 399	✓	410	N12-16E	192-16 N25-15E
T@399				
BS on 398	409	20-59E	192-16	S25-15W
to 400	247	N08-43W	351-16	N4-25E
T@400				
BS on 399	247	15-06	351-16	S4-05W
to 401	✓	246	N06-22E	186-22 N19-10E
T@401				
BS on 400	245	11-14	186-22	S19-00W
to 402	248	N04-51W	355-08	N7-50E
T@402				
BS on 401	246		355-08	S7-15W
to 403	139	S8W39E	93-20	N74-40W
T@403				
BS on 402	138		93-20	S74-00E
to 404	✓	190	31-35E	328-23 N17-30W

about 80ft SE  
to US G Survey  
Near T529

to US G.L.O. Survey Brass Cap  
ft





3-20-24

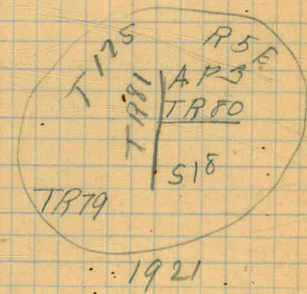
Sta	Pt.	Stadia	Lt	Az	Mag Co
T@272					
BS on 271		65	S 88 $\frac{1}{2}$ E	91-33 $\frac{1}{2}$	S 84-35 E
T@273		195	S 03	176-48 $\frac{1}{2}$	S 0-40 N
T@273					
BS on 272		196	S 03 11 $\frac{1}{2}$ E	176-48 $\frac{1}{2}$	N 0-40 E
T@274	r	315	N 15-45 E	15-45 S	19-35 W
T@274					
BS on 273		315		15-45	N 19-15 E
T@275		240	S 48-56 $\frac{1}{2}$ E	136-03 $\frac{1}{2}$	S 40-05 E
T@275					
BS on 274		240		136-03 $\frac{1}{2}$	N 40-05 N
T@276		118	N 59-37 $\frac{1}{2}$ E	59-37 $\frac{1}{2}$	S 63-35 W
T@276					
BS on 275		118		59-37 $\frac{1}{2}$	N 63-40 E
T@277		150	S 02-48 $\frac{1}{2}$ E	177-11 $\frac{1}{2}$	S 0-45 W
T@277					
BS on 276		150		177-11 $\frac{1}{2}$	N 1-00 E
T@278		158	N 04-06 E	4-06	S 7-45 W
T@278					
BS on 277		157		4-06	N 8-10 E
T@279		138	S 08-00 $\frac{1}{2}$ E	171-59 $\frac{1}{2}$	S 0-45 E
T@279					
BS on 278		138		171-59 $\frac{1}{2}$	N 4-05 W
T@280		160	N 64-37 $\frac{1}{2}$ E	244-57 $\frac{1}{2}$	N 69-30 E

3-21-24

Sta	Rt	Stadia	Lt	Az	Mag Co
To 280					
Bson 279		160	N 64-37 1/2 E	244-37	N 68-45 E
To 281	✓	227		178-15	S 2-05 W
To 281					
Bson 280		228	S 01-44 1/2 E	178-15	N 2-20 E
To 282	✓	100		81-04	S 85-05 W
To 282					
Bson 281		100	N 81-04 1/2 E	81-04	N 85-20 E
To 283		190	✓	234-18	S 58-45 W
To 283					
Bson 282		190	N 54-18 1/2 E	234-18	N 58-10 E
To Brassl		76	✓	330-37	S 25-30 E
To 404		137	✓	9-19	S 13-10 W
To 404					
Bson 283		137		9-19	N 13-10 E
To Br. Cr		91		40-53	N 44-40 E
To TS 31				9-05	N 13-15 E
To TS 24				296-43	N 59-00 W
To TS 19				232-56	S 57-30 W
To TS 29				178-33	S 2-40 W
To St 403		190		157-02	S 19-00 E
To CP 28 ?				190-01	S 14-15 W

554-18  
29 23  
8

US Gen Land Survey  
= CP 30



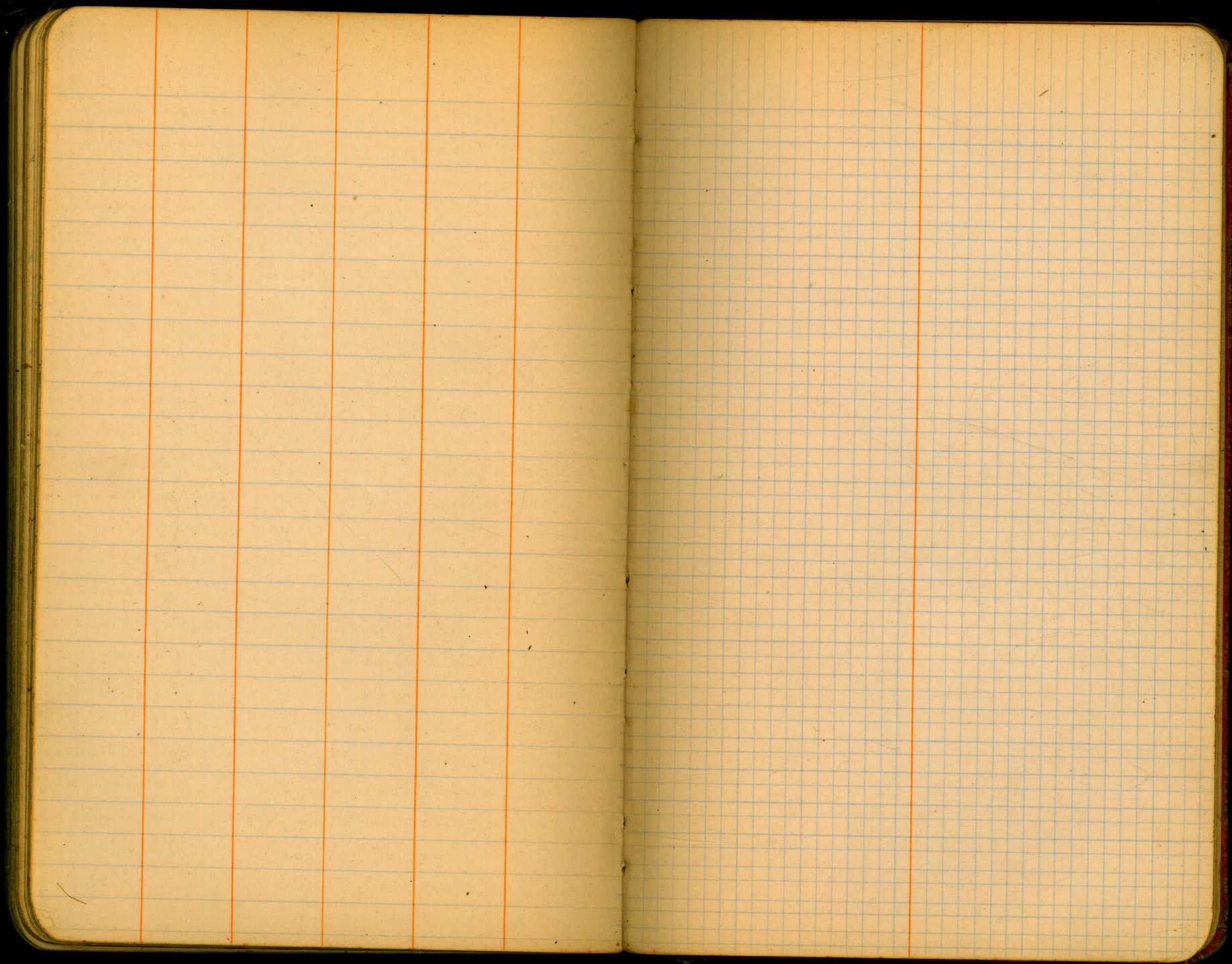
N 09-19 1/2 E

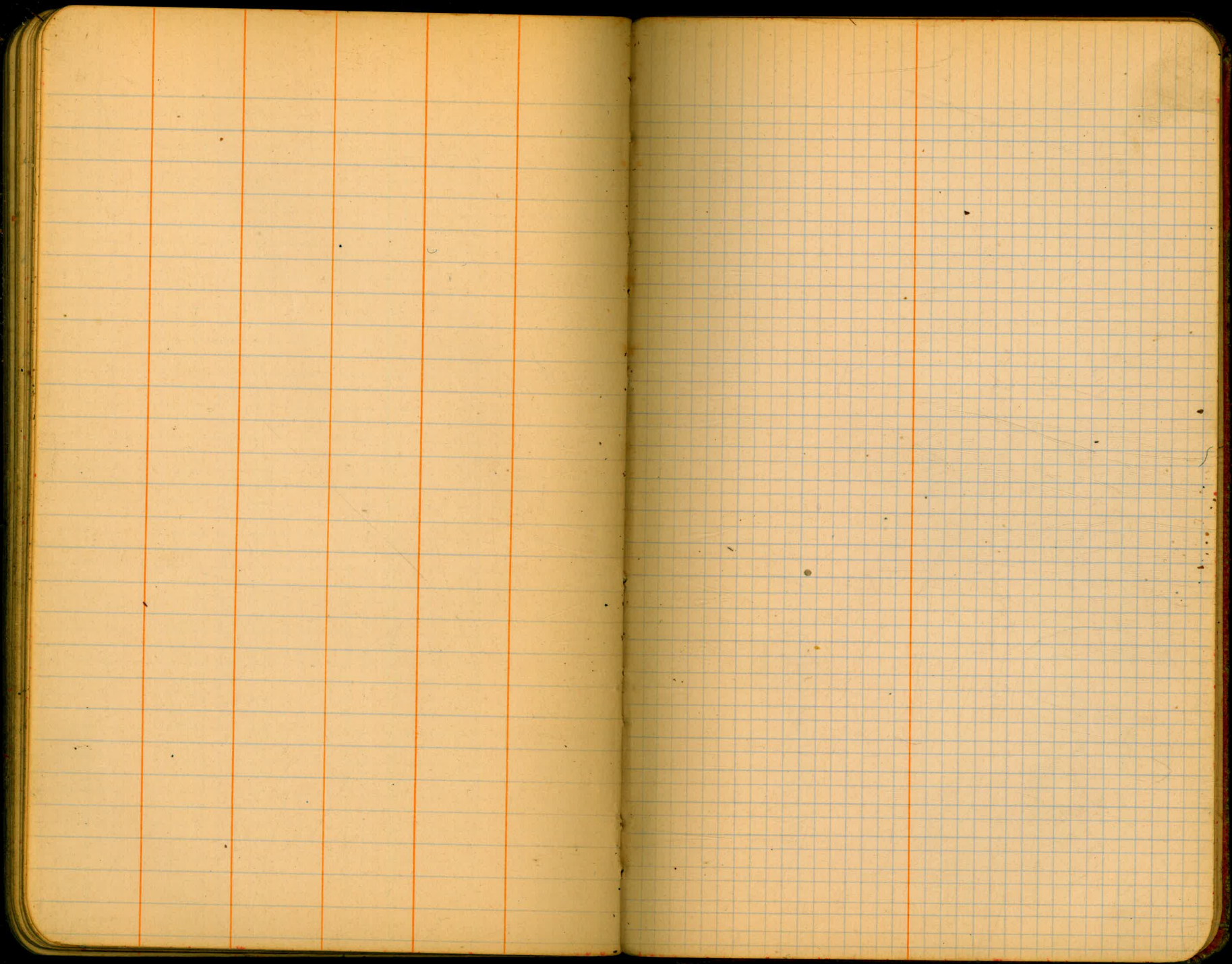
Sta	Distance	Lt	Rt	Co	Mag Ca
To Stake					
to Stake	0	0			N14-10W
to CP12	333-54				N41-00W
to TS14			17-57		N2-35E
to TS24			31-35		N16-30E
to TS19			44-18		N29-00E
to CP18			54-41		N39-20E
to CP17			33-19		N49-00E

= Monument near Sta 334, CP17.

= 2X4 Post (Burned) near Sta 50

= Sta 334







DIRECTIONS FOR USE OF TABLES

TABLE No. 1.

Distance of slope stake from side or shoulder stake for any width roadway, slope 1 $\frac{1}{2}$  to 1. If ground is nearly level, the cut or fill at side stake is located by the double entry method in

left column and top row. The number in body

of table in same row and column gives distance

level estimate the difference in elevation between

the side stake and slope stake by this

amount if cut, elevate it all. Add this amount

to cut or subtract from the side stake to

rod at the top of cut. If it does not make the right adjustment

target. If it does not make the right adjustment

necessity.

TABLE No. 2.

To find Tangent and External for curve of

any other degree, divide by degree of curve and

add correction found in column of corrections.

Degree of curve with a given  $T$  may be found

by dividing tangent (or external), opposite  $T$  by

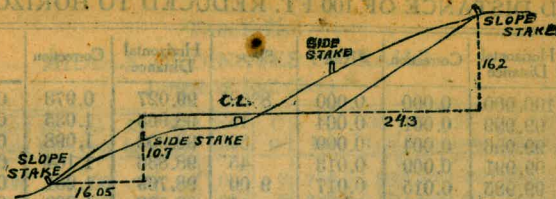
given tangent (or external).

The distance from a point on the tangent to

the curve is very nearly the square of the tangent

length divided by twice the radius.

INCLINED FACE OR 100 FT. REDUCED TO HORIZONTAL



DISTANCES FROM SIDE STAKES FOR CROSS-SECTIONING.

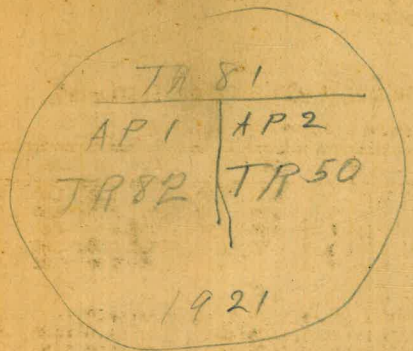
SLOPE 1 1/4 TO 1. ROADWAY OF ANY WIDTH.

	0	.1	.2	.3	.4	.5	.6	.7	.8	.9	
0	0 00	0 15	0 30	0 45	0 60	0 75	0 90	1 05	1 20	1 35	0
1	1 50	1 65	1 80	1 95	2 10	2 25	2 40	2 55	2 70	2 85	1
2	3 00	3 15	3 30	3 45	3 60	3 75	3 90	4 05	4 20	4 35	2
3	4 50	4 65	4 80	4 95	5 10	5 25	5 40	5 55	5 70	5 85	3
4	6 00	6 15	6 30	6 45	6 60	6 75	6 90	7 05	7 20	7 35	4
5	7 50	7 65	7 80	7 95	8 10	8 25	8 40	8 55	8 70	8 85	5
6	9 00	9 15	9 30	9 45	9 60	9 75	9 90	10 05	10 20	10 35	6
7	10 50	10 65	10 80	10 95	11 10	11 25	11 40	11 55	11 70	11 85	7
8	12 00	12 15	12 30	12 45	12 60	12 75	12 90	13 05	13 20	13 35	8
9	13 50	13 65	13 80	13 95	14 10	14 25	14 40	14 55	14 70	14 85	9
10	15 00	15 15	15 30	15 45	15 60	15 75	15 90	16 05	16 20	16 35	10
11	16 50	16 65	16 80	16 95	17 10	17 25	17 40	17 55	17 70	17 85	11
12	18 00	18 15	18 30	18 45	18 60	18 75	18 90	19 05	19 20	19 35	12
13	19 50	19 65	19 80	19 95	20 10	20 25	20 40	20 55	20 70	20 85	13
14	21 00	21 15	21 30	21 45	21 60	21 75	21 90	22 05	22 20	22 35	14
15	22 50	22 65	22 80	22 95	23 10	23 25	23 40	23 55	23 70	23 85	15
16	24 00	24 15	24 30	24 45	24 60	24 75	24 90	25 05	25 20	25 35	16
17	25 50	25 65	25 80	25 95	26 10	26 25	26 40	26 55	26 70	26 85	17
18	27 00	27 15	27 30	27 45	27 60	27 75	27 90	28 05	28 20	28 35	18
19	28 50	28 65	28 80	28 95	29 10	29 25	29 40	29 55	29 70	29 85	19
20	30 00	30 15	30 30	30 45	30 60	30 75	30 90	31 05	31 20	31 35	20
21	31 50	31 65	31 80	31 95	32 10	32 25	32 40	32 55	32 70	32 85	21
22	33 00	33 15	33 30	33 45	33 60	33 75	33 90	34 05	34 20	34 35	22
23	34 50	34 65	34 80	34 95	35 10	35 25	35 40	35 55	35 70	35 85	23
24	36 00	36 15	36 30	36 45	36 60	36 75	36 90	37 05	37 20	37 35	24
25	37 50	37 65	37 80	37 95	38 10	38 25	38 40	38 55	38 70	38 85	25
26	39 00	39 15	39 30	39 45	39 60	39 75	39 90	40 05	40 20	40 35	26
27	40 50	40 65	40 80	40 95	41 10	41 25	41 40	41 55	41 70	41 85	27
28	42 00	42 15	42 30	42 45	42 60	42 75	42 90	43 05	43 20	43 35	28
29	43 50	43 65	43 80	43 95	44 10	44 25	44 40	44 55	44 70	44 85	29
30	45 00	45 15	45 30	45 45	45 60	45 75	45 90	46 05	46 20	46 35	30
31	46 50	46 65	46 80	46 95	47 10	47 25	47 40	47 55	47 70	47 85	31
32	48 00	48 15	48 30	48 45	48 60	48 75	48 90	49 05	49 20	49 35	32
33	49 50	49 65	49 80	49 95	50 10	50 25	50 40	50 55	50 70	50 85	33
34	51 00	51 15	51 30	51 45	51 60	51 75	51 90	52 05	52 20	52 35	34
35	52 50	52 65	52 80	52 95	53 10	53 25	53 40	53 55	53 70	53 85	35
36	54 00	54 15	54 30	54 45	54 60	54 75	54 90	55 05	55 20	55 35	36
37	55 50	55 65	55 80	55 95	56 10	56 25	56 40	56 55	56 70	56 85	37
38	57 00	57 15	57 30	57 45	57 60	57 75	57 90	58 05	58 20	58 35	38
39	58 50	58 65	58 80	58 95	59 10	59 25	59 40	59 55	59 70	59 85	39
40	60 00	60 15	60 30	60 45	60 60	60 75	60 90	61 05	61 20	61 35	40
41	61 50	61 65	61 80	61 95	62 10	62 25	62 40	62 55	62 70	62 85	41
42	63 00	63 15	63 30	63 45	63 60	63 75	63 90	64 05	64 20	64 35	42
43	64 50	64 65	64 80	64 95	65 10	65 25	65 40	65 55	65 70	65 85	43
44	66 00	66 15	66 30	66 45	66 60	66 75	66 90	67 05	67 20	67 35	44
45	67 50	67 65	67 80	67 95	68 10	68 25	68 40	68 55	68 70	68 85	45
46	69 00	69 15	69 30	69 45	69 60	69 75	69 90	70 05	70 20	70 35	46
47	70 50	70 65	70 80	70 95	71 10	71 25	71 40	71 55	71 70	71 85	47
48	72 00	72 15	72 30	72 45	72 60	72 75	72 90	73 05	73 20	73 35	48
49	73 50	73 65	73 80	73 95	74 10	74 25	74 40	74 55	74 70	74 85	49
50	75 00	75 15	75 30	75 45	75 60	75 75	75 90	76 05	76 20	76 35	50

Computed by L. Leland Locke.

Along side of Concrete Monument  
on Island

4x4 Post.



13 | 18  
24 | 19

760.62  
496.55  
1257.17

Concrete Man - Near Big Sign



- N84-09 E -

Sight -  
AT 14 To 20

77° 44'

1921

ACROSS LAKE

23-28

62

85.92

N84-09 E

97-44

46-50

23-21 7.92

N 06-25 E -

23-25 R

N 79-20 E

N 29-50 E

30-48

S 29-50 W

110-45

1 1/2" Gas Pipe with Brass cap in field  
near gate.



1918

22° 3' E 45-03 R  
AT 19 - ST 14 To 28

25° 3' L 78° 24'  
37-12

M 570-371