

EL CAPITAN
PIPE LINE SURVEY

Double Rod Levels

PASTS

FIELD BOOK

No. 385

W 1999



314.84
MICROFILMED
JAN 11 1965

9.7 - 307.1
1.0 - 313.8
6.7

Our Leather Bound Engineers' Note Books are carried in the following rulings:

- No. 380 LEVEL BOOK. Left and Right Hand Page the same as Left Hand Page of this Book.
- No. 382 FIELD BOOK. Left Hand Page as in this Book, Right Hand Page 4 x 4 to the inch, Center Line Red.
- No. 384 MINING TRANSIT BOOK. Left Hand Page as in this Book, Right Hand Page 8x8 to the inch, Center Line Red.
- No. 385 FIELD BOOK. Left Hand Page as in this Book, Right Hand Page 8 vertical and 4 horizontal lines to the inch, Center Line Red.

We also carry the Note Books listed above, bound in extra strong Fabri-Hide (otherwise the same quality of book), which can be furnished at a somewhat lower price.

In ordering Fabri-Hide covered books, add the letter "F" to catalog number.

THE FREDERICK POST CO.
ENGINEERING and DRAFTING SUPPLIES
IRVING PARK STATION
CHICAGO, ILL.

Index to El Capitan Levels.

Pages Inclusive

- 1-6 Abandoned
- 7-10 Copy of 1-6
- 11-25 Continuation of level notes.
- 26-30 Abandoned
- 31-35 Copy of 26-30
- 37-59 Continuation of level notes
- 77 A check on B.M. Σ 90-90 $\frac{1}{2}$ -90a
- 78 Abandoned
- 79 Abandoned
- 80 Lower half of page
check on B.M. Σ at 1132+60
and 1137+60
- 60- Relocation of B.M. between
Sta. 962+96.16 and 00+0 of Bissels line
or Between B.M. Σ - and B.M. Σ 115a

①

+ #1	+ #2	↑ #1	↑ #2	- #1	- #2
		412.281			
3.414		412.281	00000		
		406.340	9.270	9.343	
3.328	3.402	406.339	406.340		
		404.383			
4.237	4.257	404.385	404.381	6.192	6.216
		404.354			
4.255	5.367	404.355	4.163	5.375	

April 7, 1926 Intermittent Rain
 Rup. T, Todd, Rey, Rod, Anderson, Duermitt, Rec.
 Elev. #1 408.867
 Elev. #2 408.867
 B.M.S.
 408.867
 Peppertree at
 Filling Sta. (1/2 mile N)

By Boren
 Checked El. 400.256
 Rec. El. Co. B.M. #21
 400.356 B.M. #49
 6 R.
 4.35 + 85

3.505	4.737	403.725	403.725	4.414	4.478
		401.683			
2.374	2.434	401.685	401.681		
		402.749	5.102	5.323	
4.126	4.347	402.749	402.749		
		401.542	4.901	5.105	
3.692	3.900	401.540	401.544		
		399.370	5.570	5.769	
3.400	3.596	399.372	399.369		

One P.M.
 Rup. T, Bailey, Todd, Rey, Rod,
 Anderson, Rec.
 Intermittent Rain

399.311	399.247
398.623	398.402
397.848	397.644

Note: Mistake made here. Minus rods
 (5.102 and 5.723) were subtracted
 from H.I. (403.725) instead of
 from H.I. (401.683)
 Equation

$$HI \text{ or Elev.} = HF \text{ or Elev.} + 2.142$$
 old Now

By Boren
 Rec. El. 399.776
 Co. B.M. #20 (+50)
 20 R.
 449.745
 Pole # 72479

+	#1	#2	-	#1	#2
		399.370			
5.644	5.311	399.463 399.463	5.551	5.218	399.819 399.152
4.109	4.404	398.918 398.918	4.654	4.749	394.209 394.514
Note - Rain mixed turns.					
4/8/26-1.P.M.		396.691			
1.229		000,000 000,000			
3.831	3.559	393.973 393.945	6.577	6.309	390.114 390.382
3.487	3.359	391.070 391.071	6.359	6.293	387.584 387.711
4.380	4.329	390.300 390.301	5.149	5.099	385.921 385.971
3.885	4.691	390.053 389.053	5.132	4.938	385.168 385.362
4.664	4.512	390.045 390.045	4.672	4.520	385.381 385.533

477-26
Fup. K Rey; Andy Rod. Todd - Notes. Bailey stakes.
E1 #1 E1 #2 B.M.s

Using this E1 to get K
39.5462 B.M. #51 Nail in Pole #72476
40' L. sta. #457427
E1 393.440

(uncorrected)
Note discrepancy - E1 rod.
Must be passed. I ignored
the mistake and kept with
the correction of 2.042

+ #1 + #2 T 390,045 T*2 - #1 - #2 E1 #1 E1 #2 B.M.

P.M. #3 B.M. #1
 5160

Power Pole
 #JR Rec. E1 = 474 + 04 # 72947
 383.857 - 40' L.

~~4443 4531 389,400 389,401 5290 5275 384,955 384,770 384,885~~

~~3.763 3.591 388,356 388,356 4506 4635 384,594 384,765~~

4-9-26 7:30 A.M. Cloudy
 Rep. Rock. Early T.D. Sol.

Tack off B.M.
 384,885

~~4.278 389,163 4.529 4.385 384,654 384,594~~

~~4.215 4.062 388,500 388,900 388,654 388,594~~

~~4.648 4.388 389,616 389,616 388,907 383,883~~

Co. E.M. #12 381.45
 48-115 72468
 E1 38001
 Rec. E1 211.717
 B.M. #53

~~3.471 4.546 387,211 387,213 383,742 383,663 383,742~~

~~4.018 3.884 385,774 385,773 381,258 381,859~~

B.M. #53 W.
 5' R 488 + 00
 Hub. Tol. File # D24976T

~~3.592 4.102 384,828 384,828 4.538 5.048 381,236 380,726 381,236~~

~~7.768 7.918 387,612 387,614 4.982 5.185 379,846 379,643~~

B.M. #54 Co. #17
 9' L at 495 + 82
 Rec. E1. 373.508
 Co. E1.

~~2.183 2.482 383,078 383,079 6.116 6.418 381,496 381,194 381,496~~

T #1	T #2	T #1	T #2	- #1	- #2
		383,676			
		381,396		6.332	6.347
4.048	4.066	381,394 381,392			
		381,194		4.134	4.175
3.934	3.972	381,192 381,193			
		380,648		4.600	4.428
4.054	3.883	380,648 380,649			
		379,779		4.582	4.607
3.713	3.738	379,779 379,779			
		379,880		3.980	4.003
4.080	4.274	379,879 379,880			
		379,813		2.478	4.637
3.410	5.571	379,812 380,814			
		377,807		9.488	9.809
2.543	2.862	377,807 377,807			
		373,112		6.356	4.645
5.604	3.690	373,112 373,112			
		372,850		4.566	4.610
4-10-26, Clear	9.15				
4.300	4.347	372,848 372,851			
		371,098		5.368	4.904
3.616	3.153	371,098 371,099			
		369,353		5.399	5.320
3.634	3.645	369,353 369,353			

Abandoned B.M.S

377,346	377,331		
377,262	377,221		
376,594	376,766		
376,066	376,041		
375,799	375,606	375,799	
377,402	375,213	377,402	
371,325	371,064		
367,511	369,222	367,511	
368,548	368,504		
369,482	369,946		
365,719	365,708		

B.M. = 55
 Stationing End of
 R.R. Survey to
 85' R. of 1000 ft
 Road 51, 377,011
 B.M. = 56
 Stationing End of
 R.R. Survey to
 1740' of 1000 ft
 (Old B.M. on the
 left side of road
 1000' from
 stationing 1105)
 Co. B.M. = 46
 El. 365.098
 Road 51, B.M. = 57
 365,510
 10' R. 51, 470

③

#1 +	#2 +	#1 -	#2 -
		369,353	
		Red #3 B.M. 1.147	
		(369,030) 369,032	5.086 4.741
4.765	4.416	369,032 369,032	
		368,952	5.065 4.458
4.286	4.373	368,952 368,952	
		369,071	4.716 4.347
4.842	4.475	369,071 369,071	
		369,146	4.812 4.235
4.878	4.302	369,146 369,146	
		369,610	4.558 3.769
5.024	3.932	369,610 369,610	
		369,171	4.688 4.670
4.248	4.232	369,171 369,171	
		369,028	4.296 4.330
4.152	4.249	369,028 369,028	
		368,772	5.249 4.822
4.925	3.965	368,772 368,772	
			4.000 4.048

Abandoned

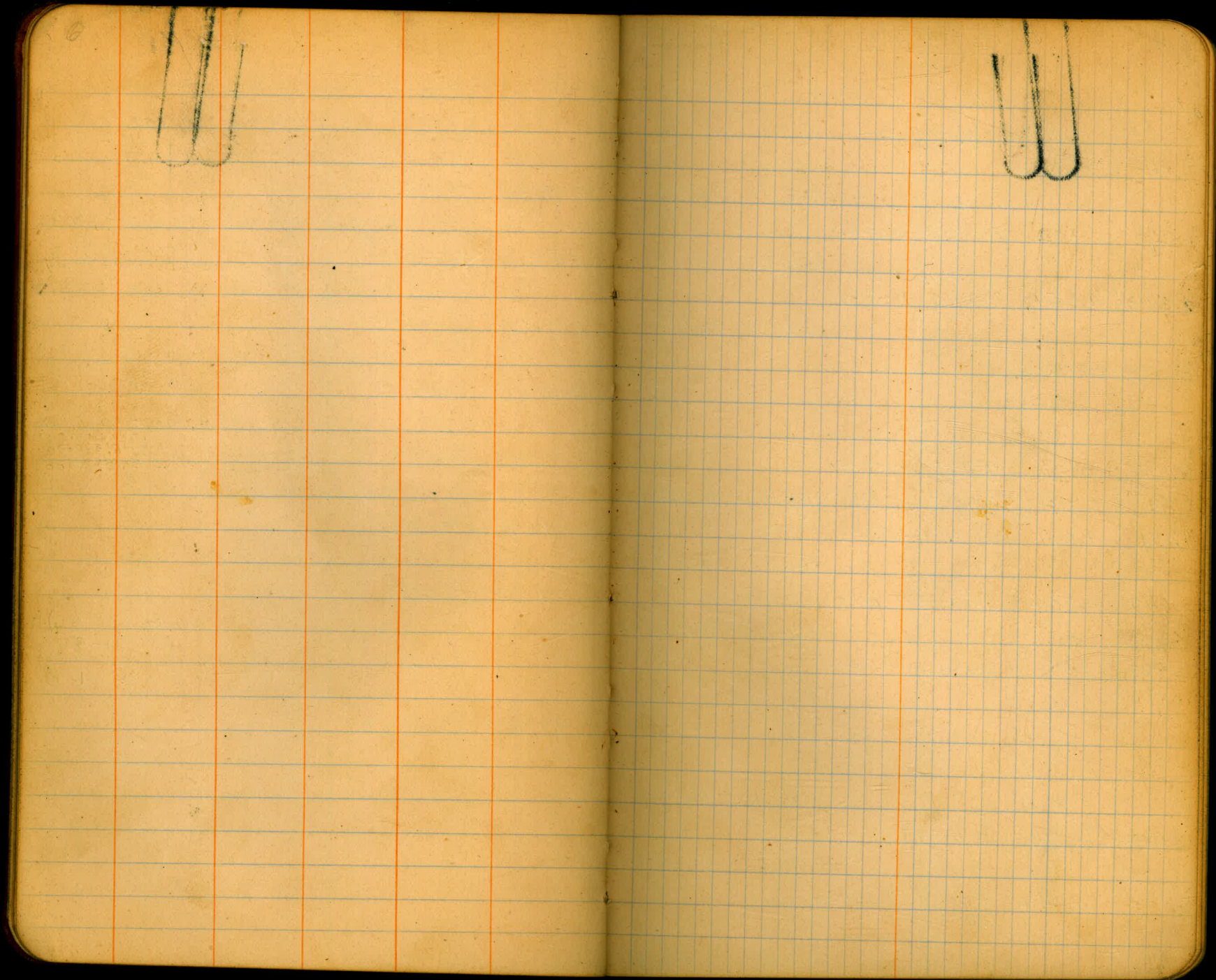
364,267	364,612
363,967	364,579
364,246	364,605
364,267	364,612
364,588	365,277
364,222	364,940
364,875	364,761
363,779	364,806
364,772	364,724

B.M. #28. Concrete
 Pillar. 10' L 520185
 Rec. El. 364,203

Discrepancy of .002
 Equation (Corrected)
 HI or Elev = HI or Elev + 2.044
 old New

B.M. #53. P.P. B.M.
 Culvert. SE Corner Post
 No. 20 R. 537722
 Rec. El. 364,588

B.M. #60. (10' dia)
 15' R. 544785
 Elev. (361,922)
 Rec. El. 361,779



Corrected Notes				"Copy"	
+ #1	+ #2	+ #1	+ #2	- #1	- #2
		412	218		
3.414				9.270	9.343
		406.340			
2.328	3.402	406.339	406.340		
		404.383		6.192	6.216
4.237	4.251	404.385	404.381		
				4.163	5.395
		403.725			
3.505	4.737	403.725	403.725		
		401.683			
2.374	2.434	401.683	401.681	4.414	4.476
		400.707		5.102	5.323
4.126	4.347	400.707	400.707		
		399.500		4.901	5.105
3.692	3.900	399.499	399.502		
		399.928		5.590	5.769
3.400	3.596	399.928	399.924		
		399.421		5.551	5.218
5.644	5.311	399.421	399.421		
		396.876		4.654	4.949
4.129	4.404	396.876	396.876		
				Red #3	3.456

7-7-26 Intermittent Rain		Rey - Rod		And - Rec.	
Rep T	Todd	And	Rec.	Rep T	Todd
Elev	Elev.	B.M.#			
		400.857			
		403.011	402.938		
		400.148	400.124		
		400.220	398.988	✓ 400.220	Rec. E. 400.256
					Co. B.M. #21 400.356
					B.M. #49 694.75405
					Ca. B.M. #20 400.356
					1:00 P.M. Rey - Rod And - Rec.
					Occasional showers
		399.311	399.247		
		398.581	398.360		
		395.606	395.602		
		393.930	393.731	✓ 393.930	Rec. E. 393.949
					Co. B.M. #20 400.356
					File # 12071
					B.M. #50 20K 449+105
					Rey - Rod
					7-7-26
					Rep T And Todd Rec.
					Boily
		392.777	392.110		
		392.767	392.472		
					Ho. L 457+27
					B.M. #51 20K 72467
					Rec. E. 393.440
				✓ 393.420	

	+ #1	+ #2	T #1	T #2	- #1	- #2
	4-8-26	1:00 P.M.	(Party same)			
3.4	6.229				374.649	
					391.901	6.577 6.309
2.3	3.831	3.559	381.203	381.899		
					389.078	6.359 6.233
4.2	3.487	3.359	387.029	387.627		
					388.258	5.149 5.099
	4.380	4.329	388.259	388.258		
					388.011	5.132 4.928
	3.885	4.691	388.011	388.011		
3.5					388.003	4.672 4.520
2.3	4.664	4.512	388.003	388.003		
4.1					5.090	5.275
					Red #3	5.160
3.6						
3.4						
	4.278				387.121	
					386.858	4.529 4.325
	4.265	4.062	386.858	386.858		
					385.574	5.923 5.617
5.0	4.640	4.333	385.575	385.574		
					385.169	3.874 4.953
4.1	3.471	4.546	385.171	385.167		
					5.453	5.322

Elem.	Elem	B.M.s
388.078	388.340	393420
385.547	385.668	
383.879	383.929	
383.126	383.320	
383.339	383.491	

(Ruined by Rain)
~~382.913~~ ~~382.922~~
 382.943
 B.M. #52 40'L
 474+04 Pole #729H
 Rec. El. 383.859

4-9-26 Cloudy 7:30 A.M.
 Ref. Rec. Todd

382.592	382.796	
380.937	381.241	
380.700	380.621	381.700
379.716	379.847	

40'L 480+15
 B.M. #53 Bl. #72468
 Rec. El. 381.717
 Co. B.M. #18 El. 381.841

9

	T ¹	T ²	T ¹	T ²	Elev.	Elev.	B.M.
					379,716	379,847	
2	4.018	3.894	383,732 383,734	383,734 383,734			
					379,194	378,684	379,124
2	3.592	4.102	382,786 382,786	382,786 382,786			
					377,604	377,601	
4	7.768	7.968	382,570 382,570	382,570 382,570			
					377,454	377,152	377,454
	2.183	2.482	381,637 381,637	381,637 381,637			
					375,364	375,289	
	4.048	4.066	379,354 379,354	379,354 379,354			
2					375,020	375,111	
2	3.934	3.972	379,152 379,152	379,152 379,152			
4					374,552	374,724	
	4.054	3.888	378,606 378,606	378,606 378,606			
					374,024	375,999	
	3.713	3.738	377,737 377,737	377,737 377,737			
3					373,757	373,564	373,757
	4.080	4.274	377,838 377,838	377,838 377,838			
					375,360	373,201	375,360
	3.410	5.571	378,771 378,771	378,771 378,771			
					369,283	368,962	
6	2.543	2.862	371,825 371,825	371,825 371,825			
					365,469	367,180	365,469
4	5.604	3.890	371,072 371,072	371,072 371,072			
					366,506	366,462	

54
B.M. #54 5'R
408+00. Hub
Tel. Pole # D2497BT

55
B.M. #55 9'L
405+82
Rec. El. 379,528
Co. B.M. #7

56
B.M. #56 35'R 30x108
Nail in R.R. Switch Tie
Rec. El. 374,021

57
B.M. #57
10' L 50' x 57'
Pole 72413
(Old B.M. Destroyed)

58
10'R 51' x 70'
B.M. #58 76' x 22410
Rec. El. 365,510
Co. B.M. #16
365,698 El.

TD		#1	#2	#1	#2	Elem	Elem	B.M. #
+ #1	+ #2	T	T	- #1	- #2			
			310.808			366.506	366.462	
4.300	4.347	370.806	374.809					
			367.056	5.518	4.904	365.440	365.904	
3.616	3.153	369.056	369.057					
			367.311	5.379	5.380	363.677	363.666	
3.634	3.645	367.311	367.311					
				5.080	4.741	362.225	362.570	
				Rod #3	1.147			
4.765	4.416	366.788	366.986					366.109
				5.065	4.453	361.923	362.535	
4.986	4.373	366.908	366.908					
				4.716	4.247	362.192	362.561	
4.842	4.475	367.035	367.036					
				4.812	4.250	362.223	362.800	
4.878	4.302	367.102	367.102					
				4.558	3.469	362.544	363.133	
5.024	3.932	367.566	367.565					
				4.688	4.670	362.876	362.896	
4.248	4.232	367.127	367.128					
				4.296	4.390	362.831	362.937	
4.152	4.249	366.904	366.983					
				5.249	4.280	361.735	362.762	361.735
4.995	3.965	366.728	366.727					
				4.000	4.048	362.726	362.680	
4.289	4.339	367.018	367.019					

Concrete Pillar
 B.M. #59
 530+85
 Rec. E.I. 366.203

362.544 B.M. #60
 R.R. Bridge
 Culvert, S.E. Corner
 Post Nail 20'R
 537+30
 Rec. E.I. 362.588

361.735 B.M. #61
 15'R 544+85
 Rec. E.I. 361.779
 Co. B.M. #14
 361.922

4-16-26 R.P.T. Rec. Bailey
 11.05. Todd - Rod

+ #1	+ #2	+ #1	+ #2	- #1	- #2	Ele ⁿ	Ele ⁿ	B.M.
		367.018						
		366.884		4.314	4.208	368.704	362.710	
4.179	4.175	366.883 366.885						
		366.985		3.960	4.053	362.424	362.831	
4.060	4.155	366.984 366.986						
		372.940		3.463	3.554	363.522	363.431	
9.418	9.508	372.940 372.939						
		372.655		3.950	5.626	368.990	367.814	368.990
3.564	5.242	372.654 372.656						
		371.680		6.173	6.371	366.382	366.184	
5.296	5.497	371.678 371.681						
		374.746		3.370	3.605	368.310	368.075	
6.435	6.673	374.745 374.748						
		375.796		3.758	3.963	370.988	370.783	
5.006	5.214	375.794 375.797						
		375.295		4.828	5.065	371.148	370.911	
4.197	4.384	375.295 375.295						
		374.262		5.676	5.982	369.649	369.313	
4.611	4.950	374.260 374.263						
		374.223		8.564	4.152	365.698	369.510	365.698
8.525	4.713	374.223 374.223						
		374.406		5.204	5.685	369.019	368.538	
5.387	5.869	374.406 374.407						
		374.765		5.369	5.202	369.037	369.204	
5.727	5.562	374.766 374.764						

62
 B.M. # 1518556728
 P.I. # 72384
 Rec. # 1367032
 Co. # 1361369155

101 R. 371135
 B.M. # 63
 Rec. # 1365712
 Co. # 13612
 # 1365832

+	+	+	+	-	-	El ₁	El ₂	B.M.
		<u>374.765</u>						
5.315	5.329	373.748 373.948 373.947	6.132	6.147	368.633	368.618		
6.279	4.154	371.577 371.577 371.577	8.650	6.525	365.298	367.423	<u>365.298</u>	
3.621	3.804	369.670 369.671 369.669	5.527	5.912	366.050	365.865		
4.830	4.475	368.336 368.338 368.335	5.662	5.610	364.008	362.840		
7.544	7.775	372.247 370.292	3.633	3.837	364.703	364.497		
4.318	4.464	368.325 368.326 368.324						
6.047	6.255	370.152 370.951 370.258	3.621	3.827	364.704	364.498		
3.256	3.459	372.808 372.808 372.809	1.200	1.402	369.552	369.350	<u>369.552</u>	
2.870	2.707	371.634 371.633 371.636	4.045	3.877	368.763	368.929		
2.804	2.813	368.156 368.156 368.157	6.282	6.290	368.952	368.344		
			3.754				<u>364.402</u>	
4.519	4.622	367.650 367.649 367.651	5.026	5.127	363.130	363.029		
			2.770	2.954	365.600	364.696	<u>365.260</u>	

51R 581+33
B.M. # ~~64~~ 54236
Rec. E. 365.369
Co. B.M. # 118
El. 365.436

4-12-26 Rip. T. Bailey Todd-Rod.
Rec.

1014 588181
B.M. # ~~65~~ 100
Rec. 369.682
Co. B.M. # 11
El. 369.711

50L 595+95
B.M. # ~~66~~ 5672280
Rec. El. 364.525

B.M. # ~~67~~ 598+08
5'R Rock

+ #1	+ #2	A #1	A #2	- #1	- #2	Elev.	Elev.	B.M. #
1.198	1.762	366.458 366.458	366.458 366.458			365.260	364.696	
3.832	1.033	361.952 361.952	361.953 361.953	8.338	5.538	358.120	360.920	2.2.2.5.1.8 B.M. # <u>68</u> 1023530T O.K. B.M. destroyed by misc. part
1.934	2.599	356.016 356.016	356.017 356.017	7.570	8.572	354.082	353.418	354.082
2.972	2.931	353.190 353.190	353.189 353.189	5.798	5.766	350.218	350.250	
2.789	3.020	349.396 349.396	349.396 349.396	6.583	6.818	346.607	346.372	
4.360	4.238	347.310 347.309	347.310 347.310	6.447	6.324	343.949	343.072	4.0.2.3.2 B.M. # <u>69</u> 102289 Rec Bl. 343.593 111
				3.826		343.882		343.482
				4.261		343.049		343.049
4.669	4.585	346.903 346.902	346.904 346.904	5.075	4.971	342.235	342.719	B.M. # <u>70</u> G.Y. pole at pole 102289
4.901	4.211	345.280 345.282	345.278 345.278	6.022	5.836	340.881	341.067	4-14-26 same party B.M. # <u>71</u> 102272 H/L of 625190 Rec Bl. 342.432 118
2.252	4.135	344.564 344.566	344.562 344.562	2.966	4.853	342.314	340.427	342.314
4.615	4.468	342.872 342.871	342.872 342.872	6.368	6.160	338.196	338.404	
				5.807	5.650	337.065	337.202	

+	+	T	T	-	-	Elev	Elev	B.M.
4.527	4.370	341.592	341.592 341.592			337.065	337.222	
				Red on B.M.	2.386			337.266
3.610	4.123	340.498	340.498 340.498			336.889	336.873	
					4.703	5.219		
4.546	4.413	339.992	339.992 339.992			335.247	335.598	
				Red on B.M.	3.299			336.913
4.472	4.416	339.884	339.884 339.884			335.409	335.418	
					4.583	4.524		
4.612	4.472	339.569	339.569 339.569			334.956	334.928	
					4.928	5.006		
2.991	2.864	339.256	339.256 339.256			336.866	336.392	
					3.303	3.177		
3.081	4.148	338.639	338.639 338.639			335.582	334.491	333.556
					8.698	4.765		
5.370	5.509	340.691	340.691 340.691			335.322	335.171	
					3.717	3.459		
3.216	3.342	340.342	340.342 340.342			337.126	336.729	
					3.568	3.692		
3.053	3.246	338.586	338.586 338.586			335.523	335.346	
					4.807	4.996		
				B.M. Red	3.315			335.271
4.181	4.224	338.333	338.333 338.333			334.153	334.108	
					4.493	4.478		

72
 B.M. # 67
 40' L - 435125
 50' L - 720945
 Rec. 337.372

73
 B.M. # 68
 40' L - 641460
 Rec. El. 334.904

74
 B.M. # 69
 50' L - 41110
 Rec. El. 334.117
 115

75
 B.M. # 70
 50' L - 658160
 Rec. 335.392

19

+	+	T	T	-	-	Elm.	Elm.	B.M.
		338.333						
4.174	4.581	337.350 334.251	337.350	5.156	5.504	333.177	332.839	
3.751	3.819	335.842 335.842	335.841	5.262	5.328	332.091	332.092	
2.950	4.441	336.565 335.566	335.564	3.126	4.719	332.716	331.123	332.716
3.591	3.589	333.415 333.412	334.414	5.744	5.190	329.821	329.875	
4.363	4.379	330.775 330.874	330.976	6.804	6.818	326.611	326.597	
				Reden B.M.	3.915			327.060
4.820	4.746	330.662 330.662	330.662	5.133	5.059	325.842	325.916	
5.062	4.815	330.098 330.098	330.099	5.626	5.380	325.036	325.282	
1.086	1.131	328.360 328.354	328.359	2.824	2.870	322.224	322.228	
3.692	5.030	328.822 328.821	328.822	3.231	4.568	325.129	327.792	325.129
5.198	5.364	329.534 329.529	329.536	4.483	4.650	324.339	324.172	
4.734	5.110	330.466 330.466	330.467	4.004	4.179	325.538	325.357	
				4.583	4.746	325.883	325.720	

76

B.M. ~~2012~~ 606400
 North Twp.
 New B.M.

77

B.M. ~~2012~~ 625100
 75591
 Red. El. 325129

78

B.M. ~~2012~~ 683768
 325129
 Red. El. 325127

		330.590				325.223	325.720
4.706	4.871	330.589 330.591					
		330.589	3.969	3.581	326.621	327.009	326.621
3.969	3.579	330.590 330.588			4-15-26 Same Party 7-15		
		329.948	4.562	4.671	326.627	325.918	
3.922	4.023	329.949 329.946					
		330.060	4.596	4.878	326.772	325.070	
4.688	4.989	330.060 330.059					
		328.790	5.198	5.511	324.862	324.549	
3.928	4.241	328.790 328.790					
		328.703	5.364	5.744	323.426	323.046	
5.276	5.658	328.703 328.704					
		327.730	3.424	4.872	325.279	323.831	325.279
1.929	3.400	327.730 327.231					
		325.112	5.533	5.501	321.697	321.729	
3.415	3.382	325.112 325.111					
		322.517	5.572	5.334	319.510	319.778	
2.978	2.738	322.517 322.516					
		322.088	3.982	3.804	318.535	318.713	
3.552	3.375	322.088 322.088					
		322.002	4.427	4.628	317.461	317.460	
4.542	4.541	322.002 322.001					
		320.982	3.303	6.342	318.699	318.660	318.699
2.282	5.322	320.981 320.982					
			4.582	4.454	316.400	316.528	

79
 B.M. # 79
 4511-623160
 Rec. Fl. 326.761
 D-140

80
 B.M. # 80
 5124
 Rec. Fl. 325.863

81
 B.M. # 81
 715405
 Rec. Fl. 318.521

78

#1	#2	#1	#2
		309,750	
		310,086	2.655
3.998	5.169	310,089 310,085	3.834
		315,456	2.359
7.728	7.945	315,455 315,458	2.573
		320,590	1.247
6.380	6.335	320,589 320,591	1.200
		319,240	4.742
3.390	2.564	319,238 319,241	4.913
		318,798	5.387
4.946	5.080	318,797 318,796	5.524
		322,512	1.356
5.069	6.680	322,511 322,512	2.966
		325,406	3.142
6.237	6.216	325,407 325,405	3.183
		330,078	3.700
8.172	8.139	330,078 330,077	3.668
		335,985	1.337
7.244	7.235	335,985 335,985	1.328
		341,378	1.996
7.388	8.269	341,377 341,379	2.875
		337,590	5.329
1.541	1.538	337,590 337,589	5.327
		339,453	4.900
5.781	5.995	339,451 339,454	4.931

Elev Elev B.M.S

306,095	3049.16	306,095
307,727	307,513	
311,209	314,236	
315,948	315,679	
313,853	313,716	
317,442	315,832	317,442
319,370	319,599	
321,906	321,938	
328,741	328,750	
333,957	333,112	333,289
336,149	336,157	
332,690	332,659	

Roller Method Sys.
 B.M. # 84 401.
 149.123
 Red. El. 306.370

10
 B.M. # 85
 on Fonce. 12R
 760.437
 Red. El. 317.570

86
 B.M. # 86
 767.83.10000
 Red. El. 333.231

T ¹	T ²	T ¹	T ²	-	-	Flch	Flch	B.M.
5.712	5.805	338.462 338.463	338.464			332.450	332.659	
6.339	6.448	342.39 342.240	342.40	2.563	2.671	335.200	335.792	
8.112	8.731	349.56 349.667	349.568	0.786	1.403	341.454	340.837	341.454
8.056	5.105	350.875 350.874	350.893	3.248	3.799	345.319	345.768	
6.930	7.046	355.161 355.160	355.159	2.693	2.761	348.181	348.113	
6.222	5.966	359.259 359.258	359.258	3.365	3.268	351.995	351.892	
1.856	2.203	354.119 354.110	354.109	5.104	5.252	352.754	352.606	352.754
1.932	2.050	348.213 348.406	348.405	8.201	8.255	346.409	346.355	
3.306	1.906	348.320 348.319	348.318	5.253	3.994	348.114	344.412	
0.745	1.282	338.603 338.602	338.601	8.461	9.000	339.858	339.319	
3.877	3.767	335.556 335.556	335.557	6.923	6.812	331.179	331.790	
3.771	5.827	336.094 336.092	336.091	3.453	5.294	332.103	330.262	338.703
				4.116	4.336	331.974	331.756	

87
B.M. # 87
121R 780+38
Rec. 51.341.613

88
B.M. # 88
81R 725+75
Rec. 51.350.910
D. 2.844

89
B.M. # 89
50L 800+23
332.258 Root

90

+	+	T	T	-	-			B.M.
3.156	3.273	335.130 335.130 351.29				331.774	331.756	
0.812	0.721	329.530 329.530 335.29	12.412	12.322		322.718	322.808	
1.727	1.506	312.564 312.565 312.562	12.692	12.474		310.932	311.056	
3.028	2.775	304.398 304.399 306.26	11.193	10.243		301.377	301.621	
2.055	1.912	298.122 298.123 288.121	8.330	8.189		276.668	298.209	
1.815	2.238	292.274 292.274 292.274	7.663	8.086		290.459	290.036	<u>290.459</u>
			3.515	3.500		289.757	288.774	

Mon. 19 April '26 Clouds & Sun.
Party Rip T + Rec
Bailey -
Todd - Rods

5.862	5.818	294.622 294.622 294.622						
5.760	5.609	295.376 295.377 295.375	5.005	4.856		287.517	287.764	
7.033	7.090	301.259 301.257 301.261	1.152	1.305		294.224	294.171	
9.607	10.106	309.020 309.019 309.022	1.847	2.393		299.412	298.916	<u>299.412</u>
			0.939	1.107		308.811	307.913	<u>308.811</u>

90
B.M. # 29 30'R
813+90 Hgt. 115 Feet
Rec. Fl. 290.471

91
B.M. # 30'L
823+40
Rec. Fl. 309.431
92
B.M. # 30'L
824+66
Rec. Fl. 308.179

(21)

+	+	T	T	-	-
5.924	6.093	314.006 314.005	314.006		
4.058	4.775	305.790 305.789	305.789	12.273	13.012
0.685	5.247	305.526 305.524	305.524	5.888	6.918
8.145	8.145	312.844 312.842	312.845	0.825	0.827
2.875	2.843	321.845 321.846	321.846	0.875	0.841
2.159	3.061	321.576 321.577	321.574	2.427	3.300
1.203	1.235	314.176 314.177	314.174	8.662	8.669
1.402	1.509	306.176 306.176	306.170	9.498	9.500
1.432	1.452	296.640 296.641	296.638	10.969	10.990
0.871	0.941	285.567 285.565	285.569	11.946	12.072
1.483	1.495	278.295 278.296	278.294	8.754	8.968
3.063	2.490	271.294 271.296	271.293	10.068	9.478

Flon	Flon	B.M.S
308.081	307.913	
301.723	300.994	
299.902	299.579	
304.697	304.299	
311.969	312.023	
319.418	318.505	319.415
312.914	312.909	
304.774	304.668	
295.509	295.186	
284.694	284.228	
276.813	276.799	
269.615		
268.233	268.803	

93
 B.M. # ~~85400~~ 85400 - 2 L
 Rec. El. 319.505

was 284.221
 Discrepancy of .007
 Notes Now correct

94
 B.M. # ~~84500~~ 84500 - 15 R

270.666
~~270.615~~
 Oak tree until 5' from
 15' below top.

Tues - 20 - Apr '26 Clear
 Note See chook in Back of Book

22													
#1	#2	#1	#2	#1	#2	Elev. #1	Elev. #2	B.M. S					
		271.294											
				on B.M. Rod 3	Red incorrect								
				11.459									
6.944	6.931	273.982	273.981	4.257	4.243	267.037	267.051	259.805	259.774				
		273.982	273.982										
1.999	1.916	272.575	272.574	3.405	3.324	270.577	270.658						
		272.575	272.574										
1.793	1.750	264.808	264.808	9.559	9.519	263.016	263.056						
		264.808	264.808										
4.217	3.243	264.557	264.557	4.468	3.474	260.340	261.314	260.340					
		264.557	264.557										
3.134	3.160	260.128	260.128	7.562	7.591	256.995	256.966						
		260.128	260.128										
2.320	5.093	260.212	260.209	2.237	5.008	257.891	255.120	257.891					
		260.212	260.209										
2.329	2.284	258.662	258.654	3.879	3.835	256.333	256.377						
		258.662	258.654										
8.776	7.284	260.045	260.040	7.392	5.902	251.270	252.760	251.270					
		260.045	260.040										
				1.267	1.126	258.778	258.919						
8.914	8.775	267.693	267.694										
		267.693	267.694										
3.205	3.176	263.130	263.129	7.766	7.740	259.927	259.953						
		263.130	263.129										
4.968	4.985	263.546	263.544	4.551	4.671	258.579	258.559						
		263.546	263.544										
				6.804	6.629	256.742	256.319						

95
 B.M. # 95B
 20 R 847+21
 Point on Rock in
 Minor Bed 10' Below
 Road. Rec. El. 259.999
 D = 144
 checked by A. L.

96
 B.M. # 96
 558+42
 Rec. El. 260.520
 Point of Rock
 5' From Road
 D = 180
 checked by A. L.

97
 B.M. # 97
 863+18-7'R
 Rec. El. 258.027
 Point of Rock 2.5' above
 road, checked by A. L.
 D = 176

98
 B.M. # 98
 868+22-12'L
 New B.M.
 Point of Rock
 3' Below Road

23

+ ⁰¹	+ ⁰²	+ ⁰¹	+ ⁰²	- ⁰¹	- ⁰²	Eleh	Eleh	B.M.
1.090	0.912	257.832	257.831			256.742	256.919	
1.291	1.272	252.452	252.450	6.670	6.654	251.162	251.178	251.162
1.548	1.344	244.579	244.596	9.422	9.218	243.032	243.234	
checked add. + sub. to here				6.752	6.665	237.827	237.914	
<u>Wed. 21 - Apr. '26 Clear - Sun</u>								
4.077	3.986	241.903	241.902					
6.637	6.575	246.216	245.214	3.323	3.264	238.580	238.639	
10.827	10.707	254.040	254.040	2.003	1.883	243.213	243.333	
8.287	8.277	261.025	261.026	1.303	1.291	252.737	252.777	
2.273	2.303	256.805	256.805	6.423	6.523	254.532	254.502	
1.452	2.439	253.055	253.054	5.201	6.190	251.604	250.615	251.604
10.677	10.630	257.871	257.872	5.862	5.813	247.193	247.242	
4.100	3.997	260.412	260.410	1.557	1.458	256.314	256.413	

B.M. # ~~99~~ **99**
 8' x 6' x 35' - 12' R
 Rec. Eleh. 251.305
 Point on Rock 1 ft
 above road 35' from 2
 Oak trees
 D = .143

B.M. # ~~100~~ **100**
 17' L of 888+17
 Rec. El. 259.199
 Point on Rock
 7' above road on
 Bank in small wash
 D = .157+

B.M. # ~~101~~ **101**
 14' R 888+25
 Rec. El. 251.760
 Point on Rock level
 with road
 D = .156+

(21)									
+ #1	+ #2	+ #1	+ #2	- #1	- #2	Elev. #1	Elev. #2	B.M.s	
		260.412							
3.643	3.643	257.196 257.197	257.195	6.858	6.860	253.554	253.552		
3.028	4.529	255.706 255.707	255.705	4.517	6.040	252.679	251.156	252.679	
6.615	6.601	259.670 259.669	259.672	2.652	2.635	253.054	253.091		
1.929	1.860	259.126 259.127	259.124	2.472	2.406	257.199	257.264		
checked to here.		257.412		7.461	7.376	251.665	251.950	251.665	
5.746	5.662	257.411 257.412							
7.491	7.418	263.489 263.488	263.488	1.218	1.142	256.194	256.270		
4.720	4.669	262.939 262.940	262.938	5.468	5.419	258.220	258.269		
8.968	9.285	269.518 269.517	269.520	2.390	2.704	260.549	260.235		
1.590	3.606	268.942 268.942	268.942	2.166	4.182	267.352	265.336	267.352	
6.367	6.370	269.302 269.302	269.302	6.007	6.010	262.935	262.932		
5.819	5.831	272.122 272.121	272.123	3.000	3.010	266.302	266.292		
11.771	12.151	283.146 283.146	283.146	0.747	1.127	271.375	270.995		

B.M. # ~~98~~ 102
 897+28-15'R
 New B.M. opposite tree
 B.M. in Oak on left of
 road. abandoned
 Point on Rock

103
 B.M. # ~~99~~ (A)
 902+75-25'L
 Rec. EL 251.836
 Point on Rock,
 4' from Culvert
 D = .171+

104
 B.M. # ~~97~~ (A)
 34'L 911+28
 Rec. EL 267.520
 Hub on Bank
 2.5' above road.
 D = .168

(25)

T ¹	T ²	T ¹	T ²	- ¹	- ²	Elev ¹	Elev ²	B.M.S
		283.146						
		293.167		1.323	1.330	281.763	281.816	
11.402	11.353	293.165 293.149						
		303.059		1.530	1.630	291.637	291.537	
11.422	11.522	303.059 303.059						
		314.845		0.860	0.854	302.199	302.205	
12.644	12.642	314.843 314.847						
		325.447		0.948	1.086	313.897	313.759	313.897
11.548	11.690	325.445 325.445						
Thurs	Apr. 22.	Bright						
		333.374		1.878	1.766	323.569	323.481	
9.804	9.895	333.373 333.376						
		334.898		1.907	1.902	331.467	331.472	
3.432	3.425	334.897 334.897						
		329.034		9.123	9.107	325.775	325.791	
1.260	1.242	329.035 329.033						
		320.932		8.063	7.791	318.971	319.243	318.971
1.963	1.688	320.934 320.931						
		313.001		9.152	9.177	311.780	311.765	
1.223	1.244	313.003 313.003						
		305.919		8.792	9.012	304.209	303.982	
1.711	1.929	305.920 305.918						
		298.657		8.221	8.204	297.678	297.625	
0.960	0.961	298.658 298.656						
		293.544		8.009	7.538	290.648	291.119	290.648
1.898	1.923	293.546 293.542						

105

B.M. # ~~240~~ (11)
 25' L of 924+42
 Rod. 314.042
 Hub. near Bush
 D = .145

106

B.M. # ~~241~~ (11)
 20' L of 831+00
 New B.M.
 Point on road.

107

B.M. # ~~242~~ (11)
 938+00 - 13' R
 Rod. El. 290.808
 Hub on bank
 4' above road.
 D = .160

Contd on Page 31.

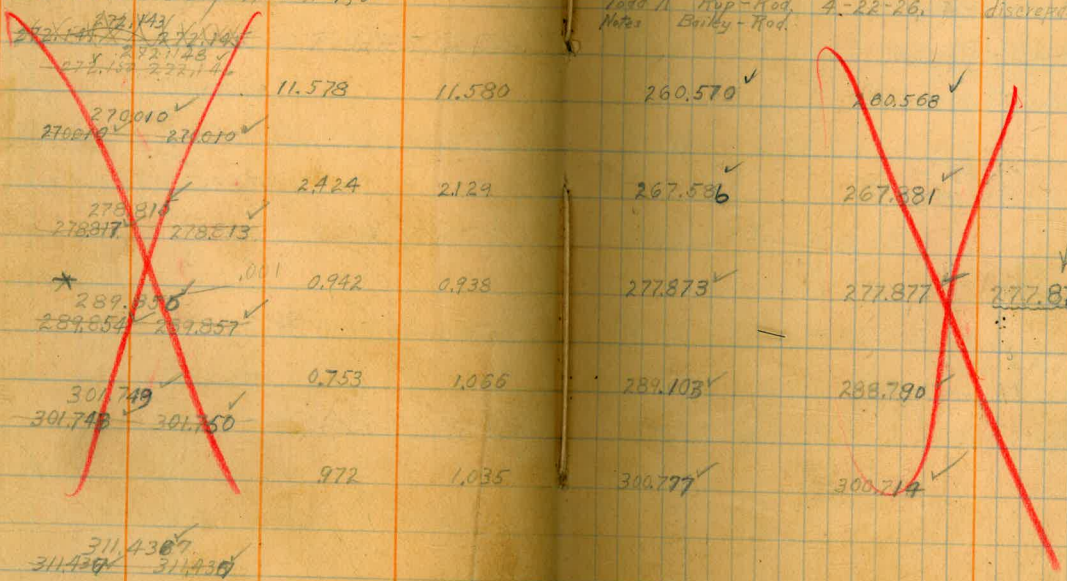
		292.544			Elon	Elon	B.M.s
		282.771	10.799	10.818	281.745	281.726	
1.028	1.093	282.773 282.769					
			12.242	11.881	270.529	270.890	
checked to here. Thursday Noon 1:00							
1.621	1.256	272.141 272.145					
		272.142 272.144					
9.440	9.492	270.010			260.570	260.568	
		270.010 270.010					
		278.815	2.424	2.129	267.586	267.881	
11.231	10.932	278.817 278.813					
		*	0.942	0.938	277.873	277.877	
11.981	11.980	289.854 289.857					
		301.749	0.753	1.086	289.103	288.790	
12.645	12.960	301.749 301.750					
			972	1.035	300.797	300.714	
10.660	10.723	311.436					
		311.436 311.436					
5.635	5.741	314.794	2.278	2.388	309.164	309.050	
5.636	5.743	314.795				309.161	
		314.792					
		Rob. Rod + Rec	12.488	12.588	302.306	302.107	
2.274	2.470	*	12.490	12.588	302.305	302.086	
1.273	1.483	304.579 304.576					
		80	12.378	12.402	292.280	292.176	
			14.232	10.187	277.946	277.949	
0.791	0.813	292.990					
		292.991 292.989					
6.207	6.210	293.128	6.069	6.071	286.921	286.919	
		293.128 293.129					

Todd T. Rip-Rod, 4-22-26, discrepancy 805; Notes correct from now on.
Notes Bailey-Rod.

B.M.#
Hub with
Tack.
100' Rt. 933+00 Approx.
Borens line. Marked
by other of rock.

B.M.#
20' Rt 942+30 - 3'
from edge of Hogan
trail. Both in ground.

Disc. of 1'



97

+ #1	+ #2	T #1	T #2	- #1	- #2	Elev #1	Elev #2	B.M. #
		292.128						

7.863	8.120	299.869	299.867	1.124	1.377	292.004	291.751	
-------	-------	---------	---------	-------	-------	---------	---------	--

		308.664	308.666	1.216	1.757	298.653	298.112	
--	--	---------	---------	-------	-------	---------	---------	--

10.010	10.554	308.663	308.666	checked to hole.				
--------	--------	--------------------	---------	------------------	--	--	--	--

		319.390	319.397	0.975	1.780	307.689	307.884	307.689
--	--	---------	---------	-------	-------	---------	---------	---------

9.701	9.507	319.390	319.397					
-------	-------	--------------------	---------	--	--	--	--	--

		328.408	328.408	0.789	0.807	316.607	316.583	
--	--	---------	---------	-------	-------	---------	---------	--

11.801	11.822	328.408	328.408					
--------	--------	--------------------	---------	--	--	--	--	--

		338.970	338.970	0.837	1.022	327.567	327.392	
--	--	---------	---------	-------	-------	---------	---------	--

11.405	11.590	338.970	338.970					
--------	--------	--------------------	---------	--	--	--	--	--

		349.208	349.208	1.201	1.385	337.730	337.586	
--	--	---------	---------	-------	-------	---------	---------	--

11.977	11.623	349.208	349.208					
--------	--------	--------------------	---------	--	--	--	--	--

		358.740	358.740	1.374	1.350	347.834	347.858	347.834
--	--	---------	---------	-------	-------	---------	---------	---------

4-26-26	cloudy							
---------	--------	--	--	--	--	--	--	--

Part	Rup. T Rec							
------	------------	--	--	--	--	--	--	--

		358.740	358.740					
--	--	---------	---------	--	--	--	--	--

10.905	10.885	358.740	358.740	0.962	1.075	357.770	357.660	
--------	--------	--------------------	---------	-------	-------	---------	---------	--

		369.480	369.480					
--	--	---------	---------	--	--	--	--	--

11.701	11.815	369.480	369.480					
--------	--------	--------------------	---------	--	--	--	--	--

		380.152	380.152	0.954	0.836	368.528	368.648	
--	--	---------	---------	-------	-------	---------	---------	--

11.626	11.508	380.152	380.152					
--------	--------	--------------------	---------	--	--	--	--	--

		391.149	391.149	0.952	0.934	379.199	379.217	
--	--	---------	---------	-------	-------	---------	---------	--

11.949	11.931	391.149	391.149					
--------	--------	--------------------	---------	--	--	--	--	--

		391.149	391.149	1.457	1.401	389.692	389.754	
--	--	---------	---------	-------	-------	---------	---------	--

B.M. #

B.M. # - New B.M.
951+45-30' V.
Hub in Hillside
6' from Road

B.M. # - New B.M.
Near top of Bank
3' from left edge
of road. Hub

Next B.M. with a survey
350.267

+ #1	+ #2	T #1	T #2	- #1	- #2	Elev #1	Elev #2	B.M.#
6.207	4.150	394.805 5.899	394.904 5.898			388.578 9.692	388.754 9.748	B.M.# - Near 96140 Hub. Bears B.M. Bears El. 383.670
12.240	12.083	394.882 5.883	394.882 5.881	12.255	12.100	387.249 3.643	382.854 3.798	388.649 3.643
9.192	8.904	402.884 3.878	402.883 3.877	1.176	0.909	393.712 4.706	393.979 4.973	B.M.# - Near 96217 Bears El. 405.037. Hub
4.660	1.966	398.733 9.734	398.742 9.737	8.804	6.107	394.079 5.074	396.716 7.711	B.M.# New B.M. 50' L of last B.M. Hub. 20' From Road
1.717	1.649	389.476 390.472	389.474 389.470	10.981	10.915	387.759 8.755	382.825 8.821	
1.309	1.151	398.441 9.437	398.441 9.437	12.343	12.185	377.132 8.128	377.210 8.256	
2.438	2.406	268.251 9.227	268.250 9.246	12.628	12.597	365.813 6.809	365.844 6.940	
1.231	0.915	357.295 8.291	357.291 8.287	12.186	11.874	356.064 7.060	356.376 7.372	
3462	4.088	352.199 3.193	352.194 3.190	8.558	9.187	348.735 9.731	348.106 9.102	B.M.# - New B.M. Near 150' R of 969300 Hub. 50' From Creekbed
10.813	11.172	361.744 2.740	361.745 2.741	1.265	1.623	350.231 1.927	350.573 1.569	356.937 1.927
3.763	3.747	362.440 3.436	362.440 3.440	3.067	3.047	358.677 9.673	358.697 9.693	
1.939	2.073	356.913 7.909	356.912 7.910	7.468	7.601	354.974 5.970	354.821 5.837	
				7.392	7.126	349.522 350.518	349.758 350.784	

29

T #1	T #2	T #1	T #2	- #1	- #2	Elev #1	Elev #2	B.M. #
		2,105				349,522 ✓	349,788 ✓	
1.589	1.319	351,109				350,518	350,784	
		2,107	2,103			344,223 ✓	344,200 ✓	
2.749	2.771	346,972	346,971	6.886	6.909	5,219	5,198	
		7,968				340,649 ✓	340,581 ✓	
		346,971		6.323	6.371	1,645	1,577	
1.160	1.227	341,808	341,808			335,613 ✓	335,104 ✓	
		2,805	2,805			6,100 ✓	6,100 ✓	
10.529	10.429	345,542	345,543	6.795	6.704	344,609 ✓	344,627 ✓	
		6,538	6,539	0.933	0.915	5,605	5,623	
Tues. 27, Apr. cloudy.								
5.839	5.821	350,448	350,448			340,272 ✓	340,605 ✓	
		1,444	3,114	10.176	9.763	1,269	1,681	
2.536	2.120	342,806	342,805			335,233 ✓	335,138 ✓	
		3,808		7.573	7.668	6,229	6,134	
		3,804	3,801					
1.316	1.408	339,557	339,557			325,219 ✓	324,812 ✓	
		5,417	5,42	12.329	12.736	1,215	808	
0.862	1.265	326,879	326,877			313,587 ✓	313,468 ✓	
		.077	.073	12.492	12.611	.583	.464	
1.115	1.230	314,702	314,698			302,570 ✓	302,556 ✓	
		.698	.694	12.130	12.144	.566	.552	
0.955	0.966	303,525	303,522			291,156 ✓	291,336 ✓	
		1,521	1,518	12.368	12.188	1152	.332	
1.213	1.031	292,369	292,367					
		.365	.363					

B.M. # - New B.M.
 50' L of road
 Point on to ch.
 Flagged with both
 340,649
 1,645

B.M. # -
 Large rock on Road
 of Hill. Near line
 Flagged by both red flag
 335,233
 6,229

(30)

T. #1	+ #2	T #1	T #2	- #1	- #2	Elev #1	Elev #2	B.M. #
		292.365						B.M. #
1.026	0.928	281.174 281.179 1175	281.175 281.175 1171	12.215	12.121	280.153 .149	280.247 .243	280.153 149 Hob with hill Halfway down Hill Flagged Post
1.906	1.928	270.532 270.528 528	270.528 270.528 524	12.551	12.577	268.626 2	268.620 .596	
1.180	0.947	259.370 259.376 1768	259.368 259.364 1364	12.938	12.109	258.192 .188	258.421 .417	
1.256	0.975	247.987 247.987 1993	247.985 247.985 1981	12.639	12.360	246.731 .727	247.010 .006	
1.299	1.301	236.721 236.792 1728	236.790 236.790 1706	12.493	12.497	235.493 .489	235.489 .485	
1.243	1.284	225.941 225.941 937	225.938 225.938 934	12.093	12.137	224.698 4	224.654 0	
1.438	1.437	210.268 210.269 1265	210.267 210.267 1263	12.109	12.110	213.831 .827	213.820 .826	
1.021	0.972	203.742 203.796 2	203.775 203.775 1	12.493	12.445	202.775 1	202.829 .819	
				9.316	9.226	194.480 476	194.570 1566	

Checked to here Tuesday Evening

From here in equation:

Corrected Elev.

"Copy"
Contd. from Page 26

(31)

①				Elevation	Elevation	B.M.
+	+	-	-			
		292	544			
		282.771		10.799	10.818	
1.028	1.043	282.773	282.769	281.745	281.726	
				12.242	11.881	
		272.148				
1.661	1.256	272.150	272.146			
		270.010		11.578	11.580	
9.440	9.442	270.010	270.010	260.570	260.568	
		278.815		2.454	3.129	
11.231	10.932	278.817	278.813	267.586	267.881	
		289.856		0.942	0.938	
11.981	11.980	289.854	289.857	277.873	277.877	277.873
		301.749		0.753	1.066	
12.645	12.960	301.748	301.750	289.103	288.790	
		311.437		1.972	1.035	
10.660	10.723	311.437	311.437	300.777	300.714	
		314.794		2.276	2.386	
5.635	5.741	314.796	314.792	309.161	309.051	309.161
		304.578		12.488	12.687	
2.274	2.470	304.580	304.577	302.306	302.107	
		292.990		12.378	12.402	
0.791	0.813	292.991	292.989	292.300	292.176	
		293.128		6.069	6.071	
6.207	6.210	293.128	293.129	286.931	286.919	

→ B.M. # 108 Hub with tach.
100' R 933 + 00 approx.
Barons line
Marked by tierotrack

→ B.M. # 109
20' R 946 + 30
3' From trail.

(38)

+	+	+	+	-	-	Elevation	Elevation
			293,128				
7.863	8.120	²⁹⁹ 299.867	⁸⁶⁹ 299.871	1.124	1.377	293,004	291,751
10.010	10.554	³⁰⁸ 308.663	⁶⁶⁴ 308.666	1.216	1.757	298,653	298,112
9.701	9.507	³¹⁷ 317.390	³⁹⁰ 317.391	0.975	0.780	307,689	307,884
11.801	11.822	³²⁸ 328.403	⁴⁰⁴ 328.405	0.789	0.807	316,601	316,583
11.405	11.590	³³⁸ 338.970	⁹⁷¹ 338.972	0.839	1.022	327,565	327,382
11.477	11.623	³⁴⁹ 349.207	²⁰⁸ 349.209	1.241	1.385	337,730	337,586
				1.374	1.350	347,834	347,858
4-26-26 cloudy							
Party Rep. Rec. + Bailey Rods Todd							
10.905	10.885	³⁵⁸ 358.739	⁷⁹¹ 358.743	0.962	1.075	357,779	357,666
11.701	11.815	³⁶⁹ 369.480	⁴⁸⁰ 369.481	0.954	0.836	368,526	368,644
11.626	11.508	³⁸⁰ 380.152	¹⁵² 380.152	0.952	0.934	379,200	379,218
11.949	11.931	³⁹¹ 391.149	¹⁴⁹ 391.149	1.457	1.401	389,692	389,748

→ B.M. # **10** New B.M.
951+65-30"L
Hub in Hillside
6' From Road

307.689

→ B.M. # **11** New B.M.
3' from left edge of
Road. Hub

347.834

(33)

33

+	+	+	+	-	-	Elevation	Elevation
6.207	6.150	395.899	395.898			389.692	3897.48
12.340	12.083	395.883	395.881	12.265	12.100	3836.43	383.798
9.172	8.904	403.878	403.877	1.176	0.909	394.706	394.973
4.660	1.966	399.736	399.737	8.804	6.107	395.074	397.771
1.717	1.649	390.472	390.471	10.981	10.915	388.755	388.821
1.309	1.151	379.437	379.437	12.343	12.185	378.128	378.286
2.438	2.406	369.247	369.246	12.628	12.597	366.809	366.840
1.231	0.915	358.291	358.289	12.186	11.874	357.060	357.372
3.461	4.088	353.193	353.192	8.558	9.187	349.731	349.102
10.813	11.172	362.740	362.740	12.65	1.623	351.927	351.569
3.763	3.747	363.436	363.438	3.067	3.047	359.673	359.693
1.939	2.073	357.910	357.910	7.468	7.601	355.970	355.837
				7.392	7.126	350.518	350.784

Contd on Page 60.

→ B.M. # -112
 Neat 961+00
 Hub. Barons B.M.
 Bearing El. 383.670

→ B.M. # -112A
 Near 962+00
 Barons B.M.
 Rec. El. 405.037 Hub

→ B.M. # -112B
 New B.M.
 60' L of road
 Hub. 20' from road.

→ B.M. # - New B.M.
 Near 150' R of 969+0
 90' L of road
 Hub 50' from creek
 bed

(39)

+	+	∧	∧	-	-	Elevation	Elevation
1.589	1.819	³⁵² 352.107	¹⁰⁵ 352.103	6.886	6.909	350.518	350.784
2.749	2.771	³⁴⁷ 347.968	⁹⁶⁸ 347.967	6.323	6.391	345.219	345.196
1.160	1.227	³⁴² 342.805	⁸⁰⁴ 342.804	6.795	6.704	341.645	341.577
10.529	10.439	³⁴⁶ 346.538	⁵³⁸ 346.539	0.933	0.915	336.009	336.100
5.839	5.821	³⁵¹ 351.444	⁴⁴⁴ 351.444	10.176	9.763	345.605	345.623
2.536	2.720	³⁴³ 343.804	⁸⁰² 343.801	7.573	7.668	341.368	341.681
1.316	1.408	³³⁷ 337.545	⁵⁴⁴ 337.542	13.329	12.736	336.229	336.134
0.862	1.265	³²⁶ 326.077	⁰⁷⁵ 326.073	13.492	13.611	325.215	324.808
1.115	1.230	³¹⁴ 314.698	⁶⁹⁶ 314.694	12.130	12.144	313.583	313.464
0.955	0.966	³⁰³ 303.521	⁵²⁰ 303.518	12.368	12.188	302.566	302.552
1.213	1.031	²⁹² 292.365	³⁶⁴ 292.363			291.152	291.332

→ B.M. # New B.M.
50' of road
Point of rock
Flagged Bush

341.645

→ B.M. # New B.M.
Rock on Brink
of hill.

336.229

(35)

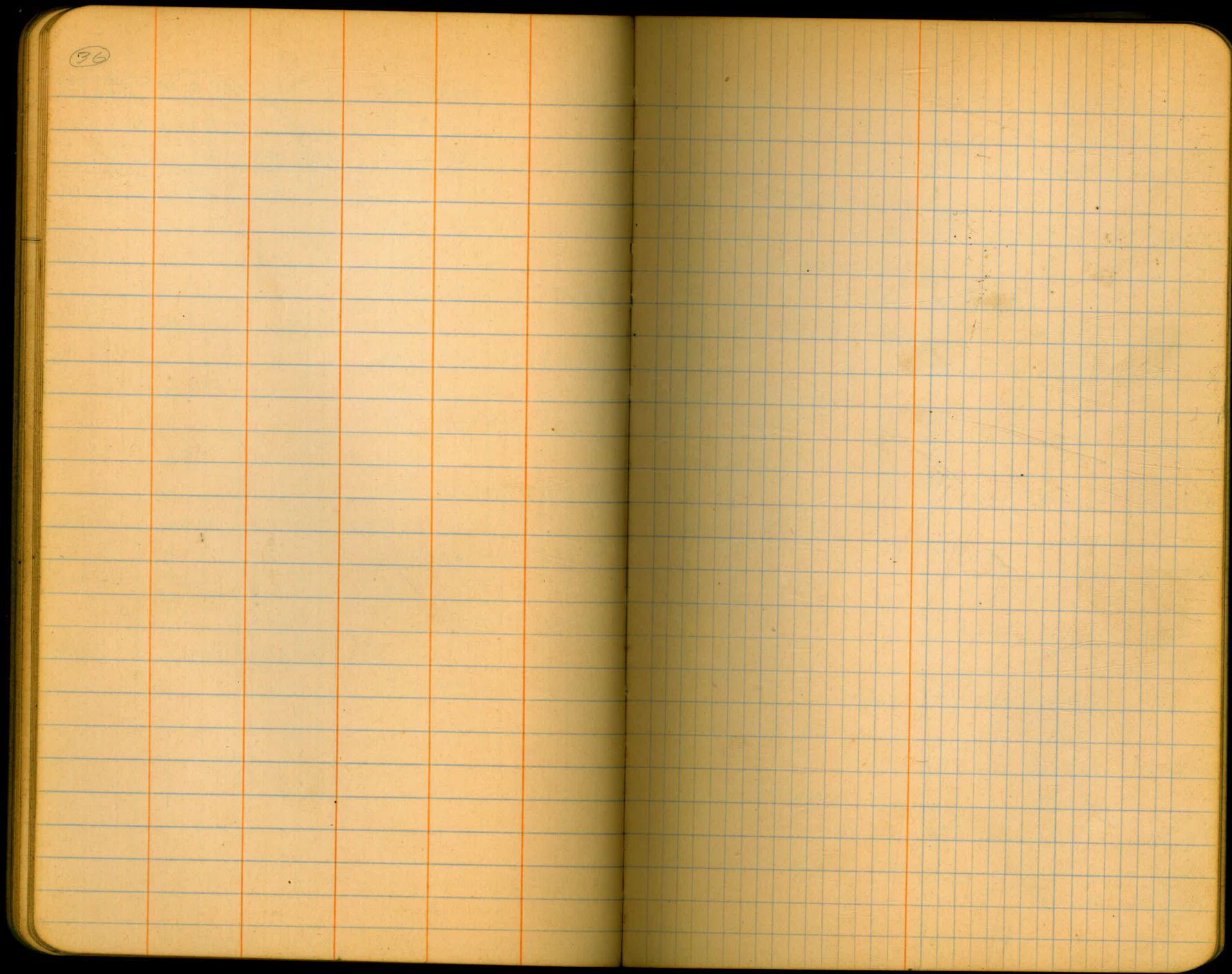
+	+	∩	∩	-	-	Elevation	Elevation
		292	364				
				12,515	12,121	280,149	280,243
1,026	0.928	²⁸¹ 281.175	¹⁷³ 281.171				
				12,551	12,577	268,622	268,596
1,906	1,958	^{270,522} 270.528	270.524				
				12,338	12,109	258,188	258,417
1,180	0,947	^{259,364} 259.368	259.364				
				12,639	12,360	246,737	247,006
1,256	0.975	^{247,982} 247.983	247.981				
				12,493	12,497	235,489	235,485
1,399	1,301	^{236,787} 236.788	236.786				
				12,093	12,137	224,694	224,650
1,243	1,384	^{225,936} 225.937	225.934				
				12,109	12,110	213,827	213,836
1,438	1,437	^{215,264} 215.265	215.263				
				12,493	12,445	202,771	202,819
1,021	0.972	^{203,792} 203.793	203.791				
				9,316	9,226	194,476	194,566

B.M. # - New B.M.

Hub with nail
 Halfway down hill
 Flagged bush

280,149

96



Wed 28. Cloudy.

Rep. T Rec.

37
+ Todd - Rads
+ Bailey +

37

				Elevation		B.M.
				#1	#2	
12.923	12.834	207.400	207.400	194.476	194.566	194.476
<i>Contd. from Page 63</i>						
12.353	12.312	218.180	218.181	205.825	205.869	
4.840	4.876	220.818	220.818	215.979	215.942	
2.032	2.323	220.608	220.609	218.576	212.286	
1.546	1.364	209.363	209.362	207.818	207.978	
1.207	1.157	198.616	198.615	197.409	197.458	
1.448	1.432	188.666	188.665	187.219	187.233	
11.386	11.407	193.910	193.910	182.524	182.503	
12.681	12.693	205.392	205.404	192.710	192.701	
11.828	11.848	215.980	215.981	204.151	204.133	
12.420	12.572	227.392	227.393	214.970	214.821	
12.799	12.784	238.919	238.920	226.119	226.136	
				235.081	234.703	235.081

~~B.M. # - rose B.M.
Hub. of top of hill
Flagged Bush near
crack hole.~~

#126
~~B.M. # 115~~
at P.I. Hub. old sta 15+56
Rec. E.I. 218.593 "A"
D = .033

#127
~~B.M. # 115~~ New B.M.
Hub with nail - 50' Ref.
P.I. 15+0562"

#128
B.M. # 115 b New B.M.
Hub. 60' R 100' tree
Nail

(38)

	+	+	-	-	Elevation	B.M.	
		246.355			235.081	234.703	
11.273	11.653	246.354	246.356				
		257.955		0.841	0.831	245.514	245.524
12.440	12.932	257.954	257.956				
		269.404		0.918	0.955	257.037	257.000
12.367	12.405	269.402	269.405				
		280.847		1.026	1.010	268.378	268.394
12.468	12.454	280.846	280.848				
		291.882		0.875	0.927	279.972	279.920
11.908	11.964	291.880	291.884				
		302.642		1.411	1.435	290.471	290.447
12.170	12.195	302.641	302.642				
		313.104		1.016	0.997	301.626	301.643
11.478	11.962	313.104	313.105				
				0.945	0.923	313.159	312.181
Thurs. Apr 29. Wet.							
		324.196					
12.037	12.014	324.195	324.195				
		335.965		1.126	1.157	323.060	323.039
12.703	12.728	335.963	335.967				
		347.071		1.007	1.017	334.758	334.748
12.313	12.323	347.071	347.071				
		351.085		5.112	4.819	341.959	342.252
9.124	8.935	351.083	351.087			<u>341.959</u>	
				1.965	2.261	349.120	348.824

#129
 B.M. #1160
 New B.M. Nail in Hub
 70' R 1006+528

(59)

+	+	+	+	-	-	Elevation	#1	#2	B.M.
			358.506			349.120		348.824	
9.386	9.683	358.506	358.507						
			363.766	1.684	1.678	356.822		356.828	
6.945	6.938	363.767	363.766						
			0	3.934	3.910	359.832		359.856	
5.737	5.715	365.569	365.571						
			367.570	2.050	2.059	363.524		363.512	
4.049	4.058	367.570	367.540						
			69	5.463	5.267	362.104		362.303	
Mistake: good multiple stages			6					362.106	
3.270	3.075	365.379	365.378						
			6	5.533	5.635	359.845		359.742	
			7						
3.504	3.606	363.349	363.349						
			7	6.478	6.475	356.871		356.874	
			198						
4.330	4.326	361.201	361.200						
			199	5.263	5.278	355.937		355.922	
			78						
2.943	2.959	358.880	358.881						
			78	4.858	4.810	354.022		354.070	
			66					354.020	
1.946	1.898	355.968	355.968						
			66	7.982	7.007	348.484		348.361	
			12						
2.229	2.351	350.714	350.712						
			3	11.064	11.146	339.650		339.568	
			2						
1.324	1.405	340.974	340.978						
			2	12.282	12.250	328.690		328.720	
			1						

#130

B.M. ~~1166~~
 New B.M.
 100' L 1017+00
 Hub with nail

#131

B.M. ~~1111~~
 Hub 25' L 1027+00
 Rec. El. 354.039
 D = .015 +

(41)

+	+	T	T	-	-	Elevation #1	#2	B.M.
1.387	1.366	337.094 337.096	337.092			335.709	335.726	
1.808	1.819	331.269 331.271	331.267	7.631	7.646	329.463	329.448	✓
4.184	4.210	331.467 331.467	331.467	3.986	4.012	327.283	327.257	
2.406	2.178	330.649 330.649	330.649	3.224	2.996	328.243	328.471	
3.886	3.768	328.043 328.042	328.044	6.493	6.373	324.156	324.276	✓
1.906	1.845	325.575 325.576	325.574	4.373	4.314	323.670	323.729	
2.927	2.927	316.870 316.870	316.869	11.132	11.133	314.443	314.442	
4.857	4.778	318.126 318.126	318.126	3.601	3.522	313.269	313.348	
4.433	4.791	317.112 317.112	317.113	5.447	5.804	312.679	312.322	
				5.861	5.813	311.251	311.299	✓
2.968	2.917	314.218 314.219	314.216					
12.423	12.431	322.528 322.527	322.529	2.114	2.120	312.104	312.098	✓

Mon May 3. '26 cloudy

Rep-Rec T
Bailey
Todd - Rods135
B.M. #1196
Hub with roll
92' R 1057+00
New B.M.

(42)

#1	#2	T	T	-	-	Elevation #1	#2	B.M.S.
		322.528						
		329.113		2.883	2.874	319.645	319.654	#136 B.M. 12 000 nail in Hub 30' L 1080+30 New B.M.
9.468	9.459	329.113	329.113					
		330.020		4.752	4.537	324.341	324.576	324.361
5.660	5.443	330.021	330.019					
		327.990		6.059	6.013	327.961	324.007	
9.028	3.763	327.989	327.990					
		322.424		8.339	8.240	319.651	319.750	
2.773	2.673	322.424	322.423					
		317.425		7.905	7.640	315.012	314.784	
2.405	2.842	317.424	317.426					
		308.935		10.005	9.829	307.420	307.596	
1.535	1.387	308.935	308.785					
		297.505		12.267	12.250	296.288	296.265	
0.817	0.800	297.505	297.505					
		286.939		11.678	11.740	285.027	285.715	
1.313	1.223	286.940	286.938					
		276.214		12.240	12.214	274.699	274.325	
1.574	1.990	276.213	276.215					#137 B.M. 12 000 20' L 1080+00 Hub Rec. El. 268.017 D = .072 +
		269.865		8.269	8.414	267.945	267.800	267.945
		269.865	269.865					
1.920	2.065			12.321	12.240	257.542	257.625	

Tues May 4 - '26 Cloudy

Rup T Rec
Bailey - Rods
Tadd

(43)

	+	+	+	+	-	-	Elevation	#1	#2	B.M.
			258.882				257.544		259.625	
1.340	1.255	258.884	258.880							
			247.816		12.815	12.268	246.067		246.014	
1.751	1.201	247.818	247.815							
			238.220		11.303	11.261	236.513		236.555	
1.709	1.663	238.222	238.218							
			227.348		12.097	12.395	226.123		225.875	
1.220	1.492	227.349	227.348							
			218.174		10.707	10.861	216.491		216.497	
1.745	1.626	218.176	218.173							
			206.780		12.255	12.328	205.919		205.790	
0.62	0.983	206.781	206.779							
			196.083		12.421	12.118	194.359		194.662	
1.725	1.420	196.084	196.082							
			185.050		12.937	12.706	183.846		183.877	
1.709	1.677	185.053	185.054							
			175.559		11.530	11.467	173.324		173.587	
1.037	0.970	175.561	175.557							
			164.810		12.077	12.171	163.482		163.368	Checked to home
3.33	1.445	164.815	164.813							
			153.694		12.791	12.623	152.023		152.129	
1.673	1.563	153.696	153.692							
			145.094		9.635	9.607	144.059		144.087	144.059
1.037	1.065	145.096	145.092							
					10.592	10.502	134.512		134.522	

138

B.M. # 138
 Hobart's man. 25' L 108420
 New B.M.

(44)

	+	+	+	+	-	-	Elevation #1	B.M.
	0.856	0.822	135.346 135.348	135.344			134.512	134.522
153			130.123		8.622	8.687	136.724	136.663
3401	3.458		130.125	130.121				
172			121.660		9.877	9.806	120.246	120.312
1.415	1.341		121.661	121.658				
			113.466		9.371	9.405	112.289	112.255
1.178	1.211		113.467	113.466				
			109.094		7.222	7.216	111.243	105.992
2.851	3.103		109.094	109.095				
			111.390		3.822	3.602	109.272	103.492 103.292
8.117	7.899		111.389	111.391				
					3.824	3.683	107.566	107.507

#139
 B.M. ~~56~~ Hub with nail
 85'R 10.26+20
 Flagged back

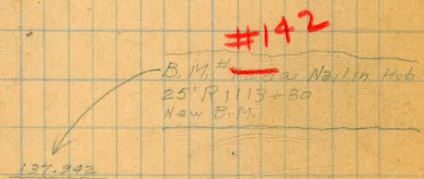
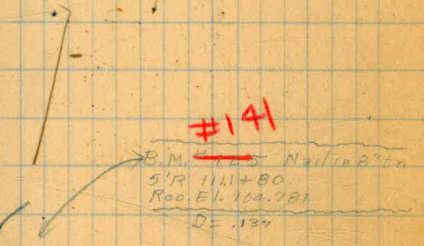
Wed. May 5-26 Cloudy

Rep. T. Rec.
 Bailey - Rods
 Todd

	3.897	3.956	111.463	111.463				
			111.463		6.547	6.261	104.886	105.202
	1.619	1.302	106.504	106.508				
			96.970		11.826	11.824	99.408	99.680
	2.363	2.289	96.971	96.367				
			91.854		7.426	7.428	89.474	89.478
2.580	2.383		91.854	91.855				
			90.805		5.520	5.586	86.324	86.268
4.481	4.537		90.805	90.805				
					1.659	1.668	89.146	89.137 89.146

#140
 B.M. ~~124~~ Nail in Syc. tr.
 25'R 11.05+00
 R = EL 89.144
 D = 0.02 -

	+	+	T	T	-	-	Elevation	B.M.
1.3	2.062	2.074	91.208	91.211			89.144	89.137
			88.967		6.322	6.322	89.878	89.828
1.7	4.021	4.127	88.267	88.965				
			94.201		5.501	5.501	83.466	83.454
1.9	10.236	10.764	94.202	94.201				
			104.482		0.840	0.977	93.361	93.274
1.2	11.121	11.253	104.882	104.883				
			111.539		3.911	3.927	104.571	104.473
1.0	10.907	11.047	111.538	11.540				
			116.510		6.621	7.038	104.918	104.501 104.918
1.1	11.590	12.010	116.508	116.511				
			128.401		0.755	0.829	115.455	115.681
1.2	12.645	12.721	128.400	128.402				
			139.974		0.855	1.160	127.526	127.241
1.2	12.420	12.738	139.973	139.976				
			150.012		2.032	1.088	137.940	137.090 137.942
1.2	12.068	10.923	150.010	150.813				
			160.910		1.307	1.113	144.205	144.707
1.2	12.205	12.322	160.910	160.911				
			172.754		0.858	0.832	160.852	160.078
1.2	12.700	12.828	172.752	172.756				
			183.738		0.959	0.968	171.295	171.785
1.1	11.947	11.953	183.738	183.739				
					6.523	6.485	182.215	182.253



(46)

	+	+	-	-	Elevation	=1	=2	B.M.	
			194.672		182.215		182.253		
12.475	12.241	192.690	192.678						
		205.409		1.207	193.485		207.350		
11.220	12.059	205.405	205.209						
		215.518		1.410	203.997		203.658	203.997	
11.519	11.857	215.516	215.519						
		226.402		0.842	214.696		214.560		
11.276	11.843	226.202	226.802						
		237.303		1.128	225.274		225.223		
12.127	11.382	237.301	237.305						
				50					
				1.157	234.146		234.254	check	
Thurs. May 6-26 Cloudy + Warm									
Rup. + Rec									
Bailey - Ruds									
Todd									
		248.260							
12.113	12.027	248.259	248.261						
		258.816		0.883	247.977		247.418		
11.437	11.420	258.814	258.816						
		269.638		1.142	258.670		257.816		
11.964	12.023	269.638	269.639						
		280.346		0.898	268.690		268.581		
11.724	11.717	280.344	280.245						
		291.038		1.258	278.898		278.897		
12.150	12.142	291.038	291.039						
		301.589		0.788	278.258		278.128		
11.328	11.303	301.588	301.570						

#143

B.M. ~~112.50~~ Nail in Hub.
10' R 1116 + 50
New B.M. Flagged post

	+	+	+	-	-	Elevation #1	#2
			301.589				
12.042	10.564	311.362	311.362	2.269	0.790	299.320	322.179
11.627	11.662	322.080	322.082	0.891	0.942	310.471	310.420
12.222	12.317	323.474	323.473	0.816	0.301	321.264	321.179
12.111	12.111	340.722	344.722	0.884	0.883	322.610	322.611
11.593	11.579	345.348	345.348	11.264	11.193	323.456	323.569
3.443	3.363	347.002	347.002	1.787	1.729	343.561	343.639
3.786	3.791	339.802	339.803	10.282	10.222	326.015	326.029
12.318	12.229	350.537	350.539	1.085	1.292	338.217	338.210
3.404	3.540	342.807	342.808	11.138	11.231	339.899	339.306
1.468	1.490	339.398	339.397	4.278	3.828	337.929	337.959
0.800	0.225	329.554	329.553	12.442	12.770	326.254	326.428
0.898	0.830	316.171	316.173	12.277	12.275	315.225	315.229

B.M. #144
Hub with nail. New B.M.
Flagged Bush

B.M. #145
Hub.
122+60-10'R
Rec. E. 1.393.917
D = .199

#146
B.M. - New B.M.
Hub with Nail
20'L 1131+00 Flagged

5400

(48)

	+	+	T	T	-	-	Elevation #1	#2	B.M.
			3.16.1971						
			305.185		12.568	12.684	303.603	303.547	
1.583	1.427	305.186	305.184						B.M. #147 1132+60+5'R Rec. El. 298.380 D=127-
			306.700		6.678	6.388	298.507	298.997	298.507
8.128	7.223	306.700	306.700						
					14.823	11.709	294.897	294.951	Take here
Fri. May 7-26 Clouds & Sun Warm									
			300.868						
5.978	5.916	300.870	300.867						
			292.544		10.571	11.585	292.297	292.283	
2.248	2.260	292.545	292.543						B.M. #148 New B.M. 302+126+50 Hib with Nail Flogged
			288.018		5.415	5.465	286.829	287.079	286.929
1.089	0.940	288.018	288.017						
			277.872		11.188	11.374	276.830	276.889	
1.044	1.127	277.872	277.871						
			266.565		12.227	12.386	265.425	265.486	
1.141	1.078	266.566	266.564						
			255.326		12.356	12.375	264.209	264.167	
1.118	1.157	255.327	255.324						B.M. #149 Hib 1139+60+10'R Rec. El. 245.838 D=880+ Ran single psych. Sep. 80
			245.325		11.168	11.185	244.158	244.191	244.158
1.169	1.182	245.327	245.323						
			233.836		12.505	12.463	232.820	232.862	
1.017	0.974	233.837	233.834						
			224.632		10.950	10.472	223.386	223.364	
1.248	1.266	224.634	224.630						

(49)

	+	+	+	-	-	Flotilla	#1	#2
			224,632					
			213,258	12,529	12,562	212,073		212,070
1,105	1,188	213,258	213,258					
		205,945		8,736	8,363	204,522		204,525 204,522
1,423	1,050	205,945	205,945					
		197,001		16,456	16,110	194,489		193,835
2,514	3,114	197,003	196,999					
		192,077		12,013	11,973	184,986		186,228 194,988
7,089	7,047	192,077	192,077					
		181,005		12,316	12,368	179,763		179,209
1,245	1,299	181,008	181,008					
		176,272		8,765	8,377	174,243		174,629 174,243
2,029	1,249	176,272	176,273					
		165,299		11,635	11,758	164,377		164,514
1,423	1,484	166,000	165,998					
		155,458		12,121	12,488	153,878		153,511
1,582	1,945	155,460	155,456					
		147,892		9,507	9,476	145,951		145,982
1,942	1,910	147,893	147,892					
		139,748		9,846	9,818	138,046		138,279 138,046
1,703	1,222	139,749	139,746					
		141,852		4,466	4,405	135,282		135,283
6,870	6,569	141,852	141,852					
		148,748		1,575	1,581	146,877		146,301
8,878	8,007	148,747	148,746					

B.M. # 150 Hub
 1142+30-10L
 Rod. E.L. 205,399
 D=1877+

B.M. # 151 Hub with 1/2
 1143+80-17'R
 Flagged

B.M. # 152 New B.M. Hub
 1146+20-15'L
 Flagged

B.M. # 153 Hub, New B.M.
 1149+00-30'L
 Flagged

+	+	-	-
		148.345	
		156.160	1.815
9.218	9.230	156.159	156.160
		183.426	2.050
9.317	9.360	162.927	167.424
		168.974	5.865
11.432	11.405	168.979	168.975
		175.355	6.362
7.923	7.875	175.355	175.355
		184.015	1.182
9.847	9.905	184.014	184.016
		191.139	2.101
9.227	9.229	191.141	191.137
		198.906	0.831
6.132	6.204	198.907	198.906
		199.244	11.210
		205.688	6.655
8.078	8.198	205.687	205.688
		211.590	1.593
7.424	7.482	211.589	211.591
		217.502	0.878
6.789	6.750	217.501	217.503

Mon May 10, 26 Clear Sun
 Rep. H. + Rec
 Bill + Kate

+	+	-	-
		148.345	
		156.160	1.815
9.218	9.230	156.159	156.160
		183.426	2.050
9.317	9.360	162.927	167.424
		168.974	5.865
11.432	11.405	168.979	168.975
		175.355	6.362
7.923	7.875	175.355	175.355
		184.015	1.182
9.847	9.905	184.014	184.016
		191.139	2.101
9.227	9.229	191.141	191.137
		198.906	0.831
6.132	6.204	198.907	198.906
		199.244	11.210
		205.688	6.655
8.078	8.198	205.687	205.688
		211.590	1.593
7.424	7.482	211.589	211.591
		217.502	0.878
6.789	6.750	217.501	217.503

B.M. #154
 1158+75-38'R
 Flagged Bush

B.M. #155
 1167+85-40'R
 Flagged Bush

157.561
 157.561
 180.908 157.736 * check

(51)

+	+	T	T	-	-	Elevation	#2
		217.502					
		225.753		1.277	1.239	216.405	216.263
9.696	9.692	225.751	225.753				
		229.532		3.105	3.436	220.328	222.317
7.225	1.235	229.559	229.552				
		234.450		2.682	2.089	226.970	227.463
7.520	6.987	234.450	234.450				226.870
		238.226		3.272	3.318	231.178	231.132
7.742	7.795	238.227	238.225				
		243.225		2.980	2.952	234.667	235.974
7.261	7.253	243.222	243.222				235.974
		246.326		8.839	8.195	234.288	235.072
11.936	11.293	246.324	246.325				234.368
		254.090		1.403	1.365	244.921	244.957
9.166	9.129	254.089	254.088				61
		261.656		1.220	1.280	253.568	252.802
8.785	8.852	261.655	261.656				4
		270.640		0.967	0.986	260.689	260.670
9.951	2.970	270.640	270.640				
		277.834		1.603	1.572	269.037	267.268
10.396	10.367	277.833	277.835				
		289.274		1.098	1.041	272.336	272.393
10.936	10.882	289.272	289.275				
		292.316		2.748	2.806	286.526	286.448
11.787	11.847	292.315	292.317				286.526

B.M.

B.M. #156 Hub. New B.M.

1179475-20R
Flagged

B.M. #157 Hub. New B.M.

1186178-40R

Flagged, 10' Below Bottom
Creek bed

to here

B.M. #158 Nail + Hub. New.

1176165-25R

Flagged 2' Below creek.

to here

+	+	↑	↑	-	-	Elevation #1	#2	B.M.
			298.316					
			309.102	0.891	0.880	297.425	297.434	
11.676	11.669	309.101	309.103					
			317.706	0.971	0.970	308.131	308.138	
2.575	2.574	317.706	317.706					
			326.976	0.938	0.925	316.068	316.781	
10.207	10.197	326.975	326.978					
			337.211	0.802	0.853	326.174	326.123	
11.033	11.087	337.212	337.210					
			340.972	2.008	2.600	375.203	375.211	
5.770	5.760	340.973	340.971					
			343.624	0.952	0.730	382.020	382.242	
11.605	11.382	343.625	343.624					
			392.301	1.323	1.311	392.301	392.313	

#159 Hub. New
1207+00-20L
Flagged - 11' Below Road

#160 U. G. 11001
1207+00-20R
Flagged - 8' Slope of hill

342.301 to hole

Tues. May 11, 26, Clear Warm. Sun.

Rup. Rec + H.I.
Boily
Todd - Pods

			354.567					
12.267	12.253	354.568	354.566	0.757	0.828	358.210	357.729	
			360.611					
6.800	6.883	360.610	360.612					
			366.813	2.597	3.553	368.014	357.058	358.014
8.777	9.757	366.811	366.815					
			370.060	2.568	2.407	364.245	364.204	
5.316	5.654	370.061	370.060					
			376.088	3.972	4.309	366.088	365.753	366.088

#161 North Side
1211+73
-25'L
D28442T

#162 Hub. SW. Cor.
Meads + Ven Dyke

(53)

	+	+	+	-	-	Elevation	B.M.
			270.508			366.288	365.753
4.422	4.755	370.508	370.508				
		372.022		3.970	4.090	366.536	366.418
5.484	5.625	372.022	372.023				
		373.820		3.793	3.938	366.229	369.284
5.582	5.538	373.818	373.822				
		375.217		4.005	4.001	369.815	369.819
5.402	5.398	375.217	375.217				
				5.603	5.626	369.614	369.611
							367.614
							363.495
		369.245					363.492
5.750	5.753	369.245	369.245				
		369.458		4.803	4.844	364.942	364.901
5.017	5.056	369.459	369.457				
		368.696		7.845	7.855	364.613	364.603
4.082	4.094	368.695	368.697				
		368.485		4.730	4.731	363.966	363.965
4.520	4.519	368.486	368.484				
		368.866		4.834	4.969	363.551	363.514
5.317	5.349	368.868	368.865				
				4.665	4.999	364.201	364.222
							364.201

363.560 = Rec. E.L.
 B.M. #163 Brass Plug
 City B.M.
 S.W. Corner E. Cajal & Verdugo
 or City Datum
 = 6.119 U.S.G.S. Datum
 369.614 - 6.119 =
 363.495
 City - 363.560
 D = .065

Note: From here on 6.119
 is subtracted, i.e. we have
 kept on with our calculations
 minus 6.119

#164
 B.M. #2A S.W. Corner
 curb return Copeland & Mead
 Point on curb

						Elevation		B.M.
		369.215				369.201	369.922	
5.016	4.791	369.217	369.213					
		370.007		4.740	4.740	369.475	369.475	
5.532	5.532	370.007	370.007					#165 B.M. 165 S.W. Corner Curb Return 42nd + Meade Point on Curb
		370.007		4.878	5.247	365.129	369.760	365.129
4.880	5.245	370.009	370.005					
		370.674		4.525	4.456	365.482	365.557	
5.194	5.122	370.676	370.673					#166 B.M. 166 S.W. Curb Return Point on Curb Monlboro Rd + Meade
		371.616		4.534	4.382	366.140	366.292	366.140 + taberc
5.495	5.324	371.615	371.616					
		372.528		4.120	4.270	367.496	367.326	
5.032	5.202	372.528	372.528					#167 B.M. 167 S.W. Curb Return Point on Curb 41st St + Meade
		373.052		4.720	4.779	367.748	367.747	367.748
5.305	5.203	373.053	373.052					
		372.566		5.713	6.757	367.337	367.295	
5.228	5.271	372.567	372.566					#168 B.M. 168 S.W. Curb Return Point on Curb Central Ave. + Meade
		374.023		4.355	4.356	368.211	368.210	368.211
5.819	5.812	374.024	374.022					
		373.178		5.547	5.568	368.478	368.455	
4.723	4.722	373.179	373.177					#169 B.M. 169 S.W. Curb Return Point on Curb 40th St. + Meade
		373.183		5.270	5.425	367.908	367.753	367.908
5.277	5.428	373.185	373.181					
		373.924		4.481	4.494	368.702	368.689	
5.221	5.236	373.923	373.925					#170 B.M. 170 S.W. Curb Return Point on Curb 39th St. + Meade
		4.823	4.811	369.101	369.113	369.101	369.101	+ here

	+	+	+	-	-	Elevation	B.M.
			375.974			369.101	369.113
6.372	6.361	375.973	375.974				
		377.985		3.204	3.926	378.070	378.048
5.415	5.427	377.985	377.985				#171 B.M. 34 S.W. Curb Retain Point on Curb 38th St. + Meade
		378.058		4.230	4.908	379.255	379.257
5.704	6.381	378.267	378.958				
		380.549		3.621	3.687	375.337	375.301
5.212	5.245	380.549	380.549				#172 B.M. 34 S.W. Curb Retain Point on Curb McClintock + Meade
		382.919		3.804	3.145	376.945	377.404
6.175	5.514	382.920	382.918				376.745
		384.962		3.723	3.901	379.126	379.128
5.836	5.835	384.962	384.963				#173 B.M. 34 S.W. Curb Retain Point on Curb Apparently 37th + Meade
		387.862		3.004	2.828	381.958	382.064
5.905	5.778	387.863	387.862				381.958
		389.488		4.027	4.111	383.775	382.767
5.712	5.727	389.487	389.488				#174 B.M. 34 S.W. Curb Retain Point on Curb Oberkood Mead
		390.590		4.382	3.468	385.106	386.020
5.933	4.520	390.539	390.540				385.106
		391.306		4.522	4.821	386.018	386.019
5.288	5.288	391.306	391.307				#175 B.M. 34 S.W. Curb Retain Point on Curb 34th St. + Meade
				4.527	4.593	386.779	386.713
						386.779	386.779

Wed. May 12-26 Hot Sun

Rup. T Rec.
Bailey
Tedd - Rds

		392.052					
5.278	5.341	392.051	392.054				

	+	+	-	-		
			392.052			
4			392.330	4.511	4.795	387.541
	4.722	5.026	392.331	392.330		387.304
5			391.755	5.118	5.215	387.212
	4.541	4.942	391.753	391.739		387.315
5			390.908	5.209	5.215	386.548
	4.362	4.369	390.910	390.907		386.540
5			391.432	4.695	4.383	386.263
	5.168	4.907	391.431	391.432		386.525
6			392.436	4.412	4.408	387.020
	5.418	5.911	392.438	392.435		387.024
5			391.210	5.339	5.507	387.106
	4.106	4.280	391.212	391.207		386.929
5			389.633	5.422	5.642	385.561
	4.092	4.072	389.633	389.633		385.561
5			387.832	5.603	5.763	384.030
	3.803	3.950	387.833	387.830		389.880
5			386.130	6.055	5.724	381.777
	4.353	4.222	386.130	386.130		382.108
5			385.235	4.967	5.380	381.163
	4.072	4.985	385.235	385.235		380.750
V			383.446	5.842	5.846	379.393
	4.052	4.057	383.445	383.446		379.389
5			383.088	4.882	5.369	378.569
	4.526	5.009	383.090	383.086		378.077

Elevation " " " B.M.

176
 B.M. #176 S.W. Curb Ret.
 Point on Curb
 Wilson + Meade

#177
 B.M. #177 S.W. Curb Ret.
 Point on Curb
 35th + Meade

#178
 B.M. #178 S.W. Curb Ret.
 Point on Curb
 Switzer + Meade

#179
 B.M. #179 S.W. Curb Ret.
 Point on Curb
 34th + Meade

#180
 B.M. #180 S.W. Curb Ret.
 Point on Curb
 Felton + Meade

181
 B.M. #181 S.W. Curb Ret.
 Point on Curb
 33rd + Meade

- Folsom

(59)

+ + + + - -

379.447
39

6.128

6.143

Elevation #1

#2 B.M.

377.293

379.298

#191

B.M. #1 A. S. E. Cor. Curb
CITY B.M. Brass Plug

Howard + Idaho
Roo. E 1373.011

D-168+

377.866

377.868

2

377.868

6

5.021

4.571

4.570

372.543

⑥ A relocation of B.M.S Between
Sta. 962+66.16 and oppo of Bissels fire
or Bet. B.M. #112 and B.M. #113

Friday May 19th 28
Wainson
Rep. Rec. M.
Bally
Todd

Contd. from Page 33, (60)

+	+	T	T	-	+	+
9.639		393.282				
		398.421	3.034	3.199	390.248	390.183
8.173	8.288	398.421	398.421			
		409.903	1.109	1.140	397.312	397.281
7.572	7.621	409.903	409.902			
		714.100	2.527	2.540	402.252	402.362
14.922	14.737	414.100	414.097			
		414.350	2.058	2.190	412.092	411.910
2.307	2.441	414.349	414.351			
		407.098	2.160	2.129	405.400	405.221
1.858	1.826	407.098	407.097			
		396.236	12.815	12.852	394.233	394.361
1.207	1.869	396.230	396.230			
		387.342	10.297	9.750	385.983	386.280
1.360	0.862	387.343	387.342			
		376.214	12.503	12.598	374.939	374.814
1.375	1.408	376.214	376.214			
		375.477	12.391	12.283	363.927	363.823
11.654	11.548	375.476	375.478			
		384.888	1.173	1.130	374.304	374.347
10.683	10.543	384.887	384.890			
		392.161	0.883	0.891	384.005	383.997
8.158	8.162	392.163	392.159			
			2.042	2.070	389.319	389.326
					388.719	387.319

B.M. #112
New location
962+66
B.M. #113
50' Ref 962+66
Hub + nail

#114
B.M. #114
969+00-30'L
Rack

#115
B.M. #115
970+65-15'R
Rack

#116
B.M. #116
95+92-772+00
Hub + Nail

#117
B.M. #117
976+65-50'R
Hub + Nail

(62)

	+	+	+	+	-	-	Elevation	B.M.
			315.602					
			305.481		11.013	11.022	309.631	309.622
1.051	1.058	305.682	305.680					
		298.502		9.448	8.585	296.233	297.096	296.233
2.271	1.405	298.504	298.501					
		287.435		12.241	12.385	286.261	286.117	
1.174	1.318	287.435	287.435					
		277.072		12.611	12.576	274.824	274.859	
2.238	2.212	277.072	277.071					
		266.270		12.691	12.508	264.381	264.664	
1.869	1.605	266.279	266.269					
		254.840		12.461	12.692	253.509	253.692	253.802
1.033	1.166	254.842	254.839					
		246.548		12.499	12.481	242.341	242.359	
4.206	4.189	246.547	246.548					
		232.202		1.215	1.751	244.833	244.797	244.833
9.348	7.406	232.201	232.203					
		246.523		9.563	9.547	242.639	242.655	
3.822	3.866	246.525	246.521					
		240.322		6.101	6.191	240.322	240.332	
		237.274		10.758	8.059	237.274	237.252	
1.522	1.823	237.274	237.274					

#122

B.M. ~~1170~~
988+80+20'R
Hub

#123

B.M. ~~1170~~
990+45+20'R
Rock

#124

B.M. ~~1170~~
993+00-15'L
Hub + Nail

125

B.M. ~~1170~~
998+45-15'R
Hub + Nail

Mon. May 17 '26 Hot
Rep. R. Rec
T. ad. Anderson - Rods

		243.510	243.509					
3.088	3.177	243.510	243.509					
		237.274		10.758	8.059	237.274	237.252	
1.522	1.823	237.274	237.274					

Use Elev. as given on
Page 37

63

	+	+	T	T	-	-	Fluctuation	B.N.
			237.274					
			226.805		12.082	12.056	228.192	225.218
1.613	1.587	226.805	226.805				218.539	
		220.917		8.266	8.273	218.539	218.532	
2.378	2.385	220.917	220.917					
				8.664		218.253	218.253	

#126
B.M. +115
Req. El. 218.576
D = .377
#126
B.M. +115
Req. El. = 212.286
D = .33

Contd. on Page 37.

69

65

66

67

(68)

69

70

(7)

72

(23)

(74)

(75)

(70)

70

① May 1st, Sat. Double peg check. ①
 Concerning apparent error between
 B.V.O, 90 $\frac{1}{2}$, 90a.

	+	+	+	+	-	-	Elevation	#1	#2	B.M.
			322.418				319.418	318.505	<u>319.418</u>	#90
3.001	3.913	322.419	322.418		7.948	7.933	319.470	319.485		
3.354	3.338	317.824	317.823							
		315.670			5.050	5.071	312.774	312.753		
2.877	2.916	315.671	315.668							
		308.544			8.842	8.840	306.828	306.830		
1.716	1.713	308.544	308.543							
		303.397			7.391	7.385	301.153	301.159		
2.245	2.237	303.398	303.390							
		297.202			7.693	7.688	295.704	295.709		
1.500	1.491	297.204	297.200							
		290.406			8.212	8.241	288.990	288.961		
1.417	1.444	290.407	290.405							
		284.112			7.904	7.924	282.502	282.482		
1.611	1.629	284.113	284.111							
		278.594			6.826	6.859	277.296	277.263		
1.299	1.331	278.595	278.594							
		278.524			7.928	8.001	270.666	270.593	<u>270.666</u>	#90 $\frac{1}{2}$
7.857	7.932	278.523	278.525							
		274.691			6.949	6.977	271.575	271.547		
3.116	3.144	274.691	274.691							
		272.014			7.118	7.152	267.573	267.539		
4.442	4.475	272.015	272.014							
					12.240	11.736	259.774	260.278	<u>259.774</u>	#90a.

98

List of B.M.s checked by Schuyt + Smith
B.M.^s EL.

x90 a 259.949 Rock River 35'R 847+21

^{92w}
~~x90 t~~ 260.520 Rock side of Road 6'R 858+42

x93 258.027 Rock 6'R 863+18

~~94 272.926 Oak 40'L 869+00~~

x94 a 251.305 ^{Rocky} 13'R 876+39

SIMPSON

x95 w 259.199 17'L 886+17

^{95 t}
x96 251.760 Rock 10'R 888+27

^{97a}
~~x98~~ 251.836 ^{802.250}
904+00

x97B(A) 267.520 Hub 30'L 911+28

^{97A(A)}
~~x93~~ 314.042 ? 25'L 924+12

x97(A) 290.808 Hub 13'R 938+00

18+160
944

(79)

+	+	H.I	H.I	-	-	Elcl	Elcl
		271.661				259.774	260.278
11.888	11.382	271.662	271.660				
		274.504		4.604	4.601	267.057	267.060
7.446	7.445	274.503	274.505				
		274.386		3.260	3.285	271.244	271.219
3.141	3.167	274.385	274.386				
		268.629		7.754	7.722	266.632	266.664
1.999	1.963	268.631	268.627				
				8.281		260.348	

#920
260.340

80
+
1.163
2.552
4.38
3.522
Sing
and
+
4.424
6.950
2.312
0.852
1.348
1.890
0.020

256.827

11,071

394.156



DIRECTIONS FOR USE OF TABLES

TABLE No. 12

Distance of slope stake from side or shoulder stake for any width roadway slope 1 1/2 to 1. If ground is nearly level, the cut or fill at side stake is located by the double entry method in left column and top row. The number in body of table in same row and column gives distance from side stake to slope stake. If ground is not level, add or subtract the amount of slope from the distance in the body of the table. Add this amount if cut, elevate if fill. Add this amount to cut or fill and add in table. Set up rod at this point, and line of sight should cut target.

**IMPROVED TABLES
AND
INFORMATION**

TABLE No. 13

To find Tangent and External for curve of any other degree, divide by degree of curve and add connection found in column of connections. Degree of curve with a given T may be found by dividing tangent (or external) opposite T by given tangent (or external). The distance from a point on the tangent to the curve is very nearly the square of the tangent length divided by twice the radius.

82

LEFAX FILING INDEX

Elem Elem B.M.

980.092

21A (*183)

32nd + Meade

381.250 381.201

382.442 382.620

383.183 384.370

383.183

N.W. Corner

Bross Plng

in Corb

City B.M.

D=038

81

Double Peg Cheat to Determine
Elev of B.M. at Iowa + Meade

+ + 7 7 - -

5.526

385.618

1.368

4.417

5.891

5.940

387.141

387.141 387.141

4.699

4.521

5.566

5.391

388.010

388.008 388.011

4.827

3.640

Bross Plng

80

+	T	-	Elev
1.163	396.225		395.462
		6.498	390.127
2.552	392.679		
		6.688	386.041
4.384	390.225		
		4.980	385.445
3.522	388.967		
		4.071	384.896 B.M. ^s

Single Peg Check Between B.M. at 1132 + 60

and 1137 + 60, Fri. May 7

+	T	-	Elev
			298.607
4.424	292.731		
		12.470	280.261
6.454	296.715		
		6.433	290.282
2.317	292.601		
		5.670	286.931 B.M. at 1136 + 50
1.832	287.783		
		11.099	276.684
1.348	278.032		
		12.610	265.422
1.890	267.312		
		11.575	255.737
0.090	255.827		
		11.671	244.156

DIRECTIONS FOR USE OF TABLES

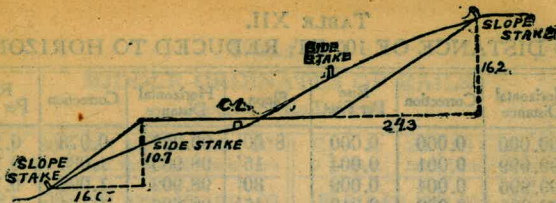
TABLE No. 1.

Distance of slope stake from side or shoulder stake for any width roadway, slope 12 to 1. If ground is nearly level, the cut or fill at side stake is located by the double entry method in left column and top row. The number in body of table is constant and column in which distance from side stake to slope stake. If ground is not

IMPROVED TABLES

AND **INFORMATION**

To find Tangent and External for curve of any other degree, divide by degree of curve and add connection found in column of connections. Degree of curve with a given T may be found by dividing tangent (or external), opposite T by given tangent (or external). The distance from a point on the tangent to the curve is very nearly the square of the tangent length divided by twice the radius.



DISTANCES FROM SIDE STAKES FOR CROSS-SECTIONING.

SLOPE 1 1/2 TO 1. ROADWAY OF ANY WIDTH.

	0	.1	.2	.3	.4	.5	.6	.7	.8	.9	
0	0 00	0 15	0 30	0 45	0 60	0 75	0 90	1 05	1 20	1 35	0
1	1 50	1 65	1 80	1 95	2 10	2 25	2 40	2 55	2 70	2 85	1
2	3 00	3 15	3 30	3 45	3 60	3 75	3 90	4 05	4 20	4 35	2
3	4 50	4 65	4 80	4 95	5 10	5 25	5 40	5 55	5 70	5 85	3
4	6 00	6 15	6 30	6 45	6 60	6 75	6 90	7 05	7 20	7 35	4
5	7 50	7 65	7 80	7 95	8 10	8 25	8 40	8 55	8 70	8 85	5
6	9 00	9 15	9 30	9 45	9 60	9 75	9 90	10 05	10 20	10 35	6
7	10 50	10 65	10 80	10 95	11 10	11 25	11 40	11 55	11 70	11 85	7
8	12 00	12 15	12 30	12 45	12 60	12 75	12 90	13 05	13 20	13 35	8
9	13 50	13 65	13 80	13 95	14 10	14 25	14 40	14 55	14 70	14 85	9
10	15 00	15 15	15 30	15 45	15 60	15 75	15 90	16 05	16 20	16 35	10
11	16 50	16 65	16 80	16 95	17 10	17 25	17 40	17 55	17 70	17 85	11
12	18 00	18 15	18 30	18 45	18 60	18 75	18 90	19 05	19 20	19 35	12
13	19 50	19 65	19 80	19 95	20 10	20 25	20 40	20 55	20 70	20 85	13
14	21 00	21 15	21 30	21 45	21 60	21 75	21 90	22 05	22 20	22 35	14
15	22 50	22 65	22 80	22 95	23 10	23 25	23 40	23 55	23 70	23 85	15
16	24 00	24 15	24 30	24 45	24 60	24 75	24 90	25 05	25 20	25 35	16
17	25 50	25 65	25 80	25 95	26 10	26 25	26 40	26 55	26 70	26 85	17
18	27 00	27 15	27 30	27 45	27 60	27 75	27 90	28 05	28 20	28 35	18
19	28 50	28 65	28 80	28 95	29 10	29 25	29 40	29 55	29 70	29 85	19
20	30 00	30 15	30 30	30 45	30 60	30 75	30 90	31 05	31 20	31 35	20
21	31 50	31 65	31 80	31 95	32 10	32 25	32 40	32 55	32 70	32 85	21
22	33 00	33 15	33 30	33 45	33 60	33 75	33 90	34 05	34 20	34 35	22
23	34 50	34 65	34 80	34 95	35 10	35 25	35 40	35 55	35 70	35 85	23
24	36 00	36 15	36 30	36 45	36 60	36 75	36 90	37 05	37 20	37 35	24
25	37 50	37 65	37 80	37 95	38 10	38 25	38 40	38 55	38 70	38 85	25
26	39 00	39 15	39 30	39 45	39 60	39 75	39 90	40 05	40 20	40 35	26
27	40 50	40 65	40 80	40 95	41 10	41 25	41 40	41 55	41 70	41 85	27
28	42 00	42 15	42 30	42 45	42 60	42 75	42 90	43 05	43 20	43 35	28
29	43 50	43 65	43 80	43 95	44 10	44 25	44 40	44 55	44 70	44 85	29
30	45 00	45 15	45 30	45 45	45 60	45 75	45 90	46 05	46 20	46 35	30
31	46 50	46 65	46 80	46 95	47 10	47 25	47 40	47 55	47 70	47 85	31
32	48 00	48 15	48 30	48 45	48 60	48 75	48 90	49 05	49 20	49 35	32
33	49 50	49 65	49 80	49 95	50 10	50 25	50 40	50 55	50 70	50 85	33
34	51 00	51 15	51 30	51 45	51 60	51 75	51 90	52 05	52 20	52 35	34
35	52 50	52 65	52 80	52 95	53 10	53 25	53 40	53 55	53 70	53 85	35
36	54 00	54 15	54 30	54 45	54 60	54 75	54 90	55 05	55 20	55 35	36
37	55 50	55 65	55 80	55 95	56 10	56 25	56 40	56 55	56 70	56 85	37
38	57 00	57 15	57 30	57 45	57 60	57 75	57 90	58 05	58 20	58 35	38
39	58 50	58 65	58 80	58 95	59 10	59 25	59 40	59 55	59 70	59 85	39
40	60 00	60 15	60 30	60 45	60 60	60 75	60 90	61 05	61 20	61 35	40
41	61 50	61 65	61 80	61 95	62 10	62 25	62 40	62 55	62 70	62 85	41
42	63 00	63 15	63 30	63 45	63 60	63 75	63 90	64 05	64 20	64 35	42
43	64 50	64 65	64 80	64 95	65 10	65 25	65 40	65 55	65 70	65 85	43
44	66 00	66 15	66 30	66 45	66 60	66 75	66 90	67 05	67 20	67 35	44
45	67 50	67 65	67 80	67 95	68 10	68 25	68 40	68 55	68 70	68 85	45
46	69 00	69 15	69 30	69 45	69 60	69 75	69 90	70 05	70 20	70 35	46
47	70 50	70 65	70 80	70 95	71 10	71 25	71 40	71 55	71 70	71 85	47
48	72 00	72 15	72 30	72 45	72 60	72 75	72 90	73 05	73 20	73 35	48
49	73 50	73 65	73 80	73 95	74 10	74 25	74 40	74 55	74 70	74 85	49
50	75 00	75 15	75 30	75 45	75 60	75 75	75 90	76 05	76 20	76 35	50

Computed by L. Leland Locke.

0.0 City Datum = 6.119 U.S.G.S.

Last B.M. at Idaho + Howard

Sta. 962+96.16 B.C.
to 0+00 on Bissell's line.

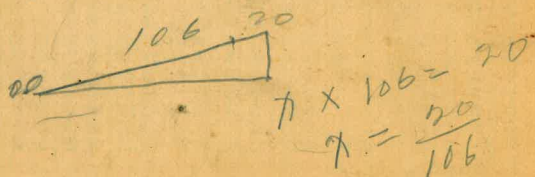
Co'R. 1061

1 =
4 = 12.923 76
2 = 12.834 66

194,476
12,923
207,399
194,566
12,834
207,400

194,480
12,923
207,403
194,570
12,834
207,404

215.9
16.5
199.4
215.9
7.7
208.2
227.3
7.3
220.0
199.4
20.6
367.566
41.688
362.878
41.248
357.126
6.740
6.738
6.739
40
6.741
6.742
20.6%



999
1000 3.328 3412

395
406.339
25-31
4.657
396.603
401.260
4.805
396.454
401.259

396.603
4.741
401.344
P. 26 - 1 foot too Low
P. 26 - .001 " Low
27 - 1007 " High
28 - .001 " Low
255,737
11,595
267,332
318,505
3,913
322,418
255,326
11,168
266,488
111 111