

F.B. # 216

Sutherland -
San Vicente Conduit

&

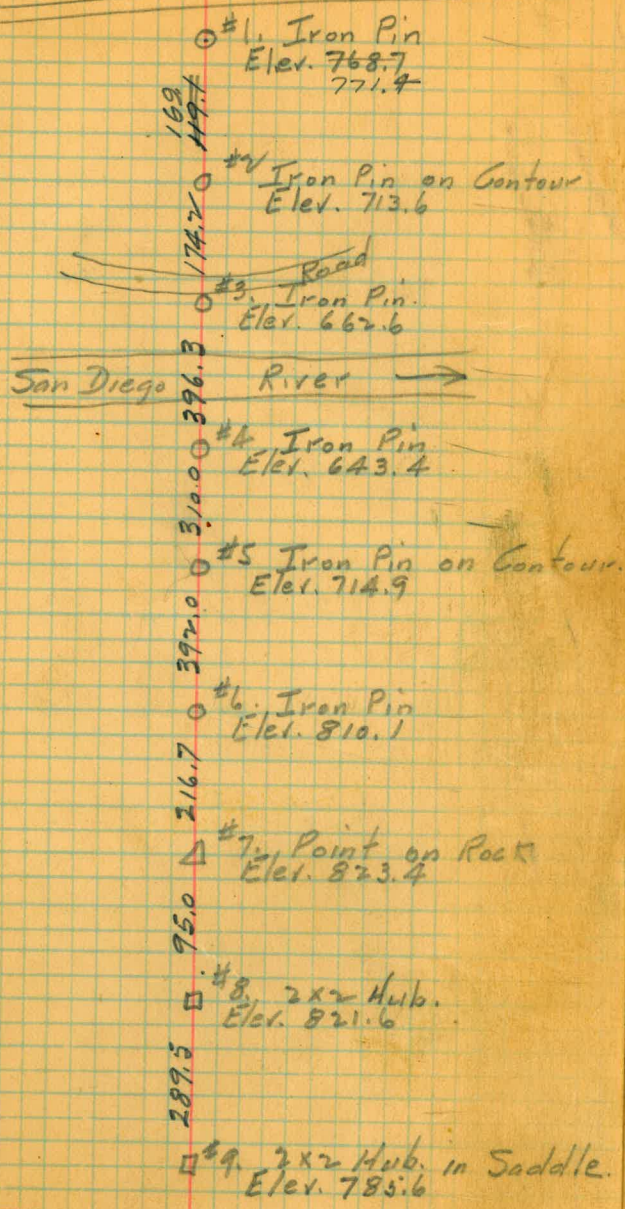
Lakeside - San Vicente
Conduit

Index

Level Notes - Secondary Points	3
Descriptions showing hubs set on Section Line; Intersection of Dam Axis with Section Line; - - - - -	37
Stadia Traverses West & South along new road from an intersection of Section Line and new road - - - - -	49
Profile Levels "H" Line - -	53

Flume

1



210
316.3
174.2
IRON

Next Notes
Secondary Points.

P.O.T. $30^{\circ}57'30''$ Direct
 $\Sigma = 0$ $4123^{\circ}50'12''$ Angle = L.
B.S. = G $30^{\circ}57'33''$

P.O.T. $30^{\circ}57'25''$ Inverted
 $\Sigma = 0$ $123^{\circ}49'50''$ Angle = L.
B.S. = G $30^{\circ}57'27''$

B₃

4

May, 2, 1927

N Glover

L Mattoon

Profile Levels on offset hubs
of Pipe Line from Sta 28+84⁹² BC. to
Sta.

On Line Change B₃

Sta	+	H.L.	-	Elev	
					Offsets on P of L from 28+40.14 to 43+09.75 " on L " " " 43+09.75 to 49+24.88
28+40.14				400.22	P.I. 28+75 T.P.
	4.84	405.06			
28+84.98			5.07	399.99	
29+00			4.50	400.56	
725			6.12	398.94	
+50			7.25	397.31	
775			9.12	395.94	T.P.
	6.53	402.47			
29+54.98			6.37	396.10	
30+00			6.25	396.22	
+50			6.43	396.04	
31+00			6.81	395.66	
+50			6.28	396.19	
32+00			3.90	398.57	
+50			4.13	398.34	
33+00			4.15	398.32	
+50			4.14	398.33	
34+00			4.37	398.10	T.P.
	6.06	404.16			
+50			5.87	398.29	
35+00			4.60	399.56	
+50			4.04	400.12	
36+00			4.47	399.69	
+50			3.64	400.52	
37+00			3.39	400.77	
+50			3.31	400.85	

Sta	+	H.I.	-	Elev	5
		404.16			
38+00			2.94	401.22	T.P.
	5.65	406.87			
	+50		5.31	401.56	
39+00			5.19	401.68	
	+50		5.15	401.72	
40+00			5.07	401.80	
	+50		5.19	401.68	
41+00			4.91	401.96	
	+50		4.84	402.03	T.P.
	7.50	409.53			
42+00			7.67	401.86	T.P.
	7.25	409.11			
	+50		7.41	401.70	
43+00			6.60	402.51	
BR. 43+09 ²⁵	on right of L		5.82	403.29	
" 43+09 ²⁵	on left of L		7.48	401.63	
	+25		5.86	403.25	
	+50		4.88	404.23	
	+75		4.54	404.57	
EC 43+83 ⁹¹			4.57	404.60	
44+00			4.75	404.36	
	+50		4.18	404.93	
	8.56	413.49			
45+00			7.85	405.64	
	+50		7.08	406.41	

Sta.	+	H.L.	-	Elev.	
3)					
		Offsets on R of L from 49+24.88 to 62+46.8			
		" " L of L " 62+46.8 to			
		413.49			
46+00			6.59	406.90	
	+50		6.68	406.81	
47+00			6.59	406.90	
	+50		6.45	407.04	
48+00			6.13	407.36	
	+50		5.28	408.21	
49+00			4.84	408.65	T.P.
		6.08	414.73		
49+24.88			5.80	408.93	
49+24.88		" T.P. "	4.10	410.63	
	+50		2.99	410.79	
50+00			4.52	410.21	
	+50		4.79	409.94	
51+00			4.66	410.07	
	+50		4.53	410.20	
52+00			4.70	410.03	
	+50		4.84	409.89	
53+00			5.35	409.38	
	+50		5.01	409.72	T.P.
		3.59	413.31		
53+59.12			3.51	409.80	
	+75		3.29	410.02	
53+99.85			2.94	410.37	
54+50			3.65	409.66	
55+00			5.06	408.25	

4)					6
Sta.	+	H.I.	-	Elev.	
		413.31			
55+50			5.21	408.10	
56+00			5.48	407.83	
+50			5.48	407.83	
BC, 56+69.6E			5.40	407.91	
+75			5.37	407.94	
57+00			5.79	407.52	
EC 57+06.74			4.82	408.49	T.P.
	3.31	411.50			
+50			3.33	408.47	
58+00			3.02	408.78	
+50			3.02	408.78	
59+00			4.41	407.39	
+50			4.98	406.82	
60+00			4.43	407.37	
+50			3.82	407.98	
61+00			4.33	407.47	
+50					
62+00			4.21	407.59	T.P.
	5.70	413.29			
BC 62+46.1E	on R. of C		5.34	407.95	
62+46.1E	on L. of C		6.19	407.10	
+75			5.91	407.38	
63+00			5.56	407.73	
EC. 63+11.2E			5.03	408.26	
+50			4.67	408.62	

51

Sta.	+	H.I.	-	Elev.	
		413.29			
64+00			4.15	409.14	
+50			5.47	407.82	
65+00			5.03	408.26	
+50			2.62	410.67	T.P.
	4.11	414.78			
66+00			4.35	410.43	
+50			4.55	410.23	
66+84 ²			4.73	410.05	
67+00			6.20	408.58	
+50			6.27	408.51	
68+00			7.59	407.19	
+60			8.23	406.55	
			2.73	412.05	412.07 BM

7

Index of - Levels to Sec. Pts. —

Sec. Pt. #	Page.
30	1
31	2
32, 33, 34	21
35, 36, 37 ⁴⁶ (38)	21
39	1
40, 41	3
42, 43, 44	4
45	20
46, Primary G'	5
47, 48, 49, 50	6
51, 52, 53, 54	8
55, 56, 57, 58	10
59	12
60, 61	17
62, 63, 64	15
65	16
66	12
Primary I	13
67, 68	14
69, 70	19

(over)

1

Sec. P#	Page.
71, 72	20
73,	29
74	20
75, 76	23
77	28
78, 79	25
80, 81	26
82, 83	28

Levets to Sec. Pts. 39, 30 and 81

1

+	π	-	Elev.
			1860.69 B.M.
6.30	1866.99		
		7.19	1859.80
5.86	1865.66		
		4.02	1861.64
10.10	1871.74		
		10.47	1861.27
12.05	1873.32		
		4.89	1868.43
5.45	1873.88		
		0.68	1873.20
11.74	1884.94		
		0.84	1884.10
11.78	1895.88		
		1.17	1894.71
12.49	1907.20		
		0.34	1906.86
12.92	1919.78		
		0.54	1919.24
			Elev. Sec. Pt. #39
			156688 B.M. Z 6
2.25	1569.13		
		3.45	1565.68
			Elev. Sec. Pt. #30
		12.39	1556.74
6.21	1562.95		
		1.31	1561.64
12.70	1574.34		

2

+ H.I. - Elev

1574.34

0.53 1573.81

11.17 1584.98

0.75 1584.23

5.98 1590.21

4.29 1585.92

Elev. Sec. Pt.
(31)

912

Levels to Sec. Pts. #

40, 41

Party Leach.
Simpson
Rauner.

July 5, 1927.

$+$	$\bar{1}$	$-$	$E/$	B.M.
			1443.53	B.M. # 3
6.14	1449.67			
		4.37	1445.30	Sec. Pt. # 41.
		3.21	1446.46	
8.12	1454.58			
		0.64	1453.94	
11.72	1465.66			
		0.31	1465.35	
11.42	1476.77			
		0.20	1476.57	
11.37	1487.94			
		6.17	1481.77	Sec. Pt. # 40.

Levels to Sec.

Pts. # 43, 42 and 44.

Party Leach
Simpson
Bauner
Clavert.

July 1, 1927

4

+	π	-	Elev.	B.M.#4
			1466.25	
5.89	1472.14			
		10.92	1461.22	
2.03	1463.25			
		8.48	1454.77	
3.05	1457.82			
		11.80	1446.02	Elev. Pt. #43
6.66	1452.68			
		1.47	1451.21	
8.75	1459.96			
		1.60	1458.36	
9.45	1467.81			
		5.58	1462.23	Elev. Pt. #42
		4.33	1463.48	
5.73	1469.21			
		3.16	1466.05	
6.92				
6.8	1472.97			
		5.52	1467.45	
8.12	1475.57			
		3.75	1471.82	Elev. Pt. #41

Levels to Sec. Points

Nos. 46 - 6' - 47 - 48 - 49 - 50

Checked on B.M. #7.

Party: Leach: Notes
Simpson T
Rauner - Red
Clarett.

July 11, 1927.

15

+	π	-	El.	B.M.'s
			1442.37	#Y-1
7.20	1449.57			
		0.94	1448.63	
10.67	1459.30			
		1.14	1458.16	
11.24	1469.40			
		1.15	1468.25	El. of Sec. Pt #46
		1.35	1468.05	T.P.
12.31	1480.36			
		0.70	1479.66	
12.32	1491.98			
		0.50	1491.48	
13.20	1504.68			
		0.44	1504.24	
12.91	1517.15			
		0.22	1516.93	
12.64	1529.57			
		0.34	1529.23	
12.66	1541.89			
		0.13	1541.76	
12.96	1554.72			
		0.01	1554.71	

+	T	-	El.
			1554.71
12.39	1567.10		
		0.67	1566.43
12.30	1578.73		
		0.48	1578.25
13.08	1591.33		
		0.30	1591.03
11.70	1602.73		
		1.43	1601.30
8.40	1609.70		
		3.35	1606.35
			El. of Primary pt. # 5.
			1468.25
			El. of Sec. Pt. # 46.
2.79	1471.04		
		12.48	1458.56
1.77	1460.33		
		5.70	1454.63
8.49	1463.12		
		3.73	1459.39
2.15	1461.54		
		9.19	1452.35
2.66	1455.01		
		5.29	1449.72
3.46	1453.18		

+	T	-	EI.	
	1453.18			
		2.04	1451.14	T.P. 17. p. 1000 Fig. 11.
11.49	1462.63			
		1.02	1461.61	
9.69	1471.30			
		3.81	1467.49	EI. of Sec. Pt. #47
			1451.14	
6.21	1457.35			
		2.42	1454.93	
6.60	1461.53			
		0.70	1460.83	
11.80	1472.63			
		0.69	1471.94	
11.27	1483.21			
		2.92	1480.29	
3.85	1484.14			
		1.91	1482.23	EI. of Sec. Pt. #48
		13.09	1471.05	T.P.
1.38	1472.43			
		12.28	1460.15	
0.83	1460.98			
		10.01	1450.97	

+	π	-	E.I.
			1450.97
7.08	1458.05		
		0.11	1457.94
10.74	1468.68		
		2.18	1466.50
			E.I. of Sec. Pt. #49
		2.05	1466.63
			T.P.
11.49	1478.12		
		0.52	1477.60
			T.P.
10.35	1487.95		
		3.39	1484.56
			E.I. of Sec. Pt. #50.
		1.45	1483.50
			E.I. B.M. #7
			1483.60
			check

1

7
14

Levels to Sec. Pts.

Nos. 51, 52, 54, 53, 55, and 56

Party Leach Notes
Simpson π
Raupner
Clavert ϕ

July 11, 1927

				B
+	T	-	El.	B.M. or Sec. Pt. No.
			1442.37	#Y-1
4.89	1447.26			
		6.68	1440.58	El. of Sec. Pt. #51
2.70	1443.28			
		7.63	1435.65	
5.64	1441.29			
		1.50	1439.79	
9.40	1449.19			
		3.42	1445.77	El. Sec. Pt # 52.
		12.06	1437.13	T.P.
8.61	1445.74			
		2.00	1443.74	
2.97	1446.71			
		6.13	1440.58	T.P. Fce. Cok near row Euc. Trees.
6.08	1446.66			
		0.97	1445.69	
6.26	1451.95			
		4.15	1447.80	
1.76	1449.56			
		5.59	1443.97	
11.99	1455.96			
		0.28	1455.68	
12.94	1468.62			
		0.11	1468.51	

15

8

	+	H.I.	-	El.	B.M. or Sec. Pt. No.
				1468.51	
	12.21	1480.72			
			0.18	1480.54	
	12.77	1493.31			
			0.40	1492.91	
	12.75	1505.66			
			0.69	1505.02	
	12.35	1517.37			
			0.19	1517.18	
	12.77	1529.95			
			0.13	1529.82	
	12.01	1541.83			
			0.31	1541.52	
	11.67	1553.19			
			0.25	1552.94	
	8.27	1561.21			
			6.50	1554.71	Elev. # Sec. Pt. 54
				1440.58	T.P. Foe. Cor Near Euc. Trees
	7.55	1448.13			
			0.73	1447.40	
	9.92	1457.32			
			6.23	1451.09	Elev. Sec. Pt. # 53

Simpson
Rauner - Rod

Hot.

July 12, 1927

9

+	HI.	-	EL.	
			1440.58	
3.97	1444.55			
		8.30	1436.25	
2.83	1439.08			
		10.06	1429.02	
7.15	1436.17			
		4.79	1431.68	T.P.
			1435.75	El. Sec. # 55
9.22	1444.97			
		0.87	1444.10	
11.55	1455.65			
		0.65	1455.00	
12.82	1467.82			
		0.29	1467.53	
12.98	1480.51			
		0.73	1480.08	
11.98	1492.06			
		1.53	1490.53	El. Sec. # 56

10' 20"
S
20"
AD'

Levels to Sec. Pts.

Nos. 58, 57, 55 and 56.

Party Leach. T
Claremont. φ

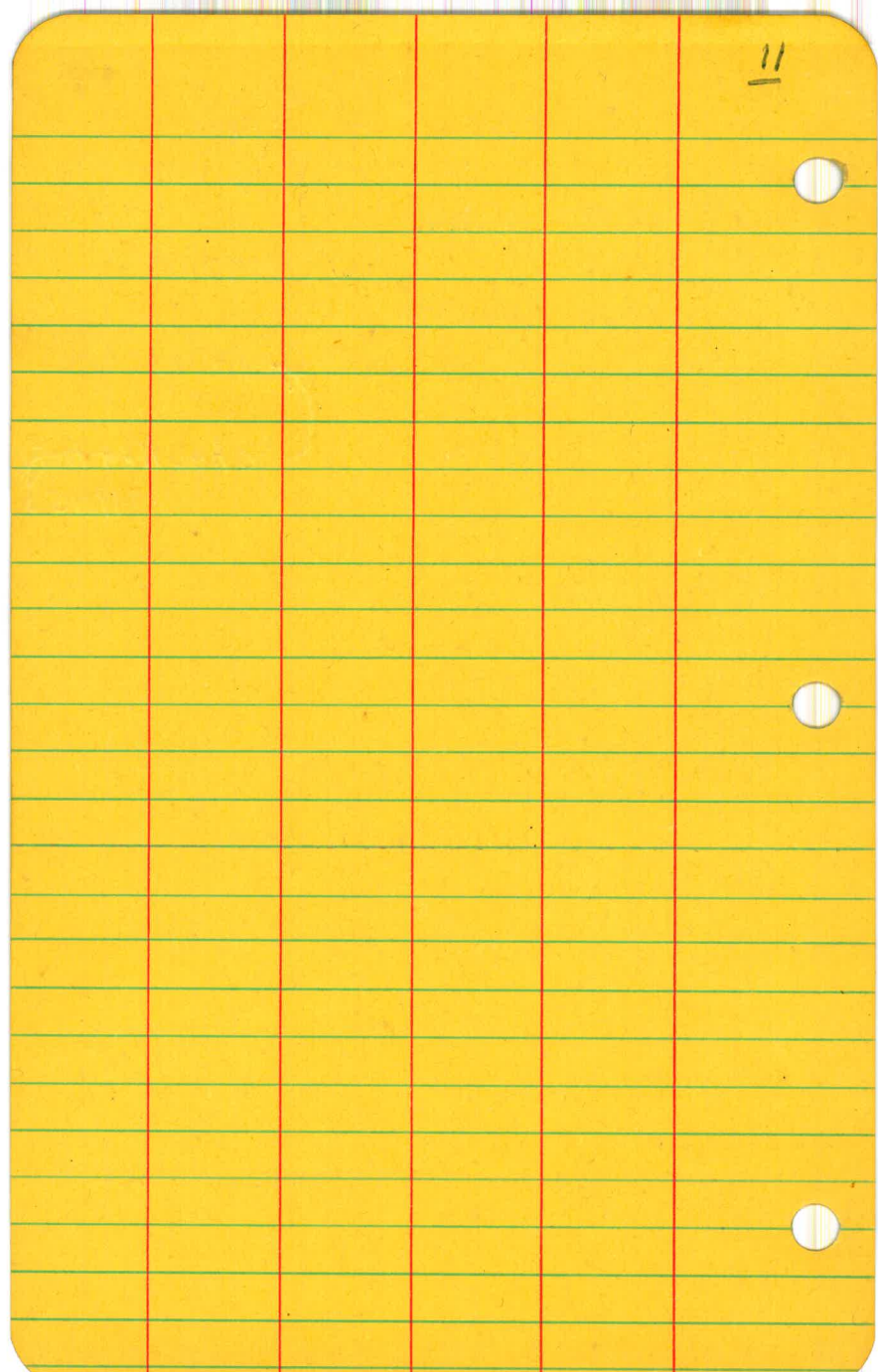
July 13, 1927.

July 13-27 10

+	H.I.	-	Elev.	
			1430.12	B.M. #Y2
1.37	1431.49	12.71	1418.78	
1.73	1420.51	1.60	1418.91	
8.95	1427.06	2.51	1425.35	El. Sec. Pt. #58
4.45	1429.80	1.86	1427.94	
5.62	1433.56	0.21	1433.35	El. Sec. Pt. #57
		8.12	1425.94	T.P
3.54	1428.98	2.44	1426.54	
1.50	1428.04	3.80	1424.24	
12.25	1436.49	0.74	1435.75	El. Sec. Pt. #55
8.99	1444.74	0.79	1443.95	
11.36	1455.31	0.19	1455.12	
12.84	1467.96	0.26	1467.70	

18

+	H.I.	-	Elev.	E/Sec 14 #56
			1467.70	
9.99	1477.69			
		0.01	1477.68	
13.14	1490.82			
		0.33	1490.49	
				check \rightarrow
				1490.53



Levels to Sec. Pts.

Nos. 59-66- Primary Pt. I'-
68 and 67.

Also to establish an
Elevation in Saddle just
East of Primary Pt. H.

Party: Leach.
Rauner.
Clavert.

July 8, 1927.

12

+	π	-	El.	B.M.
			1494.66	#9
13.03	1507.69			
		0.14	1507.55	
12.16	1519.71			
		0.58	1519.13	Sec. Pt. # 59.
		2.38	1517.33	T.P.
11.93	1530.26			
		0.03	1530.23	
12.26	1542.49			
		0.42	1542.07	
12.22	1554.29			
		0.00	1554.29	
13.02	1567.31			
		0.24	1567.07	
13.21	1580.28			
		0.04	1580.24	
13.08	1593.32			
		0.09	1593.23	
4.40	1597.63			
		12.04	1585.59	El. in saddle East of H.
		8.96	1588.67	set B.M. on rock. S.W. of large pile of rock.

12
19

+	π	-	E.L.	B.M. # 8
13.00	1520.29			
		0.65	1519.64	
12.19	1531.83			
		0.72	1531.11	
12.98	1544.09			
		0.79	1543.30	
13.25	1556.55			
		0.30	1556.25	
12.47	1568.72			
		0.51	1568.21	
12.47	1580.68			
		0.44	1580.24	
12.08	1592.32			
		0.84	1591.48	
12.86	1604.34			
		0.92	1603.42	
12.37	1615.79			
		0.54	1615.25	
12.50	1627.75			
		0.72	1627.03	
12.90	1639.93			
		0.20	1639.73	
13.04	1652.77			
		1.21	1651.56	sec. pt. # 66

13

$+$	π	$-$	El.	
	1652.77			
		7.41	1645.36	T.P.
7.53	1652.89			
		1.80	1651.09	Primary Pt. I
		12.62	1690.27	T.P.
0.52	1640.79			
		12.83	1627.96	
0.84	1628.80			
		13.03	1615.77	
0.72	1616.49			
		13.02	1603.47	
0.74	1604.21			
		12.78	1591.43	
0.45	1591.88			
		12.53	1579.35	
0.35	1579.70			
		12.85	1566.85	
0.95	1567.80			
		13.06	1554.74	
0.44	1555.18			
		12.84	1542.34	
1.27	1543.61			
		12.78	1530.83	
1.69	1533.52			

+	π	-	E.L.	
	1533.52			
		12.89	1520.63	
2.23	1522.86			
		8.61	1514.25	B.M.# 5 E.L. 1514.24
				B.M.# 5 1514.24 E.L. 1514.24
12.82	1527.06			
		0.92	1526.14	
13.13	1539.27			
		0.96	1538.31	
12.97	1551.28			
		0.09	1551.19	T.P.
12.76	1563.95			
		0.44	1563.51	
12.55	1576.06			
		0.43	1575.63	
12.47	1588.10			
		0.41	1587.69	
12.59	1600.28			
		0.74	1599.54	
11.19	1610.73			
		1.07	1609.66	
12.76	1622.42			
		0.51	1621.91	

+ $\bar{\Lambda}$ - E.I.

1621.91

12.00 1633.91

10.12 1623.79

Sec. Pt. #68

0.34 1633.57

12.48 1646.05

5.91 1640.14

E.I.
Sec. Pt. #67

14
21

Level Notes to

Sec. Pts # 62, 63

64, 65, 60 and 61.

60, 61

Party - Leach

Simpson

Rauner

Clairmont.

June 27, 1927.

+	T	-	El.	
			1860.69	B.M #E5
5.20	1865.89			
		0.0	1865.89	
10.26	1876.15			
		12.96	1863.19	
2.65	1865.84			
		13.02	1852.82	
2.69	1865.57			
		12.48	1843.03	
1.49	1844.52			
		12.98	1831.54	
1.02	1832.56			
		Boosted. 15.14	1872.42	E.I. Sec. pt. #63
		3.26	1829.30	
10.40	1839.70			
		1.51	1838.19	
12.42	1850.61			
		0.57	1850.04	
12.10	1862.14			
		0.53	1861.61	
11.48	1873.09			
		0.09	1873.00	
12.75	1885.75			
		0.27	1885.48	
12.74	1898.22			

15
22

+	T	-	EI.
	1898.22		
		0.14	1898.08
12.65	1910.73		
		0.18	1910.55
12.61	1923.16		
		0.86	1922.30
11.43	1933.73		
		0.51	1933.22
11.92	1945.14		
		0.65	1944.49
12.33	1956.82		
		0.67	1956.15
6.80	1962.95		
		3.98	1958.97
		12.97	1949.98
7.91	1957.89		
		12.51	1945.38
2.32	1947.70		
		13.03	1934.67
0.52	1935.19		
		13.08	1922.11
3.20	1925.31		
		12.92	1912.39
1.14	1913.53		
		4.47	1909.06

EI. Sec
Pl # 62

EI. Sec Pl.
69

16

+	π	-	El.
	1913.53		
		12.41	1901.12
3.93	1905.05		
		13.01	1892.04
0.69	1892.73		
		11.79	1880.94
1.42	1882.36		
		10.08	1872.28
3.75	1876.03		
		.47	1875.56
10.05	1885.61		
		4.08	1881.53
	1882.36		
		12.05	1870.31
0.41	1870.72		
		12.88	1858.34
1.52	1859.86		
		13.00	1846.86
2.22	1849.16		
		11.69	1837.47
1.43	1838.90		
		12.98	1825.92
1.15	1827.07		
		12.41	1814.66

El. Sec. Pt. #
65

	+	π	-	E.L.	$\frac{16}{23}$
				1814.66	
	0.87	1815.53			
			13.07	1802.46	
	0.57	1803.03			
			12.30	1790.73	
	0.77	1791.50			
			12.68	1778.82	
	1.90	1780.72			
			12.92	1767.80	
	0.60	1768.40			
			12.23	1756.17	
	2.07	1758.24			
			12.76	1745.48	
	2.76	1748.24			
			12.25	1735.99	
	1.78	1737.77			
			10.72	1727.05	
	E.L. Sec Pt. # 14.			1726.99	
					.06 Check.

Levels to Sec. Pts #60, 61. 17
 Sheet #

+	π	-	EI.
			1823.87 B.M # E, 3
12.92	1836.79	1.42	1835.37
10.70	1846.07	0.80	1845.27
11.50	1156.77	1.00	1855.77
11.62	1167.39	0.35	1867.04
13.26	1180.30	0.80	1879.50
12.69	1192.14	0.90	1891.24
10.92	1902.16	0.12	1902.04
12.11	1914.15	0.29	1913.91
12.88	1926.79	4.60	1922.19
		12.84	1913.95
2.88	1916.83		
		12.93	1903.90
3.14	1907.04	12.64	1894.40

El. Topo Pt.
#61

June 24, 1927.

17
24

+	T	-	E.I.
			1894.40
4.02	1898.42		
		9.65	1888.77
5.60	1894.37		
		11.23	1883.14
6.12	1889.26		
		7.51	1881.75
		12.27	1876.99
0.01	1877.00		
		12.03	1864.97
0.74	1865.71		
		11.96	1853.75
1.66	1855.41		
		11.20	1844.21
0.81	1845.02		
		12.47	1832.55
1.89	1834.44		
		7.05	1827.39
2.37	1829.76		
		5.90	1823.86
E.I. B.M. E 3 =			<u>1823.87</u>

E.I. Sec. Pt.
60

101 Check.

18

Levels to Sec. Pts.

Nos. 69, 70, 71, 72, 45, 74, 36

37, 35, 32, 34, 33, 45

Also to check. Elet. of

Sec. Pt. # 30 and 31. and 44.
and 40.

July 6, 1927

Party - Leach - Notes
Simpson - T
Rauner - Red
Claret.
Peg Book

	+	π	-	El.	B.M.
				1566.88	#Z-6
July 5, 1927	2.11	1568.99			El. 1565.68
			3.33	1565.66	Sec. Pt. #30 (checked)
			8.58	1560.41	T.P.
	11.49	1571.90			
			1.12	1570.78	
	8.47	1579.25			
			0.83	1578.42	
	11.73	1590.15			El. 1585.92
July 6, 1927			4.23	1585.92	Sec. Pt. #31 (check)
	5.03	1590.95			
			9.90	1581.05	
	0.75	1581.80			
			10.36	1571.44	
	0.45	1571.89			
			12.62	1559.27	
	3.11	1562.38			
			12.15	1550.23	
	7.09	1557.32			
			12.65	1544.67	
	3.83	1548.50			
			6.88	1541.62	Sec. Pt. #69
		1557.32			
			1.20	1556.12	

July 6, 1927 Hot.

Early - Leach, Simpson, Rauner, Clavert.

+	⌈	-	E.L.	(19)
		1556.12	1556.12	26
12.53	1568.65			
		2.29	1566.36	
12.20	1578.56			
		0.89	1577.67	Sec. Pt. # 70
		12.31	1566.25	T.P.
3.58	1569.83			
		8.31	1561.52	
2.19	1563.71			
		10.48	1553.23	
0.31	1553.54			
		11.65	1541.89	
4.50	1541.39			
		0.65	1545.74	
12.10	1557.84			
		1.16	1556.68	
11.78	1568.46			
		0.33	1568.13	
12.19	1580.32			
		0.53	1579.79	
11.04	1590.83			
		1.31	1589.52	
11.87	1601.39			
		0.60	1600.79	

20

	+	π	-	E/	
				1600.79	
	13.09	1613.88			
			0.10	1613.78	Sec. Pt. # 71.
			12.69	1601.19	T.P.
	0.49	1601.68			
			12.04	1589.64	
	0.74	1590.38			
			12.90	1577.48	
	0.38	1577.86			
			12.63	1565.23	
	1.47	1566.70			
			12.25	1554.45	
	0.19	1554.64			
			11.99	1542.65	
	0.39	1543.04			
			12.98	1530.06	
	2.03	1532.09			
			3.76	1528.33	Sec. Pt. # 72.
July 7, 1927	0.00	1528.33			
			12.33	1516.00	
	1.43	1517.43			
			12.37	1505.06	
	1.67	1506.73			
			10.07	1496.66	

July 7, 1927

Very hot

Early - Leach
Simpson
Rautner,
Clavert.

+

cloudy
 π

-

E1.

28

1496.66

0.61 1497.27

9.79 1487.48

Sec. Pt.
45

2.20 1489.68

7.88 1481.80

2.05 1483.85

6.67 1477.18

3.21 1480.39

8.56 1471.83

1471.82
Sec. Pt.
44,
check.

1496.43

B.M.#
Z-3

3.58 1500.01

5.70 1494.31

Sec. Pt.
74

1487.48

Sec. Pt.
45.

7.74 1495.22

2.00 1493.22

6.23 1499.45

2.82 1496.63

5.37 1502.00

2.17 1499.83

11.02 1510.85

21

+	π	-	El.	
	1510.85			
		0.58	1510.27	
11.11	1521.38			Sec. Pt. #
		3.70	1517.68	36
		8.81	1512.57	T.P.
0.42	1512.99			
		12.48	1500.51	
2.28	1502.79			Sec. Pt.
		6.08	1496.71	#37.
		1.32	1501.17	T.P.
9.78	1511.25			
		3.97	1507.28	
12.49	1519.71			Sec. Pt.
		6.42	1513.35	#35
		1.95	1517.82	T.P.
9.73	1527.55			Sec. Pt.
		3.03	1524.52	#32.
4.11	1528.63			
		12.91	1515.72	
0.74	1516.46			
		6.59	1509.87	
6.07	1515.94			

	+	π	-	E.I.	21 28
		1515.99			
			5.11	1510.83	
	7.75	1518.58			
			0.95	1517.63	
	11.64	1529.27			
			1.42	1527.85	
	11.76	1539.61			
			3.00	1536.61	
	9.55	1546.16			
			1.10	1545.06	
	12.08	1557.14			
			2.28	1554.86	Sec. Pt. # 34
			3.81	1553.33	T.P.
	6.91	1560.24			
			7.73	1552.51	Sec. Pt. # 33
			11.53	1548.71	T.P.
	1.76	1550.47			
			12.92	1537.55	
	3.53	1541.08			
			6.80	1534.28	
	1.90	1536.18			
			12.63	1523.55	
	1.05	1524.60			

+	Σ	-	Elev.
	1524.60		
		12.75	1511.85
1.75	1513.60		
		12.97	1500.63
4.78	1505.41		
		5.85	1499.56
4.18	1503.74		
		2.29	1501.45
2.16	1503.61		
		12.88	1490.73
3.80	1494.53		
		9.32	1485.21
6.47	1491.68		
		12.39	1479.29
11.95	1491.24		
		2.10	1489.14
9.22	1498.36		
		12.37	1485.99
3.37	1489.36		
		5.73	1483.93
5.04	1488.97		
		7.20	1481.77

CHECK ON SEC #40 -
El. = 1481.77

22
09

Levels to Sec. Pts.

Nos. — 76 and 75

Party - Leach.

Simpson

Rauner

Clavert.

23

$+$	π	$-$	$E/$	
				El. Sec. Pt # 71
11.57	1625.35		1613.78	
		0.04	1625.31	
12.07	1637.35			
		1.32	1636.03	
9.71	1645.74			
		0.81	<u>1644.93</u>	T.P.
12.51	1657.44			
		1.75	1655.69	
10.15	1665.84			
		0.55	1665.29	
12.86	1678.15			
		0.73	1677.42	
12.71	1689.83			
		1.10	1688.73	
12.08	1700.81			
		4.03	1696.78	El. Sec. Pt. # 76
			1644.93	T.P.
6.11	1651.04			
		3.56	1677.48	
6.56	1654.04			
		4.21	1649.83	
11.68	1661.51			
		1.29	1660.22	

23

50

+

π

-

El.

1660.22

12.81

1673.03

4.16

1668.87

1673.87

4.30

1668.73

El. Sec. #75

24

Level Notes to
Sec. Pts. Nos. 78 and 79
and 80 and 81.
Sheets Nos.

Party Leach π
Clare ϕ

July 14, 1927.

25

T	T	-	F.I.	B.M. Sec. pt. #74.
1.50	1495.81		1494.31	
		8.17	1487.64	
5.95	1493.59			
		1.25	1492.34	
5.32	1497.66			
		0.62	1497.04	
3.35	1500.39			
		12.28	1488.11	T.P. marked with Red flag
3.78	1491.89			
		6.64	1485.25	
8.28	1493.53			
		1.03	1492.50	
13.02	1505.52			
		0.64	1504.88	
7.41	1512.29			
		1.60	1510.69	
12.96	1523.65			
		1.12	1522.53	
13.15	1535.68			
		0.28	1535.40	
13.02	1548.42			
		0.60	1547.82	
12.75	1560.57			
		0.32	1560.25	

+	T	-	E1.
			1560.25
12.68	1572.93		
		0.59	1572.34
12.79	1585.13		
		0.13	1585.00
12.94	1597.94		
		0.04	1597.90
12.63	1610.53		
		0.02	1610.51
12.68	1623.19		
		0.84	1622.35
12.33	1634.68		
		1.08	1633.60
12.92	1646.52		
		0.56	1645.96
12.04	1658.00		
		3.25	1654.75
			E1. Sec. Pt. # 78
13.07	1667.82		
		1.45	1666.37
13.13	1679.50		
		1.65	1677.85
12.81	1690.66		
		1.20	1689.46
7.02	1696.98		
		3.50	1692.98
			E1. Sec. Pt. # 79

July 15, 1927.		Party - Leach π Clavert π	
+	π	-	E/
			1496.43
12.82	1509.25		
		0.10	1509.15
11.56	1520.71		
		0.59	1520.12
11.43	1531.55		
		3.00	1528.55
13.04	1541.59		
		2.30	1539.29
12.50	1551.79		
		0.53	1551.26
12.07	1563.33		
		0.14	1563.19
12.61	1575.80		
		0.30	1575.50
12.79	1588.29		
		0.40	1587.89
11.87	1599.76		
		1.10	1598.66
			Top on rock
12.81	1611.97		
		0.08	1611.37
8.71	1620.10		
		6.15	1613.95
			Sec. Pt #81

2326

+	T	-	E /	T. Pon rock.
4.66	1603.32			
		9.63	1593.69	
9.39	1603.08			
		0.76	1602.32	
13.10	1613.92			
		0.65	1614.77	
12.86	1627.63			
		0.40	1627.23	
13.06	1640.29			
		0.32	1639.97	
13.10	1653.07			
		0.32	1652.75	
12.98	1665.73			
		1.96	1663.77	
9.14	1672.91			
		3.05	1669.86	2008' sec. pt. #80

27

Levels to Sec. Pts.

Nos. 77, 82 and 83.

Party - Leach
Simpson
Ranner
Clarent

July 15, 1927.

28

+	T	-	E/.	
			1425.35	Sec. Pt. # 56
7.79	1433.14			
		5.00	1428.14	
8.08	1436.22			
		0.72	1435.50	
3.03	1438.53			
		7.50	1431.03	
8.32	1439.35			Sec. Pt. # 77
		0.45	1438.90	Sec. Pt. # 77
			1440.85	B.M. # 11
12.19	1453.04			
		0.52	1452.52	E/ Sec. Pt. # 82
		10.61	1442.43	T.P.
6.10	1448.53			
		0.37	1448.16	
11.78	1459.94			
		1.86	1458.08	
10.73	1468.81			
		3.64	1465.17	Sec. Pt. # 83

Levels to Sec.
Pt. # 73 -

Party-Leach
Simpson
Rauver
Clavert.

July 12, 1927

29

+	∩	-	E.I.	B.M.#
			1496.43	Z-3
12.01	1508.14			
		0.30	1508.14	
12.65	1520.79			
		0.34	1520.45	
13.08	1533.53			
		0.90	1532.63	
13.11	1545.74			
		1.06	1545.68	
13.06	1558.74			
		0.75	1557.99	
13.19	1571.18			
		0.45	1570.73	
12.83	1583.56			
		0.99	1582.57	
13.20	1595.77			
		0.37	1595.40	
13.05	1608.45			
		0.33	1608.12	
13.14	1621.26			
		0.24	1621.02	
13.12	1634.14			
		0.25	1633.89	
13.26	1647.15			
		0.19	1646.96	

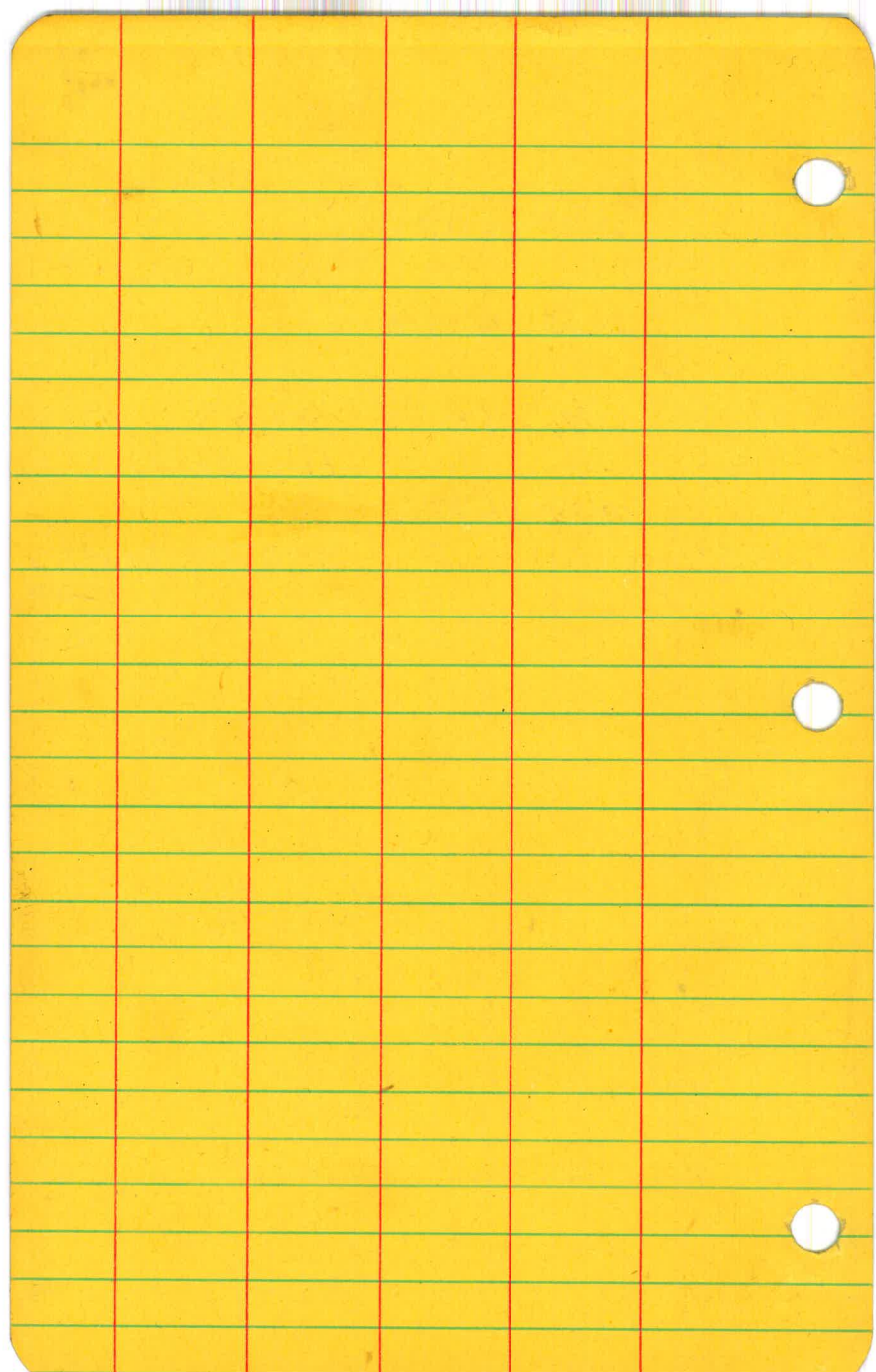
12.2
1.58

29

26

+	T	-	E.L.
			1646.96
13.28	1660.24		
		0.01	1660.23
13.15	1673.38		
		0.18	1673.20
13.13	1686.33		
		0.00	1686.33
13.29	1699.62		
		0.15	1699.47

E/Sec.
P/#73



Descriptions showing Hubs
Set on Section Line; Intersection
at Dam Axis with Section Line;
and
Stadia Traverses West & South;
along New Road from an
Intersection of Sec. Line
and New Road. = (0+00)

Party-Lead.
Simpson.
Rauner.
Clavert.

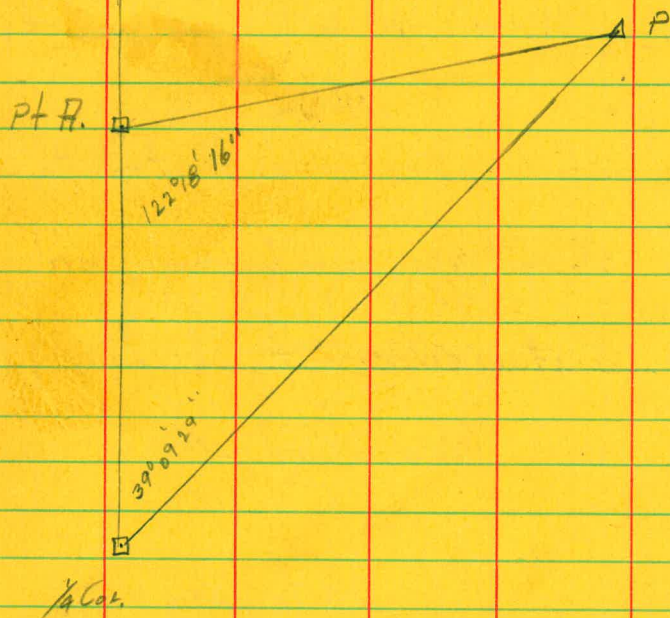
July 18, 1927.

Sec. Cor.



1

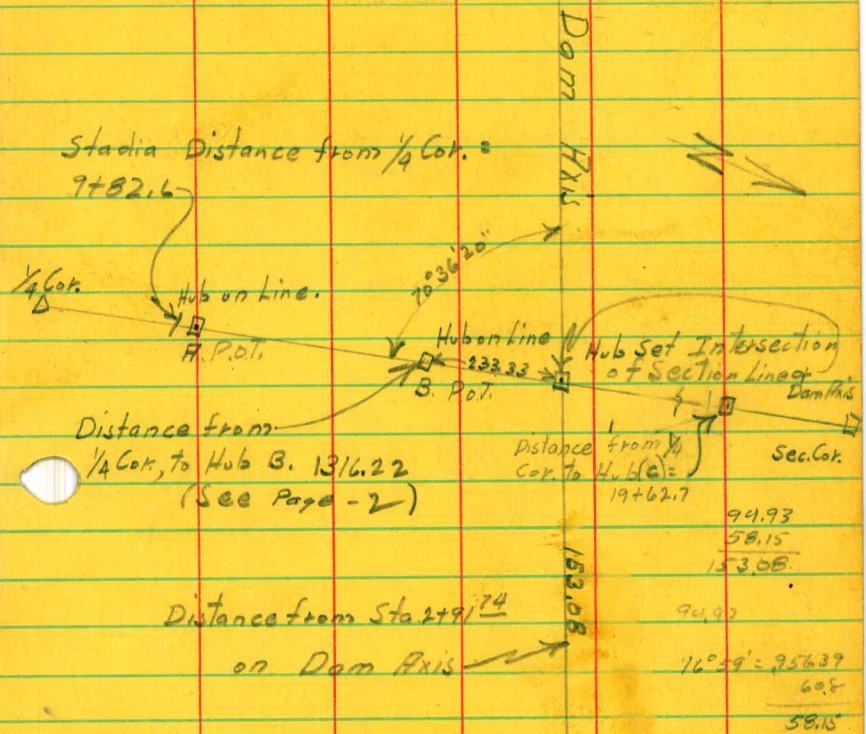
FS = P $122^{\circ} 18' 30''$
T = P_{Line} $733^{\circ} 49' 35''$
B.S. = $\frac{1}{4}$ Lot $122^{\circ} 18' 16''$



1221830

A R.P. Hub. of Dam Axis.

28



Stadia Distance from 1/4 Cor. = 9+82.6

1/4 Cor. Hub on line. R.P.O.T.

70°36'20"

Hub on line Hub on line of Section line Hub Set Intersection of Section line of Dam Axis

Distance from 1/4 Cor. to Hub B. 1316.22 (See Page - 2)

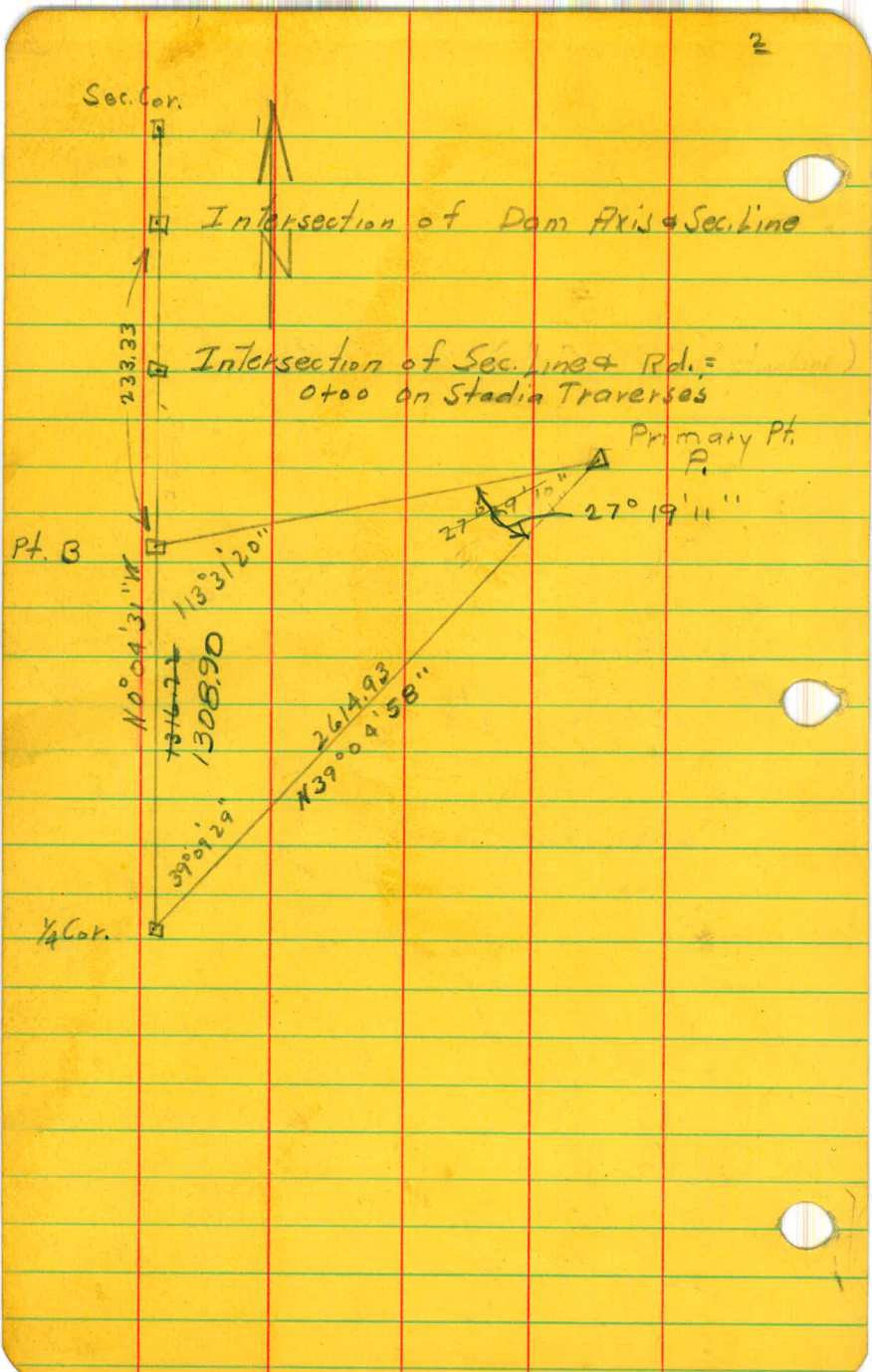
Distance from 1/4 Cor. to H. H.C. = 19+62.7

94.93
58.15
153.08

Distance from Sta 2+91.74 on Dam Axis

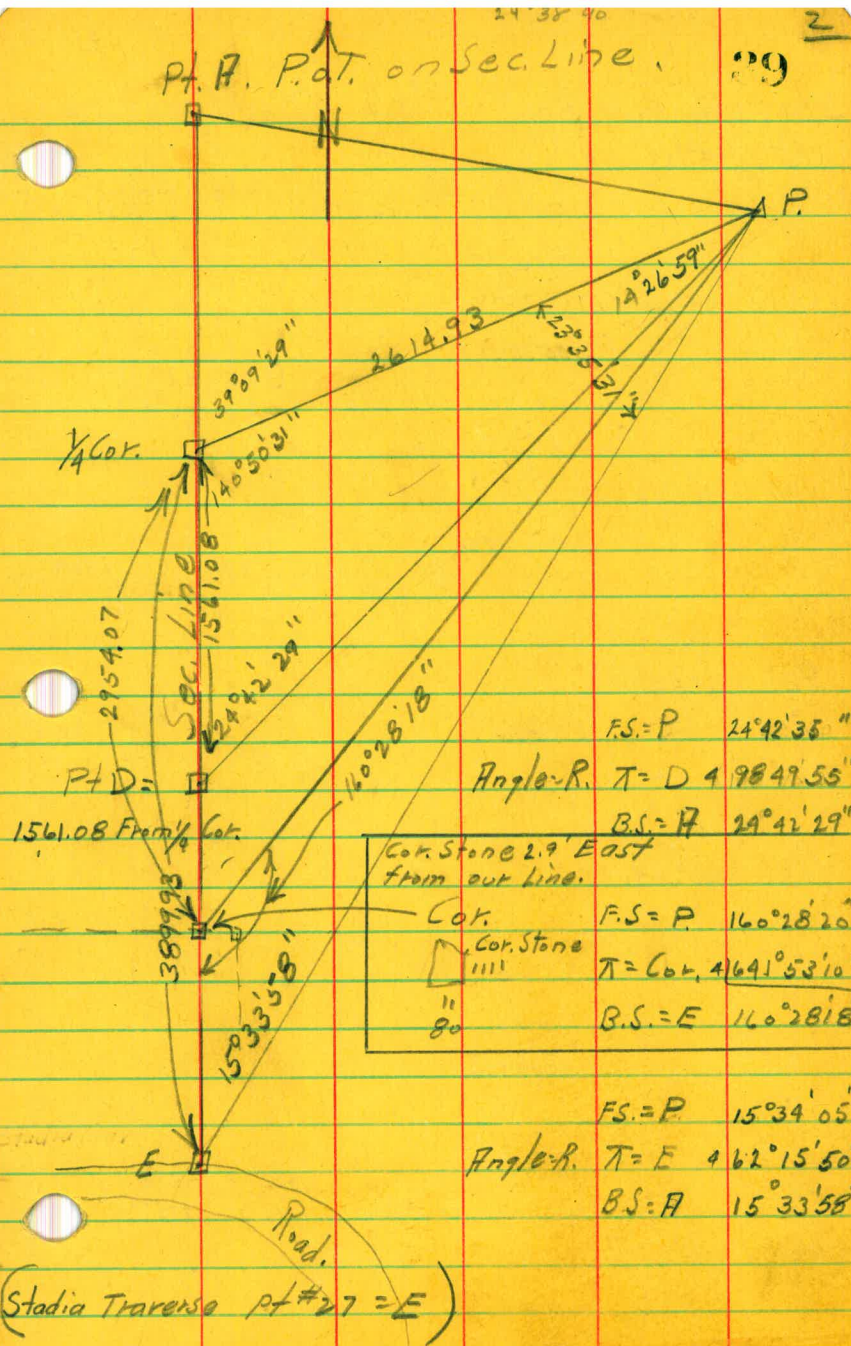
94.93
76°59' = 95.639'
60.5
58.15

Hub at Intersection of Dam Axis and old Spillway Axis. Sta. = 2+91.74



Pt. H. P.O.T. on Sec. Line.

29



F.S. = P $24^{\circ}42'35''$

Angle - R. T = D $98^{\circ}49'55''$

B.S. = H $29^{\circ}42'29''$

F.S. = P $160^{\circ}28'20''$

T = Cor. $4641^{\circ}53'10''$

B.S. = E $160^{\circ}28'18''$

F.S. = P $15^{\circ}34'05''$

Angle - R. T = E $62^{\circ}15'50''$

B.S. = H $15^{\circ}33'58''$

Stadia Line South of 0+00.

3

Sta.	Hor. Angle	Back Sight	F.S. Rod	B.S. Rod	Vert. Angle
(5)	47°07'15" R	S 38°35'04" W	$\frac{6.2}{4.38}$ 2.24	$\frac{4.53}{4.2}$ 2.23	$\frac{3^{\circ}51' - 3^{\circ}52'}$
		S 83°2'11" E			
(4)	64°08'10" L	S 55°35'59" W	$\frac{7.00}{3.55}$ 3.45	3.45	$\frac{1^{\circ}25' - 1^{\circ}24'}$
		S 14°20'39" W	$\frac{6.59}{2.59}$ 2.59	2.59	$\frac{1^{\circ}09' - 1^{\circ}02'}$
(3)	41°15'20" R	S 16°05'01" E	$\frac{6.97}{4.50}$ 2.47	$\frac{7.96}{5.50}$ 2.46	$\frac{4^{\circ}26' - 4^{\circ}48'}$
		S 38°39'41" E			
(1)	22°34'46" R		.82	.82	$\frac{5^{\circ}11' - 4^{\circ}27'}$
0+00.	38°35'10"				
		S 0°04'31" E			

Stadia Traverse

from a, Pt (0+00) at an
Intersection of the
Section Line and Road,
following South along
Road until it connects
with old Road. at Summit

Party Leach
Simpson
Rauner
Clarett.

July 19, 1927

Sta.	Hor. Angle	Back.	F.S. Rod	B.S. Rod	Ver. Angle
(5)	41°07'15"	S83°21'E	6.62 4.38 <u>2.24</u>	6.53 4.30 <u>2.23</u>	2.23 3°51' 3°52'
(4)	64°08'10"L	S55°35'59"W			
(3)	41°15'20"R.	S14°20'39"W	7.00 3.55 <u>3.45</u>	3.45	1°24' 1°25'
(2)	30°25'40"R	S16°05'01"E	6.59 4.00 <u>2.59</u>	2.59	1°02' 1°04'
(1)	22°34'40"R		6.97 4.50 <u>2.47</u>	2.46 7.96 5.50 <u>2.46</u>	2.46 4°48' 4°26'
		S38°39'41"E			
0+00	38°35'10"L		0.82	0.82	5°11' 2°27'
		S0°04'31"E			

Note F.A.C. = 1.10.

±

4
41

July 19, 1927

Cloudy -

± rd 10' R.

± rd 10' L.

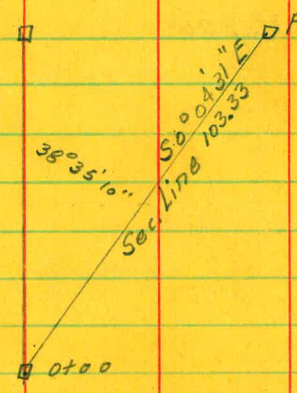
Sta. A.

Sta. 3. ± of rd 10' R.

Sta. 2. □

Sta. 1. □

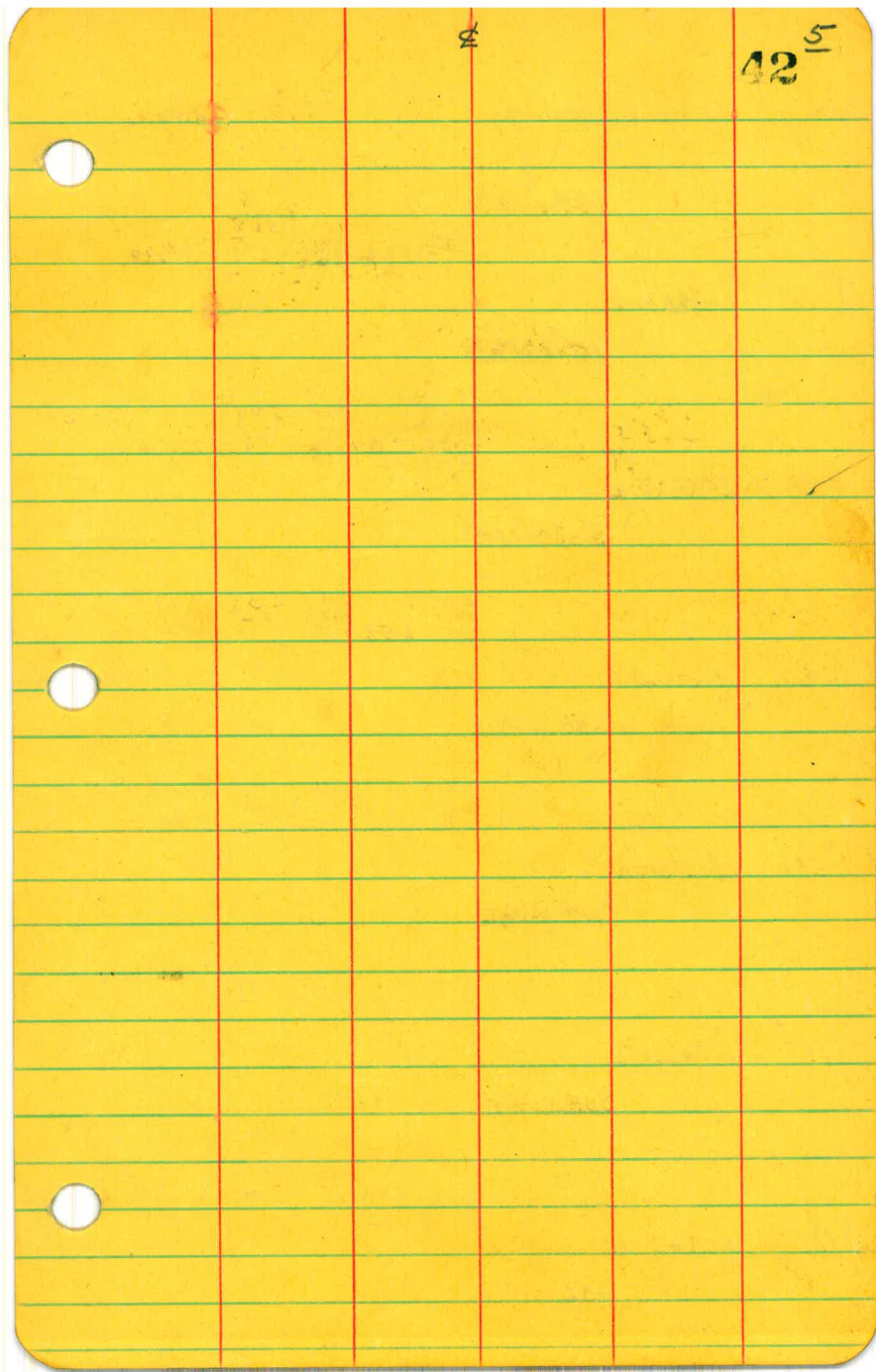
Pt. B.



Note: 0+00 = 130.00' S. of P.I. at Dam
Axis.

5

Sta.	Hor. Angle	Bearing	F.S. Rod.	B.S. Rod.	Yel. Angle
		S 57° 33' 09" W	$\frac{6.68}{4.20}$ 2.48	2.48	3° 41'
(10)	14° 51' 00" R.	S 42° 42' 09" W	$\frac{6.48}{4.00}$ 2.48	2.48	3° 38'
			$\frac{7.00}{5.10}$ 2.40	1.80	2° 18'
(9)	13° 44' 50" R.	S 48° 51' 19" W	$\frac{7.78}{3.00}$ 2.40	4.78	2° 23'
			$\frac{8.00}{3.00}$ 5.00	5.00	1° 45'
(8)	52° 55' 00" L.	S 81° 52' 19" W	$\frac{7.86}{5.40}$ 2.46	4.92	1° 47'
			$\frac{6.54}{4.14}$ 2.14	2.14	0° 19'
(7)	7° 32' 20" R.	S 74° 19' 59" W	$\frac{6.54}{4.14}$ 2.14	2.14	0° 23'
			$\frac{6.78}{4.00}$ 2.78	2.78	2° 29'
(6)	35° 44' 55" R.	S 38° 35' 09" W	$\frac{6.78}{4.00}$ 2.78	2.78	2° 39'
			$\frac{6.35}{4.40}$ 1.95	1.95	3° 54'
(5)	47° 07' 15" R.	S 8° 32' 11" E	$\frac{6.35}{4.40}$ 1.95	1.95	3° 59'



Sta.	Hor. Ang. / Bearing	FS Rod	BS. Rod	Vert. L
				<u>6</u>
	S35°2'14"W			
(16)	68°57'20" R	$\begin{array}{r} 7.00 \\ 3.34 \\ \hline 3.66 \end{array}$	$\begin{array}{r} 7.00 \\ 3.35 \\ \hline 3.65 \end{array}$	$\begin{array}{r} 3.65 \\ \hline 2.44 \end{array}$
	S65°0'50"E			2°46'
(15)	51°05'15" L	$\begin{array}{r} 6.59 \\ 3.70 \\ \hline 2.89 \end{array}$	$\begin{array}{r} 7.00 \\ 4.11 \\ \hline 2.89 \end{array}$	$\begin{array}{r} 2.89 \\ \hline 0.46 \end{array}$
	S13°59'51"E			10°39'
				0°46'
(14)	41°30'25" R	$\begin{array}{r} 6.62 \\ 4.10 \\ \hline 2.53 \end{array}$	$\begin{array}{r} 6.49 \\ 3.90 \\ \hline 2.54 \end{array}$	$\begin{array}{r} 2.54 \\ \hline 0.01 \end{array}$
	S55°36'16"E			0°03'
				0°01'
(13)	22°05'50" R	$\begin{array}{r} 9.94 \\ 3.00 \\ \hline 6.94 \end{array}$	$\begin{array}{r} 6.93 \\ 2.00 \\ \hline 4.93 \end{array}$	$\begin{array}{r} 6.93 \\ \hline 0.10 \end{array}$
	S77°36'06"E			0°09'
				0°10'
(12)	23°40'30" L	$\begin{array}{r} 7.00 \\ 4.13 \\ \hline 2.87 \end{array}$	$\begin{array}{r} 5.40 \\ 3.26 \\ \hline 2.87 \end{array}$	$\begin{array}{r} 2.88 \\ \hline 0.19 \end{array}$
	S53°35'36"E			0°19'
(11)	111°28'45" L	$\begin{array}{r} 6.11 \\ 4.00 \\ \hline 2.11 \end{array}$	$\begin{array}{r} 6.11 \\ 4.00 \\ \hline 2.11 \end{array}$	$\begin{array}{r} 2.11 \\ \hline 0.09 \end{array}$
	S57°33'09"W			0°20'

13

Mag = 76°

Sta.	Hor. Angle	Bearing	F.S. Rod.	B.S. Rod.	Ver. L.
(22)	22°33'47" R	S46°31'22" E	$\begin{array}{r} 1.00 \\ 3.99 \\ \hline 3.01 \end{array}$	$\begin{array}{r} 7.00 \\ 3.97 \\ \hline 3.01 \end{array}$	$\begin{array}{r} 3.01 \\ \hline 0^{\circ}33' \\ 0^{\circ}34' \end{array}$
(21)	110°16'15" L	S69°05'09" E	$\begin{array}{r} 7.00 \\ 2.80 \\ \hline 4.20 \end{array}$	$\begin{array}{r} 7.00 \\ 2.80 \\ \hline 4.20 \end{array}$	$\begin{array}{r} 4.20 \\ \hline 1^{\circ}47' \\ 1^{\circ}36' \end{array}$
(20)	23°02'15" R	S41°11'06" W	$\begin{array}{r} 7.00 \\ 3.25 \\ \hline 2 \times 3.75 \\ \hline 7.50 \end{array}$	$\begin{array}{r} 11.43 \\ 4.00 \\ \hline 7.43 \end{array}$	$\begin{array}{r} 7.43 \\ \hline 2^{\circ}12' \\ 2^{\circ}01' \end{array}$
(19)	55°30'37" R	S18°08'51" W	$\begin{array}{r} 7.00 \\ 3.67 \\ \hline 3.33 \end{array}$	$\begin{array}{r} 7.00 \\ 3.67 \\ \hline 3.33 \end{array}$	$\begin{array}{r} 3.33 \\ \hline 4^{\circ}47' \\ 4^{\circ}45' \end{array}$
(18)	76°28'30" L	S37°21'46" E	$\begin{array}{r} 6.02 \\ 4.70 \\ \hline 1.32 \end{array}$	$\begin{array}{r} 6.32 \\ 5. \\ \hline 1.32 \end{array}$	$\begin{array}{r} 1.32 \\ \hline 3^{\circ}25' \\ 3^{\circ}35' \end{array}$
(17)	35°14'30" R	S39°06'44" W	$\begin{array}{r} 6.36 \\ 4.60 \\ \hline 1.76 \end{array}$	$\begin{array}{r} 6.26 \\ 4.50 \\ \hline 1.76 \end{array}$	$\begin{array}{r} 1.76 \\ \hline 4^{\circ}08' \\ 4^{\circ}02' \end{array}$

14

2/45°07'35"

2/220°32'30"

Mag = 519.30W

Sta.	Hor. Angle	Bearing	F.S. Rod	B.S. Rod	Vert. Angle
------	------------	---------	----------	----------	-------------

1/4 Cor.

N0°06'05"W

(27) 68°49'40"L

N68°38'35"E

7.00	7.00	5.19
1.83	1.84	
5.17	5.19	

3°18' 3°33'

(26) 114°12'00"L

S2°50'35"W

6.30	6.10	1.44
4.86	4.66	
1.44	1.44	

2°25' 2°23'

(25) 31°35'35"L

S34°26'10"W

6.60	6.90	2.60
4.00	4.30	
2.60	2.60	

5°02' 5°01'

(24) 19°58'42"R

S14°27'28"W

6.67	6.47	2.37
4.30	4.10	
2.37	2.37	

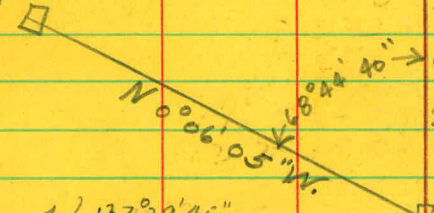
4°31' 4°28'

(23) 60°58'50"R

S46°31'22"E

Note: Correct
Bearing of
Section Line =
N0°04'31"E
W

1/4 Cor.



4 | 137°29'45"

Sta. 27 = Sta. E. =
(on Section Line)

2 | 282°00"

Sta. 26

2 | 63°11'10"

2 | 39°57'25"

2 | 21°57'40"

Sta.	Hor. Angle	Bearing	F.S. Rod.	B.S. Rod.	Vert. Angle
		S11°27'36" W	7.60 3.00 4.60	1.59 4.59 3.00 4.59	4°18' 4°20'
(31)	71°29'50" L	S82°57'26" W			
			5.98 4.80 1.18	5.89 1.19 4.70 1.19	2°17' 2°27'
(30)	39°50'47" R	S43°06'39" W			
			5.10 3.64 1.46	6.10 1.46 4.64 1.46	4°01' 3°59'
(29)	69°9'56" R	S26°11" E			
			7.00 3.91 3.09	6.09 3.09 3.00 3.09	3°32' 3°31'
(28)	26°54'36" R	S53°05'41" E			
			6.23 4.40 1.83	6.33 1.83 4.50 1.83	3°36' 3°38'
(27)	53°01'10" L	N0°09'31" W			

July 26, 1927

Partly-Same 9

Hot Angle - Warm -

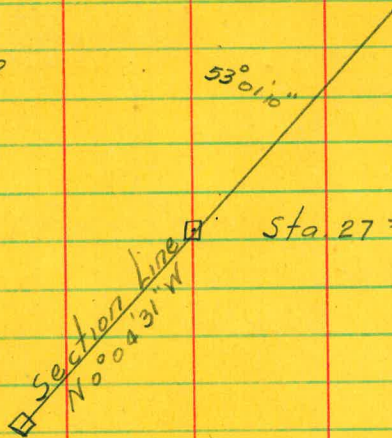
16

$$\begin{array}{r} 71^{\circ}29'55'' \\ 2 \ 142^{\circ}59'40'' \\ \hline 71^{\circ}29'50'' \end{array}$$

$$\begin{array}{r} 39^{\circ}50'45'' \\ 2 \ 79^{\circ}41'35'' \\ \hline 39^{\circ}50'47'' \end{array}$$

$$\begin{array}{r} 69^{\circ}17'35'' R. \\ 2 \ 138^{\circ}35'40'' \\ \hline 69^{\circ}17'30'' \end{array}$$

$$\begin{array}{r} 26^{\circ}54'35'' R \\ 2 \ 53^{\circ}49'00'' \\ \hline 26^{\circ}54'30'' R \end{array}$$

$$\begin{array}{r} 53^{\circ}01'00'' \\ 2 \ 106^{\circ}02'20'' \\ \hline 53^{\circ}01'10'' \end{array}$$


1/4 Cot.

Sta. Hor. Angle Bearing F.S. Rod. B.S. Rod Vert. Angle

(38)

S1°57'32"W

10.68
3.00 7.68
7.63 2.10
7.64

9.64

0°51'
0°57'

(37) 8°17'22" R

S6°19'50"E

6.50
3.80 2.70
2.70 4.21
2.69

6.90 2.69

2°01' 2°01'

(36) 43°29'50" L

S3°10'00"W

5.84
4.10 1.74
1.74 4.30
1.75

6.05 1.75

0°39'
0°37'

(35) 43°16'32" R

S6°06'32"E

6.60
3.70 2.90
2.90 3.50
2.92

6.42 2.92

1°00' 0°55'

(34) 17°25'32" R

S13°32'04"E

5.30
3.90 2.40
2.40 3.60
2.77

6.37 2.77

4°08' 4°08'

(33) 60°59'25" L

S37°27'21"W

7.00
3.54 3.46
3.46 3.54
3.46

7.00 3.46

3°59'
4°01'

(32) 25°59'45" R

S11°27'36"W

10

Hor. Angle.

Mag = 2°30' V.

8°17'20" R

16°34'45"

8°17'22"

43°29'40" L

86°59'40"

43°29'50"

43°16'35"

2) 86°33'05"

43°16'32"

17°26'00"

2) 34°51'05"

17°25'32"

60°59'25" L

2) 121°58'50"

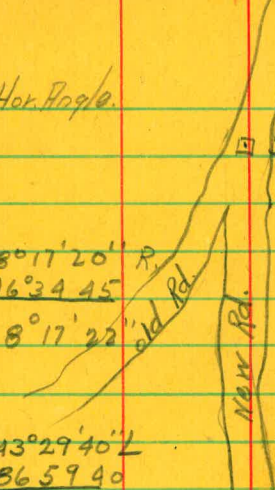
60°59'25"

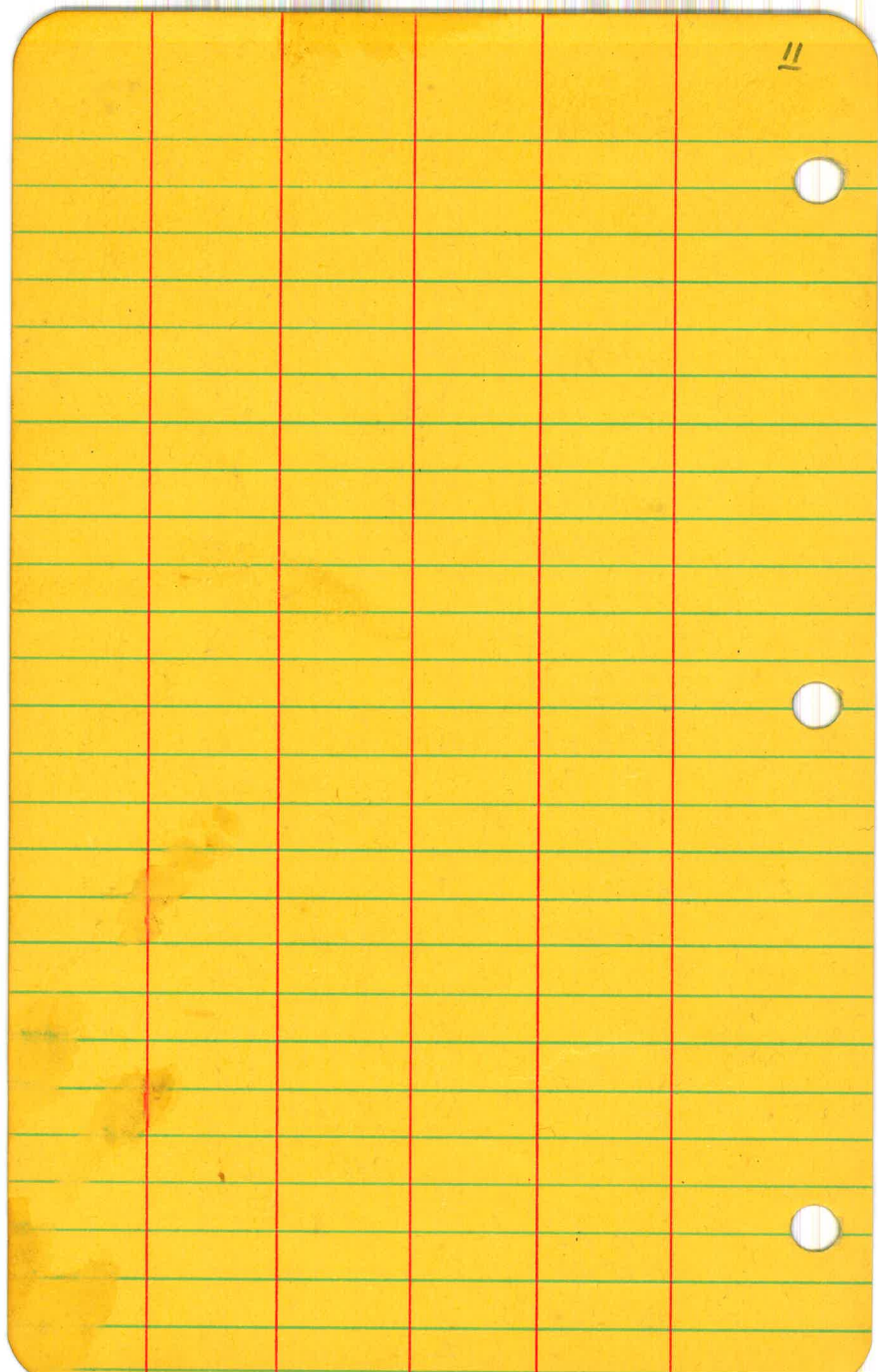
25°59'52"

2) 51°59'30"

25°59'45"

Sta. 38 = P.I. of
old Road and
New Road. Both
Leading to Dam.



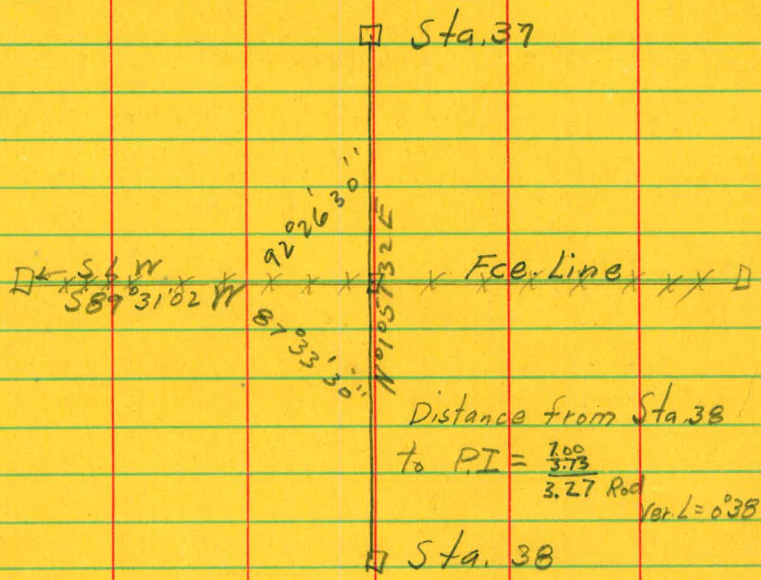


7.00
3.73

0°38'

11
18

179°59'60
87'33"30
922630



Note: Turned an angle of 92°26'30" L from Sta. at P.I. of Road Traverse and Fce. Line: (Section Line)

12

Stadia Traverse

from a Pt. (1000) at an
Intersection of the Section
Line and Road. following
West along Road until it
connects with Mesa Grande
Road at Concrete Bridge.

Party Leach. Notes
Simpson T
Raunder Rod
Clarett "

July 20, 1927

Sta - Hor. Angle Bearing F.S. Rod B.S. Rod. Ver. Angle

(5) $32^{\circ}29'37''L$
 $N42^{\circ}55'52''W$
 $N10^{\circ}26'15''W$

$\frac{7.00}{3.76}$
 $\frac{3.76}{3.94}$ 5.18

(4) $65^{\circ}44'25''R$
 $N76^{\circ}10'40''W$

$\frac{6.55}{4.10}$ 2.45 $\frac{6.55}{4.1}$ 2.45 $\frac{2.45}{2.45}$ 5.83
 $\frac{2.45}{2.45}$ 5.30'

(3) $26^{\circ}11'52''L$
 $N55^{\circ}58'48''W$

$\frac{5.98}{4.80}$ 1.18 $\frac{5.87}{4.70}$ 1.17 $\frac{1.17}{1.17}$ 5.48' 5.50'

(2) $37^{\circ}21'55''R$
 $S86^{\circ}39'17''W$

$\frac{7.67}{3.30}$ 4.37 $\frac{7.57}{3.20}$ 4.37 $\frac{4.37}{4.37}$ 6.02' 6.01'

(1) $17^{\circ}38'42''L$
 $N75^{\circ}42'01''W$

$\frac{7.00}{3.76}$ 3.24 $\frac{7.00}{3.77}$ 3.23 $\frac{3.23}{3.23}$ 5.05' 5.052'

0+00 $75^{\circ}37'30''L$
 $N0^{\circ}04'31''W$

$\frac{6.49}{4.70}$ 1.79 $\frac{6.59}{4.80}$ 1.79 $\frac{1.79}{1.79}$ 5.19' 5.026'

Hor. Angle

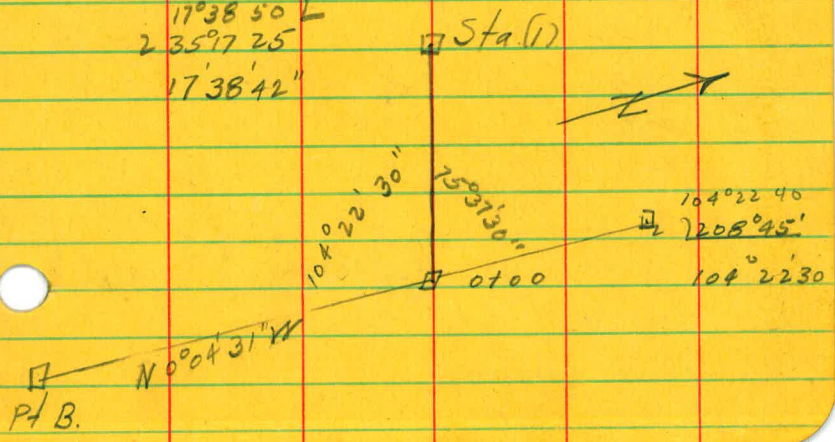
32°29'35"
2) 64°59'15"
32°29'37"

65°44'20"
2) 131°28'50"
65°44'25"

20°12'00"
2) 40°23'45"
20°11'52"

37°22'00"
2) 74°43'50"
37°21'55"

17°38'50"
2) 35°17'25"
17°38'42"



85



Sta.	Hor. Angle	Bearing	F.S. Rod.	B.S. Rod.	Var. Angle
		S64°33'15"W			
(10)	19°11'38"L	S83°44'53"W	$\frac{6.67}{3.70}$ 2.99	$\frac{6.70}{3.71}$ 2.99	3°15' 3°15'
(9)	55°28'00"L	N41°07'07"W	$\frac{6.08}{4.00}$ 2.08	$\frac{6.29}{4.20}$ 2.09	3°42' 3°42'
(8)	12°47'15"L	N38°19'52"W	$\frac{4.73}{3.00}$ 4.73	$\frac{4.73}{2.26}$ 4.74	3°37' 3°38'
(7)	34°34'05"L	N69°41'3"E	$\frac{6.29}{3.30}$ 2.99	$\frac{6.70}{3.70}$ 3.00	4°25' 4°22'
(6)	49°10'05"R	N42°55'52"W	$\frac{6.25}{4.30}$ 1.95	$\frac{5.75}{3.80}$ 1.95	2°05' 2°02'
(5)	32°29'37"L	N10°26'15"W	$\frac{7.00}{3.56}$ 3.44	$\frac{7.00}{3.57}$ 3.43	5°18' 5°19'

♀

14

Hor. Angle

51

19°11'40"
2 38°23'15"
19°11'38"

55°07'35"
2 110°16'00"
55°08'00"

12°47'10"
2 25°34'30"
12°47'15"

34°34'15"
2 69°08'10"
34°34'05"

49°10'00"
2 98°20'10"
49°10'05"

Sta.	Hor. Angle	Beaving	F.S. Rod	B.S. Rod	Ver. L
					15'
(16)	.	S84°57'21" W			
			4.57 3.70 2.87	6.90 2.87 4.03 2.87	3°15' 3°13'
(15)	15°32'47" R	S69°24'34" W			
			6.56 3.80 2.76	6.57 2.77 3.80 2.77	3°48' 3°49'
(14)	34°21'15" L	N76°14'11" W			
			5.97 4.60 1.37	6.00 1.37 4.63 1.37	4°08' 4°03'
(13)	37°45'10" R	S66°00'39" W			
			6.78 4.00 2.78	6.67 2.77 3.90 2.77	3°08' 3°08'
(12)	18°31'38" L	S84°32'17" W			
			6.90 3.69 3.21	6.90 3.20 3.70 3.20	4°02' 4°00'
(11)	19°59'02" R	S64°33'15" W			

Hor. Angle



15-
52

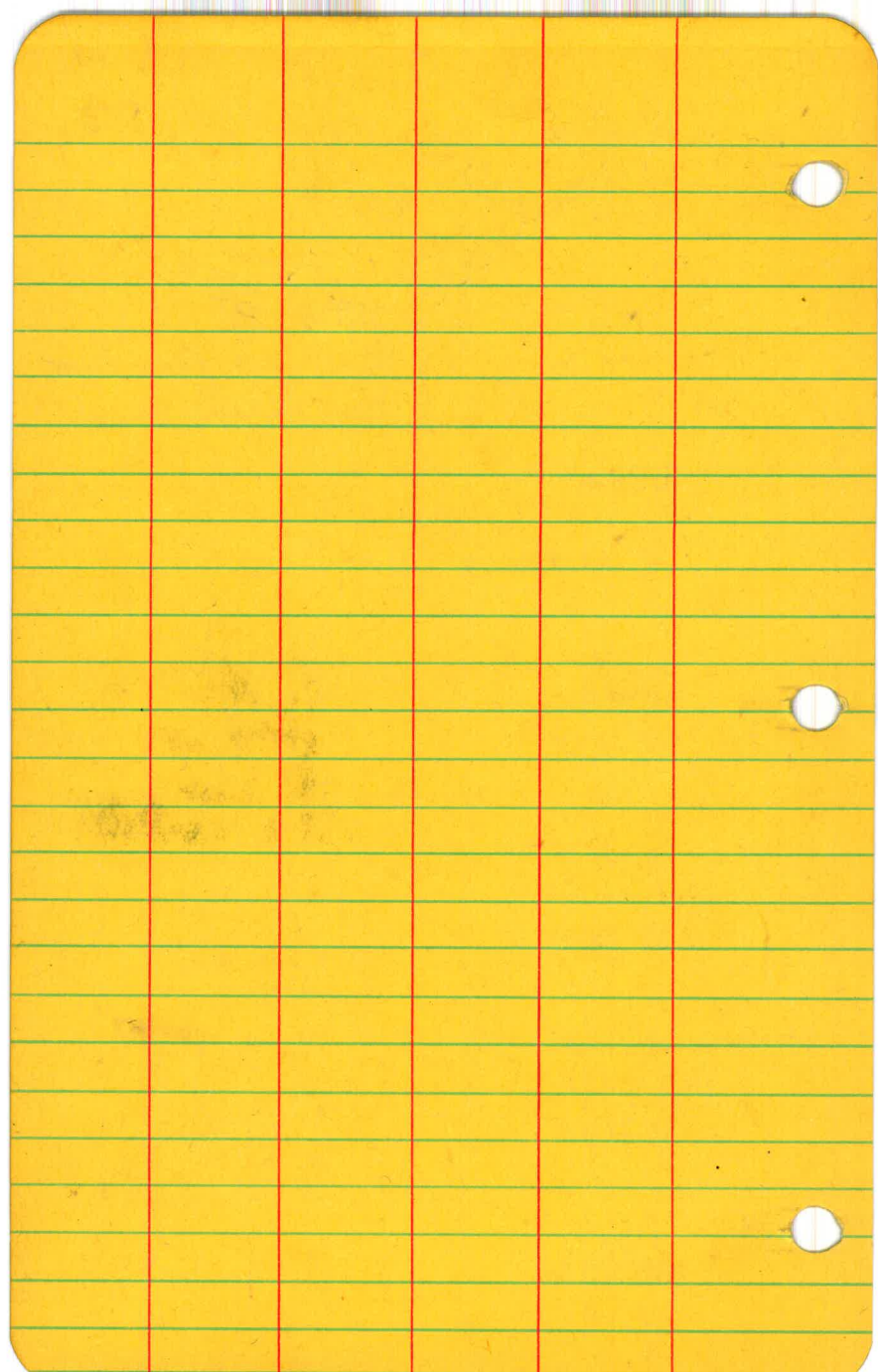
15°32'40"
2 31 05 35
15°32'47"

34°21'30"
68 42 30
34°21'15"

37 44 55
2 75 30 20"
2 37 45 10

18 31 45"
2 37 03 15"
18 31 38'

19°59'15"
2 39°58'05"
19°59'02"



~ S H Line ~

~ Profile Levels

Southerland San Vicente

Conduit ~

~ From Sta. 41+00
to Sta. 80+00

Party Leach
Ravner
Clarex.

Aug. 9, 1927.

Sta	+	T	-	E.l.	
				1950.731	T.P.#7
	³⁶²⁹ 12.925	1959.360			
41+00			9.3	1945.060	
+50			5.3	1949.060	
42+00			4.6	1949.760	
+50			6.7	1947.660	
			.140	1954.220	
		10.778		1964.998	
43+00			4.9	1960.098	
+50			3.2	1961.998	
44+00			7.0	1957.998	
B.C.					
+51			12.5	1952.498	
			12.262	1952.736	T.P.
		3.590		1956.326	
+75			5.6	1950.726	
45+00			6.9	1949.426	
+25			6.9	1949.426	

← Warm →

Party Leach π
Rauner π
Clavert. π

4' L Sta. 41+35 -

54

point on rock sta. 44+62

Sta	+	T	-	Elev.
		1956.526		
45+50			7.8	1948.526
+75			7.0	1949.326
BP. +83 ²			7.2	1949.126
46+00			9.1	1947.226
			11.494	1944.832 T.P.
	1.382	1946.214		
+50			9.8	1936.414
			12.667	1933.547 T.P.
	.313	1933.860		
47+00			8.0	1925.860
			12.167	1921.703 T.P.
	.560	1922.263		
+18 ²⁰			2.5	1919.763
+34 ²⁰			5.5	1916.763
+50			10.9	1911.363
+67			16.6	1905.663
BP. +73 ⁰²			13.8	1908.463

3' right of & Sta 46+07 point on rock

point on rock at sta 46+65

3' left of & Sta 47+20 point on rock

Sta	+	T	-	Elev.	
		1922.263			
			1.111	1921.152	T.P.
	12.961	1934.113			
48+00			6.3	1927.813	
			1.431	1932.682	T.P.
	13.067	1945.749			
+25			7.6	1938.1	
EG.	+51.4		0.9	1944.8	
			9.46	1944.803	T.P.
	6.963	1951.766			
			2.501	1949.265	T.P.#8
Aug 12				1949.268	
	9.967	1959.235			
			9.452	1949.783	B.M.#7
				1949.781	B.M.#7
	9.452	1959.233			
49+00			7.8	1951.4	
+30 ⁶⁴	P.O.T.		4.5	1954.7	
+50			4.3	1954.9	
50+00			5.8	1953.4	

56

point on rock at sta 47+90

turn on E.C. hub Sta. 48+51.4

El. T.P. #8 (Sta. 48+76) = 1992.685

Check

El. = 1992.81, 3' Left Sta. 48+76 Nail in Pine Hub.
check ✓

Sta.	+	T	-	E.I.
		1959.233		
50+45 ²²	B.C.		8.3	1950.9
+50			8.7	1950.5
			8.307	1950.926 T.P.
	3.388	1954.314		
+75			3.8	1950.5
+87 ²	E.C.		4.7	1949.6
51+00			5.0	1949.3
+30			8.5	1945.8
			12.239	1942.075 T.P.#9.
				1942.065 T.P.#9
	0.576	1942.641		
51+50			3.1	1939.5
+70			11.2	1931.4
52+00			6.5	1936.1
+50			1.7	1940.9

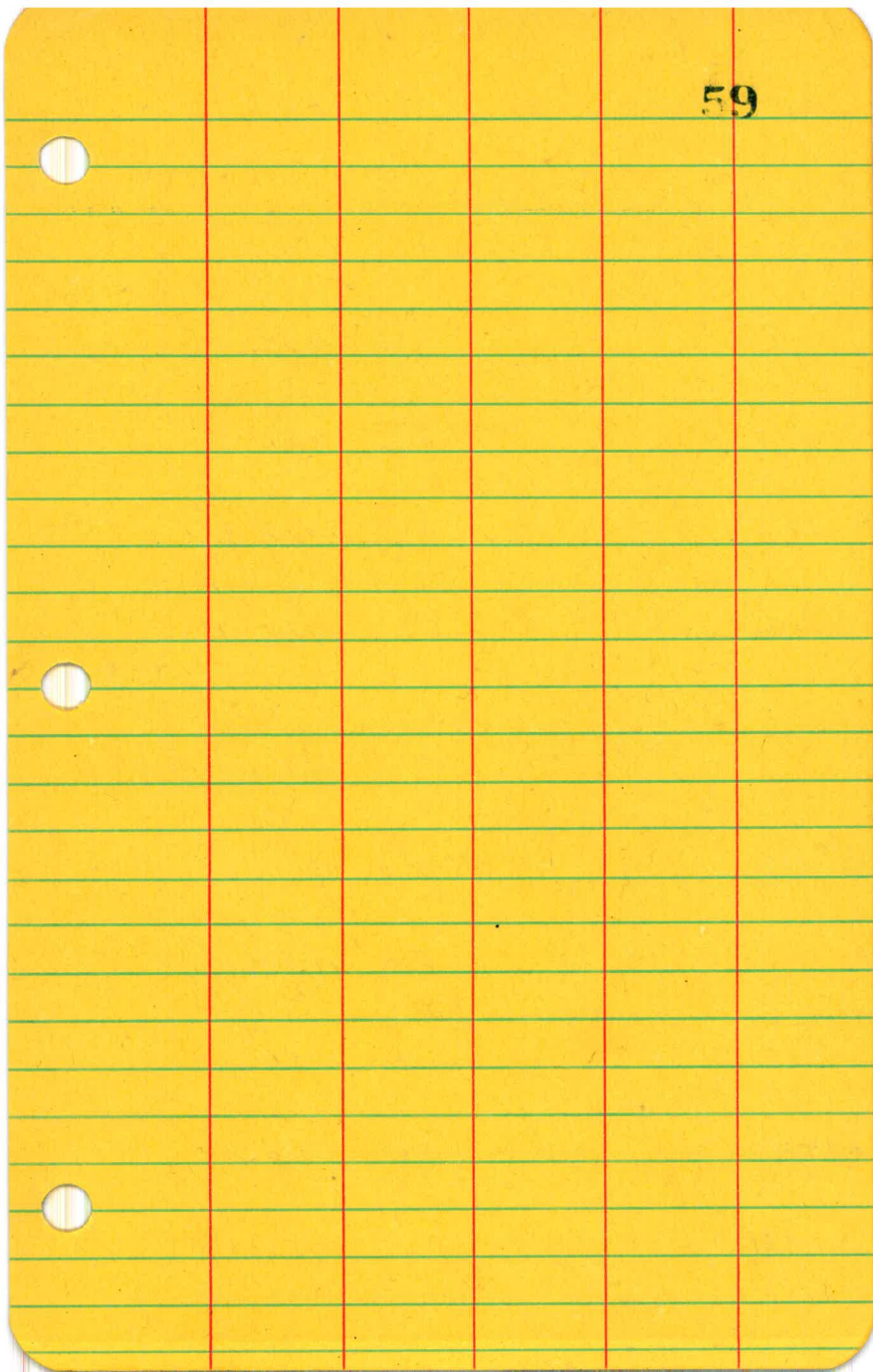
On B.C. Hub Sta. 50+45²²

Pt. on rock Sta. 51+50.
Correct E.L. = 1942.075.
See Check Levels (Page 1)

Sta.	+	T	-	El.
		1942.641		
52+66			2.6	1940.0
			0.111	1942.530 T.P.
	12.912 ³	1955.443		
53+00			3.3	1952.1
			0.475	1954.968
	12.447	1967.915		
+50			1.0	1966.4
			0.148	1967.267
	11.189	1978.956		
54+00			4.1	1974.4
+08 ^L P.O.T.			3.3	1975.2
+50			8.7	1969.8
			12.544	1965.912
	6.007	1977.919		
55+00			14.8	1957.1
+50			9.0	1962.9
56+00			2.0	1969.9
+50			2.7	1969.2

Boasted Red.

Sta.	+	T	-	El.
		1971.919		
+69 ⁸¹	P.O.T.		2.9	1969.0
57+00			9.0	1962.9
			8.519	1963.405
	1.460	1964.865		
+75			4.2	1960.7
+50			3.2	1961.7
+56 ⁹³	E.C.		6.2	1963.7
58+00			2.8	1962.1
+50			4.5	1960.4
			3.821	1961.044
	0.487	1961.531		
+63 ²⁰	B.C.		1.4	1960.1
+75			1.8	1959.7
59+00			3.3	1958.2
+25			9.0	1952.5
			8.637	1952.894



Sta.	+	π	-	El.
				1952.894
	0.107	1953.001		
59+50			9.6	1943.4
+61			13.4	1939.6
+75			8.6	1944.4
+91 ⁵⁴ E.C.			4.6	1948.4
60+00			3.6	1949.4
			1.259	1951.742 B.M#8
				1951.736 B.M#8
	12.310	1964.096		
60+50			12.0	1952.0
61+00			5.0	1959.0
+50			3.1	1960.9
61+90			4.0	1960.0
+98 ²¹ B.C.			7.4	1956.6

Center of Running creek

El B.M.#8 = 1951.736 (Page 7 of B.M.s)

Sta.	+	T	-	E.L.
		1964.046		
62+25			5.9	1958.1
			3.988	1960.058
	9.713	1969.831		
+50			5.7	1964.1
+55 ^{BT}	E.C.		5.0	1964.8
63+00			4.7	1965.1
+50			6.2	1963.6
+68 ³⁵	B.C.		5.8	1964.0
64+00			5.7	1964.1
+25			7.7	1962.1
+40 ^{BT}	E.C.		10.3	1959.5
			12.875	1956.956
+50	0.081	1957.037		
+50			1.3	1955.7
+81			16.3	1940.7

61

	+	π	-	El.
		1957.037		
65+00			11.4	1945.6
+23			7.2	1949.8
+50			10.2	1946.8
			12.892	1944.145
	0.403	1944.548		
66+00			5.5	1939.0
+30			10.6	1933.9
			12.38 ⁹	1932.164
	0.130	1932.294		
+50			7.7	1924.6
+62			12.6	1919.7
+76			6.3	1926.0
67+00			5.5	1926.8
+14			8.9	1923.4
			0.141	1932.153 B.M.#9

62

Point on rock, Sta. 67+25
El = 1932.157 ft
— check. —

Sta.	+	T	-	El.
				1932.157 B.M.#9.
	12.753	1944.910		
67+50			6.2	1938.7
			0.647	1944.263 T.P.
	12.697	1956.960		
68+00			7.6	1949.4
+50			1.7	1955.3
68+82 ²⁹	B.C.		0.9	1956.1
69			3.7	1953.3
			3.527	1953.433 T.P.
+ 5.700	1959.133			
69+25			5.3	1953.8
+50 ³³	E.C.		4.2	1954.9
70+00			2.5	1956.6
+50			5.4	1953.7
71+00			8.0	1951.1
+50			10.8	1948.3

63

Point on rock. Sta. 67+25.

Sta.	+	T	-	E.I.
		1959.133		
			10.177	1948.956 T.P.
	3.082	1952.035		
72+00			6.3	1945.7
	+44		10.9	1941.1
	+50		9.4	1942.6
73+00			3.3	1948.7
			0.689	1951.349
		11.226	1962.575	
	+50		6.6	1956.0
	+67.95		4.9	1957.7
	+75		4.6	1958.0
74+00			5.4	1957.2
	+65		12.2	
			11.866	1950.709
		8.070	1958.779	
	+50		14.4	

12.9
1.5
14.4

64

Sta.	+	π	-	El.
		1958.779		
74+72 ⁹⁸			13.8	
75+00			8.6	1950.2
+50			9.1	
76+00			—	1932.1
+07			—	1926.9 [✓]
+50			9.6	1949.2
			.152	1958.627 T.P.
		1958.78		
			12.10	1946.68
	0.44	1947.12		
76+00			15.0	1932.1
+07			20.2	1926.9
Aug. 13. '27				1958.627 T.P.
	9.806	1968.433		
77+00			6.4	1962.0
			1.025	1967.408
	11.770	1979.178		

Pt. on rock. 76+85

Pt. on rock Sta. 76+85

Sta.	+	π	-	El.
		1979.178		
77+50			7.9	1971.3
+69			3.7	1975.5
78+00			5.1	1974.1
+60			9.8	1969.4
			12.163	1967.015
	1.628	1968.643		
			9.691	1958.952
	6.102	1965.054		
79+00			11.2	1953.8
+06			13.1	
+50			3.8	
+72			7.0	1958.6
80+00			3.5	1961.5
+50			8.5	
			7.857	1957.197
	1.293	1958.490		

T.P.# 10. Point on rock.
Sta.

~~Koid~~

Sta	+	T	-	El.
		1958.490		
80+62 ⁴³			0.8	1957.3
80+80 ³¹	B.C.		4.6	1953.9
81+00			4.0	1954.5
+25			7.5	1951.0
+50			7.4	
+18 ⁴⁶			7.9	1950.6
82+00			12.4	1946.1
			12.719	1945.771
	0.267	1946.036		
			12.263	1933.775
				BM#10
	2.338	1936.113		
+50			8.0	1926.1
+91 ³⁸	B.C.		5.1	1931.0
83+00			5.6	
+25			3.9	

Void

El. B. M#10 = 1933.7 B6 (Page 8, of BMs)

	+	T	-	E.I.
		1936.113		
83+50			5.4	
			8.260	1927.853
	3.670	1931.523		
83+75			9.5	
+87 ³⁷ F.C.			15.9	1915.6
84+00			11.0	1920.5
+20			3.1	1928.4
			0.046	1931.977 T.P.
	13.072	1944.549		
84+50			12.1	1932.4
			0.626	1943.923 T.P.
	12.765	1956.688		
85+00			2.3	1952.4
			0.012	1956.676 T.P.
Aug. 15,	12.318	1968.994		
			0.159	1968.835
	12.545	1981.380		
85+33 ⁵⁵			10.1	
+50			0.8	
			2.882	1978.498

Void

5' Left Sta. 85407.

Sta.	+	π	-	E.I.
				1978.498
	12.823	1991.321		
			0.241	1991.080
	12.872	2003.952		
85+75			11.5	
			2.4	2001.5
86+00			0.136	2003.816
	12.034	2015.850		
86+20 ⁷³			8.6	2007.2
			4.7	2011.1
+50			2.7	2013.1
+73 ⁹⁴				
87+00			6.3	2009.5
			11.919	2063.931
	0.803	2004.134		
			12.835	1991.899
	0.179	1992.076		
87+50			1.6	1990.5
			12.436	1979.642
	0.231	1979.873		
			12.711	1967.162
	1.148	1968.310		

Void

Sta	+	T	-	El.
		1968.310		
88+00			3.8	64.5
			11.307	1957.003
	0.229	1957.232		
			12.542	1949.690
	1.303	1945.993		
+32 ⁰⁹			3.9	
+50			13.5	1932.5
+63			18.7	
89+00			10.7	1935.3
+50			2.4	43.6
90+00			2.5	43.5
			2.339	1943.654
	12.936	1936.590		
+50			11.6	45.0
+68 ⁰⁹ BC			10.3	
+75			9.7	46.9

Void

Sta.	+	T	-	EI.
		1956.590		
91+00			7.3	1949 ³
+25			3.4	1953 ²
+51 ⁶⁶	E.C.		6.0	1950 ¹
+68			7.9	
			0.410	1956.180
	12.003	1968.183		
92+00			5.0	1963 ²
			0.233	1967.950
	11.554	1979.504		
+50			0.7	75 ⁸
			.228	1979.276
	11.323	1990.599		
			0.707	1989.872
	12.229	2002.121		
93+00			8.6	1993 ⁵
+50			1.2	2000 ⁹
			0.055	2002.066
	5.290	2007.356		
+63 ⁶⁰	B.C.		5.0	

Void

Note:- From here, we used Rod
5

Sta.	+	T	-	EI,
		2002.356		
93+75			1.7	2005.7
94+00			4.6	2002.8
+25			6.6	2000.8
+50			13.3	1994.1
			12.134	1995.222
	0.651	1995.813		
+75			3.8	1992.1
			6.570	1989.303
	0.561	1989.864		
95+00			1.1	1988.8
+22			7.2	1982.7
			12.812	1977.052
	4.978	1982.050		
95+50			11.7	1970.3
96+00			9.2	1972.8
+036			9.0	1973.0
			0.884	1981.166
	10.690	1991.856		

12 819
7

72

Void

Sta	+	π	-	El.
		1991.856		
96+25			9.1	1982.8
+50			3.4	1988.5
+62 ⁹⁶			1.7	1990.2
			0.216	1991.640
	3.638	1995.278		
+87 ⁶³			1.2	1994.1
97+00			2.0	1993.3
+50			4.1	1991.2
98+00			8.5	1986.8
+50			11.3	1984.0
99+00			11.5	1983.8
+50			12.8	1982.5
100+00			11.4	1983.9
			11.900	1983.378
	11.415	1994.793		

11.021
6

Void

Sta	+	T	-	EI
		1994.793		
100+50			7.2	1987.8
	+93 [±]		2.0	1993.0
101+00			3.7	1991.3
	+50		4.5	1990.5
102+00			6.7	1988.3
	+50		9.5	1985.5
			11.535	1983.255
	0.660	1983.718		
103+00			6.0	1977.9
			12.844	1971.074
	0.771	1971.895		
	+50		3.0	1968.8
	+68 ⁵⁵ B.C.		8.4	1963.4
	+75		9.7	1962.1
104+00			14.0	1957.8
			12.227	1959.618

Void

Sta.	+	T	-	El.
				1959.618
	0.794	1960.412		
104+25			6.4	1955.0
+50			6.5	1953.9
+53 ^{6.5} E.C.			7.2	1953.2
105+00			7.2	1953.2
			11.198	1949.214
	0.341	1949.555		
+50			9.2	1940.4
			12.428	1937.127
	0.200	1937.327		
			6.380	1930.947 B.M#12.

T.P. rail.

Point on rock. 35' Right Sta.
105+75.

