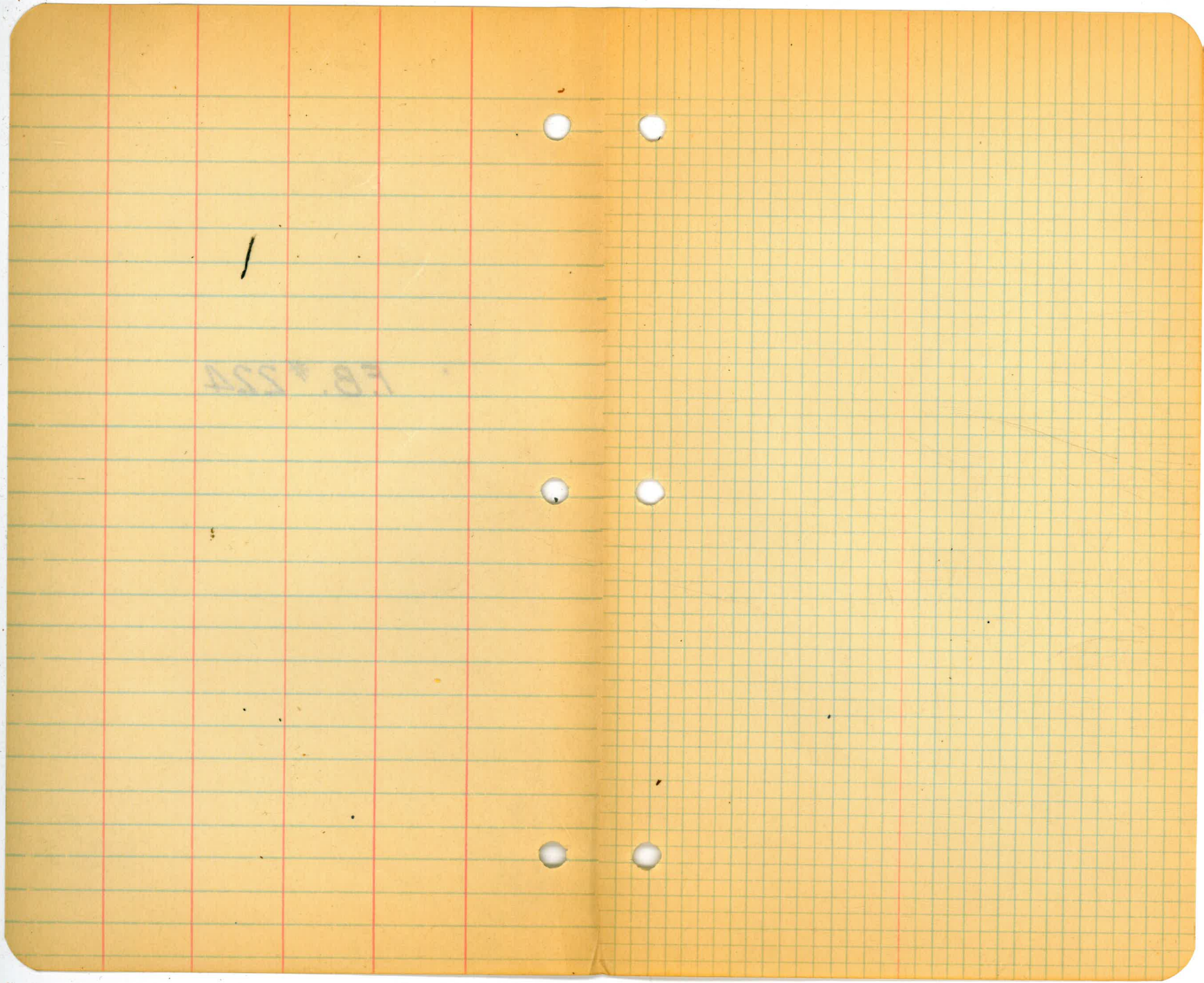


F.B. # 224



F.B. 224

/

Van Horn
Simpson
Elliott
Clavert
Lundy
Mottson
Clear

9/29-29.

From Tunnel to

Pass #1.

(H)

Line Change H' 37+85 ³¹
to N. Portal Tunnel #1
continued to South Portal

Notes made up from
paper location.

+50

157

+50

156

³⁸

+106 Δ

155

+50

154

+50

153

⁶⁶

+66 Δ

+27 ⁶³ Δ

152

+50

+09 ⁸⁸ Δ

151

+50

150

+50

149

+50

+26 ^L Δ

148

+50

147

Van Horn
Simpson
Elliott
Clavert
Mattoon
7/28-27
clear

(H)

(H' Line can)

+37⁶⁵ Δ

168

+50

167

+50

+13⁹⁷ Δ

166

+50

165

+50

164

+50

163

+50

162

+81⁵⁰ Δ

+50

161

+50

160

+50

159

+81³⁸ Δ

+50

158

Van Horn.
Simpson.
Elliott.
Clavert.
Mattoon.

7/29-27.
Clear

(H)

Preliminary Loc. South to S.V.)
(H' Line Con)
Sta. 169 to 177+17⁹⁹.

see Level notes
For
Profile

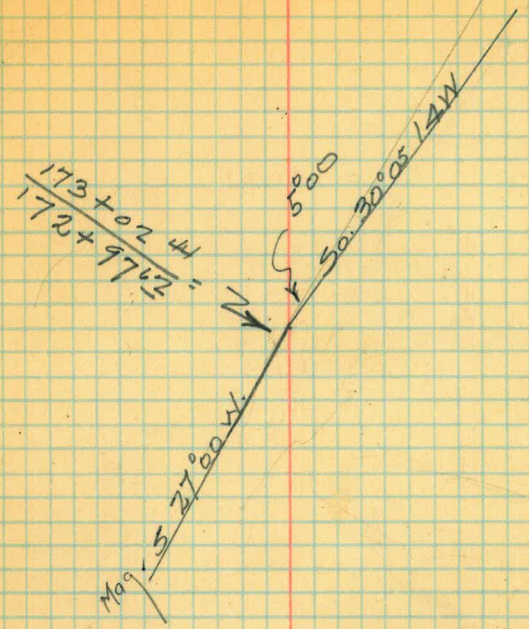
$+17$ ⁹⁸ ✓ EC
 $177+00$
 $+81$ ⁶⁸ P.I.
 $+75$
 $+50$
 $+37$ ⁹⁷ / B.C

$176+00$
 $+50$
 $175+00$
 $+50$
 $174+00$
 $+50$
 $173+02$ ✓
 $172+97$ ✓ Equation
 173

$+50$
 172
 $+87$ ⁵⁵ Δ
 $+50$
 171
 $+96$ ²¹ Δ
 $+50$
 170
 $+50$
 169

18° out 19° $\Delta = 57^\circ 18' L$
 $R = 80'$
 $T = 43.71$ ✓
 35° out 8° $L = 80^\circ Z$ ✓
 $12'$ out $0'$

584.06



Van. Horn
Simpson
~~He~~ Duerrpit
Claver
Mattoon
8-30-27
clear

(H)
Prel. Loc. Suth. to S.V.
(H' Line Con)
Sta 177+50 to 185+29 ⁹⁹

(see level notes
for
Profile.

80 50

+29⁹⁹ E.C

+25

185

+88¹¹ P.I.

+75

+50

+31 B.C.

184

+50

183

+50

182

+50

181

+50

+38⁶² E.C

+25

+16⁷⁴ P.I

180

9363 B.C

+50

179

+50

178

+50

472 6

347 46

5² out 0¹⁵
29⁴ out 5⁶

41⁴⁵ out 11⁵
18³ out 2¹¹

13⁶ out 1¹¹

6⁴ out 0²⁵

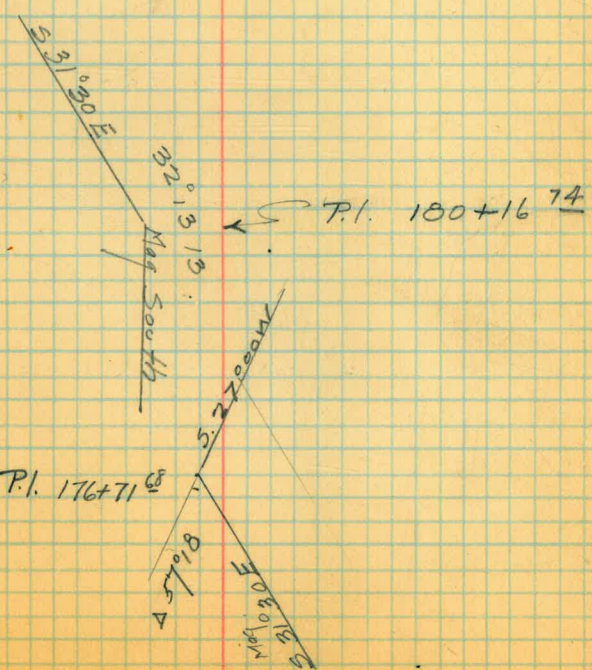
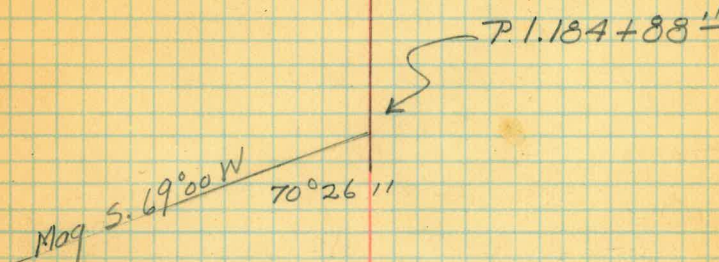
Mag. S. 69°00' W.

Mag. South

A = 70°26' 11" R
R 80
T 56 47
L 98 35

A 32°13' 13" R
R 80
T 23.11
L 44.99

South



Van Horn
Simpson
~~Mr. Duermitt~~
Clavert
Mattoon
8-30-27
clear

(H)

Prel. Loc. South to S.V. Conduit.
H' Line con.
Sta. 185+50 to 195

see Level notes
For
Profile

195
 +50
 194
 +50
 193
 +50
 192
 +50
 191
 +50₁₅
 +19 P.I.
 190
 +50
 189
 +50₂₇
 +04 P.I.
 188
 +50
 187
 +50
 186
 +68⁵⁶ E.C.
 +54¹² P.I.
 +50₃₅
 +39 B.C.

550 24

214 58

251 08

10⁶ out 02

Mag. S. 37° 00' W.

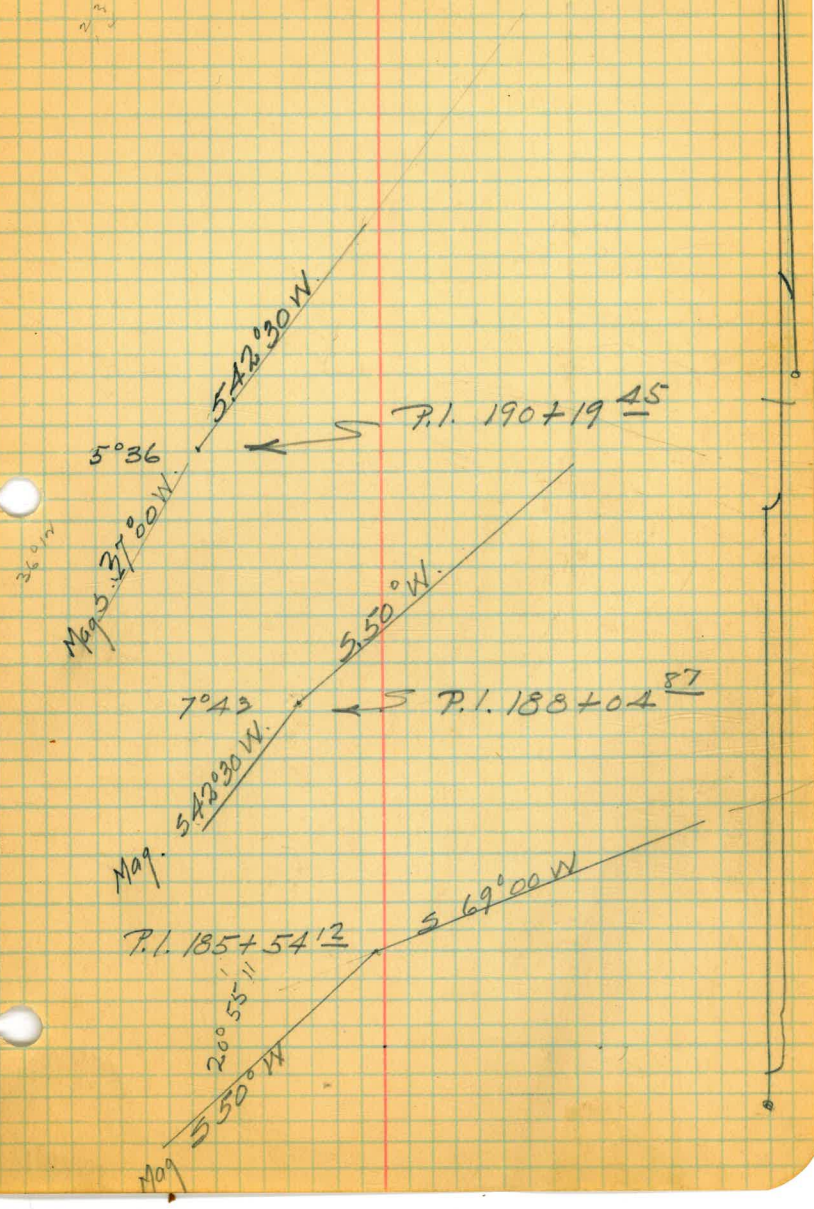
Mag. S. 42° 30' W.

Mag. S. 50° W.

Δ 5° 36' L

Δ 7° 43' L

Δ = 20° 55' L
 R 80
 T 14.77
 L 29.21



Van Horn
Simpson
~~Mc Duermit~~
Clavert
Mattoon
8-31-27
Clear
Mac

(H)

Prel. Loc. South to S.V. Conduit
('H' Line Con)
Sta. 195, to 202.

See Level notes
for
Profile

372 28

Mag. S 59° 15' W

$\Delta 56^{\circ} 55'$ R
R 80
T 43.36
L 79.46

2¹ out 0⁰⁶
27¹⁶ out 4⁷⁴

26⁶ out 4⁵²
1² out 0⁰²

P.I. 199+41 45' \rightarrow $56^{\circ} 55'$

Mag. S 59° 15' W

S 20' 15" W

202
+50
201
+50
200 ✓
+77⁵¹ E.C.
+75
+50
+41⁴⁵ P.I.
+25
199 ✓
+98⁰⁹ B.C.
+50
198
+50
197
+50
196 ✓
+92⁹² E.C.
+75⁶⁹
+69⁶⁹ P.I.
+50
+44⁹⁶ B.C.
195

573 25

Mag. S 21° 15' W

$\Delta 34^{\circ} 21'$ L
R 80
T 24.73
L 47.96

17⁹ out 2⁰
5⁰ out 0¹⁶

34° 21'

Mag. S 21° 15' W

S 37° 00' W

P.I. 195+69 69'

Van Horn
Simpson
M. Duermit
Clavert
M. G.
Mattoon
Clear
8-31-27

(H)

Prel. Loc. Conduit south to S.V.
(H Line Con)
sta 202 to 209+50

See Level notes
For
Profile.

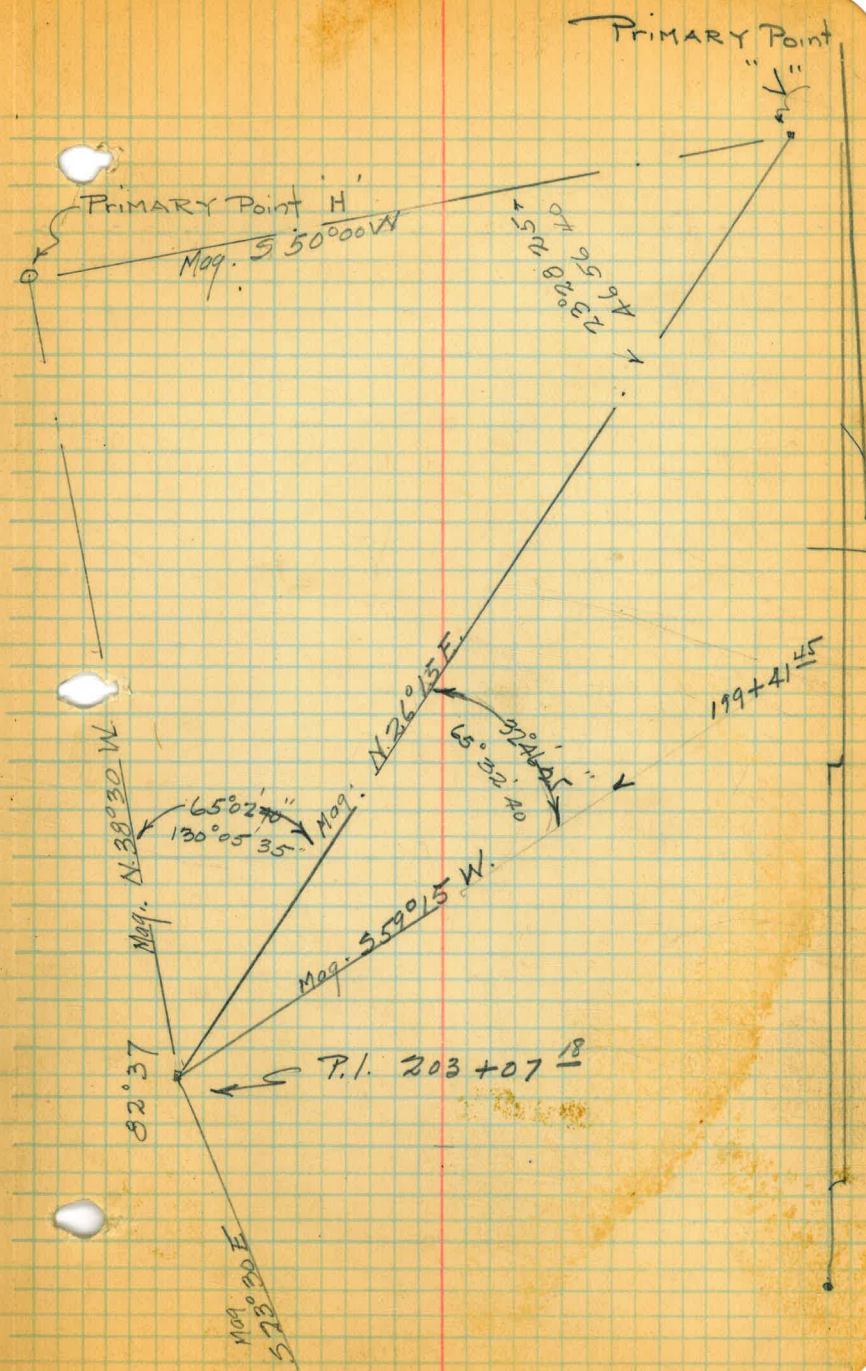
+50
 209
 +50
 208
 +50
 207
 +50
 206
 +50
 +31⁷⁴ E.C. ✓
 +25
 205
 +96⁹⁷ P.I.
 +75
 +55⁹⁹ B.C.
 +50
 204
 +52²³ E.C. ✓
 +50
 +25
 +07¹⁸ P.I.
 203
 +75
 +50
 +36⁹⁸ B.C. ✓
 202

515.78
 215.04

6⁷⁵ out 0²⁸
 31⁰⁰ out 6²¹
 18²⁷ out 2²⁵
 41° 18' 1/2
 40° 30
 31° 33
 22° 36
 13° 37
 4° 41

Mag. S. 23° 30' E

Δ 54° 15' R
 R 80
 T 40.98
 L 75.75
 Δ 82° 37' L
 R 80
 T 70.30
 L 115.35

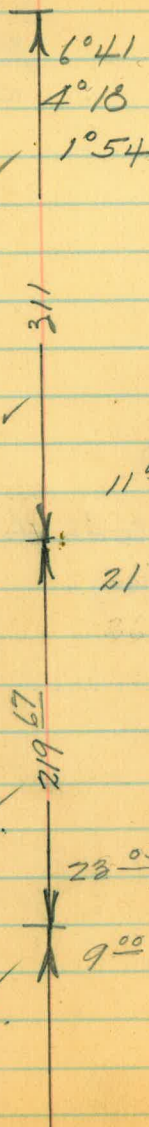


Van Horn.
Simpson.
Duermitt.
Clavert.
M^c Baine.
Mattoon.
C. Rauner.
9/8-27.
Clear.

(H)

Prel. Loc. Conduit Suth. to S.V.
(H' Line Con)
Sta 269+50 to 276

276
 +23³⁹ P.I.
 +75
 +50
 +30.09 B.C.
 +17.57 P.O.T.
 275
 +50
 274
 +50
 +36⁰² E.C.
 +25
 +18¹³ P.I.
 273
 +88⁵³ B.C.
 +50
 272
 +50
 +23³³ E.C.
 271
 +95⁹⁸ P.I.
 +75
 +66¹¹ B.C.
 +50
 270



$\Delta 34^{\circ}33'$
 $R 300$
 $T 93.3$
 $L 180.90$

Mag. $S 20^{\circ}00' W$

Mag. $11^{\circ}02' out 0^{\circ}25'$

$\Delta 33^{\circ}48'$
 $R 80$
 $T 24.30$
 $L 47.17$

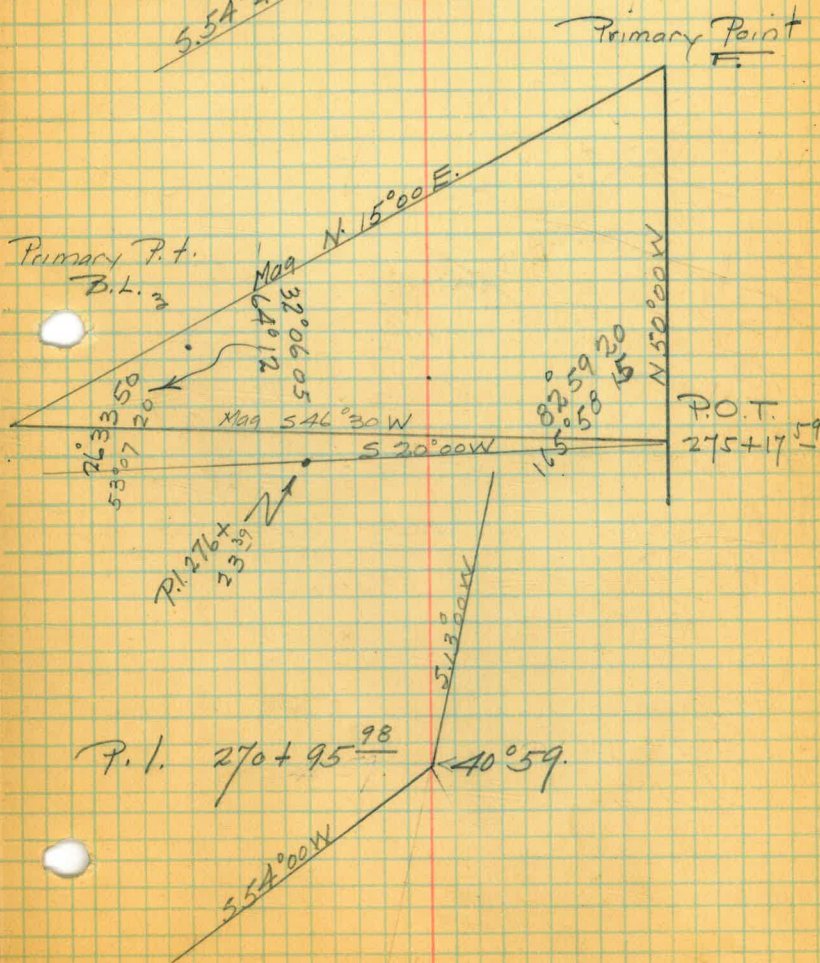
Mag. $S 54^{\circ}00' W$

Mag. $23^{\circ}05' out 3^{\circ}4'$

$\Delta 40^{\circ}59' R$
 $R 80$
 $T 29.87$
 $L 57.22$

Mag. $S 13^{\circ}00' W$

P.I. $276 + 23.39$
 $S 70^{\circ}00' W$
 $5.54^{\circ}45' W$
 $34^{\circ}33'$



Van Horn
Simpson
Duermet
Clover +
Mc. Baine
Mattoon
9/1 - 27.
clear

(H)

Prcl. Loc Conduit Suth to S.V.

(H' Line Con)

290+50 to 215+25

See Level notes

For

Profile

+25⁷¹ ✓
E.C.
+04⁰³ P.I.

215 ✓ 18⁶⁷ out 2²⁸

+81¹⁷ B.C.

+50

214

+50

213 ✓

+51⁷² E.C.

+50 1⁷ out 0⁰¹

+26¹⁶ P.I.

+25 26⁴² out 4⁴¹

212 ✓

+98⁵⁵ B.C.

+50

211

+50⁸⁴ ✓

+40 E.C.

+25 58 out 1⁵⁶

+06⁵⁴ P.I.

210

32⁷ out 6⁹⁶

+75 86 out 0⁴⁶

+66³³ B.C. ✓

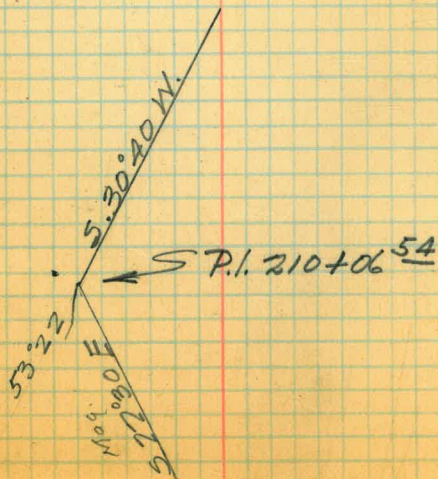
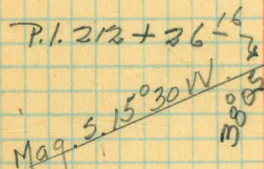
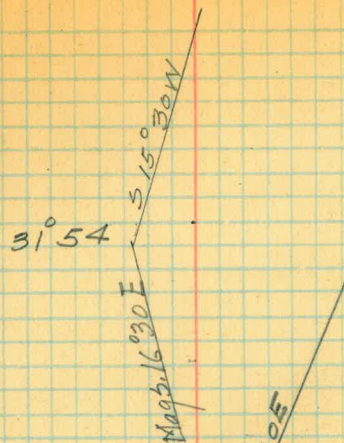
Δ 31°54' L
R 80
T 22.86 ✓
L 44.54 ✓

Mag. S 15° 30' W

Δ 38°05' R
R 80
T 27.61 ✓
L 53.17 ✓

Mag. S 27° 30' E

Δ 53°22' L
R 80
T 40.21 ✓
L 74.51 ✓



Van Horn
Simpson
Ducmit
Clavert
M^c Baine
Mattoon
8-1-27
Clear

(H)

Prel Loc. South to S.V.
(H' Line con)
Sta 215+25 to 223

(See Level notes
For
Profile.)

+59⁶⁰ E.C. ✓

+50

+25

+02⁵⁵ P.I.

9⁶ out 0¹⁵

34⁵³ 2°

Δ 22° 04 L

R 300

T 58.49 ✓

L 115.54 ✓

222

+75

+50 ✓

+144⁰⁵ B.C. ✓

55⁵⁸ out 5²³

30⁸⁵ out 1⁶

5⁹ out 0⁰⁶

221

+50

254⁵⁵

Mag. 5.67° 30 E

220

+86¹⁹ E.C. ✓

+75

+53⁰⁶ P.I.

+50

+25 ✓

14²⁷ B.C.

11⁸⁰ out 0⁷⁸

34¹⁸ out 7⁶⁵

10¹⁸ out 0⁶⁵

Δ 51° 09 L

R 80

T 38.29 ✓

L 71.42 ✓

219+

+50

218

+50

217

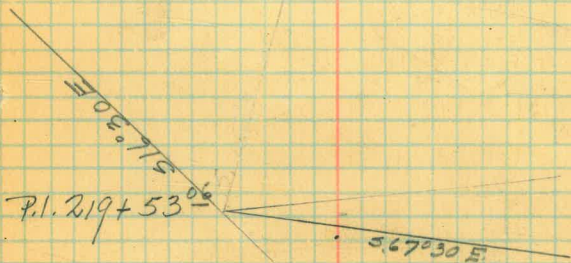
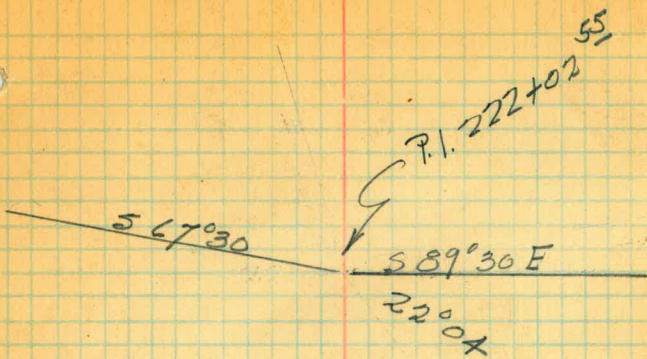
+50

216

+50

450²¹

Mag. 5.16° 30 E



Van Horn
Simpson
Duermit
Clavert
M^c Baine
Mattoon
8/2-27
clear

(H)

Prelim. Loc. South to S.V. Conduit
(H' Line con)
sta 223 to 229+50

(see level notes
for
Profile.)

+54^s
 +50
 229
 +50
 +40⁶¹ E.C.
 +25⁰⁵ P.I.
 228
 +80⁵⁰ B.C.
 +50
 227
 +94⁹³ E.C.
 +75
 +56¹¹ P.I.
 +50
 +25³⁴ ✓
 +07 B.C.
 226
 +50
 225
 +50
 224
 +50
 223

198.49

165.89

155

15⁵³ out 1⁵¹

19³⁵ out 2³⁶

19⁷⁵ out 2⁴⁸

40⁸³ out 9²¹

17⁶ out 1.9⁵

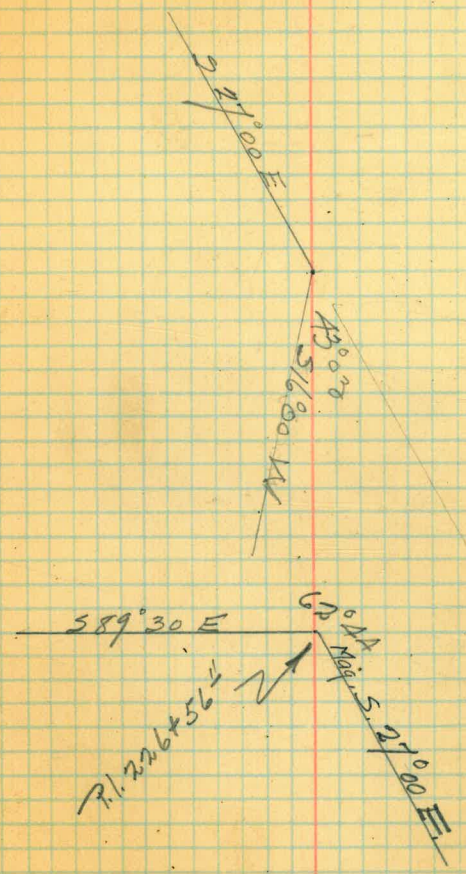
527°00 E

Mag 5.16^{80W}

Mag 5.89°30 E

$\Delta 43^{\circ}03 \checkmark$
 $R 80$
 $T 31.55 \checkmark$
 $L 60.11 \checkmark$

$A = 62^{\circ}44 \checkmark$
 $R 80$
 $T 48.77 \checkmark$
 $L 87.59 \checkmark$
 $L.Ch. 83 \checkmark$



Van Horn
Simpson
Duermit
Clavert
M. Baine
Mattoon
9-2-27
clear.

(H)

Prel. Loc. Conduit South to S.V.
Sta. 229+50 to 236+50
(H' Line Con.)

(see Level notes
For
Profile)

+50
 236
 +90 ○
 +50
 235
 +50
 234
 +50
 233 ✓
 +55⁹⁷ E.C.
 +50
 +25
 +12⁹² P.I.
 232
 +75 ✓
 +52⁶⁰ B.C.
 +50
 231
 +36⁴⁶ E.C.
 +50
 +25
 +07⁵⁵ P.I.
 230
 +75 ✓
 +54⁵³ B.C.

801.96
~~801.08~~

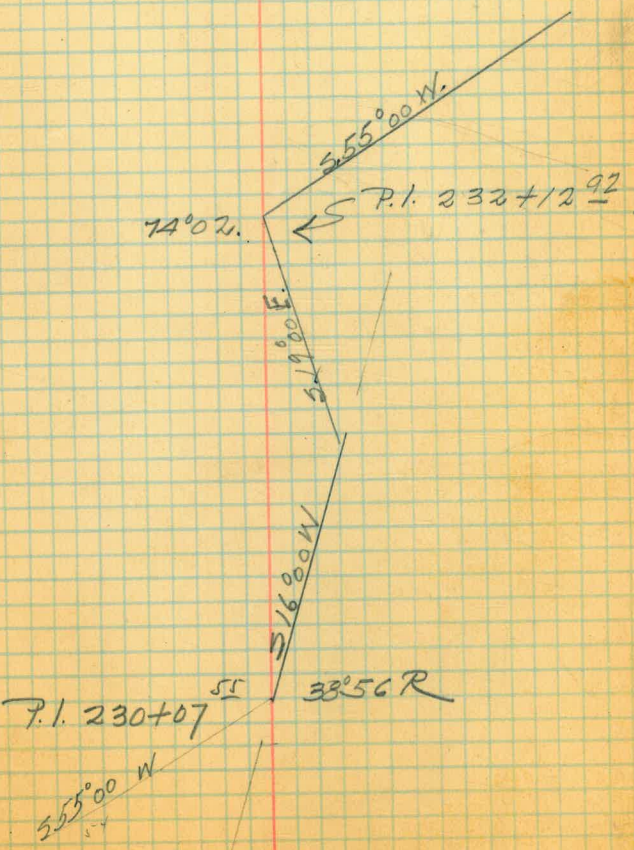
Mag. 5.19° 00 E.

5⁹² out 0²⁴
 30³ out 6⁰⁰
 44²⁴ out 13⁶⁸
 22¹⁸ out 3¹²
 6⁴⁶ out 0¹²
 31²⁶ out 3³¹
 44⁸⁵ out 6⁸⁶
 20⁴⁵ out 1⁴⁰

Δ 74° 02
 R 80
 T 60.32
 L 103.37

Mag 5 55° 00 W

Δ 38° 56 R
 R 150
 T 53.02
 L 101.93



Van Horn.
Simpson.
Over mit
Clavert.
Mc Baine.
Mattoon
a year
9/6-17

(#)
Prel. Loc Conduit Suth. to
S.V.
(H Line Con)
Sta 236+50 to 244

(see level notes
for
Profile)

244

+50

243

+64⁸⁴ E.C. ✓

+50⁸⁸

+24 P.I.

242

+73⁵² B.C. ✓

+50

241

+50³⁷ ✓

+19³⁷ E.C.

240

+97⁶⁵ P.I. ✓

+74⁶⁷ B.C.

+50

239

+50

238

+50

237

349.17

228.45
~~227.57~~

14⁴⁴ out 1³⁷

26¹³ out 4.37

19⁶ out 2⁰⁸

578°30 W

Mag 5.13²⁰ W

Δ 65°24 R

R 80

T 51.36 ✓

L 91.32 ✓

Δ 32°01 R

R 80

T 22.94

L 44.7 ✓

242 + 24⁸⁸

578°30 W

65°24

578°30 W

519°05 E

← 239 + 97⁶⁵ P.I.

513°00 W

32°01

10.25

Vantorn
Simpson
Duermit
Clavert
M. C. Barne
Mattoon
9-6-27
Clear

(H)
Prel. Survey Sub to S.V. Conduit
(H' Line Con)
Sta. 244 to 251

(see level notes
for
Profile.)

+50
 251
 +50
 250 ⁷⁸ ✓
 +96 E.C. 39°08 1/2 ✓
 +75 35°33 1/2
 +50 31°28
 +25 27°22 1/2
 249+20 P.I. 73°17 ✓ 248+77 ²⁸
 +75 N9°11 1/2
 +50 15°06
 +25 11°00
 248 6°55
 +75 ⁶⁸ ○ 2°50 ✓
 +57 B.C.
 247 342 ⁵²
 +50 ⁵⁷ ✓
 +20 E.C.
 246 20 ⁵⁵ out 1 ²¹
 +75 ⁶⁵ 45 ¹² out 5 ⁸⁵
 +62 P.I. 49 ⁶⁴ out 7 ²⁶
 +50 25 ²³ out 1 ²⁵
 +25
 245 ⁶⁷
 +99 B.C.

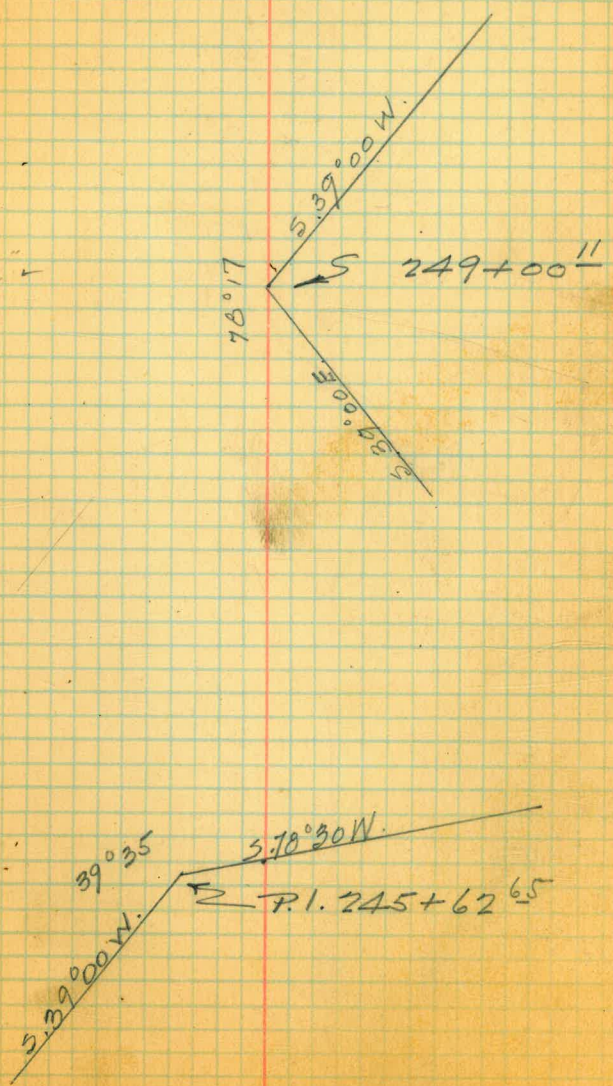
379 ⁵⁸

Mag 5 39°00 E

Mag 5 39°00 W

Δ 78°17 L
 R. 175
 T. 142.43 ✓
 L. 239.10 ✓
 2 | 220.93
 110.46 ✓
 M. 39.27
 E 50.61

Δ 39°35 L
 R 175
 T 62.98 ✓
 L 120.90 ✓
 I.C. 118.51



Van Horn.
Simpson.
Duermit.
Clavert.
M^r Baine.
Mottoon.
9-7-27

(H)
Prel. Loc. Suth to S.V. Conduit
(H' Line Con)
Sta. 251 to 261

(see Level notes
for
Profile.)

$+12^{32}$ P.I.
 261 $\Delta 22^{\circ}00'$ 55^{58} out 22^{41} $R 80$
 $+75$ $13^{\circ}02'2''$ 35^{26} out 8^{17} $T 73.74$ ✓
 $+50$ ✓ $4^{\circ}05'1/2''$ 11^{37} out 0^{81}
 $+38^{58}$ B.C.

260
+50

259
+50

258
+50

257
+50

256
+50

255
+50

254
+50

253
 $+56^{52}$ ✓ E.C.

$+50$ 6^5 out 0^{26}
 $+34^{23}$ P.I.

$+25^{65}$ ✓ 14^3 out 1^3
 $+10$ B.C.

252

579.38

Mag. $5.6^{\circ}45'E$

$\Delta 32^{\circ}51'R$
 $R 80$
 $T 23.58$ ✓
 $L 45.87$
 $Lc 45.24$

$578^{\circ}30'W$
 $85^{\circ}20'$
 $56^{\circ}45'E$
 $261 + 12^{32}$ P.I.

$539^{\circ}00'E$
 $56^{\circ}45'E$

P.I. $252 + 34^{23}$

Van Horn.
Simpson.
Duermatt
& Javert
Mr. Baine.
Mattoon.
C. Rauner.
9/8-27
Clear.

(H)

Prel. Loc. Conduit Suth. to S.V.
(H' Line Con.)
Sta. 261 to 269+50

(See Level notes
for
Profile.)

74
 +58 E.C. ✓
 +50
 +25
 +11⁴² P.I.

186.49

8^{7L} out 0¹⁹
 33⁶ out 2⁸⁰
 37⁶³ out 3⁵⁸
 12⁸³ out 0⁴¹

Δ 27.40 L
 R 200
 T 49.25 ✓
 L 96.57 ✓

269
 +75
 +62¹⁷ B.C.

+50

268
 +50

267
 +50

266
 +50

265
 +50

+73¹² E.C. ✓

+50

+47⁵⁵ P.I.

+25⁹⁷ ✓
 +19 B.C.

264
 +50

263
 +50

262
 +50 ✓

+57⁷³ E.C.

+50

+25

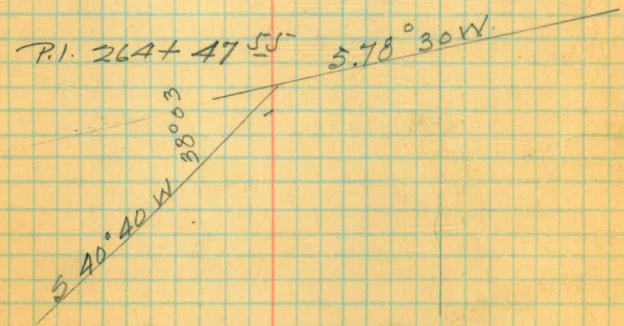
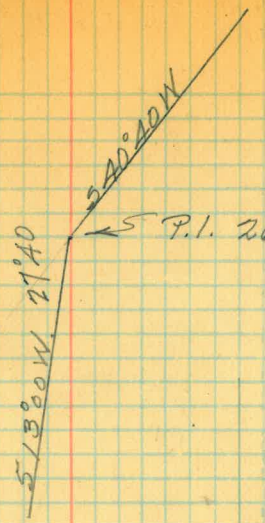
465.90

363.56

Mag. 5.40²⁴ W.

Mag. 5.78³⁰ W.

42° 40
 39° 53¹/₂ 7¹⁰ out 0³⁷
 30° 56¹/₂ 231⁹ out 6⁴³ L 119.15 ✓



Van Horn.
Simpson.
Duermit
Clavert.
Mattoon

9-12-27
clear

(H)
Prel. Loc. Conduit South to S.V.
(H' Line Con)

sta. 276 to 282

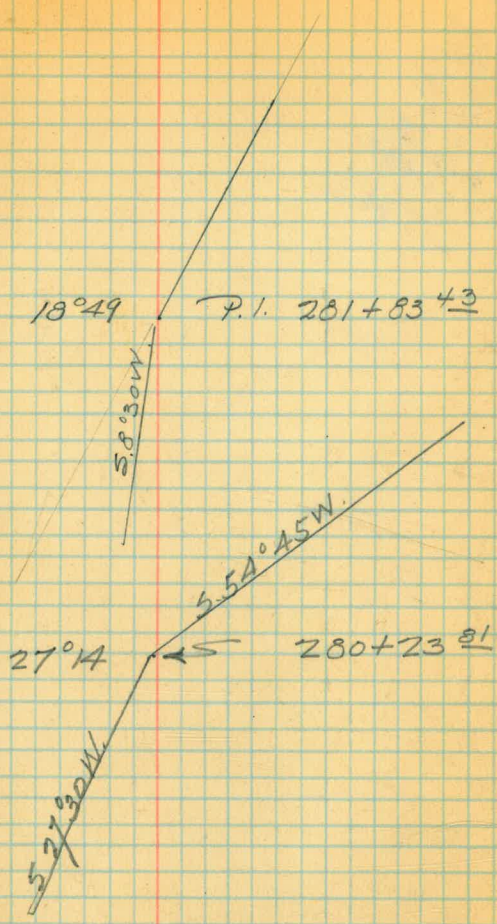
+50
 282
 +83⁴³ P.I.
 +75²¹ ✓
 +50 B.C.
 281
 +69⁹⁹ E.C.
 +50
 +25³⁸
 +23³⁸ P.I.
 280
 +74⁹³ B.C.
 +50
 279
 +50
 278
 +50
 +10⁹⁹ E.C.
 277
 +75
 +50
 +25

260.64
 161.89
 161.89
 405.69

15²⁷ out 0⁶⁷
 24⁶⁵ out 1⁴⁶
 19²⁷ out 1⁰
 44⁶⁰ out 5⁰⁵
 24⁹⁵ out 1⁵
 17°16'¹/₂
 16°14'
 13°51'
 11°27'¹/₂
 9°04'

Mag. S 83°30' W.
 Mag. S 27°30' W.
 Mag. S 54°45' W.

Δ 18°49'
 R 200
 T 33.14 ✓
 L 65.68 ✓
 Δ 27°14'
 R 200
 T 48.45 ✓
 L 95.06 ✓



260.64
33.14

227.50

282 + 15.97
2 271

284 + 3.43
2 36.24

285 + 6.92
2 12.75

289.22 APR. 1.

31.21
288 + 90.75 ac.

Van Horn.
Simpson
Permit
Clavert
Mattoon
9/13-27
clear

Phase

(H)
Prel. Loc. South to S.V. Conduit
(H' Line Con)

sta 282 to 291

+92⁸¹ E.C. ✓
 +75 17⁸¹ out 19⁵
 +70⁷² P.I.
 150 ✓ 2⁷ out 0¹⁵
 +47³¹ B.C.
 290
 +51^N E.C. ✓
 +25 25⁷⁵ out 4²³
 +22⁴⁶ P.I.
 289 9²⁵ out 0⁵³
 +90⁷⁵ B.C. ✓
 +50
 288
 +50
 287
 +69⁷¹
 +50
 286
 +50
 285
 +50
 +43⁴⁷
 284
 +50
 283



S 17° 27' E

Mag. 5.50 000 E

Mag. 5.6° 30' E

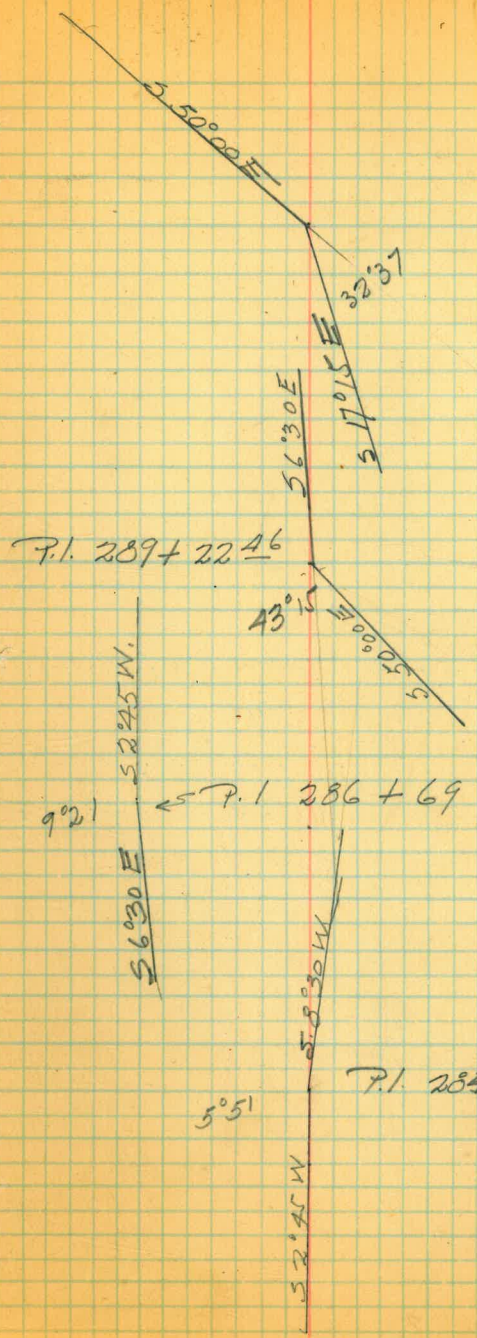
Mag. 5.2° 45' W

Δ 32° 37' R
 R 80
 T 23.41 ✓
 L 45.54 ✓

Δ 43° 15' L
 R 80
 T 31.71 ✓
 L 60.39 ✓

Δ 9° 21' L

Δ 5° 51' L



Van Horn
Simpson
Duermitt
Claver +
Mattoon
9/13-27
clear

(H)

Prel. Loc. Conduit Suth, to S.V.

'H.' Line con.

sta. 291, to 297+50.

+29⁵³ ✓ EC
 +25
 +12²⁸ P.I.
 297 ✓
 +95⁷² B.C.
 +50
 296
 +81¹⁸ EC ✓
 +75
 +50
 +38⁷⁷ P.I.
 +25
 295
 +89²⁹ B.C. ✓
 +50
 +05⁴⁰ EC ✓
 294
 +75
 +66²⁰ P.I.
 +50
 +25⁰³ ✓ B.C.
 293
 +50
 292
 +50
 291

181¹⁸
 174⁵⁴
 296⁷⁶

4⁵ 0¹²
 4³ out 0¹²
 6²⁰ out 0³
 30²⁷ out 4⁶
 34⁹ out 6²⁴
 10⁶⁸ out 0⁵⁷
 5⁴ out 0⁰⁹
 30²² out 3⁰⁶
 24⁹¹ out 2⁰⁸

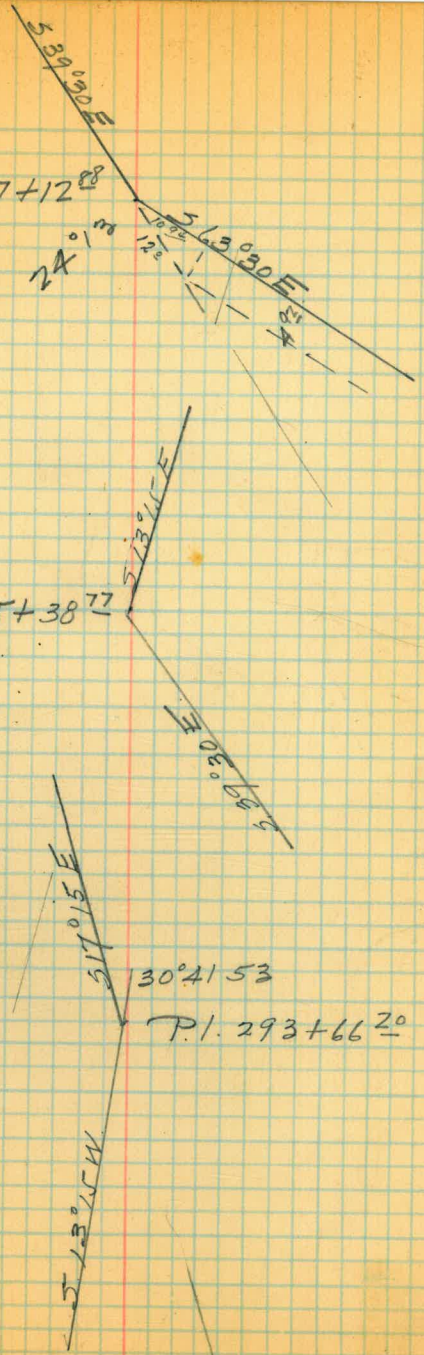
Mag. 5.39° 30 E
 Mag. 5.13° 15 W
 Mag. 5.17° 15 E

Δ 24° 32
 R 80
 T 17.16 ✓
 L 33.81 ✓
 Δ 52° 38 53 L
 R 100
 T 49.48 ✓
 L 91.89 ✓
 Δ 30° 21 53 R
 R 150
 T 41.17 ✓
 L 80.37 ✓

P.I. 297+12⁰⁸

P.I. 295+38⁷²

P.I. 293+66²⁰



Van Horn
Simpson
Duermit
Clavert
Mattoon
2/14-27
clear

Prel. Loc South to S.V. Conduit
(H' Line con)
sta 297+50 to 305+40

282.19
 +41⁵⁶ ✓ E.C.
 +25
 +01²⁰ P.I.
 305
 +75
 +50
 +48⁸⁵ B.C.
 304
 +50
 303
 +50
 302
 +50
 301
 +50
 300
 +50
 299
 +82⁰⁰ E.C.
 +75³⁹
 +56 P.I.
 +50
 +28²¹ B.C.
 298
 +50
 144.02
 204.41

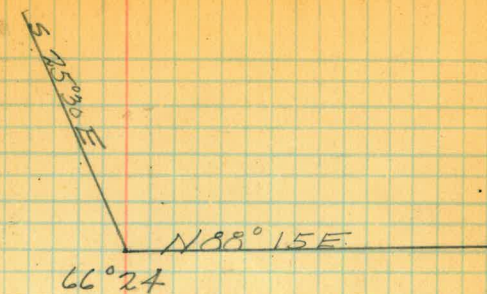
Mag. N. 88° 15' E
 Mag. S. 25° 30' E
 563° 30' E

16⁵¹ out 1⁷²
 47⁸⁵ out 16⁰²
 25⁸⁰ out 4²⁵
 15 out 0⁰⁸

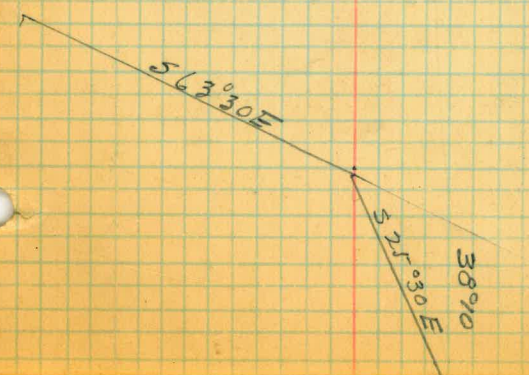
7° out 0³¹
 21¹¹ out 2⁸³

Δ 66° 24' L
 R 80
 T 52.35 ✓
 L 92.71 ✓

Δ 38° 10' R
 R 80
 T 27.68 ✓
 L 53.29



P.I. 305 + 01 3



Van Horn
Simpson
Duermit
Clavert
Mattoon
9/15-127
Clear

(H)

(H Line Con)
Suth. to San Vicente Conduit
Sta 305+40 to 312

+88⁸⁶ ✓
 B.C.
 +75
 +55¹⁴ P.I.
 +50
 +25 ✓
 +15²¹ B.C.

13⁸⁰ out 1³
 33¹⁵ out 7¹⁵
 9⁰⁸ out 0⁵¹

Δ 52°15
 R 80
 T 39.23 ✓
 L 72.95 ✓

311
 +50
 310
 +50
 309
 +58²⁴ ✓
 E.C.
 +50
 +25
 308
 +75
 +71⁴⁰ P.I.
 +50⁰⁰ P.I.

8²⁴ out 0¹²
 33¹³ out 2¹⁵
 57⁴⁸ out 8⁴²
 80⁹³ out 17⁰⁸

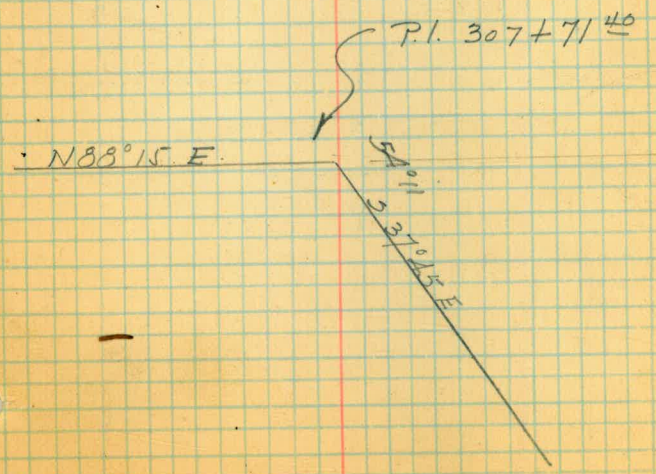
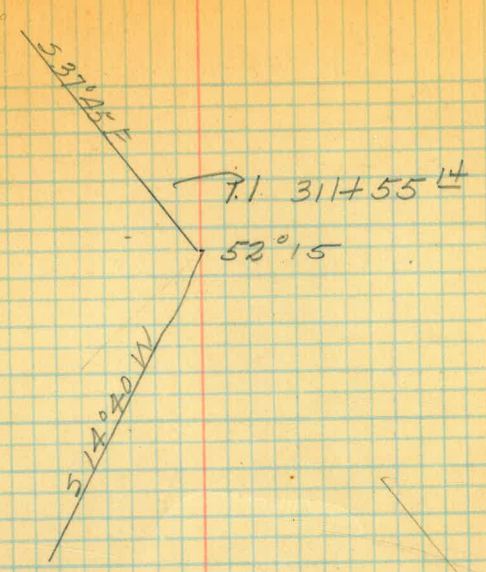
Δ 54°11 R
 R 200 ✓
 T 102.3 ✓
 L 189.14 ✓

+25
 307
 +75 ✓
 +69¹⁰ B.C.
 +50
 306

78⁸⁹ out 16¹⁰
 55³² out 7⁷⁶
 30²¹ out 2³⁹
 5² out 0²

399²⁰

Mag 5 37°45 E



Van Horn
Simpson
Duermit
Clavert
Mattoon
9/15.27
clear

(H)

Pre. Loc. South to S.V. Conduit
(H. Line con)

Sta 312 to 322

250.75
 5.77°09.00
 +30⁵¹ P.I.
 +25 —
 322
 +75
 +66²⁵ E.C.
 +50
 321
 +50
 +17⁴⁰ E.C.
 320
 +79³⁸ P.I.
 +75
 +50³⁰ ✓
 +32 B.C.
 319
 +50
 318
 +50
 317
 +50
 316
 +50
 315
 +50
 314
 +50
 313
 +50
 312

260.19

829.75

57¹¹ out 11³⁷
 33⁵⁴ out 3⁷⁹
 8²⁵ out 0²⁵

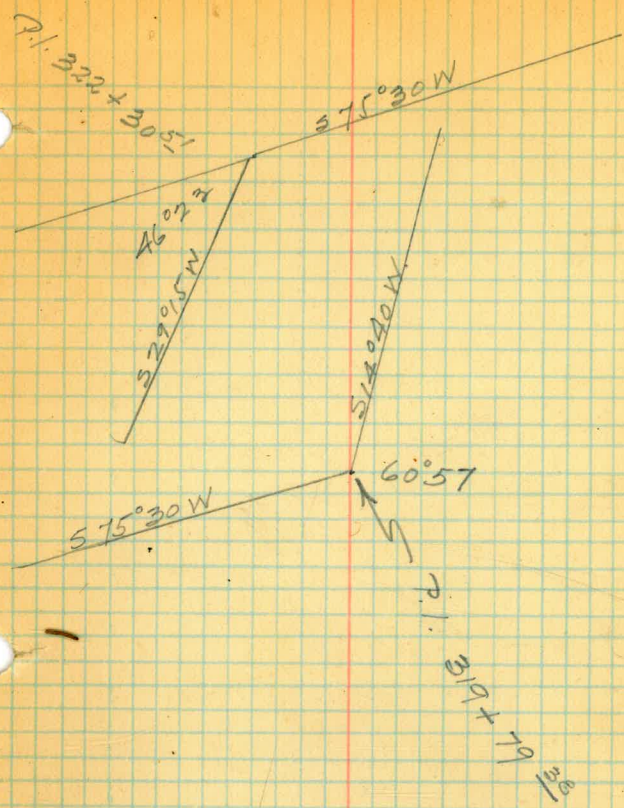
17²⁹ out 1⁸⁹
 40⁸³ out 11¹²
 17⁵⁹ out 1⁹⁵

Mag. 575°30W

Mag. 514°40W

$\Delta 46^{\circ}23$
 $R 150$
 $T 64.26$ ✓
 $L 121.43$

$\Delta 60^{\circ}57$
 $R 80$
 $T 47.08$ ✓
 $L 85.10$ ✓



Van Horn
Simpson
Doermitt
Clayert
Mattoon
Brook
9/16-27
clear

(H)

Prel. Loc. South to S.V. Conduit

(H' Line Con)

Sta 320 to 329+50

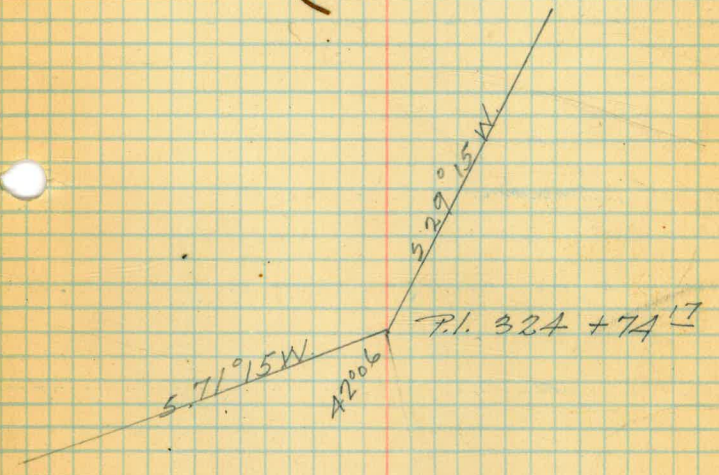
+50
 329
 +50
 328
 +50
 327
 +50
 326 ⁶⁴ ✓
 +96 EC.
 +75
 +50
 +25 ₁₁₀
 325
 +75
 +74 ¹² P.I.
 +50
 +25
 324
 +75 P.I.
 +50
 +39 ⁴⁷ B.C. ✓
 323
 +87 ⁶⁸ EC
 +75
 +50

693.75
 ↑
 250.75

21° 03
 19° 16 1/2
 17° 13 1/2
 15° 11
 13° 08
 11° 05 1/2
 9° 03
 7° 00
 4° 57
 2° 54 1/2
 0° 52
 12 ⁶⁹ out 0 ⁵⁴
 37 ³³ out 4 ⁶²

Mag. 5.71° 15' W.
 Mag. 5.29° 15' W.

Δ 42° 06 E
 R 350
 T 134.70 ✓
 L 257.17 ✓



Van Horn
Simpson
Duermit
Clavert
Mattoon
Bopp's
9/16-27

(H)

Prel. Loc. Conduit Suth. to S.V.
(H' Line con.)
Sta 329+50 to 340

340

+50

339

+50

+20⁴⁶ E.C. ✓

+08³⁵ P.I.

338

+96⁰⁵ B.C. ✓

+50

337

+50

336

+50

335

+02⁰¹ B.C. ✓

334

+93³⁷ P.I.

+84⁶⁷ B.C.

+50

333

+50

332

+55⁶⁹ P.I.

331

+50

330

304.27

115.04

237.68

S. 58° 45' W.

Mag. S 76° 00' W.

Mag. S 63° 45' W.

Δ 17° 29' L
R 80
T 12.30 ✓
L 24.41 ✓

Δ 12° 25' R
R 80
T 8.7 ✓
L 17.34 ✓

Δ 7° 28' L

3 95 0' 10

02 out 02

P.I. 338708 31'

17° 29'

S 58° 45' W

S 76° 00' W

S 63° 45' W

S 76° 00' W

12° 25'

P.I. 334932

Primary Point B₃

N 53° 59' 02" E
659.541

S 63° 47' N
581.27 26

110° 23' 01"

S 71° 15' W

P.I. 331455 69
Δ 7° 28'

S 11° 50' 21" W
523.171

Primary Pt 'E'

Van Horn
Simpson
Dyermit
Clavert
Mattoon
Brook's
Clear
9/19-27

'H'

Prel. Loc. Conduit Suth. to S.Y.
('H' Line Con)
sta. 340 to 346

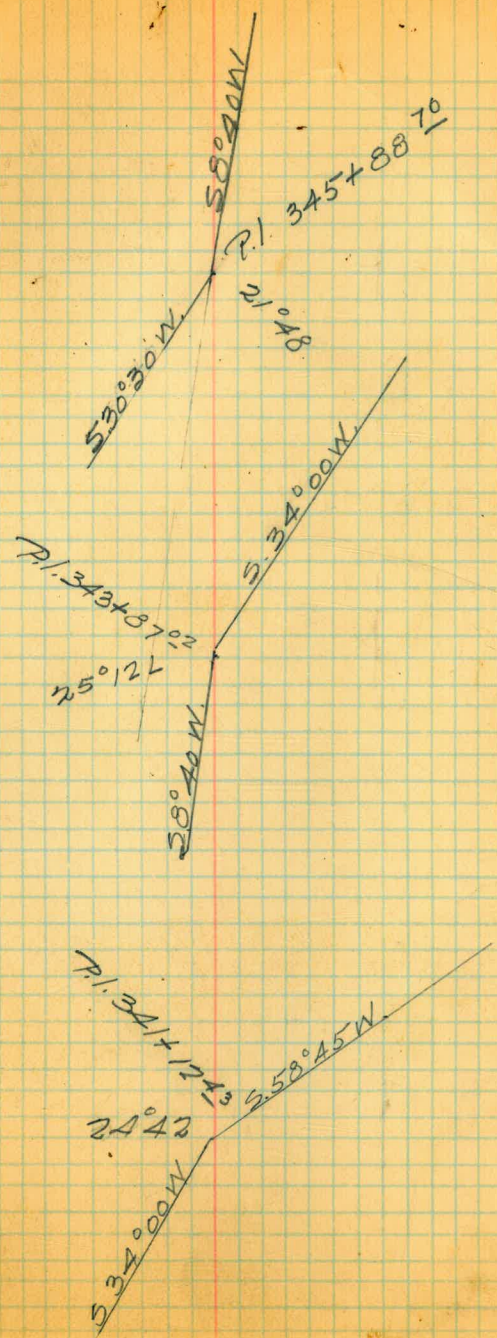
346 +03⁷³ E.C. 3⁷ out 0⁰⁹
 +88⁷⁰ P.I. 1⁷ out 0⁰³
 +75
 +73²⁹ B.C.
 +50
 345 +50
 +04³³ E.C. 4³ out 0¹²
 344 +87⁰² P.I. 5⁸⁵ out 0²²
 +75
 +69¹⁴ B.C.
 +59
 343 +50
 342 +50⁴⁰ 2⁷⁵ 4⁴ out 0¹²
 +29 E.C.
 +25
 +12⁴³ P.I.
 341 +94²¹ B.C. 5¹ out 0¹⁵
 +50

$\Delta 21^{\circ}48' R$
 $R 80$
 $T 15.41$
 $L 30.44$

$\Delta 25^{\circ}12' L$
 $R 80$
 $T 17.88$
 $L 35.19$

$\Delta 24^{\circ}42' L$
 $R 80$
 $T 17.52$
 $L 34.49$

Mag 5.30°30' W
 Mag 5.8°40' W
 Mag 5.37°20' W



Van Hoon
Simpson
Duermit
Clovert
Mattoon
Brookly.
9/19. 27
clear.

(H)

Prcl. loc. south to S.V. Conduit
(H' Line can)

sta 346 to 352+50

+50

341-36

584°00 E

+49³⁷ P.I.

Δ 6°43 L

352

+50

368³⁷

Mag. 5.77°15 E

351

+50

350

+93²² E.C

Δ 18°20 L
R 80 ✓
T 12.91 ✓
L 25.50

+81 P.I.

+75

+68³¹ B.C

+50

349

+50

348

+91⁰⁶ E.C

+75

+50

+45⁴⁰ P.I.

+25

269⁵⁸

Mag. 5.57°05 E

16⁰¹ out 161

Δ 89°35 L

39⁴³ out 1035

R 80

53⁹⁸ out 20⁸⁹, 531-19²

T 79.42 ✓

33⁰⁸ out 7¹⁵. 30⁰⁶ = 152

L 125.08 ✓

8⁹⁸ out 0⁵¹. 9 = 5⁸³

Lch. 112.72 ✓

M = 23.23

347

+75

+65⁹⁸ B.C

+50

5.77°15 E

P.I. 352 + 49³⁷

5.84°00 E

5.59°05 E

P.I. 349 + 81²²

5.77°15 E

P.I. 347 + 45⁴⁰

230°30 W

89°35

5.59°05 E

Van Horn
Simpson
Duermit
Clayert
Mattoon
Brooks
9/20-27
Clear

(H)

Tel. Loc. Conduit sub to S.V.
(H' Line Con)
sta 352+50 to 361

+06²¹ E.C.
 361
 +75
 +69⁵⁰ P.I.
 +50
 +25
 360+24⁹⁶ BC
 +50
 359
 +50
 358
 +50
 357
 +50 ✓
 +35⁶¹ E.C.
 +25
 356
 +94⁷³ P.I.
 +75
 +50
 +41^{old} B.C.
 355
 +50
 354
 +50
 353

6²¹ out 0²³
 30⁷⁷ out 6¹⁵
 24⁶ out 3⁸⁷
 0^{out} out 0⁰⁰

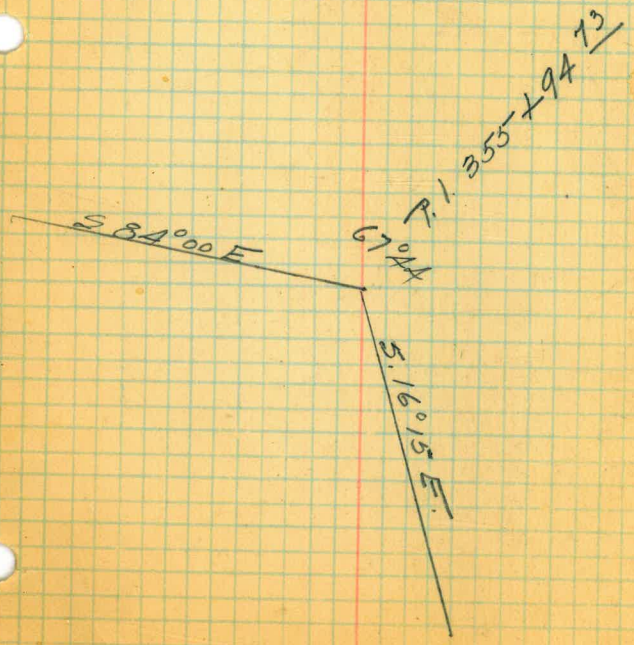
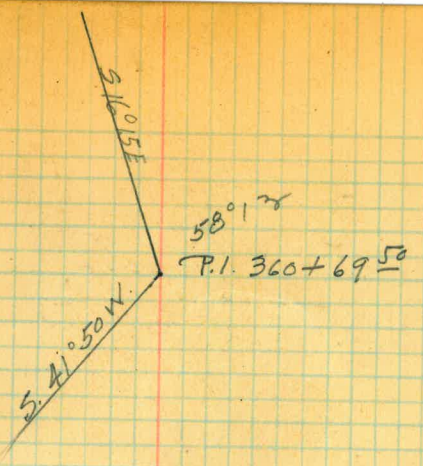
Δ 58° 12' R
 R 80
 T 44.54 ✓
 L 81.29 ✓

Mag. S. 16° 15' E.

487⁵⁸

10⁵⁸ out 0⁰⁷
 34⁵⁴ out 7⁸¹
 33⁰⁸ out 7¹⁵
 8⁹⁸ out 0⁵¹

Δ 67° 44' R
 Δ 77° 32' R
 R 80
 T 53.69 ✓
 L ~~110.22~~
 94.57



Van Horn
Simpson
Ducmit
Clayer
Mattoon
~~Brooks~~
Kouner
N.C. Baird
9/21-27

(H)

Prel. Loc. South to S.V. Conduit
(H' Line Con)

sta 361 to 368

368

+50
+35⁷¹ E.C.
+25⁹⁶
+07 P.I.

158.62

10² out 0⁷²

58°30'E

Δ 41°42'E
R 80
T 30.47 ✓
L 58.22 ✓

367

+77⁴⁹ B.C.
+50⁶²
+38 E.C.
+25

121.39

22²⁷ out 3¹²

53°05'E

Δ 66°06'L
R 80
T 52.05 ✓
L 92.29 ✓

366

+98³⁸ P.I.
+75
+50³³
+46 B.C.

245.60

13⁵⁵ out 1¹⁴
37¹⁰ out 9¹⁸

28⁰⁵ out 5⁰⁹

3⁷ out 0²¹

Mag. 5.16°00'W.

Δ 25°51'L
R 80
T 18.36 ✓
L 36.09 ✓

365

+50

364

+71¹⁴ E.C.
+53 P.I.
+50
+35⁰⁵ B.C.

291.70

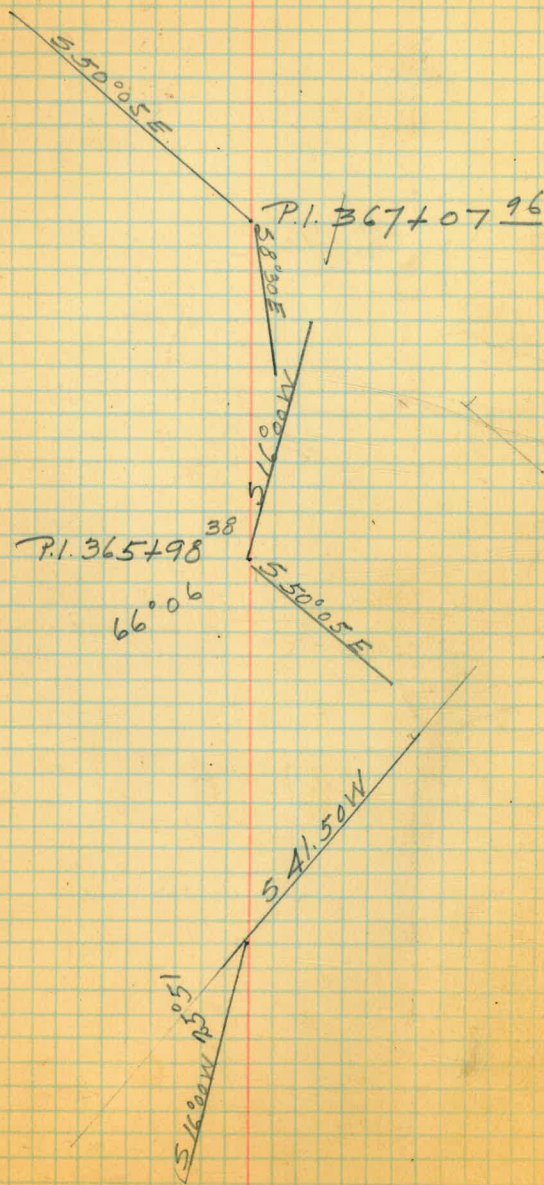
14²⁵ out 1¹⁴

Mag. 5.15°00'W.

363

362

+50



Van Horn
Simpson
Duermitt
Clavert
Mattoon
Rauner
9/22-27
clear.

(4)

Prel. Loc. Conduit Suth to S.V.
(H. Line Con)

368 to 375

+13⁰⁰ E.C.

558.12

S. 2° 45' W.

375

13⁰⁰ out 0²⁴

Δ 20° 12' L

+75

37²³ out 2⁰⁶

X 350

+51²⁵ P.I.

T 62.34 ✓

L 123.39 ✓

+50

60¹¹ out 5²⁴

+25

35³⁵ out 1⁸¹

374

10⁴⁰ out 0¹⁵

+89⁶¹ B.C.

+50

373

+50

372

+50

371

+50

370

+50

369

+85²⁶ E.C.

10³ out 0⁶⁶

Δ 31° 24' R

R 80

T 22.29 ✓

L 43.74 ✓

+75⁹¹ E.C.

+63 P.I.

+50

9⁶ out 0⁴⁵

+41⁴² B.C.

+25

368

559.18

Mag. S. 23° 00' W.

S 23° 00' W.

20° 12'
P.I. 374+5195

S 24° 5' W.

S 8° 30' E

P.I. 368+63 91

31° 24'

S 23° 00' W.

Van Horn
Simpson
Clavert
Mattoon
Rauner
9/
/22-27
Clear.

(H')

Prel. Loc Conduit Suth to S.V.
(H' Line con)

sta 375 to 382+50

+52⁷⁸ E.C.

+50

+30¹ P.I.

+25

+06²⁷ B.C.

382

+50

381

+50

+16⁵³ E.C.

+25²⁸

+09 P.I.

380

+75

+71¹³ B.C.

+50

379

+50²⁸ P.I.

378

+50

377

+50

376

+50

220²³

221.73

558.62

2⁸ out 0⁰⁵

8⁹ out 0⁵

21² out 1¹²

2776 out 2⁰⁸

3² out 0²⁵

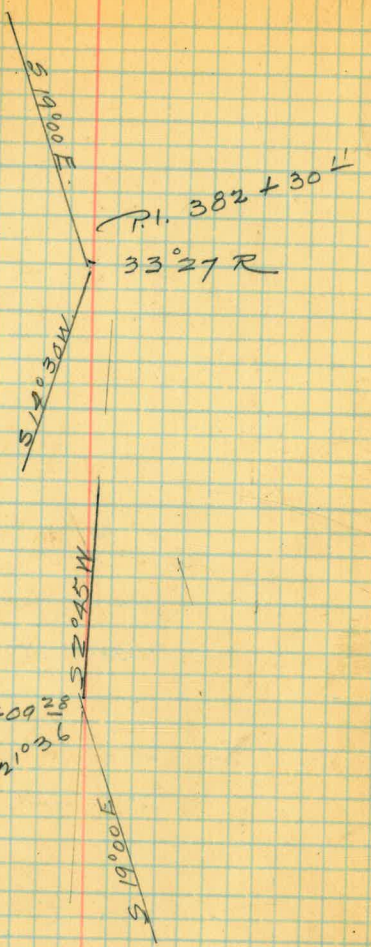
Mag 514°30' W

Mag. 519°00' E

Mag 52°45' W

Δ 33°27' R
R 80
T 24.04
L 46.71

Δ 21°36' L
R 200
T 38.15
L 75.46



Van Horn
Simpson
Clovert
Mattoon
Rouner
9/22-27
Clear.

(1)
Prel. Loc. Conduit Suth to S.V.
('H' Line Con)
Sta 382+50 to 390

390
 +50
 389
 +50
 388
 +50
 387
 +68⁹⁹ E.C.
 +50
 +25
 +03⁶¹ P.I.
 386
 +75
 +50
 +36⁰⁰ B.C.
 385
 +90⁵⁶ E.C.
 +75
 +50⁹⁷
 +48 P.I.
 +25
 384
 +93⁵³ B.C.
 +50
 383

635.05
 168.69
 220.23

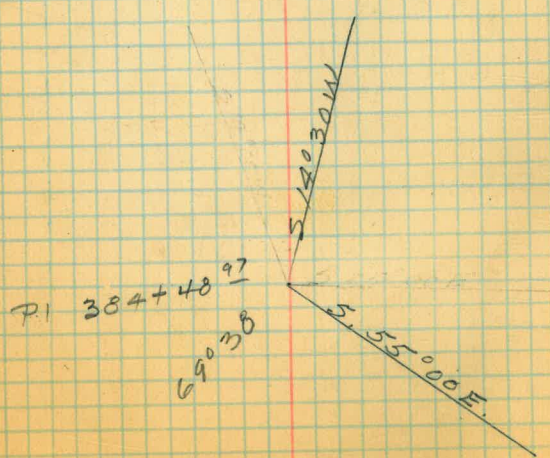
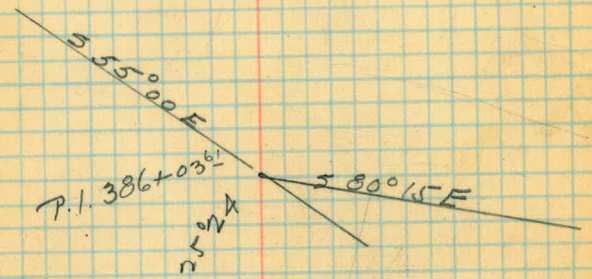
19° out 0⁶⁰
 43⁸⁵ out 3²²
 63⁵³ out 6⁸¹
 38⁹ out 2⁵³
 14° out 0³²
 10⁵ out 0²⁷
 34⁶³ out 6⁵⁷
 31⁰⁸ out 6²¹
 6² out 0²⁸

Mag. S 80° 15' E
 Dist from
 E.C. back to P.I.

Δ 25° 24' L
 R 300 ✓
 T 67.61 ✓
 L 132.99 ✓

Mag S 55° 55' E

Δ 69° 38' L
 R 80 ✓
 T 55.64 ✓
 L 97.23 ✓



$$\begin{array}{r} 3357 \\ 3241 \\ \hline 1116 \\ \hline 9 \end{array}$$

13.

Van Horn
Simpson
Duermit
Clavert
Mattoon
9-23-27
Clear

(H)

Prel. Loc. Conduit South to S.V.
(H' Line Con)
sta 390 to 398

+20⁶⁰ E.C.

398

+75

+70⁴ P.I.

+50

+25

+17³³ B.C.

397

+50

396

+50

395

+50

394+00

+50

+25

+06¹⁸ E.C.

393

+75

+50

+36⁴³ P.I.

+25

392

+75

+50⁹⁸

+43 B.C.

391

+50

20⁵² out 1⁰⁶

45.22 out 5²¹

32⁵⁹ out 2⁶⁹

7¹² out 0¹⁵

Δ 29°35' R
R 200
T 52.81 ✓
L 103.27 ✓

55°41'

Mag 5.11°40'E

34°20 1/2

33°02 1/2

27°45

32°26 1/2

17°09 1/2

11°52

6°34

1°16 1/2

Δ 68°41' R
R 135.31
T 92.45
L 162.20

29°35'

P.I. 397+70¹⁴

5.11°40'E

5.18°00' E

P.I. 392+26¹³

5.80°15'E

68°41'

5.11°40'E

Van Horn
Simpson
Dyermit
Clavert
Mattoon

9/24-27

(#)

Prel. Loc Conduit Suth to S.V.
('H' Line Con)
Sta 398 to 405+50

+50
 405 ✓
 +52³³ E.C.
 +50
 +25
 404
 +97⁸³ P.I.
 +75
 +50
 +42⁰⁶ B.C. ✓
 403
 +50
 402
 +78²⁶ E.C. ✓
 +75
 +50⁴⁶ P.I.
 +50
 +25⁹² ✓
 +19 B.C.
 401
 +50
 400
 +50
 399
 +50

212.67
 250
 302.67

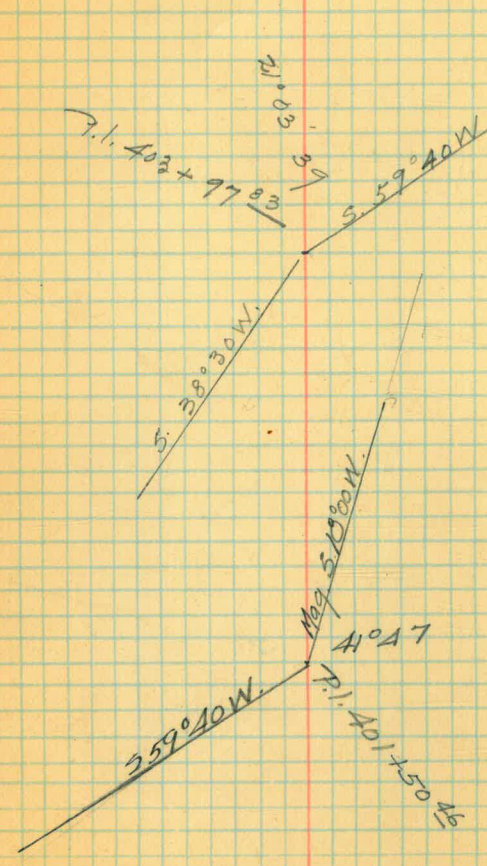
2³³ out 0⁰¹
 27²⁵ out 1²⁴
 52¹³ out 4¹⁵
 32⁸⁹ out 1⁸⁶
 7⁹⁴ out 0¹⁶
 3²⁵ out 0⁰²
 29⁵⁷ out 5⁶³
 5¹ out 0¹⁶

Mag. 5.35°30 W
 Δ 21°03 39 L
 R 300
 T 55.77 ✓
 L 110.27 ✓

Mag. 5.59°40 W

Δ 41°47 R
 R 80 ✓
 T 30.54 ✓
 L 58.34 ✓
 Leb. 57.057

Mag. 5.18°00 W



Van Horn
Simpson
Duermit
Clavert
Mattoon
Brook 2.
9/26-27
clear

(H)

Preli. Loc. south to S.V. Conduit
('H' Line Con)
sta 405+50 to 411

+06⁶⁸ E.C.
 411 37 6⁶⁸ out 0²⁸
 +94 P.I.
 +81⁸⁵ B.C.
 +50
 136¹⁸
 410 19
 +58 P.I.
 +50
 409
 +50
 +32²⁷ E.C.
 +25
 7³ out 0²¹
 408 85 32⁰³ out 1¹³
 +78 P.I.
 +50 56.6 out 13⁵¹
 +25 33.4³ out 4.59
 8²⁵ out 0³⁶
 +16.25 B.C.
 407 170.76
 +50
 30⁸⁵ E.C.
 +25 5²⁵ out 0²¹
 +09 P.I.
 406 13⁶ out 1¹⁵
 +86⁴³ B.C.

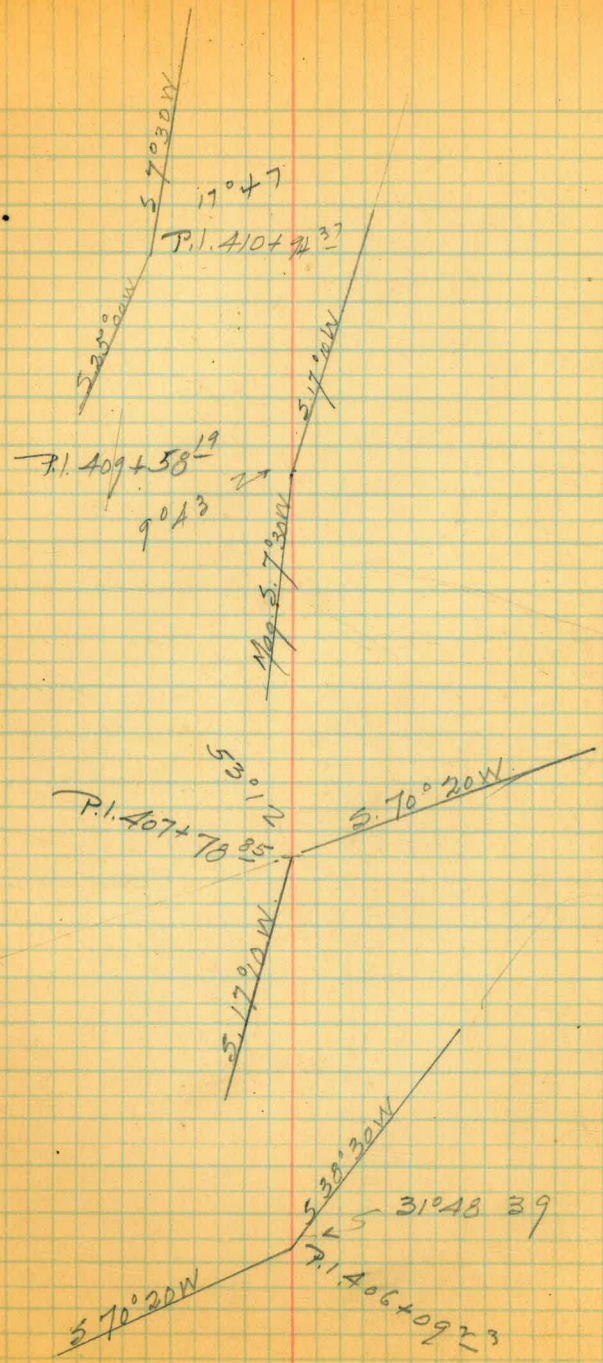
Mag. S. 17° 10' N. Mag. S. 73° 30' W.

Mag. S. 70° 20' W.

$\Delta 17^{\circ} 47'$
 $R 80$
 $T 12.52$
 $L 2483$

$\Delta 53^{\circ} 21'$
 $R 125$
 $T 62.60$
 $L 116.06$

$\Delta 31^{\circ} 48' 39''$
 $R 80$
 $T 22.80$
 $L 44.42$



Von Horn
Simpson
Duermit
Clayert
Mattoon
~~Brook~~

9/26-27
clear

(H)

Trch. loc. Suth to S.V. Conduit
(H' Line Con)

Sta 411 to 420

+03.25 E.C.
 420
 +75
 +15.55 P.I.
 +50

32 out 0⁰⁴
 28⁰² out 3¹⁸
 24⁶⁸ out 2.46

$\Delta 35^{\circ}46$
 R 125
 T 40.33
 L 78.03

+25.22 B.C.
 419
 +50

418
 +78⁸⁰ E.C.
 +75
 +50
 +43 P.I.

3⁸ out 0⁰⁹
 28³³ out 5¹⁶
 24² out 3⁹

$\Delta 55^{\circ}58$
 R 80
 T 42.51
 L 78.14

+25
 417 +00⁶⁶ B.C.
 +50

416
 +50
 +29⁶⁸ E.C.
 +21
 +00³¹ P.I.

4⁶⁸ out 0¹³
 31²⁴ out 6⁵²
 74 out 0³⁴

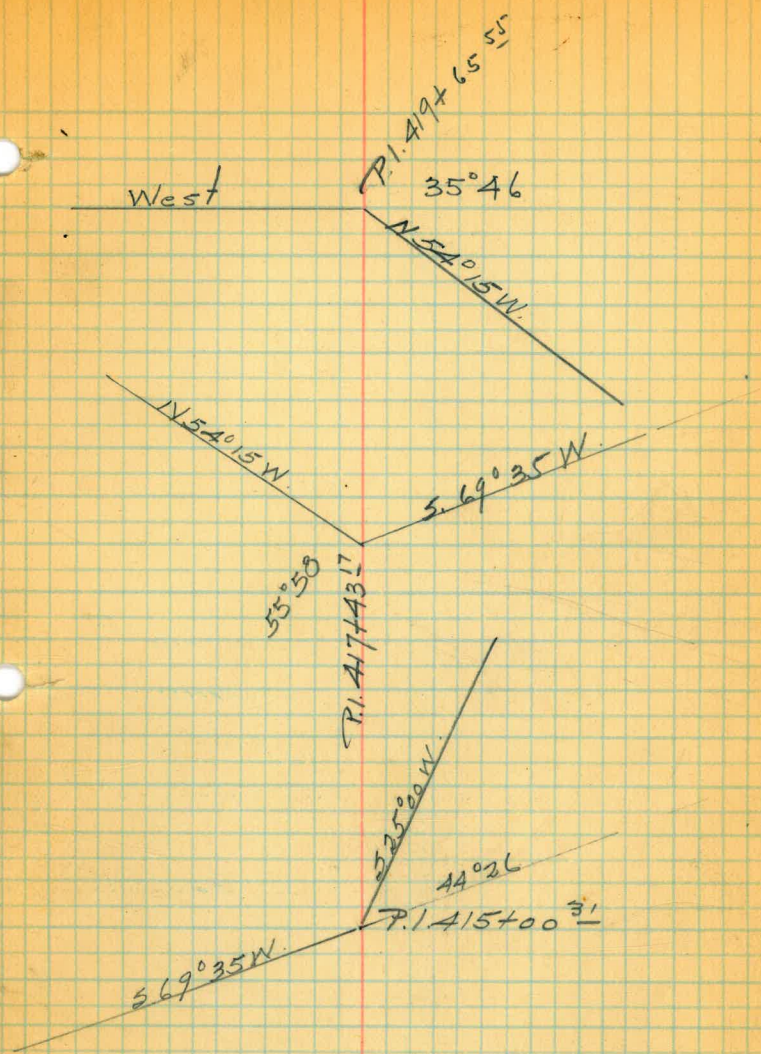
$\Delta 44^{\circ}26$
 R 80
 T 32.67
 L 62.04

415
 +75⁶⁴
 +67 B.C.
 +50

414
 +50
 413
 +50
 412
 +50

229.26
 246.16
 406.15

Mog N 54° 15' W
 Mog S 69° 35' W
 Mog S 35° 00' W



Van Horn
Zimerson
Duchmit
Clavert
Mattoon
Brooks
9/27-27
Clear

(H)

Prel. Loc. South to S.V. Conduit
('H' Line Con)

Sta 420 to 427 + 00

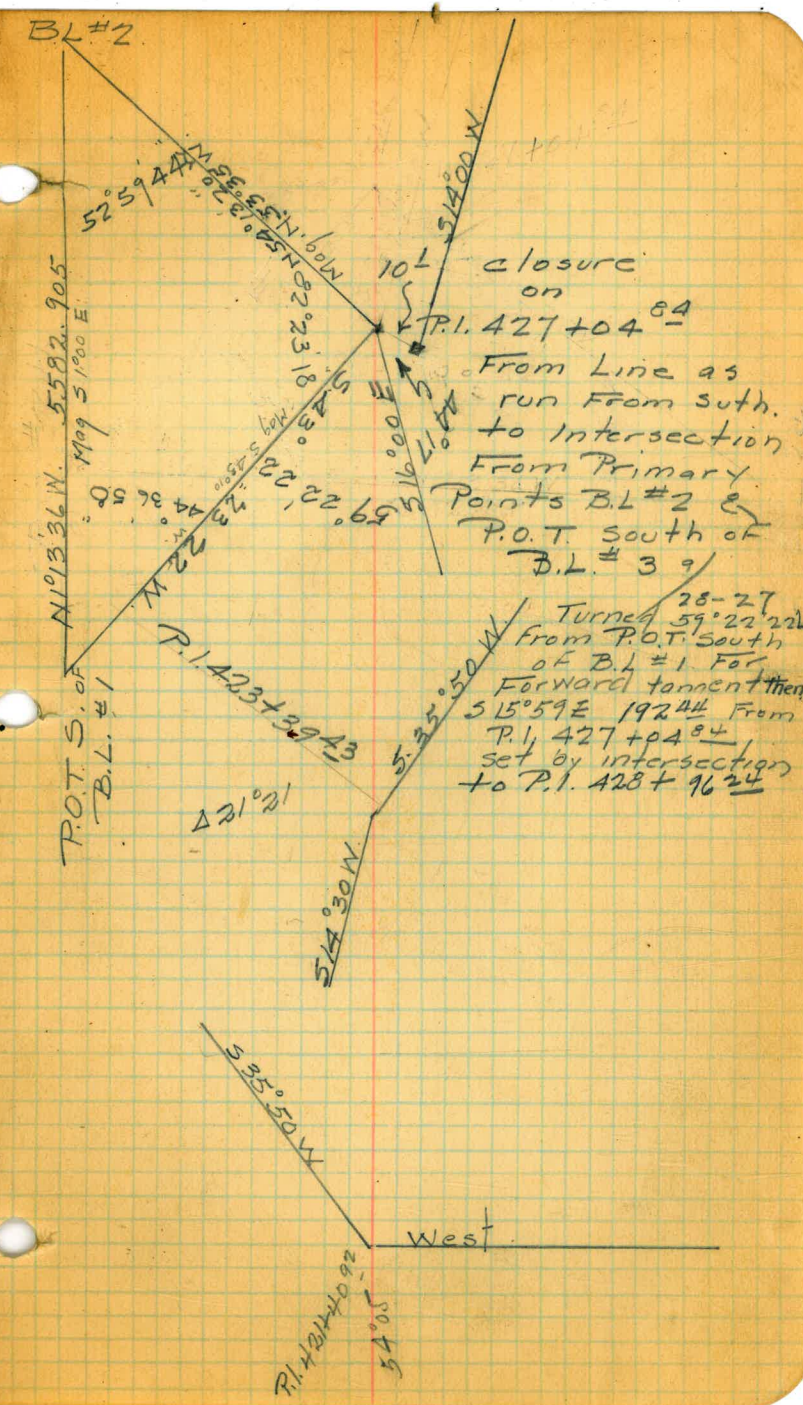
192.44
 +25⁶⁵ E.C.
 +04⁸⁴ P.I.
 427 99
 +82 B.C.
 +50
 426
 +50
 425
 +50
 424
 +54¹⁶ E.C.
 +50
 +39⁴³ P.I.
 +24³⁵ B.C.
 423
 +50
 422
 +84²⁷ E.C.
 +75⁹²⁺⁵⁰
 +40⁹² P.I.
 +25
 421
 +89⁸⁸ B.C.
 +50

17° out 18"
 17° out 18"
 17° out 18"
 16" out 0"
 9²⁹ out 0⁴⁶
 34⁴¹ out 6"
 10⁸² out 0⁵¹
 192.44
 365.76
 206.20
 178.80
 Mag 516°00'E
 Mag 514°30'W
 Mag 535°50'W
 West

$\Delta 30^{\circ}33' L$
 $R 80$
 $T 21.85$
 $L 42.66$

$\Delta 21^{\circ}21' L$
 $R 80$
 $T 15.08$
 $L 29.81$

$\Delta 54^{\circ}05' L$
 $R 100$
 $T 51.04$
 $L 94.39$



Van Horn
Simpson
Duermitt
Clavert
Mattoon
Brook
9-27-27
clear

14'
Prel. Loc. Suth. to S.V. Conduit
(H' Line Con)
sta 427+00 to 433

483

+87⁹⁵ E.C. 299

+75

+50

+25

37° 40' 1/2

36° 01' 1/2

33° 50'

29° 39' 1/2

26° 28' 1/2

23° 17' 1/2

Δ 75° 21' L
R 225

T 173.74

L 295.90

Lch 275.035

M 46.915

Mag. 542° 40' E

432

+75

+65²⁹ P.I.

+50

+25

20° 06' 1/2

16° 55' 1/2

13° 44' 1/2

10° 33' 1/2

7° 22' 1/2

4° 11' 1/2

1° 01'

16° 50' 14"

Mag. 532° 50' E

431

+75

+50

+25

430

+92⁰⁵ B.C.

+50

+28¹⁵ E.C.

+25

3⁵⁵ out 0° 06'

27⁵⁶ out 4° 20'

15¹⁵ out 1° 44'

Δ 48° 55' R
R 80

T 36.39

L 68.30

429

+96²⁴ P.I.

+75

+59⁸⁵ B.C.

+50

428

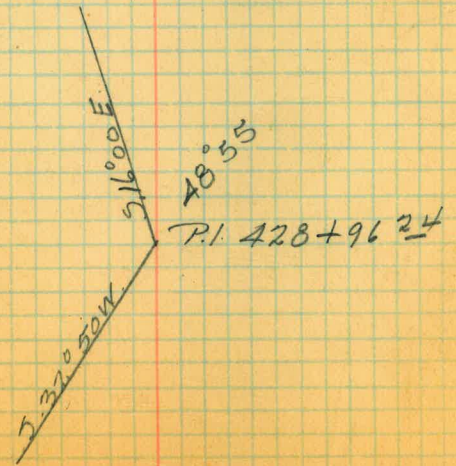
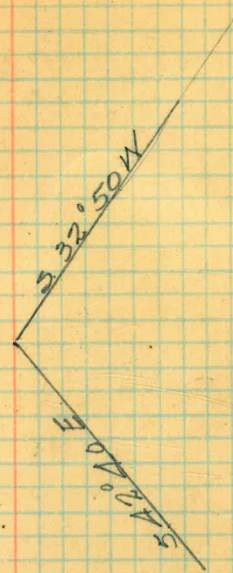
+50

299

274

192

75° 21'
71.431 + 65.79



Van Horn
Simpson
Duermit
Clavert
Ma Hean
Brooks
9/30-27
Clear.

(H)

Prel. Loc. Conduit south. to S.V.
(H' Line con.)
Sta. 433 to 440

note: - Found Beehive

440
+50
439
+56⁹⁸ ✓
+50
+25
+06⁴⁷ P.I.

57A 01

54° 12'
52° 13'
45° 03'

Mag. N 03° 55' E

Δ 108° 26'
R 100
T 138.74 ✓
L 189.25 ✓
Lch 162.246

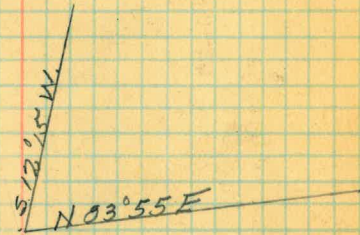
438
+75
+50
+25

Y

37° 53 1/2'
30° 44'
23° 34'
16° 24 1/2'

Mag. S 12° 15' W

P.I. 438 + 06⁴⁷
108° 26'



437
+75⁷³ ✓
+67⁷³ B.C.
+50

399.34

9° 14 1/2'
2° 05'

436
+50
435
+50 ✓
+48⁶⁴ E.C.
+25

Y

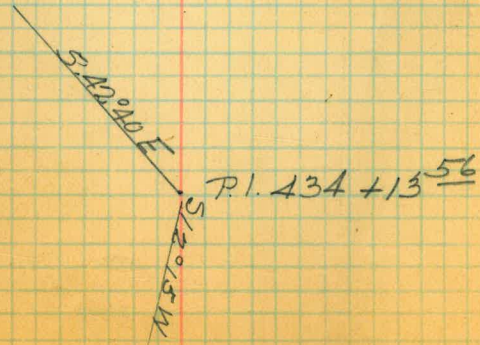
23° 25' out 3° 46'

Δ 54° 51' R
R 80
T 41.51 ✓
L 76.59

+13⁵⁶ P.I.
434
+72⁰⁵ B.C.
+50

Y

27° 36' out 4° 02'



Van Horn
Simpson
Duermit.
Clavert.
Mattoon.
Brooks.
9/30-27
Clear.

(H)

Preliminary Loc. Conduit south to S.V.
'H' Line con sta. 440 to 448+50

+46³⁹ E.C. 42°18'

+25 34°39'

+01⁰⁶ P.I. 25°42'

+75 16°44'

+50 7°47'

+28²⁴ B.C. 94

447 +93⁵⁶ E.C. 51°11'

+75 44°31'

+50⁰⁷ P.I. 35°34'

+25 26°37'

446 +75 17°40'

+75 8°43'

+50⁶³ B.C. 88

445 +50 362

+50

444 +50

+25²³ E.C. 23

443 +92²⁵ P.I. 24⁹⁸ out 4°

+75²¹ 20⁶⁰ out 2°

+54 B.C.

442 +50

+50

441 +50

+50

Δ 84°37' L

R 80

T 72.82

L 118.15

Δ 102°22' R

R 80

T 99.44

L 142.93

Δ 50°52' R

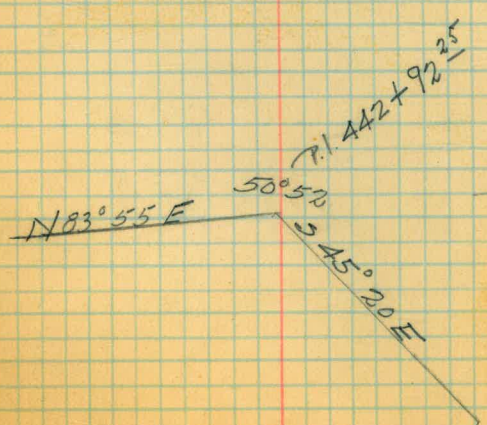
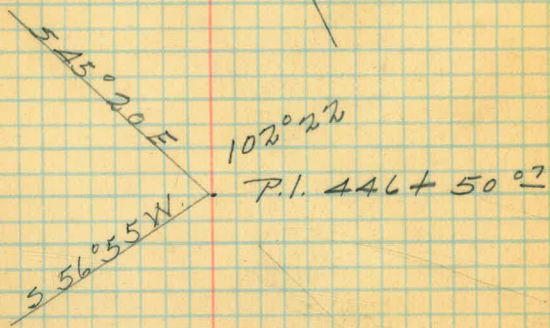
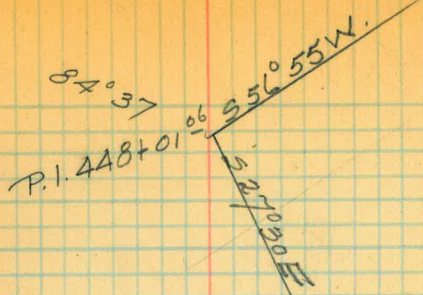
R 80

T 38.04

L 71.02

Mag. S 56°55' W

Mag. S 45°20' E



Van Horn
Simpson
Duerm. +
Clavert
Mattoon
~~Brooks~~
9/31-27

(H)

Prel. Loc. Conduit south to 5.v.
H' Line con. sta. 448+50 to 454+50

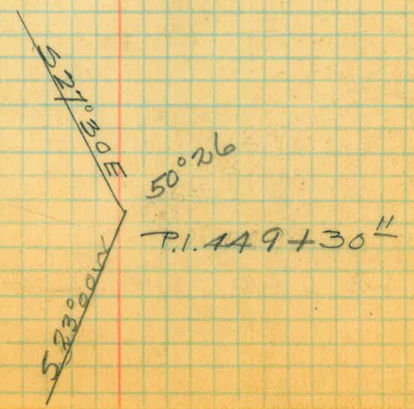
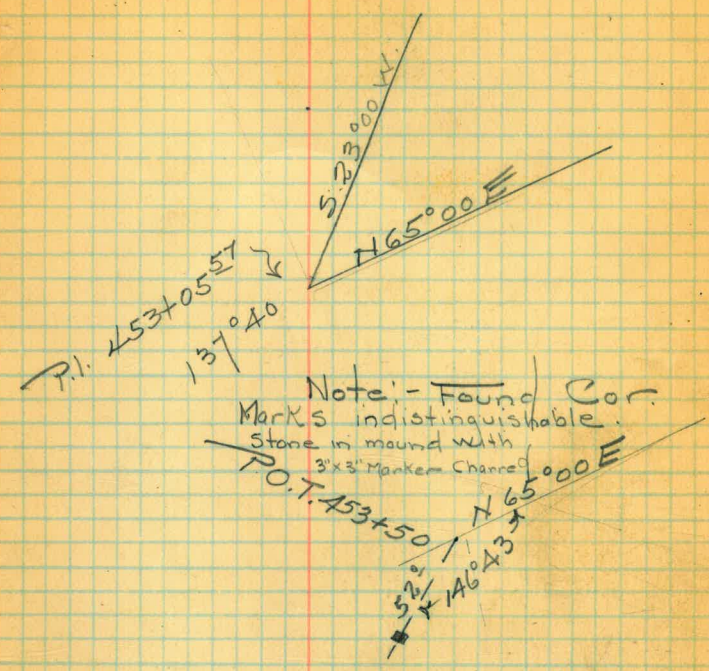
+50
 454
 +50 P.O.T.
 +05⁵⁷ P.I.
 453
 +91¹⁸ E.C. ✓
 +75
 +50
 +25
 452
 +75
 +50
 +25
 451
 +98⁹⁶ B.C.
 +50
 450
 +62⁸⁶ E.C. ✓
 +50
 +30¹¹ P.I.
 +25
 449
 +92⁴⁴ B.C.

420 12
 380.38
 156 54

Mag N 65° 00' E
 Mag S 23° 00' W
 Mag S 27° 30' E

$\Delta 137^{\circ} 40'$
 $R 80$
 $T 206.61$
 $L 192.22$ ✓

$\Delta 50^{\circ} 26'$ R
 $R 80$
 $T 37.67$ ✓
 $L 70.42$



105 + 99.67
6 01
111 00.7

917.94
748
916.36
1.5
6.1
90
91.5

96.60
241.24 1/2
327.84 1/2
300.00
627.84 1/2
290.
917.84
258.60
1176.44

618.

Sta 112+00

6186
34.11
29.62
48.2
25.6

27
61
18

24
26
28
30
32
34
36
38
40
42
44
46
48
50
52
54
56
58
60
62
64
66
68
70
72
74
76
78
80
82
84
86
88
90
92
94
96
98
100

21	EC	10'58
26		17'26
32		14'4
45		11'36
55		7'01
75		3'26

44-51 EC.

30° 05' 14



14°

Van Horn
Simpson
Duermit
Clayert
Mattoon
Brooks
10/1-'27
Clear

(H)

Pre Loc. south to S.V Conduit
H. Line con. sta 454+50 to 461

+25³¹ E.C. 38°41"
 A61 33°51
 +75 29°05
 +50⁸⁶ 24°18
 +42⁸⁶ P.I.
 +25 19°32
 A60 14°46
 +75 9°59
 +50 5°12
 +25⁷² 0°26
 +22 B.C.

459+
 +50
 458
 +50
 457
 +50

A56
 +41⁹⁰ E.C.
 +25
 +04⁶⁹ P.I.

A55
 +75²⁶
 +59 B.C.

546.39
420.12

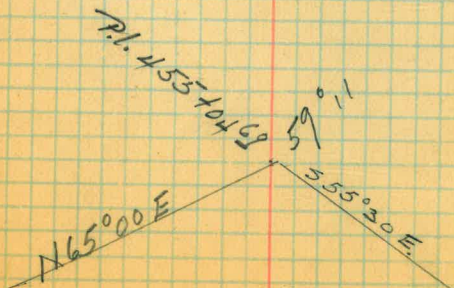
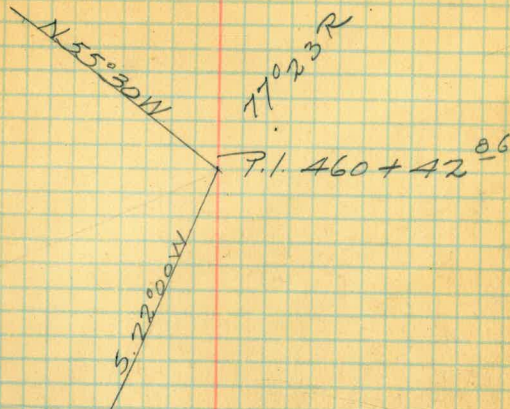
Mag. S. 22° 00' W

Δ 77° 23 R
 R 150
 T 120.14 ✓
 202.59 ✓

Mag. S. 55° 30' E

Δ 59° 11
 R 80
 T 45.43 ✓
 L 82.64

Mag. N 65° 00' E



Van Horn
Simpson
Claver +
Mattoon
Brooks
10/27
Clear

(H)
- Prel. Loc. Conduit Suth. to S.V.
(H-Line Con.)
sta 461 to 470

470
 +50
 A69
 +33²⁶ E.C.
 +25
 +15⁸² P.I.
 A68
 +98 BC
 +50
 467
 +50
 +33³³ ✓
 +08 E.C.
 466
 +75
 +50
 +39⁹² P.I.
 +25
 A65
 +75
 +50
 +41¹¹ B.C.
 464
 +50
 463
 +50
 462

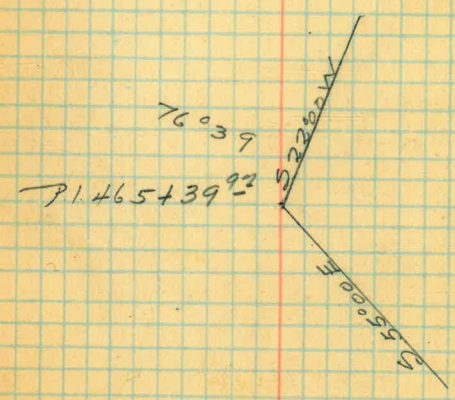
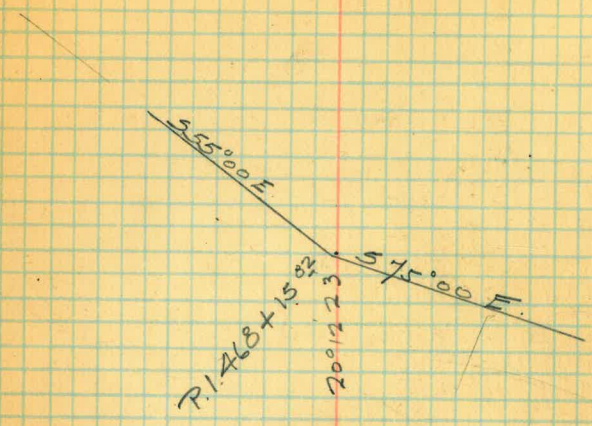
264.98
 306.30
 534.75

8²⁶ out 0³⁵
 2° out 0²²
 38°19.4
 36°28.7
 30°41
 24°57
 19°13¹¹ ✓
 13°30
 7°46
 2°02

Mag. 5/15⁰⁰E
 Mag. 5/55⁰⁰E
 Mag. 5/22⁰⁰W

Δ 20°12.2
 R 100
 T 17.82 ✓
 L 35.27 ✓

Δ 76°39
 R 125
 T 98.89 ✓
 L 167.22 ✓



Van Horn
Simpson
Clavert
Brook's
10/4-27

Preliminary Loc. Conduit South to S.V.
H Line Con Sta 470 to 476

476
 +50
 +39⁴⁸ E.C. 63°05
 +25 60°19
 +04⁶³ P.I.

502.27

Δ 126°10 L
 R 150
 T 295.45 ✓
 L 330.3 ✓
 Ch 267.50

475
 +75 55°32
 +50 50°46
 +25 45°59 1/2
 41°13

474
 +75 36°26 1/2
 +50 31°40
 +25 26°53 1/2
 +25 22°07
 25°56 1/4

473 +75 17°21
 +50 12°34
 +25 7°48
 +09¹⁸ B.C. 3°01

430.83

Mag. 519°45 E

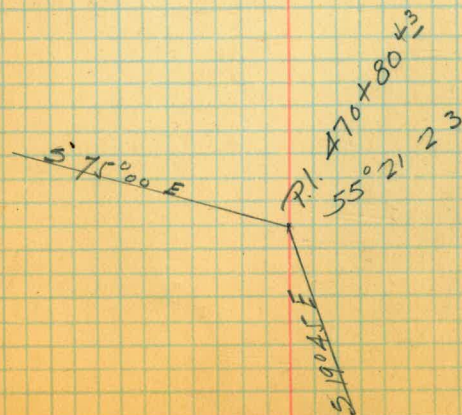
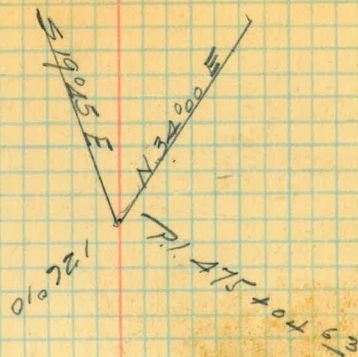
472
 +50⁴⁶ E.C.
 +15

471 15°20 out 2⁴⁸

Δ 55°21 23 E
 R 80
 T 41.96 ✓
 L 77.29

+80⁴³ P.I.
 +75 35°26 out 8¹⁸
 +50 11⁵³ out 0⁸⁴
 +38⁴⁷ B.C.

470



Van Horn
Simpson
Clavert
Brooklyn
10/5 - 27

Prel. Loc. Conduit Suth. to S.V.
H' Line Con
sta 476 to 485

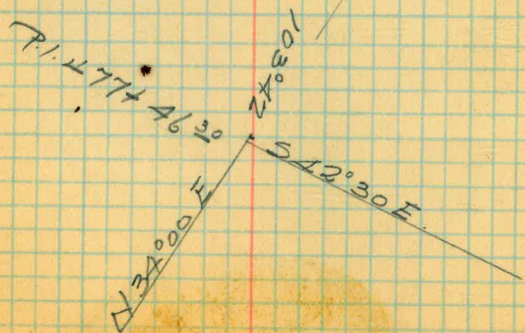
+50
 485
 +50
 484
 +50
 483
 +50
 482
 +50
 481
 +50
 480
 +50
 479
 +50
 478
 +89^{25'} - E.C. 51°51'
 +75 46°44'
 +50 37°47'
 +46^{30'} - P.I.
 +25 28°50'
 477 19°52'
 +75 10°56'
 +50 1°59'
 +44^{46'} - B.C.
 476

3093.07

Mag S 42°30' E.

Mag N 34°00' E

A 103°42'
 R 80
 T 101.84 ✓
 L 144.79 ✓



Van Horn
Simpson
Clavert
Brooks
10/6-27.

(14)
Prel Loc. Conduit Suth to S.V
H' Line can sta 485 to

498+50

+50

497

+50

496

+50

495

+50

494

+50

493

+50

492

+50

491

+50

490

+50

489

+50

488

+50

487

+50

486

Van Horn
Simpson
Clavert
Brook 5
10/6 - 27
clear.

(H)

Pre. Loc Suth to S.V. Conduit.
H' Line Con sta. 498 to

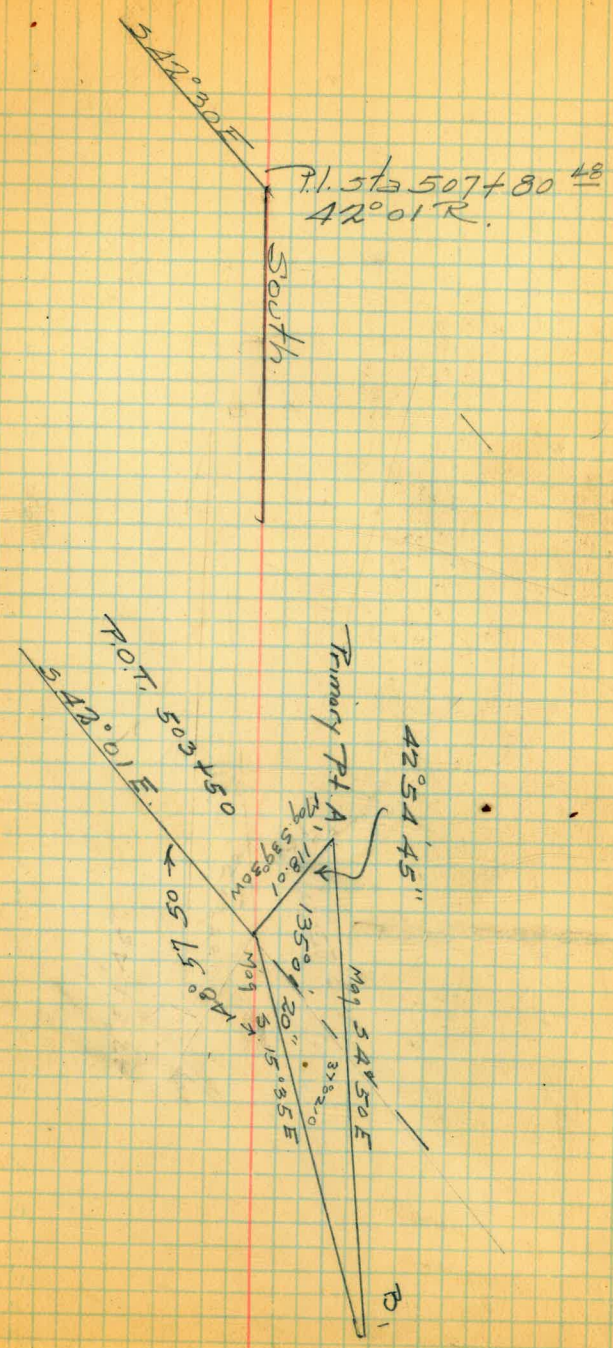
+95²² E.C.
 +75
 +50
 +25
 508
 +80⁴⁸ P.I.
 +75
 +50
 +25
 507
 +75
 +65²² B.C.
 +50
 506
 +50
 505
 +50
 504
 +50 T.O.T.
 503
 +50
 502
 +50
 501
 +50
 500
 +50
 499

10²² out 0¹²
 35²¹ out 2⁰⁷
 57²¹ out 6⁰³
 84¹⁵ out 12⁰³

107²⁵ out 19²⁴ Δ 42° 01' R
 83⁵⁵ out 11⁸⁸ R 300
 59³³ out 5⁹² T 115.21 ✓
 34⁶⁴ out 2⁰¹ L 220 ✓
 97³ out 0¹⁵

3093.07

Mag. S. 42° 30' E



Van Horn
Simpson
Clavert
Brooks.
Clear.
10/7 -27

(H)

Prel. Loc. Conduit south to SV.
N Line con sta 509 to 521

+78⁴⁴ ✓ EC

+75

+50

+25⁵
3-20 +22⁰⁶ P.1

+75

+50

+33⁷² BC

579

+50

518

+50

517

+50

516

+50

515

+50

514

+50

513

+50

512

+50

511

+50

510

+50

509

340.60

1252

1252

— 3⁴ out 0²⁵
— 28¹¹ out 4⁰³
— 58²⁴ out 13⁴⁵
— 61⁶ out 21³
— 40³³ out 8³⁹
— 16² out 1³¹

Δ 82° 55'

R 100

T 88.34

L 144.72

South

South

3.82° 45' W

82° 55'

P.1. 520 + 22° 06'

Van Horn
Simpson
Clavert
Brooks
Clear.

10/7-27

(H)

Prel Loc Conduit Suth to S.V.
H' Line Con Sta 521 to 529

\checkmark
 \checkmark
 +31⁴⁰ EC
 +25
 529+00²⁹ P.I.
 +75
 P.W.
 +66³⁰ B.C.
 \checkmark

6⁴ out 0²⁰
 \checkmark 33⁰² out 5⁴¹
 1264' out 37

Δ 37¹⁸ R
 R 100
 T 33.75 \checkmark
 L 65.10 \checkmark

+50
528

+50

527

+50

526

+50

525

+50

524

+83⁴⁵ EC

+75

+50

+30²⁰ P.I.

+25

523

+76²¹ B.C.

+50

522

+50

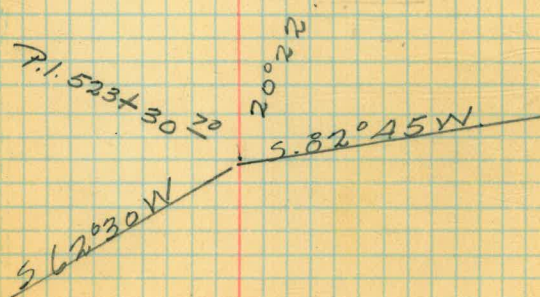
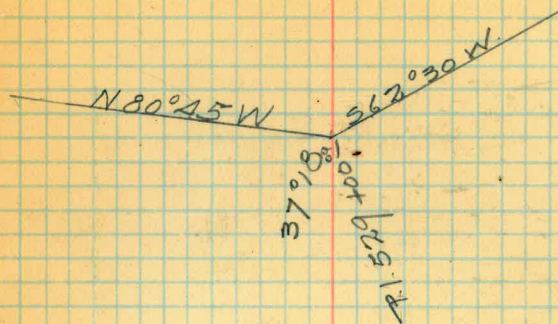
521

570.53

Mag 5.62°30 W

8⁴⁵ out 0¹²
 33.40 out 1²²
 \checkmark 27.97 out 3⁸⁶
 23.15 out 0²⁰

Δ 20°22 L
 R 300
 T 53.89 \checkmark
 L 106.64 \checkmark



Van Horn
Simpson
Clovert
~~Brooks~~
Clear
10-9-27.

(W)

Prel. Loc. Conduit Suth. to S.V.
'H' Line Con. sta. 529 to

+50

539

+50

538

+50

537

+50

536

+95⁴⁹ E.C.

+75

+50

+40⁷⁰ P.I.

+25

535

+75

+61⁴² B.C.

+50

534

+50

533

+50

532

+50

531

+50

530

1016 el

Mag S. 28° 30' W

20³⁹ out 2¹⁰

44⁰⁴ out 10²¹

59⁵² out 19⁶⁰

37¹² out 7³⁷

13⁵⁷ out 0⁹²

Δ 76° 49' L

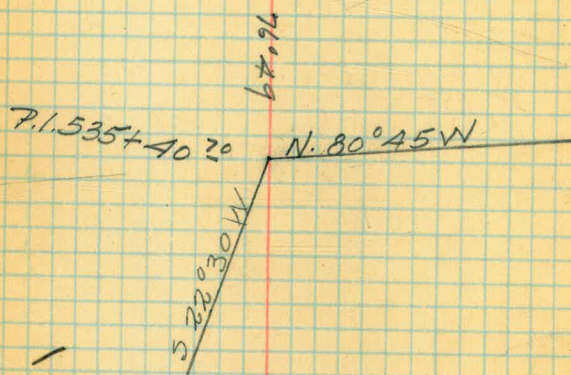
R 100

T 79.28

L 134.07

643 el

Mag N. 80° 45' W



Van Horn
Simpson
Cldvert
Brook 5
10/9-27

④
Arel Loc Conduit Suth to S.V.
N Line Con 539 to 547

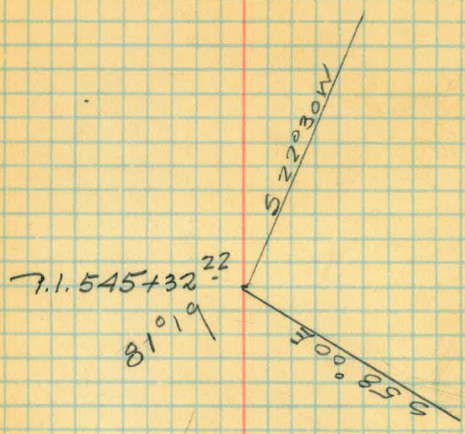
547+00³³ ✓ E.C.N 40°39½
 +75 38°14½
 +50 35°51
 +25 33°28
 546 31°04.8
 +75 28°41½
 +50 26°18
 +32²² P.I. ✗ 23°55
 545 21°31.8
 +75²⁷ 19°08½
 +50 16°45
 +25 14°22
 544 11°58.8
 +75 9°35½
 +50 7°12.3
 +25 4°49
 543 2°25.8
 +75 ✓ 0°02¼
 +74⁵⁶ B.C.
 +50
 542
 +50
 541
 +50
 540

Mag. 5.58 E

Δ 81.°19 L
 R 300
 T 257.66 ✓
 L 425.77 ✓

1016 PL

Mag. 5.22°30 W.



Van Horn
Simpson
Clavert
Brooks.
10/9 - 27

(H)

Pre. Loc Conduit Suth to S.V.
H' Line Con Sta. 547 to

+66⁸⁸ End of Conduit (Pass #1)

+50
556
+50
555
+50 7.O.T.
554
+50
553⁹⁸
+32⁹⁸ E.C.
+25
552
+75
+65⁴⁹ P.I.
+50
+25
551
+95⁵⁴ B.C.
+50
550
+50
549
+50
548
+50

503.81

S. 04° 30' E

7⁹⁸ out 0¹⁰
32⁹² out 1⁸⁰
57⁶⁵ out 5⁵⁷
54²⁴ out 4⁰³
29⁴⁶ out 1⁴⁵
4⁴⁶ out 0⁰³

Δ 26° 15'
R 300
T 69.95'
L 137.44'

722.82

Mag. S 58° 00' E

Note: Tie to last
Tangent Prel. Loc.
Suth. to S.V. Sta
556+66⁸⁸ End of Line
not visible from
Primary Pts. N 60° 00' E

