

W 232

EAST

FIELD BOOK

No. 885

2

232

MICROFILMED

Our Leather Bound Engineers Note Books are carried in the following rulings:

- No. 380 LEVEL BOOK. Left and Right Hand Page the same as Left Hand Page of this Book.
- No. 382 FIELD BOOK. Left Hand Page as in this Book, Right Hand Page 4 x 4 to the inch, Center Line Red.
- No. 384 MINING TRANSIT BOOK. Left Hand Page as in this Book, Right Hand Page 8x8 to the inch, Center Line Red.
- No. 385 FIELD BOOK. Left Hand Page as in this Book, Right Hand Page 8 vertical and 4 horizontal lines to the inch, Center Line Red.

We also carry the Note Books listed above, bound in extra strong Fabri-Hide (otherwise the same quality of book), which can be furnished at a somewhat lower price.

In ordering Fabri-Hide covered books, add the letter "F" to catalog number.

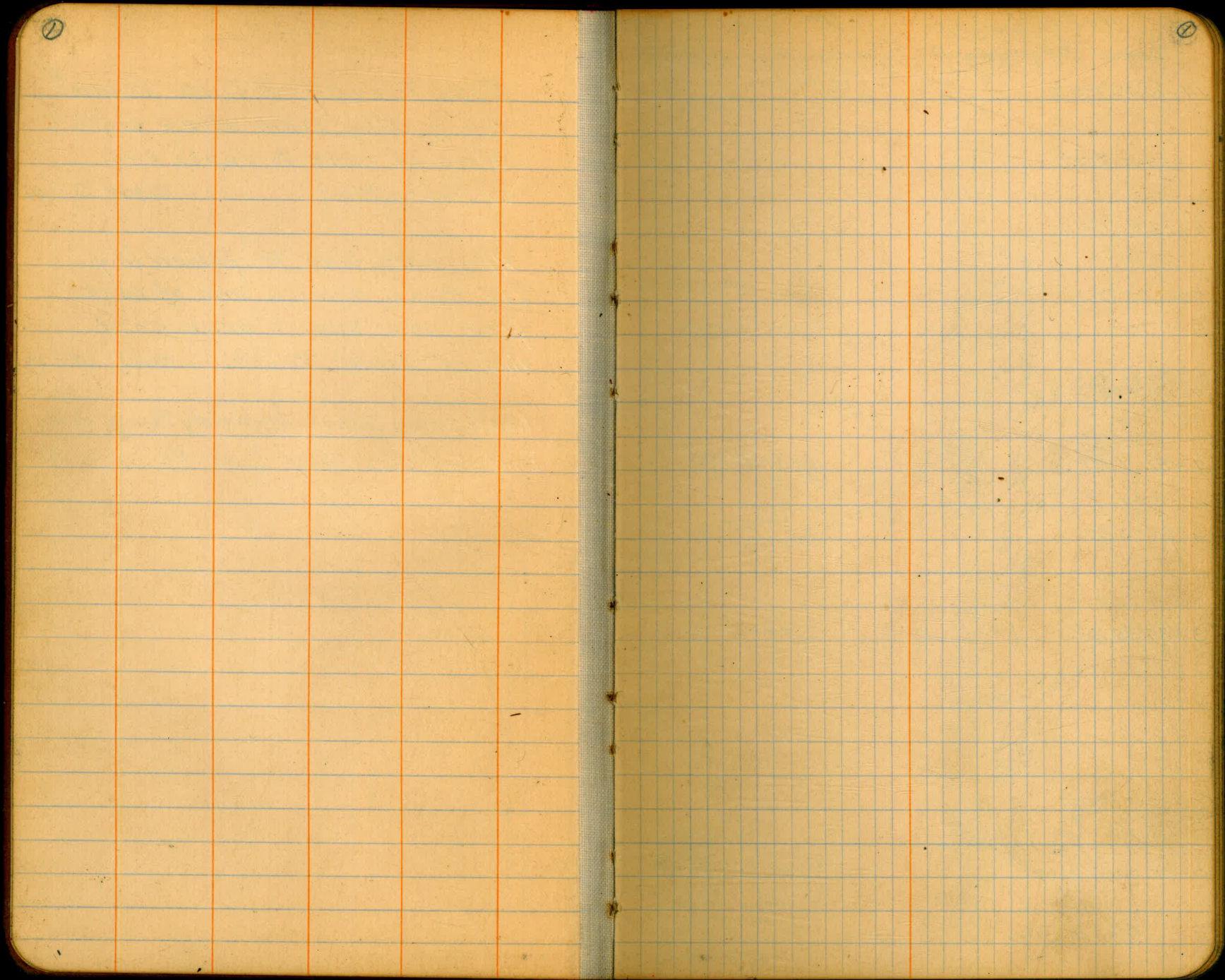
THE FREDERICK POST CO.
ENGINEERING and DRAFTING SUPPLIES
IRVING PARK STATION
CHICAGO, ILL.

Index.

Road Survey - "A" Line from ✓
Lower Otay Dam along south
side of Lake to upper end
at County Road. Pages 2-16

Alternate Line "B" following
old Road around arm of Lake
from near Dam to near east
line of Janal Ranch. — Pages 20-26

Lower Otay Dam - Spillway Topog. 27-30
Employees Colony Sewer Line etc. 31



② Road Location - "A" Line.
Lower Clay Dam to Upper end of Lake.

14+10.43 P.O.T.

11+28.17 P.O.T.

8+72.09 P.O.T.

7+16.80 P.O.T.

5+41.49 P.O.T.
5+35.53 E.C. Equation

+25
5+00
4+81.11 P.I.
+75
+50
+25
4+20.73 B.C.

3+39.35 P.I.

0+00 P.O.T.
Beg. Line "A"
East end of Bridge
over Spillway

Road Survey - "A" Line.

E 45.36
N 15° 48' E

41.76
N 28° 03' W

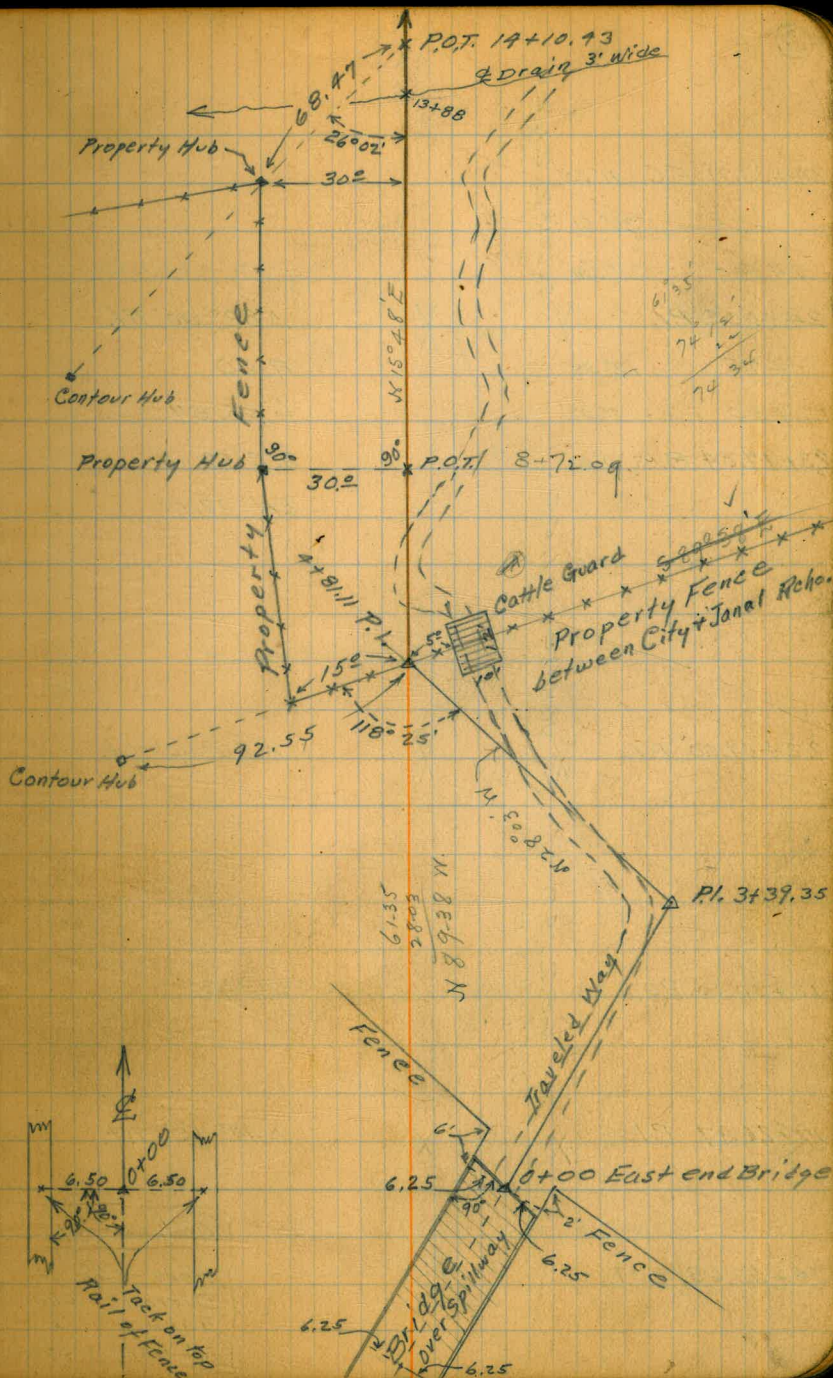
339.35
N 46° 24' E

39095
 $\Delta 43^{\circ} 51' R.H.$
R 150
L 114.80
ST. 60.38
Ext. 11.68

$\Delta 74^{\circ} 27' L.H.$

Oct. - 10 - 1927

Ward - Chf.
Duermit - Chm.
Rauher - Chm.
McBain - Stks.



③

24+33.71 E.C. $41^{\circ}00'$
 +25 $36^{\circ}51'$
 24+00 $24^{\circ}54'$
 24+00 = P.I.
 +75 $12^{\circ}58'$
 +50 $1^{\circ}02'$
 23+47.84 B.C. $0^{\circ}00'$

S66°21'E 21.26

N31°58'E 191.00

N57°58'E 482.53

22+09.00 P.I.

18+70.00 P.O.T.

17+26.47 P.I.

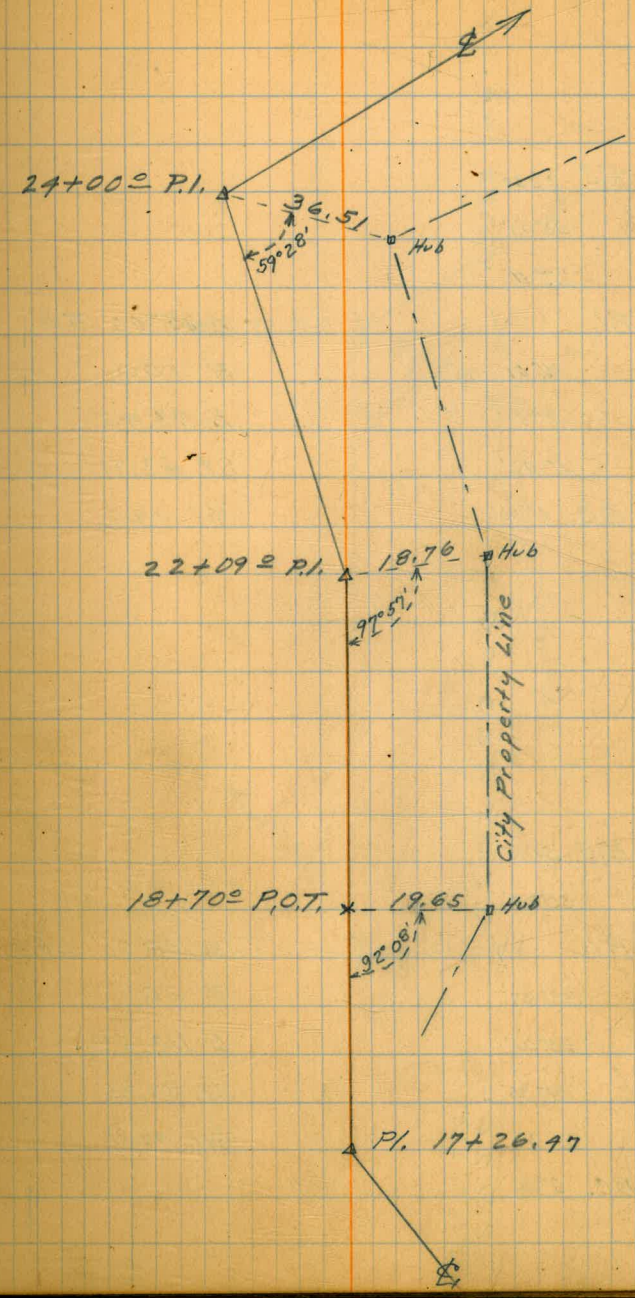
16+63.68 P.O.T.

$\Delta 82^{\circ}00'$ Rt.
 P 60
 L 85.87
 S.T. 52.16
 Ext. 19.5

$\Delta 26^{\circ}00'$ Lt.

$\Delta 42^{\circ}10'$ Rt.

Oct. - 11 - '27
 Ward - Chf.
 Duermit - Chf.
 Ravner -
 Mc Bain - S.M.



④

28+32.53 E.C. 32°30'

+25 38°21'

28+00 23°11'

27+82.79 P.I.

+75 16°01'

+50 8°51'

+25 1°42'

27+19.08 B.C. 0°00'

N 70°28' E 166.99

N 5°28' E 233.06

26+33.08 E.C. 54°15'

+25 50°24'

26+02.81 P.I.

26+00 38°27'

+75 26°31'

+50 14°35'

+25 2°39'

25+19.46 B.C. 0°00'

N 221.26
S 66°02' E

Δ 65°00' Rt.

R 100

L 113.45

S.T. 63.71

Ext. 18.6

Δ 108°30' Lt.

R 60

L 113.62

S.T. 83.35

Ext. 42.7

27+82.79 P.I.



City Property Line

Ditch

Survey

P.I. 26+02.81

(5)

35+50.74 P.O.T.
(Edge Water)

35+34.66 E.C. 23°30'

+ 25 17°58'

35+15.38 P.I. X X

35+00 3°39'

34+93.64 B.C. 0°00'

102.30
N 67°00' E

Δ 47°00' Lt.

R = 50

L 41.02

S.T. 21.74

34+13.08 P.I. X X

59.91
N 89°39' E

Δ 22°39' Lt.

33+53.17 P.I. X X

74.52
N 73°18' E

Δ 16°21' Ft.

32+78.65 P.I. X X

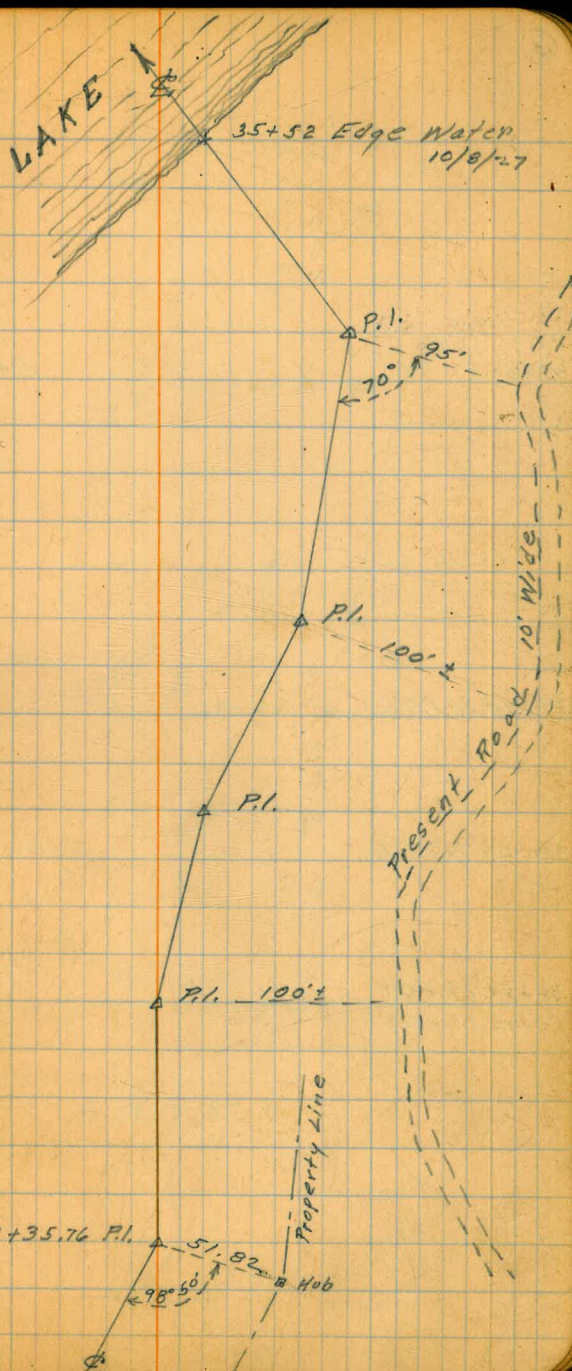
342.89
N 45°18' E

Δ 28°00' Ft.

29+35.76 P.I. X X

Δ 25°10' Lt.

Oct. -12-'27
Ward - Ch.
Duermit - Ch.
Ravner - "
NE Bain - sks.



6

209.13 ✓
N67°00'E

38+65.87 P.I.



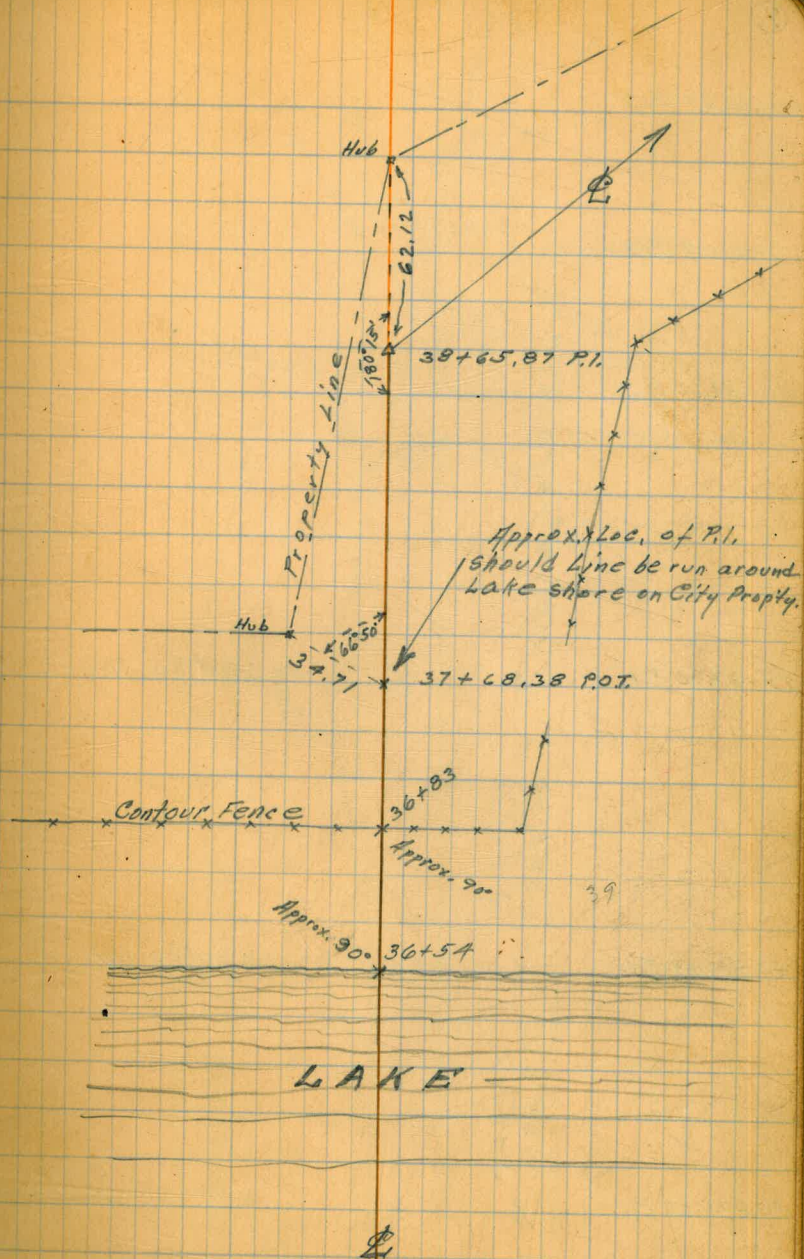
Δ 47°00 FT.

37+68.38 P.O.T.

352.95 ✓
N20°00'E

36+66.74 P.O.T.

36+54.29 P.O.T.
(Edge Water)



⑦

63+86.67 P.O.T.

57+27.05 P.O.T.

53+54.62 P.O.T.

49+17.40 P.L.

43+40.62 P.L.

40+75.00 P.L.

N 58°00' E 1750.53

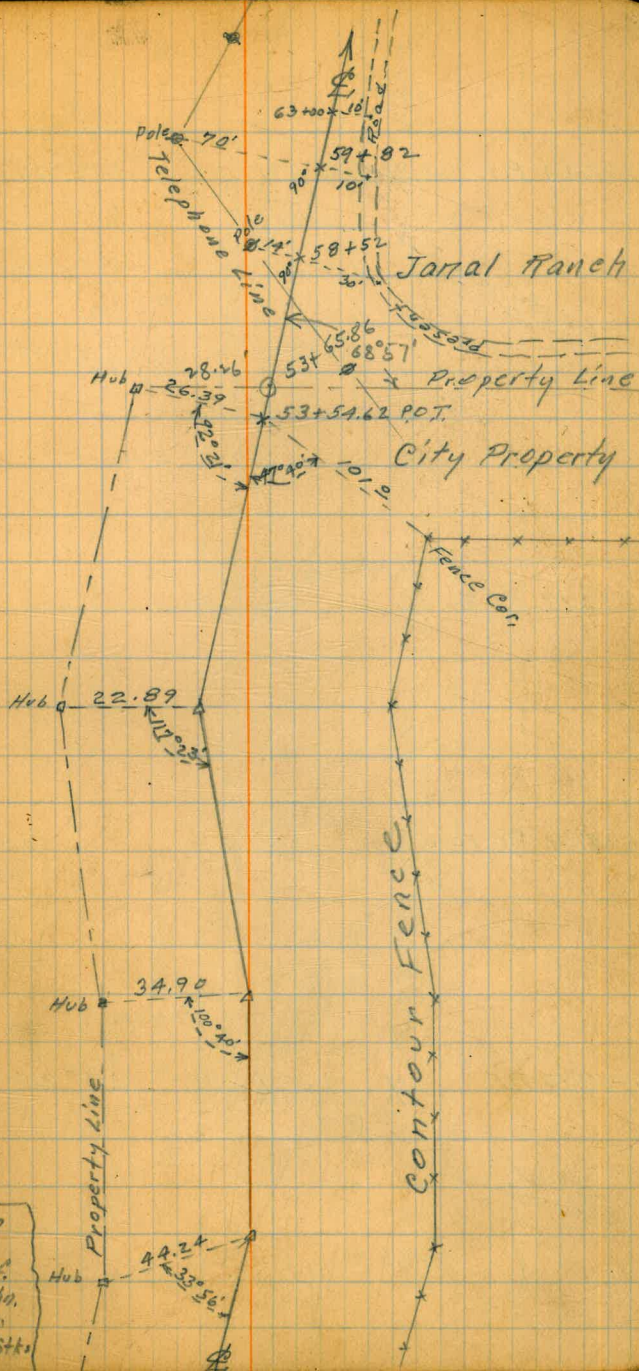
576.78
N 19°30' E

265.62
N 49°30' E

Δ 38°30' Rt.

Δ 30°00' Lt.

Δ 17°30' Lt.



7
8

63

86+22.44 P.I.

30945
N 75° 20' E

Δ 12° 00' Rt.

57

53

80+52.17 P.O.T.

86+22.44
66+67.93
145 L. 51

49

71+48.01 P.O.T.

195 L. 51
N 63° 20' E 956.51

Oct-14-'27

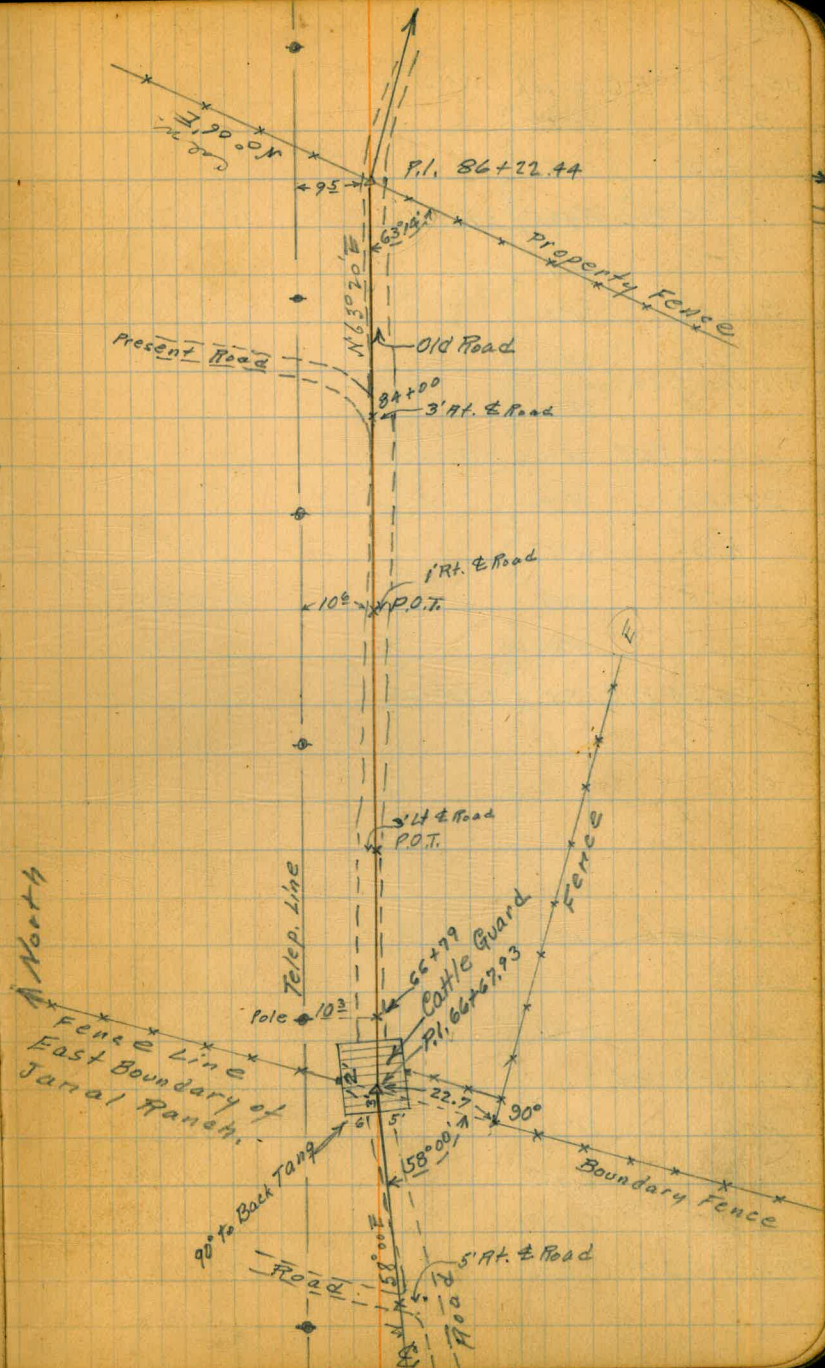
Ward - chf
Duermitt - Chn
Ravner - "
Mc Bain - stks

43

66+67.93 P.I.

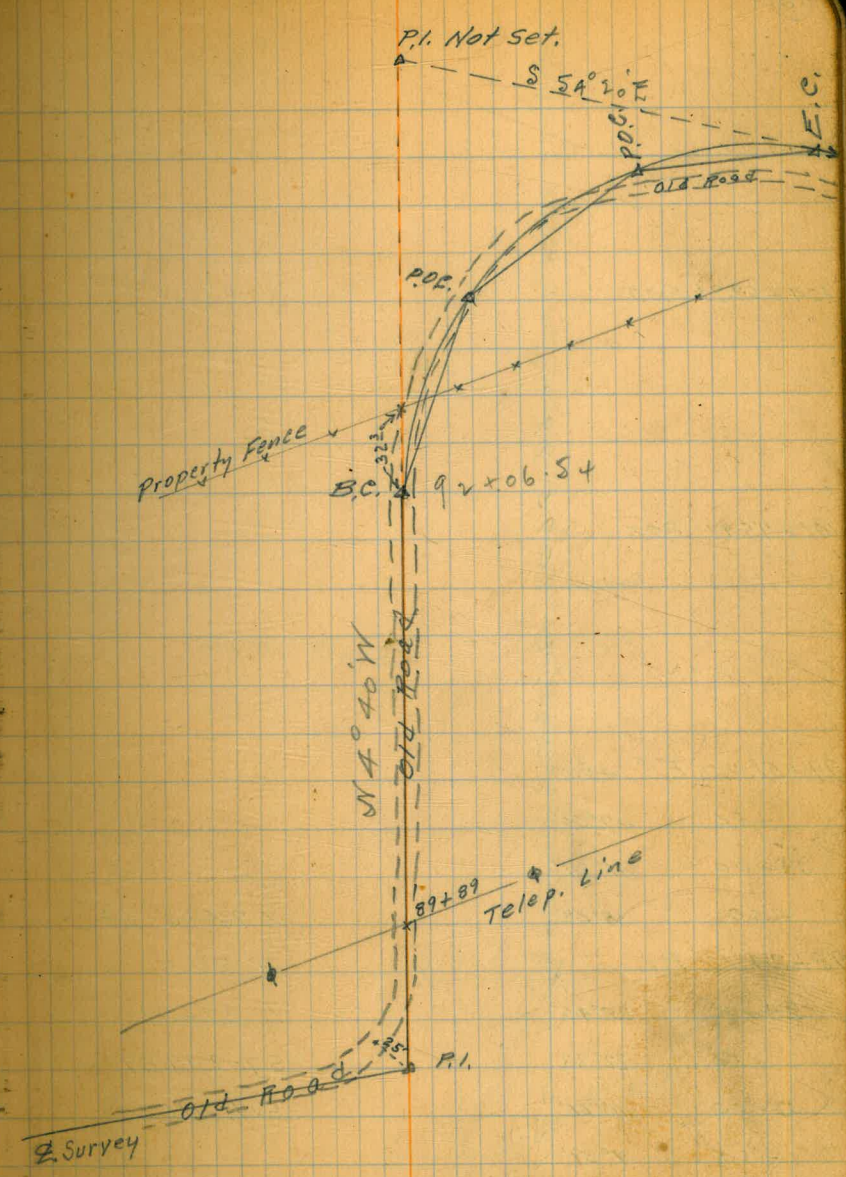
Δ 5° 20' Rt.

40



9

95+25.00 E.C. 65°16'	$\Delta 15^{\circ}21'30''$	
95+00 60°03'		
+75 54°56'		
+50 P.O.C. 49°48'30"	$\Delta 40^{\circ}56'$	
+25 44°42'		
94+00 39°35'		
+75 34°28'		
P.I. Not Set		X
+50 29°21'		
+25 P.O.C. 24°14'	$\Delta 49^{\circ}48'30''$	
93+00 19°07'		
+75 14°00'		$\Delta 130^{\circ}20' R+$
+50 8°53'		R 140
+25 3°46'		L 318.46
92+06.54 B.C. 0°00'	$\Delta 24^{\circ}14'$	ST. 302.53
CH. = 114.93		
89+76.46 E.C. 10°00'		
+75 39°28'		
+50 30°31'		
89+31.89 P.I.		X
+25 21°34'		$\Delta 80^{\circ}00' Lt.$
89+00 12°37'		R 80
+75 3°40'		L 111.70
88+64.76 B.C. 0°00'		ST. 67.13
		Ext. 24.4



(10)

104+69.92 P.O.T.

101+75.97 P.O.T.

99+51.22 E.C. 48°00'

+50 47°50'

99+00 41°29'

+50 35°07'

98+24.12 P.I. X X

98+00 28°45'

+50 22°23'

97+00 16°01'

+50 9°39'

96+00 3°17'

95+74.23 B.C. 0°00'

N 29°40' E 1095.99

S 54°20' E 299.12

$\Delta 96^{\circ}00'$ Lt.

R 225

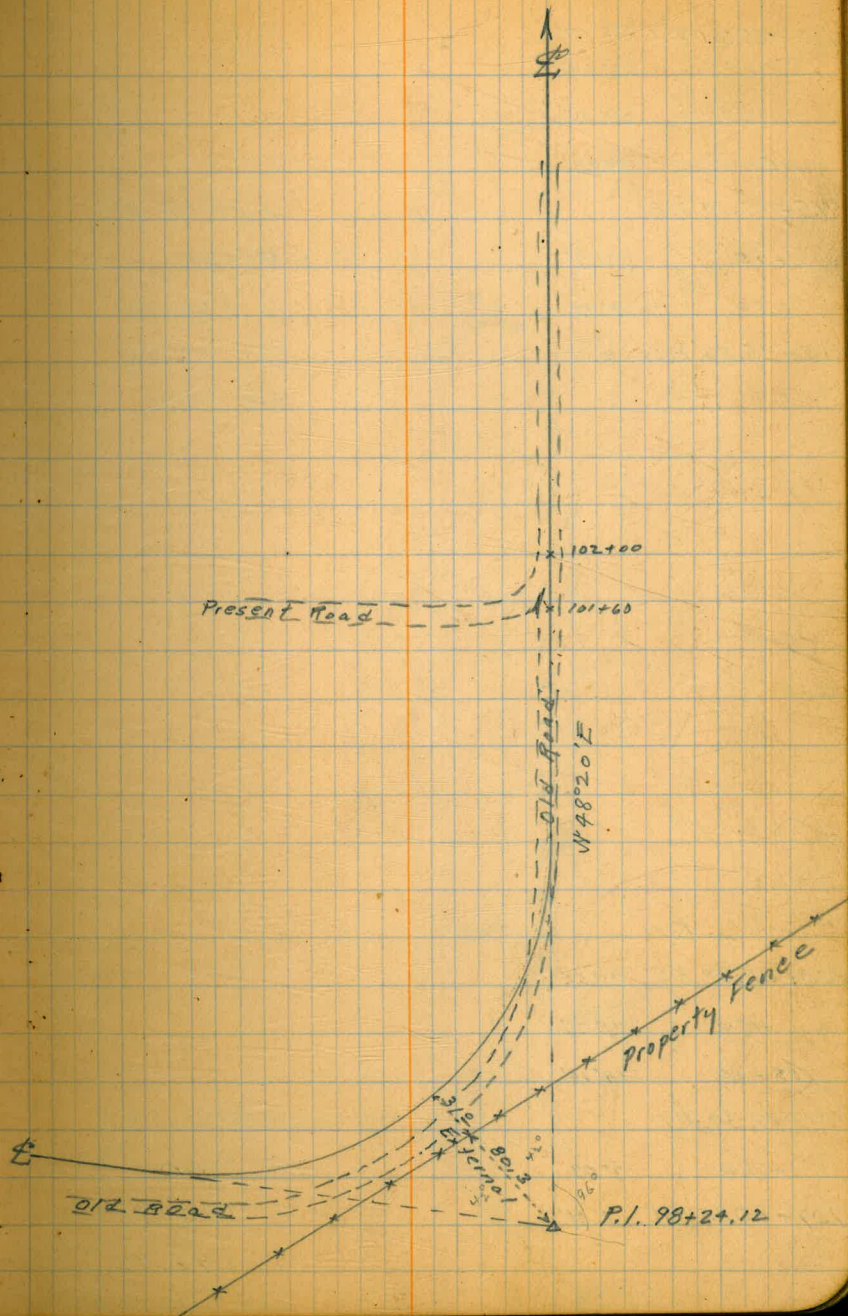
L 376.99

S.T. 249.89

Ext. 111.3

Oct-15-'27

Ward - Chf
Duermit - Chf
Favner - "
McBain - Stks



116+62.31 E.C. 26°07'
 +50 23°46'
 +25 19°00'
 116+00 14°13'

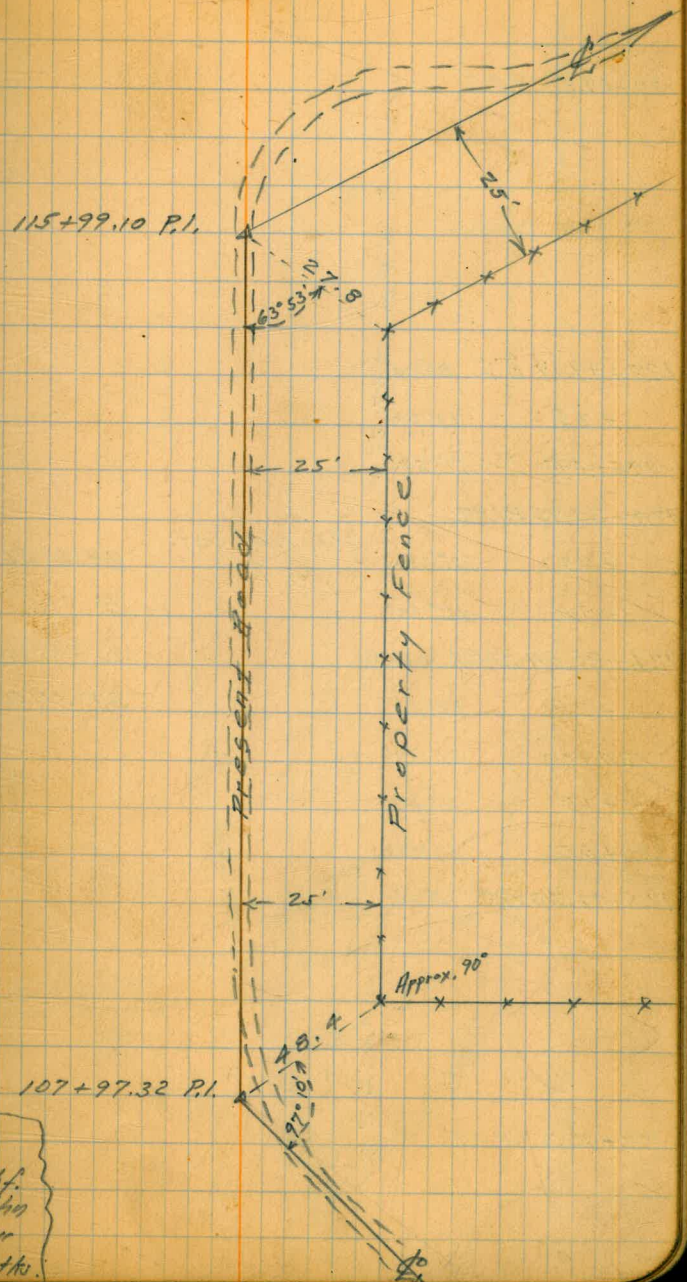
115+99.10 P.I. X X Δ 52°14' Ft.
 +75 9°27' R 150
 +50 4°40' L 136.75
 115+25.56 B.C. 0°00' ST. 73.54
 Ext. 17.0

W 80° 24' E 815.17 ✓

108+80.93 E.C. 25°52'
 +50 21°26'
 108+00 14°16'

107+97.32 P.I. X X Δ 51°44' Ft.
 +50 7°07' R 200
 107+00.35 B.C. 0°00' L 180.58
 ST. 96.97
 Ext. 22.2

Det. 17-27
 Ward - Chf.
 Dermitt - Chf.
 Rauner - r
 McBain - Stk.



127+09.99 P.O.T.

125+49.19 E.C. 83°00'

+25 73°06'

125+00 62°52'

124+84.75 P.I.#2

+75 52°38'

+50 42°25'

124+25.84 P.I.#1

+25 32°11'

124+00 21°57'

+75 11°43'

+50 1°29'

123+46.38 B.C. 0°00'

122+43.37 P.O.T.

N 32° 22' W
969.30
4

N 32° 22' W
546.22
F

P.I. Not Set.
X

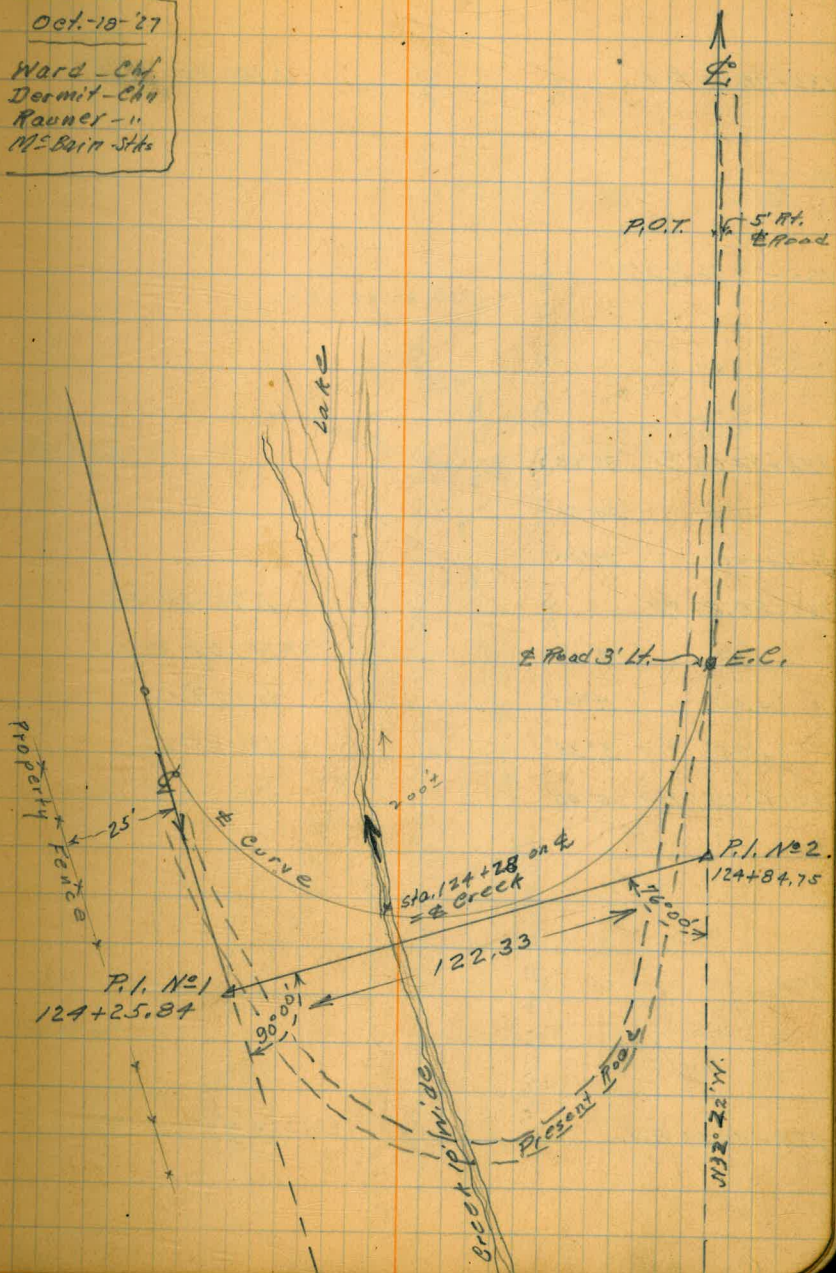
Δ 166° 00' Lt.

R 70

L 202.81

S.T. 570.10

Oct-18-27
Ward - Ch.
Dermit - Ch.
Rauner - U.
McBain Sts



136+78.12 P.I. X X $\Delta 14^{\circ} 50'$ Rt.

135+22.16 P.O.T.

87.5

134+34.65 E.C. $37^{\circ} 00'$

+25 $34^{\circ} 14'$

134+00 $27^{\circ} 04'$

133+80.86 P.I.

+75 $19^{\circ} 55'$

+50 $12^{\circ} 45'$

+25 $5^{\circ} 35'$

133+05.50 B.C. $0^{\circ} 00'$

N 64° 36' E 318.83 L

N 19° 22' W 432.37 L

129+48.49 P.I.

$\Delta 74^{\circ} 00'$ Rt.

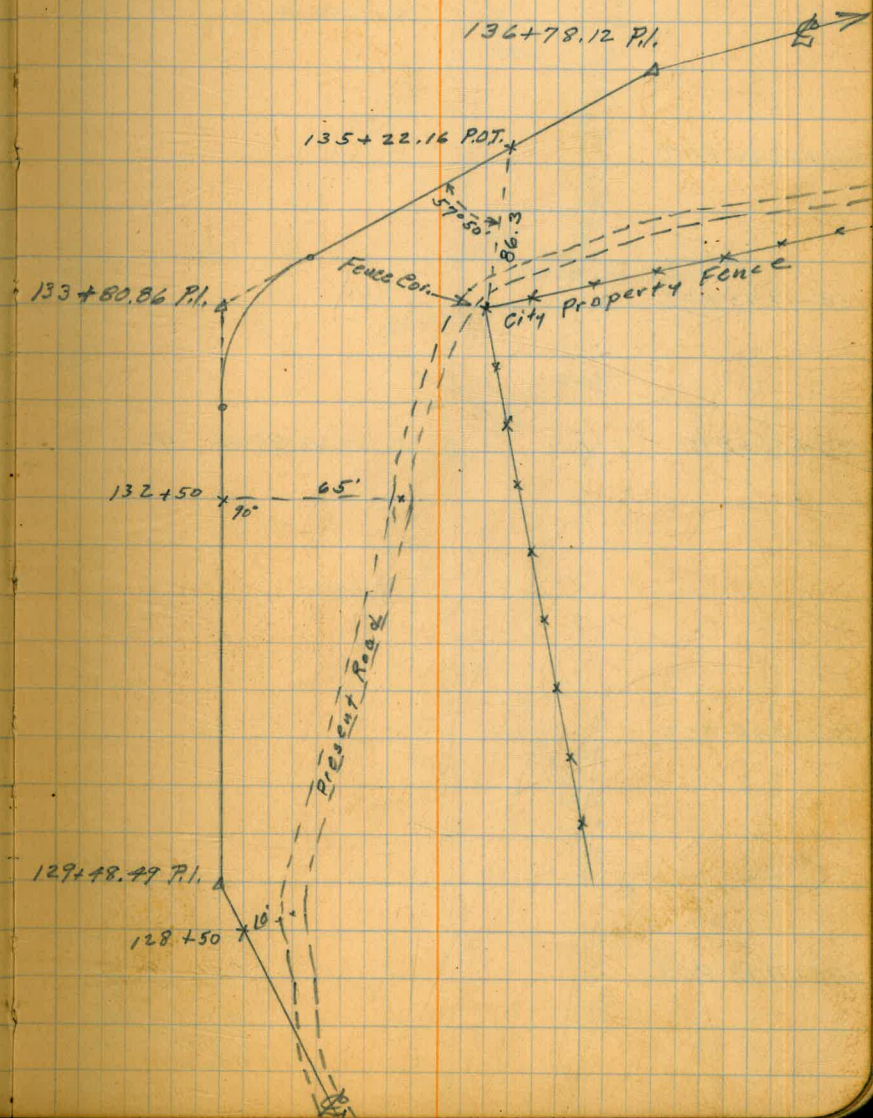
R 100

L 129.15

ST. 75.36

EXT. 25.2

$\Delta 23^{\circ} 00'$ Rt.



165+48.51 P.O.T.

160+66.84 P.O.T.

158+19.93 P.O.T.

155+56.52 P.I.

146+14.15 P.O.T.

140+71.13 P.O.T.

N 87° 34' E 1872.55'

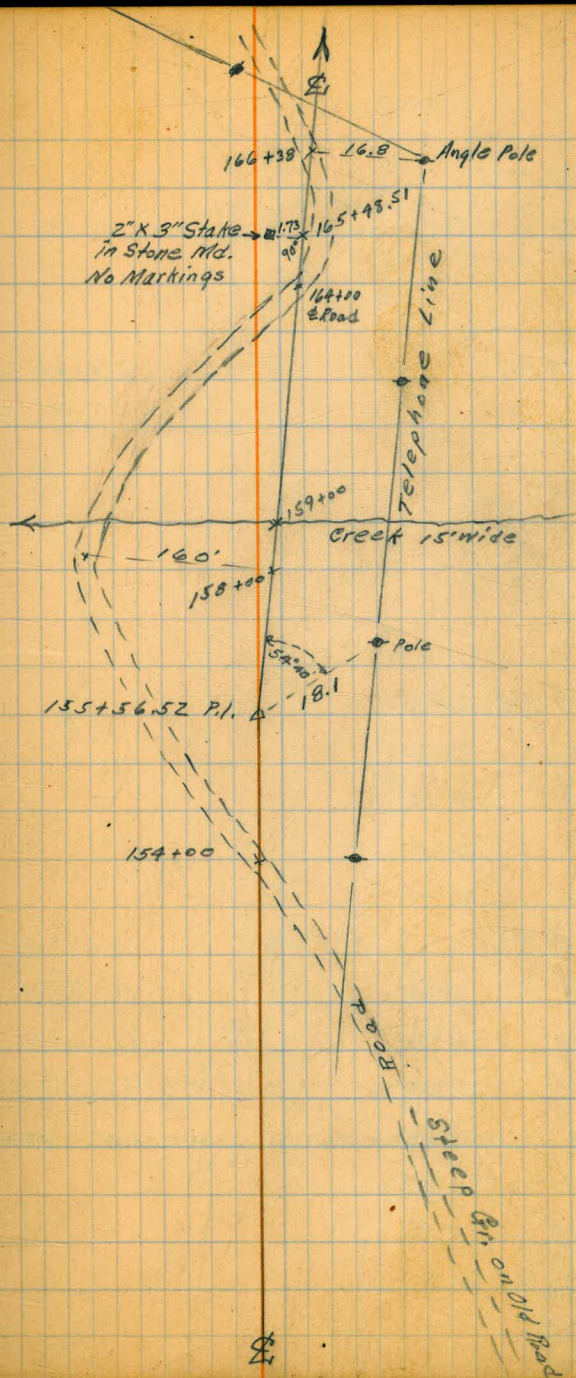
N 79° 28' E 1878.40'

X X

Δ 8° 06' FH.

Oct. 19 '27

Ward - Chf.
Dermitt - Chn.
Ravner - "
Ms Bain - Sfts



(15)

181+67.28 P.O.T.

N 14° 54' E 1068.09

179+56.74 P.I.

X

X

Δ 3° 40' Lt.

175+32.47 E.C. 34° 30'

+25 33° 26'

175+00 29° 51'

+75 26° 16'

+50 22° 41'

174+29.07 P.I.

X

X

Δ 69° 00' Lt.

+25 19° 06'

174+00 15° 32'

+75 11° 57'

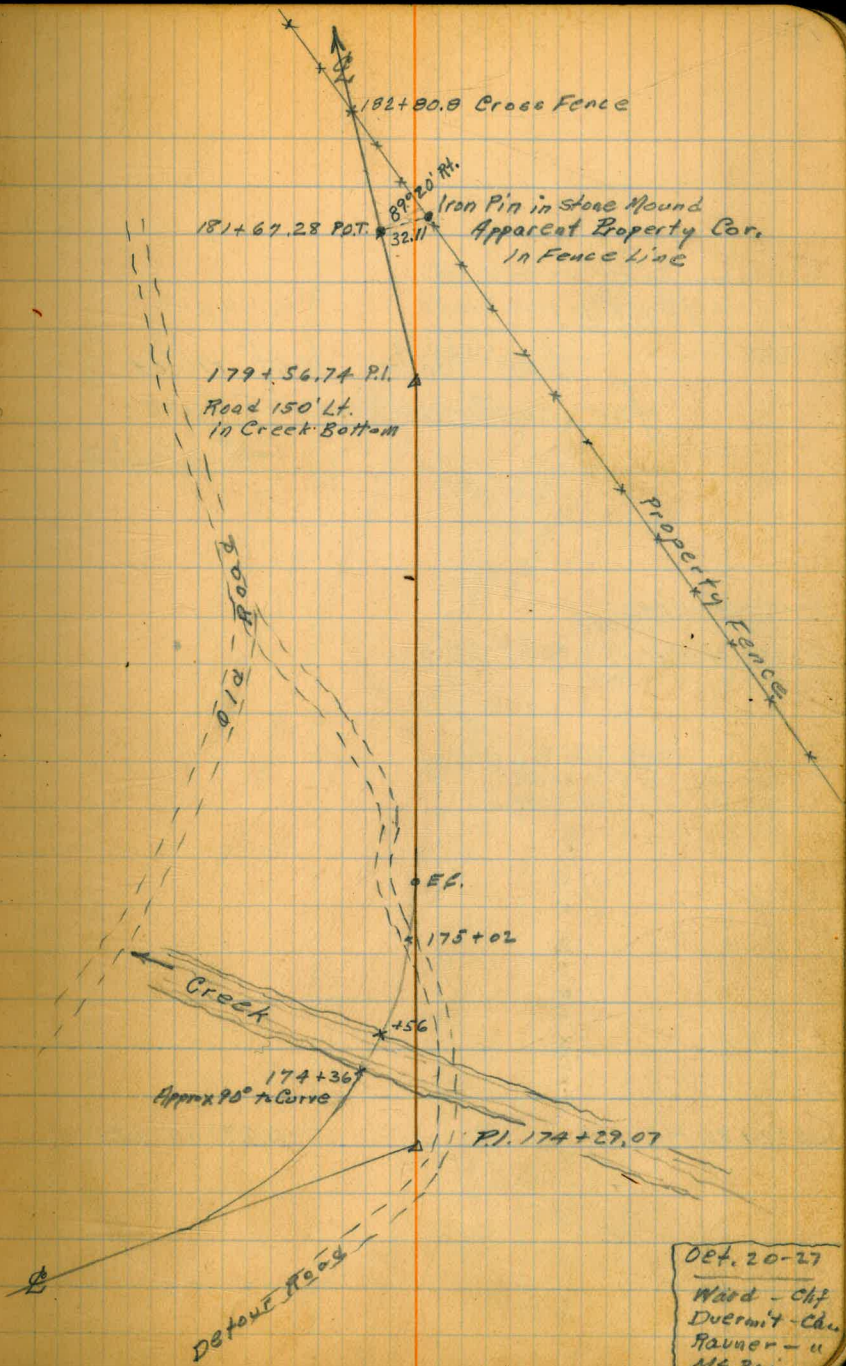
+50 8° 22'

+25 4° 47'

173+00 1° 12'

172+91.61 B.C. 0° 00'

N 18° 34' E 561.73



R 200

L 240.86

ST. 137.46

Ext. 42.7

Oct. 20-27
 Ward - Chf
 Duermit - Cdn
 Ranner - u
 NE Bain

Notes:

Vol 490-231

See loose leaf notes
for continuation of line:

2/23/28

End of line

193+73.11 P.I.

X

X

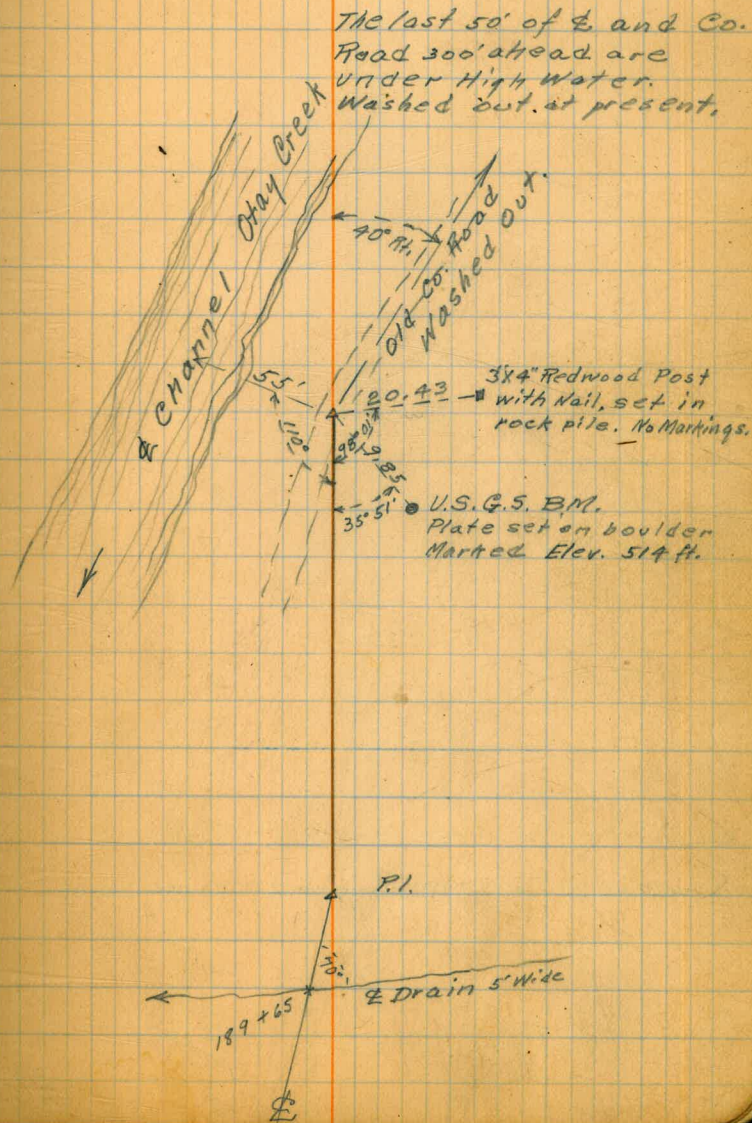
190+24.83 P.I.

X

X

 $\Delta 27^{\circ} 40'$ Lt.

N 124° 11' 32" E

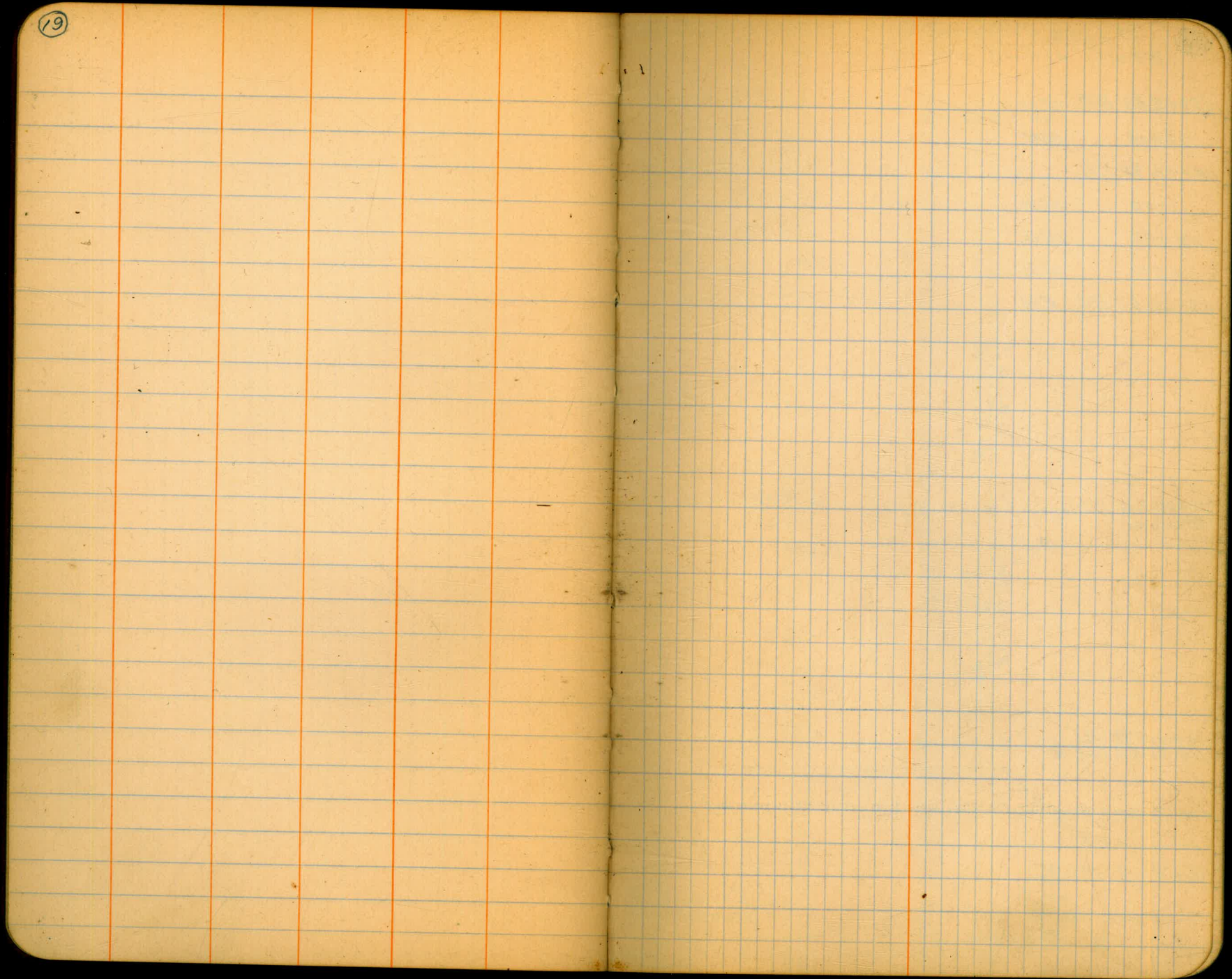


17

18

18

19



(20) "B" Line Alternate. - Follows present Road around arm of Lake.

15+05.89 E.C. 52°30'

15+00 58°49'

14+52.95 P.I. X X

+50 36°30'

14+00 22°10'

+50 7°51'

13+22.63 B.C. 0°00'

$\Delta 105^\circ 00'$ Lt.

R 100

L 183.26

S.T. 130.32

Ext. 64.3

641.67'
N 80° 58' E

8+11.28 P.I.

"B" Line

X

X

$\Delta 34^\circ 50'$ Rt.

811.28'
N 46° 08' E

0+00 "B" P.I.

11+28.17 P.O.T. "A"

X

X

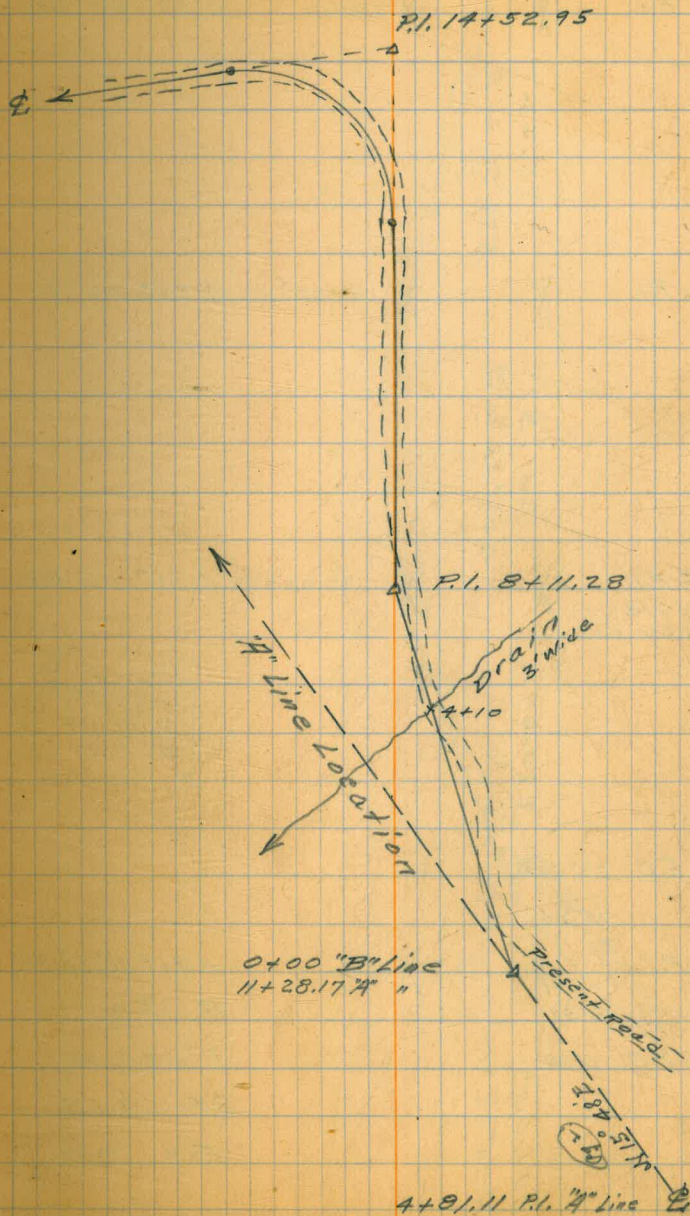
$\Delta 30^\circ 20'$ Rt.

4+81.11 P.I. "A"

"B" Line Alternate

Nov. 3-'27

Ward - Chf.
Dvermit - Chn.
MSBain - "



22+97.92 P.I.



Δ 32° 00' Lt.

95.66
N 89° 58' 30" E
5'

22+02.26 P.I.



Δ 32° 00' Rt.

201.31
N 57° 58' 30" E

20+00.95 P.I.

(Orig. Hub of old
Road survey)



Δ 36° 00' Rt.

290.69
N 21° 58' 30" E

17+73.94 E.C. 23° 00'

+50 18° 26'

17+17.17 P.I.



Δ 46° 00' 30" Rt.

17+00 8° 53'

16+53.49 B.C. 0° 00'

341.60
N 24° 02' W

R 150

L 120.45

S.T. 63.68

Ext. 13.0

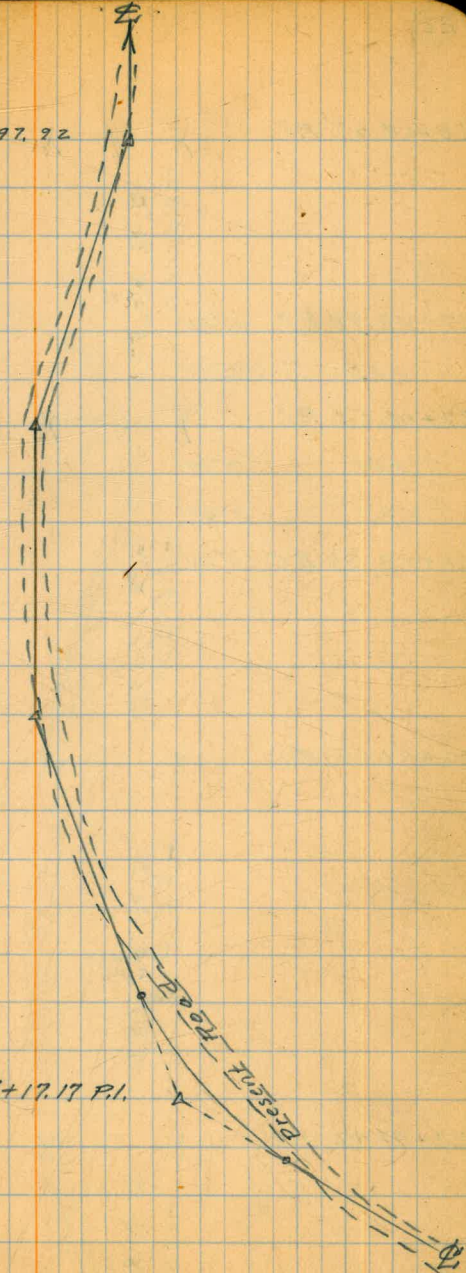
Nov. - 4 - '27
Ward - Chf.
Duermit - Ch.
McBain - Ch.

22+97.92

22+02.26

20+00.95

17+17.17 P.I.



28+68.69 P.I.

X X

$\Delta 22^\circ 00' \text{ Rt}$

27+42.98 E.C.

42°45'

+25

32°27'

27+14.59 P.I.

X X

$\Delta 85^\circ 30' \text{ Lt}$

27+00

18°07'

R 50

+75

3°48'

L 74.61

26+68.37 B.C.

0°00'

S.T. 46.22

Ext. 18.1

26+01.65 P.I.

X X

$\Delta 23^\circ 00' \text{ Rt}$

23+91.42 P.I.

X X

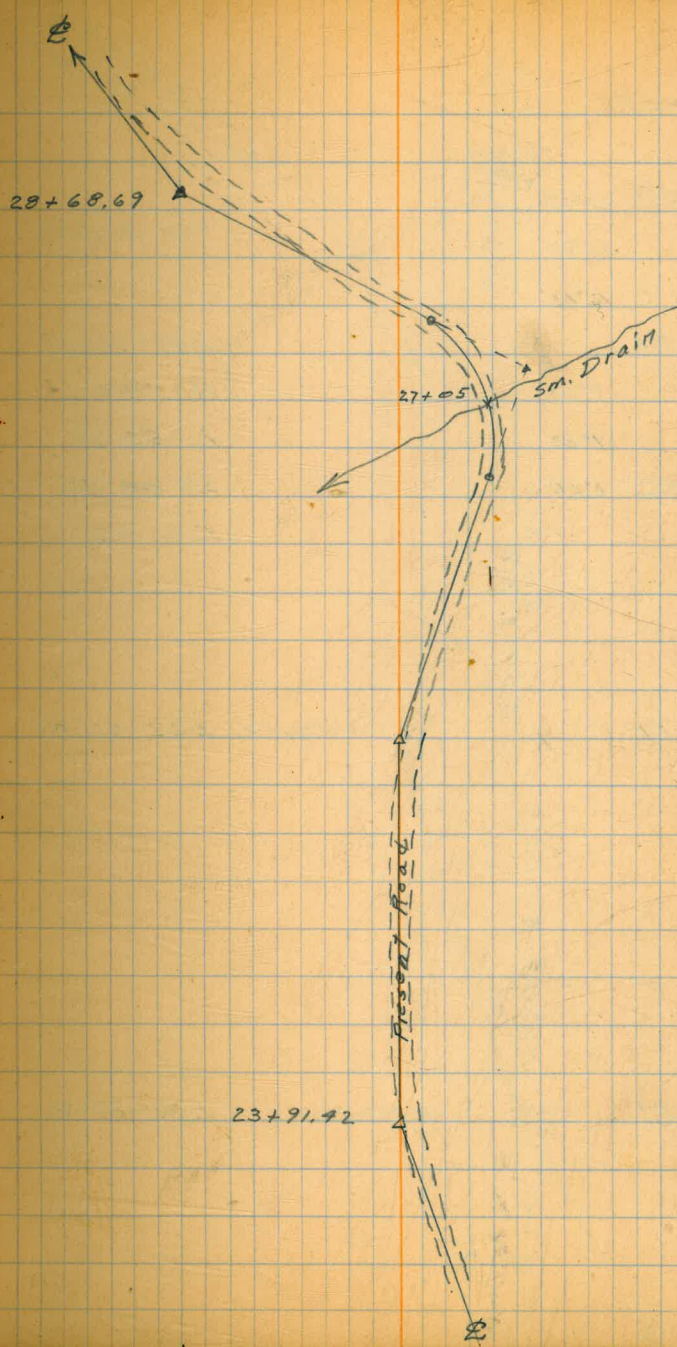
$\Delta 30^\circ 00' \text{ Rt}$

171.93
N 25° 28' 30" E
29

112.94
S 69° 01' 30" E

210.23
N 87° 58' 30" E
59

93.50
N 57° 58' 30" E
59



33+81.55 P.O.T.

33+01.30 E.C. 23°45'

33+00 23°23'

+75 16°13'

32+62.40 P.I. X X

+50 9°03'

+25 1°53'

32+18.40 B.C. 0°00'

31+28.09 P.I. X X

29+97.29 P.I. X X

233.42
N 62° 58' 30" E
59'

134.31
569° 31' 30" E

130.80
N 78° 28' 13" E
29'

128.60
N 47° 28' 13" E
29'

Δ 47° 30' Lt.

R 100

L 82.90

S.T. 44.00

Ext. 9.2

Δ 32° 00' Rt.

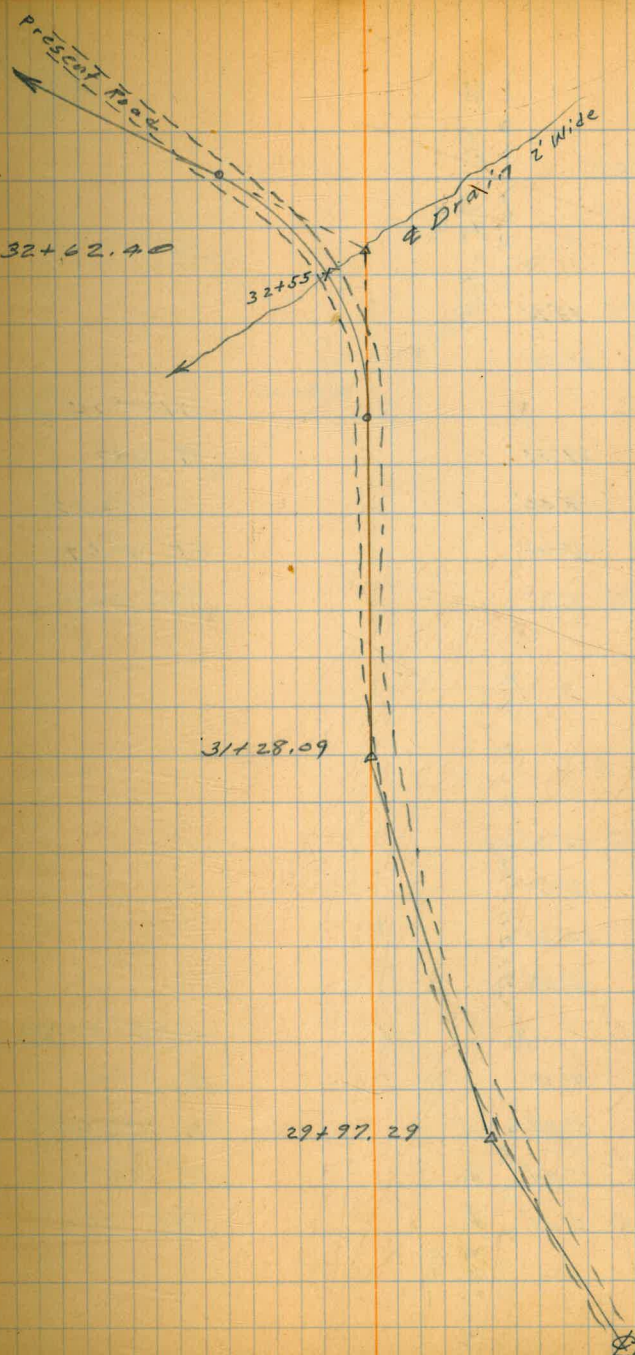
Δ 31° 00' Rt.

32+62.40

32+55

31+28.09

29+97.29



37+99.41 P.O.T.

274.70
W 8° 58' 59" E

37+24.34 E.C. 53° 36'

37+00 4° 53'

36+93.38 P.I. X X

+75 29° 57'

+50 18° 00'

+25 6° 04'

36+12.29 B.C. 0° 00'

Δ 107° 00' Lt.

R 60

L 112.05

ST. 81.09

Ext. 40.9

35+54.68 E.C. 26° 30'

+50 25° 37'

+25 20° 50'

35+00 16° 03'

5640.13
E 21° 3.49'

34+90.72 P.I. X X

+75 11° 17'

+50 6° 30'

+25 1° 44'

34+15.93 B.C. 0° 00'

Δ 53° 00' Rt.

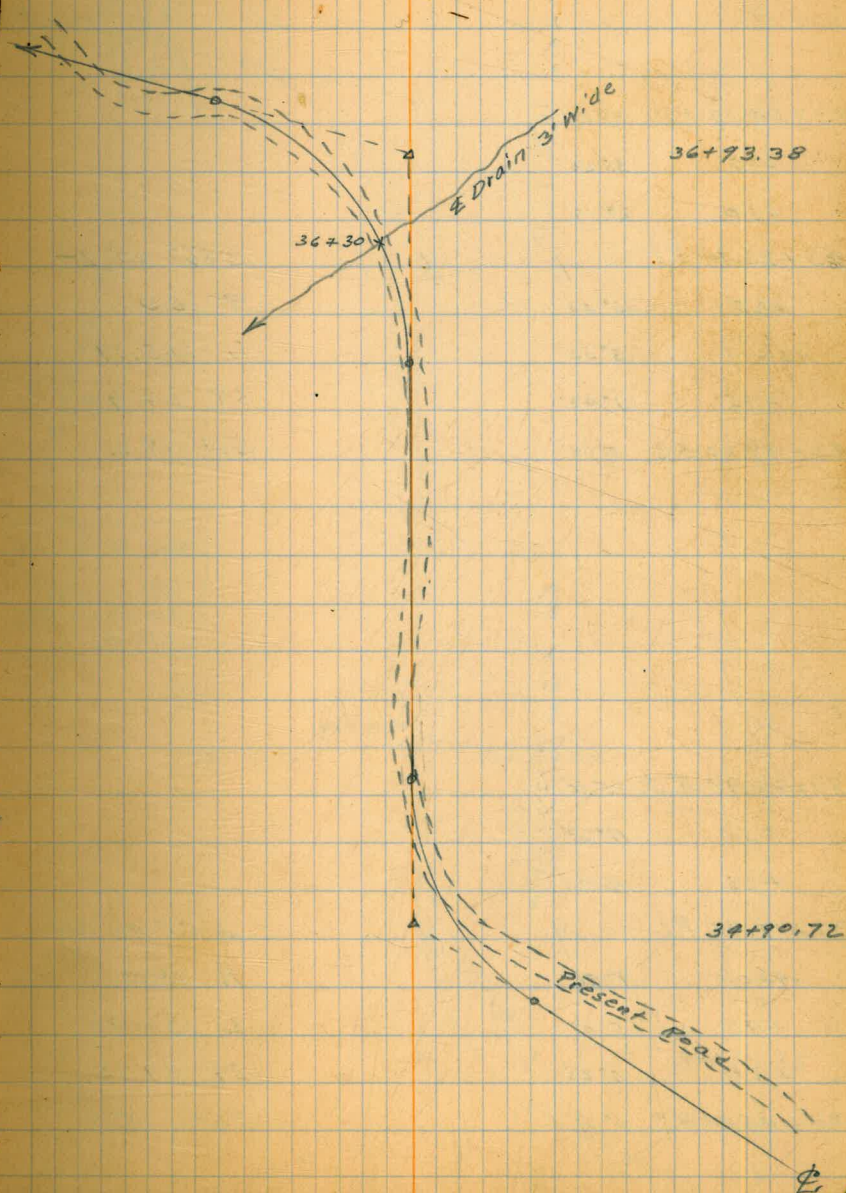
R 150

L 138.75

ST. 74.79

Ext. 17.6

233.42
N 62° 58' 59" E



43+84.19 E.C. 33°00'

+75 30°22'

+50 23°12'

43+33.94 P.I.

+25 16°03'

43+00 8°53'

+75 1°43'

42+69.00 B.C. 0°00'

N 70° 00' W 995.03

Δ 66° 00' Lt.

R 100

L 115.19

S.T. 64.94

Ext. 19.2

Nov. 8-'27

Ward - Ch.
Duermitt - Ch.
M^e Bain - "

39+78.90 E.C. 25°00'

+50 19°29'

+25 14°42'

39+17.95 P.I.

39+00 9°56'

+75 5°09'

+50 0°23'

38+48.00 B.C. 0°00'

N 58° 58' E 427.99

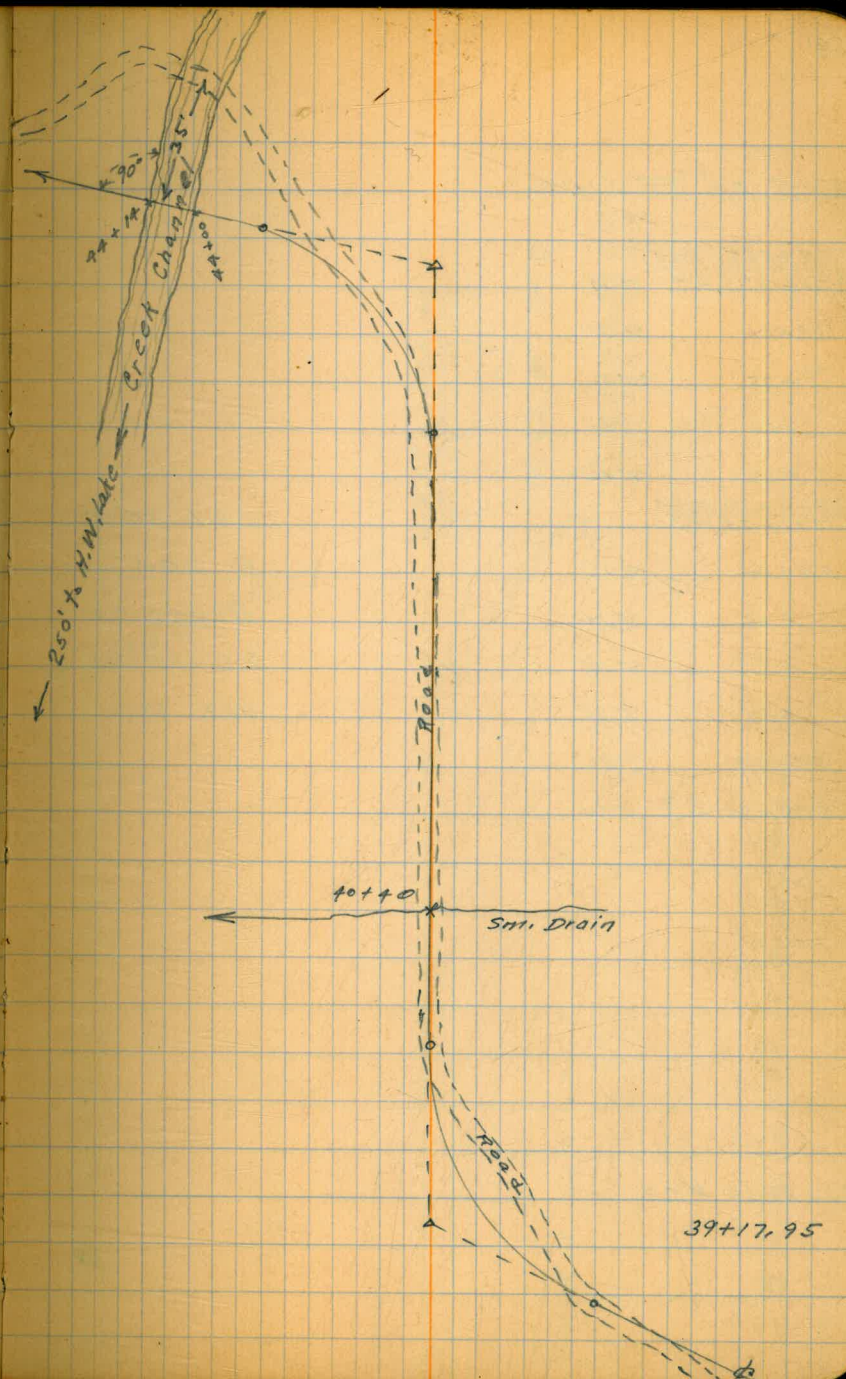
Δ 50° 00' Rt

R 150

L 130.90

S.T. 69.95

Ext. 15.5



End of "B" Line.

"A" 59+02.21 P.O.T.
"B" 54+13.73 E.C. 32° 29'

54+00	30° 31'
+75	26° 56'
+50	23° 21'
+25	19° 46'

X 57° 56' 30" E
57'

Closure 30'
M

"A" 57+74.88 P.O.T.
"B" 53+14.28 P.T.

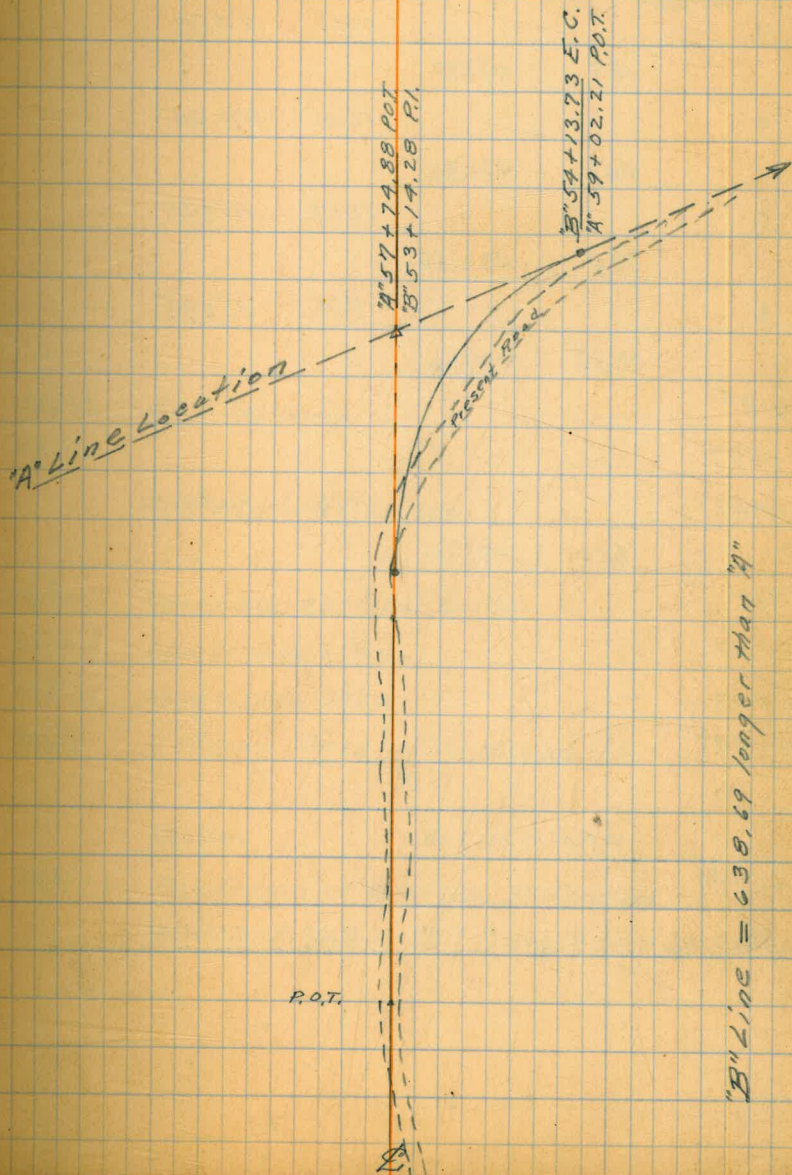
53+00	16° 12'
+75	12° 37'
+50	9° 02'
+25	5° 27'
52+00	1° 52'

Δ 64° 58' P.T.
R 200
L 226.78
S.T. 127.33
Ext. 37.1

"B" 51+86.95 B.C. 0° 00'

46+28.64 P.O.T.

(N 70° 15' W 99.5.03)



"B" Line = 638.69 longer than "A"

(28)

Lower Otay Dam
Stadia Topography
Vicinity End Independent Spillway

3/26/32
3/28/32
R.C. Woeste
Frank Osborne
Semmermeyer
Ball

Copied 4/1/32

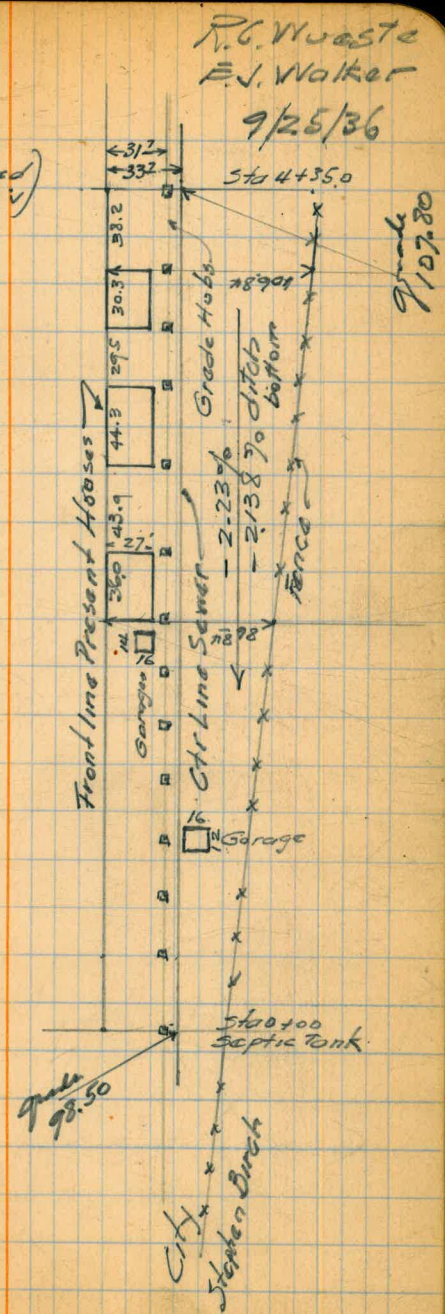
Sta	Stadia	Vert Angle	Diff Elevation	Elev	Horiz Dist	Defl. Angle	
	101	-13°53'	-23.8	367.3	96.1	Rt 28-21	Lt side channel
	38	+27°33'	+16.0	407.1	30.7	Rt 122-50	on Rt bank
	65	+7°10'	+8.2	399.3	65.0	Lt 6-08	on Lt bank
	78	+26°32'	+31.6	422.7	63.3	Rt 138-53	on Rt bank
4 + 01 ²⁸	123	-12°05'	-25.38	391.08	118.57	Rt 34-20	on ledge at angle pt in channel
	73	-30°25'	-32.4	415.6	55.1	Rt 16-58	Bottom channel
	165	-9°54'	-28.1	419.9	161.1	Rt 3-24	Top Lt bank
	130	-1°18'	-3.9	445.0	130.9	Lt 14-30	Top Lt bank
	63	-34°38'	-30.3	417.7	43.5	Rt 25-12	Bottom channel 2' up Rod held
	54	-22°55'	-19.7	428.3	46.7	Rt 33-05	on Rt side
	92	-14°40'	-22.8	425.2	87.0	Rt 3-18	on Lt side channel
	32	-30°20'	-14.4	433.6	24.6	Rt 41-31	Bottom channel
	14	+9°41'	+2.5	450.5	14.6	Lt 11-12	on Rk rib in channel
	64	-16°14'	-17.4	430.6	59.9	Rt 7-55	on Lt bank
	83	+0°47'	+1.2	449.2	84.0	Rt 52-20	Top bank Rt side
	52	+0°50'	+0.8	448.8	53.0	Lt 9-54	Top bank Lt side
	37	+15°38'	+9.9	457.9	35.2	Rt 84-44	Top cut Rt side channel
	32	+32°33'	+15.0	463.0	23.6	Lt 89-41	Top cut Lt side channel
	71	+28°38'	+30.3	478.3	55.4	Rt 157-14	Upper Rt cor Spillway
	43	+11°04'	+7.8	455.8	42.4	Rt 159-08	Lower Rt cor Spillway
	69	+28°32'	+29.3	477.3	54.1	Lt 157-28	Upper Lt cor Spillway
	42	+11°10'	+8.2	456.2	41.4	Lt 159-42	Lower Lt Cor. Spillway
2 + 57 ³⁶	166	-21°30'	-56.95	448.03	144.62	Rt 16-37	B.S. on ϕ spillway See page 27 on ϕ of spillway produced

Sta	Stadia	Vert Angle	Diff Elevation	Elev	Horiz Dist	Defl Angle	
	172	+22°28'	+61.1	426.8	147.7	Lt143-18	
	111	+17°44'	+32.5	398.2	104.6	Lt122-51	Some descrip. as line below on axis of rounded sloping ridge forming Lt barrier channel
	14	-15°05'	-38	361.9	14.0	Rt102-12	Lt bank Otay Creek
	55	-2°41'	-2.6	363.1	55.9	Lt78-27	Lt bank Otay Creek
	14	+3°40'	+1.0	366.7	14.9	Rt147-57	Lt bank Otay Creek
5+20 ^{EE}	338	+1°05'	+6.41	365.70	338.88	Rt81-34	Center channel at confluence w/ main River
	9	+4°25'	+0.8	391.9	9.9	Rt116-47	
	34	-22°11'	-12.2	378.9	30.0	Rt20-20	Center channel on sloping bed rock
	33	-3°32'	-2.1	389.0	33.9	Rt149-00	Rt side channel W/S of hole 9' deep
	30	-28°13'	-12.9	378.2	24.1	Rt54-34	Rt side channel
	55	-2°21'	-2.3	388.8	55.9	Rt154-30	Rt side channel
	57	-0°01'	0.0	391.1	58.0	Rt172-04	Center channel bottom of falls
	43	-31°00'	-19.2	371.9	32.3	Rt28-51	Rt side channel
	55	-21°35'	-19.2	371.9	48.4	Rt38-07	Rt side channel
	67	-17°41'	-19.7	371.4	61.7	Rt41-09	Rt side channel
	70	-21°41'	-24.4	366.7	61.3	Rt32-52	Rt side channel
	22	-0°01'	0.0	391.1	23.0	Lt88-15	Lt side channel
	84	-18°21'	-25.4	365.7	76.6	Rt33-40	Rt side channel in pothole
	91	-15°26'	-23.6	367.5	85.5	Rt34-07	Rt side channel
	82	-8°47'	-12.5	378.6	81.1	Rt39-55	on Rt bank
	33	-7°28'	-4.4	386.7	33.4	Lt14-25	Lt side channel
	60	+5°29'	+5.8	396.9	60.4	Rt54-11	Rt bank
	65	-21°42'	-22.7	368.4	57.0	Rt20-34	Lt side channel
	28	+10°15'	+5.1	396.2	28.1	Rt66-42	on Rt bank

Sta	Stadio	Vert Angle	Diff Elevation	Elev.	Horiz Dist	Defl. Angle	
elevation closure - 0.99 ft.							
				447.04			
$\frac{12+139.31}{2457.36}$							See page 28
11+75.72	73	-22°02'	-25.73	472.77	63.59	Rt 34-15	
11+09.75	65	-1°19'	-1.52	474.29	65.97	Lt 13-47	
10+36.34	77	+14°02'	+18.35	455.94	73.41	Lt 1-22	on hill bet. spillway and river
	88	-3°58'	-6.1	366.0	88.6	Rt 173-37	Lt bank Otay Creek
	176	-1°43'	-5.3	366.8	176.8	Rt 34-55	Contact of dam w/ Lt bank of Otay Ck
8+59.43	218	+24°59'	+83.83	372.11	176.91	Rt 139-41	on rk pile ctr of Creek
	315	+15°45'	+82.5	448.2	292.7	Rt 103-29	same descrip. as line below
	233	+19°35'	+73.9	439.6	207.7	Rt 108-38	same descrip. as line below
	184	+25°46'	+72.4	438.1	150.1	Rt 135-25	on hill forming Rt barrier of Spillway channel
	113	-1°32'	-3.0	362.7	113.9	Rt 85-38	Lt bank Otay Creek
	14	-20°23'	-4.9	360.8	13.2	Lt 5-33	Bottom Otay Creek Channel of Spillway channel mouth w/ Lt bank
	8	-15°08'	-2.3	363.4	8.4	Lt 91-57	Junct Lt side Channel Otay Ck.

3) Lower Story Employees Colony
Sewer Line and Septic Tank - S.V.O. 328

	HT		Grade	Cut			
0+00	8.00	108.00	100.00	98.50	1.50 Location Septic Tank (Assumed Elevation)		
0+39.5			7.35	100.65	99.35	1.30	
0+69.7			6.52	101.48	99.99	1.49	
0+99.9			5.90	102.10	100.64	1.46	In front of garage
1+29.1			5.13	102.87	101.26	1.61	
1+57.4			4.78	103.22	101.87	1.35	
1+84.9			4.40	103.60	102.46	1.14	
2+12.8			3.81	104.19	103.05	1.14	NL Walker Hse
2+48.8	3.32	108.09	3.23	104.77	103.82	0.95	SL do do
2+92.7			1.88	106.21	104.74	1.17	NL Reader Hse
3+37.0			0.74	107.35	105.71	1.64	SL do do
3+66.5	6.18	111.81	2.46	105.63			
3+96.8			3.18	108.63	106.34	2.29	NL Bottalberg's Hse
4+35.0			2.44	109.37	106.99	2.38	SL do do
			2.10	109.71	107.80	1.91	Rear of Proposed New Hse



31

32

31

33

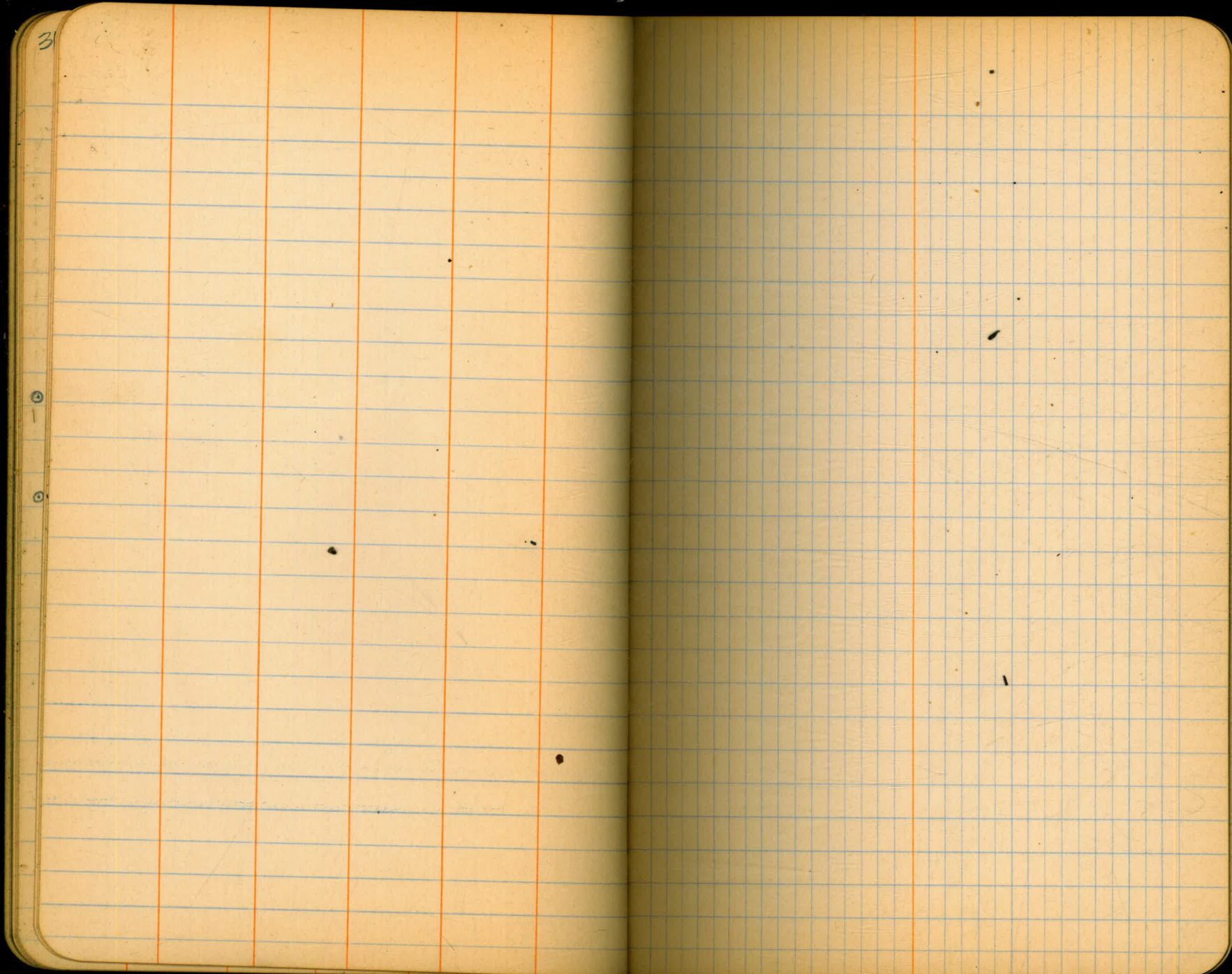
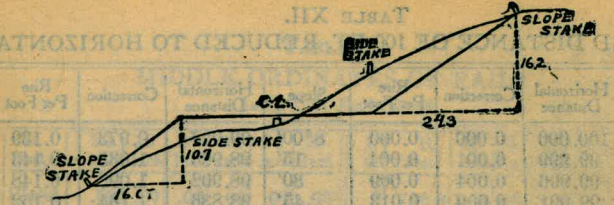


TABLE XII
DISTANCES FROM SIDE STAKES FOR CROSS-SECTIONING.



DISTANCES FROM SIDE STAKES FOR CROSS-SECTIONING.

SLOPE 1 1/4 TO 1. ROADWAY OF ANY WIDTH.

	0	.1	.2	.3	.4	.5	.6	.7	.8	.9	
0	0 00	0 15	0 30	0 45	0 60	0 75	0 90	1 05	1 20	1 35	0
1	1 50	1 65	1 80	1 95	2 10	2 25	2 40	2 55	2 70	2 85	1
2	3 00	3 15	3 30	3 45	3 60	3 75	3 90	4 05	4 20	4 35	2
3	4 50	4 65	4 80	4 95	5 10	5 25	5 40	5 55	5 70	5 85	3
4	6 00	6 15	6 30	6 45	6 60	6 75	6 90	7 05	7 20	7 35	4
5	7 50	7 65	7 80	7 95	8 10	8 25	8 40	8 55	8 70	8 85	5
6	9 00	9 15	9 30	9 45	9 60	9 75	9 90	10 05	10 20	10 35	6
7	10 50	10 65	10 80	10 95	11 10	11 25	11 40	11 55	11 70	11 85	7
8	12 00	12 15	12 30	12 45	12 60	12 75	12 90	13 05	13 20	13 35	8
9	13 50	13 65	13 80	13 95	14 10	14 25	14 40	14 55	14 70	14 85	9
10	15 00	15 15	15 30	15 45	15 60	15 75	15 90	16 05	16 20	16 35	10
11	16 50	16 65	16 80	16 95	17 10	17 25	17 40	17 55	17 70	17 85	11
12	18 00	18 15	18 30	18 45	18 60	18 75	18 90	19 05	19 20	19 35	12
13	19 50	19 65	19 80	19 95	20 10	20 25	20 40	20 55	20 70	20 85	13
14	21 00	21 15	21 30	21 45	21 60	21 75	21 90	22 05	22 20	22 35	14
15	22 50	22 65	22 80	22 95	23 10	23 25	23 40	23 55	23 70	23 85	15
16	24 00	24 15	24 30	24 45	24 60	24 75	24 90	25 05	25 20	25 35	16
17	25 50	25 65	25 80	25 95	26 10	26 25	26 40	26 55	26 70	26 85	17
18	27 00	27 15	27 30	27 45	27 60	27 75	27 90	28 05	28 20	28 35	18
19	28 50	28 65	28 80	28 95	29 10	29 25	29 40	29 55	29 70	29 85	19
20	30 00	30 15	30 30	30 45	30 60	30 75	30 90	31 05	31 20	31 35	20
21	31 50	31 65	31 80	31 95	32 10	32 25	32 40	32 55	32 70	32 85	21
22	33 00	33 15	33 30	33 45	33 60	33 75	33 90	34 05	34 20	34 35	22
23	34 50	34 65	34 80	34 95	35 10	35 25	35 40	35 55	35 70	35 85	23
24	36 00	36 15	36 30	36 45	36 60	36 75	36 90	37 05	37 20	37 35	24
25	37 50	37 65	37 80	37 95	38 10	38 25	38 40	38 55	38 70	38 85	25
26	39 00	39 15	39 30	39 45	39 60	39 75	39 90	40 05	40 20	40 35	26
27	40 50	40 65	40 80	40 95	41 10	41 25	41 40	41 55	41 70	41 85	27
28	42 00	42 15	42 30	42 45	42 60	42 75	42 90	43 05	43 20	43 35	28
29	43 50	43 65	43 80	43 95	44 10	44 25	44 40	44 55	44 70	44 85	29
30	45 00	45 15	45 30	45 45	45 60	45 75	45 90	46 05	46 20	46 35	30
31	46 50	46 65	46 80	46 95	47 10	47 25	47 40	47 55	47 70	47 85	31
32	48 00	48 15	48 30	48 45	48 60	48 75	48 90	49 05	49 20	49 35	32
33	49 50	49 65	49 80	49 95	50 10	50 25	50 40	50 55	50 70	50 85	33
34	51 00	51 15	51 30	51 45	51 60	51 75	51 90	52 05	52 20	52 35	34
35	52 50	52 65	52 80	52 95	53 10	53 25	53 40	53 55	53 70	53 85	35
36	54 00	54 15	54 30	54 45	54 60	54 75	54 90	55 05	55 20	55 35	36
37	55 50	55 65	55 80	55 95	56 10	56 25	56 40	56 55	56 70	56 85	37
38	57 00	57 15	57 30	57 45	57 60	57 75	57 90	58 05	58 20	58 35	38
39	58 50	58 65	58 80	58 95	59 10	59 25	59 40	59 55	59 70	59 85	39
40	60 00	60 15	60 30	60 45	60 60	60 75	60 90	61 05	61 20	61 35	40
41	61 50	61 65	61 80	61 95	62 10	62 25	62 40	62 55	62 70	62 85	41
42	63 00	63 15	63 30	63 45	63 60	63 75	63 90	64 05	64 20	64 35	42
43	64 50	64 65	64 80	64 95	65 10	65 25	65 40	65 55	65 70	65 85	43
44	66 00	66 15	66 30	66 45	66 60	66 75	66 90	67 05	67 20	67 35	44
45	67 50	67 65	67 80	67 95	68 10	68 25	68 40	68 55	68 70	68 85	45
46	69 00	69 15	69 30	69 45	69 60	69 75	69 90	70 05	70 20	70 35	46
47	70 50	70 65	70 80	70 95	71 10	71 25	71 40	71 55	71 70	71 85	47
48	72 00	72 15	72 30	72 45	72 60	72 75	72 90	73 05	73 20	73 35	48
49	73 50	73 65	73 80	73 95	74 10	74 25	74 40	74 55	74 70	74 85	49
50	75 00	75 15	75 30	75 45	75 60	75 75	75 90	76 05	76 20	76 35	50

Computed by L. Leland Locke.

780
 15

 950
 85

 845
 64

 781
 65

 716
 62

 654
 493

 0214
 31

 214
 642

 6634

22

BC

U.S.G.S. BM. 514, 887

At upper end Lake

492.2 - Roadway on Lower Otay.

3/8/30
J. X. W.
T. M. M.

BC = 191+77.05

Δ 130°57' P.I. = 193+09.05

ST. 132'

R = 60.22

Width of Co Ford 23.00

Nail in crack in concrete 11.50

192+⁰⁰22.95

191+77.05

132

193+09.05

130-57

65-28.30

ST 65°28'30"

2,1918	60.22
2,1918	132,000
	131,508
	49,200
	43,836
	83,640

