

W 307

Wash. Reservoir Basin Leds

400' Contour

307

MICROFILMED
JAN 12 1965

Our Leather Bound Engineers Note Books are carried in the following rulings:

- No. 380 LEVEL BOOK. Left and Right Hand Page the same as Left Hand Page of this Book.
- No. 382 FIELD BOOK. Left Hand Page as in this Book, Right Hand Page 4 x 4 to the inch, Center Line Red.
- No. 384 MINING TRANSIT BOOK. Left Hand Page as in this Book, Right Hand Page 8x8 to the inch, Center Line Red.
- No. 385 FIELD BOOK. Left Hand Page as in this Book, Right Hand Page 8 vertical and 4 horizontal lines to the inch, Center Line Red.

We also carry the Note Books listed above, bound in extra strong Fabri-Hide (otherwise the same quality of book), which can be furnished at a somewhat lower price.

In ordering Fabri-Hide covered books, add the letter "F" to catalog number.

THE FREDERICK POST CO.
ENGINEERING and DRAFTING SUPPLIES
IRVING PARK STATION
CHICAGO, ILL.

INDEX

Page

	Levels to Establish 400' contour	-
N. Side Traverse	East line Scripps property to Axis	- 4
	Dam Axis #2	- 32
	Levels thru Lake side	- 76
So. Side	{ 400' Contour from Axis of Mission #2 } to connection with Hayler Survey in 1922	33 - 48
	University Hts Reservoir	73
	Bench Levels to Establish 400' El. - Lakeside	76 -
	" " " " S.D. River	77 - 79
	Solar Observation	80
	Elevations at University Hts. Res.	80
	285 contour at El Cajon N-Bldg	49
	Tie to Mission Dam site No 2	51
	Bench levels to Mission No 2	58 - 59
	Notes on old Sand Pit - water hole near	
	Murray Canyon x spring of S.D. River	53 - 58
	X-Sec. of Pump House Site	71 - 72
	Bench Levels - La Mesa to Murray Dam	56 - 57

A Line of levels to establish 400' contour
South from County Road


Sta	+R	H.I.	-R	Elev.
				336.71
9.40	346.11		1.85	344.26
8.10	352.36		5.71	346.65
8.28	354.93		5.50	349.43
1.48	350.91		4.83	346.08
6.09	352.17		5.65	346.52
5.94	352.46		0.09	352.37
9.08	361.45		0.76	360.69
11.87	372.56		.36	372.20
13.04	385.24		0.51	⁴ 384 .73
8.30	³ 397 .03		0.69	⁷ 397 .34
11.49	³ 407 .83		1.01	² 407 .82 B.M.

P.O.C.
Bailey
Spet
Jacobson
Remmen

Feb. 27-30 Raining heavy

①

Starting from El Capitan Pipe Line BM
72 being a nail in Power Pole # 72297 -
This pole is approx. 100' West of where the East
line of Scripps Prop. crosses the County Road
and El Capitan Pipe line - This Prop line
is well defined by a road on the South side
and a fence on the North disappearing over
the hills a mile eastward

on largest point of split Boulder 
on point covered with large rocks about $\frac{3}{4}$ mile south
of County Road

Bench levels North along East line of Scripps Prop
to establish 400 Elev. Contour.

+	H.I.	-	Elev.
			336.71
5.53	342.24		
		5.78	336.46
4.60	341.06		
		2.91	338.15
3.65	341.80		
		8.95	332.85
3.91	336.76		
		6.02	330.74
9.74	340.48		
		8.04	332.44
6.66	339.10		
		0.61	338.49
11.19	349.68		
		0.49	349.19
12.57	361.76		
		0.28	361.48
12.67	374.15		
		0.49	373.66
13.07	386.73		
		0.39	386.34
12.12	398.46		
		0.09	398.37
7.37	405.76 ^A		
		5.76	399.98
		1.34	400.00
			+04.90

B.M.

P.O.G.
Jacobzain
Boyle
Soper
Remmen

Raining Feb. 27-30

(2)

Electric
Pole #78972
River bottom.

on Fence line North of Strobeck Cor. (as called by Nussle)
set on fence Post 15' N of Contour point 1922

Check levels to close circuit

	405.74			
		12.73		
0.32	393.33		393.01	
		12.69	380.64	
1.14	381.78			
		12.58	369.20	
0.95	370.15			
		12.16	357.99	
0.52	358.51			
		12.68	345.83	
1.01	346.82			
		8.83	338.00	
0.94	338.94			
		3.88	335.06	
5.41	340.47	9.74	320.73	=330.74
8.34	339.07	8.		
		4.05	335.02	
6.73	341.75			
		4.73	337.02	
4.32	441.34			
		4.59	336.75	=336.71

3

Traverse of 400' Contour on N.S. San Diego River

408.42

350

(4)

Sta	Az	H.I.	Dist.	Bear	404.40
		0.25 404.65		50°19' W	
	359°51				
	358°51		.98		
N-1	102°46		0.80		400
N-2	84°29		2.16		400
N-3	86°15		2.59		"
N-4	92°55		5.20		"
N-5	70°40		4.03		"
N-6	52°51		4.40		"
N-7	45°04		5.21		"
N-7A	45°10	404.40 BM 4.08 BM	0.66	545°10' W	403.83
N-7A to N-8		408.48	0.66		
N-8	734°47		.08		400
N-9	61°07		.68		"
N-10	86°54		2.72		"
N-11	82°12		4.18		"
N-11A	86°18	6.73	5.74	582°18' W	403.96
N-11A to N-7A		410.56	5.76		403.83
N-12	8°47		.25		400
N-13	91°41		.73		"
N-14	140°05	400.00 7.86	2.52	N 39°55' W	400.00
N-14 to N-11-A		404.86	2.52		405.92
N-15	170°51		2.72		400
N-16	139°51		2.36		"
N-17	87°15		3.30		"

B.M. see preceding Pa

to B.M. on South Side of Valley

to 4x4 with track North of County Road S.E. cor. Scripps Prop.
to Strobeck cor. (see Book 154)

1465.5 3079 W to Scripps East line and prominent E.W. Fence

in small gulley

Mag. 545° W

Mag. 582° W

Mag. N 40° W

in draw

A00 contour N-S of San Diego River

P.C.G.
Jacobson
Boiley
Loper
Kammen

Feb. 28-30

(5)

Sta	Az	H.T	Dist.	Beqr	
Trat N-14-to					
N-18	59°30		3.78	400	
N-19	48°46		4.94	"	
999 in # N-11-A to					
N-17A		6.90 40.73	5.78	N82°18E 403.83	Mag. N82°30E
N-20	67°08		6.46	400.	
N-20-A	66°41		7.74	566°41W 405.94	Mag. 567° W
N-20-A to					
N-11-A		4.91 410.83	7.76	405.92	
N-21	24°30		3.4	400	
N-22	88°05		1.30	"	
N-23	103°00		2.40	"	
N-24	94°01		3.58	"	
N-25	95°05		5.56	"	
N-26	101°07		6.82	"	
N-26 A	102°02		5.93	N77°58W 404.74	Mag. N 78°15W
N-26-A to					
N-20-A		3.79 409.73	5.98	405.94	
N-27	105°34		1.92	400	
N-27-A	115°53		2.48	8.19 N64°07W 401.54	Mag. N64°30W
N-27-A to					
N-26-A		1.64 406.38	2.45	404.74	
N-28	170°41		1.65	400	
N-29	159°06		4.68	"	
N-30	159°46		5.40	"	

400 Contour N.S. San Diego River

ROC
 Terrace
 Body
 Super
 Remnant

March 1-30

⑥

Sta.	Az	M. I.	Dist.	Bearg.	Elev.
N-31	162°21	406.38	6.00		400
N-32	166°32		7.34		"
N-33	156°04		8.36		"
N-34	152°30		11.54		"
N-35	156°42		12.52		"
N-36	148°47		12.46		"
N-37	145°03		10.34		"
N-38	135°06		8.40		"
N-39	122°12		7.56		"
N-40	105°47		5.38		"
N-41	99°52		5.16		"
N-42	68°44		6.54		"
N-42-A	68°52		8.44	568°52N 403.69	403.69
π N-42-A to		7.32			
N-43		408.86	8.41		401.54
N-43	335°30		.61		400
X-44	36°30		.85		"
N-45	117°30		3.80		"
N-46	102°23		6.56		"
N-46A	113°45		8.48	N66°55W 403.99	403.99
π N-46-A to		5.35			
N-42-A		409.04	8.44		403.69
N-47	85°02		.52		400
N-48	138°28		4.8		"
N-49	124°41		7.42		"

small draw

in bottom of wash draining good sized area

The contour to this point has run about 10 feet below the edge of a bench sloping gradually to the hills 1000' away

Mag. 568°52W

The contour is now on top of bench which is covered with small hummocks 1.5 to 2 ft high all grazing land only, this far

in old Road N65

Mag. N66°55W

400' Contour N-S San Diego River

Sta	Az	H.I. 409.04	Dist.	Bear	Elev. 4.00 405.04
N-49-A	122°11		10.22	N57°49W	
N-49-A to		6.13			
N-46-A		410.12	10.16		403.99
N-50	331°47		1.21		400
N-51	67°47		1.70		"
N-52	145°12		2.26		"
N-53	147°17		4.70		"
N-65-A	154°28		12.46	N25°32W	3.25 406.87
N-65-A to		6.68			
N-49-A		411.72	12.50		405.04
N-54	325°11		7.54		400.
N-55	322°03		7.10		"
N-56	319°14		6.28		"
N-57	316°30		5.94		"
N-58	306°35		6.08		"
N-59	309°22		8.10		"
N-60	290°48		9.34		"
N-61	279°55		8.50		"
N-62	275°08		6.06		"
N-63	268°00		4.00		"
N-64	291°22		2.70		"
N-65	283°13		1.56		"
N-66	328°22		1.50		"
N-67	47°37		2.02		"
N-68	87°50		3.54		"

P.O.C.
Jacobson
Boiling
paper
Rammes

March 1 '30

⑦

Mag N 58° 15 W

Mag. N 26° 30 W

} Rocky Point

400' Contour N.S. San Diego River

Sta.	Az	H.T.	Dist.	Bear.	Elev.
N-68-A	104°58	411.72	3.98	N 75-02W	405.40 6.32
⊥ N-68-A to		3.58			
N-65-A		410.45	3.94		406.87
N-69	54°39		1.21		400
N-70	165°18		1.30		"
N-71	179°17		1.68		"
N-72	205°50		2.78		"
N-73	169°27		2.22		"
N-74	137°28		2.56		"
N-75	127°00		4.32		"
N-75-A	142°30		4.88	N 37-30W	404.30 6.15
⊥ N-75-A to		3.75			
N-68-A		409.25	4.88		405.10
N-76	190		1.26		400
N-77	159°12		5.22		"
N-77-A	160°54		9.46	N 19°06W	402.64 6.51
⊥ N-77-A to		3.47			
N-75-A		407.77	9.48		404.30
N-78	91°00		1.50		400
N-79	178°14		1.90		"
N-80	177°42		3.20		"
N-81	155°47		3.06		"
N-82	143°23		4.32		"
N-83	147°50		6.40		"
N-83-A	158°02		8.40	N 21°58W	402.80 4.97

P.O.S
Jacobson
Bailey
Soper
Remmon

March 3-20
Raining

(3)

Mag. N 75° 26' W

small draw

Mag. N 38° 45' W

Mag. N 19° 30' W

small gully

400' Contour N-S San Diego River

Fog
Jacobson
Baily
Soper
Remmen

March 3-30

(9)

Sta.	Az	H.T.	Dist.	Bear.	Elev.
N-83-A to		5.08			
N-77-A		407.72	8.38		402.64
N-84	83°37		.30		400
N-85	172°41		2.36		"
N-86	183°07		3.28		"
N-87	192°36		3.80		"
N-88	172°54		4.54		"
N-89	169°57		6.00		"
N-90	171°50		6.90		"
N-90-A	174°22		6.98	N 5°30 W	5.43 402.29
N-90-A to		4.58			
N-83-A		407.38	6.98		402.80
N-91	213°52		.75		400
N-92	184°45		1.96		"
N-93	186°52		2.80		"
N-94	190°25		4.36		"
N-94-A	192°31		4.32	N 12°31 E	5.88 401.50
N-94-A to		4.01			
N-90-A		406.30	4.36		402.29
N-95	199°25		2.12		400
N-96	198°30		4.52		"
N-97	201°20		7.40		"
N-97-A	203°11		7.30	N 23°11 E	3.55 402.75
N-97-A to		6.37			
N-94-A		407.87	7.28		401.50

Small gully

Mag. N 5° W

Small wash

Mag. N 13° E

of E & W Fence set hub which comes about 60'
east of Gate across old road

400' Contour N.S. San Diego River

P.O.G.
Jacobson
Bailey
Saper
Remmen

March 3-30

(10)

Sta.	Az.	H.I. 407.87	Dist	Bear.	Elev.
TN97-A to					
N-98	84002 235°07		.50		400
N-99	192°05		2.00		"
N-100	202°30		3.00		"
N-101	206°14		3.80		"
N-102	208°00		5.14		"
N-103	202°30		6.40		"
N-104	194°16		6.54		"
N-105	200°41		8.16		"
N-106	194°30		7.80		"
N-107	188°45		9.84		"
N-107-A	119°08		11.16	N60°52W	404.05 ^{3.82}
N-107-A to		6.01			
N-97-A		408.76	11.10		402.76
N-108	262°17		8.52		400
N-109	250°39		8.46		"
N-110	224°25		4.34		"
N-111	218°18		3.56		"
N-112	221°15		2.54		"
N-113	308°23		.12		"
N-114	15°50		1.90		"
N-115	13°30		5.82		"
N-115-A	222°02		5.88	322°02W	403.59 ^{5.17}
N-115 A to					
N-107-A					404.05

on East side of Canyon (Big Sycamore)
to fence cor. West of Point N95

East channel

Q channel

on West Side of Big Sycamore Canyon

Mag. N60°45W

on N&S Fence

Mag. 321°15W

400' Contour N-S San Diego River

P.O.G.
Tadison
Bailey
Soper
RemmenMarch 3-30
4-30

(11)

Sta.	Az	H 1	Dist	Bear	Elev.
N-115-A to		4.40			
N-107-A		408.45	5.84		404.05
	76°41				
N-116	296°18		52		400
N-117	15°40		1.28		"
N-118	19°40		3.02		"
	2°01		2.00		
	341°41		3.80		
	333°57		3.50		
N-119	23°21		3.90		400
N-119-A	19°00		6.79	S 19°00W	402.59
N-119-A to		3.82			586
N-115-A		407.41	6.78		403.59
N-120	12°36'		.70		
N-121	26°34'		2.16		
N-122	20°00		4.46		
N-122-A	11°44		9.44	S 11°34W	401.39
N-122-A to		3.88			6.02
N-119-A		406.47	9.40		402.59
N-123	322°40		.32		400.
N-124	51°14		.36		"
N-125	196°36		1.70		"
N-126	105°34		2.62		"
N-127	107°04		4.68		"
N-128	100°07		5.80		"

S 21°15W Mag.

to Fence cor shot from N-97A

on E & W Fence

Angle in Fence to Windmill

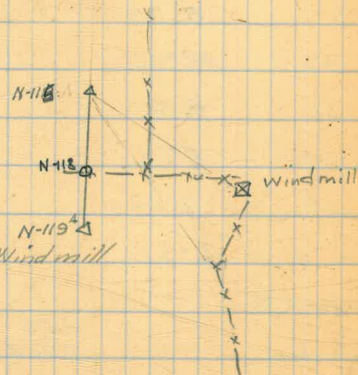
Windmill

N & S on East Fence from Windmill

Mag. S 19° W

Mag. S 11° 45W

large gully



400' Contour N-S. San Diego River

P.O.G.
Jacobson
Boily
Super
Rechner

cloudy March 4-30

(12)

Sta.	Az	H.I.	Dist.	Bear.	Elev.
N-122-A		406.47			401.39
N-129	91°00		4.96		400
N-130	81°17		4.84		"
N-131	70°34		3.60		"
N-132	48°08		3.84		"
N-133	4°50		5.74		"
N-134	5°33		7.94		"
N-135	2°00		8.94		"
N-135-A	3°30		11.66	53°30W	401.70 4.77
π N-135A to		5.06			
N-122-A		406.45	11.62		401.39
N-136	270°00		.06		400
N-137	38°35		.60		"
N-138	58°50		2.82		"
N-139	35°40		2.28		"
N-140	2°34		2.28		"
N-141	358°06		3.16		"
N-145-A	350°10		8.36	59°50E	404.94 1.51
π N-145A to		8.15			
N-135-A		409.85	8.40		401.70
N-142	121°05		2.80		400
N-143	103°23		2.16		"
N-144	126°15		1.08		"
N-145	164°15		.60		"
N-146	276°35		.22		"

Mag. S30°45W

small draw

Small draw

400' Contour N-S San Diego River

POC
Tinkers
Bark
Soper
Kammen

cloudy March-1-30

(13)

Sta	Az	H.I.	Dist	Bear	Elev
KN-145-A		409.85			404.94
N-147	353°54		1.54		400.
N-148	9°15		2.54		"
N-149	1°50		3.90		"
N-150	11°05		4.58		"
N-151	31°20		5.25		"
N-152	15°50		5.66		"
N-153	4°15		6.70		"
N-154	357°10		7.30		"
N-155-A	358°25		9.26	51°35E	404.62 5.23
KN-155-A to					
N-145-A		4.57 409.51	9.34		404.94
N-155	248°35		.74		400
N-156	355°05		1.12		"
N-157	30°00		3.66		"
N-158	26°25		5.20		"
N-159	21°55		5.60		"
N-160	16°55		7.34		"
N-161	10°50		8.02		"
N-162	7°10		7.52		"
N-163	354°12		6.78		"
N-164	342°48		7.42		"
N-165	339°45		8.26		"
N-166	341°20		8.80		"
N-171-A	12°44		13.28	512°44W	405.84 3.67

small draw

Mag. S-1°45E

Mag. N10°45W

this shot thru saddle

400' Contour N.S. San Diego River

P.O.C

March 4-30

(14)

Sta.	Az	H.L.	Dist	Bear.	Elev.	
N-171-A to		5.22				
N-155-A		410.84	13.24		404.62	Mag. N12°E
N-167	241°15	^{5.8} 5.0	5.70		400	
N-168	243°30		4.32		"	
N-169	238°05		3.24		"	
N-170	211°35		2.26		"	
N-171	212°45		1.02		"	
N-172	350°45		.78		"	
N-173	87°50		1.86		"	
N-174	23°40		2.72		"	
N-175	27°43		4.68		"	
N-176	34°15		5.56		"	
N-177	25°05		5.26		"	Small gulley
N-178	10°15		5.30		"	
N-179	4°00		5.96		"	
N-180	357°45		6.40			
N-180-A	3°45		6.52	53°45W	4.32 406.54	Mag. 5.4°W
N-180-A		5.57				
N-171-A		411.41	6.52		405.84	Mag. N4°E
N-181	270°47	^{6.2} 5.9	1.02		400	on Prominent E&W Fence
N-182	16°13		2.30		"	
N-183	24°00		3.88		"	
N-184	0°53		4.66		"	
N-185	2°09		6.30		"	
N-185-A	11°00		7.92	511°00W	6.20 401.95 405.21	

400' Contour N-S. San Diego River

P.O.G.
Jacobson
Bailey
Soper
Remmen

March 4-30

Sta	Az	H.I.	Dist.	Bear.	Elev.	
N-185-A to		4.01 410.55 5.2			405.21 401.95	
N-180-A			7.87		406.54	
N-186-A	49°17		3.14	S49°17W	4.64 405.91	Mag. S49°30W
N-186-A to		5.37 407.30 410.58				
N-185-A		4.2	3.12		405.21 401.95	
N-186	238°23		3.14		400	lots of hummocks 2' high scattered over this fairly level bench
N-187	326°00		4.6		"	
N-188	107°12		1.44		"	
N-189	95°11		2.64		"	
N-190	103°30		3.80		"	
N-190-A	106°04		3.68	N 73°56W	5.42 401.90 405.16	Mag. N 73°30W
N-190-A to						
N-186-A		4.51 410.42 5.2	3.71		405.91	
N-191	147°08		2.60		400	
N-192	142°45		5.26		"	
N-193	128°23		4.44		"	
N-194	119°30		5.10		"	
N-195	99°07		3.96		"	
N-196	73°30		3.16		"	
N-197	58°35		2.62		"	
N-198	16°40		3.14		"	
N-199	354°47		6.34		"	
N-199-A	3°59		7.96	S3°59 W	5.20 405.22	Mag. S4° W
N-199-A to						
N-190-A		4.82 406.77 408.98			405.16 401.90	

400' Contour N-S San Diego River.

P.O.S
Jacobson
Bailey
Soper
Remmen

Windy March 4-30

(6)

Sta	Az	H.I.	Dist	Bear.	Elev	
X N-199A		409.98 406.72	7.92		405.22	
	165°48		3.25			4" x 6" x 2" in middle of rock - no fence or any thing
N-200	323°N		.28		400	
N-201	43°30		3.10		"	
N-202	53°55		3.34		"	
N-204-A	59°38		8.18	S.59°38N	3.89 402.83 406.09	Mag. S 60°30W
N-204-A-u						
N-199-A		6.07 411.29	8.26		405.22	
N-203	234°26		3.18		400	
N-204	237°42		1.78		"	
N-205	269°07		1.08		"	
N-206	67°45		.94		"	
N-207	97°35		2.44		"	
N-208-A	109°05		4.04	N70°55N	5.15 406.14 408.16	Mag. N 70°25W
X N-208-A+0						
N-204-A		4.56 409.39 412.65	4.06		406.09 402.83	
N-208	137°40		.37		400	
N-209	108°30		1.10		"	
N-210	170°50		1.42		"	
N-211	177°20		2.70		"	
N-228-A	108°10		12.20	N71°50W	7.61 405.04	Mag. N 71°N
N-228-A+0						
N-208-A	270°00	1.97 410.13	12.30		408.16	
N-212	270°00		12.20		400	
N-213	262°25		12.38		"	

400' Contour N-S San Diego River

R.C.G.
Jacobson
Bailey
Loper
Remmen

Raining

March 5-30

(17)

Sta.	Az.	H.d.	Dist.	Bear	Elev.
N-228-A		410.13			
N-214	254°45		14.52		400.00
N-215-a	250°39		14.36		"
N-215-b	248°02		12.70		"
N-216	249°38		11.16		"
N-217	247°17		10.78		"
N-218-a	244°15		11.92		"
N-218-b	243°54		13.66		"
N-219	235°25		14.86		"
N-220	233°33		13.26		"
N-221-a	225°51		12.14		"
N-221-b	219°22		11.86		"
N-222	218°26		10.14		"
N-223	208°47		10.32		"
N-224	202°14		9.54		"
N-225	197°34		9.28		"
N-226	195°30		8.00		"
N-227-a	180°00		8.22		"
N-227-b	175°23		8.84		"
	180°28		14.22		"
N-228-a	178°03		8.16		"
N-228-b	172°08		5.58		"
N-229	158°50		3.66		"
	118°16		3.00		392.89 ←
N-230	121°17		4.02		"
N-231-A	114°17		8.76	N 65°43 W	4.88 405.25
N-231-A		4.56			
N-228-A		409.60	8.70		405.07
	337°56	V.A. 5°38	4.12		
N-231	312°43		.94		400
N-232	91°34		1.20		"

in fence line in bottom of good sized canyon
to fence cor. this is the ^{West} east end of long
fence going thru valley - fence turns
in saddle - for island see page 48
S-W direction

in fence running S-W

Mag. N 65°43 W

Mag. 365° E

Fence cor. N-E - South & West fences

400' Contour N-S. San Diego River

 POG
 Jacobson
 Bailey
 Soper
 Remman

Raining!

March 5-30

(18)

Sta.	Az	H.I.	Dist.	Bear.	Elev.
N-231-A to		409.60			
N-233	148°30		1.74		400
N-234	165°53		1.14		"
N-235	159°01		4.12		"
N-236	159°40		6.20		" small draw
N-237	156°45		5.16		"
N-238	149°16		4.38		"
N-239	146°47		3.76		"
N-240	107°37		2.20		"
N-241	70°00		2.86		"
N-242	62°07		3.76		"
N-242-A	66°30		4.02	S66°30W	6.05 403.55
N-242-A to		3.50			
N-231-A		402.75	3.98		405.25
N-243	72°52		.48		400
N-244	97°00		2.32		
N-244-A	104°06		3.40	N75°54W	5.15 403.60
N-244-A to		4.34 407.89			
N-242-A			3.42		403.55
N-245	110°00		.22		400
N-246	108°30		1.26		"
N-247	114°30		3.12		"
N-248	112°21		5.38		"
N-248-A	115°21		6.00	N64°09W	3.52 404.37
N-248-A to		5.94 409.54			
N-244-A			5.98		403.60

Mag S66°15W

1 Mag N75°54W

Mag N64°W

400' Contour N-S. San Diego River

 RCG
 Jacobszoon
 Soper
 Bailey
 Remmen

Raining March 5-30

(19)

Sta.	Az	H.L.	Dist.	Bear.	Elev.	
N-248-A		409.54			404.37	
N-249	114°23		1.98		400	
N-250	126°08		1.73		"	
N-251	146°30		1.62		"	
N-252	186°30		2.20		"	
N-253	161°50		3.35		"	
N-254	155°22		3.70		"	
N-255	145°17		4.00		"	
N-256	136°35		4.70		"	
N-257	133°55		5.64		"	
N-257-A	138°22		5.88	N41°32W	405.19	Mag. N41°W
N-248-A to		5.19				
N-248-A		409.56	5.94		404.37	
N-258	107°06	4.16 4.3	.72		400	
N-259	198°22		1.66		"	
N-260	216°35		4.40		"	small drain
N-261	188°10		3.78		"	
N-262	169°47		4.34		"	
N-263	163°15		5.40		"	
N-264	164°20		6.78		"	
N-264-A	166°29		9.00	N13°31W	404.62	Mag. N13°W
N-264-A to		4.67				
N-257-A		409.86	7.02		405.19	Mag. 513°E
N-265	182°45		.94		400	
N-266	199°11		2.70		"	small drain

400' Contour N.S. San Diego River

P.O.G.
Jacobson
Bailey
Soper
KammenMarch 5-30
Raining!

20

Sta.	Az.	H.L.	Dist.	Bear.	Elev.
N-264-A		402.86			404.62
N-267	178°35'		3.32		400
N-268	174°10'		4.20		"
N-269	174°23'		6.16		"
N-269-A	172°13'		6.74	N 2°47' W	404.55 4.31
N-269-A to		5.20 409.82			
N-269-A			6.76		404.62
N-270	90°00'		.20		400
N-271	177°05'		3.00		"
N-272	179°00'		5.70		"
N-273	177°00'		6.70		"
N-274	176°30'		7.54		"
N-275	179°16'		8.72		"
N-276	177°34'		11.46		"
N-277	170°55'		11.70		"
N-278	170°08'		10.74		"
N-279	165°25'		10.20		"
N-280	164°27'		9.30		"
N-281	158°37'		7.54		"
N-282	150°42'		6.00		"
N-283	142°35'		5.74		"
N-284	120°56'		5.16		"
N-285	104°18'		5.04		"
N-286	84°25'		5.34		"
N-287	77°25'		6.00		"

Mag. N 2° 30' W

Mag. 52° 55' E

in bottom of wash going far back into the hills

" " " " " " " " " " " "

400 Contour Survey N.S. San Diego River

POC
Jacobs 200m Raining to march! March 5-30
Bailey
Soper
Remmen

Sta.	Az	H.I.	Dist.	Bear.	Elev.
N-269-A to		409.82 408.86			
N-288	64°05		6.54		400
N-289	55°38		7.22		"
N-290	50°30		8.52		"
N-291	49°30		9.34		"
N-292	42°30		10.66		"
N-293	41°00		11.94		"
Magam N-257A		441 409.53			
to N 264-A	166°29		10.52		404.62
N-294	111°08		10.52		400
N-295	105°10		10.38		"
N-296	100°00		10.70		"
N-297	91.37		11.08		"
N-298	88°00		12.80		7.33
N-298-A	89°06 88°06		12.60	S89°06W	402.20
N 298-A to		406.65			401.91
N-257-A-	269°06		12.60		
N-299	92°30		1.38		400.
N-300	108°22		2.24		"
N-301	96°20		2.70		"
N-302	92°48		4.54		"
N-302-A	93°45		5.50	N86°15W	4.71 401.94
N-302-A to		4.64			
N-298-A		406.55	5.44		401.91
N-303	104°35		3.8		400

Mag. N 13°30W

Mag. S 89°30W

New H.I. by level from B.M. at old Mission Dam

Mag. N 89°45E

Mag. N 85°30 W

Mag. S 85°15 E

400' Contour N-S. San Diego River

P.O.G.
Jacobszoon
Bailey
Soper
Remmen

March 7 '30

22

Sta.	Az.	H.L.	Dist.	Bear.	Elev.
⊥ N-302-A		406.55			
N-304	121°00		9.2		400.
N-304-A	130°44		1.18	N49°16W	401.77
⊥ N-304-A		4.61 406.55			
N-302-A			1.18		401.94
N-305	149°38		1.08		400
N-306-	157°00		1.55		"
N-306-A	160°30		2.36	N19°26W	402.04
N-306-A to		4.71 406.68			
N-304-A			2.36		401.99
N-307	70°00		1.06		400
N-308	176°22		1.14		"
N-308-A	185°57		1.56	N5°57E	402.72
⊥ N-308-A to		5.54 407.58			
N-306-A			1.54		402.04
N-309	206°53		1.60		400
N-310	225°20		3.90		"
N-311	175°45		2.02		"
N-312	166°35		3.16		"
N-313	160°35		4.70		"
N-313-A	162°09		6.32	N17°51W	402.42
⊥ N-313-A to		4.33 407.05			
N-308-A			6.32		402.72
N-314	172°45		1.66		400
N-315	183°33		1.02		"

going around point into little Sycamore Canyon.

Mag. N48°10W

Mag. N12°30W

Mag. N6°45E

Mag. N17°15W

400' Contour N-S San Diego River

Sta.	Az	H.I.	Dist.	Bear.	Elev.
N-313-A to		407.05			402.42
N-316-	203°13		2.50		400
K-317	181°14		2.94		"
N-318	169°50		3.44		"
N-319	167°35		4.84		"
K-320	165°50		5.86		"
N-320-A	166°50		6.74	N13°10W	^{5.19} 401.86
N-320-A to		^{4.18} 406.60			
K-313-A			6.78		402.42
K-321	140°00		.10		400
N-322	177°30		.98		"
N-323	187°40		1.56		"
K-324	171°05		2.10		"
K-325	170°30		2.82		"
N-326	175°15		4.88		"
N-327	181°00		6.84		"
N-328	175°30		7.17		"
N-329	171°00		8.18		"
N-330	169°50		8.88		"
N-331	170°40		10.28		"
N-332	168°30		12.92		"
N-333-A	167°43		16.04	N12°17W	^{5.28} 401.32 + 4.96 406.28
N-333-A to		406.28			
N-320-A	347°43				
N-333	341°00		1.26		400
K-334	90°00		.10		"

P.O.G.
Dobson
Bailey
Soper
Remmen

March 7-30

23

Mag. N12°30W

Mag. N12°30W

400' Contour N-S. San Diego River

Sta.	Az	H.I.	Dist.	Bear.	Elev.
N-333-A to		406.28			401.32
N-335	172°52		1.62		400
N-336	165°05		3.26		"
N-337	159°30		4.06		"
N-338	151°55		3.34		"
N-339	125°30		2.10		"
N-340	96°55		1.94		"
N-341	50°30		3.38		"
N-342	37°00		4.84		"

again at N-320 to
406.57

N-313-A.	346°50			313°10E	402.42
N-343	151°12		12.86		400
N-344	140°43		10.44		"
N-345	133°22		9.34		"
N-346	128°40		8.52		"
N-347	124°00		8.20		"
N-348	98°00		6.52		"
N-349	80°30		6.70		"
N-350	67°53		7.12		"
N-351	63°12		7.66		"
N-352	49°35		8.80		"
N-353	44°45		9.62		"
N-354	39°51		10.60		"
N-355	26°30		13.34		"

P.O.G.
Tocodonta
Bailey
Spart
Remmen

March-7-30

(24)

in bottom of draw

Mag. 512°45E

400 contour N-S San Diego River

Sta	Az	H.I.	Dist	Bear	Elev
999 in at N-306-A to		4.68 406.65			
N-304	340°30				401.97
N-356	93°30		9.48		400
N-357	86°45		9.46		"
N-358	82°52		10.36		"
N-359	74°35		10.10		"
N-360	64°30		10.70		" c. 65
N-360-A	59°57		11.70	559°57W	400.00
N-360 to		2.94 402.98 by H.I. Rod			
N-306-A		404.94	11.72		402.04
	South				
N-361 S	43°55		1.68		400
N-362	59°08		2.08		"
N-363	65°18		2.46		"
N-365-A	53°09		7.06	553°09W	4.03 400.91
N-365-A to		5.86 405.86 by H.I. Rod			
N-360		406.91	7.06		400.00
	275°38 Va = 5°42		5.78		
N-364	178°44		4.92		400
N-365	206°35		.42		"
N-366	342°00		.10		"
N-367	59°45		.66		"
N-367-A	85°14		2.18	585°14W	4.15 400.91
N-367-A to		4.70 405.61			
N-365-A			2.18		400.91

ERC
Jacobson
Bailey
Saper
Remmon

March 7-30

(25)

Mag. 518°30E

Mag. 561°45W

This Sta. set by Wye Level

Mag. 861°30E

to N & S Fence running into River

Mag. 553°15W

Mag. N 53° E

to Fence cor. Fence S & E

Mag. 585°15W

Mag. 585°15E

400' Contour

Sta	Az	H.I.	Dist	Bear.	Elev.
N-367-A to		405.61			400.91
N-368	90°00		.10		400
N-369	128°38		.98		"
N-370	125°33		3.79		"
N-371	137°35		5.88		"
N-383-A	128°42		11.64	N51°18W	4.80 400.81 7.490 405.71
N-383-A to		405.71			
N-367-A-	308°42				
N-372	306°09		4.18		400
N-373	283°35		3.06		"
N-374	244°18		3.08		"
N-375	223°20		3.92		"
N-376	221°00		4.40		"
N-377	208°55		5.02		"
N-378	208°15		5.40		"
N-379	202°35		6.18		"
N-380	203°23		5.54		"
N-381	196°53		4.86		"
N-382	208°25		4.08		"
N-382	208°35		2.46		"
N-383	223°05		.80		"
N-384	20°00		.70		"
N-385	36°40		1.00		"
N-386	48°00		2.68		"
N-387	29°00		4.32		"

POG.
Jacobs 2001
Bailey
Soper
Remmen

March 7-30

26

Mag. N 51°30' W

in bottom of gully

400' Contour N-S. San Diego River

P.O.
Jacobson
Bailey
Soper
Remmen

March 7-30

27

Sta.	Az	H.I.	Dist.	Bear.	Elev.
N-383-A to		405.71			
N-388	31°18		4.90		400.
N-389	24°46		5.42		"
N-390	21°34		5.94		"
N-391	18°30		7.28		"
again at N-367-A		4.67			
N-367-A to		405.53			400.91
N-365-A	198°30		2.18		400.91
					Mag. S 85° SE
N-392	86°13		12.66	S 86° 13' N	5.49 400.04 + 4.80 404.84 H.I.
N-392 to		404.84			
N-367-A	366°13		12.62		Mag. N 28° E ?
N-393	59°05		.90		400
					on Fence N & S.
N-394	56°30		3.47		
N-409-A	56°52		8.40	S 56° 52' W	0.95 403.90
N-409-A to		8.70 408.74			
N-392			8.36		400.04
					Mag. N 52° 30' E ?
N-394	236°24		4.26		400.
N-395	229°04		3.26		"
N-396	229°52		2.60		"
N-397	219°50		2.00		"
N-398	167°55		1.64		"
N-399	148°50		2.24		"
N-400	123°05		3.42		"
N-400-A	124°30		3.50	N 53° 30' W	3.43 405.37 + 4.6 409.94
N-400-A to		409.94			

Mag. S-55° W

March 7-30

Mar-8-30

400' Contour N.S. San Diego River

P.O.G.
Bailey
Soper
Remmen

March-8-30

(22)

Sta.	Az	H.I.	Dist	Bearing	Elev
N 400-A to		409.94			
N-401	145°35'		.70		400
N-402	162°16'		4.60		"
N-403	161°34'		3.60		"
N-404	137°39'		2.08		"
N-405	89°00'		1.03		"
N-406	42°26'		2.17		"
N-407	12°42'		1.67		"
N-408	329°00'		2.25		"
N-409	311°00'		2.74		"
N-409-A					
again at		5.04			
N-392 to		405.08			400.04
N-367-A	266°13'				
N-410	56°52'		8.35		400
N-411	50°25'		7.46		"
N-412	46°05'		7.44		"
N-413	37°32'		5.46		"
N-414	29°24'		4.44		"
N-415	19°04'		4.40		"
N-416	11°33'		5.23		"
N-417	10°07'		5.88		"
N-418-A	9°56'		6.56	59°56'W	4.71 400.37
418-A to		5.13 405.07			
N-392			6.58		400.04
N-419					400

lots of water running in this canyon
to East Contour Point 50'

Mag. 511°45'W ?

Mag. 13°45'E ?

400' Contour N-S. San Diego River

R.G.
Jacobszoon
Soper
Remmen

March 10 30

(29)

Sta	Az	H.L.	Dist.	Bear.	Elev.	
N-418-A		405.17			400.37	
N-420	18°30		1.28		400.	
N-426	3°54		5.92		5.27 399.90	
N-429	349°29		7.56	S 10°31E	5.02 400.15	Mag. 57°15 E
N-426	to	404.57 4.20				
N-418-A					400.37	
N-421	139°47		3.56		400	
N-422	117°00		2.68		"	
N-423	78°30		2.86		"	Small drain
N-424	78°12		2.34		"	
N-425	72°00		1.30		"	
N-427	284°35		.38		"	
again ok - set this from 418		4.45				
N-429 to		404.82			400.15	
N-418-A				N 10°31E	400.37	Mag. N 8°15W
N-428	175°45		.88		400	
N-430	5°37		.72		"	
N-431	21°30		1.88		"	
N-432	14°14		3.12		"	
N-433	12°55		4.16		"	
N-434-A	12°19		5.26	S 12°19W	3.96 400.86	
N-434-A to		4.74 405.60				
N-429			5.28		400.15	Mag. N 22° E ?
N-435	47°23		.80		400	
N-436	34°00		1.56			
	38°30		2.24			

400' Contour N.S. San Diego River

P.O.G.

Jacobszoon
Soper
Remmon

March 10-30

30

Sta	Az	H.I.	Dist.	Bear	Elev.
N-434-A		405.60			400.86 4.78
N-438-A	38°37		2.16	S 38°37W	400.62
N-438-A to		405.57			
N-434-A					400.86
N-434	53°00		.10		400.
N-435	74°30		1.80		"
N-436	53°53		2.52		"
N-437	50°30		3.24		"
N-438	52°20		4.34		"
N-439	52°45		4.60		"
N-440	44°30		4.02		"
N-441	25°30		2.50		"
N-442	5°54		2.92		"
again at N-434-A to		4.74 405.60			400.86
N-429			5.28		400.15
N-429 Callact 444 now 18°31			5.78	S 12°31W	4.13 401.17
New 443-A	18°31	7.84	5.74		
N-443-A to		408.70			404.80
N-434-A			5.74		400.86
S-16-A	340°41		12.00	S 19°19E	7.11 401.59
S-16-A to		1.50 406.30			
N-443-A			12.00		404.80
N-444	145°35		10.50		400.
N-445	143°23		10.02		"
N-446	135°47		9.42		"
N-447	123°21		8.52		"

Mag. N 39°45 E

Canyon seems to drain good sized area

could not set up slide rock ect 150' high
beginning of Rock cliff
moved back another pinnacle and ranged in new dist.
on same course

Mag. N 20°45 E

this point is on S-E side of San Diego River ^{for} going S-W on W-S

Mag. N 22°45 W

set flag

400' Contour N-S. San Diego River

POG
Jacobson
Soper
Kammen

March 10-30

(31)

Sta.	Az	H.L.	Dist.	Bear.	Elev.
at S-16-A to		406.30			401.59
N-448	108°57		7.88		400
N-449	101°22		7.66		"
N-450	95°00		7.94		"
N-451	92°53		8.26		"
N-452	90°30		7.94		"
N-453	71°05		8.26		"
N-454	63°05		8.98		"
N-455	60°34		9.60		" 6.30
N-456	57°21		9.98	S 57°21W	400.00
at N-456 to		3.30 404.89			
S-16-A			10.00		401.59 4.73
N-457	35°02		2.26	S 35°02W	400.16 +4.90
at N-457 to		405.06			
N-456	215°02		2.26		5.06
N-458	42°24		.42	S 42°24W	400.00
at N-458 to		4.60 404.66			
S-16-A			12.66		401.59
S-15	238°45		12.20	121°15	400
S-14	245°08		12.34	114°52	400
S-13	248°00		12.48	112°00	"
S-12	248°48		11.66	111°12	"
S-11	254°25		10.76	105°35	"
S-10	266°35		9.44	93°25	"
S-9	278°00		8.78	82°00	"

end of Rock cliff

Mag. S 57°30W

this point on N.W. side of River (marked 447 in field)

Mag. N 57°30E

Mag. S 36°45N

(marked 448 in field)

this point on Dam axis [obscure]

(marked 449 in field)

(marked 450 in field)

27.70
D - 85.00
" 93.00
" 198.02
+ 10.00
21°25' = 25.74
V.A. 34°49' = 68.14
" 28°57' = 81.38
" 27°46' = 175.79
+ 10
185.79

938
814
133

N 42°24E
27-58
178-60
180-22
99-38

400' Contour N-S. San Diego River

Sta.	Az	H.I.	Dist.	Bear.	Elev.
T. 458 = N end Dam Axis to		404.66			400.00
S-8	284°34		8.74	75°26	400.00
S-7	292°42		9.46	67°18	"
S-6	294°30		9.60	65°30	"
S-5	294°45		8.84	65°15	"
S-4	297°40		8.02	62°20	"
S-3	304°30		7.42	58°30	"
S-2	314°00		7.58	46°00	"
S-1	312°40		7.12	41°20	"
S-1 = S end Dam Axis	322°02		7.04	537°58E	"
	V.A 36°47		.85		

length of Axis on 320 contour 485'
 " " " " 300 " 38'0

P.O.G.
 Jacobsen
 Sager
 Kemmen

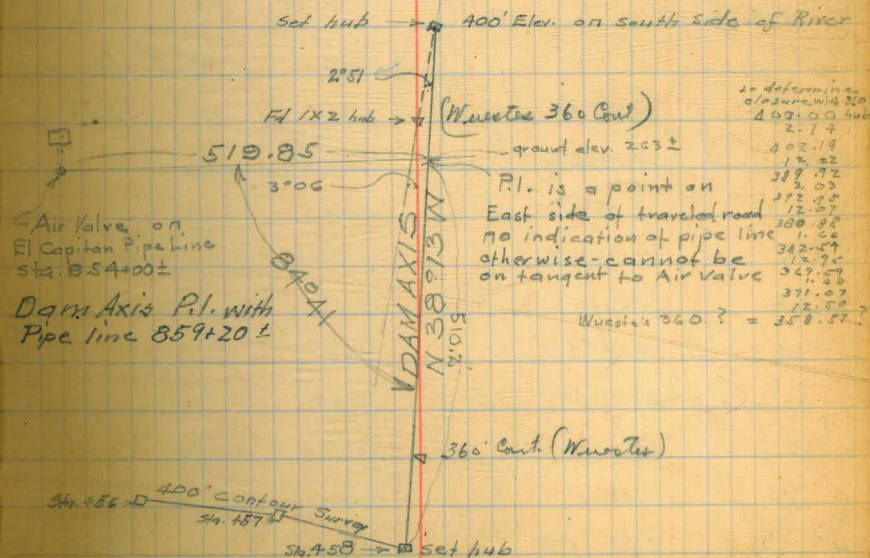
March 10-30

(32)

} cliff

203 S-E 28°13
 251 - 251
 267 44-04E
 29 5 35-22E
 317

this point is about on Axis large Oaks on Southside
 interfere with Sight found 1x2 with tach about 360



400 Contour South-Side of S.D. River

Sta	Az	H.I.	Dist.	Bearg.	Elev.
again at N-443-A to		7.01 408.60			401.80
S-16	340°41			319°19E	401.59
S-17	339°00		11.00		400
S-18	331°53		9.56		"
S-19	326°20		9.00		"
S-20	318°55		8.94		"
S-21	314°17		8.80		"
S-22	303°30		9.26		"
	V-A-5°22 299°30		7.36		
S-23	299°57		9.98		400
	V-A-5°00 231°00		7.04		7.94
S-24-A	293°00		11.58	367°00E	400.66
		0.36			
N-443-A to		405.16			
S-25	299°40		7.0		400
S-26	299°50		2.70		"
S-27	275°50		3.32		"
S-28	273°12		4.84		"
S-29	265°10		7.18		"
S-30	269°50		9.54		"
S-31	257°00		9.68		"
S-32	254°00		10.00		"
S-33	249°35		10.26		"
S-34	246°00		10.98		"
S-35	244°33		11.94		"

P.O. G
Jacobson
Soper
Remmen

March 11-30

(33)

this point is on N.S. of River at beginning of cliff.

to 444 by 1.5 post marked on southside Lot 73 Cor. #9

to fence cor. N.S. of River the part of the fence running north does not line up with cor #9 post by about 30'

Map N276 W

Beehive 25 East Harold Stung

400' Contour S.S. San Diego River

P.P. 6
Jacobson
Super
Hamm

March 11-30

(34)

Sta.	Az	H.I.	Dist.	Bear.	Elev.	
S-24-A to		405.16			400.66 5.13	
S-36-A	242°51	4.96	14.52	N62°51E	399.98	-400.30 set by 'Y' level see page
S-36-A to		405.26			400.30	Corrected
S-24-A			14.48			Mag. 367°W
S-37	264°42		.56		400 5.22	
S-38	279°02	4.45	1.24	S80°58E	400.04	
S-38 to		404.75				
S-36-A			1.24		400.30	Mag. N78°15W
S-39	306°11		1.46		400 4.76	
S-40	309°14	4.65	1.90	S50°46E	400.00	
S-40 to		404.69				
S-38			1.90		400.04	Mag. N48°30W
S-41	342°55		1.80		400	
S-42-A	350°14		1.18	S9°46E	399.45 5.24 +4.79	
S-42-A to		404.44				
S-40			1.20		400.00	Mag. N6°W
S-43	4°38		.88			
S-44	357°11		1.54			
S-45	358°10		4.14			
S-46	353°53		4.60			
S-47	352°42		5.34			
S-48-A	353°47		6.26	S6°13E	400.13 4.32	
S-48-A to		4.53 404.94				
S-42-A			6.24		399.45 4.23	Mag. N1°W.?
S-49	21°17		2.90		400.	

400' Contour S-S. San Diego River

Sta	Az	H.I.	Distanc	Bearg	Elev
S-48-A to		404.92			400.12
S-50	36°55		3.62		400
S-51	29°17		3.48		"
S-52	7°47		3.76		"
S-53	353°26		4.98		"
S-54	349°50		6.92		"
	342°18		6.42		
S-55	345°43		7.62		400
S-56	345°54		11.42		"
S-57	343°00		10.66		"
S-58	337°40		10.72		"
S-59	333°52		11.16		"
S-60	331°25		10.36		"
S-61	321°55		10.06		"
S-62	313°17		12.86		"
S-63-A	309°10		10.62	550°50E	402.51
S-63-A to		7.32 407.44			
S-63-A			10.58		400.12
	295°31		1.64		
S-63	299°04		1.88		400
	292°58		2.04		"
S-64	276°51		3.02		400
S-65	280°46		3.78		"
S-66	292°00		4.74		"
S-67	274°35		4.34		"

POG
Jacobszoon
Japer
Remmen

March 11-30

34

to Fence cor. most S-W point of Subdivision

in good sized Canyon small trickle of water

Mag. 345°30E ?

we are on the south side of
a little knoll Top of same about 400' 29

to Fence cor. West Side of Road

" " " East " " "

Small gully

400' Contour S.S. San Diego River

POL
Jacobsen
Soper
Remmen

March 12-30

36

Sta.	Az	H.I.	Dist.	Bear.	Elev.
S-63-A		407.44			402.51
S-68	259°13		4.68		400
S-69-A	259°32		7.44	N77°32E	402.52
S-69-A to		407.47	7.46		
S-63-A					402.51
S-69	172°30		.44		400
	52°50		.17		
	12°49		3.32?		
			2.32		
S-70	274°08		3.14		400
S-70	276°52		3.70		"
S-71	283°30		3.46		"
S-72	286°07		4.50		"
S-73-A	283°40		5.14	S76°20E	401.26
S-73-A to		406.28			
S-69-A			5.12		402.52
S-73	219°30		.20		400
S-74	294°30		.60		"
S-75	316°47		1.24		"
S-76	310°25		4.24		"
S-77	304°55		4.92		"
S-78	302°33		5.66		"
S-79	303°33		6.64		"
S-80	305°25		7.36		"
S-81	303°32		8.44		"
S-82	293°30		9.16		"

Mag. N79 E?

M378°W

in Fence line between two props fence gave out
last post going North, in N & S Fence
to Fence con

small drain

Mag. 576° E

400' contour S-S-San Diego River

P.O.G.
Jacobson
Soper
Remmen

March 12-30

(37)

Sta.	Az	H.I.	Dist.	Bear	Elev.
S-73-A to		406.28	~		401.26 6.21
S-83	290°28		10.90	569°32E	400.07
S-83 to		3.78 405.04			
S-73-A			10.88		401.26
S-84	315°35		4.2		400
S-85	349°18		1.16		"
S-86	328°05		1.36		"
S-87	323°50		2.94		"
S-88	328°05		3.40		"
S-89	340°10		3.87		"
S-90	325°35		3.60		"
S-91	318°53		3.78		"
S-92	317°15		4.70		"
S-93	326°10		5.30		"
S-94	319°10		5.00		"
S-95	310°35		4.58		"
S-96	290°40		5.06		"
S-97	287°48		5.68		"
S-98-A	289°47		6.16	570°13E	4.63 400.41
S-98-A to		5.23 405.30			
S-83.			6.18		400.07
S-99	333°44		2.62		
S-100	343°54		4.30		400
S-101	336°35		5.18		"
S-102	329°40		5.56		"

Mag. 569°15E

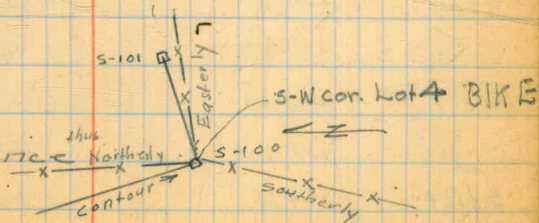
small gully

} many washes

small gully

Mag. 569°15E

to Fence con Fence



400' Contour S.S. San Diego River

 POF
 Jacobson
 Calky
 Soper
 Remmen

March 12-30

38

Sta	Az	H. I	Dist.	Bear	Elev	
S-98-A to		405.30			400.41	
S-103	319°06		8.34		400	on Fence running Northerly
S-104-A	321°39		8.48	532°21E	402.23	Mag. 537°NE
S-104-A to		6.72 407.13				
S-98-A			8.48		400.41	
	354°05		.94			to Fence cor.
S-104	343°00		1.30		400	in Fence running S-E
S-105	349°10		1.76		"	"
S-106	331°40		1.84		"	"
S-107	327°15		2.08		"	"
S-108	327°30		2.30		"	"
S-109	331°45		2.68		"	"
S-110	346°30		2.82		"	in small gulley
S-111	328°00		3.02		"	"
S-112	322°15		4.70		"	"
S-113-A	324°56		5.94	535°04E	400.11	Mag. 534° E
S-113-A to		2.83 405.06				
S-104-A			5.88		402.23	
S-114	2°45		.54		400	
S-115	25°53		2.94		"	
S-116	350°00		2.76		"	
S-117	345°50		3.16		"	
S-118	348°23		3.58		"	
S-119	356°14		4.36		"	
S-120	346°21		3.94		"	

400' Contour S.S. San Diego River

Sta	Az	H.I.	Dist.	Bearg	Elev
S-113-A to		405.06			400.11
S-121	327°47		3.24		400
S-122	333°40		5.54		"
S-123	327°45		6.72		"
S-124	326°51		8.90	533°09E	399.94
S-124 to		404.94			
S-113-A			8.86		400.11
S-125	347°52		1.32		400
S-126	306°20		1.80		"
S-127	320°10		2.42		"
S-128	339°40		3.18		"
S-129	321°00		2.72		"
S-130	307°55		3.84		"
S-131	306°45		4.30		"
S-132	309°25		5.24		"
S-133	306°21		7.04		"
S-140-A	289°01		9.60	570°57E	400.82
S-140-A to		405.78			
S-134	27°09		3.36		400
S-135	9°18		3.92		"
S-136	356°05		5.36		"
S-137	333°30		6.12		"
S-138	343°33		5.44		"
S-139	336°55		4.62		"
S-140	342°13		2.36		"

P.O.G.
Jacobson
Bailey
Soper
Rammen

March 12-30

(39)

Mag. 532°E

big drainage area to this gully

in Fence running S-W

on East side of Main Canyon and inside of Fence starting at S-100 running S-E

in bottom of Main Canyon

400 <

Sta	Az	H.I.	Dist	Bear.	Elev
S-140-A to		405.78			400.82
S-141	111°44		.18		
	308°42		5.80		
S-142	143°41		1.92		
	310°39		4.98		
	148°21		2.68		
	299°00		5.76		
	280°25		3.62		
	273°04		3.34		
Again at S-124 to		404.94			399.94
S-113-A			8.86		
S-143	263°00		7.52		400 1.50
S-145-A	253°50		8.44	N73°50E	403.44
S-145-A to		8.47 402.41			
S-124			8.48		399.94
S-144	107°55		.28		400
S-145	231°48		.20		"
S-146	277°59		.46	S82°01E	2.37 400.04 + 4.78
S-146 to		404.82			
S-145-A			.46		
S-147	323°21		.60		400.
S-148	338°10		1.88		"
S-149	329°17		3.62		"
S-156	274°38		4.80	S85°28	400.00
S-165	252°29		14.84	N72°59E	

POB
Jacobson
Daly
Soper
Remmen

March 12-30

(46)

in Fence

Fence cor.

to Fence cor. making end of Fence begin. S-100

to Fence cor.

" " "

" " "

Mag. N74°30E

Mag. S81°45E

Mag. S85°E

Mag. N72°45E

400 contour S-S. San Diego River

P.O.C
Jacobson
Bailey
Soper
Rennan

March 12-30

(41)

Sta	Az	H.I.	Dist.	Bear.	Elev.
S-156 to		1.95 404.99			
S-150	290 V.A. 5048 165502		4.06		400.04
S-151	79°06		5.20		400
S-152	130°53		6.08		"
S-153	140°00		5.08		"
S-154	120°35		4.88		"
S-155	90°14		2.02		"
S-156	30°33		.30		"
S-157	224°17		.42		"
S-158	257°33		1.28		"
S-159	243°20		1.28		"
S-160	225°16		2.52		"
S-161	279°18		4.00		"
moved up to S-165 set from S-146 see preceding page					
S-165 to		404.35			399.66
S-146			14.20 ^v		
S-162	67°07		4.00		400
S-163	72°18		3.50		"
S-164	83°18 V.A. 6002 192°10		.60		"
S-166	263°30		3.63		"
S-167	268°00		5.66		"
S-167-A	268°09		5.62	N 88°09 E	400.72
S-167-A		405.52			
S-165			5.70		399.66

to Fence cor. east side of Road coming from River
west side fence 18.9' but lots wider to the north

saddle between this side gulley and Main Canyon only
2 or more or less higher

in Fence line

on Fence N&S

this elev. from "Y" levels carried from starting
B.M.

to Fence cor

Mag N 20°30 E

400 Contour S.S. San Diego River

D.C.
Jacobszoon
Bailey
Soper
Remmen

March 13-30

(42)

Sta	Az	H.C.	Dist.	Bear.	Elev.
S-167-A to	V.A. 5035 178°30	405.52			400.72
			2.88		
S-168	295°08		2.90		400
S-169	307°10		5.08		"
S-170	293°00		4.62		"
S-171	271°23		5.62		"
S-172	261°85		7.58		"
S-173	261°30		10.36	N	"
S-174-A	258°53		12.52	N78°53E	4.39 401.13
S-174-A to		5.37 406.09			
S-167-A			12.48		400.72
S-174	84°00		1.04		
	V-A 2025 103°02		7.54		
	V.A. 4918 137°52		3.50		
S-175	252°48		3.28		400
S-176-A	258°34		5.12	N78°34E	1.02 401.47
S-176-A to		4.06.22	from Y'ava / T.R.	397.31 399.36 406.22	
S-174-A			5.10		
S-176	182°50		1.12		400
S-177	265°40		1.66		"
S-178	271°27		2.96		"
S-179-A	274°30		4.88	S 85°30E	5.48 400.74
S-179-A to		405.44			4.88 405.44
S-176-A			4.84		401.47
	V-A-2048 206°25		6.32		

Mag. N78°NE

to Fence cor

Mag. N78°NE

Mag. S85°NE

to Fence cor. Fence W-E-N-S

400 Contour S.S. San Diego River

P.O.G.
Jacobson
Barley
Super
Remmen

March -30

43

Sta	Az	M.I.	Dist	Bear	Elev	
S-179-A		405.44			400.74	
S-179	120°00		.20		400	
S-180	297°00		2.66 1.33		"	
S-181	310°29		3.04		"	
S-182	293°42 V.A. 20		3.10		"	in Fence line
	274°19		2.84		"	to Fence cor
S-183	278°43		3.74		"	
S-184	272°50		4.52		"	
S-185	274°27		5.48	S85°33E 4027	5.31 400.13 + 1.67	Mag. S85°NE
S-185 to		4.67 404.80				
S-179-A			5.48		400.74	
S-186	303°52 VA C°30		.84		400	
	256°45		2.30			to Fence cor.
S-187	312°30		1.98	S47°30E	4.77 400.03	Mag. S47°NE
S-187 to		4.84 404.97				
S-185			1.96		400.13	
S-188	321°24		1.36		400	in Fence line
S-189	316°21		2.70		"	
S-190	318°45		3.98		"	
S-191-A	321°09		4.32	S38°57E	3.92 401.05	Mag. S38°NE
S-191-A to		405.73				
S-187			4.30		400.03	
S-191	232°00		.10		400	
S-192	of 343°30? 242°30		2.40		"	
S-193-A	350°07		3.62 4.30	S9°53E	3.83 402.42	Mag. S9°30E

400 Contour S-S S-Diego River

Sta.	Az	H.I.	Dist.	Bear	Elev
S-193-A to		407.04			402.40
S-191-A	2		3.62		401.05
S-193-1	270°00		.30		400
S-194	357°36		.90		"
S-195	10°35		1.84		"
S-196-A	7°58		3.04	S-738W	5.39 402.65 + 4.66 2.31
S-196-A to		406.31			
S-193-A			3.04		
S-196	270°00		.10		400
S-197	23°12		.38		"
S-198	60°40		1.92		"
S-199	76°20		1.62		"
S-200	12°30		2.40		"
S-201	21°45		2.96		"
S-202	9°00		3.54		"
S-203	352°34		6.66		"
S-203	355°14		6.64		"
S-204	347°25		8.14		"
S-210-A	324°06		9.20		497.52 401.26 + 5.02 406.30
S-210-A to		406.36 ⁵³			
S-196-A			9.26		
S-205	56°19		3.16		400
S-206	28°52		3.52		"
S-207	0°30		3.58		"
S-208	24°42		3.30		"

R.O.G.
Jacobszoon
Bailey
Soper
Kermer

March 14 30
Rain heavy wind

(13)

in Fence - Northside of Farmroad into Field
14' wide

Mag. S 80° 15' W

to Fence cor. Fence E-S-W

on Fence line E & W

20 S-W of bank of creek

on S-W bank of creek

on East of Road R/W Fence at bridge on bank of creek

in creek bed

A full patch

400 Contour S.S. San Diego River

P.B. Jacobszoon
Bailey
Super
Remmen

Rain
wind

March 14-30
17-30

15

Sta	Az	H.I.	Dist.	Bear.	Elev
S-210-A		406.53			401.52
	24°32		4.10		
S-209	15°10		2.42		400
S-210	83°21		4.5		"
S-211	182°35		1.54		"
S-212	203°20		2.70		"
S-213	192°26		3.70		"
S-214	189°59		5.15		"
S-215	189°50		12.66		"
	161°15		5.36		
again at S-191-A to		3.42 405.82			
S-193-A	350°07 V.A-2°37 320°27 V.A-2°32 317°15		5.28 5.56		402°40
S-216	299°41		8.30		400
S-217	289°50		8.28		"
S-218	275°00		7.92		"
S-219	255°51		9.66		"
S-220-A	249°33		11.14	N 69°33E	5.64 400.18
S-220-A to		4.19 405.78		Corrected	
S-191-A.			11.14		401.05
	292°28		3.70		
S-221	295°19		3.84		400 5.14
S-222	292°21		4.42	567°39E	400.24
S-222 to					

Fence cor. East side Road 35 wide

on Fence line E&W

Well kept Farm. between both these sheds

on Fence

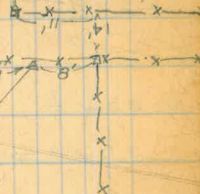
to Fence cor at Road

Fence cor. at Road West Side

" " " " East "

on Fence line best kept Farm. in this section N. of Fence

this fence makes
Yard only



on fence E&W 8' east to Fence cor. S-219

Mag. N 69°45E in yard of run down farm

to Fence cor.

on Fence line N&S

Mag. 567°39E

400' Contour S.S. San Diego River

P.O.G.
Feb 22 2012
Bailey
Super
Remmen

Cloudy

March 17-30

46

Sta.	Az	H.I.	Dist	Bear.	Elev.	
S-222 to		4.87 405.05				
S-220-A			4.40		400.12	
S-223	269°18		1.30		400. 5.22	
S-224	275°09		4.26	584°51E	3.97.77	= 400 by "Y" level. Mag. 585°E
S-224 to		4.94 404.94				H.I. From "Y" level elev. of hub
S-222			4.22			
S-225	297°38		.64		4.00	
S-226	318°02		2.96		"	
S-227	300°50		4.36		"	
S-228	303°12 V.A-2°43 319°18		6.08 7.70		"	on Fence line N&S to Fence cor N-S-W
S-229	303°18		7.64		400	
S-230	293°12		7.34		"	
S-231	290°07		8.30		"	
S-232	290°00		9.70		"	
S-233	286°02		10.26		"	
S-234	294°15		11.50		"	
S-235	291°18		11.94		"	
S-236-A	290°40		14.18	569°20E	4.51 400.43	Mag. 569°30E
S-236-A to		3.56 405.56				
S-224			17.18		400.00 5.33	
S-237-A	259°57		5.22	N79°54E	400.23	on ROCK ISLAND (one of several) Mag. N
S-237-A to		4.80 405.23				
S-236-A			5.20		400.43	
S-237	71°57		4.64		400	

400 Contour S.S. San Diego River

POG
Jacobson
Bailey
Soper
Remmen

Cloudy

March 17-30

(47)

Sta	Az	H.I.	Dist.	Bear.	Elev.
S-237-A		405.23			400.24
S-238	63°30		5.04		400.0
S-239	62°55		6.32		"
S-240	54°30		7.42		"
S-241	38°08		6.88		"
S-242	25°19		6.02		"
S-243	17°50		6.64		"
S-244	10°04		6.14		"
S-245	20°55		5.78		"
S-246	14°25		4.72		"
S-247	350°32		4.86		"
S-248	338°53		3.90		"
S-249	314°05		3.04		"
S-250	314°30		4.28		"
S-251	305°07		5.72		"
S-252-A	306°22	406.19	6.94	553°38E	401.35 + 4.84 3.48 402.71
S-252-A to	307°43		14.92		

on Fence line N&S found 1/4" marker 170 hunk
Elev. of ground 297.8
Mag. S 53°30E
end of our Survey as
shown by map as the contour having
been run in 1922

Transit point set out at time of running 'Y' levels, which
point is also the reference line at time of taking.

Solar observation for starting Azimuth = 50°19N

V-A 4°35
169°04 / 4.46

Transit Point to

0+00 on N.S. of San Diego River 0°21 = 110°21E = 50°19N

Az. of beginning of line

for 400' contour N.S. San Diego River
island opposite Sta N-228

P.O.
Jaakson
Bailey
Soper
Remmen

Rainy March 18, 30
good and hard!

(48)

Sta	Az	H.I	Dist	Bear.	Elev.
N-208-A to		409.63		L	404.68
N-228-A	108°10		12.20	N71°50W	
	107°00		11.16		400.
	102°00		10.44		"
	94°45		10.78		"
	93°15		12.64		"
N-231- to		^{A.S.} 406.88			
N-228-A	294°17			S65°43E	402.03
	293°15		8.64		400.
	297°07		7.62		"
	307°25		6.70		"
	310°23		7.12		"
	312°15		8.28		"
	314°25		9.42		"
	V.A. 1025				
	300°43		9.32		to top of island

Let'er rain -

POG. Nov. 17-30
J. Salgado

Stadia Survey to determine location
of 285 & 301 contours in San Diego River
with reference to El Cajon Westerly Bdry line
on South Bank of River east of old M. Dam

	+ H.I.	-	Elev.
	0.74	289.25	288.51 BM
		6.40	282.85
at P.I.	4.35	287.20	
4 Ft	180° Az.		Contours 285
26 "	180°00		301
144 "	0°00	22.4	264.8
365 "	0000		285
387 "	0°00		301
372 "	19°50		285
394 "	19°50		301
560 "	32°30		285
570 "	29°30		301
610 "	35°40	11.2	276.0
685 "	35°40		285
715 "	35°40		301
485 "	47°00		285
517 "	47°00		301
505 "	68°50	8.25	278.95 T.P.
	4.80	223.75	267.5
at top of Dam	354°		
60 Ft	174°	12.0	271.75
135 "	"		285
160 "	"		301

Point of beginning on S.B. of S.D. River
set up on fence line produced approx. in line
with Post #9 cor. of Ranch line - used
Fence line North - Azimuth - N 24-30 W
Main Channel on Bdry line

POG. assumed bearing
of fence line as North
for purposes of this survey
11/19/30

of side Creek
} on east side side creek

N 45°40 E M.B. on top of old Mission Dam
lowest point ^{in channel} on Axis near N.S.
N 30°30 W M.B. of old Mission Dam

of creek lowest opening in Dam Axis

continued

POG
J. Salgado

Nov. 17 -30

50

283.75

175 Ft	354 ⁰⁰⁰ Az		285	
195 "	"			301
1185 "	22 ⁰ 50	6.55	277.20	
Mat 1185	4.56		281.70	
35 Ft	180 ⁰⁰⁰		285	
85 "	"			301
220 "	0 ⁰⁰		285	
250 "				301
820 "	74 ⁰ 10	1.30	280.40	
Mat 820				
	4.85		285.25	
590 Ft	55 ⁰ 00	2.45	282.80	
Mat 590	4.80		287.60	
700 Ft	74 ⁰ 20	3.00	284.60	
Mat 700	4.60		289.20	
315 Ft	100 ⁰⁰⁰		285	
250 "	48 ⁰		285	N.B. of
90 "	180		285	S.B. "

M.B. N58°40'E

West line of L.M.I.D. about 278.2

M.B. N49°15'E

N' from S.B. = 285 Contour

M.B. N310~~E~~

30' from S.B. = 285 "

M.B. N50°20'E 100 " N.B. = " "

end of 285 contour in $\frac{1}{2}$ of Channel

River-bank here is 14 ft vertical than about 1:100

" sand bar only 30' about 1200' South

Tie to Sec. con 26 25 T155 R2W
35 36

Mission Gorge Dam site No 2

This field calc. should be checked

Dam Axis N38°13'W
647.56' N54°40'E

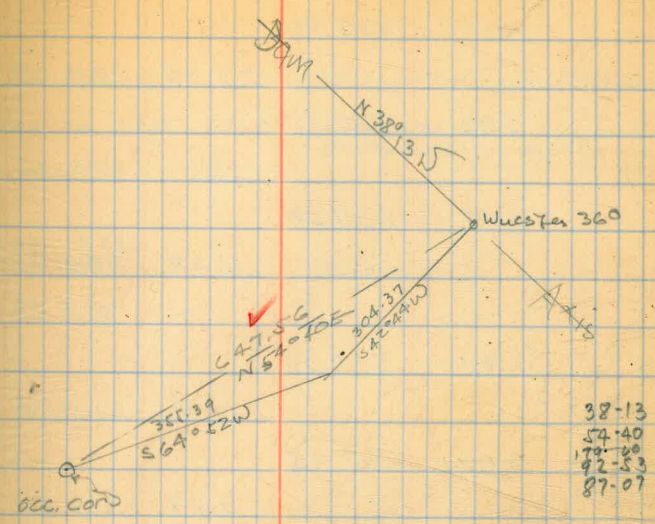
Sec. con to Wuester 360 cont. hub. on East Bank

Chained dist. to here

to edge of Road	460'	16°20'	West
		25°08' Rt	West
at 2" Galv. pipe with cap in Rock mound = Sec. con.	47.05 100.00 96.92 29.27 82.92	0800 3°00' 3°06' 000 6°14'	564°52'W
at B	22°08' Rt		
	43.59 100.00	11°10' 4°52'	
at A	0°00'		
	63.73 100.00	13°30' 0°00'	542°44'W 527°30'W
0-00	178°06' Rt		SL
at East side of Wuester 360 contour (hub 1x2 fd)			
Sighting on P.O.G. 400 contour hub. Bearing = 535°22'E			see page 32

P.O.G.
J. Salgado.

Dec. 19-30



(by stadia) to West edge of Road on South Prop line
Declination 15°30' NE

This Man. has no other marks except a x in top of cap and a lath flag at the pipe.
This cannot be very old - flapping on lath still intact
Also See Pg. 32

320 Contour

5.27 330.40

5.76 332.81

9.97 337.57

1.45 327.28

3.67 318.25

6.71 321.22

4.78 325.26

7.37 329.20

6.50 328.03

2.10 322.03

12.88 329.08

4.30 330.44

325.13 PD235997

3.35 327.05

5.21 327.60

4.37 333.20
330.20

11.74 325.83

12.70 314.58

3.74 314.51

0.74 320.48

3.43 321.83

7.67 321.53

4.69 323.32

8.10 319.93

5.83 316.20

2.64 326.44

5.62 325.12

P.O.G.
J. Seilgoeb
J. W. Williams

Dec. 24-30

52

Set B.M. by 6x6 post. 300' East of Scripps Headquarters.

Set Flag on 320 1920' upstream from Scripps Ranch
Headquarters (further upstream
in S.D. River Channel)

Set B.M. S.E. Cor. Scripps Headquarters.

Set flag 320 Contour on west bank Sycamore Creek at
Junction with S.D. River.(North Bank)
Set B.M. Nail on Gate post 50' North of road across S.D. river.

Check on B.M. (325.13)

Levels to determine grade of San Diego River channel from Old Sand Pit West

RGS April 21-31

100.00 = W.S. April 10

9.72	109.72		
		8.04	101.68
9.34	111.02		
		5.48	105.54
		5.95	105.07
3.20	108.27		
		6.73	101.54
7.10	108.64		
		8.83	99.81
4.55	104.36		
		7.60	96.76
		8.60	95.76
		8.22	96.14
4.72	100.85		
		6.00	94.85
9.18	104.04		
		9.71	94.33
		3.34	100.70
		2.25	101.79
6.05	107.84		
		3.90	103.94

on city well curb shore discharge outlet (furthest upstream well)

River bottom

in Riv bed

on bank

Transit Notes over line on preceding page

April 21 '31

POG

59

	Az.	Dist.		
1st to Top of Bank	103°30	5.10	15.3	99.7
to Bench	115°50	3.50	17.8	97.2
to River Bot.	128°30	3.50	95.8?	97.2
to Top of Bank	18°00	5.20	9.5	105.5
to River bot. <small>no bench here</small>	16°15	5.20	18.0	97.0
to Top of Bank	7°00	7.90	10.2	104.8
to bench	6°10	7.70	16.2	97.8
to Sta A	0°00			99.81
Σ at Sta B		15.15		
		114.96		
to Sta B	151°55	16.20	0.0	
to Top of bank	148°30	5.70 8.40	8.4	102.3
to bench	150°50	8.40	11.7	99.0
to River bot.	156°00	9.00	13.3	97.4
to River bot.	168°30	5.55	12.7	98.0
to bench	152°00	4.00	10.0	100.7
to Top of Bank	146°30	3.95	7.9	102.8
to River bottom	177°00	2.05	12.3	99.4
to Top of bank	173°48	1.95	7.0	103.1
to Edge bank	225°42	1.10	7.5	103.2
to Well	154°57	110.73		
to P.P. line	113°30	8.59 110.73		
to Topog. Sta	0°00	6.95		
Σ at A				
to Sta A	325°30	6.95		
Σ at Topog. Sta	sighting on Windmill north			

on fence

on fence

on burmact being old sandpit debris

40 L^t ground averages 5 higher very uneven heavy brush.
Some big cottonwood's

on N. & S. Fence

top of carb S. N. side

this point is in line of P.P. lines serving city wells I hope they are parallel to Wells heavy brush prevents using the wells to set up over

used Sta. last occupied as 0°00 all angles Rt

Transit Notes on line on River cont.

April 21 - 31

P.O.C

(5)

Az	H.I.	Dist.	-Rd	El.
	9°51			
to P.P. line	124°32	4.55		
to Bench	25°10	.45	5.0	94.9
to Top of Bank	74°40	.90		100.7
to Top of Bank	45°10	1.00	1.0	98.9
to Riv. Bank	143°50	.84	6.0	93.9
	5.55			
	99.88			94.33
to Sta C	0°00			
at D				
to Sta D	176°45	3.75	5.60	
				94.86
at C	5.01			
	100.87			
to Sta C	122°40	12.70		
to level land	116°15	12.00	14.80	100.16
to Top of Bank	119°00	12.20	16.00	98.96
to Bench	122°00	13.20	19.00	95.96
to River Bank	126°20	13.40		94.86
at Sta B	114.96			

this line will not enter the heavy growth protecting the high ground
to check angle
in front of Willow Tree

Bench levels to Murray Dam from La Mesa U.S.G.S B.M. MCI

April 22-31

			540.06
4.28	544.34	6.23	538.11
4.13	542.24	5.32	536.92
2.18	539.10	6.70	532.40
1.93	534.33	12.28	522.05
1.32	523.37	8.31	515.06
4.77	519.83	4.38	515.45
3.61	519.06	4.43	514.63
8.98	523.61	11.33	512.28
2.14	514.42	12.17	502.25
1.22	503.47	13.05	490.42
0.335	490.755	12.255	478.500
3.915	482.415	12.400	470.015
0.170	470.185	4.650	466.535
0.255	470.270	8.090	462.180
3.98	466.160	0.890	465.270
12.610	477.950	0.23	477.120
12.775	489.895	1.470	488.425
10.995	499.420	1.700	497.720
8.700	506.420	0.810	505.610
10.485	516.095	0.740	515.355
10.530	525.885	0.125	525.760
11.930	537.680	1.100	536.580
7.790	544.370	4.230	540.140
3.165	543.305	2.930	540.375
1.320	541.695	12.320	529.375

12.72 12.720

lost this turn

TP. on Pd # 76877

Levels to Murray Dam
continued

			529.375
12.720	542.095	5.525	536.570
12.490	542.060 ⁹	8.520	539.540 ⁴⁰
11.925	551.465 ²	12.655	538.810 ⁹
0.200	539.010 ⁴⁰	10.610	528.400 ⁹
3.465	538.865 ²	2.590	528.275 ³⁰
11.760	548.035 ²	0.695	539.340 ^{41.3}
10.670	550.010	10.390	539.620 ^{41.}
5.08	546.70	5.00	541.7
		1.06 +	542.08
			541.6
			- 4.
			537.6
			- 102.
			439.6

B.M. on inside edge of walk on top of Dam in center of last arch

Spillway lip width lip 7.5' 2. like this
Top of coping

W.S. April 27-'31

Flow line of outlet 24" pipe near valve pipe rises leaving dam
apparently 1/4 of seft issues from one leak in toe
of arch in the same bay the outlet pipe is located
about 10' above former creek bed

April 25-'31
R.O.G.

(57)

Bench/levels to Mission Dam No 2

April 28-31

(57)

			288.51	B.M.	U.S.G.S at old Padres Dam
10.675	299.185	4.355	294.830		
11.240	306.070	9.790	296.280		
1.680	297.960	12.035	285.925		
10.670	296.595	12.240	284.355		
3.950	288.305	3.430	284.875		
12.905	297.780	0.540	297.240	B.M.	on ledge 8' south of Axis
12.670	309.860	11.07	298.79	=300.00	used for old Topo.
12.420	322.195	0.085	309.775		
11.825	333.910	0.110	322.085		
12.400	346.180	0.130	323.780		
12.665	358.500	0.345	345.835		
		9.910	348.590	B.M. = 349.70	on Rock old Topo etc 50' N of Axis
12.460	370.530	0.430	358.070		
11.990	382.420	0.100	370.430		
12.710	394.920	0.210	382.210		
12.915	407.665	0.170	394.750		
		8.545	399.120	B.M. = 400.20	on Rock old Topog. elev. 30 N. of Axis
12.160	419.555	0.270	407.395		
12.595	432.050	0.100	419.455		
12.735	444.365	0.420	431.630		
12.890	457.195	0.060	444.305	(B.M. = 449.84)	on Rock 40 N of Axis old Topo. el.
		4.530	452.665		
12.380	469.345	0.230	466.965		
13.010	482.325	0.030	469.315		
11.890	494.105	0.110	482.215		
12.480	506.580	0.005	494.180		
		1.750	504.83	B.M.	on Rock 45 N of Axis

Bench levels contin.
to creek bed

			284.875	
0.420	285.295			
0.520	273.380	12.435	272.860	
0.305	261.055	12.630	260.750	
6.550	254.785	12.820	248.235	
	.890			
		0.128	254.660	B.M.

on Bed rock ledge 100' south of Axis and 50' from Road

Check levels back To U.S.G.S. B.M.

			297.240	B.M.
6.530	303.770	7.885	295.885	
6.235	302.120	5.770	296.350	
9.650	306.000	12.985	293.015	
5.780	298.795	3.710	295.085	
12.730	307.815	11.760	296.055	
7.133	300.385	11.920	288.465	=288.51

Tie-in on B.M. U.S.G.S.

Road grade Survey Mission No 2
"A" line

May 1st '31
P.O.S.

4.1.3332

60

Lt 6'

11.9321.3 39.1 294.1 R+ 6'
15.7 317.8 19.6 313.6

10+25				
10+00				
9+				
9+50	13.80	333.16	11.79	319.36
9+00				
8+50				
8+00				
7+50				
7+50				
6+97.45	P.I. 6.55 Lt			
6+50	7.15	331.15	5.31	324.00
6+17.75	P.I. 8.27 Lt			
6+00				
5+50				
5+00				
4+50	9.16	329.31	6.90	320.15
4+20.9	P.I. 11.08 Lt			
4+00				
3+50				
3+00				
2+50				
2+00	14.35	327.05		312.70
1+50				
1+00				
0+50				
0+00	in center of existing road			

4.7 327.0 7.7 320.4 10.7 320.4

2.9 328.2 6.8 324.3 10.2 321.0

3.0 328.1 7.0 324.1 10.4 320.7

4.1 326.0 12.0 319.1 18.2 313.0

4.5 326.6 7.7 323.2 12.0 319.1

2.9 324.4 5.8 323.5 9.7 319.6 329.3

2.9 326.4 11.0 318.3 10.7 318.6

3.2 326.1 8.1 321.2 11.1 318.2

2.3 327.0 6.2 323.1 10.1 319.2

3.5 325.8 7.6 321.7 12.5 316.8

8.2 321.1 11.5 317.8 14.9 314.4

1.3 325.7 4.0 323.0 8.0 319.1 327.0

1.9 325.1 5.5 321.5 8.5 318.5

1.3 326.7 4.5 324.5 8.3 318.7

0.9 326.1 5.1 321.9 8.2 318.8

same slope 8.7 318.3 13.2 313.8 308.4

19.4 307.6 7.3 303.7 24.0 303.0

2.2 304.4 22.3 304.7 22.0 305.0

20.5 306.5 20.5 306.5 20.2 306.8

15.4 311.6 17.6 309.4 18.6 308.4

16.4 310.6 16.4 310.6 16.4 310.6

near El Cayon Ranch Cor #9

14.3 312.3 13.9 313.1 13.5 313.5

block!

Contin "A" line

+66					
20+50					
20+00					
19+50					
19+00					
18+50	8.50	320.00			
18+00			4.70	311.50	
17+70					
17+50	1.20	315.70			
17+06.60	PI. 21° 04' R		14.59	314.50	on hub
17+00					
16+50					
16+10.10	P.O.T	7.05	329.09		
16+00					
15+50					
15+00					
14+50					
14+00		333.16	11.08	322.04	
13+50					
13+11.05	PI. 13° 00' R				
13+00					
12+50					
12+00					
11+50					
11+00					
10+68.2	PI. 24° 49' R				
10+50					

May 2 '31
P.O.G

L' G' out	17.3	305.7	R' G' out	17.1	320.00		
" "	7.8	312.2					
same slope	7.5	312.5					
	3.5	316.5	7.4	312.6	11.0	309.0	
	3.7	316.3	7.6	312.4	11.1	308.9	
	4.4	315.6	7.9	312.1	11.4	308.6	
	4.1	311.6	6.1	309.6	7.8	11.7	315.7
	6.8	308.9	9.4	306.3	12.2	307.9	
						303.5	
							17+40 256.
	11.2	317.9	14.3	314.8	17.3	17.1	329.1
	8.2	320.9	11.8	317.3		311.8	
					15.7	313.4	
	4.9	324.7	8.0	321.1	14.7	314.4	
	3.0	326.1	7.4	321.7	12.7	316.4	
	11.1	318.0	16.1	313.0	21.1	308.0	
	2.4	326.7	7.9	321.2	12.2	316.9	
	7.8	325.9	12.4	320.2	17.2	17.1	323.2
						316.0	
	6.5	326.7	10.7	322.5	15.5	317.7	
+ 1.0	334.2	5.6	327.6	11.7	321.5		
	3.9	329.3	9.5	323.7	14.3	318.9	
	3.0	330.2	7.6	325.6	12.3	320.9	
	1.0	332.2	4.9	328.3	8.6	324.6	
	3.2	330.0	5.4	327.4	9.5	323.7	
	6.1	327.1	8.3	324.7	11.0	322.2	

Road grad contin "A" line

May 2-31
POG

H.I. 285.80
22.910
Approx. Sta. Line
588 ft W N.B.

32+00				
31+50				
31+00	274.9	275.8 1.5	273.4 8.5	275.9 16
30+45 +41	15.5	265.85	15.70	292.0 39.5
30+00				264.30
29+50				
29+00				
28+50				
28+00	0.15	280.00	15.02	279.85
+65				
27+50	+65 16	292.0	280.0 slope 11.5	16.3 16
27+00				273.7
26+50	4.42	294.87	9.59	
26+00				290.45
+85				
25+69.35	R.I. 9°23' RT			
25+50				
25+00				
24+50	1.18	300.04		
+21				
24+00			15.44	298.86
+08				
23+50				
23+00	5.30	314.30		
22+50		320.00	11.00	309.00
22+00				
21+67.47	P.I. 83°11' RT to Dam Axis	20.7	RT to 300 Ft. on East Side	
21+50	P.I. 70°38' RT			
21+00				

257.5	83			
259.5	6.3			
257.7	8.1			31+42±
X-section for 20+45				
+29.3	28.9	+16.5	276.4	7.4
33.0		18.0		13.3
		+12.5	276.1	20.1
		16		259.9
		+12.5	276.0	16.4
		16		263.6
		+12.8	284.6	16.5
		16		263.5
				8.2
				271.8
				7.5
				272.5
				14.2
				280.7
				17.3
				277.6
				9.0
				285.9
				5.3
				294.7
				7.1
				292.9
				4.1
				285.9
				9.0
				291.0
				11.6
				288.4
				9.7
				290.3
				14.7
				285.3
				17.3
				297.0
				21.1
				293.2
				13.0
				300.7
				5.3
				309.0
				9.7
				304.6
				7.5
				309.8
				12.2
				331.2
				1.0
				319.0
				0.4
				319.6
				4.8
				315.2
				6
				314.6
				5.4
				320.0
				6
				306.1
				8.6
				311.4
				6

H.I. 280.0
-2.7
-3.2
286.7
8
16
-5.6
288.0
16
-4.6
289.6
16
-5.5
291.7
16
12
259.8
H.I. 294.9
-4.8
281.6
10.1
H.I. 300.0
-10.4
284.3
-12.0
297.1
16
280.9

Road grade contin
in present road

254.66

23+00	12.50	267.16
23+50		
24+00		
24+50		
25+00		
25+00	+27.08	R1. 9028LH
25+50		
26+00		
26+50		
27+00		
27+50		
28+00		
28+50		
29+00		
29+50		
30+00		
30+50		
31+00		
31+50		
32+00		
32+50		
33+00		

MAY 4-'31
P.O.C

H.I. 267.2

(23)

Rt out ♀ Lt out

259.6	7.6	7.6	259.6
	17.0		
259.2	8.0	8.9	258.3
	13.0		
258.2	9.0	9.1	257.8
	11.		
257.4	9.4	9.4	257.8
	19		
	9.1	9.1	258.1
	1.0		
	9.1	9.1	258.1
	7.0		
	9.1	9.1	258.1
	9.0		
	8.7	8.7	258.5
	10.0		
257.2	9.2	9.2	258.0
	17.0		
	9.1	9.1	258.1
	17.0		
	9.2	9.2	258.0
	22.0		
	8.6	8.6	258.6
	22.0		
	8.4	8.4	258.8
	2.6		
	8.4	8.4	258.8
	19.		
	10.2	10.2	257.0
	16		
	11.5	11.5	256.7
	7.		
		11.8	11.8 255.4
		14	
		11.4	11.4 255.8
		15	
		10.6	10.6 256.6
		13	
		8.7	8.7 258.5
		13	
		1.3	
		1.6	
		4.5	252.6

End line = end of line to establish top of slope by

"A" line

running back on
Present road

33+25			
33+00	265.85	7.50	258.35
32+50			

262.3	3.5
257.8	8.7

252.0

Road line continues
in present road

May 4-31

H.I. 282.0
4

Rt out

Lt out

10+50				
11+00				
11+50				
12+00 + 25	P.I. 22203 Lt			
12+50				
13+00	8.94	282.02	2.70	273.08
13+50				
14+00				
14+50				
15+00				
15+50	P.I. 24200 Lt			
16+00				
16+50				
17+00				
17+50				
18+00				
18+50				
19+00				
19+50				
20+00 + 25	P.I. 12202 Lt			
20+50	11.07	275.78		
21+00		267.16	2.45	264.71
21+50				
22+00				
22+50				

14.8 6	14.8	287.2
14.8 10	14.8	287.2
15 9	15.0	267.0
15 8	15	267.0
83 8	83	H.I. 275.8
84 18	84	267.9
80 17	80	267.8
77 17	77	268.1
76 15	76	268.2
76 12	76	268.2
72 0.5	72	268.6
56 12	56	270.2
54 20	54	270.4
54 18	54	270.4
54 19	54	270.4
64 16	64	269.4
77 16	77	267.7
90 15	90	268.8
101 113	101	265.7
27 50	27	H.I. 267.2
32 7	32	264.0
37 12	37	263.5
43 17	43	262.9
45 25	45	262.7
62 43	62	261.0
62 43	62	261.0

Road line continues
in present road

0+50				
0+71.6	P.I. 493L			
1+00				
1+50				
2+00	8.12	309.40	14.28 - 296.12 = 295.85	
2+50	19.7	314.67	13.39	301.28
3+00				
3+50	15.57	312.75	0.05	312.70
4+00				
4+50	P.I. 3046R			
5+00				
5+50	15.72	297.78	0.60	297.18
6+00	→ 20° 01'			
+25	P.I. 1908R			
6+50				
7+00				
7+50				
8+00				
8+50		282.02	0.07	282.00
9+00				
9+50				
10+00				

£

H.I. 312.7

0 = 0+00 A line
0+71.6 B "

311.6	1.1	3	
309.5	5.7	4	
307.6	5.7	3	
306.2	6.5		
304.3	8.4		
302.0			
10.7	10.7		
16			
12.3	300.6	12.3	
6			
299.1		297.7	
to 0+00 of first line	13.6	15.0	
		3	
	290.5		H.I. 297.8
	1.3		2.5 295.3
			3.0
5.0	292.8	5.0	
8.0			
7.3	290.5	7.3	
1.9			
16.5	286.3	11.5	
1.8			
15.4	282.4	15.4	
8.0			
3.9	278.1	4.6	H.I. 282.0
		5	277.4
5.8	274.1	7.2	274.8
		5	
8.0	270.0	9.5	272.5
		6.0	
10.8	271.2	12.0	270.0
		5	
14.3	267.7	14.3	
1.0			
14.5	267.5	14.5	
8			

Alternate line "B"

May 6-31
P.O.C

£

5+69.30 P.D. 12°22H

5+50

5+00

4+50

4+00

3+50

11.605

324.305

312.70

0.260

324.045

3+00

12.940

336.985

0.225

336.760

2+50

11.90

348.660

0.360

348.30

2+00

12.890

361.19

0.360

360.830

1+50

11.425

372.255

0.290

371.965

1+00

12.590

384.555

2.64

381.915

0+50

0+00

25°48H

sighting on A 0+00

Lt out

8.0 367.8
16

8.1 366.9
16

+7.0 362.1
16

6.9 358.9
16

6.3 351.8
16

4.67 347.1
13

+4.1 341.5
16

+4.1 337.4
16

+5.0 334.7
16

+2.7 328.9
16

+1.0 325.1
16

+4.8 320.7
16

Rt out

359.8
14 H.I. 361.190
-9.7 350.1
16

357.8
34 -7.9 349.9
16

355.1
6 -7.0 348.1
16

352.0
92 -8.4 343.6
16

345.5
32 H.I. 348.660
-7.5 338.0
16

340.4
83 -5.1 335.3
16

337.4
113 -4.2 333.2
16

333.3
37 H.I. 336.985
-3.5 329.8
16

329.7
73 -2.4 327.3
16

326.2
108 -3.0 323.2
16

324.1
122 -6.8 317.3
16

316.8
75 H.I. 324.385

315.6
82 -7.0 314.6
16

El. Ca. Pa. Co.

El. Ca. Pa. Co.

El. Ca. Pa. Co.

El. Ca. Pa. Co.

El. Ca. Pa. Co.

El. Ca. Pa. Co.

El. Ca. Pa. Co.

El. Ca. Pa. Co.

El. Ca. Pa. Co.

El. Ca. Pa. Co.

El. Ca. Pa. Co.

El. Ca. Pa. Co.

El. Ca. Pa. Co.

El. Ca. Pa. Co.

El. Ca. Pa. Co.

El. Ca. Pa. Co.

El. Ca. Pa. Co.

El. Ca. Pa. Co.

El. Ca. Pa. Co.

El. Ca. Pa. Co.

"B" line

+ 24.82 P.L. 103° 50' R^H
 12+00 381.915

+ 54.59 P.L. 26° 57' L^H 5.690 387.605

12+50 11.950 375.615

P.L. 26° 57' L^H 2.87 378.485

11+00 11.83 366.655

3.32 369.975

10+50 10.89 359.085

+ 27.75 P.L. 10° 50' L^H 2.745 361.830

10+00 12.70 349.130

2.625 357.705

9+50 9.45 342.305

+ 00.83 P.L. 10° 12' L^H

9+00

8+50

8+00

+ 7+69⁰⁰ P.L. 15° 25' L^H

7+50

7+00

+ 85

6+50

6+00

May 2-31
P.O.C.

H.I. 387.60

48 382.8

+ 11.3 391.5 74 380.2 -10.1 370.1
 12 in Gully

23 385.3

27 384.9 -5.9 379.0
 16

45 400.9 + 6.4 391.3
 45 16

+ 7.0 390.2 44 383.2 -8.3 374.9
 16

• + 8.1 391.9 08 383.8 H.I. 384.555
 16 -8.6 375.2

7.7 391.7 03 384.3 -5.3 379.3 -13.1 371.2
 16 15. 16

+ 8.2 389.7 31 381.5 -12.0 368.5
 16

+ 11.7 387.3 80 376.6 -13.8 362.8
 16

+ 11.0 385.8 98 374.8 -5.0 369.8 -13.4 361.4
 16 12 16

+ 9.3 378.7 29 369.4 H.I. 372.255
 16 -8.2 361.2

+ 11.7 378.9 51 367.2 -10.0 367.2
 16 16

+ 11.5 378.9 40 367.4 -11.9 355.5
 16 16

+ 15.9 381.5 + 5.0 370.4 69 365.4 -10.4 355.0
 16 3 16

9.4 373.2 85 363.8 -12.0 351.8
 16 16

371.8 359.1 351.2
 16 16

+ 10.4 370.6 121 360.2 -7.2 353.0
 16 16

+ 6.1 368.9 95 362.8 -9.5 353.3
 16 16

Brim contour

18+50

18+00

17+50

17+00

16+50

16+00

15+50

15+00

14+50

14+00

+89 R.O.T

13+50

+10.52 P.S. 25° 23E

13+00

12+50

(12+31) 375.9

May 6-31

P.O.G

H.I. 369.97

+11.2 373.9
16

+12.3 374.1
16

+12.0 374.8
16

+12.4 374.0
16

+12.4 372.0
16

+10.0 372.5
16

+9.1 371.4
16

+9.0 373.9
16

+10.9 377.9
16

+15.2 383.1
16

+16.0 386.6
16

+11.0 388.1
16

+12.0 392.5
17.0

+4.5 385.1
9.0

10%
slope

7.8 362.2

8.2 361.8

7.2 362.8

8.4 361.6

8.4 361.6

8.1 361.9

7.7 362.3

5.1 364.9

11.2 367.5

6.9 371.6

5.6 372.9

2.9 375.6

12.2 374.9

10.5 377.1

7.2 380.6

-11.2 351.0
16

-13.4 348.4
16

-12.1 350.7
16

-11.5 350.1
16

-14.7 346.9
16

-12.0 349.9
16

-11.8 350.5
16

-10.5 354.4
16

H.I. 378.50
-9.8 357.7
16

-9.0 363.9
16

-10.8 364.8
16

H.I. 387.60

-10.1 367.0
16

-7.6 373.0
13.0
-16.7 364.4
2.3
entry

"B" inc contin.

May 7-31
P.O.S

+75				
2440				
2460				
+50		7.54	349.845	342.305
		3.250	340.645	12.450 337.395
		1.265	329.700	12.210 328.435
23+00				
+78.97	P.I. 26926H			
+50				
22+00				
+50				
21+80.41	P.I. 19059H			
21400				
21+06 ⁷³	P.I. 11749R			
				21415 - 3348
				6' further 15' wall of solid rock
				351.715
20+50				
+01.35	P.I. 39012H	0.490	339.535	12.71 339.045
20+00				
		0.495	327.715	12.515 327.020
19+50				
+02.86	P.O.T			12.970 314.545
19+00				314.500

		321.1	H.I. 329.7
		8.6	
		324.7	
+9.7	334.1	5.0	-9.6 315.1
16			
		328.4	H.I. 340.6
+10.6	339.0	12.2	-9.7 318.7
			16
		333.7	
+10.1	343.8	6.7	-10.1 323.6
16			
		332.5	
+10.0	346.5	4.1	-9.5 327.0
16			16
		337.7	
		343.4	H.I. 349.8
+8.3	351.7	6.4	-7.1 336.3
16			16
		347.3	
+9.3	356.6	2.5	-9.2 338.1
16			16
		348.3	
+9.8	358.1	2.5	
16			
		346.1	
		341.7	H.I. 351.80
		10.0	
		339.7	
+11.2	350.9	12.1	-20.3 319.4
16			20.5 quarry
		346.2	
+9.4	355.6	5.6	-13.0 333.2
16			16
		350.6	H.I. 361.80
+8.8	359.4	11.2	-7.3 343.3
16			16
		359.1	
		359.1	
+10.2	369.9	2.4	-10.1 349.0
16			16

Same slope

"B" = 1.172

70

329.700

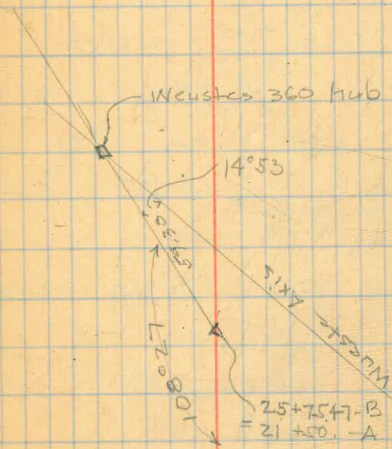
10.45 319.25

$\frac{25+75.47}{21+50.00} = \frac{B}{A}$ P.I. $8^{\circ}10'$

+50

25+45

24+92



H.I. 329.7

319.1

10.6

319.5

+ 12.5 332.0
16

10.2

- 12.9 306.4
16

320.1

" 332.0 9.6

" 306.6

314.0

+ 12.5 326.5 15.7

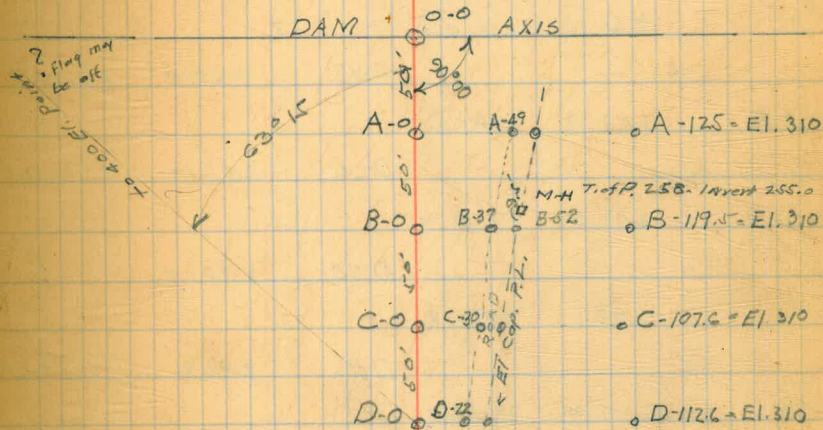
" 301.1

Cross-sections of area below Dam
for Pump house

June 17-31
P.O.G.

Sta	EI.	Bedrock	SLG	EI.	Bedrock
A-0	251.8	247.6 248.8 N.B.	B-0	252.6	249.3 R
38			15		
A-38	256.4		B-15	252.6	
11			22		
A-49	261.8		B-37	260.2	
10			20		
A-59	261.8		B-57	259.5	
5			8		
A-64	261.1		B-65	262.2	261.1 R
7			3.5		
A-72.7	262.2	263.6 R	B-68.5	265.5	265.5 R
72.7 b	263.6		9.5		
55			5		
A-76.5	266.8	266.8 R	B-78.0	272.5	271.5 DG
165			5		
A-93.0	279.0	278.0 DG	B-83	279.3	276.8 DG
3			11.5		
A-96	286.0		B-94.5	285.4	
8			7.0		
A-104	293.4	282.3 DG		10.0	
8			24.9	7.9	
A-112			B-119.4	310.3	303.3 DG
13					
A-125	310.3	301.6 D-6			

B.M. El. 254.66
Page



Cross-section of Pump house
site

June 17-31
P.O.G.

Sta	EI.	Bedrock	Sta.	EI.	Bedrock
C-0	252.2	249.2R	D-0	252.0	249.8 R
30			22		
C-30	259.0		D-22	258.3	
16			135		
C-46	258.2		D-35.5	257.8	
9			4.5		
² C-55	264.2	264.2 R	D-43	259.9	259.9 R
^h C-55	266.0	266.0 R	7		
55			D-47	263.0	262.5 R
C-60.4	269.0	268.0 R	" 8		
0.6			D-66	275.7	273.0 R
C-61.0	271.0	271.0 R	4		
9			D-70	281.7	?
C-70	278.1	279.0 R	" 11		
.5			D-96	296.2	294.6 R
C-70.5	279.4	279.4 R	" 10 66		
11			D-112.6	310	309.8 R
C-81.5	286.4	285.0 R			
95					
C-91.0	294.3	291.9 D.G.			
7					
3					
C-101	306.3	300.0 D.G.			
66					
C-107.C	310.0	305.5 N.B.			

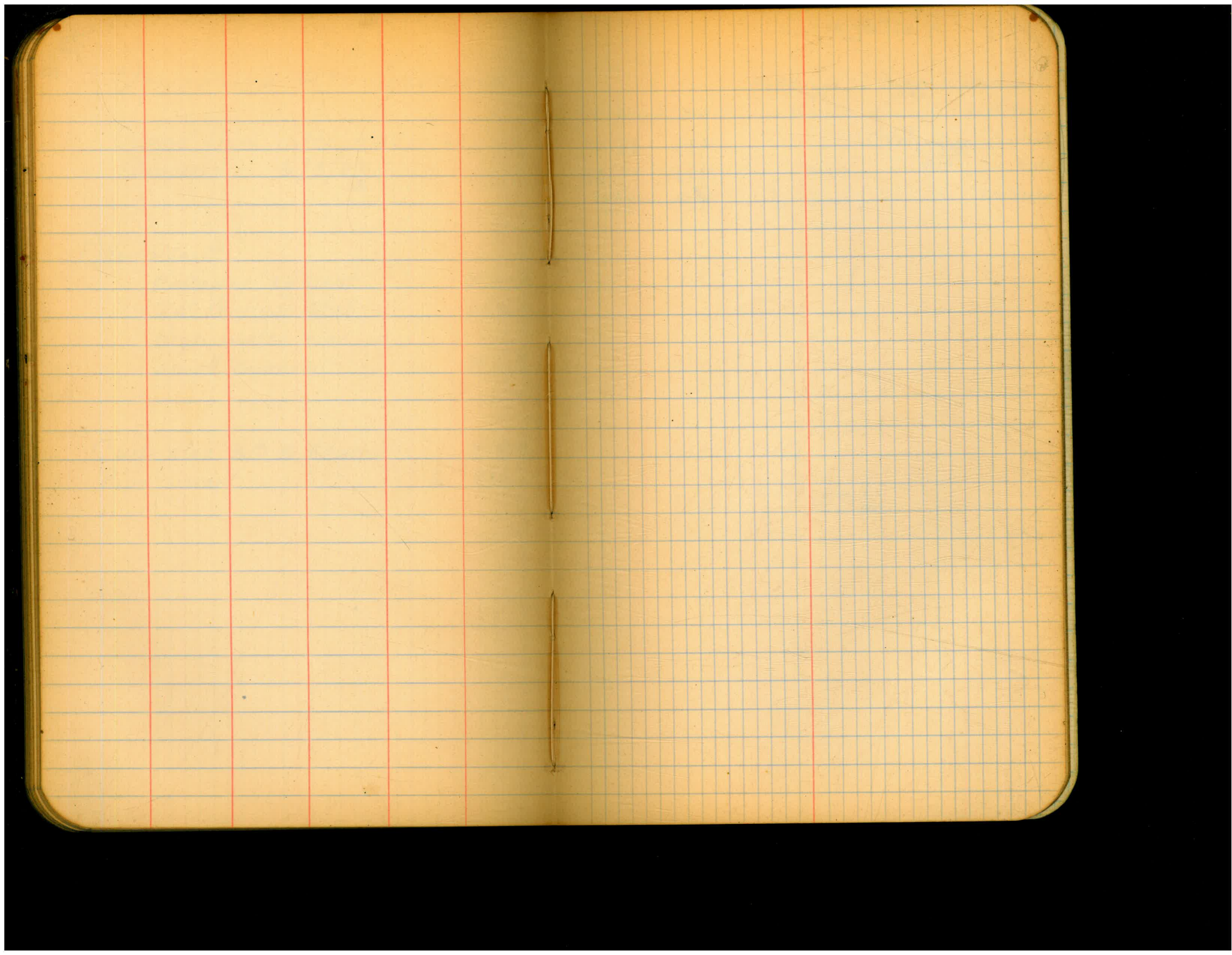
UNIVERSITY HTS RESERVOIR

Copied from notes made by
Converse - 3/8/37
#

Filter Plant.

Wasteway effluent	392.4
24" Vertical stub	382.4
High water elev. in small reservoir	382.6

Curb elev. 30 th & Adams	389.0
Pipe invert	± 384



Bench levels to establish 400 elev.
thru Lake side from Woodbine St. to
North end of Lake side bridge

		Elev.	B.M. # 21
		400.22	
5.15	405.37		
	2.50	402.87	
12.72	415.59		
	7.30	408.29	
4.96	413.25		
	7.80	405.45 X	
6.20	411.65		
	4.99	406.66	
1.03	407.69		
Nail in Root of 3H. tree of South side of Lake	center 5 ft. from edge	8.58	399.11
5.65	404.76		
East end of Lake road	75 ft. N. of E. Monte	4.87	399.89
4.90	404.79		
300 ft. from East edge of Lake on North side of Rd.	80 ft. South of Rd.	2.88	401.91
5.04	406.95		
300 ft. West of last T.P.		2.50	404.45
0.81	405.26		
	4.09	401.17 X	
5.60	406.77		
	3.65	403.12	
9.87	412.99		
	4.30	408.69	
1.05	409.74		
	5.22	404.52	

+	H.I.	-	Elev.	
6.81	411.33			
4.82	414.25	1.90	409.33	
3.19	410.07	7.37	406.88	
3.22	407.40	5.89	404.18	
		6.42	400.98	
2.84	403.06		400.22	
3.01	400.17	5.90	397.16	
3.84	397.97	6.04	394.13	
4.46	397.53	4.90	393.07	
12.93	404.36	6.10	391.43	
B.M.	4.96	409.12	0.20	404.16
	7.94	409.86	7.20	401.92
	6.42	413.86	2.42	407.44 X
		13.00		400.86
	1.78	409.22		407.44
	5.70	402.46	12.46	396.76
	4.98	404.68	2.74	399.70
		3.86		400.82

N.W. corner
of Lakeside bridge
Lake 2 ft. West of
End Guard post.

400.98

Bench levels to carry 400 Elev.
to contour line S-E side San Diego River

8.42	342.41		333.99	B.M. on El
11.93	349.44	4.90	337.51	
7.14	355.73	0.85	348.59	
3.31	356.61	2.43	353.30	
2.78	356.32	3.07	353.54	
3.32	356.33	3.31	353.01	
		12.63		
		3.34		
		15.97	340.36	
11.68	366.89	1.12	355.21	
12.97	379.42	0.99	366.45	
11.80	390.45	0.77	378.65	
13.10	402.97	0.58	389.87	
		2.97	400.	
		2.97	400	
0.22	340.58		340.36	
4.91	332.49	13.00	327.58	* T.P.
1.73	322.15	12.07	320.42	
1.47	310.95	12.67	309.48	
2.79	300.94	12.80	298.15	
		12.73	288.21	= 288.51
9.37	337.25	337.25	327.88	T.P. corrected
11.68	348.51	0.42	336.83	
12.36	358.66	2.21	346.30	
12.30	370.61	0.35	358.31	
12.14	382.32	0.45	370.16	

P.O.G.
Forbesman
Bailey
Soper
Remmen

March 6-30

BM. on El Captain Pipp's line

Set hub on S. side on first rocky point above old Dam
top of lat 402.

U.S.G.S. B.M. near old Mission Dam

Levels to Establish 400 Elev. on N.S.
of San Diego River

March 6-30

	382.32		
12.96	394.79	0.49	381.83
9.86	404.26	0.39	394.40
		2.43	401.83 = 404.62 1.83 2.79
6.65	406.65		400.00
		4.86	401.79

405.19
401.83
3.36

West on S.S. of River

March 13-30

7.08	409.90		402.82 B.M. see page 1
		1.79	408.11
13.01	421.12		
		12.08	409.04
2.66	411.70		
		6.36	405.34
2.48	407.82		
		7.82	400.00
10.82	410.82		
		12.25	398.57
2.13	400.70		
		10.30	390.40
12.64	403.04		
		3.04	400.00
6.93	406.93		
		9.65	397.28

	12.87	410.15			
			2.52	407.63	
	3.85	411.48			
			11.82	399.66	
Sta N-298-A	7.23	409.14		401.91	Elev.
	5.25	407.95	6.44	402.70	
Sta 231-A			6.09	401.86	= 405.25
Sta 228-A	6.90	411.94	5.82	402.03	= 405.04
		408.93	1	4.25	
			4.25	404.68	
Levels to 500-300-330 Page	13.02	301.53		288.51	
	12.22	313.73	0.02	301.51	
	12.04	325.64	0.13	313.60	
	11.50	335.10	2.04	323.60	
		300.31			
	11.80			288.51	
	12.67	312.98	0.20	300.31	
	15.50	322.98	5.50	307.48	
	4.25	323.49	3.74	319.24	
			7.08	316.81	B.M. on
	00.0	316.81	16.81	300.00	B.M. on
				316.81	B.M. on
P	15.64	332.45	0.67	331.78	
	15.97	347.75	0.33	347.42	
	15.97	363.39	13.67	349.72	B.M. on
			0.21	363.18	

Rock 15' upstream from Axis on W.B. of River

Rock 15' upstream from Axis on W.B. of River

Rock 40' upstream from Axis on W.B. of River

288.51
311.80
300.31

Solar obs. Feb. 28-30

T = 9-37-30 am } #1
 H = 46°-23-30 }
 V = 36°-58 }

T = 9-43-30 } #2
 H = 45-05 }
 V = 37°-45 }

Solar Obs March 10-30

T = 8-59 A.M. } #1
 H = 67°-56' }
 V = 33°-27' }

T = 9-02-30 AM } #2
 H = 67°-15' }
 V = 34°-00' }

Calc. S90°56'W Course N-392 to N418°A Mag. S 11°45'N
 400' contour

397.9
 6.12
 391.0

397.7
 6.12
 403.82

City Datum 8/4/33 PB

80

May 11/27/24 S.E. cor Idaho & Harvard

El. 373.01

12.53

385.54

8.80

386.34

6.65

392.99

10.99

382.00 = W.S.

392.99

5.02

387.90 - Top of Wall

392.99

3.09

section

389.90 bottom of horiz. inlet pipe

392.99

2.71

397.70 crest of vert. inlet pipe

El capitan pipe

From Redwood Tanks Enters 50' E of N.W. cor of Res.

Filter

386.5 bottom of Wood Flume at discharge

382.00

5.9

387.9 South West cor. top of Wall

dribble point water spill into street at various times

Pipe crest

El. 397.7

387.9 - Top of Concr. Wall

382.0 El. W.S. July 5-'30

from Filters
 Wood Flume

El. 386.5

Street

Level Curb Elev.
 373.01

P.O.G.

Solar

T = 9-37-30 a.m.
 H = 46° 23-30 } #1
 V = 36° 58

Solar

T = 8-59 A.M.
 H = 67° 56' } #1
 V = 33° 27'

Calc. 59° 56' W Course. N-39°

73096
 27.7
 651685
 651685
 126190
 2577735

82098
 83
 246294
 636784
 6814134

87504
 93
 262572
 787536
 8137872

88782
 198
 710256
 799038
 88782
 17578836

D 1140 - D 79° 29 RT

D 885 - D 18° 09 RT

397.9
 6.7
 391.2

14.03	379.21	0.43	378.78	363.18
15.46	394.24	0.49	393.75	
15.14	408.89	8.61	400.28	
15.26	424.02	0.13	408.74	
16.01	435.52	0.51	423.51	
15.77	451.29	0.00	435.52	
		1.45	449.84	
			401.32	
			300.00	
			306.20	
			300.15	

1435
 25
 8.65

DIRECTIONS FOR USE OF TABLES

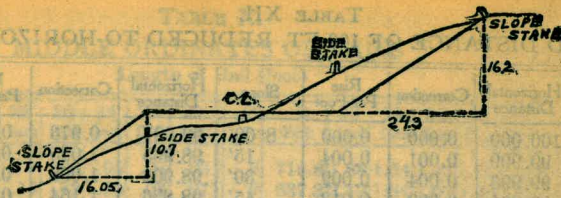
B.M. ROCKS 5 UP STEAMS FROM AXIS W.B. River

Distance of slope stake from side or shore stake for any width roadway, slope 1% If ground is nearly level, the cut or fill stake is located by the double entry method.

IMPROVED TABLES AND INFORMATION

To find tangent and External for curves any other degree, divide by degree of curve and connection found in column of connection. Degree of curve with a given I may be found by dividing tangent (or external), opposite I, by given tangent (or external).

The distance from a point on the tangent to the curve is very nearly the square of the tangent length divided by twice the radius.



DISTANCES FROM SIDE STAKES FOR CROSS-SECTIONING

SLOPE 1 1/2 TO 1. ROADWAY OF ANY WIDTH.

	0	.1	.2	.3	.4	.5	.6	.7	.8	.9	
0	0 00	0 15	0 30	0 45	0 60	0 75	0 90	1 05	1 20	1 35	0
1	1 50	1 65	1 80	1 95	2 10	2 25	2 40	2 55	2 70	2 85	1
2	3 00	3 15	3 30	3 45	3 60	3 75	3 90	4 05	4 20	4 35	2
3	4 50	4 65	4 80	4 95	5 10	5 25	5 40	5 55	5 70	5 85	3
4	6 00	6 15	6 30	6 45	6 60	6 75	6 90	7 05	7 20	7 35	4
5	7 50	7 65	7 80	7 95	8 10	8 25	8 40	8 55	8 70	8 85	5
6	9 00	9 15	9 30	9 45	9 60	9 75	9 90	10 05	10 20	10 35	6
7	10 50	10 65	10 80	10 95	11 10	11 25	11 40	11 55	11 70	11 85	7
8	12 00	12 15	12 30	12 45	12 60	12 75	12 90	13 05	13 20	13 35	8
9	13 50	13 65	13 80	13 95	14 10	14 25	14 40	14 55	14 70	14 85	9
10	15 00	15 15	15 30	15 45	15 60	15 75	15 90	16 05	16 20	16 35	10
11	16 50	16 65	16 80	16 95	17 10	17 25	17 40	17 55	17 70	17 85	11
12	18 00	18 15	18 30	18 45	18 60	18 75	18 90	19 05	19 20	19 35	12
13	19 50	19 65	19 80	19 95	20 10	20 25	20 40	20 55	20 70	20 85	13
14	21 00	21 15	21 30	21 45	21 60	21 75	21 90	22 05	22 20	22 35	14
15	22 50	22 65	22 80	22 95	23 10	23 25	23 40	23 55	23 70	23 85	15
16	24 00	24 15	24 30	24 45	24 60	24 75	24 90	25 05	25 20	25 35	16
17	25 50	25 65	25 80	25 95	26 10	26 25	26 40	26 55	26 70	26 85	17
18	27 00	27 15	27 30	27 45	27 60	27 75	27 90	28 05	28 20	28 35	18
19	28 50	28 65	28 80	28 95	29 10	29 25	29 40	29 55	29 70	29 85	19
20	30 00	30 15	30 30	30 45	30 60	30 75	30 90	31 05	31 20	31 35	20
21	31 50	31 65	31 80	31 95	32 10	32 25	32 40	32 55	32 70	32 85	21
22	33 00	33 15	33 30	33 45	33 60	33 75	33 90	34 05	34 20	34 35	22
23	34 50	34 65	34 80	34 95	35 10	35 25	35 40	35 55	35 70	35 85	23
24	36 00	36 15	36 30	36 45	36 60	36 75	36 90	37 05	37 20	37 35	24
25	37 50	37 65	37 80	37 95	38 10	38 25	38 40	38 55	38 70	38 85	25
26	39 00	39 15	39 30	39 45	39 60	39 75	39 90	40 05	40 20	40 35	26
27	40 50	40 65	40 80	40 95	41 10	41 25	41 40	41 55	41 70	41 85	27
28	42 00	42 15	42 30	42 45	42 60	42 75	42 90	43 05	43 20	43 35	28
29	43 50	43 65	43 80	43 95	44 10	44 25	44 40	44 55	44 70	44 85	29
30	45 00	45 15	45 30	45 45	45 60	45 75	45 90	46 05	46 20	46 35	30
31	46 50	46 65	46 80	46 95	47 10	47 25	47 40	47 55	47 70	47 85	31
32	48 00	48 15	48 30	48 45	48 60	48 75	48 90	49 05	49 20	49 35	32
33	49 50	49 65	49 80	49 95	50 10	50 25	50 40	50 55	50 70	50 85	33
34	51 00	51 15	51 30	51 45	51 60	51 75	51 90	52 05	52 20	52 35	34
35	52 50	52 65	52 80	52 95	53 10	53 25	53 40	53 55	53 70	53 85	35
36	54 00	54 15	54 30	54 45	54 60	54 75	54 90	55 05	55 20	55 35	36
37	55 50	55 65	55 80	55 95	56 10	56 25	56 40	56 55	56 70	56 85	37
38	57 00	57 15	57 30	57 45	57 60	57 75	57 90	58 05	58 20	58 35	38
39	58 50	58 65	58 80	58 95	59 10	59 25	59 40	59 55	59 70	59 85	39
40	60 00	60 15	60 30	60 45	60 60	60 75	60 90	61 05	61 20	61 35	40
41	61 50	61 65	61 80	61 95	62 10	62 25	62 40	62 55	62 70	62 85	41
42	63 00	63 15	63 30	63 45	63 60	63 75	63 90	64 05	64 20	64 35	42
43	64 50	64 65	64 80	64 95	65 10	65 25	65 40	65 55	65 70	65 85	43
44	66 00	66 15	66 30	66 45	66 60	66 75	66 90	67 05	67 20	67 35	44
45	67 50	67 65	67 80	67 95	68 10	68 25	68 40	68 55	68 70	68 85	45
46	69 00	69 15	69 30	69 45	69 60	69 75	69 90	70 05	70 20	70 35	46
47	70 50	70 65	70 80	70 95	71 10	71 25	71 40	71 55	71 70	71 85	47
48	72 00	72 15	72 30	72 45	72 60	72 75	72 90	73 05	73 20	73 35	48
49	73 50	73 65	73 80	73 95	74 10	74 25	74 40	74 55	74 70	74 85	49
50	75 00	75 15	75 30	75 45	75 60	75 75	75 90	76 05	76 20	76 35	50

Computed by L. Leland Locke.

859+64 ± N 38-18W approx.

359 60
34 30
325 - 30

o Air valve stem

84° 41'

v = 14° 28'
d = 5.44

720

$\frac{16}{99}$
61

15.97
81
16.78
.75

$\frac{13}{712}$
11.85

105' : 30 = 35.00 : 10 : 300 = 380
 $\frac{90}{75}$ 330 = 485
 310 = 570
 390 = 695
 700 = 730

705
485
70 220 3.143
100 125.720
4.4290

360 705
125
500
330 92
486
94
392

6.4
16
22.4

500 x 20

+

2.2
20

= 440 = Acr. 1-ft deep 44 Acr-ft

20 10 440 "

100 4 440 "

200
1.98
198.02

16
94
66