

W36

See Col. Mr. Watson



LEVEL

404

Smithsonian Institution

H. S. CROCKER COMPANY

DRAWING MATERIALS AND
SURVEYING INSTRUMENTS

SAN FRANCISCO

TABLES FOR EXCAVATIONS AND EMBANKMENTS

DISTANCES FROM CENTER OF ROADWAY FOR CROSS-SECTIONING

Roadway 18 Feet Wide. Side Slopes 1 to 1.

For Single Track Excavation.

"Copyright, 1895, by Kueffel & Esser Co."

	0	.1	.2	.3	.4	.5	.6	.7	.8	.9	
0	9.0	9.1	9.2	9.3	9.4	9.5	9.6	9.7	9.8	9.9	0
1	10.0	10.1	10.2	10.3	10.4	10.5	10.6	10.7	10.8	10.9	1
2	11.0	11.1	11.2	11.3	11.4	11.5	11.6	11.7	11.8	11.9	2
3	12.0	12.1	12.2	12.3	12.4	12.5	12.6	12.7	12.8	12.9	3
4	13.0	13.1	13.2	13.3	13.4	13.5	13.6	13.7	13.8	13.9	4
5	14.0	14.1	14.2	14.3	14.4	14.5	14.6	14.7	14.8	14.9	5
6	15.0	15.1	15.2	15.3	15.4	15.5	15.6	15.7	15.8	15.9	6
7	16.0	16.1	16.2	16.3	16.4	16.5	16.6	16.7	16.8	16.9	7
8	17.0	17.1	17.2	17.3	17.4	17.5	17.6	17.7	17.8	17.9	8
9	18.0	18.1	18.2	18.3	18.4	18.5	18.6	18.7	18.8	18.9	9
10	19.0	19.1	19.2	19.3	19.4	19.5	19.6	19.7	19.8	19.9	10
11	20.0	20.1	20.2	20.3	20.4	20.5	20.6	20.7	20.8	20.9	11
12	21.0	21.1	21.2	21.3	21.4	21.5	21.6	21.7	21.8	21.9	12
13	22.0	22.1	22.2	22.3	22.4	22.5	22.6	22.7	22.8	22.9	13
14	23.0	23.1	23.2	23.3	23.4	23.5	23.6	23.7	23.8	23.9	14
15	24.0	24.1	24.2	24.3	24.4	24.5	24.6	24.7	24.8	24.9	15
16	25.0	25.1	25.2	25.3	25.4	25.5	25.6	25.7	25.8	25.9	16
17	26.0	26.1	26.2	26.3	26.4	26.5	26.6	26.7	26.8	26.9	17
18	27.0	27.1	27.2	27.3	27.4	27.5	27.6	27.7	27.8	27.9	18
19	28.0	28.1	28.2	28.3	28.4	28.5	28.6	28.7	28.8	28.9	19
20	29.0	29.1	29.2	29.3	29.4	29.5	29.6	29.7	29.8	29.9	20
21	30.0	30.1	30.2	30.3	30.4	30.5	30.6	30.7	30.8	30.9	21
22	31.0	31.1	31.2	31.3	31.4	31.5	31.6	31.7	31.8	31.9	22
23	32.0	32.1	32.2	32.3	32.4	32.5	32.6	32.7	32.8	32.9	23
24	33.0	33.1	33.2	33.3	33.4	33.5	33.6	33.7	33.8	33.9	24
25	34.0	34.1	34.2	34.3	34.4	34.5	34.6	34.7	34.8	34.9	25
26	35.0	35.1	35.2	35.3	35.4	35.5	35.6	35.7	35.8	35.9	26
27	36.0	36.1	36.2	36.3	36.4	36.5	36.6	36.7	36.8	36.9	27
28	37.0	37.1	37.2	37.3	37.4	37.5	37.6	37.7	37.8	37.9	28
29	38.0	38.1	38.2	38.3	38.4	38.5	38.6	38.7	38.8	38.9	29
30	39.0	39.1	39.2	39.3	39.4	39.5	39.6	39.7	39.8	39.9	30
31	40.0	40.1	40.2	40.3	40.4	40.5	40.6	40.7	40.8	40.9	31
32	41.0	41.1	41.2	41.3	41.4	41.5	41.6	41.7	41.8	41.9	32
33	42.0	42.1	42.2	42.3	42.4	42.5	42.6	42.7	42.8	42.9	33
34	43.0	43.1	43.2	43.3	43.4	43.5	43.6	43.7	43.8	43.9	34
35	44.0	44.1	44.2	44.3	44.4	44.5	44.6	44.7	44.8	44.9	35
36	45.0	45.1	45.2	45.3	45.4	45.5	45.6	45.7	45.8	45.9	36

Calculated by Julien A. Hall, M. Am. Soc. C. E.

MICROFILMED

JAN 6 1963

Index.

Traverse of Campain Road	1-4
Topography along Ocho Lin	5-8
Topog. around Building	9-13
Traverse South Alfalfa field	14-15
Traverse around Olive Orchard	16-18
Traverse of Potrero Creek	19-24
County Road, Smith's to Ochechlin	25-27
E Side grain field, Road to Olive Orchard	28
Traverse Cultivated Sand South of Potrero Cr	29-32
Traverse County Road, Smith's - 2nd	33-34
Seeds from USGS Bin 875	50-51
Measurements into Section 2in	57-58
Traverse Cottonwood River North Side through Healy Property	35-38
Location of Bin 875	38
Traverse Cottonwood River South Side through Healy property	39-42
Plots of Healy Property	54-55
West Side SE $\frac{1}{4}$ Sec 4 T 19 S; R 3 E	45-46

1. Traverse of Company Road
from W. min Dec 17 to north line S-e 4.
Var 1430

T 185 R 3 E

2-17-'08

Wheat
Saw
Mill

Sta	Dist	Chain	Var ₂	Def ₂	Elv.	Magn ₂	LT	R	Calc	3	2	1	2	3
12		528.7	-039			N6025E		2022	N6028 1/2 E	9741 R to Sandhill				
11		547.5	-025			N4035E	046 1/2		N4016E	9524 R to Barn				
10		330.7	+105			N4110E	4042		N4102 1/2 E	8255 R to Out building				
9		187.6	-251			N8145E		014	N8144 1/2 E	9755 R to Windmill				
8		231.8	-005			N8130E		193 1/2	N8130 1/2 E	10949 R to Barn				
7		503.5	-225			N6155E		42	N6159E	2003 R to house				
6		288.3	-123			N5735E		1014	N5738E	12625 R to Out building				
5		333.3	+308			N4725E	2730		N4724E	Buildings N6045E				
4		500.3	+215			N7450E		2602 1/2	N7454E					
3		141.5	+134			N4835E	3403		N4851 1/2 E					
2		319.0	+018			N831E		381 1/2	N8254 1/2 E					
1		371.1	+312	+20.7		N4430E	1362 1/2		N4436E					
OR	240.1	2464	-1254	-55.0		S11W			S103 1/2 W				7 8	18 17

to Sandhill
at distance of 1/2 mile

Sta

Dist

Chain

Vene

Dijle

Siv.

Maate

L+

R+

Calc

3

2

3

Sta

Dist

Chamber

Dij

Elev.

mag to

L+

R+

Cal to

3

2

2

3

6.

termined at □ I

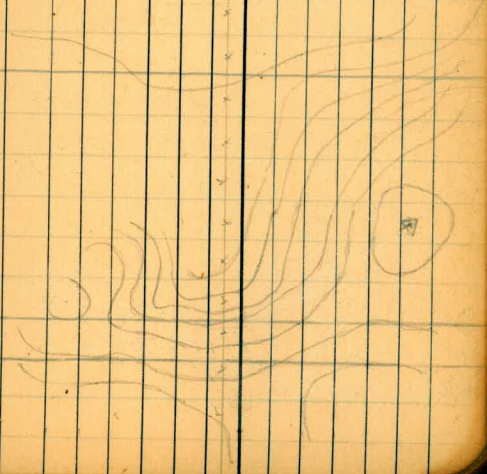
2-21-08

W. W. W. W.
W. W. W.

Sta	Dist	Stadia	Vert	Diff Ele	Elev.	Mag Co	L+	R+	Cal Co	=	2	1	2	3
1/2 mi cor		1374	-					11000						
NE field cor		13	-207					12330						
NE fence cor		33	-252		866.86			8432						
□ J		HI 476			on NPS fence line									
CP		342	+030					10544						
SW fence cor		346	-					9440						
SW cor field		271	-033					9616						
edge of field		344	-027					1450						
edge of field		425	-007					5844						
SE cor field		488	-015					5511						
SE cor fence		516	-019					5445						
NW cor field		73.0	-050			1622 SW		1535 1/2						
□ I		HI 491			867.22									
CP		159	-208					000	000					
CP near dam		587	-628					7042						
CP		270	-1241					6423						
CP		176	-2125					2406						
□ H		HI 497			953.73									
CP		95	-1334					116						
CP		33	-142					6006						
CP		272	+211					10614						
CP		204	+021					12506						
CP		115	+306					14644						
□ G		HI 5.11			995.65									
□ F		HI 475			991.40									
CP		144	+248					000	000					

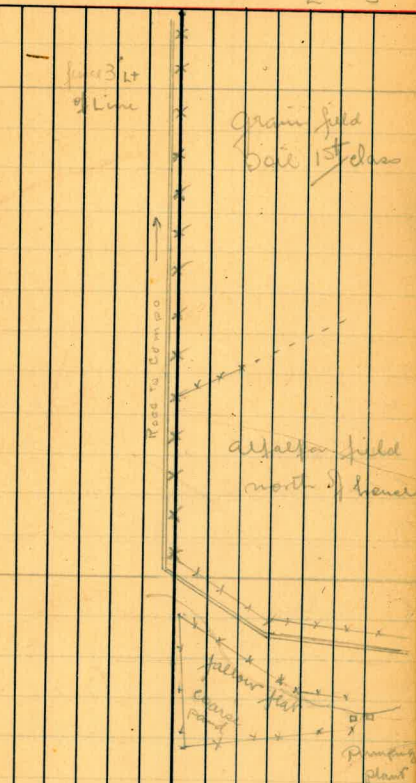
Level field
for site
planted to
grain

Bluff



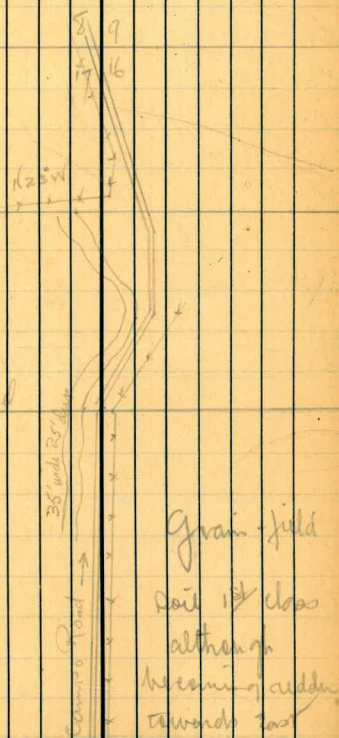
Sta	Dist	Stadia	Vert	Dif Elev	Elev.	Magn to	St	R.	Calc
cor garden patch		466.6	-049			S 9 W		9812	
□ M	HI	5.19			910.25				
apian							4037		
cor allalfa patch		763.1	-034			S 54 5 W		9445	S 6 13 1/2 W
ditto		764.6	-025			S 63 5 W		8939	S 1 06 1/2 W
"		747.8	-022			S 1 10 E		8749	S 0 43 1/2 E
"		783.7	+001			S 14 55 E		7400	S 14 3 1/2 E
"		525.7	+023			S 26 50 E		6205	S 26 2 1/2 E
"		466.6	+019			S 27 45 E		6112	S 27 19 1/2 E
"		529.3	+051			S 40 20 E		4835	S 39 56 1/2 E
cor allalfa		169.0	-053			S 27 30 W		11626	S 27 54 1/2 W
cor allalfa		117.5	+208				000	000	S 8 3 1/2 E
NW cor allalfa		240	+253		894.12		000	000	S 9 3 1/2 E
□ L	HI	5.10	near	edge	camp	Road			
fence cor bottom bank		313	+117					019	
fence cor		80	-300					201	
base of river bank		9	-2741					18000	
edge of channel		52	-538	-5.1	859.0			18000	
edge of channel		109	-248	-5.3	858.8			18000	
CP base of river bank		182	-121		864.13			18000	
□ K	HI	5.18		on E	River bank				
CP top of river bank		105	-024				000	000	
CP on bluff		480	+345					15721	
CP on bluff		562	+349					13712	
CP in saddle		786	+226					13114	
CP on top of hill		778	+623					11739	

Common sta M
2-22-08
west
side



Corran Wood

Sta	Dist	Stadia	Vert	Dist	Elv	Magn to	W	R+	Calc	Co	3	2	1	2	3
AP					964.77										
					Sec Col S side Campstead										
CP edge barrow	170		+132				1745								
tree cor delapatch	48		+140					1104							
CP edge barrow	43		-210				9000								
□ O	HI	501			940.93										
apianj							13920								
CP edge barrow	147		+152					657							
lot grain field	132		+232					836							
CP edge barrow	23		-606				932								
□ N	HI	494			925.93										
tree							9000								
1/4 mi lot	40.0						000	000							
apianj							9102								
CP	132		-242				12609								
CP	41		-151				7254								
Ur Remains	2787		-057			3330W		9226							
cor garden	5593		-040			5505W		9412							
cor garden	5602		-016			5730W		9626							



9. Topography adjacent to side of Road
Traverse in front of Dwelling

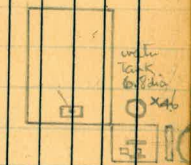
2-22-08

Winst
Hill

Sta	Dist	Stadia	Vert	By Eye	Elev.	Magn Co	ht	Pr	Calc				
From junction in E		252	-542					6450					
CP		205	-356					5259					
← PT in fence		269	-004					17432					
SE cor open shed		117	-701					7700					
NE cor open shed		112	-652					8714		20 x 15			
SE cor engine house		130	-631					8750					
NW cor engine house		142	-719					9251		8 1/2 x 11 1/2			
NE cor engine house		129	-701					9239					
CP distillate tank 26 dia x 26		127	-753					10201		4.6 dia x 2.6			
CP on fence line		138	-747					11450					
CP Bot post along fence		267	-428					13551					
CP Bottom in field		146	-859					12711					
CP		87	-105					15515					
Junction fence		53	-118					15542					
Sum of standpipes		/	/				9218						
□ 77		2604	-015	-1.0									
□ 76	HI 499				887.3								
□ 76		3347	-032	3.0	887.3	5030 W	3106		5105 W				
CP		195	-135				1520						
Cor alfalfa		130	/				11477						
□ 75	HI 490				890.3								
CP		140	+026				5922						
CP edge of Hall		26	-433				18000						
CP top of tank on fence		124	-305				13922						
□ 75		174.0	-119	-3.8		53135 W		120412	53210 W				
□ L	HI 508				894.10								

Uccant Sov
 Sloping towards
 river. Contains
 engine house with
 one H.P. motor and
 engine, two 3E H.P.
 centrifugal pumps
 with all apparatus
 and wood shed with
 10' dia. Also
 open shed with
 other pumps and engine

alfalfa patch



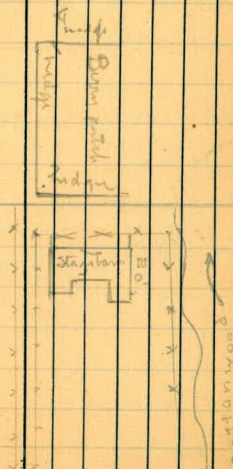
Sum of standpipes

alfalfa patch

West edge lamp Pond

= Co Sec line Bet. 8 and 17

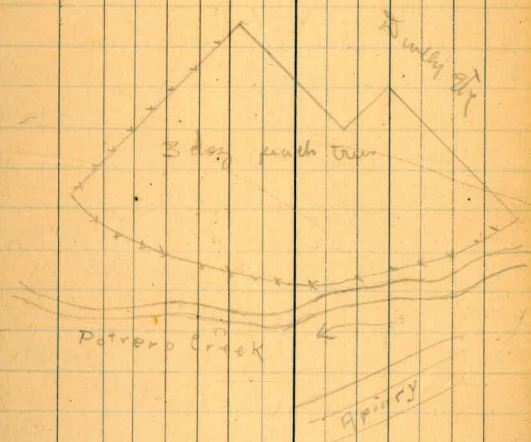
Sta	Dip	Stade	Dev L	Dip 26	Elev.	Magn Co	LT	R	Calc.	3	2	1	2	3
cor kitchen		122	-					351						
cor chimney		123	-					506						
cor chimney		119	-					525						
cor chimney		120	-					653						
cor porch		110	-					721						
cor dwelly		113	-					1429						
cor dwelly		109	-					1456						
NW cor dwelling		115	-					2246						
cor corral area		47	-516					10200						
cor corral structure		48	-428					9747						
fine cor on Pine hill		280	-425					7900						
End of Pine fence		82	-340					5640						
L in road fence		45	-					322						
E end gate		56	-				844							
End of rail fence		60	-				1155							
S end trough		30	-				3504							
N end trough		22	+059				5348							
PI in telephone		75	+150				13526							
fence cor		22	-128					12956						
□ 77	NI	5.18			876.3				at time of road S. side					
NE cor gran fm		225	-121					1125						
NW cor gran Room		226	-126					1325						
cor stage fm		237	-202					1803						
cor stage fm		228	-208					1831						
NW cor stage fm		231	-215					2131						
fine cor		360	-334					4326						



Sta	Dyar	Stair	Vert	Dy El	Elv.	May 60	K	R	cal co	2	3	1	2	3
SW cor hay barn		149	-					14501						
cor corral SE hay barn		102	-					12924						
cor corral SE hay barn		58	-					14508						
Irish brood hut		161	-125					2142		10x16				
CP little ridge		263	-100				318							
CP little ridge		148	-146					2979						
CP bot gully		145	-559					6222						
CP bot gully		96	-732					1827						
CP bot gully		193	-310				346							
CP bot gully		274	-136					2136						
CP		195	-021					2627						
CP		79	-333					032						
□ 79	HE	503								DE Hay barn				
□ 79		3687	+008			51508E		7037	51509E					
Edge little iron corral		260	-					7056						
NE cor hay barn		209	-					7555						
SE cor cow shed		204	-					1800						
NE cor cow shed		159	-					1621						
NW cor cow shed		159	-					4156						
NE cor barn patch		26	-					14351						
Imed. fence for garden		286	+136				4457							
□ 78	HE	496				889.5				North westerly cor 2nd edge patch				
□ 78		1123	+143	+32		58605		66502	58545EE					
SW cor berry patch		136	-					1117						
NW cor barn		164	-					658						
NE cor back porch		124	-					014						

Sta	Dist	Stadia	Dist	Ref	Elev	Height	H	P+	Cal Co	3	2	1	2	3
□ 91		HI 501							SW 1/4	Rowley	in orchard			
□ 11		263.8	-024			Wason		501.2	14433 W					
Jun junction side		145	-653				132							
LPI in pig sty fence		69	-1246				248							
EP		43	+024				12746							
Jun cor		145	-203				10651							
SE cor pig sty		69	-1014				7013							
LPI in pig sty fence		37	-700					1955						
NE cor pig sty		71						4235						
LPI in corral fence		94	-038					4243						
NW cor pig sty		78	-021					8519						
SE cor corral		65	-1118				501							
junction between fence		93	-853					1224						
LPI in corral fence		123	-724					2201						
cor of corral fence		130	-654					2519						
LPI in corral fence		135	-513					3513						
CP		120	-146					4951						
LPI in corral fence		114	-					6257						
SW cor barn		170	-					7431						
SE cor barn		159	-					8848						
SW cor cow shed		162	-					9826						
Jun in end back cow shed		154	-					9620						
Jun in end back cow shed		113	-					9520						
□ 80		HI 498												
□ 80		126.1	-210			SW 1/4		10021	58122 W					
SE to hay barn		112	-					16140						

Sta	Dist	Stadia	Dist \angle	Dist Sta	Elev.	Angle	L ⁺	R ⁺	Calc	3	2	1	1	2	3
Q 78									65302	S 85 44 2 E					
Q 77															
Q 77			212.0	+044		NR 115 E		7319	NR 84 5 E						
cor orchard			147	-106				5724							
cor orchard			128	+043				4653							
cor orchard			137	-412			16516								
cor orchard			155	-446			15925								
cor orchard			127	-927			14524								
cor orchard			109	-1038			3817								
cor orchard			180	+622			1937								
cor orchard			224	-448			634								
SW cor stone cellar			33	-				14524							
SE cor stone cellar			41	-				14412							
NW cor stone cellar			33	-				13408							
cor dwelling			78	-				9929							
Change in beds			89	-				9609							
SW cor kitchen			79	-				10215							
SE cor kitchen			98	-				11129							
NW cor stone house			93	-				11257							
SW cor stone house			90	-				11820							
SE cor stone house			100	-				11953							
SW cor fence and box			37	+007				16442							

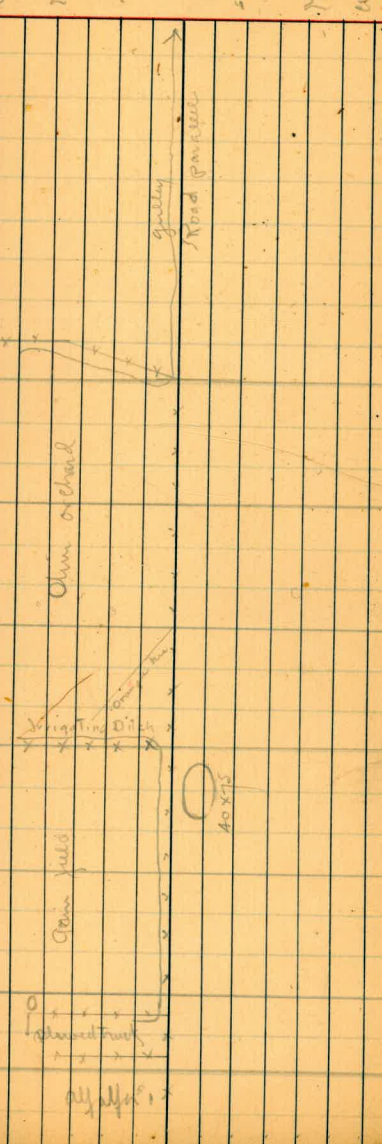


14 Traverse of South Alfalfa Field

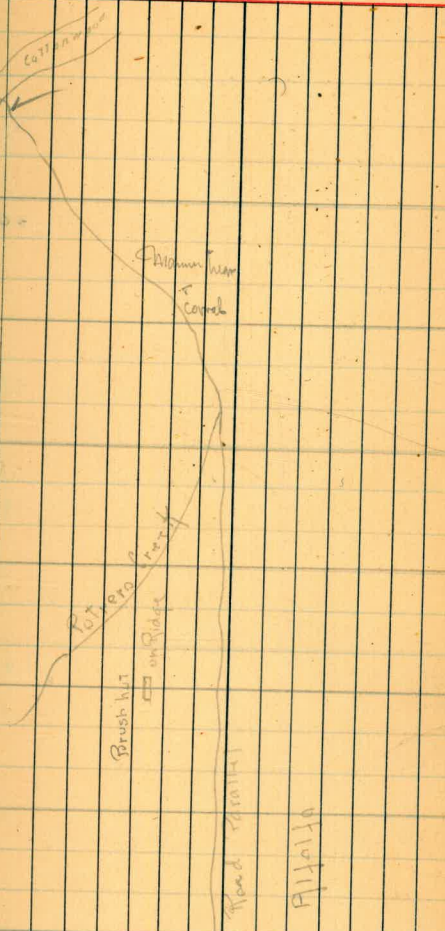
2-25-08

West
Salem
Hill

Sta	Dist	Stadia	Vert	Diff El.	Elev	Mag	L	R+	Calc	3	2	1	2	3
CP		394	-207					8823						
CP		365	-101					9129						
CP		205	-041					5549						
CP		175	-321					1512						
CP		164	-158					9908						
CP under oak		123	-039					451						
CP		47	-852					1543						
CP		22	-319					1829						
87	HI 526				8955			an path to chin orchard						
87		1692	-102	-3.1		S1020W	5105 1/2	S1059 1/2 W						
85			+205											
86	HI 521				8986									
86		2723	-203	-9.9		S6130W	4812 1/2	S6205 W						
84			+047											
85	HI 500				9095									
85		1317	-046	-1.8		S1310W	6254	S1352 1/2 W						
83			-124											
84	HI 504				9103			an road to pt 513						
84		737	+123	+1.8		S4030E	2154 1/2	S4901 1/2 E						
82			-044											
83	HI 491				9085									
83		3791	+044	+4.9				1555	S1056 E					
78			-143											
82	HI 515				9036									
82		468.0	+144	+14.1			105 1/2	S8651 E						
77	HI 518				8995									
								6077-78						
								S1945 1/2 E						



Sta	Dist	Stadia	Vert	Dyke	zlev	Mag	W	R+	Cal	co	3	2	2	3
□ 79									11149 1/2	S 86 50 E				
□ 92			-006											
□ 78					889.8									
□ 78		238.0	+006	+0.4		N 85 50 W	245 1/2			N 83 39 1/2 W				
□ 92			+020											
□ 93		HI 507			889.4									
□ 93		96.3	-019	-0.4		N 6 - E	4133			N 67 6 E				
□ 91			-145											
□ 92		HI 520			889.8									
□ 92		93.2	+147	+2.9		N 47 35 E			11937 1/2	N 47 49 E				
□ 90			-010											
□ 91		HI 517			886.9									
□ 91		124.6	+012	+0.4		N 72 20 W	1439			N 71 48 1/2 W				
□ 89			+151											
□ 90		HI 494			886.5									
□ 90		101.0	-129	-3.2		N 57 40 W			614	N 57 09 1/2 W				
□ 88			+013											
□ 89		HI 486			889.7									
□ 89		217.3	-012	-0.8		N 63 40			1241	N 63 23 1/2 W				
□ 87			+132											
□ 88		HI 455			890.5									
□ 88		187.2	-131	-5.0		N 77 W			9256	N 76 04 1/2 W				
□ 86 CP		395	-057						8030					



2-26 '08
West
Surrey
Hill
2 3

Sta	Road	Distn	Vert	Diff	Elev	Magn	LT	R+	Calc
105		2000	-118	-4.6		N43°W		2359	N423½°W
103			+221						
104	HI 511				9024				
104		41.7	-218	-1.7		N6650W	1702		N6636½°W
102			+158						
103	HI 529				904.1				
103		201.4	-157	-6.9		N5010W		6738	N4934½°W
101			+427	0					
102	HI 526				911.0				
EP	HI		-337					6320	
EP		140	+71				2706		
102		4183	-427	-32.5		S6215W		91562	S624½°W
100			-045						
101	HI 514				9435				
101		181.6	+044	+2.3		S2730E		17152	S2709E
99			-053						
100	HI 490				9412				
100		1863	+064	+2.9		S4645E	18202		S4624½°E
TP on ditch		280	+427				2944		
CP on ditch		180	+626				5240		
CP on ditch		135	+901				9139		
98			-055						
99	HI 492				9383				
99		3343	+057	+54		S2735E		7425	S2704E
97			-630						
in gully		36	-459				1555		

at Fence Cor.



Olive Orchard

Irrigating Ditch

This is parallel
to row 101

Sta	Prior	Station	Dist	By	Elev.	Mag. B	W	R	Cal to	3	2	1	2	3
-----	-------	---------	------	----	-------	--------	---	---	--------	---	---	---	---	---

LPR in fence		98.5				S 82° 0' W								
□ 88														
□ 106			-041											
□ 87					895.4									
□ 87		216.0	+041	+2.6		N 19° 25' W								
LPR in fence		22.0												
□ 105			+133											
□ 106					892.8									
□ 106		187.4	-131	-5.0		N 52° 30' W								
□ 104			+121											
□ 105	HI	496			897.8									
LPR in fence		26	-244			N 75° 25' W								

15157
5646
N 76° 04' W ✓

at gate in fence to orchard
324 1/2 N 19° 18' W

11109
929
N 52° 06' W

1015

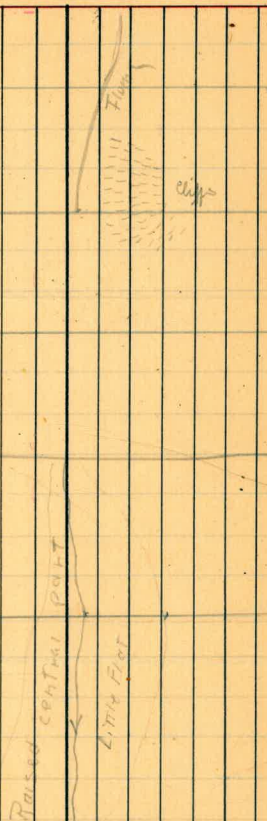
Alvado Patch #2

Oliver Orchard



Sta	Riser	Stadia	Vert	Byz	Elv	Mag	W	R	Calcs	1	2	3
S Creek		92	-111					11014				
Q 102 (Chin. Oak)		165	+243				4809					
N Creek		93	-211				5441					
Q 110		366.0	+205	+13.2		SS-E		1419	55426E			
Q 113			-121									
Q 114	HI	509			9030							
Q 114		312.0	+121	+7.4		S6920E	1216		S6905E			
CP		136	+257					3231				
S Creek		164	000					541				
CP		52	+410					1252				
S branch creek		29	-616					7004				
north bank		159	-125				3044					
CP main creek		130	-427				1252					
CP		97	-156				1050					
Q 112			-202									
Q 113	HI	417			8936							
CP		111	+233					1106				
CP		125	+311					1422				
Q 113		354	+203	+12.6		S5657E		256	S5649E			
Q 111			-053									
Q 112	HI	500			7930							
Q 112		409.0	+054	+6.4		S5940E	1446		S5945E			
CP		230	+050				9219					
CP		160	+324				9721					
CP		211	+355				12251					
CP edge creek		113	-042				12222					

Sta	Dnot	Stadin	Int L	R/L	Elev	Magn	L	R	Cal Co	3	2	1	1	2	3
124			+255												
125	HI 450														
125		310	-253	-15.7		S 82 W	814		S 82 30 W						
123		38	+317												
124	HI 487														
124		38	-318	-2.1		N 143 SW	7914		N 14 11 W						
122		164	-214												
123	HI 498														
123		165.0	+215	+6.4		N 64 35 E	705		N 65 03 E 15						
121			-223												
122	HI 500														
CP		165	+145					5559							
122		238.0	+224	+9.9		N 72 40 E		329	N 73 06 E						
120			-249												
121	HI 451														
CP at junction of gully		102	+309					5056							
CP creek		45	+108					6559							
CP		58	+311				484								
121		194.0	+223	+9.6		N 69 10 E	1234		N 69 39 E						
119			-258												
120	HI 519														
CP on bank		76	+1614					2916							
CP on tributary		35	+440					5607							
CP		56	+224					627							
120		103.0	+200			N 114 5 E	4059		N 92 B E						
118			-405												



Sta	Dist	Station	W or E	R/L	Elev	Magn	H	P	Cal to	3	2	2	3
CP on fence line		474	+840					10904					
129		473	-118	-10.7		N6755W		537	N6707W				
CP ditch		272	+621					11009					
CP bank		92	+202					10230					
UP creek		64	-512					10046					
127			+048										
128	HI	516											
Telephone post office		-	+1934					11627					
128		153	-026	-2.1		N7315W		1107	N7244W				
CP		49	-303					6908					
CP on bank		66	+712					9423					
CP on ditch		232	+712					9423					
117 in creek		164	-234				240						
UP end of field		160	-156				1347						
126			+1197										
127	HI	495											
127		213	-117	-4.8		N8420W		1130	N8351W				
CP lith divide		80	+318				7527						
CP top of bank		77	+1554					14027					
125			+316										
126	HI	440											
126		208	-318	-11.7		S84W		204	S8439W				
CP on Ditch		71	+1111					4849					
CP end of flume		76	+858					17006					
CP		96	+1243					7936					
CP		25	+024					8617					



Sta	Dist.	Stadia	Surf	By the	lev.	Magn.	W	P	Cal Co	3	2	1	2	3
CP Top of bank		23	+131											
Q 103						N 50° W	9346	556	(4933 W (34))					
Q 129			+231											
Q 102	HI	537												
Telephone post on hill			+1612						12830					
CP bank		212	+238						12837					
CP bank		100	-414						6530					
CP creek		93	-837						2846					
CP creek		64	-1147						6705					
Q 102 (thin orchard)		252.0	-230	-11.0		N 40° W			2330	(4337 W)				
Q 129			+119											
Q 129	HI	353												
CP in creek		244	-303						3428					
CP		380	+204						6344					
CP on Ditch		400	+306						6547					
CP		474	+811						926					

Sta	Bur	Radio	Var ₂	Dif Elev	Elev	Magn
Q60		5509	+050	+7.9		N66°W
Q58			+030			1425 15938E
Q59	HI 5.12					
CP		224	+015			2113
CP		220	+236			2644
CP		283	+202			1430
CP		49	+175			1326
Q59		3376	-028	-2.8		N74°SW
Q57			+041			1445 N740E W
Q58	HI 5.05					
CP		79	+125			13249
CP edge of flat		300	-108			4112
CP		92	+744			2500
CP edge of flat		52	-143			13204
CP edge of flat		205	-053			6230
Q58		2334	-040	-2.7		N84°W
Q56			+015			1043 18346E W
Q57	HI 4.97					
Q57		4319	-014	-1.8		N75°W
CP		334	+1319			2223 N73.03E
CP		98	+816			16315
CP		42	+2200			14514
CP		44	-1249			945A
Q55			+030			138
Q56	HI 5.12					
Q56		115.6	-030	-1.0		S8610W

Flat

Grain-field

CP coral	212	-407
CP	263	-400
CP from hill	219	-436
CP from hill	122	
CP	77	-600

Q2		
Q60		-42

Q16	HI 502	
-----	--------	--

CP Edge flat	142	-403
CP on grass hill	460	+121
CP in grain field	209	
CP in grain field	189	+204
CP	302	-009

CP in Rd Road	243	-206
Point old mud flat	165	-152

Q1	854	+044 +7.0
----	-----	-----------

Q59		-049
-----	--	------

Q60	HI 521	
-----	--------	--

CP	374	-019
----	-----	------

CP Edge flat	200	-015
--------------	-----	------

CP	67	+134
----	----	------

CP	208	+404
----	-----	------

1521

10501

10138

10950

10032

1346 1/2 N4435 1/2 E

9921

16214

12851

1544

2009

2623

1759

9528

N6911 W

726

3450

13559

15038

60' dia

Pasture

Old Road

Grain-field

28

along East Side grain-field
from Section line to Olive orchard

2-29-08

□ 95
□ 103
□ 112

277 -1307 52135E 3333

S2107E

Went
to
S. Pine
Hill

□ 94 288 -306 -156 51155E 1521 S1226W

SE on grain field 260 +100

UP on fence line 270 +1051

UP edge of field 123 +007

UP in grain field 306 -208

□ 152 340 -202

□ 153 HI 478

□ 153 334 +205 +12.2 5325E

Pr on telephone 258 -

UP on fence line 432 +725

UP 196 +402

UP 134 +243

on Sandspiper in pond 114 +021

□ 151 146 -032

□ 152 HI 93

UP 66 +052

UP on fence line 171 +638

L pl in fence 24 -

□ 152 145 -030 -1.3 5175W

□ 150 215 -039

□ 151 HI 446

□ 151 215 +041 +2.5 545E

□ 0 354 +133

□ 150

□ 150 352 -131 +9.4 587W

□ 0 HI 448

141

6211

1330

13920

= most Eastern stage

edge grain field

2110

S255E

2540

4940

3332

3654

126

2341

2618

1212

6252 S1915W

13200

S4437E

at L pl in fence

17550

S9723W

29 Traverse of Cultivated Sand
 Mouth of Paturo Creek

2-29-08

Sta	Dist	Stadia	Utz	Ref/Elev	Mag	H	R+	Calc	3	2	1	2	3
Q183		76	-358		N725E		564	N740 $\frac{1}{2}$ E					
Q181		610	+116										
Q182	HI 500												
Q182		615	-115		N2930W	234		N4903 $\frac{1}{2}$ W					
Q180			+204										
Q181	HI 504												
Q181		2636	-202		N3450W	228		S3429 $\frac{1}{2}$ W					
Q179			+329										
Q180	HI 511												
Q180		3715	-328		N1250W		8832	N1221W					
Q178			-106										
Q179	HI 496												
Q179		2637	+107		S7910W	206		S7908 $\frac{1}{2}$ W					
Q177			+103										
Q178	HI 500												
Q178		2378	-101	-4.3	N8035W		8837	N8009 $\frac{1}{2}$ W					
Q176			-217										
Q177	HI 525												
Q177		1960	+219	+7.6	S1055W	4631		S1132W					
Q175			-031										
Q176	HI 450												
Q176		1222	+034	+1.2	S5725W		2122	S55745W					
Q102			-129										
Q175													
Q175		4903	+130	+12.8	S3545W	2630		S3617 $\frac{1}{2}$ W					
Q102	HI 537												

Long Grad. 111.1 - 110.5

S6247 $\frac{1}{2}$ W. S10101-102

Sta	Dist	Stadin	Dist	Dip	Elw	Mag	Rt	Cal	Lo	3	2	1	2	3
□ 189		27	+141			5600	3402	56028E						
□ 186		182	-004											
UP		200	+133				4008							
UP		212	+324				5246							
UP		80	+819				11110							
UP		48	+310				11532							
□ 187	HI	493												
UP		70	-044				5857							
UP		47	-944				6011							
UP		30	-419				5900							
□ 187		182	+005			N 85° 05' E	371.8	N 95° 22' E						
□ 185		562	-019											
□ 186	HI	511												
UP		340	+1049				5983							
□ 186		554	+021			N 47° 50' E	15946	N 48° 04' E						
□ 184		426	+133											
□ 185	HI	495												
UP		66	+213				7548							
UP		50	-748				3836							
□ 185		430	-121			S 67° 55' W	5326	S 68° 18' W						
□ 183		120	+245											
□ 184	HI	498												
□ 184		121	-244			N 58° 50' W	6556	N 58° 15' W						
□ 182		86	+400											
UP	HI	474												
UP		70	-454				13155							



Sta	Diat	Qladi	Vert	Ryfle	Elev	Ang 6	HT	R+	Calco	3	2	1	2	3
CP on fence line		50	-344				1752							
CP		265	-112				1749							
CP on fence line		290	-153				1708							
□ 191		175	+037			55340E	1735		55319E					
□ 189		402	-117											
□ 190	HI 518													
CP		128	-521				86							
CP		108	-349				87E							
CP		64	-651				107							
□ 190		402	+118			54540E	2420		54544E					
□ 188		110	-45											
□ 189	HI 505													
lines intersect in c		80	-503				184							
□ 189		110	+417			52140E		3401	52120E					
□ 187		218	-140											
□ 188	HI 489													
EE end of ramp		230	+154				415							
W end of ramp		150	-				157							
W end of ramp		130	-				230							
SW end of ramp		124	-				236							
SE end of ramp		133	-				2021			10X12				
CP in fence		130	+050					212						
CP in fence		108	+240				2101							
CP in fence		122	+133				3801							
CP in fence		90	+309				6011							
CP creek		32	-501				5626							

Sta	Dist	Station	Unk	Dj	Elev.	Mag	R	Calcs	3	2	1	2	3
CP on June hill		71	-236				1702						
□ 176						S5730W		3637	S742W	✓			
□ 194		133	-405										
□ 175		HI 436											
CP at top of June		133	-419				1383						
□ 175		122	+406			S2036W		7223	S2105W				
□ 193		480	-145										
□ 194		HI 442											
W.		130	+020				6443						
□ 194		480	+146			S530E	2733		S5118E				
□ 192		106	-230										
□ 195		HI 520											
CP		82	+008					300					
top of June		97	✓				1513						
June		7	✓				900						
□ 193		106	+231			S22-E		5317	S2145E				
□ 191		245	-109										
□ 192		HI 506											
□ 192		246	+111			S7510E	2143		S7602E				
□ 190		175	-035										
□ 191		HI 510											
CP		138	-137				2782						

Traverse County Road
South - East

3-2-08

West

Salem

Hill

Sta	Dist	Stadia	Vert	D. Elev	Elev	Magn	L	R	Cal Co.	3	2	1	2	3
204			-238											
205	HI	497												
0 (Median)		88	✓				9432							
CP		260	+751					1746						
CP		203	+238				343							
205		70.9	+239	+30.4		N7825E	1847		N7834½E					
203			+205											
204	HI	510												
CP		370	+601					1109						
CP		412	+610				015							
CP		274	+140				1013							
CP		202	+105					2750						
204		264.8	+206	+9.7		S83°E	2943		S8238½E					
202			-033											
203	HI	523												
203		913	+025	+1.0		S53°E	3301½		S52.55°E					
201			-206											
202	HI	518												
202		527.3	+207	+19.4		S8625E	304½		S85.56½E					
200			-156											
201	HI	505												
201		508.9	+155	+17.1		S8910E	5849		S8901E					
BL			-026											
200	HI	503												
200		17.8	+029	+0.1		N3155P								
BL	HI	513												

N32.10E = 60.75 L

Marshall
Cabin

Sawtooth Quarry

Cauldron

Cauldron

Grain
fieldPine
field

Sta	Dir	Alaska	Dist	W. of	Elv.	Miles	N	R+	Calo	3	2	1	1	2	3
PP in truck		335	-93				874								
PP under telephone		172	+927					946							
Q210		347.8	+339			58358		2940	58337E						
Q208			-125												
Q209	4.77														
Q209		341.7	+125	+8.4		N6628E	10309E		N6643E						
Q207			-440												
Q208	4.96														
Q208		1804	+440	+14.7		S1031E		5313	S1007E						
Q206			-436												
Q207	4.96														
Four cor		48	+139					2738							
Marshall cabin								15319							
Q207		402.8	+438	+32.4		S6330E		2948	S6320E						
Q205			-340												
Q206	HI	5.11													
EP		320	+1046						6325						
Marshall cabin			+002					4624							
Q206		479.7	+341	+30.7		N7635E		817	N7651E						

35

Traverse of Cottonwood
North Side

Sta	Dist	Stadia	W/L	N/E	Elev	Mag
CP Edge bluff		167	+529	+15.8		
CP		232	+1123	+44.9		
CP		300	+1642	+82.6		
CP		338	+1745	+98.1		
Q 256		155	-017	-0.8		S63W
Edge Water		85	-330	-5.2		
CP Edge flat		39	-003	-0.0		
Q 53 Road Trav.		31	-027	-0.2		N62.30W
Q 255	HI 525				858.5	
Q 255		171	+031	+1.5		S52.35W
Edge water		38	-240	-1.8		
Q 254	HI 523				857.0	
Q 254		122	-036	-1.3		S41.40W
Q 253	HI 535				858.3	
Q 253		297	-044	-3.8		S31.5W
CP Edge rim		97	-307	-4.7		
CP bank above rim		74	-025	-0.5		
Q 252	HI 545				862.1	
Q 252		194	-023	-1.3		S19.0W
Q 251	HI 529				863.4	
Q 251		232	-042	-2.8	863.4	S62.5E
CP Edge water		92	-425	-7.1	859.1	
CP		22	-1650	-6.1	860.1	
Q 250	HI 504				866.2	
Q 250		104	-021	-0.7		N75.5E
Q J	HI 482				866.9	

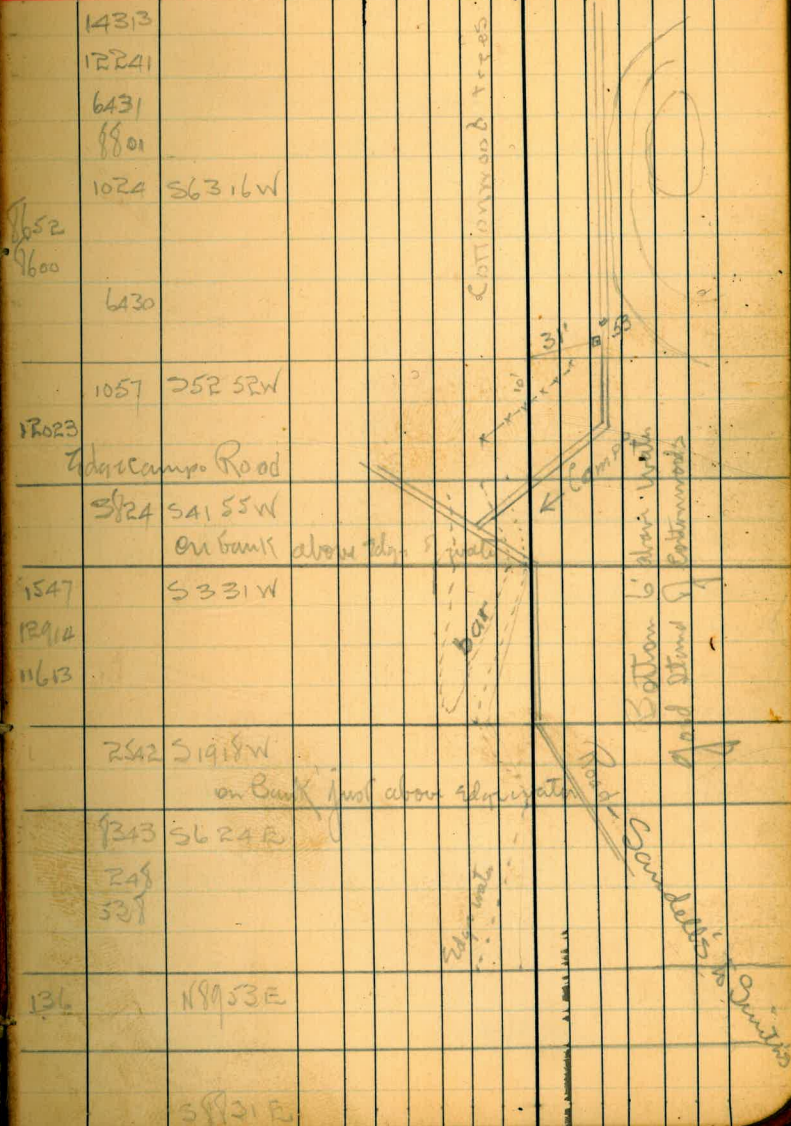
River thru Healy Property

3-13-08

Wells
2.4 Run
Well 3

H R Cables

3 2 1



Sta	Dist	Station	Dist	Dist	Dist	Mag	H	R	Calc	5	2	1	1	2	3
End of little pt		87	-301				4536								
Edge water S		60	-725				4330								
QR62		199	-148	-6.2		N780W		1509	N7806W						
QR61	HI 503						855.8								on bank
QR61		148	+025	+1.1		S7635W	536		S7645W						
Edge water Nail		20	-1608				7854								
QR60	HI 487						854.7								
QR60		116	-110	-2.4		N7755W		349	N7739W						
CP S side		67	-246				10847								
S bank		64	-100				7237								
Edge water S		28	-1516				6530								
Edge water N		15	-3057				6530								
QR59	HI 508						857.1								
QR59		128	+031	+1.2		S7830W		9226	S7832W						
CP water sign		119					7923								End of little island
S bank		131	+047				6359								
S bank		61	-011				2358								
Edge water S bank		44	-619				2210								
Edge water		20	-1417				000	000							
QR58	HI 503						855.9								on Bank of Run
QR58		94	+011	+0.3		S550W	8837		S606W						
QR57	HI 528						855.6								40 feet South of Camp Road
QR57		181	-040	-2.1		N7535W		3127	N7517W						
CP		41	-025				9239								
CP Edge water		79	-336				9239								
QR56	HI 515						857.7								on flat bet. Camp Road and Run

Sta	Dist	Stadia	U ₁	D ₁	U ₂	D ₂	Eliv	Magn	Ht	R+	Calco	3	2	1	1	2	3
Q267		544	-010	-1.2				N89-W	273		N89 44 W						
CP		166	-214						9212								
CP		116	-615						9551								
CP		100	-711						14542								
Q266	HI	522					855.1				Top of bank - edge of flat						
Q266		760	+002	+0.5				N6130W		619	N6131W						
Q265	HI	516					854.6				Top of bank - edge of flat.						
CP edge of run		135	✓						5235								
CP		75	-2605						725								
Q265		206	-039	-2.3				N69W		729	N6749W						
Q264	HI	526					856.9				Top of bank edge of flat - Run 200' Lt.						
Top sand bank		273	-018						9044								
Top sand bank		227	+011						10549								
CP hand pin		92	✓						9216								
R64		143	+122	+4.6				N7530W		1437	N75 18 W						
Q263	HI	516					852.0										
CP		130	+233						9027								
CP		75	+214						8937								
CP		12	+154						7637								
Edge run at bend		166	✓						2963								
Top of sand bank		147	+115						4545								
Water's edge at bend		127	-122						3064								
S Side stream bed		115	-022						12245								
Q263		114	+123	+2.7				N61W		1725	N6041W						
Q262	HI	510					849.6										
Edge water N		40	-1132						4841								

Dry Gully Channel

Across Depression with bank

Sta Dist Station Dist Elev. Mag. N R Calc

SE cor house	128					16608	
SW cor house	92					16421	
NW cor house	95					15403	
NE cor Barn	5					11400	
NW cor Barn	66					948	
USGS BM 875	39				N 9° W	9242	N 75° W
□ Y							
□ Y	478				S 89° W	4310	S 89° 21' W
□ X							
□ X	127				S 46° 15' W	135	S 46° 11' W
□ 1							
□ 2							
□ 1 Road Trav.	313	+318	+18.0		N 20° 10' E	10913	N 20° 21' E
□ 267	1503						

Highest Dist
to Sheku Bldg

Barn 27' deep

S 44° 36' W = Per Co □ 1 to □ 2 Road Trav.

2410 N 44° 39' E (N 44° 36' E) ← correction - 003

Top bank - back of Sheku Corral.

29. Traverse Cottonwood River
South Side

Thru Heavy Property 3-14-08

Mount
Saddle
Hill

Sta	Dist	Stadia	Ink	Rif	Elw	Magn	Mag	ft	R	Label	3	2	1	2	3
CP		16	-128					7051							
□ 271		292	+006	+0.5		57515 E		1628	57448 E						
CP		470	+259					11200							
CP		430	+048					11004							
CP		91	+103					9521							
CP		74	-116					9630							
□ 270	HI	512			849.3										
□ 270		480	+025	+3.5		N8830 E	3705		N8844 E						
CP		294	+440					7448							
CP		233	+121					8524							
CP		99	+118					8317							
CP		90	-052					9219							
□ 269	HI	515			845.8				on sand flat						
□ 269		313	+012	+1.1		S5430 E	3989		S5411 E						
edge water S		68	-422	5.2	839.5			1903							
CP edge sand bank		58	-012					834							
CP		175	+124					1523							
CP		149	-040					1456							
□ 268	HI	502			844.7				on sand flat 2' water						
□ 268		388	-122	-9.2		S151 E	10356		S1443 E						
edge water N		270	-307	14.5	839.4			11424							
CP		139	-520					9654							
CP		123	-354					9756							
CP		66	-1211					9209							
CP		34	-2643					12256							
□ 267	HI	495			853.9										

Cottonwood Woods # W. Wilson

Oak

Birch



N8847W = connects to 266-267 pg 37

Sta	Dir	Stn	Dist	Dist	Dist	Mag	W	R	Cal	3	2	1	2	3
Q275		580.	+007	+1.2		N760SE	2302		N7611E					
UP		396	+253					1144						
UP		276	+035					419						
UP		149	+1639					1223						
UP old road		89	+141					7523						
UP Edge sand bank		26	-444											
Q274	HI	531			856.9									
Q274		350	+032	+33		S810SE	3336		S8047E					
Edge sand bank		58	-003				12333							
UP		226	+448					6730						
UP		304	+636					608						
UP on old Road		163	+114					448						
Q273	HI 508				853.6				in oak zone					
Q273		161	+031	+1.4		S4735E	911		S4711E					
Q272	HI 523				852.2				Edge sand bank above water					
Q272		379	+022	+2.4		S3810E	3648		S3800E					
UP N side channel		545	-052					2320						
Point of sandy island		318	-026					1140						
band in run N		290	-109					425						
UP Edge water S		17	-2514					5746						
Q271	HI	501			849.8				Edge of sand bank above water					
Band in Run N side		278	-					1457						
Edge water N		156	-247					6768						
Edge water S		92	-443					7051						
UP		70	-250					7051						
UP		22	-932					7051						

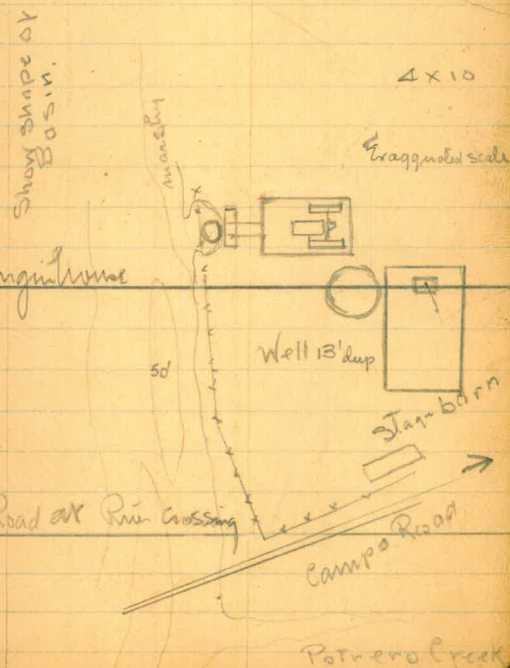
Boulder

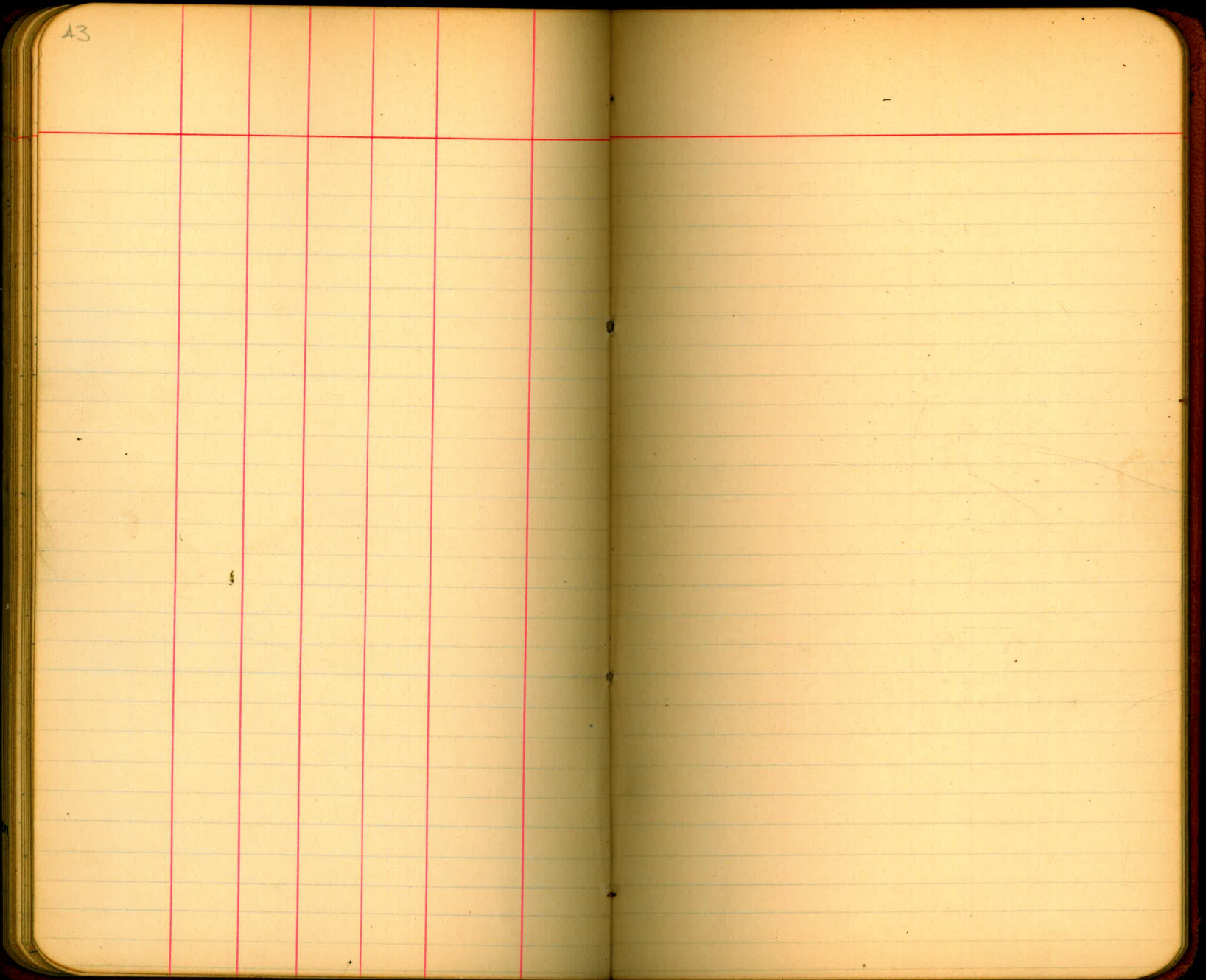
100'

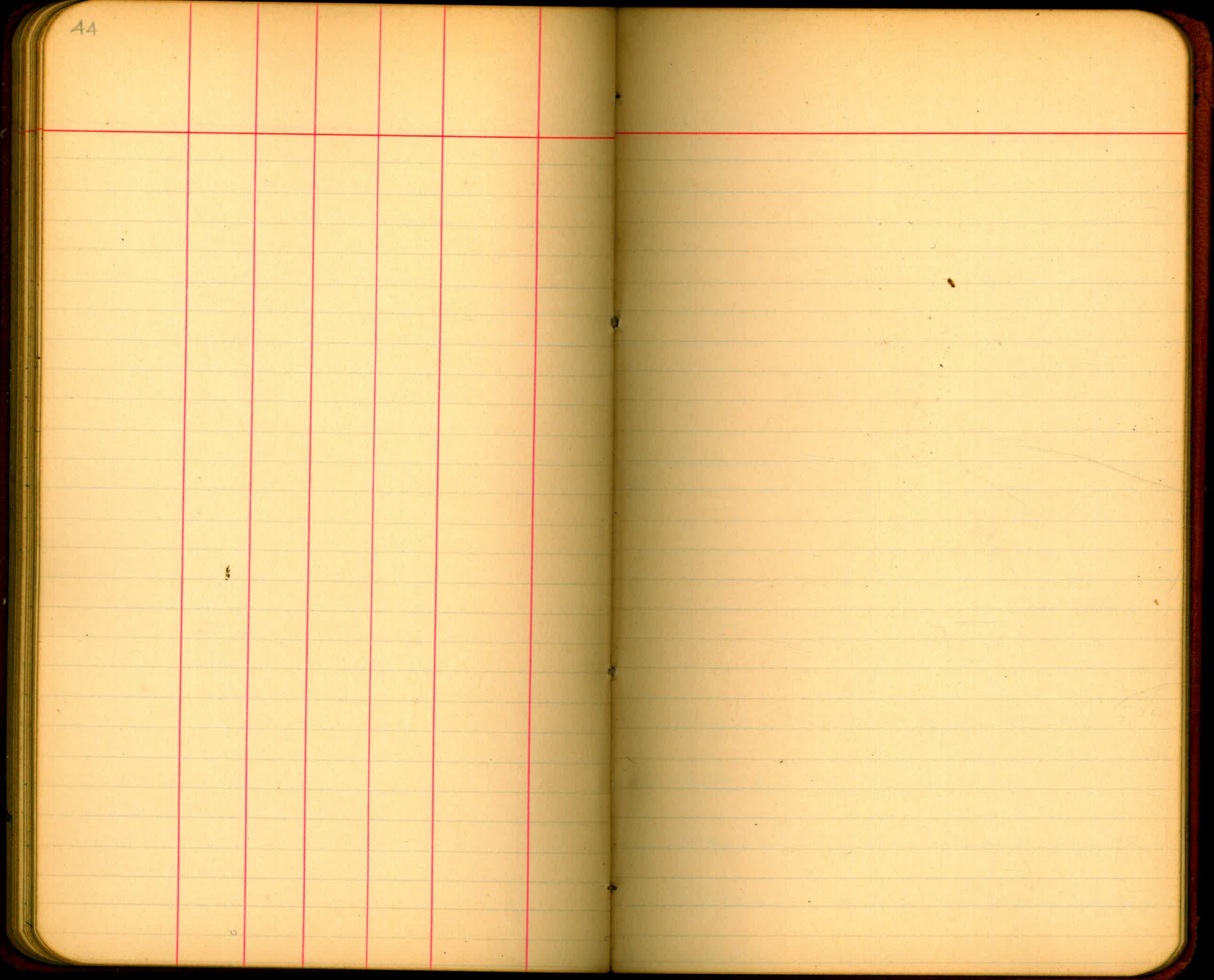
Oak Trunk

Sta	Dist	Stadia	Vert	Dist	Elev	Magn Co	Lt	R	Calc
Point edge bar		223	-121					114	
Point of bar		128	-202				5239		
N edge Riv		132	-231				6511		
Q 278	HI	513			857.9				
Corner in opp bank		160	-250				5850		
Water's edge N side Riv		194	-223				6151		
Point of small island		160	-237				6151		
Point of island		108	-402				6509		
Edge Riv in bed		34	-1212				6107		
Q 278		171	-014	-0.7		N4230E	908	N4205E	
CP		77	-029				523		
CP hot creek		54	-751				237		
CP		11	-155				221		
Q 277	HI	520			858.6				
Q 277		137	000	0.0		N3435E	2722	N3437E	
Edge sandbank		34	-109				9108		
Q 276	HI	502			858.6				on sand bar
Remains of contour P line		56	-834				6842		
Edge water N side channel		118					13631		
CP hidden bank		148	+020				15433		
Q 276		155	+012	+0.5		N6150E	1412	N6159E	
Q 275	HI	525			858.1				on edge sand bank
CP W of gulch		190	+131				13959		
CP		116	-356				1530		
Edge water N side channel		108	-541				1530		
Edge water S side channel		54	-1125				1725		

Sta	Dist	Stadia	Vert	Ref. Elev.	Mag. to	HT	R+	Cal. Co
Flag Telegraph stand						011		N8831W ✓ (S8831E)
□ K				862.2				
□ K base line	118		-144	-3.6	N8820W	1151		N8820W
□ 282	HI 531			865.8				
□ 282	400		+033	+3.8	N640W	1120		N629W
□ 291	HI 500			862.0				
SW cor Zinguhua	13						75	
ridge river	248		✓			933		
N end island	221		✓			11018		
dr well	31		-2116			1887		
dr pump box	18		-1823			1540		
CP	66		-514			6223		
on Rock dikes	88		-550			821		
W on fence	58		-619			10120		
□ 291	105		-243	-5.0	N115E	1238		
□ 280	HI 510			867.0				
Top bank	46		-541			1804		
S end small island	132		-436			9625		
2nd large bar	293		-156			1633		
□ 280	282		+033	+2.4	N242E	2504		N242E
□ 50 Road Truss	50		-157		S325W			16328 S3201W
□ 279	HI 530			864.6				N of Campo Road at River Crossing
□ 279	553		+042	+6.7	N4915E			648 N4933E
head in S bank	126		-244			1826		







45 West line SE $\frac{1}{4}$ Sec 4 T18SRSE

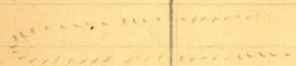
3-19-08
West
Sagin
Hills

Sta River Station L+ R+ Cal co Mag co

16						
15						
14						
13						
12						
11						
10						
9						
8						
7						
6						
5						
4						
3						
2						
1						
□		1956	156.5	N	N 000W	
□				11502	S 2355E	S 2100E
□			634		N 4103E	N 4100E
□	Flag Telegraph Divide		4352		N 4737E	N 4730E
			206.31	11502	S 7831E	

500	1130	20	634
418	752	38	
70	977	32	4103
46	1956	50	11502
45		386	15605
45	1451		150
50	1967	35	52355
45		27	193
63		28	150
1361		606	1097
605			734

Shuckles Agency



Sill Ridge



Depression

Original $\frac{1}{4}$ cor bet 489 - found by Harry Edwards and
known by Ferguson Shuckles
N 150 SW of Shuckles Agency Smith

Pr on big Bldr East side Cottonwood above Camp 1

On see him bet 1817 - Bearing S 7831 E

46

Sta	Dist	Station	L+	R+	Calc	Mag
+40						
26						
↑ Junction hill		75		2320		
Edge water		51	14242			
Bank of River		328	14409			
at Junction		47		14030		
25						
+16	□	#I 494				
24						
23						
22						
+95						
21						
20						
+67	□	565				
19						
18						
+50						
17						

1350
735
565

1227

#I 494

76 40
20 16
5626 40
1967
573

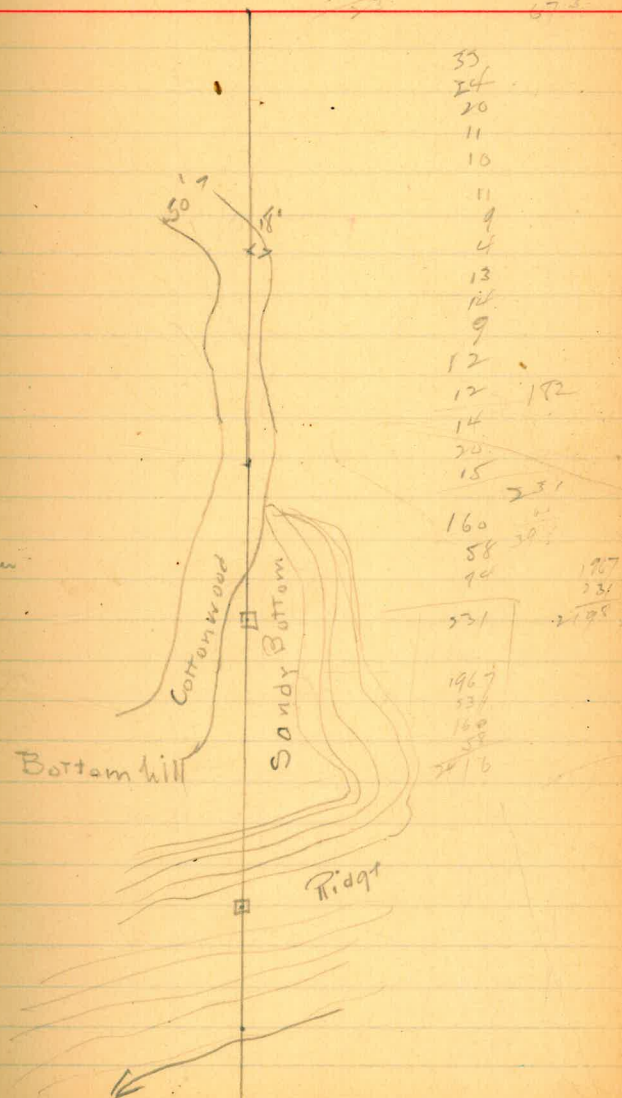
in River

+132

-446

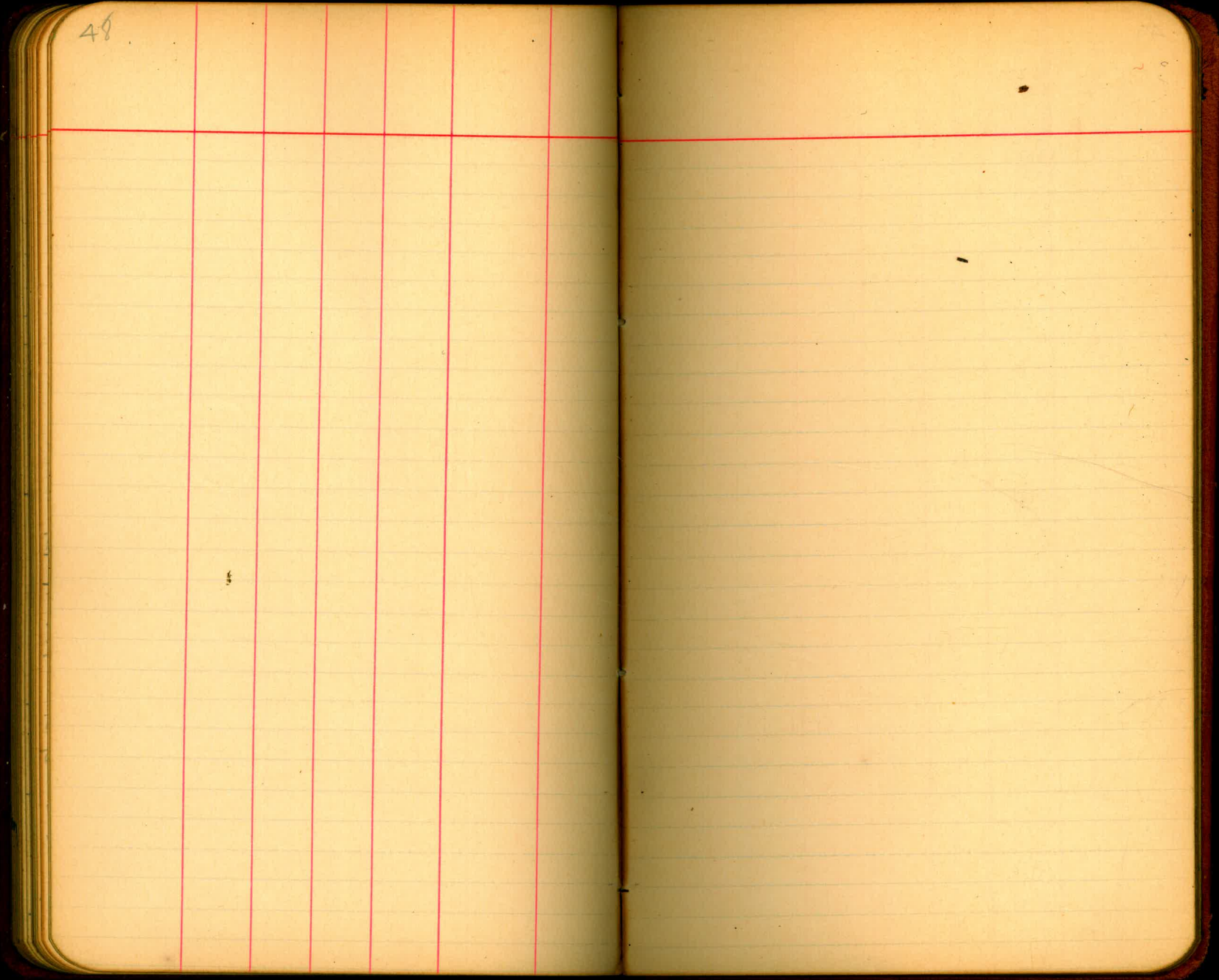
Edge River

-1223



47

48



49

50

50

Levels from USGS BM 975

west of Checklin's house

3-5-'08 PM

West
Sakura.

	419	87919			875.00
o			497	874.22	
	11.66	88588			
o			0.21	885.67	
	7.71	89338			
□ 2					0.21 893.7
□ 3					3.66 899.72
o			7.28	896.10	
	5.51	891.61			
o			9.01	882.60	
	0.87	883.47			
o			11.48	871.99	
	3.78	875.77			
o			12.07	863.70	
	4.28	867.95			
□ 56			3.25	864.70	
	4.39	869.09			
□ 54			7.10	860.99	
o	1.33	862.32			
			4.95	857.37	
o	5.75	863.12			
			1.01	862.11	
o	10.86	872.97			
			4.17	868.80	
	2.58	871.38			
					9.30 862.09
					12.90 858.48

= BM copper plate side granite bed.

= 3rd instrument Sta of Campen Road transect page 1
= 2nd " " " Base line page 5 & 57

County Road transect page 26

County Road transect page 25

on bar in Cottonwood Run at road crossing.

south of Zinger house

= height of compound pump
= water level at well 3-5-'08. About 1/2 ft above top of well

	871.39		
o	1273	89153	251 86880
o			037 88066
□ 75	1129	89195	194 89001
□	660	89661	
□ L			251 89410

Page 9

Page 7 and 57

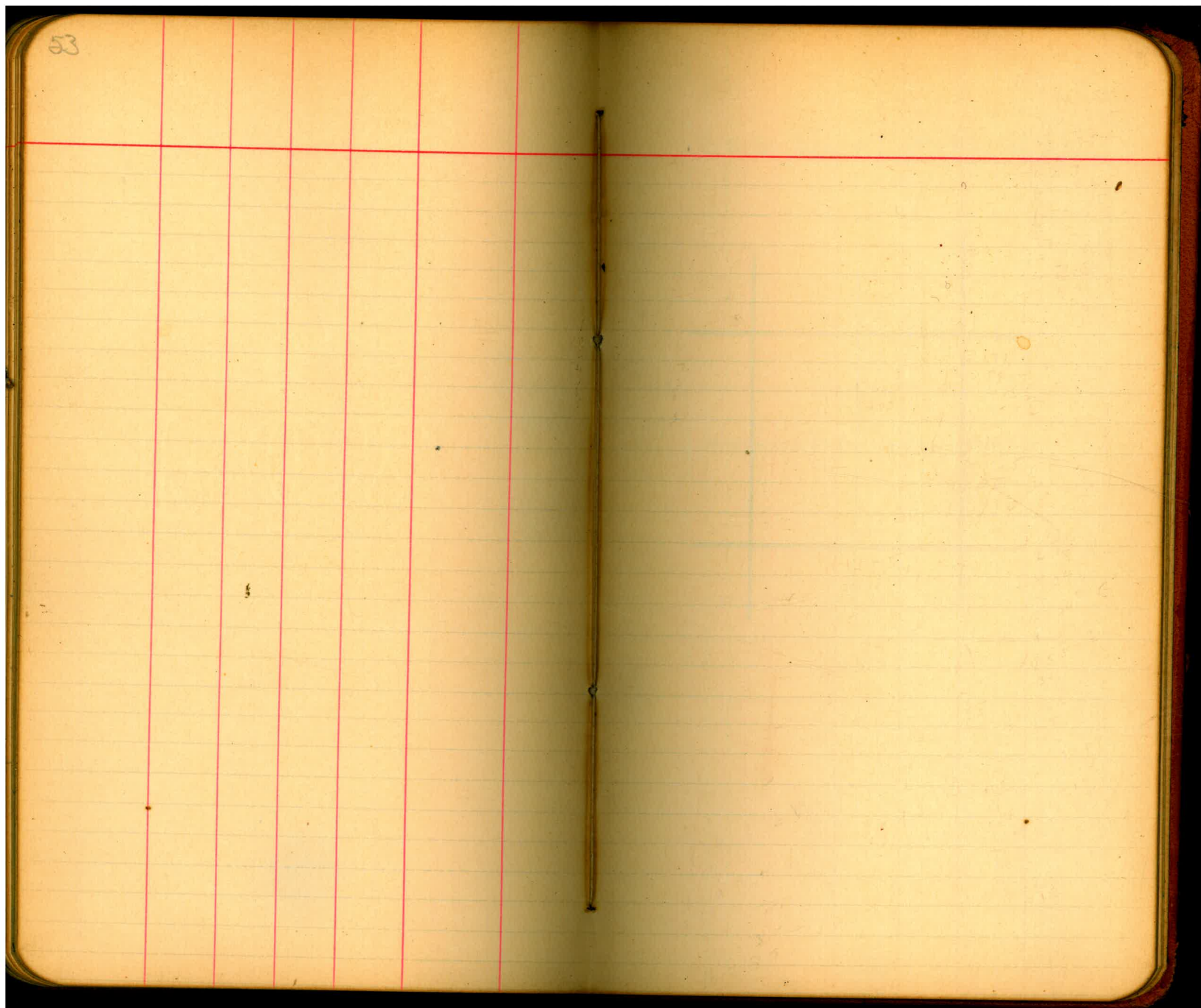
52

N 35 10 E

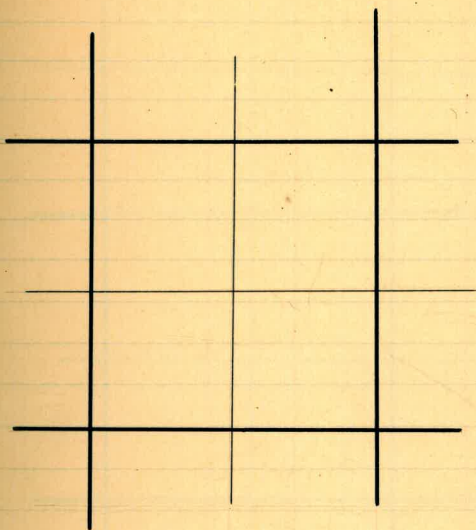
58.00

40.59

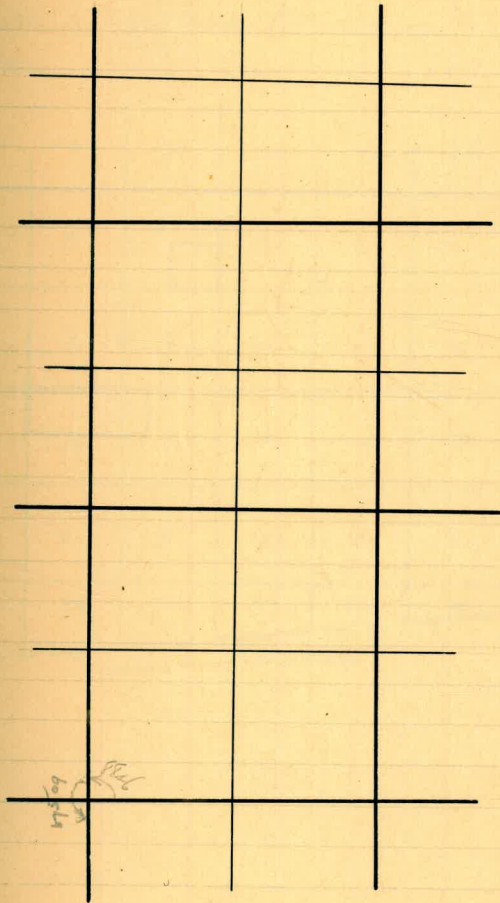
119.01



SE $\frac{1}{4}$ Sec 4 T.18S., R.3E.

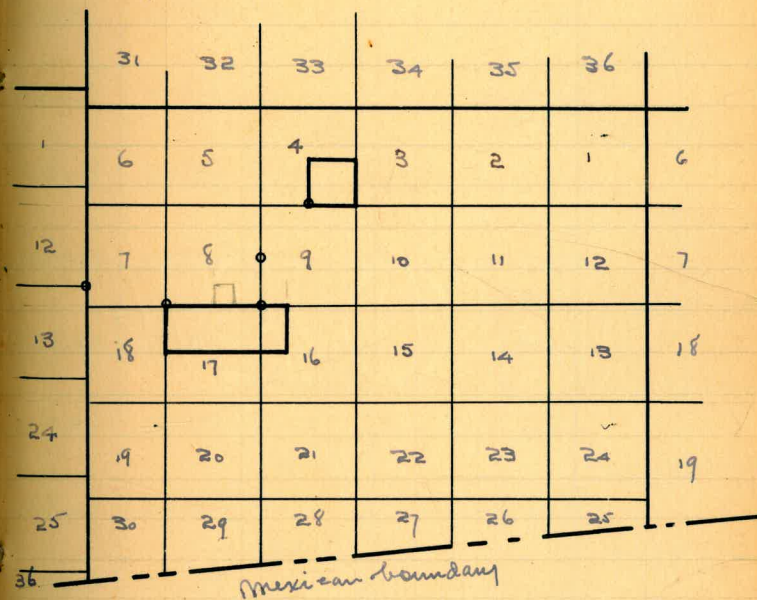


$N \frac{1}{2}$ sec 17 and $W \frac{1}{2}$ of $NW \frac{1}{4}$ Dec 16 T. 18 S., R. 3 E.



T. 18 S., R. 3 E.

Heavy-lined rectangles show an aggregate of 560 acres belonging to Wm. M. Healey.



57

Measurement notes

- section line

between 8 and 17 T. 18S R. 3E

True Bearing S 88° 31' 1/2" E. mag to S 88° 35' E

Sta	chain	Rev. Chain	Dist	Rev. Dist	mean chain	mean angle	Hor Dist	Dy	Slw
M 3825.01	447.77	447.45	-200	+201	447.66	+200 1/2	447.19	+156.9	910.25
L 3363.41	461.87	461.89	-200	+200	461.88	+200	461.60	+161.3	894.12
K 2973.34	391.22	391.19	-423 1/2	+424	391.21	+423 1/2	390.07	+299.9	864.13
J 2665.63	307.74	307.71	+031	-030	307.72	-030 1/2	307.71	-2.73	866.86
I 2315.15	350.45	350.50	+004	-003	350.48	-003 1/2	250.48	-0.36	867.22
H 2055.59	273.7	273.60	+1826	-1826	273.60	-1826	259.56	-86.51	953.73
G 1809.25	249.8	249.88	+940	-939	249.84	-939 1/2	246.34	-492.	995.65
F 1697.21	112.14	112.10	-210	+211	112.12	+210 1/2	112.04	+42.5	991.40
E 1461.14	299.00	299.00	-801	+803	299.00	+802	296.07	+41.78	949.62
D 1055.80	349.88	349.90	-915	+916	349.89	+915 1/2	345.34	+56.29	993.33
C 558.28	497.65	497.62	-112	+113	497.63	+112 1/2	497.52	+10.99	882.84
B 232.10	326.30	326.20	+113	-112	326.25	-112 1/2	326.19	-6.88	884.72
A	235.12	235.10	+911	-910	235.11	-910 1/2	232.10	-37.99	927.21

See Cor E of Shecken

7 1/8
18 1/4

6730 Rt to p. 1001

551453 Rt

217.91
+42 1/2

Measurement notes

Section (cont.)

Sta	Rw.		Rw.		Mean Angle		Hor Dist	By	Elev
	Chain	Chain	Vert	Vert	Mean	Angle			
P 5251.34	= See Cor S of Campo Road								
	499.99	500.00	-244	+244	500.00	+244	499.43	+23.84	964.77
O 4751.91	479.88	480.00	-148	+147	479.94	+147.5	479.71	+15.00	940.93
N 4272.20									925.93

Slab tests 7-20-21

2x8-0 with heavy mesh reinfement
Loaded thru pts 3'8" span
held 100° cracked at 200°
did not fail utterly with
corvex weight suspended

2x12-0 with $7\frac{1}{2}$ " rods.
Loaded thru pts 3'8" span
held 900° with $\frac{3}{4}$ " defl
cracked at 200 more sudden
deflection @ 1000° still no ultimate
failure

Tie out points for 077 in front of Smith
 23.6 from track in end of trough
 28.9 " " " 3rd oak post north

Tie out points for Sta 1 Road Transition
 23.1 from kil mark on ground Bld. S side Road
 22.7 " " " N side Road

DISTANCES FROM CENTER OF ROADWAY FOR CROSS-SECTIONING.

FOR SINGLE TRACK EMBANKMENT.

ROADWAY 14 FEET WIDE. SIDE SLOPES 1½ TO 1.

	0	.1	.2	.3	.4	.5	.6	.7	.8	.9	
0	7.0	7.2	7.3	7.5	7.6	7.8	7.9	8.1	8.2	8.4	0
1	8.5	8.7	8.8	9.0	9.1	9.3	9.4	9.6	9.7	9.9	1
2	10.0	10.2	10.3	10.5	10.6	10.8	10.9	11.1	11.2	11.4	2
3	11.5	11.7	11.8	12.0	12.1	12.3	12.4	12.6	12.7	12.9	3
4	13.0	13.2	13.3	13.5	13.6	13.8	13.9	14.1	14.2	14.4	4
5	14.5	14.7	14.8	15.0	15.1	15.3	15.4	15.6	15.7	15.9	5
6	16.0	16.2	16.3	16.5	16.6	16.8	16.9	17.1	17.2	17.4	6
7	17.5	17.7	17.8	18.0	18.1	18.3	18.4	18.6	18.7	18.9	7
8	19.0	19.2	19.3	19.5	19.6	19.8	19.9	20.1	20.2	20.4	8
9	20.5	20.7	20.8	21.0	21.1	21.3	21.4	21.6	21.7	21.9	9
10	22.0	22.2	22.3	22.5	22.6	22.8	22.9	23.1	23.2	23.4	10
11	23.5	23.7	23.8	24.0	24.1	24.3	24.4	24.6	24.7	24.9	11
12	25.0	25.2	25.3	25.5	25.6	25.8	25.9	26.1	26.2	26.4	12
13	26.5	26.7	26.8	27.0	27.1	27.3	27.4	27.6	27.7	27.9	13
14	28.0	28.2	28.3	28.5	28.6	28.8	28.9	29.1	29.2	29.4	14
15	29.5	29.7	29.8	30.0	30.1	30.3	30.4	30.6	30.7	30.9	15
16	31.0	31.2	31.3	31.5	31.6	31.8	31.9	32.1	32.2	32.4	16
17	32.5	32.7	32.8	33.0	33.1	33.3	33.4	33.6	33.7	33.9	17
18	34.0	34.2	34.3	34.5	34.6	34.8	34.9	35.1	35.2	35.4	18
19	35.5	35.7	35.8	36.0	36.1	36.3	36.4	36.6	36.7	36.9	19
20	37.0	37.2	37.3	37.5	37.6	37.8	37.9	38.1	38.2	38.4	20
21	38.5	38.7	38.8	39.0	39.1	39.3	39.4	39.6	39.7	39.9	21
22	40.0	40.2	40.3	40.5	40.6	40.8	40.9	41.1	41.2	41.4	22
23	41.5	41.7	41.8	42.0	42.1	42.3	42.4	42.6	42.7	42.9	23
24	43.0	43.2	43.3	43.5	43.6	43.8	43.9	44.1	44.2	44.4	24
25	44.5	44.7	44.8	45.0	45.1	45.3	45.4	45.6	45.7	45.9	25
26	46.0	46.2	46.3	46.5	46.6	46.8	46.9	47.1	47.2	47.4	26
27	47.5	47.7	47.8	48.0	48.1	48.3	48.4	48.6	48.7	48.9	27
28	49.0	49.2	49.3	49.5	49.6	49.8	49.9	50.1	50.2	50.4	28
29	50.5	50.7	50.8	51.0	51.1	51.3	51.4	51.6	51.7	51.9	29
30	52.0	52.2	52.3	52.5	52.6	52.8	52.9	53.1	53.2	53.4	30
31	53.5	53.7	53.8	54.0	54.1	54.3	54.4	54.6	54.7	54.9	31
32	55.0	55.2	55.3	55.5	55.6	55.8	55.9	56.1	56.2	56.4	32
33	56.5	56.7	56.8	57.0	57.1	57.3	57.4	57.6	57.7	57.9	33
34	58.0	58.2	58.3	58.5	58.6	58.8	58.9	59.1	59.2	59.4	34
35	59.5	59.7	59.8	60.0	60.1	60.3	60.4	60.6	60.7	60.9	35
36	61.0	61.2	61.3	61.5	61.6	61.8	61.9	62.1	62.2	62.4	36

Calculated by Julien A. Hall, M. Am. Soc. C. E.