

SPILLWAY

W 451

670 Elev.

MICROFILMED  
JAN 12 1965

451

Our Leather Bound Engineers' Note Books are carried in the following rulings:

- No. 380 LEVEL BOOK. Left and Right Hand Page the same as Left Hand Page of this Book.
- No. 382 FIELD BOOK. Left Hand Page as in this Book, Right Hand Page 4 x 4 to the inch, Center Line Red.
- No. 384 MINING TRANSIT BOOK. Left Hand Page as in this Book, Right Hand Page 8x8 to the inch, Center Line Red.
- No. 385 FIELD BOOK. Left Hand Page as in this Book, Right Hand Page 8 vertical and 4 horizontal lines to the inch, Center Line Red.

We also carry the Note Books listed above, bound in extra strong Fabri-Hide (otherwise the same quality of book), which can be furnished at a somewhat lower price.

In ordering Fabri-Hide covered books, add the letter "F" to catalog number.

**THE FREDERICK POST CO.**  
*ENGINEERING and DRAFTING SUPPLIES*

IRVING PARK STATION

CHICAGO, ILL.

MICROFILMED

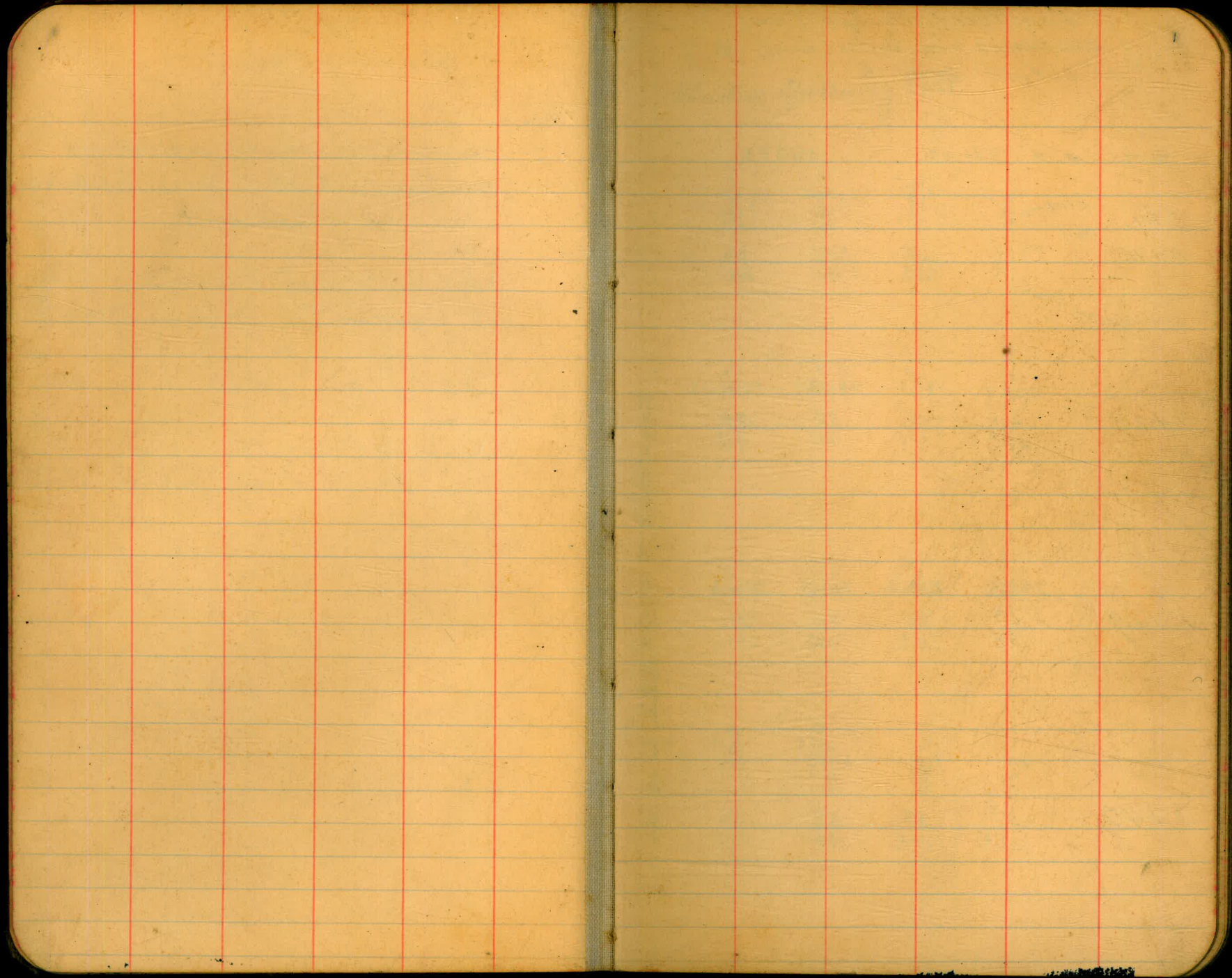
MICROFILMED

JAN 12 1965

Index  
Spillway Book

Page

- 1-2 Final X sections under O.G. at 76 to 1+68 <sup>1-15, 47</sup>
- 3- Final profile of cutoff trench 1+00 to 1+78  
" " of core wall
- X Sec Overbreak along South Side Edge <sup>76-77</sup>
- " Spillway Floor Subgrade 18-44, 46, 67-77 <sup>48-57</sup>
- Final Profile Core Trench <sup>45-79</sup>
- X Sec Surface Spillway Core Floor <sup>58-65</sup>
- " Dam, Core Wall to Spillway <sup>78</sup>



Final X Sections Spillway  
 (Distances are North from  $\Phi$ )  
 of cutoff trench

B.M. A.14 731.47 727.33

Sta. Elev. → Rod →  
 0+96 728.0 726.5 726.7 725.9  
 85 50 48 56  
 50 80 120 15  
 Distance from  $\Phi$

Plotted

1+20 726.7 726.8 725.8 726.7  
 4.8 4.2 5.2 4.8  
 23.8 17.2 16.2 12.2

1+29 725.3 726.4 726.9 726.6  
 6.2 5.1 4.0 4.2  
 3.5 5.0 10.0 14.0

1+40 726.0 726.5 725.6 726.6  
 5.5 5.0 5.9 4.2  
 26.5 17.5 17.5 14.2

Under Spillway OG

725.8 726.7 725.9  
 5.7 4.8 4.1  
 16.2 17.0 25.5

726.1 724.4  
 5.4 7.1  
 6.0 4.0

725.8 726.7 726.5  
 5.2 4.8 5.0  
 17.0 17.0 26.0

726.8 725.4  
 4.2 6.1  
 7.0 4.0

Elev. ok by G.S.H. 10-1-34 T Blotting ok

	722.1	724.1	726.3	726.0
1+55	94 35	74 60	52 80	53 140
	731.47			

	723.5	724.4	725.7	725.7
1+68	80 40	71 70	58 90	58 145

Sept 22

B.M. 198 729.31 727.38

	714.8	720.6	722.5	725.0
1+92	14.5 713.60	8.7 720.633	6.8 724.363	4.3 724.578

2+16	15.7 0	8.7 3.3	5.0 6.1	4.8 9.2
	713.2	723.1	724.0	723.3

2+40	16.1 0	6.2 721.95	5.3 7	6.0 15
	7104.0	723.8	724.1	723.3

2+64	18.9 0	7.4 3.5	5.5 5.5	5.2 10
------	-----------	------------	------------	-----------

Etc. etc by G.B.H.

	724.6	723.6	724.2	724.6
	1.7 15.5	5.7 17.8	5.1 18.5	4.7 27.4
	724.2	723.1	723.8	724.2
	5.1 15	6.2 18	5.5 18	5.1 27.9
	722.7	723.2	723.4	
	6.6 17.4	6.1 17.4	5.9 28.3	
	723.1	722.2		
	6.2 15	7.2 17.5		
			6.723.8 5.722.8	
			17.5	
				722.8
				6.5 28.7

Continued on page 4

Final Profile, Cutoff Trench  
Sept 16-1933

B.M.	2.38	729.71 ✓	727.33
+00		13.4	16.3 ✓
+20		12.9	16.8 ✓ ✓
+40		13.3	16.4 ✓ ✓
+60		13.2	16.5 ✓
+78		13.5	16.2 ✓

Final Xsection Sept 28-1933

Taking Plot from  
at - 20 ft 11-21-33

B.M.	3.15	741.49 ✓	738.34
		10.50	730.99 ✓
	0.36	731.35 ✓	
	717.1	728.0	727.7
	717.7	727.0	727.5
0+48	12.2	33	36
	5	3	14.5
	717.7	727.0	727.9
	717.7	727.0	727.5
0+64	13.5	43	34
	5	3	4.5
	717.7	727.0	727.9
	717.7	727.0	727.5

Elev. at by SBA

	727.8	728.3
	3.5	3.0
	17	24.8
	726.8	727.9
	726.8	727.8
	4.5	3.4
	16	17.2
	726.8	727.9
	726.8	727.8
	4.5	3.5
	16	24.9

	717.8	731.35	725.5	726.8	727.1	726.5	727.3	727.5
0+74	135	52	45	42	48	40	38	
	8	35	6	155	17	18	254	

	717.8	725.6	726.7	726.8	726.0	726.6	727.1
0+82	135	52	46	45	53	42	42
	8	35	7	15	17	18	254

Floor Subgrade point 0.67 730.68 ✓ Check 730.68

Sept 30 - 1933

B.M. 0.57 724.03 723.46 offset grade Sta 3+12

Elliott  
Soper  
Salgado  
Remmen

Plotted.

	713.3	720.1	721.6	723.4	722.4	721.8	722.4	722.8	721.0	721.5
2+70	102	39	24	05	16	22	16	12	30	25
	8	3	4	8	18	19	21	225	23	282
	713.1	719.3	721.2	721.6	720.1	720.0	717.7	717.2	719.3	
2+76	109	42	28	24	39	40	63	68	42	
	8	3	6	10	15	19	21	25	288	
	711.9	720.4	721.9	719.5	718.4	717.6	718.1	719.7		
2+83	121	35	21	45	56	64	59	43		
	8	3	5	19	14	21	25	289		

Elev. of C.C.P.A.

checked by  
Plotting

Continued on page 6



724.03

2+88	711.7 123 8	720.0 40 3	721.7 23 5	721.4 26 9
------	-------------------	------------------	------------------	------------------

2+95	711.9 121 8	718.3 52 3	721.9 21 5	721.7 23 9
------	-------------------	------------------	------------------	------------------

B.M. 0.58 724.04

723.46

~~ok~~ ok

3+04	711.9 121 8	719.3 42 3	721.4 26 5	721.4 26 9
------	-------------------	------------------	------------------	------------------

3+12	711.7 123 8	717.0 70 4	721.5 25 8	720.3 37 14
------	-------------------	------------------	------------------	-------------------

717.7 63 10	717.2 68 16	719.1 42 19	719.8 42 24	719.7 43 29
-------------------	-------------------	-------------------	-------------------	-------------------

717.9 61 13	717.5 65 15	719.6 44 21	720.2 38 29
-------------------	-------------------	-------------------	-------------------

719.6 44 15	719.4 46 17	719.0 50 19	720.0 40 20	719.8 42 24	720.2 38 29
-------------------	-------------------	-------------------	-------------------	-------------------	-------------------

720.0 40 17	718.9 51 19	719.9 41 20	720.1 39 25	720.1 39 29
-------------------	-------------------	-------------------	-------------------	-------------------

These sections superceeded on next page

Segregate Hem 8 0+48 2+64

Final X section under

spillway D.G.

plotted

BM	1.22	724.68 <sup>v</sup>		723.46	
	719.8	719.9	717.3	717.3	716.2
2+88	$\frac{4.9}{29.1}$	$\frac{4.8}{24}$	$\frac{7.4}{17}$	$\frac{7.4}{13}$	$\frac{8.5}{5.3}$
	719.2	719.7	717.2	717.7	717.1
2+93	$\frac{5.5}{29.2}$	$\frac{5.0}{22}$	$\frac{7.5}{16}$	$\frac{7.0}{10}$	$\frac{7.6}{4.3}$
	720.0	718.4	719.3	719.1	717.1
3+00	$\frac{4.7}{29.3}$	$\frac{6.3}{25}$	$\frac{5.4}{21}$	$\frac{5.6}{14}$	$\frac{7.6}{10}$
	720.1	720.0	718.4	720.2	715.2
3+12	$\frac{4.6}{29.5}$	$\frac{4.7}{23}$	$\frac{6.3}{14}$	$\frac{4.5}{7}$	$\frac{9.5}{4.5}$

continued from page 4

715.4	<del>714.4</del>
$\frac{9.3}{3}$	
715.2	
$\frac{9.5}{3}$	
715.3	
$\frac{9.4}{4.8}$	
714.4	
$\frac{10.3}{3.5}$	

713.4

Plotting checked this sheet C.B.H. 11-20-34

Final X sections under  
Oct 7 - 1933

Spillway Ogee  
Elliott-Soper-McHugh

B.M. 1.83 725.29 723.46

5.41 719.88

305 722.93

Plotted

	719.0	180	18.7	16.7
3+19	$\frac{32}{292}$	$\frac{49}{26}$	$\frac{42}{21}$	$\frac{62}{19}$
	711.2	11.2	20.8	20.3
3+23	$\frac{112}{2}$	$\frac{112}{3}$	$\frac{21}{5}$	$\frac{26}{9}$
	21.5	21.5	16.8	17.5
3+27	$\frac{14}{299}$	$\frac{14}{25}$	$\frac{61}{21}$	$\frac{54}{15}$
	11.3	16.4	21.0	16.7
3+31	$\frac{116}{2}$	$\frac{65}{4}$	$\frac{19}{8}$	$\frac{62}{11}$
	18.9	19.4	19.5	17.8
3+40	$\frac{40}{301}$	$\frac{35}{25}$	$\frac{34}{15}$	$\frac{51}{11}$

	206	208	187	711.1
	$\frac{23}{9}$	$\frac{21}{6}$	$\frac{42}{4}$	$\frac{118}{2}$
	16.7	180	202	19.7
	$\frac{62}{14}$	$\frac{42}{22}$	$\frac{22}{24}$	$\frac{32}{298}$
	19.7	19.7	158	11.4
	$\frac{32}{8}$	$\frac{32}{4}$	$\frac{71}{4}$	$\frac{115}{2}$
	17.2	20.4	20.5	
	$\frac{52}{15}$	$\frac{25}{24}$	$\frac{24}{292}$	
	18.8	15.8	10.6	
	$\frac{41}{5}$	$\frac{71}{3}$	$\frac{123}{2}$	

Plotting of C&A this page

722.93

710.6 ✓  
157 ✓  
181 ✓  
185 ✓  
19.6 ✓

3+46  
 $\frac{12.3}{4}$  ✓  
 $\frac{72}{3}$  ✓  
 $\frac{48}{5}$  ✓  
 $\frac{44}{10}$  ✓  
 $\frac{33}{20}$  ✓

Plotted

20.4 ✓  
19.0 ✓  
19.5 ✓  
18.5 ✓

3+50  
 $\frac{2.5}{303}$  ✓  
 $\frac{39}{23}$  ✓  
 $\frac{34}{20}$  ✓  
 $\frac{44}{15}$  ✓

09.9 ✓  
15.7 ✓  
17.4 ✓  
19.5 ✓

3+60  
 $\frac{13.0}{4}$  ✓  
 $\frac{72}{3}$  ✓  
 $\frac{55}{6}$  ✓  
 $\frac{34}{12}$  ✓

3+36 Grade point 0.10 722.8 <sup>check</sup> 722.8

181 ✓  
19.8 ✓

$\frac{48}{24}$  ✓  
 $\frac{31}{303}$  ✓

19.1 ✓  
18.3 ✓  
17.2 ✓

$\frac{38}{12}$  ✓  
 $\frac{46}{9}$  ✓  
 $\frac{52}{4}$  ✓

19.1 ✓  
20.5 ✓  
21.1 ✓

$\frac{38}{15}$  ✓  
 $\frac{24}{23}$  ✓  
 $\frac{18}{305}$  ✓

14.9 ✓  
10.7 ✓  
710.7 ✓

$\frac{8.0}{25}$  ✓  
 $\frac{12.2}{25}$  ✓  
 $\frac{12.2}{2}$  ✓

Plotting of this page C&H.

Final X sections  
Oct 11-1933

under Spillway Ogee 9  
Elliott-Soper-McHugh

B.M. 6.95 730.39 723.44

T.P. 2.48 724.04 883 721.56

Plotted

3+62 ✓  
09.3 ✓  
147 ✓  
72 ✓  
62 ✓  
51 ✓  
09.9 ✓  
163 ✓  
3 ✓  
6 ✓  
17 ✓  
178 ✓  
18.9 ✓  
170 ✓  
18.2 ✓  
17 ✓

3+68 ✓  
09.4 ✓  
141 ✓  
141 ✓  
70 ✓  
58 ✓  
09.9 ✓  
25 ✓  
25 ✓  
8 ✓  
14.7 ✓  
18.5 ✓  
16 ✓  
22 ✓  
30 ✓  
30.45 ✓  
19.3 ✓  
20.1 ✓  
20.9 ✓

3+74 ✓  
09.7 ✓  
146 ✓  
146 ✓  
93 ✓  
55 ✓  
09.7 ✓  
23 ✓  
23 ✓  
5 ✓  
11.7 ✓  
18.5 ✓  
11 ✓  
17 ✓  
25 ✓  
30.2 ✓  
19.8 ✓  
18.4 ✓  
19.6 ✓  
19.2 ✓  
19.2 ✓

3+78 ✓  
09.5 ✓  
143 ✓  
143 ✓  
123 ✓  
55 ✓  
09.5 ✓  
25 ✓  
25 ✓  
6 ✓  
16.0 ✓  
18.6 ✓  
21.0 ✓  
9 ✓  
13 ✓  
17 ✓  
25 ✓  
30.8 ✓  
19.9 ✓  
21.8 ✓  
18.2 ✓  
19.1 ✓  
19.2 ✓

3+83 ✓  
145 ✓  
145 ✓  
80 ✓  
54 ✓  
3 ✓  
3 ✓  
6 ✓  
30 ✓  
41 ✓  
22 ✓  
58 ✓  
49 ✓  
13 ✓  
16 ✓  
20 ✓  
23 ✓  
30.9 ✓

21.6 ✓  
21.0 ✓  
24 ✓  
30 ✓  
22 ✓  
30.45 ✓  
19.3 ✓  
20.1 ✓  
20.9 ✓  
42 ✓  
39 ✓  
31 ✓  
18.7 ✓  
19.9 ✓  
20.0 ✓  
19.9 ✓  
53 ✓  
41 ✓  
40 ✓  
41 ✓  
11 ✓  
17 ✓  
25 ✓  
30.2 ✓  
19.8 ✓  
18.4 ✓  
19.6 ✓  
19.2 ✓  
19.2 ✓  
42 ✓  
55 ✓  
44 ✓  
48 ✓  
9 ✓  
13 ✓  
17 ✓  
25 ✓  
30.8 ✓  
21.0 ✓  
19.9 ✓  
21.8 ✓  
18.2 ✓  
19.1 ✓  
19.2 ✓  
30 ✓  
41 ✓  
22 ✓  
58 ✓  
13 ✓  
16 ✓  
20 ✓  
23 ✓  
30.9 ✓

Plotting this page checked L.H.H.

	097 ✓	724.04	097 ✓	161 ✓	207 ✓
3+88 ✓	143 4	143 3	79 5	33 12	
	091 ✓	091 ✓	13.8 ✓	16.4 ✓	
3+99 ✓	149 4	149 35	102 35	76 6	
	087 ✓	087 ✓	17.4 ✓	18.5 ✓	
4+04	153 2	153 3	66 35	55 7	
	096 ✓	100 ✓	17.7 ✓	18.3 ✓	
4+08	144 4	140 25	63 35	52 6	

	214 ✓	193 ✓	173 ✓	175 ✓	
	26 21	42 28	62 29	65 31	
	183 ✓	19.2 ✓	20.5 ✓	18.5 ✓	18.7 ✓
	57 11	48 16	35 23	55 28	53 31
	211 ✓	181 ✓	181 ✓	198 ✓	186 ✓
	29 11	59 14	59 18	42 23	54 26
	186 ✓	181 ✓	19.0 ✓	18.8 ✓	
	54 13	59 17	50 25	52 31	51 32

Check 3+60

1.90 722.14 722.14

Plotting this page as 284.

Final X sections  
Oct 17 - 1933

Under Spillway Ogee  
Elliott - Soper - Mc Hugh

B.M. 0.72

721.66

720.94

4+13 ✓

709.8

119  
8

09.8

119  
25

18.2

35  
65

18.4

33  
14

4+20 ✓

708.1

136  
8

08.1

136  
2

14.8

62  
3

18.0

32  
7

4+32 ✓

707.3

144  
4

07.3

144  
3

15.3

64  
35

17.2

45  
16

4+43 ✓

706.4

153  
4

06.4

153  
25

13.5

82  
3

17.4

43  
22

4+46 ✓

706.1

156  
8

06.1

156  
25

13.7

80  
3

15.7

60  
13

16.0

52  
15

17.4

43  
13

17.5

42  
318

17.4

43  
32

15.6

61  
20

18.7

30  
19

18.2

35  
16

19.5

22  
29

17.5

42  
18

18.5

32  
314

18.7

35  
316

Plotting of this page on 204

4+50  
 706.3  
 154  
 25  
 154  
 25  
 81  
 3  
 48  
 10  
 16.9

4+56  
 706.5  
 152  
 25  
 152  
 25  
 75  
 3  
 58  
 6  
 15.9

Plo Hood

721.66

Check 4+56

2.2 719.5 719.51

16.9  
 48  
 17  
 16.5  
 52  
 10  
 16.0  
 57  
 18  
 16.1  
 56  
 17  
 15.8  
 59  
 22  
 16.7  
 50  
 20  
 16.9  
 48  
 32  
 15.2  
 65  
 25  
 15.9  
 58  
 28  
 17.4  
 43  
 32.2

This page ok for plotting 2004



Oct 25 - 33

Elliott  
Soper  
N.E. Hush.

13

Elev Ch - Meyer

B.M.	3.56	72450		72094	
	383	71985	8.48	71602	
	06.3	06.2	14.2	15.2	16.0
4+60	13.6	13.6	5.6	4.6	3.8
	2	2	25	4	8
					19

	16.7	16.5	15.4	17.2
	3.1	3.3	4.4	2.6
	21	26	29	32.3

Plotted

	06.4	06.3	14.2	15.2	14.3
4+66	13.5	13.5	5.6	4.6	5.5
	2	2	3	6	8

	15.8	15.7	14.9	16.0	15.8	17.1
	4.0	4.1	4.9	3.8	4.0	2.7
	11	17	21	27	30	32.4

	06.2	06.1	14.4	15.1	15.6
4+70	13.7	13.7	5.4	4.7	4.2
	2	2	3	7	12

	14.5	14.7	14.7	16.0
	5.3	5.1	5.1	3.8
	13	16	23	32.5

	06.9	06.8	13.8	14.6	15.4
4+75	13.0	13.0	4.0	5.2	4.4
	2	2	3	4	18

	14.1	16.0
	5.7	3.8
	28	32.6

This page plotting of E.C.H.

	07.3	07.2	719.85	14.8	15.6	14.1	16.0
			13.7				
4+80	$\frac{12.6}{2}$	$\frac{12.6}{2}$	$\frac{6.1}{3.5}$	$\frac{50}{45}$	$\frac{4.2}{14}$	$\frac{5.7}{26}$	$\frac{3.8}{32.7}$

Form 4+80 check 1.0 718.85 718.85

Nov. 4, - 1933

B.M. 2.37 726.49 ✓ 724.12

	06.2	06.2	14.4	15.2	15.3	15.2	16.2
4+85	$\frac{20^{10}}{2}$	$\frac{20^{10}}{2}$	$\frac{12^1}{35}$	$\frac{11^{13}}{15}$	$\frac{11^2}{25}$	$\frac{11^3}{30}$	$\frac{10^3}{32^8}$
	06.4	06.4	12.5	13.8	14.4	15.1	15.2
4+95	$\frac{20^1}{2}$	$\frac{20^1}{15}$	$\frac{14^0}{3}$	$\frac{12^2}{5}$	$\frac{12^1}{13}$	$\frac{11^4}{21}$	$\frac{11^3}{29}$ $\frac{10^3}{32^9}$

Plotted

Plotting of this page 200

Final Xsections  
Under Ogee  
Nov 27-1933

B.M.	3.76	722.32	718.56	5+21
	14.9	06.1	06.1	06.1
5+10	74 32 <sup>5</sup>	16 <sup>2</sup> 31	16 <sup>2</sup> 30	16 <sup>2</sup> 29
	14.9	06.1	06.1	06.1
5+04	74 32 <sup>5</sup>	16 <sup>2</sup> 31	16 <sup>2</sup> 30	16 <sup>2</sup> 29
	15.0	14.0	12.0	09.6
5+04	73 32 <sup>5</sup>	83 28	10 <sup>3</sup> 10	12 <sup>2</sup> 3
			16 <sup>2</sup> 3	16 <sup>2</sup> 4

Plotted

Plotting of CRH

Final Xsections from 6' of  
cut off trench. Sta. carried ahead  
from wier sta. 5+10, sections at  
90° to wier line.

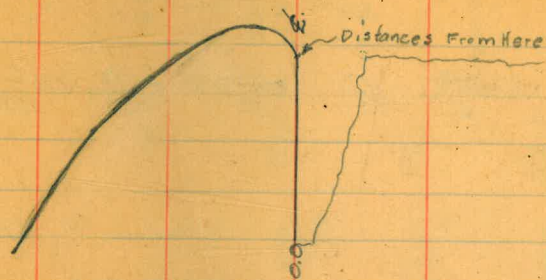
B.M.	1.89	722.20	720.31
	06.0	06.0	11.6
5+10	16 <sup>2</sup> 4	16 <sup>2</sup> 3 <sup>0</sup>	10 <sup>6</sup> 5 <sup>5</sup>
	06.0	06.0	11.6
5+15	16 <sup>2</sup> 4	16 <sup>2</sup> 3 <sup>0</sup>	5 <sup>3</sup> 5 <sup>5</sup>
	06.0	06.0	16.9
			13.1
			13.7
			14.9
			16.3
			16.9
			17.4
			19.4
			28
			29 <sup>5</sup>

CRH

	06.0	722.20	06.0	27.4	30.6	22.1	18.4	15
	16 <sup>2</sup> 4		06.0	27.4	30.6	22.1	18.4	15
			16 <sup>2</sup> 3 <sup>0</sup>					
			16 <sup>2</sup> 5 <sup>0</sup>					
			16 <sup>2</sup> 23 <sup>5</sup>					
			01					
			28 <sup>0</sup>					
			38					
			29 <sup>0</sup>					

Mayer

Cross-sections of Excavation at  
Back of Wier.



B.M.	1.50	751.37	749.87
0+49	$\frac{6.5}{0.0}$	$\frac{44.9}{6.2}$	$\frac{33.9}{2.48.6}$
0+58	$\frac{6.7}{0}$	$\frac{44.7}{5.9}$	$\frac{40.4}{3.1}$
0+77	$\frac{20.309}{0.5}$	$\frac{31.7}{19.7}$	$\frac{48.3}{3.1}$
0+88	$\frac{9.1}{0}$	$\frac{42.3}{4.65}$	$\frac{48.0}{4.5}$
0+96	$\frac{1.4}{0}$	$\frac{40.9}{7.2}$	$\frac{47.4}{4.0}$
1+02	$\frac{8.433}{0}$	$\frac{43.3}{1.1}$	$\frac{47.5}{2.5}$
1+15	$\frac{0.451}{0}$	$\frac{47.4}{4.0}$	$\frac{47.4}{1.0}$
1+29	$\frac{9.46.9}{0}$	$\frac{46.9}{1.5}$	$\frac{46.9}{1.5}$
1+35	$\frac{13.6}{0}$	$\frac{37.8}{12.8}$	$\frac{47.2}{4.2}$
		$\frac{2.5}{5.5}$	

Oct. 28, 1933  
Simpson  
Solgado  
Remmen,

Meyer  
p. 16

1+45	$\frac{17.5}{0}$	$\frac{33.9}{751.37}$	$\frac{16.5}{3.5}$	$\frac{4.4}{6.5}$
1+55	$\frac{11.0}{0}$	$\frac{40.4}{10.8}$	$\frac{3.5}{1.5}$	$\frac{4.6.9}{4.5}$
1+64	$\frac{9.9}{0}$	$\frac{41.5}{44.3}$	$\frac{7.1}{6}$	$\frac{47.0}{8.5}$
1+70	$\frac{8.8}{0}$	$\frac{42.6}{8.7}$	$\frac{8.8}{7.5}$	$\frac{46.9}{5.0}$
1+80	$\frac{8.42.7}{0.8}$	$\frac{42.6}{5.58}$	$\frac{8.8}{1.5}$	$\frac{46.9}{4.7}$
1+90	$\frac{8.42.7}{0}$	$\frac{42.7}{5.6}$	$\frac{8.7}{1.5}$	$\frac{46.4}{5.0}$
1+95	$\frac{13.2}{0}$	$\frac{37.2}{12.2}$	$\frac{13.2}{3}$	$\frac{46.3}{4.1}$
2+00	$\frac{10.40.8}{0}$	$\frac{40.8}{10.6}$	$\frac{10.8}{1.5}$	$\frac{46.5}{2.0}$
2+17	$\frac{9.41.6}{0}$	$\frac{41.6}{9.8}$	$\frac{9.8}{1}$	$\frac{46.4}{5.0}$
2+29	$\frac{10.41.2}{0}$	$\frac{41.2}{4.5}$	$\frac{10.2}{9.9}$	$\frac{46.7}{1.5}$
2+38	$\frac{10.41.4}{0}$	$\frac{41.4}{10.1}$	$\frac{10.4}{1.5}$	$\frac{45.0}{5.4}$
2+45	$\frac{19.31.9}{0}$	$\frac{31.9}{19.5}$	$\frac{19.9}{1.5}$	$\frac{46.2}{4.6}$
				$\frac{4.8}{3.5}$

B.M.

1.50 749.87

B.M. 0.77 750.64  
 2+55  $\frac{18.31.7}{0.9}$   $\frac{16.34.6}{4}$   $\frac{5.44.0}{4.5}$  749.87  
 2+65  $\frac{16.33.7}{0.9}$   $\frac{16.34.6}{5}$   $\frac{11.7}{7}$   $\frac{31.46.8}{7.0}$   
 2+75  $\frac{16.33.8}{0.8}$   $\frac{16.34.6}{5}$   $\frac{11.7}{7}$   $\frac{34.6.7}{10}$   
 2+90  $\frac{16.34.6}{0.0}$   $\frac{16.34.6}{5}$   $\frac{11.7}{7}$   $\frac{34.6.7}{10}$   
 3+00  $\frac{15.35.2}{0.4}$   $\frac{17.35.8}{2.5}$   $\frac{8.41.9}{8}$   $\frac{3.46.9}{11}$   
 3+09  $\frac{16.33.7}{0.9}$   $\frac{15.34.8}{3.8}$   $\frac{8.42.6}{8.5}$   $\frac{7.43.5}{11}$   $\frac{3.4}{14}$   
 3+20  $\frac{19.31.6}{0.0}$   $\frac{17.33.3}{8}$   $\frac{4.6.4}{13}$   $\frac{3.47.2}{14}$   
 3+30  $\frac{17.33.7}{0.9}$   $\frac{16.34.5}{10}$   $\frac{3.4}{14}$   $\frac{3.47.2}{14}$   
 3+40  $\frac{18.32.0}{0.6}$   $\frac{17.33.3}{5}$   $\frac{3.4}{14}$   $\frac{3.47.2}{14}$   
 3+50  $\frac{17.33.1}{0.5}$   $\frac{14.9}{5}$   $\frac{3.47.1}{13}$   $\frac{3.47.2}{14}$   
 3+60  $\frac{17.33.4}{0.0}$   $\frac{17.33.6}{2}$   $\frac{8.42.6}{9}$   $\frac{3.47.2}{14}$

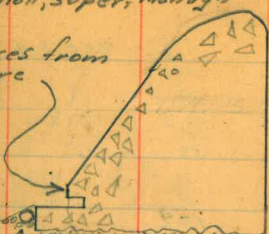
3+70  $\frac{16.34.3}{0.3}$   $\frac{15.7}{2}$   $\frac{8.42.4}{7}$   $\frac{3.47.3}{12.5}$   
 3+82  $\frac{13.9}{0}$   $\frac{13.5}{1.5}$   $\frac{3.46.9}{9}$   
 3+85  $\frac{8.42.4}{0.2}$   $\frac{8.42.4}{5}$   $\frac{3.47.1}{9}$   
 4+00  $\frac{8.42.3}{0.3}$   $\frac{8.42.4}{4}$   $\frac{3.47.0}{8.5}$

B.M. 0.77 749.87  
 4+07  $\frac{3.63}{42.8}$   $\frac{753.50}{43.4}$   $\frac{7.46.4}{7}$   $\frac{6.47.2}{10}$   
 4+10  $\frac{12.7}{40.8}$   $\frac{10.1}{5}$   $\frac{7.46.4}{7}$   $\frac{6.47.2}{10}$   
 4+20  $\frac{12.7}{40.8}$   $\frac{10.1}{5}$   $\frac{7.46.4}{7}$   $\frac{6.47.2}{10}$

Rec. E101  
749.87

Final X Sections of Spillway  
Floor. Nov. 2 - 1933 - Elliott, Soper, McHugh  
(Subgrade)

Distances from  
Here



Note: Tile already in place + covered with rock

B.M.	8.85	733.00	724.15		
	28.3	28.5	28.2	28.6	27.4
Plotted 1+2.5	42 4	45 45	48 11	44 28	56 29
	28.1	27.2	27.5	28.0	28.0
Plotted 1+35	49 36	58 31	55 27	50 20	50 4
	27.5	27.2	28.0	27.6	27.6
Plotted 1+45	55 4	58 7	50 13	54 19	54 28
	27.4 27.6	27.3	27.5	26.7	27.0
Plotted 1+55	54 36	57 22	55 14	63 7	60 4
	26.6	26.3	27.5	27.4	27.0
Plotted 1+65	64 4	67 9	55 13	56 26	60 36

28.2  
28.3  
48  
32

28.0

50  
3

27.8

52  
36

Cont. on Page 71

This page plotting sheet 2004

733.00'

Plotted  
1+75

26.9	27.0	27.3	26.3
61 36	60 20	57 13	67 10
26.0	26.4	27.0	26.8
70 4	66 13	60 19	62 36

Plotted  
1+86

Nov. 3 - 1933  
Elliott - Soper - McHugh  
B. M., 6.48 <sup>7</sup> 730.63' 724.15

26.3	26.0	26.4	26.5
43 4	46 8	43 16	41 30
25.9	25.8	26.3	26.1
47 4	48 10	43 15	45 27

2+00

26.3  
67  
426.7  
32  
8626.1  
45  
36

This page Plotted at 2004

7  
230.63 ✓

Plotted  
2 + 16

25.6	26.0	25.5	
50	46	51	48
4	17	28	36

Plotted  
2 + 26

25.0	25.8	25.8	25.7
56	48	48	49
4	13	27	36

Plotted  
2 + 36

24.7	25.5	25.4	25.7
57	51	52	42
4	10	23	37

Plotted  
2 + 46

24.6	25.3	25.3	25.4
60	53	53	51
4	9	22	30

Plotted

2 + 53 <sup>25</sup> Top of trench

24.8	25.2
58	54
4	16

24.8
58
36

Two page plotting sheet 20H.

25.1	25.1
55	55
29	36



7.  
230.63

Plotted  
2+53<sup>75</sup> Bottom of trench

20.8	21.2
98	94
4	16
21.1	21.1
95	95
29	36

Plotted  
2+56<sup>25</sup> Bottom of trench

20.8	21.2
98	94
4	16
21.1	21.1
95	95
29	36

Plotted  
2+56<sup>25</sup> Top of trench

24.8	25.2
58	54
4	16
25.1	25.1
55	55
29	36

Plotted  
2+66

24.2	24.7	24.8	24.3	24.7
64	59	58	63	59
4	5	19	30	36

see Page 27

Plotted  
2+76

23.5	24.3	24.1	24.1	23.3
76	63	65	65	73
4	10	24	32	36

Plotting this page checked

7  
230.63Plotted  
2+86

23.1	24.0	24.1	24.0
75	66	65	66
4	11	20	32

23.8
68
36

See Page 26

Plotted  
2+96

22.9	23.5	23.9	23.7	23.8
72	71	67	62	62
4	7	19	28	36

Plotted  
3+06

22.8	23.3	23.6	23.8
78	73	70	68
15	4	17	28

23.7
69
36

Nov. 3, 1933

Simpson - Salgado - Remmen.

B.M. 2.77 726.92 23.3 724.15

Plotted  
3+16

22.6	22.6	23.3	23.3
4.3	4.3	3.5	3.6
3	4	5.5	18

23.4
3
36

Plotted  
3+26

22.3	22.4	23.1	23.1
4.6	4.5	3.0	3.0
3	1.5	7	18

23.0
3.9
36

This page plotting and L.P.H.

Plotted  
3+36Plotted  
3+46

726.92	22.8	22.9
$\frac{40}{7}$	$\frac{41}{8}$	$\frac{40}{8}$
$\frac{48}{9}$	$\frac{49}{8}$	$\frac{49}{8}$

 $\frac{44}{36}$   
22.5

see Page 26

B.M.

2.79

724.13

Rec. Elev.  
724.16

Nov. 6, 1933

Simpson  
SaperMcKugh  
Salgado

B.M.

3.02

727.14

22.2

724.12

Plotted  
3+56
 $\frac{49}{5}$   
22.4

 $\frac{49}{20}$   
22.2

 $\frac{50}{37}$   
22.1

see Page 27

Plotted  
3+66
 $\frac{50}{4}$   
22.1

 $\frac{51}{20}$   
22.0

 $\frac{52}{31}$   
21.4

 $\frac{53}{36}$   
21.4

 $\frac{52}{37}$   
21.9
Plotted  
3+76
 $\frac{61}{4}$   
21.0

 $\frac{55}{5}$   
21.6

 $\frac{54}{20}$   
21.7

 $\frac{55}{37}$   
21.6
Plotted  
3+86
 $\frac{63}{11}$   
20.8

 $\frac{57}{9}$   
21.4

 $\frac{62}{20}$   
20.9

 $\frac{61}{37}$   
21.1

B.M.

3.02

724.12

Plotting this page of LBH

Final sections of Spillway Floor.  
Distances are from dubbed off  
100 of 0gee.

May 23-1934

Elev. ck - Meyer

24

B.M. 3.14 736.73 733.59

	30.5	30.7	30.8	30.4	
0-01 <sup>12</sup>	62	60	59	63	32.9
	25	15	29	316	38
					316

0+01<sup>88</sup>

DUBBED  
CK

	30.7	30.8	30.8	30.4	
	60	59	52	53	32.8
	25	15	29.5	32.3	39
					32.5

0+03

	30.1	31.7	31.7	31.6	
	66	50	50	51	30.6
	25	5	15	29	30
					32.5
					32.8
					39
					332

0+18

	29.9	30.5	30.8	31.3	
	68	62	59	54	31.3
	25	5	10	13	31.2
					30.3
					30.2
					32.2
					45
					388

B.M. 2.35 735.94 733.59

0+33

	30.0	30.9	31.0	30.9	
	59	50	49	50	30.0
	25	4	20	40.1	41
					30.1
					32.1
					58
					44.3

Final X sections Spillway Floor  
 May 25 - 1934

Meyer

25

B.M. 2,29 735.88 733.59

↓  
 Plotted  
 0+50

29.8	30.6	30.5	30.6
61	51	54	53
25	51	20	35

30.7	29.7	29.7	31.7
52	62	62	42
472	474	50	504

Final X Sections - Floor Subgrade

Simpson  
 Joper  
 McHugh  
 Salgado

Meyer

Nov. 8, 1933.

B.M.	5.59	729.71	724.12
Plotted 2+86	6.23.3 $\frac{6.4}{38}$	6.23.6 $\frac{6.1}{45}$	6.23.3 $\frac{6.4}{70}$
Plotted 2+96	6.23.6 $\frac{6.1}{40}$	6.23.5 $\frac{6.0}{50}$	6.23.9 $\frac{5.8}{70}$
Plotted 3+06	6.23.5 $\frac{6.0}{39}$	6.23.4 $\frac{6.0}{48}$	6.23.4 $\frac{6.3}{75}$
Plotted 3+16	6.22.9 $\frac{6.0}{40}$	6.22.8 $\frac{6.4}{45}$	6.23.3 $\frac{6.4}{75}$
Plotted 3+26	6.23.0 $\frac{6.1}{38}$	6.22.8 $\frac{6.3}{43}$	6.22.5 $\frac{7.0}{70}$
Plotted 3+36	6.22.7 $\frac{7.0}{38}$	6.22.6 $\frac{7.1}{50}$	6.21.4 $\frac{8.3}{74}$
Plotted 3+46	6.22.4 $\frac{7.3}{38}$	6.22.5 $\frac{7.2}{50}$	6.21.8 $\frac{7.8}{70}$
			6.23.3 $\frac{6.4}{75}$
			6.22.7 $\frac{7.0}{76}$
			6.22.4 $\frac{7.3}{76}$
			6.22.6 $\frac{7.1}{76}$

Plotting this page check 204

Final X Sections - Floor Subgrade

Meyer

27

Plotted  
3+56

729.71'  
22.1  
 $\frac{76}{39}$

21.7  
 $\frac{80}{44}$

22.2  
 $\frac{75}{50}$

22.2  
 $\frac{75}{65}$

22.4  
 $\frac{73}{76}$

Plotted  
3+66

22.1  
 $\frac{76}{37}$

21.5  
 $\frac{82}{45}$

20.8  
 $\frac{83}{60}$

22.1  
 $\frac{76}{76}$

B.M.

5.59

724.12

Rec. Elev.  
724.12

Nov. 10, 1933

B.M.

6.12 630.24'

724.12

Plotted  
2+76

24.3  
 $\frac{53}{34}$

23.6  
 $\frac{66}{37}$

23.6  
 $\frac{66}{43}$

24.0  
 $\frac{63}{50}$

24.2  
 $\frac{60}{60}$

Plotted  
2+66

24.8  
 $\frac{53}{34}$

24.2  
 $\frac{60}{37}$

24.4  
 $\frac{58}{45}$

24.3  
 $\frac{60}{57}$

24.5  
 $\frac{57}{60}$

Plotting this page also OK

Final X Sections - Floor Subgrade

Nov 13 - 1933

Elliott - Soper - McHugh

Meier

B.M.	4.42	728.54		724.12		
Plotted		21.0	21.7	21.3	20.9	21.5
3+76	75 42	68 46	72 55	75 62	70 67	60 77

Plotted		21.1	21.5	21.4	21.4	
3+86	74 41	72 45	71 60	71 77		

B.M.	6.79	730.91		724.12	
Plotted		25.0	24.9	24.6	24.7
2+56 <sup>25</sup>	59 35	60 45	63 50	62 57	

Plotted		21.0	21.1	25.2	24.9	24.9
2+56 <sup>25</sup>	92 33	98 37	52 39	60 47	60 57	

Plotted		21.0	21.1	25.2	24.9	24.9
2+53 <sup>25</sup>	99 33	98 37	52 39	60 47	60 57	

Plotted		24.5	24.6	24.7	24.9	24.9
2+53 <sup>25</sup>	64 40	63 48	62 57			

Plotting this page checked 1934



Final X Sections  
Floor Subgrade

meyer

730.91

✓	25.4	23.9	25.3	23.1	23.6
Plotted					
2+46	Cont from Page 20				
	55	70	56	78	73
	38	42	46	49	56

Cont to Page 35

T.P. 6.88 734.52 3.27 727.64

	28.3	28.8	29.2	29.0
1+02	62	52	53	55
	4	6	14	20
				Plotted ✓

	28.0	28.5	28.9	28.7
1+12	65	60	56	58
	4	6	14	20
				Plotted ✓

These Sec. Continued  
on Page 70 CRH

Nov. 14, 1933

Final Xsections

B. M. 3.62 727.74 724.12

Plotted	20.6	21.3	21.0	21.2	20.9
3+96	71 5	64 7	67 20	65 30	68 38
Plotted	20.4	21.0	20.9	20.1	20.7
4+06	73 4	62 7	68 25	76 30	70 40
Plotted	20.1	20.5	20.6	19.3	19.6
4+16	76 5	72 10	71 22	84 24	81 32
Plotted	19.6	19.9	20.3	19.7	
4+26	81 5	78 7	74 20	80 40	
Plotted	18.9	19.5	19.9	20.2	
4+36	88 5	82 6	78 20	75 40	
Plotted	18.6	19.4	19.7	20.0	
4+46	91 4	83 7	80 20	72 40	

20.5  
72  
35

20.5  
72  
40

Plotting on this page checked BBA

Meyer

## Final X sections

Nov. 15, 1933

B.M.	1.74	725.86		724.12
	18.3	18.3	19.6	19.6
Plotted	$\frac{76}{3}$	$\frac{76}{5}$	$\frac{63}{9}$	$\frac{63}{20}$
4+56				

	19.7	19.8
	$\frac{62}{30}$	$\frac{61}{40}$

B.M.	2.40	726.52		724.12
	18.1	19.2	19.4	19.5
Plotted	$\frac{84}{3}$	$\frac{70}{8}$	$\frac{71}{20}$	$\frac{70}{30}$
4+64				
	21.1	20.3	19.7	21.2
Plotted	$\frac{54}{50}$	$\frac{62}{54}$	$\frac{68}{66}$	$\frac{53}{70}$
3+96				
	20.9	20.9	21.3	20.8
Plotted	$\frac{56}{37}$	$\frac{56}{50}$	$\frac{52}{60}$	$\frac{53}{70}$
4+06				
	20.6	19.5	20.1	20.4
Plotted	$\frac{59}{40}$	$\frac{70}{50}$	$\frac{64}{60}$	$\frac{61}{70}$
4+16				

	20.6	20.4	19.5
	$\frac{57}{80}$	$\frac{61}{80}$	$\frac{70}{40}$
	20.1	20.4	19.5
	$\frac{64}{78}$	$\frac{57}{80}$	$\frac{70}{40}$

Plotting checked this page. C.B.H. 11/20/33

Final X sections

726.52

	19.9	20.2	20.3	20.2
Plotted 4 + 26	$\frac{66}{40}$	$\frac{63}{50}$	$\frac{62}{60}$	$\frac{63}{70}$

20.1
$\frac{64}{78}$

Nov. 16, 1933.

B.M. 2.11 726.23 724.12

	20.2	19.9	20.2	19.9
Plotted 4 + 36	$\frac{60}{40}$	$\frac{63}{50}$	$\frac{60}{60}$	$\frac{63}{70}$

20.1
$\frac{65}{80}$

	19.9	19.8	19.8	19.8
Plotted 4 + 46	$\frac{63}{40}$	$\frac{64}{50}$	$\frac{64}{60}$	$\frac{64}{70}$

19.8
$\frac{64}{80}$

	19.8	19.3	19.1	19.6
Plotted 4 + 56	$\frac{64}{40}$	$\frac{63}{50}$	$\frac{71}{55}$	$\frac{66}{60}$

19.7
$\frac{65}{80}$

	19.5	19.4	19.3	19.7
Plotted 4 + 64	$\frac{67}{40}$	$\frac{68}{50}$	$\frac{69}{60}$	$\frac{65}{70}$

19.6
$\frac{65}{80}$

Plotting checked Oct. 2, 1934 2234

19.6
$\frac{66}{80}$

B.M. 5.21 723.77 718.56

Plotted  
4+75 19.1 42 42 42 48  
5 10 20 40

Plotted  
4+85 18.6 52 54 48  
5 20 40

Plotted  
4+95 17.4 64 55 52 53  
3 6 20 40

B.M. 1.72 725.84 724.12

Plotted  
4+75 19.1 67 68 68  
55 70 80

Plotted  
4+85 18.7 71 71 62  
50 65 80

Plotted  
4+95 18.4 74 75 74  
50 65 80

Plotted  
5+05 17.4 84 72 76 76 79 79  
4 7 20 40 60 80

Plotting checked 10-2-34 B.H.

17.9

Nov 20 - 1933

X sections of floor

Elev. 421 731.54 727.33 6" above at Sta 2+25

Plotted 1+65  
27.0  
45 27.0  
46

Plotted 1+75  
26.9  
46 26.9  
43 48

Plotted 1+86  
26.7  
48 26.7  
43 50

Plotted 1+96  
26.6  
42 26.6  
45 53

Plotted 2+06  
25.9  
55 26.0  
45 56

Plotting checked 10-2-34 to B.H.

731.54

Plotted  
2 + 16

✓ 25.7	✓ 25.9	✓ 25.6	✓ 25.7
58 40	58 47	59 50	58 60

Plotted  
2 + 26

✓ 25.6	✓ 25.0	✓ 25.1
59 40	65 50	64 65

Plotted  
2 + 36

✓ 24.8	✓ 24.6	✓ 24.8
67 40	69 50	67 65

Plotted  
2 + 46

Cont. from Page 29	✓ 24.9	✓ 25.1
66 60	64 69	

Cont. on page 72

Plotted

2 + 56  
No cut off  
ditch

✓ 24.1	✓ 24.0
74 65	75 72

Plotted  
2 + 66

✓ 24.3	✓ 24.3
72 65	72 75

Cont'd. on Page 73

Plotting of 10-2-34 284  
this page

$\sqrt{731.54}$ 

 Plotted  
 2+76

 $\sqrt{24.4}$   
 71  
 65

 $\sqrt{24.0}$   
 75  
 79

 Plotted  
 2+86

 $\sqrt{24.2}$   
 73  
 70

 $\sqrt{23.6}$   
 72  
 82

 Plotted  
 2+96

 $\sqrt{24.0}$   
 75  
 73

 $\sqrt{24.0}$   
 75  
 85

 Plotted  
 3+06

 $\sqrt{23.7}$   
 78  
 75

 $\sqrt{23.6}$   
 72  
 88

 Plotting  $\sqrt{A}$  10-2-34 284

Continued on Page 73



Final X sections  
 Nov 23 - 1933  
 Elliott - Soper - McHugh

B.M. 2.36 726.48 724.12  
 T.P 4.97 721.51  
 3.42 724.93

Plotted 3+66	21.9	21.7	21.6	21.7
	$\frac{30}{80}$	$\frac{32}{90}$	$\frac{33}{100}$	$\frac{32}{108}$
Plotted +76	21.8	21.7	21.2	21.7
	$\frac{31}{80}$	$\frac{32}{90}$	$\frac{32}{100}$	$\frac{32}{109}$
Plotted +86	21.3	21.3	21.3	21.4
	$\frac{32}{80}$	$\frac{36}{90}$	$\frac{36}{100}$	$\frac{35}{111}$
Plotted 3+96	20.1	20.5	21.0	20.8
	$\frac{48}{80}$	$\frac{44}{90}$	$\frac{39}{100}$	$\frac{41}{113}$
Plotted 4+06	20.3	20.1	20.8 20.1	19.9 20.4
	$\frac{46}{80}$	$\frac{48}{90}$	$\frac{41}{100}$	$\frac{50}{110}$ $\frac{45}{115}$

Plotting of 10-2-34 LBA

contd. on Page 68. This Book.

724.93

Plotted  
4+16

20.0	20.3	20.0	20.4
42	46	42	45
80	90	100	110

19.7	52
115	

Plotted  
+26

19.9	20.0	19.9	20.3
50	49	50	46
80	90	100	110

20.2	47
122	

cont'd. in Book #456

Plotted  
+36

20.1	19.3	19.8	19.8
48	56	51	51
80	90	100	110

19.9	50
120	

19.7	50
130	

" " " "

Plotted  
+46

19.7	19.8	19.8	18.9
52	51	51	60
80	100	115	120

19.1	58
130	

" " " "

Plotted  
4+56

19.6	19.4	18.6
53	55	63
80	100	120

19.1	58
135	

" " " "

Plotting 10-2-34 r.c.H.

These sections are taken  
normal to back of wier & dist.  
is from dubbed toe of ogee

724.93

Plotted 4+64	19.3	19.2	18.8	18.8
	$\frac{56}{80}$	$\frac{57}{100}$	$\frac{61}{120}$	$\frac{61}{135}$

Plotted 4+75	19.0	19.0	18.6	18.4
	$\frac{59}{80}$	$\frac{59}{100}$	$\frac{63}{120}$	$\frac{65}{135}$

Plotted 4+85	18.8	18.8	18.6	18.2
	$\frac{61}{80}$	$\frac{61}{100}$	$\frac{63}{120}$	$\frac{67}{138}$

Plotted 4+95	18.4	18.4	18.5	18.5
	$\frac{65}{80}$	$\frac{65}{100}$	$\frac{64}{120}$	$\frac{64}{140}$

Plotted 5+05	17.7	18.2	18.1	18.1
	$\frac{72}{80}$	$\frac{62}{100}$	$\frac{68}{120}$	$\frac{68}{140}$

Plotting of 10-2-34 GPM

contd. in Book #456

" " "

" " " "

" " " "

" " " "

Final X Sections. Nov 27 - 1933  
 (Floor subgrade) Elliott  
 Soper  
 Osborne

40

These sections Normal to  $\perp$   
 and distances are N. or S. from  
 $\perp$  as shown.

B.M. 2.67 721.23 718.56

South Side of  $\perp$

Plotted 5+10	17.3 39 33	17.4 38 50	17.9 33 65	17.9 33 105	14.7 65 108.5
Plotted 5+10 also cut off	13.9 73 108.5	13.8 74 100	13.7 75 75	13.5 72 50	13.4 76 33
Plotted 5+12.5 cut off	13.9 73 108.5	13.8 74 100	13.7 75 75	13.5 72 50	13.6 76 33
Plotted 5+12.5 also	16.9 43 33	17.2 40 50	17.5 37 75	17.5 37 100	16.2 50 108.5
Plotted 5+20	16.8 44 30	16.7 45 50	16.9 43 75	17.0 42 103	

Plotting of 10-2-34 2004

721.33 South Side of  $\frac{1}{2}$

Plotted 5+30	16.1	15.9	16.2	16.3	16.2
	52 R	54 33	51 50	50 75	51 103
Plotted 5+40	15.3	15.1	15.3	15.3	15.2
	60 R	62 25	60 50	60 75	61 103

Plotting of 10-2-34  
L.B.H.

Final X sections  
(Floor Subgrades)

Dec 5-1933  
Elliott 41  
Soper  
Osborne

South Side of  $\frac{1}{2}$

B.M. 3.09 723.40 720.31

Plotted 5+10 cut off	17.9	17.9	17.6
	55 R	55 15	58 30
Plotted 5+10 cut off	13.6	13.7	13.6
	98 R	92 15	98 30
Plotted 5+12.5 cut off	13.6	13.7	13.6
	98 R	92 15	98 30
Plotted 5+12.5 cut off	17.6	17.4	17.0
	58 R	60 15	64 30

Plotting of 10-2-34  
L.B.H.

723.40

South side

Plotted

5+20

16.9

65  
15

16.6

68  
15

16.5

69  
30

Plotted

5+30

15.9

75  
15

15.9

75  
15

15.9

75  
30

Plotted

5+40

15.3

81  
15

15.3

81  
15

15.0

84  
30

Plotting of 10-2-34 CBK

Plotted

5+50

14.1

93  
15

14.1

93  
15

13.9

95  
30

T. P.

3.94

717.66

9.68

713.72

717.66 South of  $\phi$

Plotted  
 5+50

	13.8	14.2	13.9	14.0
	$\frac{39}{50}$	$\frac{35}{65}$	$\frac{38}{80}$	$\frac{37}{100}$

Plotted  
 5+60

	12.9	12.9	12.7	12.9	GRM
	$\frac{48}{50}$	$\frac{48}{15}$	$\frac{50}{30}$	$\frac{48}{50}$	

Dec 7-1933 Elliott-Simpson Super-Remmen

	12.7	12.9	12.9
	$\frac{50}{65}$	$\frac{48}{80}$	$\frac{48}{100}$

B.M. 3.02 721.58 718.56

Plotted  
 5+70

	11.5	11.4	11.2	11.2	11.3
	$\frac{10.1}{50}$	$\frac{10.2}{20}$	$\frac{10.4}{40}$	$\frac{10.4}{60}$	$\frac{10.3}{80}$

Plotting of 10-2-24

Plotted  
 5+80

	10.1	10.0	10.1	09.8	09.8
	$\frac{11.5}{50}$	$\frac{11.6}{20}$	$\frac{11.5}{40}$	$\frac{11.8}{60}$	$\frac{11.8}{80}$

	11.5
	$\frac{10.1}{100}$
	09.9
	$\frac{11.2}{100}$

Elliott  
London

Final X Sections Spillway Floor  
Dec 15 - 1933 (Subgrade)

44

North of  $\frac{1}{2}$

722.47

B.M. 2.16 722.47

720.31

Plotted  
5+10  
Top ditch

17.9  
4.6  
15  
18.1  
4.4  
29.2

Plotted  
5+30

16.2  
6.3  
10  
16.2  
6.3  
20  
16.2  
6.3  
30

Plotted  
5+10  
Bottom ditch

13.5  
7.2  
15  
13.7  
8.8  
29

Plotted  
5+40

15.3  
7.2  
10  
15.3  
7.2  
20  
15.4  
7.1  
30

Plotted  
5+12.5  
Bottom

13.5  
9.2  
15  
13.7  
8.8  
29

Plotted  
5+50

14.2  
8.3  
10  
14.2  
8.3  
20  
14.2  
8.3  
30  
14.0  
8.5  
38

Plotted  
5+12.5  
Top

17.6  
4.9  
15  
17.7  
4.8  
29

Plotted  
5+60

13.0  
9.5  
10  
13.0  
9.5  
20  
13.0  
9.5  
30  
13.0  
9.5  
38

Plotted  
5+20

17.0  
5.5  
10  
16.9  
5.6  
20  
17.1  
5.4  
30

Plotting of 10-2-32 GBN



Copied from back of book 443

Final Profile Core Wall,

Dec 18-1933

45

	1.60	708.6	707.00	
4088		9.1	99.5	✓
4099		9.1	99.5	✓
4099		3.1	05.5	✓
4110		2.9	05.7	✓
	0.9	708.9	708.00	
4130		3.0	05.9	✓
50		3.0	05.9	✓
4166		3.0	05.9	✓

Feb 5 - 1934

BM	-995	711.30	721.25	
0+14 <sup>I</sup>			721.3	
0+14 <sup>b</sup>		5.4	05.9	✓
N 4175 E = 0+00		5.8	05.5	✓
N 4166		5.3	06.0	✓

See FB 447  
55

Grout holes

N 4169	W
74	E
0+04	W
0+09	E
0+14	W

Elliott  
Super  
Remmen

Final X Sections  
Jan 12 - 1934 (Floor Subgrade)

46

T.P. 5.73 716.42 710.69

South

Plotted  
5+70

Plotted  
5+80

Plotted  
5+90

Plotted  
6+00

	08.5	08.0	08.7	08.4
	72	84	82	80
	100	80	60	40
06.4	06.4	06.4	06.3	
10 <sup>2</sup>	10 <sup>2</sup>	10 <sup>2</sup>	10 <sup>1</sup>	
100	80	60	40	

	08.3	08.4	08.3	08.3
	81	80	81	81
	20	42	20	42
06.3	06.4	06.5	06.4	
10 <sup>1</sup>	10 <sup>2</sup>	9 <sup>3</sup>	10 <sup>2</sup>	
20	42	20	42	

11.4  
52  
15

10.0  
64  
20

08.3  
81  
20

06.5  
9<sup>3</sup>  
20

11.6  
48  
41

10.0  
64  
42

08.3  
81  
42

06.4  
10<sup>2</sup>  
42

North

Plotting on this page of EOT Nov. 20-3\*



Final X sections  
 (Subgrade) Spillway Floor  
 Jan 19 - 1934

Elliott  
 Soper  
 Remmen

B. M. 11.57 707.93 696.36

Plotted

6 + 10

04.4

35  
 28

South

04.4

35  
 10

04.5

34  
 4

Plotted

6 + 20

02.3

56  
 28

02.4

55  
 10

02.4

55  
 4

Plotting of  
 10-2-34 204

04.5

34  
 20

04.5

34  
 44

North

02.4

55  
 20

02.3

56  
 44

Final X sections  
(Floor Subgrade) Jan 22 - 1934

Elliott  
Soper  
Remmen

49

B.M. 8.68 705.04 696.36

Plotted  
6+30

00.2	00.2	00.2	00.2
48	48	48	48
28	20	2	20

Plotted  
6+40

97.8	97.7	97.89	97.9	97.7
72	73	75	71	73
28	20	2	20	45

5100.0  
45

97.3  
77  
50

97.6  
74  
65

Jan 23 - 1934

B.M. 5.83 702.19 696.36

Plotted  
6+50

South		
95.2	95.1	95.3
70	71	69
27	15	4

Plotted  
6+60

92.6	92.6	92.6
96	96	96
27	15	2

95.3  
69  
20

92.4  
98  
20

North  
95.0  
72  
40

92.2  
100  
40

95.3	92.6	92.7
69	96	95
65	45	65

Plotting on this page and page 48 11-20-34

Final X sections  
(Floor Subgrade) Jan 26-1934

Elliott  
Soper  
Remick

50

B.M. 4.47 700.83 696.36

T.P. 0.37 700.46

5.38 705.84

T.P. Plug at 6+20 2.31 703.53

4.63 708.16

3.85

Plotted  
6+10

04.4	04.7	South of $\frac{1}{2}$			
38	35	04.5	04.6	04.4	04.7
36	40	37	36	36	35
		50	60	70	80

Plotted  
6+20

02.4	02.6	04	02.4	02.1	02.2
58	56	58	58	61	60
35	50	60	70	80	90

Plotting at 10-2-24 24

Extended on Jan 30  
same HI

04.6	04.6	04.0	03.2	03.4	05.6
36	36	42	50	48	26
90	100	101.5	102	105.5	106.5
02.3		01.1	01.3	03.5	
52		71	69	47	
99		102	104	106.0	

Final X Sections Elliott  
 Jan 27 - 1934 Soper  
 Remmen  
 Floor + South Side Wall Footing  
 (Subgrade) South of  $\Phi$

Note: No trench for tile  
 from 6+30 to 6+60. SI



T.P. plug at 6+20 703.53

0.72 704.25 ✓  
 Blotted  
 6+30 40 41 43 42 43 46 39 40 51 55 30  
 35 51 64 75 85 90 95 99 101 103 105

Blotted  
 6+40 54 71 75 65 64 73 65 66 64 63 97.9  
 103 103 100 98 90 80 65 55 40 30

Blotted  
 6+50 91 93 94 95 91 92 101 101 82  
 30 48 63 76 90 97 98 101 102

Check on grade  
 pin 6+50 8.04 696.21 696.23

B.M. 2.50 698.86 696.36

Blotted  
 6+60 63 63 65 64 62 63 65 61 73 73 52  
 30 40 50 60 70 80 90 97 98 101 102

Plotting  $\Phi$  - 10-2-34 L&M

Floor X Sections Elliott  
Soper  
Temmen

Jan 29-1934  
(Floor subgrade)

South

North

B.M. 11.91 694.96 683.05

Plotted  
6+70

89.6	89.7	89.7	89.7	89.7
54	53	53	53	52
26	20	20	20	40

Cont'd. on Page 76.

Jan 30-1934

B.M. 9.45 692.50 683.05

Plotted  
6+80

86.7	86.6	86.7	86.8
58	59	58	57
33	20	20	20

Cont'd. on Page 76

Plotted  
6+87<sup>2.9</sup> E.V.C.

84.7	84.6	84.7	84.6
78	79	78	79
33	20	20	20

Cont'd. on Page 54

Plotting of 10-2-34 E.V.C.

B.M. 0.80 704.33 703.53

South

(?)  
6+60

92.5	92.4	92.4	92.5
118	119	119	118
40	60	80	90

92.5	91.8	91.8	93.6
118	125	125	107
97	98	100.5	102.0



Final  
Spillway Floor X Sections  
Feb. 12, 1934. (Subgrade)

Jimpson  
Soper  
Remmen

53

T.P. 8.30 693.09 684.79 - 6+87

Plotted 6+70

Plotted 6+80

Plotted 6+87<sup>29</sup>

Plotted 7+00

South of R.

Plotting at 10-2-34 BRN

87.8	87.7	87.5	87.5	90.1
$\frac{33}{40}$	$\frac{34}{60}$	$\frac{36}{80}$	$\frac{35}{86}$	$\frac{30}{89}$
86.8	86.6	86.5	86.7	
$\frac{63}{40}$	$\frac{65}{60}$	$\frac{66}{80}$	$\frac{64}{93}$	
84.6	84.5	84.6	84.7	
$\frac{85}{40}$	$\frac{86}{60}$	$\frac{85}{80}$	$\frac{84}{91}$	
80.5	80.4	80.5	80.7	
$\frac{121}{126}$	$\frac{127}{20}$	$\frac{126}{40}$	$\frac{124}{60}$	

89.7	89.1	88.8	90.8
$\frac{32}{96}$	$\frac{40}{97}$	$\frac{43}{100}$	$\frac{23}{100}$
86.0	85.5	87.8	
$\frac{71}{95}$	$\frac{76}{100}$	$\frac{53}{100}$	
83.9	83.5	85.6	
$\frac{93}{95}$	$\frac{96}{99}$	$\frac{75}{100}$	
80.5	80.6	79.5	79.3
$\frac{126}{80}$	$\frac{125}{95}$	$\frac{136}{96}$	$\frac{138}{98}$
			81.6
			$\frac{115}{98}$

11.48 681.61 check on Sta 7+00 Grade Pin El. 681.58

Final  
Spillway Floor X Sections  
Feb. 12, 1934 (Subgrade)

T.P. 8.30 693.09 684.79

North of  $\Phi$

Plotted  
6+27.29

84.5	84.5	83.5	83.6
$\frac{86}{10}$	$\frac{86}{96}$	$\frac{96}{97}$	$\frac{95}{99}$

Plotted  
7+00

80.6	80.3	80.3	80.8
$\frac{12.5}{20}$	$\frac{12.8}{40}$	$\frac{12.8}{60}$	$\frac{12.3}{80}$

This Page Plotted and Checked 11-20-94

Simpson  
Soper  
Remmen.

54

85.6  
 $\frac{75}{99.5}$

80.7	79.9	80.2	81.0
$\frac{12.4}{96}$	$\frac{13.2}{96.5}$	$\frac{12.9}{98.5}$	$\frac{11.5}{98.3}$

Final Xsections of Spillway Floor  
(Subgrade) Feb 19-1934

B.M. 5.78 680.02 674.24

South

Plotted  
cut off  
7+1104

77.1	77.1	76.9	77.1	
22	22	31	22	
20	20	40	65	

Plotted  
7+1104

Plotting of 6-2-34-504

72.8	73.0	72.8	72.9	73.2
20	20	40	60	80

Plotted  
7+1354

72.7	72.9	72.8	72.9	73.2
20	20	40	60	80

Plotted  
7+1354

76.0	75.9	76.2	75.9	
40	41	38	41	
20	20	40	60	

of E

76.3	77.5	76.8	77.0	77.0	75.8	75.9	78.1
37	25	32	30	30	42	41	12
68	70	77	81	95	96	98	98.3

73.2	77.6			
68	24			
98	98			

73.1	77.1			
69	29			
98	98			

76.0	76.0	75.1	74.8	77.1
40	40	49	52	22
80	95	95	97.8	98

Final X Sections  
Feb 27-1934

Elliott  
Remmen

56

Grade pin 2.71 678.00 675.29 Sta. 7+20

So. of  $\phi$

Plotted 7+20	74.3	74.1	74.2	74.2	74.1	74.3	75.1	72.8	75.3
	32	32	38	38	39	32	49	52	22
	4	20	40	60	80	94	943	976	976

Feb 28-1934

B.M. 3.60 678.59 674.99

North of  $\phi$

Plotted 7+11 <sup>04</sup>	77.0	76.9	77.1	77.1	77.0	76.0	78.0
	16	12	15	15	16	26	06
	20	40	65	80	942	95	982
Plotted 7+11 <sup>04</sup>	78.0	73.6	73.1	72.9	72.9	73.0	76.0
	06	52	55	52	57	56	26
	982	98	80	60	40	20	98
Plotted 7+13 <sup>54</sup>	77.9	73.4	73.1	72.8	72.8	73.0	76.1
	07	52	55	58	58	56	75.9
	982	98	80	60	40	20	27
Plotted 7+13 <sup>54</sup>	77.9	75.0	75.1	76.0	76.1	76.1	75.9
	07	36	35	26	25	25	27
	98	978	95	947	80	60	40

Plotting of 10-2-34 CBM

Plotted  
7+20

74.3	74.2	74.1	74.2
678.59			
43	44	45	44
20	40	60	80

B.M. 1.65 676.64 674.99

So. of  $\phi$

Plotted  
7+30

71.0	71.1	70.9	70.8
57	55	57	58
20	20	40	60

Plotted  
7+40

67.9	68.0	67.9	67.8
87	86	87	88
20	20	40	60

B.M. 4.02 679.01 674.99

Mar 1-2-3-1934

Plotted  
7+30

71.0	70.9	71.2	70.9
80	81	78	81
20	40	60	80

Plotting at 10-2-34 GPH

7+40

68.0	67.8	67.9	68.0
110	112	114	110
20	40	60	80

74.0	73.3	73.4	75.3
46	53	52	33
942	945	972	973

70.7	70.9	69.5	69.5	72.2
59	57	71	71	71
80	93	932	97	975
68.0	67.9	66.9	66.9	68.9
80	82	92	92	71
80	93	93	955	963

Elliott-Soper-Remmen

71.1	70.1	70.2	72.1
79	87	88	69
935	936	966	972

68.0	67.1	67.0	69.0
110	112	120	100
934	934	962	962

X sections of Finish Concrete  
of Spillway Floor (To be used  
for computing batch yield)

JUNE 14-1934  
Elliott  
Simpson  
Soper

58

Distances are from dubbed toe of edge  
and 90° to back of weir.

B.M. 2.29 726.41 724.12

								Finished Grade as per Plans 722.97
3+66	3.42 0	3.42 20	3.42 40	3.44 60	3.45 74.5	3.48 107.5		
Elev.	722.99	722.99	722.99	722.97	722.96	722.93		
3+76	3.70 0	3.70 20	3.70 40	3.70 60	3.75 80	3.69 109.2		722.70
	722.71	722.71	722.71	722.71	722.66	722.72		
3+86	3.98 0	3.97 20	3.95 40	3.94 60	3.99 80	3.91 110.2		722.42
	722.43	722.44	722.46	722.47	722.42	722.50		
3+96	4.24 0	4.25 20	4.27 40	4.23 60	4.28 80	4.22 112		722.15
	722.17	722.16	722.14	722.18	722.13	722.19		
4+06	4.52 0	4.50 20	4.52 40	4.45 60	4.55 80	4.53 113.4		721.87
	721.89	721.91	721.89	721.96	721.86	721.88		

Cladding of 10-2-34 LBA

# X Sections of Finished Concrete

Section	721.57	721.59	721.61	721.69 721.66	721.54	721.63	
4+16	4.84 0	4.82 20	4.80 40	4.75 60	4.87 80	4.78 114.2	721.60
4+26	5.12 0	5.05 20	5.04 40	5.00 60	5.14 80	5.03 113.5	721.33
4+32	5.27 0	5.22 20	5.20 40	5.18 60	5.29 80	5.22 113.5	5.27 126.5
4+36	5.40 0	5.33 20	5.30 40	5.31 60	5.37 80	5.37 100	5.37 127.5
4+46	5.59 0	5.62 20	5.52 40	5.55 60	5.58 80	5.60 100	5.64 130
4+56	5.87 0	5.86 20	5.81 40	5.84 60	5.88 80	5.92 100	5.91 132.6

OK Plotting 10-1-34 to BKA

X Sections of Finished Concrete.

4+64	726.41 720.31 6.10 0	720.94 720.94 6.07 20	720.39 720.39 6.02 40	720.29 720.29 6.12 60	720.32 720.32 6.09 80	720.32 720.32 6.09 100	720.26 720.26 6.15 134.2	720.29
4+75	720.01 720.01 6.35 0	720.00 720.00 6.41 20	720.05 720.05 6.36 40	720.00 720.00 6.41 60	720.05 720.05 6.36 80	720.01 720.01 6.40 100	720.00 720.00 6.41 120	719.98 719.98 6.42 136.4
4+85	719.68 719.68 6.73 0	719.73 719.73 6.68 20	719.76 719.76 6.65 40	719.71 719.71 6.70 60	719.71 719.71 6.70 80	719.72 719.72 6.69 100	719.65 719.65 6.76 120	719.71 719.71 6.72 137.6
4+95	719.41 719.41 7.00 0	719.39 719.39 7.02 20	719.41 719.41 7.00 40	719.40 719.40 7.01 60	719.38 719.38 7.03 80	719.40 719.40 7.01 100	719.42 719.42 6.99 120	719.41 719.41 7.00 138.1
5+05	718.91 718.91 7.50 0	718.97 718.97 7.44 20	718.97 718.97 7.44 40	718.99 718.99 7.42 60	718.97 718.97 7.44 80	718.99 718.99 7.42 100	719.08 719.08 7.33 120	719.08 719.08 7.33 138.6

ck. Plotting 10-1-34 ~~804~~



\*Sections of Finished Conc. Floor  
 Sections taken No. + So. of  
 # as noted

B.M. 2.31 726.43 724.12

	718.72	718.72	718.74	718.68	718.72	718.73	No.
5+10	7.71	7.71	7.69	7.75	7.71	7.70	
	1103	80	60	40	20	298	

	718.53	718.56	718.59	718.54	718.56	718.56	No.
5+12.5	7.90	7.87	7.84	7.89	7.87	7.87	
	1099	80	60	40	20	282	

	717.98	718.00	718.03	718.03	718.04	718.06	No.
5+20	8.45	8.43	8.40	8.40	8.39	8.37	
	1094	80	60	40	20	296	

	717.22	717.21	717.22	717.26	717.28	717.21	No.
5+30	9.21	9.22	9.21	9.17	9.15	9.22	
	1082	80	60	40	20	33	717.20

	716.32	716.29	716.31	716.24	716.26	716.26	No.
5+40	Covered	Covered	10.11	10.14	10.12	10.19	
			60	40	20	34	716.25

	715.22	715.26	715.15	715.20	715.09	715.15	No.
5+50	Covered	Covered	11.21	11.28	11.23	11.34	
			60	40	20	37	715.15

T.P.

0.65 714.57

12.51 713.92

Checked Platting 10.1-34 20A

X sects. of Finished Concr. Floor Cont'd.

So.

No.

Station	Description	713.88	713.89	713.89	713.95	713.90	
5+60	Covered	0.69 60	0.68 40	0.68 20	0.62 Φ	0.67 39.5	713.91
5+70	Covered	2.03 60	2.03 40	2.06 20	2.01 Φ	1.97 20	712.53
5+80	Covered	3.62 60	3.57 40	3.59 20	3.55 Φ	3.52 20	710.99
5+90	Covered	5.23 60	5.13 40	5.21 20	5.19 Φ	5.18 20	709.33
6+00	Covered	7.00 60	6.91 40	7.00 20	6.99 Φ	7.06 20	707.51
6+10	Covered	8.95 60	8.95 40	8.91 20	8.96 Φ	9.00 20	705.55

713.88

712.54

710.95

709.34

707.59

705.62

713.89

712.54

710.00

709.47

707.66

705.62

713.89

712.51

710.98

709.36

707.59

705.66

713.95

712.56

711.02

709.38

707.58

705.61

713.90

712.50

711.05

709.39

707.57

705.57

713.90

712.50

711.03

709.33

707.53

705.63

Plotting of 10-1-36

T.P. plug 6+20 11.06 703.51 703.52

Xsects. of Finished Concr. Floor - Contd.  
 June 15-1934 So.

								No.	
B.M.	0.93	704.45	703.52						
6+20		Covered		703.50	703.53	703.52	703.52		
				0.95 40	0.92 20	0.93 Φ	0.93 20	0.93 416	703.45
6+30		"		701.24	701.23	701.27	701.24	701.28	✓
				3.21 40	3.22 20	3.18 Φ	3.21 20	3.17 417	701.21
6+40		"		698.80	698.84 698.74	698.80	698.87	698.87	✓
				5.61 40	5.61 Φ	5.65 20	5.58 42	5.68 629	698.82
B.M.	0.63	704.15	703.52						
6+50		Covered		696.28	696.22	696.21	696.27	696.30	
				7.87 40	7.92 Φ	7.93 20	7.88 40	7.85 625	696.29
6+60		"		693.62	693.61	693.59	693.61	693.59	
				10.53 40	10.54 20	10.55 Φ	10.56 20	10.54 40	693.61
T.P.									
	0.22	691.28	691.06						

698.84  
 698.74  
 698.80  
 698.84  
 698.74  
 696.28  
 696.22  
 696.21  
 696.27  
 696.30  
 693.62  
 693.61  
 693.59  
 Plotting of 10-1-34 L.B.A.

X Sects of Finished Concr. Floor - Contd.

Station	Description	690.81	690.80	690.68	690.72	690.74	690.75	690.79	
6+70	Covered	0.47 40	0.48 20	0.60 4	0.56 20	0.54 40	0.53 62.3	690.79	
6+80	"	3.45 40	3.48 20	3.52 4	3.51 20	3.46 40	3.47 61.8	687.83	
6+85	"	11.99 40	5.12 20	5.00 4	5.00 20	4.97 40	5.03 61.2	4.78 78.5	
(6+87.29 plotted Station)									
7+00	"	9.65 40	9.69 20	9.65 4	9.59 20	9.70 40	9.68 60	9.48 97.5	681.58
7+104	"	13.14 40	13.19 20	13.11 4	13.07 20	13.13 40	13.10 60	13.02 96.8	678.11
T.P.		13.06	679.22						
B.M.	2.06	680.28							
B.M.	6.06	680.30	6.06	674.22	674.24				

OK plotting 10-1-34 - B.M.

X Sects. of Finished Corner, Floor

South

677.30

677.36  
677.36

7+13.54

Covered

2.94  
40

677.32

2.98  
20

677.36

2.94  
40

677.42

2.88  
20

677.39

2.91  
40

677.40

2.90  
60

677.44

2.86  
96.6

677.33

7+20

675.34  
675.34

4.96  
40

675.38  
675.38

4.93  
20

675.39  
675.39

4.91  
40

675.40  
675.40

4.90  
20

675.35  
675.35

4.95  
40

675.39  
675.39

4.91  
60

675.41  
675.41

4.83  
96.2

675.30

7+30

672.23  
672.23

8.07  
40

672.22  
672.22

8.08  
20

672.20  
672.20

8.10  
40

672.21  
672.21

8.09  
20

672.21  
672.21

8.09  
40

672.20  
672.20

8.10  
60

672.18  
672.18

8.17  
80

8.00  
95.5

672.16

7+40

Covered with tons of material

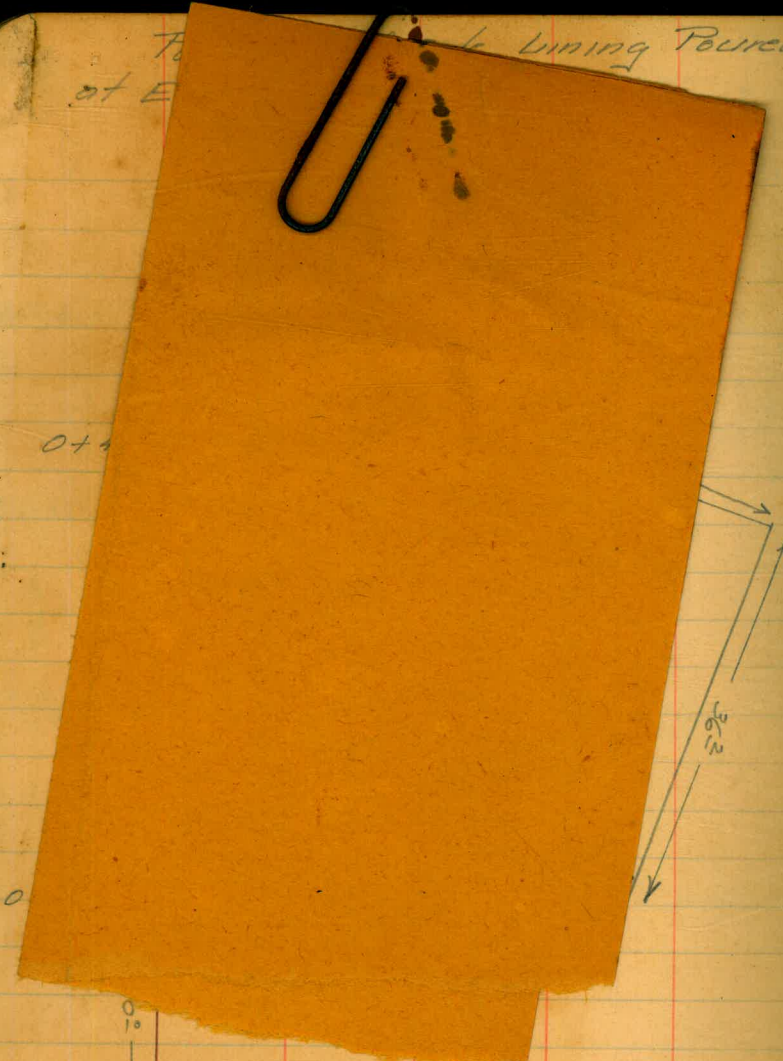
Plotting at 10-1-34 684

North

65

Lining Poured

66



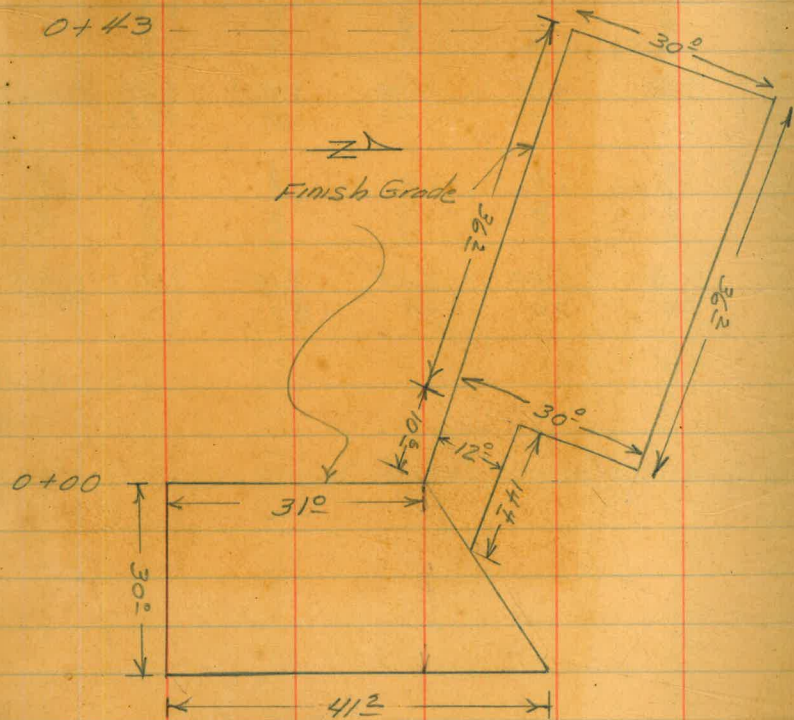
This Paper just  
checked  
Nov. 20-1932  
E.B.H.

These used for Batch  
grad

Portions of Side Lining Paired  
at East End of Spillway  
June 15 - 1934

66

0+43





Final X Sections  
Spillway Floor Subgrade

Aug. 4-1934

Simpson  
Saper  
Remmen  
Salgado  
Toabelle

67

B.M.	2.84	725.73	722.89
	718.4 ✓	718.7 ✓	
4 + 85	7 <sup>3</sup>	7 <sup>0</sup>	
	140	164 <sup>5</sup>	
	718.5 ↓	718.5 ↓	
4 + 75	7 <sup>3</sup>	7 <sup>3</sup>	
	140	163	
	719.0 ↓	718.9 ↓	
+ 64	6 <sup>7</sup>	6 <sup>8</sup>	
	140	160	
	719.3 ↓	719.2 ↓	
+ 56	6 <sup>4</sup>	6 <sup>5</sup>	
	135	157	
	719.7 ↓	719.7 ↓	
+ 46	6 <sup>2</sup>	6 <sup>2</sup>	
	133	154	
	719.6 ↓	719.7 ↓	
+ 36	6 <sup>1</sup>	6 <sup>0</sup>	
	131	151	
	720.3 ↓	720.3 ↓	
+ 26	5 <sup>4</sup>	5 <sup>4</sup>	
	120	147	

Plotted 10-1-34 C.B.H.

Note: All Spillway Floor Subgrade X Sections

From Sta. 0+00 to Sta. 5+10 are  
Taken normal to Back of weir,  
and Distances are from Dubbed  
Toe of Ogee.

Drain Ditches not shown in X sections.

Final X Sections  
Spillway Floor Subgrade

Aug-4-1934

68

725.73

	720.51	719.61	720.61	contd. in Book #456
4 + 16	5 <sup>2</sup>	6 <sup>1</sup>	5 <sup>1</sup>	
	118	130	144	

	720.91	719.71	720.61
+ 06	4 <sup>8</sup>	6 <sup>0</sup>	5 <sup>1</sup>
	116	126	141

T.P. 5.84 727.61 3.96 721.77 <sup>on Grade</sup> Pin at Sta. 4+10 Elev. 720.77

	721.11	720.31	721.01
3 + 96	6 <sup>5</sup>	7 <sup>3</sup>	6 <sup>5</sup>
	115	125	138

	721.51	721.31	721.21
3 + 86	6 <sup>1</sup>	6 <sup>3</sup>	6 <sup>4</sup>
	113	125	133

	721.51	721.51
3 + 76	6 <sup>1</sup>	6 <sup>1</sup>
	113	130

	721.71	721.91
3 + 66	5 <sup>7</sup>	5 <sup>7</sup>
	110	127

Plotted 10-1-34 LPH

4.76 722.85 <sup>on Grade</sup> Pin 3+70 Elev. 722.85

Cont'd. on Page 74, this Book.

Final X Sections, Spillway Floor

Subgrade.

Sept. 5-1934.

Osborne  
Soper  
Isabelle

69

B.M. 4.28 737.87 733.59

0+60  
730.3<sup>✓</sup> 730.5<sup>✓</sup> 730.3<sup>✓</sup> 729.9<sup>✓</sup> 729.3<sup>✓</sup>  
7<sup>6</sup> 7<sup>9</sup> 7<sup>6</sup> 8<sup>0</sup> 8<sup>6</sup>  
15 30 48 50<sup>5</sup> 51

729.1<sup>✓</sup> 731.3<sup>✓</sup>  
8<sup>8</sup> 6<sup>6</sup>  
54<sup>5</sup> 55

0+75  
729.7<sup>✓</sup> 729.8<sup>✓</sup> 729.9<sup>✓</sup> 729.7<sup>✓</sup> 727.7<sup>✓</sup>  
8<sup>2</sup> 8<sup>1</sup> 8<sup>0</sup> 8<sup>0</sup> 8<sup>0</sup>  
4 25 40 52 56

728.7<sup>✓</sup> 728.7<sup>✓</sup> 730.9<sup>✓</sup>  
9<sup>2</sup> 9<sup>2</sup> 7<sup>0</sup>  
56<sup>5</sup> 59<sup>7</sup> 59<sup>7</sup>

0+85  
729.6<sup>✓</sup> 729.4<sup>✓</sup> 729.6<sup>✓</sup> 729.5<sup>✓</sup>  
8<sup>3</sup> 8<sup>5</sup> 8<sup>3</sup> 8<sup>9</sup>  
4 15 27 40

729.3<sup>✓</sup> 729.8<sup>✓</sup> 729.6<sup>✓</sup> 728.5<sup>✓</sup> 728.5<sup>✓</sup> 730.5<sup>✓</sup>  
8<sup>6</sup> 8<sup>1</sup> 8<sup>3</sup> 9<sup>4</sup> 9<sup>4</sup> 7<sup>4</sup>  
47 56 59 59<sup>5</sup> 63 63<sup>3</sup>

0+95  
729.0<sup>✓</sup> 729.4<sup>✓</sup> 729.3<sup>✓</sup> 729.0<sup>✓</sup>  
8<sup>9</sup> 8<sup>5</sup> 8<sup>6</sup> 8<sup>9</sup>  
5 13 30 40

729.4<sup>✓</sup> 729.4<sup>✓</sup> 727.9<sup>✓</sup> 727.7<sup>✓</sup> 730.4<sup>✓</sup>  
8<sup>5</sup> 8<sup>5</sup> 10<sup>0</sup> 10<sup>0</sup> 7<sup>5</sup>  
60 63 64 67 67<sup>3</sup>

Plotted 10-1-34  
G.H.

Copied From Book. 443 - Pg. 13.

Final X Sections, Spillway Floor Subgrade

Sept. 6-1934

Simpson  
Soper  
Isabelle

70

See Page 29 to complete these sections

B.M. 2.11 735.70 733.59

1 + 02

729.2 ↓	728.9 ↓	729.3 ↓	729.1 ↓
6 <sup>5</sup>	6 <sup>8</sup>	6 <sup>4</sup>	6 <sup>5</sup>
30	50	65	66

727.8 ↓ 727.8 ↓ 730.3 ↓

7 <sup>9</sup>	7 <sup>9</sup>	5 <sup>±</sup>
67	69 <sup>5</sup>	69 <sup>5</sup>

complete

1 + 12

728.7 ↓	728.5 ↓	728.8 ↓	728.7 ↓
7 <sup>0</sup>	7 <sup>2</sup>	6 <sup>2</sup>	7 <sup>0</sup>
30	50	69	70

727.9 ↓ 727.7 ↓ 727.8 ↓

7 <sup>8</sup>	8 <sup>0</sup>	5 <sup>9</sup>
71	73 <sup>5</sup>	74

complete

1 + 25

728.5 ↓	728.1 ↓	728.3 ↓	728.6 ↓
7 <sup>2</sup>	7 <sup>6</sup>	7 <sup>4</sup>	7 <sup>1</sup>
50	58	70	74

727.6 ↓ 727.6 ↓ 730.7 ↓

8 <sup>1</sup>	8 <sup>6</sup>	5 <sup>0</sup>
75	78	79 <sup>5</sup>

complete

5.43 730.27 Check on

Grade Pin 1400

Rec. Elev. 730.26

CBH

Plotted 10-1-34 L.B.H.

Continued from Page 29 this book

Continued from Page 18 this book

Final X Sections - Spillway Floor Subgrade  
Sept. 7-1934.

Simpson  
Soper  
Isabelle

71

B.M. 1.41 735.00 733.59

1+35  
Cont. from  
Page 18

728.3 ✓	728.1 ✓	728.4 ✓	727.1 ✓
6 <sup>2</sup>	6 <sup>9</sup>	6 <sup>6</sup>	7 <sup>2</sup>
50	70	78	79

727.1 ✓	729.5 ✓
7 <sup>2</sup>	5 <sup>5</sup> complete
81 <sup>5</sup>	82 <sup>3</sup>

1+45

728.0 ✓	728.1 ✓	728.1 ✓
7 <sup>0</sup>	6 <sup>9</sup>	6 <sup>9</sup>
50	77	81 <sup>2</sup>

726.5 ✓	726.5 ✓	729.0 ✓
8 <sup>5</sup>	8 <sup>5</sup>	6 <sup>0</sup> complete
82 <sup>5</sup>	85 <sup>5</sup>	86 <sup>0</sup>

1+55

727.4 ✓	727.6 ✓	727.9 ✓	727.6 ✓	727.6 ✓
7 <sup>5</sup>	7 <sup>4</sup>	7 <sup>2</sup>	7 <sup>4</sup>	7 <sup>4</sup>
43	60	74	80	86

726.3 ✓	726.3 ✓	728.4 ✓
8 <sup>7</sup>	8 <sup>7</sup>	6 <sup>6</sup> complete
86 <sup>5</sup>	89 <sup>1</sup>	89 <sup>5</sup>

See Page 18 to complete these Sections

6.12 728.88 Rec. Elev. 728.89

Sept. -12-1934

B.M. 0.26 733.85 733.59

1+65

727.3 ✓	727.2 ✓	726.3 ✓	726.3 ✓
6 <sup>2</sup>	6 <sup>6</sup>	7 <sup>5</sup>	7 <sup>5</sup>
68	89 <sup>5</sup>	90	92 <sup>5</sup>

728.3 ✓
5 <sup>5</sup> complete
93

1+75

727.3 ✓	726.1 ✓	726.1 ✓
6 <sup>5</sup>	7 <sup>3</sup>	7 <sup>7</sup>
70	93 <sup>5</sup>	94

728.2 ✓
5 <sup>6</sup> complete
96 <sup>6</sup>

Plotted 10-1-34 B.M.

Final X Sections - Spillway Floor Subgrade

Sept. 12-1934.

cont'd. from Page 34-35 this Book.

733.85

1+86  
 726.71 727.11 726.61 726.71  
 7<sup>1</sup> 6<sup>7</sup> 7<sup>2</sup> 7<sup>1</sup>  
 70 80 90 95

1+96  
 726.61 726.41 726.51 726.81  
 7<sup>2</sup> 7<sup>4</sup> 7<sup>3</sup> 7<sup>0</sup>  
 65 85 96 101

2+06  
 726.31 726.21 726.01 725.81  
 7<sup>5</sup> 7<sup>6</sup> 7<sup>8</sup> 8<sup>0</sup>  
 70 85 100 104<sup>5</sup>

2+16  
 725.81 725.71 726.01 726.01  
 8<sup>0</sup> 8<sup>1</sup> 7<sup>8</sup> 7<sup>8</sup>  
 75 90 103 108

6.74

727.11 <sup>Finish Grade Pin</sup>  
 2+15 - Elev. 727.11

Sept. 17-1934.

Finish Grade  
 Pin 2+40 6.71

733.13

726.42

2+26  
 725.51 725.21 725.51 724.01  
 7<sup>5</sup> 7<sup>9</sup> 7<sup>6</sup> 9<sup>1</sup>  
 80 100 111 112

2+36  
 725.41 725.11 725.41 725.61  
 7<sup>7</sup> 8<sup>0</sup> 7<sup>7</sup> 7<sup>5</sup>  
 80 100 111 115<sup>2</sup>

2+46  
 725.11 724.91 725.11 725.11  
 8<sup>0</sup> 8<sup>2</sup> 8<sup>0</sup> 8<sup>0</sup>  
 80 100 115 119

Cont'd from Page 35

5.62 727.51 check on

Simpson  
 Soper  
 Tobell

726.71 725.31 725.31 727.91  
 7<sup>1</sup> 8<sup>5</sup> 8<sup>5</sup> 5<sup>9</sup>  
 97 97<sup>5</sup> 100<sup>5</sup> 100<sup>6</sup>

725.01 725.01 727.61  
 8<sup>8</sup> 8<sup>8</sup> 6<sup>2</sup>  
 101<sup>5</sup> 104<sup>5</sup> 104<sup>7</sup>

724.31 724.31 727.11  
 9<sup>5</sup> 9<sup>5</sup> 6<sup>7</sup>  
 105 108 108<sup>5</sup>

724.31 724.31 726.91  
 9<sup>5</sup> 9<sup>5</sup> 6<sup>9</sup>  
 108<sup>5</sup> 111<sup>3</sup> 111<sup>8</sup>

Plotted 10-1-34 E.B.H.

724.01 726.81  
 9<sup>1</sup> 6<sup>3</sup>  
 114<sup>5</sup> 115

724.11 724.11 724.41  
 9<sup>0</sup> 9<sup>0</sup> 6<sup>7</sup>  
 116 118<sup>5</sup> 119

724.01 724.01 726.11  
 9<sup>1</sup> 9<sup>1</sup> 4<sup>0</sup>  
 119<sup>5</sup> 122<sup>5</sup> 122<sup>5</sup>

vertical cut 2+00 - Elev. 727.52

Final X Sections - Spillway floor Subgrade

Oct. 4, 1934

Cont'd. from Pages 35-36, this Book.

Osborne  
Soper  
Isbell

Meyer

73  
72

B.M. 2.57 729.56 726.99

	724.8	724.6	724.5	724.6	724.7	723.4	723.4	725.5
2+66	4 <sup>8</sup> 85	5.0 100	5.1 110	5.0 120	4.9 127	6.2 127 <sup>6</sup>	6.2 130 <sup>2</sup>	4 <sup>2</sup> 131

	724.6	724.3	724.3	724.3	724.4	723.2	723.2	725.5
2+76	5 <sup>0</sup> 90	5.3 100	5.3 110	5.3 120	5.2 130 <sup>4</sup>	6 <sup>4</sup> 130 <sup>8</sup>	6 <sup>4</sup> 134	4 <sup>2</sup> 134 <sup>2</sup>

	724.3	724.1	724.1	724.4	723.1	723.1	725.6
2+86	5 <sup>3</sup> 93	5.5 106	5.5 120	5.2 134 <sup>2</sup>	6 <sup>5</sup> 134 <sup>5</sup>	6 <sup>5</sup> 137 <sup>2</sup>	4 <sup>2</sup> 138

	723.9	723.9	723.9	724.2	723.1	723.1	725.3
2+96	5 <sup>2</sup> 100	5.7 110	5.7 120	5.4 138 <sup>2</sup>	6 <sup>5</sup> 138 <sup>5</sup>	6 <sup>5</sup> 141 <sup>2</sup>	4 <sup>2</sup> 141 <sup>5</sup>

3+06 <sup>see page 74:</sup>  
~~6.1 6.1 5.7 5.8 5.8 7<sup>0</sup> 7<sup>0</sup> 4<sup>8</sup>  
 112 122 127 138 141<sup>5</sup> 141<sup>8</sup> 145 145<sup>3</sup>~~

Oct. 22-1934

B.M. 2.91 736.50 733.59

T.P. 3.87 731.58 8.77 727.71

	725.2	724.7	724.9	725.0	723.8	723.8	725.9
2+53 <sup>75</sup>	6 <sup>4</sup> 77	6 <sup>2</sup> 90	6 <sup>3</sup> 100	6 <sup>6</sup> 122 <sup>2</sup>	7 <sup>8</sup> 122 <sup>5</sup>	7 <sup>8</sup> 126 <sup>0</sup>	5 <sup>2</sup> 126 <sup>3</sup>

731.58

Oct. 22-1934

Simpson - Soper  
Isbell.

of cut-off trench  
30" wide

	722.16	723.4	722.0	723.3	721.3	720.9	721.0	721.0
2+55	9 <sup>0</sup> 75	8 <sup>2</sup> 77	9 <sup>6</sup> 81	8 <sup>2</sup> 84	10 <sup>3</sup> 92	10 <sup>2</sup> 110	10 <sup>6</sup> 121	10 <sup>6</sup> 126 <sup>5</sup>

2+56 <sup>25</sup>

	725.0	725.0	724.9	724.5	724.7	723.4	723.4	725.8
	6 <sup>0</sup> 72	6 <sup>5</sup> 80	6 <sup>3</sup> 100	7 <sup>1</sup> 110	6 <sup>2</sup> 124 <sup>4</sup>	8 <sup>2</sup> 124 <sup>2</sup>	8 <sup>2</sup> 127 <sup>5</sup>	5 <sup>5</sup> 127 <sup>8</sup>

4.58

727.00: check on  
B.M. Elev.  
726.99

Nov. 3-1934.

B.M.	1.07	728.06				726.99			
	723.6	723.8	723.5	723.7	723.8	722.6	724.8		
3+06	4 <sup>5</sup> 77	4 <sup>3</sup> 90	4 <sup>6</sup> 115	4 <sup>4</sup> 135	4 <sup>3</sup> 141 <sup>5</sup>	5 <sup>5</sup> 141 <sup>8</sup>	5 <sup>5</sup> 145	3 <sup>3</sup> 145 <sup>2</sup>	
	723.4	723.6	723.3	723.5	723.4	722.4	724.4		
3+16	4 <sup>7</sup> 80	4 <sup>5</sup> 100	4 <sup>8</sup> 120	4 <sup>6</sup> 135	4 <sup>7</sup> 145 <sup>3</sup>	5 <sup>7</sup> 145 <sup>8</sup>	5 <sup>7</sup> 149	3 <sup>7</sup> 149 <sup>2</sup>	
	722.9	723.2	723.0	723.3	723.1	721.9	724.1		
3+26	5 <sup>2</sup> 80	4 <sup>9</sup> 100	5 <sup>1</sup> 120	4 <sup>8</sup> 140	5 <sup>0</sup> 149	6 <sup>2</sup> 149 <sup>2</sup>	6 <sup>2</sup> 152 <sup>2</sup>	4 <sup>0</sup> 153	
	722.6	722.9	722.6	722.8	722.7	721.5	723.7		
3+36	5 <sup>5</sup> 80	5 <sup>3</sup> 100	5 <sup>5</sup> 120	5 <sup>2</sup> 140	5 <sup>4</sup> 152 <sup>5</sup>	6 <sup>6</sup> 152 <sup>9</sup>	6 <sup>6</sup> 156	4 <sup>4</sup> 156 <sup>2</sup>	

B.M. 1.08 726.98 <sup>Elev.</sup> 726.99

Nov. 6-1934

B.M.	2.30	729.29				726.99		
	722.6	722.7	722.5	722.4	722.4	721.3	721.2	723.3
3+46	6 <sup>7</sup> 80	6 <sup>6</sup> 100	6 <sup>8</sup> 120	6 <sup>9</sup> 140	6 <sup>9</sup> 156	8 <sup>0</sup> 157	8 <sup>1</sup> 160 <sup>5</sup>	6 <sup>0</sup> 161
	722.2	722.3	722.2	722.1	722.0			
3+56	7 <sup>1</sup> 80	7 <sup>0</sup> 100	7 <sup>1</sup> 120	7 <sup>2</sup> 140	7 <sup>3</sup> 157			
	721.8	721.6	721.6					
3+66	7 <sup>5</sup> 120	7 <sup>7</sup> 140	7 <sup>7</sup> 160					

Cont'd. on Page 75

J.S.

B.M.	1.83	728.82		726.99
	721.4	721.4	721.2	
3+76	7 <sup>4</sup> 135	7 <sup>4</sup> 150	7 <sup>6</sup> 165	Cont'd. on Page 75 this Book.
	721.3	721.5	721.3	
3+86	7 <sup>5</sup> 140	7 <sup>3</sup> 155	7 <sup>5</sup> 165	"
	721.2	721.3	721.0	
3+96	7 <sup>6</sup> 140	7 <sup>5</sup> 155	7 <sup>8</sup> 170	"
	721.0	721.0	720.9	
4+06	7 <sup>8</sup> 143	7 <sup>8</sup> 160	7 <sup>8</sup> 175	"
	720.7	720.6	720.4	
4+16	8 <sup>1</sup> 145	8 <sup>2</sup> 160	8 <sup>4</sup> 175	

Cont'd. in Book 456 - Page 52

J.S.



Final X Sections Spillway Floor Subgrade.

Meyer

75

Note:

Oct. 15-1934

These x sections taken  
Normal to face of Weir and  
Distances are North from Dubbed  
Toe of Ogee.

Note: Drain Ditches not shown  
in these x sections.

B.M.	0.91	727.90	726.99	
		722.1	721.3	721.1
3 + 56		5 <sup>8</sup> 159 <sup>5</sup>	6 <sup>5</sup> 159 <sup>8</sup>	6 <sup>2</sup> 163 <sup>2</sup>
		721.5	720.5	720.5
+ 66		6 <sup>2</sup> 162 <sup>2</sup>	7 <sup>4</sup> 163 <sup>0</sup>	7 <sup>4</sup> 166 <sup>5</sup>
		721.0	719.8	719.8
+ 76		6 <sup>9</sup> 166 <sup>5</sup>	8 <sup>1</sup> 167	8 <sup>1</sup> 171 <sup>2</sup>
		721.0	719.6	719.6
+ 86		6 <sup>2</sup> 171 <sup>5</sup>	8 <sup>3</sup> 171 <sup>8</sup>	8 <sup>3</sup> 175 <sup>3</sup>
		721.0	720.0	720.0
+ 96		6 <sup>9</sup> 174 <sup>8</sup>	7 <sup>2</sup> 175 <sup>1</sup>	7 <sup>2</sup> 177 <sup>8</sup>
		721.0	720.1	720.1
4 + 06		6 <sup>9</sup> 178 <sup>2</sup>	7 <sup>8</sup> 178 <sup>5</sup>	7 <sup>8</sup> 181 <sup>2</sup>

over-break

5.86 722.04 check on vertical cut sta. 4+00

Elev. 722.04

cont'd. in Book 456

J.S.

Final X Sections - Spillway Floor Subgrade

Cont'd. From Page 52 this Book,

These x sections taken  
Normal to  $\phi$  and Distances  
North or South as noted.

Oct. 23-1934.

Finish Grade Pin  
Sta. 6+60

3.99 697.60 693.61

North of  $\phi$ .

6+80 686.7 686.7 685.4 685.4 686.7  
10<sup>2</sup> 10<sup>2</sup> 12<sup>2</sup> 12<sup>2</sup> 10<sup>2</sup>  
75 96<sup>2</sup> 96<sup>2</sup> 99<sup>2</sup> 99<sup>2</sup>

6+70 689.9 689.5 687.9 687.9 690.5  
7<sup>2</sup> 8<sup>2</sup> 9<sup>2</sup> 9<sup>2</sup> 7<sup>2</sup>  
75 97<sup>2</sup> 97<sup>2</sup> 100<sup>2</sup> 100<sup>2</sup>

6+60 692.3 692.6 692.3 691.3 691.3 693.7  
5<sup>2</sup> 5<sup>2</sup> 5<sup>2</sup> 6<sup>2</sup> 6<sup>2</sup> 3<sup>2</sup>  
75 80 97<sup>2</sup> 97<sup>2</sup> 100<sup>2</sup> 101<sup>2</sup>

6+50 695.2 695.1 694.3 694.3 696.2  
2<sup>2</sup> 2<sup>2</sup> 3<sup>2</sup> 3<sup>2</sup> 1<sup>2</sup>  
75 98<sup>2</sup> 98<sup>2</sup> 101<sup>2</sup> 101<sup>2</sup>

T.P. 10.35 707.49 0.46 697.14

6+40 698.0 697.3 696.8 696.8 698.8  
9<sup>2</sup> 10<sup>2</sup> 10<sup>2</sup> 10<sup>2</sup> 8<sup>2</sup>  
75 98<sup>2</sup> 99 102<sup>2</sup> 102<sup>2</sup>

6+30 699.8 700.2 699.6 699.1 699.1 701.2  
7<sup>2</sup> 7<sup>2</sup> 7<sup>2</sup> 8<sup>2</sup> 8<sup>2</sup> 6<sup>2</sup>  
60 80 99<sup>2</sup> 100<sup>2</sup> 103<sup>2</sup> 103<sup>2</sup>

+20 702.2 702.5 702.0 701.9  
5<sup>2</sup> 5<sup>2</sup> 5<sup>2</sup> 5<sup>2</sup> 6<sup>2</sup> 6<sup>2</sup> 4<sup>2</sup>  
60 70 88 101 101<sup>2</sup> 104<sup>2</sup> 104<sup>2</sup>

Check on vertical cut Sta. 6+25 5.19 702.30 702.31

Simpson  
Seper  
Isbell

Cont'd. From Page 46, this Book,  
48

76  
Meyer

North of  $\phi$ .

Oct. 24-1934

B.M. 10.12 713.65 703.53

6+10 703.9 704.0 704.1 704.2 703.7 703.5 705.6  
9<sup>2</sup> 9<sup>2</sup> 9<sup>2</sup> 9<sup>2</sup> 10<sup>2</sup> 10<sup>2</sup> 8<sup>2</sup>  
60 80 93 100<sup>2</sup> 100<sup>2</sup> 109<sup>2</sup> 104<sup>2</sup>

6+00 706.2 706.2 706.2 706.6 705.6 705.6 707.5  
7<sup>2</sup> 7<sup>2</sup> 7<sup>2</sup> 7<sup>2</sup> 8<sup>2</sup> 8<sup>2</sup> 6<sup>2</sup>  
55 75 90 101 101<sup>2</sup> 105<sup>2</sup> 105<sup>2</sup>

5+90 708.5 708.1 707.9 708.4 707.6 707.6 709.6  
5<sup>2</sup> 5<sup>2</sup> 5<sup>2</sup> 5<sup>2</sup> 6<sup>2</sup> 6<sup>2</sup> 4<sup>2</sup>  
55 70 89 101<sup>2</sup> 102<sup>2</sup> 105<sup>2</sup> 105<sup>2</sup>

5+80 710.1 709.8 709.4 709.8 709.8 708.9 708.9 711.0  
3<sup>2</sup> 3<sup>2</sup> 4<sup>2</sup> 3<sup>2</sup> 3<sup>2</sup> 4<sup>2</sup> 4<sup>2</sup> 2<sup>2</sup>  
55 70 85 90 103 103<sup>2</sup> 106<sup>2</sup> 106<sup>2</sup>

2.66 710.99

Finish Grade Pin  
Sta. 5+80  
Elev. 710.99

Oct. 25-1934

B.M. 12.36 715.89 703.53

5+70 711.8 711.3 711.5 711.3 711.3 710.5 710.5 712.2  
4<sup>2</sup> 4<sup>2</sup> 4<sup>2</sup> 4<sup>2</sup> 4<sup>2</sup> 5<sup>2</sup> 5<sup>2</sup> 3<sup>2</sup>  
50 80 90 101 104<sup>2</sup> 104<sup>2</sup> 107<sup>2</sup> 107<sup>2</sup>

5+60 713.3 712.9 713.0 712.7 711.9 711.9 713.8  
2<sup>2</sup> 3<sup>2</sup> 2<sup>2</sup> 3<sup>2</sup> 4<sup>2</sup> 4<sup>2</sup> 2<sup>2</sup>  
60 80 95 103<sup>2</sup> 104 107<sup>2</sup> 108

J.S.

Final X Sections - Floor Subgrade  
Contd. From Page 61, this Book.

Oct. 25 - 1934.

These X sections taken  
Normal to  $\phi$ , and distances  
are North or South as noted.

Simpson  
Baker  
Isbell

Meyer

724.57 77  
031  
724.90  
16 25  
8.65

715.89  
North of  $\phi$ .

5+50	714.3 1 <sup>6</sup> 55	714.2 1 <sup>2</sup> 76	714.2 1 <sup>2</sup> 85	714.2 1 <sup>2</sup> 100	714.3 1 <sup>6</sup> 104 <sup>7</sup>	713.4 2 <sup>5</sup> 104 <sup>9</sup>	713.4 2 <sup>5</sup> 108 <sup>4</sup>	715.2 0 <sup>2</sup> 108 <sup>5</sup>
------	-------------------------------	-------------------------------	-------------------------------	--------------------------------	---	---	---	---

5+40	715.0 0 <sup>2</sup> 55	715.2 0 <sup>2</sup> 72	715.2 0 <sup>2</sup> 82	715.3 0 <sup>6</sup> 95	715.0 0 <sup>2</sup> 105 <sup>2</sup>	714.1 1 <sup>8</sup> 105 <sup>3</sup>	714.1 1 <sup>8</sup> 108 <sup>2</sup>	716.2 +0 <sup>3</sup> 108 <sup>6</sup>
------	-------------------------------	-------------------------------	-------------------------------	-------------------------------	---	---	---	--

T.P. 5.51 720.81 0.59 715.30

5+30	716.1 4 <sup>2</sup> 50	715.8 5 <sup>0</sup> 68	716.1 4 <sup>2</sup> 75	716.0 4 <sup>8</sup> 95	716.0 4 <sup>8</sup> 104 <sup>7</sup>	715.1 5 <sup>2</sup> 104 <sup>9</sup>	715.1 5 <sup>2</sup> 108 <sup>1</sup>	717.1 3 <sup>2</sup> 109
------	-------------------------------	-------------------------------	-------------------------------	-------------------------------	---	---	---	--------------------------------

4.58  
check on  
Finish Grade  
Pin 5+40  
Elev. 716.25

Nov. 15 - 1934

vertical cut  
Sta. 5+40

4.70 720.95 716.25

5+10 - East edge Top of cut-off Trench.	717.6 3 <sup>3</sup> 35	717.3 3 <sup>6</sup> 50	717.6 3 <sup>3</sup> 70	717.4 3 <sup>5</sup> 90	717.6 3 <sup>3</sup> 102 <sup>5</sup>	716.7 4 <sup>2</sup> 103	716.7 4 <sup>2</sup> 105 <sup>5</sup>	718.1 2 <sup>8</sup> 106 complete
---	-------------------------------	-------------------------------	-------------------------------	-------------------------------	---	--------------------------------	---	---

5+11 <sup>2</sup> - Bottom of cut-off Trench.	713.7 7 <sup>3</sup> 40	713.8 7 <sup>1</sup> 60	714.0 6 <sup>2</sup> 80	713.6 7 <sup>3</sup> 98	713.6 7 <sup>3</sup> 105 <sup>1</sup>	718.1 2 <sup>8</sup> 106 <sup>5</sup>
--	-------------------------------	-------------------------------	-------------------------------	-------------------------------	---	---

5+12 <sup>3</sup> West edge Top of cut-off Trench	717.0 3 <sup>9</sup> 40	717.2 3 <sup>7</sup> 60	716.9 4 <sup>0</sup> 80	716.9 4 <sup>0</sup> 100	716.1 4 <sup>8</sup> 103 <sup>3</sup>	716.1 4 <sup>8</sup> 106 <sup>2</sup>	718.2 2 <sup>7</sup> 107
---	-------------------------------	-------------------------------	-------------------------------	--------------------------------	---	---	--------------------------------

5+20	716.7 4 <sup>2</sup> 40	716.9 4 <sup>0</sup> 60	716.9 4 <sup>2</sup> 80	716.8 4 <sup>1</sup> 100	716.8 4 <sup>1</sup> 103 <sup>5</sup>	715.9 5 <sup>0</sup> 103 <sup>7</sup>	716.0 5 <sup>0</sup> 106 <sup>5</sup>	717.7 3 <sup>2</sup> 107 <sup>4</sup>
------	-------------------------------	-------------------------------	-------------------------------	--------------------------------	---	---	---	---

J.S.

X Sections of portion of dam  
between core wall and spillway

Jan 12 - 1933

B.M.	2.87	768.87	766.00	
			N4210	
E 5015	12.6	756.3	Hard Material	
5021	13.9	55.0	" "	
5025	16.6	52.3	" "	
5031	19.7	49.2	" "	
5038	20.9	48.0	Loose "	
5050	21.9	47.0	" "	
			N4200	
5050	22.1	46.8	" "	
5038	20.5	48.4	" "	
5038	16.7	52.2	" "	
5020	9.4	59.5	Hard Material	
5013	2.7	66.7	" "	
5010 <sup>E</sup>	6.6	62.3	" "	
			N4190	
5007 <sup>E</sup>	8.0	60.9	" "	
5013 <sup>E</sup>	1.3	67.6	" "	
5031	13.1	55.8	" "	
5048	21.4	47.5	Loose "	
5060	21.8	47.1	" "	

Elliott  
Soper  
Remmen

Weather Fine  
78

768.87

N4180

5060	21.8	47.1	Loose Material	
5048	21.1	47.8	" "	
5033	14.4	54.5	" "	
5017	2.6	66.3	Hard "	
5013	2.6	66.3	" "	
5006	10.2	58.7	" "	
			N4170	
5004	14.4	54.5	" "	
5013	3.5	65.4	" "	
5015	4.1	64.8	" "	
5038	20.6	48.3	Loose "	
5060	21.2	47.7	" "	
			N4160	
5040	21.3	47.6	Hard "	
5029	20.8	48.1	" "	
5022	11.6	57.3	" "	
5015	10.2	58.7	" "	
5011	10.8	58.1	" "	
5003	20.1	48.8	" "	
T.P.	1.96	758.83		
	2.91	751.82		
			N4150	
5030	4.5	747.3	" "	
5003	5.2	746.6	" "	

Final Profile of Cutoff Trench at East  
End of Ogee, And Location of Grout Holes.

Oct. 15-1934.

B.M.	4.31	754.20 ✓	749.89
0+00		25.8	728.4 ✓
0-02 <sup>5</sup>		25.8	728.4 ✓
0-06		16.9	737.3 ✓
0-09 <sup>5</sup>		16.3	737.9 ✓
0-11		9.7	744.5 ✓
0-11 <sup>2</sup>		+1.1	755.3 ✓

Grout Holes

0-03 = 1 <sup>7</sup>	No. of Face of Wier	24.4
0-06 <sup>6</sup> = 2 <sup>3</sup>	"	17.2
0-09 <sup>4</sup> = 4 <sup>2</sup>	"	16.0
0-09 <sup>4</sup> = 1 <sup>3</sup>	"	15.7

Where Grout  
Pipe enters  
Ground.

"

"

"

76  
751.8

11.7

4.9

+ 6.8

751.8

76  
75

32

46

+ 2.6

754.8

758.4

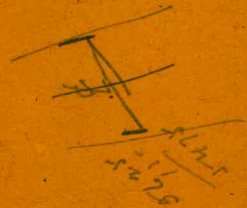
79

48.7

48.8

Not Plotted

Nov 21-1934



Not Plotted

Nov 21-1934

5725  
511  
5214

451-73 - Done 2+66 on

Spillway Ogee

Nov. 20-34

Final Profile of Cutoff Trench at East  
End of Ogee, And Location of Grout Holes.

Oct. 15-1934.

B.M.	4.31	754.20 ✓	749.89
0+00		25.8	728.4 ✓
0-02 <sup>5</sup>		25.8	728.4 ✓
0-06		16.9	737.3 ✓
0-09 <sup>5</sup>		16.3	737.9 ✓
0-11		9.7	744.5 ✓
0-11 <sup>2</sup>		+ 1.1	755.3 ✓

Grout Holes

0-03 = 1 <sup>2</sup>	No. of Face of Wier	24.4
0-06 <sup>6</sup> = 2 <sup>3</sup>	"	17.2
0-09 <sup>4</sup> = 4 <sup>2</sup>	"	16.0
0-09 <sup>4</sup> = 1 <sup>3</sup>	"	15.7

Where Grout  
Pipe enters  
Ground.

"

"

"

76  
751.8

11.7  
4.9  
+ 6.8  
751.8  
758.6  
10.2

12  
4.6  
+ 2.6  
751.8  
754.4

79  
28.9  
48.8

11.4  
4.6  
16.0

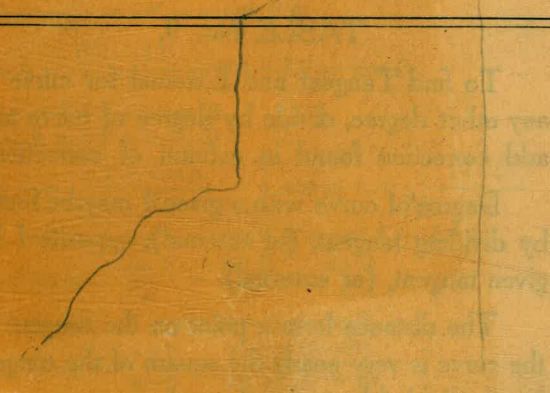
12.6  
17.2

12.3  
4.6  
16.9

17.0  
4.6  
21.6  
L.F.  
20.0

46  
11.0  
15.6

## IMPROVED TABLES AND INFORMATION





32-36-39



536  
16.08

5.34  
5126.81  
2.1  
1.8  
3.1

26.81  
16.08  
42.89

