

W
485

LEVEL BOOK

370

KEUFFEL & ESSER CO.

DRAWING MATERIALS
AND
SURVEYING INSTRUMENTS.
NEW YORK.

CHICAGO. ST. LOUIS. SAN FRANCISCO. MONTREAL.

TABLES FOR EXCAVATIONS AND EMBANKMENTS.

DISTANCES FROM CENTER OF ROADWAY FOR CROSS-SECTIONING.

ROADWAY 18 FEET WIDE. SIDE SLOPES 1 TO 1.

FOR SIDE TRACK EXCAVATION.

Copyright 1896, by Keuffel & Esser Co.

	0	.1	.2	.3	.4	.5	.6	.7	.8	.9	
0		9.1	10.2	9.3	9.4	9.5	9.6	9.7	9.8	9.9	0
1	10.0	10.1	10.2	10.3	10.4	10.5	10.6	10.7	10.8	10.9	1
2	11.0	11.1	11.2	11.3	11.4	11.5	11.6	11.7	11.8	11.9	2
3	12.0	12.1	12.2	12.3	12.4	12.5	12.6	12.7	12.8	12.9	3
4	13.0	13.1	13.2	13.3	13.4	13.5	13.6	13.7	13.8	13.9	4
5	14.0	14.1	14.2	14.3	14.4	14.5	14.6	14.7	14.8	14.9	5
6	15.0	15.1	15.2	15.3	15.4	15.5	15.6	15.7	15.8	15.9	6
7	16.0	16.1	16.2	16.3	16.4	16.5	16.6	16.7	16.8	16.9	7
8	17.0	17.1	17.2	17.3	17.4	17.5	17.6	17.7	17.8	17.9	8
9	18.0	18.1	18.2	18.3	18.4	18.5	18.6	18.7	18.8	18.9	9
10	19.0	19.1	19.2	19.3	19.4	19.5	19.6	19.7	19.8	19.9	10
11	20.0	20.1	20.2	20.3	20.4	20.5	20.6	20.7	20.8	20.9	11
12	21.0	21.1	21.2	21.3	21.4	21.5	21.6	21.7	21.8	21.9	12
13	22.0	22.1	22.2	22.3	22.4	22.5	22.6	22.7	22.8	22.9	13
14	23.0	23.1	23.2	23.3	23.4	23.5	23.6	23.7	23.8	23.9	14
15	24.0	24.1	24.2	24.3	24.4	24.5	24.6	24.7	24.8	24.9	15
16	25.0	25.1	25.2	25.3	25.4	25.5	25.6	25.7	25.8	25.9	16
17	26.0	26.1	26.2	26.3	26.4	26.5	26.6	26.7	26.8	26.9	17
18	27.0	27.1	27.2	27.3	27.4	27.5	27.6	27.7	27.8	27.9	18
19	28.0	28.1	28.2	28.3	28.4	28.5	28.6	28.7	28.8	28.9	19
20	29.0	29.1	29.2	29.3	29.4	29.5	29.6	29.7	29.8	29.9	20
21	30.0	30.1	30.2	30.3	30.4	30.5	30.6	30.7	30.8	30.9	21
22	31.0	31.1	31.2	31.3	31.4	31.5	31.6	31.7	31.8	31.9	22
23	32.0	32.1	32.2	32.3	32.4	32.5	32.6	32.7	32.8	32.9	23
24	33.0	33.1	33.2	33.3	33.4	33.5	33.6	33.7	33.8	33.9	24
25	34.0	34.1	34.2	34.3	34.4	34.5	34.6	34.7	34.8	34.9	25
26	35.0	35.1	35.2	35.3	35.4	35.5	35.6	35.7	35.8	35.9	26
27	36.0	36.1	36.2	36.3	36.4	36.5	36.6	36.7	36.8	36.9	27
28	37.0	37.1	37.2	37.3	37.4	37.5	37.6	37.7	37.8	37.9	28
29	38.0	38.1	38.2	38.3	38.4	38.5	38.6	38.7	38.8	38.9	29
30	39.0	39.1	39.2	39.3	39.4	39.5	39.6	39.7	39.8	39.9	30
31	40.0	40.1	40.2	40.3	40.4	40.5	40.6	40.7	40.8	40.9	31
32	41.0	41.1	41.2	41.3	41.4	41.5	41.6	41.7	41.8	41.9	32
33	42.0	42.1	42.2	42.3	42.4	42.5	42.6	42.7	42.8	42.9	33
34	43.0	43.1	43.2	43.3	43.4	43.5	43.6	43.7	43.8	43.9	34
35	44.0	44.1	44.2	44.3	44.4	44.5	44.6	44.7	44.8	44.9	35
36	45.0	45.1	45.2	45.3	45.4	45.5	45.6	45.7	45.8	45.9	36

Calculated by Julien A. Hall, M. Am. Soc. C. E.

35

485

Embark
Concrete
Inspector

1-74

Spillway Extension Concrete

Blank (75-79)

Sawyer Monday & Thursday

MICROFILMED
JAN 17 1965

312526-27

9854

no cylinders J.E. cutoff walls

Keel for marking same ✓

How many feet sea gravel

2 or 6 feet
scratch

Laps?

160-8th

13+80

24

1550

1228

322

1074ds1009

4

428

816

785

31

14404 to 14428 so side 4th

13450 to 13480 " " 4th

24
1472

25 x Corn

sand 466

1 1/2 - 1" 490

3/4 mesh 168

crusher pen 66

Sat. Sept 8. 1934

7³⁰ am to 3¹⁵ am - 9
20 hours

Cutoff wall sta 15+50

3 mixer men

3 crane operators

1 Carpenter

3 laborers - mixer

12 " - concrete

3 " Bunkers

3 Bunker men

2 engine runners

2 Train Helpers

1 Foreman

(13)

Start meter 64532 batches

Finish 64776 244

av water 39 gals. to ssay

Cement 564#

Sand 1300#

1 1/2" to 1" 1720#

3/4" 400#

pea 200#

242 batches into wall

1 batch grout

1 wasted no sand

Sept 11-34 Spillway Ext 7³⁰ am 3³⁰

Bunkers

1 Crane runner 1.5 ramped 3 1/2 hrs

1 Carp 3 helpers

1 man mixer repair

1 Mechanic 3 hrs repair

Form yard

2 men

9-11-34

2

2 Trucks on cement haul

9.12.34. 7³⁰am 3³⁰pm ✓

Spillway Extension

1 Mixer man plant repair

1 Crane

1 Crane operator } stock pile

1 Crane swamper }

1 mechanic

1 Carpenter } Bunker repair and

1 Helper } extensions ^{out to am to} forms

4 men in form yard - 10 am

10 am. all corps & helpers

to forms sta 144557 to 144797

steel

1 steelmen } 7 hrs
start 12³⁰pm

1 Foreman

1 Laborer } 5 1/2 hrs

9 am. McWood ordered that the

1st 30' of tile drain be 6"

9⁴⁰ am. said to use 4"

2¹⁵ pm. spoke to A Badarhammer

about air for cleaning floor and

he said he did not intend to

use any

9-13-34. 7³⁰ am to 3³⁰ pm Thursday

4

1 Carpenter ✓

5 " helpers ✓

1 mixer man repairing

1 mechanic

1 crane

1 operator ✓

1 Swamper ✓

1 steelman

1 Foreman

} 4¹/₂ hr

7³⁰ am Told Bodenhammer that

until further orders - no

drivels shall be worked

until 24 hours after

grouting.

12⁴⁵ pm Told Cletas that tile

drain on 4 must be supported

by 2x4 being strung through on

this pour

Fri. 7.14.34 7:30 am

4:45 pm V

7.14.34

(7.14) 5

1 Crane

1 Locomotive 4 cars

Mixing plant

1 Crane runner

1 ... Scramper

1 Mixer man - 1 Bunserman 1 Cementman

1 Dinky runner 1 trainman

1 mechanic

1 Carpenter 4 helpers

5 concrete laborers

1 Foreman cletas

1 Finisher

2 Trucks cement haul

2 Drivers

Pour floor sta 14+55.7 to 14+79.7

Meter 64785 64933 148

start 8 am

9¹⁵ am verified cement scale

water added av 36 gals

148 x 6 = 888

Steel - 15 ft long

92 long

148
6
888

steel

2 laborers

1 steelman

Sat 9-15-34 7³⁰ am 3³⁰ pm ✓

1-Crane

1-Dinky

4-Cars

Mixer plant

1-Crane runner 15 rimpol

1-Mixer man - 1 Bunker - 1 Cement

1-Dinky runner - 1 Train helper

1-Carp. 4 helpers - 1 help off shift

1 Finisher

6 laborers

2 laborers cleaning up

2 Trucks Cement haul

① 6

7³⁰ am

Pour floor 14431.7 to 14455.7

Batch meter start 64933-65074 141

1²⁵ pm Told Bodenthamer that

sidewall anchors must

be grouted 36 hours before

they can be used

water added 37 gals

141
6
846

steel

2 Lab - 2 steel - 1 Foreman

Monday Sept 17-1934 7³⁰ am to 3³⁰ pm

(1)

7

1 crane - 1 mixing plant

Pour floor 14+07.7 to 14+31.7

1 Dinky - 4 cars

meter 65076 65213 137

Plant - crane operator - 13 wampler
mixer man - Bunker man - cement man

First concrete 7⁵⁵ am

1 Dinky runner - 1 train helper

6 Conc laborers

137

1 conc Finisher

6
822

2 mechanics

2 Carp - 4 helpers 1 shift

water added 39 gals

14.077

24

14.837

2 steel men 1 foreman

2 laborers

Tue Sept-18 34 7³⁰am 4:30 pm ✓

(1) 8

1 Crane
1 Dinky 4 cars
1 mixer plant
1 Crane runner 1 swamper
1 Dinky runner 1 train helper
1 mixer man - 1 cement - 1 Bunker
6 concrete laborers
1 Finisher
1 Foreman
1 Carp. 4 helpers (Joe)

meter start 65214 65392 178

10¹⁵ obel cement scale $\overline{1068}$

Pour floor sta 13+83.7 to 14+07.7

and cutoff wall 13+93

Av water 419 als hot

steel

1 steelman 1 laborer 3 1/2

1 Foreman

Wed. Sept-19-34. 5am 12³⁰pm ✓

9

Crane

Meter start. 65394 - 65532 - 138

B10

Dinky - 4 cars

Pour floor 13+83.7 to 13+57.7

Mixing plant.

11⁰⁰am start 13+25.7 to 13+11.7

1 Crane runner

meter 65532 65553 21

1 Mixer man - 1 Batcher - 1 Cement

1.59

1 Dinky runner - 1 helper

6

9.54

1 Foreman

1 Finisher

5 laborers

1 mechanic

41 gals added - hot

1 Carp - 5 helpers

4 lab cleaning up etc 3 1/2 hrs

2 trucks cement haul

2 steelmen

94
6
584

2 laborers

Thu Sept-20-34 5am - 12:30 pm

10

Crane

Meter start 65664 - 65816 152

Dinky - 3 Cars

Pour floor 13+59.7 + 0

Mixer plant

start 11:18 65816 - 65861 45

1 Crane runner

11:30 am
Pour 15+03.7 + 0 14+79.7 197

1 Mixer man - Batcher man - 1 Cement man

6
1182

1 mechanic

38 gals added

8 laborers

Cast trench against

1 Finisher

earth on form

1 Carp - 5 helpers

Pour around beam

Cement haul - 2 Trucks

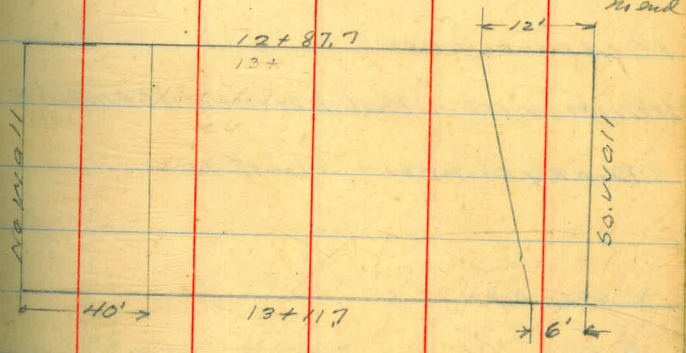
3 steel men 1 Foreman

3 Lab

Fri. Sept 21- 1934 5:00 12:30pm

- 1 Crane
- 1 Dinky - 3 cars
- 1 Mixer Plant
- 1 Crane runner
- 1 Mixer man - 1 Batcher 1 cement
- 2 Mechanic's (1 PM)
- 1 Dinky runner 1 helper
- 1 Finisher
- 5 spreaders 3 laborers
- 1 Carp - 7 helpers
- 2 Trucks Cement haul

Motor start 65967 - 66067 1 00
 52
 152
 Pour 12+87.7 to 13+11.7 Floor
 meter 52 stop
 66067- 66119 15.27.7 1503.7 55' from
 mud



Samples 3232-3233-3234
 38.9 gals added

3 steelmen
 1 Foreman
 152
 6
 912

Sat Sept 22-34

5am-10am



1 Crane

1 Dinky - 3 cars

1 Mixing Plant

1 Crane runner

1 Mixer man - 1 Balcher man - 1 Cement man

1 Dinky runner - 1 helper

2 Mechanics

8 Laborers

1 Finisher

1 Carp - 7 helpers

12

Meter start 66205 - 66243

38

Pour floor 15:50 + 15:27.7

6
278

Start pour 8:50 am. cleaning

15:50

38 gals added

scale Balances @ 675 with

6 bags cement bags

included - scale balances @ 107

4 Steelmen 1 formman

Mon Sept 24-34 - 5^{am} 12³⁰pm ✓

13

Batcher

1 Crane

Meter start 66353 - 66424 - 71

1 Dinky - 3 cars

12+59 to 12+39.5

39.5
24
15

1 Mixing plant

9:30 am

66424 66461 37

1 Crane runner

12+87.7 to 12+69

108

1 Maxwellman - 1 Bunker - 1 cement

6

648

1 Finisher

8 laborers

Start pour 6³⁰ Held up moving

1 Dinky runner - 1 helper

header board so joint went

1 Carp - 6 helpers

Came on splice. Added 8 bars to

1 Mechanic

north end closed down 11³⁰

7 am 37 gals 9 am Badrock

8³⁰ 36 gals sent sample for

9³⁰ 36 gals test

11³⁰ 38 gals

2 Trucks cement haul

4 Steel men 1 Foreman all the

2 Laborers

Tue Sept. 25-34 5 am 12³⁰ pm ✓

12+150 14
24
11915

1 Crane

meter start. 66496 66603 107

1 Dinky 3 cans

12+15.5 to 12+15.5 and cutoff 12+28

1 mixing plant

50 End- 9' x 30' wall Panel 50 long. N-S

start 6⁴⁰ am

7¹⁵ am 34 gals

1 Crane runner

8³⁰ am 35 gals

1 Mixer man - 1 Batcher - 1 Cement

9⁴⁰ am 35 gals

1 Dinky runner 1 helper

10¹⁵ am Told Bodenhamer to provide

2 Mechanics

water jet at rock pile

1 Finisher

Finish pour 11²⁰

7 Laborers

1 Carp - 6 helpers

Cyls # 3254-3255

2 Trucks cement haul

steel

1 Foreman 4

2 Lab 4

4 Steel 4

Wed Sept-26-34 5^{am} 12³³ pm ✓

15

1 Crane
1 Dinky 3 Cars
1 Mixing Plant

Meter start 66603 66693 90
do 12+15.5 to 11491.5 - start 9' No. 50

well. to 50 no. of start

start 7³⁰ am No sand

12³³ pm
12+59 to 12+69 66693-66702 $\frac{9}{54}$

1 Crane runner
1 Mixer man - 1 Cement - 1 Batchor.

7³⁰ 37 gals.

1 Mechanic

8⁴⁵ 37 gals

1 Dinky runner - 1 helper

9⁵⁵ 35 gals jetting rock.

1 Carp 2 helpers

9⁵⁵ set cement scale

Car + Platform 342
Cement 564
906

7 Laborers

1 am 34 gals rock wet

1 Finisher

12³⁰ 38 gals

2 Trucks cement haul

4 Steelman 4

3 Laborers 4

Thu Sept-27-34 5:00-12:30pm V

2 cranes (1.4 hrs)

1 Dinky - 4 cars

1 Mixing Plant

2 Crane runners

1 Mixer man - 1 Batchman - 1 Cement man

1 Dinky runner 1 helper

1 Carp 7 helpers

7 laborers

1 mechanic

85° 38

Meter start 66769 66812

4.3

6

25.8

South wing wall - 15+50

meter 38

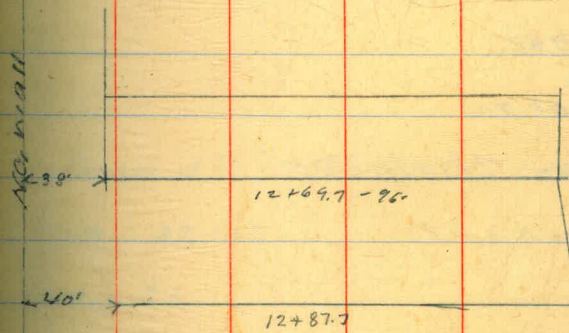
4 steel men 4 hrs

4 Lab 4 hrs

samples south wing wall 15+50

3260 61-62

126-



Fri. Sept 28-34 5^{am} 12³⁰pm

✓

18

1 Crane
1 Dinky - 2 cars
1 Mixer plant

1 Crane runner
1 Dinky runner - 1 helper
1 Mixer man - 1 Batcher - 1 Cement
2 Finisher
7 Laborers
1 Carp - 7 helpers
1 mechanic

2 Trucks Cement haul
2 dummies

meter start 66848 - 66920 $\frac{72}{43\frac{1}{2}}$
section 11+40 2 to 11+60 - start 9' north
of south wall - to point 59' north of
39 wall - a strip 50' nr-south
20' 4" tile

Down 5³⁰ - 7⁴⁵ Dinky repair

8am 37 gals

9am 36

10^{am} 36

10am set cement scale

10³⁰ Dinky Down

4 steelmen 4

3 Lab 4

Sat Sept 29-1934 Tam - 12²⁵pm ✓

1 Crane

1 Dinky - 2 cars

1 Mixing Plant

1 Hoist

1 Crane runner

1 mixer man - 1 Batcher 1 cement

2 Carp - 6 Helper

7 Lab

1 Finisher

1 Mechanic

1 Foreman Cletis

1 Dinky runner - 1 helper

2 Trucks cement haul

meter start 67065 67120 .55

11:00 to 11:20 330

adjust to 75 batches

20 wide 50' End 9' from so. wall

strip 50' x 25

20' drain tile

All 8 hrs

7⁴⁵ dinky belly up

10⁰⁰ 37 gals

4 steel 4

3 Lab 4

1 Foreman 4

change to 5

Monday Oct 4 1934 7am - to 2:30pm

24
60
52
136

136
8
816

20

1 Crane

meter

67390-67450-60

1 Dinky 3 cars

12+04 to 12+16 - 12' wide

1 Mixing plant

start 59' No. of south wall

1 Comp 17H 3 1/2 hrs

and runs north to within

1 Mixer man 1 Batcher 1 cement

6' of north wall comp 9:20 am

1 Dinky runner 1 helper

9:30 am
meter 67450-67502-52

1 Mechanic

11+60 to 11+70 start 59' No. of so

1 Carp 7 helpers

wall, north to within 6' of north wall

9 Laborers

2 4' x 4" tile - 12+04 to 12+16

1 Finisher

9 am
36 gals

1 Crane runner

9:45 387 gals

10 am set cement scale

20' x 4" tile 11+70 to 11+80

24

1 pm
Meter 67503 - 67527 2:40 pm Dinky down

2 Trucks cement haul

11+40 to 11+30 - 136' long

steck

3 Lab 4 Steed 1 Foreman

30' x 4" tile

Tue Oct-2 1934 7 am 2 30 pm

21

Crane

Dinky - 7 cars

Mixing Plant

Crane runner

1 Dinky runner 1 helper

1 Mixer man - 1 Batcher - 1 Cement

1 Mechanic

2 Carpenters

8 helpers

9 Laborers

1 Finisher

2 Trucks Cement haul

7¹⁵ am meter start 67641 - 67674 ⁸³⁵ (33)

11+50 to 11+60 start 50' - 50' of no. wall

pour 45' south to join previous pour

7²⁵ am meter start 67674 - 67700 (26)

pour no. 421 of 11+60 to 11+70 pour

to within 6' of north wall

12¹⁰ pm start 67700 - 67741 (41)

station 11+00 to 11+10 pour north

88' to complete section. Completed

during Fred's shift

389 gals water average

41
26
<u>33</u>
100

600 bwp

Wed Oct 3 1934 7³⁰ 2³⁰

22

1 Crane

7¹⁵ am start 67834 9²⁵ am wastel 67864 30

1 Dinky - 2 Cars

1120 to 1130 start 6' No of so

1 Mixing Plant

wall, pour north 45' to complete

the section 10'-4" Tile

1 Crane runner

11²⁵ am start 67865 20'-4" Tile 67913 2⁴⁰ pm 48

1 Dinky runner - 1 helper

1140 to 1150 start 6' so of

1 Mixer man - 1 Batcher 1 Cement

north wall pour south 90' to

1 Mechanic

complete section

1 Finisher

78
6
46.8

6 Laborers

2 carp. The helpers Joe

5 Carp - 3/ab Jackie

2 Trucks Cement haul

Thu Oct. 4 1934 7^{am} 2^{pm} ✓

23

1 Crane
 1 Dinky - 2 cars
 1 Mixing Plant
 1 Comp - 1 Breaker
 1 Crane runner
 1 Mixer man - 1 Batcher - 1 Cement
 1 Dinky runner - 1 helper
 12 Laborers
 1 Finisher
 2 car - 1 helper Joe
 5 Carp Jack
 1 mechanic

water start 67949 - 68009 59
 sta 11+10 to 11+20 start 6' 50 of
 no. wall pour to 90' south to
 completed section - 7 am 20'-4" tile
 9³⁰ 34 10³⁵ 1 PM - 35
 7³⁰ 40 gals - 8^{am} 32 gals 8⁴⁵ 34 gals
 10 am Dinky down

12¹⁵ start
 12⁵⁰ pm
 10+90 to 11+00 - start 68009 - 68012 3

62
 6
 372

Test cyls. 8^{am} 38 gals

3326-27-28

5 steelmen 3 Lab 1 Foreman

at

Fri. Oct 5 1934 7am 2:30pm

24

1 Crane

1 Comp - Breaker

1 Crane runner

1 Mixer man

2 - carp. - Helpers

9 laborers

Clotas

3 steelmen 3 Lab^{4hr} 1 Foreman 4

2 " 4hr

Sat Oct 6-1934 7 AM 2 PM ✓

25

2 cranes

Checked batchers

2 TRUCKS

ROCK 19 cu feet

1 Comp - 1 BROAKER

Sand 13.8 cu ft 3% bulk

3/4 Peg 6.9 cu feet

Sand SW cor 2.54

NW 2.61

2.35 x 1.67"

3.92

NE 2.68

1" 3.92 - 3.26 ft
12

SE 2.59

2 CRANE RUNNER

2 TRUCK DRIVERS

2 Carp - 7 helpers

4 Laborer

1 Finisher

ROCK SW 2.40

1 Mechanic

SE 2.50

NE 2.48

2.3 x 3.4

S. Side 14752 to 14728 4th litt

NW 2.40

68074 - 68082 40 gals

1 Batch grout

Monday, Oct. 8-1934 7am 2:30pm ✓

1 Crane - gravel

1 Concrete

1 Mixing Plant

1 Truck 2 Ton

1 Compressor 1 Breaker

10+90 full to 03339-3340-334

Brackman took test cyls

2 crane runners

1 Mixer man 1 Batcher 1 Cement

1 Truck Driver

8 Laborers

1 Mechanic 40 Gals

2 Carp. - 8 helpers

1 Finisher

4 Steelmen 3 Lab 1 Foreman 1/2 all

South Footing tile cleaned

13+32 to 14+52

8:56 am

Meter start 68145 - 68201 334

15+26 to 15+50 No side 2nd lift

1 grout

9:45 14+30 to 14+54 No side 2nd lift

1 batch grout

10:05 15+02 to 14+78 No side 2nd lift

1 Batch grout

10:25 ordered another tamper

in to forms

10:25 14+04 to 13+80 No side 2nd lift

1 Batch Grout

11:10 13+32 to 13+50 No side 2nd lift

1:05 6' strip of floor so side

14+04 to 14+28 ✓

6' strip of floor 13+20 to 13+56 ✓

2:10 14+04 to 13+80 so side 4th lift

2:45 13+32 to 13+56 so side 4th lift

Tested sand Bulking 4/3

56
12
44

26
1404
26

56
6

334

2nd lift

2nd lift

2nd lift

2nd lift

No side

2nd lift

2nd lift

12 batches

4th lift

4th lift

Tue Oct 9 - 1934 7 am 2³⁰ pm

1 Crane

1 Mixing Plant

2 Trucks

1 Crane Munnor

2 Truck Drivers

1 Mixer man - 1 Batcherman - 1 Cement man

1 Mechanic

2 Finishers

13 Laborers

2 Carp - 8 helpers

~~2 Truck Drivers~~

4 Steelmen 3 Lab 1 Foreman

@ 8 hrs

8¹⁰ am 2⁴⁰ pm

Meter start 68300 - 68339

Floor 10+70 to 10+80

start Finish 9⁵⁵

27

39

6

234

Fred Oct. 10. 1934

7 am 2 30 pm

2 cranes

1 Truck sidewall

1 Comp. 1 Breaker

1 Mixing Plant

2 Trucks Floor

1 mixer man - 1 Cement - 1 Batcher

2 crane runners

1 mechanic

3 Truck Drivers

5 Carp - 10 helpers

18 Laborers

1 Finisher.

Fred camp Steiner

68551
442
109

8 am

68,248 SW

meter start 68442 68551

10780 to 10790 + cutoff 39 gal.

13734 to 13758 No side 3rd lift.

13782 to 14706 No side 3rd lift.

14730 to 14754 No side 3rd lift.

14728 to 14752 - 5th side 5th lift

15750 to 15726 No side 3rd lift

68551

68442.

109

29

80

6

74

109

6

654

28

28

Thu. Oct 11-34 7 am 2:30 pm ✓

1 Crane
Ford-white
2 Trucks Floor

1 Comp- 15H

Mixing Plant

1 Crane runner

2 Truck Drivers

1 Mixer man- 1 Cement- 1 Batch

2 Finishers

1 Mechanic

1 Truck siderail

19 Laborers

5 carp- 6 Helpers

1 Driller

1 Truck 3 1/2 hr

1 Truck Driver

1 3 1/2 hr

Water start 68700 68800
4 Grout - 12 CONC
Floor 10+60 to 10+70 No 60' - to -

complete Freds pour last nite

11:18 am

13+32 to 13+08 so side 2nd Lift

finished 12 noon

13+80 to 14+04 so side 5th Lift

14+54 to 14+78 so side 2nd Lift

14+54 to 14+30 so side 6th Lift

No 1/2

10+40 to 10+50 Floor

Cyls - 3344-45-46

100
12

88
4

84

Fri. Oct-12-1934

Holiday

30

7 am 3:30 pm

Sat Oct 13-1934

1 Crane 1 operator

3 Trucks - 3 Drivers

1 Mixing Plant

1 Mixer man 1 cement - 1 Batch per

1 Mechanic

1 Comp - 1 Breaker

23 Laborers

4 Carp - 1 helper

1 Carp Foreman

3 finishes

water 40

(1)

31

Meter start 68942 - 69107 $\frac{165}{990}$

10+14 to 10+07 Floor 50' 70'

10+31 to 10+19 Floor No 65'

9+90 to 10+02

Floor poured 135' strips to

10+31

No 65' 10+31 to 10+19

10+19 to 10+07. poured

Told Jack that joints on
north wall should be properly
cleaned before forms are set

Monday Oct 15-1934 5 am 2³⁰ pm ✓

1 Crane

1 Comp - Breaker

3 Trucks

1 Mixing Plant

1 Mixer man + 1 com. man 1 Batcherman

1 mechanic

3 Finisher

14 Laborers

5 carp - 5 helpers

3 Truck Drivers

4 Carps

1 Carp Foreman

water 39

(2)

Tam change sent 69280 -

meter start 69207 - 69368 2²⁵

10+31 to 10+19 50 70 feet

10+02 to 10+14 complete

9+78 to 9+90 - when this
50 50'

is completed tanite floor
will be completed to 9+66

except end strips and
area on flat 12+87 - etc

16 1/2
966 pavers

samples 932 to 942 No 1 1/2

40 gals 3350-51-52

10^{am} Told Charlie about dirty joints
north side He promised to
clean at once

Tue Oct 16 - 1934 7am - 2³⁰pm V

1 Crane - 1 Operator

3 Trucks - 3 Drivers

1 Mixing Plant

1 Mixer man - 1 Cement - 1 Batched

1 Compressor 1 Breaker

6 Carpenters

1 Mechanic

17 Laborers

1 Carp Foreman

6 Carp

4 Helpers

4 Laborers

2 Finishers

33

2³⁰pm

10¹⁵ am meter start 69545 - 69615

9+07 to 9+19 and cutoff wall

N6 70'

55

16

70

7nd 169.

45' 8+83 to 8+95

South 65 9+07 to 9+19

136 9+42 to 9+54

Told Charlie B about loamy

Cement trucks

Oct 16-34 7am - 2³⁰ pm - 10 - 305 pm

Sidewall

1 CRANE

1 CONC PAVE

1 Finisher

2 Laborers

1 MIXER

1 MIXERMAN

5 Laborers

1 Truck + Driver

(8)

34

Scale:

Cam	2 sac	- 188 + 84	- 272
		233 + 70	- 303
		466 +	
	2 x	229 +	314 x 2
		4.58	
	3/4	133 + 80	213
	Pea	133 + 80	213

Cement 151 x 2 = 302

8 grout

144 CONC

Complete

13+34 to 13+38 No side 2nd Lift

Cam 188

13+58 to 13+82 No side 5th Lift Complete

Sand 466

15+38 to 15+26 So. Side 1st Lift

1 1/2 - 4.58

15+88 to 15+50 So. Side 2nd lift

3/4 133

15+02 15+26 So side 4th lift

Pea 133

12+36 to 12+60 So side 1 Lift Footing

11+88 to 12+12 " " " "

Wed Oct 17-34 7am-2³⁰ ✓

35

1 Crant & operator Full shift

3 Trucks & Drivers

1 Mixing Plant

1 Mixer man - cement 1 Batchol

Down noon rain

Intermittent work Rain

7³⁰ am

1 stand

Metw start 69783 - 69814

Floor 9+19 to 9+31 - 30' Rain

Floor strip so side 15+26 to 15+50

Floor strip so side 12+36 to 12+56

69814

69783

31

1

30

12 Finishers

1 Slab

16 carp - 4 helpers

1 Carp Foreman

14 abores

14 Carp

12 Lab

12⁰⁰ Told Charlie no more floor today - my shift He agreed

Thu Oct-18-34 7 am 5 pm ✓

1 Crane & operator

3 Trucks - 3 Drivers

Mixing plant

1 Mixer man - 1 Cement loader

1 Compressor - Braaker

1 Carp Foreman Joe

3 Carp

4 Help 1 Lab.

1 Mechanic

15 Laborers

2 Finishers

5 Carp -

1 Carp Foreman

7 Lab

} andy

(212)

36

7:30 am small - 43 1/2

meter start 69826 - 69989

2 off of Prods total

9+89 to 9+81 30 10.5

8+83 to 8+95 20 75 to complete

strip

8+62 to 8+74 FLOOR No. 30'

35 gals

Floor laid to 9+07

8+83 to 8+95 ok

69989

69826

163

43 1/2 mdown

119 1/2

6

714

3

717

Fri. Oct. 19-1934 7am 6pm ✓

37

70094

1 Mechanic

2 Finishers - Carpentery

Carp Foreman

3 carp. 4 Helpers 1 Lab

17 Laborers

1 Carp Foreman Andy

2 carp - 3 Lab

Floor
Test Cyls 3366-67-68 8+747-2+2

Oct 19. Short pour ✓

38

Floor 9:30 to 10:30 am

Mixing Plant

1 Truck + Driver

2 Lab

1 Finisher

1 Foreman

50 Floor Strip

11+64 to 11+88

12+12 to 12+36

20 batches 70094 end

Sat Oct 20 31 7AM - 12³⁰am Sunday

(12)

70390

20259

191-

39

- 1 Crane - 1 Operator
- 3 Trucks - 3 Drivers
- 1 Mixing Plant
- 1 Maximator - cement - 1 Batch
- 1 Mechanic
- 1 Carp - 4 man
- 3 Carp - 4 Helpers 1 Lab
- 17 Laborers
- 1 Carp Foreman
- 7 Carp 2 Lab
- 2nd shift
- 1 Concrete Fireman
- 9 Lab
- 2 Truck - 2 Drivers
- 1 Crane 1/2 shift and runner
- 1 Finisher
- Hoist - Hoist runner
- Mixing Plant + crew

Floor steel in complete east of 10+92

Motor start 70259 - 70316 - 70390

Start 11 am Down 11:45

8+38 to 8+50 Floor - Floor 2 1/2
5 wall

1 Floor
Nowall 22+39 reut } 4pm
30 wall 26+59 reut }

Floor start 70322 Floor is batch

4 equals all 2nd 199 - wall

Nowall 105 cone
49 reut

137 Total

15+50 to 15+38 completed 6th

15+38 to 15+26 comp 3rd lift

13+34 to 13+58 comp 7th lift

15+02 to 15+26 so side 7th lift

12+36 to 12+60 so side 3rd lift

14+06 to 14+30 so side 6th lift ✓

11+88 to 12+12 so side 3rd lift

14+54 to 14+78 so side 6th lift

11+16 to 11+40 so side 2nd lift

13+82 to 14+06 no side 6th lift

11+16 to 11+40 so side Floor strip

OCT 20 - 34 ✓

✓ 14+30 to 14+54 No side 6th Lift

✓ 13+34 to 13+58 No side 6th Lift

✓ 15+02 to 14+78 No side 6th Lift Finish

Monday Oct 22 - 34 7am - 5pm v

1 Crane - Operator 3-1/2 shift
3 Trucks 3 Drivers 2-1/2 shift
1 Steam Hoist & Boiler - runner - 1 Finisher
1 Mixing Plant
1 Mixer man - 1 Cement - 1 Batcher
1 Mechanic

1 Carp - Foreman - Joe

3 Carp - 5 Helpers

21 Laborers

2 Finishers

1 Carp - Foreman (on dy)

6 Carp

4 Lab

(3)

8741

4:15pm End of Lees Shift
Meter start 70390 - 70477

12 Sidewall - 3 Grout - 72 Floor

Floor 8+50 to 8+38 south 10.5'

72
6
432

11+40 to 11+64 50 Side Flow Strip

70.477
70.390
87

Tue Oct-23-34 7am - 6pm ✓

- 1 Crane - Operator
- 1 steam
- 1 Hoist - runner - Foreman
- 1 Mixing plant
- 1 Mixer man - 1 cement - 1 Batcher
- 1 Mechanic
- 1 Carp Foreman (Joe)
- 5 Carp - 1 Helper
- 1 Finisher
- 1 Carp Foreman (Andy)
- 7 Carp
- 2 Lab
- 19 Laborers
- 2 Trucks - Driver

3374-5-6 - 399 a/c

3 45 PM 42

Grout 4 Grout
sidewall 35

meter start 70617 - 70786 - 169

Floor 8150 to 8162 ^{up} $\frac{136}{780}$

2nd Grout 11 1/2 conc. Sidewall

Floor 32 nos. on No side 12+150 to 12+139
30 Batches

South 15' 8127 to 8138

Water 38 ✓

15+02 to 15+26 No side 5th Finish

14+78 to 14+54 " " Lift

14+30 to 14+06 " " " "

13182 to 13+58 " " 4th ✓

2nd shift To Floor 6 PM

1 Crane 169

1 Truck $\frac{39}{130}$

2 Finishers 12.5

1 Conc. Foreman $\frac{6}{750}$

4 Laborers

Wed Oct 24-34

7am - 5³⁰pm

✓

- 1 Crane - 1 runner
- 3 Trucks - 3 Drivers
- 1 Steam Hoist - 1 Runner 1 Fireman
- 1 Mixing Plant
- 1 Mixer man - 1 Cement - 1 Batcher
- 1 Finisher
- 2 Mechanics
- 1 Carp Foreman - Joe
- 3 Carp - 5 Helpers
- 1 Carp Foreman Andy
- 7 Carp - 3 Lab
- 1 Compressor 1 Breaker
- 25 Laborers

71075 43

927

148

22

126

Meter start 70927 71075

Grout 4 - sidewalk - 18

Floor 7+91 to 8+03 - start 52'

South of North side wall, pour

South to a point 33' North of South

sidewall

Floor 7+57 to 7+79 start 6.50.

at No wall pour south 112'

126

6

756

127

6

762

Thu Oct 25 '34 7am - 3:30 pm ✓

1 Crane - operator
3 Trucks - 3 Drivers
1 Steam Hoist - Runner & Fireman
1 Mixing Plant - 1 Mixer man - 1 Cement - 1 Batch
2 Mechanics
1 Carpenter Foreman - Joe
3 Carpenters & 5 Helpers
1 Carpenter Foreman - Andy
8 Carpenters
6 Laborers
1 Finisher
2 Laborers

44

3:30 pm

Motor start 71156 Finish 71283

Grout 3 - sidewall - 11 Batches

Floor 8103 to 8115 start 45 from

North wall pour south to within

10' of south wall

Floor 7191 to 7179 start 33'

North of south wall, pour north

40' - Brickman completes

71283
71156
127
6
762

Thu Oct 25-34 5pm - 12³⁰am

45

Reported by Van. Segern

2 Grout - 48 conc

1 crane - Operator

2 Trucks - 2 Drivers

1 Conc Foreman

5 Laborers

2 Finishers

1 Carp Foreman Jacil

8 Carp

4 Lab

1 Mechanic

Ed 10+92 to 10+68 so side 1st Lift

Ed 9+72 to 9+96 so side 1st Lift

Ed 10+20 to 10+44 so side 1st Lift

Jack 13+10 to 13+34 so side 8th Comp. Tap

Jack 11+16 to 11+40 so side 5th Lift?

this lift may not be correct

due to former short pour

Jack 12+12 to 12+36 so side 4th Lift

Jack 11+64 to 11+88 so side 4th Lift

Ed 9+24 to 9+48 so side 1st

Friday Oct. 26-34 9am-5pm

- 1 Crane operator
- 3 Trucks - 3 Drivers
- 1 Steam Hoist - 1 Runner
- 1 Mixing Plant
- 1 Mixerman - 1 Cement - 1 Batcher
- 1 Finisher
- 1 Carp Foreman - Joe -
- 3 Carp - 6 Helper
- 1 Carp Foreman - Andy -
- 8 Carp
- 4 Lab
- 2 Mechanics
- 21 Laborers

71338

46

Floor 10 39 am

(58)

meter start 71421 - 71519

98

start 6' 30 No wait - go South 12.0'

58

50 1/2

Floor 7142 to 7151. Test section

waste 1/2 yard cleaning

Hoppers

North wall 24 cone - 26 out

30 Floor strips 12 cone 0 " "

36

60 on Floor

Floor so side 10+44 to 10+20

7.25' x 24' x 1'

9+72 to 9+96 5' x 24' x 1' 5 batches

9+24 to 9+48 7' x 24' x 1' 7 batches

12

Now nice report 24 cone - 2 grant

Change rock to 1700#

Test cyl. Floor pour

Freds last strip 3377-78-79

3at Oct 27-34 - 7am - 12:30pm

47

1 Crane - operator

1 Truck - Driver

1 Mixing Plant

1 Mixer man - 1 cement - 1 Batcher

1 Cong Foreman - 6 Laborers

1 Finisher - 2 Helpers

1 Carp Foreman (andy)

8 Carp 5 Lab

15 Laborers

1 Truck - 1 Driver - ^{not concrete} Cleaning up

1 Carp Foreman Joe

4 carp - 5 Helpers

1 Laborer

7:35 am

meter start 71640 - 71668

28

6
12.8

sidewall - 11 Grout

12+30 to 12+60 So side 6th lift

1188 to 12+12 So side 6th lift

5.5 x 24 x 1

Floor strip 9+48 to 9+72 So side 5 Bat

Floor strip 10+68 to 10+92 south

side and cutoff wall - 7.25 x wide

12'-12" Floor - 12'-24" Floor 9 Bat

Monday Oct 29-34 11 AM - 6³⁰ am

48

- 1 Crane - operator
- 1 Truck - 1 Driver
- 1 Mixing Plant
- Mixer man - cement - Batcher
- 1 Concrete Foreman
- 1 Finisher
- 7 Laborers
- 1 Carp Foreman
- 4 Carp
- 6 Helpers
- 3 Laborers
- 1 Steam Hoist - 1 Runner

Meter start 71790 71816 - 26

26 batches to sidewalk

26
6
156

Pours

9+33 to 9+57	No side	1st Lift	5 ¹⁵ am
		started 2 nd	
9+81 to 10+05	" "	started 2 nd	3 am
8+85 to 9+09	" "	started 2 nd	4 ⁴⁵ am
10+29 to 10+53	" "		5 ²⁰ am

Tue Oct. 30-34 11pm 6:30am ✓

49

1 Crane Operator

1 Mixing Plant

1 Mixer man

1 Hoist - 1 runner

2 Trucks - 2 Drivers

1 Conc Foreman

1 Finisher

7 Laborers

1 Carp Foreman

3 Carp

6 Carp Helpers

2 Laborers

85
24

Model Start 71907 - 71950

13 Floor - 27 Sidewall

3 wasted

3 Batch wasted too wet

bad valve on mixer

5.5 x 24 x 1 5 yds

9+33 to 9+57 Floor strip No side

9+09 to 9+33 No side 1st Lift
No side 1st Lift

9+54 to 9+81 Bottom 1/2

10+29 to 10+53 No side 1st Top 1/2

Floor 10+29 to 10+53

$\left(\frac{10+8}{2}\right) \times 24 \times 1 = 8 \text{ batches}$
Lower 1/2

10+05 to 10+29 1st Lift No side

8+85 to 8+61 No side 1st Lift

Floor 13 Batches

Sidewall 27

Wed Oct 31-34 11pm to 3am 1173
✓

50

1 Crane - 1 operator - Gravel

meter start 72042 72099

1 " - " - Concrete

57 - 2904

13 Trucks - 3 Drivers

55 Sidewall

1 Mixing Plant

1 Hoist - 1 runner

12+21 to 12+45 No side 1st Lift

1 mixer man - 1 cement

11+73 to 11+97 No side 1st Lift

1 Conc. Foreman

11+25 to 11+49 No side 1st Lift

1 Finisher

8+61 to 8+85 No side 1st Lift 2nd 1/2

8 Laborers

9+09 to 9+33 No side 1st Lift Top 1/2

5 Carpenters

9+57 to 9+81 No side 1st Top 1/2

10+05 to 10+29 No side 1st Top 1/2

8+37 to 8+61 No side 1st Lower 1/2

59

354

Thu Nov 1-1934-11 PM 6:32am ✓

- 2 Cranes - 2 operators
- 2 Trucks - 2 Drivers
- 1 Mixing plant
- 1 Mixer man - 1 cement - 1 Batcher
- 1 Concrete Foreman
- 1 Finisher
- 5 Laborers

Carpenters are leaving
 footing excavations very
 dirty

- start 72202 - 72274 - 72
- 18 Floor sidewall ^{1 Grout} 53 concrete
- sidewall 41 gals
- Floor 38 gals
- ✓ 12+81 to 13+05 No side 1st Lift
- 24' section station correction
- ✓ sidewall 12+45 to 12+57 1st lift
- ✓ Floor strip No side 12+57 to 12+8
- ✓ Floor strip No side 11+73 to 11+97
- ✓ " " " " 11+25 to 11+49
- ✓ 11+97 to 12+21 No side 1st Lift
- 11+73 to 11+49 No side 1st Lift
- 11+25 to 11+49 No side 1st Top 1/2
- 9+04 to 9+24 so. side 1st Lift
- 8+00 to 9+04 " " 1st Lift top 1/2

72
 6
 432

Fri. Nov-2-1934 11pm to 6³⁰ am V
3rd shift

1 Crane - Gravel - 1 Operator
1 Crane Concrete 1 Operator 3 1/2
1 Truck 3 1/2 1 Driver
2 Trucks - 2 Drivers
1 Mixing Plant
1 Mixer man - Cement
1 Hoist - Runner
1 Concrete Foreman
1 Finisher
5 Laborers
1 Laborer 3 1/2 hrs
1 Compressor - 1 Breaker

52
Meter start 72413 - 72465

8 Floor } 2 wasted
3 grout } sidewall
39 concrete }

waste 1 batch - was ahead
of the grout

waste 1 batch too wet for floor

Mixer valve functions: badly
according to mixer man

11+49 to 11+73 No side Top 1st lift

10+29 to 10+53 No side 2nd lift

9+21 to 10+05 No side 3rd lift 1 am

10+05 to 10+29 No side 2nd lift whalers
break

Floor strip No side 10+77 to 11+01

Sat Nov. 3 - 1934 6pm - 11pm
3rd shift

✓

53

- 1 Crane - 1 operator
- 2 Trucks - 2 Drivers
- 1 Steam Hoist - 1 operator
- 1 Mixing Plant
- 1 mixer man - 1 cement
- 1 concrete Foreman
- 2 Finishers
- 6 Laborers
- 1 Truck - 1 Driver 3 1/2 hrs

Meter start 72542 - 72566 24
29 grout waste 19 grout
sidewall 6 concrete Floor 14 1 concrete

waste 1 Batch of grout, leaky truck
and bad hoppers.

1 Batch Conc. - no place for it

10+53 to 10+77 No side Top 1/2 1st Lift

10+83 to 10+77 Floor strip No side

11+01 to 11+25 No side Top 1/2 1st Lift

11+01 to 11+25 " " Floor strip

8+13 to 8+07 " " Top 1/2 1st Lift

$$\frac{22}{6}$$

$$182$$

Monday Nov. 5-1934 7am 2³⁰pm V

1 Crane - Operator

1 Mixing Plant

2 Trucks - 2 Drivers

1 Mixer man - 1 Cement - 1 Bunker

1 Concrete Foreman

8 Laborers

1 Steam Hoist - 1 Operator

1 Carpenter Foreman

9 Carpenters

8 Laborers

2 Finisher

1 Crane 3" 1/2

1 Truck 3" 1/2

Excavation of Point S. side 7+42

1 Comp. - 1 SH - 1 Driller

7 Laborers - 1 Foreman

1 Steel Foreman 1 Steelman 3 Laborers

Fred. Test Cyls. No Sidewall SA

Gals. 42 - 3387-8-9

Start 72566 - 72648 82

89 grout }
74 Concrete } Sidewall

11101 to 11125 No side 2nd Lift

11125 to 11149 No side 2nd Lift

10⁴⁵ am Told Charlie B. that we needed
another man to help finish until
caught up with stripping

11212 to 11236 so Sidewall 10th Lift

11140 to 11164 " " 8th Finished

11885 to 9109 No 4th " " "

11164 to 11189 so " 10th " "

19109 to 9133 No 3rd " "

(9181) to 10105 " " 2nd " "

10129 to 10153 " " 3rd " "

12157 to 12181 " " 4th " "

12121 to 12145 " " 4th " "

11173 to 11197 " " 3rd Lift

Wed Nov. 7. 1934 7am to 2³⁰pm ✓

2 cranes 2 operators

1 Truck - 1 Driver 2 1/2 hr

2 Truck - 2 Drivers

1 Hoist - 1 operator

1 Mixing Plant

mixer operator - Cementman - Batchman

1 Concrete Foreman

9 Laborers

1 Carpenter Foreman

7 Carpenters

7 Laborers

2 Finishers

1 Mechanic

2 Laborers - cleaning up 1 Truck

Excavation - Point 7+42 50 Side

1 compressor 1-JH 1 Driller

1 Foreman - 5 Laborers

56
6
33

Von Cyls
Fred Test Cyls

55

38 to 43 grout 8:20 am

Meter Start 72765 stop 72822-57

To Sidewall 6 grout
50 concrete
waste grout 1

57

9:50 am to 11:15 am

waste 1 batch grout. Too Cold

Told Chas. B and Finishers that finish joints

8th & 9th lifts 11+64 to 11+88. So side 11+64
was not satisfactory

✓ 12+21 to 12+45 No sidewall 5th Lift ✓

✓ 12+45 to 12+57 3rd Lift ✓

✓ 12+57 to 12+81 6th Lift ✓

✓ 12+81 to 13+05 3rd Lift ✓

✓ 10+53 to 10+77 3rd Lift ✓

✓ 11+97 to 12+21 2nd Lift ✓

✓ 11+73 to 11+97 4th Lift ✓

✓ 10+05 to 10+29 started shift end 3rd Lift

May be a difference in station
12+50 to 13+50. Do not have
progress sheet for stations

Thu Nov 8 1934 7am 2³⁰ pm ✓

First shift

1 crane - 1 operator - Gravel

1 " " " " " Concrete

3 Trucks - 3 Drivers

1 - Steam Hoist - 1 operator

1 Mixing Plant

1 Mixer Operator - 1 Cement - 1 Batchman

1 Concrete Foreman

9 Laborers

1 Mechanic

2 Finishers

1 Carpenter Foreman

7 Carpenters

6 Laborers

1 - 30 Bulldozer - Operator
1 - compressor - 1 1/2" ID Miller
Excavation 7+42 - So Side

1 Foreman - 6 Laborers

Fred Cyl - No. Sidewall - 39.56

3396-97-98 ✓

Water start 72907 - 72954 47

waste 1/2 batch grout

3 1/2 grout } sidewall
43 Concrete }

waste 1/2 batch grout 10+77 to 11+01

Tremie plugged

✓ 11+97 to 12+21 No sidewall 3rd lift

✓ 12+21 to 12+45 " " " 6th lift

✓ 10+77 to 11+01 " " " 3rd lift

✓ 11+49 to 11+73 " " " 2nd lift

✓ 11+01 to 11+25 " " " 3rd lift

✓ 11+73 to 11+97 " " " 5th lift

465

6

2790

- 1 crane - operator
- 1 crane 4
- 1 Hoist - operator
- 3 Trucks - 3 Drivers 2 - 8 hrs
1 - 4 hrs only
- 1 Mixing Plant
- 1 Mixer operator - 1 Cement - 1 Batcher
- 1 Concrete Foreman
- 9 Laborers
- 2 Finishers
- 1 Mechanic
- 1 Carpenter Foreman
- 9 Carpenters
- 6 Laborers

EXCAV 7+42. So. side 1 Foreman 6 Lab.
1 Comp - 15 H. 1 Driller

Motor start 73035 - 73077
waste 1/2 grout 1/2 conc. Leaky Form
sidewall 4 1/2 grout
27 1/2 conc
Floor 9 conc

waste 1/2 batch washout hole 11+25 to 11+49
waste 1/2 batch concrete - Cold

Down: 1 1/2 hrs mixer repair Liff No
12+81 to 12+05 No side 5th
12+45 to 12+57 " " 5th
11+25 to 11+49 " " 4th
10+77 to 11+01 " " 4th
8+13 to 8+37 ~~was it poured~~ 4th ⊕
7+48 to 7+66 " " Floor strip
7+90 to 8+13 " " Floor strip
4/6
246

Test Cyls No Floor strips made at
Hopper sta 8+00 No side 359 cks
3399 - 3400 - 3401

Sat Nov 10-1984 7am 3pm ✓

58

1 Crane - Operator

2 Trucks - 2 Drivers

1 Hoist - Operator

Mixing Plant

Mixer man - Cement man - Batcherman

2 Finishers - 1 Laborer

1 Concrete Foreman

6 Laborers

1 Carpenter Foreman

5 Carpenters

4 Laborers

1 Mechanic

1-60 Bulldozer cleaning floor

Excav, 50 side 7+42

1 Foreman 1 Laborer

1 Comp - TH Driller

Meter Start 73168 and 73211 43

Too Cold waste grout 1

42

5 grout

Sidewall 37 Concrete

40

25-2

waste 1 Batch grout Too Cold

11 am

Notified Chas. B. about Tight slope

and 3 dowels No side. Also

about rough forms

✓ 8113 to 8137 No side wall Finished

✓ 9767 to 9781 " " 3rd Lift

✓ 10229 to 10253 " " 4th "

✓ 8191 to 8195 " " 4th Finish

✓ 10292 to 11116 So side wall 8th Finish

✓ 9704 to 9724 " " 3rd Lift

✓ 11140 to 11164 " " 10th "

✓ 8160 to 8180 " " 2nd "

10144 to 10168 " " 5th "

Tue. Nov-13-1934 3pm-11pm V

59

1 Crane Operator

1 Hoist Operator

2 Trucks-2 Drivers

1 Mixing Plant

Mixer man-Cement man-Butcher man

Meter start 73330 stop 73364-34

4 grout 30 concrete

all to sidewalk

34

6

204

1 Concrete Foreman

8 Laborers

1 Mechanic

4 Laborers Cleanup

1 Carpenter Foreman

4 Carpenters

2 Helpers

2 Finishers

Excav 50 side 7+42

1 Foreman - 4 Laborers

1 Comp-1 H-1 Drill

1-60 Bulldozer- Art. Bodenhamer
operating it

11+73 to 11+97 No side

11+97 to 12+21 ..

8+37 to 8+61

7+90 to 8+13 ..

7+42 to 7+66 ..

Flow 7+40 to 7+50 start at

north end of unfinished strip

and pour south

F109V

9th

6th Lift

9th

Finish

2nd

3rd

Wed. Nov. 14 - 1934 3 pm 11 pm

60

- 1 Crane Operator
- 1 Truck - } 1 operator
- 1 Hoist - } 1 operator
- 1 Mixing Plant
- 1 Truck & Driver 5 pm
- 1 Mixerman
- 4 Labors stripping Forms 2 1/2 mi
- to conc. 5³⁰ to
- 1 Mechanic
- 1 Finisher - 1 Helper
- 1 Conc Foreman
- 7 Laborers
- 1 Carp Foreman
- 4 Carp
- 2 Help
- 4 Lab

Motor start 73406 - 73427 -
 grout - 2 - conc - 19

21
 12/6

EXCAV. So. Side 7+40
 1 Comp 15 H - 1 Driller
 1 Foreman - 6 Lab
 1-60 Bulldozer - operator

11+97 to 12+21	No side	8 th
12+45 to 12+57	" "	9 th
7+90 to 8+13	" "	3 rd
7+48 to 7+60	" "	4 th finish

21

Thu Nov 15 1934 2pm - 11pm ✓

61

start small mixer

2 Trucks - 3 Drivers

1 Mixer man

1 Conc. Foreman

1 Lab

1 Carpenter Foreman

4 carp

2 " Helpers

2 Laborers

Preparing
small
mixer lay
out

Excav - So side 7+40

1 Comp - 1 1/4 1 Driller

1 Foreman - 5 Laborers + 6 -

1 60 Bulldozer operator

all work on setup change

Nov-15-1934

2.5ax Batch

2.5ax cem 188

sand 466

1 1/2" 524

3/4 Pea 200
1378

1/2 sand 233 + 74 307

1/2 Rock 262 + 79 341

Cement 188 + 187 375
Borrow & plate

Pea-3/4 200 + 73 273

11-16-34 changed mix

Cem 188 * water 9 3/4" 10"

sand 466 * in tank

1 1/2" 574

3/4-Pea 150

Ford Truck 7x5' x 15' = 52.5'

waste 30 bags cement

Hardened in cement bin

at small mixer, former

set up

188
490
150

550
1378

Friday Nov-16-1934-3pm-11pm ✓

start 4pm

1 Mixing Plant - mixer man

4 Laborers

1 Hoist operator

2 Trucks - 2 driver

1 Concrete Foreman

4 Laborers

1 Finisher - 1 Helper

1 Carpenter Foreman

4 Carpenters

2 " Helpers

3 Laborers

1 Mechanic

Conc 41
 Total. 49
 5
 49
 Waste 3
 46

waste 10 bags cement rain

2 batches 9 grout Trucks chutes

1 concrete 700 wet

Excav - So Side 7+40

1 Comp - 1 JH - 1 Driver

1-60 Bulldozer

1 Foreman - 4 Laborers

√ 11+49 to 11+73 No. Sidewall 8th Lift

√ 11+01 to 11+25 " " 6th Lift

√ 11+25 to 11+49 " " 5th "

11+97 to 12+21 " " 10th Lift

6 grout } sidewall
40 cements }

63
46
92

Sat. Nov-17-1934 3pm-11pm ✓

1 Hoist- 1 operator
 2 Trucks- 2 Drivers
 1 Mixer- 2 sack
 1 Mixer Operator
 4 Laborers
 1 Concrete Foreman
 4 Laborers
 1 Finisher - 1 Helper
 1 Carpenter Foreman
 4 Carp
 2 .. Helpers
 1 Laborer

Excav- 50 Side 7+40
 1 Comp- 17 H- 1 DRILLER
 1 Foreman - 4 Laborers
 1-60 Bulldozer 1 operator

Samples #

73 64
24

Batches Total 68
2
 136
 Concrete 60
 Grout 8
 68

Mix change
 make 1 1/2" 549 (79)
 sand 491 (69)

11+25 to 11+49 NO SIDE 6th Lift
 11+49 to 11+73 .. 9th ..
 7+66 to 7+90 .. 7th ..

$\begin{array}{r} \sqrt{549} \\ 275 \\ \underline{79} \\ 354 \end{array}$	$\sqrt{491}$ $\begin{array}{r} 246 \\ \underline{74} \\ 320 \end{array}$
---	--

Sunday Nov. 18-1934 3pm-11pm

8pm

65

1 Mixing Plant

1 Mixer man

4 Laborers

2 Trucks - 2 Drivers

1 Hoist - Operator

1 Concrete Foreman

3 Laborers

Batches 87

$\frac{2}{174}$

Concrete 76 Operators

Grout 11 Court

7+40 to 7+48 No side Finish

11+01 to 11+25 " " 8th Finish

11+49 to 11+73 " " 10th Finish

11+25 to 11+49 " " 7th Lift

Excavation So Side 7+40

1 Comp. 1 J.H. 1 Driller

1 Foreman 1 Laborer

Monday Nov. -19-1934

3rd shift 11pm - 7am

No Construction work
All Hands moving
and resetting plant

3rd shift crew

1 Foreman

9 Laborers

2 mechanics

Tue Nov 20, 1934 3rd shift
11pm to 7am

67

1 Mixer 2 sack

1 " Operator

4 Laborers

1 Concrete Foreman

5 Laborers

1 Mechanic

Batches Concrete 54

Waste 1- Tea Cold 1

Net 53.5

Sax 10.6

13+05 to 13+34 No side 1st lift

closing in panel

13+08 to 12+84 So side 1st lift

West 1/2 of closing strip

Wed Nov 21-1934

No Concrete

Excav. So side 7+40

1- Foreman 9 Lab

3 Laborers cleaning up

Thu Nov 22-1934 3rd 11pm-7am

No Concrete

Excavation 30 side 7+40

1 Foreman

7 Laborers

Tile Drain Excav and

Floor 30 side 12+15

1 Compressor 1 Breaker

1 Laborer

1 Mechanic

Fri Nov 23-1934 11pm-7am 68

Excav-30 side-7+40

1 Foreman 1-60 Bulldozer-1 operator

1 Carp- 1 Breaker

10 Laborers

1 Laborer 3 1/2 hr

1 Carp Foreman

4 Carp

4 Lab

1 Miller 3 1/2 hrs

13+05 to 13+34 No side 5th Lift

12+84 to 13+05 30 side 6th Lift

4 Grout Sidewall

30 Conc

34
2
68

Sat. Nov. 24-1934 11pm-7am (30)

69

No concrete

Excavation 7+40 So side

1 Foreman

9 Laborers

1 Comp - 1 Breaker 3 1/2 hrs

1-60 Bulldozer - 1 Operator

Steel

1 Compressor 27 H } 6 hrs
2 Driller }

Monday - Nov 26-34 7am - 2:30pm

1- 2 sack mixli
 1 Mixer man 1 carp Foreman
 3 Laborers
 1 Truck - 3 Hr. 2 driver 3 Hr.
 1 Finisher - 1 Helper
 1 Haist - 1 operator 1 Hr.
 1 Carp Foreman
 4 Carp
 2 Lab

Stock
 1 Foreman
 4 Steelmen
 2 Laborers

Grout 3
 Concrete 73
76
 2
 152

13+05 to 13+34 No side 10⁴⁵ am 7th Lift
 12+84 to 13+08 So side 9 am 8th Lift
 12+60 to 12+84 So side 12 noon 5th Lift
 8+37 to 8+60 So side Bottom 1st 1/2

Excavation So side 7+40
 1 Power shovel - 1 operator
 1 5yd Dump Truck
 2 Foreman - 3 Lab
 1 Comp - 1 Breaker
 1-60 Bulldozer operator 4 Hr

Tue Nov. 27-1934 7am 3pm

1-2 sack mixer- Operator
 1 Concrete Foreman
 8 Laborers 1 Truck-Driver 3 1/2'
 1 Finisher- 1 Helper 1-Hoist. op.
 1 Carp Foreman
 4 Carps
 2 Laborers
 Excav
 1 Foreman
 5 Laborers
 1 Power shovel - 2 DRIVERS
 2 Trucks
 1-60 Bulldozer cleaning up

 2 steel men
 1 Laborer

71

Sidewall Grout	4
" Concrete	43
Floor	52
	99
	<u>2</u>
	198

12+84 to 13+08 So Side Finish
 11:30 am
 8+37 to 8+60 So Side Top 1/2 1st Lift
 8+13 to 8+37 Bottom 1/2 1st Lift
 7+90 to 8+13 Top 1/2 1st Lift
 8+37 to 8+60 Floor strip
 7+40 to 7+52 Floor slab - start at
 north end of unfinished strip
 and pour south to within 6'
 of south sidewall

Wed Nov-28-1934 7am 3pm

- 4-2 sack Mixer - 1 operator
- 1 Concrete Foreman
- 8 Laborers
- 1 Finisher 1 Helper
- 1- Truck - 1 Driver
- 1 Steam Hoist 1 operator
- 1 Carp Foreman
- 4 Carp
- 2 Laborers

Excav. So Side 7+40

- 1 Power shovel - 1 operator
- 2- 5yd Trucks - 2 Drivers
- 1- 60 Bulldozer - 1 operator
- 1 Foreman
- 2 Laborers

Sidewall

Floor

800
190
9

4 Grout

18 Concrete

90 Concrete

112

224

German Non Last Week 105 ax

7+8 to 7+60 so side 1st Lift Top 12' ✓

8+13 to 8+37 " " " " " " ✓

7+40 to 7+48 " " 2nd Lift ✓

8+13 to 8+37 " " Floor strip ✓

8+13 to 8+01 " " " " " " ✓

7+60 to 7+90 " " 1st Lift Top 4' ✓

7+81 7+92 " " Floor - From JolWall

" " 30' No. to Finish

start 9am No Cement

Friday Nov 30 1934 - 7 am to 3 pm

1- 2 Sack Mixer

1 Concrete Foreman mixing

8 Laborers

1 Finisher - 1 Helper

1 Mechanic

Excavation -

1- Power shovel 1 operator

2- 5 yd Dumps - 2 Drivers

Clean up & Back fill

1- 60 Bulldozer 1 operator

1- Foreman - 4 Laborers } Backfill

No side. 8+00

Clean up 5/11

73

Concrete 22

Grout

3
25
50

12+60 to 12+84 50 Side wall 9th Lift

13+05 to 13+34 No side Finish

Test Cyl - 34 12-13-14
Sidewall

Sat Dec 1-1934 7am 3pm ✓

Finis

- 1- 2 sack mixer - 1 operator
- 1- Concrete Foreman
- 11 Laborers
- 1- Finisher - 1 Helper
- 1- Steam Hoist - 1 operator
- 1- Truck - 1 Driver
- 1- Carpenter Foreman
- 4- Carpenters
- 1- Laborer
- 1- Finisher - Floor

Excavation and Cleanup

- 1- Power shovel - 1 operator
- 2- 5 yd Dump Trucks - 2 Drivers
- 2- Mechanics repair Bulldozer
and shovel

Floor	48
Grout SW	2
Concrete	<u>19</u>
Total	69
	<u>2</u>
	138

Told Chas B. about all back fill.

Told Barr and Chipman to refinish floor drip so side 7140

792 to 8101 - Floor 30' No so Finish Floor

8137 to 8160 15' so Sidewalk Finist

started pour down 12 1/2" no cement

2nd shift will complete

15/10

7

1

3

2

1

17

18

19

20

17

18

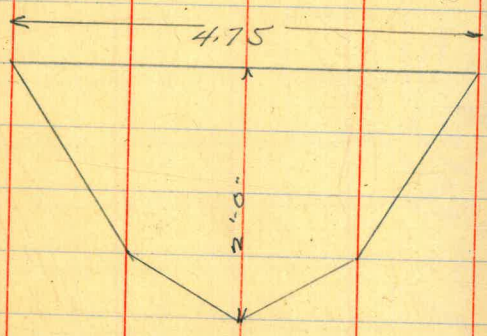
19

20

21

22

Cars



4.05 Long

Test Cyls. Spillway Ext

8125-26 Cutoff wall. Sta 15+50. 3' above
27 bottom. at intersection so. wall

9-14-34 Floor 3151-3152-3153 on.

EW & on pour 14+55.7 to 14+79.7
3229-30-31

9-18-34, Floor and trench 13+93 & 4050
3232-33-34

Overtime

Sept 8-9.	12 hrs.
9-14	1
15	1
17	1
18	1
October 13	1
15	2
16	8
18	2 1/2
20	12
22	3
23	2
24	2
25	7
Nov 18	<u>8</u>
	63 1/2 hrs
25	<u>8</u>
	71 1/2 hrs

10+92
144
 9+48

15+50
24
 15+26
24
 15+02
24
 14+88
24
 14+64
24
 14+40
24
 14+16
24
 13+92
24
 13+68
24
 13+44
24
 13+20
24
 12+96
24
 12+72
24

24
 5.5
 120
120
 132
 27
 3
15
 885
24
 909 1215
24
 933 24
24
 957 1269
24
 981 1293
24
 1005 1317
24
 1029
24
 1053
24
 1077
24
 1101
24
 1125
24
 1149
24
 1173
24
 1197
24
 1221
24
 1245

64532 start batches 80
 41
3.5 2.4
 37.5 96
9 10+92
 796
24
 268 972
 27
 0.1
 27 en fit 4.5
7.5
 13.5
189
 102.5 gals 7.5

1 load out 857 26.5
3.5
 10+92 36
4
 48 3(144)
48
 10+44 94
48
 12+12 205
48
 11+64 3.5 82
48
 25 102
 18 45.5
36
 95 15+50
24
 6 71283 240
6 64532
 6751 13+10
6
 40506 7.25
6
 675 12
24
 200 1450
 725
 8700
 174
 21261 9
248
 7

4. long in bottom
6. along each side.

64578
64532

740 564 # am
36
787 13.7
354
364
978
94 5 1/2 yds
94 16 2/4
15
64
24
24
277 144

888 490.0
444 platforms 888

2 men 460
1. cap on track 00
1 man cement 888
791
64690
6593/8

750 79
12
70 767
12

Crane 767
490
17 men 550 labor

1 Carpenter 78
4 Conc Lab 2
2. Train Crew 156
75
1 man labor 780
1092
Chlor 70

8 PM mixer same
8 laborer
Chlor
anderson found
2 men out 100 an

5 and - 1300#
1 1/2 - 1" 1720
3/4 350#
pro 200#
137 car feet
18.4
3.5
2.5
2.5 500 feet

DISTANCES FROM CENTER OF ROADWAY FOR CROSS-SECTIONING.

ROADWAY 14 FEET WIDE. SIDE SLOPES 1 1/2 TO 1. 564#
700 FOR SINGLE TRACK EMBANKMENT. cement
550 1 1/2 - 1"

	0	.1	.2	.3	.4	.5	.6	.7	.8	.9	
0	7.0	7.2	7.3	7.5	7.6	7.8	7.9	8.1	8.2	8.4	0
1	8.5	8.7	8.8	9.0	9.1	9.3	9.4	9.6	9.7	9.9	1
2	10.0	10.2	10.3	10.5	10.6	10.8	10.9	11.1	11.2	11.4	2
3	11.5	11.7	11.8	12.0	12.1	12.3	12.4	12.6	12.7	12.9	3
4	13.0	13.2	13.3	13.5	13.6	13.8	13.9	14.1	14.2	14.4	4
5	14.5	14.7	14.8	15.0	15.1	15.3	15.4	15.6	15.7	15.9	5
6	16.0	16.2	16.3	16.5	16.6	16.8	16.9	17.1	17.2	17.4	6
7	17.5	17.7	17.8	18.0	18.1	18.3	18.4	18.6	18.7	18.9	7
8	19.0	19.2	19.3	19.5	19.6	19.8	19.9	20.1	20.2	20.4	8
9	20.5	20.7	20.8	21.0	21.1	21.3	21.4	21.6	21.7	21.9	9
10	22.0	22.2	22.3	22.5	22.6	22.8	22.9	23.1	23.2	23.4	10
11	23.5	23.7	23.8	24.0	24.1	24.3	24.4	24.6	24.7	24.9	11
12	25.0	25.2	25.3	25.5	25.6	25.8	25.9	26.1	26.2	26.4	12
13	26.5	26.7	26.8	27.0	27.1	27.3	27.4	27.6	27.7	27.9	13
14	28.0	28.2	28.3	28.5	28.6	28.8	28.9	29.1	29.2	29.4	14
15	29.5	29.7	29.8	30.0	30.1	30.3	30.4	30.6	30.7	30.9	15
16	31.0	31.2	31.3	31.5	31.6	31.8	31.9	32.1	32.2	32.4	16
17	32.5	32.7	32.8	33.0	33.1	33.3	33.4	33.6	33.7	33.9	17
18	34.0	34.2	34.3	34.5	34.6	34.8	34.9	35.1	35.2	35.4	18
19	35.5	35.7	35.8	36.0	36.1	36.3	36.4	36.6	36.7	36.9	19
20	37.0	37.2	37.3	37.5	37.6	37.8	37.9	38.1	38.2	38.4	20
21	38.5	38.7	38.8	39.0	39.1	39.3	39.4	39.6	39.7	39.9	21
22	40.0	40.2	40.3	40.5	40.6	40.8	40.9	41.1	41.2	41.4	22
23	41.5	41.7	41.8	42.0	42.1	42.3	42.4	42.6	42.7	42.9	23
24	43.0	43.2	43.3	43.5	43.6	43.8	43.9	44.1	44.2	44.4	24
25	44.5	44.7	44.8	45.0	45.1	45.3	45.4	45.6	45.7	45.9	25
26	46.0	46.2	46.3	46.5	46.6	46.8	46.9	47.1	47.2	47.4	26
27	47.5	47.7	47.8	48.0	48.1	48.3	48.4	48.6	48.7	48.9	27
28	49.0	49.2	49.3	49.5	49.6	49.8	49.9	50.1	50.2	50.4	28
29	50.5	50.7	50.8	51.0	51.1	51.3	51.4	51.6	51.7	51.9	29
30	52.0	52.2	52.3	52.5	52.6	52.8	52.9	53.1	53.2	53.4	30
31	53.5	53.7	53.8	54.0	54.1	54.3	54.4	54.6	54.7	54.9	31
32	55.0	55.2	55.3	55.5	55.6	55.8	55.9	56.1	56.2	56.4	32
33	56.5	56.7	56.8	57.0	57.1	57.3	57.4	57.6	57.7	57.9	33
34	58.0	58.2	58.3	58.5	58.6	58.8	58.9	59.1	59.2	59.4	34
35	59.5	59.7	59.8	60.0	60.1	60.3	60.4	60.6	60.7	60.9	35
36	61.0	61.2	61.3	61.5	61.6	61.8	61.9	62.1	62.2	62.4	36

Calculated by Julien A. Hall, M. Am. Soc. C. E.

18 969
5 96
90
60

MADE IN GERMANY.