



TRANSET

398

W49

Table showing the difference of latitude and departure in running 80 chains at any course from 1 to 60 minutes.

MINUTES.	LKS.	MINUTES.	LKS.	MINUTES.	LKS.
1	2½	21	49	41	95½
2	4½	22	51½	42	98
3	7	23	53½	43	100½
4	9½	24	56	44	102½
5	11½	25	58½	45	105
6	14	26	60½	46	107½
7	16½	27	63	47	109½
8	18½	28	65½	48	112
9	21	29	67½	49	114½
10	23½	30	70	50	116½
11	25½	31	72½	51	119
12	28	32	74½	52	121½
13	30½	33	77	53	123½
14	32½	34	79½	54	126
15	35	35	81½	55	128½
16	37½	36	84	56	130½
17	39½	37	86½	57	133
18	42	38	88½	58	135½
19	44½	39	91	59	137½
20	46½	40	93½	60	140

TABLE FOR RUNNING ON SLOPES.

In the following table the first column shows the angle, the second the number of links to be added to a chain on the slopes, to make one chain, horizontal measurement.

JAN 6 1965

ANGLE	COR. IN LINKS	ANGLE	COR. IN LINKS	ANGLE	COR. IN LINKS	ANGLE	COR. IN LINKS
0		0		0		0	
4	0.24	11	1.88	18	5.14	25	10.54
5	0.38	12	2.24	19	5.76	26	11.26
6	0.55	13	2.63	20	6.42	27	12.24
7	0.76	14	3.06	21	7.11	28	13.37
8	0.98	15	3.53	22	7.85	29	14.34
9	1.24	16	4.02	23	8.64	30	15.47
10	1.55	17	4.56	24	9.47	35	22.0

(Chapel)
W. R. Wheaton
342 - Citizens Trust Bank Bldg

207 pages, 214 pages, 189



Part of this Pueblo Lot survey made as early as 1899 by W.R. Wheaton. These corners were all replaced by conc. monuments in 1917 + 1918 by J.W. Williams. The above information given by J.W.W. 11/12/30 #

Elizabeth Bashore
722 - E. Pine St.
Santa Ana.

INDEX

I.

Page.

- I. Index
- II Index
- III
- 1
- 2
- 3
- 4
- 5
- 6 Meander Prop. line along E. Line 1299
- 7 " " " " " " " " Cont.
- 8 " " " " " " " " "
- 9 " " " " " " " " "
- 10 W. 1/2 of N. Line 1296
- 11 " " " " " " " " "
- 12 Meander of E. Prop. Line 1296.
- 13 " " " " " " " " Cont.
- 14 W. 1/2 of S. Line 1296.
- 15 W. Line of 1296.
- 16 " " " " " " " " Cont.
- 17 Meander E. Side Canyon - Cont. of Prop. Line E. of Can. Road.
- 18 " " " " " " " " " " " " " " Cont.
- 19 " " " " " " " " " " " " " " "
- 20 " " " " " " " " " " " " " " "
- 21 " of Prop. Line W. side of Canyon.
- 22 Meander of Road N. from Bank House to New Road.
- 23 " Branch of New Road Leading W. from 14-15³² " "
- 24 " " " " " " " " " " " " " " "
- 25 " North Road from House N.
- 26 " " " " " " " " " " " " " " "
- 27 " " " " " " " " " " " " " " "
- 28 W. Line 1311
- 29 " " " " " " " " " " " " " " Cont. and W. Line 1314.
- 30 N. " " " " " " " " " " " " " " "

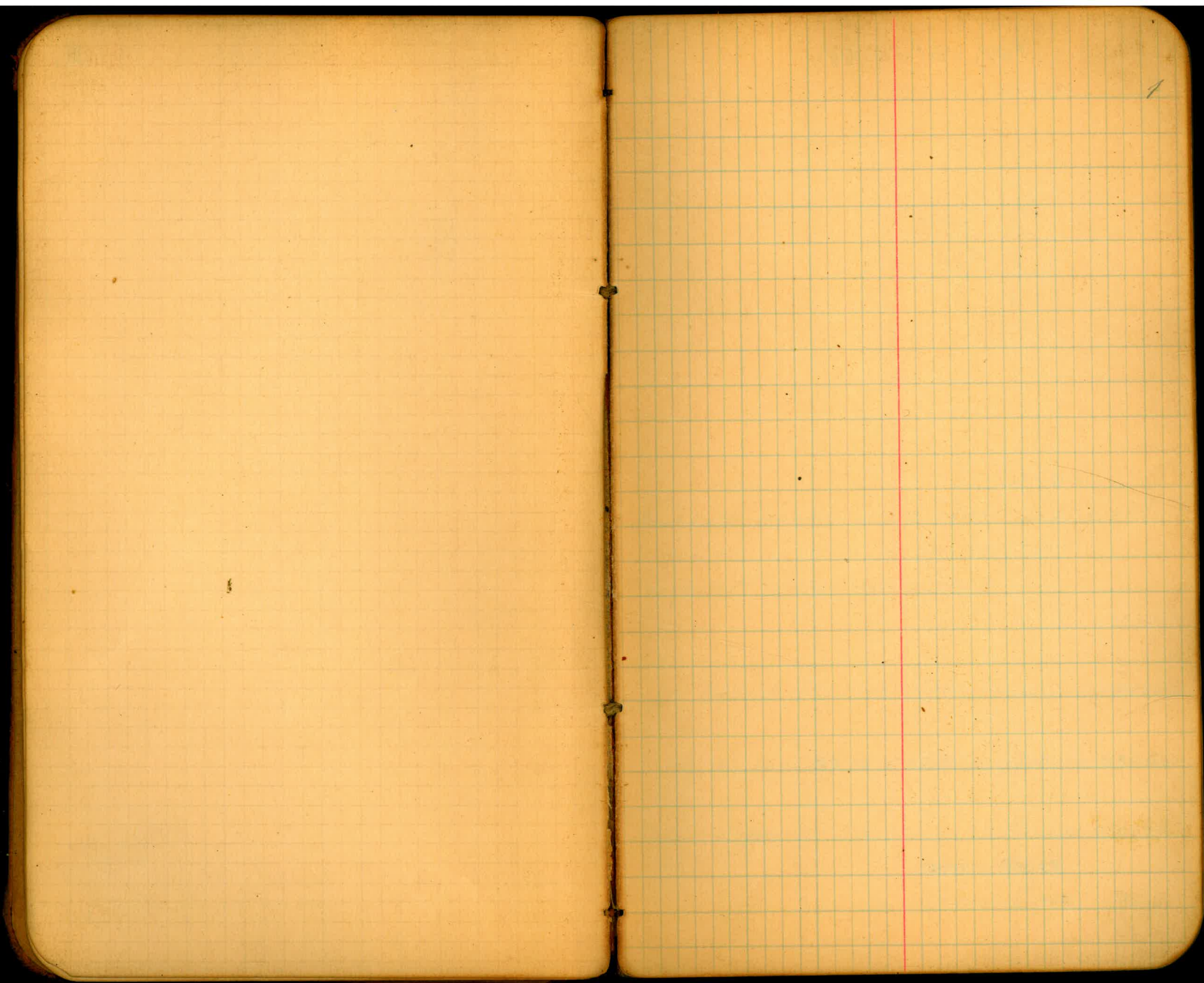
INDEX - Cont.

Page.

- 31 N. Line 1311 - Cont.
 32 Meander of Linda Vista Road.
 33 " " " " " "
 34 " " " " " "
 35 " W. Branch " " " to L.A. Road
 36 Short Pieces Road around house + camp.
 37 " " " " " " " "
 38 W. Line 1314 Cont.
 39 Road Running W. from House.
 40 W. Line 1323
 41 " " " Cont.
 42 E. 1/2 S. Line 1299.
 43 " "
 44 E. 1/2 S. Line 1296
 45 " "
 46 E 1/2 N. Line 1299
 47 Meanders around Eucalyptus Groves
 48 " "
 49 " "
 50 Clearing for Lower Camp.
 51 W. Line 1323 - Cont. from P. 41
 52 E. New Rose Canyon Road
 53 " "
 54 Road Crossing North Road in Lot 1314
 55 " "
 56 N. Line 1314
 57 " "
 58 Traverse of Prop. Line W. side Canyon (P. 31)
 59 " "
 60 " "
 61. Road Running S.W. from N.W. Cor 1296.
 62. Prop. Meander - Mesa N.E. of Dump.
 63. " "
 64. " "
 65. " "
 66. " "
 67. W. Line 1279 - E Line 1280
 68. S. Line 1280
 69. Cont. from P. 58
 70. W. Line City Land Lot 1280

II.

71. E. Canyon Road
 72. " "
 73. " "
 74. Proposed Road to Torrey Pines
 75. " "
 76. " "
 77. " "



Var. $16^{\circ}30'W$

Angle Bearing needle Dist

661.01

111.5

90°

52780

26780

N

52783.8

90°

-N-

$15^{\circ}32'$

26793.8

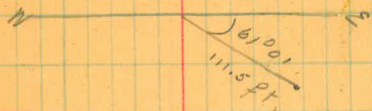
$92^{\circ}50'$ N $90^{\circ}50'$ N

0

~~$89^{\circ}10'$ N $87^{\circ}45'$ N $15^{\circ}25'$ E~~

N

2

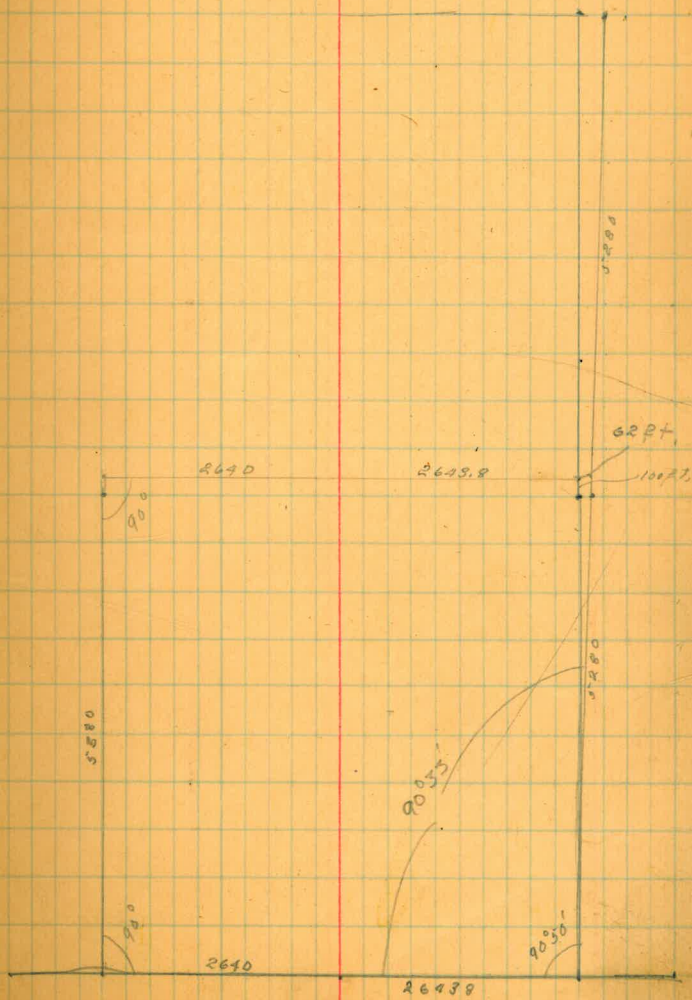
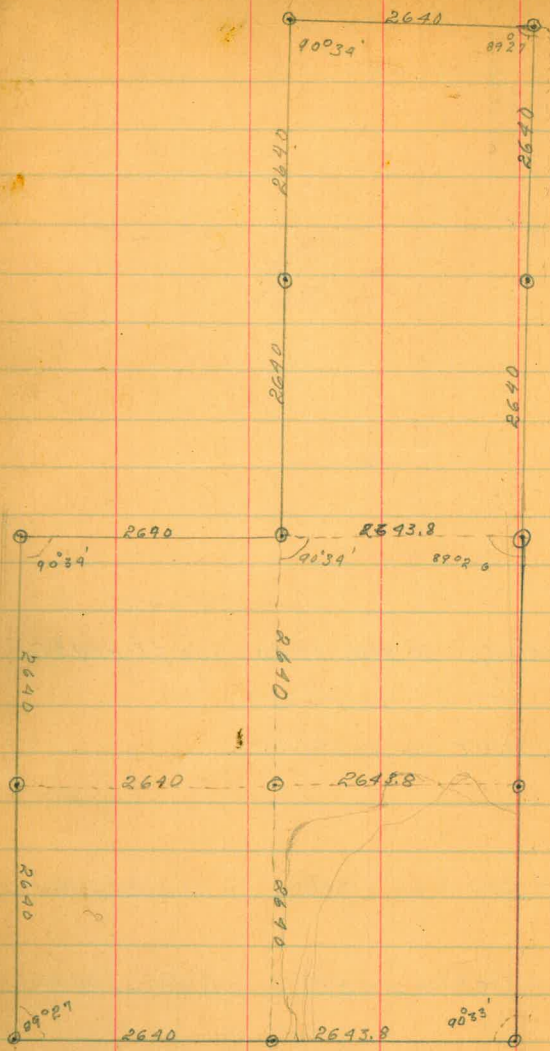


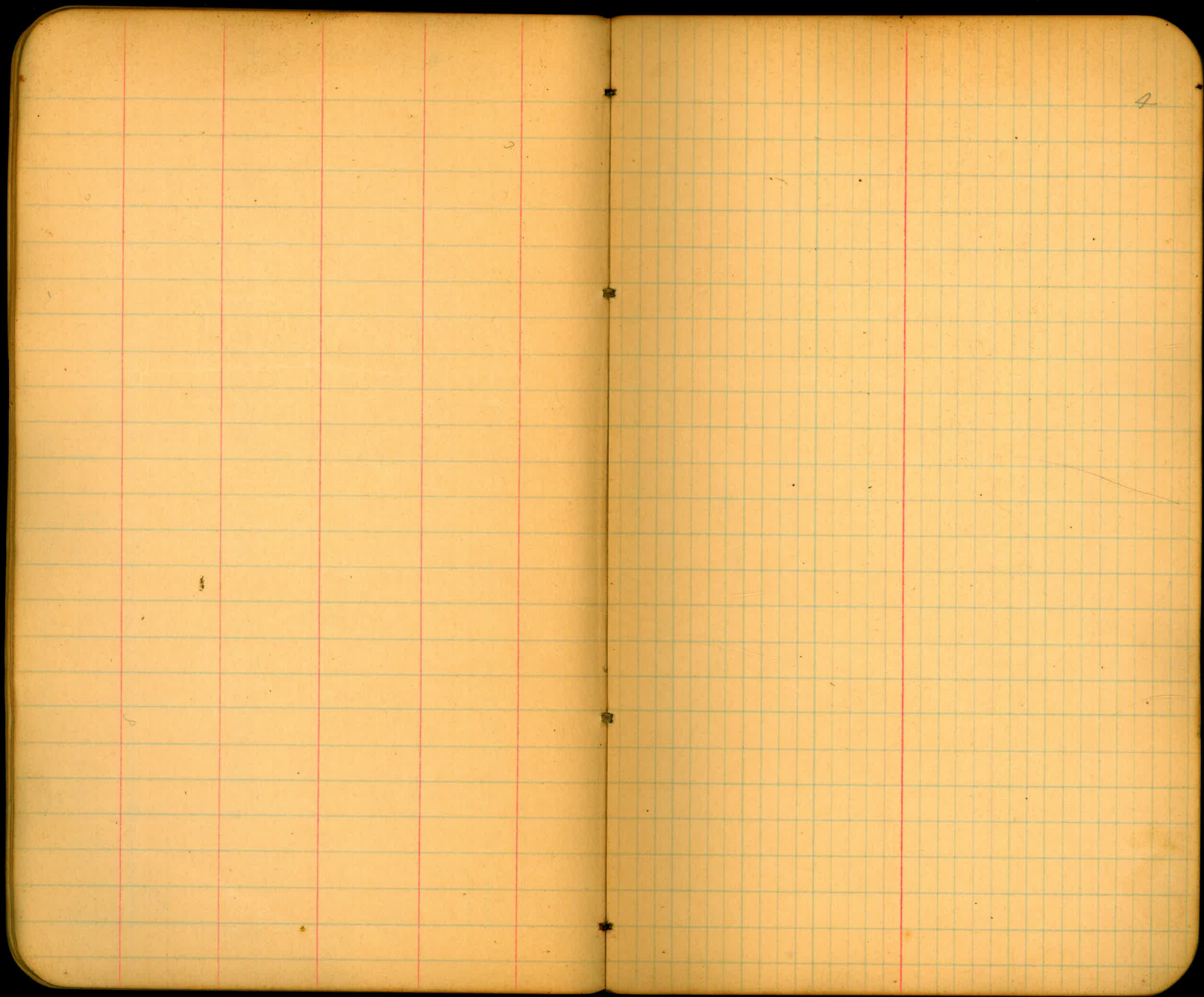
found old marks at sta. 1790, 100 ft right,
run on north line sec. 36,
put hub at NW cor 36, no stake.

put hub at 1/4 cor. no stake, on W. line sec. 36

S.W. cor. Sec. 36. no stake. half mc. correct.

stake at quarter Sec. cor. on south line sec. 36





4

Morena,

Murphy Ranch

MEXICO

Callowood

5

Meander Following 16° Lt. w. 11 to line
of trees along road.

~~0+0° Meander = 12+39° "A" Line
Course "A" Line E.~~

~~Dist. Rt. Lt. Course
116°00' 5.26°00' W.~~

~~+70° = To first road~~

~~1+0°~~

~~Sta.~~

~~From Sta. 12+39° "A" Line 116°00' Rt.
Course from 0+0° Meander 5.26°00' W~~

0+0°

+70° To center of Road approx. 5.26°00' W.

1+0°

2+0°

2+12° Δ 0°30' Lt.

+63° = Road 5.25°30' W

+72° = Edge of holes for trees.

3+0°

+42° = Edge of holes for trees.

+63° Δ 6°45' Lt

4+0°

5.18°45' W

+82° Δ 3°30' Lt.

5+0°

5.15°15' W

Cal.
Course

1320
123967
804

N.

6

Cal. Cont.

Course

Sta.		Course
6+00		
+05°	Δ 5°45' Lt.	S. 9°30' W ✓
+66°	Δ 6°30' Lt.	
7+00		S. 3°00' W ✓
+299°	Δ 13°15' Lt.	S. 10°15' E ✓
+64°	Δ 28°30' Lt.	S. 38°45' E ✓
8+00	Δ 23°30' Lt.	S. 62°15' E ✓
+37°	Δ 11°00' Lt.	S. 78°15' E ✓
+68	Δ 6°30' Lt.	
9+00		S. 79°45' E ✓
+30°	Δ 5°30' Lt.	S. 85°15' E ✓
3+60°	Δ 8°30' Lt.	
10+00		N. 86°15' E ✓
+22°	Δ 6°30' Rt.	S. 87°15' E ✓
+45°	Δ 53°05' Rt.	S. 34°10' E ✓
10+65.89	Δ 34°08' Rt.	S. South (Error of 80°02') ✓
11+00		
12+00		
13+00		
14+00		
16+00	Δ 14°00' Rt.	S. 14°0' W ✓
+50°	Δ 21°00' Rt.	S. 35°0' W ✓
17+00		

Meander Prop. Line. Cont.

	Cal.	
	Course	
57a.		
17+10 ⁰ A 13°00' Lt.	S. 22°00' W ✓	△
+48 ⁰ A 20°45' Lt.	S. 7°15' W ✓✓	△
+78 ⁰ A 14°30' Lt.	S. 13°18' E ✓✓	△
18+0 ⁰		
+12 ⁰ A 14°15' Lt.	S. 27°30' E ✓✓	△
19+0 ⁰		
+03 ⁰ A 16°01' Rt.	S. 11°29' E ✓	△
+27 ⁰ A 11°28' Rt.	South (Error of 00°01')	△
20+0 ⁰		
21+0 ⁰		
22+0 ⁰		
22+58 A 23°00' Rt.	S. 23°00' W ✓✓	△
+83 ⁰ A 27°00' Rt.	S. 50°00' W ✓✓	
23+0 ⁰		
+65 ⁰ A 5°30' Lt.	S. 44°30' W ✓✓	
+97 ⁰ A 18°30' Lt.		
24+0 ⁰	S. 26°00' W ✓✓	
+33 ⁰ A 23°45' Lt.		
25+0 ⁰	S. 2°15' W ✓✓	
+86 ⁰ A 5°30' Rt.		
26+0 ⁰	S. 7°45' W ✓✓	
+47 ⁰ A 4°30' Lt.	S. 3°15' W ✓✓	
+77 ⁰ A 11°30' Lt.	S. 8°15' E	

Meander Cont.

	Cal Course	
25+0		
27+0	S. 8° 15' E ✓ ✓	
+122 A 19° 00' LT.		
28+0	S. 27° 15' E ✓ ✓	
+038 A 10° 00' RT.	S. 17° 15' E ✓ ✓	
+30 A 7° 30' RT.	S. 9° 45' E ✓ ✓	
+68 A 22° 30' RT.	S. 12° 40' W ✓ ✓	
29+0		
+17 A 14° 43' LT. to buson Sec. Line.		
+60 = Trees on north side of road.		
+73 ⁰⁶ / _A = Hub on Sec. Line, 1116 ⁶² W. of Corner.	S. 1° 58' E	
+78 ⁶² / _A 80° 24' to Sec. Corner.		

Running from N.E. Cor. 1299 to S.E.
Cor. 1296, deflection .0° 06' W. at S.E.
Cor. 1299.

23030
9045
5 12° 45' N

14043
12043
5 1° 58' E

9

West 1/2 of north boundary of 1296.

Sta. Cor. at center of north boundary
0+00 Δ = of 1296.

1+00

+11⁶² Δ = R. 9+78⁵⁶ of meander

+50⁰⁰ Δ = Offset 160ft W. of E. Sec. line.

2+00

3+00

+ Δ

4+00

5+00

6+00

7+00

8+00

9+00

9+20⁰⁰ Δ

+30⁰⁰ to edge of Arroyo.

10+00

+20⁰⁰ Center of Road.

+90⁰⁰ Edge of Arroyo

11+00 Δ

+23.7⁰⁰ Δ = Sta. 4+43⁰⁰ of Prop. Line on W. Side
of Cañon.

12+00

13+00

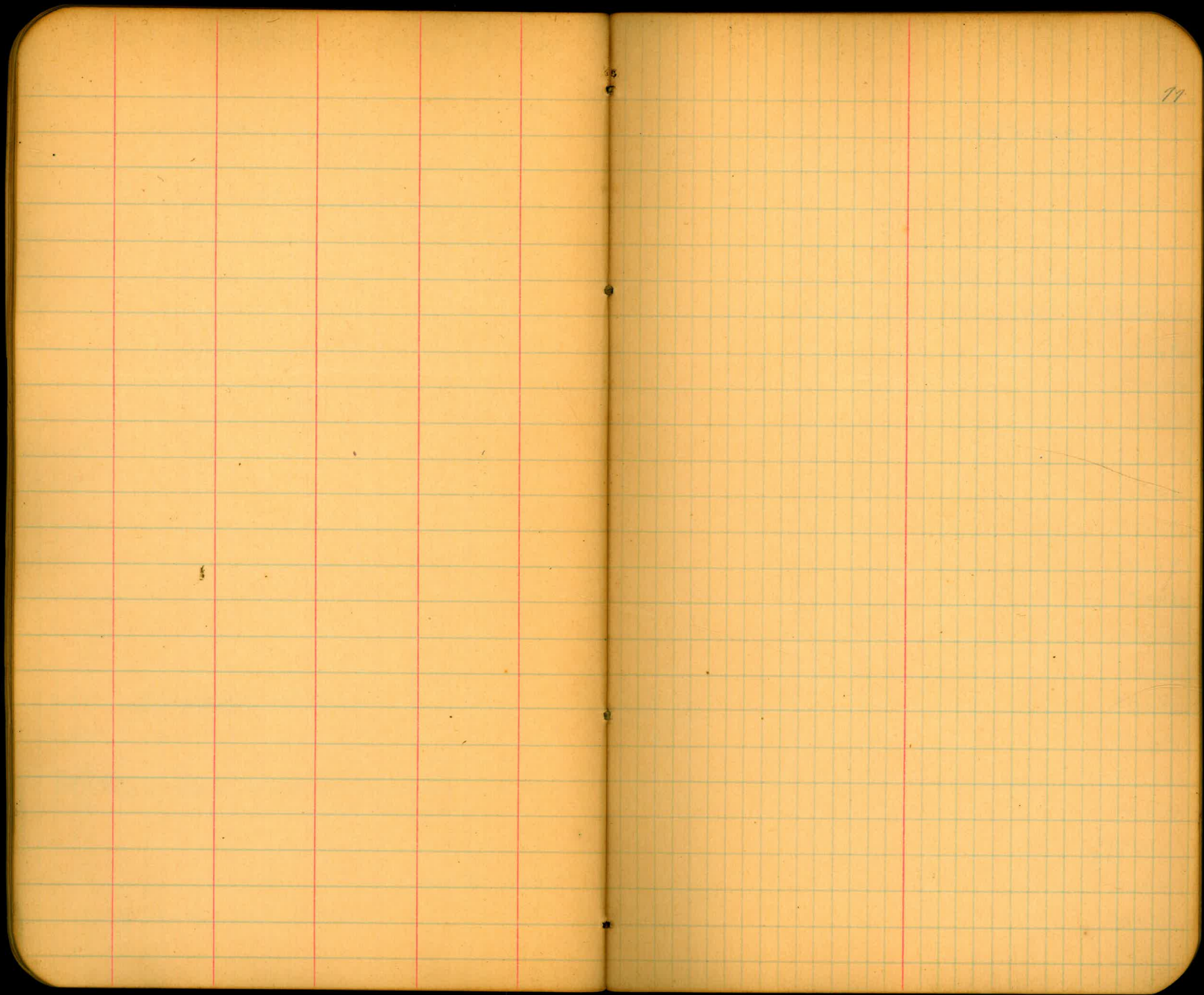
+20⁰⁰ Δ Permanent Corner, north-west
corner of 1296.

E

10

Δ

Course
W



29+78.56 1st meander
Sta. 0702 of meander produced on South
along property line.

12

0702 Δ 34°15' LT.

+255 To line of trees on S. side of Road.

+682 Δ 15°00' RT

+972 Δ 4°30' RT.

1+02

+225 Δ 9°45' RT.

+922 Δ 6°56' RT. = Hub on prop line 45 ft W. of Sec. Line.

2+02

3+02

4+02

5+02

6+02

7+02

8+02

9+02 Δ

10+02

11+02

12+02

13+02

14+02

15+02

+572 Δ

16+02

17+02

18+0°

19+0°

20+0°

21+0°

22+0°

23+0°

24+0°

25+0°

26+0°

Hub on

+56²⁰/₂₁ = N South boundary Sec. 12. 22

27+0°

28+0°

29+0°

30+0°

31+0°

+23²⁴/₂₄ = Sta. 65+85⁴⁸ of meander along

Prop. Line following Canyon Road.

+23²⁴/₂₄ 33°07' Lt. to hub at Sta. 65+70° of meander.

Line along ^{W 12} South Boundary 1296

Sta.

0+0⁰ Δ = Center of South Boundary 1296

+45⁰ Δ = Prop. Line 11 to Sec. Line.

1+0⁰

2+0⁰

3+0⁰

4+0⁰

5+0⁰

6+0⁰

+06.58⁰

+22⁰ = East edge of canyon.

7+0⁰

+50⁰ = Bottom of Canyon.

8+0⁰

+65⁰ = West edge of Canyon.

9+0⁰

10+0⁰

+242⁰ Δ = Old Hub on Sec. Line.

11+0⁰

12+0⁰

13+0⁰

+1855⁰ Δ S. W. Corner 1296.

Sec. P. 44.

E.

17

Sta.

0+0² = Stone monument N.W. Cor. 12961+0²2+0²3+0²4+0²5+0²6+0²7+0²8+0²+598² Δ Hub 2 ft. east of old hub.9+0² = Edge of canyon. (north)10+0²+50² Δ Old A11+0²12+0²+64² Center of road.13+0² Δ +25² Bottom of Canyon.14+0²+55² Δ South edge of canyon.15+0²+41² Δ 16+0²

W. Line 1296 - Cont.

Sta.

17+0⁰

18+0⁰

19+0⁰

19+81⁰₄

20+0⁰

21+0⁰

22+0⁰

23+0⁰
+50²⁴ R.I. Meander Prop. Line Sta. 20+47⁰⁵

50° 33' LT. to Line ahead.

24+0⁰

25+0⁰ Not put in. Rock.

26+0⁰

+41³² S.W. Cor. 1296. Stone Mark

Angle E. to South Boundary = 90° 07'

Meander. Continuation of Prop.
Line Run along east side of Canyon
Road. Tangent from $0+0^2$ to $23+45^2$
etc.

Course to $23+45^2 - 5.17^{\circ} 30' W.$

$23+45^2$ $38^{\circ} 00' Lt.$ (Calcu. Course)

$24+0^2$ $5.15^{\circ} 30' E$ ✓

$25+0^2$

$26+0^2$

$27+0^2$

$+52^{\circ} A = 8 + 93^{\circ} 30'$ of Sec. Line 1299

$106^{\circ} 31' Rt.$ to Stone monument on

S.W. Cor. 1299.

$+52^{\circ} A$ $9^{\circ} 30' Rt.$

$28+0^2$ $5.6^{\circ} 00' E.$ ✓

$29+0^2$

$30+0^2$

$31+0^2$

$+75^{\circ} A$ $22^{\circ} 30' Lt.$

$32+0^2$ $5.28^{\circ} 30' E$ ✓

$+20^{\circ} A$ $31^{\circ} 30' Rt.$

$33+0^2$

$+20^{\circ} A$ $31^{\circ} 30' Rt.$

$34+0^2$ $5.3^{\circ} 00' W$

$+53^{\circ} A$ $15^{\circ} 00' Lt.$

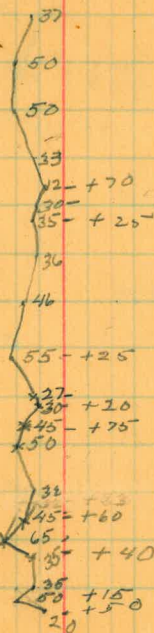
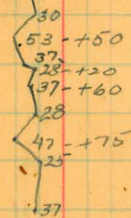
$35+0^2$ $5.12^{\circ} 00' E.$

$36+0^2$

N.

17

Head of Gulch → Bisect. L



Sta. Meander - Cont. ^{Cal.} Courco

37+0⁰
+20° 426° 30' RT.

38+0⁰ 5.14° 30' W ✓
+90° 4 18° 00' LT.

39+0⁰ 5.8° 30' E ✓
40+0⁰
+25° 4 35° 00' LT.

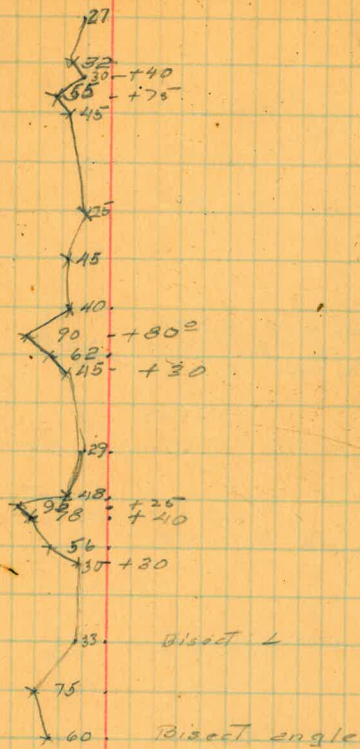
41+0⁰ 5.38° 30' E ✓
+70° 4 37° 30' RT.

42+0⁰ 5.1° 00' E ✓
43+0⁰
44+0⁰
45+0⁰
+15° 4 48° 30' RT.

46+0⁰ 5.42° 30' W ✓
+90° 4 18° 30' LT.

47+0⁰ 5.29° 00' W ✓
48+0⁰
+07° 4 46° 00' LT.

49+0⁰ 5.17° 00' E ✓
50+0⁰
+25° 4 Hub. Point on tangent.



Sta. Meander Cont. ^{Cal.} Course

51+0⁰

52+0⁰
+65⁰⁰ Δ 37°30' LT.

53+0⁰ S. 54°30' E ✓

54+0⁰ +62⁰⁰ Δ 41°00' RT. S. 13°30' E

55+0⁰

56+0⁰ +50⁰⁰ Δ 16°30' LT. S. 30°00' E. ✓

+00⁴² Δ = Hub on Sec. Line. South Boundary 1296.

+00¹⁸ Δ 60°01' LT. to Cor. at center of South Boundary 1296.

+50⁰⁰ Δ 36°00' RT.

57+0⁰ S. 6°00' W. ✓

+40⁰⁰ Δ 33°00' LT.

58+0⁰ S. 32°00' E ✓

+40⁰⁰ Δ 31°30' LT.

59+0⁰ S. 63°30' E ✓

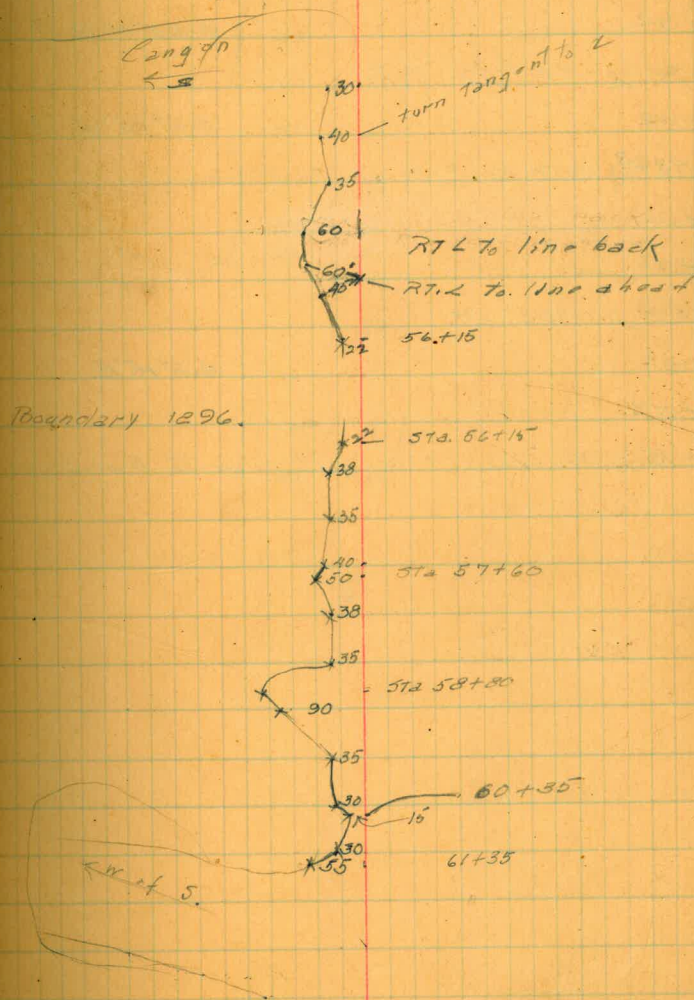
+70⁰⁰ Δ 12°00' LT.

60+0⁰ S. 76°30' E ✓

61+0⁰ Δ 29°00' RT.

62+0⁰ S. 47°30' E ✓

63+0⁰



Sta. Meander - Cont. ^{Cal.} Course

63+45² 19°15' Rt.
 +85² 4 = { Sta. 31+23² of Prop. Line 1/2 to E. Bound 1280
 64+0² 146°53' Lt. to Prop. Line.

65+0² 5.28°15'E ✓

+70² 4 28°00' Rt.

66+0² 5.4°45' W. ✓

+73² 2 Intersection with Prop. Line.

67+0²

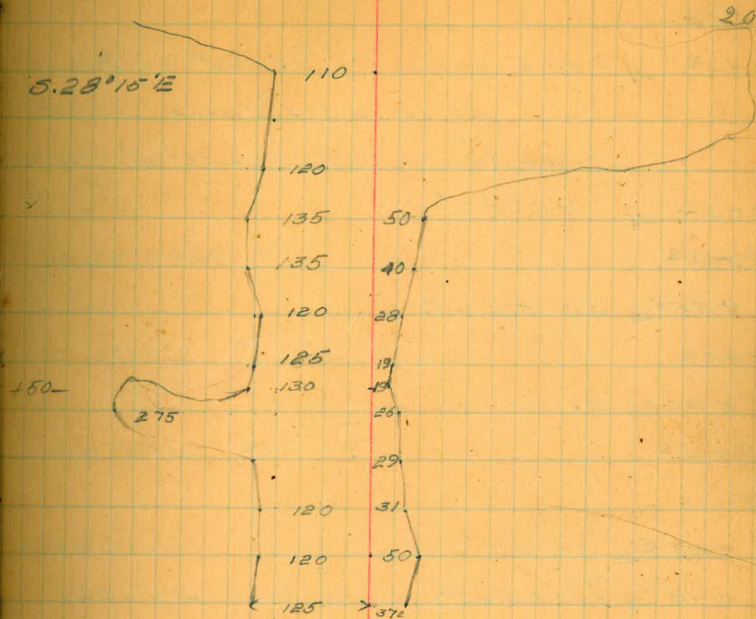
68+0² 150-

+80² 4 11°00' Lt.

69+0² 0.6°15'E

70+0²

+75² 4 Approx. Intersection with Sec. Line.



Meander of Prop. Line W. of Canyon.

Sta. 0+0² Δ = Hub opposite ^{Sta} 23+45² of Prop. Line along E. side Canyon Road.

Offset 60 ft. from 23+45² at Rt L. to

Prop. Line. Course of Prop line $5.17^{\circ}30' W.$
Cal. Course

0+0² Δ $73^{\circ}00' LT.$

5.39°30' W. ✓ 30.

1+0²

+55² Δ $50^{\circ}30' LT.$

5.16°00' E ✓ 35.

2+0²

+90² Δ $21^{\circ}00' RT.$

5.0°00' W. ✓ 30.

3+0²

4+0²

+143² Δ $84^{\circ}58' RT.$ to Stone man. S.W. Cor 1299

+13² Δ = ^{Sta} 11+23² South Boundary 1299.

+143² Δ $04^{\circ}00' RT.$

5.9°00' W. ✓ 30.

5+0²

6+0²

+130² Δ $7^{\circ}30' LT.$

5.1°30' W. ✓ 40.

7+0²

8+0²

9+0² Δ $13^{\circ}00' LT.$

5.11°30' E. ✓ 30.

10+0²

11+0² Δ $22^{\circ}00' RT.$

5.16°30' W. ✓ 30.

12+0² Δ $7^{\circ}30' LT.$

5.3°00' W. ✓ 30.

Cont. P. 58

29 End of Canyon. 21

0+40

Meander of Road Running North
through trees from in front of Bank
House.

Sta. 0+02 Meander = Sta. 12+50² 7'

0+02 Δ 82°30' Lt. from Cen. Center of N. Road

1+02

2+02

3+02

+70² Δ = Intersection with Road from House.

+70² Δ 23°45' RT.

4+02

+80² Δ 12°15' RT. - ~~RT.~~

5+02

6+02

7+02

+60² Δ 8°15' Lt.

8+02

9+02

10+02

+65² Δ 41°30' RT.

11+02

+80²⁸ Δ = Sta. 20+06⁶⁵ Δ New Road.

+80²⁸ Δ 91°25' Lt.

12+02

13+02

14+02

Showing Dist. Δ to trees. 22

Cal.
Course

1299

N. 7°30' E

122

92

142

112

162

112

25²

Δ

222

282

192

N. 31°15' E

N. 43°30' E.

92

192

112

152

122

92

112

Δ

112

N. 40°15' E.

122

122

82

112

72

112

N. 31°45' E.

Δ

Sta.

15+0⁰

16+0⁰

16+12¹⁵ Δ = Hub on \curvearrowleft of New Road Sta. 15+72⁹⁰

+12¹⁵ Δ = P.I. of Road to Left.

+12¹⁵ Δ = 0+0⁰ of Meander of Road to Left.

0+0⁰ Δ 75°15' Lt. from Sta. 14+45³⁰

1+0⁰

N. 87° 57' W

2+0⁰

+75° Δ 46° 20' Rt.

3+0⁰

N. 41° 37' W

+25° P.O.T.

4+0⁰

5+0⁰

6+0⁰

7+0⁰

+75° P.O.T.

8+0⁰

9+0⁰

10+0⁰

Δ = Sta. 14+39⁵³ \curvearrowleft North Road

+25¹⁵ Δ P.I. with North Road. 42° 05' Rt. to N. Road ahead.

+25¹⁵ Δ 10° 30' Lt. (Note. Should be 42° 13')

+57¹⁵ Δ 32° 32' Lt. N. 52° 07' W

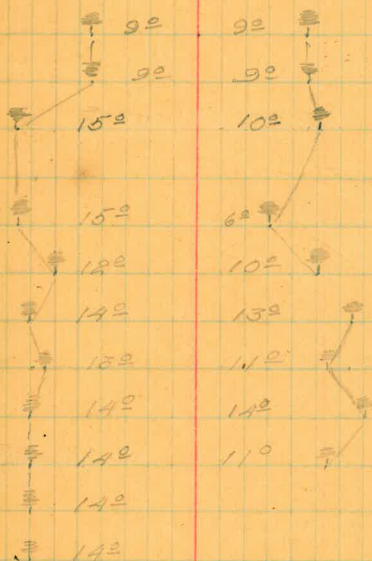
+90⁵⁰ Δ = P.I. at Sta. 17+50²⁵ of Linda Vista Road

Δ 34° 16' Lt. to \curvearrowleft Linda Vista Road back.

23

\curvearrowleft

Showing Distance of trees from \curvearrowleft





24



Sta. 0+02 of E North Road = Sta 5+15⁰⁰
of "B" Line.

Sta.

0+00 Δ 89°24' Lt. to E North Road.

1+00

2+00

3+00

+37⁰³ P.O.T.

4+00

5+00

6+00

7+00

8+00 Δ P.O.T.

9+00

10+00

11+00

12+00

13+00

14+00

+39⁰³ = P.I. Sta. 10+25¹⁵ of Meander of
+94⁵⁵ Road Running N. from Sta. 15+72²⁵ of

15+00

16+00

17+00

18+00

25

N. 00° 36' E.

10⁰⁰

12⁰⁰

15⁰⁰

11⁰⁰

J

17⁰⁰

11⁰⁰

17⁰⁰

40⁰⁰

Branch of New Road.

New Road. 42°05' Lt. to
Lt. to Linda Vista Road ahead.

22⁰⁰

21⁰⁰

24⁰⁰

22⁰⁰

☐ of North Road = Cont.

19+00
20+00
21+00
22+00
23+00 A
24+00
25+00
26+00
27+00
28+00 A
29+00
30+00
31+00
32+00
33+00 A
34+00
35+00
36+00 A
37+00
38+00
39+00
40+00
41+00 A

+762.4 = P. I. N. Line 1311. 89°17' Rt. To stationing ahead on line 1311

+382.5 = P. I. Sta. 9+96.50 ☐ Cross Road 90°36' Rt.

☐	232		222	☐
☐	242		222	☐
☐	242		222	☐
☐	242		222	☐
☐	252		222	☐

N. 00°36' E.

Line of Trees

Line of Trees

← of North Road - Cont.

Sta.

42+00

43+00

44+00

+66²⁵/_A

45+00

+46¹⁵/_A 3°55' LT.

46+00

47+00

48+00

+172²⁵/_A P.I. M. Line 1314. Sta. 10+25 25/92°57' RT. to Eec Line.

49+00

50+00 A

51+00

52+00

53+00

54+00

55+00 A

56+00

57+00

+30⁵³/_A

← of North Road.

27

M. 100° 36' E.

22°

22°

22°

25°

M. 80° 57' W.

24°

25°

22°

24°

23°

23°

Sec. Lind V. Bound of 1311.

Sta.

0+00 Δ Stone Mark NW Cor. 1299.

1+00

2+00

3+00

4+00

5+00

6+00

7+00

8+00

9+00

+10²⁵

10+00

11+00

12+00

13+00

+63.50 Δ = Cross Road. P. lat Sta. 6+4963

14+00

15+00 Δ

16+00

17+00

+25.9 Δ = E. Branch of Lind V. Road, 52°03' Lt. to A & Road.

18+00

19+00

Lot No. Δ

28

Δ
R
O
D

25² 25⁰

Line of Poles

25² 25⁰

Sec. Line, W. Bound 1311
Cont.

20

Sta.

20+02

21+02

22+02

23+02

24+02

25+02

26+02

+37⁰¹/₂ Stone monument at N.W. Cor. 1311

+37⁰¹/₂ Inside angle to mon. 1/2 mile E. $89^{\circ}58'$ = N.E. Cor. 1311.

Continuing North. $400^{\circ}02'$ Rt.
W. Line of 1311

27

28

29

30

31+02

32+02

33+02

34+02

35+02 \triangle

36+02

37+02

38+02

Cont. P. 38.

Sta.

30

0+00 A Stone monument. N.W. Cor 1311. Inside angle 1311 = $89^{\circ}58'$

1+00

2+00

+3+05 A

3+00

4+00

5+00

6+00

7+00

8+00

9+00

10+00

P.I. at Sta. 21+76 $\frac{1}{2}$ of E North Road.

+11+00 A = Intersection E North Road $89^{\circ}14'$ Lt.

11+00

12+00

13+00

+14+00 A

14+00

15+00

16+00

17+00

North Line 1311 - Cont.

Sta.

18+00 - 18+69⁹⁵ = A Sta. 297 33² meander of \angle Linda Vista Road.

46° 26' Lt. to \angle Linda Vi Road.

+80 = Edge of trees.

19+00 A

20+00

+100 = Edge of trees.

(our line strikes

at 76° 31' Lt. to P.I. \angle New Road.

+120² = \angle of New Road (ht. of tack in hub

center New Road. 232.21 N. to P.I. Linda Vista Road.

21+00

22+00

23+00

24+00

25+00

26+00

+39² = Post. N.E. Cor 1311. Line strikes 28 ft N.

Meander of Linda Vista Road

32

Sta.	Cal. Course
0+0 ² Δ = P.I. of L.F. Road. Approx. Angle 12°00' RT. (To get true angle when run meander of L.F. Road.)	
1+0 ²	N. 12° 15' E.
+90° Δ 8°00' RT.	Δ
2+0 ²	
3+0 ²	N. 20° 15' E.
+10° Δ 7°30' RT.	Δ
4+0 ²	N. 27° 45' E.
+20° Δ 8°45' RT.	Δ
5+0 ²	N. 36° 30' E.
+85° Δ 6°40' RT.	Δ
6+0 ²	N. 43° 15' E.
+49° Δ = P.I. of W. Boundary of 1311. Δ 42° 15' LT. to Men. N.W. Cor. 1311.	
+49° Δ = Sta. 13+63 ² " " 1311	
+86.1 ² Δ = P.I. of G Road. 4 to W Bound. 1311.	
+86.1 ² Δ 6°45' RT.	Δ
7+0 ²	N. 50° 00' E.
+90° Δ 8°28' RT.	Δ
8+0 ²	N. 58° 28' E.
9+0 ²	
+08° Δ 2°51' RT.	Δ
	N. 61° 19' E.

← Linda Vista Road Cont.

Sta.

Cal.
Course

33

10+02

N. 61° 19' E

11+02

+25° Δ P.I. of another branch of Road.
Swings N 84° W to P.I. with L.F. Road.

+25° Δ = 0+02 of meander of Branch.

12+02

13+02

14+02

15+02

16+02

17+02

+50° Δ P.I. of Cross Road starting at Sta. 15+74.25 of New Road \angle 34° 16' Rt. to meander X Road back.

18+02

+12° Δ = P.I. Sta. 14+94.25 of North Road.

+17° Δ P.I. \angle 60° 37' Lt. to tangent North Road ahead.

19+02

20+02

21+02

22+02

23+02 Δ 9° 37' Lt.

+70° Δ 8° 08' Lt.

Δ
N. 51° 42' E.

Δ
N. 43° 34' E.

24+02

25+02

↳ Linda Vista Road - Cont.

Sta.

26+02

27+02

28+02

29+02

+33²² Δ P.I. with N. Boundary 1311. $\angle 46^{\circ}25'$ Rt. from Stationing ahead to
Post. NE Cr. 1311

30+02

31+02

32+02

+43²² Δ P.I. with E of New Road. $149^{\circ}58'$ Rt. to E New Road.

+43³² Δ P.I. on E New Road 232²² ft. N. of P.I. N. Boundary 1311 + E New Road.

Cal.
Course

34

N. $43^{\circ}34'$ E.

Traverse of Branch of Linda Vista
Road swinging North to run to P.I. with L. A. Road.

Sta.

0+0⁰ Δ = P.I. at Sta. 11+25⁰ Linda Vista Road.

0+0² Δ 20°40' RT. from line produced
back from Sta. 13+10⁰⁰, P.I. North Road from Camp.

1+0² Δ 13°15' RT.

2+0² Δ 14°30' RT.

3+0²

4+0² Δ 18°00' RT.

+95²² Δ Center of Road running N to W. Line 1311

4+0²

+86²⁰ Δ P.I. Sta. 17+25² W. Line 1311.

+26²⁰ Δ 52°08' RT. To Stone Man. N.W. Cor. 1311

+55²⁰ Δ 13°00' RT.

5+0²

+95² Δ 10°15' RT.

6+0²

4+0²

+10² Δ 9°30' RT.

8+0²

9+0²

+96² Δ P.I. main Loo A. Road, 159°53' Lt. to P.I. L.A. 70+0² of Linda V. Road.

Calc.
Course

35

Δ
S. 82° 04' W.

Δ
N. 84° 41' W.

Δ
N. 70° 11' W.

Δ
N. 52° 11' W.

Δ
N. 39° 11' W.

Δ
N. 28° 56' W.

Δ
N. 19° 26' W.

0102 of Canyon Road Produced N.
Sta. 9 + 9/2 of N. Line 1299.

0102 A on Canyon Road.

A from E " " produced = 8°15' Rt.

1102

2102

+072 A R L

+652 A 38.00 Aug 4 1913

3

+662 A 14.14

4

+94.40 intersect line East of barn

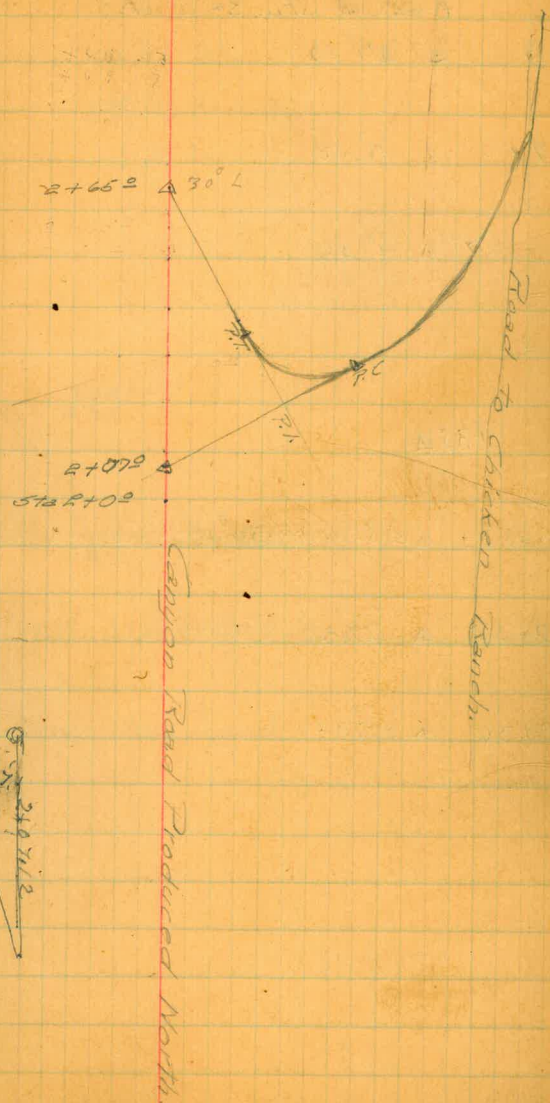
5

6

7

+12.720 = Sta. 2+07.12 of Road running north from camp

36



R L

Sta. 3+70 of Road running WEST of

0 Δ 27.10

1 Δ 16.00

+70 Δ 12.29

2

+35A

+88.83 Δ 37.17

2+35 Δ 77.40

0+36 Δ 357.03

Aug 4. 1913.

37

garden

interior angle Δ 26 23.0

+90 26 17.

+90 11 11

9 11

+30 - 5 17

+90 15

interior angle = Sta. 2+07 of Canyon Road

of above road 36 ft = 2+65 of Canyon Road

to 3+60 of Canyon Road

- 39+00
- 40+00 A
- 41+00
- 42+00
- 43+00
- 44+00
- 45+00 A
- 46+00
- 47+00
- 48+00
- 49+00
- 50+00
- 51+00

52+76 ⁵⁶/₄ Stone Monument

+76 ⁵⁶/₄ A of line Back = 5+00 Stationing ahead along W. Line 1323.

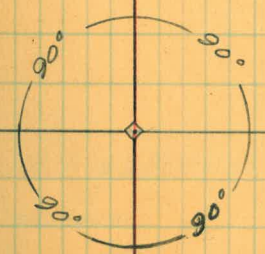
along W. Line of

See page 40.

Tangent from back produced ahead. No deflection

1314

1313



1323

1324

Road Running W. from House.

Sta. Δ R Δ L C.C.

59

+46.42 Δ = 4.194.40 of Canyon Road

19

+74.89 Δ = 0 of line running North bet Tank and Bangalore

+20.11 Δ 14.00' 389.56E

10

+85 Δ 17.40' N75.58E

+454

trees 30 + 19.5 19.5 + 30

9

8

7

6

5

4

3

2

1

0

Δ 64.18' N64.18E interior angle

0 = Point 20.66 feet north of Stone

trees - 30 + 19.5 19.5 + 30

from hub north of
Mon. N.W. Cor. 1299.

August 4, 1913.

Line W. Boundary of 1323.
Running N. from Monument at S.W. Cor 1323

40.

Sta.

0+00 Δ of W. line 1323 = 52+76 Δ W. line 1314

1+00 No deflection in line produced ahead.

2+00

3+00

4+00

5+00 Δ P.O.T.

6+00

7+00 From this station nails used

8+00 as plugs.

9+00

10+00 Δ P.O.T.

11+00

12+00

13+00

14+00

15+00 Δ P.O.T.

16+00

17+00

18+00

19+00

20+00 Δ P.O.T.

+71² = Approx. P.I. Center of Road.

Sta

21+00

22+00

23+00

24+00

25+00 A P.O.T.

26+00

+40⁰⁰ A Stone Monument at N.W. Cor. 1323.

and line

26+40⁰⁰ Δ Stationing cent. ahead from our hub.

27+00

28+00

29+00

30+00 A P.O.T.

31+00

32+00

33+00

34+00

Cont. P. 51.

Remarks
Original

Monument has evidently been washed by rain until it has settled to the N and W. Left stone as it was and put in hub on true line at as nearly correct dist. as could estimate. Found old line of stakes. Our line checks with them.

Sta.

0+0.0 = Old Post Center S. Half 1299.

1+0.0

2+0.0

3+0.0

+58° 00' Δ Fence Interferes. 90° offset 10 ft. R.

4+0.0

5+0.0

6+0.0

7+0.0

+60° 00' Δ

8+0.0

9+0.0

10+0.0

+34° 00' Δ Offset back 10 ft. to line

11+0.0

Sta. 56+80.50

+46° 50' Δ = P.I. of New Road 68° 13' R. to Road ahead

12+0.0

13+0.0

+20° 00' Δ S.E. Cor. 1299 = N.E. Cor. 1296

14+0.0 Linehead = S. Line -

15+0.0

16+0.0

17+0.0



Sta. S. Line Cont.

18+00

19+00

+65°₂₁

20+00

21+00

+50°₂₁

22+00

23+00

24+00 Δ

25+00

26+00

+80°₂₁ Old Post.

E. Half of S. Line of 1296.

Hubbed but not staked.

Sta. Def. $00^{\circ}02'$ Lt.

$0+0^{\circ} \Delta =$ Post = Sta. $0+0^{\circ}$ of W. $\frac{1}{2}$ of S. Line of 1296.

$1+0^{\circ} \Delta$

$2+0^{\circ}$

$3+0^{\circ}$

$+95.9 \Delta$

$4+0^{\circ}$

$5+0^{\circ}$

$6+0^{\circ}$

$7+0^{\circ}$

$+18.50 \Delta$

$=$ Fence

$=$ P.I. E. New Road Sta. $84+09.25$.

$+69.96 \Delta$

$8+0^{\circ}$

$9+0^{\circ}$

$10+0^{\circ}$

$11+0^{\circ}$

$12+0^{\circ}$

$13+0^{\circ}$

$14+0^{\circ}$

$+20^{\circ} \Delta$

$=$ S.E. Cor. 1296, Stationing ahead

$15+0^{\circ}$

$=$ W. $\frac{1}{2}$ S. Line 1296.

$16+0^{\circ}$

$+87.65 \Delta$

7780.
10.04
7469.96

44.

W. Δ General Course - Due East

V E

$73^{\circ}18'27''$ To Sta $82+15^{\circ}$ E New Road.

Sta.

16+00

17+50⁶⁹₇₄

18+00

19+00

20+00

21+00

22+00

23+00

24+00 Δ Nail and guard-stake.

Check 02' def

+50⁰₄ Hub.

25+00

26+00

+40⁰₄ = Cor. 1/4 mile E. of S.E. Cor 1296.

27+00

28+00

29+00

+60⁷⁰₄ Int. Angle Bet. N.W. Cor 1292 and

S. Line 1295. 75° 50'

Course of W. Line 1292, N. 14° 10' E

"A" Line. Cont. E. (See other book.)

13+20⁰⁰ Old Post Center N. line 1299.

E and W line \perp to N. and S.

14+20⁰⁰

15+0⁰⁰

16+0⁰⁰

+ A = Hub = P. O. T.

17+0⁰⁰

18+0⁰⁰

19+0⁰⁰

+ 47⁰⁰ A = P. L. Sta. 29 + 27⁰⁰ of \curvearrowright New Road.

98° 48' Rt. to \curvearrowright New Road ahead.

20+0⁰⁰

21+0⁰⁰

22+0⁰⁰

23+0⁰⁰

24+0⁰⁰

25+0⁰⁰

26+0⁰⁰

+ 44⁰⁰ A S. E. Cor. 1299.

180
87 12
95.48

26.

Meander's around eucalyptus grove,
No 1. Grove on N.W. 1/4 of N.W. 1/4 of 1299.

Sta.

0+0° Δ = Sta. 6+64³³ of N. Line 1299.

0+0° Δ Angle from Sec. Line ahead 66°06' RT.

1+0°

+01° Δ 10°15' LT.

2+0°

+45° Δ 127°46' RT.

3+0°

4+0°

+53° Δ 23°00' RT.

5+0°

6+0°

+56° Δ 23°00' RT.

7+0°

8+0°

+62° Δ 15°15' LT.

9+0°

10+0°

11+0°

+138° Δ Sec. Line. External \angle 85°37'

+138° Δ = Sta. 1+41⁴⁵ of E. line 1299.

Cal.
Course.

Δ

S. 23°54' E.

Δ

S. 64°09' E.

Δ

S. 63°36' W.

Δ

S. 56°36' W.

Δ

N. 70°24' W.

Δ

N. 85°39' W.

Rt. to Stone Mon. N.E. Cor. 1299. Δ

North.

90° Rt. to N. Line 1299. Δ

East

Sta.	Cal. Course.
0+0 ² Δ of traverse = Sta. 7+02 ² of S. line 1311.	
0+0 ² Δ 37°15' Lt. from Stationing ahead on line 1311.	Δ N. 52°45' E.
+32 ² Δ 13°45' Rt.	Δ
1+0 ²	N. 66°30' E.
2+0 ²	
3+0 ² Δ 3°00' Rt.	Δ
4+0 ²	N. 69°30' E.
+59 ² Δ 68°45' Lt.	Δ
5+0 ²	N. 00°45' E.
6+0 ²	
+67 ² Δ 91°30' Rt.	Δ
7+0 ²	S. 87°45' E.
+76 ² Δ 91°30' Lt.	Δ
8+0 ²	N. 0°45' E.
9+0 ²	
10+0 ² Δ 90°00' Lt.	Δ
+96 ² Δ 89°37' Rt. Note: - Long tan ahead	N. 89°15' W.
11+0 ² to Sta. 22+05 ² is 5.0 ft	Δ
12+0 ² E. of true boundary.	N. 6°22' E.
13+0 ²	
14+0 ² Δ P.O.T.	
15+0 ²	
+95 ² Approx. = P.O.T.	

Traverse of Grove - Cont.

Sta.

16+02

17+02

18+02

19+02 A.P.O. Tr.

20+02

21+02

22+02

+05° = Edge of trees.

+20° = Approx. Center Road.

+30° = Hub

+30° Δ 44° 27' Lt. to P.I. of North Road and
Road running W. from New
Road.

Dist. from hub at

+30° Δ to P.I. = 204.13

NOTE: - Triangle between
New Road, Linda Vista Road
and W. Branch from 14+45⁰² of New Road.
all planted to trees.

22+30
10 92
11 34

49

Tie-in of Clearing for Lower Camp

572.

10+22°

10+60°

11+0°

12+0°

12+50°

13+25°

14+0°

15+0°

16+0°

17+0°

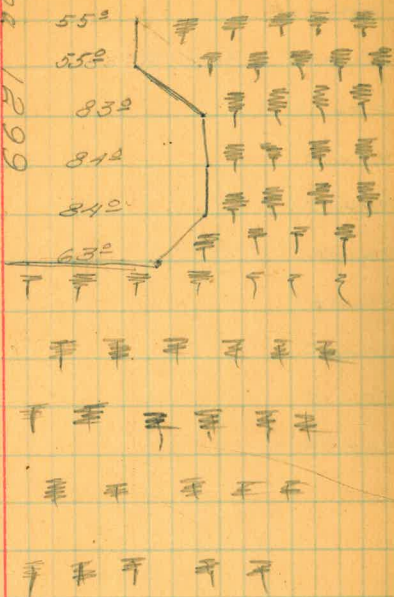
18+0°

19+0°

+55°

50

N. Line 1899



Sta. W. Line 1323 Cont. from P. 41.

35+00

36+00 A.P.O.T.

37+00

38+00

39+00

40+00 A.P.O.T.

41+00

42+00

43+00

44+00

↳ New Road - Cont. Picked up
Line and Stationing at nail Sta.

52

Sta.		6.18°28'W
70+0 ²	Δ 10°45' LT.	
71+0 ²		5.7°48'W
	+59° Δ 4°10' LT.	
72+0 ²		
73+0 ²		
74+0 ²		
	+25° Δ P.O.T.	
75+0 ²		
76+0 ²		
	+93 ²³ / ₄ P.O.T.	
77+0 ²		5.3°33'W
78+0 ²	Δ 11°00' LT.	
79+0 ²		5.7°27'E
	+51° Δ 7°30' RT.	
80+0 ²		
81+0 ²		5.00°3'W
	+23° Δ 6°30' RT.	
82+0 ²		5.6°38'W
	+15° Δ 2°15' RT.	
83+0 ²		

← New Road - Cont.

Sta.

83+85² = Center of Gulch 25² ft wide; 15² ft deep.

84+0²

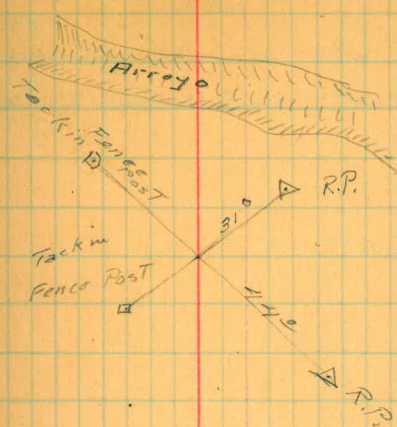
5.16° 18' W

+09²⁵ P.I. S. Line 1296 at Sta. 7+69. ²⁶

+09²⁵ 106° 18' Lt. to S.E. Cor. 1296.

106 17
73
1800

53.

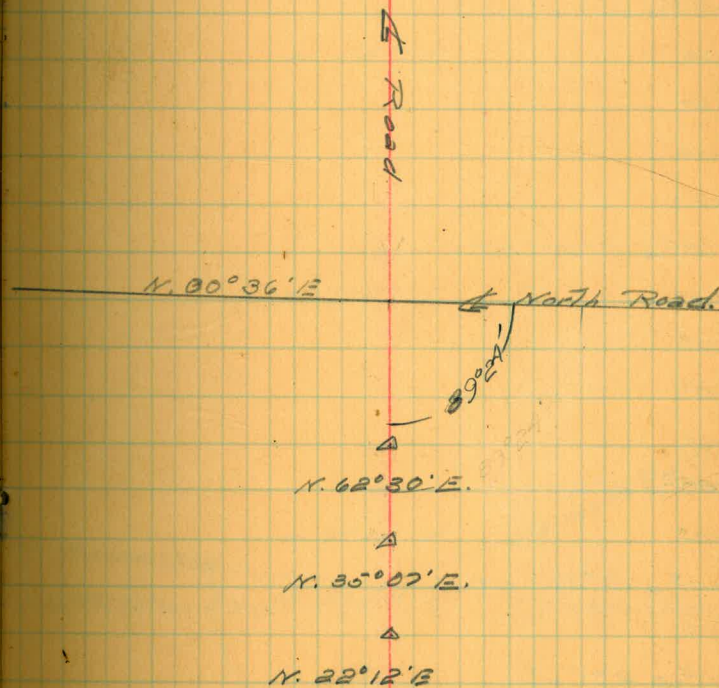


Road Crossing North Road.

Sta. P.T. of Road II W. Line of 1314.
 0+00 Δ Opp. Sta. 35+00 W. Line ¹³¹⁴
 0+00 Δ Cross Road \perp Road II Sec. Line.
 1+00
 2+00
 3+00 Δ P.O.T.
 4+00
 5+00
 6+00
 7+00
 8+00
 9+00 Δ P.O.T.
 +96⁵⁰ Δ P.L. North Road. Sta. 30+38²⁵
 +96⁵⁰ Δ 89°24' Lt. to Sta. ahead \perp North Road.
 10+00
 11+00
 +93° Δ 27°30' Lt.
 12+00
 +93° Δ 27°23' Lt.
 13+00
 +88⁵⁰ Δ 12°55' Lt.
 14+00

Cal.
 Courses.

Considering W. Line 1323 due
 North, \perp of Road = Due East.



Sta.
 15+00
 16+00
 17+00
 18+00
 19+00
 20+00
 +17³⁰ 20°15' LT.
 21+00
 22+00
 23+00
 24+00
 +18³⁰ 5°30' RT.
 25+00
 26+00
 27+00
 28+00
 +88³⁰ 9°45' LT.
 29+00
 30+00 10°30' LT.
 +96³⁰ = P.I. N. Line 1314. Sta. 16+46³⁰ - 102°51' RT to
 31+00
 32+00 2°41' LT.

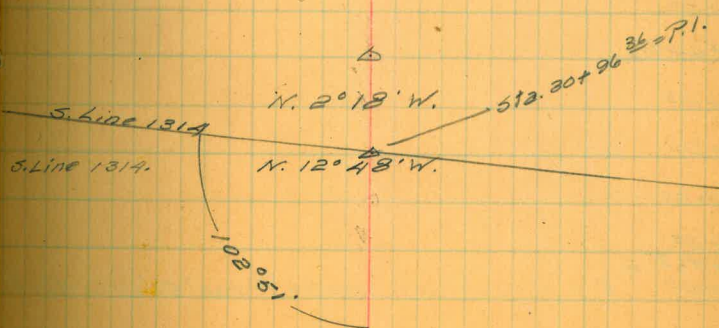
Cal.
 Course
 N. 22°12'E

N. 1°57'E

N. 7°27'E

N. 2°18' W.

N. 12°48' W.



N. Line of 1314

Sta.

0+00 Δ = Stone monument N.W. Cor. 1314

N. Line 1314 \perp W. Line 1314.

0+25.2 = \Leftarrow Road.

1+00

2+00

3+00

4+00

5+00 Δ

6+00

7+00

8+00

9+00

10+00

125²⁵ Δ P.I. North Road Sta. 48+17.25 $92^{\circ}57'$ L.T. to \Leftarrow Road
+38²⁴ P.O.T.

11+00

12+00

+68¹⁰ Δ

13+00

14+00

15+00

16+00

+76³³ Δ

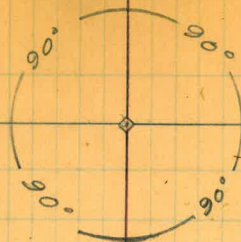
17+00 P.I. Cross Road. 30+96³⁶ $102^{\circ}51'$ L.T. to 321⁰

17+00

1313

1324

56.



1314

1323

57a.

18+02

19+02

20+02

21+02

22+02

23+02

23+40²⁵ P.O.T.

24+02

25+02

+86²³ P.O.T.

26+02

+41²⁷ N.E. Cor. 131A

Meander Prop. Line W Side Canyon
Cont. from P. 21.

Sta.

12+00 Δ 7°30' Lt.

13+00

+65° Δ 45°30' Rt.

14+00

+45° Δ 40°45' Rt.

15+00

+42° Δ P.L. W. Line 1296. Sta. 8+73⁴² W. Line 1296.

+42° Δ 119°14' S. To W. Line 1296.

+42° Δ 59°00' Lt. to Line ahead.

16+00

17+00

18+00

19+00

+95° Δ 19°38' Rt.

20+00

21+00

22+00

23+00
+92° Δ = P.L. Cross Road, 12+81¹², 45°20' to Xroad Δ ahead.

+42° Δ 55°45' Lt.

24+00

25+00

26+00

Cal.
Course.

Δ

5.8°00' W. ✓

Δ

5.78°30' W. ✓

Δ

46.60°45' W. ✓

1296.

Δ

5.60°15' W. ✓ +702

9+10 = 80

+40

+45

+80

18 + 40

+80

+75

Δ

5.79°45' W. ✓

Δ

5.24°00' W. ✓

+15

+65

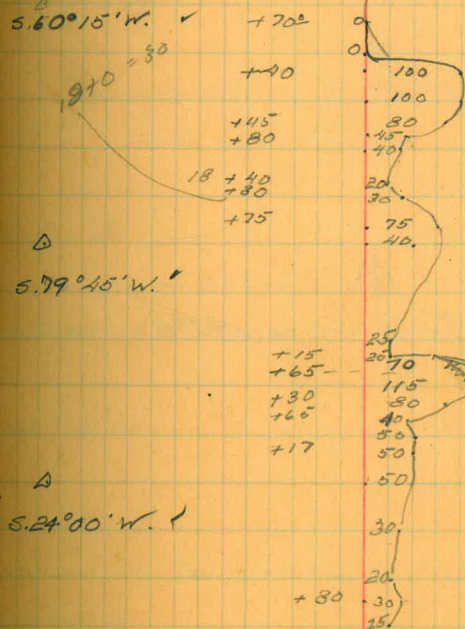
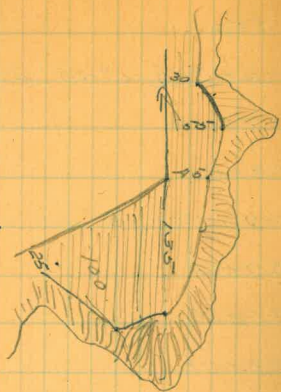
+30

+65

+17

+80

58.



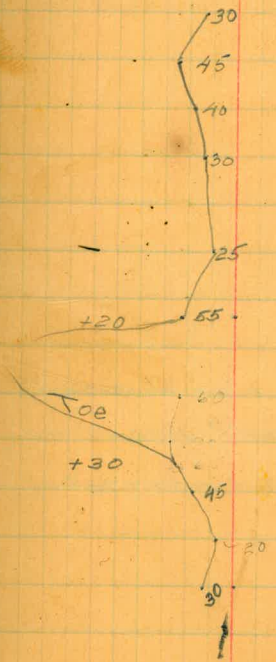
Sta.
 26+74 Δ 11° 45' Lt.
 27+0 Δ
 28+0 Δ
 29+0 Δ 15° 00' Lt.
 30+0 Δ
 31+0 Δ
 32+0 Δ
 33+0 Δ 23° 00' Rt.
 34+0 Δ
 +06 Δ 10 ft. offset Lt. to center road.
 Line from offset line back.
 +06 Δ 21° 30' Lt.
 35+0 Δ
 36+33 Δ 10 ft. offset Lft. to property line
 Δ 42° 30' Rt. from line parallel to 34+06-36+33
 37+0 Δ
 38+0 Δ
 39+5 Δ 41° Lt.
 39+0 Δ
 39+47 Δ 49° Lt.
 40+0 Δ
 41+0 Δ
 41+40 Δ 32° Rt.

Cal.
 Course.

Δ
 5.12° 10' W. ←
 +55
 Δ
 5.2° 46' E. ←
 +75
 Δ
 5.20° 15' W. ←
 +40
 +60
 34+60 = 10
 Δ
 5.1° 15' E
 +70
 Δ
 5.41° 15' W
 500' 15' W
 Intersection Sou. line P.B. 1297 x 115 ft. Lft. old hub on line
 5.45° 45' E
 Δ
 5.16° 45' E

Sta.	
42+0 ²	S. 16° 46' E
42+65 Δ 28° 30' RT.	
43+0 ²	S. 11° 45' W.
44+0 ²	
45+0 ²	
45+11 Δ 10° 30' LT.	S. 1° 15' W.
46 Δ 26° 30' LT.	
47	S. 25° 15' E
47+70 Δ 33° RT.	
48	S. 7° 45' W.
49+0 ² Δ 27° 30' RT.	
50	S. 35° 15' W.
50+70 Δ 26° 45' LT.	
51+0 ²	S. 8° 30' W.
+24 ² Δ 49° 30' LT.	S. 41° 00' E
+32 ² Δ 63° 00' LT.	
52+00 ² Δ 33° LT.	N. 76° 00' E
+39 ² Δ 57° 30' LT.	
53+0 ² Δ 34° LT.	N. 18° 30' E
+55 ² Δ 30° 34' LT.	
54+0 ²	N. 12° 04' W.
+69 ² = Sta. 49+0 ² Same Line.	
+69 ²⁰ Δ 132° 38' LT. To Sta. 50+70 ²	

Line showing edge of point. Outline of top of hill.



S. of tan. 51+82 to
 52+39 lead slopes
 off in big tree for
 200 ft.

← Road from N. W. Cor. 1296 To P.I.
Prop. Line W. side Canyon.

05. 20

61

Sta.

2+00 Δ = Sta. 1401.88 W. Line 1296

34°27' Rt. from W. line 1296 To

← Road.

1+00

Cal. Course

+449 Δ

2+00

S. 34°27' Rt.

3+00

4+00

5+00 Δ P.O.T.

6+00

7+00

8+00

9+00

10+00 Δ P.O.T.

11+00

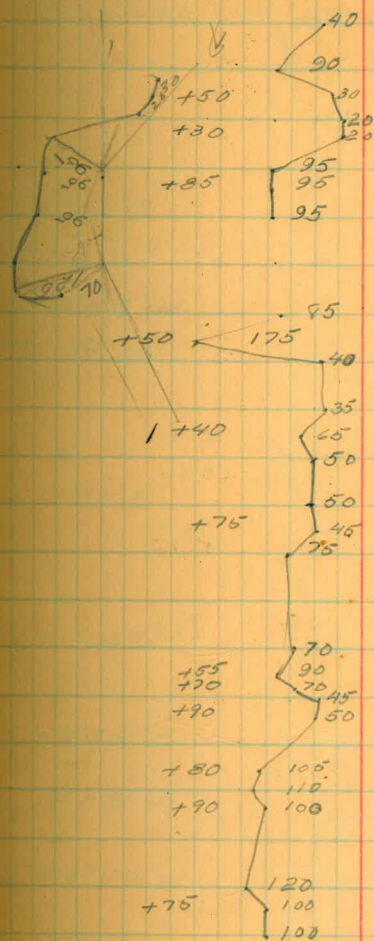
12+00

+81°00' Δ = P.I. Prop. line W. side Canyon.

at Sta. 23+32¹⁷ Prop. line

Δ 45°20' Rt. to Sta. 23+72⁰⁰ of Prop. line.

Sta.	Cal. Courses
8+16 ² Δ 49°30' LT.	
9+02	S. 52°35' W.
10+00	
+130 ² Δ 23°15' LT.	Δ
11+02	S. 29°20' W.
+146 ² Δ 61°30' LT.	Δ
12+02	S. 32°10' E.
+167 ² Δ 18°45' LT.	Δ
13+02	S. 50°55' E.
14+02	
+222 ² Δ 11°30' RT.	Δ
15+02	S. 6°25' E.
+31 ² Δ 61°00' RT.	Δ
16+02	S. 54°35' W.
+180 ² Δ 50°15' LT.	Δ
17+02	S. 40°20' W.
+84 ² Δ 68°45' LT.	Δ
18+02	S. 64°25' E.
19+02	
+96 ² Δ 13°45' RT.	Δ
20+02	S. 50°40' E.



Sta.

20+47⁵⁵ P.I. W. Line 1296 Sta. 23+50²⁴

A 50°33' Rt. To S.W. Cor. 1296.

21+0²

+19² A 48°00' Rt.

22+0²

+91² A 43°13' Rt.

23+0²

187²⁵ A Monument S.W. Cor. 1296. P.O.T.

24+0²

+55² A 53°30' Lt.

25+0²

26+0²

+10² A 93°00' Lt.

27+0²

+39² A 55°00' Rt.

28+0²

+29² A 61°00' Rt.

+89² A 39°45' Rt.

29+0²

+91² A 50°30' Lt.

30+0²

+79² A 37°15' Rt.

Cal.
Course.

64.

S. 2°40' E.

Δ

S. 40°38' W.

+50

Δ

S. 12°52' E.

+60

+60

Δ

N. 74°08' E.

+15

+50

Δ

S. 50°52' E.

Δ

S. 10°08' W.

+60

Δ

S. 49°53' W.

+65

Δ

S. 0°37' E.

Δ

S. 36°38' W.

95

55

60

40

90

75

110

75

80

60

90

55

60

80

60

40

25

40

35

40

30

35

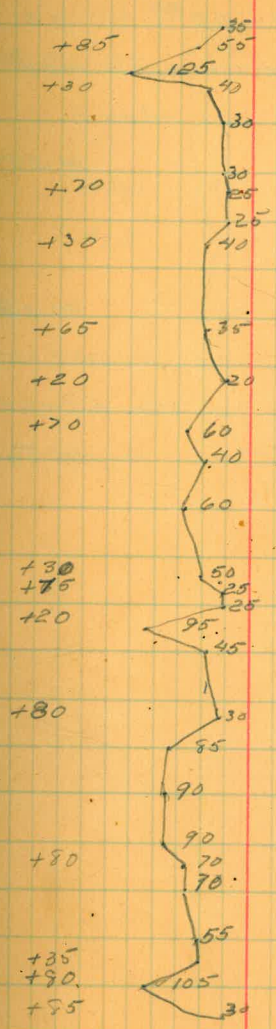
30

35

30

35

Sta.	Cal. Course
31+00	S. 26° 38' W.
+91° A	Δ
52° 46' LT.	
32+00	S. 16° 07' E.
33+00	Δ
+15° A	
21° 00' RT.	
34+00	S. 4° 58' W.
34+56 Δ	Δ
24° 00' LT.	
35+00	S. 19° 07' E.
35+58 Δ	Δ
36° 45' LT.	
36+00	S. 55° 52' E.
36+30 Δ	Δ
76° 15' LT.	
37+00	N. 47° 58' E.
38+00	Δ
38+68 Δ	
39° 15' LT.	
39+00	N. 8° 38' E.
40+00	
41+00	
42+00	
43+00 Δ	Δ
8° 15' LT.	
44+00	N. 00° 28' E.
45+00	
46+00	



Sta.

46+36⁵⁵ P.I. Sta. 9+29³⁰ W. 1/2 S. Line 129.6

△ 89°39' Rt. from A Sta. 43+02 to Sta. 6+06⁶⁸ Sec. Line. +85

△ 27°30' Rt. to Line ahead. △

47+02 N. 27°53' E.

48+02

+43² △ 18°51' Rt. △

49+02 N. A. 44' E

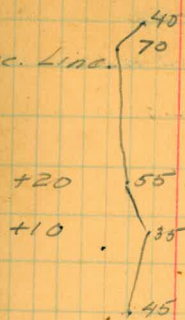
+87²⁷ △ P.I. Prop. Line meander along

E. edge canyon. Sta. 52+65²

△ 78°47' Rt. Exterior Angle to 53+62 of meander.

100
33.55
69.45

66.



W. Line 1279 = E. Line 1280.
Not staked.

570.

0+00 Δ = S.W. Cor. 1296.

Δ 75°10' Rt. from S. Line 1296. Course W. line 1271 = S. 14°50' E.

1+00

2+00 Δ Nail P.O.T.

3+00

4+00

5+00

6+00 Δ Nail P.O.T.

7+00

8+00

+79⁷⁵ Δ Rt. 512.37 + 37³⁰ meander prop.

line. 117°15' Lt. to " ahead.

9+00

+30° Δ P.O.T.

10+00

11+00

12+00

13+00

+86²⁰

14+00

+09³⁰ Δ Cor. Line ahead to S. Line W = 88°37' Lt.

13+867

23.1

86.7

109.8

150

104.50

75.10

67

S. Line 1280.

572.

07+02 A = S.E. Cor. 1280. Line 1 E. Line 1280.

17+02

27+02 A P.O.T.

37+02

47+02

57+02

67+02

77+02

87+02

97+02

107+02

117+02

127+02 A P.O.T.

137+02

147+02 A P.O.T.

157+02

1600 ft along S. Line 1280

1280

to hub.

Prop. Line Picked up at 53+55² of
W. Side Canyon and run along W edge
of Point.
Sta.

0+02 Δ = Sta. 53+55² of other prop. line.

Angle turned from Sta 52+32² - 14°00' LT.

1+02

2+02

N. 4°30' E

3+02

4+02

5+02

6+02

7+02

8+02

+29¹⁵ Δ 19°30' LT.

9+02

N. 15°00' W.

10+02

11+02

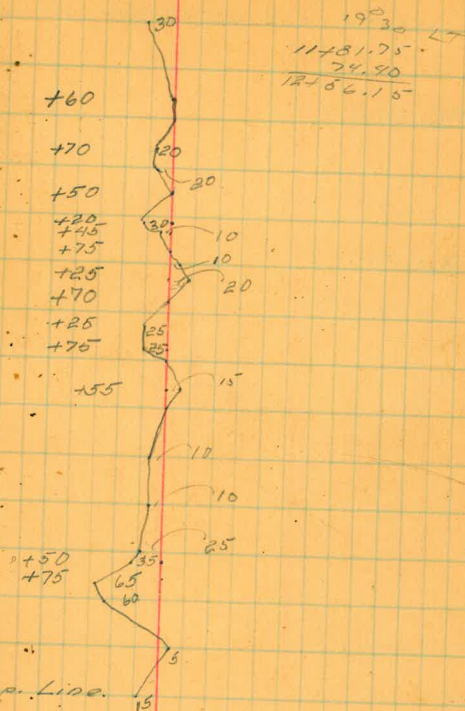
+81²⁵ Δ 20°40' LT. to Δ Sta. 36+38² of meander of other Prop. Line.

12+02

N. 35°40' W.

+56¹⁵ Δ = Sta. 36+38² of other meander prop. line.

Line: Base line to tie in Prop. line along
E edge of Point. See P. 58. 69.



Line through Lot 1280. Divides
City Land from Richter's.

Sta.

0+02 A = P.L. G. Line 1280. Int. Angle $88^{\circ}55'$

1+02

2+06 ⁴⁴ A P.O.T.

3+02

4+02

4+24 ¹⁶ A P.O.T.

5+02 A P.O.T.

6+02

7+02

8+02

9+02

10+02

11+02

12+02

13+02

14+02

15+02

16+02

17+02

18+02

+68 ³⁵ A Com

70.

Canyon Road, 0+02 = Δ 30' W. of
Sta. 23+03 of E. Prop. Line, $\angle = 90^{\circ}00'$

Sta.

16

15

+03 Δ 90 $^{\circ}$ 30' RT.

14

13

+24 Δ 11 $^{\circ}$ 00' LT.

12

11

+74 Δ 16 $^{\circ}$ 45' RT.

10

9+02 Δ 9 $^{\circ}$ 15' LT.

8

7

+55 Δ 12 $^{\circ}$ 16 $\frac{1}{2}$ ' LT.

6

5+00 Δ 7 $^{\circ}$ 45' RT.

4

3

2

+95 Δ 7 $^{\circ}$ 30' LT.

1

0+02 Δ 101 $^{\circ}$ 30' LT. To line ahead.

71.

Cal. Course

S. 21 $^{\circ}$ 30' W.

Δ

S. 9 $^{\circ}$ 30' E

Δ

S. 1 $^{\circ}$ 30' W.

Δ

S. 16 $^{\circ}$ 15' E

Δ

S. 6 $^{\circ}$ 00' E

Δ

S. 6 $^{\circ}$ 15' W

Δ

S. 1 $^{\circ}$ 30' E

Δ

S. 6 $^{\circ}$ 00' W

Sta.		Cal. Course.
33+02 Δ	2°30' RT.	S. 14° 35' W
32+02 Δ	4°34' RT.	S. 2° 00' W
31+02 Δ	1°56' RT.	S. 2° 1' W
30+02 Δ	3°11' RT.	S. 2° 30' W
29+02 Δ	8°33' LT.	S. 2° 30' W
28+02 Δ	14°45' LT.	S. 2° 30' W
27+02 Δ	22°20' LT.	S. 2° 30' W
+62° Δ	10°27' LT.	S. 2° 30' W
26		N. 86° 30' W.
+62° Δ	11°15' LT.	Δ
25		
24		
23		N. 75° 15' W.
22	Δ 22°40' RT.	Δ
21+02 Δ	9°45' LT.	S. 82° 45' W.
20		Δ
		N. 87° 30' W.
+88° Δ	12°30' RT.	Δ
19		
18		S. 80° 00' W.
+09° Δ	35° 30' RT.	Δ
17	43°	S. 44° 30' W.
16+02 Δ	23°30' RT.	Δ

-21°10' - 25'	+86°45' - 35'
-23°45' - 25'	+37°40' - 25'
-13°50' - 30'	+24°15' - 20'
-34°20' - 15' level	+34°20' - 30'
-31°10' - 8' level	+31°10' - 30'
-2° 01' r.	+28°30' - 40'
-2° 01' old road.	+24°30' - 50'
-2° 01' old road. Level.	+11°40' - 50'

5210 ²	▽
5110 ² P.O.T	▽
5010 ² Δ 2°35' RT.	57°52' W
4910 ² Δ 6°47' LT.	▽
4810 ² Δ 1°53' RT.	56°17' W.
4710 ² Δ 7°53' RT.	▽
4610 ² Δ 7°08' LT	512°04' W
4510 ² Δ 1°31' RT.	▽
4410 ² Δ 1°01' RT.	510°11' W
4310 ² Δ 0°50' LT.	▲
4210 ² Δ 3°50' RT.	52°18' W
4110 ² Δ 1°26' RT.	▽
4010 ² Δ P.O.T.	59°26' W
3910 ² Δ 7°03' RT.	▽
3810 ² Δ 3°30' RT.	57°55' W
3710 ² Δ 6°02' LT.	▲
3610 ² Δ 12°13' LT.	56°54' W.
3510 ² Δ 22°24' RT.	▲
3410 ² Δ 11°00' LT	57°44' W.
3310 ² Δ 12°57' LT	▲
	53°54' W.
	▽
	55°20' W.
	▽
	51°43' E
	▽
	55°13' E.
	▽
	50°49' W
	▽
	513°02' W.
	▽
	59°22' E
	▽
	51°38'
	▲

-23°45' - 12' Level	+28°45' - 40'
-23°15' - 15' Level	+27°45' - 40'
-19°30' - 15' Level	+26°15' - 40'
-21°00' - 20' Level	+34°40' - 40'
-22°15' - 15' Level	+29°45' - 40'
-16°15' - 20' Level	+31°10' - 40'
-13°15' - 25' Level	+29°45' - 50'
-17°30' - 20' Level	+24°50' - 40'
-22°00' - 15' Level	+39°45' - 50'
-22°15' - 22' Level	+33°20' - 50'
-38°30' - 20' Level	+41°15' - 50'
-30°00' - 20' Level.	+38°45' - 50'
-23°45' - 20' Level	+36°00' - 40'
-29°15' - 25' Level	+26°45' - 40'
-11°15' - 15'	+19°20' - 20'
-11°00' - 20'	+12°30' - 40'
-10°00' - 25'	+12°15' - 30'
-7°15' - 30'	+12°45' - 35'
-35°40' - 40'	+35°15' - 40'

Terry Pine Road. Picked up at
Sta. 57+30⁵³ of North Road.

Cal. Course

76

+24²⁴ P.O.T.

75

74

73

72

71

N. 16° 03' E.

136²⁴ 30° 00' RT.

Δ

70

69

68

67

66

65+10² P.O.T.

64

63

62

61

N. 13° 57' W.

60+10² 11° 00' Lt.

Δ

59

58+0²

N. 22° 57' W.

57+30⁵³ Δ Tan. prod. forward from 55+16¹⁸.

74.

Sta.

Cal. Course

97

96

95

N. 1067' W.

94 + 02 A 13° 00' RT.

Δ

93

92

91

90 + 02 A P.O.T.

89

88

87

86

85 + 02 A P.O.T.

84

83

82

81

80 + 02 A P.O.T.

79

78

77

N. 14952' W

76 + 34 A 31° 00' LT.

Δ

572.

117

116

115 + 42 A 90° 10' LT.

N. 15° 22' W.

115

114

113

112

111

110 + 00^A P.O.T.

109

108

107

106

133° 42' 45" RT.

N. 24° 48' E.

105

104

103 + 10° A P.O.T.

102

101

100 + 02° A P.O.T.

99

98

15720
13550
1570

77

572.

137

136

+50° A 41°00' RT.

N. 4°08' E.

FB.

135

134

133

132

131

130 10³/₄ P.O.T.

129

128

127

126

125

124 10³/₄ P.O.T.

123

122

121

120

N. 36°52' W.

+16° A 21°30' LT.

119

118

Sta.	+	H.I.	-	Elev.	Corr.
B.M.				100	
	5.35	105.35	8.20	97.15	
	11.60	108.45	2.20	106.55	
			3.50	100.25	
			3.75	100.00	

Try 2.5 % grade.

T.P. by cactus

T.P. 30.0ft. Rt. cactus (Flagged)

T.P. on point ahead, (")

B.M.				100.00.
	3.98	108.98	1.21	107.77
	9.94	117.71	1.06	116.65

Luis Castro,

P.O.

Del Mar.

148

141

140 A.P.O.T.

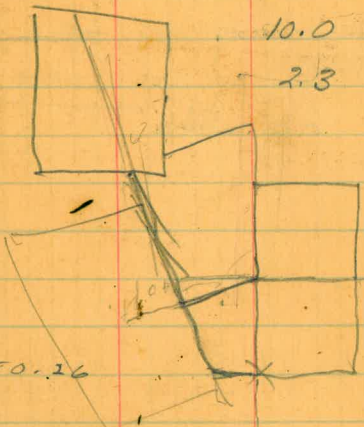
139

138

3+49.2 P.I. 92°05' RT.

Sta	T.	H.I.	-	Elev.
0+00	0.6			100.00
3+00	0.5	100.5	10.80	89.70
	.4	90.1	9.2	80.9
			7.5	82.6
P+02			5.0	85.1
T.P.	10.2	100.3	0.00	90.1
1+50			7.2	93.1
1+00			10.0	90.3
			2.3	97.7

24°48'30"



25+01.64

31+50.36

31+80.32
678.65

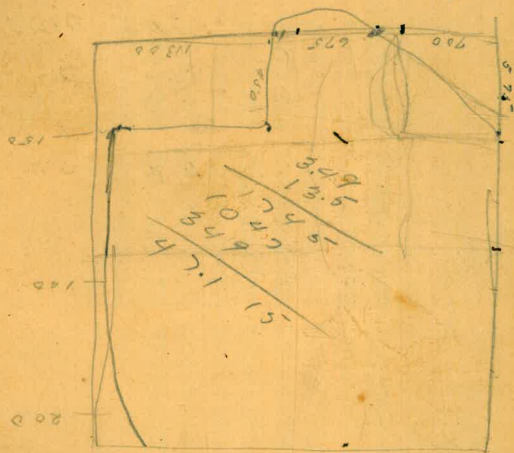
2501.64

337.11
118.41
455.52

41.2
867.52

337.11
118.41
41.2
867.52

$$\begin{array}{r} 35 \\ 26 \\ \hline 210 \\ 20 \\ \hline 910 \end{array} \begin{array}{r} 110.5 \\ 10.5 \\ \hline 89.7 \\ 1.4 \\ \hline 901 \\ 9.2 \\ \hline 110 \\ 93 \\ \hline 170 \end{array} \begin{array}{r} 337.2 \\ 341.48 \\ \hline 678.68 \\ \hline 349.2 \\ 113.2 \\ \hline 1069.52 \\ 349.2 \\ \hline 3952.944 \end{array}$$



Multiply distance across between Terminal tangents by 57.296 and divide by tangential dist. whole numbers = 2, int & dec. x 60 = min.

196
48
244
1403
1247

196
48
254

1624
62
1686

1709
1686
23



Published by H. S. CROCKER COMPANY, Stationers, Drawing Materials, Mathematical Instruments, etc., San Francisco.

TRAVERSE TABLE FOR TRANSIT BOOK.

From 1° to 90° for a distance of 100.

Degrees.	DEGREES.		¼ DEGREE.		½ DEGREE.		¾ DEGREE.		Degrees.
	Lat.	Dep.	Lat.	Dep.	Lat.	Dep.	Lat.	Dep.	
0	99.98	1.75	100.00	0.44	100.00	0.87	99.99	1.31	89
1	99.94	3.49	99.98	2.18	99.97	2.62	99.95	3.05	88
2	99.86	5.23	99.92	3.93	99.91	4.36	99.88	4.80	87
3	99.76	6.98	99.84	5.67	99.81	6.10	99.79	6.54	86
4	99.62	8.72	99.73	7.41	99.69	7.85	99.66	8.28	85
5	99.45	10.45	99.58	9.15	99.54	9.58	99.50	10.02	84
6	99.25	12.19	99.41	10.89	99.36	11.32	99.31	11.75	83
7	99.03	13.92	99.20	12.62	99.14	13.05	99.09	13.49	82
8	98.77	15.64	98.97	14.35	98.90	14.78	98.84	15.21	81
9	98.48	17.36	98.70	16.07	98.63	16.50	98.56	16.93	80
10	98.16	19.08	98.40	17.79	98.33	18.22	98.25	18.65	79
11	97.81	20.79	98.08	19.51	97.99	19.94	97.90	20.36	78
12	97.44	22.50	97.72	21.22	97.63	21.64	97.53	22.07	77
13	97.03	24.19	97.34	22.92	97.24	23.34	97.13	23.77	76
14	96.59	25.88	96.92	24.62	96.81	25.04	96.70	25.46	75
15	96.13	27.56	96.48	26.30	96.36	26.72	96.25	27.14	74
16	95.63	29.24	96.00	27.98	95.88	28.40	95.76	28.82	73
17	95.11	30.90	95.50	29.65	95.37	30.07	95.24	30.49	72
18	94.55	32.56	94.97	31.32	94.83	31.73	94.69	32.14	71
19	93.97	34.20	94.41	32.97	94.26	33.38	94.12	33.79	70
20	93.36	35.84	93.82	34.61	93.67	35.02	93.51	35.43	69
21	92.72	37.46	93.20	36.24	93.04	36.65	92.88	37.06	68
22	92.05	39.07	92.55	37.86	92.39	38.27	92.22	38.67	67
23	91.35	40.67	91.88	39.47	91.71	39.87	91.53	40.27	66
24	90.63	42.26	91.18	41.07	91.00	41.47	90.81	41.87	65
25	89.88	43.84	90.45	42.66	90.26	43.05	90.07	43.44	64
26	89.10	45.40	89.69	44.23	89.49	44.62	89.30	45.01	63
27	88.29	46.95	88.90	45.79	88.70	46.17	88.50	46.56	62
28	87.46	48.48	88.09	47.33	87.88	47.72	87.67	48.10	61
29	86.60	50.00	87.25	48.86	87.04	49.24	86.82	49.62	60
30	85.72	51.50	86.38	50.38	86.16	50.75	85.94	51.13	59
31	84.80	52.99	85.49	51.88	85.26	52.25	85.04	52.62	58
32	83.87	54.46	84.57	53.36	84.34	53.73	84.10	54.10	57
33	82.90	55.92	83.63	54.83	83.39	55.19	83.15	55.56	56
34	81.92	57.36	82.66	56.28	82.41	56.64	82.16	57.00	55
35	80.90	58.78	81.66	57.71	81.41	58.07	81.16	58.42	54
36	79.86	60.18	80.64	59.13	80.39	59.48	80.13	59.83	53
37	78.80	61.57	79.60	60.53	79.34	60.88	79.07	61.22	52
38	77.71	62.93	78.53	61.91	78.26	62.25	77.99	62.59	51
39	76.60	64.28	77.44	63.27	77.16	63.61	76.88	63.94	50
40	75.47	65.61	76.32	64.61	76.04	64.94	75.76	65.28	49
41	74.31	66.91	75.18	65.93	74.90	66.26	74.61	66.59	48
42	73.14	68.20	74.02	67.24	73.73	67.56	73.43	67.88	47
43	71.93	69.47	72.84	68.52	72.54	68.84	72.24	69.15	46
44	70.71	70.71	71.63	69.78	71.33	70.09	71.02	70.40	45
45									
Degrees.	Dep.	Lat.	Dep.	Lat.	Dep.	Lat.	Dep.	Lat.	Degrees.
Degrees.	DEGREES.		¼ DEGREE.		½ DEGREE.		¾ DEGREE.		Degrees.