

MORENA

NOTES Nº 2

*Compendio*

41

W6

Table showing the difference of latitude and departure in running 80 chains at any course from 1 to 60 minutes.

**MICROFILMED**

MINUTES	LKS.	MINUTES	LKS.	MINUTES	LKS.
1	2 1/3	21	49 1/3	41	95 2/3
2	4 2/3	22	51 1/3	42	98
3	7	23	53 2/3	43	100 1/3
4	9 1/3	24	56	44	102 2/3
5	11 2/3	25	58 1/3	45	105
6	14	26	60 2/3	46	107 1/3
7	16 1/3	27	63	47	109 2/3
8	18 2/3	28	65 1/3	48	112
9	21	29	67 2/3	49	114 1/3
10	23 1/3	30	70	50	116 2/3
11	25 2/3	31	72 1/3	51	119
12	28	32	74 2/3	52	121 1/3
13	30 1/3	33	77	53	123 2/3
14	32 2/3	34	79 1/3	54	126
15	35	35	81 2/3	55	128 1/3
16	37 1/3	36	84	56	130 2/3
17	39 2/3	37	86 1/3	57	133
18	42	38	88 2/3	58	135 1/3
19	44 1/3	39	91	59	137 2/3
20	46 2/3	40	93 1/3	60	140

TABLE FOR RUNNING ON SLOPES.

In the following table the first column shows the angle, the second the number of links to be added to a chain on the slopes, to make one chain, horizontal measurement.

Angle	COR. IN LINKS	Angle	COR. IN LINKS	Angle	COR. IN LINKS	Angle	COR. IN LINKS
0		0		0		0	
4	0.24	11	1.88	18	5.14	25	10.54
5	0.38	12	2.24	19	5.76	26	11.26
6	0.55	13	2.63	20	6.42	27	12.24
7	0.76	14	3.06	21	7.11	28	13.37
8	0.98	15	3.53	22	7.85	29	14.34
9	1.24	16	4.02	23	8.64	30	15.47
10	1.55	17	4.56	24	9.47	35	22.07



# Index

Pa

Extending contours of section lines from 150 to 180' drawings show monument locations	1-15
Levels from Ward's Reservoir along pipe line	19
grades and centres for tunnel	20-24
Levels for pipe line at Skye Valley	25
Levels for 180' contour across wards land	26-27
Line around 180' contour on wards property	28-30
Centres on North Lower Bench on Curve $5^{\circ}44'$	31
meander lines A to M	32-51

Line

86

1.15

1.40

1350

180

180

Section 23.

South	87	to	160 Cans
	128	to	170 Cans
	160	to	180 Cans

rust	135	to 180
"	115	to 170
"	86	to 160

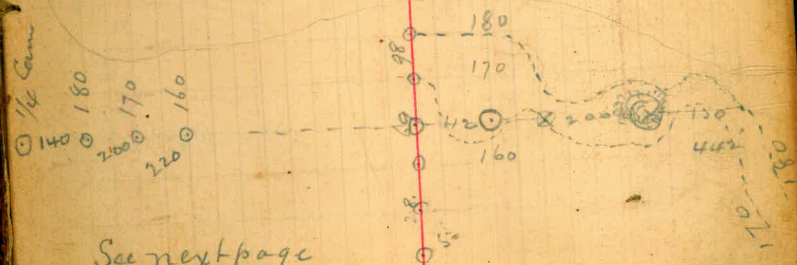
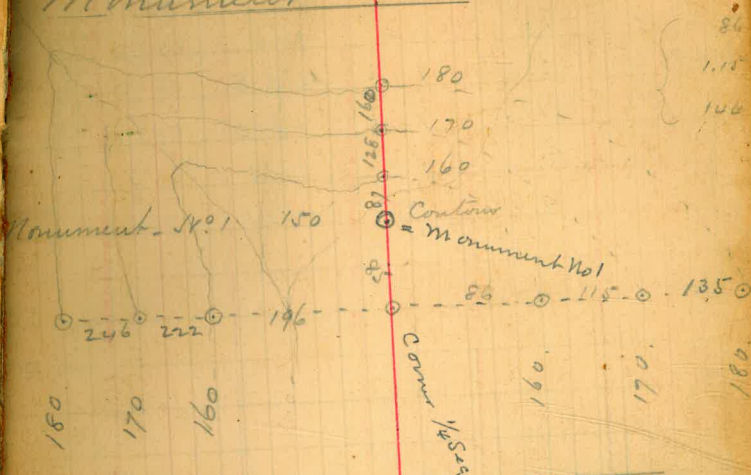
East	196	160
"	222	170
"	246	180

South	28	to	160
	69	"	170

East.	98	180
10+	"	170
442	"	180

Extending contour at Section Line  
from 150 to 180 -

Monument No 1. Sta 25430



See next page

Monument No 2.



Notes from Monument No 2 Sta. 66.

Sect  
South

4.8		182.8	178.
0.0	11.8	171.0	171.0
2.5	9.7	163.8	161.5
11.6	14.4	161.0	149.4
12.0	0.0	173.0	161.0
9.6	0.5	182.1	172.5

West

East

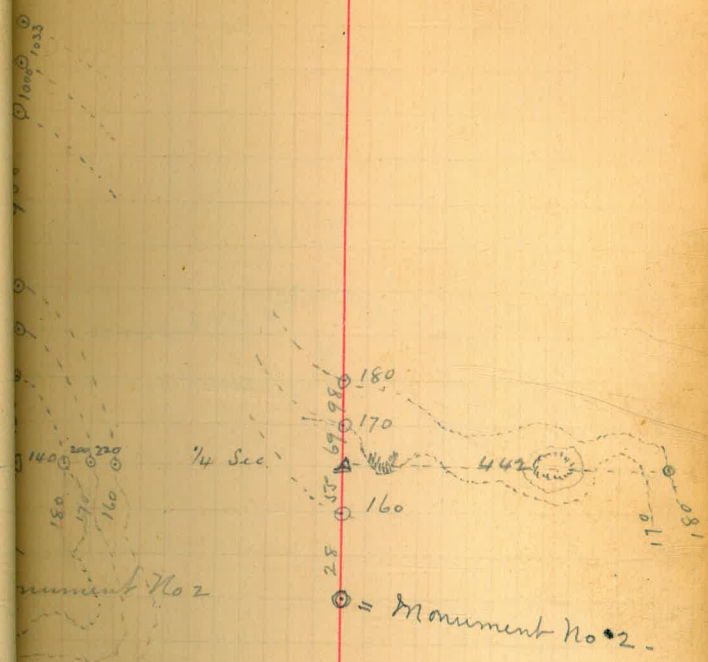
South

East.

640.

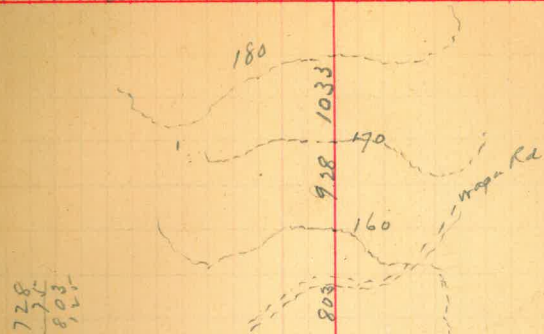
Sec 24

178 feet 10 =



Monument No 3.

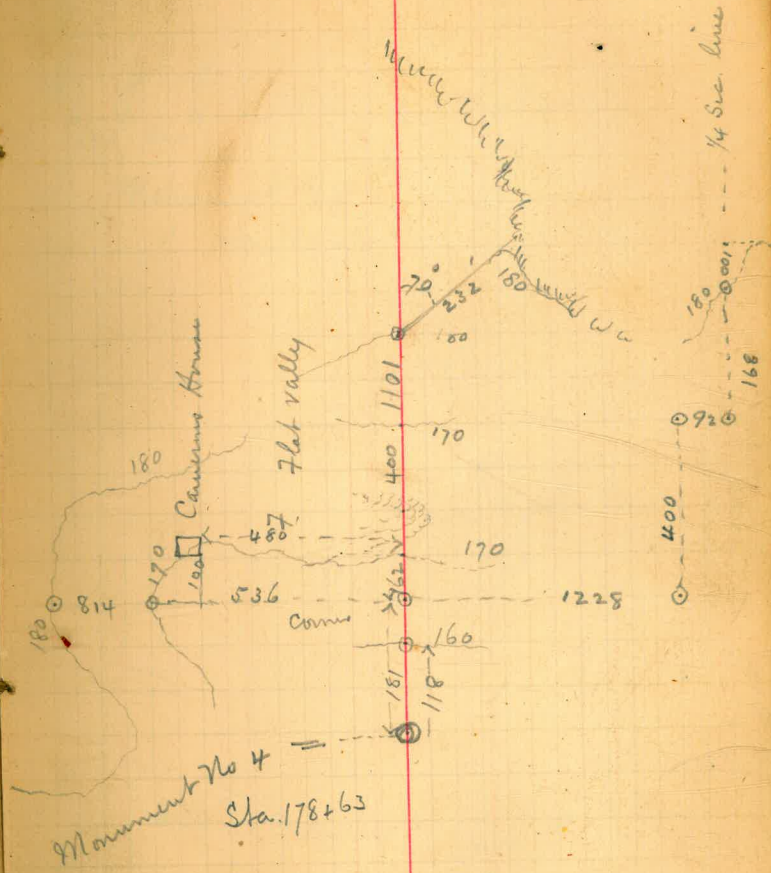
Sta 138+48



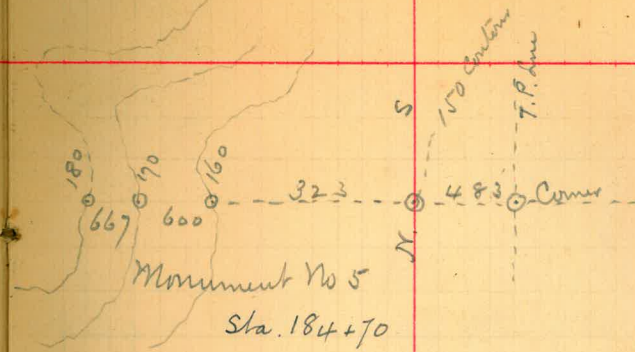
728  
36  
803  
812

Monument No. 3. 600 Sec. Corner.

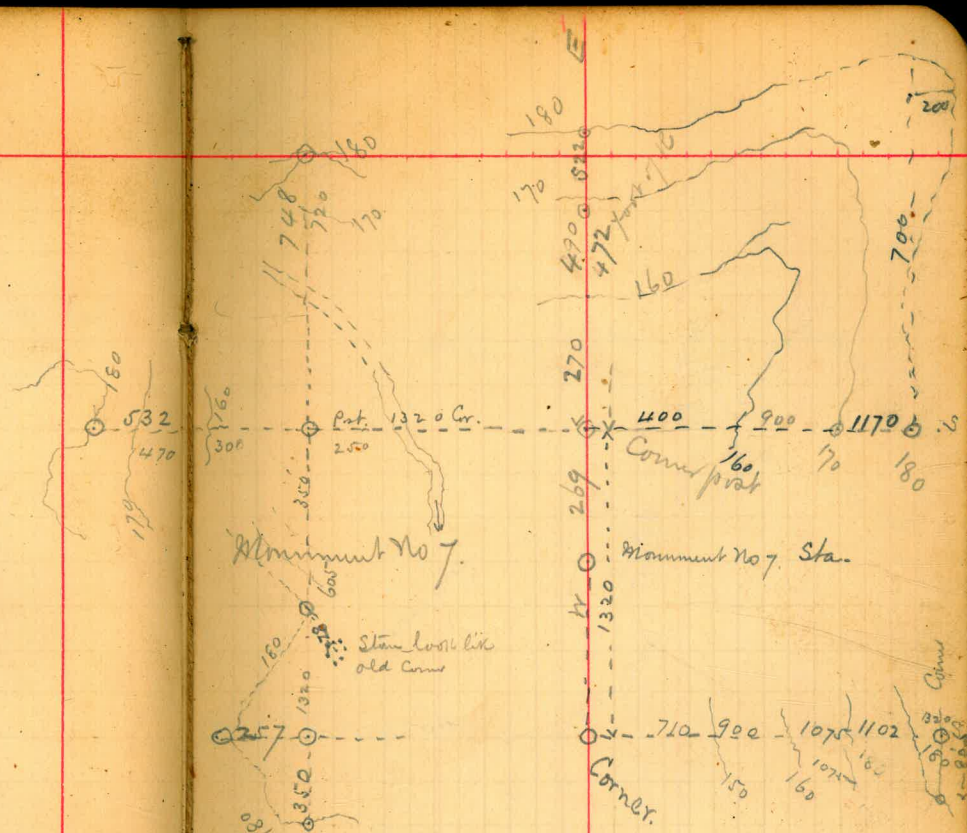




5



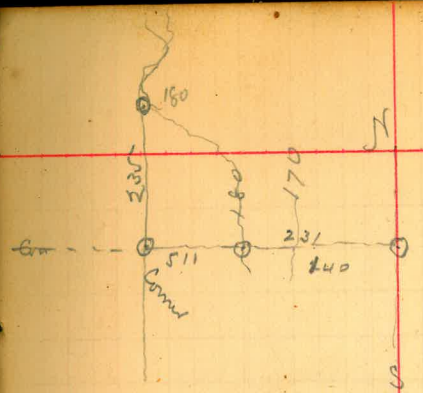






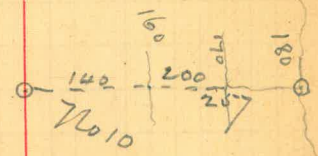


8



No 9. Sta = 351+37

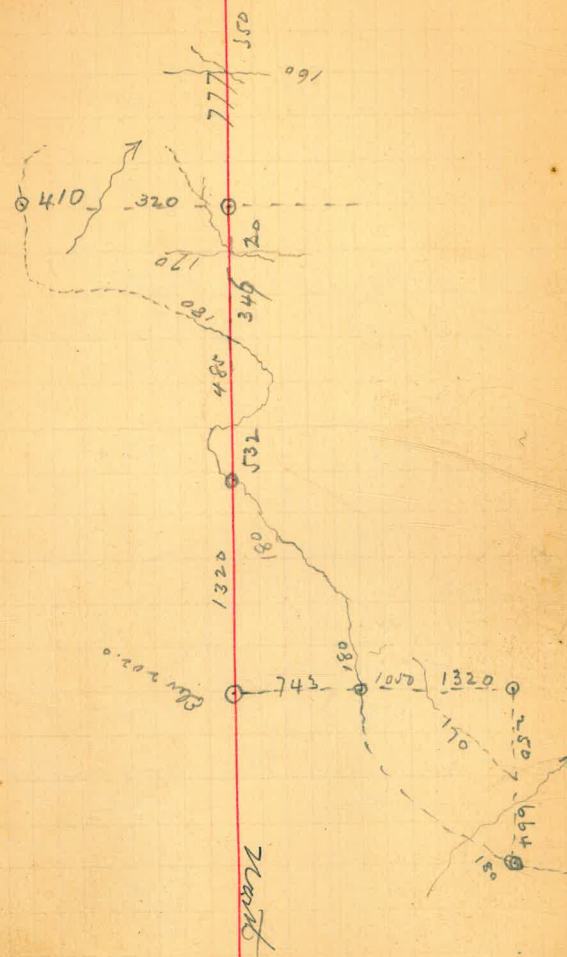
Monument No 10  
Sta = 371+67



No 11 upside down

Start

Mount No 11 = Sta = 379 + 95

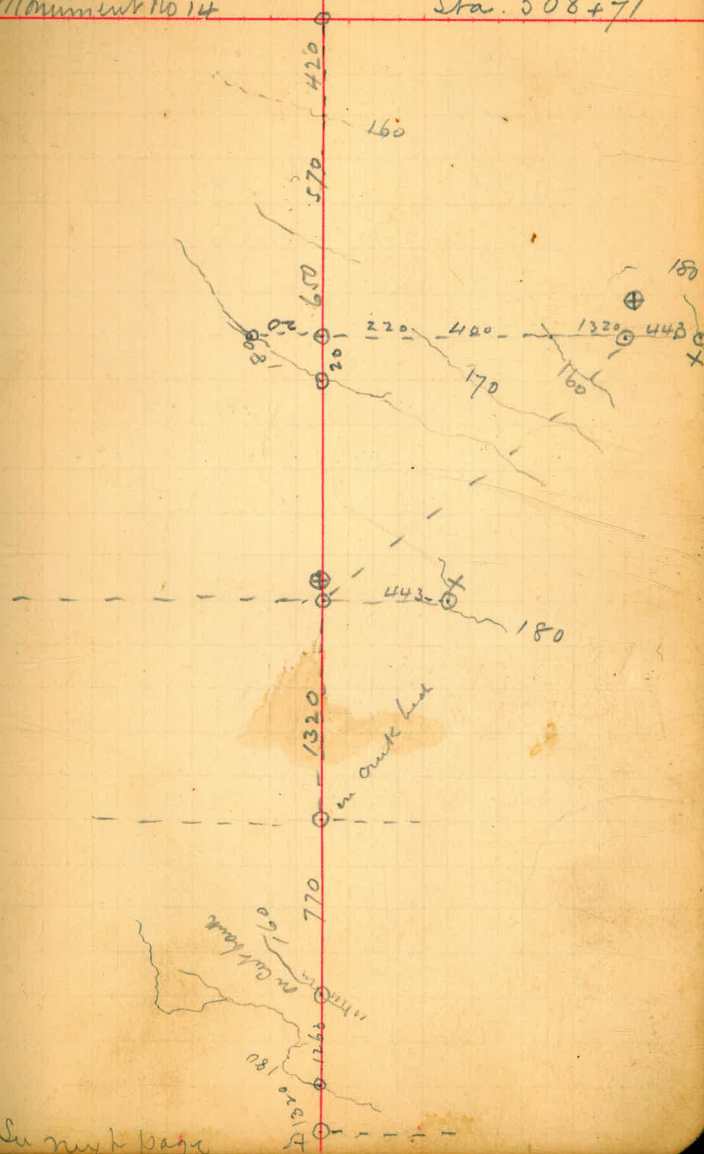




3.4		164.0	160.6
	4.4		
9.7		169.3	159.6
	1.0		168.3
6.9		175.2	
	2.1		173.1
5.6		178.7	
	3.		175.7
		169.3	
	10.3		159.6
5.9		164.9	
	2.5		162.4
5.1		167.5	
	11.2		156.3
0.6		156.9	
	10.6		146.3
7.2		153.5	
	3.5		150.0
4.8		154.8	
	12		153.6
6.6		160.2	
	1.0		159.2
11.9	0.4	171.1	170.7
12.8		183.5	
	3.5		180
13.5		192.5	182.3
	11.2		

Monument No 14

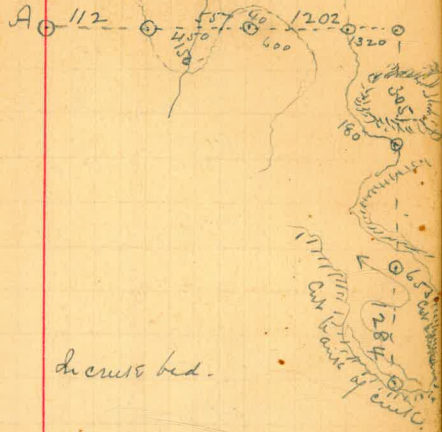
Sta. 508+71



14.1		196.4	182.3
5.0	7.4	194.0	189.0
	10.4		183.6
13.1		196.7	
	6.7		190.0
8.3		198.3	
	7.4		190.9
5.1	5.1	196.0	190.9
0.5		191.4	
4.8	8.5	187.7	182.9

5  
Done from book page

1235



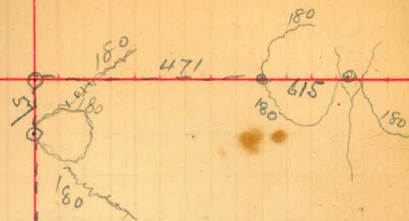


4.9 152.9 150.  
 9.9 00. 164.8 152.9  
 10.6 02. 175.2 164.6  
 10.4 01. 185.5 175.1  
 14.2 194.7 180.5  
 3.1 12.3 185.5 182.4

16.6 166.6 150.0  
 12.5 0.6 178.5 166.0

5.0 1.0 153. 150.  
 12.3 1.0 166.3 154.  
 12.2 +0.2 178.7 166.5  
 2.9 175.8

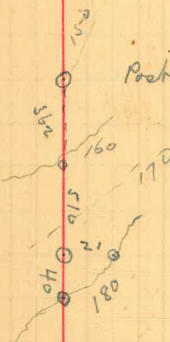
Corner post



Post 583+50

Post 578+58

Corner post



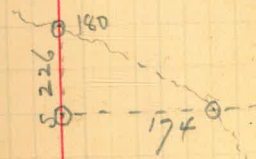
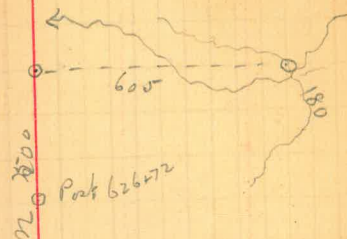
Mammont No 16  
 Sta 613+81



5.2		155.2	150.
11.1	14.3	155.0	143.9
12.0	0.4	166.8	154.8
11.6	1.5	176.9	165.3
6.0	1.0	181.9	175.9
8.5	7.0	183.4	174.9
5.0		155.0	150.
2.5	1.5	156.0	143.5
5.2	3.6	157.6	152.4
8.2	4.7	161.1	152.9
	8.5	687	152.6
11.6	0.0	172.7	161.1
9.8	0.8	181.7	171.9
5.0		157.6	152.6
17.5	0.4	174.7	157.2
	0.3		174.4

Cmme.

Monument No 17



687

Sta. 641+65



14

4.8		154.8	150.
12.4	0.6	166.6	154.2
12.1	0.2	178.5	166.4
5.1	0.4	183.2	178.1

12.7		162.7	150.
8.6	0	171.3	162.7
10.8	0.1	182.0	171.2
	2.0		180.0

No 18

Lighthouse



No 18

Sta. 690+82



20.

Sta.

710+08

Big Flat Rock



Contours post 150' Contour



137  
 179  
 256  
 216  
 472

16.  
 380  
 596

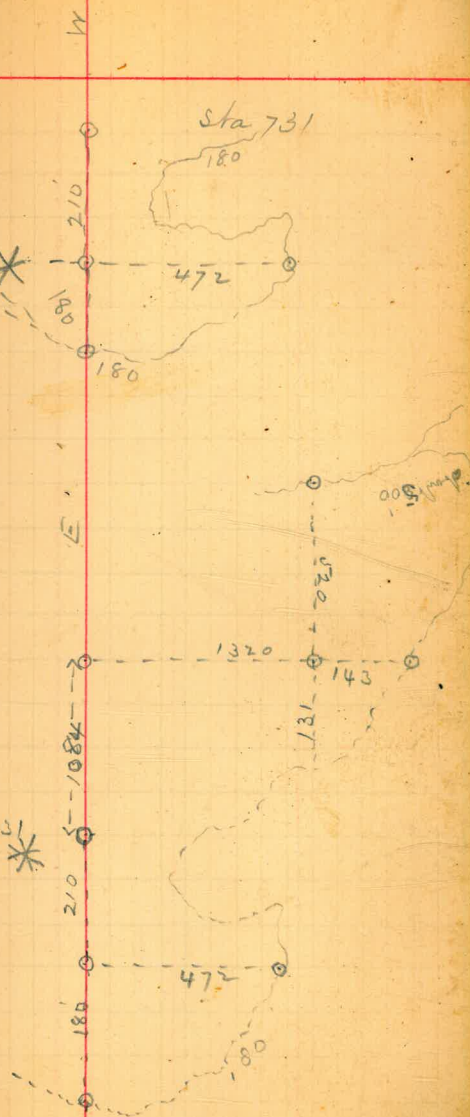
11.5		161.5	150.
4.2	1.	164.2	160.5
11.3	3.2	172.8	161.5
6.8	2.3	177.3	170.5
7.2	2.4	182.1	174.9
		172.8	
8.9	0.5	181.2	172.3
4.6	1.8	184.0	179.4
	4.0		180.0
4.6		154.6	150.
2.0	0.0	156.6	154.6
9.6	0.6	165.6	156.0
13.1	2.6	176.1	163.0
7.	1.7	181.4	164.4
12.6		176.0	
11.6		174.6	163.00
7.0	+0.3	181.9	174.9
4.2		167.2	163.0
12.0	0.0	179.2	167.2
	0.2		179.0

Monument No

Corner post \*

Sta 731

White monument sta 731 \*





16

- 0+40.8

- 0+27.7

- 0+10.7

0

+ 0+05.8

0 +22.3

0 +49.

Mark on R.

Mark on R.

Mark on R.

Mark on R.

Sub.

	6.00			36.00	30.00
		0.0			36.00
	11.80		0.	47.80	
			0.6		47.20
	12.30			59.50	
-0+40.8		1.90			57.6
0+27.7			0.40		59.1
-0+27.7	4.80			63.90	
-0+20		8.0			55.9
-0+10.7		4.30			59.6
0.0		2.3			61.6
			0.30		63.60
	6.3			69.9	
0+22.3			0.0		69.9

on Amherst wall.

on Boulder.

point on R.

point on R.

point on R.

about 2' stripping

about 4' stripping



## Levels from Words Reservoir

along pipe line -

	10.70		280.70	270.00
	7.00			273.70
	10.30			279.4
	4.60			
0+50	10.75			
	7.40			
	7.00			
+80	11.22			
		12.02	268.68	
	2.90		271.58	
1-	3.50			
1+50	5.70			
2.0	9.80			
		11.65	259.93	
	0.77		260.70	
2+50	2.27			
3.	3.90			
3+50	6.10			
4.0	7.80			
4+50	10.80			
		12.05	248.65	
	0.31		248.96	
5.00	1.90			
5+50	1.95			
5+75	1.95			

Bottom of Reservoir Words.

Water Elev.

Top of feed pipe Words Reservoir

Overflow pipe Words Reservoir

Top of 4" pipe

on Top of Top Words Corral

Mark on post in words 4" Elev gauge

on top outside words fence

on pipe

on Res.

on ground 3' above pipe

on pipe

Modes &amp; Centus for

Tunnel

3.43

5.26

35.06 31.62

29.80

July 6<sup>th</sup> Centus given  
167' from Range = 189'

3.53

35.16

5.36

29.8

29.80

Centus given  
July 14 -

204'

6.	3.60	248.96	
6+50	7.90		
		11.50	237.46
0.93		238.39	
7.00	3.03		
7+50	9.00		
		11.27	227.12
0.34		227.46	
8.	2.30		
8+50	4.40		
9.00	9.70		
		9.76	217.70
4.02		221.72	
9+50	7.90		
10.	6.90		
10+50	4.30		
11	5.60		
11+50	5.90		
12	1.00		
		0.82	220.89
9.63		230.52	
12+50	6.10		
		0.94	229.58
11.53		241.11	
13.	11.30		

on pipe

"

"

"

on stone

on pipe

"

"

on pipe

on Road

on pipe

"

"

"



13.50	6.60		241.11	
14.	2.20			
		0.62	240.50	
11.48			251.98	
14+50	8.0		244.00	
15+00	1.8		250.2	
15+50		0.63	250.85	
12.45			263.80	
15+50	8.0			
16.	6.80			
16+50	3.90			
		0.03	0	263.77
6.10			269.87	
17.	5.6			
+50	5.6			
18.	4.10		265.77	
+50	6.70			
19.	9.70			
19+50	8.20			
20.	7.80			
+50	7.90			
		8.30	261.57	
3.18			264.75	
21	3.60			
+50	1.80			

on pipe

274

250

24.

20

on pipe

at angle when pipe turns down to Inlets -  
 B.M. on point of Rock 15' W. W of corner above

on pipe

on stone

on pipe

## Levels from Woods Reservoir

22.	3.00	264.75
+50	4.20	
+85	3.2	
23.	4.0	
+50	5.5	
24	6.5	
+50	6.9	
25	7.1	
+50	7.8	
+75	5.7	
26	2.7	
+15	1.8	
+50		
27.	0.5-6	
+50	1.50	
28.	4.00	
+50	5.90	
29.	6.50	
+30	7.80	
+50	7.30	
+70	7.00	
30	9.40	
+50	7.65	

8.70

256.05

on pipe

4

A

6

31.	9.23	5.85	265.28	256.05
+10		5.30		
+50		10.		
			11.17	254.11
	3.19		257.30	
32.		5.4		
+20		4.9		

on pipe

"

"

"  
top of pipe when pipe turns down hill to T.B.S.

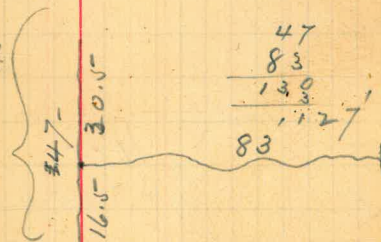


Levels for line of pipe at Sky Val

8.22		48.22	40
	5		
1.35		44.56	
	12		
.6		33.15	
	10		
5.35		28.50	
	1.80		
3.30		30	
	5		25
<u>18.82</u>	<u>33.80</u>		<u>15</u>
	<u>18.82</u>		
	<u>14.98</u>		

fall to trough

Invent on Smt  
Side - 127'  
July 13<sup>th</sup>



## Levels for 180' Contour

	10.80		160.80	150.
		0.15		160.65
	11.63		172.28	
		0.04		172.24
	11.00		183.24	
No 1		3.24	<del>3.24</del>	
2			3.24	180.00
	9.05		189.05	
3		9.05		
4		9.05		
5		9.05		
---			8.63	180.42
	7.35		187.77	
6.		7.77		
			6.73	181.04
	10.51		191.55	
7		18.55		180.
8		8.58		183.
---			10.67	180.88
	4.84		185.72	
9		5.1		182.6
			5.93	179.79
	9.32		189.11	
10		9.11		
11		9.11		
		5.24		183.87

across words Land -

No 1 Monument -

160 from Monumt = 245' from Corner

on point of R. 3' above 180' -

Levels for 180' Contour across Wards place -

120  
10  
180  
2

12	5.70			189.57	183.87
		8.10			181.5
13			8.44		181.13
	13.35			194.48	
		0.0		194.5	
			0.30	194.18	
	2.30			196.48	
14			12.38		184.10
	4.65			188.75	
		8.75	H		
			11.80		

on Big boulder

on Rock. above Churnings house



Line around 180' Contour on Woods property

Celestia Iron Mine  
Copper Needle

11+43 14° 50' R. N. 1° 30' E N. 0.30' W.

9+63 6° 02' L 13° 20' N 15° W.

7+72.5 7° 06' R. N. 7° 18' W. N. 9° W.

6+22 2° 58' R ± N. 14° 24' W. N. 16° W.

4+73.3 10° 57' L N. 17° 22' W. N. 19° W.

3+90 N. 6° 25' W. N. 8° W.

3+77.7 131° 03' L

S. 55° 22' E S. 56° 20' E

1+47.5 21° 46' R.

S. 77° 08' E S. 77° E

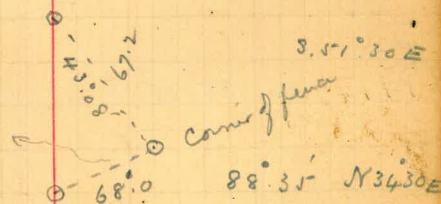
0 102° 52' R. S. 72° 52' E

0 0.0 N. 13° 05' E

being 245 feet South of 1/2 way Corner and at the 180' Contour  
 Commencing at point on N. & S. line East side of Woods land near Lewis house

47' 10+60

7+90



21+92 5.48 R. S64.11 E S65.15 E

On big R.

18+16.3 17°23' R. S69.59 E S.71° E

15+55 8°26' R. S.87.22 E S.88.15 E

15+14.7 26°45' R. N.83.30 E  
N.84.12 E

14+47.2 35°05' R. N.56.30 E  
N.57.27 E

13+81.6 14°52' R. N.22.22 E N.21.15 E

13+08.6 6°40' R. N.7.30 E N.6° E

1.03

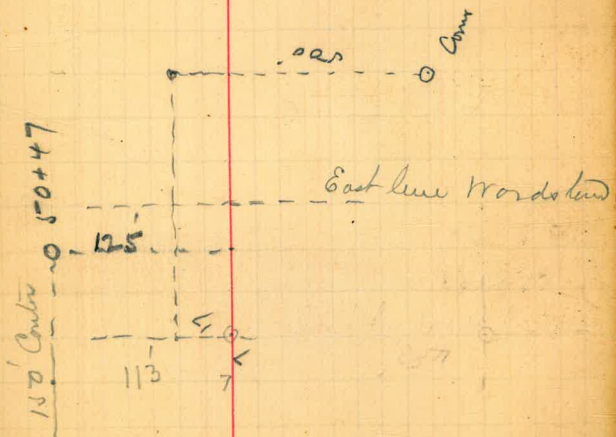
34.70 33.67

$$\begin{array}{r} 34.70 \\ 25 \\ \hline 9.70 \end{array}$$

26+50  
26+48  
26+35  
26+17  
26

24+20

608

angle L.  $\frac{5}{41}$



31

Centre in North Town Bench on Curve 5.44' -

Outside Tracks

+59

1.41  $\frac{1}{2}$  L

+40

1.09 L

+19'

0.32  $\frac{1}{4}$  L

0

Inside Tracks Measured in

B.C. at 2<sup>nd</sup> Rail Length from old axis

Cal.

Mag.

1956

19+50

15+30

13+50

12.00

9.36 10.45 L.

2.74

6+62 7.15 R.

2.92

3+70 27.26 L

2.82

+ 87. 28.00 L

87

263+27 = 0. 19.15 L

N. 11.49

N. 11° E

edge of cottonwood

N. 22.345

N. 22° E

N. 15.19 E

N. 14° E

N. 42.40 E

N. 42° E

N. 70° 1/4 E

N. 70° 1/4

N. 90° E

90° L

Corner of fence -

Big oak (6)

11 7

13.50 7

out (2) 7

all above fence

line & outside of bed  
of stream would be  
heavy clearing -Scattered  
clearing about 1/20.100  
0.100  
0.100

3.7

4.7

10 7

40 fence.

Commencing at Monument No 7. Sta 263+27 and following fence line  
Meander lines in Reservoir for clearing purposes.

July 23 1897

B.7. 18+70 40° 09' L

1.52

B.6. 17+18 24° 23' L

1.96

B.5. 15+22 48° 32' L

1.70

B.4. 13+52 66° 32' R

5.12

B.3. 8+40 4° 55' L

2.95

B.2 = 5+45 37° 10' L

2.38

B.1 = 3+07 69° 18' L

3.07

263+27 0 93° 30' L

S. 19° 58' W S. 19° W

S. 59° 22' W S. 59° W

S. 83° 44' W S. 83° W

N. 47° 41' W N. 48° W

Heavy clay?

S. 65° 47' W S. 65° 1/4° W

S. 70° 02' W S. 70° W

S. 70° 02' W S. 70° W

N. 72° 48' W N. 72° 5/8° W

N. 3° 30' W N. 3° 30' W

N. 90° E N. 90° E



Rock

Heavy clay?

Light clay about 20 ft. Heavy clay

Heavy clay -

Commencing at Mount Holy

Sta 263+27

and meandering around between light +



B15- 34+28 81° 15' L.

2.21

S. 13.01 S 13.35 E

B14- 32.07 47° 43' R

1.76

S. 60.44 E S. 61 E

B13- 30.31 55° 40' L

5.1

S. 5.04 E S. 5° 1/2 E

B12- 29.80 67° 06' L

2770

2.13

S. 62.02 W S. 61.30 W

B11- 27.67 7° 38' L

1.43

S. 69.40 W S. 69. W

B10- 26+24 4° 05' L

.88

S. 73.45 W S. 73. W

B9- 25+36 65° 25' R

5.13

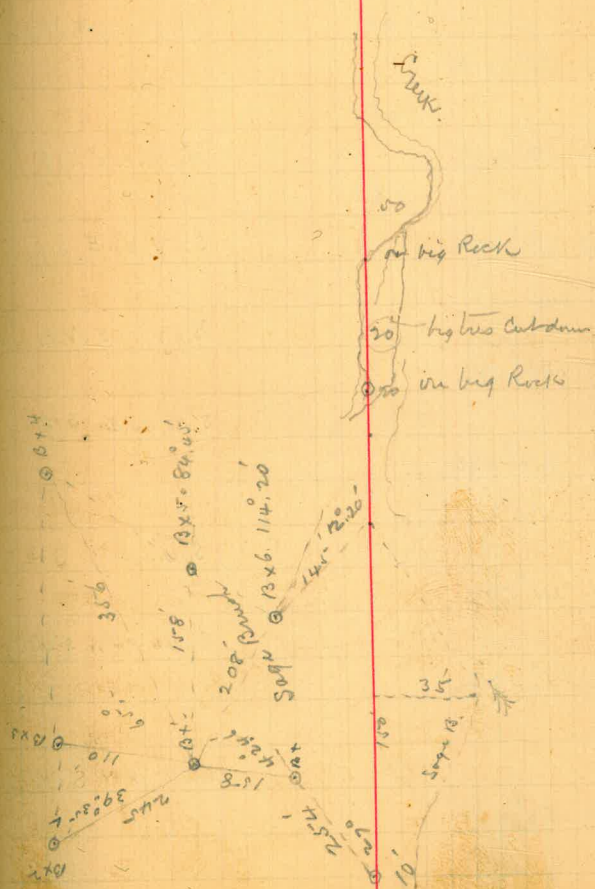
B8- 20+23 11° 18' L

1.53

S. 8.20 W S. 73.0 W

S. 19° 38' W S. 19° W

Heavy sage brush light



35

B. Line

53.45

50.35

14

B24. 50.21

204

B25. 48.17 53.14 R

165

B22. 46.52 111.10 L

88

B21. 45.64 68.05 R

137

B20. 44.27 109.05 L

110

B19. 43.17 22.50 L

170

B18. 41.47 41.56 L

156

B17. 39.91 13.22 L

293

B16. 36.98 153.44 R

270

N 72.24 E N 72.2 E

N 19.10 E N 18 3/4 E

S 59.40 E S 60 1/4 E

N 52.15 E N 51 1/2 E

S 18.40 E S 19 1/2 E

S 41.10 W S 3 1/2 W

S 46.06 W S 45.00

S 59.28 W S 58 1/2 W

N 65.44 E N 65 E

Inlet

16°

310

Corner post.

2. fence -

$$\begin{array}{r} 81.85 \\ 0.15 \\ \hline 87.30 \end{array}$$

$$\begin{array}{r} 87.30 \\ 66.00 \\ \hline 153.30 \end{array}$$

Mega Rd

Light grey

Heavy grey



## C. Line + D Line

D.3 = 6+00 21° 16' R

146

S. 53° 51' W. S. 52° W

D.2 = 4.54 37° 40' R

181

S. 16° 11' W. S. 16° 4' W

D.1 = 2.73 6° 10' L

273

S. 22° 21' W. S. 23° W

0.578 = D.0 100° 46' L

N. 56° 53' W

C.4 = 6.81

C-D = 5.78

5.20

1.86

N. 56° 53' W. N. 56° 4' W

C.3 = 4.95 71° 24' L

1.52

N. 14° 21' E. N. 14° 4' E

C.2 = 3.43 10° 53' R

1.83

N. 3° 38' E. N. 3° 4' E

C.1 = 1+60 23° 38' R

16.0

N. 19° 40' W. N. 19° 4' W

B.2 = O.C. 53° 08' R

1

N. 72° 48' W. N. 72° 9' W

a quantity of light clay -

C. line commences at B.2 and runs around to North enclosing with a line

10'

60'

Median N.C.

B.S. in C.3

150' contour

on solid ledge about 15' high

Cottonwood = D

Cottonwood

Backsight on B.1

40' 10' 10'

light clay  
about 20 ft. - 7' Median  
heavy sandstone



37

D line

(610)

183

S. 31.18° W S 32° W

D11-26.75 61° 55' L

245

N. 86.51° W N 87° W

D10 24.28 64° 44' R

131

S. 28.25° W S 28° W

D9 22.97 22° 55' R

3.56

S. 5° 30' W S 5° 2' W

D8 19.41 12° 10' L

4.23

S. 17° 40' W S. 17° 12' W

D7 15.18 76° 22' L

3.86

N. 85.58° W N 86° W

D6 11.32 14° 07' L

1.57

N. 71.51° W N. 72° W

D5 9.75 31° 20' R

2.27

S. 76.49° W S. 76° 1/4° W

S

820

D4 7.48 1° 42' R

148

1.48

S. 75.07° W S 75° W

Hutton 150' Contour

98

Big Rock from Spring

30

15

25

30

50

60

S. 10°

Medium Heavy

Creek

D20.	47.27	33° 30' R	1.27	N. 48.48 W. N 49° 4 W
D19.	46.00	32° 58' L	3.10	N. 15.50 W. N 16° 4 W
D18.	42.90	74° 00' R		
			1.64	N. 89.54 W. N 89° 5 E
D17.	41.26	64° 37' L	2.57	N. 25.17 W. N 25° 4 W
D16.	38.71	53° 55' R	3.70	N. 79.12 W. N 79° 6 W
D15.	35.01	8° 57' R	120	N. 88.09 W. N 88° 4 W
D14.	33.81	10° 15' R	2.88	S 81.36 W. S 81° 4 W
D13.	30.93	30° 28' R	237	
D12.	28.56	14° 50' R		S 46.08 W. S 46° W

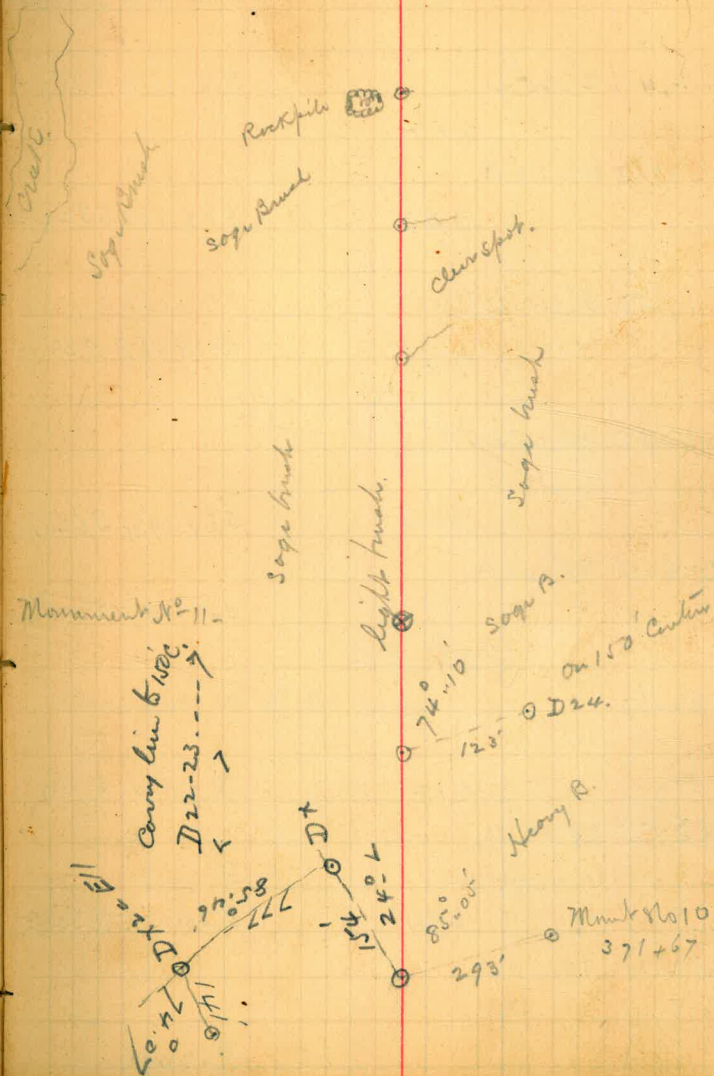
S 81.18

(4.27)



## D and E line

	281	N. 62.49 W 62° W
E 6. 31.80 82.25 R	433	S. 34.46 W 34° W
E 5. 26.47 20.15 L		
	412	S. 55.43 N, S 55.5 W
E 4. 22.35 104.06 R		
	695	S 48.23 E S 48.20 E
E 3. 15.40 13.52 L		
	685	S 34.31 E S 34.2 E
E 2. 8.55 77.30 L		
	5.30	S. 42.59 W S 42.9 W
E 1. 3.25 97.27 L	325	N. 39.34 W N 40° W
E 0. 52.03 38.10 L		
D 23. 52.03 38.10 L		
	146	N. 12.4 W N 13.4 W
D 22. 50.57 13.54 R		
	2.65	N. 15.18 W
D 21. 47.92		
	65	N. 15.18 W N 16°





40

E line

E14 - 24.27

190

S. 13° 10' W S. 13° 2' W

E13 - 22.47 2° 25' L

282

S. 15° 35' W S. 15° 4' W

E12 - 19.65 47° 52' R

2.50

S. 32° 17' E S. 32° 4' E

E11. 17+15 3° 21' L

4.95

S. 28° 53' E S. 28° 4' E

E10. 12.20 93.25 L

36.45

S. 64° 39' W S. 64° 4' W

E. 2 = 8+55 21° 40' R

S. 42° 09' W S. 42° 4' W

fo to E 2

E9. 44+67

Connects with E. 8.

6.12

N. 75° 56' W N. 8° W

E8. 38.55 28° 50' L

394

N. 36° 57' E N. 36° 4' E

Sage Brush,

clearing -

E7. 34.61 99.40 R

N. 62

N. 62° 49' W

① Monument No. 12 Sta 392+53

①

41

E Line

E27. 42.72

3.51

S. 5° 38' E S. 5 1/2° E

E26 - 39.21 52° 58' R

1.61

S. 58° 36' E S. 58 1/4° E

E25 - 37.60 85° 56' L

3.46

S. 27° 20' W 27° 1/4° W

E24 - 34.14 18° 20' R

1.84

S. 9° 00' W S. 9 1/4° W

E21 - 32.30 19° 03' R

2.28

S. 10° 03' E S. 10° E

E20 - 30.02 42° 18' R

2.00

S. 52° 21' E S. 52 1/2° E

E19 - 28.02 5° 13' R

1.00

S. 57° 34' E S. 57 1/2° E

E17 - 27.02 111° 28' L

1.70

S. 53° 54' W S. 53 1/4° W

E15 - 25.32 32° 36' L

95'

S. 86° 30' W S. 86 3/4° W

E14 - 24.37 73° 20' R

S. 13° 10' W S. 13 1/2° W



light clay

S.B.

E18, 150' Center

Medium Heavy

light clay

S.B.

48° 08' R, 250', E16, 150' Center

Medium Heavy

clay

light clay

S.B.



B18  
E35 } 83.45

E 4.17

N. 40°.47' E N. 40°25' E

E34 - 79.28 3°.05' R

380

N 37°.42' E N 37°25' E

E33 75.48 3°.10' R

610

N 34°.32' E N. 34°45' E

E32 - 69.38 5°.00' L

725

N. 39°.32' E N 39°25' E

E31 - 62.13

7.75

N. 63°.30' E N. 63°25' E

E30 - 54.38 29°.14' L

280

S 87°.16' E S 87°25' E

E29 - 51.58 67°.06' L

5100

49+20

530

S 20°.10' E S. 20° E

E28. 46.28 46°.31' L

3.56

S 26°.12' E S. 26°3/4' E

E27. 42.72 31°.50' R

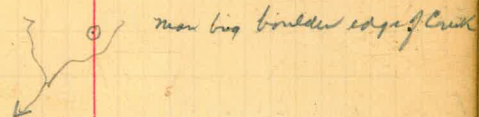
S 5°.38' E

Jons Blime at B18. -

700ft x 40' clens

Sage Brush

Cherry



Creek

sage brush to D line -

Turn + cross creek + follow road



F. 6. 33 + 78

F. 6. 33 + 78

590

S. 42° 42' W S 42½ W

F5, 2788 1.05 L

283

S. 43.47 W S 43 <sup>3</sup>/<sub>4</sub> W.

F4. 25.05 16°. R

4,35-

S 27° 47' W S 27 1/4 W.

F3 20.70 8°33' L

F3. 20.70

690

S. 36° 20' W S 36  $\frac{1}{4}$  W

F2 13.80 17° 51' L

Fr.	950
-----	-----

S 54.31 W S. 54° W

F1- 430 23°46'N

4.30

S. 30.45W 30  $\frac{11}{4}$ W.

F. .00 101.23 L

D-12 -

F

N 37.5° W N 38° 4' W

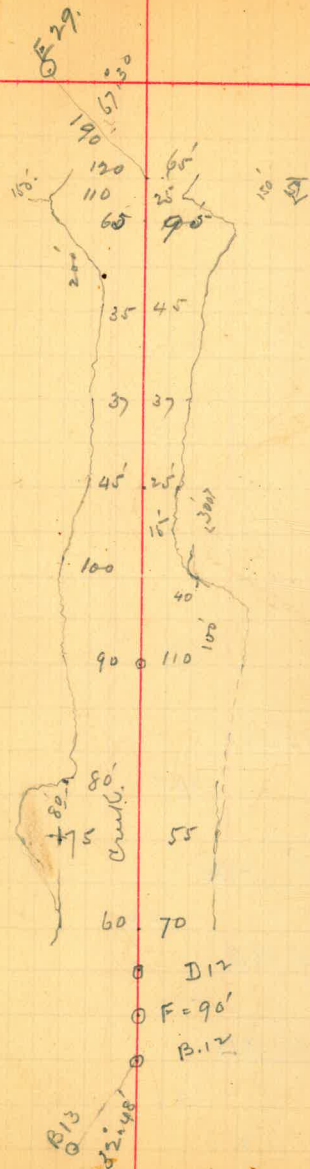
$$B_2 = 0.32.484$$

В.

Ms. 04711.

1313.

Return to B. 12 + go to center of creek + meander down creek



45  
G4 1642

1.90

N.50°25'E N.50°E

G3 1452 84°16'R

7.05

N.33.47 N34°W

G2 7.47 15°45' E

42

N.18.02W N18¼W

G1 7.05 59°18'E

512

N.77°20W N.77½W

G1.93 23°28'R

193

S.79°12'W S79¼W

E28= 0 53°0'R

S.26°12'W

Return to E28 and run between light and Medium heavy birds



46

H. Luin

H. Lucas is appraised of Morona valley

14.17

H12-39.73

340

N. 65° 03 E A. 65° 03 E

H.11- 3.6 + 3 3 37.45 R

291

N.  $27^{\circ}$  18 E N.  $27^{\frac{1}{2}}$  E

14.10 33.42  $38^{\circ}23'12''$

4.15-

 $N, 11^{\circ} 10' 5'' N, 11^{\circ} 11''$ 

H.9. 28+27 55<sup>0</sup> 13' L

3.75

N44.08E N. 44 1/2 E

H. 8 - 24.52 137° 38' 12"

9.35

$5.86^{\circ} 30' N$   $586\frac{1}{2} W$

H. 4 15.17  $103^{\circ} 10'$  R

1.82

5.16.40 E

11.3 13.35 - - -

520

H<sub>2</sub> 8+15 - - -

360

S. 16.40' E S. 16½ E

N. 1. 455 16° 40' 2

4.55

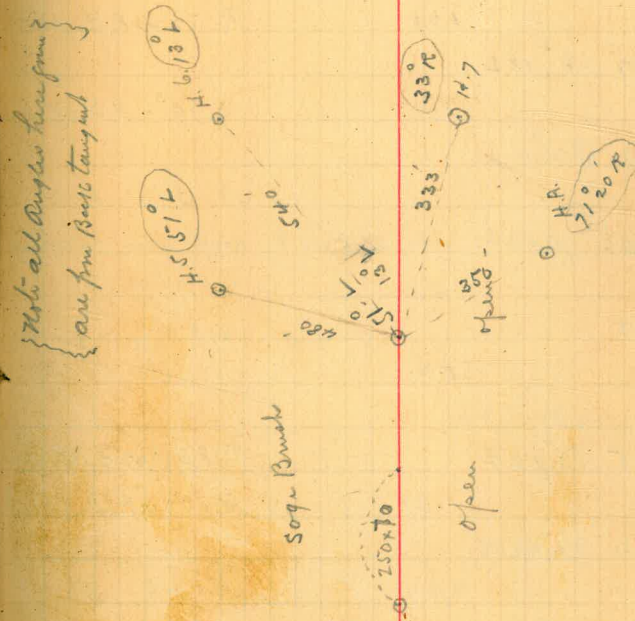
5.00      5.00.

H. O

500 00

Monument No 14.

Commencing at Monument No 14 Sta 508+71 of C&D Contains lime on rising to open place





J. 5. 8.75

K. 0. 3.56

J. 4. 5.19 57.22 L

235

J. 2. 284 6.02 L

177

J. 1-107 68.18 L

1.07

J. 0 39.0 L

J. 50 ft post sta 578+58 and run as above

I. 4 = 9.53

I. 4. 5.30

I. 3 4.25 53.18 R

31

I. 2 = 3.94 30.24 R

197

I. 1 - 197 90.0 L

197

I = 0

I-line Commences at corner post center

N. 11.18° E N. 11 1/2° E

N. 66.40° E N. 67° E

N. 72.42° E N. 73° E

S. 39.00° E S. 39° E

N. S. N.

N. 83.42° E N. 83 3/4° E

N. 30.24° E N. 30 1/2° E

N. 00 N. 00

N. 90° E N. 90° E

Heavy clearing

light clearing

150' center - fence - 3'

150' center - fence - 3'

all light clearing -

N. N. W. of Sect 12 -

K1  
K12 4190

K12 38+86 3.04

K10 34+06 112° 0' R 4.80

K9- 27+41 = --- 6.65

K8- 24+14 84° 43' R 3.27

K7- 21+49 23° 25' L 2.65

K6- 17+59 44° 37' R 3.90

K5- 12+34 100° 47' R 5.25

K4- 9+98 --- 2.36

K3- 9+98 --- 6.23

K1 375 47° 28' L 375

K0=J4.0. 9° 42' R

K Commences at Sta J4

N. 12° 24' W

N. 12° 24' W N. 12° 4' W

S. 55° 36' W S. 55° 4' W

S. 29° 07' E S. 29° E

S. 5° 42' E S. 5° 2' E

S. 50° 19' E S. 50° E

N. 28° 54' E

N. 28° 54' E N. 29° 4' E

N. 76° 22' E N. 76° 3/4' E

N. 66° 40' E

and runs

around open space

85° 10' 46' 85° 10'

light clearing



Clearing

light clearing



49

43.28

L line

410

L19-40.88 37°10' L

525

L18-35.63 11°15' R

275

L16-37.88 17°52' L

150

L15-30.38 23°04' R

725

L12-23.13 2°55' R

4.18

L8-18.95 53°33' L

233

L7-16.62 36°04' R

141

L6-15.21 7°05' R

383

L4-11.38 30°40' L

432

L3-7.06 46°06' R

226

L2-4.80 27°15' R

2.67'

L1-2.13 64°22' L

228

J1=L-0 49°50' R

S. 8.07 W S 7 1/2 W

S. 3.08 E S 3 1/4 E

S. 14.44 W S 14 1/2 W

S. 18.20 E S 18 1/2 E

S. 21.15 E S. 21 1/2 E

S. 32.18 W S 32 1/4 W

S. 3.46 E S 3 1/4 E

S. 10.51 E S. 10 3/4 E

S. 19.49 W S. 20 W

S 26 1/2 E S 26 1/4 E

S. 52.32 E S 53 1/2 E

S. 10.50 W S 11 W

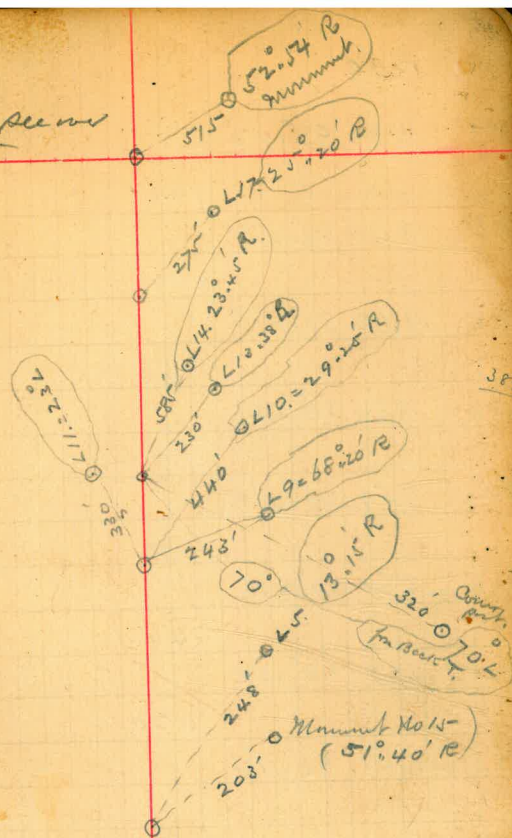
S. 39.0 E

error 200' seen

any line for  
Beck's map

Light

Medium heavy

Line J1-L1 to oak point is 382'  
(Sta

Return to J1 &amp; turn to Right following below sage bench &amp; heavy clay.



52  
M8. 1829

S.3°.14'E S.3¼'E

M7 - 15.82 92°.05'L 247

188

S.88°.11'W S.88¼'W

M6 - 13.94 89°.35'R

294

S.0°.44'E S.1¼'E

M5 - 11.00 37°.56'R

1.66

S.38°.40'E S.39¼'E

M4 - 9.34 35°.48'L

1.77

S.2°.52'E S.2¾'E

M3 - 7.57 29°.40'R

1.97

S.32°.32'E S.32¾'E

M2 - 5.60 30°.54'R

1.40

S.63°.26'E S.64°E

M1 - 4.20 43°.20'R

420

N.73°.14'E N.72¾'E

M0 = L21 = 0, 92°.11'L

S.14°.35'E

M line commences at L21 and turns 92°11'L following around Sticks Chert

~~M0~~  
L23 } 55+67

5.60

S.14°.38'W S.14¼'W

L22 - 50 07 42°.15'L

77

S.56°.53'W S.56°.53'W

M0 }  
L21 } 49+30 71°.28'R

592

S.14°.35'E S.15°E

L20 - 43.38 14°.28'R

1450

S.29°.03'E S.29¼'E

150' Contour end of Sticks Chert

around draw to Sticks Chert

around 200'

50 51

Finis  
Aug 2 1897

to oak tree the end - N. 41.21° E N 41 <sup>3</sup>/<sub>4</sub> E

M 6 M 18.44 + 75 93° 10' N S 45° 29' W S 45° W

M. 84  
M17-43491 25.00L S70.29'W, S70°W

M		317	
M	16.40 + 74	67° 35' N	
M		343	S 2° 52' W S 2° 42' W S 2° 42' W

M15 37°31'10.40"E  
M. 345  
S7°46'E 84%

M14 - 33.86	16.18 L		
M	3.50	S. 8.32' W.	S 8 1/4 W.

M.13- 30<sup>31</sup> 17<sup>38</sup>L  
M - 242 S 26<sup>10</sup>W S 20<sup>4</sup>E

M12 = 27.89 13.20' N 330 S 12.00' W S 12.00' W

M 11 24<sup>h</sup> 59 21°.06'18  
320 S. 8°.16' E S 9° E

U20  
M.105 21.39 22.58 R

M. 9- 1989 1° 45' R 150 S 31 14 E. S 31 3/4 E

160  
M8.18+29 29.45L S 32.59E S 33 1/2 E

$$\begin{array}{r} 16.18 \\ 8.32 \\ \hline 340 \end{array}$$

7.46  
10.40

2. 5-4  
67.3 5

70.29

95.29

45.29  
93.10

138.3

4 1 " 2

346 -

364 = 364  
13

any

Sticks clear



Handwritten calculations and notes on the left page of the notebook, including various numbers and mathematical operations.

362

84.12 53.27

6.26 26.4

192.38 84.12

87.22 84.12

82+ 66+ 87 235

100

87.22

2369

83x84 x 50

27

249

12250

25+30

130

190

17.22

2.58

14.24

605

675

62

1342

92

354

1320

34

05

06

02

06

3.4

29

11.3

100

108

62.4

6

# TRAVERSE TABLE FOR TRANSIT BOOK. From 1° to 90° for a distance of 100.

Degrees.	DEGREES.		¼ DEGREE		½ DEGREE.		¾ DEGREE.		Degrees.
	Lat.	Dep.	Lat.	Dep.	Lat.	Dep.	Lat.	Dep.	
0			100.00	0.44	100.00	0.87	99.99	1.31	89
1	99.98	1.75	99.98	2.18	99.97	2.62	99.95	3.05	88
2	99.94	3.49	99.92	3.93	99.91	4.36	99.88	4.80	87
3	99.86	5.23	99.84	5.67	99.81	6.10	99.79	6.54	86
4	99.76	6.98	99.73	7.41	99.69	7.85	99.66	8.28	85
5	99.62	8.72	99.58	9.15	99.54	9.58	99.50	10.02	84
6	99.45	10.45	99.41	10.89	99.36	11.32	99.31	11.75	83
7	99.25	12.19	99.20	12.62	99.14	13.05	99.09	13.49	82
8	99.03	13.92	98.97	14.35	98.90	14.78	98.84	15.21	81
9	98.77	15.64	98.70	16.07	98.63	16.50	98.56	16.93	80
10	98.48	17.36	98.40	17.79	98.33	18.22	98.25	18.65	79
11	98.16	19.08	98.08	19.51	97.99	19.94	97.90	20.36	78
12	97.81	20.79	97.72	21.22	97.63	21.64	97.53	22.07	77
13	97.44	22.50	97.34	22.92	97.24	23.34	97.13	23.77	76
14	97.03	24.19	96.92	24.62	96.81	25.04	96.70	25.46	75
15	96.59	25.88	96.48	26.30	96.36	26.72	96.25	27.14	74
16	96.13	27.56	96.00	27.98	95.88	28.40	95.76	28.82	73
17	95.63	29.24	95.50	29.65	95.37	30.07	95.24	30.49	72
18	95.11	30.90	94.97	31.32	94.83	31.73	94.69	32.14	71
19	94.55	32.56	94.41	32.97	94.26	33.38	94.12	33.79	70
20	93.97	34.20	93.82	34.61	93.67	35.02	93.51	35.43	69
21	93.36	35.84	93.20	36.24	93.04	36.65	92.88	37.06	68
22	92.72	37.46	92.55	37.86	92.39	38.27	92.22	38.67	67
23	92.05	39.07	91.88	39.47	91.71	39.87	91.53	40.27	66
24	91.35	40.67	91.18	41.07	91.00	41.47	90.81	41.87	65
25	90.63	42.26	90.45	42.66	90.26	43.05	90.07	43.44	64
26	89.88	43.84	89.69	44.23	89.49	44.62	89.30	45.01	63
27	89.10	45.40	88.90	45.79	88.70	46.17	88.50	46.56	62
28	88.29	46.95	88.09	47.33	87.88	47.72	87.67	48.10	61
29	87.46	48.48	87.25	48.86	87.04	49.24	86.82	49.62	60
30	86.60	50.00	86.38	50.38	86.16	50.75	85.94	51.13	59
31	85.72	51.50	85.49	51.88	85.26	52.25	85.04	52.62	58
32	84.80	52.99	84.57	53.36	84.34	53.73	84.10	54.10	57
33	83.87	54.46	83.63	54.83	83.39	55.19	83.15	55.56	56
34	82.90	55.92	82.66	56.28	82.41	56.64	82.16	57.00	55
35	81.92	57.36	81.66	57.71	81.41	58.07	81.16	58.42	54
36	80.90	58.78	80.64	59.13	80.39	59.48	80.13	59.83	53
37	79.86	60.18	79.60	60.53	79.34	60.88	79.07	61.22	52
38	78.80	61.57	78.53	61.91	78.26	62.25	77.99	62.59	51
39	77.71	62.93	77.44	63.27	77.16	63.61	76.88	63.94	50
40	76.60	64.28	76.32	64.61	76.04	64.94	75.76	65.28	49
41	75.47	65.61	75.18	65.93	74.90	66.26	74.61	66.59	48
42	74.31	66.91	74.02	67.24	73.73	67.56	73.43	67.88	47
43	73.14	68.20	72.84	68.52	72.54	68.84	72.24	69.15	46
44	71.93	69.47	71.63	69.78	71.33	70.09	71.02	70.40	45
45	70.71	70.71							
Degrees.	DEGREES.		¼ DEGREE.		½ DEGREE.		¾ DEGREE.		Degrees.
	Dep.	Lat.	Dep.	Lat.	Dep.	Lat.	Dep.	Lat.	

Published by H. S. CROCKER COMPANY, Stationers, Drawing Materials Mathematical Instruments, etc., San Francisco.



# TRAVERSE TABLE FOR TRANSIT BOOK.

From 1° to 90° for a distance of 100.

Degrees.	DEGREES.		1/4 DEGREE		1/2 DEGREE.		3/4 DEGREE.		Degrees.
	Lat.	Dep.	Lat.	Dep.	Lat.	Dep.	Lat.	Dep.	
0			100.00	0.44	100.00	0.87	99.99	1.31	89
1	99.98	1.75	99.98	2.18	99.97	2.62	99.95	3.05	88
2	99.94	3.49	99.92	3.93	99.91	4.36	99.88	4.80	87
3	99.86	5.23	99.84	5.67	99.81	6.10	99.79	6.54	86
4	99.76	6.98	99.73	7.41	99.69	7.85	99.66	8.28	85
5	99.62	8.72	99.58	9.15	99.54	9.58	99.50	10.02	84
6	99.45	10.45	99.41	10.89	99.36	11.32	99.31	11.75	83
7	99.25	12.19	99.20	12.62	99.14	13.05	99.09	13.49	82
8	99.03	13.92	98.97	14.35	98.90	14.78	98.84	15.21	81
9	98.77	15.64	98.70	16.07	98.63	16.50	98.56	16.93	80
10	98.48	17.36	98.40	17.79	98.33	18.22	98.25	18.65	79
11	98.16	19.08	98.08	19.51	97.99	19.94	97.90	20.36	78
12	97.81	20.79	97.72	21.22	97.63	21.64	97.53	22.07	77
13	97.44	22.50	97.34	22.92	97.24	23.34	97.13	23.77	76
14	97.03	24.19	96.92	24.62	96.81	25.04	96.70	25.46	75
15	96.59	25.88	96.48	26.30	96.36	26.72	96.25	27.14	74
16	96.13	27.56	96.00	27.98	95.88	28.40	95.76	28.82	73
17	95.63	29.24	95.50	29.65	95.37	30.07	95.24	30.49	72
18	95.11	30.90	94.97	31.32	94.83	31.73	94.69	32.14	71
19	94.55	32.55	94.41	32.97	94.26	33.38	94.12	33.79	70
20	94.37	34.20	93.82	34.61	93.67	35.02	93.51	35.43	69
21	93.36	35.84	93.20	36.24	93.04	36.65	92.88	37.06	68
22	92.72	37.46	92.55	37.86	92.39	38.27	92.22	38.67	67
23	92.05	39.07	91.88	39.47	91.71	39.87	91.53	40.27	66
24	91.35	40.67	91.18	41.07	91.00	41.47	90.81	41.87	65
25	90.63	42.26	90.45	42.66	90.26	43.05	90.07	43.44	64
26	89.88	43.84	89.69	44.23	89.49	44.62	89.30	45.01	63
27	89.10	45.40	88.90	45.79	88.70	46.17	88.50	46.56	62
28	88.29	46.95	88.09	47.33	87.88	47.72	87.67	48.10	61
29	87.46	48.48	87.25	48.86	87.04	49.24	86.82	49.62	60
30	86.60	50.00	86.38	50.38	86.16	50.75	85.94	51.13	59
31	85.72	51.50	85.49	51.88	85.26	52.25	85.04	52.62	58
32	84.89	52.99	84.57	53.36	84.34	53.73	84.10	54.10	57
33	83.87	54.46	83.63	54.83	83.39	55.19	83.15	55.56	56
34	82.90	55.92	82.66	56.28	82.41	56.64	82.16	57.00	55
35	81.92	57.36	81.66	57.71	81.41	58.07	81.16	58.42	54
36	80.90	58.78	80.64	59.13	80.39	59.48	80.13	59.83	53
37	79.86	60.18	79.60	60.53	79.34	60.88	79.07	61.22	52
38	78.80	61.57	78.53	61.91	78.26	62.25	77.99	62.59	51
39	77.71	62.93	77.44	63.27	77.16	63.61	76.88	63.94	50
40	76.60	64.28	76.32	64.61	76.04	64.94	75.76	65.28	49
41	75.47	65.61	75.18	65.93	74.90	66.26	74.61	66.59	48
42	74.31	66.91	74.02	67.24	73.73	67.56	73.43	67.88	47
43	73.14	68.20	72.84	68.52	72.54	68.84	72.24	69.15	46
44	71.93	69.47	71.63	69.78	71.33	70.09	71.02	70.40	45
45	70.71	70.71							
Degrees.	DEGREES.		1/4 DEGREE.		1/2 DEGREE.		3/4 DEGREE.		Degrees.
	Dep.	Lat.	Dep.	Lat.	Dep.	Lat.	Dep.	Lat.	

Published by H. S. CROCKER COMPANY, Stationers, Drawing Materials  
Mathematical Instruments, etc., San Francisco.