

FIELD BOOK

1898

W66

MICROFILMED

JAN X 6 1965

C.W.D.

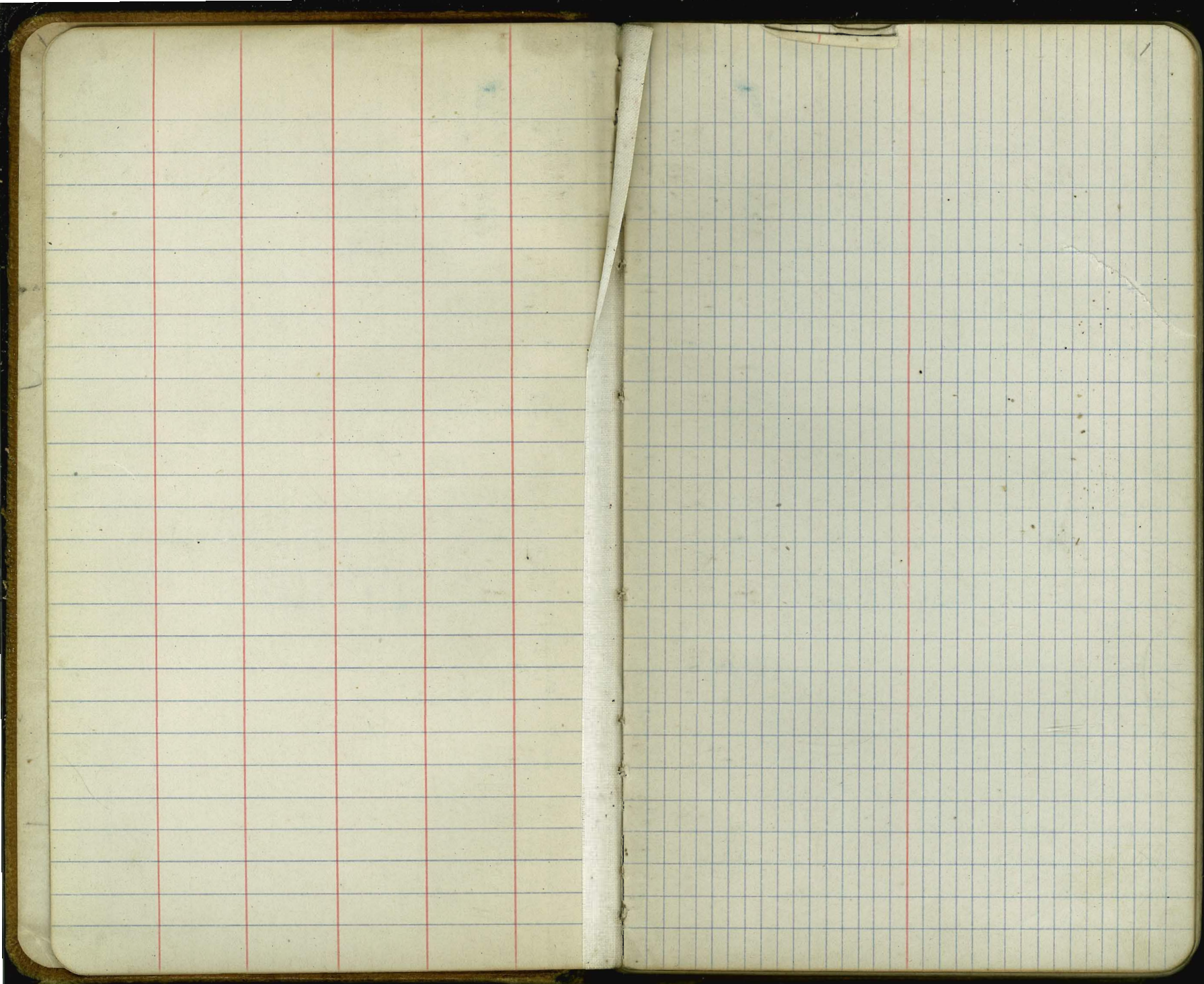
Bonita Line

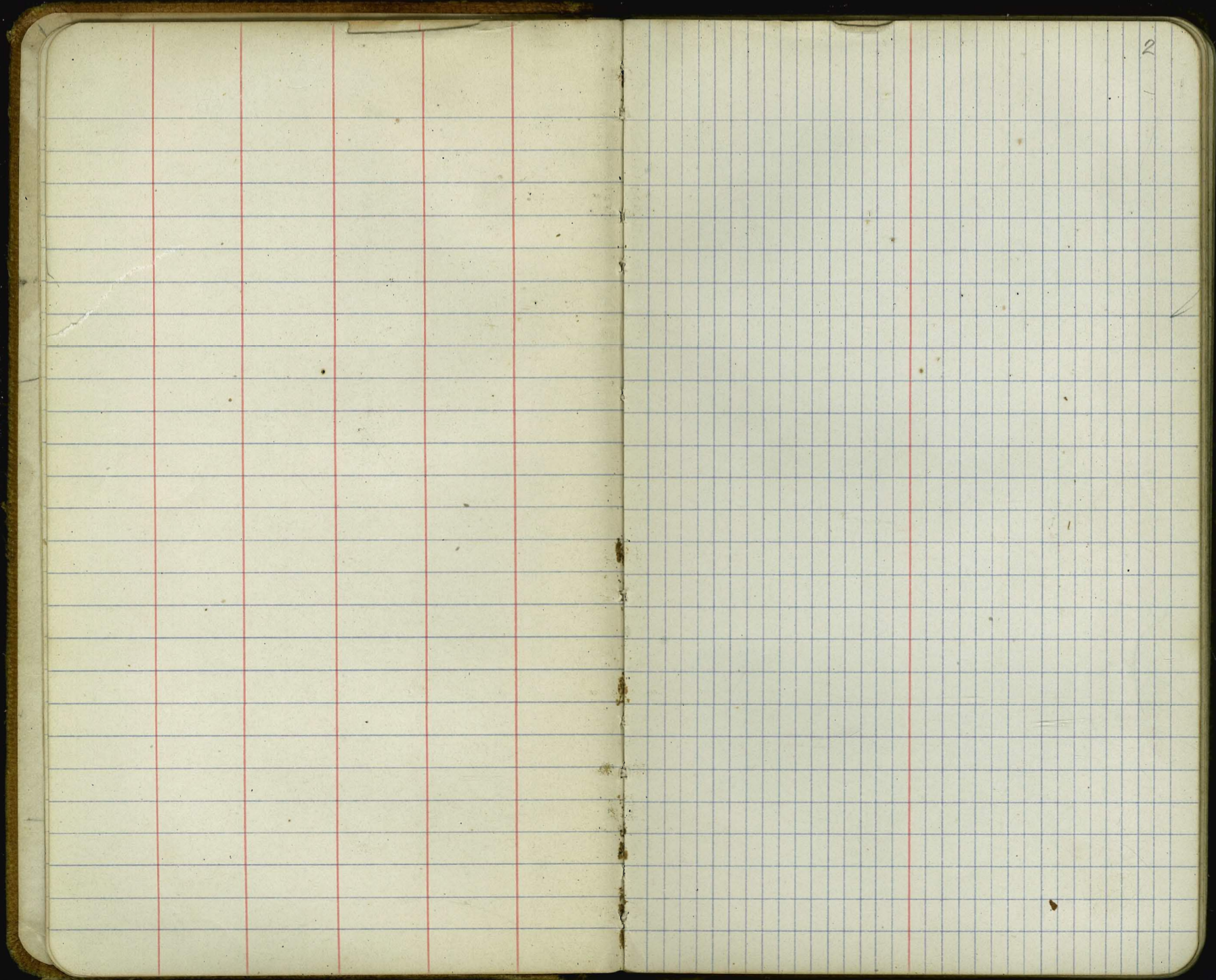
C. Line - - Page 6

" " Levels " 34

D. Line - - " 32

" " Levels " 64





2

11-17-14

3

Schoedsack
Maxim
O'Brien
Davis

C

Sta.	Angle	R.	C.C.	M.C.
0+00			N.34°42'W.	N.34°42'W.
8+00 [△]	20°		N.54°42'W.	N.54°42'W.
18+49 [△]	5°44'		N.48°58'W.	N.48°58'W.
26+60 [△]	14°08'		N.34°51'W.	N.35°00'W.
31+00 [○]	P.O.T.			
37+32 ²³ [○]	P.O.T.			
40+19	Center of Road			
40+54	Center of R.R.			
40+78	R. of W. Fence			

Sta.	Angle		C.C.	M.C.
	L.	R.		
43+76	Fence			
47+62	C. of Sweetwater Creek			
47+91	Fence			
		Alfalfa		
50+16 ⁵⁰		16°18'	N. 18°33'W	N. 18°40'W
50+20 ⁵	Fence			
		Orchard		
58+95	Private Road			
66+24	Fence			
66+53	C. County Road			
51.67+53 ⁵⁵	28°36'		N 47°29'W	N 47°29'W
71+31 ⁵	P.O.T.			

Angle

Sta	L	R	C.C.	M.C.
-----	---	---	------	------

72+00^o P.O.T

75+13^Δ 31° 17' N 16° 12' W N 16° 10' W

Orchard

SL 81+73^Δ 22.27 N 38° 39' W N 38° 39' W

82+38 Pipeline

91+42⁵⁰ P.O.T

92+13 Private Road

102+05^o P.O.T

105+15² P.O.T

SL 108+96^k P.O.T

74.65 from Co. W. W.

C. Line

11-17-14

6

SCHROEDSACK
MAXIM
OSALEN
DAVIS

Angle

Sta L R C.C. M.C.

37+32^{23°} P.O.T.

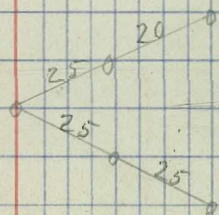
31+00^{9°} P.O.T.

26+60^Δ 14°07' N.34°51'W N.34°51'W

18+49^Δ 5°44' N.48°58'W N.48°58'W

8+00^Δ 20° N.54°42'W N.54°42'W

0+00 N.34°42'W N.34°42'W



Anze

Sta	L	R	C.C	M.C
50+16 ^{5A}		16°18'	N 18°33'W	N 18°33'W

Alfalfa

47+91 Fence

47+62 C. of Sweetwater Creek

43+76 Fence

40+78 R. of W. Fence

40+54 C. of R. R.

40+19 Center of Road

Angele

Sta L R C C M.C

71+31¹⁵ P.O.TS.L. 67+53⁵⁵ 28° 56'

N. 47° 29' W N. 47° 29' W

66+53 C. of County Road

66+24 Fence

58+95 Private Road

50+20⁵ Orchard
Fence

Angle
Sta L R C.C. M.C.
102+05^o P.O.T.

92+13 Private Road

91+43^o P.O.T.

89+98 E of Sweetwater W. Co. Pipe Line

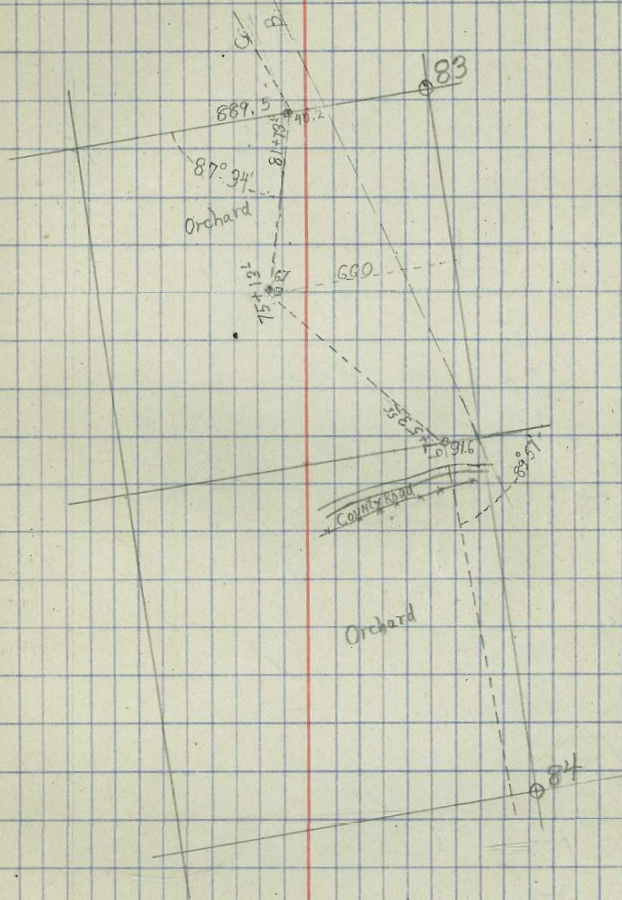
51+81^Δ 22° 27' N. 38° 39' W N. 36° 39' W

See Page 22

Orchard

75+13^Δ 31° 17' N. 16° 12' W N. 16° 12' W

72+00 P.O.T.



Sta	Angle		C.C.	M.C.
	L.	R.		
144+51 ^{8°}				
139+44				
139+24				
138+13 ^{2°}				
129+75 ^{8°}				
118+50 ^{8°}				
SL 109+96 ^{1°}				
105+53 ^{3°}				

P.O.T.

Fence

Private Road

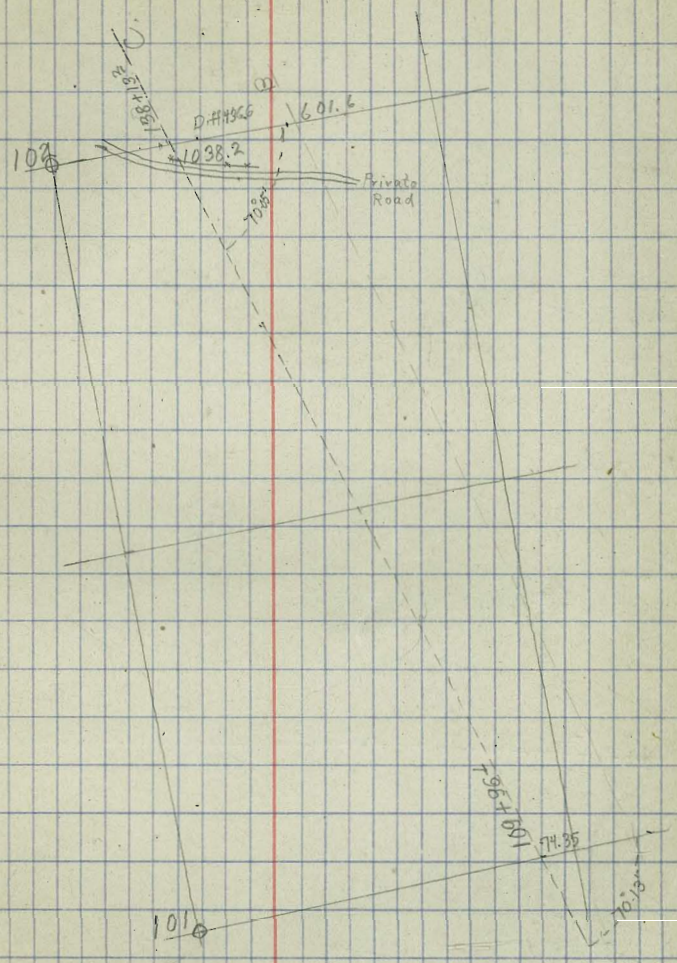
P.O.T.

P.O.T.

P.O.T.

P.O.T.

P.O.T.



Sta AncTe
 L R C.C. M.C.
 (CONT on Pg 12)

176+51⁵⁸ P.O.T.

173+45⁷⁵ P.O.T.

170+46⁰ P.O.T.

(Continued from Page 24)

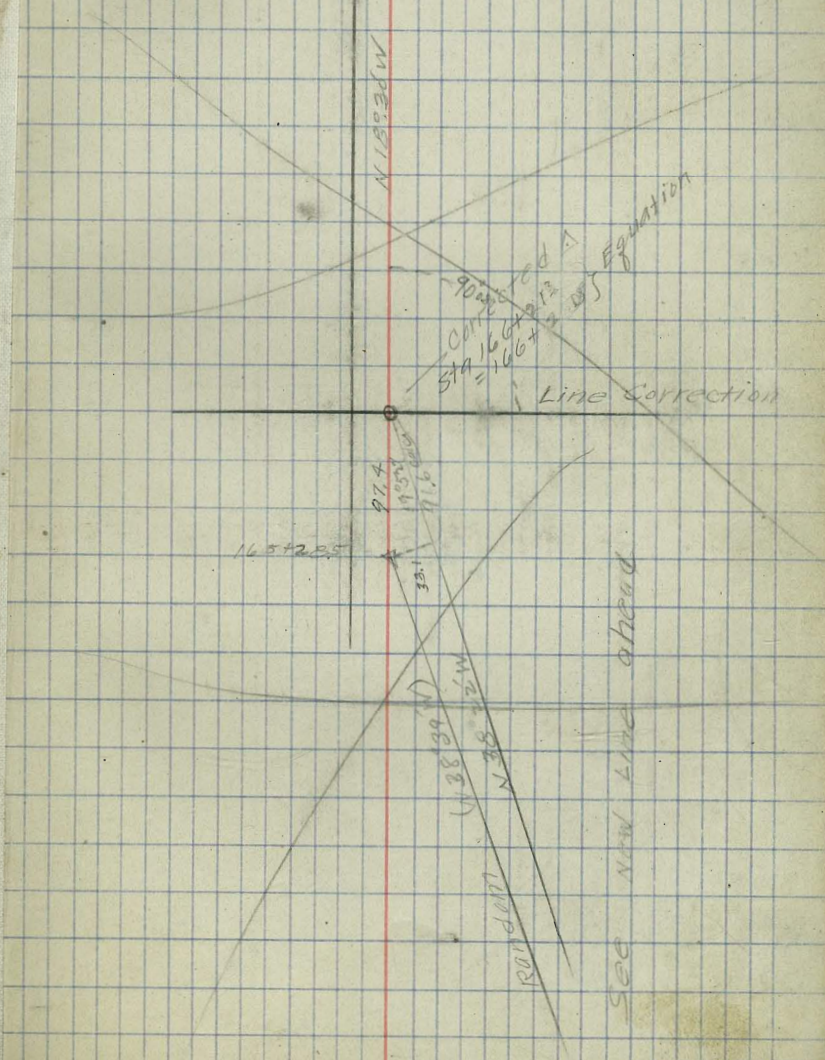
~~166+21⁰ P.O.T.~~

~~165+28⁰ 1945 N18°54' W N18°54' W~~

~~161+65⁴ P.O.T.~~

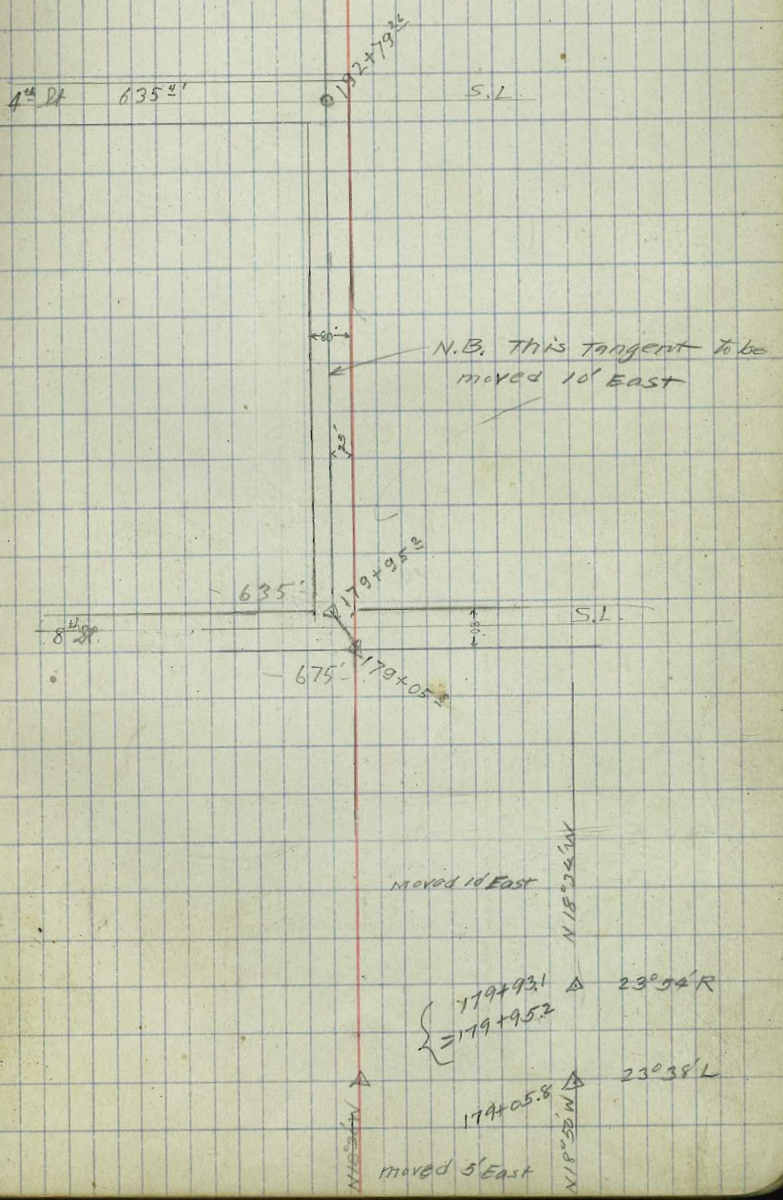
~~154+00⁰ P.O.T.~~

~~152+10⁰ FENCE~~



Sta	Angle		CC	M.C.
	L	R		
231+00				
206+94 ⁵⁵				
SL 205+62 ²	44° 26'		N63.04W	N69.30W
198+58 ²	P.O.T.			
192+95 ²	P.O.T.			
SL 192+79 ²	P.O.T.			
179+95 ² Δ	26° 48'		N.18°34'W	N.18°38'W
179+05 ² Δ	26° 32'		N.45°22'W	N.45°26'W

(Corrected from
New course)



Angle

Sta. L. R. C.C. M.C.

~~197+87⁴ P.O.T.~~~~266+95^{0.45} P.O.T.~~~~264+99² P.O.T.~~~~256+67²⁰ P.O.T.~~~~247+16⁰ P.O.T.~~~~240+73⁴~~~~67° 52' No 0° 12' W No 0° 30' N~~

Sta	L	R	C.C	M.C
-----	---	---	-----	-----

244+55⁵ P.O.T

242+66^{0.5} POT

(Cont. on Pg 17)

225+33⁶ P.O.T

212+41² P.O.T

S.L 205+62² 16° 04'

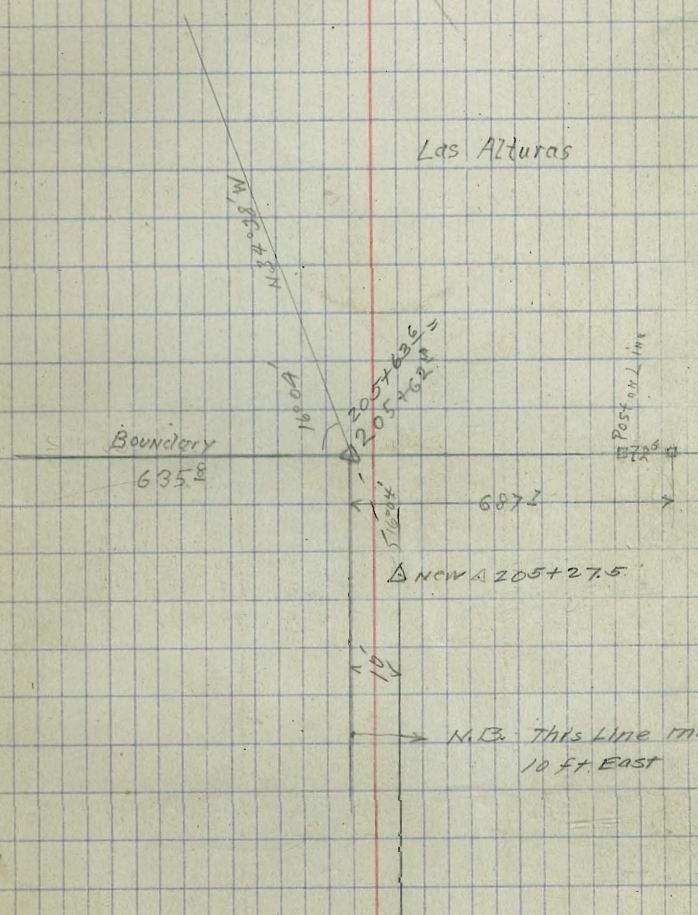
N37° 38' W
N37° 42' W

N18° 34' W } Corrected & B Line Bearing

198+58⁷

193+95⁰ P.O.T

OK Final



Ancle

Sta L. R. C.C. M.C.

292+24 Road

292+00^o P. 5 L of L

286+25 (Road)

279+00^o P. 5 L of L

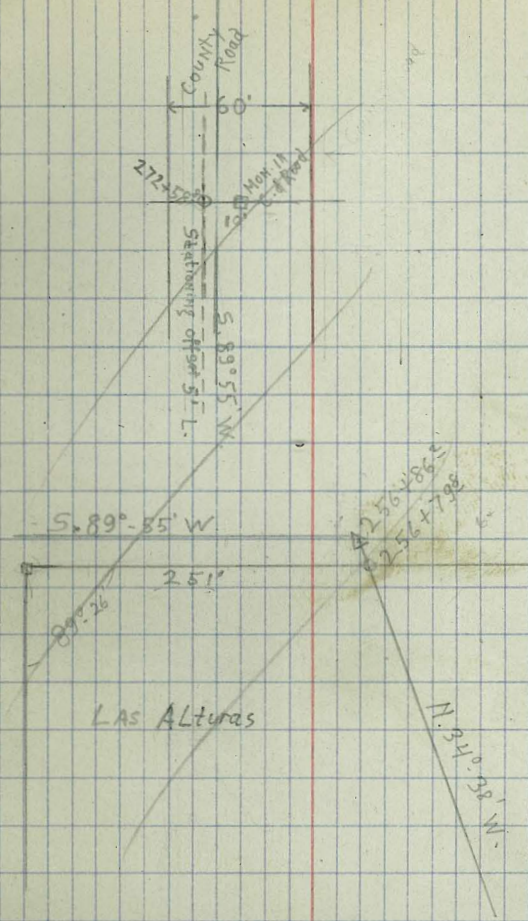
272+58^o P. 5 L of Line

265+33¹^o P. 5 L P. Line

256+86²^o 55° 27' S 89° 55' W S 89° 55' W

256+79^o P. O. T. Intersection N. Boundary of Las Alturas

O.K.
Y.M.M.



Angle

Sta L R C.C. M.C.

Cont. on Pg. 20.

see page 26 - Latest

See A Line Notes

C. LINE Δ 45
299+17

~~90°06' N00°01'E N00°00'E (A289102⁴⁵)~~

~~312+38~~

~~00°13' (5' L. of Line)~~

~~303+27~~

~~Bridge~~

~~302+51~~

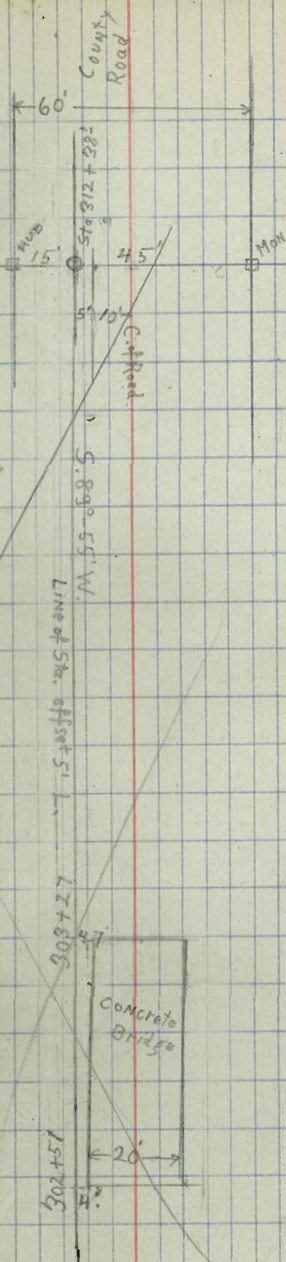
~~299+25~~

~~Road~~

~~295+75~~

~~Road~~

*a.k. to here
see page 26*

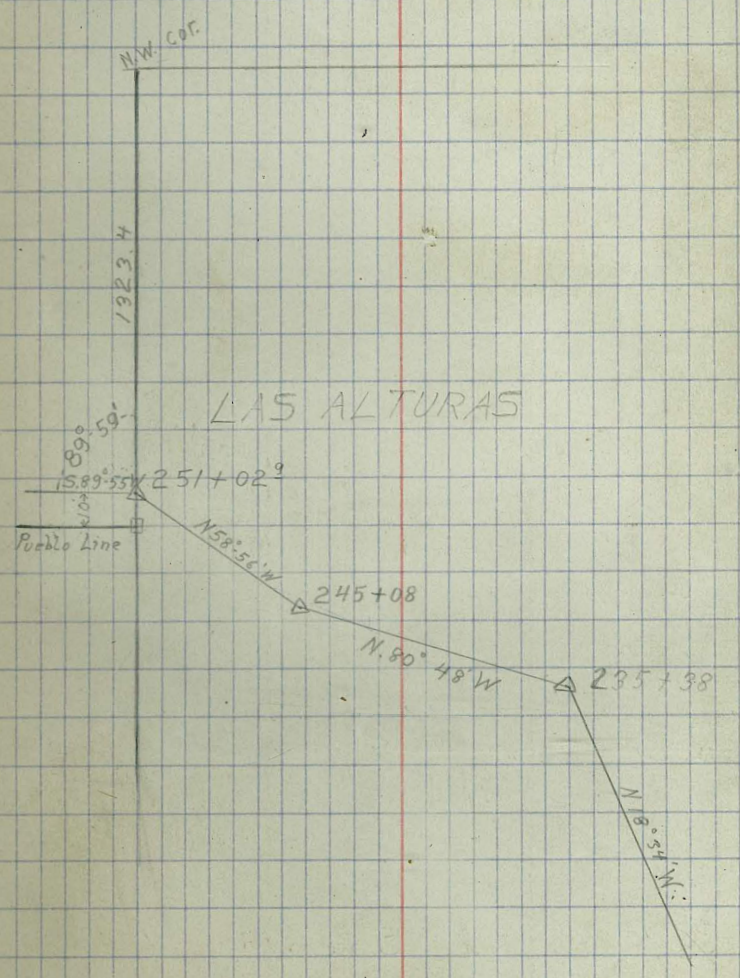


~~Sta. 299+17⁴⁵ C Line
= Sta. 299+17⁴⁵ A Line
Dist 1089'~~

(Cont from Pg. 14)

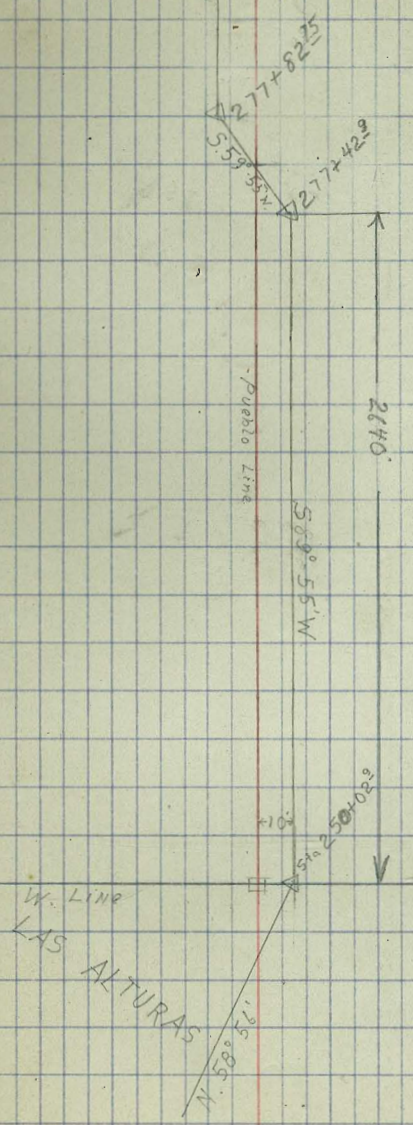
Angle

Sta	L	R	C.C.	M.C.
-260+16 ^E				P.O.T.
253+63 ²⁵				P.O.T.
251+02 ⁹	31° 09'		S. 89° 55' W	S. 89° 45' W
249+72 ⁹⁵				P.O.T.
245+08 ^Δ	21° 52'		N. 58° 56' W	N. 58° 56' W
242+10 ³				P.O.T.
238+79 ³²				P.O.T.
235+38 ^Δ	46° 10'		N. 80° 48' W	N. 80° 48' W



Angle

Sta.	L.	R.	C.C.	M.C.
317+70 ^{Δ 85}	10' R at 90° to Hub on City Limits.			
309+33	} Bridge			
309+03				
276+44 ^Δ	P.O.T.			
277+82 ^{Δ 75}	30° 00'	S 89° 55' W / S 89° 45' W		
277+42 ^{Δ 2}	30° 00'	S 59° 55' W / S 60° 00' W		
264+05 ^{0 b}	P.O.T.			



Intersection

(E. side)

Sta. L. R. C.C. M.C.

City of ...

...

...

...

~~299+17 (C. 2nd)~~~~90° 06'~~~~100.0' E~~

A Line 2897 F4 D. 2/2

Line on E & W Pueblo L. (D. St.)

Cont. from A. Line

See Pg. 16

Sta. L. R. C.C. M.C.

383+00

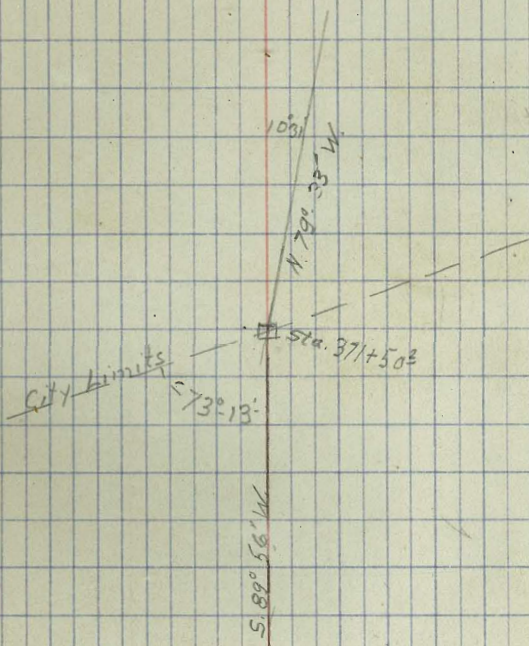
381+47⁰¹ P.O.T.381+74³⁵ P.O.T.376+55⁴ P.O.T.376+28³⁵ P.O.T.371+50² P.O.T. 1031 City Limits N. 79° 35' W N. 79° 45' W371+03²⁵360+20⁰ P.O.T.342+00⁰ P.O.T. Pueblo Line (Approx)336+17⁰⁵ P.O.T.328+98⁰⁴ 98° 04'328+90⁰² 90° 07'

(A. LINE)

S 89° 56' W

S 89° 54' W S 89° 35' W

10' S. of Pueblo Line

Cont from Pg. 16²⁷

on D

21

Sta L. R. C. C. M. C.

426+56⁰ 10' E + 17⁵ S of C., 30+ D Sts

423+49⁰ P.O.T. (Nail in Street)

421+39 Fence - End of Grading on D. St.

415+94⁸ P.O.T.

415+17⁰ P.O.T.

413+76⁰ 25' R. Hub on ^{NW} N. E. Prop. Cor., 32+D.

386+56^{Δ7} 11°-13

589-14' W 589-00' W

986+30^{Δ4}

(Cont from Pg. 9)

22

AnaZe

Sta L R C.C. M.C.

118+52²⁰ P.O.T.

5.L. 109+91¹⁷ P.O.T.

105+54²⁰ P.O.T.

102+05⁰ P.O.T.

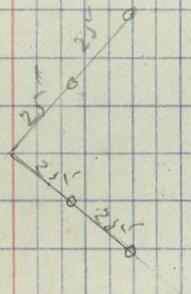
95+25 Private Road

94+45²⁰ P.O.T.

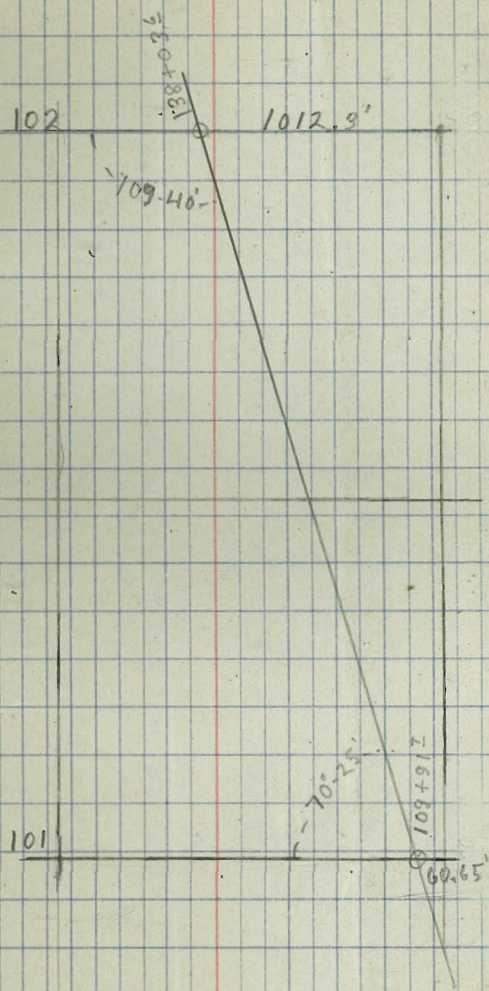
83+37 C. of Sweetwater W. Co. Pipe Line

5181+73¹⁴ 22°-10' N. 38°-22' W / N. 38°-22' W

Cont. from Page 9



Sta	L	R	C.C.	M.C.	Angle
154+00					P.O.T.
152+65					Fence
144+52					
139+25					Fence
139+00					Private Road
51138+03					P.O.T.
129+85					P.O.T.



Sta.	Angle		C.C.	M.C.
	L.	R.		
166+23 ⁷⁰	19°-32'		N 18° 50' W.	N 18° 50' W.
S.L. 166+14 ⁹⁰		P.O.T.		
165+50		Fence		
160+67 ³⁰		P.O.T.		

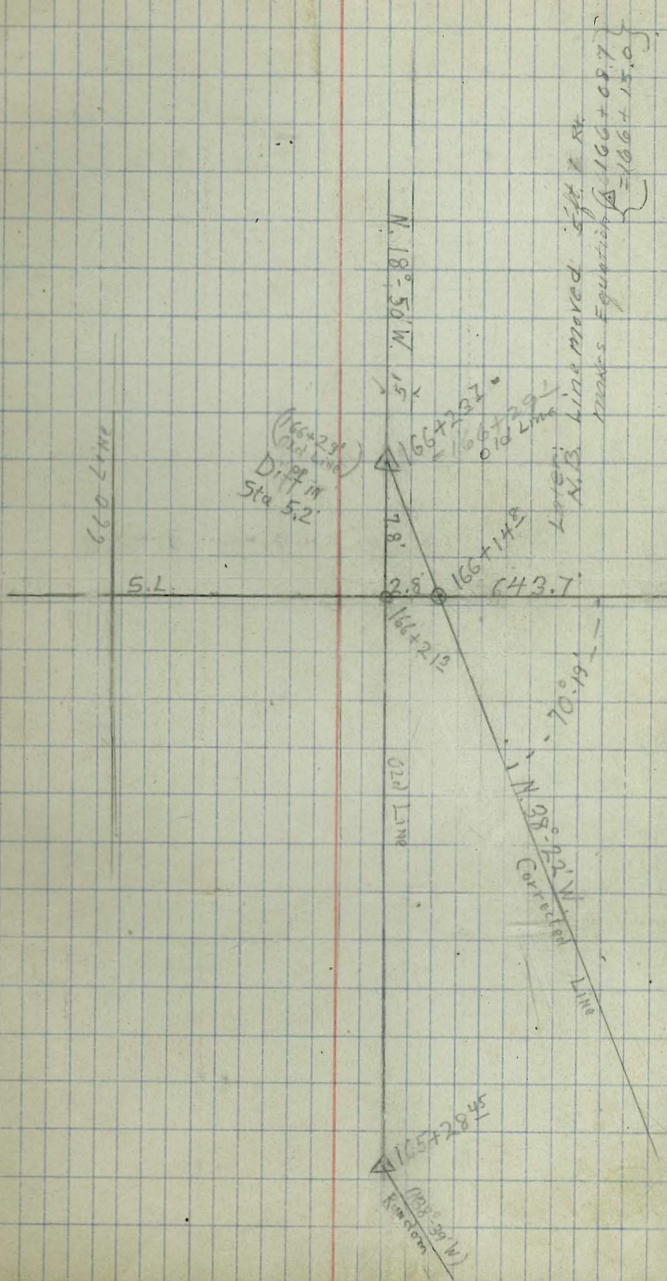
(Continued on Page 11.)

166+23⁷⁰ 19°-32' N 18° 50' W. N 18° 50' W.

S.L. 166+14⁹⁰ P.O.T.

165+50 Fence

160+67³⁰ P.O.T.



Line from Encanto Road to D. St.
Parallel to N. S. Pooko L.

1-26-15 26

Sta. L. R. C.C. M.C.

312+42^Δ₅ 00-09' N00°-00'W/N00°-00'W

310+85.²⁵ P.O.T.

310+54 R. of W. Fence

310+26 C. of SD & SE RR.

309+88 R of W. Fence

306+76 } Creek

305+79 }

299+58⁰⁶⁵ P.O.T. 10' E of NW Prop. Cor.

299+19^Δ₅₃
C. Line 89° 56' N. 00°-00'W N00°-10'W
(con. from page 16)

Sta.	L	R	C.C.	M.C.
------	---	---	------	------

see page 20

= 328+98L

339+03⁸⁵ 90°-04

5.89°-56W 5.90°-00W

C 339+03⁸⁵

= A 328+98L

336+95 } Outhouse

336+90 }

332+52 Fence

329+67⁰⁶ P.O.T.

325+90 E.M. Pueblo L.

312+62 Fence

↓ Check on A Line Bearing

D. Line

Angle

11-18-14

Schoedsack

Max om

O'Brien

Davis

32

Sta.	L.	R.	C.C.	M.C.
49+80 ^Δ		29° 03'	N 18° 34' W	N 18° 33' W

47+43 Fence

47+9 C. of Creek

43+15 Fence

40+17 R. of W. Fence

39+93 C. of R.R.

39+59 C. of Road

32+64^Δ P.O.T.

24+57^Δ 12° 55' N 47° 27' W N 47° 37' W

0+00 N 37° 42' W N 37° 42' W

11-18-1493

D

Angle

Sta.	L.	R.	C.C.	M.C.
0+00			N 34° 42' W	N 31° 42'
24+57 ^Δ	12° 55'		N. 47° 37' W	N. 47° 37' W
32+64 [⊙]	P.O.T.			
39+59	C. of Road			
39+93	C. of R.R.			
40+17	R. of W. Fence			
43+15	Fence			
47+9	C. of Creek.			
47+43	Fence			
49+80 ^Δ	Alfa 2 fa		N. 18° 31' W	N. 18° 31' W
	29° 03'			

11-19-14 34.

C Line
Levels

Sta	B.S.	H.I.	I.S.	Elev.
B.M.	0.24	343.24		343.00
TP	0.17	330.70	12.71	330.53
TP	0.21	318.05	12.86	317.84
TP	1.55	306.64	12.96	305.09
8			4.75	301.89
+60	0.44	294.24	12.84	293.80
9			10.2	284.04
+15 TP	0.55	281.90	12.89	281.35
+80 TP	0.88	270.40	12.38	269.52
10			6.2	264.2
+30 TP	0.24	257.69	12.95	257.45
11			11.97	245.9
+75 TP	0.42	234.15	12.45	233.73
12			5.7	228.45
+20 TP	0.42	223.64	12.93	223.22
+80 TP	0.25	212.29	11.60	212.04
13 TP	0.1	198.99	13.4	198.89
HAND Level	1.00	186.99	13.0	185.99
TP +60	1.40	175.59	12.8	174.19
TP +80	12.5	175.09	13.0	162.59
TP +90	12.7	185.19	2.6	172.49
14			9.0	176.19
TP +5	10.9	196.64	0.45	184.74
TP +30	12.7	207.79	0.55	195.09
+85			0.2	207.59

Rec. 5 R of Sta. 2.

Rec. Left of Sta.

STA	BS	HI	FS	Elev
14-85 ^{TP}	11.86	21930	4.85	207.44
15			10.0	209.30
+30 ^{TP}	10.43	228.60	1.13	218.17
+80			21.7	206.90
16			11.5	217.1
+20			29.8	198.8
+35			9.4	219.2
+70 ^{TP}	9.43	229.18	8.85	219.75
17			7.4	221.78
+45			4.0	225.18
18			7.7	221.48
+49 ⁴			10.8	218.38
+93 ^{TP}	0.79	216.96	13.01	216.17
19			0.75	216.21
+80 ^{TP}	11.9	206.18	11.97	204.99
20			5.61	200.57
+50 ^{TP}	13.9	194.15	12.42	193.76
21-			10.6	183.55
+10	0.29	181.52	12.92	181.23
+45 ^{TP}	0.39	169.39	12.52	169.00
+75 ^{TP}	0.4	158.15	11.64	157.75
+100	0.7	142.45	15.4	142.75
+120	1.7	132.75	12.4	131.05
+145			11.1	121.65
+165 ^{TP}	13.1	144.55	1.3	131.45

Sta	BS	HI	FS	Elev
22 +90 ^{TA}	11.5	152.55	3.5	141.05
23			7.4	145.1
+10			7.0	145.5
+30			7.3	145.2
+50 ^{TA}	12.6	164.05	11	151.45
+65			4.70	159.35
TA +65	7.13	165.89	10.63	158.76
24			11.30	154.6
+80			10.4	155.5
25			13.7	152.2
+30			11.4	151.5
TA +80	1.65	155.17	12.37	159.52
+85			9	148.3
26			17.3	137.9
+15			9.3	145.9
Δ +60			5.4	149.8
27			7.5	147.6
TA +25	2.09	147.22	10.04	145.19
28			15.0	132.2
29			11.0	136.2
30			13.4	133.8
" TA	0.89	135.96	12.15	135.07
31			9.2	128.8
+80 ^{TA}	1.11	123.12	12.95	129.01
32			3.4	119.7

24

Top of Ridge
 Rod 15 - Right of line
 Edge of canyon
 Bottom " "
 Edge " "

Bottom of canyon
 Edge " "
 Ground at station
 on stake

STA	BS	HI	FS	Elev
		123.12		
33			10.0	113.1
+50	0.36	110.46	13.07	110.05
34			5.0	105.4
35	0.60	99.23	11.78	98.63
36			3.2	95.8
37			11.35	87.9
37+32.23	0.2	86.24	13.01	86.22
+60	0.63	74.52	12.35	73.89
+80	1.11	63.42	12.21	62.31
38			10.0	53.4
38			10.07	53.4
39			12.86	50.6
40			11.3	52.1
+19			11.9	51.5
+54			10.8	52.6
+54	3.38	56.14	10.66	52.76
41			4.50	51.6
42			4.3	51.8
43			4.0	52.1
44			6.0	50.1
45			4.6	51.5
46	6.62	57.34	5.42	50.72
+60			5.5	51.8
47			6.2	51.1
+25			7.0	50.3

Top of Station

on Stake Top of Bank

Bottom of Bank

Center of Road

" " Rail Road

on Rail

Bank of River

Bank of River

STA	BS	HI	F.S.	Elev
47	+62	57.94	9.5	47.8
	+70		7.5	50.1
48			6.0	51.3
49			5.2	52.1
	+95		2.8	54.5
50			1.2	56.1
	T.P.	61.71		
	+12	437 61.71	0.0	57.74
	TP	74.9		58.47
	+16.69	12.63 70.56	3.24	57.95
51			3.0	64.1
52			5.9	65.2
53			3.8	67.3
54			6.1	70.0
	+40	560 76.60	0.10	71.00
55			4.3	71.7
56			5.2	71.4
57			6.5	70.1
58			6.4	70.2
59			5.6	71.0
60			3.0	73.6
	TP			
	+80	11.06 87.63	0.03	76.57
61			9.9	77.7
62			3.6	84.0
	TP			
	+45	12.71 100.30	0.04	87.59
63			9.0	91.3
64			2.0	98.3

Center of River
Bank

Bottom of Slope

Peg in Line

on Stub. Intersection of

Rock

STA	BS	H.I	FS	ELEV
64+25 ^{TP}	12.62	112.89	0.03	100.27
65			6.4	106.5
+60 ^{TP}	11.40	124.27	0.02	112.87
66			6.9	117.4
+25 ^{TP}			3.8	120.5
+37	10.17	137.20	0.24	124.03
+43			3.2	131.0
+53			2.7	131.5
+63			3.4	130.8
+73			5.8	128.4
67			5.7	128.5
+15 ^{TP}	12.31	146.43	0.08	134.12
+53 ^{SS}			6.6	139.8
+85			2.5	143.9
68			2.6	143.8
+10 ^{TP}	12.42	158.76	0.09	146.34
69			7.9	150.9
+50 ^{TP}	12.94	171.27	0.43	158.33
70			4.8	166.5
+35 ^{TP}	10.93	181.86	0.34	170.93
71			2.00	179.9
+31 ^{SS}	1.95	182.88	0.93	180.93
72			2.00	174.9
+25 ^{TP}	0.61	170.59	12.90	169.98
73			13.7	156.9

Bottom of Bank (Road)

Edge of Road

Center of Road

Edge of "

Bottom "

Top of Bank

Orig 10' Right of Line on old Road

Intersection

Break of Road

Rock 10' Right of Line on Road

Orig on Line

Top of Hill

Orig 6' Left of Line

Ground at Station

STA	BS	H.I	FS	ELEV
73	0.31	170.39 157.88	13.00	157.57
+75	0.49	145.37	13.00	144.88
74			6.6	138.8
+45	0.73	133.15	12.95	132.42
75			10.9	122.2
+13'	0.60	120.75	13.00	120.15
+75			6.00	114.7
76			5.8	115.0
+25			7.0	113.7
+94	2.63	110.43	12.95	107.80
			2.7	107.7
+15			6.4	104.0
78			12.0	98.4
+15	0.56	97.99	13.00	97.43
79			5.9	92.1
80			5.4	92.6
81			6.6	91.4
+50			5.2	92.8
+73'			8.7	89.3
82	See Page 53		8.6	89.4
82			5.3	92.7
+25	10.66	108.65	0.00	97.99
+55			9.4	99.2
83			11.9	96.7
+37			12.1	96.5

Top of Stake

Rock 5' Right of Line

Stamb

Top of Ridge

Rig 2' Left of Line

Top of Bank

Road

Top of Bank

Top of Bank

Rig off 25' Right

Top of Ridge

End of Paper

S

83	108.65		9.3	99.3
- 39			12.9	95.8
+ 75			7.8	100.8
- 81			10.1	98.5
84			9.3	99.3
85			4.2	104.4
TP				
+ 35	12.22	120.87	0.00	108.65
86			10.9	110.0
+ 25			10.3	110.6
87			4.0	116.9
TP				
+ 15	10.68	131.55	0.00	120.87
88			6.4	125.1
TP				
+ 50	9.99	141.45	0.09	131.46
89			2.0	139.4
TP				
+ 10	11.22	152.65	0.02	141.43
TP				
+ 85	11.98	167.40	0.23	152.42
90			10.8	153.6
91			1.3	163.1
TP				
8.05	172.04	9.72	163.68	
+ 43.5			6.1	165.9
92			4.4	167.6
93			2.5	169.5
94			13.0	159.0
TP				
11	0.05	159.19	12.71	159.33
TP				
+ 55	9.77	156.21	12.89	146.99

Top of pipe corner
 Side " "
 Top of drain
 Bottom " "

Bottom of drain

30" Left of Line

20" Left of Line

Fig 4' Left of Line

Top of Stakes

Ground
 Top of Stakes

S	ES	HI	FS	Elev	
		156.21			
95			14.2	142.0	Bottom of Canyon
96			9.0	147.2	
	+7.0 TP	16.49	10.0	156.21	Region Limit
97			8.5	159.2	
98			6.9	160.8	
	+8.0 TP	11.72	0.20	167.50	Rock on Line
99			8.9	170.3	
	+4.0 TP	11.47	0.07	179.15	Rock on Line
100			1.8	188.8	
	+0.8 TP	2.69	1.40	189.22	Rock on Line
100+95		12.15	1.30	200.61	" 10' Left of Line
101			11.5	201.3	
2			1.1	211.7	
	+0.5		0.7	212.1	Stub
	+0.5 TP	10.17	0.00	212.76	Top of Stake
3			5.5	217.4	
4			4.0	218.9	
	" TP	7.28	0.00	222.93	Top of Stake
5			3.1	227.1	
	+5.35		1.85	228.4	
6			3.6	226.6	
	+6.0		5.7	224.5	Top of Hill
7			13.9	216.3	Ground at Station
	TP	0.99	13.00	217.21	Top of Stake
	+5.0	0.47	12.97	205.23	Region Limit

35-100 checked

STA	BS	HI	F.S	Elev
107+85 ^{TP}	0.93	203.70 193.71	12.92	192.78
8			7.2	186.5
+15 ^{TP}	0.48	181.28	12.91	180.80
+40 ^{TP}	5.69	174.06	12.91	168.37
+50			13.2	160.9
+55			19.0	155.1
+65			13.4	160.7
9			3.5	170.6
+10 ^{TP}	12.49	186.55	0.00	174.06
+40	9.85	195.21	1.19	185.36
SL +96 [±]			2.65	192.5
110+00			3.00	192.2
111			12.2	183.0
112			10.4	184.8
113			4.4	190.8
+20			4.5	190.7
+60 ^{TP}	0.96	183.25	12.92	182.29
+98 ^{TP}	0.88	171.23	12.90	170.35
114			2.2	169.0
+20 ^{TP}	6.17	164.84	12.56	158.67
+45			14.1	150.7
+50			15.7	149.1
+55			13.00	151.8
+90 ^{TP}	12.50	176.64	0.70	164.14
115			8.5	168.1

Top of Lane

" " "

Side of Ditch

Bottom of Ditch

Top 15" Left of Lane

S.L.

Bank

+90 Rock 45 Left of Lane

Sta.	B.S.	H.T.	F.S.	Elev.
115+20		176.69	0.00	176.6
116			8.7	167.9
+10			11.1	165.5
+25			18.6	158.0
+70			12.9	163.7
117			.9	175.7
TR	12.50	188.96	0.18	176.46
+95 TR	11.92	200.86	0.02	188.94
8			5.0	195.9
+25 TR	11.57	212.37	0.06	200.80
+50			7.7	204.7
9			4.6	207.8
TR	10.50	218.89	3.98	208.39
120			6.6	212.3
1			5.9	213.0
2			5.5	213.4
3			3.5	215.4
4			6.0	212.9
+20			7.5	211.4
+25			11.7	207.2
+30			8.3	210.6
5			7.4	211.5
6			2.9	216.0
+ TR	11.84	230.22	0.51	218.38
7			9.4	220.8

Top of Sta.
+95 10' P. of Line

Sub
Ground
119 Top of Stake

Big on Line

STA	BS-	H.I	FS
		230.72	
128	TP		3.9 226.3
	2.75	232.06	0.91 229.31
			2.0 230.1
0	+0.5		2.5 229.6
130			3.2 228.9
1			12.1 220.0
	+0.5 TP	220.69	12.95 219.11
2			11.1 209.6
	+1.8 TP	200.34	12.92 207.77
3			7.1 201.2
4			8.6 199.7
5			6.3 202.0
6			9.1 199.2
	+4.5		15.3 193.0
	+5.0		17.5 190.8
	+6.0		14.3 194.0
7			11.1 197.2
	+8.5		11.9 196.4
8			10.3 198.0
0	+13.2		9.6 198.7
			3.1 205.2
	+5.5 TP	218.80	0.65 207.69
140			7.7 211.1
1			2.8 216.0
	+5.0 TP	228.05	0.11 218.62

+90 5' Right of Line

Peg on Line

Peg on Line

Edge of Ditch

Center " "

Edge " "

Intersection

Peg on Line

Rock on Line

Sta	BS	HI	FS	Elev
142		228.05	8.00	220.0
3			62	221.8
4			34	224.6
⊙ +51.8			3.4	224.6
5			6.3	221.7
+18			4.6	223.4
+55			83	219.7
6			10.1	217.9
TP	213	217.69	12.49	215.56
7			3.3	214.4
8			3.0	214.7
+35			5.4	212.3
TP +80	2.47	207.19	12.97	204.72
9			11.5	195.7
+15			15.2	192.0
+20			17.2	190.0
+25			14.1	193.1
150			2.4	204.8
TP	10.78	217.92	0.05	207.14
1			10.5	207.4
2			6.3	211.6
3			5.0	212.9
⊙ 4 TP	.054	215.11	3.35	214.57
5			10.20	204.97
155+50 K.D.	.124	202.67	12.68	202.43

Small ditch

Bottom "

"137

50' Left of Line on Mound

Back of Canyon

Rock on Line

Edge of Ditch

Bottom "

Edge "

Fig. 75' Right of Line appears #150

Stub.

Sta.	B.S.	I.S.	F.S.	Elev.
156		202.67	7.00	195.67
+			10.95	191.72
+18 ^{T.P.}	1.16	190.96	12.87	189.80
+85			8.9	182.06
157			12.5	178.46
+10			9.65	181.31
158			11.15	179.81
T.P.	11.82	202.78	0.00	190.96
159			9.35	193.43
160			4.30	198.48
161			1.40	201.38
T.P.	1.80	204.03	0.55	202.23
161+85 ⁴⁰			2.10	201.93
T.P.	0.19	191.45	12.77	191.26
162			4.00	187.45
+20 ^{T.P.}	0.05	178.63	12.87	178.58
+40 ^{T.P.}	1.23	166.96	12.98	165.73
+70			11.30	155.66
163			12.6	154.36
164			3.9	163.06
+20 ^{T.P.}	10.42	177.35	0.03	166.93
165			11.40	165.95
+28 ⁴⁵			10.10	167.25
+60 ^{T.P.}	9.82	187.14	0.03	177.32
166			6.10	181.04

+70 - 15 L. Line

Top of Stake 161

L. Sta.

Sta.	B.S.	H.T.	F.S.	Elev.
166+24 ^{ES}	(cont. from Pg. 60)	187.14	1.10	186.04
+80			2.50	184.64
167			9.75	177.39
+10 ^{T.P.}	0.08	174.23	12.99	174.15
+75			10.7	163.53
+85			15.2	159.03
168			11.2	169.03
+25			10.6	163.63
169			4.7	169.53
+1 ^{T.P.}	6.67	177.99	2.91	171.32
170			4.0	173.99
+46 ⁰			5.1	172.89
171			11.85	166.14
+04 ^{T.P.}	1.91	167.01	12.89	165.10
+45 ^{T.P.}	0.81	154.93	12.89	154.12
+75 ^{T.P.}	1.13	143.16	12.90	142.03
172			9.2	133.96
+1 ^{T.P.}	8.87	139.09	12.94	130.22
+25			12.1	126.99
173			12.9	126.19
174			8.0	131.09
175			7.25	131.74
176			9.2	129.89
+51 ⁵⁸⁰			9.25	129.84
177			9.1	129.99

Edge of Ditch
Bottom " "
Edge " "

Reg 10' Eft of Sta 170

Reg 15' Eft of Sta 172

Sta.	- Rod	139.00	- Rod	Flev
	B.S.	H.T.	F.S.	
178			6.9	132.19
T.P.	5.61	138.57	6.13	132.96
179			5.4	133.17
+05 ⁸			5.30	133.27
+50			5.40	133.17
+60			5.35	133.22
+70			8.70	129.87
+80			5.20	133.37
+95 ²			4.97	133.60
180			5.0	133.57
181			4.45	134.72
T.P.	11.02	146.01	3.58	134.99 ✓
182			8.6	137.4
183			3.56	142.4
+70	11.88	157.70	0.19	145.52
4			9.9	147.8
5			4.4	153.3
	12.16	169.80	0.06	157.64
6			11.3	158.5
7			4.3	165.5
+45	12.54	182.27	0.07	169.73
8			7.6	174.7
+75	11.93	194.19	0.01	182.26
9			8.00	186.2
+70	10.94	205.03	0.00	194.09

Top of Stake - Sta 178.

Center of Road.

Top of Stake - Pile 1 P 1

Rock on Line

185+80 - Rock 10' Right of Line

Rock

Rock on Line

Rock

STA	BS	HI	F.S	Elev
		20503		
190			6.0	199.0
+50	12.96	217.90	0.09	204.94
1			5.85	212.0
+80	6.65	224.55	0.00	217.90
2			5.4	219.1
SL + 79.2			1.39	223.16
3			2.5	222.0
4			6.3	218.2
5			5.19	212.9
6			7.3	205.6
7			9.50	196.1
7			12.4	183.7
+15			12.42	171.3
+87.5			3.51	167.8
8			4.4	163.4
+25			5.3	158.1
+80	0.10		12.89	145.2
9			3.4	141.8
+14.3			5.19	136.7
200			13.4	123.4
RR	0.88		12.73	110.6
1			6.9	103.7
2			10.9	92.8
3			13.6	79.2
T.P.	1.06		13.01	66.2

Rock

Pig on Line

S.L.

B Line

Pig on Line

Rock

Monument

Top of Stake Sta 200

Top of Stake Sta 203

STA.	I.S.	H.I.	F.S.	E Lev.
204			4.1	
5			6.2	
6			8.7	
7			11.1	
8	T.F.	2.19	12.91	
9			3.45	
210			5.0	
11			4.9	
12			5.6	
+38			59.4	
13			6.7	
14			8.5	
15	T.F.		10.8	
+40	0.76		12.42	
16			4.0	
17	T.F.		9.0	
+80	0.48		12.95	
18			1.6	
19			6.7	
220			11.4	
+50			13.8	
1			14.1	
2			11.5	
3			9.1	
+32 ⁶			9.05	

Peg at Station

Measurement

Peg on Line

Bottom of Hill

STA	FS	H.I	FS
224			10.6
+35	TR 0.09		12.33
5			38.5
+58			74.7
6			10.0
7			13.5
8			14.1
9			13.7
230			11.0
1			4.8
2	TR 0.61		8.01
3			6.7
4			10.4
5			11.7
6			11.3
7			8.3
+56	TR		7.89

Monument

STA	BS	Line. (Cont. from Pg. 40) H.I.	FS	Elev	
BM	6.40	104.39		97.99	Fig 25' R Sta 25
0			15.3	89.09	
+85			15.4	89.00	
82			11.9	92.5	
+50			5.0	99.4	
3			7.6	96.8	
+30			7.9	96.5	Side of Pipe
+31			5.5	98.9	Top "
+33			8.2	96.2	Side "
+50			3.4	101.0	Top of Ridge
+65			6.1	98.3	Bottom "
4			5.1	99.3	
TP	12.68	116.96	0.11	104.21	Rock 10' Left Sta 85
5			12.2	104.8	
+50			6.4	110.6	
6			6.7	110.3	
7			0.2	116.8	
TP	11.15	127.53	0.58	116.38	30' Right of Sta 87
8			2.2	125.3	Rock on Line
+20	13.07	140.17	0.43	124.10	
9			0.55	139.62	
TP	12.28	151.70	0.75	139.42	4' Left 89
TP +75	12.63	163.94	0.39	151.31	Peg on Line
90			10.1	153.84	
1			0.55	163.39	

Kneeshaw

D'Brien 12-11-14

Side of Pipe

Top "

Side "

Top of Ridge

Bottom "

Rock 10' Left Sta 85

30' Right of Sta 87

Rock on Line

Rock on Line

4' Left 89

Peg on Line

STA	+	H.I	-	Elev	
IF	10.85	174.74	0.05	163.89	OP on top of Sta 91
91+45 ²			8.58	166.16	
2			17.1	167.64	
+50			4.25	172.5	
3			4.8	169.9	
TP	1.54	164.19	12.09	162.65	
94			5.1	159.1	
+75			20.2	144.0	
95			22.0	142.2	bottom of corner
+75			18.6	145.6	
96			17.4	146.8	
97			6.0	158.2	
98			3.9	160.3	
+50			1.7	162.5	
TP	12.69	175.70	1.15	163.01	30' R of 98+70. Rock ✓
99			7.0	158.7	
TP	12.37	188.01	0.06	175.64	Rock on line 99+35 ✓
100			0.7	187.3	
TP	12.99	200.90	0.10	187.91	Top of 100
TP	12.16	212.82	0.24	200.66	Rock on line 100+90
101			10.6	202.2	
TP	13.11	225.81	0.12	212.70	Rock on line 101+90
102			11.8	214.0	
+05			11.44	214.37	Hub
103			6.2	219.6	

"C" Line

Sta	+	H.I	-	Elev	
104		225.51	0.8	225.0	
T.P.	6.17	231.90	0.08	225.73	Top of 104
105			2.5	229.4	
+54.5			2.34	229.56	
106			4.1	227.8	
+50			6.3	225.6	
T.P.	1.17	220.09	12.95	218.92	Rock on line 106+90
107			2.4	217.7	
T.P.	1.30	208.90	12.49	207.60	Rock on line 107+50
T.P.	0.11	196.39	12.62	196.28	" " " 107+25
108			7.6	188.8	
T.P.	0.50	184.23	12.66	183.73	" " " 107+12
108+65			28.0	156.2	Bottom of arroya
109			8.6	175.6	
T.P.	12.57	196.80	0.00	184.23	Rock 109+15
109+91.2			1.86	195.94	Hub
110			2.1	194.7	
111			11.0	185.8	
+30			11.9	184.9	
112			9.8	185.0	
113			3.2	193.6	
+20			2.9	193.9	
T.P.	0.72	185.21	12.91	184.49	Rock 10' Rock 113+75
114			10.1	186.7	
T.P.	1.56	174.02	12.75	172.46	Rock 10' L of 114

"C" Line

Sta	+	H.I.	-	Elev
114	65	174.02	23.0	151.0
115			6.2	167.8
T.P.	1229	186.30	0.01	174.01
	+35		2.6	183.7
6			8.5	177.8
	+30		23.0	163.3
7			14.5	171.8
	+50		9.4	176.9
	+75		4.0	182.3
T.P.	1303	199.04	0.29	186.01
8			8.4	177.9
T.P.	1278	211.50	0.22	198.32
	+522		10.10	201.4
9			7.7	203.8
T.P.	1012	221.41	0.01	211.29
120			10.3	210.6
1			9.1	212.3
	+80		8.9	212.5
2			6.1	215.3
	+75		4.8	246.6
3			5.1	216.3
	+80		6.1	215.3
4			7.8	213.6
	+20		10.7	210.7
	+80		7.7	213.7

115+20 - 30' left of Line
Top of Ridge

Bottom of Draw

Rock 15' R 118+15

Rock 10' R 118+55

Rock 10' L 119+75

STA.	+	HI	-	Elev.	
125		221.41	6.0	215.4	
	+20		7.4	214.0	
6			4.3	217.1	
7			0.9	220.5	
TP	11.63	232.79	0.25	221.16	
8			7.6	225.2	
9			3.5	229.3	
0	+85.2		2.23	230.56	
130			2.2	230.6	
	+20		2.3	230.5	
1			8.9	223.9	
TP	+40	1.71	231.52	12.98	219.81
2			9.5	212.0	
TP	4.64	213.97	12.29	209.23	
750			6.2	207.7	
3			10.4	203.5	
	+50		12.3	201.6	
4			11.8	202.1	
	+50		9.2	204.7	
5			9.7	204.2	
	+80		10.2	203.7	
6			12.4	201.5	
	+65		21.5	192.4	
7			13.0	200.9	
	+99		14.5	199.4	

Top of bank Sta 127

Reg 20' Log Pin 132+18

(old line)

Bottom of

STA	+	H.I	-	E	
0					
138	+03 $\frac{1}{2}$	212.97	14.0	199.9	
	+20		11.9	202.0	
9			9.0	205.9	
	+30		5.7	208.2	
140			2.0	211.9	
	T.P.				
	+15	1264	225.92	0.59	213.28
1			8.4	217.5	
	+25		4.9	221.0	
	+60		6.4	219.5	
2			5.3	220.6	
3			1.1	224.8	
	T.P.				
	3.81	229.64	0.09	225.93	
4			3.4	226.2	
0	+52.2		4.23	225.41	
5			6.5	223.1	
	+25		5.9	223.7	
6			9.8	219.8	
7			13.6	216.0	
	T.P.				
	0.74	217.17	12.71	216.93	
	+85		6.1	211.6	
8			6.1	211.6	
	T.P.				
	5.04	209.84	128.7	204.90	
9			15.6	194.2	
	+0.7		17.3	192.5	
	+85		1.5	208.3	

Top of Stake 140

Top of Stake 147

Rock out Line

Billings Point

STA	+ Rod	H.I.	- Rod	ELEV
150		209.84	04	209.4
TP	10.04	219.88	000	209.84
1			71	212.8
2			46	215.3
3			30	216.9
460			32	216.7
4			4.44	215.44
+50			91	210.8
+75			8.2	211.7
5			12.5	207.4
TP	0.82	207.98	12.92	206.96
+20			1.7	206.1
+40			4.5	209.3
+70			6.0	201.8
6			12.4	195.4
TP	042	195.47	12.73	195.05
+45			14.5	181.0
7			12.4	183.1
8			11.7	183.8
+40			36	191.8
TP	998	205.33	012	195.35
9			8.4	196.9
160			3.2	202.1
+45			1.4	204.0
673			2.91	202.42

Top of Sta 150

Rock 10' E of Sta 155

Rock 3' N. of 156.01

Rock 20' E of Sta 159

STA.	+Fd	H.I.	-	Elev
161		205.33	9.2	196.1
+50			12.6	192.7
TP	038	193.02	12.69	192.64
2			13.0	180.3
TP	022	181.50	11.94	181.06
+40			22.5	158.8
+65			24.0	157.3
3			20.5	160.8
4			11.4	169.9
5			6.7	174.6
TP	1183	192.83	0.30	191.00
775			8.6	184.2
6			5.90	186.93
+148			5.0	187.83
+251				

(CONT ON Pg. 48)

Rock 1' Left 161750

Top of Sta 162

Rock

D-Line

STA	BS	H.I.	I.S	Elev
13m	037	193.29		192.92
24			3.75	189.5
25			9.15	183.8
+20	0.83	181.15	12.97	180.32
26			7.7	173.4
+50	0.41	169.14	12.42	168.78
27			4.95	164.1
28			13.08	156.1
28 TP	005	156.18	13.01	156.18
29			6.1	150.1
+50 TP	028	143.55	12.91	143.27
+80			5.3	138.3
30			6.1	137.4
31			9.9	133.6
32			11.7	131.48
" TP	058	132.72	11.41	132.14
+64.9			6.9	125.8
33			13.5	119.2
" TP	062	120.47	12.87	119.85
+35	0.49	108.40	12.56	107.91
+88 TP	071	96.61	12.50	95.90
34			4.4	92.2
+30	1.72	85.90	12.43	84.18
+50			14.6	71.3
+75			17.7	68.2

Fig. 6 Right of 2440 (B-Line)
Intersection of D and B.

Ground at Station
Top of Station

Ground at Station
and Station

Ground at Station
and Station

Top of Bush
Bottom "
" Canyon

O.K.

STA	BS	H.I.	FS	Elev
		8590		
35			16.0	69.9
+75 ^{TP}	547	78.48	12.89	72.01
36			4.6	73.9
+40			1.50	77.0
+75 ^{TP}	1.22	66.97	12.73	65.75
37			13.6	53.4
37. TP	1.71	55.91	12.77	54.20
38			4.9	51.0
39			4.9	51.0
+59			2.8	53.1
+93 ^{TP}	332	55.91	3.32	52.59
40			4.10	51.8
41			5.3	50.6
42			4.3	51.6
43			4.4	51.5
+10			3.6	52.3
+35 ^{TP}	657	56.37	6.11	49.80
44			5.7	50.7
45			6.3	50.1
46			6.1	50.3
+50			7.9	48.5
			8.9	50.5
47			8.7	47.7
+90			9.1	47.3
			5.9	50.5

Rock on line (Side of Ridge)

Top of Ridge

Ground at Station and at Bottom on Station

Center of Road on Rail

Top of Ridge

Edge of Road

Center of Road

STA	BS	HI	FS	Elev
		56.37		
47 +30	742	58.11	5.68	50.69
48			7.2	50.9
49			5.9	52.2
+80			0.52	57.59

Top of Creek Bed

Intersections of C. Line

STA ES HI

67

~~79+05¹/₂~~

~~179+75¹/₄~~

705+26.62

36+75 2.8' too long

75+15¹/₄ " "

N 19° 12' W
N 60° 24'
11° 48'

687.7
494.4

193.3
72.6

20.7

119.80

571044' W
7401

14595

3415

50

56.28
494.41
 545.29

 417.81
164.96
 582.77

612.80
41.94
 661.74

218.26
417.81
 626.07
619.40
 6.27

438.40
518.27
 53.13

124.28
 128.88
 128.90
 12.50

 509.56
 37.00
 546.56

167.15

 107.57

58.57
31.09
 90.06

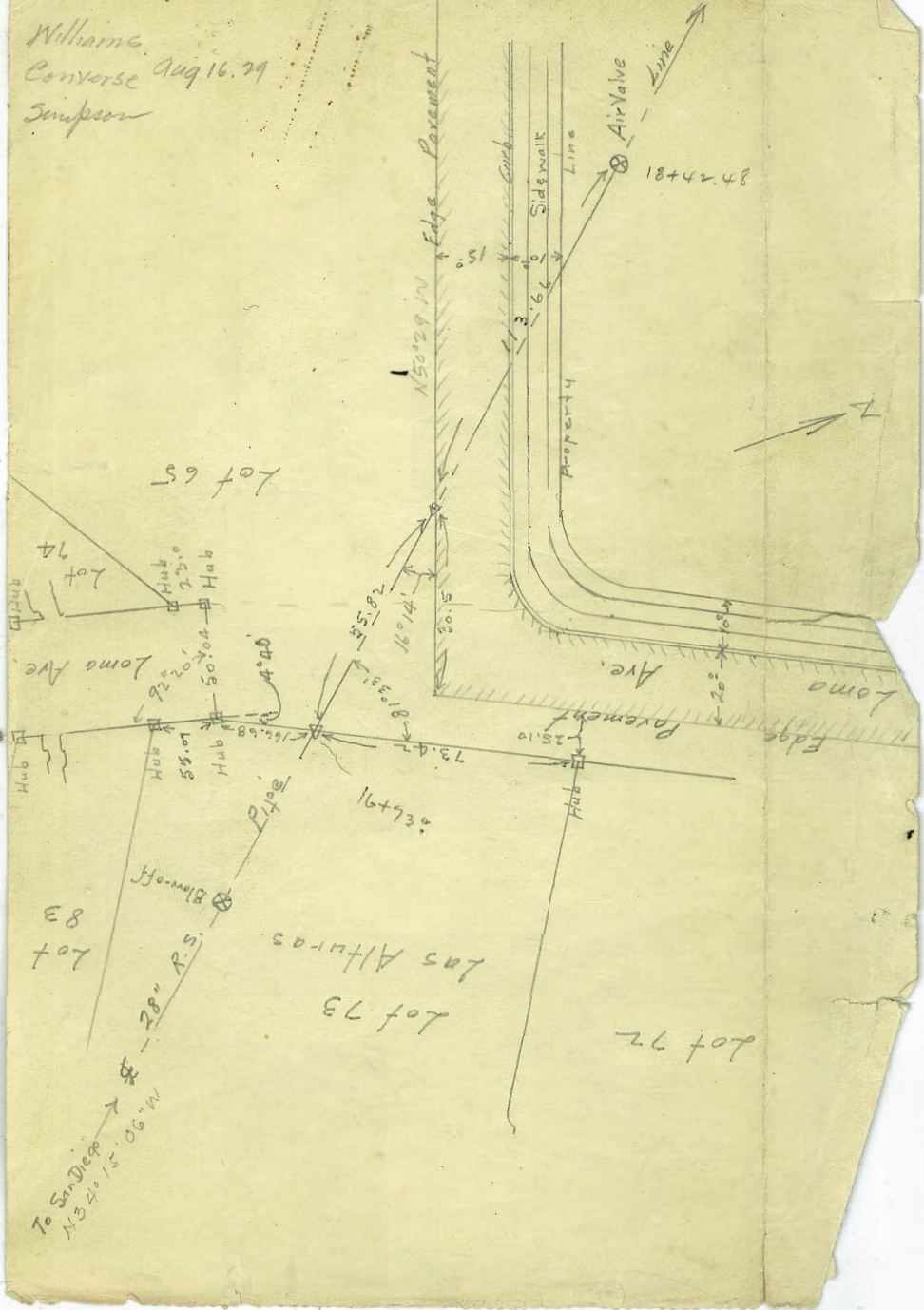
11.76
 78.59

Two Fire Plog.
 29 + Woodman Clean 112.28. City of Salem
 209 + 17.45 C.L. 110

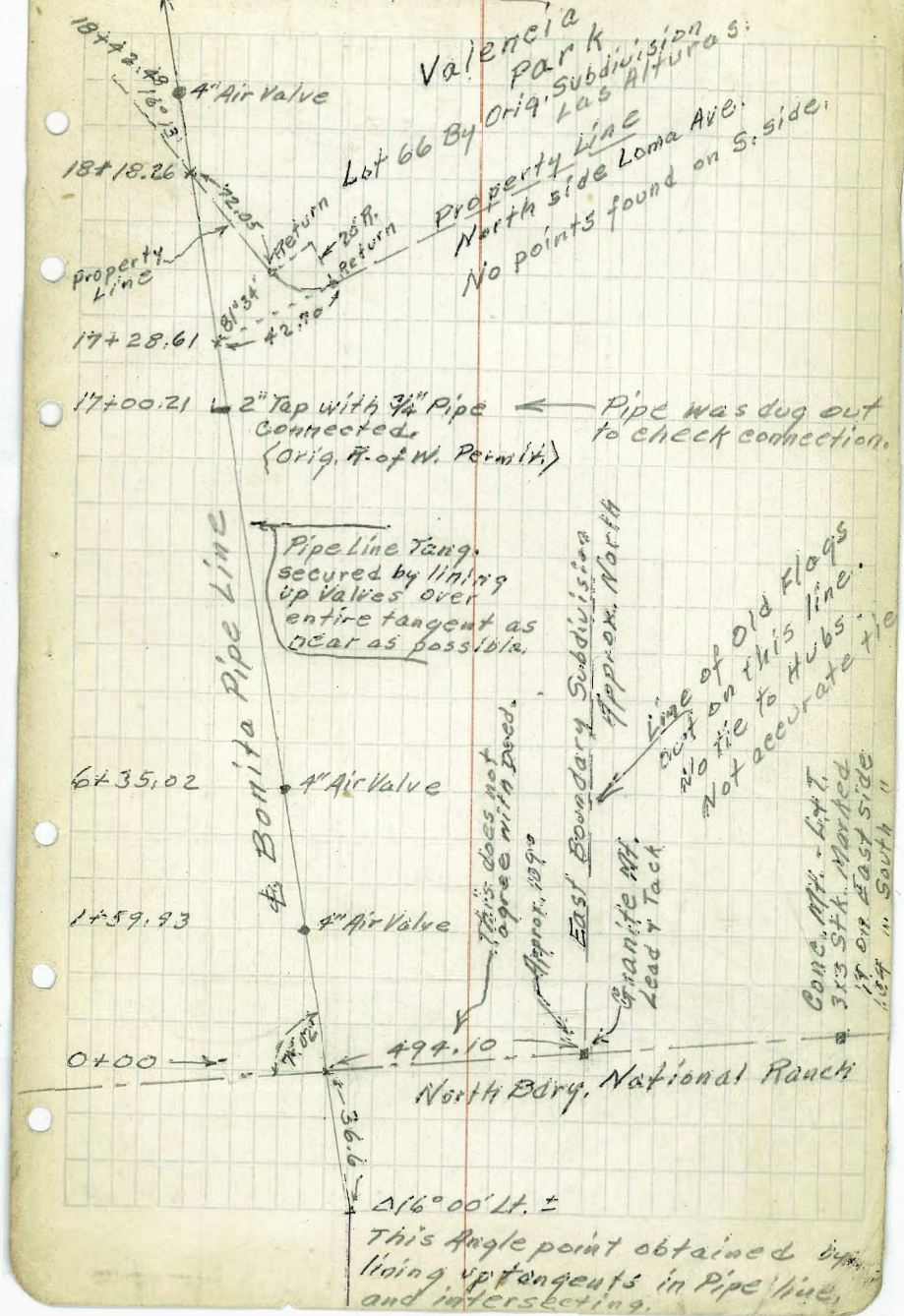
87.55
 59.47

325.99

Williams
Converse Aug 16. 29
Simpson



Bonita Pipe Line



Valencia Park
By Orig. Subdivision
Las Alturas:
Property Line
North side Loma Ave.
No points found on S. side.

17+00.21 2" Tap with 3/4" Pipe Connected.
(Orig. R. of W. Permit)
Pipe was dug out to check connection.

Pipe Line Tang. secured by lining up valves over entire tangent as near as possible.

This does not agree with deed. Approx. 1990

East Boundary Subdivision Approx. North

Line of Old Flags cut on this line. No tie to Hubs. Not accurate tie

Conc. Mt. - Lot 7. 3x3 ft. Marked 17' on East side 107" on South

North Bdry. National Ranch

$\Delta 16^{\circ} 00' Lt. \pm$
This angle point obtained by lining up tangents in pipe line, and intersecting.

Bonita Pipe Line.

Check up on Location of
a portion of Bonita Pipe Line
of City of San Diego, from
the North Boundary of Rancho
De La Nacion, to a point
passing Loma Ave. and
covering Lots 73-84 & 85
of the old Las Alturas Subdivision.
Ties made by R. E. Ward 10/21/27.

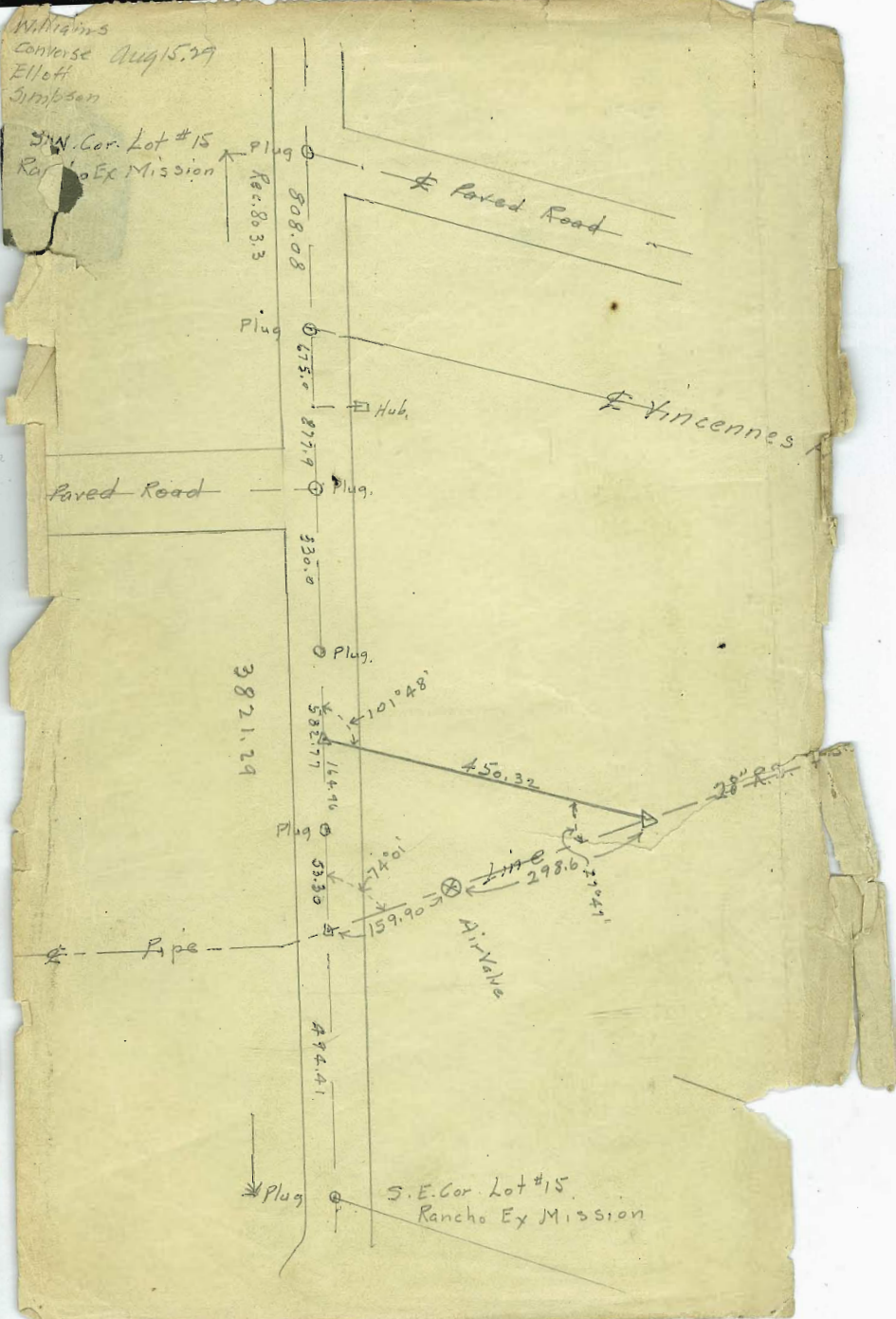
Definite points were found on
the Ranch Line and on New
Subdivision on North side of
Loma Ave.

Pipe line was established by
Air Valves and exposed portions
of Pipe, and runs tangent
through entire Las Alturas Tract.

Distance on North Ranch line
that failed to check Deed, was
rechecked in field.

sheet with data Attached.

R. E. Ward
10/21/27



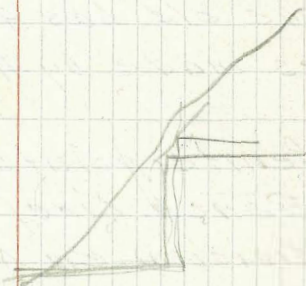
Bonita Pipe Line-

LAS ALTURAS VILLA

Location of Existing Pipe Line

Oct 1927.

F.E. Ward.



02-26

07-18