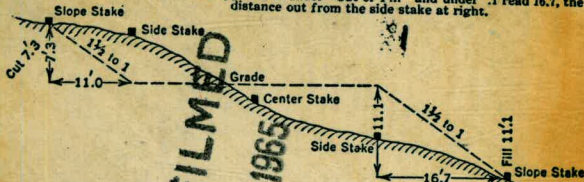


W 675

5974
675

DISTANCES FROM SIDE STAKES FOR CROSS-SECTIONING
Roadway of any Width. Side Slopes 1/2 to 1.

In the figure below: opposite 7 under "Cut or Fill" and under .3 read 11.0, the distance out from the side stake at left. Also, opposite 11 under "Cut or Fill" and under .1 read 16.7, the distance out from the side stake at right.



Cut or Fill	Distance out from Side or Shoulder Stake										Cut or Fill
	0	.1	.2	.3	.4	.5	.6	.7	.8	.9	
0	0.0	0.2	0.5	0.6	0.8	0.9	1.1	1.2	1.4	1.4	0
1	1.5	1.7	2.0	2.1	2.3	2.4	2.6	2.7	2.9	2.9	1
2	3.0	3.2	3.5	3.6	3.8	3.9	4.1	4.2	4.4	4.4	2
3	4.5	4.7	5.0	5.1	5.3	5.4	5.6	5.7	5.9	5.9	3
4	6.0	6.2	6.5	6.6	6.8	6.9	7.1	7.2	7.4	7.4	4
5	7.5	7.7	8.0	8.1	8.3	8.4	8.6	8.7	8.9	8.9	5
6	9.0	9.2	9.5	9.6	9.8	9.9	10.1	10.2	10.4	10.4	6
7	10.5	10.7	11.0	11.1	11.3	11.4	11.6	11.7	11.9	11.9	7
8	12.0	12.2	12.3	12.5	12.6	12.8	12.9	13.1	13.2	13.4	8
9	13.5	13.7	13.8	14.0	14.1	14.3	14.4	14.6	14.7	14.9	9
10	15.0	15.2	15.3	15.5	15.6	15.8	15.9	16.1	16.2	16.4	10
11	16.5	16.7	16.8	17.0	17.1	17.3	17.4	17.6	17.7	17.9	11
12	18.0	18.2	18.3	18.5	18.6	18.8	18.9	19.1	19.2	19.4	12
13	19.5	19.7	19.8	20.0	20.1	20.3	20.4	20.6	20.7	20.9	13
14	21.0	21.2	21.3	21.5	21.6	21.8	21.9	22.1	22.2	22.4	14
15	22.5	22.7	22.8	23.0	23.1	23.3	23.4	23.6	23.7	23.9	15
16	24.0	24.2	24.3	24.5	24.6	24.8	24.9	25.1	25.2	25.4	16
17	25.5	25.7	25.8	26.0	26.1	26.3	26.4	26.6	26.7	26.9	17
18	27.0	27.2	27.3	27.5	27.6	27.8	27.9	28.1	28.2	28.4	18
19	28.5	28.7	28.8	29.0	29.1	29.3	29.4	29.6	29.7	29.9	19
20	30.0	30.2	30.3	30.5	30.6	30.8	30.9	31.1	31.2	31.4	20
21	31.5	31.7	31.8	32.0	32.1	32.3	32.4	32.6	32.7	32.9	21
22	33.0	33.2	33.3	33.5	33.6	33.8	33.9	34.1	34.2	34.4	22
23	34.5	34.7	34.8	35.0	35.1	35.3	35.4	35.6	35.7	35.9	23
24	36.0	36.2	36.3	36.5	36.6	36.8	36.9	37.1	37.2	37.4	24
25	37.5	37.7	37.8	38.0	38.1	38.3	38.4	38.6	38.7	38.9	25
26	39.0	39.2	39.3	39.5	39.6	39.8	39.9	40.1	40.2	40.4	26
27	40.5	40.7	40.8	41.0	41.1	41.3	41.4	41.6	41.7	41.9	27
28	42.0	42.2	42.3	42.5	42.6	42.8	42.9	43.1	43.2	43.4	28
29	43.5	43.7	43.8	44.0	44.1	44.3	44.4	44.6	44.7	44.9	29
30	45.0	45.2	45.3	45.5	45.6	45.8	45.9	46.1	46.2	46.4	30
31	46.5	46.7	46.8	47.0	47.1	47.3	47.4	47.6	47.7	47.9	31
32	48.0	48.2	48.3	48.5	48.6	48.8	48.9	49.1	49.2	49.4	32
33	49.5	49.7	49.8	50.0	50.1	50.3	50.4	50.6	50.7	50.9	33
34	51.0	51.2	51.3	51.5	51.6	51.8	51.9	52.1	52.2	52.4	34
35	52.5	52.7	52.8	53.0	53.1	53.3	53.4	53.6	53.7	53.9	35
36	54.0	54.2	54.3	54.5	54.6	54.8	54.9	55.1	55.2	55.4	36
37	55.5	55.7	55.8	56.0	56.1	56.3	56.4	56.6	56.7	56.9	37
38	57.0	57.2	57.3	57.5	57.6	57.8	57.9	58.1	58.2	58.4	38
39	58.5	58.7	58.8	59.0	59.1	59.3	59.4	59.6	59.7	59.9	39
40	60.0	60.2	60.3	60.5	60.6	60.8	60.9	61.1	61.2	61.4	40

KEUFFEL & ESSER CO., N. Y.

Please Return to
City of San Diego Water Dept.
Room 268 Civic Center
Telephone Main 5161

The paper in this book No. 370A
is made of 50% high grade rag stock
with a WATER RESISTING surface sizing.

11,083-5. k, m, yc. kM.

Indexed top 80 - 2/7/46

Bonita P.L. Connee. along Imperial Ave
~ INDEX ~

	Pages
Align. sta 0+00 to 17+36.22	8
" 17+36.22 to 94+00	7-1
" Alternate 92+15 to 130+15.6	
= Bonita line on 45th St	9-10
& part tie pts	5-6
Profile levels	13-59
" " on alternate	60-75
check levels	76-77
TIES TO 63 rd ST.	78
Revision at Churchward-Imperial	79
TIES FROM LOCATED LINE to	
EXISTING BONITA STEEL at	
IMPERIAL and CHURCHWARD	80

In th

from

7

7

7

7

7

7

7

7

7

7

7

7

7

7

7

7

7

7

7

7

7

7

7

7

7

7

7

7

7

7

7

7

7

7

7

7

7

7

7

7

7

7

7

7

7

7

7

7

7

7

7

7

7

7

7

7

7

7

7

7

7

7

7

7

7

7

7

7

7

7

7

7

7

7

7

7

7

7

7

7

7

7

7

7

7

7

7

7

7

7

7

7

7

7

7

7

7

7

7

7

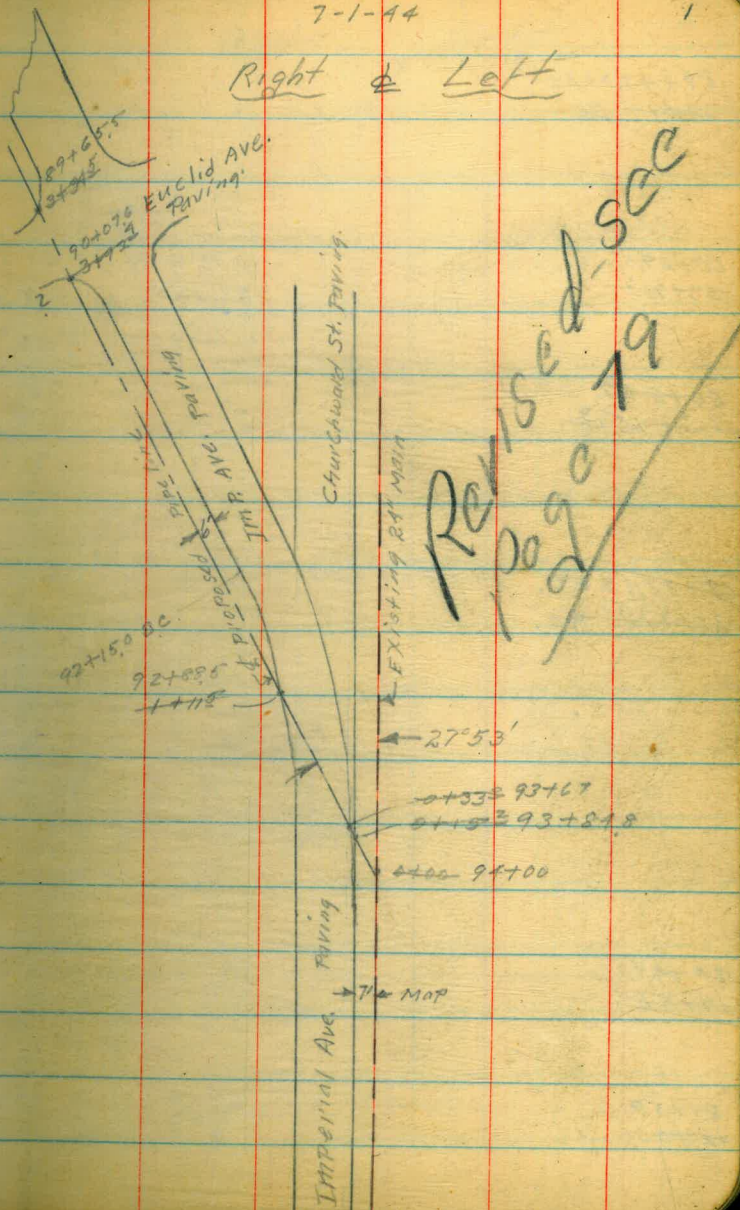
ALIGNMENT IMPERIAL AVE.
PIPE LINE

7-1-44

1

Right & Left

Note 0+00 reversed from
Bonita Pl. at Churchward &
Imperial Ave. to Otag 2nd
M. Pl. east of 65th St. *W.H.*



94+00
0+00 = point on Bonita pipeline see sketch

59+43.20 BC fd. L.P.C.T. & Pav.
34+56⁸¹ FG.

60+29.5
33+70.5

60+84.7
33+153

62+22.12 EC. fd. L.P.C.T. & Pav.
31+77⁵⁸ BC.

74+19.5
19+50⁵

81+50
+2+50

~~RT~~ ~~RT~~
Right & Left

2.

RT
R 13010
R 1215
T
L 279.22

62 22.42
60 84.7
137.72

60+90
+84.7
5.3

Begin Asphalt
end Conc. Pav.

± dirt Road
55th St

65+19.1
25+00.2
59th St. T
25+42
65+53.1

± dirt St.
53rd St.

± dirt St.
52nd St.
?

49
45 16°19'

25
+25 16°30'

+50 4°46'

49+70.8 EC
44+29² BC

53+38.7 BC
+64⁸⁴ AC 4°10'

+50 3°18'

40+25

5A
40+00 0°26'

5A+05.09 EC
39+97³¹ BC

28
277°
A 41°33' 50" Lt.
R 125

L 90.67

T. 47. 23
m. 4.

Rt
A 0° 20 H
R 485

L 70.53

T. 35.33
m. 4.

Continued Page 7

RT. & LT.

4

~~42+35.85~~
~~51+41.45~~

~~Merlin St~~
~~Cont. Paved St.~~

43+38.11 B.C.
~~46+29.55 21°08'30"~~

450 20°10'

~~44~~
~~50~~ 16°05'

450 11°59'

~~Δ 42°17' 44"~~
R 350
T 130.35
L 258.29

~~46~~
~~49~~ 7°55'

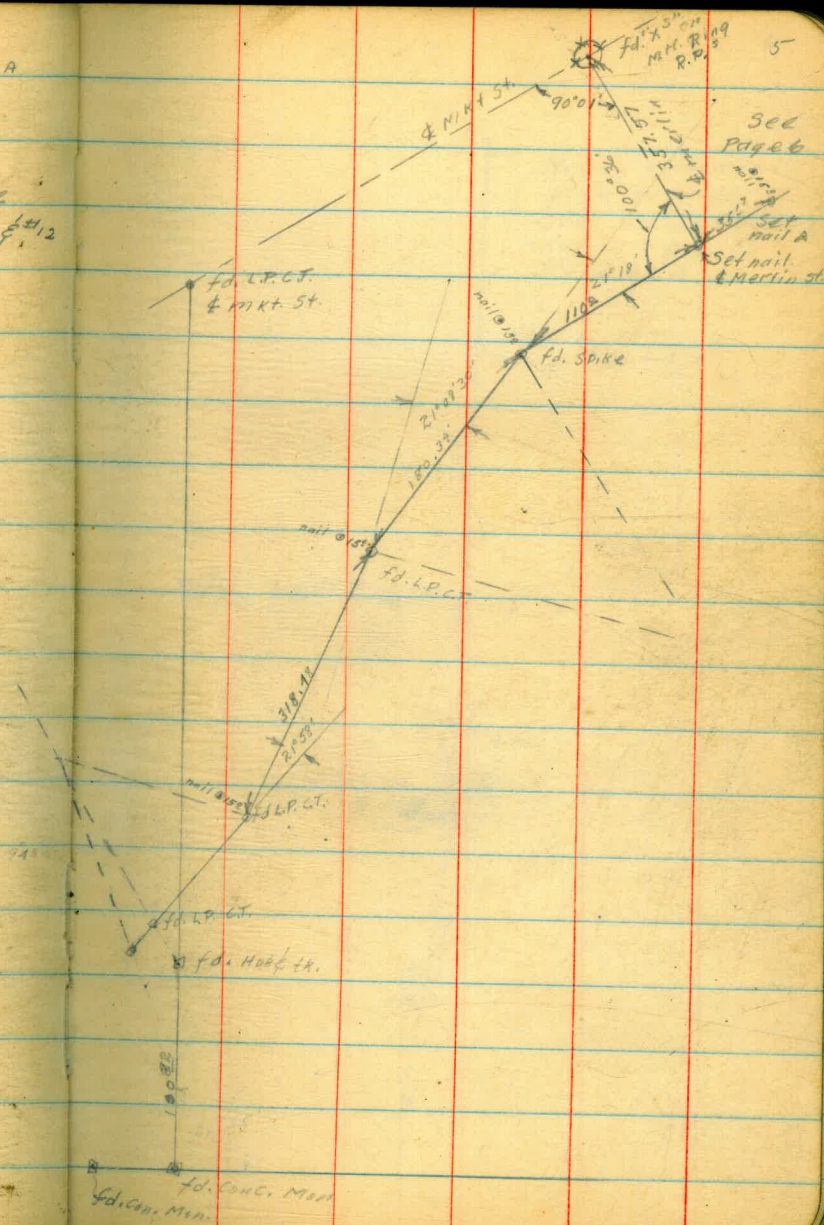
~~45+50~~
~~48+50~~ 3°48'

~~45+96.40 EC~~
~~48+03.60 EC~~

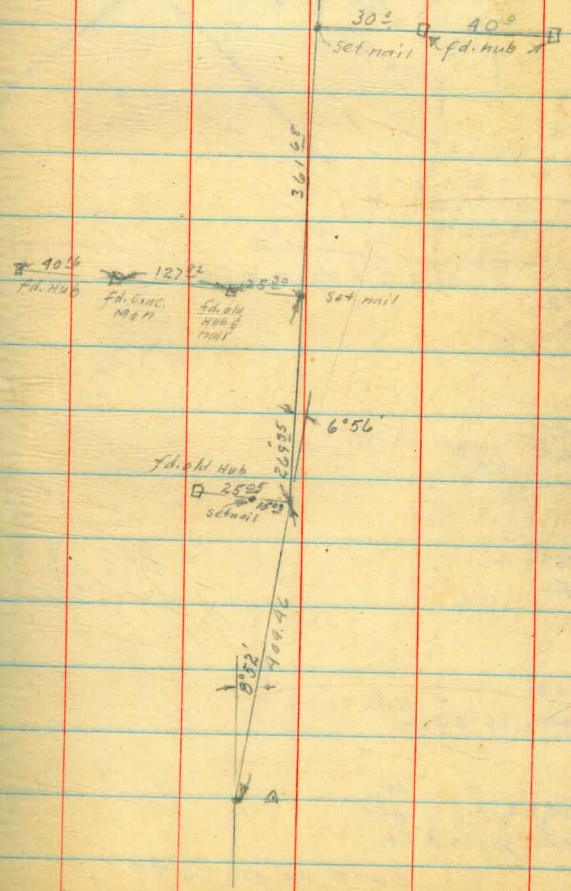
~~48+80.13 B.C.~~
~~45+19.27 EC 20°46'45"~~

ALIGNMENT IMPERIAL AVE
 from E. line Lot 16 Rancho MISSION to A
 Point E. of 60th St.

Note - Old tie points shown here
 & next page are from F.O. #1080 & #12
 Also tie sheet for Imperial Ave.



Note - Alignment
 from here to
 Otay 2nd main follows
 that in R.P. 1080
 Page 354



Continued from Page 4

RT. & Lt. 7

94+38±

93+30±

91+83±

78+99' 4°15'30" Lt.

Revised see
page 4 & 8

20+32

73+68

cont. from page 6

31+84.7

62+15.3

Pot

33+05

60+95

58

37+14.8

55+85.2

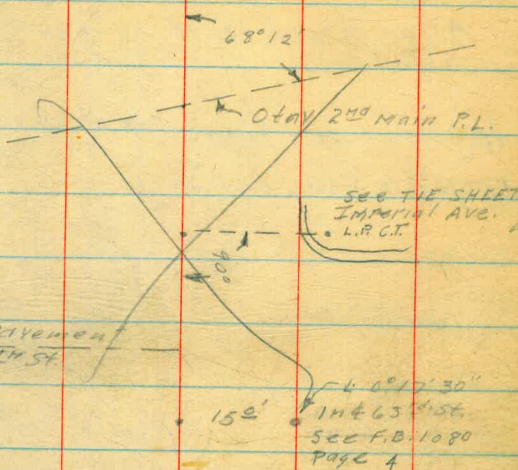
6°56' Lt.

42+24.2

51+75.3

8°52' Lt.

cont. on page 4



4 dirt st.
? 63rd St.
62nd St.

60th St
18' dirt st.

See 2004 1080
Page 3

1005 6°00' Lt. in
F.B. 12 Page 57

1505 6°03' Lt. in
F.B. 12 Page 57

Revision Alignment Between
 Otay 2nd main P.L. to 63rd St.
 Align. changed 12' N. of north edge part

17+00 ahead see page * (lower half)

17+36 $\angle 3^{\circ}16'$ Rt. = 77+00 End Revision

16+32 $\angle 3^{\circ}01'$ Left.

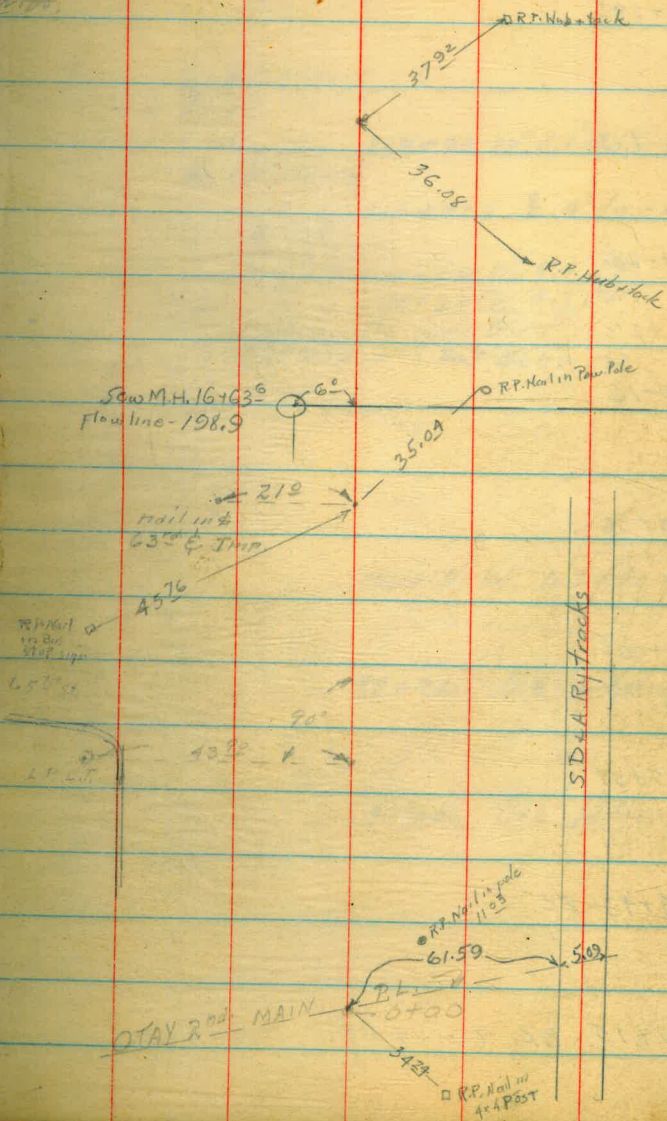
2+07.75

0+00

7-12-44

Lt. & Rt.

9



Alternate Line Imperial Ave.
From CHURCHWARD to 95th St

1-12-44

±

9

123+29²

± 20' dirt st.
46th St.

120+13³

± FINCHBONE ST.

± 15' dirt st.

119+90 12" C/drain 2.40

← 15' →

116+97.6 ? 4' deep Pf

116+87⁵

± 47"

conc. paved st

116+78 W. 5.5' PF.

114+23

114+28 G. 4.3 PF.

110+16

48th St.

± Escondido St Dirt

114+12 W. 2.7 deep PF

± 10' dirt road

103+36

± 10' dirt road

49th St

100+18 W. 1.3 deep Pf

100+06⁵

± 30' dirt st.

OZARK ST.

97+96.5 Gas 2.3 deep PF

95+59

± dirt st. 30'

50th St.

95+46 Gas 2' deep PF

94+43 EC.

92+15 B.F. Curve Rt.

Imperial Ave

Profile-page 60

130+15⁴

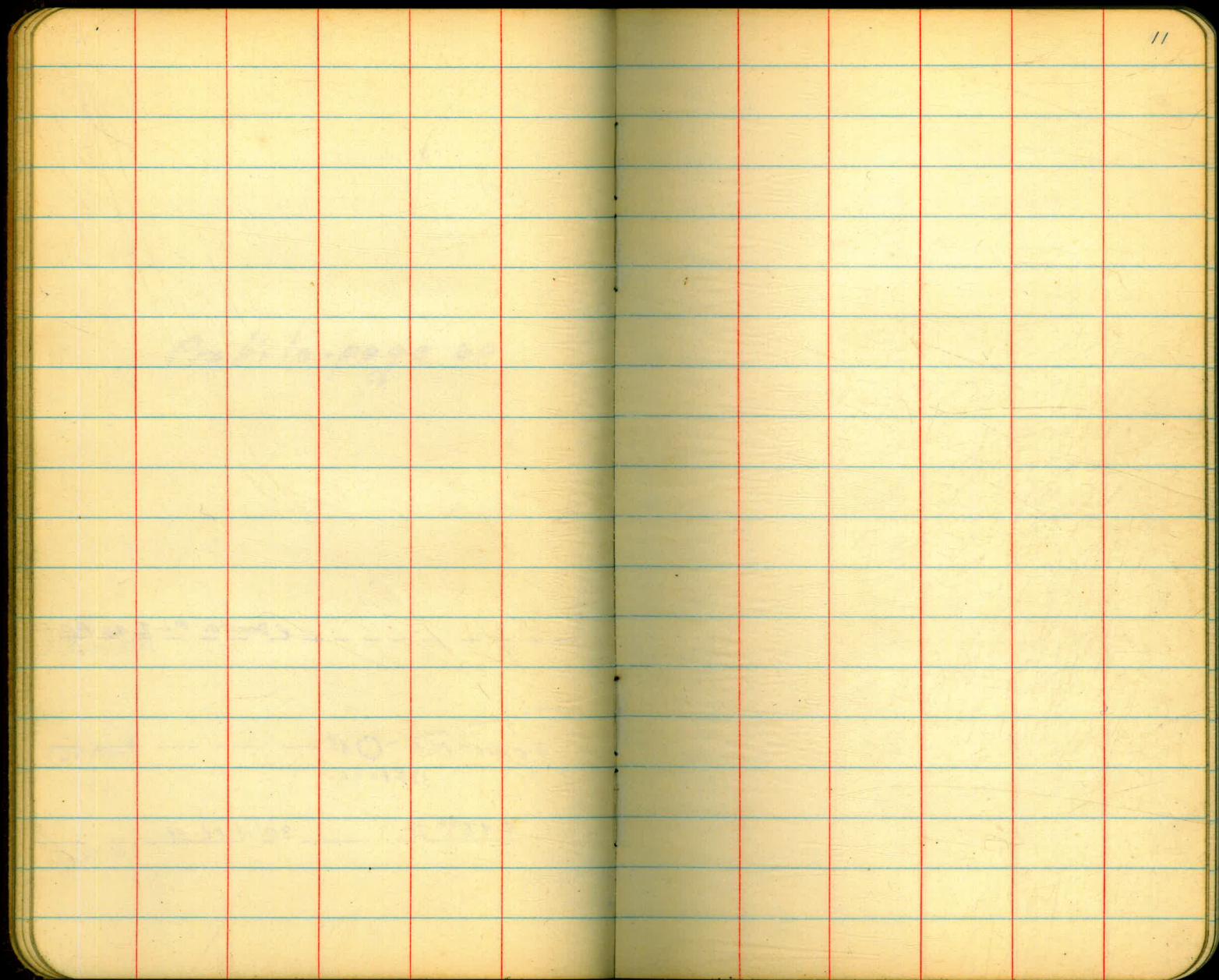
130+10⁸

130+06⁸⁵

----- f Benita. P.L. D. 46 P.E.

SEWER M.H. - O 48
136+0 F.L.

4 45th st 30' dirt st.



11

Profile Imperial Ave P.L.
Churchward to Stay end M. Pa.

from

7-2-44

Rt. E Lt.

13

City Datum

Tel. pole # D. 11651T.

B.M. Nail in pole N. Side Imperial @ Churchward
Intersec.

depth of P.L. at 0+0 3.0 (PT)

Top ground over Benito PL. at Imperial @ Churchward

SEE PAGE 79

3.59	188.75 188.68	185.16 185.09
92+00	6.0	182.8 ✓
on Pav	5.7	183.1 ✓
7' off.	5.35	183.40 ✓
+85		
+50	4.8	184.0 ✓
6' 50.	4.6	184.2 ✓
on Pav.	4.7	184.1 ✓
93	4.5	184.3 ✓
+100	4.8	184.0 ✓
6' 50.		
on Pav		
88.5		
+115		
+50	4.8	184.0 ✓
edge	4.6	184.2 ✓
Pav.	4.7	184.1 ✓
92	4.2	184.6 ✓
edge		
Pav		

92+84.5 W.H.

1+15.5 82
tel. pole D11651T

91+86 W.H.

2+14 60
tel. pole
#84296 H

188.75

~~188.69~~

91+50

~~81+50~~

edge

PAV.

5.2

183.6 ✓

5.0

183.8 ✓

91

~~81+00~~

edge

PAV.

6.2

182.6 ✓

5.9

182.9 ✓

+50

edge

PAV.

7.7

181.1 ✓

7.3

181.5 ✓

08

~~+42~~

9.0

179.8 ✓

90

~~+400~~

edge

PAV.

9.2

179.6 ✓

9.2

179.6 ✓

+65.5

~~+34.5~~

10.6

178.2 ✓

+50

edge

PAV.

11.1

177.7 ✓

11.1

177.7 ✓

TP

8.83

177.85 ✓

0.23

180.15

~~180.08~~

RT, & LT,

14

W41
90426

3704

0 50

421.70/c

33956

BMTOP F.P. S.E. Cor. ENCLID & IMP

180.18⁵ ✓
180.09

Rt. = Lt.

15

89
~~5100~~
edge 4.7 175.5 ✓
pav.

76
+24 4.3 175.9 ✓

tel. pole
#93951 032

+50
edge 6.5 173.7 ✓
pav.

6.2 174.0 ✓

88
~~1100~~
edge 8.4 171.8 ✓
pav.

8.1 172.1 ✓

+50
edge 10.1 170.1 ✓
pav.

9.7 170.5 ✓

tel. pole
#11655 032

87
~~7100~~
edge 11.7 168.5 ✓
pav.

11.2 169.0 ✓

	180.16 180.08	5 ✓		
86750				
7750		13.5	166.7	
edge				
PAV.		12.8	167.4 ✓	
			167.6X ✓	
TP		12.49	167.59	
	169.3X			
	1.67			
86				
8100		4.0	165.3 ✓	
edge				
		3.6	165.7 ✓	
86				
11				
68				
32				
+50		5.4	163.9 ✓	
edge				
PAV.		5.0	164.3 ✓	
38				
62				
19				
84				
03				
47				
85				
9100		7.0	162.3 ✓	
edge				
PAV.		6.6	162.7 ✓	

RT. # LT

16

Water meter
□ 12'

8' dirt drive

Water meter
□ 12'

8' dirt drive

Water meter □ 4'

169.34³
~~169.26~~

84+68
~~91.92~~

RT. ± LT.

17

2 dirt drive

+50
edge
POV

8.5 160.8
8.1 161.2

84
~~84~~
edge
POV

10.1 159.2
9.7 159.6

$\frac{-0.3}{7}$ $\frac{+0.2}{2}$

+50
edge
POV

10.8 158.5
11.3 158.0

$\frac{-3.6}{13}$ $\frac{+0.2}{7}$ $\frac{+0.2}{2}$ $\frac{-0.5}{2}$

83
~~83~~
edge
POV

12.8 156.5
12.8 156.5

$\frac{-4.0}{12}$ $\frac{0.0}{5}$ $\frac{-0.2}{2}$

TP

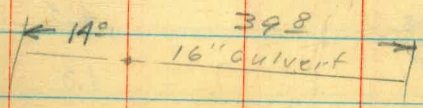
12.99 156.88
12.99 156.77

4.61 161.98
~~161.98~~

82+72
~~77.28~~

10.29 151.16
11.69 149.76

Fl. line Right
" " Left



161.98^S
161.38

+50
edge
PAV 5.7 155.8 ✓
5.9 155.6 ✓

82
~~12700~~
edge
PAV 6.2 155.3 ✓
6.3 155.2 ✓

+50
edge
PAV 6.3 155.2 ✓
6.1 155.4 ✓

81
~~13100~~
edge
PAV 5.8 155.7 ✓
5.6 155.9 ✓

+50
edge
PAV 5.3 156.2 ✓
5.1 156.4 ✓

+7030
+8317
80
14100
edge
PAV 4.5 157.0 ✓
4.3 157.2 ✓

RT. ± LT.

18

$\frac{-1.6}{11.5}$ $\frac{0.0}{5}$ $\frac{-0.3}{2}$

$\frac{-1.0}{13}$ $\frac{+0.4}{5}$ $\frac{0.7}{2}$

$\frac{-0.2}{13}$

Watermeter
□ .20'
2' dirt drive

161.40^s ✓
~~161.38~~

Rt. # Lt. 19

+50 3.7 157.8 ✓

edge
Pav. 3.5 158.0 ✓

34
~~+50~~

~~+50~~
~~+50~~

79
~~+50~~ 2.9 158.6 ✓

edge
Pav. 2.7 158.8 ✓

+50 2.1 159.4 ✓

edge
Pav. 2.0 159.5 ✓

78
~~+50~~ 2.1 159.4 ✓

edge
Pav. 1.9 159.6 ✓

+50
~~+50~~

+50 2.3 159.2 ✓

edge 2.4 159.1 ✓

77
~~+50~~ 3.4 158.1 ✓

edge
Pav. 3.4 158.1 ✓

□ 12'
8' dirt drive

Stub Power pole guy
to pole #77441 @ 9°

161.48⁵ ✓
~~161.38~~

Rt ← Lt

20

+50		4.4	157.1
edge			
PAY.		4.5	157.0 ✓
TP		5.32	156.18 ³ 156.06

3.84 159.98
~~159.90~~

76			
+8100		3.8	156.2 ✓
edge			
PAY.		3.9	156.1 ✓

+50		4.7	155.3 ✓
edge			
PAY.		4.6	155.4 ✓

75			
+9100		5.0	155.0 ✓
edge			
PAY.		4.7	155.3 ✓

80		7.18	152.79 ✓
+26		7.31	152.66 ✓

+50		5.1	154.9 ✓
edge			
PAY.		4.9	155.1 ✓

B.M.		2.63	157.23 ³ ✓ 157.27
------	--	------	--

18" Conc. H.S.
12"?

Fl. line Right
" " Left
←6° 35° →

Top I.P. S.E. Cor. 53rd & IMP.

159.98⁷
~~159.90~~

Rt. & Lt.

21

74
~~20+100~~
edge
Pav. 5.2 154.8 ✓
4.9 155.1 ✓

+50
edge
Pav. 5.2 154.8 ✓
4.9 155.2 ✓

73
~~2+100~~
edge
Pav. 5.1 154.9 ✓
4.6 155.4 ✓

78
~~+22~~
+50
edge
Pav. 4.9 155.1 ✓
4.4 155.6 ✓

34
~~+66~~
26
~~+74~~
08
~~+92~~

72
~~22+100~~
edge
Pav. 4.4 155.6 ✓
4.1 155.9 ✓

77
~~+33~~

8' dirt drive

Water meter
□ 13°

8' dirt drive

8' dirt drive

Water meter
□ 13°

159.98⁷
159.90

Rt. E Lt.

22

71450
~~22150~~ 3.9 156.2 ✓

edge
Pdv. 3.7 156.3 ✓

71
~~23400~~ 3.5 156.5 ✓

edge
Pdv. 3.1 156.9 ✓

450 3.0 157.0 ✓

edge
Pdv. 2.5 157.5 ✓

70
~~24400~~ 2.4 157.6 ✓

edge
Pdv. 2.1 157.9 ✓

450 1.7 158.3 ✓

edge
Pdv. 1.5 158.5 ✓

TP 1.54 158.9³
158.36 ✓

6.63 165.0⁶
164.99

165.02 ✓
164.87

Rt. # Lt.

23

69
~~25100~~
edge
POV. 6.1 158.7 ✓
6.1 159.0 ✓

55.1
~~+442~~
5.77 159.27 ✓

edge 54th St. POV

+50
edge
POV 5.8 159.31
5.7 159.4 ✓

9.82 155.24 To Top

Filling M.H. 200

16.02 149.04 To Fl. L.

N. of Imp. on 54th

4.88 160.18 To Top

Filling M.H. 150

11.08 153.98 To Fl. L.

S. of Imp on 54th

+19.1
~~+80~~
5.64 159.42 ✓

edge 54th St. POV.

68
~~26100~~
edge
POV. 5.6 159.5 ✓
5.4 159.7 ✓

B.M. 2.98 162.08 ✓

Top. F.P. S.E. Cor. 54th & Imp.

+50
edge
POV. 5.5 159.6 ✓

5.1 160.0 ✓

165.0^C ✓
~~164.99~~

67
~~27400~~
edge
pav. 5.0 160.1 ✓
4.8 160.3 ✓

+50
edge
pav. 4.7 160.4 ✓
4.6 160.5 ✓

66
~~28100~~
edge
pav. 4.4 160.7 ✓
4.5 160.6 ✓

+50
edge
pav. 4.6 160.5 ✓
4.4 160.7 ✓

65
~~29100~~
edge
pav. 4.5 160.6 ✓
4.2 160.9 ✓

+50
edge
pav. 4.3 160.8 ✓
4.1 161.0 ✓

RT. # Lt.

24

$\frac{-0.2}{13}$

$\frac{-3.1}{13}$ $\frac{+0.3}{5}$

$\frac{-3.4}{13}$ $\frac{+0.1}{5}$ $\frac{-0.4}{2}$

2-3/4" W.L.
from 54th St.
to Sta. 30+00

$\frac{-2.7}{13}$

14.0

$\frac{+0.5}{5}$

← W.L. Ft. 158.8

$\frac{0.0}{13}$

	165.08 ✓ +69.94		
TP	5.80	161.08 ✓ +60.94	4.05
6A+24 29176	166.82 166.74		
6A 30100		161.1 ✓	5.7
edge PAV		161.2 ✓	5.6
+50 edge PAV		161.4 ✓	5.4
40 +60		161.4 ✓	5.4
63 31100		161.6 ✓	5.2
edge PAV		161.7 ✓	5.1
+50 edge PAV		162.0 ✓	4.8
62 32100		162.2 ✓	4.6
edge PAV		162.5 ✓	4.3
		162.8 ✓	4.0

RT £ LT

25

12' dirt drive

12' dirt drive

8' dirt drive

166.92 ✓
166.74

+50
edge 3.7 163.1 ✓
PAV 3.3 163.5 ✓

61
~~33~~
edge 3.1 163.7 ✓
PAV 2.9 163.9 ✓

+50
edge 3.0 163.8 ✓
PAV 3.0 163.8 ✓
TP 164.5x ✓
B.M. 3.27 164.47 ✓
3.79 168.38³
168.26

nail in P.P. S.W. Cor. 55th & IMP
pole # 878P

60
~~34~~
6' on 3.8 164.5 ✓
PAV 3.7 164.6 ✓

46
+56 3e
6' on 4.3 164.0 ✓
PAV 4.2 164.1 ✓

RT. & LT

26

168.38³
+68.26

Rt.

£

Lt.

27

~~39~~

~~35~~

6' ~~Rt.~~ on
Lt.
PAV

4.6 163.7 ✓

4.5 163.8 ✓

+50

6' ~~Rt.~~ on
Lt.
PAV

5.0 163.3 ✓

4.9 163.4 ✓

~~38~~

~~36~~

6' ~~Rt.~~ on
Lt.
PAV

5.3 163.0 ✓

5.0 163.3 ✓

+50

6' ~~Rt.~~ on
Lt.
PAV

5.8 162.5 ✓

5.5 162.8 ✓

~~37~~

~~37~~

6' ~~Rt.~~ on
Lt.
PAV

7.2 161.1 ✓

6.7 161.6 ✓

+50

6' ~~Rt.~~ on
Lt.
PAV

19.0 159.3 ✓

18.5 159.8 ✓

$\frac{0.5}{11}$

$\frac{0.0}{5}$

$\frac{0.0}{2}$

$\frac{+2.8}{16}$

$\frac{+1.2}{11}$

$\frac{0.0}{5.0}$

$\frac{+1.0}{10}$

$\frac{+1.6}{7}$

$\frac{+0.2}{5.0}$

$\frac{1.6}{10}$

$\frac{1.6}{8}$

$\frac{0.0}{5}$

				RT	±	LT	28
	169.38 ³ 168.26						
56							
58		11.1	157.2 ✓		-0.3		
PAY 6					13		
RT LT		10.7	157.6 ✓				
			155.99 156.02				
TP		12.34	155.92 ✓				
	1.40						
	157.42 ³⁹ +57.32						
+50		1.4	156.0 ✓	-2.5 8	+0.8 2	-0.6 2	
6' RT on LT PAY		2.0	155.4 ✓				
55							
57		3.5	153.9 ✓	-4.0 8	+0.4 2	-0.8 2	
6' RT LT ON PAY		4.2	153.2 ✓				
+50		6.0	151.4 ✓	-2.1 8	+0.4 2	-0.8 1	
6' RT on LT PAY		6.6	150.8 ✓				
54 + 0569 1943 B.C.E.C.		8.3	149.1 ✓	+1.2 8	+1.0 2	-0.4 1	
6' RT on LT PAY		8.6	148.8 ✓				

157.39 ✓
157.42
+5732

53+50
40+50

9.6 147.8 ✓

6' on
LT
PAV.

9.6 147.8 ✓

+35.16

+64.84

3e.
FC.

9.8 147.6 ✓

6' on
LT
PAV.

9.7 147.7 ✓

53

41

9.4 148.0 ✓

6' on
LT
PAV.

9.9 147.5 ✓

+50

10.4 147.0 ✓

6' on
LT
PAV.

10.2 147.2 ✓

+39

+61

12.72 144.67 ✓

13.60 143.79 ✓

LT
to fl. line
RT
to fl. line

← 20" CONC. PIPE CULVERT
115 36' →

52

42

10.7 146.7 ✓

6' on
LT
PAV.

10.2 147.2 ✓

0.0
8

10.7
10.2

11.39

RT = LT

+2.2
8

+1.2
2

-2.2
8

+1.2
3

-0.7
2

-1.0
10

+1.5
5

TP
 157.42^{.39} ✓
 157.32
 10.34^{.05} ✓
 147.88
 146.98
 7.42^{.47}
 154.50
 154.40

51+50
 42+50
 7.3 147.2 ✓

6' ~~RF~~ on Lt. Pav.
 6.9 147.6 ✓

51
~~43~~
 6.8 147.7 ✓

6' ~~RF~~ on Lt. Pav.
 6.6 147.9 ✓

+50
 6.7 147.8 ✓

6' ~~RF~~ on Lt. Pav.
 6.5 148.0 ✓

50
~~44~~
 6.6 147.9 ✓

6' ~~RF~~ on Lt. Pav.
 6.6 147.9 ✓

+70.8 EC.
 +29.3 BE.
 7.0 147.5 ✓

6' ~~RF~~ on Lt. Pav.
 6.5 148.0 ✓

$\frac{0.0}{10}$ $\frac{+0.9}{5}$

$\frac{-0.2}{10}$ $\frac{+0.9}{5}$

$\frac{-2.5}{17}$ $\frac{-1.5}{16}$ $\frac{+0.9+0.9}{11.2}$

1.1 WASH $\frac{-7.2}{24}$ $\frac{+1.3}{8}$ $\frac{+1.0}{2}$

154.50 ✓
154.40

49+50			
44+50	6.9	147.6	✓
6' rt. on LT PAV.	6.3	148.2	✓
25			
+75	6.7	147.8	✓
6' rt. on LT PAV.	6.2	148.3	✓
49			
45	6.6	147.9	✓
6' rt. on LT PAV.	6.1	148.4	✓
80.13			
+198	6.6	147.9	✓
6' rt. on LT PAV.	6.1	148.4	✓
+50	6.4	148.1	✓
6' rt. on LT PAV.	5.9	148.6	✓
48			
+6	5.8	148.7	✓
6' rt. on LT PAV.	5.7	148.8	✓

Right & Lt.

31

1st WASH $\frac{-5.0}{16}$ $\frac{+1.0}{6}$ $\frac{0.0}{4}$

1st WASH $\frac{-2.0}{25}$ $\frac{+0.7}{20}$ $\frac{+0.7}{9}$ $\frac{-0.2}{5}$

1st WASH $\frac{-4.7}{28}$ $\frac{+0.3}{1.9}$ $\frac{+1.7}{5}$

1st WASH $\frac{-5.0}{23}$ $\frac{+1.1}{5}$

154.47 ✓
154.50
154.70

+50 5.7 148.8 ✓

6' Pt. on Pav. 5.4 149.1 ✓

47 5.0 149.5 ✓

6' Pt. on Pav. 4.9 149.6 ✓

46+50 4.5 150.0 ✓

6' Pt. on Pav. 4.4 150.1 ✓

45+964 Ec. 3.1 151.4 ✓
48+1036 Dc.

6' Pt. on Pav. 3.1 151.4 ✓

+50 1.3 153.2 ✓

6' Pt. on Pav. 1.4 153.1 ✓

TP 1.1.8 ✓
153.22
153.22

13.00 ✓
166.27
166.22

50161.19
Right & Left.

32

1" Wash -3.5 +1.0 0.0
16 6 4

1" Wash -3.1 0.0
13 9

-2.9 0.0
16 4

1" Wash -3.5 -0.1
16 9

-5.0 0.7
16 13

166.32
166.32

Rt. ± At.

33

45
49.00

11.4 154.9 ✓

$\frac{-8.5}{21} \frac{0.0}{6}$

6' ~~ft.~~ on
Pav.

11.4 154.9 ✓

+50

9.3 157.0 ✓

$\frac{-12.5}{19} \frac{+0.3}{6}$

6' ~~ft.~~ on
Pav.

9.4 156.9 ✓

44

7.3 159.0 ✓

$\frac{-12.5}{25} \frac{-6.0}{19} \frac{0.0}{6}$

50

6' ~~ft.~~ on
Pav.

7.6 158.7 ✓

+50

6.0 160.3 ✓

$\frac{+1.0}{25} \frac{0.0}{6}$

6' ~~ft.~~ on
Pav.

6.2 160.1 ✓

+38.11

gc.
f.c.

5.9 160.5 ✓

~~+61.29~~
6' ~~ft.~~ on
Pav.

6.0 160.3 ✓

43

51

5.1 161.2 ✓

6' ~~ft.~~ on
Pav.

5.3 161.0 ✓

	166. ^{.29} 32 166.22		
B.M.	166. ^{.65} 166.68 166.45	4.38	161. ^{.91} 94 161.84
A.74			
42+76 51124		5.1	161.6 ✓
+58.58 51141 ⁴⁵		5.0	161.7 ✓
		6.11	160.54 ✓
		11.71	154.94 ✓
+50		5.0	161.7 ✓
6' on LT. POV		5.0	161.7 ✓
39 164		5.0	161.7 ✓
+24.62 +75 ³⁹		5.0	161.7 ✓
6' on LT. POV		5.0	161.7 ✓
42 52+00		5.0	161.7 ✓
6' on LT. POV		5.0	161.7 ✓

B.M. Nail in N.E. Cor. Merlin & Imp.
161.71 El. 161.71 (P.C.)

Wedge Pav.
Merlin St.

4 Merlin St.
Top M.H. R. Side Imp. at Merlin
Fl. line sawyer

Edge pav.
Merlin St.

166.65 ✓
~~166.65~~
+66.45

RT. & LT.

35

41+50

~~52+50~~

6' ~~off~~ on

LT.

P.V.

4.9 161.8 ✓

4.9 161.8 ✓

41

~~53~~

6' ~~off~~ on

LT.

P.V.

4.9 161.8 ✓

4.8 161.9 ✓

41+50

6' ~~off~~ on

LT.

P.V.

4.9 161.8 ✓

4.8 161.9 ✓

40

~~54~~

6' ~~off~~ on

LT.

P.V.

5.0 161.7 ✓

4.7 162.0 ✓

61

~~79~~

6' ~~off~~ on

LT.

P.V.

9.50 157.15 ✓

10.50 156.15 ✓

+50

6' ~~off~~ on

P.V.

5.0 161.7 ✓

4.7 162.0 ✓

fl. line Rt. side

LT.

fl. line Lt. side

RT.

412" Conc. Culvert

7°

36 ±

-2.6 - 2.6 - 0.3

12 6 3

~~166.55~~
166.45

RT. \neq LT.

36

39
~~55~~ 60
6' station
P.V. 4.8 161.9 ✓

$-\frac{2.5}{6}$ $-\frac{0.4}{3}$

4.5 162.2 ✓

750
6' station
P.V. 4.6 162.1 ✓

$-\frac{1.0}{8}$

4.3 162.4 ✓

148
~~752~~
6' station
P.V. 4.4 162.3 ✓

4.2 162.5 ✓

38
~~56~~
6' station
P.V. 4.4 162.3 ✓

$-\frac{1.3}{10}$ $+\frac{0.3}{7}$

4.2 162.5 ✓

750
6' station
P.V. 4.1 162.6 ✓

3.9 162.8 ✓

37
~~57~~
6' station
P.V. 3.4 163.3 ✓

3.3 163.4 ✓

Rt # 44

	✓			
		166.65		
		166.00		
		166.45		
36 + 50				
57 + 50				
6' from L.P.			2.7	164.0 ✓
			3.7	164.0 ✓
TP.				
			2.44	164.0 ^{.21} ✓
				164.0 ⁺ ✓
		✓		
		176.42		
		176.45		
12.2.1		176.22		
36				
58				
6' from L.P.			11.7	164.7 ✓
			11.7	164.7 ✓
+ 50			10.9	165.5 ✓
6' from L.P.			10.7	165.7 ✓
35				
59				
6' from L.P.			9.1	167.3 ✓
			8.8	167.6 ✓
+ 50			8.3	168.1 ✓
6' from L.P.			7.7	168.7 ✓

176.17 ✓
176.22

34 60	6.7	169.7	✓
6' station PAV	6.3	170.1	✓
+50	4.7	171.7	✓
6' station PAV.	4.7	171.7	✓
23 177			
33+05 60+95	3.3	173.1	✓
33 61	3.5	172.9	✓
6' station PAV.	3.3	173.1	✓
+50	2.5	173.9	✓
6' station PAV.	2.0	174.4	✓
32 62	1.6	174.8	✓
6' station PAV.	0.8	175.6	✓
+50	0.6	175.8	✓
6' station PAV.	0.2	176.2	✓

RT. E. H.

38

Trans. Powder Pole
#70151 0-10'

± 60" St.

	176.42 ✓ 176.45 176.22			
TP	.19	0.39	176.03 ✓ 175.83	
	8.16		184.22 183.99	
31 63		7.6	176.6 ✓	
6' Pt. on Lt. POV.		7.4	176.8 ✓	
56 +44				
+50		7.2	177.0 ✓	
6' Pt. on Lt. POV.		6.9	177.3 ✓	
30 64		6.5	177.7 ✓	
6' Pt. on Lt. POV.		6.4	177.8 ✓	
+50		6.2	178.0 ✓	
6' Pt. on Lt. POV.		6.0	178.2 ✓	
29 65		5.8	178.4 ✓	
6' Pt. on Lt. POV.		5.5	178.7 ✓	

173015
Pt. 6 Lt

POWER POLE
173015 0-92

28+50				
5+50		5.3	178.9	✓
6' station PAV.		5.0	179.2	✓
28				
66		4.9	179.3	✓
6' station PAV.		4.5	179.7	✓
+96				
+04				
+70				
+30		10.2	174.0	✓
+50		4.5	179.7	✓
6' station PAV.		4.1	180.1	✓
27				
67		4.1	180.1	✓
6' station PAV.		3.6	180.6	✓
		7.21	176.98	✓
37		7.31	176.88	✓
+46				
+50		3.4	180.8	✓
6' station PAV.		3.1	181.1	✓
26				
68		3.1	181.1	✓
6' station PAV.		2.6	181.6	✓

.19 ✓
189.22
183.99

Rt. & Lt.

40

$\frac{-1.3}{8}$ $\frac{+0.2}{4}$

$\frac{-2.2}{12}$ $\frac{0.0}{4}$

Power pole

70154 0c92

Fl. line R.R. Culvert 60' left.
6.83

$\frac{1.5}{6}$ $\frac{0.0}{3}$

Fl. line R. end. 39' 34' →
Fl. line L. end. & 20" conc. pipe culvert

$\frac{-2.2}{8}$ $\frac{+0.4}{3}$

$\frac{-2.0}{5}$ $\frac{0.0}{1}$

	✓ 184.19 183.99			
25+50 68+50		2.7	181.5	✓
6' RT. on PAV.		2.2	182.0	✓
25+40 68+60				
25 6.9		2.3	181.9	✓
6' RT. on PAV.		1.7	182.5	✓
TP			.39 ✓ 182.42	
	✓ 194.20 12.28 194.47	1.80	182.19	
+50		12.3	182.4	✓
6' RT. on PAV		11.7	183.0	✓
2A 70		11.5	183.2	✓
6' RT. on PAV		11.2	183.5	✓
+50		10.5	184.2	✓
6' RT. on PAV.		10.5	184.2	✓

RT. & LT.

41

$\frac{-2.2}{10} - \frac{2.0}{6} \frac{0.0}{1}$

Power pole
AVC. LIFE OR 92
FT NO. NUMBER

194.75 ✓
~~194.97~~

23+07
~~70+93~~

23
~~71~~

6' station
at
Pav.

9.3 185.4 ✓

9.1 185.6 ✓

+50

6' station
at
Pav.

7.8 186.9 ✓

7.5 187.2 ✓

22
~~72~~

6' station
at
Pav.

5.9 188.8 ✓

5.6 189.1 ✓

+50

6' station
at
Pav.

3.9 190.8 ✓

3.5 191.2 ✓

21
~~73~~

6' station
at
Pav.

1.8 192.9 ✓

1.2 193.5 ✓

74
~~+26~~

TP

0.59 194.11 ✓

~~193.88~~

RT. ± Lt. 42

Power pole OK 120
70156

-3.0 +0.4
12 7

-2.1 +0.4
10 5

-1.3
10

Power pole
Avg. 1175
70157 OK 120

			199.11 ^{.08} ✓
	.97		✓
	206.50		
12.39	206.27		
20+50			
73+50		11.0	195.5 ✓
6' 11.01			
PAV.		10.8	195.7 ✓
+ 2.8			
+ 7.2		10.5	196.0 ✓
20			
74		8.8	197.7 ✓
6' 11.01			
PAV.		8.6	197.9 ✓
+ 50			
6' 11.01		6.6	199.9 ✓
PAV.		6.4	200.1 ✓
19			
75		4.8	201.7 ✓
6' 11.01			
PAV.		4.6	201.9 ✓
+ 53			
+ 47			
+ 50			
6' 11.01		3.5	203.0 ✓
PAV.		3.2	203.3 ✓

RT \$ Lt.

13

\$ 6200.50

TRANS. POWER POLE

70158

0 ← 140

206.⁴⁷₅₀
~~206.27~~

24

±

18

76

6' Pt. on

P.V.

2.2 204.3 ✓

1.9 204.6 ✓

750

6' Pt. on

P.V.

1.0 205.5 ✓

0.8 205.7 ✓

TP

1.03 205.⁴⁴₂₇ ✓

8.58 214.⁰²₉₂

17-17+36.22

77

EQUATION

7.6 206.4

6' Pt. on

See P. 52

P.V.

7.6 206.4

Revised see page 52

+50

6' Pt. on

P.V.

6.8

6.7

+70

+94

6.4

78+09⁴ L

6' Pt. on

P.V.

6.1

6.0

POWER POLE On 15°
AVG. LIFE
#70159

± 63° st.

214.85

+50 5.2

6' Rt. on Pav. 5.2

1.32 212.73

0.90 213.63
213.52

79 4.4

6' Rt. on Pav. 4.3

+50 4.6

6' Rt. on Pav.

+83

+99

80 5.0

6' Rt. on Pav. 4.9

+50 5.3

6' Rt. on Pav. 5.3

98
edge pav.

B.M. Top P.P. S.E. Cor. Imp. & 63rd St.
Elev. 212.64 (Rec.)

Palm
78+75 12°

10°
edge pav.

79+55 12°
Palm

TRANSFORMER
PAIR #70160 16°
& Arc. Lite

#170398 16°

85
edge pav.

45

213.63
~~213.52~~

£

16

81
6' Rt. on
Pav. 6.1
5.9

← 9°
edge pav

+50
6' Rt. on
Pav 5.5
5.5

+96

power & trans. pole
Aro lite 0 15°
#70161

82
6' Rt. on
Pav. 4.9
4.8

← 9°
edge pav.

+50
6' Rt. on
Pav 4.3
4.1

+61

Palm 13°

83
6' Rt. on
Pav. 3.4
3.1

← 9°
edge pav.

TP 3.46 ~~210.17~~
210.06

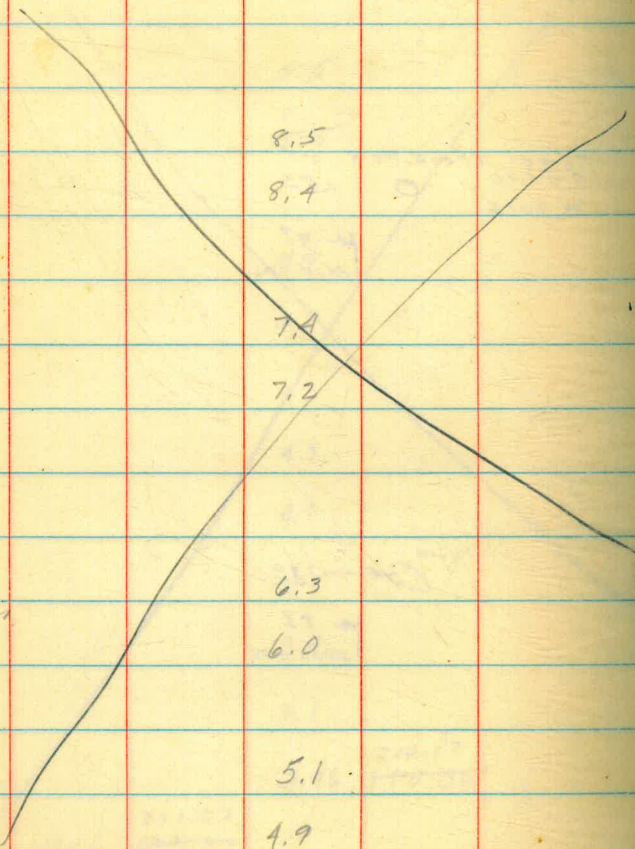
11.16 221.33
221.22

+46

Palm 13°

221.33
~~221.22~~

+50	9.6
6' Rt. on Pav.	9.6
+56	
+82	
84	8.5
6' Rt. on Pav.	8.4
+30	
+50	7.4
6' Rt. on Pav.	7.2
+70	
+85	
85+00	6.3
6' Rt. on Pav.	6.0
+10	
+50	5.1
6' Rt. on Pav.	4.9
+98	



Power Pole
Arc Lite # 70162 145
Palm 130

91
edge pav.

Palm 120

Palm 120

Power Pole
Arc Lite # 171821 139

95
edge pav.

Palm 120

Palm 120

4

47

221.33
221.22

8600 4.0

6' RT. on Pav. 3.7

+15

+50 2.8

6' RT. on Pav. 2.5

+66

+86.8

87 2.0

6' RT. on Pav. 1.7

+50

6' RT. on Pav. 1.5
1.3

+65

88 1.0

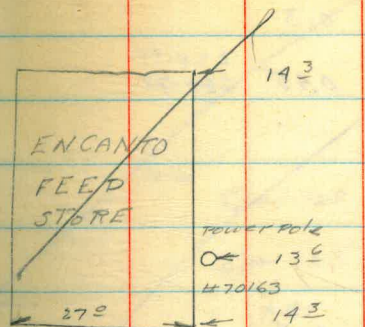
6' RT. on Pav. 0.8

+10

4

48

92
edge pav.



98
edge pav.

palm 130

89
edge pav.

palm 130

221.33
~~221.22~~

+50
6' RT. on
PAV.

0.4

0.3

TP

0.15

220.88

220.77

5.15 226.03
~~225.98~~

+51

+92

89
6' RT. on
PAV.

4.5

1.4

+03

+40

+50
6' RT. on
PAV.

4.2

3.9

+82

90+00
6' RT. on
PAV.

4.2

3.9

+23

±

49

Palm

12°

12°

8.8
ledge pav.

Power pole
arc. lite 0 → 15°
20164

Palm

12°

Palm

12°

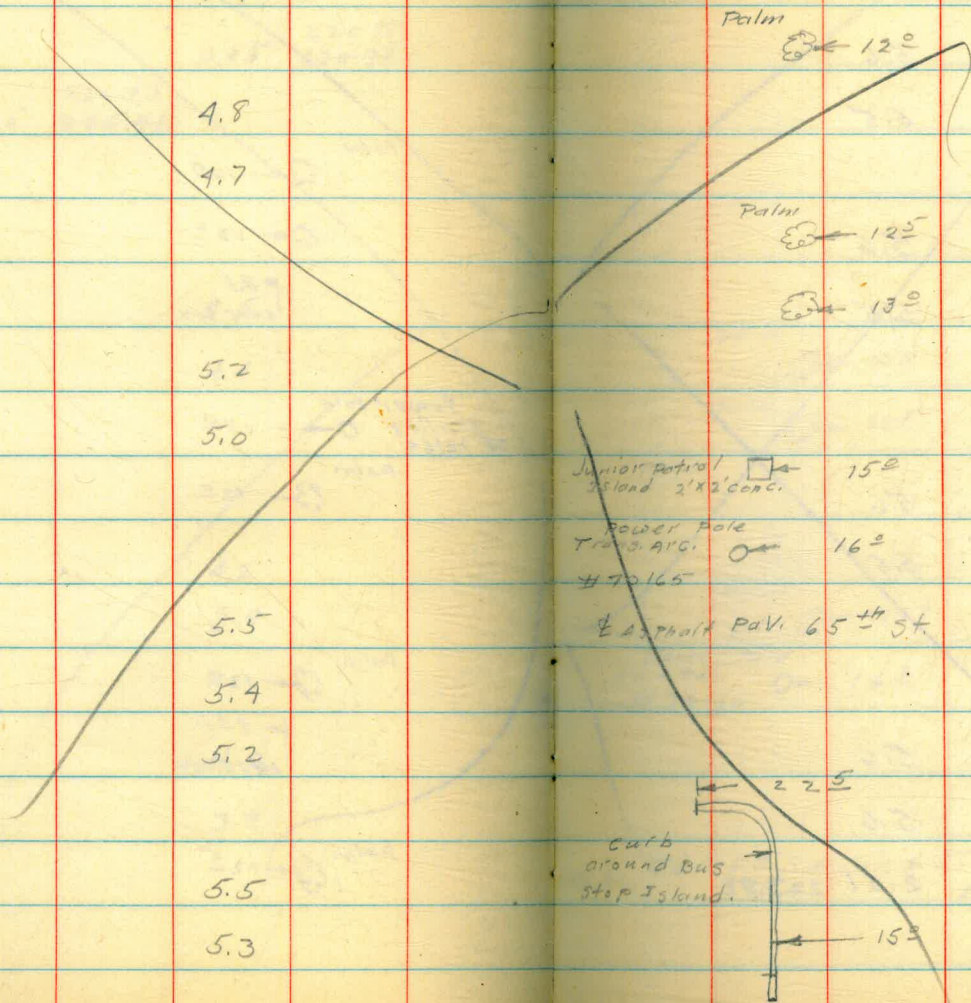
9°
ledge pav.

Palm

12.5°

226.03
225.92

+50 6' R.t. on Pav.	4.5 4.4
+63 91 6' R.t. on Pav.	4.8 4.7
+04 +42 +50 6' R.t. on Pav.	5.2 5.0
+58 +60 +83 92 too 6' R.t. on Pav.	5.5 5.4 5.2
+01 +50 6' R.t. on Pav.	5.5 5.3
+69	



5

50

226.03
225.72

+71

+76

93400

6' Rt. on

Pav.

5.6

5.5

+50

6' Rt. on

Pav.

5.6

5.5

+55

+90

94400

6' Rt. on

Pav.

5.6

5.5

+25

+39

+38³

6' Rt. on

Pav.

5.6

5.6

2.21 223.82

3'x4' conc.
Junior Patrol
Island



15°

Power pole

#74150



16°

Palm



135°

Palm



135°

Palm



130°

Power pole
Arclite

#70166



163°

B.M. TOP FP S.E. Cor. 6.5th & Jimp.
E.I. 223.76 (Rec.)

57

PROFILE REVISION
65th to 63rd St

7-12-49

Lt.

Rt.

52

2.30 226.06
~~225.99~~

223.76
~~223.61~~

B.M. TOP P.P. SEC. OF 65th & IMP. ELEV. 223.76 (REL.)

0+00
6' left
on PAV.

6.1 220.0 ✓

Ground over Otay 2nd M.P.T.

5.8 220.3 ✓

+02

Power pole

10' →

74166

+12

7' → Palm

+40

7' → Palm

+50

6.0 220.1 ✓

6' L. on
PAV.

5.8 220.3 ✓

+81

7.5' → Palm

1+00
6' L. on
PAV.

6.0 220.1 ✓

5.7 220.4 ✓

+50

6.0 220.1 ✓

6' L. on
PAV.

5.7 220.4 ✓

+61

Power pole
10' → # 74150

226.06 ✓
225.99

+635

2+00

6' L. on

PAV.

5.8

220.3 ✓

5.6

220.5 ✓

+35

4.79

221.27 ✓

221.15 ✓

+50

6' L. on

PAV.

5.8

220.3 ✓

5.5

220.6 ✓

+53

+77

+78.5

+93

3+00

6' L. on

PAV.

5.6

220.5 ✓

5.2

220.9 ✓

+32

+50

6' L. on

PAV.

5.0

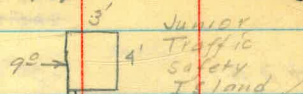
221.1 ✓

4.8

221.3 ✓

Lt. E Rt

53.



← curb around Bus Island

15° →

B.P. SE. COR 65° (Temp. El. 221.27 (Rec.))

+65 to 5+

Power Pole
Trans. Arc. lite
70165

90° → Junior Traffic Safety Island

75° → Palm

6' → Palm

226.06
225.74

+74

4+00

6' L. ON

PAV.

4.9

221.2 ✓

4.6

221.5 ✓

+14

+50

6' L. ON

PAV.

1.6

221.5 ✓

4.2

221.9 ✓

+55

+96

5+00

6' L. ON

PAV.

1.6

221.5 ✓

4.1

221.7 ✓

+33⁵

+44

+50

6' L. ON

PAV.

4.9

221.2 ✓

4.7

221.4 ✓

+84

6+00

6' L. ON

PAV.

5.6

220.5 ✓

5.4

220.7 ✓

Lt. & Rt

5' 9"

68 → 3

Palm

70 → 3

Palm

72 → 3

Palm

65 → 3

Palm

90 → 0

Power Pole
H.C. 11/2
#70164

60 → 3

Palm

65 → 3

Palm

226.06 ✓
~~225.91~~

+26

+50

6' L. on

POV.

6.2

219.9 ✓

6.0

220.1 ✓

+67

7+00

6' L. on

POV.

6.6

219.5 ✓

6.5

219.6 ✓

+49

TP

7.28

218.78 ✓
218.66 ✓

1.72

220.20 ✓
220.08 ✓

+50

6' L. on

POV.

1.7

218.8 ✓

1.1

219.1 ✓

+70

8+00

6' L. on

POV.

2.4

217.8 ✓

2.1

218.1 ✓

+21

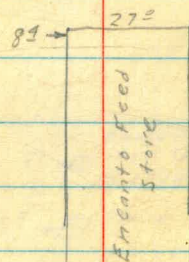
+38

Lt. & Rt

53

6° → 3 Palm

6° → 3 Palm



8° → 0 Recover pole
ARC line
#70163

8° →

55° → 3 Palm

220.20 ✓
220.09

+50 3.5 216.7 ✓

6' L. on

POV

3.2 217.0 ✓

+700

6' L. on

POV

4.7 215.5 ✓

4.4 215.8 ✓

+26

+50

6' L. on

POV

5.8 214.4 ✓

5.3 214.7 ✓

+51

+66

10+00

6' L. on

POV

6.8 213.4 ✓

6.6 213.6 ✓

+07

+50

6' L. on

POV

8.0 212.2 ✓

7.8 212.4 ✓

+53

+81

Lt. & Rt.

56

62-20 Palm

92-20 Power pole
Arc. lite
#171821

62-20 Palm

62-20 Palm

72-20 Palm

82-20 Power pole
Arc. lite
#70162

220.20 ✓
220.08

+94

11400

6' L. on

PAV.

9.5

210.7 ✓

9.2

211.0 ✓

+50

6' L. on

PAV.

10.7

209.5 ✓

10.4

209.8 ✓

+75

12400

6' L. on

PAV.

11.4

208.8 ✓

11.1

209.1 ✓

+42

TP

11.03

209.17 ✓

209.05 ✓

9.24

213.41
213.29

12450

6' L. on

PAV.

5.1

208.3 ✓

4.9

208.5 ✓

13400

6' L. on

PAV.

5.7

207.7 ✓

5.5

207.9 ✓

+50

6' L. on

PAV.

6.1

207.3 ✓

5.7

207.7 ✓

Lt. & Rt. 57

60-80 Poles

7-10 Poles

Power Pole
Trans. Arc. Lite
22161

21341 ✓

14100	5.1	208.3	✓
6' L. on Pav.	5.0	208.4	✓
+37			
+50	4.9	208.5	✓
6' L. on Pav.	4.7	208.7	✓
+55			
+81			
15100	4.6	208.8	✓
6' L. on Pav.	4.3	209.1	✓
+50	4.5	208.9	✓
6' L. on Pav.	4.3	209.1	✓
+63			
16100	5.0	208.4	✓
6' L. on Pav.	5.9	207.5	✓
+320' L	5.7	207.7	✓
6' L. on Pav.	5.5	207.9	✓
	0.76	212.65	✓

Lt. ~~d~~ Rt. 38

92 0 #1703099

Transformer
Galley

93 0 #70160

75 0 palm

72 0 palm

B.M. TOP FT. S.E. COR. 63rd & IMP. EL. 212.62 (REG.)

213.41 ✓

+50	6.0	207.4	✓
6' Left on Pav.	5.7	207.7	✓
17+00	6.5	206.9	✓
6' L. on Pav.	6.9	207.0	✓
+36 ²³ = 17+00	7.0	206.4	✓
6' L. on Pav.	6.9	206.5	✓

See pg. 44

Lt. ~~2~~ Rt.

59

Profile Alternate Line

Churchward to 45th St. $\frac{1}{4}$
on N. side of Imperial

60

1.23 186.39
186.32 185.16
185.09

left Right
B.M. nail in Tel. Pole N.W. Cor.
Churchman & Imp. El. 185.09 (Rec.)

92+15 BC. 2.4 184.0
edge
P.V. 2.3 184.1

+50 2.4 184.0
edge
P.V. 2.2 184.2

+86
93+00 2.5 183.9
edge

P.V. 2.5 183.9

+50 3.1 183.3
edge
P.V. 3.1 183.3

+75
94+60 4.6 181.8
edge

P.V. 4.2 182.2

+43 EC. 5.9 180.5
edge

P.V. 5.3 181.1

3+0 Tel. Pole
D116517

3+0 Tel. Pole
300530

186.39
186.32

+50
edge
pav. 6.0 180.4
5.6 180.8

+78

95400
edge
pav. 7.3 179.1
6.6 179.8

+50
edge
pav. 8.5 177.9
7.8 178.6

+59 8.6 177.8

96400
edge
pav. 9.7 176.7
9.4 177.0

+28

+50
edge
pav. 11.5 174.9
11.0 175.4

97400
edge
pav. 13.0 173.4
12.9 173.5

+06

+17

Lt

±

Rt.

60

7-0 Tel pole
839 5511

± 50th st.

650 Tel pole
D 111 98 T

8' dirt drive

8^o □ water meter

186.39
+86.32

+24

+33

TP

12.91
174.72
1.24 +74.65

173.48
+73.41

+50

edge

POV

3.0 171.1

3.2 171.5

+56

+73

+78

+85

+94

98+00

edge

POV

5.8 168.9

5.5 169.2

+61

+50

edge

POV

8.3 166.4

7.8 166.9

Lt.

±

Rt.

62

8' dirt drive

72-~~63~~

82-~~63~~

72 □ Water meter

63 ⊙ tree

63 ○ Power pole

D11197

8' paved drive

52

65 □ Meter

174.72
~~174.05~~

99+00 10.6 164.1

edge

PAV 10.1 164.6

+26

+50 12.5 161.9

edge

PAV 12.4 162.3 ✓

TP 13.04 161.68
141.61

1.00 162.68
162.61

100+00 2.7 160.0

edge

PAV 2.6 160.1

+06⁵ 3.5 159.2

+25

+50 5.6 157.1

edge

PAV 5.0 157.7

+76

101+00 7.6 155.1

edge

PAV 7.1 155.6

+47

Lt £ Rt 63

650 tel. pole
84280H

+ Ozark St.

73 Water meter

620 tel. pole
D11195T

55 conc. drive

162.68
142.61

101+50
edge 9.5 153.2
pav. 9.2 153.5

+70

102+60
edge 11.1 151.6
pav. 11.0 151.7

+02

+27

+50
edge 12.9 149.8
pav. 12.5 150.2

TP 13.09 149.51

0.92 150.51
150.44

103+00
edge 1.8 148.7
pav. 1.6 148.9

+36 2.7 147.8

+50
edge 3.0 147.5
pav. 2.9 147.6

+76

Lt. E Rt. 64

70 → conc. drive

118 → water meter

80 → tel. pole
#1011194T

E 4th St.

tel. pole
63 → # 84295 H

150.51
150.11

Lt.

E

Rt.

C5-

107400
edge 4.1 146.4

Pav. 3.9 146.6

+50
edge 4.7 145.8

Pav. 4.7 145.8

105
edge 5.4 145.1

Pav. 5.3 145.2

+24

+50
edge 6.1 144.4

Pav. 5.9 144.6

106
edge 6.4 144.1

Pav. 6.5 144.0

+50
edge 6.6 143.9

Pav. 6.8 143.7

+77

107
edge 7.1 143.4

Pav. 6.9 143.6

tel. pole

65 → 0 # D11192T

tel. pole

62 → 0 # D11191T

150.51
150.14

107+50
edge
pav. 7.3 143.2
7.1 143.4

108
edge
pav. 7.4 143.1
7.3 143.2

TP 7.38 143.13
143.06

1.07 144.20
144.13

+27

55+0 tel. pole
3073304

+50
edge
pav. 1.9 142.3
1.4 142.8

109
edge
pav. 2.9 141.3
2.5 141.7

+50
edge
pav. 4.6 139.6
4.0 140.2

+79

tel. pole
530 # 892024

110
edge
pav. 6.1 138.1
5.7 138.5

+16 6.6 137.6

± 98th St.

144.20
~~144.13~~

+50
edge
Pav.

7.7 136.5

7.4 136.8

+57

+83

111
edge
Pav.

9.7 134.5

9.4 134.8

+02

+14

+28

+50
edge
Pav.

11.3 132.9

11.4 132.8

TP

13.07 131.13
~~131.06~~

131.43
0.30 131.36

112
edge
Pav.

0.3 131.1

0.7 130.7

+50
edge
Pav.

1.7 129.7

2.7 128.7

Lt.

±

Rt.

67

60° □ water meter

40° III conc. steps

± 8' dirt Drive

40° □ water meter

60° tel. pole
307329H

13193
13136

Lf

E

Rt.

68

+60

2⁵ Meter

+77

CONC. DRIVE

+85

62x Tel. Pole
207328 H

113

5.2 126.2

edge

PAV.

5.0 126.4

+32

8' dirt Drive

+50

7.2 124.2

edge

PAV.

7.5 123.9

+92

62 Tel. Pole
D11185T

114

9.8 121.6

edge

PAV

9.8 121.6

+23

11.1 120.3

ESCUELA ST.

+50

12.3 119.1

edge

PAV

12.0 119.4

+89

70 tree

TP

13.09 118.34
118.27

0.96 119.30
119.23

119.30
119.23

115	2.0	117.3
edge		
PAV.	1.8	117.5
+21		
+50	3.6	115.7
edge		
PAV.	3.4	115.9
+51		
+68		
+72		
+85		
116.	5.0	114.3
edge		
PAV.	4.9	114.4
+25		
+45		
+50	6.4	112.9
edge		
PAV.	6.3	113.0
+53		
+62		
+63		

Lt

±

Rt

69

7^{1/2} tree

4² tel. pole
D 111847
48' drive (dirt)

4⁰ water meter

8⁰ tree

Begin SERVICE Sta. & Gro. OPENING

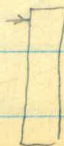
Filler for Buried gas tank 9⁰ x
550 gal.

Gas Island

14⁰

Filler for Buried Gas Tank 8⁰ x
550 Gal.

Gas Island



119.30
~~119.23~~

+78

+87.5

117

edge
pav.

+13

+50

edge
pav.

118

edge
pav.

+30

+50

edge
pav.

TP

112
107.34
~~107.27~~

+90

7.4 111.9

7.8 111.5

7.8 111.5

7.11 ~~112.19~~
112.12

9.8 109.5

9.1 109.9

11.9 107.9

11.0 108.3

12.7 106.6

12.6 106.7

13.08 ~~106.22~~
106.15

Lt.

±

Rt.

70

8" water main

155 → 8" gate

± 47th St. Concr. Paved.

B.P. S.E. Cor. 47th & Jmp. El. 112.23

6" tel. pole
432796 H

5" tel. pole
111827

155 → 1100

107.34
~~107.27~~

119	2.5	104.8
edge		
PdV.	2.2	105.1
+11		
+50	4.2	103.1
edge		
PdV	3.7	103.6
+65		
+80		
120	5.5	101.8
edge		
PdV	5.2	102.1
+23 ³	6.2	101.1
+50	6.7	100.6
edge		
PdV.	6.5	100.8
+90		
121	11.9	95.4
edge		
PdV.	7.8	99.5
+31		


Lt.

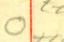
±


Rt.


71

140 →  Tree

150  tree

60  tel. pole
#306151

150 

 6 trees
in all
+90 to
+65

500 tel. pole
#414520



	107.34 107.27		
121+50		9.4	97.9
edge			
POV.		9.2	98.1
+65			
+70			
122		11.0	96.3
edge			
POV		10.7	96.6
+50		13.0	94.3
edge			
POV		12.7	94.6
+65			
+80			
TP		12.92	94.42 94.35
	19.3	96.35 96.28	
123		3.9	92.5
edge			
POV.		3.8	92.6
+29.9			
+44.5			

123420

2+

RT

72

6 trees
in all
+90 to
+65

15°

div. alley

W. meter

tel. pole

55.0

306153 H

46th St.

19°

2 W. meters

96.35
96.28

123+50 6.8 89.6

edge

PAV

6.4 90.0

+70

124

edge

PAV

9.6 86.8

9.3 87.1

+30

+50

edge

PAV

12.1 84.3

12.2 84.2

TP

13.00 83.35 ✓
83.29

0.08 83.43
83.36

125

edge

PAV

2.7 80.7

2.4 81.0

+50

edge

PAV

5.9 77.5

5.4 78.0

+71

126

edge

PAV

8.8 74.6

8.3 75.1

L4

L

RT.

73

150 water meter

60 tel. Pole
306154 H

580 tel. Pole
306155 H

83.43
~~83.36~~

126+50		11.4	72.0
edge			
PaV		11.2	72.2
TP		12.99	70.49 ✓ 70.37
	0.95	71.39	
		71.32	

+92

127		1.7	69.7
edge			
PaV		1.7	69.7

+10

+22

+28

+44⁵

+50		4.0	67.4
edge			
PaV		4.0	67.4

+58

+69

+74

Lt.

£

Rt.

74

Power
55 0 stub guy
#P173876

63 ⊗ tree

63 0

68 ⊗ tree

69 ⊗ tree

65 ⊗ tree

68 □ W. meter

63 ⊗ tree

	71.39 ✓ 71.32		
128 edge		6.6	64.8
PAV.		6.2	65.2
+21			
+50 edge		8.2	63.2
PAV.		8.3	63.1
+76 ³			
129 edge		9.6	61.8
PAV.		9.9	61.5
+50 edge		10.7	60.7
PAV.		11.1	60.3
130 edge		11.7	59.7
PAV.		11.0	59.8
+06 ⁸⁵		11.7	59.7
+10 ⁸		11.56	59.83
		25.16	46.23
+15 ⁶		11.7	59.7
B.M.			61.91 ✓
TP		9.98	61.84
	9.95	71.36 ✓ 71.29	

Lt. & Rt. 75

48' dirt drive

Tel. Pole
 7² 0 #1306156 H

& 45th St on top conc. sewer box
 S. Edge M.H. Ring Sewer
 FLL.

on grad. over Bonita P.L.
 depth of P.L. 4.6 (P.F.)
 Nail in tel. pole # 1982 71 L N.W. Cor. 45th
 & Imp.

	71.36 71.29		70.67 70.60
		0.69	
12.76	83.43 83.36		83.30 83.23
		0.13	
12.32	95.62 95.55		95.08 95.01
		0.54	
11.79	106.87 106.80		106.32 106.25
		0.55	
8.25	114.57 114.50		112.16 112.09
		2.11	

Lt.

E

Rt.

76

B.P. S.F. Col Imp $\frac{1}{2}$ 47th El. 112.23

Levels Imperial Ave 1-13-44

6^{3rd} to 47th St.

77

B.M.	0.95	213.12 212.88		212.67 212.87	Top. F.P. SE. Cor. 63 rd & IMP
TP	0.92	203.49 203.55	10.55	202.57 202.48	
TP	0.60	191.11 190.47	12.98	190.51 190.37	
TP	2.54	189.16 184.82	9.49	181.62 181.48	
TP	1.57	178.27 178.13	7.46	176.76 176.56	
TP	0.96	166.80 166.66	12.43	165.89 165.70	
TP				161.93	Mail NE. Cor.
B.M.	1.56	163.49	4.87	161.79	Merlin St.
TP	3.56	159.40	12.65	150.84	
TP	7.96	155.09	7.27	147.13	
TP	11.53	166.44	0.18	154.91	
TP	5.07	168.22	3.29	163.15	
B.M.			3.65	164.57	Mail in Pole # 878 P SW. Cor. 55 th St.
TP	4.54	165.44	7.32	160.90	
TP					Top F.P. SE. Cor. 54 th & IMP.
B.M.	0.07	162.16	3.35	162.09	
TP					Top F.P. SE. Cor. 53 rd & IMP.
B.M.	5.67	163.02	4.81	157.35	
TP					Top F.P. SE. Cor. 52 nd & IMP.
B.M.	6.17	164.57	4.62	158.40	
TP	11.34	175.77	0.14	164.43	

175.77

12.92 187.53 1.16 174.61

B.M. 7.60 179.93

TP

B.M. 0.13 185.29 2.37 185.16

TP 0.95 173.31 12.95 172.36

TP 1.15 161.90 12.56 160.75

TP 0.94 150.05 12.79 149.11

TP 0.30 143.68 6.67 143.38

TP 0.04 131.54 12.18 131.50

TP 1.86 121.44 11.96 119.58

9.20 112.24

F.P. SE. Cor.
Euclid &
IMP.

B.P. SE.
Cor. 47th St.
El. 112.23

Byler
King
O'Brien
Stephens

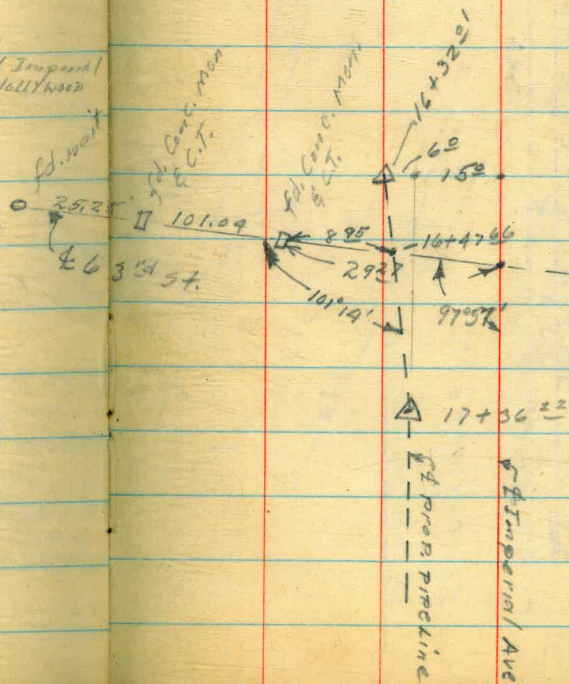
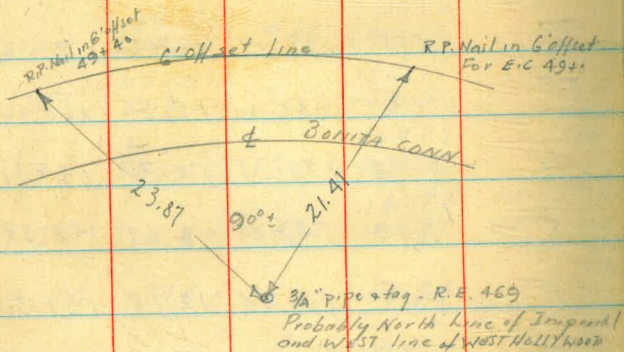
TIES TO 63rd ST

78

8-2-44

R.P.'s For PROP. COR.

Sept. 1, 1945
Super
King
Phillips



OLD STA. 94+00
NEW STA. 94+17.88

8-17-44

BYLER
KING
OTTEN
STEPHENS

PROFILE ALIGNMENT ALTERNATE
LINE IMPERIAL PL. AT Churchward

79

Revision of connecto
Bonita PL. at Churchward - Imp-
erial from page 1 *M.H.*

B.M. Nail
in pole
N. side
Churchward
Imperial

B.S. is 574
ahead of 90+60.85
Sec page 80

93+60.85
112
12²
(Motion)

Tan. To Curve
AT STA 93+00

3.83 188.99

185.16

93+00

5.1 183.9

93+00
ALTERNATE
LINE
PAGE 60

+08

5.13 183.86

edge
POV

+50

4.7 184.29

+52.65

+57

4.72 184.27

edge
POV

+60.85

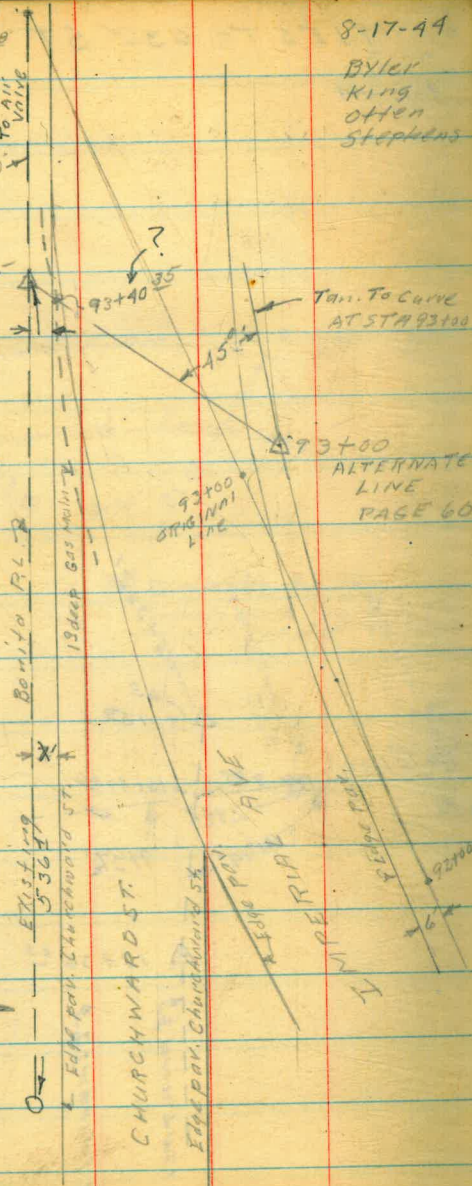
4.6 184.39

44

5.7 183.3



G. VOIVE



40

Bonita Connee

Aug 4 1945
Super
Phillips

Riv. joint

3+

TOP of B.S. LINE is 4'
BELOW 93+60.85

Elev 93+60.85 = 184.4 (Page 79)

4.7

TOP B.S. LINE = 179.7

2.4
177.3

BONITA STEEL

LOCATED LINE

93+60

TIES FROM LOCATED LINE TO
EXISTING BONITA STEEL LINE
AT CHURCHWARD and IMPERIAL AVE

BM. Pole N. side Imperial
at Churchward interset. elev 185.09

B.M. Nail in L.P. in curb N.E. Cor. Martin
IMPERIAL E.I. 161.71

B.M. Top F.P. SE Cor. 63rd IMPERIAL E.I. 212.62

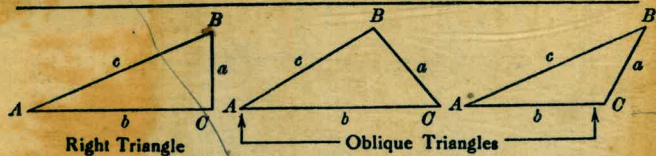
B.M. Top F.P. SE Cor. 65th IMPERIAL E.I. 228.64

Handwritten calculations and notes:

29.60
32.20
63.80
92.51
108.50
114.29
70.00
15.65
47.66

Please Return to
City of San Diego Water Dept.
Room 268 Civic Center
Telephone Main 5161

TRIGONOMETRIC FORMULÆ



Solution of Right Triangles
For Angle A. $\sin = \frac{a}{c}$, $\cos = \frac{b}{c}$, $\tan = \frac{a}{b}$, $\cot = \frac{b}{a}$, $\sec = \frac{c}{a}$, $\text{cosec} = \frac{c}{a}$

Given	Required	Formulas
A, b	A, B, c	$\tan A = \frac{a}{b} = \cot B$, $c = \sqrt{a^2 + b^2} = a \sqrt{1 + \frac{b^2}{a^2}}$
a, c	A, B, b	$\sin A = \frac{a}{c} = \cos B$, $b = \sqrt{(c+a)(c-a)} = c \sqrt{1 - \frac{a^2}{c^2}}$
A, a	B, b, c	$B = 90^\circ - A$, $b = a \cot A$, $c = \frac{a}{\sin A}$
A, b	B, a, c	$B = 90^\circ - A$, $a = b \tan A$, $c = \frac{b}{\cos A}$
A, c	B, a, b	$B = 90^\circ - A$, $a = c \sin A$, $b = c \cos A$

Solution of Oblique Triangles

Given	Required	Formulas
A, B, a	b, c, C	$b = \frac{a \sin B}{\sin A}$, $C = 180^\circ - (A + B)$, $c = \frac{a \sin C}{\sin A}$
A, a, b	B, c, C	$\sin B = \frac{b \sin A}{a}$, $C = 180^\circ - (A + B)$, $c = \frac{a \sin C}{\sin A}$
a, b, C	A, B, c	$A + B = 180^\circ - C$, $\tan \frac{1}{2}(A - B) = \frac{(a - b) \tan \frac{1}{2}(A + B)}{a + b}$ $c = \frac{a \sin C}{\sin A}$
a, b, c	A, B, C	$s = \frac{a + b + c}{2}$, $\sin \frac{1}{2}A = \sqrt{\frac{(s - b)(s - c)}{bc}}$ $\sin \frac{1}{2}B = \sqrt{\frac{(s - a)(s - c)}{ac}}$, $C = 180^\circ - (A + B)$
a, b, c	Area	$s = \frac{a + b + c}{2}$, $\text{area} = \sqrt{s(s - a)(s - b)(s - c)}$
A, b, c	Area	$\text{area} = \frac{bc \sin A}{2}$
A, B, C, a	Area	$\text{area} = \frac{a^2 \sin B \sin C}{2 \sin A}$

REDUCTION TO HORIZONTAL



Horizontal distance = Slope distance multiplied by the cosine of the vertical angle. Thus: slope distance = 319.4 ft. Vert. angle = 5° 10'. From Table, Page IX. $\cos 5^\circ 10' = .9959$. Horizontal distance = $319.4 \times .9959 = 318.09$ ft.
Horizontal distance also = Slope distance minus slope distance times (1 - cosine of vertical angle). With the same figures as in the preceding example, the following result is obtained. $\text{Cosine } 5^\circ 10' = .9959$. $1 - .9959 = .0041$. $319.4 \times .0041 = 1.31$. $319.4 - 1.31 = 318.09$ ft.
When the rise is known, the horizontal distance is approximately:—the slope distance less the square of the rise divided by twice the slope distance. Thus: rise = 14 ft. slope distance = 302.6 ft. Horizontal distance = $302.6 - \frac{14 \times 14}{2 \times 302.6} = 302.6 - 0.32 = 302.28$ ft.