

W69

FIELD BOOK

1908

Property of S.D. Water Dept.
Main 414

DEPARTMENT OF WATER
ENGINEERING DIVISION
SAN DIEGO, CALIFORNIA
Supt. _____ Hyd. Eng. _____
Scale. _____ Date. 1915

Tia Juana

A Line	Pg 2
" " Levels	15
B Line	7
" " Levels	24
C Line	9
" " Levels	61
D Line	33
" " Levels	37
E Line	36
" " Levels	53
check Levels	66-67

MICROFILMED

JAN X 6 1965

Blank page with faint ghosting of text from the reverse side.

Blank page with a blue grid pattern and a vertical red margin line on the left side.

A. Line (See Pg. 6)

Sta. L. R. C.C. M.C.

SL 37413 P.I.

29+68 C. of S.D. + S.E. RR

29+25 C. of County Road

24+23^e Q. S.L. (Approx) C. of Road

10+92²⁵^Δ 00°24' N. 00°08'E N. 00°08'E

3+00^o P.O.T.

1+70⁵^o N. Bank Tia Juana River (Washed out See Level Notes)

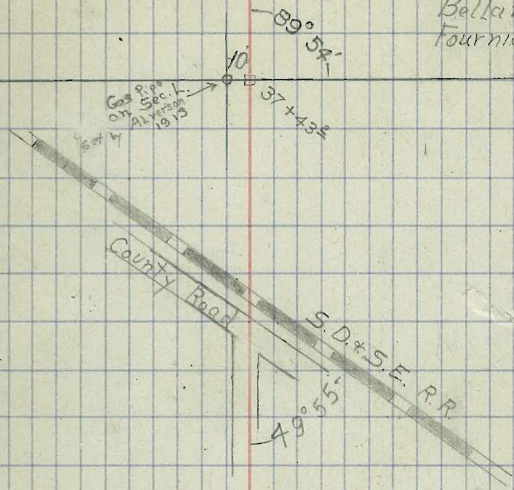
0+00 C. of Tia Juana River (Approx)

2-4-15

2

Schgedsack
Fisher
Bellamy
Journier

35



N. 00°08'E

S.W. 1/4 Sec. 35.

89°52'

T.S.L
MERIDIAN

Gas Pipe
in C. of Road

10+92²⁵

N. 00°32'E

00°24'

90°32'

N.W. 1/4 Sec. 2.

Sta. L R C.C. M.C.

70+40⁴ P.O.T

69+31 Fence

55+40⁴ 53°26' N53°18'W N53°20'W

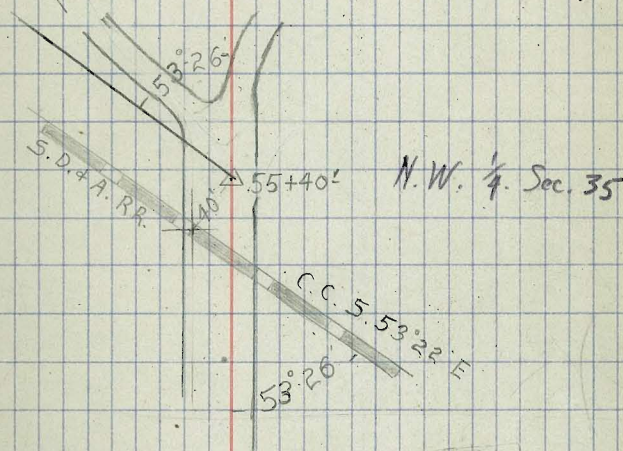
54+91 C of S.D. & A. RR

50+65⁻ P.I.

49+66⁶ P.O.T

42+25⁵ P.O.T

2-5-15. 3
Schoedsack,
Fisher
Bellamy
Fournier



Sta. L. R. C.C. M.C.

$124+39^{\Delta}$ $90^{\circ}00'$ $N00^{\circ}02'E$ $N00^{\circ}00'E$

$124+19^{\Delta}$ P.I. $90^{\circ}00'$ $589^{\circ}88'E$ $N.90^{\circ}00'E$

$110+85^{\circ 25}$ P.I. C. of Coronado Ave.

$105+45^{\Delta}$ $53^{\circ}20'$ $N00^{\circ}02'E$ $N00^{\circ}00'E$

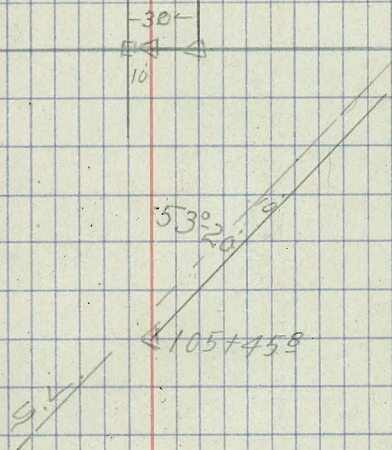
$95+16.5$ } Culvert under RR Embankment
 $95+05$ }

$87+25^{\circ 45}$ P.O.T.

~~P.O.T.~~

2-15-15
Schoedsack
Fisher
Bellamy
Furnier

7



Sta L R C.C. M.C.

137+26⁷ S.W. Cor. Railing, Highland Reservoir

136+26^A 90°00'

134+97^{0.8} P.O.T.

132+47^E Fence 30.2, L. to Mon. 6x6

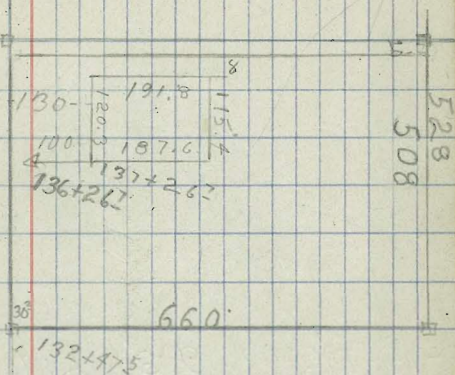
127+45 N. Side Orchard

126+53 Fence (Orchard)

126+01 Fence

125+77 Fence

Schoedsack 2-17-15
Fisher 2-18-15
Ballamy 5



A. Line (See Page 2)

Sta	L	R	C.C	M.C
-----	---	---	-----	-----

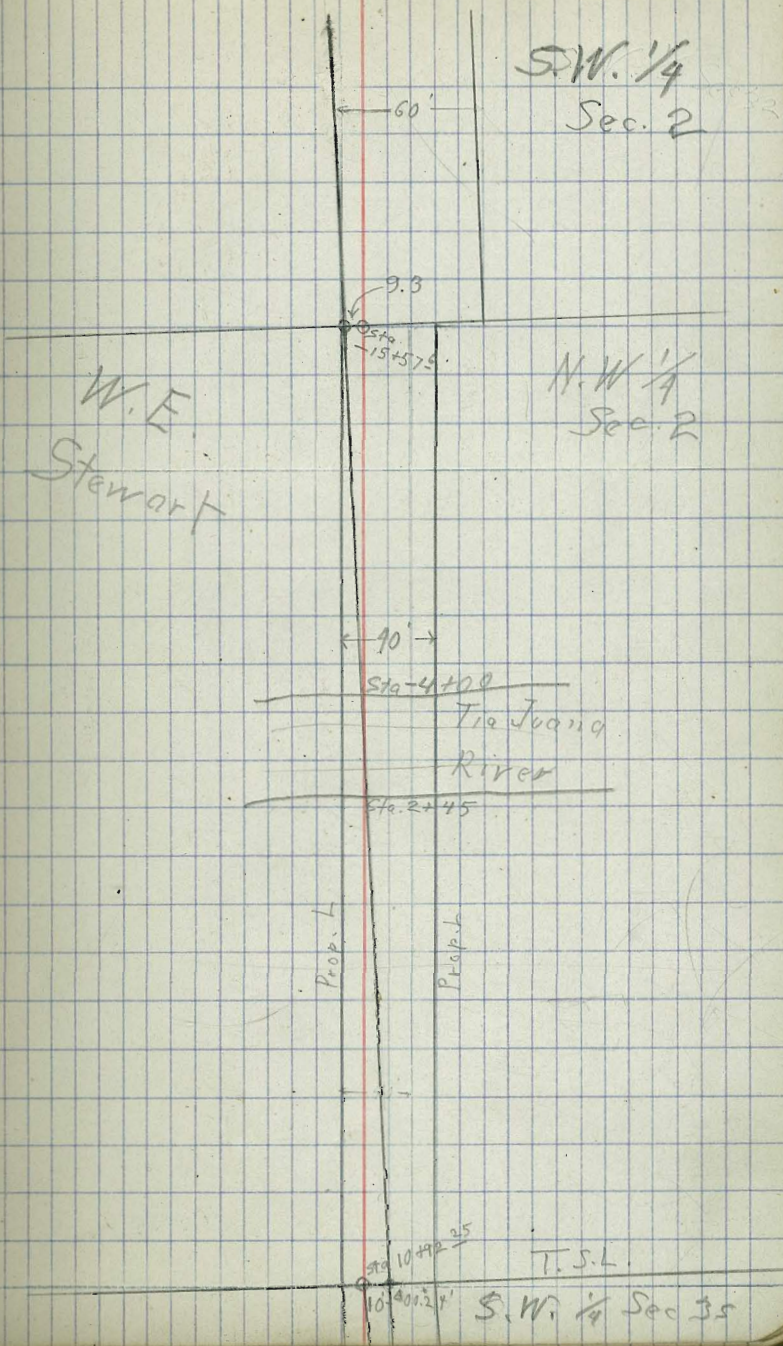
-15+57⁰ 9.3' L. to Gas Pipe on 1/2 Sect

-10+86⁰ P.O.T.

-4+41²⁸ P.O.T.

-4+00 S. Bank River

0+00 C. of Tia Juana River (Approx)



Direct Line from Sta 55+40^Δ, A. Line to
S.E. Cor Reservoir Lot

2-17-15
Schoedsack
Fisher
Bellamy

Sta. L. R. C.C. M.C.
126+47^B S.E. Cor Highland Reservoir

125+43 } Shed
125+24 }

121+33^Δ Mon. 6' x 6' - S.E. Cor Reservoir Lot
N. 41° 28' W N. 42° 08' W

111+97^o Fence
104+00^o P.O.T.

90+66^{o 55} P.O.T.

72+00^o P.O.T.

65+60 Fence

65+30 C. of Road

55+40^Δ 30° 18' N 30° 10' W N 31° 00' W
(A Line)
Sta. 9

C. Line
(Highland Ave)

Schoedsack
Fisher
Whitmore
Bellamy
2-26-15

9

Sta. L. R. C. C. M. C.

58+75⁸ C. of S.D. & S.E. R.R.

58+36 C. of County Road.

48+09⁴ P.I.

21+60² P.I.

21+40 Property L.

8+30⁵ Fence

3+00⁰ P.O.T. N. 00°-08' W / N 01°-00' W

2+64⁸⁵ P.O.T. N. Bank River.

0+00 C. of Tia Juana River (Approx)

Schoedsack
Fisher
Whitmore
2-27-15

10

Sta L R C.C. M.C.

82+68[±] 00°-02'

A. Line Bearing
N00°-02'W N30°-00'W

C Line Sta 82+68[±] =

A Line Sta 105+45[±]

Diff = 22 77'

82+22

C of S. D. & A. R.R.

78+19

Fence

74+81

Fence

74+79[±]

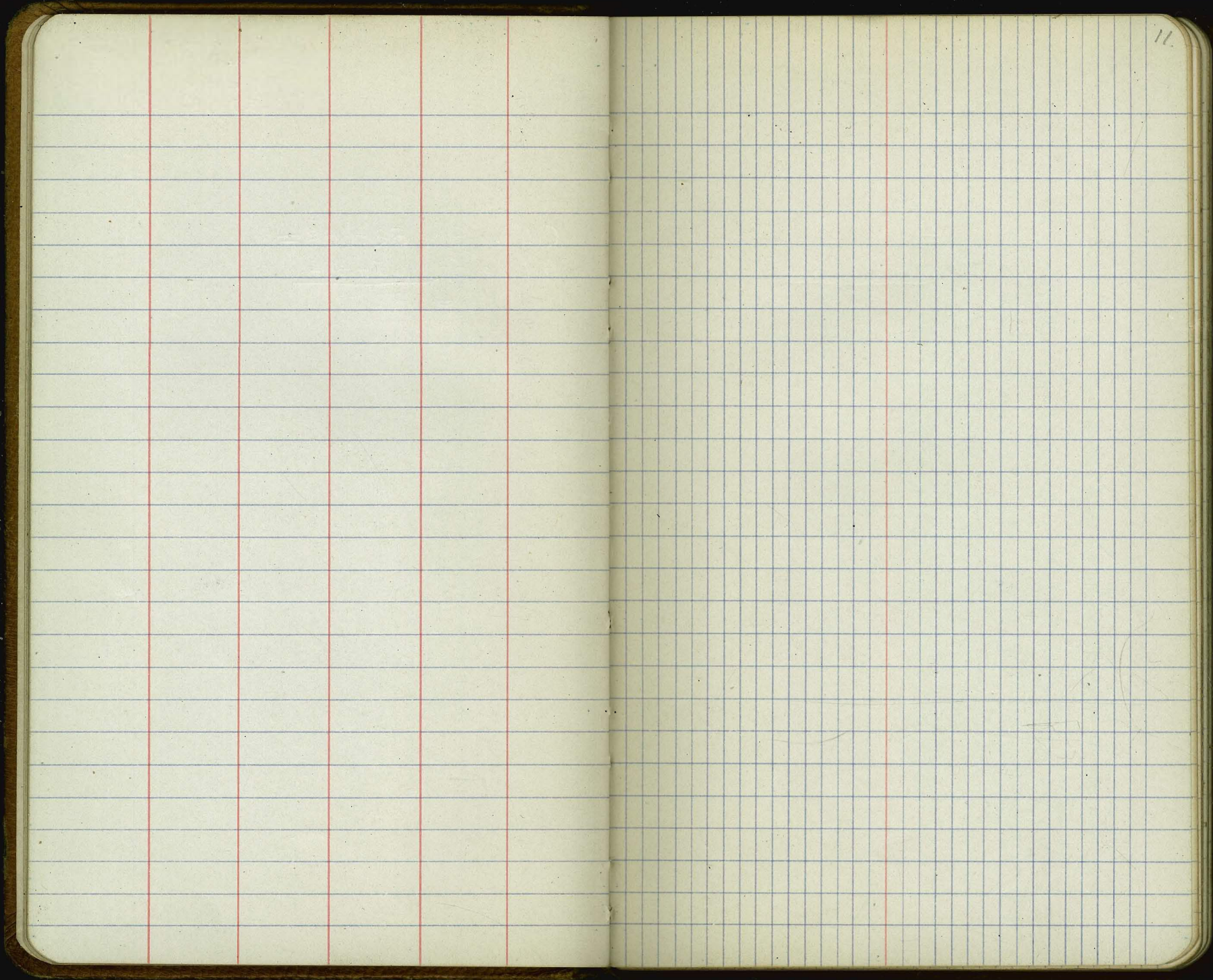
P.I. 15' L to Stone Mark on Q.S.L.

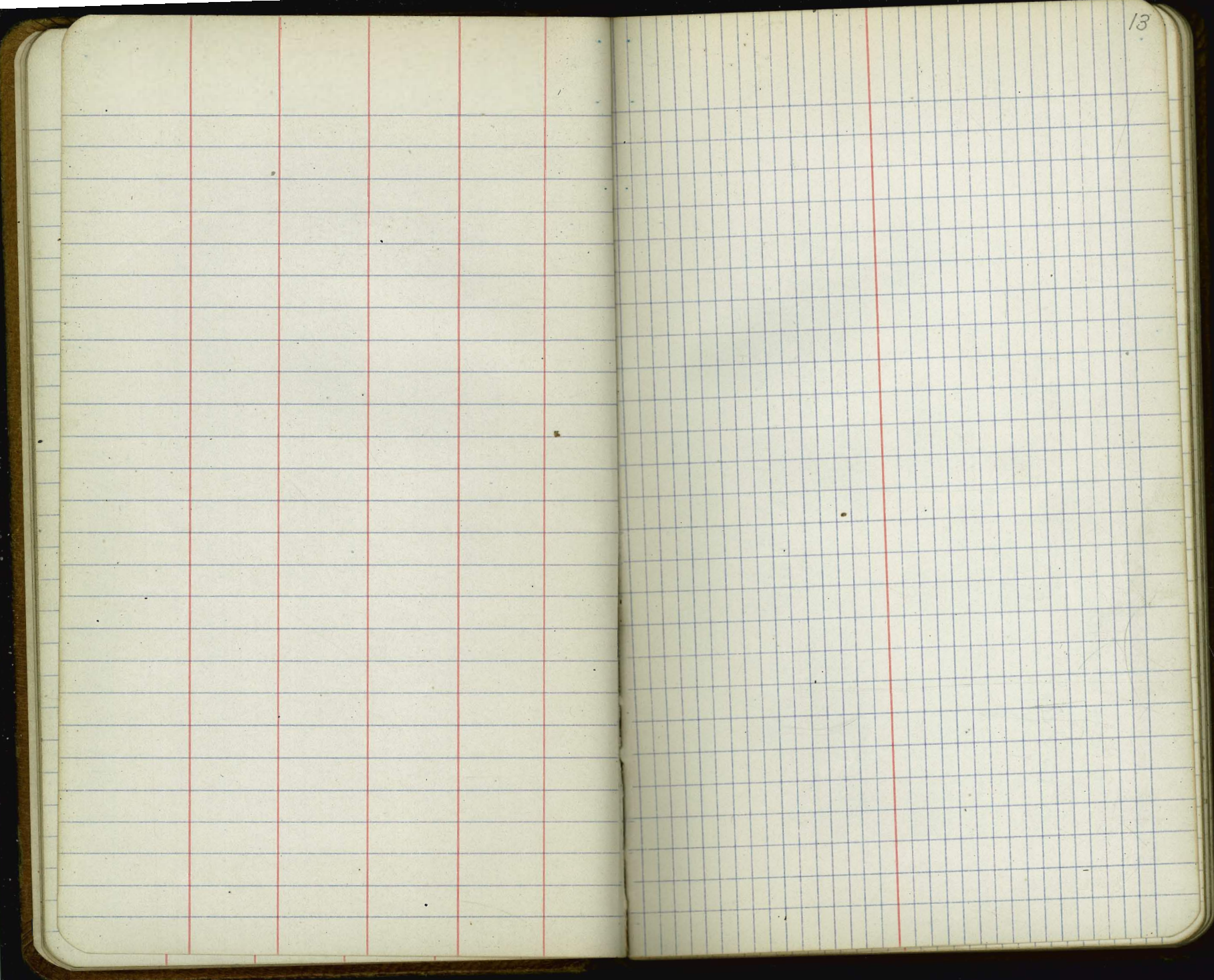
70+77[±]

P.O.T.

61+35[±]

P.I. Sec. Line
00°-08' N00°-00'W N00°-30'W





A Line Levels

Sta	+	H. I.	-	Elev.
B.M.	11.602	49.632		38.03
29+70.5			11.64	37.99
30			11.45	38.18
31			6.62	43.01
32			1.49	48.14
T.P.	11.397	59.619	1.410	48.222
33			7.69	51.92
34			6.20	53.41
35			5.69	53.92
36			3.88	55.73
37			1.06	58.55
+43 ^o T.P.	11.990	70.904	0.705	58.914
38			9.96	60.94
39			5.15	65.75
40			0.31	70.59
T.P.	10.705	81.370	0.240	70.664 ✓
41			8.12	73.25
42			4.65	76.72
+25 ^o			3.78	77.59
43			3.76	77.61
44			6.55	74.62
45			11.09	70.28
+30			12.17	69.10
46			8.85	72.52
47			3.99	77.44

Schoedsack
Fisher

2-23-15

Checked O.K. 2-24-15

Nail in S.D. + S.E. RR. Sign Post, Schnell's Crossing

Top of Rail

Peg 13' R. Sta 32

Peg 2' R. Sta 40

Sta	+	81.370 H.I	-	Elev.
48			1.41	79.96
1.P.	5.663	85.622	14.10	79.959
49			6.26	79.36
50			5.84	79.78
51			5.39	80.23
+28			4.13	81.49
+41			5.10	80.52
52			5.24	80.38
53			4.51	81.11
54			4.90	80.72
+22			4.52	81.10
+43			2.32	83.30
+60			4.59	81.09
+75			5.36	80.26
+76			7.35	78.27
+88			5.75	79.82
55			7.24	78.38
+04			6.97	78.65
+08			4.22	81.40
+30			4.25	81.37
+40 ^Δ T.P.	2.464	84.815	3.271	82.351
+48			3.86	80.95
+63			4.14	80.67
56			3.92	80.89
57			6.82	80.99 78.0

Reg. 5' L Sta 48.

Top of Rail, S.D. & A.R.R.

Sta.	+	H. I.	-	Elev.
B.M.		84.815	3.05	81.765
58			8.41	76.40
59			6.62	78.19
60			6.21	78.60
61			7.22	77.59
T.P.	80.794 3.22	80.794	7.241	77.574
62			4.00	76.94
63			4.68	76.11
64			4.86	75.91
65			6.17	74.62
66			6.95	73.84
67			6.98	73.81
+88			5.61	75.18
68			3.88	76.91
69			1.42	74.37 79.4
T.P.	3.090	82.375	1.509	79.285
+43			5.82	76.55
+78			7.04	75.33
+84			5.74	76.63
70			4.71	77.66
+40 ⁴⁵			1.70	80.67
+80			4.81	77.56
71			5.42	76.95
72			6.00	78.37 76.4
+35			6.80	75.57

Nail in S.D. & A.R.R. Crossing Sign 30' L. Sta 56+90

Peg in R. Sta. 61

Peg in R. Sta. 69

82.375

Sta.	+	H.T	-	Elev.
73			11.56	70.81
T.P.	3.453	74.266	11.562	70.813
74				
75				
76				
77				
78			5.19	69.07
79			4.09	70.17
80			3.42	70.84
+34			3.25	71.01
81			2.28	71.98
T.P.	3.930	75.941	2.255	72.011
82			3.58	72.36
83			3.46	72.48
84			5.23	70.71
85			5.17	70.77
86			5.34	70.60
87			5.71	70.23
+25 ⁰⁴⁵			3.91	72.03
+43			6.19	69.75
88			6.92	69.02
T.P.	1.358	70.399	6.900	69.041
89			6.65	63.74
+31			7.38	63.01
90			11.77	64.62 58.6

Reg. 1' R. Sta. 73.

Reg. 1' L. Sta. 81

under
Water
2-23-15

60.936
70.399

Sta.	+	H.T	-	Elev
90+T.P. 25	0.754	58.552	12.601	57.798
90+35			2.57	55.98
91			10.09	48.46
+56			12.01	46.54
92			8.68	49.87
93			11.90	46.65
94			14.40	44.15
T.P.	8.31	54.377	12.485	46.067
95			10.18	44.19
B.M.			9.950	43.42 44.4
95+54			10.60	43.78
+76			7.70	46.68
96			9.41	44.96
97			7.40	46.97
+96			6.52	47.85
T.P.	10.180	61.477	3.080	51.297
98			10.67	50.80
99			8.14	53.37
100			3.97	57.5
+18			2.88	58.59
101			3.03	58.44
102			3.15	58.32
103			2.18	59.29
104			1.86	59.61
T.P.	8.676	68.304	1.849	59.628

Peg on L.

Peg on A 93+26

Top of Culvert 'R. of L. (S.D. & A. Dat = 38.365)

Top of Boulder on L. Sta 97+56

Peg 1" R. Sta 104

Sta.	+	65.304 H.I	-	Elev.	
105			9.20	59.1	
+20			8.74	59.6	
+45 ⁸⁵			7.11	61.2	
B.M.			7.38	60.9	60.924
106			4.92	63.4	
107			4.19	64.1	
108			3.46	64.8	
109			2.47	65.8	
T.P.	6.220	72.114	2.410	65.894	
110			5.99	66.12	
111			5.41	66.7	
112			3.61	68.5	
113			2.95	69.76	
T.P.	6.031	75.840	2.305	69.809	
114			5.46	70.38	
115			5.05	70.79	
116			4.68	81.16 71.2	
117			4.33	81.51 71.5	
118			1.64	74.20	
T.P.	12.316	86.354	1.802	74.038	
119			8.24	78.11	
120			3.40	82.95	
T.P.	11.930	97.771	0.513	85.841	
121			9.26	94.51 88.5	
122			2.84	94.92	

Mark in Sign Post S of SD-A RR

Peg 1' R Sta 109

Peg 1' R Sta 113

Peg 4' Sta 118

Peg 4' Sta 120+48

Sta	+	HT	-	Elev
T.P.	12.490	97.771 110.261	0.000	97.771
123			5.41	104.85
T.P.	12.962	123.223	0000	110.261
124			10.04	113.18
+19 ²			9.35	113.87
+39 ²			6.88	116.34
125			3.64	119.58
+50			2.22	121.0
T.P.	5.823	127.258	1.788	121.435
126			10.59	116.66
+30			10.95	116.30
+57			8.43	118.82
127			5.99	121.26
+50			3.8	123.45
+55			2.82	124.43
+75			2.44	124.81
128			3.89	123.36
129			8.5	118.75
130			9.52	117.73
+10			10.0	117.25
+50			9.44	118.61 117.8
131			5.4	121.85
+50 T.P.	13.04	138.033	2.265	124.993
132			8.14	124.89 129.9
+50 T.P.	12.39	149.395	1.03	137.003

5' L 8122 + 39 Peg.

Peg on Line 131450

Peg on Line 131448

Sta	HT		Elev.
	149.393		
133		5.71	143.68
470 T.P.	13.035	161.842	0.586 148.807
134		10.62	151.22
+ 70		6.24	155.60
135		3.8	158.04
+ 35		1.69	160.15
136		1.84	160.0
T.P. 426 ^o	12.562	173.644	0.76 161.082
136 + 68		8.78	164.86
137		4.79	168.85
+ 12 T.P.	8.232	181.163	0.713 172.931
+ 22		2.45	178.710
267		2.13	179.03
BM		0.67	180.29

Peg on Line 133+70

Peg on Line 137+12

Top of Res. Curb, S.W. Cor.
Nail in S.E. Cor. Reservoir Railing

BM	3105	41.135	38.03
29+30		5.91	35.225
29+25		5.75	35.38
29		6.13	35.0
28		5.42	35.71
27		5.41	35.72
26		5.11	36.02

Nail in SD SE RR Sign Post

Center of County Road

Sta	+	41.135 NI	-	Elev
25			5.34	35.79
24			4.8	36.33
T.F	3.90	40.405	4.63	36.505
23			3.76	36.64
22			4.45	35.95
21			5.65	34.75
20+86			6.16	34.24
20+15			6.34	34.06
20			5.64	34.76
19+87			4.86	35.54
19			3.12	37.28
18+75			3.85	36.55
18+63			6.23	34.17
18			5.67	34.73
17+95			6.29	34.11
17+70			4.99	35.41
17			4.40	36.0
16			3.64	36.76
T.F	5.062	41.697	3.77	36.635
15			4.82	36.85
14			5.2	36.49
13+7			4.42	37.27
13			5.05	36.64
12+52			5.0	36.69
12+40			6.82	34.85

Contd Page 31

Pas on Line 23+87

Peg in Sta 16

Sta	+	H.I.	-	Elev
B.M.	3.354	85.123		81.769
A 55+40 ⁺			2.772	82.351
+52			4.29	80.833
56			5.03	80.093
+80			7.08	78.043
57			6.80	78.323
+70			6.92	78.203
58			5.90	79.223
59			4.58	80.543
60			4.89	80.233
TF.	4.955	85.078	5.00	80.123
61			4.92	80.158
62			5.01	80.068
63			5.2	79.878
64			5.22	79.858
65			5.09	79.988
+25			5.19	79.888
66			5.13	79.848
67			5.11	79.968
TF.	4.54	84.456	5.162	79.916
68			4.46	79.996
69			4.81	79.646
70			4.88	79.576
71			4.86	79.596
⊙ 72			4.83	79.626

2-24-15 24
 Schoedsack
 Fisher
 Whitmore
 Checked O.K.
 2-25-15

Nail in S. De A. RR. Crossing Sign

Peg 1' R Sta 60

TF. Peg 1' R 67

Sta	+	#I	-	Elev
		84.456		
73			4.81	79.646
+80			4.86	79.596
74			4.85	79.606
+84			5.77	78.686
75			5.72	78.736
+65			6.54	77.916
76			6.42	78.036
TP	1.242	79.177	6.521	77.935
77			3.25	75.927
+70			4.08	75.097
78			3.96	75.217
79			4.66	74.517
80			9.37	69.807
81			11.11	68.067
+48			11.51	67.667
+57			12.8	66.377
+64			11.8	67.377
82			10.93	68.247
+30			7.61	69.507 71.6
83			7.8	70.377
+75			9.44	69.737
84			9.15	70.027
TP	5.84	75.787	9.23	69.947
+52			7.04	68.747

Page R Sta 76

Page R Sta 84

Sta	+	HI	-	Elev.
		75.787		
84+80			9.06	66.727
85+ 85			13.3	62.487
+7			15.7	60.087
+17			14.5	61.287
86			13.4	62.387
87			11.99	63.797
+40			11.05	64.737
88			5.84	69.947
89			1.75	74.037
T.P	9.044	83.085	1.746	74.041
90			6.05	77.035
+58			4.94	78.145
⊙ 66 ⁵⁵			4.09	78.995
91			5.09	77.995
92			6.38	76.705
93			6.12	76.965
94			5.68	77.405
95			4.18	78.905
96			4.57	78.515
+50			4.02	79.065
+64			5.44	77.645
97			4.88	78.205
T.P	6.605	84.79	4.90	78.185
98			6.71	78.08

Page i R Sta 89

Page i R Sta 97

Sta	+	H.I.	-	Elev	
		84.79			
99			6.31	78.48	
100			6.69	78.10	
101			5.53	79.26	
102			5.44	79.35	
+50			6.0	78.79	
103			5.0	79.79	
⊙ 104	TF	6.202	90.252	0.74	84.05
+40			6.97	83.28	
+70			13.3	76.95	
105			11.7	78.55	
106			9.96	80.29	
+25			10.48	79.77	
+65			9.34	80.91	
107			10.51	79.74	
+35			9.61	80.64	
108			6.3	83.95	
TF	11.96	102.212	0.00	90.252	
109			10.5	91.7	
110			3.88	98.33	
+40			0.69	101.52	
TF	11.15	113.362	0.00	102.212	
111			10.91	102.45	
112			10.13	103.23	
+10			10.95	102.41	

Center of Road
 Peg 108+81 on Line

Peg on Line 110+89

Sta	+	HT	-	Elev	
		113.362			
113			11.88	101.48	
114			10.58	102.78	
115			4.22	109.14	
TP	12.701	125.413	0.65	112.712	Peg on Line 115+30
116			6.1	119.31	
TP	11.492	136.170	0.735	124.678	Peg 9' R Line 116+40
117			3.06	133.11	
TP	12.96	148.481	0.649	135.521	Peg on Line 117+16
118			5.59	142.89	
TP	11.84	158.061	2.26	146.221	Peg 25' R Line 118+40
119			8.65	149.41	
120			4.9	153.16	
121			2.74	155.32	
△ 121+33 ⁵			1.329	156.732	B.M. 6x6 Mon S.E. Cor Reservoir Lot
TP	12.884	170.945	0.00	158.061	Peg in Road 50'L
122			8.68	162.76	
TP	10.285	180.27	0.96	169.985	Rock on Line 122+90
123			9.58	170.69	
124			6.59	173.68	
125			5.18	175.09	
+80			5.59	174.68	
126			4.61	175.66	
+37			2.94	177.43	
43			1.48	178.79	

Sta	+	HI	-	Elev.	
		180.270			
126+47 ²			1.20	179.07	S.E. Cor Reservoir Wall
BM			0.00	180.27	Nail in Cor Post of Res. Fence

A. Line Levels, Cont. from Pg. 23

Sta	+	HI	-	E Lev
12			6.7	34.99
11+40			7.5	34.19
11			5.48	36.21
10			5.19	36.50
9			5.8	35.89
8			4.32	37.37
T.P	4.29	42.067	3.92	37.777
7			4.67	37.39
6			4.57	37.49
5			4.31	37.75
B.M.			3.88	38.187
4			4.81	37.25
3			5.2	36.86
			4.76	37.30
		3-12-15		
B.M.	4.47	42.657		38.187
2+47			5.5	37.2
2+45			8.4	34.3
0+00			8.7	34.0
B.M. ^{x.p.}	3.54	43.747	2.45	40.207
-3+97			7.1	37.6
-4			4.7	39.0
-4+1 ²⁸⁶			4.72	39.027

IR Sta 8

Nail in Tel Post Highwater Mark

N River Bank

Nail in Post, N. River Bank

Top N. Bank

Bottom N. Bank

Center of River (Approx)

Nail in Post, S. side River

Bottom S. Bank

Top S. Bank

(A. Line)

43.747

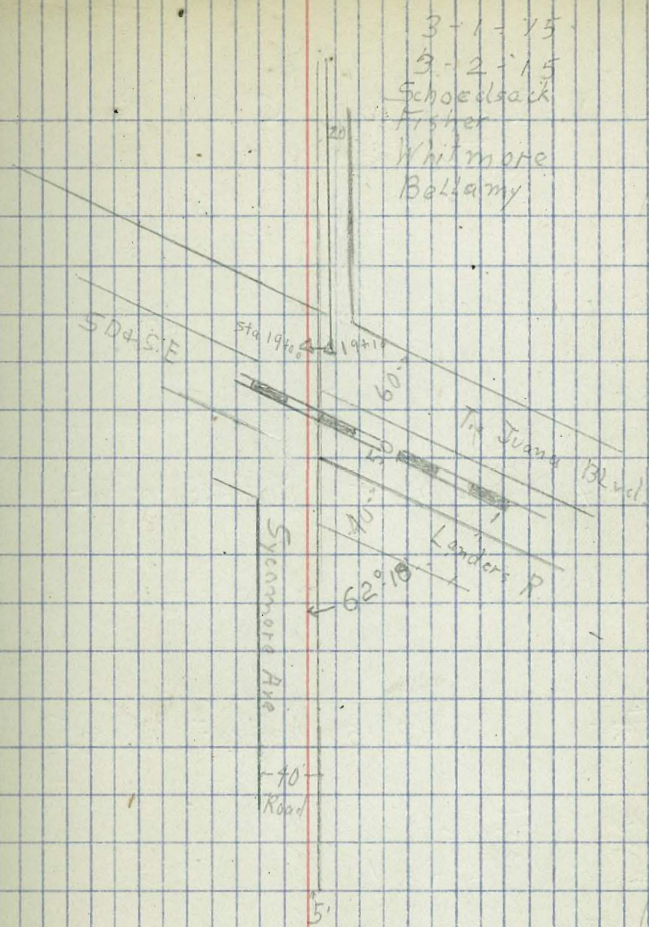
Sta	+	H.I	-	Elev.
- 5			4.6	39.1
- 6			5.0	38.7
- 7			5.1	38.6
- 8			5.7	38.0
- 8+95			6.3	37.4
- 9			5.2	38.5
- 9+87			5.2	38.5
- 10			6.4	37.3
- 10+86 ⁶			6.4	37.3
- 11			6.4	37.3
- 11+75			6.5	37.2
- 11+82			7.7	36.0
- 12			6.3	37.4
- 13			6.9	36.8
- 14			6.8	37.5
- 15			5.2	38.5
- 15+57 ⁶⁶			5.39	38.357

R.M.

D Line

33

Sta	L.C.	R.	C.C.	M.C.
31+29°		P.O.T.		
26+86		C. of Road		
22+20		P.O.T.		
19+48°		P.O.T.		
19+20		C. of Tia Juana Blvd		
19+10 ^Δ	90°-00'	N00°-04'W	N00°-30'W	
19+00 ^Δ		90°-00'	N89°-36'E	N90°-00'E
18+51 [±]		C. of S.D. & S.E. RR		
13+19 [±]	P.T.	5' R. to G.P. on Prop. 2		
0+00°	P.I.	5' R. to Caspipe on S. King Little	N00°-04'W	N00°-15'W
			Landers Col.	



Sta. L. R. C.C. M.C.
67+75 Fence

67+00 Road

63+82 C. of County Road

63+24.4 ^Δ 15°-24' N 05°-3' N 05°-56' E N 06°-00' E

44+58.1 ^Δ 42°-18' N 21°-20' E N 21°-30' E

44+37 Fence

40+04 C. of Road

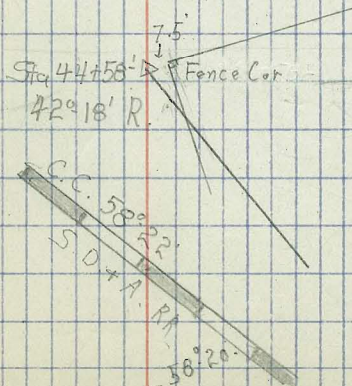
39+85.8 ^Δ 20°-54' N 0°-58' W N 21°-00' W

35+69 C. of Road

34+12 C. of S.D. & A. R.R.

3-3-15
Schoedtsack.
Fisher
Whitmore
Bellamy

37



Sta. L. R. C.C. M.C.
132+88¹ C. of 20" Pipeline, Coronado Branch

132+81² P.O.T.

129+04³ P.O.T.

107+99.00 P.I.

105+99² P.O.T.

103+97¹ P.O.T.

84+31.00 P.O.T.

80+85¹ P.O.T.

71+95⁰ P.O.T.

3-3-15
Schoedsack
Fisher
Whitmore
Bellamy

35

3-4-15
Coronado Pipeline

3271
Sta. 132+88¹

66°44'
Approx.

95°41'

467.2
Sta. 107+99.00
Mon. 6x.6

E. Line

Sta. L. R. C.C. M.C.

117+57⁰ C. of 16" Steel Pipe L., Coronado Branch

100+27³ P.O.T.

94+04² P.O.T.

90+74² P.O.T.

84+86² P.O.T.

81+04⁵ P.O.T.

73+55 Fence

71+66 P.O.T.

64+05 Fence

63+95 Road

55+40^Δ 00°-04'
(A Line)
Sta.

N00°-00'E N00°-00'E
A. Line Bearings
Corrected to S. D. & A. bearing
N00°-04'E

Schoedsack
Whitmore
Bellamy

36

3-8-15

3-9-15

D. Line Levels

Sta	+	HI	-	Elev
BM	2.255	58.485		56.23
19			1.8	56.68
18+51 ^s			3.14	55.34
18+25			4.0	54.48
18			7.1	51.38
17+70			11.71	46.77
17+12 T#	5.31	50.815	12.98	45.505
17			5.81	45.0
16			5.7	45.11
15			5.55	45.26
14+50			4.81	46.00
14			4.70	46.11
13+15			4.80	46.01
13			4.36	46.45
12			3.97	46.94
11			3.81	47.0
10+50			3.80	47.01
10			5.1	45.71
9+50			6.4	44.41
9			6.35	44.46
T#	7.165	52.250	5.73	45.085
8+85			8.1	44.15
8+80			7.31	44.94
8			6.12	46.13
7+30			6.1	46.15

3-4-15
Schroed sack
Fisher
Whitmore

37

Mar in SD + SE RR Crossing Post, San Ysidro

Top of Rail

Peg 14+12 8' Left

Top of Sta. 9

Sta	+	HI	-	Elev.
7+25		52.250	6.6	45.65
7			6.1	46.15
6			4.45	47.80
5			4.5	47.75
4			4.55	47.70
3			4.04	48.21
2			5.62	46.63
1			3.9	48.35
00	o		4.75	47.50
B.M.			3.85	48.40

O.K.

Nail in Corner Post 35' Left Sta 00

BM	11.315	67.545		56.23
19+25			10.25	57.29
19+26			10.21	57.33
19+49			9.22	58.32
20			9.35	58.19
+50			9.76	57.78
21			8.2	59.34
+24 T.P.	11.04	71.919	6.666	60.879
+50			8.8	63.11
+83			9.6	62.31

Peg

Nail in SD + S.E. RR Crossing Past San Ysidro

Sta	+	71.999 HI	-	F Lev	
22			10.0	61.91	
+20	°		7.2	64.71	
+40			4.36	67.56	
23			3.29	68.62	
+60			4.0	67.91	
24			3.7	68.21	
25			3.6	68.31	
T.F.	12.78	81.196	3.503	68.416	
26			6.42	72.77	
+70			6.45	74.74	
+75			4.2	76.99	
27			3.6	77.59	
+50	T.F.	12.65	93.846	0.0	81.196
28			10.45	83.39	
+55			9.63	84.21	
29			8.41	85.43	
30			3.19	90.65	
+45	T.F.	12.84	106.686	0.0	93.846
31			9.34	97.34	
+29	°		7.44	99.24	
32			5.78	100.90	
33			2.98	103.70	
+75			0.56	106.12	
+83			3.14	103.54	
+98			2.79	103.89	

Peg Left Sta 25

Peg on Line 27+50

Peg on Line 30+45

Sta	+	106.686 HI	-	Elev
34			3.56	103.12
+10			1.96	104.72
+24			3.3	103.38
+ TF	7.616	111.999	2.303	104.383
+31			4.62	107.37
35			4.95	107.04
+15			5.1	106.89
+65			7.05	104.94
+93			8.16	103.83
36			7.9	104.09
+73			7.4	104.59
37			5.46	106.53
38 ^{TF}	6.34	118.339	0.0	111.999
+50			4.54	113.79
39			5.46	112.87
+35			7.54	110.79
+45			11.47	106.86
+66			7.7	110.63
+85 ^Δ			6.86	111.47
40			6.48	111.85
+55			6.0	112.33
+72			3.4	114.93
41			2.23	116.10
TF	9.25	125.659	1.93	116.409
42			6.64	119.01

Top Rail SD + A

Spike on Line 34+ North Rail

Peg 37+99 1' Left

Top Sta. 41

Sta	+	125.659 H.I.	-	Elev.
43			3.4	122.25
+33			4.32	121.33
+40			6.2	119.45
+85			7.03	118.62
+95			9.9	115.75
44			8.3	117.35
TP	10.80	136.459	0.0	125.659
42 +58	8.19		8.19	129.269
+88	7.30		7.30	129.159
45	7.70		7.70	128.759
+40	9.30		9.30	127.159
+62	12.20		12.20	124.259
+68	14.00		14.00	122.459
+78	13.30		13.30	123.159
46	8.0		8.0	128.459
46+52	12.928	149.007	0.38	136.679
47			8.8	140.20
+50			7.5	141.50
48			6.8	142.20
+20			6.7	142.30
+50			5.1	143.90
49			3.0	146.00
46+25	11.877	159.714	1.17	147.837
+50			11.4	148.31
+70			11.7	137.30 148.0

Peg 3" Left 44+37

Peg on line

Peg on line

Schoedsack
Whitmore
O'Brien
Bellamy

3-5-15

71

Sta	+	H.I.	-	Elev.
50		159.714	10.0	149.714
+12			10.2	149.512
+28			8.3	151.414
+50			8.5	151.21
51			6.0	153.71
+25			5.0	154.71
+40			3.7	156.01
+50			3.8	155.91
+65			4.4	155.31
52			2.6	157.11
TP	12686	170097	2.303	157.411
+14			12.90	157.19
+22			14.00	156.09
+50			13.90	156.19
53			12.8	157.29
54			6.5	173.59 163.6
TP	12.33	181.076	1.351	168.746
55			10.5	170.576
+50			8.1	172.976
+72			7.1	173.97
56			5.2	175.87
+25			6.8	174.27
+86			5.6	175.47
57			7.2	173.87
+18			9.3	171.77

Top of Sta 52

Peg 3' left of line Sta. 54+74

Sta	+	181.076 H.I.	-	Elev.	
+32			10.9	170.17	
58			3.0	178.07	
TP	13.002	193.598	0.48	180.596	Peg 58+23. 3' R of line
+30			12.1	181.49	
+70			8.8	184.79	
59			7.5	186.09	
+42			5.0	188.59	
+80			2.7	190.89	
+92			3.2	190.39	
60			2.5	191.09	
TP	12.902	206.500	0.00	193.598	Peg 60+05 10' left of line
+25			14.5	192.01	
+50			13.9	192.61	
61			11.0	195.51	
+55			6.3	200.21	
+85			2.7	203.81	
62			1.7	204.81	
TP					
62+10	10.42	215.970	0.95	205.55	Peg on line
+47			6.1	209.88	
63			3.6	212.38	
Hub+245			2.76	213.22	
+74			7.4	208.59	
+82			6.9	209.08	County Road
+90			6.8	209.18	
64			10.7	205.28	

Sta	+	215.97 HI	-	Elev.
64 ^{TP} +09	1.24	204.202	12.928	203.043
64+50 ^{TP}	1.678	193.020	12.94	191.342
65			12.1	186.93
TP	5.75	186.560	12.21	180.810
+10			7.7	178.87
66			8.7	177.870
+12			9.4	177.17
+20			11.8	174.77
+23			11.9	174.67
+37			8.5	178.07
+48			6.7	179.87
67			5.9	180.67
+15			4.6	181.97
+50			2.8	183.77
TP	12.988	199.548	0.00	186.560 ✓
68			11.3	188.25
+30			9.3	190.25
+45			9.6	189.95
69			7.0	192.55
70			0.7	198.85
TP	11.447	210.605	0.39	199.158
71			7.8	202.81
Hub + 95			3.74	206.77
72			3.9	206.71
73			1.3	209.31

Peg on line

Peg on line

Peg 1' W of Sta.

Peg 7' E of line Sta. 67+80

Top of Sta. 70,

Sta	+	210.605 H.I.	-	Elev.
73 T.P.	2.58	212.855	0.33	210.275
73 +50			3.1	209.767
74			3.6	209.267
+25			4.6	208.267
75			9.4	203.467
+28			11.3	201.567
75+37 T.P.	4.67	204.611	12.914	199.941
76			12.3	192.323
+17			13.3	191.323
+26			16.7	187.923
+33			14.3	190.323
77			13.1	191.523
+25			13.8	190.823
+45			16.9	187.723
+50			19.4	185.223
+55			19.3	185.323
+59			18.5	186.123
78			14.2	190.423
79			2.7	201.923
+27 T.P.	12.850	216.790	0.671	203.940
+65			9.5	207.303
80			4.5	212.303
+27 T.P.	12.03	228.343	0.477	216.313
Hub +85'			6.4	221.953
81			6.4	221.953

Peg on line 73+24

Peg on line.

Peg on line

Peg on line.

Sta.	+	228.343 H.I.	-	Elev
82			5.5	222.75
+60			4.9	223.45
+85			3.6	224.75
83			4.3	224.05
+10			4.4	223.95
+35			2.5	225.85
+55			3.4	224.95
84			4.9	223.45
Hub + 31			6.2	222.15
+ 75	0.83	216.600	12.573	215.770
85			5.5	222.75 211.1
+ 25	4.05	208.490	12.16	204.440
+ 42			9.9	198.60
86			11.5	197.00
+ 47			11.8	196.70
+ 50			13.2	195.30
+ 55			11.8	196.70
+ 88			4.7	203.80
87			3.0	205.50
+ 26	9.578	218.068	0.00	208.490
88			5.0	213.08
89			1.7	216.38
+ 25			1.8	216.28
90			7.5	210.58
+ 50			10.2	217.88 207.9

Peg on line

Peg on line

Sta	+	218.068 H.I	-	Elev
91			11.2	206.868
	+56		10.8	207.68 207.3
	+90	4.174	209.711	12.531 205.537
92			5.2	204.523
	+20		8.0	201.723
	+44		6.8	202.923
	+66		8.0	201.723
93			6.0	203.723
	+60		4.2	205.523
94			5.6	204.123
	+31		7.5	202.223
	+50		7.4	202.323
	+82		10.1	199.623
95			10.2	199.523
	+25		8.9	200.823
	+50		10.0	199.723
96			10.5	199.223
	+12		10.5	199.223
	+50		12.1	197.623
	+65 ^{TP}	82.05	205.016	12.90 196.811
97			9.9	195.123
	+38		11.0	194.023
98			10.2	194.22 194.8
	+38		9.0	196.023
	+48		9.5	195.523

Peg on line

Peg on line

Sta	+	205.016 H.T.	-	Elev.	
+62			8.4	196.62	
+85			8.7	196.32	
99			8.1	196.92	
+20			8.4	196.62	
+33			7.5	197.52	
100			7.3	197.72	
+12			6.3	198.72	
+56			6.3	198.72	
+75			9.8	195.22	
+86			11.1	193.92	
+93			14.3	190.72	
101			12.8	192.22	
+12			10.4	194.62	
102			9.8	195.22	
+10			10.3	194.72	
+74			8.3	196.72	
103			5.0	200.02	
TP +34	12.15	217.166	0.00	205.016	
104			4.2	216.97	213.0
+50			2.0	215.17	
105			1.8	215.37	
+22			2.6	214.57	
+43			2.7	214.47	
+58			1.8	215.37	
+78			4.3	216.87	212.9

Teg on line.

Sta.	+	217.166 HT	-	Elev	
106			3.9	216.277	213.3
	+15		6.3	210.876	
	^{T.P.} +58	6.40	211.876	11.69	205.476
	+77		8.1	203.78	
107			10.4	201.48	
	+18		10.3	201.58	
	+32		13.0	198.78	
	+56		9.9	201.98	
108			7.9	203.98	
	+60		7.6	204.28	
109			10.3	201.58	
	+25		11.8	200.08	
	+40		11.0	200.88	
	+63		11.3	200.58	
	+85		9.1	201.78	202.8
110			9.0	201.88	202.9
111			5.5	206.38	
112			0.8	211.0	
T.P.	8.630	230.106	0.41	211.476	
	+46		10.0	210.11	
	+65		7.3	211.81	
	+90		11.6	208.51	208.5
113			10.5	209.61	
	+15		8.8	211.31	
114			9.9	210.21	

Peg on line

Top of Sta 112

Sta	+	HT	-	Elev
		230.106		
		HT		
	+75		12.8	207.31
	+80		14.4	205.71
	+90		13.41	206.71
115			13.0	207.11
	+45		13.1	207.01
116			11.4	208.71
	+20		11.3	208.81
	+45		11.2	208.91
	+65		9.9	210.21
	+80		10.4	209.71
117			9.8	210.31
	+50		9.9	210.21
118			8.4	211.71
119			5.7	214.41
TP	12.904	227.290	5.72	214.386
120			10.1	219.2 217.2
121			7.0	213.11 220.3
	+14		6.1	211.01 221.6
	+74		5.7	211.11 221.6
122			4.7	215.11 222.6
	+45		2.9	217.21 224.4
123			1.9	218.21 225.4
TP	12.485	238.353	1.42	225.870
	+50		10.9	237.46
124			9.9	226.46 228.5

1' Right of Sta 119. Peg.

Top of Sta 123

238.355
H.T

Sta	+	-	Elev
125		6.7	231.66
+60		5.7	232.66
+83		5.5	232.86
126		4.2	234.16
+21		4.7	233.66
+38		3.5	234.86
+78		4.1	234.26
127		1.9	236.46
TP +25	1194	249425	0.87 237.485
+47		13.4	236.025
+82		11.0	238.425
128		10.7	238.72
+33		9.0	240.42
+75		7.3	242.12
129		5.2	244.22
+25		5.6	243.82
+58		3.1	246.31
+85		3.8	245.63
130		3.1	246.31
TP +40	6515	253710	2.23 247.195
131		6.0	247.71
+56		5.2	248.51
+69		6.0	247.71
132		5.8	247.91
+31		5.8	247.91

Peg on line

Peg on line

Sta	+	253.710 H.T.	-	Elev
+48			6.5	247.22
+74			5.8	247.92
Hub+81 ⁶			4.7	249.02
+86			6.1	247.61
132+88.1			3.607	250.103
B.M.			1.502	252.208 <u>O.K.</u>

Ground at Pipe

Top of Pipe Coronado Branch 20' Dia

Top 6" x 6" Quar. Sect. Mon-327 Ref Line

E Line Levels

Sta	+	H.T.	-	Elev.
B.M.	5.36	87.129		81.769
55+40 ²			4.78	82.349
55+55			6.1	81.0
56			7.1	80.0
+50			7.9	79.2
57			6.8	80.3
+47			6.3	80.8
+70			7.2	79.9
58			6.9	80.2
+30			5.7	81.4
+80			3.6	83.5
59			4.1	83.0
60			3.3	83.8
T.P.	11.76	96.039	2.85	84.279
61		10.	10.8	85.2
+65			8.4	87.6
62			8.2	87.8
+23			7.3	88.7
63			6.6	89.4
+23			5.6	90.4
+45			6.0	90.0
64			6.2	89.8
+07			6.3	89.7
65			4.3	91.7
+27			2.7	93.3

Schoedsack 53

Fisher
Whitmore
Bet. Nancy

Nail in Crossing Post, S. D. & A. 3-11-25

Copied from loose
sheets 3-141-15 F.S

Tap Sta. 60

Sta. T.P.	+	H.T.	-	Elev.	
65	12.47	108.169	0.34	95.699	Peg on Line.
66			7.0	101.1	
+40			2.9	105.2	
+66 ^{T.P.}	12.621	120.32	0.47	107.699	Peg on Line.
67			9.4	110.9	
+77 ^{T.P.}	13.03	133.35	0.000	120.32	
68			9.8	123.5	
+44			3.2	130.1	
+60 ^{T.P.}	12.963	146.312	0.0	133.35	Peg on L.
+76			9.3	137.0	
69				139.6	
+40 ^{T.P.}	12.60	158.443	0.47	145.843	Peg on L.
70			2.9	155.5	
+16 ^{T.P.}	12.125	169.998	0.57	157.873	Peg on L.
71			4.3	165.698	
+26 ^{T.P.}	4.032	171.56	2.47	167.528	Peg on L.
+66 [⊙]			3.4	168.1	
72			3.7	167.8	
+32			5.9	165.6	
+75			9.6	161.9	
+92 ^{T.P.}	0.39	158.92	13.03	158.53	Peg on Line.
73			1.6	157.3	
+50			8.7	150.2	
+65 ^{T.P.}	0.832	146.99	12.762	146.158	Peg on Line.
+75			3.0	144.0	

(E Line)

55

146.99

Sta	+	H.T.	-	FLcy
74			9.9	137.1
	+21 ^{T.P.}	1.48	135.57	12.90
				134.09
	+50		11.8	123.8
	+85 ^{TP}	0.872	123.372	19.07
				122.50
75			4.7	118.7
	+13		6.6	116.8
	+30 ^{T.P.}	1.142	115.24	12.99
				11038.2
	+55		10.1	101.4
	+70 ^{TP}	6.45	105.044	12.93
				98.594
76			10.0	95.00
	+26		13.3	91.7
	+30		12.0	93.0
77			9.7	95.3
	+24		7.4	97.6
	+40		4.8	100.2
	+80 ^{T.P.}	13.062	117.626	0.48
				104.564
78			12.2	105.4
	+70		4.1	113.5
79			1.9	115.7
	T.P.	12.90	130.121	0.40
				117.226
79+66			7.8	123.3
80			5.4	124.7
	T.P.	12.54	142.666	0.00
				120.121
81			11.5	131.1
	+04 ^o		11.1	131.5

Peg on L

Peg on L

Peg on L

Peg on L

Peg on L

Sta	+	H.T.	-	Elev	
81			10.4	132.3	
82			12.5	130.2	
	+20		13.4	129.3	
	+33		12.5	130.2	
	+61		11.8	130.9	
83			4.4	138.3	
	TR.	11.45	153.596	0.52	142.146
83	+45		9.9	143.7	
84			5.4	148.2	
	+26 ³⁰		2.1	151.5	
85			1.9	151.7	
86			7.8	145.8	
	+45		12.4	141.2	
	+57 ^{TR}	1.002	141.588	13.01	140.586
87			7.7	133.9	
	+50		14.4	127.2	
88			16.5	125.1	
	+40		17.5	124.1	
89			16.6	131.0	
	+55		8.1	133.5	
90			8.3	133.3	
	+58		6.7	134.9	
	+47 ³⁰		5.6	136.0	
91			5.0	136.6	
	TR	4.98	141.608	4.96	136.628

Peg R of Sta 83

Peg on Line

Peg 1' R. Sta 91

(E. Line)

57

141.608

Sta	+	H.I.	-	Flev.
91+90			5.4	136.2
92			5.2	136.4
+10			5.0	136.6
+40			6.5	135.1
93			5.8	135.8
+73			3.2	138.4
94			3.7	137.9
+16			4.3	137.3
+35			8.9	133.3
+63			10.5	131.1
T.P.	1.670	130.278	13.000	138.608
95			3.9	126.4
+60			8.4	121.9
96			12.4	117.9
+27	TR 1.10	118.338	13.04	117.238
+38			3.0	115.3
+69			10.6	108.3
97			14.0	104.3
+35			15.8	102.5
+40			18.2	100.1
+48			16.0	102.3
98			16.6	101.7
+25			17.0	101.3
+53			11.5	106.8
99			7.1	111.2

Peg. 1' R Sta 67

118.738 (E Line)

58

Sta	+	H.T.	-	Elev.
99+50			2.8	115.5
TR.	7.460	125.798	0.000	118.338
100			6.1	119.7
+27 ⁰⁵			3.7	122.1
+57			4.3	121.5
+70			3.7	122.1
101			5.1	120.7
+28			4.0	121.8
+53			5.1	120.7
+84			5.0	120.8
102			4.2	121.6
+40			5.8	120.0
+70			5.3	120.5
103			6.7	119.1
104			8.0	117.8
+52			9.9	116.5
105			8.2	117.6
+40			6.6	119.2
106			11.0	114.8
TR.	1.71	116.768	10.74	115.058
+51			10.5	106.2
+80			12.6	104.1
107			11.9	104.8
+28			13.0	103.7
108			6.8	110.0

Pag 4 L Sta 99+84.

Pag 1 R Sta 106

116.768 (E Line)

59

Sta	+	H.I	-	Elev.
108+45			3.6	113.1
109			2.8	114.0
+33			3.7	113.0
+60			3.8	112.9
+75			5.3	111.4
110			5.4	111.3
+46			7.0	109.7
+70			7.2	109.5
111			6.7	110.0
TP	8.395	118.673	6.49	110.278
111+34			10.8	107.9
+75			8.3	110.4
112			11.0	107.7
+29			10.9	107.8
+60			10.4	108.3
113			12.5	106.2
+10			11.5	107.2
+35			12.7	106.0
+73			12.6	106.1
114			11.8	107.7
+11			12.2	106.5
+35			12.7	106.0
+60			13.0	105.7
115			10.8	107.9
+10			11.3	107.4

Page 1 R Sta. 111

Sta.	+	H.I	-	Elev.
115+30			10.5	108.2
+60			10.6	108.1
116			8.6	110.1
+13			9.0	109.7
117			6.2	112.6
+22			5.3	113.4
+57 ²⁰			3.6	115.1
			6.07	112.663
B.M.			7.23	111.443

Ground over Pipe.

Top of 16" Steel Pipe, Coronado Branch

Top of Concrete Gate Box - 55' R

C Line Levels

Sta	+	HI	-	E Lev
BM	2.31	63.234		60.924
82			3.35 3.23	59.58 60.0
81			2.24	60.99
80			3.06	60.17
79			3.80	59.43
78			6.55	56.68
77+25			10.20	53.03
TP	0.97	51.554	12.55	50.684
77			2.25	49.30
76+35			10.78	40.77
TP	3.82	43.674	11.70	39.854
76+13			10.72	32.95
76			10.33	33.34
75			6.86	36.81
74+50			3.63	40.04
74+40			1.52	42.15
TP	12.55	55.214	1.01	42.664
74			10.75	44.46
73			3.72	51.49
72+40	10.28	65.404	0.09	55.124
72			8.73	56.67
71			5.81	59.59
70			5.06	60.36
69			5.37	60.03
68			6.00	59.40

Schoedsack
Fisher
Whitmore

4-20-15

Top of Rail SP+ARR

Top 15' R 76+30

Bottom Slope County Road

Edge County Road

Note - Sta. 71 to 61+70 inc. on edge of Bank, - readings taken in Road at foot of Bank.

Sta	+	HI	-	Elev
67			6.90	58.50
66	TP	0.16	57.394	8.17 57.234
65			1.06	56.33
64			1.93	55.46
63			3.35	54.04
62			5.34	52.05
61+70			6.17	51.22
61+85			7.90	49.49
61			10.14	47.25
	TP	0.29	45.574	12.11 45.284
60			3.66	41.91
59			11.15	34.42
58+78	TP	1.11	34.684	12.00 33.574
58+68			2.22	32.46
58+56			3.03	31.65
58			5.60	29.08
57			8.10	26.58
56			9.33	26.35
55	TP	4.91	31.084	8.51 26.174
54			4.50	26.58
53			4.88	26.20
52			5.01	26.07
51			4.64	26.40
50			4.38	26.70
49			4.80	26.28

Rock 3 Left 60+65

Top Rail 'SD+SE RR'

Edge

Center County Road

Sta	H	31.074	H1	-	FLcu	
48				4.53	26.55	
TF	5.17	31.824		4.43	26.654	Top on Line 48+08
47				5.10	26.72	
46				5.00	26.82	
45				4.90	26.92	
44				4.87	26.95	
43				5.73	26.09	
42+22				6.20	25.62	
42+15				8.45	23.37	Wash on Side Road
42+10				6.38	25.44	
42				6.60	25.22	
41				6.21	25.61	
TF	6.97	33.074		5.72	26.104	Top Sta 41+00
40				6.95	26.134	
39				6.70	26.37	
38				6.10	26.97	
37				5.41	27.66	
36				5.15	27.92	
35				5.33	27.74	
34				5.20	27.87	
33				4.67	28.40	
TF	5.12	33.944		4.25	28.824	Top Sta 33+00
32				5.44	28.50	
31				5.41	28.53	
30				5.73	28.21	

Sta	+	HT	-	ELEV
29			5.44	28.50
28			5.14	28.80
27			5.62	28.32
26			5.30	28.64
TP	4.02	33244	4.72	29.234
25			4.50	28.74
24			5.15	28.09
23			5.55	27.69
22			4.67	28.57
21-60			4.54	28.70
+40			4.24	29.00
21			4.30	28.94
20			4.12	29.12
TP	4.58	34514	3.31	29.934
19			5.05	29.46
18			5.05	29.46
17			5.30	29.21
16			5.27	29.24
15			4.80	29.71
14			5.00	29.51
TP	1.66	34954	1.23	33.294
13			5.45	29.50
12			5.10	29.85
11			4.87	30.08
10			5.29	29.66

Top Sta 24+00

Center Road
End of Road

Rock 15' Left Sta 20+00 Cor Shed

Fence Post 5' Left 13+90

Sta	+	34954 HT	-	Elev.	
9			5.90	29.05	
8			5.11	29.84	
	TP	4.57	35084	4.44	30.514
7			5.95	29.13	
6			5.10	29.98	
5			4.78	30.30	
4+50			6.18	28.90	
4			5.21	29.87	
3	TP		4.76	30.32	
	TP	4.84	35574	4.35	30.734
2+50			5.00	30.57	
2+25			7.12	28.45	
2			5.92	29.65	
1+90			6.56	29.01	
1			7.77	27.80	
00			8.70	26.87	
BM			1.27	34.304	

Top Sta 8+00

River Bank

Fence Post 2+30 10' Left

Levels from Highland Reservoir.
to Otay B.M.

Sta	+	HT	-	Elev
BM	0.67	180.94		180.27
TP	0.97	169.48	12.43	168.51
TP	0.40	157.19	12.69	156.79
TP	0.03	144.48	12.74	144.45
TP	0.29	132.85	11.92	132.56
TP	0.66	120.70	12.81	120.04
TP	1.01	109.04	12.67	108.03
TP	1.65	97.75	12.94	96.10
TP	0.84	85.67	12.92	84.83
TP	0.79	73.91	12.55	73.12
TP	1.61	62.61	12.91	61.00
TP	2.01	51.66	12.96	49.65
TP	3.49	45.43	9.72	41.94
TP	6.34	42.38	9.39	36.04
TP	4.62	42.44	4.56	37.82
TP	11.18	52.06	1.56	40.88
TP	8.82	58.87	2.01	50.05
TP	7.45	63.30	3.02	55.85
BM			0.80	62.50

4-20-15

Schoedsock
Fisher
Whitmore
Nail in S. Encor. reservoir Railing, Blaine Dat.

62.57

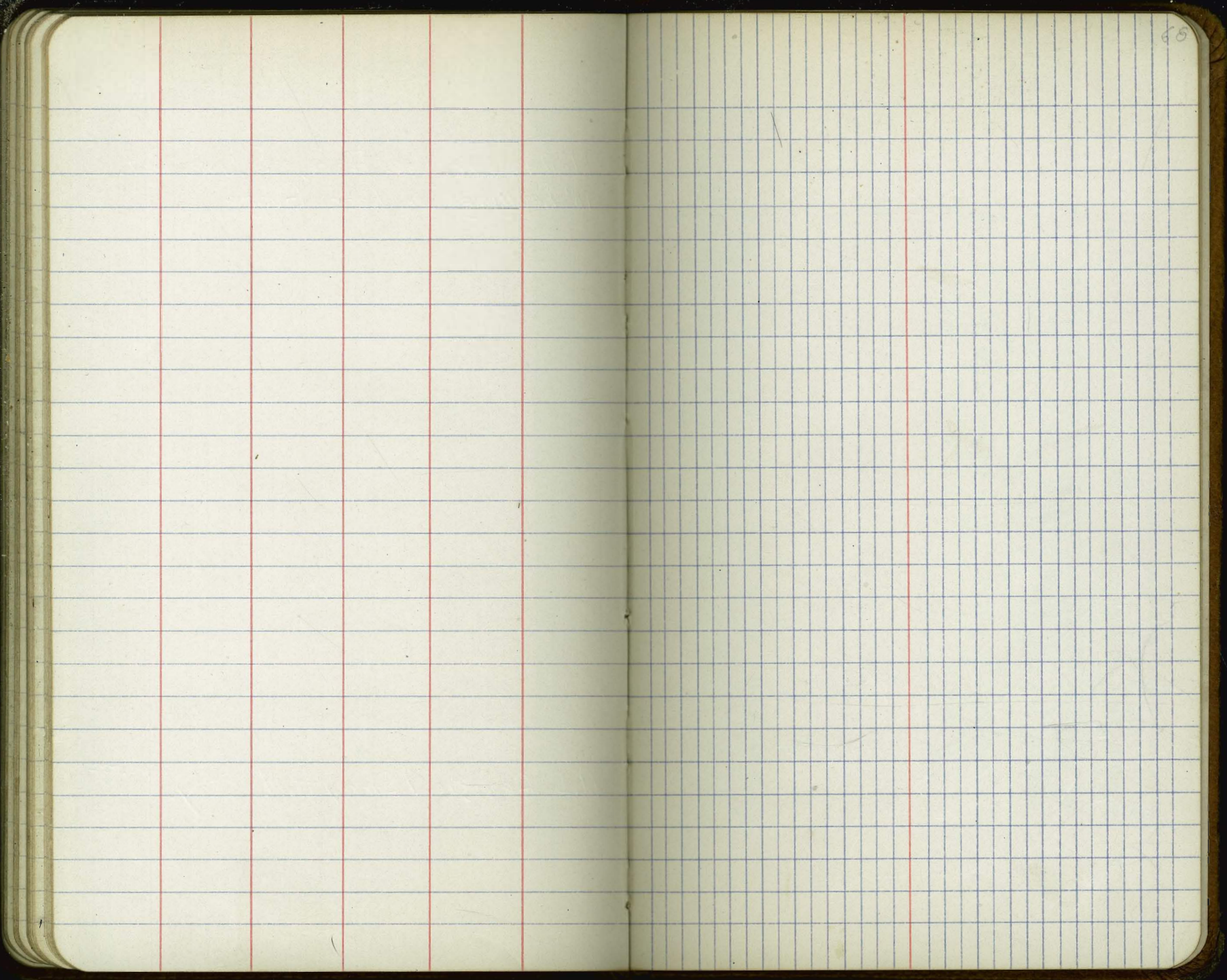
U.S. Geological Survey B.M. Otay Elev 62

Check Levels, Highland Res to
Otoy B.M.

Sta	+	H. I.	-	Elev.
B.M.	1.385	181.655		180.27
			3.14	178.515
T.P.	0.59	164.49	12.755	168.90
T.P.	1.05	157.88	12.66	156.83
T.P.	0.695	145.675	12.90	144.98
T.P.	0.52	133.105	13.09	132.585
T.P.	1.07	121.225	12.95	120.155
T.P.	0.21	108.425	13.01	108.215
T.P.	0.64	96.065	13.00	95.425
T.P.	0.91	83.905	13.07	82.995
T.P.	0.31	71.25	12.965	70.940
T.P.	0.29	58.82	12.72	58.53
T.P.	1.22	47.44	12.60	46.22
T.P.	2.80	44.01	6.26	41.18
T.P.	5.25	43.35	5.91	38.10
T.P.	5.23	47.58	1.00	42.35
T.P.	8.41	51.22	4.77	42.81
T.P.	9.23	59.00	1.45	49.77
T.P.	7.15	63.89	2.22	51.74
B.M.			1.41	62.48

Na 7 in Car. Res. Fence, B. Line Pat.
10' Reading on Rest. Gauge

U.S. Geological Survey B.M., Otoy ^{Fl. 62.572}



N. Bank Tia Juana River

Sta. L. R. C.C. M.C. Dist. from B.

6+63				6'
4+26	$13^{\circ}-01'$	N. $58^{\circ}-11'W$	N. $58^{\circ}-20'W$	1'
3+91				10'
3+65	$23^{\circ}-51'$	N. $71^{\circ}-12'W$	N. $72^{\circ}-20'W$	2'
2+30	$11^{\circ}-41'$	N. $47^{\circ}-21'W$	N. $47^{\circ}-30'W$	1'
0+00	$59^{\circ}-34'$	N. $59^{\circ}-02'W$	N. $59^{\circ}-00'W$	00'

W. of Line

0+00 = 1+70 E

*Washed
Out*



70



DIRECTIONS FOR USE OF TABLES

TABLE No. 1.

Distance of slope stake from side or shoulder stake for any width roadway, slope $1\frac{1}{2}$ to 1. If ground is nearly level the cut or fill at side stake is located by the double entry method in left column and top row. The number in body of table in same row and column gives distance

IMPROVED TABLES

AND

INFORMATION

TABLE No. 2.

To find Tangent and External for curve of any other degree, divide by degree of curve and add connection found in column of connections.

Degree of curve with a given L may be found by dividing tangent, (or external), opposite L by given tangent, (or external).

The distance from a point on the tangent to the curve is very nearly the square of the tangent length divided by twice the radius.

"B.M. 575D"

National City at 25th St. 60' North
of School El. 57.832