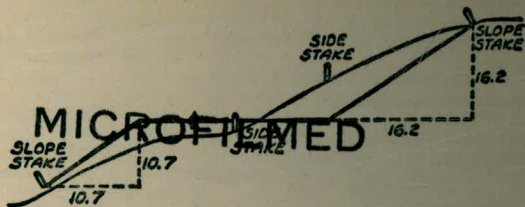


W 748



DISTANCES FROM SIDE STAKES FOR CROSS-SECTIONING  
SLOPE 1 TO 1. ROADWAY OF ANY WIDTH

	0	.1	.2	.3	.4	.5	.6	.7	.8	.9	
0	0.00	0.10	0.20	0.30	0.40	0.50	0.60	0.70	0.80	0.90	0
1	1.00	1.10	1.20	1.30	1.40	1.50	1.60	1.70	1.80	1.90	1
2	2.00	2.10	2.20	2.30	2.40	2.50	2.60	2.70	2.80	2.90	2
3	3.00	3.10	3.20	3.30	3.40	3.50	3.60	3.70	3.80	3.90	3
4	4.00	4.10	4.20	4.30	4.40	4.50	4.60	4.70	4.80	4.90	4
5	5.00	5.10	5.20	5.30	5.40	5.50	5.60	5.70	5.80	5.90	5
6	6.00	6.10	6.20	6.30	6.40	6.50	6.60	6.70	6.80	6.90	6
7	7.00	7.10	7.20	7.30	7.40	7.50	7.60	7.70	7.80	7.90	7
8	8.00	8.10	8.20	8.30	8.40	8.50	8.60	8.70	8.80	8.90	8
9	9.00	9.10	9.20	9.30	9.40	9.50	9.60	9.70	9.80	9.90	9
10	10.00	10.10	10.20	10.30	10.40	10.50	10.60	10.70	10.80	10.90	10
11	11.00	11.10	11.20	11.30	11.40	11.50	11.60	11.70	11.80	11.90	11
12	12.00	12.10	12.20	12.30	12.40	12.50	12.60	12.70	12.80	12.90	12
13	13.00	13.10	13.20	13.30	13.40	13.50	13.60	13.70	13.80	13.90	13
14	14.00	14.10	14.20	14.30	14.40	14.50	14.60	14.70	14.80	14.90	14
15	15.00	15.10	15.20	15.30	15.40	15.50	15.60	15.70	15.80	15.90	15
16	16.00	16.10	16.20	16.30	16.40	16.50	16.60	16.70	16.80	16.90	16
17	17.00	17.10	17.20	17.30	17.40	17.50	17.60	17.70	17.80	17.90	17
18	18.00	18.10	18.20	18.30	18.40	18.50	18.60	18.70	18.80	18.90	18
19	19.00	19.10	19.20	19.30	19.40	19.50	19.60	19.70	19.80	19.90	19
20	20.00	20.10	20.20	20.30	20.40	20.50	20.60	20.70	20.80	20.90	20
21	21.00	21.10	21.20	21.30	21.40	21.50	21.60	21.70	21.80	21.90	21
22	22.00	22.10	22.20	22.30	22.40	22.50	22.60	22.70	22.80	22.90	22
23	23.00	23.10	23.20	23.30	23.40	23.50	23.60	23.70	23.80	23.90	23
24	24.00	24.10	24.20	24.30	24.40	24.50	24.60	24.70	24.80	24.90	24
25	25.00	25.10	25.20	25.30	25.40	25.50	25.60	25.70	25.80	25.90	25
26	26.00	26.10	26.20	26.30	26.40	26.50	26.60	26.70	26.80	26.90	26
27	27.00	27.10	27.20	27.30	27.40	27.50	27.60	27.70	27.80	27.90	27
28	28.00	28.10	28.20	28.30	28.40	28.50	28.60	28.70	28.80	28.90	28
29	29.00	29.10	29.20	29.30	29.40	29.50	29.60	29.70	29.80	29.90	29
30	30.00	30.10	30.20	30.30	30.40	30.50	30.60	30.70	30.80	30.90	30
31	31.00	31.10	31.20	31.30	31.40	31.50	31.60	31.70	31.80	31.90	31
32	32.00	32.10	32.20	32.30	32.40	32.50	32.60	32.70	32.80	32.90	32
33	33.00	33.10	33.20	33.30	33.40	33.50	33.60	33.70	33.80	33.90	33
34	34.00	34.10	34.20	34.30	34.40	34.50	34.60	34.70	34.80	34.90	34
35	35.00	35.10	35.20	35.30	35.40	35.50	35.60	35.70	35.80	35.90	35
36	36.00	36.10	36.20	36.30	36.40	36.50	36.60	36.70	36.80	36.90	36
37	37.00	37.10	37.20	37.30	37.40	37.50	37.60	37.70	37.80	37.90	37
38	38.00	38.10	38.20	38.30	38.40	38.50	38.60	38.70	38.80	38.90	38
39	39.00	39.10	39.20	39.30	39.40	39.50	39.60	39.70	39.80	39.90	39
40	40.00	40.10	40.20	40.30	40.40	40.50	40.60	40.70	40.80	40.90	40
41	41.00	41.10	41.20	41.30	41.40	41.50	41.60	41.70	41.80	41.90	41
42	42.00	42.10	42.20	42.30	42.40	42.50	42.60	42.70	42.80	42.90	42
43	43.00	43.10	43.20	43.30	43.40	43.50	43.60	43.70	43.80	43.90	43
44	44.00	44.10	44.20	44.30	44.40	44.50	44.60	44.70	44.80	44.90	44
45	45.00	45.10	45.20	45.30	45.40	45.50	45.60	45.70	45.80	45.90	45
46	46.00	46.10	46.20	46.30	46.40	46.50	46.60	46.70	46.80	46.90	46
47	47.00	47.10	47.20	47.30	47.40	47.50	47.60	47.70	47.80	47.90	47
48	48.00	48.10	48.20	48.30	48.40	48.50	48.60	48.70	48.80	48.90	48
49	49.00	49.10	49.20	49.30	49.40	49.50	49.60	49.70	49.80	49.90	49
50	50.00	50.10	50.20	50.30	50.40	50.50	50.60	50.70	50.80	50.90	50

Distance of slope stake from side or shoulder stake for any width roadway, slope 1 to 1. If ground is nearly level, the cut or fill at side stake is located by the double entry method in left column and top row. The number in body of table in same row and column gives distance from side stake to slope stake. If ground is not level estimate the difference in elevation between the side stake and slope stake, lower target by this amount if cut, elevate if fill. Add this amount to cut or fill and find distance in table. Set up rod at this point, and line of sight should cut target. If it does not make the slight adjustment necessary.



Profile of Calletres Lomas  
0+00 = E Roanoke St.

King  
West  
Williams

7-16-51

T.B.M	2.30	304.10		301.80
T.P.	0.67	296.25	8.52	275.53
T.P.	0.10	283.84	12.51	283.74
T.P.	5.19	275.95	13.08	270.76
0+00			13.30	
0+50			11.4	
1+00			8.1	
1+50			4.3	
2+00			0.7	
T.P.	12.03	287.84	0.34	275.61
2+50			9.0	
3+00			4.5	
3+50			0.9	
T.P.	12.55	299.53	0.91	286.73
4+00			10.2	
4+50			7.2	
5+00			4.0	
5+50			4.1	
6+00			5.3	

Page 36 BP 201

E Roanoke

Profile  
Calk Tred Lomas

KING  
WEST  
Williams

7-16-51

2

299.23

6+50			7.0		
7+00			9.2		
7+50			10.5		
8+00			11.2		
8+50			11.5		
9+00			11.6		
9+50			12.4		
10+00			12.8		
10+50			12.2		
11+00			11.1		
T.P.	13.26	302.27	10.22	289.01	
11+50			11.9		
12+00			8.7		
12+50			5.4		
13+80			2.3		
T.B.M.	13.19	315.02	0.47	301.80	301.80
13+50			11.9		
14+00			10.6		
14+50			10.2		

Profile Treshomas

King  
West  
Williams

7-16-51

3

315.02

15700			8.0	
15750			5.6	
16400			2.1	
T.P.	13.05	328.06	0.01	315.01
16750			11.8	
17400			7.4	
17750			2.8	
T.P.	11.22	338.91	0.87	327.19
18400			9.0	
+50			6.2	
19400			4.5	
+50			3.7	
20700			4.0	
+50			4.3	
21700			4.6	
21750			6.4	
T.B.M.		398	334.43	

Approx @ Calle Trepadora

Top stake 21700

Profile - Calle Trepadora

0+00 - North P.L. Cumberland St.  
(Pentaresca)

King  
West  
Williams

7-16-51

4

T.B.M.	430	306.10		301.80
0+00			11.8	
+50			12.2	
1+00			12.1	
+50			12.1	
2+00			10.9	
2+50			9.1	
3+00			7.1	
+50			4.0	
4+00			1.5	
T.P.	1303	319.03	0.10	306.00
4+50			10.4	
5+00			6.9	
5+50			3.3	
6+00			0.0	
T.P.	1121	330.01	0.23	318.80
6+50			7.8	
7+00			4.4	
7+50			1.7	

BK 001 P-36

Profile Calle Trepadora

King  
West  
Williams

7-16-51

5

330.01

T.P.	10.76	340.48	0.29	329.72	
8+00			10.2		
8+50			8.6		
9+00			7.8		
9+50			7.2		
10+00			5.0		
10+50			2.4		
T.P.	8.79	348.47	0.80	339.68	
11+00			0.0		
11+50			5.7		
12+00			5.9		
12+50			7.6		
13+00			10.0		
13+50			13.7		
T.P.	1.89	340.34	10.02	338.45	
T.P.			5.93	334.41	334.43

Edge of Canyon

CK. Top stake 21100 Page 3



Proposed Alignment  
 12" CIP, Roscranz St - Clatsworth  
 on Macaulay - Wabaska

6+81 Tel. Conduit

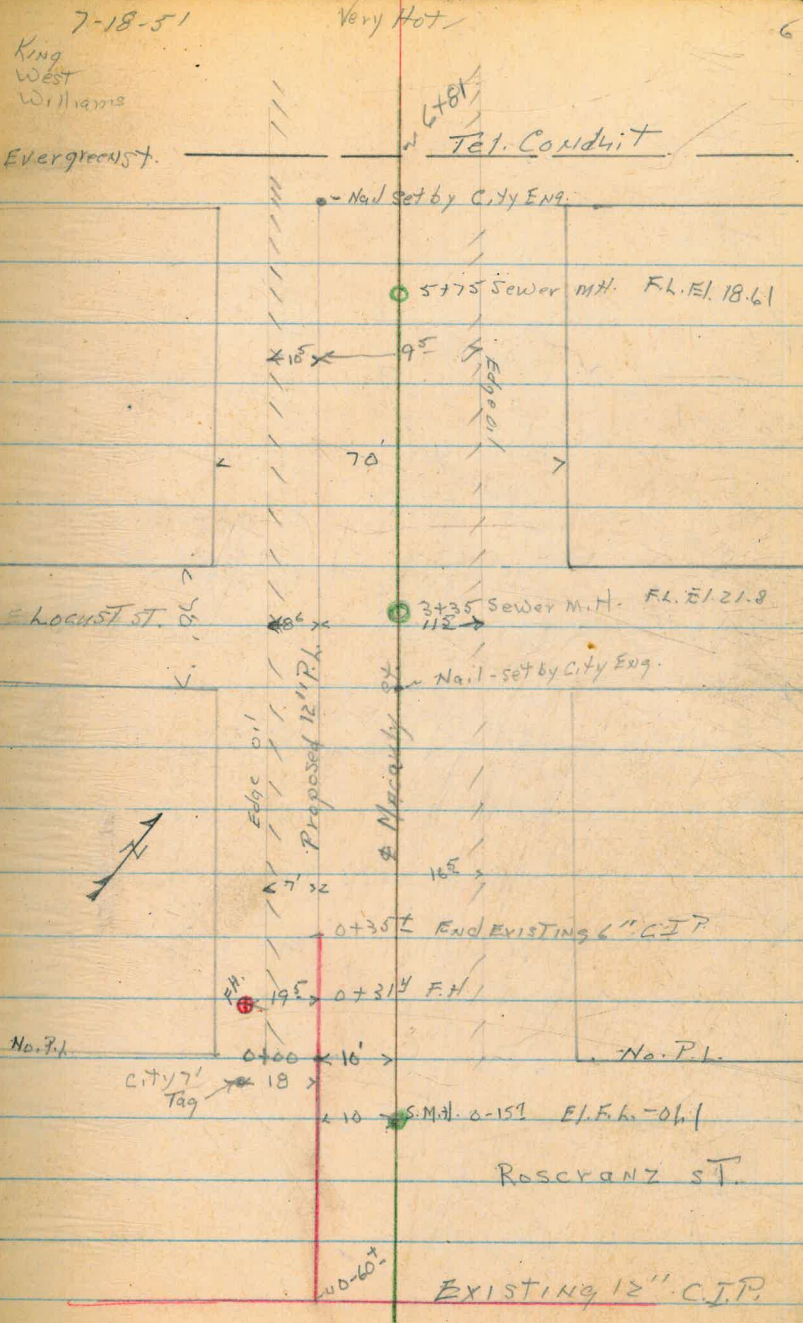
5+75 Sewer M.H.

3+35 Sewer M.H.

0+314 F.H.

0-157 Sewer M.H.

0-60 Begon Work



12" C.T.P. Wabaskew Way  
(Cont)

10+95

Start 8" C.T.P.

10+78

Start oil

EC, 10+54.60

9+40

Sewer M.N.

9+03

Sewer xing

$\Delta 25^{\circ} 40'$  RT  
R. 420.1  
T. 9570  
L. 188.19  
Defl. -4.037 per ft

B.C.

A 8+66.41

$14^{\circ} 24'$  RT. #T B.C. To get TANG to curve

8+40

Leave oil

7+40

No. Pl. Evergreen

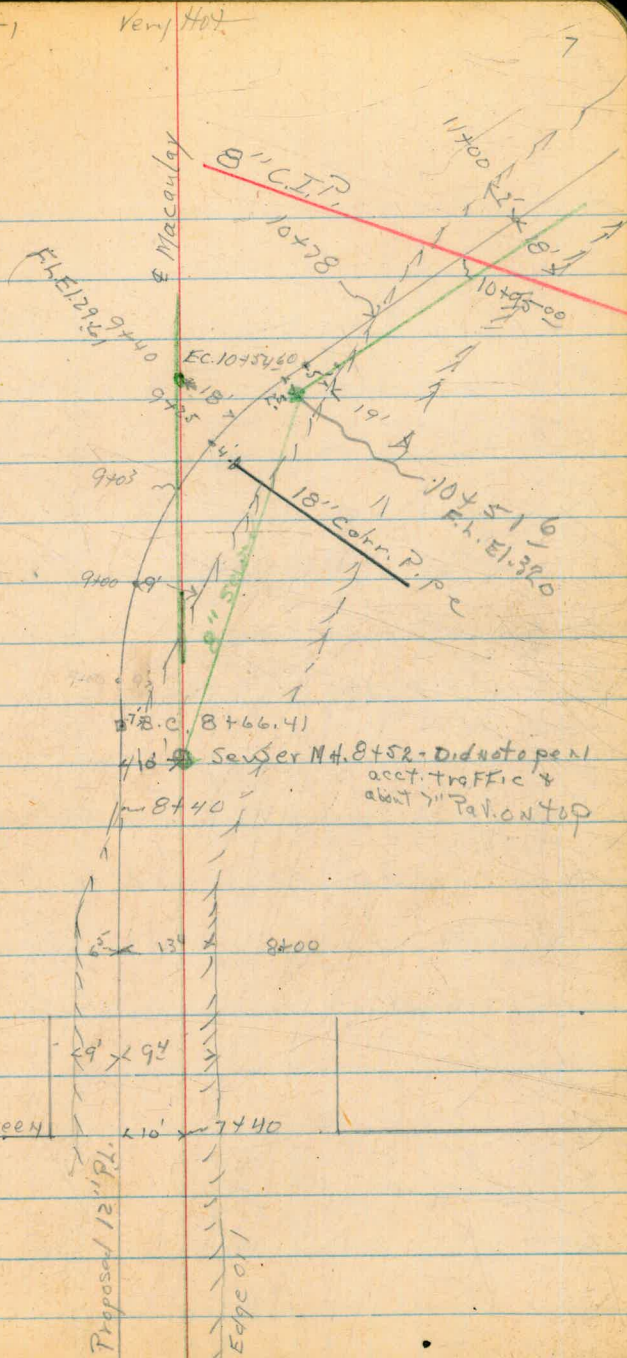
7-19-51

Very Hot

King  
West  
Williams



No. Pl. Evergreen



12" C.I.P.  
Wabaska Way  
(Cont)

E.C. 20+61.50

$\Delta$  18°04' LT  
R = 13948.3  
T = 122.85  
L = 245.07  
DEPT FT = 1.232

19+25.5 Sewer M.H.

BC. 18+16.43

13+56 Sewer Xing

13+54 Sewer M.H.

12+90.75 P.O.T.

7-19-51  
King  
West  
Williams

Very Hot

8

The diagram illustrates a sewer line layout on a grid. Key features include:

- Stationing:** The sewer line is marked with stations from 12+90.75 to 20+61.50.
- Curves:** A circular curve is shown with a central angle of 18°04' LT, a radius of R = 13948.3, and a tangent length of T = 122.85. The curve length is L = 245.07 and the depth of chord is DEPT FT = 1.232.
- Intersections:** The sewer line intersects with "Ed. Hgt. City Eng." at station 18+00 and "Edge of Sewer Line" at station 13+54.
- Proposed P.O.T.:** A proposed Point of Tangency is marked at station 12+90.75.
- Other Lines:** A line labeled "FL. 46.68" is shown at station 19+25.5. Another line is labeled "Ed. Hgt. City Eng." at station 18+00.
- Dimensions:** Various dimensions are noted, such as 11', 14', 14', 13+56, and 13+54.
- Angles:** An angle of 7°5' is indicated near station 19+25.5.
- Labels:** "Edge of Sewer Line" is written vertically along the sewer line.

12" C.I.P.  
Wabaska Way

27+60

995 King

27+58.08

Capistrano

27+39.5

Water King

24+92.5

Sewer M.H.

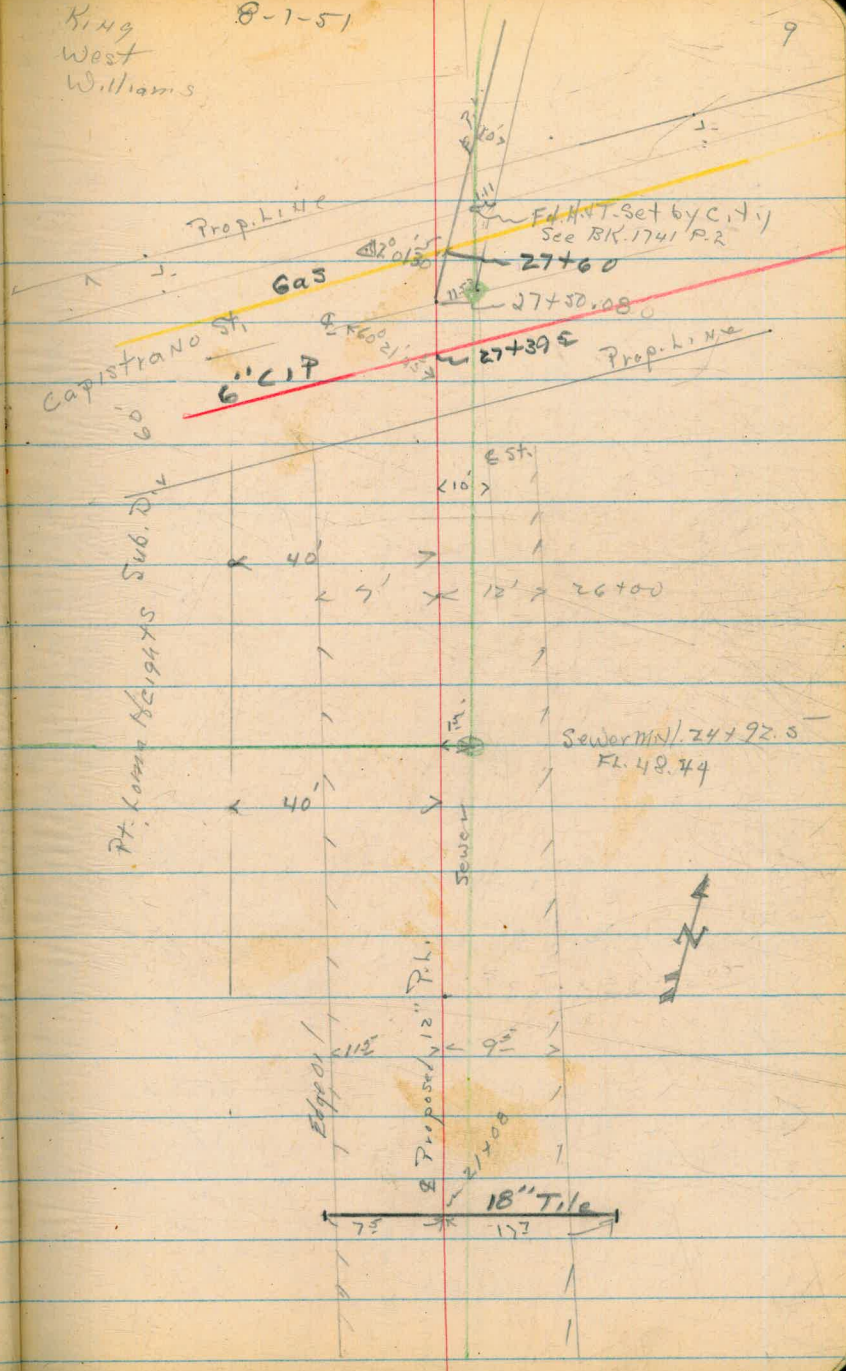
21+08

King 8" diam

King  
West  
Williams

8-1-51

9

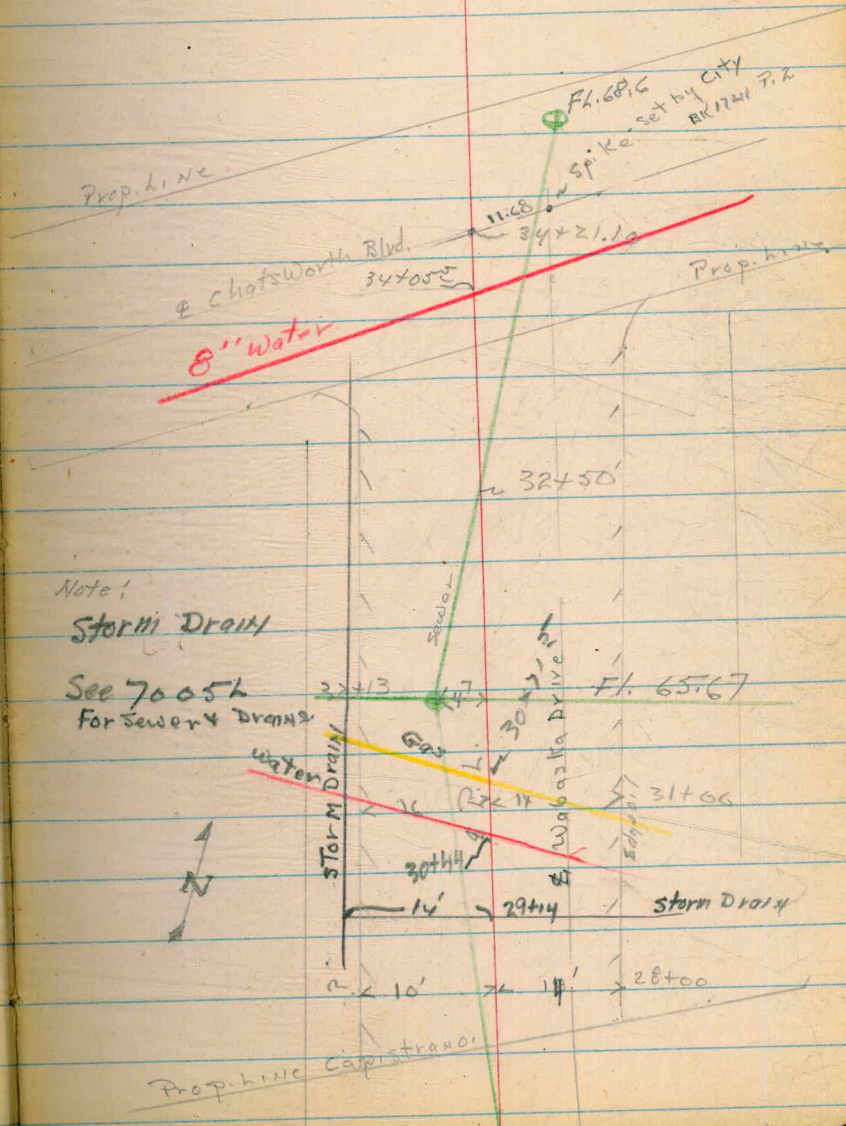


King  
West  
Williams

8-151 2001

10

- 34+21.10 End. @ Chatsworth
- 34+05.5 Water xing
- 32+50 Sewer xing
- 32+13 Sewer M.H.
- 30+71.5 gas xing
- 30+44 Water xing



Profile for Proposed 12' R.h.  
Wabaska Way

King  
West  
Williams

7-19-51

11

B.M.	5.15	18.41 <del>17.71</del>	13.26 <u>12.56</u>	New E.L. - F.H. been moved
0-60			8.0	
0-15 <sup>M.H.</sup>			8.1	10.30
0+00			8.2	
+50			6.9	
1+00			5.8	
+50			4.8	
2+00			3.9	
+50			2.9	
3+00			1.7	
3+50			0.4	
T.P.	13.01	31.18 <del>30.48</del>	0.24	18.17 <del>17.47</del>
3+35 <sup>M.H.</sup>			13.45	27.73
4+00			11.7	
+50			10.7	
5+00			8.9	
+50			7.4	
5+75 <sup>M.H.</sup>			6.67	24.51
6+00			6.2	

Top F.H. S.W. Cor Macaulay & Rosecrance

Top M.H. E.L. - 01.1

Top M.H. E.L. 21.8

Top M.H. E.L. 18.61

Profile 12" P.L.  
Wabaska Way

King  
Williams  
West 7-19-51

12

31.18  
~~30.48~~

R.

6+50			4.7	
7+00			3.0	
7+50			1.5	
8+00			0.4	
TP.	10.20	41.03 <del>40.33</del>	0.35	30.83 <del>30.13</del>
8+40			9.3	
+50			8.7	
B.C. 8+66.4			9.50	
+75			9.5	
9+00			8.7	
+25			7.9	
9+25			10.3	
9+33			5.5	
m. # 9+40			5.75	35.28
9+50			8.6	
9+75			5.9	
10+00			3.7	
+25			2.9	
10+50			3.8	

Edge Oil

on hrb

F.L. 18" Corr. Pipe. 4' Rt.

Top Md. 29.18 F.L.

Rt.

Rt.

6.2  
10

0.8  
21

6.0  
7

0.3  
10

5.4  
3

0.0  
4

Profile - 12" P.H.  
Wabaska Way

41.03  
~~40.33~~

E.C. 10+54.6			4.2	
T.P.	9.82	48.75 <del>48.05</del>	2.10	38.93 <del>38.23</del>
11+00			10.9	
+50			9.7	
12+00			8.8	
+50			7.8	
13+00			6.9	
+50			5.7	
+54			5.70	38.45 P.H.
			10.3	<del>37.75</del>
14+00			4.9	
+50			3.9	
15+00			2.9	
+50			1.7	
TP	10.78	58.73 <del>58.03</del>	0.80	47.95 <del>47.25</del>
16+00			10.6	
+50			9.7	
17+00			8.8	
+50			8.0	
18+00			7.0	

King  
West  
Williams

7-19-51

7-30-51

13

Top guide Post 10+55

10+51.6 Top M.H. 35.63 F.L. 32.0

Top sewer M.H.  
F.L. 31.7



Profile 12" 9.L.  
Wabaska Way

King  
West  
Williams

7-30-51

17

	+	58.73 <del>58.03</del>	-	
180				
18+16 <sup>s</sup>		58.03	6.8	
+50			6.4	
19+00			6.0	
+25 <sup>s</sup>			5.85	52.88
+50			5.5	
20+00			4.9	
+50			4.3	
20			4.2	
+61 <sup>s</sup>				
21+00			3.9	
			7.10	86T
21+09			7.90	172 RT
21+50			3.2	
22+00			2.1	
+50			0.9	
T.P.	1025.60.36	68.06	0.92	57.81 57.11
23+00			9.0	
+50			7.8	
24+00			6.7	
+50			5.2	
25+00			3.5	

Top Sewer MH

F.L. 46.68

18" Tile Cross Drain

Profile 12" P.H.  
Wabaska Way

King  
West  
Williams

7-30-50

25

	+	H <sub>1</sub>	+	
24+92 <sup>5</sup>		68.06 <del>60.36</del>	3.72	54.34 <sub>54</sub>
25+50			2.3	
26+00			1.3	
+50			0.6	
TP	7.60	74.60 <del>66.90</del>	1.06	67.00 59.30
26+86				12.6
27+00				6.1
+50				5.1
+70				6.2
28+00				5.2
+50				5.1
29+00				4.9
+50				4.7
30+00				4.5
TP	8.32	78.37		4.55 <sup>70.85</sup> <del>62.35</del>
30+50				8.0
31+00				7.5
+50				7.1
32+00				6.5

Top Sewer MH

TL 4844

On Rock 20R

26+30

36" Wabaska + Capistrano 40' RT  
Storm Drain - End

30L Top Grate N-W Cor Wabaska + Capistrano  
18" Storm Drain Curb inlet

Top of end of curb S-W Cor Pat + Wabaska

Profile 12" Rk.  
Wabaska Way

KING  
West  
Williams

8-1-51

Cool

12

78.37

32+13

6.40

71.97

Top Sewer M.H.

F.L. 65.67

32+50

5.14

33+00

4.0

4.50

2.8

34+00

2.2

34+21.10

1.6

76.77

E Chatsworth Blvd.

T.P

3.99

82.04

0.32

78.05

ck. B.M.

3.87

78.17

78.21

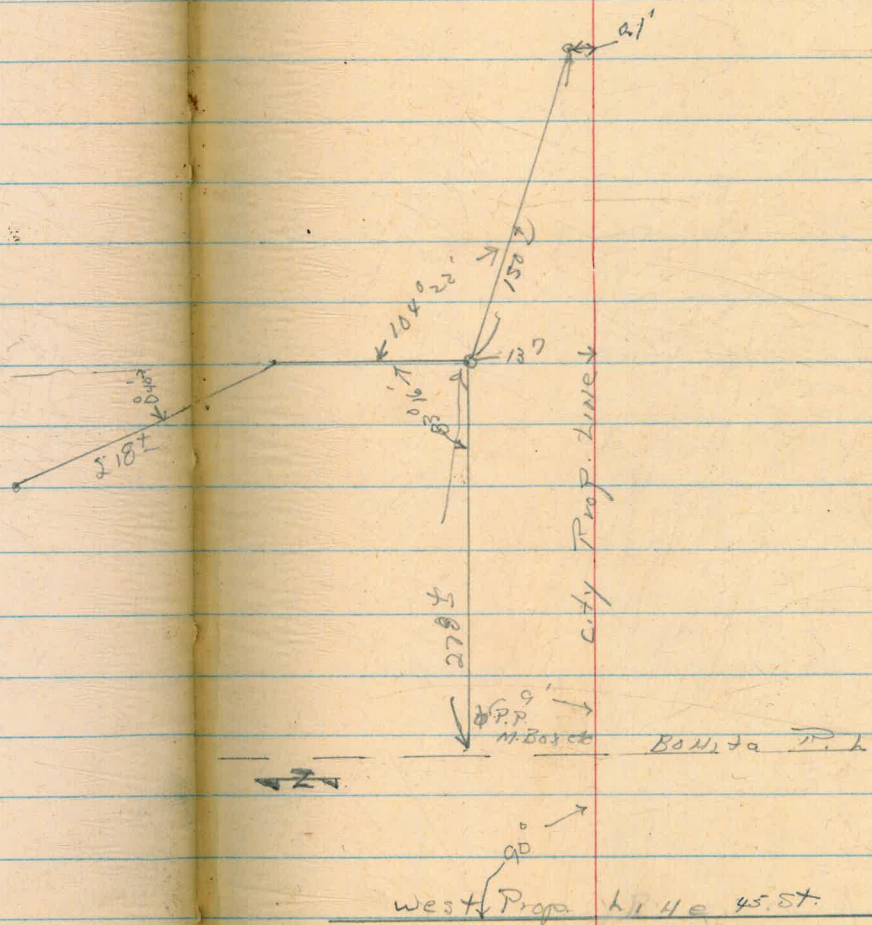
R.P. S.E. Cor Post Chatsworth End of Survey



Loc. Cathodic Electrodes  
Near 45<sup>th</sup> Market St.  
OFF Bonita Pk. - 319743  
File - 2883 14C

3-12-52  
KING  
West  
Williams

! Note! Located by P.P. Finder





Bonita P.L.  
Trestle #1  
As on ground 7-23-51

King  
West  
Williams

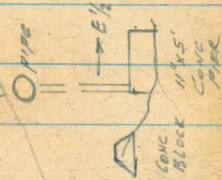
#67.

20

B.M	3.45	224.72	226.27	BR 224 P. 12	
11+92.4		10.8	213.9	El. Top Pipe	— JT
11+98.2		15.2	209.5	ground & Pier	CONC. Pier
12+05		10.88	213.8	Top Pipe	— JT,
12+07		16.2	208.5	ground	
12+14.9		20.9	203.8	ground	Wood Pier ON CONC. Blocks
12+17.6		10.99	213.7	Top Pipe	— JT
12+29.7		11.03	213.7	" "	— JT,
12+30.9		29.2	195.5	ground	Wood Pier ON CONC. Blocks
12+46.9		11.03	213.7	Top Pipe	— JT,
12+42		35.2	189.5	ground	
12+47		32.2	192.5	ground	Wood Pier, ON CONC. Blocks
12+49.6		11.08	213.6	Top Pipe	8" B.O.
12+54.5		11.05	213.7	" "	— JT,
12+63		28.2	196.5	ground & Pk	Dem. Top .85 x 11.4 Pier
12+63		24.5	200.2	Top Conc. Pier	
12+66.7		16.99	213.7	" Pipe	— JT,
12+79.2		10.92	213.8	" "	Pier + JT
12+79.2		20.2	264.5	ground	See Next Page

St. 11.1.5

N



.85 x 11.4 ✓

Bonita R.R. Trestle #1  
 As on ground - 7-23-51

King  
 West  
 Williams

Hot

21

	224.72			
12+79 <sup>2</sup>	19.1		205.6	
12+90	10.88	?	213.8	
12+95 <sup>7</sup>	13.9		210.8	
13+01.6	11.12	?	213.6	
13+08	9.55		215.1	
13+13 <sup>2</sup>	3.29		221.4	
13+18 <sup>5</sup>	3.5		221.2	
CK. B. M.	8.46		221.26 <sup>ok</sup>	

Top CONC Pier

Dim. Top  
 18" x 9"

" " at Vertical Angle

ground

Top Pipe

ground

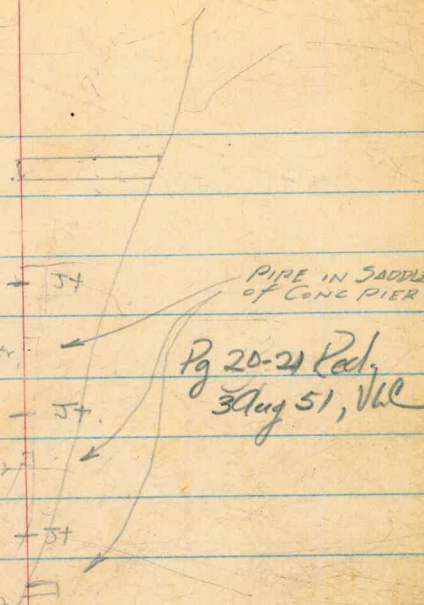
Top Pipe

gr. 7

CONC Pier

CONC Pier

CONC Pier





BONITA PIPE LINE  
TRESTLE No 1  
Additional Elev. 5

AUG. 6 1951  
BEATTY  
LEONARD

22

BM	1.11	222.38	221.27	2 pier 15 LT 12+18
12+8990		8.56	213.82	Top of pipe
12+957		6.75	215.63	Top of pipe
12+952		8.40	213.98	Top of pier (Conc)
13+016		4.78	217.60	Top of pipe
13+08		2.77	219.61	Top of pipe
13+08		4.69	217.69	Top of pier (Conc)
13+132		1.00	221.38	Top of pipe
13+185		+0.65	223.03	Top of pipe
13+185		1.11	221.27	Top of pier (Conc)
TD	0.60	210.57	12.41 209.97	
12+792		4.89	205.68	Top of pier (Conc)
+63		10.31	200.28	Top of pier
TD	8.99	209.19	10.37 200.20	
12+149		5.08	204.11	Top of pier (Conc) (E 1/2 only)

BONITA PIPELINE  
TRESTLE #1  
CROSS-SECTIONS AT  
PROPOSED PIER LOCATIONS

8-6-51

23

12+25  
209.19

208.4	204.7	203.0	203.0	203.3	199.6	198.3	196.4	195.2	191.9	193.4	11.2
6.8	4.5	6.2	6.2	5.9	7.6	10.9	12.8	14.0	17.3	15.8	25
25	12	11	9	8	8	3	6	11	13	16	

12+2866

207.1	202.7	200.5	196.6	194.0	193.4	191.3	188.4	199.8
2.1	6.7	8.7	12.6	15.2	15.8	17.9	10.8	9.4
25	12	9	8	5	10.5	10.5	21	25

P 0.58 200.81 8.96 200.23

WOOD  
GTTB  
DEF. CHANNEL

12+52

188.7	186.5	186.8	190.8	192.5	193.1	197.0	201.0	204.1
12.1	14.3	14.0	10.0	8.3	7.7	3.8	+0.2	+4.1
25	20	8	6	3	8	11	16	25

12+5933

186.4	186.9	194.1	194.3	195.2	201.1	202.8	204.8
14.2	13.7	6.7	6.5	5.6	+0.3	+2.0	+2.0
25	16	8	4	8	14	20	25

CK II

0.58 200.23

BONITA PIPELINE  
 TRESTLE No. 1  
 STAKES SET FOR PROPOSED PIERS  
 & RING GIRDERS MARKED

8-14-51  
 Pearl Leonard  
 Seavale

BM	0.40	221.67	221.27		□ pier 15 LT 13+18	
12+88	(506) ④	EAST End/Pier	11.01	210.66	212.10	F144 ✓
IP	0.35	208.79	13.23	208.44		
12+88	(506) ④	WEST End/Pier	5.23	203.56	212.10	F854 ✓
12+58	④	EAST End/Pier	10.28	198.51	197.8	9071 ✓
IP & CK IP	4.80	205.00	8.59	200.20	= 200.23	
12+58	④	WEST End/Pier	11.70	193.30	197.80	F450 ✓
12+28	④	EAST End/Pier	11.24	193.76	199.10	F534 ✓
12+28	④	WEST End/Pier	4.61	200.39	199.10	C129 ✓

DETAILS OF VALVE CHAMBER  
& AIR VALVE CHAMBER  
AT LANDIS & HIGHLAND AVE

Aug. 15 1951  
BEATTY  
LEONARD  
SEAVELLO

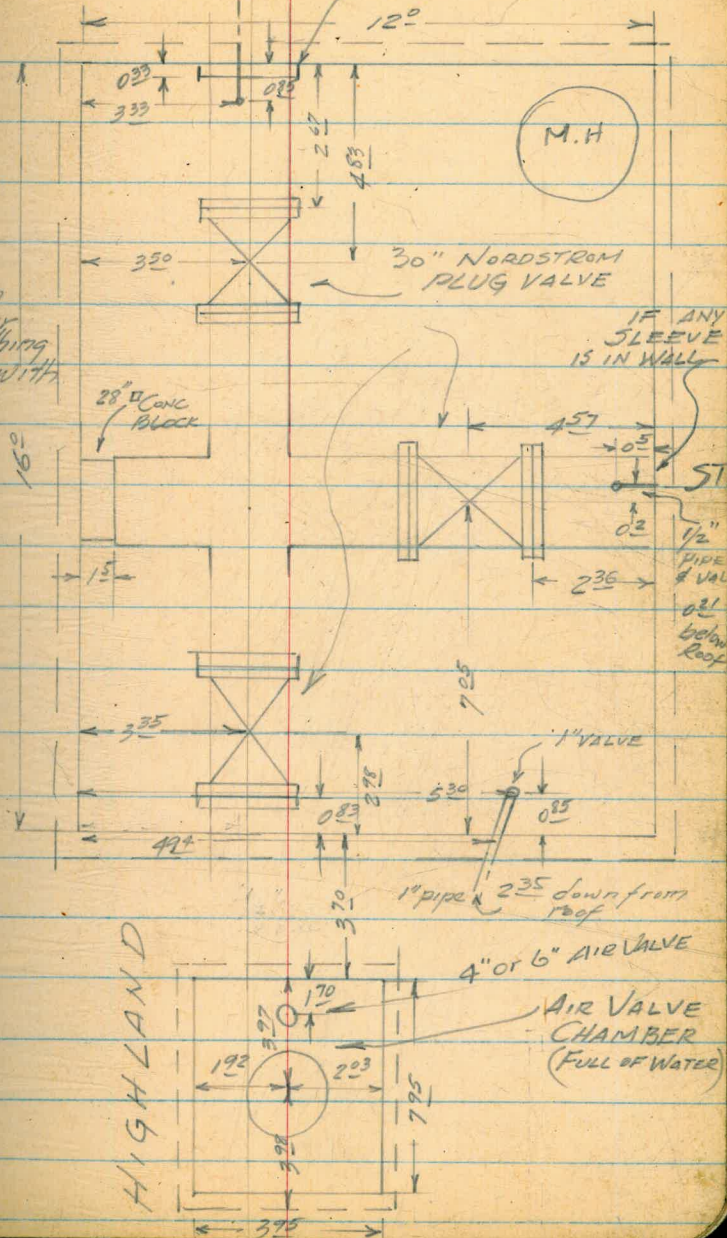
AVE

25

3x12"  
4-SECT  
ROOF  
SLAB

WATER  
4'-6"  
Deep in  
Chamber  
& Everything  
Covered with  
GREASE

LANDIS



800  
306  
494  
612

Please Return to  
City of San Diego Water Dept.  
Room 903 Civic Center  
SLOPE STAKE 16.55  
SLOPE STAKE 16.2  
SLOPE STAKE 16.7

**DISTANCES FROM SIDE STAKES FOR CROSS-SECTIONING.**  
SLOPE 1 1/2 TO 1. ROADWAY OF ANY WIDTH.

	0	.1	.2	.3	.4	.5	.6	.7	.8	.9	
0	0.00	0.15	0.30	0.45	0.60	0.75	0.90	1.05	1.20	1.35	0
1	1.50	1.65	1.80	1.95	2.10	2.25	2.40	2.55	2.70	2.85	1
2	3.00	3.15	3.30	3.45	3.60	3.75	3.90	4.05	4.20	4.35	2
3	4.50	4.65	4.80	4.95	5.10	5.25	5.40	5.55	5.70	5.85	3
4	6.00	6.15	6.30	6.45	6.60	6.75	6.90	7.05	7.20	7.35	4
5	7.50	7.65	7.80	7.95	8.10	8.25	8.40	8.55	8.70	8.85	5
6	9.00	9.15	9.30	9.45	9.60	9.75	9.90	10.05	10.20	10.35	6
7	10.50	10.65	10.80	10.95	11.10	11.25	11.40	11.55	11.70	11.85	7
8	12.00	12.15	12.30	12.45	12.60	12.75	12.90	13.05	13.20	13.35	8
9	13.50	13.65	13.80	13.95	14.10	14.25	14.40	14.55	14.70	14.85	9
10	15.00	15.15	15.30	15.45	15.60	15.75	15.90	16.05	16.20	16.35	10
11	16.50	16.65	16.80	16.95	17.10	17.25	17.40	17.55	17.70	17.85	11
12	18.00	18.15	18.30	18.45	18.60	18.75	18.90	19.05	19.20	19.35	12
13	19.50	19.65	19.80	19.95	20.10	20.25	20.40	20.55	20.70	20.85	13
14	21.00	21.15	21.30	21.45	21.60	21.75	21.90	22.05	22.20	22.35	14
15	22.50	22.65	22.80	22.95	23.10	23.25	23.40	23.55	23.70	23.85	15
16	24.00	24.15	24.30	24.45	24.60	24.75	24.90	25.05	25.20	25.35	16
17	25.50	25.65	25.80	25.95	26.10	26.25	26.40	26.55	26.70	26.85	17
18	27.00	27.15	27.30	27.45	27.60	27.75	27.90	28.05	28.20	28.35	18
19	28.50	28.65	28.80	28.95	29.10	29.25	29.40	29.55	29.70	29.85	19
20	30.00	30.15	30.30	30.45	30.60	30.75	30.90	31.05	31.20	31.35	20
21	31.50	31.65	31.80	31.95	32.10	32.25	32.40	32.55	32.70	32.85	21
22	33.00	33.15	33.30	33.45	33.60	33.75	33.90	34.05	34.20	34.35	22
23	34.50	34.65	34.80	34.95	35.10	35.25	35.40	35.55	35.70	35.85	23
24	36.00	36.15	36.30	36.45	36.60	36.75	36.90	37.05	37.20	37.35	24
25	37.50	37.65	37.80	37.95	38.10	38.25	38.40	38.55	38.70	38.85	25
26	39.00	39.15	39.30	39.45	39.60	39.75	39.90	40.05	40.20	40.35	26
27	40.50	40.65	40.80	40.95	41.10	41.25	41.40	41.55	41.70	41.85	27
28	42.00	42.15	42.30	42.45	42.60	42.75	42.90	43.05	43.20	43.35	28
29	43.50	43.65	43.80	43.95	44.10	44.25	44.40	44.55	44.70	44.85	29
30	45.00	45.15	45.30	45.45	45.60	45.75	45.90	46.05	46.20	46.35	30
31	46.50	46.65	46.80	46.95	47.10	47.25	47.40	47.55	47.70	47.85	31
32	48.00	48.15	48.30	48.45	48.60	48.75	48.90	49.05	49.20	49.35	32
33	49.50	49.65	49.80	49.95	50.10	50.25	50.40	50.55	50.70	50.85	33
34	51.00	51.15	51.30	51.45	51.60	51.75	51.90	52.05	52.20	52.35	34
35	52.50	52.65	52.80	52.95	53.10	53.25	53.40	53.55	53.70	53.85	35
36	54.00	54.15	54.30	54.45	54.60	54.75	54.90	55.05	55.20	55.35	36
37	55.50	55.65	55.80	55.95	56.10	56.25	56.40	56.55	56.70	56.85	37
38	57.00	57.15	57.30	57.45	57.60	57.75	57.90	58.05	58.20	58.35	38
39	58.50	58.65	58.80	58.95	59.10	59.25	59.40	59.55	59.70	59.85	39
40	60.00	60.15	60.30	60.45	60.60	60.75	60.90	61.05	61.20	61.35	40
41	61.50	61.65	61.80	61.95	62.10	62.25	62.40	62.55	62.70	62.85	41
42	63.00	63.15	63.30	63.45	63.60	63.75	63.90	64.05	64.20	64.35	42
43	64.50	64.65	64.80	64.95	65.10	65.25	65.40	65.55	65.70	65.85	43
44	66.00	66.15	66.30	66.45	66.60	66.75	66.90	67.05	67.20	67.35	44
45	67.50	67.65	67.80	67.95	68.10	68.25	68.40	68.55	68.70	68.85	45
46	69.00	69.15	69.30	69.45	69.60	69.75	69.90	70.05	70.20	70.35	46
47	70.50	70.65	70.80	70.95	71.10	71.25	71.40	71.55	71.70	71.85	47
48	72.00	72.15	72.30	72.45	72.60	72.75	72.90	73.05	73.20	73.35	48
49	73.50	73.65	73.80	73.95	74.10	74.25	74.40	74.55	74.70	74.85	49
50	75.00	75.15	75.30	75.45	75.60	75.75	75.90	76.05	76.20	76.35	50

THE NATIONAL BLANK BOOK COMPANY  
HOLYOKE MASSACHUSETTS  
NEW YORK CHICAGO BOSTON SAN FRANCISCO