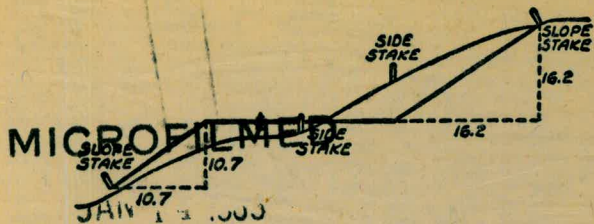


#756



DISTANCES FROM SIDE STAKES FOR CROSS-SECTIONING
SLOPE 1 TO 1. ROADWAY OF ANY WIDTH

	0	.1	.2	.3	.4	.5	.6	.7	.8	.9	
0	0.00	0.10	0.20	0.30	0.40	0.50	0.60	0.70	0.80	0.90	0
1	1.00	1.10	1.20	1.30	1.40	1.50	1.60	1.70	1.80	1.90	1
2	2.00	2.10	2.20	2.30	2.40	2.50	2.60	2.70	2.80	2.90	2
3	3.00	3.10	3.20	3.30	3.40	3.50	3.60	3.70	3.80	3.90	3
4	4.00	4.10	4.20	4.30	4.40	4.50	4.60	4.70	4.80	4.90	4
5	5.00	5.10	5.20	5.30	5.40	5.50	5.60	5.70	5.80	5.90	5
6	6.00	6.10	6.20	6.30	6.40	6.50	6.60	6.70	6.80	6.90	6
7	7.00	7.10	7.20	7.30	7.40	7.50	7.60	7.70	7.80	7.90	7
8	8.00	8.10	8.20	8.30	8.40	8.50	8.60	8.70	8.80	8.90	8
9	9.00	9.10	9.20	9.30	9.40	9.50	9.60	9.70	9.80	9.90	9
10	10.00	10.10	10.20	10.30	10.40	10.50	10.60	10.70	10.80	10.90	10
11	11.00	11.10	11.20	11.30	11.40	11.50	11.60	11.70	11.80	11.90	11
12	12.00	12.10	12.20	12.30	12.40	12.50	12.60	12.70	12.80	12.90	12
13	13.00	13.10	13.20	13.30	13.40	13.50	13.60	13.70	13.80	13.90	13
14	14.00	14.10	14.20	14.30	14.40	14.50	14.60	14.70	14.80	14.90	14
15	15.00	15.10	15.20	15.30	15.40	15.50	15.60	15.70	15.80	15.90	15
16	16.00	16.10	16.20	16.30	16.40	16.50	16.60	16.70	16.80	16.90	16
17	17.00	17.10	17.20	17.30	17.40	17.50	17.60	17.70	17.80	17.90	17
18	18.00	18.10	18.20	18.30	18.40	18.50	18.60	18.70	18.80	18.90	18
19	19.00	19.10	19.20	19.30	19.40	19.50	19.60	19.70	19.80	19.90	19
20	20.00	20.10	20.20	20.30	20.40	20.50	20.60	20.70	20.80	20.90	20
21	21.00	21.10	21.20	21.30	21.40	21.50	21.60	21.70	21.80	21.90	21
22	22.00	22.10	22.20	22.30	22.40	22.50	22.60	22.70	22.80	22.90	22
23	23.00	23.10	23.20	23.30	23.40	23.50	23.60	23.70	23.80	23.90	23
24	24.00	24.10	24.20	24.30	24.40	24.50	24.60	24.70	24.80	24.90	24
25	25.00	25.10	25.20	25.30	25.40	25.50	25.60	25.70	25.80	25.90	25
26	26.00	26.10	26.20	26.30	26.40	26.50	26.60	26.70	26.80	26.90	26
27	27.00	27.10	27.20	27.30	27.40	27.50	27.60	27.70	27.80	27.90	27
28	28.00	28.10	28.20	28.30	28.40	28.50	28.60	28.70	28.80	28.90	28
29	29.00	29.10	29.20	29.30	29.40	29.50	29.60	29.70	29.80	29.90	29
30	30.00	30.10	30.20	30.30	30.40	30.50	30.60	30.70	30.80	30.90	30
31	31.00	31.10	31.20	31.30	31.40	31.50	31.60	31.70	31.80	31.90	31
32	32.00	32.10	32.20	32.30	32.40	32.50	32.60	32.70	32.80	32.90	32
33	33.00	33.10	33.20	33.30	33.40	33.50	33.60	33.70	33.80	33.90	33
34	34.00	34.10	34.20	34.30	34.40	34.50	34.60	34.70	34.80	34.90	34
35	35.00	35.10	35.20	35.30	35.40	35.50	35.60	35.70	35.80	35.90	35
36	36.00	36.10	36.20	36.30	36.40	36.50	36.60	36.70	36.80	36.90	36
37	37.00	37.10	37.20	37.30	37.40	37.50	37.60	37.70	37.80	37.90	37
38	38.00	38.10	38.20	38.30	38.40	38.50	38.60	38.70	38.80	38.90	38
39	39.00	39.10	39.20	39.30	39.40	39.50	39.60	39.70	39.80	39.90	39
40	40.00	40.10	40.20	40.30	40.40	40.50	40.60	40.70	40.80	40.90	40
41	41.00	41.10	41.20	41.30	41.40	41.50	41.60	41.70	41.80	41.90	41
42	42.00	42.10	42.20	42.30	42.40	42.50	42.60	42.70	42.80	42.90	42
43	43.00	43.10	43.20	43.30	43.40	43.50	43.60	43.70	43.80	43.90	43
44	44.00	44.10	44.20	44.30	44.40	44.50	44.60	44.70	44.80	44.90	44
45	45.00	45.10	45.20	45.30	45.40	45.50	45.60	45.70	45.80	45.90	45
46	46.00	46.10	46.20	46.30	46.40	46.50	46.60	46.70	46.80	46.90	46
47	47.00	47.10	47.20	47.30	47.40	47.50	47.60	47.70	47.80	47.90	47
48	48.00	48.10	48.20	48.30	48.40	48.50	48.60	48.70	48.80	48.90	48
49	49.00	49.10	49.20	49.30	49.40	49.50	49.60	49.70	49.80	49.90	49
50	50.00	50.10	50.20	50.30	50.40	50.50	50.60	50.70	50.80	50.90	50

Distance of slope stake from side or shoulder stake for any width roadway, slope 1 to 1. If ground is nearly level, the cut or fill at side stake is located by the double entry method in left column and top row. The number in body of table in same row and column gives distance from side stake to slope stake. If ground is not level, estimate the difference in elevation between the side stake and slope stake, lower target by this amount if cut, elevate if fill. Add this amount to cut or fill and find distance in table. Set up rod at this point, and line of sight should cut target. If it does not make the slight adjustment necessary.

97.20
40.1
137.30

TABLE XIII—CORRECTIONS FOR TANGENTS AND EXTERNALS

These corrections are to be added to the approximate values, found by dividing the tangent, or external, for a 1° curve (Table VIII) by the degree of curve, in order to obtain the true tangents, or externals. Intermediate values may be obtained by interpolation.

FOR TANGENTS ADD

Central Angle	DEGREE OF CURVE													
	5°	10°	15°	20°	25°	30°	35°	40°	45°	50°	55°	60°	65°	70°
10°	.03	.06	.09	.13	.16	.19	.22	.25	.28	.31	.34	.38	.42	.46
15°	.04	.10	.14	.19	.24	.29	.34	.39	.45	.51	.53	.58	.63	.68
20°	.06	.13	.19	.26	.32	.39	.45	.51	.58	.65	.72	.79	.84	.90
25°	.08	.16	.24	.33	.40	.49	.58	.67	.75	.83	.90	.99	1.06	1.14
30°	.10	.19	.29	.39	.49	.59	.69	.79	.89	.99	1.09	1.20	1.29	1.39
35°	.11	.22	.34	.47	.58	.69	.79	.81	.92	1.04	1.29	1.42	1.54	1.66
40°	.13	.26	.40	.53	.67	.80	.93	1.06	1.20	1.34	1.49	1.64	1.79	1.94
45°	.15	.30	.44	.60	.76	.91	1.06	1.21	1.37	1.52	1.70	1.87	2.04	2.21
50°	.17	.34	.51	.68	.85	1.02	1.19	1.36	1.54	1.72	1.91	2.10	2.29	2.48
55°	.19	.38	.57	.76	.95	1.14	1.32	1.52	1.72	1.92	2.14	2.35	2.56	2.77
60°	.21	.42	.63	.84	1.05	1.27	1.49	1.71	1.94	2.17	2.38	2.60	2.83	3.07
65°	.23	.46	.69	.93	1.16	1.40	1.64	1.88	2.13	2.38	2.63	2.88	3.13	3.39
70°	.25	.51	.76	1.02	1.28	1.54	1.80	2.06	2.33	2.60	2.88	3.16	3.44	3.72
75°	.27	.56	.83	1.12	1.40	1.69	1.98	2.27	2.57	2.87	3.16	3.47	3.78	4.09
80°	.30	.61	.91	1.22	1.53	1.84	2.15	2.46	2.78	3.10	3.44	3.78	4.12	4.46
85°	.33	.66	1.00	1.33	1.68	2.02	2.36	2.70	3.05	3.40	3.77	4.14	4.55	4.89
90°	.36	.72	1.09	1.45	1.83	2.20	2.57	2.94	3.32	3.70	4.10	4.50	4.91	5.32
95°	.39	.79	1.19	1.55	2.00	2.40	2.80	3.20	3.61	4.02	4.40	4.98	5.38	5.83
100°	.43	.86	1.30	1.74	2.18	2.62	3.06	3.50	3.95	4.40	4.88	5.37	5.85	6.34
110°	.51	1.03	1.56	2.08	2.61	3.14	3.67	4.21	4.76	5.31	5.86	6.43	7.01	7.60
120°	.62	1.25	1.93	2.52	3.16	3.81	4.45	5.11	5.77	6.44	7.12	7.80	8.50	9.22

FOR EXTERNALS ADD

Central Angle	DEGREE OF CURVE													
	5°	10°	15°	20°	25°	30°	35°	40°	45°	50°	55°	60°	65°	70°
10°	.001	.003	.004	.006	.007	.008	.009	.011	.012	.014	.015	.017	.018	.020
15°	.003	.007	.010	.014	.018	.023	.027	.032	.036	.041	.045	.050	.054	.059
20°	.006	.011	.017	.022	.028	.034	.038	.045	.051	.057	.063	.070	.076	.083
25°	.009	.018	.027	.036	.046	.056	.065	.074	.083	.093	.103	.112	.122	.135
30°	.013	.025	.038	.051	.065	.078	.090	.103	.116	.129	.149	.170	.179	.188
35°	.018	.035	.054	.072	.086	.109	.131	.153	.175	.197	.213	.230	.247	.264
40°	.023	.046	.070	.093	.117	.141	.172	.203	.234	.265	.277	.290	.315	.341
45°	.030	.060	.093	.119	.153	.184	.216	.254	.289	.325	.351	.378	.411	.445
50°	.037	.075	.116	.151	.189	.227	.266	.305	.345	.384	.425	.467	.508	.550
55°	.046	.093	.142	.188	.236	.283	.332	.381	.420	.479	.530	.582	.641	.700
60°	.050	.112	.168	.225	.283	.340	.398	.457	.516	.575	.636	.697	.774	.851
65°	.057	.135	.204	.273	.343	.412	.483	.554	.625	.697	.711	.845	.922	1.01
70°	.080	.159	.240	.321	.403	.485	.568	.652	.735	.819	.906	.994	1.08	1.17
75°	.095	.182	.266	.353	.440	.528	.617	.707	.797	.877	.971	1.07	1.18	1.29
80°	.110	.220	.332	.445	.558	.671	.787	.903	1.02	1.13	1.25	1.38	1.50	1.62
85°	.128	.259	.391	.524	.657	.790	.926	1.06	1.20	1.34	1.47	1.62	1.76	1.91
90°	.149	.299	.450	.603	.756	.910	1.07	1.22	1.38	1.54	1.70	1.87	2.03	2.20
95°	.174	.350	.522	.706	.885	1.06	1.25	1.43	1.62	1.80	1.99	2.18	2.38	2.58
100°	.200	.401	.604	.809	1.01	1.22	1.43	1.64	1.85	2.06	2.28	2.50	2.73	2.96
110°	.268	.536	.806	1.08	1.35	1.63	1.91	2.20	2.48	2.76	3.05	3.35	3.66	3.96
120°	.360	.721	1.08	1.45	1.82	2.19	2.57	2.95	3.33	3.72	4.11	4.50	4.91	5.32

INDEX CONT'D ON LAST PAGE

INDEX

Alignment & X-sections Road
to Country Club Drive Res. Pages 1-8 ✓
profile country club drive res.
from sta 9405 to int. with Murland
pipeline. 9-10 ✓
cuts (rough) for East & West
axis of water tank Murland ✓
Realignment on Road to La Jolla View
Reservoir Res. & X-section on same 13-19 ✓
New Road Alignment La Jolla Res. 19 ✓
Slope stakes 20-22
Ties to E Pt. La Jolla Res. 23
Cut stakes 8' offset 24-26
Ref. Pt. to Murland's Pipeline 28 ✓
Slope stakes Tank Site La Jolla Res. 29 ✓
Cross sections at Tank Site 30 ✓
Check levels on Soledad Mt. on F.H. 31 ✓
Slope stakes for intercepting Ditch 31 ✓
Check levels La Jolla Soledad Res. 32 ✓
Check levels on F.H. Country Club Drive 33-35
Grades for Drains 36 ✓
Bluetops for Tank Foundation 37 ✓
References Set on Valve Chamber 38
Check Elevation for Tank Movement 39
Profile & Dead PL 1264 to Fighter Control Bldg. (LA JOLLA RESERVOIR) 40-43
ALIGNMENT & DETAILS FOR PROPOSED 6" MAIN COUNTRY CLUB RESERVOIR - N.W. SIDE DRIVE CONC. & PROFILE of Above 44-49
E PROFILE Revised Align. Sta 3700 to 9404 50-59
58-59

Alignment & profile
Road to Country Club
Reservoir

Ra - 1

o PL
 $\Delta = 98^\circ 21' 14''$
 $R = 100.00$
 $T = 115.21$
 $L = 171.65$

o BC Sta 2+91.25

o POC Sta 2+23.13

104° 38' 30"

At a pine hub 5' edge closure

South Boundary of plot

At a pine hub
N edge closure
this point off
this record
distance

3200

EC. Sta.
7+33.73

2

(+3°00')

$\Delta = 16.40'$

$R = 600'$

$T = 87.89'$

$L = 174.53'$

EC. Sta. 5+59.20

EC. Sta. 4+23.90

PT

X sections of road
to Country Club
reservoir

Sept. 13, 1948

Rainey
King
Baker
9-15-48

3

LEVELS CHECKED & REDUCED SEP 14 1948 RRE

		on N Curb	
Top E.H. 100' from end	Excelix	684.75	
1.68	686.43		
TR#1		7.03	679.40
0.47	679.87		
TR#2		12.98	666.89
0.57	667.46		
TR#3		12.51	654.95
0.41	655.36		
		13.02	642.34
0.48	642.82		

0-50		640.9	640.3	638.6	638.6	642.5	641.9
		1.9	2.5	4.2	4.2	0.3	0.9
		25	20		5	11	25

0-35	exist. Rd.	640.4	640.2	638.9	637.8	637.8	640.9	641.6
		2.4	2.6	3.9	5.0	5.0	1.9	1.2
		25	22	13		11	17	25

Void - See
13 PM
pp. 6-7-49

0-27		640.8	639.1	636.5	637.2		636.0
		2.0	3.7	6.7	5.6		6.8
		37	25	16			30

0-21		639.2	638.1	636.7	636.7	637.1	636.1
		3.6	4.7	7.2	6.1	0.7	6.7
		50	23	14		7	31
				635.6			

LEVELS CHECKED & REDUCED SEPT 14 '48 R.P.C.

642.82

0-07

637.3	638.7	637.1	635.7	629.7	636.3	635.8
5.5	5.7	21	14.2	13.1	6.5	7.0
31	23	8	5		21	35
6286						

0+00

636.8	636.2	634.6	628.8	630.1	631.7	632.6
6.0	6.6	8.2	16.0	12.7	11.1	10.2
34	25	17		14	21	39

0+14

635.4	634.9	633.7	631.4	626.6	622.9	622.8	627.0	629.5
7.4	7.9	9.1	11.4	16.2	19.9	20.0	15.8	13.3
83	25	16	8		75	11	25	40

T.P.

12.92 629.90

1.87 631.77

0+32

632.2	630.6	628.3	616.9	617.3	622.5
10.4	11	3.5	14.7	14.5	9.3
25	6		20	24	50

0+50

631.0	629.2	628.3	626.2	618.8	612.5	609.6	612.7
9.8	2.6	3.5	5.6	13.0	19.3	22.2	14.1
25	10		14	20	37	38	47
14.4 35							

0+75

625.2	623.3	618.6	TOP
6.6	8.5	13.2	
17	27		

1+00

626.8	623.5	621.3	617.5	616.4
5.0	8.3	10.5	14.3	15.4
35	17		21	40

T.P.

12.80 618.97

6.13 625.10

605.10

LEVELS CHECKED & REDUCED SEPT 14 28

1+50

621.4	618.0	615.8	614.2	612.7
3.7	7.1	9.3	10.9	12.4
25	10		10	25

2+00

618.0	616.8	614.4	612.1	610.1	607.4
7.1	8.3	10.7	13.0	15.0	17.7
25	17	10		10	25

T.P.

12.12 612.98

4.28

617.76

2+50

616.1	613.4	609.8	608.0	605.2
17	4.4	8.0	9.8	12.6
25	15		10	25

2+91.55 B.C.

614.4	611.3	608.3	605.5	602.2
3.4	6.5	9.5	12.3	15.6
30	10		10	25

3+25

613.0	608.7	606.7	604.8	601.5
4.8	9.1	11.1	13.0	14.3
30	10		10	25

T.P.

12.92 604.84

4.24

609.08

3+75

607.1	603.4	602.2	601.3	600.7
2.0	5.7	6.9	7.8	8.4
30	10		10	25

LEVELS CHECKED & REDUCED SEPT 14 48

609.08

4400

602.5	599.7	598.4	597.4	596.3
6.6	9.4	10.7	11.7	12.8
30	10		10	35

T.P.

12.77 596.31

3.07 599.38

4450

594.2	591.2	589.2	586.4	583.3
5.2	8.2	10.2	13.0	16.1
25	10		10	25

4463.9 EC.

594.8	589.2	586.7	584.3	579.0
4.6	10.2	12.7	15.1	20.4
30	10		10	32

edge of bank

T.P.

12.85 586.53

3.08 589.61

5700

12.55 586.53

589.6	585.9	581.8	578.6	569.2
0.0	3.7	7.8	11.0	20.4
25	10		10	33

5446

589.2	575.2	560.9
0.4	14.4	28.7
17		30

T.P.

12.51 577.10

3.74 580.84

5759.2

585.8	577.8	573.7	572.3	567.8	556.7
75.0	3.0	7.1	8.5	13.0	24.6
28	10		4	10	30

LEVELS CHECKED & REDUCED SEP 11 1908

	580.84		
6+00			
T.P.		13.04	567.80
	5.56		573.36
6+50			
T.P.		11.92	561.44
	1.97		563.41
7+00			
T.P.		13.07	550.34
	2.15		552.49
7+33 ²⁵ EC.			
7+50			
T.P.		13.06	539.43
	3.12		542.55
8+00			
8+50			
T.P.		13.10	529.45
	0.52		529.97

580.4	573.8	569.8	567.6	556.4
0.0	7.0	11.0	13.2	24.4
28	10		6	35
573.4	565.2	560.6	548.2	
0.0	8.2	12.8	25.2	
28	10	10	30	
563.4	555.7	551.4	557.6	538.5
0.0	7.7	12.0	5.8	24.9
28	10		10	32
557.5	549.4	545.6	541.3	531.1
+5.0	3.1	6.9	11.2	21.4
30	10.		10	35
555.1	547.1	543.3	538.9	531.3
72.4	57	9.2	13.6	21.2
30	10		10	30
547.6	540.4	537.1	533.1	525.6
+5.0	2.2	5.5	9.5	17.0
30	10		10	30
¹⁰ 539.1	533.2	529.6	526.6	519.3
3.5	9.4	13.0	18.0	23.3
30	10		10	30

529.97

940.5²⁸ POT end road present time

Ch. to top 10.82 519.15 corn 519.16

Levels Checked RPC
8 Reduced Aug 14 1918

525.9	522.9 ^P	523.4	521.0	517.8	509.5
41	3.2	6.4	9.0	12.2	20.5
34	25	10		10	30

end. 107978'
 = 0+51 Maitlands
 Pipeline

EC. Sta. 10+29¹³

$$\Delta = 93^{\circ}32'$$

$$R = 50'$$

$$T = 53.08$$

$$L = 81.62$$

BC. Sta. 9+47⁵¹

EC. Sta. 7+33⁷⁸

Sept. 5, 1948

Rainey 10

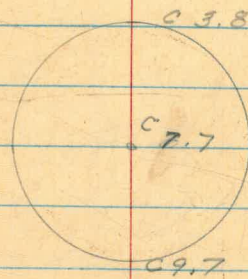
King
Baker

T.B.M.			519.16
0.27	519.43		
⁹ 874751 B.C.		9.1	510.3
T.P.	0.97	507.94	12.46
			506.97
⁹ 87475		5.2	502.7
10+00		12.6	495.3
T.P.	0.50	495.86	12.53
			495.36
0.5			
10+25		10.7	485.2
10+29.3 EC.		12.0	483.9
1			
10+50		12.5	483.4
10+97.81	Pipeline 0+51	4.7	491.2
	0+50	4.2	491.7

Sauvaders
Rairoy 11
Dec. 9, 1948

to water level pipeline

12.1
496.8
- 2.7
496.9
507.6
10.7



2 cl. bottom
gravel
499.1

E.C. STA. 4+64.23

 $\Delta = 96^{\circ}01'20''$
 $R = 104.14$
 $L = 174.89$
 $T = 115.71$

B.C. STA. 2+89.51

 $106^{\circ}00'35''$

CITY PROPERTY LINE

Levels on Road to La Jolla Country Club Res. on city Prop.

King - Notes 12-23-48
Shipman & Adams

13

B.M. 1.71 686.46 684.75

T.P. 2.09 681.57 6.98 679.48

T.P. 0.65 669.17 13.05 668.52

T.P. 0.27 656.42
~~652.42~~ 13.00 656.17

T.P. 1.60 645.09 12.95 643.49

T.B.M. 4.00 640.23 886 636.23

Top of Hill - Encelia

Rim Tel. M.H. - 6160

0-30 3.2 637.0 ✓

0-13 3.6 636.6 ✓

0+00 9.0 631.2 ✓

0+18 18.5 621.7 ✓

T.P. 3.85 630.99 13.09 627.14

0+50 2.6 628.4 ✓

637.2 630.7 636.1
3.0 9.5 4.1
29 15 15

636.0 627.8 636.0 636.2
4.2 12.4 4.2 4.0
29 12 12 20

633.8 626.0 626.2
6.4 14.2 14.0
29 20 26

630.5 628.4 628.4 626.2 617.0 612.0
0.5 1.6 2.4 4.8 14.0 14.0
25 20 4 5 21 26

630.99

1400

10.6

620.4 ✓

624.8
62
25

618.4 ✓
12.4
8

616.8 ✓
14.2
25

T.P.

3.34

623.07

11.26

619.73

620.9
2.7
25

612.9 ✓
10.2
21

611.0 ✓
12.1
28

1450

8.1

615.0 ✓

617.8 ✓
5.3
28

614.1 ✓
9.0
12

609.0 ✓
14.1
15

606.8 ✓
16.3
25

2400

11.4

611.7 ✓

616.0 ✓
7.1
25

605.0 ✓
18.1
25

2450

14.7

608.4 ✓

T.P.

4.48

616.22

11.33

614.74

B.e. 2489⁵⁴

8.2

608.0 ✓

613.7 ✓
2.5
25

601.0 ✓
15.2
25

3400

8.8

607.4 ✓

609.5 ✓
6.7
25

602.9 ✓
13.3
25

3450

11.1

605.1 ✓

T.P.

1.19

606.84

10.57

605.65

606.84

1 1/2
602.4
4.4
25

pt.
597.7
9.6
25

4400

7.8 599.0 ✓

T.P.

0.93 598.27 9.50 597.34 ✓

4450

7.9 590.4 ✓

1
595.6
2.7
25

1
586.3
12.0
25

F4464⁴³

10.5 587.8 ✓

T.P.

2.51 589.55 11.23 587.04

5400

6.5 683.1 ✓

592.8
586.4
+3.2
25

1
578.2 574.2
11.4 18.4
25 25

5459³⁴

15.1 574.5 ✓

586.1
3.5
25

1
572.3 565.3
17.3 24.3
25 25

T.P.

0.50 577.57 12.48 577.07

6400

7.2 570.4 ✓

581.3
573.9
+3.7
25

1
560.2
17.4
25

	572.57		
T.P.		12.13	565.44 ✓
	1.43		562.07
6.450		6.4	560.7 ✓
T.P.		12.61	554.46 ✓
	2.40		554.86 ✓
7.400		4.2	550.7
4.339	50	10.5	544.4
7.450		13.0	541.9
T.P.		12.17	542.69
	5.05		547.74
8.400		12.5	535.2
T.P.		12.89	534.85
	2.43		537.28

16

	Lts.		Bts.
	572.5	✓	✓
	561.7	560.7	551.9
	+5.4	6.4	15.2
	25		25
	561.0	✓	✓
	548.8	550.7	541.1
	+6.1	4.2	13.8
	25		25
		544.4	
		10.5	
	551.3	✓	✓
	-3.6	541.9	532.4
	25	13.0	22.5
			25
	543.7	✓	✓
	-4.0	535.2	526.1
	25	12.5	21.6
			25

53728

8450

10.0

527.3

✓
535.4
- 1.9
25

✓
527.3
10.0

✓
519.9
13.4
25

TP

12.84 524.44

1.62 526.06

9400

7.3

518.8

✓
525.1
- 1.0
25

✓
518.8
7.3

✓
510.0
16.1
25

940923 BC

8.7

517.4

✓
517.4
8.7

9425

11.7

514.4

✓
522.5
- 3.6
25

✓
514.4
11.7

✓
502.3
23.8
25

TP

12.97 513.09

4.09 517.18

9450

5.4

511.8

✓
516.2
1.0
25

✓
516.7
0.5
20

✓
511.8
5.4

✓
502.0
15.2
25

9475

10.0

507.2

✓
508.4
8.8
25

✓
507.2
10.0

✓
502.0
15.2
25

TP

10.47 506.71

0.51 507.22

507.22

9+8324 EC 5.2 502.0

10+00 12.6 494.6

TP 11.87 495.35

4.59 499.94

10+10 8.1 491.8

10+39 9.0 490.9

10+60 6.0 493.9

10+73 1.8 498.1

CK to 10+99 8.7 491.2

10+79.43 = 0+30.40 Pipeline

506.4 502.0 496.9

0.8 52 10.3

25 25

501.8 499.6 490.1

5.4 12.6 17.1

25 25

498.4 491.8 486.4

1.5 8.1 13.5

25 25

495.6 490.9 486.7

4.3 9.0 13.2

25 25

497.9 493.9 486.9

2.0 6.0 13.0

25 25

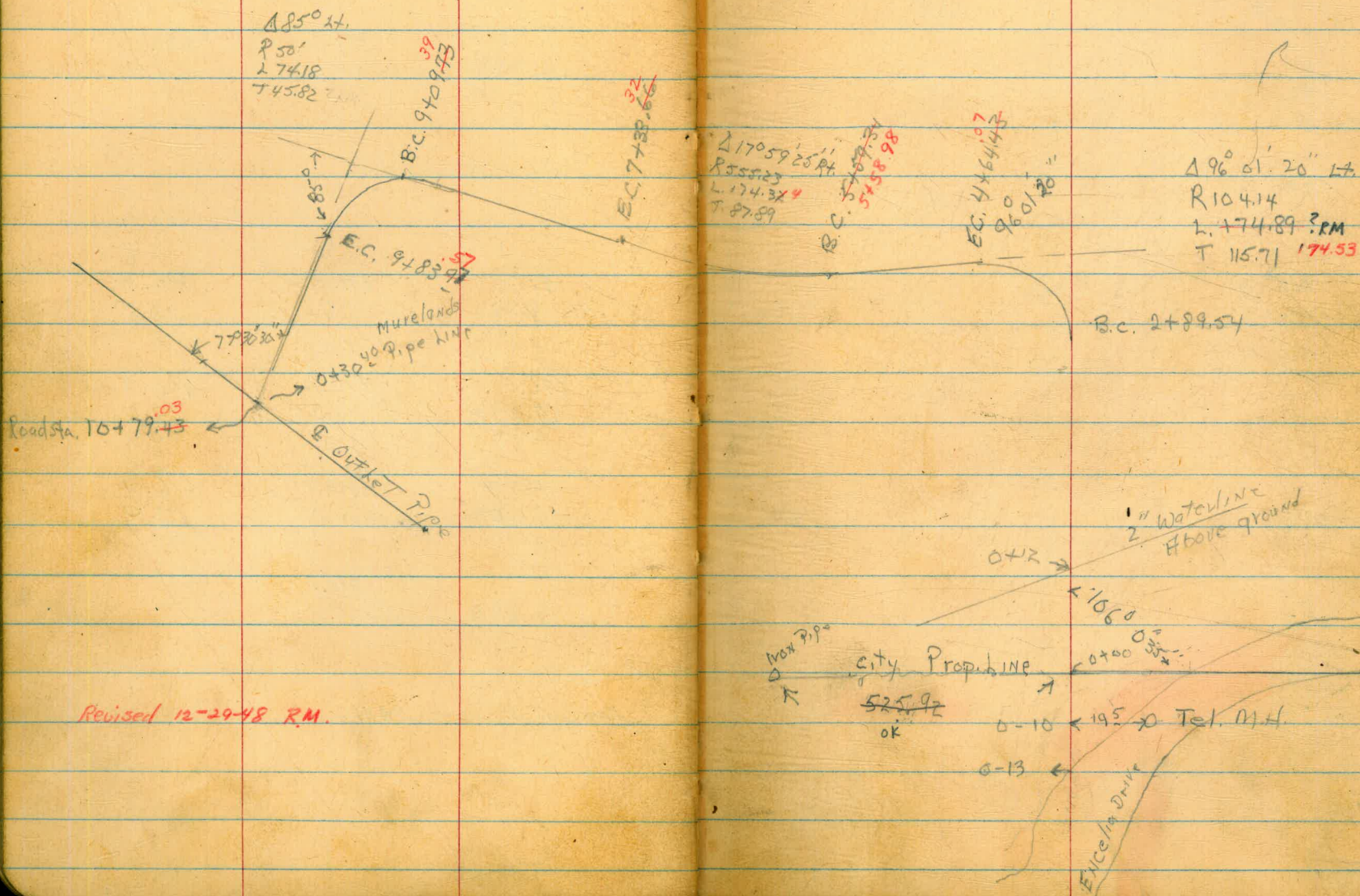
498.1 1.8

Reduced 12-28-48 RAM

New Road Alignment
La Jolla Res. Above Co. Club

King
Shipman
Adams
12-23-48

19



Revised 12-29-48 R.M.

N:10 cut
1 1/2:1 A:11

70

0-13

N
0.2
C0.2

5
22
F4.8

636.1

634.3

±
631.2

±
636.6

0+00

0.0
C0.0

7.5
F5.0

634.3

634.78
±
631.2

0+18

9.0
F6.0

4.0
F2.7

631.4

±
637.88

0+50

27.0
F18.0

2.0
C2.0

627.3

±
627.8
628.4

1+00

3.7
F2.5

2.0
C2.0

620.3

620.8
620.4

1+50

8.0
F0.8

8
C2.2

615.0

2+00

10.0
F7.5

C2.0

611.7

2+58

5.3
F3.5

C1.1

608.4
609.6

3+00

12.9
F3.3

C3.0

602.4
602.5

3450

F13

C2.1

605.1
~~599.0~~
603.4

4400

F0.1

C3.1

599.0
597.7

4450

F7.9

C2.6

590.4
589.9

3400

F3.0

C3.5

582.1
582.2

5459.39

F10.4

C6.1

574.5
573.0

6400

C 0.4

C8.1

570.4
566.7

6450

F3.2

C5.9

560.7
559.0

7400

F6.7

C4.5

550.1
550.6

7450

F7.2

C3.1

541.9
542.1

8400

F3.4

C5.4

535.2
533.7

8450	F23	C55	527.3 525.3
9400	F65	C70	518.8 516.9
9450	F13	C71	511.8 508.4
9475	C23 34	C45 200	507.2 504.2
9483 ⁵⁷ 12.90			502.0 502.7
10400			494.5 502.1
10410			491.8 500.3
439			490.9 500.3
10450			493.9 502.2

Ties to E Pt. LaSolla Res

130 16'

P.L.

/ otop - Marielondo P.L.

- Line only

45'

gimney
tack

60'

gimney & tack

- 90°

	496.13		
10400		+0.2	496.3
10410		4.0	492.1
10439		5.1	491.1
10450		1.9	494.2

RT

F10
15

562.1

F15.0
22.5

566.3

F16.7
25.0

566.8

F13.9
20.8

568.9

King BAKER-notes
 Shipman 2/1/49
 Adams & 25

	3.66			500.3			
0+2347		503.90	1.8	502.2	494.6	C-7.6	8' offsets
0+41			10.5	492.5	496.6	F-2.1	
T.P.#1	1.62	493.41	12.17	491.79			
0+58			5.0	488.4	485.6	C-2.8	
0+80			10.3	483.1	477.7	C-5.4	
T.P.#2	0.05	480.99	12.47	480.94			
T.P.#3	0.81	468.97	12.83	468.16			
1+25			6.0	463.0	459.7	C-3.3	
T.P.#4	0.70	457.55	12.12	456.85			
1+50			5.1	452.5	449.7	C-2.8	
1+70			12.0	445.6	441.0	C-4.6	
T.P.#5	0.31	445.86	12.00	445.55			
1+88			8.9	437.0	432.2	C-4.8	
T.P.#6	1.04	433.28	12.62	433.24			
2+06			8.6	424.7	422.4	C-2.3	
T.P.#7	1.15	421.59	12.84	420.44			
2+24			8.3	413.3	411.5	C-1.8	
T.P.#8	0.85	409.37	13.07	408.52			

409.37

2750

9.9

399.5

~~395.4~~

C-41

CK
2750 019

10.4

399.0

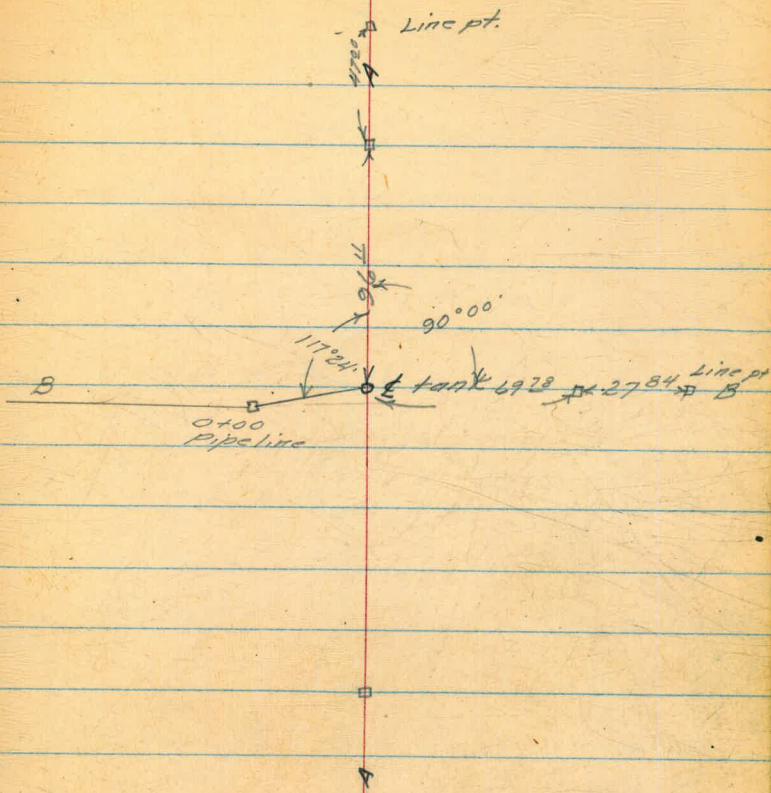
5. 9.

Book 27 in the hands of the author



Reference Pts. to
Muirlands pipeline

28



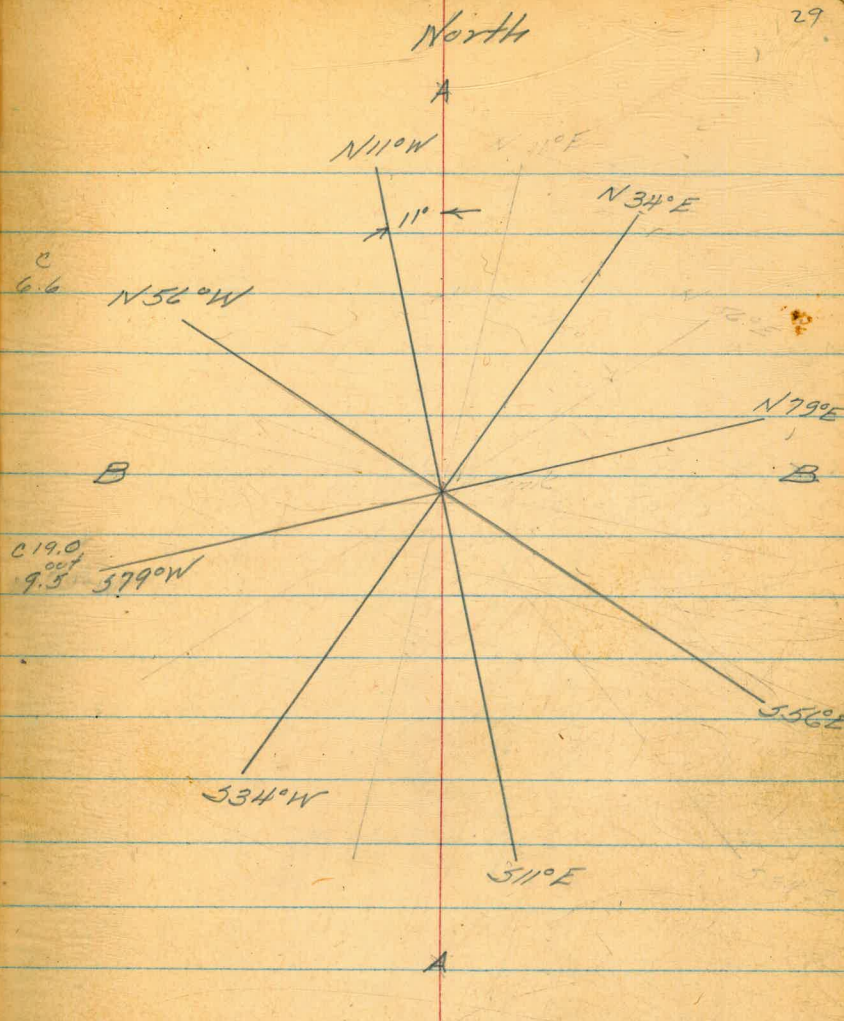
0+00 Muirlands Pipeline

500.30

11.05 511.35
T.B.M. set intro ^{Event. 1.95}
S.E. of center 509.50

center of tank	11.54	499.81	493.2
N34°E	0.0	511.35	493.5
			C285 117 out
N79°E	+1.6	512.95	493.7
		522.2	C29.0 14.5 out
S56°E	5.5	505.85	492.8
		511.8	C19.0 9.5 out
S11°E	14.6	496.8	492.5
			C4.0 2.0
S34°W	9.7	501.7	492.8
			C85 40
S79°W	8.4	503.0	493.2
			C80 45
N56°W	14.0	497.4	493.5
			C39 18 out
N11°W	6.4	505.0	493.8
			C112 56.0

29



3/2/59

Beatty

Daker

Rogers

230

SECTIONS TAKEN AT LAJOLLA VIEW TANK SITE
(Radial along quadrant lines as shown
on pg. 29, this book)

TBM	0.00	509.50	509.50
N 11 W			
N 34 E			
N 79 E			
S 56 E			
S 11 E			
S 34 W			
S 79 W			
N 56 W			
CK B.M.	0.00	509.00	

499.9	499.7	498.4	497.7	498.5	502.0	505.2	505.7	507.9	
C	9.6	9.8	11.1	12.2	10.7	7.5	4.3	3.8	1.6
PT.	3	4	25	20	23	46	52	53	
NG					5.5			N.G.	
500.5	298.4	497.8	500.7	504.5	514.2	515.4	517.2	517.0	
C	9.7	11.1	11.7	8.8	5.0	+4.7	+5.9	+7.7	+7.5
PT.	2	4	12	37	42	47	50	51	52.5
								N.G.	5.5
500.0	498.8	499.2	498.5	499.7	502.2	514.5	518.4	521.9	
C	9.5	10.7	10.3	11.0	10.2	7.3	+5.0	+8.9	+12.2
PT.	3	6	16	34	37	41	45	49	55.5
								N.G.	5.5
499.9	498.9	497.8	499.1	507.1	509.6	511.0	512.9		
C	9.6	10.6	11.7	9.6	2.4	+0.1	+1.5	+2.8	
PT.	4	6	32	39	45	47	48.5	50	
							N.G.	5.5	
499.7	498.7	496.5	497.2	496.0	496.5	491.9			
C	9.8	10.8	13.0	12.3	13.5	13.0	18.2		
PT.	4	6	42	45	48.5	62	72		
			35	38	48.5	62	72		
			90.8		F.I.I		N.G.		
499.0	497.7	498.5	492.6	501.1					
C	10.5	11.8	9.7	6.9	8.4				
PT.	4	21.5	24	38	4.4				
			N.G.	N.G.	5.5				
498.0	500.4	503.9	502.6	503.0	501.2				
C	11.5	9.1	6.2	5.7	6.5	8.3			
PT.	22	22	30	34	40	44			
		N.G.	N.G.	N.G.	N.G.	5.5			
497.8	497.8	502.0							
C	11.7	11.7	7.5						
PT.	34	50	84						
			F.I.I						
			(55 gage)						

5.5 = Slope Stake
N.G. = Natural Ground.

MAR. 23 1969
 Besty
 Baker
 Rodgers

31

SLOPE STAKES FOR INTERCEPTING DITCH
 AT LA JOLLA VIEW TANK SITE

STATION	LEFT GROUND EL.	RIGHT
0+00 END DITCH	512.3 C10	511.3
+25	518.0 C10	518.0
+50	522.7 C10	521.7
+75	527.4 C10	526.4
1+00	530.7 C10	529.7
+25	531.2 C10	530.2
+50	531.7 C10	530.7
+75	532.2 C10	531.2
2+00	532.7 C10	531.7
+25	533.2 C10	532.2
+37 Begin DITCH	533.5 C10	532.5

Slope Stakes for Sump EXCAV.

Center of Sump 70' from tank	C40
Slope Stake 90° LT.	C20 ³ out 22°
" " 135° LT.	C90 out 11°
45° LT.	C89 out 10°

Ck levels La Jolla Soledad
Reservoir

King
Shipman
Wash.

3-21-49

32

11.36 696.11 F.H. CO. 684.75

0.53 695.58

13.16 708.74

0.23 708.51

13.14 721.65

top of roof joists 0.45 721.20

conc. curb & edge 1.40 720.25

conc. Man USC 6.5 0.20 721.45

SW. Cor.

High water line 3.20 718.45

bottom of tank 14.95 706.70

13.14 708.51

0.93 709.44

12.48 696.96

0.89 699.35

12.60 684.75

CK Levels on Fire Hydrants
at Country Club Drive

Mar. 24, 1949 King
Shipman
West

33

Top of F.H. NE. Cor. ^{Encelia Drive} 7200 E.H. 684.75

	1.00	685.75		
T.P.#1			6.93	678.82
	2.05	680.87		
T.P.#2			12.91	667.96
	0.37	668.33		
T.P.#3			13.05	655.28
	0.63	655.91		
T.P.#4			12.94	642.97
	1.15	644.12		
T.P.#5			13.07	631.05
	1.08	632.13		
T.P.#6			12.88	619.25
	0.41	619.66		
T.P.#7			12.86	606.80
	0.61	607.41		
T.P.#8			13.07	594.34
	0.99	595.33		
T.P.#9			12.88	582.45

T.P.#9			582.45
	0.61	583.06	
T.P.#10			10.90 570.16
	1.09	571.25	
T.P.#11			13.10 558.15
	1.20	559.35	
F.H. N.E. Cor. Romero + Broderia		9.66	549.69
	0.00	549.69	
T.P.#12			13.01 536.68
	0.42	537.10	
T.P.#13			13.08 524.02
	1.23	525.25	
T.P.#14			12.86 512.39
	0.35	512.74	
T.P.#15			13.05 499.69
	0.66	500.35	
T.P.#16			12.92 487.43
	0.35	487.78	
T.P.#17			13.03 474.75

T.P.#18

474.75

0.29 475.04

T.P.#19

12.91 462.13

0.28 462.41

T.P.#20

13.05 449.36

0.99 450.35

F.H. NE Car. Ramona & Country Club 11.09 439.26

corr.
435.25

0.51 439.77

T.P.#22

12.99 426.78

1.30 428.08

T.P.#23

12.93 415.15

0.25 416.00

T.P.#24

13.06 402.94

1.34 404.28

T.P.#25

9.15 395.13

2.28 397.41

ck to TBM

8.11 389.30

MAR. 29, 1989

76

GRADES FOR DRAINS, LAJOLLA VEIN
TANK SITE

B.M.	0.13	509.63		509.50	
Set. Tram	0.96	497.85	12.74	496.89	Nail in Euc TREE NEAR Sump
0+00	8" Conc Drain, 39' from c tank		^{5.02}	492.83	490.44 ^{C 239}
0+70	c Sump E of Drain 17°30' LT. AA'		^{6.29}	491.56	490.07 ^{C 49}
0+00	Open Ditch 40' from c tank	4.83		493.02	492.50 ^{C 05}
+25		5.49		492.36	492.0 ^{C 08}
+50		5.36		492.29	491.5 ^{C 08}
+60	E of Ditch 11°00' LT AA'	5.3		492.55	491.3 ^{C 12}
0+00	Begin Drain 30' from c tank	5.01		492.84	492.84 ^{C 00}
+06	Begin 4" Conc Di. 30' from c tank	5.02		492.83	491.6 ^{C 23}
+26		1.75		496.10	487.8 ^{C 83}
+46	End 4" Conc Di. 76' from c tank E of 4" Drain on AA'		^{4.70}	493.15	484.0 ^{C 915}

April 6 1969

27

Bluetops set for Foundation of TANK

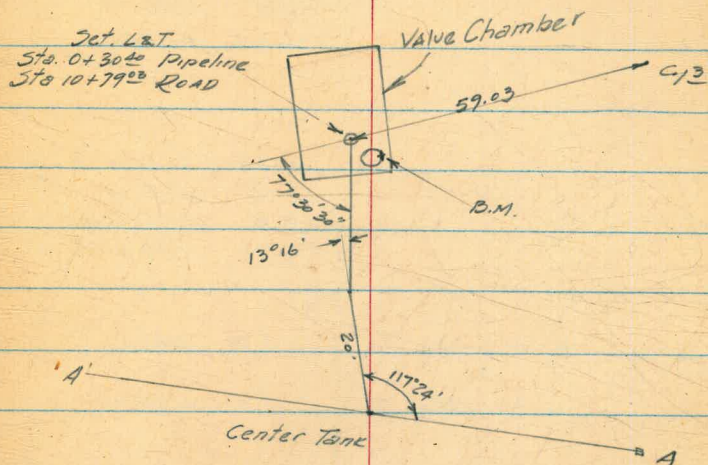
TOM	0.84	497.73	496.89	NAIL IN EUC TREE
		6.13	491.6	Set BT. End Drain ²
		4.75	493.0	SET BT. 18' from C (E) A (N) B (W)
		4.88	492.85	1' of B.L.T. & DRAIN
		5.03	492.70	E DRAIN

APRIL 11 1949

38

REFERENCES Set on Valve Chamber

T.M.	8.31	505.20	496.89	
Set B.M.			4.44	500.76 Chis + on Nor. Rim. MH
			3.10	502.10 C/3 to 502.8



June 27 1949

Realty

39

LA JOLLA VEIN TANK
Check Elevations For Tank Movement

T.M.	1.34	498.23 ✓	496.89	
SW		4.34	493.89 ✓	
		4.09	494.14 ✓	
		4.09	494.14 ✓	
		4.22	494.01 ✓	
SE		4.33	493.90 ✓	
		4.09	494.14 ✓	
		4.09	494.14 ✓	
		4.24	493.99 ✓	
TP	4.31	498.45 ✓	4.09	494.14 ✓
TP	4.72	498.76 ✓	4.21	494.04 ✓
NE		4.77	493.99 ✓	
		4.62	494.14 ✓	
		4.62	494.14 ✓	
		4.72	494.04 ✓	
TP	5.33	499.36 ✓	4.73	494.03 ✓
N.W. 3' LT of Mt opening		5.38	493.98 ✓	
		5.22	494.14 ✓	
		5.22	494.14 ✓	
		5.35	494.01 ✓	
TP	4.01	498.00 ✓	5.37	493.99 ✓
CK T.M.			1.11	496.89 = 496.89

on flange
Blue top (6" outside of curb)
mark on tank
chis # curb

7454
494.01

on flange
Blue top
mark on tank
chis # curb

on flange
Blue top
mark on tank
chis # curb

on flange
Blue top
mark on tank
chis # curb

Profile
 from Country Club Bldg.
 to Fighter Control Bldg.
 for possible Reservoir Use

SEPT. 27, 1949

Peatly
 Roger's
 Finney

20

PROFILE ALONG E ROAD FROM
 WESTERLY LINE PL. 1264 TO FIGHTER CONTROL
 CONC. BLDG. LA JOLLA AWS. STATION

BM	12.35	697.10	684.75	Top F.H. (Jan 19 35)
	10.76	707.62	0.24	696.86
0+00			8.8	698.8 ✓ NAIL SET IN E ROAD A.C. PAVT PRORCOR RT.
+50			5.2	702.4 ✓
1+00			4.6	703.0 ✓
+50			7.3	700.3 ✓
2+00			11.9	695.7 ✓
TP Reck			12.91	694.71 ✓
TP Reck	10.61	717.59	0.64	706.98
	5.05	722.17	0.47	717.12
Top 4" Pipe USC & GS Δ TANK			1.03	721.14
Top 4" Pipe USC & GS → R.P. Δ			0.69	721.48 = 721.45
TP Reck	0.07	694.78		694.71 ✓
3+00			6.9	687.9 ✓
4+00			12.9	681.9 ✓
TP Reck	0.55	682.71	12.62	682.16
5+00			5.1	677.6 ✓
6+00			3.5	679.2 ✓
TP Reck	4.10	685.66	1.15	681.56

See 32

SEE
 PG
 32

AT Country Club RESERVOIR

9/27/49

41

PROFILE & ROAD - LaJolla AWS STATION
Continued

7+00	685.66	3.9	681.8	✓
8+00		4.2	681.5	✓
9+00		9.4	676.3	✓
TP Rock	0.32 673.20	12.78	672.88	
10+00		3.5	669.7	✓
11+00		10.7	662.5	✓
TP Rock	0.29 661.04	12.45	660.75	
12+00		9.1	651.9	✓
TP Rock	0.43 648.59	12.88	648.16	
13+00		5.3	643.3	✓
14+00		13.2	635.4	✓
TP Rock	0.22 636.16	12.65	635.94	
15+00		5.7	630.5	✓
+70		8.0	628.2	✓
16+00		6.7	629.5	✓
TP	12.37 647.57	0.96	635.20	
17+00		8.4	639.2	✓
18+00		0.6	647.0	✓
TP	12.97 660.34	0.20	647.37	
+60		11.9	648.4	✓

PROFILE & ROAD — LA JOLLA AHS Station
 660.34

19+00		9.0	651.3 ✓
20+00		0.1	660.2 ✓
IP (Rock)	11.15	671.15	0.34 660.00
21+00		5.0	666.2 ✓
22+00		0.80	670.35 ✓
IP (Rock)	12.34	683.44	0.05 671.10
23+00		7.8	675.6 ✓
IP	12.44	695.79	0.09 683.35
24+00		3.8	692.0 ✓
IP	12.43	708.02	0.20 695.59
25+00		9.5	698.5 ✓
26+00		4.3	702.7 ✓
27+00		0.0	708.0 ✓
IP	10.37	717.95	0.44 707.58
28+00		4.9	714.1
+45		2.6	716.4
SET TBM. chis x in	WEST	SOUTH	Deerway 5.34 712.61
SET TBM chis x in	SOUTH	WEST	Deerway 5.70 712.25

9-27-49

43

CHECK LEVELS — LA JOLLA AWS STATION

TRM.				
	4.70	716.95	712.25	CH 12 X III SOUTH DOORWAY CONTROL BLDG. pg. 42
TP	0.53	704.47	13.01	
TP	0.20	692.09	12.58	691.89
TP	0.00	679.91	12.18	679.91
TP	0.42	667.94	12.39	667.52
TP	0.27	655.33	12.88	655.06
TP	0.07	642.46	12.94	642.39
TP	12.28	645.94	8.80	633.66
TP	11.74	657.57	0.11	645.83
TP	12.30	669.55	0.32	657.25
TP	12.06	681.47	0.14	669.41
TP	10.45	691.70	0.22	681.25
TP	12.87	704.18	0.39	691.31
TP	0.85	704.71	0.32	703.86
TP	1.10	693.61	12.20	692.51
CK B.M.	Top F.H. (ENCILIA DE)		8.88	684.79 = 684.75

Lot 3 BIKT. Map # 1975
 La Jolla Country Club Heights

COUNTRY CLUB RES. CONN PIPELINE
 VIA HILLSIDE DR.

April 21, 1950
 BEATTY
 ROGERS
 PAYNE

44

4+00 X PT 30°00' LT.
 3+00 X PT Δ = 25°22' LT

Revised Alignment
 June 26, 1950

STA 4+00 X PT
 30° LT.

STA 3+00 X PT.
 Δ = 25°22' LT.

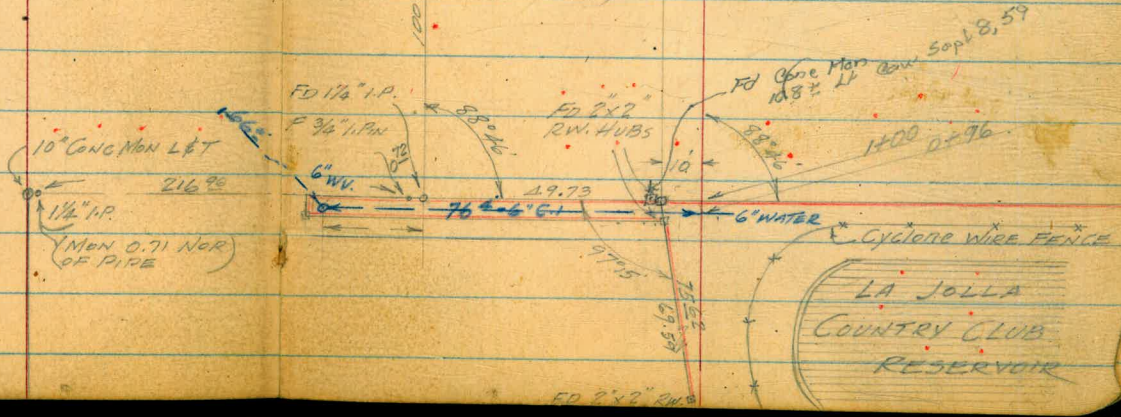
1264

II

(Sept 8, 59)
 (C.A.W.) 11" CON. MON (R.C.E. 9416)
 11.4' 16"
 50' 10'

PRIVATE PROPERTY PRIVATE PROPERTY

1+00 (AT PROPERTY LINE)
 0+96 (AT 6" WATER LINE)



LA JOLLA
 COUNTRY CLUB
 RESERVOIR

FD 2x2 8x8

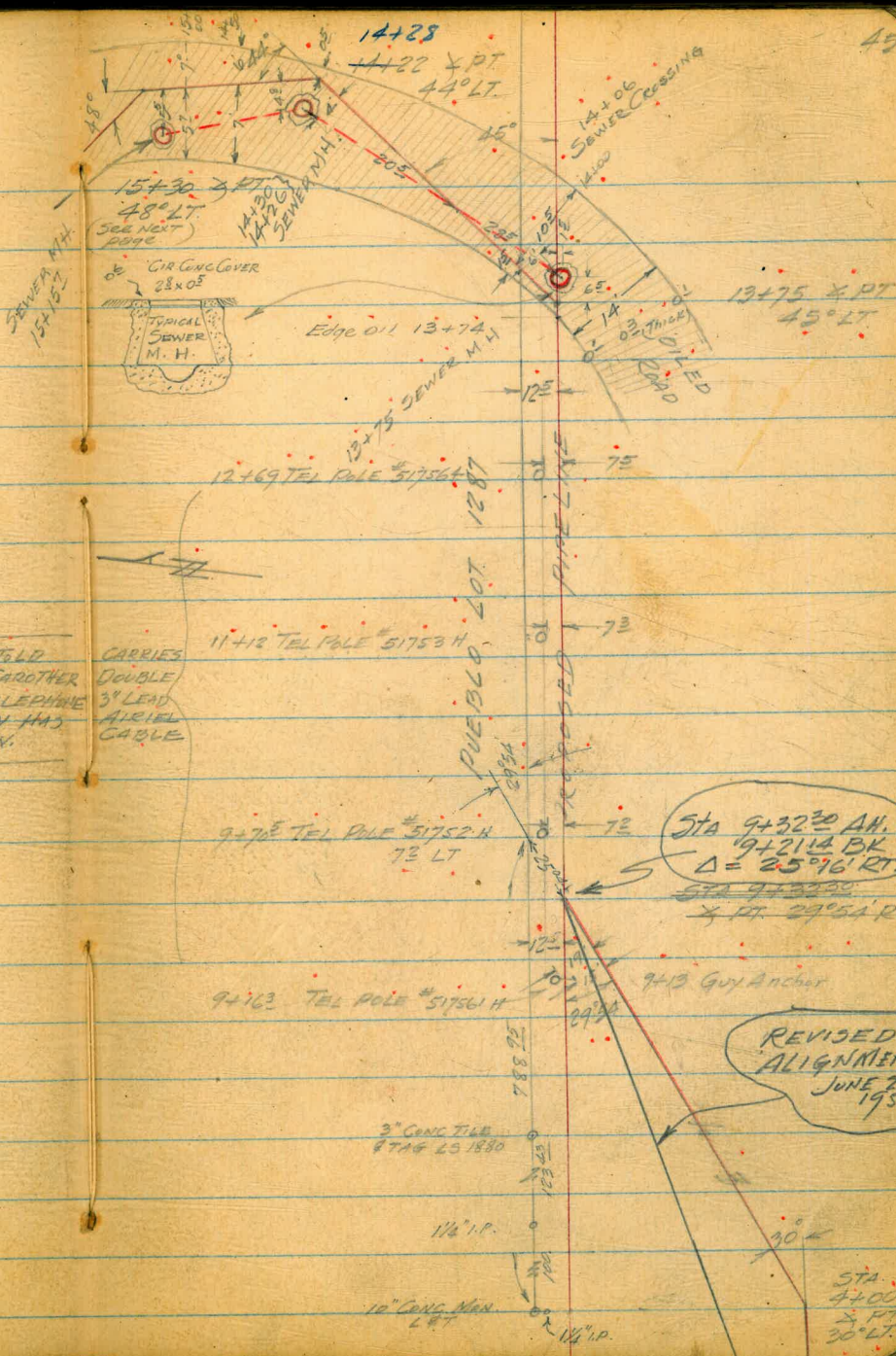
4/24/50

45

COUNTRY CLUB RES. CONN.
VIA HILLSIDE DR

14+22 X PT 44° LT

13+75 X PT 45° LT



NOTE: WAS TOLD
BY MR CAROTHER
THAT TELEPHONE
COMPANY HAS
50' ROW.

CARRIES
DOUBLE
3' LEAD
AERIAL
CABLE

9+32.30 X PT 29°54' RT

9+32.30 AH. = X PT Δ = 25°16' RT.
9+21.14 BK

STA 9+32.30 AH. =
9+21.14 BK
Δ = 25°16' RT.
STA 9+32.30
X PT 29°54' RT

REVISED
ALIGNMENT
JUNE 26
1950

4+00 X PT 30° LT

STA
4+00
X PT
30° LT

COUNTRY CLUB RES. CANN
VIA HILLSIDE DR

19+45 X PT 27° RT.

18+75 X PT, 30° RT.

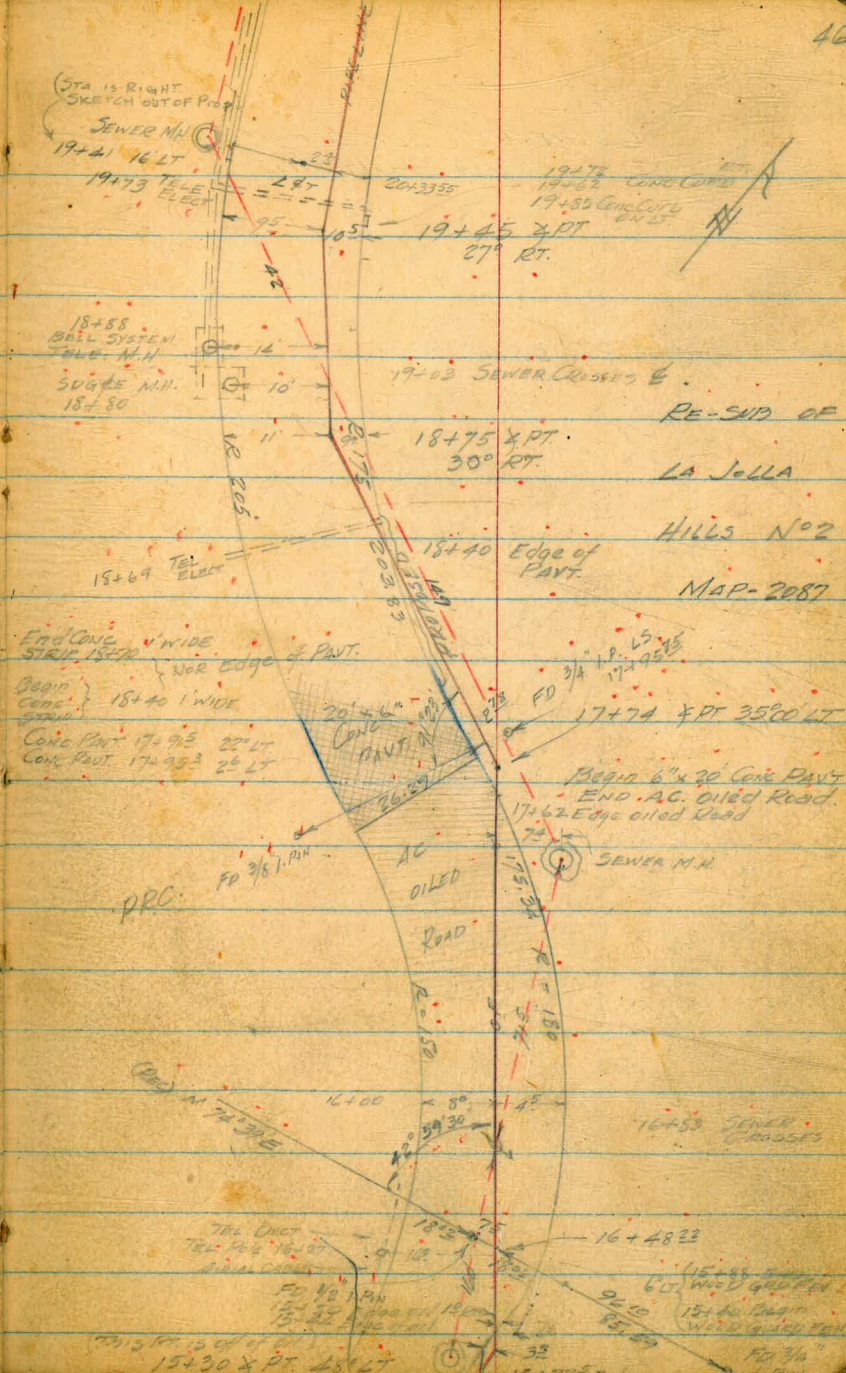
17+74 X PT 35° LT.

15+30 X PT 48° LT.

NOTE:

FROM STA 19+60
TO 22+30 & FROM
23+50 TO 24+85
HAS IMPROVEMENTS
BEGINNING AT EDGE OF
PAVT. CONSISTING OF
BRICE DRIVEWAYS,
WALKS, GATES, GRASS,
SHRUBBERY ETC.
WHICH WAS NOT
DETAILED

END CONC STRIP 15 FT WIDE
NOR EDGE OF PAVT.
Begin CONC STRIP 18+40 1 WIDE
CONC PAVT 17+93 22° LT
CONC PAVT 17+53 26° LT



STA IS RIGHT
SKETCH OUT OF PROJ
SEWER M.H.
19+41 16 LT
19+73 TELE ELECT

18+58
BELL SYSTEM
TELE. M.H.
50' x 6" M.H.
18+80

15+69 TELE ELECT

PRC

TEL DUCT
TEL 4" x 1/2"
CIRCUIT

15+30 X PT 48° LT

19+45 X PT 27° RT.

18+75 X PT 30° RT.

17+74 X PT 35° LT

Begin 6" x 20" Conc Pavt
END AC Oiled Road
17+62 Edge oiled Road

SEWER M.H.

16+50 SEWER CROSSES

16+4823

15+30 X PT 48° LT

RE-SURF OF
LA JOLLA
HILLS No 2
MAP-2087

19+78 CONC CONC
19+80 CONC CONC ON ST

19+03 SEWER CROSSES E

18+40 Edge of PAVT.

17+93 22° LT
17+53 26° LT

AC OILED ROAD

RE-SURF

16+00

15+30

15+30

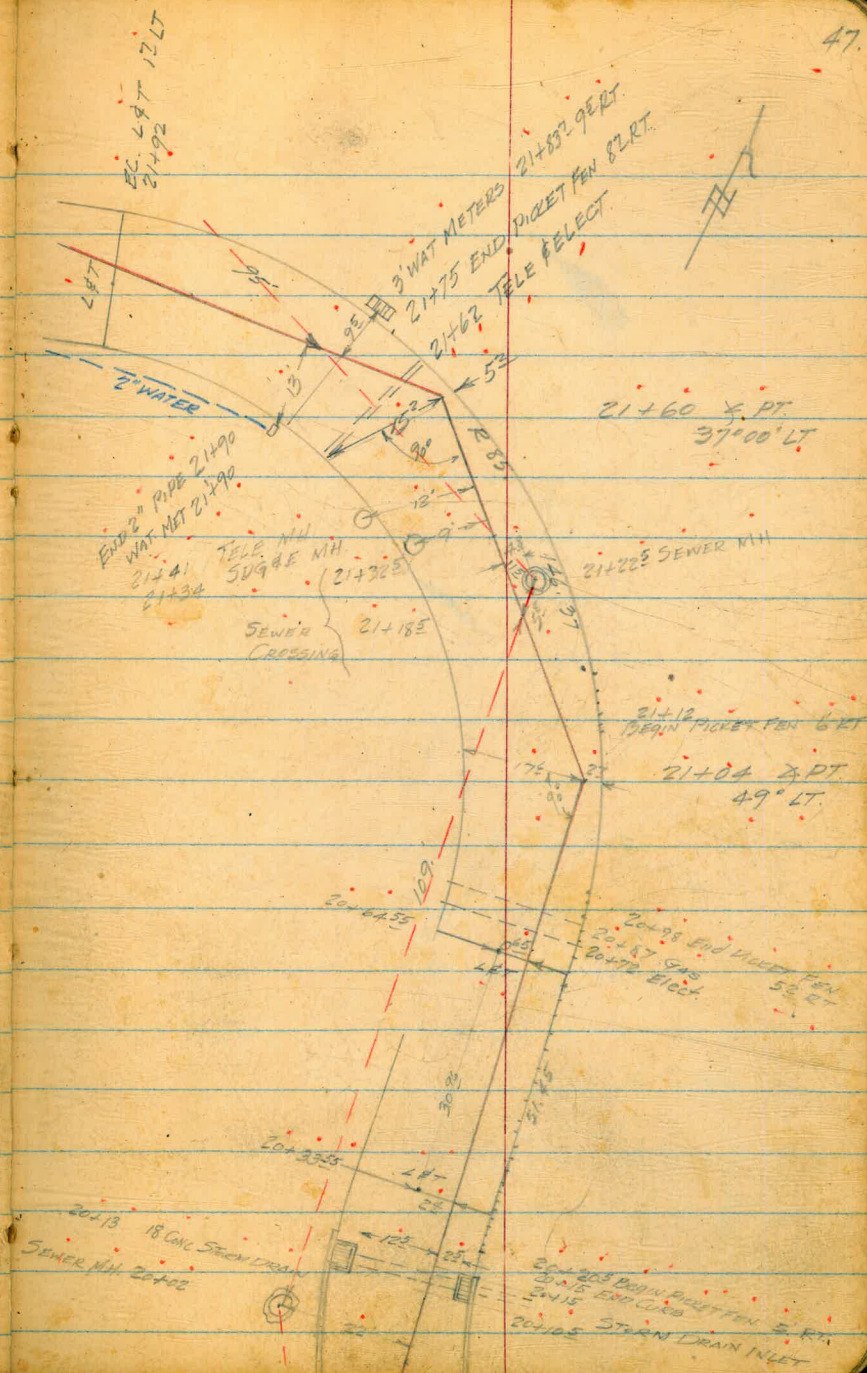
15+30

4-27-50

COUNTRY CLUB RES CONN
VIA HILLSIDE DR

21460 X PT 37°00' LT

21704 X PT 49°00' LT



47.

4/27/50

48

COUNTRY CLUB CONN. PIPELINE
Via HILLSIDE DR

24+94 X PT 22°30' LT

24+94 X PT
22°30' LT

24+69.25
LBT 5° LT

24+20²⁵ LBT 498 LT

TEL
ELECT 23+68

NOTE:
2" WATER, 2" GAS
ELECT DUCT & TELE DUCT
ALL LAY VERY CLOSE
TOGETHER ALONG SOUTHERLY
EDGE OF PAVT.

EG 23+31.70 LBT 5° LT

23+21.90 X PT 24°11' RT

23+29° 50.64 E M.H.

23+21.90 X PT
24°11' RT

22+78
X PT
48°57'30" RT

22+78 X PT 48°57'30" RT

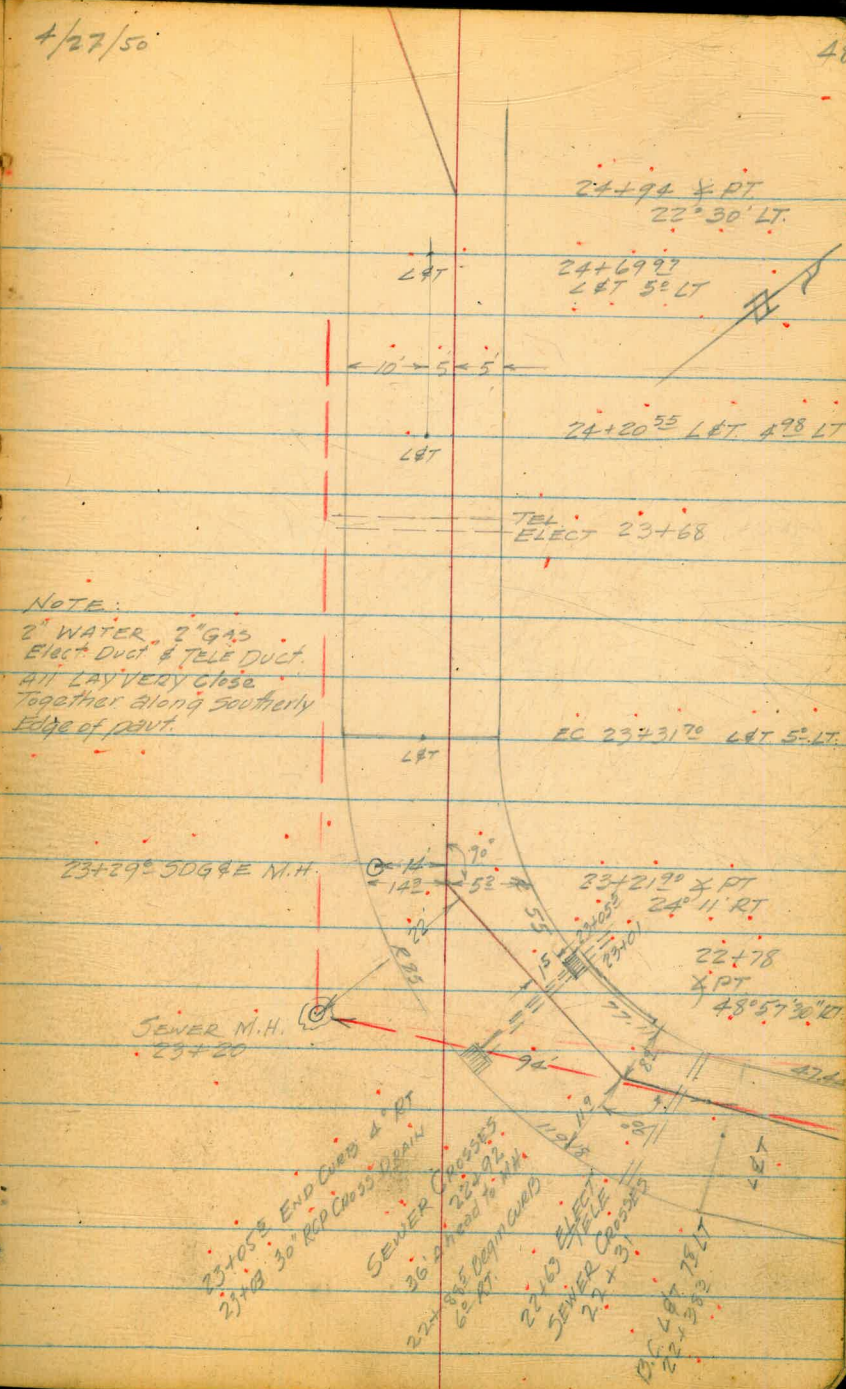
SEWER M.H.
23+20

23+05.8 END CROSS 4" RT
23+08 30" RCP CROSS DRAIN

SEWER CROSSING
36" 24" RCP
22+88.5 BEGIN CURVE
6° RT

22+63 ELECT
22+62 TELE
SEWER CROSSING
22+51

PT. 24+94 TEL
22+38.5



COUNTRY CLUB RES
 HILLSIDE DR CONN.

4/27/50

49

25+43⁶⁵ X PT 22°30' RT

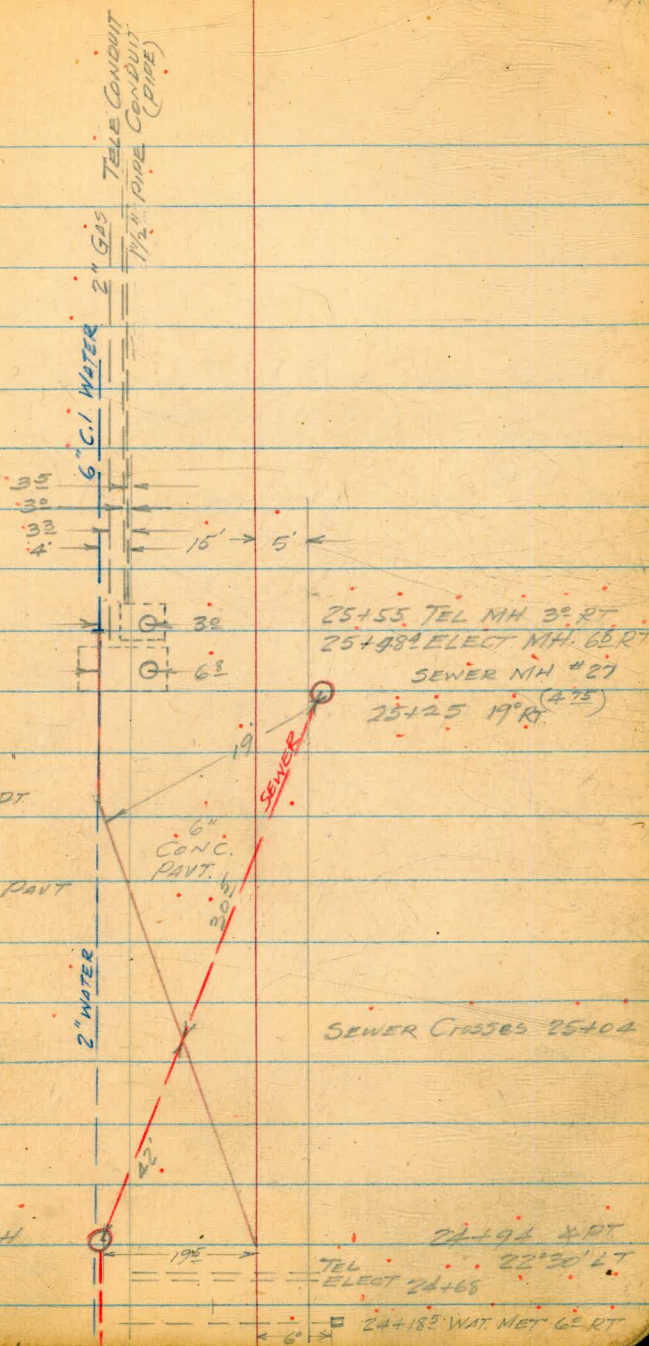
24+94 X PT 22°30' LT

25+55⁹⁰
 END LINE
 BEGIN 6" WATER

25+43⁶⁵ X PT
 22°30' RT

25+35 Edge PAVT

SEWER M.H.
 24+65



May 3, 1950

BEATTY
ROGERS
PAYNE

50

E PROFILE

COUNTRY CLUB RES - HILLSIDE DR. CONN
STATION + B.S. H.I. - F.S. ELEV.

BN 3270	1.15	722.60 ✓	1.50	721.45 City Datum
0+96			6.6	716.0
1+00			7.1	715.5
+08			8.6	714.0
+11			7.7	714.9
+50			9.9	712.7
P (rock)	1.18	710.88 ✓	12.90	709.70 ✓
+75			1.5	709.4
2+00			6.5	704.4
+10			7.9	703.0
P (end)	0.45	698.78 ✓	12.35	698.53 ✓
+50			7.3	691.7
P (rock)	1.00	686.90 ✓	13.08	685.90 ✓
+84			1.5	685.4
+91			1.7	685.2
3+00			2.8	684.1
+09			4.4	682.5
+20			2.9	684.0
+10			4.8	682.1
+50			4.8	682.1

REDUCTIONS CHECKED BY E.W.E. 5-8-50

(SEE PG 40) 4" I.P. USC # 95 A TANK → RP. on West side of RES
" " " " " " " " " " " " " on East side of RES

USGS A TANK Orig. elev. 721.10
See FB 915-50 for
Revised Elev. 721.76.

5/3/50

51

E PROFILE

COUNTRY CLUB RES HILLSIDE DR CONN

	686.90		
4+00	(3 RT)	8.3	678.6
HP (rock)	0.00	12.85	674.05 ✓
+33		1.2	672.9 EE
+50		5.8	685.7
			668.3 EE
			681.1
HP (rock)	0.82	12.71	662.16 ✓
			661.34 ✓
+76		2.2	660.0
+95		13.0	649.2
5+00		14.3	647.9
+12		17.4	644.8
+29		21.6	640.6
+50		25.0	637.2
+57		26.6	635.6
+77		26.1	636.1
6+00		22.0	640.2
			642.4 EE
+25		19.8	632.4
+50		17.0	645.2
+84		15.4	646.8
HP (rock)	0.62	12.46	650.32 ✓
			649.70 ✓
7+00		6.1	644.2

May 4, 1950

52

E PROFILE

COUNTRY CLUB RES - HILLSIDE DR CONN

650.32 ..

7+18		9.0	641.3 ..
+50		11.7	638.6 ..
TP (BOB)	0.36	637.87 ✓	12.81 637.51 ✓ ..
+50		3.7	634.2 ..
8+00		9.9	628.0 ..
TP (BOB)	0.08	626.11 ✓	11.84 626.03 ✓ ..
+27		2.7	623.4 ..
+50		3.0	623.1 ..
+66		4.4	621.7 ..
+87		6.8	619.3 ..
9+00		6.6	619.5 ..
9+32 ³⁰	PT	6.6	619.5 ..
SET T.B.M.		7.69	618.42 ✓ ..
+42		6.7	619.4 ..
+50		7.6	618.5 ..
TP (BOB)	1.47	614.79 ✓	12.79 613.22 ✓ ..
10+00		2.4	612.4 ..
+21		3.8	611.0 ..
+50		8.2	606.6 ..

NAIL IN TELE. POLE # 5175614 (2 904 ANCHORS)
EAST SIDE.

MAY 4 1950

53

E PROFILE

COUNTRY CLUB RES - HILLSIDE DR CONN
614.79

10+58		9.4	605.4	..
HP (200)	0.21	602.32 ✓	12.68	602.11 ✓
+78		2.0	600.3	..
+84		3.0	599.3	..
11+00		6.6	595.7	..
+13		9.9	592.4	..
HP (NAIL IN ROOT) 11+22	0.45	589.94 ✓	12.83	589.49 ✓
+37		5.6	584.3	..
+50		12.0	577.9	..
HP (200)	0.34	577.78 ✓	12.50	577.44 ✓
HP (200)	0.79	565.88 ✓	12.69	565.09 ✓
12+00		10.5	555.4	..
HP (200)	0.16	553.22 ✓	12.80	553.08 ✓
+12		2.2	551.0	..
+50		10.8	542.4	..
SET TBM.	0.17	540.52 ✓	12.89	540.35 ✓
+64		0.9	539.6	..
13+00 13+00		8.7	531.8	..
+17		12.6	527.9	..
HP (200)	1.43	529.16 ✓	12.79	527.79 ✓

NAIL IN POLE # 517564H

5/4/50

54

485.

486.46
 485.79
 .67
 501.01
 501.68

E. PROFILE

COUNTRY CLUB RES - HILLSIDE DR. CONN.

529.16 ✓

13				
+26		3.7	525.5	..
+31		5.9	523.3	..
+50		9.9	519.3	..
+58		11.8	517.4	..
+62		13.4	515.8	..
11. (Peak)	0.10	516.48 ✓	12.78	516.38 ✓
+68		6.6	509.9	EE
+70		10.2	506.3	..
+74		11.67	504.81	..
+75	PT	11.72	504.76	..
	Center, Top of SEWER N.H. #	11.99	504.49	..
14.00	0.76	504.27 ✓	12.97	503.51 ✓
		3.75	500.52	..
	Center, Top SEWER N.H. #	8.05	496.22	..
14.28	PT	8.00	496.27	..
+50		11.52	492.75	..
15.00	0.48	491.71 ✓	13.04	491.23 ✓
		6.16	485.55	..
	Center, Top SEWER N.H. #	8.04	483.67	..

11.1 11.8 22.8
 10 8 10

Edge of oil

RT 2 To 1.5 2.3 5.3 11.5 11.7 11.0 10.9 10.6
 FWD TAN 12 9 9 2 8 13.5 15 16
 Edge of oil

Nail in Pole # 517565 H
 28' RT 14+09

Gone

on oil 14.0 +16 1.8 3.6 3.8 3.0
 10 7 5 4 8 10.5 Edge of oil

5/4/50

55

E PROFILE

COUNTRY CLUB RES. - HILLSIDE DR. CONN.

491.71 ✓

15+22E		8.69	483.02	Edge of Oil				
15+30 (X PT.)		9.7	482.0	Sect. taken on split of angle	9.25	9.33	9.8	11.4
15+44		10.58	481.13	Edge of oil	16. Edge of oil	3.5 Edge of oil	8	10 15
+50		10.96	480.75					
11P	11.8	480.28 ✓	12.61	479.10 ✓				
16+00		3.21	477.07					
+50		6.30	473.98					
SET TBM.		6.27	474.01 ✓	3/4" IR IN SE LT 16+54				
17+00		8.73	471.55					
+50		10.85	469.40					
Center, Top Sewer N.H. #21		10.74	469.54					
+62		11.33	468.95	Edge of oil				
17+74 (X PT.)		11.6	468.7					
11P	1.54	469.36 ✓	12.46	467.82 ✓	Core Conc Pavt. (Northernly side of Pavt.)			
18+00		1.5	467.9		Core Pavt	1.69	1.5	
+40		2.96	466.4	Edge of Core Pavt	2.7	2		
+50		3.21	466.15	" " "				
+75 X PT		3.84	465.52	" " "				
			464.93 EE					
19+00		4.43	465.93	" " "				

5/4/50

56

COUNTRY CLUB RES - HILLSIDE DR. CONN.

	469.36		
19+45	X PT	5.68	463.68 ..
	Center, Top Sewer M.H. #23	5.06	464.30 ..
+50		5.86	463.50 ..
20+00		7.62	461.74 ..
	# outlet 18" Cross Dr	12.62	456.74 ..
	# Inlet 18" Cross Dr	12.02	457.34 ..
+50		10.12	459.24 ..
IP	1.21	458.19 ✓	12.38 456.78 ✓
21+00		2.42	455.77 ..
21+04	X PT	2.56	455.63 ..
	Center, Top Sewer M.H. #24	3.89	454.30 ..
+50		6.19	452.00 ..
21+60		6.79	451.40 ..
22+00		9.80	448.39 ..
IP	0.50	446.00 ✓	12.69 445.50 ✓
+50		2.52	443.48 ..
22+78	X PT	4.44	441.56 ..
23+00		7.27	438.73 ..
	Outlet # 30" Cross Dr	17.50	428.50 ..
	Inlet # 30" Cross Dr	15.60	430.40 ..

28 RT 20+13

128 LT 20+13

New in Contruction joint
4 RT 20+85(NAIL) 2 RT 22+28
IN CRACK15 RT 23+03
132 LT 23+03

5/4/50

57

COUNTRY CLUB RES - HILLSIDE DR CONN

			446.00	
23+21.90		8.88	437.12	
Center, Top SEWER MH #25		6.27	439.73	
+50		9.60	436.40	
TP	0.19	433.72	12.47	433.53
				432.63
24+00		1.09	431.63	
+50		4.99	428.73	
Center, Top SEWER MH #26		6.27	427.45	427.32
+94 (2 PT)		9.22	424.50	
25+00		9.90	423.82	
TP	207	423.68	12.11	421.61
+33		3.55	420.13	
+43.65 (2 PT)		4.2	419.5	
25+55.90	END OF LINE	6.1	417.6	
25+55.90	Top 6" C.I. PIPE	8.80	414.88	
	(Center, Top SEWER MH #27)	3.14	420.54	420.44
	(4.15 TO INV.)			
SET TBM		5.92	417.76	

NAIL IN CONTRACTION JOINT
3' BT 23+89.2

Edge of CONC PAVT

+2.5	+1.0	1.2	4.0	4.7	4.61	Edge CONC PAVT
6	6	3	2	2	4	
0.0	3.1	4.1	6.1	6.1	6.06	Edge CONC PAVT
6	5	4	6	2	4	

(SEE BOOK 2056 pg 14. CITY ENG.)

End of Curb

Bar

JUNE 26-58

Beatty
West
Shipman
Carver

59

PROFILE OF REVISED ALIGNMENT

Sta 3+00 To 9+21.4 BK = 9+32.32 AH

TP	277	688.67 ✓	685.90 ✓
3+00	PT	4.6	684.1 ✓ = 684.1
+12		7.8	680.9 ✓
+19		7.0	681.7 ✓
+50		8.6	680.1 ✓
TP	0.34	676.02 ✓	12.99 675.68 ✓
4+00		3.5	672.5 ✓
+19		6.0	670.0 ^{ee} ✓ 676.0 ✓
+25		8.4	667.6 ✓
TP	0.55	663.91 ✓	12.66 663.36 ✓
+50		2.9	661.0 ✓
TP	0.28	651.65 ✓	13.04 650.87 ✓
5+00		6.4	645.3 ✓
TP	1.50	640.06 ✓	13.09 638.56 ✓
5+50		9.7	630.4 ✓
+67		16.8	623.3 ✓ 629.2 ^{ee}
6+00		10.9	629.1 ✓
+30		5.7	634.4 ✓
+50		2.2	637.9 ✓

Bottom Creek

6/26/50

59

PROFILE OF REVISED ALIGNMENT

Sta 3+00 to 9+21.4 PK = 9+32.30 AH

620.06

T.P.	307	641.53 ✓	1.60	638.46 ✓
6+99			2.2	639.3 ✓
7+00			5.1	636.4 ✓
+50			6.7	635.1 ✓
7+76			11.5	630.0 ✓
T.P.	409	633.32 ✓	12.30	629.23 ✓
8+00			9.7	623.6 ✓
+50			12.4	620.9 ✓
T.P.	218	623.93 ✓	11.20	621.57 ✓
9+00			4.3	619.5 ✓
+21.4			4.3	619.5 ✓
B.M.	534	618.41 ✓	618.42	

Field notes checked by EWE
4/19/51

Nail in Tol Pole.

JULY 25 1950

BETTY
KING
LEONARD
BAKER

60

GRADES SET FOR COUNTRY CLUB DES - HILLSIDE DR

DN	0.52	721.62		721.10	A TANK	(pp. 50)
+0.296			6.0	715.6	703.0	0.126
+1.00			6.3	715.3	703.0	0.123
+4.50					700.0	12.2
TP			9.4	712.2	700.0	0.98
Top Gro.	0.37	709.08	12.91	708.71	689.8	8.4
+80			0.9	708.2	702.0	8.2
+2.00					700.5	
+10			8.2	700.9	699.0	0.9
TP	0.26	696.44	12.90	696.18		
+50			5.4	691.0	687.0	0.95
TP						
+3.00	0.12	683.42	13.14	683.30	677.9	0.54
+10			1.3	682.1	676.0	0.6
+50			4.2	679.2	674.5	0.47
+87			9.1	674.3	670.0	0.43
+4.00			11.6	671.8	667.3	0.45
TP Rock	0.01	670.15	13.28	670.14		
+25			3.4	666.8	662.0	0.48
+50			10.2	660.0	655.3	0.42
P			12.80	657.31		
Top Gro.	0.31	657.62	1.0	656.6	652.0	0.46
+62						
TP						
+5.00	0.29	644.76	13.15	644.47	640.2	0.43
TP	8.04	620.21	12.59	632.17		
+50			10.8	629.4	623.4	0.60
+60			13.0	627.2	620.0	0.72

7/25/50

Beatty T.
Leonard F

61

GRADES SET FOR COUNTRY CLUB RES - Hillside DR
640.21

5+75		14.6	625.6	620.0	C56 ✓
6+00		12.0	628.2	624.3	C39 ✓
+50		2.4	637.8	633.0	C48 ✓
+70		1.5	638.7	634.0	C47 ✓ ?
7+00		4.3	635.9	632.1	C38 ✓
+50		6.6	633.6	629.0	C46 ✓
7D	1.56	628.40	13.37	626.82	
8+00		4.4	624.0	619.0	C50 ✓
+50		7.7	620.7	616.0	C47 ✓
9+00		8.8	619.6	615.3	C43 ✓
9+20.9 BK 9+32.3 2W	X PT	9.6	618.8	615.0	C38 ✓
CK BM		10.03	618.37	618.42	NAIL IN POLE. (pg. 53)
+50		10.6	617.8	614.0	C38 ✓
7D	1.73	616.90	13.23	615.17	
10+00		3.8	613.1	608.5	C45 ✓
+50		9.5	607.4	602.0	C54 ✓
	0.01	603.69	13.22	603.68	
+90		5.4	598.3	594.0	C43 ✓
11+10		10.9	592.8	588.0	C48 ✓
D	0.14	590.70	13.13	590.56	
11+50		13.40	577.30	573.5	C38 ✓
7D	0.41	577.71	13.21	574.50	
12+00		9.1	555.6	551.0	C46 ✓
7D	0.13	551.66	13.21	551.53	
+50		8.8	542.9	538.0	C49 ✓
D	0.24	540.50	11.40	540.26	540.35

7/25/50

62

GRADE 3 SET FOR Country Club Res - Hillside Dr
540.50

13+00			8.6	531.9	527.0	C42
HP	0.17	527.33	13.34	527.16		C78
+45			6.0	521.3	513.5	
HP (4WB.)	0.34	515.84	11.83	515.50		C88 (MARKED TO HERE)
+70			5.0	510.8	508.0	
OK BVA	3.02	506.45	12.41	503.43	503.51	C63
+75	X PT		(Net) +0.9	507.4	501.1	
			(30.) 1.2	505.3		
14+00			4.0	501.8 EE	496.5	C40 (Reset C53) 10/18/50
+82	X PT		10.3	496.2	492.9	C33
HP Rock	0.14	493.43	13.16	493.29		C34
+50			0.7	492.7	489.3	
15+00			8.2	485.2	482.0	C32
+30	X PT		11.1	482.3	479.0	C33
+50			12.7	480.7	477.0	C32
HP	0.30	480.44	13.29	480.14		C40
16+00			3.4	477.0	473.0	
OK HP			6.50	473.94	474.01	C36
+50			6.35	474.09	470.5	
17+00			8.8	471.6	468.0	C36
+50			11.1	469.3	466.0	C33
+74	X PT		12.1	468.3	465.0	C33
OK HP	2.97	470.71	12.70	467.74	467.82	C36
18+00			3.14	467.6	464.0	
+50			4.64	466.1	462.5	C36
+75	X PT		5.15	465.56	461.75	C38
19+00			5.8	464.9	461.0	C39

7/25/50

63

GRADE 3 JET FOR HILLSIDE DR

		470.71			
19+45	2 PT		7.02	463.7 - 459.7	C40
19	1.58	464.10	8.19	462.52	
20+00			2.3	461.8 - 457.0	C48
+50			5.15	458.9 - 454.3	C46
21+04	2 PT		8.9	455.2 - 451.2	C40
+12			9.5	454.6 - 451.0	C36
+60			13.0	451.1 - 447.0	C41
19	0.56	451.51	13.15	450.95	
22+00			3.4	448.1 - 443.5	C46
+50			7.6	443.9 - 439.2	C47
+78	2 PT		9.7	441.8 - 437.0	C48
23+00			12.4	439.1 - 435.0	C41
+21.90	2 PT		13.0	438.1 - 433.7	C42
19	0.08	438.54	13.05	438.46	
+50			2.2	436.3 - 432.0	C43
24+00			6.0	432.5 - 428.0	C45
+50			9.9	428.6 - 424.0	C46
19	1.19	426.61	13.12	425.42	
+94	2 PT		2.1	424.5 - 420.4	C41
25+43.85	2 PT		7.8	418.8 - 415.4	C34
25+55.70			9.1	417.5 - 414.7	C42
CK TBN			8.95	417.66 - 417.76	09.57

Field notes checked by E.W.E. 4/19/51 EWE

Elev. Top. Various P.h.s. etc.
 Intersection - Texas + Mission Valley Rd.

King
 Leonard
 West.

8-15-50

Hot.

69

B.M.	9.73	58.75	City Datum 43.02	
		7.36	45.39	Top Hdwl - No. side Inters.
		8.06	44.6	Top P. pipe 16" Camp Elliot P.h.
		10.84	41.91	56' East 9.1. " " 16" " " "
		7.66	45.09	Top 36" Pipe Alvarado P.h. in box
		6.45	46.30	Top ^{A.V.} Box 36" " " " "
		6.0	46.7	Top rim CONC Box 76" Pipe 175' foot
		4.0	48.7	50' From 36" Pipe + Box - Towards Hdwl - on Texas st.
		9.4	43.3	Top Hdwl
		1.8	50.9	F.h. Box Culv.
		4.0	48.7	Top. Paving, Texas st 5' No. Gas P.L.
		4.3	48.4	" " " " Intersection 16" P.h. & 24" P.h.
		3.8	48.9	Par. at Kickblock 16" P.h.
		8.2	44.5	No. Rim G.V. Box 16" P.h.
		9.72	43.03	Top 16" P.h. at E. No. side Mission Rd.

ck B.M.

8.12
 8.13
 8.14
 8.15

Aug. 22 1950

RAINEY
BEATTY
KING
Leonard
West

ALVARDO & CAMP ELLIOTT PIPELINE

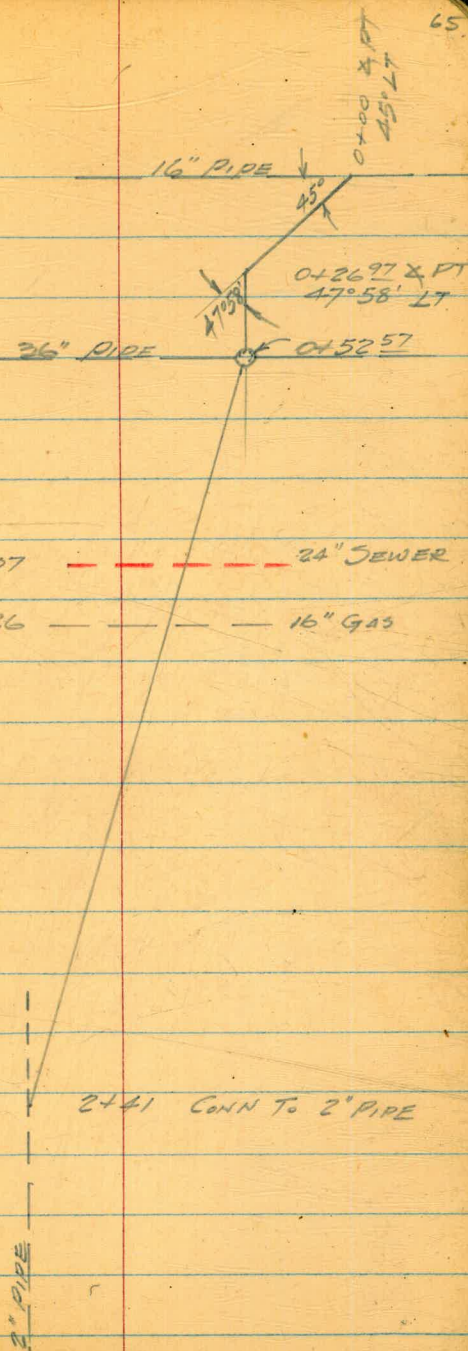
CONNECTION

VICINITY OF TEXAS STREET & MISSION VALLEY ROAD

BM - 11.72 54.74 43.02 (Pg. 64)

			GL	GRD	
0+00	⑤ SE	7.5	47.2	42.3	C49
0+00	⑤ NW	7.5	47.2	"	C49
0+00	⑤	7.7	47.0	"	
0+2697	⑤	8.1	46.6	42.6	
"	⑤ SE	8.3	46.4	42.6	C38
"	⑤ NW	7.9	46.8	42.6	C42
0+5257	⑤	11.8	42.9	42.9	
"	5' SE	9.8	44.9	"	C22
"	5' N	9.6	45.1	"	C22
1+00	⑤	10.0	44.7	42.6	
	⑤ NW	9.6	45.1	"	C15
1+50	⑤	8.4	46.3	44.3	
	⑤ NW	8.3	46.4	"	C21
2+00	⑤	5.1	49.6	47.1	
	⑤ NW	4.6	50.1	"	C32
2+12	⑤	4.3	50.4		
2+41	⑤	+1.8	56.5	53.5	
	⑤ NW	2.7	52.0	"	F25
CK BM		4.08	50.66	= 50.63	

CK BM
COUNTY BM
ORANGE PIPE
IN SW COR INTERSN



LEHIGH STREET
 TONOPAH TO MORENA
 © STK'S & GRD'S FOR
 WATER METERS

Mar. 22, 1954
 BETTY
 SPERRY
 MARTELL
 ALEXANDER

66.

B.M.	2.51	12.55	10.04		DR. Bridge MORENA & LEHIGH
0+92 Sely.		4.4	08.2	08.5	F03 1371 LEHIGH
1+13 Sely.		4.4	08.2	08.4	F02 1367 LEHIGH
1+48 NWly.		5.1	07.5	08.3	F08 1364 LEHIGH
1+97 Sely.		4.9	07.7	08.2	F02 1355 LEHIGH
2+18 NWly.		4.7	07.9	08.1	F02 1350 LEHIGH
2+36 Sely.		4.6	08.0	08.1	F01 1347 LEHIGH
2+99 NWly.		4.2	08.4	07.9	C05 1340 LEHIGH
3+25 NWly.		4.1	08.5	07.8	C03 1332 LEHIGH
3+71 NWly.		4.4	08.2	07.7	C05 1324 LEHIGH
R		4.65	07.90		

NASHVILLE ST
 TONOPAH TO MORENA
 (2) STKS & GRDS FOR
 WATER METERS

3/24/52
 Same Party

67.

ID	396	11.86	07.90	from prev page		
0+15 Nwly			3.1 08.8	08.6	C02	1318. NASHVILLE
0+56 Nwly			3.6 08.3	08.5	F02	1370. "
0+76 Sely			4.3 07.6	08.7	F11	1371. "
1+01 Nwly			4.1 07.8	08.4	F06	1364. "
1+29 Sely			4.4 07.5	08.5	F10	1357. "
1+54 Nwly			4.2 07.7	08.2	F05	1356. "
2+04 Nwly			4.2 07.7	08.1	F04	1348. "
2+41 Sely			5.2 06.7	08.2	F15	1347. "
2+54 Nwly			4.4 07.5	07.9	F04	1340. "
2+85 Sely			5.2 06.7	08.1	F14	1339. "
3+04 Nwly			4.5 07.4	07.8	F04	1332. "
3+33 Sely			4.8 07.1	07.9	F08	1333. "
3+54 Nwly			4.9 07.0	07.6	F06	1326. "
3+74 Sely			5.1 06.8	07.8	F10	1325. "
3+79 Sely			5.1 06.8	07.8	F10	1323. "
CK BM			4.80 07.06 =	07.06	PK Nail @ Nashville	

ALLEY BLOCK 82 (CITY HEIGHTS)
 DWIGHT TO LANDIS, BETWEEN 37TH & 38TH
 ⑤ STAKES & GRDS for 6" A.C. WATER

MAR 25, 1952
 BEATTY
 SHREY
 MARTEL
 ALEXANDER

68.

Sta	Dist	Grd	Grd	Grd	Grd	Grd	Grd
B.M.	2.77	322.76		319.99		NW B.P.	37th & DWIGHT
		Bottom Exist 4" 8.8	314.00				Ground line & PIPE
0+35	6x4 REDUCER	5.3	317.5	313.8	C37		317.5
				316.9			317.5
0+40	BEGIN WORK	5.1	317.7	313.8	C37		317.5
				314.3			317.5
0+50		5.1	317.7	313.8	C37	0+50	317.5
				312.2			317.5
0+75		4.8	318.0	313.8	C42	0+75	317.5
1+00	8.52 330.77	7.8	322.25	316.4	C66	1+00	317.5
			323.0				317.5
1+50		5.8	325.0	320.6	C44		324.6
							32
2+00		4.3	326.5	322.2	C43		326.5
							32
2+50		3.0	327.8	323.8	C40		327.8
Pace	7.00	336.51	1.26	329.51			32
3+00		7.0	329.5	325.4	C41		329.5
							7.2
3+25	④	6.8	329.7	326.1	C36		329.7
							6.8
3+50		6.2	330.3	326.4	C32 ✓		329.9
							6
4+00	④	5.4	331.1	327.0	C41		330.8
							5.7
4+50		4.6	331.9	327.6	C43		331.2
							5.7
5+00		4.2	332.3	328.2	C41		332.3
							4.2
5+50		4.2	332.3	328.5	C38		4.0
				328.0			4.0
5+75		5.2	331.3	328.5	C33		4.9
							4.9
6+00		6.5	330.0	326.6	C34		6.3
				327.2			6.3
6+50		8.8	327.7	324.0	C37		8.9
				324.7			8.9

ALLEY BLK. 82

(Cont'd.)

3/25/54

69.

336.51

6+975	F.H. TEE	10.3	326.2	321.6		
H)	8.57	335.29	9.79	326.72	322.3	C46
(5)	F.H.		9.6	325.7	325.4	C03, C41
9+00				321.5	322.2	
7+25		11.1	324.2	320.9		C33
7+60	End Work	11.8	323.5	320.4		C31
P	0.22	331.70	3.81	331.48		
P	4.02	324.64	11.08	320.62		
CK BM			4.64	320.00		

WATER METERS.

1+08 W	11	330.77	7.7	323.1	321.5	C16
1+86 W			4.8	326.0	325.8	C02 ✓
1+97 E			4.3	326.5	326.0	C05
2+26 E			3.6	327.2	326.8	C04
2+28 W			3.6	327.2	326.9	C03
2+49 E			3.0	327.8	327.5	C03
2+90 E			1.9	328.9	328.7	C03
3+05 W	336.51		6.9	329.6	329.1	C05
3+59 W			6.0	330.5	330.2	C03
3+60 E			6.2	330.3	330.2	C01
3+79 E			5.8	330.7	330.5	C03
3+90 W			5.4	331.1	330.8	C03

ALLEY BLK 82

(Cont'd.)

WATER METS

336.51

4/29/54

70.

4+25 W	5.2	331.3	331.2	C01
4+42 E	4.7	331.8	331.2	C06
4+57 W	4.8	331.7	331.6	C01
4+90 W	3.9	332.6	332.0	C06
5+07 W	3.7	332.8	332.2	C06
5+21 E	4.1	332.4	332.1	C03
5+43 W	3.6	332.9	332.6	C03
5+55 E	4.1	332.4	332.1	C03
5+98 W	4.6	331.9	331.1	C08
6+20 E	7.2	329.3	329.5	F02
6+33 W	6.5	330.0	329.2	C08
6+34 W				
6+35 W	6.2	330.3	329.0	C13
6+53 E	8.8	327.7	327.5	C02

36TH ST.
GILMORE TO IMPERIAL AVE
GRADE FOR
EXISTING WATER METERS

MAR. 29TH 1954

BEATTY
SHOREY
MARTELL
ALEXANDER

71

BM. 12.15 76.39 64.24

TP 13.35 89.48 0.26 76.13

IP 11.44 100.46 0.46 89.02

SET TBM 9.31 102.16 7.01 92.85

0+00 = 3ly Prop. line Gilmore

0+41 W 8.9 93.3 94.5

0+80 W 7.0 95.2 95.0

0+87 E 6.6 95.6 94.6

0+88 E 6.6 95.6 94.6

1+30 E 5.9 96.3 94.9

1+74 E 5.5 96.7 95.2

1+80 E 5.4 96.8 95.2

2+01 E 5.8 96.4 95.3

2+27 W 3.8 98.4 96.5

2+48 E 6.3 95.9 95.8

2+87 W 5.0 97.2 97.0

3+01 E 5.7 96.5 96.1

3+18 W 4.4 97.8 97.1

3+84 W 4.3 97.9 96.9

4.25 101.42 4.99 97.17

4+04 E 5.4 96.0 95.9

Top FH
SE Cor 36TH & Oceanview

SE Cor Driveway SW Cor Gilmore

F12 320 36TH

C02 314 "

C10 - ?

C10 - ?

C14 279 "

C15 273 "

C16 - ?

C17 265 "

C19 272 "

C01 259 "

C02 264 "

C04 251 "

C07 256 "

C10 248 "

C01 - ?

36TH ST.
Cont'd.
WAT METS

3/29/54

72.

101.22

4+07 E.		5.3	96.1	95.9	C02	237	36 TH ST.
4+15 W		3.5	97.9	96.8	C1L	240	"
4+75 W		4.2	97.2	96.6	C06	232	"
5+18 E		5.2	96.2	95.4	C08	?	
5+70 E		5.2	96.2	95.0	C12	205	"
5+88 E		5.1	96.3	94.6	C12	3601	Imperial
\bar{D}	5.14	102.43	4.13	97.29			
CK TBM	4.57	97.42	9.58	92.85 = 92.85			
0+00 = Sly prop. line Gilmore							
0+10 W		5.1	92.3	93.8	F15		New house - no number
0+50 W		5.4	92.0	93.4	F14		330, 336, 36 TH
0+71 E		0.4	97.0	94.4	C26		315 36 TH
1+21 W		4.9	92.5	92.7	F02		348 "
1+37 E		1.2	96.2	93.8	C24		321 "
1+79 E		1.5	95.9	93.4	C25		325 "
2+26 W		7.4	90.0	91.3	F13		404 "
2+79 W		9.3	88.1	89.4	F13		410 "
2+87 E		5.9	91.5	90.3	C12		345 "
3+20 E		7.5	89.9	88.9	C10		405 "

36th ST.

3/29/54

73

Cont'd

WAT. METS

97.42

3+36 W		11.6	85.8	86.9	F1L	416	36 th ST.
3+56 E		8.7	88.7	87.3	C04	415	"
3+75 W	2.24	86.48	13.18	84.24			
		3.2	83.2	85.2	F19	422	"
4+16 W		4.9	81.6	83.2	F16	428	"
4+25 E		+0.2	86.7	83.9	C28	431	"
4+98 W		9.6	76.9	76.2	C02	444	"
5+25 E		6.8	79.7	73.4	C63	432, 435	"
P	0.40	73.74	13.10	73.34			
CK B.M.		9.51	64.23 = 64.24		Top FH. SE Cor 36 th & Oceanview		

EXCHANGE PLACE RESERVOIR
Northernly SIDE OF RES.

April 2, 1954
Beatty
Shorey
Martell
Alexander

74

14966 43' @ 28°55' = 37.64 out to Cor Frame House

14622 23' @ 43°30' = 16.68' out to Cor Frame Gar.

14428 22' @ 43°00' = 16.09 out to Cor Frame Garage

14347 34' @ 30°45' = ~~28.6~~ out to Cor Stucco House

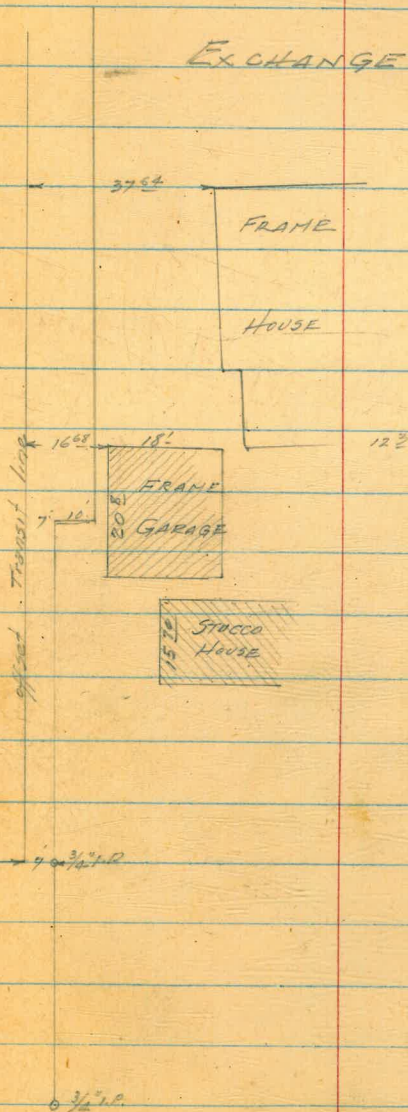
28.6 (THIS IS O.K. Beatty 7/2/55)

14190 34' @ 33°20' = 28.41 out to Cor Stucco House

045962

0400 Wly Prop line AL BANK

EXCHANGE PLACE



AL BANK ST

EXCHANG PLACE RESERVOIR
 Additional X-sections
 on Northernly SIDE
 See Also FB 7/19 50

4/3/54

75

LT. 514

N. 266.75

N. 254.68

RT. N14

Transit Line

TBM: 1.77 266.75 264.98

1471.6 ✓

1496.6 ✓

2415 - End A.C.

2416.6 ✓

2436.6 ✓

17 0.25 254.68 12.32 254.43

2458.6 ✓

17 1.84 243.67 12.85 241.83

2462 ✓

2470.6

2491.2 & Exchange Place

17 7.39 249.39 1.67 247.00

17 2.18 247.21 - 247.16 Nadiyaga Papita & Exchange Pl.

260.0
 2.8 2.9 0.87 0.29 0.29 0.29 1.2 3.9 6.6
 125 95 04 02 5 07 1 2 6
 CURS FEN
 RES.

265.75
 266.25
 266.75
 267.25
 267.75
 268.25
 268.75
 269.25
 269.75
 270.25
 270.75
 271.25
 271.75
 272.25
 272.75
 273.25
 273.75
 274.25
 274.75
 275.25
 275.75
 276.25
 276.75
 277.25
 277.75
 278.25
 278.75
 279.25
 279.75
 280.25
 280.75
 281.25
 281.75
 282.25
 282.75
 283.25
 283.75
 284.25
 284.75
 285.25
 285.75
 286.25
 286.75
 287.25
 287.75
 288.25
 288.75
 289.25
 289.75
 290.25
 290.75
 291.25
 291.75
 292.25
 292.75
 293.25
 293.75
 294.25
 294.75
 295.25
 295.75
 296.25
 296.75
 297.25
 297.75
 298.25
 298.75
 299.25
 299.75
 300.25
 300.75
 301.25
 301.75
 302.25
 302.75
 303.25
 303.75
 304.25
 304.75
 305.25
 305.75
 306.25
 306.75
 307.25
 307.75
 308.25
 308.75
 309.25
 309.75
 310.25
 310.75
 311.25
 311.75
 312.25
 312.75
 313.25
 313.75
 314.25
 314.75
 315.25
 315.75
 316.25
 316.75
 317.25
 317.75
 318.25
 318.75
 319.25
 319.75
 320.25
 320.75
 321.25
 321.75
 322.25
 322.75
 323.25
 323.75
 324.25
 324.75
 325.25
 325.75
 326.25
 326.75
 327.25
 327.75
 328.25
 328.75
 329.25
 329.75
 330.25
 330.75
 331.25
 331.75
 332.25
 332.75
 333.25
 333.75
 334.25
 334.75
 335.25
 335.75
 336.25
 336.75
 337.25
 337.75
 338.25
 338.75
 339.25
 339.75
 340.25
 340.75
 341.25
 341.75
 342.25
 342.75
 343.25
 343.75
 344.25
 344.75
 345.25
 345.75
 346.25
 346.75
 347.25
 347.75
 348.25
 348.75
 349.25
 349.75
 350.25
 350.75
 351.25
 351.75
 352.25
 352.75
 353.25
 353.75
 354.25
 354.75
 355.25
 355.75
 356.25
 356.75
 357.25
 357.75
 358.25
 358.75
 359.25
 359.75
 360.25
 360.75
 361.25
 361.75
 362.25
 362.75
 363.25
 363.75
 364.25
 364.75
 365.25
 365.75
 366.25
 366.75
 367.25
 367.75
 368.25
 368.75
 369.25
 369.75
 370.25
 370.75
 371.25
 371.75
 372.25
 372.75
 373.25
 373.75
 374.25
 374.75
 375.25
 375.75
 376.25
 376.75
 377.25
 377.75
 378.25
 378.75
 379.25
 379.75
 380.25
 380.75
 381.25
 381.75
 382.25
 382.75
 383.25
 383.75
 384.25
 384.75
 385.25
 385.75
 386.25
 386.75
 387.25
 387.75
 388.25
 388.75
 389.25
 389.75
 390.25
 390.75
 391.25
 391.75
 392.25
 392.75
 393.25
 393.75
 394.25
 394.75
 395.25
 395.75
 396.25
 396.75
 397.25
 397.75
 398.25
 398.75
 399.25
 399.75
 400.25
 400.75
 401.25
 401.75
 402.25
 402.75
 403.25
 403.75
 404.25
 404.75
 405.25
 405.75
 406.25
 406.75
 407.25
 407.75
 408.25
 408.75
 409.25
 409.75
 410.25
 410.75
 411.25
 411.75
 412.25
 412.75
 413.25
 413.75
 414.25
 414.75
 415.25
 415.75
 416.25
 416.75
 417.25
 417.75
 418.25
 418.75
 419.25
 419.75
 420.25
 420.75
 421.25
 421.75
 422.25
 422.75
 423.25
 423.75
 424.25
 424.75
 425.25
 425.75
 426.25
 426.75
 427.25
 427.75
 428.25
 428.75
 429.25
 429.75
 430.25
 430.75
 431.25
 431.75
 432.25
 432.75
 433.25
 433.75
 434.25
 434.75
 435.25
 435.75
 436.25
 436.75
 437.25
 437.75
 438.25
 438.75
 439.25
 439.75
 440.25
 440.75
 441.25
 441.75
 442.25
 442.75
 443.25
 443.75
 444.25
 444.75
 445.25
 445.75
 446.25
 446.75
 447.25
 447.75
 448.25
 448.75
 449.25
 449.75
 450.25
 450.75
 451.25
 451.75
 452.25
 452.75
 453.25
 453.75
 454.25
 454.75
 455.25
 455.75
 456.25
 456.75
 457.25
 457.75
 458.25
 458.75
 459.25
 459.75
 460.25
 460.75
 461.25
 461.75
 462.25
 462.75
 463.25
 463.75
 464.25
 464.75
 465.25
 465.75
 466.25
 466.75
 467.25
 467.75
 468.25
 468.75
 469.25
 469.75
 470.25
 470.75
 471.25
 471.75
 472.25
 472.75
 473.25
 473.75
 474.25
 474.75
 475.25
 475.75
 476.25
 476.75
 477.25
 477.75
 478.25
 478.75
 479.25
 479.75
 480.25
 480.75
 481.25
 481.75
 482.25
 482.75
 483.25
 483.75
 484.25
 484.75
 485.25
 485.75
 486.25
 486.75
 487.25
 487.75
 488.25
 488.75
 489.25
 489.75
 490.25
 490.75
 491.25
 491.75
 492.25
 492.75
 493.25
 493.75
 494.25
 494.75
 495.25
 495.75
 496.25
 496.75
 497.25
 497.75
 498.25
 498.75
 499.25
 499.75
 500.25
 500.75
 501.25
 501.75
 502.25
 502.75
 503.25
 503.75
 504.25
 504.75
 505.25
 505.75
 506.25
 506.75
 507.25
 507.75
 508.25
 508.75
 509.25
 509.75
 510.25
 510.75
 511.25
 511.75
 512.25
 512.75
 513.25
 513.75
 514.25
 514.75
 515.25
 515.75
 516.25
 516.75
 517.25
 517.75
 518.25
 518.75
 519.25
 519.75
 520.25
 520.75
 521.25
 521.75
 522.25
 522.75
 523.25
 523.75
 524.25
 524.75
 525.25
 525.75
 526.25
 526.75
 527.25
 527.75
 528.25
 528.75
 529.25
 529.75
 530.25
 530.75
 531.25
 531.75
 532.25
 532.75
 533.25
 533.75
 534.25
 534.75
 535.25
 535.75
 536.25
 536.75
 537.25
 537.75
 538.25
 538.75
 539.25
 539.75
 540.25
 540.75
 541.25
 541.75
 542.25
 542.75
 543.25
 543.75
 544.25
 544.75
 545.25
 545.75
 546.25
 546.75
 547.25
 547.75
 548.25
 548.75
 549.25
 549.75
 550.25
 550.75
 551.25
 551.75
 552.25
 552.75
 553.25
 553.75
 554.25
 554.75
 555.25
 555.75
 556.25
 556.75
 557.25
 557.75
 558.25
 558.75
 559.25
 559.75
 560.25
 560.75
 561.25
 561.75
 562.25
 562.75
 563.25
 563.75
 564.25
 564.75
 565.25
 565.75
 566.25
 566.75
 567.25
 567.75
 568.25
 568.75
 569.25
 569.75
 570.25
 570.75
 571.25
 571.75
 572.25
 572.75
 573.25
 573.75
 574.25
 574.75
 575.25
 575.75
 576.25
 576.75
 577.25
 577.75
 578.25
 578.75
 579.25
 579.75
 580.25
 580.75
 581.25
 581.75
 582.25
 582.75
 583.25
 583.75
 584.25
 584.75
 585.25
 585.75
 586.25
 586.75
 587.25
 587.75
 588.25
 588.75
 589.25
 589.75
 590.25
 590.75
 591.25
 591.75
 592.25
 592.75
 593.25
 593.75
 594.25
 594.75
 595.25
 595.75
 596.25
 596.75
 597.25
 597.75
 598.25
 598.75
 599.25
 599.75
 600.25
 600.75
 601.25
 601.75
 602.25
 602.75
 603.25
 603.75
 604.25
 604.75
 605.25
 605.75
 606.25
 606.75
 607.25
 607.75
 608.25
 608.75
 609.25
 609.75
 610.25
 610.75
 611.25
 611.75
 612.25
 612.75
 613.25
 613.75
 614.25
 614.75
 615.25
 615.75
 616.25
 616.75
 617.25
 617.75
 618.25
 618.75
 619.25
 619.75
 620.25
 620.75
 621.25
 621.75
 622.25
 622.75
 623.25
 623.75
 624.25
 624.75
 625.25
 625.75
 626.25
 626.75
 627.25
 627.75
 628.25
 628.75
 629.25
 629.75
 630.25
 630.75
 631.25
 631.75
 632.25
 632.75
 633.25
 633.75
 634.25
 634.75
 635.25
 635.75
 636.25
 636.75
 637.25
 637.75
 638.25
 638.75
 639.25
 639.75
 640.25
 640.75
 641.25
 641.75
 642.25
 642.75
 643.25
 643.75
 644.25
 644.75
 645.25
 645.75
 646.25
 646.75
 647.25
 647.75
 648.25
 648.75
 649.25
 649.75
 650.25
 650.75
 651.25
 651.75
 652.25
 652.75
 653.25
 653.75
 654.25
 654.75
 655.25
 655.75
 656.25
 656.75
 657.25
 657.75
 658.25
 658.75
 659.25
 659.75
 660.25
 660.75
 661.25
 661.75
 662.25
 662.75
 663.25
 663.75
 664.25
 664.75
 665.25
 665.75
 666.25
 666.75
 667.25
 667.75
 668.25
 668.75
 669.25
 669.75
 670.25
 670.75
 671.25
 671.75
 672.25
 672.75
 673.25
 673.75
 674.25
 674.75
 675.25
 675.75
 676.25
 676.75
 677.25
 677.75
 678.25
 678.75
 679.25
 679.75
 680.25
 680.75
 681.25
 681.75
 682.25
 682.75
 683.25
 683.75
 684.25
 684.75
 685.25
 685.75
 686.25
 686.75
 687.25
 687.75
 688.25
 688.75
 689.25
 689.75
 690.25
 690.75
 691.25
 691.75
 692.25
 692.75
 693.25
 693.75
 694.25
 694.75
 695.25
 695.75
 696.25
 696.75
 697.25
 697.75
 698.25
 698.75
 699.25
 699.75
 700.25
 700.75
 701.25
 701.75
 702.25
 702.75
 703.25
 703.75
 704.25
 704.75
 705.25
 705.75
 706.25
 706.75
 707.25
 707.75
 708.25
 708.75
 709.25
 709.75
 710.25
 710.75
 711.25
 711.75
 712.25
 712.75
 713.25
 713.75
 714.25
 714.75
 715.25
 715.75
 716.25
 716.75
 717.25
 717.75
 718.25
 718.75
 719.25
 719.75
 720.25
 720.75
 721.25
 721.75
 722.25
 722.75
 723.25
 723.75
 724.25
 724.75
 725.25
 725.75
 726.25
 726.75
 727.25
 727.75
 728.25
 728.75
 729.25
 729.75
 730.25
 730.75
 731.25
 731.75
 732.25
 732.75
 733.25
 733.75
 734.25
 734.75
 735.25
 735.75
 736.25
 736.75
 737.25
 737.75
 738.25
 738.75
 739.25
 739.75
 740.25
 740.75
 741.25
 741.75
 742.25
 742.75
 743.25
 743.75
 744.25
 744.75
 745.25
 745.75
 746.25
 746.75
 747.25
 747.75
 748.25
 748.75
 749.25
 749.75
 750.25
 750.75
 751.25
 751.75
 752.25
 752.75
 753.25
 753.75
 754.25
 754.75
 755.25
 755.75
 756.25
 756.75
 757.25
 757.75
 758.25
 758.75
 759.25
 759.75
 760.25
 760.75
 761.25
 761.75
 762.25
 762.75
 763.25
 763.75
 764.25
 764.75
 765.25
 765.75
 766.25
 766.75
 767.25
 767.75
 768.25
 768.75
 769.25
 769.75
 770.25
 770.75
 771.25
 771.75
 772.25
 772.75
 773.25
 773.75

EXCHANGE PLACE RESERVOIR
 ADDITIONAL CROSS-SECTIONS
 FOR
 NORTH BANK STABILIZATION
 (W.O. 27890)

TBM	0.81	265.79		264.98
HP	0.55	253.24	13.10	252.69
HP	0.02	240.16	13.10	240.14
HP	9.28	239.63	9.81	230.35

0-1725 Edge Conc. pmt.

0-10

0+00 (Prop. line AL BANK ST)

HP 12.10 251.50 0.23 239.00

0+05

0+10

0+15

0+20

0+25

Prop.
Line

May 2, 1955
 Beatty
 Shroyer
 MONTGOMERY
 KELLINGER

76

NOTE: See SKETCHES FB. 787 pp 50; This Book pp 74.

End of CURB NE. COC RESERVOIR DRIVEWAY.

LT. (Sly)

RT. (Nly)

230.25 230.15 230.01
 9.38 9.30 9.62
 10 9 10

231.6 231.4 230.95 231.07
 8.0 8.2 8.68 8.56
 10 0 3 15
 Conc
 Driveway

235.5 235.0 235.0 232.93 232.82
 4.1 4.6 4.6 6.70 6.81
 10 0 1 2 12
 Conc
 Driveway

Dense
Brush.

237.9 238.1 238.0 237.2 234.2 233.8
 13.6 12.4 12.5 14.3 17.7 17.7
 10 0 0.5 2 3 14
 Conc
 Driveway

240.3 239.9 239.8 235.2 235.1
 11.2 11.6 11.7 16.3 16.2
 10 0 1 3 12
 Conc
 Driveway

241.8 241.6 241.4 236.6 236.6
 9.7 9.9 10.1 14.9 14.9
 10 0 2 4 15
 Conc
 Driveway

243.9 244.3 243.8 237.3 237.4
 7.7 7.2 7.7 14.2 14.1
 10 0 3 5.5 16.5
 Conc

245.6 245.6 245.0 238.3 238.5
 5.9 5.9 6.5 13.2 13.0
 5 0 2 7 17
 Conc
 Driveway

EXCHANGE PLACE RES.
(Cont'd.)

5/2/55

77

251.50

0430

0435

0440

TP

0445

0450

0455

TP

0459⁶³

0465

0468

0470

0475

CK TBM

0480

0485

0490

0495

1400

12.81 262.93 1.38 250.12

4.41 766.84 0.50 262.43

1.87 264.97 = 264.98

4
ON
PROP.
LINE

E
7' 5 1/2
of
PROP.
LINE

Dense
Brush

Edge Conc
Curb wall

(END CONC CURB &
DRIVEWAY 12' LT
04838

@ FOR

AC 13

@ FOR

AC

@ FOR

AC

2478 2476 2469 2464 2396 2398
3.7 3.9 4.6 5.1 11.90 11.70
10 5 2 6 9 18

Conc
Driveway

2490 2487 2485 2481 2412 2415
2.5 2.6 3.0 3.4 10.3 10.35
.10 5 2 82 9

2511 2509 2502 2487 2419 2417
2.4 4.6 4 2.8 10.2 9.23
10 5 2 82 AC AC Conc Dr

2549 2540 2530 2531 2518 251 2421 2422
8.0 8.9 9.2 9.1 11.12.8 20.8 20.7
20 10 2 10 7 10 11 AC 20

2607 2606 2597 2563 2533 2537 2527 2422
2.2 2.3 3.2 6.6 7.6 9.2 10.2 20.7
13 10 5 2 11 12.5 13.5 Edge AC

2629 2620 2599 2589 2573 2552 2422
2.0 2.9 3.0 4.0 3.6 3.7 20.7
16 9 2 2 3 7 11 Edge AC

2627 2624 2607 2595 2574 2547
4.1 4.4 6.1 7.3 9.4 12.1 23.1
13.2 7 3 2 5 10 11.5 Edge AC

2633 2632 2630 2599 2551 2438
Edge Conc 3.5 3.6 3.8 3.9 11.7 23.0
Curb 2 2 11 15.5 17 Edge AC

243.7 263.3 259.2 255.0 243.8
3.1 3.5 3.6 4.8 23.0
2 2 8.5 15.2 17 Edge AC

263.8 263.8 263.5 260.5 258.6 246.3
Edge Conc 3.8 3.8 3.3 6.3 8.2 11.2 20.5
Curb 3 2 7 10.5 13.5 15 Edge
Black
wall

264.0 264.1 264.0 261.6 260.1 244.8
2.8 2.7 2.8 3.2 6.7 22.0
2 2 2 4 11

264.5 264.4 264.2 260.1 244.8
Edge Conc 2.3 2.4 2.6 6.7 22.0
Curb 1.5 2 2 8.5 10

(END CONC CURB &
DRIVEWAY 12' LT
04838

265.45 265.01 264.87 265.37 265.37 265.71 264.9 264.8
1.39 1.53 1.97 1.47 1.47 1.27 1.9 2.2 6.2 2.1
AC 13 10 0.8 0.8 0.8 0.8 2 7.5 2.1

265.48 265.09 265.0 265.0 265.5 265.5 264.9 264.6 264.6
1.36 1.77 1.6 1.8 1.8 1.3 1.9 2.2 6.2 2.1
AC 11 8.5 0.5 0.7 1.4 1.8 3 6 8.5 10

265.5 265.2 265.1 265.1 265.1 265.1 264.8 264.8
1.2 1.6 1.7 1.7 1.7 1.7 1.9 2.2 6.2 2.1
AC 9.2 7 2 1 1.3 1.3 2.4 3 7 12.5 14

244.7

EXCHANGE PLACE RES.
(Cont'd)

5/2/55

79.

266.84

LT

RT

1495

2400

2405

2410

2415

2418

2420

2425

2430

2435

2440

2445

2450

2460

2465

2470

2470³

R

EX 24

1.02 257.65 10.21 256.63

1.01 245.69 12.97 244.68

2.66 247.31 1.04 244.65

0.06 247.25 = 247.16

17' sly
of
PROP.
LINE

2657	2658	2659	2660	2661	2662	2663	2664	2665	2666	2667	2668	2669	2670	2671	2672	2673	2674	2675	2676	2677	2678	2679	2680	2681	2682	2683	2684	2685	2686	2687	2688	2689	2690	2691	2692	2693	2694	2695	2696	2697	2698	2699	2700	2701	2702	2703	2704	2705	2706	2707	2708	2709	2710	2711	2712	2713	2714	2715	2716	2717	2718	2719	2720	2721	2722	2723	2724	2725	2726	2727	2728	2729	2730	2731	2732	2733	2734	2735	2736	2737	2738	2739	2740	2741	2742	2743	2744	2745	2746	2747	2748	2749	2750	2751	2752	2753	2754	2755	2756	2757	2758	2759	2760	2761	2762	2763	2764	2765	2766	2767	2768	2769	2770	2771	2772	2773	2774	2775	2776	2777	2778	2779	2780	2781	2782	2783	2784	2785	2786	2787	2788	2789	2790	2791	2792	2793	2794	2795	2796	2797	2798	2799	2800	2801	2802	2803	2804	2805	2806	2807	2808	2809	2810	2811	2812	2813	2814	2815	2816	2817	2818	2819	2820	2821	2822	2823	2824	2825	2826	2827	2828	2829	2830	2831	2832	2833	2834	2835	2836	2837	2838	2839	2840	2841	2842	2843	2844	2845	2846	2847	2848	2849	2850	2851	2852	2853	2854	2855	2856	2857	2858	2859	2860	2861	2862	2863	2864	2865	2866	2867	2868	2869	2870	2871	2872	2873	2874	2875	2876	2877	2878	2879	2880	2881	2882	2883	2884	2885	2886	2887	2888	2889	2890	2891	2892	2893	2894	2895	2896	2897	2898	2899	2900	2901	2902	2903	2904	2905	2906	2907	2908	2909	2910	2911	2912	2913	2914	2915	2916	2917	2918	2919	2920	2921	2922	2923	2924	2925	2926	2927	2928	2929	2930	2931	2932	2933	2934	2935	2936	2937	2938	2939	2940	2941	2942	2943	2944	2945	2946	2947	2948	2949	2950	2951	2952	2953	2954	2955	2956	2957	2958	2959	2960	2961	2962	2963	2964	2965	2966	2967	2968	2969	2970	2971	2972	2973	2974	2975	2976	2977	2978	2979	2980	2981	2982	2983	2984	2985	2986	2987	2988	2989	2990	2991	2992	2993	2994	2995	2996	2997	2998	2999	3000
------	------	------	------	------	------	------	------	------	------	------	------	------	------	------	------	------	------	------	------	------	------	------	------	------	------	------	------	------	------	------	------	------	------	------	------	------	------	------	------	------	------	------	------	------	------	------	------	------	------	------	------	------	------	------	------	------	------	------	------	------	------	------	------	------	------	------	------	------	------	------	------	------	------	------	------	------	------	------	------	------	------	------	------	------	------	------	------	------	------	------	------	------	------	------	------	------	------	------	------	------	------	------	------	------	------	------	------	------	------	------	------	------	------	------	------	------	------	------	------	------	------	------	------	------	------	------	------	------	------	------	------	------	------	------	------	------	------	------	------	------	------	------	------	------	------	------	------	------	------	------	------	------	------	------	------	------	------	------	------	------	------	------	------	------	------	------	------	------	------	------	------	------	------	------	------	------	------	------	------	------	------	------	------	------	------	------	------	------	------	------	------	------	------	------	------	------	------	------	------	------	------	------	------	------	------	------	------	------	------	------	------	------	------	------	------	------	------	------	------	------	------	------	------	------	------	------	------	------	------	------	------	------	------	------	------	------	------	------	------	------	------	------	------	------	------	------	------	------	------	------	------	------	------	------	------	------	------	------	------	------	------	------	------	------	------	------	------	------	------	------	------	------	------	------	------	------	------	------	------	------	------	------	------	------	------	------	------	------	------	------	------	------	------	------	------	------	------	------	------	------	------	------	------	------	------	------	------	------	------	------	------	------	------	------	------	------	------	------	------	------	------	------	------	------	------	------	------	------	------	------	------	------	------	------	------	------	------	------	------	------	------	------	------

2450 Century plant

NAIL IN R. POLE

INDEX (Cont'd)

GRADES SET FOR Country Club Res Hillside Dr 60-63
Elevs Top of PL Texas St & Mission Valley Rd
Alvarado & Camp Elliott CONNECTION.

LEHIGH ST, TONOPAH TO MORENA, WAT METS 66

NASHVILLE ST, TONOPAH TO MORENA, WAT METS 67 ✓

Alley BLK 82, ^{BETWEEN 37TH & 38TH} DWIGHT TO LANDIS, 6" WATER 68-70

EXCHANGE PLACE RES, Additional X-Sections 74 ✓

" " " " " 75 ✓
" " " " " 76-79 ✓

Alice - 2-21-58

64
65 m 80

Alice

Alice

Alice

Alice

Alice

65.46

5' 47"

.0117

75.822

65.46

65.46

.9883

76.58.82

65.46

76

64.70

No

50

4.06

384

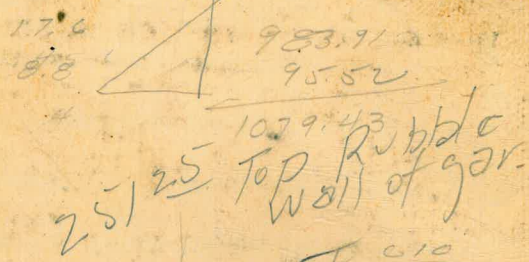
22

7007-117.84

22
11
25° 32' LEFT
25° 16' RT

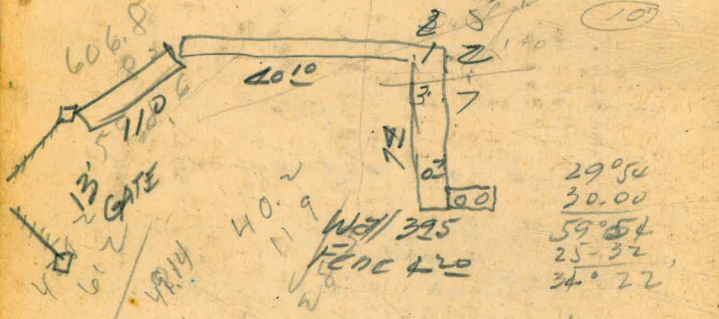
496.89
1.01
497.90

GRADE
Elevs
Alvarado



LEHIGH
NASHUA
ALLEY
EXCH

35
35
125
122.5



29.94
30.00
59.54
25.32
34.22

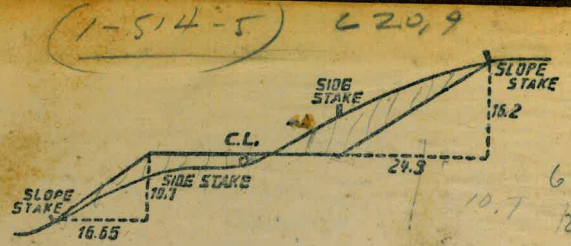
628.3
1387
642.7
504
37.13

3400 to
9+322
285 to stucco house

50.61

42.17
2.94
79.77

1+20 17.5
0+80 10.5
0+70 15+



DISTANCES FROM SIDE STAKES FOR CROSS-SECTIONING.
SLOPE 1 1/2 TO 1. ROADWAY OF ANY WIDTH.

	0	.1	.2	.3	.4	.5	.6	.7	.8	.9	
0	0.00	0.15	0.30	0.45	0.60	0.75	0.90	1.05	1.20	1.35	0
1	1.50	1.65	1.80	1.95	2.10	2.25	2.40	2.55	2.70	2.85	1
2	3.00	3.15	3.30	3.45	3.60	3.75	3.90	4.05	4.20	4.35	2
3	4.50	4.65	4.80	4.95	5.10	5.25	5.40	5.55	5.70	5.85	3
4	6.00	6.15	6.30	6.45	6.60	6.75	6.90	7.05	7.20	7.35	4
5	7.50	7.65	7.80	7.95	8.10	8.25	8.40	8.55	8.70	8.85	5
6	9.00	9.15	9.30	9.45	9.60	9.75	9.90	10.05	10.20	10.35	6
7	10.50	10.65	10.80	10.95	11.10	11.25	11.40	11.55	11.70	11.85	7
8	12.00	12.15	12.30	12.45	12.60	12.75	12.90	13.05	13.20	13.35	8
9	13.50	13.65	13.80	13.95	14.10	14.25	14.40	14.55	14.70	14.85	9
10	15.00	15.15	15.30	15.45	15.60	15.75	15.90	16.05	16.20	16.35	10
11	16.50	16.65	16.80	16.95	17.10	17.25	17.40	17.55	17.70	17.85	11
12	18.00	18.15	18.30	18.45	18.60	18.75	18.90	19.05	19.20	19.35	12
13	19.50	19.65	19.80	19.95	20.10	20.25	20.40	20.55	20.70	20.85	13
14	21.00	21.15	21.30	21.45	21.60	21.75	21.90	22.05	22.20	22.35	14
15	22.50	22.65	22.80	22.95	23.10	23.25	23.40	23.55	23.70	23.85	15
16	24.00	24.15	24.30	24.45	24.60	24.75	24.90	25.05	25.20	25.35	16
17	25.50	25.65	25.80	25.95	26.10	26.25	26.40	26.55	26.70	26.85	17
18	27.00	27.15	27.30	27.45	27.60	27.75	27.90	28.05	28.20	28.35	18
19	28.50	28.65	28.80	28.95	29.10	29.25	29.40	29.55	29.70	29.85	19
20	30.00	30.15	30.30	30.45	30.60	30.75	30.90	31.05	31.20	31.35	20
21	31.50	31.65	31.80	31.95	32.10	32.25	32.40	32.55	32.70	32.85	21
22	33.00	33.15	33.30	33.45	33.60	33.75	33.90	34.05	34.20	34.35	22
23	34.50	34.65	34.80	34.95	35.10	35.25	35.40	35.55	35.70	35.85	23
24	36.00	36.15	36.30	36.45	36.60	36.75	36.90	37.05	37.20	37.35	24
25	37.50	37.65	37.80	37.95	38.10	38.25	38.40	38.55	38.70	38.85	25
26	39.00	39.15	39.30	39.45	39.60	39.75	39.90	40.05	40.20	40.35	26
27	40.50	40.65	40.80	40.95	41.10	41.25	41.40	41.55	41.70	41.85	27
28	42.00	42.15	42.30	42.45	42.60	42.75	42.90	43.05	43.20	43.35	28
29	43.50	43.65	43.80	43.95	44.10	44.25	44.40	44.55	44.70	44.85	29
30	45.00	45.15	45.30	45.45	45.60	45.75	45.90	46.05	46.20	46.35	30
31	46.50	46.65	46.80	46.95	47.10	47.25	47.40	47.55	47.70	47.85	31
32	48.00	48.15	48.30	48.45	48.60	48.75	48.90	49.05	49.20	49.35	32
33	49.50	49.65	49.80	49.95	50.10	50.25	50.40	50.55	50.70	50.85	33
34	51.00	51.15	51.30	51.45	51.60	51.75	51.90	52.05	52.20	52.35	34
35	52.50	52.65	52.80	52.95	53.10	53.25	53.40	53.55	53.70	53.85	35
36	54.00	54.15	54.30	54.45	54.60	54.75	54.90	55.05	55.20	55.35	36
37	55.50	55.65	55.80	55.95	56.10	56.25	56.40	56.55	56.70	56.85	37
38	57.00	57.15	57.30	57.45	57.60	57.75	57.90	58.05	58.20	58.35	38
39	58.50	58.65	58.80	58.95	59.10	59.25	59.40	59.55	59.70	59.85	39
40	60.00	60.15	60.30	60.45	60.60	60.75	60.90	61.05	61.20	61.35	40
41	61.50	61.65	61.80	61.95	62.10	62.25	62.40	62.55	62.70	62.85	41
42	63.00	63.15	63.30	63.45	63.60	63.75	63.90	64.05	64.20	64.35	42
43	64.50	64.65	64.80	64.95	65.10	65.25	65.40	65.55	65.70	65.85	43
44	66.00	66.15	66.30	66.45	66.60	66.75	66.90	67.05	67.20	67.35	44
45	67.50	67.65	67.80	67.95	68.10	68.25	68.40	68.55	68.70	68.85	45
46	69.00	69.15	69.30	69.45	69.60	69.75	69.90	70.05	70.20	70.35	46
47	70.50	70.65	70.80	70.95	71.10	71.25	71.40	71.55	71.70	71.85	47
48	72.00	72.15	72.30	72.45	72.60	72.75	72.90	73.05	73.20	73.35	48
49	73.50	73.65	73.80	73.95	74.10	74.25	74.40	74.55	74.70	74.85	49
50	75.00	75.15	75.30	75.45	75.60	75.75	75.90	76.05	76.20	76.35	50

THE NATIONAL BLANK BOOK COMPANY
HOLYOKE MASSACHUSETTS
NEW YORK CHICAGO BOSTON SAN FRANCISCO