

76
W 76

TRANSIT BOOK.

No. 389 T

Albion 607 Second St
 Knoxville 3948 Chavela St
 Hills 1717 W.

DEPARTMENT OF WATER
 ENGINEERING DIVISION
 SAN DIEGO, CALIFORNIA
 Supt. _____ Hyd. Eng. _____
 Scale _____ Date _____

Room ⁹⁰³ 269 Civic Center
 # 76

MICROFILMED
 JAN 6 1965

1486
 5306
 2077

72002

EUGENE DIETZGEN CO.
 Drawing Materials and Surveying Instruments
 NEW YORK. CHICAGO. SAN FRANCISCO.

TABLES FOR EXCAVATIONS AND EMBANKMENTS
 DISTANCES FROM CENTER OF ROADWAY FOR CROSS-SECTIONING
 ROADWAY 20 FEET WIDE. SIDE SLOPES 1 TO 1.
 FOR SINGLE TRACK EXCAVATION.

Copyright, 1902. No. 39340.

	0	.1	.2	.3	.4	.5	.6	.7	.8	.9	
0	10.0	10.1	10.2	10.3	10.4	10.5	10.6	10.7	10.8	10.9	0
1	11.0	11.1	11.2	11.3	11.4	11.5	11.6	11.7	11.8	11.9	1
2	12.0	12.1	12.2	12.3	12.4	12.5	12.6	12.7	12.8	12.9	2
3	13.0	13.1	13.2	13.3	13.4	13.5	13.6	13.7	13.8	13.9	3
4	14.0	14.1	14.2	14.3	14.4	14.5	14.6	14.7	14.8	14.9	4
5	15.0	15.1	15.2	15.3	15.4	15.5	15.6	15.7	15.8	15.9	5
6	16.0	16.1	16.2	16.3	16.4	16.5	16.6	16.7	16.8	16.9	6
7	17.0	17.1	17.2	17.3	17.4	17.5	17.6	17.7	17.8	17.9	7
8	18.0	18.1	18.2	18.3	18.4	18.5	18.6	18.7	18.8	18.9	8
9	19.0	19.1	19.2	19.3	19.4	19.5	19.6	19.7	19.8	19.9	9
10	20.0	20.1	20.2	20.3	20.4	20.5	20.6	20.7	20.8	20.9	10
11	21.0	21.1	21.2	21.3	21.4	21.5	21.6	21.7	21.8	21.9	11
12	22.0	22.1	22.2	22.3	22.4	22.5	22.6	22.7	22.8	22.9	12
13	23.0	23.1	23.2	23.3	23.4	23.5	23.6	23.7	23.8	23.9	13
14	24.0	24.1	24.2	24.3	24.4	24.5	24.6	24.7	24.8	24.9	14
15	25.0	25.1	25.2	25.3	25.4	25.5	25.6	25.7	25.8	25.9	15
16	26.0	26.1	26.2	26.3	26.4	26.5	26.6	26.7	26.8	26.9	16
17	27.0	27.1	27.2	27.3	27.4	27.5	27.6	27.7	27.8	27.9	17
18	28.0	28.1	28.2	28.3	28.4	28.5	28.6	28.7	28.8	28.9	18
19	29.0	29.1	29.2	29.3	29.4	29.5	29.6	29.7	29.8	29.9	19
20	30.0	30.1	30.2	30.3	30.4	30.5	30.6	30.7	30.8	30.9	20
21	31.0	31.1	31.2	31.3	31.4	31.5	31.6	31.7	31.8	31.9	21
22	32.0	32.1	32.2	32.3	32.4	32.5	32.6	32.7	32.8	32.9	22
23	33.0	33.1	33.2	33.3	33.4	33.5	33.6	33.7	33.8	33.9	23
24	34.0	34.1	34.2	34.3	34.4	34.5	34.6	34.7	34.8	34.9	24
25	35.0	35.1	35.2	35.3	35.4	35.5	35.6	35.7	35.8	35.9	25
26	36.0	36.1	36.2	36.3	36.4	36.5	36.6	36.7	36.8	36.9	26
27	37.0	37.1	37.2	37.3	37.4	37.5	37.6	37.7	37.8	37.9	27
28	38.0	38.1	38.2	38.3	38.4	38.5	38.6	38.7	38.8	38.9	28
29	39.0	39.1	39.2	39.3	39.4	39.5	39.6	39.7	39.8	39.9	29
30	40.0	40.1	40.2	40.3	40.4	40.5	40.6	40.7	40.8	40.9	30
31	41.0	41.1	41.2	41.3	41.4	41.5	41.6	41.7	41.8	41.9	31
32	42.0	42.1	42.2	42.3	42.4	42.5	42.6	42.7	42.8	42.9	32
33	43.0	43.1	43.2	43.3	43.4	43.5	43.6	43.7	43.8	43.9	33
34	44.0	44.1	44.2	44.3	44.4	44.5	44.6	44.7	44.8	44.9	34
35	45.0	45.1	45.2	45.3	45.4	45.5	45.6	45.7	45.8	45.9	35
36	46.0	46.1	46.2	46.3	46.4	46.5	46.6	46.7	46.8	46.9	36
37	47.0	47.1	47.2	47.3	47.4	47.5	47.6	47.7	47.8	47.9	37
38	48.0	48.1	48.2	48.3	48.4	48.5	48.6	48.7	48.8	48.9	38
39	49.0	49.1	49.2	49.3	49.4	49.5	49.6	49.7	49.8	49.9	39
40	50.0	50.1	50.2	50.3	50.4	50.5	50.6	50.7	50.8	50.9	40

Calculated by F. E. Paradis, C. E.

About 1915 A.D.

Index

Page

Ties on Bonita Line 1-6

CATHODIC PROTECTION

Horton's Purch. Lot 39 8-10

Los Alturas Lots 1+2 11-12

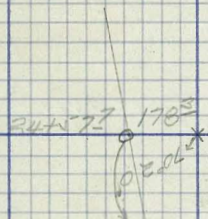
" " " 1+19 13

BONITA PIPELINE R.O.W. ✓ 15-30

& PROPOSED PIPELINE

DETAILS

msd

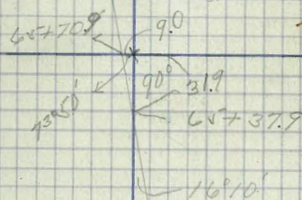
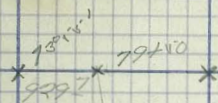


18739.9

2471

10770.9

1335
2215



2975

3916.45

38737.4

90°
573.1

$41^{\circ} 03'$
 1074124
 1641

937292

7733
 7342 * cor.

* cor.

48
 1041

$62^{\circ} 30'$
 1112

7

Survey for
CATHODIC PROTECTION

8

Lot 39

Hortons Purchase

2/6/40

Beermann

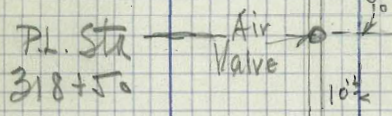
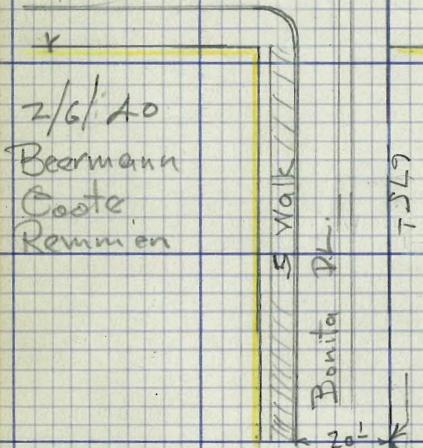
Cooto

Remmen

See detail on opposite page

MARKET ST.

ARTH ST.

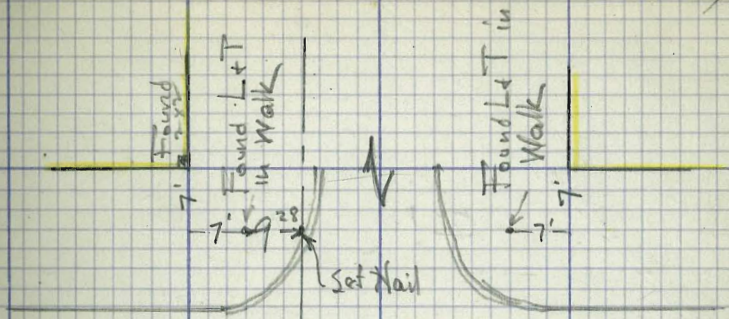


Lot 39

300'

HORTONS PURCHASE

Lot 39



Lot 38
Lot 39

Set Hub
1x2

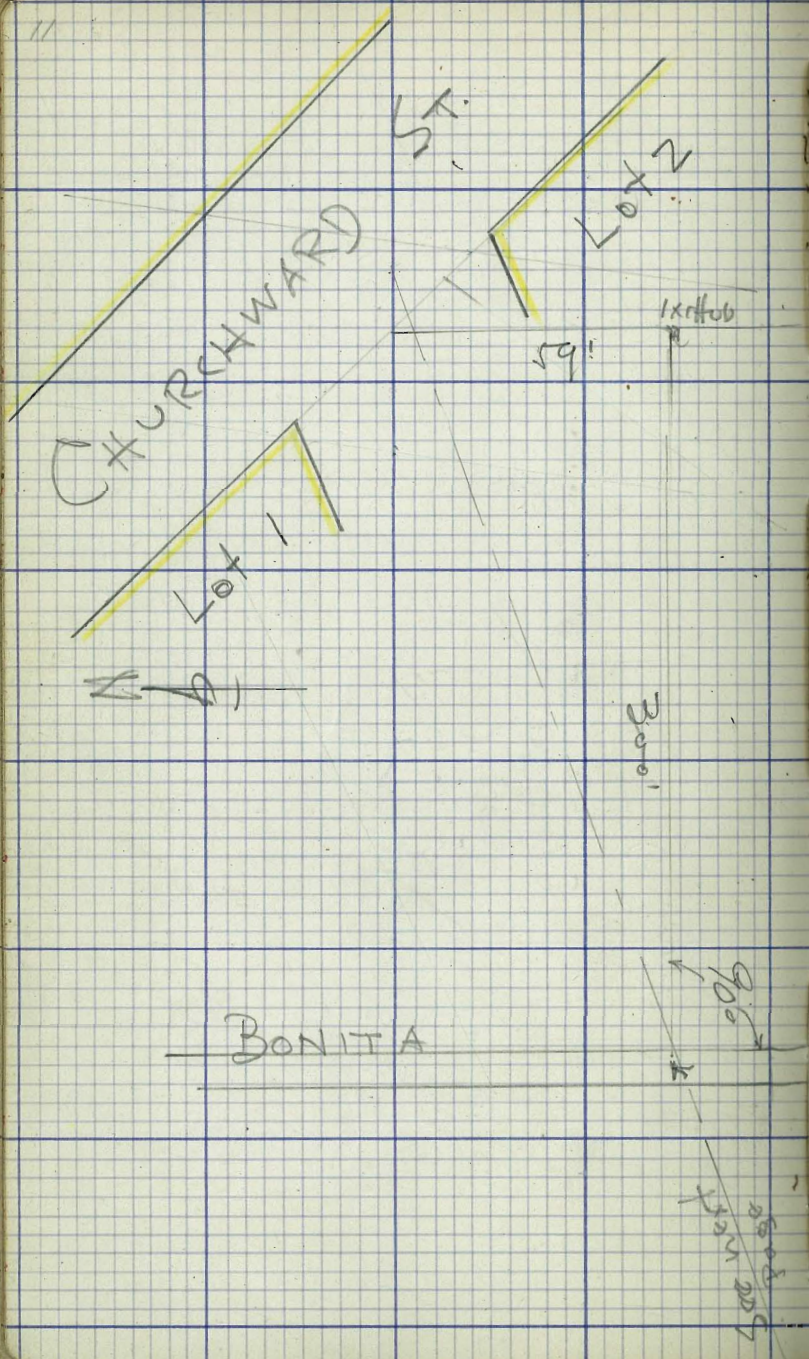
250'

Set Hub
1x2

250'

Set Hub
1x2





Survey for
CATHODIC PROTECTION

Los Alturas
2/6/40
Beermann
Coate
Remmen

PIPE LINE

170'

Set 1x1ft tub

441'

59'

100ft

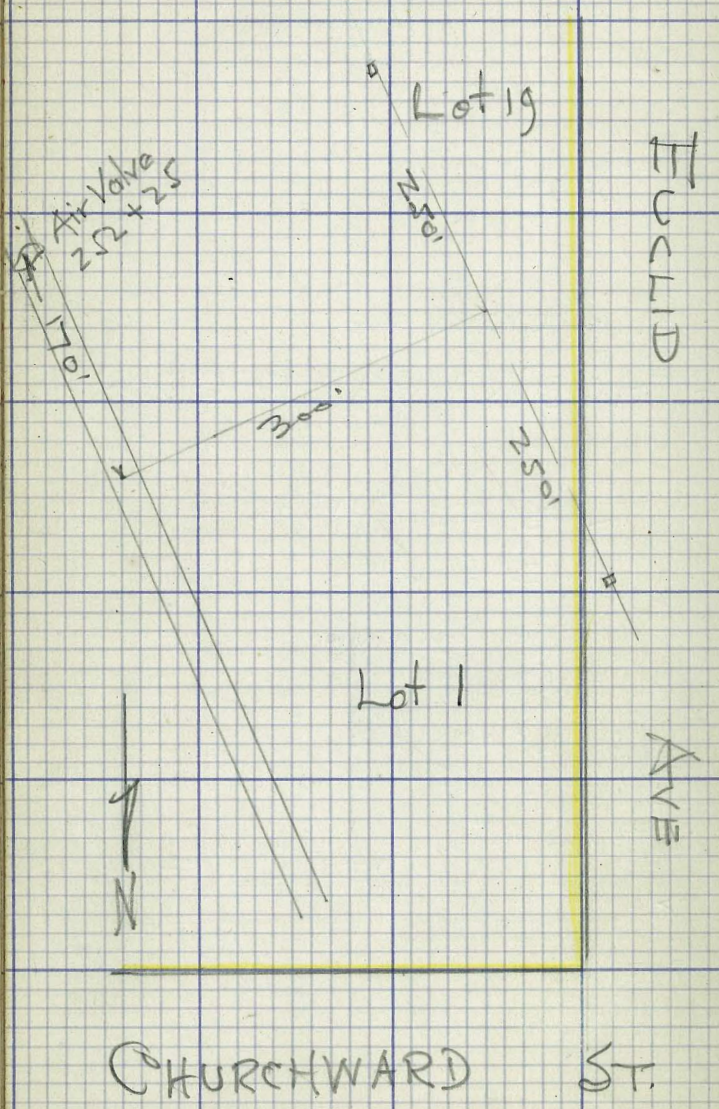
Air Valve
252+25

90°

170'

200ft

CATHODIC PROTECTION Los Alturas



BENITA PIPELINE R.O.W.

DEC 7 1949

Beatty
Rogers
Purdy

DEC 8 1949

LOT 91

LOT 90

16

222+23.42
AT 60MA

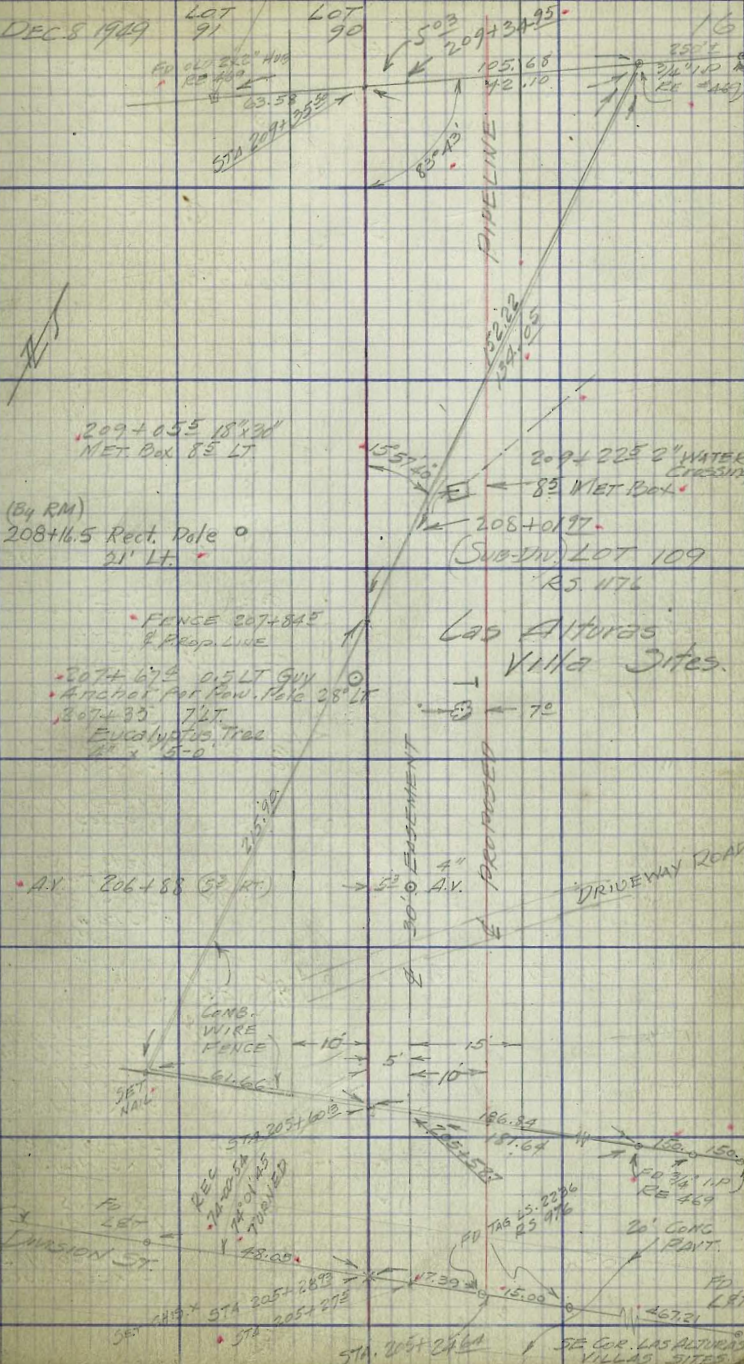
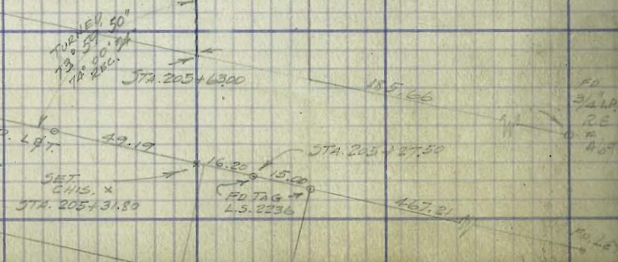
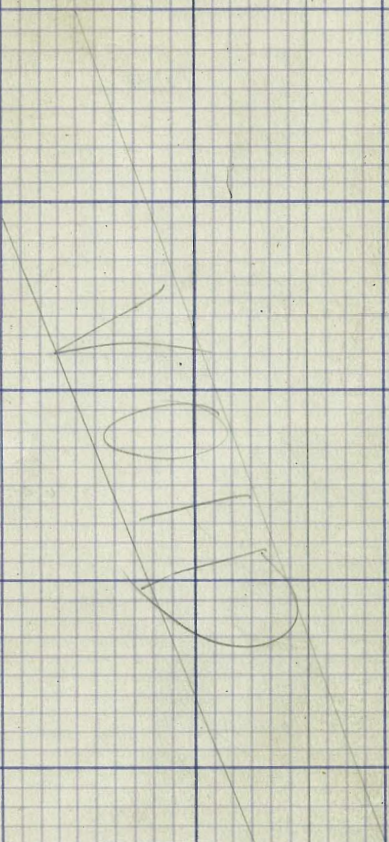
218+70
4 PIPE 4.8 RT

214+66
2 V. AS RT

211+66
2 V. AS RT

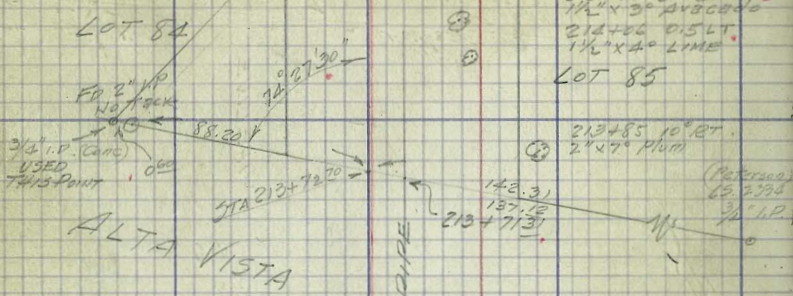
206+90
2 V. 4.8 RT

SOUTH BOUNDARY
LOS ALTURAS HILLS RD. L.R.T.
DIVISION ST.



17

BONITA PIPELINE ROW DEC 8 1929



Las Alturas Villa Sites

AV. 211+63 (32 RT)

LOT 91

LOT 90

215+50 30 LT
1 1/2\"/>

213+85 10 RT
2\"/>

212+73 82 RT
3\"/>

212+56 15 LT
3\"/>

212+42 10 RT
2\"/>

212+30 81 LT
2\"/>

212+28 91 RT
3\"/>

212+18 51 LT
2\"/>

212+01 1\"/>

211+96 51 RT
7\"/>

211+51 25 LT
6\"/>

211+50 1\"/>

211+27 1\"/>

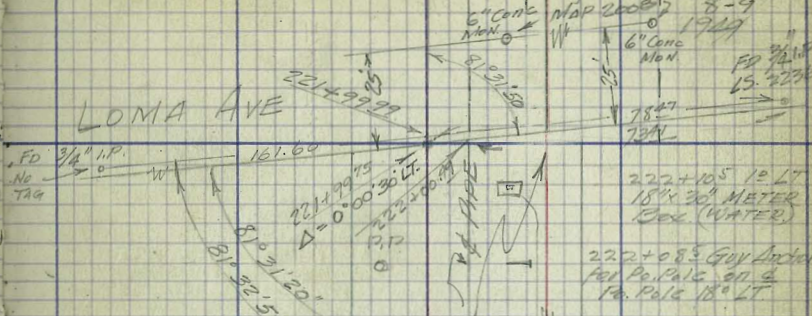
211+09 15 LT
3\"/>

209+69 6 RT
1\"/>

209+69 15 LT
1\"/>

209+60 9\"/>

BONITA PIPELINE ROW DEC 18 1929



LOT Las Alturas VILLA SITES

Fd Conc
Map
919165
CAW
ARROYO AVE

Villa Sites

218+99 1\"/>

Fd Conc
Map
919165
CAW

LOT 71

Las Alturas Villas

LOT 84

215+78 6 LT
2\"/>

215+78 7 RT
1\"/>

LOT 85

6\"/>

221+99.77
161.00

221+90.75
Δ=0°00'30\"/>

221+50.00
81°32'50\"/>

221+21.20
81°32'50\"/>

221+00.00
81°32'50\"/>

220+50.00
81°32'50\"/>

220+21.20
81°32'50\"/>

220+00.00
81°32'50\"/>

219+50.00
81°32'50\"/>

219+21.20
81°32'50\"/>

219+00.00
81°32'50\"/>

218+50.00
81°32'50\"/>

218+21.20
81°32'50\"/>

218+00.00
81°32'50\"/>

217+50.00
81°32'50\"/>

217+21.20
81°32'50\"/>

217+00.00
81°32'50\"/>

216+50.00
81°32'50\"/>

216+21.20
81°32'50\"/>

216+00.00
81°32'50\"/>

215+50.00
81°32'50\"/>

215+21.20
81°32'50\"/>

215+00.00
81°32'50\"/>

6\"/>

6\"/>

78+27
78+1

222+105 10 LT
18\"/>

222+083 Gov. Order
Tel. Co. Poles 20' &
14' Poles 18' LT

221+60 1\"/>

219+50 1\"/>

73

218+99 1\"/>

933 LT
3/4\"/>

122.55
117.5

218+81.52
STA 218+79.23

136.86
171.00

545

171.00

128.36

128.36

128.36

128.36

128.36

128.36

128.36

128.36

128.36

128.36

128.36

128.36

128.36

128.36

6\"/>

6\"/>

78+27
78+1

222+105 10 LT
18\"/>

222+083 Gov. Order
Tel. Co. Poles 20' &
14' Poles 18' LT

221+60 1\"/>

219+50 1\"/>

73

218+99 1\"/>

933 LT
3/4\"/>

122.55
117.5

218+81.52
STA 218+79.23

136.86
171.00

545

171.00

128.36

128.36

128.36

128.36

128.36

128.36

128.36

128.36

128.36

128.36

128.36

128.36

128.36

128.36

BONITA PIPELINE R.O.W.

DEC 10 1949

BEATTY ROBERTS FINNEY

4.5" High CONC BRICK WALL 0.2" THICK

VALENCIA PARK

UNIT NO. 2
MAP 2008

(See also spec. 1/9/50)

(Now BONITA DRIVE (East of) & LONTA AVE

LOT 73
LAS ALTURAS
VILLA SITES

DEC 13 1949

SAN ONOFRE TREE

STA 227463

SANTA ISABEL DR

LOT 27

LOT 25

LOT 28

LOT 16

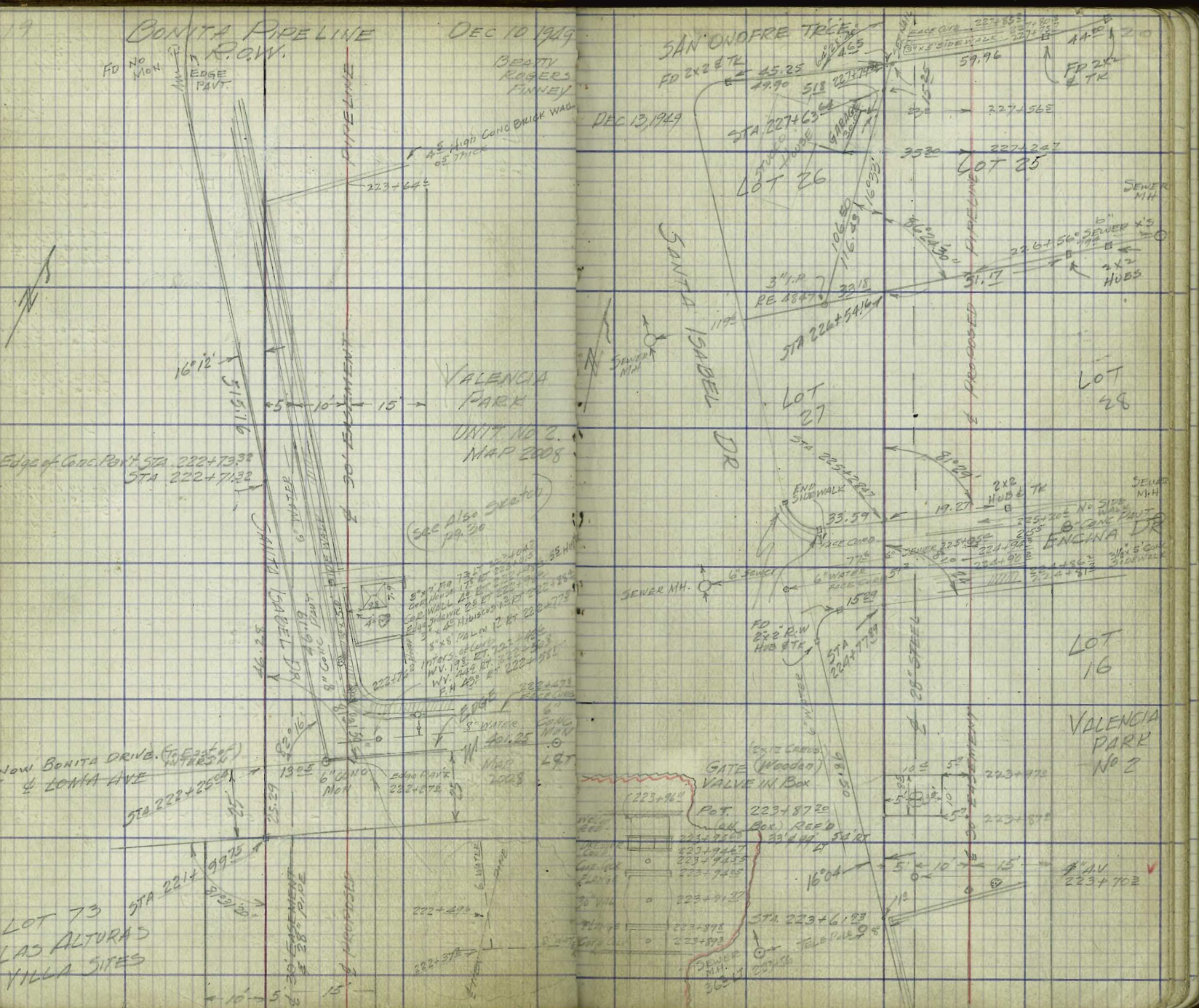
VALENCIA PARK No 2

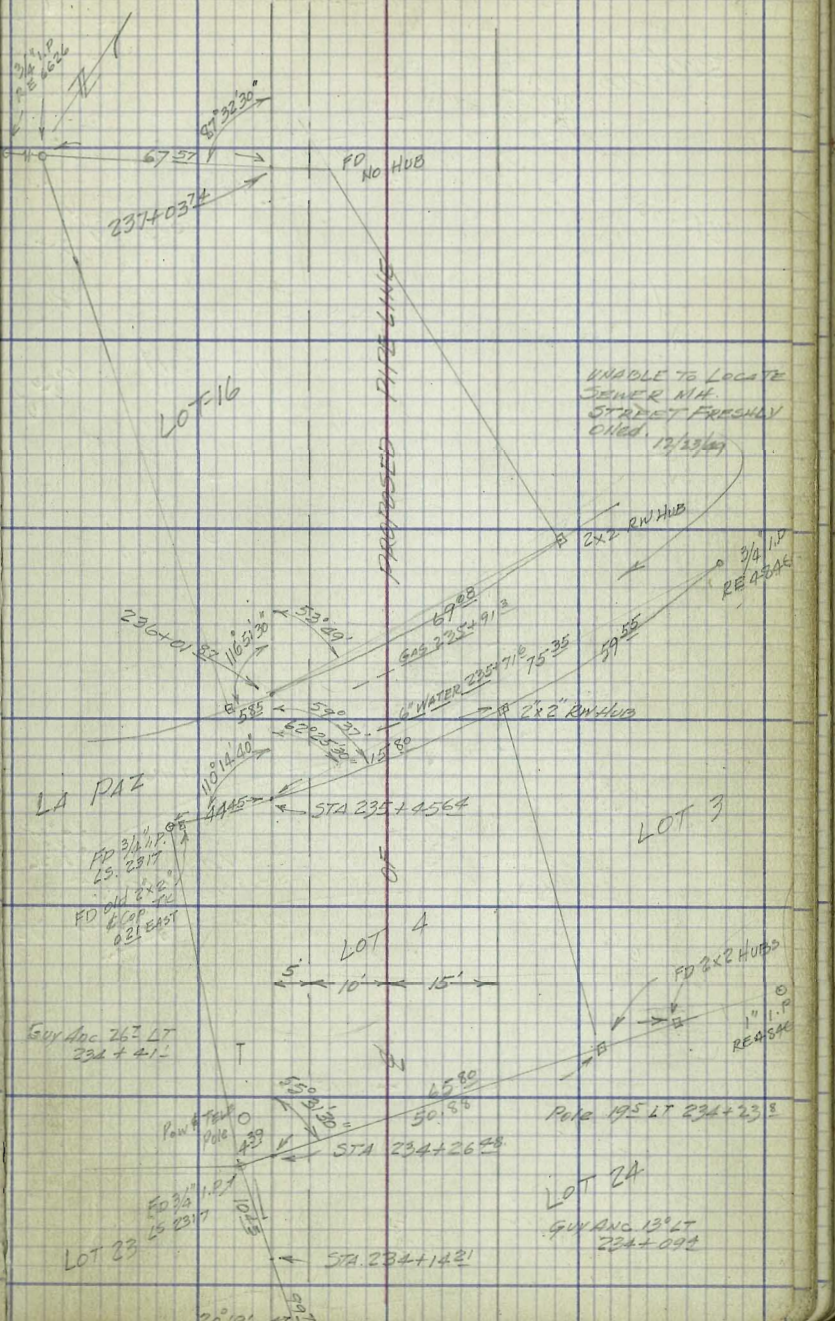
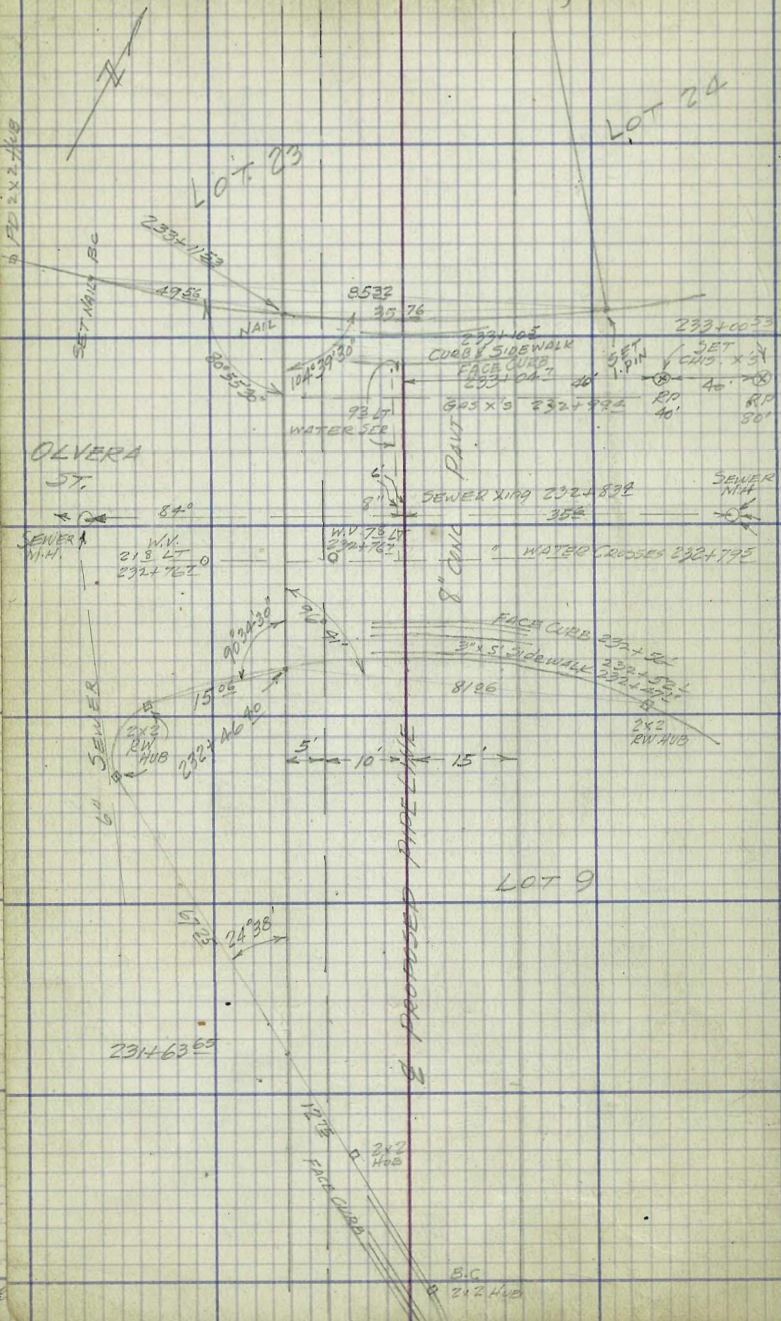
GATE VALVE IN Box

POT 22348720
(all Box) REEF

STA 22346123

SEWER MH.



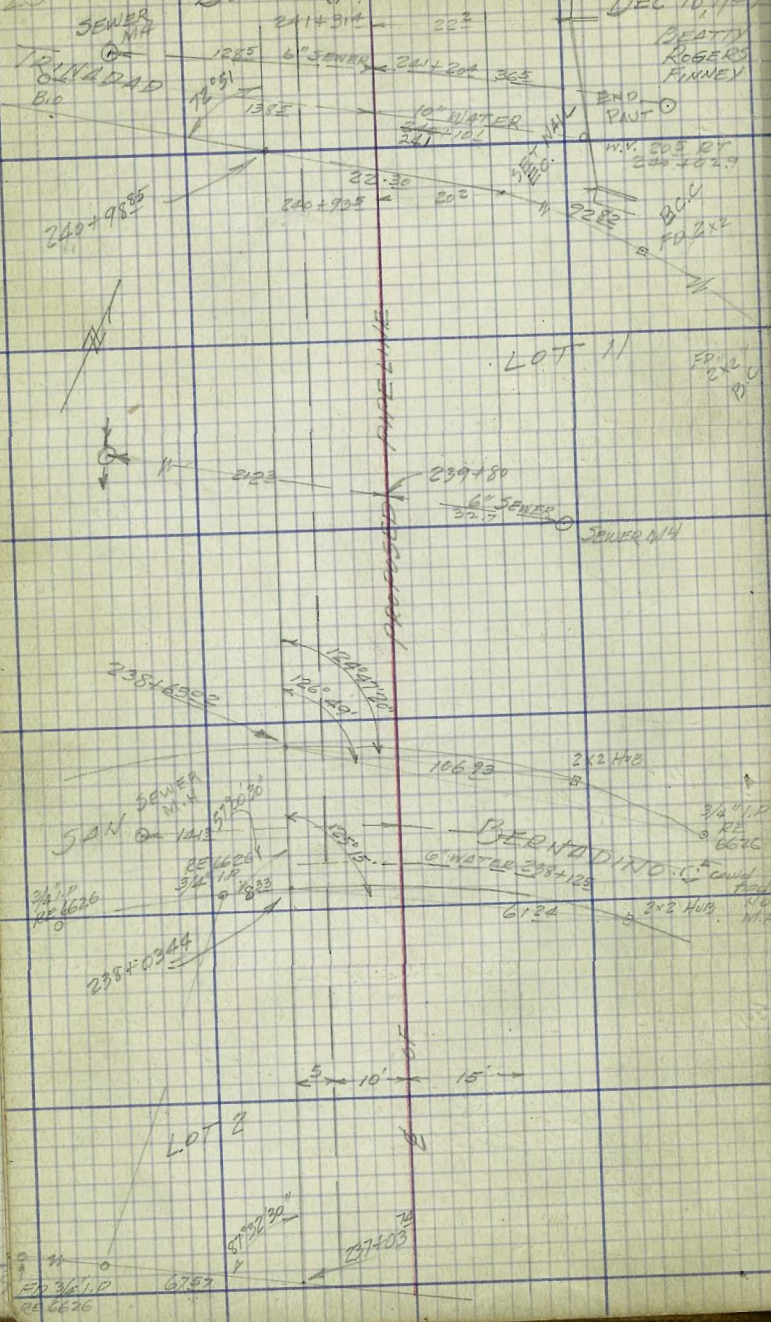


25

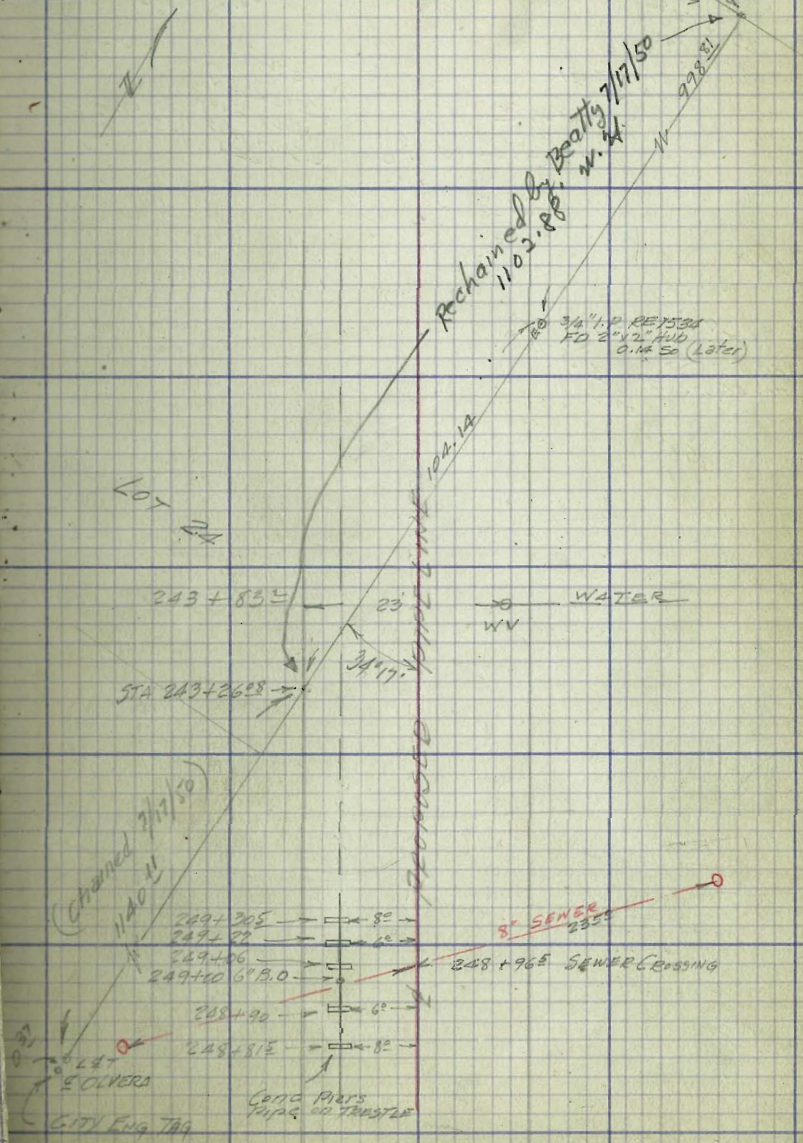
BONITA PIPELINE ROW

DEC 16, 1947

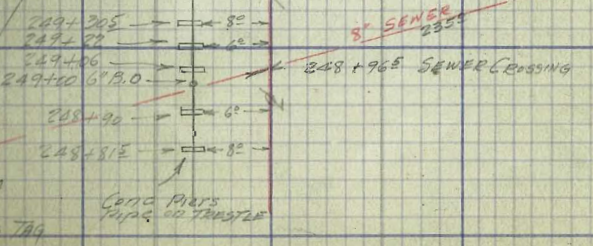
DEC. 20,



CHURCH ROAD
 F.D. L&T
 15572
 4824.61
 CITY 325.89
 516
 716
 F.D. L&T



(Reclaimed 7/17/50)
 1140.11



5' OLIVERS
 CITY Eng TAG
 CONC PIPES
 TAPS ON TRANSLS

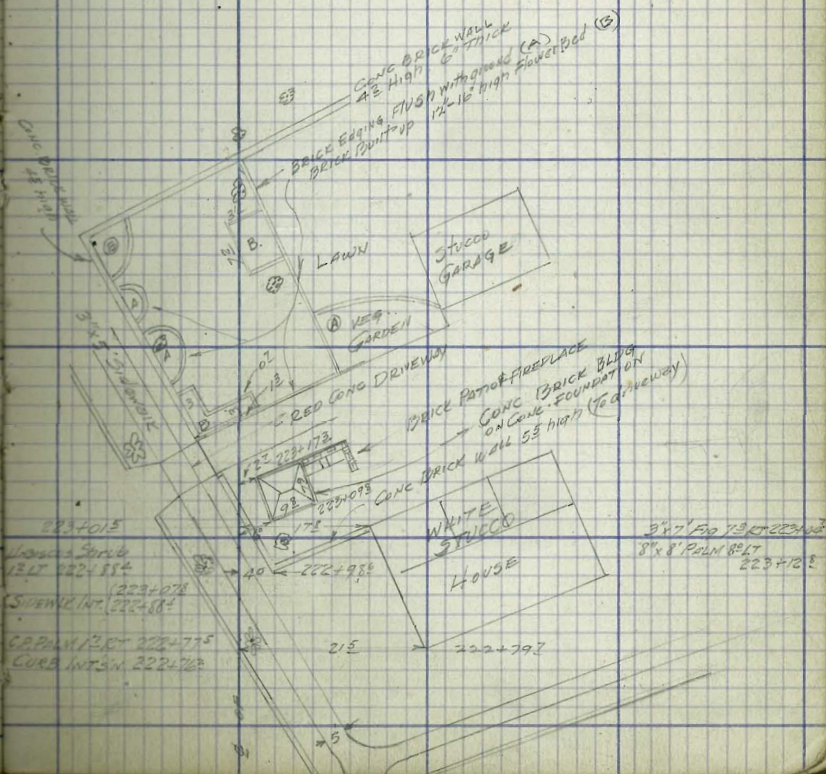
BONITA PIPELINE

DETAIL of HOUSE & YARD IMPROVEMENT
VICINITY - BONITA DR & SANTA ISABEL
STA. 2224 to STA. 2234

30

DEC. 22
1949APPROXIMATE
PIPE
LINE

12' x 6" Tred 10' RT 223+70.
3' x 3/4" Tred 05' LT 223+67.5
 { 223+64.0
 { 223+64.0
Intersect 4 1/2' x 0' Conc Brick Wall
3' x 5' Edge & 223+56
Intersect Brick Flower - 223+48.6
 2' LT to 2 1/2' Okander 223+43.0
 12' RT to Brick Flower Bed 223+42.8
 30' RT to 3 1/2' Peach 223+44.6
 (223+316
Edge Brick Flower Bed 223+28.6
Begin Conc Wall 38' LT 223+27.3
 223+26.9 } 48' wide
Intersect Conc Driveway 223+18.0
End Conc Brick Wall 02' LT 223+17.4



BONITA PIPELINE

MAR. 2 1950

CRATTY
ROBERTS
FRYING

262+05.56 P.I. 117°36' RT

262+05.56

50' OFF ENDS DISC
2.80

FULL
WATER
M.H.

END CURB 261+737

AC.
PAV'T 6" CONC

END CONC PAV'T 261+647
TEL POLE 261+01.0

WAT. SER. 261+16
GAS X'S 260+90
PE. POLE 260+80

261+547

6" CONC
PAV'T

WATER SER. 260+25

WAT. SER. 260+104

WAT. SER. 259+80

WATER SER. 259+34
PE. & TEL POLE 259+215

FACE CURB 259+102

258+99.48 P.I. 0°48' LT

E. EUCLID

259+05.1

S. SIDEWALK

0°28' LT
FD 2' LT

258+99.48

258+97.5

258+55.1

FACE CURB 258+88.2
258+80 W.V.

W.V.

25

20'

258+40.2 WAT. SER.

258+34 GAS

258+16.1 W.V.

W.V.

25

20' FIRE HYD.

WAT. SER. 257+40

20'

WATER SER. 257+40.2

GAS 257+35.1

TEL. CABLE 257+19.5

PE. & TEL. POLE 257+14.8

WATER SER. 256+90.3

TEL. CABLE

TEL. CABLE

TEL. CABLE

TEL. CABLE

TEL. CABLE

TEL. CABLE

TEL. CABLE

TEL. CABLE

TEL. CABLE

TEL. CABLE

TEL. CABLE

TEL. CABLE

TEL. CABLE

TEL. CABLE

TEL. CABLE

TEL. CABLE

TEL. CABLE

TEL. CABLE

256+69.24

256+69.24

256+69.24

25

20'

20'

20'

20'

20'

20'

20'

20'

20'

20'

20'

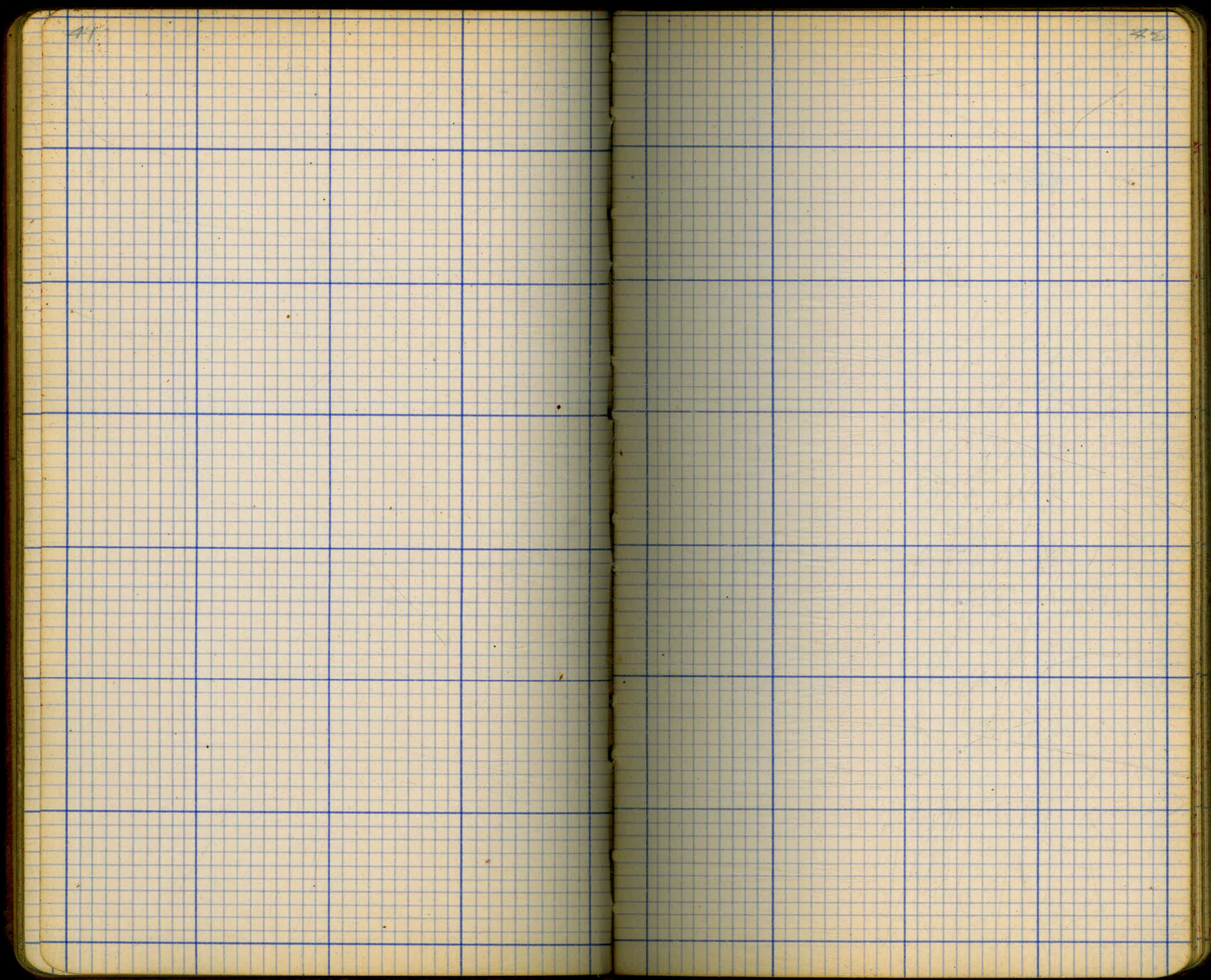
20'

E. CHURCHMAN

GAS

33

34



15

16

47

48

49

50

51

52

55

56

57

58

59

60

61

62

63

64

63

64

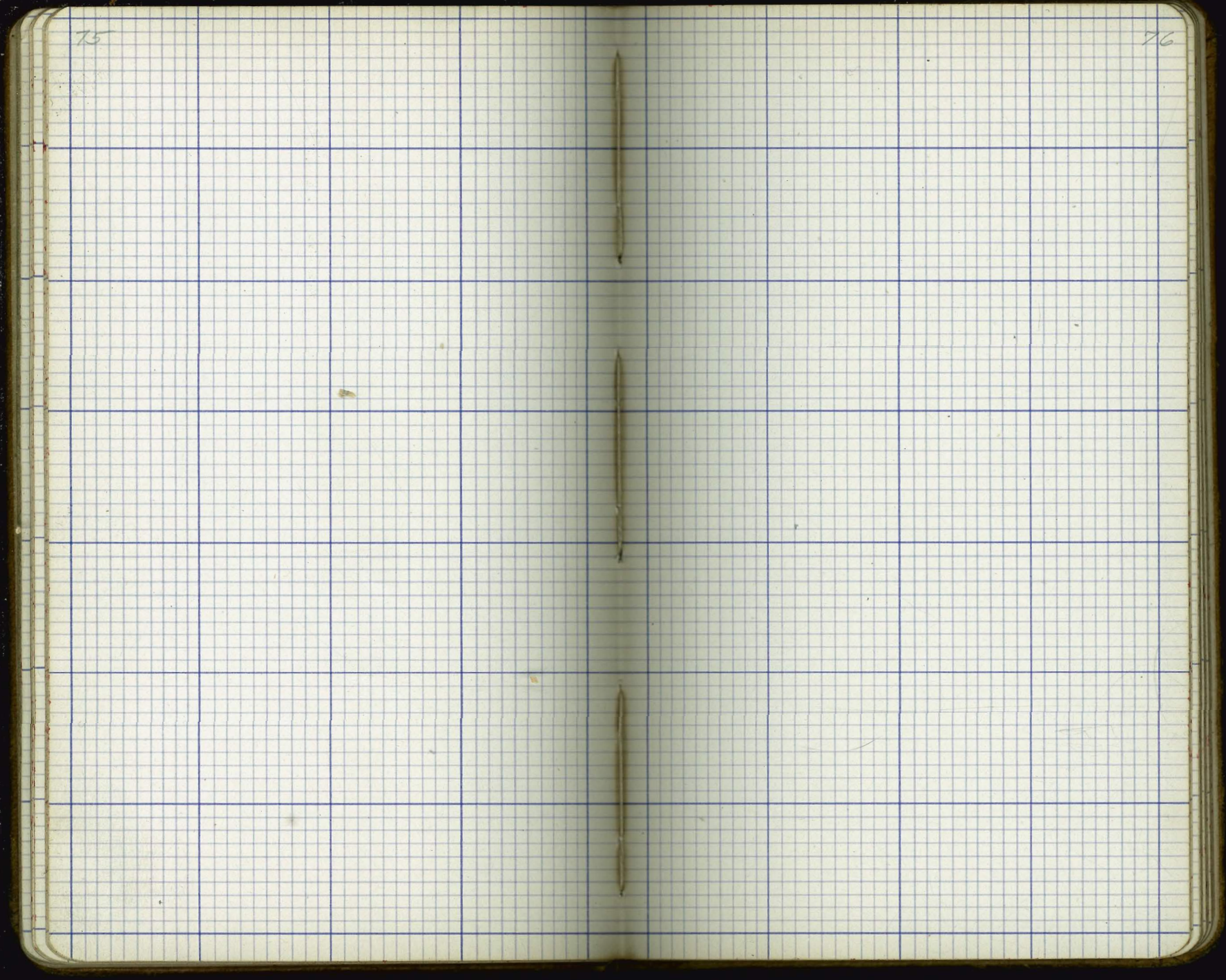
67

68

69

2

70



79

80

81

82

83

84

85

86

87

88

89

90

93

94

95

96

97

98

99

100

101

102

103

104

105

106

107

108

109

110

113

114

115

116

117

118

119

120

121

122

123

124

125

126

127

128

129

130

131

132

133

134

1/ 135

136

137

138

139

140

141

142

143

144

145

146

147

148

149

150

SE 1/4 NE 1/4 2

Martha Averill



Adelina Johnson

Ida M. Kastner

w line
1333.4
1328.6
N 0° 19' E

Back Shores
1672

66
N 02° 1' E 1828.46
Sold by A.W.E.C.M.
Lot 66

Lot 65 Map # 282

N 89° 40' W
1328.2
A.W.E.C.M.
Lot 70

589° 40' E 1288.36

425.82

N 0° 19' E

Lot 72

Millerton
Lot 71

Lot 70

County Road

870.6

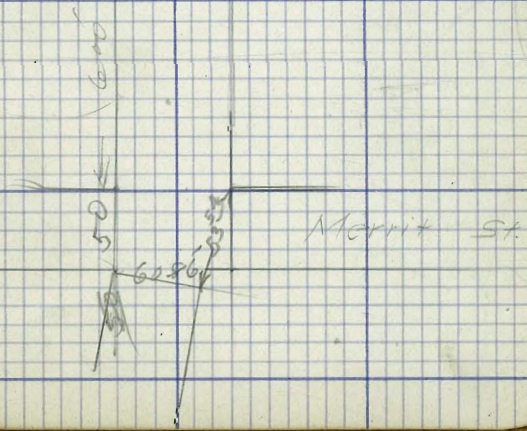
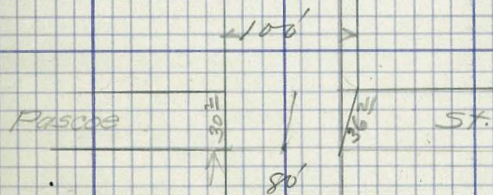
Iron Pipe

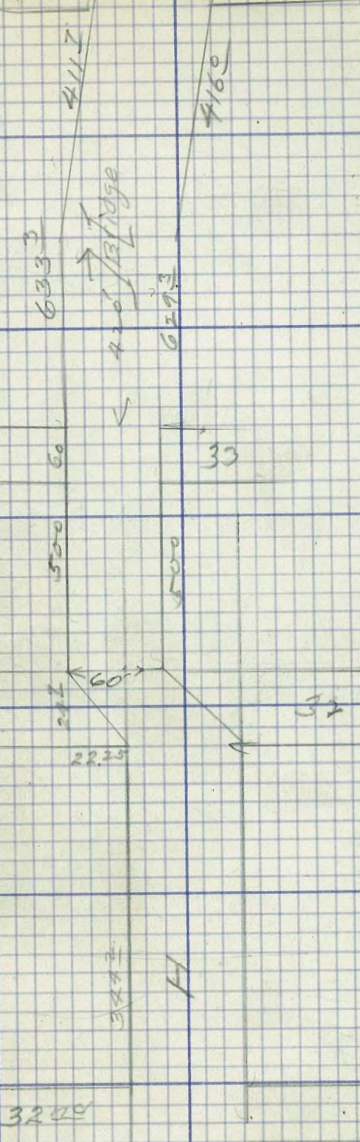
571.50 W
C. Man
N 02° 1' E
1328.2
A.W.E.C.M.
Lot 70

N 71° 50' E 1215.7

National Ranch
1/4 Sec 130

121





15 7 18 1/2 in.
 Bonilla East 200
 R.R. Book 50000
 1 Book tickets 500
 2nd 500
 1 Book tickets 500
 Cash

Mission Valley to Old Mill
 1 Book 5000
 1 " 5000

120

DISTANCES FROM CENTER OF ROADWAY FOR CROSS-SECTIONING.
 ROADWAY 14 FEET WIDE. SIDE SLOPES 1 1/2 TO 1.
 FOR SINGLE TRACK EMBANKMENT.

	0	.1	.2	.3	.4	.5	.6	.7	.8	.9	
0	7.00	7.15	7.30	7.45	7.60	7.75	7.90	8.05	8.20	8.35	0
1	8.50	8.65	8.80	8.95	9.10	9.25	9.40	9.55	9.70	9.85	1
2	10.00	10.15	10.30	10.45	10.60	10.75	10.90	11.05	11.20	11.35	2
3	11.50	11.65	11.80	11.95	12.10	12.25	12.40	12.55	12.70	12.85	3
4	13.00	13.15	13.30	13.45	13.60	13.75	13.90	14.05	14.20	14.35	4
5	14.50	14.65	14.80	14.95	15.10	15.25	15.40	15.55	15.70	15.85	5
6	16.00	16.15	16.30	16.45	16.60	16.75	16.90	17.05	17.20	17.35	6
7	17.50	17.65	17.80	17.95	18.10	18.25	18.40	18.55	18.70	18.85	7
8	19.00	19.15	19.30	19.45	19.60	19.75	19.90	20.05	20.20	20.35	8
9	20.50	20.65	20.80	20.95	21.10	21.25	21.40	21.55	21.70	21.85	9
10	22.00	22.15	22.30	22.45	22.60	22.75	22.90	23.05	23.20	23.35	10
11	23.50	23.65	23.80	23.95	24.10	24.25	24.40	24.55	24.70	24.85	11
12	25.00	25.15	25.30	25.45	25.60	25.75	25.90	26.05	26.20	26.35	12
13	26.50	26.65	26.80	26.95	27.10	27.25	27.40	27.55	27.70	27.85	13
14	28.00	28.15	28.30	28.45	28.60	28.75	28.90	29.05	29.20	29.35	14
15	29.50	29.65	29.80	29.95	30.10	30.25	30.40	30.55	30.70	30.85	15
16	31.00	31.15	31.30	31.45	31.60	31.75	31.90	32.05	32.20	32.35	16
17	32.50	32.65	32.80	32.95	33.10	33.25	33.40	33.55	33.70	33.85	17
18	34.00	34.15	34.30	34.45	34.60	34.75	34.90	35.05	35.20	35.35	18
19	35.50	35.65	35.80	35.95	36.10	36.25	36.40	36.55	36.70	36.85	19
20	37.00	37.15	37.30	37.45	37.60	37.75	37.90	38.05	38.20	38.35	20
21	38.50	38.65	38.80	38.95	39.10	39.25	39.40	39.55	39.70	39.85	21
22	40.00	40.15	40.30	40.45	40.60	40.75	40.90	41.05	41.20	41.35	22
23	41.50	41.65	41.80	41.95	42.10	42.25	42.40	42.55	42.70	42.85	23
24	43.00	43.15	43.30	43.45	43.60	43.75	43.90	44.05	44.20	44.35	24
25	44.50	44.65	44.80	44.95	45.10	45.25	45.40	45.55	45.70	45.85	25
26	46.00	46.15	46.30	46.45	46.60	46.75	46.90	47.05	47.20	47.35	26
27	47.50	47.65	47.80	47.95	48.10	48.25	48.40	48.55	48.70	48.85	27
28	49.00	49.15	49.30	49.45	49.60	49.75	49.90	50.05	50.20	50.35	28
29	50.50	50.65	50.80	50.95	51.10	51.25	51.40	51.55	51.70	51.85	29
30	52.00	52.15	52.30	52.45	52.60	52.75	52.90	53.05	53.20	53.35	30
31	53.50	53.65	53.80	53.95	54.10	54.25	54.40	54.55	54.70	54.85	31
32	55.00	55.15	55.30	55.45	55.60	55.75	55.90	56.05	56.20	56.35	32
33	56.50	56.65	56.80	56.95	57.10	57.25	57.40	57.55	57.70	57.85	33
34	58.00	58.15	58.30	58.45	58.60	58.75	58.90	59.05	59.20	59.35	34
35	59.50	59.65	59.80	59.95	60.10	60.25	60.40	60.55	60.70	60.85	35
36	61.00	61.15	61.30	61.45	61.60	61.75	61.90	62.05	62.20	62.35	36
37	62.50	62.65	62.80	62.95	63.10	63.25	63.40	63.55	63.70	63.85	37
38	64.00	64.15	64.30	64.45	64.60	64.75	64.90	65.05	65.20	65.35	38
39	65.50	65.65	65.80	65.95	66.10	66.25	66.40	66.55	66.70	66.85	39
40	67.00	67.15	67.30	67.45	67.60	67.75	67.90	68.05	68.20	68.35	40

Calculated by F. E. Paradis, O. E.

15-57-40
6681
7
675

DISTANCES FROM CENTER OF ROADWAY FOR CROSS-SECTIONING

ROADWAY 16 FEET WIDE. SIDE SLOPES 1½ TO 1.

FOR SINGLE TRACK EMBANKMENT.

	0	.1	.2	.3	.4	.5	.6	.7	.8	.9	
0	8.0	8.2	8.3	8.5	8.6	8.8	8.9	9.1	9.2	9.4	0
1	9.5	9.7	9.8	10.0	10.1	10.3	10.4	10.6	10.7	10.9	1
2	11.0	11.2	11.3	11.5	11.6	11.8	11.9	12.1	12.2	12.4	2
3	12.5	12.7	12.8	13.0	13.1	13.3	13.4	13.6	13.7	13.9	3
4	14.0	14.2	14.3	14.5	14.6	14.8	14.9	15.1	15.2	15.4	4
5	15.5	15.7	15.8	16.0	16.1	16.3	16.4	16.6	16.7	16.9	5
6	17.0	17.2	17.3	17.5	17.6	17.8	17.9	18.1	18.2	18.4	6
7	18.5	18.7	18.8	19.0	19.1	19.3	19.4	19.6	19.7	19.9	7
8	20.0	20.2	20.3	20.5	20.6	20.8	20.9	21.1	21.2	21.4	8
9	21.5	21.7	21.8	22.0	22.1	22.3	22.4	22.6	22.7	22.9	9
10	23.0	23.2	23.3	23.5	23.6	23.8	23.9	24.1	24.2	24.4	10
11	24.5	24.7	24.8	25.0	25.1	25.3	25.4	25.6	25.7	25.9	11
12	26.0	26.2	26.3	26.5	26.6	26.8	26.9	27.1	27.2	27.4	12
13	27.5	27.7	27.8	28.0	28.1	28.3	28.4	28.6	28.7	28.9	13
14	29.0	29.2	29.3	29.5	29.6	29.8	29.9	30.1	30.2	30.4	14
15	30.5	30.7	30.8	31.0	31.1	31.3	31.4	31.6	31.7	31.9	15
16	32.0	32.2	32.3	32.5	32.6	32.8	32.9	33.1	33.2	33.4	16
17	33.5	33.7	33.8	34.0	34.1	34.3	34.4	34.6	34.7	34.9	17
18	35.0	35.2	35.3	35.5	35.6	35.8	35.9	36.1	36.2	36.4	18
19	36.5	36.7	36.8	37.0	37.1	37.3	37.4	37.6	37.7	37.9	19
20	38.0	38.2	38.3	38.5	38.6	38.8	38.9	39.1	39.2	39.4	20
21	39.5	39.7	39.8	40.0	40.1	40.3	40.4	40.6	40.7	40.9	21
22	41.0	41.2	41.3	41.5	41.6	41.8	41.9	42.1	42.2	42.4	22
23	42.5	42.7	42.8	43.0	43.1	43.3	43.4	43.6	43.7	43.9	23
24	44.0	44.2	44.3	44.5	44.6	44.8	44.9	45.1	45.2	45.4	24
25	45.5	45.7	45.8	46.0	46.1	46.3	46.4	46.6	46.7	46.9	25
26	47.0	47.2	47.3	47.5	47.6	47.8	47.9	48.1	48.2	48.4	26
27	48.5	48.7	48.8	49.0	49.1	49.3	49.4	49.6	49.7	49.9	27
28	50.0	50.2	50.3	50.5	50.6	50.8	50.9	51.1	51.2	51.4	28
29	51.5	51.7	51.8	52.0	52.1	52.3	52.4	52.6	52.7	52.9	29
30	53.0	53.2	53.3	53.5	53.6	53.8	53.9	54.1	54.2	54.4	30
31	54.5	54.7	54.8	55.0	55.1	55.3	55.4	55.6	55.7	55.9	31
32	56.0	56.2	56.3	56.5	56.6	56.8	56.9	57.1	57.2	57.4	32
33	57.5	57.7	57.8	58.0	58.1	58.3	58.4	58.6	58.7	58.9	33
34	59.0	59.2	59.3	59.5	59.6	59.8	59.9	60.1	60.2	60.4	34
35	60.5	60.7	60.8	61.0	61.1	61.3	61.4	61.6	61.7	61.9	35
36	62.0	62.2	62.3	62.5	62.6	62.8	62.9	63.1	63.2	63.4	36
37	63.5	63.7	63.8	64.0	64.1	64.3	64.4	64.6	64.7	64.9	37
38	65.0	65.2	65.3	65.5	65.6	65.8	65.9	66.1	66.2	66.4	38
39	66.5	66.7	66.8	67.0	67.1	67.3	67.4	67.6	67.7	67.9	39
40	68.0	68.2	68.3	68.5	68.6	68.8	68.9	69.1	69.2	69.4	40

Calculated by F. E. Paradis, C. E.

1644
5486
8.19

A.V.
2237+71 ~~RT~~
10 LT

AV
237+62 ~~RT~~
10 LT

B.O. ON TOP PIPE
240+02 (42) RT
10 LT

AV
244+15 (43) RT
10 LT

AV
246+65 (43) RT
10 LT

BO
249+00 10 LT

AV
251+92 (40) RT
10' LT

AV
254+66 (40) RT
10' LT

A.V.

53.280
 30
 1.776

274.37
 158.72
 433.09

996.81 1049.69
 704.14 53.26
 110295 1107.95

256.73.05
 243.26.08
 13.4697

15-57-40
 6681
 7
 6701

DISTANCES FROM CENTER OF ROADWAY FOR CROSS-SECTIONING
 ROADWAY 16 FEET WIDE. SIDE SLOPES 1½ TO 1.
 FOR SINGLE TRACK EMBANKMENT.

	0	.1	.2	.3	.4	.5	.6	.7	.8	.9	
0	8.0	8.2	8.3	8.5	8.6	8.8	8.9	9.1	9.2	9.4	0
1	9.5	9.7	9.8	10.0	10.1	10.3	10.4	10.6	10.7	10.9	1
2	11.0	11.2	11.3	11.5	11.6	11.8	11.9	12.1	12.2	12.4	2
3	12.5	12.7	12.8	13.0	13.1	13.3	13.4	13.6	13.7	13.9	3
4	14.0	14.2	14.3	14.5	14.6	14.8	14.9	15.1	15.2	15.4	4
5	15.5	15.7	15.8	16.0	16.1	16.3	16.4	16.6	16.7	16.9	5
6	17.0	17.2	17.3	17.5	17.6	17.8	17.9	18.1	18.2	18.4	6

7305
 5486
 1819

806244
 104.
 35459

880
 1380
 1800

24 7.7
 19 1.3
 388 5.9

DRAWN BY
 TRACKED BY
 CHECKED BY
 FIELD BOOKS

APPROVED

5-57-40 668
7
675

DISTANCES FROM CENTER OF ROADWAY FOR CROSS-SECTIONING

ROADWAY 16 FEET WIDE. SIDE SLOPES 1½ TO 1.
FOR SINGLE TRACK EMBANKMENT.

	0	.1	.2	.3	.4	.5	.6	.7	.8	.9	
0	8.0	8.2	8.3	8.5	8.6	8.8	8.9	9.1	9.2	9.4	0
1	9.5	9.7	9.8	10.0	10.1	10.3	10.4	10.6	10.7	10.9	1
2	11.0	11.2	11.3	11.5	11.6	11.8	11.9	12.1	12.2	12.4	2
3	12.5	12.7	12.8	13.0	13.1	13.3	13.4	13.6	13.7	13.9	3
4	14.0	14.2	14.3	14.5	14.6	14.8	14.9	15.1	15.2	15.4	4
5	15.5	15.7	15.8	16.0	16.1	16.3	16.4	16.6	16.7	16.9	5
6	17.0	17.2	17.3	17.5	17.6	17.8	17.9	18.1	18.2	18.4	6
7	18.5	18.7	18.8	19.0	19.1	19.3	19.4	19.6	19.7	19.9	7
8	20.0	20.2	20.3	20.5	20.6	20.8	20.9	21.1	21.2	21.4	8
9	21.5	21.7	21.8	22.0	22.1	22.3	22.4	22.6	22.7	22.9	9
10	23.0	23.2	23.3	23.5	23.6	23.8	23.9	24.1	24.2	24.4	10
11	24.5	24.7	24.8	25.0	25.1	25.3	25.4	25.6	25.7	25.9	11
12	26.0	26.2	26.3	26.5	26.6	26.8	26.9	27.1	27.2	27.4	12
13	27.5	27.7	27.8	28.0	28.1	28.3	28.4	28.6	28.7	28.9	13
14	29.0	29.2	29.3	29.5	29.6	29.8	29.9	30.1	30.2	30.4	14
15	30.5	30.7	30.8	31.0	31.1	31.3	31.4	31.6	31.7	31.9	15
16	32.0	32.2	32.3	32.5	32.6	32.8	32.9	33.1	33.2	33.4	16
17	33.5	33.7	33.8	34.0	34.1	34.3	34.4	34.6	34.7	34.9	17
18	35.0	35.2	35.3	35.5	35.6	35.8	35.9	36.1	36.2	36.4	18
19	36.5	36.7	36.8	37.0	37.1	37.3	37.4	37.6	37.7	37.9	19
20	38.0	38.2	38.3	38.5	38.6	38.8	38.9	39.1	39.2	39.4	20
21	39.5	39.7	39.8	40.0	40.1	40.3	40.4	40.6	40.7	40.9	21
22	41.0	41.2	41.3	41.5	41.6	41.8	41.9	42.1	42.2	42.4	22
23	42.5	42.7	42.8	43.0	43.1	43.3	43.4	43.6	43.7	43.9	23
24	44.0	44.2	44.3	44.5	44.6	44.8	44.9	45.1	45.2	45.4	24
25	45.5	45.7	45.8	46.0	46.1	46.3	46.4	46.6	46.7	46.9	25
26	47.0	47.2	47.3	47.5	47.6	47.8	47.9	48.1	48.2	48.4	26
27	48.5	48.7	48.8	49.0	49.1	49.3	49.4	49.6	49.7	49.9	27
28	50.0	50.2	50.3	50.5	50.6	50.8	50.9	51.1	51.2	51.4	28
29	51.5	51.7	51.8	52.0	52.1	52.3	52.4	52.6	52.7	52.9	29
30	53.0	53.2	53.3	53.5	53.6	53.8	53.9	54.1	54.2	54.4	30
31	54.5	54.7	54.8	55.0	55.1	55.3	55.4	55.6	55.7	55.9	31
32	56.0	56.2	56.3	56.5	56.6	56.8	56.9	57.1	57.2	57.4	32
33	57.5	57.7	57.8	58.0	58.1	58.3	58.4	58.6	58.7	58.9	33
34	59.0	59.2	59.3	59.5	59.6	59.8	59.9	60.1	60.2	60.4	34
35	60.5	60.7	60.8	61.0	61.1	61.3	61.4	61.6	61.7	61.9	35
36	62.0	62.2	62.3	62.5	62.6	62.8	62.9	63.1	63.2	63.4	36
37	63.5	63.7	63.8	64.0	64.1	64.3	64.4	64.6	64.7	64.9	37
38	65.0	65.2	65.3	65.5	65.6	65.8	65.9	66.1	66.2	66.4	38
39	66.5	66.7	66.8	67.0	67.1	67.3	67.4	67.6	67.7	67.9	39
40	68.0	68.2	68.3	68.5	68.6	68.8	68.9	69.1	69.2	69.4	40

Calculated by F. E. Paradis, C. E.

7385
5486
104
384.59

60674

74
18
388
37.4
388
8.4

DRAWN BY
TRACED BY
CHECKED BY
FIELD BOOKS

APPROVED

MANUFACTURERS & IMPORTERS OF
DRAWING MATERIALS AND
SURVEYING INSTRUMENTS
NEW ORLEANS, CHICAGO,
NEW YORK & SAN FRANCISCO

CITY OF SAN DIEGO
OPERATING DEPARTMENT

DATE
SCALE
DRAWING NUMBER