

W 765

765

MICROFILMED TRAVERSE TABLE FOR TRANSIT BOOK.
From 1° to 90° for a distance of 100.

JAN 1

Degrees.	DEGREES.		¼ DEGREE.		½ DEGREE.		¾ DEGREE.		Degrees.
	Lat.	Dep.	Lat.	Dep.	Lat.	Dep.	Lat.	Dep.	
0			100 00	0 44	100 00	0 87	99 99	1 31	89
1	99 98	1 75	99 98	2 18	99 97	2 62	99 95	3 05	88
2	99 94	3 49	99 92	3 93	99 91	4 36	99 88	4 80	87
3	99 86	5 23	99 84	5 67	99 81	6 10	99 79	6 54	86
4	99 76	6 98	99 73	7 41	99 69	7 85	99 66	8 28	85
5	99 62	8 72	99 58	9 15	99 54	9 58	99 50	10 02	84
6	99 45	10 45	99 41	10 89	99 36	11 32	99 31	11 75	83
7	99 25	12 19	99 20	12 62	99 14	13 05	99 09	13 49	82
8	99 03	13 92	98 97	14 35	98 90	14 78	98 84	15 21	81
9	98 77	15 64	98 70	16 07	98 63	16 50	98 56	16 93	80
10	98 48	17 36	98 40	17 79	98 33	18 22	98 25	18 65	79
11	98 16	19 08	98 08	19 51	97 99	19 94	97 90	20 36	78
12	97 81	20 79	97 72	21 22	97 63	21 64	97 53	22 07	77
13	97 44	22 50	97 34	22 92	97 24	23 34	97 13	23 77	76
14	97 03	24 19	96 92	24 62	96 81	25 04	96 70	25 46	75
15	96 59	25 88	96 48	26 30	96 36	26 72	96 25	27 14	74
16	96 18	27 56	96 00	27 98	95 88	28 40	95 76	28 82	73
17	95 63	29 24	95 50	29 65	95 37	30 07	95 24	30 49	72
18	95 11	30 90	94 97	31 32	94 83	31 73	94 69	32 14	71
19	94 55	32 56	94 41	32 97	94 26	33 38	94 12	33 79	70
20	93 97	34 20	93 82	34 61	93 67	35 02	93 51	35 43	69
21	93 36	35 84	93 20	36 24	93 04	36 65	92 88	37 06	68
22	92 72	37 46	92 55	37 86	92 39	38 27	92 22	38 67	67
23	92 05	39 07	91 88	39 47	91 71	39 87	91 53	40 27	66
24	91 35	40 67	91 18	41 07	91 00	41 47	90 81	41 87	65
25	90 63	42 26	90 45	42 66	90 26	43 05	90 07	43 44	64
26	89 88	43 84	89 69	44 23	89 49	44 62	89 30	45 01	63
27	89 10	45 40	88 90	45 79	88 70	46 17	88 50	46 56	62
28	88 29	46 95	88 09	47 33	87 88	47 72	87 67	48 10	61
29	87 46	48 48	87 25	48 86	87 04	49 24	86 82	49 62	60
30	86 60	50 00	86 38	50 38	86 16	50 75	85 94	51 13	59
31	85 72	51 50	85 49	51 88	85 26	52 25	85 04	52 62	58
32	84 80	52 99	84 57	53 36	84 34	53 73	84 10	54 10	57
33	83 87	54 46	83 63	54 83	83 39	55 19	83 15	55 56	56
34	82 90	55 92	82 66	56 28	82 41	56 64	82 16	57 00	55
35	81 92	57 36	81 66	57 71	81 41	58 07	81 16	58 42	54
36	80 90	58 78	80 64	59 13	80 39	59 48	80 13	59 83	53
37	79 86	60 18	79 60	60 53	79 34	60 88	79 07	61 22	52
38	78 80	61 57	78 53	61 91	78 26	62 25	77 99	62 59	51
39	77 71	62 93	77 44	63 27	77 16	63 61	76 88	63 94	50
40	76 60	64 28	76 32	64 61	76 04	64 94	75 76	65 28	49
41	75 47	65 61	75 18	65 93	74 90	66 26	74 61	66 59	48
42	74 31	66 91	74 02	67 24	73 73	67 56	73 43	67 88	47
43	73 14	68 20	72 84	68 52	72 54	68 84	72 24	69 15	46
44	71 93	69 47	71 63	69 78	71 33	70 09	71 02	70 40	45
45	70 71	70 71							

TABLE OF STADIA REDUCTIONS.—Continued.

Min.	24°		25°		26°		27°		28°		29°		30°	
	Hor. Dist.	Diff. Elev.	Hor. Dist.	Diff. Elev.	Hor. Dist.	Diff. Elev.	Hor. Dist.	Diff. Elev.	Hor. Dist.	Diff. Elev.	Hor. Dist.	Diff. Elev.	Hor. Dist.	Diff. Elev.
0'	83.46	37.16	82.14	33.30	80.73	28.40	79.39	40.45	77.96	41.45	76.50	42.40	75.00	43.30
2	83.37	37.27	82.05	33.33	80.69	28.41	79.36	40.42	77.94	41.42	76.47	42.37	74.97	43.23
4	83.33	37.27	82.01	33.33	80.65	28.41	79.32	40.42	77.90	41.42	76.43	42.37	74.93	43.19
6	83.28	37.31	81.96	33.40	80.60	28.54	79.20	40.59	77.81	41.59	76.30	42.53	74.80	43.42
8	83.24	37.35	81.92	33.40	80.55	28.58	79.15	40.62	77.77	41.61	76.25	42.56	74.75	43.45
10	83.20	37.35	81.87	33.40	80.51	28.61	79.11	40.65	77.72	41.61	76.20	42.56	74.70	43.47
12	83.15	37.43	81.83	33.55	80.46	28.65	79.06	40.65	77.67	41.65	76.20	42.59	74.65	43.50
14	83.11	37.47	81.78	33.60	80.41	28.69	79.01	40.72	77.62	41.71	76.15	42.65	74.60	43.53
16	83.07	37.51	81.74	33.64	80.37	28.72	78.96	40.76	77.57	41.74	76.05	42.68	74.55	43.56
18	83.02	37.54	81.69	33.67	80.32	28.76	78.92	40.79	77.52	41.77	76.00	42.71	74.49	43.59
20	82.98	37.58	81.65	33.71	80.28	28.79	78.87	40.82	77.48	41.81	75.95	42.74	74.44	43.62
22	82.93	37.62	81.60	33.75	80.23	28.83	78.82	40.86	77.43	41.84	75.90	42.77	74.39	43.65
24	82.89	37.66	81.56	33.78	80.18	28.86	78.77	40.89	77.38	41.87	75.85	42.80	74.34	43.67
26	82.85	37.70	81.51	33.82	80.14	28.90	78.73	40.92	77.33	41.90	75.80	42.83	74.29	43.70
28	82.80	37.74	81.47	33.85	80.09	28.93	78.68	40.96	77.28	41.93	75.75	42.86	74.24	43.73
30	82.76	37.77	81.42	33.89	80.04	28.97	78.63	40.99	77.23	41.97	75.70	42.89	74.19	43.76
32	82.72	37.81	81.38	33.93	80.00	29.00	78.58	41.02	77.18	42.00	75.65	42.92	74.14	43.79
34	82.67	37.85	81.33	33.97	79.95	29.04	78.54	41.06	77.13	42.03	75.60	42.95	74.09	43.82
36	82.63	37.89	81.28	34.00	79.90	29.07	78.49	41.09	77.08	42.06	75.55	42.98	74.04	43.84
38	82.58	37.93	81.24	34.04	79.86	29.11	78.44	41.12	77.04	42.09	75.50	43.01	73.99	43.87
40	82.54	37.96	81.19	34.08	79.81	29.14	78.39	41.15	77.00	42.12	75.45	43.04	73.93	43.90
42	82.49	38.00	81.15	34.11	79.76	29.18	78.34	41.19	76.95	42.15	75.40	43.07	73.88	43.93
44	82.45	38.04	81.10	34.15	79.72	29.21	78.30	41.22	76.90	42.18	75.35	43.10	73.83	43.95
46	82.41	38.08	81.06	34.18	79.67	29.24	78.25	41.25	76.85	42.21	75.30	43.13	73.78	43.98
48	82.36	38.11	81.01	34.22	79.62	29.28	78.20	41.29	76.79	42.25	75.25	43.16	73.73	44.01
50	82.32	38.15	80.97	34.25	79.58	29.31	78.15	41.32	76.74	42.28	75.20	43.18	73.68	44.04
52	82.27	38.19	80.92	34.29	79.53	29.35	78.10	41.35	76.69	42.31	75.15	43.21	73.63	44.07
54	82.23	38.23	80.87	34.33	79.48	29.38	78.06	41.39	76.64	42.34	75.10	43.24	73.58	44.09
56	82.18	38.26	80.83	34.36	79.44	29.42	78.01	41.42	76.59	42.37	75.05	43.27	73.52	44.12
58	82.14	38.30	80.78	34.40	79.39	29.45	77.96	41.45	76.55	42.40	75.00	43.30	73.47	44.15
60	82.10	38.34	80.74	34.44	79.35	29.49	77.92	41.49	76.50	42.43	74.95	43.33	73.42	44.18
c=75	68	31	68	32	67	33	66	35	66	36	65	37	65	39
c=115	1.05	48	1.04	50	1.03	51	1.02	53	1.01	55	1.00	57	0.99	58
c=190	1.73	79	1.72	82	1.70	85	1.69	88	1.67	91	1.65	94	1.64	95

Published by the A. Lutz Co., San Francisco, Cal.

MORENA RESERVOIR

SILT SURVEY

7-12-48 TO 8-6-48

RANGE PROFILES

PLOTTED BY

F. B. Finney

FROM FIELD BOOKS:

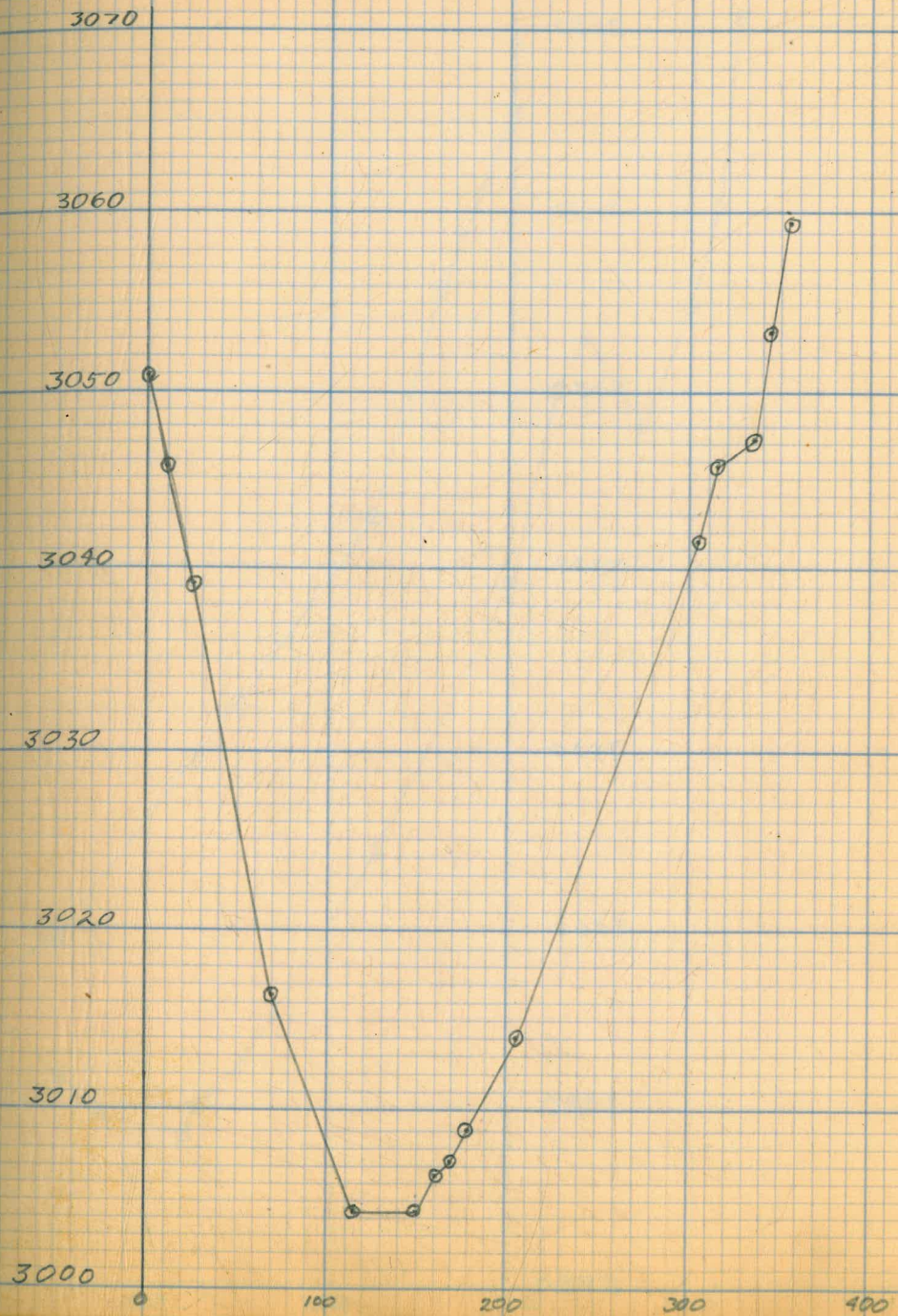
763, 764

SCALE - VARIOUS

INDEX

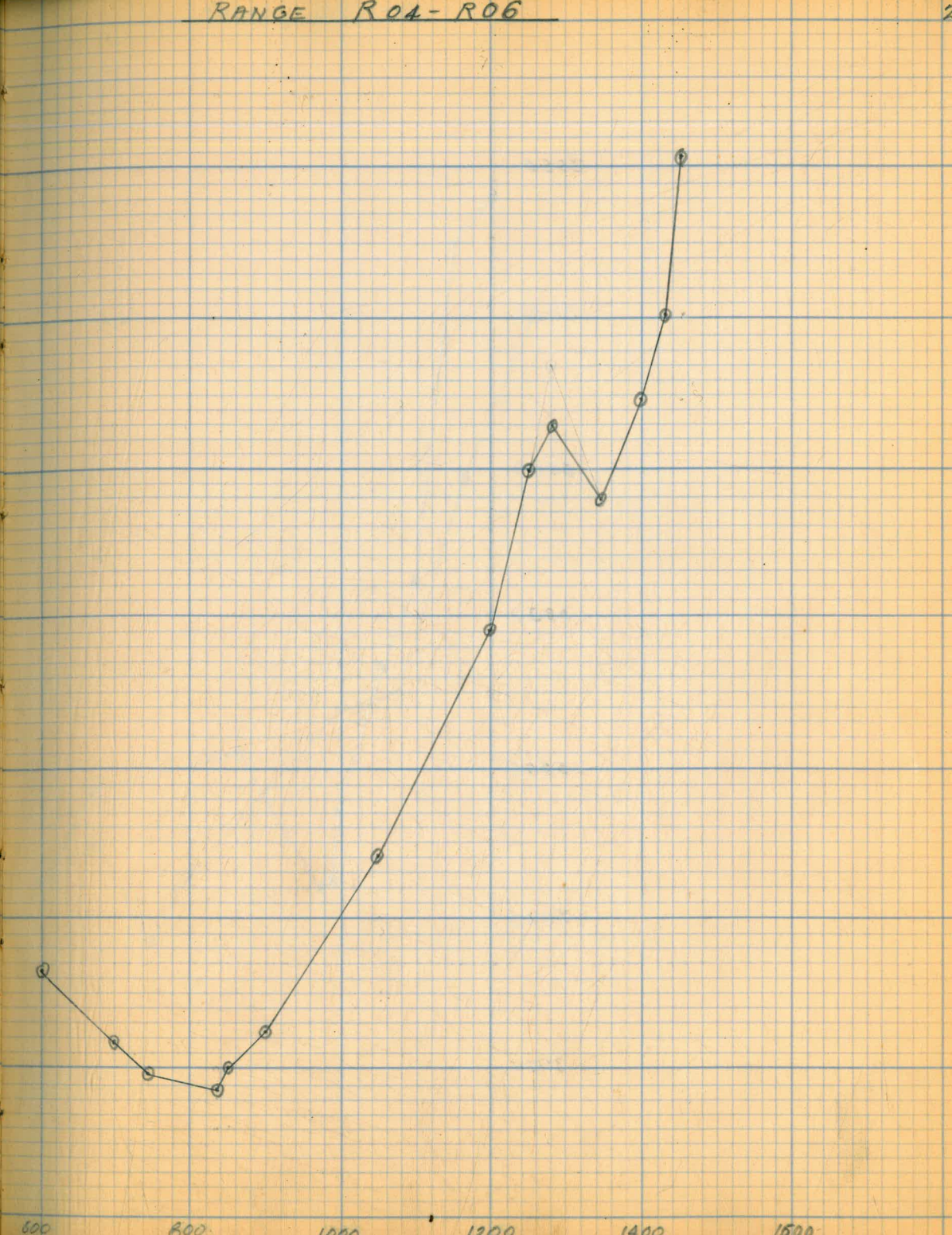
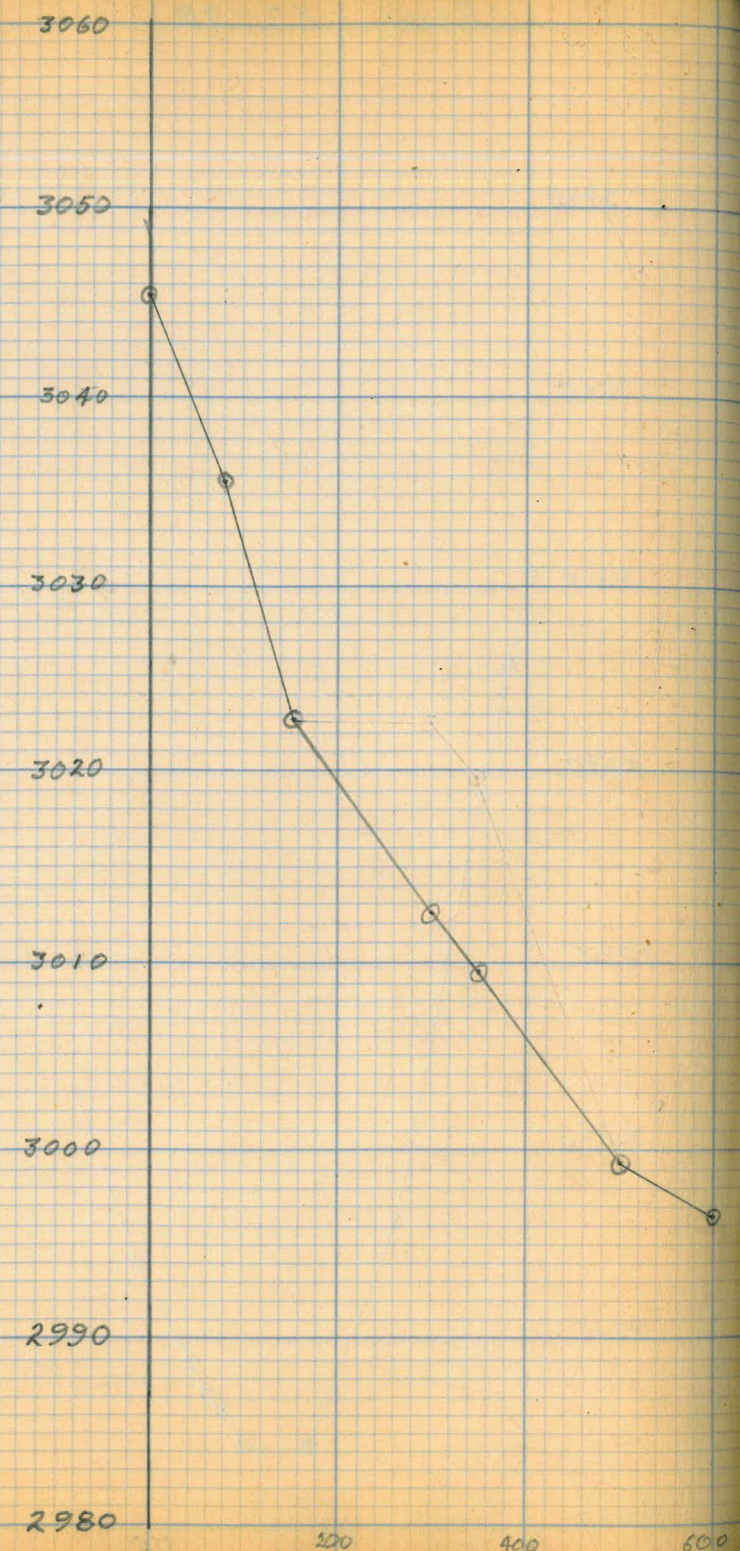
RANGE	PAGE	RANGE	PAGE
01-02	25	026-027	24
04-03	26	028-029	21
03-05	4	030-031	20
04-06	2	033-032	17
07-08	29	035-034	19
09-010	3	037-036	18
011-012	27	038-025	7
013-014	28	040-039	9
015-016	5	042-041	15
017-018	1	042-043	10
020-019	23	044-045	14
021-022	22	046-047	16
021-023	8	048-049	11
024-025	6	050-051	13
		053-052	12

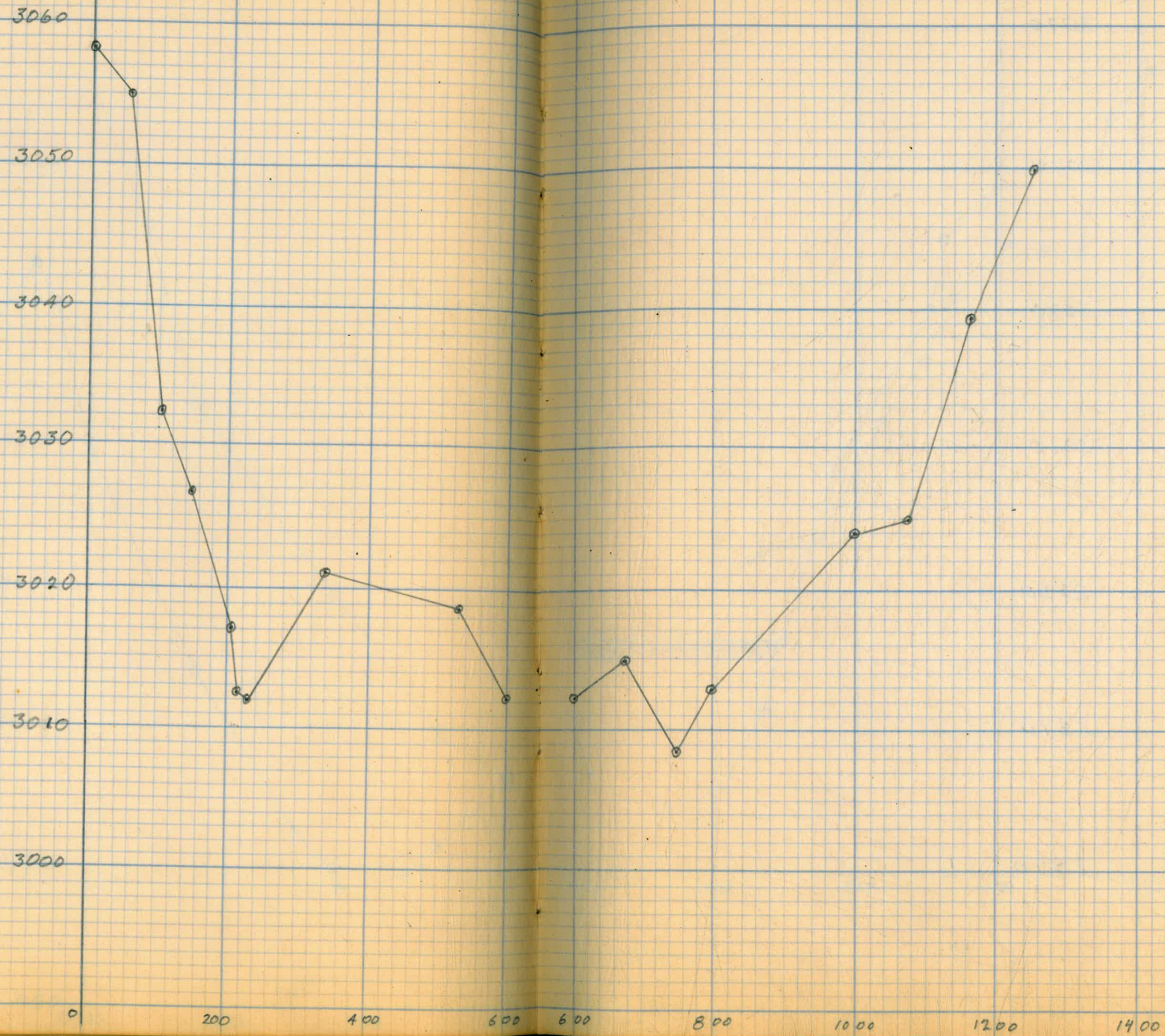
RANGE R7-R8

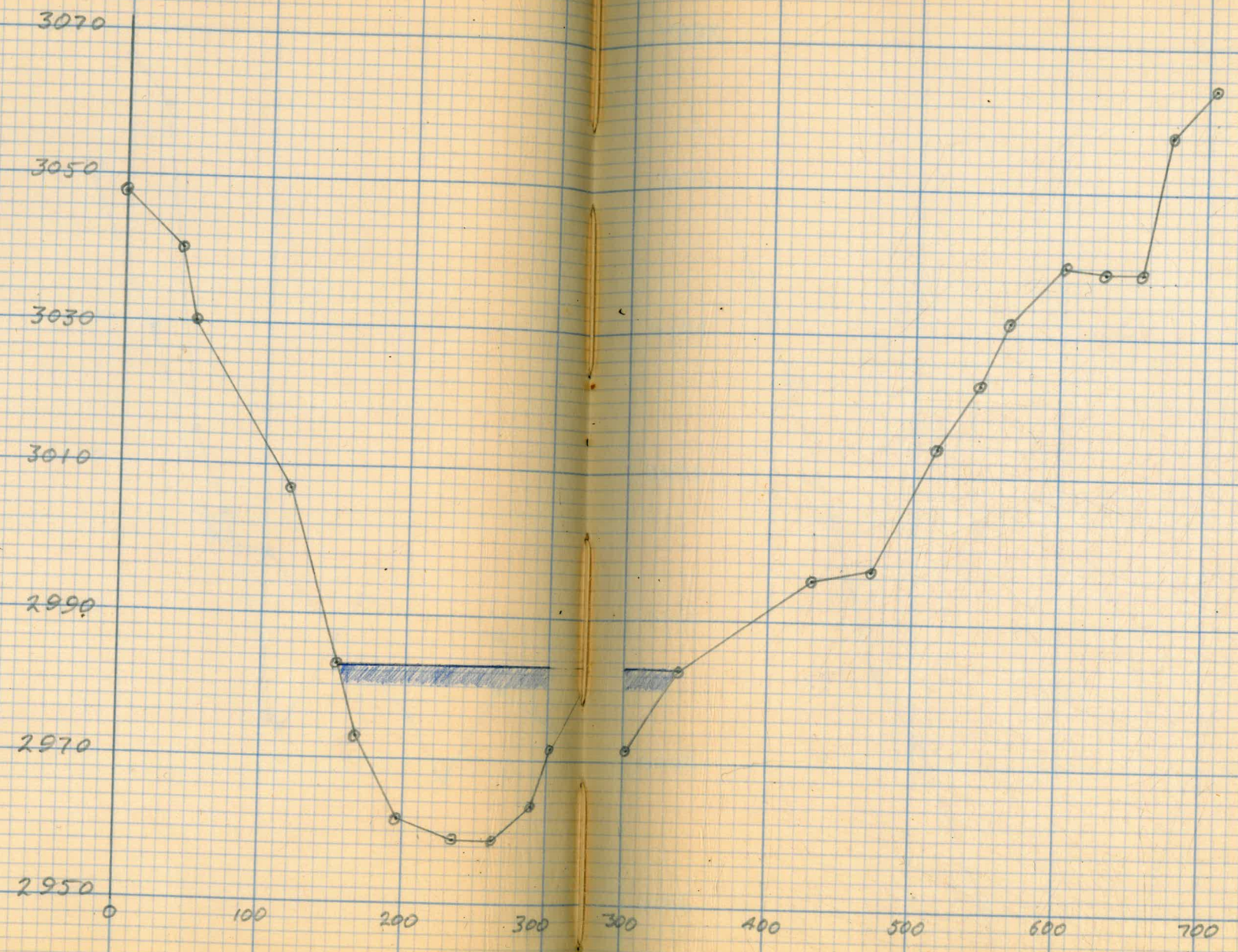


3060
 3050
 3040
 3030
 3020
 3010
 3000
 2990
 2980

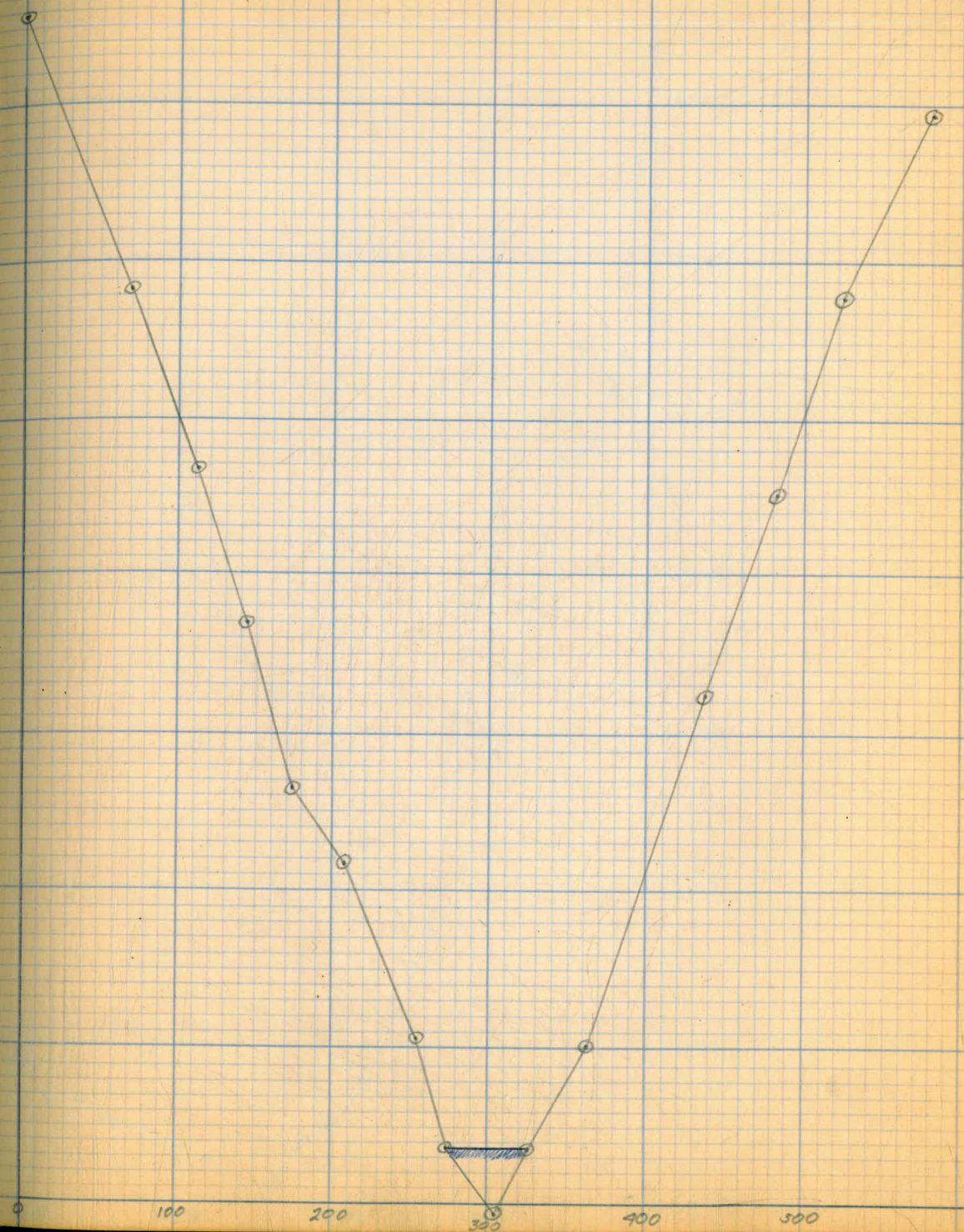
200 400 600 800 1000 1200 1400 1500

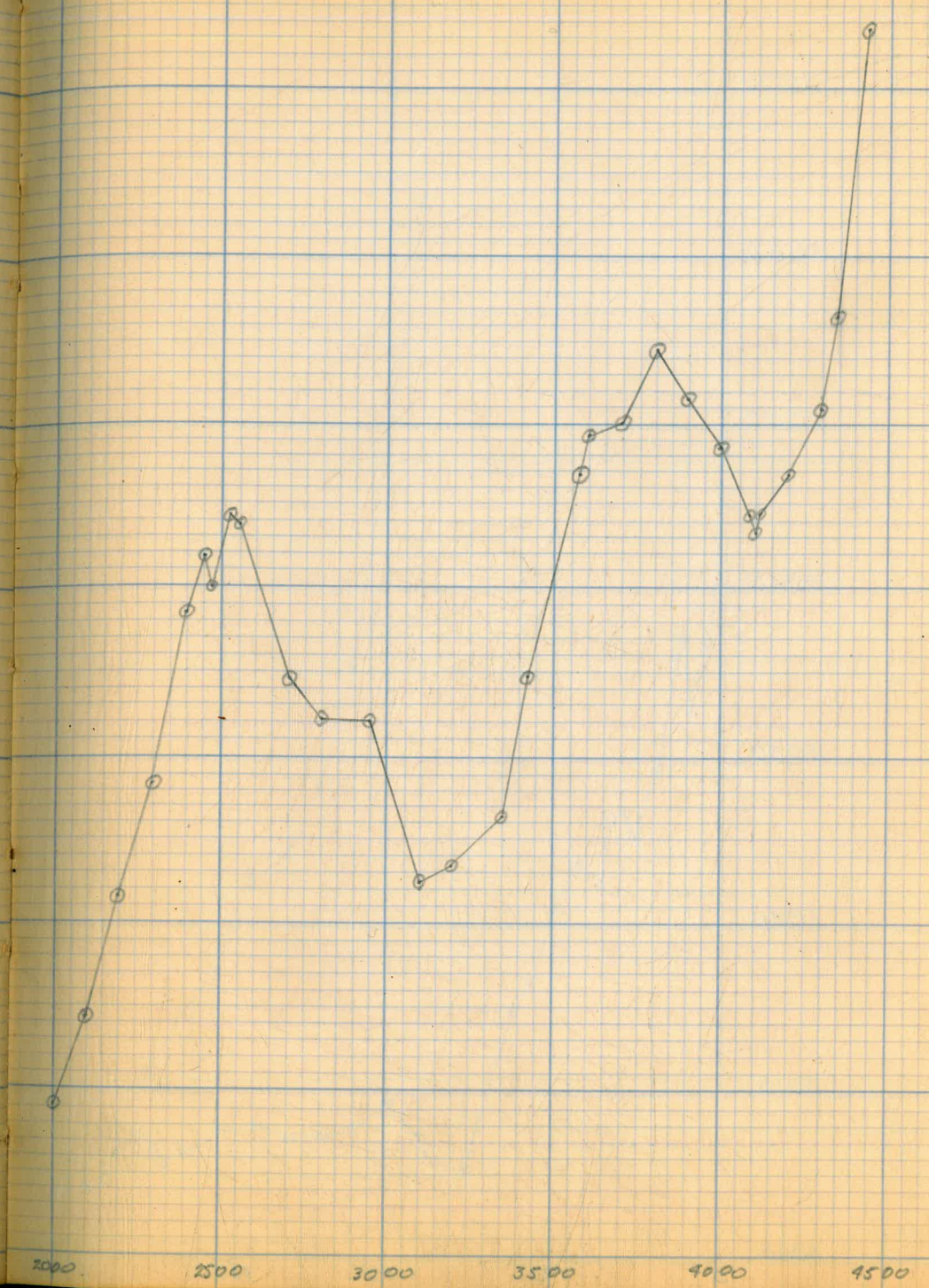
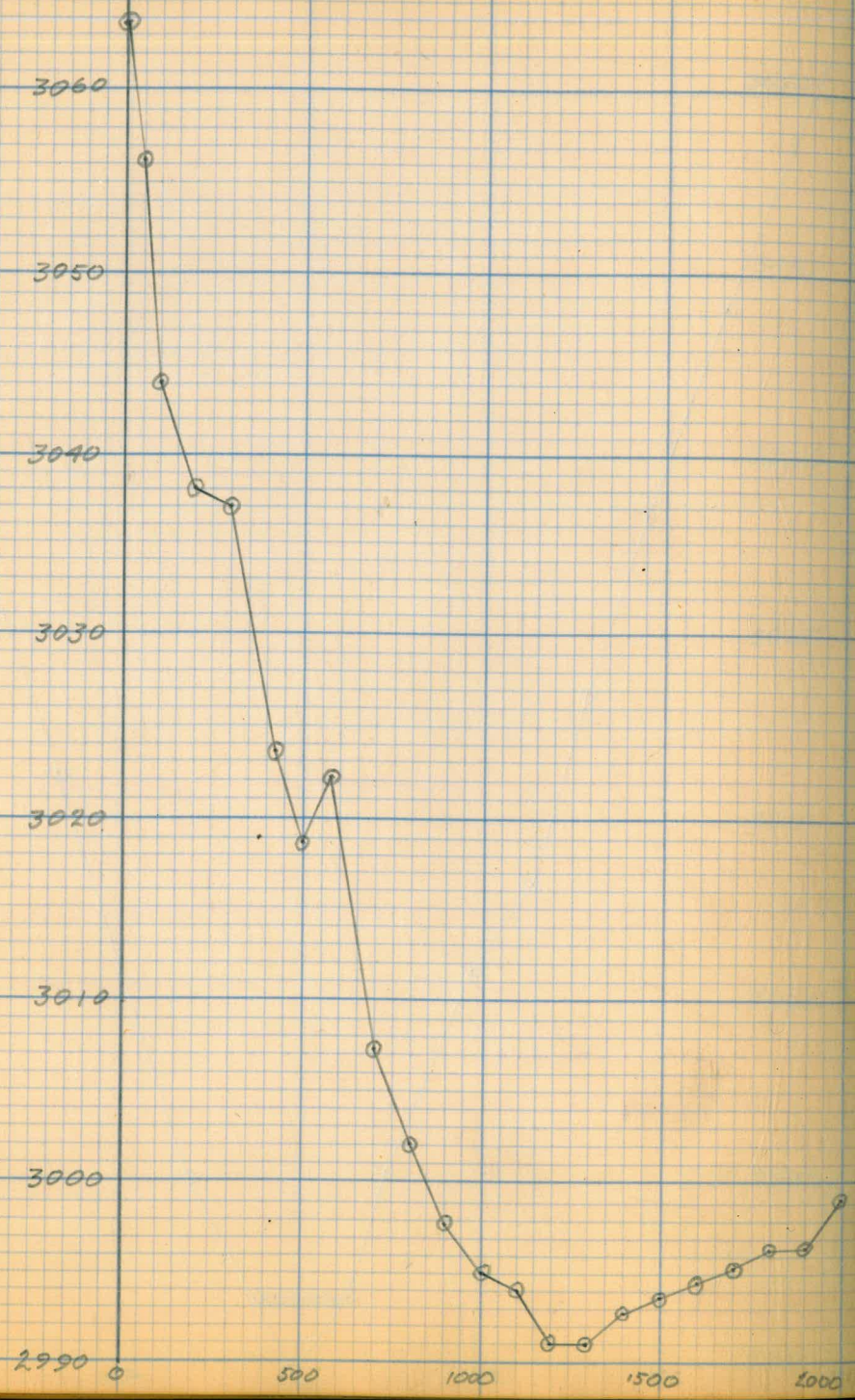






3050
3040
3030
3020
3010
3000
2990
2980





3070

3060

3050

3040

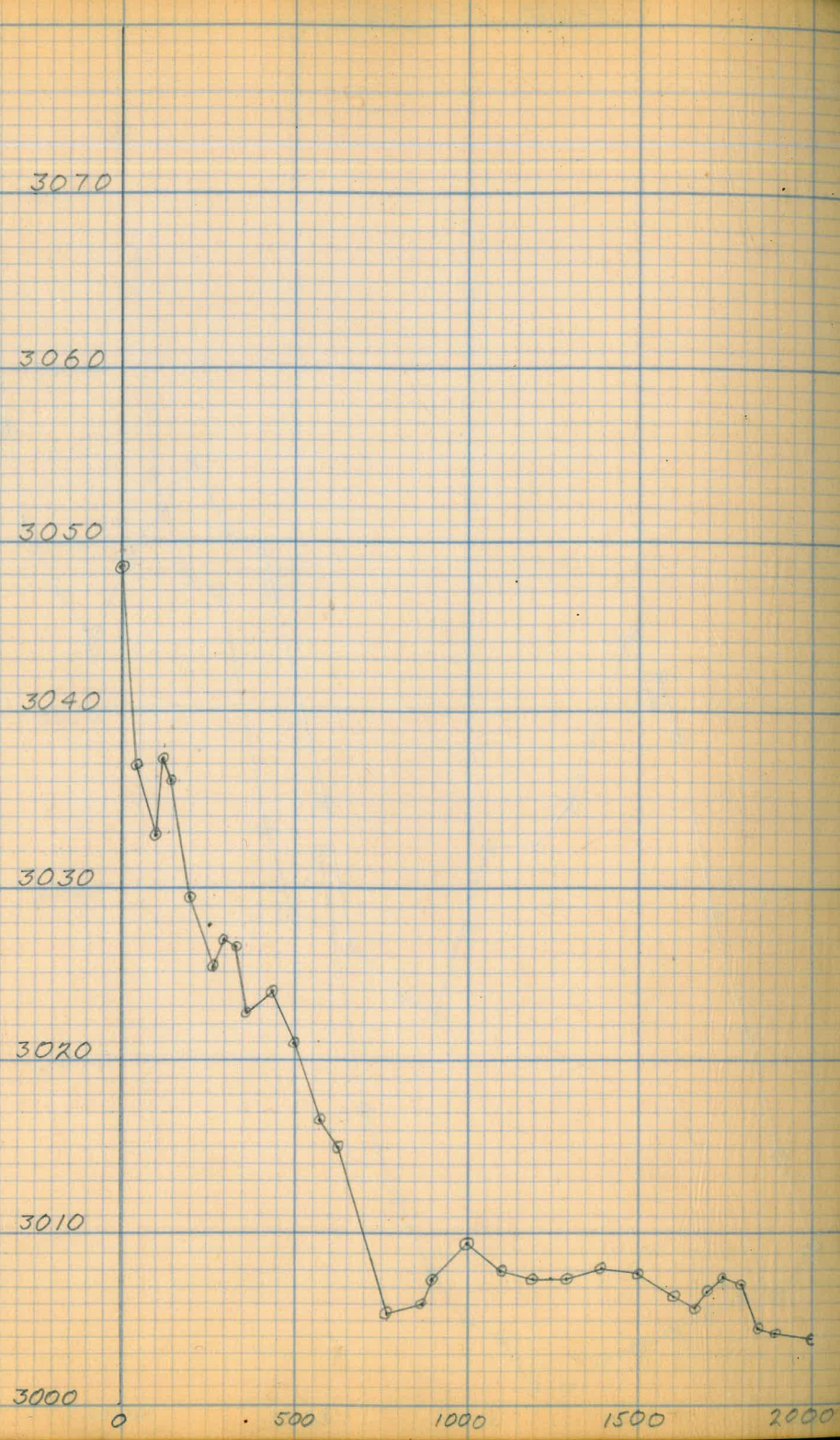
3030

3020

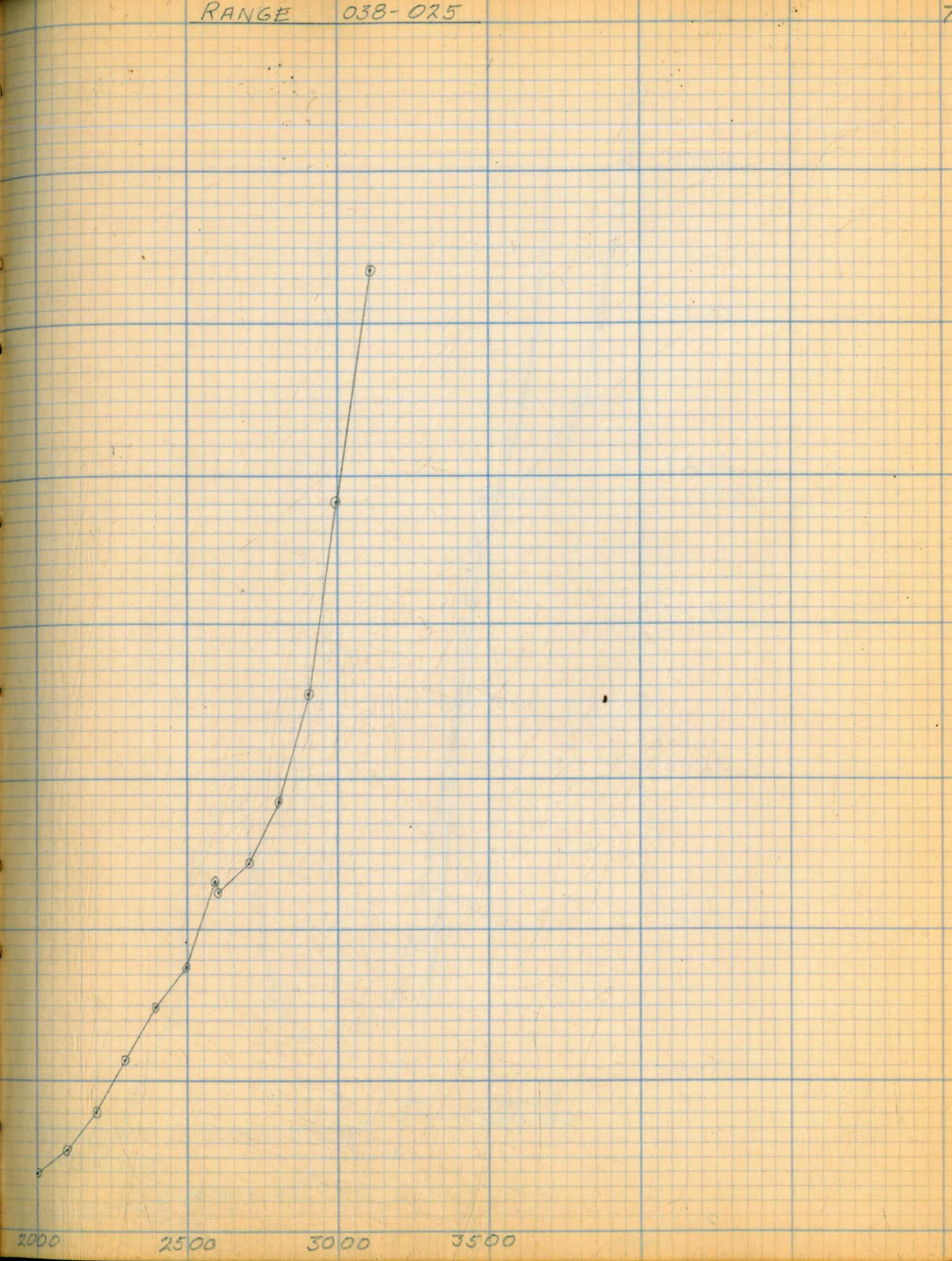
3010

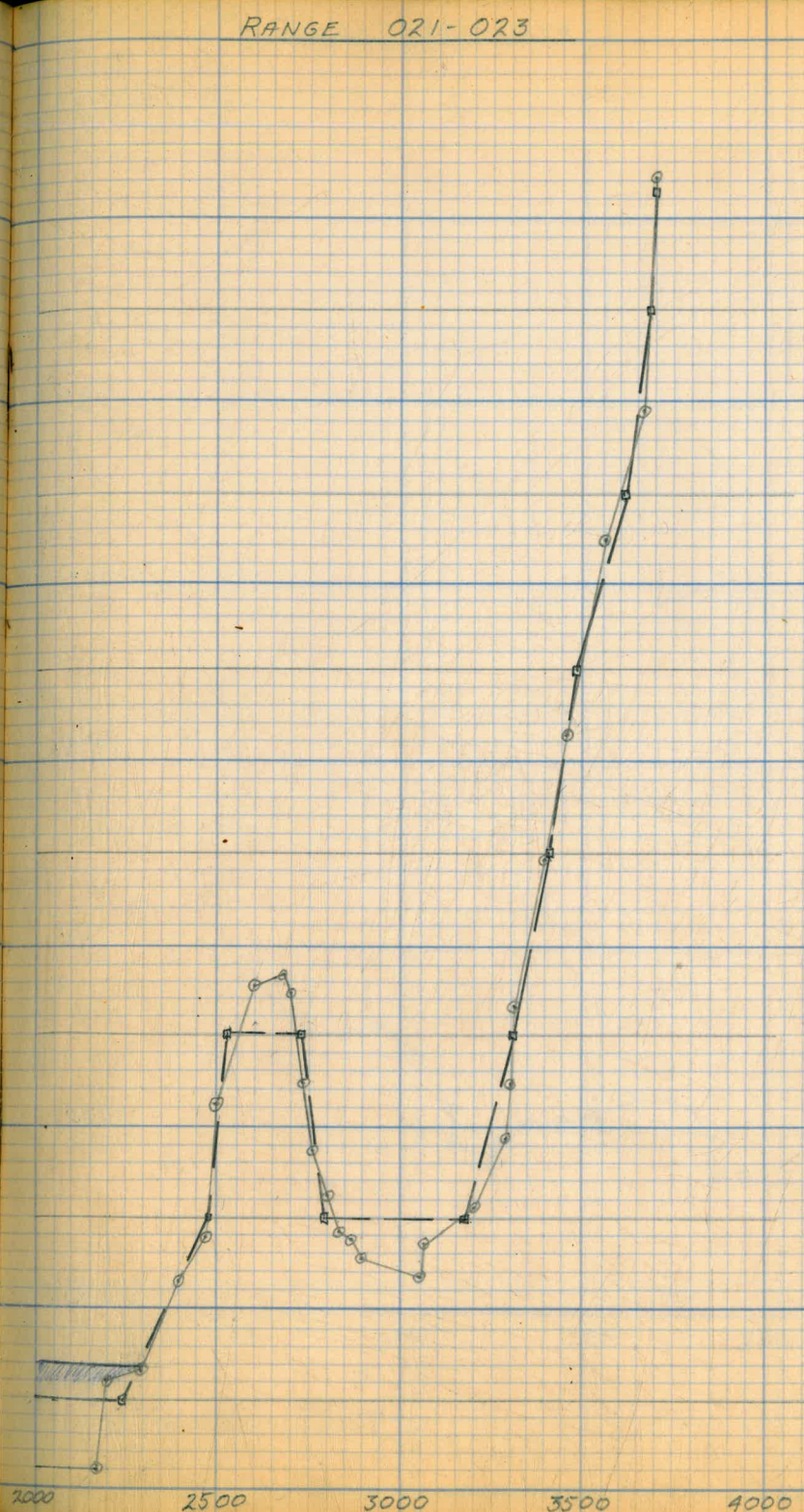
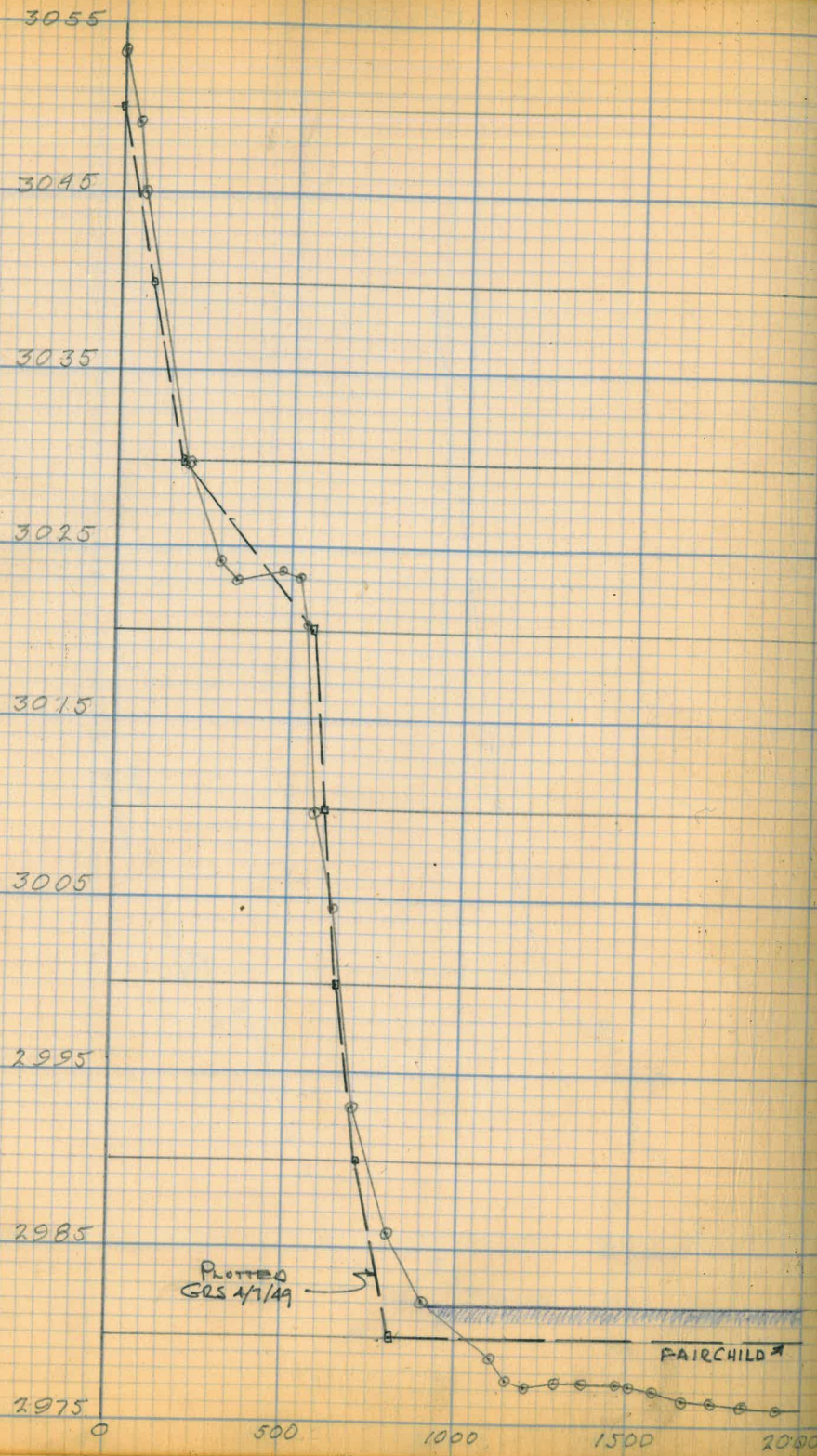
3000

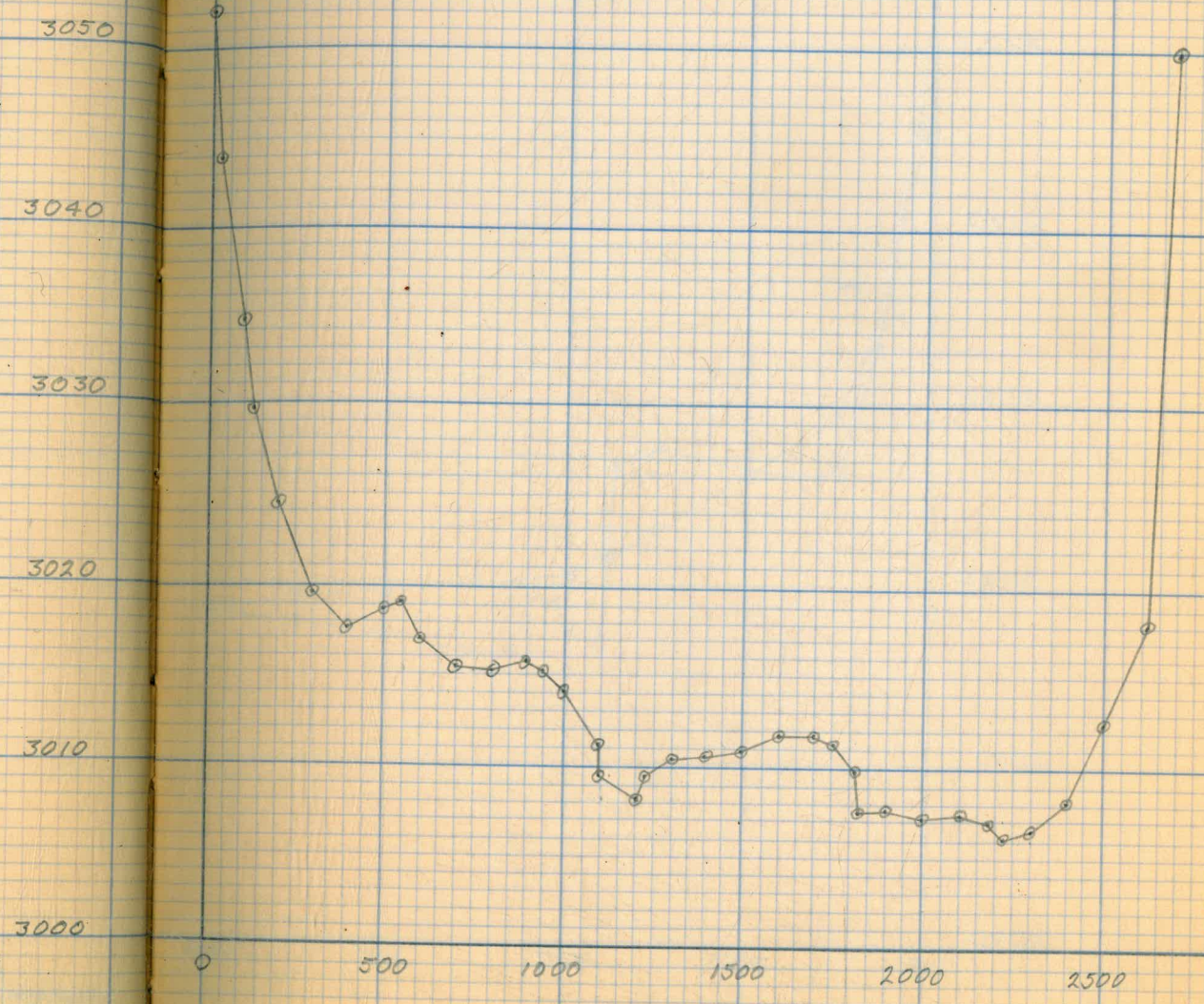
0 500 1000 1500 2000

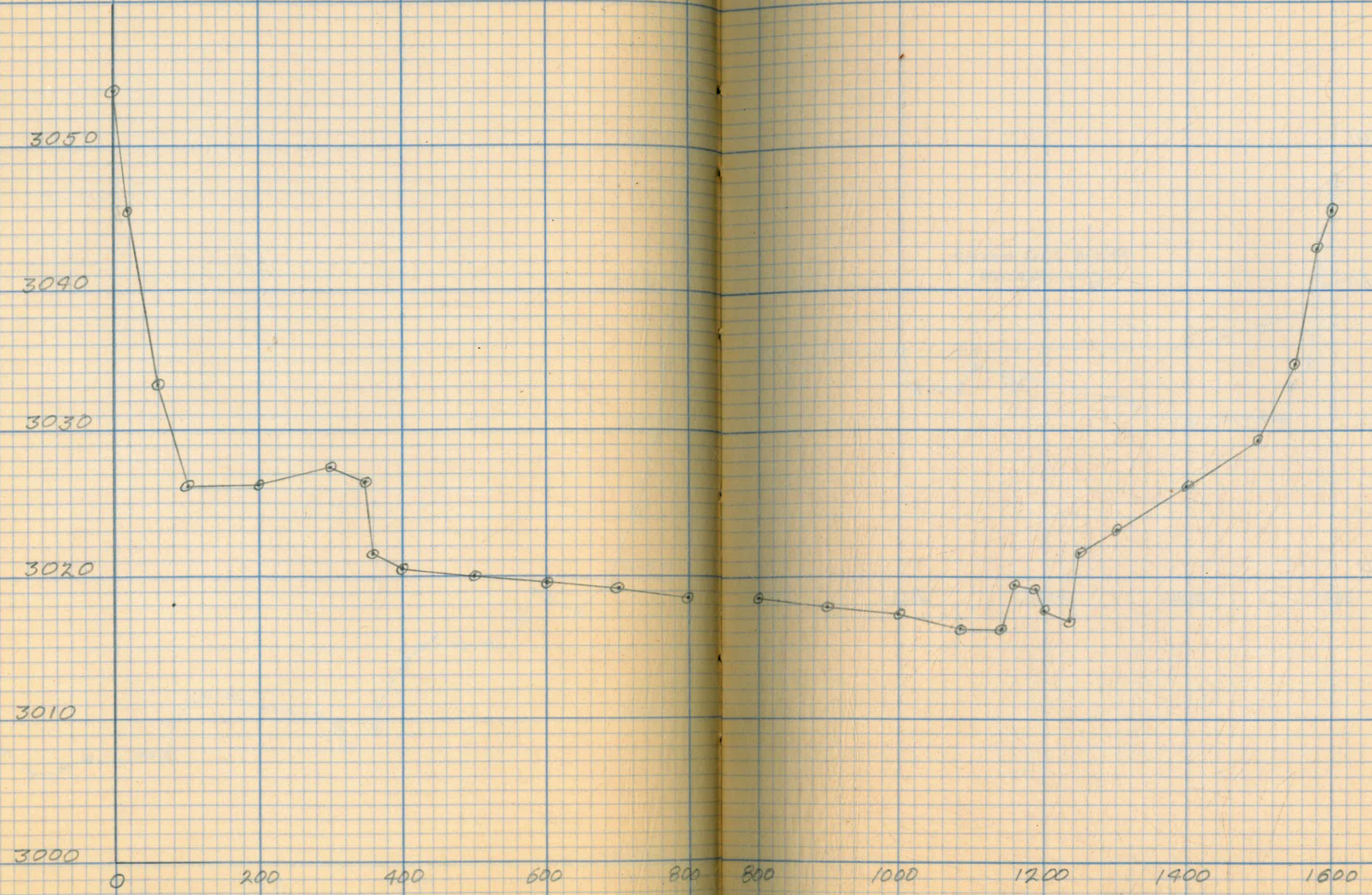


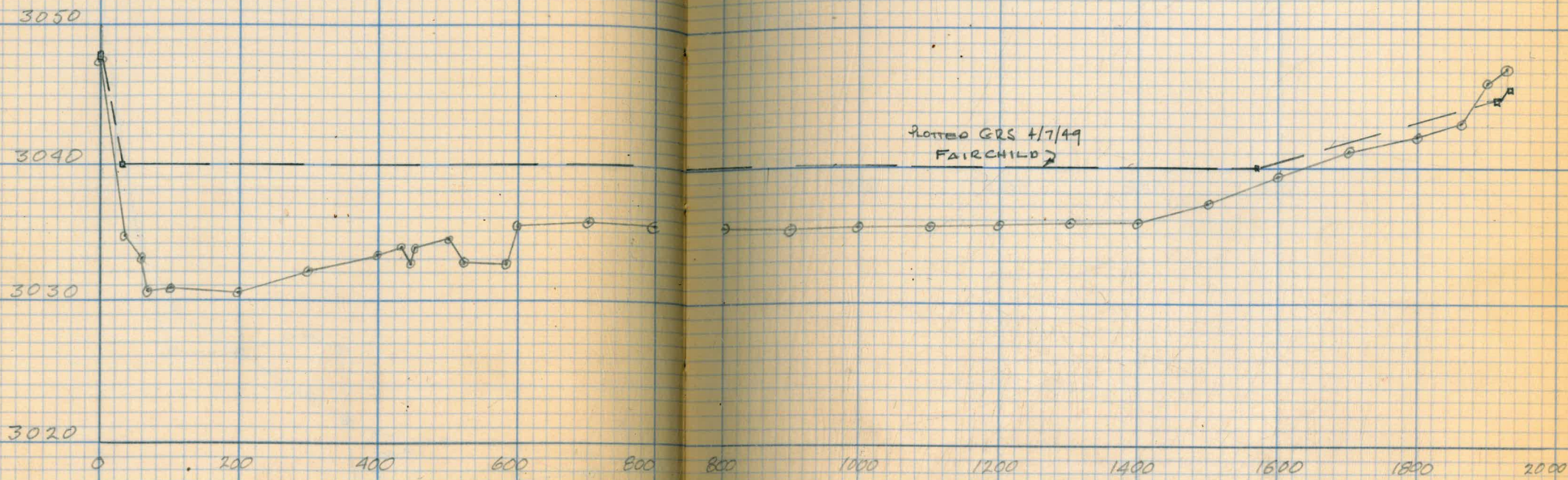
2000 2500 3000 3500







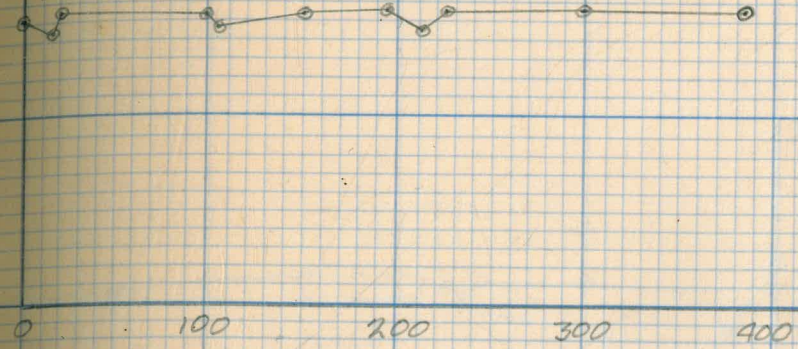


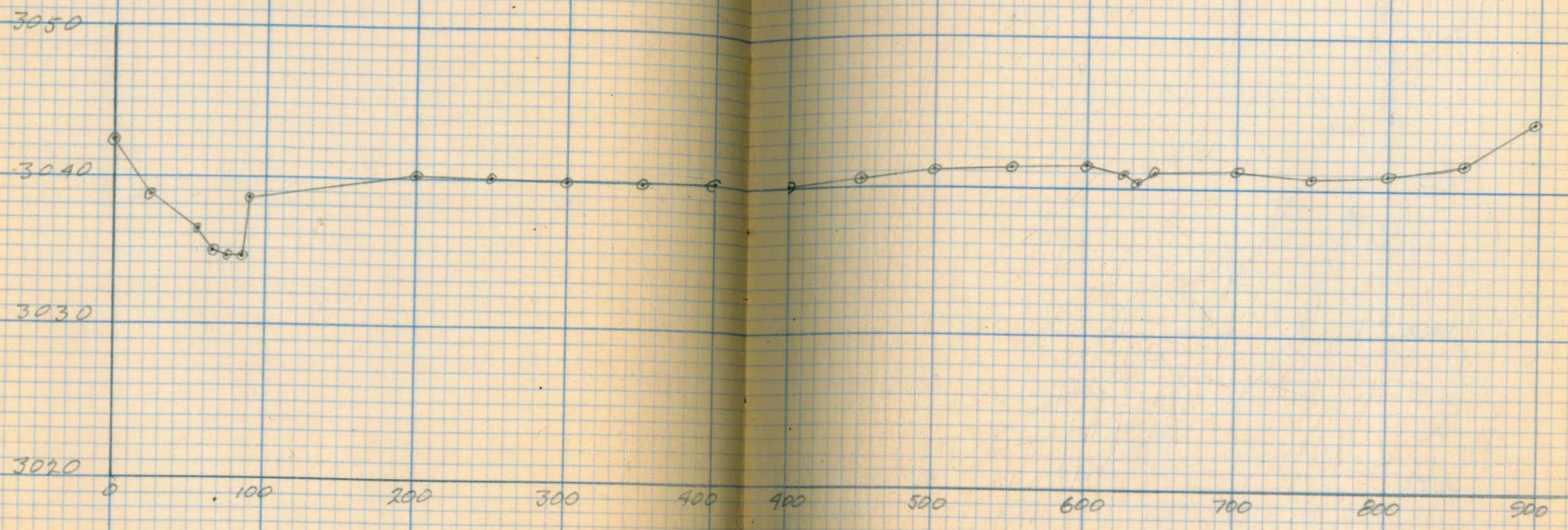


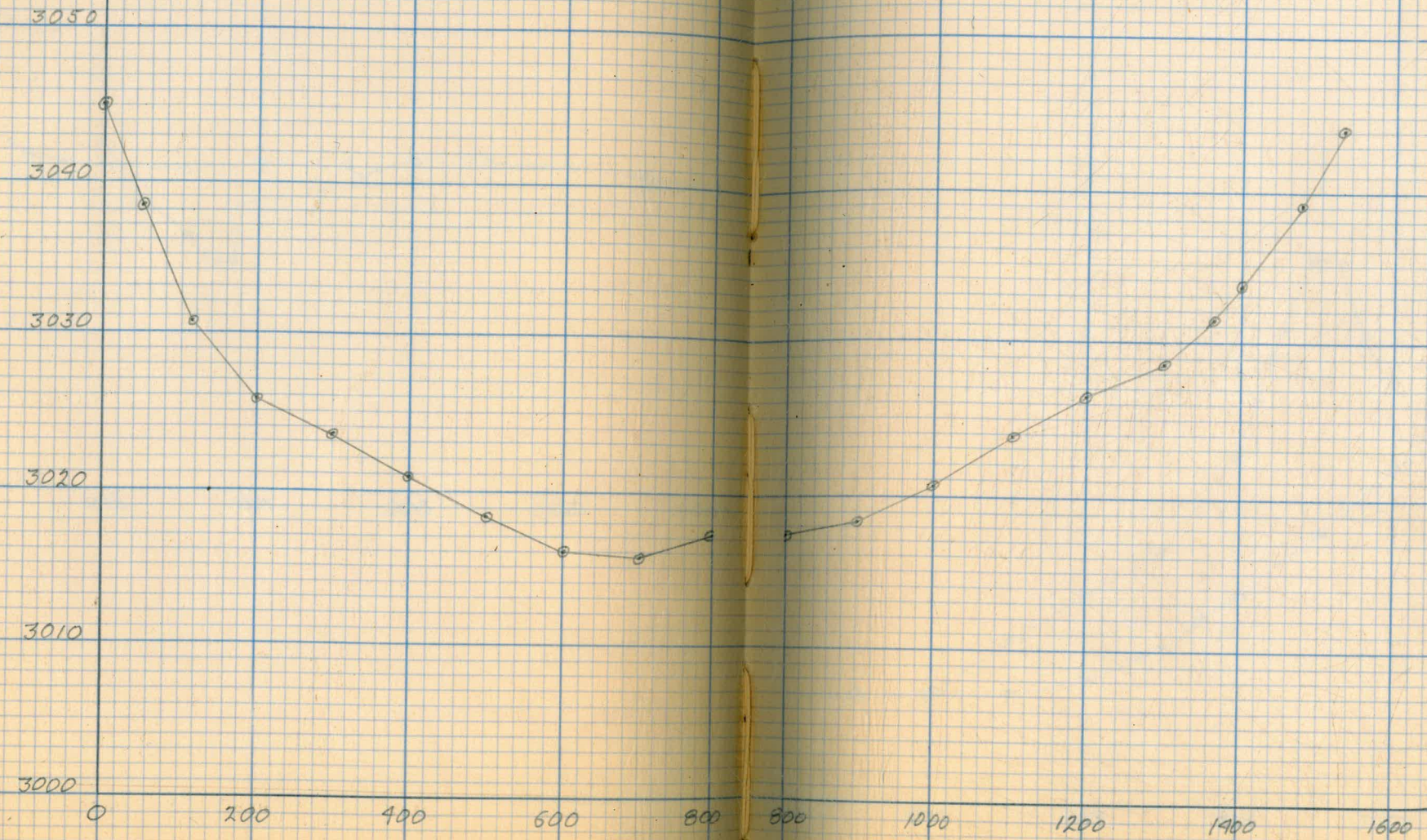
3050

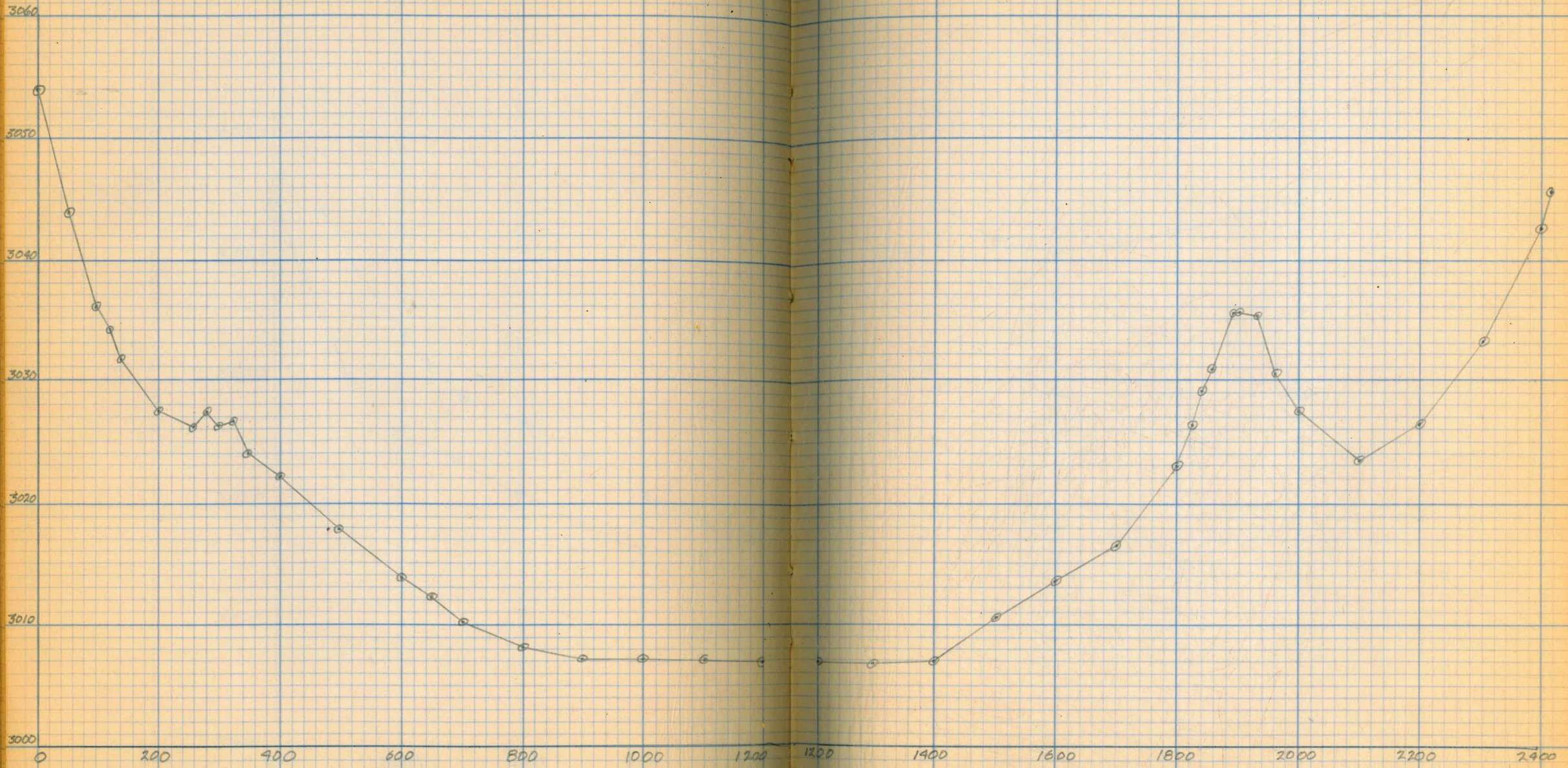
3040

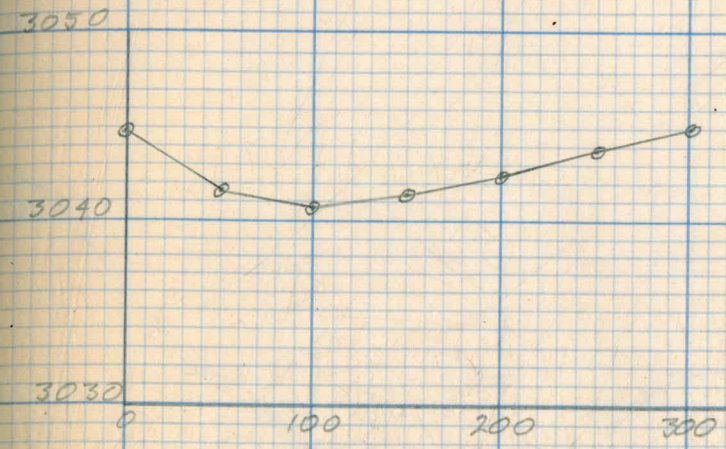
3030

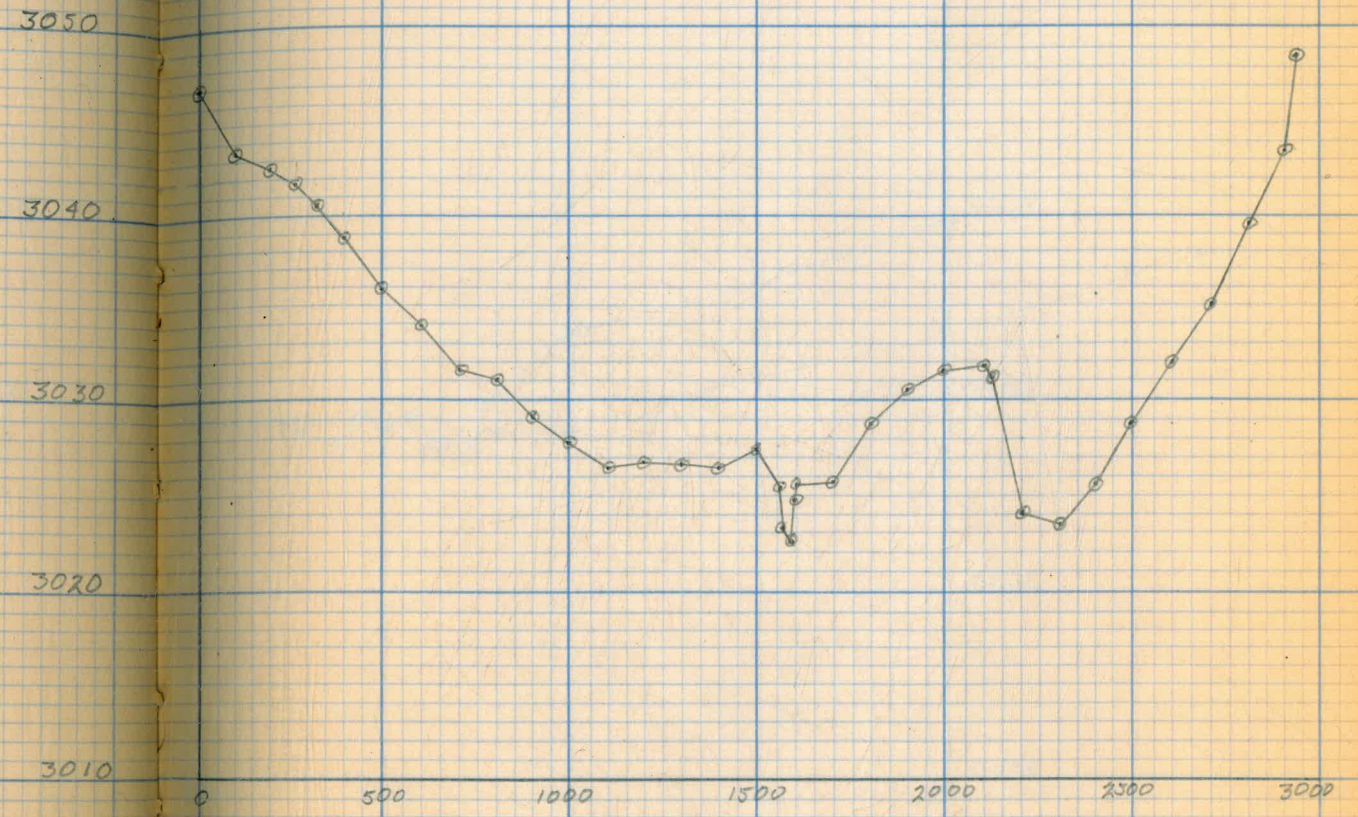


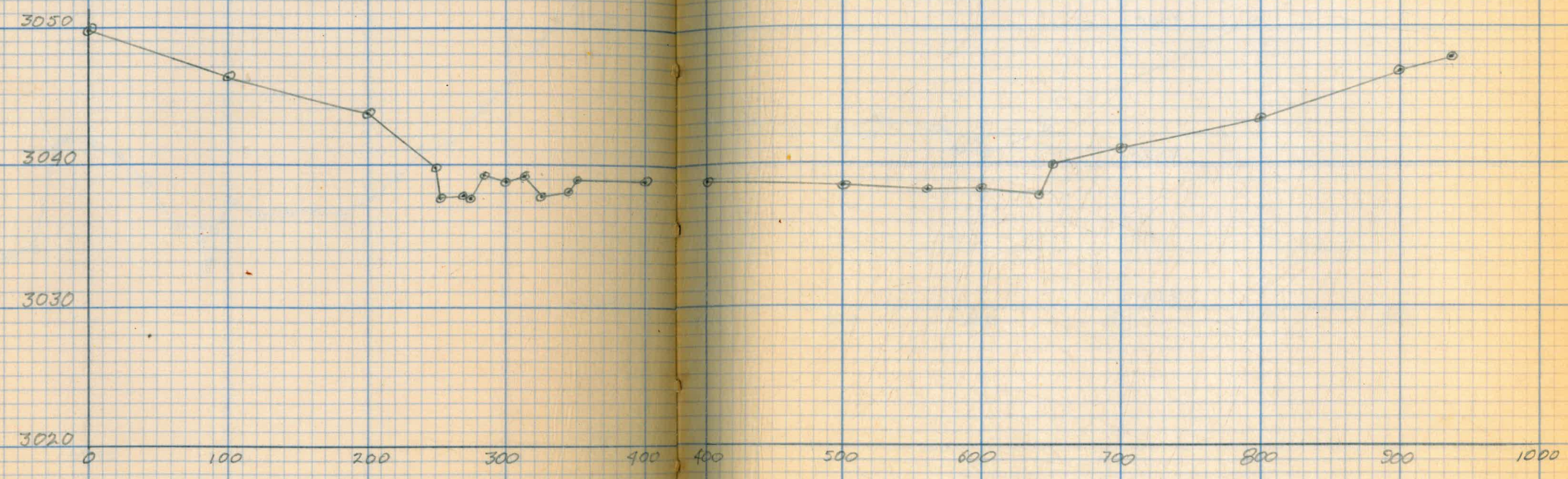


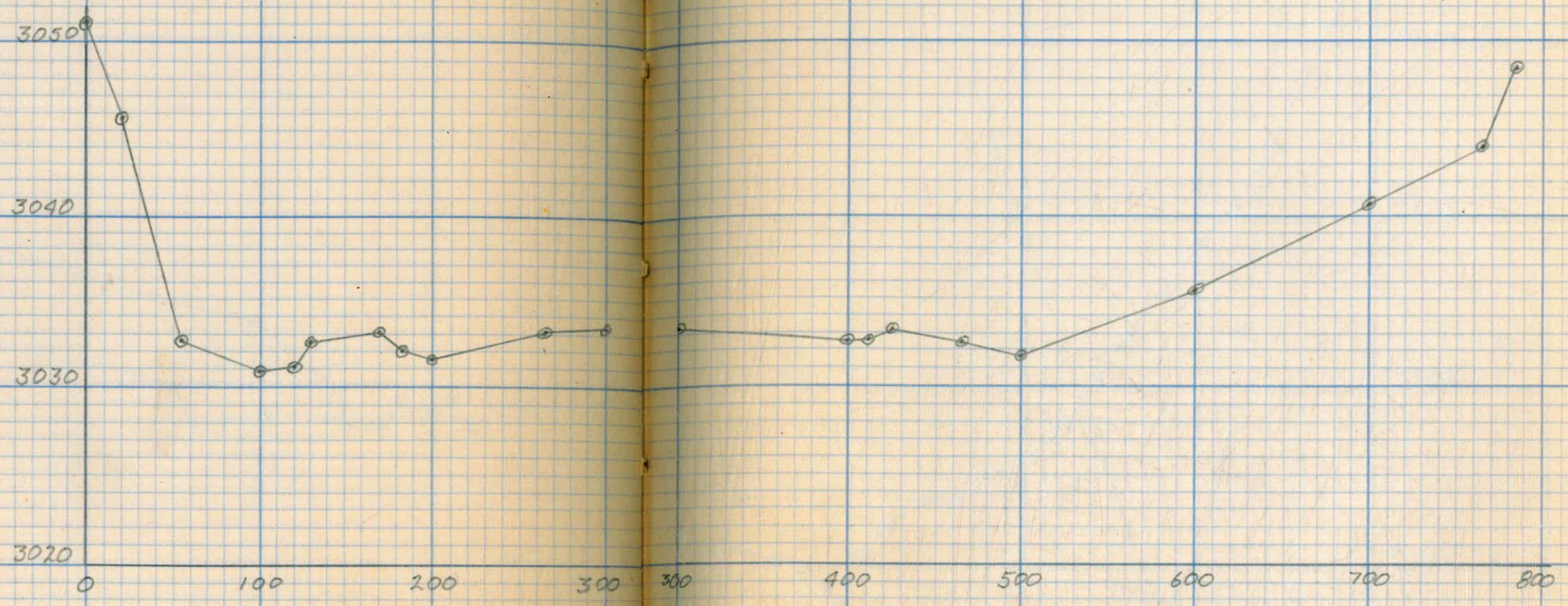


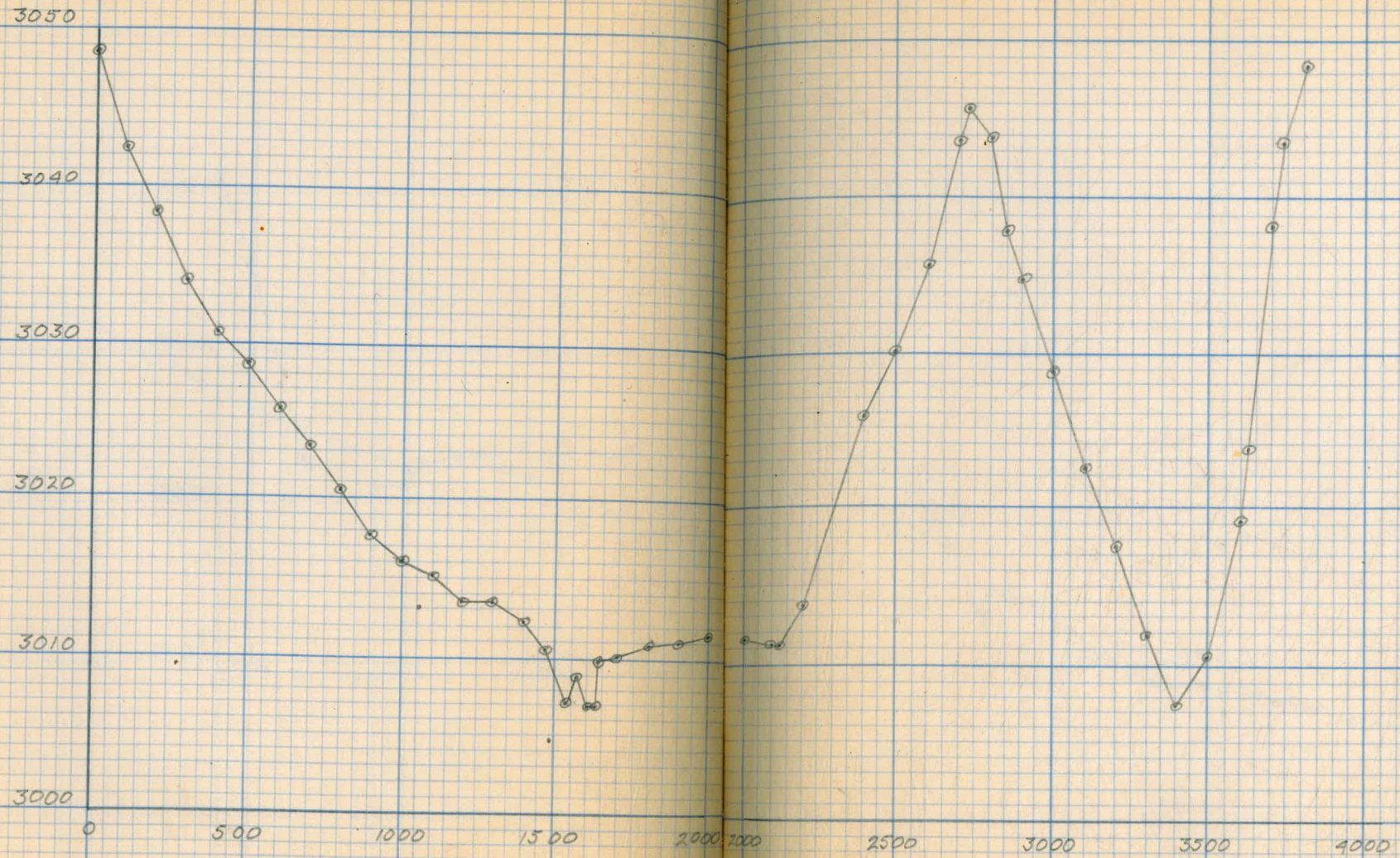












3050

3040

3030

3020

3010

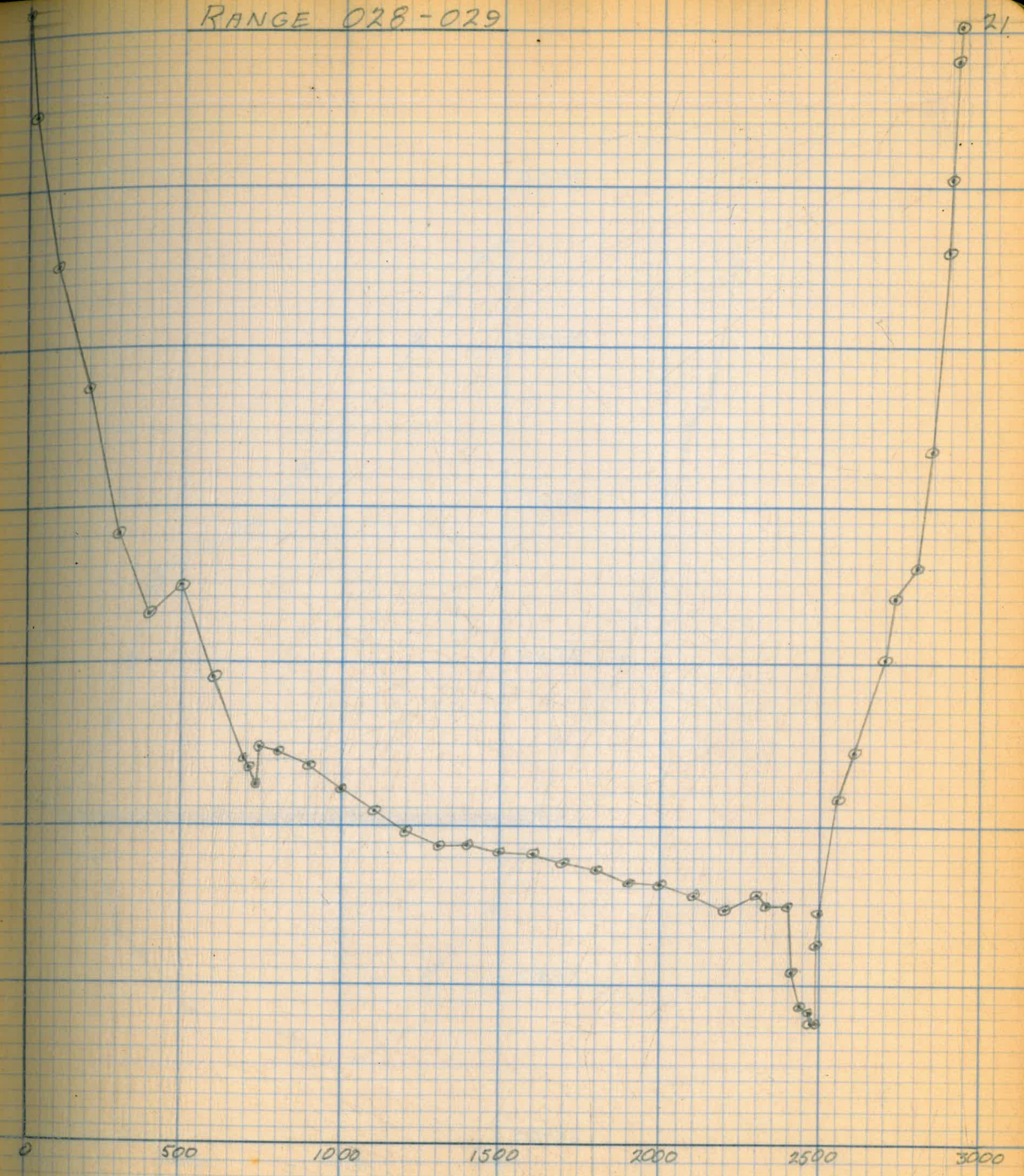
3000

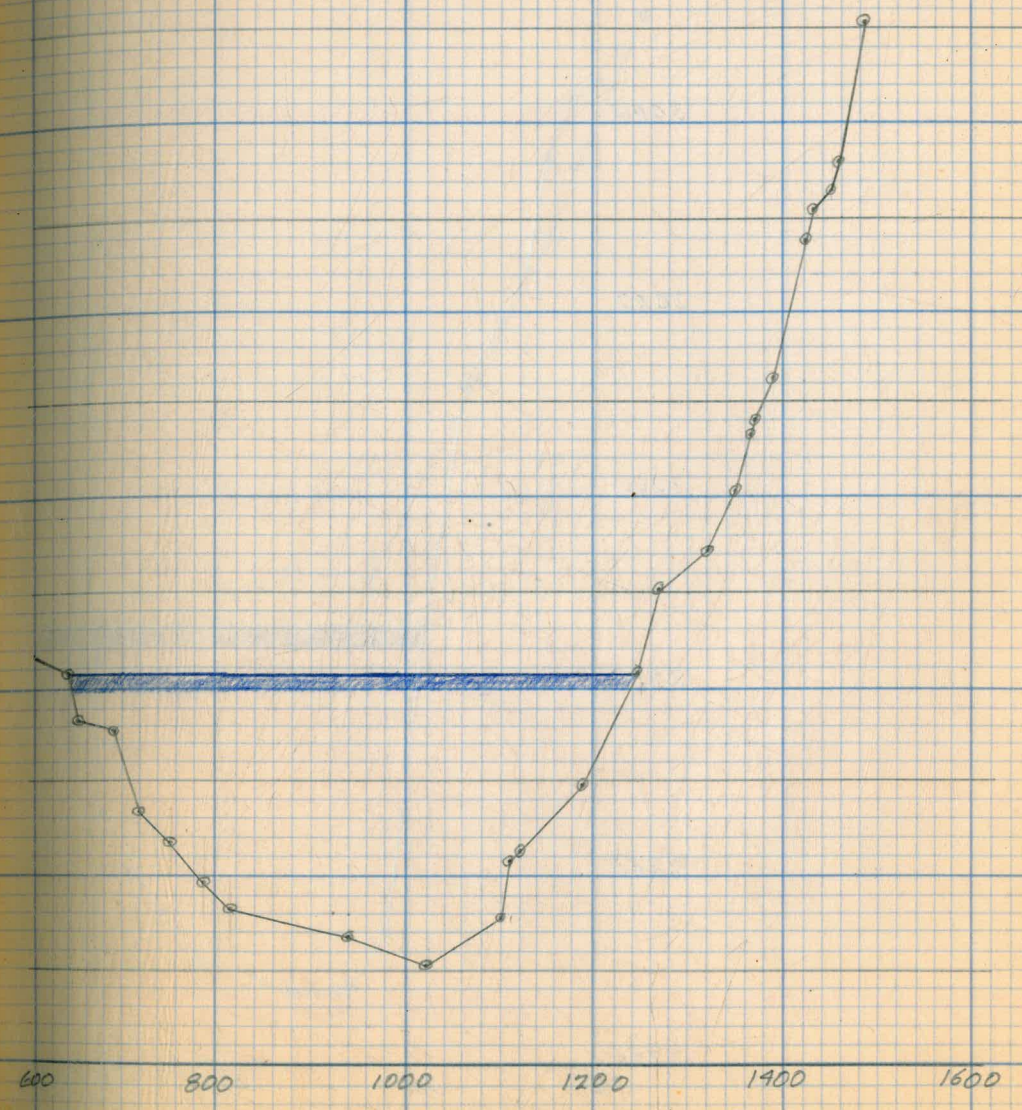
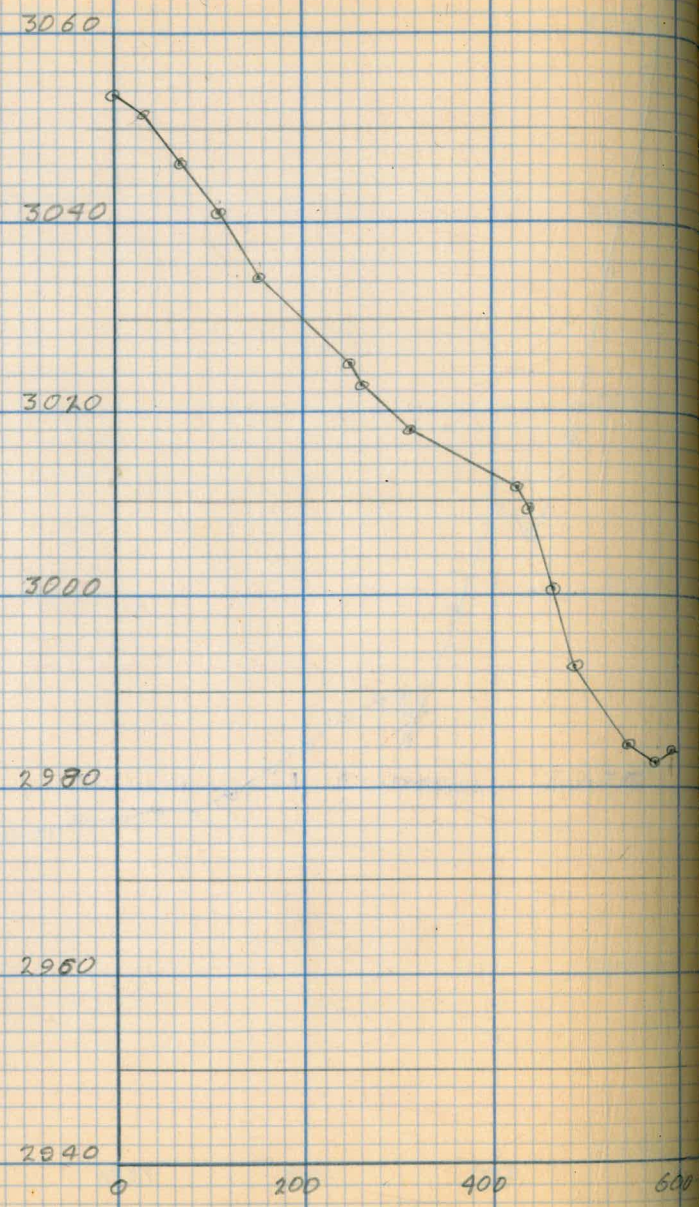
2990

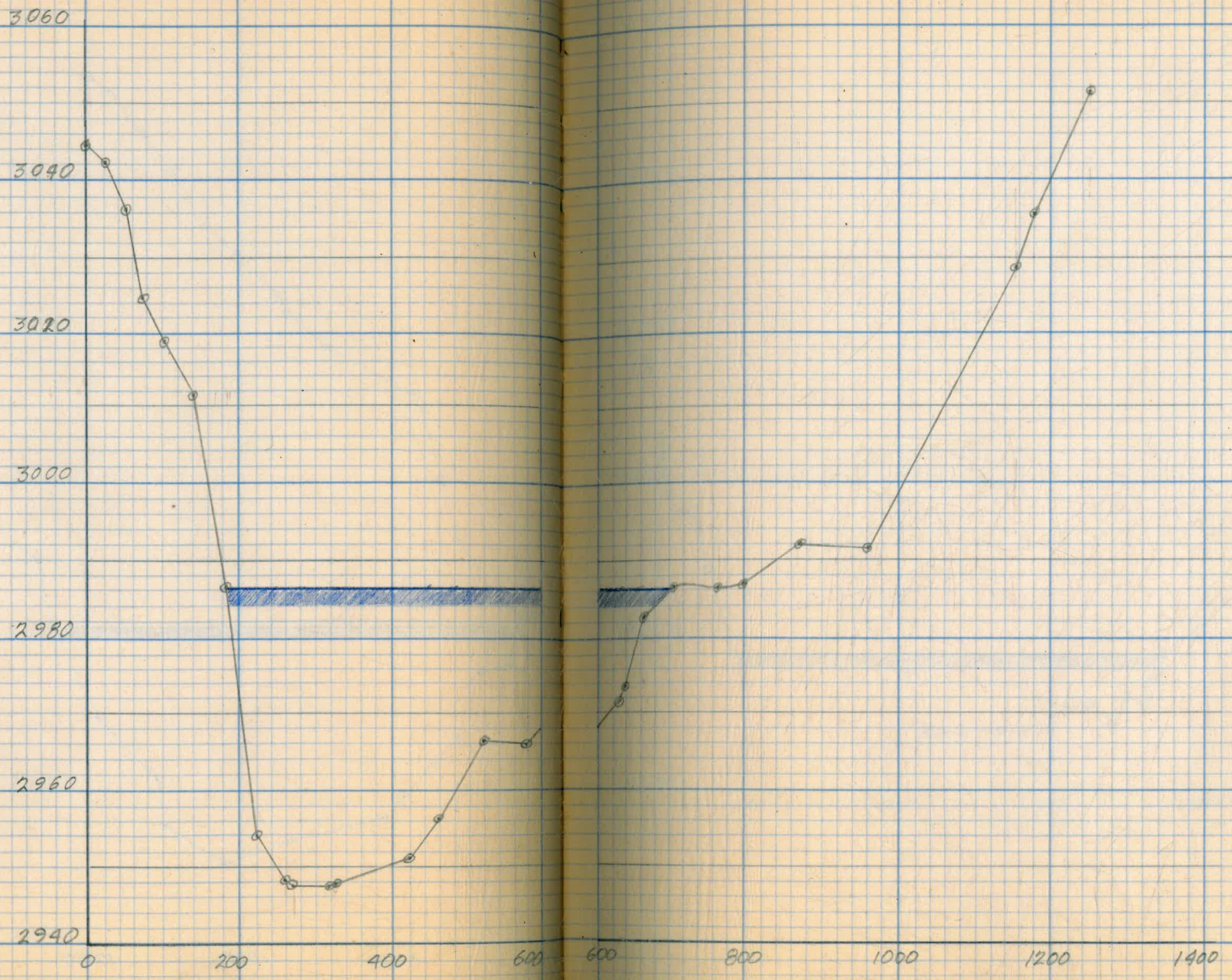
2980

RANGE 028-029

21







3060

3040

3020

3000

2980

2960

500

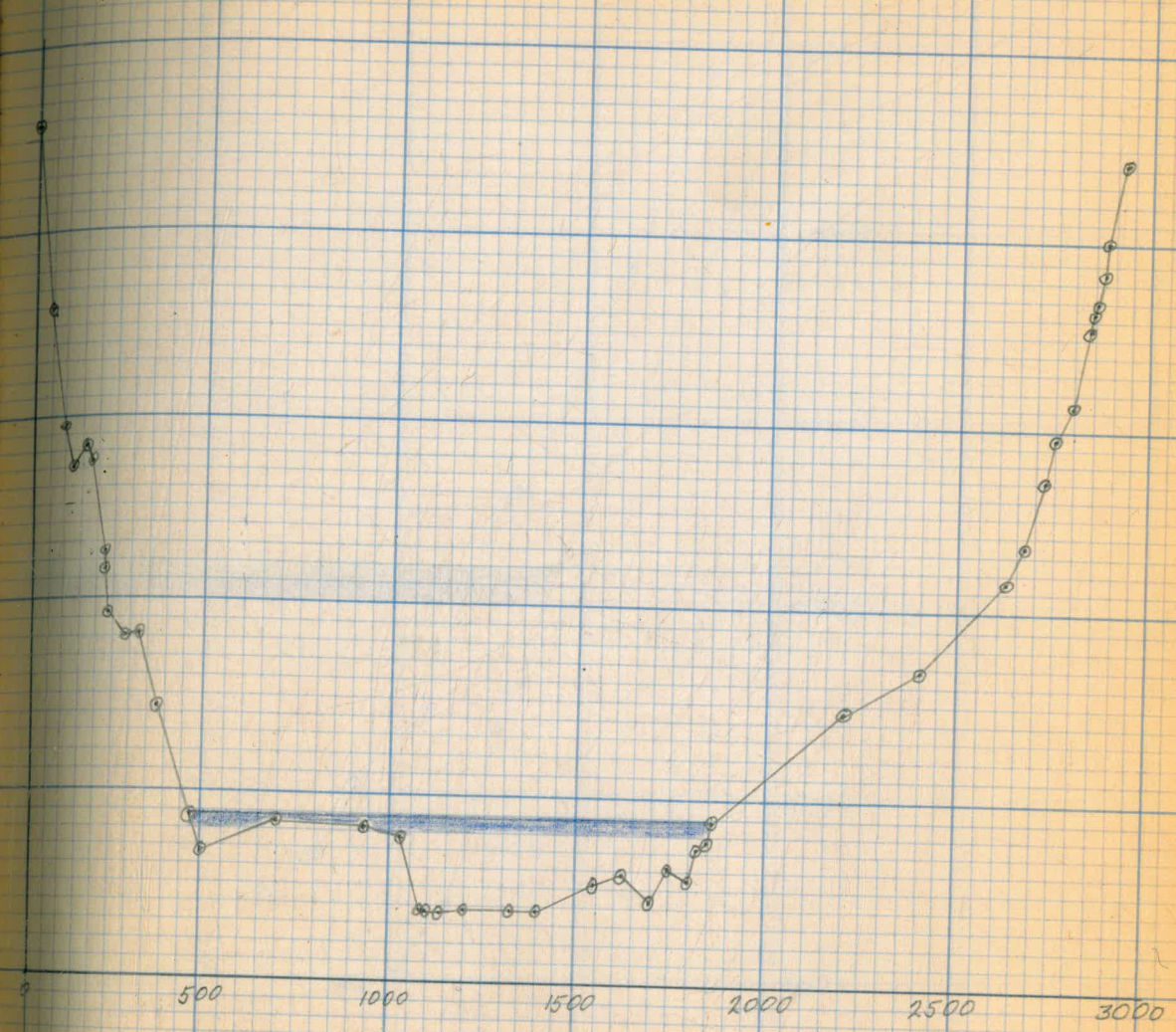
1000

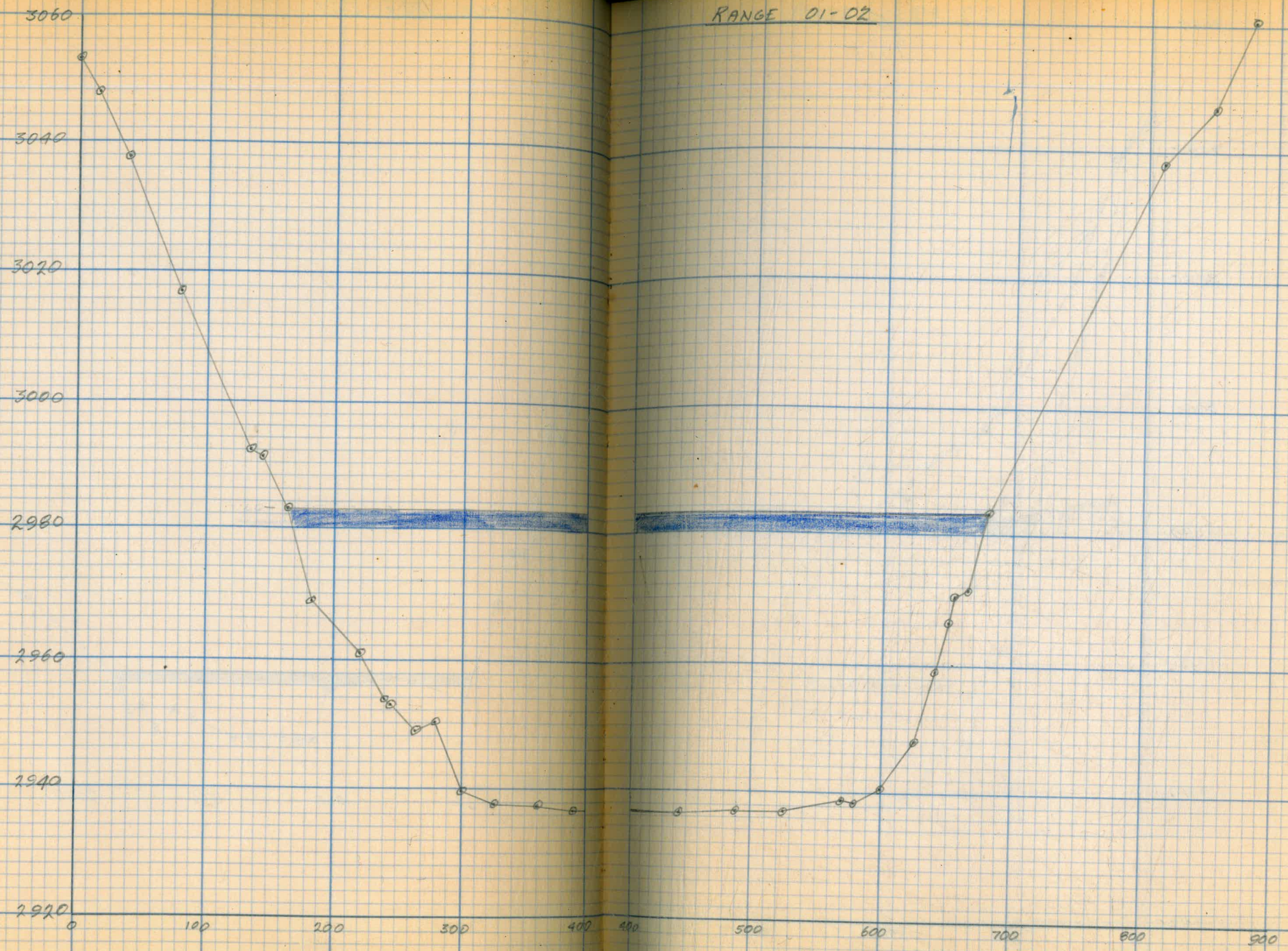
1500

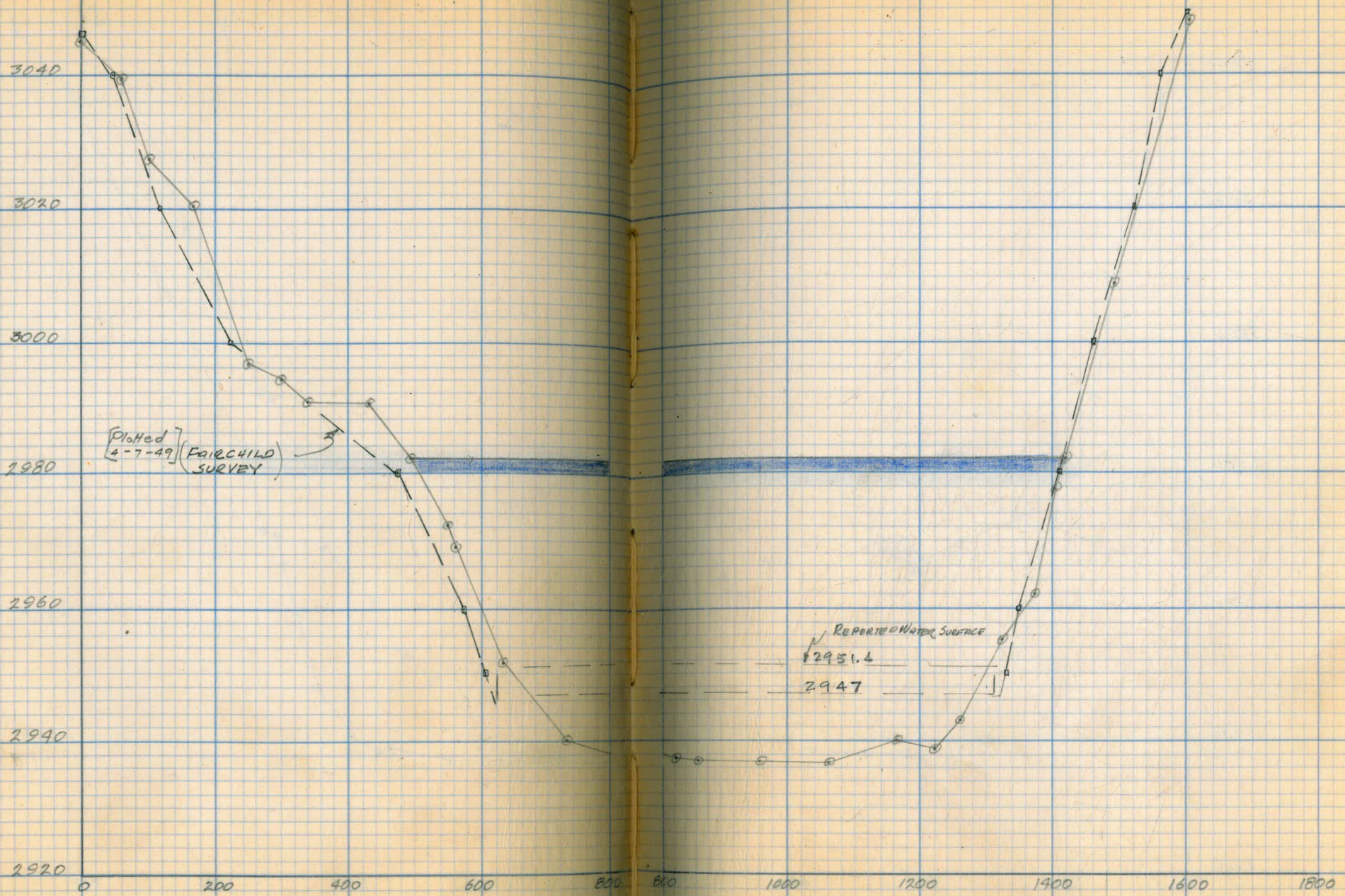
2000

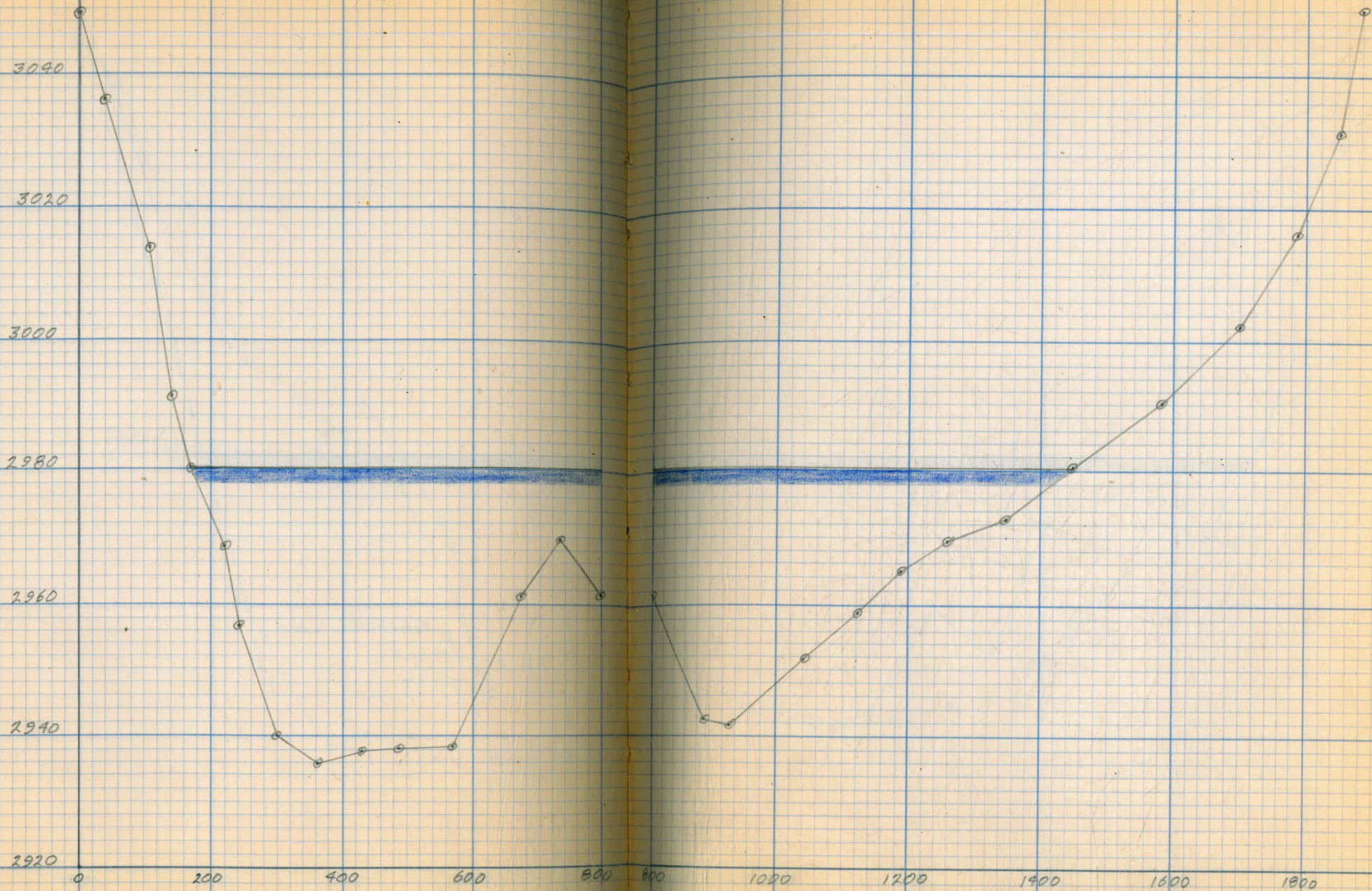
2500

3000









3060

3040

3020

3000

2980

2960

2940

2920

0

200

400

600

800

1000

1200

1400

1600

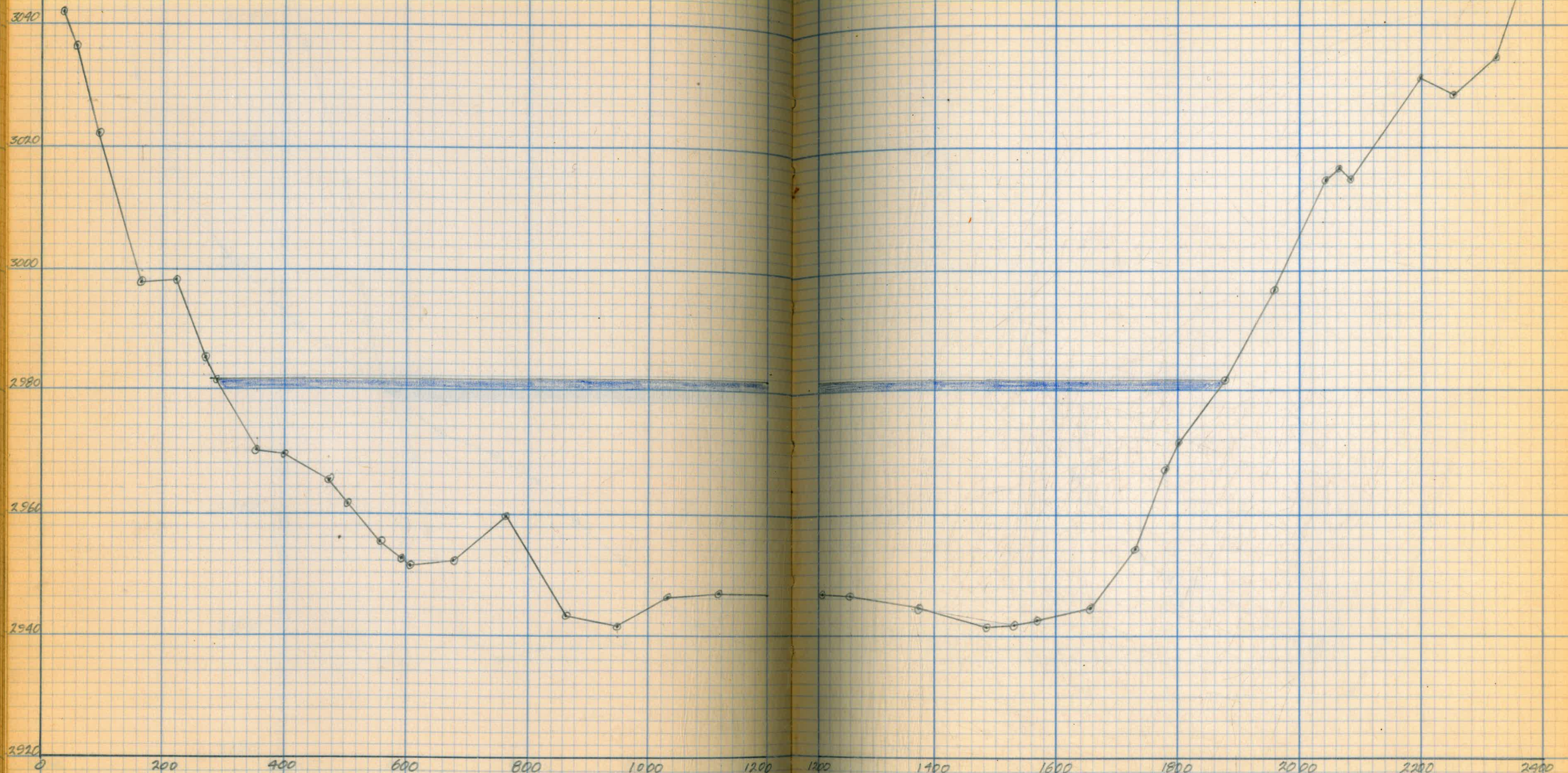
1800

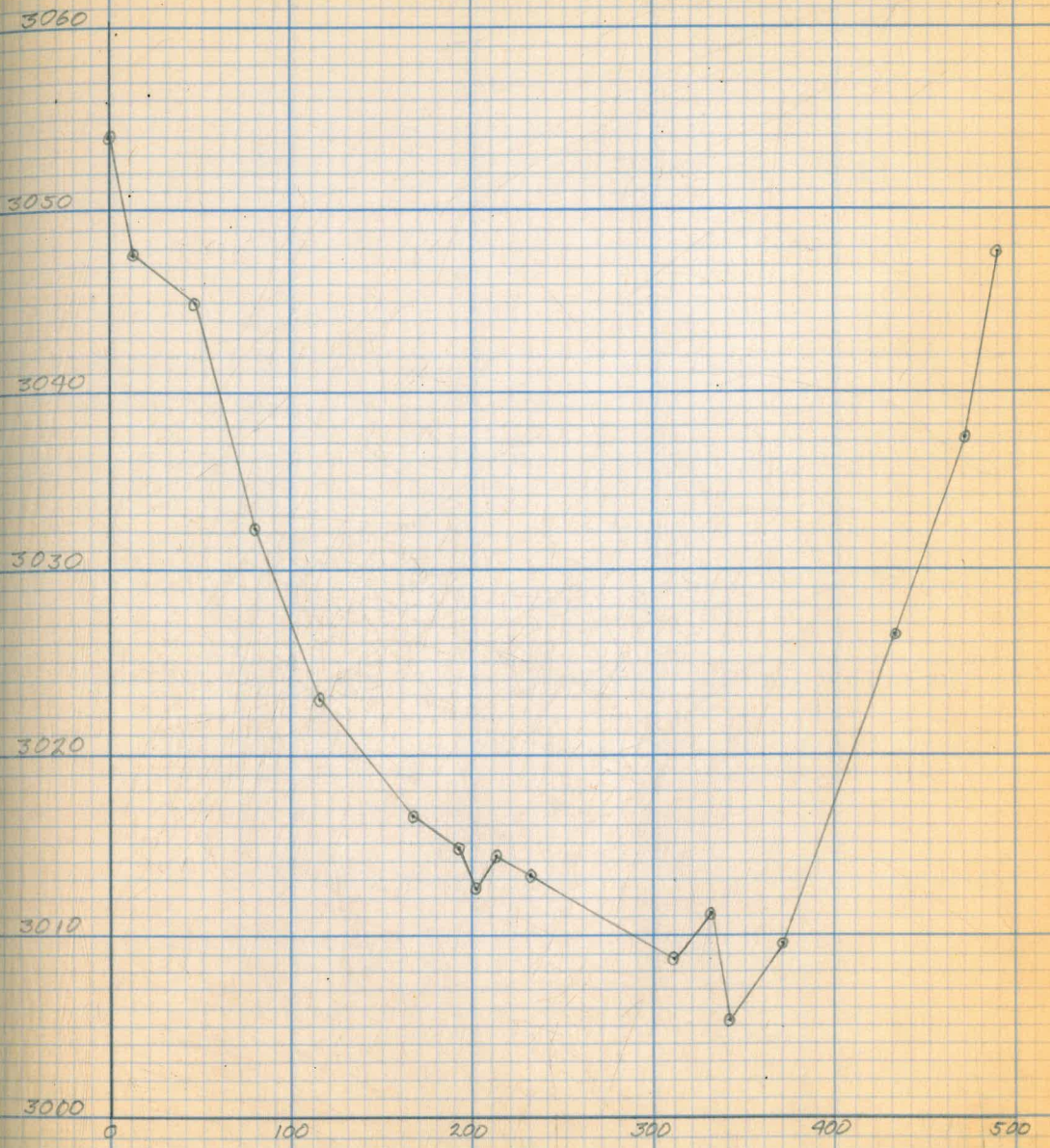
2000

2200

2400

2600





NATURAL TRIGONOMETRICAL RATIOS

Angle.	Sine.	Tan.	Sec.	Cosec.	Cotg.	Cosin.	Angle.	Sine.	Tan.	Sec.	Cosec.	Cotg.	Cosin.			
16	.2756	.2867	1.0403	3.628	3.487	.96126	74	.4067	.4452	1.0946	2.450	2.246	.91355	66		
17	.2784	.2899	1.0412	3.592	3.450	.96046	50	10	.4094	.4487	1.0961	2.443	2.229	.91236	50	
20	.2812	.2931	1.0423	3.556	3.412	.95964	40	20	.4120	.4522	1.0975	2.427	2.211	.91116	40	
30	.2840	.2962	1.0429	3.521	3.376	.95882	30	30	.4147	.4557	1.0989	2.411	2.194	.90996	30	
40	.2868	.2994	1.0438	3.487	3.340	.95799	20	40	.4173	.4592	1.1004	2.396	2.177	.90875	20	
50	.2896	.3026	1.0448	3.453	3.305	.95715	10	50	.4200	.4628	1.1019	2.381	2.161	.90753	10	
17	.2924	.3057	1.0457	3.420	3.271	.95630	73	25	.4226	.4663	1.1034	2.366	2.145	.90631	65	
10	.2952	.3089	1.0466	3.388	3.237	.95545	50	10	.4253	.4699	1.1049	2.351	2.128	.90507	50	
20	.2979	.3121	1.0476	3.357	3.204	.95459	40	20	.4279	.4734	1.1064	2.337	2.112	.90383	40	
30	.3007	.3153	1.0485	3.326	3.172	.95372	30	30	.4305	.4770	1.1079	2.323	2.097	.90259	30	
40	.3035	.3185	1.0495	3.295	3.140	.95284	20	40	.4331	.4806	1.1095	2.309	2.081	.90133	20	
50	.3062	.3217	1.0505	3.265	3.108	.95195	10	50	.4358	.4841	1.1110	2.295	2.066	.90007	10	
18	.3090	.3249	1.0515	3.236	3.078	.95106	72	26	.4384	.4877	1.1126	2.281	2.050	.89879	64	
10	.3118	.3281	1.0525	3.207	3.048	.95015	50	10	.4410	.4913	1.1142	2.268	2.035	.89752	50	
20	.3145	.3314	1.0535	3.179	3.018	.94924	40	20	.4436	.4950	1.1158	2.254	2.020	.89623	40	
30	.3173	.3346	1.0545	3.152	2.989	.94832	30	30	.4462	.4986	1.1174	2.241	2.006	.89493	30	
40	.3201	.3378	1.0555	3.124	2.960	.94740	20	40	.4488	.5022	1.1190	2.228	1.991	.89363	20	
50	.3228	.3411	1.0566	3.098	2.932	.94646	10	50	.4514	.5059	1.1207	2.215	1.977	.89232	10	
19	.3256	.3443	1.0576	3.072	2.904	.94552	71	27	.4540	.5095	1.1223	2.203	1.963	.89101	63	
10	.3283	.3476	1.0587	3.046	2.877	.94457	50	10	.4566	.5132	1.1240	2.190	1.949	.88968	50	
20	.3311	.3508	1.0598	3.020	2.850	.94361	40	20	.4592	.5169	1.1257	2.178	1.935	.88835	40	
30	.3338	.3541	1.0608	2.996	2.824	.94264	30	30	.4617	.5206	1.1274	2.166	1.921	.88701	30	
40	.3365	.3574	1.0619	2.971	2.798	.94167	20	40	.4643	.5243	1.1291	2.154	1.907	.88566	20	
50	.3393	.3607	1.0631	2.947	2.773	.94068	10	50	.4669	.5280	1.1308	2.142	1.894	.88431	10	
20	.3420	.3640	1.0642	2.924	2.747	.93969	70	28	.4695	.5317	1.1326	2.130	1.881	.88295	62	
10	.3448	.3673	1.0653	2.900	2.723	.93869	50	10	.4720	.5354	1.1343	2.119	1.868	.88158	50	
20	.3475	.3706	1.0665	2.878	2.699	.93769	40	20	.4746	.5392	1.1361	2.107	1.855	.88020	40	
30	.3502	.3739	1.0676	2.856	2.675	.93667	30	30	.4772	.5430	1.1379	2.096	1.842	.87882	30	
40	.3529	.3772	1.0688	2.833	2.651	.93565	20	40	.4797	.5467	1.1397	2.085	1.829	.87743	20	
50	.3557	.3805	1.0700	2.811	2.628	.93462	10	50	.4823	.5505	1.1415	2.073	1.816	.87603	10	
21	.3584	.3839	1.0711	2.790	2.605	.93358	69	29	.4848	.5543	1.1434	2.063	1.804	.87462	61	
10	.3611	.3872	1.0723	2.769	2.583	.93253	50	10	.4874	.5581	1.1452	2.052	1.792	.87321	50	
20	.3638	.3906	1.0736	2.749	2.560	.93148	40	20	.4899	.5619	1.1471	2.041	1.780	.87178	40	
30	.3665	.3939	1.0748	2.729	2.539	.93042	30	30	.4924	.5658	1.1490	2.031	1.767	.87036	30	
40	.3692	.3973	1.0760	2.709	2.517	.92935	20	40	.4950	.5696	1.1509	2.020	1.756	.86892	20	
50	.3719	.4006	1.0773	2.689	2.496	.92827	10	50	.4975	.5735	1.1528	2.010	1.744	.86748	10	
22	.3746	.4040	1.0785	2.670	2.475	.92718	68	30	.5000	.5774	1.1547	2.000	1.732	.86603	60	
10	.3773	.4074	1.0798	2.650	2.455	.92609	50	10	.5025	.5812	1.1566	1.990	1.720	.86457	50	
20	.3800	.4108	1.0811	2.632	2.434	.92499	40	20	.5050	.5851	1.1586	1.980	1.709	.86310	40	
30	.3827	.4142	1.0824	2.613	2.414	.92388	30	30	.5075	.5890	1.1606	1.970	1.698	.86163	30	
40	.3854	.4176	1.0837	2.595	2.394	.92276	20	40	.5100	.5930	1.1626	1.961	1.686	.86015	20	
50	.3881	.4210	1.0850	2.577	2.375	.92164	10	50	.5125	.5969	1.1646	1.951	1.675	.85866	10	
23	.3907	.4245	1.0864	2.559	2.356	.92050	67	31	.5150	.6009	1.1666	1.942	1.664	.85717	59	
10	.3934	.4279	1.0877	2.542	2.337	.91936	50	10	.5175	.6048	1.1687	1.932	1.653	.85567	50	
20	.3961	.4314	1.0891	2.525	2.318	.91822	40	20	.5200	.6088	1.1707	1.923	1.643	.85416	40	
30	.3987	.4348	1.0904	2.508	2.300	.91706	30	30	.5225	.6128	1.1728	1.914	1.632	.85264	30	
40	.4014	.4383	1.0918	2.491	2.282	.91590	20	40	.5250	.6168	1.1749	1.905	1.621	.85112	20	
50	.4041	.4417	1.0932	2.475	2.264	.91472	10	50	.5275	.6208	1.1770	1.896	1.611	.84959	10	
						.91355	66								.84805	58
						.91236	50								.84650	50
						.91116	40								.84495	40
						.90996	30								.84339	30
						.90875	20								.84182	20
						.90753	10								.84025	10
						.90631	65								.83867	57
						.90507	50								.83708	50
						.90383	40								.83549	40
						.90259	30								.83389	30
						.90133	20								.83228	20
						.90007	10								.83066	10
						.89879	64								.82904	56
						.89752	50								.82741	50
						.89623	40								.82577	40
						.89493	30								.82413	30
						.89363	20								.82248	20
						.89232	10								.82082	10
						.89101	63								.81915	55
						.88968	50								.81748	50
						.88835	40								.81580	40
						.88701	30								.81412	30
						.88566	20								.81242	20
						.88431	10								.81072	10
						.88295	62								.80902	54
						.88158	50								.80730	50
						.88020	40								.80558	40
						.87882	30								.80386	30
						.87743	20								.80212	20
						.87603	10								.80038	10
						.87462	61								.79864	53
						.87321	50								.79688	50
						.87178	40								.79512	40
						.87036	30								.79335	30
						.86892	20								.79158	20
						.86748	10								.78980	10
						.86603	60								.78801	52
						.86457	50								.78622	50
						.86310	40								.78442	40
						.86163	30								.78263	30
						.86015	20								.78084	20
						.85866	10								.77905	10
						.85717	59								.77726	59
						.85567	50								.77547	50
						.85416	40								.77368	40
						.85264	30								.77189	30
						.85112	20								.77010	20
						.84959	10								.76831	10
						.84805	58								.76652	58

NATURAL TRIGONOMETRICAL RATIOS

Angle.	Sine.	Tan.	Sec.	Cosec.	Cotg.	Cosin.	Angle.	Sine.	Tan.	Sec.	Cosec.	Cotg.	Cosin.		
32	.5209	.6249	1.1792	1.887	1.600	.84805	58	30	.6225	.7954	1.2778	1.606	1.257	.78261	30
10	.5324	.6289	1.1813	1.878	1.590	.84650	50	40	.6248	.8002	1.2808	1.601	1.250	.7807	