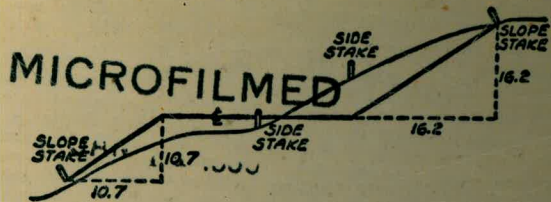


#770



DISTANCES FROM SIDE STAKES FOR CROSS-SECTIONING
SLOPE 1 TO 1. ROADWAY OF ANY WIDTH

	0	.1	.2	.3	.4	.5	.6	.7	.8	.9	
0	0.00	0.10	0.20	0.30	0.40	0.50	0.60	0.70	0.80	0.90	0
1	1.00	1.10	1.20	1.30	1.40	1.50	1.60	1.70	1.80	1.90	1
2	2.00	2.10	2.20	2.30	2.40	2.50	2.60	2.70	2.80	2.90	2
3	3.00	3.10	3.20	3.30	3.40	3.50	3.60	3.70	3.80	3.90	3
4	4.00	4.10	4.20	4.30	4.40	4.50	4.60	4.70	4.80	4.90	4
5	5.00	5.10	5.20	5.30	5.40	5.50	5.60	5.70	5.80	5.90	5
6	6.00	6.10	6.20	6.30	6.40	6.50	6.60	6.70	6.80	6.90	6
7	7.00	7.10	7.20	7.30	7.40	7.50	7.60	7.70	7.80	7.90	7
8	8.00	8.10	8.20	8.30	8.40	8.50	8.60	8.70	8.80	8.90	8
9	9.00	9.10	9.20	9.30	9.40	9.50	9.60	9.70	9.80	9.90	9
10	10.00	10.10	10.20	10.30	10.40	10.50	10.60	10.70	10.80	10.90	10
11	11.00	11.10	11.20	11.30	11.40	11.50	11.60	11.70	11.80	11.90	11
12	12.00	12.10	12.20	12.30	12.40	12.50	12.60	12.70	12.80	12.90	12
13	13.00	13.10	13.20	13.30	13.40	13.50	13.60	13.70	13.80	13.90	13
14	14.00	14.10	14.20	14.30	14.40	14.50	14.60	14.70	14.80	14.90	14
15	15.00	15.10	15.20	15.30	15.40	15.50	15.60	15.70	15.80	15.90	15
16	16.00	16.10	16.20	16.30	16.40	16.50	16.60	16.70	16.80	16.90	16
17	17.00	17.10	17.20	17.30	17.40	17.50	17.60	17.70	17.80	17.90	17
18	18.00	18.10	18.20	18.30	18.40	18.50	18.60	18.70	18.80	18.90	18
19	19.00	19.10	19.20	19.30	19.40	19.50	19.60	19.70	19.80	19.90	19
20	20.00	20.10	20.20	20.30	20.40	20.50	20.60	20.70	20.80	20.90	20
21	21.00	21.10	21.20	21.30	21.40	21.50	21.60	21.70	21.80	21.90	21
22	22.00	22.10	22.20	22.30	22.40	22.50	22.60	22.70	22.80	22.90	22
23	23.00	23.10	23.20	23.30	23.40	23.50	23.60	23.70	23.80	23.90	23
24	24.00	24.10	24.20	24.30	24.40	24.50	24.60	24.70	24.80	24.90	24
25	25.00	25.10	25.20	25.30	25.40	25.50	25.60	25.70	25.80	25.90	25
26	26.00	26.10	26.20	26.30	26.40	26.50	26.60	26.70	26.80	26.90	26
27	27.00	27.10	27.20	27.30	27.40	27.50	27.60	27.70	27.80	27.90	27
28	28.00	28.10	28.20	28.30	28.40	28.50	28.60	28.70	28.80	28.90	28
29	29.00	29.10	29.20	29.30	29.40	29.50	29.60	29.70	29.80	29.90	29
30	30.00	30.10	30.20	30.30	30.40	30.50	30.60	30.70	30.80	30.90	30
31	31.00	31.10	31.20	31.30	31.40	31.50	31.60	31.70	31.80	31.90	31
32	32.00	32.10	32.20	32.30	32.40	32.50	32.60	32.70	32.80	32.90	32
33	33.00	33.10	33.20	33.30	33.40	33.50	33.60	33.70	33.80	33.90	33
34	34.00	34.10	34.20	34.30	34.40	34.50	34.60	34.70	34.80	34.90	34
35	35.00	35.10	35.20	35.30	35.40	35.50	35.60	35.70	35.80	35.90	35
36	36.00	36.10	36.20	36.30	36.40	36.50	36.60	36.70	36.80	36.90	36
37	37.00	37.10	37.20	37.30	37.40	37.50	37.60	37.70	37.80	37.90	37
38	38.00	38.10	38.20	38.30	38.40	38.50	38.60	38.70	38.80	38.90	38
39	39.00	39.10	39.20	39.30	39.40	39.50	39.60	39.70	39.80	39.90	39
40	40.00	40.10	40.20	40.30	40.40	40.50	40.60	40.70	40.80	40.90	40
41	41.00	41.10	41.20	41.30	41.40	41.50	41.60	41.70	41.80	41.90	41
42	42.00	42.10	42.20	42.30	42.40	42.50	42.60	42.70	42.80	42.90	42
43	43.00	43.10	43.20	43.30	43.40	43.50	43.60	43.70	43.80	43.90	43
44	44.00	44.10	44.20	44.30	44.40	44.50	44.60	44.70	44.80	44.90	44
45	45.00	45.10	45.20	45.30	45.40	45.50	45.60	45.70	45.80	45.90	45
46	46.00	46.10	46.20	46.30	46.40	46.50	46.60	46.70	46.80	46.90	46
47	47.00	47.10	47.20	47.30	47.40	47.50	47.60	47.70	47.80	47.90	47
48	48.00	48.10	48.20	48.30	48.40	48.50	48.60	48.70	48.80	48.90	48
49	49.00	49.10	49.20	49.30	49.40	49.50	49.60	49.70	49.80	49.90	49
50	50.00	50.10	50.20	50.30	50.40	50.50	50.60	50.70	50.80	50.90	50

Distance of slope stake from side or shoulder stake for any width roadway, slope 1 to 1. If ground is nearly level, the cut or fill at side stake is located by the double entry method in left column and top row. The number in body of table in same row and column gives distance from side stake to slope stake. If ground is not level estimate the difference in elevation between the side stake and slope stake, lower target by this amount if cut, elevate if fill. Add this amount to cut or fill and find distance in table. Set up rod at this point, and line of sight should cut target. If it does not make the slight adjustment necessary.

19
38
18
56

148+2272

TABLE XIII—CORRECTIONS FOR TANGENTS AND EXTERNALS

These corrections are to be added to the approximate values, found by dividing the tangent, or external, for a 1° curve (Table VIII) by the degree of curve, in order to obtain the true tangents, or externals. Intermediate values may be obtained by interpolation.

FOR TANGENTS ADD

Central Angle	DEGREE OF CURVE														
	5°	10°	15°	20°	25°	30°	35°	40°	45°	50°	55°	60°	65°	70°	
10°	.03	.06	.09	.13	.16	.19	.22	.25	.28	.31	.34	.38	.42	.46	
15°	.04	.10	.14	.19	.24	.29	.34	.39	.45	.51	.53	.58	.63	.68	
20°	.06	.13	.19	.26	.32	.39	.45	.51	.58	.65	.72	.79	.84	.90	
25°	.08	.16	.24	.33	.40	.49	.58	.67	.75	.83	.90	.99	1.06	1.14	
30°	.10	.19	.29	.39	.49	.59	.69	.79	.89	.99	1.09	1.20	1.29	1.39	
35°	.11	.22	.34	.47	.58	.69	.79	.89	.99	1.09	1.20	1.29	1.42	1.54	
40°	.13	.26	.40	.53	.67	.80	.93	1.06	1.20	1.34	1.49	1.64	1.79	1.94	
45°	.15	.30	.44	.60	.76	.91	1.06	1.21	1.37	1.52	1.70	1.87	2.04	2.21	
50°	.17	.34	.51	.68	.85	1.02	1.19	1.36	1.54	1.72	1.91	2.10	2.29	2.48	
55°	.19	.38	.57	.76	.95	1.14	1.32	1.52	1.72	1.92	2.14	2.35	2.56	2.77	
60°	.21	.42	.63	.84	1.05	1.27	1.49	1.71	1.94	2.17	2.38	2.60	2.83	3.07	
65°	.23	.46	.69	.93	1.16	1.40	1.64	1.88	2.13	2.38	2.63	2.88	3.13	3.39	
70°	.25	.51	.76	1.02	1.28	1.54	1.80	2.06	2.33	2.60	2.88	3.16	3.44	3.72	
75°	.27	.56	.83	1.12	1.40	1.69	1.98	2.27	2.57	2.87	3.16	3.47	3.78	4.09	
80°	.30	.61	.91	1.22	1.53	1.84	2.15	2.46	2.78	3.10	3.44	3.78	4.12	4.46	
85°	.33	.66	1.00	1.33	1.68	2.02	2.36	2.70	3.05	3.40	3.77	4.14	4.55	4.89	
90°	.36	.72	1.09	1.45	1.83	2.20	2.57	2.94	3.32	3.70	4.10	4.50	4.91	5.32	
95°	.39	.79	1.19	1.55	1.94	2.32	2.70	3.08	3.46	3.84	4.24	4.64	5.05	5.43	
100°	.43	.86	1.30	1.74	2.18	2.62	3.06	3.50	3.95	4.40	4.88	5.37	5.85	6.34	
110°	.51	1.03	1.56	2.08	2.61	3.14	3.67	4.21	4.76	5.31	5.86	6.43	7.01	7.60	
120°	.62	1.25	1.93	2.52	3.16	3.81	4.45	5.11	5.77	6.44	7.12	7.80	8.50	9.22	

FOR EXTERNALS ADD

Central Angle	DEGREE OF CURVE														
	5°	10°	15°	20°	25°	30°	35°	40°	45°	50°	55°	60°	65°	70°	
10°	.001	.003	.004	.006	.007	.008	.009	.011	.012	.014	.015	.017	.018	.020	
15°	.003	.007	.010	.014	.018	.023	.027	.029	.032	.035	.039	.043	.047	.051	
20°	.006	.011	.017	.022	.028	.034	.038	.045	.051	.057	.063	.070	.076	.083	
25°	.009	.018	.027	.036	.046	.056	.065	.074	.083	.093	.106	.120	.127	.135	
30°	.013	.025	.038	.051	.065	.078	.090	.103	.116	.129	.149	.170	.179	.188	
35°	.018	.035	.054	.072	.086	.109	.131	.153	.175	.197	.213	.230	.247	.264	
40°	.023	.046	.070	.093	.117	.141	.172	.203	.234	.265	.277	.290	.315	.341	
45°	.030	.060	.093	.119	.153	.184	.216	.254	.289	.325	.351	.378	.411	.445	
50°	.037	.075	.116	.151	.189	.227	.266	.305	.345	.384	.425	.467	.508	.550	
55°	.046	.093	.142	.188	.236	.283	.332	.381	.420	.479	.530	.582	.641	.700	
60°	.056	.112	.168	.225	.283	.340	.398	.457	.516	.575	.636	.697	.774	.851	
65°	.067	.135	.204	.273	.343	.412	.483	.554	.625	.697	.771	.845	.922	1.01	
70°	.080	.159	.240	.321	.403	.485	.568	.652	.735	.819	.906	.994	1.08	1.17	
75°	.095	.182	.286	.383	.480	.578	.678	.777	.877	.977	1.07	1.18	1.29	1.39	
80°	.110	.220	.332	.445	.558	.671	.787	.903	1.02	1.13	1.25	1.38	1.50	1.62	
85°	.128	.259	.391	.524	.657	.790	.926	1.06	1.20	1.34	1.47	1.62	1.76	1.91	
90°	.149	.299	.450	.603	.756	.910	1.07	1.22	1.38	1.54	1.70	1.87	2.03	2.20	
95°	.174	.350	.522	.706	.885	1.06	1.25	1.43	1.62	1.80	1.99	2.18	2.38	2.58	
100°	.200	.401	.604	.809	1.01	1.22	1.43	1.64	1.85	2.06	2.28	2.50	2.73	2.96	
110°	.268	.536	.806	1.08	1.35	1.63	1.91	2.20	2.48	2.76	3.05	3.35	3.66	3.96	
120°	.360	.721	1.08	1.45	1.82	2.19	2.57	2.95	3.33	3.72	4.11	4.50	4.91	5.32	

Sta. 122+86 to 154+32
Kearney Mesa pipeline alignment 1-23

Mission Beach Res Site 73-74

Stadia Alignments Profile Linda Vista - 9)

West Edge Linda Vista 25-27 - M)

Void Kearney Mesa P.H. Alignment - 19-24

Kearney Mesa P.H. Alignment to Profile -

Sta 183+50 - 199 P 29-34

related to

Profile - Realignment K.M. - Sta 183+50 to 199 35-39

Profile - Kearney Mesa P.H. Sta 199+36 to 210 40-68

x-sect. S.D. River bottom K.M. P.H. line - Sta 184+00 69

Levels to Stadia pipes - Linda Vista 70-71

Property Ties to Kearney Mesa P.H. in Linda Vista 75

Relocation K.M. P.H. - Sta 183+60 to 184+66 73

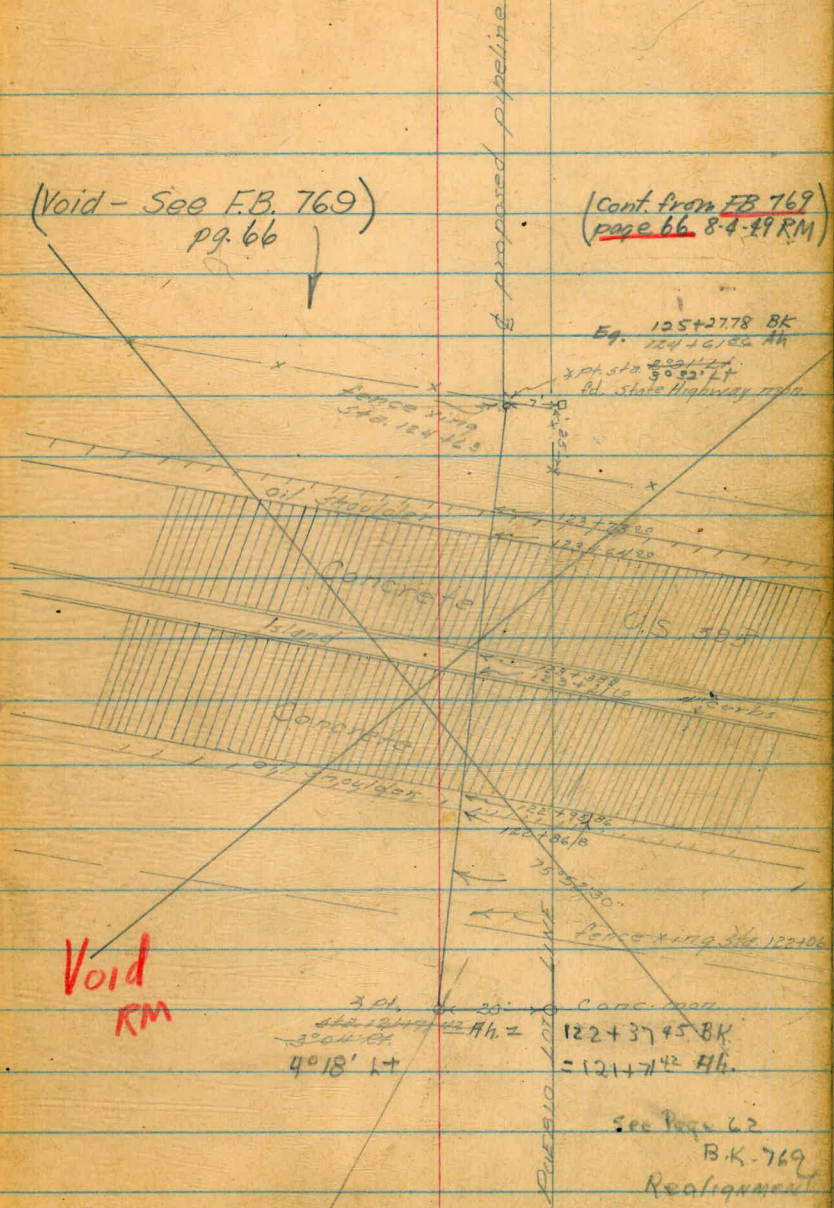
1. K.M. P.H. 146 to 149+01 05 Page 3

11 K.M. P.H. Sta 183+60 to 184+98 70 P. 24 AB

Kearny Mesa Pipeline Alignment

(Void - See E.B. 769)
pg. 66

(Cont. from E.B. 769)
page 66 8-4-49 RM



Void
RM

See Page 62
B.K. 769
Realignment

131465

Picket fence 2

Corr. Garage
No Floor
20'

131429 ← 8'

DM.
0.4105

131406 P.P. 279181

DM.
0.151

#279184

PP. Sta 126456

Sta 127403

Wood + wire
chicken
cage

Sta. 126487

#279186

Dist. 0.15'

PP. Sta 126450

← 5' →

DM. Sta 126483

PP. Sta 125451

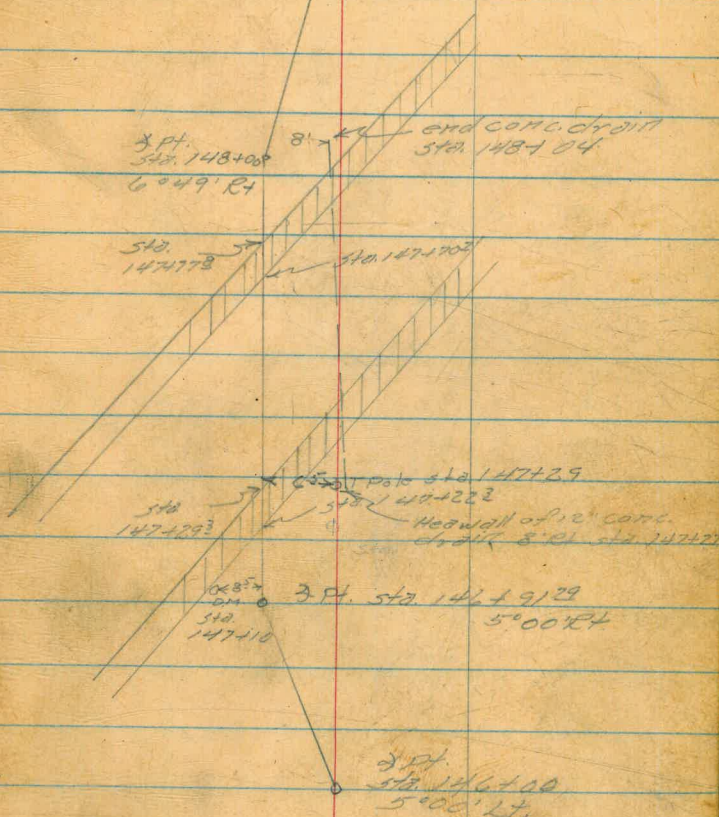
(cont from pg. 51 FB 769)
9.14.49 RM

3.49	354.74		351.25
146400	3.6		351.1
146450	4.0		350.7
414649/79	4.8		349.9
147422 ³ gr.	3.8		350.9
147422 ³ Sidewalk	3.23		351.51
147429.3 curb	3.41		351.33
147429 ³ gutter	3.90		350.84
147450	3.7		351.0
147470 ² gutter	4.3		350.4
147470 ² curb	3.79		350.95
147477.8 Sidewalk	3.75		350.99
148400	5.7		349.0
148450 ditch	7.2		347.5
+52	6.9		347.8
149400	6.5		348.2
149401.05 BK	6.3		348.4
= 149 Fl.			

(See page 52 FB 769 9.14.49 RM)

KING
RAINY 9-7-49
(See page 8)
9.8.49 RM

int w/ existing
1170 sta. 149401.05 BK
= sta. 149400



Cont. from page 8
9.8.49 RM

134750 Q-24 -

134726 Q-18 -

ELECTRYS



6' Eucalyptus 136406

4

DM 512 136401

Q-15

#279174

PR 512 135488

7'

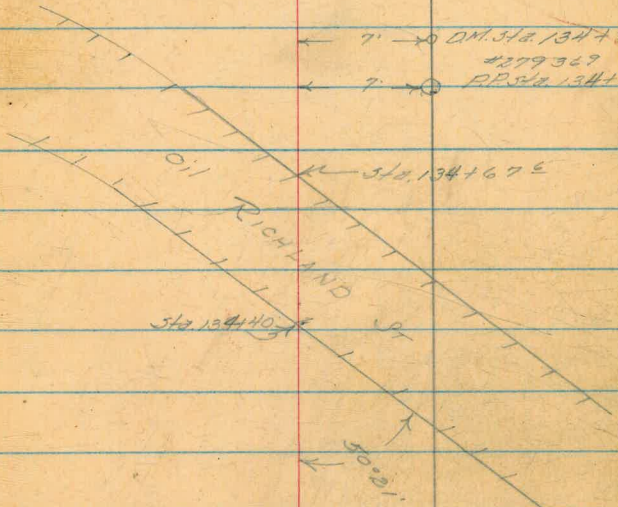
7'

7' DM 512 134795

#279329

PR 512 134174

7'



512 134167

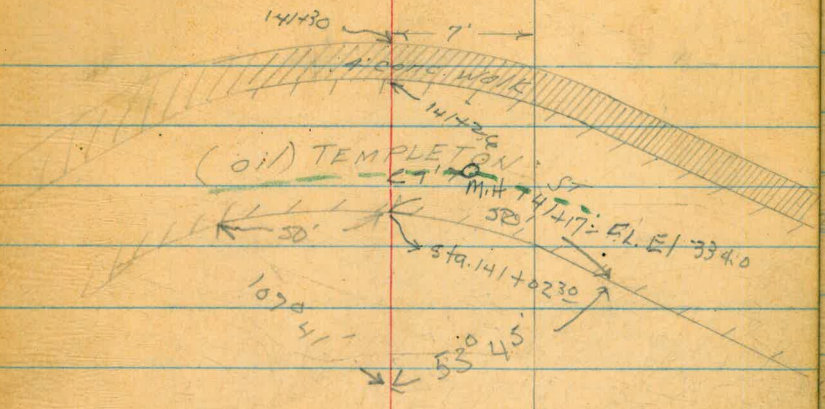
512 134140

50-21

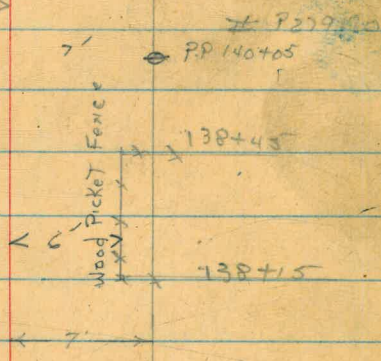
Jan. 7, 1949

King
Shipman
Adams

5

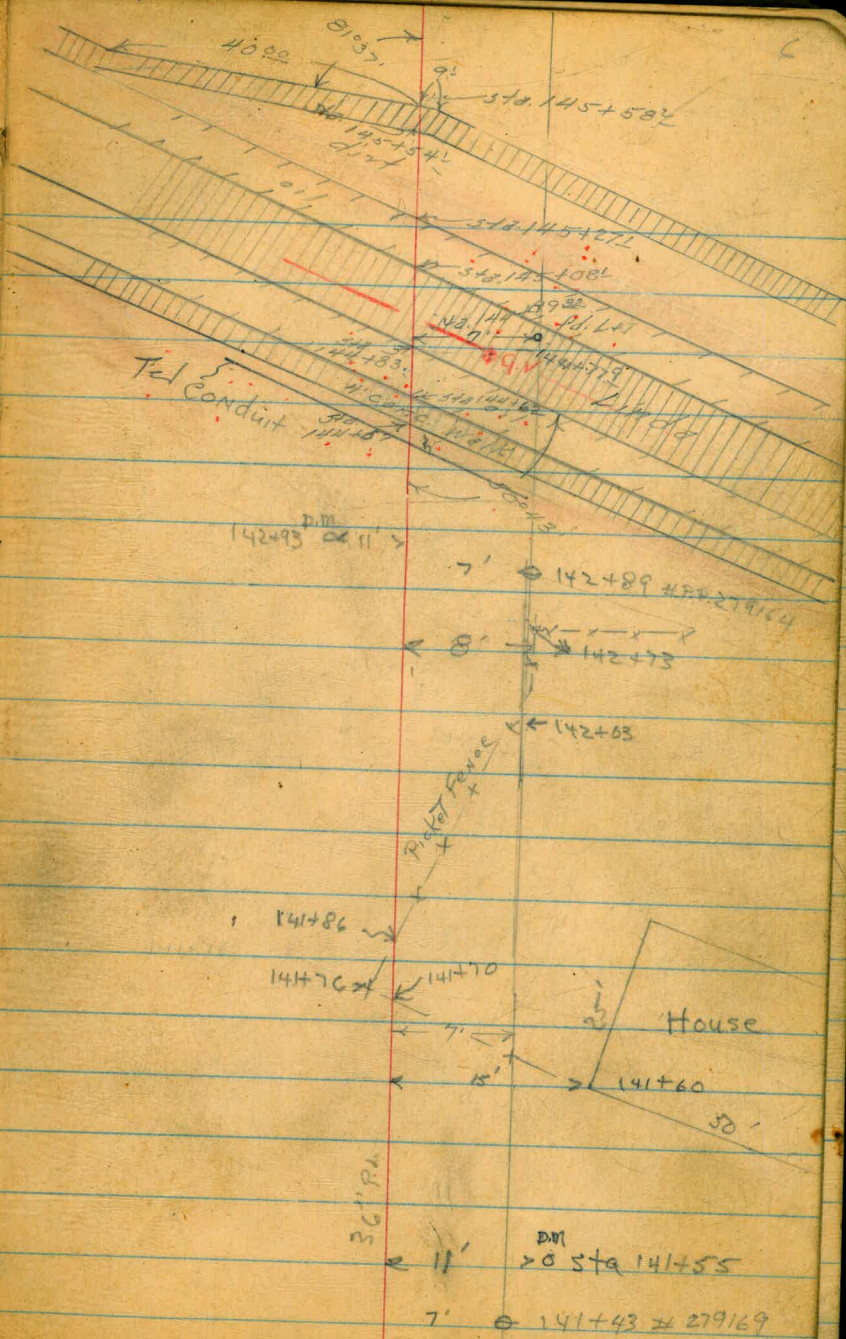


sta. 140+23 PM $\circ < 5^\circ >$



#279173
P.P. Sta. 138+60

137+15 $\circ < 7' >$
6"
136+73 $\circ < 9' >$
6" Euc. Tree



141+90

146+20¹⁵

± 11° 15' LT.

146+00

± 11° 15' RT.

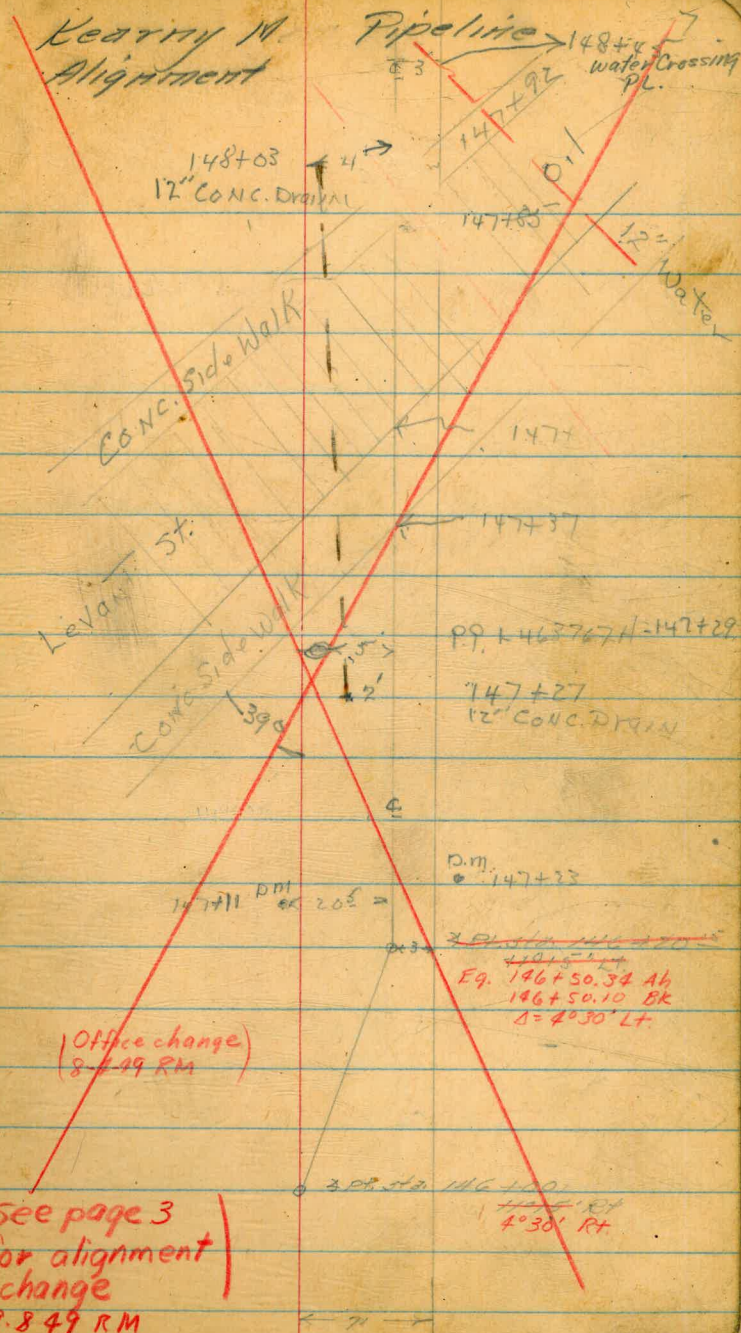
154
147+85

(15)

(change of alignment 146+00 to 146+50.10)
Office change 4.4.49 C.M.

(Office change)
8.7.49 RM

(See page 3
for alignment
change
9.8.49 RM



Kearny M. Alignment

Pipeline

148+03
12" CONC. DRAIN

148+44
Water Crossing PL.

CONC. Side Walk

LeVan St.

CONC. Side Walk

147+85
12" Water

147+71

147+37

99.146876711 = 147+29

147+27
12" CONC. DRAIN

147+11 PM
205 =

D.M.
147+23

~~205.111 146+20~~
~~101.5~~
Eq. 146+50.34 AB
146+50.10 BK
Δ = 4° 30' LT.

205.111 146+00

~~101.5~~
4° 30' RT.

12" CONC DRAIN

IRON 6' and Rail

154+32.5

13' DIM. 17' 20" DIM.

190°

11.2

CONC SIDE WALK

DROP INLET DRAIN

154+26

curb

Levant Street

(OUT)

154+13.0

233'

mt
FL 338.1

FL 341.1

curb



11.2 154+00

CONC SIDE W

curb

12" DRAIN 153+84

16.4

153+81.5

Gas G. Valve

153+89.5

153+90.5

Begin curb 153+92.5

2.5

10'

10'

152+52

3'

Drain Ditch

(Cont. from page 3)

155+73

∠ 39°36' Rt.

9
Baseball
Field

Map - E 85

City Prop Line
23 23

156+73 72

156+09

24 5

∠ 39°36'

Navy
Housing

15+8 P.P. - No 4
156+06

30
Walt in
the Park

spike

∠ 155+73 - 39°36' Rt.

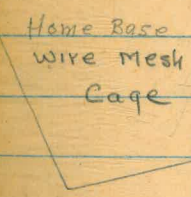
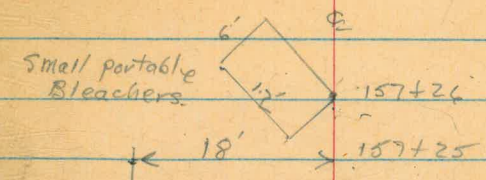
12' Tile Drain

∠ 15°

155+00 P.O.T.

2" Water ← 158+40 9.4 18
123 →

← 157+91 25' → Flood Lite P.P.



φ 73 157+07
Flood Lite Pole ← 17' → 157+04

City P.P. With Meters & Switch Box

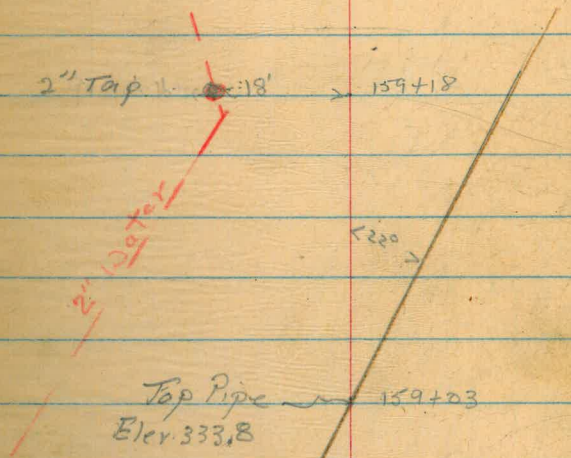
← 156+96 8' Atlas Wire Fence
→ 156+93

← 156+62 - T.P.
Laying Flat as wheel guard for parking on Top ground

Small Drain Ditch 161+69
& Berm

Water Tap 159+94
15' ← → 2" Water
0.6' Deep

2" Tap 159+18



1" Storm Drain
24

165+1989

± 53°32' LT

53°32'

165+1989 ± 53°32' LT

45.25

S. E. Coy
Church

92.78

70'

School

3/4" Gas.
15' deep.

164+29

37'

164+05

35'

12" Euc

163+87

17'

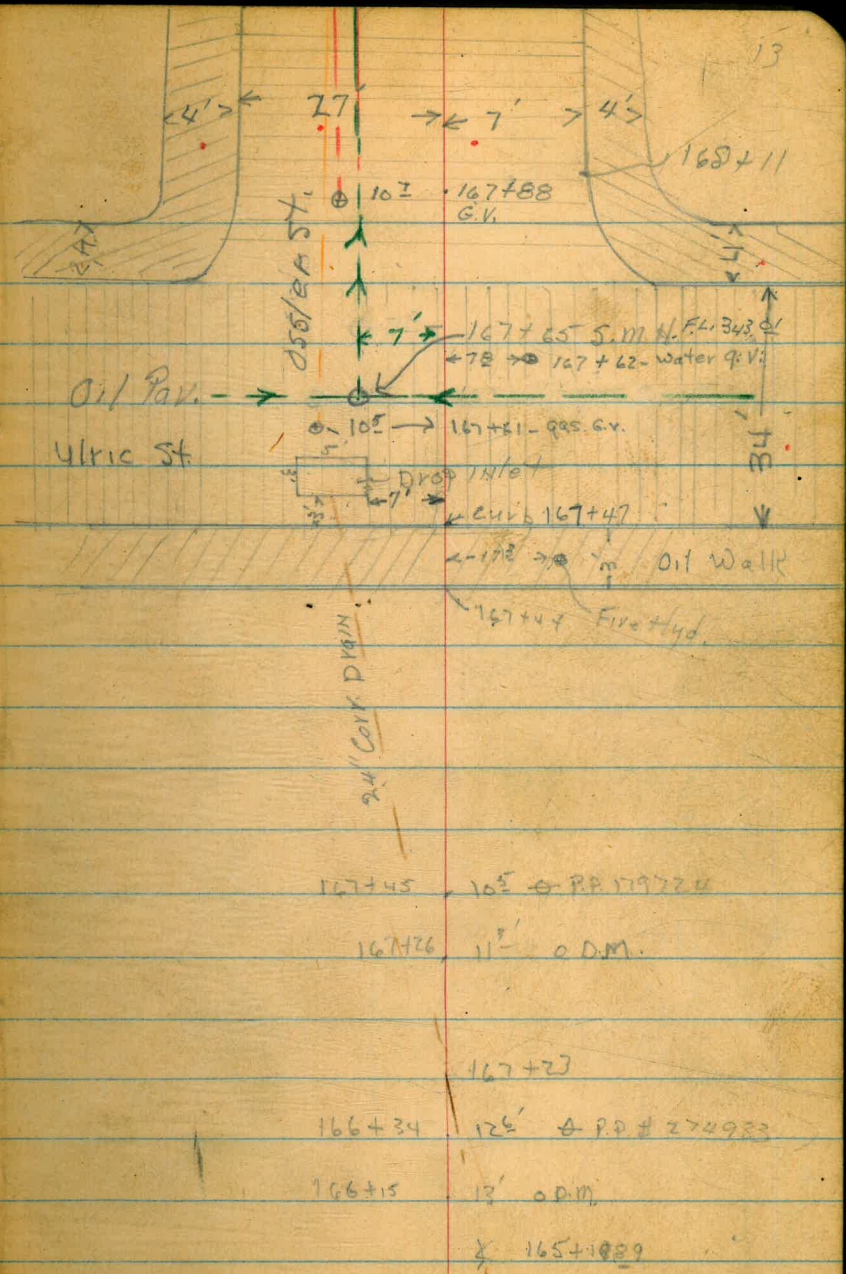
6" Euc

163+67

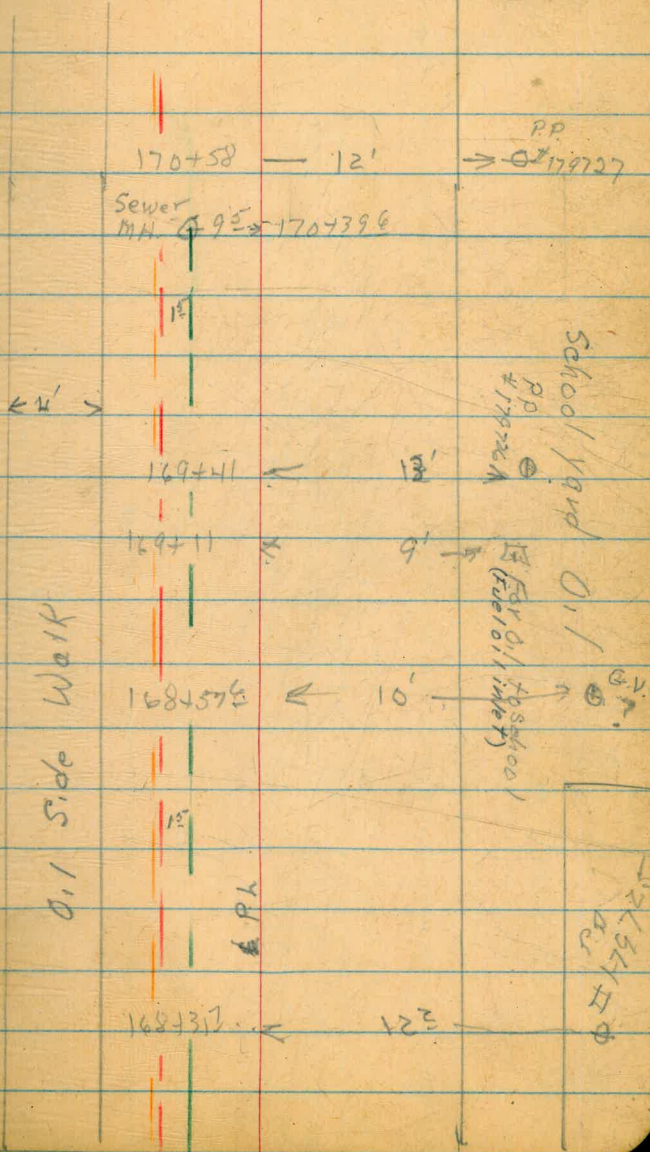
22'

8" Euc

44
23
21
14
26



P.O.T. 171+26.59



EC 174 7306

Vord! RM
Sec F8771
~~PA 16~~
OK 8-4-49
RM

Δ 8° 18' Rt
R. 221534
L 32092

BC 171+52¹⁴

Oil Side Walk

OS/er - 27

EC 174 7306

128' 9'

17482
0224780

173+82

7'

173400

#17979

173700

172+41

118

BC 171+52¹⁴

School Yard

End Oil
IN school
171+84
#179728

15

175+182

Void! See EB971
PT 16 RM
OK 8-4-49 RM

M.H.

⊙ 9' >

177+21

< 27' >

< 11'E > 176+64 # 179663

RP

Gas 176+33 (out)
Water 176+31

< 11'S >

oil walk

Comstock St.

M.H. F.L. E/326.6

⊙ 10' >

Q.W.

⊙ < 35' >

175+81
175+80 13' Q.V.
175+79

175+64 40

⊙ 2° 51' R4

~~175+40 # 1041 175+41~~

175+40 # 105 175+41

+ 6440 # 1051 R1

OS F.H. 45' E

175+62

175+62 Q.V. ⊙ < 10'S >

< 76'S >

175+64

PP # 179662
175+54

15' x 15'

Drop Inlet - 175+30 S

Drop Inlet

15' x 15' - 175+27 S

< 90 >

> 175+40

< 27' >

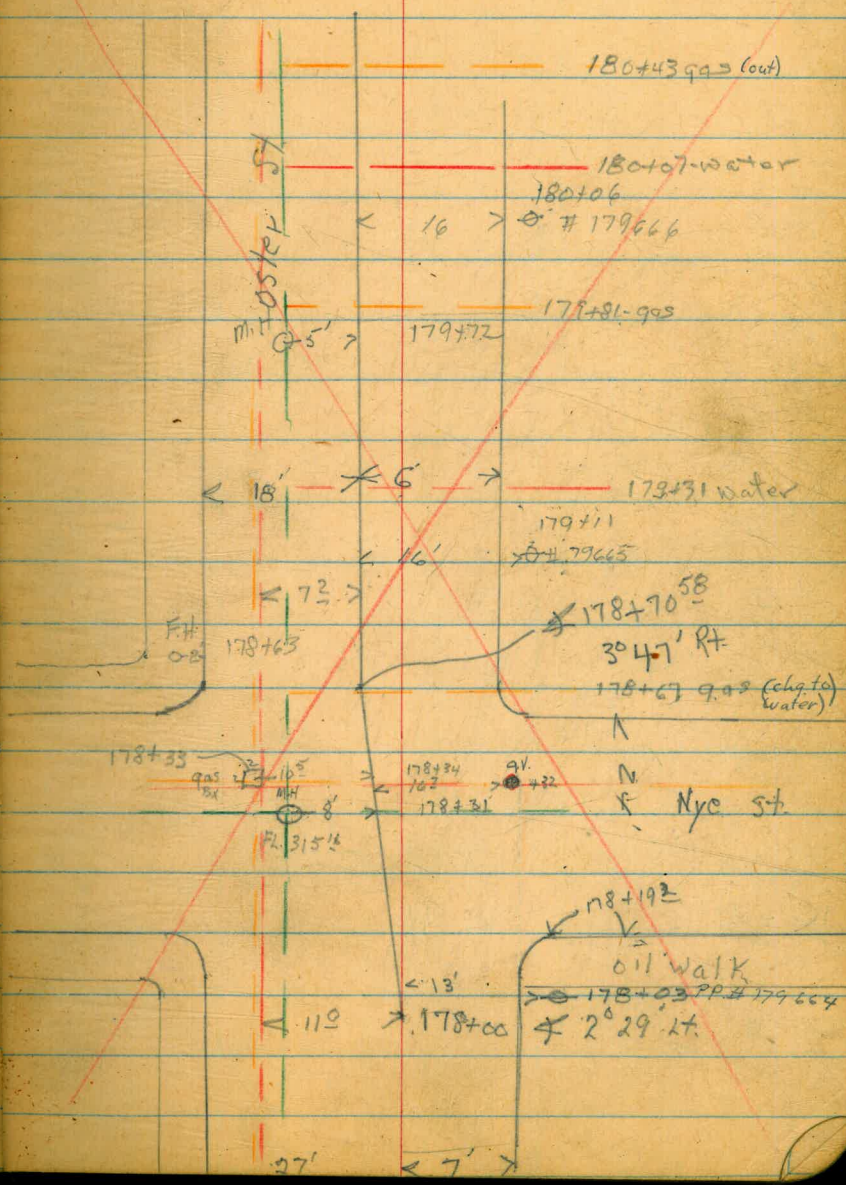
< 7' >

15" Drain

~~Word Sec FB III~~
~~Pg. 17 RM~~
OK 8-4-49 RM

178+70⁵⁸ ± 3° 47' Rt

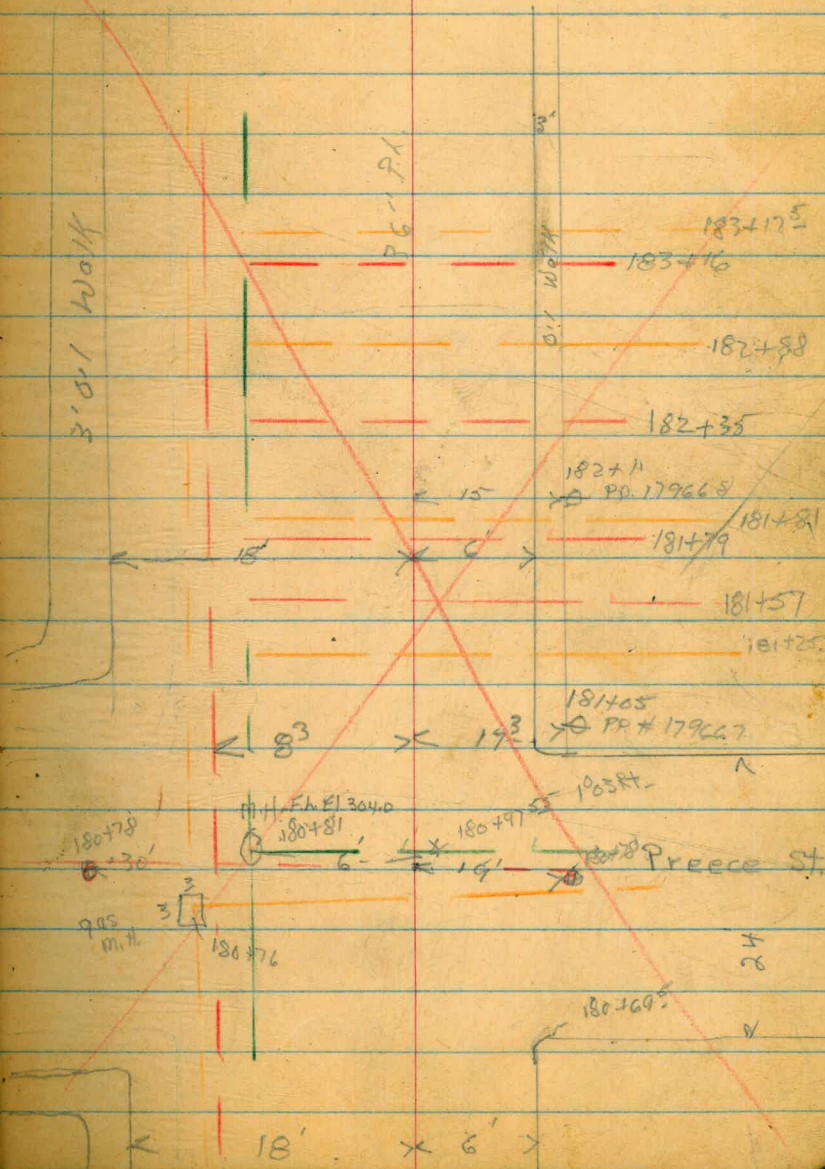
178+00 ± 2° 29' Lt



Void! See F.B. 771
RM 9917
OK 8-4-49 RM

180+97.55

1003' Pt.



~~(See page 29)~~

24 12-23-49
~~(See page 76)~~
8-4-49

Adler

Void
↑

Wheatstone

M.H. - E. 300.03

Q.V. 183+99

183+78.00

91°02'30" Rt

183+72.00

#172009

B.C. 181+00.00
181+50.00
181+100.00

A24020
R. 6627
L. 128379

F.H. 183+53
Ox

OK to Sta. 183+60.20
8-4-49 RM

183+78.00

91°02'30" Rt

18'

6'

1587' Lt - sighting on 186+9352

186+06
PP.# 279040

EC: 189+94.72

Void! RM
8-4-49

9x19 1/4"
M.H.

189+68

CONC. HORIZON

188+32
PP.# 279039

Δ 30° 14' Lt

R 570.81

L = 361.20

FLE 1301.36

187+05 Emb. 1
186+92

3053' Lt

186+92
5' out PPZ 17981

186+53
52'

Oil Road

Proposed Line

185+50
17981

Δ 24° 24' Lt

R 666.27

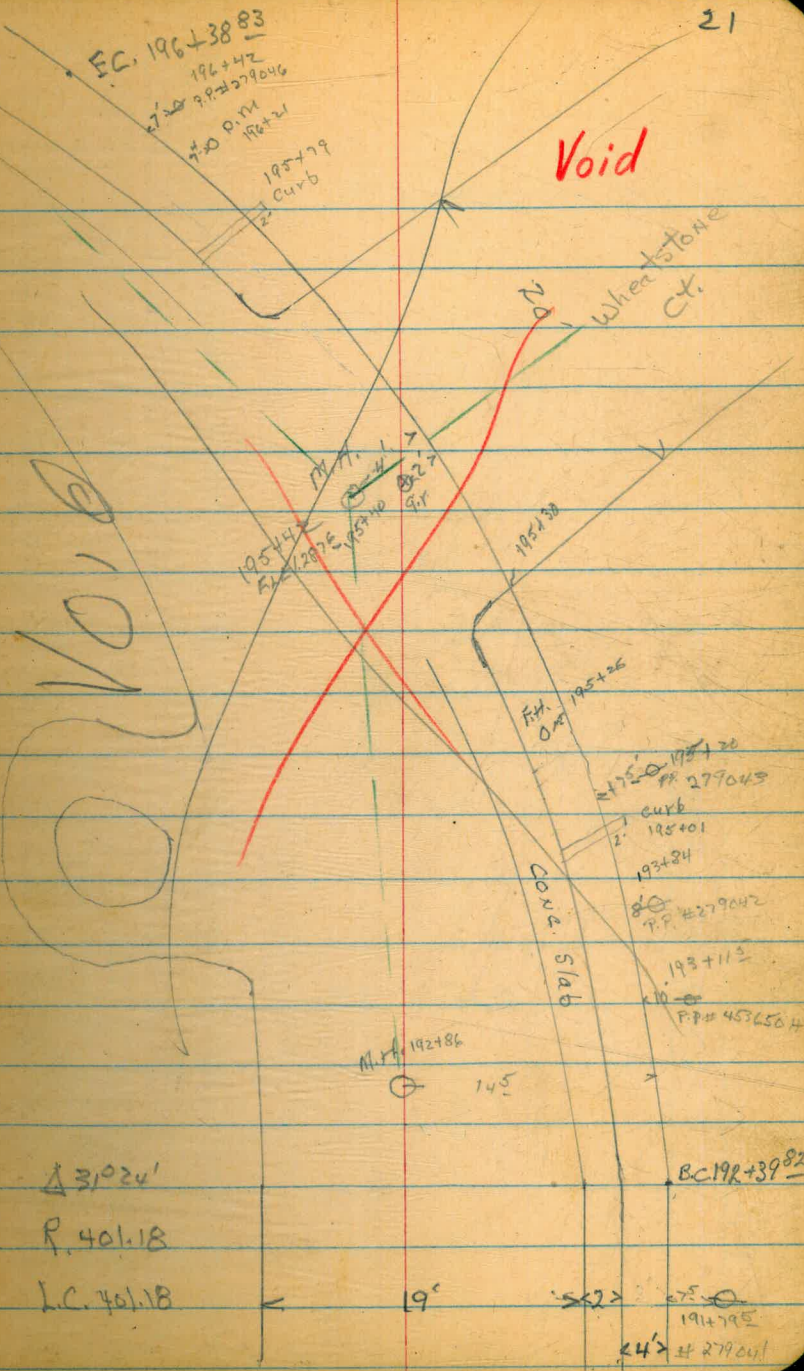
LC 28370

B.C. 184+09.82

17981
walk

186+9352

30° 55' Lt



Void

Void

Wheatstone Ct.

COND. Slab

EC. 196+38.83
 196+42
 7:30 P.M. 192+21
 195+79
 Curb

195+144
 195+130
 195+126
 195+120

195+126
 195+120

195+120
 195+101
 193+84
 193+113
 191+795
 191+795
 192+86
 145

193+113
 191+795
 191+795
 279043

192+86
 145

BC 19R+39.82

Δ 31024'
 R. 401.18
 L.C. 401.18

19°

24'
 279043

199+0683

∠ 19°49'30" Rt

∠ 199+0683 ∠ 19°49'30" Rt

Void

197+50

∠ 20° 00' Lt

197+50
∠ 20° Lt

EC.

176+3883

Void

32° 30' Lt

32° 50' Lt 199+88 Z'

19° 49' 30" Lt

199+0683

199+0683

19° 49' 30" Rt

Kearney Mesa Pk
 Realignment - Sta. 183+60²⁰
 -184+984⁰

cont from FB 769 pg. 58
 12.23.49 RM

B.M. Top Mt.	6.47	312.50	306.03	wheatstone	Osler
183+60 ²⁰			5.6	306.9	
184+00			5.9	306.6	
184+36 ²⁰ gutter			5.7	306.8	
184+30 ⁷⁰ Top curb			5.4	307.1	
184+40 S.Walk			4.8	307.7	
184+48 S.Walk			4.5	308.0	
184+50			4.5	308.0	
184+98 ⁴⁰ BK			3.4	309.1	
184+96 ⁶ Mt.					
			6.48	306.02	

See FB 771 pg. 27
 12.23.49 RM

King
 Shipman
 West
 12-21-49

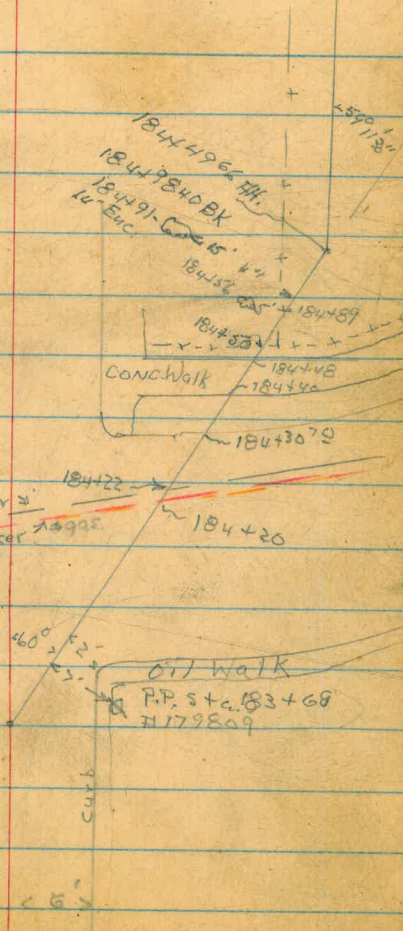
24

See FB 771 pg. 19
 12.23.49 RM

Wheatstone St.

Cont. from pg 19
 12.23.49 RM

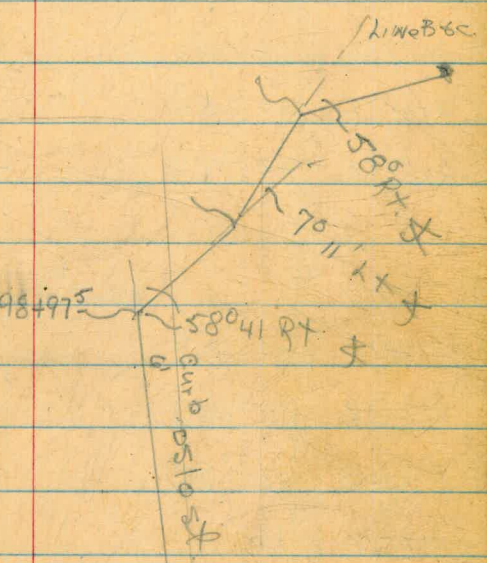
183+60²⁰
 $\Delta = 60^{\circ}00'$ Rt.



King 2-15-49
Shipman
Adams

Stadia Alignment Profile Kearney
Mesa P.L. #C - West Linda Vista

Sta.	Dist.	Hor. Δ	Ver. Δ	HT	Red.	Elev.
Sta. 198+97.5*	800'		00'			285.57 ground. 6' East-West curb Oslo St.
✓ 206+97.5*		79° 11' Lt	000'	5.2	128	278.0 at sta 206+97.5
213+75.0	700' (677.5)		P.O.T. -10° 20'	5.2	5.2	154.5
✓ 214+71.8*	801' (774.3)		580° 27' -10° 26'	5.2	5.2	135.5
P.O.T. 216+27.8	162' (152)		P.O.T. -9° 04'	5.2	5.2	110.2
P.O.T. 216+70	200'		P.O.T. -5° 38'	5.2	5.2	116.0
220+96.8	625'		P.O.T. -2° 17'	5.2	5.2	110.6
221+26.8	655'		P.O.T. -2° 37'	5.2	5.2	105.6
✓ 222+30.8	760' (759)	hinge "	P.O.T. -3° 25'	5.2	5.2	103.2
221+85.80	" "					
222+85.80	LINE B					



KEARNY MESA PIPE LINE
WEST OF LINDA VISTA
ROUTE "D" Stadia

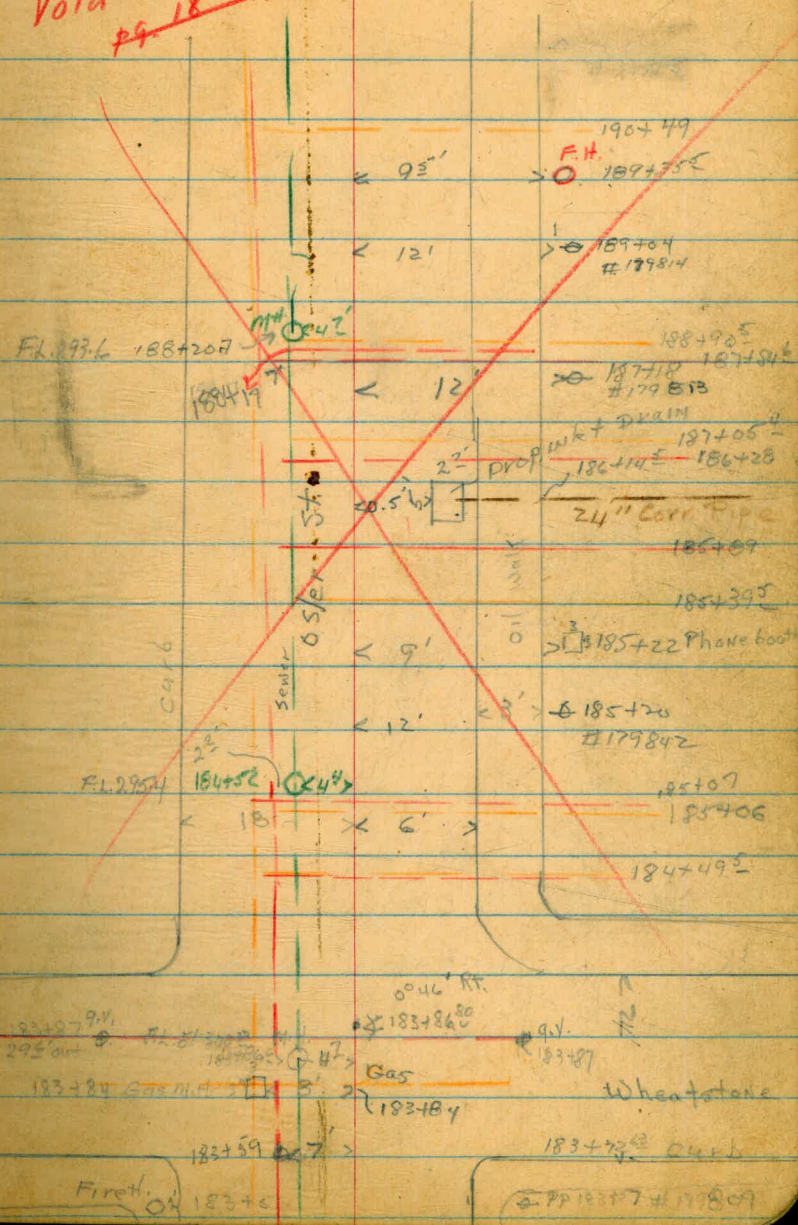
2-16-49
King
Shipman
Adams
Entered by Meredith

28

Sta.	Dist	Horiz. \angle	Vert. \angle	HI.	Rod	Elev.	
T 213+25	(B+D)	80° 37' Rt.				265.7	
213+74	49'		0°	5.2	6.5	264.4	
T 214+31	108' (106')		-6° 16'	5.2	5.2	254.0	
T 216+77	310 (246.2)					128.6	
216+30	52' (-47')		-18° 03'	5.2	5.2	143.9	Back
T 216+77		43° 56' Lt.				128.6	
217+19	44' (42')		-10° 15'	5.2	5.2	121.0	
219+38	262' (261)		-3° 12'	5.2	5.2	114.0	Bank
219+53	277' (276')		-3° 41'	5.2	5.2	111.0	Creek
219+77	300'		-1° 18'			121.8	
220+12	335'		+0° 40'			132.5	
221+90	514 (513')		+3° 19'	5.2	5.2	158.3	D= 13+80 A

Cont'd. From Page 18

Void! See F8771
Pg. 18 Rt.

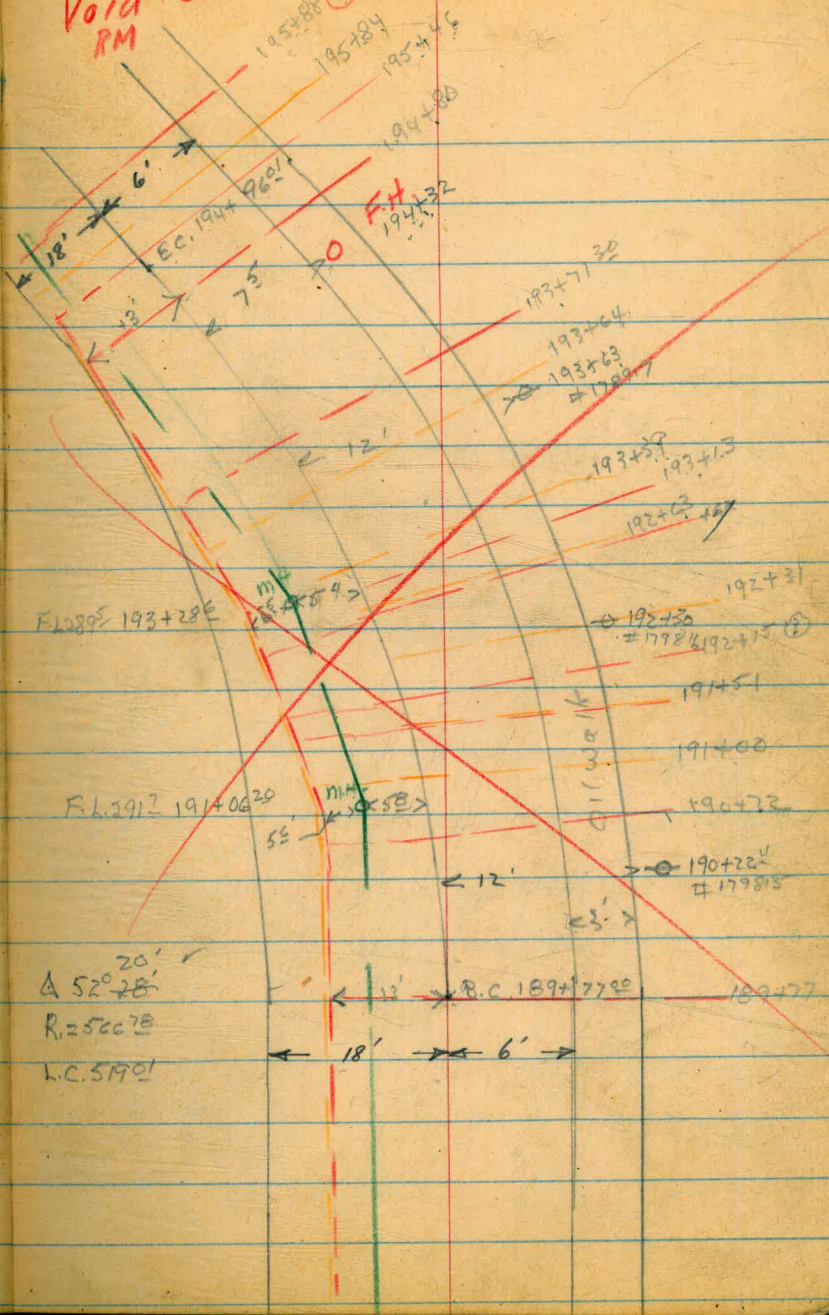


183+86⁸⁰ S 0°46' Rt.

183+87⁹⁴ 20' out
 183+86⁸⁰ 9.4' RT
 183+84 Gas
 183+84
 183+59
 Fireh. 183+8
 183+75⁸⁰ Curb
 183+74 #19809
 Wheatstone

Void See F.B. 771 pg. 20
RM

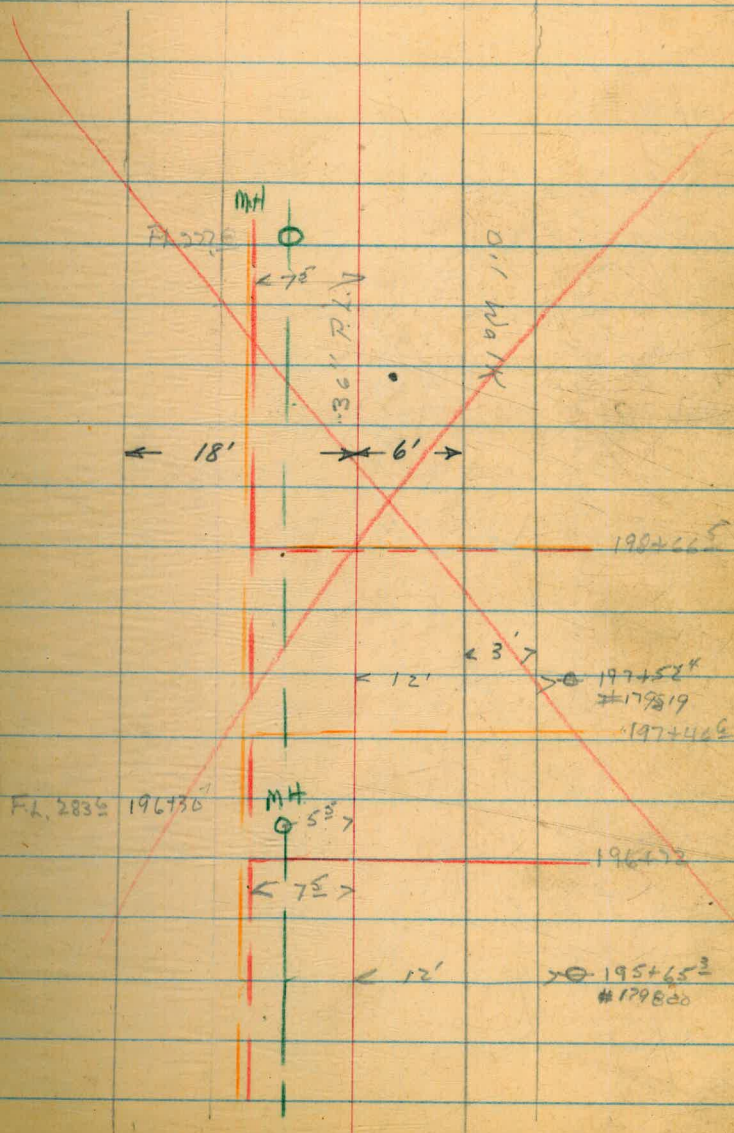
EC. 194+96.01



B.C. 189+77

Cont-
(See F.B. 771)

Void!
RM



7.7
33
11.2

307.6
307.5

M.H.

	1.55	307.58		306.03
183+8680			1.6	306.0
184+00			2.1	305.5
+50			3.9	303.7
M.H.				
184+52			4.0	303.6
185+02			5.8	301.8
185+50			7.0	300.6
186+00			7.6	300.0
186+112 F.L. 24" Drain			11.2	296.4
186+50			7.3	300.3
187+00			7.0	300.6
187+50			6.6	301.0
188+00			6.3	301.3
188+76 ⁷⁰ M.H.			5.96	301.62
188+50			5.6	302.0
T.P.	5.64	308.59	4.63	302.95
189+00			5.6	303.0
+50			7.47	303.9
			(7.4)	301.2

Void

	308.59			
BC 189+77		4.2	304.4	
190+00	Void	4.5	304.1	
190+50		6.2	302.4	
191+00		8.6	300.0	
Top M.H. 191+06.25		8.89	299.70	
191+50		10.7	297.9	
192+00		11.7	296.9	
192+50		12.1	296.5	
193+00		12.5	296.0	
T.P.	0.72	296.51	12.80	295.79
Top M.H. 193+28.60		0.72	295.79	
193+50		1.2	295.3	
194+00		2.5	294.0	
194+50		3.9	292.6	
EC. 194+95.01		4.6	291.9	
195+00		4.7	291.8	
195+50		5.2	291.3	
196+00		5.7	290.8	

296.51

top mt			
196+307	6.01	290.5	
196+50	6.4		290.1
197+00	6.8		289.7
197+50	7.3		289.2
198+00	7.8		288.7
198+50	8.3		288.2
199+00	9.0	287.5	287.5
T.P.	7.18	289.33	

Void

checked & reduced pg. 32-34
3-7-49 R.A.M.

Top F.H. 199+50

Profile over Realignment
 Kearny Mesa - Sta 21+96+74.60
 (See FB. 769 pp. 27)

King
 Shipman
 West

3-11-49

35

	+	+	-	
	1031	5011		39.80
22+00			10.3	39.8
22+50			10.6	39.5
23+00			10.6	39.5
23+50			10.4	39.7
24+00 ⁵⁰			10.4	39.7
24+22	Void RM		12.1	40.0
+50			8.4	41.7
24+00			5.1	45.0
+50			0.0	50.1
T.P.	1039	5999	0.59	49.59
26+00			3.6	56.4
T.P.	1204	71.84	0.18	59.80
26+50			8.1	63.7
T.P.	1220	81.58	1.46	69.38
27+00			9.1	(70.5)
+50			6.8	74.8
27+50			4.6	77.0

Station

L
 Fence
 Top Slope

(See FB. 771 pp. 41-45
 FB. 777 pp. 25-29
 8-4-49 RM)

2.5

	+	*	-	
		81.58		
28+50			41	77.5
29+00			35	78.1
+50			22	79.4
T.P.	11.93	9224	1127	80.31
30+00			9.7	82.5
30+16			8.9	83.3
	9.21	9225	9.21	83.03
			^{9.20} 83.04	
30+50			7.7	84.6
+57			5.7	85.6
31+00			3.3	89.0
T.P.	11.69	10343	0.51	91.74
31+50			7.5	95.9
32+00			1.4	102.0
T.P.	12.37	115.05	0.75	102.88
32+50			7.3	107.8
33+00			1.4	113.7
T.P.	12.74	12756	0.23	114.82

Void
RMEdge
Black Top
BM ON PIN
IN Friars Rd.N.E.D.S.
Black Top

	T	T	T	Flow
		127.56		
33+50			7.7	119.9
34+00			1.7	125.9
T.P	12.26	139.82	0.00	127.56
34+50	Void		7.9	131.9
	RM			
35+00			1.8	138.0
T.P	12.54	152.56	0.0	129.82
35+50			8.1	144.3
36+00			2.2	150.2
T.P	12.79	164.95	0.20	152.16
36+50			8.7	156.3
37+00			3.0	162.0
T.P	12.68	177.18	0.45	164.50
37+50			8.4	168.8
38+00		189.65 ^{EE}	3.3	173.9
		188.65		
T.P	12.77	188.65	0.30	176.98
38+50			10.00	179.7 ^{EE}
				178.7
39+00			4.4	185.3 ^{EE}
				184.3
T.P	12.77	202.07	0.35	189.30

	+	X	+	2200
		202.07		
39+50			11.3	190.8
40+00			5.8	196.3
40+50			0.50	201.6
T.P.	13.03	214.80	0.30	201.77
41+00	Void		7.8	207.0
41+50	RM		2.1	212.7
T.P.	13.08	227.88	0.00	214.80
42+00			9.5	218.4
42+50			4.0	223.9
T.P.	12.05	239.13	0.80	227.08
43+00			10.3	228.8
43+15			8.5	230.6
T.P.	2.83	250.47	1.49	232.64
TBM	8.53	258.79	0.17	257.30
43+70			7.3	251.5
44+00			5.5	253.3
44+03			5.6	253.2

BOTTOM
Bank + Edge Pavement

TOBM ON
Fence Post

Top BANK

T .83 EE
258.79

44450			4.2	254.6
45400			2.0	256.8
^{EC} 45421 ⁷⁹			0.2	258.6
T.P	12.86	^{12 EE} 271.07	0.57	^{.26 EE} 258.22
45450			9.4	261.7
^{BC} 45456 ⁷⁹			8.7	262.4
46400			3.1	268.0
T.P	8.22	^{278.03 EE} 277.99	1.31	^{.81 EE} 269.97
46450			5.1	272.9
^{BP EC} 46474 ⁶⁰			3.0	275.0

Void
RM

Checked & Reduced Pg. 35-39
3-14-49 RM

~~(See FB 769 pg. 32 for continuation)~~
(See FB 769 pg. 32 for continuation)
8-4-49 RM

MARCH 16, 1949

LEONARD
PAYNE
CARVER

40

PROFILE OVER NEARNEY MESA PIPELINE.

CONTINUED FROM PAGE 34 OF THIS BOOK.

Top of Fire Hydrant in front of 6256 OSSLER ST.
Invert of sewer man hole 7' from 199.36¹¹

T.B.M.	+0.43	289.76	289.33
SEWER INVERT.		-11.69	278.07
199+36.79		-2.66	287.10
199+41.5		-2.79	286.97
199+42.8		-2.48	287.28 EE. 287.32
199+45.8		-2.46	287.30
199+50		-3.0	286.5
200+00	Void	-5.8	284.5
200+50		-6.5	283.9
201+00		-6.8	282.9
+50		-7.1	282.7
202+00		-6.6	283.2
+50		-6.4	283.4
203+00		-5.2	284.6
+16.75 R.C.		-4.9	284.9
+50		-5.6	284.2
T.P.		-5.36	284.40
	+1.98	286.38	

Rock 10' Lt 203+40

		286.38	
	204+00	-4.3	282.1
	+50	-5.7	280.7
	+90 ⁵⁶ E.C.	-5.6	280.8
	205+00	-5.5	280.9
	+50	-4.2	282.2
	206+00	-3.4	283.0
	+50	8.1	283.3
	207+00	-3.7	282.7
	+50	-7.7	278.7
Rock 10' Rt. 208+00	T.P.	-13.01	273.87
	+0.09	273.46	
	208+00	-1.3	272.2
	+50	-11.4	262.1
1' x 1" Hub 31' Rt STA 208+68	T.P.	-12.94	260.52
	+0.17	260.69	
	209+00	-7.7	253.0
Rock 40' Rt 209+25	T.P.	-13.01	247.68
	+0.08	247.76	

Rock 7' Lt 209+88

	247.76	
209+50	-4.5	243.5
209+80	-10.2	237.6
T.P.	-12.34	235.42

+0.03 235.45

210+00	-2.4	233.0
+13	-4.1	231.3
+33	-9.0	226.4
+50	-12.5	222.9

1'x1" Hub 21' Rt 210+62

T.P.	Void	-12.87	222.58
------	------	--------	--------

+0.62 223.20

211+00	-10.8	212.4
--------	-------	-------

Rock 3' Rt 211+07

T.P.	-12.80	210.40
------	--------	--------

+0.47 210.87

211+50	-8.2	202.7
--------	------	-------

+62	-10.7	200.2
-----	-------	-------

+76	-13.4	197.5
-----	-------	-------

1'x1" Hub 39' Rt 211+76

T.P.	-13.01	197.86
------	--------	--------

+0.22 198.08

198.08

R11+90	-5.0	193.1
R12+00	-6.1	192.0
+10	-7.2	190.9
+13	-9.4	188.7
T.P.	-12.97	185.11
+0.89		185.50

R12+50	-2.7	182.8
+67	Void	179.2
R13+00	-12.7	172.8
T.R.M.	-12.89	172.51

+0.56 173.07

R13+50	-8.3	164.8
+70	-11.0	162.1
T.P.	-12.88	160.19

0.24 160.43

R14+00	-4.0	156.4
R14+03 ²⁵ R.C.	-4.8	155.6

GULLY

1" X 1" HOR 36' RT R12+43

NOTE: GULLY, 4' WIDE, 3' DEEP, 1' RT. OF LINE.

" RUNS OUT 3' RT. " "

2' ABOVE GROUND

SET SPIKE IN N. SIDE OF POWER POLE, 13.5' LT. OF R12+25

1" X 1" HOR 24' LT. R13+83

Rock 13.5 LT 214+50

T.P.

160.45

-13.04 147.39

+0.37 147.76

214+50

-1.1 146.7

Rock 12' LT 214+95

T.P.

-12.76 135.00

+0.31 135.31

215+00

-2.1 133.2

Rock 215+40

T.P.

-11.69 121.62

+1.02 124.64

215+50

-9.4 120.2

+80

-11.7 112.9

216+00

Void

-13.8 110.8

+26

-14.6 110.0

+27

-18.2 106.4

+32

-18.2 106.4

+33

-14.8 109.8

216+50

-12.2 112.4

217+00

-10.0 114.6

BOTTOM OF GULLY

h n n

	124.64	
R17+50	-10.7	113.9
+81 ⁸⁸ F.C.	Void	114.7
R18+00	-10.0	114.6
+50	-9.4	115.2
R19+00	-9.2	115.4
+50	-8.9	115.7
R20+00	-8.7	115.9
+50	-9.8	114.8
R21+00	-9.5	115.1
T. B. M.	-12.45	112.19
	+3.84	116.03
RR144 ⁰⁴ B.C.	-1.3	114.7
+50	-1.5	114.5
+68	-1.9	114.1
RR2+00	-4.3	111.7
+13	-4.7	111.3
+50	-8.9	107.1

(Cont. from FB 771 p. 34)
8-4-49 RM

1X1" HOB 50'LT. RR1+00

			116.03	
		RRR+61 ⁵⁶ E.C.	-9.6	106.4
		RR3+00	-10.2	105.8
TOP OF CREEK BANK		+20	-9.8	106.2
CREEK BED		+42	-12.8	103.2
		+50	-13.1	102.9
DEEPEST PART OF CREEK BED		+79	-14.3	101.7
		+85	-12.4	103.6
TOP OF CREEK BANK		+96	-10.7	105.3
		RR4+00	-10.5	105.5
		+38	-7.3	108.7
		+50	-7.2	108.8
1' x 1" HUB APPROX 150' LT. RR5+00		T.P.	-0.50	115.79
		+9.24	124.97	
		RR5+00	-10.8	114.2
		+50	-4.1	120.9
ROCK 5' RT. RR5+60		T.P.	-0.95	123.99
		+13.10	137.09	

			137.09	
ASCENDING STEEP HILL.		RR6+00	-0.5	136.6
NOR ON R' BOULDER IN BANK 57' LT. RR6+00		T.P.	-0.60	136.49
		+11.50		148.99
		RR6+17	-3.6	145.4
		+20	-3.6	145.4
ROCK 8' LT	RR6+25	T.P.	-0.65	148.34
		+11.58		160.92
		RR6+25	-13.1	147.8
ROCK 20' LT.	RR6+45	T.P.	-0.98	159.94
		+12.87		172.81
		RR6+50	-11.9	160.9
OUTCROPPING ROCK ON LINE RR6+55 TO +60		+60	-6.5	166.9
		+63	-4.3	168.5
		+66	-3.8	169.0
BOULDER, 26' LT.	RR6+70	T.P.	-0.48	172.33
		+12.23		184.56
		RR6+75	10.4	174.2

ROCK 40' LT	227+00	T.P.	184.56	- 0.40	184.16
		+ 12.36	196.52		
		227+00		- 9.8	186.7
TOP OF STEEP INCLINE, LEVELING REF.		" +20		- 2.1	194.4
ROCK 35' RT	227+25	T.P.		- 0.26	196.26
		+ 11.74	208.00		
		227+50		- 7.1	200.9
1 1/2" HUB 35' RT	228+25	T.P.		- 0.29	207.71
		+ 11.66	219.37		
		228+00		- 11.2	208.2
		+ 50		- 2.3	217.1
1 X 1 HUB 46' RT	228+85	T.P.		- 0.09	219.28
		+ 12.83	232.11		
EDGE OF DIRT ROAD, VERY POOR CONDITION		229+00		- 3.1	229.0
" " " "		+ 15		- 1.7	230.4 EE
					(231.4)
TOP OF STAKE ON CENTER LINE	229+16.93	T.B.M.		- 0.37	231.74

REDUCED BY E.W.E. pg. 40 to 48 incl. 3-23-49

MARCH 17, 1949.

LEONARD
FRYNE
CARYER

49

PROFILE OVER KEARNEY MESA PIPE LINE, CONT'D.

TOP OF STAKE AT 229+16.95	T.R.M. +12.19	243.95	-	231.74
TOP OF BANK, N. SIDE DIRT ROAD	229+25		-8.4	235.5
	+38		-3.2	240.7
1" X 1" HUB 5' LT. 229+45	T.P.		-0.57	243.36
	+11.88	255.24		
	229+50		-10.6	244.6
1" X 1" HUB 229+60±	T.P.		-0.27	254.97
	+12.54	267.51		
	230+00		-1.9	265.6
1" X 1" HUB 50' LT. 230+00	T.P.		-0.43	267.08
	+13.09	280.17		
	230+10		-10.5	269.7
	+50		0.1	280.1
1" X 1" HUB 50' LT. 230+40	T.P.		-0.37	279.80
	+11.61	291.41		
	230+70		-8.5	282.9
	231+00		-3.9	287.5
1" X 1" HUB 50' LT. 231+25	T.P.		-0.14	291.27
	+10.80	302.07		

REDUCED BY E.E. B-23-49 PR 49

MARCH 22, '49. LEONARD
PAYNE
CARYER 50

		H.d.	302.07	
		231+50	-8.1	294.0
		+69 ²⁶ B.C.	-5.8	296.3
		232+00	-1.5	300.6
1'x1" HUB 50'RT.	E.C. 232+00 ²⁸	T.B.M.	-3.86	298.21
		+12.51	310.52	
		E.C. 232+00 ²⁸	-8.2	302.3
		232+50	-7.8	302.7
		233+00	-8.1	302.4
		+50	-7.6	302.9
		234+00	-5.0	305.5
		+50	-2.0	308.5
1'x1" HUB 4'	234+70	T.P. +70	-0.57	309.95
		+11.58	321.53	
		235+00	-9.3	312.2
		+50	-6.1	315.4
		236+00	-3.4	318.1
		+50	-1.4	320.1
1'x1" HUB 45'	5'RT 237+00	237+00 T.P.	-0.23	321.30

86. Pt. of R40+00
1" X 1" HUB SET BY OTHERS, MARKED 326.93

1" X 1" HUB

Sta R44+00

	+7.82	329.12	321.30
	R37+50	-6.8	322.3
	R38+00	-6.7	322.4
	+50	-6.6	322.5
	R39+00	-6.6	322.5
	+50	-6.8	322.3
	R40+00	-6.5	322.6
	CHECK R.M.	-1.90	327.22 = 326.93
	R40+50	-7.9	321.2
	R41+00	-8.8	320.3
	+50	-9.6	319.5
	R42+00	-10.3	318.8
	+50	-11.0	318.1
	R43+00	-11.7	317.4
	+50	-12.8	316.3
	R44+00	-13.4	315.7
	T.P.	-12.70	316.42
	+1.09	317.51	
	R44+50	-2.8	315.2

H.d.	317.51	
245+00	-3.1	314.4
+50	-5.6	318.9
246+00	-4.0	318.5
+50	-4.8	312.7
247+00	-6.2	311.3
+21	-6.5	311.0
+25	-6.6	311.9
+50	-5.9	311.6
248+00	-6.1	311.4
+50	-6.5	311.0
249+00	-8.0	309.5
+50	-7.6	309.9
250+00	-10.7	306.8
T.P.	-12.18	305.33
+6.20	311.53	
250+50	-4.8	306.7
251+00	-5.5	306.0
+50	-5.2	306.3

Rock 51' LT Sta 240+00

	311.50	
252+00	-4.9	306.6
+50	-7.1	304.4
253+00	-9.1	302.4
+50	-10.6	300.9
254+00	-10.8	300.7
+RR ²¹ /	-10.7	300.8
+50	-10.8	300.7
255+00	-11.4	300.1
+50	-12.0	299.5
256+00	-12.1	299.4
+50	-12.0	299.5
257+00	-12.8	298.7
+50	-12.7	298.8
258+00	-12.7	298.8
+50	-13.4	298.1
T.P.	-10.41	301.12
	+0.44	301.56

1" x 1" HOR 50' RT. STA. 258+50.

N. L.	\$01.56		
259+00		- 4.0	297.6
+50		- 4.4	297.2
260+00		- 4.8	296.8
+50		- 4.9	296.7
261+00		- 5.1	296.5
+50		- 5.2	296.4
262+00		- 5.3	296.3
+50		- 5.4	296.2
263+00		- 5.1	296.5
+50		- 4.9	296.7
264+00		- 4.8	296.8
+50		- 4.6	297.0
265+00 T.P.		- 4.76	296.80
+1.66	298.46		
265+50		- 1.7	296.8
266+00		- 2.3	296.2
266+50		- 2.9	295.6
267+00		- 3.0	295.5

1"x1" HOS on 2 STD. 265+00

		N. d.	298.46	
		267+50	-3.1	295.4
		268+00	-3.6	294.9
		+50	-4.7	293.8
		269+00	-5.1	293.4
		+50	-5.6	292.9
		270+00	-6.0	292.5
		+50	-6.6	291.9
		271+00	-6.8	291.7
		+50	-5.8	292.7
		272+00	-7.2	291.3
		+50	-7.2	291.3
		273+00	-7.5	291.0
		+50	-7.6	290.9
		274+00	-8.0	290.5
	68' LT. STA. 274+15.	T.B.M. SET.	-11.51	286.95
	TOP OF $\frac{5}{8}$ " RAIL IN S.E. COR. OF WIND SOCK POLE RING	+5.32	292.27	
		274+50	-2.5	289.8
		275+00	-3.1	289.2

H.d.	298.27	
275+50	-4.1	288.2
276+00	-4.0	288.3
+50	-4.0	288.3
277+00	-4.3	288.0
+50	-4.5	287.8
278+00	-4.7	287.6
+50	-5.7	286.6
279+00	-5.9	286.4
+50	-6.4	285.9
280+00	-6.9	285.4
+50	-6.9	285.4
281+00	-6.8	285.5
+50	-6.9	285.4
282+00 ^{1/2} R.C.	-6.6	285.7
+50	-7.1	285.2
283+00	-7.8	284.5
+50	-7.8	284.5
T.P.	-7.40	284.87

Rock 17' R.T. STA 283+50

	+5.16	290.00	284.87
284+00		-5.6	284.4
+50		-5.2	284.9
+64 ⁴⁵ E.C.		-5.2	284.8
285+00		-5.5	284.5
+50		-5.8	284.2
286+00		-5.7	284.9
+50		-5.2	284.8
287+00		-4.7	285.3
+50		-5.4	284.6
288+00		-6.1	283.9
+50		-5.9	284.1
289+00		-7.4	282.6
+28		-7.0	283.0
+50		-8.7	281.3
T.P.		-12.95	277.08
	+0.49	277.57	
290+00		-1.5	276.1
+50		-8.7	268.9

1" x 1" HOR 50' LT STA 290+00

			297.57		
		291+00		-14.1	263.5
1" HUB	20' LT	291+20	T.P.	-12.92	264.65
Note: should be 0.14 lower from this point or Rainy			+0.66		265.81
		291+26		-2.2	263.1
		+50		-5.6	259.7
		+66 ¹⁸ / 2		-8.0	257.3
1" HUB ON LINE		291+91	+91 T.P.	-15.00	252.31
			+0.13		252.44
NOTE: COULD NOT FIND ANY STATIONS SET BETWEEN CORRECTION: FOUND 292+66 AND 294+19.68			292+00	-3.2	249.2
292+25 AND 295+00, THRU DEEP CANYON.			+25	-11.6	240.3
MARKER DRIVEN FLUSH			+29 T.P.	-12.90	239.54
1" HUB ON LINE		292+27	+1.27		240.81
ROCK ON LINE		292+50	+50 T.P.	-12.68	228.13
			+2.09		230.22
1" HUB ON LINE			+70 ¹ T.P.	-12.89	217.33
			+0.44		217.77
1" HUB ON LINE			+93 T.P.	-12.93	204.84
			+0.36		205.20

1'x1" HUB ON LINE

293+13 T.P.	205.20	-12.99	192.21
+0.39	192.60		
293+24		-12.77	179.83
+0.41	180.24		

BOTTOM OF GULLY

+50		-13.0	167.2
+57		-20.6	159.6
+66		-13.4	166.8

1'x1" HUB ON LINE

+88 T.P.		-0.08	180.16
+11.48	191.64		

1'x1" HUB 12' LT. 294+15

294+06		-6.2	185.4
T.P.		0.18	191.46
+11.47	202.93		

1'x1" HUB 15' LT. 294+40

294+38		-7.8	195.1
T.P.		-0.05	202.88
+11.62	214.50		

1'x1" HUB 15' LT. 294+65

294+50		-5.9	208.6
T.P.		-0.09	214.41
+11.63	226.04		
294+75		-8.1	217.9

1'x1" HUB AT STA. 295+00

295+00 T.P.	226.04	-0.25	225.79
+12.97	238.76		

295+09		-9.6	229.2
+27		-5.6	233.2

1'x1" HUB ON LINE 295+50

+53 T.P.		-0.12	238.64
+12.86	251.50		

296+00		-6.0	245.50
--------	--	------	--------

+16 ⁸³ B.C.		-5.4	246.1
------------------------	--	------	-------

See FB 473 pg 58
9-16-49 RM

+50		-2.8	248.7
-----	--	------	-------

1'x1" HUB 10' RT 296+70

T.P.		-0.89	251.11
------	--	-------	--------

+7.24	258.35		
-------	--------	--	--

297+00		-5.5	252.8
--------	--	------	-------

+50		-2.3	256.0
-----	--	------	-------

EDGE OF OILED ROAD

+86 ⁸¹ B.C.	Void	-1.5	256.8
------------------------	------	------	-------

298+00		-2.4	255.9
--------	--	------	-------

EDGE OF OILED ROAD

+17		-2.5	255.8
-----	--	------	-------

+43		-4.6	253.7
-----	--	------	-------

+50		-4.6	253.7
-----	--	------	-------

SEE SPIKE IN R.R. TIE FENCE POST 25' L. OF 299+00

T.B.M.		-2.99	255.36
--------	--	-------	--------

3-23-49

.99.50 to 60 Incl.

REDUCED BY EWE

King
Shipman
West

4-20-49

61

B.M.	7.53	262.89		255.36
299+00			11.4	251.5
+50			10.9	252.0
300+00			9.7	253.2
+50		Void	3.3	259.6
300+90			11.0	FENCE 261.9
T.P.	2.95	265.40	0.44	262+5
301			2.6	262.8
+50			1.1	264.3
302			3.7	261.7
+50			10.6	254.8
303+00			15.6	249.8
+50			17.0	248.4
304+00			13.2	252.2
304+19 ⁴ B.C.			11.1	254.3
305+00			11.2	254.2
T.P.	2.31	256.49	11.22	254+8
305+50			2.2	254.3
305+76 ⁵⁴ EE.			2.9	253.6

Spike in R.R. Tie Fence Post 25' Lt. Sta. 299

Turn on Spike P.I.

Void 256.49

306+00		3.7	252.8
306+50		4.9	251.6
307		7.3	249.2
307+50		7.6	248.9
307+93 ⁹³		8.5	248.0
308+00		8.6	247.9
308+50		10.5	246.0
T.P.	158	245.07	13.00 248.49
309+00 ⁸³	B.C.	5.0	240.1
T.P.	0.40	233.53	11.94 233.13
309+50		1.9	231.6
310+00		11.1	222.4
T.P.	0.94	221.73	12.74 220.79
310+50		7.4	214.3
311+00		12.0	209.7
T.P.	0.33	209.79	12.27 209.46
311+50		3.7	206.1
312+00		4.9	204.9
312+25		5.0	204.8

Cont. from FB 773 pg. 59
9-16-49 RM

		209.79			
312+50			6.4		203.4
313+00			9.8		200.0
T.P.	0.36	198.52	11.53	198.26	
313+50			3.4		195.2
314			10.0		188.6
T.P.	1.68	188.49	11.81	186.81	
314+50			7.7		180.8
315+00			13.2		175.3
T.P.	0.53	178.62	10.40	178.09	
315+07			4.4		174.2
315+10			6.1		172.5
B.M.	0.44	174.90	4.16	174.46	
315+50			5.3		169.6
316+00			11.0		162.9
T.P.	1.06	164.65	11.31	163.59	
316+48 ⁷⁸ _{8.0}			6.8		157.9
316+67			10.8		153.9
T.P.	0.94	152.80	12.79	151.86	

Spike in cor F.P. 40' Rt Sta. 315+25

Spike in cor F.P. 40' Rt Sta. 315+25

		152.80			
316+89			1.8		151.0
317+06			4.8		148.0
317+28 ⁰⁰ Fc.			8.6		144.2
317+50			12.0		140.8
T.P.	0.84	140.61	13.03	139.77	
317+25			3.1		137.5
318+00			9.3		131.3
T.P.	1.69	129.81	12.49	128.12	
318+50			7.8		122.0
318+62			9.7		120.1
318+64			12.8		117.0
T.P.	0.23	117.18	12.84	116.95	
319+00			5.6		111.6
319+14			8.4		108.8
T.P.	0.46	104.93	12.71	104.47	
319+44			3.5		101.4
319+50			6.1		98.8
T.B.M.	0.62	92.90	12.65	92.28	

91114cy 25' Lt. 319+80

		92.90		
320+00			9.0	83.9
T.P.	1.51	^{81.46} 81.56	12.95	79.95
320+50			9.4	72.1
320+55			11.8	69.7
T.P.	1.63	^{70.40} 70.50	12.69	^{68.77} 68.87
321			3.8	66.6
321+50			8.0	62.4
321+63			10.3	60.1
321+72			12.5	57.9
321+75			11.3	59.1
322			9.1	61.3
322+46			7.2	63.2
322+50			5.8	64.6
322+50)			5.6	64.8
322+57			7.7	62.7
322+63			5.7	64.7
322+78			4.7	65.7
322+85			5.9	64.5

		70.40 70.50			
322192			4.6		65.8
323400			5.3		65.1
B.Mc	7.30	69.62 69.72	8.08	62.32 62.42	Top open Fire Place - Near Romo's Patio Extreme top North Side Chimney 4100' 519723
323450			4.3		65.3
324201			3.8		65.8
324450			3.6		66.0
324263			2.9		66.7
325400			3.1		66.5
325450			6.7		62.9
326400			7.6		62.0
326449			9.7		59.9
327400			7.1		62.5
T.P.	8.59	71.42 71.52	6.79	62.83 62.93	Boulder 12471 327950
327450			7.9		63.5
328400			6.6		64.8
+68			6.0		65.4
#19	Road East Edge		3.0		68.4

6722

2.55 67

4.55 E

4.55
2.92

4.6 W
3.83

7.47

8.43 - 292

71.42
7152

328+40	3.4	68.0
328+50	8.7	62.7
328+86	8.4	63.0
328+96	5.9	65.5
329+00 Top ballast	4.9	66.5
329+05 ⁸⁰ Top rail	4.25	67.17
+67 ² " "	4.22	67.20
+12 ⁴⁰ " "	4.24	67.18
+15 ⁰⁰ " "	4.70	67.22
329+21	4.6	66.8
+24	5.5	65.9
+48	5.2	66.2
+53	6.0	65.4
+74	6.2	65.2
+82	8.2	63.2
330	8.8	62.6
330+05 ³⁷	8.8	62.6

Tel. Cables -

T.B.M. 4.12 67.67

13.55

Top East Stake	2.38	65.29
" Cable - 292		62.37
Top West Stake	2.45	65.22
" Cable		61.39

T.P. 11.13 ^{74.68} 74.78 78.7 ^{63.55} 63.65

Top 1/2" Pipe S.E. Cov Am. Cab. Co. 330+08

74.68
74.78

330450			10.6		64.1
331+86			7.7		67.0
331950			4.0		70.7
+77			3.1		71.6
332400			3.9		70.8
B.M.			3.85	70.83 ₁₄	70.69
T.B.M.	1.55	65.10 65.28		63.55 63.65	
T.P.	1.69	53.76 63.86	13.63	52.07 52.17	
T.P.	1.99	42.80 42.90	12.95	40.81 40.91	
T.P.	8.60	32.89 32.99	10.59	32.21 32.31	
T.P.	4.69	28.26 28.36	9.24	23.57 23.67	
B.M.			6.75	21.51 21.61	21.02

See page 58 for corr.

Top Conc. Man - 10' Lt 332+10²⁵

Top 1/2" Pipe Sta 330410 - see page 67

(See FB 773 pg 31
8-4-49 R.M.)

B.P. Seend gas pump Island Union Oil Co. Balboa
Pac. Hqn
These levels carried from 6100

checked & Reduced pg. 61-68
4-22-49 R.M.

X-SECTIONS - Kearney Mesa
P. Line - San Diego River Bottom

King
Shipman
West

5-11-49

69

Sta.				
41	2.59	40.43		37.84
5+00			12.0	IN water
7+00			9.9	
	sect. will change Hauling sand - on Rt.			
T.P.	4.85	45.14	0.14	40.29
10+50			3.8	
	old ground &			
T.P.	3.40	44.01	4.53	40.61
16+50			3.3	
18+00			5.1	
	ALL old gr.			
Check 18+00 BR 769.			5.1	38.9
				39.0

Lt.		Right	
Top hub Sta. 3+58 BK 769 Page 25			
42.4	40.4	30.1	28.4
+2.0	0.0	10.3	27.8
250'	19.5'	100'	100'
			12.6 Water
			11.6 IN
			200' Water
			29.6
			10.8
			29.8
			10.6
			600'
26.6	29.2	29.6	30.7
13.8	11.2	10.8	9.7
200'	300'	200'	100'
			30'
			44'
			9.3
			31.0
			9.4
			150'
			31.6
			4.8
			225'
			31.6
			8.8
			435'
			24.3
			6.1
			440'
			33.4
			7.0
			600'
38.5	29.4	29.1	28.6
6.6	5.7	16.0	16.5
600'	410'	352'	250'
			79'
			5.4
			60'
			3.6
			200'
			41.9
			3.2
			400'
			42.3
			2.8
			600'
			Hauling sand
28.1	28.1	40.1	40.7
15.9	15.9	3.9	39.7
600'	600'	42'	40.1
			4.3
			200'
			3.9
			400'
			40.5
			3.5
			600'
28.4	37.9	36.5	38.9
5.6	6.1	7.0	38.9
600'	400'	200'	38.9
			5.1
			200'
			37.5
			6.5
			400'
			6.2
			600'
			37.8
			6.2
			600'
			Checked & Reduced Pg. 69
			5-12-49 R.A.M.

Levels to Stand Pipe
No. of Linda Vista

	+	+	-	
B.M.	11.33	412.78		401.45 401.45
T.P.	11.42	423.94	0.26	412.52
T.P.	11.51	435.09	0.36	423.58
T.P.	11.81	446.66	0.29	434.80
T.P.	9.94	455.78	0.82	445.84
Set B.M.	1.47	453.29	3.96	451.82
	0.90	441.34	12.85	440.44
	0.61	429.29	12.66	428.68
	0.36	416.81	12.84	416.45
	5.12	416.88	11.05	405.76
			9.45	367.43 401.45

King
Shipping
West
Payne

5-19-49

70

State B.M. # 22 1/2" Iron Pipe Lt. Sta. 205 450

Chiseled Sq. N.W. Cor. of Conc. Pier under ladder - West side Tank

State B.M. # 23

Levels to stand pipe
IN Linda Vista

King
Shipman
West
Payne

5-20-49

71

B.M.	4.46	357.14		352.68
	2.76	358.67	12.3	335.91
	6.08	357.48	7.27	351.40
	10.87	367.75	0.60	356.88
	10.03	377.28	0.50	367.25

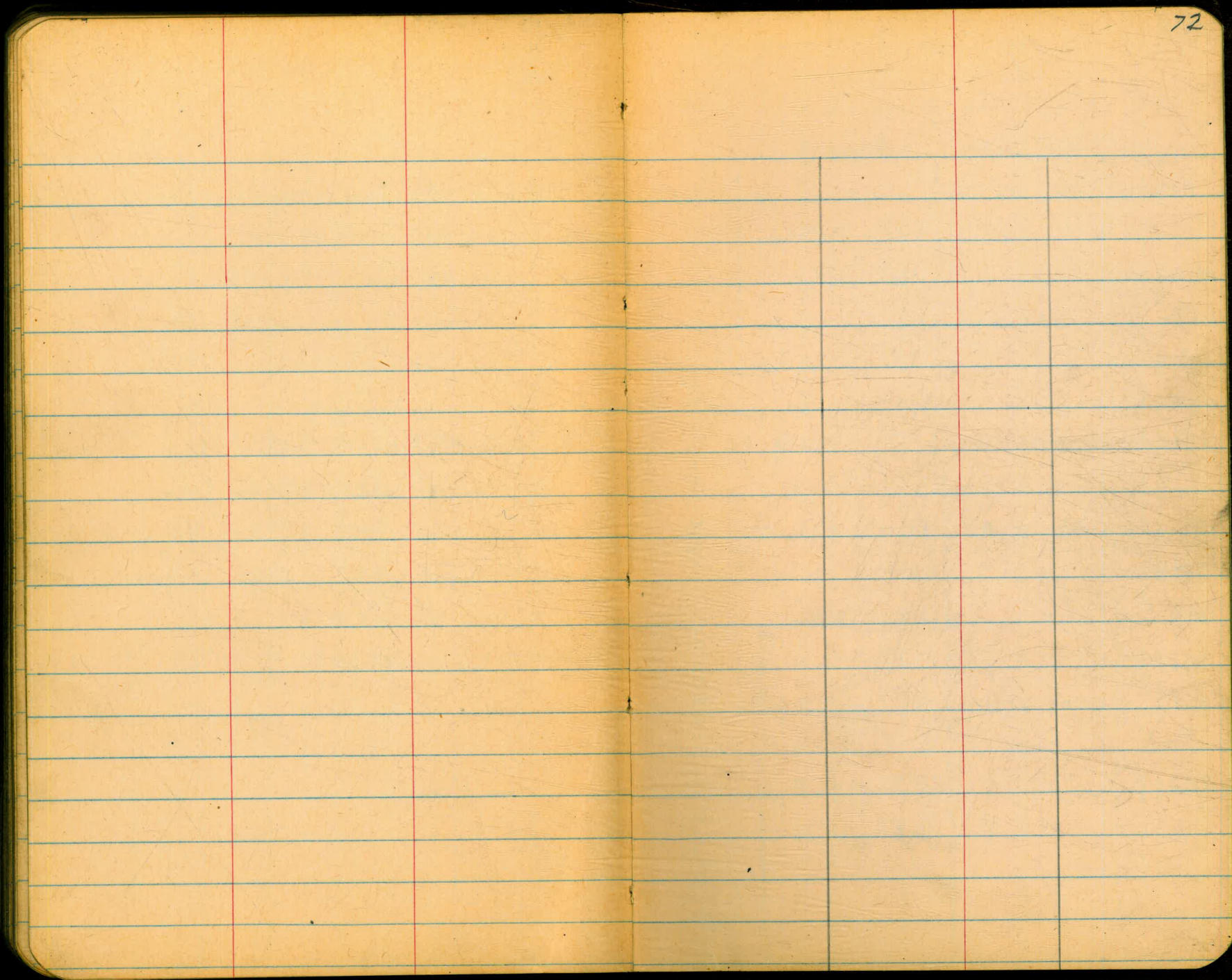
Extremity Top F.H. RT 167+46 1.74 351.767
Fire Plug Upton St + UL Ric

Set B.M.	1.64	375.79	3.13	374.15	chisled 39
	2.40	365.36	12.83	362.96	
	4.02	357.39	11.99	353.37	
	6.86	358.27	5.98	357.41	
	1.15	357.08	2.34	355.93	

S.E. Cor Concrete Pier of East Pier
with meter boxes et. on it

B.M.			4.39	352.69	352.68
------	--	--	------	--------	--------

Top F.H. RT 167+46



Prelim. Survey Mission
Beach Res. Site on
Soledad Terrace Park

King
H & A
Shipman

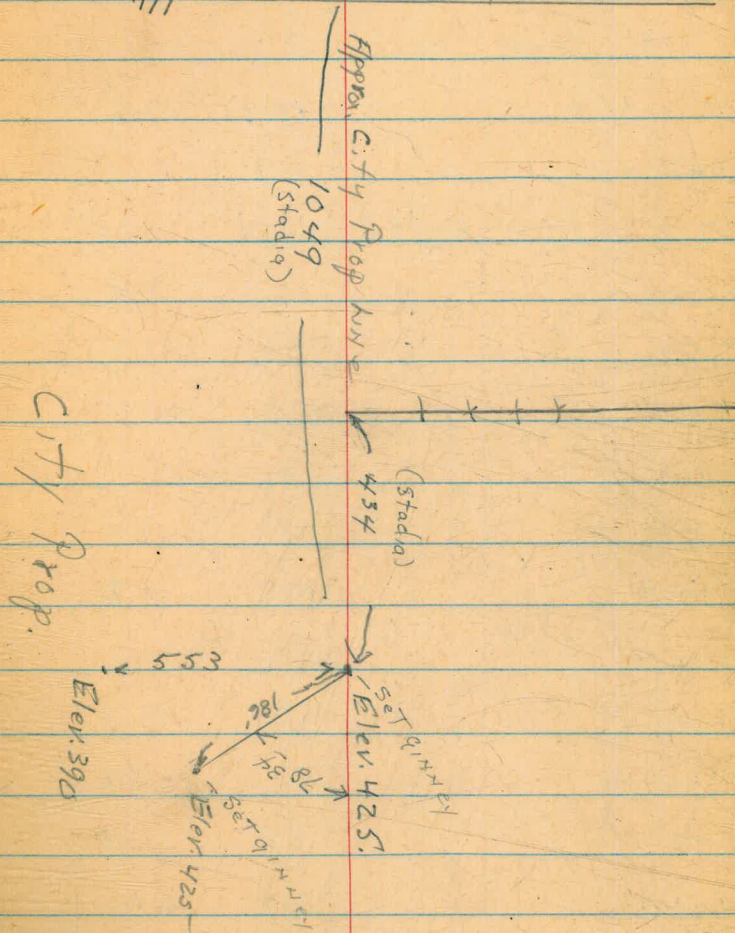
1-21-49

73

B.M.	1295	42703		414.09
	6.28	429.93	3.38	423.65
0+00 South			4.9	425.0
0+50 S.			7.6	22.3
1+00 S.			7.3	22.6
1+50 S.			6.8	23.1
2+00 S.			7.7	22.2
2+50 S.			10.1	19.8
T.P.	0.00	41693	13.00	416.93
3+00 S'			0.9	16.0
3+50 S			5.2	11.7
4+00 S			11.3	05.6
T.P.	0.10	40405	12.98	403.95
4+50 S			2.7	401.4
5+00 S			8.3	395.8
5+50 S.			13.1	391.0

REDUCED by ELEV. 3-23-49

Approx Φ Soledad Road



Pretim

T.P.	12.68	437.68		425.00
0 Foot North			12.7	425.0
0+50 N			5.4	432.3
T.P.	12.73	449.68	0.73	436.95
1+00 N			10.9	38.8
1+50 N			6.7	43.0
2+00 N			3.2	46.5
2+50 N			1.4	448.3
3+00 N			0.6	449.1
3+50 N			1.5	48.2
4+00 N			3.4	46.3
4+50 N			4.3	45.4
5+00 N			5.6	444.1
5+50 N			4.8	44.9
6+00 N			2.7	47.0
T.P.	7.27	454.17	2.78	446.90
6+50 N			5.8	48.4
7+00 N			2.4	51.8
7+50 N			0.00	54.17

REDUCED BY G.W.F. 3-23-49

10.34 = 4438.3 - 443.82 - City Mon.

RAINEY SHIPMAN WEST June 16, 1949 75

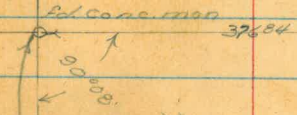
90°16'

P.L. 1190

P.L. 1192

P.L. 1197

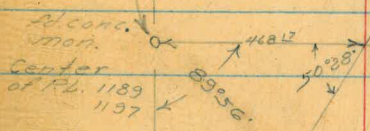
P.L. 1189



Public 1st Line
136.47



Alternate Km. Line



Intersection with Kearney Mass line Sta 163+11.40

Baseball diamond

Profile Realignments
Kearny Mass Pl.

8-4-49 RM
(Cont from FB. 769 pg. 59)

TOP M.H. & OSLER + WHEATSTONE		306.93	
Top M.H.	8.07	314.10	306.95
L 18376020		7.2	306.9
184100		7.6	306.5
Bottom Curb	7.40	Bottom	306.6
18412210		7.25	Top
E Side Walk			306.95
1841295		6.6	307.44
W Side Walk			307.65
1841363		6.45	307.65
184150		5.9	308.2
184164 65 AHD			
L 18570642 BK		5.5	308.6
L 18410528		5.25	308.35
			308.40

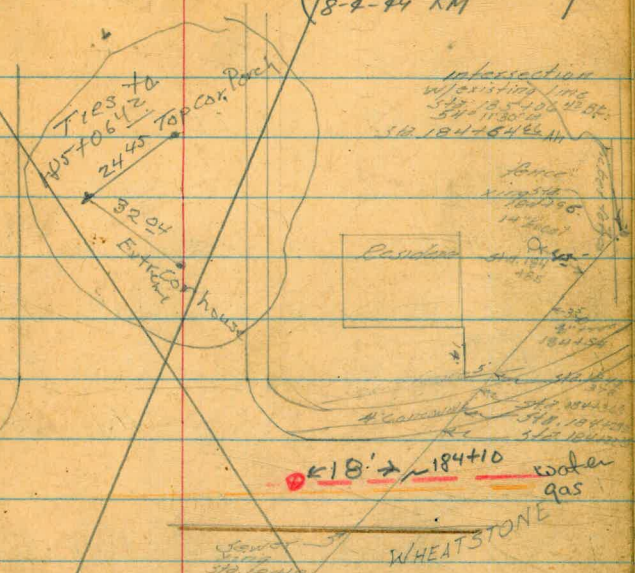
(See FB. 771 pg 27)
8-4-49 RM

checked & reduced
9.15.49 RM

Void See pg. 24
12.23.49 RM

King
Shuman
7-28-49
Realignment
Kearny Mass Pl.

(See FB. 771 page 19)
8-4-49 RM



4 PT STA 183150.00
5500' PL
Curbline

(cont. from page 19)
8-4-49 RM

Void See pg. 24
12.23.49 RM

1-19-49
 King
 Shipman
 Adams

Profile over 4' offsets
 Murieland Hght. P.L.
 Country Club Drive

388

77

Sta.	+	H.I.	-	388.84	Cuts	
	0.37	389.21				
5+62028			0.00	389.2	381.6	7.6
5+62041			0.00	389.2	381.6	7.6
5+8959			3.6	385.6	379.5	6.1
6+1795			6.4	382.8	376.1	6.7
6+50			11.1	378.1	372.3	5.8
T.P.	0.56	378.65	11.12	378.09		
7+00			7.3	371.3	366.4	4.9
T.P.	1.28	368.07	11.86	366.79		
7+50			3.5	364.6	360.6	4.0
8+00			9.7	358.4	354.8	3.6
T.P.	1.19	356.82	12.44	355.63		
8+50			4.0	352.8	348.4	4.4
B.C. 8+90			8.4	348.4	344.4	4.0
9+00			9.4	347.4	343.4	4.0
T.P.	1.74	346.44	12.12	344.70		

346.44

9450			4.9	341.5	337.9	3.6
10400			10.1	336.3	332.7	3.6
T.P.	0.96	334.41	12.99	333.45		
10+50			2.8	331.6	327.6	4.0
11+00			6.9	327.5	323.2	4.3
11+50			10.2	324.2	319.7	4.5
T.P.	3.49	325.36	12.54	321.87		
12+00			4.7	320.7	316.9	3.8
12+50			6.9	318.5	314.4	4.1
13+00			9.7	315.7	312.0	3.7
13+50			11.1	314.3	310.5	3.8
Δ 13+96.85			12.2	313.2	309.0	4.2
T.P.	2.04	315.16	12.24	313.12		
Δ 14+4905			3.0	312.2	306.6	5.6
Δ 15+01.25			7.6	307.6	302.4	5.2
15+50			9.0	306.2	297.5	8.7
Δ 15+69.19			10.1	305.1	295.7	9.4
T.P.	1.84	304.03	12.97	302.19		

304.03.

1640374

6.4 297.6 • 292.4

5.2

1644255 = 16445

8.8 295.2 • 288.7

6.5

16473

12.3 291.7 • 286.3

5.4 ✓

9.61 • 294.36 • 291.43

checked by EWR. 3/23/99

K.M.P.L. #2
 Cuts - 5' OFF - Casing Santa Fe P.R.
 XING

34 19

1640374 2.21 69.39 17.18

164423

1647 329479 Off 6.45 62.94 52.9

329439 Off 3.25 66.14 54.9

2.21 67.18

T.B.M. 4.03 25.81 21.25

34330 5' OFF 6.11 19.70 6.9

342430 10' OFF 6.84 18.97 6.9

Check on casing 5-10-50

342485 .33 low
 .5 to Far No.

14.9
 6.9

 8.0

Cuts

8.04

11.24

Top E Highway - 1st

12.80 - To bottom casing

12.07

Green - Sewer
 Brown - Drains
 Red - Water
 Yellow - Gas

467.95
 468.77
 16 x 50
 800

180'
 -2030'

86.80
 26.60

183 + 60.20
 88.65
 452

84.13

242
 298 - 9010

431.91

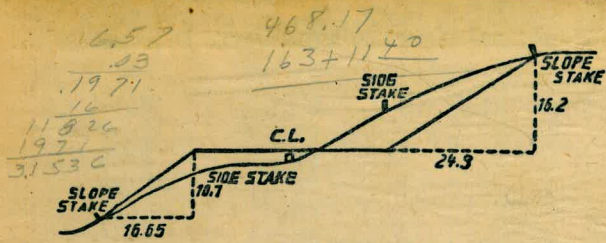
330

200

4300

26.89
 24.21
 144.42
 13
 1044
 180.3
 86.31
 28
 114.31
 269.4
 257.8
 1001.5

144 + 78.03
 1 1431.5
 143 + 63.72



DISTANCES FROM SIDE STAKES FOR CROSS-SECTIONING.
 SLOPE 1 1/2 TO 1. ROADWAY OF ANY WIDTH.

	0	.1	.2	.3	.4	.5	.6	.7	.8	.9	
0	0.00	0.15	0.30	0.45	0.60	0.75	0.90	1.05	1.20	1.35	0
1	1.50	1.65	1.80	1.95	2.10	2.25	2.40	2.55	2.70	2.85	1
2	3.00	3.15	3.30	3.45	3.60	3.75	3.90	4.05	4.20	4.35	2
3	4.50	4.65	4.80	4.95	5.10	5.25	5.40	5.55	5.70	5.85	3
4	6.00	6.15	6.30	6.45	6.60	6.75	6.90	7.05	7.20	7.35	4
5	7.50	7.65	7.80	7.95	8.10	8.25	8.40	8.55	8.70	8.85	5
6	9.00	9.15	9.30	9.45	9.60	9.75	9.90	10.05	10.20	10.35	6
7	10.50	10.65	10.80	10.95	11.10	11.25	11.40	11.55	11.70	11.85	7
8	12.00	12.15	12.30	12.45	12.60	12.75	12.90	13.05	13.20	13.35	8
9	13.50	13.65	13.80	13.95	14.10	14.25	14.40	14.55	14.70	14.85	9
10	15.00	15.15	15.30	15.45	15.60	15.75	15.90	16.05	16.20	16.35	10
11	16.50	16.65	16.80	16.95	17.10	17.25	17.40	17.55	17.70	17.85	11
12	18.00	18.15	18.30	18.45	18.60	18.75	18.90	19.05	19.20	19.35	12
13	19.50	19.65	19.80	19.95	20.10	20.25	20.40	20.55	20.70	20.85	13
14	21.00	21.15	21.30	21.45	21.60	21.75	21.90	22.05	22.20	22.35	14
15	22.50	22.65	22.80	22.95	23.10	23.25	23.40	23.55	23.70	23.85	15
16	24.00	24.15	24.30	24.45	24.60	24.75	24.90	25.05	25.20	25.35	16
17	25.50	25.65	25.80	25.95	26.10	26.25	26.40	26.55	26.70	26.85	17
18	27.00	27.15	27.30	27.45	27.60	27.75	27.90	28.05	28.20	28.35	18
19	28.50	28.65	28.80	28.95	29.10	29.25	29.40	29.55	29.70	29.85	19
20	30.00	30.15	30.30	30.45	30.60	30.75	30.90	31.05	31.20	31.35	20
21	31.50	31.65	31.80	31.95	32.10	32.25	32.40	32.55	32.70	32.85	21
22	33.00	33.15	33.30	33.45	33.60	33.75	33.90	34.05	34.20	34.35	22
23	34.50	34.65	34.80	34.95	35.10	35.25	35.40	35.55	35.70	35.85	23
24	36.00	36.15	36.30	36.45	36.60	36.75	36.90	37.05	37.20	37.35	24
25	37.50	37.65	37.80	37.95	38.10	38.25	38.40	38.55	38.70	38.85	25
26	39.00	39.15	39.30	39.45	39.60	39.75	39.90	40.05	40.20	40.35	26
27	40.50	40.65	40.80	40.95	41.10	41.25	41.40	41.55	41.70	41.85	27
28	42.00	42.15	42.30	42.45	42.60	42.75	42.90	43.05	43.20	43.35	28
29	43.50	43.65	43.80	43.95	44.10	44.25	44.40	44.55	44.70	44.85	29
30	45.00	45.15	45.30	45.45	45.60	45.75	45.90	46.05	46.20	46.35	30
31	46.50	46.65	46.80	46.95	47.10	47.25	47.40	47.55	47.70	47.85	31
32	48.00	48.15	48.30	48.45	48.60	48.75	48.90	49.05	49.20	49.35	32
33	49.50	49.65	49.80	49.95	50.10	50.25	50.40	50.55	50.70	50.85	33
34	51.00	51.15	51.30	51.45	51.60	51.75	51.90	52.05	52.20	52.35	34
35	52.50	52.65	52.80	52.95	53.10	53.25	53.40	53.55	53.70	53.85	35
36	54.00	54.15	54.30	54.45	54.60	54.75	54.90	55.05	55.20	55.35	36
37	55.50	55.65	55.80	55.95	56.10	56.25	56.40	56.55	56.70	56.85	37
38	57.00	57.15	57.30	57.45	57.60	57.75	57.90	58.05	58.20	58.35	38
39	58.50	58.65	58.80	58.95	59.10	59.25	59.40	59.55	59.70	59.85	39
40	60.00	60.15	60.30	60.45	60.60	60.75	60.90	61.05	61.20	61.35	40
41	61.50	61.65	61.80	61.95	62.10	62.25	62.40	62.55	62.70	62.85	41
42	63.00	63.15	63.30	63.45	63.60	63.75	63.90	64.05	64.20	64.35	42
43	64.50	64.65	64.80	64.95	65.10	65.25	65.40	65.55	65.70	65.85	43
44	66.00	66.15	66.30	66.45	66.60	66.75	66.90	67.05	67.20	67.35	44
45	67.50	67.65	67.80	67.95	68.10	68.25	68.40	68.55	68.70	68.85	45
46	69.00	69.15	69.30	69.45	69.60	69.75	69.90	70.05	70.20	70.35	46
47	70.50	70.65	70.80	70.95	71.10	71.25	71.40	71.55	71.70	71.85	47
48	72.00	72.15	72.30	72.45	72.60	72.75	72.90	73.05	73.20	73.35	48
49	73.50	73.65	73.80	73.95	74.10	74.25	74.40	74.55	74.70	74.85	49
50	75.00	75.15	75.30	75.45	75.60	75.75	75.90	76.05	76.20	76.35	50

THE NATIONAL BLANK BOOK COMPANY
 HOLYOKE MASSACHUSETTS
 NEW YORK CHICAGO BOSTON SAN FRANCISCO