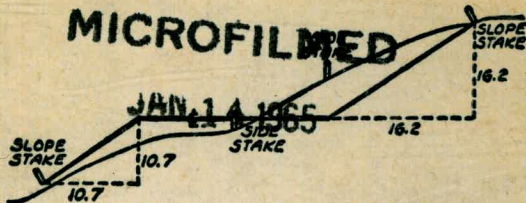


W 776

MICROFILMED



118.73
106.00
62.73

DISTANCES FROM SIDE STAKES FOR CROSS-SECTIONING
SLOPE 1 TO 1. ROADWAY OF ANY WIDTH

| | 0 | .1 | .2 | .3 | .4 | .5 | .6 | .7 | .8 | .9 | |
|----|-------|-------|-------|-------|-------|-------|-------|-------|-------|-------|----|
| 0 | 0.00 | 0.10 | 0.20 | 0.30 | 0.40 | 0.50 | 0.60 | 0.70 | 0.80 | 0.90 | 0 |
| 1 | 1.00 | 1.10 | 1.20 | 1.30 | 1.40 | 1.50 | 1.60 | 1.70 | 1.80 | 1.90 | 1 |
| 2 | 2.00 | 2.10 | 2.20 | 2.30 | 2.40 | 2.50 | 2.60 | 2.70 | 2.80 | 2.90 | 2 |
| 3 | 3.00 | 3.10 | 3.20 | 3.30 | 3.40 | 3.50 | 3.60 | 3.70 | 3.80 | 3.90 | 3 |
| 4 | 4.00 | 4.10 | 4.20 | 4.30 | 4.40 | 4.50 | 4.60 | 4.70 | 4.80 | 4.90 | 4 |
| 5 | 5.00 | 5.10 | 5.20 | 5.30 | 5.40 | 5.50 | 5.60 | 5.70 | 5.80 | 5.90 | 5 |
| 6 | 6.00 | 6.10 | 6.20 | 6.30 | 6.40 | 6.50 | 6.60 | 6.70 | 6.80 | 6.90 | 6 |
| 7 | 7.00 | 7.10 | 7.20 | 7.30 | 7.40 | 7.50 | 7.60 | 7.70 | 7.80 | 7.90 | 7 |
| 8 | 8.00 | 8.10 | 8.20 | 8.30 | 8.40 | 8.50 | 8.60 | 8.70 | 8.80 | 8.90 | 8 |
| 9 | 9.00 | 9.10 | 9.20 | 9.30 | 9.40 | 9.50 | 9.60 | 9.70 | 9.80 | 9.90 | 9 |
| 10 | 10.00 | 10.10 | 10.20 | 10.30 | 10.40 | 10.50 | 10.60 | 10.70 | 10.80 | 10.90 | 10 |
| 11 | 11.00 | 11.10 | 11.20 | 11.30 | 11.40 | 11.50 | 11.60 | 11.70 | 11.80 | 11.90 | 11 |
| 12 | 12.00 | 12.10 | 12.20 | 12.30 | 12.40 | 12.50 | 12.60 | 12.70 | 12.80 | 12.90 | 12 |
| 13 | 13.00 | 13.10 | 13.20 | 13.30 | 13.40 | 13.50 | 13.60 | 13.70 | 13.80 | 13.90 | 13 |
| 14 | 14.00 | 14.10 | 14.20 | 14.30 | 14.40 | 14.50 | 14.60 | 14.70 | 14.80 | 14.90 | 14 |
| 15 | 15.00 | 15.10 | 15.20 | 15.30 | 15.40 | 15.50 | 15.60 | 15.70 | 15.80 | 15.90 | 15 |
| 16 | 16.00 | 16.10 | 16.20 | 16.30 | 16.40 | 16.50 | 16.60 | 16.70 | 16.80 | 16.90 | 16 |
| 17 | 17.00 | 17.10 | 17.20 | 17.30 | 17.40 | 17.50 | 17.60 | 17.70 | 17.80 | 17.90 | 17 |
| 18 | 18.00 | 18.10 | 18.20 | 18.30 | 18.40 | 18.50 | 18.60 | 18.70 | 18.80 | 18.90 | 18 |
| 19 | 19.00 | 19.10 | 19.20 | 19.30 | 19.40 | 19.50 | 19.60 | 19.70 | 19.80 | 19.90 | 19 |
| 20 | 20.00 | 20.10 | 20.20 | 20.30 | 20.40 | 20.50 | 20.60 | 20.70 | 20.80 | 20.90 | 20 |
| 21 | 21.00 | 21.10 | 21.20 | 21.30 | 21.40 | 21.50 | 21.60 | 21.70 | 21.80 | 21.90 | 21 |
| 22 | 22.00 | 22.10 | 22.20 | 22.30 | 22.40 | 22.50 | 22.60 | 22.70 | 22.80 | 22.90 | 22 |
| 23 | 23.00 | 23.10 | 23.20 | 23.30 | 23.40 | 23.50 | 23.60 | 23.70 | 23.80 | 23.90 | 23 |
| 24 | 24.00 | 24.10 | 24.20 | 24.30 | 24.40 | 24.50 | 24.60 | 24.70 | 24.80 | 24.90 | 24 |
| 25 | 25.00 | 25.10 | 25.20 | 25.30 | 25.40 | 25.50 | 25.60 | 25.70 | 25.80 | 25.90 | 25 |
| 26 | 26.00 | 26.10 | 26.20 | 26.30 | 26.40 | 26.50 | 26.60 | 26.70 | 26.80 | 26.90 | 26 |
| 27 | 27.00 | 27.10 | 27.20 | 27.30 | 27.40 | 27.50 | 27.60 | 27.70 | 27.80 | 27.90 | 27 |
| 28 | 28.00 | 28.10 | 28.20 | 28.30 | 28.40 | 28.50 | 28.60 | 28.70 | 28.80 | 28.90 | 28 |
| 29 | 29.00 | 29.10 | 29.20 | 29.30 | 29.40 | 29.50 | 29.60 | 29.70 | 29.80 | 29.90 | 29 |
| 30 | 30.00 | 30.10 | 30.20 | 30.30 | 30.40 | 30.50 | 30.60 | 30.70 | 30.80 | 30.90 | 30 |
| 31 | 31.00 | 31.10 | 31.20 | 31.30 | 31.40 | 31.50 | 31.60 | 31.70 | 31.80 | 31.90 | 31 |
| 32 | 32.00 | 32.10 | 32.20 | 32.30 | 32.40 | 32.50 | 32.60 | 32.70 | 32.80 | 32.90 | 32 |
| 33 | 33.00 | 33.10 | 33.20 | 33.30 | 33.40 | 33.50 | 33.60 | 33.70 | 33.80 | 33.90 | 33 |
| 34 | 34.00 | 34.10 | 34.20 | 34.30 | 34.40 | 34.50 | 34.60 | 34.70 | 34.80 | 34.90 | 34 |
| 35 | 35.00 | 35.10 | 35.20 | 35.30 | 35.40 | 35.50 | 35.60 | 35.70 | 35.80 | 35.90 | 35 |
| 36 | 36.00 | 36.10 | 36.20 | 36.30 | 36.40 | 36.50 | 36.60 | 36.70 | 36.80 | 36.90 | 36 |
| 37 | 37.00 | 37.10 | 37.20 | 37.30 | 37.40 | 37.50 | 37.60 | 37.70 | 37.80 | 37.90 | 37 |
| 38 | 38.00 | 38.10 | 38.20 | 38.30 | 38.40 | 38.50 | 38.60 | 38.70 | 38.80 | 38.90 | 38 |
| 39 | 39.00 | 39.10 | 39.20 | 39.30 | 39.40 | 39.50 | 39.60 | 39.70 | 39.80 | 39.90 | 39 |
| 40 | 40.00 | 40.10 | 40.20 | 40.30 | 40.40 | 40.50 | 40.60 | 40.70 | 40.80 | 40.90 | 40 |
| 41 | 41.00 | 41.10 | 41.20 | 41.30 | 41.40 | 41.50 | 41.60 | 41.70 | 41.80 | 41.90 | 41 |
| 42 | 42.00 | 42.10 | 42.20 | 42.30 | 42.40 | 42.50 | 42.60 | 42.70 | 42.80 | 42.90 | 42 |
| 43 | 43.00 | 43.10 | 43.20 | 43.30 | 43.40 | 43.50 | 43.60 | 43.70 | 43.80 | 43.90 | 43 |
| 44 | 44.00 | 44.10 | 44.20 | 44.30 | 44.40 | 44.50 | 44.60 | 44.70 | 44.80 | 44.90 | 44 |
| 45 | 45.00 | 45.10 | 45.20 | 45.30 | 45.40 | 45.50 | 45.60 | 45.70 | 45.80 | 45.90 | 45 |
| 46 | 46.00 | 46.10 | 46.20 | 46.30 | 46.40 | 46.50 | 46.60 | 46.70 | 46.80 | 46.90 | 46 |
| 47 | 47.00 | 47.10 | 47.20 | 47.30 | 47.40 | 47.50 | 47.60 | 47.70 | 47.80 | 47.90 | 47 |
| 48 | 48.00 | 48.10 | 48.20 | 48.30 | 48.40 | 48.50 | 48.60 | 48.70 | 48.80 | 48.90 | 48 |
| 49 | 49.00 | 49.10 | 49.20 | 49.30 | 49.40 | 49.50 | 49.60 | 49.70 | 49.80 | 49.90 | 49 |
| 50 | 50.00 | 50.10 | 50.20 | 50.30 | 50.40 | 50.50 | 50.60 | 50.70 | 50.80 | 50.90 | 50 |

Distance of slope stake from side or shoulder stake for any width roadway, slope 1 to 1. If ground is nearly level, the cut or fill at side stake is located by the double entry method in left column and top row. The number in body of table in same row and column gives distance from side stake to slope stake. If ground is not level estimate the difference in elevation between the side stake and slope stake, lower target by this amount if cut, elevate if fill. Add this amount to cut or fill and find distance in table. Set up rod at this point, and line of sight should cut target. If it does not make the slight adjustment necessary.

TABLE XIII—CORRECTIONS FOR TANGENTS AND EXTERNALS

These corrections are to be added to the approximate values, found by dividing the tangent, or external, for a 1° curve (Table VIII) by the degree of curve, in order to obtain the true tangents, or externals. Intermediate values may be obtained by interpolation.

FOR TANGENTS ADD

| Central Angle | DEGREE OF CURVE | | | | | | | | | | | | | |
|---------------|-----------------|------|------|------|------|------|------|------|------|------|------|------|------|------|
| | 5° | 10° | 15° | 20° | 25° | 30° | 35° | 40° | 45° | 50° | 55° | 60° | 65° | 70° |
| 10° | .03 | .06 | .09 | .13 | .16 | .19 | .22 | .25 | .28 | .31 | .34 | .38 | .42 | .46 |
| 15° | .04 | .10 | .14 | .19 | .24 | .29 | .34 | .39 | .45 | .51 | .53 | .58 | .63 | .68 |
| 20° | .06 | .13 | .19 | .26 | .32 | .39 | .45 | .51 | .58 | .65 | .72 | .79 | .84 | .90 |
| 25° | .08 | .16 | .24 | .33 | .40 | .49 | .58 | .67 | .75 | .83 | .90 | .99 | 1.06 | 1.14 |
| 30° | .10 | .19 | .29 | .39 | .49 | .59 | .69 | .79 | .89 | .99 | 1.09 | 1.20 | 1.29 | 1.39 |
| 35° | .11 | .22 | .34 | .47 | .58 | .69 | .79 | .81 | .92 | 1.04 | 1.29 | 1.42 | 1.54 | 1.66 |
| 40° | .13 | .26 | .40 | .53 | .67 | .80 | .93 | 1.06 | 1.20 | 1.34 | 1.49 | 1.64 | 1.79 | 1.94 |
| 45° | .15 | .30 | .44 | .60 | .76 | .91 | 1.06 | 1.21 | 1.37 | 1.52 | 1.70 | 1.87 | 2.04 | 2.21 |
| 50° | .17 | .34 | .51 | .68 | .85 | 1.02 | 1.19 | 1.36 | 1.54 | 1.72 | 1.91 | 2.10 | 2.29 | 2.48 |
| 55° | .19 | .38 | .57 | .76 | .95 | 1.14 | 1.32 | 1.52 | 1.72 | 1.92 | 2.14 | 2.35 | 2.56 | 2.77 |
| 60° | .21 | .42 | .63 | .84 | 1.05 | 1.27 | 1.49 | 1.71 | 1.94 | 2.17 | 2.38 | 2.60 | 2.83 | 3.07 |
| 65° | .23 | .46 | .69 | .93 | 1.16 | 1.40 | 1.64 | 1.88 | 2.13 | 2.38 | 2.63 | 2.88 | 3.13 | 3.39 |
| 70° | .25 | .51 | .76 | 1.02 | 1.28 | 1.54 | 1.80 | 2.06 | 2.33 | 2.60 | 2.88 | 3.16 | 3.44 | 3.72 |
| 75° | .27 | .56 | .83 | 1.12 | 1.40 | 1.69 | 1.98 | 2.27 | 2.57 | 2.87 | 3.16 | 3.47 | 3.78 | 4.09 |
| 80° | .30 | .61 | .91 | 1.22 | 1.53 | 1.84 | 2.15 | 2.46 | 2.78 | 3.10 | 3.44 | 3.78 | 4.12 | 4.46 |
| 85° | .33 | .66 | 1.00 | 1.33 | 1.68 | 2.02 | 2.36 | 2.70 | 3.05 | 3.40 | 3.77 | 4.14 | 4.55 | 4.89 |
| 90° | .36 | .72 | 1.09 | 1.45 | 1.83 | 2.20 | 2.57 | 2.94 | 3.32 | 3.70 | 4.10 | 4.50 | 4.91 | 5.32 |
| 95° | .39 | .79 | 1.19 | 1.55 | 2.00 | 2.40 | 2.80 | 3.20 | 3.61 | 4.02 | 4.40 | 4.98 | 5.38 | 5.83 |
| 100° | .43 | .86 | 1.30 | 1.74 | 2.18 | 2.62 | 3.06 | 3.50 | 3.95 | 4.40 | 4.88 | 5.37 | 5.85 | 6.34 |
| 110° | .51 | 1.03 | 1.56 | 2.08 | 2.61 | 3.14 | 3.67 | 4.21 | 4.76 | 5.31 | 5.86 | 6.43 | 7.01 | 7.60 |
| 120° | .62 | 1.25 | 1.93 | 2.52 | 3.16 | 3.81 | 4.45 | 5.11 | 5.77 | 6.44 | 7.12 | 7.80 | 8.50 | 9.22 |

FOR EXTERNALS ADD

| Central Angle | DEGREE OF CURVE | | | | | | | | | | | | | |
|---------------|-----------------|------|------|------|------|------|------|------|------|------|------|------|------|------|
| | 5° | 10° | 15° | 20° | 25° | 30° | 35° | 40° | 45° | 50° | 55° | 60° | 65° | 70° |
| 10° | .001 | .003 | .004 | .006 | .007 | .008 | .009 | .011 | .012 | .014 | .015 | .017 | .018 | .020 |
| 15° | .003 | .007 | .010 | .014 | .018 | .023 | .027 | .029 | .032 | .035 | .039 | .043 | .047 | .051 |
| 20° | .006 | .011 | .017 | .022 | .028 | .034 | .038 | .045 | .051 | .057 | .063 | .070 | .076 | .083 |
| 25° | .009 | .018 | .027 | .036 | .046 | .056 | .065 | .074 | .083 | .093 | .106 | .120 | .127 | .135 |
| 30° | .013 | .025 | .038 | .051 | .065 | .078 | .090 | .103 | .116 | .129 | .149 | .170 | .179 | .188 |
| 35° | .018 | .035 | .054 | .072 | .086 | .109 | .131 | .153 | .175 | .197 | .213 | .230 | .247 | .264 |
| 40° | .023 | .046 | .070 | .093 | .117 | .141 | .172 | .203 | .234 | .265 | .277 | .290 | .315 | .341 |
| 45° | .030 | .060 | .093 | .119 | .153 | .184 | .216 | .254 | .289 | .325 | .351 | .378 | .411 | .445 |
| 50° | .037 | .075 | .116 | .151 | .189 | .227 | .266 | .305 | .345 | .384 | .425 | .467 | .508 | .550 |
| 55° | .046 | .093 | .142 | .188 | .236 | .283 | .332 | .381 | .420 | .479 | .530 | .582 | .641 | .700 |
| 60° | .056 | .112 | .168 | .225 | .283 | .340 | .398 | .457 | .516 | .575 | .636 | .697 | .774 | .851 |
| 65° | .067 | .135 | .204 | .273 | .343 | .412 | .483 | .554 | .625 | .697 | .771 | .845 | .922 | 1.01 |
| 70° | .080 | .159 | .240 | .321 | .403 | .485 | .568 | .652 | .735 | .819 | .906 | .994 | 1.08 | 1.17 |
| 75° | .095 | .182 | .286 | .383 | .480 | .578 | .678 | .777 | .877 | .977 | 1.07 | 1.18 | 1.29 | 1.39 |
| 80° | .110 | .220 | .332 | .445 | .558 | .671 | .787 | .903 | 1.02 | 1.13 | 1.25 | 1.38 | 1.50 | 1.62 |
| 85° | .128 | .259 | .391 | .524 | .657 | .790 | .926 | 1.06 | 1.20 | 1.34 | 1.47 | 1.62 | 1.76 | 1.91 |
| 90° | .149 | .299 | .450 | .603 | .756 | .910 | 1.07 | 1.22 | 1.38 | 1.54 | 1.70 | 1.87 | 2.03 | 2.20 |
| 95° | .174 | .350 | .522 | .706 | .895 | 1.06 | 1.25 | 1.43 | 1.62 | 1.80 | 1.99 | 2.18 | 2.38 | 2.58 |
| 100° | .200 | .401 | .604 | .809 | 1.01 | 1.22 | 1.43 | 1.64 | 1.85 | 2.06 | 2.28 | 2.50 | 2.73 | 2.96 |
| 110° | .268 | .536 | .806 | 1.08 | 1.35 | 1.63 | 1.91 | 2.20 | 2.48 | 2.76 | 3.05 | 3.35 | 3.66 | 3.96 |
| 120° | .360 | .721 | 1.08 | 1.45 | 1.82 | 2.19 | 2.57 | 2.95 | 3.33 | 3.72 | 4.11 | 4.50 | 4.91 | 5.32 |

INDEX

Page

Details W. Pt. Loma Blvd, West of Prince St. ✓ 2-3
 Alignment & Details } Midway Drive - Point Loma Pipeline ✓ 4-22
 Realignment & Profile Midway DR - Pt. Loma " 1 23
 Vicinity of Catalina & Voltaire.
 & PROFILE REV. Alignment Sta. 125+55.72 - 144+00.29 ✓ 24-27
 (MIDWAY DRIVE - Pt. Loma RES. Pipeline.)

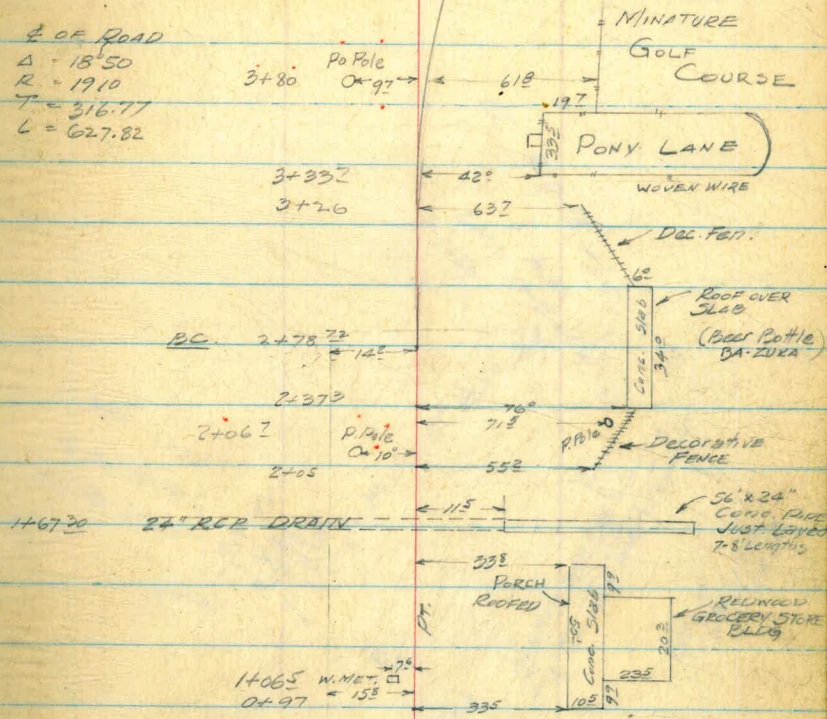
Nov 27 1929
Beatty & Party

DETAILS OF AREA NEAR of West Pt. Loma Blvd.
West of E of Prince St.

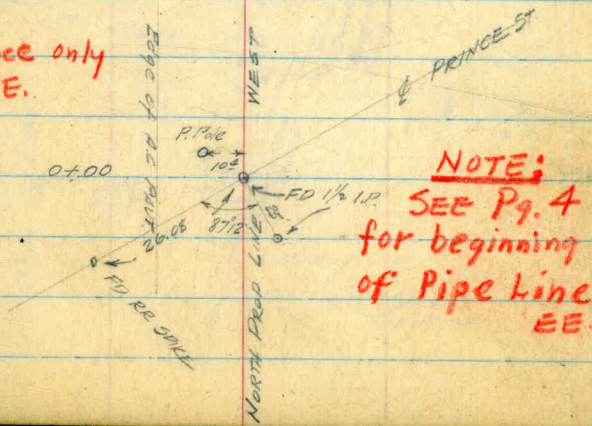
- 9+06.54 EC. 25° RT TO CHOICE WIRE FEN 10° LT TO AC
8+77.5 3° RT FEN COR 8° TO P. Pole LT
8+56 63° RT TO FEN COR GRD FEN 60°
- 6+79 LT 8° TO FACE P. Pole
6+84 LT 8° TO C METER
6+50 LT 10° TO AC Edge
6+40 RT 41° TO CONC. 54° TO FENE
5+85 RT 50° TO FEN 40° TO CONC.
4+60 RT 59° TO ST. P. Pole 60° RT TO FEN
3+780 LT 92° TO P. Pole 61° RT TO Golf fence
3+337 RT 42° TO SE COR PONY LANE FENCED
3+26 RT 63° TO Cor of Dec Fen
2+372 RT 76° TO SE COR Conc. Slab
2+343 RT 71.5° TO Stub P. Pole
2+05 55° RT TO Cor. Dec Fence
2+06.65 LT 10° FACE P. Pole SDGE #4122
1+67.20 E 24" CRP. CROSS DRAIN.
- 1+065 LT 7° E of W. METER 15° Edge AC. Pavt.
0+97 RT 32° SE COR. (No Slab)
0+07 LT 10° TO P. Pole SDGE #4108
0+00 Int. E Prince St. & NEAR Prop. Line



E OF ROAD
Δ = 18° 50
R = 1910
T = 316.77
L = 627.82

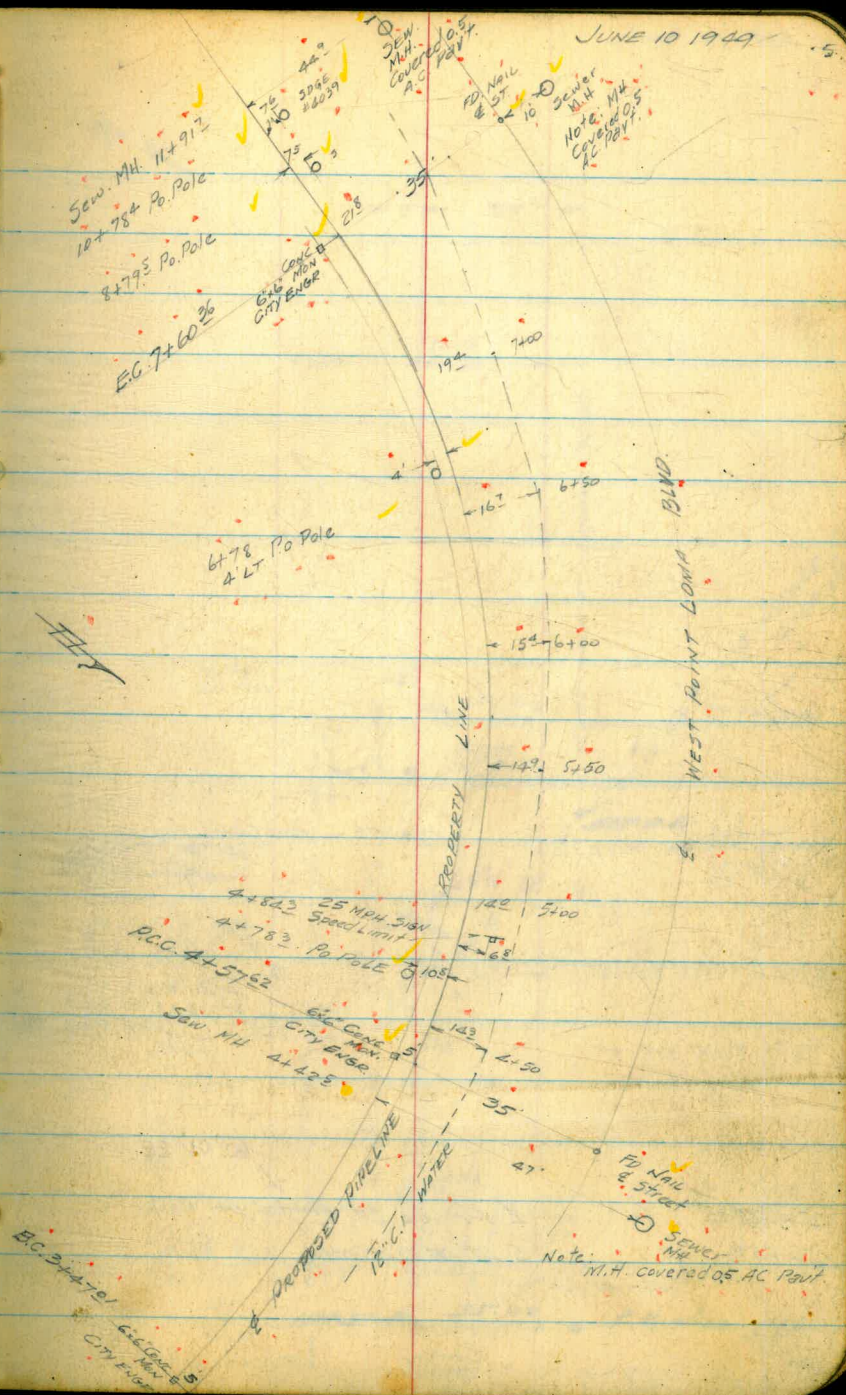


For Reference only
EE.



NOTE:
SEE Pg. 4
for beginning
of Pipe Line
EE.

JUNE 10 1949



E.C. 7+60³⁶

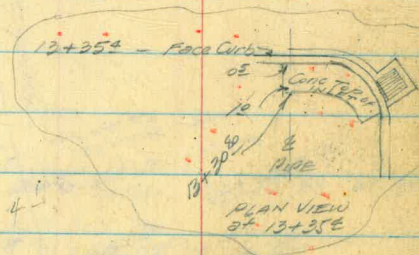
$\Delta = 13^{\circ} 01' 30''$ LT
 $R = 1336.72$ 1331.72 EE OK BH
 $L = 302.74$
 $T = 152.02'$ EE OK BH

P.C.C. 4+5762

E.C. 3+4761
 6" CONC. MAX. 5' CITY ENGR.

Note: Sewer MH covered as AC Pavt.

JUNE 10, 1949 6.

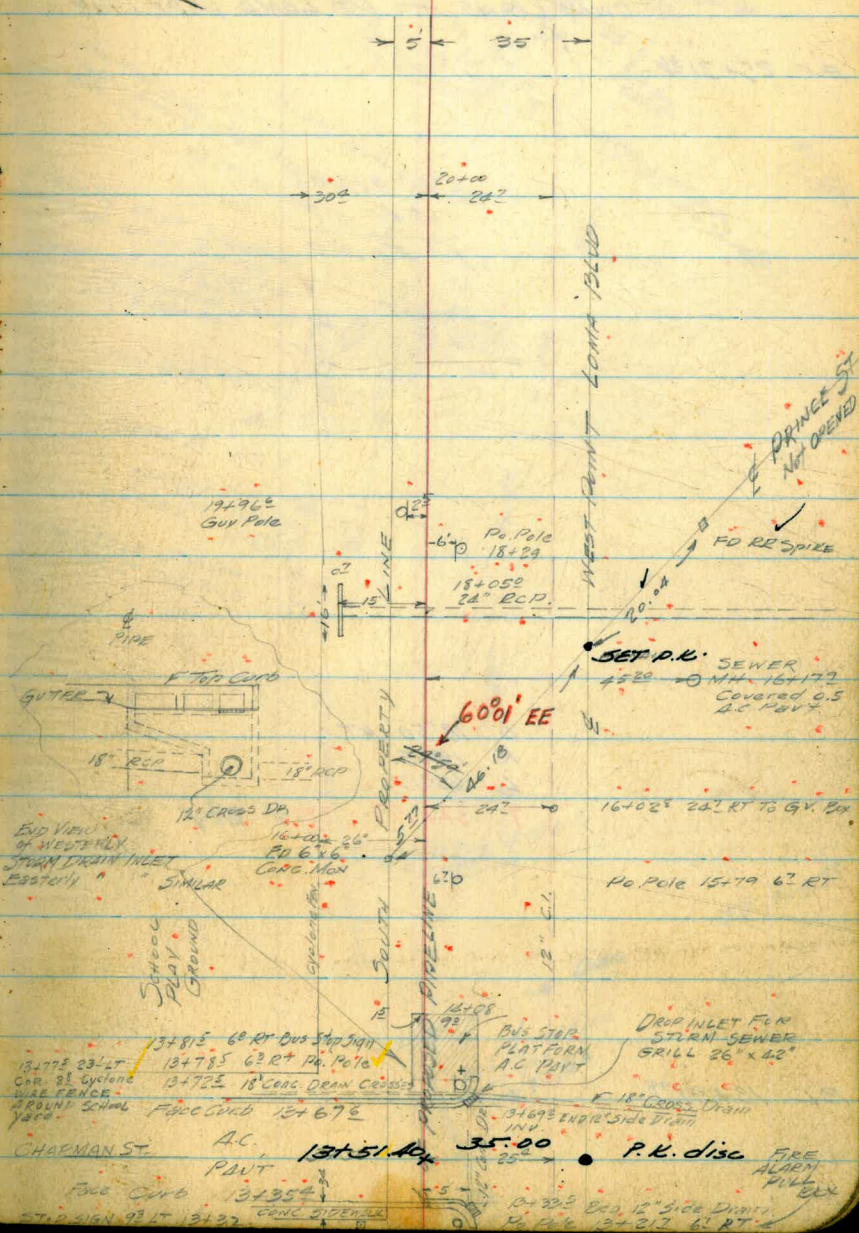


60° 01' EE.

15+92.85

15+89.96

E Prince St. 275 ft RT
5 LT to Conc. Man



CHARMAN ST.

A.C. PAVT 13+51.44

35.00

P.K. disc

FREE ALDEN PULL EX

Face Curb 13+35.4

CONC. SIDEWALK

13+32.5

13+27.3

62 RT

ST. SIGN 93 LT 13+37

13+77.5

13+72.3

13+67.6

13+51.44

13+17.5

13+12.5

13+7.5

13+2.5

13+0.0

13+0.0

12+55.0

12+50.0

12+45.0

12+40.0

12+35.0

12+30.0

12+25.0

12+20.0

12+15.0

12+10.0

12+5.0

12+0.0

11+55.0

11+50.0

11+45.0

11+40.0

11+35.0

11+30.0

11+25.0

11+20.0

11+15.0

11+10.0

11+5.0

11+0.0

10+55.0

10+50.0

10+45.0

10+40.0

10+35.0

10+30.0

10+25.0

10+20.0

10+15.0

10+10.0

10+5.0

10+0.0

9+55.0

9+50.0

9+45.0

MIDWAY DRIVE — PT. LOMA PIPELINE

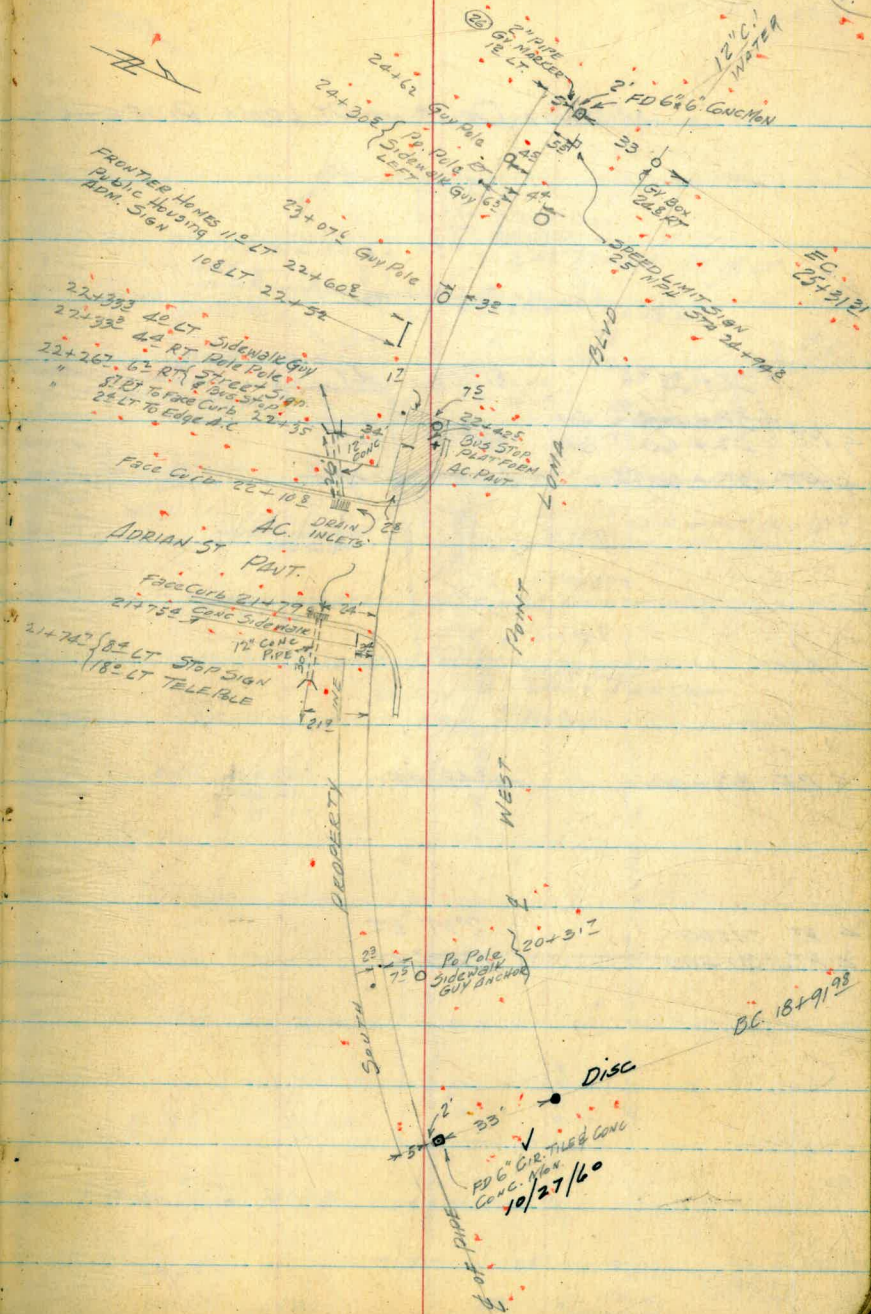
E.C. 25+31.21

1891.98
540.58
1351.40

Δ 18°50' RT.
R 1945.
L 639.33.
T 322.57 · EE. V BTV

B.C. 18+91.98

JUNE 13 1949 (7)

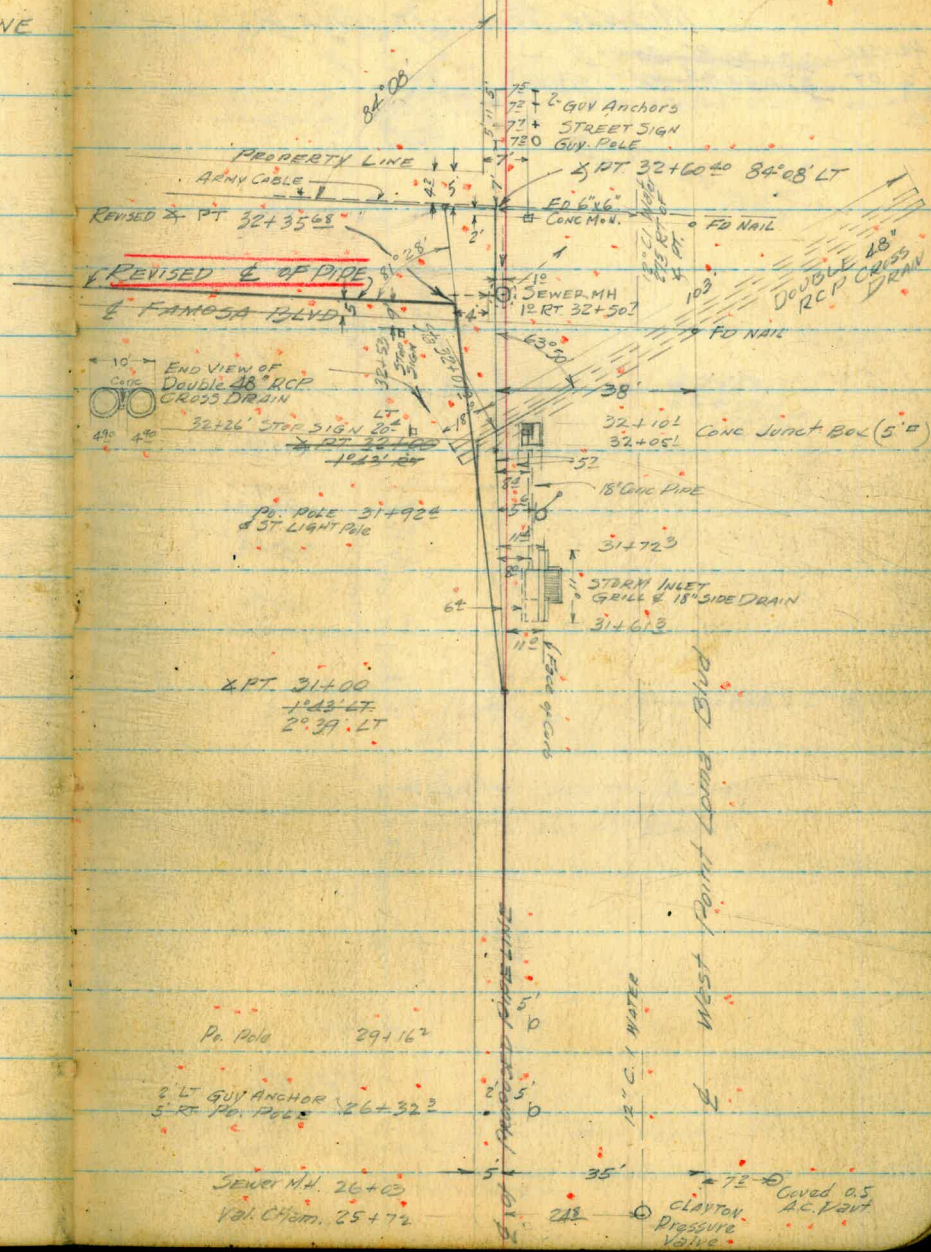


MIDWAY DRIVE - PT LOMA PIPELINE

32+35.68 81°28' LT.
 { 32+64.90 AH
 32+60.98 BK. 81°28' LT
 X PT 32+60.40 84°07'30" LT.

X PT 32+00 1°43' RT.

X PT 31+00 2°39' LT
 X PT 31+00 1°43' LT.



(Align) JUNE 13 1949
 SEPT. 1 1949 (Details)

Pa. Pole 29+16.2

2 LT GUY ANCHOR 26+32.2
 5 RT PO. POLES

SEWER M.H. 26+00
 Val. Cham. 25+72

12" C.I. WATER

West Point Loma Blvd

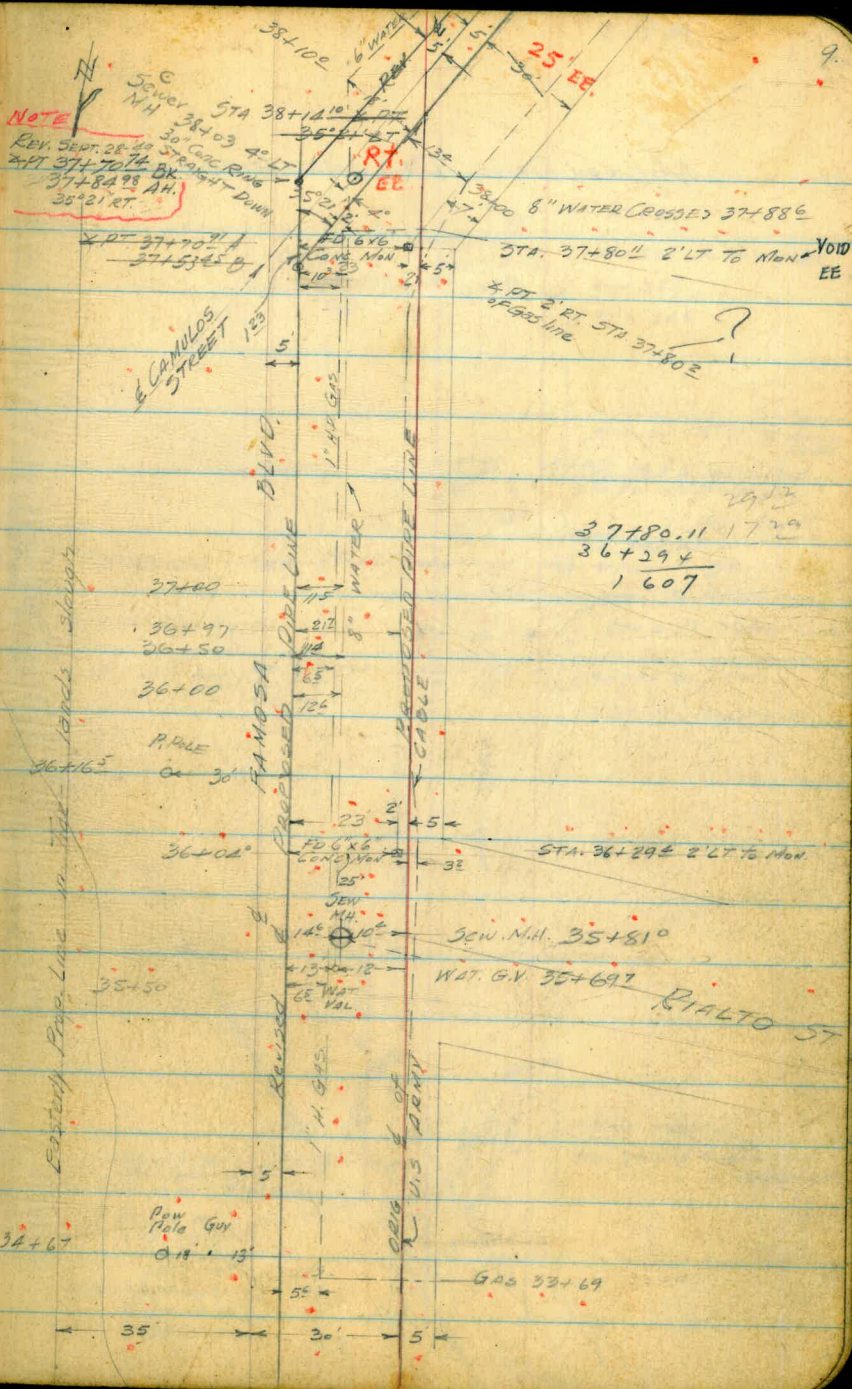
7E-50 Covered 0.5
 Clayton A.C. Vent
 Pressure Valve

JUNE 12th

MIDWAY DRIVE - PT. LOMA PIPELINE

Revised 37+70.21 AH
X PT 37+53.45 BK (9/7/49)

37+53.45
17.29
37+70.74
38+14.10
23.12
37+87.98



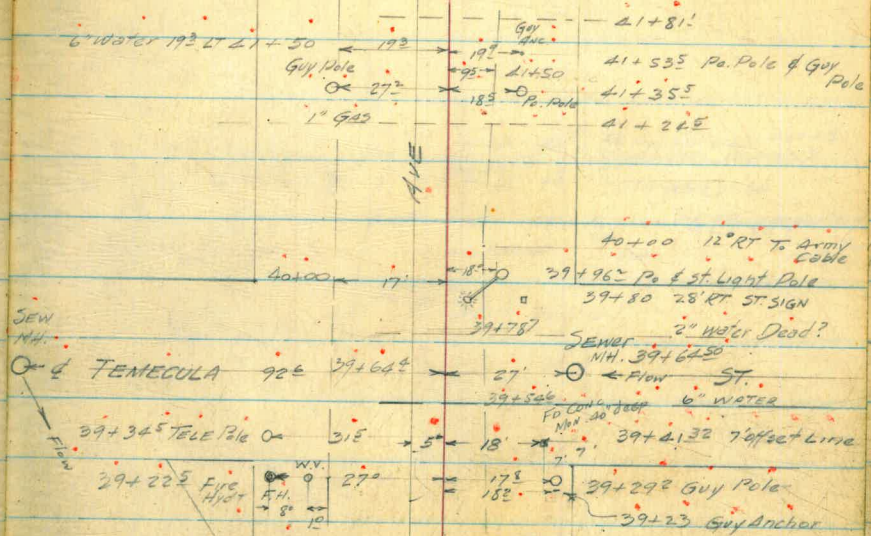
Existing Pipe Line in the lands along

34+67
Pow
Pala Gov
Sta 13'

37+80.11 17.29
36+29.4
1607

RIALTO ST

MIDWAY DRIVE PT. LOMA PIPELINE



SEW M.H.

End of TENECULA 92.0 39+64.4

39+34.5 TELE Pole Or 31.5

39+22.5 F.I.C. 27"

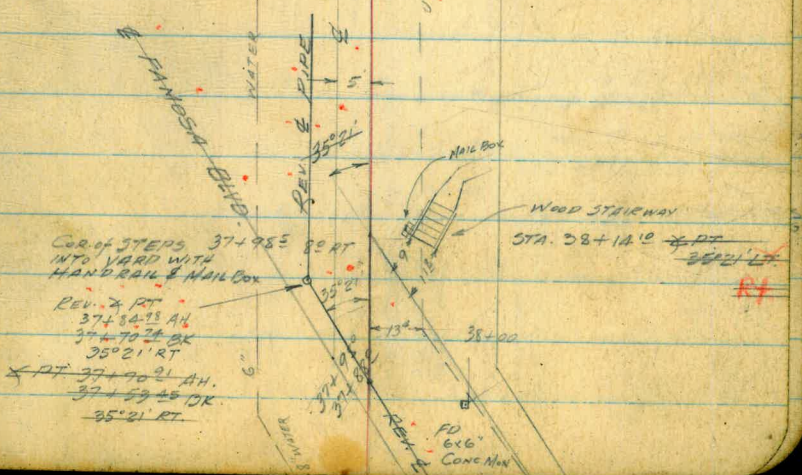
W.V. 9

F.H. 9

27" 10

CANULOS

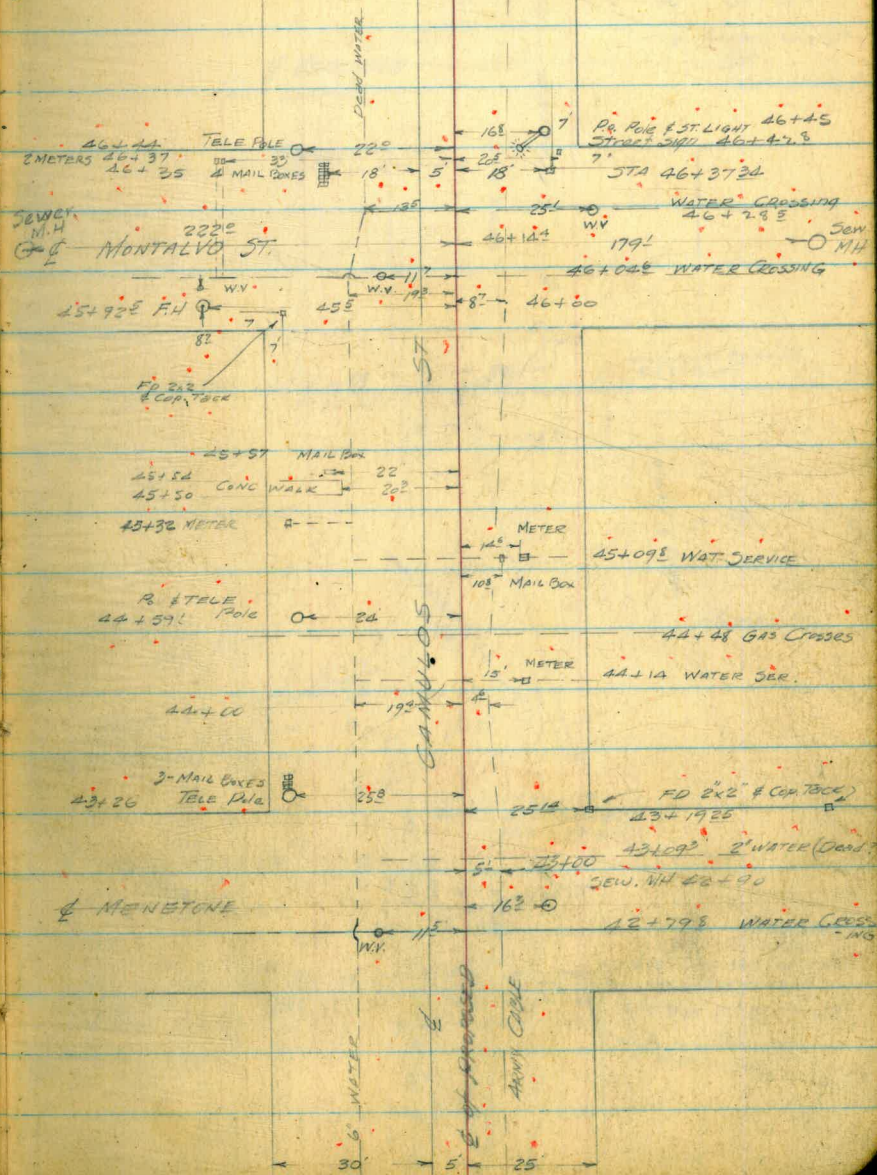
U.S. ARMY CABLE



MIDWAY DRIVE - PT LOMA PIPELINE

JUNE 15 1949 Sept. 13, 1949
 Detail

11.



MIDWAY DRIVE - PT. LOMA PIPELINE

JUNE 16 1949
Booby Baker
Rogers

of BANNING
(Not operated)

62+13.3 WATER Meter on E

CATALINA BLVD

4+12

Po. & TELE Pole
62+57.5

Guy Anc 62+57.0
ST.
(Not operated)

2 PT 61+10.52
9°32' RT

W.V.

WEVEN WIRE BARRIER
8" x 8" Posts

Collier

DEAD END of 2" WATER

48+77.0 44
48+57.2 GUY ANCHOR
GUY POLE
WATER CROSSINGS 48+42.2
49+44

NOTE
REV. SEPT 29 1949
2 PT 28+30.0 BK
48+21.25 AH

VALETA ST.

9°38'30" LT

FD 2"x2" HDG
& COP. TEE

47+65 Po. Pole
(JOINT CONT.)

FD 6"x6" CONC NON
1" HD GAS 47+67

ST SIGN 21.8 RT 47+67.3
Po. Pole 47+65
(JOINT CONT.)

| | |
|----------|----------|
| 58.92 | 48+50 |
| 47+71.48 | 19.75 |
| 48+30.40 | 48+31.25 |

WATER & PIPE
E. ST.
& APPROVED
PIPELINE
ARMY CABLE

ARMY CABLE

Park

IDENTICAL LINE

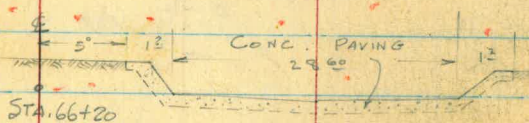
MIDWAY DRIVE — PT LOMA PIPELINE



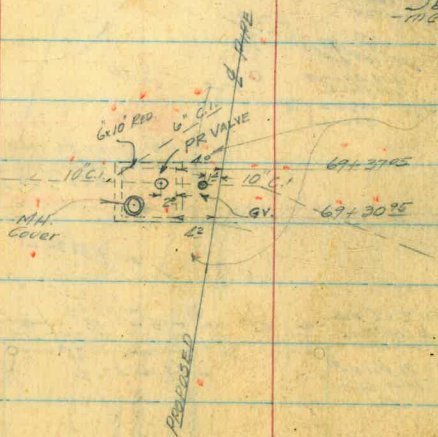
Section at 68+06.8



SECTION AT 67+00

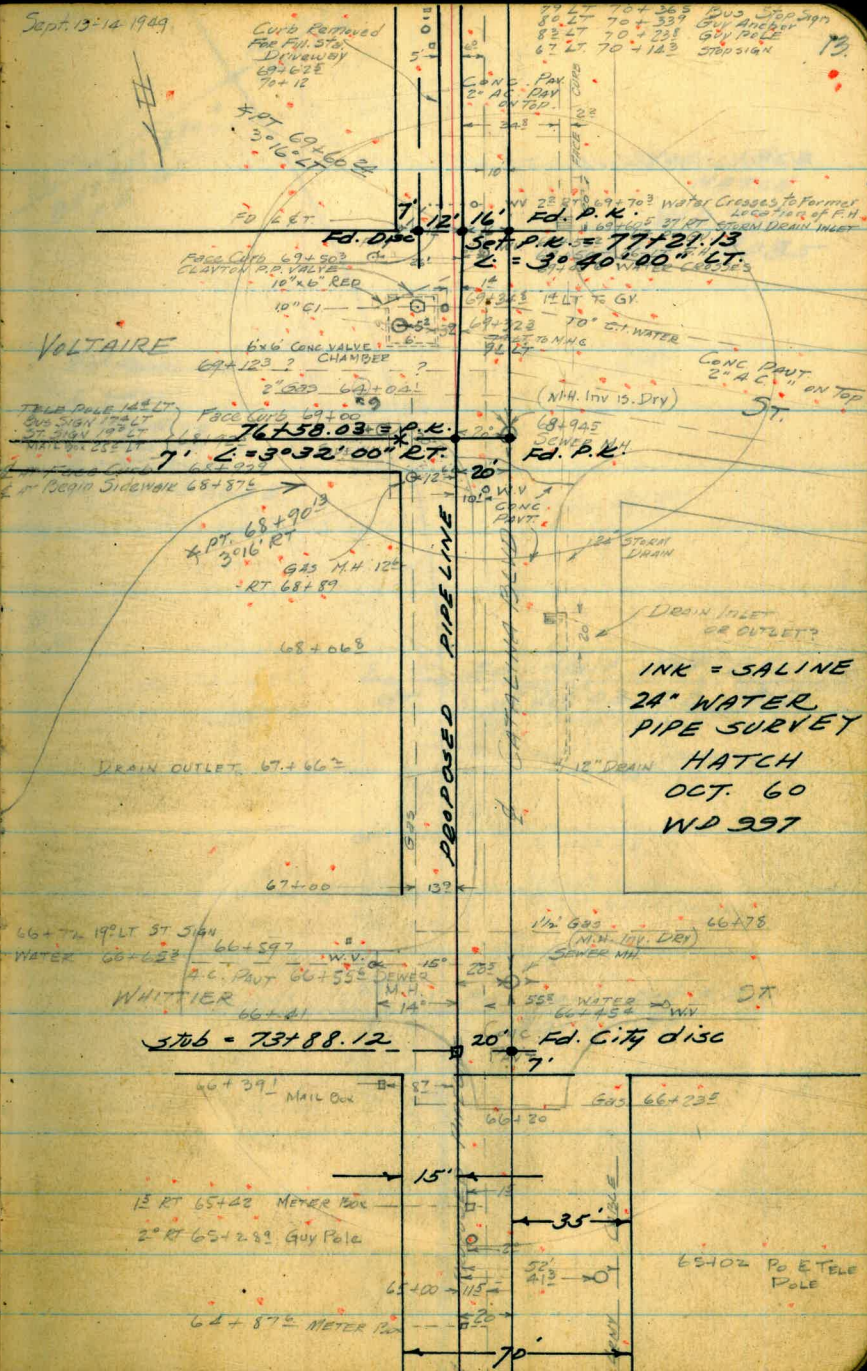


Section AT 66+20



NOTE:
SEE RESUME
-MONT PAGE 23

Sept. 13-14 1949



INK = SALINE
24" WATER
PIPE SURVEY
HATCH
OCT. 60
WD 997

89 LT 70+36.5 DUS. JOE SIGN
85 LT 70+33.1 GUY ANCHOR
82 LT 70+28.8 GUY POLE
63 LT 70+14.3 STATION SIGN

Curb Returned
Foe F.H. ST.
Diveaway
69+6.7E
70+12

Face City 69+50.2
CLAYTON P.P. VALVE
10" x 6" REP
10" CI

76+58.03 E.P.K.
7 Z = 30+32.00 RT.

5706 = 73+88.12

Fd. City disc

68+02 PO & TELE POLE

MIDWAY DRIVE - PT. LOMA PIPELINE

SEPT. 14 1969

Fd. Nail
Set P.K.

JUNE 29 1969 14.

82+15.09
85+73.5
P.B.C.

77+92? END CURB
SEWER M.H. 77+78?
GAS KING 77+85?
77+82? FACE CURB

NOV. 1960
HATCH
WD 997
FILE No. 4085

End of PIPELINE

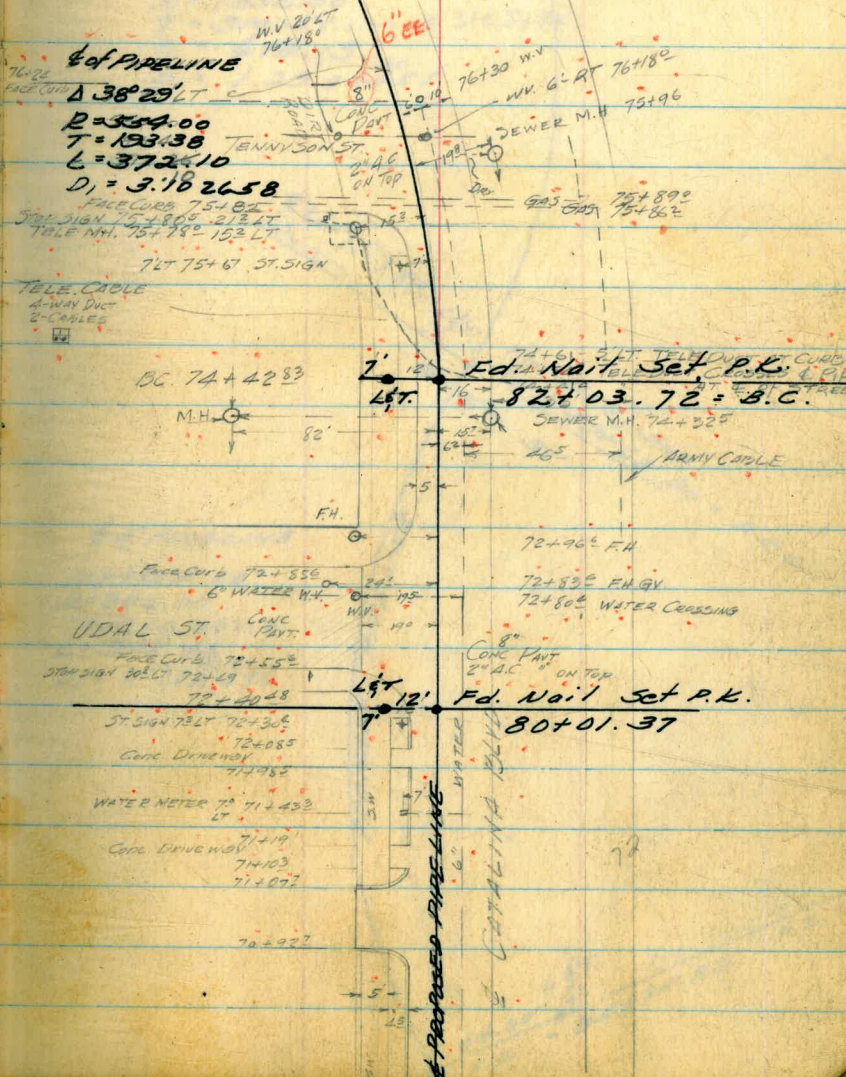
$\Delta 38^{\circ} 29' LT$

$R = 354.00$

$T = 193.38$

$L = 372.10$

$D_1 = 3.18 2658$



72+55.06
72 x 40/15

EC. 88+17.69 EE
 EC. 88+17.72
 Set P.K. = 95+78.43
 E of PIPELINE
 $\Delta = 269.14' 40''$
 $R = 1332.00$
 $T = 310.51$ 10.37 # 310.51 EE
 $L = 618.13$
 $D_1 = 1.2904451$ 610.13 #

P.C. 82+07.57 EE
 L&T. 77
 19' 16' 35'
 Fd. Nail Set
 P.K. = 89+68.30 = P.P.C.

E of PIPELINE
 $\Delta = 272.54' 00''$
 $R = 806.00$
 $T = 260.30$ 21 #
 $L = 392.48'$
 $D_1 = 2.132596$ 392.48 #

PROPOSED PIPELINE
 CAROLINA COND

L&T. 11
 44.00
 P.K. = 95+75.82
 P.C. 78+15.69
 P.P.C.

HATCH
Nov. 7, 1960

PROPOSED PIPE LINE

CATALINA PL.

Set P.K. = 98+40.93 = EC 76

LET.

28' 7"

EC 90+80.19

4" PIPELINE
 $\Delta = 44^{\circ} 22' 30''$
 $R = 291.12$
 $T = 118.73$
 $L = 225.47$
 $D_1 = 590.4345$

BLVD
CAMP

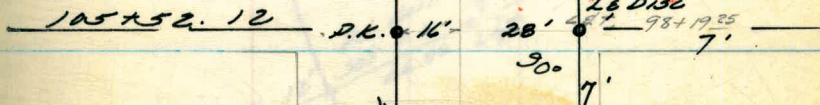
96+75.46 = EC
Set P.K.
37.03
Set P.K.
P.K. = 85+78.43
EC 88+77.67

JUNE 30 1929 17.

HATCH
NOV. 8, 1960

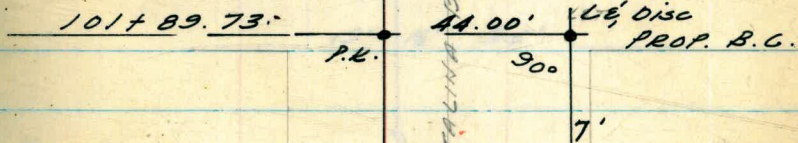
NARRAGANSETT.

ST.

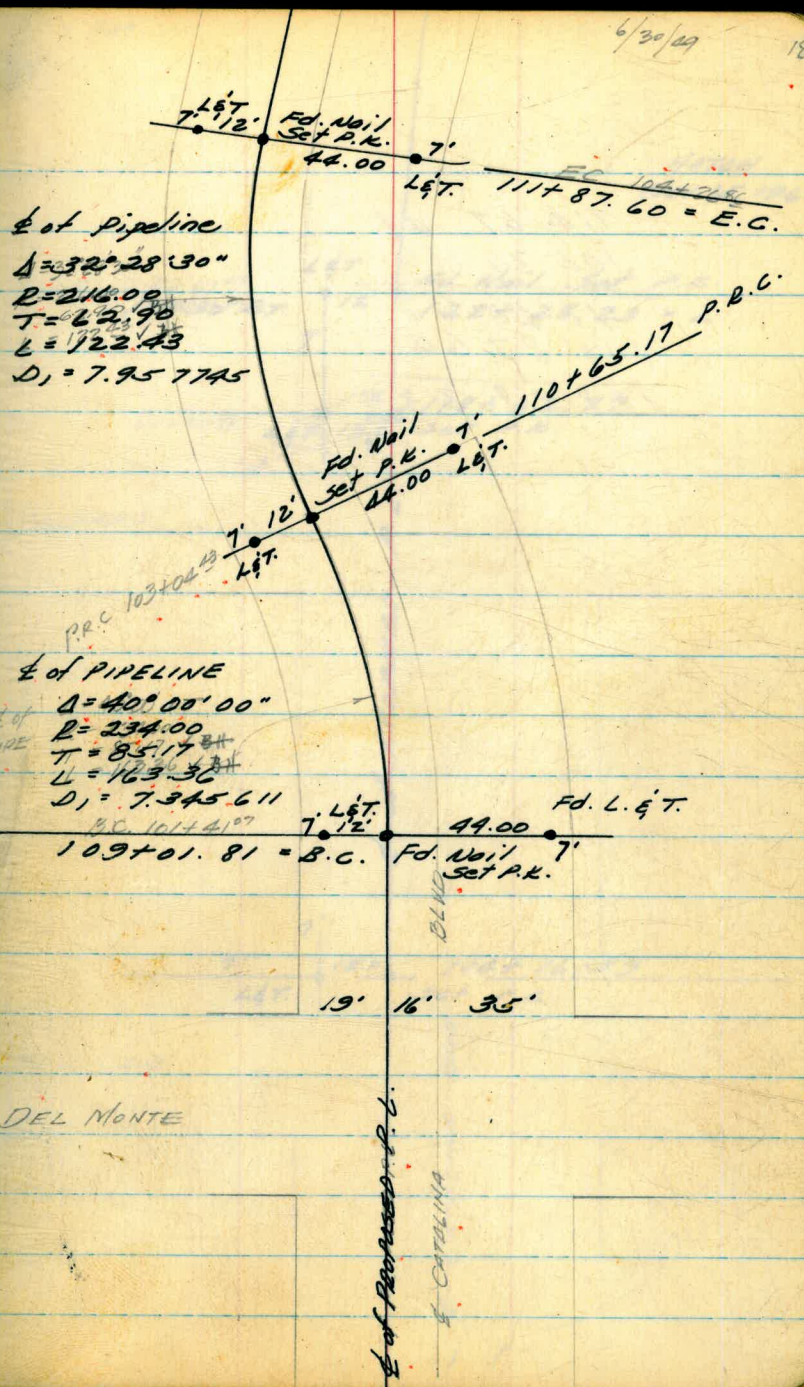


NIAGARA

ST



CATALINA BLVD



E of Pipeline
 $\Delta = 32^{\circ} 28' 30''$
 $R = 216.00$
 $T = 62.96$
 $L = 122.43$
 $D_1 = 7.957745$

E of PIPELINE
 $\Delta = 40^{\circ} 00' 00''$
 $R = 234.00$
 $T = 85.17$
 $L = 163.36$
 $D_1 = 7.345611$

DEL MONTE

E of Progress P.C.

CATELINA

114 67 49
 104 26 86
 10 40.63
 111 87.60
 122+28.23

July 13, 1949
 Beatty
 Rogers
 West

19.

HATCH
 Nov. 15, 1960

XPT 112+67.49
 139°30' RT.

L&T
 12
 Ed. Nail Set P.K.
 122+28.23 = L
 7'

110+42.98
 L&T 12.0
 O.K. E.V.
 118+03.77
 Set P.K.

110+42.98
 L&T 12.0
 O.K. E.V.
 118+03.77
 Set P.K.
 7'

CORONADO

E. of Peasees P.I.

7'
 7' 12.0
 L&T
 114+16.39
 Set P.K.

7'
 7' 12.0
 L&T
 114+16.39
 Set P.K.

SANTA CRUZ

E. CATARINA Blvd.

100
 100
 100

7/12/49

20

HATCH
Nov. 15, 1960

Post 126+00 out!

19' 16' 40"

E of Proposed P.I.

CATALINA BLVD

5'

118+13.56 EE

E.C. 118+12.68

Ed. Nail 16' 35'

Set P.I. 125+74.30 = E.C.

$\Delta = 18^{\circ}00'00''$
 $R = 200.00$
 $T = 63.35$ 63.35 BH
 $L = 125.66$ 125.66 BH
 $D_1 = 4.2972$

116+87.90

Ed. Nail
Set P.I.

124+48.62

ORCHARD

MIDWAY DRIVE - PT LOMA RES PIPELINE

0.7
1.0
1.0

66 96
85
6781

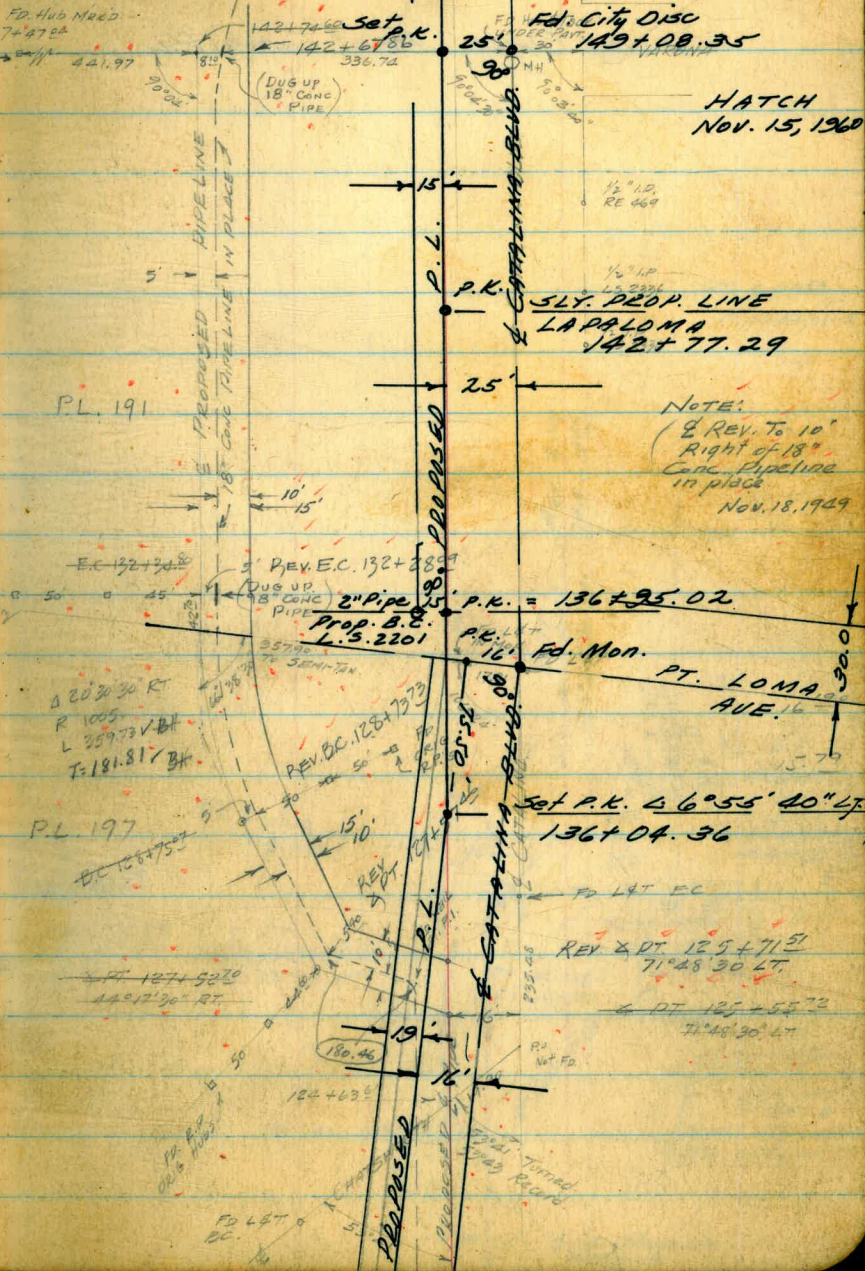
127+72.17
127+74.68
127+90.57
90.57

142+44.29 End
26.03
144+18.41 P.I.
38.22
143+80.17 P.I.

32.06
61.51
31+28.00 EC New
3-50.36
125+79.79 P.C. New
1-16.27
127+57.46 NEW P.I.
85.25
125+71.51 NEW P.I.
15.79
125+55.72 Old P.I.

SLY. FENCE LINE OBSERVATION
156+89.17 = End HUB. L.V.
150+71.11 = P.O.T. HUB

FD Hub Need
7+47.20
441.97



Aug. 17, 1949
BETTY
ROGERS
FINNEY

HATCH
Nov. 15, 1960

NOTE:
8' REV. TO 10'
Right of 18"
Conc. Pipeline
in place
Nov. 18, 1949

PT. LOMA
AVE.

Set P.K. 46°55'20" LT
136+04.36

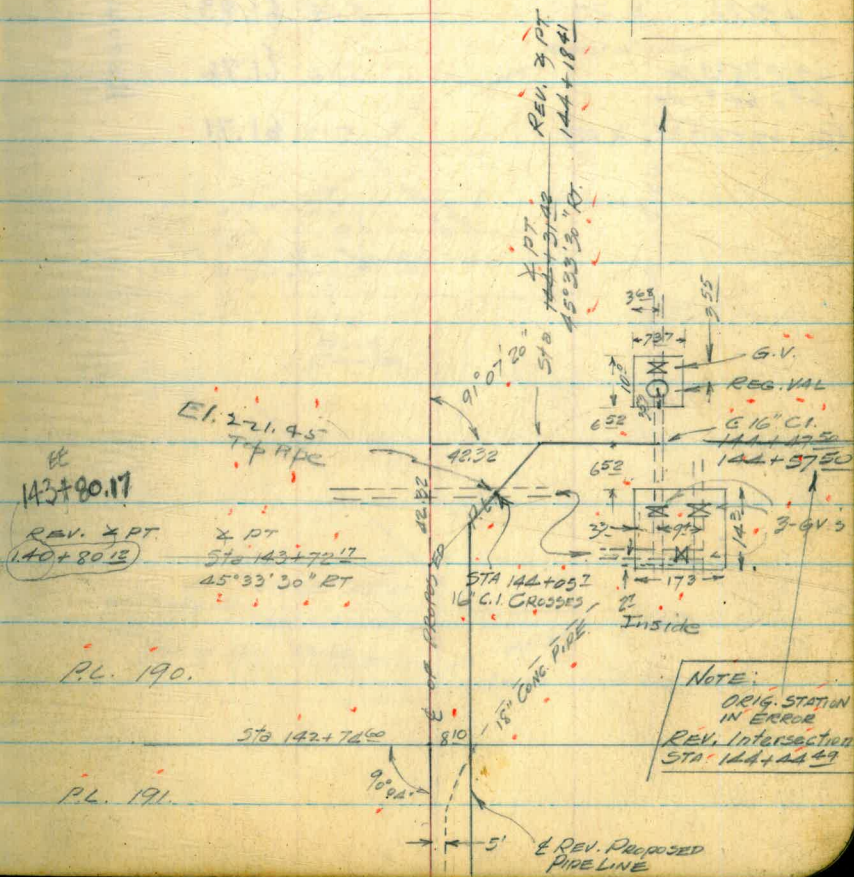
REV & DT. 125+71.51
71°48'30" LT
DT 125+55.72
71°48'30" LT

Aug. 23 1949

22.

MIDWAY DRIVE Point Loma PL.

PT. LOMA
RESERVOIR



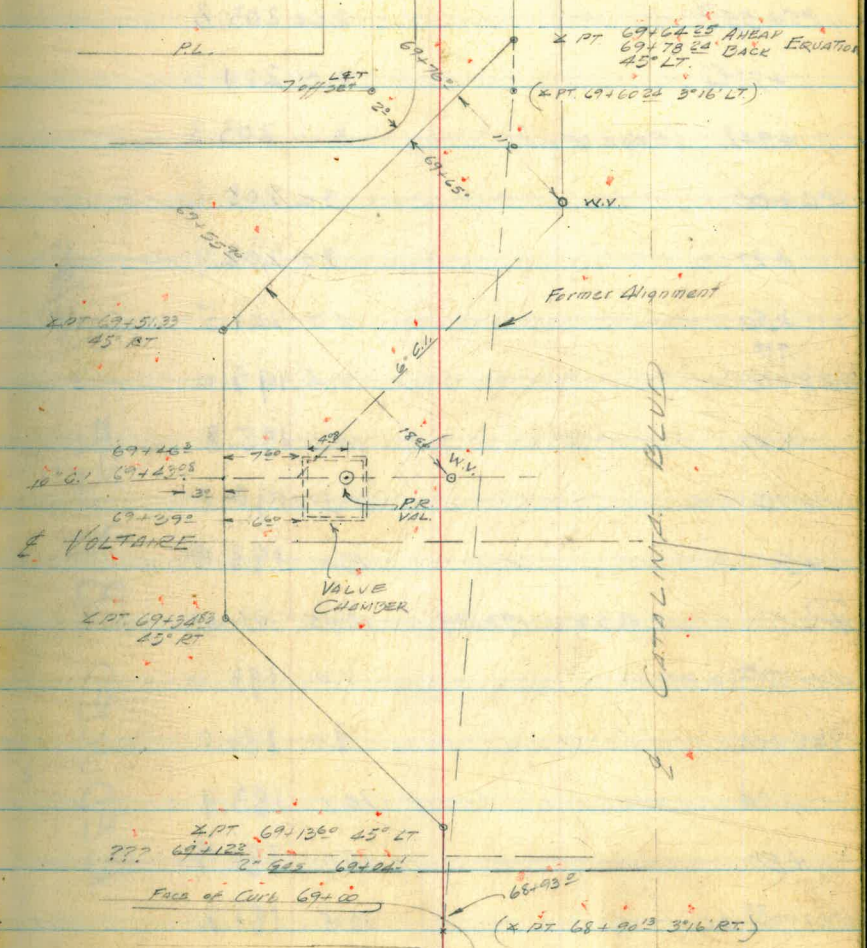
MIDWAY DRIVE - PT. LOND

Nov. 1, 1929
 MILD. BEATTY
 ROGERS
 PIPELINE FINNEY

REALIGNMENT & PROFILE FOR 10" CONNECTION
 Vicinity of Catalina at Voltaire

| B.M. | | 2.39 | 66.88 | 64.49 | Top FH |
|--------------------|----------|------|-------|-------|--------|
| 68+90.13 | X PT | 5.61 | 61.27 | | |
| +930 | Top Curb | 5.53 | 61.35 | | |
| +932 | Gutter | 6.06 | 60.82 | | |
| 69+00 | | 5.77 | 61.11 | | |
| +1360 | X PT | 5.18 | 61.70 | | |
| +3483 | X PT | 4.87 | 62.01 | | |
| +5133 | X PT | 5.05 | 61.83 | | |
| 69+78.24 DK | | 5.12 | 61.76 | | |
| 69+64.35 AH | | | | | |
| (OR 69+60.24 X PT) | | 5.17 | 61.71 | | |

Reduced by E.W.F.
 11-2-49



Nov. 17 1949

12 BATTI
KASBES
FINISH

24

MIDWAY DRIVE - PT. LOMA RES. PIPELINE
E PROFILE OF REVISED ALIGNMENT
STATION 125+55.72 TO 144+44.49

DEPT. OF
HIGHWAYS
CALIFORNIA

| | | | |
|---------------------|------|--------|--------------|
| BM | 4.80 | 206.42 | 201.62 |
| 125+55.72 | | | 2.64 203.8 |
| +71.51 | | | 2.41 204.0 |
| +94.3 (Edge of oil) | | | 3.11 203.3 |
| 126+00 | | | 3.2 203.2 |
| +27 | | | 3.5 202.9 |
| +50 | | | 4.9 201.5 |
| 7 ^{EE} | | | |
| 128+00 | | | 9.4 197.0 |
| +10 | | | 10.6 195.8 |
| +15 | | | 10.3 196.1 |
| +50 | | | 13.0 193.4 |
| HP | 0.52 | 193.99 | 12.95 192.47 |
| 127+57.46 P.T. | | | 1.0 193.0 |
| 128+00 | | | 8.0 186.0 |
| +20 | | | 10.1 183.9 |
| +50 | | | 12.1 181.9 |
| 128+73.73 EC. | | | 12.8 181.2 |
| 129+00 | | | 12.9 181.1 |
| +50 | | | 12.7 181.3 |

REDUCED BY EE 11/22/49

Nov. 17 1949

25.

MIDWAY DRIVE - PT. LOMA RES. Pipeline

 $\frac{1}{2}$ PROFILE
 193.99

| | | |
|--------------|-------|-----------|
| 130+00 | 8.5 | 185.5 .. |
| +30 | 5.2 | 188.8 .. |
| +50 | 3.7 | 190.3 .. |
| IP Recd | 11.76 | 205.38 .. |
| | 0.37 | 193.62 .. |
| 131+00 | 11.1 | 194.3 .. |
| +50 | 8.9 | 196.5 .. |
| 132+00 | 7.5 | 197.9 .. |
| 132+28.00 EC | 6.7 | 198.7 .. |
| +58 | 5.8 | 199.6 .. |
| 133+00 | 4.5 | 200.9 .. |
| +50 | 3.4 | 202.0 .. |
| 134+00 | 2.2 | 203.2 .. |
| +50 | 1.0 | 204.4 .. |
| IP | 12.88 | 217.95 .. |
| | 0.31 | 205.07 .. |
| 135+00 | 12.3 | 205.7 .. |
| +50 | 11.2 | 206.8 .. |
| 136+00 | 10.4 | 207.6 .. |
| +50 | 9.2 | 208.8 .. |
| +75 | 9.2 | 208.8 .. |

Nov. 18 1949

26.

MIDWAY DRIVE - PT. LOMA RES Pipeline

E. PROFILE
217.95.

| | | | | |
|-----------|-------|--------|-------|--------|
| 137+00 | | 11.5 | 206.5 | |
| +10 | | 12.0 | 206.0 | |
| +50 | | 8.0 | 210.0 | |
| +60 | | 6.3 | 211.7 | |
| 138+00 | | 3.9 | 214.1 | |
| +50 | | 5.1 | 212.9 | |
| +65 | | 5.0 | 213.0 | |
| 139+00 | | 2.9 | 215.1 | |
| +50 | | 3.8 | 214.2 | |
| 140+00 | | 4.5 | 213.5 | |
| +50 | | 2.5 | 215.5 | |
| IP (Peak) | 10.61 | 226.82 | 1.74 | 216.21 |
| 141+00 | | 9.5 | 217.3 | |
| +50 | | 8.8 | 218.0 | |
| 142+00 | | 7.8 | 219.0 | |
| +50 | | 7.0 | 219.8 | |
| 143+00 | | 6.6 | 220.2 | |
| +50 | | 6.0 | 220.8 | |
| 143+80.7 | PT. | 5.2 | 221.6 | |
| IP | 8.46 | 234.26 | 1.02 | 225.80 |

NOV. 18 1949

27

MIDWAY DRIVE PT. LOMA RES. PIPELINE

± PROFILE

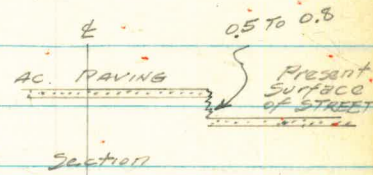
234.26

| | | | | |
|------------------------------|-------------|--------|--------|----------|
| 124+00 | | 8.9 | 225.4 | |
| +11 | | 6.7 | 227.6 | |
| +13 | | 7.5 | 226.8 | |
| +15 | | 6.2 | 228.1 | |
| 144+184 | 2 PT | 6.0 | 228.3 | |
| +26 | | 5.1 | 229.2 | |
| +27 | | 5.5 | 228.8 | |
| +35 | | 4.8 | 229.5 | |
| 144+449 | END OF LINE | 3.3 | 231.0 | |
| CK TBM | | 1.93 | 232.33 | = |
| TP | 10.74 | 244.99 | 0.01 | 234.25 |
| TP | 9.90 | 254.62 | 0.27 | 244.72 |
| CK BM (Verona & Catalina) | | 3.79 | 250.83 | = 250.79 |

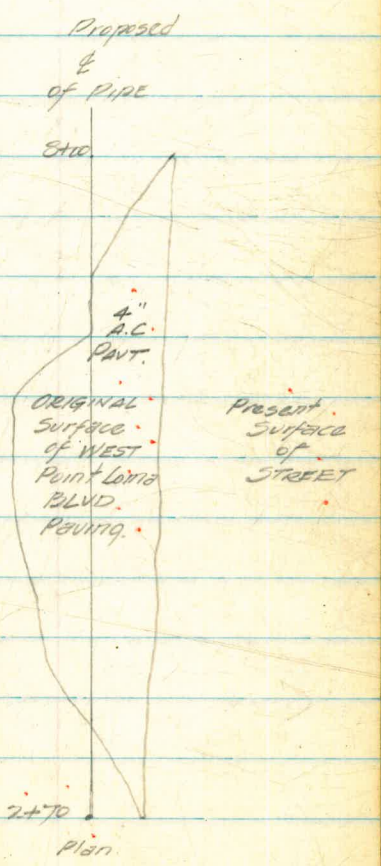
REDUCED BY CE 11/22/49

Dec. 6 1969

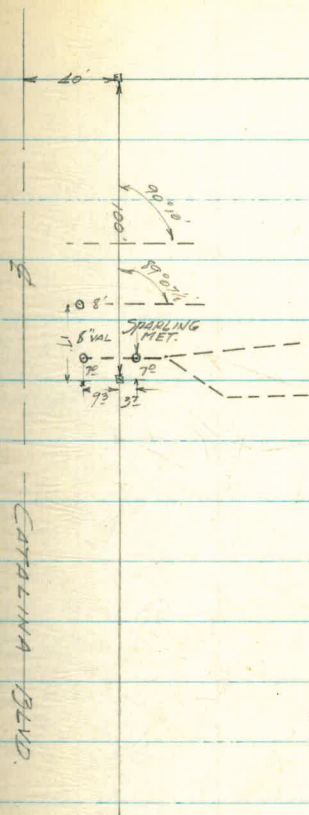
A.C. PAVING STA 2+70 To STA 8+00



| | |
|------|------------------|
| 8+00 | 7.5 RT |
| 7+50 | 2° RT 8.3 RT |
| 7+00 | ± 8.3 RT |
| 6+50 | ± 8.5 RT |
| 6+00 | 3° 8.3 RT |
| 5+50 | 3.5° LT 9.3 RT |
| 5+00 | 3° LT 8.7 RT |
| 4+50 | 3° LT 9° RT |
| 4+00 | 1.7° LT 8.8 RT |
| 3+50 | 1° LT 9° RT |
| 3+00 | 8.5 RT 7.0 RT |
| 2+70 | 3.0 RT |



DEC. 14 1951



24" C.I.
 B = 25"
 S = 31"

Cable
 4+40

4+35 wt

6.05
 5.75 Top inside
 5.35 Top outside
 10.25 Both inside
 10.65 Both outside

Nail in Pole by Doc
 299.85

21.28

71.28

64.52

10

100.10

9.50
 71.28
 9.99
 64.52
 71.28
 64.52
 655.0632
 1.05.20

7733-7736L
 4343-60L

3

2478.22
 627.82
 9406.54

1.005
 28
 8080
 2010
 2880

52-03-04

7-43-04

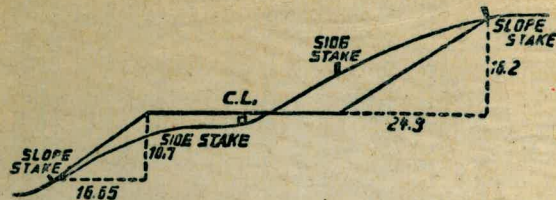
44-20-

180

224-70

112-10

77-50



DISTANCES FROM SIDE STAKES FOR CROSS-SECTIONING.
 SLOPE 1 1/2 TO 1. ROADWAY OF ANY WIDTH.

| | 0 | .1 | .2 | .3 | .4 | .5 | .6 | .7 | .8 | .9 | |
|----|-------|-------|-------|-------|-------|-------|-------|-------|-------|-------|----|
| 0 | 0.00 | 0.15 | 0.30 | 0.45 | 0.60 | 0.75 | 0.90 | 1.05 | 1.20 | 1.35 | 0 |
| 1 | 1.50 | 1.65 | 1.80 | 1.95 | 2.10 | 2.25 | 2.40 | 2.55 | 2.70 | 2.85 | 1 |
| 2 | 3.00 | 3.15 | 3.30 | 3.45 | 3.60 | 3.75 | 3.90 | 4.05 | 4.20 | 4.35 | 2 |
| 3 | 4.50 | 4.65 | 4.80 | 4.95 | 5.10 | 5.25 | 5.40 | 5.55 | 5.70 | 5.85 | 3 |
| 4 | 6.00 | 6.15 | 6.30 | 6.45 | 6.60 | 6.75 | 6.90 | 7.05 | 7.20 | 7.35 | 4 |
| 5 | 7.50 | 7.65 | 7.80 | 7.95 | 8.10 | 8.25 | 8.40 | 8.55 | 8.70 | 8.85 | 5 |
| 6 | 9.00 | 9.15 | 9.30 | 9.45 | 9.60 | 9.75 | 9.90 | 10.05 | 10.20 | 10.35 | 6 |
| 7 | 10.50 | 10.65 | 10.80 | 10.95 | 11.10 | 11.25 | 11.40 | 11.55 | 11.70 | 11.85 | 7 |
| 8 | 12.00 | 12.15 | 12.30 | 12.45 | 12.60 | 12.75 | 12.90 | 13.05 | 13.20 | 13.35 | 8 |
| 9 | 13.50 | 13.65 | 13.80 | 13.95 | 14.10 | 14.25 | 14.40 | 14.55 | 14.70 | 14.85 | 9 |
| 10 | 15.00 | 15.15 | 15.30 | 15.45 | 15.60 | 15.75 | 15.90 | 16.05 | 16.20 | 16.35 | 10 |
| 11 | 16.50 | 16.65 | 16.80 | 16.95 | 17.10 | 17.25 | 17.40 | 17.55 | 17.70 | 17.85 | 11 |
| 12 | 18.00 | 18.15 | 18.30 | 18.45 | 18.60 | 18.75 | 18.90 | 19.05 | 19.20 | 19.35 | 12 |
| 13 | 19.50 | 19.65 | 19.80 | 19.95 | 20.10 | 20.25 | 20.40 | 20.55 | 20.70 | 20.85 | 13 |
| 14 | 21.00 | 21.15 | 21.30 | 21.45 | 21.60 | 21.75 | 21.90 | 22.05 | 22.20 | 22.35 | 14 |
| 15 | 22.50 | 22.65 | 22.80 | 22.95 | 23.10 | 23.25 | 23.40 | 23.55 | 23.70 | 23.85 | 15 |
| 16 | 24.00 | 24.15 | 24.30 | 24.45 | 24.60 | 24.75 | 24.90 | 25.05 | 25.20 | 25.35 | 16 |
| 17 | 25.50 | 25.65 | 25.80 | 25.95 | 26.10 | 26.25 | 26.40 | 26.55 | 26.70 | 26.85 | 17 |
| 18 | 27.00 | 27.15 | 27.30 | 27.45 | 27.60 | 27.75 | 27.90 | 28.05 | 28.20 | 28.35 | 18 |
| 19 | 28.50 | 28.65 | 28.80 | 28.95 | 29.10 | 29.25 | 29.40 | 29.55 | 29.70 | 29.85 | 19 |
| 20 | 30.00 | 30.15 | 30.30 | 30.45 | 30.60 | 30.75 | 30.90 | 31.05 | 31.20 | 31.35 | 20 |
| 21 | 31.50 | 31.65 | 31.80 | 31.95 | 32.10 | 32.25 | 32.40 | 32.55 | 32.70 | 32.85 | 21 |
| 22 | 33.00 | 33.15 | 33.30 | 33.45 | 33.60 | 33.75 | 33.90 | 34.05 | 34.20 | 34.35 | 22 |
| 23 | 34.50 | 34.65 | 34.80 | 34.95 | 35.10 | 35.25 | 35.40 | 35.55 | 35.70 | 35.85 | 23 |
| 24 | 36.00 | 36.15 | 36.30 | 36.45 | 36.60 | 36.75 | 36.90 | 37.05 | 37.20 | 37.35 | 24 |
| 25 | 37.50 | 37.65 | 37.80 | 37.95 | 38.10 | 38.25 | 38.40 | 38.55 | 38.70 | 38.85 | 25 |
| 26 | 39.00 | 39.15 | 39.30 | 39.45 | 39.60 | 39.75 | 39.90 | 40.05 | 40.20 | 40.35 | 26 |
| 27 | 40.50 | 40.65 | 40.80 | 40.95 | 41.10 | 41.25 | 41.40 | 41.55 | 41.70 | 41.85 | 27 |
| 28 | 42.00 | 42.15 | 42.30 | 42.45 | 42.60 | 42.75 | 42.90 | 43.05 | 43.20 | 43.35 | 28 |
| 29 | 43.50 | 43.65 | 43.80 | 43.95 | 44.10 | 44.25 | 44.40 | 44.55 | 44.70 | 44.85 | 29 |
| 30 | 45.00 | 45.15 | 45.30 | 45.45 | 45.60 | 45.75 | 45.90 | 46.05 | 46.20 | 46.35 | 30 |
| 31 | 46.50 | 46.65 | 46.80 | 46.95 | 47.10 | 47.25 | 47.40 | 47.55 | 47.70 | 47.85 | 31 |
| 32 | 48.00 | 48.15 | 48.30 | 48.45 | 48.60 | 48.75 | 48.90 | 49.05 | 49.20 | 49.35 | 32 |
| 33 | 49.50 | 49.65 | 49.80 | 49.95 | 50.10 | 50.25 | 50.40 | 50.55 | 50.70 | 50.85 | 33 |
| 34 | 51.00 | 51.15 | 51.30 | 51.45 | 51.60 | 51.75 | 51.90 | 52.05 | 52.20 | 52.35 | 34 |
| 35 | 52.50 | 52.65 | 52.80 | 52.95 | 53.10 | 53.25 | 53.40 | 53.55 | 53.70 | 53.85 | 35 |
| 36 | 54.00 | 54.15 | 54.30 | 54.45 | 54.60 | 54.75 | 54.90 | 55.05 | 55.20 | 55.35 | 36 |
| 37 | 55.50 | 55.65 | 55.80 | 55.95 | 56.10 | 56.25 | 56.40 | 56.55 | 56.70 | 56.85 | 37 |
| 38 | 57.00 | 57.15 | 57.30 | 57.45 | 57.60 | 57.75 | 57.90 | 58.05 | 58.20 | 58.35 | 38 |
| 39 | 58.50 | 58.65 | 58.80 | 58.95 | 59.10 | 59.25 | 59.40 | 59.55 | 59.70 | 59.85 | 39 |
| 40 | 60.00 | 60.15 | 60.30 | 60.45 | 60.60 | 60.75 | 60.90 | 61.05 | 61.20 | 61.35 | 40 |
| 41 | 61.50 | 61.65 | 61.80 | 61.95 | 62.10 | 62.25 | 62.40 | 62.55 | 62.70 | 62.85 | 41 |
| 42 | 63.00 | 63.15 | 63.30 | 63.45 | 63.60 | 63.75 | 63.90 | 64.05 | 64.20 | 64.35 | 42 |
| 43 | 64.50 | 64.65 | 64.80 | 64.95 | 65.10 | 65.25 | 65.40 | 65.55 | 65.70 | 65.85 | 43 |
| 44 | 66.00 | 66.15 | 66.30 | 66.45 | 66.60 | 66.75 | 66.90 | 67.05 | 67.20 | 67.35 | 44 |
| 45 | 67.50 | 67.65 | 67.80 | 67.95 | 68.10 | 68.25 | 68.40 | 68.55 | 68.70 | 68.85 | 45 |
| 46 | 69.00 | 69.15 | 69.30 | 69.45 | 69.60 | 69.75 | 69.90 | 70.05 | 70.20 | 70.35 | 46 |
| 47 | 70.50 | 70.65 | 70.80 | 70.95 | 71.10 | 71.25 | 71.40 | 71.55 | 71.70 | 71.85 | 47 |
| 48 | 72.00 | 72.15 | 72.30 | 72.45 | 72.60 | 72.75 | 72.90 | 73.05 | 73.20 | 73.35 | 48 |
| 49 | 73.50 | 73.65 | 73.80 | 73.95 | 74.10 | 74.25 | 74.40 | 74.55 | 74.70 | 74.85 | 49 |
| 50 | 75.00 | 75.15 | 75.30 | 75.45 | 75.60 | 75.75 | 75.90 | 76.05 | 76.20 | 76.35 | 50 |