

DISTANCES FROM SIDE STAKES FOR CROSS-SECTIONING
SLOPE 1 TO 1. ROADWAY OF ANY WIDTH

	0	.1	.2	.3	.4	.5	.6	.7	.8	.9	
0	0.00	0.10	0.20	0.30	0.40	0.50	0.60	0.70	0.80	0.90	0
1	1.00	1.10	1.20	1.30	1.40	1.50	1.60	1.70	1.80	1.90	1
2	2.00	2.10	2.20	2.30	2.40	2.50	2.60	2.70	2.80	2.90	2
3	3.00	3.10	3.20	3.30	3.40	3.50	3.60	3.70	3.80	3.90	3
4	4.00	4.10	4.20	4.30	4.40	4.50	4.60	4.70	4.80	4.90	4
5	5.00	5.10	5.20	5.30	5.40	5.50	5.60	5.70	5.80	5.90	5
6	6.00	6.10	6.20	6.30	6.40	6.50	6.60	6.70	6.80	6.90	6
7	7.00	7.10	7.20	7.30	7.40	7.50	7.60	7.70	7.80	7.90	7
8	8.00	8.10	8.20	8.30	8.40	8.50	8.60	8.70	8.80	8.90	8
9	9.00	9.10	9.20	9.30	9.40	9.50	9.60	9.70	9.80	9.90	9
10	10.00	10.10	10.20	10.30	10.40	10.50	10.60	10.70	10.80	10.90	10
11	11.00	11.10	11.20	11.30	11.40	11.50	11.60	11.70	11.80	11.90	11
12	12.00	12.10	12.20	12.30	12.40	12.50	12.60	12.70	12.80	12.90	12
13	13.00	13.10	13.20	13.30	13.40	13.50	13.60	13.70	13.80	13.90	13
14	14.00	14.10	14.20	14.30	14.40	14.50	14.60	14.70	14.80	14.90	14
15	15.00	15.10	15.20	15.30	15.40	15.50	15.60	15.70	15.80	15.90	15
16	16.00	16.10	16.20	16.30	16.40	16.50	16.60	16.70	16.80	16.90	16
17	17.00	17.10	17.20	17.30	17.40	17.50	17.60	17.70	17.80	17.90	17
18	18.00	18.10	18.20	18.30	18.40	18.50	18.60	18.70	18.80	18.90	18
19	19.00	19.10	19.20	19.30	19.40	19.50	19.60	19.70	19.80	19.90	19
20	20.00	20.10	20.20	20.30	20.40	20.50	20.60	20.70	20.80	20.90	20
21	21.00	21.10	21.20	21.30	21.40	21.50	21.60	21.70	21.80	21.90	21
22	22.00	22.10	22.20	22.30	22.40	22.50	22.60	22.70	22.80	22.90	22
23	23.00	23.10	23.20	23.30	23.40	23.50	23.60	23.70	23.80	23.90	23
24	24.00	24.10	24.20	24.30	24.40	24.50	24.60	24.70	24.80	24.90	24
25	25.00	25.10	25.20	25.30	25.40	25.50	25.60	25.70	25.80	25.90	25
26	26.00	26.10	26.20	26.30	26.40	26.50	26.60	26.70	26.80	26.90	26
27	27.00	27.10	27.20	27.30	27.40	27.50	27.60	27.70	27.80	27.90	27
28	28.00	28.10	28.20	28.30	28.40	28.50	28.60	28.70	28.80	28.90	28
29	29.00	29.10	29.20	29.30	29.40	29.50	29.60	29.70	29.80	29.90	29
30	30.00	30.10	30.20	30.30	30.40	30.50	30.60	30.70	30.80	30.90	30
31	31.00	31.10	31.20	31.30	31.40	31.50	31.60	31.70	31.80	31.90	31
32	32.00	32.10	32.20	32.30	32.40	32.50	32.60	32.70	32.80	32.90	32
33	33.00	33.10	33.20	33.30	33.40	33.50	33.60	33.70	33.80	33.90	33
34	34.00	34.10	34.20	34.30	34.40	34.50	34.60	34.70	34.80	34.90	34
35	35.00	35.10	35.20	35.30	35.40	35.50	35.60	35.70	35.80	35.90	35
36	36.00	36.10	36.20	36.30	36.40	36.50	36.60	36.70	36.80	36.90	36
37	37.00	37.10	37.20	37.30	37.40	37.50	37.60	37.70	37.80	37.90	37
38	38.00	38.10	38.20	38.30	38.40	38.50	38.60	38.70	38.80	38.90	38
39	39.00	39.10	39.20	39.30	39.40	39.50	39.60	39.70	39.80	39.90	39
40	40.00	40.10	40.20	40.30	40.40	40.50	40.60	40.70	40.80	40.90	40
41	41.00	41.10	41.20	41.30	41.40	41.50	41.60	41.70	41.80	41.90	41
42	42.00	42.10	42.20	42.30	42.40	42.50	42.60	42.70	42.80	42.90	42
43	43.00	43.10	43.20	43.30	43.40	43.50	43.60	43.70	43.80	43.90	43
44	44.00	44.10	44.20	44.30	44.40	44.50	44.60	44.70	44.80	44.90	44
45	45.00	45.10	45.20	45.30	45.40	45.50	45.60	45.70	45.80	45.90	45
46	46.00	46.10	46.20	46.30	46.40	46.50	46.60	46.70	46.80	46.90	46
47	47.00	47.10	47.20	47.30	47.40	47.50	47.60	47.70	47.80	47.90	47
48	48.00	48.10	48.20	48.30	48.40	48.50	48.60	48.70	48.80	48.90	48
49	49.00	49.10	49.20	49.30	49.40	49.50	49.60	49.70	49.80	49.90	49
50	50.00	50.10	50.20	50.30	50.40	50.50	50.60	50.70	50.80	50.90	50

Distance of slope stake from side or shoulder stake for any width roadway, slope 1 to 1. If ground is nearly level, the cut or fill at side stake is located by the double entry method in left column and top row. The number in body of table in same row and column gives distance from side stake to slope stake. If ground is not level estimate the difference in elevation between the side stake and slope stake, lower target by this amount if cut, elevate if fill. Add this amount to cut or fill and find distance in table. Set up rod at this point, and line of sight should cut target. If it does not make the slight adjustment necessary.

Dr. P. P. P.

Please Return to
City of San Diego Water Dept.
Room 903 Civic Center

MICROFILMED

JAN 14 1965

TABLE XIII—CORRECTIONS FOR TANGENTS AND EXTERNALS

These corrections are to be added to the approximate values, found by dividing the tangent, or external, for a 1° curve (Table VIII) by the degree of curve, in order to obtain the true tangents, or externals. Intermediate values may be obtained by interpolation.

FOR TANGENTS ADD

Central Angle	DEGREE OF CURVE													
	5°	10°	15°	20°	25°	30°	35°	40°	45°	50°	55°	60°	65°	70°
10°	.03	.06	.09	.13	.16	.19	.22	.25	.28	.31	.34	.38	.42	.46
15°	.04	.10	.14	.19	.24	.29	.34	.39	.45	.51	.53	.58	.63	.68
20°	.06	.13	.19	.26	.32	.39	.45	.51	.58	.65	.72	.79	.84	.90
25°	.08	.16	.24	.33	.40	.49	.58	.67	.75	.83	.90	.99	1.06	1.14
30°	.10	.19	.29	.39	.49	.59	.69	.79	.89	.99	1.09	1.20	1.29	1.39
35°	.11	.22	.34	.47	.58	.69	.79	.81	.92	1.04	1.29	1.42	1.54	1.66
40°	.13	.26	.40	.53	.67	.80	.93	1.06	1.20	1.34	1.49	1.64	1.79	1.94
45°	.15	.30	.44	.60	.76	.91	1.06	1.21	1.37	1.52	1.70	1.87	2.04	2.21
50°	.17	.34	.51	.68	.85	1.02	1.19	1.36	1.54	1.72	1.91	2.10	2.29	2.48
55°	.19	.38	.57	.76	.95	1.14	1.32	1.52	1.72	1.92	2.14	2.35	2.56	2.77
60°	.21	.42	.63	.84	1.05	1.27	1.49	1.71	1.94	2.17	2.38	2.60	2.83	3.07
65°	.23	.46	.69	.93	1.16	1.40	1.64	1.88	2.13	2.38	2.63	2.88	3.13	3.39
70°	.25	.51	.76	1.02	1.28	1.54	1.80	2.06	2.33	2.60	2.88	3.16	3.44	3.72
75°	.27	.56	.83	1.12	1.40	1.69	1.98	2.27	2.57	2.87	3.16	3.47	3.78	4.09
80°	.30	.61	.91	1.22	1.53	1.84	2.15	2.46	2.78	3.10	3.44	3.78	4.12	4.46
85°	.33	.66	1.00	1.33	1.68	2.02	2.36	2.70	3.05	3.40	3.77	4.14	4.55	4.89
90°	.36	.72	1.09	1.45	1.83	2.20	2.57	2.94	3.32	3.70	4.10	4.50	4.91	5.32
95°	.39	.79	1.19	1.55	2.00	2.40	2.80	3.20	3.61	4.02	4.40	4.98	5.38	5.83
100°	.43	.86	1.30	1.74	2.18	2.62	3.06	3.50	3.95	4.40	4.88	5.37	5.85	6.34
110°	.51	1.03	1.56	2.08	2.61	3.14	3.67	4.21	4.76	5.31	5.86	6.43	7.01	7.60
120°	.62	1.25	1.93	2.52	3.16	3.81	4.45	5.11	5.77	6.44	7.12	7.80	8.50	9.22

FOR EXTERNALS ADD

Central Angle	DEGREE OF CURVE													
	5°	10°	15°	20°	25°	30°	35°	40°	45°	50°	55°	60°	65°	70°
10°	.001	.003	.004	.006	.007	.008	.009	.011	.012	.014	.015	.017	.018	.020
15°	.003	.007	.010	.014	.018	.023	.027	.032	.035	.039	.043	.047	.051	.051
20°	.006	.011	.017	.022	.028	.034	.038	.045	.051	.057	.063	.070	.076	.083
25°	.009	.018	.027	.036	.046	.056	.065	.074	.083	.093	.106	.120	.127	.135
30°	.013	.025	.038	.051	.065	.078	.090	.103	.116	.129	.149	.170	.179	.188
35°	.018	.035	.054	.072	.086	.109	.131	.153	.175	.197	.213	.230	.247	.264
40°	.023	.046	.070	.093	.117	.141	.172	.203	.234	.265	.277	.290	.315	.341
45°	.030	.060	.093	.119	.153	.184	.216	.254	.289	.325	.351	.378	.411	.445
50°	.037	.075	.116	.151	.189	.227	.266	.305	.345	.384	.425	.467	.508	.550
55°	.046	.093	.142	.188	.236	.283	.332	.381	.420	.479	.530	.582	.641	.700
60°	.056	.112	.168	.225	.283	.340	.398	.457	.516	.575	.636	.697	.774	.851
65°	.067	.135	.204	.273	.343	.412	.483	.554	.625	.697	.771	.845	.922	1.01
70°	.080	.159	.240	.321	.403	.485	.568	.652	.735	.819	.906	.994	1.08	1.17
75°	.095	.182	.286	.383	.480	.578	.678	.777	.877	.977	1.07	1.18	1.29	1.39
80°	.110	.220	.332	.445	.558	.671	.787	.903	1.02	1.13	1.25	1.38	1.50	1.62
85°	.128	.259	.391	.524	.657	.790	.926	1.06	1.20	1.34	1.47	1.62	1.76	1.91
90°	.149	.299	.450	.603	.756	.910	1.07	1.22	1.38	1.54	1.70	1.87	2.03	2.20
95°	.174	.350	.522	.706	.885	1.06	1.25	1.43	1.62	1.80	1.99	2.18	2.38	2.58
100°	.200	.401	.604	.809	1.01	1.22	1.43	1.64	1.85	2.06	2.28	2.50	2.73	2.96
110°	.268	.536	.806	1.08	1.35	1.63	1.91	2.20	2.48	2.76	3.05	3.35	3.66	3.96
120°	.360	.721	1.08	1.45	1.82	2.19	2.57	2.95	3.33	3.72	4.11	4.50	4.91	5.32

BOOK No 3

INDEX

Page	Well Number	Remarks
1		
2		
3		Method of designating location of wells
✓4.	13 S-2W-1A	36" Con. Pipe (Cow Ranch)
✓5.	12S-1W-31U	3/4" Pipe in swale
✓6.	12S-1W-31G	12" G.I. Cas'g. Haskell
✓7.	12S-1W-31A ₂	ESC. M.W. Co 450' E "T" rd "W" VALLEY
✓8.	12S-1W-31A ₁	" " " " 750' " " " "
✓9.	12S-1W-31A ₃	Bradbury-E of Dairy Barn
✓10.	12S-1W-30Z ₁	2" Test Well #3 Parrish
✓11.	12S-1W-30Z ₂	12" Press. System " "
✓12.	12S-1W-31H	12' " " " (Cow Ranch)
✓13.	12S-1W-32E	2" Test Well #9
✓14.	12S-1W-32V	2" " " #10
✓15.	12S-1W-32Y	2" " " #11
✓16.	12S-1W-32X	2" " " #22
✓17.	12S-1W-32S	concrete Pump Pit
✓18.	12S-1W-32T	Old Hill Ranch-Local 23

Page	Well Number	Remarks
✓19.	12S-1W-32C	Press. System (Ballard)
✓20.	12S-1W-32G	2" Test Well # 25
✓21.	12S-1W-32F	2" " " # 17
✓22.	12S-1W-32A	2 story White House Palms Front
✓23.	12S-1W-33E	" " EUCS, Garage not <input type="checkbox"/>
✓24.	12S-1W-33U	Near Battle Monument
✓25.	12S-1W-33X	3/4 W/S Lane 3/8 S. River Channel
✓26.	13S-1W-4C	3/4 E/S Lane, 100 S. S.M. Creek
✓27.	13S-1W-4A	3/4 Fenton Lane E. of S.M. Crk
✓28.	13S-1W-3D	3/4 " " E. of Barin
✓29.	13S-1W-3E	3/4 Hiland V. Rd. 50' E. S.M. Crk.
✓30.	12S-1W-34Z	3/4 Near Fenton School
✓31.	12S-1W-35V	Meter # 68214
✓32.	12S-1W-35U	10" Near Judson Cow Corral
✓33.	12S-1W-35T	June Chase
✓34.	12S-1W-35F	3/4 NE cor. Walnut Orch'd.
✓35.	12S-1W-36F	3/4 S.W. cor. Eucalyptos Gr.
✓36.	12S-1W-36D	Jorgenson P.P.
✓37.	12S-1W-36E	3/4 78 1/2 W. 330 E. Nelson.

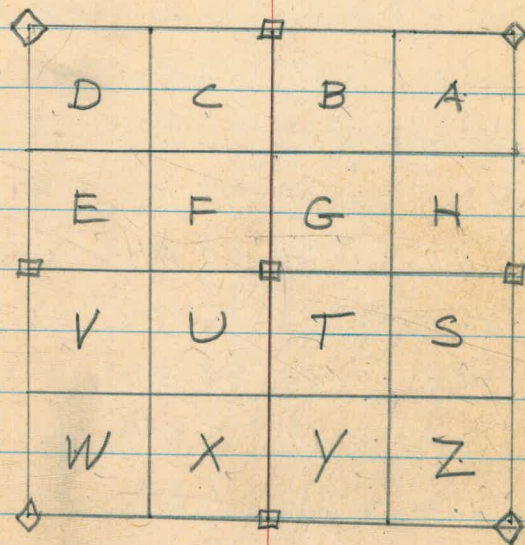
2

Page	Well Number	Remarks
✓38	12S-1W-35B	14" P.P. Stanley Trussel
✓39.	12S-1W-26Y	3/4 Miss Johnson Downstream
✓40.	12S-1W-25W	3/4 " " UPstream
✓41.	12S-1W-35C	7" Dom. Rockwood
✓42.	12S-1W-26F	" P.P.
✓43.	12S-1W-26U	2" Test Well Rockwood
✓44.	12S-1W-34B	3/4 S/S HWY # 78
✓45.	12S-1W-33H	Sunny "G"
✓46	12S-1W-32W	3/4 S/S Valley End Trail.
✓47.	12S-1W-31Y	Line UP Teepee
✓48.	12S-1W-34A	Fenton P.P. Guejito Cr.

6 5 4 3 2 1
7 8 9 10 11 12
13

A. C. Torrey took readings
UP to & including JULY-1954.
New Keeper at Hodges (Pearls)
August 1954 to - ?
con

METHOD OF DESIGNATING
LOCATION OF WELLS



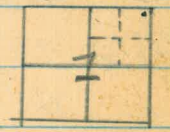
- ① TOWNSHIP
- ② Range
- ③ SECTION
- ④ Appropriate Letter from above sketch.
- ⑤ Sub number if more than one well in a particular 40 acres.

135,-2W-1A

cont'd from
F.B #2 P. 56

Date	HOLD ON M.P.	Wetted TAPE	DEPTH	ELEV M.P. 346.49	ELEV W.S.
8-11-53		Pumping			
9-15	13.0	0.73	12.27	Corr Ranch	334.22
10-13	14.0	0.81	13.19		333.30
11-17		Pumping			
12-15	14.0	0.81	13.19		333.30
1-12-54	14.0	1.49	12.51		333.98
2-9		Pumping			
3-9	14.0	2.50	11.50		334.99
4-20	14.0	5.49	8.51		337.98
5-18	14.0	4.64	9.36		337.13
6-15	11.0	1.20	9.80		336.69
7-13	12.0	1.23	10.77		335.72
8-10	13.0	1.17	11.83		334.66
9-14	13.0	0.61	12.39		334.10
10-19	14.0	1.15	12.85		333.64
11-17	14.0	1.23	12.77		333.72
12-14	14.0	1.32	12.68		333.81

Location: About 660' S. & 480' W. of NE. COR
W/s row of cedars. About 125'
S.W. of adobe bath.

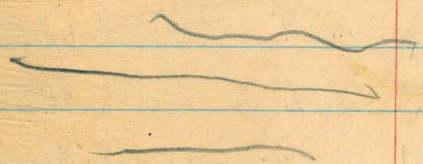


DESCRIPTION: Dug stock Well 36' Ø
concrete PIPE casing. Windmill &
small gas engine.

M.P. = TOP of conc PIPE casing

EL. M.P. = 346.49

EL. Ground 344.7



Date	Hold on M.P.	Wetted Tape	DEPTH	Elev. M.P. 350.29	Elev W.S
8-11-53	6.0	1.52	4.48		345.81
9-15-53	7.0	1.33	5.67	In Swale	344.62
10-13	7.0	0.63	6.37		343.92
11-17	8.0	1.16	6.84		343.45
12-15	8.0	1.34	6.66		343.63
1-12-54	8.0	1.54	6.46		343.83
2-9	7.0	1.20	5.80		344.49
3-9	6.0	2.06	3.94		346.35
4-20	4.0	1.47	2.53		347.76
5-18	4.0	1.26	2.74		347.55
6-15	4.0	0.99	3.01		347.28
7-13	4.0	0.40	3.60		346.69
8-10	6.0	1.23	4.77		345.52
9-14	7.0	1.08	5.92		344.37
10-19	8.0	1.18	6.82		343.47
11-17-54	8.0	1.10	6.90		343.39
12-14	8.0	1.32	6.68		343.61

12S-1W-31U

✓ 5

cont'd from
book 2 P 57

Location About 2150' N. & 2650' W. of S.E. Cor.

10' N.W. of N'ly river bank in swale	31
about 200' S.W.'ly from bend in	
abandoned dirt County road, D.G. formation	
poinded water and Tules in river channel.	
About 60' ± S.W. of 10" willow. Wild grape	
Vines W. & S. of.	
DESCRIPTION. 3/4" PIPE - 18' long - capped	
With 3/4" coupling, 3/4" reducer & 3/8" nipple	
standing 0.14 ft above coupling.	
M.P. = TOP of 3/8" PIPE nipple. 1' above ground	
Elev M.P. = 350.29	
Owner City of San Diego	

Date	Hold on M.P.	Wetted Tape	DEPTH	Elev M.P. 358.02	Elev W.S.	
8-11-53	13.0	0.90	12.10		345.92	Location 1330'S. & 1450' W of NE COR.
9-15	14.0	1.02	12.98		345.04	95' N & 40' W "T" end road W. end
10-13	14.0	0.76	13.24		344.78	of San Pasqual Valley. Above
11-17	14.0	1.02	12.98		345.04	Valley floor.
12-15	14.0	1.44	12.56		345.46	Description: 12" G.I. casing Well
1-12-54	14.0	1.86	12.14		345.88	not in use.
2-9	14.0	2.67	11.33		346.69	M.P. = Top of 12" G.I. casing
3-9	12.0	1.51	10.49		347.53	EL M.P. = 358 ⁰²
4-20	10.0	1.05	8.95		349.07	" Ground = 355 ⁸
5-18	11.0	1.34	9.66		348.36	Owner Haskell.
6-15	12.0	1.14	10.86		347.16	New owner Pressman
7-13	13.0	0.86	12.14		345.88	
8-10	14.0	1.26	12.74		345.28	
9-14	15.0	1.32	13.68		344.34	
10-19	15.0	0.86	14.14		343.88	
11-17	15.0	1.24	13.76		344.26	
12-14	15.0	1.79	13.21		344.81	

12S-1W-31G,

6 ✓

contd front
book 2 P 58

31

Date	Hold on M.P.	Wetted Tape	Depth	Elev. M.P. 353.55	Elev W.S.
8-11-53	9.0	1.63	7.37		346.18
9-15	9.0	0.94	8.16	450'	345.49
10-13	9.0	0.57	8.43	E of.	345.12
11-17	9.0	0.81	8.19	Road T	345.36
12-15	9.0	1.21	7.79		345.76
1-12-54	9.0	1.71	7.29		346.26
2-9	8.0	1.20	6.80		346.75
3-9	7.0	0.96	6.04		347.51
4-20	6.0	0.90	5.10		348.45
5-18	7.0	1.30	5.70		347.85
6-15	7.0	0.51	6.49		347.06
7-13	8.0	0.56	7.44		346.11
8-10	9.0	0.64	8.36		345.19
9-14	10.0	0.72	9.28		344.27
10-19	10.0	0.43	9.57		343.98
11-17	10.0	0.76	9.24		344.31
12-14	10.0	1.21	8.79		344.76

Cont'd from Book #2
P. 105
12S-1W-31A₂ 7 ✓

Location: about 1300'S & 900' W of NE Cor.

450' E & 100' ± N of "T" end County



Rd near W. end of S. Pasqual Valley.

Description - 12" Gravel envelope Well,

Stove Pipe casing, drilled by Escondido

M.W.Co. in 1946. M.P. = T.C. Under

removable Steel Plate cover.

El M.P. = 353.55 - El Ground 351 Z

Owner Mrs. Bradbury.

B.M. chusted □ on E. end, s head wall, conc

box culvert. Xing of Bach Creek 150'

E. "T" end road near West end

San Pasqual Valley Elev 353.29

New owner City of San Diego

Date	Hold on M.P	Wetted Tape	DEPTH	Elev. M.P. 355.35	Elev W.S.
8-11-53	10.0	1.96	8.04		347.31
9-15	10.0	1.26	8.74	750'	346.61
10-13	10.0	0.91	9.09	E of	346.26
11-17	10.0	1.09	8.91	Road T	346.44
12-15	10.0	1.38	8.62		346.73
1-12-54	10.0	1.62	8.38		346.97
2-9	10.0	2.26	7.74		347.61
3-9	8.0	0.90	7.10		348.25
4-20	7.0	1.04	5.96		349.39
5-18	7.0	0.62	6.38		348.97
6-15	8.0	0.93	7.07		348.28
7-13	9.0	1.03	7.97		347.38
8-10	10.0	1.10	8.90		346.45
9-14	11.0	1.26	9.74		345.61
10-19	11.0	1.07	10.93		344.42
11-17	11.0	1.33	9.67		345.68
12-14	10.0	0.67	9.33		346.02

✓ 8

12S-1W-31A, cont'd from
book 2 p 60

Location: About 1300' S #620' W of NE COR.

750' E. of "T" end road near W. end

San Pasqual Valley.

DESCRIPTION 12' gravel envelope well,
capped with removable steel plate
cover. Drilled by Escondido M. W. Co. 1946

M.P. = Top of stovepipe casing.

EL M.P. 355.35 EL ground 353.0

Owner: - Mrs Bradbury

Adjacent B.M. Nail in Power Pole
S/S Co. Rd about 400' W of old ranch house

Pole # 14027 EL. 355.42

Date	Hold on M.P.	Wetted Tape	Depth	Elev M.P. 356.32	Elev W.S.
8-11-53	11.0	0.94	10.06		346.26
9-15-53	12.0	1.08	10.92	Mutual	345.40
10-13	12.0	0.74	11.26	Well	345.06
11-17	12.0	1.08	10.92	E of	345.40
12-15	12.0	1.51	10.49	Bradbury	345.83
1-12-54	12.0	1.74	10.26	Barn	346.06
2-9	11.0	1.29	9.71		346.61
3-9	11.0	1.82	9.18		347.14
4-20	11.0	2.88	8.12		348.20
5-18	11.0	2.67	8.33		347.99
6-15	11.0	1.94	9.06		347.26
7-13	11.0	0.82	10.18		346.14
8-10	12.0	0.60	11.40		344.92
9-14	14.00	1.38	12.62		343.70
10-19	14.0	1.32	12.68		343.64
11-17-54	14.00	1.84	12.16		344.16 ⁴
12-14	14.00	2.36	11.64		344.68

12S-1W-31A₃cont'd from
book 2 p. 62

9

Location: About 500' W & 135' S of NE Cor

About 610' E of Bradbury Well.

Description: - 12" gravel envelope.

Well with hinged steel plate cover. Well

drilled by Escondido M.W. Co AUG 1946

M.P. = T.C.

Elev M.P. = 356³² Elev Grd 354¹Owner: - Olive B & W^m E Jr Bradbury

Date	Hold on M.P.	Wetted Tape	depth	Elev M.P. 358 ⁷⁰	Elev W.S.
8-11-53	10.3	Dry	✓		✓
9-15	10.3	Dry	✓	#3	✓
12-17	"	"	✓	Test Well	✓
1-12-54	"	"	✓	Parrish	✓
3-9	"	"	✓		✓
4-20	"	"	✓		✓
5-18	"	"	✓		✓
6-15	"	"	✓		✓
7-13	"	"	✓		✓
8-10	"	"	✓		✓
9-14	"	"	✓		✓
10-19	"	"	✓		✓
11-17	"	"	✓		✓
12-14	"	"	✓		✓

125-1W 302, cont'd from 10
 Test Well #3 book #2 P 63 ✓
 Location: - 525' N & 280' W S.E. cor.
 About 3' N of X fence
 2" Test Well. M.P. = Top of 2' cap drilled
 with 3/8" hole, 2.3' above ground.
 Owner Owen Parrish
 New owner Howard Zanke
 Owner City of S.D.

Date	Hold 0.7 M.P.	Wetted Tape	DEPTH	Elev M.P. 361.07	Elev W.S.
8-11-53	Pumping				
9-15	20.0	2.91	17.09	Parrish	343.98
10-13	20.0	1.59	18.41	Press	342.66
11-17	20.0	3.69	16.31	system	344.76
12-15	20.0	2.51	17.49		343.58
1-12-54	20.0	3.85	16.15		344.92
2-9	18.0	2.69	15.31		345.76
3-9	18.0	0.90	17.10		343.97
4-20	18.0	3.02	14.98		346.09
5-18	18.0	3.12	14.88		346.19
6-15	18.0	2.26	15.74		345.33
7-13	18.0	0.84	17.16		343.91
8-10	Pumping				
9-14	Pumping				
10-19	20.0	0.94	19.06		342.01
11-17-54	20.0	2.22	17.78		343.29
12-14	18.0	0.77	17.23		343.84

12S-1W-302

cond'd from 11
book #2 P 64 ✓

Date	HOLD ON M.P.	Wetted Tape	DEPTH	Elev M.P. 357.41	Elev W.S.
8-11-53	10.0	1.35	8.65		348.76
9-15	10.0	0.76	9.24	Cow	348.17
10-13	11.0	1.36	9.64	Ranch	347.77
11-17	11.0	1.37	9.63		347.78
12-15	11.0	1.57	9.43		347.98
1-12-54	Pump reset, casing raised.				
	M.P. Top of casing.			<u>359.06</u>	
7-20-54	11.0	0.60	10.40		348.66
8-10	Pumping				
9-14	12.0	0.38	11.63		347.44
10-19	13.0	1.15	11.85		347.21
11-17	pumping				
12.14	13.0	1.25	11.75		347.31

125-1W-31 H
Local # 14

cont'd from (12)
book 2 P 66 ✓

Date	Hold off M.P.	Wetted Tape	Depth	Elev M.P. 360.53	Elev W.S.
8-11-53	10.0	1.68	8.32		352.21
9-15	10.0	1.0	9.0	Well	351.53
10-13	10.0	0.57	9.43	#9	351.10
11-17	11.0	1.25	9.75		350.78
12-15	11.0	1.14	9.86		350.67
1-12-54	11.0	1.22	9.78		350.75
2-9	11.0	1.49	9.51		351.02
3-9	10.0	1.22	8.78		351.75
4-20	8.0	0.96	7.04		353.49
5-18	8.0	1.00	7.00		353.53
6-15	8.0	0.65	7.35		353.18
7-13	9.0	1.04	7.96		352.57
8-10	10.0	1.39	8.61		351.92
9-14	10.0	0.52	9.48		351.05
10-19	11.0	1.13	10.87		349.66
11-17-54	11.0	0.85	10.15		350.38
12-14	11.0	0.75 1.0	10.25		350.28

12S-1W-32E
Test Well #9

cont'd from 13
book 2 P67 ✓

Date	Hold ⁰¹⁷ Mr.P.	Wetted Tape	Depth	Elev. M.P. 360.17	Elev W.S.
9-14-53	9.0	1.21	7.79		352.58
9-15	9.0	0.50	8.50	Well	351.67
10-13	10.0	1.16	9.89	#10	351.33
11-17	10.0	1.02	8.99		351.19
12-15	10.0	1.15	8.85		351.32
1-12-54	10.0	1.33	8.67		351.50
2-9	10.0	1.99	8.01		352.16
3-9	8.0	1.31	6.69		353.48
4-20	6.0	0.72	5.28		354.89
5-18	7.0	1.27	5.73		354.44
6-15	7.0	0.53	6.47		353.70
7-13	8.0	0.65	7.35		352.82
8-10	9.0	0.90	8.10		352.07
9-14	10.0	1.30	8.70		351.47
10-19	10.0	0.85	9.15		351.02
11-17-54	10.0	0.74	9.26		350.91
12-14	10.0	0.80	9.20		350.97

12S-1W-32V
Test Well # 10

cont'd from 14
book 2 p 68 ✓

Date	Hold on M.P.	Wetted Tape	Depth	Elev M.P. 360.07	Elev W.S.
8-11-53	7.0	0.67	6.33		353.74
9-15	8.0	0.84	7.16	Well	352.91
10-13	8.0	0.40	7.60	#11	352.47
11-17	9.0	1.18	7.82		352.25
12-15	9.0	1.30	7.70		352.37
1-12-54	9.0	1.55	7.45		352.62
2-9	9.0	2.33	6.67		353.40
3-9	6.0	0.87	5.13		354.94
4-20	8.0	2.60	3.40		356.67
5-18	6.0	1.76	4.24		355.83
6-15	6.0	1.11	4.89		355.18
7-13	7.0	1.18	5.82		354.25
8-10	8.0	1.30	6.70		353.37
9-14	9.0	1.53	7.47		352.60
10-19	9.0	1.86	7.94		352.19
11-17-54	9.0	0.91	8.09		351.94
12-14	9.0	1.01	7.99		352.08

12S-1W-32V, cont'd from 15
 Test Well #11 book #2 P 69 ✓

Date	No. Id ON M.P.	Wetted Tape	Depth	Elev M.P. 365 90	Elev W.S.
8-11-53	8.0	0.48	7.52		358.38
9-15	9.0	0.67	8.33	Well	357.57
10-13	10.0	1.15	8.85	#22	357.05
11-17	10.0	0.95	9.05		356.85
12-15	10.0	1.18	8.82		357.08
1-12-54	10.0	1.55	8.45		357.45
2-9	10.0	2.39	7.61		358.29
3-9	8.0	1.50	6.50		359.40
4-20	6.0	1.65	4.35		361.55
5-18	7.0	1.25	5.75		360.15
6-15	7.0	0.59	6.41		359.49
7-13	8.0	0.90	7.10		358.80
8-10	9.0	1.15	7.85		358.05
9-14	10.0	1.34	8.66		357.24
10-19	10.0	0.78	9.22		356.68
11-17-54	10.0	0.58	9.42		356.48
12-14	10.0	0.69	9.31		356.59

12S-1W-32X cont'd from 16
Test Well # 22 book 2 P 70 ✓

Date	Hold 017 M.P.	Wetted Tape	Depth	Elev M.P. 375.44	Elev W.S.
8-11-53	8.0	1.01	6.99		368.45
9-15	8.0	0.67	7.33	Concrete	368.11
10-13	8.0	0.45	7.55	Pump	367.89
11-17	9.0	1.30	7.70	Pit	367.74
12-15	9.0	1.15	7.85		367.59
1-12-54	9.0	1.05	7.95		367.49
2-9	9.0	1.25	7.75		367.69
3-9	8.0	1.09	6.91		368.53
4-20	7.0	0.86	6.14		369.30
5-18	8.0	1.20	6.80		368.64
6-15	8.0	1.00	7.00		368.44
7-13	8.0	0.80	7.20		368.24
8-10	8.0	0.67	7.33		368.11
9-14	8.00	0.52	7.48		367.96
10-19	8.0	0.38	7.62		367.82
11-17-54	8.0	0.31	7.69		367.75
12-14	9.0	1.27	7.73		367.71

12 S-1W-32 S, cont'd from (17)
book 2 P.71 ✓

Date	Nohd of M.P.	Wetted Tape	Depth	Elev M.P. 370.72	Elev W.S.	12S-1W-32T Local # 23	contd from book # 2 P.72	18 ✓
8-11-53	14.0	0.65	13.35		357.37			
9-15	15.0	1.16	13.84	Old	356.88			
10-13	15.0	0.72	14.28	Hill	356.44			
11-17	16.0	1.43	14.57	Ranch	356.15			
12-15	16.0	1.24	14.76		355.96			
1-12-54	16.0	1.55	14.45		356.27			
2-9	16.0	1.66	14.34		356.38			
3-9	14.0	0.49	13.51		357.21			
4-20	14.0	1.96	12.04		358.68			
5-18	14.0	1.64	12.36		358.36			
6-15	14.0	1.27	12.73		357.99			
7-13	14.0	0.72	13.28		357.44			
8-10	15.0	0.60	14.40		356.32			
9-14	16.0	1.44	14.56		356.16			
10-19	16.0	0.83	15.17		356.55			
11-17-54	16.0	0.73	15.27		355.45			
12-14	Tree has been felled across well cover							

Date	Hold on M.P	Wetted tape	Depth	Elev M.P	Elev W.S.
				362.68	
8-11-53	13.0	1.52	11.48		351.20
9-15	14.0	1.85	12.15	Ballard	350.53
10-13	14.0	2.82	11.18	Press Tank+	351.50
11-17	Pumping	✓	✓	Pump a- cross Rd.	✓
12-17	"	✓	✓	from hse.	✓
1-12-54	14.0	3.06	10.94		351.74
2-9	14.0	3.26	10.74		351.94
3-9	13.0	2.53	10.47		352.21
4-20	13.0	1.68	11.32		351.36
5-18	Pumping	✓	✓		✓
6-15	13.0	2.80	10.20		352.48
7-13	13.0	0.47	12.53		350.15
7-10?	Pumping				
8-10	"				
9-14	"				
10-19	Pumping				
11-17-54	13.0	1.28	11.72		350.96
12-14	13.0	1.08	11.92		350.76

351.14
1.98

12S-1W-32C

cont'd from 19
book 2 P-73 ✓

Date	HOLD ON M.P.	Wetted Tape	DEPTH	Elev M.P.	Elev W.S.
8-13-53	12.0	0.93	11.07	369.45	358.38
9-17	12.0	0.91	11.09	Test	358.36
10-15	12.0	0.81	11.19	Well	358.26
11-19	12.0	0.73	11.27	#2.5	358.18
12-15	12.0	0.69	11.31		358.14
1-15-54	12.0	0.60	11.40		358.05
2-11	12.0	0.55	11.45		358.00
3-11	12.0	0.54	11.46		357.99
4-20	12.0	0.60	11.40		358.05
5-20	12.0	0.65	11.35		358.10
6-15	12.0	0.67	11.33		358.12
7-15	12.0	0.59	11.41		358.04
8-10	12.0	0.48	11.52		357.93
9-16	12.0	0.35	11.65		357.80
10-12	12.0	0.14	11.86		357.59
11-17-54	12.0	dry			
12-14	12.0	dry	✓		✓

12S-1W32S
Local T.W. #25

cont'd from
book-2-P74 20 ✓

Along fence & Telephone poles
east of County yard

Date	HOLD ON M.P	Wetted Tape	Depth	Elev M.P 364.07	ELEV W.S.
8-11-53	10.0	1.18	8.82		355.25
9-15	10.0	0.87	9.13	Well	354.94
10-13	10.0	0.55	9.45	#17	354.62
11-17	11.0	1.27	9.73	Behind	354.34
12-15	11.0	1.10	9.90	Co. yard	354.17
1-15-54	11.0	0.97	10.03		354.04
2-9	11.0	1.04	9.96		354.11
3-9	11.0	1.27	9.73		354.34
4-20	11.0	1.95	9.05		355.02
5-18	11.0	2.18	8.82		355.25
6-15	11.0	2.10	8.90		355.17
7-13	11.0	1.76	9.24		354.83
8-10	11.0	1.37	9.63		354.44
9-16	11.0	0.91	10.09		353.98
10-12	11.0	0.64	10.36		353.71
11-17-54	11.0	0.42	10.58		353.49
12-14	12.0	1.31	10.69		353.38

12S-1W-32 F
Test Well # 17

Cont'd from 21
Book # 2, P 75

Date	Hold on M.P.	Wetted Tape	Depth	Elev M.P. 374.77 373.38	Elev W.S.
8-13-53	16.0	1.69	14.31		?
9-17	16.0	1.61	14.39	2 story	
10-15	16.0	1.01	14.99	White	
11-19	16.0	1.46	14.54	House	(258.84)
12-17	16.0	1.42	14.58	M.P.	
1-15-54	16.0	1.34	14.66	under Pump	
2-11	16.0	1.42	14.58	Base towards	
3-11	16.0	1.70	14.30	Tank.	
4-22	16.0	2.25	13.75		
5-20	16.0	1.56	14.44		
6-17	Pumping	✓	✓		
7-15	16.0	1.36	14.64		
8-11	16.0	0.95	15.05		
9-14	16.0	0.40	15.60	357.78 359.19	
10-12	16.0	0.34	15.66	357.72 359.13	
11-17-54	16.0	pumping			
12-14	16.0	0.45	15.55		

12 S-1W-32A
Local # 24

cont'd from 22
book # 2 P 76 ✓

10-28-54

There was a note in Book # 2 that a new elev. was needed for the M.P. for this well.

Corr

Use this M.P. ~~374.77~~ 373.38
(See Note in F.B. #2, Page 25 of 10-14-52)

NOTE
By Levels, 10/14/55, F.B. #752, Page 57.

Date	Hold OM M.P.	Wetted Tape	Depth	Elev M.P. 389.56	Elev W.S.
8-13-53	18.0	1.57	16.43		373.13
9-17	Pumping			House	
10-15	20.0	1.91	18.09	Garage	371.47
11-19	20.0	2.52	17.48	not sq.	372.08
12-17	20.0	3.01	16.99		372.57
1-15-54	20.0	3.30	16.70		372.86
2-11	20.0	3.94	16.06		373.50
3-11	18.0	2.50	15.50		374.06
4-22	18.0	2.93	15.07		374.49
5-20	18.0	2.20	15.80		373.76
6-15	18.0	1.16	16.84		372.72
7-15	18.0	0.40	17.60		371.96
8-11	20.0	2.10	17.90		371.66
9-14	19.0	0.60	18.40		371.16
10-12	19.0	0.51	18.49		371.07
11-17	19.0	0.73	18.27		371.29
12-14	19.0	0.81	18.19		371.37

12S-1W-33E

cont'd from (23)
book #2 p.77 ✓

Date	Hold on M.P.	Wetted Tape	DEPTH	Elev M.P. 380.78	Elev W.S.
8-13-53	3.0	1.06	1.94		378.84
9-17	3.0	0.53	2.47	Near	378.31
10-15	3.0	0.80	2.20	Battle	378.58
11-19	3.0	1.20	1.80	Monu't.	378.98
12-15	3.0	1.26	1.74	Turn Rt. on Fent.	379.04
1-15-54	3.0	1.53	1.47	Rd. Sign.	379.31
2-9	2.0	0.55	1.45	Under old car Fender.	379.33
3-9	2.0	0.62	1.38		379.40
4-20	2.0	1.23	0.77		380.01
5-20	2.0	0.87	1.13		379.65
6-15	2.0	0.49	1.51		379.27
7-15	3.0	0.87	2.13		378.65
8-11	4.0	1.36	2.64		378.14
9-14	3.0	0.40	2.60		378.18
10-12	3.0	0.81	2.19		378.59
11-17	filled with dirt				
12-16	2.0	0.59	1.41		379.37

12S-1W-33 U

cont'd from
BOOK #2 P-78

(24)

Date	Hold on M.P.	Wetted Tape	Depth	Elev M.P. 383.24	Elev W.S.
8-13-53	5.0	0.87	4.13		379.11
9-17	6.0	1.33	4.67	1000'	378.57
10-15	6.0	1.61	4.39	SHW'y	378.85
11-19	6.0	2.12	3.88	#78	379.36
12-15	6.0	1.84	4.16	6' Sec. of 18' Cotton- wood	379.08
1-15-54	6.0	3.56	2.44	Fenton lane.	380.80
2-9	4.0	0.60	3.40		379.84
3-9	4.0	0.67	3.33		379.91
4-20	4.0	0.95	3.05		380.19
5-20	4.0	0.47	3.53		379.71
6-15	4.0	0.37	3.63		379.61
7-15	5.0	0.63	4.37		378.87
8-11	6.0	1.00	5.00		378.24
9-14	6.0	1.04	4.96		378.28
10-19	6.0	1.32	4.68		378.56
11-17	6.0	1.68	4.32		378.92
12-16	5.0	1.46	3.54		379.70

12S-1W-33 X

cont'd from
book #2 P 79

(25)

Date	HOLD ON M.P.	Wetted Tape	Depth	Elev M.P. 390.08	Elev W.S.
8-13-53	7.0	1.31	5.69		384.39
9-17	7.0	1.21	5.79	Fenton	384.29
10-15	7.0	2.33	4.67	E/W lane	385.41
11-19	7.0	2.22	4.78	E of	385.30
12-17	7.0	2.03	4.97	S.M. Creek	385.11
1-15-54	7.0	2.54	4.46	Pole. #112410	385.62
2-11	7.0	1.28	5.72		384.36
3-11	7.0	1.97	5.03		385.05
4-20	7.0	1.60	5.40		384.68
5-20	7.0	1.58	5.42		384.66
6-15	7.0	0.96	6.04		384.04
7-15	7.0	0.51	6.49		383.59
8-11	8.0	1.16	6.84		383.24
9-16	5.0	0.41	4.59		385.49
10-19	6.0	0.52	5.48		384.60
11-18	6.0	0.85	5.15		384.93
12-16	6.0	0.64	5.46		384.62

13S-1W-4A

cont'd from
book #2 P-8127
✓

Date	HOLD on M.P.	Wetted Tape	DEPTH	Elev M.P. 403 34	Elev W.S.
8-13-53	18.0	1.18	16.82		386.52
9-17	19.0	0.95	18.05	Fenton	385.29
10-15	19.0	4.20	14.80	E of Barn	388.54
11-19	19.0	3.30	15.70	E of Lane Pole	387.64
12-17	19.0	5.50	13.50	#W2403.	389.94
1-15-54	18.0	0.74	17.26		386.08
2-11	18.0	2.85	15.15		388.19
3-11	16.0	1.27	14.73		388.61
4-20	16.0	0.94	15.06		388.28
5-20	18.0	1.76	16.24		387.10
6-15	18.0	0.95	17.05		386.29
7-15	20.0	1.57	18.43		384.91
8-11	20.0	0.76	19.24		384.10
9-16	21.0	1.30	19.70		383.64
10-19	19.0	1.98	17.02		386.32
11-18	19.0	2.72	16.28		387.06
12-14	19.0	0.65	18.35		384.99

13S-1W-3D

cont'd from
book #2 P-82

28

✓

Date	HOLD ON M.P.	wetted Tape	DEPTH	Elev M.P. 402.21	Elev W.S.
8-13-53	10.0	1.81	8.19		394.02
9-17	10.0	1.62	8.38	Hiland V.	393.83
10-15	10.0	3.52	6.48	Ad. E of	395.73
11-19	10.0	2.40	7.60	S. M. creek	394.61
12-17	10.0	3.63	6.37	W. S. of Fenton	395.84
1-15-54	11.0	1.20	9.80	Dairy	392.41
2-11	11.0	0.65	10.35	Down Stack bank by	391.86
3-11	11.0	0.68	10.32	Fence.	391.89
4-22	11.0	1.29	9.71		392.50
5-20	11.0	1.14	9.86		392.35
6-15	11.0	3.26	7.74		394.47
7-15	11.0	3.30	7.70		394.51
8-11	11.0	3.77	7.23		394.98
9-16	10.0 11.0	2.68	8.32		393.89
10-12	11.0	0.89	10.11		392.10
11-18	11.0	1.73	9.27		392.94
12-16	11.0	0.87	10.13		392.08

13-S-1W-3E

cont'd from
book #2 P 83

29

Short pipe on east side of
small rock

Date	Hold on M.P.	Wetted Tape	Depth	Elev. M.P. 411.79	Elev. W.S. 400.05
8-13-53	13.0	1.26	11.74		400.05
9-17	13.0	0.96	12.04	Near Fenton School	399.75
10-15	13.0	0.66	12.34	School	399.45
11-19	14.0	1.15	12.85	Bull Past. 100' W. of	398.94
12-17	14.0	0.53	13.47	Angle in	398.32
1-15-54	14.50	0.50	14.00	Power line	397.79
2-11	14.50	1.28	13.22	By Fence	398.57
3-11	14.0	0.57	13.43		398.36
4-22	14.0	2.02	11.98		399.81
5-20	14.0	2.63	11.37		400.92
6-17	14.0	2.31	11.69		400.10
7-15	14.0	1.25	12.75		399.04
8-11	14.50	0.56	13.94		397.85
9-14	14.50	0.10	14.40		397.39
10-12	14.50	Dry	✓		✓
11-18	14.50	Dry	✓		✓
12-16	14.50	"	✓		✓

Cont'd from Book # 30
P. 84

125-1W - 342 ✓

Date	Hold on M.P.	Wetted Tape	Depth	Elev. Eley. M.P. 421.57 W.S.
8-13-53	16.0	0.60	15.40	Near 406.17
9-17	17.73	2.02	15.71	transformer 405.86
10-15	17.67	1.57	16.10	pole to 405.47
11-19	17.67	1.41	16.26	pumping 405.31
12-17	17.67	1.34	16.33	plant 405.24
1-15-54	17.67	1.17	16.50	Elect. Met on Pole. 405.07
2-11	17.67	1.39	16.28	405.29
3-11	17.67	1.94	15.73	405.84
4-22	17.0	2.12	14.88	406.69
5-18	17.0	3.34	13.66	407.91
6-15	17.0	3.20	13.80	407.77
7-13	17.0	2.51	14.49	407.08
8-10	17.0	1.95	15.05	406.52
9-16	17.0	1.00	16.00	405.57
10-12	17.0	0.58	16.42	405.15
11-18	17.50	Dry	✓	✓
12-16	17.50	✓	✓	✓

Cont'd from Book #2 31
P. 85

ISS-1W-35V

power pole # 11894

Date	Hold off M.P.	Wetted Tape	Depth	Elev. M.P.	Elev. Y.K.S.
8-13-53	19.0	0.83	18.17	432.37	Near 414.20
9-17	Pump relocated.			Judson Cow corral	
	New M.P. at ground line			<u>429.98'</u>	

Cont'd from Book #2
P. 86

32

12 S-1W - 850

Date	Hold M.P.	Wetted Tape	Depth	Elev. M.P. 431.52	Elev. W.S.
8-13-53	17.0	0.49	16.51		415.01
9-17	20.0	2.11	17.89	June	413.63
10-15	20.0	1.07	18.93	Chase	412.59
11-19	20.0	2.12	17.88	7 th Day Adv. Property.	413.64
12-17	22.0	1.96	20.04	E. on NW fence. At	411.48
1-15-54	22.0	1.48	20.52	P. Pit. along HiVal. Rd.	411.00
2-11	22.0	3.10	18.90		412.62
3-11	22.0	1.38	20.62		410.90
4-22	15.0	0.58	14.42		417.10
5-20	16.0	0.90	15.10		416.42
6-17	17.0	1.56	15.44		416.08
7-15	18.0	1.32	16.68		414.84
8-11	18.0	0.45	17.55		413.97
9-16		pumping			
10-12		pumping			
11-18	20.0	0.45	19.55		411.97
12-16		pumping			

Cont'd from Book #2
P. 87

33 ✓

125-1W-35T

Date	Hold M.P.	Wetted Tape	Depth	Elev. M.P. 427.10	Elev. W.S.
8-13-53	15.0	0.85	14.15		412.95
9-17	16.37	0.65	15.72	Walnut	411.38
10-15	16.37	0.22	16.15	Orchard	410.95
11-19	16.37	Dry	✓	West of	✓
12-17	"	"	✓	Trussell	✓
1-15-54	"	"	✓	Dairy	✓
2-11	"	"	✓	We'll back of Pittse.	✓
3-11	"	"	✓	W. side by Walnut Tree.	✓
4-22	12.0	1.0	11.0		416.10
5-20	13.0	1.34	11.66		415.44
6-17	13.0	0.36	12.64		414.46
7-15	14.0	0.54	13.46		413.64
8-10	16.0	1.65	14.35		412.75
9-16	16.40	0.57	15.83		411.27
10-12	16.40	Dry	✓		✓
11-18	16.40	Dry	✓		✓
12-16	16.40	Dry	✓		✓

Cont'd from Book #2
P. 88

34
✓

12.5 - 1W - 35F
Get owners name. Mr. Dyer

Date	Hold M.P.	Wetted Tape	Depth	Elev. M.P. 453.13	Elev. W.S.
8-13-53	17.0	0.82	16.18		436.95
9-17	20.0	1.15	18.85	SW Cor.	434.28
10-15	22.0	1.31	20.69	Eucalyptus	432.44
11-19	23.0	0.46	22.54	Grove	430.59
12-17	26.0	2.20	23.80		429.33
1-15-54	26.0	0.74	25.26		427.87
2-11	26.0	0.60	25.40		427.73
3-11	26.0	3.28	22.72		430.41
4-22	10.0	3.28	6.72		446.41
5-18	10.0	0.99	9.21		443.92
6-15	14.0	1.16	12.84		440.29
7-13	18.0	1.61	16.39		436.74
8-10	21.0	7.64	19.36		433.77
9-16	23.0	0.63	22.37		430.76
10-12	25.0	1.25	23.75		429.38
11-18	27.0	1.30	25.70		427.43
12-16	27.0	0.54	26.46		426.67

Owner - Dr. Pfeiffer, S.D.

Cont'd from Book #2
P. 89

35

12S-1W-36-F

Date	Hold M.P.	Wetted Tape	Depth	Elev. M.P. 447.90	Elev. W.S.
------	--------------	----------------	-------	-------------------------	---------------

Cont'd from Book #2
P. 90

36

125-1W-36D ✓

8-13-53 Reset; need new elevation.

Jorgensen

P.P.

Top of casing: 1

449.07

Probably 1954

8-10	Pumping ✓				
9-16	25.0	6.87	24.13		424.94
10-12	26.0	8.59	25.41		423.66
11-18	28.0	0.95	27.05		422.02
12-16	28.0	0.38	27.62		421.45

Date	Hold on M.P.	Wetted Tape	Depth	Elev. M.P. 446.38	Elev. W.S.
8-13-53	20.0	0.89	19.11		427.27
9-17	23.0	1.66	21.34	N side	425.04
10-15	23.0	0.60	22.40	Hwy 78	423.98
11-19	25.0	1.16	23.84	S.D. Gas	422.54
12-17	25.0	0.50	24.50	Elect. Pole	421.88
1-15-54	26.0	1.13	24.87	#11921	421.51
2-11	26.0	0.69	25.31		421.07
3-11	26.0	0.94	25.06		421.32
4-22	15.0	1.25	13.75		432.63
5-18	15.0	0.52	14.48		431.90
6-15	19.0	2.02	16.98		429.40
7-13	20.0	0.61	19.39		426.99
8-10	23.0	1.54	21.46		424.92
9-16	25.0	1.48	23.52		422.86
10-12	25.0	0.20	24.80		421.58
11-18	27.0	1.06	25.94		420.44
12-16	27.0	0.40	26.60		419.78

Cont'd from Book #2
P. 91

37

12 S - 1 W - 36 E

Date	Hold on M.P.	Wetted Tape	Depth	Elev. M.P. 437.86	Elev. W.S.
9-18-52					
9-13-53					

Reset; no chance for reading.

Trussel

Pump.

New M.P. NE. Cor. Bottom

Pump base 438.17

9-16-54	Pumping				
10-17-54	"				
11-18-54	"				
12-16	24.0	1.16	22.84		415.33

Cont'd from Book #2
P. 92

38

12S-1W-35B

Date	Hold on M.P.	Wetted Tape	Depth	Elev. M.P. 437.31	Elev. W.S.
8-13-53	14.0	1.07	12.93		424.38
9-17	16.0	0.88	15.12	Miss	422.19
10-15	17.0	0.57	16.43	Johnson's	420.88
11-19	17.66	Dry	✓	Down	✓
12-17	"	"	✓	stream	✓
1-15-54	"	"	✓	near	✓
2-11	"	"	✓	Pepper	✓
3-11	"	"	✓	Tree	✓
4-22	15.0	5.75	9.25	Well by E/W fence	428.06
5-20	15.0	4.93	10.07	15' West of Cottonwood Tree	427.24
6-17	15.0	3.21	11.79	Tree	425.52
7-15	15.0	1.36	13.64	Turn IN, left of	423.67
8-11	16.0	0.82	15.18	#78 W. End of Concrete Bridge.	422.13
9-16	17.65	0.65	17.00		420.31
10-19	17.65	Dry	✓		✓
11-18	17.65	Dry	✓		✓
12-16	17.65	"	✓		✓

Cont'd from Book #2
P. 93

39

125-1W-26Y ✓

Date	Hold on M.P.	Wetted Tape	Depth	Elev. M.P. Eler 446.17 W.S.	Elev.
8-13-53	16.0	1.15	14.85		431.32
9-17	19.0	1.28	17.72	Miss	428.45
10-15	20.0	0.66	19.34	Johnson's	426.83
11-19	21.0	0.90	20.10	Upstream	426.07
12-17	23.0	1.15	21.85	Go up thr	424.32
1-15-54	24.0	1.11	22.89	Ranch to Wash in	423.28
2-11	24.6	0.66	23.34	field- Well on	422.83
3-11	24.0	1.43	22.57	Rt. ft. of Bank.	423.60
4-22	15.0	6.44	8.56		437.61
5-20	15.0	4.37	10.63		435.54
6-17	15.0	1.94	13.06		433.11
7-15	17.0	1.31	15.69		430.48
8-11	20.0	1.93	18.07		428.10
9-16	21.0	0.45	20.55		425.52
10-19	23.0	0.69	22.31		423.86
11-18	25.0	1.36	23.64		422.53
12-16	25.0	0.70	24.30		421.87

$\frac{10}{25}$

Cont'd from Book #2
P. 94

40

12S-1W-25W

Date	Hold on M.P.	Wetted Tape	Depth	Elev. M.P.	Elev. W.S.
8-13-53	14.0	0.57	13.43	430.76	417.33
9-17	Pumping			Rockwood	
10-15	16.0	0.89	15.11	Dom.	415.65
11-19	16.0	0.55	15.45	Deal	415.31
12-17	17.0	1.30	15.70	7 ¹ / ₂ N/s	415.06
1-15-54	17.0	0.83	16.17	H. Way #78	414.59
2-11	17.0	1.0	16.0	on g ^{no} jt ^o Gr. Rd.	414.76
3-11	17.0	1.60	15.40		415.36
4-22	17.0	5.61	11.39		419.37
5-20	13.0	1.72	11.28		419.48
6-17	13.0	1.03	11.97		418.79
7-15	14.0	1.23	12.77		417.99
8-11	14.0	0.43	13.57		418.19
9-16	15.0	0.80	14.20		416.56
10-12	16.0	0.88	15.12		415.64
11-19	18.0	1.86	16.14		414.62
12-16	18.0	1.52	16.48		414.28

Cont'd from Book #2
P. 95

41

12S-1W-35C ✓

Date	Hold on M.P.	Wetted Tape	Depth	Elev. M.P.	Elev. W.S.
				441.13	
8-13-53	7.0	1.44	5.56		435.57
9-17	8.0	1.37	6.63	Deal	434.50
10-15	8.0	0.45	7.55	PP	433.58
11-19	9.0	0.63	8.37	Upper End of Flowid	432.76
12-17	10.0	0.91	9.09	Area to and E/W fence, 150	432.04
1-15-54	11.0	1.25	9.75	West-Well is fenced.	431.38
2-11	11.0	2.31	8.69		432.44
3-11	11.0	3.90	7.10		434.03
4-22	5.0	1.14	3.86		437.27
5-20	5.0	1.80	3.20		437.93
6-17	5.0	0.56	4.44		436.69
7-15	Pumping	✓	✓		✓
8-11	10.0	2.68	7.32		433.81
9-16	10.0	1.37	8.63		432.50
10-12	10.0	0.74	9.26		431.87
11-19	11.0	1.02	9.98		431.15
12-16	12.0	1.30	10.70		430.43

Cont'd from Book #2
P. 96

42 ✓

125-1W-26F

Date	Hold on M.P.	Wetted Tape	Depth	Elev. M.P.	Elev. W.S.
8-13-53	9.0	1.85	7.15	436.42	429.27
9-17	9.0	1.71	7.29	2" Test	429.13
10-15	9.0	1.69	7.31	Well	429.11
11-19	9.0	1.53	7.47	up the Deal	428.95
12-17	9.0	1.19	7.81	Rd. to E/W fence, then	428.61
1-15-54	9.0	0.69	8.31	300' S on	428.11
2-11	9.0	0.53	8.47	N/S Fence on farm Rd	427.95
3-11	9.0	0.54	8.46		427.96
4-22	9.0	1.09	7.91		428.51
5-20	9.0	2.41	6.59		429.83
6-17	9.0	2.05	6.95		429.47
7-15	9.0	1.89	7.11		429.31
8-11	9.0	1.76	7.24		429.18
9-16	10.0	1.24	8.76		427.66
10-12	11.0	1.34	9.66		426.76
11-19	11.0	0.40	10.60		425.82
12-16	12.0	0.98	11.02		425.40

Cont'd from Book #2 43
P. 97

12S-1W-26U

Date	Hold M.P.	Wetted Tape	Depth	Elev. M.P.	Elev. W.S.
				413.38	
8-13-53	12.0	1.28	10.72		402.66
9-17	12.0	2.55	9.45	S/S	403.93
10-15	13.0	0.69	12.31	Hwy 78	401.07
11-19	16.0	1.34	14.66	Culvert	398.72
12-17	16.0	3.11	12.89	Between A.7.30	400.49
1-15-54	16.83	0.53	16.30	A.7.25	397.08
2-11	16.83	0.88	15.95	Line up Elect. pole	397.43
3-11	16.00	0.63	15.37	+Rock,	398.01
4-22	16.00	5.93	10.07		403.31
5-20	16.00	6.60	9.40		403.98
6-17	16.00	5.65	10.35		403.03
7-15	16.00	4.76	11.24		402.14
8-11	14.00	2.06	11.94		401.44
9-16	14.0	2.23	11.77		401.61
10-19	14.0	1.26	12.74		400.64
11-19	14.0	0.37	13.63		399.75
12-16	14.0	1.61	12.39		400.99

Cont'd from Book #2
P. 99

44

125-1W-34B ✓

Date	Hold M.P.	Wetted Tape	Depth	Elev. M.P. 391.81	Elev. W.S.
8-13-53	7.0	0.55	6.45		385.36
9-17	7.0	0.98	6.02	Sunny	385.79
10-15	8.0	1.12	6.88	G	384.93
11-19	8.0	0.78	7.22		384.59
12-17	8.0	0.58	7.42		384.39
1-15-54	8.0	0.72	7.28		384.53
2-11	8.0	0.94	7.06		384.75
3-11	7.0	1.14	5.86		385.95
4-22	6.0	1.10	4.90		386.91
5-20	6.0	1.39	4.61		387.20
6-17	6.0	0.75	5.25		386.56
7-15	7.0	0.72	6.28		385.53
8-11	6.0	1.07	4.93		386.88
9-16	7.0	1.16	5.84		385.97
10-19	7.0	1.67	5.33		386.78
11-19	7.0	1.12	5.88		385.93
12-16	7.0	1.07	5.93		385.88

12S-1W-33H

Cont'd from Book #2
P. 100

45 ✓

Date	Hold on M.P.	Wetted Tape	Depth	Elev. M.P.	Elev. W.S.
				358.88	
8-11-53	5.0	0.54	4.46		354.42
9-15	6.0	0.87	5.13	½ Valley	353.75
10-13	6.0	0.61	5.39	near	353.49
11-17	6.0	0.68	5.32	Haystack	353.56
12-15	6.0	0.95	5.05		353.83
1-12-54	6.0	1.24	4.76		354.12
2-9	6.0	2.47	3.53		355.35
3-9	5.0	2.01	2.99		355.89
4-20	5.0	1.99	3.01		355.87
5-20	5.0	1.77	3.23		355.65
6-15	5.0	1.53	3.47		355.41
7-13	5.0	0.99	4.01		354.87
8-11	6.0	1.35	4.65		354.23
9-16	6.0	0.68	5.32		353.56
10-19	6.0	0.38	5.62		353.26
11-18	6.0	0.45	5.55		353.33
12-16	6.0	0.67	5.33		353.55

Cont'd from Book #2
P. 102

46

12S - 1W 32W.

Date	Hold on M.P.	Wetted Tape	Depth	Elev. M.P. 347.47	Elev W.S.
8-11-53	6.0	1.41	4.59		342.88
9-15	7.0	1.03	5.97	Line	341.50
10-13	8.0	1.25	6.75	up Teepee	340.72
11-17	8.0	1.10	6.90		340.57
12-15	8.0	1.34	6.66		340.81
1-12-54	8.0	1.58	6.42		341.05
2-9	8.0	2.08	5.92		341.55
3-9	6.0	1.90	4.10		343.37
4-20	2.0	1.40	0.60		346.87
5-18	2.0	1.04	0.96		346.51
6-15	4.0	1.90	2.10		345.37
7-13	4.0	0.63	3.37		344.10
8-10	6.0	1.03	4.97		342.50
9-14	7.0	0.77	6.23		341.24
10-19	9.0	2.34	6.66		340.81
11-17	9.0	2.27	6.73		340.74
12-14	7.0	0.44	6.56		340.91

Cont'd from Book #2
P. 103

47

125-1W-314

Date	Hold M.P.	Watted Tape	Depth	Elev. M.P.	Elev. W.S.
8-11-53	Pumping			419.36	
9-17	"	✓	✓	Fenton	✓
10-15	"	✓	✓	Pump	✓
11-19	20.0	3.08	16.92	near bank	402.44
12-17	Pumping	✓	✓	Guejito	✓
1-15-54	20.0	3.82	16.18	Creek	403.18
2-11	20.0	6.27	13.73	Gulch	405.63
3-11	Pumping	✓	✓	H. 7.65	✓
4-22	"	✓	✓	250' Son. Hi. Way 78.	✓
5-20	"	✓	✓		✓
6-17	"	✓	✓		✓
7-15	"	✓	✓		✓
8-11	"	✓	✓		✓
9-16	"	✓	✓		✓
10-19	"	✓	✓		✓
11-19	20.0	5.23	14.77		404.59
12-16	16.0	8.69	15.31		404.05

125-1w-34A

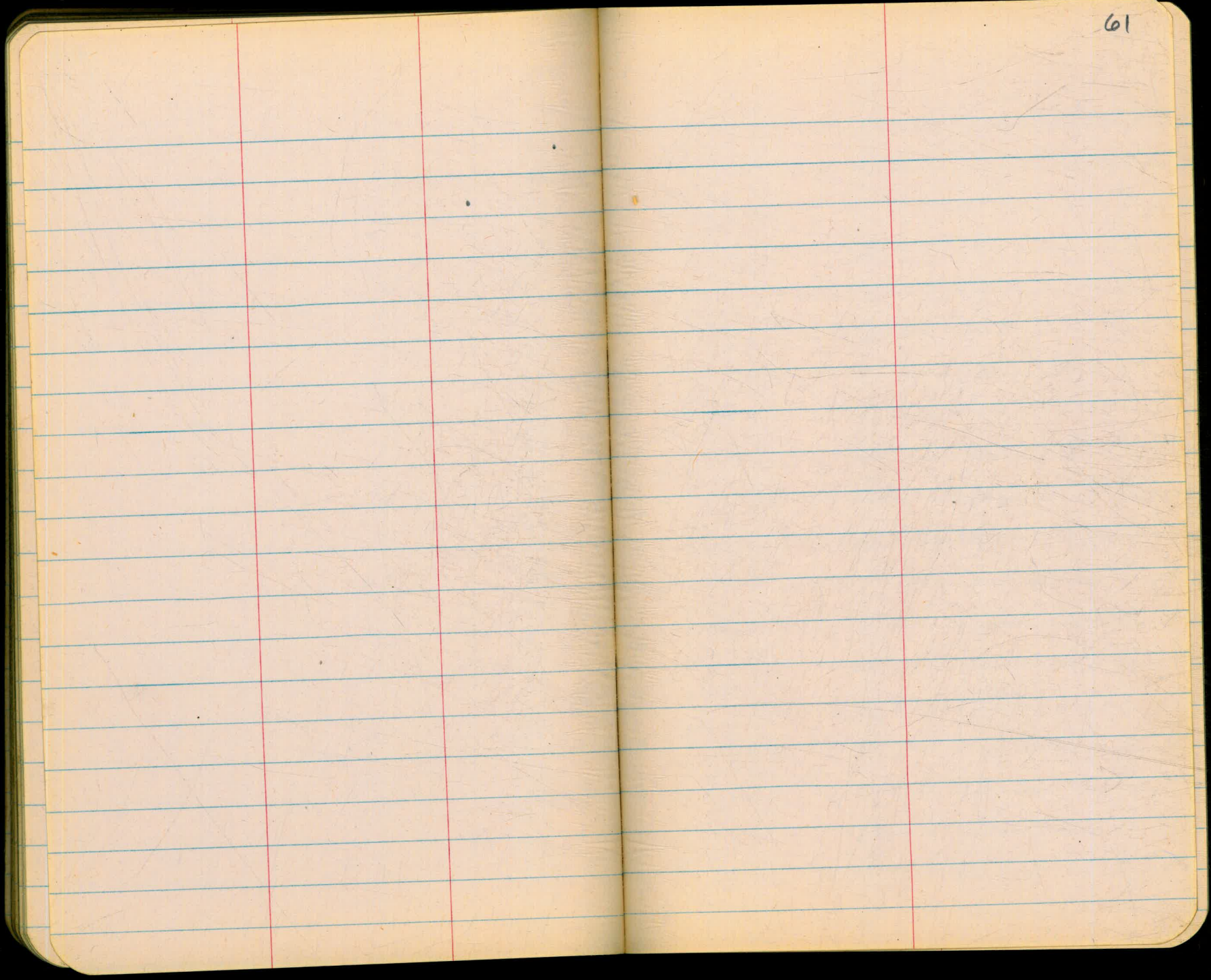
Cont'd from book #2
P. 98 48 ✓

50

52

53

55



62

65

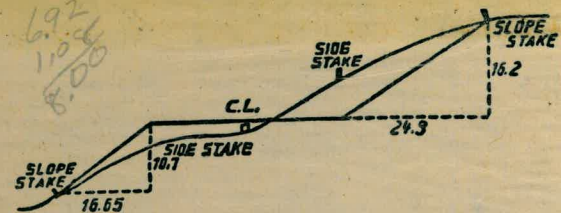
66

68

70

79

0
1
2
3
4
5
6
7
8
9
10
11
12
13
14
15
16
17
18
19
20
21
22
23
24
25
26
27
28
29
30
31
32
33
34
35
36
37
38
39
40
41
42
43
44
45
46
47
48
49
50



DISTANCES FROM SIDE STAKES FOR CROSS-SECTIONING.
 SLOPE 1 1/2 TO 1. ROADWAY OF ANY WIDTH.

	0	.1	.2	.3	.4	.5	.6	.7	.8	.9	
0	0.00	0.15	0.30	0.45	0.60	0.75	0.90	1.05	1.20	1.35	0
1	1.50	1.65	1.80	1.95	2.10	2.25	2.40	2.55	2.70	2.85	1
2	3.00	3.15	3.30	3.45	3.60	3.75	3.90	4.05	4.20	4.35	2
3	4.50	4.65	4.80	4.95	5.10	5.25	5.40	5.55	5.70	5.85	3
4	6.00	6.15	6.30	6.45	6.60	6.75	6.90	7.05	7.20	7.35	4
5	7.50	7.65	7.80	7.95	8.10	8.25	8.40	8.55	8.70	8.85	5
6	9.00	9.15	9.30	9.45	9.60	9.75	9.90	10.05	10.20	10.35	6
7	10.50	10.65	10.80	10.95	11.10	11.25	11.40	11.55	11.70	11.85	7
8	12.00	12.15	12.30	12.45	12.60	12.75	12.90	13.05	13.20	13.35	8
9	13.50	13.65	13.80	13.95	14.10	14.25	14.40	14.55	14.70	14.85	9
10	15.00	15.15	15.30	15.45	15.60	15.75	15.90	16.05	16.20	16.35	10
11	16.50	16.65	16.80	16.95	17.10	17.25	17.40	17.55	17.70	17.85	11
12	18.00	18.15	18.30	18.45	18.60	18.75	18.90	19.05	19.20	19.35	12
13	19.50	19.65	19.80	19.95	20.10	20.25	20.40	20.55	20.70	20.85	13
14	21.00	21.15	21.30	21.45	21.60	21.75	21.90	22.05	22.20	22.35	14
15	22.50	22.65	22.80	22.95	23.10	23.25	23.40	23.55	23.70	23.85	15
16	24.00	24.15	24.30	24.45	24.60	24.75	24.90	25.05	25.20	25.35	16
17	25.50	25.65	25.80	25.95	26.10	26.25	26.40	26.55	26.70	26.85	17
18	27.00	27.15	27.30	27.45	27.60	27.75	27.90	28.05	28.20	28.35	18
19	28.50	28.65	28.80	28.95	29.10	29.25	29.40	29.55	29.70	29.85	19
20	30.00	30.15	30.30	30.45	30.60	30.75	30.90	31.05	31.20	31.35	20
21	31.50	31.65	31.80	31.95	32.10	32.25	32.40	32.55	32.70	32.85	21
22	33.00	33.15	33.30	33.45	33.60	33.75	33.90	34.05	34.20	34.35	22
23	34.50	34.65	34.80	34.95	35.10	35.25	35.40	35.55	35.70	35.85	23
24	36.00	36.15	36.30	36.45	36.60	36.75	36.90	37.05	37.20	37.35	24
25	37.50	37.65	37.80	37.95	38.10	38.25	38.40	38.55	38.70	38.85	25
26	39.00	39.15	39.30	39.45	39.60	39.75	39.90	40.05	40.20	40.35	26
27	40.50	40.65	40.80	40.95	41.10	41.25	41.40	41.55	41.70	41.85	27
28	42.00	42.15	42.30	42.45	42.60	42.75	42.90	43.05	43.20	43.35	28
29	43.50	43.65	43.80	43.95	44.10	44.25	44.40	44.55	44.70	44.85	29
30	45.00	45.15	45.30	45.45	45.60	45.75	45.90	46.05	46.20	46.35	30
31	46.50	46.65	46.80	46.95	47.10	47.25	47.40	47.55	47.70	47.85	31
32	48.00	48.15	48.30	48.45	48.60	48.75	48.90	49.05	49.20	49.35	32
33	49.50	49.65	49.80	49.95	50.10	50.25	50.40	50.55	50.70	50.85	33
34	51.00	51.15	51.30	51.45	51.60	51.75	51.90	52.05	52.20	52.35	34
35	52.50	52.65	52.80	52.95	53.10	53.25	53.40	53.55	53.70	53.85	35
36	54.00	54.15	54.30	54.45	54.60	54.75	54.90	55.05	55.20	55.35	36
37	55.50	55.65	55.80	55.95	56.10	56.25	56.40	56.55	56.70	56.85	37
38	57.00	57.15	57.30	57.45	57.60	57.75	57.90	58.05	58.20	58.35	38
39	58.50	58.65	58.80	58.95	59.10	59.25	59.40	59.55	59.70	59.85	39
40	60.00	60.15	60.30	60.45	60.60	60.75	60.90	61.05	61.20	61.35	40
41	61.50	61.65	61.80	61.95	62.10	62.25	62.40	62.55	62.70	62.85	41
42	63.00	63.15	63.30	63.45	63.60	63.75	63.90	64.05	64.20	64.35	42
43	64.50	64.65	64.80	64.95	65.10	65.25	65.40	65.55	65.70	65.85	43
44	66.00	66.15	66.30	66.45	66.60	66.75	66.90	67.05	67.20	67.35	44
45	67.50	67.65	67.80	67.95	68.10	68.25	68.40	68.55	68.70	68.85	45
46	69.00	69.15	69.30	69.45	69.60	69.75	69.90	70.05	70.20	70.35	46
47	70.50	70.65	70.80	70.95	71.10	71.25	71.40	71.55	71.70	71.85	47
48	72.00	72.15	72.30	72.45	72.60	72.75	72.90	73.05	73.20	73.35	48
49	73.50	73.65	73.80	73.95	74.10	74.25	74.40	74.55	74.70	74.85	49
50	75.00	75.15	75.30	75.45	75.60	75.75	75.90	76.05	76.20	76.35	50

Please Return to
 City of San Diego Water Dept.
 Room 903 Civic Center

THE NATIONAL BLANK BOOK COMPANY
 HOLYOKE MASSACHUSETTS
 NEW YORK CHICAGO BOSTON SAN FRANCISCO