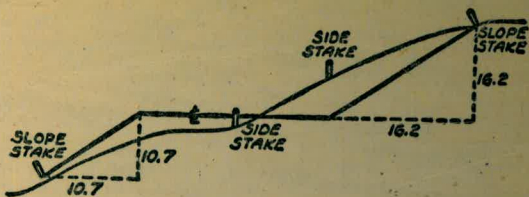


#786



DISTANCES FROM SIDE STAKES FOR CROSS-SECTIONING
SLOPE 1 TO 1, ROADWAY OF ANY WIDTH

	0	.1	.2	.3	.4	.5	.6	.7	.8	.9	
0	0.00	0.10	0.20	0.30	0.40	0.50	0.60	0.70	0.80	0.90	0
1	1.00	1.10	1.20	1.30	1.40	1.50	1.60	1.70	1.80	1.90	1
2	2.00	2.10	2.20	2.30	2.40	2.50	2.60	2.70	2.80	2.90	2
3	3.00	3.10	3.20	3.30	3.40	3.50	3.60	3.70	3.80	3.90	3
4	4.00	4.10	4.20	4.30	4.40	4.50	4.60	4.70	4.80	4.90	4
5	5.00	5.10	5.20	5.30	5.40	5.50	5.60	5.70	5.80	5.90	5
6	6.00	6.10	6.20	6.30	6.40	6.50	6.60	6.70	6.80	6.90	6
7	7.00	7.10	7.20	7.30	7.40	7.50	7.60	7.70	7.80	7.90	7
8	8.00	8.10	8.20	8.30	8.40	8.50	8.60	8.70	8.80	8.90	8
9	9.00	9.10	9.20	9.30	9.40	9.50	9.60	9.70	9.80	9.90	9
10	10.00	10.10	10.20	10.30	10.40	10.50	10.60	10.70	10.80	10.90	10
11	11.00	11.10	11.20	11.30	11.40	11.50	11.60	11.70	11.80	11.90	11
12	12.00	12.10	12.20	12.30	12.40	12.50	12.60	12.70	12.80	12.90	12
13	13.00	13.10	13.20	13.30	13.40	13.50	13.60	13.70	13.80	13.90	13
14	14.00	14.10	14.20	14.30	14.40	14.50	14.60	14.70	14.80	14.90	14
15	15.00	15.10	15.20	15.30	15.40	15.50	15.60	15.70	15.80	15.90	15
16	16.00	16.10	16.20	16.30	16.40	16.50	16.60	16.70	16.80	16.90	16
17	17.00	17.10	17.20	17.30	17.40	17.50	17.60	17.70	17.80	17.90	17
18	18.00	18.10	18.20	18.30	18.40	18.50	18.60	18.70	18.80	18.90	18
19	19.00	19.10	19.20	19.30	19.40	19.50	19.60	19.70	19.80	19.90	19
20	20.00	20.10	20.20	20.30	20.40	20.50	20.60	20.70	20.80	20.90	20
21	21.00	21.10	21.20	21.30	21.40	21.50	21.60	21.70	21.80	21.90	21
22	22.00	22.10	22.20	22.30	22.40	22.50	22.60	22.70	22.80	22.90	22
23	23.00	23.10	23.20	23.30	23.40	23.50	23.60	23.70	23.80	23.90	23
24	24.00	24.10	24.20	24.30	24.40	24.50	24.60	24.70	24.80	24.90	24
25	25.00	25.10	25.20	25.30	25.40	25.50	25.60	25.70	25.80	25.90	25
26	26.00	26.10	26.20	26.30	26.40	26.50	26.60	26.70	26.80	26.90	26
27	27.00	27.10	27.20	27.30	27.40	27.50	27.60	27.70	27.80	27.90	27
28	28.00	28.10	28.20	28.30	28.40	28.50	28.60	28.70	28.80	28.90	28
29	29.00	29.10	29.20	29.30	29.40	29.50	29.60	29.70	29.80	29.90	29
30	30.00	30.10	30.20	30.30	30.40	30.50	30.60	30.70	30.80	30.90	30
31	31.00	31.10	31.20	31.30	31.40	31.50	31.60	31.70	31.80	31.90	31
32	32.00	32.10	32.20	32.30	32.40	32.50	32.60	32.70	32.80	32.90	32
33	33.00	33.10	33.20	33.30	33.40	33.50	33.60	33.70	33.80	33.90	33
34	34.00	34.10	34.20	34.30	34.40	34.50	34.60	34.70	34.80	34.90	34
35	35.00	35.10	35.20	35.30	35.40	35.50	35.60	35.70	35.80	35.90	35
36	36.00	36.10	36.20	36.30	36.40	36.50	36.60	36.70	36.80	36.90	36
37	37.00	37.10	37.20	37.30	37.40	37.50	37.60	37.70	37.80	37.90	37
38	38.00	38.10	38.20	38.30	38.40	38.50	38.60	38.70	38.80	38.90	38
39	39.00	39.10	39.20	39.30	39.40	39.50	39.60	39.70	39.80	39.90	39
40	40.00	40.10	40.20	40.30	40.40	40.50	40.60	40.70	40.80	40.90	40
41	41.00	41.10	41.20	41.30	41.40	41.50	41.60	41.70	41.80	41.90	41
42	42.00	42.10	42.20	42.30	42.40	42.50	42.60	42.70	42.80	42.90	42
43	43.00	43.10	43.20	43.30	43.40	43.50	43.60	43.70	43.80	43.90	43
44	44.00	44.10	44.20	44.30	44.40	44.50	44.60	44.70	44.80	44.90	44
45	45.00	45.10	45.20	45.30	45.40	45.50	45.60	45.70	45.80	45.90	45
46	46.00	46.10	46.20	46.30	46.40	46.50	46.60	46.70	46.80	46.90	46
47	47.00	47.10	47.20	47.30	47.40	47.50	47.60	47.70	47.80	47.90	47
48	48.00	48.10	48.20	48.30	48.40	48.50	48.60	48.70	48.80	48.90	48
49	49.00	49.10	49.20	49.30	49.40	49.50	49.60	49.70	49.80	49.90	49
50	50.00	50.10	50.20	50.30	50.40	50.50	50.60	50.70	50.80	50.90	50

Distance of slope stake from side or shoulder stake for any width roadway, slope 1 to 1. If ground is nearly level, the cut or fill at side stake is located by the double entry method in left column and top row. The number in body of table in same row and column gives distance from side stake to slope stake. If ground is not level estimate the difference in elevation between the side stake and slope stake, lower target by this amount if cut, elevate if fill. Add this amount to cut or fill and find distance in table. Set up rod at this point, and line of sight should cut target. If it does not make the slight adjustment necessary.

MICROFILMED

JAN 1 1965

TABLE XIII—CORRECTIONS FOR TANGENTS AND EXTERNALS

These corrections are to be added to the approximate values, found by dividing the tangent, or external, for a 1° curve (Table VIII) by the degree of curve, in order to obtain the true tangents, or externals. Intermediate values may be obtained by interpolation.

FOR TANGENTS ADD

Central Angle	DEGREE OF CURVE													
	5°	10°	15°	20°	25°	30°	35°	40°	45°	50°	55°	60°	65°	70°
10°	.03	.06	.09	.13	.16	.19	.22	.25	.28	.31	.34	.38	.42	.46
15°	.04	.10	.14	.19	.24	.29	.34	.39	.45	.51	.53	.58	.63	.68
20°	.06	.13	.19	.26	.32	.39	.45	.51	.58	.65	.72	.79	.84	.90
25°	.08	.16	.24	.33	.40	.49	.58	.67	.75	.83	.90	.99	1.06	1.14
30°	.10	.19	.29	.39	.49	.59	.69	.79	.89	.99	1.09	1.20	1.29	1.39
35°	.11	.22	.34	.47	.58	.69	.79	.81	.92	1.04	1.29	1.42	1.54	1.66
40°	.13	.26	.40	.53	.67	.80	.93	1.06	1.20	1.34	1.49	1.64	1.79	1.94
45°	.15	.30	.44	.60	.76	.91	1.06	1.21	1.37	1.52	1.70	1.87	2.04	2.21
50°	.17	.34	.51	.68	.85	1.02	1.19	1.36	1.54	1.72	1.91	2.10	2.29	2.48
55°	.19	.38	.57	.76	.95	1.14	1.32	1.52	1.72	1.92	2.14	2.35	2.56	2.77
60°	.21	.42	.63	.84	1.05	1.27	1.49	1.71	1.94	2.17	2.38	2.60	2.83	3.07
65°	.23	.46	.69	.93	1.16	1.40	1.64	1.88	2.13	2.38	2.63	2.88	3.13	3.39
70°	.25	.51	.76	1.02	1.28	1.54	1.80	2.06	2.33	2.60	2.88	3.16	3.44	3.72
75°	.27	.58	.83	1.12	1.40	1.69	1.98	2.27	2.57	2.87	3.16	3.47	3.78	4.09
80°	.30	.61	.91	1.22	1.53	1.84	2.15	2.46	2.78	3.10	3.44	3.78	4.12	4.46
85°	.33	.66	1.00	1.33	1.68	2.02	2.36	2.70	3.05	3.40	3.77	4.14	4.55	4.89
90°	.36	.72	1.09	1.45	1.83	2.20	2.57	2.94	3.32	3.70	4.10	4.50	4.91	5.32
95°	.39	.79	1.19	1.55	2.00	2.40	2.80	3.20	3.61	4.02	4.40	4.98	5.38	5.83
100°	.43	.86	1.30	1.74	2.18	2.62	3.06	3.50	3.95	4.40	4.88	5.37	5.85	6.34
110°	.51	1.03	1.56	2.08	2.61	3.14	3.67	4.21	4.76	5.31	5.86	6.43	7.01	7.60
120°	.62	1.25	1.93	2.52	3.16	3.81	4.45	5.11	5.77	6.44	7.12	7.80	8.50	9.22

FOR EXTERNALS ADD

Central Angle	DEGREE OF CURVE													
	5°	10°	15°	20°	25°	30°	35°	40°	45°	50°	55°	60°	65°	70°
10°	.001	.003	.004	.006	.007	.008	.009	.011	.012	.014	.015	.017	.018	.020
15°	.003	.007	.010	.014	.018	.023	.027	.029	.032	.035	.039	.043	.047	.051
20°	.006	.011	.017	.022	.028	.034	.038	.045	.051	.057	.063	.070	.076	.083
25°	.009	.018	.027	.036	.046	.056	.065	.074	.083	.093	.106	1.20	1.27	1.35
30°	.013	.025	.038	.051	.065	.078	.090	.103	.116	.129	.149	.170	.179	.188
35°	.018	.035	.054	.072	.086	.109	.131	.153	.175	.197	.213	.230	.247	.264
40°	.023	.046	.070	.093	.117	.141	.172	.203	.234	.265	.277	.290	.315	.341
45°	.030	.060	.093	.119	.153	.184	.216	.254	.289	.325	.351	.378	.411	.445
50°	.037	.075	.116	.151	.189	.227	.266	.305	.345	.384	.425	.467	.508	.550
55°	.046	.093	.142	.188	.236	.283	.332	.381	.420	.479	.530	.582	.641	.700
60°	.056	.112	.168	.225	.283	.340	.398	.457	.516	.575	.636	.697	.774	.851
65°	.067	.135	.204	.273	.343	.412	.483	.554	.625	.697	.711	.845	.922	1.01
70°	.080	.159	.240	.321	.403	.485	.568	.652	.735	.819	.906	.994	1.08	1.17
75°	.095	.182	.286	.383	.480	.578	.678	.777	.877	.977	1.07	1.18	1.29	1.39
80°	.110	.220	.332	.445	.558	.671	.787	.903	1.02	1.13	1.25	1.38	1.50	1.62
85°	.128	.259	.391	.524	.657	.790	.926	1.06	1.20	1.34	1.47	1.62	1.76	1.91
90°	.149	.299	.450	.603	.756	.910	1.07	1.22	1.38	1.54	1.70	1.87	2.03	2.20
95°	.174	.350	.522	.706	.985	1.06	1.25	1.43	1.62	1.80	1.99	2.18	2.38	2.58
100°	.200	.401	.604	.809	1.01	1.22	1.43	1.64	1.85	2.06	2.28	2.50	2.73	2.96
110°	.268	.536	.806	1.08	1.35	1.63	1.91	2.20	2.48	2.76	3.05	3.35	3.66	3.96
120°	.360	.721	1.08	1.45	1.82	2.19	2.57	2.95	3.33	3.72	4.11	4.50	4.91	5.32

786

INDEX
Replacement.

Profile - Proposed Bonita Pipeline 1-7

CK Elev. - BM. etc. 8.

Profile " " " 9-22

BONITA PIPELINE REPLACEMENT } 26-33
TIES TO VALS PRIOR CO'S NEW HOUSES }
REF. PTS ETC. - VALENCIA PARK AREA } Valice

DEC. 15 1949

BEATTY
ROGERS
FINNEY

1.

Q PROFILE, PROPOSED
NEW BONITA PIPELINE
(10' EAST OF PRESENT PIPELINE)

B.M.	9.49	234.89	225.40	County RM. (City Datum)
205+24.4		9.44	225.45	
+35.0		9.49	225.40	
+46.1		9.2	225.7	
+53		8.9	226.0	
+57.2		7.6	227.3	
+83		5.3	229.6	
206+00		3.5	231.4	
+50		2.5	232.4	
+68		2.0	232.9	
+75		1.9	233.0	
+85		2.2	232.7	
207+00		2.3	232.6	
+59		3.1	231.8	
+59		7.0	227.9	
+81		10.7	224.2	
208+00		12.3	222.6	
IP	5.62	227.48	13.03	221.86
+46		6.6	220.9	

ON TAG 275' NE Q40
R.S.
ED TAG 43-2226

NOTE: - 36.6 To BE
ADDED TO THIS
STATIONING OF
THIS PROFILE

Q Division St. on Conc part.

Edge of Conc part.

at fence

Edge of driveway road

Q " " " "

Edge " " " "

Note: Insert Equation
at Churchward St.
in lieu of above.

1-3-50 RM

12/15/49

2.

E Profile - Bonita P.L.

	227.48			
208+36		10.6	216.9	at fence
+50		12.1	215.4	
209+00		13.7	213.8	
+31		13.2	214.3	
+33		12.1	215.4	
+22		11.6	215.9	
+50		10.2	217.3	
+71		5.4	222.1	
210+00				
209+00		4.1	223.4	
+15		3.7	223.8	
+27		2.7	224.8	
IP (exc)	11.67	238.81	0.34	227.14
+48		10.6	228.2	
+49		9.8	229.0	
+51		10.3	228.5	
+60		10.6	228.2	
+55		9.0	229.8	
+68		9.5	229.3	
211+00		8.4	230.4	

12/15/49

3

Profile - Bonita P.L.

211+15	238.81	8.8	230.0
+20		6.3	232.5
+30		6.1	232.7
+42		1.2	237.6
+44		1.7	237.1
+50		1.2	237.6
+83		1.8	237.0
+85		1.5	237.3
212+00		4.2	234.6
+03		4.5	234.3
+28		4.4	234.4
+35		5.5	233.3
+50		5.8	233.0
+63		6.2	232.6
+70		8.1	230.7

9.3 8.4 8.4 6.3 5.0
10 8 4 C 10

7.8 6.1 1.1
10 C 10

7.1 6.9 1.2 1.7 1.3
15 10 C 2 10

6.9 6.7 0.7 1.2 1.2 1.3
20 13 6 3 C 10

6.9 6.8 1.5 1.9 1.5 1.4
13 8 C 2 3 10

6.6 6.6 5.0 4.2 1.6 2.0 1.6 1.4
20 17 12 C 5 7 9 20

9.7 9.7 6.5 5.9 4.4 3.8 1.6
25 20 17 3 C 12 15

9.3 8.7 6.1 5.8 5.6 4.1 4.0
20 12 7 C 7 10 20

9.4 8.1 6.2 6.0 4.2 4.8
16 C 7 16 24 29

12/15/29

41

Profile - Bonita P.L.

	238.81		
212+93		9.3	229.5
213+00		10.6	228.2
TP rock 0.05	226.08	12.78	226.03
(11.0 LT. 213+17)		6.05	220.03
(11.0 LT. 213+20)		6.60	219.48
+29		4.1	222.0
+29		2.3	223.8
+30		3.9	222.2
+31		3.9	222.2
+32		3.0	223.1
+44		3.1	223.0
+50		3.4	222.7
+53		3.8	222.3
+56		5.4	220.7
+57		3.5	222.6
+59		3.3	222.8
+67		10.6	215.5
+89		12.6	213.5
TP rock 0.11	213.54	12.65	213.43

139 147 140 106 9.4
17 13 9 0 20

Top 28" steel pipe

" " " "

Shldr of Alta Vista road

1/2 road

Shldr of road

12/15/49

♀ Profile - Bonita P.L.

5.

		213.54			
214+00			2.2		211.3
+50			10.0		203.5
³⁶ P	0.00	200.50	13.04	200.50	NAIL IN PIPE 25' RT 214+70
215+00			3.8		196.7
+32			6.2		194.3
+37			8.0		192.5
+50			9.4		191.1
¹⁶ +			10.4		190.1
³⁰ P	0.76	188.22	13.04	187.46	Top 1 1/4 PIPE
216+00			3.6		184.6
+27			9.8		178.4
+50			12.2		176.0
³⁶ P	1.07	177.57	11.72	176.50	
217+00			5.2		172.4
+17			6.0		171.6
¹² +36			5.3		172.3
+50			6.4		171.2
218+00			6.4		171.2
+32			8.9		168.7

12/15/49

6.

Profile - Bonita P.L.

218+39	177.57	10.0	167.6	So. edge of road	} Arroya St.
+49		10.3	167.3	Nor " " "	
(9.7 LT. 218+49)	10.86	166.71		Top 28" Steel pipe	
+50		10.2	167.4		
+53		11.2	166.4		
+58		12.3	165.3		
+67		15.7	161.9		
+70		16.4	161.2		
+72		15.7	161.9		
+78		13.7	163.9		
(9.8' LT. 218+85)	10.56	167.01		Top 28" steel pipe	
+90		10.7	166.9		
219+00		9.5	168.1		
+50		5.1	172.5		
220+00		7.0	170.6		
Peck	12.59	189.94	0.22	177.35	
10' LT. 220+16	12.58	177.36		Top 28" steel pipe	
10' LT. 220+32	10.94	179.00		" " "	
+35		7.6	182.3		
+45		7.2	182.7		

12/15/49

Profile - Bonita P.L.

		189.94		
220+50			6.1	193.8
221+00			2.6	187.3
TP rock	12.84	202.38	0.40	189.54
221+00			10.1	192.3
+36			12.6	189.8
+43			10.4	192.0
+48			8.1	194.3
+50			7.7	194.7
+58			4.2	198.2
TP rock	9.32	211.49	0.21	202.17
222+00			7.3	204.2
+17			4.6	206.9
+18			4.6	206.9
222+275			5.13	206.36
SET TBM	2.02	212.22	1.29	210.20
P	2.09	205.26	9.05	203.17
P	0.11	192.54	12.83	192.43
P	0.06	182.18	10.42	182.12
P	8.93	178.26	12.85	169.33

Edge of concrete paving. (1.95 LT to edge of Post N-5)

Top F.H. NE Cor Bonita Dr & Santa Isabel

X on Corbet. NE Cor Encina

Top F.H. NE Cor San Onofre

NAIL IN pole Har of Olivera

12/15/49

8.

Check Elev. Bonita P.L.

		178.26		
TP	8.11	186.31	0.06	178.20
TP	5.60	184.66	7.25	179.06
CK City BM	10.21	184.66	10.21	174.45
TP	8.71	187.77	5.60	179.06
TP	5.68	192.87	0.58	187.19
TP	3.90	190.54	6.23	186.64
CK City BM			5.47	185.07
CK old nail in pole			5.44	185.10
CK old nail in pole			4.79	185.75

City Datum

= 174.24 Disc in sidewalk SE Cor. San Jacinto & Manzanera

City Datum

= 185.12 BP End of curb So Side Churchward at Imperial

+ 6.12 = 191.22 } NAIL IN TEL. Pole Nor Side Imperial
near Junct. of Churchward.+ 6.12 = 191.87 } Elev. = 191.31 (File 532)
USGS Datum

Checked & Reduced pg. 1-8 1-3-50 RM

DEC. 19, 1949
 Cool, BEATTY
 ROGERS
 FINNEY

9.

± PROFILE — BENITO PL

STATION	297	213.17	210.20		
					Top E.H. Benito & Santa Isabel (pg. 7)
222+50		6.27	206.90		on part
223+12.6					
223+76.8		6.33	206.84		in gutter
223+76.2		5.80	207.37		top curb
223+78.2		5.70	207.47		top curb
223+80.5		5.48	207.69		Edge sidewalk
223+80		5.23	207.94		on "
223+87.8		5.07	208.10		Edge "
223+87.5		4.5	208.7		Base wall
223+87.5		+2.92	214.09		Top conc. Brick wall
223+87.5		4.5	208.7		Base of wall
223+87.5		4.64	208.53		Edge of conc. DRIVEWAY
223+87.5		4.52	208.65		Edge " " " } Red conc.
223+87.5		4.2	209.0		
223+87.5	Sewer M.H. 36" LT	5.5	207.7		
223+87.5	Run 100.	12.9	200.3		
223+87.5		4.1	209.1		Base of wall
223+87.5		0.06	213.11		Top conc. Brick wall (0.5 thick)
223+87.5		4.1	209.1		Base of wall
102 RT 223+90		6.82	206.35		Top 30" pipe at E. flange of G.V.
224+00		5.0	208.2		

12/19/29

10

E PROFILE - BENITA PL

	213.17				
224+00		4.6		208.6	
+50		5.8		207.4	
+67		6.4		206.8	
+82		8.10		205.07	Edge conc sidewalk
+84		8.04		205.13	" " "
+87	Jewer M.H. 77 ⁵ LT Inv. 18.00		195.17		
+88	215 ⁵ RT Inv. 10.00	8.10	203.17		
+88		8.10		205.07	Top curb
+88		8.10		205.07	" "
+90		8.70		204.47	on conc gutter
225+00		8.47		204.70	on conc part
+55		8.53		204.64	on conc paved st. (Encino Trce)
+20		9.24		203.93	on conc gutter
+20		8.69		204.49	Top curb
+20		8.68		204.49	Top curb
TP (on curb) 1.93	205.12	9.98	203.19		
+39		0.4		204.7	
+50		1.2		203.9	
+76		4.1		201.0	
226+00		4.9		200.2	
+26		6.3		198.8	
+50		12.2		194.9	
+26	Sewer M.H. 119 ⁵ LT Inv. 21.4		183.7		
+27	79 ⁵ RT Inv. 14.8		190.3		
+27		11.7		193.4	

12/19/29

11.

E PROFILE - BONITO PL.

TP	205.12				
0.19	192.39	12.92	192.20		
227+00		2.4		190.0	
+50		5.1		187.3	
+70		5.6		186.8	
+25		8.5		183.9	
+26		8.59		183.80	Edge Conc Sidewalk
+27		8.66		183.73	Edge Sidewalk
+28		8.66		183.73	Top curb
+29		8.66		183.73	Top curb
+30		9.31		183.08	10' Conc gutter
228+00		8.88		183.51	on part
+31		8.88		183.51	1/2 st, on part San onfra
+32		8.82		183.57	in gutter
+33		8.82		182.57	Top curb
+34		8.82		183.57	" "
+35		8.82		182.57	" "
+36		8.79		183.60	Edge Conc Sidewalk
+37		8.76		183.63	" " "
+38		12.8		179.6	
+39		12.5		179.9	

Sewer MH. 810 LT

722 RT

8.88	182.4
19.3	173.1
15.3	183.8
7.42	177.0

12/19/29

12.

E PROFILE - BONITA P.L.

CR 11. on F.H.	192.39	10.24	182.15	
11. 3.07	182.41	13.05	179.34	= 182.12 (pg. 7)
228+50		4.4	178.0	
+51		5.6	176.8	
+52		7.1	175.3	
229+00		9.4	173.6	
+53		9.6	172.8	
+54		9.2	173.2	
+55		10.9	171.5	Edge conc sidewalk
+56		11.18	171.23	" " "
+57		12.30	170.11	Top curb
+58		12.32	170.09	" " } seems to have dropped down
+59		12.52	169.89	conc gutter
11. 0.12	169.61	12.92	169.49	(Edge conc part)
+60		1.72	167.89	
230+00		2.5	167.1	
+61		4.1	165.5	
+62		4.9	164.7	
+63		5.7	163.9	
+75				Rim MH Sewer Rod E.I. 10.40 159.20

12/19/49

13

E PROFILE BONITA P.L.

	169.61			
230+718		7.03	162.58.	Edge conc part
231+00		8.60	161.01.	on " "
+07 ³		9.03	160.58.	on gutter
+07 ⁴		8.48	161.13.	Top curb
+08 ⁶		8.55	161.06.	Top curb
+162		8.98	160.63.	Edge conc sidewalk
+282		9.48	160.13.	" " "
+31		9.8	159.8.	
+50		7.8	161.8.	
+56		9.7	159.9.	
+71		9.8	159.8.	
232		11.5	158.1.	
+19		11.4	158.2.	
+35		13.0	156.6.	
TP	7.82 164.67	12.76	156.85	x on curb
+47 ¹		8.78	155.89.	Edge conc sidewalk
+50		8.82	155.85.	
+52 ¹		8.84	155.83.	Edge conc sidewalk
+55 ⁵		8.85	155.82.	Top curb
+56 ¹		8.85	155.82.	Top curb

12/19/49

14

± PROFILE - JUNITA PL.

164.67

232+56'		9.50		155.17.	in gutter.
(83' SEWER M.H. 84' LT	Rim 12.70	151.97			
+79.6	111' 19.80	144.87			
	8.93			155.74.	± 5T
+83' SEWER M.H. 35' RT	Rim 7.6	157.1			
233+00	111' 15.3	149.4			on pav't
	9.40			155.27.	
+04.6		9.56		155.11.	in gutter
+04.7		8.90		155.77.	Top curb
+10.6		8.75		155.92.	Edge conc. sidewalk
+15		7.8		156.9.	
+15.5		4.6		160.1.	
+16		3.8		160.9.	
+18		3.0		161.7.	
11) 12.65 173.31		4.01	160.66		
+19		5.4		167.9.	
+22		4.6		168.7.	
+35		3.0		170.3.	
+50		5.0		168.3.	
+75		4.6		168.7.	
+83		3.8		169.5.	
+88		4.6		168.7.	
234+00		4.5		168.8.	
+23		5.3		168.0.	

12/17/49

15.

♀ PROFILE - BONITA P.L.

	173.31			
234 +25		5.9	167.4	
+33		5.5	167.8	
+45		5.8	167.5	
+50		6.4	166.9	
ck P		3.94	169.37	-169.33 NAIL IN POLE (pg. 2)
+61		7.8	165.5	
+79		7.4	165.9	
235+00		7.9	165.4	
+33		7.0	166.3	
+50		5.4	167.9	
+62		4.3	169.0	
+63		4.9	168.4	Edge road not surfaced
+80		3.9	169.4	& Road (approx) " "
+97		3.7	169.6	Edge road not surfaced
236+00		2.8	170.5	
P	5.94	179.25	0.00	173.31
+50		9.1	170.2	Top west prop. marker post
237+00		7.3	172.0	
+27		6.4	172.9	

Sprayed with oil
& Sanded 12/23/49

12/19/29

16.

E PROFILE - BONITA PL

	179.25		
237 +47		4.4	174.9
+50		4.2	175.1
238+00		4.8	174.5
+27		5.0	174.3
+22 SEWER MH 1413 LT	Rim 6.80 Inn. 13.70	173.45 165.55	
+39		5.3	174.0
+50		4.6	174.7
+64		13.5	165.8
TI Deck	0.24 166.93	12.56 166.69	
+655		5.4	161.5
+70		4.4	162.5
+84		5.8	161.1
239+00		8.7	158.2
TI Deck	0.07 153.99	13.01 153.92	
+50		6.9	147.1
+56		7.0	147.0
+91		11.6	142.4
+80 Sewer MH 2122 LT	Rim 17.7 Inn. 25.2	136.3 127.8	
" " 327 RT	Rim 9.0 Inn. 15.8	145.0 138.2	
+98		12.4	141.6

Edge med not surfaced

" " " "

Sprayed with oil
& sanded 60'+
RT of E.

12/23/29

12.56
5.75
6.81

13.9 14.2 13.4 11.8 11.6 14.0 14.4 13.6 12.8 19.1 19.0
12 7 3 3 2 OK 1 4 4 10 10 20

13.4 19.0 16.2 16.5 16.4 12.4 12.4 14.4 15.3 15.38 15.9 12.8
15 7 7 5 3 2 3 7 10 10 12 15
T&P
PIPE

Right side.

LEFT SIDE

12/19/49

201+31 17.

E PROFILE - BONITA PL.

240+00	153.99	14.1	139.9
2+02		18.8	135.2
+08		18.8	135.2
+14		16.8	137.2
+19		12.6	141.4
+28		12.5	141.5
+50		8.9	145.1
+72		6.0	148.0
TP	12.99	166.79	0.19 153.80
+91		7.6	159.2
241+10.1	Top 10" Water (RM)		155.6
241+00		7.9	158.9
241+10	Top 8" gv. 20" RT Top 12" Val 138" LT	8.21	157.60 151.49
241	20.5 RT STA 240+93	8.82	157.91
+204	Jewer N.H. 125" LT (RM) 10.1	10.1	156.7
+204	" " 36" RT (RM) 8.5	8.5	158.3
		100.23.7	143.1
	21.3 RT STA 241+13	7.93	158.86
	20.8 RT STA 241+34	7.66	159.13
		8.23	158.56
+30		7.2	159.6

132.61
 16.8 16.8 15.38 15.8 17.4 14.1 14.1 19.0 18.6 18.0
 15 12 10 .8 6 6 1 3 10 15
 Top
 Pipe

158.99

15.00 12.50

10
 Top
 Pipe

RM 153.80

10.60

164.40 etc

6.80 = 157.60

12.91 = 151.49

(RAIN 3:40 pm)

DEC. 20 1949
 Beatty
 Rogers.Top of curb
 in gutter conc part.

E CON. PAV.

Top. curb
 in gutter conc part

12/20/49

18.

PROFILE - BONITA PL

	166.79			
241+41		60	160.8.	
+46		62	160.6.	
+50		5.1	161.7.	
+70		06	166.2.	
P	11.73	177.40	1.12	165.67
+87		10.3	167.1.	
+96		6.1	171.3.	
242+00		5.8	171.6.	
+05		4.8	172.6.	
+10		3.1	174.3.	
+23		1.3	176.1.	
+31		0.2	177.2.	
P	11.99	188.98	0.41	176.99
+35		10.1	178.9.	
+41		9.0	180.0.	
+50		9.0	180.0.	
+90		6.9	182.1.	
243+00		7.4	181.6.	
+50		5.6	183.4.	

12/20/49

19.

♀ PROFILE - BONITA PL.

		188.98			
2	243+58		4.9		184.6
	+60		3.0		186.0
	+80		1.4		187.6
	+85		0.3		188.7
H	TP	0.47	188.72	0.73	188.25
	244+00		+0.1		188.8
	+10		0.0		188.7
2	+24		1.4		187.3
	+50		8.1		180.6
	TP				TP 150.07
	TBM	0.20	175.88	13.04	175.68 245+00
	+90		7.8		168.1
	245+00		9.2		166.7
H	+23		11.5		164.4
	+50		19.9		156.0
	+70		21.1		154.8
	+85		18.9		157.0
	246+00		17.8		158.1
2	+37		14.1		161.8

12/20/29

20.

E PROFILE - BONITO PL

	175.88			
246+50		13.3		162.6
+64		13.5		162.4
TP	0.74	163.96	12.66	163.22
+80		3.4		160.6
+86		5.7		158.3
247+00		7.3		156.7
+50		10.1		153.9
+88		10.1		153.9
248+00		9.2		154.8
+05		8.3		155.7
+23		9.0		155.0
+38		10.9		153.1
TP	2.30	153.60	12.66	151.30
+50		3.9		149.7
+58		6.2		147.4
+72		7.6		146.0
10' LL	248+75	7.92	145.68	
+85		10.2		143.4
+90		11.9		141.7

TOP 28" PIPE

12/20/49

21.

1/2 PROFILE - BONITA P.L.

	153.60		
248+95		14.5	139.1
249+00		14.6	139.0
+09		15.1	138.5
+13		14.0	139.6
+28		12.4	141.2
+45		9.3	144.3
10' Lt Sta (249+45)		7.90	145.70
Set P		9.83	143.71
			conc. Pipe 8' Lt. 249+32
+50			8.0 145.6
P	1138	164.86	0.12 153.48
250+00		4.0	160.9
+10		1.5	163.4
+20		1.0	163.9
+50		4.2	160.7
+67		6.1	158.8
+72		6.1	158.8
+80		5.2	159.7
251+00		4.2	160.7

8" TRUNK SEWER 248+965

TP.	3.76	147.53	149.77
248	} Top Sewer M.H. 2350 RT. Inv. " " " "	0.30	147.23
+965		7.80	139.73
	} Top Sewer M.H. 1393 LT. Inv. " " " "	11.65	135.88
		17.40	130.13

Top 28" Pipe

12/20/29

22

PROFILE — BONITO PL.

	164.86			
TP	12.77	177.60	0.03	164.83
251+50			8.7	168.9
+84			3.7	173.9
252+00			3.3	174.3
+50			5.4	172.2
+81			10.6	167.0
10' Lt 252+57			11.93	165.67
TP	6.30	176.56	7.34	170.26
+89			12.0	164.6
+94			10.8	165.8
+95			12.7	164.4
253+00			13.0	163.6
10' Lt Sta 252+90			12.80	163.76
+04			9.5	167.1
+15			8.3	168.3
+47			4.6	172.0
+54			2.5	174.1
+65			0.8	175.8
+73			0.0	176.6

Top 28" Pipe

Nail in
center, post
pile

Top 28" Pipe at vert &

Edge of Road

" " "

12/20/49

23

E PROFILE - BONITA P.L.

P	12.56	176.56 188.70	0.42	176.14		
254+00			5.7	183.0		
+17			2.7	186.0		
+25			0.1	188.6		
P	9.11	197.30	0.51	188.19		
+37			7.3	190.0		
+50			4.6	192.7		
+56			3.6	193.7		
+78			2.4	194.9	256+337-10' LT	186.9 TOP 2" GAS
255+00			2.0	195.3	256+342 10' LT.	186.3 TOP 28" GUNITE PIPE
+50			1.7	195.6	256+347 10' LT.	188.05 SIDEWALK
+78			2.6	194.7		
256+00			4.6	192.7		
+22			4.6	192.7		
+28 ²			9.19	188.11	Edge of sidewalk	
+34 ³			9.33	187.97	" " "	
+37 ²			9.39	187.91	Top Curb	
+36 ²			9.45	187.85	" "	
+38 ²			10.03	187.27	IN GUTTER CONC. PAVT.	

✓ 2/17/50

12/21/49

24

♀ PROFILE - BONITA P.L.

		197.30			nail in TP
TP	4.10	192.47	9.01	188.29	Churchward
CK TBH			5.81	186.66 = 186.64	SE curb Return Church ward

(300
29.7)

TP	9.01	197.30		188.29	
----	------	--------	--	--------	--

256+44 ⁵			9.80	187.50	
---------------------	--	--	------	--------	--

7.45

+50			9.80	187.50	
-----	--	--	------	--------	--

+69 ²⁴	(on CONC pav't AT 1/4 of 30" G.YAL.)		9.92	187.40	
-------------------	--	--	------	--------	--

L 79

+69 ²⁴	(Top 28" pipe ST. GATE VAL)		12.15	185.15	
-------------------	--------------------------------	--	-------	--------	--

CK TP			9.01	188.29	
-------	--	--	------	--------	--

Checked & Reduced pg. 9-24 R.M. Jan. 1950

MAR 3 1950

TP (300 2600)	3.80	190.46		186.66	
------------------	------	--------	--	--------	--

257+00			3.39	187.07	
--------	--	--	------	--------	--

+50			3.66	186.80	
-----	--	--	------	--------	--

258+00			4.02	186.44	
--------	--	--	------	--------	--

+50			4.21	186.25	
-----	--	--	------	--------	--

259+00			4.42	186.04	
--------	--	--	------	--------	--

+50			4.71	185.75	
-----	--	--	------	--------	--

260+00			4.83	185.63	
--------	--	--	------	--------	--

+50			5.05	185.41	
-----	--	--	------	--------	--

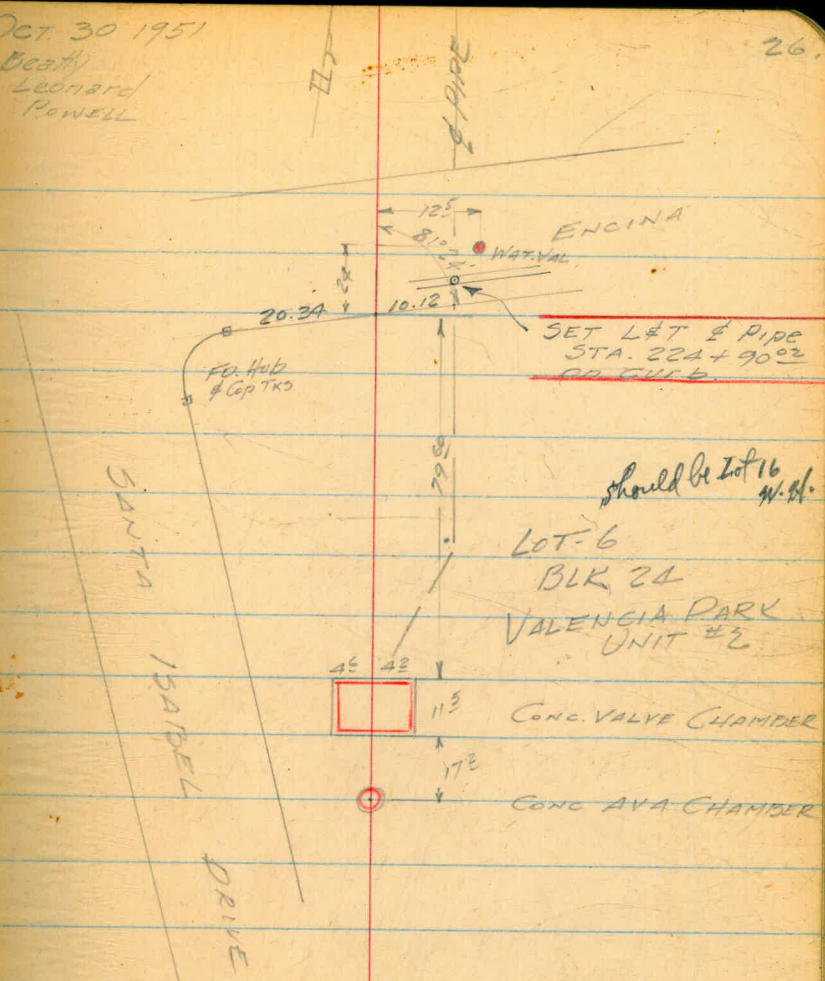
	190.46			
261+00		5.30	185.16	
+50		5.68	184.78	
+64 ⁶		5.81	184.65	End Concrete
+69 ⁶		5.81	184.65	Begin Oil Shoulder
262+00		6.1	184.4	
+05 ⁵⁶		6.3	184.0	
+12 ²		6.35	184.11	Begin Concrete
+55 ⁵		6.55	183.91	End Concrete
CK BM		5.37	185.09 - 185.12	

BONITA P.L. REPLACEMENT
STRUCTURES TIED TO
PROPERTY LINES

OCT 30 1951

Beatty
Leonard
Powell

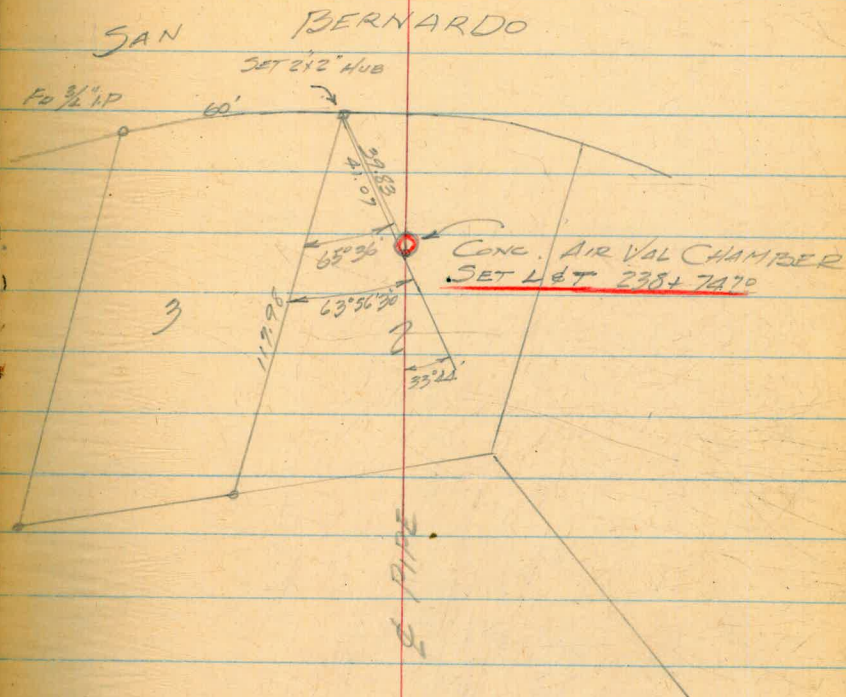
26



BONITA P.L. REPLACEMENT
STRUCTURES TIED TO
PROPERTY CORNERS

10-30-51

27.

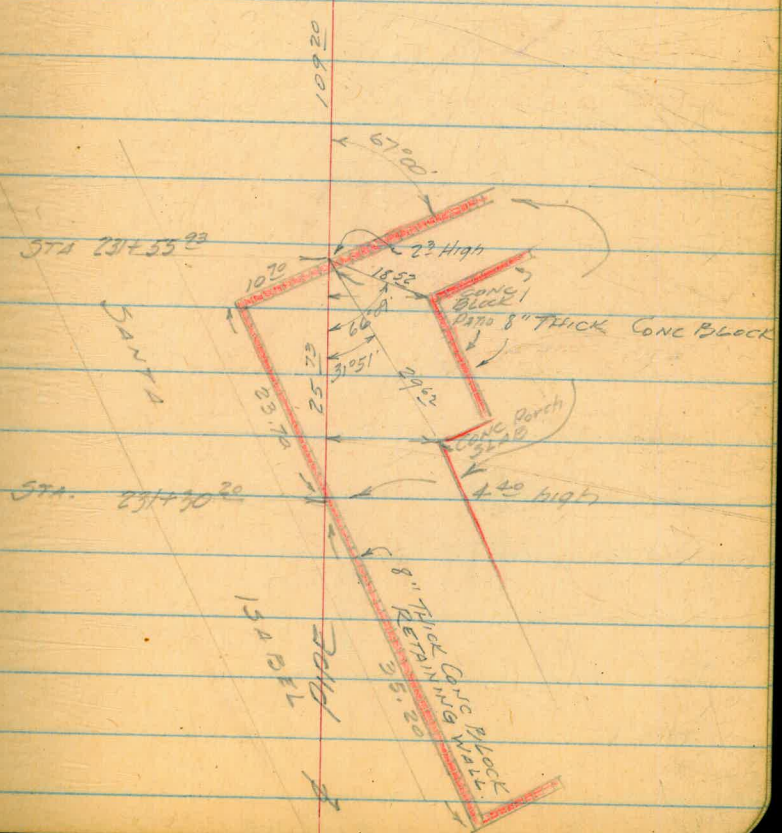
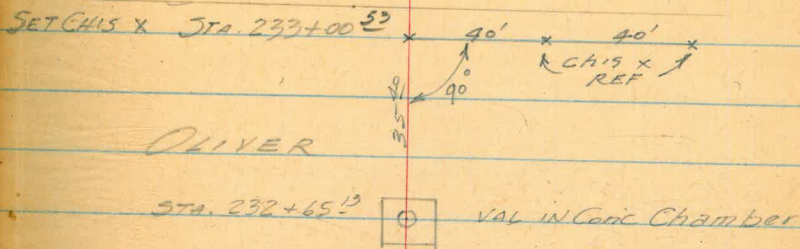


63-50-30
4102

BONITA P.L. REPLACEMENT
 TIES TO STRUCTURES, VAL'S
 CONC WALL ON EASEMENT

OCT 31 1951

30.



STA 231+55.23

STA. 231+70.20

SANTA

154 FT
 200 FT

8" Thick Conc Block
 8" Thick Conc Wall

23 High

4.40 high

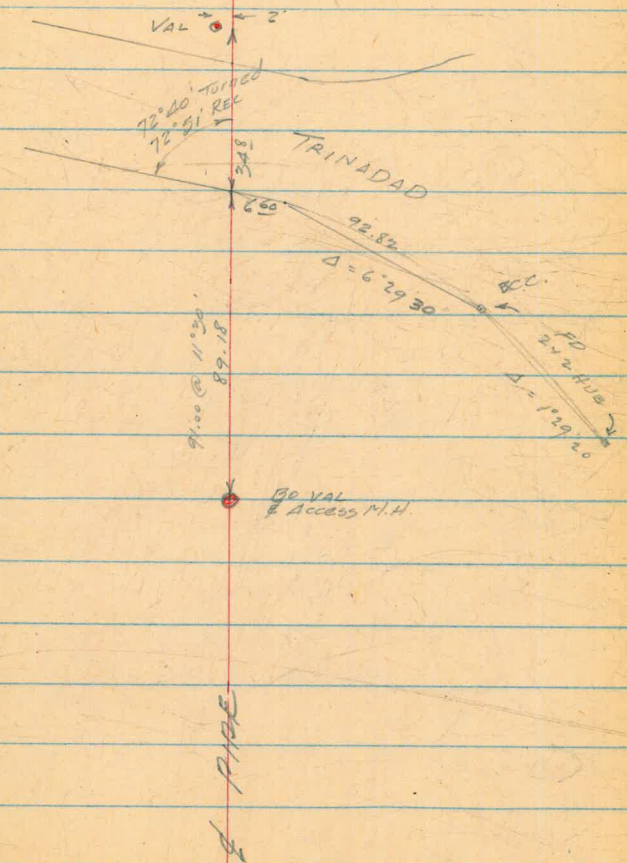
CONC Block
 8" THICK CONC BLOCK

CONC PERCH

BONITA P.L. REPLACEMENT
TIES TO VALS ETC.

Oct. 31, 1951

31.



BONITA P.L. REPLACEMENT
 TIES TO VAL'S
 & NEW HOUSES

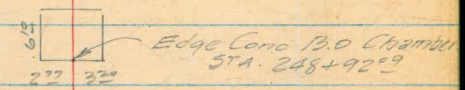
Nov. 1, 1951

32.

SET CHIS X ON CURB
 STA 252+78.47



LOT 106

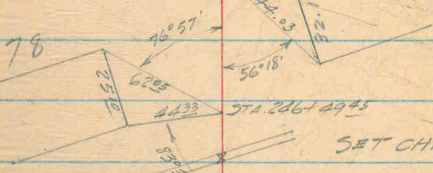


Edge Conc B.O Chamber
 STA 248+92.09

STA 247+29.25

LOT 77

LOT 78



SET CHIS X ON CURB
 STA 246+26.88

AGUA VISTA Way

SET CHIS X ON CURB
 STA 246+06.81

STA 245+70.2

LOT 69

New Stucco House

STA 245+23.5

LOT 68

3/4" P. Pipe Cor
 RE 1534

VELMA TERR

AVA IN CONC
 Chamber
 SET. LOT 243+98.51

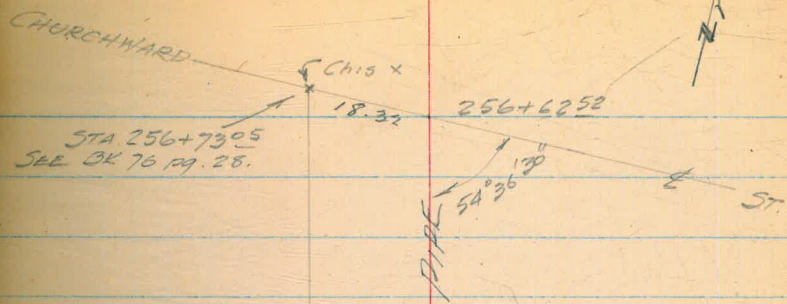
$127.80 \quad 12^{\circ}06' = 124.99$

$245+23.50$

BONITA P.L. REPLACEMENT
TIES VALUES, HOUSES, ETC

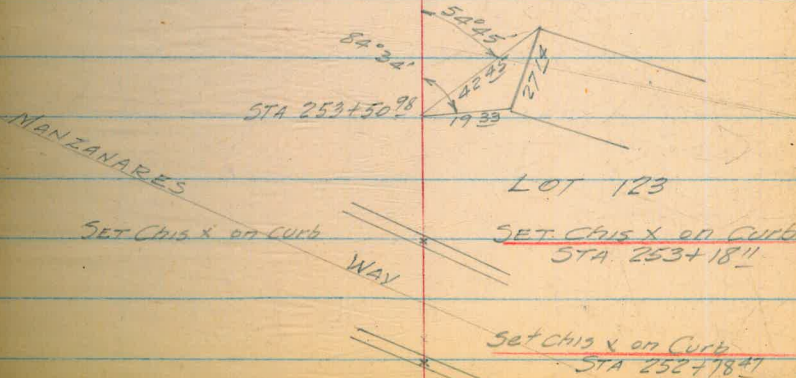
Nov. 1 1951

33.

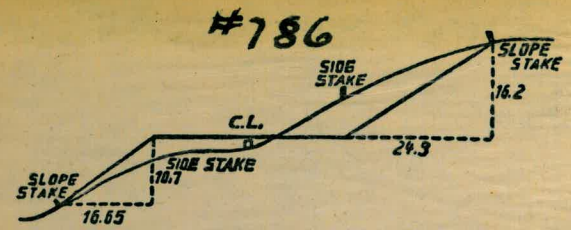


STA 256+73⁰⁵
SEE OK 76 PG. 28.

AVA IN CONC CHAMBER
~~SET 1 ET~~
STA 255+70⁵⁰



+998
23
 222 + 0 2.1
25.3



DISTANCES FROM SIDE STAKES FOR CROSS-SECTIONING.
 SLOPE 1 1/2 TO 1. ROADWAY OF ANY WIDTH.

	0	.1	.2	.3	.4	.5	.6	.7	.8	.9	
0	0.00	0.15	0.30	0.45	0.60	0.75	0.90	1.05	1.20	1.35	0
1	1.50	1.65	1.80	1.95	2.10	2.25	2.40	2.55	2.70	2.85	1
2	3.00	3.15	3.30	3.45	3.60	3.75	3.90	4.05	4.20	4.35	2
3	4.50	4.65	4.80	4.95	5.10	5.25	5.40	5.55	5.70	5.85	3
4	6.00	6.15	6.30	6.45	6.60	6.75	6.90	7.05	7.20	7.35	4
5	7.50	7.65	7.80	7.95	8.10	8.25	8.40	8.55	8.70	8.85	5
6	9.00	9.15	9.30	9.45	9.60	9.75	9.90	10.05	10.20	10.35	6
7	10.50	10.65	10.80	10.95	11.10	11.25	11.40	11.55	11.70	11.85	7
8	12.00	12.15	12.30	12.45	12.60	12.75	12.90	13.05	13.20	13.35	8
9	13.50	13.65	13.80	13.95	14.10	14.25	14.40	14.55	14.70	14.85	9
10	15.00	15.15	15.30	15.45	15.60	15.75	15.90	16.05	16.20	16.35	10
11	16.50	16.65	16.80	16.95	17.10	17.25	17.40	17.55	17.70	17.85	11
12	18.00	18.15	18.30	18.45	18.60	18.75	18.90	19.05	19.20	19.35	12
13	19.50	19.65	19.80	19.95	20.10	20.25	20.40	20.55	20.70	20.85	13
14	21.00	21.15	21.30	21.45	21.60	21.75	21.90	22.05	22.20	22.35	14
15	22.50	22.65	22.80	22.95	23.10	23.25	23.40	23.55	23.70	23.85	15
16	24.00	24.15	24.30	24.45	24.60	24.75	24.90	25.05	25.20	25.35	16
17	25.50	25.65	25.80	25.95	26.10	26.25	26.40	26.55	26.70	26.85	17
18	27.00	27.15	27.30	27.45	27.60	27.75	27.90	28.05	28.20	28.35	18
19	28.50	28.65	28.80	28.95	29.10	29.25	29.40	29.55	29.70	29.85	19
20	30.00	30.15	30.30	30.45	30.60	30.75	30.90	31.05	31.20	31.35	20
21	31.50	31.65	31.80	31.95	32.10	32.25	32.40	32.55	32.70	32.85	21
22	33.00	33.15	33.30	33.45	33.60	33.75	33.90	34.05	34.20	34.35	22
23	34.50	34.65	34.80	34.95	35.10	35.25	35.40	35.55	35.70	35.85	23
24	36.00	36.15	36.30	36.45	36.60	36.75	36.90	37.05	37.20	37.35	24
25	37.50	37.65	37.80	37.95	38.10	38.25	38.40	38.55	38.70	38.85	25
26	39.00	39.15	39.30	39.45	39.60	39.75	39.90	40.05	40.20	40.35	26
27	40.50	40.65	40.80	40.95	41.10	41.25	41.40	41.55	41.70	41.85	27
28	42.00	42.15	42.30	42.45	42.60	42.75	42.90	43.05	43.20	43.35	28
29	43.50	43.65	43.80	43.95	44.10	44.25	44.40	44.55	44.70	44.85	29
30	45.00	45.15	45.30	45.45	45.60	45.75	45.90	46.05	46.20	46.35	30
31	46.50	46.65	46.80	46.95	47.10	47.25	47.40	47.55	47.70	47.85	31
32	48.00	48.15	48.30	48.45	48.60	48.75	48.90	49.05	49.20	49.35	32
33	49.50	49.65	49.80	49.95	50.10	50.25	50.40	50.55	50.70	50.85	33
34	51.00	51.15	51.30	51.45	51.60	51.75	51.90	52.05	52.20	52.35	34
35	52.50	52.65	52.80	52.95	53.10	53.25	53.40	53.55	53.70	53.85	35
36	54.00	54.15	54.30	54.45	54.60	54.75	54.90	55.05	55.20	55.35	36
37	55.50	55.65	55.80	55.95	56.10	56.25	56.40	56.55	56.70	56.85	37
38	57.00	57.15	57.30	57.45	57.60	57.75	57.90	58.05	58.20	58.35	38
39	58.50	58.65	58.80	58.95	59.10	59.25	59.40	59.55	59.70	59.85	39
40	60.00	60.15	60.30	60.45	60.60	60.75	60.90	61.05	61.20	61.35	40
41	61.50	61.65	61.80	61.95	62.10	62.25	62.40	62.55	62.70	62.85	41
42	63.00	63.15	63.30	63.45	63.60	63.75	63.90	64.05	64.20	64.35	42
43	64.50	64.65	64.80	64.95	65.10	65.25	65.40	65.55	65.70	65.85	43
44	66.00	66.15	66.30	66.45	66.60	66.75	66.90	67.05	67.20	67.35	44
45	67.50	67.65	67.80	67.95	68.10	68.25	68.40	68.55	68.70	68.85	45
46	69.00	69.15	69.30	69.45	69.60	69.75	69.90	70.05	70.20	70.35	46
47	70.50	70.65	70.80	70.95	71.10	71.25	71.40	71.55	71.70	71.85	47
48	72.00	72.15	72.30	72.45	72.60	72.75	72.90	73.05	73.20	73.35	48
49	73.50	73.65	73.80	73.95	74.10	74.25	74.40	74.55	74.70	74.85	49
50	75.00	75.15	75.30	75.45	75.60	75.75	75.90	76.05	76.20	76.35	50

THE NATIONAL BLANK BOOK COMPANY
 HOLYOKE MASSACHUSETTS
 NEW YORK CHICAGO BOSTON SAN FRANCISCO