

DISTANCES FROM SIDE STAKES FOR CROSS-SECTIONING
SLOPE 1 TO 1. ROADWAY OF ANY WIDTH

	0	.1	.2	.3	.4	.5	.6	.7	.8	.9	
0	0.00	0.10	0.20	0.30	0.40	0.50	0.60	0.70	0.80	0.90	0
1	1.00	1.10	1.20	1.30	1.40	1.50	1.60	1.70	1.80	1.90	1
2	2.00	2.10	2.20	2.30	2.40	2.50	2.60	2.70	2.80	2.90	2
3	3.00	3.10	3.20	3.30	3.40	3.50	3.60	3.70	3.80	3.90	3
4	4.00	4.10	4.20	4.30	4.40	4.50	4.60	4.70	4.80	4.90	4
5	5.00	5.10	5.20	5.30	5.40	5.50	5.60	5.70	5.80	5.90	5
6	6.00	6.10	6.20	6.30	6.40	6.50	6.60	6.70	6.80	6.90	6
7	7.00	7.10	7.20	7.30	7.40	7.50	7.60	7.70	7.80	7.90	7
8	8.00	8.10	8.20	8.30	8.40	8.50	8.60	8.70	8.80	8.90	8
9	9.00	9.10	9.20	9.30	9.40	9.50	9.60	9.70	9.80	9.90	9
10	10.00	10.10	10.20	10.30	10.40	10.50	10.60	10.70	10.80	10.90	10
11	11.00	11.10	11.20	11.30	11.40	11.50	11.60	11.70	11.80	11.90	11
12	12.00	12.10	12.20	12.30	12.40	12.50	12.60	12.70	12.80	12.90	12
13	13.00	13.10	13.20	13.30	13.40	13.50	13.60	13.70	13.80	13.90	13
14	14.00	14.10	14.20	14.30	14.40	14.50	14.60	14.70	14.80	14.90	14
15	15.00	15.10	15.20	15.30	15.40	15.50	15.60	15.70	15.80	15.90	15
16	16.00	16.10	16.20	16.30	16.40	16.50	16.60	16.70	16.80	16.90	16
17	17.00	17.10	17.20	17.30	17.40	17.50	17.60	17.70	17.80	17.90	17
18	18.00	18.10	18.20	18.30	18.40	18.50	18.60	18.70	18.80	18.90	18
19	19.00	19.10	19.20	19.30	19.40	19.50	19.60	19.70	19.80	19.90	19
20	20.00	20.10	20.20	20.30	20.40	20.50	20.60	20.70	20.80	20.90	20
21	21.00	21.10	21.20	21.30	21.40	21.50	21.60	21.70	21.80	21.90	21
22	22.00	22.10	22.20	22.30	22.40	22.50	22.60	22.70	22.80	22.90	22
23	23.00	23.10	23.20	23.30	23.40	23.50	23.60	23.70	23.80	23.90	23
24	24.00	24.10	24.20	24.30	24.40	24.50	24.60	24.70	24.80	24.90	24
25	25.00	25.10	25.20	25.30	25.40	25.50	25.60	25.70	25.80	25.90	25
26	26.00	26.10	26.20	26.30	26.40	26.50	26.60	26.70	26.80	26.90	26
27	27.00	27.10	27.20	27.30	27.40	27.50	27.60	27.70	27.80	27.90	27
28	28.00	28.10	28.20	28.30	28.40	28.50	28.60	28.70	28.80	28.90	28
29	29.00	29.10	29.20	29.30	29.40	29.50	29.60	29.70	29.80	29.90	29
30	30.00	30.10	30.20	30.30	30.40	30.50	30.60	30.70	30.80	30.90	30
31	31.00	31.10	31.20	31.30	31.40	31.50	31.60	31.70	31.80	31.90	31
32	32.00	32.10	32.20	32.30	32.40	32.50	32.60	32.70	32.80	32.90	32
33	33.00	33.10	33.20	33.30	33.40	33.50	33.60	33.70	33.80	33.90	33
34	34.00	34.10	34.20	34.30	34.40	34.50	34.60	34.70	34.80	34.90	34
35	35.00	35.10	35.20	35.30	35.40	35.50	35.60	35.70	35.80	35.90	35
36	36.00	36.10	36.20	36.30	36.40	36.50	36.60	36.70	36.80	36.90	36
37	37.00	37.10	37.20	37.30	37.40	37.50	37.60	37.70	37.80	37.90	37
38	38.00	38.10	38.20	38.30	38.40	38.50	38.60	38.70	38.80	38.90	38
39	39.00	39.10	39.20	39.30	39.40	39.50	39.60	39.70	39.80	39.90	39
40	40.00	40.10	40.20	40.30	40.40	40.50	40.60	40.70	40.80	40.90	40
41	41.00	41.10	41.20	41.30	41.40	41.50	41.60	41.70	41.80	41.90	41
42	42.00	42.10	42.20	42.30	42.40	42.50	42.60	42.70	42.80	42.90	42
43	43.00	43.10	43.20	43.30	43.40	43.50	43.60	43.70	43.80	43.90	43
44	44.00	44.10	44.20	44.30	44.40	44.50	44.60	44.70	44.80	44.90	44
45	45.00	45.10	45.20	45.30	45.40	45.50	45.60	45.70	45.80	45.90	45
46	46.00	46.10	46.20	46.30	46.40	46.50	46.60	46.70	46.80	46.90	46
47	47.00	47.10	47.20	47.30	47.40	47.50	47.60	47.70	47.80	47.90	47
48	48.00	48.10	48.20	48.30	48.40	48.50	48.60	48.70	48.80	48.90	48
49	49.00	49.10	49.20	49.30	49.40	49.50	49.60	49.70	49.80	49.90	49
50	50.00	50.10	50.20	50.30	50.40	50.50	50.60	50.70	50.80	50.90	50

Distance of slope stake from side or shoulder stake for any width roadway, slope 1 to 1. If ground is nearly level, the cut or fill at side stake is located by the double entry method in left column and top row. The number in body of table in same row and column gives distance from side stake to slope stake. If ground is not level estimate the difference in elevation between the side stake and slope stake, lower target by this amount if cut, elevate if fill. Add this amount to cut or fill and find distance in table. Set up rod at this point, and line of sight should cut target. If it does not make the slight adjustment necessary.

799

N
N
N
N

MICROFILMED

JAN 15 1965

Please Return to
City of San Diego Water Dept.
Room 903 Civic Center
Telephone F-7511 Ext. 313

DIRECTIONS FOR USE OF TABLES

TABLE No. XIV

Distance of slope stake from side or shoulder stake for any width roadway, slope $1\frac{1}{2}$ to 1. If ground is nearly level, the cut or fill at side stake is located by the double entry method in left column and top row. The number in body of table in same row and column gives distance from side stake to slope stake. If ground is not level estimate the difference in elevation between the side stake and slope stake, lower target by this amount if cut, elevate if fill. Add this amount to cut or fill and find distance in table. Set up rod at this point, and line of sight should cut target. If it does not make the slight adjustment necessary.

TABLE No. VIII

To find Tangent and External for curve of any other degree, divide by degree of curve and add correction found in column of corrections. Degree of curve with a given I may be found by dividing tangent, (or external), opposite I by given tangent, (or external).

The distance from a point on the tangent to the curve is very nearly the square of the tangent length divided by twice the radius.

5010
001
4009

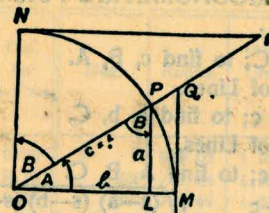


TABLE II
TRIGONOMETRIC FORMULÆ.

$$\begin{aligned} \angle A &= \angle MOP & \angle B &= \angle PON = \angle OPL \\ R &= OB = c = 1 \end{aligned}$$

$$\begin{aligned} \sin A &= \frac{a}{c} = \frac{a}{1} = a = \text{cos } B = LP \\ \text{cos } A &= \frac{b}{c} = \frac{b}{1} = b = \text{sin } B = OL \\ \tan A &= \frac{a}{b} = \frac{MQ}{OM} = \frac{MQ}{1} = MQ = \text{cot } B = MQ \\ \text{cot } A &= \frac{NT}{ON} = \frac{NT}{1} = NT = \text{tan } B = NT \\ \text{sec } A &= \frac{OQ}{OM} = \frac{OQ}{1} = OQ = \text{csc } B = OQ \\ \text{csc } A &= \frac{OT}{ON} = \frac{OT}{1} = OT = \text{sec } B = OT \\ \text{vers } A &= \frac{LM}{OP} = LM = \text{covers } B = \text{---} \\ \text{covers } A &= \frac{OP-LP}{OP} = OP-LP = \text{vers } B \\ \text{exsec } A &= PQ = \text{coexsec } B \\ \text{coexsec } A &= PT = \text{exsec } B \end{aligned}$$

$$\begin{aligned} \sin \frac{1}{2} A &= \sqrt{\frac{1-\text{Cos } A}{2}} & \cos \frac{1}{2} A &= \sqrt{\frac{1+\text{Cos } A}{2}} \\ \sin 2 A &= 2 \sin A \cos A & \cos 2 A &= \cos^2 A - \sin^2 A \end{aligned}$$

$$\begin{aligned} \text{Law of Lines} & \frac{\sin A}{a} = \frac{\sin B}{B} = \frac{\sin C}{C} \\ \text{Law of Cosines} & c^2 = a^2 + b^2 - 2 ab \cos C \\ \text{Law of Tangents} & \frac{a+b}{a-b} = \frac{\tan \frac{1}{2} (A+B)}{\tan \frac{1}{2} (A-B)} \end{aligned}$$

TABLE XIII—CORRECTIONS FOR TANGENTS AND EXTERNALS

These corrections are to be added to the approximate values, found by dividing the tangent, or external, for a 1° curve (Table VIII) by the degree of curve, in order to obtain the true tangents, or externals. Intermediate values may be obtained by interpolation.

FOR TANGENTS ADD

Central Angle	DEGREE OF CURVE													
	5°	10°	15°	20°	25°	30°	35°	40°	45°	50°	55°	60°	65°	70°
10°	.03	.06	.09	.13	.16	.19	.22	.25	.28	.31	.34	.38	.42	.46
15°	.04	.10	.14	.19	.24	.29	.34	.39	.45	.51	.53	.58	.63	.68
20°	.06	.13	.19	.26	.32	.39	.45	.51	.58	.65	.72	.79	.84	.90
25°	.08	.16	.24	.33	.40	.49	.58	.67	.75	.83	.90	.99	1.06	1.14
30°	.10	.19	.29	.39	.49	.59	.69	.79	.89	.99	1.09	1.20	1.29	1.39
35°	.11	.22	.34	.47	.58	.69	.79	.81	.92	1.04	1.29	1.42	1.54	1.66
40°	.13	.26	.40	.53	.67	.80	.93	1.06	1.20	1.34	1.49	1.64	1.79	1.94
45°	.15	.30	.44	.60	.76	.91	1.06	1.21	1.37	1.52	1.70	1.87	2.04	2.21
50°	.17	.34	.51	.68	.85	1.02	1.19	1.36	1.54	1.72	1.91	2.10	2.29	2.48
55°	.19	.38	.57	.76	.95	1.14	1.32	1.52	1.72	1.92	2.14	2.35	2.56	2.77
60°	.21	.42	.63	.84	1.05	1.27	1.49	1.71	1.94	2.17	2.38	2.60	2.83	3.07
65°	.23	.46	.69	.93	1.16	1.40	1.64	1.88	2.13	2.38	2.63	2.88	3.13	3.39
70°	.25	.51	.76	1.02	1.28	1.54	1.80	2.06	2.33	2.60	2.88	3.16	3.44	3.72
75°	.27	.56	.83	1.12	1.40	1.69	1.98	2.27	2.57	2.87	3.16	3.47	3.78	4.09
80°	.30	.61	.91	1.22	1.53	1.84	2.15	2.46	2.78	3.10	3.44	3.78	4.12	4.46
85°	.33	.66	1.00	1.33	1.68	2.02	2.36	2.70	3.05	3.40	3.77	4.14	4.55	4.89
90°	.36	.72	1.09	1.45	1.83	2.20	2.57	2.94	3.32	3.70	4.10	4.50	4.91	5.32
95°	.39	.79	1.19	1.55	2.00	2.40	2.80	3.20	3.61	4.02	4.40	4.98	5.38	5.83
100°	.43	.86	1.30	1.74	2.18	2.62	3.06	3.50	3.95	4.40	4.88	5.37	5.85	6.34
110°	.51	1.03	1.56	2.08	2.61	3.14	3.67	4.21	4.76	5.31	5.86	6.43	7.01	7.60
120°	.62	1.25	1.93	2.52	3.16	3.81	4.45	5.11	5.77	6.44	7.12	7.80	8.50	9.22

FOR EXTERNALS ADD

Central Angle	DEGREE OF CURVE													
	5°	10°	15°	20°	25°	30°	35°	40°	45°	50°	55°	60°	65°	70°
10°	.001	.003	.004	.006	.007	.008	.009	.011	.012	.014	.015	.017	.018	.020
15°	.003	.007	.010	.014	.018	.023	.027	.029	.032	.035	.039	.043	.047	.051
20°	.006	.011	.017	.022	.028	.034	.038	.045	.051	.057	.063	.070	.076	.083
25°	.009	.018	.027	.036	.046	.056	.065	.074	.083	.093	.106	.120	.127	.135
30°	.013	.025	.038	.051	.065	.078	.090	.103	.116	.129	.149	.170	.179	.188
35°	.018	.035	.054	.072	.086	.109	.131	.153	.175	.197	.213	.230	.247	.264
40°	.023	.046	.070	.093	.117	.141	.172	.203	.234	.265	.277	.290	.315	.341
45°	.030	.060	.093	.119	.153	.184	.216	.254	.289	.325	.351	.378	.411	.445
50°	.037	.075	.116	.151	.189	.227	.266	.305	.345	.384	.425	.467	.508	.550
55°	.046	.093	.142	.188	.236	.283	.332	.381	.420	.479	.530	.582	.641	.700
60°	.056	.112	.168	.225	.283	.340	.398	.457	.516	.575	.636	.697	.774	.851
65°	.067	.135	.204	.273	.343	.412	.483	.554	.625	.697	.711	.845	.922	1.01
70°	.080	.159	.240	.321	.403	.485	.568	.652	.735	.819	.906	.994	1.08	1.17
75°	.095	.182	.286	.383	.480	.578	.678	.777	.877	.977	1.07	1.18	1.29	1.39
80°	.110	.220	.332	.445	.558	.671	.787	.903	1.02	1.13	1.25	1.38	1.50	1.62
85°	.128	.259	.391	.524	.657	.790	.926	1.06	1.20	1.34	1.47	1.62	1.76	1.91
90°	.149	.299	.450	.603	.756	.910	1.07	1.22	1.38	1.54	1.70	1.87	2.03	2.20
95°	.174	.350	.522	.706	.885	1.06	1.25	1.43	1.62	1.80	1.99	2.18	2.38	2.58
100°	.200	.401	.604	.809	1.01	1.22	1.43	1.64	1.85	2.06	2.28	2.50	2.73	2.96
110°	.268	.536	.806	1.08	1.35	1.63	1.91	2.20	2.48	2.76	3.05	3.35	3.66	3.96
120°	.360	.721	1.08	1.45	1.82	2.19	2.57	2.95	3.33	3.72	4.11	4.50	4.91	5.32

Bay View Res. check shots on Roof Slabs P1-B, 11 - *AB*

Midway Drive Sketch 4 Levels - 181-107+85 9-10

Roof shots (elev.) Bayview Res 11-22

" " " " " 23-60 ✓

Elevations on Roof Slab Over Tops of Columns 61-65 ✓

at Bayview Reservoir

" " " " " 65-70

Bay View Res. Elev. Top Test Hole Casings Westside Res. *AB* 71 ✓

BAYVIEW RES.

ELEVATIONS ON ROOF SLABS

✓ 72-80

Alice

BAYVIEW RESERVOIR
CHECK LEVELS - TOP OF ROOF

FIRST BAY - SLAB #9

B.M.	10.332	462.582	452.25
S 186.70 W 345.50		1.864	460.718
S 186.70 W 336.50		1.878	460.704
S 186.70 W 327.60		1.878	460.704
S 204.40 W 345.50		1.690	460.892
S 204.40 W 336.50		1.724	460.858
S 204.40 W 327.60		1.694	460.888
S 195.50 W 336.50		1.710	460.872
S 195.50 W 345.50		1.719	460.863
S 195.50 W 327.60		1.719	460.863

King - A #
Baker - NOTES
West - Rod #
Lietz - Level # 5140

9-20-50

DATE POURED 9-12-50

ON PIPE NEXT TO SANDER'S EQUIPMENT HUT
NORTH WEST
CENTER
EAST
SOUTH WEST
CENTER
EAST
E OF SLAB.
WEST
EAST

King
Baker
west

9-20-50

2

FIRST BAY - SLAB # 4

DATED FOUR 9-13-50

462.582

5276.60 w 345.50	2.244	460.338	NORTH - WEST
5276.50 w 336.50	2.214	460.368	CENTER
5276.50 w 327.60	2.194	460.388	EAST
5294.40 w 345.50	2.423	460.159	SOUTH WEST
5294.40 w 336.50	2.419	460.163	CENTER
5294.40 w 327.60	2.374	460.208	EAST
5285.50 w 336.50	2.198	460.384	☐ OF SLAB
5285.50 w 345.50	2.274	460.308	WEST
5285.50 w 327.60	2.217 2.19	460.365	EAST

King
Baker
West

9-20-50

7

SECOND BAY - SLAB #18

DATE POURED 9-13-50

	+	x	-	
S294.60 W 327.40			462.582	2.388 460.194 NORTH - WEST
S294.60 W 317.50				2.413 460.169 CENTER
S294.60 W 306.60				2.412 460.170 EAST
S303.50 W 327.40				2.431 ~ 460.151 WEST
S303.50 W 317.50				2.407 460.175 @ OF SLAB
S303.50 W 306.60				2.426 460.156 EAST
S312.40 W 327.40				2.581 460.001 SOUTH - WEST
S312.40 W 317.50				2.602 459.981 Center
S312.40 W 306.60				2.617 459.965 EAST

King
Baker
West

9-20-50

4

SECOND BAY - SLAB # 25

DATE POURED, 9-14-50

+
π
462.582

S168.60 W327.40	2.030	460.552	NORTH - WEST
S168.60 W317.50	2.035	460.547	CENTER
S168.60 W306.60	2.023	460.549	EAST
S177.50 W327.40	1.868	460.714	WEST
S177.50 W317.50	1.888		C. OF SLAB
S177.50 W306.60	1.878		EAST
S186.40 W327.40	1.869	460.713	SOUTH WEST
S186.40 W317.50	1.875		CENTER
S186.40 W306.60	1.853	460.729	SOU

Check-Top Slabs.
Bay View Res.

Slab #4 1st. Bay
Pans
Removed
9-25-50

King
West

9-29-50

Lietz Level 5140

B.M.	10.050	462.300		452.25
S276.6	W345.5		1.930	460.370
S276.5	W336.5		1.930	460.370
S276.5	W327.6		1.915	460.385
S294.4	W345.5		2.120	460.180
S294.4	W336.5		2.123	460.177
S294.4	W327.6		2.073	460.227
S285.5	W345.5		1.978	460.322
S285.5	W336.5		1.923	460.377
S285.5	W327.6		1.926	460.374

ON pipe next Saunders Eo Bldg

First Bay slab #9

Pans Removed

9-28-50

462.300

5186.70 W345.5

1.560

460.740

N.W. cor

5186.70 W336.5

1.573

460.727

5186.7 W327.5

1.570

460.730

N.E

5204.4 W345.5

1.380

460.920

S.W

5204.4 W336.5

1.401

460.899

5204.4 W327.5

1.393

460.907

S195.5 W345.5

1.426

460.874

S.W. cor

S195.5 W336.5

1.415

460.885

S195.5 W327.5

1.415

460.885

S.E. cor

Second Bay

Slab # 18

Parts
Removed

462.300

9-22-50

5294.9	W327.4	2.080	460.220	N.W
5294.9	W317.5	2.103	460.197	
5294.9	W306.6	2.127	460.173	N.E
5303.5	W327.4	2.138	460.162	W
5303.5	W317.5	2.114	460.186	
5303.5	W306.6	2.138	460.162	E
5312.4	W327.4	2.256	460.044	SW
5312.4	W317.5	2.282		
5312.4	W306.6	2.282	460.018	SE

Second Bay
5126 #25

Parts Removed

462,300

9-28-50

5168.6	W327.4	1.718	582	N.W. Cor
5168.6	W317.5	1.743	557	
5168.6	W306.6	1.717	583	N.E
5177.5	W327.4	1.572	728	E.W
5177.5	W317.5	1.589	711	
5177.5	W306.6	1.588	712	E.E
5186.4	W327.4	1.549	751	S.W
5186.4	W317.5	1.563	737	
5186.4	W306.6	1.543	757	S.E

9-29-50

Barroy
King
West

8

00.7 -330
 -4
 -3.30
 Sub-grade Elev.

Midway Drive

5' offsets - Lowering & Replacing
16" C.I.P.P.

B.M. 11.35 13.09 01.74

Tap S.W. Box - set by Barrigan

187+85 12.4 00.7 -2.5

4' cut - ok'd by B. Huntington
for every sta.

187+51 12.6 00.5 -2.5

3.0

187+00 12.2 00.9 +1

3.1 2.0

186+50 11.5 1.6 +0.4

186+00 11.0 2.1 -1

185+50 10.0 3.1 -

185+00 8.2 4.9 -1

184+50 6.2 6.9 -0

184 4.5 8.6 -0

King
Baker X
West.

10-2-50

9

Midway Drive
 Replace - 16" CI Pipe

13.69

183450		2.7	10.4	
183400		0.8	12.3	
1 T.P.	8.36	20.67	0.78	12.31
182450		6.5	14.2	
182400		5.2	15.5	14.7
18450		3.9	16.8	14.7
T.B.M		3.88	16.79	14.7

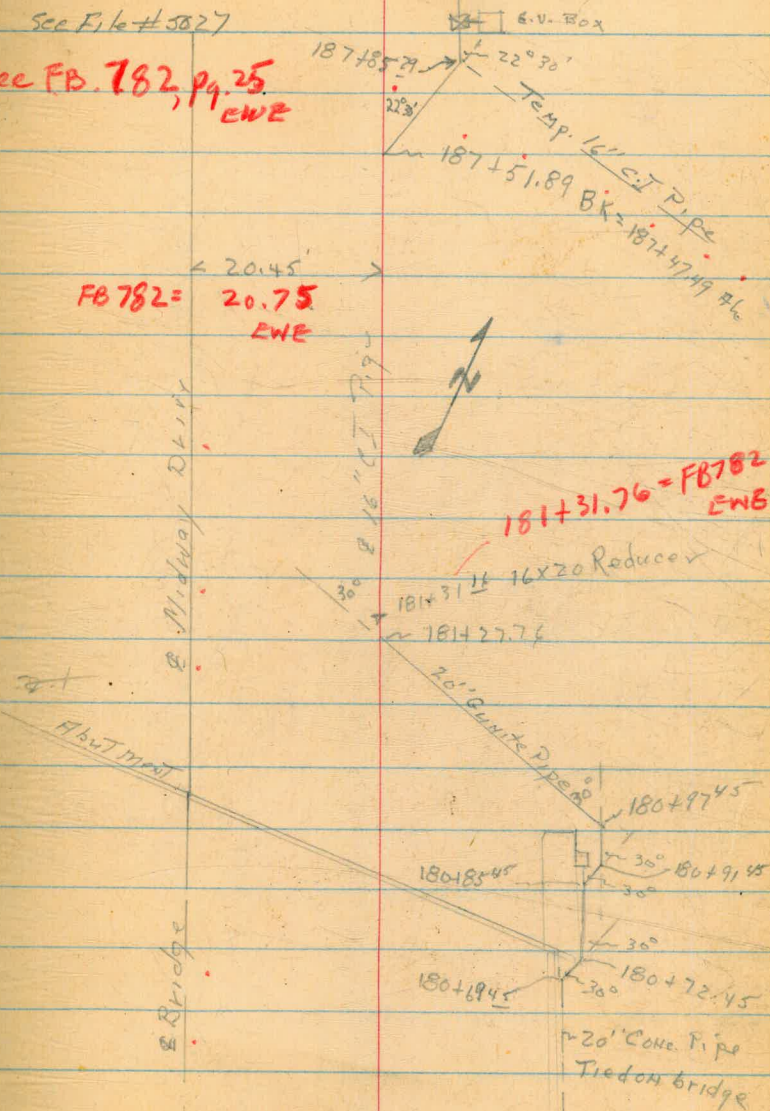
King
 Baker &
 West

10-2-50

10

See File #5827

see FB. 782, p. 25
 EWE



Bay #3 S196#35
Poured 9-28

	+ 9.623	461.873	452.25
S. 276.50		1.518	460.355
W 306.50		1.518	
S 278.50		1.511	
W 296.0		1.548	460.362
S 276.50		1.548	
W 285.50		1.418	
S 267.50	W 306.50	1.418	
"	W 296.0	1.399	
"	W 285.50	1.399	
S 258.50	W 306.5	1.410	460.490
	W 296.0	1.383	
	W 285.50	1.383	
		1.403	
		1.371	460.502

King West 10-5-50

Iron Pipe by Office Bldg

S.W. Cor

W. West Side

N.W. Cor

Pans removed
10-5-50

Bay # 3 - Slab 38
Pour'd 9-29

461.873

S 222.50	W 306.50	09.710	.143
	W 296.0	7.009	
	W 285.50	1.005	460.868
S 213.50	W 306.50	0.929	
	W 296.0	0.929	
	W 285.50	0.951	
S 204.50	W 306.5	1.900	460.873
	W 296.0	1.010	
	W 285.50	0.995	460.878

King T West 10-5-50

Pans removed

10-9-50

S.W. Cor

+

N.W. Cor N.E.

Boyd - Slab 47
Poured Oct 2

King X 10-5-50
West

B

S-330.50 W285.50 2.031 59.842 S.W. Cor.

W275.0 2.052

W264.5 2.052 59.821

S321.50 W285.50 1.890 ♀ West side

W275.0 1.891

W264.5 1.892

S312.50 W. 285.50 1.895 59.978 N.W. Cor No ✓

W275.0 1.920

W264.5 1.900 59.973

Bay 4 - Slab 56
Poured Oct 3

S 186.50	W 285.50	1.344
	W 275.0	1.356
	W 264.5	1.344
S 177.50	W 285.50	1.383
	W 275.0	1.379
	W 264.5	1.390
S 168.50	W 285.50	1.562
	W 275.0	1.541
	W 264.5	1.530

S.W. Cor.

West End

N.W. Cor.

OCT. 18 1950

68

BEATTY
LEONARD

BAY 5 - SLAB 69
Poured OCT. 10 1950

25

	9.428	461.678		452.25	
SET. TOM	6.15	462.174	4654	457.024	ON FOOTING OF BUTTRESS BLOCK { 396.50 W 347.50
			2.272		SW COR
			2.299		
			2.305		SE COR
			2.228		E WEST END
			2.216		
			2.248		E East End
			2.290		NW COR
			2.325		
			2.309		NE COR

$$\begin{array}{r} 65 \\ 231 \\ \hline 384 \end{array}$$

OCT. 18, 1950

16

BAY 6 - SLAB 85
Poured Oct. 16, 1950

463.174

2.300 460.874

SW COR

2.305

2.310

SE COR

2.307 460.867

West End E

2.290

2.321

East End E

2.461 40.713

NW COR

2.453

2.437 40.737

NE COR

OCT. 18, 1950

17

Bay 5 - SLAB 64
Poured Oct. 11, 1950

467.174

3.027

460.147

SW COR

2.998

3.013

460.161

SE COR

2.872

W West End

2.848

2.870

E East End

2.860

NW COR

2.870

2.853

NE COR

Oct. 18 1950

BEATTY
Leonard

18

BAY 6 SLAB 78
Poured Oct. 13, 1950

463.174

3.177

SW Cor

3.230

3.180

SE Cor

3.052

W West End

3.030

3.025

E East End

3.014

NW Cor

3.024

3.030

NE Cor

P

4.612 461.636 6.150 457.024

CK BM

9.390 452.246 = 452.25

Bay 1 Slab 4

8.945

465.969

457.024

5.613 460.356

5.618 460.357

5.593 460.376

5.658 .311

5.609 .360

5.611 .368

5.807 .162

5.809 .160

5.767 .202

King
West

10-19-50

19

N.W. Cor

E.W.

S.E.

S.W.

Bay 1 5/969

465.969

5.249 460.720

5.266 460.703

5.260 460.709

5.114 460.855

5.180 460.859

5.113 460.856

5.070 460.899

5.092 460.877

5.076 460.893

King
West

10-19-50

30

N.W. Cor

N.E. Cor

C.W.

C.C.

C.F.

S.W.

S.E.

Bay 2 S/ab 18

465.969

5.760 .289

5.795 1.74

5.818 .151

5.840 .129

5.820 .149

5.841 .128

5.949 .020

5.983 459.986

5.988 459.981

King
West

10-19-50

21

H. W. Cor.

N. E. Cor.

E. W.

Q. E.

S. W. Cor.

Bay 2 5/ab 2 5

465.969

5.406 563

5.431 538

5.407 562

5.264 765

5.282 687

5.227 692

5.238 731

5.252 717

5.237 732

King
West

16-17-50

22

N.W. Cor

N.E

P.W.

S.E

S.W.

S.E

Boys Slab 35

King
West
Baker

10-25-50

23

B.M. 8.891 465,915 457.024

5.408

N.W. cor

5.429

5.390

N.E. c

5.443

S.W

5.424

5.432

S.E

5.534

S.W

5.588

5.574

S.E

Bay 3 - 8/638

465.915

5.016

5.036

4.953

4.966

4.985

4.983

5.034

5.036

King
West

10-25-50

24

N. Cor.

E. W.

E. E.

S. W.

S. E.

Bay 4-5 6647

10-25-50

25.

465.915

5.934

N.W.

5.958

5.926

N.E.

5.924

E.W.

5.924

5.937

E.E.

6.063

S.W.

6.082

6.062

S.E.

Bay 4 5196 58

465915

5.534

5.568

5.520

5.415

5.426

5.492

5.384

5.405

5.382

10-25-50

26

N.W.

N.E.

E.W.

F.E.

S.W.

P.W.

S.E.

Bay 5-519664

469.915

5.600

5.616

5.602

5.618

5.592

5.622

5.767

5.745

5.760

N.W.

N.E.

S.W.

S.E.

Bay 5- 5/26/68

10-25-50

28.

469915

5.027

N.W.

5.058

5.043

N.E.

4.964

E.W.

4.956

4.990

5.011

S.W.

5.036

5.047

S.E.

Bay 6- 5/96 78

469.915

5.748

5.755

5.758

5.796

5.765

5.772

5.935

5.960

5.922

70-25-50

29.

N.W.

N.W.

Q.W.

S.W.

S.E.

Bay 6 slab ⁸⁴~~85~~

Ring
West

10-27-50

30.

8.942 465.966

457.024

5.244 466.722

N.W

5.244

5.227 466.739

N.E

5.107 466.859

S.W

5.094

5.132

S.E

5.092 466.874

S.W

5.106

5.106

S.E

Bay 7

5/96 95

Poured 10-25

465.966

5.413

460.553

5.449

5.413

5.433

460.533

5.422

5.400

5.582

5.590

5.590

460.376

K. 119

West

10-27-50

31.

N.W.

N.E

Φ W.

2 E

S.W

SE

Bay 7 5/ab 98

Poured 10-24

465.966

5.098 460.868

5.122

5.084

5.021

5.015 460.951

5.014

5.054

5.080

5.091

KING T
West

10-27-50

32.

N.W

N.E

P.W

S.E

S.W

S.E

Slab 119

Poured - 11-8-50

465.770

5.950

5.955

5.984

5.811

5.817

5.821

5.785

5.805

5.797

11-9-50

King

Baker

West

N.W. cor

o

N.E. cor

W-o

o

E.o

S.W.

S.E

33.

Slab 108

Poured - 11-6-50

King
Baker
West 9

11-9-50

34.

465.770

5.586

N.W

5.635

Q

5.616

NE

5.629

WQ

5.642

5.669

E.A

5.769

S.W.

5.796

5.810

S.E

Slab 95

King
Baker T. 11-9-50
West

35.

465770

5224 460546

N.W

5247

5227

N.E

5252 460518

W.C

5258

5232

E. P

5395

SW

5412

5410 460360

SE

519698

465.770

4.913 460.857

4.930

4.891

4.831

4.848 460.922

4.833

4.850

4.902

4.915 460.855

11-9-50
King
Baker X
West

N.W

N.E

W. P

E. P

S.W

S.E

26

465.196

4.622 460.874 4.612

4.647

4.621

4.552

4.552 460.944

4.550

4.573

4.610

4.618 460.878

BAY #9 SLAB #122
Poured Nov. 13

Nov. 17 1950
BETTY
WELKER

37.

B.M.	13.246	465.496	452.25
CK TBM		8.463	457.033 = 457.024
		8.413	457.083
		5.520	
		5.522	
		5.491	
		5.503	
		5.540	
		5.561	
		5.692	
		5.653	
		5.615	

SEF Pg 15

NW Cor

NE Cor

E E

E

W E

SW Cor

SE Cor

BAY #9 SLAB #130
Poured Nov 16.

465.496

4.942

4.923

4.907

4.820

4.787 ✓

4.736 ✓

4.733 ✓

4.735 ✓

4.723

Nov. 17 1950
BEATTY
WELKER

38.

NW Cor

NE Cor

W &

&

E &

SW Cor

SE Cor

CK TOM

8.465 457.031 = 457.033

CK BM

13.248 452.248 = 452.250

South Side of Joint
break on Expansion Joint Line

BM	Boy #1 +8.704	Slab #9 465.728	457.024
		5.014	460.714
		5.014	460.714
		4.997	460.731
		4.868	460.960
		4.855	460.873
		4.873	460.855
		4.824	460.904
		4.844	460.884
		4.828	460.900

March 19, 1961

King
West
Williams

BM on NW Buttress
Block

NE Cor

NW Cor

Q W

Q E

S-E Cor

S-W Cor

Bay #2 Slab #25

465.728

5.155

5.177

5.169

5.023

5.044

5.035

4.992

736

5.003

4.992

Kings
West
Williams

March 19, 1951

40.

N.E. Cor

N.W. Cor

E.W.

R.E.

S.E. Cor

S.W. Cor

Bay #6 Slab #84

465.728	4.984	460 .844
	4.996	.732
	4.997	.731
	4.869	.859
	4.856	.872
	4.885	.843
	4.848	.880
	4.858	.870
	4.838	.890

Kings
West
Williams

March 19, 1951

41.

N-E Cor,

N-W Cor

Q West

Q East

S-E Cor

S-W Cor

King
West
Williams

42

March 19, 1951

Bay #9

slab #130

465.758	5.142	460.586
	5.155	.573
	5.179	.549
	5.074	.654
	5.042	.686
	4.982	.846
	4.949	.779
	4.957	.771
	4.990	.738
7697	8.697	457.031 = 457.024

NE Cor,

N-W Cor

Q West

Q East

S-E Cor

S-W Cor

Bayview Res
Check Levels on Roof Slabs

King
West
Williams

3/20/51

hazy warm 43

Bay # 1 Slab # 4

BN

+ 8.650 465.674 5.387 457.024
460.387

→ NE Cor

5.316

5.310 460.364

N-W Cor

5.369

⊙ West

5.315

5.327

⊙ East

5.470 460.204

S-E Cor.

5.514

5.514 460.160

S-W Cor.

8.663

Bay # 1 Slab # 9.

465.674 4.959

4.970

4.959

4.824

4.824

4.814

4.777

460.897

4.801

4.776

Kings
West
Williams

3/20/51

44

N-E Cor

N-W Cor

E West

E East

S-E Cor

S-W Cor

Kings
West
Williams

45.

3/20/51

Boy #2

Slab #18

465.674 5.515 460.159

N-E Cor

5.497

5.465 460.209

N-W Cor

5.546

R West

5.512

5.559

R East

5.678 459.996

S-E Cor

5.673

5.654 460.020

S-W Cor

3/20/51

Bay # 2

Slab # 25

465.674 5.103

460.571

N-E Cor.

5.143

5.108

460.566

N-W Cor.

4.974

E. West

4.985

4.985

E. East

4.934

460.740

S-E Cor.

4.954

4.948

460.726

S-W Cor.

3/20/51

Bay # 3 Slab # 35

465.674 5.149

5.185

5.169

5.196

5.178

5.196

5.326

460.348

5.341

5.288

460.386

N-E Cor

N-E Cor

West

East

S-E Cor

S-W Cor

3/20/51

Warm

Bay #3

Slab #38

465.674 4.768

460.906

N-E Cor

4.792

4.769

460.905

N-W Cor

4.712

E West

4.720

4.747

E East

4.791

S-E Cor

4.790

4.749

S-W Cor

Bay #4

Slab #47

465.674 5.682 459.992

5.711

5.674 460.000

5.695

5.701

5.702

5.839 459.835

5.850

5.816 459.858

King
West
Williams

3/20/51

49

N-E Cor

N-W Cor

Q West

Q East

S-E Cor

S-W Cor

King Is.
West
Williams

3/20/51

Bay #4

Slab #56

465.674 5.313 460.361

N-E Cor.

5.325

5.280 460.394

N-W Cor.

5.180

W West

5.189

5.199

E East

5.135 460.539

S-E Cor.

5.160

5.137 460.537

S-W Cor.

Bay # 5

Slab 64

465.674 5.346 460.328

5.368

5.346 460.328

5.383

5.362

5.388

5.495 460.179

5.499

5.512 460.162

King
West
Williams

3/20/67

51

N-E Cor

N-W Cor

E West

E East

S-E Cor

S-W Cor

3/20/51

Bay # 5

Slab # 68

465.674 4.796

4.818

4.776

4.732

4.717

4.751

4.798

4.791

4.748

460.898

460.876

460.926

N-E Cor

N-W Cor

Q West

Q East

S-E Cor

S-W Cor

Bay # 6

Slab # 78

465.674

5.511

460.163

5.515

5.498

5.569

5.569

5.547

5.671

460.003

5.727

5.687

459.987

King
West
Williams

3/20/51

53.

N-E Cor

N-W Cor

Q West

Q East

S-E Cor

S-W Cor

3/20/51

Bay #6 Slab #84

465.674	4.925	460.749
	4.959	
	4.942	460.732
	4.816	
	4.816	
	4.838	
	4.806	460.868
	4.813	
	4.791	460.883

N-E Cor

N-W Cor

E West

E East

S-E Cor

S-W Cor

3/20/51

Bay #7

Slob # 95

465674 5.110

460.564

N-E Cor

5.157

5.112

460.562

N-W Cor

5.146

Q West

5.159

5.139

Q East

5.293

460.381

S-E Cor

5.291

5.276

460.398

S W Cor

3/20/51

56

Bay #7

Slab # 98

465.674 4.783

460.891

NE Cor

4.839

4.793

NW Cor

4.731

Q West

4.737

4.729

Q East

4.795

460.875

S-E Cor

4.784

4.759

460.915

S-W Cor

King
West
Williams

3/20/51

57

Bay # 8

Slab # 108

465.674

5.507

460.167

N-E Cor

5.516

5.473

460.201

N-W Cor

5.521

Q West

5.531

5.565

Q East

5.697

S-E Cor

5.697

5.655

S-W Cor

3/20/51

Bay # 8

Slab^P 119

465.674 5.891

5.853

5.853

459.821

5.728

5.737

5.749

5.687

5.697

5.674

460.000

N-E Cor

N-W Cor

E West

E East

S-E Cor

S-W Cor

Bay # 9

Slab 102

465.674 5.674 460.000

5.719 459.955

5.693 459.981

5.752

5.749

5.698

5.800 459.874

5.835

5.860 459.814

59
N-E Cor

N W Cor

∅ West

∅ East

S-E Cor

S-W Cor

2/20/51

60

Bay # 9 Slab # 130

465.674 5.082 460.592

N-E Cor

5.115

5.120 460.554

N-W Cor

5.025

Q West

4.995

4.949

Q East

4.900 460.774

S-E Cor

4.917

4.953 460.721

S-W Cor

Check .

8.663 457.011 = 457.024

17

27

BAYVIEW RESERVOIR
ELEVATIONS ON ROOF SLAB
OVER TOPS OF COLUMNS
(5 FT OF WATER)

April 2, 1951
BEATTY
LEONARD
G. NELSON

Note: Roof Slabs are
numbered from South to
North, starting at 111
in Southwest Corner.
Northwest Corner is No 15.
Northeast Corner is No 195.
Southeast Corner is No 181.

BM	8.973	465.997	465.997	465.997		
SW 17.	6.150	59.847	NE 92.	5.990	60.007	
SE 17.	6.182	59.815	SE 78.	6.002	59.995	
SW 47.	6.150	59.847	SW 78.	6.020	59.977	
SE 47.	6.168	59.829	NE 47.	6.012	59.985	
SW 77.	6.187	59.810	NW 47.	6.008	59.989	
SE 77.	6.155	59.842	SE 18.	6.010	59.987	
SW 107.	6.190	59.807	SW 18.	5.975	60.022	
SW 122.	6.190	59.807	NW 18.	5.800	60.197	
SE 122.	6.128	59.869	NE 18.	5.852	60.145	
SW 152.	6.140	59.857	NE 33.	5.853	60.144	
SE 152.	6.160	59.837	SW 64.	5.850	460.127	Phenomenal! SEE Pg 17
SW 182.	6.124	59.873	SE 64.	5.842	460.155	
SW 183.	5.962	60.035	NE 78.	5.858	60.139	
SE 153.	5.938	60.059	NW 108.	5.813	60.184	
SW 153.	6.003	59.994	NE 108.	5.846	60.151	
NE 122.	6.005	59.992	NW 138.	5.801	60.196	
NW 122.	6.028	59.969	NE 138.	5.825	60.172	
			SW 169.	5.830	60.167	
			SE 169.	5.800	60.197	

BAYVIEW RES
 ELEVATIONS ON ROOF SLAB
 OVER COLUMNS
 (Continued) 5' FT-WATER

4/2/51

62

SE 170.	465.997	5.628	60.369	NW 125	465.997	5.477	60.520
SW 170.		5.630	60.367	NE 125.		5.456	60.541
SE 140.		5.630	60.367	NW 155		5.463	60.534
NE 124.		5.614	60.383	NE 155		5.468	60.529
NW 124		5.649	60.348	NW 185		5.460	60.537
SE 95		5.637	60.360	SW 187		5.272	60.725
SW 95		5.620	60.377	SW 172		5.254	60.743
NE 64.		5.690	60.307	SW 157		5.280	60.717
NW 64		5.685	60.312	NW 141.		5.275	60.722
SE 35		5.668	60.329	NW 126.		5.317	60.680
SW 35		5.630	60.367	NW 111.		5.281	60.716
NE 4		5.628	60.369	NW 96.		5.356	60.641
NW 20.		5.425	60.572	NW 81.		5.322	60.675
SE 21.		5.472	60.525	NW 66.		5.300	60.697
SE 36.		5.473	60.524	NW 51.		5.298	60.699
SW 66		5.442	60.555	NW 36.		5.308	60.689
NW 80		5.498	60.499	NW 21.		5.260	60.737
NW 95		5.458	60.539	SE 8		5.108	60.889
NE 95		5.454	60.543	NW 37		5.088	60.909

BAYVIEW RES.
ELEVATIONS ON ROOF SLAB
OVER COLUMNS

4/2/51

63

5 FT WATER IN RESERVOIR

	465.997				465.997	
NW 52.		5.105	60.892	NE 38.	5.106	460.891 ✓
SW 68.		5.105	60.892	NW 38.	5.102	460.895 ✓
SE 68.		5.140	60.857	SE 9.	5.110	460.887 ✓
SW 98.		5.092	60.905	SW 25.	5.270	460.727 ✓
SE 98.		5.137	60.860	SE 25.	5.270	460.727 ✓
NW 127		5.108	60.889	NW 54.	5.270	60.727
SW 143		5.030	60.967	NW 69.	5.266	60.731
SE 143		5.090	60.907	NW 84.	5.282	60.715
SW 173.		5.080	60.917	NE 84.	5.265	60.732
SW 188.		5.078	60.919	NW 114	5.278	60.719
SW 189		5.100	60.897	SW 130.	5.290	60.707
SW 174.		5.103	60.894	SE 130.	5.240	60.757
SW 159.		5.110	60.887	NW 159.	5.249	60.748
SW 144.		5.040	60.957	NW 174.	5.278	60.719
SW 129		5.102	60.895	NW 189.	5.202	60.795
NE 98		5.121	60.876	NW 190.	5.478	60.519
SE 84		5.143	60.854	SW 176	5.477	460.520 ✓
SW 84		5.129	60.868	SW 161.	5.405	60.592
NW 68		5.120	60.877	NE 130.	5.423	60.574

BAYVIEW RES.
ELEVATIONS OF ROOF SLAB
OVER COLUMNS

4/2/51

64

265.997

5 FT. WATER

465.997

NW 130.	5.457	60.540	NW 191.	5.640	60.357
NW 115.	5.450	60.547	NW 192.	5.811	60.186
NW 100.	5.467	60.530	NW 177.	5.840	60.157
NW 85.	5.469	60.528	NW 162.	5.818	60.179
SE 56.	5.477	60.520	NW 147.	5.840	60.157
SW 56.	5.475	60.522	NW 132.	5.834	60.163
NE 25.	5.450	60.547	NW 117.	5.820	60.177
NW 25.	5.440	60.557	NW 102.	5.832	60.165
NW 26.	5.642	60.355	NW 87.	5.822	60.175
NW 41.	5.618	60.379	NW 72.	5.798	60.199
NW 56.	5.618	60.379	NW 57.	5.820	60.177
NE 56.	5.652	60.345	NW 42.	5.808	60.189
NE 71.	5.640	60.357	NW 27.	5.809	60.188
NW 101.	5.648	60.349	NW 28.	6.000	59.997
NW 116.	5.641	60.356	NW 43.	6.011	59.986
NW 131.	5.645	60.352	NW 58.	6.008	59.989
NW 146.	5.592	60.405	NW 73.	6.010	59.987
NW 161.	5.590	60.407	NW 88.	6.007	59.990
NW 176.	5.646	60.351	NW 103.	6.005	59.992

BAYVIEW RES.
ELEVATIONS OF ROOF SLAB
OVER COLUMNS

4/2/51

65

5' FT. WATER

465.997

SW 119.	6.008	59.989
SW 134.	5.992	60.005
NW 148.	5.985	60.012
SW 164.	5.980	60.017
SW 179.	5.948	60.049
SW 194.	5.982	60.015
NE 179.	6.178	59.819
NW 179	6.188	59.809
NW 164	6.210	59.787
SW 150	6.171	59.826
NW 134.	6.198	59.799
NW 119.	6.170	59.827
NW 104.	6.190	59.807
NW 89	6.168	59.829
NW 74.	6.188	59.809
NW 59.	6.178	59.819
NW 44	6.190	59.807
NW 29	6.165	59.832
CK B.M.	8.973	457.024

BAYVIEW RES.
ELEVATIONS OF ROOF
OVER COLUMNS

April 6 1951
BEATTY
LEONARD
NELSON

66

21' FT WATER IN RESERVOIR

466.049

B.M.	9.025	466.049	457.020	NE 92	60.50	59.999
SW 17		6.200	59.849	SE 78	6.062	59.987
SE 17		6.223	59.826	SW 78	6.082	59.967
SW 47		6.192	59.857	NE 47	6.077	59.972
SE 47		6.210	59.839	NW 47	6.058	59.991
SW 77		6.230	59.819	SE 18	6.058	59.991
SE 77		6.198	59.851	SW 18	6.020	60.029
SW 107		6.241	59.808	NW 18	5.845	60.204
SW 122		6.250	59.799	NE 18	5.910	60.139
SE 122		6.175	59.874	NE 33	5.918	60.131
SW 152		6.182	59.867	SW 64	5.912	60.137
SE 152		6.198	59.851	SE 64	5.902	60.147
SW 182		6.161	59.888	NE 78	5.915	60.134
SW 183		6.002	60.047	NW 108	5.871	60.178
SE 153		5.915	60.064	NE 108	5.908	60.141
SW 153		6.058	59.991	NW 138	5.862	60.187
NE 122		6.058	59.991	NE 138	5.884	60.165
NW 122		6.082	59.967	SW 169	5.888	60.161
				SE 169	5.846	60.203

BAYVIEW RES
 ELEV'S OF ROOF
 OVER COLUMNS
 21-FT WATER

4/6/51

67

466.049			466.049		
SE 170	5.670	60.379	NW 125	5.552	60.497
SW 170	5.680	60.369	NE 125	5.524	60.525
SE 140	5.682	60.367	NW 155	5.518	60.531
NE 124	5.680	60.369	NE 155	5.520	60.529
NW 124	5.720	60.329	NW 185	5.492	60.557
SE 95	5.698	60.351	SW 187	5.310	60.739
SW 95	5.700	60.349	SW 172	5.313	60.736
NE 64	5.762	60.287	SW 157	5.343	60.706
NW 64	5.750	60.299	NW 141	5.340	60.709
SE 35	5.718	60.331	NW 126	5.388	60.661
SW 35	5.710	60.339	NW 111	5.393	60.716
NE 4	5.668	60.381	NW 96	5.434	60.615
NW 20	5.472	60.577	NW 81	5.389	60.660
SE 21	5.553	60.496	NW 66	5.354	60.695
SE 36	5.538	60.511	NW 51	5.350	60.699
SW 66	5.502	60.547	NW 36	5.368	60.681
NW 80	5.563	60.486	NW 21	5.306	60.743
NW 95	5.537	60.512	SE 8	5.150	60.899
NE 95	5.523	60.526	NW 37	5.148	60.901

BAYVIEW RES.
ELEV. OF ROOF
OVER COLUMNS
21' FT WATER

4/6/51

68

	466.049				466.049		
NW 52		5.158	60.891	NE 38		5.16.6	460.883 ✓
SW 68		5.158	60.891	NW 38		5.16.5	460.884 ✓
SE 68		5.206	60.843	SE 9		5.16.6	460.883 ✓
SW 98		5.162	60.887	SW 25		5.32.5	460.724 ✓
SE 98		5.215	60.834	SE 25		5.33.4	460.715 ✓
NW 127	WATER Standing	5.183	60.866	NW 52		5.33.2	60.717
SW 143		5.108	60.941	NW 69		5.32.8	60.721
SE 143		5.162	60.887	NW 84		5.34.2	60.707
SW 173		5.132	60.917	NE 84		5.32.5	60.724
SW 188		5.112	60.937	NW 114		5.30.0	60.709
SW 189		5.132	60.917	SW 130		5.36.4	60.685
SW 174		5.150	60.899	SE 130		5.30.0	60.749
SW 159		5.172	60.877	NW 159		5.31.0	60.739
SW 144		5.106	60.943	NW 174		5.34.8	60.701
SW 129		5.167	60.882	NW 189		5.25.1	60.798
NE 98		5.180	60.869	NW 190		5.53.0	60.519
SE 84		5.203	60.846	SW 176		5.54.5	460.505 ✓
SW 84		5.189	60.860	SW 161		5.46.8	460.581 ✓
NW 68		5.177	60.872	NE 130		5.48.2	60.567

BAYVIEW RES.
ELEV. OF ROOF
OVER COLUMNS

21 FT. OF WATER

466.049

NW 130	5.519	60.530
NW 115	5.512	60.537
NW 100	5.552	60.497
NW 85	5.525	60.524
SE 56	5.530	60.519
SW 56	5.529	60.520
NE 25	5.534	60.515
NW 25	5.493	60.556
NW 26	5.692	60.357
NW 41	5.700	60.349
NW 56	5.673	60.376
NE 56	5.710	60.339
NE 71	5.698	60.351
NW 101	5.709	60.340
NW 116	5.708	60.341
NW 131	5.719	60.330
NW 146	5.660	60.389
NW 161	5.642	60.407
NW 176	5.713	60.336

4/6/51

69

466.049

NW 191	5.680	60.369
NW 192	5.850	60.199
NW 177	5.890	60.159
NW 162	5.888	60.161
NW 147	5.892	60.157
NW 132	5.900	60.149
NW 117	5.884	60.165
NW 102	5.891	60.158
NW 87	5.879	60.170
NW 72	5.852	60.197
NW 57	5.877	60.172
NW 42	5.874	60.175
NW 27	5.863	60.186
NW 28	6.046	60.003
NW 43	6.060	59.989
NW 58	6.060	59.989
NW 73	6.060	59.989
NW 88	6.057	59.992
NW 103	6.055	59.994

BAYVIEW RES.
 ELEV. OF ROOF
 OVER COLUMNS
 21' FT WATER

4/6/51

70.

466.049

SW 119	6.060	59.989
SW 132	6.048	60.001
NW 148	6.045	60.004
SW 164	6.040	60.009
SW 179	5.998	60.051
SW 194	6.025	60.024
NE 179	6.211	59.838
NW 179	6.231	59.818
NW 164	6.252	59.797
SW 150	6.215	59.834
NW 134	6.241	59.808
NW 119	6.217	59.832
NW 104	6.241	59.808
NW 89	6.218	59.831
NW 74	6.240	59.809
NW 59	6.230	59.819
NW 44	6.245	59.804
NW 29	6.225	59.824
CK BM	9.025	457.024

WATER
 Standing

Bay View Res.
Elev. Top Test Well Casings
Top New Drain M. Hole
Floor " " " "

King
West
Williams

5-17-51

71

B.M. 1.48' 458.50 457.02

1.12 457.38

Top casing - E Oil Drive

T.P. 2.47 447.92 13.05 445.45

3.68 444.24

Top casing - Ft. of slope

6.66 441.26

Top M. Hole

19.65 428.27

Top Floor in Man Hole

T.P. 13.10 459.44 1.58 446.34

B.M. 2.39 457.05

BAYVIEW RESERVOIR

ROOF SLAB ELEV'S.

22' WATER

WILLIAMS X
KELLHOFER
BULL †

72

CLOUDY
&
WARM
APRIL 24, 1959

B.M.	9.036 9.019	466.060 466.043	PAINTED N.W. COR. RES. 457.024		466.060 466.043	
SE 1		6.333		SW 6	5.507	
NE 1		6.226		SE 6	5.484	
NW 1		6.226		NE 6	5.309	
SW 2		6.224		NW 6	5.340	
SE 2		6.216		SW 7	5.327	
NE 2		6.022		SE 7	5.321	
NW 2		6.049		NE 7	5.171	
SW 3		6.056		NW 7	5.165	
SE 3		6.034		SW 8	5.163	
NE 3		5.853		SE 8	5.156	60.904
NW 3		5.899		NE 8	5.160	
SW 4		5.877	460.183	NW 8	5.158	
SE 4		5.849	460.211	SW 9	5.158	
NE 4		5.675	460.385	SE 9	5.166	60.894
NW 4		5.686	460.374	NE 9	5.354	
SW 5		5.682		NW 9	5.346	
SE 5		5.680		SW 10	5.351	
NE 5		5.496		SE 10	5.340	
NW 5		5.520		NE 10	5.505	
				NW 10	5.507	

BAYVIEW RESERVOIR
ROOF SLAB ELEV. (CONT.)

WILLIAMS &
KELLHOFER
BULL †

SAME
PARTY

WILLIAMS
KELLHOFER &
BULL †

73

~~466.060~~
466.043

~~466.060~~
466.043

April 24, 1957

SW 11	5510	SW 16	6.334	
SE 11	5.525	SE 16	6.376	
NE 11	5.711	NE 16	6.232	
NW 11	5.711	NW 16	6.205	
SW 12	5.700	SW 17	6.206	459.854
SE 12	5.712	SE 17	6.219	459.841
NE 12	5.878	NE 17	6.068	
NW 12	6.047	NW 17	6.014	
SW 13	5.858	SW 18	6.020	60.040
SE 13	5.880	SE 18	6.068	59.992
NE 13	6.050	NE 18	5.928	60.132
NW 13	6.036	NW 18	5.848	60.212
SW 14	6.041	SW 19	5.839	
SE 14	6.046	SE 19	5.915	
NE 14	6.229	NE 19	5.785	
NW 14	6.219	NW 19	5.662	
SW 15	6.252	SW 20	5.674	
SE 15	6.234	SE 20	5.794	
NE 15	6.344	NE 20	5.625	
CHK. B.M. 11:20 AM.	9.033	NW 20	5.487	60.573

3060 #
457.022

BAYVIEW RES. ROOF SLAB EL.

WILLIAMS

74.

CONT.

WILLIAMS
KELLHOFER T
BULL †

KELLHOFER T

BULL †

466.084
~~466.067H~~

CHK. B.M.	466.060	9.036	SUNNY + WINDY			
12:00 Noon		9.019	457.024 = 457.024	NE 25	5.668	.416
B.M.	9.060 9.043	466.084 466.067	457.024	NW 25	5.520	.569
SW 21		5.511		SW 26	5.535	
SE 21		5.642	60.442	SE 26	5.683	
NE 21		5.437		NE 26	5.797	
NW 21		5.330	460.752	NW 26	5.721	.363
SW 22		5.329		SW 27	5.712	
SE 22		5.439		SE 27	5.773	
NE 22		5.235		NE 27	5.945	
NW 22		5.189		NW 27	5.881	.203
SW 23		5.180		SW 28	5.888	
SE 23		5.221		SE 28	5.946	
NE 23		5.231		NE 28	6.104	
NW 23		5.120		NW 28	6.068	.016
SW 24		5.120		SW 29	6.020	
SE 24		5.240		SE 29	6.090	
NE 24		5.409		NE 29	6.278	
NW 24		5.364		NW 29	6.230	.854
SW 25		5.349	.735	SW 30	6.248	
SE 25		5.387	.697	SE 30	6.297	

BAYVIEW RES. ROOF SLAB EL.

CONT.

WILLIAMS X
KELLHOFER
BULL ↑

~~466.084~~
~~466.007~~

NE30	6.426	459.658
NW30	6.368	459.716
SW31	6.406	459.678
SE31	6.421	459.663
NE31	6.238	459.846
NW31	6.255	459.829
SW47	6.227	459.857
SE47	6.248	459.836
SW77	6.269	459.815
SE77	6.232	459.852
SW107	6.280	459.804
SW122	6.279	459.805
SE122	6.211	459.873
SW152	6.225	459.859
SE152	6.244	459.840
SW182	6.204	459.880
SE182	6.248	459.836
CE BM	9.064 9.047	457.020 = 457.024

BAYVIEW ROOF SLAB
(CONT.)

WEST
WILLIAMS
KELLHOFFER
BULL

April 25, 1957

465.857

B.M.	8.833	465.857	457.024
NW 47		5.880	459.963
NE 47		5.892	459.965
NW 77		5.897	459.960
NW 92		5.881	459.976
NE 92		5.867	459.990
N.W. 122		5.894	459.963
NE 122		5.885	459.972
SW 153		5.891	459.966
SE 153		5.816	460.041
SW 183		5.814	460.043
SE 183		5.835	460.022
SE 184		5.661	460.196
SE 169		5.653	460.204
SW 169		5.701	460.156
NE 138		5.701	460.156
NW 138		5.669	460.188
NE 108		5.722	460.135
NW 108		5.688	460.169
NE 78		5.742	460.115

SE 64	5.730	460.127
SW 64	5.732	460.125
NE 33	5.742	460.115
SW 35	5.513	460.284
SE 35	5.532	460.325
NW 64	5.590	460.287
NE 64	5.586	460.271
SW 95	5.522	460.335
SE 95	5.512	460.345
NW 124	5.538	460.319
NE 124	5.502	460.355
SE 140	5.519	460.338
CHK. B.M.	8.836	$457.021 = 457.024$
SET T.B.M.	6.408	459.449 CHISEL <input type="checkbox"/> ON TOP N.W. FOOTING.

April 26, 1957

RECHECK T.B.M.	8.706	465.730	457.024
	6.275	<u>459.455</u>	- CHISEL <input type="checkbox"/>

BAYVIEW RES.
ROOF SLAB. (CONT)

	6.275	465.730	459.455
SW 170		5.373	460.357
SE 170		5.339	460.391
SE 185		5.324	460.406
NE 185		5.149	460.581
NW 185		5.168	460.562
NE 155		5.214	460.516
NW 155		5.200	460.530
NE 125		5.212	460.518
NW 125		5.236	460.494
NE 95		5.214	460.516
NW 95		5.222	460.508
NW 80		5.254	460.476
SW 66		5.188	460.542
SE 36		5.212	460.518
NW 36		5.081	460.649
NW 51		5.027	460.703
NW 66		5.032	460.698
NW 81		5.071	460.659
NW 96		5.121	460.609

WILLIAMS T
KELLHOFFER
Bull #

77

April 26, 1957

	465.730		
NW 111		5.032	460.698
NW 126		5.068	460.662
NW 141		5.021	460.709
SW 157		5.020	460.710
SW 172		5.021	460.709
SW 187		4.999	460.741
SE 187		4.991	460.739
NE 187		4.822	460.908
SW 188		4.788	460.942
SW 173		4.849	460.881
SE 143		4.848	460.882
SW 143		4.789	460.941
NW 127		4.870	460.860
SE 98		4.910	460.820
SW 98		4.845	460.885
SE 68		4.887	460.843
SW 68		4.833	460.897
NW 52		4.828	460.902
NW 37		4.853	459.877

BAYVIEW RES.
ROOF SLAB (CONT.)

78

APRIL 26, 1957

	465.730		465.730		
NW 38	4.849	460.881	NE 84	5.009	460.721
NE 38	4.834	460.896	NW 84	5.022	460.708
NW 68	4.851	460.879	NW 69	4.999	460.731
SW 84	4.867	460.863	NW 54	4.999	460.731
SE 84	4.887	460.843	SW 25	5.033	460.697
NE 98	4.866	460.864	NE 25	5.320	460.410
SW 129	4.853	460.877	SW 56	5.200	460.530
SW 144	4.792	460.938	SE 56	5.206	460.524
SW 159	4.858	460.872	NW 85	5.208	460.522
SW 174	4.865	460.865	NW 100	5.207	460.523
SW 189	4.809	460.921	NW 115	5.195	460.535
SE 189	4.822	460.908	NW 130	5.200	460.530
NE 189	5.027	460.703	NE 130	5.168	460.562
NW 189	4.914	460.816	SW 161	5.149	460.581
NW 174	5.055	460.675	SW 176	5.249	460.481
NW 159	5.002	460.728	NW 190	5.198	460.532
SE 130	4.981	460.749	SE 191	5.179	460.551
SW 130	5.052	460.678	NE 191	5.359	460.371
NW 114	5.031	460.699	NW 191	5.350	460.380

BAYVIEW RES.
ROOF SLAB (CONT.)

79

465.730			465.730			April 26, 1957		
NW 176	5.454	460.276	NW 177	5.630	460.100			
NW 161	5.332	460.398	NW 192	5.528	460.202			
NW 146	5.345	460.385	NE 192	5.548	460.182			
NW 131	5.404	460.326	SE 194	5.737	459.993			
NW 116	5.388	460.342	SW 194	5.719	460.011			
NW 101	5.388	460.342	SW 179	5.720	460.010			
NE 71	5.369	460.361	SW 164	5.739	459.991			
NE 56	5.386	460.344	NW 148	5.742	459.988			
NW 56	5.348	460.382	SW 174	5.750	459.980			
NW 41	5.418	460.312	SW 119	5.755	459.975			
NW 42	5.570	460.160	NW 103	5.756	459.974			
NW 57	5.554	460.176	NW 88	5.748	459.982			
NW 72	5.530	460.200	NW 73	5.750	459.980			
NW 67	5.548	460.182	NW 68	5.743	459.987			
NW 102	5.574	460.156	NW 43	5.730	460.000			
NW 117	5.574	460.156	NW 44	5.910	459.820			
NW 132	5.589	460.141	NW 59	5.900	459.830			
NW 147	5.586	460.144	NW 74	5.914	459.816			
NW 162	5.584	460.142	NW 89	5.888	459.842			

	465.730		
NW 104	5.914	459.816	
NW 119	5.888	459.842	
NW 134	5.922	459.808	
SW 150	5.899	459.831	
NW 164	5.930	459.800	
NW 179	5.915	459.815	
NE 179	5.901	459.829	
NE 194	5.899	459.831	
NE 180	6.041	459.689	
NW 180	6.041	459.689	
NW 165	6.084	459.646	
NW 150	6.057	459.673	
NW 135	6.103	27	
NW 120	6.122		
NW 105	6.062		
NW 90	6.081		
NW 75	6.067		
NW 60	6.060		
NW 45	6.081		
CHK BM	6.276	459.454 =	459.455

G.

9	
.35	0
.85	1
.35	2
.85	3
.35	4
.85	5
.35	6
.85	7
.35	8
.85	9
.35	10
.85	11
.35	12
.85	13
.35	14
.85	15
.35	16
.85	17
.35	18
.85	19
.35	20
.85	21
.35	22
.85	23
.35	24
.85	25
.35	26
.85	27
.35	28
.85	29
.35	30
.85	31
.35	32
.85	33
.35	34
.85	35
.35	36
.85	37
.35	38
.85	39
.35	40
.85	41
.35	42
.85	43
.35	44
.85	45
.35	46
.85	47
.35	48
.85	49
.35	50

