

Construction Notes

5

TRANSIT

18

W8

Table showing the difference of latitude and departure in running 80 chains at any course from 1 to 60 minutes.

MICROFILMED

MINUTE	LKS.	MINUTE	LKS.	MINUTE	LKS.
1	1 1/3	21	49	41	95 2/3
2	2 2/3	22	51 1/3	42	98
3	4 1/3	23	53 2/3	43	100 1/3
4	6 2/3	24	56	44	102 2/3
5	9 1/3	25	58 1/3	45	105
6	12	26	60 2/3	46	107 1/3
7	15 1/3	27	63	47	109 2/3
8	18 2/3	28	65 1/3	48	112
9	22	29	67 2/3	49	114 1/3
10	25 1/3	30	70	50	116 2/3
11	28 2/3	31	72 1/3	51	119
12	32	32	74 2/3	52	121 1/3
13	35 1/3	33	77	53	123 2/3
14	38 2/3	34	79 1/3	54	126
15	42	35	81 2/3	55	128 1/3
16	45 1/3	36	84	56	130 2/3
17	48 2/3	37	86 1/3	57	133
18	52	38	88 2/3	58	135 1/3
19	55 1/3	39	91	59	137 2/3
20	58 2/3	40	93 1/3	60	140

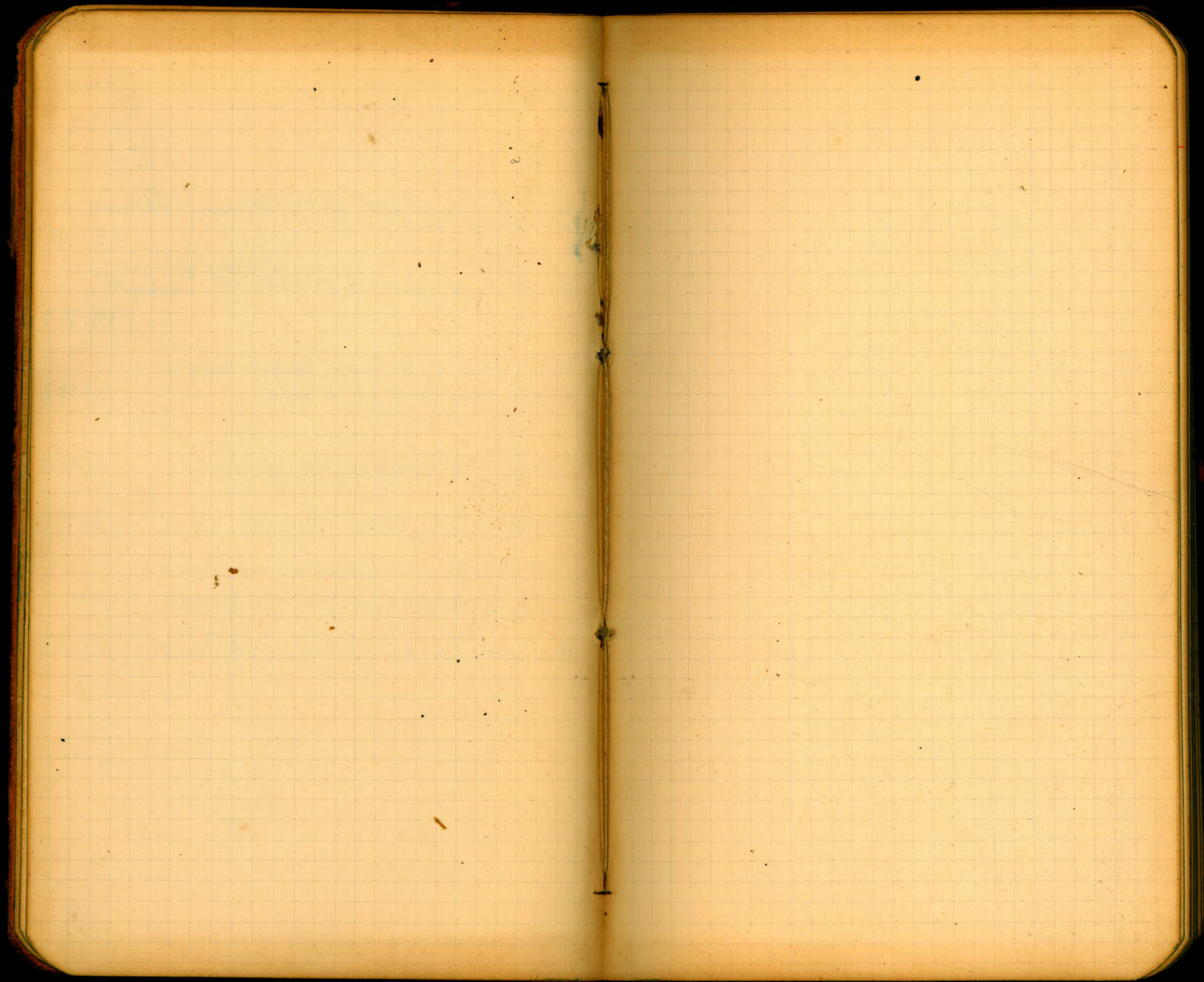
TABLE FOR RUNNING ON SLOPES.

In the following table the first column shows the angle, the second the number of links to be added to a chain on the slopes, to make one chain, horizontal measurement.

Angle	COR. IN LINKS	Angle	COR. IN LINKS	Angle	COR. IN LINKS	Angle	COR. IN LINKS
0		0		0		0	
4	0.24	11	1.88	18	5.14	25	10.54
5	0.38	12	2.24	19	5.76	26	11.26
6	0.55	13	2.63	20	6.42	27	12.24
7	0.76	14	3.06	21	7.11	28	13.37
8	0.98	15	3.53	22	7.85	29	14.34
9	1.24	16	4.02	23	8.64	30	15.47
10	1.55	17	4.56	24	9.47	35	22.07

INDEX

	Page
150' Contour around reservoir <i>Pages 1-12</i>	1-12
Levels to connect with Gort B.M. near <i>Stammers</i> (abandoned - see Pgs 19-24) <i>Pages 13-18</i>	13-18
Check levels from Gort B.M. to <i>Dam site</i> <i>Pages 19-24</i>	19-24
Extension of Wilson Creek Road from Sta 110 to dam site	25-26
Extend 150' contour for quarry	27-29
Levels along curve - Barrett dam	30-32
X-sections on Cottonwood Creek opp. Lauterbach's Ranch house	34
Barrett Road in Cottonwood Canon	35-37



Levels for flagging 150' contour around Barrett

		152.05	
4.15	156.20		
0		5.80	152.40
2.27	155.07		
0		5.83	149.24
7.00	156.24		
0		6.40	149.84
6.58	156.42		
0		4.75	151.67
4.77	156.44		
0		5.90	150.54
4.62	155.10		
0		4.82	150.34
9.60	159.97		
0		9.95	150.02
12.06	162.08		
0		11.69	150.39
8.96	159.35		
0		9.19	150.10
7.07	157.23		
0		7.70	149.53
12.89	162.42		
0		12.22	150.20
12.15	162.35		
0		12.62	149.73

Barroover

July 8th 1905

B.M. on rock near belt east side of dam.

July 10th 1905

150' contour around River

July 10th 1905

			149.73
	9.24	158.97	
o			9.42 149.55
	8.11	157.00	
check			9.16 154.50 =
o			7.61 150.05
	5.15	155.20	
o			5.03 149.57
	12.83	162.60	
o			10.85 151.55
	9.00	160.85	
o			10.58 150.27
	11.49	161.76	
o			11.97 149.79
	10.61	160.40	
o			10.94 149.46
	12.92	162.38	
o			12.36 150.02
	6.48	156.50	
o			3.88 152.62
	10.84	163.44	
o			12.69 150.75
	11.12	161.87	
o			11.86 150.01
	9.88	159.89	

check on Woodland B.M. No. 3 in head of wood
 road flat. original elev = 154.52
 154.50
 .02 dif-

July 11th 1905

3
150' Contour around Summit

July 11th 1905

0	159.89		
0		10.22	149.67
0	10.68	120.35	
0		10.00	150.35
0	8.43	158.78	
0		7.23	151.55
0	4.95	156.50	
0		6.34	150.16
0	7.27	157.43	
0		7.41	150.02
0	9.09	159.11	
0		12.57	146.54
0	5.27	151.81	
0		11.89	139.92
0	12.84	152.96	
0		2.50	150.26
0	5.18	155.44	
0		6.25	149.19
0	8.72	157.91	
0		10.87	147.04
0	12.08	159.12	
0		10.62	148.50
0	11.37	159.87	
0		9.71	150.16
0	12.84	163.00	

4
150' contour around Reservoir

1
July 11th 1905

	123.00		
B.M.		9.88	153.42 =
o		12.44	150.56
	12.14	122.70	
o		4.09	156.21
	6.97	123.58	
o		10.05	153.53
S	5.20	159.13	
o		8.72	150.41
	10.71	161.12	
o		11.11	150.01
	12.57	162.58	
o		11.24	151.34
	10.19	161.53	
o		12.76	149.77
	7.84	150.61	
o		9.54	147.07
	8.14	155.21	
o		5.96	149.25
	5.45	154.70	
o		4.45	150.25
	8.11	158.36	
o		7.95	150.41
	7.60	158.01	
o		8.04	149.97

B.M. On Cottonwood 1' dia. on South side of
Cottonwood creek at head of reservoir.

July 12th 1905

150' Contour around Reservoir

July 12th 1905

			149.97
	11.17	161.14	
0			8.92 152.22
	8.81	161.03	
0			12.38 148.65
	10.21	158.86	
0			9.19 149.67
	8.29	157.96	
0			5.29 152.68
	10.63	163.31	
0			12.94 150.37
	11.55	161.92	
0			11.71 150.21
	12.36	162.57	
0			12.63 149.94
	7.99	157.93	
0			8.51 149.42
	7.47	156.89	
0			6.95 149.94
	6.69	156.63	
0			7.00 149.63
	7.71	157.34	
0			7.48 149.86
	10.80	160.66	
0			10.32 150.34

July 13th 1905

150' Contour around Reservoir

July 13th 1905

		150.34
7.69	160.03	
0		6.81 153.72
7.31	161.03	
0		12.61 148.42
12.70	161.12	
0		11.52 149.20
7.48	157.08	
0		6.41 150.67
6.26	156.93	
0		6.33 150.60
11.75	162.35	
0		12.27 150.08
12.65	162.73	
0		12.50 150.23
11.04	161.27	
0		10.67 150.60
9.92	160.52	
0		10.07 150.45
11.97	162.42	
0		11.31 150.61
8.68	159.29	
0		10.94 148.35
6.74	155.09	
0		4.44 150.65

July 14th 1905

July 14th 1905

7
150' Contour around reservoir

			150.65	
	8.79	159.44		
o			9.63	149.81
	7.24	157.05		
o			6.38	150.67
	9.86	160.53		
o			10.33	150.20
	11.50	161.70		
o			5.20	156.50
	6.32	162.82		
o			12.11	150.71
	12.08	162.79		
o			12.15	150.64
	11.74	162.38		
o			4.69	157.69
	3.42	161.11		
o			12.92	148.19
	9.32	157.51		
o			4.07	153.44
	7.85	161.39		
o			9.54	151.45
	9.76	161.21		
B.M.			9.00	152.21 =
o			12.82	148.39
	7.34	155.73		

B.M. On 30 penny wire spike in dead Cottonwood tree
3' dia at head of reservoir Pine Creek

8
150' contour around reservoir

	155.73		
o		0.41	155.32
	1.93	160.25	
o		8.69	151.56
	9.32	160.88	
o		12.34	148.54
	12.38	160.92	
o		12.25	148.67
	3.94	152.61	
o		4.32	148.29
	8.14	156.43	
B.M.		6.62	149.81 =
o		7.65	148.78
	10.39	159.17	
o		9.01	150.10
	10.13	160.29	
o		10.41	149.88
	7.90	157.78	
o		7.34	150.44
	6.27	156.71	
o		6.19	150.52
	11.76	162.28	
o		12.40	149.88
	9.58	159.66	
B.M.		6.74	152.72

July 14th 1905

July 17th 1905

B.M. 30 penny wire spike in post telephone pole west
of Pine creek crossing

B.M. 30 penny spike in Cottonwood 3'6" dia head of Eagle creek

9
150' Center around Reservoir

	159.46		
0		9.95	149.51
	11.36	160.87	
0		10.68	150.19
	11.15	161.34	
0		12.02	149.32
	7.34	156.66	
0		11.28	146.38
	9.84	155.22	
0		5.67	149.55
	9.01	158.56	
0		8.41	150.15
	11.46	161.61	
0		11.57	150.04
	12.31	162.35	
0		12.07	150.28
	12.50	162.78	
0		10.57	152.21
	9.87	162.08	
0		12.02	150.06
	12.69	162.75	
0		12.82	149.93
	9.77	159.70	
0		9.82	149.88
	12.88	162.76	

July 17th 1905

July 18th 1905

150' Contour around river

July 18th 1905

	112.76		
0		12.27	150.09
	6.98 157.07		
0		7.00	150.07
	11.96 162.03		
0		10.41	151.62
	10.68 162.30		
0		12.15	150.15
	6.44 156.59		
0		6.46	150.13
	11.54 161.67		
0		11.64	150.03
	8.56 158.59		
0		8.18	150.41
	10.71 161.12		
0		11.17	149.95
	12.71 162.66		
0		11.14	151.52
	10.91 162.43		
0		12.70	149.73
	8.78 158.51		
0		8.84	149.67
	12.57 162.24		
0		12.13	150.11
	8.90 159.01		

July 19th 1905

150' Contour around reservoir

	159.01		
o		8.22	150.79
	1.82	157.21	
o		8.07	149.54
	4.55	154.09	
o		3.72	150.37
	8.97	159.34	
o		8.90	150.44
	10.15	150.59	
o		10.61	149.98
	8.45	158.43	
o		7.78	150.25
	11.38	152.03	
o		12.10	149.93
	11.14	151.07	
o		8.51	152.56
	5.09	157.25	
o		7.10	150.05
	12.25	152.30	
B.M.		3.54	158.70
o		12.12	150.18
	9.01	159.19	
o		9.01	150.18
	6.60	156.78	
o		6.41	150.37

B.M. 30 penny spike in Oak tree 2' dia head Wilson creek

150' Contour around reservoir.

			150.97
	873	159.10	
o			894 150.10
	907	159.23	
o			922 150.01
	11.40	161.47	
B.M.			0.45 155.02
	3.80	158.88	
o			1191 146.97
	12.44	159.41	
Check			0.96 152.45

July 19th 1905

B.M. On large boulder head of camp cañon

July 20th 1905

Check on B.M. at Danville elev = $\frac{152.45}{152.05}$
 0.40 dif-

ends to connect with U. S. G. S. B. M. near

1471.937
 12.873 1484.810
 0.797 84.013
 2.879 96.883
 0.680 96.203
 2.188 1508.691
 0.631 1508.060
 12.994 1521.054
 0.663 20.391
 12.010 32.401
 0.692 31.709
 7.755 39.464
 0.723 37.741
 12.995 50.736
 1.258 49.478
 11.138 60.016
 0.895 59.723
 11.702 71.475
 0.630 70.845
 12.220 83.065
 0.653 82.412
 12.710 95.122
 1.010 94.112
 10.215 107.327
 3.935 100.392

Abandoned
 See Pages

- 24

Titusmunnis Ranch

July 28th 1905

= Initial B. M. on boulder back of Hacksmith ship

Levels to Fort B.M.

July 28th 1905

			1000.892
4.550	1604.942		
0		0.910	1604.032
12.865	16.897		
0		1.458	15.039
22.040	27.379		
0		1.080	26.299
10.985	37.284		
0		5.670	31.614
10.160	41.974		
0		2.990	38.784
10.870	49.654		
0		4.815	44.840
9.090	53.930		
0		8.130	45.500
10.830	56.330		
0		5.007	51.323
7.990	58.413		
0		2.003	56.410
10.450	66.860		
0		11.50	65.710
12.395	78.105		
0		1.575	76.530
2.170	78.700		
0		3.485	75.215

Level to East B.M.

			1675.215
0	1640	1082.855	5.890 76.965
0	12.980	89.945	84.70 81.475
0	4.845	86.320	5.145 81.175
0	4.887	86.062	4.507 81.555
0	10.360	91.915	0.840 91.075
0	5.392	99.467	6.912 92.555
0	6.352	98.907	3.350 1095.557 =
Check			0.613 1698.294
0	12.880	171.174	0.689 1710.485
0	12.870	23.355	1.132 22.223
0	12.988	35.211	0.576 34.615
0	12.987	47.602	1.400 46.202
0	11.540	57.742	

July 28th 1905

head of Wilson creek
 check on original B.M. on rock ledge elev = $\frac{1095.557}{1695.550}$
 Diff = 0.007

links to Govt B.M.

	1757.742		
0		0.763	1756.979
	12.390	29.369	
0		0.601	28.768
	12.912	81.680	
0		0.665	81.015
	12.283	93.298	
0		0.656	92.642
	88.40	1801.482	
0		2.620	1798.862
	4.527	1803.589	
0		1.920	1701.469
	11.646	1713.109	
0		12.890	1800.219
	8.120	08.339	
0		3.200	05.339
	10.145	15.484	
0		1.610	13.874
	11.176	25.050	
0		0.630	24.420
	8.025	32.445	
check		6.030	1826.415
0		1.770	30.675
	8.683	39.308	
0		1.835	37.473

July 28th 1905July 29th 1905

check on Govt B.M. on oak tree at junction of Bonnett
and Morana roads

1826.415
45.583
1871.998

Lands to Govt 13.721

			1837.473
0	10.770	1848.243	0.785 17.468
0	12.420	59.878	1.002 58.846
0	12.720	71.766	0.910 70.856
0	12.743	83.699	0.917 82.650
0	12.880	95.560	0.690 94.870
0	12.685	1907.565	0.600 1906.965
0	12.570	19.525	0.657 18.868
0	10.105	28.973	0.690 28.283
0	12.965	41.248	1.470 39.778
0	12.955	52.733	0.673 52.060
0	11.943	64.003	1.113 62.890
0	12.400	75.290	0.784 74.506

July 29th 1905

Accts to Govt B.M.

July 29th 1905

		1974.506
0	12.752 1987.458	0.778 1986.680
0	12.265 99.985	0.602 98.683
0	12.497 2011.180	0.504 2010.376
0	13.002 2023.378	1.020 22.358
0	12.530 34.588	0.758 34.190
0	12.770 46.900	0.670 46.230
0	11.435 57.225	0.675 56.980
0	12.310 69.290	2.150 67.140
0	3.510 70.950	
check		4.838 2064.112

Govt cl = 2110.242
 check on Govt B.M. mar 2nd communc from 2064.112
 46.130

Final check levels from U. S. G. S. B. M. near

2110.242 =

0.175 2110.417

o

12.504 03.913

0.623 04.536

o

12.948 2091.588

0.642 2092.230

o

12.955 79.275

0.608 79.880

o

11.923 67.960

3.990 71.950

o

12.740 59.210

0.710 59.920

o

12.565 47.355

0.780 48.135

o

12.690 35.445

0.750 36.195

o

12.852 23.243

0.697 24.040

o

12.950 11.090

1.247 12.337

o

12.920 1999.417

11.57 2000.574

o

12.333 1788.241

0.713 88.954

o

10.053 78.901

Approximate bench to initial B.M. at Darroite

edge of large dish on boulder. Aug 3rd 1905

1978.901

2.168 1981.049

122.55 1988.814

2.595 75.409

12.050 23.359

0.655 24.014

12.927 51.087

0.820 51.907

12.940 38.967

0.733 39.700

12.905 26.795

0.586 27.381

11.975 15.402

1.523 12.929

12.820 04.029

1.053 05.122

12.358 1892.724

1.793 1894.557

11.195 83.322

1.720 85.122

11.510 73.212

Check

2.375 75.987

11.335 24.652

1.875 26.527

11.110 55.417

Gross

			1855.417	
	12.00	1856.617		
o			9.845	46.772
	11.253	58.455		
o			12.938	45.517
	1.475	46.992		
o			12.953	34.039
	0.818	34.857		
o			12.927	21.930
	0.640	22.570		
o			12.960	09.610
	0.783	10.393		
o			12.187	1798.200
	1.558	1799.764		
o			12.935	86.829
	0.540	87.369		
o			12.940	74.429
	1.057	75.510		
o			12.954	62.562
	0.988	63.550		
o			12.966	50.584
	0.202	50.780		
o			10.440	40.346
	3.734	44.080		
check			2.305	1741.712

check on B.M. head Wilson creek

	1744080		
0		7.462	1734.618
0.912	35.530		
0		8090	27.440
4.927	32.347		
0		34.72	28.695
3.607	32.302		
0		2.182	30.120
7.395	37.515		
0		12.670	24.845
1.362	26.208		
0		11.655	14.550
6.777	21.330		
0		8045	13285
2.650	15.935		
0		12.915	03.020
1.390	04.410		
0		12.120	1092.290
2.603	94.893		
0		5.180	89.710
5.283	95.396		
0		4.317	91.079
4.682	95.761		
0		4.587	91.174
1.090	92.264		

Aug 4th 1905

	1292.264		
0	1010 80.904	12.370	1279.894
0	1220 70.509	11.615	29.289
0	5425 25.234	10.700	59.809
0	0.592 53.021	12.805	52429
0	5453 51.734	2740	46.281
0	4995 50.787	5942	45.792
0	0.903 38.690	13.000	37.787
0	0.670 26.375	12.985	25.705
0	0.593 14.066	12.902	13.473
0	0.553 02.377	12.542	01.524
0	1030 1590.744	12.663	1589.714
0	1.590 79.809	12.525	78.219

	1579.809		
o		12.228	1527.581
	0.863	28.444	
o		12.975	55.469
	0.918	54.387	
o		12.610	43.777
	0.561	44.338	
o		12.672	31.666
	0.507	32.173	
o		11.482	20.691
	1.119	1521.810	
check		3.758	1518.052 =

check on Sykes initial B.M. back of Blacksmith shop
 original elev of same = $\frac{1518.052}{1471.937}$
 Dif. by check levels = $\frac{46.115}{46.130}$ on page 18
 " " first set " = $\frac{.015}{.015}$ Dif.

using .007 as mean difference will make constant
 difference 46.123 to be added to all B.M. on
 dam site. zero of dam site = 1446.123 to
 compare with U.S.G.C. elevations.

Extension of the Wilson Creek
road from sta 110 to the dam Site
Jan 30 1906
Exact

	3.20			200.00
		203.20		
110+50			5.70	197.5
111			8.20	195.0
0			8.20	195.0
	6.03	201.03		
+50			8.53	192.5
0			8.53	192.5
	2.60	195.10		
112			5.10	190.0
0			5.10	190.0
	3.40	193.40		
+50			5.90	187.5
113			8.40	185
0			8.40	185
	2.50	187.50		
+50			5.0	182.50
0			5.0	182.5
	5.50	188.0		
114			8.0	180.0
+50			10.5	177.5
0			10.5	177.5
	5.80	183.3		
115			8.3	175
0			8.3	175

Continue Com. at → 110 Wilson Creek

	2.20	177.20		175
115+50			4.70	172.50
116			7.20	170.0
+50			9.70	167.5
			9.70	167.5
	2.90	170.40		
117			5.40	165
0			5.40	165
	7.0	172.0		
+50			4.2	167.8
118			12.0	160.0
0			12.0	160
	2.40	162.4		
+50			4.90	157.50
119			7.40	155.0
0			7.40	155.0
	2.8	157.8		
+50			5.30	152.50
			5.30	152.5
	6.30	158.70		
+84			8.70	150
0			8.70	150
	4.60	154.6		
120			4.6	150

End of road + EXT. 150' Contour
over

27

Extend 150 Contour for

154.60

4.60

150.0

81.0

153.60

0

1.0

153.60

6.0

159.60

7.60

150.0

4.30

154.30

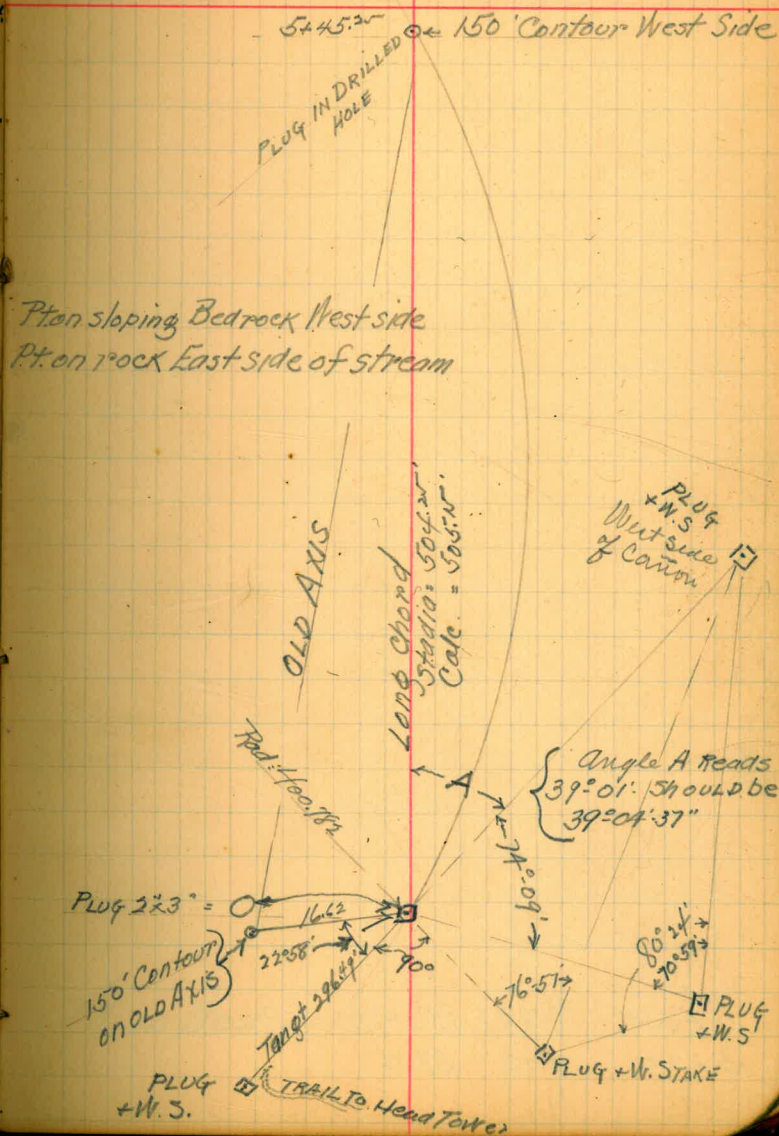
Quarry

28

May 20 1902 at

	+10	0°-43'	36°-33'
5		1-17-24	35°-50'
	+82	0-51-36	34-32-36
	+70	1°-76	33°-41'
	+50	1-17-24	32-15
	+32	0°-47-18	30-57-36
4	+21	8-46-18	30-10-18
3		1-47-30	21°-30'
	+75	0-42	19-42-30
	+65	1-04-30	18-59-30
	+50	1-47-30	17-55
△	+25	1-47-30	16-07-30
2		1-47-30	14°-26'
	+75	1-47-30	12°-32-35
	+50	1-47-30	10-45
	+25	1-47-30	8-57-30
1		1-47-30	7°-10'
	+75	1-47-30	5-22-30
	+50	1-47-30	3°-35'
	+25	1-47-30	

P.C.①

Plug 223
on 150 Ft. Contour

29

+45.25	1°48'37"	39°04'37"
5+20	0°43'	37'16"

• - P.T. on West side

30. Levels along Curve
Barrett Dam
May 31, 1902

	0.21			150.00
		150.21		
P.C. 0			0.21	150.00
+25			9.46	140.75
0			11.40	138.81
	0.11	138.92		
+50			11.07	127.85
0			11.89	127.03
	0.18	127.21		
+75			10.15	117.06
0			11.67	115.54
	1.17	116.71		
1			9.53	107.18
0			11.65	105.06
	0.69	105.75		
+25			7.56	98.19
0			12.01	93.74
	0.69	94.43		
+50			4.59	89.84
+75			11.15	83.28
0			12.27	82.16
	0.40	82.56		
0			12.28	70.28
	0.02	70.30		
2			0.17	70.13

B.M.

P.C. 14° 30'

		70.30			
2+25			4.53	65.77	
0			11.50		58.80
	0.91	59.71			
+50			5.07	54.64	
0			11.38		48.33
	0.43	48.76			
+75			10.47	38.39	
0			11.91		36.85
	0.52	37.37			
3			9.85	27.52	
3				9.80	
0			12.23		25.14
	0.69	25.83			
4+16				9.80	
4+21			12.25	13.58	
0			0.15		25.68
	12.14	37.80			
0			0.05		37.75
	11.87	49.62			
+37			5.25	44.37	
0			0.10		49.52
	11.13	60.65			
+50			1.27	59.38	
0			0.41		60.24
	11.39	71.61			

Surface of water East side

Surface of water West side

32

		71.61	0.64	70.97	
+70			0.63		70.98
0	11.70	82.68			
0			0.02		82.66
	12.15	94.81			
42.82			11.35	83.46	
0			0.22		94.59
	11.15	105.74			
5			9.05	96.69	
0			0.51		105.23
	11.22	116.45			
+10			9.98	106.47	
0			5.3		111.15
	8.30	119.35			
+20			1.5	117.85	
+45.25				150.00	

From 5+70 to 5+45²⁵ uniform slope
and Sta 5+45²⁵ being set rock
level no need of carry in
line notes further

B.C.

50'

Hor

1200

6.30

NER ANGLE 23°00'

the wall



head tower a wester

34
5/6/07

Cross Sections on Cottonwood Creek opposite Louterbecks Ranch House

Sta 0	4.71	104.71	100
o			4.32
	3.41	103.80	
o			2.78
	1.60	102.62	
5+00			6.46
o			3.40
	3.68	102.90	
o			5.64
	3.14	100.40	
o			3.840
	4.24	100.80	
Sta. 10+00			6.91
o			4.23
	2.83	99.40	
o			5.53
	3.32	97.19	
o			3.65
	1.62	95.16	
15+00			6.60
	28.53		39.99

Bench at Water Level at S.E. Cor. Louterbecks Garden
 200.0 0.0 2.5 3.4 3.5 4.1 4.6 6.7 6.73 5.3 4.6 5.8 5.9 5.1 4.0 0.7
 H.W. H.W. 120 112 100 72 60 45 36 0 3 14 17 33 37 37 77
 875 Sq. Ft. X Sec.

H.W. Refers to evidence of High Water such as drift, etc.

4.7 3.0 5.1 7.1 7.9 2.7 2.72 5.5 2.3 4.65 4.1 3.2 (3.28 Av)
 2.21 187 175 100 35 28 0 36 53 H.W. H.W. H.W.

6.34 Sq. Ft. X Sec.

5.9
5.5
2.7
2.05
2.8
1.70
1.3 W.L.
1.02
1.4
1.0
1.7
1.25
1.7
1.00

2.25 9.2 12.1 12.15 10.2 10.5 12.15 11.98 2.28 8.03 16.1 6.1 7.0
 33 82 69 52 4.8 35 27 0 15 46 57 70 H.W.

Ft. Bank
at water level

855. Sq. Ft. X Sec.

1.4 3.4 2.5 1.1 1.6 1.67 5.6 3.7 3.6 0.7 (2.08 Av H.W.)
 157 117 70 70 0 H.W. 12 26 48 64

857 Sq. Ft. X Sec.

5/8/07

35/

Barrett Road in Cottonwood Canon.

Stakes reset to allow for cut.

Sta 60+50	4.9	104.9		100.	
o			7.8	97.1	
	4.4	101.5			
			5.8	95.7	
61 o			5.0	96.5	96.5
	3.5	99.0			
61+50			6.0		93.0
			7.9		
51+50	11.8	111.8		100	
			3.4		
52+00	1.8	101.8		100	
53+00			9.2	92.6	
o	2.1				
			9.1		
49.50	8.1				
			1.1		

Ground level

5/8/07

Barrett Road - Cottonwood Canon.

336

Stakes reset thru point at Sta. 51 making a grade of 7.85%

49+50	1.9	101.9	100			Road at Grade.
50+50			8.5	93.4		
	1.85	95.25				
51+50			11.7	83.55		
	1.8	85.35				
52+50			8.9	76.45		
49+50	1.9	101.9		100		
50+00			5.12	96.78	96.1	C .6
50+50			8.4	93.5	92.1	C 1.4
0			9.3	92.6		
	2.8	95.4				
51+00			5.4	90.0	88.3	C 1.7
51+50			12.	83.4	84.26	F .8
0			12.	83.4		
	1.8	85.2				
52+00			5.2	80.0	80.33	F .3
+ 50			8.9	76.3		
49+50	2	102		100		
50			5.8	96.2		
+ 50 0			9.8	92.2		
0	3.3	95.5				
51+00			7.1	88.4		
+ 50			1.2.	83.5		

37

17

85.2

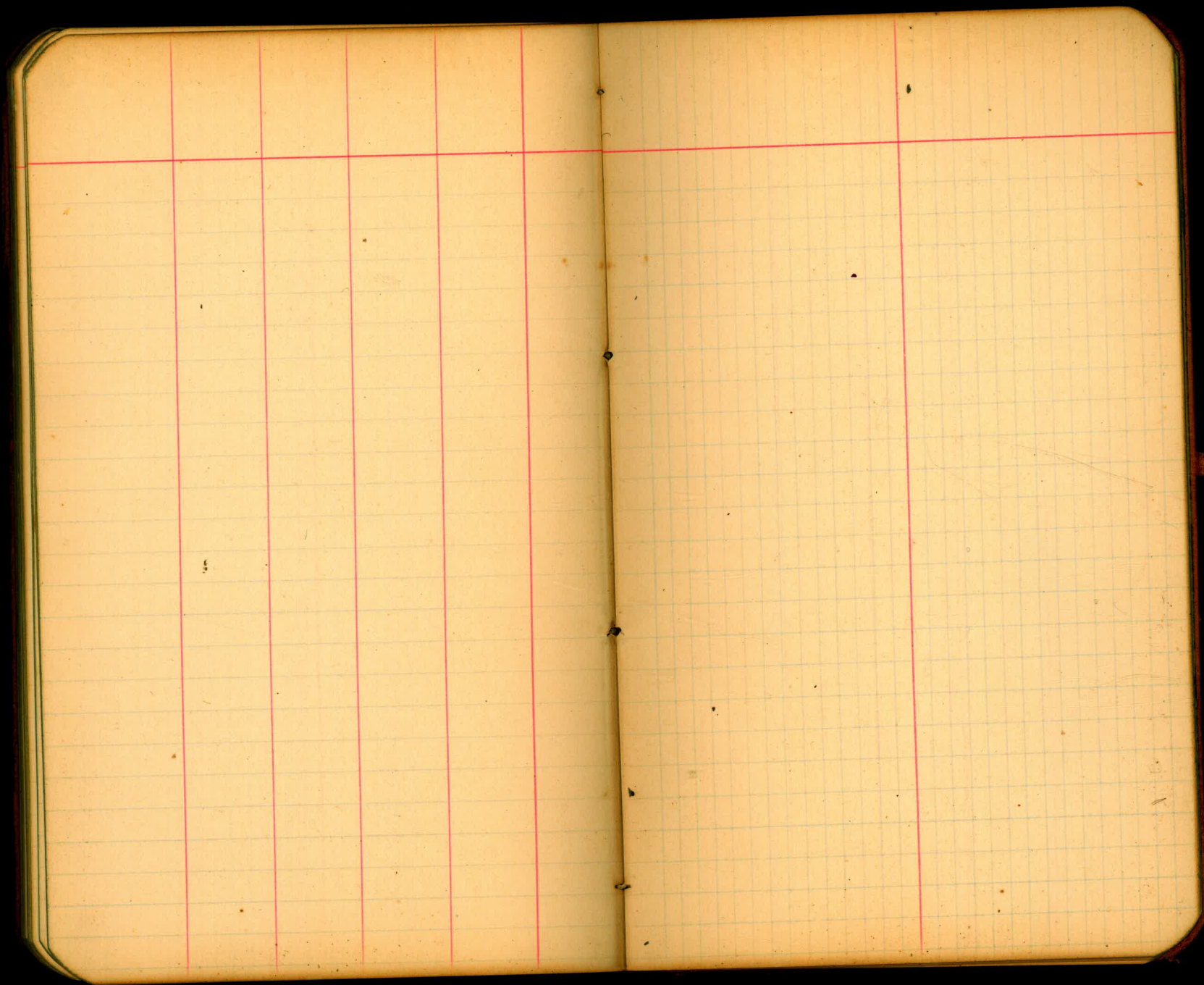
4.9

80.3

8.8

76.4

38



TRAVERSE TABLE FOR TRANSIT BOOK.

From 1° to 90° for a distance of 100.

Degrees.	DEGREES.		¼ DEGREE.		½ DEGREE.		¾ DEGREE.		Degrees.
	Lat.	Dep.	Lat.	Dep.	Lat.	Dep.	Lat.	Dep.	
0			100.00	0.44	100.00	0.87	99.99	1.31	89
1	99.98	1.75	99.98	2.18	99.97	2.62	99.95	3.05	88
2	99.94	3.49	99.92	3.93	99.91	4.36	99.88	4.80	87
3	99.86	5.23	99.84	5.67	99.81	6.10	99.79	6.54	86
4	99.76	6.98	99.73	7.41	99.69	7.85	99.66	8.28	85
5	99.62	8.72	99.58	9.15	99.54	9.58	99.50	10.02	84
6	99.45	10.45	99.41	10.89	99.36	11.32	99.31	11.75	83
7	99.25	12.19	99.20	12.62	99.14	13.05	99.09	13.49	82
8	99.03	13.92	98.97	14.35	98.90	14.78	98.84	15.21	81
9	98.77	15.64	98.70	16.07	98.63	16.50	98.56	16.93	80
10	98.48	17.36	98.40	17.79	98.33	18.22	98.25	18.65	79
11	98.16	19.08	98.08	19.51	97.99	19.94	97.90	20.36	78
12	97.81	20.79	97.72	21.32	97.63	21.64	97.53	22.07	77
13	97.44	22.50	97.34	22.92	97.24	23.34	97.13	23.77	76
14	97.03	24.19	96.92	24.62	96.81	25.04	96.70	25.46	75
15	96.59	25.88	96.48	26.30	96.36	26.72	96.25	27.14	74
16	96.13	27.56	96.00	27.98	95.88	28.40	95.76	28.82	73
17	95.63	29.24	95.50	29.65	95.37	30.07	95.24	30.49	72
18	95.11	30.90	94.97	31.32	94.83	31.73	94.69	32.14	71
19	94.55	32.56	94.41	32.97	94.26	33.38	94.12	33.79	70
20	93.97	34.20	93.82	34.61	93.67	35.02	93.51	35.43	69
21	93.36	35.84	93.20	36.24	93.04	36.65	92.88	37.06	68
22	92.72	37.46	92.55	37.86	92.39	38.27	92.22	38.67	67
23	92.05	39.07	91.88	39.47	91.71	39.87	91.53	40.27	66
24	91.35	40.67	91.18	41.07	91.00	41.47	90.81	41.87	65
25	90.63	42.26	90.45	42.66	90.26	43.05	90.07	43.44	64
26	89.88	43.84	89.69	44.23	89.49	44.62	89.30	45.01	63
27	89.10	45.40	88.90	45.79	88.70	46.17	88.50	46.56	62
28	88.29	46.95	88.09	47.33	87.88	47.72	87.67	48.10	61
29	87.46	48.48	87.25	48.86	87.04	49.24	86.82	49.62	60
30	86.60	50.00	86.38	50.38	86.16	50.75	85.94	51.13	59
31	85.72	51.50	85.49	51.88	85.26	52.25	85.04	52.62	58
32	84.80	52.99	84.57	53.36	84.34	53.73	84.10	54.10	57
33	83.87	54.46	83.63	54.83	83.39	55.19	83.15	55.56	56
34	82.90	55.92	82.66	56.28	82.41	56.64	82.16	57.00	55
35	81.92	57.36	81.66	57.71	81.41	58.07	81.16	58.42	54
36	80.90	58.78	80.64	59.13	80.39	59.48	80.13	59.83	53
37	79.86	60.18	79.60	60.53	79.34	60.88	79.07	61.22	52
38	78.80	61.57	78.53	61.91	78.26	62.25	77.99	62.59	51
39	77.71	62.93	77.44	63.27	77.16	63.61	76.88	63.94	50
40	76.60	64.28	76.32	64.61	76.04	64.94	75.76	65.28	49
41	75.47	65.61	75.18	65.93	74.90	66.26	74.61	66.59	48
42	74.31	66.91	74.02	67.24	73.73	67.56	73.43	67.88	47
43	73.14	68.20	72.84	68.52	72.54	68.84	72.24	69.15	46
44	71.93	69.47	71.63	69.78	71.33	70.09	71.02	70.40	45
45	70.71	70.71							
Degrees.	Dep.	Lat.	Dep.	Lat.	Dep.	Lat.	Dep.	Lat.	Degrees.
	DEGREES.		¾ DEGREE.		½ DEGREE.		¼ DEGREE.		

Published by H. S. CROCKER COMPANY, Stationers, Drawing Materials,
Mathematical Instruments, etc., San Francisco.

Handwritten calculations and notes on the left page of the notebook, including various numbers and mathematical operations.

14 10 1.8 2.8 3.1
 3.5
 96.5
 95.7
 8
 7.87
 2.5
 39.35
 15.74
 19.675
 2110.00
 1741.12
 368.86
 50
 100
 19.67
 80.33
 309.56
 76.4
 100
 92.2
 49.50
 50
 50.50
 57.00
 51.50
 39.99
 28.53
 11.46
 7.87
 102.87
 15.74
 88.54
 84.26
 95.4
 93.5
 92.6
 83.4
 92.9
 90.63
 42.26
 84.26
 95.4
 100
 7.9
 92.1
 7.87
 8.97
 100
 13.7
 84.3
 11.7
 100
 10.7
 88.3