

DISTANCES FROM SIDE STAKES FOR CROSS-SECTIONING
SLOPE 1 TO 1. ROADWAY OF ANY WIDTH

	0	.1	.2	.3	.4	.5	.6	.7	.8	9	
0	0.00	0.10	0.20	0.30	0.40	0.50	0.60	0.70	0.80	0.90	0
1	1.00	1.10	1.20	1.30	1.40	1.50	1.60	1.70	1.80	1.90	1
2	2.00	2.10	2.20	2.30	2.40	2.50	2.60	2.70	2.80	2.90	2
3	3.00	3.10	3.20	3.30	3.40	3.50	3.60	3.70	3.80	3.90	3
4	4.00	4.10	4.20	4.30	4.40	4.50	4.60	4.70	4.80	4.90	4
5	5.00	5.10	5.20	5.30	5.40	5.50	5.60	5.70	5.80	5.90	5
6	6.00	6.10	6.20	6.30	6.40	6.50	6.60	6.70	6.80	6.90	6
7	7.00	7.10	7.20	7.30	7.40	7.50	7.60	7.70	7.80	7.90	7
8	8.00	8.10	8.20	8.30	8.40	8.50	8.60	8.70	8.80	8.90	8
9	9.00	9.10	9.20	9.30	9.40	9.50	9.60	9.70	9.80	9.90	9
10	10.00	10.10	10.20	10.30	10.40	10.50	10.60	10.70	10.80	10.90	10
11	11.00	11.10	11.20	11.30	11.40	11.50	11.60	11.70	11.80	11.90	11
12	12.00	12.10	12.20	12.30	12.40	12.50	12.60	12.70	12.80	12.90	12
13	13.00	13.10	13.20	13.30	13.40	13.50	13.60	13.70	13.80	13.90	13
14	14.00	14.10	14.20	14.30	14.40	14.50	14.60	14.70	14.80	14.90	14
15	15.00	15.10	15.20	15.30	15.40	15.50	15.60	15.70	15.80	15.90	15
16	16.00	16.10	16.20	16.30	16.40	16.50	16.60	16.70	16.80	16.90	16
17	17.00	17.10	17.20	17.30	17.40	17.50	17.60	17.70	17.80	17.90	17
18	18.00	18.10	18.20	18.30	18.40	18.50	18.60	18.70	18.80	18.90	18
19	19.00	19.10	19.20	19.30	19.40	19.50	19.60	19.70	19.80	19.90	19
20	20.00	20.10	20.20	20.30	20.40	20.50	20.60	20.70	20.80	20.90	20
21	21.00	21.10	21.20	21.30	21.40	21.50	21.60	21.70	21.80	21.90	21
22	22.00	22.10	22.20	22.30	22.40	22.50	22.60	22.70	22.80	22.90	22
23	23.00	23.10	23.20	23.30	23.40	23.50	23.60	23.70	23.80	23.90	23
24	24.00	24.10	24.20	24.30	24.40	24.50	24.60	24.70	24.80	24.90	24
25	25.00	25.10	25.20	25.30	25.40	25.50	25.60	25.70	25.80	25.90	25
26	26.00	26.10	26.20	26.30	26.40	26.50	26.60	26.70	26.80	26.90	26
27	27.00	27.10	27.20	27.30	27.40	27.50	27.60	27.70	27.80	27.90	27
28	28.00	28.10	28.20	28.30	28.40	28.50	28.60	28.70	28.80	28.90	28
29	29.00	29.10	29.20	29.30	29.40	29.50	29.60	29.70	29.80	29.90	29
30	30.00	30.10	30.20	30.30	30.40	30.50	30.60	30.70	30.80	30.90	30
31	31.00	31.10	31.20	31.30	31.40	31.50	31.60	31.70	31.80	31.90	31
32	32.00	32.10	32.20	32.30	32.40	32.50	32.60	32.70	32.80	32.90	32
33	33.00	33.10	33.20	33.30	33.40	33.50	33.60	33.70	33.80	33.90	33
34	34.00	34.10	34.20	34.30	34.40	34.50	34.60	34.70	34.80	34.90	34
35	35.00	35.10	35.20	35.30	35.40	35.50	35.60	35.70	35.80	35.90	35
36	36.00	36.10	36.20	36.30	36.40	36.50	36.60	36.70	36.80	36.90	36
37	37.00	37.10	37.20	37.30	37.40	37.50	37.60	37.70	37.80	37.90	37
38	38.00	38.10	38.20	38.30	38.40	38.50	38.60	38.70	38.80	38.90	38
39	39.00	39.10	39.20	39.30	39.40	39.50	39.60	39.70	39.80	39.90	39
40	40.00	40.10	40.20	40.30	40.40	40.50	40.60	40.70	40.80	40.90	40
41	41.00	41.10	41.20	41.30	41.40	41.50	41.60	41.70	41.80	41.90	41
42	42.00	42.10	42.20	42.30	42.40	42.50	42.60	42.70	42.80	42.90	42
43	43.00	43.10	43.20	43.30	43.40	43.50	43.60	43.70	43.80	43.90	43
44	44.00	44.10	44.20	44.30	44.40	44.50	44.60	44.70	44.80	44.90	44
45	45.00	45.10	45.20	45.30	45.40	45.50	45.60	45.70	45.80	45.90	45
46	46.00	46.10	46.20	46.30	46.40	46.50	46.60	46.70	46.80	46.90	46
47	47.00	47.10	47.20	47.30	47.40	47.50	47.60	47.70	47.80	47.90	47
48	48.00	48.10	48.20	48.30	48.40	48.50	48.60	48.70	48.80	48.90	48
49	49.00	49.10	49.20	49.30	49.40	49.50	49.60	49.70	49.80	49.90	49
50	50.00	50.10	50.20	50.30	50.40	50.50	50.60	50.70	50.80	50.90	50

Distance of slope stake from side or shoulder stake for any width roadway, slope 1 to 1. If ground is nearly level, the cut or fill at side stake is located by the double entry method in left column and top row. The number in body of table in same row and column gives distance from side stake to slope stake. If ground is not level estimate the difference in elevation between the side stake and slope stake, lower target by this amount if cut, elevate if fill. Add this amount to cut or fill and find distance in table. Set up rod at this point, and line of sight should cut target. If it does not make the slight adjustment necessary.

Please Return to
City of San Diego Water Dept.
Room 903 Civic Center
Telephone F-7511 Ext. 313

MICROFILMED

JAN 15 1965

Index

Alice ✓

- Grade Stakes & Meter Boxes Columbia - Pepper Drive - Snowdrop 2-17
- Profile - Ogden St. Wrightman - Landis ✓ 14
- Meter Boxes Pepper Drive - Poplar - Polk St. ✓ 15-18
- P.L. grades - 40th Natl - Newton - Newton 39-40 ✓ 19-21
- 8" P.L. Catoctins La Dorna - Montezuma - No ✓ 22-25
- 6" Transite - Pasadena 44 - Desoto ✓ 26-27
- 6" CIP - Midway - Colima - on Waverley ✓ 28-29
- Meter Box - 39th - 40th - Newton ✓ 30-31
- 6" CIP - Charles - S. Varge to Albion - Dupont ✓ 32-33
- Meter Boxes - La Dorna - Catoctin ✓ 34-35
- 8" CIP - Cumberland St. ✓ 36-37
- 8" Transite Nichols - Rosecrantz - San Fernando ✓ 38
- 6" CIP - Broadway - 30th - 31st - 9' Curb ✓ 39
- 8" Transite Orton St - 12th Ave ✓ 40
- 6" CIP - Brooklyn - Otway - 63rd ✓ 41-43
- 6" CIP - Loring St. Lamont East ✓ 44
- 6" CIP - Rect. Mission Blvd - Dawes ✓ 45-46 57
- 6" & 8" CIP - Bldg - 40 - 39th - Hilltop ✓ 47-48 50
- 8" CIP - Violet - Poplar - Pepper ✓ 49-52
- 6" CIP - " Pepper - East end ✓ 56

Alice ✓

- Birmingham Road MET. Boxes 58 ✓
- Prelim. Meas. for Relining Polk - Suncred on 30th - 59 ✓
- MONTUZUMA F.H. Rest. 55th St 60 ✓
- 42nd St. MET. Boxes Alpha to Gamma 61 ✓
- Brooklyn Ave 60th - 63rd MET Boxes 62-63
- 8" A.C. WATER, SANTA FE AVE, Nbr of Bulboz. 64 ✓
- 6" C.I. " MISSOURI, LAMONT, Easterly 65 ✓
- WAT. MET. Alley Bayside Lane to Strandway 66 ✓
- 6" WAT. Alcott St, Poinsetta to Zola 67 ✓
- WAT. MET. Alley Red to Hazel, VANCOUVER - HALLER 68 ✓
- WAT. MET. MISSOURI, Lamont, Easterly 69 ✓

see next page

Blk B
Inalta

12" Transite garden - Knoxville - east 1310' - 53-84 ✓

6" CIP - Birmingham Drive -

(53) (58) ✓

76" CIP - Best - Park - Suncrest - linear Ft. for veline

(59) ✓
alice

Profile - 6" C.I.P.
 (4) Columbine -
 Manzanita - Fairmont

1-10-51
 King
 Thomas

Rain

(2)

B.M.	3.66	300.86		297.19	B.P.S.E Fairmont Quince	
0+00			5.2	295.7	295.1	C 4.4 Alley Quince Columbine
0+50			5.3	295.6	295.1	C 4.3
1+00			5.0	295.9	294.9	C 4.8
1+50			6.1	294.8	294.7	C 3.9
2+00			6.0	294.9	295.1	C 3.6
+			5.3	295.6	295.4	C 4.0
3+00			5.6	295.3	295.7	C 3.6
+			5.4	295.5	295.6	C 3.7
4+00			5.3	295.6	295.2	C 4.2
+			5.2	295.7	294.7	C 4.8
5+00			5.4	295.5	294.0	C 5.3
+			5.9	295.0	293.2	C 5.6
6+00			5.4	295.5	295.4	C 3.9
+			5.9	295.0	295.0	C 3.8
1-			6.2	294.7	294.6	C 3.9
+			6.3	294.6	294.2	C 4.2
2+00			6.2	294.7	293.9	C 4.6
2+50			6.6	294.3	293.2	C 5.0
B.M.			5.53	295.33	295.40	

294.3
 5.9
 30.02 4.9
 4.8
 95.5
 97.3 4.8
 2.0

Pepper Ave - (4) C.I.P.
Columbine-Snowdrop

KING
West
Thomas

1-12-51

3

R.M.	0.15	295.55		295.40	Spike IN P.P. S.W. cor Columbine & Pepper
9+00			0.8	294.8	C 4.8
8+50			1.4	294.2	C 5.3
8+00			2.4	293.2	4.6
7+50			3.4	292.2	4.6
7+00			4.3	291.3	4.4
6+50			5.4	290.0	4.3
6+00			6.4	289.2	5.1
5+50			8.1	297.5	5.3
5+00			10.4	285.2	5.0
T.P.	3.20	288.36	10.39	285.16	Ginney 5+00
4+50			5.2	283.2	5.0
4+00			9.6	278.8	3.0
3+50			12.5	275.9	0.3
3+00			6.5	281.9	3.3
2+50			1.4	286.8	5.6
1.P.	7.80	294.59	1.57	286.79	
2+00			5.5	289.1	5.8
1+50			4.8	289.8	5.6

286

Pepper Ave - Columbine - Snowdrop
6' C.I.P.

294.59

King
West
Thomas

1-12-51

4

1100

5.0

289.6

288.0

5.4

0750

5.7

288.9

286.6

6.1

0400

7.1

287.5

286.2

5.1

F.H.C

7.0

287.6

286.2

F.H.C

7.0

287.6

286.2

T.B.M.

7.20

287.39

Top hub - N.E. Cor Snowdrop & Pepper

2.9

3.8

1.3

6" C. P.
Columbine
Pepper to Fairmont

King
West
Thomas

clear
1-15-51

5

	1.02	296.42		285.40		9.00
3+00			3.1	293.3	292.5	4.6
3+50			4.6	291.8	291.5	4.2
4+00 ²⁵			6.3	290.1	289.8	4.1
4+50			8.4	288.0	288.0	3.8
5+00			11.2	285.2	286.3	2.8
5+50			10.4	286.0	285.0	4.8
5+77 ⁹²			18.0	286.4	284.2	6.0
5+50 ⁰⁵			9.7	286.7	284.2	6.8
4+75 ⁶⁸			11.4	285.0	285.3	4.5
4+50			11.9	284.5	285.5	2.8
T. P.	6.07	290.55	11.94	284.48		
4+25			6.0	284.6	285.5	3.0
4+00			5.5	285.1	285.5	3.4
3+75			5.6	285.0	285.5	3.3
3+50			5.5	285.1	285.5	3.4

Columbine Cont.

290.55

BC 3420 Δ	5.2	285.4	285.5	C 3.7
3700	4.9	285.7	285.1	4.4
2450	4.5	286.1	285.3	C 0 ⁸ - 4.6
248170 Δ	5.0	285.6	285.4	C 0 ² 4.0
1450	5.2	285.4	285.8	F 0 ⁴ 3.4
1700	5.1	285.5	286.0	F 0 ⁵ C 3 ³
0450	4.4	286.2	286.8	F 0 ⁶ C 3 ⁴
0900	3.0	287.6	287.7	F 0 ¹ C 3 ²
E Par.	2.80	287.75		

4.63 290.83

286.70

F.H. Δ	6.11	284.72	285.80	F 1.1
(5)	6.28	284.55	285.80	F 1.3

P.M. 436 301.55 • 297.19

B.P. Quince & Fairmont S.E. cor.

N.E. cor 4.7 296.9 295.5 E04 Quince & Columbine

S.E. cor 5.6 296.8 295.5 C0.5

Meter Boxes
Manzanita - Poplar
ON Columbine

1-17-51 Warm
King
West
Thomas

9

T.B.M	5.35	300.95		295.6		9.11.14.21.50
3+17 N			4.8	296.2	295.7	C 0.5
3+57 S			4.9	296.1	295.6	C 0.5
3+88 S			4.7	²⁹⁶ 296.3	295.3	C 1.0
4+48 S			4.8	296.2	294.7	C 1.5
7.85 S			5.0	296.0	294.2	C 1.8
5+09 S			4.8	296.2	294.8	C 2.4
4+45 N			4.8	296.2	294.8	C 0.8 1.4
4+05 N			4.4	296.6	295.4	C 1.2
3+58 N			4.3	296.7	295.8	C 0.9
2 T.B.M	5.35			295.6		

Snowdrop St.
East From Poplar St.
6" C.I.P.

King
West T
Thomas

1-18-51 Cold
Cloudy

B.M.	5.04	292.43		287.39
0+00		3.5	288.9	288.8
0+50		3.4	289.0	288.4
1+00		3.5	288.9	287.6
1+47 ⁰⁰ B.C.		4.8	287.6	286.9
2+00		4.7	287.7	286.2
+50		4.9	287.5	285.5
3+00		5.5	286.9	284.9
+50		6.9	285.5	284.2
4+00		8.8	283.6	283.0
4+33 P.C.		9.6	282.8	282.4
4+50		9.6	282.8	282.1
4+75		10.4	282.0	281.8
5+00		10.8	281.6	281.2
+25		11.5	280.9	280.8
⁵⁰ +95		12.0	280.4	280.8
5+87 ⁰⁵ E.C.		12.4	280.0	279.4

City Hub N.E. Prop Cor.

CO¹ - 3.97 West - East Line Poplar St.

CO⁶ - 4.4

CO¹ - 5.1

CO² - 4.5

CO¹ - 5.3

CO² - 5.8

CO² - 5.8

CO³ - 5.1

CO⁶ - 4.4

CO⁴ - 4.2

CO⁷ - 4.5

EO² - 4.0

EO⁴ - 4.2

EO¹ - 4.0

EO² - 4.0

EO⁶ - 4.4

Meter Boxes
 Snowdrop - East From
 Poplar
 292.45

KING
 West
 Thomas

1-18-51 cloudy

9

5485			13.7	277.8 280.7	279.5	C0.2
5408			11.2	281.2	281.7	F0.5
4431			9.2	283.2	282.4	C0.8
3455			7.1	285.3	284.0	C1.2
2444			5.2	287.2	286.7	C1.5
CK.TBM			5.04	287.39		
B.M.	5.86	293.25		287.39		
^{Snowdrop} 20'E-NO. LINE			5.9	287.3	284.3	2.6
22' W. N. W. COR Snowdrop			5.0	288.2	285.0	2.4

6" C.I.P. 5/1st
Orange - Polk

King
West
Williams

1-22-51

10

B.M.	1.29	332.33		331.04		
6+29		2.1	330.3	330.0	00 ²	04 ²
6+80		2.4	330.0	330.5	00 ⁵	03 ⁵
5+50		2.3	330.1	330.5	00 ⁴	03 ⁵
5+00		2.1	330.3	330.2	00 ¹	04 ⁰
4+50		2.4	330.0	329.0	01 ⁰	04 ⁹
4+00		2.9	329.5	327.8	00 ⁷	04 ⁶
3+50		4.5	328.9	326.6	01 ³	05 ²
3+00		6.3	326.1	325.2	00 ⁹	04 ⁸
2+50		7.5	324.9	324.0	00 ⁹	04 ⁸
2+00		8.9	323.5	322.6	00 ⁹	04 ⁸
1+50		10.5	321.9	321.2	00 ⁷	04 ⁴
1+00		11.6	320.8	320.2	00 ⁶	04 ⁶
0+50		12.3	320.1	319.5	00 ⁶	04 ⁶
0+00		11.3	321.1	319.0	01 ⁹	05 ⁸
M.H.		10.63	321.80			

5.1
20.1

25.2

20.1
19.8

20.0

24
25

meter Boys

Columbine St

Quinn - Pepper

West
Thomas

1-22-51

11

Sta	V	H _i	-			
Bm	4.77	300.17			295.40	
0+35			4.5	295.7	295.3	004
+73			4.5	295.7	294.8	009
1+06			4.9	295.3	294.6	003
1+34			5.0	295.2	244.4	008
1+80			4.7	295.5	294.0	015
2+15			4.8	295.4	293.8	016
2+61			4.9	295.3	293.1	023
2+98			6.0	294.2	292.4	018
Bm	4.77				295.40	

Bm	2.94	290.68			287.74	
			5.5	285.2	285.3	

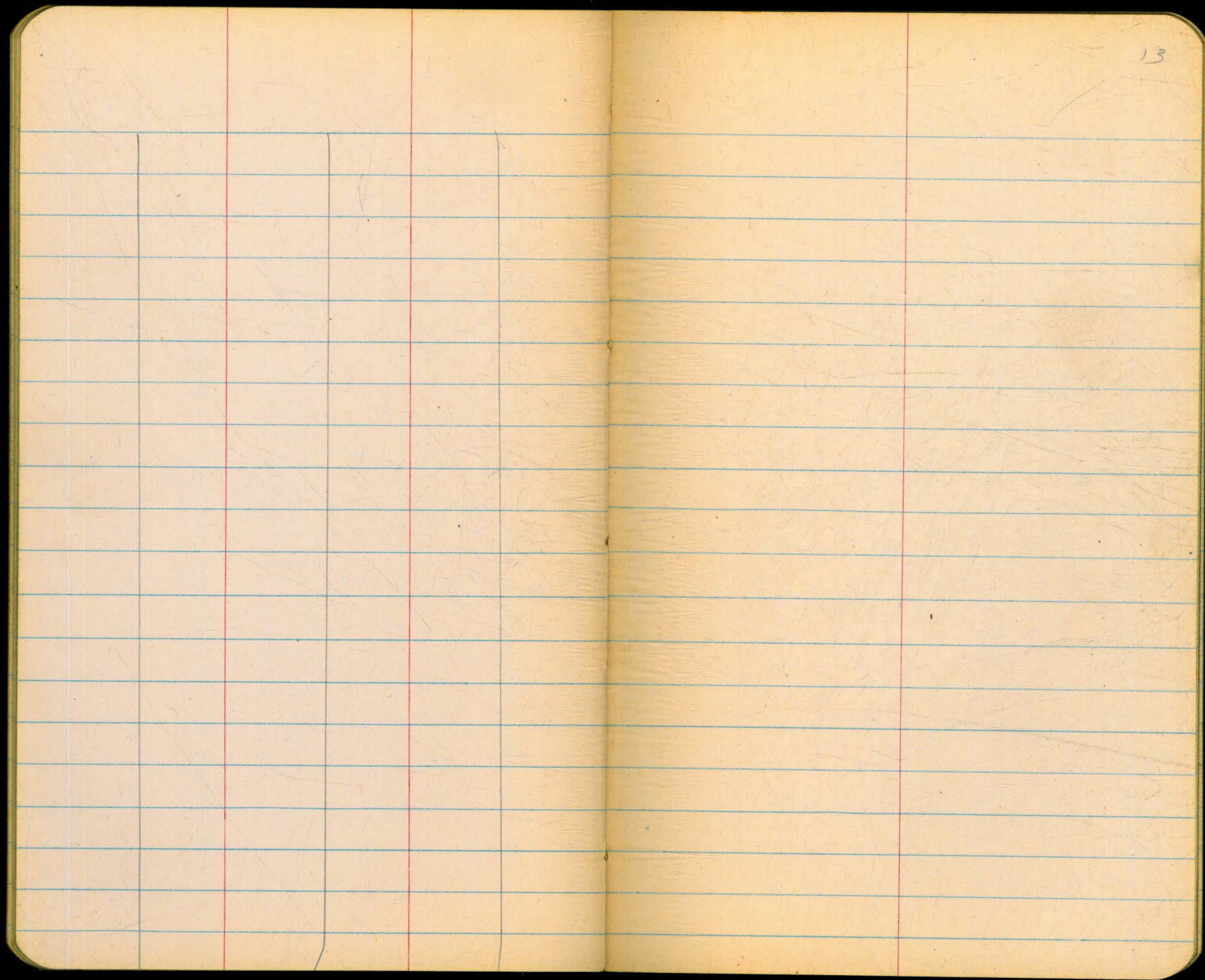
P. Fairmont - West Edge

Meter Boxes
51st - Profile Sheet

King
West
Williams

Very Hot
1-25-51

B.M.	1.04	332.08		331.04		Orange S.E. Curb return - 451st.
0+79 W			1.7	330.4	330.6	FO ² So. Prop Line Orange
1+32 W			1.8	330.3	330.2	CO ¹
2+00 W			2.5	329.6	329.4	CO ²
2+02 E			1.8	330.3	328.8	CO ¹
2+49 E			2.7	329.4	327.6	CO ¹
2+95 E			4.6	327.5	326.4	CO ¹
2+54 W			4.5	327.6	327.2	CO ⁴
3+07 W			6.5	325.6	325.8	FO ²
3+54 W			7.9	324.2	324.6	FO ⁴
3+44 E			6.3	325.8	325.0	CO ⁸
4+07 W			8.6	323.5	323.2	CO ³
4+41 W			9.7	322.4	322.2	CO ²
4+39 E			8.7	323.4	322.8	CO ⁶
4+97 E			10.8	321.3	321.2	CO ¹
5+42 E			11.8	320.3	319.7	CO ⁶
5+34 W			10.8	321.3	320.6	CO ⁸
Met. Point			12.35	321.73	321.80	Top M.X. 451st Point



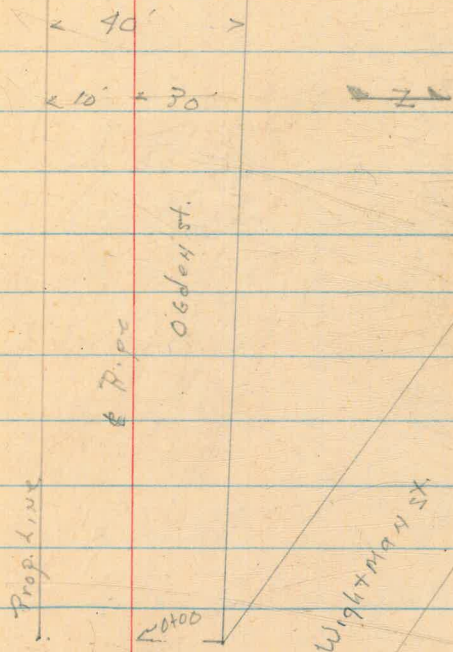
Profile O'Gden st.
Wrightman roads

KING 1-20-51 Cold-Cloudy
West
Williams

14

T.B.M.	4.09	359.82		355.73
0+00			4.6	355.2
+50			3.9	355.9
1+00			3.8	356.0
+50			4.5	355.3
2+00			4.6	355.2
+50			4.5	355.3
3+00			4.7	355.1
+50			5.4	354.4
4+00			6.1	353.7
+50			6.6	353.2
5+00			8.0	351.8
10'ht.			8.8	351.0
5+50			12.1	347.7
10'ht.			13.2	346.6
T.P.	2.59	350.53	11.88	347.94
6+00			10.3	340.2
10'ht.			14.5	336.1
6+25			12.9	337.6
10'ht.			15.0	335.5

1/2" pipe S.W. Cor O'Gden & Wrightman



Meter Boxes
Pepper Drive
Snowdrop - Columbine

King - N.
West T
Williams T

2-15-51

15

B.M	6.42	293.81		287.39	City Hub. N.E. Prop. line	Snowdrop & Pepper
0+31 E			5.4	288.4	286.2	00 ² 0+00 No. Prop Snowdrop
1+37 E			3.7	290.1	289.7	00 ⁴ Note - Grade has been
0+82 W			3.8	290.0	288.3	01 ² changed since 6" P.L.
1+24 W			3.3	290.5	289.3	01 ² put in - 1-12-51
1+71 W			3.1	290.7	289.5	01 ² Grades in Pen. used
1+62 E			3.7	290.1	289.2	00 ⁹ For Meter Boxes
2+20 W			4.6	289.2	287.9	01 ³ OK'd by City Eng. Office
2+37 E			5.6	288.2	287.9	00 ³ 1 Fire Hydrant Snowdrop
2+94 E			9.2	284.6	284.6	00 ² Pepper Drive put in at old grade
2+52 W			6.6	287.2	286.6	00 ⁶
4+65 W			8.8	285.0	284.8	00 ³
5+25 E			7.0	286.8	286.4	00 ⁴
5+25 W			6.4	287.4	286.9	00 ⁵
T.P	10.33	297.77	6.37	287.44		
5+45 E			10.0	287.8	286.6	01 ²
5+50 W			9.2	288.6	287.8	00 ²

Meter Boxes
Pepper Drive
Snowdrop-Columbine

297.77

6+69 E	8.3	289.5	288.8	002
6+13 W	8.5	289.3	289.4	00 ⁰
6+40 E	8.1	289.7	289.6	00 ¹
6+58 W	7.6	290.2	290.4	00 ⁰
6+95 W	6.3	291.5	291.2	00 ⁰
7+16 E	6.6	291.2	291.2	00 ⁰
7+48 E	5.8	292.0	291.5	00 ⁵
7+18 W	6.0	291.8	291.8	00 ⁰
7+68 W	5.5	292.3	292.0	00 ³
8+03 W	4.5	293.3	292.2	01 ¹
8+38 W	3.8	294.0	292.8	01 ²

29.1

295.36

295.40

Spike P.P. N.W. cor Pepper-Columbine

King-
West
Williamst

2-15-51

76

Meter Boxes
Poplar St.

King
West
Williams

3-6-51

17

6	T.B.M.	5.94	301.34		295.40	Spike in P.P. Columbine & Pepper
	1+60		3.3	298.0	297.2	00 ³ going No. East side From Columbine
	2+26		2.9	298.4	298.0	00 ⁴
	3+80		1.4	299.9	300.0	F 0 ¹
	1+53		7.6	293.7	294.1	F 0 ³ going So. " " " "
	3+53		10.9	290.4	290.4	00 ²
	T.P.	6.71	297.20	10.85	290.49	
	5+55		11.2	282.2	285.5	00 ⁵
	7+88		9.5	287.7	287.8	F 0 ¹
	8+31		8.9	288.3	288.6	F 0 ³
	8+67		8.3	288.9	289.0	F 0 ¹
	9+02		8.3	288.9	289.4	F 0 ⁵
	6+85		8.8	288.4	288.5	F 0.1
			8.0	289.2	289.2	

27
25
12
26
85

Meter Boxes
 #6" C.I.P. Dalhousie - Manzanita to Poplar

King
 West
 Williams

3-6-51

18

297.20

0+00	5.2	292.0	291.0	0 48
+50	5.2	292.0	291.4	0 44
1+00	5.6	291.4	291.3	0 41
+50	7.1	290.1	290.0	0 38
2+00	8.6	288.6	288.2	0 42
+50	9.8	287.4	286.3	0 42
2+65	10.3	286.9	285.7	0 52
2+80	11.0	286.2	285.4	0 46
5' OFFFH.	12.3	284.9	283.5	0 14
♀	12.5	284.7	283.5	0 12
2+60				
Meter Box N.	7.7	289.5	286.4	0 31
2+32 No.	7.0	290.2	287.7	0 25
1+80 No.	6.9	290.3	289.5	0 08
1+58 No.	6.4	290.8	290.3	0 05
1+67 50	7.0	290.2	288.5	0 17

4054
Natl. - Newton

King
West
Williams

3-12-37

19

B.m 689 51.04 44.75

5465 15.0 36.0 36.9 0 39

65.40

5400 13.6 37.4 37.0 0 40

4450 11.0 40.0 40.8 0 39

4400 8.2 42.8 42.0 0 46

3450 5.7 45.3 44.4 0 47

3400 3.9 47.1 46.0 0 49

2450 1.7 49.3 48.9 0 43

T.P. 13.20 62.54 17.0 49.34

2300 10.9 51.6 51.3 0 41

1450 8.7 53.8 53.8 0 38

1400 6.3 56.2 56.3 0 39

0450 3.9 58.6 58.8 0 36

0400 1.8 60.7 61.0 0 35

1.5 61.00 61.00 Top curb S.E. cor

Newton
40th to 39th

King
West
Williams

3-13-51

Warm + Clear
20

BM	11.36	55.51	44.15				B.M. Spike in P.P. Cor 40 th + Newton
0+10 BC				10.7	44.8	44.0	0.4 ^e
0+55 ⁶⁰				9.8	45.7	45.3	0.4 ³
0+80 ⁶⁰				7.8	47.7	46.8	0.4 ³
1+05 ⁶⁰				5.8	49.7	49.0	0.4 ³
1+30 ⁶⁰ LL				3.9	51.6	51.0	0.4 ³
1+55 ⁶⁰ EC				2.2	53.3	54.0	0.3 ⁰
1+80 ⁶⁰			0.28	0.3	55.23	55.3	0.3 ²
	9.66	64.89					
BC 2+27 ⁷⁷				7.7	57.2	57.5	0.3 ²
2+50				7.0	57.9	58.1	0.3 ^e
3+00				5.9	59.0	58.8	0.4 ^e
+50				5.5	59.4	59.2	0.4 ^e
4+00				5.0	59.9	59.8	0.3 ²
+50				4.6	60.3	60.2	0.3 ²
EC 4+21 ⁴⁴				4.2	60.7	60.5	0.4 ^e
BC 5+16 ¹²				4.0	60.9	61.0	0.3 ²
+50				3.7	61.2	61.3	0.3 ⁸
+75				3.7	61.2	61.4	0.3 ⁶
6+00				3.4	61.5	61.8	0.3 ^e

Newton St
40th to 39th

King
West
Wilbors 3/13/57

21

6125	64.89	3.0	61.9	62.1	C 3 ^E
+441		5.7	62.2	62.0	C 4 ^E
7100		1.8	63.1	63.1	C 3 ^E
	0.90	63.97			Property line 39 th

Meter Boxes - 40th North to Newton

T.B.M	3.41	64.41		61.00	Top S.E. Curb - 40 th & 9 th N 97 th	2.74	
0435			2.9	61.5	59.1	C 2.0	1.24
1405			7.0	57.4	55.4	C 2.0	98
1490			11.7	52.7	51.7	C 1.0	44.15
			3.41	61.00			3.99
B.M.	592	5007			44.15	40 th & Newton - 7 th S.E. Cor.	48.1 ²
	4.68	48.83					11.4
4+60 (81)			10.2	38.6	38.6	0-0 C 2.0	36x7 ³
5+14 (135)			13.1	36.7	35.7	0-0 C 1.3	
F.H. (3)			3.2	45.63	46.0	F 2.4 C 0.9	

10' East §

Cotocton Drive
6" C.P.King
West
Williams

3/14/51

Plat. & Map

22

B.M.	196	456.21	454.25			T.B.M. on F.P. on East P.L.	Denistad Subd.
9+50			8.1	448.1	448.1	0 3 ³	
9+00			4.6	451.6	448.2	0 7 ³	
8+50			4.2	452.0	448.4	0 7 ⁴	
8+00			5.1	451.1	448.9	0 6 ⁴	
7+50			5.8	450.4	449.2	0 5 ⁹	
7+00			6.2	450.0	449.4	0 4 ⁴	
6+50			6.5	449.7	449.8	0 3 ³	
6+00			6.4	449.8	450.0	0 4 ⁴ 3.6	F.H. 6400 - Co. 0 (5)
5+50			6.2	450.0	450.3	0 3 ⁵	
5+00			5.6	450.6	450.6	0 3 ⁸	
4+50			4.7	451.5	451.0	0 4 ³	
4+00			4.2	452.0	451.2	0 4 ⁵	
3+50			3.9	452.3	451.6	0 4 ⁵	
3+00			3.8	452.4	451.8	0 4 ⁴	
2+50			3.6	452.6	452.1	0 4 ³	
2+00			3.5	452.7	452.4	0 4 ¹	
1+50			3.3	452.9	452.7	0 4 ⁹	
1+00			3.0	453.2	453.0	0 4 ²	
0+50			2.6	453.6	453.3	0 4 ¹	

Botetown Dr.

King
West
Williams

3-14-51

23

BM

456.21 277 453.44

Con @ Mon 453.44

F.H. 4.90

(4) ~~Sta 5469~~

10' East @

8" C.I.P. Ladder no
Montezuma - Downstuf Pt.King
West
Williams

Hot

24

	0.38	452.00		451.62	Top F.H. S.E. Cor. Montezuma at Catact 14
0-22			5.0	447.0	447.0 C 4.2
0+00			4.6	447.4	447.4 C 4.2
0+50			5.4	446.6	446.8 C 4.8
1+00			6.1	445.9	446.9 C 3.2
1+50.80			6.4	445.6	446.4 C 3.6
2+00			6.5	445.5	445.8 C 3.9
2+50			6.7	445.3	445.1 C 4.3
F.H. (2+50)			5.7	446.3	445.1 C 1.2
F.H. (5)			5.6	446.5	445.1 C 1.4
3+00			7.5	444.5	444.6 C 4.4
3+50			9.7	442.3	444.3 C 2.3
4+00			11.2	440.8	444.3 C 0.7
4+50			10.9	441.7	444.5 C 0.8
5+00			8.9	443.1	445.1 C 2.2
T.P.	10.55	453.67	8.88	443.12	
5+50			8.7	445.0	445.2 C 4.0
6+00			7.3	446.4	445.5 C 5.1
6+50			6.2	447.5	445.8 C 5.9

La Dorner - 8' C.I.P.
Montezuma - Dennsted Pt.

453.67

King
West
William

Hot

55

7+00			5.3	448.4	446.1	C 6.5
7+50			4.5	449.2	446.5	C 6.9
8+00			4.4	449.3	446.9	C 6.6
♀ F.H. 8+34			3.9	449.8	447.1	C 2.6
F.H. (5)			3.8	449.9	447.1	C 2.8
8+50			4.7	449.0	447.2	C 6.0
9+00			4.9	448.8	447.5	C 5.5
9+50			5.2	448.5	447.8	C 4.9
10+00			6.0	447.7	448.2	C 3.7
10+50			6.0	447.7	448.6	C 3.1
11+00			9.7	444.0	448.9	F 0.7
11+50			11.9	442.8	449.2	F 2.2
12+00			11.8	441.9	449.5	F 3.4
12+50			8.5	445.2	449.9	F 0.5
13+00			5.3	448.4	450.2	C 2.4
13+50			2.5	451.2	450.6	C 4.8
14+00			1.2	452.5	450.9	C 5.8
14+50			2.3	451.4	451.1	C 4.4
T.P	7.48	458.83	2.32	451.35		
			4.56	454.27	454.26	

8' CIP.
Balboa - Desoto - Pasadena
6' CIP.
DN Desoto - Pasadena - No.

King
West
Williams

3-16-51

Cloudy-cold

25

B.M	6.48	27.68			21.20	B.P. So. End Island gas station N.E. of Pacific Balboa
T.P.	12.76	39.27	1.17	26.51		
0+00			11.0	27.3	28.0	3.5 Prop. Line No. side Balboa
B.C. 0+29.30			8.8	30.5	29.5	5.2 - 0+24.30 set tee to West
0+54.30			6.6	32.7	30.6	6.3
0+79.30			4.5	34.8	33.8	5.2
E.C. 0+87.31			4.0	35.3	34.6	4.9
0+92.19 BC			3.7	35.6	34.8	5.0
1+17.19			1.1	38.2	37.7	5.2
T.P.	12.38	51.35	0.30	38.97		
1+42.19			10.4	41.0	40.7	4.5
1+67.19			7.0	44.4	43.7	5.3
1+92.19			3.8	47.4	45.2	6.6
2+17.19			1.7	49.7	47.5	6.4
PRC 2+26.78			—			
2+45.78			6.0	51.4 51.2	49.4	6.2
T.P.	8.52	59.68	0.19	51.16		
2+71.58			6.3	53.4 53.0	50.8	6.8
2+03.26			4.8	54.9 54.4	52.2	6.5
						2.7 3.0

End 8''

Pasadena St. & De Soto
(Cont.)

King
West
Williams

3-16-51

27

59.68

3425		4.2	55.5	57.0	Cont
3440		4.0	55.7	54.0	Cont
3459.74 ⁵⁰		4.1	55.6	54.2	6.0
4409.74		5.0	54.7	54.6	3.9
+59.74		5.7	54.0	54.0	3.8
5409.74		6.3	53.4	53.4	3.8
5459.74		6.4	53.2 ³	52.6	4.5
		9.89	49.78	49.7	F. Con-Mon
	4.90	58.20		53.3	(4) Sta 5409.74
F.H.		3.7	54.5	52.8	C1 ²

6" C.I.P. - Waverley
Midway - Colima

King
West
Williams

3-22-51

Clear Hot

28

TBM	3.15	111.90		109.80 East 108.75 West	Curb return - Midway Curb return	
0700			2.8	109.1	0 3 ²	
0721 E			2.1	109.8	109.4	0 0 ²
0730 W			3.4	108.5	108.8	F 0 ³
0750			3.1	108.8	108.8	0 3 ²
0804 E			3.0	108.9	108.1	C 0 ²
H00			4.0	107.9	107.8	0 3 ²
1741 W			5.1	106.8	107.0	F 0 ²
1750			4.9	107.0	107.0	0 3 ²
1769 E			4.7	107.2	106.7	0 0 ²
2707 W			6.1	105.8	106.2	F 0 ²
2700			5.4	106.5	106.5	0 3 ²
2713 E			5.3	106.6	106.4	0 0 ²
2750			6.2	105.7	106.4	0 (3 ²)
2757 E			6.1	105.8	106.4	F 0 ⁶
2760 W			6.6	105.3	106.0	F 0 ²
2789 E			6.2	105.7	106.0	F 0 ³
3700			6.6	105.3	106.0	C (3 ²)
3716 W			7.1	104.8	105.7	F 0 ⁹

Waverley 6" C.I.P.
(Cont)

King
West
Williams

3-22-51 clear

29

111.90

3+50		6.8	105.1	106.0	O (3 ²)
4+00		7.6	104.3	105.8	C (3.2)
4+50		7.9	104.0	105.4	C (3.2)
T.P.	5.73	109.78	7.85	104.05	
5+00		5.3	104.6	105.3	O (3 ²)
5+50		4.4	105.5	105.2	C 3 ⁵
5+58 E		4.3	105.6	105.3	F 0 ³
		1.05	108.73	108.75	

3

L

Meter Boxes
Newton 39th 40th

3-23-51

Clear-Hot

30

King
West
Williams

B.M.	14.34 13.10	58.49 57.25		44.15	Spike P.P. SE 40th 4 Newton
5 ⁵⁸ 5+83 N		7.6	50.9 49.7	51.0	F13 F01 N. side of po. E.P. 2. 39th
0+86 S		10.3	48.2 47.0	49.2	F10
1+58 S		5.2	53.3 52.1	52.0	C13
2+12 S		2.0	58.5 55.3	57.2	F02
5+07 N		1.8	56.7 55.5	55.3	C14 D02
T.P.	13.02	69.29 68.05	58.27 55.03		
4+55 N		10.8	58.7 57.5	58.2	C0.5 F07
3+96 N		18.1	59.2 58.0	59.4	F0.2 F14
2+69 S		10.8	58.5 57.3	58.5	C02
3+24 S		10.3	59.0 57.8	59.0	C02
3+42 N		9.4	59.9 58.7	59.9	C0.0 F12
2+88 N		9.1	61.2 60.1	60.6	C0.6 F0.5
3+78 S		9.8	59.5 58.3	59.5	C02
4+30 S		9.3	60.0 58.8	60.1	C0'
2+34 N		7.9	61.4 60.2	61.2	F10 C0.2
1+77 N		7.0	62.3 61.1	61.8	F07 C0.5
1+27 N		7.2	62.1 60.9	62.0	F13 F01

Meter Boxes
New tax - 39th - 40th

King
West
Williams

3-23-51

31

~~69.29~~
~~68.65~~

4+825		8.5	60.8 59.6	60.6	002
5+46 S		8.8	60.5 59.3	61.3	F08
5+665		8.6	60.7 59.5	61.5	F08
0+77 N		6.8	62.5 61.3	62.8	F0.3 F1.5
0+40 N		6.1	63.2 62.0	63.0	C0.2 F1.0
6+23 S		7.9	61.4 60.2	62.0	F06

T.P. 12.12 7203 5.38 63.91

11.03 8594 1.12 7491

2.89 83.05 83.05

B.P. S.W. Cor 394 No 7A

62.64

6" C.I.P. - 5' So. E Charles
Silvergate to Albion

King
West
Williams

4251

Clear-Wain

32

B.M. 0.90 293.60 292.70

Silvergate & Charles - N. End East curb-

0400 2.2 291.4 291.6

36 EAST prop line Silvergate

0450 5.5 288.1 288.0

39

284.6

1400 9.6 284.0 284.9

(32)

Σ 283.6

1750 13.1 280.5 281.6

(32)

T.P. 0.52 281.04 13.08 280.52

6" C.I.P. - Albion St - Charles - Dupont

0400 = N. Prop line Dupont - 10' East of

2400 3.6 277.4 280.0

(32)

10437.5 6.0 275.0 276.0

(38)

7450 5.4 282.7

277.3

10700 5.4 275.6 276.3

32

7460 FH. 2

5.0 - 277.7 - 277.6 - 280.1

9450 4.7 276.3 276.9

33

FH. 5

5.5 - 277.2 277.6 - 280.4

9400 4.3 276.7 277.5

32

8450 4.0 277.0 278.0

32

8400 3.8 277.2 278.0

32

7450 3.7 277.3 277.5

36

7400 4.2 276.8 277.1

35

T.P. 5.26 282.12 4.18 276.86

6" C.I.P. Albion St
(Cont)

King
West
Williams

4-2-51

33

282.12
~~284.12~~

6+50		5.5	276.6	276.9	3 ⁵	2+61	275.9
6+00		5.7	276.4	276.6	3 ⁶		\$
5+697 EC		6.3	275.8	276.4	3 ²	1+24	275.1
5+50		6.3	275.8	276.2	3 ⁴		<u>274.9</u>
5+25		6.4	275.7	276.1	3 ⁴		
5+00.52 BC		6.8	275.3	276.0	3 ²	76.0 275.2	
4+514 EC		7.2	274.9	275.8	(3 ²)		
4+25		7.4	274.5	275.7	(3 ²)		
4+00		7.6	274.5	275.6	(3 ²)	2+50 - 5.5 = 281.1	275.6
3+65 BC		7.1	275.0	275.5	3 ²	8 FH.	5.0 - 276.1 = 275.0 - 1.1
3+50		7.0	275.1	275.5	3 ⁴	(5) F.H.	5.5 - 275.6 = 275.0 - 0.6
3+00		6.8	275.3	275.3	3 ²		
2+50		6.5	275.6	275.7	4 ³		75.6 1.2
2+00		6.2	275.9	275.0	4 ¹		76.8 76.4
T.P.	5.49	281. 283.45	275. 277.96			1.6. 75.3 9	275.9 275.5 274.8 1+35
1+50		5.6	275.9	274.8	5 ⁰	75.2 76.7 0.	
1+00		5.0	276.5	274.7	5 ⁶		
0+50		5.2	276.3	274.6	5 ⁵		
0+00		5.4	276.1	274.4	5 ⁵		
		5.42	275.03	275.1			

N.E. Prop Line Albion & Dupont

Meter Bares
La Dorna-st

King
West
Williams

4-3-51

34

T.B.M	11.12	451.92		440.86	Spike-4200
2427E			5.2	446.7	445.5 C12
4402W			16.0	435.9	443.7 F 79
4420E			10.4	441.5	444.3 F 28
5407E			6.7	445.2	445.0 C 0 ²
6422E			4.1	447.8	445.6 C 2 ²
5485W			8.1	443.8	444.9 F 0 ²
6460W			5.7	446.2	445.4 C 0 ²
7405E			2.6	449.3	446.2 C 3 ¹
7452E			2.0	449.9	446.6 C 3 ³
T.P	4.03	453.81	2.15	449.77	
8449W			5.5	448.3	446.7 C 16
9465W			5.6	448.2	447.0 C 12
9476W			6.6	447.2	447.6 F 0 ²
12455W			9.0	444.8	449.7 F 4.1
8498E			4.3	449.5	447.4 C 2 ¹
9440E			4.7	449.1	447.8 C 1 ²
CK9480			8.15	448.65	448.8

Meter Boxes
Montezuma - No.
8N-Catocini

King
West
Williams

4-4-51

35

T.B.M.	4.53	456.53			452.00	(4) 4x00
0+70			3.1	453.4	453.0	00 ⁴
1+79			3.2	453.3	452.6	00 ²
2+65			3.1	453.4	452.0	01 ²
4+16			3.6	452.9	451.4	01 ⁵
4+86			4.0	452.5	451.0	01 ⁵
8+25			4.0	452.5	449.2	03 ³
CK 5+50 (1)			6.4	450.13		

8" C.I.P., Cumberland St.
Calle Tres Hornos - Tortuoso

King
West
Williams

4-5-51

cool-cloudy

36

TRM)	11.04	312.84		301.80	B.C. curb return Calle Tres Hornos - S.E. cor. = 0+00
0+00			—		
0+50			11.1	301.7	303.0 (3.4)
1+00			9.0	303.8	304.2 3.8
1+50			7.7	305.1	305.6 3.7
1+85 F.H. @			5.3	307.5	306.4 0.1 ^L
F.H. (3)			5.7	307.1	306.4 0.0 ^Z
2+00			6.6	306.2	307.0 3.4
+50			5.5	307.3	308.2 3.3
3+00			4.3	308.5	309.0 3.5
+50			3.3	309.5	310.6 (3.2)
4+00			2.1	310.7	311.7 3.2
4+50			1.4	311.4	312.0 3.6
5+00			1.8	311.0	311.6 3.6
+50			3.0	309.8	310.6 3.4
6+00			4.7	308.1	309.2 (3.2)
+50			6.7	306.1	306.7 3.6
7+00			8.7	304.1	304.4 3.9
7+50			10.9	301.9	301.6 3.5

8" C.I.P. Cumberland St
Calle tres Lomas - Tortuoso

King
West
Williams

4-5-51

Cool.

37

312.84

T.P.	3.53	305.44	10.93	301.91		
Stoo			6.0	299.4	299.6	4.0
8+13 ⁹⁰			6.6	298.8	299.0	4.0
8+09 Q			6.2	299.2	299.2	0.0 ²
8+09 (5)			5.7	299.7	299.2	0.0 ⁵
Ch. to R.C. Prop.			6.35	299.09	299.03	

312.84

11

211.6

8th Transit P.L.(5) So. of Nicolas St. Rosacruz - San Fernando
Profile (4)King
West
Williams

4-17-51

38

B.M.	12.75	54.37			41.62	N.E. B.P. Rosacruz & Nicolas	
6750			12.5	41.9	42.0	C 4.0	
6700			4.3	50.1	47.5	C 6.4	4.4
T.P.	12.42	66.74	0.05	54.32			
5750			12.1	54.6	51.0	C 7.4	7.0
5700			6.5	60.2	58.0	C 6.0	5.5
4750			1.2	65.5	63.1	C 6.2	6.0
T.P.	12.48	78.73	0.49	66.25			
4700			9.1	69.6	68.4	C 5.2	4.2
E.H. C			5.9	72.8	72.0	C 0.8	
(3)			5.9	72.8	72.0	C 0.8	
3750			5.3	73.4	73.5	C 3.9	
3700			0.4	78.3	74.5	C 7.6	
T.P.	12.14	90.44	0.45	78.28			
2750			8.5	81.9	81.4	C 4.2	
2700			5.3	85.1	89.2	C (3.8)	
C.K. 3750			17.24	73.2	73.2		

7.3

2.5

4.8

6' C.I.P. (9) OFFsets
Bdry - 30-31st.

King
West
Williams

5-1-51

39

B.M. 2.76 197.84 195.08

0+50 5.3 194.5 194.5

1+00 4.0 193.8 194.0

+50 4.7 193.1 193.5

2+00 6.1 191.7 192.1

2+50 10.2 187.6 188.2

T.P. 0.22 ¹⁴ 185.24 12.92 ^{184.92} ~~185.02~~

3+00 1.8 183.3 183.5

3+50 6.5 178.6 178.6

4+00 11.1 174.0 174.0

T.P. 0.87 174.87 11.14 ⁰⁰ 174.10

4+50 5.6 169.3 169.2

5+00 2.5 167.4 164.8

13.24 187.81 0.30 174.57

10.27 197.92 0.16 187.65

2.85 197.07 - 197.08

B.P.S.E. Bdry + 30

C 3.8 Meter 1422 193.5 193.4

C 3.8 Meter 1430 El. 193.4 193.7-

C 3.5 " 1455 193.1 193.2

C 3.5 " 1476 192.9 192.8-0.1

C 3.5

C 3.6 " 878 180.5 180.2

C 3.8 " 2149 - 178.8 - 179.2

C 3.8 " 4462 174.0

C 3.8 " 4287

C 6.4

Bross Plug

TRANSITE
8" C.I.P. Ortenst. - 11thion West

5-1-51
King
West
Williams W.O.# 2-933-5

40

B.m.	11.64	68.70		57.06	
T.P.	13.10	81.45	0.35	69.35	
T.P.	13.28	94.60	0.13	81.32	
T.P.	13.74	107.45	0.29	94.31	
T.P.	12.63	119.71	0.37	107.08	
0+00			4.4	115.3	
0+50			1.9	117.8	117.0
T.P.	12.11	131.02	0.86	118.91	
1+00			16.1	120.9	122.0
1+25			8.1	122.9	125.0
1+50			4.3	126.7	128.0
T.P.	13.02	142.28	1.76	129.26	
1+75			9.8	132.5	131.4
2+00			7.2	135.1	134.8
2+25			3.4	138.9	136.9

B.P. West curb - Orten + Frank Fort

Hook to 8" pipe

C 4.8

(C 3.5)

(C 3.5)

(C 3.5)

C 5.3

C 4.5

(C 3.5)

Road Not up to grade so put pipe lower on track wash etc.

1197

45

1.22

C.I.P. - 10 So. P.
63rd - 07th Brooklyn

King
West
Williams

5-2-51 - Worm

41

GRADE STAKES

T.S. m.	2.62	273.83		271.21
0+00			2.5	271.3 270.6
0+50			2.9	270.9 270.0
0+70 M.S. Meter So.			5.2	268.6 270.4
1+00			4.6	269.2 269.2
1+50			6.2	267.4 268.4
2+00			6.9	266.9 267.8
2+35 M.S.			8.2	265.6 267.6
2+35 M.N.			4.8	269.0 268.6
2+50			6.9	266.9 267.5
2+66 M.S.O.			7.9	265.9 267.4
3+00			6.8	267.0 267.2
3+50			6.7	267.1 267.0
3+77 M.N.			4.1	269.7 267.9
4+00			6.7	267.1 266.6
5+00			7.0	266.8 266.5
5+11 F.H.C.			7.6	266.1 266.5
(5)			7.8	266.0 266.5
T.P.	2.58	269.31	7.10	266.73

Top F.H. S.E. Cor. Brooklyn & 63rd St.

4.5 E. Prop. Line 63rd

4.7

F 2²

C.00 @ 38

C.3.0

C.2.9

F 2⁰

@ 0⁴

C.3.2

F 1⁵

C.3.6

C.3.9

@ 1⁸

C.4.3

C.4.1 E.P.L. Stork

F 0³

F 0⁵

6" CIP.
Stork-Otay on Brooklyn

King
West
Williams

5-R-51

42

229.31

0+32 M. No.	0.2	269.1	267.0	C 2'	
0+50	2.7	266.6	265.8	C 4.6	
1+00	4.3	265.0	263.8	C 5.0	
1+10 M. N	2.8	266.5	264.4	C 2'	
1+47 M. No	5.6	263.7	262.6	C 1'	
1+50	7.4	261.9	261.2	C 4.5	
2+00	11.7	257.6	257.2	C 4.2	
2+67 M. No	10.4	258.9	258.0	C 0.9	
T.P.	0.25	256.34	13.23	256.08	
2+42 M. No	3.8	252.5	251.6	F 2'	
2+50	4.3	252.1	253.2	C 2.7 To low on present ground.	
3+00	8.7	247.6	248.8	C 2.6 " " " "	
3+25 M. No.	5.5	250.8	248.2	C 2.6 " " " "	
3+50	11.4	244.9	246.8	C 2.9 " " " "	
3+76 M. No.	10.7	245.6	245.7	F 0'	
T.P.	7.68	250.92	13.10	243.24	
4+60	11.0	239.9	244.2	F 0.5	
4+50	12.7	238.2	244.4	F 2.4	
5+00	8.9	242.0	247.8	F 2.0	

6" C.I.P. Stork-Otay
on Brooklyn

250.92

T.H.P.	12.89	262.86	0.95	249.97	
5750			10.8	262.1	254.6
6700			1.0	261.9	263.0
T.P.	12.22	274.10	0.98	261.88	
6750			5.5	268.6	266.5
Top Otay P.H.			9.9	264.2	267.1
B.W.			3.95	270.15	270.26
F.H.C				266.7	265.8
F.H.B.				266.9	265.8

King
West
Williams

5-1-51

43

C 1.3

C 2.7

21
70

C 5.9

Top F.H. N.E. Cor. 65th & Brooklyn

C 0.9

265.0

269.6

C 1.1

263.9

266.7

70

10' E

6" CIP
Loring - Laramie - EastKing
West
Williams

5-7-51

44

3.M.	10.92	217.77		206.85				
0-30			9.3	208.5				
0400			8.4	209.4	208.7		C 3.1	539
F.H. 4			8.2	209.6	209.3		C 0.3	14
E.H. (50)			8.4	209.4	209.3		C 0.1	
0450			6.9	210.9	210.4		C 4.3	707 210
1400			4.6	213.2	212.7		C 4.3	
1450			1.0	216.8	216.6		C 4.0	1488 220.2 219.2 C 1.0 21
T.P.	10.52	227.31	1.02	216.75				
2400			7.5	219.8	220.0		C 3.6	
2450			6.0	221.3	221.6		C 3.5	2469 222.3 221.9
3400			5.1	222.2	222.1		C 3.9	04 3241 223.1 C 0.9 222.2
3450			4.8	222.5	222.3		C 4.0	
4400			4.8	222.5	222.6		C 3.7	3498 223.3 C 0.7 222.6
4450			4.9	222.4	222.8		C 3.4	
5400			4.5	222.8	223.0		C 3.6	
T.P.	1.09	219.89	2.51	218.80				
3.M.			13.05	206.83	206.85			

6" P.L. Reed St.
Cass to Mission Blvd

45

B.M. 2.49 08.87 6.38

B.P.N.E. Cor Thomas & Bayard

0+00 4.5 04.4 4.0

C4.2 West Prop Line Bayard St.

0+50 6.1 02.8 3.2

C3.4

1+00 6.9 02.0 2.4

C3.4

1+50 7.8 01.1 1.4

C3.5

2+00 8.4 00.5 1.0

C3.3

2+50 8.8 00.1 0.8

C3.2

3+00 9.1 -0.2 +0.6

(C3.0)

3+50 9.5 -0.6 +0.4

(C3.0)

4+00 9.6 -0.7 +0.3

(C3.0)

4+50 9.1 -0.2 +0.2

C3.4

5+00 7.8 01.1 0.0

C4.9 East Prop Line Mission Blvd.

F.H. 4.1 04.8 5.0

F 0 2

F.H. 4.1 04.8 5.0

F 0 2

4.4 Top curb 4.5

0+00 4.5 04.4 5.0

C3.2 East Prop Line Bayard on Reed St.

0+50 3.8 05.1 5.4

C3.5

1+00 3.4 05.5 5.6

C3.7

1+50 3.0 05.9 6.0

C3.7

2+00 2.7 06.2 6.3

C3.7

For cover

6" P.L.
Reed St. Cass-Mission Blvd

King
West
Williams

5-10-51

46

08.87

2+50		2.3	06.6	6.7	C3.7
3+00		1.9	07.0	7.0	C3.8
3+50		1.7	07.2	7.3	C3.7
4+00		1.4	07.5	7.8	C3.6
4+50		1.1	07.8	8.0	C3.6
5+00		0.9	08.0	8.5	C3.3
Meter Boxes					
4+60		4.02	09.1	8.7	C04
3+69		0.6	08.3	8.0	C03
3+39		0.4	08.5	7.8	C02
2+92		0.8	08.1	7.7	C04
2+13		1.3	07.6	7.0	C04

6" x 8" C.I.P.
40B-39B ON Bdwg
39B to hilltop

King
West
Williams

5-21-51

47

B.M.	6.29	172.82		166.53	B.P. S.W. 394 Hill top	
8" C.I.P.						
2+50			6.2	166.2	165.3	5.1
2+00			6.2	166.2	165.0	5.3
1+50			5.4	167.4	164.6	6.0
1+00			5.4	167.4	164.2	7.4
0+50			6.5	166.3	163.8	7.7
F.H. 2			6.3	166.5	163.6	2.9 S.E. Cor Bdwg-39A
F.H.			6.1	166.7	163.6	3.1
0+00			8.1	164.7	163.5	5.0
6" C.I.P.						
7+14			12.1	160.7	163.0	3.8
7+00			12.6	160.2	162.8	3.8
6+50			9.4	163.4	163.0	4.2
T.P.	13.13	179.45	6.50	166.32		
6+00			11.6	167.9	164.9	6.8
5+50			8.2	171.3	167.8	7.3
5+00			6.0	173.5	170.6	6.7
4+50			5.6	174.3	172.5	5.6

166.5
164.0
2.5

6"48" C.P.
(Contd)

179.45

4+00	5.1	174.4	173.6
3+50	4.9	174.6	174.0
3+00	4.9	174.6	174.5
2+50	4.7	174.8	174.9
2+00	4.0	175.5	175.4
1+50	3.3	176.2	175.7
1+00	2.9	176.6	176.2
0+50	2.9	176.6	176.4
0+00	3.2	176.3	176.2
D-60	1.6	177.9	174.4
F.H.Q.	2.0	177.5	174.4
F.H.③	2.3	177.2	174.4
	12.90	166.55	166.53

KING
West
Williams

5-21-51

48

4.6

4.4

3.9

3.7

3.9

4.3

4.2

4.0

3.9

West P. 1. 40th St.

7.3

3.2

2.8

8" CIP - Poplar - Pepper - on Violet
 6" CIP - Pepper - to End of Violet

King
 West
 Williams

5-22-51

49

B.M.	1.58	287.96			286.38	Top F.H. SE. Cor Poplar + Violet
2+50			4.6	283.4	280.9	6.5
2+00			4.6	283.4	281.5	5.9
1+50			4.9	283.1	281.5	5.6
1+00			5.5	282.5	281.3	5.3
0+50			6.1	281.9	280.6	5.3
0+00			6.9	281.1	280.0	5.1
0+35			7.2	280.8	280.0	4.8
T.P.	3.27	284.18	7.05	280.91		N.W. Prop line Pepper going No. on Pepper
0+50			3.9	280.3	279.4	4.7
1+00			4.3	279.9	278.8	4.9
1+50			4.5	279.7	278.2	5.3
F.H. R			5.9	278.3		
F.H. (15)			5.6	278.6		
40' So.			5.7	278.5		So. on Pepper
2+00			5.2	279.0	277.7	5.1
2+50			6.1	278.1	277.0	4.9
3+00			6.7	277.5	276.3	5.0
Top M.H.			7.25	276.93		

Meter Boxes
Bdwy-394-40th

KING
West
Williams

5-23-51

50

T.B.M.	4.73	179.33		174.6	(4) 3+00
5406.50.		6.5	172.8	170.9	0 1 ²
4445 "		5.2	174.1	173.0	0 1 ⁴
4402 "		5.2	174.1	173.8	0 0 ³
3463 "		5.1	174.2	174.0	0 0 ²
2460 "		4.9	174.4	174.9	F 0 ²
2414 "		4.1	175.2	175.2	0 0 ⁰
1446 "		3.1	176.2	175.8	0 0 ⁴
0479 "		2.6	176.7	176.2	0 0 ²
0407 "		2.9	176.4	176.3	0 0 ⁴
0424 No.		3.7	175.6	176.4	F 0 ²
0486 "		3.0	176.3	176.2	0 0 ¹
1423 "		2.6	175.7 176.7	175.7	0 0 ⁰
1490 "		3.7	175.6	175.5	0 0 ⁴
2430 "		3.9	175.4	175.1	0 0 ³
4402 "		4.0	175.3	173.9	0 1 ⁴
4445 "		4.0	175.3	173.0	0 2 ³
4484 "		4.4	174.9	171.8	0 3 ⁴
5723 "		6.7	172.4	170.0	0 2 ²
CI		4.75	174.6	174.6	3450

Violet St.
Sycamore - Dead End

King
West
Williams

5-24-51

51

B.M.	3.22	280.5		276.93		
0+00			4.2	276.0	275.3	4.5
0+50			5.2	275.0	274.6	4.2
1+00			6.3	273.9	273.5	4.2
1+50			7.2	273.0	272.5	4.3
2+00			8.3	271.9	271.5	4.2
2+50			9.2	271.0	270.5	4.3
3+00			10.2	270.0	269.6	4.1
			3.22	276.93		

B.M. 3.30 280.23 276.93

P.L.W. 3.1 277.1 275.6 4.9

*-cross 3.7 276.5 275.5 4.8

So. East 5.3 274.9 275.2 3.5

3.30 276.93

stakes on Intersect Violet & Sycamore

N.E. Prop Line Sycamore

X-10' East - 10' So. Intersection

Tee E 10' @ Sycamore & P.L. Violet

Meter Box
Violet St

5-25-51

52

Poplar to Pepper

BM _N	0.44	286.82		286.38		BM Top FH	SE Cor Poplar + Violet
1+50		2.4	284.4	282.3	0 2 1/2		
^S 1+37		4.4	282.4	281.5	0 0 2		
^N 1+21		3.1	283.7	282.1	0 1 6		
^S D+66		4.9	281.9	280.8	0 1 1/2		
^S 0+10		5.4	281.4	280.0	0 1 1/2		

^S Pepper to Sycamore

^S 0+10		5.8	281.0	279.9	0 1 1/2		
^N 1+74		6.8	280.0	278.5	0 1 1/2		
^S 2+15		8.2	278.6	277.7	0 0 2		
^S 2+45		8.8	278.0	277.0	0 1 2		
FH		10.6	276.2	275.8	0 0 4	FH	SE Cor Sycamore + Violet
(S) FH		10.6	276.2	275.8	0 0 4		
		9.90	276.92	276.92			check top FH

5-28-51

Gardena Av
12" Transit
H1King
West
Williams

53

BM Brass Plus N Line W curb Gardena +
Frank Fort

	1.50	65.62		64.12
	0.89	53.68	12.83	52.79
	0.75	41.58	12.85	40.83
	1.45	29.72	13.31	28.27
	5.30	26.51	8.51	21.21
0700			4.2	
0750			5.7	
1400			5.2	
+50			5.2	
2700			4.8	
+50			4.4	
3700			4.2	
+50			3.7	
4700			3.3	
+50			3.2	
			2.8	
5700	7.92	31.63	2.80	23.71
+50			7.6	
6700			7.3	
+50			6.8	

TP.

5-28-51

Gardena Av

King
West
Williams

54

	+	H.		
7+00		3,63	6.7	
+50			6.4	
8+00			5.9	
+50			5.3	
9+00			5.1	
+50			4.9	
10+00			4.2	
+50			3.6	
11+00			3.2	
+50			2.8	
12+00			2.4	
+50			2.7	
13+00			1.9	
+				
T.P.		1.95	29.68	

on Gentry

9/14/51 13+00

Birmingham Drive
6" C.I.P.

B.M.	12.49	389.67			377.18
0150					
F.H. Q			5.8	383.9	388.8
F.H. (3)			5.9	383.8	383.8
0450			6.1	383.4	384.3
1400			4.7	385.0	384.9
1450			4.0	385.7	385.6
2400			3.0	386.7	386.4
2450			1.8	387.9	387.0
2470			1.6	388.1	387.5
CK.			5.25	384 42	384.4

T.B.M

383.87

5-29-51

King
West
Williams P

BN Prop Line Pipe - See Chester Plan

Co. 1 So. Prop Line on Lot King

C.00

C3.2

C3.9

C3.9

C4.1

C4.7

C4.4

Q. 9, 11, 12, 13 Fire Hydr

Meter Boxes

Violet 56
Sycamore to Dead end-East

	1.63	278.56		276.93
S				
0772			4.2	274.4 273.8
S				
1411			5.0	273.6 273.2
S				
1453			5.7	272.9 272.4
S				
2432			7.4	271.2 270.4
S				
3100			9.3	269.3 269.2
and				
3100			9.2	269.4 269.1
N side				
2483			8.4	270.2 270.2
N				
2453			8.0	270.6 270.8
N				
2407			6.8	271.8 271.8
ck			1.63	276.93

T.B.M. 6.88 283.81 276.93

Meter Box			7.20	276.6 276.0
2425. No. Side			4.6	279.2 278.2

King 5-29-51
West
Williams

56

Top MH Violet & Sycamore

0 0⁴
0 0⁴
0 0⁵
0 0⁸
0 0⁴
0 0³
0 0⁴
1 0³
0 0²

0 0⁶
0 1.0

Reelst-Cass. Dawes
6" C.P.

King
Leonard
Williams

6-4-57

57

T.B.M.

5400	6.26	14.25			08.0	
0+00			6.0	08.3	0.85	3.6
0+50			5.6	08.7	0.85	4.0
1+00			5.7	08.6	0.86	3.8
1+50			5.7	08.6	0.87	3.7
2+00			5.7	08.6	0.89	3.4
2+50			5.6	08.7	9.0	3.5
3+00			5.5	08.8	9.1	3.5
3+50			5.5	08.8	9.2	3.4
4+00			5.4	08.9	9.4	3.4
4+50			5.1	09.2	9.5	3.5
5+00			4.9	09.4	9.5	3.7
CK			4.69	09.57		

East-Prop Line Cass

Meter Boxes
Birmingham Road.

KING
LEONARD
WILLIAMS
BOYD

6-6-51

58

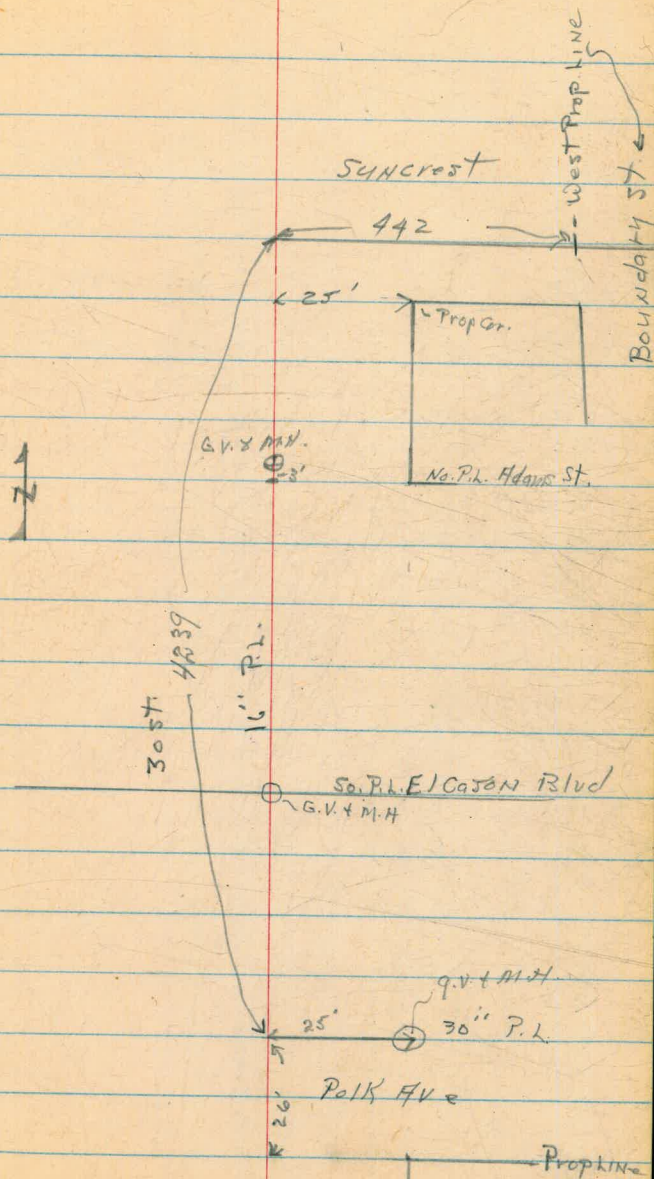
T. B. WY	108	38495		38387		
0+41 ^{LK}			2.0	383.0	382.0	C 1.0
1723 ^{LK}			4.7	380.3	380.0	C 0.3
2437 ^{RY}			4.9	380.1	378.8	C 1.3
3+73 ^R			7.1	377.9	376.9	C 1.0
4+29 ^{LK}			8.0	377.0	376.5	C 0.5
			8.73	376.2	376.70	

Distance Forvelining
30 St. - 16 C.I.P. Polk to Suncrest
to Boundary ON 30th St.

King
Williams
Leongid

6-1-51

59



Montezuma
Between 55 - Camille
Reset F.H.

KING
LEONARD
WILLIAMS

6-15-51

50

B.M.	4.15	459.84		455.69		
Curb-50			6.31	453.53		
" No.			6.32	453.52		
F.H.			4.77	453.07	453.53	1.54
F.H. (5)			4.60	453.24	453.53	1.71

meter. Box on 40rd.
Between Alpha + Gamma

King
West
Williams 7-11.

7/15/51

sta	+	H ₁	-			
	8.48	89.61		81.13		BM on Fire Hyd 40 rd + Gamma
E 1+40			6.0	83.6	82.0	0 1 ⁶
W 1+65			6.6	83.0	81.7	0 1 ³
E 2+08			5.4	84.2	82.4	0 1 ⁸
E 2+69			4.9	84.7	82.9	0 1 ⁸
E 3+50			4.8	84.8	83.3	0 1 ⁵
E 4+14			4.7	84.9	84.0	0 0 ⁹
W 4+18			5.9	83.7	83.5	0 0 ²
E 4+74			4.2	85.4	84.6	0 0 ⁸
E 5+26			3.8	85.8	85.2	0 0 ⁶
			2.75	86.86	=86.80	curb return 40 rd + Alpha N.E. Cor

Meter Boxes
Brooklyn 6063rd St.

King
West
Williams

7-20-51 Hot

52

Top Ft. 63rd & Brooklyn

B.M.	1.98	273.19		271.21	
7490N			+0.10	273.3	269.5 C3.8
7411N			7.8	265.4	264.0 C1.4
7404S			11.4	261.8	262.6 F0.8
T.P.	0.87	260.88	13.18	260.01	
6407S			6.9	254.0	254.5 F.05
5461N			7.9	253.0	252.3 C0.7
5449S			11.5	249.4	250.7 F.13
T.P.	8.26	255.94	13.20	247.68	
4427N			9.1	246.8	245.4 C1.4
3451N			3.8	252.1	247.9 C2.4
3464S			8.4	247.5	246.4 C1.1
3414S			6.8	249.1	249.4 F.03
344N			1.9	254.0	249.6 C4.4
2468N			1.2	254.7	251.3 C3.4
2443S			5.7	250.2	250.7 F.05
1464S			6.4	249.5	250.5 F1.0
1468N			1.5	254.4	251.5 C2.9
1411S			7.6	248.3	248.9 F0.4

Meter Boxes
Brooklyn - 60-63

KING 7-20-51
WEST
Williams

63

255.94

0+77 N			4.4	251.5	249.0	C2.5
T.P.	0.90	247.99	8.85	247.09		
0+255			1.6	246.4	246.8	F.0.4
0+04N			40.3	248.3	245.3	C3-0 0400 East P.h. Fergusst.
6+41 N			5.7	242.3	242.8	F.0.5
5+93 N			6.1	241.9	242.2	F.0.3
5+48 N			5.5	242.5	241.4	C1.1
4+94 N			5.9	242.1	240.7	C1.4
4+57 N			7.1	240.9	240.0	C0.9
3+97 N			9.2	238.8	237.1	C1.7
T.P.	1.34	236.48	12.85	235.14		
2+71 N			5.1	231.4	231.4	C-0.0
1+75 N			6.5	230.0	229.9	C0.1
0+00						East P.h. 60 th St
B.M.			1.95	234.53	234.53	

SANTA FE AVE
BALBOA TO NOR. LY TERMINUS
④ 8" A.C. WATER MAIN

FEB. 5 1952

BEATTY
POWELL
BERGER

64

B.M.	12.85	59.70		46.85							
0+00	CONN. TO TEE		11.5	48.2	48.00 43.6	C46					
+50			10.6	49.1	48.20 43.8	C53					EXISTING TEE TO FH (10' W. of E. Prop. LINE SANTA FE)
1+00			9.8	49.9	49.2 44.8	C51					E. of proposed 8" MAIN 5' W. of E. Prop. LINE
+50			8.0	51.7	51.2 46.8	C49					" " " " " "
+62.3	8x8 TEE (Pasadena)										
2+00			5.0	54.7	53.2 49.0	C52					" " " " " "
P	+50	13.25	72.25	0.70	59.00	56.0 51.6	C74				Do
	3+00			11.3	61.0	52.8 48.4	C81				Do
	+50			9.8	62.5	60.9 56.5	C60				Do
	4+00			8.5	63.8	63.3 58.9	C49				Do
	+50			6.4	65.9	63.9 59.5	C45				Do
	5+00			2.2	70.1	66.0 61.6	C65				Do
	+50			+1.0	73.3	69.1 64.7	C88				Do
	+76.40	8" PLUG		+0.3	72.6	69.2 64.8	C78				Do
P	0.11	59.12	13.24	59.01							
CK B.M.			12.26	46.86	= 46.85						

MISSOURI ST
 LAMONT TO EASTLY TERMINUS
 (4) 6" C.I. WATER MAIN

FEB. 5, 1952

BEATTY
 POWELL
 BERGER

65

B.M.	13.42	116.11	102.69
HI	13.27	115.60	102.55
B.M.	0.20	116.20	116.00

Conn. Mon DE. 32

End of Work

10' SE. Cor. Int. Lamont & Missouri

($\frac{1}{2}$ of pipe staked 10' South of ST.)

0+80	(Conn. to Exist 6" C.I.)		112.4	
	+01	116.3		
1+00	+03	115.9	112.4	C35 - C39
	0.1	116.1		
+50	+0.1	115.7	111.3	C44 - C48
	2.1	114.1		
2+00	+1.9	113.7	110.1	C36 - C40
	3.8	112.4		
+50	3.6	112.0	109.0	C32 - 34
	5.3	110.9		
3+00	5.1	110.5	108.7	C48 (in a hole) C22
	4.1	112.1		
+50	3.9	111.7	108.2	C33 - C37
	4.7	111.5		
4+00	4.5	111.1	107.5	C36 - C40
	5.9	111.2		
+50	4.7	110.9	106.6	C42 - C46
	6.1	110.1		
5+00	5.9	109.7	105.4	C43 - C47
	8.0	108.2		
+50	7.8	107.8	103.4	C44 - C48
	9.6	106.6		
+75	9.4	106.2	102.4	C38 - C42
	13.1	103.1		
6+25	+2.9	+102.7	99.4	C32 - C37
	13.5	102.7		
6+50	+3.3	+102.3	98.8	C35 - C39
CK. B.M.	0.20	116.00		

Blk 160
Mission Blk WATER METER GRADES
IN ALLEY BETWEEN MIANTIC & SAN JUAN
FROM BAYSIDE LANE TO STRANDWAY

FEB. 8, 1952

BEATTY
POWELL
BERGER

66

B.M.	4.80 4.52			
	4.26 3.98	4.26	-0.28	
		4.80	4.82 7.07	-0.15
B.M.	2.48	9.55		
0-01 = L&T E	Alley 10' offset w/ Prop line Bayside			
0+24 RT. (Nor)		11.06	-1.51	-1.6
0+36 RT. (Nor)		11.14	-1.59	-1.6
0+52 LT (So)		10.92	-1.37	-1.5
0+81 RT.		10.98	-1.43	-1.5
0+87 LT.		11.07	-1.52	-1.5
0+91.5 RT.		11.00	-1.45	-1.5
1+24.5 LT		10.83	-1.28	-1.4
1+31 RT		11.05	-1.50	-1.35
1+47.5 RT.		10.85	-1.30	-1.3
1+53 LT.		10.60	-1.05	-1.25
1+91 RT. NOR (STIFF)		10.56	-1.01	-0.9
2+10 LT.		9.91	-0.36	-0.9
1+73.5 LT.		10.31	-0.76	-1.20
2+12.90 = L&T E ALLEY	3' offset E Prop line Mission BLVD.			
0+00 = L&T E ALLEY	3' offset W Prop Line Mission BLVD.			
0+41.5 RT		7.61	1.94	01.80
0+18 LT. STIFF		8.51	1.04	00.9
0+59.5 LT STIFF		6.25	03.3	03.1
0+89.5 LT STIFF		5.17	04.38	04.8
OK BM		2.48	7.07	

BP. NE Cor } SAN JUAN & MISSION BLVD
CITY SW Cor }

BP SEA WALL SW Cor SAN JUAN R.

CO¹

CO²

CO³

CO⁴

CO⁵

CO⁶

CO⁷

FO²

CO²

CO²

FO¹

CO⁵

CO⁴

11.06

9.55

1.51

11.10

9.55

1.59

10.31

9.55

7.6

9.96

9.55

-41

9.96

2.48

7.68

11.36

9.55

1.81

ALCOTT ST
Poinsetta - Palarmo - ZOLA

FEB. 11, 1952 - Cool
DEATTY
POWELL
BERGER

67

B.M.	10.71	172.21		161.50	
	0.26	160.86	11.61	160.60	
c 6+75			16.32	144.54	
c +50			14.41		
c 6+00			8.0		
IP	4.41	160.15	5.12	155.74	
c 5+50			4.22	155.93	151.5
5+00			3.97		
+75			4.02		
+50			4.03		
+25			4.04		
4+00			4.15	156.00	151.5
+75			4.35		
+50			4.63		
+25			4.84		
3+00			5.13		
+75			5.44		
+50			5.87		
IP	2.71	156.91	5.95	154.20	
+25			3.80		
2+00			3.20	153.71	149.3
+75			3.55		
+50			4.15		
1+00			4.80		
+50			5.30		
0+00 - TEE ALCOTT & Poinsetta	4.95	152.0	147.6		
SET B.M.	13.02	168.53	1.40	155.51	

Note: $\frac{1}{2}$ on Top of Curb
 Cut of $\frac{1}{4}$
 marked thru out.

					168.53
P.P. Chatsworth & Zola					
0+00 = TEE POINSETTA & ALCOTT					
0+50	15.22	153.21	148.8	94.	
1+00	12.07	156.4	152.0		
+50	7.65	160.88	156.5		
curb	2+00	2.97			
IP	12.66	181.03	0.16	168.37	
+50	10.97				
3+00	7.12				
+50	5.30				
3+67.4 VAL.	5.06				
IP 0.53	168.65	12.93	168.10		
CL B.M.	9.40	159.23	159.20		
		BP. SW COR			
		ALCOTT &			
		Chatsworth			

044

on curb

044

Blk B. Jeralta

ALLEY - REDWOOD TO THORN
BETWEEN VANCOVER & HALLER

② STAKES FOR EXISTING WATER METERS

Back Edge of METER 10' from E of Alley

FINISH
GRADE

FEB. 13, 1952 - FAIR

H. BRATTY
C. POWELL
M. BERGER

68

CK BM. ID										GRADE
	1.60	<u>307.83</u>	7.82	300.01	299.98	ALLEY				
0+335 W			6.92	306.23						
			3.25	309.9	309.0	C09	5+195 W	3.10	299.0	299.1
0+19 E			3.00	310.2	309.2	C10	5+90 W	3.95	298.15	297.5
0+88 E			3.80	309.4	308.6	C08				
0+97 W			3.95	309.2	308.4	C08				
1+370 W			4.70	308.5	308.2	C03				
1+66 W			5.20	308.0	307.8	C02				
1+80 E			5.00	308.2	307.8	C04				
2+30 W.			6.55	306.6	306.6	C00				
2+32 E			5.95	307.2	306.8	C04				
2+66 W.			7.05	306.1	305.9	C02				
2+88 E.			6.75	306.4	305.7	C01				
2+93 W.			7.45	305.7	305.4	C03				
3+555 W			9.07	304.1	304.1	C00				
3+82 E			9.30	303.85	303.4	C05				
3+86 W			10.05	303.1	303.1	C00				
4+31 W			11.15	302.0	301.8	C02				
4+41 E			10.85	302.3	301.6	C07				
ID	11.38	<u>313.15</u>	0.33	301.77						
4+81 W			2.10	300.0	300.2	F02				
BM	2.12	302.10		299.98						

NOTE: -
LEVEL NOTES
RUN UP THE PAGE

MISSOURI ST.

LAMONT TO EAST TERMINUS

② FOR WATER METERS
Back Edge of METER 25' FROM E. ST.

BM	3.11	119.11		116.00	
0+00 =					
0+45 Nor		0.35	118.8	115.3	C35
0+84 South		4.11	115.0	115.0	C00
1+03 South		4.91	114.2	114.3	F01
1+45 So.		6.25	112.9	114.0	F11
1+50 Nor.		4.20	114.9	114.5	C04
1+86 So.		7.4	111.7	113.3	F16
2+02 Nor		6.04	113.1	113.6	F05
2+28 Nor.		4.6	114.5	113.2	C13
2+94 So.		7.9	111.2	111.5	F02
3+16 So.		7.81	111.3	111.2	C01
3+75 So.		8.35	110.8	110.1	C07
3+85 Nor		6.7	112.4	110.5	C17
4+105 So		8.9	110.2	109.3	C02
4+31 So.		9.35	109.8	108.6	C12
4+41 Nor.		8.2	110.9	108.6	C23
4+63 So.		10.75	108.4	107.4	C10
⑤ 5+59 So	2.26	109.11	12.26	106.85	
			6.66	102.5	F08
5+74 So.		7.16	102.0	102.6	F06
ck 6+25 (4)		6.11	103.00	= 103.1	

FEB. 15, 1952

69

Beatty
Powell
BERGER36' curb to curb, 5' contiguous sidewalk, planned
(but not in this job)

LET SECOR LAMONT & MISSOURI

C.S.S

FINING.

.9	
1.35	0
2.85	1
4.35	2
5.85	3
7.35	4
8.85	5
10.35	6
11.85	7
13.35	8
14.85	9
16.35	10
17.85	11
19.35	12
20.85	13
22.35	14
23.85	15
25.35	16
26.85	17
28.35	18
29.85	19
31.35	20
32.85	21
34.35	22
35.85	23
37.35	24
38.85	25
40.35	26
41.85	27
43.35	28
44.85	29
46.35	30
47.85	31
49.35	32
50.85	33
52.35	34
53.85	35
55.35	36
56.85	37
58.35	38
59.85	39
61.35	40
62.85	41
64.35	42
65.85	43
67.35	44
68.85	45
70.35	46
71.85	47
73.35	48
74.85	49
76.35	50

319.07
12.49

331.56
134

330.22
12.46

342.68
00

342.68
12.52

355.20
1.61

365.09
5.02

360.11
438

355.73

287
17
287
2057
06

44
3
12
245
2527
25

5424

54.6
19
54.6
49
51.6

55.0
52
34

3494
3.59
5.1
74.7
1.3

1
1
10.4
1.2

