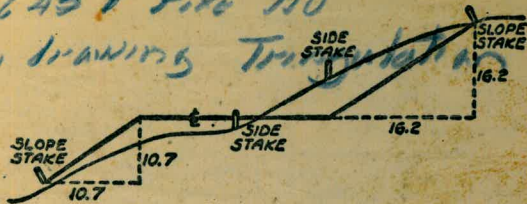




6459 File 100  
my drawing



DISTANCES FROM SIDE STAKES FOR CROSS-SECTIONING  
SLOPE 1 TO 1. ROADWAY OF ANY WIDTH

	0	.1	.2	.3	.4	.5	.6	.7	.8	.9	
0	0.00	0.10	0.20	0.30	0.40	0.50	0.60	0.70	0.80	0.90	0
1	1.00	1.10	1.20	1.30	1.40	1.50	1.60	1.70	1.80	1.90	1
2	2.00	2.10	2.20	2.30	2.40	2.50	2.60	2.70	2.80	2.90	2
3	3.00	3.10	3.20	3.30	3.40	3.50	3.60	3.70	3.80	3.90	3
4	4.00	4.10	4.20	4.30	4.40	4.50	4.60	4.70	4.80	4.90	4
5	5.00	5.10	5.20	5.30	5.40	5.50	5.60	5.70	5.80	5.90	5
6	6.00	6.10	6.20	6.30	6.40	6.50	6.60	6.70	6.80	6.90	6
7	7.00	7.10	7.20	7.30	7.40	7.50	7.60	7.70	7.80	7.90	7
8	8.00	8.10	8.20	8.30	8.40	8.50	8.60	8.70	8.80	8.90	8
9	9.00	9.10	9.20	9.30	9.40	9.50	9.60	9.70	9.80	9.90	9
10	10.00	10.10	10.20	10.30	10.40	10.50	10.60	10.70	10.80	10.90	10
11	11.00	11.10	11.20	11.30	11.40	11.50	11.60	11.70	11.80	11.90	11
12	12.00	12.10	12.20	12.30	12.40	12.50	12.60	12.70	12.80	12.90	12
13	13.00	13.10	13.20	13.30	13.40	13.50	13.60	13.70	13.80	13.90	13
14	14.00	14.10	14.20	14.30	14.40	14.50	14.60	14.70	14.80	14.90	14
15	15.00	15.10	15.20	15.30	15.40	15.50	15.60	15.70	15.80	15.90	15
16	16.00	16.10	16.20	16.30	16.40	16.50	16.60	16.70	16.80	16.90	16
17	17.00	17.10	17.20	17.30	17.40	17.50	17.60	17.70	17.80	17.90	17
18	18.00	18.10	18.20	18.30	18.40	18.50	18.60	18.70	18.80	18.90	18
19	19.00	19.10	19.20	19.30	19.40	19.50	19.60	19.70	19.80	19.90	19
20	20.00	20.10	20.20	20.30	20.40	20.50	20.60	20.70	20.80	20.90	20
21	21.00	21.10	21.20	21.30	21.40	21.50	21.60	21.70	21.80	21.90	21
22	22.00	22.10	22.20	22.30	22.40	22.50	22.60	22.70	22.80	22.90	22
23	23.00	23.10	23.20	23.30	23.40	23.50	23.60	23.70	23.80	23.90	23
24	24.00	24.10	24.20	24.30	24.40	24.50	24.60	24.70	24.80	24.90	24
25	25.00	25.10	25.20	25.30	25.40	25.50	25.60	25.70	25.80	25.90	25
26	26.00	26.10	26.20	26.30	26.40	26.50	26.60	26.70	26.80	26.90	26
27	27.00	27.10	27.20	27.30	27.40	27.50	27.60	27.70	27.80	27.90	27
28	28.00	28.10	28.20	28.30	28.40	28.50	28.60	28.70	28.80	28.90	28
29	29.00	29.10	29.20	29.30	29.40	29.50	29.60	29.70	29.80	29.90	29
30	30.00	30.10	30.20	30.30	30.40	30.50	30.60	30.70	30.80	30.90	30
31	31.00	31.10	31.20	31.30	31.40	31.50	31.60	31.70	31.80	31.90	31
32	32.00	32.10	32.20	32.30	32.40	32.50	32.60	32.70	32.80	32.90	32
33	33.00	33.10	33.20	33.30	33.40	33.50	33.60	33.70	33.80	33.90	33
34	34.00	34.10	34.20	34.30	34.40	34.50	34.60	34.70	34.80	34.90	34
35	35.00	35.10	35.20	35.30	35.40	35.50	35.60	35.70	35.80	35.90	35
36	36.00	36.10	36.20	36.30	36.40	36.50	36.60	36.70	36.80	36.90	36
37	37.00	37.10	37.20	37.30	37.40	37.50	37.60	37.70	37.80	37.90	37
38	38.00	38.10	38.20	38.30	38.40	38.50	38.60	38.70	38.80	38.90	38
39	39.00	39.10	39.20	39.30	39.40	39.50	39.60	39.70	39.80	39.90	39
40	40.00	40.10	40.20	40.30	40.40	40.50	40.60	40.70	40.80	40.90	40
41	41.00	41.10	41.20	41.30	41.40	41.50	41.60	41.70	41.80	41.90	41
42	42.00	42.10	42.20	42.30	42.40	42.50	42.60	42.70	42.80	42.90	42
43	43.00	43.10	43.20	43.30	43.40	43.50	43.60	43.70	43.80	43.90	43
44	44.00	44.10	44.20	44.30	44.40	44.50	44.60	44.70	44.80	44.90	44
45	45.00	45.10	45.20	45.30	45.40	45.50	45.60	45.70	45.80	45.90	45
46	46.00	46.10	46.20	46.30	46.40	46.50	46.60	46.70	46.80	46.90	46
47	47.00	47.10	47.20	47.30	47.40	47.50	47.60	47.70	47.80	47.90	47
48	48.00	48.10	48.20	48.30	48.40	48.50	48.60	48.70	48.80	48.90	48
49	49.00	49.10	49.20	49.30	49.40	49.50	49.60	49.70	49.80	49.90	49
50	50.00	50.10	50.20	50.30	50.40	50.50	50.60	50.70	50.80	50.90	50

Distance of slope stake from side or shoulder stake for any width roadway, slope 1 to 1. If ground is nearly level, the cut or fill at side stake is located by the double entry method in left column and top row. The number in body of table in same row and column gives distance from side stake to slope stake. If ground is not level estimate the difference in elevation between the side stake and slope stake, lower target by this amount if cut, elevate if fill. Add this amount to cut or fill and find distance in table. Set up rod at this point, and line of sight should cut target. If it does not make the slight adjustment necessary.

812

53 36 36

185 312 30

32

546 2600

10 24

Please Return to  
City of San Diego Water Dept.  
Room 903 Civic Center

MICROFILMED

JAN 16 1965



TABLE XIII—CORRECTIONS FOR TANGENTS AND EXTERNALS

These corrections are to be added to the approximate values, found by dividing the tangent, or external, for a 1° curve (Table VIII) by the degree of curve, in order to obtain the true tangents, or externals. Intermediate values may be obtained by interpolation.

FOR TANGENTS ADD

Central Angle	DEGREE OF CURVE													
	5°	10°	15°	20°	25°	30°	35°	40°	45°	50°	55°	60°	65°	70°
10°	.03	.06	.09	.13	.16	.19	.22	.25	.28	.31	.34	.38	.42	.46
15°	.04	.10	.14	.19	.24	.29	.34	.39	.45	.51	.53	.58	.63	.68
20°	.06	.13	.19	.26	.32	.39	.45	.51	.58	.65	.72	.79	.84	.90
25°	.08	.16	.24	.33	.40	.49	.58	.67	.75	.83	.90	.99	1.06	1.14
30°	10	19	29	39	49	59	69	79	89	99	1.09	1.20	1.29	1.39
35°	11	22	34	47	58	69	79	81	92	1.04	1.29	1.42	1.54	1.66
40°	13	26	40	53	67	80	93	1.06	1.20	1.34	1.49	1.64	1.79	1.94
45°	15	30	44	60	76	91	1.06	1.21	1.37	1.52	1.70	1.87	2.04	2.21
50°	17	34	51	68	85	1.02	1.19	1.36	1.54	1.72	1.91	2.10	2.29	2.48
55°	19	38	57	76	95	1.14	1.32	1.52	1.72	1.92	2.14	2.35	2.56	2.77
60°	21	42	63	84	1.05	1.27	1.49	1.71	1.94	2.17	2.38	2.60	2.83	3.07
65°	23	46	69	93	1.16	1.40	1.64	1.88	2.13	2.38	2.63	2.88	3.13	3.39
70°	25	51	76	1.02	1.28	1.54	1.80	2.06	2.33	2.60	2.88	3.16	3.44	3.72
75°	27	56	83	1.12	1.40	1.69	1.98	2.27	2.57	2.87	3.16	3.47	3.78	4.09
80°	30	61	91	1.22	1.53	1.84	2.15	2.46	2.78	3.10	3.44	3.78	4.12	4.46
85°	33	66	1.00	1.33	1.68	2.02	2.36	2.70	3.05	3.40	3.77	4.14	4.55	4.89
90°	36	72	1.09	1.45	1.83	2.20	2.57	2.94	3.32	3.70	4.10	4.50	4.91	5.32
95°	39	79	1.19	1.55	2.00	2.40	2.80	3.20	3.61	4.02	4.40	4.98	5.38	5.83
100°	43	86	1.30	1.74	2.18	2.62	3.06	3.50	3.95	4.40	4.88	5.37	5.85	6.34
110°	51	1.03	1.56	2.08	2.61	3.14	3.67	4.21	4.76	5.31	5.86	6.43	7.01	7.60
120°	62	1.25	1.93	2.52	3.16	3.81	4.45	5.11	5.77	6.44	7.12	7.80	8.50	9.22

FOR EXTERNALS ADD

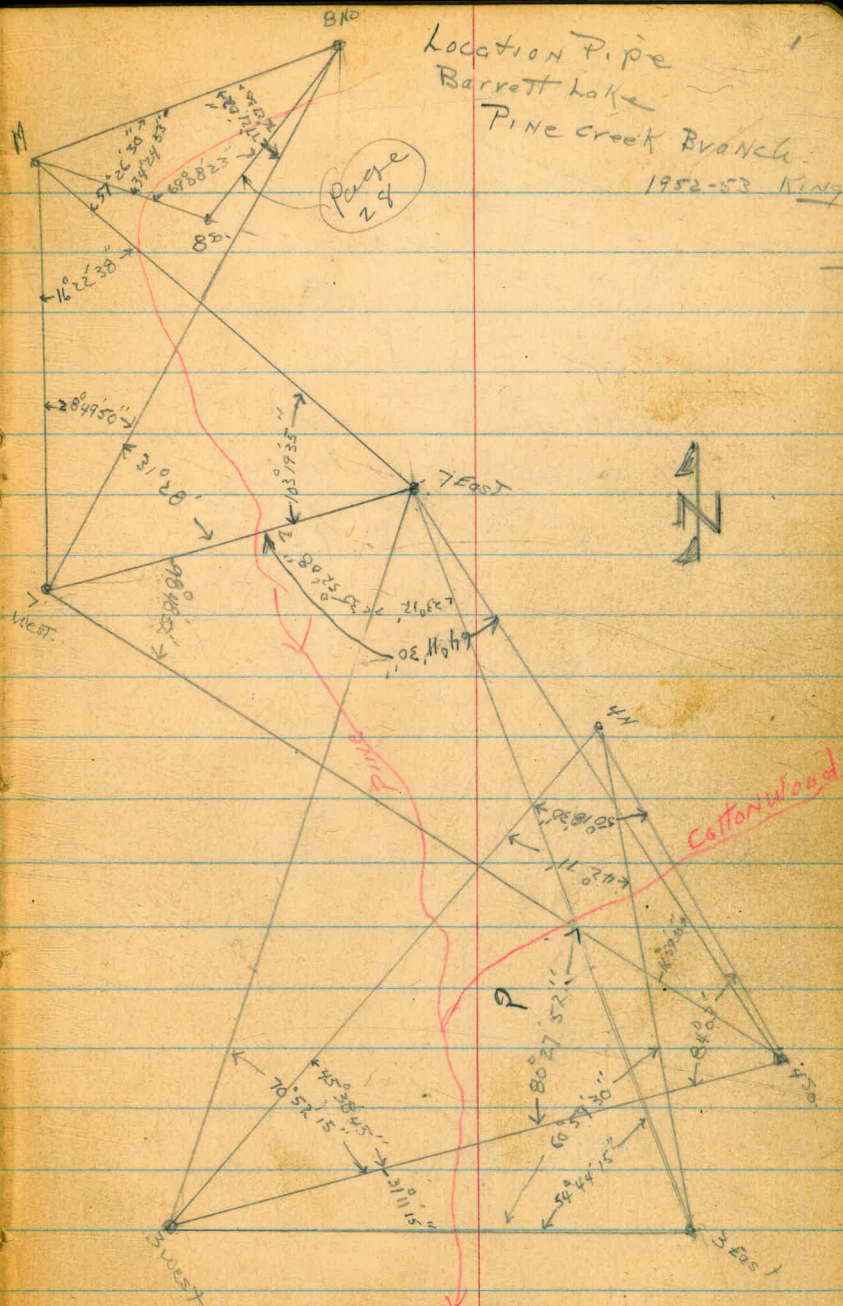
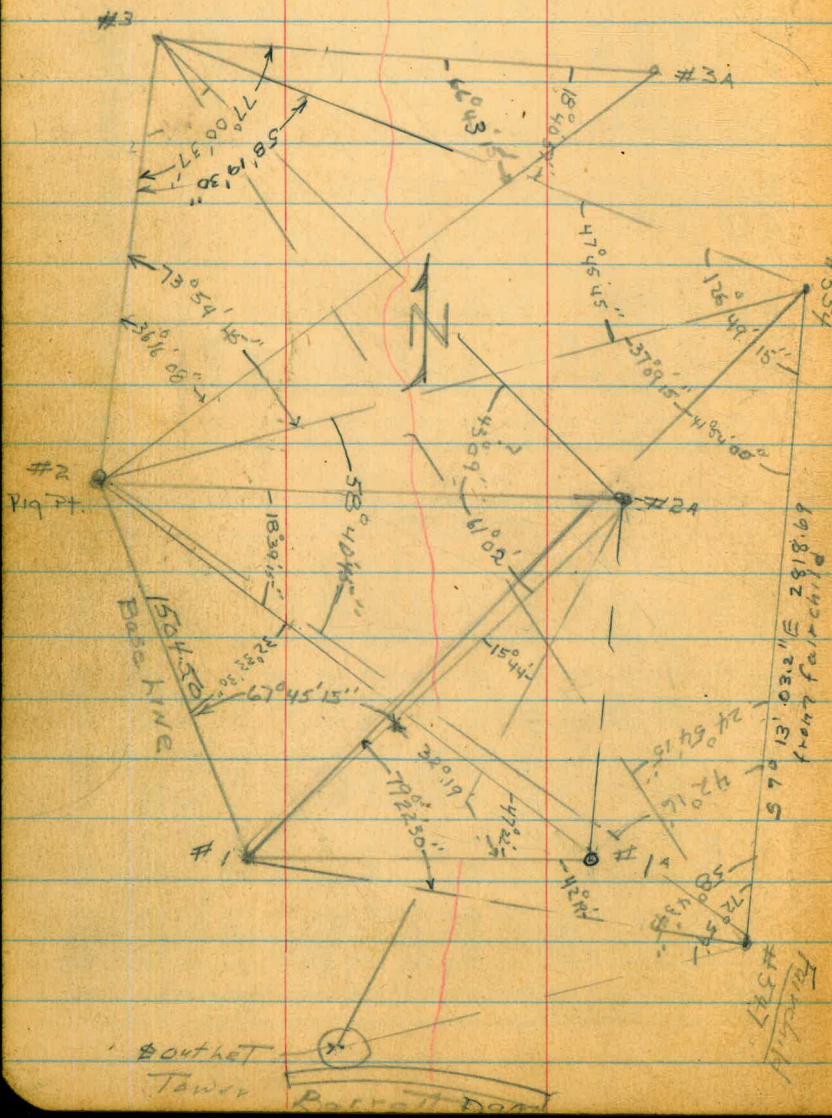
Central Angle	DEGREE OF CURVE													
	5°	10°	15°	20°	25°	30°	35°	40°	45°	50°	55°	60°	65°	70°
10°	.001	.003	.004	.006	.007	.008	.009	.011	.012	.014	.015	.017	.018	.020
15°	.003	.007	.010	.014	.018	.023	.027	.029	.032	.035	.039	.043	.047	.051
20°	.006	.011	.017	.022	.028	.034	.038	.045	.051	.057	.063	.070	.076	.083
25°	.009	.018	.027	.036	.046	.056	.065	.074	.083	.093	.106	1.20	1.27	1.35
30°	.013	.025	.038	.051	.065	.078	.090	.103	.116	.129	.149	.170	.179	.188
35°	.018	.035	.054	.072	.086	.109	.131	.153	.175	.197	.213	.230	.247	.264
40°	.023	.046	.070	.093	.117	.141	.172	.203	.234	.265	.277	.290	.315	.341
45°	.030	.060	.093	.119	.153	.184	.216	.254	.289	.325	.351	.378	.411	.445
50°	.037	.075	.116	.151	.189	.227	.266	.305	.345	.384	.425	.467	.508	.550
55°	.046	.093	.142	.188	.236	.283	.332	.381	.420	.479	.530	.582	.641	.700
60°	.056	.112	.168	.225	.283	.340	.398	.457	.516	.575	.636	.697	.774	.851
65°	.067	.135	.204	.273	.343	.412	.483	.554	.625	.697	.771	.845	.922	1.01
70°	.080	.159	.240	.321	.403	.485	.568	.652	.735	.819	.906	.994	1.08	1.17
75°	.095	.182	.286	.383	.480	.578	.678	.777	.877	.977	1.07	1.18	1.29	1.39
80°	.110	.220	.332	.445	.558	.671	.787	.903	1.02	1.13	1.25	1.38	1.50	1.62
85°	.128	.259	.391	.524	.657	.790	.926	1.06	1.20	1.34	1.47	1.62	1.76	1.91
90°	.149	.299	.450	.603	.756	.910	1.07	1.22	1.38	1.54	1.70	1.87	2.03	2.20
95°	.174	.350	.522	.706	.885	1.06	1.25	1.43	1.62	1.80	1.99	2.18	2.38	2.58
100°	.200	.401	.604	.809	1.01	1.22	1.43	1.64	1.85	2.06	2.28	2.50	2.73	2.96
110°	.268	.536	.806	1.08	1.35	1.63	1.91	2.20	2.48	2.76	3.05	3.35	3.66	3.96
120°	.360	.721	1.08	1.45	1.82	2.19	2.57	2.95	3.33	3.72	4.11	4.50	4.91	5.32

Fairchild  
Adjusted  
Error

Barrett Res. - X-sects. Fors. 17 <sup>alice</sup> 1-13 ✓  
 BUTTRESS 8, 9, 10, 11. ✓  
 SUTHERLAND DAM - SECTIONS THRU BRANCHES, 15-19. ✓  
 " " ELEV. TOP BUTTRESS 8, <sup>alice</sup> 22. ✓  
 BARRETT RESERVOIR - PROFILES 23-31 <sup>alice</sup> ✓  
 Barrett Reservoir Triangulation 36-64 <sup>alice</sup> ✓



Note! See Fairchild  
Aerial-Topo. Map.

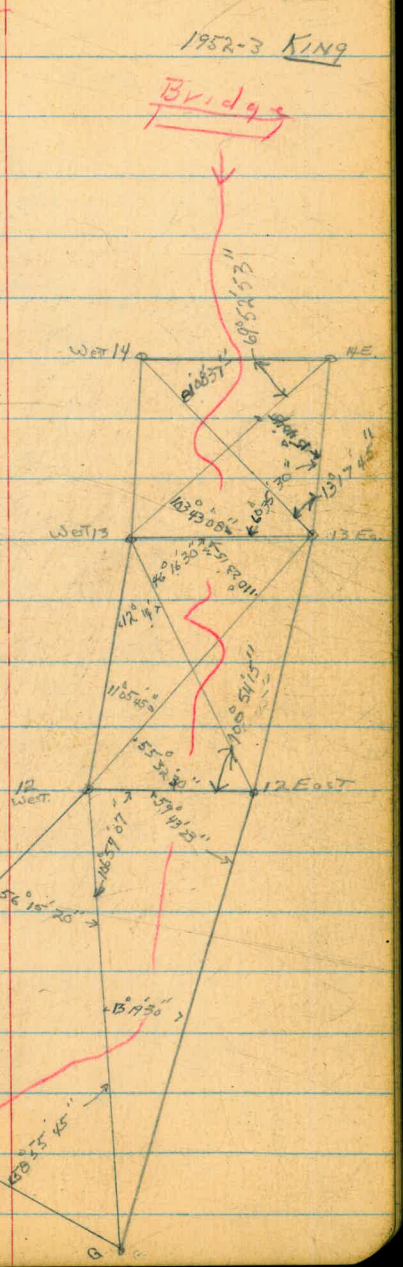
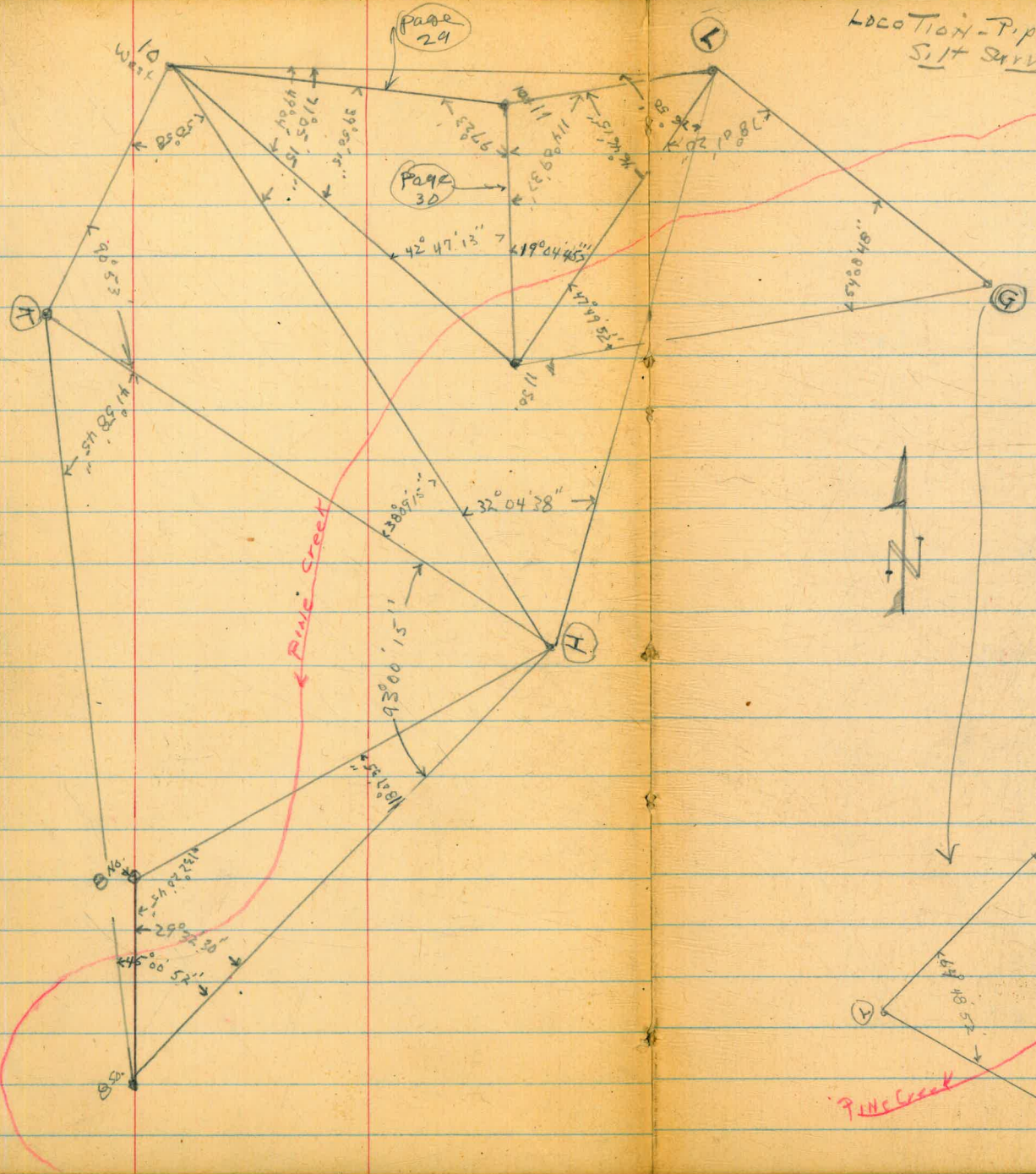




LOCATION - Pipes - Barrett Lake  
 Silt Survey - Pine Creek

1952-3 KING

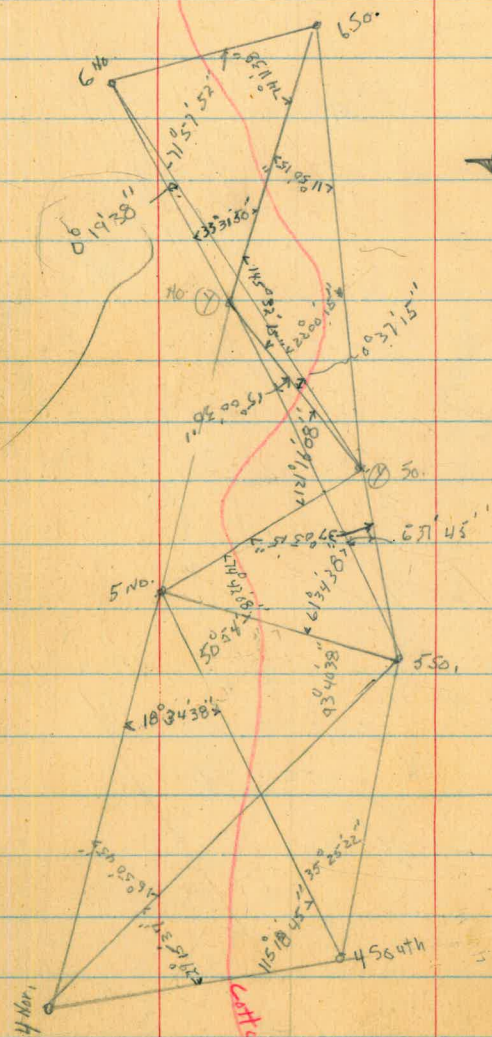
Bridges



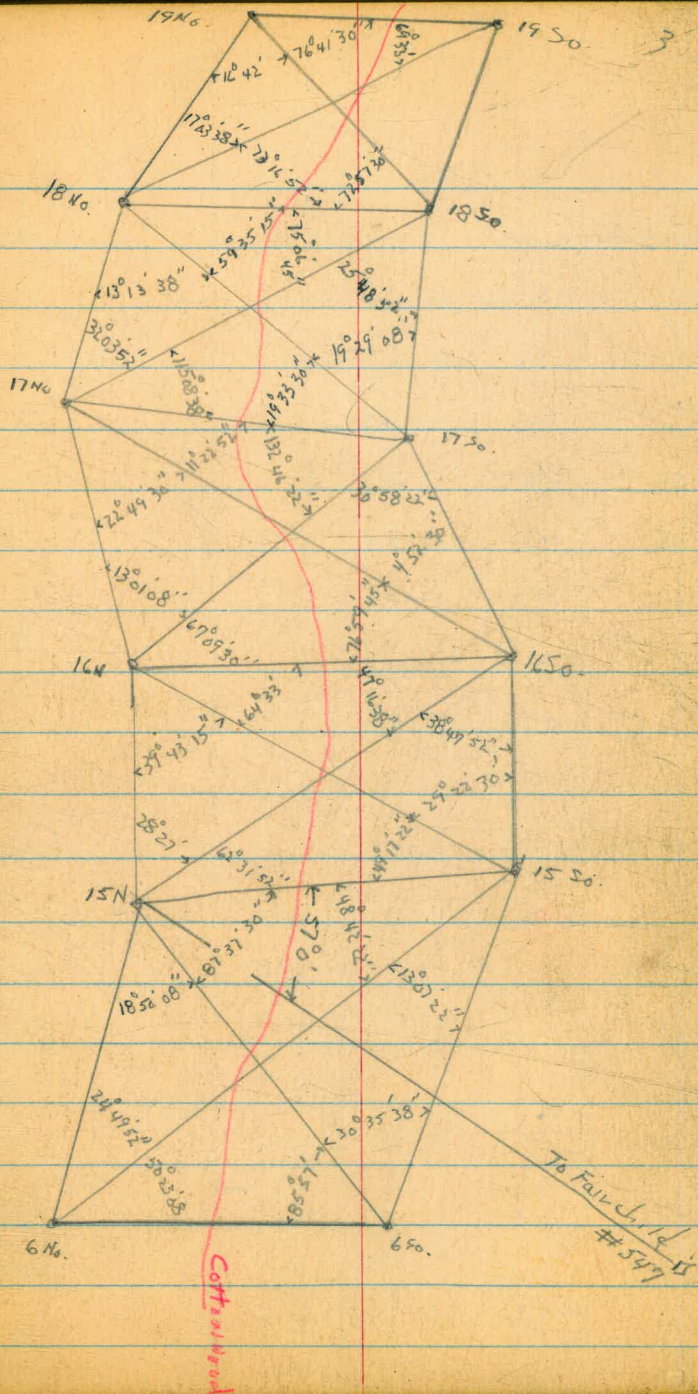


Location Pipe  
Barrett Lake-Cottonwood Creek.

KING-1952



Pinecrest  
Cottonwood



To Fair Lake is  
#537



Barrett Data  
Profile line #1 -  
For Erosion & Silt

10-15-51  
King

1446.1  
42.2  
1488.3

4

	+	HI	-	
T.B. m. 0400				1632.16
0+37.95	40	-18°-26'		1619.45 ✓
0+90.28	98	-22-54		1593.87 ✓
1+64.91	169	-13-14		1598.41 ✓
Post. 2+25 <sup>16</sup>	230.58	-12-27	⌘	1582.39 ✓
3+35.96	115	-15-39		1551.37 ✓
4+18.21	198	-12-50		1538.41 ✓
Post 5+02 <sup>62</sup>	282.69	-11-58	⌘	23.78 1528.29
5+43.97	43	-15-56		11.98 1516.00 ✓
El. Water	+			
	11.83	1500.15		1488.30 ✓
	+			
	12.49	1511.62	1.00	1499.13 <del>1499.72</del>
5+54.00			4.8	1506.82 ✓
5+58			4.9	1506.72 ✓
5+77			12.5	1499.12 ✓
5+91			17.3	1494.32 ✓
5+97			23.3	1488.32 ✓
6+09			29.3	1482.32 ✓
6+13			35.3	1476.32 ✓

Top 2" Pipe Above Parking Area - Near Dam Keeper's Office



Barrett Dam  
Profile Line # 1

10-15-51  
King

5

1511.62

6+76	36.3	1475.32
7+19	35.4	1476.22
7+54	33.3	1478.32
7+64	31.5	1480.12
7+90	28.2	1483.42
8+12	28.1	1483.52
8+39	23.3	1488.32
8+67 <sup>27</sup>	7.62	1510
8+97 <sup>11</sup>		1523.51
9+34.26		1537.36
11+01 <sup>35</sup>		1622.16

Edgewater

Top 2" Pipe

Road + Parking

11+01.35 → 2" Pipe

↗

11+01.35  
Mag. N 75° E

108°

110°  
N 6° W

1570 Contour

East End Dam

0+00 → 2" Pipe

Dam  
Office





Barrett Dahl  
Profile Line II  
Tig Point

10-15-51  
KING

B.M. = 0+00				1609.15	Top 2" Pipe - West side - 8' west of Road on Point
0+29	29'	0°		1604.65	
1+45.03	128'	-24.57'		1550.65 ✓	
2+46.89	232	-20.05		1525.08 ✓	
3+15.87 P.O.I.	300	-17.01'		1516.86 ✓	
3+70.92	52.79	1515.79		1570.00 ✓	ON GINNEY
4+30.12 ✓			27.5	1488.29 ✓ 1488.16	Edge Water
4+69.97			30.5	1485.29	
5+19			34.3	1481.49	
6+03			33.7	1482.09	
6+33			32.7	1483.09	
6+61			29.6	1486.19	
7+30.46 ✓			27.5	1488.29 ✓ 1488.08	Edge Water
7+65			16.0	1499.79	
9+45			11.3	1504.49	
9+85.3 P.O.S.	77.19	+36.37	5.79	1510.00 -	ON GINNEY
10+47.26 P.O.S.	76.15	+19.24'		1556.03 ✓	
11+19.09	60'	+9.35		1581.82 ✓	
11+78.25 P.O.P.	94.0	+6.39		1592.31 91.3	

Next Page







Barrett Lake  
Profile Line #3  
Cottonwood Creek

10-15-51  
King

8

B.M. 1042				1615.0	Top 2" Pipe - Set by level					
0+94.50	0.9450 96.50	-10° 41'		1595.46						
142±	149 (293.44)	-15° 19'	57.42	1543.95						
3+88 <sup>14</sup> R.O.T.	298.0	-9° 52'	43.95	1538.80				Top 2" Pipe		
4+76.64 R.O.T.	(88.8) 88.15	-3° 26'	38.80	1538.80						
5+03.87	27.23 28	-13° 26'		1532.30						
5+41.34	64.70 67	-15° 04'		1521.39						
5+73.08	96.44 100	-15° 26'		1512.36						
5+82.02	105.38 108.53	-15° 56'		(2512)	Set by level - 9/11/51			Top 2" Pipe - 2x66 West side		
T.B.M. #4	0.85	1517.67		1516.82				1506.95		
5+82.82	0.78	1506.95	7.67 11.50	1510 1506.17	8+68	11.2	95.7	1506.47		
6+00			4.0	1502.95	1513.67	9+07	8.0	1498.9	1509.67	
6+14			6.6	1500.3	1511.07	9+53	2.7	1504.2	1514.87	
6+31			8.5	1498.4	1509.17	T.P.	11.52	1517.97	0.50	1506.45
6+47			11.6	953	1506.07	9+74.02	7.97	1510.06		
6+85			12.0	949	1505.67	T.B.M. #4	1.12	1516.85	1512.82	
7+43			13.7	932	1503.87	11+11.58		1569.01		
7+70			12.8	94.1	1504.87	12+42.21		(1616.0)	Set by level	
8+00			11.5	954	1506.17					
8+40			10.7	96.2	1506.97					



Barrott Lake  
Profile Line #4  
Cottonwood Creek

B.M. 0400	130.89	-16.34	π	1614.17 ✓
1+2609 Bot.	130.89	-16.34		1526.85 ✓
2+40.14	121	-19.31		1536.43 ✓
2+75.81	157	-17.31		1529.60 ✓
3+31.86	216.32	-17°58'		1570.00 ✓
T.P.	2.16	1512.16		1510.00 ✓
3+42 ✓			4.4 ✓	1507.76 ✓
4+32 ✓			7.4 ✓	1504.76 ✓
4+76 ✓			9.4 ✓	1502.76 ✓
5+22 ✓			9.1 ✓	1503.06 ✓
5+90 ✓			9.5 ✓	1502.66 ✓
6+24 ✓			11.8 ✓	1500.36 ✓
6+62 ✓			12.1 ✓	1500.06 ✓
7+15 ✓			11.6 ✓	1500.56 ✓
7+30 ✓			10.7 ✓	1501.46 ✓
7+44 ✓			4.4 ✓	1507.76 ✓
7+50.86 ✓			2.16 ✓	1570.00 ✓
8+15.86				1529.67 ✓
8+67.56				1524.1 ✓

10-16-51  
RING

9

Top Pipe - North side - Set by level

ON GINNEY SET by level

11764 ○ 10' 2"  
2" PIPE

□ Toilet

Water RUNNING

○ 0+00 - North side  
2" PIPE

ON GINNEY - Set by level



Barret Lake  
Profile Line #4  
Cottonwood Creek

B: 10+28.21

1556.24 ✓

11+03.41

1590.09 ✓

11+64.00

1613.53

1613.89 ✓

set by level - Top 2" Pipe

10-16-51

KING

20



Barrett Lake  
Profile Line # 5  
Cottonwood Creek

B.M. 0+00			(1615.00)
T.T.B.M.	2.5'	1531.44	1528.93
1+40.9		2.5'	1528.94
1+83		6.9'	1524.54
1+91		6.1'	1525.34
2+04		4.6'	1526.84
2+60		4.9'	1526.54
3+48		6.0'	1525.44
3+58		8.9'	1522.54
3+69		5.7'	1525.74
4+60		5.7'	1525.74
5+69		5.6'	1525.84
6+60		5.7'	1525.74
7+00		5.0'	1526.44
7+13.00		2.5'	1528.93
8+17	83'	418°41'	1544.9
9+03.86	200'	418°09'	1590.75
9+59.04	41'	423°57'	1615.5 (1615.0) —

10-3051

1119

11

Set by level - Top 2" Pipe - No. side

" " " Ginney too ok slope

2" Pipe



Mag. 33 W

0+00 2" Pipe - No. side

Set by level - Ginney

Set by level - Top 2" Pipe



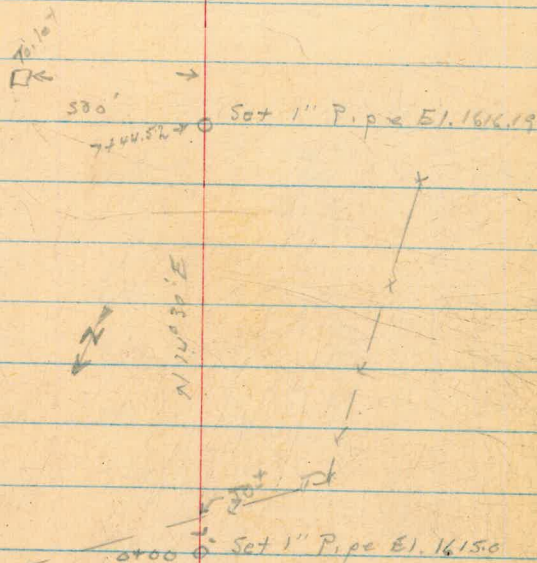
Barrett Lake  
Profile Line # 5  
Cottonwood Creek

B.M. 0100			1615.00
T.B.M.	4.41	1557.20	1552.79
1+44.72		2.0	1555.20
1+58		4.2	1553.00
2+00		4.7	1552.50
2+72		6.1	1551.10
2+98		5.1	1552.10
3+05		6.2	1551.00
4+14		6.3	1550.90
4+23		4.7	1552.50
5+00		4.3	1552.90
5+75		4.7	1552.50
6+13		5.1	1552.10
6+24.51		3.53	1552.67
7+44.52			1615.91 (1616.19)

10-4-51  
King

12

Set by Level - Top 2" Pipe - No. Side



Water

gimney

Set by level - Top 2" Pipe



Barrett Lake  
 Prob. 12 Line #7  
 Pine Creek

B.M. 5040

1614.96 ✓

Set by level - N.E. side - Pipe

1402.25

1526.77 ✓

7+30.67 S.W. Side E.L. 1610.97

2+75.75

1530.00 ✓

ON GINNEY

T.B.M. 328  $\nabla$  7533.28

1530.00

2+84.

8.4.

1524.68.

535' W

NE

3+06.

9.3.

1523.98.

3+42.

10.6.

1523.28.

6-0700 - N.E. Side - 1614.96

3+83.

10.0.

1523.28.

3+89.

11.8.

1521.48.

4+74.

12.5.

1520.78.

5+06.

12.3.

1520.98.

5+44.

12.2.

1521.08.

5+52.45

3.28

1530.00

GINNEY S.W. Side

5+78.96

(21.5)

24.52

+28.44

1541.78 ✓

7+30.67

(101.7)

166.33

+24.30

1610.92

(1610.97)

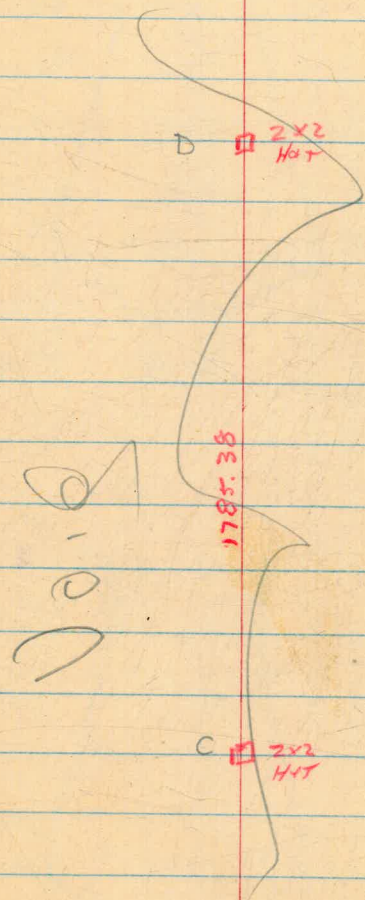
Set by level - Top pipe



10-15-51  
King

14

Base Line





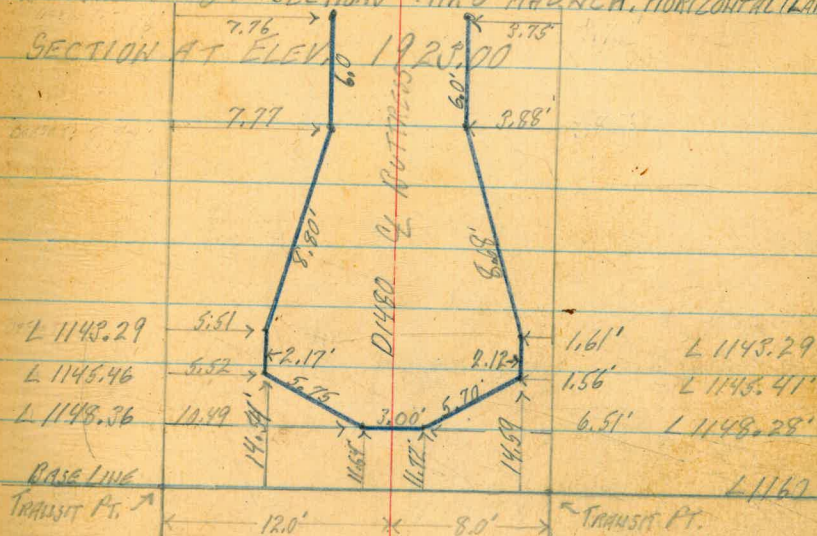
R.M. 15.74	1925.76	1920.02
	-0.76	1925.00
	-7.76	1916.00
T.P. +0.44	1916.67	-7.50
		1916.23
	-0.67	1916.00
T.P. +3.04	1920.19	-6.61'
		1917.15
	-4.19	1916.00
	+2.81	1925.00

Aug. 6, 1952.

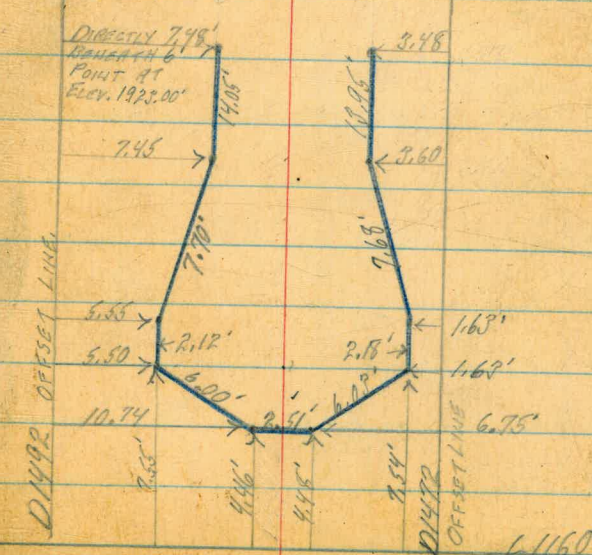
LEONARD  
KING  
WILLIAMS  
McFARNEY  
KEMP

15

SUTHERLAND DAM  
Buttress #8: SECTIONS THRU RAUNCH. HORIZONTAL PLANE.



SECTION AT ELEV. 1916.



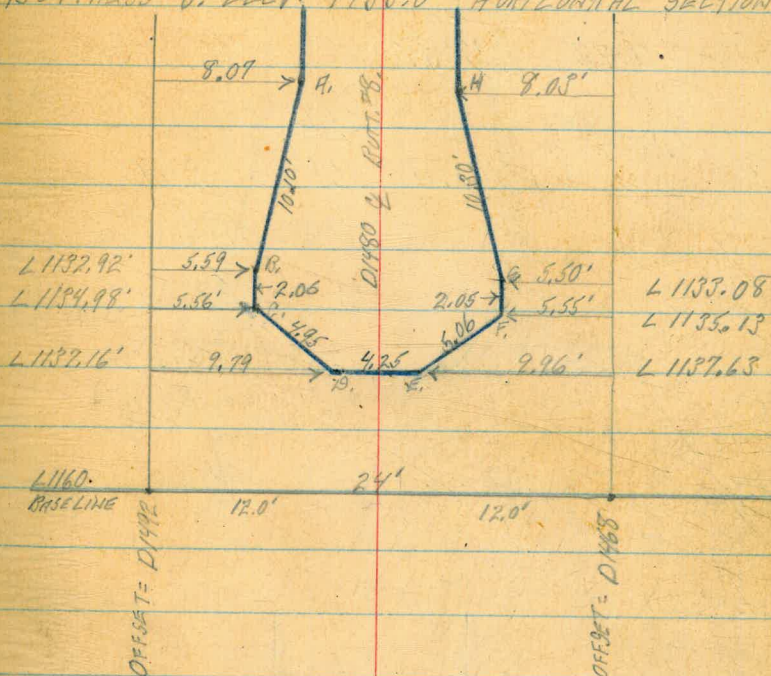


R.M. +3.44 1943.72 1940.28 PAINTED ON ROCK  
 SECTION LEVEL. -10.72 1933.00'  
 1933.00 - 9.51 1923.49  $\pi$   
 R.M. +0.13 1920.10  $\pi$  1919.97 (?)

Aug. 11, 1952.

LEONARD  
 MARTEL  
 VAROLFAKIS

BUTTRASS #8, ELEV. 1933.0' HORIZONTAL SECTION



POINT	HORIZ. ANGLE	VERT. ANGLE	SLOPE DISTANCE	CALCULATED OFFSET - L	COORD.
B	11°39'	18°59'	(27.64) 27.23	L1160 - 27.08 = L1132.92	
C	12°36'	20°21'	(25.64) 27.35	" - 25.02 = L1134.98	
D	23°54'	21°11'	(24.50) 26.27	" - 22.84 = L1137.16	
E	25°59'20"	27°48'	(24.49) 27.69	" - 22.87 = L1137.63	
F	12°36'30"	26°51'	(25.48) 28.57	" - 24.87 = L1135.13	
G	11°35'	25°06'	(27.48) 30.35	" - 26.92 = L1133.08	

$\pi$  BELOW DATUM ELEV. -9.51 = 1923.49 FOR "B", "C", & "D"  
 R.M. 1919.97 ± 0.13 = 1920.10 ± " "E", "F" & "G".



Aug. 12, 1952.

LEONARD  
MARTEL  
VARONFARIS

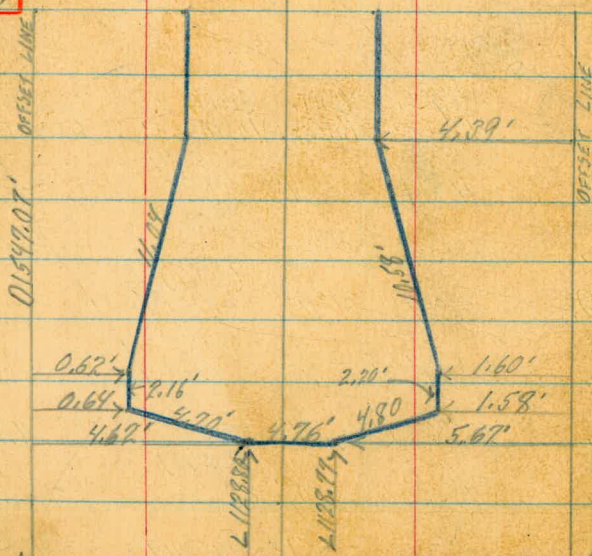
17

CLEAR, WATT

BUTTRESS #9: X-SECTIONS OF HAUNCH.

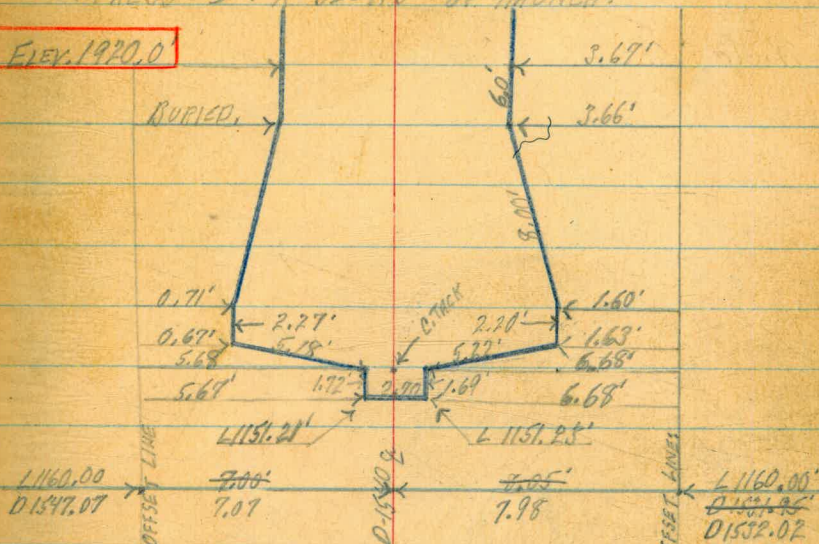
R.M.	+0.72	1923.15	1925.48
		-6.15	
BOULDER Pt. of 28 BUTTS			
T.P.	+3.90	1910.05	1916.15
		+19.92	1940
		+21.92	1942
B.M.	+2.52	1942.80	1940.28
		-2.80	1940.01
		-0.90	1942.01

ELEV. 1942.01

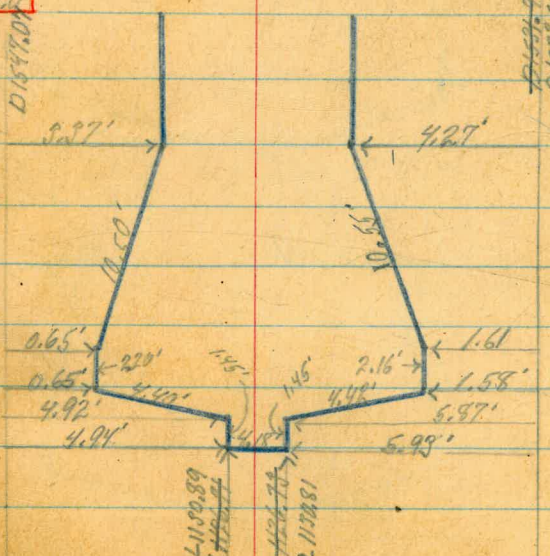


L 1160.0  
D 1547.07

ELEV. 1920.0



ELEV. 1940.0



L 1160.0  
D 1547.07



H. d.

1942.50

5.70	1934.60
<del>7.11</del>	<del>1924.66</del>
72.50	1930.0

Aug. 12, 1952.  
" 13, 1952.

LEONARD,  
MARTEL,  
YARDWEXIS.

18.

CLEAR-HOT.

BUTTRESS 710

ELEV. 1930.0

TOP OF KEY  
ELEV. 1934.60

ELEV. 1940.0

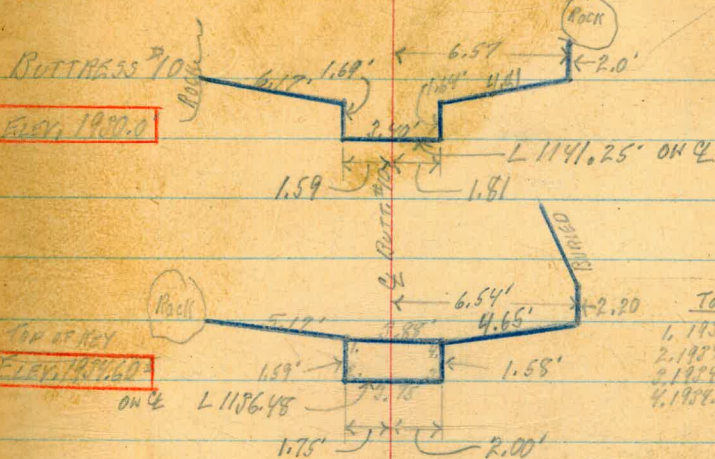
ELEV. 1950.0

H. d.

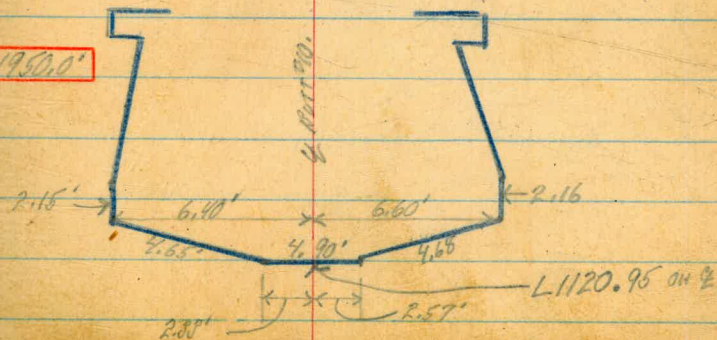
1950.09

1130.95
5.55
1136.98
4.77
1141.25

1160.00
-29.07
1130.95



TOP OF KEY  
 1. 1934.61 ELEV.  
 2. 1934.66 "  
 3. 1934.58 "  
 4. 1934.30 "





B.M.	+ 9.06	1949.34	1940.28
		- 0.24	1949.00'
T.P. Ck. Sup.		- 0.99	1948.35
	+10.25	1958.63	
		- 4.63	1954.00'
		- 0.98	1957.65
T.P. Rock.		- 0.94'	1957.69
	+12.68	1970.37	
		- 0.37'	1970.0'

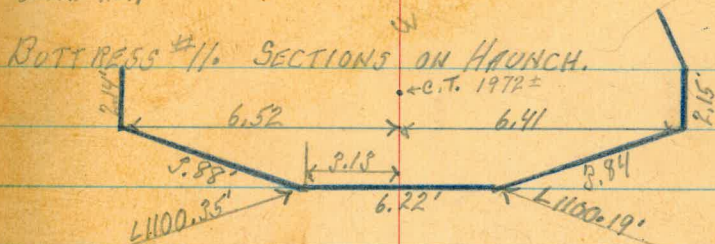
Aug. 14, 1952,

LEONARD  
MARTEL  
VARON FRANKS.

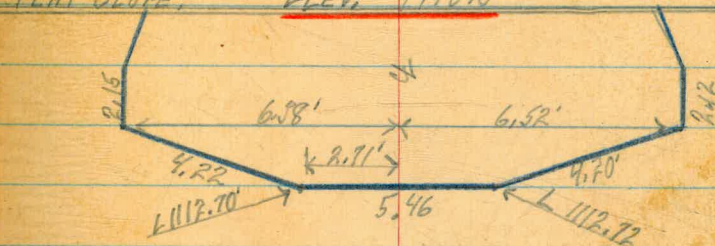
19.

CLEAR-HOT.

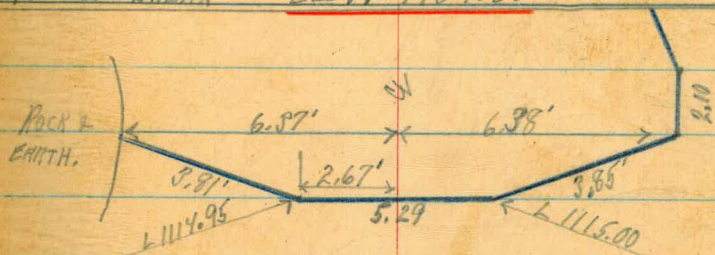
BUTTRESS #11. SECTIONS ON HAUNCH.



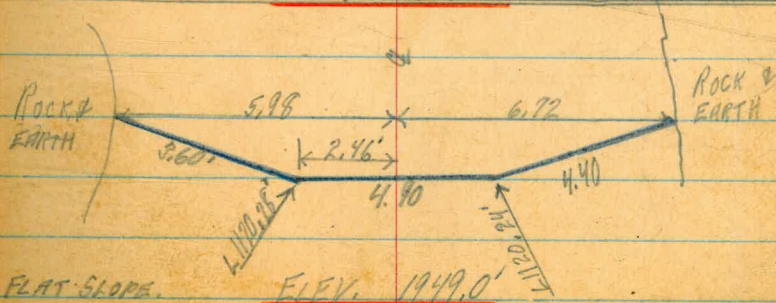
FLAT SLOPE, ELEV. 1970.0'



TOP OF BREAK, ELEV. 1957.65'



TOE OF BREAK, ELEV. 1954.0'





~~Barrett Lake~~  
~~Proctite L140# 8~~

~~1-23-52~~

~~1-23-52~~

20.



Barrett - Res -  
Profile Line 19

West  
Williams  
mortell  
Voronfokis

21.

19 Feb 53

Sta	Vert Z Slope Dis	+	H <sub>i</sub>	-	Elev
0+00			1658.50		1658.50 ✓
0+95 <sup>2</sup>	-24° 33'				
	94.0'			39.06	1619.44 ✓
1+70	-13° 47'				
	176.0'		1616.56	41.94	1616.56 ✓
1+91 <sup>3</sup>	-27° 59'				
	23.0			10.70	1605.86 ✓
2+53 <sup>25</sup>	-7° 42'				
	83.0			11.12	1605.44 ✓
3+10 <sup>2</sup>	-3° 01'				
	140.0			7.36	1609.20 ✓
	-0° 15'				
3+25	154.0			0.63	1615.93 ✓
4+70 <sup>90</sup>	+0° 46'				
	300.0	4.01	1620.57		1620.57 ✓
5+37 <sup>21</sup>	+10° 15'				
	68.0	12.11			1632.68 ✓
6+12 <sup>76</sup>	+15° 30'				
	136.84	36.57			1657.14 ✓
6+37 <sup>73</sup>	+18° 53'				
	176.43	57.10			1677.67

1" I.P. North bank set by Levels

Top North edge creek bank P.O.T.

Bottom of creek

Top of South creek bank

P.O.T.

1657.03 ✓ 1" I.P. South Side

Set 2x2 Hub on line above South 16.



Aug. 13, 1952.

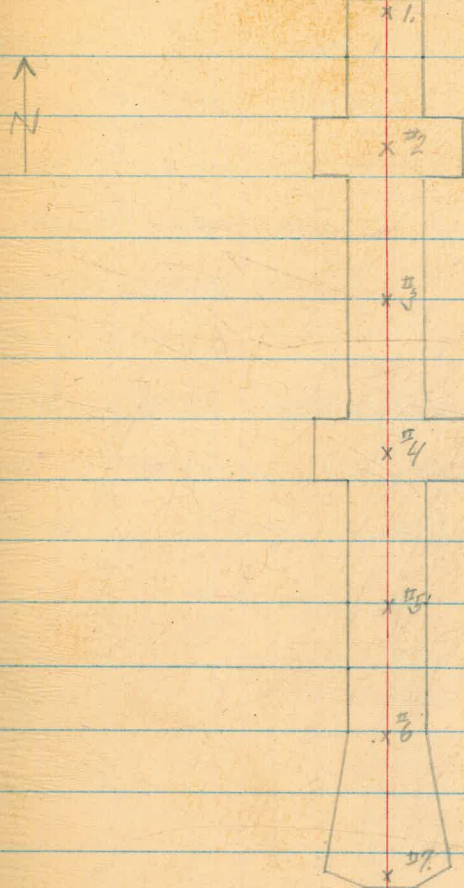
LEONARD, - NOTES.  
MARTEL, π  
VARDOLAKIS - ROD

22.

LEVELS FOR ELEV. ON TOP BUTTRESS #8.

B.M.	+11.31	1951.59	1940.28
T.P. - ROCK			-0.65 1950.94
H.d.	+12.34	1960.28	
T.P. - ROCK			-2.20 1961.08
H.d.	+12.78	1973.86	
CHECK ELEV. D-1377.25 HOR on AVIS.			-4.18 1969.68
POINT #1.			-3.81 1970.05
" #2.			-3.72 1970.14
" #3.			-3.61 1970.25
" #4.			-3.72 1970.14
" #5.			-3.78 1970.08
" #6.			-3.82 1970.04
" #7.			-3.98 1969.88
T.P. - ROCK.			-13.02 1960.84
	1.34	1962.18	
T.P.			-11.25 1950.93
	+2.29	1953.22	
CHECK B.M.			-12.95 1940.27 = 1940.28.

POSITION OF ELEV'S ON BUTTRESS #8.





Profile Line #18  
S 25°W

West  
Williams  
Martell  
Varonfakis

28.

19 Feb 53

Sta	Vent & Slope	Dist	+	Hi	-		
						1623.30	1" IP. North bank of creek
0+56 <sup>31</sup>	-20°10'	60.0'		1623.30	20.70'	1602.60'	
1+27	-10°07'	129.0'			22.66'	1600.64'	Top of creek bank
1+75 <sup>52</sup>	-9°28'	178.0'			29.28'	1594.02'	bottom of creek
2+11 <sup>83</sup>	-8°04'	214			30.03'	1593.27'	creek bed
2+19 <sup>25</sup>	7°08'	221			27.44'	1595.86'	
2+99 <sup>02</sup>	-4°28'	300.0'		1599.94	23.36'	1599.94'	POT Top creek bank
5+67 <sup>09</sup>	+0°01'	263.0'	+0.08'	1600.02'			POT Bottom of hill
6+12 <sup>46</sup>	+21°28'	48.75'	17.84'			1617.86'	1617.781 1" IP. South bank



Profile Line #17

West

24.

19 Feb 53

Sta	Vert 3 Slope Dist	+	Hi	-	Elev
0+00			1626.00		1626.00
0+26	16 -29°20'			14.70'	1611.30 ✓
	51 30.00'				
	51 17°44'				
1+08	114.0'			34.72'	1591.28 ✓
	37 -8°17'				
2+49	252.0			36.31'	1589.69 ✓
	44 -7°32'				
2+97	300		1586.67	32.33'	1586.67 ✓
	44 -0°42'				
3+76	79.0'			0.96'	1585.71 ✓
	44 +0°46'	1.15			
3+83	86.0'	0.12			87.82
	44 +0°25'				1585.79
4+07	110.0	0.80 ✓			1587.47 ✓
	44 +1°20'				
4+17	120.0	2.79 ✓			1589.46 ✓
	44 +0°29'				
5+23	226.0	1.91 ✓			1588.58 ✓
	44 +0°43'				
5+95	300.	29.98 ✓	1616.55 ✓		
	44 +6°19'				
7+62	167.21	18.40 ✓	1634.95 ✓	1634.94	

1" IP North Side

POT in Creek Bed

POT Top of rocks

Top 1" IP South Side

Levels

4.37	1639.31		1634.94
1.73	1635.84	5.20	1634.11
		5.84	1630.00

Set 2"x2" Hub South side approx  
500' east of 1" IP South side #17



Profile Line 17A East  
From South 5"x2" Hub to North 1"IP

West  
Williams  
Varonakis  
Kemp

25 Feb 53

25.

Sta	Vert Z	Slope Dist	+	Hi	-	Elev	
0+00				1630.00		1630.00	Top 5"x2" Hub South Side
	-19° 04'						
0+50 <sup>21</sup>	53.0				-17.31		on Ridge of Large Rock
	8° 32'						
1+97 <sup>22</sup>	200'				-29.68		
	-8° 51'						
2+22 <sup>33</sup>	225'				-34.62		
	-7° 05'						
2+97 <sup>23</sup>	300'			1593.00	37.0	1593.00	P.O.T.
	-0° 39'						
4+40 <sup>2</sup>	143'				-1.62		
	-0° 24'						
5+89 <sup>24</sup>	292.0'			1590.96	2.04	1590.96	P.O.T. Top of Creek Bank
	-26° 14'						
5+96 <sup>2</sup>	90.1'				3.54		Creek Bot Sandy
	-5° 40'						
6+24	34.5'				3.40		
	3° 13'						
6+28 <sup>2</sup>	39.0'				2.19		
	+0° 24'						
6+49 <sup>2</sup>	60.0	0.42					
	+0° 44'						
6+89 <sup>24</sup>	100.0	1.28					
	+7° 44'						
7+45 <sup>3</sup>	157'	21.13					
	+11.15'						
7+66 <sup>36</sup>	180.11	35.14			1626.10	1626.00	Top 1" 1A North Side
				4.74	1630.74	1626.00	
				3.46	1632.49	1.71	1629.03
					0.27	1632.22	
				3.36	1616.27	1612.91	TBM
					3.07	1613.00	Set 5"x2" Hub



## Profile Line 173

West

25

25 Feb 53

Sta	Vert $\Delta$ Slope Dist	+	H <sub>1</sub>	-	Elev	
					1613.00	2"x2" Hub + Tack
0+00			1613.00			
	-14° 25'					
0+66 <sup>g</sup>	69.0			17.18		Top Bank
	-16° 10'					
0+87 <sup>g</sup>	91.0			25.34		
	-5° 21'					
2+66 <sup>g</sup>	268'			24.99		
	-4° 55'					
2+98 <sup>20</sup>	300'		1587.29	25.71	1887.29	P.O.T
	-0° 49'					
3+95 <sup>g</sup>	97.0'			1.38		
	-1° 16'					
4+00 <sup>g</sup>	102.0			2.25		Bottom of rocky slope
	-1° 05'					
4+38 <sup>g</sup>	140			2.65		
	+10° 00'					
5+44 <sup>61</sup>	249.4'	43.31	1630.60			P.O.T
	+3° 05'					
6+28 <sup>52</sup>	84.20	4.53	1635.13	=	1634.94	Top of 1" IR



## Profile Line #16

Sta	Vent & Slope Dist	+	H <sub>i</sub>	-	Elev	
0+00			1615.00		1615.00	1" IP on point of land North Side
0+33	-16° 38'			10.02	1604.98	Top 1" IP
0+46	35.0					
0+76	-20° 22'			17.40	1597.60	Bottom of Bank
0+80	50'					
1+17	-17° 31'			25.28	1589.72	on top of steep 4' bank north edge Flume
1+70	84					
1+70	-17° 50'			37.67	1577.33	
2+97	123.0					
3+67	-13° 04'			39.56	1575.44	center of branch sandy creek
3+67	175'					
2+97	-7° 22'			58.47	1576.53	P.O.T.
3+67	300'		1576.53			
5+97	+0° 04'	0.08			1576.61	Top of sandy creek bed
6+77	70					
5+97	-0° 11'			0.96	1575.57	P.O.T.
6+77	300		1575.57			
7+33	+0° 14'	0.33			1575.98	Bottom of main creek bank
8+96	80					
7+33	+4° 53'	11.58			1587.23	Top of " " "
8+96	136					
9+44	3° 55'					
8+96	300	20.49	1596.06 <sup>14</sup>		1596.06 <sup>14</sup>	P.O.T.
9+44	+4° 38'	3.88			1600.02	
9+88	48'	3.08			1599.22	
9+88	+11° 43'	19.06				
	93.85				1615.72 <sup>20</sup>	3 1614.94 Top 1" IP South Side

Note: No Sects at # 15

Triangulation Pts. Only



Barrett Lake  
Profile #8 - Pine Creek

7-23-52  
KMS

28

E.I.

TBM #			E.I.	
0700			1617.00	
1409.42	(109.42) 122	-26°15'	1563.04	
1446.3	(309) 45 92.5	-34°52'	1536.3	37.3
2401.9	96	-15°28'	1537.1	37.4
2429.5	120.12 122	-18°05'	1541.7	
2493.9	184.35 185	-04°47'	1547.1	
4406.7	297.35 298	-30°47'	1543.38	
4468.1	89.8 92	-12°33'	1557.1	57.3
4499.1	58.0 62	-18°37'	1577.1	57.5
5459.9	154.4 155	+12°38'	1596.9	77.3
6441.6	83.7 85	+9°54'	1611.5	91.9
7413.1	155.2 159	+12°29'		11.6
7454.5	196.59 200.5	+11.20	1617.92	1618.0

Top 1" Pipe So. Side

Top pipe No. Side



Prob. le line # 10  
Barrett Lake - Pine Creek

1-23-52  
KINS

29

	Dist.	$\Delta$	El
7.2.71 0+00			1617.00
1+22.33	123.45	-7°40'	1600.33 ✓
2+08.63	92'	-20°10'	1578.8 ✓
3+21.63	202'	-9°25'	1577.5 ✓
3+50.03	270'	-8°02'	1578.4 ✓
4+04.43	284'	-5°46'	1572.0 ✓
4+21.25	300'	-4°51'	1575.118 ✓
4+74.75	54'	+7°39'	1582.4 ✓
5+76.25	152'	+5°38'	1590.5 ✓
6+59.52	219'	+4°39'	1592.92 ✓
7+43.52	104'	-1°11'	1590.8 ✓
7+56.52	118'	-3°39'	1585.4 ✓
7+67.52	128	-2°09'	1588.1 ✓
8+29.52	196	+6°23'	1594.3 95.8
9+17.52	278'	+2°44'	1606.2 ✓
9+38.92	300	+3°17'	1610.23 ✓
9+65.45	27.50	+15°10'	1617.32 1617.00

Top Pipe N.E. Side = at or inters. line 10411

Note pipe on west side  
6110.59 elev 1617± Q.A.M.

Top Pipe west  
has been knocked out. Replaced



Profile-Line # 11  
Barrett-Pine Creek

1-23-52  
KING

30

Elev.

	TBM				
	0+00			1617.00	
1	8+23.60	24'	-10° 50'	1612.5 ✓	
2	1+18.40	92'	-12° 13'	1596.5 ✓	92.0
3	2+32.54	218	-11°	1575.4 ✓	70.9
3	2+67.99	244'	-11° 09'	1529.8 ✓	65.3?
4	2+95.92	300'	-90° 26'	1527.83 ✓	
4	4+62.09			1566.03 ✓	
6	4+73.99	12	-10° 32'	1564.63 ✓	
5	4+47.49	86	-1° 16'	1564.3 ✓	
6	6+12.09	150	-0° 52'	1563.7 ✓	
6	6+14.09	152	-0° 29'	1564.7 ✓	
6	6+50.09	188	-0° 17'	1565.1 ✓	
6	6+60.09	198	+0° 51'	1529.9 ✓	
7	7+35.09	274'	+3° 20'	1597.9 ✓	
7	7+61.60	300	+6° 29'	1589.58 ✓	
9	9+06.06	151'	+10° 25'	1616.97 ✓	1617.00

Top Pipe No. Side = 0+00 on Line # 10

Top pipe S. Side



Profile Line # 12  
Barnett Lake - Pine Creek

1-23-52  
KINS

31

T.B.M.				
0700				169.00
0+48.21	60	-36°32'	1583.3 ✓	
0+74.01	73	-26°55'	1581.4 ✓	
1+00.6	107	-19°52'	1582.6 ✓	
2+21.98	125	-9°23'	1582.3 ✓	
2+67.62	268	-3°04'	1604.7 ✓	
3+03.00	303	0°X	1618.00	

Top Pipe West Side

Top pipe East Side



+	H.	-	
5.75	1622.75		1617.00
9.22	1624.82	7.15	1615.60
3.99	1627.01	1.80	1623.02
10.32	1628.75	8.58	1618.43
		11.75	1617.00
		10.75	1618.00
6.91	1626.17	9.49	1619.26
5.54	1627.38	4.33	1621.84
9.48	1626.93	9.93	1617.45
		9.96	1616.97 =

4 May 53

32

West  
Kemp  
Varenfaks

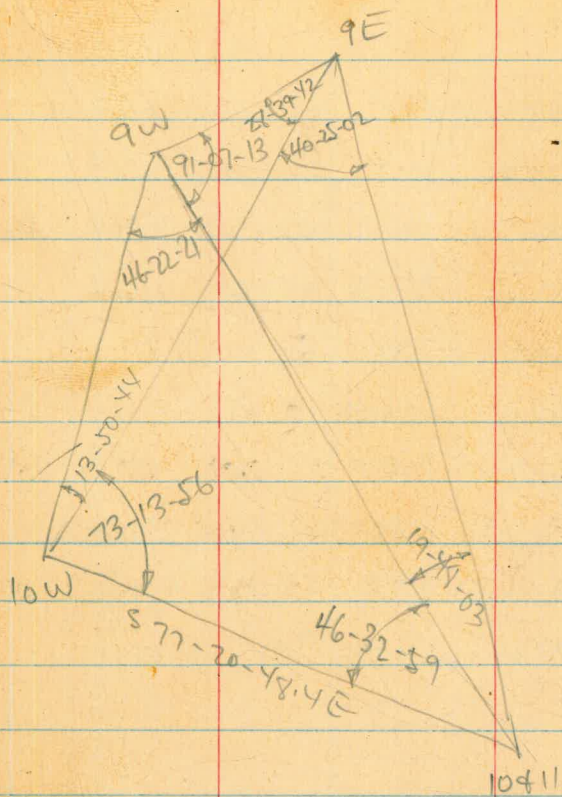
Top pipe 10411

Top 1" IP East Side #9

Top 1" IP West Side #9

1617.00 Top 1" IP #10 on East





577-20-48.4E

277-20-48.4W

π 10W			π 9E		
9W to 9E			10E to 10W		
ID	13° 50' 30"		ID	40° 25' 00"	
4D	55° 22' 30"		4D	161° 40' 00"	
	18° 50' 38"			40° 25' 00"	

π 10W			π 9E		
9E to 10E			10W to 9W		
ID	73° 13' 30"		ID	28° 39' 30"	
4D	292° 55' 00"		4D	114° 39'	
	73° 13' 50"			28° 39' 45"	

π 10 + 11 N.E		
10W to 9W		
ID	46° 33' 00"	
4D	186° 11' 30"	
	46° 32' 53"	

π 10 + 11 N.E		
9W to 9E		
ID	19° 48' 00"	
4D	79° 12' 00"	
	19° 48' 00"	



27  
T 9 E

10+11 NE to 10 W

1D

4D

T 9 W

9 E to 10+11 NE

1D  $91^{\circ} 07' 30''$

4D  $04^{\circ} 29' 00''$

360

364 29 00

$91^{\circ} 07' 15''$

T 9 W

10+11 NE to 10 W

1D  $46^{\circ} 25' 30''$

4D  $185^{\circ} 29' 00''$

$46^{\circ} 25' 15''$



Profile Line #9  
Barrett Lake

May 4-1953

West  
Kemp  
Varonfokris

35

Sta	Vert 2 Slope Dist	+	H <sub>i</sub>	-	Elev
0+00			1617.00		1617.00
0+89 <sup>6</sup>	-5°09' 90'			8.08	1608.92
1+47	148' -5°31'			20.96	1596.04
2+05 <sup>8</sup>	267' -5°56'			24.71	1592.29
(266)	265' -5°24'			(27.39)	1589.61
2+98 <sup>6</sup>	300' 10 47'		1588.77	28.23	1588.77
3+26 <sup>6</sup>	28' +0°11'			-0.87	1587.90
3+74 <sup>6</sup>	76' +5°00'	0.24			1589.01
3+96 <sup>3</sup>	99' 9°01'	8.54			1597.31
4+83 <sup>12</sup>	186.82	29.28			1618.05 = 1617.05

Top 1" IP East Side #9

24.71  
-3.42  
21.29

Top creek bank

Bottom " "

D.O.T

West Side sandy creek

Top 1" IP #9 W



Barrett Tringulation

$\Delta$  LBS Note for Location  
of sta see Fairchild's  
filed Map # 6959

West  
Williams  
Kellhofer  
Varonfakis

6-10-54

36  
Plotted  
7-19-54  
JRM

$\Delta$  Les

20' East of Needle Like point of Rock on range of Hills

M to 10 W

10  $61^{\circ} 40' 00''$

AD  $246^{\circ} 39'$

$61^{\circ} 39' 45''$

576-15-16.7W  
61-39-45.0

137-55-01.7  
179-59-60.0

142-04-58.3W

between Pine Creek + Houser Creek

$\Delta$  Les

10W to L by cattle feed sheds

10  $22^{\circ} 08' 30''$

AD  $88^{\circ} 32' 30''$

$22^{\circ} 08' 08''$

N 42-04-58.3W  
72-08-08.0

N 19-56-50.3W

$\Delta$  Les

L to 12E

10  $27^{\circ} 43' 30''$

AD  $110^{\circ} 59' 00''$

$27^{\circ} 43' 30''$

N 19-56-50.3W  
27-43-30.0

N 7-46-39.7E

$\Delta$  Less

Hollywood central to Will 1000' South West of Less

10  $21^{\circ} 56' 00''$

AD  $87^{\circ} 42' 30''$

$21^{\circ} 55' 42''$

521-11-58.2W  
21-55-37.8

543 07 36.0W



△ Los Cont

A 245

Will to M

10 33° 08' 00"

AD 132° 31' 00

33° 07' 45"

S 43-07-36.0W  
33-07-40.7  
576-15 16.7W  
16.7  
0.5

S 76-15-16.7W

A 255

Jim to Hollywood

10 50° 08' 00"

AD 200° 30' 30"

50° 07' 38"

S 28-55-16.1E 08-06.7  
50-07-52.0  
S 21-12-21.9W

S 21-11-58.2W  
22.7

Close Horiz

10 143° 18' 00

AD 213 12' 30"

143° 18' 08

216° 42' 28 TOTAL SMALL Δ

360° 00' 36"

6/10/54

37

Plotted  
7-19-54  
EPM

Jim on High peak on North side Houser creek above SN



△ Well 1000' SW of Los

△ Well

Jim to Fairchild 547

1D 34° 39' 00"

4D 138° 36' 15"

34° 39' 04"

543-17-11.6E  
34-38-42.4  
58-38-29.2E

△ Well

Fairchild 547 to Hollywood

1D 12° 06' 30"

1D 48° 27' 00"

12° 06' 45"

58-38-29.2E  
12-06-23.4  
53-27-54.2W  
53-27-54.2W  
42.2

△ Well

Hollywood to M

1D 86° 32' 00"

1D 346° 06' 30"

86° 31' 38"

9 53-27-54.2W  
86-31-46.7  
89-59-40.9  
17-23  
5 89-59-40.9W  
8.7

△ Well

M to 10W

1D 68° 07' 30"

4D 272° 29' 00"

68° 07' 15"

589-59-40.9W  
68-07-08.4  
158-06-49.3  
179-59-60.0  
N 21-53-10.7W

Wage  
Williams  
Varonakis  
Kellhofer

8-11-54

38

Plotted  
7-19-54  
SAM



△ Will Cont

△ Will

10 W to 12 E

10 39° 57' 30"

AD 159° 49' 00"

39° 57' 15"

N 21-53-10.7 W  
39-57-08.4  
N 18-03-57.7 E

6-11-54

39  
Plotted  
7-19-54  
EPM

△ Will

12 E to Les

10 25° 04' 00"

AD 100° 15' 00"

25° 03' 45"

N 18-03-57.7 E  
25-03-38.3  
N 43-7-36.0 E

N 43-07-36.0 E  
12.9

△ Will

Les to Jim

10 93° 35' 00"

AD 14° 19' 00"

93° 34' 45"

266 25 42

360° 00' 57"

N 43-07-36.0 E  
93-35-12.4  
136-42-48.4  
179-59-60.0  
43-17-11.6  
543-17-11.6 E  
27.4



△ 12E

△ 12E

125 to Will

10 10° 18' 00"

40 41° 12' 00"

10° 18' 00"

△ 12E

Will to 12W

10 60° 13' 30"

40 240° 59' 00"

60° 13' 30"

△ 12E

Close Horst

10 289° 29' 00"

40 77° 55' 00"

289° 28' 45"

10° 18' 00"

60 13' 30"

360° 00' 15"

57-46-39.7W  
 10-17-18.0  
 518-03-57.7W  
 3 57.7W  
 42.0

518-03-57.7W  
 60-13-43.5  
 578-17-41.2W

578-17-41.2W  
 289-28-58.5  
 367-46-39.7W  
 57-46-39.7W  
 27.0

6-11-54

40  
 Plotted  
 7-19-54  
 28m



Δ 2"

on Large Flat Granite

Δ 2

Les to M

1D 61° 19' 00"

4D 295° 14' 00"

61° 19' 00"

Δ 4"

M to 10W

1D 52° 03' 30"

4D 208° 14' 30"

52° 03' 38"

Close Horiz

1D 246° 37' 30"

4D 246° 30' 00"

246° 37' 30"

113 20 38"

360° 00' 08"

$$\begin{array}{r}
 519-56-50.3E \\
 61-18-27.8 \\
 \hline
 541-21-37.5W \\
 41-21-37.5 \\
 \hline
 322
 \end{array}$$

$$\begin{array}{r}
 541-21-37.5W \\
 52-03-50.1 \\
 \hline
 93-25-27.6 \\
 179-59-60 \\
 \hline
 186-34-324W
 \end{array}$$

$$\begin{array}{r}
 86-34-32.4 \\
 246-37-42.1 \\
 \hline
 160-03-09.7 \\
 179-59-60.0 \\
 \hline
 19-56-50.3
 \end{array}$$

Rock 100' South of cattle feed sheds

71

Plotted  
7-19-54  
3pm



↗ Δ Fairchild 6F538

6F539  
Δ Fairchild to Mike

1D 47° 54'

AD 191° 35' 00"

47° 53' 45"

Mike to Jim

1D 5° 38' 30"

AD 22° 33' 00"

5° 38' 15"

Jim to Fairchild 547

1D 6° 54' 00"

AD 27° 34' 30"

6° 53' 38"

<sup>547</sup>  
A Fairchild to #1

1D 12° 22' 30"

AD 49° 29' 00"

12° 22' 15"

1 to #2 pig point

1D 8° 59' 00"

AD 35° 56' 00"

8° 59' 00"

542-56-148E  
47-53-39.7  
54-57-24.9W

54-57-24.9W  
5-38-09.7  
510-35-34.6W

510-35-34.6W  
516-53-36.7  
517-29-07.3  
07.2  
16.0

517-29-07.2W  
12-22-05.8  
529-51-13.0W

529-51-22.2W  
8-58-50.8  
538-50-03.8W

West  
Williams  
Varonfakis  
Kellhofer

6/14/54

42

P1. T. J.  
FLM  
7-15-54



△ Fairchild cont GF 538

#2 to Hollywood

10 28° 00' 00"

40 111° 59' 00"

27° 59' 45"

S 38-50-03.8 W  
27-59-35.8  
S 66 49-39.6 W

Close Horiz Hollywood to Fairchild GF 539

10 250° 14' 00"

10 280° 57' 00"

250° 14' 15"

10.9 16 38

360° 00' 53"

66-49-39.6  
42-56-14.8  
250-14-5.8  
360-00-37.0  
00

△ 539 to Δ "M"

10 60° 12' 00"

40 290° 48' 30"

60 12 07.5

S 28-01-18.4 W  
60-12-07.5  
S 88-43 25.9 W

43

Detailed  
FLM  
7-15-54



T 6F 539 Fairchild  
on large rock peak

map #6459

15 South to 547 Fairchild

ID 46° 23' 30"

AD 185° 33' 00"

46° 23' 15"

547 to Δ Mike

ID 7° 51' 30"

AD 31° 26' 00"

7° 51' 30"

Mike to Fairchild 554

ID 13° 08' 00"

5D 85° 42' 30"

F 13° 08' 30"

Fairchild 554 to Δ Jim

ID 18° 31' 30"

AD 74° 05' 00"

18° 31' 15"

Δ Jim to Δ 538 Fairchild

ID 42° 30' 00"

AD 169° 58' 30"

42° 29' 38"

555-02-59.3W  
 $\frac{46-23-15.0}{58-39-44.3W}$   
+ 7.5  
58-39-51.8W

555-02-59.3W  
 $\frac{7-51-30.0}{562-54-29.3W}$   
+ 1.5  
562-54-30.8W

562-54-29.3W  
 $\frac{13-08-30.0}{576-02-59.3W}$   
76-03-02.4  
-3.1

576-03-02.4W  
 $\frac{18-31-15.0}{94-34-17.4}$   
179-59-60.0  
N 85-25-42.6W  
+ 5.1  
N 85-25-47.7W

N 85-25-42.6W  
 $\frac{42-29-38.0}{N 42-56-4.6W}$   
N 42-56-14.2W  
-10.2

West.  
Williams  
Kellwater

6/23/54

44  
Plotted  
E.P.M.  
7-14-54



T GF 539

Close Horiz

A 538 to 15 E

10 231° 36' 30"

AD 206° 25' 00"

231° 36' 15"

128° 24' 09"

360° 00' 23"

N 42-56-14.8 W

42-56-14.8'

180-00-00'

8-39-51.8'

231 36-06.6

Plot  
7-14-54



△ 15 North

△ 15 S to 547 Fairchild

10 56° 59' 30"

40 227° 59' 30"

56° 59' 52"

$$\begin{array}{r}
 511-43-26.8W \\
 56-59-54.7 \\
 \hline
 568-43-27.5W \\
 \hline
 21.5 \\
 \hline
 2.7
 \end{array}$$

△ 547 Fairchild to △ Mike

10 19° 47' 00"

40 79° 07' 30"

19° 46' 52"

$$\begin{array}{r}
 568-43-21.5W \\
 19-47-21.3 \\
 \hline
 88-30-42.8 \\
 \hline
 42.8 \\
 \hline
 29.3
 \end{array}$$

△ Mike to Jim

10 31° 45' 30"

40 127° 00' 30"

31° 45' 08"

$$\begin{array}{r}
 544-30-42.8W \\
 31-45-56.6 \\
 \hline
 120-15-39.4 \\
 179-59-60.0 \\
 \hline
 59-44-20.6 \\
 \hline
 20.6 \\
 \hline
 11.4
 \end{array}$$

Close Horiz △ Jim to △ 15 S

10 251° 28' 30"

40 285° 55' 00"

251° 28' 45"

108 31' 52"

360° 00' 37"

$$\begin{array}{r}
 559-44-20.6W \\
 251-27-47.4 \\
 \hline
 191-43-26.8 \\
 191-43-26.8 \\
 \hline
 57.6
 \end{array}$$

6/22/54

46  
Plotted  
7-20-54  
Efm



△ 15 South

△ 15 N to GF 539 Fairchild

1D 3° 03' 00"

4D 12° 12' 30"

3° 03' 08"

27.0  
N 11-43-26.8E  
3-03-35.0  
N 8-39-51.8E

△ GF 539 Fairchild to △ Jim

1D 55° 18' 00"

4D 221° 12' 00"

55° 18' 00"

N 8-39-51.8E  
55-17-45.3  
N 46-37-53.5W  
32-53.5  
11.7

△ Jim to △ Mike

1D 26° 18' 30"

4D 105° 13' 30"

26° 18' 30"

N 46-37-53.5W  
26-18-12.7  
N 72-56-06.2W  
N 72-56-06.2W  
9.2

Close Horiz △ Mike to △ 15 N

1D 275° 20' 00"

4D 21° 20' 00"

275° 20' 00"

84 39 30

259 59 30

N 72-56-06.2W  
275-20-27.0  
348-16-33.2  
359-59-60.0  
11-43-26.8  
11-43-26.8  
54.0

Hot

6/22/54

Plotted  
7-20-54  
3PM



△ Mike

△ 547 to A554

10 58° 28' 30"

AD 233° 55' 00

58° 28' 45"

△ 554 to "M"

10 32° 21' 30"

AD 129° 26' 30"

32° 21' 38"

△ "M" to △ Hollywood

10 8° 15' 30"

AD 33° 00' 00"

8° 15' 00"

△ Hollywood to △ Will

10 8° 22' 30"

AD 33° 30' 00

8° 22' 30"

△ Will to A554

10 9° 15' 00

AD 36° 59' 30"

9° 14' 52"

S 42-58-25.6W ✓  
58-28-34

101-26-59.6  
179-59-60.0

N 78-33-0.4W ✓  
32-21-38

N 46-11-22.4W  
+ 5.3  
N 46-11-27.7W ✓

N 46-11-22.4W  
8-15-00

N 37-56-22.4W  
+ 10.6

N 37-56-33.0W ✓  
20.0

N 37-56-22.4W  
8-22-30.0

N 29-33-52.4W  
+ 15.9  
N 29-34 08.3W ✓

N 29-33-52.4W  
9-14-52.0

N 20-19-00.4W  
+ 21.2  
N 20-19-21.6W ✓

West  
Williams  
Varonfakis  
Kullhofer

6/23/54

78  
Plotted  
7-15-54



T A Mike

Δ Les to Δ Jim

ID 17° 01' 00"

AD 68° 02' 30"

17° 00' 38"

N 20-19-00.4 W  
17-00-38.0  
N 3-18-22.4 W  
+ 26.5  
N 3-18-48.9 W

Δ Jim to Δ 538

ID 8° 16' 30"

AD 33° 06' 00"

8° 16' 30"

N 3-18-22.4 W  
8-16-30.0  
N 4-58-7.6 E  
- 31.7  
N 4-57-35.9 E

Δ 538 to Δ 539 both Fairchilds

ID 57° 57' 30"

AD 291° 18' 00"

57° 57' 20"

N 4-58-7.6 E  
57-57-00  
N 62-55-7.6 E  
62-54-30.8  
+ 36.8

Δ 539 to Δ 15 N

ID 25° 36' 30"

AD 102° 25' 00"

25° 36' 15"

N 62-54-30.8 E  
25-36-15  
N 88-30-45.8 E  
- 3  
N 88-30-42.8 E

Δ 15 N to 15 S

ID 18° 33' 30"

AD 74° 13' 00"

18° 33' 15"

N 88-30-45.8 E  
18-33-15.0  
107-04-00.8  
179-59-00  
5 72-55-59.2 E  
572-56-06.2 E

49  
Plotted  
EPM  
7-15-54



↑ Δ Mike Cont

Close Holly

Δ 15° N to 547

ID 115° 55' 30"

AD 103° 40' 00"

115° 55' 00"

244 06 23 Total

360° 01' 23"

Additional Angle

Δ Hollywood to Δ Jim

ID 34° 37' 30"

AD 138° 30' 30"

34° 37' 37.5"

572-55-59.2E  
42-58-25.6

115-54-24.8  
244-06-23

360 00-47.8  
-368

+11.0

{ 406 31

6/23/54

50  
Plotted  
EPM  
7-15-54

37-56-33.0  
3-18-48.9

34-37-44.1 ✓



TAU<sub>100</sub>

Δ 15N to 155

ID 13° 07' 00"

AD 52° 26' 30"

13° 06' 37.5"

Δ 155 to Δ Mike

ID 43° 19' 30"

AD 173° 17' 00"

43° 19' 15"

Δ Mike to Δ 547

ID 25° 42' 30"

AD 102° 49' 30"

25° 42' 22.5"

Δ 547 to Δ 554

ID 26° 41' 00"

AD 106° 45' 00"

26° 41' 15"

Δ 554 to Δ Hollywood

ID 71° 01' 30"

AD 284° 05' 00"

71° 01' 15"

559-14-420.6  
13-06-27.1  
546-37-53.5 E ✓

546-37-53.5 E  
43-19-04.6  
3-18-48.9 E ✓  
3-18-48.9 E ✓  
-21.2

53-18-48.9 E  
25-42-26.9  
22-23-38.0 W ✓

522-23-38.0 W  
26-41-19.4  
549-04-57.4 W ✓  
549-04-57.4 W ✓  
-8.8

549-04-57.4 W  
71-01-19.5  
120-06-07.9  
179-59-60.0  
N59-53-52.1 W

6/23/54

51  
Pl. Tol  
TAM  
7-15-54



T Δ Jim

Δ Hollywood to Δ Will

ID 16° 37' 00"

AD 66° 27' 00"

16° 36' 45"

N 59-53-52.1 W  
16 36 40.5  
N 43-17 11.6 W ✓

Δ Will to Δ 123

ID 14° 22' 30"

AD 57 28' 00

14° 22' 00

N 43-17-11.6 W  
14-21-55.5  
N 28-55-16.1 W ✓

Δ 123 to Δ 538

ID 39° 31' 00"

AD 158° 03' 30"

39° 30' 52.5"

N 28-55-16.1 W  
39-30-48.0  
N 10-35 31.9 E ✓

Δ 538 to Δ 539

ID 83° 59' 00"

AD 335° 55' 00"

83° 58' 45"

N 10-35-31.9 E  
83-58-40.5  
S 94-34 12.4  
179-59-60.0  
S 85-25 47.7 E ✓  
S 85-25 47.7 E  
-22.6

Δ 539 to 15° N Close

ID 25° 41' 30"

AD 102 46' 30"

25° 41' 37.5"

S 85-25-47.7 E ✓  
25-41-27.1  
S 59-44 20.6 E

West  
Williams  
Varonfakis  
Kellhofer

6/23/95

Total 360° 00' 45.0"

52  
Plotted  
E.A.H.  
7-15-54

Additional Angles

Δ 554 to "M"

ID 70° 26' 30"

AD 70° 26' 00"

S 49-04-57.4 W  
70-26-00  
119 30-57.4  
179-59-60.0  
N 60-29-02.6 W



△ Hollywood: { Pafford - Jones  
White Control Sta  
Hollywood California }

△ 554 to \*1

ID 17° 55' 00

AD 71° 40' 00

17° 55' 00

\*1 to #2 pig pl

ID 9° 37' 30

AD 39° 59' 30"

9° 37' 22.5"

A#2 to "M"

ID 105° 20' 30"

AD 61 23' 00

105° 20' 45"

△ M to △ Will

ID 64° 40' 30"

AD 258 41' 30"

64° 40' 225"

△ Will to △ Les

ID 17° 44' 00

AD 70° 56' 30"

17° 44' 075"

514-05-21RE  
17-54-56.5  
S 3-49 34.7 W ✓

S 3-49 34.7 W  
9-37-19.0  
S13-26-53.7 W ✓

S13-26-53.7 W  
105-20-41.5  
118-47-35.2  
179-59-60.0  
N 61-12 24.8 W ✓

N 61-12 24.8 W  
64-40-19.0  
N 3-27-54.2 E ✓

N 3-27-54.2 E  
17-44-04.0  
N 2-11-58.2 E ✓

West  
Williams  
Varon Parks

6/28/54

53  
Plotted  
EPA  
7-16-54





T Δ Hollywood Cont

Δ 205 to Δ 538

ID 45° 38' 00"

AD 182° 31' 00"

45° 37' 45"

Δ 538 to Δ Jim

ID 53° 16' 30"

AD 213° 04' 30"

53° 16' 07.5"

Δ Jim to Δ 155

ID 7° 43' 00"

AD 30° 54' 00"

7° 43' 30"

Δ 155 to Δ Mike

ID 14° 14' 00"

AD 56° 57' 00"

14° 14' 15"

Δ Mike to 554

ID 23° 51' 00"

AD 95° 22' 30"

23° 50' 37.5"

N 21-11-58.2E  
45-37-41.4E  
N 66-49-39.6E  
39.6  
~~21.1~~

N 66-49-39.6E  
53-16-14.6  
120-05-54.2  
179-59-60  
S 59-54-05.8E

S 59-54-05.8E  
7-43-39.1  
S 52-10-28.7E

552-10-42.9E  
14-14-22.1  
S 37-56-06.6E  
20.0  
From Mike Arbitrary  
S 37-56-06.6E  
23-50-44.8  
S 14-05-21.8E  
21.8  
~~21.8~~

S 14-05-21.8E

54

Plotted  
7-16-54

Total 359° 59' 52.5"

Additional Angle

Δ 554 to 547

ID 2° 48' 00"

AD 11' 13' 00"

2° 48' 15"

14-05-21.8  
11-17-15.0  
2-48-06.8  
✓



X 10 W

Δ Will to Lot A

10 20° 12' 00"

AD 90 49' 00"

20° 12' 15"

Lot A to Δ 2"

10 44 29' 00"

AD 177° 57' 30"

44° 29' 27.5"

Δ 2" to Δ Will

10 295° 18' 00"

AD 101° 10' 30"

295° 17' 37.5"

$$\begin{array}{r}
 521-53-10.7E \\
 20-11-47.6 \\
 \hline
 542 \quad 04-58.3E \\
 04-59.3 \\
 \hline
 27.4
 \end{array}$$

$$\begin{array}{r}
 542-04-58.3E \\
 44-29-34.1 \\
 \hline
 586 \quad 34-32.4E \\
 11.6
 \end{array}$$

$$\begin{array}{r}
 546-34-32.4E \\
 295-18-38.3 \\
 \hline
 381-53-10.7 \\
 360 \\
 \hline
 521-53-10.7E
 \end{array}$$

West  
Williams

6/28/54

Total 359' 59' 15"

55"  
Plotted  
EPM  
7-19-54



↑ Δ # 547

Δ # 2 Pig point to Δ M

ID 23° 08' 30" IR 23° 08' 00"

AD 92° 31' 30" AR 92° 30' 30"

23° 07' 52.5" 23° 08' 07.5"

Δ M to Δ Hollywood

ID 15° 04' 00"

AD 15° 19' 30"

15° 04' 52.5"

Δ M to Δ Hollywood

ID 15° 04' 30"

AD 60° 18' 00" AR 00° 00' 30"

15° 04' 30"

Δ Hollywood to Δ 538

ID 28° 46' 30"

AD 115° 05' 30"

28 46 22.2

Δ 538 to Mike

ID 25° 29' 30"

AD 101° 57' 30"

25 29 22.0

N 26-21-45.0 W  
28-07-22.5  
N 49-29-37.5 W ✓

N 11-17-15.0 W  
15-04-30.0  
N 26-21-45.0 W ✓

N 28-46-22.2  
N 17-29-07.2 E  
N 11-17-15.0 W ✓

N 17-29-07.2 E  
25-29-22.2  
N 42-58-29.4 E  
-30  
42-59-25.6 ✓

West  
Williams  
Varanfakis  
Kullhofer

6/29/54

56  
Plotted  
7-14-54  
EAM

23-07-52.5 ✓ # 2 Pig Point to M

15-04-30.0 ✓ M to Hollywood

28-46-22.2 ✓ Hollywood to 538

25-29-22.2 ✓ 538 to Mike

12-04-37.5 Mike to 539

13-40-22.2 539 to 15N

241-47-00.0 Closure

360 00 06.6

N 68-43-21.5 E 547 to 15N

N 49-29-37.5 W 547 to # 2 Pig Point

241-47-00.0 Closure

359 59-59.0



△ 547

△ Mike to 539

ID 12° 04' 30"

AD 48° 18' 30"

12° 04' 37.5"

# 539

△ Fairchild to A15N

ID 13° 40' 30"

AD 54° 41' 30"

13° 40' 22.2

A15N to "C" Pig Point West Horiz

ID 241° 46' 30"

AD 247° 08 00

241° 47' 00

118 13 06.3

360 00 06.3

△ Hollywood to Will

ID 2° 39' 00"

AD 10° 39' 30"

2° 38' 37.5

N 42-58-29.4E  
12.04-37.5  
SS 03-06.9  
55-02-59.3 ✓  
+ 7.6

N 55-02-59.3E  
13-40-22.2 ✓  
N 68-48-21.5E ✓

N 11-17-15.0W  
2-38-37.5  
N 8-38-37.5W  
- 10  
N 8-38-27.5W

57  
Plotted  
7-14-54  
ZAM



$\Delta$  547 cont

Additional angles

$\Delta$  Hollywood to  $\Delta$  Las

ID  $8^{\circ} 43' 00''$

AD  $34^{\circ} 50' 00''$

$8^{\circ} 42' 30''$

$\begin{array}{r} N 11-17-15.0W \\ 8-42-30.0 \\ \hline N 2-34-45.0W \\ -2.5 \\ \hline N 2-34-25.0W \end{array}$

$\Delta$  Hollywood to  $\Delta$  Jim

ID  $33^{\circ} 41' 30''$

AD  $134^{\circ} 44' 30''$

$33^{\circ} 41' 07.5$

$\begin{array}{r} N 11-17-15.0W \\ 33-41-07.5 \\ \hline N 22-23-52.5E \\ +31.0 \\ \hline N 22-23-21.5E \end{array}$

$\Delta$  554 to  $\Delta$  Jim

ID  $29^{\circ} 36' 30''$

AD  $118^{\circ} 26' 30''$

$29^{\circ} 36' 37.5$

$\begin{array}{r} N 7-13-03.2W \\ 29-36-37.5 \\ \hline N 22-23-34.3E \\ -11.9 \\ \hline N 22-23-22.5E \end{array}$

$\Delta$  554 to  $\Delta$  Mike

ID  $50^{\circ} 12' 00''$

AD  $700^{\circ} 47' 30''$

$50^{\circ} 11' 52.5''$

$\begin{array}{r} N 7-13-03.2W \\ 50-11-52.5 \\ \hline N 42-58-49.3E \\ +23.7 \\ \hline N 42-58-25.6E \end{array}$

West  
Williams  
Varonakis  
Kallhoffer

6/29/54

58  
Plotted  
7-14-54  
2:50 PM



$\nabla \Delta = 1$

$\Delta$  Hollywood  $\Delta$  554

1D  $30^{\circ} 53' 00''$

4D  $123^{\circ} 28' 30''$

$30^{\circ} 52' 07.5''$

$\Delta$  205 to  $\Delta$  554

1D  $25^{\circ} 39' 00''$

4D  $102^{\circ} 36' 00''$

$25^{\circ} 39' 00''$

$N 3-49-34.7E$   
 $30-52-07.5$   
 $N 34 41-42.2E$

$\sqrt{34-41-42.2E}$   
 $25-39-00$   
 $9-02-42.2$

West

Williams

Vanontakis

Kulhofer

6/29/04

59  
Plotted  
7-19-04  
EAM



T Δ M

Δ L to Δ Los

ID 34° 53' 30"

AD 139° 53' 00"

34° 53' 45"

Δ Los to Δ Will

ID 13° 46' 00"

AD 54° 58' 00"

13° 44' 30"

Δ Will to Δ Hollywood

ID 28° 48' 00"

AD 115° 12' 00"

28° 48' 00"

Δ Hollywood to Δ Mike

ID 15° 01' 30"

AD 60° 06' 00"

15° 01' 30"

Δ Mike to 554

ID 11° 49' 30"

47° 18' 00"

11 49' 45"

N 41-21-37.5E  
34-53-39.2

N 76-15-16.7E

N 76-15-16.7E  
13-44-24.2

N 89-59-40.9E

N 89-59-40.9E  
28-47-54.3

118-47-35.2  
79-59-40.0

S 61-12-21.5E  
17.3

S 61-12-24.8E  
15-01-13.6

S 46-11-11.2E

S 46-11-11.2E  
11-49-28.6

S 34-21-42.6E

S 34-21-42.6E  
32.8

West  
Williams  
Varonakis  
Kellhofer

6/30/54

60  
Plotted  
7-16-54  
JPM



T A M Con

Δ 554 to Δ 547

1D 8° 00' 30"

AD 32° 00' 00"

8° 00' 30"

534-21-42.6W  
8-00-30

526-21-12.6E

526-21-45.0E  
32.4

Not used

Δ Fairchild 538 to Δ Jim

1D 31° 17' 30"

AD 125° 10' 30"

31° 17' 37.5"

Δ Jim to Δ 554

1D 26° 07' 30"

AD 104° 30' 30"

26° 07' 37.5"

N 89-13-25.9 E  
31-17-25.8

119-31-51.7

174-59-60.0

S 60-29-08.3 E

S 60-29-08.3 E

26-07-28.7

S 34-21-42.6 E

534-21-42.6 E  
22.5

Close Horiz

Δ 547 to Δ 2"

1D 247° 44' 00"

AD 270° 53' 30"

247 43 22.5

Plotted  
7-16-54  
2/2



$\uparrow$   $\Delta$  554  
 57-13-03.1E

(Hot)

62  
 Plotted  
 7-14-54  
 3PM

6/30/54

$\Delta$  547 to #2 pig point

ID 79° 04' 00"  
 AD 316° 14' 30"  
 79° 03' 37.5"

79-03-37.5  
 57-13-03.1E  
 71-50-34.3W  
 571-50-29.6W

$\Delta$  #2 pig point to "M"

ID 73° 48' 00"  
 AD 295° 11' 30"  
 73° 47' 52.5"

571-50-34.3W  
 73-47-52.5  
 145-39-26.8  
 79-59-26.8  
 N 34-21-33.7W  
 +9.4  
 N 34-21-42.6W

$\Delta$  M to  $\Delta$  Hollywood

ID 20° 17' 00"  
 AD 81° 05' 30"  
 20° 16' 22.5"

N 34-21-33.7W  
 20-16-25.5  
 N 14-05-17.7W  
 +14.1  
 N 14-05-21.8W

$\Delta$  Hollywood  $\Delta$  538

ID 42° 07' 00"  
 AD 168° 27' 00"  
 42° 06' 45"

N 14-05-17.7W  
 42-06-45.0  
 N 28-01-37.3E  
 28-01-19.4E  
 +16.9E

$\Delta$  538 to  $\Delta$  Jim

ID 21° 03' 30"  
 AD 84° 14' 30"  
 21° 05' 37.5"

N 28-01-37.3E  
 21-03-37.5  
 N 49-05-14.8E  
 -17.4  
 N 49-04-57.4E



△ 554

△ Jim to 539  
ID 26° 58' 00"  
AD 107° 53' 30"  
26° 58' 22.5"

△ 539 to △ Mike  
ID 25° 24' 30"  
AD 101° 37' 00"  
25° 24' 15"

△ Mike to 547  
ID 71° 20' 30"  
AD 285° 21' 00"  
71° 20' 15"

360° 01' 07.5" Total

△ Hollywood to △ W. 11

ID 4° 43' 30"  
AD 18° 52' 30"  
4° 43' 07.5"

N 49-05-14.8 E  
26-58-22.5  
N 76-03-37.3 E  
76-03-02.4 E  
+34.9

N 76-03-02.4 E  
25-24-15.0  
101-27-17.4  
179-59-60  
S 78-32-42.6 E  
57-18-03.2  
+17.8  
76-33-00.4

S 78-32-42.6 E  
71-20-15.0  
S 7-12-27.6 E  
57-18-03.2  
-35.6"

N 14-05-3.0 W  
4-43-7.5  
N 9-21-55.5 W

West  
Williams  
Varontakis  
Kellhofer.

6/30/54

63  
Plotted  
7-14-54  
JPM

△ Will to △ Lee  
ID 8° 50' 30"  
AD 35° 21' 00"  
8° 50' 15"

N 9-21-55.5 W  
8-50-15.0  
N 0-31-40.5 W



↗ Δ #2 Pigs Point

Δ 547 to 554

1D 58° 40'

4D 234° 41' 30"

58 40 22.5

Δ 538 to Hollywood

1D 25° 23' 00"

4D 101° 33' 30"

25 23 22.5

Δ Hollywood to Δ 547

1D 242° 55' 30"

4D 251 42' 30"

242° 55' 37.5

Δ 554 To Δ 538

1D 33° 00' 30"

4D 132° 00' 30"

33° 00' 07.5

549-29-37.5E  
58-40-22.5

108-10-00.0  
179-60  
N71-50-00E  
71-50-29.6  
29.6

N38-50-03.9E  
25-23-22.5  
N13-26-41.3E  
N13-26-53.7E  
12.4

62-55-37.5  
N13-26-53.7E  
549-28-43.8E  
549-29-37.5  
53.7

N71-50-29.6E  
33-00-7.5  
N34-50-22.1E  
N38-50-03.8  
18.3

West  
Williams  
Varontakis  
Kellhofer

7/1/59

Hots 64

Plotted  
EPA  
7-19-59



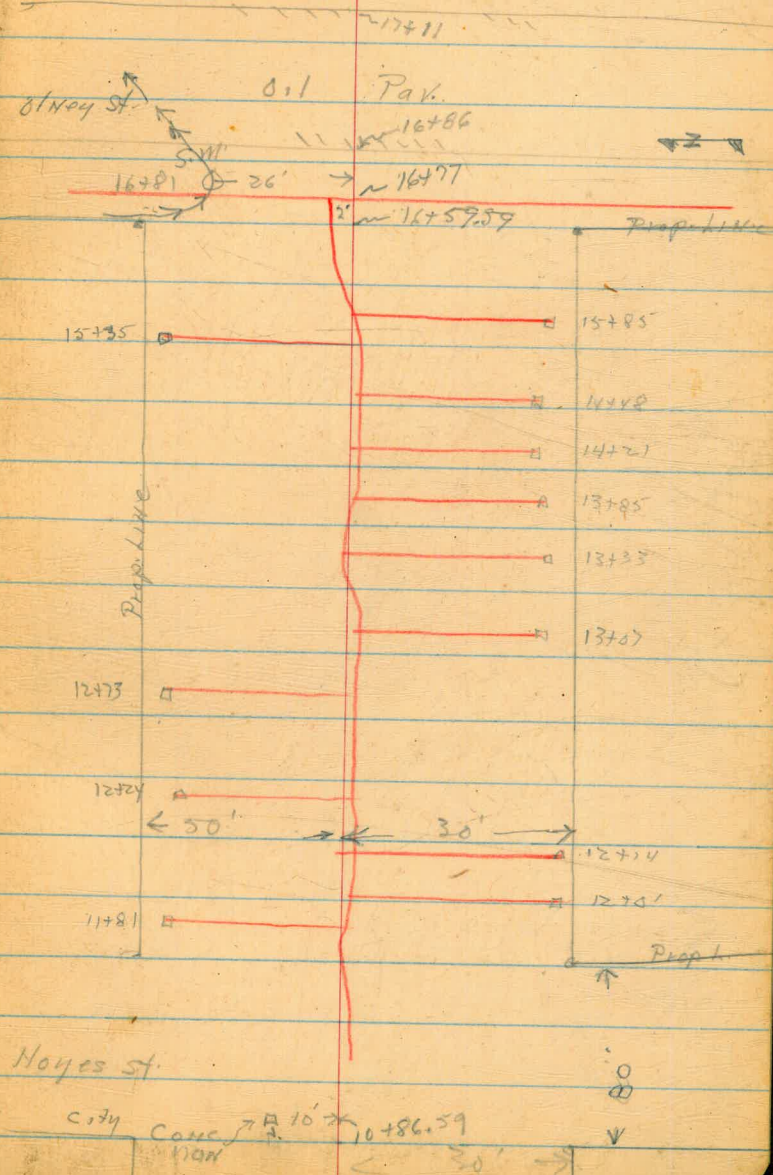
Plan 4 Profile

Thomas St  
Noyes - Olney

B.M.	4.22	34.70		30.48	Top S.M. H 11+20
11+50			3.6		
12			1.6		
+50			1.9		
13			2.8		
+50			5.0		
14			7.9		
+50			9.5		
15			10.4		
T.P.	4.07	58.45	10.32	24.38	
15+50			5.2		
16			5.6		
+50			6.7		
16+81	1-top S.M. H Fl.		8.10 18.1		
17+60			9.4		
T.P.	10.71	37.55	1.61	26.84	
C.R.B.M.			7.07	30.48	30.48

7-10-52  
King

Gov. Prop.





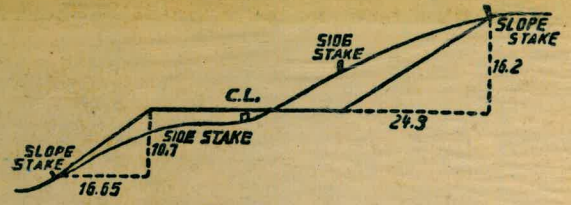
178538

770  
 360  
 1080  
 101 1030  
 119821 30 30  
 295 17375

Please Return to  
 City of San Diego Water Dept.  
 Room 903 Civic Center

C. Roder, Lodi, Union

57.88  
 40.28  
 11.84



DISTANCES FROM SIDE STAKES FOR CROSS-SECTIONING.  
 SLOPE 1 1/2 TO 1. ROADWAY OF ANY WIDTH.

	0	.1	.2	.3	.4	.5	.6	.7	.8	.9	
0	0.00	0.15	0.30	0.45	0.60	0.75	0.90	1.05	1.20	1.35	0
1	1.50	1.65	1.80	1.95	2.10	2.25	2.40	2.55	2.70	2.85	1
2	3.00	3.15	3.30	3.45	3.60	3.75	3.90	4.05	4.20	4.35	2
3	4.50	4.65	4.80	4.95	5.10	5.25	5.40	5.55	5.70	5.85	3
4	6.00	6.15	6.30	6.45	6.60	6.75	6.90	7.05	7.20	7.35	4
5	7.50	7.65	7.80	7.95	8.10	8.25	8.40	8.55	8.70	8.85	5
6	9.00	9.15	9.30	9.45	9.60	9.75	9.90	10.05	10.20	10.35	6
7	10.50	10.65	10.80	10.95	11.10	11.25	11.40	11.55	11.70	11.85	7
8	12.00	12.15	12.30	12.45	12.60	12.75	12.90	13.05	13.20	13.35	8
9	13.50	13.65	13.80	13.95	14.10	14.25	14.40	14.55	14.70	14.85	9
10	15.00	15.15	15.30	15.45	15.60	15.75	15.90	16.05	16.20	16.35	10
11	16.50	16.65	16.80	16.95	17.10	17.25	17.40	17.55	17.70	17.85	11
12	18.00	18.15	18.30	18.45	18.60	18.75	18.90	19.05	19.20	19.35	12
13	19.50	19.65	19.80	19.95	20.10	20.25	20.40	20.55	20.70	20.85	13
14	21.00	21.15	21.30	21.45	21.60	21.75	21.90	22.05	22.20	22.35	14
15	22.50	22.65	22.80	22.95	23.10	23.25	23.40	23.55	23.70	23.85	15
16	24.00	24.15	24.30	24.45	24.60	24.75	24.90	25.05	25.20	25.35	16
17	25.50	25.65	25.80	25.95	26.10	26.25	26.40	26.55	26.70	26.85	17
18	27.00	27.15	27.30	27.45	27.60	27.75	27.90	28.05	28.20	28.35	18
19	28.50	28.65	28.80	28.95	29.10	29.25	29.40	29.55	29.70	29.85	19
20	30.00	30.15	30.30	30.45	30.60	30.75	30.90	31.05	31.20	31.35	20
21	31.50	31.65	31.80	31.95	32.10	32.25	32.40	32.55	32.70	32.85	21
22	33.00	33.15	33.30	33.45	33.60	33.75	33.90	34.05	34.20	34.35	22
23	34.50	34.65	34.80	34.95	35.10	35.25	35.40	35.55	35.70	35.85	23
24	36.00	36.15	36.30	36.45	36.60	36.75	36.90	37.05	37.20	37.35	24
25	37.50	37.65	37.80	37.95	38.10	38.25	38.40	38.55	38.70	38.85	25
26	39.00	39.15	39.30	39.45	39.60	39.75	39.90	40.05	40.20	40.35	26
27	40.50	40.65	40.80	40.95	41.10	41.25	41.40	41.55	41.70	41.85	27
28	42.00	42.15	42.30	42.45	42.60	42.75	42.90	43.05	43.20	43.35	28
29	43.50	43.65	43.80	43.95	44.10	44.25	44.40	44.55	44.70	44.85	29
30	45.00	45.15	45.30	45.45	45.60	45.75	45.90	46.05	46.20	46.35	30
31	46.50	46.65	46.80	46.95	47.10	47.25	47.40	47.55	47.70	47.85	31
32	48.00	48.15	48.30	48.45	48.60	48.75	48.90	49.05	49.20	49.35	32
33	49.50	49.65	49.80	49.95	50.10	50.25	50.40	50.55	50.70	50.85	33
34	51.00	51.15	51.30	51.45	51.60	51.75	51.90	52.05	52.20	52.35	34
35	52.50	52.65	52.80	52.95	53.10	53.25	53.40	53.55	53.70	53.85	35
36	54.00	54.15	54.30	54.45	54.60	54.75	54.90	55.05	55.20	55.35	36
37	55.50	55.65	55.80	55.95	56.10	56.25	56.40	56.55	56.70	56.85	37
38	57.00	57.15	57.30	57.45	57.60	57.75	57.90	58.05	58.20	58.35	38
39	58.50	58.65	58.80	58.95	59.10	59.25	59.40	59.55	59.70	59.85	39
40	60.00	60.15	60.30	60.45	60.60	60.75	60.90	61.05	61.20	61.35	40
41	61.50	61.65	61.80	61.95	62.10	62.25	62.40	62.55	62.70	62.85	41
42	63.00	63.15	63.30	63.45	63.60	63.75	63.90	64.05	64.20	64.35	42
43	64.50	64.65	64.80	64.95	65.10	65.25	65.40	65.55	65.70	65.85	43
44	66.00	66.15	66.30	66.45	66.60	66.75	66.90	67.05	67.20	67.35	44
45	67.50	67.65	67.80	67.95	68.10	68.25	68.40	68.55	68.70	68.85	45
46	69.00	69.15	69.30	69.45	69.60	69.75	69.90	70.05	70.20	70.35	46
47	70.50	70.65	70.80	70.95	71.10	71.25	71.40	71.55	71.70	71.85	47
48	72.00	72.15	72.30	72.45	72.60	72.75	72.90	73.05	73.20	73.35	48
49	73.50	73.65	73.80	73.95	74.10	74.25	74.40	74.55	74.70	74.85	49
50	75.00	75.15	75.30	75.45	75.60	75.75	75.90	76.05	76.20	76.35	50

THE NATIONAL BLANK BOOK COMPANY  
 HOLYOKE MASSACHUSETTS  
 NEW YORK CHICAGO BOSTON SAN FRANCISCO