

DISTANCES FROM SIDE STAKES FOR CROSS-SECTIONING  
SLOPE 1 TO 1. ROADWAY OF ANY WIDTH

	0	.1	.2	.3	.4	.5	.6	.7	.8	.9	
0	0.00	0.10	0.20	0.30	0.40	0.50	0.60	0.70	0.80	0.90	0
1	1.00	1.10	1.20	1.30	1.40	1.50	1.60	1.70	1.80	1.90	1
2	2.00	2.10	2.20	2.30	2.40	2.50	2.60	2.70	2.80	2.90	2
3	3.00	3.10	3.20	3.30	3.40	3.50	3.60	3.70	3.80	3.90	3
4	4.00	4.10	4.20	4.30	4.40	4.50	4.60	4.70	4.80	4.90	4
5	5.00	5.10	5.20	5.30	5.40	5.50	5.60	5.70	5.80	5.90	5
6	6.00	6.10	6.20	6.30	6.40	6.50	6.60	6.70	6.80	6.90	6
7	7.00	7.10	7.20	7.30	7.40	7.50	7.60	7.70	7.80	7.90	7
8	8.00	8.10	8.20	8.30	8.40	8.50	8.60	8.70	8.80	8.90	8
9	9.00	9.10	9.20	9.30	9.40	9.50	9.60	9.70	9.80	9.90	9
10	10.00	10.10	10.20	10.30	10.40	10.50	10.60	10.70	10.80	10.90	10
11	11.00	11.10	11.20	11.30	11.40	11.50	11.60	11.70	11.80	11.90	11
12	12.00	12.10	12.20	12.30	12.40	12.50	12.60	12.70	12.80	12.90	12
13	13.00	13.10	13.20	13.30	13.40	13.50	13.60	13.70	13.80	13.90	13
14	14.00	14.10	14.20	14.30	14.40	14.50	14.60	14.70	14.80	14.90	14
15	15.00	15.10	15.20	15.30	15.40	15.50	15.60	15.70	15.80	15.90	15
16	16.00	16.10	16.20	16.30	16.40	16.50	16.60	16.70	16.80	16.90	16
17	17.00	17.10	17.20	17.30	17.40	17.50	17.60	17.70	17.80	17.90	17
18	18.00	18.10	18.20	18.30	18.40	18.50	18.60	18.70	18.80	18.90	18
19	19.00	19.10	19.20	19.30	19.40	19.50	19.60	19.70	19.80	19.90	19
20	20.00	20.10	20.20	20.30	20.40	20.50	20.60	20.70	20.80	20.90	20
21	21.00	21.10	21.20	21.30	21.40	21.50	21.60	21.70	21.80	21.90	21
22	22.00	22.10	22.20	22.30	22.40	22.50	22.60	22.70	22.80	22.90	22
23	23.00	23.10	23.20	23.30	23.40	23.50	23.60	23.70	23.80	23.90	23
24	24.00	24.10	24.20	24.30	24.40	24.50	24.60	24.70	24.80	24.90	24
25	25.00	25.10	25.20	25.30	25.40	25.50	25.60	25.70	25.80	25.90	25
26	26.00	26.10	26.20	26.30	26.40	26.50	26.60	26.70	26.80	26.90	26
27	27.00	27.10	27.20	27.30	27.40	27.50	27.60	27.70	27.80	27.90	27
28	28.00	28.10	28.20	28.30	28.40	28.50	28.60	28.70	28.80	28.90	28
29	29.00	29.10	29.20	29.30	29.40	29.50	29.60	29.70	29.80	29.90	29
30	30.00	30.10	30.20	30.30	30.40	30.50	30.60	30.70	30.80	30.90	30
31	31.00	31.10	31.20	31.30	31.40	31.50	31.60	31.70	31.80	31.90	31
32	32.00	32.10	32.20	32.30	32.40	32.50	32.60	32.70	32.80	32.90	32
33	33.00	33.10	33.20	33.30	33.40	33.50	33.60	33.70	33.80	33.90	33
34	34.00	34.10	34.20	34.30	34.40	34.50	34.60	34.70	34.80	34.90	34
35	35.00	35.10	35.20	35.30	35.40	35.50	35.60	35.70	35.80	35.90	35
36	36.00	36.10	36.20	36.30	36.40	36.50	36.60	36.70	36.80	36.90	36
37	37.00	37.10	37.20	37.30	37.40	37.50	37.60	37.70	37.80	37.90	37
38	38.00	38.10	38.20	38.30	38.40	38.50	38.60	38.70	38.80	38.90	38
39	39.00	39.10	39.20	39.30	39.40	39.50	39.60	39.70	39.80	39.90	39
40	40.00	40.10	40.20	40.30	40.40	40.50	40.60	40.70	40.80	40.90	40
41	41.00	41.10	41.20	41.30	41.40	41.50	41.60	41.70	41.80	41.90	41
42	42.00	42.10	42.20	42.30	42.40	42.50	42.60	42.70	42.80	42.90	42
43	43.00	43.10	43.20	43.30	43.40	43.50	43.60	43.70	43.80	43.90	43
44	44.00	44.10	44.20	44.30	44.40	44.50	44.60	44.70	44.80	44.90	44
45	45.00	45.10	45.20	45.30	45.40	45.50	45.60	45.70	45.80	45.90	45
46	46.00	46.10	46.20	46.30	46.40	46.50	46.60	46.70	46.80	46.90	46
47	47.00	47.10	47.20	47.30	47.40	47.50	47.60	47.70	47.80	47.90	47
48	48.00	48.10	48.20	48.30	48.40	48.50	48.60	48.70	48.80	48.90	48
49	49.00	49.10	49.20	49.30	49.40	49.50	49.60	49.70	49.80	49.90	49
50	50.00	50.10	50.20	50.30	50.40	50.50	50.60	50.70	50.80	50.90	50

Distance of slope stake from side or shoulder stake for any width roadway, slope 1 to 1. If ground is nearly level, the cut or fill at side stake is located by the double entry method in left column and top row. The number in body of table in same row and column gives distance from side stake to slope stake. If ground is not level estimate the difference in elevation between the side stake and slope stake, lower target by this amount if cut, elevate if fill. Add this amount to cut or fill and find distance in table. Set up rod at this point, and line of sight should cut target. If it does not make the slight adjustment necessary.

813

Please Return to  
City of San Diego Water Dept.  
Room 903 Civic Center

MICROFILMED

JAN 16 1965

MICROFILMED

JAN 16 1965



4" A.C. P.L. Central Ave - Park - Lynn ✓ 1-2

6" C.I.P. P. 2 6th St - Madison ✓ 3

Meter Boxes Alley - Moore - El Cajon between ✓ 4-5

Van Dyke & Cape Blvd

Alley - 43 - Fairmount - Landis - Whitman ✓ 6

Steel Loc. Suth. Dam ✓ 7-12

Check Levels Suth. Pl. ✓ 13-15

" " Suth. P.L. #2 Tunnel Portal ✓ 16-17

Steel Loc. Suth. Dam (Cont) ✓ 18-32

alice

alice

4" A.C. P.L.  
 Central Ave - Polk to 100' No.  
 U.S. Prop Line  
 (Alley)

2-19-52  
 King  
 West of  
 Williams

B.M.	5.90	357.83		351.93		
0+20			0.9	352.9		
+50			1.1	352.7	0 3 4	
1+00			1.5	352.3	0 3 5	
+50			1.8	352.0	0 3 6	
2+00			2.3	355.5	351.9	0 3 6
+50			2.7	355.1	351.5	0 3 6
3+00			3.1	354.7	351.0	0 3 6
+50			3.5	354.3	350.6	0 3 7
4+00			3.9	353.9	350.2	0 3 7 9
+50			4.3	353.5	349.7	0 3 8
5+00			4.7	353.1	349.2	0 3 9
5+34 <sup>5</sup>			5.0	352.8	349.2	0 3 9
0+58			5.0	352.8	349.2	0 3 6
1+00			4.1	353.7	349.5	0 4 0
1+50			3.4	354.4	350.0	0 4 4
2+00			3.2	354.2	350.0	0 4 0
2+50			2.7	355.1	350.4	0 4 7

N.W. Cor. Union Central R.F. Long



357.83  
~~357.83~~

3400		2.6	355.2	350.6
T.P.	4.44	359.42	2.85	354.98
3450		4.4	355.0	350.6
3479		5.0	354.4	350.6
	4.21	358.21	5.42	354.04
		6.28	351.93	351.93

C46

C44

C38

West Prop. 41st

R.M.

4' OFF.  
6" CIP.  
END OF Madison at 6<sup>th</sup> - 292 on  
Curve.

King 12-20-82  
West  
Williams

37

B.M.	3.10	224.12		221.02
0-35			3.4	320.7 309.0
0700			5.5	318.6 307.3
+25			7.1	317.0 306.1
+50			8.8	315.3 304.7 305.9
+75			9.8	314.3 303.4 304.7
1700			11.2	312.9 302.3 303.5
+25			12.2	311.9 301.0 302.3
+50			12.8	311.3 300.3 301.0
+75			13.0	311.1 299.5 300.5
2700			13.4	310.7 299.0 299.9
T.P.	8.07	219.02	13.17	310.95
2+25			8.8	310.2 298.9 299.3
+50			8.8	310.2 298.8 288.9
T.P.	6.23	223.88	1.37	317.65
			2.86	321.02 321.02

Top Mt. Sec BR

Prop. Line

MARYLAND SWBP 346.98  
Delaware " 343.44  
MASS New BP 333.03  
N.H. New 7' BP 319.90



Meter Boxes  
 Alley - El Cajon - Maude  
 between W. Capeland & Van Dyke

King  
 West  
 Williams

4

B.M.	5-43	364.99		363.56	R.P. S.W. COR CAJON & VAN DYKE
6408 E			4.5	364.5	
5466 W			3.3	365.7	005
5451 W			3.7	365.3	000
5430 E			3.7	365.3	001
4496 E			3.7	365.3	001
4488 W			3.4	365.6	004
4412 E			3.7	365.3	005
T.P.	3.73	369.06	3.66	365.33	
4420 W			3.6	365.5	008
3493 E			4.0	365.1	005
3478 W			4.4	364.7	003
3434 E			4.5	364.6	008
3429 W			4.7	364.4	007
3405 W			5.1	364.0	006
2483 E			5.7	363.4	004
2453 W			6.4	362.7	000
2440 E			6.5	362.6	001
2416 W			6.6	362.5	001
1480 E			6.9	362.2	002

Meter Box grades  
Alley-Mead - to Canyon - between Van Dyke  
& Copeland

2-29-52

King

5

369.06

1+78W			6.7	362.4	362.3	CO <sup>L</sup>
1+49W			7.2	361.9	362.3	FO <sup>H</sup>
1+16E			7.1	362.0	362.1	FO <sup>L</sup>
5+73D	5.29	367.49	6.86	362.20		
6+81W			4.9	362.6	362.2	CO <sup>H</sup>
6+34E			4.5	363.0	362.0	CO <sup>L</sup>
0+24W			4.0	363.5	362.0	CO <sup>L</sup>
TBM			5.60	361.81		
T.B.M.			5.55	361.94	361.86	



May-43 - Fairmont  
Laudis - Wightman

B.M.	6.10	355.25			349.15	
0+80			6.4	348.9	344.9	4.0
1+00			4.9	350.4	345.5	4.9
1+20			4.2	351.1	346.2	4.9
1+50			3.4	351.9	346.6	5.3
1+60			3.5	351.8	346.7	5.1
2+00			3.7	351.6	346.8	4.8
2+50			3.7	351.6	346.9	4.7
3+00			3.0	352.3	347.0	5.3
3+40			2.9	352.4	347.3	5.1
4+00			2.7	352.6	347.7	4.9
T.P.	5.90	358.68	2.47	352.78		
4+20			6.1	352.1	347.9	4.7
4+50			5.4	353.3	348.2	5.1
5+00			5.0	353.7	348.8	4.9
4+50			4.5	354.2	349.4	4.8
6+00			3.8	354.9	350.1	4.8
+40			3.3	355.4	350.3	5.1
8+77			4.4	354.3	350.0	4.3
			3.34	355.32		

3-3-52  
King  
West  
Williams

N.W.R.P. Laudis & Fairmont



Note: Distances  
45° slope

abt #14  
steel on East Edge

King West Williams 3-5-52

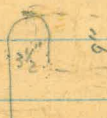
VRLH

	West Row 1	3/4" Row 2	Row 2	5/8" Row 3	Row 3
	23' East Edge	14 1/2" East Edge	♀ - ♀	3 1/2" East Edge	♀ - ♀
	18" ♀	#1 - El. 2030	♀ - ♀	1/2" below El. 2030	♀ - ♀
#1 - 3' on slope From El. 2030	Length 48"	Length 38"	1-2-20"	46"	1-2-18 1/4"
↑ Steel Length doesn't include Hook	#2 47"	37"	2-2-25"	47"	2-3-18"
	#3 48"	35 1/2"	2-4-26 1/2"	48 1/2"	
	#4 48"	36"	4-5-24 1/2"	48"	
	#5 47 1/2"	39"	5-6-31 1/2"	47"	
	#6 48"	37"	6-7-19 1/2"	46"	
	#7 48"	39 1/2"	7-8-25 1/2"	48"	
	#8 48"	37"	8-9-26"	47 1/2"	
	#9 47"	35 1/2"	9-10-24"	46"	
	#10 46 1/2"	34"	10-11-26"	48"	
	#11 48"	37"	11-12-25 1/2"	47 1/2"	
	#12 48"	38"	12-13-24 1/2"	48"	
	#13 47"	38"	13-14-25"	46"	
	#14 47 1/2"	36"	14-15-27"	47"	
	#15 47 1/2"	36"	15-16-24 1/2"	50"	
	#16 47 1/2"	43"	16-17-24 1/2"	49"	
	#17 47 1/2"	39"	17-18-25 1/2"	50"	
	#18 48"	46"	18-19-24"	47"	
	#19 48"	45"	19-20-21 1/2"	50 1/2"	
	#20 49"	41"	20-21-25 1/2"	49"	
	#21 48 1/2"	43"	21-22-26 1/2"	48"	
	#22 49"	41"	22-23-26"	47 1/2"	
	#23 50"	41"	23-24-28 1/2"	51 1/2"	
	#24 49"	32 1/2"		47"	
	#25 47 1/2"			47"	
	#26 49"			44"	
	#27 50"			47"	
	#28 48 1/2"			44"	
	#29 48"			47"	
	#30 50"			47"	
	#31 49"			47"	
	#32 cut = 1 3/4"			47"	
	#33 48 1/2"			47"	
	#34 48 1/2"			47"	

27" - width slab = 3 rows steel

27"  
25"  
0.5"  
13"  
El. 2030

Note = All Measurements to  
Top of steel - All steel has  
9" Return





✓RLH

Steel in 46t. 14 - West Side

3-6-52  
King

RLH ✓

No. Steel	Row 1	Row 1	Row 2	Row 2	Row 3	Row 3	#	Row 1	Row 1	Row 3
From El. 2030.	23" West Edge	Q-Q	14" West Edge	Q-Q	3" West Edge	Q-Q	Length	Length	Length	cc
5 1/4" From El. 2030.0	Length #1		19 1/2" below	El. 2030	12" below	El. 2030.				
2	48 1/2	1-2-19"	39 1/2	23 1/2	48 1/2	18"	36	47 1/2	35-36	8"
3	47 1/2	2-3-16"	40 1/2	24	48 1/2	18 3/4"	37	48"	36-37	8 1/2"
4	48	3-4-23"	36	28 1/2	47 1/2	18 1/2"	38	48"	37-38	10 1/2"
5	48"	4-5-18"	37"	33 1/2	48 1/2	18 1/2"	39	47 1/4	38-39	8 1/4"
6	48 1/2	5-6-18"	39"	19 1/4	47 1/2	18"	40	48"	39-40	9 1/4"
7	50"	6-7-17 3/4"	36 1/2	26"	48"	18 1/2"	41	48 3/4	40-41	8 1/2"
8	49"	7-8-18"	35"	26"	49"	17 1/2"	42	45 1/2	41-42	9 3/4"
9	48 1/2	8-9-18"	36"	21 1/2	48"	21"	43	43 1/4	42-43	9 1/4" - No hook
10	51	9-10-18 1/2"	38 1/2	25"	47 1/2	15"	44	46"	43-44	13 1/2"
11	46 1/2	10-11-18 1/2"	33 1/2	26"	48"	18"	45	43 3/4	44-45	8"
12	49	11-12-18"	36"	27	48"	19 1/2"	46	47 1/2	45-46	11"
13	50 1/2	12-13-18"	34 1/2	28	48"	18"	47	47 1/2	46-47	7 1/2"
14	50	13-14-17"	36	21 1/2	47"	18 1/2"	48			
15	49 1/2	14-15-18 1/2"	41"	24"	47 1/2	18"	49			
16	50 1/2	15-16-18"	42"	29"	48"	18"				
17	51"	16-17-18 1/4"	42"	26"	48"	18"				
18	50	17-18-18 1/2"	41"	24"	48"	18"				
19	50"	18-19-18"	39"	21"	49 1/2	18"				
20	51"	19-20-10 1/4"	40"	28"	49 1/2	10 1/2"				
21	50"	20-21-7 1/2"	35"	25 1/2"	48"	9"				
22	48 1/2	21-22-10 1/2"	35 1/2"	26"	47"	7"				
23	48 1/2	22-23-10 1/2"			47"	8 1/2"				
24	49 1/2	23-24-7 1/2"			47"	10 1/2"				
25	48	24-25-6"			47"	10"				
26	48	25-26-11 1/2"			48"	10"				
27	48 1/2	26-27-8"			48"	9"				
28	50	27-28-10 1/2"			47 1/2	9 1/2"				
29	48	28-29-9 1/2"			50"	9"				
30	48"	29-30-9"			49 1/2	9 3/4"				
31	49	30-31-9"			49	9 1/2"				
32	45 3/4	31-32-9"			47 1/2	9 1/2"				
33	47 1/2	32-33-11 1/2"			48 1/2	4 1/2"				
34	51"	33-34-7 3/4"			50"	13"				
35	47 1/2	34-35-10"			49 1/2	9 1/2"				

3 1/4" steel



From West Edge Row 1-23

VRLM

Steel in Hot 13 - West Side

Row 1 - 14"

Row 2 - 3"

12 3/4" Below 2030.0 → 16 1/2" → 13 1/2"

No. Steel	Row #1	Row #1	Row #2	Row #2	Row #3
below El. 2020	Length	A - a	Length	Φ - Φ	Length
1	48"		36"		47"
2	47 1/2"	1-2-17 1/2"	34 1/2"	33"	49"
3	47"	2-3-17 1/2"	34 1/2"	18 1/4"	46"
4	46 1/2"	3-4-18"	36"	19"	48"
5	49"	4-5-17 1/2"	36 1/2"	22 1/2"	47"
6	47"	5-6-17 1/2"	37"	20 1/2"	48"
7	50"	6-7-19 1/2"	37"	28"	46 1/2"
8	49"	7-8-16 1/2"	34"	21"	46 1/2"
9	46"	8-9-15 1/2"	40"	28"	48"
10	49"	9-10-19"	38"	25 1/2"	49"
11	50 1/2"	10-11-16 1/2"	41"	27"	50 1/2"
12	50 1/2"	11-12-18 1/2"	46 1/2"	25 1/2"	48 1/2"
13	49"	12-13-18"	38 1/2"	30"	50"
14	50"	13-14-17 1/2"	40 1/2"	25 1/2"	57"
15	53"	14-15-19"	42"	26 1/2"	52"
16	49 1/2"	15-16-17 1/2"	35 1/2"	22"	48"
17	49"	16-17-17 1/2"	35 1/2"	25 1/2"	47"
18	49 1/2"	17-18-18 1/4"	37 1/2"	26 1/2"	49 1/2"
19	51"	18-19-18 1/2"	37"	26"	49"
20	50 1/2"	19-20-18"	41 1/2"	24"	46 1/2"
21	50"	20-21-17 1/2"	42"	26 1/4"	50"
22	52"	21-22-18 1/2"	40"	22 1/2"	50"
23	50"	22-23-18"	38"	25"	42"
24	52 1/2"	23-24-18"	41 1/2"	20"	48"
25	52"	24-25-18 1/2"	40"	27 1/2"	43"
26	47 1/2"	25-26-18 1/2"	41"	26 1/2"	39 1/2"
27	49"	26-27-20"	42"	28"	49"
28	49"	27-28-19 1/4"	39"	26 1/2"	50 1/2"
29	47"	28-29-20"	43"	26 1/2"	49"
30	49"	29-30-20 1/2"	25"	21 1/2"	50"
31	51 1/2"	30-31-18 1/2"	43"	22 1/2"	49 1/2"
32	50"	31-32-18"	43"	27 1/2"	53 1/2"
33	49"	32-33-17 1/2"	47"	18 1/2"	51 1/2"
34	50 1/2"	33-34-18 1/2"	44 1/2"	34"	47"
35	51"	34-35-18 1/2"	41"	18 1/4"	48 1/2"

King West Williams 3-5-52

9  
IRLH ✓

Row 3	Row 1	Row 2	Row 3
Φ - Φ	Length	Length	Φ - Φ
34	3/4" - 48"	35-36	9 1/2"
37	1" - 48"	36-37 - 10"	11 1/2"
38	3/4" - 49"	37-38 - 11 3/4"	12 1/2"
39	1" - 49"	38-39 - 4 1/2"	13 1/2"
40	3/4" - 47"	39-40 - 4 1/2"	14 1/2"
41	1" - 50"	40-41 - 5 1/2"	15 1/2"
42	3/4" - 49"	41-42 - 4 1/2"	16 1/2"
43	1" - 50"	42-43 - 4 1/2"	17 1/2"
44	3/4" - 49"	43-44 - 4"	18 1/2"
45	1" - 51"	44-45 - 5"	19 1/2"
46	3/4" - 55"	45-46 - 4 3/4"	20 1/2"
47	1" - 55"	46-47 - 4 1/4"	21 1/2"
48	3/4" - 52"	47-48 - 5"	22 1/2"
49	1" - 51"	48-49 - 5 1/2"	23 1/2"
50	3/4" - 50"	49-50 - 3 1/2"	24 1/2"
51	1" - 50 1/2"	50-1	25 1/2"
52	50	51-2	26 1/2"
53	1" - 47 1/2"	52-3	27 1/2"
54	3/4" - 48"	53-4	28 1/2"
55	1" - 46"	54-5	29 1/2"
56	3/4" - 46"	55-6	30 1/2"
57	1" - 47 1/2"	56-7	31 1/2"
58	3/4" - 47 1/2"	57-8	32 1/2"
59	1" - 46"	58-9	33 1/2"
60	3/4" - 46 1/2"	59-60	34 1/2"
61	1" - 46 1/2"	60-1	35 1/2"
62	3/4" - 49"	61-2	36 1/2"
63	1" - 48 1/2"	62-3	37 1/2"
64	3/4" - 49"	63-4	38 1/2"
65	1" - 47"	64-5	39 1/2"
66	3/4" - 49"	65-6	40 1/2"
67	1" - 48"	66-7	41 1/2"
68	3/4" - 47"	67-8	42 1/2"
69	1" - 48"	68-9	43 1/2"
70	3/4" - 48"	69-70	44 1/2"
71	1" - 57 1/2"	70-1	45 1/2"
72	3/4" - 61"	71-2	46 1/2"
73	1" - 4"	72-3	47 1/2"
74	3/4" - 67"	73-4	48 1/2"

75-8  
74-75-10  
10 1/2"  
60"  
cut  
off



RLH

Steel in Abt 13 - East Side

23' From East edge → 14" 3"

No. Steel	Row 1	Row 2	Row 3
Below E12020	Length 13" below 2030.0	Length 15 1/2" below 2030.	Length 1" below
1	48" 1-2 - 17 1/2	38 1/2	46 1/2
2	47 1/2	33	47
3	48	36 1/4	47
4	49 3-4 - 17 1/4	35	46
5	48 1/2 4-5 - 17 3/4	34 1/2	48
6	49 5-6 - 18 1/4	35 1/4	48
7	49 6-7 - 18 1/2	36	49
8	48 7-8 - 16 1/2	41	49
9	43 8-9 - 15 1/4	39	49
10	46 9-10 - 20	41	47
11	49 10-11 - 15 1/2	40	42
12	50 11-12 - 18"	45 1/2	47
13	49 12-13 - 19"	37	50
14	52 13-14 - 16 3/4	45 1/2	54 1/2
15	46 14-15 - 19 1/2	34"	53
16	46 1/2 15-16 - 17 1/2	42 1/2	50 1/2
17	47 16-17 - 17 1/2	43	49 1/2
18	48 17-18 - 18"	39	50
19	46 1/2 18-19 - 19"	37	50
20	43 1/2 19-20 - 18"	40	49 1/2
21	45 1/2 20-21 - 18"	41	49
22	47 21-22 - 17"	36	49
23	50 22-23 - 18"	42	48
24	49 23-24 - 18"	43 1/2	47 1/2
25	49 24-25 - 19"	45	51
26	50 25-26 - 19 1/2	42 1/2	52
27	50 26-27 - 19"	41"	49
28	50 27-28 - 17 3/4	39 1/2	49 1/2
29	51 28-29 - 18"	41 1/2	51
30	51 29-30 - 18"	41 1/2	51
31	50 30-31 - 18"	41	50
32	49 1/2 31-32 - 18 1/4	32	53
33	49 32-33 - 18"	43	48 1/2
34	50 33-34 - 19 1/4	38 1/2	50
35	49 34-35 - 9 1/2	40	51

RLH

Row 1	Row 2	Row 3	
#	Length	#	
36	3/4 - 39	35-36	8
37	1" - 49 1/2	36-7	8
38	3/4 - 50	37-8	9
39	1" - 51	38-9	11"
40	3/4 - 50	39-10	9
41	1" - 50 1/2	40-1	9 1/2
42	3/4 - 45 1/2	41-2	7 1/2
43	1" - 49 1/2	42-3	9 1/2
44	3/4 - 50	43-4	8 3/4
45	1" - 50	44-5	9 1/2
46	3/4 - 52	45-6	9 1/2
47	1" - 50	46-7	11 1/4
48	3/4 - 46 1/2	47-8	8"
49	1" - 50	48-9	12 1/2
50	3/4 - 51	49-10	7
51	1" - 41	50-1	9 1/2
52	3/4 - 50	51-2	7 3/4
53	1" - 46	52-3	14
54	3/4 - 49	53-4	9 1/2
55	1" - 49	54-5	9 1/2
56	3/4 - 49	55-6	9 1/2
57	1" - 50	56-7	9
58	3/4 - 52	57-8	9
59	1" - 50 1/2	58-9	9 1/2
60	3/4 - 52	59-10	9 3/4
61	1" - 50	60-1	10 1/2
62	3/4 - 50	61-2	8 1/2
63	1" - 47	62-3	7 3/4
64	3/4 - 50	63-4	9"
65	1" - 69	64-5	7
66	3/4 - 66	65-6	7 1/4
67	1" - 68	66-7	8 1/2
68	3/4 - 63	67-8	9 3/4
69	1" - 34	68-9	7 1/2
70	3/4 - 38	69-10	6 1/2



RLH

Steel in Abt. # 12 - West side

12 1/2" below El. 2030.0 ← 1" El. 2030

No. Steel	Length	Row 1	Row 2	Row 3
1	49	1-2	35	48
2	48	2-3	37 1/2	48 1/2
3	49	3-4	38	48 1/2
4	47 1/2	4-5	35	30
5	45 1/2	5-6	35	30
6	49	6-7	36	48 1/2
7	48	7-8	43 1/2	47
8	46 1/2	8-9	41	47
9	29	9-10	40	47 1/2
10	51	10-11	40 1/2	48
11	51 1/2	11-12	41	48 1/2
12	50	12-13	37	51 1/2
13	49	13-14	40 1/2	48 1/2
14	48 1/2	14-15	45	53
15	51 1/2	15-16	42	49 1/2
16	47	16-17	43	48 1/2
17	48	17-18	39 1/2	49 1/2
18	47	18-19	43 1/2	50
19	48	19-20	42	47
20	50	20-1	45	47
21	48 1/2	21-2	41	50
22	45 1/2	22-3	44	50
23	49 1/2	23-4	42	50
24	48 1/2	24-5	41	50 1/2
25	51 1/2	25-6	37	50
26	50	26-7	44	50
27	51	27-8	38	51
28	50 1/2	28-9	40 1/2	51
29	49 1/2	29-30	37 1/2	51
30	50	30-1	41	50
31	49	31-2	42 3/4	50 1/2
32	49	32-3	43	49
33	48	33-4	43	51 1/2
34	46	34-5	34	50
35				

Steel  
3/4"

5"  
1"

3/4"  
1"

Steel  
3/4"

5"  
1"

3/4"  
1"

50-52 King

RLH

No. Steel	Length	Row 1	Row 2	Row 3
36	47	35-36	8 1/2	38"
37	49	36-7	8 1/2	38"
38	49	37-8	8 1/2	38"
39	50 1/2	38-9	9 1/4	38"
40	51	39-10	7	37"
41	51	40-1	9 3/4	38 1/2"
42	51	41-2	7 1/2	37 3/4"
43	51	42-3	8 1/2	37"
44	51	43-4	7	38"
45	49	44-5	8 1/2	37"
46	50	45-6	9	48"
47	49	46-7	9	49"
48	49	47-8	9	50"
49	48 1/2	48-9	9	50"
50	50	49-50	9	51 1/2"
51	49	50-1	9	51"
52	49	51-2	9 1/2	49 1/2"
53	49	52-3	9 3/4	50 1/2"
54	53	53-4	8	50"
55	49 1/2	54-5	9	49"
56	69	55-6	8	39 1/2"
57	49	56-7	8 3/4	42 1/4"
58	46	57-8	9 1/2	45"
59	47 1/2	58-9	8	48 1/2"
60	48 1/2	59-10	8	48"
61	47	60-1	8 1/2	48"
62	47	61-2	8	67"
63	47 1/2	62-3	6 1/4	67"
64	48 1/2	63-4	7	50"
65	50	64-5	8 1/2	50 1/2"
66	49 1/2	65-6	7 1/2	48"
67	49	66-7	9 1/4	49"
68	49	67-8	8	48"
69	48	68-9	4 1/2	48"
70	48	69-10	4 1/4	49"
71	46 1/2	70-1	4 3/4	50"
72	48	71-2	4 1/2	50"

1" Steel



RLH

Steel in 467.12 West side

# Steel	Row #	Length	# R	# L	Row # 3	Length	# R	# L
73	3/4 steel	48	72-73	4 1/2	1 1/2 steel	49	9"	
74	1"	48	73-4	4 1/2		47	10	
75	3/4	47	74-5	4 1/2		48	9 1/4	
76	1	48	75-6	4 1/2				
77	3/4	49	76-7	3 1/2				
78	1	49	77-8	6"				
79	3/4	48 1/2	78-9	4 1/4				
80	1	48 1/2	79-80	5"				
81	3/4	49	80-1	4 1/4				
82	1	49 1/2	81-2	4 1/4				
83	3/4	50 1/2	82-3	5 1/4				
84	1	50 1/2	83-4	4 3/4				
85	3/4	50	84-5	4 1/2				
86	1	49 1/2	85-6	3 3/4				
87	3/4	49"		5"				
88	1	49		4 1/2				
89	3/4	49 1/2		4 1/2				
90	1	45	89-90	4 1/4				
91	3/4	43 1/2		6"				
92	1	46 1/2		2 1/4				
93	3/4	48 1/2		5 3/4				
94	1	48 1/2		4 3/4				
95	3/4	48"		3 3/4				
96	1	48		3 1/2				
97	3/4	50		4 1/2				
98	1	46		4 1/2				
99	3/4	48		4 1/2				
100	1	46	99-100	4 1/2				
101	3/4	48		4 3/4				
102	1	49		6 1/2				
103	3/4	45 1/2		2 1/4				
104	1	48		3 3/4				
105	3/4	45		6 1/2				
106	1	48		5 1/4				
107	3/4	50		5"				
108	1	48		2 1/2				
109	3/4	48	108-109	6 1/4				

3-C-52  
R2119Steel in 407.12  
West side

Typed RLH 12

RLH

# Steel	Row #	Length	# R	# L
110	1"	48 1/2	109-110	2"
111	3/4"	48		4
112	1"	46		4
113	3/4	48 1/2		6
114	1	46 1/2		3
115	3/4	49 1/2		5 1/4
116	1	50 1/2		3 3/4
117	3/4	49 1/2		6 3/4
118	1	49		3 1/2
119	3/4	49		4 3/4
120	1"	47	119-120	4 1/2
121	3/4	47		5"
122	1	51 1/2		3 3/4
123	3/4	54		5"
124	1	52		3 1/2
125	3/4	52		5 1/4
126	1	53		3 3/4
127	3/4	53		4 3/4
128	1	54		3 1/4
129	3/4	53		6
130	1	64 1/2	129-130	4
131	3/4	52		4 1/2
132	1"	56	131-132	4 1/4

Contd Page 18



Sutherland P.L. Check  
Levels - to tunnel #2

King  
West  
Williams

3-20-52

Cold + cloudy

13

R.H.	10.30	1618.26		1607.96
T.P.	13.22	1630.46	1.02	1617.24
T.P.	11.14	1641.00	0.52	1629.94
T.P.	12.99	1646.86	9.21	1633.87
T.P.	13.06	1659.79	0.13	1646.73
T.P.	02.41	1650.59	11.61	1648.18
T.P.	9.75	1652.29	10.05	1640.54
T.P.	11.69	1661.59	0.39	1649.90
T.P.	11.34	1672.75	0.18	1661.41
T.P.	11.28	1683.54	0.49	1672.26
T.P.	13.04	1696.30	0.28	1683.26
T.P.	13.13	1708.75	0.68	1695.62
T.P.	13.00	1721.69	0.06	1708.69
T.P.	12.76	1734.40	0.05	1721.64
T.P.	12.45	1745.91	0.94	1733.46
T.P.	11.20	1757.07	0.04	1745.87
T.P.	12.25	1769.17	0.15	1758.92
T.B.M.	11.92	1776.02	5.20	1763.97
T.P.	12.39	1788.36	0.05	175.97

Spike in P.P. #1 1409.2 - 40W - Sta

on wall

on wall

on wall

Corr.  
1764.10

on hub - 228498<sup>35</sup>

see BK. 236



Check Levels to Tunnel # 2  
Sutherland Pl.

3-20-52  
King  
West  
Williams

cold-cloudy

14

178836

T.P.	13.07	1801.23	0.20	1788.16
T.B.M.	13.05	1814.15	0.13	1801.10
T.B.	12.61	1826.45	0.31	1813.84
T.B.M.	12.63	1839.08	0.00	1826.45
T.P.	11.78	1850.31	0.55	1838.53
T.P.	13.17	1863.22	0.26	1850.05
T.P.	12.44	1875.53	0.13	1863.09
T.B.M.	12.87	1887.27	1.13	1874.40
T.P.	6.76	1893.19	0.84	1886.45
T.B.M.	10.29	1896.88	6.60	1886.59
T.P.	46.51	1896.05	9.34	1889.57
T.P.	4.34	1895.60	-4.79	1891.26
T.P.	4.43	1895.44	4.59	1891.01
T.P.	7.67	1901.50	1.61	1893.88
T.P.	12.00	1904.96	-8.54	1892.96
T.P.	11.34	1915.90	0.40	1904.56
T.P.	12.03	1927.89	0.04	1915.86
T.P.	13.12	1940.55	0.46	1927.43
T.P.	12.65	1952.58	0.82	1939.93

spike East side - Cleveland Natl. Forest sign

Chisled Square Marked with Keel - East Edge Rd. Big Flat Rock

1888.70

on Back in Rd.

GUNNEY East Edge Rd.

Top Tunnel # 3 - Nail in Nakancy gate post

GUNNEY - W. Edge Rd on curve to Pt -

Sat. P.h. Tunnel #2  
- Check Levels

1952.58

T.B.M.

1.112

1941.46 1940.9

T.R.

1182

1964.13

0.37

1952.21

B.M.

2.04

1962.09

50

1961.59

Use  
1961.59

Note: ON Tunnels P.L.

Use Elev. 1961.59 - ON M/GN

This El. set From Dam & checks

With old line B.M.s. - BK 236

3-

Clear - Hot.

13

King - Notes.  
West T  
Williams

old hub - 1714.875 BK 236

Set B.M. ON No. Edge - Top TIN - CONC. MON. 170 + 95.35

El. RY # 14 From The DAM.

1962.09 El. from P.P. - Nile + Magnolia

170 + 95.35 @ - So. Edge Rd.



Levels from B.M. # 12-021  
 Edge Rd. straight East - No.  
 Tunnel Portal # 2 - to Oak tree  
 50' Lt. 143450 - Spike

KING 4-3-52  
 West  
 Williams

B.M.	1.73	2105.35		2103.62
	1.56	96.23	70.68	2094.57
	0.98	85.83	11.38	84.85
	1.09	73.73	13.19	72.64
	0.00	2060.86	12.87	2060.86
	0.40	48.35	12.91	47.95
	0.10	35.19	13.28	35.09
	0.27	2022.38	13.08	2022.11
	0.70	09.49	12.99	09.39
	0.00	1997.20	12.29	1997.20
	0.62	1984.83	12.99	84.21
	0.58	73.20	12.21	72.62
	0.55	61.01	12.74	60.46
	0.47	1948.47	13.07	48.00

# 12 - Edge Co. Rd

B.M.			12.52	1935.95
B.M.	13.07	1949.02		1935.95
	12.88	61.25	0.65	48.37
	12.94	1973.85	0.34	60.91
	13.01	86.1	0.25	73.60

Spike in large Oak 50' Lt 143450



Check Levels

From B.M. #12 - to Oak Tree - 50' ± 143450  
Large Spike

1986.61

13.12	99.73	0.00	1986.61
12.44	2012.69	0.08	99.65
13.01	2024.34	0.72	2011.37
13.27	37.49	0.16	2024.22
12.44	49.96	0.01	37.18
12.91	61.36	1.51	48.45
12.95	74.30	0.01	61.35
13.13	85.85	1.60	72.76
11.25	2097.04	0.51	85.29
10.44	2105.34	2.14	94.90
B.M.		1.67	2103.67    2103.62

4-3-52  
King  
West  
Williams

clear Hot

17

#12 East Edge Co. Rd - East of Tunnel Portal #2  
No. En



RLH

Ext.

Steel in #67.12 - Haunches  
East Side

4-28-52  
King  
W. Higgins  
West

Rain

Typed RLH

18  
RLH

#67.12 East Side on Haunch

Row 3 (cont.)

23" From East Edge  
Row 1

13" From East Edge  
Row 2

3" From East Edge  
Row 3

Row 1 (cont.)

Row 2 (cont.)

Dist. Length Size

Dist.	Length	Size	Dist.	Length	Size	Dist.	Length	Size
0.9	50"	3/4	0.1	48"	5/8	52.2	51"	3/4
2.4	47"	"	1.6	46"	"	53.0	53"	1"
3.9	45"	"	3.0	48"	"	53.8	51"	3/4
5.3	48"	"	4.4	45"	"	54.8	53"	1"
6.9	46"	"	6.0	47"	"	55.1	51"	3/4
8.2	49"	"	7.6	50"	"	55.8	53"	1"
9.8	49"	"	9.2	50"	"	56.3	49"	3/4
11.2	49"	"	10.4	49"	"	57.0	50"	1"
12.2	48"	1"	11.8	43"	"	57.7	50"	3/4
13.8	51"	1"	12.9	48"	3/4	58.3	49"	1"
15.4	49"	1"	14.5	52"	2 1/4	59.1	50"	3/4
17.0	50"	1"	16.0	49"	3/4	59.7	49"	1"
18.7	52"	1"	17.7	51"	3/4	60.4	50"	3/4
21.0	49"	1"	19.3	57"	3/4	61.2	50"	1"
21.7	47"	"	20.9	50"	3/4	62.0	51"	3/4
23.2	48"	"	22.3	49"	3/4	62.6	53"	1"
24.7	48"	"	23.8	49"	3/4	63.3	52"	3/4
26.1	50"	"	25.4	50"	3/4	63.9	53"	1"
27.7	49"	"	26.9	48"	"	64.9	49"	3/4
29.2	48"	"	28.4	47"	"	65.8	50"	1"
30.6	47"	"	30.0	51"	"	66.6	49"	3/4
32.1	50"	"	31.3	49"	"	67.3	49"	1"
33.6	50"	"	32.9	50"	"	67.9	50"	3/4
35.0	47"	"	34.4	50"	"	69.3	50"	3/4
36.7	49"	"	35.8	49"	"	69.8	50"	1"
38.9	57"	"	37.3	50"	"	70.4	50"	3/4
40.2	49"	"	38.7	49"	"	71.1	49"	1/4
41.7	52"	"	40.2	49"	"	71.8	50"	3/4
43.2	50"	"	41.6	49"	"	72.6	49"	1"
44.8	49"	"	43.0	48"	"	73.3	47"	3/4
46.4	49"	3/4	44.5	49"	3/4	74.0	49"	1"
47.0	50"	1"	46.0	46"	1"	74.7	49"	3/4
47.8	47"	3/4	47.5	47"	1"	75.3	49"	1"
48.5	49"	1"	49.0	49"	1"	75.9	48"	3/4
49.4	50"	3/4	50.6	52"	1"	76.7	49"	1"
50.1	50"	1"	51.9	52"	1"	77.2	49"	3/4
50.8	50"	3/4	53.4	50"	1"	77.8	50"	1"
51.4	51"	1"	54.9	51"	1"			

26" From East Edge

9" FROM EAST EDGE



RLH

#6+12  
East SideSuth. Dam  
Steel in Haulches

Row #1 (cont) size

	Length	Size
78.5	49	3/4
79.2	49	1
79.8	51	3/4
80.5	49	1"
81.2	49	3/4
81.7	46	1
82.6	47	3/4
83.2	49	1
83.9	48	3/4
84.6	48	1
85.3	50	3/4
85.8	48	1"
86.5	49	3/4
87.2	49	1
87.8	48	3/4
88.6	48	1"
89.2	47	3/4
89.9	49	1
90.6	49	3/4
91.3	49	1
91.9	48	3/4
92.4	51	1
93.2	51	3/4
93.9	51	1
94.5	49	3/4
95.2	50	1
95.9	48	3/4
96.5	67	1
97.3	50	3/4
97.5	46	3/4
97.6	57	1/2"
97.8	70	1"
98.5	68	3/4

45" From Front  
Edge #12

1969

King  
Williams  
Martel

4-29-52 - Cool - Rain

#6+11 - West Side on Haulche

19

Row #1 (Ext)  
23' From West Edge  
0+00 = E1.2020Row 2 (Middle)  
13' From West EdgeRow 3 (Int)  
3' IN FROM West side

Length	Size	Length	Size	Length	Size
0.5	15"	3/4"	0.8	36"	3/4"
2.0	47"	"	2.6	36"	↓
3.5	46"	"	4.7	34"	
4.9	47"	"	6.6	36"	
6.5	48"	"	9.0	38"	
8.0	48"	"	10.6	37"	
9.4	47"	"	12.6	43"	
10.9	48"	"	14.8	38"	
12.4	48"	"	17.0	40"	
14.0	48"	"	19.4	41"	
15.4	47"	"	21.4	35"	
16.9	48"	1	23.4	39	
18.4	48	3/4	25.7	42	
19.9	44"	1"	27.9	40	
21.3	29	1"	30.2	36	
22.7	46"	1"	32.1	34	
24.2	46	1"	34.2	41	
25.8	54"	1	36.4	41	
27.3	55	1	38.6	43	
28.8	55	1	40.4	41	
30.3	57"	1"	42.5	37"	
31.9	52"	1"	44.7	41	
33.4	49"	1"	46.9	37	
34.8	48"	1"	48.9	37	
36.4	46"	1"	50.7	38	
37.7	46"	1"	52.8	40"	
39.0	51	1"	55.0	39	
40.3	48	1"	57.2	34	
41.6	49	1"	59.3	38	
43.2	48	1	61.1	40"	
44.6	50"	1"	63.2	40"	
46.2	49"	1"	64.7	38"	
47.6	45"	1"	66.9	38	
49.1	47"	1"	69.0	36"	
50.9	49"	1"	71.3	40"	
51.6	50"	3/4"	73.4	39"	
52.2	51"	1	75.7	37"	
52.8	51	3/4	77.6	39"	↑
53.5	51	1"	79.7	39"	3/4
					57.1
					58



Ext ✓ Row 1 (Cont'd)			Middle ✓ Row 2 (Cont'd)			Int ✓ Row 3		
	Length	Size						
54.3	51	3/4	82.0	38	3/4	58.5	48	1"
54.9	50	1	83.7	38"	↓	59.7	48"	↓
55.5	49	3/4	85.8	39"		60.8	50"	
56.2	49	1	87.9	40"		62.2	50"	
56.9	49	3/4	89.9	39"		63.6	43"	
57.5	49	1"	92.0	40"		64.9	47"	
58.1	48	3/4	93.5	38"		66.2	46"	
58.8	48	1"	94.2	40"		67.5	45"	
59.4	49	3/4	94.9	40"		68.9	47	
60.1	47"	1"	95.7	41"		70.2	45-	
60.8	49"	3/4	96.5	39"		71.2	46	
61.7	49	1"	97.2	42"		72.6	48	
62.6	47	3/4	98.0	38"		73.7	49	
63.2	43	1"	98.7	41		75.0	49	
64.0	43"	3/4	99.3	48	↑	76.3	48"	
64.8	44"	1	100.0	44"	3/4"	77.7	49"	
65.5	42"	3/4	100.8	37"	↓	78.7	49"	
66.1	42	1"	102.3	40"		80.3	48"	
66.7	44	3/4	103.9	46		81.7	46	
67.2	43	1"	105.4	39"		82.8	48"	
67.9	45	3/4	107.5	39"		84.2	49"	
68.6	45	1"	109.0	39"		85.4	50	
69.4	46	3/4	110.5	38"		86.8	49"	
69.8	46	1	112.2	38		88.2	49	
70.5	46	3/4	113.4	38		89.3	44"	
71.1	46	1	115.2	40		90.9	47"	
71.7	48	3/4	116.9	39	↑	91.7	48"	
72.3	54	1"	118.2	38	3/4"	93.2	51"	
72.8	49	3/4	22"	From West Edge		94.0	51"	
73.5	49	1				94.8	47	
74.1	49	3/4				95.5	50	
74.6	48	1				96.2	50	
75.1	48	3/4				97.1	50	
75.6	49	1				97.8	50	
76.3	50	3/4				98.6	49	
76.8	50	1				99.1	61	↓
77.6	51	3/4				100	75"	1"
78.5	51	1				101.2	46	1"

Ext ✓ Row 1 (Cont'd)			Int ✓ Row 3 (Cont'd)		
	Length	Size			
79.0	50	3/4	102.8	51"	1"
79.7	49	1	104.3	48"	↓
80.4	49	3/4	105.8	49"	
81.0	49	1"	107.4	47"	
81.7	49	3/4	108.9	43	
82.1	49	1	110.4	44	
82.5	48	3/4	112.0	46	
83.5	48	1"	113.6	45	
84.0	49	3/4	115.1	44	
84.8	49	1"	116.6	47	
85.5	49	3/4	117.8	59"	
86.2	50	1"	5" - West Edge		
87.0	49"	3/4			
87.2	49	1"			
88.1	49	3/4			
88.8	43	1"			
89.6	43	3/4			
90.4	47	1"			
90.6	45"	3/4			
91.5	50"	1"			
92.1	47	3/4			
93.0	46	1"			
93.8	43"	3/4			
94.5	46	1"			
94.9	44	3/4			38
95.4	44	3/4			
95.7	45	1			
96.0	47	1			
96.2	41	3/4			
97.0	40	3/4			
97.3	42	1"			
97.5	41	3/4			
98.8	41	3/4			
98.6	40	3/4			
98.7	54	1"			
98.9	64	1"			
99.3	54	3/4			
99.7	48	3/4			
100	73	1"			



Abt # 11 - Steel in Haunch - East side

May - 4-29-52

Abt # 11 - Steel in Haunches

West side

Ext  
Row # 1 - East side  
23" From East Edge

Middle  
Row # 2 - East  
13" From East Edge

Int  
3" From East Edge

Ext  
Row 1 - East side

Row	Length	Size	1.5	46"	3/4	0.4	38"
700-3	49	1"	3.0	48	↓	2.3	35"
101.2	50	3/4	4.5	45		4.0	36"
102.0	49	1"	6.0	47		6.2	38"
103.0	50	3/4	7.5	46		8.3	36"
103.6	50	1"	9.0	49		10.2	37"
104.4	49	3/4	10.5	49		12.3	42
105.1	50	1"	12.3	48		14.2	39
106.0	49	3/4	13.7	49		16.6	42
107.0	41	1"	15.2	50		18.8	41
107.7	46	3/4	16.6	49"	↑	20.8	40
108.5	48	1"	18.2	49"	3/4	23.4	32
109.2	48	3/4	19.7	47	1"	25.5	31
109.9	49.0	1"	21.2	44	1"	27.7	35
110.8	49	3/4	22.6	46	1"	29.6	35
111.4	49	1"	24.1	46	1"	31.4	33
112.2	46	3/4	25.6	49	1"	33.7	36
113.0	50	1"	27.0	53	1"	35.6	34
113.8	48	3/4	28.6	53	1"	37.7	40
114.5	49	1"	30.1	51	7"	39.9	38
115.3	49	3/4	31.6	49	1"	42.1	39
116.0	50	1"	33.2	45	1"	44.2	40
116.7	49	3/4	34.5	49	1"	46.1	40
117.4	71	1"	36.1	49	1"	48.1	41
↓ 43.2	To West Edge		37.5	47	1"	50.7	39
			38.9	48	1"	52.7	41
			40.3	49	1"	55.0	35
			41.6	49	1"	56.9	36
			43.0	49	1"	59.3	39
			44.4	51	1"	61.2	39
			46.0	51	1"	63.0	39
			47.5	49	1"	65.3	39
			48.9	49	1"	67.4	38
			50.7	46	1"	69.5	39
			51.3	48	3/4	71.4	38
			52.0	48	1"	73.4	37
			52.6	49	3/4	75.5	36
			53.4	50	1"	77.3	38

Row # 3 - East	Length	Size	54.0	50	3/4
0.7	49"	5/8	54.0	50	3/4
2.0	42"	↓	54.7	50"	1
3.4	49"		55.2	49"	3/4
5.0	49"		56.0	43"	1
6.5	49"		56.5	44	3/4
8.0	48"		57.4	43	1
9.5	46"		57.8	45"	3/4
10.9	49"		58.5	47	1"
12.6	50"		59.1	46	3/4
14.1	49"		59.8	48	1
15.7	49"		60.4	50	3/4
17.1	47"	↑	60.9	50	1
18.8	49"	5/8	61.5	51	3/4
20.3	48	3/4	62.3	50	1
21.6	47"	↓	63.0	51	3/4
23.1	46"		63.8	48	1
24.5	46"		64.5	47	3/4
26.1	47"		65.1	47	1
27.6	47"		65.8	46	3/4
29.1	49"		66.5	46	1
30.7	50"		67.0	46	3/4
32.2	48		67.7	47	1
33.9	48		68.3	47	3/4
35.2	49		68.9	48	1
36.7	50"		69.6	48	3/4
38.1	48		70.3	49	1
39.6	49		71.0	47	3/4
41.1	48"		71.5	48	1
42.6	50		72.1	48	3/4
44.2	50		72.9	49	1
45.6	48		73.6	48	3/4
47.2	47		74.2	48	1
48.6	46	↑	74.9	49	3/4
50.2	48	3/4	75.6	48	1
51.0	48	1"	76.3	50	3/4
53.0	49	1	76.9	49	1
54.2	49	1	77.5	49	3/4



Steel in Hdt 11 - Havnch  
East Side

(Ext)			(Middle)		
Row	East (cont)		Row	East (cont)	
78.1	49	1"	79.4	37	3/4"
78.8	49	3/4"	81.8	38	↓
79.5	50	1	83.9	36	
80.1	50	3/4"	86.0	38	
80.8	47	1"	90.1	39	
81.5	48	3/4"	92.3	42	
82.1	49	1"	93.6	37	
82.8	48	3/4"	95.3	37	
83.5	49	1	96.6	36	
84.2	49	3/4"	98.1	36	
84.9	49	1	99.5	29"	
85.5	49	3/4"	101.0	37	
86.2	48	1	102.5	35	
86.9	48	3/4"	104.2	37	
87.5	49	1	105.6	35"	
88.2	49	3/4"	107.4	44"	
89.0	47	1	108.8	37	
89.5	47	3/4"	110.3	37	
90.4	50	1	111.7	39"	
91.0	52	3/4"	113.3	38"	
91.7	50	1	114.8	38"	
92.5	46	3/4"	116.3	38"	
93.1	50	1	117.9	39	
93.9	50	3/4"	↓		
94.6	50	1	21" TO East Edge		
95.4	53	3/4"			
96.1	51	1"			
96.8	50	3/4"			
97.5	53	1"			
98.4	52	3/4"			
98.9	53	1			
99.9	49	3/4"			
100.6	47	1			
101.5	47	3/4"			
102.1	48	1			
103.1	46	3/4"			
103.8	47	1			
104.6	47	3/4"			

King - 4-29-52

Hdt 11 - Steel on East Side  
Havnch 22

(Int)		(Ext)			(Int)		
Row	East (cont)	Row	East	size	Row	East (cont)	
55.7	49"	105.3	48"	1"	107.1	46	1"
56.9	50	106.1	45"	3/4"	108.6	50"	↓
58.3	49	106.8	45"	1"	110.2	46"	
59.6	48	107.6	49"	3/4"	116.6	45"	
60.9	49"	108.2	42	1	118.1	48"	
62.1	49"	109.0	48	3/4"	114.6	49	
63.5	48"	109.7	47	1	116.1	63"	
64.8	48	110.5	48	3/4"	117.8	79"	
66.0	49	111.3	49	1	↓ 5" TO East Edge		
67.3	48"	112.0	48	3/4"			
68.7	49	112.7	49	1			
70.0	49	113.5	49	3/4"			
71.4	47	114.3	48	1			
72.4	46	115.1	49	3/4"			
73.7	46	115.8	58"	1			
75.0	46	116.4	48	3/4"			
76.3	45	117.1	76"	1"			
77.7	47"	↓ 45" FROM East Edge					
79.0	46						
80.4	49						
81.4	49						
82.7	48						
84.0	48						
85.4	49						
86.7	47						
88.0	47						
89.3	50						
90.6	54						
92.2	50						
93.5	46						
95.1	43						
96.6	48						
98.0	53						
99.6	75						
100.5	44						
102.5	48						
104.1	49						
105.6	50						



Steel #67 #10 - Havnch  
West side

King. 4-29-52

Steel #67 #10 Havnch  
West side

23

EXT			Mid			Row # 3		
Row # 1 - 0400 = E/2030 23" From West Edge			13" From West Edge Row # 2					
Size	Dist	Reading	Size	Dist	Reading	Size	Dist	Reading
0.3	47"	3/4	0.4	33"	3/4			
2.3	48"	↓	2.1	48"	↓			
3.7	47"	↓	4.4	38"				
5.4	47"		6.7	36"				
6.9	47"		8.8	37"				
8.4	47"		11.0	36"				
10.2	47"		12.9	44"				
11.5	48"		14.8	36"				
13.0	47"		15.8	33"				
14.6	47"		18.8	35"	↑			
16.0	47"		20.8	36"	3/4			
17.6	48"	↑	23.8	34" →	1"			
19.0	49	3/4	25.8	36"	↓			
20.5	46	→ 1"	27.9	36"				
22.0	46	↓	29.8	36"				
23.3	46		32.3	35"				
24.7	46"		34.8	39"	↑			
26.1	47		37.6	37"	1"			
27.7	47"		38.6	41"	→ 3/4			
29.2	45		40.8	41"	↓			
30.8	49"		42.8	41"				
32.4	46"		45.1	39"				
33.8	48"		37.4	42"				
35.4	47"		39.8	42"				
36.8	46"		41.9	40"				
38.4	46"		44.1	39"				
39.9	46"		55.8	38"				
41.5	50	2000	57.9	37"				
42.9	45		60.0	37"				
44.4	49		61.8	36"				
45.9	48		64.0	39"				
47.4	50		66.1	38"				
48.8	49		68.1	38"				
50.3	48	↑	70.1	38"				
51.9	50	1"	72.3	41"				
53.4	48"	3/4	74.5	40"				
54.1	48	1"	76.6	41"	↑			
54.9	50	3/4	78.6	40"	3/4			

EXT			EXT			EXT		
Row # 1 (Contd)			Row # 1 (Contd)			Row # 1 (Contd)		
Size	Dist	Reading	Size	Dist	Reading	Size	Dist	Reading
55.6	53"	1"	82.9	48	1"	108.9	46	1"
56.4	50	3/4	83.4	49	3/4	109.7	46	3/4
57.1	50	1"	84.2	50	1"	110.8	47	1"
57.8	51	3/4	84.8	49	3/4	110.7	48	3/4
58.6	50	1"	85.5	50	1"	111.6	48	1"
59.4	51	3/4	86.2	49	3/4	112.3	49	3/4
60.1	50	mid	86.9	49	1"	112.9	48	1"
60.8	49	3/4	87.4	49	3/4	113.6	49	3/4
61.6	50	1"	87.9	48	1"	114.3	39	1"
62.3	49	3/4	88.7	48	3/4	114.8	39	3/4
63.0	50	1"	89.3	49	1"	115.5	42	1"
63.8	52	3/4	90.1	49	3/4	116.2	45	3/4
64.6	47	1"	90.7	49	1"	116.8	51	1"
65.5	49	3/4	91.7	49	3/4	117.8	48	3/4
66.1	48	1"	92.4	53	1"	118.4	49 1946	1"
66.9	50	3/4	93.2	50	3/4	119.4	49	3/4
67.7	49	1"	93.9	49	1"	120.0	49	1"
68.4	50	3/4	94.7	49	3/4	120.8	49	3/4
69.1	50	1"	95.5	49	1"	121.5	47	1"
69.9	48	3/4	96.2	50	3/4	122.2	48	3/4
70.7	48"	1"	96.9	50	1"	123.0	47	1"
71.4	49	3/4	97.7	49	3/4	123.9	4.9	3/4
72.3	47	1"	98.4	51	1"	124.8	50	1"
73.1	49	3/4	99.2	48	3/4	125.7	50	3/4
73.9	50	1"	99.9	48"	1"	126.4	50	1"
74.5	50	3/4	100.5	48	3/4	127.2	57	3/4
75.2	49	1"	101.1	49	1"	128.0	49	1"
75.9	50	3/4	101.9	48	3/4	128.8	48	3/4
76.4	49	1"	102.4	49	1"	129.5	49	1"
77.1	50	3/4	103.0	49	3/4	130.3	48	3/4
77.8	49	1"	103.7	49	1"	130.9	49	1"
78.4	48	3/4	104.4	49	3/4	131.8	48	3/4
79.1	48	1"	105.2	49	1"	132.5	48	1"
79.7	50	3/4	105.7	49	3/4	133.6	41	1"
80.4	50	1"	106.4	48	1"	134.3	44	3/4
80.9	49	3/4	106.7	48	3/4	134.8	44	1"
81.5	50	1"	107.6	47	1"	135.6	46	3/4
82.4	50	3/4	108.3	47	3/4			



Steel #6x10 Haunched  
West Side

Ring 4-30-52

#6x10

24

Row # 2 (Cont'd)	Mid	Ext	Row # 3	Int	3" From West Edge
80.7	40"	3/4	136.4	47"	1"
82.9	35"	↓	137.1	46"	3/4
85.1	36"		137.9	48	1"
87.0	34"		138.6	47	3/4
89.4	40		139.4	48	1"
91.5	38		140.2	48	3/4
93.5	38		140.9	60"	1"
95.6	37				↓ 49" From West Edge
97.8	39	↑			
99.7	34"	3/4			
102.0	38"	↓			
104.1	36"				
106.3	37"				
108.9	36"				
111.4	35"				
113.3	37"				
115.3	35"				
117.5	48"				
119.0	38				
120.6	37				
122.0	38"				
123.6	36"				
125.0	46"				
127.0	39"				
128.5	39				
130.0	40				
131.7	38				
133.0	39				
135.5	39	↑			
136.9	39	3/4			
138.4	52"	"			
140.0	58"				
141.4	47"	3/4			
		↓ 26" In From West Edge			

Row 3 - West Side	Int	Row # 3 - West	Int
58.4	47"	109.6	49
60.9	48	110.9	49
61.4	48	112.2	48
62.9	47	113.6	48
64.5	51	114.9	52
66.4	51	116.1	49
67.9	49	117.4	48
69.4	48	118.9	49
71.0	51	120.5	49
72.5	48	122.0	50
74.0	50	123.4	52
75.4	48	124.9	63"
76.5	48	126.9	48"
77.8	48	128.4	49
79.1	49	129.9	49
80.5	43"	131.5	48
81.8	47	132.8	48
83.0	48	135.8	48
84.4	47"	135.1	47
85.8	51	136.7	48
87.0	48	138.2	56"
88.4	44		
89.6	49	139.8	50
91.0	48	140.9	53"
92.3	49		↓ 5" From West Edge
92.8	48		
95.1	49		
96.4	50		
97.4	50		
98.9	50		
100.4	49"		
101.7	49		
103.0	50		
104.3	50		
105.6	42		
106.9	48		
108.1	50		



Steel #6710-Haunch  
East side

King 4-30-52 Steel #6710-Haunch  
East side

25

0700 = El. 2030			(Ext) Row #1		(Ext) Row #1			
23" From East Edge	East Edge		55.0	45	1"	82.7	51"	1"
0.9	46"	3/4"	55.7	48	3/4	83.4	40	3/4
2.4	47	↓	56.4	48	1"	84.2	50	1"
4.0	47		57.2	48	3/4	84.7	52	3/4
5.5	47		58.0	48	1"	85.4	50	1"
6.9	47"		58.7	50	3/4	86.1	49	3/4
8.4	47		59.4	50	1"	86.9	49	1"
10.0	48		60.2	51	3/4	87.8	49	3/4
11.5	48"		60.8	48	1"	88.7	49	1"
13.0	48		61.7	52	3/4	89.5	48	3/4
14.5	48		62.4	52	1"	90.3	48	1"
16.0	47		63.2	47	3/4	90.9	49	3/4
17.5	47"	↑	64.0	53	1"	91.8	49	1"
19.0	47"	3/4	64.8	47	3/4	92.4	49	3/4
20.5	47	1"	66.0	48	1"	93.2	48	1"
22.0	47	↓	67.7	49	3/4	93.9	48	3/4
23.5	48		67.5	48	1"	94.6	50	1"
25.0	49		68.2	49	3/4	95.5	49	3/4
26.6	47		68.9	48	1"	96.4	49	1"
27.9	47		69.6	51"	3/4	97.0	48	3/4
29.4	49		70.4	48	1"	97.7	44"	1"
30.9	48		71.2	49	3/4	98.4	45	3/4
32.5	47		72.0	50	1"	99.3	47	1"
34.0	48		72.6	51"	3/4	100.0	50	3/4
35.5	48		73.1	49	1"	100.7	47	1"
37.0	46		73.9	50	3/4	101.4	50	3/4
38.4	48		74.5	49	1"	102.1	47	1"
39.7	50"		75.2	51	3/4	102.6	49	3/4
41.4	49		75.9	49	1"	103.2	50	1"
42.9	50		76.5	48	3/4	104.1	48	3/4
44.4	47		77.3	48	1"	104.7	50	1"
45.9	49"		78.0	49	3/4	105.4	49	3/4
47.4	48		78.5	49	1"	106.1	49	1"
48.9	50		79.2	51	3/4	106.9	49	3/4
50.4	49		79.9	49	1"	107.7	49	1"
51.8	49		80.9	49	3/4	108.5	47	3/4
53.3	48	1"	81.5	49	1"	109.1	46	1"
54.2	47	3/4	82.0	50	3/4	109.9	46	3/4

(Ext) Row #1 - East		# 13" From Edge Row 2 - East side		(Mid) Row # East side	
110.3	47"	1"			
110.8	47"	3/4	0.4	37"	3/4
111.5	48	1"	2.2	38	↓
112.3	47	3/4	4.8	37"	
112.9	47	1"	6.6	38	
113.6	48	3/4	8.7	37"	
114.2	48	1"	10.8	38	
114.8	48	3/4	12.9	31	
115.4	47	1"	14.8	36	
116.2	49	3/4	16.9	36"	
116.7	49	1"	19.0	34"	↑
117.7	47	3/4	21.2	34	3/4"
118.5	48	1"	23.3	34	1"
119.3	48	3/4	25.5	34	↓
119.9	50	↓ 1946	27.6	36	
121.7	49	3/4	29.6	36	
121.4	50	1"	32.0	36	
122.4	48	3/4	34.2	37	↑
122.9	48	1"	36.3	40"	1"
123.7	49	3/4	38.4	40"	3/4
124.4	49	1"	41.3	44	↓
125.9	46	3/4	43.6	38"	
126.5	48	1"	46.0	42.0	
127.3	48	3/4	48.4	36"	
128.0	49	1"	50.5	37"	
128.4	49	3/4	52.5	42.0	
129.5	47	1"	54.4	41	
130.3	45	3/4	56.6	41	
131.1	47	1"	58.8	34"	
131.8	46	3/4	60.9	35"	
132.6	48	1"	62.1	43	
133.4	45	1"	64.9	38	
134.3	43	3/4	67.1	37	
135.7	45	3/4	69.2	41	
136.6	48	1"	71.1	38	
137.4	48	3/4	73.0	40	
138.1	47	1"	75.5	37	↓ 28" From East Edge
			77.5	42	3/4



(Ext) Row #1 - East			(Int) 3" From East Edge Row #3			(Int) Row #3		
138.8	49"	3/4"	0.0	46"	5/8"	57.0	49"	1"
139.6	48"	1"	1.6	47"	↓	58.0	51"	↓
140.5	49"	3/4"	3.2	48"		59.4	50"	
141.0	50"	1"	4.8	48"		61.0	49"	
↓ 50" From East Edge			6.2	48"		62.5	49"	
			7.8	48"		64.0	49"	
			9.4	47"		65.5	48"	
			10.8	48"		67.0	49"	
			12.3	47"		68.6	51"	
			13.7	48"		70.1	48"	
			15.2	48"		71.9	48"	
			16.6	47"		73.2	50"	X
			18.1	48"	↑	74.5	48"	
			19.6	48"	1 5/8	75.8	47"	
			21.0	49"	3/4	77.2	48"	
			22.6	48"	↓	78.8	46"	
			23.9	45"		79.7	47"	
			25.6	48"		81.3	45"	
			27.1	47"		82.3	48"	
			28.5	48"		83.8	48"	
			30.1	46"		84.8	47"	
			31.6	47"		86.1	47"	
			33.1	46"		87.5	48"	
			34.6	47"		88.6	48"	
			36.1	48"		89.9	49"	
			37.3	47"		91.3	49"	
			39.0	46"		92.2	49"	
			40.5	47"	2 000	93.9	48"	
			41.9	48"		95.2	49"	
			43.5	51"		96.6	50"	
			45.0	50"		97.6	49"	
			46.5	47"		98.7	51"	
			47.9	45"		99.7	50"	↑
			49.5	50"		100.9	47"	↓
			51.0	52"		101.9	49"	↓
			52.5	50"	3/4	103.1	49"	
			54.0	41"	1"	104.4	48"	
			55.6	26"	1"	105.4	49"	1"

Abt. #10 - East

(Int) Row #3 East Edge		
106.7	45"	1"
108.2	47"	↓
109.6	48"	
110.9	46"	
112.2	47"	
113.6	47"	
114.9	48"	
115.9	49"	1946
117.3	48"	
118.9	47"	
120.4	49"	
122.0	49"	
123.5	50"	1940
125.0	60"	
127.1	47"	
128.6	48"	
130.1	46"	
131.5	45"	
133.1	51"	1939
135.3	46"	
136.8	47"	
138.4	51"	
139.9	50"	
141.5	63"	
↓ 5" From East Edge		



Steel in Hbt #9 West side

Havnd

Hbt #9 - West

Ext  
Row #1  
0700 = 2030.0  
2 3" From West Edge

Ext  
Row #1 - West

Ext  
Row 1 West

Ext  
Row #1 West

Row 1 West

Mid  
13" From Edge

Row #2 - West

0.4	47"	3/4	57.9	48	1"	82.3	49	1"
1.5	47"	↓	55.7	41"	3/4	83.0	50	3/4
3.3	47"		56.4	48	1	83.6	48	1
4.7	47"		57.2	43	3/4	84.3	49	3/4
6.5	48		58.0	46	1	84.9	49	1
7.8	39 ← 2024		58.8	48	3/4	85.6	49	3/4
9.3	47		59.5	48	1 <sup>1908</sup>	86.2	48	1
10.7	47		60.3	47	3/4	86.9	50	3/4
12.2	47		61.0	48	1	87.6	48	1
13.6	48		61.8	46	3/4	88.0	50	3/4
15.0	48		62.5	47	1	88.6	47	1
16.5	48 ← 2018 ↑		63.2	48	3/4	89.3	47	3/4
18.0	48		64.0	53"	1	90.0	45	1
19.4	48	3/4	64.9	48	3/4	91.0	46	3/4
21.0	48	1"	65.3	51	1	91.6	45	1
22.7	47	↓	66.2	52	3/4	92.3	48	3/4
24.3	47		66.9	50	3/4	93.0	48	1 <sup>1949</sup>
25.5	47 ← 2012		67.6	50	3/4	93.9	48	3/4
27.2	47		68.3	49	1"	94.6	48	1
28.7	48		69.0	49	3/4	95.2	48	3/4
30.4	46		69.8	48	1 <sup>1902</sup>	95.9	46	1
31.8	46		70.5	49	3/4	96.8	48	3/4
33.3	47 ← 2006		71.3	48	1	97.5	48	1
34.7	47		72.0	49	3/4	98.2	49	3/4
36.2	46		72.8	48	1"	98.8	49	1
37.7	46		73.5	49	3/4	99.6	49	3/4
39.1	48		74.3	50"	1	100.2	49	1
40.7	48		75.0	50	3/4	101.0	49	3/4
42.2	49 ← 2000		75.6	50	1	101.7	49	1
43.8	48		76.3	51	3/4	102.6	49	3/4 <sup>1958</sup>
45.1	48		77.0	47	1 <sup>1926</sup>	103.1	50	1
46.7	48		77.6	49	3/4	104.0	49	3/4
48.1	49		78.2	50	1	104.7	48	1
49.6	49		79.0	50	3/4	105.6	49	3/4
51.1	48 ← 1997 ↑		79.7	49	1"	106.3	49	1
52.7	48		80.2	49	3/4	107.1	49	3/4
54.0	49	1"	81.0	48	1	107.8	49	1
			81.7	47	3/4	108.7	47	3/4

109.4	49"	1"	109.4	49"	1"	109.4	49"	1"
110.2	49	3/4	110.2	49	3/4	110.2	49	3/4
110.8	49	1	110.8	49	1	110.8	49	1
111.8	48	3/4 ← 1952	111.8	48	3/4	111.8	48	3/4
112.5	50	1	112.5	50	1	112.5	50	1
113.4	49	3/4	113.4	49	3/4	113.4	49	3/4
114.1	49	1	114.1	49	1	114.1	49	1
115.0	35	3/4	115.0	35	3/4	115.0	35	3/4
115.6	35	1	115.6	35	1	115.6	35	1
116.7	36	3/4	116.7	36	3/4	116.7	36	3/4
117.2	27	1	117.2	27	1	117.2	27	1
117.8	38	3/4	117.8	38	3/4	117.8	38	3/4
118.6	47	1"	118.6	47	1"	118.6	47	1"
119.2	36	3/4 ← 1946	119.2	36	3/4	119.2	36	3/4
120.1	48	1"	120.1	48	1"	120.1	48	1"
120.8	38	3/4	120.8	38	3/4	120.8	38	3/4
121.6	49	1"	121.6	49	1"	121.6	49	1"
122.3	35	3/4	122.3	35	3/4	122.3	35	3/4
123.1	48	1	123.1	48	1	123.1	48	1
123.8	36	3/4	123.8	36	3/4	123.8	36	3/4
124.5	48	1	124.5	48	1	124.5	48	1
125.2	44	3/4	125.2	44	3/4	125.2	44	3/4
125.9	52"	1" ← 1940	125.9	52"	1"	125.9	52"	1"

↓ 47" From Edge - West  
Note: Not End of Havn  
See page 29

0.9	34	3/4	0.9	34	3/4	0.9	34	3/4
2.8	35	↓	2.8	35	↓	2.8	35	↓
4.4	37		4.4	37		4.4	37	
7.0	35		7.0	35		7.0	35	
9.0	35		9.0	35		9.0	35	
11.2	34		11.2	34		11.2	34	
13.4	35		13.4	35		13.4	35	
15.7	34		15.7	34		15.7	34	
17.7	36		17.7	36		17.7	36	
20.2	33		20.2	33		20.2	33	
22.1	35		22.1	35		22.1	35	
24.1	37		24.1	37		24.1	37	
26.5	37		26.5	37		26.5	37	
28.5	37	↑	28.5	37	↑	28.5	37	↑
30.9	38	3/4	30.9	38	3/4	30.9	38	3/4
33.0	35	1"	33.0	35	1"	33.0	35	1"
35.4	34	↓	35.4	34	↓	35.4	34	↓
37.3	35		37.3	35		37.3	35	
39.2	36	1"	39.2	36	1"	39.2	36	1"
41.5	40	3/4	41.5	40	3/4	41.5	40	3/4
43.7	39	↓	43.7	39	↓	43.7	39	↓
46.1	37		46.1	37		46.1	37	
48.2	37		48.2	37		48.2	37	
50.5	36		50.5	36		50.5	36	
52.6	38		52.6	38		52.6	38	
54.7	39		54.7	39		54.7	39	
56.1	34"		56.1	34"		56.1	34"	
59.0	38"		59.0	38"		59.0	38"	
61.0	38		61.0	38		61.0	38	
63.2	36		63.2	36		63.2	36	
65.3	38		65.3	38		65.3	38	
67.1	32		67.1	32		67.1	32	
69.0	36		69.0	36		69.0	36	
71.2	32		71.2	32		71.2	32	
73.3	39		73.3	39		73.3	39	
75.0	37		75.0	37		75.0	37	
77.4	39		77.4	39		77.4	39	
79.6	40		79.6	40		79.6	40	



## Steel in #9 - West Side Haulch.

Mid	Int	Int
Row # 2 - West	3" From Edge Row # 3 - West	Row # 3 - West
81.8 37" 3/4	0.8 47" 5/8	52.8 47" 1"
83.6 31 ↓	2.3 46 ↓	59.3 48" ← 1988
85.6 40"	3.8 45"	61.0 55" ↓
87.7 33"	5.3 48"	62.4 55"
89.6 33"	6.8 48"	64.6 48
91.6 27	8.3 44 ← 2024	66.1 50
94.1 32	9.8 48	67.6 49
95.8 34	11.3 48	69.1 49 ← 1982
98.2 41	12.7 49	70.6 49
100.2 36	14.2 49	72.2 49
102.4 34	15.7 48	73.7 51
104.3 35	17.2 48 ← 2018	75.0 49
106.0 34	18.7 49 ↑	76.2 48 ← 1976
108.5 33	20.1 49" 5/8	77.7 48
110.3 32	22.0 50" 3/4	78.8 48
112.4 35	23.4 49 ↓	80.3 49
114.6 35	25.0 48 ← 2012	81.8 48
116.0 37	26.7 48	83.3 48
117.5 37	28.0 47	84.7 47 ← 1970
119.0 38	29.4 48	86.0 48
120.5 38	30.8 46"	87.3 48
122.0 37	32.5 49	88.6 50"
123.9 40	34.0 48 ← 2006	90.0 48
125.0 38	35.4 47	91.5 49
↓ 27" From Edge	36.9 47	93.0 48 ← 1964
Note: See Page 29	38.4 48	94.2 49
	39.9 47	95.3 49
	41.4 58	96.6 49
	42.9 50 ← 2000	98.1 49
	44.5 48	99.3 48
	45.9 47	100.3 48
	47.4 50	101.6 48 ← 1958
	49.0 49"	103.0 49
	50.4 50 ← 1999 ↑	104.3 48
	51.8 49	105.5 46
	53.3 50 3/4	106.8 49
	54.7 48 1"	108.1 50 ↑
	56.3 45 ↓	109.5 55 1"

King - 4-30-52

AGT 9 - West

20

Int
Row # 3 - West
110.8 55" 1" ← 1952
112.1 51" ↓
113.4 51"
114.6 51"
115.7 59
117.5 49 ← 1978
119.0 49
120.6 49
122.0 46
123.6 50
125.1 49 1"
126.3 71 1" ← 1940
End 5" From Edge

Note: See page 29



Steel in Abt 9 - Haunch, West side

1/2" Round Steel

Sta. From	Int Length #3	Sta.	Mid Length #2	Sta.	Ext Length #1
El. 2030.0	16" W. Edge		28" W. Edge		39" W. Edge
127.7	38	127.7	37	127.7	35
128.4	35	129.1	34	129.1	37
130.3	40	130.3	24	130.3	39
131.8	32	131.8	25	131.8	37
133.4	33	133.4	35	133.4	35
134.7	31	134.7	25	134.7	35
136.0	36	136.6	33	136.6	34
138	34	138.0	34	138	32
139.6	36	139.6	37	139.6	34
141.0	38	141.3	39	141.3	38
142.7	40	142.7	36	142.7	37
144.1	0	144.1	20	144.1	38
145.6	41	145.6	37	145.6	40
147.1	39	147.1	39	147.1	38
148.7	38		39		37
150.5	37		36		33
152.0	38		39		38
153.5	36	153.7	33	153.5	38
155.3	37		36		37
156.8	21		39		0

King-4-20-52

Abt. #9 - Haunch - East side

29

1/2" Round Steel

Sta. From	Ext Length #1	Sta.	Mid Length #2	Sta.	Int Length #3
El. 2030.0	40" E. Edge		25" East Edge		15" E. Edge
127.1	40		37		41
128.3	42		35		40
129.9	42		39		43
131.9	40		39		27
133.7	37		23		42
135.0	40	134.6	17	135.0	42
136.6	40		41		42
138.0	39		35		41
139.6	37		39		40
141.1	37		0		38
142.8	39	142.6	1" 36"	142.8	38
144.3	37		39		42
145.7	36		36		42
147.0	38		52		43
148.5	40		39		40
150.3	29		32		35
151.8	39		33		32
153.5	42	1" →	47		34
155.0	40		36		37
157.6	35	158.1	39	157.1	35
160.7	33	161.4	35		37
162.5	36	163.0	40	162.5	36



Steel in #6 #9 - Hannels  
East side

King 5-1-52

Steel in #6 #9 - East Side

30

Ext			Ext		
Row #	1-23" From East Edge	Row #	1-East	1-East	
0.3	48" 3/4	55.2	47	1"	
1.6	47" ↓	56.0	46	3/4	
3.0	47	56.7	46	1	
4.5	45	57.3	47	3/4	
6.0	47	58.1	46	1	
7.6	47" ← 2024	58.8	48	3/4	1988
9.0	47	59.8	47	1	
10.6	49	60.5	47	3/4	
12.2	47"	61.3	49	1	
13.6	49	62.0	50	3/4	
15.0	47	62.7	49	1	
16.5	48 ← 2018	63.3	50	3/4	
18.0	47	64.0	50	1	
19.5	48 3/4	64.8	51	3/4	
21.3	47 1"	65.6	50	1	
22.8	47 ↓	65.6	50	1	
24.2	47	66.3	49	3/4	
25.9	47 ← 2012	67.0	51	1"	
27.3	48	67.8	51	3/4	
28.7	47	68.7	50	1	
30.4	47	69.4	50	3/4	
31.9	47	70.2	49	1	← 1982
33.3	47 ← 2006	70.5	49	3/4	
34.9	49	71.3	48	1	
36.3	49	71.3	48	1	
38.4	50	72.4	49	3/4	
39.3	49	73.2	50	1	
40.9	49	73.5	49	3/4	
42.3	49 ← 2000	74.5	49	1	
43.8	47	75.1	48	3/4	
45.3	46	75.8	49	1	
46.8	48	76.5	47	3/4	
48.2	48	77.2	47	1	← 1976
49.9	48	77.7	50	3/4	
51.3	49 ← 1994	78.2	49	1	
52.9	50	79.1	49	3/4	
54.3	49 1"	79.9	49	1	
		80.7	49	3/4	
		81.4	50	1	
		82.0	48	3/4	

Ext			Mid			Mid		
Row #	1-East		Row #	2-13" From East Edge		Row #	2	
82.7	49	1"	1.5	36"	3/4"	83.5	35	3/4
83.3	50	3/4	3.0	35"	↓	85.4	30	↓
84.0	50	1	5.6	37"		87.4	36	
84.8	48	3/4	7.5	40		89.6	41	
85.2	48	1	10.0	33		91.7	40	
85.9	50	7/4 ← 1970	12.2	36"		94.0	41	
86.7	49	1	14.6	37		96.0	35	
87.3	49	7/4	16.6	36		98.4	39	
88.0	49	1	18.7	36		100.3	36	
88.7	49	3/4	21.0	35		102.5	39	
89.2	51	1	23.0	36		104.6	37	
90.0	45	3/4	25.3	37		107.0	35	
90.8	50	1	27.4	36	↑	109.9	38	
91.5	50	3/4	29.8	34	3/4"	111.2	37	
92.2	49	1	31.9	35	1"	113.9	38	
93.1	48	3/4	33.9	36	1"	114.5	70"	
94.0	50	1	35.9	37	1"	116.0	40"	
94.6	50	3/4	38.0	35	1"	117.5	39	
95.3	50	1	40.3	39	3/4"	119.0	38	
96.0	47	7/4	42.4	39	↓	120.5	38	
97.0	44	1	44.9	39		122.0	38"	
97.7	44	3/4	47.0	38		123.5	37	
98.3	45	1	49.3	38		125.0	38	
99.0	47	3/4	51.4	38		↓ 27" From East Edge		
99.7	47	1	53.5	43		Note: See Page 29		
100.2	48	3/4	55.4	40				
101.0	48	1	57.5	40				
101.9	47	3/4	59.6	39				
102.4	47	1 ← 1958	61.6	38				
103.0	45	3/4	64.1	35				
104.1	47	1	66.0	40				
105.4	44	3/4	68.0	38				
106.1	44"	3/4"	70.4	41				
107.0	44	3/4 1	72.4	38				
107.8	45	1 3/4	74.7	36				
108.5	45	3/4 1	76.7	40				
109.3	45	1 3/4	79.0	40				
110.0	44	3/4 1	81.9	39				



Steel Abt. #9 Haunely  
East Side

5-1-52-King

Steel Abt. 9 - East Side Haunely

31

Row #3	Int	3" From East Edge	Row #3-East	Int
0.9	46"	5/8	58.1	49" 1"
2.3	48"	↓	59.6	48" ← 1959 ↓
3.7	46"		61.2	50
5.3	48		62.7	48
6.8	45		64.1	51
8.3	46"	20.24	65.6	49
9.7	47		67.7	49
11.3	49		69.2	51 ← 1982
12.8	38		70.8	50
14.2	38		72.3	49
15.7	38		73.7	50
17.3	50	20.18 ↑	75.2	48
18.8	48	5/8	76.5	49 ← 1976
20.2	48	3/4	77.9	51
22.1	47	↓	79.0	49
23.6	47	↓	80.6	50
25.0	46	← 2012	82.0	48
26.6	42		83.4	49
28.0	48"		84.8	49 ← 1970
29.5	44"		86.0	48
31.0	46		87.4	48
32.6	48		88.8	49
34.0	47		90.1	51
35.6	48	20.06	91.3	47
37.0	47		92.4	46 ← 1969
38.7	47		93.8	49
40.0	49		95.0	48
41.6	50	2.000	96.5	48
43.1	48		98.0	46"
44.6	48		99.7	46"
46.5	45		100.3	49
47.6	50		101.7	50 ← 1958
49.1	48		103.1	49
50.6	48	← 1977	104.4	46
52.1	52	↑	105.5	48
53.6	50	3/4	106.7	50
55.1	48	1"	108.0	49
56.7	48	1"		

Row #3-East	Int
109.5	48" 1"
110.7	51" ← 1952
112.1	49
<del>113.4</del>	<del>47</del>
114.6	51
116.0	44
117.6	46
119.0	45 ← 1946
120.5	48
122.0	49
123.5	48 6
125.0	59"
126.6	58"
↓	5" From East Edge ← 1940

Note: See Page 29

Row #1-East-#9	Ext
110.7	46" 1" ← 1952
111.5	46 3/4
112.2	48" 1
113.2	47 3/4
114.0	49 1
114.7	34 3/4
115.5	48 1
116.2	46 3/4
117.0	47 1/2
117.7	39 3/4
118.4	48 1 ← 1946
119.2	35 3/4
119.9	48" 1
120.7	35 3/4
121.4	46 1" 9
122.2	37 3/4
123.0	48 1"
123.7	37" 1 3/4
124.4	48" 1"
125.2	38 3/4
125.5	60" 1" ← 1940

↓ 48" From East Edge

Note: see Page 29

233  
123  
121



0+00 = 1970  
H&B  
106'

57  
A9

Steel in 467.8 Hunch  
West Side

Row 1

0+00 = EA 1958 - 43" W. Edge

Row #1	Row #1	Row #1 - West
0.00	48 3/4"	26.0 48"
0.9	47 1"	26.7 47"
1.8	48 3/4"	27.3 47"
2.5	48 1"	28.0 50"
3.2	49 3/4"	28.7 48 3/4"
3.9	48 1"	29.1 48 1"
4.7	48 3/4"	29.7 49 3/4"
5.4	48 1"	30.4 47 1"
6.2	47 3/4"	31.1 48 3/4"
6.8	49 1"	31.9 47 1"
7.5	49 3/4"	32.4 47 3/4"
8.1	48 1969	32.8 48 1"
8.9	48 3/4"	33.8 47 3/4"
9.4	48 1"	34.2 47 1"
9.9	48 3/4"	35.2 47 1946
10.8	48 1"	35.8 48 1"
11.4	48 3/4"	36.6 47 3/4"
12.2	48 1"	37.0 47 1"
12.9	49 3/4"	37.3 46 1"
13.8	46 1"	38.2 47 3/4"
14.2	47 3/4"	38.8 47 1"
14.8	48 1"	39.6 48 3/4"
15.5	48 3/4"	40.2 45 1"
16.1	48 1"	41.2 46 3/4"
16.8	48 3/4 1958	41.7 45 1"
17.3	47 1"	42.7 42 3/4 1940
17.8	48 3/4"	43.4 45 1"
18.6	48 1"	44.3 46 3/4"
19.3	48 3/4"	44.9 47 1"
20.0	48 1"	45.6 47 3/4"
20.6	48 3/4"	46.3 45 1"
21.3	48 1"	47.0 46 3/4"
21.9	47 3/4"	47.8 46 1"
22.8	47 1"	48.7 46 3/4"
23.3	46 3/4"	49.4 47 1"
24.1	49 1"	50.0 47 3/4"
24.6	48 3/4"	50.7 47 1"
25.1	49 1"	51.3 45 3/4"

← 1934

KNY - 5-1-52

Abt. 4-8

0+00 = 1970  
H&B

47

32

37  
0+00 = 1958.0 E/  
23' From W. Edge.

Row #2 - West

2.1	36"	1"
3.8	34	↓
5.8	35	
8.4	34	
10.2	35	
12.4	34	
14.6	34	
16.5	35	
18.8	35	
20.9	35	
23.0	35	
25.3	35	
27.6	33	
29.6	35	
31.6	36	
33.8	36	
36.0	35	
38.3	34	
39.9	35	
41.9	35	
43.5	34	
45.9	34	
47.8	32	
50.1	32	
52.0	32	
54.0	35	
56.0	35	
58.0	35"	
60.0	35	
61.9	36	
63.5	35	
65.9	36	
67.9	36	
69.9	38	
71.9	37	
73.5	35	↑
75.9	36	1"

← 32" From W. Edge  
E Hd

Row 3 - West

3" From W. Edge		
0.6	46	1"
2.1	47	↓
3.6	46	
5.1	47	
6.6	48	
7.9	48	
9.2	47	1969
10.7	47	
11.9	48	
13.6	48	
14.7	48	
15.8	47	
17.2	48	1958
18.5	48	
19.8	47	
21.3	48	
22.6	47	
23.9	49	
25.2	48	1952
26.5	48	
27.6	49	
29.0	48	
30.3	49	
31.7	47	
33.0	47	
34.0	47	1946
45.7	47	
46.8	46	
48.3	49	
49.8	48	
51.3	48	1940
42.5	47	
44.3	47	
45.9	47	
48.8	47	
50.3	48	
52.3	48	1934

54.0 48 1"  
55.2 49 ↓  
57.2 49  
58.8 49  
60.2 48 1928  
61.7 47  
63.3 48  
64.7 45  
66.4 46  
67.7 48  
69.2 48 1922  
70.8 47  
72.4 48  
73.6 48  
75.1 47  
76.8 45  
78.7 48  
79.7 48  
72.6 46  
78.7 48-1"  
3" Front  
West Edge  
End



0+00=1970  
H2B

Steel in Abut #8  
East Side haunch

Row #1  
(E. 1958) - 48" in

Row #1 (Con't)

Row #1 (Con't)

0.1	49"	3/4	26.3	47	1"	54.9	48	3/4
0.9	48"	1"	26.8	48	3/4	55.8	46	1.
1.6	46"	3/4	27.7	48	1	56.4	47	3/4
2.3	47"	1	28.2	49	3/4	57.1	46	1
3.1	46"	3/4	29.0	49	1	57.8	46	3/4
3.8	46"	1	29.7	47	3/4	58.5	46	1
4.6	46"	3/4	30.3	48	1	59.2	47	3/4
5.2	46"	1	31.0	47	3/4	59.8	48	1
5.9	48"	3/4	31.8	47	1	60.1	48	3/4
6.6	48"	1	32.4	48	3/4	60.4	28	1
7.2	46"	3/4	32.9	48	1	60.7	47	3/4
7.9	48"	1	33.7	49	3/4	61.1	48	1
8.7	46"	3/4	34.3	47	1	61.9	46	3/4
9.2	47"	1	35.1	47	3/4	62.3	48	1
10.2	47"	3/4	35.7	49	1	62.7	48	3/4
10.6	48"	1	36.7	45	3/4	63.1	47	1
11.2	48"	3/4	37.4	44	1	63.7	48	3/4
12.6	48"	1	38.2	46	3/4	63.9	47	1
12.7	48"	3/4	38.7	46	1	64.3	47	3/4
13.3	43"	1	39.7	45	3/4	64.7	47	1
14.0	46"	3/4	40.2	44	1	65.0	48	3/4
14.7	47"	1	41.2	44	3/4	65.6	47	1
15.3	47"	3/4	41.9	45	1	65.8	49	3/4
15.9	46"	1	42.7	46	3/4	66.2	48	1
16.3	46"	3/4	43.4	45	1	66.6	49	3/4
17.0	46"	1	44.2	47	3/4	67.0	48	1
17.7	46"	3/4	45.0	47	1	67.8	48	3/4
18.4	47"	1	45.8	47	3/4	68.2	47	1
19.1	45"	3/4	46.3	47	1	68.4	46	3/4
20.0	47"	1	47.3	47	3/4	68.8	47	1
20.4	46"	3/4	47.7	47	1	69.1	47	3/4
21.3	46"	1	48.9	47	3/4	69.7	47	1
21.7	47"	3/4	49.3	46	1	70.0	48	3/4
22.3	47"	1	50.3	48	3/4	70.4	47	1
23.1	47"	3/4	51.0	47	1	70.8	47	3/4
23.8	46"	1	51.8	48	3/4	71.1	48	1
24.6	49"	3/4	52.5	48	1	71.7	48	3/4
25.3	47"	1	53.2	48	3/4	72.3	48	1
25.7	47"	3/4	54.0	49	1	72.4	46	3/4

67 67

Steel in Abut #8  
East Side haunch  
Row 2  
24" in

Row #1 (Con't)

72.8	48	1	1.0	38"	1"
73.2	48	3/4	3.3	34	
73.8	48	1	5.3	34	
74.1	49	3/4	7.6	38	
74.5	49	1	9.7	37	
74.8	49	3/4	11.2	36	
75.1	48	1	14.3	37	
75.6	46	3/4	16.1	36	
75.9	49	1	18.1	35	
76.4	47	3/4	20.4	35	
76.7	48	1	22.4	34	
77.3	47	3/4	24.7	34	
77.9	46	1	26.7	38	
78.2	47	3/4	28.7	38	
78.5	47	1	30.8	36	
78.8	48	3/4	33.0	33	
79.1	46	1	35.3	32	

58" in from East Edge

39.8	34	
41.7	35	
43.6	35	
46.0	36	
48.1	36	
50.3	34	
52.2	34	
54.2	29	
56.2	36	
58.1	34	
60.1	36	
62.0	35	
63.8	35	
65.9	35	
67.9	40	
69.9	40	
72.1	38	
73.9	38	
75.9	40	
78.0	39	

33" in from E. Edge



Row #3 - 3" in from  
East Edge

0+00 = 1970  
HEB

39

Steel in Abut #8 East Haund

Row #3 (cont)

29

0.4	48"	1"	56.7	46	1"
1.9	48"	▲	59.0	47	▲
3.4	49"		59.8	48	→ 1928
4.9	48"		60.6	48	
6.4	47"		61.4	49	
7.6	46"		62.1	49	
9.0	47"	← 1961	62.9	49	
10.3	47"		63.7	49	
11.7	46"		64.5	48	
13.0	46"		65.1	47	
14.5	48"		65.9	49	
16.0	47"		66.6	47	
17.5	47	← 1958	67.4	47	
19.0	46		68.0	38	
20.4	46		68.9	49	← 1922
21.7	47		69.7	40	
23.1	47		70.6	49	
24.4	46		71.2	47	
25.9	46	← 1952	71.9	48	
27.1	48		72.7	46	
28.5	46		73.4	47	
29.6	46		74.2	48	
31.0	47		75.0	49	
32.5	47		75.9	46	
33.8	47	← 1946	76.6	46	
35.2	47		77.4	49	
36.5	47		78.2	48	
37.8	48		79.0	48"	▼
39.3	46		79.8	49"	1" ← 1916 =
40.8	47	← 1940			
42.3	48				
43.9	48				
45.4	46				
46.9	48				
48.4	47				
49.9	47	← 1934			
51.4	46				
53.0	46				
54.4	48				

3" from E. Edge

transferred  
with May 52  
by bill.

191958 Flt #8 - West side

Row #1	40"		Row #1		
0.1	49	3/4	18.4	41	1" ✓
0.9	48	1 ✓	19.1	45	3/4 ✓
1.6	46	3/4 ✓	20.0	47	1 ✓
2.3	47	1 ✓	20.4	46	3/4 ✓
3.1	46	3/4 ✓	21.3	46	1 ✓
3.8	46	1	21.7	47	3/4 ✓
4.6	46	3/4 ✓	22.3	47	1 ✓
5.2	46	1 ✓	23.1	47	3/4 ✓
5.9	48	3/4 ✓	23.8	46	1 ✓
6.6	48	1 ✓	24.6	47	3/4 ✓
7.2	46	3/4 ✓	25.3	47	1 ✓
7.9	48	1 ✓	25.7	47	3/4 ✓
8.7	46	3/4 ✓	26.3	47	1 ✓
9.2	47	1 ✓	26.8	48	3/4 ✓
10.2	47	3/4 ✓	27.7	48	1 ✓
10.6	48	1 ✓	28.2	49	3/4 ✓
11.2	48	3/4 ✓	29.0	49	1 ✓
12.0	48	1 ✓	29.7	47	3/4 ✓
12.7	48	3/4 ✓	30.3	48	1 ✓
13.3	45	1	31.0	47	3/4 ✓
14.0	46	3/4 ✓	31.8	47	1 ✓
14.7	47	3/4 ✓	32.4	48	3/4 ✓
15.3	47	3/4 ✓	32.9	48	1 ✓
15.9	46	1 ✓	33.7	49	3/4 ✓
16.3	46	3/4 ✓	34.3	47	1 ✓
17.0	46	1 ✓	35.1	47	3/4 ✓
17.7	46	3/4 ✓	35.7	49	1 ✓



Row #3 - 3" in from  
East Edge

0+00 = 1970  
HEB

39

Steel in Abut #8 East Haund

Row #3 (cont)

29

0.4	48"	1"	56.7	46	1"
1.9	48"	↑	59.0	47	↑
3.2	49"		59.8	48	← 1928
4.9	48"		60.6	48	
6.4	47"		61.4	49	
7.6	46"		62.1	49	
9.0	49"	← 1961	62.9	49	
10.3	47"		63.7	49	
11.7	46"		64.5	48	
13.0	46"		65.1	47	
14.5	48"		65.9	49	
16.0	47"		66.6	47	
17.5	47	← 1958	67.4	47	
19.0	46		68.0	38	
20.4	46		68.9	49	← 1922
21.7	47		69.7	40	
23.1	47		70.6	49	
24.6	46		71.2	47	
25.9	46	← 1952	71.9	48	
27.1	48		72.7	46	
28.5	46		73.4	47	
29.6	46		74.2	48	
31.0	47		75.0	49	
32.5	47		75.9	46	
33.8	47	← 1946	76.6	46	
35.2	47		77.4	49	
36.5	47		78.2	48	
37.8	43		79.0	48"	↓
39.3	46		79.8	40"	1" ← 1916 =
40.8	47	← 1940			
42.3	48				
43.9	48				
45.4	46				
46.9	48				
48.4	47				
49.9	47	← 1934			
51.4	46				
53.0	46				
54.4	48				

3" from E. Edge

transferred  
with May 52  
by W.C.

37.4	44	1" ✓	60.4	28	1" ✓	73.8	48	1" ✓
38.2	46	3/4" ✓	60.7	47	3/4" ✓	74.1	49	3/4" ✓
38.7	46	1" ✓	61.1	48	1" ✓	74.5	49	1" ✓
39.7	45	3/4" ✓	61.9	46	3/4" ✓	74.8	49	3/4" ✓
40.2	44	1" ✓	62.3	48	1" ✓	75.1	48	1" ✓
41.2	44	3/4" ✓	62.7	48	3/4" ✓	75.2	49	3/4" ✓
41.9	45	1" ✓	63.1	47	1" ✓	75.9	49	1" ✓
42.7	46	3/4" ✓	63.7	48	3/4" ✓	76.4	47	3/4" ✓
43.4	45	1" ✓	63.9	49	1" ✓	76.7	48	1" ✓
44.2	47	3/4" ✓	64.3	47	3/4" ✓	77.3	47	3/4" ✓
45.0	47	1" ✓	64.7	47	1" ✓	77.9	46	1" ✓
45.8	47	3/4" ✓	65.0	48	3/4" ✓	78.2	47	3/4" ✓
46.3	47	1" ✓	65.6	49	1" ✓	78.5	47	1" ✓
47.3	47	3/4" ✓	65.8	49	3/4" ✓	78.8	48	3/4" ✓
47.7	47	1" ✓	66.2	48	1" ✓	79.1	46	
48.9	47	3/4" ✓	66.6	49	3/4" ✓			
49.3	46	1" ✓	67.0	47	1" ✓			
50.3	48	3/4" ✓	67.8	48	3/4" ✓			
51.0	47	1" ✓	68.2	47	1" ✓			
51.8	48	3/4" ✓	68.4	46	3/4" ✓			
52.5	48	1" ✓	68.8	47	1" ✓			
53.2	48	3/4" ✓	69.1	47	3/4" ✓			
54.0	49	1" ✓	69.7	47	1" ✓			
54.9	48	3/4" ✓	70.0	48	3/4" ✓			
55.8	46	1" ✓	70.4	47	1" ✓			
56.4	47	3/4" ✓	70.8	47	3/4" ✓			
57.1	46	1" ✓	71.1	48	1" ✓			
57.8	46	3/4" ✓	71.7	47	3/4" ✓			
58.5	46	1" ✓	72.3	48	1" ✓			
59.2	47	3/4" ✓	72.8	48	3/4" ✓			
59.8	48	1" ✓	72.9	48	1" ✓			

58" IN  
From E. side



Row #3. 3" in from  
East Edge

0+00 = 1970  
H+EB

39

Steel in Abut #8 East Haund

Row #3 (Cont)

29

0.2	48"	1"	56.7	46	1"
1.9	48"	▲	59.0	47	▲
3.4	47"		59.8	48	← 1928
4.9	48"		60.6	48	
6.4	47"		61.4	49	
7.6	46"		62.1	49	
9.0	47"	← 1964	62.9	49	
10.3	47"		63.7	49	
11.7	46"		64.5	48	
13.0	46"		65.1	47	
14.5	48"		65.9	49	
16.0	47"		66.6	47	
17.5	47"	← 1958	67.4	47	
19.0	46"		68.0	38	
20.4	46"		68.9	49	← 1922
21.7	47		69.7	40	
23.1	47		70.6	49	
24.4	46		71.2	47	
25.9	46	← 1952	71.9	48	
27.1	48		72.7	46	
28.5	46		73.4	47	
29.6	46		74.2	48	
31.0	47		75.0	49	
32.5	47		75.9	46	
33.8	47		76.6	46	
35.2	47	← 1946	77.4	49	
36.5	47		78.2	48	
37.8	48		79.0	48"	▼
39.3	46		79.8	40"	1" ← 1916 =
40.8	47	← 1940			
42.3	48				
43.9	48				
45.4	46				
46.9	48				
48.4	47				
49.9	49	← 1934			
51.4	46				
53.0	46	▼			
54.4	48	1"			

3" from E. Edge

transferred  
with May 52  
by W.C.

3.3	34"	↓	17.9	35	✓
5.3	34"	✓	69.9	40	✓
7.6	38"	✓	72.1	40	✓
9.7	37"	✓	73.9	38	✓
11.2	36"	✓	75.9	40	✓
14.3	37"	✓	78.0	39	✓
16.1	36"	✓			▼
18.1	35"	✓			33" IN
20.4	35"	✓			From E. Edge
22.4	34"	✓			
24.7	34"	✓			
26.7	38"	✓			
28.7	38"	✓			
30.8	38"	✓			
33.0	33"	✓			
35.3	32"	✓			
37.2	35"	✓			
39.8	34"	✓			
41.7	34"	✓			
43.6	35"	✓			
46.0	35"	✓			
48.1	35"	✓			
50.3	36"	✓			
52.2	34"	✓			
54.2	34"	✓			
56.2	29"	✓			
58.1	36"	✓			
60.1	34"	✓			
62.0	36"	✓			
63.8	35"	✓			



Row #3 - 3" in from  
East Edge

0+00 = 1970  
H+EB

39

Steel in Abut #8 East Haund

Row #3 (cont)

29

0.4	48"	1"	56.7	46	1"
1.9	48"		59.0	47	A
3.4	47"		59.8	48	1928
4.9	48"		60.6	48	
6.4	47"		61.4	49	
7.6	46"		62.1	49	
9.0	47"	1961	62.9	49	
10.3	47"		63.7	49	
11.7	46"		64.5	48	
13.0	46"		65.1	47	
14.5	48"		65.9	49	
16.0	47"		66.6	47	
17.5	47	1958	67.4	47	
19.0	46		68.0	38	
20.4	46		68.9	49	1922
21.7	47		69.7	49	
23.1	47		70.6	49	
24.6	46		71.2	47	
25.9	46	1952	71.9	48	
27.1	48		72.7	46	
28.5	46		73.4	47	
29.6	46		74.2	48	
31.0	47		75.0	49	
32.5	47		75.9	46	
33.8	47		76.6	46	
35.2	47	1946	77.4	49	
36.5	47		78.2	48	
37.8	48		79.0	48"	Y
39.3	46		79.8	49"	1" ← 1916 =
40.8	47				
42.3	48	1940			
43.9	48				
45.4	46				
46.9	48				
48.4	47				
49.9	47	1934			
51.4	46				
53.0	46				
54.4	48	1"			

3" from E Edge

transferred  
with May 52  
by W.C.

1.9	48	✓	↓	36.5	47	✓	108.9	49	✓	↓
3.4	47	✓		37.8	43	✓	↓	109.7	49	✓
4.9	48	✓		39.3	42	✓		70.6	49	✓
6.4	47	✓		41.8	47	✓		71.2	47	✓
7.6	46	✓		42.3	49	✓		71.9	48	✓
9.0	47	✓		43.9	48	✓		72.7	46	✓
10.3	47	✓		45.4	46	✓		73.4	47	✓
11.7	46	✓		46.9	48	✓		74.2	48	✓
13.0	46	✓		48.4	47	✓		75.0	49	✓
14.5	48	✓		49.9	47	✓		75.7	46	✓
16.0	47	✓		51.4	46	✓		76.6	46	✓
17.5	47	✓		53.0	46	✓		77.4	49	✓
19.0	46	✓		54.4	48	✓		78.2	48	✓
20.4	46	✓		56.0	46	✓		79.0	48	✓
21.7	47	✓		59.0	47	✓		79.8	49	✓
23.1	47	✓		59.8	48	✓				
24.6	46	✓		60.6	48	✓				
25.9	46	✓		61.4	49	✓				
27.1	48	✓		62.1	49	✓				
28.5	46	✓		62.9	49	✓				
29.6	46	✓		63.7	49	✓				
31.0	47	✓		64.5	48	✓				
32.5	47	✓		65.1	47	✓				
33.8	47	✓		65.9	49	✓				
				66.6	47	✓				
				67.4	47	✓				

3" from  
E Edge



12-1-52

CUB

BB

Core Holes Buttress 7

Hole	Depth on 45°	vertical 4	Distance off 4
7-C1	16'-1"	-40° North	1.60' East

$$L = 1010.4'$$

7-C2

1.00'  
East

$$L = 1024.78'$$

Depth = 23.10' on slope

Step 6.05' S of axis



7-C Vertical

$$L = 1007.95$$

0.15' E of  $\perp$

1.75 S of step

7-U 5.1' N of step

0.5 W of  $\perp$

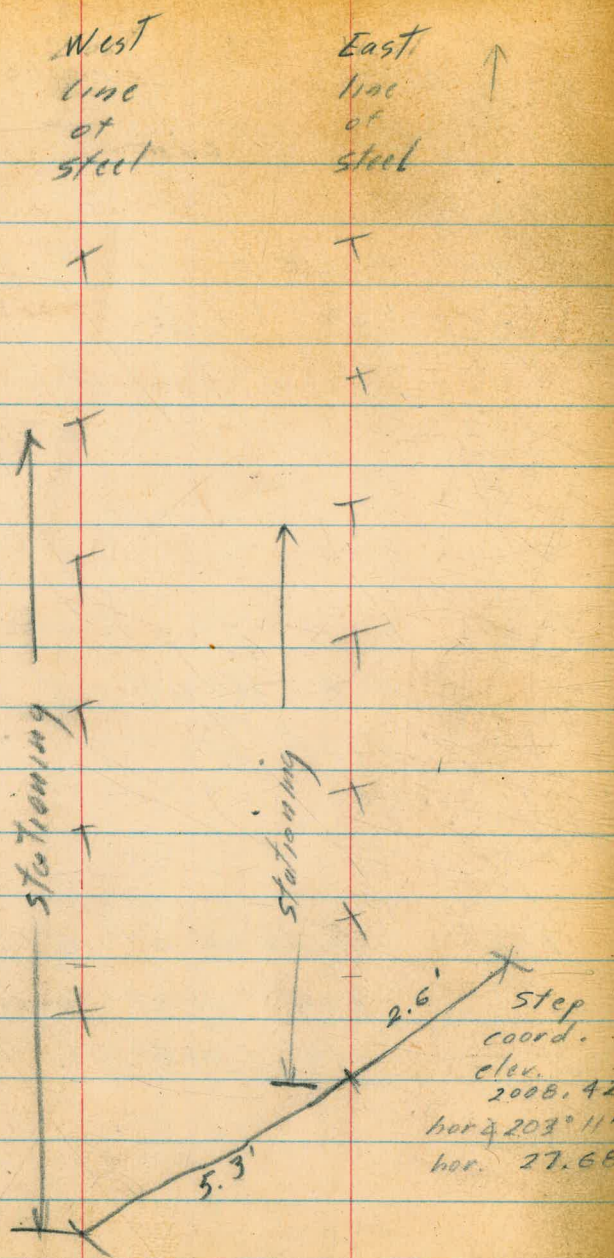
Vertical

7-D 0.16 W of  $\perp$

3.05' N of axis

$$L = 996.95$$





Buttress 15  
Dec. 12, 1952

37  
Existing steel

West			East		
sta.	length	size	sta.	length	size
79.8'	0.5'	3/4" □			
78.4'	1.4'	↑	75.4'	1.2'	3/4" □
76.8'	2.7'	↑	73.9'	3.2'	↑
74.4'	2.8'	↑	71.6'	2.9'	↓
72.2'	2.9'	↓	69.5'	3.0'	↓
70.0'	3.2'	3/4" □	67.3'	2.9'	3/4" □
67.9'	3.2'	13/16" □	65.1'	3.2'	7/8" □
65.5'	3.3'	7/8" □	62.9'	3.2'	↑
63.5'	3.1'	□	60.7'	3.3'	↓
61.6'	3.2'	↑	58.8'	3.1'	↓
59.3'	3.3'	↓	56.8'	3.2'	↓
57.0'	3.2'	7/8" □	54.5'	3.3'	7/8" □
54.8'	3.6'	1" □	52.7'	3.8'	1" □
52.3'	4.2'	↑	50.0'	4.2'	↑
50.0'	4.7'	↑	47.7'	4.4'	↑
47.3'	5.2'	↑	44.9'	4.9'	↑
45.2'	5.3'	↑	42.7'	5.2'	↑
42.8'	5.7'	↓	40.0'	5.9'	↓
40.7'	5.8'	1" □	38.0'	6.0'	1" □



Pilaster steel 1 1/4" □ West	Horizontal steel 1" □ Sta. length	Pilaster re bars E 1/2" □	Boltress 15 Dec 12, 1952 West	Existing steel East
3.6'	West	66.3' 12.0'	Sta. length size	Sta. length size
3.6'	50.8' 11.7'	W	38.3 6.2' 1" □	35.5' 6.4' 1" □
3.7'	36.5' 13.2'	68.9' 12.0'	36.0 6.6'	33.5' 6.4'
3.7'	24.4' 10.7'		33.7 6.7'	31.2' 6.7'
3.7'			31.4 6.9'	28.7 7.0'
3.8'	East		29.2 7.1'	26.7 1.7'
3.8'	48.3' 11.6'		27.1 1.8' 1" □	24.4 1.6' 1" □
4.0'	34.9' 11.8'		0.9' high step	23.0' high step
3.9' <sup>33.10 OK</sup>	20.9' 9.2'		23.7 1.1' 1 1/8" □	20.9' 0.8' 1 1/8" □
East			21.4' 1.3'	18.8' 1.0'
4.2'			19.3' 1.2'	16.8' 1.3'
4.1'			17.6' 1.1'	14.7' 1.1'
4.3'	60.2' on W line		15.3' 1.2'	12.4' 0.7'
4.2'	to core hole		13.2' 1.1'	10.3' 0.7'
4.4'	on approx. of		11.3' 0.9' 1 1/8" □	8.2 0.8' 1 1/8" □
4.4'	boltress		7.5' 3.8' 1" □	3.9' 3.8' 1" □
4.3'			W. 1.7' ↑	E. 1.4' Hooked ←
4.2'			included in cutoff 14-15	
4.4' OK				



SAND BLASTED STEEL  
CUTOFF 15-16 (EL. 2009)  
MEASURED BY H. G. HILKEY  
1-15-54

39

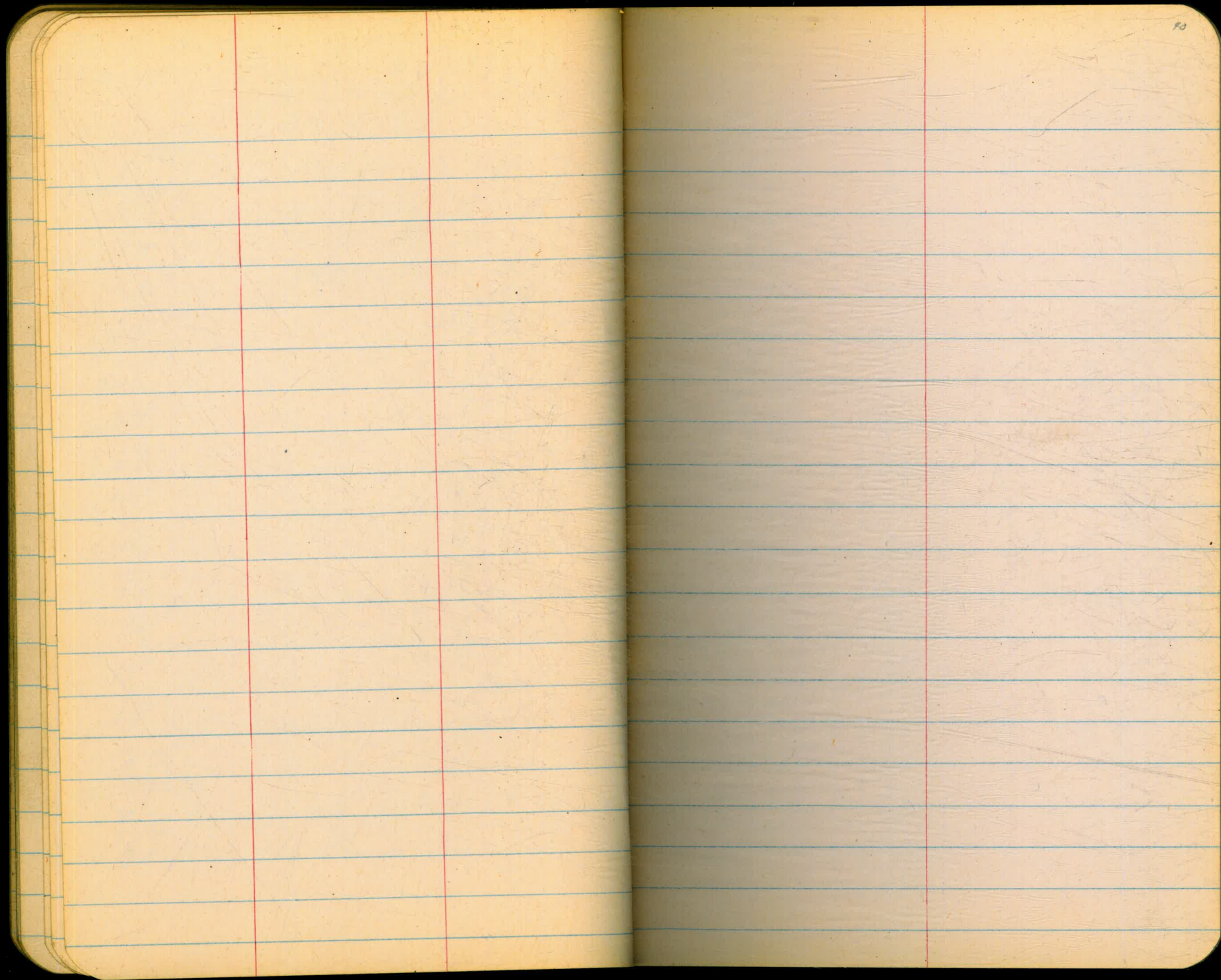
1"0  
56"  
44"  
58"  
60"  
68"  
64"  
17"  
40"  
66"  
72"  
18"  
15"  
18"  
20"

STEEL IS ON TOP  
OF HORIZ. CUTOFF  
AND PROJECTS  
VERT. FROM CUTOFF.

3/4"0  
36"  
34"  
35"  
37"  
53"  
51"  
53"  
54"  
55"  
22"  
43"  
50"  
54"  
55"  
54"  
66"  
80"  
832" TOTAL 3/4"0  
69'-4" TOTAL 3/4"0

616" TOTAL 1"0  
51'-4" TOTAL 1"0







127.7

28.39

168 0 0

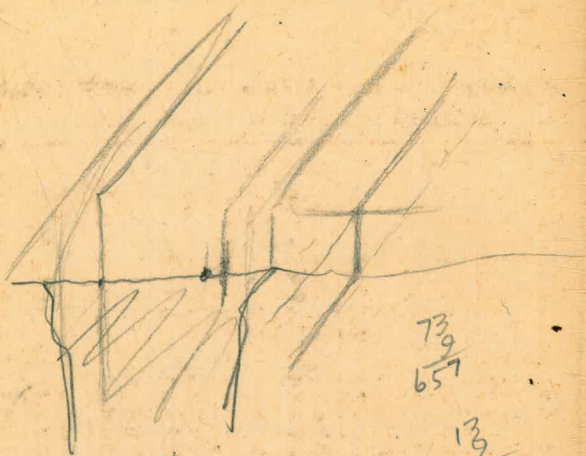
TYPE  
TAKE

ONING.

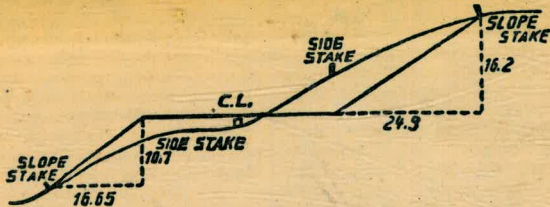
	.9	
)	1.35	0
)	2.85	1
)	4.35	2
)	5.85	3
)	7.35	4
)	8.85	5
)	10.35	6
)	11.85	7
)	13.35	8
)	14.85	9
)	16.35	10
)	17.85	11
)	19.35	12
)	20.85	13
)	22.35	14
)	23.85	15
)	25.35	16
)	26.85	17
)	28.35	18
)	29.85	19
)	31.35	20
)	32.85	21
)	34.35	22
)	35.85	23
)	37.35	24
)	38.85	25
)	40.35	26
)	41.85	27
)	43.35	28
)	44.85	29
)	46.35	30
)	47.85	31
)	49.35	32
)	50.85	33
)	52.35	34
)	53.85	35
)	55.35	36
)	56.85	37
)	58.35	38
)	59.85	39
)	61.35	40
)	62.85	41
)	64.35	42
)	65.85	43
)	67.35	44
)	68.85	45
)	70.35	46
)	71.85	47
)	73.35	48
)	74.85	49
)	76.35	50



813



Please Return to  
City of San Diego Water Dept.  
Room 903 Civic Center



**DISTANCES FROM SIDE STAKES FOR CROSS-SECTIONING.**  
SLOPE 1 1/2 TO 1. ROADWAY OF ANY WIDTH.

	0	.1	.2	.3	.4	.5	.6	.7	.8	.9	
0	0.00	0.15	0.30	0.45	0.60	0.75	0.90	1.05	1.20	1.35	0
1	1.50	1.65	1.80	1.95	2.10	2.25	2.40	2.55	2.70	2.85	1
2	3.00	3.15	3.30	3.45	3.60	3.75	3.90	4.05	4.20	4.35	2
3	4.50	4.65	4.80	4.95	5.10	5.25	5.40	5.55	5.70	5.85	3
4	6.00	6.15	6.30	6.45	6.60	6.75	6.90	7.05	7.20	7.35	4
5	7.50	7.65	7.80	7.95	8.10	8.25	8.40	8.55	8.70	8.85	5
6	9.00	9.15	9.30	9.45	9.60	9.75	9.90	10.05	10.20	10.35	6
7	10.50	10.65	10.80	10.95	11.10	11.25	11.40	11.55	11.70	11.85	7
8	12.00	12.15	12.30	12.45	12.60	12.75	12.90	13.05	13.20	13.35	8
9	13.50	13.65	13.80	13.95	14.10	14.25	14.40	14.55	14.70	14.85	9
10	15.00	15.15	15.30	15.45	15.60	15.75	15.90	16.05	16.20	16.35	10
11	16.50	16.65	16.80	16.95	17.10	17.25	17.40	17.55	17.70	17.85	11
12	18.00	18.15	18.30	18.45	18.60	18.75	18.90	19.05	19.20	19.35	12
13	19.50	19.65	19.80	19.95	20.10	20.25	20.40	20.55	20.70	20.85	13
14	21.00	21.15	21.30	21.45	21.60	21.75	21.90	22.05	22.20	22.35	14
15	22.50	22.65	22.80	22.95	23.10	23.25	23.40	23.55	23.70	23.85	15
16	24.00	24.15	24.30	24.45	24.60	24.75	24.90	25.05	25.20	25.35	16
17	25.50	25.65	25.80	25.95	26.10	26.25	26.40	26.55	26.70	26.85	17
18	27.00	27.15	27.30	27.45	27.60	27.75	27.90	28.05	28.20	28.35	18
19	28.50	28.65	28.80	28.95	29.10	29.25	29.40	29.55	29.70	29.85	19
20	30.00	30.15	30.30	30.45	30.60	30.75	30.90	31.05	31.20	31.35	20
21	31.50	31.65	31.80	31.95	32.10	32.25	32.40	32.55	32.70	32.85	21
22	33.00	33.15	33.30	33.45	33.60	33.75	33.90	34.05	34.20	34.35	22
23	34.50	34.65	34.80	34.95	35.10	35.25	35.40	35.55	35.70	35.85	23
24	36.00	36.15	36.30	36.45	36.60	36.75	36.90	37.05	37.20	37.35	24
25	37.50	37.65	37.80	37.95	38.10	38.25	38.40	38.55	38.70	38.85	25
26	39.00	39.15	39.30	39.45	39.60	39.75	39.90	40.05	40.20	40.35	26
27	40.50	40.65	40.80	40.95	41.10	41.25	41.40	41.55	41.70	41.85	27
28	42.00	42.15	42.30	42.45	42.60	42.75	42.90	43.05	43.20	43.35	28
29	43.50	43.65	43.80	43.95	44.10	44.25	44.40	44.55	44.70	44.85	29
30	45.00	45.15	45.30	45.45	45.60	45.75	45.90	46.05	46.20	46.35	30
31	46.50	46.65	46.80	46.95	47.10	47.25	47.40	47.55	47.70	47.85	31
32	48.00	48.15	48.30	48.45	48.60	48.75	48.90	49.05	49.20	49.35	32
33	49.50	49.65	49.80	49.95	50.10	50.25	50.40	50.55	50.70	50.85	33
34	51.00	51.15	51.30	51.45	51.60	51.75	51.90	52.05	52.20	52.35	34
35	52.50	52.65	52.80	52.95	53.10	53.25	53.40	53.55	53.70	53.85	35
36	54.00	54.15	54.30	54.45	54.60	54.75	54.90	55.05	55.20	55.35	36
37	55.50	55.65	55.80	55.95	56.10	56.25	56.40	56.55	56.70	56.85	37
38	57.00	57.15	57.30	57.45	57.60	57.75	57.90	58.05	58.20	58.35	38
39	58.50	58.65	58.80	58.95	59.10	59.25	59.40	59.55	59.70	59.85	39
40	60.00	60.15	60.30	60.45	60.60	60.75	60.90	61.05	61.20	61.35	40
41	61.50	61.65	61.80	61.95	62.10	62.25	62.40	62.55	62.70	62.85	41
42	63.00	63.15	63.30	63.45	63.60	63.75	63.90	64.05	64.20	64.35	42
43	64.50	64.65	64.80	64.95	65.10	65.25	65.40	65.55	65.70	65.85	43
44	66.00	66.15	66.30	66.45	66.60	66.75	66.90	67.05	67.20	67.35	44
45	67.50	67.65	67.80	67.95	68.10	68.25	68.40	68.55	68.70	68.85	45
46	69.00	69.15	69.30	69.45	69.60	69.75	69.90	70.05	70.20	70.35	46
47	70.50	70.65	70.80	70.95	71.10	71.25	71.40	71.55	71.70	71.85	47
48	72.00	72.15	72.30	72.45	72.60	72.75	72.90	73.05	73.20	73.35	48
49	73.50	73.65	73.80	73.95	74.10	74.25	74.40	74.55	74.70	74.85	49
50	75.00	75.15	75.30	75.45	75.60	75.75	75.90	76.05	76.20	76.35	50

THE NATIONAL BLANK BOOK COMPANY  
HOLYOKE MASSACHUSETTS  
NEW YORK CHICAGO BOSTON SAN FRANCISCO

Handwritten calculations and notes:

- 739 / 657
- 54 / 526
- 13 / 117
- 49 / 117
- 21 / 189
- 61 / 549
- 48.47 / 335.95
- 67 / 603
- 66 / 554
- 60 / 540