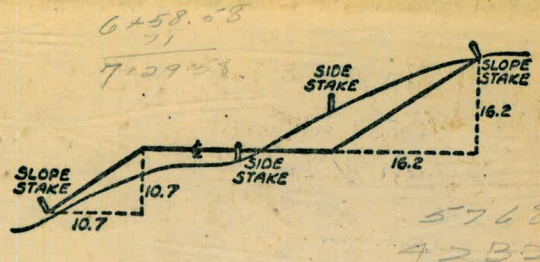


W 823





Please Return to  
City of San Diego Water Dept.  
Room 903 Civic Center

DISTANCES FROM SIDE STAKES FOR CROSS-SECTIONING  
SLOPE 1 TO 1. ROADWAY OF ANY WIDTH

	0	.1	.2	.3	.4	.5	.6	.7	.8	.9	
0	0.00	0.10	0.20	0.30	0.40	0.50	0.60	0.70	0.80	0.90	0
1	1.00	1.10	1.20	1.30	1.40	1.50	1.60	1.70	1.80	1.90	1
2	2.00	2.10	2.20	2.30	2.40	2.50	2.60	2.70	2.80	2.90	2
3	3.00	3.10	3.20	3.30	3.40	3.50	3.60	3.70	3.80	3.90	3
4	4.00	4.10	4.20	4.30	4.40	4.50	4.60	4.70	4.80	4.90	4
5	5.00	5.10	5.20	5.30	5.40	5.50	5.60	5.70	5.80	5.90	5
6	6.00	6.10	6.20	6.30	6.40	6.50	6.60	6.70	6.80	6.90	6
7	7.00	7.10	7.20	7.30	7.40	7.50	7.60	7.70	7.80	7.90	7
8	8.00	8.10	8.20	8.30	8.40	8.50	8.60	8.70	8.80	8.90	8
9	9.00	9.10	9.20	9.30	9.40	9.50	9.60	9.70	9.80	9.90	9
10	10.00	10.10	10.20	10.30	10.40	10.50	10.60	10.70	10.80	10.90	10
11	11.00	11.10	11.20	11.30	11.40	11.50	11.60	11.70	11.80	11.90	11
12	12.00	12.10	12.20	12.30	12.40	12.50	12.60	12.70	12.80	12.90	12
13	13.00	13.10	13.20	13.30	13.40	13.50	13.60	13.70	13.80	13.90	13
14	14.00	14.10	14.20	14.30	14.40	14.50	14.60	14.70	14.80	14.90	14
15	15.00	15.10	15.20	15.30	15.40	15.50	15.60	15.70	15.80	15.90	15
16	16.00	16.10	16.20	16.30	16.40	16.50	16.60	16.70	16.80	16.90	16
17	17.00	17.10	17.20	17.30	17.40	17.50	17.60	17.70	17.80	17.90	17
18	18.00	18.10	18.20	18.30	18.40	18.50	18.60	18.70	18.80	18.90	18
19	19.00	19.10	19.20	19.30	19.40	19.50	19.60	19.70	19.80	19.90	19
20	20.00	20.10	20.20	20.30	20.40	20.50	20.60	20.70	20.80	20.90	20
21	21.00	21.10	21.20	21.30	21.40	21.50	21.60	21.70	21.80	21.90	21
22	22.00	22.10	22.20	22.30	22.40	22.50	22.60	22.70	22.80	22.90	22
23	23.00	23.10	23.20	23.30	23.40	23.50	23.60	23.70	23.80	23.90	23
24	24.00	24.10	24.20	24.30	24.40	24.50	24.60	24.70	24.80	24.90	24
25	25.00	25.10	25.20	25.30	25.40	25.50	25.60	25.70	25.80	25.90	25
26	26.00	26.10	26.20	26.30	26.40	26.50	26.60	26.70	26.80	26.90	26
27	27.00	27.10	27.20	27.30	27.40	27.50	27.60	27.70	27.80	27.90	27
28	28.00	28.10	28.20	28.30	28.40	28.50	28.60	28.70	28.80	28.90	28
29	29.00	29.10	29.20	29.30	29.40	29.50	29.60	29.70	29.80	29.90	29
30	30.00	30.10	30.20	30.30	30.40	30.50	30.60	30.70	30.80	30.90	30
31	31.00	31.10	31.20	31.30	31.40	31.50	31.60	31.70	31.80	31.90	31
32	32.00	32.10	32.20	32.30	32.40	32.50	32.60	32.70	32.80	32.90	32
33	33.00	33.10	33.20	33.30	33.40	33.50	33.60	33.70	33.80	33.90	33
34	34.00	34.10	34.20	34.30	34.40	34.50	34.60	34.70	34.80	34.90	34
35	35.00	35.10	35.20	35.30	35.40	35.50	35.60	35.70	35.80	35.90	35
36	36.00	36.10	36.20	36.30	36.40	36.50	36.60	36.70	36.80	36.90	36
37	37.00	37.10	37.20	37.30	37.40	37.50	37.60	37.70	37.80	37.90	37
38	38.00	38.10	38.20	38.30	38.40	38.50	38.60	38.70	38.80	38.90	38
39	39.00	39.10	39.20	39.30	39.40	39.50	39.60	39.70	39.80	39.90	39
40	40.00	40.10	40.20	40.30	40.40	40.50	40.60	40.70	40.80	40.90	40
41	41.00	41.10	41.20	41.30	41.40	41.50	41.60	41.70	41.80	41.90	41
42	42.00	42.10	42.20	42.30	42.40	42.50	42.60	42.70	42.80	42.90	42
43	43.00	43.10	43.20	43.30	43.40	43.50	43.60	43.70	43.80	43.90	43
44	44.00	44.10	44.20	44.30	44.40	44.50	44.60	44.70	44.80	44.90	44
45	45.00	45.10	45.20	45.30	45.40	45.50	45.60	45.70	45.80	45.90	45
46	46.00	46.10	46.20	46.30	46.40	46.50	46.60	46.70	46.80	46.90	46
47	47.00	47.10	47.20	47.30	47.40	47.50	47.60	47.70	47.80	47.90	47
48	48.00	48.10	48.20	48.30	48.40	48.50	48.60	48.70	48.80	48.90	48
49	49.00	49.10	49.20	49.30	49.40	49.50	49.60	49.70	49.80	49.90	49
50	50.00	50.10	50.20	50.30	50.40	50.50	50.60	50.70	50.80	50.90	50

Distance of slope stake from side or shoulder stake for any width roadway, slope 1 to 1. If ground is nearly level, the cut or fill at side stake is located by the double entry method in left column and top row. The number in body of table in same row and column gives distance from side stake to slope stake. If ground is not level estimate the difference in elevation between the side stake and slope stake, lower target by this amount if cut, elevate if fill. Add this amount to cut or fill and find distance in table. Set up rod at this point, and line of sight should cut target. If it does not make the slight adjustment necessary.

10771  
53

10778  
5389

024  
501120

109064  
126

624384  
208128  
10771  
113064  
MICROFILMED  
JAN 16 1965







INDEX (Contd)

- OLIVE St. Fairmount to Highland, proposed 6" water 52-53  
 E of Fairmount ✓
- Alley BIK 5 N of Quipoo proposed P1 55-57  
 E. of 38<sup>th</sup> alic ✓
- Alley BIK 66 N. of Landis St Proposed PL. 58-60 ✓
- Marigold St Juniper St to Azalea Park 60-63 ✓
- Alley BIK 111 N of Thorn E of 38<sup>th</sup> 64-66 ✓
- Alley BIK 115 N of Bellingham E of 36 67-68 ✓
- Myrtle St Alley E of 36<sup>th</sup> to Wilson St 69-71 ✓
- Boundary St Laurel to Kabama 72-73 ✓  
 alic ✓
- Alley BIK 24, N. of Orange, E of 42<sup>nd</sup>, Sts & Grds 6" water 74-75 ✓
- Alley BIK 4, N. of Monroe, E of 39<sup>th</sup>, " " " " 76-77 ✓  
 E of Fairmount
- Alley BIK 5 N of Quipoo " " " " 78 ✓  
 alic ✓



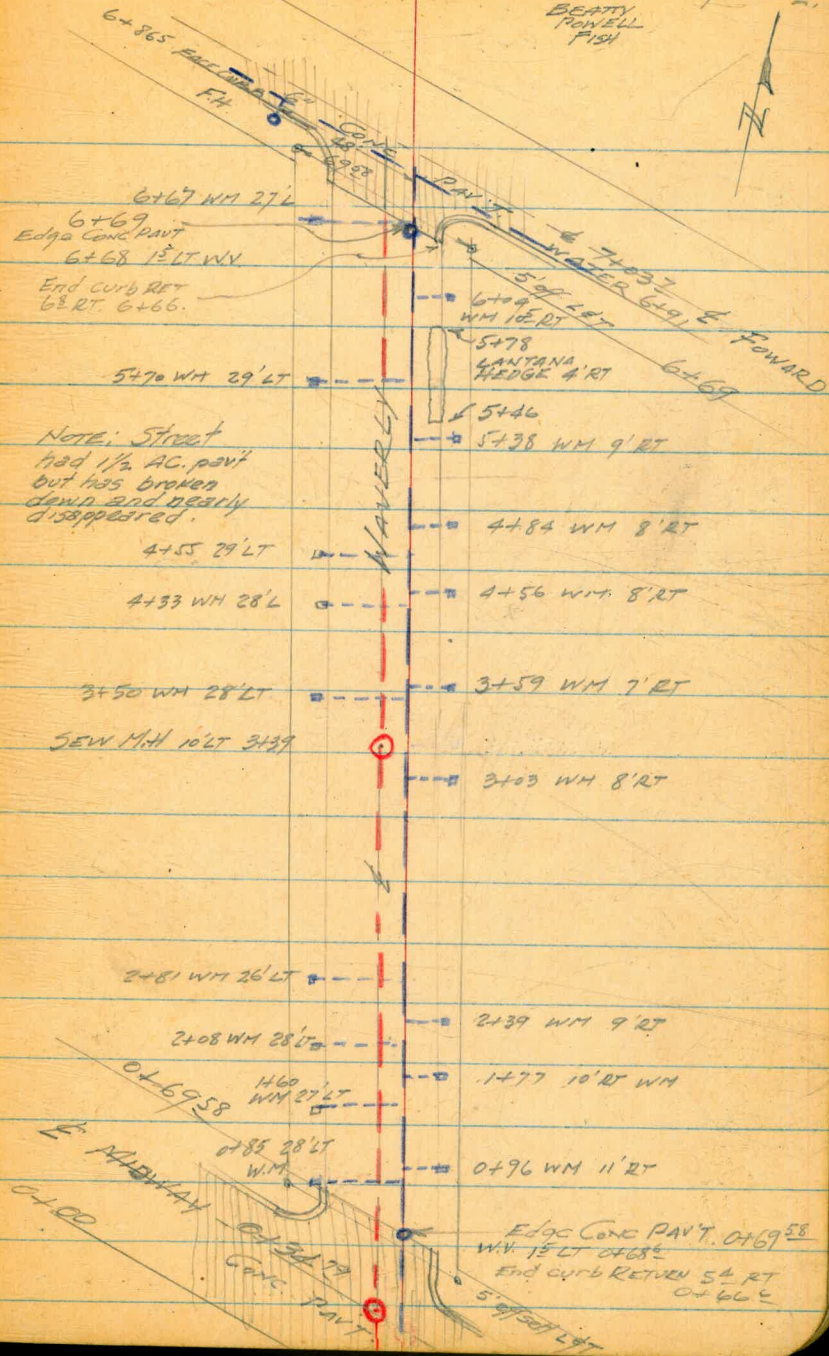
WAVERLY ST.  
MIDWAY TO FORWARD  
& PROPOSED WATER

6+69 Not Prop LINE FORWARD

0+69<sup>58</sup> Not prop. line Midway

0+00 = So Prop. LINE MIDWAY

JUNE 30 1952 2.  
BETTY  
FOWELL  
FISH





WAVERLEY ST  
MIDWAY TO FORWARD  
& Profile  
Proposed Water

6-30-52

3.

BM	0.03	120.03	120.00
IP	13.26	122.34	109.08
		INV. 15.95	
0+63.78		RIM 13.40	108.9
0+69		13.4	108.9
1+00		11.7	110.6
+50		10.6	111.7
2+00		9.8	112.5
+50		8.7	113.6
3+00		7.5	114.8
		INV. 12.30	110.0
		RIM 6.35	116.0
+50		6.2	116.1
4+00		5.2	117.1
+50		4.4	117.9
5+00		3.6	118.7
+50		2.8	119.5
6+00		1.4	120.9
+50		0.0	122.3
+69		+0.3	122.6
+74		+0.2	122.5

• BP NW Cor Midway & ~~FORWARD~~ BELLVIEW

on Rim Sew M.H. 0+34.79 Waverley

on Conc part

" " "

SEW M.H. 3+39 10' LT

on Conc part

" " "



WAVERLY ST.  
(Cont'd.)

6-30-52

4.

		122.34		
TP	11.03	120.11	13.26	109.08
CK BM		0.12		119.99 = 120.00



Taft St  
From Colima to Forward  
Q. Profile Proposed PL

West  
Kemp  
Jacobs

1 July 52

5.

Sta	+	Hi	-	
	3.05	123.05		120.00
	7.47	125.02	5.50	117.55
	13.04	138.02	0.04	124.98
	12.13	150.13	0.02	138.00
	3.32	149.95	3.50	146.63
0+00			0.4	149.6
0+17			1.42	148.5
0+17.5			2.05	147.9
0+34.8			3.31	+8.50 146.6
0+50			3.70	146.3
0+69.6			3.96	145.99
1+00			3.1	146.9
1+50			4.2	145.8
2+00			6.2	143.8
+50			9.6	140.4
3+00			12.4	137.6
+50	3.58	140.39	12.84	137.11
+100			4.3	136.1
4+00			4.55	+5.0
+50			4.7	135.71
+50			4.7	135.7
5+00			4.5	135.9

B.M. NW BP Bellview + Midway

South prop Line Colima edge sidewalk

Top curb

street gutter

Q Colima W rim MH

Edge pavement North prop Line Colima

$\frac{3.7}{3.0} \times \frac{20}{10}$

2.9

10

4.9

10

8.7

10

W Rim MH



Taft St Cont

6.

5+50		140.39	4.7		135.7
6+00			5.2		135.2
7+50			7.0		133.4
6+50			7.4		133.0
7+00			8.29	+5.30 To invert	
7+20			7.7		132.6
+29.4			8.5		131.9
+50			8.0		132.4
8+00			6.6		133.8
+50			5.6		134.8
9+00	13.09	149.20	4.4		136.0
			4.28		136.11
+50			1.7		137.5
10+00			9.40	+4.80	
10+00			9.6		139.6
+50			6.9		142.3
11+00			4.7		144.5
+50			3.0		146.2
12+00			1.7		147.5
+50	1.28	150.26	0.9		148.3
			0.22		148.99
13+00			0.9		149.4
+30±			1.45		148.8
+50			1.70		148.6
+22			2.20		148.1
+22			1.60		148.7
			1.75		148.5
13+99.2			12.73		137.53 = 137.49

Edge Pavement South Prop Line Midway  
W Rim MH & Midway

N Prop Line Midway edge pavement

2.6  
7.0  
4.0  
7.0

8.1 5.3  
3.0 8.0

7.2 4.7  
4 10

5.5 3.7  
4 12

4.3 3.4  
4 6

8.4  
10

W Rim MH

4.5  
10

4.3 2.3  
4 10

edge pavement s prop line Forward

Top curb  
N prop Forward st on edge sidewalk

S.E. Top Hyd Bellview + Forward



Toft St  
 Colima to Forward  
 Proposed Water

6+60

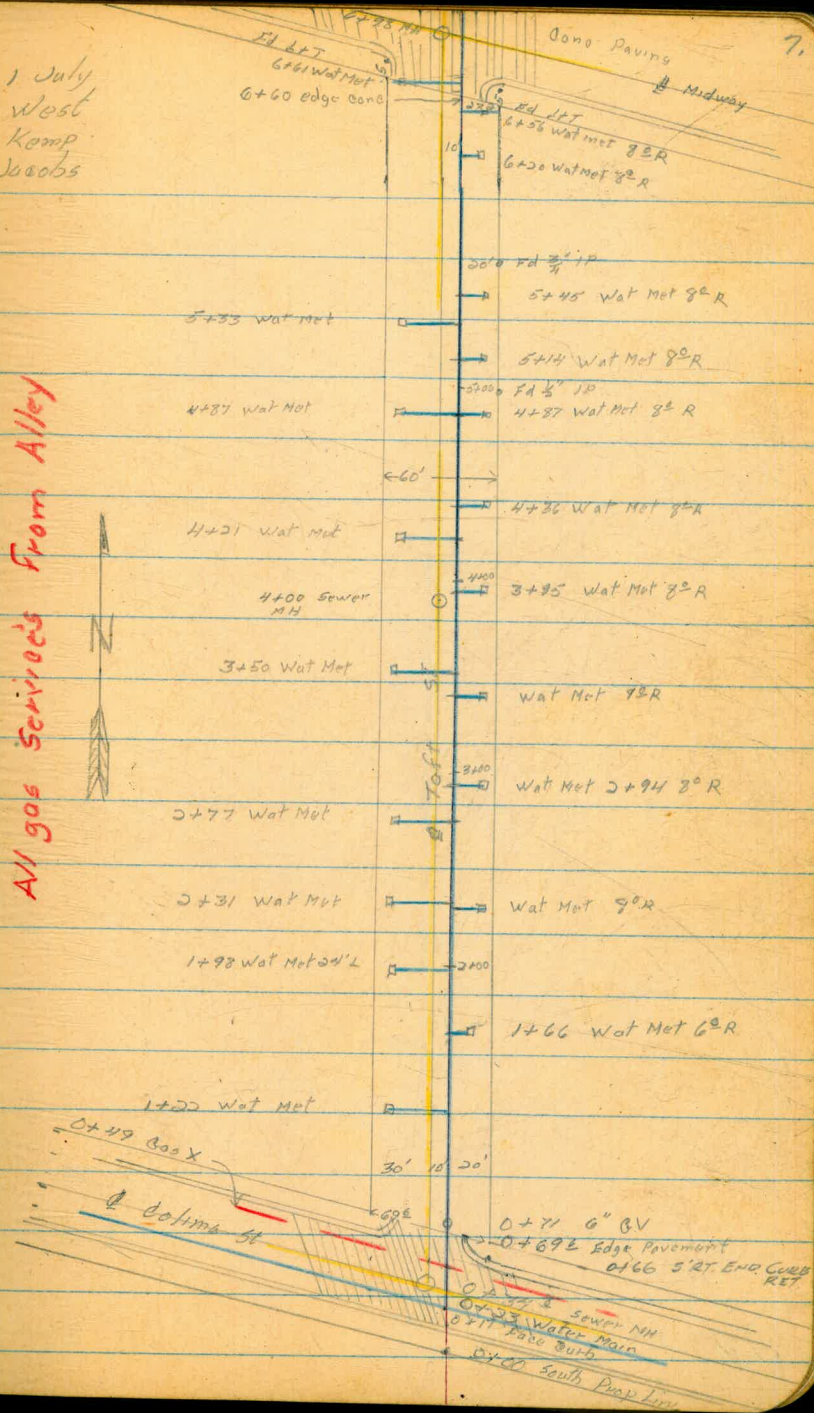
South Prop Line Midway

0+00

South Prop Line Colima

1 July  
 West  
 Kemp  
 Jacobs

All gas services from Alley





Taft St cont

13+99<sup>2</sup>

N prop line Forward

13+30

S prop line Forward

7+29<sup>6</sup>

Nor Prop Line Midway St

13+56 Wat Met  
 F.H. 26<sup>3</sup>R 13+31  
 W.V. 02<sup>1</sup>R 13+29<sup>5</sup>

Cont Pavement  
 13+24<sup>2</sup> & Forward St  
 F.H. 5<sup>2</sup>L+T  
 13+30 Edge pavement  
 7<sup>2</sup>R to edge curb

13+47 Wat Met

DE

12+05 Wat Met 10<sup>2</sup>R

11+60 Wat Met 8<sup>2</sup>R

o. Fd 3/4" 1P

30 10 00'

10+64 Wat Met

10+25 Wat Met

30 06 30

10+00 sewer MH

9+70 Wat Met

9+64 Wat Met 8<sup>2</sup>R

9+71 Wat Met

9+22 Wat Met 3<sup>2</sup>R

8+75 Wat Met

8+62 Wat Met 7<sup>2</sup>R

8+50 Wat Met

8+07 Wat Met

7+45 Wat Met

Ed 5<sup>2</sup>L+T

7+21 Wat Met 9<sup>2</sup>R

7+09<sup>2</sup> Edge curb paving

Ed 8<sup>2</sup>L+T C<sup>0</sup>R to Curb

7+07 See Main Xing



ANNEA St  
 A Profile  
 Gaines to Louretta

	1.27	44.56		43.29
0-05	0.85	32.67	12.74	31.83
0+00			0.08	East rim Gas MH
			0.70	31.97
0+50			2.5	30.17
1+00			3.1	29.57
			10.00	22.17 102
1+12			12.20	20.47 31' R inverted
1+29.4			3.20	+80 To Bottom +26 (29.47) To Top Box
1+50			4.0	28.67
2+00			4.7	27.97
2+13			4.6	28.07
2+50			4.4	28.27
2+67			5.46	
3+00			5.1	27.57
			+102 To Bottom	
3+02			5.06	← 27.61 +102 To Bottom +11 Top Box
3+50			5.6	27.07
3+97			5.79	26.88
4+00			5.4	27.27
4+50			4.9	27.77
			+80 To Bottom	
4+60			4.60	← 28.07 +22 To Bottom Top Box
5+00			3.7	28.97
5+50			2.5	30.17
			+92 To Bottom	
5+93			0.95	← 31.72 +133 To Bottom Top Box

West  
 Kemp  
 Jacobs

2 July 50

GM. Spk 10 PP SW cor Bencaio & Riley

15'  
 15' 5" @ Louretta St

$\frac{50}{10} \frac{00}{50}$   
 $\frac{56}{7} \frac{15}{3}$   
 $\frac{85}{15} \frac{23}{3}$

24" CMP Storm Drain

Gas Co MH 5<sup>5</sup>R East Rim

$\frac{4.5}{10} \frac{36}{5}$

E dge oil Rivet

E dge Gas Co MH 17<sup>2</sup>R

West Rim Gas Co MH 5<sup>5</sup>R

16<sup>2</sup>R E Rim Gas Co MH

E rim Gas Co MH 5<sup>5</sup>R

E rim Gas Co MH 8<sup>0</sup>R



Azusa St

10.

6+00 32.67 0.5 32.17

6+05 0.8 31.87

12.47 44.31 0.83 31.84

1.06 43.25 =

43.29

PL line South Side Gaines



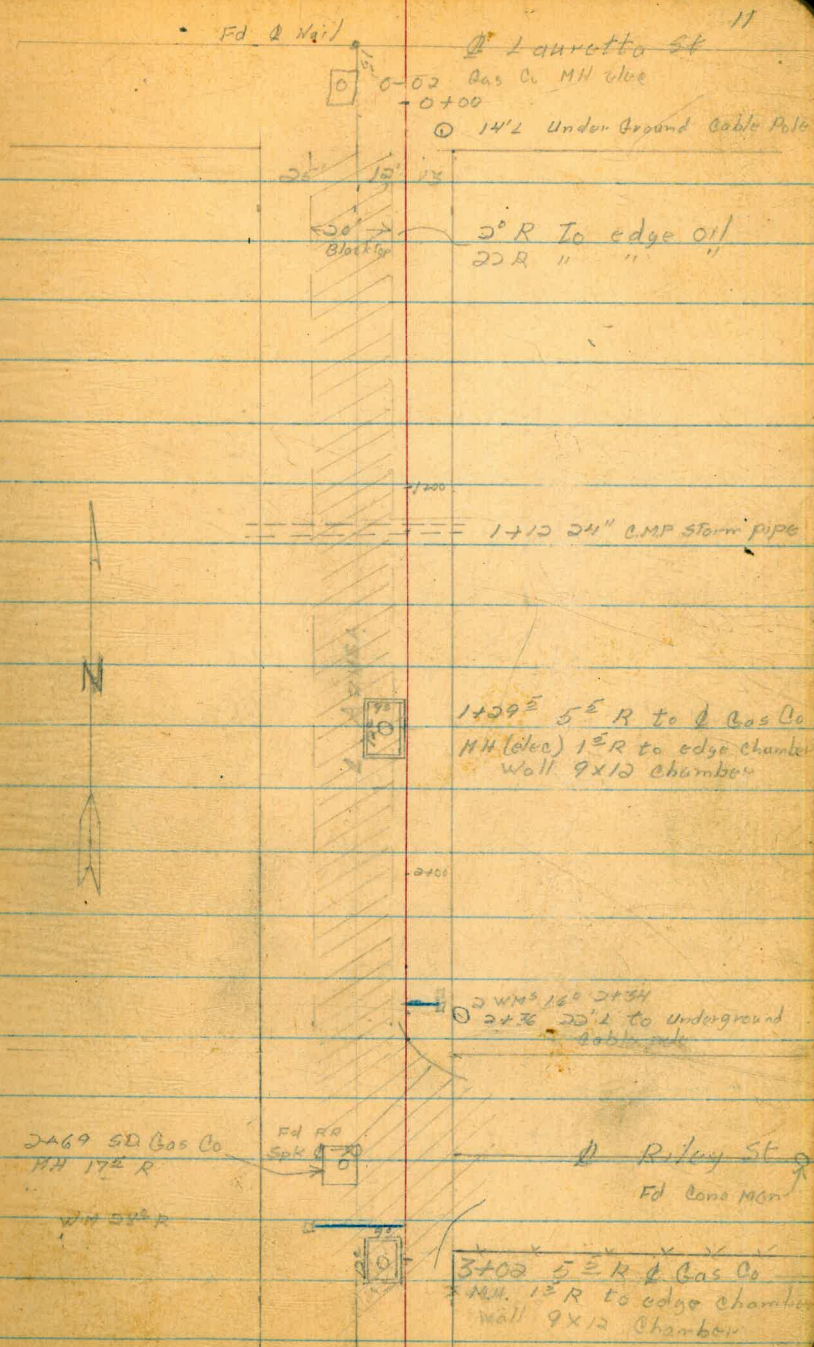
Azusa St  
Gaines to Loretta

0+00

10' south of Loretta St

2+60

of Riley St





5+80

North Prop Line Cairns St

6+05

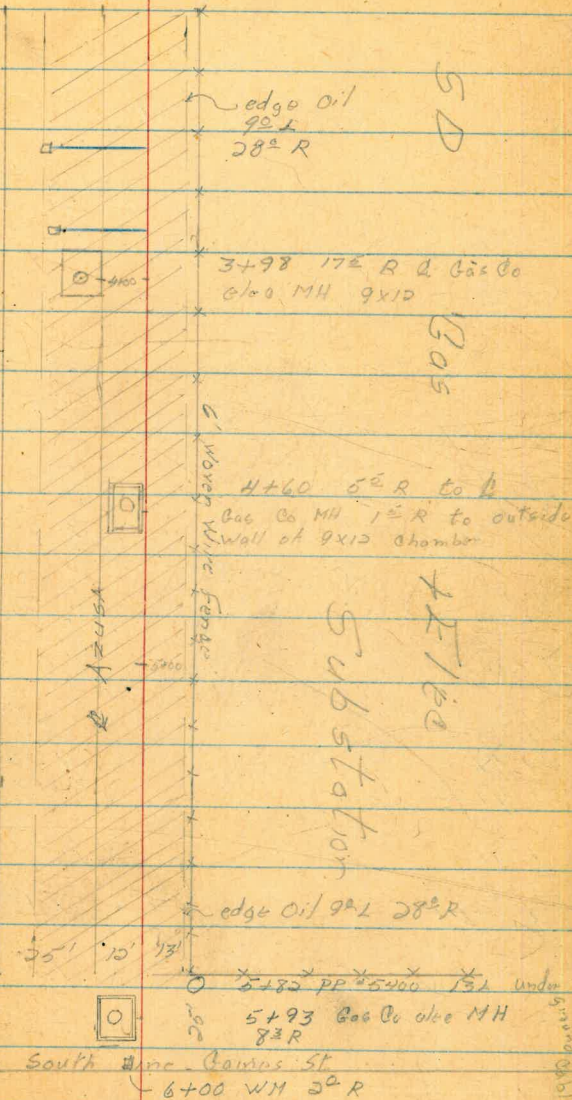
3+66 WM 30 R

3+86 WM 28 R

SD Dog Pond



PL



SD

Gas

Substation

5'00' 0'00' 1'00' 1'00'



Lauretta  
 Profile - 10'50 @  
 Mollie to Goshen

	0.55	43.84	43.29
	8.02	39.81	12.05 31.79
0+00			7.7 32.11 ✓
+50			7.5 32.3 ✓
1+00			7.2 32.6 ✓
+50			6.6 33.2 ✓
2+00			5.8 34.0 ✓
+50			5.0 34.8 ✓
3+00			4.4 35.4 ✓
3+50			6.3 33.5 ✓
4+00			8.1 31.7 ✓
4+30 <sup>2</sup>			7.67 32.1 ✓
+37			7.23 32.6 ✓
+41 <sup>2</sup>			7.43 32.4 ✓
+50			7.7 32.1 ✓
+59			7.1 32.7 ✓
+70			9.7 30.1 ✓
5+00			9.2 30.6 ✓
+50			7.8 32.0 ✓
6+00			7.8 32.0 ✓

West  
 Williams  
 Kemp

3 July 52 13

B.M. set in PP Benevia + Riley

E. Pine Mollie

5.3	7.0
<u>1.02</u>	<u>7.0</u>
10	

Edge Black top Azusa  
 West Rim Gas Co Mill  
 Azusa

E. edge of Azusa  
 Berm of road



Profile Laur. etta  
 Malle-goshes

Sta	H.		
6+50	39.81	5.8	34.0 ✓
7+00		2.7	37.1 ✓
	12.89	52.50	0.20 39.61
7+50		7.1	45.4 ✓
8+00		2.2	50.3 ✓
	9.25	60.85	0.90 51.60
+50		8.1	52.8 ✓
9+00		6.6	54.3 ✓
+08 <sup>9</sup>		6.30	54.6 ✓
+50		4.8	56.1 ✓
10+00		2.9	58.0 ✓
+50		0.7	60.2 ✓
	11.10	71.66	0.29 60.56
11+00		9.4	62.3 ✓
+50		7.7	64.0 ✓
12+00		6.5	65.2 ✓
+50		5.1	66.6 ✓
13+00		4.4	67.3 ✓
+50		3.2	68.5 ✓

Turn on meter Box 8+04 ± 90 R

Ben idia

4.8  
 10  
 2.7  
 8 0.6  
 10

80  
 18  
 72  
 10  
 64  
 10  
 62  
 10  
 40  
 10



Robt. Laurotta

Molle-Goskey

71.66

+

M.

-

King  
Williams  
Jacobs

6-7-52

15

T.P. 2.82 70.91 3.57 68.09

T.P. 0.57 70.64

T.P. 0.76 61.09 10.58 60.33

T.P. 1.41 50.23 12.57 48.82

(K.B.M) 6.95 43.28 = 43.29

T.B.M 6.89 77.51 70.64 ✓

14+00 6.7 70.8 ✓

+50 4.0 73.5 ✓

15+00 8.6 76.9 ✓

T.P. 503 82.38 8.16 77.35 ✓

15+50 3.1 79.3 ✓

16+00 2.4 80.0 ✓

16+09 2.5 80.1 ✓

16+23 11.2 71.2 ✓

T.P. 11.39 80.54 13.23 69.15 ✓

16+33 19.5 61.0 ✓

16+50 28.0 60.3 ✓

16+67 7.9 72.6 ✓

T.B.M Top Five Hyd NE. Cor Colusa-Laurotta

Top F.H. Colusa-Laurotta



Profile Lavette  
Mollie - Goshon

King 2-7-52

16

80.54

T.P.	12.77	91.99	1.32	79.22	
16+88			8.8	83.2	✓
17+00			8.6	83.4	✓
17+50			2.6	89.4	✓
T.P.	11.96	102.11	1.84	90.15	
18+00			6.2	95.9	✓
T.P.	12.24	113.96	0.89	101.72	
18+50			11.1	102.9	✓
19+00			5.4	108.6	✓
T.P.	12.17	125.83	0.30	113.66	
19+50			10.3	115.5	✓
20+00			3.6	122.2	✓
T.P.	11.70	137.31	0.22	125.61	
20+50			10.1	127.3	✓
21+00			6.7	130.6	✓
22+00			2.8	134.7	
T.P.	7.69	144.72	0.28	137.02	
22+50			5.8	138.9	✓
23+00			5.0	139.7	✓



Pro. Site - Lauretta  
Mollie - Goshen

144.72

23442		5.3	139.4	
+44		4.1	140.6	
23447.13		4.3	140.4	
T.B.M. 068	145.29	0.11	144.61	
T.P.	0.18	132.86	12.61	132.68
T.P.	0.56	120.42	13.00	119.86
T.P.	5.41	112.96	12.87	107.55
T.P.	0.27	100.38	12.85	100.11
B.M.		12.83	87.55	87.62

KING-7-7-52

17

E. Prop line Goshen

Top Iron Pipe N.E. Cor Lauretta Goshen

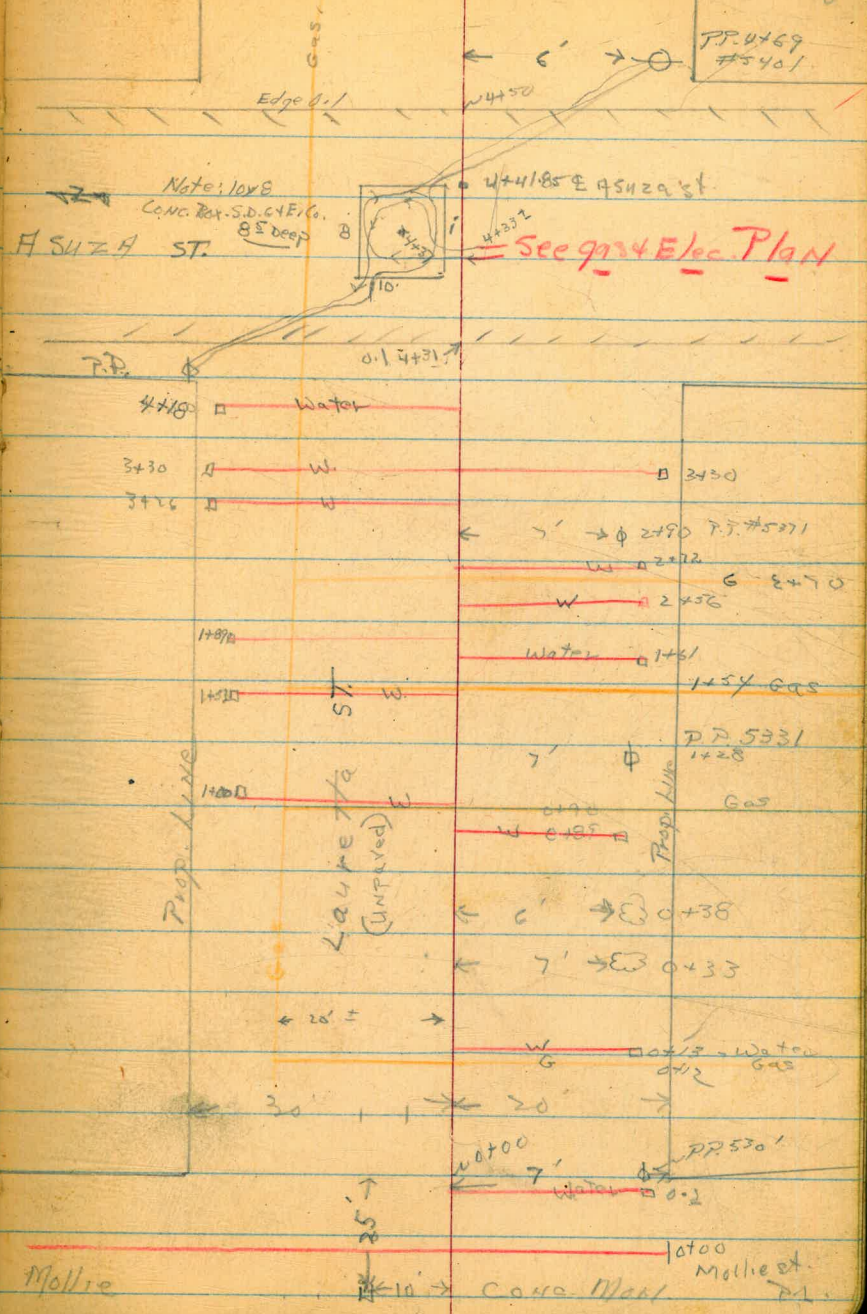
Iron Pipe N.E. Cor Eureka P. lay



Alignment Lauretta  
Mollie - goshaw

7-7-52  
King

18





Alignment  
 Laurretta St.  
 Mothe-goshen

King 7-7-52

19

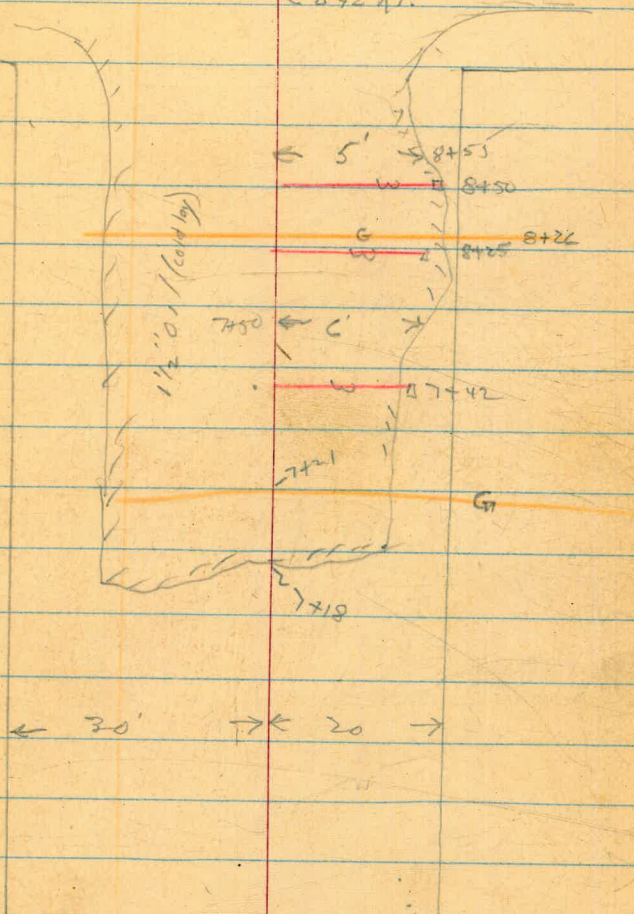
↑

9+20

Water

Fd. 5x2  
 N4T. @ 10' → 9+08.81 - & Benicia St →  
 8'42" RT.

↓



← 30' → ← 20' →

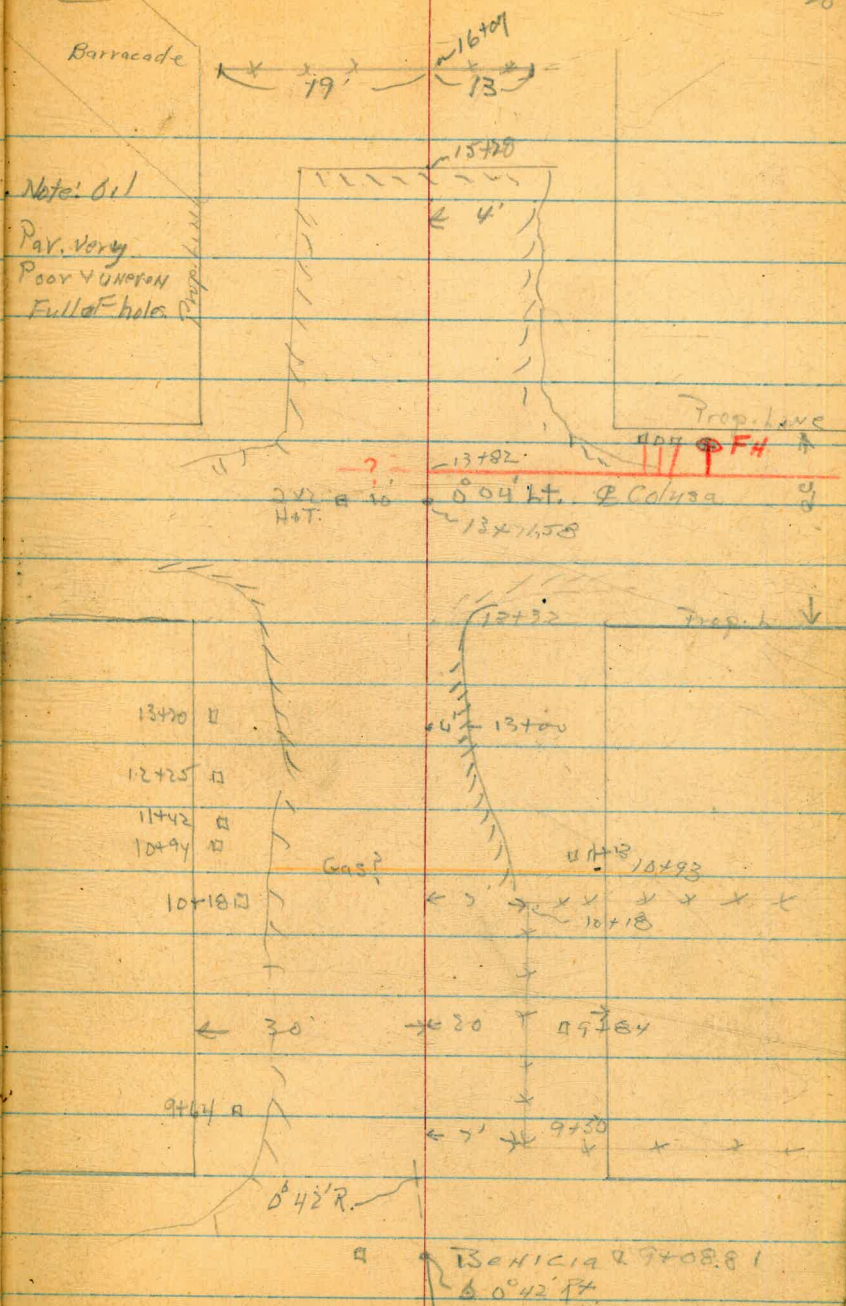
A5424



Alignment Lauretta St.  
Mollie-Goshen

KING 7-7-52

20





Alignment - Lauratta St.  
Moline to Goshen

King 7-7-52

Rel. Pipe

Fd. Non  
P.P.

30'

23+47.13  
20'

21

Goshen St.

500'

Gas 22+42

Water 21+97

Gas 21+04

Gas 20+41

Gas 19+29

18+93  
3/4 P.L.

See Tie

Hubs  
Out { 0 10'  
10 10'

Eureka

Gas?

30'

20'

Barricade 18+24 17+41

16+44 - crack

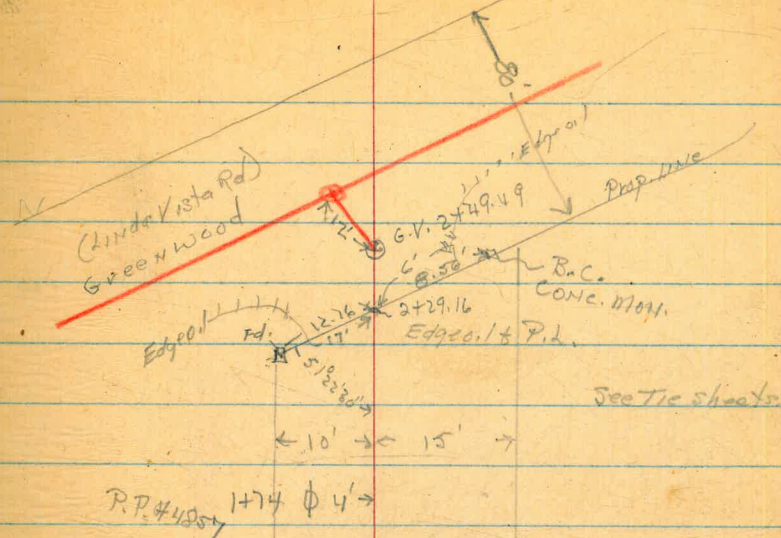


Plant Profile  
 Mallie St.  
 Lauretta to G.V. Linda Vista Rd

7-9-52  
 King

22

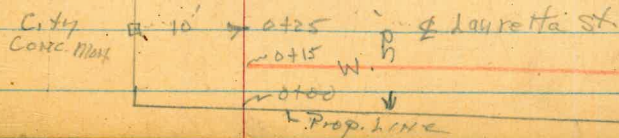
T.B.M.	5.34	37.45		32.11	
S.P.L. Lauretta			5.3	32.2	
6400	2+55		5.2	32.3	✓
+50	2+05		5.3	32.2	✓
1400	1+55		5.2	32.3	✓
+50	1+05		4.8	32.7	✓
2400	0+55		4.5	33.0	✓
R.I.			4.4	33.1	✓
+29.16	0+26		4.8	32.7	✓
Edge			5.34	32.11	
2430 (1)	0+25				
2+50	0+05				
CR					



See Tie sheets

← 10' → 15' →

0+50 ↑





AZUSA ST 6" A.C. MAIN

WEST  
WILLIAMS  
VARON FAKIS

7-24-53

13

STA	+	H <sub>1</sub>	-	E <sub>1</sub>		
T.B.M.	4.25	36.84			32.59	EAST RIM GAS M. H. 0-05 LAURETTA
0-15			4.7	32.1	27.0	C5 <sup>1</sup>
0-5			5.1	31.7	26.9	C4 <sup>8</sup>
0+00			4.4	32.4	26.9	C5 <sup>5</sup>
0+15			4.5	32.3	26.8	C5 <sup>5</sup>
0+15			7.7	29.1	30.8	F1 <sup>7</sup>
0+50			5.6	31.2	26.8	C4 <sup>4</sup>
1+00			6.4	30.4	25.9	C4 <sup>5</sup>
1+50			8.2	28.6	25.1	C3 <sup>5</sup>
2+00			8.9	27.9	24.4	C3 <sup>5</sup>
+50			8.5	28.3	23.6	C4 <sup>7</sup>
2+65			8.7	28.1	23.4	C4 <sup>7</sup>
2+70			8.8	28.0	23.3	C4 <sup>7</sup>
2+74			8.7	28.1	28.1	C0 <sup>0</sup>
T.P.						
3+00	7.39	34.88	9.35	27.49	23.0	C4 <sup>5</sup>
+50			7.7	27.2	22.4	C4 <sup>8</sup>
4+00			7.7	27.2	22.5	C4 <sup>7</sup>
+50			7.1	27.8	22.8	C5 <sup>0</sup>
5+00			6.0	28.9	24.0	C4 <sup>7</sup>

F.H. TEE

⑤ F.H.

ONE 6" GATE VALVE

6" TEE

W.M. WEST

NOTE!  
See pg 29



AZUSA ST. 6" A.C. MAIN

WEST  
WILLIAMS  
VARONFAKIS

7-24-53

29

STA	+	H <sub>1</sub>	-	E <sub>1</sub>
		34.88		
5+50			4.8	30.1 25.3
5+75			4.2	30.7 25.9
5+75			4.0	30.9 30.3
5+90			3.5	31.4 26.4
CK. To T.B.M			3.16	31.72 31.72

C4  $\frac{8}{8}$   
 C4  $\frac{8}{8}$   
 C0  $\frac{6}{9}$   
 C5  $\frac{9}{9}$

F.H. TEE  
 (5') E F.H.

E. RIM GAS Co. M.H. AZUSA + GAINES



Gloria St  
Franklin to Ocean view

West  
Williams  
Varonakis  
Kemp

7-27-53

25

Sta	+	Hi	-	Low
	2.03	118.52		116.49
	4.55	113.93	9.14	109.38
	12.87	126.77	0.03	113.90
	11.92	138.65	0.04	126.73
	11.93	150.43	0.15	138.50
0+00			6.2	144.2
0+00			7.0	143.4
1+06			5.2	145.2
1+06			8.3	142.1
2+05			4.9	145.5
2+05			8.8	141.6
3+00			7.6	142.8
3+00			11.6	138.8
	4.14	144.58	10.59	140.14
4+06			4.4	139.9
4+06			7.7	136.6
5+05			5.7	138.6
5+05			9.3	135.0
	12.1	134.37	11.17	133.11
	1.57	125.32	10.62	123.75
			8.92	116.40 = 116.49

BM BP 5-w cor 47<sup>th</sup> + Ocean View

Ground

Top stem RV

Ground

Top pipe

Ground

Top pipe

Ground

Top of pipe

Top pipe

Top pipe



Lauretta St

8" @ 170 in

15+75 to 18+50 (Canyon)

West  
Williams  
Varonakis  
Kemp

26

4.41 75.05 70.64

9.15 83.80 0.40 74.65

11 1/2 Band

15+75 4.4 79.4 73.6

C 5 8

16+00 4.0 79.8 72.0

C 7 9

+03 4.4 79.4 71.1

C 10 3

(225 Band)

0.44 72.55 11.69 72.11

16+33 11.2 62.6 59.0

~~C 0 4~~ <sup>4/9/55</sup> Replaced ~~C 2 4~~

+50 10.5 63.9 58.5

~~C 1 6~~ ~~C 5 4~~ ~~C 3 0~~

(45 Band)

16+60 9.6 64.9 58.4

~~C 2 6~~ ~~C 6 5~~ ~~C 4 0~~

Grade  
changed to  
lower pipe  
See 9713A

11.49 83.90 0.14 72.41

16+67 11.5 72.4 69.0

C 3 3

11 1/2 Band

+95 4.0 79.9 78.2

C 1 3

17+00 3.5 80.4 78.7

C 1 2

12.83 96.20 0.53 83.37

+50 6.8 89.4 85.2

C 4 2

18+00 0.6 95.6 91.6

C 4 0

9.67 (104 83) 0.04 96.16

18+50 2.1 102.7 98.2

C 4 5

1.09 93.28 12.64 92.19

5.76 87.52 = 87.55 BM NE Cor Riley Eureka

See page 15

TBM Top FH NE Cor Lauretta

4/9/55  
Replaced

72.4  
75  
72.4  
75  
72.4  
75  
72.4  
75



Lauretta St. Cont

West  
Williams  
Varonakis  
Kemp

27

7-31-53

	12.32	99.87		87.55						
	12.28	111.50	0.65	99.22						
18+81 <sup>2</sup>	Relocated		5.3	106.2	102.6					
	18+82 Bestly 8/1/53									
19+00			2.9	108.6	104.6					
+05 <sup>2</sup>			2.0	109.5	105.5					
	12.61	123.94	0.17	111.33						
+50			8.6	115.3	111.2					
20+00			2.1	121.8	117.8					
	12.88	136.80	0.02	123.92						
+50			9.7	127.1	122.4					
21+00			6.2	130.6	127.0					
+50			1.8	135.0	129.1					
	8.15	144.38	0.57	136.23						
22+00			7.6	136.8	131.2					
+50			5.9	138.5	133.3					
23+00			4.62	139.8	135.3					
	1.39	132.73	13.03	131.35						
	0.71	120.46	12.98	119.75						
	0.60	108.29	12.77	107.69						
	1.84	97.74	11.39	96.90						
									10.19	87.55
										=87.55

BM NE Cor Eureka + Rity

⊙ 5<sup>6</sup>

⊙ 4<sup>2</sup>

⊙ 4<sup>0</sup>

⊙ 4<sup>1</sup>

⊙ 4<sup>0</sup>

⊙ 4<sup>3</sup>

⊙ 3<sup>6</sup>

⊙ 5<sup>2</sup>

⊙ 5<sup>6</sup>

⊙ 5<sup>2</sup>

⊙ 4<sup>5</sup>

+

11

10.19

87.55

=87.55



Lauretto St. Cont

28

7-31-53

			Elev	Grade	East rim Gas Co	Elev NN
	6.15	38.74	32.59			
0-13	0-08	6.6	32.1	27.8	C 4 3	
0+00		6.8	31.9	27.9	C 4 0	
+50		6.5	32.2	28.4	C 3 8	
1+00		5.9	32.8	29.0	C 3 8	
+50		5.2	33.5	29.7	C 3 8	
2+00		4.5	34.2	30.3	C 3 9	
+50		3.7	35.0	31.0	C 4 0	
3+00		2.8	35.9	30.0	C 5 9	
+50		4.0	34.7	29.0	C 5 3	
4+00		6.6	32.1	28.0	C 4 1	

6.15

59  
28  
87



AZUSA ST  
Shots to Top of Pipe  
for extra excavation

7-31-53

	34.22	58.07
6.15	38.74	32.59
		35.6
3+00	10.6	24.1
4+00	11.47	22.75
4+00	11.6	22.6
4+50	12.1	22.1
5+00	10.85	23.37
4+50	9.84	24.38
4+75	9.26	24.96
	6.15	32.59

TBM cast rim  
Azusa & Gaines Gas Co MH

} Top 6" AC pipe

} Ground Bottom of Trench

32.59



Lauretta St Pl. 8" 01  
Sta 4+54 to 15+75

West  
Williams  
Varonoku  
Kemp

30

	8.98	41.47		32.59		East rim Cas Co MH Azusa Lauretta
4+55 <sup>50</sup>			9.2	32.3	26.3	C 6 <sup>0</sup>
+75	10.87	43.46		32.59		
			12.5	34.0	26.6	C 4 <sup>2</sup>
5+00			12.8	30.7	26.8	C 3 <sup>9</sup>
+50			12.0	31.5	27.6	C 3 <sup>9</sup>
6+00			10.9	32.6	28.4	C 4 <sup>2</sup>
+15 <sup>13</sup>			10.8	32.7	29.2	C 3 <sup>2</sup>
6+50			9.3	34.2	31.0	C 3 <sup>2</sup>
7+00	15.11	55.39	6.3	37.2	33.6	C 3 <sup>6</sup>
+50			0.18	43.59		
			9.9	45.5	37.7	C 6 <sup>8</sup>
8+00			5.5	49.9	43.9	C 6 <sup>0</sup>
+50			2.7	52.7	49.0	C 3 <sup>5</sup>
9+00			1.4	54.0	50.9	C 3 <sup>2</sup>
+45	11.82	66.21	0.80	54.59		
+50			10.9	55.5	52.4	C 3 <sup>4</sup>
10+00			10.8	55.6	52.6	C 3 <sup>4</sup>
+50			8.8	57.6	54.3	C 3 <sup>3</sup>
			6.6	59.8	56.0	C 3 <sup>2</sup>
11+00			4.7	61.7	57.7	C 4 <sup>0</sup>
+50			3.0	63.4	59.4	C 4 <sup>2</sup> 58.8 C 4 <sup>6</sup>
12+00			1.7	64.7	61.0	C 3 <sup>2</sup> 60.3 C 4 <sup>4</sup>

Fire Hyd Tee



WEST  
WILLIAMS  
VARONFAKIS  
KEMP

31

66.41

12+50	12.51	78.40	0.52	65.89	62.8	C 3 <sup>1</sup>	61.9	C 4 <sup>0</sup>
13+00			11.7	66.7	64.1	C 2 <sup>6</sup>	63.1	C 3 <sup>6</sup>
+50			11.5	66.9	65.4	C 1 <sup>5</sup>	64.4	C 2 <sup>5</sup>
+71			9.9	68.5	65.9	C 2 <sup>6</sup>	64.9	C 3 <sup>6</sup>
+75			9.8	68.6	66.0	C 2 <sup>6</sup>	65.0	C 3 <sup>6</sup>
14+00			8.3	70.1	67.5	C 2 <sup>6</sup>	66.6	C 3 <sup>5</sup>
+50			5.3	73.1	70.3	C 2 <sup>8</sup>	69.3	C 3 <sup>8</sup>
15+00			1.9	76.5	73.2	C 3 <sup>3</sup>	72.0	C 4 <sup>5</sup>
+50			+0.7	79.1	74.0	C 5 <sup>1</sup>		
+75			7.81	70.59	=	70.64		



Lauretta St  
Water Mts

West  
Williams  
Kemp  
Varonakis

8-5-53

30

	6.29	38.88		32.59		TBM east	Lauretta Azusa rim Pac Co MH
0+00		6.6	32.3	31.8	CO <sup>5</sup>		WM S No add
0+00	0-02		6.7	32.2	31.8	CO <sup>4</sup>	FH South (165 So & St)
0+12			6.5	32.4	31.9	CO <sup>5</sup>	
<del>0+47</del>	<del>WM Nly 5410</del>			32.4	32.5	<del>FO 2</del>	<del>WM (S) 5401</del>
+89			6.2	32.7	32.7	CO <sup>0</sup>	WM (S) 5419
1+00			5.7	33.2	33.2	CO <sup>0</sup>	
+53			5.0	33.9	34.0	FO <sup>1</sup>	WM(N) 5410, 5416, 5422
+63			5.3	33.6	33.7	FO <sup>1</sup>	WM N 5430
+87			4.4	34.5	34.6	FO <sup>1</sup>	WM S 5431
2+26	WM Nly (VACANT) ✓			33.8	32.6	FO <sup>8</sup>	WM N 5438
2+55			4.2	34.7	34.6	CO <sup>1</sup>	WM S 5439
+74			3.4	35.5	34.4	C 1 <sup>1</sup>	WM S 5451
3+25			2.2	36.7	34.0	C 2 <sup>1</sup>	WM N 5460
+30			2.1	36.8	33.9	C 2 <sup>9</sup>	WM N 5468
+30			4.9	34.0	33.4	CO <sup>6</sup>	5465
4+15			6.2	32.7	32.6	CO <sup>1</sup>	WM S No Add
			6.29	32.59	32.59		WM N 5475-MILDRED
	11.42	44.01		32.59			No add
	11.67	55.38	0.30	43.71			
7+09			12.2	43.2	43.3	FO <sup>1</sup>	5554 LAURETTA
							WM N No add

~~NO EXISTING MET  
STUD BECAUSE  
ON PLANS~~

NO EXISTING MET  
STUD BECAUSE  
ON PLANS



LAURETTA WATER METERS

WEST  
WILLIAMS  
VARONFAKIS  
KEMP

8-5-53

33

7+42	55.38	10.1	45.3	44.6	C0 <sup>7</sup>	WM S 5539	
8+25		3.6	51.8	51.0	C0 <sup>8</sup>	WM S 5561	
+50		2.5	52.9	53.0	F0 <sup>1</sup>	WM S 1245 Benidia	
+56	10.75	65.33	0.80	54.58	53.7	C0 <sup>2</sup>	W.M.N. No Add.
9+45		9.7	55.6	56.5	F0 <sup>9</sup>	R.F.H. S	
+64		7.2	58.1	57.6	C0 <sup>5</sup>	WMN 5604	
+84		8.0	57.3	57.8	F0 <sup>5</sup>	WM S 5605	
10+18		4.4	60.9	59.1	C1 <sup>8</sup>	WMN 5614	
+94		1.1	64.2	61.8	C2 <sup>4</sup>	WMN 5626	
11+15		2.7	62.6	61.6	C1 <sup>0</sup>	WM S 5627	
+42	11.84	76.87	0.30	65.03	63.4	C1 <sup>6</sup>	WMN 56447
12+25		9.2	67.7	66.0	C1 <sup>7</sup>	5648 WMN No Add	
13+20		7.3	69.6	68.6	C1 <sup>0</sup>	WMN 5678	
14+56		3.3	73.6	74.5	F0 <sup>9</sup>	WM S 5709	
+79	7.45	82.11	2.21	74.66	75.9	F1 <sup>2</sup>	WM S 5715
14+85		3.3	78.9	76.5	C2 <sup>3</sup>	WMN 5712	
15+00		5.6	76.5	77.3	F0 <sup>8</sup>	WM S 5719	
15+33	WM Nly (VACANT)		82.0	78.6	C2 <sup>6</sup>	WM H. VACANT	
+67		2.8	79.3	79.9	F0	WM S 5727	
	1.31	72.60	10.82	71.29			
		2.00	70.60		70.64		

No EXISTMET  
STKED because  
on plans.



Lauretta St

WEST  
WILLIAMS  
VARONFAKIS  
KEMP

8-5-53

34

	2.83	105.53		102.70			
17+68			13.5	92.0	94.9	7 2 $\frac{9}{1}$	WM S 5765
18+14			7.7	97.8	101.0	7 3 $\frac{2}{1}$	WM S 1230 Eureka
	12.96	118.40	0.09	105.44			
19+06 <sup>7</sup>			9.0	109.4	111.1	7 1 $\frac{7}{1}$	(S) FH 5
19+33			5.0	113.4	114.2	7 0 $\frac{8}{1}$	WM S 5805
	12.91	131.06	0.25	118.15			
20+41			5.3	125.8	127.4	7 1 $\frac{6}{1}$	WM S 5821
	12.62	143.34	0.34	130.72			
+86			10.4	132.9	131.6	C 1 $\frac{3}{1}$	WM N 5826
21+42			9.4	133.9	134.0	7 0 $\frac{1}{1}$	5845
21+ <del>83</del> <sup>93</sup>			3.7	139.6	136.1	C 3 $\frac{5}{1}$	WM S No Add
22+35			2.3	141.0	138.0	C 3 $\frac{0}{1}$	5842
+40			5.4	137.9	138.0	7 0 $\frac{1}{1}$	WM N 5850
+65			1.3	142.0	139.4	C 2 $\frac{6}{1}$	WM S 5865
			4.90	138.44	= 137.6		WM N 5858







BANCROFT ST. (CONT.)

392.27

6+50			3.9	388.5	384.9
7+00			3.5	388.8	385.1
+50	6.30		3.0	389.3	385.3
+91		395.67	2.90	399.37	385.4
8+00			6.3	389.4	385.5
+25			6.0	389.7	385.6
+50			6.0	389.7	386.0
9+00			5.7	390.0	386.4
+50			5.6	390.1	386.6
10+00			5.3	390.4	386.9
+50			5.0	390.7	387.0
11+00			4.9	390.8	387.2
+50			4.7	391.0	387.5
12+00			4.5	391.2	387.7
+50	5.83	397.36	4.2	391.5	388.0
13+00			5.7	391.7	388.2
+50			5.6	391.8	388.5
14+00			5.3	392.1	388.7
+25			5.3	392.1	388.9

WEST  
WILLIAMS  
VARONFAKIS  
SHOREY

8-6-53

36

C 3 6

9+94 W 4828 BAN.

C 3 2

10+52 E 4835 "

C 4 0

10+77 W 4838 "

C 4 0

11+02 W 4840 "

7+86 END WORK

C 3 9

6" x 6" C 1055

7+96 Begin Work

C 4 1

11+67 W 4850 "

C 3 7

11+68 E 4849 "

C 3 6

11+93 E 4857 "

C 3 5

12+19 W 4858 "

C 3 4

12+47 E 4863 "

C 3 3

12+66 W 4864

C 3 6

12+95 E 4873

C 3 5

13+15 W 4872

C 3 5

13+70 W 4884

C 3 5

13+72 E 4883

C 3 5

14+03 E 4889

C 3 3

C 3 4

C 3 2



Bancroft St Contd

WEST  
WILLIAMS  
VARONFAKIS  
SHOREY

8-6-53

37.

397.36

141+29

5.3

392.1

389.0

0.34

FM Fee

+51<sup>3</sup>

4.8

392.6

389.1

0.3<sup>2</sup>

end of work

T.P.

3.06

394.35

6.07

391.29

T.P.

2.64

389.89

7.10

387.25

T.P.

4.29

387.29

6.89

383.00

CHECK

To B.M.

6.41

380.88 = 381.01

MADISON + BANCROFT

S.E.B.P.



BROADWAY.  
41<sup>st</sup> To 42<sup>nd</sup>  
② STK.S & GRDS FOR WAT. METS

(179.11 H. from pg 39.)

8/13/53 DEATY  
MAYTEL  
ALEXANDER

38.

0+00 = Ely Prop. Line 41<sup>st</sup>

0+37 N.	7.1	172.0	172.2	FO <sup>2</sup>	4104 Broadway	
0+89 N.	6.5	172.6	172.7	FO <sup>1</sup>	4112 "	
1+12 S.	6.5	172.6	172.5	CO <sup>1</sup>	4119 "	
1+47 N.	5.7	173.4	173.4	CO <sup>2</sup>	4124 "	
1+73 S.	5.8	173.3	173.2	CO <sup>1</sup>	4127 "	
2+06 N.	5.2	173.9	174.1	FO <sup>2</sup>	BAPTIST CHURCH	
2+24 S.	5.6	173.5	173.7	FO <sup>2</sup>	4135 Broadway	
2+75 S.	6.1	173.0	173.1	FO <sup>1</sup>	4143 "	
3+07 N.	6.1	173.1	172.6	CO <sup>2</sup>	4146 "	
3+18 S.	7.3	171.8	171.6	CO <sup>2</sup>	4149 "	
3+53 N.	8.9	170.2	170.5	FO <sup>3</sup>	4156 "	
3+80 S.	10.6	168.5	168.2	CO <sup>3</sup>	4161 "	
P 4+21 S	4.32	170.63	12.80 166.31	166.31	CO <sup>2</sup>	4167 "
4+71 S	6.0	164.6	164.3	CO <sup>3</sup>	4175 "	
4+79 N.	5.4	165.2	164.8	CO <sup>4</sup>	4176 "	
5+ <sup>18</sup> <del>22</del> S	7.1	163.5	163.5	CO <sup>2</sup>	4185 "	
5+69 S	7.4	163.2	162.9	CO <sup>3</sup>	4191 "	
5+93 N	5.73	162.9	163.5	CO <sup>4</sup>	4192 "	
5+98 S	8.1	162.5	162.5	CO <sup>2</sup>	928 42 <sup>nd</sup>	
6+00 N	4.0	166.6	163.7	CO <sup>9</sup>	1003 } 42 <sup>nd</sup>	
TP	2.70	160.51	12.82	157.81	1006 } 42 <sup>nd</sup>	
OK BM			7.55	152.96 = 152.94		

BP SW. Cor Hilltop & 42<sup>nd</sup>



41 ST. ST.  
 BROADWAY TO C ST  
 (2) STKS & GRDS. WAT METS

8/13/53

37

TBM	1.72	188.79	187.07	
3+00 W	3-METS	4.0	184.8	185.2
		3.9	183.9	
3+45 N		3.1	185.7	185.9
1+97 W		8.4	180.4	180.3
R 1+32 W	3.66	179.11	13.34	175.45
				175.6
0+73 W		6.4	172.4	172.7
0+00 = Nly Prop line Broadway				
	3-METS			
0-60	SW. Cor. 41st Broadway	7.0	172.1	170.5
0-58		6.6	172.5	170.5

Inside Cor Conc. curb prop line F.B. 833 pg. 67  
 FO<sup>4</sup>, FO<sup>2</sup> 1051, 1045, 1027, C. ST.  
 FO<sup>2</sup> 1048 C ST.  
 COL 1030 41 ST.  
 FO<sup>1</sup> 1020 "  
 FO<sup>3</sup> 1016 "



Felton St.  
 Alley So. of Adams Ave. to Copely St.  
 6" A.C. Main

Shorey  
 Williams  
 Varonfakis

8/28/53

40

B.M. S.E.B.P. Madison & Bancroft.

	6.63	387.69		381.01	
TP	5.97	391.68	1.33	385.71	
TP	5.34	392.86	4.16	387.52	
- 1+35			5.7	387.2	383.8
- 1+00			5.6	387.3	383.9
- 0+50			5.6	387.3	384.0
0+00			5.1	387.8	384.1
0+25			4.2	388.7	382.8
0+30			4.2	388.7	382.5
0+50			4.15	388.7	381.6
0+75			4.5	388.4	381.6
1+00			4.7	388.2	382.6
1+50			4.6	388.3	384.5
2+00			4.6	388.3	384.6
TP	5.26	393.92	4.20	388.66	
2+50			5.7	388.2	384.7
3+00			5.7	388.2	384.9
3+50			5.5	388.4	385.0
4+00			5.4	388.5	385.1
4+50			5.4	388.5	385.2
			4.5	389.4	
4+53			5.3	389.6	385.2
4+59 <sup>±</sup>			5.3	389.6	385.2

0 3<sup>±</sup>

0 3<sup>±</sup>

0 3<sup>±</sup>

0 3<sup>±</sup>

0 5<sup>±</sup>

0 6<sup>±</sup>

0 7<sup>±</sup>

0 6<sup>±</sup>

0 5<sup>±</sup>

0 5<sup>±</sup>

0 3<sup>±</sup>

0 3<sup>±</sup>

0 3<sup>±</sup>

0 3<sup>±</sup>

0 3<sup>±</sup>

0 3<sup>±</sup>

0 3<sup>±</sup>

0 3<sup>±</sup>

0 3<sup>±</sup>

0 3<sup>±</sup>

0 3<sup>±</sup>

0 3<sup>±</sup>

0 3<sup>±</sup>

0 3<sup>±</sup>

① F.M.

F.H. Tee

6" x 4" Tee



Felton St.  
Alley So. of Adams Ave. to Copley St.  
6" A.C. Main

373.72

5+00		5.2	389.7	385.3
5+50		5.2	388.7	385.5
6+00		5.0	388.9	385.6
6+50		5.0	388.9	385.7
7+00		4.9	389.0	385.8
7+50		4.7	389.0	385.9
7+75		4.8	389.1	386.0
7+81		4.7	389.2	386.1
8+01		4.4	389.5	386.2
TP	336 6.57	393.25 396.06	3.45 390.47 4.34 389.49	
8+25		6.5	389.6	386.4
8+50		6.4	389.7	386.6
9+00		6.1	390.0	386.8
9+50		6.0	390.1	387.0
10+00		5.8	390.3	387.2
10+50		5.5	390.6	387.4
11+00		5.2	390.9	387.6
11+50		4.95	391.1	387.8
12+00		4.6	391.5	388.0

Shorey 8/28/53  
Williams  
Varonakis

41

C 3<sup>2</sup>  
C 3<sup>2</sup>  
C 3<sup>3</sup>  
C 3<sup>2</sup>  
C 3<sup>3</sup>  
C 3<sup>3</sup>  
C 3<sup>3</sup>  
C 3<sup>1</sup>  
C 3<sup>1</sup> End of work  
C 3<sup>3</sup> Begin work

N. Cor. Canal Walk & Stop 4721 Felton St.

C 3<sup>3</sup>  
C 3<sup>1</sup>  
C 3<sup>2</sup>  
C 3<sup>1</sup>  
C 3<sup>1</sup>  
C 3<sup>2</sup>  
C 3<sup>3</sup>  
C 3<sup>3</sup>  
C 3<sup>2</sup>



Felton St.  
 Alley So. of Adams Ave. to Copley St.  
 6" A.C. Main

396.06

12+50

4.0391.5 388.2

13+00

4.3391.8 388.4

13+50

4.0392.1 388.6

14+00

3.9392.2 388.8

14+25

3.0392.5 389.0

14+50

3.0392.5 389.1

4.12 396.71

3.47 392.59

4.04 392.67 = 392.65

Shorey 8/28/53

22

Williams  
 Varonakis

C 3<sup>3</sup>

C 3<sup>2</sup>

C 3<sup>5</sup>

C 3<sup>2</sup>

C 3<sup>5</sup>

C 3<sup>2</sup>

End of work

14+51<sup>2</sup> Benecraft



WAVERLY AVE  
MIDWAY TO FORWARD  
⑤ STRS & GRDS for 6" WATER

SEPT 3 1953  
BEATTY  
SHOREY  
KEMP

43

B.M.	0.01	120.01	120.00			
TD	7.90	117.95	9.96	110.05		
0+696	EXISTING GV.		10.4	107.5	Top Stem	
0+75	BEGIN WORK FH TEE		8.3	109.7	105.6	C41
⑤ FH			5.7	112.1		C23 C65
			6.6	111.2	109.8	C16 C58
1+25			6.5	111.5	106.0	C55
+50			6.1	111.9	106.6	C53
2+00			5.1	112.9	107.8	C51
+50			4.1	113.9	109.0	C49
3+00			2.8	115.2	110.2	C50
+50			1.4	116.6	111.4	C52
4+00	7.16	124.77	0.34	117.61	112.6	C50
+40			6.7	118.1	113.6	C48
+50			5.8	119.0	113.8	C52
5+00			5.8	119.0	114.8	C42
+50			4.8	120.0	115.7	C43
+65			4.4	120.4	116.0	C44
6+00			3.6	121.2	117.2	C42
+50			2.3	122.5	118.9	C36
+63	End Work		1.1	123.7	119.4	C43
+682	EXIST. GV.		3.6	121.2	Top Stem	

NW. CP. Railway & Midway

EXIST. GV. 125 LT & pipe  
& pipe moved 135 to LT.  
(std 125 from 4 st.)  
PIPE  
GRD. LINE  
11.3  
6.7  
& pipe moved 05 to LT.  
11.7  
6.3  
112.6  
5.4  
113.6  
2.4  
3.3  
1.8  
0.9  
7.1  
6.1  
5.2  
5.0  
3.9  
2.5  
6.1  
2.5  
To MEET Exist. GV



WAVERLY AVE  
(Cont'd)

WATER METS

9/3/53

44

TP	13.25 <del>15.77</del>	124.77 137.41 <del>29</del>	0.53	124.24				
CK BM			<del>0.05</del> +0.05	137.44 = 137.69			Top Fsl SE Cor Bellview & Forward (pg. 6)	
							Bk of MET 20 <sup>E</sup> RT & IT & ST (par E. Gabrielson 26' ST)	
0487 W ✓	"	1179.5	9.1	1089	1087	C02	✓	620 MIDWAY
0497 E ✓	"	"	6.1 <del>5.5</del>	1119 1115	1099	E16 C20	✓	5501 WAVERLY
1459 W ✓	"	"	2.4 <del>7.2</del>	1106 1100	110.2	E02 C04	✓	630 MIDWAY
1476 E ✓	"	"	4.4 <del>5.4</del>	113.6 112.6	111.0	E16 C26	✓	5515 WAVERLY
2409 W ✓	"	"	6.2 <del>5.9</del>	111.8 112.7	111.3	E08 C05	✓	5516 "
2439 E ✓	"	"	3.6 <del>4.0</del>	112.2 112.0	112.5	E15 C19	✓	5523 "
2482 W ✓	"	"	4.1 <del>3.9</del>	113.9 114.1	113.0	E12 C07	✓	5524 "
3403 E ✓	"	"	1.92.2	115.8	116.1 113.8	E20 C23	✓	5531 "
3450 W ✓	"	"	2.22.0	116.0	115.8 114.6	E14 C12	✓	5534 "
3459 E ✓	"	"	10.1 <del>8.5</del>	118.1 117.5	115.2	E22 C27	✓	5537 "
4432 W ✓	"	"		116.6				
3487 W ✓	124.77		7.6	117.2	115.4	C06	✓	5540 "
2456 W ✓	"	"	8.09.6	117.2	116.8 117.1	C04 F03	✓	5546 "
2456 E ✓	"	"	5.5	119.3	117.2	C21	✓	5549 "
4484 E ✓	"	"	5.1 <del>5.6</del>	119.7 119.2	117.8	E14 C17	✓	5555 "
5458 E ✓	"	"	3.9 <del>4.2</del>	120.9 120.6	119.4	E13 C15	✓	5559 "
5469 W ✓	"	"	5.8 <del>5.6</del>	119.0 119.2	119.6	F04 F06	✓	5556 "
6404 E ✓	"	"	2.4 <del>2.8</del>	122.4 122.0	120.4	E18 C22		711 FORWARD
6468 W ✓	"	"	3.3 <del>3.1</del>	121.5 121.7	121.8	F04 F03		637 FORWARD



TAFT AVE  
 COLIMA TO FORWARD  
 (5) STRS & GRDS. for 6" A.C. WAT

Sept. 3, 1953  
 BEATTY  
 SUGGEBY  
 KEMP.

TP	2.92	149.56		146.64			W. Rm Sew M.H. Colima to Taft (pg 5)
0+69.5	= Prop Line Colima (N.Y.)						
0+71.5	Existing GV. on & pipe		4.9	144.7	142.4	Top Stem	
0+76.5	Begin Work		2.4	147.2	142.4		C48
1+00			2.0	147.6	142.0		C50
1+50			3.1	146.5	141.0		C55
2+00			5.3	144.3	139.3		C50
+50			8.9	140.7	136.5		C42
3+00			11.8	137.8	134.8		C30
TP	4.09	140.59	13.06	136.50			
+50			4.4	136.2	132.0		C42
4+00			5.2	135.4	131.6		C38
+50			5.0	135.6	131.1		C45
5+00			4.8	135.8	130.6		C52
+50			4.9	135.7	130.2		C55
6+00			4.1	136.5	129.7		C68
6+47	= F.H. TEE		4.5	136.1	129.3		C68
6+47	(5) F.H.		4.2	136.1	134.7		C42 C68
6+52	= End Work		6.1	134.5	129.2		C53
6+57.5	Exist. GV. 18 RT & pipe						
6+59.6	Edge Conc. Pav.						

146.3

7.3

137.5

12.1

136.3

2.1

135.9

4.7

135.9

4.7

135.9

4.7

135.6

5.0

135.1

5.5

7.1

7.6

2.3

3.1

& pipe moved 05 RT

& pipe moved 15 RT

& pipe moved 165 RT



TAFT AVE  
(Cont'd)

9/3/53

46

	140.59		Cover up dc 132.11		w. rim Sew MH. Midway & Taft		
7+29 <sup>2</sup>	Edge Conc part	8.70	131.89	= 131.89	Nor edge part		
7+34	Begin Work	7.5	133.1	129.2	C39	131.9	EI. Grd Line & pipe
+50		7.1	133.5	129.2	C43	8.2	
+75		6.2	134.4	129.2	C52	7.6	
8+00		6.6	134.0	129.7	C43	6.8	
+50		5.7	134.9	130.6	C43	5.7	
9+00		4.0	136.6	131.6	C50	4.7	
+50		2.8	137.8	133.7	C41	3.1	
10+00	9.23	149.20	0.62	139.97	135.8	C42	1.9
+50			6.3	142.9	137.9	C50	4.9
11+00			3.6	145.6	140.0	C56	144.5
+37			3.1	146.1	141.6	C45	3.4
+50			2.7	146.5	141.9	C46	3.0
12+00			1.3	147.9	142.9	C52	1.7
+50			0.6	148.6	144.0	C46	0.9
13+00	4.19	153.26	0.13	149.07			
			3.6	149.7	145.1	C46	3.9
+23.7	End Work	3.7	149.6	145.7	C39	4.2	E pipe moved 13 RT
+28.7	Exist 9V. 15 RT E pipe						
ck 17		4.75	148.51	= 148.51	Edge sidewalk Nor prop line Forward		



TAFT AVE  
(Cont'd.)

WGT. METS

9/8/56

47

DK of MET 20<sup>E</sup> RT & LT. & ST.

1+21 W	-2.2	1+00	145.4	144.8	C06	5404 Taft
1+65 E	+0.3	1+50	146.8	144.3	C25	5415 "
2+01 W	-1.2	2+00	143.3	142.2	C12	5412 "
2+265 E	-1.3	2+00	143.0	141.7	C13	5423 "
2+31 W	-2.8	2+00	141.5	140.1	C14	5416 "
2+945 E	+2.2	3+00	139.8	138.0	C18	5427 "
2+765 W	-0.3	3+00	137.5	138.0	F05	5424 "
3+36 E	+1.0	3+50	137.2	136.3	C09	5433 "
3+50 W	-1.5	3+50	134.7	135.2	F05	5432 "
3+82 W	-1.2	4+00	134.2	134.7	F05	5436 "
4+00 E	+1.0	4+00	136.4	135.3	C11	5441 "
4+21 W	-1.2	4+50	134.4	134.4	C02	5442 "
4+35 E	+0.9	4+50	136.5	135.1	C14	5445 "
4+86 W	-1.4	5+00	134.0	133.8	C06	5448 "
4+87 E	+1.4	5+00	137.2	134.6	C26	5449 "
5+13 E	+1.0	5+00	136.8	134.4	C24	5455 "
5+34 W	-0.8	5+00	135.0	133.5	C15	5456 "
5+15 E	+1.6	5+00	137.4	134.1	C23	5461 "
6+19 E	+1.5	6+47	137.6	136.3	C23	811 Midway



Taft Ave

48

6+71 W	2-NETS -2.0 6+52	132.5	132.2	C03	783, 775 Midway
7+46 W	-1.2 7+36	131.9	131.9	C02	776 Midway
7+36 E	+2.3 7+34	135.0	132.1	C33	806 Midway
8+06 W	-2.3 8+50	132.6	132.3	C03	5512 Taft Ave
8+25 E	+1.0 8+50	135.9	133.6	C23	5371 Taft Ave
8+49 W	-1.3 8+50	133.6	133.3	C03	780 Midway
8+62 E	+1.3 8+50	136.2	134.5	C12	5414 Taft
8+75 W	-1.0 8+50	133.9	134.0	F01	5417 "
9+05 E	+0.8 9+00	137.4	135.8	C16	5518 "
9+30 W	-0.2 9+00	136.4	136.1	C03	5521 "
9+62 E	+0.5 9+50	138.3	138.7	C02	5520 "
9+69 W	-1.0 9+50	136.8	137.7	F09	5531 "
10+28 W	-2.5 10+50	140.4	140.3	C01	5526 "
10+65 W	-0.5 10+50	142.4	142.0	C04	5532 "
10+92 W	-2.9 11+00	142.9	143.0	F01	5536 "
11+50 E	+0.5 11+50	147.0	145.8	C12	5540 "
12+04 E	+1.1 12+00	149.0	147.1	C12	5551 "
12+45 W	-2.0 12+50	146.6	147.8	F12	5559 "
					5558 "



Opol 5<sup>th</sup> Dawes to Everts  
 stks for existing meters

	12.86	116.56		103.70	
	12.84	128.76	0.64	115.92	
0+05			12.8	116.0	114.2
+30			11.9	116.9	115.4
+71			10.4	118.4	117.0
1+11			8.7	120.1	118.6
+93			5.4	123.4	122.3
2+44			3.2	125.6	124.5
+92			1.6	127.2	126.4
3+28	3.45	131.76	0.45	128.31	127.6
+73			1.9	129.9	129.1
4+25			0.6	131.2	130.7
+80			+1.0	132.8	132.5
	1.48	121.49	11.75	120.01	
	5.55	116.67	10.97	110.52	
			12.34	103.73	= 103.70

West  
 Williams  
 Varonakis  
 Kemp

10-1-53

49

BM chiseled  $\square$  OTR SW. Ch rd during 5<sup>th</sup>

CI  $\frac{8}{5}$

(5) FH

CI  $\frac{5}{4}$

CI  $\frac{4}{5}$

CI  $\frac{5}{1}$

CI  $\frac{1}{1}$

CI  $\frac{1}{8}$

CO  $\frac{8}{7}$

CO  $\frac{7}{8}$

CO  $\frac{8}{5}$

CO  $\frac{5}{3}$

CO  $\frac{3}{3}$



Stks for 6" C.I. P.L.

Jennings St Bangor to Cage Dr  
also elev of existing rd

West  
Williams  
Varen Lakes  
Kemp

50

5.31 273.14 267.83

0.02 11' North of  
proposed Ch line 10' South of  
existing sewer line

0+00 3.46 269.68

Top existing Pavement W side Bang

+50 2.7 4

1+00 6.1

1+00 7.2

Top existing 6" C.I. 10' LT and Plug

2+13 15.30

Sewer Xing

0.30 261.05 12.39 260.75

+50 1.1

2+00 9.6

0.06 245.10 13.01 248.04

+50 5.6

3+00 0.10 235.25 12.95 235.15

+35 6.8

6" C.I.  
Top existing 14' LT

+46 11.9

Sewer Xing Flow line

+60 5.3

4+10 10.1

0.42 222.94 12.75 222.52



697  
87

222.94

4+50 3.1

5+00 9.4

4.60 214.98 1256 210.38

+50 8.34

5+87 12.6

6+00 17.1

+05 7.9

+50 2.9

4.78 218.03 1.73 213.25

163 216.40 = 216.37

exist 6" ci 13' 21"

exist 6" ci 14' 21"

exist 6" ci 16' 21"  
⊕ Base on oil ±

Top existing 6" ci 16' 21"

Flow line lower line



OLIVE ST.  
FAIRMOUNT TO HIGHLAND  
E PROPOSED 6" WATER

DEC. 31, 1953

BEATTY  
SHUREY  
MARTELL  
ALEXANDER

52

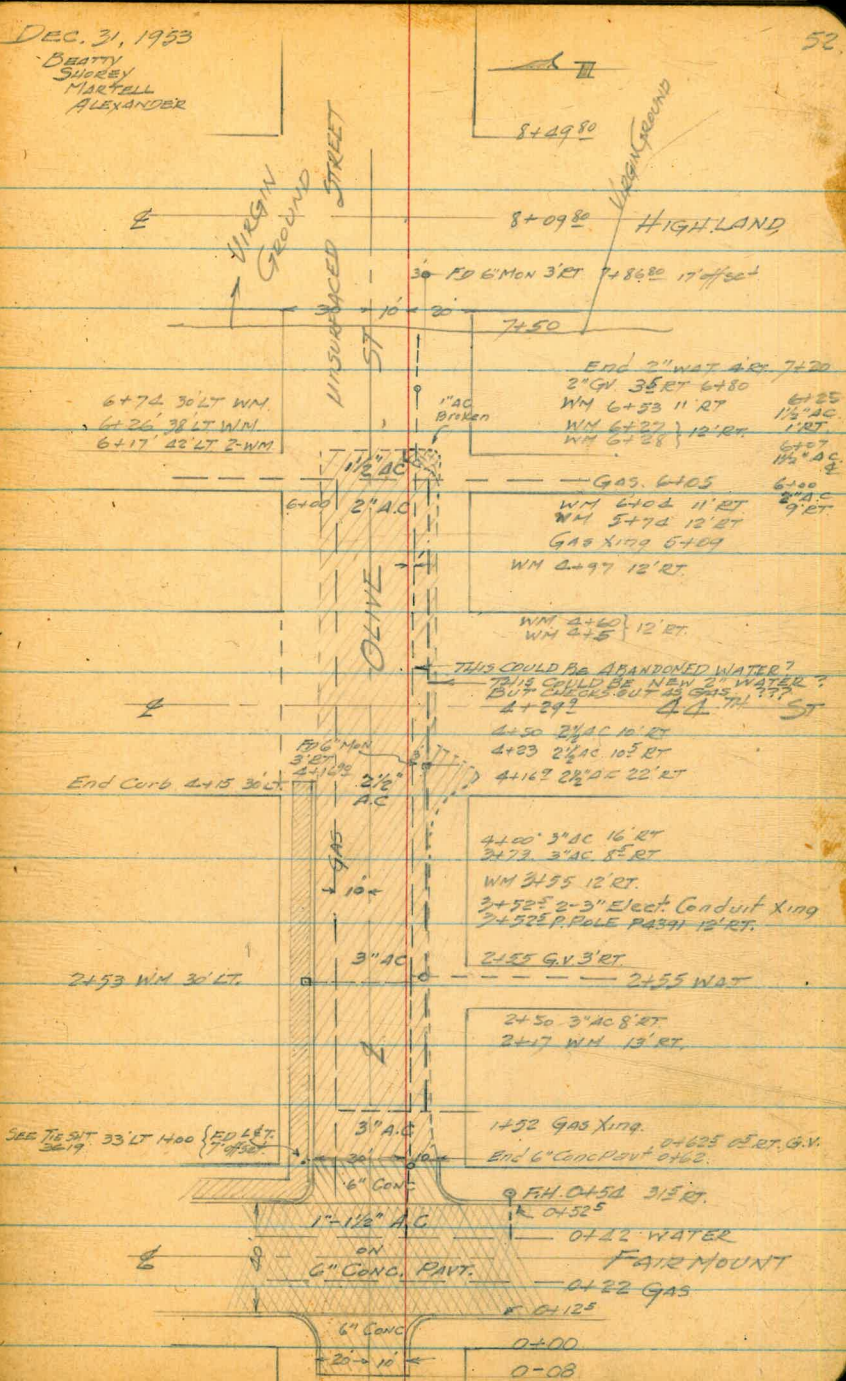
8+49.80 = Ely prop. line Highland  
7+86.80 = 17' offset SW Cor Highland & Olive

4+16.90 17' offset SW Cor 44TH & Olive

Fairmount Ave is actually 106.88' wide at Olive St., therefore, all stations will be moved ahead accordingly.  
RE Barbar  
1-27-55

1+00 Ely prop. line Fairmount

0+00 Ely prop. line Fairmount





OLIVE ST.  
Fairmount to Highland  
(Contd.)

± P

1/4/52

53

B.M.	4.11	301.30	297.19	
SET TBM	6.61	301.29	6.62	294.68
0+08	End Conc. part.		6.61	
0+00	on " "		7.25	
0+12	gutter line		7.19	
0+33	on 1" A.C. on Conc.		6.59	
0+50	on A.C.		7.04	
0+52	gutter line (Conc)		7.04	
0+62	Edge Conc. part.		6.95	
1+00			6.22	
1+50			5.82	
2+00			5.80	
2+50			5.61	
3+00			5.02	296.27
3+50			4.68	
4+00			4.94	
4+50			4.84	296.45
5+00			5.35	295.94
5+50			6.67	

SE. B.M. QUINCE & Fairmount

End of curb, SW Cor.

± Fairmount



OLIVE ST.  
(Cont'd.)

1/2/56

54

301.31

6+00			8.23	
6+07	End AC. put.		8.53	
6+50			10.8	290.51
P	136	289.48	13.17	288.12
7+00			3.0	286.48
7+50			9.5	279.98
P	0.08	276.58	12.98	276.50
8+00			5.5	271.08
8+30			10.9	265.68
8+42			15.5	261.08
8+49 <sup>80</sup>	Ely		16.3	260.28
SET TBM	12.42	286.12	2.88	273.70
P	12.13	297.60	0.65	285.47
P	3.79	300.57	0.82	296.78
P	6.49	301.16	5.90	294.67
CL. BM.			3.98	297.18 = 297.19

NE. Cor. Cape Driveway 3' RT. 6+95

6" Gr. Conc. Man 17' of 30"  
3' RT. 7+86<sup>80</sup>



ALLEY BLOCK 5  
 Nor. of QUINCE,  
 EAST OF FAIRMOUNT  
 & Proposed 6" WATER

Jan. 2 1954  
 BEATY,  
 SHOPEY,  
 MITCHELL,  
 ALEXANDER.

55

6+10<sup>43</sup>

Nly prop line REDWOOD

5+91 Bus Grate way

125'

132.50

5' offset  
 247'  
 3' back  
 prop line

REDWOOD

5+50<sup>43</sup>

Sly prop line REDWOOD

75.5'

25'

5+52 end of existing 3" Main

ALLEY (on panel)  
 Proposed 6" WATER

3056.5' Fence

7' High Con-  
 crete  
 Wall  
 15' 20"

2480' 6" wire fence

0+40

Nly prop line QUINCE

128.10

75.5' 25'

(No Road)  
 QUINCE

0+00

Sly prop line QUINCE

2x2 4x105  
 center

AA<sup>TH</sup>



ALLEY BLK 5  
(Cont'd.)

Profile Proposed WATER

BM.	4.42	301.61	297.19
	3.60	292.29	12.92 288.69
0+00		4.2	288.1
+08		4.6	287.7
+13		6.7	285.6
+50		9.3	283.0
	0.92	280.88	12.33 279.96
1+00		3.8	277.1
	3.30	271.46	12.72 268.16
+50		4.3	267.2
+78		8.4	263.1
2+00		5.3	266.2
+50		2.3	269.2
	11.75	281.88	1.33 270.13
3+00		6.7	275.2
+50		4.0	280.9
	11.71	292.79	0.80 281.08
+69		5.8	287.0
+78		3.2	289.6

W1006  
Williams  
Voronokas  
Kemp

56

1-5-54

SE P.P. QUINCE & FAIRMOUNT

	259.5	289.0
	0.8	4.3
	12.5	25.81
	287.9	285.3
	4.4	20
	12.5	25.81
	7.9	9.0
	12.5	25.81
	184.4	282.8
	10.2	276.6
	12.5	4.3
		25.81
	0.7	4.9
	12.5	25.81
	270.8	266.6
	4.7	5.3
	12.5	25.81
	1.6	1.4
	12.5	25.81
	169.9	270.1
	4.0	6.7
	12.5	25.81
	277.9	275.2
	0.4	1.0
	12.5	25.81
	281.5	280.9
	3.2	2.1
	12.5	25.81
	289.5	290.7
	6.6	3.1
	11.4	5.0
	286.2	292.8
	3.6	0.0
	12.5	25.81
	287.2	289.6
	4.9	5.0
	12.5	25.81
	281.5	289.6



292.79

4+00 5.4 287.4

10.49 302.35 0.95 291.86

+50 11.3 291.1

+75 4.1 298.3

5+00 2.2 300.2

3.96 306.06 0.25 302.10

+50 3.1 303.0

6+00 2.6 303.5

+70 2.2 303.9

9.86 297.20 297.19

6.1 286.1  
12.628

5.4 287.4  
2.581

13.7 288.7  
12.624

10.9 291.5  
2.581

5.0 297.4  
12.624

4.6 297.9  
2.581

2.2 300.2  
12.624

2.2 300.2  
2.581

3.3 302.7  
12.624

3.1 303.0  
2.581

2.6 303.6  
12.624

2.6 306.5  
2.581

2.1 304.0  
12.624

2.1 304.0  
2.581

edge cone  
North Pyramid



ALLEY BLK 66

North of Landis St.  
East of 38<sup>th</sup> St.  
Proposed 6" Water

7+60<sup>01</sup> = So. Line

6+80<sup>02</sup> = North Prop. Line Landis St

0+80 = So. Prop. Line Wightman St

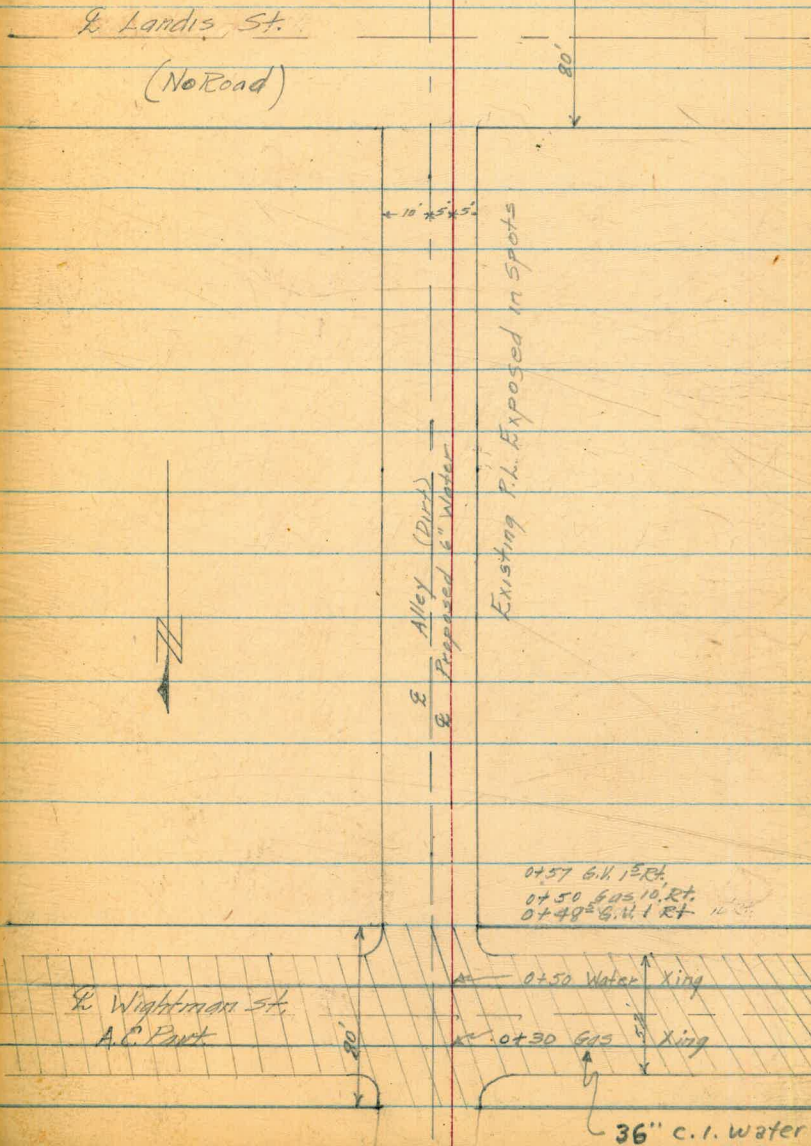
4" A.C. Part 0+66 to 0+80  
6" A.C. Part 0+14 to 0+66  
4" A.C. Part 0+00 to 0+14

0+00 = North Prop. Line Wightman St

Sheroy  
Alexander  
Varonfakis

2-26-54

53





Ally BK 7  
N. of Currier  
E. of Highland  
about 1000.

32nd St  
BOSTON

BK 851



ALLEY BLK 66  
(Contd)  
B Profile Proposed Water

Shorey  
Alexander  
Varamfakis

2/26/54

59

BM	7.26	342.51		335.25
TP	5.34	340.08	2.77	337.79
TP	0.28	338.11	2.25	337.83
TP	7.59	335.37	12.22	325.78
TBM	11.15	339.63	6.89	328.48
0+00			10.5	329.1
0+14			10.7	328.9
0+50			10.8	328.8
0+66			11.3	328.3
0+80			10.8	328.8
1+00			7.4	332.2
1+00			7.80 14.30	331.83 TOP 325.33 INV
1+50			5.8	333.8
2+00			4.9	334.7
2+50			4.6	335.0
3+00			4.2	335.4
3+50			5.1	334.5
4+00			5.7	333.9
4+50 P.O.T	339.63		6.4	333.2

N.W.B.P. Landis & 36<sup>th</sup>

Nail in P.P. 3849

Nax Gutter

So. Gutter

Edge of A.C. Pavt

Sen. M.H. 5' Pt. East Edge



ALLEY BLK 66  
(Cont'd)  
Proposed 6" Water

337.63

Shorey  
Alexander  
Voronfakis

2/26/59

60

TP							
1 7+80	1.42	333.26	7.86 16.46	331.77 Top 316.80 Inv.	Sew. M.H. 5' RT. East Edge.		D.E. M.H. Flows South
1 5+00			1.4	331.9			
1 5+50			9.3	329.0			
1 6+00			8.2	325.1			
TP	0.02	320.28	13.00	320.26			
1 6+50			0.2	320.1			
1 6+80			10.6	309.7	10.6 5'		10.7 15'
1 7+00			15.5	304.8	10.7 5'		19.3 15'
1 7+10			17.6	302.7	16.6 5'		22.1 15'
1 7+21			20.01 24.11	300.27 Top 296.17 Inv.	Sew. M.H. 5' RT.		
1 7+21			23.4	296.9	Both Ditch		
1 7+25			19.0	301.3	19.1 5'		23.5 15'
1 7+50			20.0	300.3	17.3 5'		25.0 10' 28.9 15'
1 7+60 <sup>07</sup>			21.1	299.2	21.3 5'		27.3 15'
2 TP	13.07	333.32	0.03	320.25			
2 TP	10.00	342.53	0.79	332.53			
3 CK.BM			7.33	335.20 = 335.25	N.W. B.P. Landis & 36 <sup>th</sup>		







Moringold St & Profile

West  
Williams  
Varenakis  
Kemp

3-9-57

6  
258.83  
6.33  
265.16  
271.49  
277.82

0.43 286.81 286.38  
0.47 274.72 12.56 274.25  
0.03 263.65 11.10 263.62  
0.13 251.06 12.72 250.93

BM Top FH NE cor Poplar & Violet

6.33 244.73 = 244.65 Nail in Power pole 30' W 1+40

3.29 244.75 9.60 241.86  
3.07 244.72 3.10 241.86

Top FH SE cor Moringold St & Juniper

1+00 10.32 234.40

Top ab South side Juniper

+00<sup>2</sup> 10.81 233.92

Butter

0+39 9.25 235.47,  
+9.6 to Flow 225' 87

Top east rim sewer MH 10' RL

+50 8.67 236.05  
+8.9 to Flow 228.0

Top west rim sewer MH 7' RL

+61 7.79 236.9

1+00 5.30 239.4

+50 3.87 240.8

2+00 2.59 242.2

+50 1.02 243.7

3+00 2.60 252.94 0.28 244.44  
+10.3 To Flow 233.85

Top east rim sewer MH 10' RL

2+69 8.79 244.15

3+41<sup>37</sup> 8.10 244.48  
8.03  
6 RT edge Oil



	252.94				252.94 - 7.78 245.16
3+50		2.02	244.9		
			+10.3 To Flow	234.67	
+70		7.97	244.9		Top east rim source MH 7' RT
+75		7.95	245.0		$\frac{7.8}{9RT}$ edge oil $\frac{7.0}{6RT}$ $\frac{6.8}{10RT}$
4+00		7.97	244.97		edge oil $\frac{7.7}{5RT}$ $\frac{7.5}{4RT}$ $\frac{6.7}{10RT}$
+25		7.87	245.0		edge oil $\frac{7.8}{7RT}$ $\frac{7.1}{5RT}$ $\frac{6.6}{10RT}$
			245.0		252.94
4+6 <sup>69</sup> EC		7.93	edge oil		$\frac{7.3}{5RT}$ $\frac{6.9}{10RT}$
			+10.5 To Flow	234.6	245.16
+77		7.78	245.1		Top east rim source MH 10' RT
5+00		7.3	245.6		edge oil $\frac{7.6}{10RT}$ $\frac{6.0}{3RT}$ $\frac{5.4}{10RT}$
+50		5.6	247.3		edge oil $\frac{6.0}{2RT}$ $\frac{4.1}{10RT}$
6+00		4.3	248.6		$\frac{7.5}{3RT}$ $\frac{7.3}{10RT}$
			+7.1 To Flow	243.8	
+27		1.98	250.9		Top east rim source MH 10' RT
+36 <sup>21</sup>		2.60	250.3		$\frac{1.5}{6RT}$ $\frac{1.3}{10RT}$
+50		1.95	250.99		edge oil $\frac{1.89}{2RT}$ $\frac{1.0}{10RT}$
+60		1.59	251.3		
+70		1.28	251.6		edge oil $\frac{1.15}{3RT}$ $\frac{0.8}{6RT}$ $\frac{0.3}{10RT}$
+70		0.85	252.1		
+90		0.45	252.5		edge oil $\frac{0.2}{3RT}$ $\frac{+0.3}{4RT}$ $\frac{+0.6}{10RT}$
	12.31	265.03	0.12	252.82	
498 <sup>21</sup> EC		10.12	252.9		edge oil $\frac{11.9}{3RT}$ $\frac{11.4}{6.4}$ $\frac{11.2}{10RT}$
	17.12	277.02	0.13	264.90	
	10.26	286.99	0.59	276.73	
			0.52	286.47 = 286.47	



Alley BIK 111 N of Thorn  
E of 38<sup>th</sup>

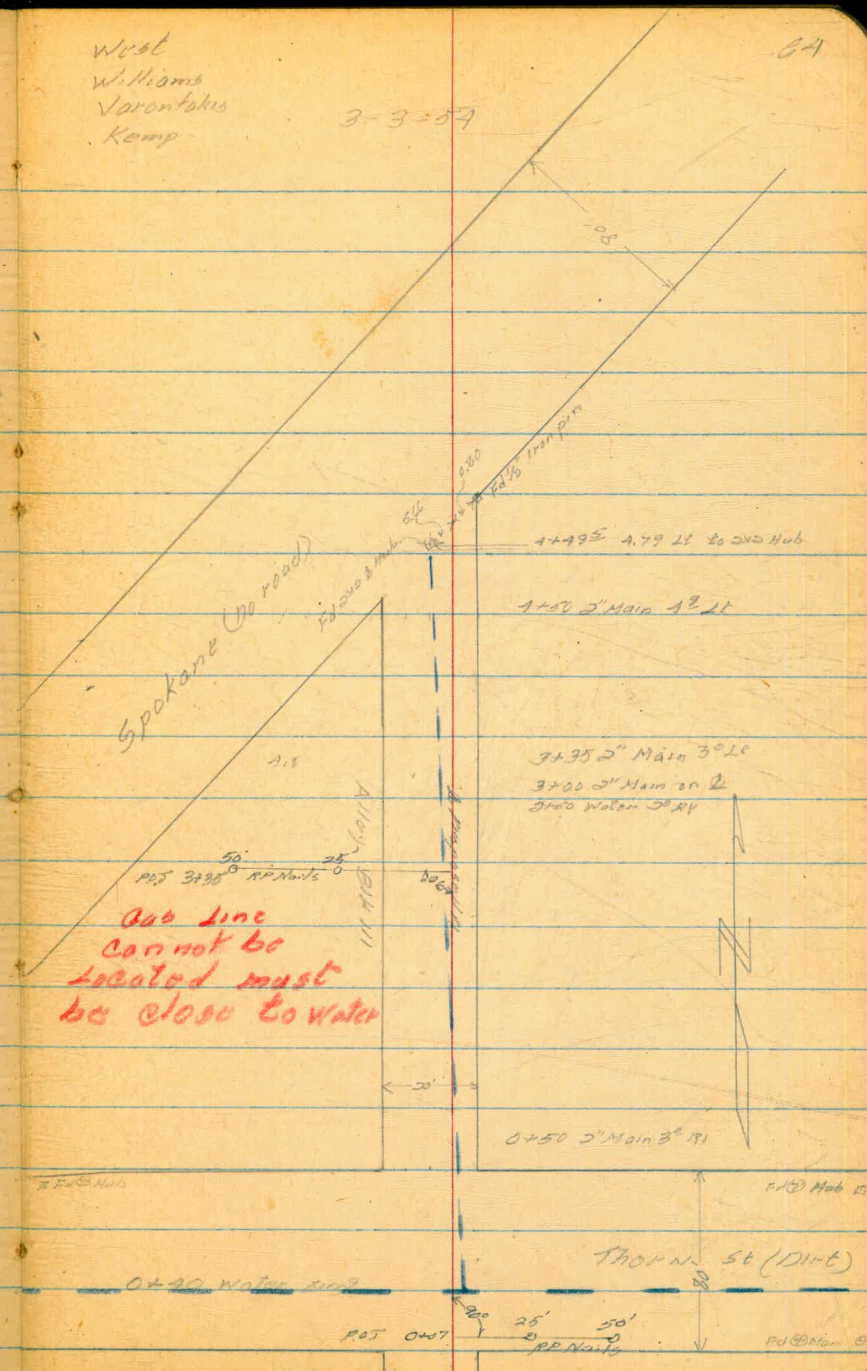
West  
Williams  
Varontakis  
Kemp

3-3-57

64

4+52<sup>62</sup>

southeasterly prop line Spokane St



**Gas line  
cannot be  
located must  
be close to water**

3+35  
2+19<sup>25</sup> - P.O.  
15<sup>75</sup>

0+00

South prop line Thorn

0+20 Water Hub

P.O. 0+07

25'  
50'  
P.E. Nails

P.O. 0+00

0+50 2" Main 3" RI

3+35 2" Main 3" LC  
3+00 2" Main on 2  
3+00 Water 3" RV

1+50 2" Main 12" LT

1+495 4.79 LT to DND Hub

3" 1/2  
1/2" 1/2" Iron Pipe

OS

P.O. 0+00

P.O. 0+00



Profile Alley BIK III

West

Williams

Varen factors

2-8-54

65

	0.01	302.98 <sup>✓</sup>		302.97	
	10.02	311.97 <sup>✓</sup>	6.53	301.45 <sup>✓</sup>	
0+00			4.5	306.97	
+50			4.9	306.57	
1+00			5.9	305.57	
+50			7.5	304.97	
2+00	0.93	302.52 <sup>✓</sup>	9.28	302.19 <sup>✓</sup>	
+50			2.5	300.02	
3+00			7.5	295.02	
	0.10	290.67 <sup>✓</sup>	11.95	290.57	290.57
+50			2.9	287.77	
+50			6.3	284.37	
	2.19	280.82 <sup>✓</sup>	12.34	278.33 <sup>✓</sup>	
	1.15	269.69 <sup>✓</sup>	12.88	267.94 <sup>✓</sup>	
4+00			10.8	259.01	
	4.87	261.11 <sup>✓</sup>	12.85	256.24 <sup>✓</sup>	
+20			10.7	250.41	
+50			13.0	248.11	
+50 <sup>62</sup>			13.0	248.11	
	12.79	261.01 <sup>✓</sup>	12.89	248.22 <sup>✓</sup>	

NWBP 40<sup>62</sup> + Redwood

TBM Nail in power pole # A3331 10' 21 3+25

Bottom of steep slope

Turn on ex2 hub 5' 20' sta 7+50



241.01 ✓

12.96 273.41 ✓ 0.56 260.45 ✓

11.91 284.62 ✓ 0.70 272.71 ✓

10.72 295.26 ✓ 0.08 284.54 ✓

12.21 306.18 ✓ 1.29 293.97 ✓

5.53 310.38 ✓ 1.33 304.85 ✓

4.11 307.10 ✓ 2.39 302.99 ✓

4.12 302.98 ✓ 302.97



Alley BIK 115  
N of Bellingham E of 36<sup>th</sup>

West  
Williams  
Varon Lake

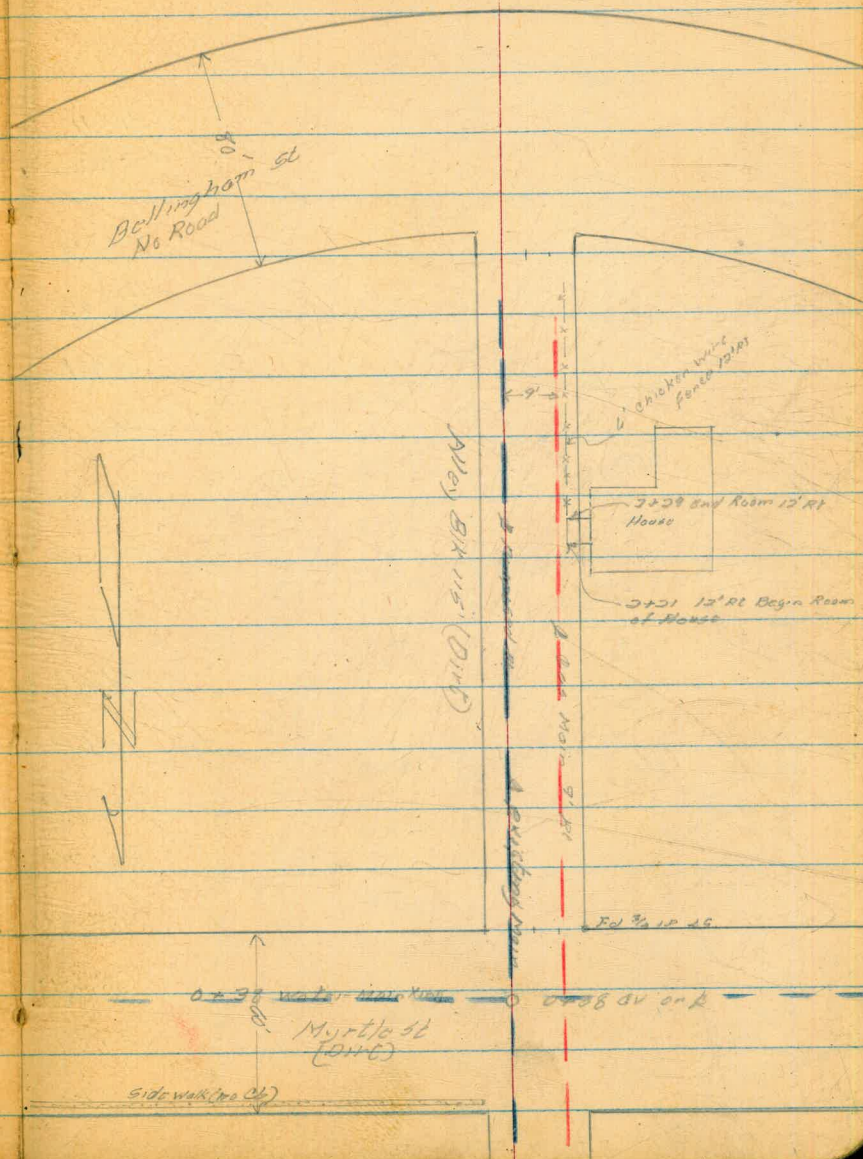
67

0+26 ±

South prop line Bellingham

1+15 80

4+00 POT



0+07 POT

0+00

North prop line Myrtle St



Profile Alley BK 115

3-9-54

554	333.09 ✓		327.55		327.55	NWBP 36 <sup>th</sup>	Dwight
017	320.51 ✓	1275	320.34 ✓		313.11		312.01
0+00		8.4		312.11	29		312.01
				FL = 306.32	5.14		312.01
0+12	0.58	311.60 ✓	8.49	311.00 ✓	4.7	to Flow	Top east edge
0+50			1.5	310.10	1.1		310.50
0+60			1.95	309.65	5.14		15 RL
0+99			3.4	308.46	20.50	Cons side walk	15' RL
1+00			3.8	307.80	17	End car side walk	17' RL
150			7.0	304.60	3.2		308.40
2+00			11.0	300.60	5.21		307.50
	0.36	298.71 ✓	13.05	298.55 ✓	2.7		303.50
150			2.5	296.41	32.2		301.00
3+00			7.1	291.11	10.6	High Conc Wall	297.11
450			9.2	289.71	7.0	Fence	291.91
	0.34	286.54 ✓	12.71	286.20 ✓	8.0	Fence	290.21
5+00			3.5	283.04	1.6	Chicken wire fence	284.94
700			9.8	277.74	1.5		278.54
	1.35	278.58 ✓	12.61	273.93 ✓	3.0		273.74
800			11.4	263.38	10.2		264.38
	0.35	262.47 ✓	12.99	262.29 ✓	5.21		260.48
70			10.6	252.04	10.1		251.54
5+00			12.8	249.84	12.7	Flows South east	250.84
				248.14	3.47	Crack hole	252.24
726			14.5	248.14	15.1		247.54
	10.90	275.10 ✓	1.34	262.32 ✓	11.3		251.34
	11.97	286.73 ✓	0.14	274.96 ✓	15.8		255.44
					11.200		286.6 ✓
					12.00		278.86 ✓
					311.55		0.27
							0.37



Myrtle St Alley E of 36<sup>th</sup>  
to Wilson

7+22<sup>49</sup>

6+57<sup>62</sup> POT

3+04<sup>21</sup> POT

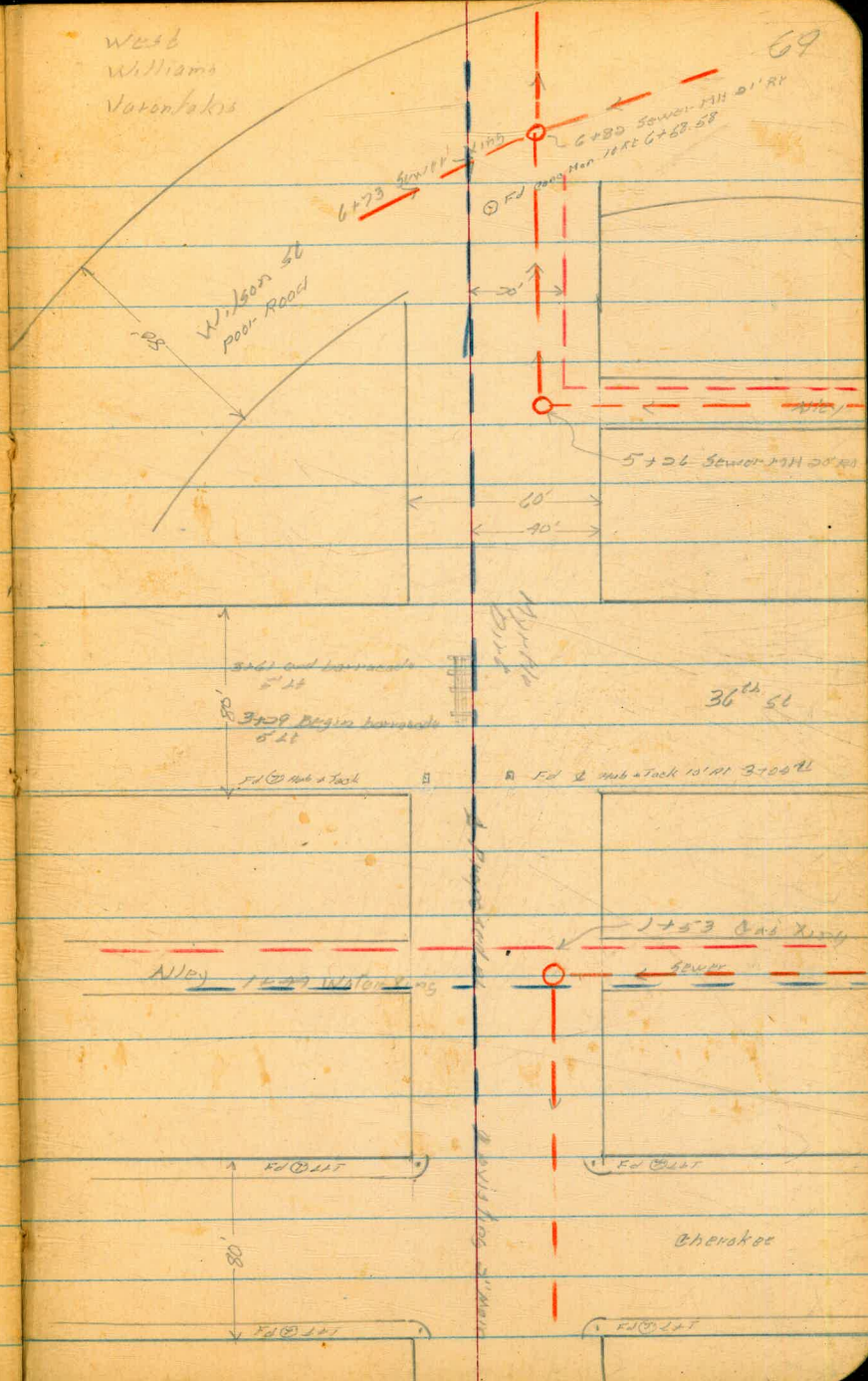
1+49<sup>2</sup> = 0+40 Alley Ter

0+00

West Prop Line Cherokee

0-07 POT

West  
Williams  
Varenfels





MYRTLE AVE

Profile Proposed P.L.

West  
Williams  
Varonfakis

70

3-10-54

	654	317.86	311.07	
0+00			1.8	315.8
+50			3.9	313.7
1+00			5.4	312.2
+13 <sup>2</sup>			7.3	310.3
+50			7.6	310.0
2+00			16.7	306.9
+	594	310.69	12.81	304.75
+50			6.8	303.9
3+00			9.1	301.6
+50			11.1	299.6
4+00			11.6	299.1
+50			10.6	300.1
5+00			6.4	304.3
			+7.0 to Flow Line	
+24	301	309.51	14.19	306.50
+50			1.3	308.2
6+00			1.4	308.1
+50			5.0	304.5
+82			9.6	299.9

Top east edge sewer M11 See page 68

West Prop Line Abernethy

Top

8.7  
5.21  
10.4  
5.21 11.0  
9.41

5.6  
5.21

18° RL to Sewer M11 Top South edge

11.7  
6.21 10.2  
3.11

10.9  
10.81



309.51

6+92

9.16

+7.6 to Elev 2100

Top South edge - Section 11 21.5

7+00

12.3

292.2

12.27 319.37 301 306.60

11.68 329.90 1.15 318.22

2.39 327.51 = 327.55 BM



Boundary St  
 Laurel to Kalmia  
 & Proposed Pl

3+95.30 +

South prop line Kalmia

0+00

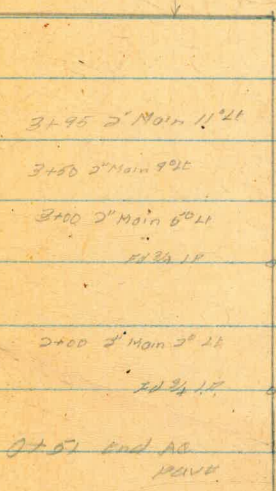
at Laurel  
 on extension of North prop line

West  
 Williams  
 Varon Lakes



72

Kalmia  
 (no Road)



Property owner  
 claims that  
 sewer is in  
 street but  
 could find no  
 Man Holes 99

5+00 LFT  
 5+00 LFT on extension of  
 Laurel St Prop line





Profile Boundary St  
Laural to Kalmia

West  
Williams  
Vermont

73

3-10-54

0.11	295.23	295.12
0+00		5.79 289.4
+50		7.09 288.1
1+00		7.6 287.6
+50		9.0 286.2
2+00		10.6 284.6
+50		12.1 283.1
9.64	291.94	12.93 282.30
3+00		10.3 281.6
+50		12.6 279.3
+95 <sup>±</sup>		15.1 276.8
6.93	298.39	0.03 291.91
		2.18 295.76

SE BP Boundary + Maple

North prop line Laural St

End AC pave

= 295.12



ALLEY BLOCK 24  
 E. of 42nd, Nor. of ORANGE  
 (5) GROS & STRS for 6" WATER

Sept. 7, 1954  
 BEATTY  
 SHOREY  
 MARTELL

74

BM.	4.42	368.87	364.45	BP. SW. Cor 42nd & El Cajon		
6+85	6x4 RED. (City)	4.7	364.2	360.0	C 12	363.7 Elev. ground line & pipe
6+50		3.8	365.1	360.7	C 14	32
6+00		3.6	365.3	360.8	C 15	38
5+50		4.2	364.7	360.6	C 15	35
5+00		4.5	364.4	360.4	C 10	43
4+50		4.7	364.2	360.2	C 10	48
4+00		4.7	364.2	360.0	C 12	49
3+50		4.9	364.0	359.8	C 12	50
3+00	5.37 368.95	5.29	363.58			50
2+50		4.9	364.1	359.6	C 15	50
2+00		5.3	363.7	359.4	C 13	52
2+00		5.3	363.7	359.2	C 15	51
1+50		5.4	363.6	359.0	C 16	52
1+00		5.4	363.6	358.8	C 18	52
0+80	{ 6" GV 4x6" RED City	6.4	362.6	358.7	C 39	58
P	6.03 369.10	5.88	363.07			
ck BM.		4.65	364.45	364.45		



ALLEY BLK 24  
(Cont'd.)

9/8/54

75

WATER METERS

6+33 E	N 368.87	3.5	365.4	364.4	C12
5+92 W	No EXISTING MET	3.3	365.6	364.4	C12
5+83 W	Box, but No MET	3.6	365.3	364.4	C09
5+48 W		4.8	364.1	364.2	F01
5+42 E	No EXISTING MET	4.4	364.5	364.1	C04
5+13 E		4.5	364.4	364.0	C04
5+08 W		4.7	364.2	364.0	C02
4+69 W		5.2	363.7	363.9	F02
4+38 E		4.6	364.3	363.7	
4+20 E		4.8	364.1	363.6	C05
4+19 W		5.0	363.9	363.7	C02
3+75 E		4.8	364.1	363.5	C06
3+62 W		5.2	363.7	363.5	C02
3+26 E		5.1	363.8	363.3	C02
3+24 W	N 368.95	5.0	363.6	363.4	C02
2+78 W		5.3	363.7	363.2	C02
2+56 E		5.2	363.8	363.1	C07
2+33 W		5.1	363.9	363.0	C02
2+03 E		5.3	363.7	362.9	C08
1+75 W		5.3	363.7	362.8	C09
1+53 E		5.6	363.4	362.7	C07
1+26 E		5.2	363.8	362.6	C12
1+13 W		6.0	363.0	362.6	C04



ALLEY BLK "J"  
N. of MONROE; E of 39<sup>TH</sup>

9/10/50  
Beatty  
Shores  
Martell

76.

TBM	6.23	373.69		367.46		LET on curb pp. 7, 8, 14	FB 878	
5+52	6x4	RED CITY		365.6 <sup>±</sup>				369.1 <sup>±</sup> Elev ground line @ pipe
		@ EXIST. G.V.						26
5+50			2.4	371.3		365.7	C56 <sup>±</sup>	46
5+00			2.9	370.8		366.5	C43	29
4+50			2.7	371.0		367.3	C37	27
4+00			1.9	371.8		368.2	C36	21
HP	4.95	377.22	1.22	372.47	=	372.45		Rim of Sew. MH
3+50			4.5	372.9		369.0	C39	47
3+00			3.9	373.5		369.2	C43	42
2+50			4.4	373.0		368.6	C44	43
2+00			4.8	372.6		368.1	C45	49
1+50			5.4	372.0		367.5	C45	55
1+00			5.9	371.5		366.9	C46	61
0+60	@ EXIST. G.V.		7.1	370.3		366.4 <sup>±</sup>	C39	74
	6x4	RED CITY						2
CK Top curb	0+12		6.67	370.75		370.77		(See 878 pp. 12)

WATER METERS

5+26 <sup>5</sup> E	H.	373.69	2.5	371.2		369.7	C15	
5+10 E			2.6	371.1		370.0	C1	
4+73 E			2.8	370.9		370.6	C03	
4+28 <sup>5</sup> E			2.3	371.4		371.4	C00	



9/10/52

27.

Alley Bk. J  
(Cont'd)

## Water Meters

373.69

4+21 W	2.9	370.8	371.3	F05	
3+96 E	1.8	371.9	371.9	C02	
3+62 W	0.9	372.8	372.3	<del>C05</del> C01 at Conc drive out of garage	
3+10 E	No Exst. MET.	4.4	373.0	372.8	C02
3+10 W	4.5	372.9	372.8	C01	
2+67 W	4.4	373.0	372.7	C03	
2+63 E	4.0	373.4	372.8	C06	
2+27 W	4.6	372.8	372.5	C03	
2+13 E	4.8	372.6	372.4	C02	
2+04 W	5.3	372.1	372.1	C02	
1+79 W	5.4	372.0	371.8	C02	
1+65 E	5.0	372.4	371.7	C02	
1+44 E	5.4	372.0	371.5	<del>C05</del> C01 at Conc drive out of garage	
1+41 W	5.6	371.8	371.4	C04	
0+86 E	6.1	371.3	370.6	C02	
0+84 W	6.5	370.9	370.6	C03	

377.42



Alley BIK #5  
N of Quince  
E of Fairmount

West  
Williams  
Varonfakis  
Kellhofer

78

170	298.89	297.19	
0+10	026286.07	13.08 285.81	282.6
+50		3.1 283.0	280.0
1+00		10.0 276.1	273.4
258	276.18	12.91	273.60
+25		5.2 271.0	268.0
+50		9.4 266.8	262.2
+625 Bend		10.9 265.4	259.4
+80		11.5 264.7	259.4
2+00		11.1 265.1	261.1
+50		6.9 269.3	265.4
3+00		2.5 273.7	271.1
1206	287.72	0.52	275.66
+25		10.2 277.5	273.9
+41 WMW		7.3 280.4	279.5
+50		4.1 283.6	276.8
11.99	299.67	0.09	287.68
+75		10.9 281.8	279.6
4+00		11.4 288.3	282.4

SE of Quince + Fairmount

C 3 $\frac{2}{0}$	12.5
C 3 $\frac{0}{0}$	3.4
C 2 $\frac{7}{1}$	10.2
C 3 $\frac{0}{0}$	5.7
C 4 $\frac{4}{0}$	9.7
C 6 $\frac{0}{0}$	10.9
C 5 $\frac{3}{0}$	11.6
C 4 $\frac{0}{0}$	11.0
C 3 $\frac{9}{0}$	7.1
C 2 $\frac{4}{0}$	2.2
C 3 $\frac{6}{0}$	9.9
C 0 $\frac{9}{0}$	
C 6 $\frac{8}{0}$	4.5
C 9 $\frac{2}{0}$	12.0
C 5 $\frac{9}{0}$	11.4

9-



299.67

A+36 WNW

129 286.8 290.0

+50

8.0 291.7 288.1

+75

43 295.4 291.0

182 WME

2.8 296.9 295.3

8.94 308.28 4.33 299.34

5400

8.2 300.1 293.7

+13 WME

7.4 300.9 298.7

+50

5.3 303.0 298.0

End

+65 at Wink

5.4 302.9 299.0

+65

8.8 299.5

1.71 303.31 6.68 301.60

6.02 297.29

F3 <sup>2</sup>

2

C3 <sup>6</sup>

7.7

C4 <sup>4</sup>

C1 <sup>6</sup>

C6 <sup>4</sup>

8.2

C6 <sup>2</sup> <sub>2</sub>

C5 <sup>0</sup>

5.2

C3 <sup>9</sup>

Top of 6" plug

- 297.19



Begin Work { 6' x 4" Reducer  
By City

~~5160 End Work~~ 50160

5150 ± 6' x 4" Reducer By City

5152 ± To 6 V. (MEAS)

	1/4 T. MET
<del>0+84</del>	0+84 W
<del>0+92</del>	0+86 E
<del>1+32</del>	1+41 W
<del>1+42</del>	1+49 E
<del>1+68</del>	1+65 E
<del>1+75</del>	1+77 W
<del>1+78</del>	2+04 W
<del>2+12</del>	2+13 E
<del>2+25</del>	2+27 W
<del>2+66</del>	2+63 E
<del>2+68</del>	2+67 W
<del>3+10</del>	3+10 W
<del>3+40</del>	3+40 E (No Meter)
<del>3+58</del>	3+62 W
<del>3+90</del>	3+96 E
<del>4+15</del>	4+21 W
<del>4+25</del>	4+28 E
<del>4+70</del>	4+73 E
<del>5+10</del>	5+10 E
<del>5+25</del>	5+26 E



Please Return to  
 City of San Diego Water Dept.  
 Room 903 Civic Center

4+3

+3

+2

+1

5+00

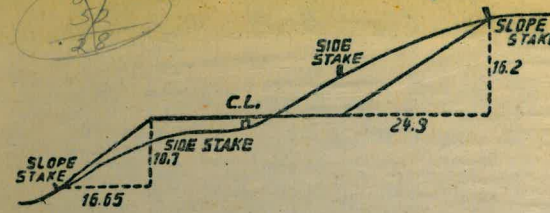
+13

+50

+6

+6

*Figueroa Bend to Grand*



**DISTANCES FROM SIDE STAKES FOR CROSS-SECTIONING.**

SLOPE 1 1/2 TO 1. ROADWAY OF ANY WIDTH.

	0	.1	.2	.3	.4	.5	.6	.7	.8	.9	
0	0.00	0.15	0.30	0.45	0.60	0.75	0.90	1.05	1.20	1.35	0
1	1.50	1.65	1.80	1.95	2.10	2.25	2.40	2.55	2.70	2.85	1
2	3.00	3.15	3.30	3.45	3.60	3.75	3.90	4.05	4.20	4.35	2
3	4.50	4.65	4.80	4.95	5.10	5.25	5.40	5.55	5.70	5.85	3
4	6.00	6.15	6.30	6.45	6.60	6.75	6.90	7.05	7.20	7.35	4
5	7.50	7.65	7.80	7.95	8.10	8.25	8.40	8.55	8.70	8.85	5
6	9.00	9.15	9.30	9.45	9.60	9.75	9.90	10.05	10.20	10.35	6
7	10.50	10.65	10.80	10.95	11.10	11.25	11.40	11.55	11.70	11.85	7
8	12.00	12.15	12.30	12.45	12.60	12.75	12.90	13.05	13.20	13.35	8
9	13.50	13.65	13.80	13.95	14.10	14.25	14.40	14.55	14.70	14.85	9
10	15.00	15.15	15.30	15.45	15.60	15.75	15.90	16.05	16.20	16.35	10
11	16.50	16.65	16.80	16.95	17.10	17.25	17.40	17.55	17.70	17.85	11
12	18.00	18.15	18.30	18.45	18.60	18.75	18.90	19.05	19.20	19.35	12
13	19.50	19.65	19.80	19.95	20.10	20.25	20.40	20.55	20.70	20.85	13
14	21.00	21.15	21.30	21.45	21.60	21.75	21.90	22.05	22.20	22.35	14
15	22.50	22.65	22.80	22.95	23.10	23.25	23.40	23.55	23.70	23.85	15
16	24.00	24.15	24.30	24.45	24.60	24.75	24.90	25.05	25.20	25.35	16
17	25.50	25.65	25.80	25.95	26.10	26.25	26.40	26.55	26.70	26.85	17
18	27.00	27.15	27.30	27.45	27.60	27.75	27.90	28.05	28.20	28.35	18
19	28.50	28.65	28.80	28.95	29.10	29.25	29.40	29.55	29.70	29.85	19
20	30.00	30.15	30.30	30.45	30.60	30.75	30.90	31.05	31.20	31.35	20
21	31.50	31.65	31.80	31.95	32.10	32.25	32.40	32.55	32.70	32.85	21
22	33.00	33.15	33.30	33.45	33.60	33.75	33.90	34.05	34.20	34.35	22
23	34.50	34.65	34.80	34.95	35.10	35.25	35.40	35.55	35.70	35.85	23
24	36.00	36.15	36.30	36.45	36.60	36.75	36.90	37.05	37.20	37.35	24
25	37.50	37.65	37.80	37.95	38.10	38.25	38.40	38.55	38.70	38.85	25
26	39.00	39.15	39.30	39.45	39.60	39.75	39.90	40.05	40.20	40.35	26
27	40.50	40.65	40.80	40.95	41.10	41.25	41.40	41.55	41.70	41.85	27
28	42.00	42.15	42.30	42.45	42.60	42.75	42.90	43.05	43.20	43.35	28
29	43.50	43.65	43.80	43.95	44.10	44.25	44.40	44.55	44.70	44.85	29
30	45.00	45.15	45.30	45.45	45.60	45.75	45.90	46.05	46.20	46.35	30
31	46.50	46.65	46.80	46.95	47.10	47.25	47.40	47.55	47.70	47.85	31
32	48.00	48.15	48.30	48.45	48.60	48.75	48.90	49.05	49.20	49.35	32
33	49.50	49.65	49.80	49.95	50.10	50.25	50.40	50.55	50.70	50.85	33
34	51.00	51.15	51.30	51.45	51.60	51.75	51.90	52.05	52.20	52.35	34
35	52.50	52.65	52.80	52.95	53.10	53.25	53.40	53.55	53.70	53.85	35
36	54.00	54.15	54.30	54.45	54.60	54.75	54.90	55.05	55.20	55.35	36
37	55.50	55.65	55.80	55.95	56.10	56.25	56.40	56.55	56.70	56.85	37
38	57.00	57.15	57.30	57.45	57.60	57.75	57.90	58.05	58.20	58.35	38
39	58.50	58.65	58.80	58.95	59.10	59.25	59.40	59.55	59.70	59.85	39
40	60.00	60.15	60.30	60.45	60.60	60.75	60.90	61.05	61.20	61.35	40
41	61.50	61.65	61.80	61.95	62.10	62.25	62.40	62.55	62.70	62.85	41
42	63.00	63.15	63.30	63.45	63.60	63.75	63.90	64.05	64.20	64.35	42
43	64.50	64.65	64.80	64.95	65.10	65.25	65.40	65.55	65.70	65.85	43
44	66.00	66.15	66.30	66.45	66.60	66.75	66.90	67.05	67.20	67.35	44
45	67.50	67.65	67.80	67.95	68.10	68.25	68.40	68.55	68.70	68.85	45
46	69.00	69.15	69.30	69.45	69.60	69.75	69.90	70.05	70.20	70.35	46
47	70.50	70.65	70.80	70.95	71.10	71.25	71.40	71.55	71.70	71.85	47
48	72.00	72.15	72.30	72.45	72.60	72.75	72.90	73.05	73.20	73.35	48
49	73.50	73.65	73.80	73.95	74.10	74.25	74.40	74.55	74.70	74.85	49
50	75.00	75.15	75.30	75.45	75.60	75.75	75.90	76.05	76.20	76.35	50

THE NATIONAL BLANK BOOK COMPANY  
 HOLYOKE MASSACHUSETTS  
 NEW YORK CHICAGO BOSTON SAN FRANCISCO