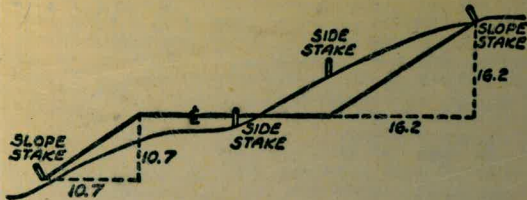


# 829



DISTANCES FROM SIDE STAKES FOR CROSS-SECTIONING  
SLOPE 1 TO 1. ROADWAY OF ANY WIDTH

	0	.1	.2	.3	.4	.5	.6	.7	.8	.9	
0	0.00	0.10	0.20	0.30	0.40	0.50	0.60	0.70	0.80	0.90	0
1	1.00	1.10	1.20	1.30	1.40	1.50	1.60	1.70	1.80	1.90	1
2	2.00	2.10	2.20	2.30	2.40	2.50	2.60	2.70	2.80	2.90	2
3	3.00	3.10	3.20	3.30	3.40	3.50	3.60	3.70	3.80	3.90	3
4	4.00	4.10	4.20	4.30	4.40	4.50	4.60	4.70	4.80	4.90	4
5	5.00	5.10	5.20	5.30	5.40	5.50	5.60	5.70	5.80	5.90	5
6	6.00	6.10	6.20	6.30	6.40	6.50	6.60	6.70	6.80	6.90	6
7	7.00	7.10	7.20	7.30	7.40	7.50	7.60	7.70	7.80	7.90	7
8	8.00	8.10	8.20	8.30	8.40	8.50	8.60	8.70	8.80	8.90	8
9	9.00	9.10	9.20	9.30	9.40	9.50	9.60	9.70	9.80	9.90	9
10	10.00	10.10	10.20	10.30	10.40	10.50	10.60	10.70	10.80	10.90	10
11	11.00	11.10	11.20	11.30	11.40	11.50	11.60	11.70	11.80	11.90	11
12	12.00	12.10	12.20	12.30	12.40	12.50	12.60	12.70	12.80	12.90	12
13	13.00	13.10	13.20	13.30	13.40	13.50	13.60	13.70	13.80	13.90	13
14	14.00	14.10	14.20	14.30	14.40	14.50	14.60	14.70	14.80	14.90	14
15	15.00	15.10	15.20	15.30	15.40	15.50	15.60	15.70	15.80	15.90	15
16	16.00	16.10	16.20	16.30	16.40	16.50	16.60	16.70	16.80	16.90	16
17	17.00	17.10	17.20	17.30	17.40	17.50	17.60	17.70	17.80	17.90	17
18	18.00	18.10	18.20	18.30	18.40	18.50	18.60	18.70	18.80	18.90	18
19	19.00	19.10	19.20	19.30	19.40	19.50	19.60	19.70	19.80	19.90	19
20	20.00	20.10	20.20	20.30	20.40	20.50	20.60	20.70	20.80	20.90	20
21	21.00	21.10	21.20	21.30	21.40	21.50	21.60	21.70	21.80	21.90	21
22	22.00	22.10	22.20	22.30	22.40	22.50	22.60	22.70	22.80	22.90	22
23	23.00	23.10	23.20	23.30	23.40	23.50	23.60	23.70	23.80	23.90	23
24	24.00	24.10	24.20	24.30	24.40	24.50	24.60	24.70	24.80	24.90	24
25	25.00	25.10	25.20	25.30	25.40	25.50	25.60	25.70	25.80	25.90	25
26	26.00	26.10	26.20	26.30	26.40	26.50	26.60	26.70	26.80	26.90	26
27	27.00	27.10	27.20	27.30	27.40	27.50	27.60	27.70	27.80	27.90	27
28	28.00	28.10	28.20	28.30	28.40	28.50	28.60	28.70	28.80	28.90	28
29	29.00	29.10	29.20	29.30	29.40	29.50	29.60	29.70	29.80	29.90	29
30	30.00	30.10	30.20	30.30	30.40	30.50	30.60	30.70	30.80	30.90	30
31	31.00	31.10	31.20	31.30	31.40	31.50	31.60	31.70	31.80	31.90	31
32	32.00	32.10	32.20	32.30	32.40	32.50	32.60	32.70	32.80	32.90	32
33	33.00	33.10	33.20	33.30	33.40	33.50	33.60	33.70	33.80	33.90	33
34	34.00	34.10	34.20	34.30	34.40	34.50	34.60	34.70	34.80	34.90	34
35	35.00	35.10	35.20	35.30	35.40	35.50	35.60	35.70	35.80	35.90	35
36	36.00	36.10	36.20	36.30	36.40	36.50	36.60	36.70	36.80	36.90	36
37	37.00	37.10	37.20	37.30	37.40	37.50	37.60	37.70	37.80	37.90	37
38	38.00	38.10	38.20	38.30	38.40	38.50	38.60	38.70	38.80	38.90	38
39	39.00	39.10	39.20	39.30	39.40	39.50	39.60	39.70	39.80	39.90	39
40	40.00	40.10	40.20	40.30	40.40	40.50	40.60	40.70	40.80	40.90	40
41	41.00	41.10	41.20	41.30	41.40	41.50	41.60	41.70	41.80	41.90	41
42	42.00	42.10	42.20	42.30	42.40	42.50	42.60	42.70	42.80	42.90	42
43	43.00	43.10	43.20	43.30	43.40	43.50	43.60	43.70	43.80	43.90	43
44	44.00	44.10	44.20	44.30	44.40	44.50	44.60	44.70	44.80	44.90	44
45	45.00	45.10	45.20	45.30	45.40	45.50	45.60	45.70	45.80	45.90	45
46	46.00	46.10	46.20	46.30	46.40	46.50	46.60	46.70	46.80	46.90	46
47	47.00	47.10	47.20	47.30	47.40	47.50	47.60	47.70	47.80	47.90	47
48	48.00	48.10	48.20	48.30	48.40	48.50	48.60	48.70	48.80	48.90	48
49	49.00	49.10	49.20	49.30	49.40	49.50	49.60	49.70	49.80	49.90	49
50	50.00	50.10	50.20	50.30	50.40	50.50	50.60	50.70	50.80	50.90	50

Distance of slope stake from side or shoulder stake for any width roadway, slope 1 to 1. If ground is nearly level, the cut or fill at side stake is located by the double entry method in left column and top row. The number in body of table in same row and column gives distance from side stake to slope stake. If the ground level is above the difference in elevation between the side stake and slope stake, lower target by this amount if cut, elevate if fill. Add this amount to cut or fill and find distance in table. Set up rod at this point, and line of sight should cut target. If it does not, make the slight adjustment necessary.

City of San Diego Water Dept.  
Room 903 Civic Center

MICROFILMED  
JAN 10 1965

TABLE XIII—CORRECTIONS FOR TANGENTS AND EXTERNALS

These corrections are to be added to the approximate values, found by dividing the tangent, or external, for a 1° curve (Table VIII) by the degree of curve, in order to obtain the true tangents, or externals. Intermediate values may be obtained by interpolation.

FOR TANGENTS ADD

Central Angle	DEGREE OF CURVE													
	5°	10°	15°	20°	25°	30°	35°	40°	45°	50°	55°	60°	65°	70°
10°	.03	.06	.09	.13	.16	.19	.22	.25	.28	.31	.34	.38	.42	.46
15°	.04	.10	.14	.19	.24	.29	.34	.39	.45	.51	.53	.58	.63	.68
20°	.06	.13	.19	.26	.32	.39	.45	.51	.58	.65	.72	.79	.84	.90
25°	.08	.16	.24	.33	.40	.49	.58	.67	.75	.83	.90	.99	1.06	1.14
30°	.10	.19	.29	.39	.49	.59	.69	.79	.89	.99	1.09	1.20	1.29	1.39
35°	.11	.22	.34	.47	.58	.69	.79	.81	.92	1.04	1.29	1.42	1.54	1.66
40°	.13	.26	.40	.53	.67	.80	.93	1.06	1.20	1.34	1.49	1.64	1.79	1.94
45°	.15	.30	.44	.60	.76	.91	1.06	1.21	1.37	1.52	1.70	1.87	2.04	2.21
50°	.17	.34	.51	.68	.85	1.02	1.19	1.36	1.54	1.72	1.91	2.10	2.29	2.48
55°	.19	.38	.57	.76	.95	1.14	1.32	1.52	1.72	1.92	2.14	2.35	2.56	2.77
60°	.21	.42	.63	.84	1.05	1.27	1.49	1.71	1.94	2.17	2.38	2.60	2.83	3.07
65°	.23	.46	.69	.93	1.16	1.40	1.64	1.88	2.13	2.38	2.63	2.88	3.13	3.39
70°	.25	.51	.76	1.02	1.28	1.54	1.80	2.06	2.33	2.60	2.88	3.16	3.44	3.72
75°	.27	.56	.83	1.12	1.40	1.69	1.98	2.27	2.57	2.87	3.16	3.47	3.78	4.09
80°	.30	.61	.91	1.22	1.53	1.84	2.15	2.46	2.78	3.10	3.44	3.78	4.12	4.46
85°	.33	.66	1.00	1.33	1.68	2.02	2.36	2.70	3.05	3.40	3.77	4.14	4.55	4.89
90°	.36	.72	1.09	1.45	1.83	2.20	2.57	2.94	3.32	3.70	4.10	4.50	4.91	5.32
95°	.39	.79	1.19	1.55	2.00	2.40	2.80	3.20	3.61	4.02	4.40	4.98	5.38	5.83
100°	.43	.86	1.30	1.74	2.18	2.62	3.06	3.50	3.95	4.40	4.88	5.37	5.85	6.34
110°	.51	1.03	1.56	2.08	2.61	3.14	3.67	4.21	4.76	5.31	5.86	6.43	7.01	7.60
120°	.62	1.25	1.93	2.52	3.16	3.81	4.45	5.11	5.77	6.44	7.12	7.80	8.50	9.22

FOR EXTERNALS ADD

Central Angle	DEGREE OF CURVE													
	5°	10°	15°	20°	25°	30°	35°	40°	45°	50°	55°	60°	65°	70°
10°	.001	.003	.004	.006	.007	.008	.009	.011	.012	.014	.015	.017	.018	.020
15°	.003	.007	.010	.014	.018	.023	.027	.029	.032	.035	.039	.043	.047	.051
20°	.006	.011	.017	.022	.028	.034	.038	.045	.051	.057	.063	.070	.076	.083
25°	.009	.018	.027	.036	.046	.056	.065	.074	.083	.093	.106	.120	.127	.135
30°	.013	.025	.038	.051	.065	.078	.090	.103	.116	.129	.149	.170	.179	.188
35°	.018	.035	.054	.072	.086	.109	.131	.153	.175	.197	.213	.230	.247	.264
40°	.023	.046	.070	.093	.117	.141	.172	.203	.234	.265	.277	.290	.315	.341
45°	.030	.060	.093	.119	.153	.184	.216	.254	.289	.325	.351	.378	.411	.445
50°	.037	.075	.116	.151	.189	.227	.266	.305	.345	.384	.425	.467	.508	.550
55°	.046	.093	.142	.188	.236	.283	.332	.381	.420	.479	.530	.582	.641	.700
60°	.056	.112	.168	.225	.283	.340	.398	.457	.516	.575	.636	.697	.774	.851
65°	.067	.135	.204	.273	.343	.412	.483	.554	.625	.697	.711	.845	.922	1.01
70°	.080	.159	.240	.321	.403	.485	.568	.652	.735	.819	.906	.994	1.08	1.17
75°	.095	.182	.266	.353	.440	.528	.618	.707	.797	.877	1.07	1.18	1.29	1.39
80°	.110	.220	.332	.445	.558	.671	.787	.903	1.02	1.13	1.25	1.38	1.50	1.62
85°	.128	.259	.391	.524	.657	.790	.926	1.06	1.20	1.34	1.47	1.62	1.76	1.91
90°	.149	.299	.450	.603	.756	.910	1.07	1.22	1.38	1.54	1.70	1.87	2.03	2.20
95°	.174	.350	.522	.706	.985	1.06	1.25	1.43	1.62	1.80	1.99	2.18	2.38	2.58
100°	.200	.401	.604	.809	1.01	1.22	1.43	1.64	1.85	2.06	2.28	2.50	2.73	2.96
110°	.268	.536	.806	1.08	1.35	1.63	1.91	2.20	2.48	2.76	3.05	3.35	3.66	3.96
120°	.360	.721	1.08	1.45	1.82	2.19	2.57	2.95	3.33	3.72	4.11	4.50	4.91	5.32

INDEX

STEEL RODS ON TOP OF BUTTRESSES #8 TO #14. ✓ 1-23.  
 " " " CUT OFF WALL BETWEEN #10 & #11. ✓ 25-33  
 BASE LINE LAYOUT FOR LOCATING STEEL RODS. ✓ 24.  
 STEEL RODS IN CUT OFF WALL BETWEEN #9 & #10. ✓ 24-die

CLEAR, HOT.

JULY 24, 1952.

LEONARD  
MARTEL  
VARON FAIRIS

1,

## ROTTRESS #8. STEEL ON TOP.

## WEST SIDE - NORTH

## EAST SIDE - NORTH

DISTANCE FROM AXIS	DIST. FROM EDGE	LENGTH EXPOSED	SIZE SHAPE	DISTANCE FROM AXIS	DIST. FROM EDGE	LENGTH EXPOSED	SIZE SHAPE
N 0.35'	0.24'	10.3'	1 1/4" □	N 0.13'	0.34'	10.5'	1 1/4" □
N 0.95'	0.24'	10.3'	"	N 0.66'	0.34'	10.5'	"
N 1.65'	0.25'	10.3'	"	N 1.28'	0.34'	10.4'	"
N 2.20'	0.24'	10.3'	"	N 1.90'	0.30'	10.5'	"
N 2.80'	0.24'	10.3'	"	N 2.50'	0.29'	10.4'	"
N 3.50'	0.34'	10.3'	"	N 3.15'	0.30'	10.4'	"
N 4.10'	0.41'	10.3'	"	N 3.85'	0.29'	10.4'	"
N 4.70'	4.08'	11.55	7/8" □	N 4.85'	4.05	11.65	7/8" □
N 5.3'	4.10'	11.65	7/8" □	N 5.05'	4.03'	11.60'	"
N 5.8'	0.25'	11.60	"	N 6.15'	0.26'	11.95'	"
N 7.9'	0.20'	11.85'	"	N 8.10'	0.25'	11.95'	"
N 10.15'	0.24'	11.95'	"	N 10.30'	0.23'	11.95'	"
N 12.25'	0.24'	11.60'	"	N 12.45'	0.23'	11.95'	"
N 14.45	0.24'	11.60'	"	N 14.50	0.23'	11.75'	"
N 16.50	0.21'	7.45'	"	N 16.55'	0.23'	7.50'	"
N 18.60	0.18'	5.55'	"	N 18.70'	0.24'	5.60'	"
N 20.75	0.18'	3.50'	"	N 20.70'	0.20'	3.70'	"
N 22.75	0.23'	2.25'	"	N 23.0'	0.20'	2.15'	"

ALL STEEL RODS LEAN NORTH EXCEPT IN PILLARS,  
WHICH ARE VERTICAL.

PILLAR TOP

## BUTTRESS #8, CONTO.

WEST SIDE - SOUTH.				EAST SIDE - SOUTH.			
DIST. FROM AXIS	DIST. FROM EDGE	LENGTH EXPOSED	SIZE & SHAPE	DIST. FROM AXIS	DIST. FROM EDGE	LENGTH EXPOSED	SIZE & SHAPE
0.4'	0.20'	11.5'	$\frac{7}{8}$ " □	0.05'	0.21	11.5'	$\frac{7}{8}$ " □
2.45'	0.25'	10.9'	$\frac{3}{4}$ " □	2.45'	0.28'	11.5'	$\frac{3}{4}$ " □
4.75'	0.26'	11.2'	"	4.75'	0.28	11.2'	"
6.90'	0.25'	10.9'	"	6.75'	0.28	11.6'	"
9.0'	0.25'	10.8'	"	9.0'	0.29	11.2'	"
11.1'	0.24'	11.0'	"	11.1'	0.26	11.2'	"
13.05'	0.25'	10.9'	"	13.55'	0.26	11.4'	"
15.35	0.22'	11.3'	$\frac{7}{8}$ " □	15.3'	0.23	11.8'	$\frac{7}{8}$ " □
17.45	0.25'	11.6'	"	17.45'	0.26'	11.7'	"
19.50	0.24'	11.5'	"	19.5'	0.25'	11.7'	"
21.70	0.22'	11.5'	"	21.65'	0.24'	11.9'	"
23.85	0.26'	11.8'	"	23.75'	0.29'	11.7'	"
25.90	0.25'	11.4'	"	25.85'	0.26'	11.7'	"
28.05	0.25'	11.2'	"	28.05'	0.25'	11.8'	"
30.15	0.24'	11.6'	"	30.15'	0.22'	11.9'	"
32.35	0.26'	11.7'	"	32.4'	0.22'	12.0'	"
34.50	0.27'	11.8'	"	34.4'	0.19'	11.9'	"
36.50	0.26'	11.8'	"	36.5'	0.22'	11.9'	"

BUTTRESS #8 CONT'D.

WEST SIDE - SOUTH.

EAST SIDE - SOUTH.

STA.	DIST. FROM EDGE	LENGTH EXPOSED	SIZE SHAPE	STA.	DIST. FROM EDGE	LENGTH EXPOSED	SIZE SHAPE
38.70	0.28'	11.8'	7/8" □	38.55	0.21'	11.9'	7/8" □
40.85	0.31'	11.5'	"	40.7	0.23'	11.7'	"
43.25	0.28'	12.3'	1" □	42.65	0.26'	11.8'	1" □
45.20	0.29'	12.1'	"	44.8	0.22'	11.8'	"
47.30	0.30'	12.1'	"	47.15	0.20'	12.2'	"
49.20	0.28'	12.2'	"	49.45	0.19'	12.2'	"
51.40	PLASTER 4.15'	11.9'	"	51.25	4.08'	12.1'	"
53.55	PLASTER 4.07'	12.1'	"	53.35	4.03'	11.9'	"
51.0	0.35'	10.3'	1 1/4" □	51.1	0.41'	10.4'	1 1/4" □
51.8	0.30'	10.2'	"	51.55	0.37'	10.4'	"
52.5	0.27'	10.2'	"	52.65	0.33'	10.4'	"
53.3	0.25'	10.2'	"	53.40	0.33'	10.4'	"
54.1	0.25'	10.3'	"	54.2	0.33'	10.4'	"
54.75	0.23'	10.2'	"	54.95	0.41'	10.4'	"
55.8	0.17'	12.6'	1 1/8" □	55.7	0.22'	12.3'	1 1/8" □
57.9	0.22'	12.7'	"	57.95	0.21'	12.4'	"
60.0	0.21'	12.5'	"	60.0	0.19'	12.4'	"
62.2	0.24'	12.7'	"	62.2	0.20'	12.5'	"

VERTICAL STEEL IN PLASTER

7        7        7  
 7        7        7  
 7        7        7  
 7        7        7  
 7        7        7

VERTICAL PLASTER

BUTNESS '89 CONT'D.

WEST SIDE - SOUTH

EAST SIDE - SOUTH

STEEL LEARNING NORTH,

STA.	DIST. FROM EDGE	LENGTH EXPOSED	SIZE & SHAPE	STA.	DIST. FROM EDGE	LENGTH EXPOSED	SIZE & SHAPE
64.4'	0.25'	12.7'	1 1/8" □	64.3'	0.20'	12.5'	1 1/8" □
66.55'	0.23'	12.5'	"	66.45'	0.20'	11.8'	"
68.65'	0.25'	12.7'	"	68.65'	0.25'	12.0'	"
70.9'	0.25'	12.4'	"	70.95'	0.24'	12.3'	"
72.9'	0.23'	12.6'	"	72.85'	0.26'	12.8'	"
74.95'	0.21'	12.2'	"	75.25'	0.25'	12.9'	"
77.0'	0.21'	12.6'	"	77.0'	0.29'	12.5'	"
79.20'	0.23'	12.9'	"	79.0'	0.26'	12.6'	"
81.65'	0.25'	12.5'	"	81.5'	0.24'	12.7'	"
83.70'	0.31'	12.9'	"	83.45'	0.25'	13.3'	"
84.95'	0.59'	12.1'	"	85.5'	0.55'	12.9'	"
87.40'	1.25'	12.7'	"	87.65'	1.19'	13.1'	"
89.5'	1.75'	12.7'	"	89.4'	1.71'	12.9'	"
91.65'	2.25'	12.9'	"	91.9'	2.27'	13.4'	"
93.7'	2.75'	12.6'	"	94.15'	<sup>CUT OFF</sup> 2.90'	0.8'	"
<sup>CUT OFF</sup> 95.9'	3.25'	0.9'	"	96.0'	<sup>CUT OFF</sup> 3.22'	0.5'	"
82.2	0.16'	10.4'	1" □	83.3	0.35'	10.5'	1" □
85.6	0.18'	8.3'	"	85.1	0.45'	8.7'	"

BEGIN STEEL LEARNING SOUTH, ALONG HAUNCH EDGE,  
WITH HOOKED END.

BUTTRESS #8. CONT'D.

WEST SIDE - SOUTH.

EAST SIDE - SOUTH.

STA.	DIST. FROM EDGE	LENGTH EXPOSED	SIZE SHAPE	STA.	DIST. FROM EDGE	LENGTH EXPOSED	SIZE SHAPE
87.6	0.38'	6.9'	1" □	87.4'	0.30'	7.1'	1" □
89.6	0.38'	5.3'	"	89.4'	0.27'	5.5'	"
91.6	0.35'	3.7'	"	91.7'	0.32'	3.7'	"
93.5	0.38'	3.3'	"	93.55'	0.31'	2.4'	"
95.1	0.90'	6.7'	"	95.0	0.86'	6.9'	"
96.0	0.36'	0.6'	"	95.8	0.36'	1.15'	"
97.8'	0.57'	5.1'	"	97.8	0.64'	5.8'	"
95.2'	3.75	7.5'	"	95.1	3.95	7.9'	"
96.25'	3.76'	7.1'	3/4" □	96.0'	3.9'	7.2'	3/4" □
97.2'	3.74'	6.3'	1" □	96.8	3.9	6.6'	1" □
98.2'	3.45'	5.5'	3/4" □	97.9	3.75'	5.8'	3/4" □
99.8'	3.38'	4.7'	1" □	99.2	3.35'	4.9'	1" □
96.3'	3.0'	6.0'	1" □	95.9	2.66'	6.0'	"
98.3'	<sup>SPLICED.</sup> 1.32'	8.0'	3/4" ○	96.7	0.50'	7.0'	3/4" ○
96.5'	<sup>SPLICED.</sup> 0.50'	7.0'	"	96.6'	0.97'	5.4'	5/8" ○
96.3'	0.97'	6.6'	5/8" ○	96.5'	2.60	4.8'	"
97.1'	2.82'	1.1'	"	96.4'	<sup>cut off</sup> 3.9'	0.9'	"
99.5'	4.50'	3.8'	3/4" ○	97.4'	1.21'	1.7'	3/4" ○
				99.7'	3.5'	2.9'	"

STEEL LEANING SOUTH, WITH HOOKED ENDS.

NOTE: LENGTH EXPOSED MEASURED TO OUTER EDGE OF HOOKED END.

LEANING NORTH.



JULY 25, 1952.

LEONARD  
MARTEL  
VARONFAKIS

6.

BUTTRESS # 9. STEEL ON TOP.

WEST SIDE.

EAST SIDE.

"STA:" MEANS DISTANCE FROM DAM AXIS, N. OR S.  
NOTE: "COVER" MEANS DISTANCE IN EDGE OF CONC.  
"LENGTH" MEANS AMOUNT OF STEEL PROTRUDING FROM  
EXISTING CONCRETE, EXCLUSIVE OF RETURN ON  
HOOKED END BARS.

STA.	COVER	LENGTH	SIZE	STA.	COVER	LENGTH	SIZE
N 0.90'	0.34'	10.4'	1 1/4" □	N 0.85	0.27	10.2'	1 1/4" □
N 1.2'	0.34'	"	"	N 1.25	0.28	10.2'	"
N 1.7'	0.35'	"	"	N 1.65	0.28	"	"
N 2.05'	0.35'	"	"	N 2.10	0.28	"	"
N 2.45'	0.37'	"	"	N 2.55	0.31	"	"
N 2.95'	0.35'	"	"	N 2.90	0.33	"	"
N 3.40'	0.39	"	"	N 3.35	0.34	"	"
N 4.0'	2.87	6.3'	3/4" □	N 0.55'	2.82	9.2'	3/4" □
N 4.3'	0.22'	3.5'	"	N 2.95'	2.84	6.2'	"
N 6.5'	0.21'	0.8'	"	N 5.25'	0.17'	3.3'	"
ON AXIS	0.22'	9.0'	"	N 7.15'	0.17'	0.7'	"
S 1.95'	0.25'	10.5'	"	S 1.65'	0.16'	11.1'	"
S 4.50'	0.27'	11.2'	"	S 3.75	0.20'	10.9'	"
S 6.60'	0.29'	10.8'	"	S 5.90'	0.20'	11.0'	"
S 8.90'	0.30'	11.4'	"	S 8.00'	0.27'	11.1'	"
S 10.80'	0.32'	12.3'	"	S 10.30'	0.29'	11.8'	"
S 13.1'	0.34'	11.3'	"	S 12.35'	0.29'	11.3'	"
S 15.05	0.38'	11.1'	"	S 14.80'	0.27'	11.5'	"

ALL PIDS LEAN NORTH, EXCEPT IN PILASTERS, WHICH  
ARE VERTICAL.

BUTTRESS #9 - CONT'D.  
WEST SIDE - SOUTH OF AXIS

EAST SIDE

STA.	COVER.	LENGTH.	SIZE.	STA.	COVER.	LENGTH.	SIZE.
5 17.00	0.32'	10.8'	3/4" □	16.55'	0.22'	11.2'	3/4" □
5 19.00	0.15'	11.5'	"	18.40'	0.13'	10.7'	"
5 20.95	0.45'	10.5'	"	20.40'	0.46'	10.8'	"
5 22.20	0.66'	10.6'	"	21.55'	0.67'	10.8'	"
23.40	0.84'	10.7'	"	22.85'	0.92'	10.9'	"
24.55	1.05'	10.7'	"	24.00'	1.12'	11.0'	"
25.9	1.35'	10.7'	"	25.20'	1.42'	10.9'	"
27.35	1.69'	10.9'	"	26.55'	1.80'	11.0'	"
28.5	1.97'	10.9'	"	27.70'	2.10'	10.8'	"
29.95	2.30'	11.0'	"	29.00'	2.35'	10.9'	"
31.2	2.70'	11.0'	"	30.25'	2.67'	11.0'	"
32.35	3.11'	10.9'	"	31.55'	3.05'	11.0'	"
33.7	3.62'	10.8'	"	32.95'	3.45'	11.1'	"
35.0	4.01'	11.1'	"	34.70'	3.83'	11.4'	"
35.9	4.38'	11.1'	"	35.80'	4.14'	11.3'	"
18.7	0.17'	13.8'	"	19.00'	0.06'	13.5'	"
21.5	0.18'	11.6'	"	21.25'	0.33'	11.6'	"
23.6	0.23'	9.9'	"	23.30	0.25'	10.0'	"

START OF STEEL LEARNING SOUTH ALONG EDGE OF  
HAUNCH, WITH HOOKED ENDS.

## BUTTRESS #9 - CONT'D.

WEST SIDE - SOUTH OF AXIS

EAST SIDE.

STA.	COVER	LENGTH	SIZE	STA.	COVER	LENGTH	SIZE
25.4'	0.34'	8.5'	$\frac{3}{4}$ " $\square$	25.40'	0.24'	8.2'	$\frac{3}{4}$ " $\square$
27.4'	0.25'	7.0'	"	27.50'	0.15'	6.9'	"
29.5'	0.27'	5.3'	"	29.50'	0.18'	5.6'	"
32.5'	0.27'	3.3'	"	32.70'	0.23'	3.3'	"
33.9'	0.32'	2.5'	"	34.30'	0.26'	2.4'	"
36.0'	0.35'	1.85'	"	36.35'	0.39'	0.5'	"
36.0'	0.86'	6.1'	$\frac{5}{8}$ " $\square$	38.40'	0.95'	4.4'	$\frac{5}{8}$ " $\square$
36.15'	1.95'	5.7'	$\frac{3}{4}$ " $\square$	34.35'	1.03'	7.4'	"
36.15'	2.47'	6.8'	"	34.35'	<sup>CUT</sup> 1.40'	<sup>OFF.</sup> 0.1'	"
36.40'	2.60'	3.6'	$\frac{1}{2}$ " $\circ$	36.60'	0.50'	0.6'	$\frac{1}{2}$ " $\circ$
36.80'	0.91'	5.2'	"	36.90'	0.40'	6.0'	"
36.90'	0.50'	1.8'	"	36.20'	2.05'	5.8'	$\frac{3}{4}$ " $\square$
38.25'	0.40'	4.6'	$\frac{5}{8}$ " $\square$	38.55'	0.65'	2.5'	$\frac{1}{2}$ " $\circ$
38.65'	0.77'	2.3'	$\frac{1}{2}$ " $\circ$	36.20'	2.70'	7.4'	"
38.15'	2.22'	5.15'	$\frac{3}{4}$ " $\square$	36.40'	2.60'	6.3'	$\frac{3}{4}$ " $\square$
39.30'	2.05'	3.2'	$\frac{1}{2}$ " $\circ$	38.20'	2.15'	5.2'	"
				39.20'	2.05'	2.6'	$\frac{1}{2}$ " $\circ$

MISC. POSITIONS.

ROUND BARS LEICA NORTH.

" " " "

" " " "

BUTTRESS #10.

WEST SIDE.

EAST SIDE.

In Pilaster Vertical



STA.	COVER.	LENGTH.	SIZE.	STA.	COVER.	LENGTH.	SIZE.
N. 0.40	0.20'	10.2'	1 1/4" □	N. 0.65'	0.30'	10.3'	1 1/4" □
N. 1.38	0.24'	"	"	N. 1.15	0.27'	"	"
N. 1.79	0.22'	"	"	N. 1.65	0.27'	"	"
N. 2.06	0.22'	"	"	N. 2.10	0.27'	"	"
N. 2.48	0.23'	"	"	N. 2.45	0.28'	"	"
N. 2.96	0.24'	"	"	N. 2.95	0.28'	"	"
N. 3.38	0.25'	"	"	N. 3.35	0.38'	"	"
N. 2.0	2.89	6.6'	3/4" □	N. 2.10'	2.28'	6.2'	3/4" □
N. 4.1	0.23'	3.8'	"	N. 4.25'	0.29'	3.5'	"
N. 6.4	0.23'	1.2'	"	N. 6.40'	0.29'	1.1'	"
S. 0.15	0.22'	9.8'	"	S. 0.15'	0.24'	9.0	"
S. 2.25	0.19'	11.2'	"	S. 2.25	0.22'	11.0	"
S. 4.40	0.19'	11.2'	"	S. 4.50	0.24'	11.2'	"
S. 6.60'	0.20	11.3'	"	S. 6.70	0.22'	11.1'	"
S. 8.70'	0.24'	11.3'	"	S. 8.80	0.20'	11.2'	"
S. 10.70'	0.25'	11.0'	"	S. 10.85	0.19'	11.0'	"
S. 12.90'	0.29'	1.3'	"	S. 13.0	0.19'	11.2'	"
S. 15.20'	0.29'	11.2'	"	S. 15.1	0.19'	11.1	"

BEGIN BARS LEARNING NORTH

7.8' 9.1' 14" LONG 1.9 LONG

BUTTRESS #10. CONT'D,  
WEST SIDE - SOUTH

## EAST SIDE - SOUTH

STA.	COVER	LENGTH	SIZE	STA.	COVER	LENGTH	SIZE
17.95'	0.28'	11.4'	$\frac{3}{4}$ " $\square$	17.40'	0.23'	11.8'	$\frac{3}{4}$ " $\square$
19.45'	0.25'	11.3'	"	19.55'	0.30'	11.0'	"
21.30'	0.55'	11.2'	"	21.65'	0.70'	11.1'	"
22.55'	0.80'	11.1'	"	22.50'	0.90'	11.0'	"
23.50'	0.97'	11.0'	"	23.60'	1.12'	10.8'	"
24.65'	1.17'	11.0'	"	24.75'	<sup>CUT</sup> 1.32'	<sup>OFF</sup> 0.5'	"
26.05'	1.48'	11.0'	"	26.0'	1.50'	10.6'	"
27.05'	1.70'	11.0'	"	27.20'	1.86'	10.7'	"
28.35'	1.98'	11.2'	"	28.35'	2.19'	10.8'	"
29.60'	2.32'	11.0'	"	29.70'	2.53'	10.9'	"
30.70'	2.62'	12.0'	"	30.95'	2.90'	11.2'	"
32.50'	3.06'	11.6'	"	32.10'	3.29'	11.1'	"
33.50'	3.43'	11.6'	"	33.25'	3.75'	11.1'	"
34.90'	3.85'	11.6'	"	34.55'	4.05'	11.2'	"
36.15'	<sup>CUT</sup> 4.25'	<sup>OFF</sup> 0.8'	"	36.00'	<sup>CUT</sup> 4.46'	<sup>OFF</sup> 0.55'	"
18.80'	0.29'	13.5'	"	19.0'	<sup>CUT</sup> 0.26'	<sup>OFF</sup> 0.9'	"
20.65'	0.07'	12.1'	"	21.4'	0.20'	11.4'	"
23.20'	0.07'	10.1'	"	23.8'	0.19'	10.0'	"

END BARS LEARNING NORTH

BEGIN BARS LEARNING SOUTH, WITH HOOKED ENDS.

JULY 25, 1932.

11.

BUTTRESS #10 - CONT'D.  
WEST SIDE - SOUTH.

EAST SIDE - SOUTH

STA.	COVER.	LENGTH	SIZE.	STA.	COVER	LENGTH	SIZE
25.35	0.22'	8.6'	3/4" □	25.6'	0.22'	8.8'	3/4" □
27.45	0.37'	7.1'	"	27.9'	0.24'	6.8'	"
29.90	0.33	5.2'	"	29.8'	0.25'	5.2'	"
32.20	0.15'	2.8'	"	31.9'	0.24'	4.2'	"
34.00	0.40	2.0'	"	34.05'	0.31'	2.0'	"
36.00	0.60	0.8'	"	35.95'	0.34'	0.8'	"
37.00	0.85	5.6'	5/8" □	37.4'	0.77'	5.4'	5/8" □
36.85	0.92'	2.8'	1/2" ○	36.7'	0.45'	2.7'	1/2" ○
36.90	0.70	2.2'	"	37.45	CUT OFF 1.0'	0.2'	"
38.60	0.60	4.0'	"	38.55'	0.5'	3.6'	"
36.40	2.75'	2.0'	"	35.0'	CUT OFF 0.9'	0.6'	5/8" □
39.20'	2.22'	4.4'	"	35.0'	CUT OFF 2.82'	0.55'	3/4" □
34.40	2.90	7.7'	3/4" □	36.7'	2.87'	2.4'	1/2" ○
37.50'	2.10'	4.6'	"	37.1'	2.65'	6.1'	3/4" □
38.65'	1.97'	4.7'	"	39.1'	1.95'	4.5'	"
78 to 9.1	0.70 0.48	1.9'	1 1/4" □	39.4'	1.12'	4.3'	1/2" ○

Basin Misc. Bars.

BAR 1/2", BOTH ENDS EMBEDDED, USED TO SUPPORT

SCAFFOLD, RENT OVER EDGE OF WALL, WEST SIDE ONLY.

July 28, 1902.

LEONARD  
HARTZEL  
VARDON CANALS

12.

ROTTRESS #11.  
WEST SIDE -

EAST SIDE.

IN PLASTER VERTICAL.

BEGIN CURVE LEARNING NORTH.

STA.	COVER	LENGTH	SIZE	STA.	COVER	LENGTH	SIZE
N 0.75	0.25'	10.2'	1 1/4" □	N 0.90	0.30'	10.3'	1 1/4" □
N 1.17	0.28'	"	"	N 1.15	0.30'	"	"
N 1.58	0.24'	"	"	N 1.53	0.28'	"	"
N 2.03	0.27'	"	"	N 2.02	0.28'	"	"
N 2.44	0.29'	"	"	N 2.48	0.26'	"	"
N 2.88	0.29'	"	"	N 2.90	0.25'	"	"
N 3.24	0.22'	"	"	N 3.40	0.24'	"	"
N 0.65	2.85'	9.1'	3/4" □	N 0.45	2.87'	9.1'	3/4" □
N 2.65	2.87'	6.3'	"	N 2.65	2.86'	6.1'	"
N 4.75	0.26'	3.8'	"	N 4.65	0.25'	3.8'	"
N 7.0	0.28'	1.2'	"	N 6.8	0.30'	1.4'	"
S 1.65	0.26'	11.4'	"	S 1.55	0.19'	11.0'	"
S 3.85	0.26'	11.5"	"	S 3.95	0.20'	11.4'	"
S 6.0	0.29'	11.5"	"	S 6.1	0.21'	11.2'	"
S 8.05	0.26'	11.8"	"	S 8.1	0.21'	11.3'	"
S 10.2	0.26'	11.3"	"	S 10.2	0.20'	11.0'	"
S 12.25	0.32'	11.4"	"	S 12.35	0.20'	11.2'	"
S 14.5	0.26'	11.4"	"	S 14.6	0.20'	11.4'	"

BOYDRESS #11 - CONT'D.  
 WEST SIDE - SOUTH

## EAST SIDE - SOUTH

STA.	COVER	LENGTH	SIZE	STA.	COVER	LENGTH	SIZE
16.65'	0.21'	11.5'	3/4" □	16.7'	0.23'	11.8'	3/4" □
18.9'	0.11'	11.5'	"	18.85'	0.24'	11.2'	"
20.7'	0.50'	10.8'	"	21.0'	<sup>CUT</sup> 0.70'	<sup>OFF</sup> 0.5'	"
22.25'	0.89'	11.7'	"	21.8'	0.87'	11.8'	"
22.9'	1.16'	10.5'	"	23.35'	1.25'	10.9'	"
24.0'	1.31'	10.6'	"	24.15'	1.45'	11.0'	"
25.1'	1.58'	10.3'	"	25.15'	1.66'	10.6'	"
26.35'	1.79'	10.4'	"	26.2'	2.00'	10.4'	"
27.6'	2.10'	10.4'	"	27.75'	2.30'	10.5'	"
28.85'	2.32'	10.3'	"	29.0'	2.55'	10.5'	"
30.15'	2.63'	10.5'	"	30.35'	2.95'	10.55'	"
31.5'	2.90'	10.4'	"	31.65'	<sup>CUT</sup> 3.30'	<sup>OFF</sup> 0.7'	"
33.5'	<sup>CUT</sup> 3.30'	<sup>OFF</sup> 1.1'	"	33.4'	<sup>CUT</sup> 3.92'	<sup>OFF</sup> 0.9'	"
34.3'	<sup>CUT</sup> 3.44'	<sup>OFF</sup> 0.45'	"	34.45'	<sup>CUT</sup> 4.10'	<sup>OFF</sup> 0.4'	"
35.95'	<sup>CUT</sup> 3.72'	<sup>OFF</sup> 0.42'	"	35.9'	<sup>CUT</sup> 4.42'	<sup>OFF</sup> 0.4'	"
20.3'	<sup>CUT</sup> 0.23'	<sup>OFF</sup> 1.4'	"	20.0'	<sup>CUT</sup> 0.15'	<sup>OFF</sup> 0.7'	"
22.65'	<sup>CUT</sup> 0.31'	<sup>OFF</sup> 0.1'	"	22.4'	0.35'	10.8'	"
24.8'	0.19'	8.7'	"	24.95'	0.26'	8.8'	"

BEGIN STEEL LEARNING SOUTH. HOINED ENDS.



Outcrop #11 - CONT'D.  
 WEST SIDE - SOUTH

EAST SIDE - SOUTH.

Sta.	Cover	Length	Size	Sta.	Cover	Length	Size
27.76'	0.39'	2.0'	3/4" □	27.35'	0.38'	2.0'	3/4" □
28.1'	0.28'	6.8'	"	29.15'	0.40'	5.7'	"
31.4'	0.36'	4.2'	"	31.3'	0.45'	4.2'	"
33.8'	0.17'	2.6'	"	33.4'	0.45'	2.7'	"
35.4'	0.36'	1.4'	"	36.05'	0.42'	1.8'	"
37.2'	0.25'	0.8'	"	37.0'	0.45'	0.4'	"
35.0	cut	off	"	35.6'	2.90'	7.8'	"
36.6'	2.54'	6.5'	"	37.8'	2.76'	5.7'	"
38.65'	2.14'	4.9'	"	38.9'	1.90'	4.1'	"
35.5'	0.90'	6.7'	5/8" □	34.6'	1.14'	2.7'	5/8" □
37.2'	1.30'	5.6'	"	36.6'	0.90'	6.8'	"
38.25'	0.25'	4.0'	"	38.7'	0.45'	4.9'	"
37.15'	0.40'	3.3'	1/2" ○	36.7'	2.80'	1.1'	1/2" ○
37.0'	0.90'	1.6'	"	37.1'	1.0'	5.3'	"
37.0'	2.71'	2.9'	"	37.2'	0.60'	3.0'	"
39.0'	0.63'	3.7'	"	38.7'	0.45'	4.9'	"
39.5'	1.65'	2.5'	"	39.55'	2.20'	5.7'	"

None only, PROJECTS.

MISS. LOCATIONS LEANS SOUTH

LOOPEO END.

" "

" "

" "

" "

LEARNING NORTH.

" "

" "

" "

" "

July 28, 1952,

15.

Buttress #12,  
WEST SIDE

EAST SIDE

IN PLASTER.

VERTICAL.

STA.	COVER	LENGTH	SIZE	STA.	COVER	LENGTH	SIZE
N. 0.75'	0.28'	10.2'	1 1/4" □	N. 0.87'	0.28'	10.5'	1 1/4" □
" 1.15'	0.27'	"	"	N 1.28'	0.25'	"	"
" 1.55'	0.27'	"	"	N 1.72'	0.25'	"	"
" 2.00'	0.30'	"	"	N 2.23'	0.25'	"	"
" 2.39'	0.25'	"	"	N 2.60'	0.25'	"	"
" 2.78'	0.31'	"	"	N 3.00'	0.25'	"	"
" 3.20'	0.32'	"	"	N 3.36'	0.25'	"	"
N 0.2'	0.22'	9.2'	3/4" □	N 0.65'	2.86'	8.9'	3/4" □
N 2.4'	2.82'	6.3'	"	N 2.5'	2.84'	6.2'	"
N 4.6'	0.22'	3.6'	"	N 4.5'	0.20'	3.6'	"
N 6.65'	0.20'	1.1'	"	N 6.8'	0.22'	1.1'	"
S 2.0'	0.25'	10.7'	"	S 2.2'	0.26'	11.2'	"
S 4.1'	0.27'	11.1'	"	S 3.85'	0.26'	10.9'	"
S 6.15'	0.28'	11.0'	"	S 6.0'	0.25'	11.0'	"
S 8.5'	0.29'	10.9'	"	S 8.7'	0.22'	11.2'	"
S 10.5'	0.27'	10.9'	"	S 11.35'	0.26'	10.7'	"
S 12.4'	0.26'	10.7'	"	S 12.35'	0.30'	10.8'	"
S 14.6'	0.20'	10.2'	"	S 14.65'	0.26'	10.8'	"

BEGIN BARS LEARNING NORTH.

BUTTRESS #12  
WEST SIDE - SOUTH

STA.	COVER	LENGTH	SIZE	STA.	COVER	LENGTH	SIZE
16.8'	0.19'	10.4'	$\frac{3}{4}$ " X	16.6'	0.25'	11.1'	$\frac{3}{4}$ " □
18.7'	0.20'	10.4'	"	18.6'	0.23'	10.8'	"
20.75'	0.54'	10.7'	"	20.45'	0.58'	10.6'	"
21.85'	0.78'	10.6'	"	22.0'	0.95'	10.5'	"
23.2'	1.09'	10.5'	"	22.8'	1.18'	10.2'	"
24.15'	1.35'	10.2'	"	24.0'	1.52'	10.2'	"
25.4'	1.64'	10.4'	"	25.35'	1.85'	10.6'	"
26.5'	1.95'	9.6'	"	26.85'	2.22'	10.5'	"
28.1'	2.35'	10.1'	"	28.0'	2.56'	10.3'	"
29.4'	2.71'	10.5'	"	29.35'	2.85'	10.2'	"
30.65'	3.00'	0.5'	"	30.75'	3.22'	0.25'	"
"	"	"	"	32.0'	3.28'	0.5'	"
"	"	"	"	33.35'	3.61'	0.5'	"
"	"	"	"	34.55'	3.86'	0.55'	"
"	"	"	"	35.4'	4.10'	0.4'	"
36.0'	0.10'	12.1'	"	36.55'	0.25'	11.7'	"
38.25'	0.20'	10.3'	"	38.85'	0.17'	10.3'	"
39.3'	0.20'	8.8'	"	39.0'	0.33'	8.6'	"

BARs CUT OFF

" " "

" " "

" " "

" " "

BEGIN HOOKED BARS LEARNING SOUTH

ROTTRESS <sup>1/2</sup> - CONT'D.  
WEST SIDE - SOUTH

EAST SIDE - SOUTH

CONTINUE HOOKED PARS LEANING SOUTH

STA.	COVER	LENGTH	SIZE	STA.	COVER	LENGTH	SIZE
27.8	0.35'	6.9'	3/4" □	26.85'	0.45'	7.2'	3/4" □
29.85	0.25'	5.6'	"	29.0'	0.40'	5.5'	"
31.6'	0.26'	4.2'	"	31.15'	0.20'	3.7'	"
33.4'	0.35'	3.1'	"	33.15'	0.32'	2.8'	"
35.45'	0.45'	1.5'	"	35.40	0.35'	9.5'	"
37.2'	0.54'	0.4'	"				"
34.7'	2.57'	8.0'	"	34.4'	2.42'	7.8'	"
36.7'	2.55'	6.4'	"	36.55'	2.48'	6.2'	"
39.05'	1.95'	4.7'	"	38.70'	1.96'	4.7'	"
34.75'	1.22'	8.0'	5/8" □	35.0'	0.78'	6.7'	5/8" □
37.0'	1.00'	5.9'	"	37.0'	0.70'	5.2'	"
36.6'	2.60'	5.7'	1/2" O	36.1'	2.56'	0.5'	1/2" O
37.7'	1.05'	1.4'	"	36.8'	0.86'	2.2'	"
37.3'	0.58'	4.7'	"	36.4'	0.43'	4.4'	"
38.5'	0.48'	5.5'	"	38.4	0.40'	5.5'	"
39.3'	2.07'	6.4'	"	39.2	2.84'	5.7'	"

TOP OF HOOK ONLY, PROJECTS,

ROUND HOOK ON END

" " " "  
" " " "  
" " " "  
" " " "

LEANING NORTH

" "  
" "  
" "

TOP - CUT OFF

SPICED

SPICED

BUTTRASS #18.

WEST SIDE.

EAST SIDE.

14 PLASTER, VERTICAL.

1

1

1

1

1

1

REGIN BARS LEARNING NORTH.

STA.	COVER	LENGTH	SIZE.	STA.	COVER	LENGTH	SIZE.
N. 0.90	0.40'	10.4'	1 1/4" □	N. 0.75'	0.36'	10.6'	1 1/4" □
N. 1.30	0.38'	"	"	N. 1.17'	0.29'	"	"
N. 1.68'	0.38'	"	"	N. 1.60'	0.29'	"	"
N. 2.17'	0.38'	"	"	N. 2.00'	0.29'	"	"
N. 2.55	0.40'	"	"	N. 2.44'	0.29'	"	"
N. 2.98	0.48'	"	"	N. 2.88'	0.28'	"	"
N. 3.38	0.48'	"	"	N. 3.28'	0.27'	"	"
AXIS	0.29'	9.4'	3/4" □	N. 0.1'	0.15'	9.5'	3/4" □
N. 2.17'	2.90	6.2'	"	N. 2.45'	2.85'	6.5'	"
N. 4.5'	0.24'	8.7'	"	N. 4.7'	0.25'	8.8'	"
N. 6.55'	0.19'	1.5'	"	N. 6.65'	0.25'	1.6'	"
S. 2.35	0.22'	11.7'	"	S. 2.1'	0.20'	11.8'	"
S. 4.1'	0.25'	11.4'	"	S. 4.05'	0.21'	11.2'	"
S. 6.25'	0.27'	11.3'	"	S. 6.25'	0.28'	11.1'	"
S. 8.4	0.29'	11.5'	"	S. 8.35'	0.28'	11.2'	"
S. 10.45	0.28'	11.2'	"	S. 10.4'	0.24'	11.3'	"
S. 12.6	0.24'	11.2'	"	S. 12.55'	0.25'	11.0'	"
S. 14.7	0.24'	11.1'	"	S. 14.75	CUT OFF 0.22'	1.1	"

## BUTTRESS #13 - CONT'D.

WEST SIDE - SOUTH

EAST SIDE - SOUTH

STA.	COVER	LENGTH	SIZE	STA.	COVER	LENGTH	SIZE
16.95'	0.28'	11.2'	$\frac{3}{4}$ " □	16.9'	0.22	11.2'	$\frac{3}{4}$ " □
18.75'	0.20	11.5'	"	18.6'	0.19	10.7'	"
21.0'	0.64'	11.0'	"	21.15'	0.68'	11.1'	"
21.9'	0.86'	10.8'	"	22.0'	0.88'	10.5'	"
23.0'	1.13'	10.4'	"	23.15'	1.13'	10.5'	"
24.15'	1.39'	10.6'	"	24.3'	1.43'	10.4'	"
25.45'	1.72	10.6'	"	25.4'	1.75'	10.3'	"
26.45'	1.94'	10.3'	"	26.65'	2.14'	10.3'	"
27.6'	2.14'	10.4'	"	27.8'	2.38'	10.3'	"
28.9'	2.49'	10.0'	"	29.1'	2.78'	10.2'	"
30.5'	2.84'	10.6'	"	30.6'	3.14'	10.6'	"
31.5'	3.02'	10.3'	"	31.55'	3.42'	10.3'	"
32.7'	3.28'	10.4'	"	32.0'	3.79'	10.4'	"
33.9'	3.56'	10.3'	"	34.25'	4.04'	10.4'	"
35.3'	3.86'	10.3'	"	35.35'	4.50'	10.2'	"
20.0'	0.15'	12.6'	"	20.2'	0.23'	12.7'	"
22.6'	0.09'	10.6'	"	22.7'	0.22'	10.4'	"
24.7'	0.35'	8.9'	"	24.8'	0.24'	8.8'	"

BEGIN HOOKED ENDS, LEANING SOUTH

## BUTTRESS #13.

## WEST SIDE - SOUTH

## EAST SIDE - SOUTH.

## HOOKED ENDS - LEANING SOUTH.

Sta.	Cover	Length	Size	Sta.	Cover	Length	Size
26.6'	0.25'	7.5'	$\frac{3}{4}$ " $\square$	27.2'	0.26'	7.0'	$\frac{3}{4}$ " $\square$
28.6'	0.27'	5.9'	"	29.25'	0.24'	5.8'	"
31.1'	0.25'	4.0'	"	31.2'	0.28'	3.9'	"
33.35'	0.24'	2.5'	"	33.1'	0.23'	3.5'	"
35.2'	0.42'	1.1'	"	35.2'	0.41'	1.3'	"

## Misc. Bars. Round Hook on End.

34.4	2.66	7.6'	"	34.4'	2.55'	7.6'	"
36.5	2.52	6.3'	"	36.65'	2.56'	6.2'	"
38.8	1.90'	4.6'	"	38.8'	1.94'	4.5'	"
35.1'	0.98'	6.9'	$\frac{5}{8}$ " $\square$	34.7	0.95'	6.9'	$\frac{5}{8}$ " $\square$
37.1'	0.75'	5.5'	"	36.95'	0.80'	5.4'	"

## LEANING NORTH.

36.25'	2.67'	4.7'	$\frac{1}{2}$ " $\circ$	36.1	2.76'	4.9'	$\frac{1}{2}$ " $\circ$
36.8'	0.93'	6.1'	"	36.6'	1.04'	2.5'	"
36.9'	0.54'	3.8'	"	36.75'	0.50'	2.1'	"
38.4'	0.42'	2.6'	"	38.25'	0.50'	2.9'	"
39.1'	2.29'	4.2'	"	39.0'	2.50'	3.3'	"

## STEEL CABLE, HANGING DOWN SIDE ABOUT 4 FT. LONG.

				12.65'	0.12'		$\frac{5}{8}$ " $\circ$
"	"	"	"	13.35'	0.15'		$\frac{5}{8}$ " $\circ$

## BUTTRESS #4,

WEST SIDE

EAST SIDE

NOTES: ALL RODS CUT OFF EXCEPT AS NOTED.

IN PLASTERS VERTICAL. CUT OFF

"	"	"	"
"	"	"	"
"	"	"	"
"	"	"	"
"	"	"	"
"	"	"	"
"	"	"	"
"	"	"	"

RODS NOT CUT OFF

"	"	"	"
"	"	"	"
"	"	"	"
"	"	"	"
"	"	"	"

STA.	COVER	LENGTH	SIZE	STA.	COVER	LENGTH	SIZE
N. 0.76'	0.23	0.8'	1/4" □	N. 0.73	0.35'	0.7'	1/4" □
N. 1.31'	0.24'	0.7'	"	N. 1.20'	0.32'	0.7'	"
N. 1.78'	0.24'	0.7'	"	N. 1.55'	0.32'	0.6'	"
N. 2.06'	0.29'	0.7'	"	N. 1.90'	0.31'	0.6'	"
N. 2.48'	0.29'	0.7'	"	N. 2.35'	0.28'	0.7'	"
N. 2.90'	0.29'	0.7'	"	N. 2.75'	0.28'	0.7'	"
N. 3.29'	0.30'	0.7'	"	N. 3.25'	0.35'	0.6'	"
N. 4.1'	2.90	5.1	3/4" □	N. 4.15'	2.92	5.0'	3/4" □
N. 5.3'	2.90	3.0'	"	N. 5.2'	2.92	4.0'	"
N. 5.45'	0.29	3.2'	"	N. 5.15'	0.22'	3.1'	"
N. 7.45'	0.26'	1.3'	"	N. 6.65'	0.23'	2.9'	"
S. 0.85'	0.25'		"	S. 1.0	0.23'	6.7'	"
S. 3.05'	0.24'	0.5'	"	S. 5.15'	0.25'	0.6'	"
S. 5.15'	0.22'	0.4'	"	S. 5.2'	0.27'	0.5'	"
S. 7.2	0.24'	0.1'	"	S. 7.4	0.24'	0.6'	"
S. 9.3	0.22'	0.5'	"	S. 9.35'	0.26'	0.6'	"
S. 11.45'	0.26'	0.4'	"	S. 11.65'	0.25'	0.6'	"
S. 13.65'	0.27'	0.4'	"	S. 13.85'	0.25'	0.6'	"



## BUTTRICKS #14-CONT'D.

WEST SIDE - SOUTH

EAST SIDE - SOUTH

Sta.	COVER	LENGTH	SIZE	Sta.	COVER	LENGTH	SIZE
15.85	0.29'	0.8'	3/4" D	15.95	0.25'	0.6'	3/4" D
17.8	0.35'	1.1'	"	18.45	0.22'	0.6'	"
20.25	0.38'	1.0'	"	20.35	0.32'	0.6'	"
22.1	0.61'	0.7'	"	22.2	0.73'	0.6'	"
23.35	0.85'	0.5'	"	23.25	0.95'	0.7'	"
24.5	1.1'	0.6'	"	24.5	1.32'	0.6'	"
25.6	1.32'	0.7'	"	25.65	1.48'	0.5'	"
26.8	1.53'	0.6'	"	26.85	1.75'	0.6'	"
28.0	1.84'	0.7'	"	28.1	2.08'	0.5'	"
29.2	2.12'	0.5'	"	29.3	2.37'	0.6'	"
30.45	2.50	0.7'	"	30.5	2.68'	0.6'	"
32.0	3.02'	0.7'	"	32.0	3.08'	0.5'	"
32.85	3.18'	0.5'	"	33.0	3.35'	0.6'	"
34.0	3.58'	0.6'	"	34.2	3.58'	0.6'	"
35.3	4.0'	0.6'	"	35.45	3.90'	0.4'	"
36.6	4.36'	0.6'	"	36.6	4.21'	0.4'	"
19.65	0.26'	0.8'	"	19.45	0.36'	0.5'	"
21.6	0.16'	0.9'	"	21.55	0.28'	0.4'	"

BEGIN RDS LEARNING SOUTH.

BUTTRESS #44,  
 WEST SIDE - SOUTH

EAST SIDE - SOUTH

STA.	COVER	LENGTH	SIZE	STA.	COVER	LENGTH	SIZE
23.6	0.28'	0.7'	$\frac{3}{4}$ " □	23.6	0.21'	0.6'	$\frac{3}{4}$ " □
25.55	0.30'	0.7'	"	25.7	0.22'	0.4'	"
27.75	0.35'	7.2'	"	27.9	0.19'	7.2'	"
30.05	0.12'	5.8'	"	30.1	0.14'	5.7'	"
32.1	0.19'	4.2'	"	32.3	0.25'	4.0'	"
34.2	0.29'	2.5'	"	34.15	0.43'	2.7'	"
36.15	0.36'	1.2'	"	36.15	0.38'	1.3'	"
36.6	2.60'	6.7'	"	36.65	2.61'	6.7'	"
37.0	1.96'	5.9'	"	38.65	2.21'	5.4'	"
38.7	2.18'	5.2'	"	39.50	1.17'	3.6'	"
34.9	0.82'	7.6'	$\frac{5}{8}$ " □	34.8	0.93'	7.9'	$\frac{5}{8}$ " □
37.1	0.82'	6.1'	"	36.9	0.81'	6.2'	"
39.2	0.38'	4.3'	"	38.9	0.46'	4.9'	"
37.05	2.68'	4.9'	$\frac{1}{2}$ " O	37.15	2.72'	4.2'	$\frac{1}{2}$ " O
37.5	0.84'	6.0'	"	37.5	0.82'	4.0'	"
37.5	0.48'	5.9'	"	37.6	0.52'	5.9'	"
39.25	0.90'	7.8'	"	39.5	1.00'	6.5'	"
39.8	2.68'	7.0'	"	39.9	2.36'	6.8'	"

BARS NOT CUT OFF, HOOKED ENDS, LEANING SOUTH

" " " "

" " " "

" " " "

" " " "

MISC. " " "

" " " "

" " " "

" " " "

" " " "

" " " "

" " " "

" " " "

" " " "

" " " "

" " " "

LEANING NORTH

NOTE: "L" & "D." REFER TO COORDINATES OF  
DAM LAYOUT - BASED ON FILE NO. 1833 PLANS.

USED COPPER TACK ON  $\frac{1}{2}$  OF BUTTRESS #8 TO  
ESTABLISH "D" STATIONING.

JULY 29, 1952. LEONARD  
MARTEL  
VARON FAXIS

24.

OVERCAST, SPRINKLES,

BASE LINE FOR MEASURING STEEL IN CUT OFF WALLS.

(L 1160  
SET 1" HUB TACK (D) DIST. 7.08

Dist. 11.00  
D 1177.08

160'

$\times 90^\circ$



$\frac{1}{2}$  BUTTRESS #4

$\frac{1}{2}$  BUTTRESS #13

$\frac{1}{2}$  BUTTRESS #12

L 1125, D 1665, SET WORK PT.

L 1140, D 1650, SET WORK PT.

L 1160, D 1680, SCRATCH + ON ROCK

L 1160, D 1600 SET PK NAIL IN ROCK

L 1160, D 1575 SET 1" HUB T.

L 1160, D 1540 SET 1" HUB T.

$\frac{1}{2}$  BUTTRESS #11

$\frac{1}{2}$  BUTTRESS #10

L 1140, DIST. 7.50 WORK PT.  
FO, COPPER TACK -  $\frac{1}{2}$  BUTT. #4.

$\frac{1}{2}$  BUTTRESS #9

SET TACK IN 10" STUMP L 1160; D 1497  
FO, COPPER TACK ON  $\frac{1}{2}$  #9 - D 1480  
USED AS STA. D 1480.

TACK IN 10" STUMP

$\frac{1}{2}$  BUTTRESS #8

$\times 90^\circ$

L 1160'

P.O.T. • NAIL - LINE ONLY, TOP OF BANK.

DAM AXIS

July 29, 1952

July 29, 1952.

LEONARD T  
MARTEL  
VARONFAKIS

25.

LEVELS FOR STEP ELEV'S.

LEVEL	ELEV.	ROCK
1 <sup>st</sup> B.M. +4.41	1944.69	1940.28
1 <sup>st</sup> STEP W. #10.	-11.92	1932.77
2 <sup>nd</sup> " " "	-10.58	1934.11
3 <sup>rd</sup> " " "	-9.15	1935.54
4 <sup>th</sup> " " "	-7.77	1936.96
5 <sup>th</sup> " " "	-6.22	1938.47
6 <sup>th</sup> " " "	-4.63	1940.06
7 <sup>th</sup> " " "	-3.20	1941.49
8 <sup>th</sup> " " "	-1.84	1942.85
9 <sup>th</sup> " " " T.P.	-0.14	1944.55 ON CORNER
CHECK B.M.	-4.41	1940.28

STEEL IN CUT OFF WALLS.

BETWEEN RUTTS #10 & #11.

"L" COORDINATE	"D" COORD.	SIZE	LENGTH	ELEV. OF CONC.
1145.5	1610.25	1" □	6.0'	1937.8
1146.35	1611.55	1/2" O	3.2'	"
1146.65	1611.78	1" □	4.6	"
1147.72	1612.45	1/2" O	3.5'	"
1148.18	1613.58	1/2" O	3.7'	"
1148.52	1613.90	1" □	5.2'	"
1149.45	1614.90	1/2" O	3.6'	"
1149.53	1606.75	1" □	5.5'	"
1150.13	1607.18	1/2" O	3.0'	"
1150.29	1607.52	3/4" □	4.0'	"
1150.91	1608.20	1" □	4.6'	"
1151.17	1607.95	1/2" O	3.1'	"
1151.69	1608.75	3/4" □	4.8'	"
1152.04	1608.95	1/2" O	3.4'	"
1152.06	1609.40	1" □	5.3'	"
1152.56	1609.92	3/4" □	5.0'	"
1152.89	1610.28	1/2" O	3.6'	"
1153.15	1610.47	1" □	5.5'	"

NOTE: STEP AT BASE OF RUTTS #10 IS BURIED UNDER

18"± OF DIRT & ROCKS - NO MEASUREMENTS TAKEN.

JULY 30, 1962.

LEONARD - X  
MARTEL  
VARONFAKIS

26.

HOT, CLEAR.

STEEL IN CUT OFF WALL BETWEEN BUTTRESS #10 & #11 - CONT'D.

"L"	"D"	SIZE	LENGTH	CONC. ELEV.
1155.62	1621.45	3/4" □	5.9'	1932.8
1153.97	1621.39	1/2" O	4.2'	"
1150.60	1615.99'	1/2" O	3.2' <sup>o.i.</sup> cut	1934.1
1157.17	1616.78'	1" □	4.8'	"
1157.19	1617.30'	1/2" O	3.5' <sup>o.i.</sup> cut	"
1152.00	1618.56"	"	3.8'	"
1152.50	1620.00'	"	4.1'	"
1155.32	1613.65'	1" □	3.8'	"
1155.66	1615.87'	1/2" O	3.3'	"
1155.85	1614.45'	3/4" □	4.1'	"
1156.25	1615.45'	1/2" O	3.7'	"
1156.20	1615.30'	1" □	4.9'	"
1156.90	1616.41'	1/2" O	4.0'	"
1156.85	1616.66'	3/4" □	4.6'	"
1157.44	1617.85'	"	4.3' v	"
1157.40	1618.05'	1" □	5.2'	"
1157.75	1619.24'	3/4" □	4.6' v	"
1154.92	1617.61 o.k.	1/2" O	3.1'	"

OUTER ROW

INNER ROW

OUTER ROW

SUNKY -

MISSED IT.

"L"	"D"	SIZE	LENGTH	CONC. ELEV.
1152.84	1621.36	1/2" O	3.8'	1935.5 ±
1152.86	1621.57	1" □	4.3'	"
1152.96	1622.70	1/2" O	3.5'	"
1153.08	1624.32	1/2" O	3.9' cut off	"
1152.95	1625.77	"	4.3' cut off	"
1158.36	1620.70	3/4" □	3.3' V	"
1158.28	1621.11	3/4" □	4.1' V	"
1158.60	1622.00	3/4" □	3.6' V	"
1158.47	1622.95	1" □	4.9'	"
1158.48	1623.45	3/4" □	3.9' V	"
1158.51	1624.98	3/4" □	4.0' V	"
1158.28	1626.44	"	3.0' V	1937.0 ±
1158.00	1627.89	"	3.3' V	"
1157.66	1629.50	"	3.2' V	"
1157.30	1630.95	"	3.4' V	"
1157.12	1631.10	1" □	4.6'	"
1157.06	1632.38	3/4" □	3.9' cut off	"
1156.75	1633.70	"	4.4' V	"

INNER ROW

OUTER ROW

OUTER ROW

"L"	"D"	SIZE	LENGTH	CONC. EVERY.
1152.98	1627.18	1/2" O	3.2'	1937.0±
1162.97	1627.20	1" O	4.2'	"
1152.65	1628.84	1/2" O	3.6'	"
1152.16	1630.24	"	4.0'	"
1152.22	1631.71	"	CUT OFF 0.1'	"
1151.40	1632.78	"	3.3'	1938.5
1151.48	1632.88	1" O	4.2'	"
1150.28	1635.58	1/2" O	3.6'	"
1149.50	1637.08	1" O	5.4'	"
1149.92	1636.82	1/2" O	4.0'	"
1148.20	1638.14	"	4.4'	"
1150.88	1634.20	"	CUT OFF 0.05'	"
1156.12	1635.22	3/4" O V	3.1'	"
1155.90	1635.62	1" O	4.3'	"
1155.58	1636.52	3/4" O V	3.4'	"
1154.80	1637.80	1" O	5.0'	"
1154.78	1637.80	3/4" O V	3.8'	"
1153.93	1639.04	3/4" O V	4.0'	"

INNER ROW  
 X  
 X  
 INNER ROW  
 X  
 OUTER ROW  
 Y

"L"	"O"	SIZE	LENGTH	CONC. ELEV.
1153.35	1640.30	$\frac{3}{4}$ " $\square$ V	4.2'	1938.5
1153.12	1640.48	1" $\square$	5.4'	"
1148.12	1658.82	"	4.2'	1940.1
1161.98	1659.23	$\frac{1}{2}$ " O	3.2'	"
1147.15	1640.48	"	3.4'	"
1152.25	1641.40	1" $\square$	4.8'	"
1146.82	1641.64	$\frac{1}{2}$ " O	3.6'	"
1153.18	1642.65	"	3.9'	"
1146.17	1644.02	1" $\square$	5.3'	"
1145.87	1644.00	$\frac{1}{2}$ " O	4.2'	"
1145.00	1641.61	"	3.0'	"
1144.16	1642.37	1" $\square$	4.8'	"
1144.11	1642.58	$\frac{1}{2}$ " O	3.5'	"
1152.42	1643.61	"	4.0'	"
1151.71	1644.55	1" $\square$	4.7'	"
1151.50	1644.96	$\frac{1}{2}$ " O	4.2'	"
1150.69	1645.55	$\frac{3}{4}$ " $\square$	4.9'	"
1149.95	1645.94	$\frac{1}{2}$ " O	4.0'	"
1149.75				
1149.27				
1148.80				



JULY 31, 1952

LEONARD  
MARTEL  
VANON FAKIS.

301

HOT, CLEAR

STEEL IN CUT OFF WALLS BETWEEN BUTTRESSES TO #11.

"L"	"O"	SIZE	LENGTH	CONC. ELEV.
1148.27	1646.58	1" □	5.0'	1940.1'
1147.65	1647.09	1/2" O	4.0'	"
1147.47	1647.36	3/4" □	4.8'	"
1147.85	1644.70	1/2" O	3.0'	1941.5'
1147.49	1644.82	1" □	4.1'	"
1146.80	1645.60	1/2" O	3.2'	"
1140.52	1646.60	"	4.6'	"
1140.52	1646.95	1" □	3.5'	"
1139.25	1647.50	1/2" O	3.7'	"
1138.05	1648.25	1" □	5.0'	"
1138.05	1648.30	1/2" O	3.9'	"
1136.83	1649.10	"	4.2'	"
1146.90	1647.76	1" □	3.9'	"
1146.65	1648.19	1/2" O	3.0'	"
1146.00	1648.80	3/4" □	3.4'	"
1145.52	1649.18	1/2" O	3.0'	"
1145.10	1649.61	1" □	4.2'	"
1144.50	1650.14	1/2" O	3.0'	"

DUG THEM OUT.

REMAINDER OF FOOTING BURIED UNDER DIRTY ROCKS.

## BETWEEN #109 &amp; #11 - CONT'D.

"L"	"D"	SIZE	LENGTH.	CONC. ELEV.
1143.96'	1650.38'	$\frac{3}{4}$ " $\square$	3.9'	1141.5
1143.16'	1651.09'	$\frac{1}{2}$ " O	3.0'	"
1142.70'	1651.52'	1" $\square$	6.0'	"
1142.20'	<del>1652.00</del> 1651.11'	$\frac{1}{2}$ " O	3.2'	"
1141.60'	1652.15	$\frac{3}{4}$ " $\square$	3.8'	"
<del>1141.60'</del>	<del>1651.95</del>	<del><math>\frac{1}{2}</math>" O</del>		"
1140.70	1652.68	1" $\square$	4.5'	"
1140.78	1652.78	$\frac{1}{2}$ " O	3.5'	"
1139.67	1653.12	$\frac{3}{4}$ " $\square$	4.2'	"
1139.36	1653.50	$\frac{1}{2}$ " O	3.5'	"
1136.45	1649.30	1" $\square$	4.0'	1142.9'
1135.25	1649.70	$\frac{1}{2}$ " O	2.9'	"
1134.25	1650.50	1" $\square$	4.1'	"
1133.90	1650.48	$\frac{1}{2}$ " O	3.0'	"
1132.78	1651.28'	$\frac{1}{2}$ " O	3.8'	"
1132.00	1651.58'	1" $\square$	4.3'	"
1131.20	1652.08'	$\frac{1}{2}$ " O	3.4'	"
1129.85	1652.50	$\frac{1}{2}$ " O	3.4'	"

BETWEEN 10<sup>th</sup> & 11 - CONT'D.

"L"	"O"	SIZE.	LENGTH.	CONC. ELEV.
1129.76	1652.60	1" □	4.5'	1142.9±
1128.47	1653.04	1/2" O	3.6'	"
1127.13	1653.40	1" □	5.2'	"
1127.05	1653.50	1/2" O	3.7'	"
1125.50	1653.88	"	3.8'	"
1125.00	1653.96	1" □	5.2'	"
1128.68	1653.85	1" □	4.0'	"
1128.29	1654.00	1/2" O	2.8'	"
1127.68	1654.20	3/4" □	3.8'	"
1127.19	1654.52	1" □	4.0'	"
1127.00	1654.70	1/2" O	3.0"	"
1126.21	1654.93	3/4" □	4.0	"
1125.05	1655.30	1" □	4.3	"
1125.41	1655.39	1/2" O	3.1	"
1124.05	1655.83	3/4" □	4.2	"
1124.21	1655.88	1/2" O	3.1'	"
1123.19	1656.27	1" □	4.6	"
1122.68	1656.48	1/2" O	3.4	"

INNER ROW

OUTER ROW

1855.10  
 2.4  
 1852

## BETWEEN #10 &amp; #11 - CONT'D.

"L"	"D"	SIZE.	LENGTH.	CONC. ELEV.
1132.21	1656.85	$\frac{3}{4}$ " $\square$	4.8	1142.9
1131.18	1657.13	1" $\square$	4.9	"
1131.25	1657.87	$\frac{1}{2}$ " $\circ$	3.6'	"
1129.99	1657.87	$\frac{3}{4}$ " $\square$	4.6'	"
1129.82	1657.95	$\frac{1}{2}$ " $\circ$	3.9'	"
1129.06	1658.41	1" $\square$	5.0'	"
1128.66	1658.65	$\frac{1}{2}$ " $\circ$	3.9'	"
1128.25	1658.66	$\frac{3}{4}$ " $\square$	4.7'	"
1127.65	1658.73	1" $\square$	4.0'	1944.5
				1928.9

RESERVE FOR STEP AT BASE OF BUTTRESS #10.

END 010 TO 011.

JULY 31, 1952

34.

P.M. VERY HOT.

STEEL IN CUT OFF WALL BETWEEN BUTTRESS #9 & #10.

B.M.	+0.68	1940.96	1940.28	"L"	"D"	SIZE	LENGTH.	CONC. ELEV.
TOP 9 BUTTRESS #10	-11.69	1929.27	1929.27	1141.05	1594.08	1" □	3.0	1929.9
+2.87	1932.14			1141.22	1593.75	1/2" O	4.5'	1929.5
BUTTRESS #10 BASE	-4.23	1928.91	1928.91	1142.04	1593.57	1" □	3.7	"
1st. EAST STEP	-5.6	1927.5	1927.5	1142.55	1593.08	1/2" O	4.0	"
2ND " "	-7.2	1924.9	1924.9	1143.26	1592.90	1" □	3.7	"
3RD " "	-9.0	1923.1	1923.1	1143.75	1592.54	1/2" O	3.7	"
B.M. S.E. COR. BUTT. #8,	-12.12	1920.02	1920.02	1144.46	1592.35	1" □	3.8	"
				1145.23	1592.02	1/2" O	3.8	"
				1145.88	1591.84	1" □	3.7	"
				1146.50	1591.55	1/2" O	3.6	"
				1147.62	1591.35	1" □	3.6'	"
				1148.00	1591.10	1/2" O	3.7	"
				1148.95	1590.89	1" □	3.4	"
				1149.36	1590.67	1/2" O	3.2'	"
				1150.54	1590.45	1" □	3.9'	"
				1150.64	1590.15	1/2" O	3.8	1924.9
				1151.19	1590.15	1" □	4.3	"
				1152.02	1589.60	1/2" O	4.1	"

HIGH SIDE OF 8" PIPE

TIP ON BACK

INNER ROW

IN FACE OF STEP

## BETWEEN #94 TO - CONT'D

"L"	"D"	SIZE	LENGTH	CONC. ELEV.
1152.64	1589.48	1" □	4.0	1924.9
1153.29	1589.00	½" ○	3.5	"
1154.16	1588.78	1" □	3.4	"
1154.63	1588.50	½" ○	1.6	"
1155.20	1588.30	1" □	4.5	1923.1
1155.83	1588.00	½" ○	4.3	"
1156.53	1587.87	1" □	4.2	"
1157.20	1587.50	½" ○	4.0	"
1157.94	1587.30	1" □	3.9	"
1158.49	1586.95	½" ○	3.6	"
1159.47	1586.55	1" □	3.7	"
1159.80	1586.24	½" ○	3.3	"
1144.22	1598.77	½" ○	3.0	1928.9
1144.41	1598.45	1" □	4.7	"
1145.18	1598.26	½" ○	3.6	"
1146.00	1597.81	1" □	4.9	1927.5
1146.82	1597.77	½" ○	4.1	"
1147.11	1597.33	1" □	4.3	"

## BETWEEN #9270 - CONT'D.

"L"	"D"	SIZE	LENGTH	CONC. ELEV.
1147.53 <sup>*</sup>	1597.73	1" □	4.7	1927.5
1147.80	1597.15	½" O	3.8	"
1149.10	1596.80	½" O	3.9	"
1149.78	1596.62	1" □	3.9	"
1150.53	1596.71	½" O	3.5	"
1151.81	1595.72	1" □	3.1	"
1151.95	1594.53	½" O	3.2	"
1153.15	1595.04	½" O	4.2	1924.9
1153.23	1594.92	1" □	4.2	"
1154.56	1594.50	½" O	3.9	"
1155.15	1594.15	1" □	4.4	"
1155.25	1593.88	½" O	3.6	"
1156.65	1593.30	1" □	3.7	"
1157.09	1593.25	½" O	1.6	"
1157.79	1592.55	1" □	4.7	1923.1
1159.63	1591.70	1" □	4.3	"
1159.77	1592.00	½" O	3.9	"
1160.82	1591.05	½" O	3.7	"

Y

BETWEEN 29 &amp; 30. CONT'D.

"L"	"D"	SIZE	LENGTH.	CONC. ELEV.
1160.91	1591.85	1" $\square$	3.8'	1923.1
1162.15	1590.25	$\frac{1}{2}$ " $\circ$	3.4'	"
1162.60	1589.90	1" $\square$	3.2'	"

REMAINER BURIED AS OF JULY 31.



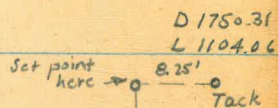
Bergman  
Browne  
Kruaskos  
Nov. 4, 1952

88.

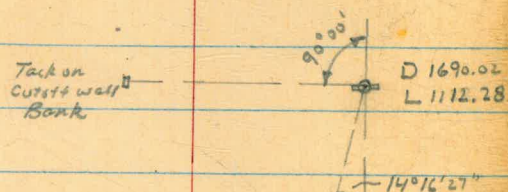
Set up for checking Steel location

in cutoff wall

± Butt. 13



± Butt. 12



± Butt. 11



± Butt. 10

First Step Steel

Extrados

Intrados

Measured from face of Step # 2

Size	Length	Distance	Size	Length	Distance
$\frac{1}{2}$ " $\phi$	in face of step	0.0	$\frac{1}{2}$ " $\phi$	5.0	0.6
$\frac{3}{4}$ " $\phi$	0.8 into face	0.5	1" $\phi$	3.0 into face	2.0
$\frac{1}{2}$ " $\phi$	5.0	1.2	$\frac{1}{2}$ " $\phi$	5.6	2.7
1" $\phi$	3.1 into face	2.0			

Set up Point L = 1112.28  
D = 1690.02

Steel in Cutoff wall between

Step Elev.	Length Inner Steel Distance	Bar Size	Horiz. $\angle$ Clockwise	Distance from Setup
	Step coordinate		31° 5' 20"	30.73 - Hor. 23.91 - 38° 54'
1944.57	6.5' 0.8	1" $\phi$		
	1.6 0.8 <sup>0.75</sup> T.C.	1" $\phi$		
	4.4 1.5	$\frac{1}{2}$ " $\phi$		
	1.7 1.5 - 0.3 T.C.	$\frac{1}{2}$ " $\phi$		
	6.4 1.85	1" $\phi$	35° 25'	Hor. 26.13 32.53 36° 33'
	1.9 2.30 <sup>0.5</sup> T.C.	1" $\phi$		
	4.4 2.40'	$\frac{1}{2}$ " $\phi$		
	1.6 2.40' <sup>0.25</sup> T.C.	$\frac{1}{2}$ " $\phi$		
	6.2 3.20'	1" $\phi$		
	4.6 3.30' <sup>0.25</sup> T.C.	$\frac{1}{2}$ " $\phi$		
	6.9 4.10'	1" $\phi$		
	4.7 4.10' <sup>0.10</sup> T.C.	$\frac{1}{2}$ " $\phi$		
	4.8 4.90' <sup>0.2</sup> T.C.	$\frac{1}{2}$ " $\phi$		
	2.4 5.20' <sup>0.5</sup> T.C.	1" $\phi$		
	7.0 5.60'	1" $\phi$		
	4.9 5.60' <sup>0.1</sup> T.C.	$\frac{1}{2}$ " $\phi$		
	5.1 6.8 <sup>0.1</sup> T.C.	$\frac{1}{2}$ " $\phi$		
	5.3 7.6	$\frac{1}{2}$ " $\phi$		
	5.4 8.4	$\frac{1}{2}$ " $\phi$		

Buttresses 11 and 12

Step Elevat.	Length Outer Steel bar Distance	Bar Size	Horiz. $\angle$ Clockwise	Distance from Setup
	Step Coordinate		32° 4'	Hor. 33.63 38.26 - 30° 18'
1944.57	4.5 0.9 <sup>0.2</sup> T.C.	$\frac{1}{2}$ " $\phi$		
	6.4 1.1	1" $\phi$		
	1.0 1.2 <sup>0.33</sup> O.C.	1" $\phi$		
	6.4 1.5	$\frac{3}{4}$ " $\phi$		
	6.5 1.6	1" $\phi$		
	4.4 1.8	$\frac{1}{2}$ " $\phi$		
	6.7 1.8	$\frac{3}{4}$ " $\phi$		
	0.7 2.0 <sup>0.1</sup> T.C.	$\frac{1}{2}$ " $\phi$		
	6.7 2.4'	1" $\phi$	36° 16'	Horiz. 30.17 35.84' - 32° 40'
	4.4 2.5' <sup>0.1</sup> O.C.	$\frac{1}{2}$ " $\phi$		
	6.5 2.8	$\frac{3}{4}$ " $\phi$		
	1.0 2.9	" $\phi$		
	6.0 3.0	1" $\phi$		
	4.6 3.4	$\frac{1}{2}$ " $\phi$		
	6.7 3.5	$\frac{3}{4}$ " $\phi$		
	6.5 3.8	1" $\phi$		
	3.3 4.2	$\frac{1}{2}$ " $\phi$		
	6.1 4.2	$\frac{3}{4}$ " $\phi$		
	0.8 4.2	1" $\phi$		

Bergman  
Browne  
Krooskas  
Nov. 5, 1952

39.

Setup Point L = 1112.28  
D = 1690.02

401

Steel in Cutoff wall between

Buttress 11 and 12

Step Elev.	Length Bar	Inner Steel Distance	Bar Size	Horiz. & Clockwise	Distance from Setup	Step Elev.	Length Bar	Outer Steel Distance	Bar Size	Horiz. & Clockwise	Distance from Setup
1	5.6	9.1	1/2" φ				4.7	4.9	1/2" φ		
1948.37		Step coordinate		51° 37'	Hor. 26.20 31.77 - 34° 27'		6.4	5.0	3/4" φ		
	4.2	0.5	1/2" φ				6.3	5.4	1" φ		
	6.5	0.9	1" φ				6.5	5.7	3/4" φ		
	4.7	1.2 <sup>0.1</sup> T.C	1/2" φ				4.8	5.8 <sup>0.1</sup> O.C.	1/2" φ		
	0.1	2.0	1/2" φ				6.5	6.0	1" φ		
	6.5	2.3	1" φ				6.6	6.2	3/4" φ		
	0.2	2.8 <sup>0.2</sup> T.C	1/2" φ				6.7	6.5	1" φ		
	4.8	3.5 <sup>0.1</sup> T.C	1/2" φ				5.1	6.6 <sup>0.2</sup> O.C.	1/2" φ		
	4.5	3.9	1/2" φ				6.7	6.9	3/4" φ		
	0.1	4.9	1/2" φ				6.6	7.3	1" φ		
	0.1	5.5	1/2" φ				5.3	7.4 <sup>0.1</sup> O.C.	1/2" φ		
	5.4	6.4	1/2" φ				6.9	8.0	3/4" φ		
1949.77		Step coordinate		66° 21'	Hor. 26.25 30.91 - 31° 53'		6.6	8.3	1" φ		
	0.18	0.3	1/2" φ				5.9	8.5	1/2" φ		
	0.18	1.1	1/2" φ				7.0	8.6	3/4" φ		
	0.18	2.6	1/2" φ				5.9	9.2 <sup>0.1</sup> O.C.	1/2" φ		
	3.1	3.3	1/2" φ				6.7	9.2	1" φ		

Setup Point L = 1112.28  
D = 1690.02

41

Steel in Cutoff wall between Buttrass 11 and 12

Step Elev.	Length Bar	Inner Steel Distance	Bar Size	Horiz. & Clockwise	Distance from Setup	Step Elev.	Length Bar	Outer Steel Distance	Bar Size	Horiz. & Clockwise	Distance from Setup
	3.0	3.8	$\frac{1}{2}$ " $\phi$				5.9	10.0 <sup>o.1</sup> o.c.	$\frac{1}{2}$ " $\phi$		
	0.1 <del>8</del>	3.9	"				7.1	10.3	1" $\phi$		
	2.8	4.3	"				6.0	10.4 <sup>o.2</sup> o.c.	$\frac{1}{2}$ " $\phi$		
	4.6	5.6	"			1948.37	Step Coordinate			52° 54'	Hor. 30.91 35.76 - 30° 11'
	5.1	6.1	"				4.7	0.2	$\frac{1}{2}$ " $\phi$		
	5.0	7.1	$\frac{1}{2}$ " $\phi$				7.3	0.6	$\frac{3}{4}$ " $\phi$		
1951.23	step coordinate			82° 02'	Horiz. - 25.20' 28.28 - 27° 00'		4.6	0.8 <sup>o.1</sup> o.c.	$\frac{1}{2}$ " $\phi$		
	3.8	0.5	$\frac{3}{4}$ " $\phi$ V				7.2	1.2 <sup>o.1</sup> T.C.	1" $\phi$		
	4.5	0.6	1" $\phi$	counterclockwise			6.3	1.4	$\frac{3}{4}$ " $\phi$		
	4.3	1.4	$\frac{3}{4}$ " $\phi$ V				4.8	1.6 <sup>o.1</sup> o.c.	$\frac{1}{2}$ " $\phi$		
	4.7	2.4	" V				7.1	2.1	1" $\phi$		
	5.2	2.9	1" $\phi$				4.5	2.3 <sup>o.1</sup> o.c.	$\frac{1}{2}$ " $\phi$		
	4.7	3.1	$\frac{3}{4}$ " $\phi$ V				7.3	2.8	$\frac{3}{4}$ " $\phi$		
	5.0	3.6	" V				5.7	3.0	1" $\phi$		
	5.2	4.6	" V				4.8	3.1 <sup>o.1</sup> o.c.	$\frac{1}{2}$ " $\phi$		
	5.0	5.2	" V				5.0	3.9	$\frac{1}{2}$ " $\phi$		
	6.5	5.7	1" $\phi$				5.0	4.7	$\frac{1}{2}$ " $\phi$		
1952.93				95° 29'	Hor. 23.51 26.12 - 25° 50'		5.2	5.4	$\frac{1}{2}$ " $\phi$		

Setup Point L = 1112.28  
D = 1690.02

42

Steel in Cutoff wall between

Buttress 11 and 12

Step Elev.	Length Bar	Inner Steel Distance	Bar Size	Horiz. & Clockwise	Distance from Setup	Step Elev.	Length Bar	Outer Steel Distance	Bar Size	Horiz. & Clockwise	Distance from Setup
	3.9	0.0	$\frac{3}{4}$ " # V				0.3	6.0	$\frac{1}{2}$ " $\phi$		
	5.2	0.1 <sup>0.3</sup> <sub>o.c.</sub>	1" #				5.5	6.6 <sup>0.1</sup> <sub>o.c.</sub>	$\frac{1}{2}$ " $\phi$		
	4.2	0.8	$\frac{1}{2}$ " $\phi$				5.3	7.4	$\frac{1}{2}$ " $\phi$		
	4.3	1.6	$\frac{1}{2}$ " $\phi$			1949.77	step coordinate			67° 36'	Hor. 30.84 34.90 - 27° 54'
	4.5	2.4	$\frac{1}{2}$ " $\phi$				4.1	0.3	$\frac{1}{2}$ " $\phi$		
	5.7	2.7 <sup>0.1</sup> <sub>o.c.</sub>	1" #				3.9	1.2	"		
	5.6	3.4	"				4.0	2.0	$\frac{3}{4}$ " # V		
	4.5	3.4	$\frac{1}{2}$ " $\phi$				4.1	2.8	" V		
	4.9	4.0	$\frac{1}{2}$ " $\phi$				4.3	3.5	" V		
	5.0	5.1	$\frac{1}{2}$ " $\phi$				4.7	4.4	" V		
	5.0	5.5	$\frac{1}{2}$ " $\phi$				4.6	5.0	" V		
	5.9	5.8	1" #				4.8	5.7	" V		
	5.4	6.1	$\frac{1}{2}$ " $\phi$				4.8	6.4	" V		
	6.7	6.3	1" #				5.1	7.1	" V		
1954.42				111° 56'	Hor. 21.84 23.91 - 24° 02'		4.9	7.8	$\frac{3}{4}$ " # V		
	4.7	0.1	1" #			1951.33	Step coordinate			83° 06'	Hor. 29.76 33.22 - 26° 24'
	4.0	0.8	$\frac{1}{2}$ " $\phi$				4.1	0.3	$\frac{3}{4}$ " # V		
	5.3	1.4	1" #				4.5	0.9	"		



Setup Point L = 1112.28  
D = 1690.02

44

Steel in Cutoff Wall					Between Buttress 11 and 12				
Step Elev.	Length Bar	Inner Steel Distance	Bar Size	Horiz. & Clockwise Distance from Setup	Step Elev.	Length Bar	Outer Steel Distance	Bar Size	Horiz. & Clockwise Distance from Setup
	5.4	1.8	1" $\phi$			6.8	4.5	1" $\phi$	
	4.1	1.9	$\frac{1}{2}$ " $\phi$			5.2	4.8	$\frac{3}{4}$ " $\phi$ V	
	4.7	2.7	"			6.6	5.1	1" $\phi$	
	5.7	2.8	1" $\phi$			5.4	5.6	$\frac{3}{4}$ " $\phi$ V	
	5.6	3.9	"			6.1	6.2	$\frac{3}{4}$ " $\phi$ V	
	4.6	3.9	$\frac{1}{2}$ " $\phi$			6.9	6.4	1" $\phi$	
	4.7	4.8	"			7.0	6.6	1" $\phi$	
	6.2	5.2	1" $\phi$			5.2	6.8	$\frac{3}{4}$ " $\phi$	
	4.8	5.7	$\frac{1}{2}$ " $\phi$			5.5	7.3	} $\frac{3}{4}$ " $\phi$	
						5.6	7.3		
	6.3	6.3	1" $\phi$		195142				Hor. 26.72 111°04' 29.13 - 23°28'
	5.4	7.0	$\frac{1}{2}$ " $\phi$			4.1	0.0	1" $\phi$	
	6.0	7.3	1" $\phi$			4.6	0.6	1" $\phi$	
	5.2	8.0	$\frac{1}{2}$ " $\phi$ <sup>TC</sup> <sub>0.1</sub>			2.9	0.7	$\frac{1}{2}$ " $\phi$	
	6.6	8.5	1" $\phi$			4.5	1.3	$\frac{3}{4}$ " $\phi$ V	
	6.1	8.8	$\frac{1}{2}$ " $\phi$			4.0	1.6	$\frac{1}{2}$ " $\phi$	
	6.8	9.9	1" $\phi$			5.0	1.7	1" $\phi$	
	5.6	10.4	$\frac{1}{2}$ " $\phi$			5.3	2.5	1" $\phi$	
	6.3	10.9	$\frac{1}{2}$ " $\phi$			4.2	2.5	$\frac{1}{2}$ " $\phi$	

Setup Point L-1112.28  
D-1690.02

45

Step Elev.	Length Bar	Inner Steel Distance	Bar Size	Steel in Cutoff wall		Between Buttress 11 and 12					
				Horiz. & Clockwise	Distance from setup	Step Elev.	Length Bar	Outer Steel Distance	Bar Size	Horiz. & Clockwise	Distance from Setup
	7.0	11.0	1" $\phi$				5.3	3.3	1" $\phi$		
							4.2	3.4	$\frac{1}{2}$ " $\phi$		
1957.81		Step coordinate		167°31'	Hor. 21.5° 22.78 - 18°38'		5.1	3.9	$\frac{3}{4}$ " $\phi$ V		
	6.2	0.1	1" $\phi$				5.3	4.3	1" $\phi$		
	5.5	0.8	1" $\phi$				4.4	4.4	$\frac{1}{2}$ " $\phi$		
	4.4	0.9	$\frac{1}{2}$ " $\phi$				5.6	5.1	1" $\phi$		
	5.9	1.6	1" $\phi$				4.6	5.3	$\frac{1}{2}$ " $\phi$		
	4.5	1.9	$\frac{1}{2}$ " $\phi$				4.7	6.4	$\frac{1}{2}$ " $\phi$		
	5.8	2.5	1" $\phi$				6.4	7.2	$\frac{3}{4}$ " $\phi$ V		
	6.5	3.1	1" $\phi$				4.8	7.3	$\frac{1}{2}$ " $\phi$		
	4.6	3.2	$\frac{1}{2}$ " $\phi$				6.7	7.5	1" $\phi$		
	4.9	3.8	$\frac{1}{2}$ " $\phi$				7.0	8.0	1" $\phi$		
	5.8	4.6	1" $\phi$				5.0	8.3	$\frac{1}{2}$ " $\phi$		
	4.9	5.2	$\frac{1}{2}$ " $\phi$ T.C. 0.2				6.2	8.5	1" $\phi$		
	7.4	5.6	1" $\phi$				6.2	8.9	$\frac{3}{4}$ " $\phi$		
1959.14		Step coordinate		182°24'	Hor. 23.12° 23.87 - 14°22'		5.2	9.4	$\frac{1}{2}$ " $\phi$		
	5.1	0.1	1" $\phi$				6.3	9.6	1" $\phi$		
	7.4	0.9	$\frac{1}{2}$ " $\phi$ T.C. 0.2				5.2	10.3	$\frac{1}{2}$ " $\phi$		
							6.8	10.3	1" $\phi$		



Setup Point L = 1112.28  
D = 1690.02

46

Steel in Cutoff Wall					Between Buttrass 11 and 12								
Step Elev.	Length bar	Inner Steel Distance	Bar Size	Horiz. & Clockwise	Distance from Setup Slope	Vertical &	Step Elev.	Length bar	Outer Steel Distance	Bar Size	Horiz. & Clockwise	Distance from Setup Slope	Vertical &
	7.1	1.1	1" $\phi$					6.4	10.5	1" $\phi$			
	7.1	1.7	"					6.8	10.7	"			
	6.6	1.9	$\frac{1}{2}$ " $\phi$ T.C. 0.2					6.2	10.9	$\frac{3}{4}$ " $\phi$			
	6.5	2.3	1" $\phi$					7.2	11.4	1" $\phi$			
	6.5	3.0	1" $\phi$					5.4	11.4 <sup>0.6</sup> T.C.	$\frac{1}{2}$ " $\phi$			
	5.9	3.0	$\frac{1}{2}$ " $\phi$ T.C. 0.2					7.0	11.7	1" $\phi$			
							1956.2				step coordinate	137° 42'	26.37' - 22° 26' Horizontal 24.37
								4.4	0.1	$\frac{1}{2}$ " $\phi$ T.C. 0.1			
1960.17		Step Junction with Buttrass 12		189° 48'	Horizontal = 24.11			5.1	0.2	$\frac{3}{4}$ " $\phi$			
								6.0	0.8	1" $\phi$			
								4.7	0.9	$\frac{1}{2}$ " $\phi$			
								4.7	1.0	1" $\phi$			
								5.2	1.9	$\frac{3}{4}$ " $\phi$			
								4.7	2.1	$\frac{1}{2}$ " $\phi$			
								5.1	2.5	1" $\phi$			
								4.9	3.0	$\frac{1}{2}$ " $\phi$			
								5.4	3.3	1" $\phi$			
								5.4	3.6	"			

Setup Point L = 1112.28  
D = 1690.02

47

Steel in cutoff wall between Buttress 11 and 12

Step Elev.	Length bar	Inner Steel Distance	Bar Size	Horiz. & Clockwise	Distance from Setup		Step Elev.	Length bar	Outer Steel Distance	Bar Size	Horiz. & Clockwise	Distance from Setup	
					Slope	Vertical &						Slope	Vertical &
							4.9	4.0	$\frac{1}{2}$ " $\phi$				
							5.7	4.3	$\frac{3}{4}$ " $\phi$				
							5.4	4.6	1" $\phi$				
							5.3	5.0	$\frac{1}{2}$ " $\phi$				
							5.8	5.2	1" $\phi$				
							5.9	5.7	"				
							5.4	5.9	$\frac{1}{2}$ " $\phi$				
							6.0	6.2	$\frac{3}{4}$ " $\phi$				
							6.2	6.9	1" $\phi$				
							5.0	7.3	$\frac{1}{2}$ " $\phi$				
							6.5	7.5	1" $\phi$				
							6.3	8.0	1" $\phi$				
							5.7	8.2	$\frac{1}{2}$ " $\phi$				
							7.3	8.6	$\frac{3}{4}$ " $\phi$				
							6.4	9.2	1" $\phi$				
							5.6	9.4	$\frac{1}{2}$ " $\phi$				
							6.8	9.9	1" $\phi$				
							6.5	10.3	1" $\phi$				

Setup Point L = 1112.28  
D = 1670.02

48

Step Elev.	Length bar	Inner Steel Distance	Bar Size	Horiz. & Clockwise	Steel in cutoff		Wall between Buttress 11 and 12									
					Distance from Setup	Slope	Step Elev.	Length bar	Outer steel Distance	Bar Size	Horiz. & Clockwise	Distance from Setup	Slope	Vertical &		
								1.1	10.5	$\frac{1}{2}$ " $\phi$						
								6.3	10.6	$\frac{3}{4}$ " $\phi$						
							1757.81			Step Coordinate	163° 38'		Hor. 24.93	26.37	-19° 01'	
								5.0	0.1	1" $\phi$						
								4.9	0.4	"						
								4.6	0.5	$\frac{1}{2}$ " $\phi$						
								5.0	1.1	$\frac{3}{4}$ " $\phi$						
								5.4	1.3	1" $\phi$						
								4.7	1.5	$\frac{1}{2}$ " $\phi$						
								5.3	2.1	1" $\phi$						
								5.8	2.5	1" $\phi$						
								4.6	2.8	$\frac{1}{2}$ " $\phi$						
								5.7	2.9	$\frac{3}{4}$ " $\phi$						
								5.8	3.4	1" $\phi$						
								5.8	3.8	1" $\phi$						
								5.1	3.9	$\frac{1}{2}$ " $\phi$						
							1757.14			Step Coordinate	174° 10'		Hor. 25.38	26.49	-16° 37'	
								5.4	0.1	$\frac{3}{4}$ " $\phi$						

## Steel in Cutoff wall between Buttress 11 and 12

Step Elev.	Length bar	
4.1	0.5	$\frac{1}{2}$ " $\phi$
4.7	0.6	1" $\phi$
4.8	0.9	1" $\phi$
4.6	1.3	"
4.2	1.6	$\frac{1}{2}$ " $\phi$
4.8	1.9	$\frac{3}{4}$ " $\phi$
5.0	2.2	1" $\phi$
4.3	2.7	$\frac{1}{2}$ " $\phi$
5.3	3.0	1" $\phi$
7.1	3.7	$\frac{3}{4}$ " $\phi$
6.9	3.9	$\frac{1}{2}$ " $\phi$
6.9	4.3	1" $\phi$
6.0	4.8	$\frac{1}{2}$ " $\phi$
6.3	4.9	$\frac{3}{4}$ " $\phi$
6.3	5.5	1" $\phi$
6.1	Edge of butt. 5.6	$\frac{1}{2}$ " $\phi$

1960.19

Step coordinate  
Junction with Butt. 12

185° 57'

HORIZ  
26.20

Step Elevations of cutoff wall between  
Buttresses 11 and 12

Rod

Elevation Great Pipe Step # 4 = 1953.67 BS F.S.

H.I. 1960.98 7.31

Step No.	elev	
1	1944.57	
	3.80	
2	1948.37	12.61
3	1949.77	11.21
4	1951.33	9.65
5	1952.93	8.05
6	1954.42	6.56
7	1956.02	4.96
8	1957.81	3.17
9	1959.14	1.84
10	1960.19	0.79









54





















































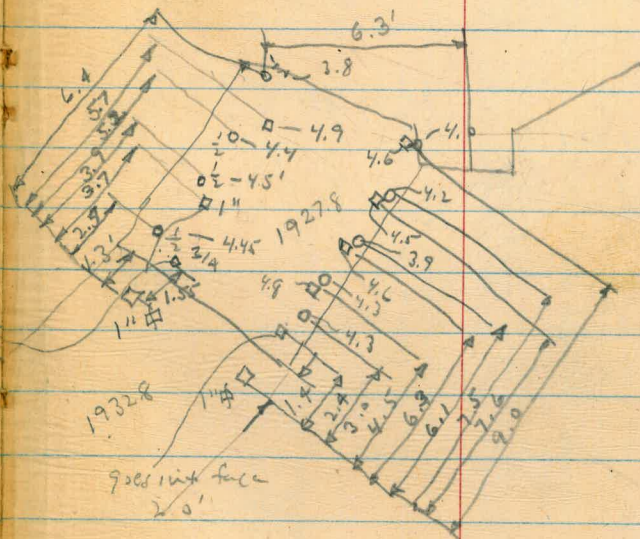


Krooslar

Oct. 29, 1952

Brown

↳ Battery #10



$\frac{3}{4} = 3.8'$   
 goes into face  
 $\frac{3}{4} = 0.8$

1932R  
 goes into face  
 2.0'

1690.02  
1625.76  
64.26

1128.63  
1112.28  
16.35

D. 1625.76  
L. 1128.63

16.35

64.26

D 1690.02

L 1112.28

11.476

2  
64.26 | 254935  
16.350  
12852  
34980  
32150

28500  
25704

27960  
25704

22560  
19278

32820

14° 16' 27"

2524 14° 10'

2544

2555

14° 10'

20 x 10  
31

6452  
311200  
186  
140

124

163

150

3  
451  
60  
27060

1750.31

1690.02

60.29

9582

2648

86238

38328

57492

19264

25282718

60.29

7362

22.87

9464

9148

4574

9148

20553

21552688

33544

9476

2278

75108

66332

18952

18952

21586320

2487

21.59

3.30

2746  
2387  
9687

16709

19096

14322

21483

23122869

22

9452

2637

37808

28356

56712

18904

24896568

2430

2159

5.31

Handwritten calculations and diagrams on the left page of the notebook. The page contains numerous vertical columns of numbers, some with horizontal lines indicating sums or differences. There are also several diagrams, including a large triangle with a line drawn from a vertex to the opposite side, and a smaller triangle. The numbers are written in various colors (black and blue) and some are underlined. The overall appearance is that of a field notebook or a set of working notes for a surveying or engineering project.

Please Return to  
 City of San Diego Water Dept.  
 Room 903 Civic Center

SLOPE STAKE  
 SLOPE STAKE  
 SLOPE STAKE  
 16.65

DISTANCES FROM SIDE STAKES FOR CROSS-SECTIONING.  
 SLOPE 1 1/2 TO 1. ROADWAY OF ANY WIDTH.

	0	.1	.2	.3	.4	.5	.6	.7	.8	.9	
0	0.00	0.15	0.30	0.45	0.60	0.75	0.90	1.05	1.20	1.35	0
1	1.50	1.65	1.80	1.95	2.10	2.25	2.40	2.55	2.70	2.85	1
2	3.00	3.15	3.30	3.45	3.60	3.75	3.90	4.05	4.20	4.35	2
3	4.50	4.65	4.80	4.95	5.10	5.25	5.40	5.55	5.70	5.85	3
4	6.00	6.15	6.30	6.45	6.60	6.75	6.90	7.05	7.20	7.35	4
5	7.50	7.65	7.80	7.95	8.10	8.25	8.40	8.55	8.70	8.85	5
6	9.00	9.15	9.30	9.45	9.60	9.75	9.90	10.05	10.20	10.35	6
7	10.50	10.65	10.80	10.95	11.10	11.25	11.40	11.55	11.70	11.85	7
8	12.00	12.15	12.30	12.45	12.60	12.75	12.90	13.05	13.20	13.35	8
9	13.50	13.65	13.80	13.95	14.10	14.25	14.40	14.55	14.70	14.85	9
10	15.00	15.15	15.30	15.45	15.60	15.75	15.90	16.05	16.20	16.35	10
11	16.50	16.65	16.80	16.95	17.10	17.25	17.40	17.55	17.70	17.85	11
12	18.00	18.15	18.30	18.45	18.60	18.75	18.90	19.05	19.20	19.35	12
13	19.50	19.65	19.80	19.95	20.10	20.25	20.40	20.55	20.70	20.85	13
14	21.00	21.15	21.30	21.45	21.60	21.75	21.90	22.05	22.20	22.35	14
15	22.50	22.65	22.80	22.95	23.10	23.25	23.40	23.55	23.70	23.85	15
16	24.00	24.15	24.30	24.45	24.60	24.75	24.90	25.05	25.20	25.35	16
17	25.50	25.65	25.80	25.95	26.10	26.25	26.40	26.55	26.70	26.85	17
18	27.00	27.15	27.30	27.45	27.60	27.75	27.90	28.05	28.20	28.35	18
19	28.50	28.65	28.80	28.95	29.10	29.25	29.40	29.55	29.70	29.85	19
20	30.00	30.15	30.30	30.45	30.60	30.75	30.90	31.05	31.20	31.35	20
21	31.50	31.65	31.80	31.95	32.10	32.25	32.40	32.55	32.70	32.85	21
22	33.00	33.15	33.30	33.45	33.60	33.75	33.90	34.05	34.20	34.35	22
23	34.50	34.65	34.80	34.95	35.10	35.25	35.40	35.55	35.70	35.85	23
24	36.00	36.15	36.30	36.45	36.60	36.75	36.90	37.05	37.20	37.35	24
25	37.50	37.65	37.80	37.95	38.10	38.25	38.40	38.55	38.70	38.85	25
26	39.00	39.15	39.30	39.45	39.60	39.75	39.90	40.05	40.20	40.35	26
27	40.50	40.65	40.80	40.95	41.10	41.25	41.40	41.55	41.70	41.85	27
28	42.00	42.15	42.30	42.45	42.60	42.75	42.90	43.05	43.20	43.35	28
29	43.50	43.65	43.80	43.95	44.10	44.25	44.40	44.55	44.70	44.85	29
30	45.00	45.15	45.30	45.45	45.60	45.75	45.90	46.05	46.20	46.35	30
31	46.50	46.65	46.80	46.95	47.10	47.25	47.40	47.55	47.70	47.85	31
32	48.00	48.15	48.30	48.45	48.60	48.75	48.90	49.05	49.20	49.35	32
33	49.50	49.65	49.80	49.95	50.10	50.25	50.40	50.55	50.70	50.85	33
34	51.00	51.15	51.30	51.45	51.60	51.75	51.90	52.05	52.20	52.35	34
35	52.50	52.65	52.80	52.95	53.10	53.25	53.40	53.55	53.70	53.85	35
36	54.00	54.15	54.30	54.45	54.60	54.75	54.90	55.05	55.20	55.35	36
37	55.50	55.65	55.80	55.95	56.10	56.25	56.40	56.55	56.70	56.85	37
38	57.00	57.15	57.30	57.45	57.60	57.75	57.90	58.05	58.20	58.35	38
39	58.50	58.65	58.80	58.95	59.10	59.25	59.40	59.55	59.70	59.85	39
40	60.00	60.15	60.30	60.45	60.60	60.75	60.90	61.05	61.20	61.35	40
41	61.50	61.65	61.80	61.95	62.10	62.25	62.40	62.55	62.70	62.85	41
42	63.00	63.15	63.30	63.45	63.60	63.75	63.90	64.05	64.20	64.35	42
43	64.50	64.65	64.80	64.95	65.10	65.25	65.40	65.55	65.70	65.85	43
44	66.00	66.15	66.30	66.45	66.60	66.75	66.90	67.05	67.20	67.35	44
45	67.50	67.65	67.80	67.95	68.10	68.25	68.40	68.55	68.70	68.85	45
46	69.00	69.15	69.30	69.45	69.60	69.75	69.90	70.05	70.20	70.35	46
47	70.50	70.65	70.80	70.95	71.10	71.25	71.40	71.55	71.70	71.85	47
48	72.00	72.15	72.30	72.45	72.60	72.75	72.90	73.05	73.20	73.35	48
49	73.50	73.65	73.80	73.95	74.10	74.25	74.40	74.55	74.70	74.85	49
50	75.00	75.15	75.30	75.45	75.60	75.75	75.90	76.05	76.20	76.35	50

THE NATIONAL BLANK BOOK COMPANY,  
 HOLYOKE MASSACHUSETTS  
 NEW YORK CHICAGO BOSTON SAN FRANCISCO