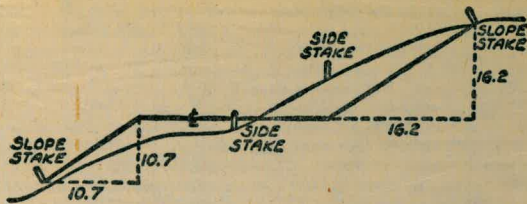


835-B



DISTANCES FROM SIDE STAKES FOR CROSS-SECTIONING  
SLOPE 1 TO 1, ROADWAY OF ANY WIDTH

	0	.1	.2	.3	.4	.5	.6	.7	.8	.9	
0	0.00	0.10	0.20	0.30	0.40	0.50	0.60	0.70	0.80	0.90	0
1	1.00	1.10	1.20	1.30	1.40	1.50	1.60	1.70	1.80	1.90	1
2	2.00	2.10	2.20	2.30	2.40	2.50	2.60	2.70	2.80	2.90	2
3	3.00	3.10	3.20	3.30	3.40	3.50	3.60	3.70	3.80	3.90	3
4	4.00	4.10	4.20	4.30	4.40	4.50	4.60	4.70	4.80	4.90	4
5	5.00	5.10	5.20	5.30	5.40	5.50	5.60	5.70	5.80	5.90	5
6	6.00	6.10	6.20	6.30	6.40	6.50	6.60	6.70	6.80	6.90	6
7	7.00	7.10	7.20	7.30	7.40	7.50	7.60	7.70	7.80	7.90	7
8	8.00	8.10	8.20	8.30	8.40	8.50	8.60	8.70	8.80	8.90	8
9	9.00	9.10	9.20	9.30	9.40	9.50	9.60	9.70	9.80	9.90	9
10	10.00	10.10	10.20	10.30	10.40	10.50	10.60	10.70	10.80	10.90	10
11	11.00	11.10	11.20	11.30	11.40	11.50	11.60	11.70	11.80	11.90	11
12	12.00	12.10	12.20	12.30	12.40	12.50	12.60	12.70	12.80	12.90	12
13	13.00	13.10	13.20	13.30	13.40	13.50	13.60	13.70	13.80	13.90	13
14	14.00	14.10	14.20	14.30	14.40	14.50	14.60	14.70	14.80	14.90	14
15	15.00	15.10	15.20	15.30	15.40	15.50	15.60	15.70	15.80	15.90	15
16	16.00	16.10	16.20	16.30	16.40	16.50	16.60	16.70	16.80	16.90	16
17	17.00	17.10	17.20	17.30	17.40	17.50	17.60	17.70	17.80	17.90	17
18	18.00	18.10	18.20	18.30	18.40	18.50	18.60	18.70	18.80	18.90	18
19	19.00	19.10	19.20	19.30	19.40	19.50	19.60	19.70	19.80	19.90	19
20	20.00	20.10	20.20	20.30	20.40	20.50	20.60	20.70	20.80	20.90	20
21	21.00	21.10	21.20	21.30	21.40	21.50	21.60	21.70	21.80	21.90	21
22	22.00	22.10	22.20	22.30	22.40	22.50	22.60	22.70	22.80	22.90	22
23	23.00	23.10	23.20	23.30	23.40	23.50	23.60	23.70	23.80	23.90	23
24	24.00	24.10	24.20	24.30	24.40	24.50	24.60	24.70	24.80	24.90	24
25	25.00	25.10	25.20	25.30	25.40	25.50	25.60	25.70	25.80	25.90	25
26	26.00	26.10	26.20	26.30	26.40	26.50	26.60	26.70	26.80	26.90	26
27	27.00	27.10	27.20	27.30	27.40	27.50	27.60	27.70	27.80	27.90	27
28	28.00	28.10	28.20	28.30	28.40	28.50	28.60	28.70	28.80	28.90	28
29	29.00	29.10	29.20	29.30	29.40	29.50	29.60	29.70	29.80	29.90	29
30	30.00	30.10	30.20	30.30	30.40	30.50	30.60	30.70	30.80	30.90	30
31	31.00	31.10	31.20	31.30	31.40	31.50	31.60	31.70	31.80	31.90	31
32	32.00	32.10	32.20	32.30	32.40	32.50	32.60	32.70	32.80	32.90	32
33	33.00	33.10	33.20	33.30	33.40	33.50	33.60	33.70	33.80	33.90	33
34	34.00	34.10	34.20	34.30	34.40	34.50	34.60	34.70	34.80	34.90	34
35	35.00	35.10	35.20	35.30	35.40	35.50	35.60	35.70	35.80	35.90	35
36	36.00	36.10	36.20	36.30	36.40	36.50	36.60	36.70	36.80	36.90	36
37	37.00	37.10	37.20	37.30	37.40	37.50	37.60	37.70	37.80	37.90	37
38	38.00	38.10	38.20	38.30	38.40	38.50	38.60	38.70	38.80	38.90	38
39	39.00	39.10	39.20	39.30	39.40	39.50	39.60	39.70	39.80	39.90	39
40	40.00	40.10	40.20	40.30	40.40	40.50	40.60	40.70	40.80	40.90	40
41	41.00	41.10	41.20	41.30	41.40	41.50	41.60	41.70	41.80	41.90	41
42	42.00	42.10	42.20	42.30	42.40	42.50	42.60	42.70	42.80	42.90	42
43	43.00	43.10	43.20	43.30	43.40	43.50	43.60	43.70	43.80	43.90	43
44	44.00	44.10	44.20	44.30	44.40	44.50	44.60	44.70	44.80	44.90	44
45	45.00	45.10	45.20	45.30	45.40	45.50	45.60	45.70	45.80	45.90	45
46	46.00	46.10	46.20	46.30	46.40	46.50	46.60	46.70	46.80	46.90	46
47	47.00	47.10	47.20	47.30	47.40	47.50	47.60	47.70	47.80	47.90	47
48	48.00	48.10	48.20	48.30	48.40	48.50	48.60	48.70	48.80	48.90	48
49	49.00	49.10	49.20	49.30	49.40	49.50	49.60	49.70	49.80	49.90	49
50	50.00	50.10	50.20	50.30	50.40	50.50	50.60	50.70	50.80	50.90	50

Distance of slope stake from side or shoulder stake for any width roadway, slope 1 to 1. If ground is nearly level, the cut or fill at side stake is located by the double entry method in left column and top row. The number in body of table in same row and column gives distance from side stake to slope stake. If ground is not level estimate the difference in elevation between the side stake and slope stake, lower target by this amount if cut, elevate if fill. Add this amount to cut or fill and find distance in table. Set up rod at this point, and line of sight should cut target. If it does not make the slight adjustment necessary.

MICROFILMED

JAN 10 1965



1952 Weather Record

Sutherland Dam

Date	High	Low
8/27	98°	—
28	102	—
29	97	—
9/2/52	98	—
3	98	66°
4	98	61
6	98	
7	95	58
8	93	56
9	93	
10	75	46
11	74	46
12	82	40
14	97	50
15	99	50
16	102	55
17	102	59
9/18/52	102	62

Weather Record

Date	High	Low
9/19/52	—	68
9/21	96	61
22	94	61
23	94	60
24	100	58
25	98	60
26	92	60
28	90	54
29	89	52
9/30/52	98	53
10/1/52	96	48
2	92	56
3	96	54
5	100	52
6	92	52
7	91	50
8	90	46
9	88	44
10/10/52	83	44

Sutherland Dam

(2)

Light rain 9/19 & 9/20 Estimated 1/4"

Begin New Water Year



## Weather Record

## Sutherland Dam

③

Date	High	Low
10/13/52	76	44
14	84	44
15	90	48
16	84	52
17	88	52
20	88	44
21	86	50
22	78	44
23	78	37
24	84	40
26	86	—
27	86	42
28	89	49
29	85	50
30	76	50
10/31/52	69	48
11/1/52	69	47
2	79	44
3	76	44
4	80	50

Cloudy

Heavy East Wind.

" " "

## Weather Record

## Sutherland Dam

④

Date	High	Low	
11/5/52	82	50	Cloudy
11/6	80	46	clear
7	71	46	
9	68	36	
10	76	36	
11	80	36	
12	68	36	
13	64	34	
14	60	44	Rain - P.M. Estimated $\frac{1}{2}$ " - Job shutdown at 2:30 PM
15	52	44	Rain - Estimated $\frac{1}{4}$ "
17	59	32	clear
18	60	36	
19	66	37	
20	68	39	
21	60	36	cloudy
24	58	33	cloudy
25	54	28	Rain - last night - measured 1"
26	58	34	
27	56	32	
28	54	28	Estimated Total rain to Date 2"



Weather Record		
Date	High	Low
11/29/52	60	46
30	58	30
12/1/52	58	34
12/2	56	46
12/3	58	31
4	56	40
5	62	40
6	56	40
7	58	32
8	58	46
9	57	34
10	62	46
11	70	47
12	74	46
13	74	46
14	75	44
15	74	44
16	65	42
17	50	48
12/18/52	60	38
12/19/52	57	38

## Sutherland Dam

(5)

Rain - last night - measured  $\frac{1}{4}$ "

Rain - last night - measured  $\frac{1}{2}$ "

Note - Rain guage installed.

Rain - last night .03"

Clear

Clear - Rain last night .09"

Clear

"

"

"

" East wind.

"

"

Cloudy

Rain - job shut down 10 AM. 0.52

Clear.

cloudy.

Total to date 3.39



## Weather Record

Sutherland Dam

Rainfall.

Date	High	Low		Brot. forwd	
12/20/52	52	40	Rain all day, to 6 PM.	3.39"	1.40"
12/21	53	34	Clear		
12/22	60	30	Clear		
12/23	56	30	Clear		
12/24	64*	40*	"		
12/25		30*	"		
12/26			"		
12/27			Rain	} .60	
12/28			"		
12/29	62		Cloudy		
12/30	59	30	Cloudy - Rain last night	0.80"	
12/31	75*	36	Rain (Morning) - Cloudy (afternoon)	Trace	
1/1/53		28*	Clear		
1/2			"		
1/3			"		
1/4			"		
1/5	68		"		
1/6	52	36	Cloudy (Morning) Rain (afternoon + evening)	1.65"	
1/7	56	45	Rain (Morning, afternoon, evening)	0.62	



## Weather Record

## Sutherland Dam

Rainfall

Bret. forward 7.86"

Date	High	Low		
1/8/53	66	47	Clear	
1/9/53	76	45	"	
1/10/53	80*	52	"	
1/11/53		40*	Clear	
1/12/53	66		"	
1/13/53	46	38	Fog (Morning) Drizzle (afternoon)	0.64" To 8:00 am
1/14/53	54	44	Cloudy, Misty (Morning) partly cloudy (afternoon)	0.08 To 8:00 am
1/15/53	58	32	Clear	
1/16/53	64*	32		
1/17/53		32*		
1/18/53				
1/19/53	64		clear	
1/20/53	64	36	cloudy, foggy (morning) clear (afternoon)	
1/21/53	64	34	clear	
1/22/53	68	40	clear	
1/23/53	77*	40	cloudy	
1/24/53		34*	"	
1/25/53			"	
1/26/53	68		clear	

## Weather Record

## Futherland Dam

Date	High	Low		Rainfall Balance Brought forw. 8.58"
1/27/53	68	30	Clear	
1/28/53	Thermometer went on the blink	30	Clear	
1/29/53	"		Clear	
1/30/53	"		"	
1/31/53	"		"	
2/1/53	"		"	
2/2/53	"		"	
2/3/53	"		"	
2/4/53	"		"	
2/5/53	"		"	
2/6/53	"		"	
2/7/53	90*	28*	"	
2/8/53	"	"	"	
2/9/53	62	"	"	
2/10/53	62	32	"	
2/11/53	64	29	"	
2/12/53	64	27	"	
2/13/53	72*	40	" Windy	
2/14/53	"	30*		



## Weather Record

## Sutherland Dam

Date	High	Low		Rainfall Balance Brought frw. 8.58"
2-15-53	"	"	Clear	
2-16-53	70°		"	
2-17-53	75°	39°	"	
2-18-53	64°	32°	Cloudy, cool	
2-19-53	44°	26°	Clear	
2-20-53	61°*	24°	Clear, cold	
2-21-53	-	22°*	Clear	
2-22-53	-	-	Clear	
2-23-53	46	-	cloudy, drizzle, snow	0.95"
2-24-53	60	34°	Cloudy	
2-25-53	62	28°	Clear	
2-26-53	67	36	"	
2-27-53	68	32	"	
2-28-53	68	30		9:00 PM Sat to 7:00 AM Sun 0.46"
3-1-53	68	30		7:00 AM Sun to 7:00 AM Mon 1.40
3-2-53	50	30		Approx 2:00 PM - Trace
3-3-53	48	26	Clear - Windy	
3-4-53	62	32°	"	
3-5-53	67	44	"	



Date	High	Low	Weather	Rainfall Bal. Brot. Ford 11.39
3-6-53	68	37	clear, cool	
3-7-53	80	40	clear, warmer	
3-8-53	70	40	" "	
3-9-53	74	34	" "	
3-10-53	65	32	cloudy, windy	
3-11-53	66	34	cloudy, "	
3-12-53	61	34		
3-13-53		44		
3-14-53	70		fair, warm	
3-15-53	62	30	fair, warm	
3-16-53	78	30	fair	
3-17-53	68	33	" - warm	
3-18-53	70	30	" "	
3-19-53	64	29+		9:30 P.M. Thurs
3-20-53	74*	44	Cloudy	To 7:00 A.M. FRI 0.73"
3-21-53		44		
3-22-53				
3-23-53	65	34*	Fair - warm	
3-24-53	81+	40	" - windy	



DATE	HIGH	LOW		RAINFALL Brought Forward=12.12
3-25-53	76	47 <sup>+</sup>	partly overcast - warm	
3-26-53	72	34	cloudy - warm	
3-27-53		36	Warm - clear	
3-28-53				
3-29-53	79°			0.18
3-30-53	64°	32°	Clear - Cool	
3-31-53	74°	35°	Clear - Warm	
4-1-53	74°	40°	Clear - Warm	
4-2-53	71°	36°	Clear - Warm	
4-3-53		36°	Partly Overcast - Cool	
4-4-53				
4-5-53	50°			Trace
4-6-53	57°	40°	Overcast - Cool	Trace
4-7-53	62°	43°	Overcast - Cool	
4-8-53	54°	36°	Partly Cloudy - Cold	0.41
4-9-53	60°	26°	Partly Cloudy - Cool	
4-10-53		29°	Cloudy - Cold	
4-11-53				
4-12-53	70°			
4-13-53	68°	27°	Partly Cloudy - Cool	



RAINFALL

Brought Forward = 12.71

DATE	HIGH	LOW		
4-14-'53	69°	32°	Clear - Warm	
4-15-'53	78°	39°	Clear - Warm	
4-16-'53	72°	37°	Clear - Warm	
4-17-'53		46°	Cloudy - Cool	
4-18-'53				
4-19-'53	79°			
4-20-'53	65°	37°	Cloudy - Cool	Rain Began 7:30 am. 0.01
4-21-'53	68°	44°	Cloudy - Cool	Rain Began 3:00 pm. 0.43
4-22-'53	66°	39°	Cloudy - Cool	0.04
4-23-'53	70°	48°	Overcast - Cool	
4-24-'53		44°	Clear - Warm	
4-25-'53				
4-26-'53	80°			
4-27-'53	64°	41°	Overcast - Rain	Rain Began 2:30 pm. 1.35
4-28-'53	64°	46°	Cloudy - Cool	
4-29-'53	63°	44°	Overcast - Cool	Rain Began 6:00 pm. 0.47
4-30-'53	58°	43°	Cloudy - Cool - Rain	Trace
5-1-'53		44°	Cloudy to Partly Cloudy	
5-2-'53				



DATE	HIGH	LOW		RAINFALL
5-3-'53	84°			Brought Forward = 15.01
5-4-'53	88°	37°	Clear - Warm	
5-5-'53	90°	40°	Clear - Warm	
5-6-'53	88°	46°	Clear - Warm	
5-7-'53	75°	38°	Clear - Cool	
5-8-'53		47°	Partly Cloudy - Warm	
5-9-'53				
5-10-'53	76°			
5-11-'53	80°	35°	Partly Cloudy - Warm	
5-12-'53	81°	38°	Clear - Warm	
5-13-'53	81°	36°	Clear - Warm	
5-14-'53	73°	41°	Cloudy - Cool	
5-15-'53		43°	Overcast - Cloudy	Rain Began 1:00 am 0.31
5-16-'53				0.61
5-17-'53	80°			
5-18-'53	87°	42°	Clear	
5-19-'53	83°	42°	Clear to Partly Cloudy	
5-20-'53	84°	45°	Cloudy to Partly Cloudy	Trace
5-21-'53	81°	45°	Partly Cloudy to Clear	



DATE	HIGH	LOW		RAINFALL
5-22-'53		40°	Clear	Brought Forward = 15.94
5-23-'53				
5-24-'53	87°			
5-25-'53	72°	38°	Partly Cloudy - Cool	
5-26-'53	72°	34°	Clear to Partly Cloudy	
5-27-'53	64°	38°	Cloudy - Rain	
5-28-'53	59°	46°	Overcast - Rain	Rain Began 1:00 a.m.
5-29-'53		35°	Clear	0.06 (till 7:00 a.m.)
5-30-'53				0.06 (till 7:00 a.m.)
5-31-'53	84°			
6-1-'53	60°	39°	Overcast - Drizzle	Trace
6-2-'53	72°	39°	Clear - Cool	
6-3-'53	83°	38°	Clear - Warm	
6-4-'53	82°	40°	Clear, High Cloudiness Afternoon	
6-5-'53		42°	Clear - Warm	
6-6-'53				
6-7-'53	82°			
6-8-'53	84°	46°	Cloudy, Clearing by Noon	
6-9-'53	85°	47°	Clear	



DATE	HIGH	LOW	
6-10-53	89°	40°	Clear
6-11-53	94°	40°	Clear, Cloudy Afternoon
6-12-53		52°	Partly Cloudy, Clear Afternoon
6-13-53			
6-14-53	123°?		
6-15-53	94°	44°	Clear
6-16-53	81°	44°	Fog, Clearing by 10:00 a.m.
6-17-53	68°	51°	Overcast all Day - Cool
6-18-53	64°	50°	Drizzle & Overcast
6-19-53		51°	Overcast, Clearing by 10:30
6-20-53			
6-21-53	100°		
6-22-53	104°	41°	Clear
6-23-53	100°	49°	Clear
6-24-53	104°	50°	Clear
6-25-53	102°	51°	Clear
6-26-53		48°	High Cloudiness
6-27-53			
6-28-53	102		

## RAINFALL

Brought Forward = 16.07

- 0.25  
15.82

Drizzle 7 a.m. to 1 p.m. 0.03



DATE	HIGH	LOW		RAINFALL
6-29-53	100°	43°	Clear	
6-30-53	102°	50°	Clear	
7-1-53	105°	52°	Clear	
7-2-53	108°?	51°	Clear	
7-3-53		63°	Cloudy	
7-4-53				
7-5-53	104°			
7-6-53	98°	55°	Clear	
7-7-53	99°	62°	Partly Cloudy to Clear	
7-8-53	103°	62°	Cloudy	
7-9-53	106°	57°	Thin High Cloudiness	
7-10-53		60°	Clear	
7-11-53				
7-12-53	104°			Trace
7-13-53	103°	66°	Thin High Cloudiness to Cloudy	
7-14-53	98°	63°	Thin High Cloudiness	
7-15-53	96°	59°	Clear	
7-16-53	99°	58°	Clear	
7-17-53		54°	Clear	



DATE	HIGH	LOW		RAINFALL
7-18-'53				
7-19-'53	95°			
7-20-'53	96°	58°	Clear	
7-21-'53	99°	56°	Clear	
7-22-'53	100°	60°	Clear	
7-23-'53	106°	59°	Clear	
7-24-'53		56°	Clear	
7-25-'53				
7-26-'53	96°			
7-27-'53	98°	57°	Clear	
7-28-'53	96°	56°	Clear	
7-29-'53	95°	56°	Clear	
7-30-'53	85°	58°	Cloudy	
7-31-'53		60°	Cloudy	Trace
8-1-'53				
8-2-'53	90°			
8-3-'53	90°	58°	Clear	
8-4-'53	91°	45°	Clear	
8-5-'53	90°	46°	Clear	



DATE	HIGH	LOW	RAINFALL
8-6-'53	96°	54°	Clear
8-7-'53		56°	Clear
8-8-'53			
8-9-'53	97°		
8-10-'53	90°	56°	Clear
8-11-'53	90°	55°	Clear to Cloudy
8-12-'53	93°	56°	Clear
8-13-'53	96°	46°	Clear to Partly Cloudy
8-14-'53		60°	Clear
8-15-'53			
8-16-'53	99°		
8-17-'53	99°	50°	Clear to High Thin Cloudiness
8-18-'53	101°	54°	Clear
8-19-'53	99°	60°	Clear
8-20-'53	99°	60°	Clear
8-21-'53		57°	Clear
8-22-'53			
8-23-'53	98°		
8-24-'53	98°	53°	Clear



DATE	HIGH	LOW		RAINFALL
8-25-'53	96°	62°	Partly Cloudy	
8-26-'53	93°	60°	Partly Cloudy	
8-27-'53	?	52°	Clear	
8-28-'53		?	Clear	
8-29-'53				
8-30-'53	81°			
8-31-'53	77°	42°	Clear	
9-1-'53	82°	43°	Clear	
9-2-'53	88°	47°	Clear	
9-3-'53	?	49°	Clear	
9-4-'53		?		
9-5-'53				
9-6-'53	?			
9-7-'53	102°	?		
9-8-'53	98°	51°	Clear	
9-9-'53	98°	60°	Clear	
9-10-'53	?	62°	High Thin Cloudiness	
9-11-'53		?		
9-12-'53				



DATE	HIGH	LOW		RAINFALL
9-13-'53	103°			
9-14-'53	96°	58°	Clear	
9-15-'53	93°	66°	"	
9-16-'53	88°	52°	"	
9-17-'53	89°	47°	"	
9-18-'53		48°	"	
9-19-'53				
9-20-'53	84°			
9-21-'53	80°	46°	Clear	
9-22-'53	84°	40°	"	
9-23-'53	90°	42°	"	
9-24-'53	96°	47°	"	
9-25-'53		47°	"	
9-26-'53				
9-27-'53	85°			
9-28-'53	78°	42°	Clear	
9-29-'53	83°	44°	"	
9-30-'53	84°	45°	"	
10-1-'53	84°	44°	"	

Total Rain for Year = 15.87"

Begin New Water Year



DATE	HIGH	LOW		RAINFALL
10-2-'53		44°	Clear	
10-3-'53				
10-4-'53	90°			
10-5-'53	89°	53°	Clear	
10-6-'53	93°	59°	"	
10-7-'53	93°	47°	"	
10-8-'53	94°	53°	"	
10-9-'53		54°	"	
10-10-'53				
10-11-'53	88°			
10-12-'53	72°	40°	Clear	
10-13-'53	74°	42°	"	
10-14-'53	75°	40°	"	
10-15-'53	76°	39°	"	
10-16-'53		40°	Overcast to High Cloudiness	
10-17-'53				
10-18-'53	79°			
10-19-'53	77°	40°	Cloudy	Trace
10-20-'53	78°	38°	Clear	



DATE	HIGH	LOW		RAINFALL
10-21-'53	74°	41°	Clear	Brought Forward = 00.01
10-22-'53	62°	38°	Cloudy-	Rain { 2:30 am + 3:30 am } 0.26
10-23-'53		46°	Partly Cloudy	
10-24-'53				
10-25-'53	72°			
10-26-'53	74°	40°	Clear - Windy	
10-27-'53	79°	42°	Clear	
10-28-'53	83°	43°	Clear	
10-29-'53	?	44°	Clear.	
10-30-'53		?		
10-31-'53				
11-1-'53	82°			
11-2-'53	77°	44°	Overcast	
11-3-'53	79°	40°	Partly Cloudy	
11-4-'53	72°	43°	Partly Cloudy	
11-5-'53	62°	47°	Foggy & Rain	0.15
11-6-'53		40°	Partly Cloudy	0.49
11-7-'53				
11-8-'53	71°			



DATE	LOW	HIGH		RAINFALL
11-9-'53	78°	44°	Partly Cloudy to Overcast - Windy	Brought Forward = 00.91
11-10-'53	75°	39°	Overcast	
11-11-'53	74°	45°	Clear	
11-12-'53	77°	43°	"	
11-13-'53		39°	"	
11-14-'53				
11-15-'53	78°			
11-16-'53	76°	42°	Clear	0.98
11-17-'53	64°	40°	Fog & Overcast	
11-18-'53	59°	36°	Clear	
11-19-'53	60°	28°	"	
11-20-'53		38°	Rain & Overcast	0.29
11-21-'53				
11-22-'53	64°			
11-23-'53	70°	29°	Clear	
11-24-'53	72°	40°	"	
11-25-'53	81°	42°	Partly Cloudy	
11-26-'53	?	?		
11-27-'53		36°	Overcast	



DATE	HIGH	LOW		RAINFALL
11-28-53				Brought Forward = 2.18
11-29-53	75°			
11-30-53	72°	30°	Clear	
12-1-53	68°	38°	Overcast all day	
12-2-53	64°	33°	Clear	
12-3-53	66°	34°	Clear	
12-4-53		46°	Fog & Rain	Rain began 7 am. .41
12-5-53				
12-6-53	?			
12-7-53	?	28°	Clear	
12-8-53	?	30°	Clear	
12-9-53	?	34°	Clear	
12-10-53	65°	36°	Clear	
12-11-53		41°	Clear - Windy	
12-12-53				
12-13-53	77°			
12-14-53	81°	38°	Clear - Windy	
12-15-53	79°	54°	Partly Cloudy	
12-16-53	67°	46°	Overcast	



DATE	HIGH	LOW	RAINFALL
12-17-'53	76°	34°	Overcast
12-18-'53		36°	Clear
12-19-'53			
12-20-'53	?		
12-21-'53	79° <sup>✓</sup>	34°	Clear
12-22-'53	? <sup>✓</sup>	45°	Clear - Windy
12-23-'53	? <sup>✓</sup>	41°	Clear
12-24-'53		✓ 24°	Clear
12-25-'53			
12-26-'53			
12-27-'53	59°		
12-28-'53	51° <sup>✓</sup>	28°	Clear
12-29-'53	61° <sup>✓</sup>	26°	Clear
12-30-'53	64° <sup>✓</sup>	34°	Clear
12-31-'53		✓ 35°	Clear
1-1-'54			
1-2-'54			
1-3-'54	61°		
1-4-'54	71°	23°	Clear



DATE	HIGH	LOW		RAINFALL
1-5-'54	76°	39°	Clear	
1-6-'54	75°	48°	Clear	
1-7-'54	55°	32°	Clear	
1-8-'54		38°	Cloudy - Rain	During Nite = .02
1-9-'54				
1-10-'54	64°			
1-11-'54	61°	26°	Clear to Cloudy	
1-12-'54	52°	38°	Overcast - Rain	During Nite = 0.24
1-13-'54	50°	35°	Cloudy	To 8:00 A.M. 0.81
1-14-'54	50°	28°	Clear	
1-15-'54		27°	Clear	
1-16-'54				
1-17-'54	57°			
1-18-'54	58°	44°	Overcast	During Nite 0.06
1-19-'54	48°	45°	Cloudy - Rain	To 8:00 A.M. 1.20
1-20-'54	54°	40°	Overcast	During Nite 1.90
1-21-'54	59°	32°	Clear	
1-22-'54		31°	Clear	
1-23-'54				



DATE	HIGH	LOW		RAINFALL
1-24-54	62°			
1-25	50°	31°	Cloudy, Rain	Rain to 8:00 am 2.20
1-26	57°	28°	Overcast	" " " " 0.44
1-27	67°	30°	Clear	
1-28	72°	37°	Overcast	
1-29		42°	Overcast	
1-30				
1-31	75°			
2-1	72°	44°	Clear	
2-2	76°	46°	Clear	
2-3	77°	37°	Clear	
2-4	77°	35°	Clear	
2-5		38°	Clear	
2-6				
2-7	76°			
2-8	73°	42°	Partly Cloudy	
2-9	71°	39°	Cloudy	
2-10	70°	33°	Clear	
2-11	71°	31°	Clear	



DATE	HIGH	LOW		RAINFALL
2-12-54		32°	Clear	
2-13				
2-14	69°			
2-15	?	33°	Clear	Rain to 8 am. = 2.60
2-16	65°	37°	Clear	
2-17	70°	34°	Clear	
2-18	58°	43°	Cloudy	Rain to 8 am = 0.15
2-19		34°	Clear - Windy	
2-20				
2-21	73°			
2-22	79°	37°	Clear	
2-23	82°	46°	"	
2-24	?	40°	"	
2-25	82°	?	"	
2-26		38°	"	
2-27				
2-28	66°			
3-1-54	71°	41°	Overcast	
3-2	72°	41°	Overcast to Clear	



DATE	HIGH	LOW		RAINFALL
3-3-54	66°	51°	Clear	Brought Forward = 12.21
3-4	65°	40°	Overcast to Clear	Rain to 8 a.m. = Trace
3-5		38°	Cloudy to Clear	
3-6				
3-7	?			
3-8	60°	45°	Overcast	
3-9	61°	42°	Clear	
3-10	53°	44°	"	
3-11	64°	39°	Cloudy	Rain to 8 a.m. = 0.08"
3-12		33°	Cloudy	
3-13				
3-14	65°			
3-15	68°	30°	High Thin Cloudiness	
3-16	60°	29°	Clear	
3-17	63°	36°	Overcast - Hail	Rain to 8 a.m. = 1.30"
3-18	58°	33°	Cloudy	" " " 0.10"
3-19		37°	Cloudy	
3-20				
3-21	60°			" " " 1.10"



DATE	HIGH	LOW		RAINFALL
3-22-'54	54°	42°	Cloudy	BROUGHT FORWARD 14.80" Rain to 8 am = 1.80"
3-23-'54	44°	38°	"	" " " 2.01"
3-24-'54	51°	38°	"	RAIN TO 8 A.M. 0.88"
3-25-'54	57°	39°	"	" " " 1.45"
3-26-'54		31°	"	" " " 0.08"
3-27-'54				
3-28-'54	61°			
3-29-'54	55°	44°	Cloudy	NONE
3-30-'54	58°	43°	"	RAIN TO 8 A.M. 0.51"
3-31-'54	81°	34°	PARTLY CLOUDY	NONE
4-1-'54	70°	39°	CLEAR	—
4-2-'54		40°	CLEAR	—
4-3-'54				
4-4-'54	76°			
4-5-'54	69°	40°	CLEAR	—
4-6-'54	67°	45°	PARTLY CLOUDY	—
4-7-'54	70°	40°	CLEAR	—
4-8-'54	76°	44°	CLEAR	—
4-9-'54		42°	CLEAR	—



DATE	HIGH	LOW		RAINFALL
4-10-54				
4-11-54	75°			
4-12-54	77°	42°	PARTLY CLOUDY	TRACE
4-13-54	80°	44°	CLEAR TO CLOUDY	
4-14-54	75°	45°	CLEAR	
4-15-54	82°	44°	CLEAR	
4-16-54	92°	51°	CLEAR	
4-17-54				
4-18-54	67°			
4-19-54	78°	47°	CLEAR	
4-20-54	75°	46°	CLEAR	
4-21-54	77°	46°	CLEAR	
4-22-54	74°	45°	CLEAR	
4-23-54	78°	48°	CLEAR	
4-24-54				
4-25-54	65°		OVERCAST	
4-26-54	70°	46°	CLEAR	
4-27-54	65°	48°	OVERCAST	
4-28-54	65°	47°	CLOUDY	RAIN TO 8:00 A.M. = 0.19"

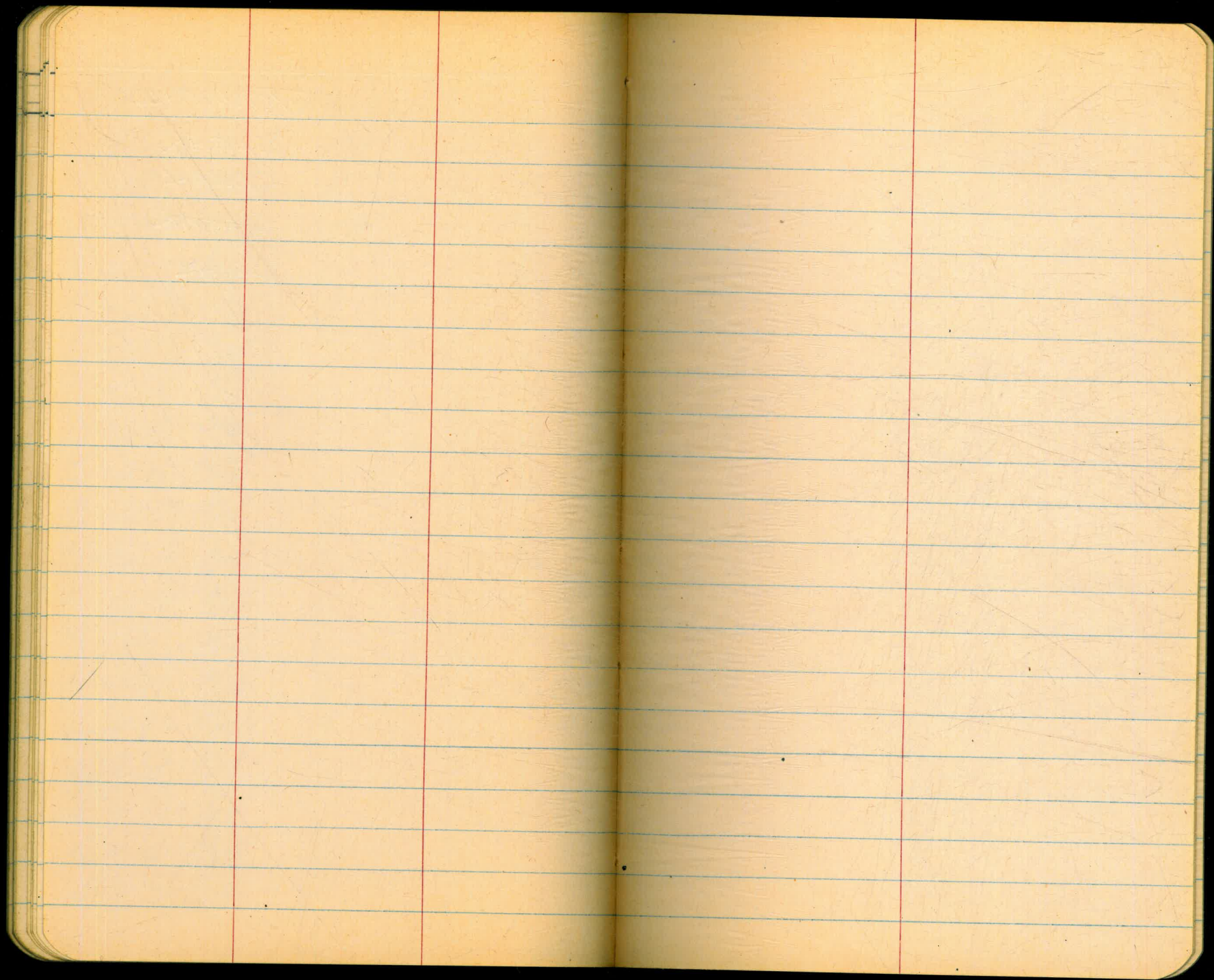


DATE	HIGH	LOW		RAINFALL
4-29-54	65°	48°	PARTLY CLOUDY	RAIN TO 8:00A.M. = 0.11
4-30-54		48°	OVERCAST	TRACE
5-1-54				RAIN TO 8:00A.M. = 0.17"
5-2-54	82°			
5-3-54	86°	38°		CLEAR
5-4-54	84°	43°		CLEAR
5-5-54	85°	44°		CLEAR
5-6-54	80°	46°		CLEAR
5-7-54		46°		
5-8-54				
5-9-54	78°			
5-10-54	79°	49°		RAIN TO 8:00A.M. = .04"
5-11-54	86°	45°		CLEAR
5-12-54	83°	46°		CLEAR
5-13-54	85°	41°		CLEAR
5-14-54		50°		CLEAR
5-15-54				
5-16-54	83°			TRACE
5-17-54	80°	49°		CLEAR



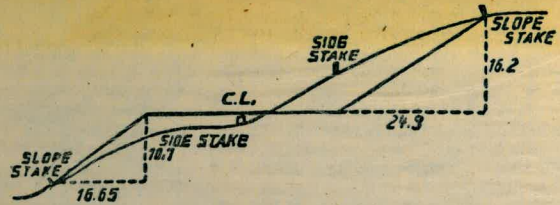
DATE	HIGH	LOW	RAINFALL
5-18-54	84°	50°	CLEAR
5-19-54	95°	54°	CLEAR
5-20-54	89°	54°	CLEAR
5-21-54		52°	CLEAR
5-22-54			
5-23-54			
5-24-54			
5-25-54			
5-26-54			
5-27-54			
5-28-54			
5-29-54			
5-30-54			
5-31-54			
6-1-54			
6-2-54			
6-3-54			
6-4-54			
6-5-54			







68 28



**DISTANCES FROM SIDE STAKES FOR CROSS-SECTIONING.**  
**SLOPE 1 1/2 TO 1. ROADWAY OF ANY WIDTH.**

	0	.1	.2	.3	.4	.5	.6	.7	.8	.9	
0	0.00	0.15	0.30	0.45	0.60	0.75	0.90	1.05	1.20	1.35	0
1	1.50	1.65	1.80	1.95	2.10	2.25	2.40	2.55	2.70	2.85	1
2	3.00	3.15	3.30	3.45	3.60	3.75	3.90	4.05	4.20	4.35	2
3	4.50	4.65	4.80	4.95	5.10	5.25	5.40	5.55	5.70	5.85	3
4	6.00	6.15	6.30	6.45	6.60	6.75	6.90	7.05	7.20	7.35	4
5	7.50	7.65	7.80	7.95	8.10	8.25	8.40	8.55	8.70	8.85	5
6	9.00	9.15	9.30	9.45	9.60	9.75	9.90	10.05	10.20	10.35	6
7	10.50	10.65	10.80	10.95	11.10	11.25	11.40	11.55	11.70	11.85	7
8	12.00	12.15	12.30	12.45	12.60	12.75	12.90	13.05	13.20	13.35	8
9	13.50	13.65	13.80	13.95	14.10	14.25	14.40	14.55	14.70	14.85	9
10	15.00	15.15	15.30	15.45	15.60	15.75	15.90	16.05	16.20	16.35	10
11	16.50	16.65	16.80	16.95	17.10	17.25	17.40	17.55	17.70	17.85	11
12	18.00	18.15	18.30	18.45	18.60	18.75	18.90	19.05	19.20	19.35	12
13	19.50	19.65	19.80	19.95	20.10	20.25	20.40	20.55	20.70	20.85	13
14	21.00	21.15	21.30	21.45	21.60	21.75	21.90	22.05	22.20	22.35	14
15	22.50	22.65	22.80	22.95	23.10	23.25	23.40	23.55	23.70	23.85	15
16	24.00	24.15	24.30	24.45	24.60	24.75	24.90	25.05	25.20	25.35	16
17	25.50	25.65	25.80	25.95	26.10	26.25	26.40	26.55	26.70	26.85	17
18	27.00	27.15	27.30	27.45	27.60	27.75	27.90	28.05	28.20	28.35	18
19	28.50	28.65	28.80	28.95	29.10	29.25	29.40	29.55	29.70	29.85	19
20	30.00	30.15	30.30	30.45	30.60	30.75	30.90	31.05	31.20	31.35	20
21	31.50	31.65	31.80	31.95	32.10	32.25	32.40	32.55	32.70	32.85	21
22	33.00	33.15	33.30	33.45	33.60	33.75	33.90	34.05	34.20	34.35	22
23	34.50	34.65	34.80	34.95	35.10	35.25	35.40	35.55	35.70	35.85	23
24	36.00	36.15	36.30	36.45	36.60	36.75	36.90	37.05	37.20	37.35	24
25	37.50	37.65	37.80	37.95	38.10	38.25	38.40	38.55	38.70	38.85	25
26	39.00	39.15	39.30	39.45	39.60	39.75	39.90	40.05	40.20	40.35	26
27	40.50	40.65	40.80	40.95	41.10	41.25	41.40	41.55	41.70	41.85	27
28	42.00	42.15	42.30	42.45	42.60	42.75	42.90	43.05	43.20	43.35	28
29	43.50	43.65	43.80	43.95	44.10	44.25	44.40	44.55	44.70	44.85	29
30	45.00	45.15	45.30	45.45	45.60	45.75	45.90	46.05	46.20	46.35	30
31	46.50	46.65	46.80	46.95	47.10	47.25	47.40	47.55	47.70	47.85	31
32	48.00	48.15	48.30	48.45	48.60	48.75	48.90	49.05	49.20	49.35	32
33	49.50	49.65	49.80	49.95	50.10	50.25	50.40	50.55	50.70	50.85	33
34	51.00	51.15	51.30	51.45	51.60	51.75	51.90	52.05	52.20	52.35	34
35	52.50	52.65	52.80	52.95	53.10	53.25	53.40	53.55	53.70	53.85	35
36	54.00	54.15	54.30	54.45	54.60	54.75	54.90	55.05	55.20	55.35	36
37	55.50	55.65	55.80	55.95	56.10	56.25	56.40	56.55	56.70	56.85	37
38	57.00	57.15	57.30	57.45	57.60	57.75	57.90	58.05	58.20	58.35	38
39	58.50	58.65	58.80	58.95	59.10	59.25	59.40	59.55	59.70	59.85	39
40	60.00	60.15	60.30	60.45	60.60	60.75	60.90	61.05	61.20	61.35	40
41	61.50	61.65	61.80	61.95	62.10	62.25	62.40	62.55	62.70	62.85	41
42	63.00	63.15	63.30	63.45	63.60	63.75	63.90	64.05	64.20	64.35	42
43	64.50	64.65	64.80	64.95	65.10	65.25	65.40	65.55	65.70	65.85	43
44	66.00	66.15	66.30	66.45	66.60	66.75	66.90	67.05	67.20	67.35	44
45	67.50	67.65	67.80	67.95	68.10	68.25	68.40	68.55	68.70	68.85	45
46	69.00	69.15	69.30	69.45	69.60	69.75	69.90	70.05	70.20	70.35	46
47	70.50	70.65	70.80	70.95	71.10	71.20	71.40	71.55	71.70	71.85	47
48	72.00	72.15	72.30	72.45	72.60	72.75	72.90	73.05	73.20	73.35	48
49	73.50	73.65	73.80	73.95	74.10	74.25	74.40	74.55	74.70	74.85	49
50	75.00	75.15	75.30	75.45	75.60	75.75	75.90	76.05	76.20	76.35	50

THE NATIONAL BLANK BOOK COMPANY  
 HOLYOKE MASSACHUSETTS  
 NEW YORK CHICAGO BOSTON SAN FRANCISCO