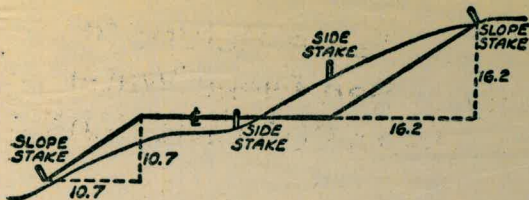


W 843

SAKE 1911



DISTANCES FROM SIDE STAKES FOR CROSS-SECTIONING  
SLOPE 1 TO 1. ROADWAY OF ANY WIDTH

	0	.1	.2	.3	.4	.5	.6	.7	.8	.9	
0	0.00	0.10	0.20	0.30	0.40	0.50	0.60	0.70	0.80	0.90	0
1	1.00	1.10	1.20	1.30	1.40	1.50	1.60	1.70	1.80	1.90	1
2	2.00	2.10	2.20	2.30	2.40	2.50	2.60	2.70	2.80	2.90	2
3	3.00	3.10	3.20	3.30	3.40	3.50	3.60	3.70	3.80	3.90	3
4	4.00	4.10	4.20	4.30	4.40	4.50	4.60	4.70	4.80	4.90	4
5	5.00	5.10	5.20	5.30	5.40	5.50	5.60	5.70	5.80	5.90	5
6	6.00	6.10	6.20	6.30	6.40	6.50	6.60	6.70	6.80	6.90	6
7	7.00	7.10	7.20	7.30	7.40	7.50	7.60	7.70	7.80	7.90	7
8	8.00	8.10	8.20	8.30	8.40	8.50	8.60	8.70	8.80	8.90	8
9	9.00	9.10	9.20	9.30	9.40	9.50	9.60	9.70	9.80	9.90	9
10	10.00	10.10	10.20	10.30	10.40	10.50	10.60	10.70	10.80	10.90	10
11	11.00	11.10	11.20	11.30	11.40	11.50	11.60	11.70	11.80	11.90	11
12	12.00	12.10	12.20	12.30	12.40	12.50	12.60	12.70	12.80	12.90	12
13	13.00	13.10	13.20	13.30	13.40	13.50	13.60	13.70	13.80	13.90	13
14	14.00	14.10	14.20	14.30	14.40	14.50	14.60	14.70	14.80	14.90	14
15	15.00	15.10	15.20	15.30	15.40	15.50	15.60	15.70	15.80	15.90	15
16	16.00	16.10	16.20	16.30	16.40	16.50	16.60	16.70	16.80	16.90	16
17	17.00	17.10	17.20	17.30	17.40	17.50	17.60	17.70	17.80	17.90	17
18	18.00	18.10	18.20	18.30	18.40	18.50	18.60	18.70	18.80	18.90	18
19	19.00	19.10	19.20	19.30	19.40	19.50	19.60	19.70	19.80	19.90	19
20	20.00	20.10	20.20	20.30	20.40	20.50	20.60	20.70	20.80	20.90	20
21	21.00	21.10	21.20	21.30	21.40	21.50	21.60	21.70	21.80	21.90	21
22	22.00	22.10	22.20	22.30	22.40	22.50	22.60	22.70	22.80	22.90	22
23	23.00	23.10	23.20	23.30	23.40	23.50	23.60	23.70	23.80	23.90	23
24	24.00	24.10	24.20	24.30	24.40	24.50	24.60	24.70	24.80	24.90	24
25	25.00	25.10	25.20	25.30	25.40	25.50	25.60	25.70	25.80	25.90	25
26	26.00	26.10	26.20	26.30	26.40	26.50	26.60	26.70	26.80	26.90	26
27	27.00	27.10	27.20	27.30	27.40	27.50	27.60	27.70	27.80	27.90	27
28	28.00	28.10	28.20	28.30	28.40	28.50	28.60	28.70	28.80	28.90	28
29	29.00	29.10	29.20	29.30	29.40	29.50	29.60	29.70	29.80	29.90	29
30	30.00	30.10	30.20	30.30	30.40	30.50	30.60	30.70	30.80	30.90	30
31	31.00	31.10	31.20	31.30	31.40	31.50	31.60	31.70	31.80	31.90	31
32	32.00	32.10	32.20	32.30	32.40	32.50	32.60	32.70	32.80	32.90	32
33	33.00	33.10	33.20	33.30	33.40	33.50	33.60	33.70	33.80	33.90	33
34	34.00	34.10	34.20	34.30	34.40	34.50	34.60	34.70	34.80	34.90	34
35	35.00	35.10	35.20	35.30	35.40	35.50	35.60	35.70	35.80	35.90	35
36	36.00	36.10	36.20	36.30	36.40	36.50	36.60	36.70	36.80	36.90	36
37	37.00	37.10	37.20	37.30	37.40	37.50	37.60	37.70	37.80	37.90	37
38	38.00	38.10	38.20	38.30	38.40	38.50	38.60	38.70	38.80	38.90	38
39	39.00	39.10	39.20	39.30	39.40	39.50	39.60	39.70	39.80	39.90	39
40	40.00	40.10	40.20	40.30	40.40	40.50	40.60	40.70	40.80	40.90	40
41	41.00	41.10	41.20	41.30	41.40	41.50	41.60	41.70	41.80	41.90	41
42	42.00	42.10	42.20	42.30	42.40	42.50	42.60	42.70	42.80	42.90	42
43	43.00	43.10	43.20	43.30	43.40	43.50	43.60	43.70	43.80	43.90	43
44	44.00	44.10	44.20	44.30	44.40	44.50	44.60	44.70	44.80	44.90	44
45	45.00	45.10	45.20	45.30	45.40	45.50	45.60	45.70	45.80	45.90	45
46	46.00	46.10	46.20	46.30	46.40	46.50	46.60	46.70	46.80	46.90	46
47	47.00	47.10	47.20	47.30	47.40	47.50	47.60	47.70	47.80	47.90	47
48	48.00	48.10	48.20	48.30	48.40	48.50	48.60	48.70	48.80	48.90	48
49	49.00	49.10	49.20	49.30	49.40	49.50	49.60	49.70	49.80	49.90	49
50	50.00	50.10	50.20	50.30	50.40	50.50	50.60	50.70	50.80	50.90	50

Distance of slope stake from side or shoulder stake for any width roadway, slope 1 to 1. If ground is nearly level, the cut or fill at side stake is located by the double entry method in left column and top row. The number in body of table in same row and column gives distance from side stake to slope stake. If ground is not level estimate the difference in elevation between the side stake and slope stake, lower target by this amount if cut, elevate if fill. Add this amount to cut or fill and find distance in table. Set up rod at this point, and line of sight should cut target. If it does not make the slight adjustment necessary.

Please Return to  
City of San Diego Water Dept.  
Room 903 Civic Center

MICROFILMED

JAN 10 1965

TABLE XIII—CORRECTIONS FOR TANGENTS AND EXTERNALS

These corrections are to be added to the approximate values, found by dividing the tangent, or external, for a 1° curve (Table VIII) by the degree of curve, in order to obtain the true tangents, or externals. Intermediate values may be obtained by interpolation.

FOR TANGENTS ADD

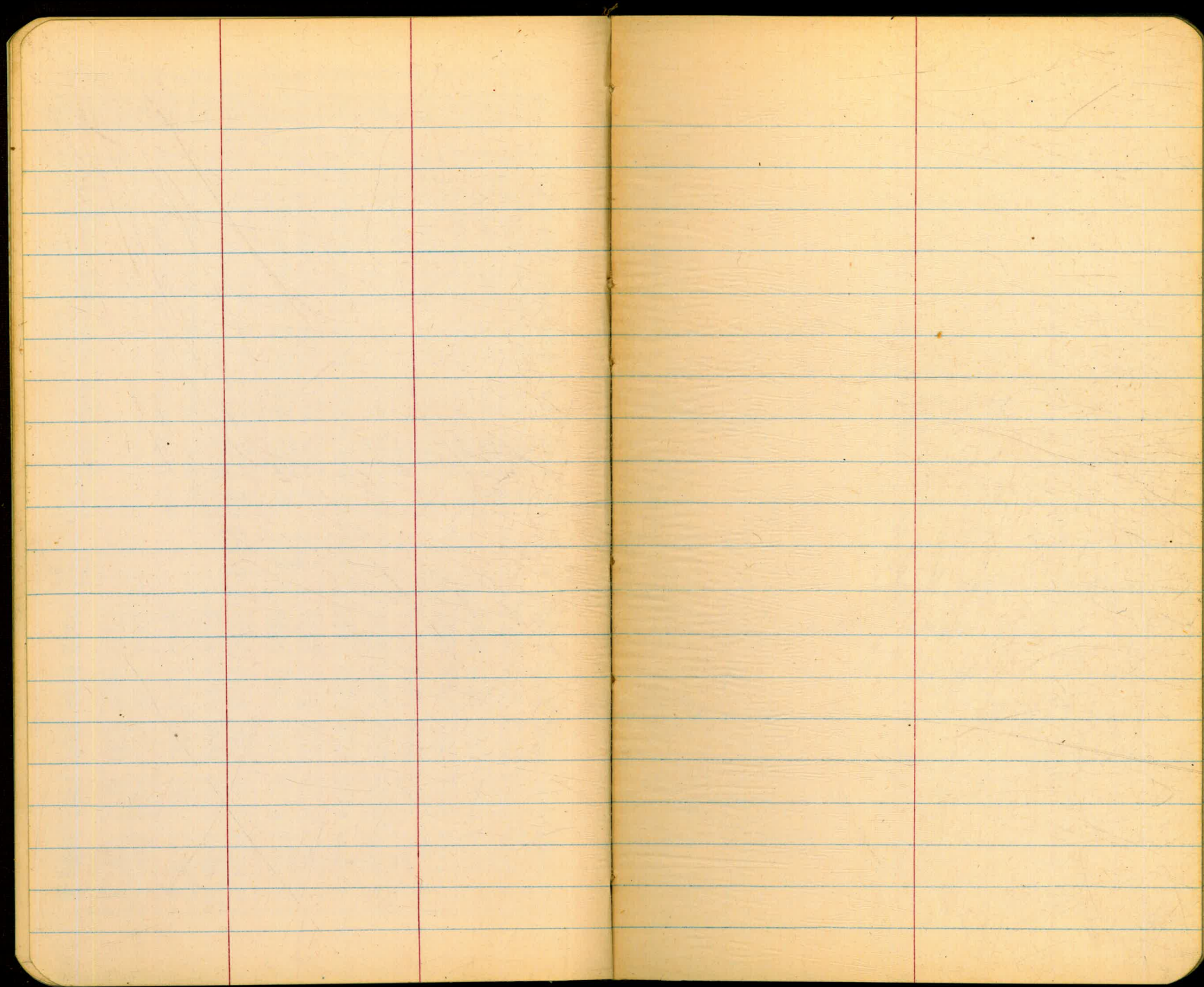
Central Angle	DEGREE OF CURVE													
	5°	10°	15°	20°	25°	30°	35°	40°	45°	50°	55°	60°	65°	70°
10°	.03	.06	.09	.13	.16	.19	.22	.25	.28	.31	.34	.38	.42	.46
15°	.04	.10	.14	.19	.24	.29	.34	.39	.45	.51	.53	.58	.63	.68
20°	.06	.13	.19	.26	.32	.39	.45	.51	.58	.65	.72	.79	.84	.90
25°	.08	.16	.24	.33	.40	.49	.58	.67	.75	.83	.90	.99	1.06	1.14
30°	.10	.19	.29	.39	.49	.59	.69	.79	.89	.99	1.09	1.20	1.29	1.39
35°	.11	.22	.34	.47	.58	.69	.79	.81	.92	1.04	1.29	1.42	1.54	1.66
40°	.13	.26	.40	.53	.67	.80	.93	1.06	1.20	1.34	1.49	1.64	1.79	1.94
45°	.15	.30	.44	.60	.76	.91	1.06	1.21	1.37	1.52	1.70	1.87	2.04	2.21
50°	.17	.34	.51	.68	.85	1.02	1.19	1.36	1.54	1.72	1.91	2.10	2.29	2.48
55°	.19	.38	.57	.76	.95	1.14	1.32	1.52	1.72	1.92	2.14	2.35	2.56	2.77
60°	.21	.42	.63	.84	1.05	1.27	1.49	1.71	1.94	2.17	2.38	2.60	2.83	3.07
65°	.23	.46	.69	.93	1.16	1.40	1.64	1.88	2.13	2.38	2.63	2.88	3.13	3.39
70°	.25	.51	.76	1.02	1.28	1.54	1.80	2.06	2.33	2.60	2.88	3.16	3.44	3.72
75°	.27	.56	.83	1.12	1.40	1.69	1.98	2.27	2.57	2.87	3.16	3.47	3.78	4.09
80°	.30	.61	.91	1.22	1.53	1.84	2.15	2.46	2.78	3.10	3.44	3.78	4.12	4.46
85°	.33	.66	1.00	1.33	1.68	2.02	2.36	2.70	3.05	3.40	3.77	4.14	4.55	4.89
90°	.36	.72	1.09	1.45	1.83	2.20	2.57	2.94	3.32	3.70	4.10	4.50	4.91	5.32
95°	.39	.79	1.19	1.55	2.00	2.40	2.80	3.20	3.61	4.02	4.40	4.98	5.38	5.83
100°	.43	.86	1.30	1.74	2.18	2.62	3.06	3.50	3.95	4.40	4.88	5.37	5.85	6.34
110°	.51	1.03	1.56	2.08	2.61	3.14	3.67	4.21	4.76	5.31	5.86	6.43	7.01	7.60
120°	.62	1.25	1.93	2.52	3.16	3.81	4.45	5.11	5.77	6.44	7.12	7.80	8.50	9.22

FOR EXTERNALS ADD

Central Angle	DEGREE OF CURVE													
	5°	10°	15°	20°	25°	30°	35°	40°	45°	50°	55°	60°	65°	70°
10°	.001	.003	.004	.006	.007	.008	.009	.011	.012	.014	.015	.017	.018	.020
15°	.003	.007	.010	.014	.018	.023	.027	.029	.032	.035	.039	.043	.047	.051
20°	.006	.011	.017	.022	.028	.034	.038	.045	.051	.057	.063	.070	.076	.083
25°	.009	.018	.027	.036	.046	.056	.065	.074	.083	.093	.106	.120	.127	.135
30°	.013	.025	.038	.051	.065	.078	.090	.103	.116	.129	.149	.170	.179	.188
35°	.018	.035	.054	.072	.086	.109	.131	.153	.175	.197	.213	.230	.247	.264
40°	.023	.046	.070	.093	.117	.141	.172	.203	.234	.265	.277	.290	.315	.341
45°	.030	.060	.093	.119	.153	.184	.216	.254	.289	.325	.351	.378	.411	.445
50°	.037	.075	.116	.151	.189	.227	.266	.305	.345	.384	.425	.467	.508	.550
55°	.046	.093	.142	.188	.236	.283	.332	.381	.420	.479	.530	.582	.641	.700
60°	.056	.112	.168	.225	.283	.340	.398	.457	.516	.575	.636	.697	.774	.851
65°	.067	.135	.204	.273	.343	.412	.483	.554	.625	.697	.711	.845	.922	1.01
70°	.080	.159	.240	.321	.403	.485	.568	.652	.735	.819	.906	.994	1.08	1.17
75°	.095	.182	.266	.353	.440	.528	.615	.702	.787	.877	.977	1.07	1.18	1.29
80°	.110	.220	.332	.445	.558	.671	.787	.903	1.02	1.13	1.25	1.38	1.50	1.62
85°	.128	.259	.391	.524	.657	.790	.926	1.06	1.20	1.34	1.47	1.62	1.76	1.91
90°	.149	.299	.450	.603	.756	.910	1.07	1.22	1.38	1.54	1.70	1.87	2.03	2.20
95°	.174	.350	.522	.706	.885	1.06	1.25	1.43	1.62	1.80	1.99	2.18	2.38	2.58
100°	.200	.401	.604	.809	1.01	1.22	1.43	1.64	1.85	2.06	2.28	2.50	2.73	2.96
110°	.268	.536	.806	1.08	1.35	1.63	1.91	2.20	2.48	2.76	3.05	3.35	3.66	3.96
120°	.360	.721	1.08	1.45	1.82	2.19	2.57	2.95	3.33	3.72	4.11	4.50	4.91	5.32

INDEX

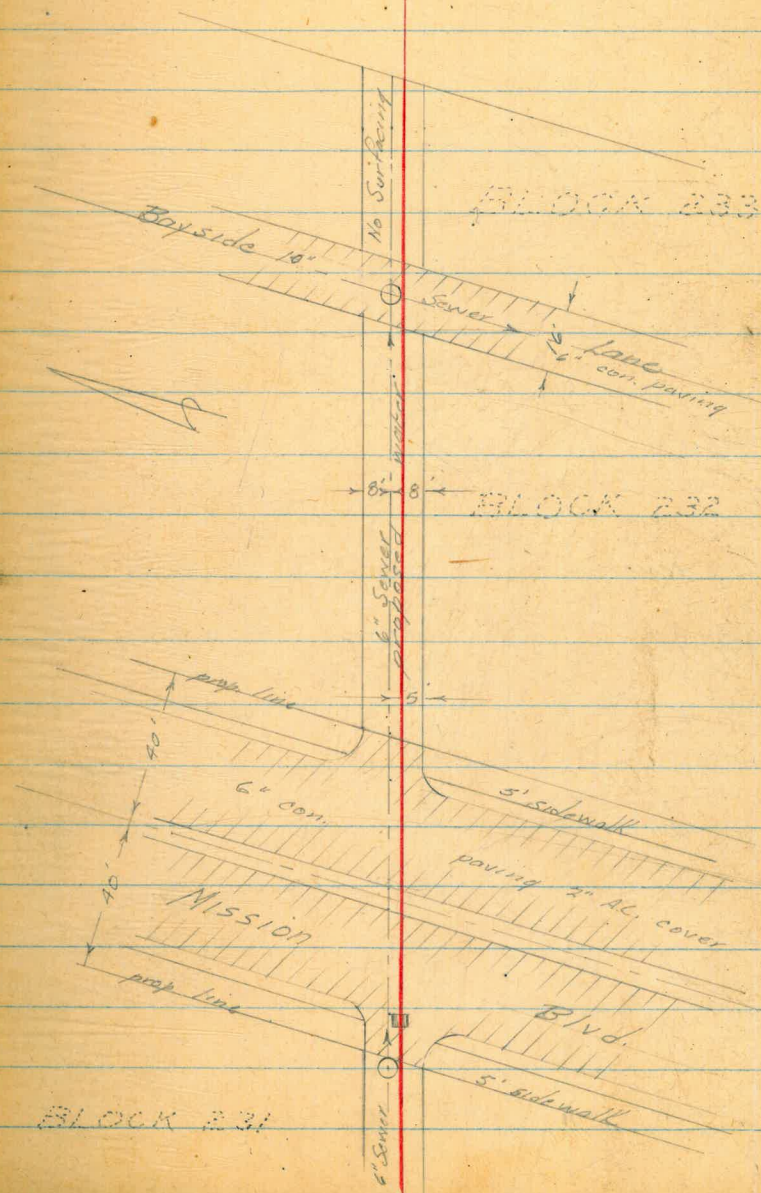
Alley Blks 230-233 Bet Venice Ct, Verona Ct 1-4 ✓  
 Alley Blks 229-226 Bet Venice Ct, San Rafael 5-8 ✓  
 Alley Blks 222-225 Bet San Rafael, Vanuxem Ct 9-13 ✓  
 Lemona, Landis to Sterling Ct (prelim) 14-16 ✓  
 Cavier, Marine to Sea Lane (prelim) 17-19 ✓  
 Union Ave, Palm to Olive (prelim) 20-24 ✓  
 Alley Blks 222-225 (5) Strks & Grds For Const. 25-26 ✓  
 alice ✓  
 alice ✓



Profile Proposed Water  
 Alley Bkks 230-233 between  
 Venice Ct. & Verona Ct.

0+00	E. end of Alley
0+54.53	E. edge of Bayside Lane
0+62.93	Sewer M.H. 4' RL
0+73.53	W. edge of Bayside Lane
1+70.44	E. edge con. apron, Mission Blvd.
1+81.44	E. curb line
2+00	G.V. on line
2+03	G.V. 2' H.
2+09.67	Curb face center island
2+13.67	" " " "
2+43	W. curb line of Storm Drain
2+53.40	N. edge con. apron
2+54	Sewer M.H. 3' RL

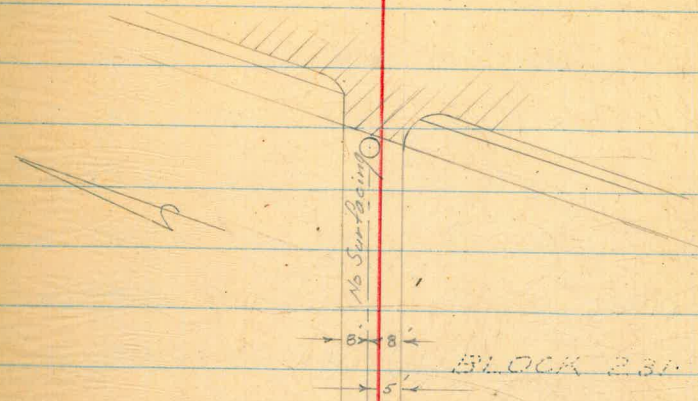
WERT  
 KEMP  
 HOLAHAN 8-30-54



BLOCK 231

2154

Sewer MH. 3' Pl.

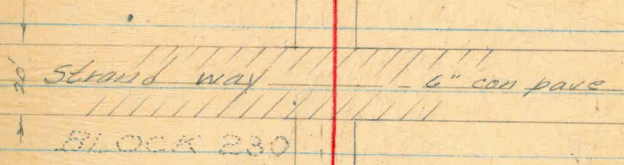


BLOCK 231

4105.60

E. edge Strand way

4125.40



4178.63

End Alley

	4.28	4.00 ✓	-0.28	T.B.M. NW. cor. Alley B/L 230
0+00			5.0 -1.0 ✓	E Mission Blvd.
+5.0			5.3 -1.3 ✓	
+59.53			5.3 -1.3 ✓	E edge 6" con. Bayside way
+62.93			5.4 -1.4 ✓	E Bayside way
+62.93			5.42 -1.42 ✓	Sewer M.H. 3' RT cut 3.7 to flow
+73.53			5.3 -1.3 ✓	W edge con pave Bayside way
1+00			5.2 -1.2 ✓	
+5.0			5.1 -1.1 ✓	
+70.44			5.3 -1.3 ✓	E edge con. apron Mission Blvd (6")
+81.44			5.2 -1.2 ✓	E curb line
2+00			4.6 -0.6 ✓	GV. on line
+09.67			3.7 +0.3 ✓	Top 9" curb center island
+13.67			3.5 +0.5 ✓	" " " " "
+43.			4.8 -0.8 ✓	W curb line & storm drain
+50			4.3 -0.3 ✓	
53.40			4.1 -0.1 ✓	edge con apron Mission Blvd (6")
54.			4.19 -0.19	Sewer M.H. 3' RT cut 2.5 to flow

	4.00		0.00
3700		4.0	0.00 ✓
+ 1.50		3.0	1.00 ✓
T.P.		2.71	1.29 ✓
6.73	8.02 ✓		
4400		3.8	4.22 ✓
+ 05.60		3.5	4.52 ✓
+ 15.60		3.0	4.42 ✓
+ 25.40		3.4	4.62 ✓
+ 50.00		2.8	5.22 ✓
+ 78.63		2.6	5.42 ✓
		2.79	5.23 ✓

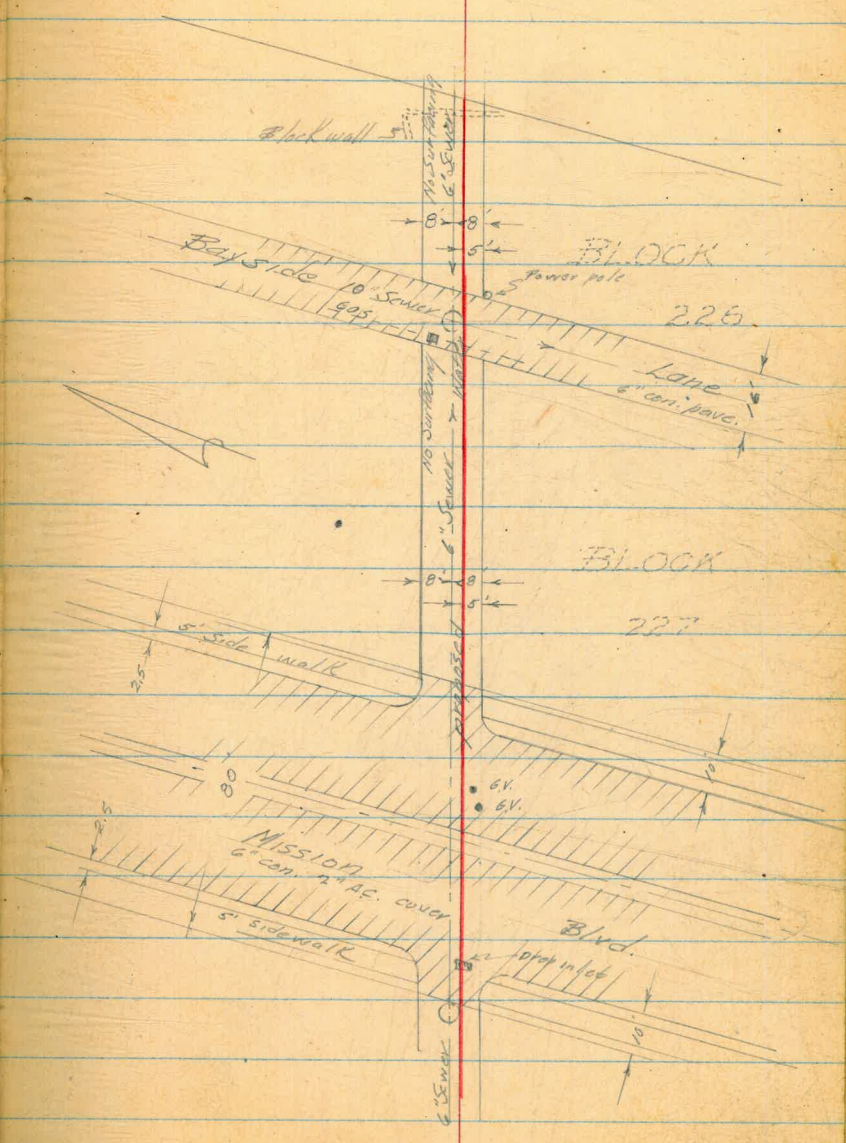
E edge Strand way 6" con. pave  
 E " " " "  
 W " " " "  
 End of Alley  
 T.B.M. 523 red head nail in T.P. Alley  
 of Strand way



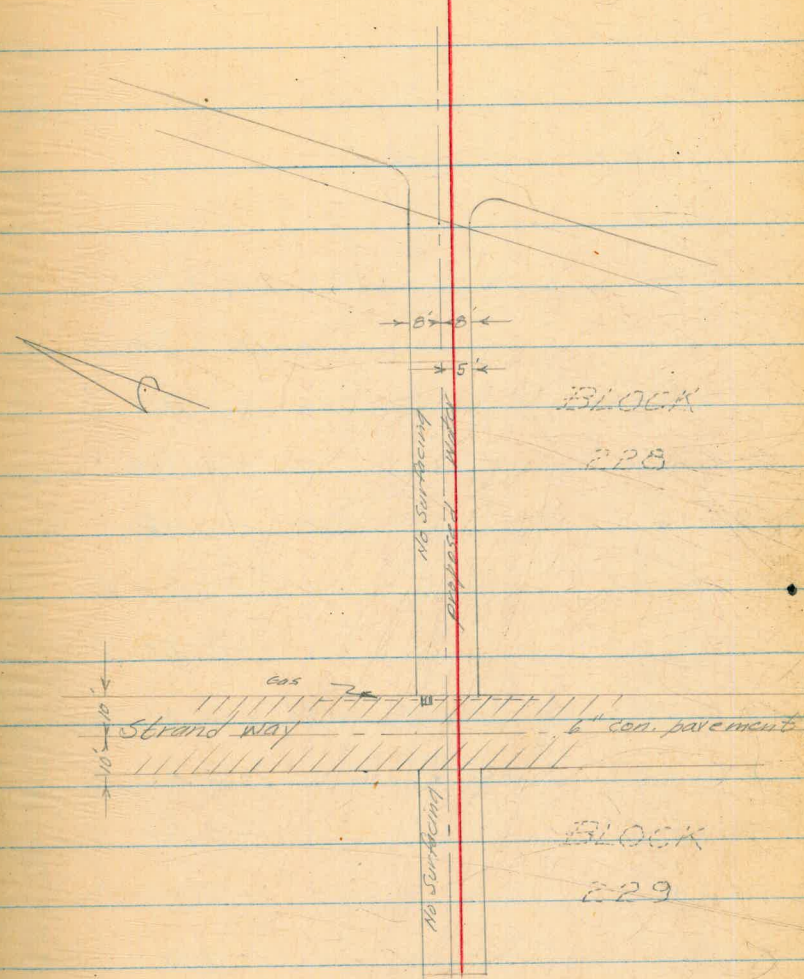
Profile Proposed Water on Alley  
 B/Ls 226 to 229 between  
 Venice Ct & San Rafael

0+00	E. end Alley
+05	Block wall extend. in alley
+53.65	E. edge 6" con. Bayside Lane
+61.65	Sewer M.H. 3' Rl
+69.65	Wedge Bayside lane
1+76.22	Con. apron
+86.22	Curb line Mission Blvd
2+05.40	G.V. 1' Lb
+07.90	G.V. 2' Lb
+14.50	Curb face center island
+18.50	" " " "
+43.	W. curb line
+57.30	edge con. apron, Sewer M.H. 3' Rl

Werb  
 Kemp  
 Holahan 8-31-54 5



3+81.60 Edge of Strandway  
 +85.60 Gas Crossing  
 4+01.60 Edge of Strandway  
  
 4+54.93 W. end Alley



			- 0.28	
	5.92	5.64 A		
0105		6.4	- 0.76 ✓	
+53.65		7.3	- 1.66 ✓	
+61.65		7.4	- 1.76 ✓	
+61.65		7.36	- 1.72 ✓	
+65.65		7.9	- 1.66 ✓	
+69.65		7.3	- 1.66 ✓	
7+00		7.0	- 1.36 ✓	
+50		6.5	- 0.86 ✓	
+76.22		6.5	- 0.86 ✓	
+86.22		6.5	- 0.86 ✓	
7+00		6.1	- 0.46 ✓	
+05.40		6.0	- 0.36 ✓	
+07.90		6.0	- 0.36 ✓	
+14.50		5.2	+ 0.44 ✓	
+18.50		5.2	+ 0.44 ✓	

N.W. curb Alley B/L 236 & Mission Blvd

E. edge con pave Bayside Lane

W. Bayside Lane

Sewer M.H. 3' RT cut 3.3 to flow

Gas M.H. 7' RT cut 0.7 top pipe

W. edge con pave Bayside Lane

E. edge con apron Mission Blvd.

E. curb line Mission Blvd.

6.1 1' H.

6.1 2' H.

Top 9" curb center island

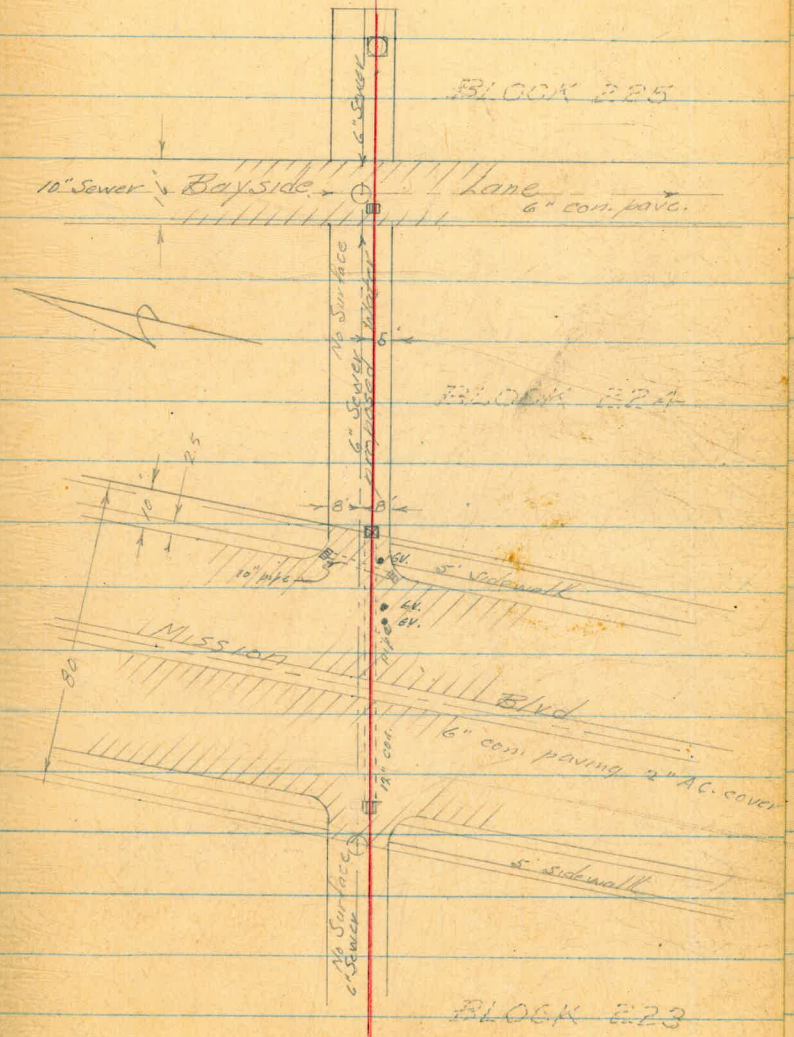
" " " " "

	5.64 ✓			
21.43		6.2	- 0.56 ✓	W. curb line & center of Drop inlet, 24" corr. iron pipe vertical 5'
+50		6.1	- 0.46 ✓	
+57.30		5.5	+ 0.14 ✓	Edge con apron Mission End
+57.36		5.51	+ 0.13 ✓	Sewer M.H. 3' Rl. cut 2.3 to flow
31.00		5.2	+ 0.44 ✓	
+50		2.9	2.74 ✓	
T.P.		1.12	4.52 ✓✓	
	5.60 10.12 ✓✓			
3781.60		5.0	+ 5.12 ✓	Edge of Strandway
+85.60		5.1	+ 5.02 ✓	Gas M.H. 7' Rt
+86.50		5.0	+ 5.12 ✓	" Crossing cut 2.6 to top pipe
+91.60		5.1	+ 5.02 ✓	& Strandway
4+01.60		4.9	+ <del>6.22</del> <sup>5.22</sup> ✓ cpw.	W. edge of Strandway
+12		4.0	+ 6.12 ✓	
4+54.93		3.9	+ 6.22 ✓	End alley
		9.13	5.99 ✓	T.B.M. nail in pp. Strandway, Blk 229

9-1-54

Profile Proposed Water  
Alley Bkls 222-225 Between  
San Rafael Ct & Vanitie Ct.

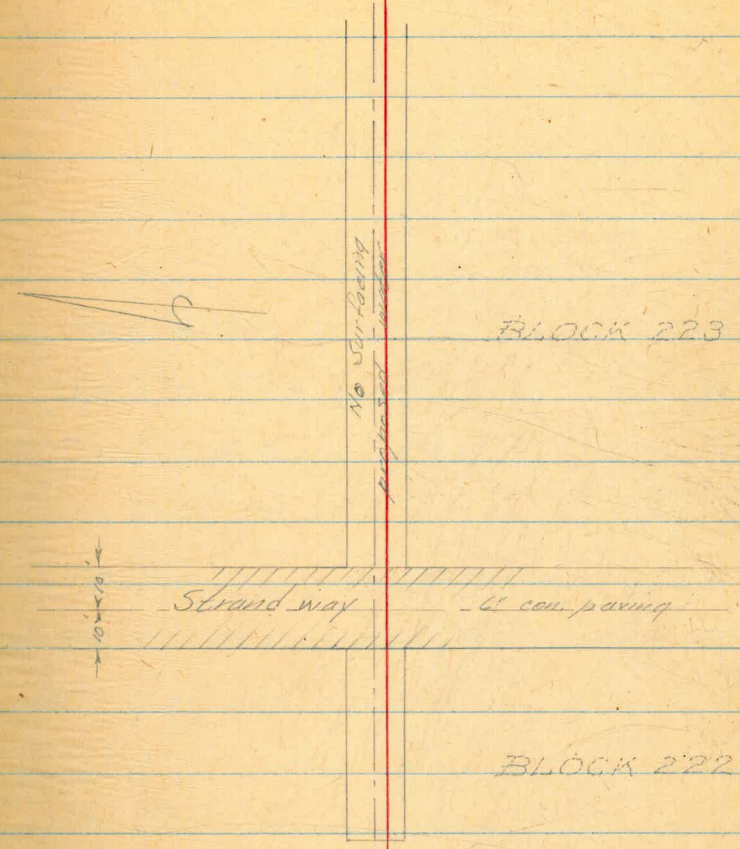
0+00	East end of alley
+15	Storm Dr. M.H. 1' Rt.
+51	East edge Bayside Lane
+57.70	Sewer Crossing
+59.80	Storm Dr. grate
+67	West edge Bayside Lane
+87.64	E. edge con. apron Miss. Blvd.
+90.64	Storm Dr. M.H. on line
+94.64	G.V. 1' Lt
+96.64	Storm Drain crossing
+97.64	E. curb line Mission Blvd.
+16.50	G.V. 1' Lt
+19	G.V. 1' Lt
+25.50	Center island curb face
+29.50	" " " "



2152.50 West curb line Mission Blvd.  
 +68 W. edge con apron Mission Bl.  
 +68 Sewer M.H. 3' PL.

3171.30 E. edge of Strandway  
 +87 Elect. crossing  
 4101.30 W. edge Strandway

4144.63 West end of Alley



-0.28

N.W. curb Alley, E/K 228 & Mission Blvd.

4.99 4.71 ✓

4.89 -0.13 ✓

3.87 3.74 ✓

0+00 4.4 -0.66 ✓

East end Alley

+15 4.24 -0.50 ✓

Storm Drain M.H. 1' RL

+51 5.8 -2.06 ✓

East edge Bayside Lane

+57.70 5.9 -2.16 ✓

Sewer crossing

+57.70 5.91 -2.17 ✓

Sewer M.H. 3' RL 2.9 to flow

+59.80 5.96 -2.22 ✓

& Bayside Lane & Storm Drain Grate

+67 5.8 -2.06 ✓

West edge Bayside Lane

1+00 5.1 -1.36 ✓

+50 4.7 -0.96 ✓

+87.64 4.6 -0.86 ✓

East edge companion Mission Blvd.

+90.64 4.51 -0.76<sup>7</sup> ✓

Storm Drain M.H., on line

+94.64 4.5 -0.76 ✓

G.V. 1' RL

+96.64 4.5 -0.76 ✓

Storm Drain Grates

$\frac{4.5}{4}$  Lg. gr.

$\frac{4.5}{11}$  Regr.

3.74

1+97.64	4.5	-0.76	✓	E curb line Mission Blvd.
2+00	4.4	-0.66	✓	
+16.50	4.0	-0.26	✓	6V. 1' 16.
+19.	3.9	-0.16	✓	6V. 1' 16.
+25.50	3.2	+0.54	✓	Top 9" curb center island
+29.50	2.9	<del>+0.84</del> <del>+7.84</del>	CFV.	" " " " "
2+50	4.0	-0.26	✓	
+57.50	4.31	-0.57	✓	W curb line Mission Blvd. & Sid. grate
+68	3.4	+0.34	✓	W edge apron Mission Blvd.
+68	3.46	+0.28	✓	Sewer M.H. 3' RL (not opened)
3+00	2.2	+1.54	✓	
7.7.	0.05	3.69	✓	
	7.08	10.77	✓	
3+50	6.2	+4.57	✓	
+71.30	4.9	+5.87	✓	E edge of Strandway



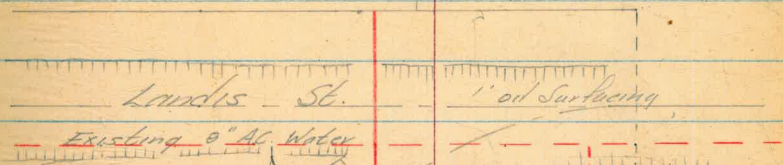
	10.77 ✓			
3+ 86.30	5.0	5.77 ✓	E Strand way	
+ 87.	4.9	5.87 ✓	Elect crossing	
4+ 01.30	4.8	5.97 ✓	W edge Strand way	
7+ 44.63	5.2	5.57 ✓	W end Alley	
	4.78	5.99 ✓	T.B.M. red head in pp. 249, Strand	

Profile Proposed Water on  
Lemona St. Landis to Sterling Ct.

WERT  
Lemp  
Holahan 9-2-54 14

0+00

N/4 of Landis St



+35

Pl. existing & pro. water lines

+53.04

Angle point of line



$\Delta = 114^{\circ} 06' 30''$   
 Lon water 179.29  
 R. " 90.0

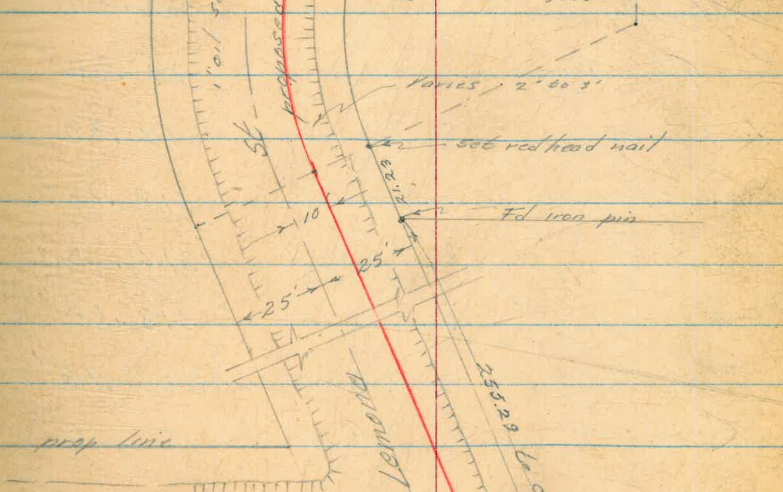
Varies 2' 60 3'

set red head nail

Fd iron pin

1+73.75

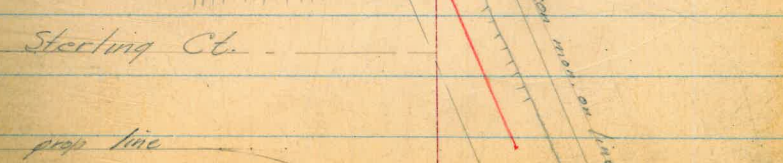
F.C.



Sterling Ct.

3+80.18

S/4 of Sterling Ct



304.01

T.B.M. nail in power pole 50 W Lemona  
Sterling Co.

9.70 313.71 ✓

0.36 313.35 ✓

11.63 324.98 ✓

0+00 1.0 323.98 ✓

No. prop. of Landis

+15 2.2 322.78 ✓

Gutter line, edge 1" of surface

+35 2.0 322.98 ✓

P.L. prop. exist. water,  $\frac{+1.4}{50}$  ll  $Rt \frac{5.0}{50}$

+53.04 2.4 322.58 ✓

Angle point in line

+69.51 3.5 321.48 ✓

+94.51 5.1 319.88 ✓

1+19.51 6.8 318.18 ✓

+94.51 8.9 316.08 ✓

+69.51 11.3 313.68 ✓

+73.75 14.5 313.48 ✓

E.C. prop. water

T.P. 12.88 312.10 ✓

1.57 313.67 ✓

2+00 1.6 312.07 ✓

313.67 ✓

2750 4.5 309.17 ✓

3100 7.2 306.47 ✓

450 8.9 304.77 ✓

+ 80.18 10.0 303.67 ✓

9.66 304.01 ✓

 $\frac{10.0}{25}$  $\frac{10.7}{50}$  $\frac{11.0}{75}$ 

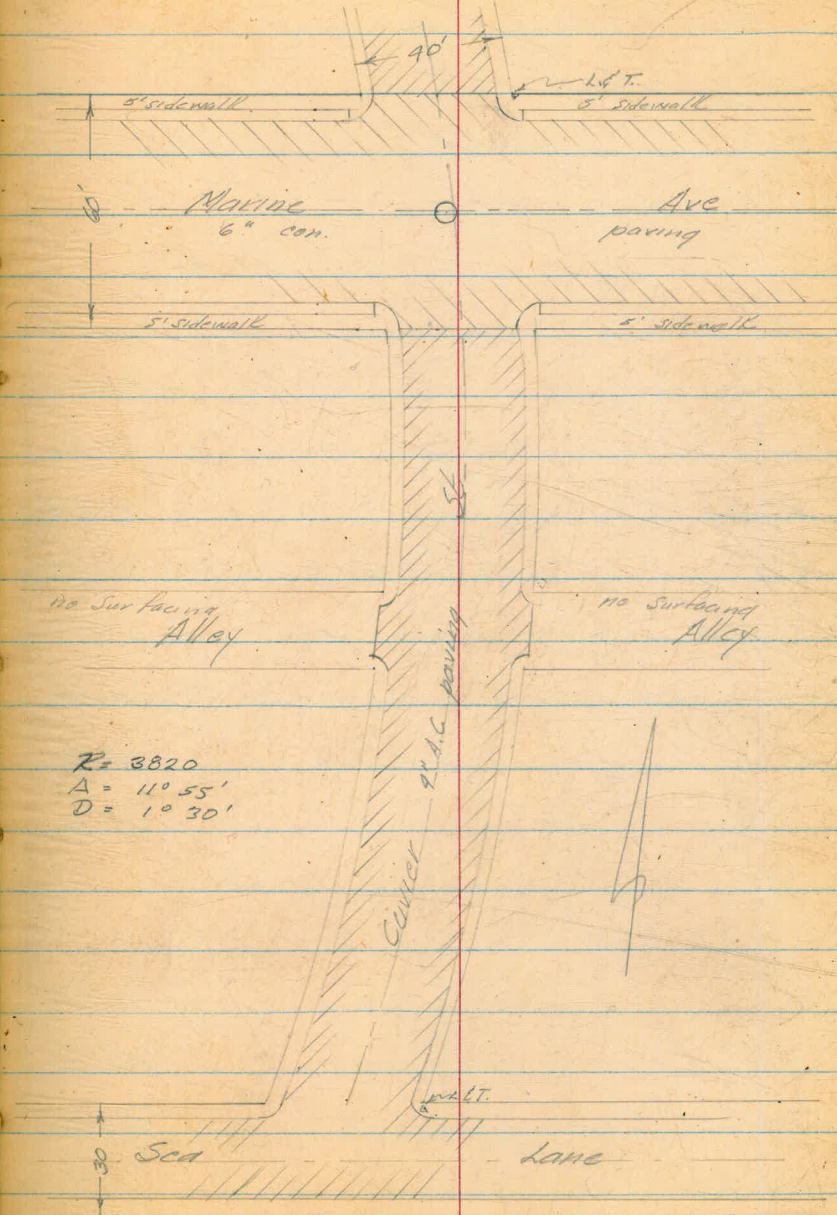
RE

Spk Sterling Ct.

T.B.M. = 309.01 ✓

WEET  
KEMP  
HOLAHAN 10-19-54 17

Profile & Proposed Water  
Culver St., Marine to Seafane



2+08 No Alley line  
2+28 So Alley line

no Surfacing  
Alley

no Surfacing  
Alley

R = 3820  
Δ = 11° 55'  
D = 1° 30'

Culver 4\"/>

30' Sea Lane

## Profile of Curb Cont

81.06

SE ~~RD~~ Curb & Pavt

6.82 87.88

3.10 84.78

6.98 91.76

0+00	5.1	86.66	N/L of Marine & G.V. on line
+11	5.3	86.46	No curb line
+30	5.2	86.56	& Marine & Sewer cross
+30	5.34	86.42	Sewer MH, 7' H.
+50	5.6	86.16	So. curb line
+60	5.4	86.36	So edge con pave & G.V. on line
1+00	4.9	86.86	
+50	4.4	87.36	
T.P.	3.70	88.06	
5.32	93.38		
2+00	5.4	87.98	
+50	4.8	88.58	
3+00	4.2	89.18	
+50	3.7	89.68	

93.38

3+82

3.5

89.88

No curb line Sea Lane

+91

3.3

90.08

& Sea Lane

4+01.5

3.5

89.88

To curb line Sea Lane

+01.5

2.8

90.58

Top curb

+06.5

2.8

90.58

Back of sidewalk

T.P.

2.33

91.05

T.B.M. NE, L&T. Sea Lane & Curvick

1.81

92.86

5.42

87.44

3.96

91.40

5.40

86.00

2.36

88.36

4.96

83.40

4.21

87.61

6.56

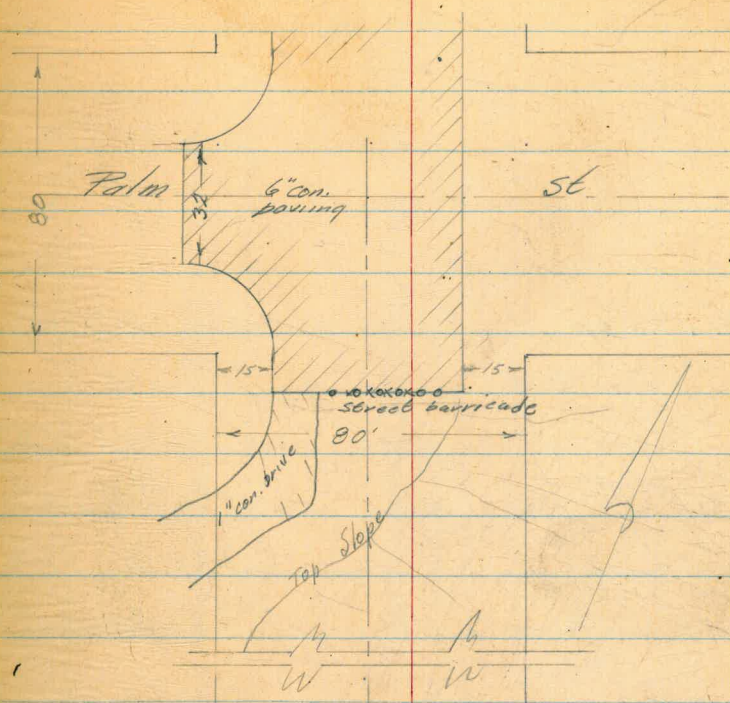
81.05

= 81.06 T.P.

Profile & Proposed Water  
 Union Ave., Palm St to Olive St

0+00 N/L of Palm  
 +40 f Palm  
 +80 S/L of Palm  
 +90 Edge con paving & barricade

WEST  
 KEMP  
 HOLAHAN 20  
 10-20-54



80'



5+11.53

con Man. f Pl Olive & Union



Union Ave Cont.

		196.25
2.52	198.77	
0+00	15	197.27
+50	2.6	196.17
+80	3.1	195.67
+90	4.0	194.77
1+00	3.4	195.37
1+19.52	4.1	194.67
1+50	8.7	190.07
T.P.	12.04	186.73
1.78	188.51	
2+00	5.4	183.11
T.P.	12.56	175.95
0.73	176.68	
2+50	32	173.48

Reduced By Palomares  
1-19-55

\$ L&T Union & Plum

N/L of Palm

G.V.

Edge con. paving Union St.

26	12
$\frac{3.4}{10}$	$\frac{4.1}{0}$
$\frac{6.1}{10}$	$\frac{8.7}{0}$
$\frac{1.0}{10}$	$\frac{5.4}{0}$
$\frac{4.7}{10}$	$\frac{3.2}{0}$
	$\frac{7.7}{10}$

$\frac{5.7}{10}$

$\frac{12.5}{10}$

$\frac{9.9}{10}$

$\frac{7.7}{10}$

176.68  
2+70 11.0 165.68

T.P. 10.63 166.05

1.41 167.46

2+84 1.4 166.06

+90 2.6 164.86

+94 4.8 162.66

3+00 4.6 162.86

+12 7.3 160.16

+14 10.6 156.86

+17 8.7 158.76

+50 9.5 157.96

+75 13.3 154.16

T.P. 13.09 154.37

1.27 155.64

4+00 8.0 147.64

+25 13.5 142.14

T.P. 12.62 143.02

1.30 144.32

2" water line exposed 16

$\frac{4.2}{10}$   $\frac{14.0}{0}$   $\frac{18.8}{10}$

$\frac{+3.7}{10}$   $\frac{14}{8}$   $\frac{7.4}{10}$

$\frac{+1.2}{10}$   $\frac{4.6}{0}$   $\frac{10.3}{10}$

$\frac{3.1}{10}$   $\frac{9.5}{0}$   $\frac{15.0}{10}$

$\frac{3.1}{10}$   $\frac{8.0}{0}$   $\frac{12.6}{10}$

Reduced Bl. Polymite  
1-19-54

	144.32		
4+50		8.5	135.82
T.P.		12.94	131.38
	0.52		131.90
5+00		11.8	120.10
T.P.		12.84	119.06
	0.81		119.87
5+11.53		4.3	115.57
T.P.		1.99	118.38
	1.58		119.96
T.P.		12.87	107.0 <sup>9</sup>
	0.88		107.9 <sup>7</sup>
5+61.53		9.5	98.47
T.P.		4.38	103.5 <sup>9</sup>
	2.38		105.9 <sup>7</sup>
		13.05	92.9 <sup>2</sup>
	0.14		93.0 <sup>6</sup>
			80.3 <sup>6</sup>
		12.70	80.28
	81.03		
	0.67		80.95

Reduced 13X Polymino  
1-19X-54

PL		16
$\frac{5.3}{10}$	$\frac{8.5}{0}$	$\frac{12.1}{10}$

$\frac{8.7}{10}$	$\frac{11.8}{0}$	$\frac{15.0}{10}$
------------------	------------------	-------------------

Pl. & water & Olive St.

Set T.B.M. Can. Man. & Pl. Olive & Union

$\frac{5.7}{10}$	$\frac{9.5}{0}$	$\frac{10.9}{10}$
------------------	-----------------	-------------------

	81.03		
	<del>80.95</del>		
		12.99	68.04
	68.58		67.96
0.54	<del>68.50</del>		
		12.95	55.63
	58.44		<del>55.55</del>
2.81	<del>58.36</del>		
		6.23	52.21
			52.13

Reduced By Polymers  
1-19-54

= 51.94 R.P. w. curb Raymond way & Arroyo

ALLEY BLKS - 222, 223, 224 & 225  
 BETWEEN VANITIE CT. & SAN RAFAEL PL.  
 (5) GRD. & STKS

4/15/55

SHOREY  
 MARTEL  
 KELLHOFER

25

SEW. M.H. (SRE Pg. 12.)

TBM.	4.00	4.28	0.28		
0+05	2" B.O. Assy		4.6	-0.3	-4.2 C3 <sup>2</sup>
0+50			6.1	-1.8	-6.0 C4 <sup>2</sup>
0+75			5.4	-1.1	-6.0 C4 <sup>2</sup>
1+00			5.1	-0.8	-5.2 C4 <sup>2</sup>
1+50			4.7	-0.4	-5.0 C4 <sup>6</sup>
1+95 Δ	6' 8" RT		5.1	-0.8	-4.5 C3 <sup>2</sup>
2+00			4.9	-0.6	-4.4 C3 <sup>8</sup>
2+15	TAPPING G.V. & 11 1/4° BEND		4.5	-0.2	-4.1 C3 <sup>2</sup>
2+17 Δ			4.5	-0.2	-4.1 C3 <sup>2</sup>
2+39 Δ	6' 8" RT.		4.2	+0.1	-4.0 C4 <sup>1</sup>
2+50			4.4	-0.1	-3.8 C3 <sup>2</sup>
3+00			2.9	+1.4	-2.6 C4 <sup>2</sup>
3+50			0.1	4.2	1.0 C3 <sup>2</sup>
TP	7.05	11.16	0.17	4.11	
4+00			5.0	6.2	2.0 C4 <sup>2</sup>
4+40	END WORK		5.1	6.1	2.0 C4 <sup>1</sup>
TP	4.16	10.33	4.99	6.17	
			3.23	7.10 = 7.11	
	WAT. METERS				
	4.28				
0+10 S.			5.1	-0.8	-0.3 FCO <sup>5</sup>
0+19 N.			5.1	-0.8	-0.3 FCO <sup>5</sup>
0+80 S.			5.2	-0.9	-1.7 CO <sup>8</sup>

B.P. IN SEAWALL AT SAN RAFAEL PL.

4.28  
WAT. METERS

0+96 S.	5.5	-1.2	-1.4
0+99 N.	5.1	-0.8	-1.2
1+28 S.	5.2	-0.9	-1.2
1+47 S.	5.0	-0.7	-1.2
1+75 S.	4.7	-0.4	-1.0
2+90 N.	3.0	+1.3	0.6
2+99 S.	2.8	+1.5	1.1
3+21 S.	1.5	<sup>2.3</sup> +2.8	2.4
3+24 N.	1.7	+2.6	2.6
3+30 N.	1.5	+2.8	3.0
3+36 S.	0.8	+3.5	3.4
3+60 N.	5.9	+5.3	5.1
3+76 S.	5.3	+5.9	5.8
4+17 S.	4.9	+6.3 0.1	6.2
4+32 S.	5.0	+6.2 6.0	6.3
4+40 N.	5.1	+6.1	6.0

Co	<u>2</u>	r
Co	<u>4</u>	
Co	<u>3</u>	
Co	<u>5</u>	
Co	<u>6</u>	
Co	<u>7</u>	
Co	<u>4</u>	
Co	<u>4</u>	r
Co	<u>0</u>	
Co	<u>2</u>	
Fo	<u>1</u>	
Co	<u>1</u>	
Co	<u>1</u>	
Co	<u>1</u>	
Fo	<u>1</u>	FOZ v
Co	<u>1</u>	002 r

4.75	1.67
-0.9	
3.83	3.87
5.01	
1.32	

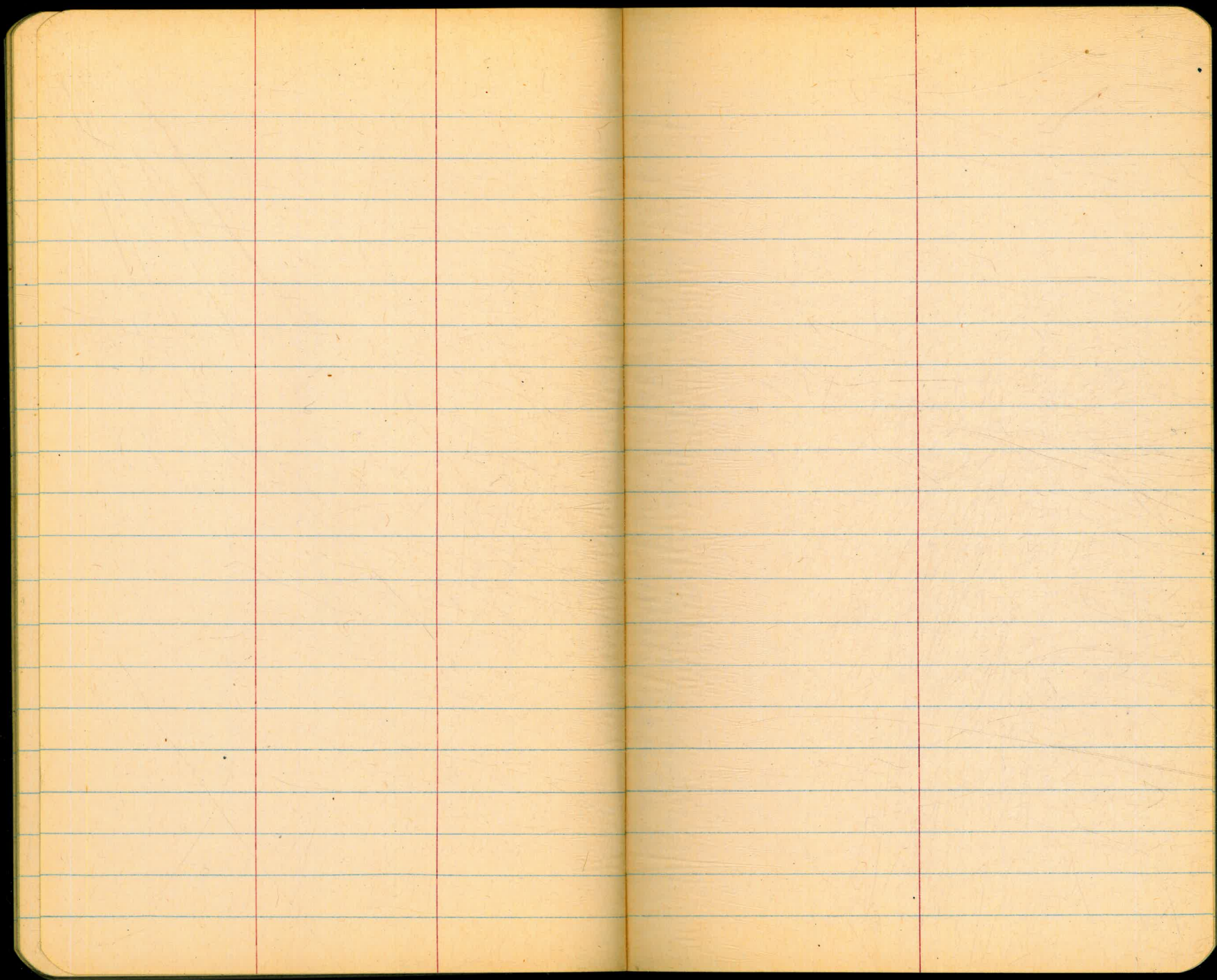
12.6	2.32
6.08	9.12
9.18	
9.14	9.14
306	2.30
608	

9.14
316
604

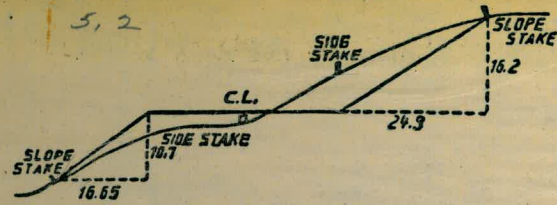








Please Return to  
 City of San Diego Water Dept.  
 Room 903 Civic Center



**DISTANCES FROM SIDE STAKES FOR CROSS-SECTIONING.**  
 SLOPE 1 1/2 TO 1. ROADWAY OF ANY WIDTH.

	0	.1	.2	.3	.4	.5	.6	.7	.8	.9	
0	0.00	0.15	0.30	0.45	0.60	0.75	0.90	1.05	1.20	1.35	0
1	1.50	1.65	1.80	1.95	2.10	2.25	2.40	2.55	2.70	2.85	1
2	3.00	3.15	3.30	3.45	3.60	3.75	3.90	4.05	4.20	4.35	2
3	4.50	4.65	4.80	4.95	5.10	5.25	5.40	5.55	5.70	5.85	3
4	6.00	6.15	6.30	6.45	6.60	6.75	6.90	7.05	7.20	7.35	4
5	7.50	7.65	7.80	7.95	8.10	8.25	8.40	8.55	8.70	8.85	5
6	9.00	9.15	9.30	9.45	9.60	9.75	9.90	10.05	10.20	10.35	6
7	10.50	10.65	10.80	10.95	11.10	11.25	11.40	11.55	11.70	11.85	7
8	12.00	12.15	12.30	12.45	12.60	12.75	12.90	13.05	13.20	13.35	8
9	13.50	13.65	13.80	13.95	14.10	14.25	14.40	14.55	14.70	14.85	9
10	15.00	15.15	15.30	15.45	15.60	15.75	15.90	16.05	16.20	16.35	10
11	16.50	16.65	16.80	16.95	17.10	17.25	17.40	17.55	17.70	17.85	11
12	18.00	18.15	18.30	18.45	18.60	18.75	18.90	19.05	19.20	19.35	12
13	19.50	19.65	19.80	19.95	20.10	20.25	20.40	20.55	20.70	20.85	13
14	21.00	21.15	21.30	21.45	21.60	21.75	21.90	22.05	22.20	22.35	14
15	22.50	22.65	22.80	22.95	23.10	23.25	23.40	23.55	23.70	23.85	15
16	24.00	24.15	24.30	24.45	24.60	24.75	24.90	25.05	25.20	25.35	16
17	25.50	25.65	25.80	25.95	26.10	26.25	26.40	26.55	26.70	26.85	17
18	27.00	27.15	27.30	27.45	27.60	27.75	27.90	28.05	28.20	28.35	18
19	28.50	28.65	28.80	28.95	29.10	29.25	29.40	29.55	29.70	29.85	19
20	30.00	30.15	30.30	30.45	30.60	30.75	30.90	31.05	31.20	31.35	20
21	31.50	31.65	31.80	31.95	32.10	32.25	32.40	32.55	32.70	32.85	21
22	33.00	33.15	33.30	33.45	33.60	33.75	33.90	34.05	34.20	34.35	22
23	34.50	34.65	34.80	34.95	35.10	35.25	35.40	35.55	35.70	35.85	23
24	36.00	36.15	36.30	36.45	36.60	36.75	36.90	37.05	37.20	37.35	24
25	37.50	37.65	37.80	37.95	38.10	38.25	38.40	38.55	38.70	38.85	25
26	39.00	39.15	39.30	39.45	39.60	39.75	39.90	40.05	40.20	40.35	26
27	40.50	40.65	40.80	40.95	41.10	41.25	41.40	41.55	41.70	41.85	27
28	42.00	42.15	42.30	42.45	42.60	42.75	42.90	43.05	43.20	43.35	28
29	43.50	43.65	43.80	43.95	44.10	44.25	44.40	44.55	44.70	44.85	29
30	45.00	45.15	45.30	45.45	45.60	45.75	45.90	46.05	46.20	46.35	30
31	46.50	46.65	46.80	46.95	47.10	47.25	47.40	47.55	47.70	47.85	31
32	48.00	48.15	48.30	48.45	48.60	48.75	48.90	49.05	49.20	49.35	32
33	49.50	49.65	49.80	49.95	50.10	50.25	50.40	50.55	50.70	50.85	33
34	51.00	51.15	51.30	51.45	51.60	51.75	51.90	52.05	52.20	52.35	34
35	52.50	52.65	52.80	52.95	53.10	53.25	53.40	53.55	53.70	53.85	35
36	54.00	54.15	54.30	54.45	54.60	54.75	54.90	55.05	55.20	55.35	36
37	55.50	55.65	55.80	55.95	56.10	56.25	56.40	56.55	56.70	56.85	37
38	57.00	57.15	57.30	57.45	57.60	57.75	57.90	58.05	58.20	58.35	38
39	58.50	58.65	58.80	58.95	59.10	59.25	59.40	59.55	59.70	59.85	39
40	60.00	60.15	60.30	60.45	60.60	60.75	60.90	61.05	61.20	61.35	40
41	61.50	61.65	61.80	61.95	62.10	62.25	62.40	62.55	62.70	62.85	41
42	63.00	63.15	63.30	63.45	63.60	63.75	63.90	64.05	64.20	64.35	42
43	64.50	64.65	64.80	64.95	65.10	65.25	65.40	65.55	65.70	65.85	43
44	66.00	66.15	66.30	66.45	66.60	66.75	66.90	67.05	67.20	67.35	44
45	67.50	67.65	67.80	67.95	68.10	68.25	68.40	68.55	68.70	68.85	45
46	69.00	69.15	69.30	69.45	69.60	69.75	69.90	70.05	70.20	70.35	46
47	70.50	70.65	70.80	70.95	71.10	71.20	71.40	71.55	71.70	71.85	47
48	72.00	72.15	72.30	72.45	72.60	72.75	72.90	73.05	73.20	73.35	48
49	73.50	73.65	73.80	73.95	74.10	74.25	74.40	74.55	74.70	74.85	49
50	75.00	75.15	75.30	75.45	75.60	75.75	75.90	76.05	76.20	76.35	50

THE NATIONAL BLANK BOOK COMPANY  
 HOLYOKE MASSACHUSETTS  
 NEW YORK CHICAGO BOSTON SAN FRANCISCO