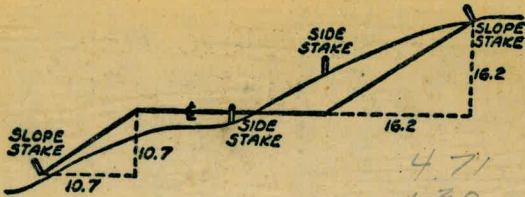


11/11/12



DISTANCES FROM SIDE STAKES FOR CROSS-SECTIONING  
SLOPE 1 TO 1. ROADWAY OF ANY WIDTH

	0	.1	.2	.3	.4	.5	.6	.7	.8	.9	
0	0.00	0.10	0.20	0.30	0.40	0.50	0.60	0.70	0.80	0.90	0
1	1.00	1.10	1.20	1.30	1.40	1.50	1.60	1.70	1.80	1.90	1
2	2.00	2.10	2.20	2.30	2.40	2.50	2.60	2.70	2.80	2.90	2
3	3.00	3.10	3.20	3.30	3.40	3.50	3.60	3.70	3.80	3.90	3
4	4.00	4.10	4.20	4.30	4.40	4.50	4.60	4.70	4.80	4.90	4
5	5.00	5.10	5.20	5.30	5.40	5.50	5.60	5.70	5.80	5.90	5
6	6.00	6.10	6.20	6.30	6.40	6.50	6.60	6.70	6.80	6.90	6
7	7.00	7.10	7.20	7.30	7.40	7.50	7.60	7.70	7.80	7.90	7
8	8.00	8.10	8.20	8.30	8.40	8.50	8.60	8.70	8.80	8.90	8
9	9.00	9.10	9.20	9.30	9.40	9.50	9.60	9.70	9.80	9.90	9
10	10.00	10.10	10.20	10.30	10.40	10.50	10.60	10.70	10.80	10.90	10
11	11.00	11.10	11.20	11.30	11.40	11.50	11.60	11.70	11.80	11.90	11
12	12.00	12.10	12.20	12.30	12.40	12.50	12.60	12.70	12.80	12.90	12
13	13.00	13.10	13.20	13.30	13.40	13.50	13.60	13.70	13.80	13.90	13
14	14.00	14.10	14.20	14.30	14.40	14.50	14.60	14.70	14.80	14.90	14
15	15.00	15.10	15.20	15.30	15.40	15.50	15.60	15.70	15.80	15.90	15
16	16.00	16.10	16.20	16.30	16.40	16.50	16.60	16.70	16.80	16.90	16
17	17.00	17.10	17.20	17.30	17.40	17.50	17.60	17.70	17.80	17.90	17
18	18.00	18.10	18.20	18.30	18.40	18.50	18.60	18.70	18.80	18.90	18
19	19.00	19.10	19.20	19.30	19.40	19.50	19.60	19.70	19.80	19.90	19
20	20.00	20.10	20.20	20.30	20.40	20.50	20.60	20.70	20.80	20.90	20
21	21.00	21.10	21.20	21.30	21.40	21.50	21.60	21.70	21.80	21.90	21
22	22.00	22.10	22.20	22.30	22.40	22.50	22.60	22.70	22.80	22.90	22
23	23.00	23.10	23.20	23.30	23.40	23.50	23.60	23.70	23.80	23.90	23
24	24.00	24.10	24.20	24.30	24.40	24.50	24.60	24.70	24.80	24.90	24
25	25.00	25.10	25.20	25.30	25.40	25.50	25.60	25.70	25.80	25.90	25
26	26.00	26.10	26.20	26.30	26.40	26.50	26.60	26.70	26.80	26.90	26
27	27.00	27.10	27.20	27.30	27.40	27.50	27.60	27.70	27.80	27.90	27
28	28.00	28.10	28.20	28.30	28.40	28.50	28.60	28.70	28.80	28.90	28
29	29.00	29.10	29.20	29.30	29.40	29.50	29.60	29.70	29.80	29.90	29
30	30.00	30.10	30.20	30.30	30.40	30.50	30.60	30.70	30.80	30.90	30
31	31.00	31.10	31.20	31.30	31.40	31.50	31.60	31.70	31.80	31.90	31
32	32.00	32.10	32.20	32.30	32.40	32.50	32.60	32.70	32.80	32.90	32
33	33.00	33.10	33.20	33.30	33.40	33.50	33.60	33.70	33.80	33.90	33
34	34.00	34.10	34.20	34.30	34.40	34.50	34.60	34.70	34.80	34.90	34
35	35.00	35.10	35.20	35.30	35.40	35.50	35.60	35.70	35.80	35.90	35
36	36.00	36.10	36.20	36.30	36.40	36.50	36.60	36.70	36.80	36.90	36
37	37.00	37.10	37.20	37.30	37.40	37.50	37.60	37.70	37.80	37.90	37
38	38.00	38.10	38.20	38.30	38.40	38.50	38.60	38.70	38.80	38.90	38
39	39.00	39.10	39.20	39.30	39.40	39.50	39.60	39.70	39.80	39.90	39
40	40.00	40.10	40.20	40.30	40.40	40.50	40.60	40.70	40.80	40.90	40
41	41.00	41.10	41.20	41.30	41.40	41.50	41.60	41.70	41.80	41.90	41
42	42.00	42.10	42.20	42.30	42.40	42.50	42.60	42.70	42.80	42.90	42
43	43.00	43.10	43.20	43.30	43.40	43.50	43.60	43.70	43.80	43.90	43
44	44.00	44.10	44.20	44.30	44.40	44.50	44.60	44.70	44.80	44.90	44
45	45.00	45.10	45.20	45.30	45.40	45.50	45.60	45.70	45.80	45.90	45
46	46.00	46.10	46.20	46.30	46.40	46.50	46.60	46.70	46.80	46.90	46
47	47.00	47.10	47.20	47.30	47.40	47.50	47.60	47.70	47.80	47.90	47
48	48.00	48.10	48.20	48.30	48.40	48.50	48.60	48.70	48.80	48.90	48
49	49.00	49.10	49.20	49.30	49.40	49.50	49.60	49.70	49.80	49.90	49
50	50.00	50.10	50.20	50.30	50.40	50.50	50.60	50.70	50.80	50.90	50

Distance of slope stake from side or shoulder stake for any width roadway, slope 1 to 1. If ground is nearly level, the cut or fill at side stake is located by the double entry method in left column and top row. The number in body of table in same row and column gives distance from side stake to slope stake. If ground is not level estimate the difference in elevation between the side stake and slope stake, lower target by this amount if cut, elevate if fill. Add this amount to cut or fill and find distance in table. Set up rod at this point, and line of sight should cut target. If it does not make the slight adjustment necessary.

Please Return to  
City of San Diego Water Dept.  
Room 903 Civic Center

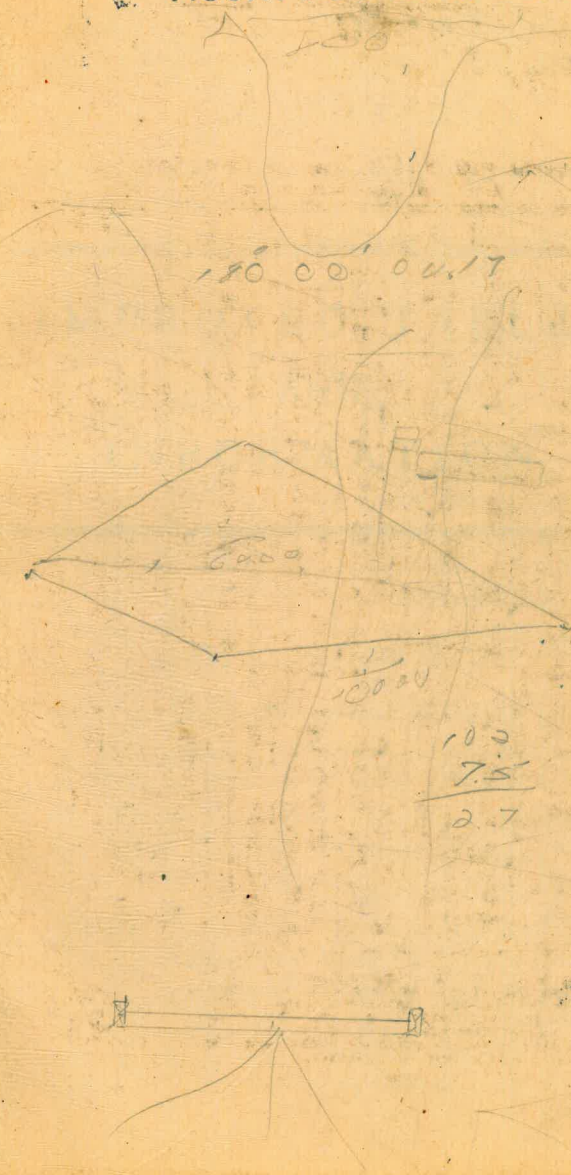




TABLE XIII—CORRECTIONS FOR TANGENTS AND EXTERNALS

These corrections are to be added to the approximate values, found by dividing the tangent, or external, for a 1° curve (Table VIII) by the degree of curve, in order to obtain the true tangents, or externals. Intermediate values may be obtained by interpolation.

FOR TANGENTS ADD

Central Angle	DEGREE OF CURVE													
	5°	10°	15°	20°	25°	30°	35°	40°	45°	50°	55°	60°	65°	70°
10°	.03	.06	.09	.13	.16	.19	.22	.25	.28	.31	.34	.38	.42	.46
15°	.04	.10	.14	.19	.24	.29	.34	.39	.45	.51	.53	.58	.63	.68
20°	.06	.13	.19	.26	.32	.39	.45	.51	.58	.65	.72	.79	.84	.90
25°	.08	.16	.24	.33	.40	.49	.58	.67	.75	.83	.90	.99	1.06	1.14
30°	.10	.19	.29	.39	.49	.59	.69	.79	.89	.99	1.09	1.20	1.29	1.39
35°	.11	.22	.34	.47	.58	.69	.79	.89	.99	1.09	1.20	1.31	1.41	1.51
40°	.13	.26	.40	.53	.67	.80	.93	1.06	1.20	1.34	1.49	1.64	1.79	1.94
45°	.15	.30	.44	.60	.76	.91	1.06	1.21	1.37	1.52	1.70	1.87	2.04	2.21
50°	.17	.34	.51	.68	.85	1.02	1.19	1.36	1.54	1.72	1.91	2.10	2.29	2.48
55°	.19	.38	.57	.76	.95	1.14	1.32	1.52	1.72	1.92	2.14	2.35	2.56	2.77
60°	.21	.42	.63	.84	1.05	1.27	1.49	1.71	1.94	2.17	2.38	2.60	2.83	3.07
65°	.23	.46	.69	.93	1.16	1.40	1.64	1.88	2.13	2.38	2.63	2.88	3.13	3.39
70°	.25	.51	.76	1.02	1.28	1.54	1.80	2.06	2.33	2.60	2.88	3.16	3.44	3.72
75°	.27	.56	.83	1.12	1.40	1.69	1.98	2.27	2.57	2.87	3.16	3.47	3.78	4.09
80°	.30	.61	.91	1.22	1.53	1.84	2.15	2.46	2.78	3.10	3.44	3.78	4.12	4.46
85°	.33	.66	1.00	1.33	1.68	2.02	2.36	2.70	3.05	3.40	3.77	4.14	4.55	4.89
90°	.36	.72	1.09	1.45	1.83	2.20	2.57	2.94	3.32	3.70	4.10	4.50	4.91	5.32
95°	.39	.79	1.19	1.55	1.90	2.28	2.65	3.02	3.40	3.80	4.20	4.60	5.00	5.40
100°	.43	.86	1.30	1.74	2.18	2.62	3.06	3.50	3.95	4.40	4.88	5.37	5.85	6.34
110°	.51	1.03	1.56	2.08	2.61	3.14	3.67	4.21	4.76	5.31	5.86	6.43	7.01	7.60
120°	.62	1.25	1.93	2.52	3.16	3.81	4.45	5.11	5.77	6.44	7.12	7.80	8.50	9.22

FOR EXTERNALS ADD

Central Angle	DEGREE OF CURVE													
	5°	10°	15°	20°	25°	30°	35°	40°	45°	50°	55°	60°	65°	70°
10°	.001	.003	.004	.006	.007	.008	.009	.011	.012	.014	.015	.017	.018	.020
15°	.003	.007	.010	.014	.018	.023	.027	.029	.032	.035	.039	.043	.047	.051
20°	.006	.011	.017	.022	.028	.034	.038	.045	.051	.057	.063	.070	.076	.083
25°	.009	.018	.027	.036	.046	.056	.065	.074	.083	.093	.106	.120	.127	.135
30°	.013	.025	.038	.051	.065	.078	.090	.103	.116	.129	.149	.170	.179	.188
35°	.018	.035	.054	.072	.086	.109	.131	.153	.175	.197	.213	.230	.247	.264
40°	.023	.046	.070	.093	.117	.141	.172	.203	.234	.265	.277	.290	.315	.341
45°	.030	.060	.093	.119	.153	.184	.216	.254	.289	.325	.351	.378	.411	.445
50°	.037	.075	.116	.151	.189	.227	.266	.305	.345	.384	.425	.467	.508	.550
55°	.046	.093	.142	.188	.236	.283	.332	.381	.420	.479	.530	.582	.641	.700
60°	.056	.112	.168	.225	.283	.340	.398	.457	.516	.575	.636	.697	.774	.851
65°	.067	.135	.204	.273	.343	.412	.483	.554	.625	.697	.771	.845	.922	1.01
70°	.080	.159	.240	.321	.403	.485	.568	.652	.735	.819	.906	.994	1.08	1.17
75°	.095	.182	.286	.383	.480	.578	.678	.777	.877	.977	1.07	1.18	1.29	1.39
80°	.110	.220	.332	.445	.558	.671	.787	.903	1.02	1.13	1.25	1.38	1.50	1.62
85°	.128	.259	.391	.524	.657	.790	.926	1.06	1.20	1.34	1.47	1.62	1.76	1.91
90°	.149	.299	.450	.603	.756	.910	1.07	1.22	1.38	1.54	1.70	1.87	2.03	2.20
95°	.174	.350	.522	.706	.885	1.06	1.25	1.43	1.62	1.80	1.99	2.18	2.38	2.58
100°	.200	.401	.604	.809	1.01	1.22	1.43	1.64	1.85	2.06	2.28	2.50	2.73	2.96
110°	.268	.536	.806	1.08	1.35	1.63	1.91	2.20	2.48	2.76	3.05	3.35	3.66	3.96
120°	.360	.721	1.08	1.45	1.82	2.19	2.57	2.95	3.33	3.72	4.11	4.50	4.91	5.32

INDEX

Proposed Pl. Francis St Webster <sup>to Oceanview</sup> <sup>alice</sup> 1-3 ✓  
 " " Paradise St Springfield <sup>to Tooley</sup> 4-5 ✓  
 " " Tooley St Paradise <sup>to Weaver</sup> 6-11 ✓  
 " " Extralpa Trojan to Orange 12-13 ✓  
 " " 35<sup>th</sup> Oceanview to Valle 14 ✓  
 " " Valle 35<sup>th</sup> to 34 ✓  
 " " 34<sup>th</sup> Valle to Martin ✓  
 " " Martin 34<sup>th</sup> to 35<sup>th</sup> ✓  
 35<sup>th</sup> Martin to Florence 19 ✓  
 33<sup>rd</sup> St Grape to Fire, Proposed Water 20-31 ✓  
 Alley - Fulton - 34<sup>th</sup> from Madison to Adams 22-23 ✓  
 \* WINNETT ST Tooley to Federal Blvd <sup>alice</sup> 24-27 ✓  
 Republica Tooley to South 28 ✓  
 Prop. Line 100 ✓ 34  
 Weaver St 60<sup>th</sup> to Burton <sup>alice</sup> 35-39 ✓  
 ✓ Flicker St. Lisbon to 400<sup>th</sup> N. 40-42 ✓  
 ✓ Pidgeon St. Jamaica to Foster 43-46 ✓  
 ✓ Detroit Ave. 65<sup>th</sup> to Woodman St. 47-52 ✓  
 or 59<sup>th</sup> St. Detroit Ave. to Benson Pl. 53-56 ✓  
 or Iona St. Kenwood to Merlia Dr. (OVER) <sup>alice</sup> 57-61 ✓



Index

✓  
x Broadway St. - Madera to 69<sup>th</sup> St. 62-66 ✓  
alice

33<sup>rd</sup> St. GRAPE TO FIR, STKS & GRDS 6" AC WOT 67-68 ✓  
alice

ESTRELLA AVE, ORANGE TO TROJAN, STKS & GRDS 6" WOT 69-70 ✓  
alice

Alley Bk. 1, E of CHAMBER, Nor Myrtle, 6" WOT & WOT MET 71-73 ✓  
alice

49<sup>th</sup> St. UNIV. to S TERMINUS, STKS & GRDS 6" WOT 74-75 ✓  
alice

50<sup>th</sup> St. UNIV. to Oakcrest, " " " " " 76-77 ✓  
alice

Alley Bk. 2, <sup>Nor. of Orange.</sup> East of Highland, " " " " " 78-79 ✓  
alice



Pl. Profile  
Francis St  
Webster St to Ocean View Blvd

West  
Martell  
Voronfakis

25 Nov 52

	8.48	76.86		68.38
	4.95	77.05	4.76	72.10
	1.29	68.45	9.89	67.16
			8.27	+8.0 To Flow
	1.58	57.37	12.66	55.79
0+00			8.5	
+10			9.2	
+14			11.7	
+50			9.2	
1+00			5.5	
	5.49	61.55	1.31	56.06
+50			5.0	
2+00			3.1	
+50			2.9	
3+00			3.9	
+50			6.0	
+75			11.7	
	3.36	52.37	12.54	49.01
4+00			6.0	
+44			10.1	
+51			8.7	
+75			2.6	
	10.78	63.10	0.05	52.32

BM SE Top Hyd 35<sup>th</sup> + Ocean View Blvd

Sewer in alley  
Top west edge sewer MH 125' LT

North prop line Webster St



		63.10		
5+00			7.5	
+09			5.8	
+50			5.2	
6+00			4.9	
+50			4.2	
7+00			3.5	
+50			2.7	
8+00			2.9	
+50	1.95	62.32	2.8	60.37
9+00			1.3	
+50			0.4	
10+00			1.1	
+50			5.4	
11+00			11.1	
+50	1.65	51.40	12.57	49.75
+50			5.2	
+58 <sup>5</sup>			5.77	
12+00			5.85	
+25 <sup>3</sup>			6.66	
+26 <sup>9</sup>			5.95	
+32 <sup>75</sup>			4.3	
	11.59	62.82	0.17	51.23
	8.34	70.86	0.30	62.52
			2.46	68.30 = 68.38

Edge cone pass Oceanview

Approx. to Oceanview

Putten

Top of



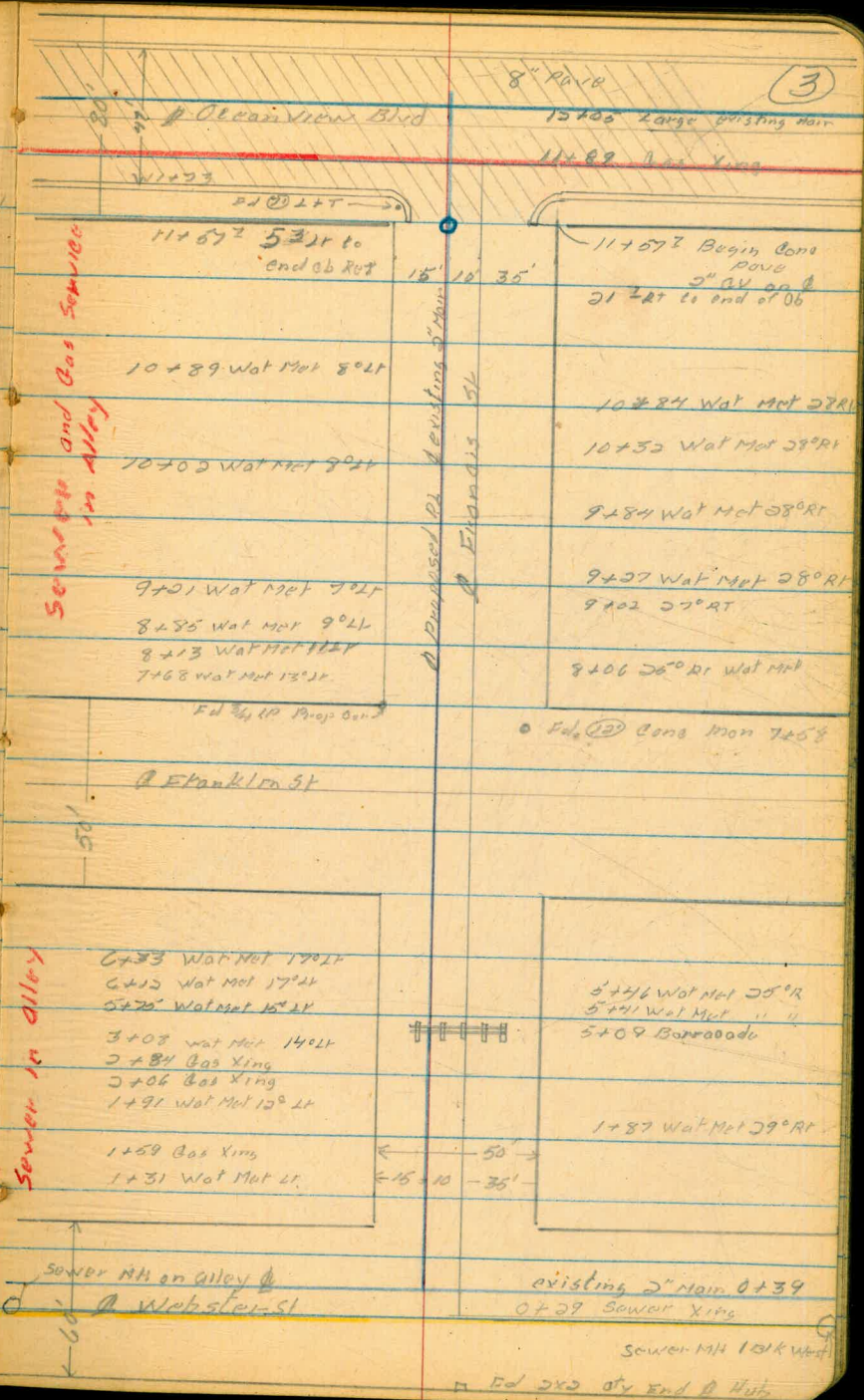
10+38.25

South prop line Ocean View



0+00

North prop line Webster St



Sewer and Gas Service in Alley

Sewer in Alley



Profile Paradise St  
Springfield to Tooley

	9.80	443.97		434.17
0+00			11.6	432.4
+50			8.7	435.3
+67				
1+00			4.5	439.5
+50			2.0	441.8
	11.64	454.41	1.20	445.97
2+00			10.3	444.1
+50			2.4	447.0
3+00			4.5	449.6
+50			1.2	453.2
	11.13	464.65	0.89	453.50
4+00			8.7	456.0
+50			6.9	457.8
5+00			5.5	459.2
+50			4.8	459.9
6+00			4.0	460.5
+50			3.2	461.5
7+00			2.2	462.5
+50 <sup>3</sup>			1.8	462.9
			2.42	462.23
	2.84	457.43	10.06	454.59
	1.81	446.55	12.71	444.72
			12.35	434.18 = 434.17

West  
Martell  
Varanfakis

26 Nov 52

4

RM Top Five Hyd SE Cor Springfield  
Paradise

SE prop line Springfield St

	2.7	7.0	7.0
Top stem 4" CV	10.2	5.0R	10.0R

4.2	6.2
10.2	10.0R
0.9	3.1
10.2	10.0R

on prop 001 West Side Tooley







Q PL Profile  
 Tooley St  
 Paradise to Weaver St

	6.11	468.34		462.23
0+00		5.5		462.8
+50		5.5		462.8
+50		4.9		463.4
1+00		5.9		462.4
+50		9.2		459.1
2+00		12.8		455.5
+50		13.4		454.94
3+00		10.7		457.6
+50		10.2		458.1
4+00		10.7		457.6
+50		10.6		457.7
5+00		9.9		458.4
+50		8.8		459.5
6+00		8.2		460.1
+50		8.8		459.5
7+00		10.0		458.3
	0.38	458.41	10.31	458.03
+50		0.9		457.5

West  
 Williams  
 Marshall  
 Varonfakis

1 Dec 50

T.B.M. 1P Prop. Cur See Page 4

Top = 7+26<sup>90</sup> Page 4

~~A~~

$\frac{6.5}{10^{\circ}RT}$	$\frac{6.5}{10^{\circ}RT}$
$\frac{9.9}{4^{\circ}RT}$	$\frac{9.9}{10^{\circ}RT}$

$\frac{11.2}{5^{\circ}RT}$

$\frac{12.1}{10^{\circ}RT}$   
 $\frac{11.6}{10^{\circ}RT}$

$\frac{10.6}{10^{\circ}RT}$   
 $\frac{9.7}{10^{\circ}RT}$

$\frac{7.8}{10^{\circ}RT}$      $\frac{7.9}{10^{\circ}RT}$

$\frac{8.2}{2^{\circ}RT}$      $\frac{7.3}{3^{\circ}RT}$      $\frac{7.9}{10^{\circ}RT}$



8+00	458.41	3.6	454.8		
+50		7.3	451.1		
9+00		10.6	447.8		
	1.31	446.79	12.93	445.48	
9+50		1.6	445.2		0.7 40° RT
10+00		3.1	443.7		40° RT
+30		4.8	441.99		3.7 30° L
+50		5.3	441.5		7.1 70° RT
11+00		6.2	440.6		6.6 Flow 20° L
+50		8.5	438.3		8.8 to Flow Line 70° RT
	0.51	434.69	12.61	434.18	
12+00		1.5	433.2		
+50		6.3	428.4		Top of Road Bank
13+00		11.4	423.3		1.3 8.0 L
	0.49	422.33	12.85	421.84	6.7 40° L
+50		4.2	418.1		8.1 60° L
+80		7.49	414.8		11.5 20° L
+90		8.3	414.0		1.4 30° L
14+00		8.5	413.8		Top Bank Road Cut

24 1/2 On/Off

8.8 to Flow Line

Top of Road Bank

Top Bank Road Cut

Begin Blacktop

2



14+00		420.33	8.66	413.7
+50			8.0	414.3
15+00			3.3	419.0
	12.55	434.13	0.75	421.58
+50			9.0	425.1
16+00			2.3	431.8
	12.31	444.26	0.18	433.95
+50			8.5	437.9
17+00			2.9	443.4
+50			0.1	446.2
	8.82	454.91	0.17	446.09
18+00			8.9	446.0
+50			9.6	445.3
19+00			10.1	444.8
+22			9.8	445.1
+50			9.4	445.5
20+00			7.7	447.2
+50			6.0	448.9
21+00			4.9	450.0

edge oil

+3.0  
 Top of Road Bank 6.41  
 +7.6  
 6.11

old 7' 10" Culvert 12.8  
 15° 21' 16.5 Flow Line  
 24 RI



Q Profile Toolway St Cont  
Paradise to Weaver

West  
Williams  
Martell  
Varenfokis

9

1	21+50		454.91	4.6	450.3		$\frac{5.3}{30 \text{ ft}}$
	+50			5.6	449.3		
12	22+00			5.9	449.0		
	+50			5.5	449.4		
	23+00			7.0	447.9		
	+50			10.2	444.7		
	24+00	0.33	442.84	12.40	442.51		
	+50			3.9	438.9		
	25+00			12.9	429.9		$\frac{9.9}{40 \text{ ft}}$
		0.28	430.36	12.76	430.08		
				11.0			
1		0.39	418.33	12.40	417.94		
	26+00			9.1	409.2		
1		0.15	406.00	12.48	405.85		
	+50			4.9	401.1		$\frac{3.0}{50 \text{ ft}}$
	27+00			11.6	394.4		
		0.42	393.34	13.08	392.92		
	+50			4.3	389.0		
	27+56			5.1	388.2		
		0.19	380.66	12.87	380.47		
		0.48	369.74	11.40	369.26		
				3.81	365.93	=	

X end of line begin Weaver St PL

366.17 TB 19 EC Core Men 40 ft 21+88.42 on Weaver







44° 38' 11" To proposed Pt Weaver

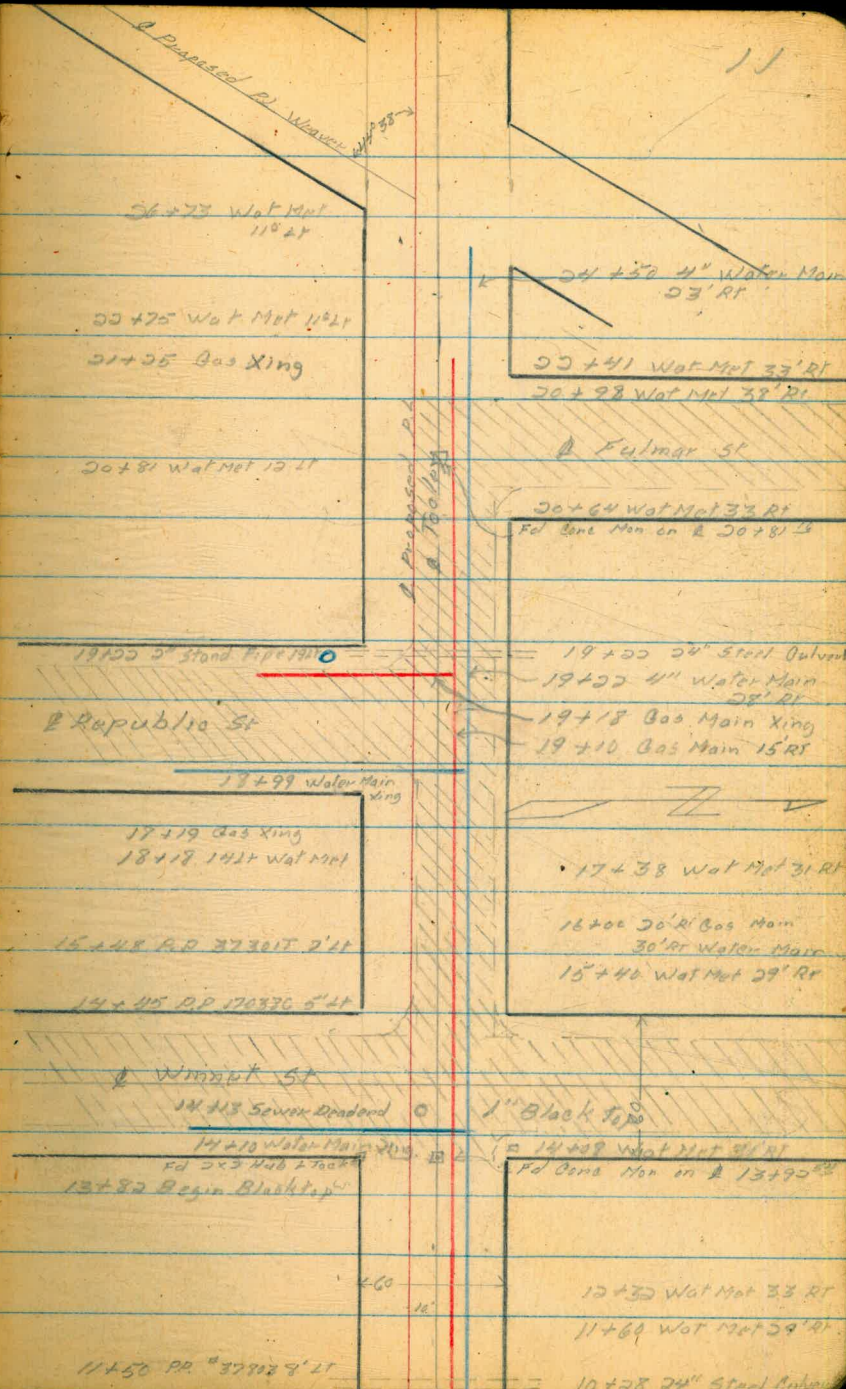
27+56<sup>02</sup> Today = 23+28<sup>20</sup> Weaver

23+92<sup>22</sup> P.O.T

17+74<sup>62</sup> P.O.T

13+92<sup>54</sup> 2° 00' RT

10+95<sup>30</sup> P.O.T





Q Pl. Profile  
Estrella  
Trojan to Orange

	0.27	363.16		362.89
	1.14	351.31	12.99	350.17
0+00			5.1	346.21
0+02			7.3	344.0
+50			4.0	347.3
1+00			3.3	348.
+50			3.4	347.9
2+00			4.0	347.3
+50			5.6	345.7
3+00			7.7	343.6
	0.25	345.39	6.18	345.13
3+50			3.8	341.6
4+00			5.8	339.6
4+37			7.3	41.0 To Flow Line
+50			6.7	338.7
+70			19.3	To Flow Line
5+00			5.3	340.1
+50			3.4	342.0
6+00			1.4	344.0
	6.72	351.21	0.89	344.49
+50			5.5	345.7
7+00			5.0	346.2
+40 <sup>23</sup>			5.7	345.5
			2.91	348.30 =

West  
Varenakis  
Kamp

Dec 3, 52 12

30" Storm Drain

BM NW BP Trojan Ave + Winona  
North prop line Trojan  
Top Wheel 5" BV

338.1 @ 327.1  
35° RT Top Grate Storm Drain  
37° Lt end of 48" Storm Drain 326.1

South prop line Orange  
348.45 BM  $\square$  Church Steps Orange  
Estrella

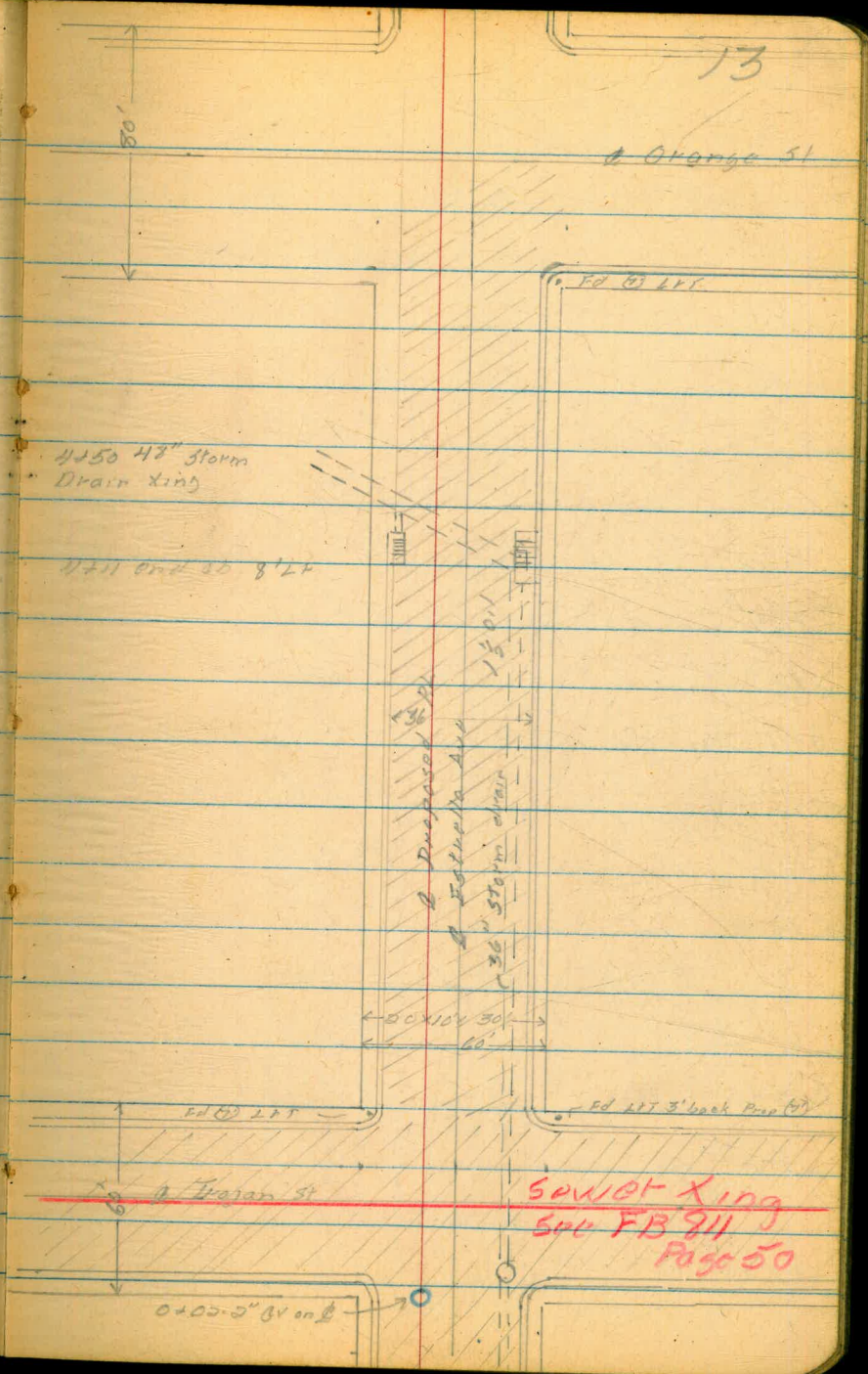


7+40<sup>23</sup>  
80  
6+60<sup>23</sup>

South prop line Orange St

0+00

North Prop Line Trajan St





Profile  
 35<sup>th</sup> Ocean View to Valle  
 Valle 35<sup>th</sup> to 34<sup>th</sup>  
 34<sup>th</sup> Valle to Martin

Elev

Sta	9.63	77.81	68.38	68.18
0+00			12.0	65.8 ✓
+50			11.9	65.9 ✓
1+00			10.6	67.2 ✓
+50			6.0	71.8 ✓
2+00			3.7	74.1
+50			4.7	73.1
3+00			5.5	72.3
+50			6.7	71.1
3+80 <sup>60</sup>			7.4	70.4
4+00			8.1	69.7
+50			10.9	66.9
5+00			13.1	64.7
	1.76	66.71	12.86	64.95
+50			4.1	62.6
6+00			6.7	60.0
+50			11.0	55.1
	1.64	55.54	12.81	53.90
7+00			8.6	46.9
	1.53	44.36	12.71	43.83

West  
 Martell  
 Varon Sakis

30<sup>th</sup> Jan 53 14

BM SE Top Five Hyd 35<sup>th</sup> Ocean View  
 edge pavement N line Ocean View



Martin 34<sup>th</sup> to 35<sup>th</sup>

15

Sta	+	HI	-	Elev
7+50		44.36	6.2	38.2 ✓
	1.87	33.71	12.62	31.84
8+00			3.9	29.8 ✓
+50			9.6	24.1 ✓
9+00			13.1	20.6 ✓
	0.82	21.43	13.10	20.61
+50			3.4	18.0 ✓
9+63 <sup>00</sup>			4.1	17.3 ✓
10+00			5.0	16.4
+50			5.4	16.0
11+00			5.2	16.2 11.99864
+15			9.44	+5.6 to Flow line
+50			6.8	14.6
12+00			7.3	14.1
+50			7.7	13.7
12+83 <sup>00</sup>			8.4	13.0
13+00	11.56	25.16	7.83	13.60
+50			9.8	15.4
14+00			7.4	17.8
+50			3.0	22.2
	12.77	37.34	0.59	24.57

Top east edge sewer MH

Turn in & Nail



35<sup>th</sup> St. Martin to  
Florence

Sta	+ HI	-	Elev
15+00	37.34	7.9	29.4
+50		2.9	34.4
16+00	12.30 49.36	0.28	37.06
+50		10.0	39.4
17+00		9.0	40.4
+50		7.8	41.6
18+00		6.7	42.7
+50		3.8	45.6
18+80	<sup>21</sup> 1.4	1.4	48.0
19+00		5.3	44.1
+25		11.2	38.2
	1.99 38.66	12.69	36.67
+50		5.2	33.5
+75		11.0	27.7
	1.96 28.65	11.97	26.69
20+00		5.8	22.9
+30		6.77	21.9
+50		7.0	21.7
21+00		6.2	22.5
	13.08 40.51	1.22	27.43
+50		13.1	27.4

2.3  
10' LT      5.5  
10' RT

Turn on NE top of post of guard rail of  
Foot Bridge

Top east edge sewer MH  
Creek Bank

3.2  
10' RT

10.2  
10' RT



Sta	+	HT	-	
21+25		40.51	9.1	31.4
22+00			4.8	35.7
	12.47	52.92	0.06	40.45
+25			11.3	41.6
+50			8.3	44.6
23+00			5.8	47.1
+50			3.3	49.6
24+00			0.1	52.8
+03			3.40	49.5
	5.20	55.82	2.30	50.62
			4.91	50.91

6.7  
10.21

2.1  
10.21

14.2  
10.21

8.2  
10.21

9.7  
10.21

6.3  
10.21

6.7  
10.21

4.5  
10.21

4.2  
10.21

2.5  
10.21

Top stem 6" C.V.

= 50.80'9 BM BP end North Ob Florence St











33<sup>rd</sup> St.  
 GRAPE TO FIR  
 & Proposed Water

4+60 = Sky Prop line FIR

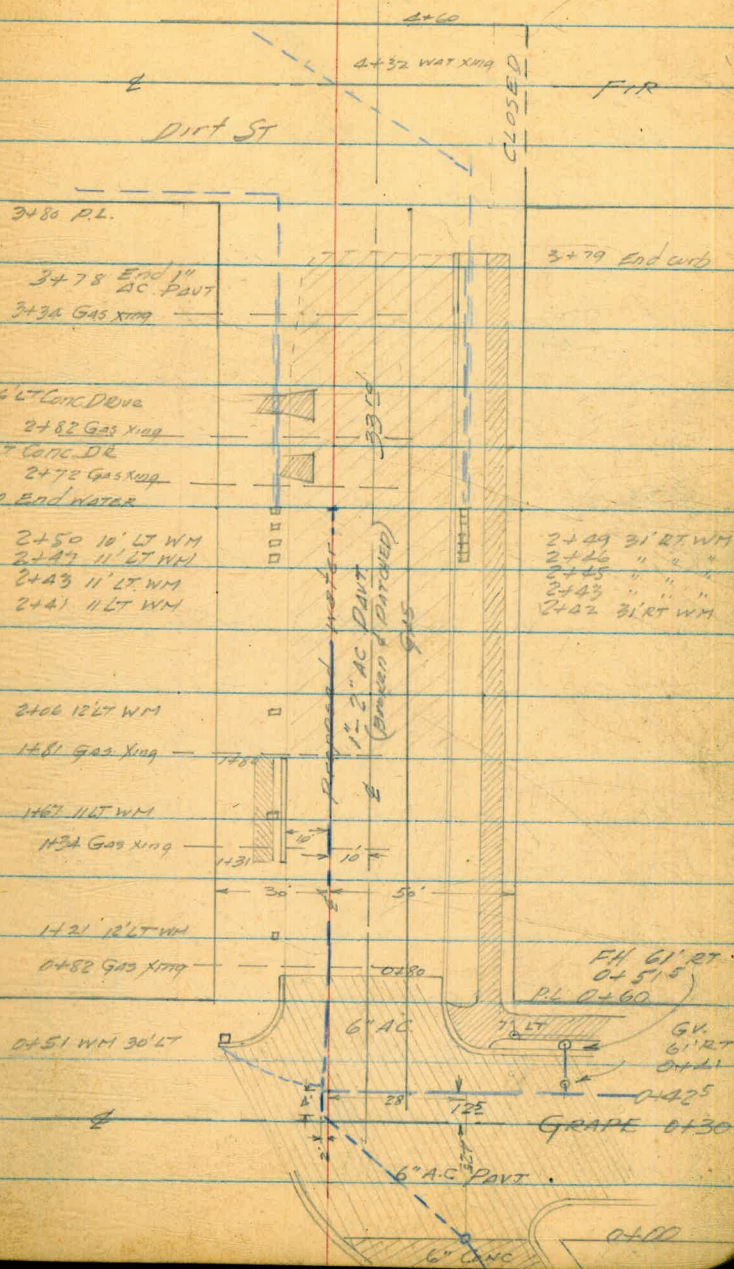
0+00 = Sky Prop line GRAPE



MAR. 18 1953

BEATTY  
 MARTELL  
 ALEXANDER

20





33<sup>rd</sup> St  
 GRAPE to FIR  
 & PROFILE PROPOSED WATER

3/18/53

21

BM	3.79	280.75		276.96
SET TBM	4.59	273.91	11.43	269.32
0+00	on A.C.		10.12	263.8
0+50			10.05	263.9
0+80	End 6" A.C. Begin		8.75	265.2
1+00			8.3	265.6
+50			7.7	266.2
2+00			9.0	264.9
+50			12.0	261.9
P	0.42	261.74	12.59	261.32
3+00			4.7	257.0
+50			10.5	251.2
4+00			14.5	247.2
+33			15.4	246.3
+58			16.3	245.4
+60			17.5	244.2
P	12.95	274.57	0.12	261.62
CK TBM	11.24	280.56	5.26	269.31 = 269.32
CK BM			3.62	276.94 = 276.96

BP SW Cor 32<sup>nd</sup> & GRAPE

Top F.H. SW Cor 33<sup>rd</sup> & GRAPE







ALLEY BIK 62  
 Between FELTON & 34TH  
 From MADISON TO ALLEY 30 of ADAMS  
 & PROFILE OF PROPOSED WATER

3/19/59

23

BM	4.75	393.37	388.32 388.62
IP	4.47	393.86	Rim 2.98 Inv. 8.38 390.39 387.16
SET TBM		7.70	388.16
SEW M.H.		Rim 7.76 Inv. 13.76	
0+60	Edge 6" AC Pavt	7.60	387.3
1+00		6.1	388.8
+50		5.6	389.3
2+00		5.3	389.6
+50		5.0	389.9
3+00		5.0	389.9
+50		5.1	389.8
4+00		4.9	390.0
+50		4.8	390.1
5+00	SEW M.H.	4.8	390.1
+50		Rim 4.51 Inv. 11.70 4.8	390.1
6+00		4.6	390.3
+50		4.3	390.6
7+00		4.2	390.7
+10.90	Edge Conc Pavt	4.30	390.6
7+18.40	& Alley	4.47	390.39
IP	2.95	393.34	4.72 388.62 = 388.62
ck BM			

BP NW Cor Felton & Adams  
 7' LT " " " "

Wedge SEW M.H. 7+18.40

None proposed water, 7' 50 of Nly prop line Madison

SEW M.H. 25 LT 0+30

SEW M.H. 25 LT 5+01



## WINNETT ST

Tooley St to Federal Blvd  
& ProfileKing  
West  
Williams  
Kemp

20 May 53

24

Sta	+	H.	-	Elev	
	4.50	418.50		414.0	Spike $\Delta$ Tooley St 13+92 <sup>52</sup> See page #7
0+00			7.9	410.6	
+50			2.5	416.0	
+80					$\frac{5.3}{6.0}$ $\frac{0.0}{8.0}$ Road Bank
1+00			8.9	409.6	$\frac{8.3}{4.0}$ $\frac{2.7}{6.0}$ $\frac{1.2}{1.6}$
+34			12.3	406.2	$\frac{12.7}{6.0}$ $\frac{6.2}{2.0}$
+50			10.6	407.9	$\frac{14.6}{8}$ $\frac{14.0}{2}$ $\frac{9.1}{2}$ $\frac{9.9}{10}$
	0.50	406.30	12.70	405.80	$\frac{6.8}{9.1}$ $\frac{6.8}{4.1}$ $\frac{3.9}{10.2}$
1+84			4.9	401.4	
2+00			8.0	398.3	
	0.44	394.36	12.38	393.92	
+50			1.6	392.8	
+67			3.9	390.5	
+85			5.5	388.9	Black Top Drive way
3+00			7.6	386.8	
	0.51	381.87	13.00	381.36	
+50			3.1	378.8	$\frac{1.7}{9.1}$ $\frac{3.4}{9.8}$
4+00			7.9	374.0	
	0.25	370.03	12.09	369.78	



	+	11.	-	
4+50		370.03	1.4	368.6
5+00			7.4	362.6
	0.45	357.60	12.88	357.15
+50			1.2	356.4
6+00			7.2	350.4
+50			13.1	344.5
	0.78	345.84	12.48	345.12
7+00			6.5	339.3
+50			11.3	334.5
	0.91	333.80	12.94	332.90
8+00			4.1	329.7
+50			8.2	325.6
9+00			11.9	321.9
	0.31	321.27	12.84	320.96
+50			2.8	318.5
10+00			5.9	315.4
+50			8.7	312.6
11+00			12.6	308.7
	0.07	308.90	12.40	308.85
+50			4.3	304.6



WINNETT ST Cont

26

308.92

12+00			8.8	300.1	on Blacktop
	0.83	297.06	12.69	296.23	
+50			1.9	295.2	
13+00			7.8	289.3	
	0.34	284.50	12.89	284.18	
+50			1.8	282.7	
14+00			9.0	275.5	
+21 <sup>3</sup>			11.32	273.2	South edge concrete Federal
14+39 <sup>6</sup>			11.07	273.4	⊙ Federal
+50			11.27	273.2	
+58			11.50	273.0	North edge concrete Federal
14+80			11.5	273.0	
	4.51	277.92	11.11	273.41	Turn on & LHS Federal + Winnett
			-5.10	272.92 =	272.88 BP South edge pave
					Federal on West prop line
					Winnett
14+16 <sup>2</sup>			-4.60		Top 15" CMP subcut 6° RT







Republic St

From North Line Tooley St  
to South Line Lot 105

10+51.42 EC ~~46'~~ RT not Rec'd.

10+18.96 450 ~~22° 30' RT~~

9+57.74 450 ~~22° 30' RT~~

8+96.23 450 ~~22° 30' RT~~

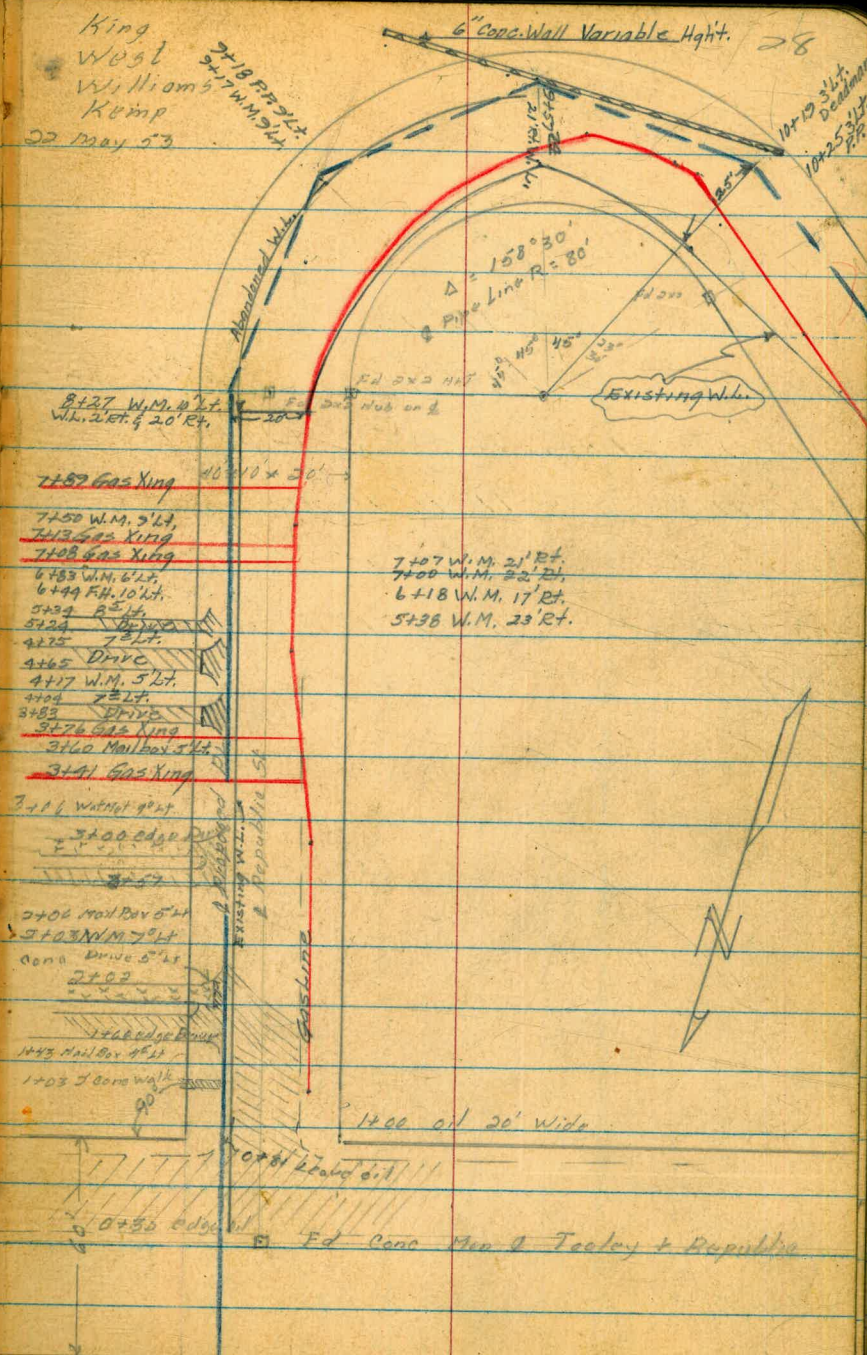
8+35 B.O. 22° 30' RT

$$\Delta = 158^{\circ} 30'$$

$$= \frac{1}{2} \Delta 79^{\circ} 15'$$

Pipe Line Radius = 80'

King  
West  
Williams  
Kemp  
22 May 53



7182 Gas Xing 40' x 10' x 20'

7150 W.M. 5' Lt.

7213 Gas Xing

7108 Gas Xing

6483 W.M. 6' Lt.

6449 F.H. 10' Lt.

5454 R. 5' Lt.

5424 R. 5' Lt.

4275 R. 5' Lt.

4265 Drive

417 W.M. 5' Lt.

4104 R. 5' Lt.

3483 Drive

3176 Gas Xing

3160 Mail Box 5' Lt.

3141 Gas Xing

3111 Water 9' Lt.

3100 edge

3100 edge

3100 edge

3100 edge

3100 edge

3100 edge

3100 edge

3100 edge

3100 edge

3100 edge

3100 edge

3100 edge

3100 edge

3100 edge

3100 edge

3100 edge

3100 edge

3100 edge

3100 edge

3100 edge

3100 edge

3100 edge

3100 edge

3100 edge

3100 edge

7407 W.M. 21' Rt.  
7400 W.M. 22' Rt.  
6418 W.M. 17' Rt.  
5436 W.M. 23' Rt.

1400' or 20' wide

Ed. Conc. Run. of Tooley + Republic

0+00

North Prop. Line Tooley



EC 16+19 <sup>32</sup>

15+63 <sup>34</sup>

12° 15'

15+07 <sup>33</sup>

12° 15'

= 36° 45' SA

14+51 <sup>32</sup> PRO

12° 15'

Δ = 75° 30'

R = 130'

13+78 <sup>21</sup>

11° 16' 40"

13+26 <sup>10</sup>

11° 16' 40"

33° 50' 00" =  $\frac{1}{2}$  Δ

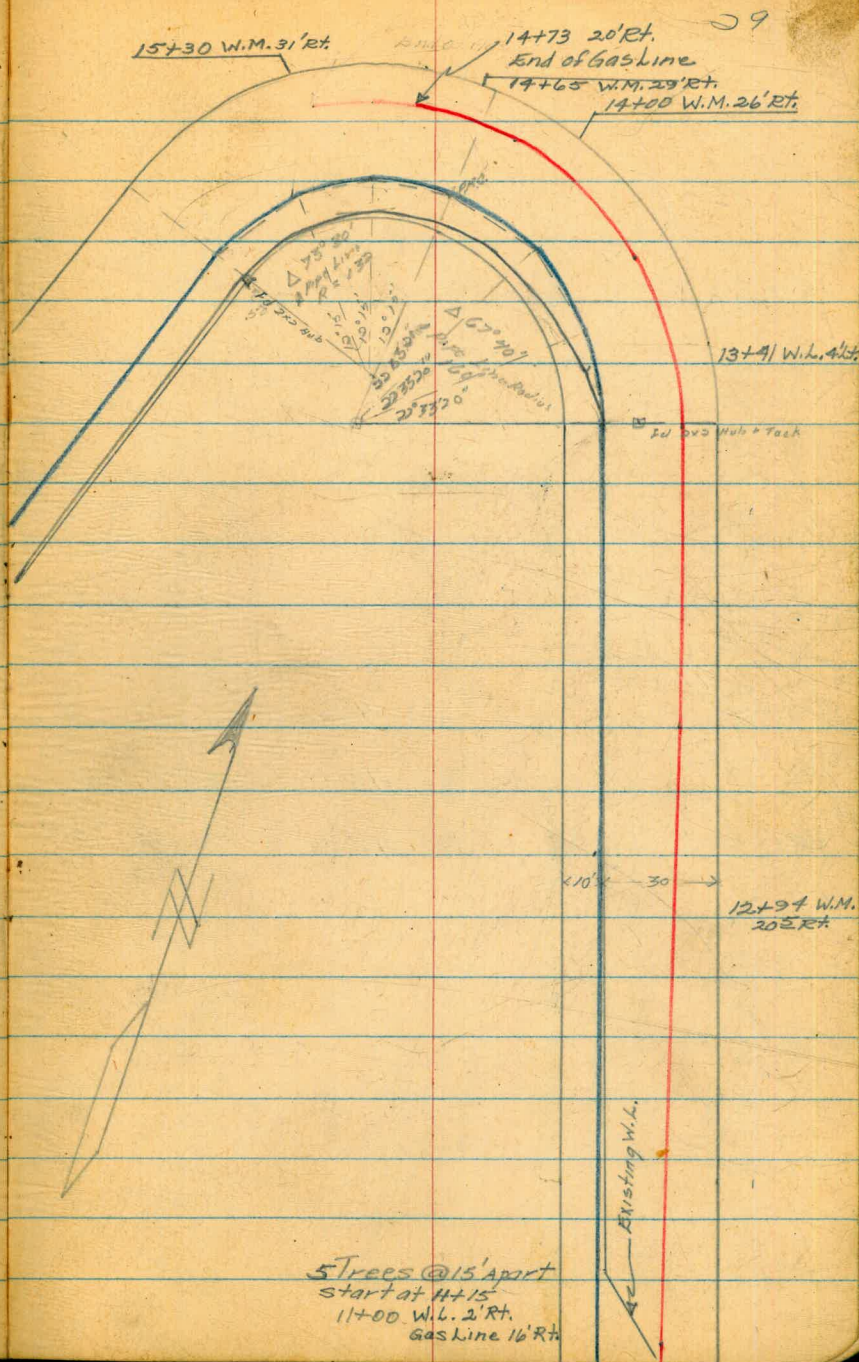
Δ = 67° 40'

BC 12+63 <sup>29</sup>

11° 16' 40"

PLR = 160'

10+50 <sup>21</sup> EC





28+27 93 South Line Lot 105

20+39 93 EC

20+03 11

19+66 29

19+29 47

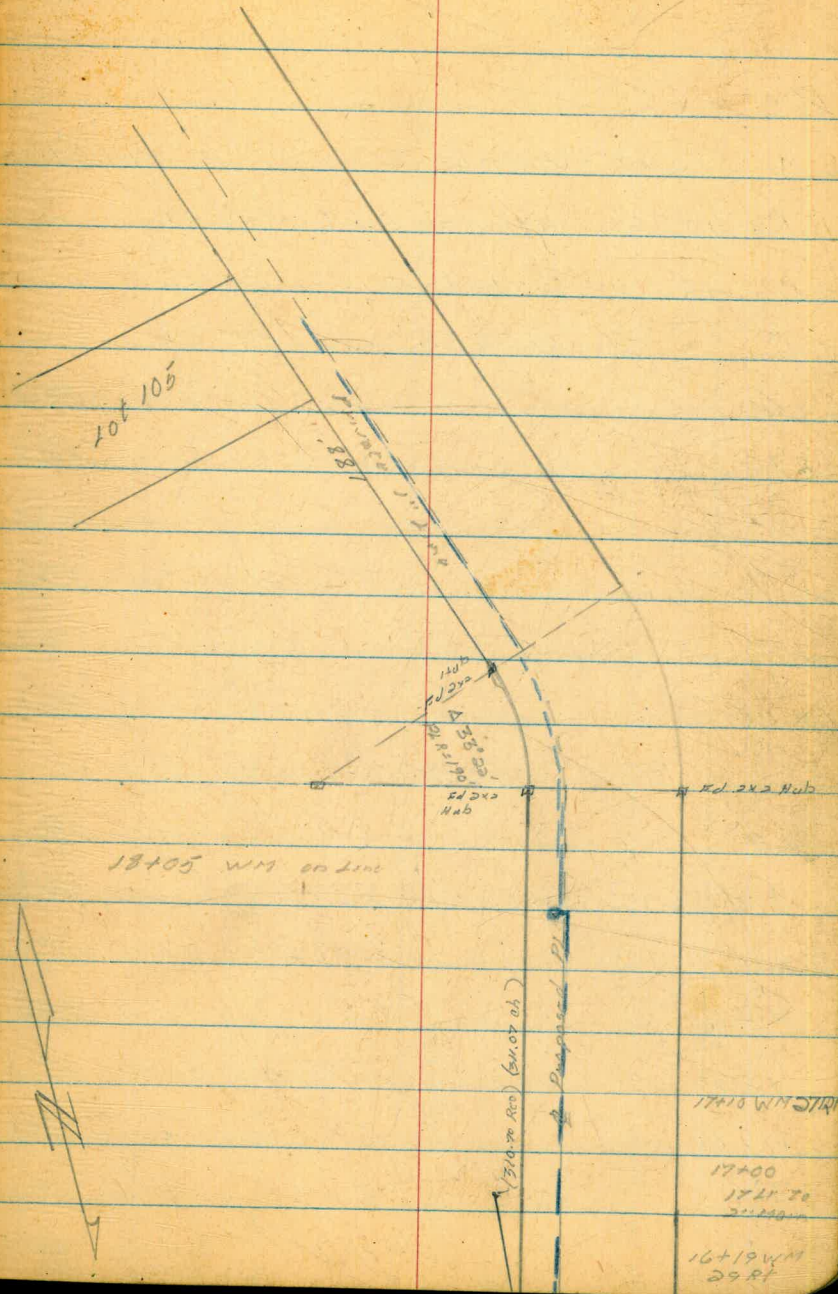
BC

5° 33' 40.11

5° 33' 40.14

5° 33' 40.11

16° 41' 00" = 3A  
 $\Delta = 33^{\circ} 22'$   
 Pipe Line Radius  
 = 190'



13+05 W.M. on Line

10+105  
 10+105  
 10+105  
 10+105

17+10 W.M. on Line

17+40  
 17+21  
 17+21

16+19 W.M.  
 29.81



Repablo St  
 Tooley St

King  
 West  
 Williams  
 Kump

31

25 May 53

Sta	+	H <sub>i</sub>	-	
B.M.	12.29	423.93		411.64
T.P.	12.06	435.35	0.64	423.29
T.P.	12.46	447.71	0.10	435.25
T.P.	3.88	450.39	1.20	446.51
0+00			16.9	433.5
+12			13.1	437.3
+23			6.5	443.9
+33			5.7	444.7
+50			5.1	445.3
1+00			2.3	448.1
	9.72	459.75	0.36	450.03
+50			8.4	451.3
+61			7.87	451.88
2+00			6.29	453.5
+50			5.6	454.1
+58			5.30	454.4
+97			5.10	454.6
3+00			5.1	454.6
3+50			4.6	455.1

TODLEY & WINNETT TOP F.H. (S.E)

♀

North Prop Line Winnet

edge of Winnet

0.6	1.0
<u>10</u>	<u>5.0</u>
	7.5
	<u>10.2</u>

North edge blacktop Driveway

5.3 concrete

10.2 South " " "

North edge driveway

4.2

10 South edge " "



5+1	+	11.1	-	
4+00		459.75	4.0	455.7
+50			3.7	456.0
5+00			3.7	456.0
+50			3.9	455.8
	5.51	461.33	3.93	455.82
6+00			5.7	455.6
+50			5.5	455.8
7+00			5.3	456.0
+50			4.8	456.5
8+00			4.1	457.2
8+35 BC			4.2	457.1
+50			4.4	456.9
8+96 <sup>52</sup>			5.0	456.3
9+50			7.0	454.3
+57 <sup>24</sup>			7.2	454.1
	2.61	452.32	11.62	449.71
10+00			1.9	450.4
+18 <sup>25</sup>			3.5	448.8
51 <sup>49</sup> FO			7.0	445.3

3.64

2.2 ft to edge cone drive

$$\begin{array}{r} 2.0 \\ 10.2 \\ \hline 12.2 \end{array}$$

6.7

6.3  
2.2 ft

7.2

2.2 ft bottom of wall

7.8

2.5

5.0

3.5

3.5

10.3

10.1

bottom of wall

bottom of wall

6<sup>2</sup> ft

4.8

6

4.6

15.1

2.4



570								
11200		452.32	6.7		445.6	$\frac{11.4}{10.1}$	$\frac{5.7}{5}$	$\frac{5.7}{10}$
+50			7.9		444.4	$\frac{12.0}{10.1}$	$\frac{6.6}{5}$	$\frac{6.6}{10}$
12+00			6.7		445.6	$\frac{11.0}{10.1}$	$\frac{6.4}{5}$	$\frac{6.7}{10}$
+50			6.5		445.8	$\frac{9.4}{10}$	$\frac{6.0}{5}$	$\frac{6.4}{5}$
+63 <sup>HA</sup> BC			6.8		445.5	$\frac{9.3}{10.1}$	$\frac{6.4}{5}$	$\frac{6.6}{5}$
	2.04	447.06	7.30		445.02			
13+00			5.7		444.4	$\frac{6.3}{10}$		
+26 <sup>10</sup>			3.0		444.1	$\frac{6.4}{10}$		
+88 <sup>21</sup>			5.2		441.8	$\frac{8.0}{10}$	$\frac{4.2}{5}$	$\frac{4.1}{10.1}$
14+51 <sup>5</sup>			7.7		439.4	$\frac{11.1}{10}$		
15+00			10.1		437.0	$\frac{13.6}{10}$	$\frac{7.9}{6}$	
15+68.34			6.8		440.3	$\frac{10.2}{10}$	$\frac{5.6}{3}$	$\frac{5.8}{10}$
E.C.								
16+19.35			8.3		438.8	$\frac{12.6}{10}$	$\frac{7.2}{4}$	$\frac{7.7}{10}$
16+58			12.0		435.1	$\frac{14.3}{10}$	$\frac{8.4}{6}$	$\frac{9.6}{8}$ $\frac{9.3}{10}$
	0.58	436.08	11.56		435.50			
17+00			4.7		431.4	$\frac{7.9}{10}$	$\frac{4.2}{3}$	$\frac{0.9}{8}$ $\frac{0.9}{11}$
+50			6.4		429.7	$\frac{10.0}{10}$	$\frac{5.6}{3}$	$\frac{2.4}{6}$ $\frac{3.3}{9}$ $\frac{3.1}{10}$
18+86			10.3		425.8	$\frac{13.0}{10}$	$\frac{9.5}{3}$	$\frac{6.3}{8}$ $\frac{7.0}{10}$
	0.97	424.51	12.54		423.54			
+50			1.9		422.6	$\frac{4.9}{10}$	$\frac{7.0}{6.0}$	$\frac{4.0}{8.0}$



West  
Williams  
Kemp

29 May 53

34

Sta	+	11.	-							
19+00		424.51	6.4	418.1		$\frac{8.9}{10}$	$\frac{0.1}{3}$	$\frac{2.2}{7}$	$\frac{2.3}{9}$	$\frac{2.3}{10}$
+29 <sup>42</sup>	BC		6.1	418.4		$\frac{8.4}{10}$	$\frac{5.4}{4}$	$\frac{3.6}{7}$	$\frac{1.6}{9}$	
+29 <sup>42</sup>	BC 3.54	418.57	9.48	416.03	Turn on city			Eng oxa Hub	10° 11'	
+66 <sup>49</sup>			3.9	415.9		$\frac{5.6}{10}$	$\frac{4.7}{5}$	$\frac{1.7}{7}$	$\frac{2.0}{10}$	ridge road 10 RY
20+03 <sup>11</sup>			5.7	413.9		$\frac{9.5}{10}$	$\frac{7.6}{5}$	$\frac{4.0}{4}$	$\frac{4.2}{10}$	
+39 <sup>93</sup>			7.9	411.7		$\frac{12.9}{10}$	$\frac{10.6}{5}$	$\frac{6.3}{4}$	$\frac{6.4}{10}$	
+50			9.4	410.2						
	2.50	410.06	12.01	407.56						
21+00			6.0	404.1		$\frac{9.7}{10}$	$\frac{8.0}{5}$	$\frac{2.3}{6}$	$\frac{2.3}{10}$	
+50			9.5	400.6		$\frac{13.1}{10}$		$\frac{5.0}{8}$	$\frac{5.0}{10}$	
22+00			11.2	398.9		$\frac{17.0}{10}$	$\frac{14.1}{5}$	$\frac{6.7}{8}$	$\frac{6.8}{10}$	
+27 <sup>93</sup>			11.9	398.8		$\frac{15.3}{10}$		$\frac{8.1}{7}$	$\frac{8.3}{20}$	
	1.33	400.52	10.87	399.19						
	0.16	389.12	11.56	388.96						
	0.43	376.96	12.59	376.53						
	0.42	366.10	11.28	365.68						
	0.17	362.65	9.62	356.48	South east cor weaver + Republic					
			10.59	352.06 = 352.04	Hub on south side Republic					
					oxa EC Hub See Book 811 P 43					



Proposed Pl.  
Weaver St  
60<sup>th</sup> to Barian

EO 8+89.42

BC 6+95.1

0+79.2

0+00

East Prop Line 60<sup>th</sup>

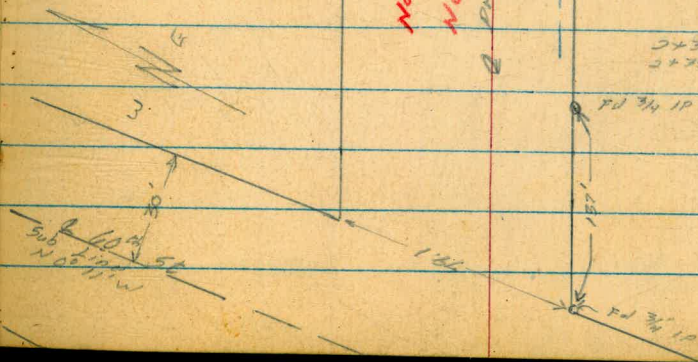
(60<sup>th</sup> St 40')

West prop line 60<sup>th</sup> St

West  
Williams  
Vorankok  
Komp

35

$D = 53^{\circ} 01'$   
 $R = 210'$   
 $L = 194.32$





11+65.56 = 6+00. sec. FB 811 Page 45

11+17.70 EC.  $28^{\circ} 34' RT$

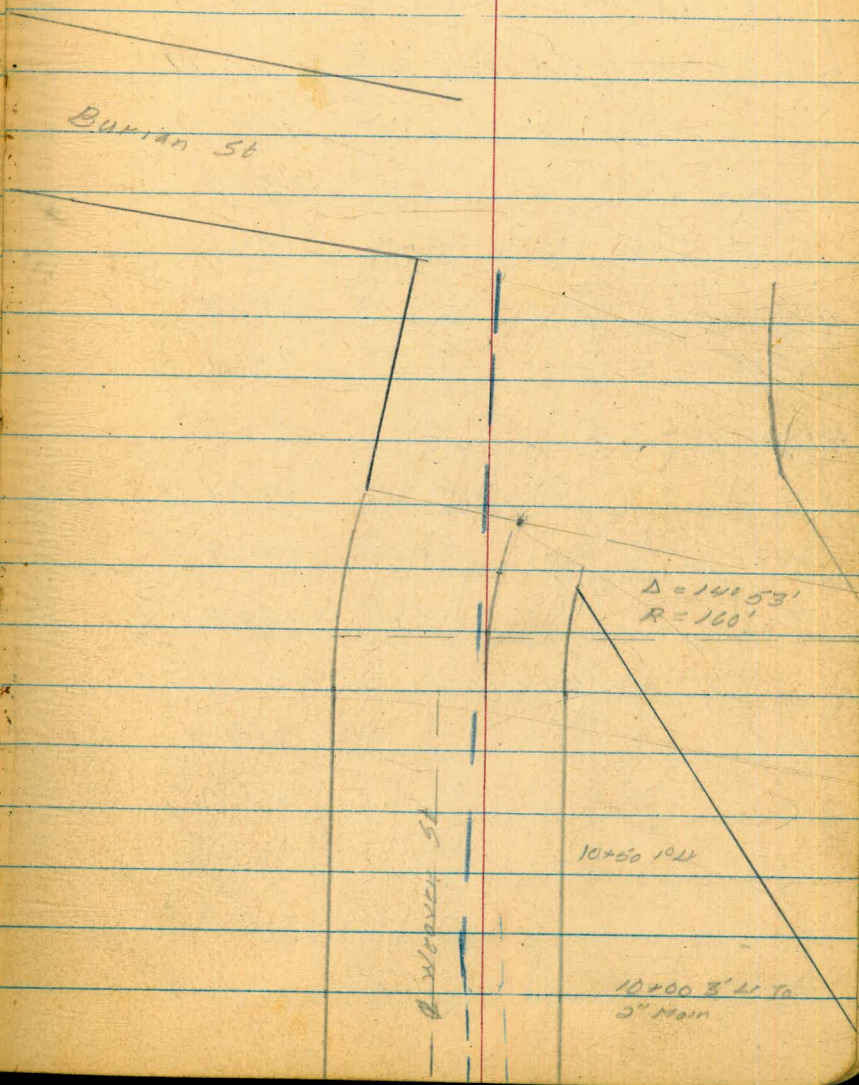
$\Delta 3^{\circ} 43' 15''$

10+96.96

$\Delta 3^{\circ} 43' 15''$

10+76.02 BC

} =  $\frac{1}{2} \Delta$





Profile Weaver St  
60th to Burner

	0.46	352.50		352.04
	1.44	341.09	12.85	339.65
	1.91	330.18	12.80	328.57
	0.00	317.19	12.99	317.19
	0.69	304.88	13.00	304.19
0+00		9.4		295.5
+45		7.3		297.6
+50		10.0		294.9
+79		6.8		298.1
1+00		6.7		298.2
		11.20		293.7
+50		6.7		298.2
2+00		3.3		301.6
	12.38	317.21	0.05	304.83
+50		11.9		305.3
3+00		8.5		308.7
+50		4.7		312.5
4+00		2.4		314.8
+20	10.00	326.64	0.59	316.62

West  
Williams  
Varanfakis  
Kemp

7-29-53

37

Page 43

TBM Top 2x2 Hub 20' RI 6+82.02 546 F.B. 911

				297.8		293.1
				$\frac{7.1}{40'}$		$\frac{11.8}{20' RI}$
				298.9		293.5
				297.6		293.5
				300.4		294.7
				$\frac{6.0}{40'}$		$\frac{11.3}{20' RI}$
				300.4		294.7
				$\frac{7.3}{30'}$		
				301.5		295.7
				$\frac{4.4}{40'}$		$\frac{8.1}{8' RI}$
				$\frac{5.1}{27'}$		$\frac{10.0}{10'}$
				$\frac{6.3}{34'}$		$\frac{10.2}{20' RI}$
				0.479 20' RI		SE Cor Weaver + 60"
				Top 3/4 Prop 20'		
				301.5		295.7
				$\frac{3.3}{40'}$		$\frac{8.5}{8' RI}$
				$\frac{4.3}{27'}$		$\frac{9.0}{20' RI}$
				$\frac{5.3}{23'}$		
				$\frac{5.0}{21'}$		
				0.0		5.7
				$\frac{1.0}{27'}$		$\frac{30}{20'}$
				$\frac{2.0}{25'}$		
				$\frac{3.0}{21'}$		
				303.1		303.7
				$\frac{8.4}{40'}$		$\frac{13.5}{20' RI}$
				303.1		306.4
				$\frac{4.1}{40'}$		$\frac{10.4}{20' RI}$
				312.0		309.7
				$\frac{6.0}{23'}$		$\frac{7.5}{20' RI}$
				$\frac{7.6}{17'}$		$\frac{5.8}{20' RI}$
				0.5		311.4
				$\frac{4.1}{10'}$		$\frac{5.8}{20' RI}$
				324.0		313.1
				$\frac{2.0}{40'}$		$\frac{13.5}{20' RI}$
				324.0		313.1
				$\frac{3.5}{34'}$		$\frac{9.3}{13'}$
				$\frac{5.9}{29'}$		
				$\frac{9.3}{13'}$		







344.18

9.43

353.35

0.26

343.92

1.27

352.08

=

352.04

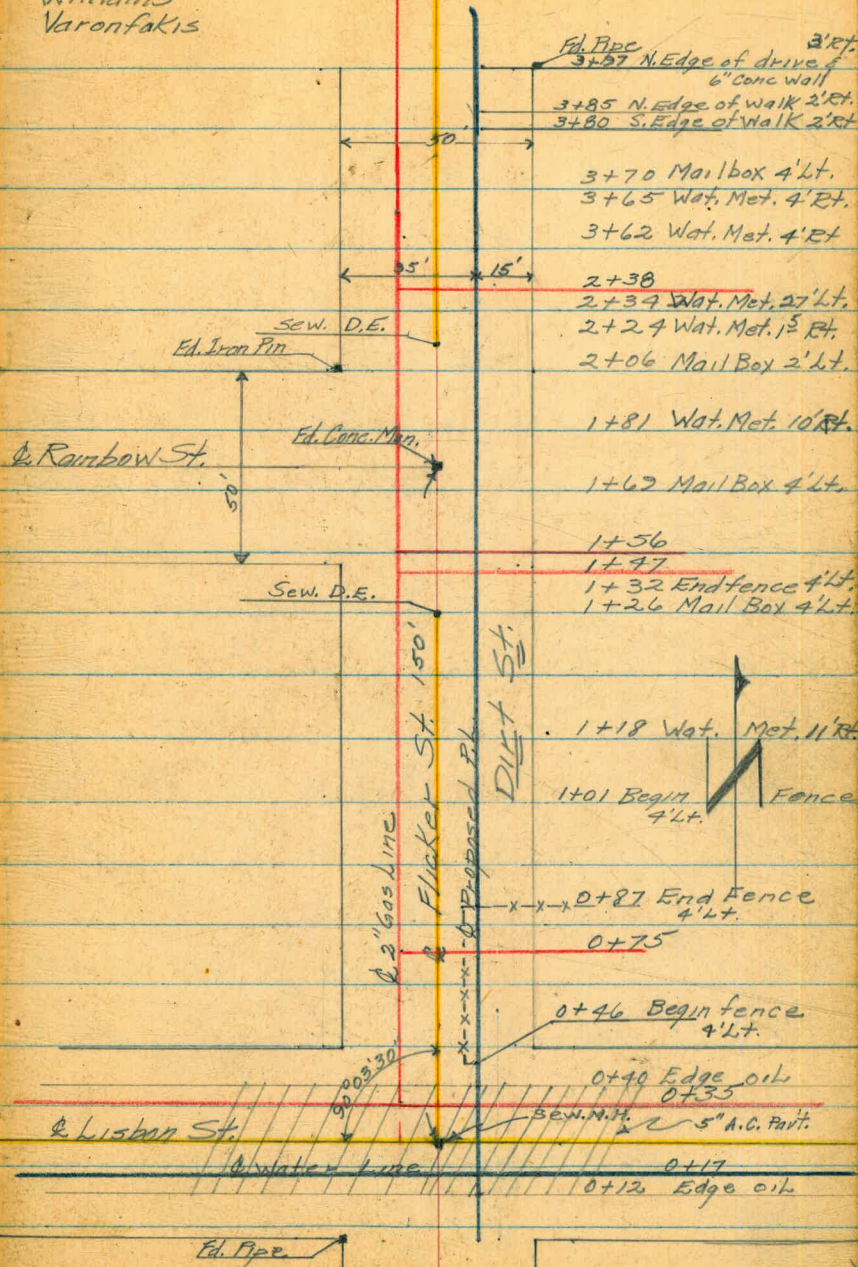
TBM



Profile Flicker St.  
Lisbon St. to 400' N. or N/2 Lot 4

West 8/7/53  
Shorey  
Williams  
Varonfakis

40



4+00 = N/2 Lot 4

1+75 = & Rainbow St.

0+50 = N. Prop. Line Lisbon St.

0+00 = So. Prop. Line Lisbon St.







Q Profile Flicker St.  
Lisbon St. N. 400' or N/L Lot 4

West  
Shorey  
Williams  
Varonfakis

(42)

4+00      284.87      12.3      272.6

TP      1.22      275.49      10.69      274.20

TP      0.68      264.25      11.92      263.57

TP                11.11      253.14 =

270.7      Lt 272.0      Q      Rt      276.8  
 $\frac{11.2}{3.5}$        $\frac{12.2}{10'}$        $\frac{11.0}{4'}$        $\frac{2.0}{6'}$        $\frac{8.1}{16'}$

Top of F.H. Chester & Lisbon St.

253.15 2" Pipe Culvert at 69<sup>th</sup> & Imperial



Profile Pidgeon St.  
Jamacha to Foster St.

10+99<sup>32</sup> = N/L Foster St.

10+74<sup>32</sup> = E. Foster St.

5+24<sup>72</sup> = E. Lisbon St.

0+50 = N/L Jamacha St.

0+00 = S/L Jamacha St.

West 8/7/53  
Shorey  
Williams  
Vorontokis

43

Pidgeon St.

7+00	Present W.L. 5' Lt.
7+57	8' Rt. W.M.
7+73	27' Lt. W.M.
7+74	9' Rt. Olive Tree
7+73	5' Rt. W.M.
7+77	1' Lt. Mailbox
8+00	5' Lt. Present W.L.
8+03	28' Lt. W.M.
8+15	8' Rt. 1' Dia. Olive Tree
8+36	4' Rt. Iron Post
8+39	7' Rt. W.M.
8+40	4' Rt. Iron Post
8+44	" " "
8+32	8 <sup>5</sup> Rt. 1' Dia. Olive Tree
8+74	24' Lt. W.M.
8+77	9' Rt. 1' Dia. Olive Tree
8+00	28' Lt. W.M.
9+33	9' Rt. 0.6' Dia. Olive Tree
9+80	21' Lt. W.M.
9+83	9' Rt. W.M.
9+85	" " "
10+99 <sup>32</sup>	Present W.L. 15' Rt.

Note: Present W.L.

Sta. 1+00	E.
3+00	3' Lt.
4+00	3 <sup>5</sup> Lt.
7+00	5' Lt.
10+99 <sup>32</sup>	15' Rt.

8.52 to Int.

Gas Xing

Gas Xing

2' W.M.

Mail Box

Gas Xing

1' Lt. W.M.

Gas Xing 6' 56' 6' W.M.

2' Lt. Mail Box

8' Rt. W.M.

Gas Xing

A.C. Part.

2' Lt. W.M.

Gas Xing

1' Dia. Tree

1' Dia. Tree

1' Dia. Olive Tree

1' W.M.

Gas Xing

1' W.M. Olive Tree

Gas Xing

1' Lt. Wat. Met.

1' Lt. Wat. Met.

1' Lt. Wat. Met.

1' Lt. Wat. Met.

1' Dia. Olive Trees

4' 8' Rt. 27' 85' End

2' Valve 1' 3' Rt.

1' Disk

1' 3/4" Pipe

Gas Line

Valve



Profile Pidgeon St.  
Jamacha to Foster St.

10+99<sup>32</sup> = N/L Foster St.

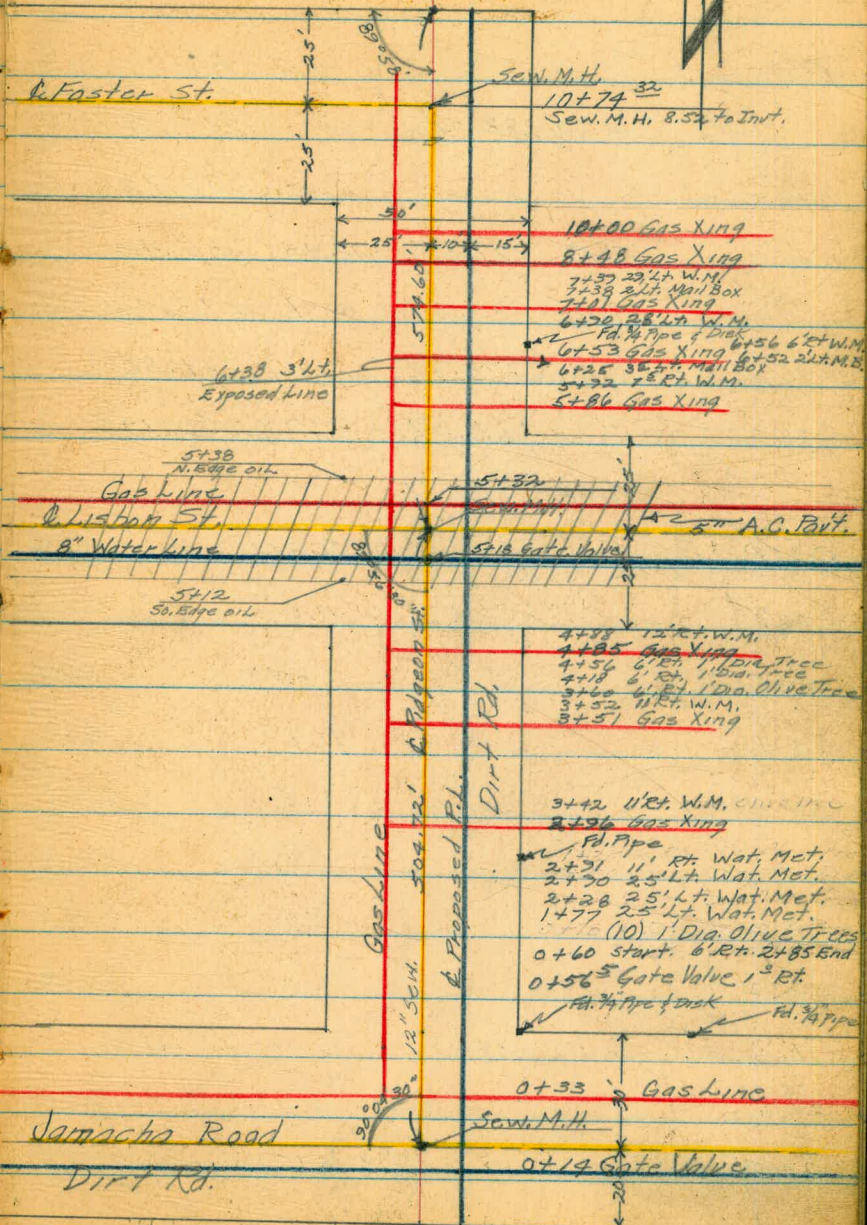
10+74<sup>32</sup> = S. Foster St.

5+24<sup>72</sup> = S. Lisbon St.

0+50 = N/L Jamacha St.

0+00 = S/L Jamacha St.

West 8/7/53  
Shorey  
Williams  
Varantakis





Profile Pidgeon St.  
Jamacha to Foster St.

West 8/7/53  
Shorey  
Williams  
Varonfakis

(44)

Sta	+ H.I.	-	Elev
	12.64	288.20	275.56
TP		0.48	287.72
TP	10.13	277.85	12.43 285.42
TP	0.55	285.97	12.91 273.06
TP	0.56	273.62	12.32 261.30
TBM	7.28	268.58	8.69 259.89
	11.88	271.77	
0+00		11.2	260.6
0+10		11.0	260.8
0+15		11.85	259.9
0+42		11.1	260.7
0+47		9.5	262.3
0+50		9.6	262.2
1+00		5.9	265.9
1+50		2.0	269.8
TP	12.80	284.21	0.36 271.41
2+00		10.2	274.0
2+50		4.85	279.4

Top M.H. East edge - Lisbon & Flicker St.

Invt. Elev.  
Top M.H. East Edge - Pidgeon & Jamacha St.

Lt. C Rt.

$\frac{10.2}{10'}$	$\frac{10.2}{6'}$	$\frac{3.2}{10'}$
$\frac{2.6}{10'}$	$\frac{7.5}{6'}$	$\frac{4.8}{10'}$
$\frac{3.7}{10'}$	$\frac{3.4}{5'}$	$\frac{1.7}{10'}$
$\frac{11.85}{10'}$	$\frac{1.9}{6'}$	$\frac{3.7}{10'}$
$\frac{6.7}{10'}$	$\frac{6.6}{6'}$	$\frac{5.0}{10'}$



Q. Profile Pidgeon St.  
Sarnacha to Foster St.

Sta.	+	H.L.	-	Elev.
T.P.		284.21	0.16	284.05
	10.87	294.92		
3+00			9.3	285.6
3+25			6.3	288.6
3+50			2.3	292.6
4+00			1.0	293.9
4+50			4.65	290.3
5+00			6.8	288.1
5+12			6.96	288.0
5+18			6.79	288.1
5+25			13.65 7.15	287.8
5+38			6.73	288.2
5+50			5.2	289.7
6+00			1.65	293.3
TP	12.87	307.56	0.23	294.69
6+50			9.7	297.9
7+00			6.1	301.5
7+50			3.4	304.2
8+00			3.5	304.1

West 8/10/53 Cloudy  
Shorey  
Williams  
Varanforkis

(45)

Top M.H. East edge - W. side of Pidgeon St.

Lt.	Rt.
$\frac{10.8}{10'}$	$\frac{9.0}{10'}$
$\frac{10.7}{5'}$	
$\frac{3.3}{10'}$	$\frac{2.0}{10'}$
$\frac{1.7}{10'}$	$\frac{0.8}{10'}$
$\frac{5.3}{10'}$	$\frac{3.0}{10'}$

Edge of oil So. E. Lisbon St.

Top Gate Valve

Invt. Elev  
Top M.H. East Edge 10' Lt.

Edge of oil N. Edge Lisbon St

$\frac{6.6}{10'}$	$\frac{6.6}{5'}$	$\frac{4.3}{10'}$
$\frac{3.1}{10'}$	$\frac{3.3}{6'}$	$\frac{1.2}{10'}$

$\frac{11.5}{10'}$	$\frac{11.5}{8'}$	$\frac{9.1}{10'}$
$\frac{8.1}{10'}$	$\frac{8.1}{7'}$	$\frac{5.25}{10'}$
$\frac{5.6}{10'}$	$\frac{5.5}{5'}$	$\frac{2.4}{10'}$
$\frac{4.6}{10'}$	$\frac{2.3}{5'}$	$\frac{0.7}{10'}$



Q Profile Pidgeon St.  
Jamacha to Foster St.

H.I.  
307.56

-

Elev.

Shorey 8/10/53  
Williams  
Varanakis  
Kemp

(46)

	+		-	Elev.	Lt	Q	Rt.
8+50			4.4	303.2	$\frac{4.75}{10'}$	$\frac{3.0}{3'}$	$\frac{1.3}{10'}$
9+00			5.7	301.9	$\frac{6.1}{10'}$	$\frac{4.1}{3'}$	$\frac{2.2}{10'}$
9+50			8.1	299.5	$\frac{8.6}{10'}$	$\frac{7.7}{5'}$	$\frac{5.5}{10'}$
ITP	4.67	301.04	11.19	296.37			
10+00			4.5	296.5	$\frac{4.95}{10'}$	$\frac{3.1}{3'}$	$\frac{1.7}{10'}$
10+50			6.8	294.2	$\frac{8.0}{10'}$		$\frac{4.0}{10'}$
10+74 <sup>32</sup>			17.50 8.28	292.06 292.1			
					Inv. Elev. Top M.H. East edge Foster St.		
10+99 <sup>32</sup>			7.0	294.0	$\frac{8.5}{10'}$		$\frac{4.2}{10'}$
TP	4.30	305.25	0.09	300.95			
TP	0.91	294.35	11.81	293.44			
TP	2.13	284.09	12.39	281.96			
			8.54	275.55 = 275.56			Top M.H. East Edge Lisbon & Flicker St.



Q Profile Pidgeon St.  
Jamacha to Foster St.

H.I.  
307.56

- Elev.

Shorey 8/10/53  
Williams  
Varanakis  
Kemp

(46)

	+		-	Elev.	Lt	Q	Rt.
8+50			4.4	303.2	$\frac{4.75}{10'}$	$\frac{3.0}{3'}$	$\frac{1.3}{10'}$
9+00			5.7	301.9	$\frac{6.1}{10'}$	$\frac{4.1}{3'}$	$\frac{2.2}{10'}$
9+50			8.1	299.5	$\frac{8.6}{10'}$	$\frac{7.7}{5'}$	$\frac{5.5}{10'}$
ITP	4.67	301.04	11.19	296.37			
10+00			4.5	296.5	$\frac{4.25}{10'}$	$\frac{3.1}{3'}$	$\frac{1.7}{10'}$
10+50			6.8	294.2	$\frac{8.0}{10'}$		$\frac{4.0}{10'}$
10+74 <sup>32</sup>			17.50 8.28	292.06 292.1			
10+99 <sup>32</sup>			7.0	294.0	$\frac{8.5}{10'}$		$\frac{4.2}{10'}$
TP	4.30	305.25	0.09	300.25			
TP	0.91	294.35	11.81	293.44			
TP	2.13	284.09	12.39	281.96			
			8.54	275.55 = 275.56			

Inv. Elev.

Top M.H. East edge Foster St.

Top M.H. East Edge Lisbon & Flicker St.

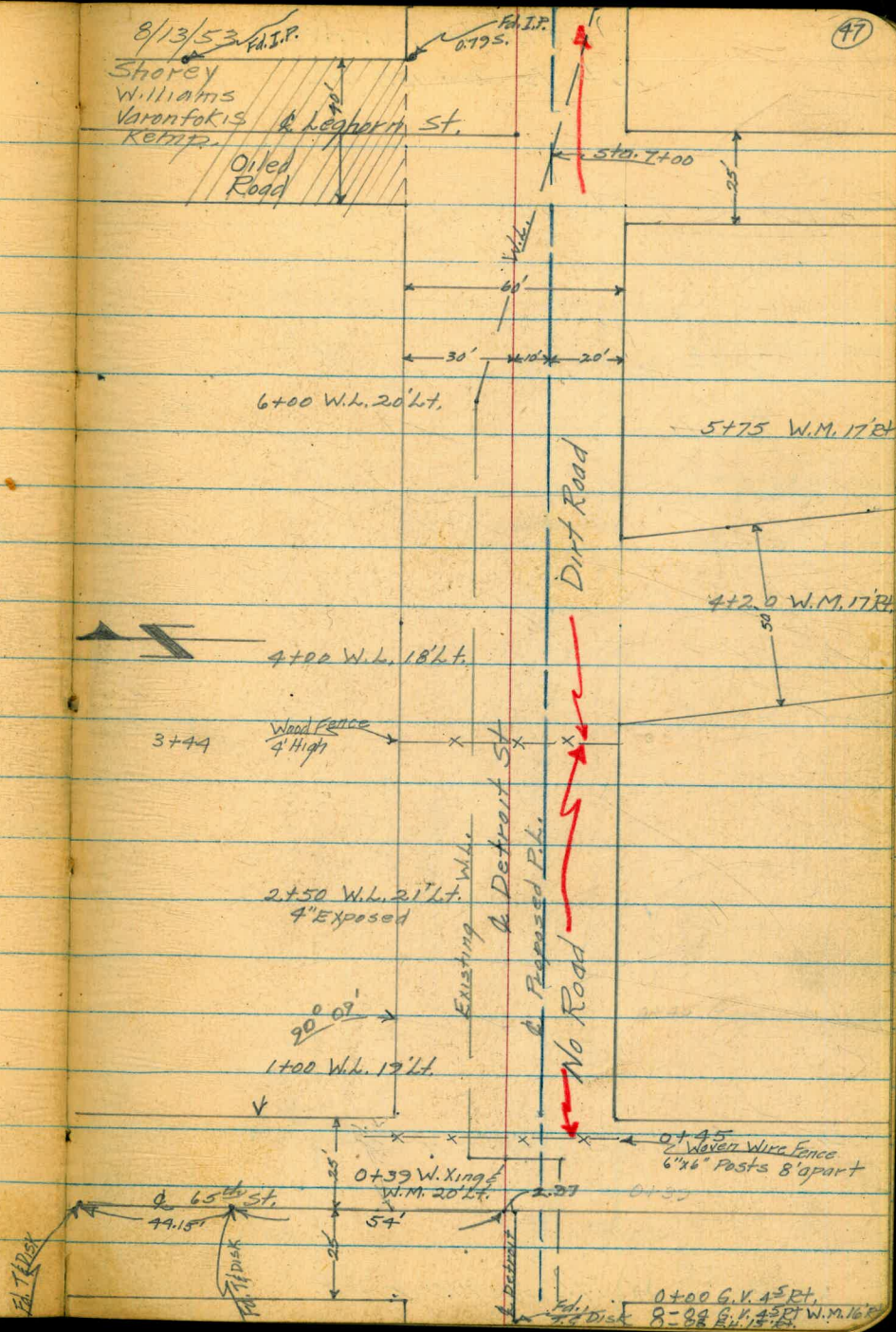


7+31  $\frac{31}{2}$  E.P/L Profile Detroit Ave,  
Leghorn St. to Woodman St.

6+21  $\frac{31}{2}$  W.P/L Leghorn St.

0+50 = E.P/L 65<sup>th</sup>

0+00 = W.P/L 65<sup>th</sup>





Profile Detroit Ave.  
65<sup>th</sup> to Woodman St.

Shorey  
Williams  
Varonfokis  
Kemp

8/13/53

(48)

10+81 <sup>48</sup> E.P./L. Woodman St.

10+41 <sup>48</sup> W.P./L. Woodman St.

7+31 <sup>31</sup> E.P./L. Leghorn St.

6+91 <sup>31</sup> W.P./L. Leghorn St.

& Henrietta

& Woodman St.

Dirt Road

10+71 W.M. 15' Rt. of  
W. King

10+50 G.V. 14' Rt.

Note:  
Southern Cal. Mtn.  
Water Co. R/W.

10+00 W.L. 14' Rt.

9+00 W.L. 14' Rt.

Note:  
No Gas Lines in  
this area

Dirt Road

& Detroit Ave.

& Proposed Pl.

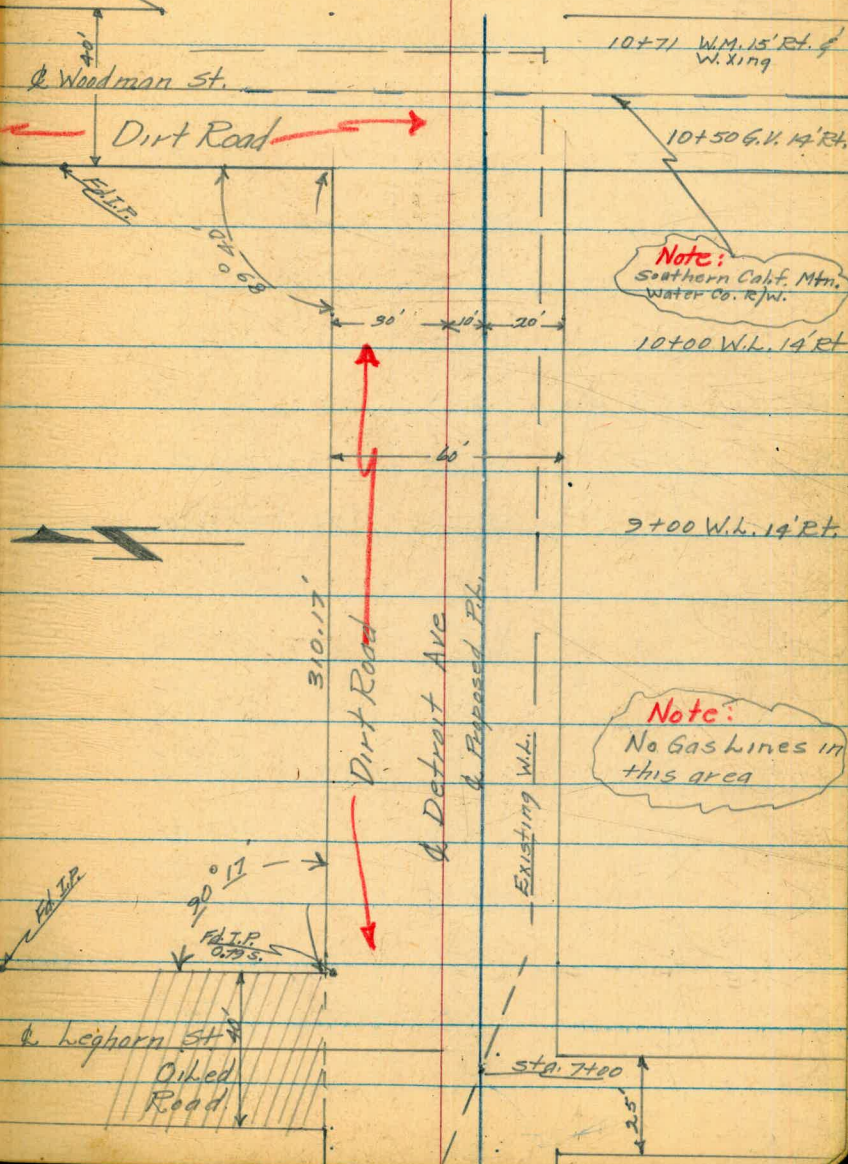
Existing W.L.

& Leghorn St.

Oiled  
Road

Sta. 7+00

25'





Q.P.L. Profile Detroit Ave  
65<sup>th</sup> to Woodman St.

SHOREY  
WILLIAM ST  
VARONFAKIS φ  
KEMP

8/14/53

(49)

Sta.	+	H.I.	-	Elev.
BM	1.75	289.54		287.79
TP	0.22	277.20	12.56	276.98
TP	5.81	273.55	9.46	267.74
TP	12.35	285.60	0.30	273.25
TP	12.03	297.35	0.28	285.32
TP	13.07	310.10	0.32	297.03
TP	12.68	322.58	0.20	309.90
TP	12.47	334.90	0.10	322.48
TP	11.11	345.63	0.38	334.52
TBM	2.85	347.23	1.25	344.38
0+00			4.7	342.53
0+50			2.2	345.0
1+00			3.7	343.5
1+50			12.7	334.5
TP	1.24	335.72	12.75	334.48
TP	1.54	325.34	11.92	323.80
2+00			7.9	317.4
2+12			12.0	313.3
2+25			13.3	312.0

B.M. L&T 61<sup>st</sup> & Detroit Ave

LT                      C                      RT

FIRE PLUG S/W COR. 65<sup>TH</sup> & DETROIT AVE

1.8      2.9  
10'      10' RT

2.4      4.7  
10'      10'

12.0      13.2  
10'      10'

7.4      8.8  
10'      10'

11.5      12.5  
10'      10'

12.8      13.8  
10'      10'



Q.P.L. Profile Detroit Ave.  
65<sup>th</sup> to Woodman St.

Shorey 8/14/53  
Williams T  
Varonakis φ  
Kemp

(50)

Sta.	+	H. I.	-	Elev.		
		325.34				
2+40			12.7	312.6	$\frac{12.3}{10'}$	$\frac{11.8}{10'}$
2+50			9.1	316.2	$\frac{9.5}{10'}$	$\frac{9.4}{10'}$
TP	12.32	337.38	0.28	325.06 <del>325.06</del> P.O.D.		
3+00			4.0	333.4	$\frac{4.4}{10'}$	$\frac{3.8}{10'}$
TP	12.73	349.94	0.17	337.21		
3+50			3.1	346.8	$\frac{3.9}{10'}$	$\frac{3.3}{10'}$
TP	12.91	362.68	0.17	349.77		
4+00			10.55	352.1	$\frac{8.3}{10'}$	$\frac{8.5}{10'}$
4+50			5.2	357.5	$\frac{10.2}{6'}$	$\frac{11.3}{10'}$
5+00			0.9	361.8		
TP	12.86	374.98	0.56	362.12		
5+50			8.0	367.0		
6+00			1.9	373.1		
T.P	12.52	387.38	0.12	374.86		
6+50			9.7	377.7		
7+00			6.5	380.9		
7+50			5.4	382.0	$\frac{2.8}{10'}$	$\frac{3.2}{8'}$
8+00			3.9	383.5	$\frac{5.3}{6'}$	$\frac{0.0}{10'}$
					$\frac{0.6}{6'}$	$\frac{2.8}{3'}$



P.L. Profile Detroit Ave  
65th to Woodman St.

SHOREY  
WILLIAMS T  
VARONFAKIS &  
KEMP

8/14/53

(51)

Sta.	+	H.I.	-	Elev.
		387.38		
8+50			3.8	383.6
9+00			5.8	381.6
9+50			9.4	378.0
TP	0.42	377.23	10.57	376.81
10+00			3.9	373.3
10+50		? →		
10+69			12.4	364.8
10+71			15.0	362.2
10+81.48			16.4	360.8
TBM			12.82	364.41
TBM	12.87	377.28		364.41
T.P.	11.16	388.31	0.13	377.15
TP	0.63	379.99	8.95	379.36
TP	0.64	368.14	12.49	367.50
TP	0.03	355.13	13.04	355.10
CHECK TO TBM	0.05	344.43	10.75	344.38 = 344.38
TP	0.88	332.59	12.72	331.71
TP	0.10	320.07	12.62	319.97

+0.1 1.3 3.5  
10' 4' 7'

0.2 0.5 5.2  
10' 8' 7'

4.8 8.9  
10' 2'

4.6 4.1  
10' 10'

11.5 11.8  
10' 10'

14.2 14.4  
10' 10'

16.0 17.0  
10' 10'

CHISEL SQ N/E COR METER BOX S/W COR WOODMAN & DETROIT

" " " " " "

FIRE PLUG S/W COR 65th & DETROIT AVE



Q Pl. Profile Detroit Ave  
65<sup>th</sup> to Woodman

SHOREY  
WILLIAMS T  
VARONFAKIS P  
KEMP

8/14/53

(52)

Sta.	+	H.I.	-	Elev.
		320.07		
TP	0.27	307.90	12.44	307.63
TP	0.11	295.92	12.09	295.81
TP	0.08	283.22	12.78	283.14
TP	1.72	272.54	12.40	270.82
TP	10.58	282.63	0.49	272.05
TP	10.25	291.40	1.48	281.15
CHECK TO BM			3.68	287.72 = 287.79

BM LET 61<sup>ST</sup> E DETROIT AVE







Q. P.L. Profile 59<sup>th</sup> St.  
 Detroit Ave. to Benson Place

Shorey  
 Williams  
 Varonfakis  
 Kemp

8/17/53

Cont'd

(54)

Sta.	+	H.I.	-	Elev.
B.M.	0.00	287.85		287.85
TP	0.39	275.64	12.60	275.25
TP	0.00	263.05	12.59	263.05
TBM			4.57	258.48
0+00			12.2	250.8
0+11			9.8	253.2
0+20			7.77	253.3
0+40			7.66	253.4
0+50			10.3	252.7
1+00			8.45	254.6
1+50			5.7	257.3
TP	11.25	270.32	3.98	259.07
2+00			10.1	260.2
2+50			7.7	262.6
3+00			5.5	264.8
3+50			2.4	267.9
4+00			0.55	269.8
TP	6.54	276.25	0.61	269.71
4+50			1.6	271.6

S.E. Cor. 58<sup>th</sup> & Detroit Ave. Nail in pole JP 170224

Nail in Pole JP 170926 Approx. 60' W. of 59<sup>th</sup> & Detroit

Edge of paving on Detroit

" " " " "



Q.P.L. Profile 59<sup>th</sup> St.  
 Detroit Ave to Benson Place

8/17/53

Cont'd

(55)

Shorey  
 Williams  
 Varenfalus  
 Kemp

Sta	+	H.I.	-	Elev.
		276.25		
5+00			4.0	272.2
5+50			3.8	272.4
6+00			4.2	272.0
6+50			5.85	270.4
7+00			9.0	267.2
TP	0.94	264.33	12.86	263.39
7+50			0.9	264.2
8+00			7.0	257.3
8+50			10.4	253.9
9+00			9.4	254.9
9+50			5.0	259.3
10+00			1.6	262.7
10+50			2.7	261.6
11+00			5.8	258.5
11+37			4.5	259.8
11+50			3.4	260.9
TBM			6.20	258.13
TBM	5.34	263.47		258.13

Set Nail in Pole No 471423

" " " " "



Q. P.h. Profile 59<sup>th</sup> St.  
 Detroit Ave to Benson Place

8/18/53  
 Shorey  
 Williams  
 Varonfakis  
 Kemp

Cont'd

(56)

Sta	+	H.I.	-	Elev.
TP		263.47		
TP	11.07	274.48	0.06	263.41
TP	0.33	270.24	4.57	269.91
TP	4.15	262.44	11.95	258.29
TP	11.17	273.47	0.12	262.32
TP	12.21	285.65	0.05	273.44
TP	6.19	291.78	0.06	285.59
TBM.			3.94	287.84 =

287.85 S.E. Cor. 58<sup>th</sup> & Detroit Nail in Pole

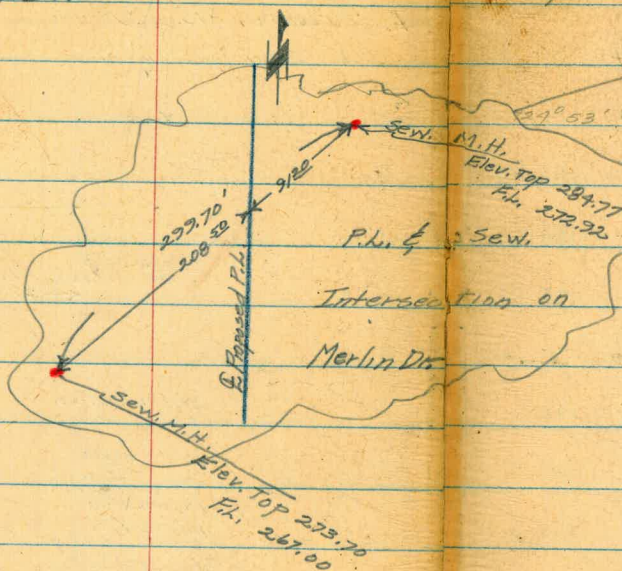






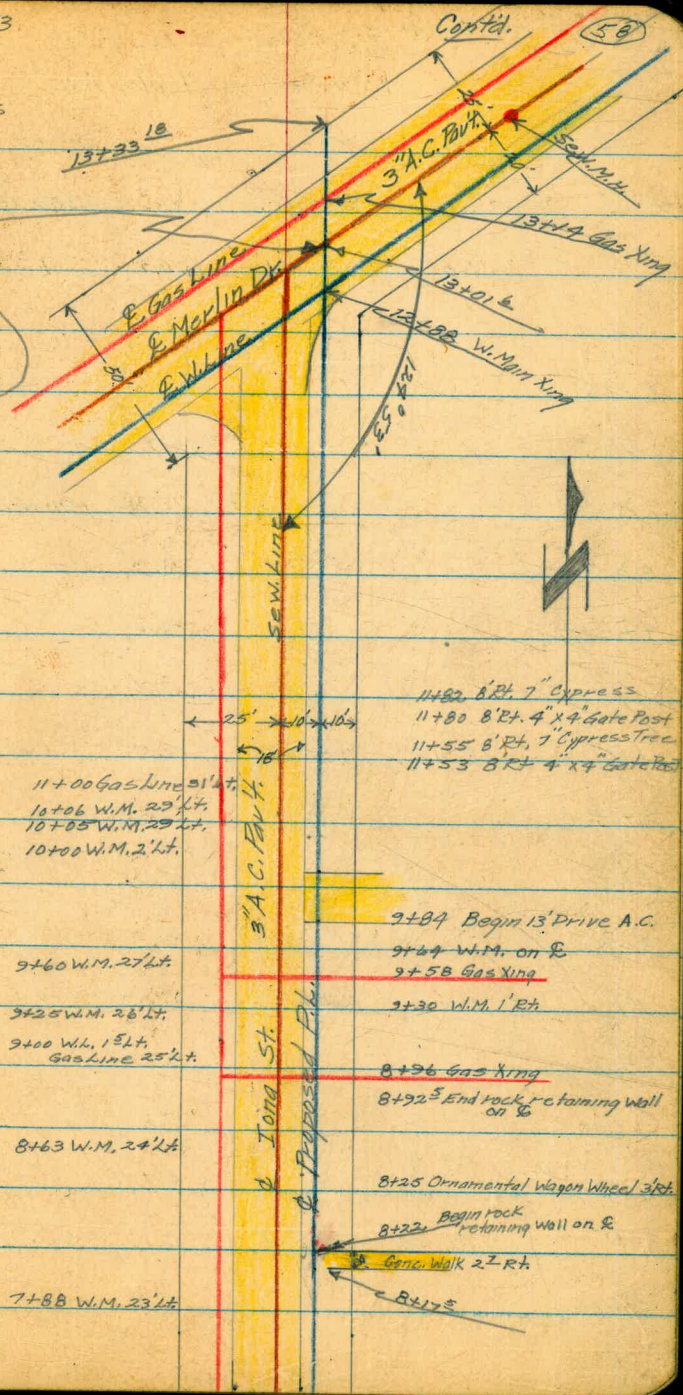
Q.P.L. Profile Iona St.  
Kenwood to Merlin Ave.

13+33<sup>18</sup> N/W Merlin Dr



8/18/53

Shorey  
Williams  
Varonfakis  
Kemp





Q.P.L. Profile Iona St.  
Kenwood to Merlin Ave.

8/13/53  
Shorey  
Williams  
Varentakis  
Kemp

Cont'd

(53)

Sta.	+	H.I.	-	Elev.
BM	6.18	215.42		209.24
TP	1.85	206.24	11.03	204.39
0+00			11.5	194.7
0+02			12.06	194.2
0+35			10.73	195.5
TBM.			2.25	196.27 <del>Invert</del>
0+50			2.9	196.3
1+00			6.0	200.2
1+50			1.7	204.5
TP	12.48	218.59	0.13	206.11
2+00			9.85	208.7
2+50			5.2	212.7
3+00			2.3	216.3
TP	11.00	229.39	0.20	218.39
3+50			2.65	219.7
4+00			5.8	223.6
4+50			0.7	228.7
TP	12.15	241.38	0.16	229.23
5+00			7.3	234.1

L & T 3' so. s/w Kenwood & E Merlin Dr.

Sidewalk

So. Edge Pav't.

N. " "

Invert Elev. 191.09  
Top Sew. M.H. N. Edge 10' Lt. 0+45



± P.L. Profile Iona St.  
Kenwood to Merlin Ave.

8/13/53  
Shorey  
Williams  
Varonfakis  
Kemp

Contd.

(60)

Sta.	+	H.I.	-	Elev.
5+50		241.38	2.0	239.4
TP	11.84	253.14	0.08	241.30
6+00			2.5	243.64
6+50			5.4	247.7
7+00			2.1	251.0
TBM			0.10	253.04
TP	12.87	265.99	0.02	253.12
7+50			12.0	254.0
8+00			7.7	258.3
8+50			3.3	262.7
TP	12.34	278.31	0.02	265.97
9+00			11.7	266.6
9+50			8.85	269.5
10+00			7.0	271.3
10+50			4.6	273.7
11+00			2.1	276.2
TP	2.07	287.29	0.09	278.22
11+50			8.0	279.3
12+00			4.6	282.7
12+25			3.6	283.7

Invert Elev. 247.04  
Sew. M.H. N. Edge 7+23 11' Lt.

Lt. ± Rt.

$\frac{3.7}{5'}$

$\frac{3.1}{10'}$



Q.P.A. Profile Iona St.  
Kenwood to Merlin Dr.

Sta	+	H.I.	-	Elev
12+50		287.29	3.2	284.1
12+65			3.8	283.5
12+75			4.1	283.2
12+82			4.9	282.4
13+00			4.8	282.5
13+20			4.22	282.4
13+21			4.16	283.13
13+30			3.9	283.2
			0.71	286.58
TP	0.53	287.11		286.58
TP	0.60	275.13	12.58	274.53
TP	1.12	264.05	12.20	262.93
TP	1.50	253.29	12.26	251.79
TP	0.90	241.33	12.86	240.43
TP	0.49	229.49	12.33	229.00
TP	2.13	218.77	12.85	216.64
CK.BM			2.55	209.22 = 209.24

9/20/53

(61)

Shorey  
Williams  
Varanforkis  
Kemp

Lt.	℄	Rt.
3.7	1.8	1.5
3.7	3.0	1.0
3.7	3.8	1.4
3.7	3.8	0.7
3.7	3.8	1.2
3.7	3.8	1.0

N. Edge Pav't. Merlin Dr.

Top Curb

Top F.H. S.E. Cor. Iona St. & Merlin Dr.

Lgt 3' So. s/l Kenwood & R. Merlin Dr.







Q.P.L. Profile Broadway St.  
Madera to 69<sup>th</sup> St.

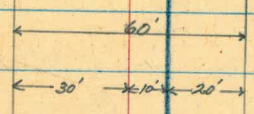
12+60<sup>83</sup> = City Limits & East line 69<sup>th</sup> St.

8/20/53  
Shorey  
Williams  
Varonfakis  
Kemp

(63)



El. Mott. 12+60<sup>83</sup>



12+22<sup>5</sup> End W.L. 1<sup>5</sup> Ft.  
12+00 W.L. 3<sup>5</sup> Ft.

10+33 W.M. 30' Lt.

10+50 W.L. 2' Rt.



748.93

9+50 W.M. 24' Rt.  
9+30 W.L. 0<sup>5</sup> Ft.

B Broadway St  
E Proposed Pk.

Dirt Road

7+00 W.L. 1' Lt.

6+71 W.M. 18' Rt.



L.P.W. Profile Broadway St.  
Madera to 65th St.

8/20/53

(69)

Shorey  
Williams  
Varonfakis  
Kemp

Sta.	+	H.I.	-	Elev.	
BM	5.05	274.91		269.86	℄ Id of Disk Madera & Broadway FB 1850-60
0+00			4.25	270.7	on Pav't
0+45			15.05		Invert Elev.
0+50			5.09	269.8	Sew M.H. So. Edge 10' Lt. in Pav't.
0+65			5.26	269.7	Edge of Pav't.
0+80			4.5	270.4	Lt. ℄ Rt.
0+90			2.1	265.8	5.4 10'
1+00			2.2	265.7	6.0 5.6 10' 8'
1+50			11.2	263.7	11.1 10'
2+00			8.8	266.1	7.1 6.2 10' 7'
2+50			3.2	271.0	10.0 10'
TP	12.54	287.07	0.38	274.53	13.4 13.8 10.5 9.2 2 3 6 10'
3+00			9.25	277.8	8.4 10.8 10.7 9.7 5 8 9 10'
3+50			2.8	284.3	5.7 5.8 10' 3'
TP	12.10	279.13	0.04	287.03	2.2 1.3 2 10'
4+00			8.7	290.4	11.2 11.3 10' 3'
4+50			3.1	296.0	7.5 5.7 3 10'
TP	11.64	310.51	0.26	298.87	3.7 10'
5+00			2.4	301.1	4.3 2.1 4 10'
CK.TBM			5.20	305.31 = 305.36	8.6 10'
					5.2 4.4 4 10'
					3.3 10'
					1.3 10'
					10.4 10'
					9.0 10'

# 76403  
Spike in Pole S.E. Cor. Evelyn & Broadway  
FB. 1850-61



Q.P.L. Profile Broadway St.  
Madera to 69<sup>th</sup> St.

Sta	+	H.L.	-	Elev.
5+50		310.51	5.8	304.7
6+00			0.7	309.8
TP	12.33	322.10	0.74	309.77
6+50			7.6	314.5
7+00			2.3	319.8
TP	12.23	334.61	0.42	331.68
7+50			9.0	325.6
8+00			2.4	332.2
TP	12.46	346.72	0.35	334.26
8+50			5.2	341.5
TP	13.00	352.68	0.04	346.68
9+00			6.5	353.2
9+50			0.8	358.9
TP	13.03	372.70	0.01	359.67
10+00			1.6	371.1
TP	2.53	374.84	0.39	372.31
CK. TBM			1.83	373.01 = 373.14
10+50			1.3	373.5
11+00			5.6	369.2

8/29/53  
Shorey  
Williams  
Varonfakis  
Kemp

(65)

Lt.	℄	Rt.
$\frac{6.0}{10'}$		$\frac{5.7}{8'}$ $\frac{4.3}{10'}$
$\frac{1.1}{10'}$		$\frac{1.7}{10'}$
$\frac{8.8}{10'}$		$\frac{7.3}{10'}$
$\frac{7.7}{10'}$		$\frac{2.7}{10'}$
$\frac{11.7}{10'}$		$\frac{9.7}{10'}$
$\frac{5.4}{10'}$		$\frac{2.8}{10'}$
$\frac{8.1}{10'}$		$\frac{5.6}{10'}$
$\frac{8.2}{10'}$	$\frac{6.0}{2'}$ $\frac{7.0}{3'}$	$\frac{7.1}{10'}$
$\frac{1.8}{10'}$		$\frac{0.9}{10'}$
$\frac{1.3}{10'}$		$\frac{2.2}{10'}$
$\frac{0.9}{10'}$		$\frac{2.4}{10'}$
$\frac{2.8}{10'}$ $\frac{3.7}{5'}$		$\frac{8.0}{10'}$

Nail in pole # 373026 10+37.75 FB. 1850-62 20' Rt.



P.L. Profile Broadway St  
Madera to 69<sup>th</sup>

Sta	+	H.I.	-	Elev.
11+50		374.84	12.7	362.1
TP	0.22	362.39	12.67	362.17
12+00			9.9	352.5
TP	1.84	351.34	12.82	349.50
CK.TBM			7.71	343.63 = 343.75
12+37			6.7	344.6
12+49			11.0	340.3
12+50			11.2	340.1
12+59 <sup>2A</sup>			11.9	339.4
CK.TBM			7.71	343.63 = 343.75

8/21/53  
Shorey  
Williams  
Varanfakis

(66)

Wt.	℄	Rt.
11.1 10'		14.8 10'
7.9 10'		11.7 10'
# Nail in Pole 370486 S.W. Cor. Broadway & 69 <sup>th</sup>		
5.4 10'		8.7 10'
9.4 10'		12.3 10'
9.8 10'		13.5 10'
10.6 10'		13.0 10'
# Nail in Pole 370486 S.W. Cor. Broadway & 69 <sup>th</sup> FB. 1850		







33rd ST  
(CONT'D)

10/19/53

(68)

II	258.49						
2+87 E	12.70	271.23	0.0	258.49	258.9	CO <sup>1</sup>	1911 33rd
2+43 W						curb.	1920-24 33rd
2+39 E			8.2	262.0	263.1	FO <sup>1</sup>	1931 "
2+06 E			6.2	265.8	265.0	CO <sup>8</sup>	1929 "
1+90 W						curb.	1928 "
1+66 E						curb.	1937 "
1+48 W						curb.	1928 "
1+21 E			5.3	265.9	266.1	FO <sup>2</sup>	1945 "

II 0.24 269.38 2.09 269.14

CK TBM 0.6 269.32 = 269.32



ESTRELLA AVE  
ORANGE TO TRAJAN  
③ STK. 5 & GROS FOR 6" A.C. WATER

Nov. 18, 1953  
DEATY  
SHREY  
MARTELL  
ALEXANDER

(69)

BM			Elev.	GRADE BOT. PIPE			
BM	1.55	350.00	348.45				
0+35	Begin Work		3.7 346.3	342.4	C39	346.3 Top Ac. & pipe	
0+50			3.6 346.4	342.2	C37	3.6	
1+00			4.3 345.7	341.6	C41	4.5	
1+50			6.1 343.9	339.8	C41	4.3	
2+00			8.2 341.8	338.0	C38	8.2	
2+50			9.9 340.1	336.2	C39	14.1	
3+00			11.2 338.8	335.2	C36	11.2	
3+35			10.5 339.5	336.0	C35		
3+50			10.0 340.0	336.0	C36	(+35) 10.0	
4+00			7.9 342.1	338.2	C39	7.9	
4+50	8.94	353.14	5.80	344.20	340.0	C42	5.8
5+00			6.9 346.2	341.8	C44	6.9	
5+50			5.5 347.6	343.6	C40	5.6	
6+00			4.9 348.2	344.0	C42	5.0	
+50			5.1 348.0	343.7	C43	5.1	
+77							
+75	F.H. TEE		5.5 347.6	343.5	C41	5.5	
6+75	③ F.H.		5.8 347.3	343.4	C39		
7+00	GV		5.9 347.2	343.4	C38	(+95) 5.8	
32							
7+35	End Work		7.0 346.1	343.2	C32	6.9	
OK BM.			4.90	348.24			
④	9.37	357.50	5.01	348.13			
④	9.38	366.56	0.32	357.18			
OK BM.			3.59	362.97	= 362.89		

BP on Church Steps Orange & Trojan (Pg. 12 This Book SE Cor.)

BP SE Cor Estrella & Trojan

BP NW Cor Trojan & Winona (Pg. 12)



ESTRELLA AVE  
(Cont'd.)

WAT MET.S

350.00

11/18/59

(70)

1+53 W	61 SW 59	323.9 324.1	324.1	FOE	4212 ESTRELLA
1+84 W					4218
2+17 E	8.4	341.7	341.8	FOE	4219
3+15 W					4236
3+47 E					4241-43-45
3+57 W	10.2	339.8	340.4	FOE	4246
4+00 E					4251
4+59 E					4261
4+60 W					4262
4+96 W					4264
5+34 E					4269-73
5+40 W					4272-78
5+98 E					4277-87
6+13 W					4280-86 "
6+61 E					4857 Trojan
6+74 W					4841 "
6+80 E					4865 "
6+82 W					4833 "
6+83 W					4827 "



ALLEY BLK 1  
 East of Chamaune, Nor. of Myrtle  
 (5) STK 5 & Grds. for 6" A.C. WATER

Nov. 19, 1953  
 BEATTY  
 SHOREY  
 MARTELL  
 ALEXANDER

(71)

BM					810 NW Cor Myrtle & Chamaune
	1.85	337.74		335.89	
	Begin Work				
0+11	6" TEE for F.H.	(E) 8.0	329.7	325.0	C07
		Curb w. 7.90	329.84		
	(5) F.H.	(E) 8.0	329.7	329.5	C02
0+50		(E) 7.8	329.9	325.6	C03
		(W) 7.1	330.6	325.9	C07
0+75		(E) 6.8	330.9	326.4	C02
P				325.9	
1+00	2.88	334.24	(W) 6.38	331.36	326.2
					C55
1+50			(W) 3.1	231.1	325.8
					C53
2+00			4.4	329.8	324.5
					C53
2+25			5.6	328.6	323.0
					323.8
					C56
2+50			8.4	325.8	320.0
					321.0
					C58
P					
2+75	0.48	321.57	13.15	321.09	315.5
					C56
3+00			5.8	315.8	309.0
					309.5
					C68
P					
3+25	0.10	309.54	12.13	309.44	303.0
					304.0
					C64
3+50			6.0	303.5	299.0
					C45
3+75			7.4	302.1	297.0
					C51
4+25			(W) 6.4	303.1	
			(E) 8.3	301.2	296.8
					C63
					C44
4+75	1 1/4° BEND		(W) 5.6	305.9	
			(E) 5.3	304.2	296.6
					C73
					C76
P					
5+00	12.07	321.43	(E) 0.18	309.36	302.0
					C74

NAT GRD  
 DISTURBED  
 From here on



ALLEY BLK 1  
(Cont'd.)

11/19/59

(72)

		321.43					
5425	11.29	331.62	1.20	320.29	308.0	307.3	C122 on back
5450			10.0	321.6	314.0		C76
5475			9.5	322.1	318.0		C41
6+00			(W) 5.1	326.5	321.0		C55
			(E) 4.9	326.7	320.3		C57
6+25			(W) 4.3	327.3			C12
			(E) 4.2	327.4	322.6		C48
6+50					322.6		
6+73			(E) 4.5	327.150	322.6		C45
6+78	336	330.16	(W) 4.82	326.80			C42

CL 13M

WATER METERS.

6.20 322.96 = 320.00

DP NW DWIGHT & CHAMOUNE

0478 E	N	337.74	6.7	331.0	329.9	C1	4586 Myrtle
0479 E	"	"	6.4	331.3	329.9	C1	4590 "
1403 E	N	334.24	2.8	331.4	329.8	C16	4580 "
1427 W	"	"	2.5	331.7	329.6	C21	4564 CHAMOUNE
1441 W	"	"	2.5	331.7	329.3	C26	"
1451 E	"	"	3.3	330.9	329.2	C17	"
1498 W	"	"	3.8	330.4	329.0	C14	"
2+49 W	"	"	5.8	328.4	328.8	F04	"
2+87 W	"	321.57	+0.5	322.1		C02	"
3+57 W	"	309.54	1.6	307.9		C02	"
3+91 W			2.4	307.1		C02	"
4+30 W			4.6	304.9		C02	"



ALLEY BLK 1  
(CONT'D)

11/20/53

(73)

4+83 W	N	309.54	5.6	303.9		CO <sup>0</sup>	
5+40 E	N	331.62	9.9	321.7		CO <sup>0</sup>	
5+44 E	N	331.62	10.1	321.5		CO <sup>1</sup>	
5+49 W	N	321.43	9.0	321.4		FO <sup>5</sup>	✓
6+05 W	N	331.62	5.1	326.5	326.6	FO <sup>1</sup>	
6+15 E	"		4.6	327.0	326.6	CO <sup>4</sup>	
6+56 E	"		3.9	327.7	326.3	C/D	
6+57 E	"						
6+58 E	"		4.0	327.6	326.3	C/D	



49<sup>th</sup> ST  
 UNIVERSITY TO Sky TERMINUS  
 (5) STKS & GROS. For 6" Water

12/21/53

Beatty  
 Shorey  
 Martell  
 Alexander

(14)

BM.	1224	324.60		312.36		NE Cor. 49 <sup>th</sup> & UNIV.
0+00 =	NLY PL UNIV.					
0+85	Begin Work		4.9	319.7	316.0	C37
1+00			4.6	320.0	316.6	C34
1+50			2.8	321.8	318.1	C37
2+00	4.75	328.03	1.32	323.28	<del>319.3</del> 319.6	C40
2+50			3.7	324.3	<del>319.3</del> 318.9	C50
3+00			5.6	322.4	<del>317.8</del> 318.2	C46
3+50			8.2	319.6	314.3	C53
3+31 3+54	FH TEE		7.23	320.8	315.6	C52
	FH. stkd 21' from & ST					
(5) FH	3.80	324.23		319.6		C46 C80
4+00	0.42	316.00	12.45	315.58	310.4	C52
4+50			4.1	311.9	306.5	C54
4+60	2" B.O. Endwork (7 Cont'd pg 75) Wat. METS		4.8	311.2	305.7	C55
	Mets. JTKD 22' RT & 17' & 51'					
1+28 E	Ni	324.6	3.3	321.3	321.3	C00 3853 49 <sup>th</sup>
1+86 W		324.6	1.0	323.6	322.5	C12 3846
2+09 E		328.0	0.5	327.5	322.5	C42 3843-45
2+32 W			3.8	324.2	322.4	C08 3835 49 <sup>th</sup>

(20' st  
 4' Cont SW  
 55' PL to SW)



49th ST  
Cont'd

(75)

2+50 E	N 3280	1.0	327.0	322.7	C33	3827	49th
3+01 E	"	3.5	324.5	322.0	C25	3829	49th
3+40 E	"	6.2	321.8	319.0	C28	?	Winona
3+82 W	"	11.7	316.3	315.2	C12	3818	49th
4+13 E	N 316.0	4.4	316.4	313.5	C29	?	Winona
4+36 W		4.7	311.3	311.2	C01	3808	49th
4+36 E		0.9	315.1	311.8	C32	3805	
4+55 W		6.3	309.7	309.7	C02	3802	
4+59 E		2.3	313.7	309.9	C38	?	

316.00

P 9.66 325.22 0.41 315.56

CK BM. 12.83 312.39 = 312.36



50<sup>TH</sup> ST  
 UNIVERSITY TO OAKCREST  
 (5) STKS. & GRDS FOR 6" WATER

12/21/53

(76)

BM	12.84	342.99		330.15		BP SW Cor 50 <sup>TH</sup> & UNIV.
0+70	= Existing GV					
0+75	Begin Work	12.7	330.3	326.0		C43
1+00		12.0	331.0	<del>326.7</del> 326.2		C43
1+50		8.8	332.2	329.5		C42
2+00		5.6	337.4	333.0		C44
2+50		2.5	340.5	336.2		C41
$\Phi$						
3+00	7.08	349.70	0.37	342.62	338.3	C43
3+25			6.4	343.3	339.2	C41
3+50			6.0	343.7	339.6	C41
4+00			4.9	344.8	340.5	C43
4+34	= BC Curb RT)					
4+50			4.0	345.7	341.4	C43
5+00			3.4	346.3	342.2	C41
5+35	& PT		2.9	346.8	343.3	C35
5+50			2.9	346.8	343.3	C35
5+65			2.8	346.9	343.4	C35
$\Phi$						
CK BM	0.76	341.88	8.58	341.12		
			11.73	330.15 =	330.15	



50<sup>TH</sup> ST

(Cont'd.)

12/21/53

(77)

	342.99						
1+27 E		8.5	334.5	335.0	F05	4009	50 <sup>TH</sup>
2+10 E		4.5	338.5	339.4	F09	4017	"
2+42 E		2.0	341.0	340.9	C01	4027	"
2+76 E		0.1	342.9	342.1	C08	4037	"
3+30 E	349.70	6.1	343.6	343.1	C05	4043	"
3+58 W		6.0	343.7	343.1	C06	4038	"
4+43 W		4.2	345.5	344.8	C07	4054	"
4+86 W		3.6	346.1	345.7	C04	4056	"
5+41 W		2.8	346.9	346.4	C05	4058	"

Mets stkd 203 rd 40  
 E 57  
 36' curb to curb  
 2-5-3



ALLEY BLK. 2  
 Nor. of Orange, East of Highland  
 STR. 5 & GRDS For 6" WATER

JAN. 7 1934

Beatty,  
 Stokely,  
 Marshall,  
 Alexander.

(78)

B.M.	5.67	359.83		352.16		NW. BR. HIGHLAND & ORANGE (FB 8'7" 19.70.)
0+85	Begin Work		5.8	354.0	350.0	C40
1+00			5.2	352.6	350.2	C44
1+50			4.6	355.2	350.8	C44
2+00			4.0	355.8	351.4	C44
2+50	5.87	362.10	3.0	356.23	351.7	C45
3+00			5.6	356.5	352.0	C45
3+50			4.9	357.2	352.2	C50
4+00			4.7	357.4	352.5	C47
4+50			4.6	357.5	352.7	C48
5+00			5.0	357.1	353.0	C41
5+50			5.1	357.0	353.3	C37
6+00			4.4	357.7	353.6	C42
6+50			3.6	358.5	353.7	C48
7+00			3.8	358.3	353.9	C44
7+43	End Work		4.7	357.4	354.0	C34
7+50	3.50	359.69	5.91	356.19		
CK 19M			5.53	354.16 =	354.16	

WAT. MET.

1+05 E	359.83 W.	5.0	354.8	353.4	C14
1+59 E		4.6	355.2	354.6	C08
1+71 W		4.2	355.6	354.8	C08
1+83 E		4.3	355.5	354.8	C07
2+11 W		4.4	355.4	355.0	C04
2+34 E		4.1	355.7	355.1	C06
2+60 W	362.10 W.	6.0	356.1	355.3	C08
3+05 W		5.3	356.8	355.5	C13
3+10 E		5.4	356.7	355.6	C11
3+57 E		5.0	357.1	355.9	C12
3+58 W		4.6	357.5	355.9	C15
4+08 E		4.7	357.4	356.2	C13
4+29 W		4.6	357.5	356.3	C13
4+45 E		4.7	357.4	356.4	C40
4+88 E		4.8	357.3	356.6	C07



ALLEY BLK 2  
(Contd)

1+00 W.L. 2  
3+00 W.L. 3.27  
4+00 " 37.11

B.M.		362.10				
0+85	5+09 W		4.6	357.5	356.7	08
	5+41 E		5.0	357.1	356.8	03
1+00	5+60 W		4.5	357.6	356.9	07
1+50						
2+00	6+00 E		4.2	357.9	357.2	07
2+50	6+08 W		3.9	358.2	357.9	08
3+00	6+35 E		3.8	358.3	357.5	08
3+50	6+36 W		3.4	358.7	357.5	12
4+00	6+81 E		3.8	358.3	357.2	05
4+50	7+06 E				357.6	
	7+07 E		3.9	358.2	357.6	06
5+00						
5+50						
6+00						
6+50						
7+00						
7+23						
CK BM						
1+05						
1+59						
1+71						
1+83						
2+11						
2+34						
2+60						
3+05						
3+10						
3+57						
3+58						
4+08						
4+29						
4+43						
4+88						



Please Return to  
 City of San Diego Water Dept.  
 Room 903 Civic Center

44°38' 11"

27+56<sup>00</sup> Tooley = 23+28<sup>20</sup> Wagon

B.M.

0+8

1+0

1+50

2+00

2+50

3+00

3+50

4+00

4+50

5+00

5+50

6+00

6+50

7+00

7+50

8+00

8+50

9+00

9+50

1+00

1+50

1+70

1+80

2+10

2+30

2+60

3+00

3+10

3+50

3+58

4+00

4+20

4+40

4+80

295<sup>45</sup>  
~~147<sup>72</sup>~~  
 2.50  
 1+45<sup>22</sup>

8.7/6  
 120

1380  
 350  
 1730  
 6.11  
 12.19

4+9650  
 8+9578  
 13+9039

7.76  
 2.65  
 4.81  
 1.96  
 6.77

350  
 10

21.63  
 12.19  
 9.44

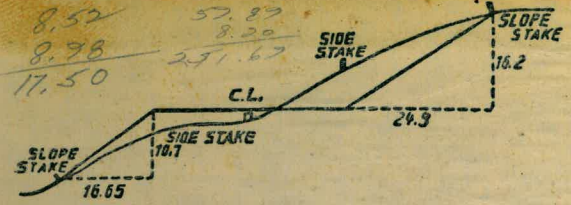
109  
 3  
 357  
 108.7  
 435.9  
 60  
 496.9

23+92<sup>02</sup>  
 20+81<sup>16</sup> Done Man  
 17+74<sup>52</sup>  
 13+90<sup>54</sup>  
 10+95<sup>30</sup> Pot  
 8+75<sup>88</sup> Opp. Man  
 6+74<sup>13</sup> Pot  
 3+99<sup>70</sup> Pot Man

13.80  
 12.19  
 1.61

449594  
 3+9970  
 18+9564

26.89  
 2.85  
 29.54  
 -7.46  
 22.08



DISTANCES FROM SIDE STAKES FOR CROSS-SECTIONING.  
 SLOPE 1 1/2 TO 1. ROADWAY OF ANY WIDTH.

	0	.1	.2	.3	.4	.5	.6	.7	.8	.9	
0	0.00	0.15	0.30	0.45	0.60	0.75	0.90	1.05	1.20	1.35	0
1	1.50	1.65	1.80	1.95	2.10	2.25	2.40	2.55	2.70	2.85	1
2	3.00	3.15	3.30	3.45	3.60	3.75	3.90	4.05	4.20	4.35	2
3	4.50	4.65	4.80	4.95	5.10	5.25	5.40	5.55	5.70	5.85	3
4	6.00	6.15	6.30	6.45	6.60	6.75	6.90	7.05	7.20	7.35	4
5	7.50	7.65	7.80	7.95	8.10	8.25	8.40	8.55	8.70	8.85	5
6	9.00	9.15	9.30	9.45	9.60	9.75	9.90	10.05	10.20	10.35	6
7	10.50	10.65	10.80	10.95	11.10	11.25	11.40	11.55	11.70	11.85	7
8	12.00	12.15	12.30	12.45	12.60	12.75	12.90	13.05	13.20	13.35	8
9	13.50	13.65	13.80	13.95	14.10	14.25	14.40	14.55	14.70	14.85	9
10	15.00	15.15	15.30	15.45	15.60	15.75	15.90	16.05	16.20	16.35	10
11	16.50	16.65	16.80	16.95	17.10	17.25	17.40	17.55	17.70	17.85	11
12	18.00	18.15	18.30	18.45	18.60	18.75	18.90	19.05	19.20	19.35	12
13	19.50	19.65	19.80	19.95	20.10	20.25	20.40	20.55	20.70	20.85	13
14	21.00	21.15	21.30	21.45	21.60	21.75	21.90	22.05	22.20	22.35	14
15	22.50	22.65	22.80	22.95	23.10	23.25	23.40	23.55	23.70	23.85	15
16	24.00	24.15	24.30	24.45	24.60	24.75	24.90	25.05	25.20	25.35	16
17	25.50	25.65	25.80	25.95	26.10	26.25	26.40	26.55	26.70	26.85	17
18	27.00	27.15	27.30	27.45	27.60	27.75	27.90	28.05	28.20	28.35	18
19	28.50	28.65	28.80	28.95	29.10	29.25	29.40	29.55	29.70	29.85	19
20	30.00	30.15	30.30	30.45	30.60	30.75	30.90	31.05	31.20	31.35	20
21	31.50	31.65	31.80	31.95	32.10	32.25	32.40	32.55	32.70	32.85	21
22	33.00	33.15	33.30	33.45	33.60	33.75	33.90	34.05	34.20	34.35	22
23	34.50	34.65	34.80	34.95	35.10	35.25	35.40	35.55	35.70	35.85	23
24	36.00	36.15	36.30	36.45	36.60	36.75	36.90	37.05	37.20	37.35	24
25	37.50	37.65	37.80	37.95	38.10	38.25	38.40	38.55	38.70	38.85	25
26	39.00	39.15	39.30	39.45	39.60	39.75	39.90	40.05	40.20	40.35	26
27	40.50	40.65	40.80	40.95	41.10	41.25	41.40	41.55	41.70	41.85	27
28	42.00	42.15	42.30	42.45	42.60	42.75	42.90	43.05	43.20	43.35	28
29	43.50	43.65	43.80	43.95	44.10	44.25	44.40	44.55	44.70	44.85	29
30	45.00	45.15	45.30	45.45	45.60	45.75	45.90	46.05	46.20	46.35	30
31	46.50	46.65	46.80	46.95	47.10	47.25	47.40	47.55	47.70	47.85	31
32	48.00	48.15	48.30	48.45	48.60	48.75	48.90	49.05	49.20	49.35	32
33	49.50	49.65	49.80	49.95	50.10	50.25	50.40	50.55	50.70	50.85	33
34	51.00	51.15	51.30	51.45	51.60	51.75	51.90	52.05	52.20	52.35	34
35	52.50	52.65	52.80	52.95	53.10	53.25	53.40	53.55	53.70	53.85	35
36	54.00	54.15	54.30	54.45	54.60	54.75	54.90	55.05	55.20	55.35	36
37	55.50	55.65	55.80	55.95	56.10	56.25	56.40	56.55	56.70	56.85	37
38	57.00	57.15	57.30	57.45	57.60	57.75	57.90	58.05	58.20	58.35	38
39	58.50	58.65	58.80	58.95	59.10	59.25	59.40	59.55	59.70	59.85	39
40	60.00	60.15	60.30	60.45	60.60	60.75	60.90	61.05	61.20	61.35	40
41	61.50	61.65	61.80	61.95	62.10	62.25	62.40	62.55	62.70	62.85	41
42	63.00	63.15	63.30	63.45	63.60	63.75	63.90	64.05	64.20	64.35	42
43	64.50	64.65	64.80	64.95	65.10	65.25	65.40	65.55	65.70	65.85	43
44	66.00	66.15	66.30	66.45	66.60	66.75	66.90	67.05	67.20	67.35	44
45	67.50	67.65	67.80	67.95	68.10	68.25	68.40	68.55	68.70	68.85	45
46	69.00	69.15	69.30	69.45	69.60	69.75	69.90	70.05	70.20	70.35	46
47	70.50	70.65	70.80	70.95	71.10	71.25	71.40	71.55	71.70	71.85	47
48	72.00	72.15	72.30	72.45	72.60	72.75	72.90	73.05	73.20	73.35	48
49	73.50	73.65	73.80	73.95	74.10	74.25	74.40	74.55	74.70	74.85	49
50	75.00	75.15	75.30	75.45	75.60	75.75	75.90	76.05	76.20	76.35	50

THE NATIONAL BLANK BOOK COMPANY  
 HOLYOKE MASSACHUSETTS  
 NEW YORK CHICAGO BOSTON SAN FRANCISCO