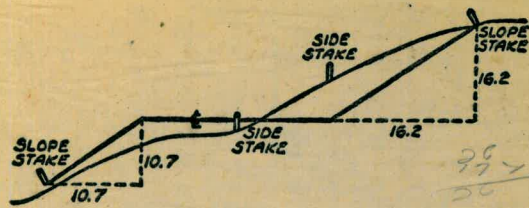


W 860

Please Return to
 City of San Diego Water Dept.
 Room 903 Civic Center



DISTANCES FROM SIDE STAKES FOR CROSS-SECTIONING
 SLOPE 1 TO 1. ROADWAY OF ANY WIDTH

	0	.1	.2	.3	.4	.5	.6	.7	.8	.9	
0	0.00	0.10	0.20	0.30	0.40	0.50	0.60	0.70	0.80	0.90	0
1	1.00	1.10	1.20	1.30	1.40	1.50	1.60	1.70	1.80	1.90	1
2	2.00	2.10	2.20	2.30	2.40	2.50	2.60	2.70	2.80	2.90	2
3	3.00	3.10	3.20	3.30	3.40	3.50	3.60	3.70	3.80	3.90	3
4	4.00	4.10	4.20	4.30	4.40	4.50	4.60	4.70	4.80	4.90	4
5	5.00	5.10	5.20	5.30	5.40	5.50	5.60	5.70	5.80	5.90	5
6	6.00	6.10	6.20	6.30	6.40	6.50	6.60	6.70	6.80	6.90	6
7	7.00	7.10	7.20	7.30	7.40	7.50	7.60	7.70	7.80	7.90	7
8	8.00	8.10	8.20	8.30	8.40	8.50	8.60	8.70	8.80	8.90	8
9	9.00	9.10	9.20	9.30	9.40	9.50	9.60	9.70	9.80	9.90	9
10	10.00	10.10	10.20	10.30	10.40	10.50	10.60	10.70	10.80	10.90	10
11	11.00	11.10	11.20	11.30	11.40	11.50	11.60	11.70	11.80	11.90	11
12	12.00	12.10	12.20	12.30	12.40	12.50	12.60	12.70	12.80	12.90	12
13	13.00	13.10	13.20	13.30	13.40	13.50	13.60	13.70	13.80	13.90	13
14	14.00	14.10	14.20	14.30	14.40	14.50	14.60	14.70	14.80	14.90	14
15	15.00	15.10	15.20	15.30	15.40	15.50	15.60	15.70	15.80	15.90	15
16	16.00	16.10	16.20	16.30	16.40	16.50	16.60	16.70	16.80	16.90	16
17	17.00	17.10	17.20	17.30	17.40	17.50	17.60	17.70	17.80	17.90	17
18	18.00	18.10	18.20	18.30	18.40	18.50	18.60	18.70	18.80	18.90	18
19	19.00	19.10	19.20	19.30	19.40	19.50	19.60	19.70	19.80	19.90	19
20	20.00	20.10	20.20	20.30	20.40	20.50	20.60	20.70	20.80	20.90	20
21	21.00	21.10	21.20	21.30	21.40	21.50	21.60	21.70	21.80	21.90	21
22	22.00	22.10	22.20	22.30	22.40	22.50	22.60	22.70	22.80	22.90	22
23	23.00	23.10	23.20	23.30	23.40	23.50	23.60	23.70	23.80	23.90	23
24	24.00	24.10	24.20	24.30	24.40	24.50	24.60	24.70	24.80	24.90	24
25	25.00	25.10	25.20	25.30	25.40	25.50	25.60	25.70	25.80	25.90	25
26	26.00	26.10	26.20	26.30	26.40	26.50	26.60	26.70	26.80	26.90	26
27	27.00	27.10	27.20	27.30	27.40	27.50	27.60	27.70	27.80	27.90	27
28	28.00	28.10	28.20	28.30	28.40	28.50	28.60	28.70	28.80	28.90	28
29	29.00	29.10	29.20	29.30	29.40	29.50	29.60	29.70	29.80	29.90	29
30	30.00	30.10	30.20	30.30	30.40	30.50	30.60	30.70	30.80	30.90	30
31	31.00	31.10	31.20	31.30	31.40	31.50	31.60	31.70	31.80	31.90	31
32	32.00	32.10	32.20	32.30	32.40	32.50	32.60	32.70	32.80	32.90	32
33	33.00	33.10	33.20	33.30	33.40	33.50	33.60	33.70	33.80	33.90	33
34	34.00	34.10	34.20	34.30	34.40	34.50	34.60	34.70	34.80	34.90	34
35	35.00	35.10	35.20	35.30	35.40	35.50	35.60	35.70	35.80	35.90	35
36	36.00	36.10	36.20	36.30	36.40	36.50	36.60	36.70	36.80	36.90	36
37	37.00	37.10	37.20	37.30	37.40	37.50	37.60	37.70	37.80	37.90	37
38	38.00	38.10	38.20	38.30	38.40	38.50	38.60	38.70	38.80	38.90	38
39	39.00	39.10	39.20	39.30	39.40	39.50	39.60	39.70	39.80	39.90	39
40	40.00	40.10	40.20	40.30	40.40	40.50	40.60	40.70	40.80	40.90	40
41	41.00	41.10	41.20	41.30	41.40	41.50	41.60	41.70	41.80	41.90	41
42	42.00	42.10	42.20	42.30	42.40	42.50	42.60	42.70	42.80	42.90	42
43	43.00	43.10	43.20	43.30	43.40	43.50	43.60	43.70	43.80	43.90	43
44	44.00	44.10	44.20	44.30	44.40	44.50	44.60	44.70	44.80	44.90	44
45	45.00	45.10	45.20	45.30	45.40	45.50	45.60	45.70	45.80	45.90	45
46	46.00	46.10	46.20	46.30	46.40	46.50	46.60	46.70	46.80	46.90	46
47	47.00	47.10	47.20	47.30	47.40	47.50	47.60	47.70	47.80	47.90	47
48	48.00	48.10	48.20	48.30	48.40	48.50	48.60	48.70	48.80	48.90	48
49	49.00	49.10	49.20	49.30	49.40	49.50	49.60	49.70	49.80	49.90	49
50	50.00	50.10	50.20	50.30	50.40	50.50	50.60	50.70	50.80	50.90	50

Distances of slope stake from side or shoulder stake for any width roadway, slope 1 to 1. If ground is nearly level, the cut or fill at side stake is located by the double entry method in left column and top row. The number in body of table in same row and column gives distance from side stake to slope stake. If ground is not level estimate the difference in elevation between the side stake and slope stake, lower target by this amount if cut, elevate if fill. Add this amount to cut or fill and find distance in table. Set up rod at this point, and line of sight should cut target. If it does not make the slight adjustment necessary.

385.27
 4.46
 380.81 (W)

30
 2 31
 3802
 517.17
 316.67
 200.56
 4.5
 36.5
 14 75.40
 77.75
 97.65
 43

NOTE
CHANGEINDEX

	Page
CATALINA Thomas St. Pipe #9 - Plan & X-Sections	alice ✓ 1-3
Redwood Village St. Pipe Site X-Sections	alice ✓ 5-8
CATALINA Linda Stand Pipe, Elev. & REPT. TEST HOLE	✓ 9
" " " , Misc. DETAILS	alice ✓ 11
" " " , Additional X-SECTIONS	✓ 12-13
CATALINA Linda Stand Pipe Elev. & Ties	alice ✓ 15-16
CATALINA STANDPIPE, X-Sections after Stripping	✓ 17-18 alice
" " , Revised " "	✓ 19
" " , X-Sections After Excav	✓ 20-22 alice
CLAIREMONT STANDPIPE, Existing 8" Drain 3/30 Elevations of Foundation	✓ 26 alice
REDWOOD VILLAGE STANDPIPE	27 ✓
" " " PERIMETER Drain	36 ✓
" " " X-Sections Add. Excav	alice 37-38
CATALINA STANDPIPE, PROPOSED DRAIN	39 ✓
" " " REV. ALIGNMT.	39 ✓
CATALINA STANDPIPE, 12" CONC. DR. (LAT. "A")	alice 39 ✓
TEMPLETON ST. - Linda Vista - Location 6" C.I. WAT. TARRU School Grounds	40 alice

	PAGE
Redwood Village St. Pipe X-Sections	alice ✓ 41-43
Catalina Standpipe Drainline MH	28 ✓
Elev. 5	alice
Redwood Village, Paving & Fen. Grds.	44 ✓
" " , FENCING & Prop. Cars	45 ✓
Alley Bk 61, Nor. Madison, E of 33rd	Const. 46-47 ✓ 6" wat. 46-47 alice
Catalina Standpipe Drainline 16" C.I.	✓ 48 ✓
Top 4" C.I. pipe, Napier & Frankfurt	✓ 78 alice
F.H. LOCATIONS ON BURTON ST., SUBD. UNIT 3, LINDA VISTA-50	50 ✓
Clairemont Standpipe Location	alice 51 ✓ alice
Linda Vista Reservoir & Pumping Plant	21 ✓
Location of Pipe Lines, Fences & Buildings	25 ✓ alice
Linda Vista Reservoir pipeline Location	52 ✓ alice

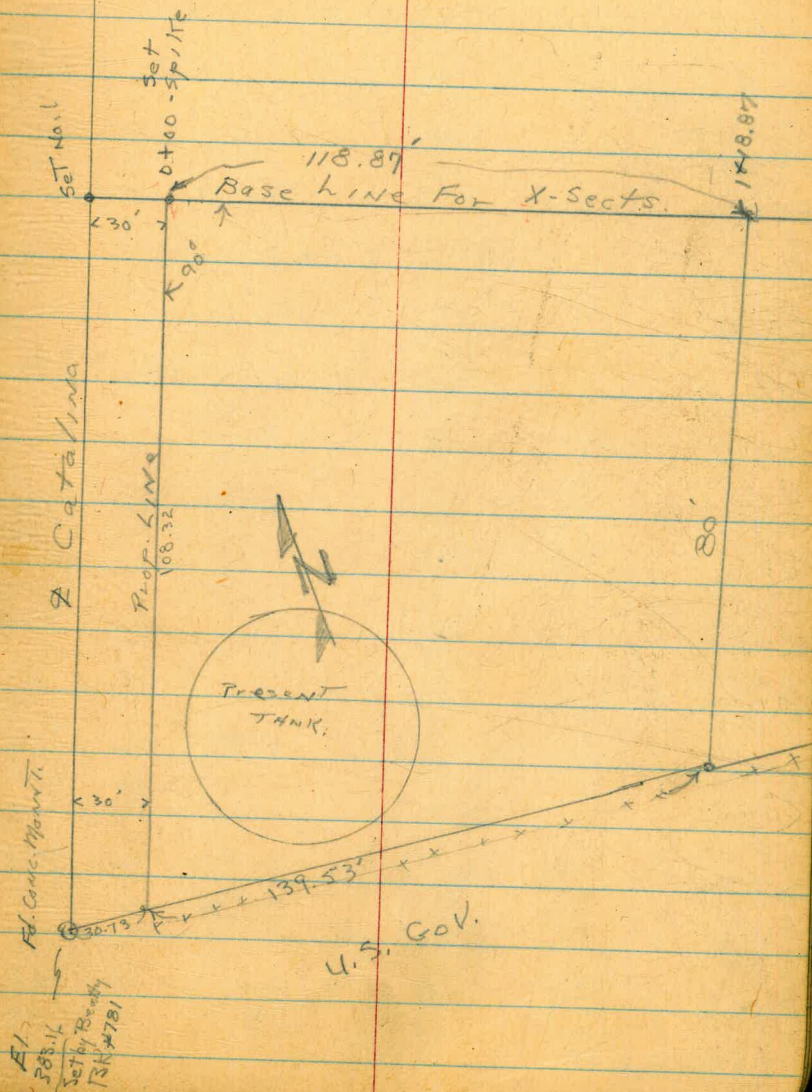
PT LOMA
CATALINA

Stand Pipe -
Plant + X-sec.
End of Catalina + Military Zone

5-12-53
KING - Notes
West
William
Ke
MNS ELECTRONIC DRIVE
Ed.

See Drawing DPW # 9

Note: Par. 2' to Edge



TEMPER
6" C.I.W

X-Sections Stand Pipe -
 End of Catalina + Military Zone
 CATALINA + Military Stand Pipe

5-12-53
 King
 West
 Williams
 Kemp

T.B.M.	6.82	389.98		383.16
B.M.			1.88	388.10
T.P.	5.52	389.00	6.50	383.98
0-9			8.7	380.3

Top Conc. Man. Military Reserve gate - Catalina
 Top Conc. base old S. Pipe - D.P.W. #9
 North - To - South side

0+00				
0+09				
0+11				
0+16				
0+30				
0+45				
0+60				
0+80				

Edge of Pav.		RT						
LT.	RT.							
380 ¹	380 ¹	381 ¹	386 ²					
9.0	8.9	7.9	2.1					
10	0	43	63					
380 ⁷	380 ²	382 ²	388 ²					
8.3	8.1	6.8	0.8					
10	0	30	60					
382 ⁹	382 ⁸	383 ⁸	388 ²					
6.1	6.2	5.2	0.8					
10	0	40	55					
383 ⁷	383 ⁶	384 ⁸	388 ²					
5.3	5.4	4.2	0.8					
10	0	38	51					
378 ²	379 ²	378 ²	388 ²					
10.5	10.8	10.7	0.8					
10	0	30	49					
372 ⁰	372 ¹	372 ⁶	375 ³	378 ²				
17.0	16.9	16.4	13.7	0.8				
20	0	24	35	53				
370 ⁶	371 ⁶	372 ⁵	371 ⁷	376 ⁵	380 ²	385 ⁹		
18.4	17.4	16.5	17.3	12.5	8.2	3.1	2.0	3.2
20	0	25	30	47	53	67	80	96
370 ⁶	371 ²	372 ²	372 ²	384 ¹		384 ²		
18.4	17.9	16.7	11.8	4.8		4.3		
20	0	35	49	65		72		

Reduced
 5/26/53
 CSB

92' FENCE

CATALINA ~~Pittoma~~ Stand Pipe
 X-sects.
 (contd) #9

5-13-55
 KING

3

Ext of Catalina
 Military Reserve

389.00

LT	ST	RT	ST	RT	ST	RT
370 ⁰	370 ⁸	371 ²	376 ²	384 ¹	383 ¹	
18.4	18.2	17.7	12.5	4.9	5.9	
20'	0'	26'	41'	61'	86' Fence	
370 ²	370 ⁸	372 ²	377 ⁶	384 ³	383 ³	381 ⁹
18.3	18.2	17.0	11.4	4.7	5.7	2.1
20'	0'	26'	41'	58'	65'	82' Fence

1700

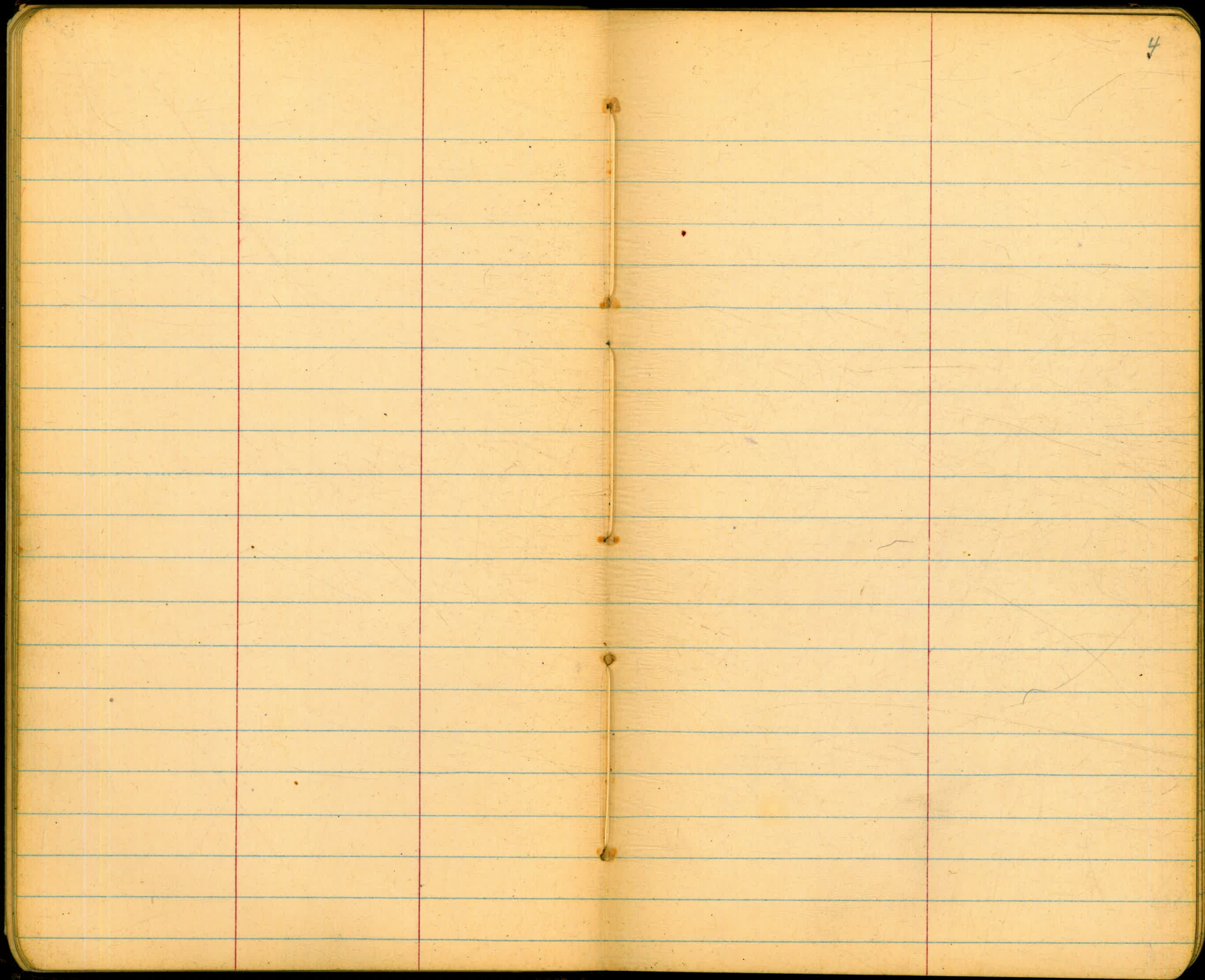
1718.87

End

TBM

5.86 383.14 383.16

CANC. 1104 - Catalina Military gate.

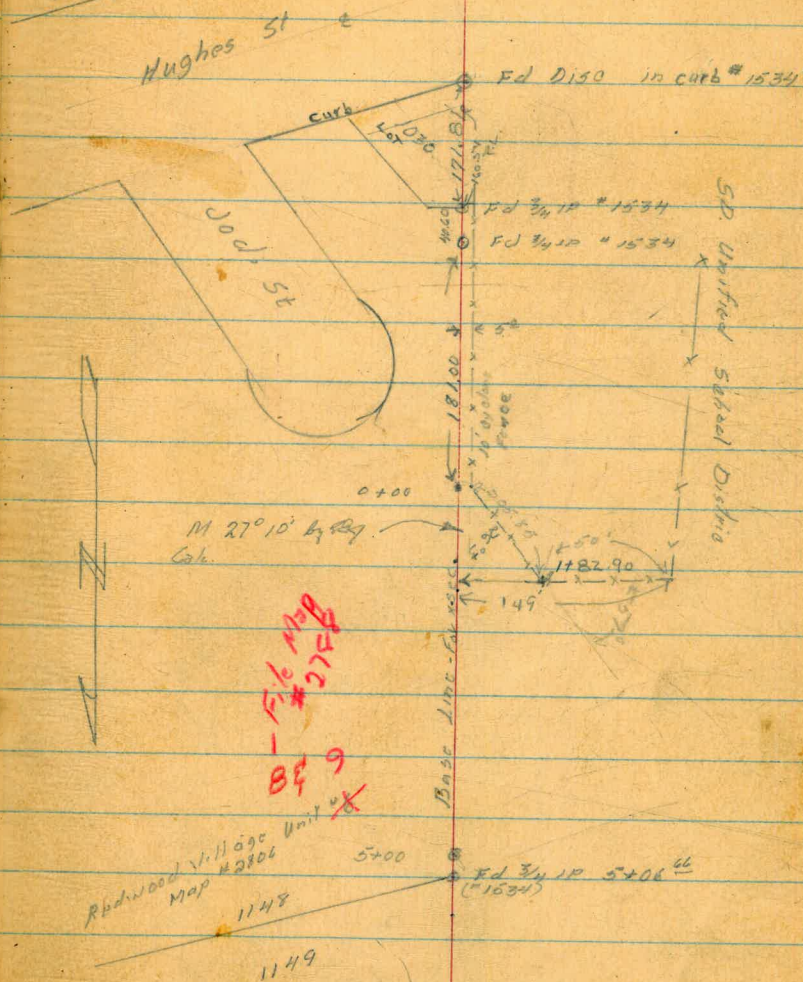


Loc. For X-sects.
Redwood Village Stand Pipe
Adjacent to School

LOCATED REDWOOD TANK AT

King 5-14-53
West
Williams
Kemp

Redwood Village Unit # 278



Redwood Village Unit # 278
Map # 2806

1148
1149

Red Wood Village Stand Pipe
X-sects. Proposed

BM	532	478.26		472.94
T.P.	1.94	472.30	7.90	470.36
0+00			1.9	
0+25			3.4	
0+50			5.6	
0+75			7.6	
1+00			10.8	
1+25			14.4	
1+50			16.7	
1+75			18.8	

5-14-53

West
Williams
Kemp

6

(BM has been covered) case

Chiseled x-m.t. West of walk - between Cafeteria + class rooms
Red Wood Village School

470.4
19 18 470.5
0 30

1689 470.8 470.5
24 13 1.8
0 3 16.8

1661 470.4 470.4
52 19 1.9
0 7 29.8

469.7 470.2 470.6
7.5 2.1 1.7
0 8 44.3

461.5 467.3 467.7 470.3 470.2
14.8 5.0 4.6 2.0 2.1
0 16 28 47 55.55 (Fence)

457.9 458.4 465.0 368.7
14.4 13.7 7.3 3.6
0 7 41 68.4 (Fence)

455.6 456.1 461.5 467.0 468.0
16.7 16.2 10.8 5.3 4.3
0 9 31 72 81.3 (Fence)

453.5 457.6 462.3 466.0 467.7
18.8 14.7 10.0 6.3 4.2
0 26 44 75 95.8

1782.90 End of Fence

Red Wood Village Standpipe
X-sections

H.I.
472.30

2+00			21.2	
2+25			24.0	
2+50			27.0	
2+75			29.2	
T.P.	3.83	468.31	7.82	464.48
3+00				
3+25			33.6	
3+50			34.4	
3+75			39.0	
T.P.	2.12	466.60	3.83	464.48
4+00			40.0	

5-14-52 - King - Notes

7

→ Take off (West) of base line

451.1	452.1	458.5	463.0	464.8	466.2	467.4	468.3	468.3	469.3
21.2	20.2	13.8	9.3	7.5	5.6	4.9	4.9	6.5	8.5
0	7	38	68	76	99	105	127	149	161
448.3	449.7	451.7	453.1	456.3	461.3	465.1	468.9	458.9	453.8
24.6	22.6	10.6	9.2	30	5.6	6.9	8.4	13.4	18.5
0	9	68	81	92	110	154	159	187	207
445.3	447.1	448.3	449.5	461.3	464.8	466.3	464.9	461.7	459.3
22.0	25.2	24.0	12.5	10.6	8.1	6.5	5.0	7.4	10.6
0	15	12	66	85	100	119	149	158	172
443.1	444.6	445.4	447.1	460.2	464.7	465.4	465.3	464.4	459.3
29.2	27.7	26.9	14.6	11.4	7.6	5.9	7.0	7.9	13.0
0	10	11	67	89	117	130	152	165	186
439.3	440.8	441.8	443.3	444.4	462	460	461	461	459.3
29.0	27.5	26.5	17.0	10.9	8.1	3.3	3.0	5.2	11.0
0	10	14	53	77	106	135	150	172	195
437.1	438.3	440.1	441.2	443.1	449.4	463.1	464.2	464.2	462.6
28.6	30.0	28.2	19.1	13.2	8.9	5.2	4.1	4.1	5.7
0	12	13	51	51	111	133	146	158	180
433.7	435.3	436.5	438.4	435.9	459.5	462.9	463.2	461.8	458.8
34.6	33.0	31.8	19.9	12.9	8.8	5.9	5.1	5.5	9.5
0	9	12	61	100	135	152	163	184	200
429.3	430.3	431.9	431.1	436.8	459.0	462.2	462.5	457.9	452.8
39.0	38.0	36.4	22.2	11.5	9.3	5.1	5.0	10.4	15.5
0	10	14	88	117	138	157	177	200	212
426.6	427.6	429.2	433.6	443.2	448.6	458.3	461.0	461.0	457.8
40	39	37.4	23.0	22.4	18.0	8.3	6.6	8.5	13.0
0	10	13	49	77	97	145	170	190	209

	+	H'	-	Elev
4+25		466.60	43.7	
	2.24	459.44	9.40	457.20
4+50				39.3
4+75			42.8	
5+00			44.7	
5+25			48.5	
	10.02	469.20	0.36	459.18
	7.40	475.29	1.31	467.89
	4.84	477.84	2.29	473.00
			4.90	472.94 = 472.94

West Williams Kemp

May 15 (Rain)

422.9	424.6	426.7	431.5	436.1	440.1	445.3	455.8	457.4	457.5	455.9
43.7	42	39.9	35.1	26.5	21.3	10.8	9.2	9.1	11.2	
0	12	14	20	67	97	147	170	186	197	
420.1	421.1	423.1	428.8	431.1	440.4	445.5	454.4	455.6	453.0	448.6
39.3	38.3	36.3	30.6	28.3	19.0	13.9	5.0	3.8	6.4	10.8
0	13	16	36	53	93	112	160	180	197	214
416.6	418.1	419.7	432.4	438.9	446.7	450.8	449.9			
42.8	41.3	39.7	22.0	21.0	10.7	8.6	9.5			
0	13	15	73	88	125	169	197			
414.7	416.0	417.5	421.4	427.7	433.9	444.4	446.1	444.5		
44.7	43.4	41.9	38.0	31.5	26	15.0	13.3	15.4		
0	13	14	40	71	98	158	177	187		
410.9	411.4	413.9	425.6	431.2	442.6	443.7				
48.5	48.2	46.5	39.8	29.2	16.8	15.7				
0	11	16	70	103	160	201				

Notes Reduced
 TP on rock in cement
 by Fence Co
 JKT
 6-9-53
 on Montfield

CATALINA
~~PT. LOMA~~ STANDPIPE
Elev. & REF PT. SET
* FOR TEST HOLE.

JUNE 8, 1953
Beatty
Mantel
Alexander

9.

TBM	3.14	386.30	383.16
IP	2.34	376.39	12.25 374.05
NAT. GED TEST HOLE		5.75	370.64
REF PT. (5) " "		5.72	<u>370.65</u>
REF PT. (20) " "		5.61	<u>370.78</u>
IP	12.20	386.25	2.34 374.05
CK TBM.		3.09	383.16

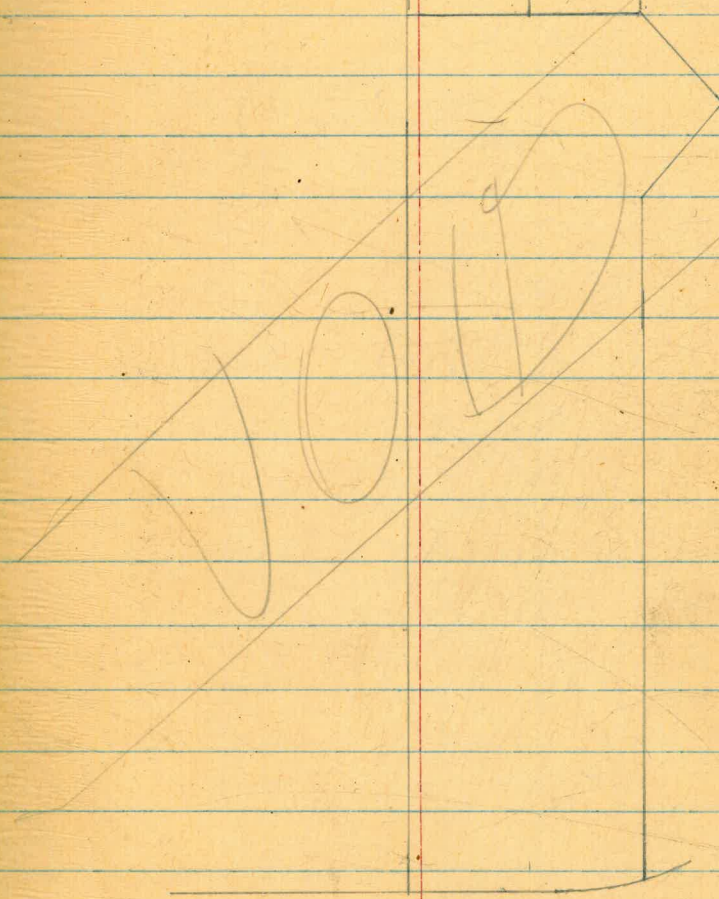
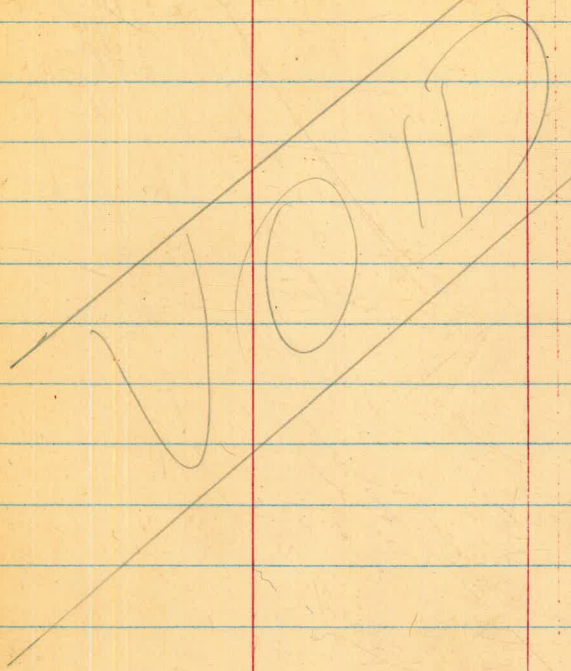
& Catalina End

NOTE: POSITION OF TEST HOLE IS 20' Nly
STA. 1400 OF BASELINE AS SHOWN
ON Pp. 1.

JUNE 8, 1953

16

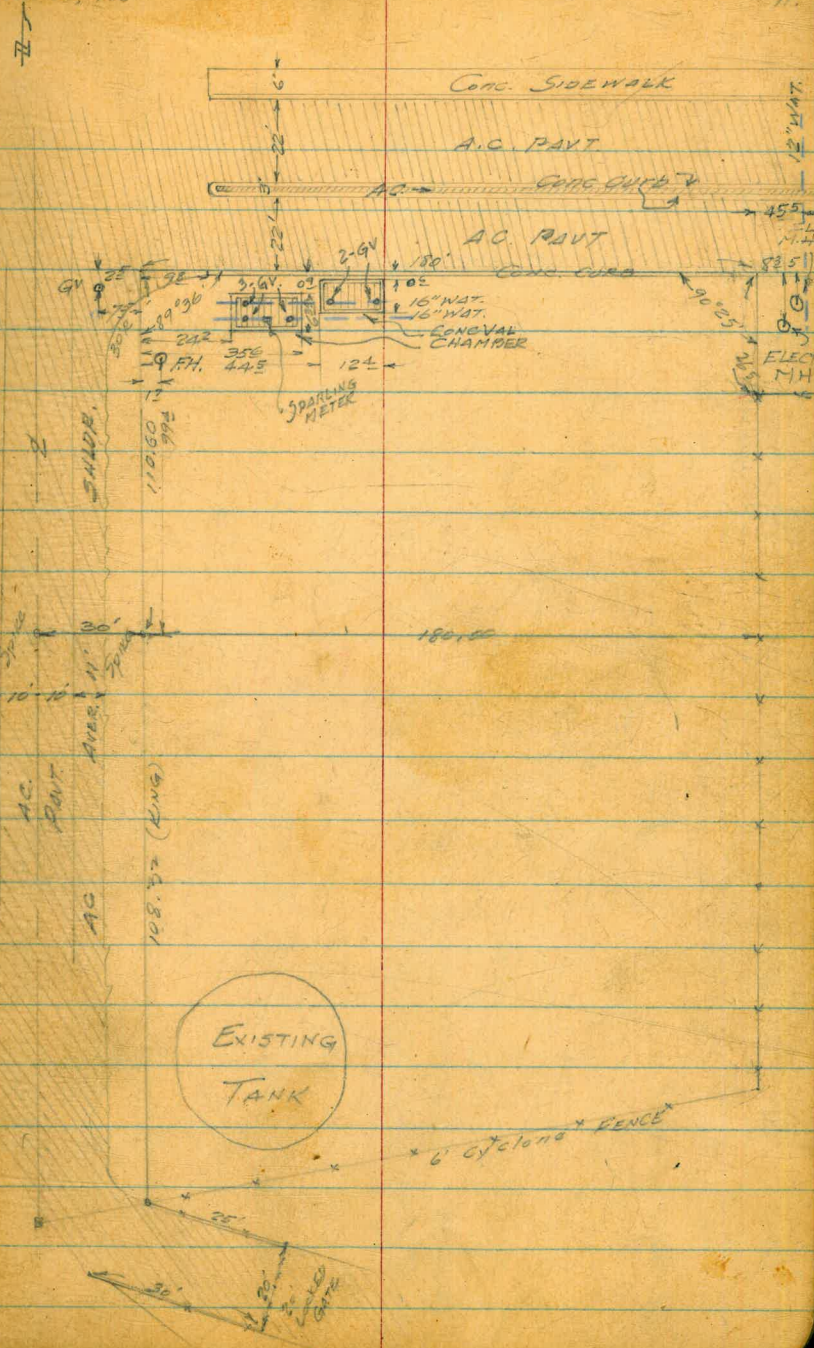
NEWPORT AVE
TO CATALINA BLVD.
6" C.I. STK'D FOR RELAYING IN EASEMENT



CATALINA
PT. LOMA STANDPIPE
MISC. DETAILS

JUNE 10, 1959

11.



CATALINA
PT. LOMA STANDPIPE
Additional X-SECTS
(Contd.)

B.M. 2.35 385.51 383.16

0-30 = @ Catalina Blvd

0-10

0+00

0+08.5

0+10

P 4.00 387.16 2.35 383.16

0+20

0+40

0+60

0+80

D 1.86 385.09 3.93 383.23

June 10 1953

GRATTY
MARTELL
ALEXANDER

12

Conc. Man & Gate Military Res
& Catalina Blvd

LT 377.48

Nly 8.03 377.84 379.00 380.20 381.26 382.28 383.01 383.16

163.3 150. 6.51 5.31 4.25 3.23 2.50 2.35

100. 50. 20 100 115. 51.4

377.00 377.40 377.76 378.20 378.86 379.31 379.69 380.21 380.43

8.51 7.25 7.31 6.67 5.80 5.52 5.30 5.08

16 14 120 100 80 60 40 20. 0

on AC - on AC on AC

376.51 376.84 376.93 377.14 377.11 377.16 377.16 378.6 379.1 380.1 379.9 379.0 379.4 379.8 380.1

9.00 8.97 8.58 8.37 8.40 8.35 7.9 6.9 6.4 5.1 4.6 6.5 6.1 5.7 5.4

16 160 120 120 108.3 104 100 76 80 60 51 51 20 20 2

Edge AC Edge AC

376.98 376.85 376.31 376.69 377.11 377.21 376.23 376.67 377.07 377.9 378.9 380.4 383.2 383.4 382.7

8.53 8.66 9.20 8.82 8.30 8.30 8.78 8.82 8.44 7.6 6.6 5.1 4.3 2.1 2.5

163.6 156 157.6 155.6 155.2 133. 132.4 116.6 110.6 100 80 60 20 20 2

Top Cur Top Cur Top Island Top Cur

376.41 374.93 375.14 375.79 375.83 375.36 375.06 376.2 377.2 383.7 383.1 378.4 375.2 374.1 374.1

11.60 11.75 12.23 11.82 11.37 11.32 11.80 12.0 11.60 10.7 3.2 11.0 15.9 16.6 15.6

163.3 157.6 157.6 155.6 155.2 133.0 132.6 110.6 110.6 100 80 60 20 20 2

Top Cur Top Cur Top Cur Top Cur

375.51 375.56 377.11 377.11 378.8 374.2 371.3 370.6 371.6

11.60 11.75 12.23 11.82 11.37 11.32 11.80 12.0 11.60 10.7 3.2 11.0 15.9 16.6 15.6

163.3 157.6 157.6 155.6 155.2 133.0 132.6 110.6 110.6 100 80 60 20 20 2

Top Cur Top Cur Top Cur Top Cur

378.09 377.7 374.1 383.2 374.2 370.6 370.7 371.1

12.07 9.5 3.1 4.0 11.0 10.6 10.5 10.1

110.6 100. 85 80 60 40 20 2

Top Cur Top Cur Top Cur Top Cur

KINGS PINE LANE
Top

CATALINA
PT LOMA STAND PIPE
(Cont'd)

6/11/53

13.

1400

385.09

1420

1440

TP

10.00 385.85

9.20 375.85

1460

1467

1480

TP

3.80 387.71 194 383.91

CK BM.

4.52 383.19 = 383.16

RT N
374.54
374.44
373.91
374.33
374.95
374.85
374.37
371.09
374.59
371.5
375.6
374.2
375.9
370.4
370.5
370.7

10.55 12.65 11.8 10.76 10.24 10.24 10.79 11.00 10.58 7.6 1.5 1.9 9.3 14.7 14.6 12.4
14.3 13.7 15.6 12.6 12.5 13.3 13.2 13.2 14.4 14.6 10.0 8.5 8.0 6.0 4.0 2.0
10.32 15.72 15.72 13.53 13.62 13.22 13.23 11.73 11.02

Top Carb
374.16
376.0
383.8
383.3
376.2
372.3
370.6
370.7
10.97 9.1 1.3 1.8 8.9 12.8 14.5 14.4
11.03 10.0 8.5 8.0 6.0 4.0 2.0

Top Carb
373.74
374.7
377.1
382.1
380.0
377.5
375.0
374.8
375.1
375.7
380.8
383.9
382.2
372.0
11.35 10.4 8.0 3.0 5.1 5.6 10.1 10.3 10.0 9.2 4.3 1.2 2.9 3.1
11.03 10.0 9.0 6.0 7.6 6.0 6.0 2.0 2.0 4.0 5.0 6.0 7.5

Top Carb
374.33
374.9
377.4
376.5
383.4
383.3
382.6
382.4
383.5
384.1
382.6
381.1
381.8
11.52 11.0 8.5 9.4 2.5 2.6 5.3 3.5 2.4 1.8 2.3 4.8 4.1
10.98 10.0 8.2 6.0 6.0 4.0 3.0 2.0 2.5 2.0 6.0 7.4

Top Carb
373.33
382.7
383.8
383.7
383.6
381.8
2.0 2.1 2.2 2.3 4.1
2.0 2.0 2.0 2.0 4.0

Top Carb
372.37
372.85
373.5
374.4
375.0
376.3
377.9
378.2
378.8
379.8
381.1
381.3
13.4 13.0 12.4 11.5 10.9 9.6 8.2 7.7 7.1 6.1 4.8 4.6
10.94 10.9 10.0 8.0 6.0 2.0 2.0 2.0 2.0 4.0 6.0 6.8

Top Carb
372.55
373.0
373.10
372.60
372.14
372.64
372.74
12.30 12.75 12.75 12.25 13.71 13.21 13.4
131.8 132.1 134.5 134.8 136.8 136.8 142.3

CATALINA
PT LOPIS STANDPIPE
& Profile proposed WATER
MAIN TO TANK

Sec BK 781 pg 43

BM	235	385.57	383.16
85+75 ^E	90°LT	5.44	380.1
+90 ^E		4.52	380.9
86+00 ⁶⁰	& CATALINA	4.48	381.0
+10 ⁶		4.71	380.8
+21 ⁶		5.22	380.3
+30 ⁶		5.6	379.9
+38 ⁶		5.1	380.4
+41		2.6	382.9
+46		1.8	383.7
+50		3.5	382.0
+70		11.4	374.1
+82		14.4	371.1
87+00		14.6	370.9
+20 ⁶⁰		14.9	370.6
CK BM		2.35	383.16

3/15/53 Beatty
Shroy
Martell
Alexander

14

Conc Man & Military RES GATE

on 2" A.C

Edge 6" A.C

Edge 6" A.C

Edge 2" A.C

Prop Line

c of proposed tank
25 per 5996 W

Ties to existing Tank
See page 1 + 11 for
previous work

West
Williams
Varenfokis
Kump

11-78, 53.

15

0+55⁶ 27⁸ RT To edge Tank

0+49⁶ 27⁹ RT To edge Tank

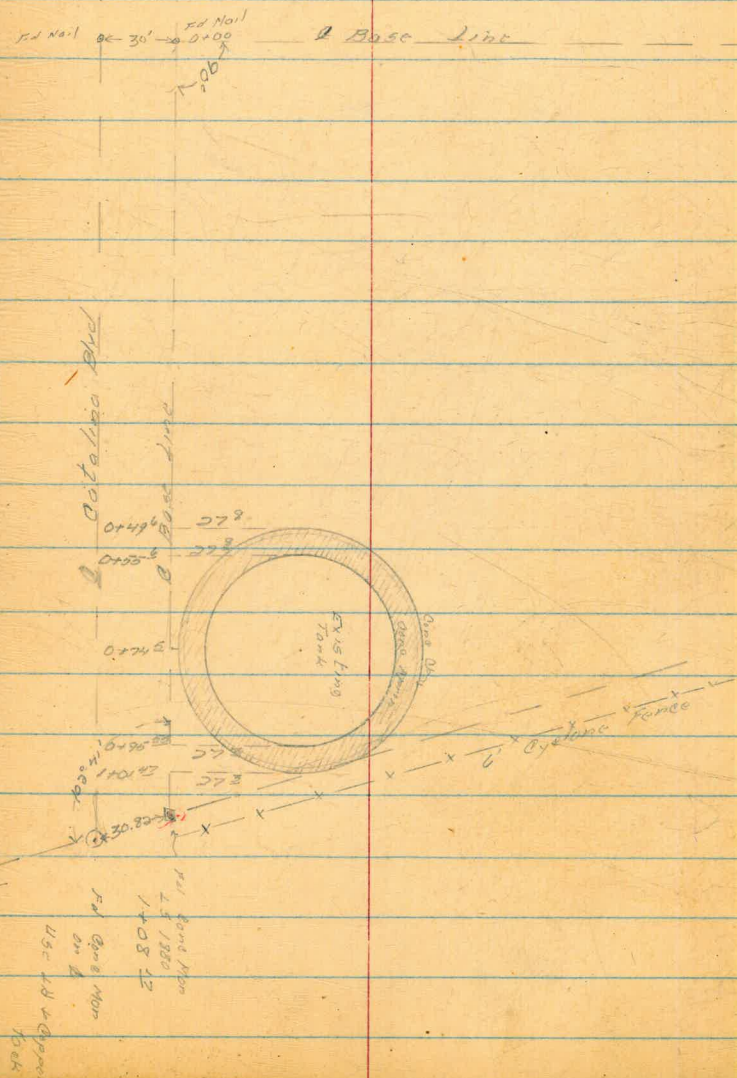
0+74⁵ 7¹ RT To edge Tank

0+74⁵ 1² RT To edge Tank

1+01⁴² 27³ RT To edge ab

0+95⁵⁵ 27³ RT To edge Tank

100 ft



Levels Top Cong
Slab Catalina Tank.

BM	+	8.71	391.87		383.16
#					
1		West side		3.71	388.16
#					
2		South side		3.61	388.26
#					
P	+	3.09	391.35		
#					
3		East side		3.14	388.21
#					
4		North side		3.19	388.16
		3.46	391.72	3.09	388.28
				8.55	383.17 = 383.16

West
Williams
Varonakis
Kemp

11-18-53

14

Top Camp Men A Catalina + Military Gate

CATALINA STANDPIPE
Cross-Sections, after Stripping
TANK SITE

See pp 5 1-3; 11-13 for Originals.

B.M. 2.11 385.27 383.16

0+00

0+08.5

0+10 BACK

0+10 AHEAD

4) 2.63 384.83 3.07 382.20

0+20

0+40

0+46 (Interpolate Original, to left, 0+45 to RT)

0+60

0+80

FEB. 9 1954

BEATTY
Shorley
Martell
Alexander

17

Cont. Man. & GATE ENTRANCE TO Military RES. (see pp 2, 12)

LEFT SLY

RIGHT SLY

79.97 79.07 79.27 79.97 80.17 80.47 81.07
53 62 62 53 51 48 42
51 51 40 20 4 20 20

78.37 79.77 80.97 80.47 80.77 80.97 81.17 83.17
69 55 43 48 45 43 41 21
57 62 43 20 2 13 20 23

76.37 80.37 81.67 81.77 81.07 80.97 82.57 83.47 85.27
69 49 36 45 42 43 27 18 20
90 60 40 20 4 13 20 22 26

79.47 81.57 82.17 82.07 82.47 82.77 83.57
58 37 31 32 28 25 17
70 52 20 20 20 20 20

77.63 78.43 79.43 81.83 83.29 83.03 81.63 81.83 81.33 82.23 84.53 87.83
72 64 54 30 16 18 32 30 35 26 23 30
75 81 78 67 60 40 20 4 20 30 40 48

SEE REVISED X-SECTS Pg. 19

76.18 76.8 77.6 83.2 82.9 76.8 75.3 74.2 73.2 73.6 76.6 84.8 87.8
865 50 72 16 19 52 95 106 116 112 82 00 30
1165 76 73 77 73 33 40 20 4 27 35 46 52
Curb

76.22 76.5 83.4 82.6 78.3 75.1 73.2 71.6 70.6 70.5 70.5 72.5 88.2
861 83 14 22 65 97 116 132 142 143 143 123 34
105 97 82 75 63 52 40 20 4 20 36 40 53
Curb VAL Box

75.56 76.1 82.5 83.3 76.8 72.8 70.2 70.1 70.5 70.5 70.5 83.2 85.8 85.8
827 87 23 15 80 122 146 147 143 143 143 16 1.0 1.0
1102 99 36 82 63 30 34 20 4 20 36 64 75 76 FEN

75.11 75.6 78.1 83.2 83.2 75.2 70.3 70.0 69.9 70.1 70.4 70.6 83.3 83.9 84.7
972 92 67 16 16 96 143 148 149 147 144 143 16 0.9 0.1
110 102 95 86 84 59 44 40 20 4 20 40 62 89 92 FEN

CATALINA STANDPIPE
X-SECTIONS
(Contd)

FEB. 9, 1954

18

384.83

1+00

LEFT NLY SEE REVISED X-SECTS Pg. 19 RIGHT SLY

74.59	74.6	82.8	82.9	72.8	71.0	69.8	69.8	70.2	70.5	70.8	83.4	82.9
102	102	2.0	1.9	12.0	13.8	15.0	15.0	14.5	12.3	14.0	1.8	1.9
110.3	103	83	82	72	23	35	20	5	20	31	63	82

1+20

74.14	73.9	83.2	83.2	75.9	71.0	70.8	70.0	70.2	70.6	70.7	83.6	83.9	82.7	81.8
106.9	109	1.6	1.6	8.9	13.8	14.0	14.8	14.5	12.2	14.1	1.2	0.9	2.1	3.0
110.2	103	85	81	58	23	32	20	5	20	22	56	60	63	83

1+33 (Interpolate Orig)

73.88	74.2	80.3	82.1	79.2	76.8	73.3	71.6	71.7	72.6	73.4	83.9	82.1	81.6
109.5	106	4.5	2.1	5.6	8.0	11.5	13.2	13.1	12.2	11.4	0.9	2.7	3.2
110.1	99	87	78	60	53	40	20	5	15	22	54	63	76

FEN.

1+40

73.73	74.1	79.1	80.4	79.7	79.3	79.9	75.9	75.1	74.6	74.7	83.3	83.3	81.5	81.6
110	107	57	4.4	5.1	5.5	4.9	8.9	9.7	10.2	10.1	1.5	1.5	3.3	3.2
110	97	81	75	74	62	60	40	20	5	17	48	52	6.4	75.5

FEN.

1+60

73.31	75.7	82.5	82.2	81.9	82.7	83.2	80.9	81.8
112	91	2.3	2.6	2.9	2.1	1.6	3.9	3.0
109.4	75	57	22	5	20	3.9	5.3	7.2

Corb FEN.

1+67

73.13	75.2	80.1	81.9	82.3	82.8	82.8	81.7
117	9.6	4.7	2.9	2.5	3.0	2.0	3.1
109.5	77	57	40	20	5	20	20

Corb

1+80 = (a.o Area for stripping.)

0+16

82.2	82.6	83.8	84.8
2.6	2.2	1.8	2.0
20	3.6	4.1	

0+30

Kings Sects
to LEFT

77.6	77.0	79.8	81.8
7.2	7.8	5.0	4.30
5	20	3.0	5.0

CK B.M

1.67 383.16 = 383.16

4.02 380.81 - 383.0

F 22 West Side Ref. grid Sat

10.00 374.83 - 383.0

F 82 Ner Side Ref. grid Sat

Notes Reduced
by A.R.
1-10-54

CATALINA STAND PIPE
 REVISED CROSS-SECTIONS
 After Additional STRIPPING

FEB. 15, 1934

BENTLEY
 SHREVE
 MARTELL
 ALEXANDER

19.

BASELINE

1 DM.	1.58	384.74	383.16
0+40			
0+46			
0+60			
0+80			
1+00			
1+20			
1+33			
1+40			
1+60			
	1.58	383.16	

LT. NY.	76 ⁸ 79 53	75 ⁰ 97 40	73 ¹ 11.0 20	73 ⁰ 11.7 0	72 ³ 12.4 20	72 ¹ 12.6 32	70 ⁵ 6.1 40	84 ² 6.0 46			
	78 ³ 8.4 63	74 ¹ 10.4 30	71 ¹ 13.6 20	70 ¹ 14.0 0	70 ³ 16.4 20	70 ³ 14.4 30	70 ⁵ 14.2 37	72 ⁵ 12.2 40			
	72 ¹ 12.0 50	70 ¹ 14.2 22	70 ³ 14.4 20	70 ⁰ 14.7 0	70 ³ 14.4 20	70 ⁴ 14.3 37	70 ² 13.8 40	83 ² 1.5 64			
	75 ² 9.5 59	71 ¹ 13.0 30	70 ³ 14.4 44	69 ⁸ 14.9 20	69 ⁸ 14.9 20	70 ⁰ 14.7 0	70 ¹ 14.6 20	70 ² 14.5 32	72 ⁶ 12.1 40	82 ⁶ 8.8 62	83 ² 0.8 89
	82 ² 1.8 82	71 ² 12.5 50	70 ⁴ 14.3 45	69 ¹ 15.0 38	70 ⁰ 14.7 20	70 ¹ 14.6 0	70 ³ 14.4 20	70 ³ 14.4 29	75 ⁰ 9.7 20	83 ⁴ 1.3 69	
	75 ² 8.8 58	72 ¹ 12.0 50	71 ² 13.5 40	70 ³ 14.4 32	70 ¹ 14.6 30	70 ⁰ 14.7 20	70 ⁰ 14.7 0	70 ⁶ 14.1 20	71 ⁵ 13.2 28	77 ³ 7.4 40	83 ⁶ 1.1 36
	76 ⁸ 7.9 53	75 ⁶ 9.1 50	73 ³ 11.4 40	71 ³ 13.4 20	71 ² 13.5 0	72 ² 12.0 20	71 ⁶ 5.1 40	83 ² 1.5 51	83 ² 0.8 54		
	79 ² 4.8 60	77 ¹ 7.6 50	75 ² 9.5 40	74 ¹ 10.3 20	74 ⁸ 9.9 0	75 ⁵ 9.2 20	80 ⁹ 3.8 40	82 ⁸ 1.9 47	83 ² 1.4 29		
					61 ² 2.8 0	No change	No change				

CATALINA STANDPIPE
 CROSS-SECTIONS After EXCAVATION
 Prior to Importation of Borrow.

BM. 1.84 385.00 393.16

0+00

0+08.5

0+10

0+20

0+33

0+40

0+46

0+60

0+80

MAR. 1, 1956
 BEATTY
 SHORLEY
 MARTELL
 ALEXANDER

LT. NLY

BASE LINE

20.

RT. SLY

80°
 2.8
 C

78° 80° 79° 80° 81° 82°
 6.5 4.7 5.2 4.2 3.9 2.7
 86 55 32 C 32 35

78° 79° 80° 80° 81° 82°
 6.2 5.4 5.0 4.1 3.8 2.5
 80 64 33 C 32 36

78° 79° 81° 81° 81° 80° 79° 79° 83° 85°
 6.4 5.5 3.2 3.2 3.3 2.5 5.8 5.8 1.7 0.0
 77 65 24 C 6 20 21 29 33 20

76° 79° 81° 80° 77° 76° 76° 77° 84°
 6.3 5.9 3.8 4.9 7.6 8.1 8.8 7.6 2.2
 98 76 21 26 13 C 10 33 45

77° 80° 80° 73° 72° 72° 72° 74° 74° 73° 77°
 7.1 4.8 4.6 12.0 13.0 13.0 12.9 12.8 12.8 11.2 7.3
 92 64 36 38 18 C 12 20 28 33 43

76° 77° 80° 73° 73° 71° 71° 73° 73° 82° 88°
 8.7 7.2 4.8 11.3 11.9 13.2 13.3 11.7 11.8 3.0 3.4
 100 92 60 26 27 C 14 19 33 54 57

76° 77° 80° 70° 69° 71° 72° 71° 83° 84° 86°
 8.0 7.3 5.0 14.2 15.2 3.1 13.0 13.4 3.0 6.7 1.6
 104 76 71 49 34 28 C 41 22 29 77

75° 77° 80° 69° 68° 72° 72° 71° 83° 83°
 9.5 7.4 5.0 16.0 16.2 15.7 13.0 13.3 1.6 1.7
 106 75 72 48 27 18 C 38 63 79

CATALINA STANDPIPE
(Cont'd)

385.00

1+00

1+20

1+33

1+40

1+47

1+60

1+67

1+80

CK BM

O.O. Area

1.82 389.16

3/1/52

21.

RISE LINE

76 ²	79 ⁴	68 ⁶	69 ⁰	71 ⁶	71 ⁶	71 ⁹	82 ²	82 ²
8.7	5.2	16.4	16.0	13.9	13.7	13.1	2.1	2.3
98	72	49	30	23	0	34	58	73

76 ⁰	79 ⁰	69 ⁸	69 ²	71 ²	71 ⁶	72 ¹	81 ⁰	81 ⁹
2.0	6.0	15.2	15.8	18.9	13.4	13.9	4.0	3.1
98	67	45	30	26	0	27	46	72

75 ²	78 ⁶	72 ¹	71 ⁶	73 ²	81 ¹	82 ¹	81 ⁵
2.8	6.4	12.2	13.9	11.8	3.2	2.2	3.6
100	64	52	0	25	40	60	71

75 ¹	79 ²	77 ⁵	75 ⁹	78 ⁰	82 ¹	82 ²	81 ⁵
2.2	5.7	7.5	2.1	7.0	2.2	2.8	3.5
98	66	33	0	28	43	20	65

74 ⁶	78 ⁰	80 ²	79 ²	80 ⁸	82 ⁰	81 ⁸	81 ³
12.4	7.0	4.8	5.7	3.2	3.0	3.2	3.7
100	70	38	0	22	40	52	61

74 ³	76 ³	79 ⁶	80 ⁴	81 ⁶	81 ²	80 ⁷
10.7	8.7	5.9	4.6	3.4	3.8	4.3
100	75	42	0	44	47	64

74 ⁰	76 ⁰	79 ⁵	80 ²
11.0	2.0	5.5	4.0
100	80	45	0

78²

Reduced by A.R.
3-2-52

3/30/54

22

CATALINA STANDPIPE
Cont'd

BM	2.26	385.42	383.16	
			7.62	377.8 381.00 F32 @ Tank
			4.59	380.83 = 1' above
			4.60	380.8 383.00 CK F22 Top Fdn
CK BM				
	Tap ANA ring		4.55	380.87

CATALINA STANDPIPE
 Cross-sections of 2 piles of material
 rejected by S.D TESTING LAB as being
 too wet for use in compacted fill

4/13/54

23

BM 2.40 385.56 383.16

0+00

O.O Area

74 6.3 4.9
 9 33

0+07

76 7.3 0.6 0.6 4.9
 22 11 17 32

0+14

77 7.5 0.8 0.0 0.8 5.0
 2 10 13 15 33

0+20

77 6.2 5.7 4.0 5.0
 12 18 21 28

0+26

79 6.2 4.1 3.3
 14 20 25

0+32

78 7.4 2.3 3.2 5.4
 25 9 16 23

0+40

79 7.4 2.6 2.4 5.3
 3 9 12 22

0+46

O.O Area

79 6.3 5.2
 13 24

BASE LINE



LINDA VISTA PUMPING PLANT
Location of Buildings + Fence

UK = HATCH 1-17-74

N 48° 25' 16" W 176.92
S 48° 21' 35" E 177.00

RF 8080
FD 2" IP

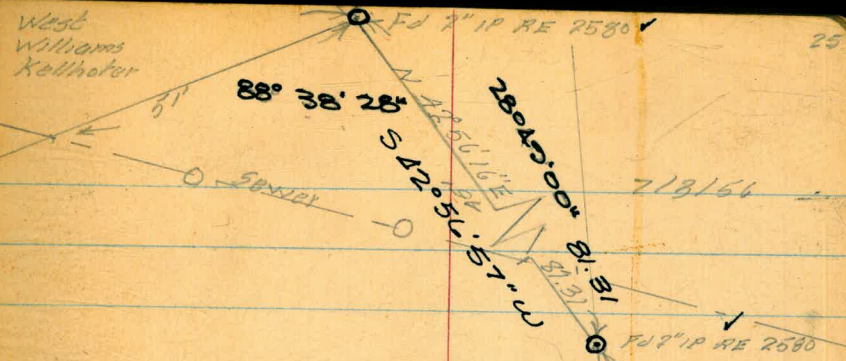
130.84
12° 18' 35"
580° 47' 00" W

end of fence 7'
against 200'
cut bank
6' Dialone
fence

3.00 OLD
PIPE TO
NEW 2"
OUT. TELCO.
SET 2" I.P.
C.E.

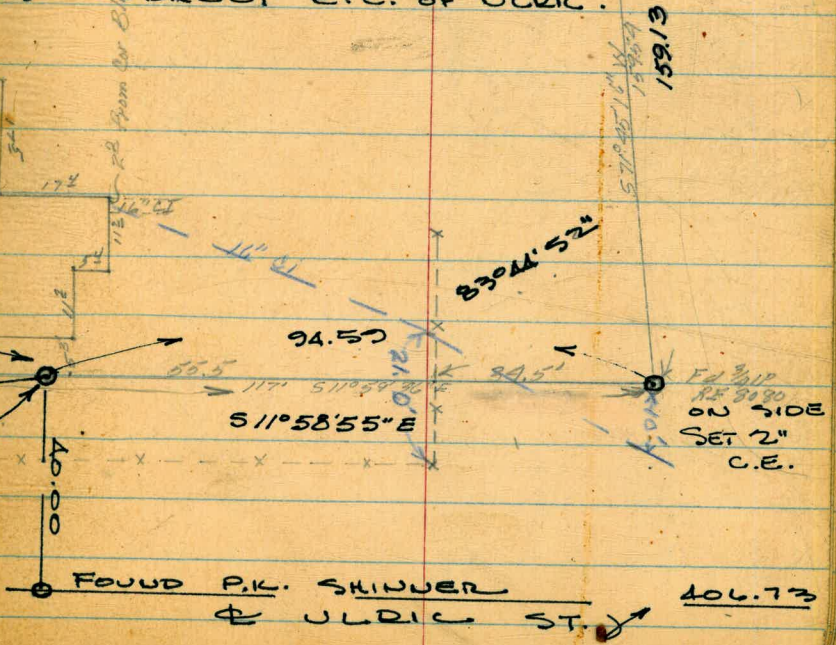
81° 54' 50"

185° 19' 25"
S 17° 18' 10" E
Δ = 10° 38' 30"
R = 640'
L = 118.85
C = 118.70



NOTE: BOUNDARY WAS
GOOD EXCEPT CURVE E.C.
AND S.E. COR. PENCIL
SHOWS ARC BEG. 117'
FROM UTH BDY. 74.57
IS CORRECT E.C. OF ULRK.

117.00
22.41
94.57



FOUND P.K. SKINNER
& ULRK ST. 406.73

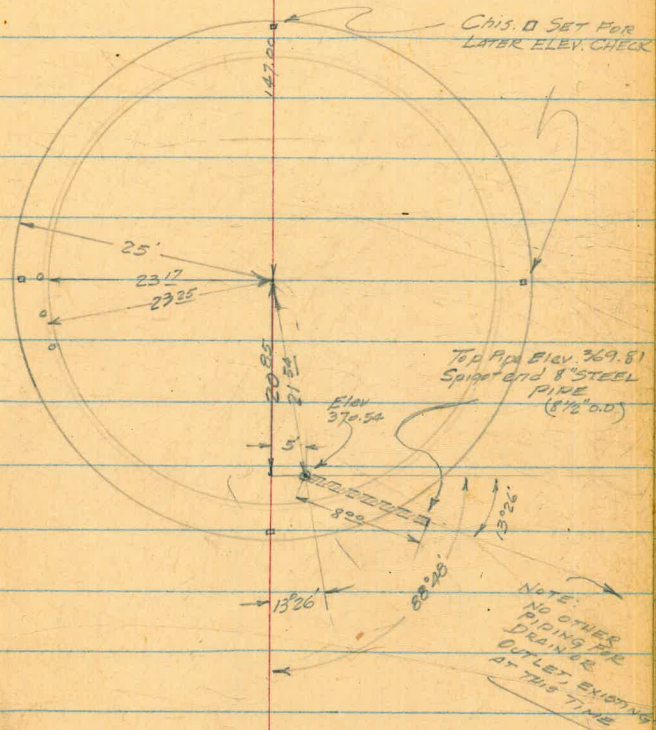
CLAIREMONT STANDPIPE
 LOCATION & ELEVATION of
 EXISTING 8" STEEL DRAIN.
 Also Elev. of Foundation for
 later Settlement Check.

B.M.	5.260	375.760	370.50	
Top of 8" steel drain pipe	5.22	370.54		
Top of end of 8" steel dr. pipe	5.95	369.81		
CK TBM.	4.627	376.102	4.285	371.475
NORTH II		5.620		370.482
EAST II		5.627		370.465
SOUTH II		5.641		370.461
WEST II		5.620		370.482
OK TBM.	4.161	375.636	4.627	371.475
OK BM.		5.135		370.501 = 370.50

Splice in
 R. Pipe 75'
 NW 1/4 TANK

APRIL 2, 1952
 DEATY
 SURVEY
 MARTEL
 ALEXANDER

R.R. SPIKE ROAD PT.
 SW. COR. DUBOIS & CLAIREMONT
 MESA DRIVE



REDWOOD VILLAGE
STAND PIPE

4/6/54

27

IP	2.77	470.66		467.89
			6.18	464.48
	9.13	475.52	4.27	466.39
CK B.M.	4.80	478.10	2.22	473.30 = 473.23
			4.26	473.84

Rock in cement at Fen. Cor.

on 3/4" I.P. set for center of Standpipe

Nail in pole # 569325 H.

CATALINA STANDPIPE
DRAIN LINE
ELEV. @ M.H.

9/23/54
Beatty & party

28

BM. 3.78 386.94 383.16

2 Bottom of M.H. 9.60 377.34

1/2 C.I. Drain pipe 9.40 377.54

Top of (Canc Pipe) M.H. (N) 1.71 385.23

(W) 1.69 385.25

(S) 1.69 385.25

(E) 1.70 385.24

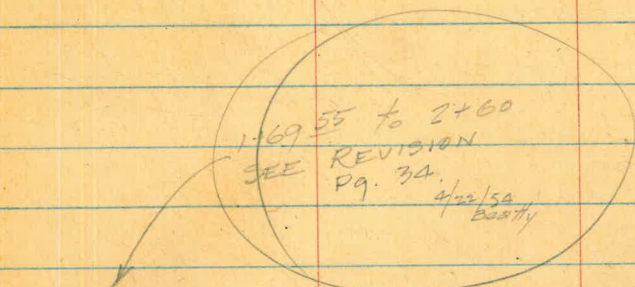
CK BM 3.78 383.16

CATALINA STANDPIPE PROPOSED DRAIN LINE

APRIL 12, 1954
BEATTY
SHUREY
MARTEL
ALEXANDER

29

CATALINA
STANDPIPE



2155 4 RT 75°00' RT

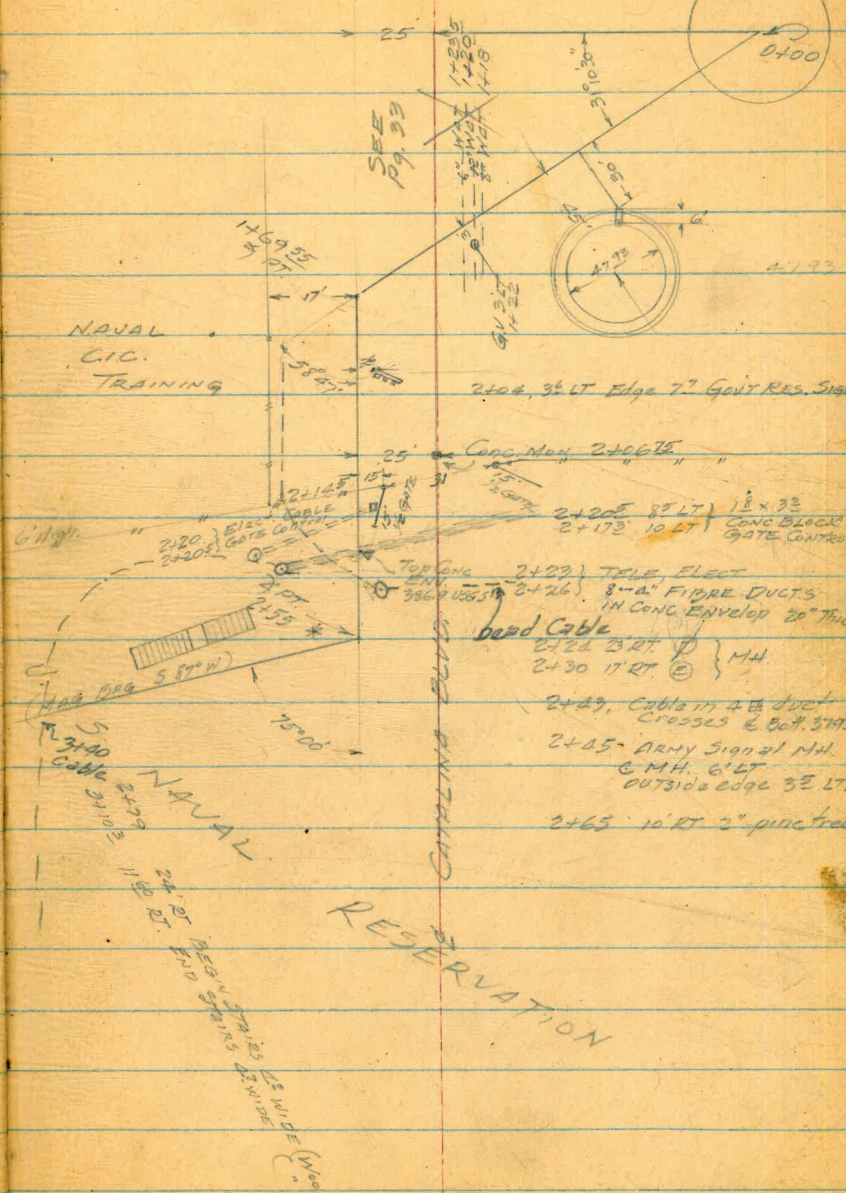
~~8+1675 DOT~~

7469.55 8 RT 58°47' LT

Cyclone FEN



0+00 = Center of Catalina Standpipe
31°10'30"



CATALINA STAND PIPE
& PROFILE PROPOSED
DRAIN LINE

1. BM.	279	385.95 ✓	383.16 ✓
0+00	(Existing fill to date)	5.4	380.5
0+50	" " " "	5.8	380.1
0+72		6.0	380.0 ✓
0+79		5.9	380.1
0+84		1.9	384.1
0+90		1.9	384.1
1+00		4.1	381.9 ✓
1+07		4.6	381.4
1+17	Edge of A.C. 2"	4.35	381.60
1+18	A.C. 6" Thick		
1+29.5		3.95	382.00
1+51	} AC. on Conc?	3.19	382.76
1+69		3.89	382.06
1+95.5	End AC	3.67	382.28
2+00		2.7	382.3
2+14.5	AT 6" Cyclone Fen.	3.2	382.8
2+22	on 2" AC	3.25	382.70 ✓
2+27	on 2" AC	3.19	382.76 ✓
4) Rnd of MH	112	384.72 ✓	2.35 383.60 ✓

4/12/54

30

Conc Man & Catalina @ Gate Military Res.

1422 3/2 8" GV

2+23

2+26

20
APPROX
↓

from Navy
Drawing
386.9 USGS = 380.8 CITY
4-4" FIBRE DUCTS
4-4" "

CATALINA STAND PIPE

4/9/52

31

384.72

2+50		1.2	383.5
2+55		1.1	383.6
2+65		0.9	383.8
P Bolt	0.09	371.46 ✓	13.35
			371.37 ✓
2+93		7.7	363.8
2+98		9.8	361.7
3+00		10.1	361.4
3+15		11.7	359.8
3+18		11.2	360.3
3+25		12.1	359.4
3+32		11.2	360.3
3+35		9.9	361.6
3+40		9.8	361.7
3+50		11.0	360.5
3+67		12.2	359.3
3+90		15.3	356.2
4+00		16.3	355.2
4+18		17.2	354.3
4+27		18.0	353.5

Bolt on Straps

3+40 Cable Crosses

CATALINA STANDPIPE

4/13/54

32

	371.46		
4+35		17.6	353.9
4+50		12.9	356.8
4+60		11.8	359.7
4+74		12.2	359.3
5+00		13.5	356.0 ✓
IP	1.23 361.23 ✓	11.46	360.00 ✓
5+00 (check)		5.2	356.0 ✓
5+30		8.9	352.3
5+50		11.5	349.7
5+65 45° LT	} see sketch	13.3	347.9
5+98		15.7	345.5
IP	13.08 373.12 ✓	11.8	360.95 ✓
IP	13.03 384.41 ✓	1.75	371.38 ✓
CK BM		1.24	383.17 = 383.16 ✓
BM	4.87 388.03		383.16
Profile connection to old standpipe			
0+72 = 00+00		8.0	380.0
0+16		7.6	380.4
0+18		5.1	382.9
0+23		4.7	383.3
0+25		3.5	384.5
0+26		3.5	384.5
0+30		1.3	386.7
0+30 Inv. 8" steel overflow		0.0	388.03 ✓

349.4 349.2 349.1 349.7 350.2 351.1
 11.8 12.0 12.1 11.5 11.0 10.1
 25 15 10 2 10 25

Notes reduced
 by JFT
 A-14-54

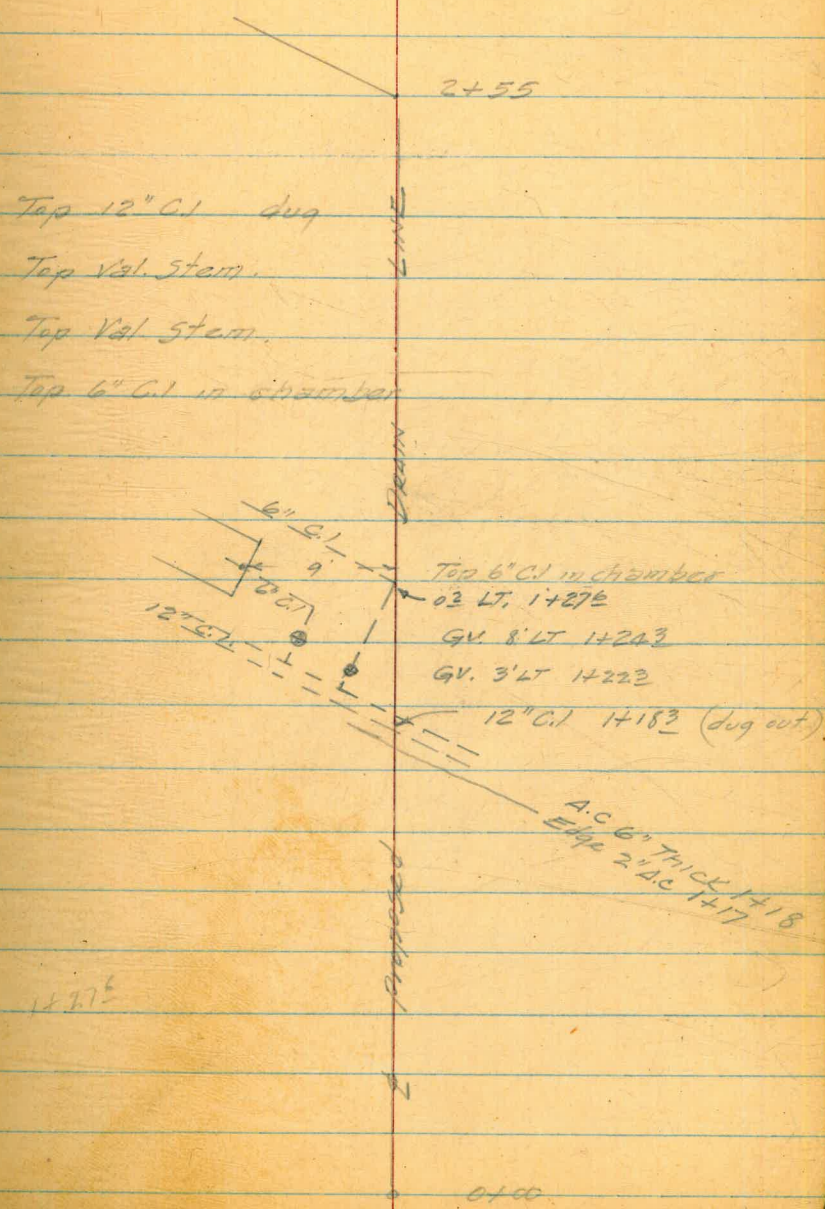
CATALINA STAND PIPE
Proposed Drain Line Details

4/16/54

33

BM	3.89	387.05 ✓	383.16
1+18 ³ on 4		8.91	378.14
3' LT, 1+22 ³		7.53	379.52
8' LT, 1+24 ³		7.29	379.76
9' LT, 1+29 ⁵		8.73	378.32

OK 3.89 383.16 ✓
Notes Reduced by J.F.T.
4-28-54



CATALINA STAND PIPE
 REVISED ALIGN'MT.
 PROPOSED DRAIN LINE

4/22/54



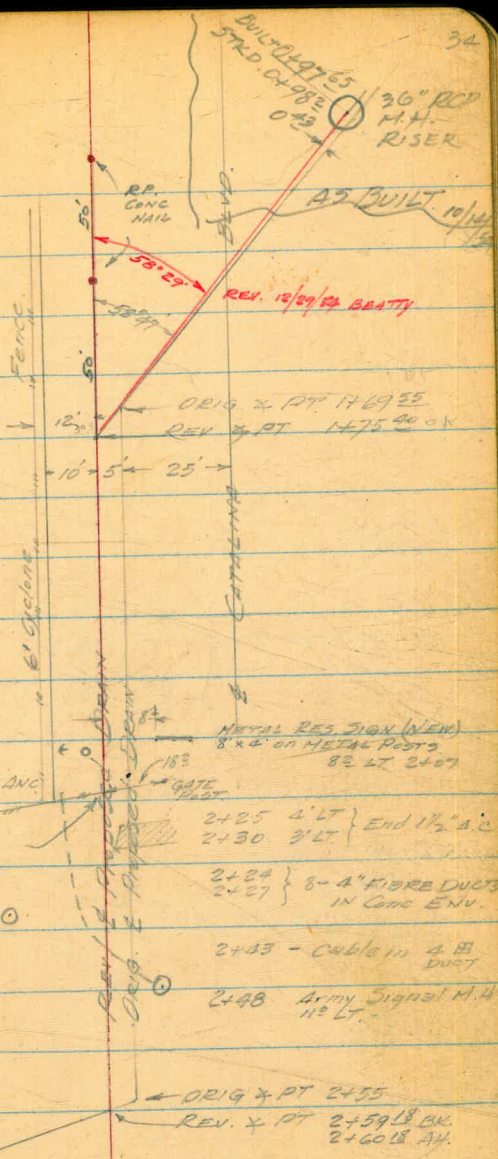
34

2+60¹⁸ Ahead
 2+59¹⁸ Back X PT 75° RT
~~2+55 Orig X PT~~

FROM
 Pg. 29

1+75⁴⁰ X PT 58°47' LT
~~1+69⁵⁵ Orig X PT~~

2+06 - 1 RT. HOLE OF PIPE Removed
 2+10 75 RT GUY ANC
 (6) FEN XING 2+18E
 18 RT 2+29 M.H. (D)
 12 RT 2+34 M.H. (D)



METAL RES SIGN (NEW)
 8x4 on METAL POSTS
 82 LT 2+07
 2+25 4' LT } End 1 1/2' d.c.
 2+30 3' LT }
 2+24 } 8-4" FIBRE DUCTS
 2+27 } IN CONC ENV.
 2+33 - Cable in 4" DUCT
 2+48 Army Signal M.H.
 1 1/2 LT.

← ORIG X PT 2+55
 REV. X PT 2+59¹⁸ BK.
 2+60¹⁸ AH.

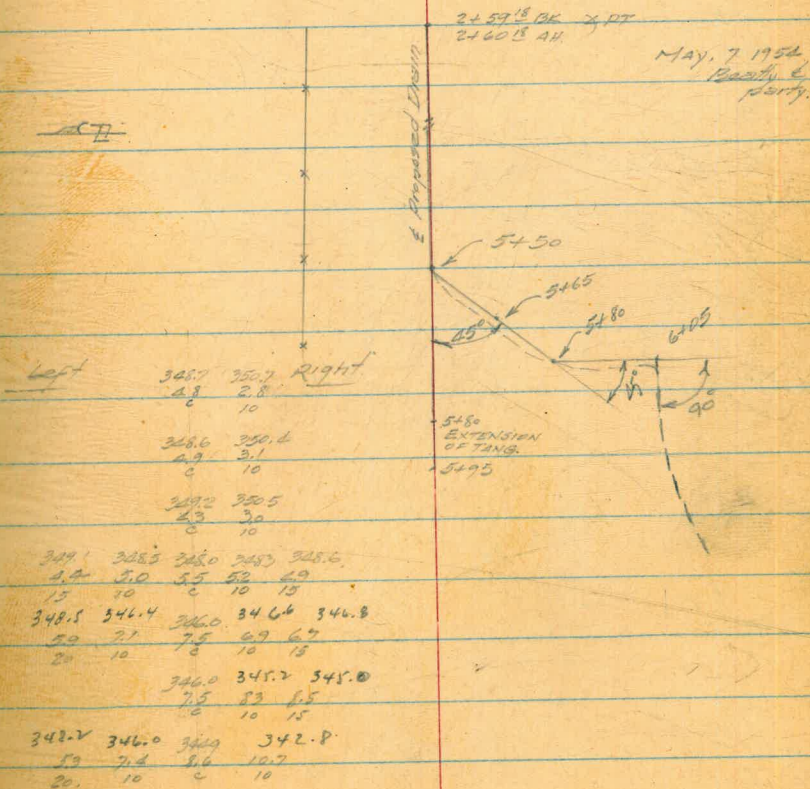
CATALINA STAND PIPE
REV. PROFILE
PROPOSED DRAIN LINE

4/22/52

35

BM.	512	388.28		382.16
1+754	X PT. 20'	A.C.	6.66	381.62
1+955	End 2" A.C.		6.08	381.80
2+00			6.5	381.8
2+50			4.7	383.6
2+59.18	X PT.		4.5	383.8
2+60.18	X PT.			
CK BM.			5.12	383.16
<hr/>				
II	130	361.30		360.00
II		353.45	10.30	351.00
5+50			3.75	349.7
<hr/>				
5+65			4.8	348.7
5+80	EXTENSION of Back Tarp.		4.9	348.6
5+95			4.3	349.2
<hr/>				
5+65			5.5	348.0
5+80	RT & T. BK Tarp.		7.5	346.0
5+80	RT & T. FWD Tarp.		7.5	346.0
6+05			8.6	344.9
CK 5+50			3.75	349.7

Notes Reduced by JFT
4-26-54



REDWOOD VILLAGE
STAND PIPE
PERIMETER DRAIN

4/22/51

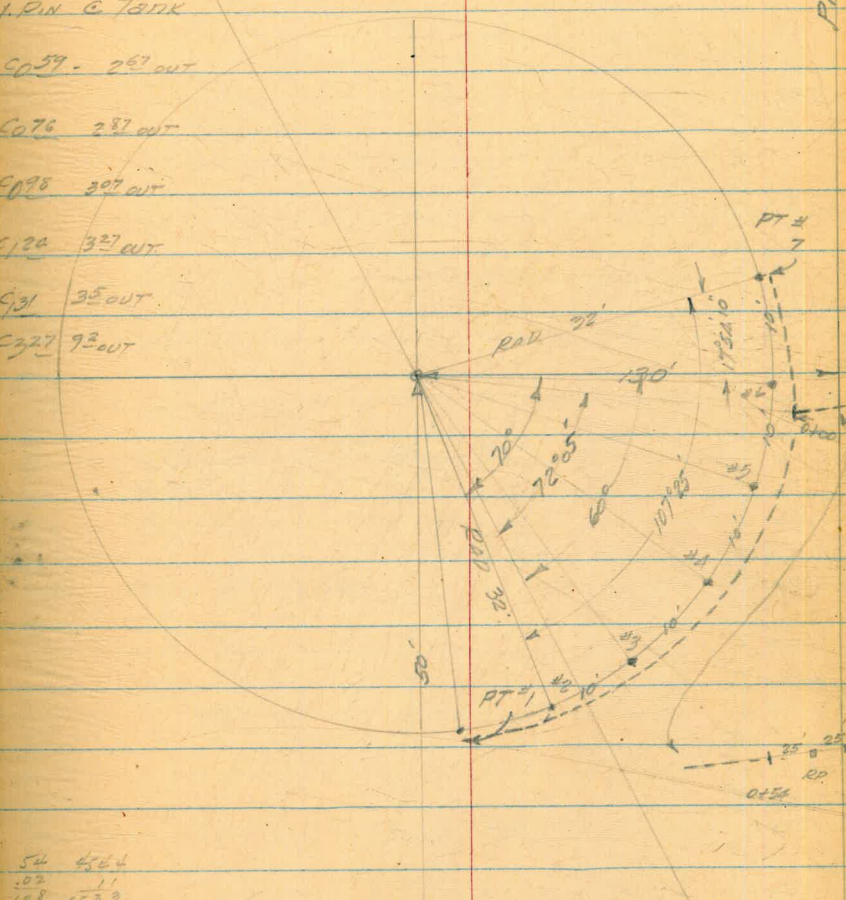
36

BM	4.18	472.07	467.89	Reck of Fen. Car		
IP	3.89	467.47	8.49	263.58	1. Rin. C Tank	
PT #1			10.38	457.09	456.5	C059 - 28" OUT
#2			10.38	457.09	456.3	C076 28" OUT
#3			10.39	457.08	456.1	C098 28" OUT
#4			10.33	457.10	455.9	C120 32" OUT
#5			10.46	457.01	455.7	C31 32" OUT
55 ↑ #5	E TEE.		10.45	457.02	453.75	C327 72" OUT
45 ↓ #6			11.17	456.30	454.4	
#7			10.50	456.97	456.5	
IP	8.52	472.10	3.89	463.58		
SK BM			4.21	476.89	= 476.89	
IP	3.82	467.40		463.58		
			5.00	462.0		{ 6" DRAIN
			13.0	454.4		Pattern of 10" Hole
BM	0.44	467.33		467.89		
0154			15.5	451.8		

100' RP HUB



Prop. Line



Prop. Line

200' RP HUB

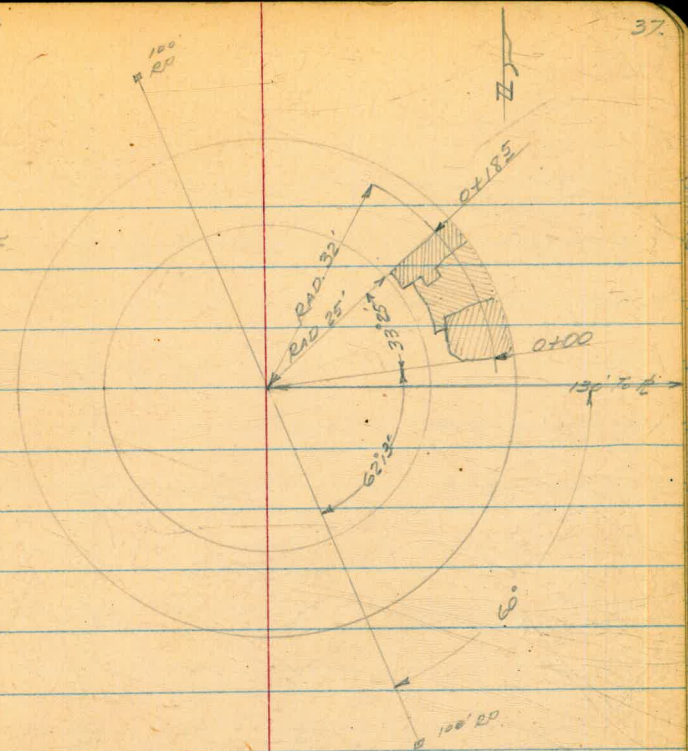
REDWOOD VILLAGE
STAND PIPE

CROSS-SECTIONS of Additional EXCAV.
Below Bottom of Ring Foundation

April 26 1954
BEATY
SHOREY
MARTEL
ALEXANDER

TBM 3.58 467.16 463.58

1.1" IN. & TANK



NOTE: STATIONS MEASURED
ON LINE 32' RAD.

0+00 0.0 Area

0+01

0+025

0+05

0+07 BK

25' RAD.
 10.0 9.8 10.1 9.9
 0 5 8 9

10.0 11.0 11.0 10.2
 0 4 5 8 9

10.1 10.7 12.5 12.5 11.2 10.9 10.9
 0 25 4 5 68 73 8 9

10.1 10.4 10.9 12.7 12.6 12.0 12.0 12.0 10.5 10.5
 0 13 32 45 42 85 9 105 105 10.5 90
 (© Hole 1 1/2 WIDE)

10.3 10.8 12.5 12.6 11.1
 0 33 43 45 88 90

REDWOOD VILLAGE
STAND PIPE
X- Sects. Contd.

467.16

0+07 AH

0+078

0+105 BK

0+105 BK & AH

0+105 AH

0+127

0+14

0+185 BK

0+185 AH

C.O. Area

4/26/50

38

25' RAD

0 10.3 11.2 11.3 12.6 12.6 11.0
3 32 23 25 85 90

0 10.1 11.2 11.1 11.0
3 32 85 90

0 10.1 11.2 11.1 11.0
24 25 85 90

102 11.3 11.2
0 28 90

102 11.3 12.0 12.0 11.3 11.2
0 28 28 28 28 90

102 11.5 12.0 12.0 11.3 11.1
0 28 28 28 28 90

103 10.7 12.0 11.9
0 08 07 90

101 10.2 11.9 11.9
0 08 03 90

100 9.9 10.0
0 45 90

Catalina Standpipe
12" C.I. DRAIN LINE (LAT. "A")

(6382-W)

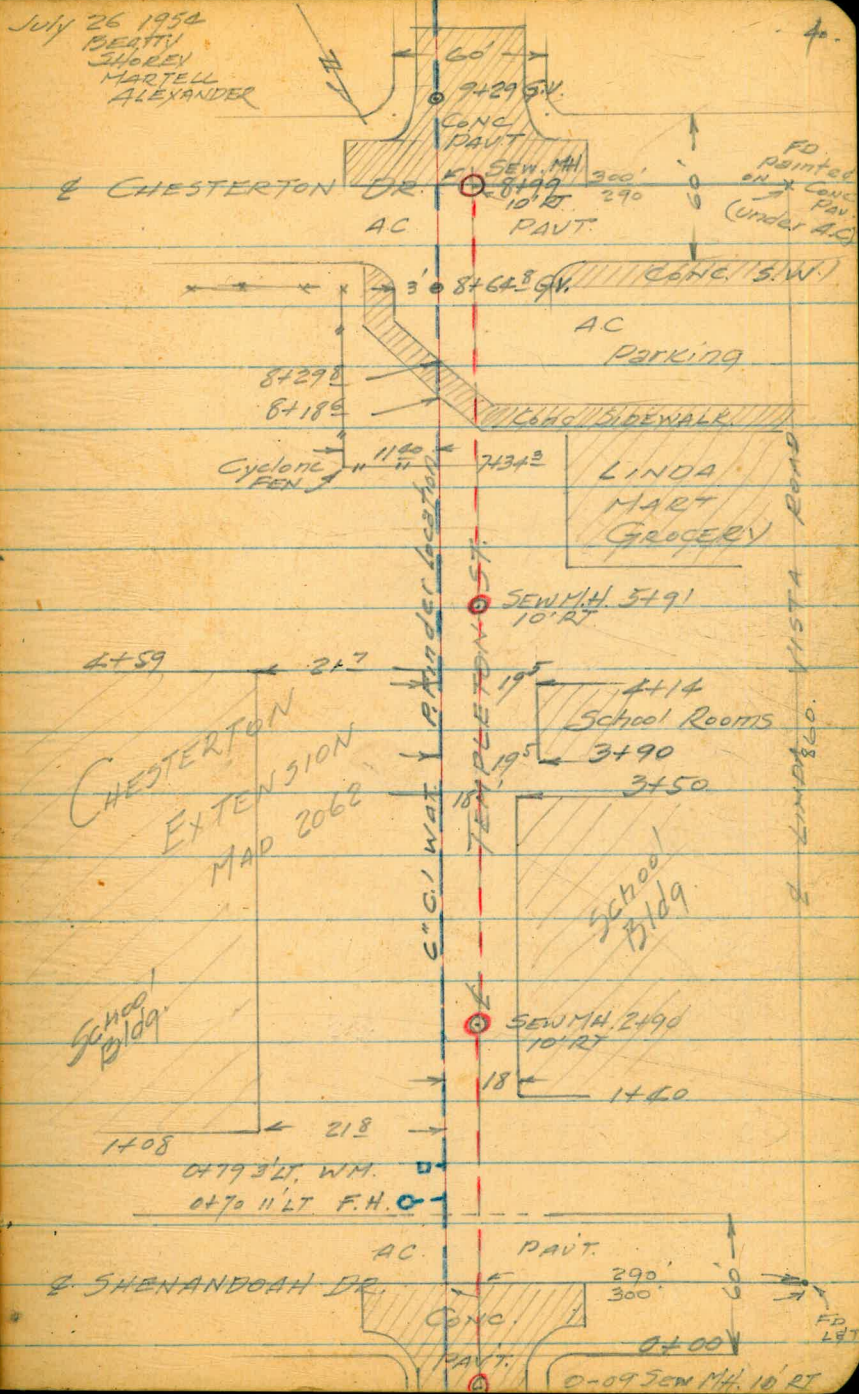
July 23, 1954
Beatty
Shelley
Martell
Alexander

39

BM	4.19	387.35	383.16	Conc. Man @ Catalina & Mitty Res. Gate.
0+37.5 (45° Bend)	5.1	382.3	377.9	C44
0+44	5.4	382.0	377.9	C41
0+50	5.4	382.0	377.9	C41
0+75	4.9	382.5	377.8	C47
0+98.2 End of work	3.1	384.3	377.7	C66
CK BM	4.19	383.16		

TEMPLETON ST. - LINDA VISTA
 LOCATION OF 6" C.I. WATER
 IN CLOSED STREET
 THRU SCHOOL GROUNDS.
 BETWEEN SHENANDOAH & CHESTERTON DR

- 9429 6" G.V. 03 RT
- 8490 Sew. M.H. 10' RT
- 84648 6" G.V. on E, curb 32 LT
- 84298 } Conc Sidewalk
- 84186 }
- 74343 12' Cyclone Fence Crossing } Cor. H. 40 LT.
- 5491 Sew. M.H. 10' RT
- 4459 End School Bldg 217 LT
- 4414 End " " 192 RT
- 3490 Begin School Bldg 195 RT
- 3464 Wat Val (wheel) 9 RT
- 3450 End School Bldg 18 RT
- 3411 Wat Valve (wheel) 9 RT
- 2490 Sew. M.H. 10 RT
- 1441 Wat Val Box 14 RT
- 1440 School Bldg 18 RT
- 1408 School Bldg 218 LT
- 0479 WAT MET 3' LT
- 0470 F.H. 11' LT.
- 0400 - Nly Prop. line Shenandoah Dr
- 0-09 Sew. M.H. 10' RT.



Redwood Village
Standpipe
X-sections
(Cont'd.)

469.37

8/31/54
Shorey
Martel
Alexander

72

Lt. - South

Rt. - North

0+40

64.7 65.0 63.9 63.9 63.4 63.4 63.4 63.3 63.4 60.4 67.7 65.8 63.8
47 44 45 45 46 46 48 48 41 40 46 47 45.6
20 10 10 20 30 40 50 60 70 80 90 100 110

0+50

66.3 65.5 65.3 64.6 64.1 64.0 63.9 63.7 63.9 63.6 63.5 63.3 62.9 60.5 67.1 64.8 63.5
51 48 44 43 43 42 42 42 42 41 41 41 41 41 41 41 41
30 20 10 10 20 30 40 50 60 70 80 90 100 110 120 130

0+60

67.9 66.6 65.7 65.5 64.6 64.2 63.9 63.9 63.8 63.4 63.7
70 68 65 63 62 62 62 62 62 62 62
30 20 10 10 20 30 40 50 60 70
30 cu yds. of spoil from
Pipeline ditch not back-filled

0+70

66.3 67.6 66.5 65.8 64.9 64.1 64.1 64.0 63.7 63.7 63.5 62.3 60.7 68.7 67.9 66.2
41 38 37 36 35 35 35 35 35 35 35 35 35 35 35 35
27 20 10 10 20 30 40 50 60 70 80 90 100 110 117 134

Fence

456.7

0+80

64.6 67.6 66.4 65.9 64.5 64.0 63.9 63.5 63.5 64.3 63.1 62.1 68.2 67.1
48 48 48 48 48 48 48 48 48 48 48 48 48 48
24 20 10 10 20 30 40 50 60 70 80 90 112 120 130 140
Fence Edge Tank Edge Tank

454.3

0+90

67.8 67.8 66.5 65.1 64.3 64.1 63.9 63.6 63.5 63.6 63.1 61.4 68.9
46 46 46 46 46 46 46 46 46 46 46 46 46
25 20 10 10 14 Edge Tank Edge Tank

Fence

454.1

1+00

67.6 67.2 66.0 64.3 64.0 64.1 64.1 64.0 63.6 64.1 64.0 63.2 62.7 60.2
48 48 48 48 48 48 48 48 48 48 48 48 48 48
24 14 10 10 12 Edge Tank Edge Tank

Fence

453.3

1+10

66.7 66.6 64.1 64.1 64.0 64.1 63.7 63.6 63.9 64.1 63.0 62.0 60.3
47 47 47 47 47 47 47 47 47 47 47 47 47
33 15 10 10 13 Edge Tank Edge Tank

Fence

452.6

1+20

66.9 66.9 63.5 63.9 63.6 63.7 64.1 63.3 63.6 63.7 63.6 63.3 62.6 61.2
45 45 45 45 45 45 45 45 45 45 45 45 45
25 17 10 10 20 Edge Tank Edge Tank

Fence

450.3

1+30

63.4 63.9 63.7 63.5 63.4 63.3 63.4 63.6 63.7 63.4 63.3 63.5 63.6
48 48 48 48 48 48 48 48 48 48 48 48 48
30 20 10 10 20 30 40 50 60 70 80 90 100 110 120 130

173

468.18

592 463.75

REDWOOD VILLAGE
"Standpipe"
X-Sections
(Cont'd)

9/31/54
Storey
Martel
Alexander

468.18

Lt. - South

Rt. - North

1+40

61.6	62.3	63.2	63.1	63.1	63.3	63.2	63.2	63.1	63.1	63.2	63.3	63.4	63.5	63.6	63.6	
6.6	4.2	5.0	5.1	5.1	4.9	5.0	5.0	5.1	5.1	5.0	4.9	4.8	4.7	4.6	4.7	
30	20	10		10	20	30	40	50	60	70	80	90	100	110	120	130

1+50

59.6	61.0	62.8	62.8	62.9	62.9	63.0	63.0	62.9	63.0	63.0	63.1	62.9	62.8	62.1	61.3	61.4
8.6	7.2	5.4	5.4	5.3	5.3	5.2	5.2	5.3	5.2	5.2	5.1	5.3	5.4	6.1	5.9	5.8
30	20	10		10	20	30	40	50	60	70	80	90	100	110	120	130

TP

5.18 468.63

4.73 463.45

TP

7.12 465.76

6.79 461.84

1+60

58.3	59.7	61.7	61.8	62.2	62.4	62.5	62.3	62.3	61.7	62.3	61.0	59.3	59.2	59.6	59.5
7.7	6.3	4.3	4.2	3.8	3.6	3.5	3.7	3.7	4.2	3.7	5.0	6.7	6.8	6.4	6.8
20	10		10	20	30	40	50	60	70	80	90	100	110	120	130

1+70

53.7	54.0	56.2	58.8	59.1	58.6	57.7	57.1	57.1	54.6	55.1	55.4	55.9	55.8
12.2	10.0	8.8	6.8	6.2	7.4	8.3	8.9	8.9	11.4	10.9	10.6	11.1	10.2
20	10		10	20	30	40	50	60	70	80	90	100	110

1+80

TOP OF SLOPE

Steep Down Hill slope
to The West

6.25 467.39

2.82 463.19

TP

CX-BM

1.50 467.89 = 467.89

49.8	49.6	50.5	52.0	51.6	50.0	50.4	50.0	49.4	50.3	50.4
16.2	16.4	15.5	14.0	14.4	16.0	15.6	16.0	16.6	13.7	15.8
10		10	20	30	40	50	60	70	80	90

Notes reduced 9/7/54

REDWOOD VILLAGE
STAND PIPE
PAVING GRDS & FENCE

11/10/50

BEATTY
MARTELL
ALEXANDER

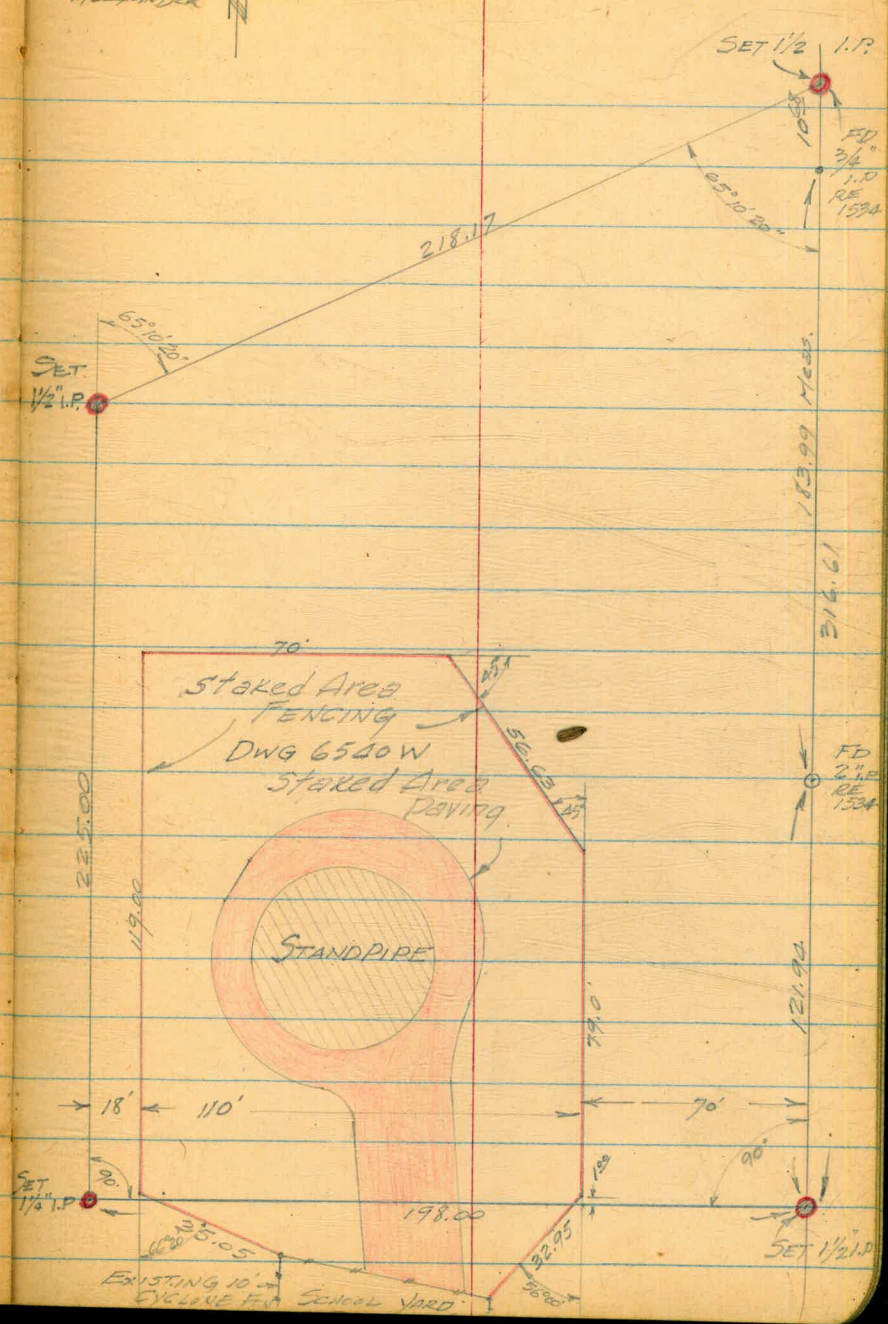
44

BM	1.92	469.81	467.89		Rock at Fly gate post	
			1.51	468.3	468.3	Wly gate post of school yard
			3.31	466.5	466.5	BC Wly
			6.11	463.7	463.7	PRC 5.31 COE
			7.21	462.60	463.0	SW Fen. Cor 7.21 FO ₂
			6.11	463.7	463.7	grd. SW 1/4
			6.11	463.7	463.7	grd W
			6.11	463.7	463.7	grd NW
			6.21	463.6	463.6	grd.
TP	6.53	468.57	7.27	462.04	463.0	NW Fen. Cor FO ₉₅
			4.97	463.6	463.6	Nor. grd.
			6.17	462.4	463.1	Nor Fen. Cor FO ₇
			5.21	463.36	463.2	at val chamb
			4.99			
			5.54	463.03	463.0	NF Fen. Cor grd
					463.2	
			4.97	463.6	463.6	
					463.5	
			4.17	464.1	463.6	CO5- PRC
			3.37	465.20	464.0	4/2 E.C.
			3.97	464.60	465.0	SE Fen. Cor FO ₄
			2.27	466.3	466.3	Prop Line
			0.47	468.1	468.1	at school gate Ely
CK BM			0.69	467.88	467.89	

RED WOOD VILLAGE
 STAND PIPE
 AREA PAVING & FENCING
 & PROPERTY CORNERS STAKED

11/10/34
 BEATTY
 MARTELL
 ALEXANDER

45



ALLEY BLK. 61
 NEAR W. MADISON, E. of 33rd.
 JTS & GROS for Construction of
 8" A.C. WATER MAIN.

11/12/56
 PARTY
 SURVEY
 MARTELL
 ALEXANDER

BM 8.02 389.03 381.01 SE. B.R. Madison & Bancroft

0+60 Existing 6" C.I. (1' E of proposed) 380.4
 8x6 RED.

0+65 4.5 384.5 380.5

1+00 4.1 384.9 380.6

1+50 5.80 390.76 4.07 384.96 380.9

2+00 5.6 385.2 381.3

2+50 4.6 386.2 381.6

3+00 4.8 386.0 381.9

3+50 3.9 386.9 382.3

4+00 3.9 386.9 382.6

4+50 3.3 387.5 382.8

5+00 2.8 388.0 383.0

5+50 5.52 393.22 3.06 387.70 383.2

6+00 5.8 387.4 383.4

6+50 5.4 387.8 383.6

7+00 4.9 388.3 383.8

7+06 6x8 RED. 4.9 388.3 383.7

7+11 Existing G.V. 4.9 388.3 383.7

7+12 4.02 389.08 8.16 385.06

7+14 5.33 390.73 5.68 385.40

CR 7+14 5.10 385.63 = 385.80

C43
 C42
 C39
 C46
 C46
 C47
 C50
 C45
 C40
 C42
 C45
 C44 } NOT MARKED

ALLEY BLK 61.

(Cont'd.)

WATER METERS.

11/2/54

47

0479 E	389.03	4.0	385.0	384.4	C06
0483 E		3.9	385.1	384.5	C06
0491 W		4.5	384.5	384.6	F01
1405 W		4.2	384.8	384.7	C01
1409 W		4.6	384.4	384.7	F03
1425 E		4.1	384.9	384.8	C01
1432 W		3.8	385.2	384.8	C04
1463 W	390.76	5.6	385.2	385.0	C02
1478 E		5.6	385.2	385.1	C01
2421 W		5.4	385.4	385.3	C01
2434 E		5.0	385.8	385.4	C04
2467 W		4.7	386.1	385.7	C04
2496 E		4.8	386.0	386.0	C00
3438 W		4.0	386.8	386.2	C06
3440 E		4.3	386.5	386.2	C03
3479 W		3.9	386.9	386.4	C05
3479 E		3.9	386.9	386.4	C05
4429 W		4.3	386.5	386.8	F03
4437 E		3.5	387.3	386.3	C05
4462 W		3.7	387.1	386.9	C02
4487 E		2.6	388.2	387.0	C12
5432 W		3.0	387.8	387.1	C07
5451 E	392.27	5.6	387.6	387.2	C04
5480 W		5.5	387.7	387.3	C04
5487 E		5.4	387.8	387.3	C05
6438 E		5.3	387.9	387.4	C05
6439 W		5.5	387.7	387.5	C02

CATALINA STAND PIPE
16" C.I. DRAIN

DEC. 29, 1954

CRATTY
MITCHELL
ALEXANDER

48

BM	3.62	386.78		383.16	
Bottom 36" MH.	7.42			377.36	
0+99.15 RT N4 ③	4.91	381.87	-377.34		C453
0+99.15 LT S4 ③	3.08	383.70	"		C636
1+183 RT	5.18	381.60	374.57		C703
1+183 LT	5.24	381.54	"		C697
1+50 RT	4.12	382.66	374.25		C821
1+50 LT	4.02	382.76	"		C821
1+754 RT	5.75	381.03	374.17		C686
1+754 LT	4.59	382.19	"		C802
2+00 RT	5.04	381.74	374.00		C774
2+00 LT	4.55	382.23	"		C823
2+185 RT	4.35	382.43	373.88		C855
2+185 LT (END WORK)	4.04	382.74	"		C886
CK BM.	3.62	383.16			

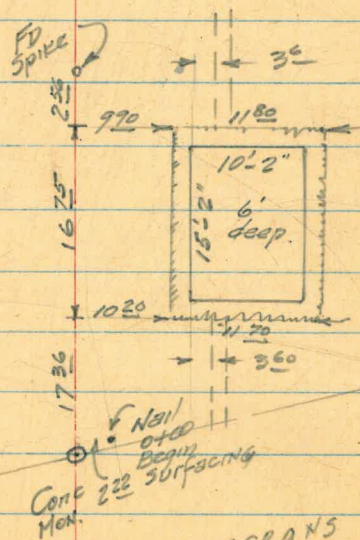
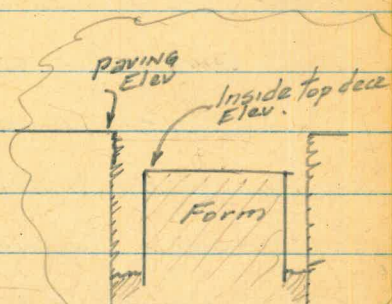
CATALINA BLVD
 LOCATION & ELEVATION
 VALVE CHAMBER
 UNDER CONSTRUCTION

Nov. 18, 1955

29

CBM				CONC MON.
4.73	387.89		383.16	
SW Cor	paving	5.34	382.55	
SW Cor	inside top deck	6.25	381.64	
SE Cor	paving	5.39	382.50	
SE Cor	inside top deck	6.45	381.44	
NE Cor	paving	5.80	382.09	
NE Cor	inside top deck	6.80	381.09	
NW Cor	paving	5.55	382.34	
NW Cor	inside top deck	6.55	381.34	
Top 12" C.I. South end box	9.17	378.72		
	5.17	382.72		
Top 12" C.I. Nor. end box	9.12	378.77		
	5.12	382.77		
OK. BM.	4.73	383.16		

Catalina Blvd.



FORT

Military Res.

F.H. LOCATIONS ON BURTON ST.
SUBD. UNIT 3 - LINDA VISTA

2-7-56
SHOREY
MARTELL
SMITH

50

3/5/56
Beatty

- F.H. AT IVES CT. & BURTON - & F.H. 0⁶ OUT FROM PROPERTY
6² No. 7/4 B.C. - S.E. COR.
- F.H. " JANEY CT. & BURTON - & F.H. 3³ OUT FROM PROPERTY
13¹ No. 7/4 B.C. - S.E. COR.
- F.H. " KRAMER & BURTON - & F.H. 1⁴ OUT FROM PROP. &
3⁴ So. 7/4 B.C. - S.E. COR.
- F.H. " LAKE CT. & BURTON - & F.H. 1¹ OUT FROM PROP. & 1¹ So.
7/4 B.C. - S.E. COR.
- F.H. " NEWBOLD CT. & BURTON - & F.H. 1¹ OUT FROM PROP. & 2⁶ So.
7/4 B.C. - S.E. COR.
- F.H. " PHILLIPS CT. & BURTON - & F.H. 0² OUT FROM PROP. & 1⁴ No.
7/4 B.C. - S.E. COR.
- F.H. " RICO CT. & BURTON - & F.H. 1² OUT FROM PROP. & ANGE
7/4 B.C. - S.E. COR.
- F.H. " TAIT ST. & BURTON - & F.H. 0² OUT FROM PROP. & 3² No.
7/4 B.C. - S.E. COR.

70° 45° RT Sky 10° Tree

✓

✓

✓

2⁵ from FH Conc. wall being built

2³ from FH 30° Cyclonic Fan

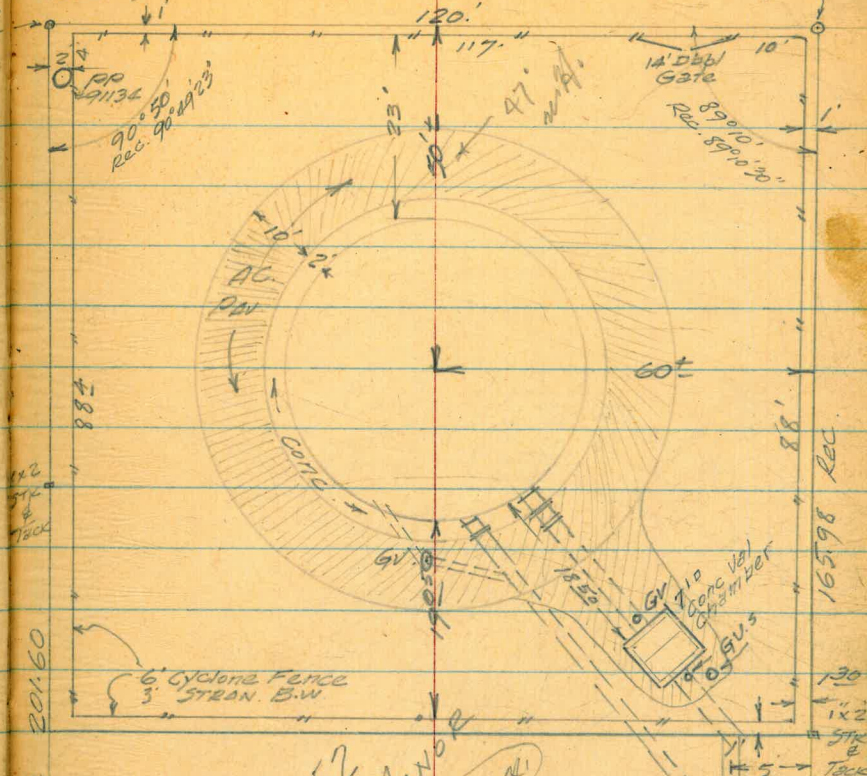
✓

CLAREMONT STANDPIPE
LOCATION OF TANK
ON LOT 552
CLAREMONT MANOR #2 #4

2 1/2" I.P.
RE 3102

JUNE 1 1956
BEATTY

3 1/2" I.P. 51



1/2" I.P.
RE 3102
88'
165' x 98' REC.
130'
1" x 2" STR. & TACK

LOT 552
CLAREMONT MANOR
UNIT #4
MAP 3016 sheet 3
(See Also 5944-W)

NO FRONT COR. FD.

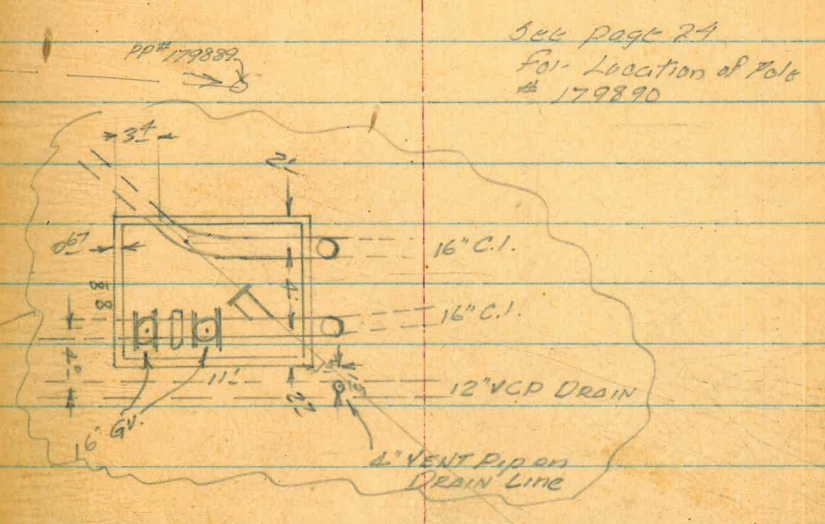
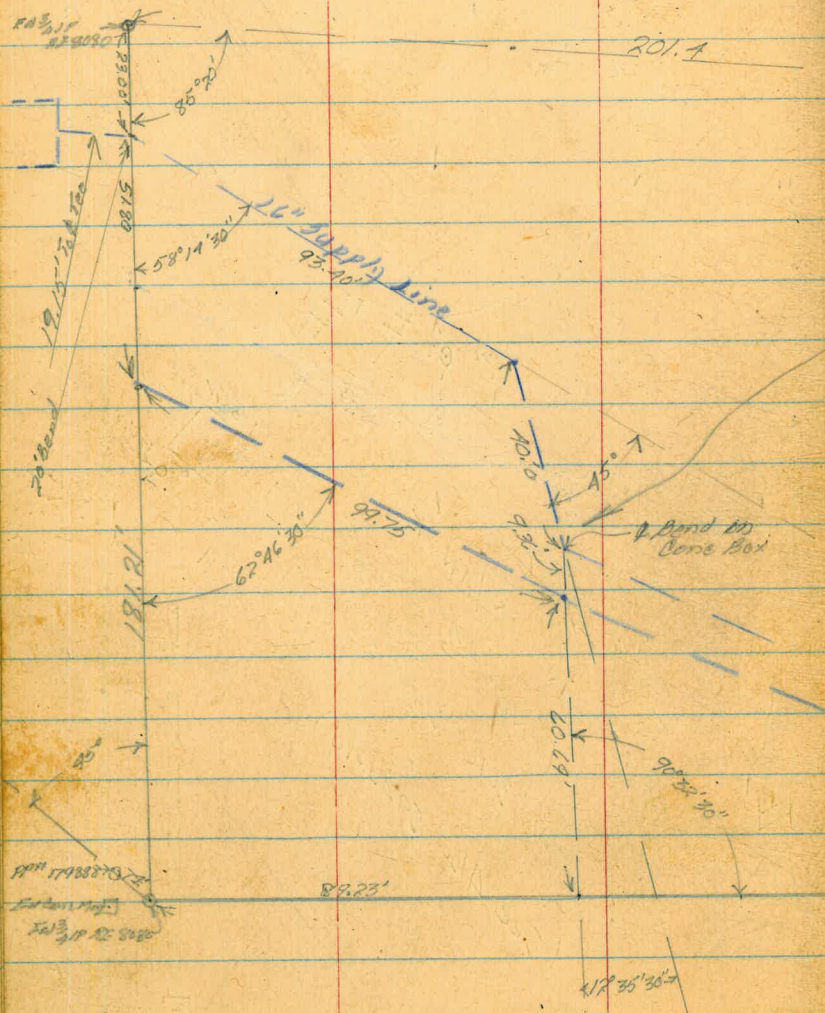
PROP. LINE
CONC. SIDEWALK
CONC. GUTTER

NO FRONT COR. FD.

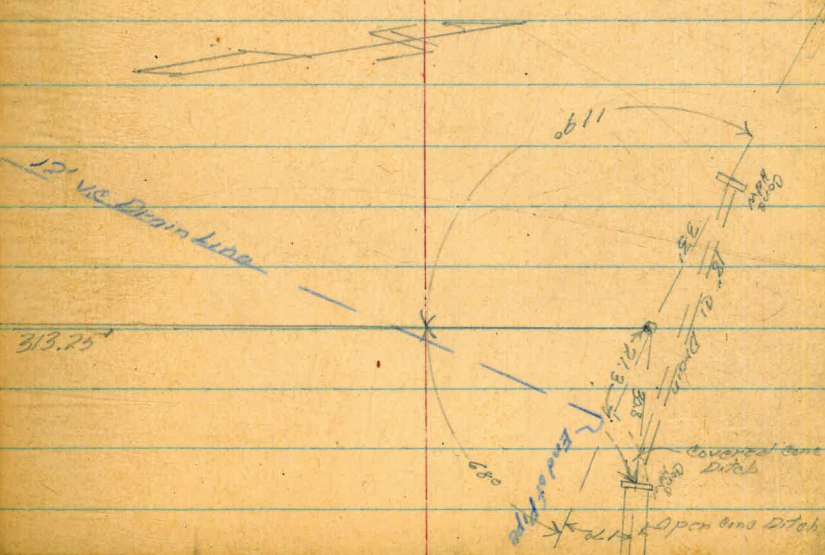
LINDA VISTA RESERVOIR
Pipe Line Location

West
Williams
Kellwater

7/18/54



See page 29
For Location of Pole
179890



78

1/21/55

Top 4" C.I.
Napier & Frankfort
4" C.I. 12' Sly & Napier

NW 1/4
Napier
& Frankfort

5.68 60.75

55.07

0+00

0+09

Top 8" Tee. 7.75 53.00

0+112

Top Conc. BIK 5.56 55.19

0+132

Top Con BIK 5.56 55.19

0+135

Top 4" C.I. 5.70 55.01

0+152

" " " @ Val 5.52 55.23

0+162

Top 4" GV. 4.42 56.35

" " " @ Val 5.38 55.37

0+160

on 4" C.I. 4.58 56.17

6.08
150
258

5.52
7
5.59
117
442

306

469.37

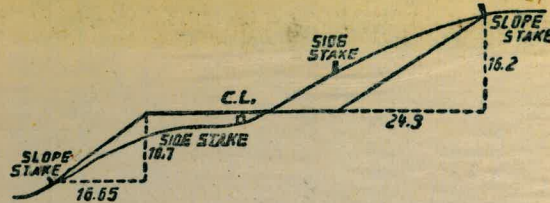
10.1

459.3

449.37

468.62

.75



DISTANCES FROM SIDE STAKES FOR CROSS-SECTIONING.

SLOPE 1 1/2 TO 1. ROADWAY OF ANY WIDTH.

	0	.1	.2	.3	.4	.5	.6	.7	.8	.9	
0	0.00	0.15	0.30	0.45	0.60	0.75	0.90	1.05	1.20	1.35	0
1	1.50	1.65	1.80	1.95	2.10	2.25	2.40	2.55	2.70	2.85	1
2	3.00	3.15	3.30	3.45	3.60	3.75	3.90	4.05	4.20	4.35	2
3	4.50	4.65	4.80	4.95	5.10	5.25	5.40	5.55	5.70	5.85	3
4	6.00	6.15	6.30	6.45	6.60	6.75	6.90	7.05	7.20	7.35	4
5	7.50	7.65	7.80	7.95	8.10	8.25	8.40	8.55	8.70	8.85	5
6	9.00	9.15	9.30	9.45	9.60	9.75	9.90	10.05	10.20	10.35	6
7	10.50	10.65	10.80	10.95	11.10	11.25	11.40	11.55	11.70	11.85	7
8	12.00	12.15	12.30	12.45	12.60	12.75	12.90	13.05	13.20	13.35	8
9	13.50	13.65	13.80	13.95	14.10	14.25	14.40	14.55	14.70	14.85	9
10	15.00	15.15	15.30	15.45	15.60	15.75	15.90	16.05	16.20	16.35	10
11	16.50	16.65	16.80	16.95	17.10	17.25	17.40	17.55	17.70	17.85	11
12	18.00	18.15	18.30	18.45	18.60	18.75	18.90	19.05	19.20	19.35	12
13	19.50	19.65	19.80	19.95	20.10	20.25	20.40	20.55	20.70	20.85	13
14	21.00	21.15	21.30	21.45	21.60	21.75	21.90	22.05	22.20	22.35	14
15	22.50	22.65	22.80	22.95	23.10	23.25	23.40	23.55	23.70	23.85	15
16	24.00	24.15	24.30	24.45	24.60	24.75	24.90	25.05	25.20	25.35	16
17	25.50	25.65	25.80	25.95	26.10	26.25	26.40	26.55	26.70	26.85	17
18	27.00	27.15	27.30	27.45	27.60	27.75	27.90	28.05	28.20	28.35	18
19	28.50	28.65	28.80	28.95	29.10	29.25	29.40	29.55	29.70	29.85	19
20	30.00	30.15	30.30	30.45	30.60	30.75	30.90	31.05	31.20	31.35	20
21	31.50	31.65	31.80	31.95	32.10	32.25	32.40	32.55	32.70	32.85	21
22	33.00	33.15	33.30	33.45	33.60	33.75	33.90	34.05	34.20	34.35	22
23	34.50	34.65	34.80	34.95	35.10	35.25	35.40	35.55	35.70	35.85	23
24	36.00	36.15	36.30	36.45	36.60	36.75	36.90	37.05	37.20	37.35	24
25	37.50	37.65	37.80	37.95	38.10	38.25	38.40	38.55	38.70	38.85	25
26	39.00	39.15	39.30	39.45	39.60	39.75	39.90	40.05	40.20	40.35	26
27	40.50	40.65	40.80	40.95	41.10	41.25	41.40	41.55	41.70	41.85	27
28	42.00	42.15	42.30	42.45	42.60	42.75	42.90	43.05	43.20	43.35	28
29	43.50	43.65	43.80	43.95	44.10	44.25	44.40	44.55	44.70	44.85	29
30	45.00	45.15	45.30	45.45	45.60	45.75	45.90	46.05	46.20	46.35	30
31	46.50	46.65	46.80	46.95	47.10	47.25	47.40	47.55	47.70	47.85	31
32	48.00	48.15	48.30	48.45	48.60	48.75	48.90	49.05	49.20	49.35	32
33	49.50	49.65	49.80	49.95	50.10	50.25	50.40	50.55	50.70	50.85	33
34	51.00	51.15	51.30	51.45	51.60	51.75	51.90	52.05	52.20	52.35	34
35	52.50	52.65	52.80	52.95	53.10	53.25	53.40	53.55	53.70	53.85	35
36	54.00	54.15	54.30	54.45	54.60	54.75	54.90	55.05	55.20	55.35	36
37	55.50	55.65	55.80	55.95	56.10	56.25	56.40	56.55	56.70	56.85	37
38	57.00	57.15	57.30	57.45	57.60	57.75	57.90	58.05	58.20	58.35	38
39	58.50	58.65	58.80	58.95	59.10	59.25	59.40	59.55	59.70	59.85	39
40	60.00	60.15	60.30	60.45	60.60	60.75	60.90	61.05	61.20	61.35	40
41	61.50	61.65	61.80	61.95	62.10	62.25	62.40	62.55	62.70	62.85	41
42	63.00	63.15	63.30	63.45	63.60	63.75	63.90	64.05	64.20	64.35	42
43	64.50	64.65	64.80	64.95	65.10	65.25	65.40	65.55	65.70	65.85	43
44	66.00	66.15	66.30	66.45	66.60	66.75	66.90	67.05	67.20	67.35	44
45	67.50	67.65	67.80	67.95	68.10	68.25	68.40	68.55	68.70	68.85	45
46	69.00	69.15	69.30	69.45	69.60	69.75	69.90	70.05	70.20	70.35	46
47	70.50	70.65	70.80	70.95	71.10	71.25	71.40	71.55	71.70	71.85	47
48	72.00	72.15	72.30	72.45	72.60	72.75	72.90	73.05	73.20	73.35	48
49	73.50	73.65	73.80	73.95	74.10	74.25	74.40	74.55	74.70	74.85	49
50	75.00	75.15	75.30	75.45	75.60	75.75	75.90	76.05	76.20	76.35	50

Please Return to
City of San Diego Water Dept.
Room 903 Civic Center

THE NATIONAL BLANK BOOK COMPANY
HOLYOKE MASSACHUSETTS
NEW YORK CHICAGO BOSTON SAN FRANCISCO