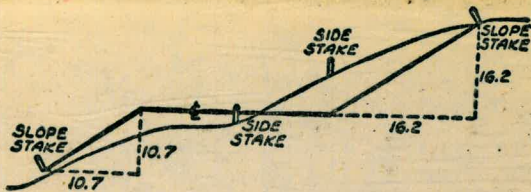


W 867



DISTANCES FROM SIDE STAKES FOR CROSS-SECTIONING  
SLOPE 1 TO 1. ROADWAY OF ANY WIDTH

	0	.1	.2	.3	.4	.5	.6	.7	.8	.9	
0	0.00										
1	1.00	0.10	0.20	0.30	0.40	0.50	0.60	0.70	0.80	0.90	0
2	2.00	1.10	1.20	1.30	1.40	1.50	1.60	1.70	1.80	1.90	1
3	3.00	2.10	2.20	2.30	2.40	2.50	2.60	2.70	2.80	2.90	2
4	4.00	3.10	3.20	3.30	3.40	3.50	3.60	3.70	3.80	3.90	3
5	5.00	4.10	4.20	4.30	4.40	4.50	4.60	4.70	4.80	4.90	4
6	6.00	5.10	5.20	5.30	5.40	5.50	5.60	5.70	5.80	5.90	5
7	7.00	6.10	6.20	6.30	6.40	6.50	6.60	6.70	6.80	6.90	6
8	8.00	7.10	7.20	7.30	7.40	7.50	7.60	7.70	7.80	7.90	7
9	9.00	8.10	8.20	8.30	8.40	8.50	8.60	8.70	8.80	8.90	8
10	10.00	9.10	9.20	9.30	9.40	9.50	9.60	9.70	9.80	9.90	9
11	11.00	10.10	10.20	10.30	10.40	10.50	10.60	10.70	10.80	10.90	10
12	12.00	11.10	11.20	11.30	11.40	11.50	11.60	11.70	11.80	11.90	11
13	13.00	12.10	12.20	12.30	12.40	12.50	12.60	12.70	12.80	12.90	12
14	14.00	13.10	13.20	13.30	13.40	13.50	13.60	13.70	13.80	13.90	13
15	15.00	14.10	14.20	14.30	14.40	14.50	14.60	14.70	14.80	14.90	14
16	16.00	15.10	15.20	15.30	15.40	15.50	15.60	15.70	15.80	15.90	15
17	17.00	16.10	16.20	16.30	16.40	16.50	16.60	16.70	16.80	16.90	16
18	18.00	17.10	17.20	17.30	17.40	17.50	17.60	17.70	17.80	17.90	17
19	19.00	18.10	18.20	18.30	18.40	18.50	18.60	18.70	18.80	18.90	18
20	20.00	19.10	19.20	19.30	19.40	19.50	19.60	19.70	19.80	19.90	19
21	21.00	20.10	20.20	20.30	20.40	20.50	20.60	20.70	20.80	20.90	20
22	22.00	21.10	21.20	21.30	21.40	21.50	21.60	21.70	21.80	21.90	21
23	23.00	22.10	22.20	22.30	22.40	22.50	22.60	22.70	22.80	22.90	22
24	24.00	23.10	23.20	23.30	23.40	23.50	23.60	23.70	23.80	23.90	23
25	25.00	24.10	24.20	24.30	24.40	24.50	24.60	24.70	24.80	24.90	24
26	26.00	25.10	25.20	25.30	25.40	25.50	25.60	25.70	25.80	25.90	25
27	27.00	26.10	26.20	26.30	26.40	26.50	26.60	26.70	26.80	26.90	26
28	28.00	27.10	27.20	27.30	27.40	27.50	27.60	27.70	27.80	27.90	27
29	29.00	28.10	28.20	28.30	28.40	28.50	28.60	28.70	28.80	28.90	28
30	30.00	29.10	29.20	29.30	29.40	29.50	29.60	29.70	29.80	29.90	29
31	31.00	30.10	30.20	30.30	30.40	30.50	30.60	30.70	30.80	30.90	30
32	32.00	31.10	31.20	31.30	31.40	31.50	31.60	31.70	31.80	31.90	31
33	33.00	32.10	32.20	32.30	32.40	32.50	32.60	32.70	32.80	32.90	32
34	34.00	33.10	33.20	33.30	33.40	33.50	33.60	33.70	33.80	33.90	33
35	35.00	34.10	34.20	34.30	34.40	34.50	34.60	34.70	34.80	34.90	34
36	36.00	35.10	35.20	35.30	35.40	35.50	35.60	35.70	35.80	35.90	35
37	37.00	36.10	36.20	36.30	36.40	36.50	36.60	36.70	36.80	36.90	36
38	38.00	37.10	37.20	37.30	37.40	37.50	37.60	37.70	37.80	37.90	37
39	39.00	38.10	38.20	38.30	38.40	38.50	38.60	38.70	38.80	38.90	38
40	40.00	39.10	39.20	39.30	39.40	39.50	39.60	39.70	39.80	39.90	39
41	41.00	40.10	40.20	40.30	40.40	40.50	40.60	40.70	40.80	40.90	40
42	42.00	41.10	41.20	41.30	41.40	41.50	41.60	41.70	41.80	41.90	41
43	43.00	42.10	42.20	42.30	42.40	42.50	42.60	42.70	42.80	42.90	42
44	44.00	43.10	43.20	43.30	43.40	43.50	43.60	43.70	43.80	43.90	43
45	45.00	44.10	44.20	44.30	44.40	44.50	44.60	44.70	44.80	44.90	44
46	46.00	45.10	45.20	45.30	45.40	45.50	45.60	45.70	45.80	45.90	45
47	47.00	46.10	46.20	46.30	46.40	46.50	46.60	46.70	46.80	46.90	46
48	48.00	47.10	47.20	47.30	47.40	47.50	47.60	47.70	47.80	47.90	47
49	49.00	48.10	48.20	48.30	48.40	48.50	48.60	48.70	48.80	48.90	48
50	50.00	49.10	49.20	49.30	49.40	49.50	49.60	49.70	49.80	49.90	49
		50.10	50.20	50.30	50.40	50.50	50.60	50.70	50.80	50.90	50

Distance of slope stake from side or shoulder stake for any width roadway, slope 1 to 1. If ground is nearly level, the cut or fill at side stake is located by the double entry method in left column and top row. The number in body of table in same row and column gives distance from side stake to slope stake. If ground is not level estimate the difference in elevation between the side stake and slope stake, lower target by this amount if cut, elevate if fill. Add this amount to cut or fill and find distance in table. Set up rod at this point, and line of sight should cut target. If it does not make the slight adjustment necessary.

Please Return to  
City of San Diego Water Dept.  
Room 903 Civic Center

TABLE XIII—CORRECTIONS FOR TANGENTS AND EXTERNALS

These corrections are to be added to the approximate values, found by dividing the tangent, or external, for a 1° curve (Table VIII) by the degree of curve, in order to obtain the true tangents, or externals. Intermediate values may be obtained by interpolation.

FOR TANGENTS ADD

Central Angle	DEGREE OF CURVE														
	5°	10°	15°	20°	25°	30°	35°	40°	45°	50°	55°	60°	65°	70°	
10°	.03	.06	.09	.13	.16	.19	.22	.25	.28	.31	.34	.38	.42	.46	
15°	.04	.10	.14	.19	.24	.29	.34	.39	.45	.51	.53	.58	.63	.68	
20°	.06	.13	.19	.26	.32	.39	.45	.51	.58	.65	.72	.79	.84	.90	
25°	.08	.16	.24	.33	.40	.49	.58	.67	.75	.83	.90	.99	1.06	1.14	
30°	.10	.19	.29	.39	.49	.59	.69	.79	.89	.99	1.09	1.20	1.29	1.39	
35°	.11	.22	.34	.47	.58	.69	.79	.81	.92	1.04	1.20	1.42	1.54	1.66	
40°	.13	.26	.40	.53	.67	.80	.93	1.06	1.20	1.34	1.49	1.64	1.79	1.94	
45°	.15	.30	.44	.60	.76	.91	1.06	1.21	1.37	1.52	1.70	1.87	2.04	2.21	
50°	.17	.34	.51	.68	.85	1.02	1.19	1.36	1.54	1.72	1.91	2.10	2.29	2.48	
55°	.19	.38	.57	.76	.95	1.14	1.32	1.52	1.72	1.92	2.14	2.35	2.56	2.77	
60°	.21	.42	.63	.84	1.05	1.27	1.49	1.71	1.94	2.17	2.38	2.60	2.83	3.07	
65°	.23	.46	.69	.93	1.16	1.40	1.64	1.88	2.13	2.38	2.63	2.88	3.13	3.39	
70°	.25	.51	.76	1.02	1.28	1.54	1.80	2.06	2.33	2.60	2.88	3.16	3.44	3.72	
75°	.27	.56	.83	1.12	1.40	1.69	1.98	2.27	2.57	2.87	3.16	3.47	3.78	4.09	
80°	.30	.61	.91	1.22	1.53	1.84	2.15	2.46	2.78	3.10	3.44	3.78	4.12	4.46	
85°	.33	.66	1.00	1.33	1.68	2.02	2.36	2.70	3.05	3.40	3.77	4.14	4.55	4.89	
90°	.36	.72	1.09	1.45	1.83	2.20	2.57	2.94	3.32	3.70	4.10	4.50	4.91	5.32	
95°	.39	.79	1.19	1.55	2.00	2.40	2.80	3.20	3.61	4.02	4.40	4.98	5.38	5.83	
100°	.43	.86	1.30	1.74	2.18	2.62	3.06	3.50	3.95	4.40	4.88	5.37	5.85	6.34	
110°	.51	1.03	1.56	2.08	2.61	3.14	3.67	4.21	4.76	5.31	5.86	6.43	7.01	7.60	
120°	.62	1.25	1.93	2.52	3.16	3.81	4.45	5.11	5.77	6.44	7.12	7.80	8.50	9.22	

FOR EXTERNALS ADD

Central Angle	DEGREE OF CURVE														
	5°	10°	15°	20°	25°	30°	35°	40°	45°	50°	55°	60°	65°	70°	
10°	.001	.003	.004	.006	.007	.008	.009	.011	.012	.014	.015	.017	.018	.020	
15°	.003	.007	.010	.014	.018	.023	.027	.029	.032	.035	.039	.043	.047	.051	
20°	.006	.011	.017	.022	.028	.034	.038	.045	.051	.057	.063	.070	.076	.083	
25°	.009	.018	.027	.036	.046	.056	.065	.074	.083	.093	.106	.120	.127	.138	
30°	.013	.025	.038	.051	.065	.078	.090	.103	.116	.129	.149	.170	.179	.188	
35°	.018	.035	.054	.072	.086	.109	.131	.153	.175	.197	.213	.230	.247	.264	
40°	.023	.046	.070	.093	.117	.141	.172	.203	.234	.265	.277	.290	.315	.341	
45°	.030	.060	.093	.119	.153	.184	.216	.254	.289	.325	.351	.378	.411	.445	
50°	.037	.075	.116	.151	.189	.227	.266	.305	.345	.384	.425	.467	.508	.550	
55°	.046	.093	.142	.188	.236	.283	.332	.381	.420	.479	.530	.582	.641	.700	
60°	.056	.112	.168	.225	.283	.340	.398	.457	.516	.575	.636	.697	.774	.851	
65°	.067	.135	.204	.273	.343	.412	.483	.554	.625	.697	.771	.845	.922	1.01	
70°	.080	.159	.240	.321	.403	.485	.568	.652	.735	.819	.906	.994	1.08	1.17	
75°	.095	.182	.286	.383	.480	.578	.678	.777	.877	.977	1.07	1.18	1.29	1.39	
80°	.110	.220	.332	.445	.558	.671	.787	.903	1.02	1.13	1.25	1.38	1.50	1.62	
85°	.128	.259	.391	.524	.657	.790	.926	1.06	1.20	1.34	1.47	1.62	1.78	1.91	
90°	.149	.299	.450	.603	.756	.910	1.07	1.22	1.38	1.54	1.70	1.87	2.03	2.20	
95°	.174	.350	.522	.706	.885	1.06	1.25	1.43	1.62	1.80	1.99	2.18	2.38	2.58	
100°	.200	.401	.604	.809	1.01	1.22	1.43	1.64	1.85	2.06	2.28	2.50	2.73	2.96	
110°	.268	.536	.806	1.08	1.35	1.63	1.91	2.20	2.48	2.76	3.05	3.35	3.66	3.96	
120°	.360	.721	1.08	1.45	1.82	2.19	2.57	2.95	3.33	3.72	4.11	4.50	4.91	5.32	

INDEX

Udall St. Evergreen to Rosecrances	Prelim	7-7V
Quimby St. Willow to Willow Lane	"	8-10V Alice
Guizot St. Ph. Lane to Hill St.	"	11-24V Alice
Wabaska Dr. Tennyson to Udall	"	25-27V Alice
Extend Wabaska Drive to Volkmar	"	28-30
Warden St. Wabaska to Udall	"	31-32
Spindrift Pl. Princess to Paseo Dorado	"	33-39 Alice
Viking Way Torrey Pines to St. Louis	"	40-43
Brooklyn Ave. Colch to South	"	44-48
ALLEY BIK B. NORTH MEAD & EAST WILLSON	"	49-52
Alley BIK 196, No. University, & E of 33rd	"	53-57 Alice
Garnett & Pendleton, Relocation of E.H.	"	58V Alice
To Torrey Pines Dr. Check on Elev	"	59
Prospect Dr. Virginia Way	"	60
Pelimo Group 25	"	60-61
Prospect Pl. Torrey Pines Rd to Park Row Pl.	"	62
Spindrift Pl. Princess to Paseo Dorado	"	62 con
Pelimo Group 25	"	63 con
Paseo Dorado Spindrift to Avenue de Alamos	"	69V
Pelimo	"	70V
Prospect Pl. Torrey Pines Rd to Park Row	"	70V Alice
55th St., ORANGE ST. TO SOUTH TERMINUS - E PROFILE PRELIM. 71-73	"	71-73
40th St., ORANGE ST. TO EL CAJON BLVD PRELIM.	"	74-78 Alice

INDEX

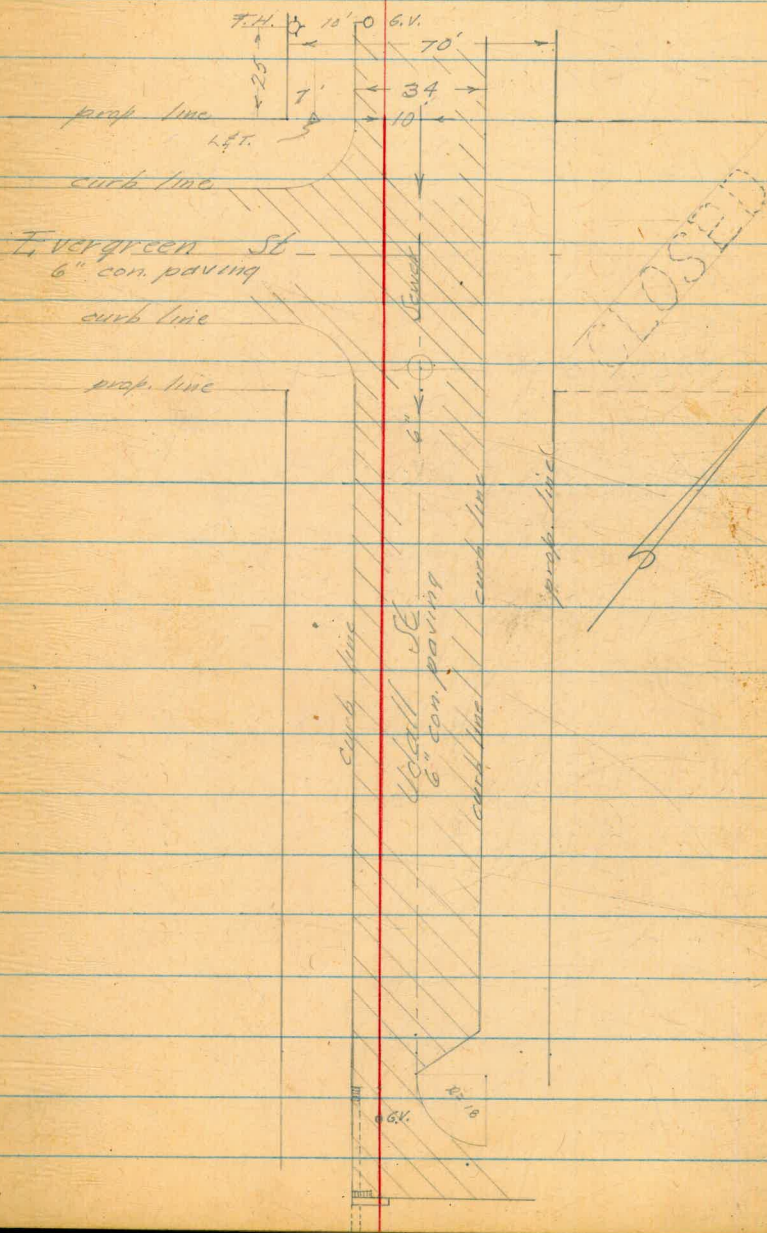
Profile of Proposed Water  
Udall St, Willow to Rosecranes

- 0+00 W. line Evergreen
- +17 W. curb line
- +52 F curb line
- +64 Sewer M.H. 10' H.
- +70 E. line Evergreen

- 2+52 2'x3' Storm Dr. C.B.
- 2+60 G.V. Existing Water

WEST  
LEMP  
HOLAHAN

5-26-54



Profile of Udall St. Contn.

2+60

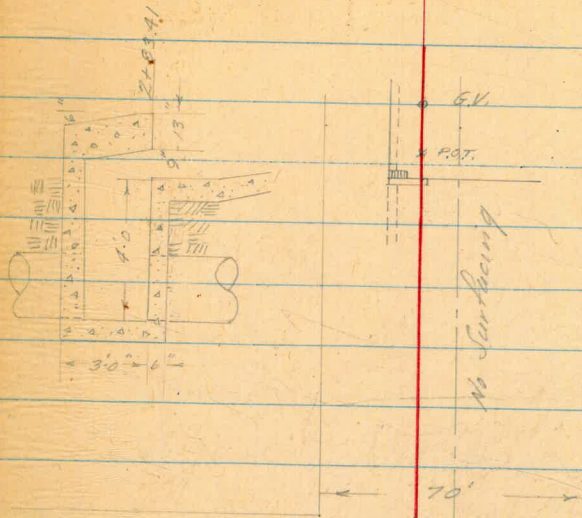
GV. Existing Water

2+78.41

P.O.T. cross in con. drive

2+83.41

W. face of head wall of  
Storm Dr. C.B. see detail



3+70

W. line of Locust

Locust

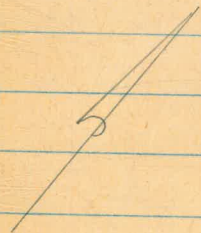
No

Surfacing

St.

4+40

E. line of Locust



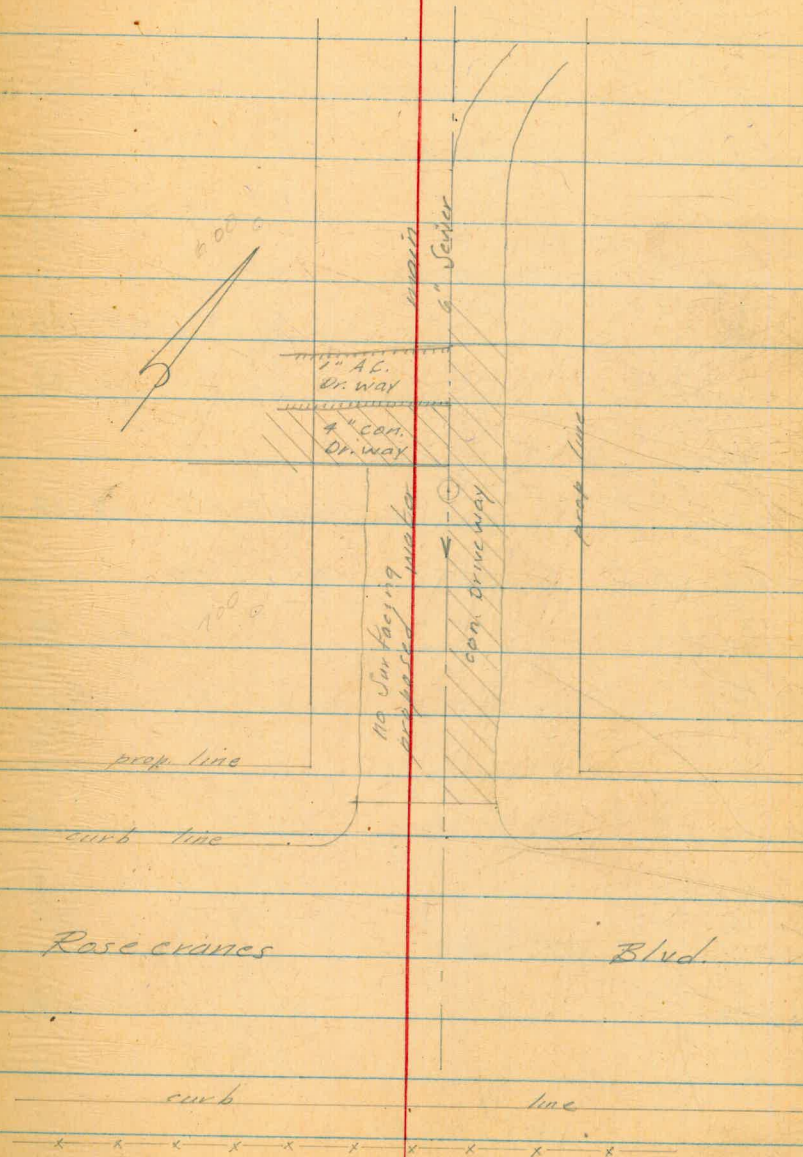
No Surfacing

Profile of Udall St. Cont.

6+22 Edge 1" A.C. Driveway  
 6+45 Edge " " 6" con drive  
 6+61 " " " "  
 6+68 Sewer M.H. 10' H

7+40 W. prop line  
 7+60 W. curb line

8+28 E. curb line Rosecranes  
 8+54 Wire Fence N.T.C.



## Profile of Udall St. Cont

187.16

SW. CP Udall &amp; Willow

1.16 188.32

T.P.

12.89 175.48

0.20 175.68

0+00

3.8

171.88

W/L of Evergreen

+17

4.7

170.98

W. curb line Evergreen

+50

6.6

169.08

+52

6.8

168.88

E. curb line Evergreen

+64

8.06

Sewer M.H. 4.9 to flow line

+100

12.5

163.18

T.P.

13.08 162.60

1.24 163.84

+150

8.8

155.04

T.P.

13.10 150.74

1.45 152.19

+200

5.6

146.59

T.P.

12.87 139.32

0.05 139.37



Profile Udash St. Camb.

139.37

2+50 1.9 137.47

752 2.33 137.04

2+83.41 5.3 134.07

3+00 8.9 130.47

T.P. 13.32 126.05

0.49 126.54

3+50 7.9 118.64

T.P. 11.13 115.91

0.92 116.33

3+75 3.7 112.63

4+06.14 11.2 105.13

4+06 12.2 104.13

T.P. 12.44 103.89

1.02 104.91

4+13 7.7 97.21

+25 9.5 95.41

T.P. 12.95 91.96

1.41 93.37

Storm Dr. grate 5' dia

Street level, see detail page 2

P.O.T.

Profile Udall St. Cont.

	93.37		
4150		7.2	86.17
T.P.		13.26	80.11
	0.61	80.72	
4475		5.5	75.22
T.P.		12.57	68.15
	0.31	68.46	
5100		3.2	65.26
415		9.6	58.86
T.P.		12.86	55.60
	1.22	56.82	
5425		3.4	53.42
438		7.2	49.62
T.P.		13.11	43.71
	0.48	44.19	
5450		1.2	42.99
458		1.9	42.29
475		7.0	37.19
6100		12.5	31.69

Profile Uddall St. Cont.

44.19

T.P. 12.61 31.58

0.95 32.53

G+27 5.8 26.73

+45 8.2 24.33

+50 8.7 23.83

+61 8.8 23.73

+68 9.78

T.P. 12.34 20.19

0.25 20.44

7+00 1.7 18.74

+50 8.1 12.34

+60 8.4 12.04

+94 8.1 12.34

8+28 8.5 11.94

+54 7.9 12.54

T.P. 1.66 18.71

Edge A.C. Driveway

" " " E con. Drive

Edge con. Driveway

Sewer M.H. about 15' to flow

W curb Rosecranes

W curb Rosecranes

E curb "

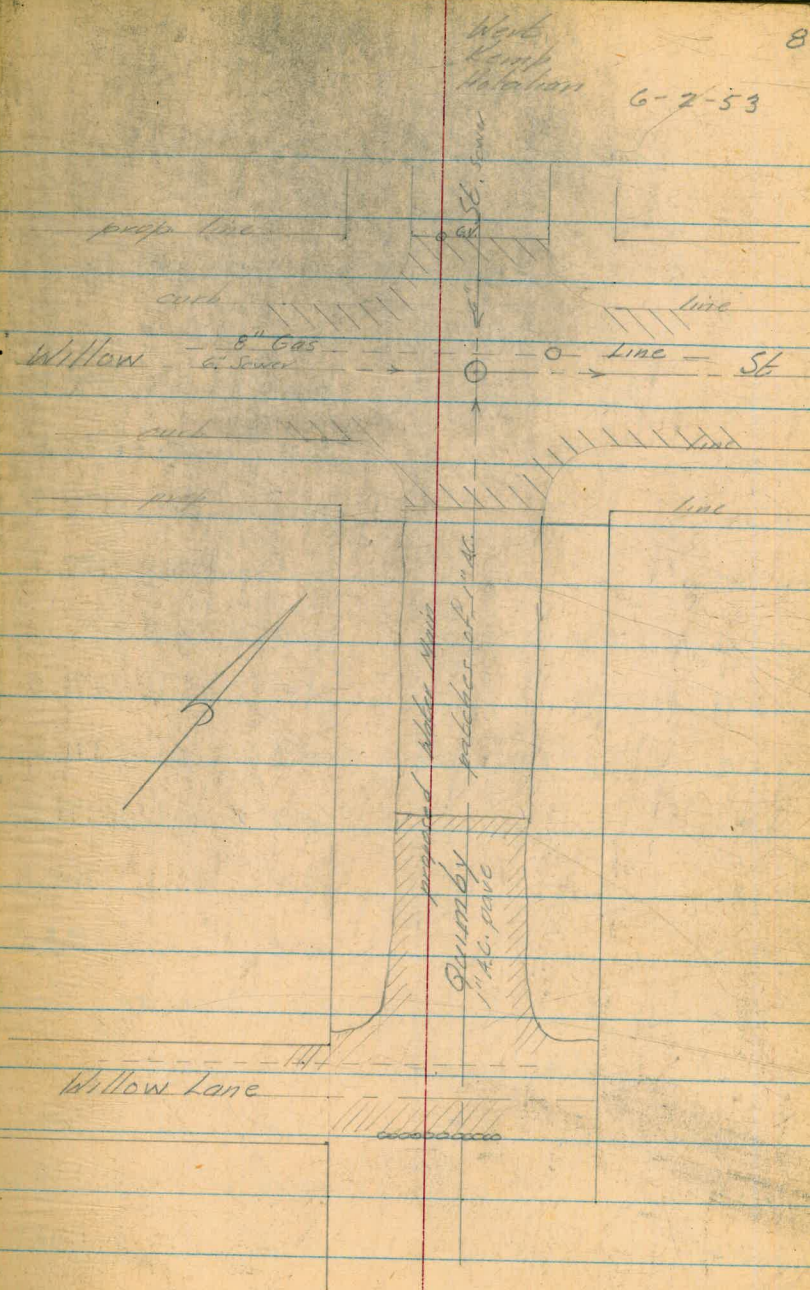
E curb "

Fence line N.T.C.

S.W. F.H. Uddall Rosecranes

Profile & Proposed Water on  
Quimby St., Willow to  
Willow Lane

0+00	G.V. & W/L of Willow
+18	W. curb line Willow
+30	of 8" Gas
+35	of Willow & Sewer M.H. 6' to Pt.
+52	E curb line
+70	Edge com. paving
1+50	Edge of non A.C.
2+10	W/L of Willow Lane
2+14	Evidence of ditch (6")?
2+33	Rock retain wall
2+35	E/L of Willow Lane



Profile of Quimby Cont.

173.20

S.W. 5P. Quimby & Willow

2.55 175.75

0+00	3.4	172.4
+18	3.5	172.3
+30	3.6	172.2
+35	3.7	172.1
+35	3.99	
+50	4.3	171.5
+52	4.3	171.5
+70	4.3	171.5
1+00	6.7	169.1
+50	10.8	165.0
T.P.	13.22	162.53
6.32	168.85	
2+00	8.8	160.1
+14	10.3	158.6
+34	10.8	158.1

W line 10" con. paving on Willow

W curb line

8" gas main

E Willow

Sewer M.H. 6.0 to flow line

E curb line Willow

E edge 10" con paving

168.85

T.P.

0.39 168.46

7.57 176.03

2.83 173.20

S.W. B.P. Quinby & Willow

Profile of Water Guizot St.

	120.15	
0.34	120.49 ✓	
0+00	0.30	120.19 ✓
+21.5	0.70	119.79 ✓
+50	0.80	119.69 ✓
+61.5	1.6	118.89 ✓
+100	1.9	118.59 ✓
+150	2.4	118.09 ✓
+24	3.3	117.19 ✓
+99	2.8	117.69 ✓
2+00	3.4	117.09 ✓
+50	5.9	114.59 ✓
3+00	9.4	111.09 ✓
33.5	12.1	108.39 ✓
+50	12.2	108.29 ✓
+69.5	13.0	107.49 ✓
T.P.	12.13	108.36 ✓
0.60	108.96 ✓	

WERT  
Kemp  
Holahan June 15, 54 11

Pl. Loma to Hill St.

S.E. 3P. Pl. Loma & Guizot

N.H. of Pl. Loma

No. curb line Pl. Loma

So. curb line Pl. Loma

Gas crossing

Sewer M.H. 10' 11" cut 5.4 to 7.1

No. curb line Adair St

So. " " " "

Profile of Guzait Cont

108.96 "

4+00 1.9 107.06 ✓

+50 3.4 105.56 ✓

+99 4.7 104.26 ✓

Gas crossing

5+00 4.8 104.16 ✓

+04 4.4 104.56 ✓

Sewer M.H. 10' 11" 4.8 to 7.1

+50 6.0 102.96 ✓

6+00 7.4 101.56 ✓

+39 8.6 100.36 ✓

No. curb line Tivoli

+50 8.3 100.66 ✓

+75 8.8 100.16 ✓

So. " " "

7+00 7.7 101.26 ✓

+50 6.6 102.36 ✓

8+00 6.4 102.56 ✓

7.7 6.36 102.60 ✓

7.22 109.82 ✓

8+05 7.3 102.52 ✓

Gas crossing

+10 6.74 103.08 ✓

Sewer M.H. 10' 16" 5.1 to 7.1



## Profile of Guroit Cont

	109.82 ✓			
8+50	7.9	101.92 ✓		
9+00	8.6	101.22 ✓		
+44	9.8	100.02 ✓	No curb line	Granger St
+50	9.4	100.42 ✓		
+80	8.5	101.32 ✓	So	" " "
10+00	7.2	102.62 ✓		
+50	3.9	105.92 ✓		
11+00	0.8	109.02 ✓		
T.P.	0.37	109.95 ✓		
	9.69	119.14 ✓		
11+10	9.5	109.64 ✓	Gas crossing	
+15	8.88	110.26 ✓	Sewer M.H.	10' H. 5.4 to T.L.
+50	7.8	111.34 ✓		
12+00	6.2	112.94 ✓		
+49	5.8	113.34 ✓	No curb line	Osprey St
+50	5.8	113.34 ✓		
+85	4.9	114.24 ✓	So	" " " "

## Profile of Guzoit Cont

Station	Grade	Elevation	Notes
		119.14 ✓	
13+00	4.6	114.54 ✓	
T.P.	2.82	116.32 ✓	
	1.75	118.07 ✓	
13+50	3.3	114.77 ✓	
14+00	3.8	114.27 ✓	
+15	4.0	114.07 ✓	Gas crossing
+19	3.36	114.71 ✓	Sanitar M.H. 10 ft. 6.4 to flow
+19	4.0	114.07 ✓	
+50	4.2	113.87 ✓	
15+00	4.4	113.67 ✓	
+50	5.3	112.77 ✓	
+54	5.4	112.67 ✓	No curb line Alhambra St.
+90	6.9	111.17 ✓	So. " " " "
16+00	7.0	111.07 ✓	
+50	7.8	110.27 ✓	
17+00	8.7	109.37 ✓	
+22	9.2	108.87 ✓	Gas crossing?
+25	9.2	108.87 ✓	

## Profile of Curbcut Cont

	118.07		
17+25		8.38	109.69 ✓
+50		10.1	107.97 ✓
T.P.		10.16	107.91 ✓✓
	0.72	108.63	✓
18+00		2.8	105.83 ✓
+50		5.4	103.23 ✓
+59		6.0	102.63 ✓
+95		6.9	101.73 ✓
19+00		6.9	101.73 ✓
+50		8.3	100.33 ✓
20+00		11.3	97.33 ✓
T.P.		11.51	97.12 ✓
	1.77	98.89	✓
20+50		5.8	93.09 ✓
21+00		9.6	89.29 ✓
+50		12.3	86.59 ✓
T.P.		12.28	86.61 ✓
	0.18	86.79	✓

Sewer M.H. 10' Pl. 7.6 to Flow

No curb line Leon St

So. " " "

Profile of Gussail Cont

86.79<sup>vw</sup>

22+00	1.7	85.09 ✓
+50	3.2	83.59 ✓
23+00	4.7	82.09 ✓
+50	6.1	80.69 ✓
+67.80	6.4	80.39 ✓
+84.	7.2	79.59 ✓
+97	6.36	80.43 ✓
+97	6.4	80.39 ✓
24+00	6.4	80.39 ✓
24+20.24	6.2	80.59 ✓
24+50.94	5.9	80.89 ✓
25+00	2.4	84.39 ✓
T.P.	2.25	89.54 ✓

12.64 92.18<sup>vw</sup>

25+50	10.1	87.08 ✓
26+00	7.4	89.78 ✓
+50	5.1	92.08 ✓

B.C. of P.T. prop. line  
 No curb line  
 Sewer M.H. 3' 11" 4.9 to flow

Angle point in line  
 B.C.

## Profile of P. Guzeit Cont.

97.18  $\checkmark\checkmark$ 

26+85	3.11	94.07 $\checkmark$
+85	3.2	93.98 $\checkmark$
27+00	3.2	93.98 $\checkmark$
+50	2.0	95.18 $\checkmark$
28+00	1.3	95.88 $\checkmark$
T.P.	1.37	95.81 $\checkmark\checkmark$

5.30 101.11  $\checkmark$ 

28+50	5.1	96.01 $\checkmark$
29+00	5.5	95.61 $\checkmark$
+50	6.0	95.11 $\checkmark$
+59.30	6.0	95.11 $\checkmark$
30+00	6.7	94.41 $\checkmark$
+50	7.2	93.91 $\checkmark$
31+00	7.8	93.31 $\checkmark$
+50	8.3	92.81 $\checkmark$
32+00	9.4	91.71 $\checkmark$
T.P.	9.50	91.61 $\checkmark$

0.46 92.07  $\checkmark$ 

Sewer M.H. 10' 16" - 5.4 to Flow

E.C.

## Profile of Gussett Cont

92.07 ✓

32+50	2.3	89.77 ✓
+73	2.3	89.77 ✓
+93	3.2	88.87 ✓
+96	3.3	88.77 ✓
33+00	3.4	88.67 ✓
+12	3.3	88.77 ✓
+12	1.96	90.11 ✓
+30.3	3.4	88.67 ✓
T.P.	12.66	79.41 ✓

0.22 79.63 ✓

T.P.	12.62	67.01 ✓
------	-------	---------

0.62 67.63 ✓

11.71 55.92 ✓

0.10 56.02 ✓

9.10 46.92 ✓

1.29 48.16 ✓

6.58 41.58 ✓

Gas crossing

No curb line Hill east

No. " " " west

Sewer crossing

Sewer M.H. 5.1 to Flow

So. curb line Hill St.

= 91.40 SE. B.P. Sewer set CHAFF. &amp; Hill St.

Profile of Guzait Cont

0+00

N/H of Pl. Loma

+21.5

No. curb line

+61.5

So. curb line

1+94

Gas crossing

1+99

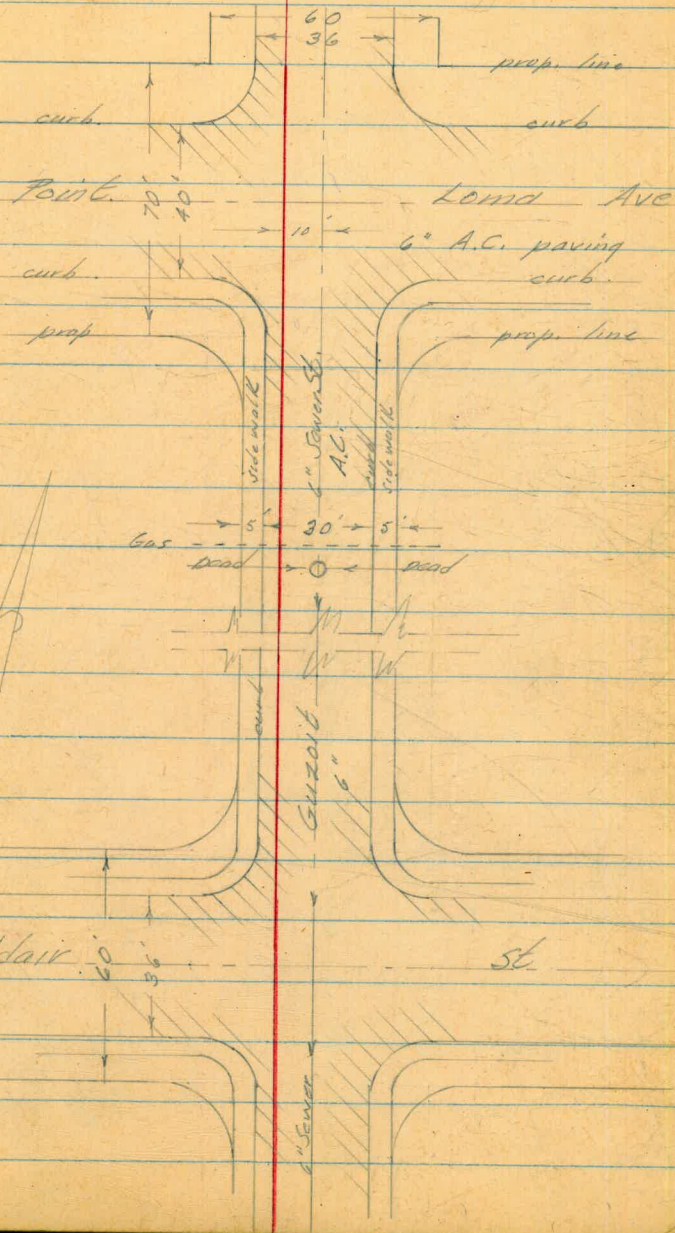
Sewer M.H.

3+33.5

No. curb line of Adair St

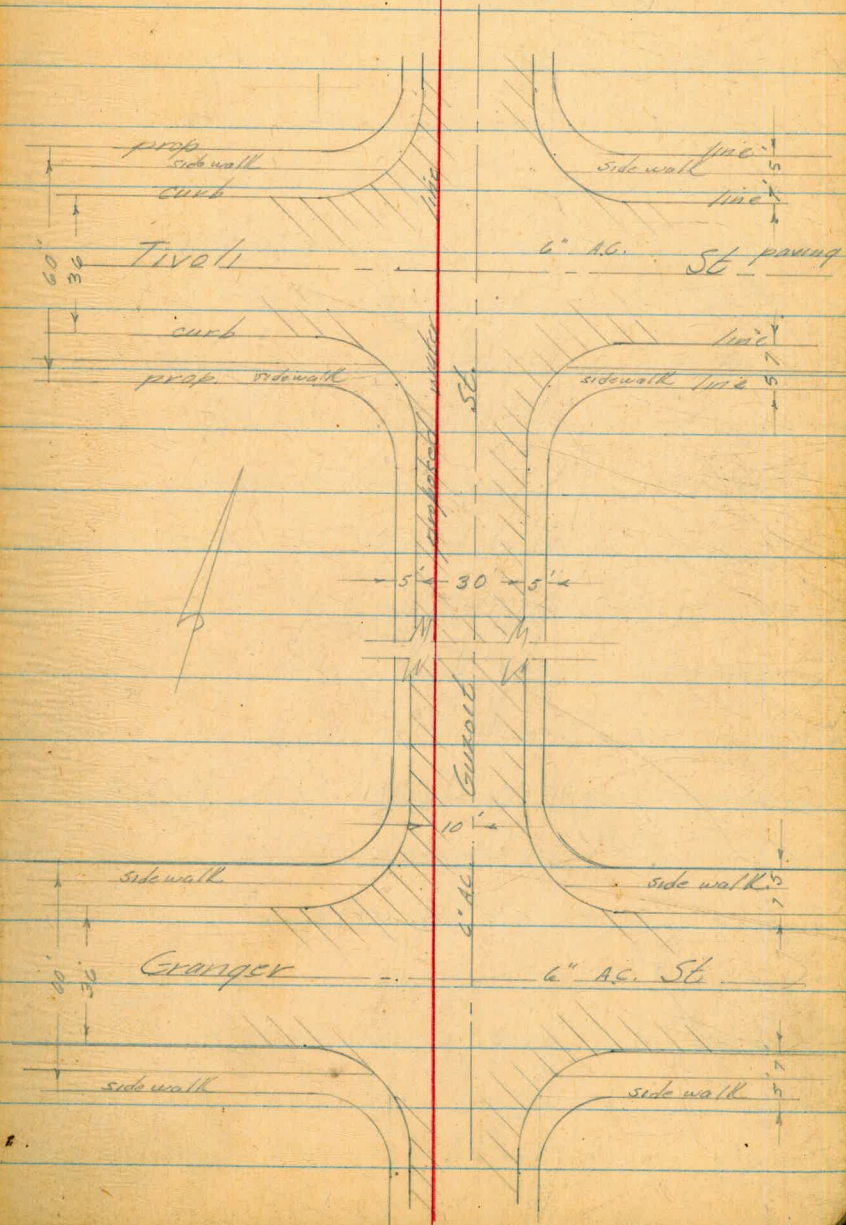
3+69.5

So. curb line of Adair



# Profile of Guzail Cant

- 4+99 Gas crossing
- 5+04 Sewer M.H. 10' 16"
- 6+39 No. curb Tivoli St.
- 6+75 So. curb Tivoli St.
- 8+01 F.H. back & sidewalk
- 8+05 Gas crossing
- 8+09 Sewer M.H. 10' 16"
- 9+44 No. curb Granger
- 9+80 So. curb Granger
- 11+10 Gas crossing
- 11+14 Sewer M.H. 10' 16"





Profile of Euzoit Cont

12+13 No. curb line Osprey

12+79 So. curb line Osprey

13+13 #4. back E sidewalk

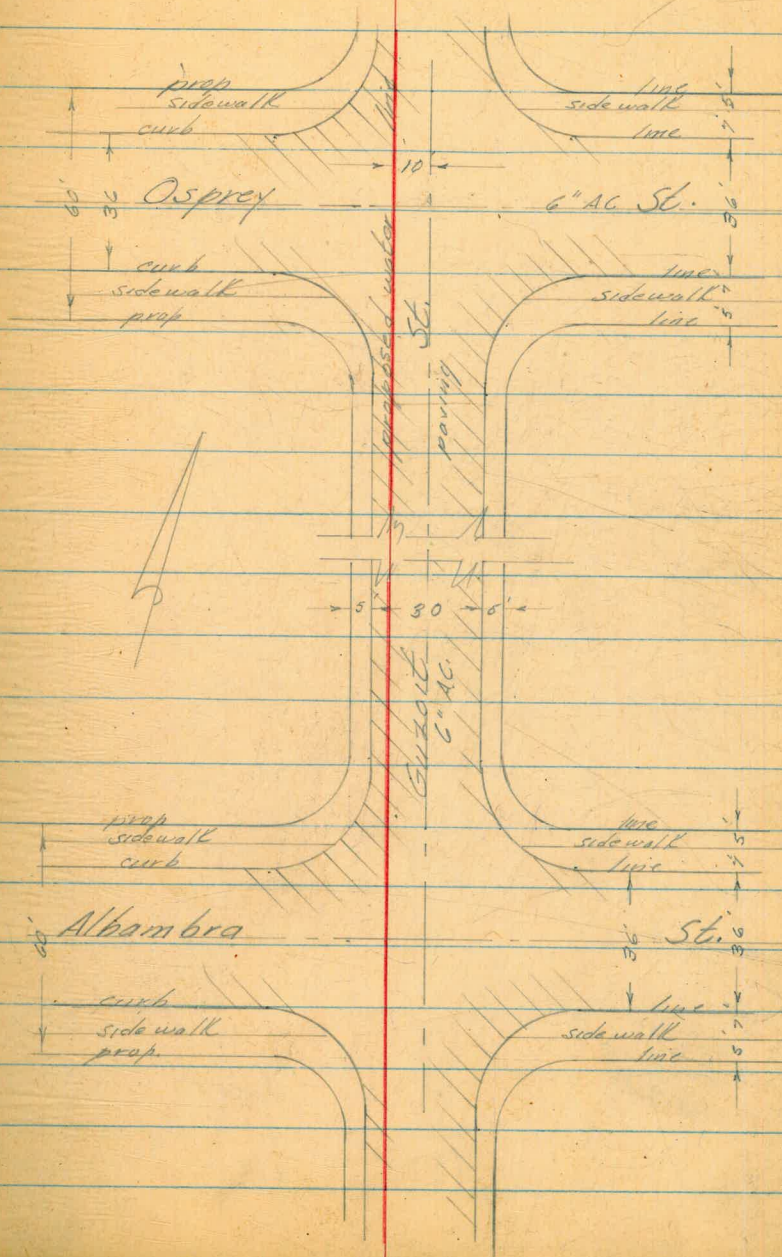
+15 Gas crossing

+19 Sewer M.H. 10' 16"

15+54 No. curb line Alhambra

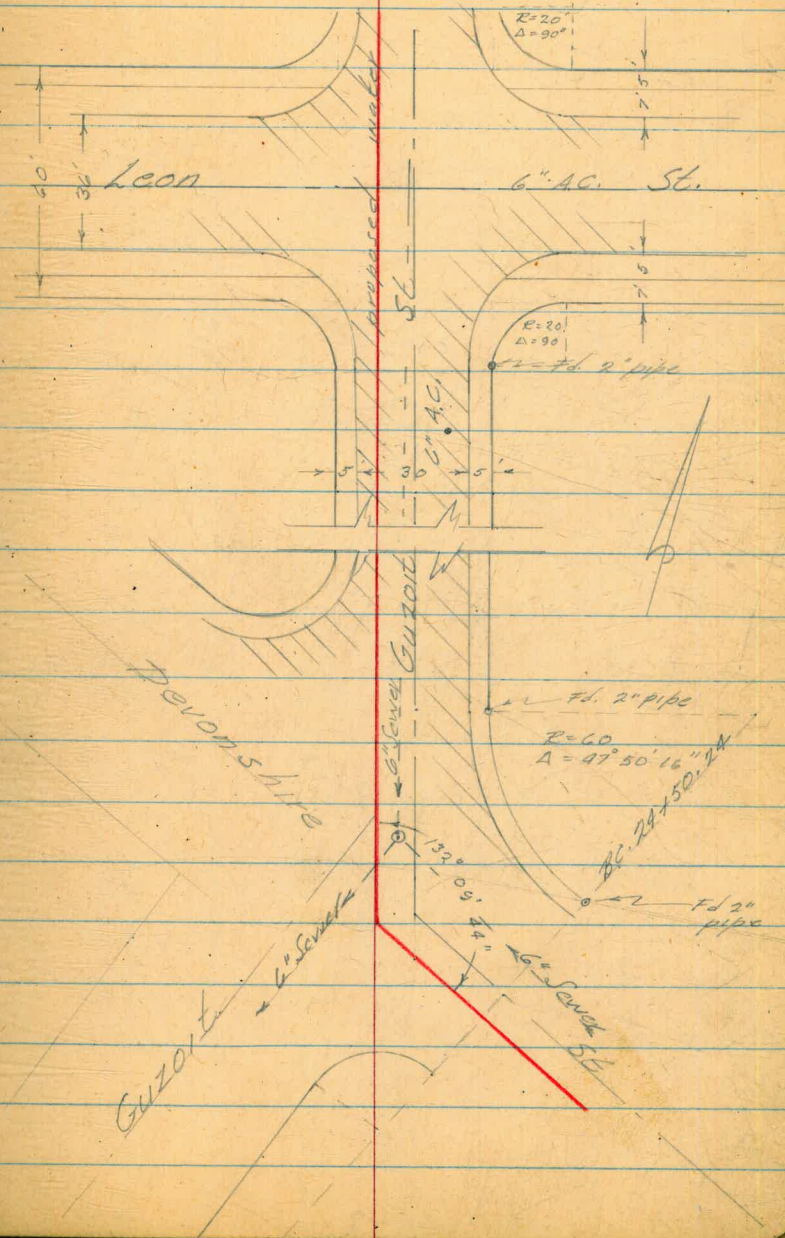
+90 So. curb line

17+24 Sewer M.H. 10' 16"



# Profile of Guzorb St. Cont

18+59	No. curb line Leon St
+87	G.V. on F prop line
18+95	So. curb line
19+02	G.V. 20' Lb.
23+66.81	P.O.T. 30' Rhd 2" pipe
23+97	Sewer M.H. 3' Lb.
24+20.29	Angle point in water line



Profile of Gussot St. Cont.

24+50.94

B.C.

24+50.94

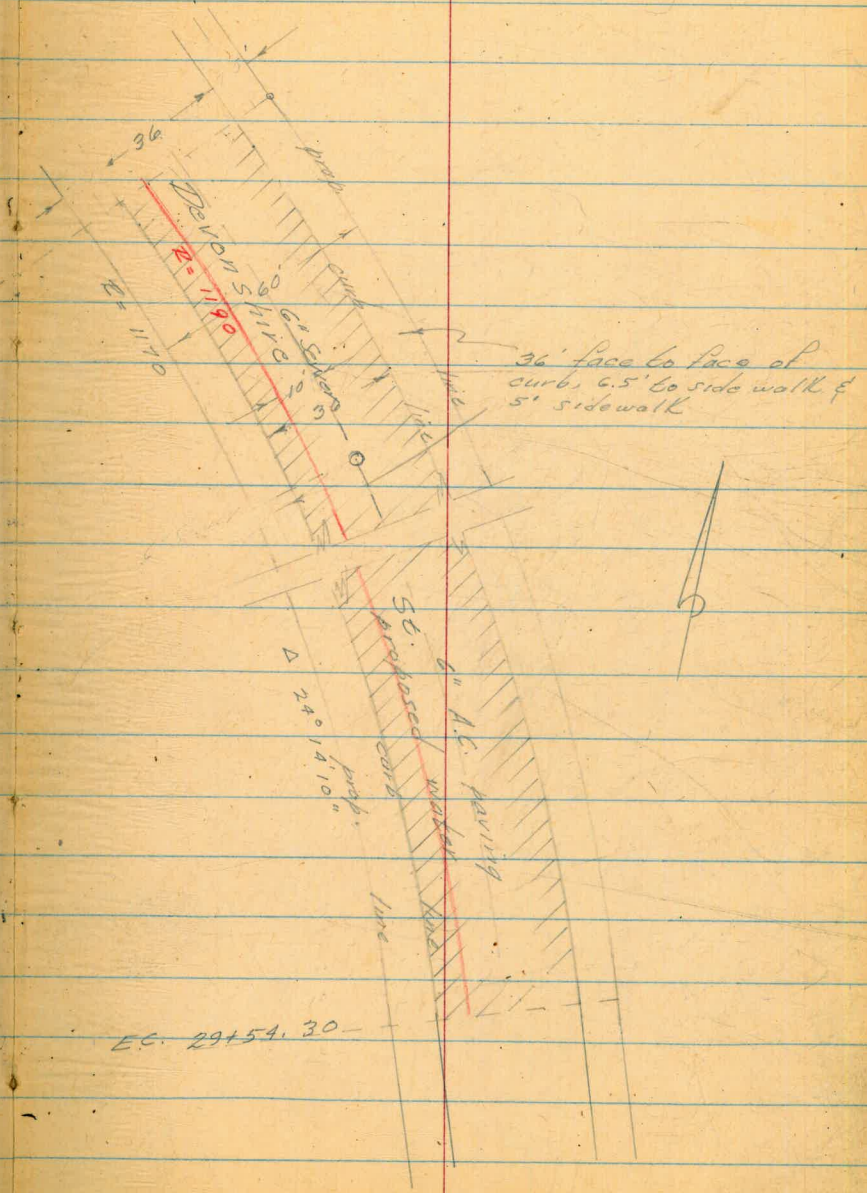
26+85

Sewer M.H. 10' 16"

29+54.30

E.C.

E.C. 29+54.30



## Profile of Guxard St. Cont.

29+54.30

F.C.

29+54.30

36' face to face of  
curb, 6.5' to walk,  
5' side walk.

32+73

Gas M.H. 5' R.L.

32+93

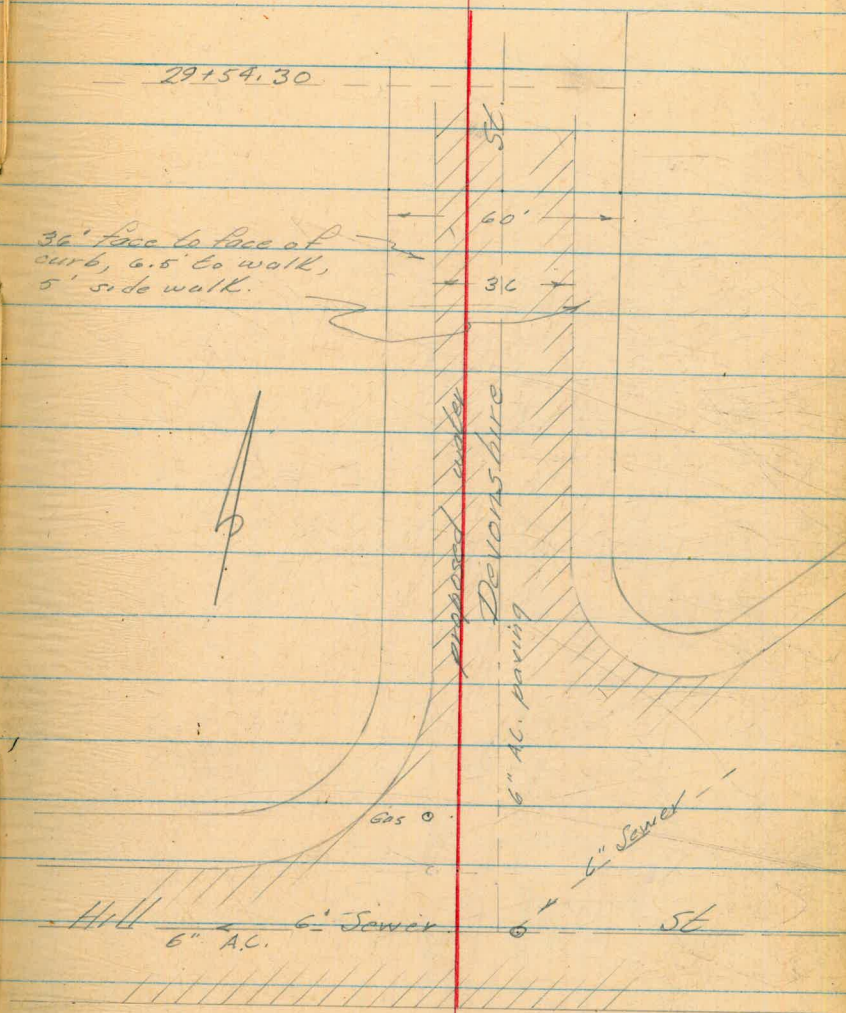
No. curb line Hill St

33+12

Sewer M.H. 27' L.L.

33+30.3

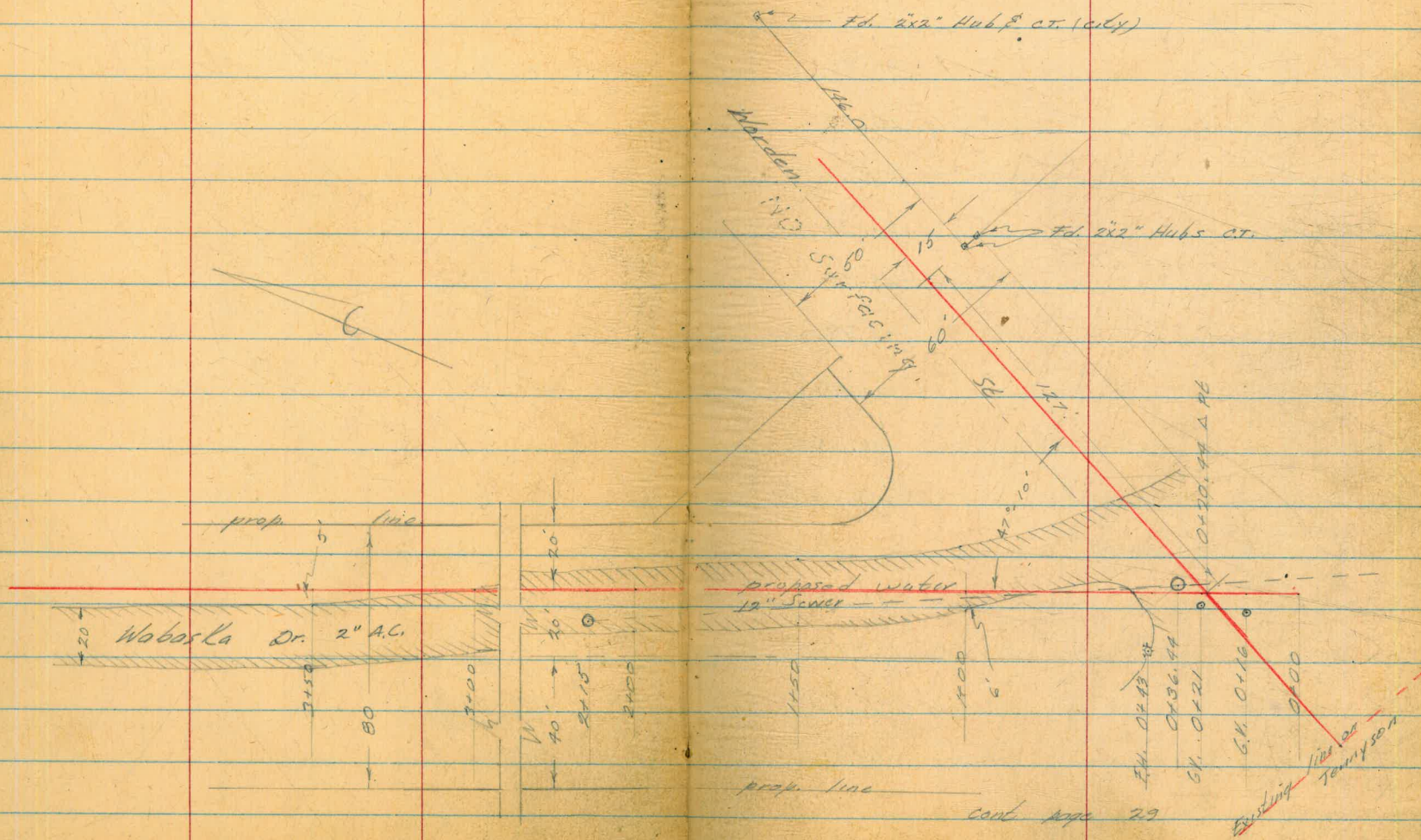
So. curb line Hill



WEST  
KEMP  
HOLAHAN 8-4-54

25

Profile & Proposed Water on  
Wabasla Dr., Tenneyson  
to Udal St.



cont page 29

## Wabaska Drive Cont

95.75

1.24 96.99<sup>A</sup>

0+00 6.3 90.69 ✓

+16 6.6 90.39 ✓

+20.44 6.7 90.29 ✓

+36.44 7.67 89.32 ✓

" " 7.5 89.49 ✓

+50 8.0 88.99 ✓

1+00 9.1 87.89 ✓

+50 10.1 86.89 ✓

T.P. 10.24 86.75 ✓

2.23 88.98<sup>B</sup>

2+00 3.3 85.68 ✓

+15 3.36 85.62 ✓

" 3.5 85.48 ✓

+50 4.6 84.38 ✓

N.W. E.B. Tennyson &amp; Alicia St

G.V. 5' 11"

angle point in proposed line

Sewer M.H. 2' R.L. cut 20' to Pl.

edge of 2" A.C.

con. mon. E edge of Wabaska Dr

Sewer M.H. 10' 11" (not opened)

## Wabaska Drive Cont.

88.98

3+00 5.6 83.38 ✓

+50 6.4 82.58 ✓

4+00 7.6 81.38 ✓

+50 9.1 79.88 ✓

5+00 10.2 78.78 ✓

+50 11.3 77.68 ✓

7+00 2.59 86.39 ✓

10.67 97.01 ✓

1.26 95.75 ✓

Profile of Proposed Water Main on  
Wobaska Dr. to Voltaire St.

		86.75	
2.53	89.28		
		10.57	78.71
3.23	81.94		
5+63		4.52	77.42
6+00			76.74
+50			76.64
7+00			74.94
+50			74.64
T.P.		8.82	73.12
5.23	78.35		

Can Man Sta. East side Wobaska Drive

12" Sewer M.H. 10 ft. E. & Udat, cut 5.1 to Man  
cc. water Lett

$\frac{5.2}{0}$   $\frac{5.4}{7}$  edge AC paving

$\frac{5.3}{0}$   $\frac{6.5}{2}$   $\frac{6.6}{8}$  edge AC.

$\frac{7.0}{0}$   $\frac{7.6}{3}$   $\frac{7.9}{9}$  edge AC.

$\frac{12.5}{74}$   $\frac{8.0}{7}$   $\frac{7.3}{0}$   $\frac{8.4}{2}$   $\frac{8.4}{8}$  edge AC.

Weir  
Camp  
Holahan 28  
8-24-54

cont page 30



Wabaska Dr. to Voltaire St.

9198

Pl. of water & of Voltaire

9111.95

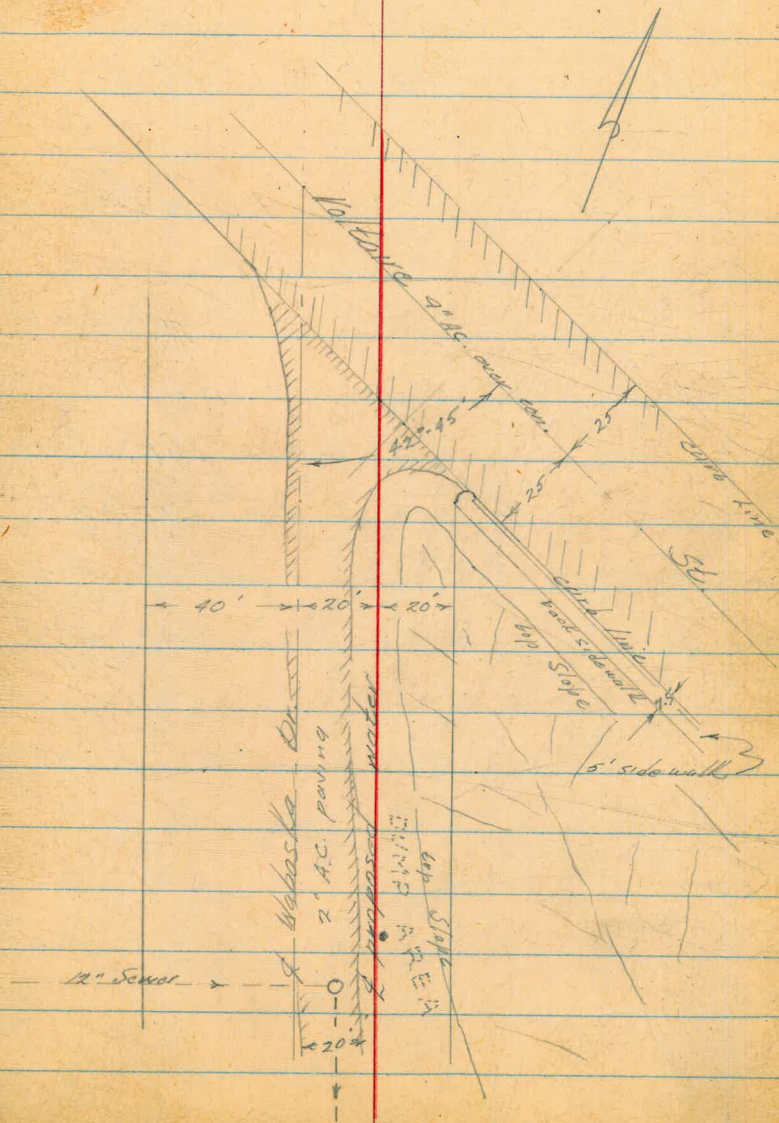
Pl. of curb line & water

5188

Power pole 1' Pb.

5163

12" Sewer



## Wabaska Co Voltaire Cont.

	78.35 ✓						
8+00		73.25 ✓		Right	Wala	Left	
				$\frac{8.4}{75}$	$\frac{4.3}{8}$	$\frac{5.1}{0}$	$\frac{5.6}{7}$
						$\frac{5.5}{8}$	edge AC.
+50		71.85 ✓ <del>72.85</del>		$\frac{9.3}{75}$	$\frac{5.0}{7}$	$\frac{6.3}{3}$	$\frac{6.5}{0}$
						$\frac{6.3}{6}$	edge AC.
+71		71.35 ✓				$\frac{7.0}{0}$	edge AC.
9+00		6.9 71.45 ✓					
+11.95		6.8 71.55 ✓		So. curb	Voltaire		
+48		6.2 72.15 ✓		♀	Voltaire		
+85		6.2 72.15 ✓		No. curb	Voltaire	(top curb 8")	
		3.00 75.35 ✓					
9.92	85.77 ✓						
		2.06 83.21 ✓					
6.70	89.91						
		3.12 86.79 = 86.75 ✓					

Profile of Proposed Water on  
 Worden St. Wabaska Dr.  
 to Udal St.

WERT  
 KEMP  
 HOLAHAN

31

8-24-54

		95.75		SW. E.P. Tennyson & Alena
	0.83	96.58 ✓		
0+00		3.6	92.98 ✓	So. prop line Tennyson
+01		3.6	92.98 ✓	back sidewalk
+06		3.9	92.68 ✓	front "
+10		4.0	92.58 ✓	Top So. curb Tennyson
+16		4.7	91.88 ✓	Water crossing
+31		4.7	91.88 ✓	& Tennyson & Sewer crossing
+45		5.3	91.28 ✓	Gas crossing
+50		5.6	90.98 ✓	No. curb line Tennyson
+52		5.7	90.88 ✓	Elect. crossing
+73.15		6.4	90.18 ✓	P.L. proposed water lines
+85		7.0	89.58 ✓	Sewer crossing
+85		7.30	89.28 ✓	Sewer M.H. 10 16
+100		7.4	89.18 ✓	
+110		7.9	88.68 ✓	No. edge AC. paving on Wabaska Dr.

## Profile Norden Cont

	96.58 ✓		
1+50		9.2	87.38 ✓
2+00		11.2	85.38 ✓
T.P.		11.73	84.85 ✓
	1.61		86.46 ✓
2+50		3.0	83.46 ✓
+71		3.98	82.98 ✓
3+00		4.7	81.76 ✓
+50		6.3	80.10 ✓
+88		7.0	79.46 ✓
4+00		13.4	73.06 ✓
+05		15.0	71.46 ✓
+77		7.4	79.06 ✓
+50		8.0	78.46 ✓
		2.50	85.96 ✓✓
	10.50		96.96 ✓✓
		0.70	95.76 = 95.75

Sewer M.H. 10 ft, out 10.6 to flow

Top dry wash

Bottom dry wash

Top dry wash

No. curb line produced of 11 ft

9-29-54

## Profile &amp; Proposed Water

Spindrift, Princess to Paseo Dorado

		37.40	SE. BT Spindrift & St Louis St.
11.74	49.14		
		0.63 48.51	
11.93	60.47		
		0.21 60.23	
12.22	72.45		
0+00		7.5	W/H of Princess St.
+06		7.5	Top curb " "
+06		8.2	Gutter line " "
+30.68		8.7	P.I. of Princess and proposed water
+37		8.5	base of con. retain wall, Princess
+37		2.0	top " " " " "
+38		3.7	street level on Spindrift
+50		3.5	
+64		3.4	sewer crossing
+80		3.76 68.69	Sewer 14.4, 15' dia. +- 20' to flow

	72.45		
1+00		3.7	
+50		4.2	68.25
2+00		4.7	67.75
+50		5.9	
3+00		8.2	
+50		11.4	
T.P.		11.38	61.07

0.83 61.90

4+00		4.1	
+44		7.11	
+50		7.3	
5+00		10.2	
+50		13.3	
T.P.		12.94	48.96

0.64 49.60

6+00		4.0	
+30		7.1	
7+00		10.1	

Sewer M.H. 15' L.E. 12.5 to flow

	49.60		
T.P.		12.20	37.40
	0.63	38.03	
7+37.10		0.7	
+43		0.9	
+50		1.0	
+64		1.3	
+64		1.29	
+71		1.5	
8+00		2.9	
8+26.40		4.7	
+50		6.8	
+75		8.8	
+78		9.09	
9+00		11.0	
+12.90		12.3	
T.P.		12.71	25.32
	0.57	25.89	
9+50		4.0	

E.C. &amp; G.V.

So. curb line St Louis

Sewer Crossing

Sewer M.H. 10' ht. 10.2 to flow

No. curb line St Louis

B.C.

Sewer M.H. 7' ht. 11.5 to flow

E.C.

	25.89		
10+00		9.6	
+17		11.3	
+17		10.89	
+30		12.5	
T.P.		13.04	12.85
	1.77	14.62	
10+50		2.8	
11+00		5.4	
+50		8.0	
+61.14		8.6	
+74.		8.92	
+90		10.0	
12+25		11.7	
12+25		10.7	
T.P.		0.14	14.48
	13.05	27.53	
T.P.		0.13	27.40

So. curb line Roseland Dr.

Sewer Crossing

Sewer M.H. 10' 16" 9.9 to flow

No. curb line Roseland Dr.

B.C. of Pasco Dorado

Sewer M.H. 15' 16" 10.2 to flow

Sewer crossing

No. Gutter Pasco Dorado

Top curb " "

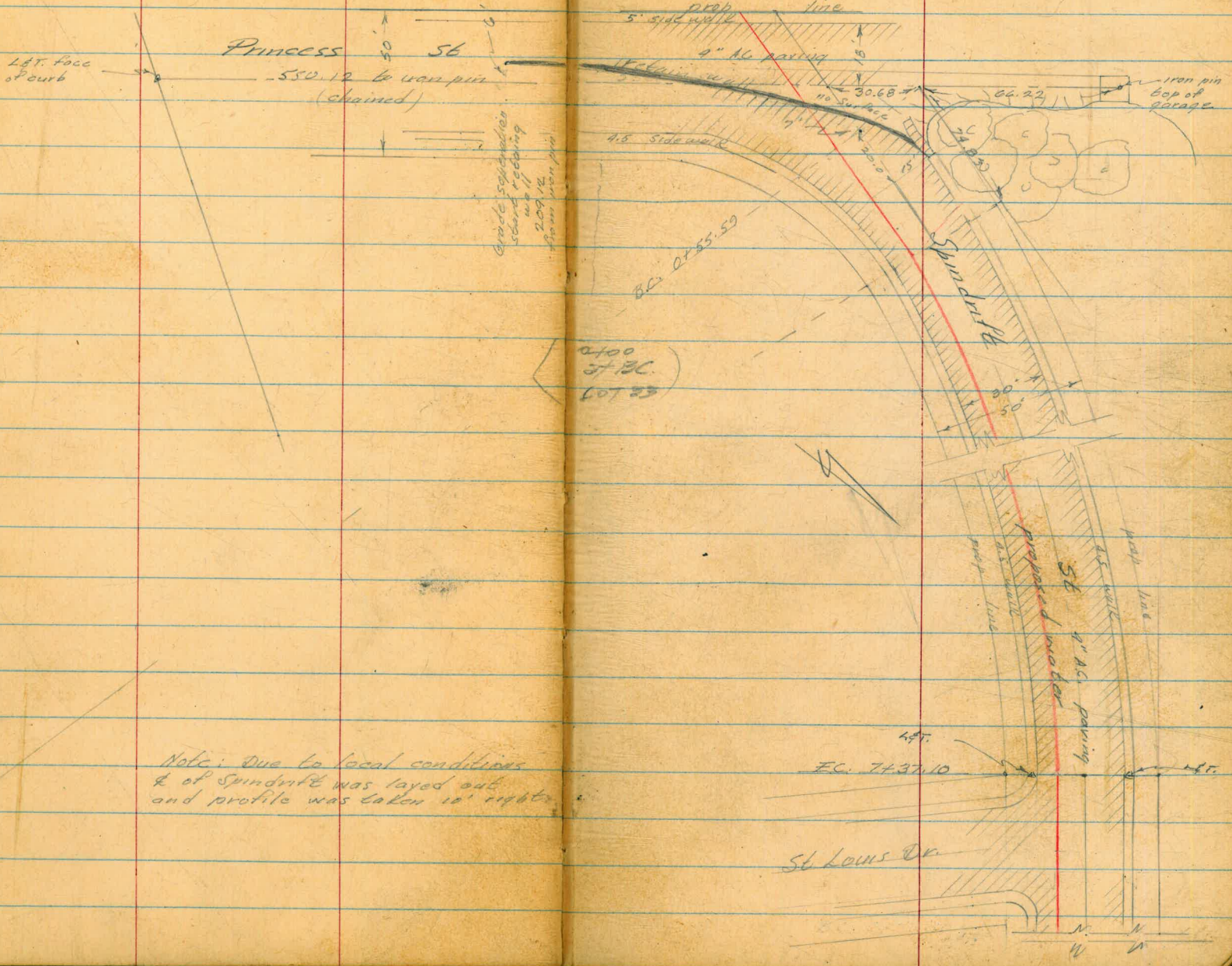


12.02 40.42

27.40

2.01 37.41

= 37.40 B.M.



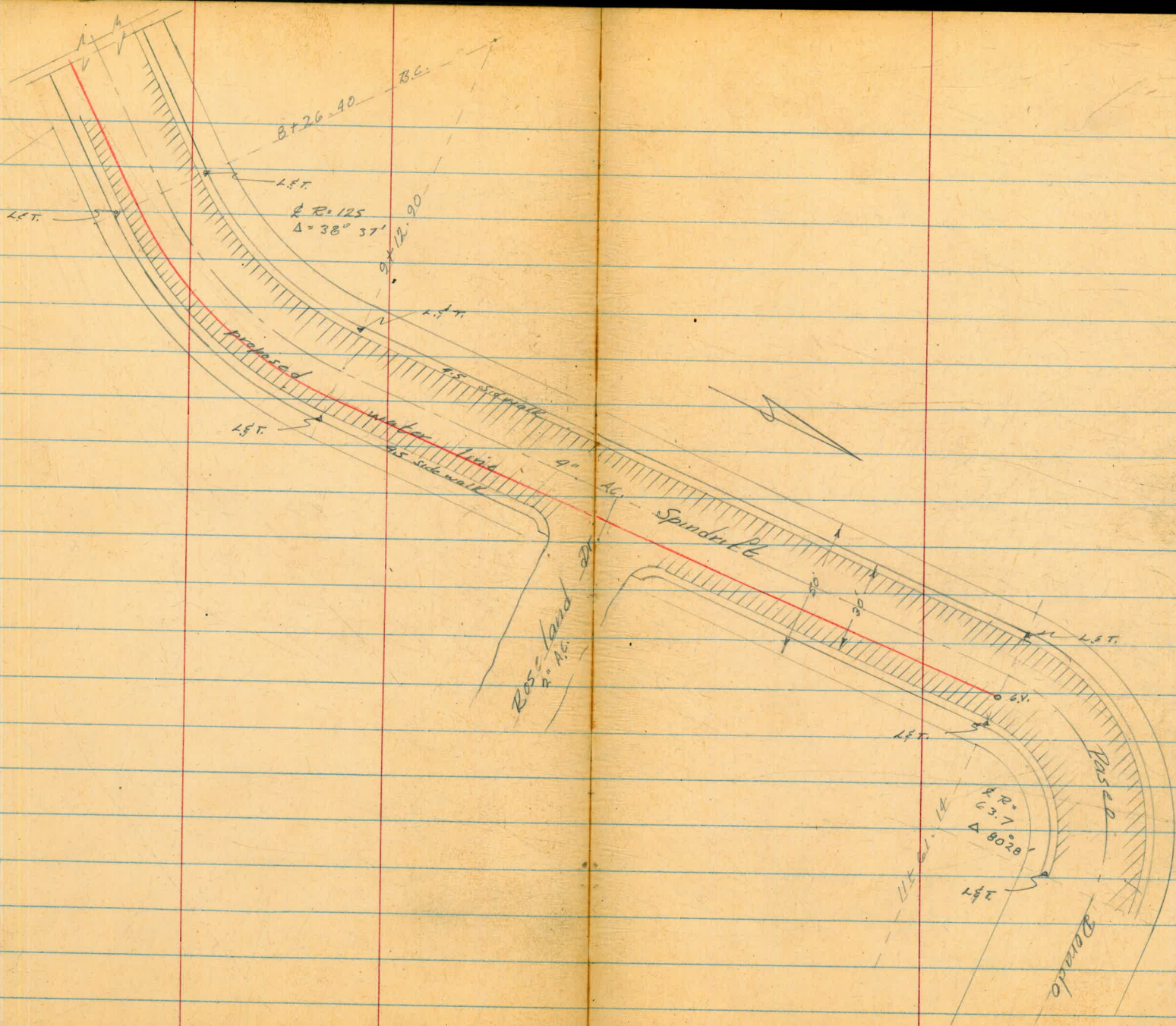
Circle separation  
stand reading  
was 11  
209.12  
from iron pin

2400  
37.30  
LOT 23

Note: Due to local conditions  
& of Sundrift was layed out  
and profile was taken 10' right.

St. Louis Dr.

N  
W



WERT.  
LEND  
Holahan.

40

10-18-54

Profile & Proposed Water Line  
Viking Way, Torrey Pines Road  
to St Louis St.

Sta. on Prop. Line	Sta. on Hill Top Dr.	Dist.	Elev.	Remarks
		96.32		N.W. corner Torrey Pines & Viking Way
		2.94	99.26	side.
0+00	7+90	0.2	99.1	G.V. on Hill Top Dr.
+17	7+77	1.7	97.6	Gas M.H. 20' 16"
+20	7+70	1.8	97.5	# Curb line Torrey Pines Road <sup>5' continuous sidewalk on North side</sup>
+35	7+55	1.2	98.1	# Torrey Pines Rd.
+41	7+49	1.1	98.2	Gas crossing
+50	7+40	1.4	97.9	W curb line Torrey Pines
+58	7+32	1.8	97.5	G.V.
1+00	6+90	5.3	94.0	
1+10.33	6+79.9	6.2	93.1	W prop line Torrey Pines Rd.
+50	6+40	9.0	90.3	
2+00	5+90	12.6	86.7	
T.P.		13.14	86.12	
		0.81	86.93	

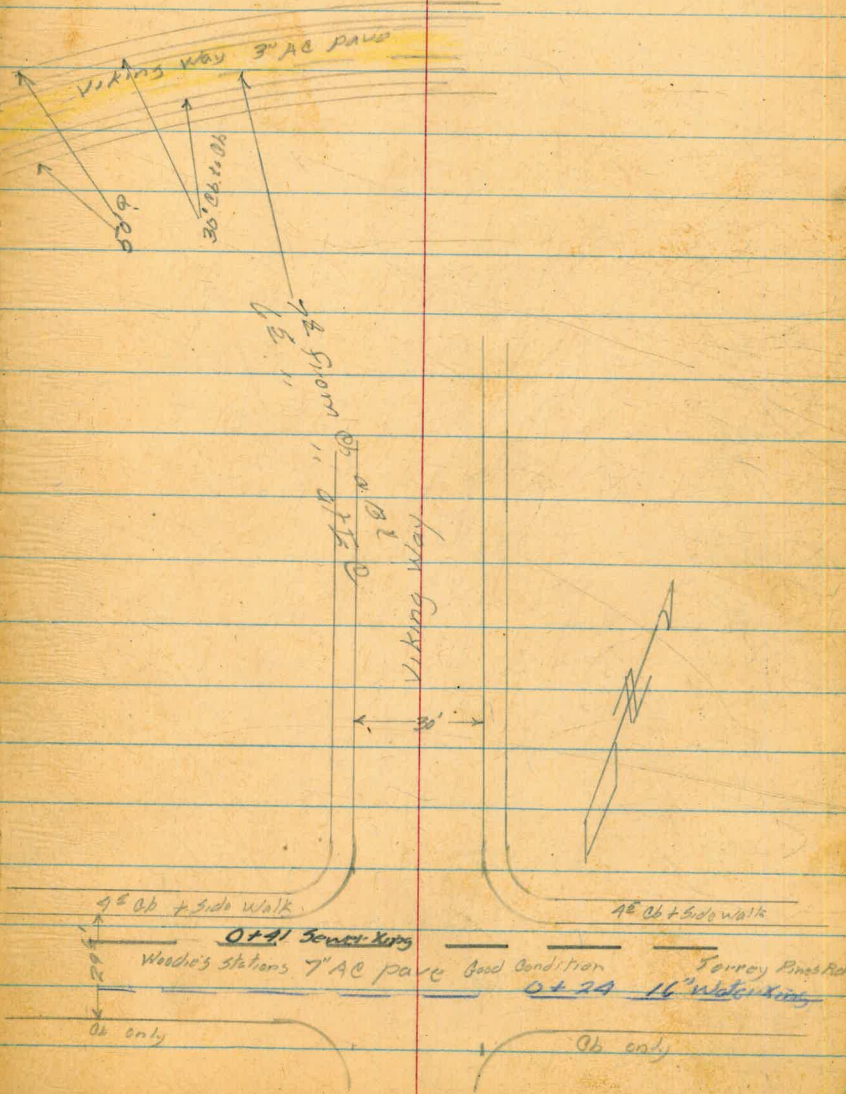
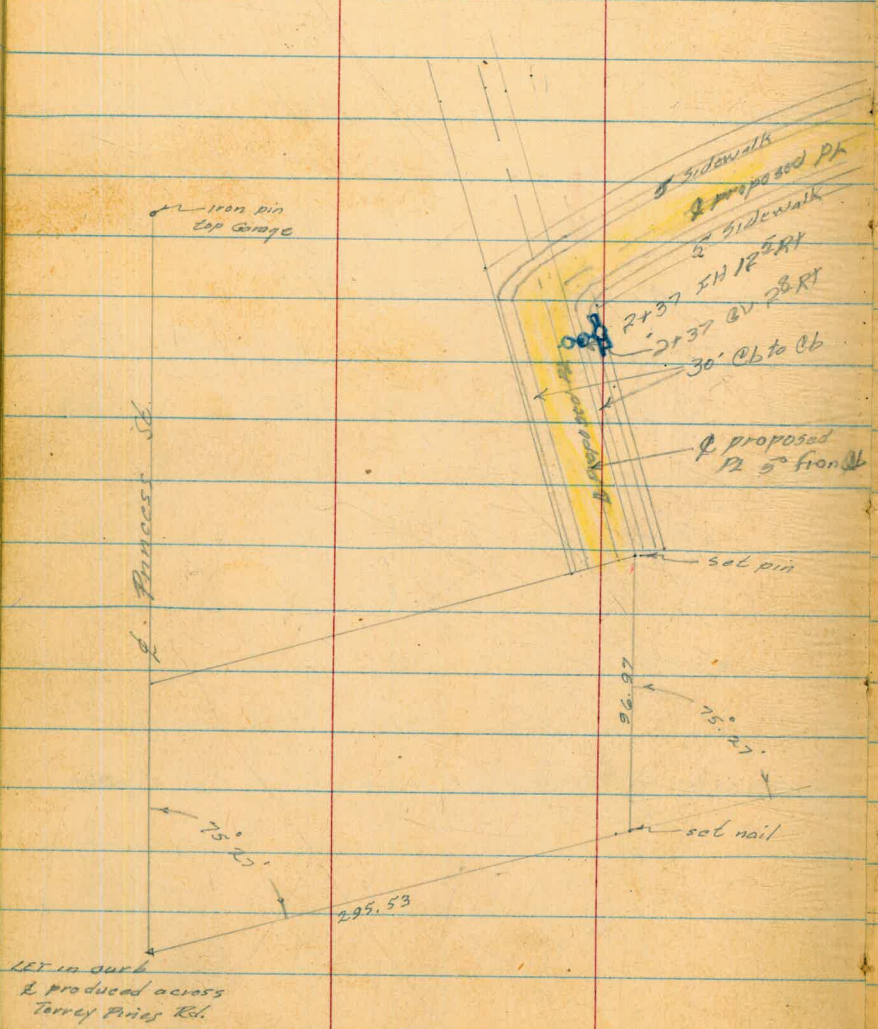
Sta. on DWG.

		86.93		
2+39	5+51	2.5	84.4	GV.
+53.88	75°49'30" R	2.8	84.1	P.I.
+53.88	5+36	2.99		Sewer MH. 11' LK cut 867 to fl.
+60.51	5+29	3.1	83.8	B.C.
3+00	4+90	4.7	82.2	
+50	4+40	6.8	80.1	
4+00	3+90	8.9	78.0	
+50	3+40	11.0	75.9	
T.P.		12.05	74.88	
	0.26	75.14		
4+95		11		Sewer MH. 13' LK no opened
5+00	2+90	1.4	73.7	
+50	2+40	3.5	71.6	
6+00	1+90	5.4	69.7	
+50	1+40	8.8	66.3	
T.P.		13.17	61.97	
	0.90	62.87		

Sta.  
on Drwg.Red 'ed  
Rocky  
by

		62.87				
7+00	0+90	2.8		60.1		
7+35.62	0+51	7.5		55.4	EC.	
7+38.62	0+51	7.9		55.0	GV.	
+48.62	0+41	8.8		54.1	So. curb line St Louis	
+55	0+35	8.5		54.4	Gas crossing	
+55	0+35	8.9			Gas MH. not 48	
+65	0+25	8.2		54.7	A St Louis	
+81	0+09	9.3		53.6	No. curb line & gutter St Louis	
+81	0+09	8.8		54.1	Top curb	
T.P.		10.90	51.97			
	0.38	52.35				
T.P.		9.07	43.28			
	3.15	46.43				
		9.09	37.34			
					= 37.40	S.F. B.P. Spindrift & St Louis

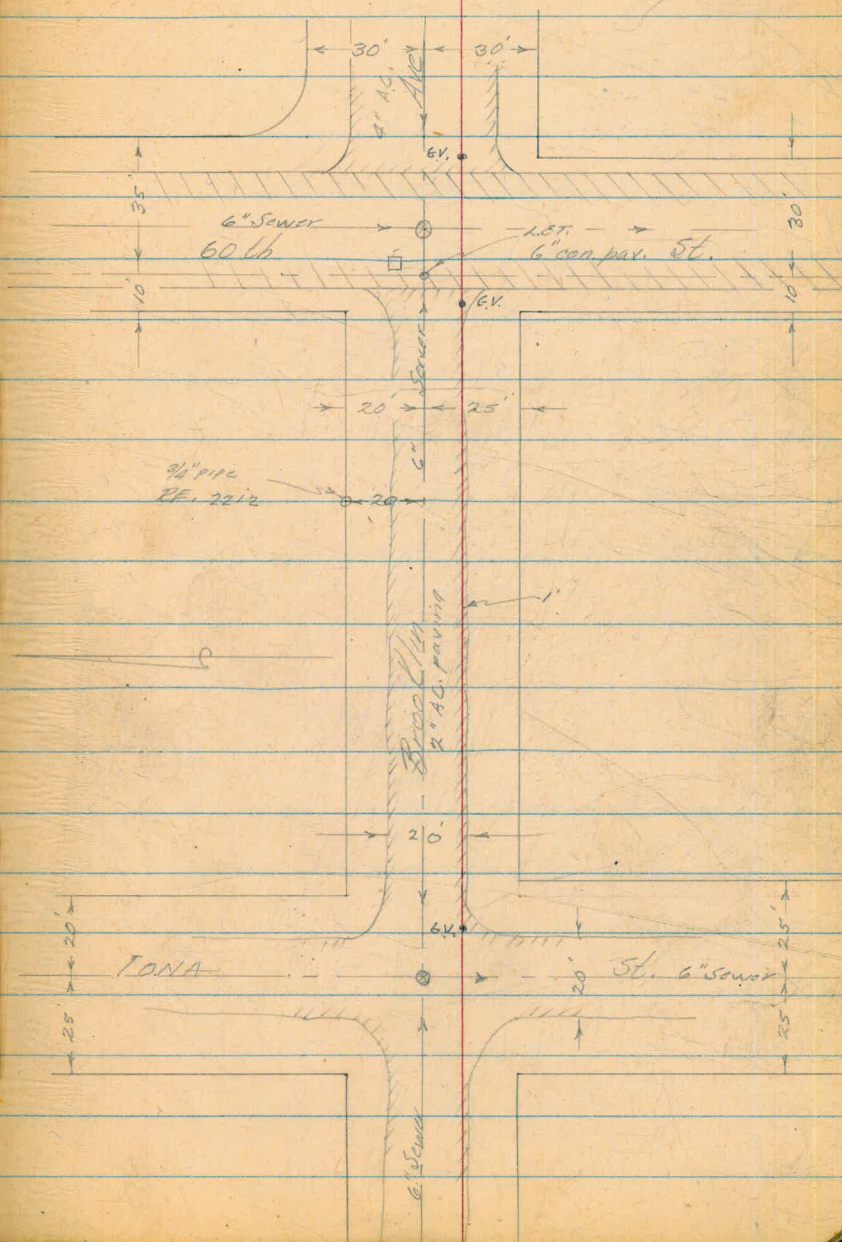
7+81  
7+35.6  
45.454  
38.5  
15.5



1-18-55

Profile of Proposed Water line on  
Brooklin Ave both to south

0+00	E. & N <sup>1</sup> / <sub>4</sub> line of 60th
+05	E & S <sup>1</sup> / <sub>4</sub> line of 60th
+09	E. edge of 6" con. paving
+24	Sewer M.H. 10' R.E.
+33	G.F.E. M.H. (not opened)
+35	L & T. of Brooklin to East
+39	Wedge of con. paving
+44	Water E.V.
+45	W/L of 60th
1+15	<sup>3</sup> / <sub>4</sub> " pipe R.E. 22' R.E.
3+20	E & S <sup>1</sup> / <sub>4</sub> line of 10th
3+25	E & N <sup>1</sup> / <sub>4</sub> line of 10th
3+35	G.W. water
3+45	Sewer M.H. 10' R.E.
3+70	W/L of 10th.





3+70

W/L of Iona St.

5+13.73

P.O.T. 10' RL

5+57.48

prop cor. iron pin 24.90 RL

6+14

G.V. water

6+20

F/L of 59th

6+30

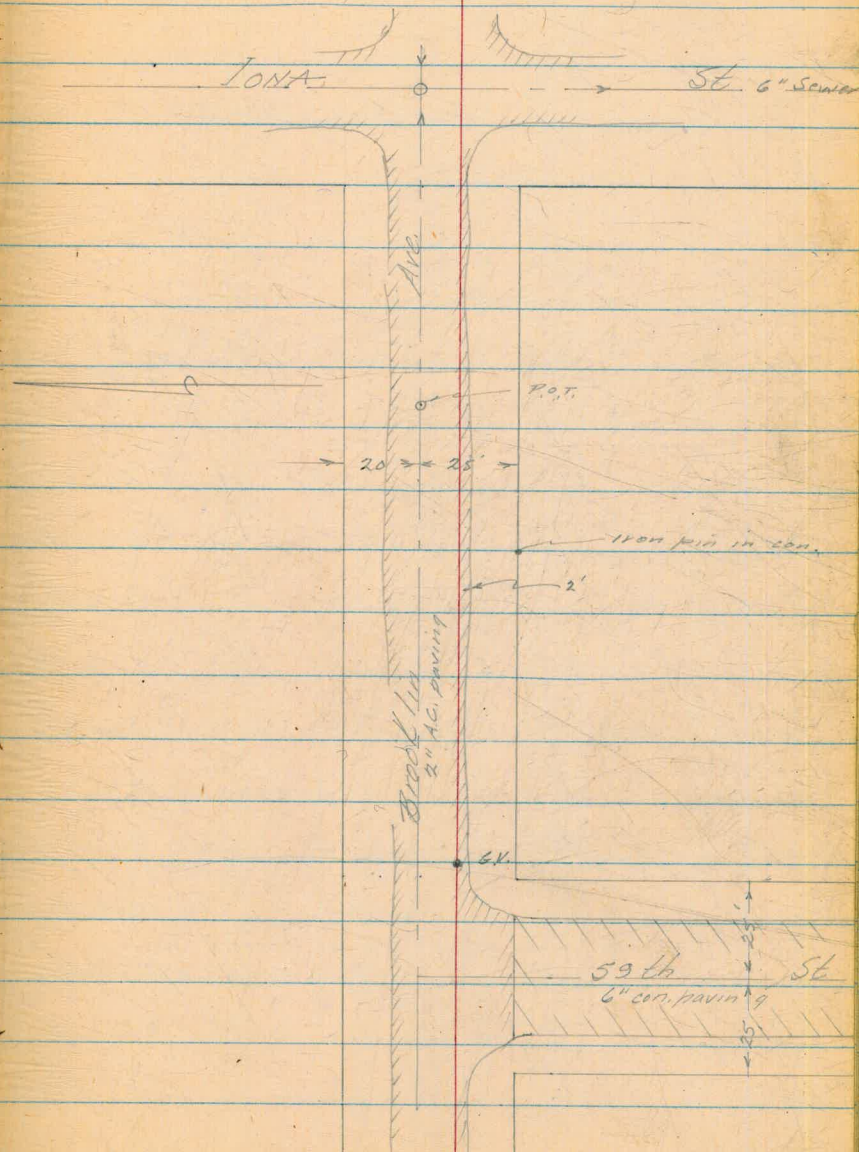
Curb line on 59

6+60

" " " "

6+70

W/L of 1 59th St.



## Brooklin Ave Cont.

		242.69	
1.28	243.97		
		8.55	235.42
0.95	236.37		
			=234.53
		1.90	234.47
			CITY Engr.
10.92	244.89		
0+00		10.8	234.09
0+03		10.7	234.19
0+09		10.8	234.09
0+21		10.6	234.29
0+24		10.27	234.67
0+33		10.8	234.09
0+33		10.13	234.76
0+39		10.8	234.09
0+44		10.5	234.39
0+50		10.2	234.69
1+00		7.6	237.29
+50		6.0	238.89

Reduced by J. Gray 2-9-53

S.W. cor. Brooklin &amp; Fergus St.

1st &amp; Brooklin &amp; 10' off w/ of walk

G.V. water on line

E. edge 6" con pavement

Sewer crossing

" MH 10' RL cut 6.0 both.

Gas crossing?

Gas MH 16' RL (full of mud)

West 6" con pave.

G.V. water on line

244.89

2100	3.7	241.19
+50	0.4	244.49
T.P.	0.23	244.66

12.53 257.19

3100	8.1	249.09
+35	5.4	251.79
+35	5.1	252.09
+45	4.8	252.39
+45	4.04	253.15
450	1.3	252.89
T.P.	4.87	252.72

11.96 264.28

4100	8.0	256.28
+50	5.5	258.78
5100	4.3	259.98
+50	4.0	260.28
6100	5.5	258.78
+14	6.1	258.18

water crossing, 6" on LONA ST

G.V. 5' PL

Sewer crossing

Sewer M.H. 10' PL cut 6.0 to PL

E.V. water on line

	264.78		
6130	6.8	257.48	
+50	7.6	256.68	
+60	7.9	256.38	
7100	9.1	255.18	
T.P.	5.90	258.38	

E curb line 59th

W " " "

SE. FH. Brooklyn E 59th

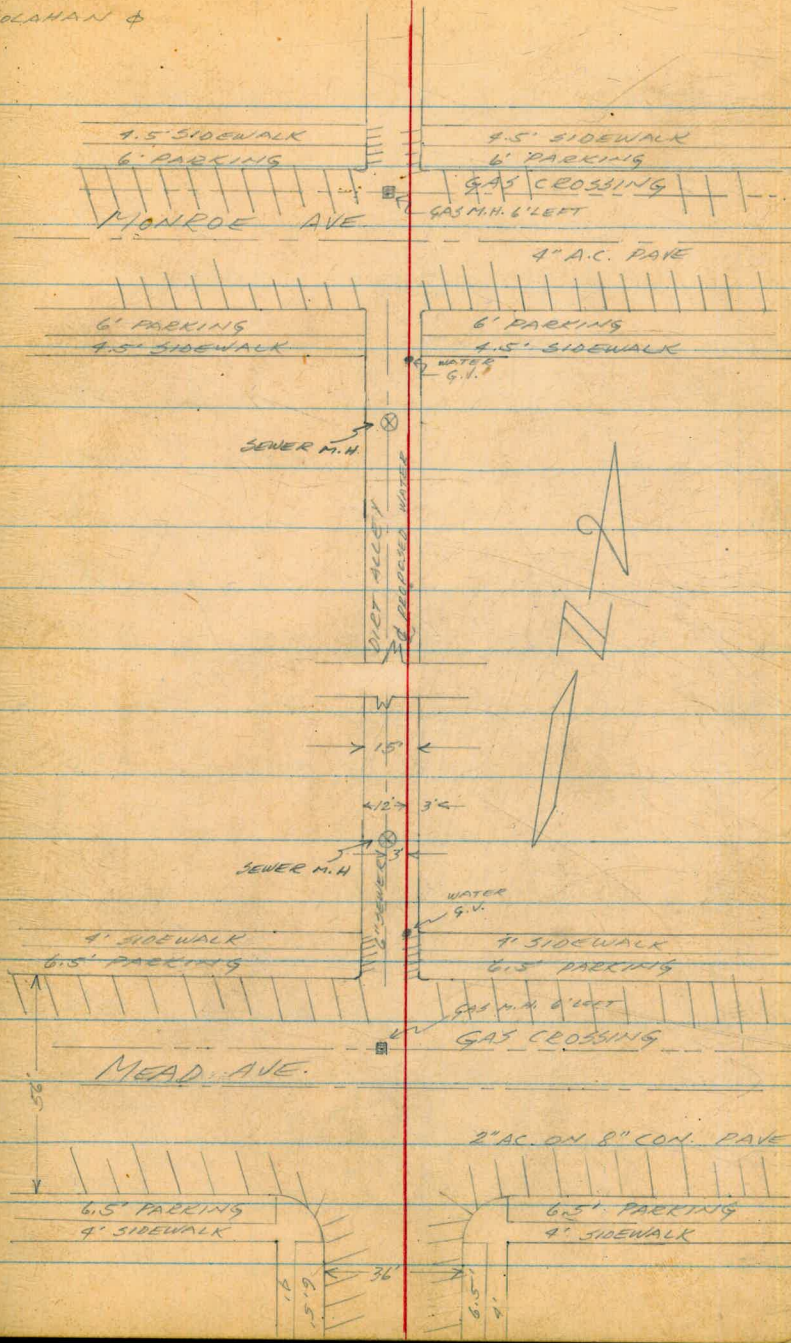
WEST  
KEMP X  
HOLAHAN &

10 DEC 54 99

PROFILES & PROPOSED WATER ALLEY BLK B.

NORTH MEAD AND EAST WILLSON

7 + 40.14	NO. PROP. LINE, MONROE
7 + 28	NO. CURB LINE
6 + 92	30. CURB LINE
6 + 80.14	30. PROP. LINE MONROE
6 + 63	SEWER M.H. 3' LEFT
1 + 04	SEWER M.H. 3' LEFT.
0 + 80	NO. PROP. LINE MEAD
0 + 68	NO. CURB LINE
0 + 50	GAS M.H. 6' LEFT
0 + 12	30. CURB LINE
0 + 00	30. PROP. LINE MEAD



PROFILE of PROPOSED WATER  
ALLEY BLK B, NORTH MEAD & EAST MONROE

		388.20	B.M. NWBP MEAD & WILLSON
	396.391.66		
0+00	5.3	386.36	30" LINE MEAD
+12	5.3	386.36	" CURB "
+40	4.7	386.96	" MEAD
+50	4.7	386.96	GAS CROSSING
+50	4.65	387.01	" M.H. 6' LEFT CUT 5.2
+68	5.1	386.56	NO CURB LINE MEAD
+80	4.8	386.86	WATER GATE & NO. LINE MEAD

LEFT

RIGHT

0+80			4.5	4.8	4.4
			70.5	0	7.5
1+00	3.7	387.96	3.2	3.7	3.2
			10.5	0	4.5
+04	3.64	388.02	SEWER M.H. 3' LEFT CUT 6.75 FLOW		
+50	2.8	388.86	2.8	2.8	2.7
			10.5	0	4.5
2+00	2.8	388.86	2.8	2.8	2.7
			10.5	0	4.5
+50	2.6	389.06	2.5	2.6	2.7
			10.5	0	4.5

391.66

F.P.

2.25 389.41

5.98 395.39

LEFT

RIGHT

3+00 6.0 389.39

6.2 6.0 5.9  
10.5' 0 4.5

+50 5.5 389.89

5.2 5.5 5.6  
10.5' 0 4.5

4+00 5.3 390.09

5.2 5.3 5.5  
10.5' 0 4.5

+50 4.7 390.69

4.7 4.7 4.5  
10.5' 0 4.5

5+00 4.5 390.89

4.2 4.5 4.5  
10.5' 0 4.5

+50 3.9 391.49

3.8 3.9 3.6  
10.5' 0 4.5

6+00 3.7 391.69

3.8 3.7 3.5  
10.5' 0 4.5

+50 3.6 391.79

3.3 3.6 3.7  
10.5' 0 4.5

+63 3.83 391.56

SEWER M.H. 3' LEFT CUT 6.3 FLOW

T.P.

3.83 391.56

4.13 395.69

6+80.19 5.2 390.49

10. LINE MONROE

+92 5.5 390.19

" CURB "

7+00 5.2 390.49

+10 5.0 390.69

MONROE

395.69

7+28

5.5

390.19

NO. CURB LINE MONROE

+40.14

5.3

390.39

NO. " "

T.P

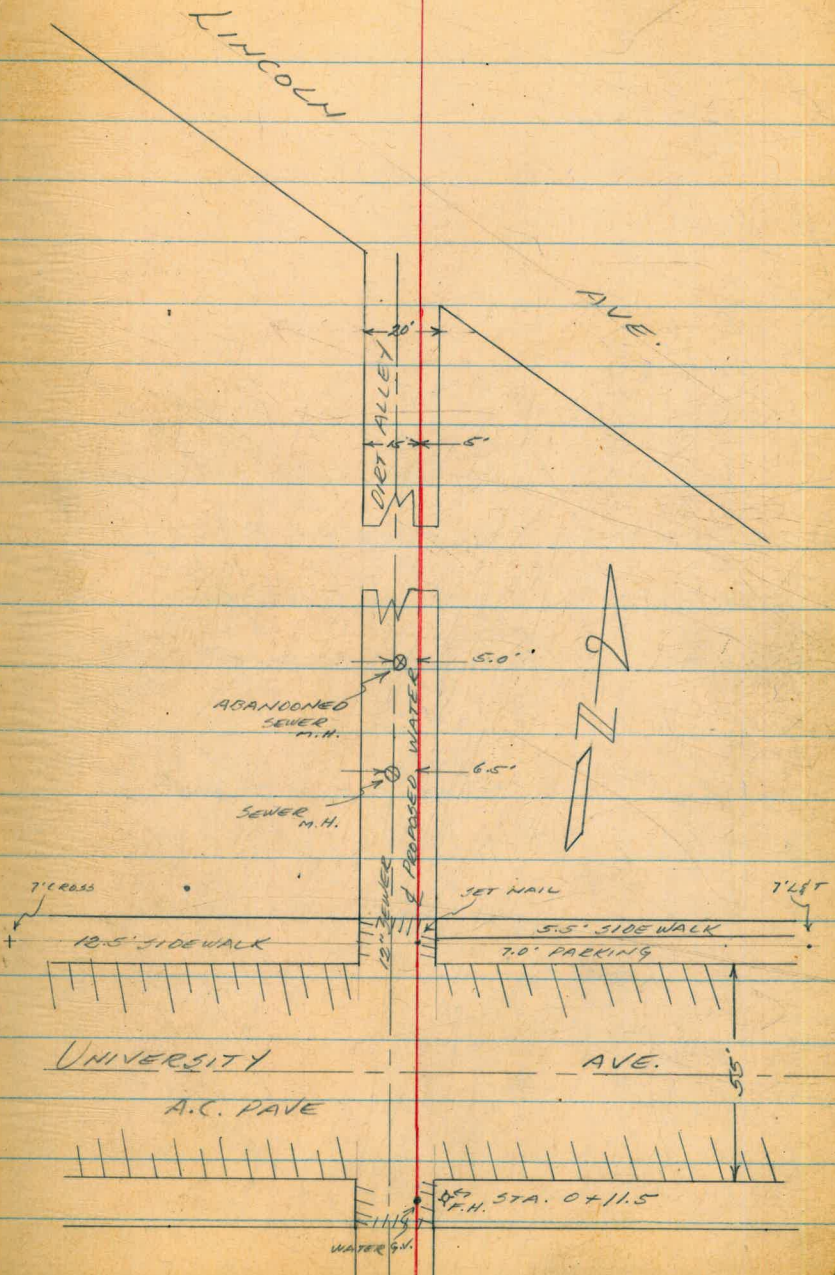
1.54 394.15-394.20

SEFH MONROE & WILLSON

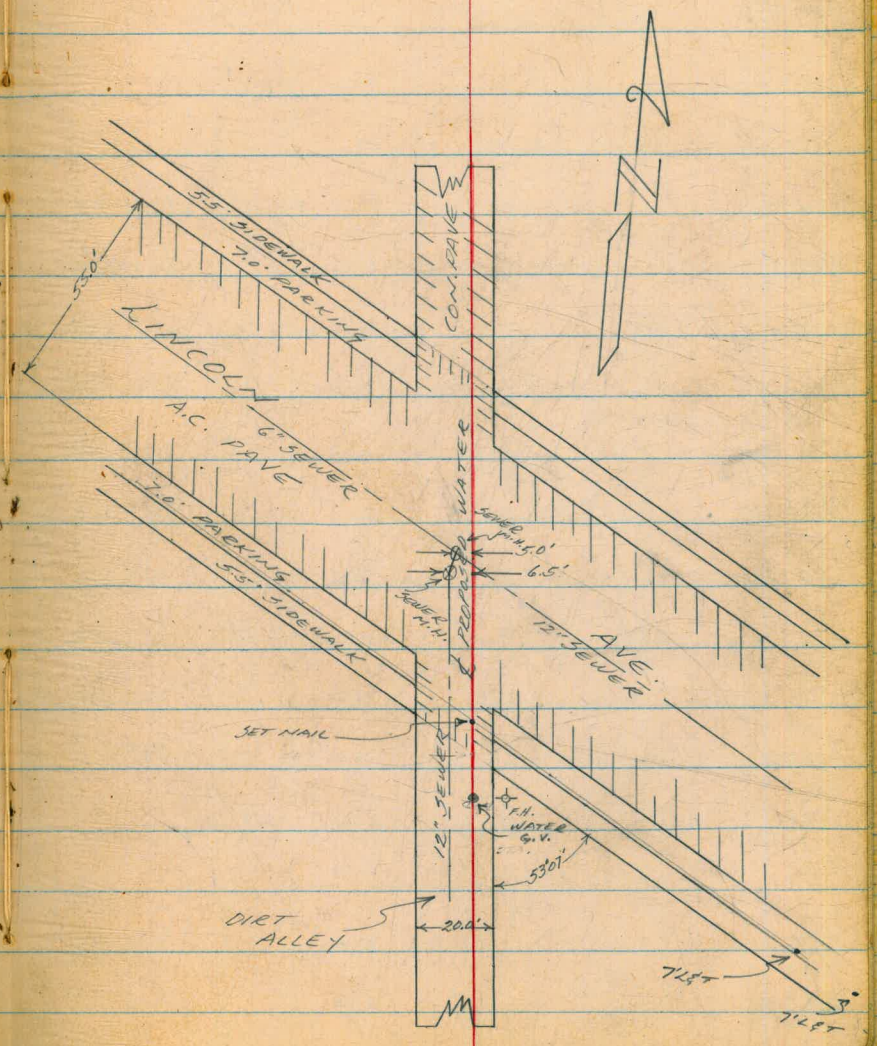


PROFILE of PROPOSED WATER  
 ALLEY BLK 196 NO. UNIVERSITY & EAST 330057

- 2+60 ABANDONED SEWER M.H. 5' LEFT
- 1+95 SEWER M.H. 6.5' LEFT
- 0+80 NO. PROP LINE UNIVERSITY
- 0+66 NO. CURB LINE
- 0+19 SO. CURB LINE
- 0+00 SO. PROP LINE UNIVERSITY



- 5 + 81.50 NO. PROP. LINE LINCOLN
- 5 + 67.76 NO. CURB LINE
- 5 + 34 SEWER M.H. 5' LEFT
- 5 + 32 SEWER CROSSING
- 5 + 28 SEWER M.H. 6.5' LEFT
- 4 + 98.25 SO. CURB LINE
- 4 + 81.50 SO. PROP. LINE LINCOLN



## Alley B/K 196 Cont.

			322.15
	6.65	328.80	
T.P.			2.17 326.63
	7.10	333.73	
0+00			7.3 326.43
+14			7.4 326.33
+40			6.4 327.33
+66			7.4 326.33
+80			6.8 326.93
1+00			6.3 327.43
+50			4.6 329.13
+95			2.3 331.43
2+00			2.2 331.53
+50			0.3 333.7
T.P.			0.24 333.49
	8.17	341.66	
2+60			7.9 333.76
3+00			5.9 335.76

SW B.P. University &amp; Nile

5/4 University

So curb "

x "

No curb "

N/A "

Sewer M.H. 6.5 ft. 7.2 to flow.

341.66

3750	3.6	338.06
4400	2.2	339.46
T.P.	1.20	340.46

5.64 346.10

4150	5.5	340.60
+81.50	5.1	341.0
+98.25	5.3	340.8
5400	5.2	340.9

+28	4.74	341.36	Sewer M.H. 4.7 to flow 6.5 ft.
-----	------	--------	--------------------------------

+31.50	4.5	341.6	& Lincoln
--------	-----	-------	-----------

+32.	4.5		Sewer crossing
------	-----	--	----------------

+34.	4.53	341.57	Sewer M.H. 5.16 4.7 to flow
------	------	--------	-----------------------------

+69.76	4.7	341.4	No. curb
--------	-----	-------	----------

+81.50	4.5	341.6	N/L of Lincoln
--------	-----	-------	----------------

T.P.	2.37	343.73	TBM. SE. 1/4. E 33rd & Lincoln
------	------	--------	--------------------------------

2.10 345.83

10.20 335.63

0.91 336.54

330.54

T.P.

9.82

326.72

1.61 328.33

6.16 322.17

= 322.15

GARNETT @ PENDLETON  
RELOCATION of F.H.

(SEE 2900-D.)

BM	4.46	41.14	36.68
	6.06	35.08	-27.50
	6.06	35.08	-35.10
	6.04	35.10	-35.10
CK BM	4.46	36.68	

April 14, 1955  
Beatty  
Williams  
ALEXANDER

58

BP NW Cor Garnett & Pendleton  
C7<sup>e</sup> To bottom of 30" RCP storm drain  
C0<sup>e</sup> (5) F.H. relocation  
& F.H.

Prospect St

Torrey Pines Blvd to

Virginia Way 0+00 Sly Prop Line

ℳ Pelon on N.Ely side of

0+00

+50

+80

1+00

+50

2+00

+50

3+00

+50

4+00

West  
Williams  
Varontakis  
Alexander

Virginia Way 8-30-55

Prospect St same as existing Main

Westly side of Prospect

+0.5 higher

+0.6 "

+0.7 "

+0.8 "

+0.9 "

+1.0 "

+1.0 "

+0.8 "

+0.1

+0.1

Prospect Pl

Torrey Pines Rd to Park Row

Station Group 26  
24

3+00 North Line Park Row Rd

3+28<sup>29</sup> of Tee

Park Row

2+96<sup>61</sup>  $\Delta$  23°19'20" L

2+23<sup>19</sup> POT 43'11" to LHT on SWly (2) HT

on Park Row

0+73  $\Delta$  10°39'00" L

0+00 Sly prop line Torrey Pines Rd

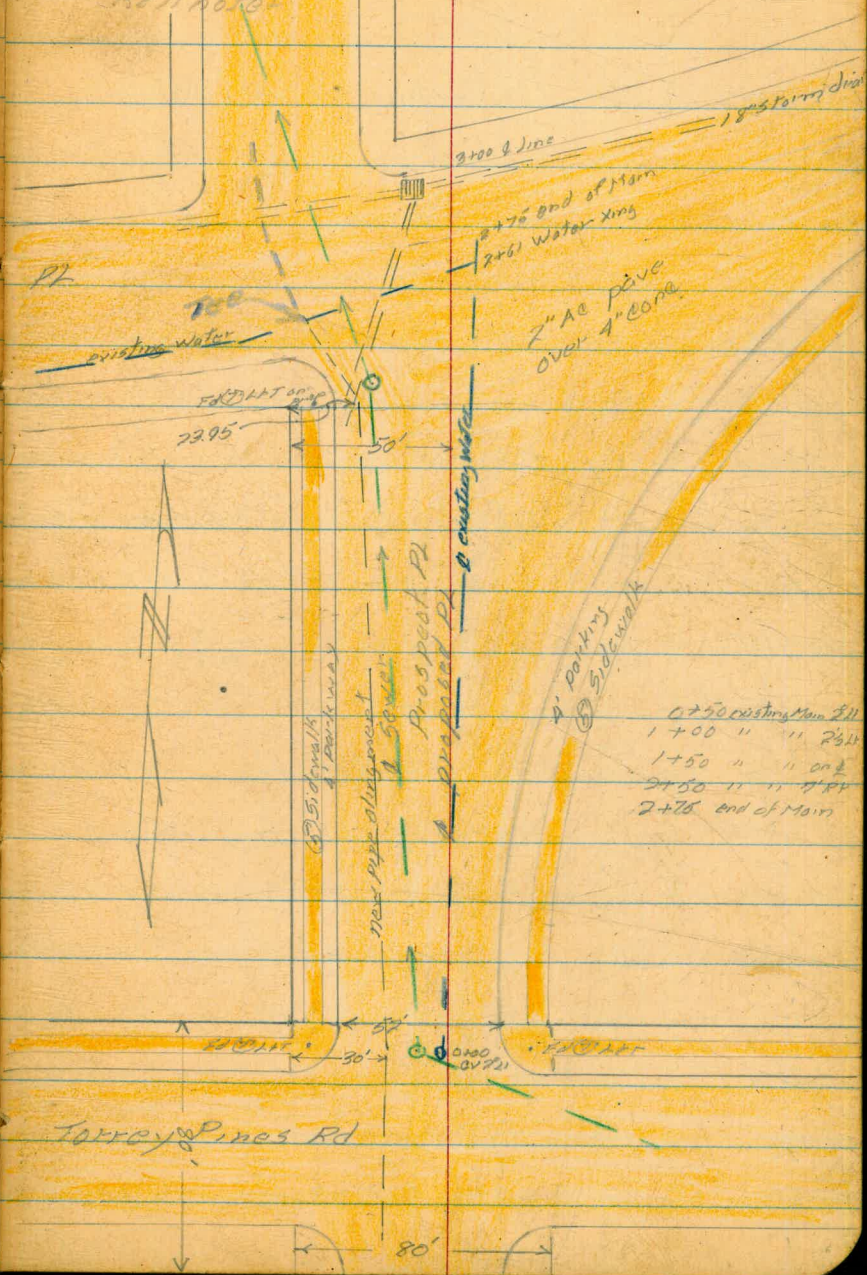
0+07 Nly prop line Torrey Pines Rd

0+00 (9) Nly prop line Torrey Pines Rd

West  
Williams  
Varon for  
Kell hole

9-16-55

60



0+50 existing Man 2 1/2"  
 1+00 " " 2 3/4"  
 1+50 " " 2"  
 2+50 " " 2"  
 2+75 end of main



Prospect Pl Cont

See page 70 for new

alignment Profile

1201	144.77	131.76	
6.56	151.25	0.08	144.69 + 6.5 TO Flow
0-01		1.19	150.06
0+00		1.56	
+07		1.94	
+50		5.65	
1+00		10.02	
0.25	138.67	12.83	138.42
+50		1.72	
2+00		5.87	+ 6.6 TO Flow
+37 <sup>±</sup>		7.59	
+50		8.48	
+99 <sup>±</sup>		11.1	
3+00		10.3	
		6.90	131.77 = 131.76

SE BP prospect Pl + Park Row

Top Fly Rim Sewer MH 11' Ht

Nly prop Line Terrey pines Rd

Top Fly Rim Sewer MH 23' Ht

Butt of Ch

Top of Ch

Spindrift Dr Princess to  
 Paseo Dorado Spindrift to  
 Palm Group 25

West  
 Williams  
 Varenfaks  
 Kallwater

EXIST  
 8+50  
 1" AC PAVE

6+50  
 2" AC PAVE

4+50  
 2" AC  
 PAVE

2+25 1 1/2" AC PAVE

1+50 1" AC PAVE

0+00 1 1/2" AC PAVE

8+02.68

EC

$$\Delta = 26^{\circ}40'$$

$$R = 1296.80'$$

$$L = 603.51$$

Existing Water Main

Existing Gas

0+50 2' RT

1+02 1/2 on  $\downarrow$

1+50 on  $\downarrow$

6+50 on  $\downarrow$

0+50 17' LT

2+50 21' LT

6+50 21' LT

10+50 20' LT

1+99.17

PCC

$$\Delta = 42^{\circ}07'$$

$$R = 132.31$$

$$L = 97.07$$

1+02.10

PCC

$$\Delta = 15^{\circ}45'$$

$$L = 102.10$$

$$R = 371.43$$

$$\text{Dist per ft} = 4.627715'$$

0+00 BC of

371.43 Radius curve Lot 33 Map 1762

9+35

ST LOUIS ST

82

9+16 Gas Valve

9+16 FH 21' RT

9-19-55

EC = 802.68

9+0+21.175  
 2V on  $\downarrow$  8+02.68

$$\Delta = 26^{\circ}40'$$

MAP 1762

3' wide Cong gutter  
 2' RT of proposed

1+1+1+3 RT  
 PCC Pipe Radius = 1296.80  
 $\Delta = 42^{\circ}07'$   
 PCC 1702.10

371.43  
 $\Delta = 15^{\circ}45'$   
 Pipe Radius = 371.43  
 BC = 0+00

Princess St

0+60 FH 39' LT

Spindrift Dr Cont.

13+15.74 EC

$$\Delta = 90^{\circ}28'30''$$

$$R = 55'$$

$$L = 77.25'$$

12+38.99 BC Moved BC ahead 4<sup>23</sup> to take care of 60' 51"

12+32<sup>56</sup> BC property line

9+85.67 EC

$$\Delta = 39^{\circ}46'40''$$

$$R = 135'$$

$$L = 93.72'$$

$$Def. per. ft = 18.7324'$$

8+91.95 BC

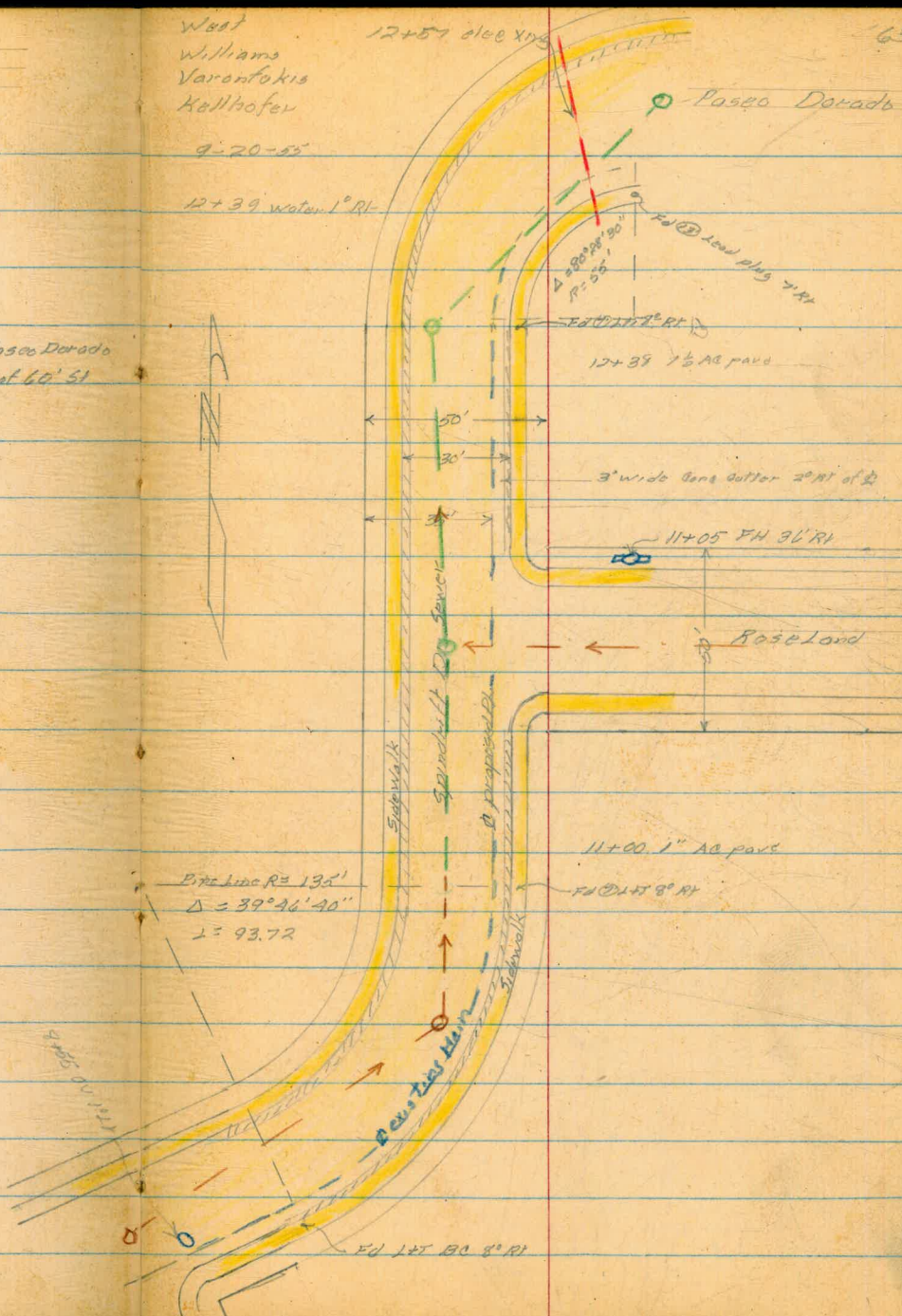
West  
Williams  
Varenfokis  
Kallhofer

9-20-55

12+39 water 1° RI

12+51 elec XPS

69



Spindrift Dr. + Paseo Dorado Const

West  
Williams  
Varonfokis  
Kullhofer

19+25 70' R

Avenida Alamar

64

19+75 ± Ely prop. line Avenida Alamar

R = 580'

Def. Per. Ft 2.964

17+67.38 BC

Water Main

12+90 25' LT

13+15 20' RH

13+50 20' RH

15+00 05' RH

15+50 0

17+50 on 0

19+00 on 0

19+50 10' LT

Gas Main

13+50 21' LT

9-20-55

19+50 Sewer MH 25' LT

17+78 12" x 18"  
Sewer drain Xing

18+00 2" AC PAVE

Ed 4" soil pipe with 1/2" in center Prop BC

Ed 1" prop 60'

1/2" wide sewer outlet  
30' RT of E of pipe

Ed 2" prop 60'

MAP 3288

Ed 2" Prop 60'

14+75 2" AC pave

15+13  
2 8" Drain  
eloy T. k. pipes

Paseo Dorado

Proposed P.

15' Sidewalk



Spindrift Dr  
 & Profile

1.68	73.37	1869	
0+00	3.73	69.64	
+08	3.80	69.57	+7.8 to Flow
+25	3.94	69.43	
+50	4.01	69.36	
+75	4.14	69.23	
1+02 <sup>10</sup> P00	4.28	69.09	
+25	4.47	68.90	
+50	4.59	68.78	
+55	4.68	68.69	+15.2 to Flow
+75	4.75	68.62	
1+99 <sup>12</sup> B00	4.95	68.42	
2+50	5.39	67.98	
3+00	6.21	67.16	
+50	8.04	65.33	
4+00	10.93	62.44	
0.16	60.42	1311	60.26
+50	1.38	59.04	
5+00	4.70	55.72	

Reduced by J. Gray  
 9-22-55

Top Sewer MH see page 33

Top Elyria Sewer MH 721

9° RT to Ob

9° " " "

8° RT to Ob

7° RT to Ob

5<sup>15</sup> RT to Ob

5<sup>23</sup> RT " "

Top South Elyria Sewer MH 23' LT

9<sup>5</sup> LT to Sewer

4<sup>5</sup> LT " "

3' LT to Sewer

3' " " "

4<sup>5</sup> LT to Sewer

8' LT to Sewer

14' LT to Sewer

	60.42		+13.5 To Flow		
5+13	5.63	54.79		Top sly edge sewer MH 16' H	
+50	7.70	52.72		11' H to sewer	
6700	10.6	49.82		7' H to sewer	
018	47.59	13.01	47.41		
+50	1.03	46.56		4' H to sewer	
7+00	4.12	43.47		3' H to sewer	
+50	7.12	40.47		5' H to sewer	
8+02 <sup>68</sup> EC	10.35	37.24		Top of CV on Q	
	10.21	37.38 = 37.40		Turn on BP 5' RT 8+02 <sup>68</sup> SW Cor Spindrift	ST LWS
043	37.83	37.40			
8+31	1.12	36.71		sewer xing	
		+10.2 To Flow			
+71	1.10	36.73	26.52	Top sly rim sewer MH 10' H	
+50	1.63	36.20			
191 <sup>68</sup> BO	4.50	33.33			
9+00	5.00	32.83		2 of sewer 14' H	
+25	6.9	30.93			
		+11.5 To Flow			
+47	8.88	26.95		Top s sly rim sewer MH 6' H	
+50	9.1	28.73			
+75	11.2	26.63			
+85 <sup>67</sup> EC	12.2	25.63			

## Spindrift Cont

37.93

0.26 24.85 13.24 24.59

10+00 0.65 24.20

+50 6.18 18.67

+87 10.18 13.67

+10.0 To Flow

+89 9.77 15.08

11+00 11.30 13.55

0.63 12.30 13.18 11.67

+50 1.86 10.44

12+00 4.60 7.70

+38<sup>29</sup> BC 6.55 5.75

+10.3 To Flow

+45 6.60 5.70

+50 7.17 5.13

+60 7.64 4.66

+70 8.07 3.23

+80 8.49 3.81

+90 8.96 3.34

13+00 9.34 2.96

+10 9.65 2.65

+15<sup>29</sup> EO 9.74 2.56

67

9-21-55

Sewer 11' Lt

" " 11' Lt

Sewer Xing

Top Ely rim Sewer MH 11' Lt

13' Lt to Sewer

14' " " " "

Top ely rim sewer MH 17' Lt

Sewer 12' Lt

" " 5' Lt

" " 12' Lt

" " 0<sup>3</sup> Rt" " 2<sup>0</sup> Rt

" " on pipe

" " 3<sup>5</sup> Lt

" " 7' Lt





Paseo Dorado  
+ Spindrift Cont

9.53

20+00

6.72

2.81

3' 11" to 4' 5" SW

3.82 9.63 3.72 5.81

4.69 6.75 7.57 2.06

13.01 19.34 0.42 4.33

13.21 31.79 0.77 18.57

11.95 41.84 1.74 29.94

4.50 37.39 = 37.40

Prospect Pl. Torrey Pines Rd. to Park Row  
 New Alignment Profile

see page 60

steps  
 on Dwg.

Red'd  
 by Rocky

358	153.64	150.06	
0+00	3+80	0.90	152.8
0+40		2.41	151.2
+50		2.76	150.9
+73			
1+00	4+80	5.31	148.3
+50		9.69	144.0
0.33	141.01	12.96	140.68
2+00	5+80	1.41	139.6
+50		5.56	135.5
+96.6		9.22	131.8
3+06			
3+09			
3+09			
+28 <sup>29</sup>	7+08.29	10.32	130.7
		9.20	131.81 = 131.76

West  
 Williams  
 Varonakis  
 Kellhofer

70

10-31-55

Top city rim sewer MH see page 61

City prep line Torrey Pines Rd

Top sewer MH 10' RI w/ly rim

sewer MH 9' RI

Storm Drain Gate

7<sup>th</sup> LT to NE Cor of 2<sup>nd</sup> by 3<sup>rd</sup>

sewer MH 8' RI

12" Cement Storm Drain Xing

Curb 6" LT

∅ Tee existing Tee

By Lamb post

SE BP Prospect + Park Row

55<sup>th</sup> ST.  
 ORANGE ST. TO SOUTH TERMINUS  
 & PROFILE PROPOSED WATER MAIN  
 PRELIMINARY

3/13/56  
 SHOREY  
 MARTELL  
 KEMP  
 SMITH

71

0+00 = N/L ORANGE ST.

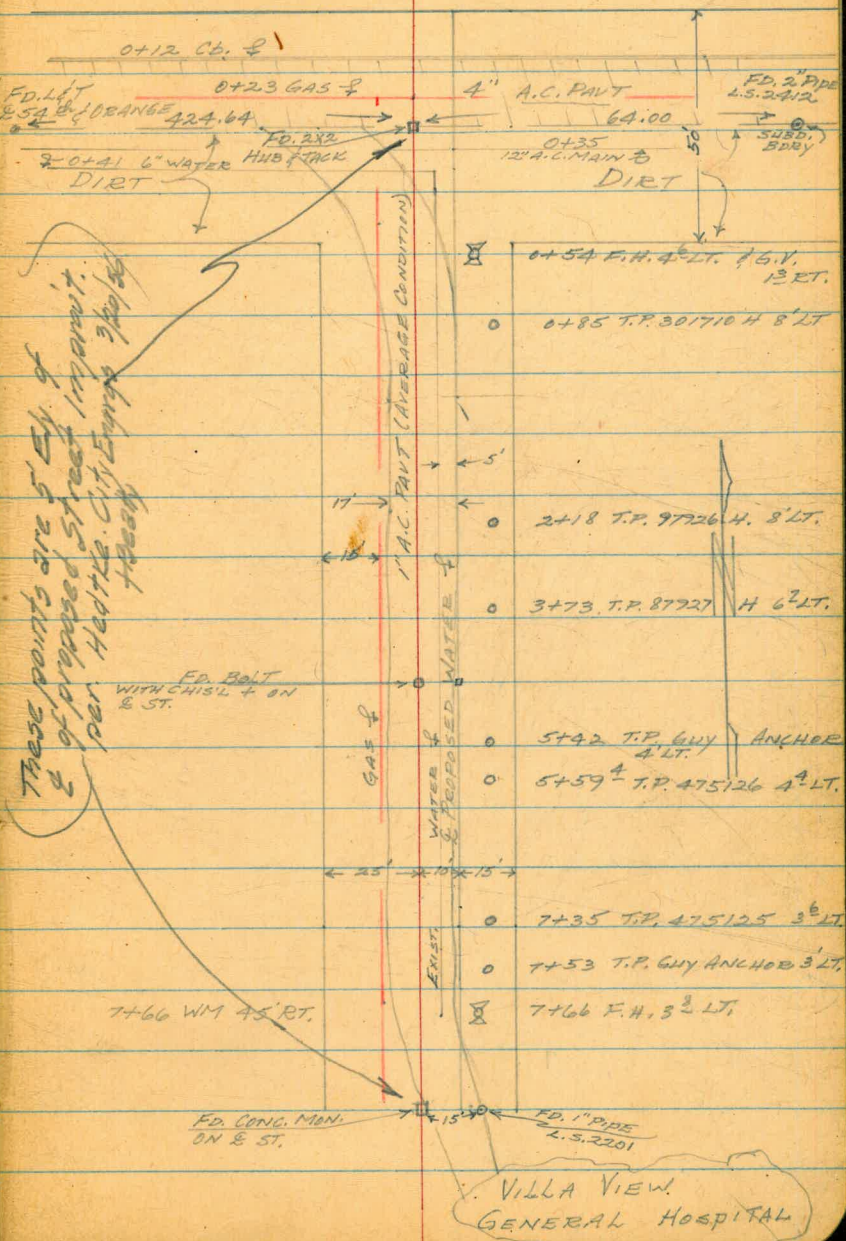
0+30 =  $\frac{1}{2}$

0+50 =  $\frac{5}{16}$

5+26<sup>34</sup> SET P.D.T.  $\frac{3}{4}$ " HUB & TACK

7+73<sup>75</sup> = SOUTH TERMINUS

NOTE: SEE F.B. 787-20  
 FOR LOCATION 12" A.C.  
 MAIN ON ORANGE ST.  
 SHEET 1 OF 6 K-18  
 CITY ENG.



These points are 5' Elev. of  
 & of proposed street in front.  
 per H&T Co. City Eng. 3/13/56  
 H&T Co.

VILLA VIEW  
 GENERAL HOSPITAL

55<sup>th</sup> ST.  
(CONT'D)

3/13/56  
SHIRLEY  
MAITELL  
KEMP  
SMITH

72

BM	5.72	369.49	363.77	
TP	8.77	377.97	0.29	369.20
0+00			11.5	366.5
0+12	Top Ch.		11.84	366.1
0+12	GUTTER		12.31	365.7
0+30	& ST. EDGE A.C. PAVT.		11.64	366.3
0+50			10.9	367.1
1+00	ON EDGE A.C. PAVT		9.78	368.2
1+50	" " " "		8.74	369.0
2+00	" " " "		8.38	369.6
2+50	" " " "		7.12	370.9
3+00	" " " "		5.20	372.8
3+50	" " " "		2.56	375.4
TBM	3.76	380.73	1.20	376.77
4+00	1' LT. EDGE A.C. PAVT		3.5	377.2
4+50	" " " "		2.6	378.1
5+00	2' LT. " " "		2.8	377.9
5+26	<sup>34</sup> P.O.T. 2' LT. " " "		3.0	377.7
5+50	" " " "		3.7	377.0
6+00	" " " "		5.5	375.2

& L & T 54<sup>th</sup> & ORANGE (CITY ENG. FB. 2099-17)

TOP F.H. S.E. COR. 55<sup>th</sup> & ORANGE

LT

RT

Reduced by A.E. MATHEISON  
3-20-56 & L.M.

11.28  
3.8 EDGE A.C. PAVT.

PK. NAIL IN P.P. 87927 H 6<sup>2</sup> LT. 3+90±

55<sup>th</sup> ST.  
(CONT'D)

73

380.73'

6+50	2' LT. EDGE A.C. PAVT	7.5	373.2
7+00	3' LT. " " "	10.3	370.4
7+50	1 <sup>5</sup> LT. " " "	12.8	367.9
7+65	ON EDGE A.C. PAVT.	13.80	366.9
TP	10.42	379.71 <sup>1</sup>	11.44 369.29 <sup>1</sup>
7+73	<sup>75</sup> SOUTH TERMINUS	12.66	367.1
SET TBM	10.42	379.71	10.42 369.29
TP	1.82	379.71	1.62 378.09
TP	1.12	371.88	7.15 370.76
CK. BM		8.11	363.77 - 363.77

TOP F.H. 7+66 3<sup>8</sup> LT.

ON A.C. PAVT

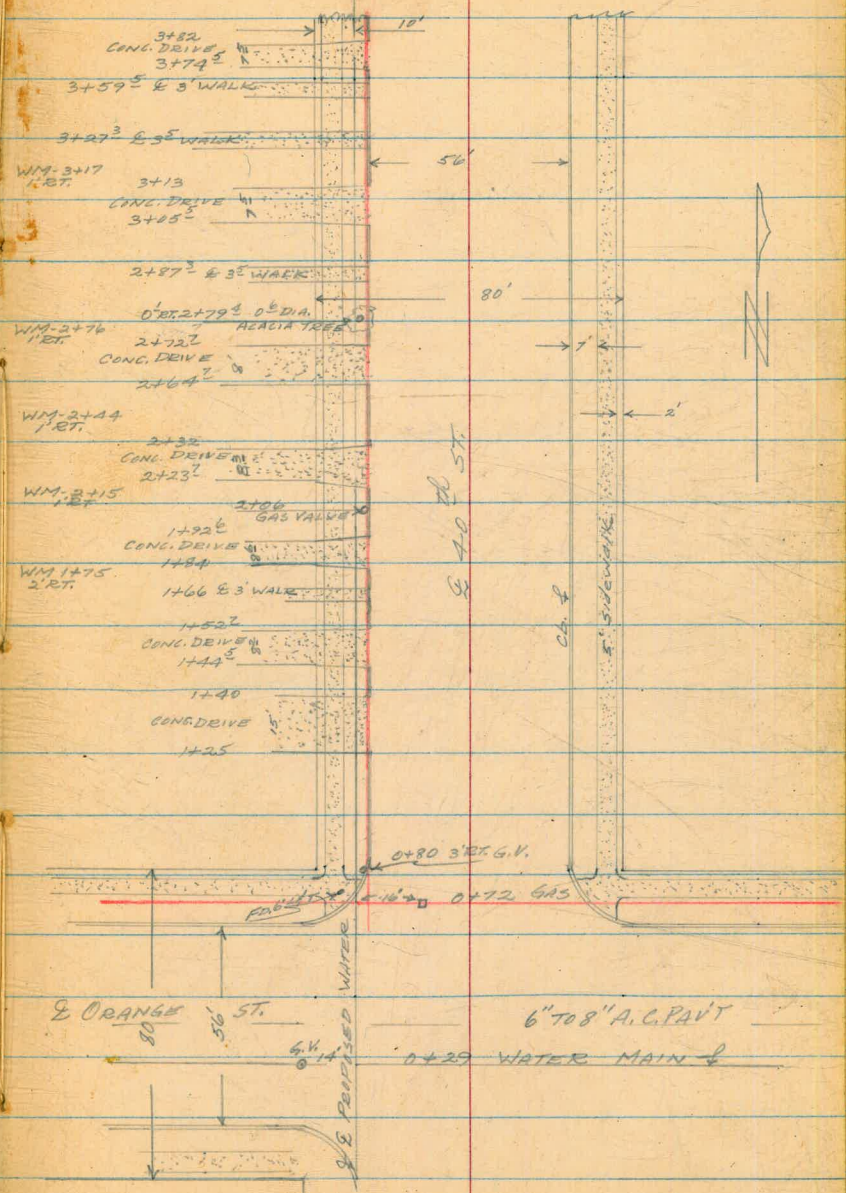
TOP F.H. 7+66 3<sup>8</sup> LT.

Q 1<sup>st</sup> LT 54<sup>th</sup> & ORANGE

40<sup>th</sup> ST.  
 ORANGE TO EL CAJON  
 & PROFILE PROPOSED MAIN  
 PRELIMINARY

NOTE: EXIST WATER MAIN  
 2' LT. OF PROPOSED MAIN  
 GAS MAIN 3' RT. - JUST  
 BEHIND CURB

- GAS XING'S
- 5+94
  - 5+53
  - 5+13
  - 4+73
  - 4+34
  - 3+93
  - 3+74
  - 3+42
  - 3+01
  - 2+60
  - 2+21
  - 1+80



0+00 = 1/4 ORANGE ST.

(CONT'D)

40<sup>th</sup> ST.  
(CONT'D)

7+11<sup>40</sup> WATER MAIN XING

NOTE: EXIST. MAIN 2' LT.  
OF PROPOSED MAIN

GAS MAIN 3" RT. - JUST  
BEHIND CURB

WM-4115  
2' RT.

WM-5174  
2' RT.

WM-5135  
2' RT.

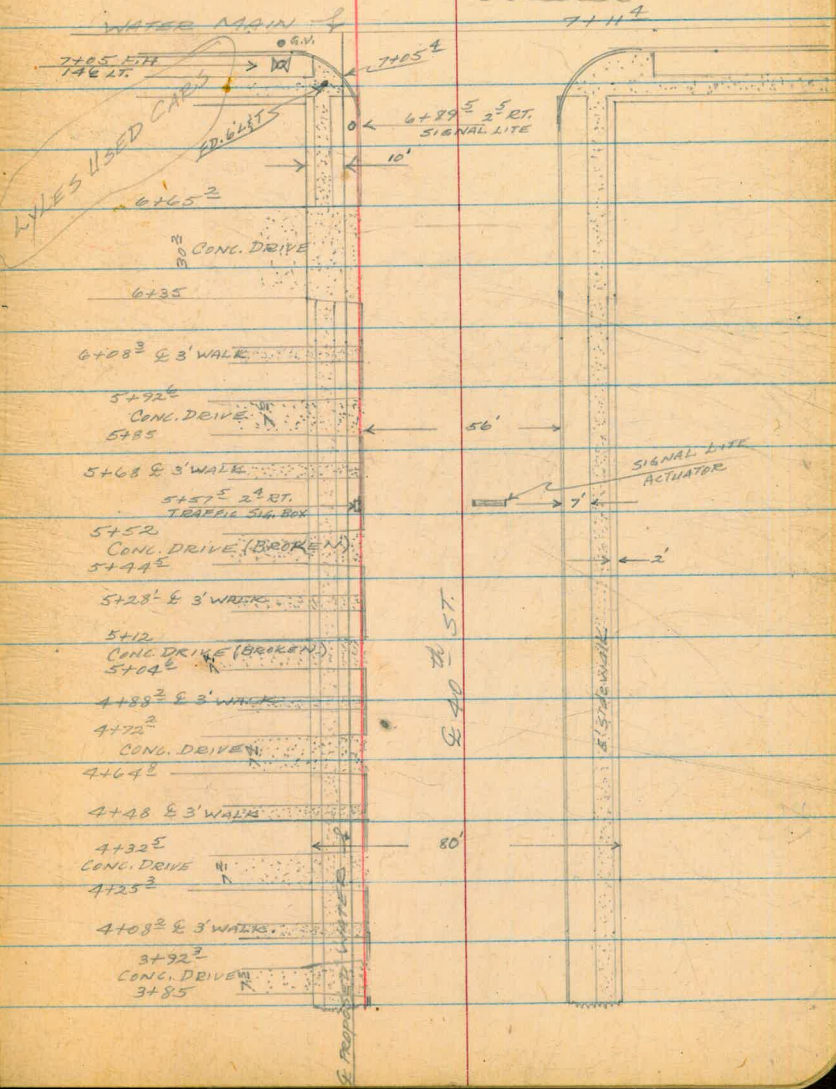
WM-4197  
2' RT.

WM-4157  
2' RT.

EL CAJON BLVD

10" A.C. PAV'T

7+11<sup>40</sup>



BM	5.43	370.05	364.62	NWBP 40 <sup>th</sup> & ORANGE
0+00		6.0	364.05	GUTTER LINE 40 <sup>th</sup> ST. SOUTH
0+30		6.0	364.05	WATER MAIN XING
0+50		5.9	364.15	LT RT.
0+67 <sup>60</sup>	GUTTER	5.8	364.25	
0+67 <sup>60</sup>	TOP CB.	5.4	364.65	
0+80	EDGE WALK.	5.27	364.78	5.44 4' TOP CB.
1+00		5.2	364.85	5.38 4' TOP CB.
1+25	EDGE DRIVE	5.18	364.87	
1+40	" "	5.15	364.90	
1+44 <sup>5</sup>	" "	5.20	364.85	
1+50		5.25	364.80	
1+52 <sup>3</sup>	" "	5.04	365.01	
1+84	" "	5.04	365.01	
1+92 <sup>6</sup>	" "	5.04	365.01	
2+00		5.1	364.95	5.20 4' TOP CB.
2+23 <sup>3</sup>	" "	4.94	365.11	
2+32	" "	4.79	365.26	
2+50		4.9	365.15	5.02 3' TOP CB.

Reduced by J. Gray 3-14-56



40<sup>th</sup> ST.  
(CONT'D)

LT

RT

77

370.05

2+64 <sup>2</sup>	Edge DRIVE	4.93	365.12
2+72 <sup>2</sup>	" "	4.78	365.27
3+00		4.7	365.35
3+05 <sup>5</sup>	" "	4.86	365.19
3+13	" "	4.88	365.17
3+50		4.6	365.45
TP	5.17 370.72	4.50	365.55
3+74 <sup>5</sup>	Edge DRIVE	5.19	365.53
3+82	" "	5.15	365.57
3+85	" "	5.18	365.54
3+92 <sup>3</sup>	" "	5.10	365.62
4+00		5.0	365.72
4+25 <sup>3</sup>	" "	5.17	365.55
4+32 <sup>5</sup>	" "	5.21	365.51
4+50		5.1	365.62
4+65 <sup>8</sup>	" "	5.01	365.71
4+72 <sup>2</sup>		5.07	365.65
5+00		4.8	365.92
5+04 <sup>6</sup>	" "	5.08	365.64
5+12	" "	5.05	365.67

4.88  
4 TOP CB4.80  
4 TOP CB.5.34  
4 TOP CB.5.16  
4 TOP CB.5.05  
4 TOP CB.

40<sup>th</sup> ST.  
(CONT'D)

78

RT

370.72

5+44<sup>5</sup> Edge Drive 5.0 365.72

5+50 5.07 365.65

5+52 " " 5.10 365.62

5+85 " " 4.80 365.92

5+92<sup>6</sup> " " 4.75 365.97

6+00 4.8 365.92

6+35 " " 4.62 366.10

6+50 4.72 366.00

6+65<sup>3</sup> " " 4.70 366.02

6+95<sup>7</sup> Edge Walk 4.37 366.35

7+00 ON SIDEWALK 4.38 366.34

7+05<sup>4</sup> Top Cb 4.30 366.42

7+05<sup>4</sup> GUTTER

7+10<sup>8</sup> 4.59 366.13

CK.BM 4.55 366.17 = 366.05

6.07 364.61 = 364.62

5.47  
4' GUTTER

4.83  
4' TOP CB.

5.14  
4' GUTTER

4.57  
4' TOP CB

WATER MAIN XING

SWBP EL CASON 4<sup>th</sup> 40<sup>th</sup>

N.W.B.P. 40<sup>th</sup> 4 ORANGE

Please Return to  
 City of San Diego Water Dept.  
 Room 903 Civic Center

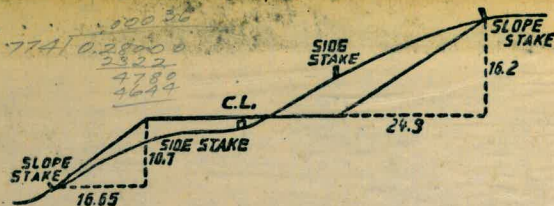
5426.53  
 19  
 5426.34

24700  
 17  
 83

36  
 13.2  
 76  
 64

526  
 .00036  
 3156  
 1578  
 18936

63.7  
 40.7  
 17  
 25  
 8



**DISTANCES FROM SIDE STAKES FOR CROSS-SECTIONING.**

SLOPE 1 1/2 TO 1. ROADWAY OF ANY WIDTH.

	0	.1	.2	.3	.4	.5	.6	.7	.8	.9	
0	0.00	0.15	0.30	0.45	0.60	0.75	0.90	1.05	1.20	1.35	0
1	1.50	1.65	1.80	1.95	2.10	2.25	2.40	2.55	2.70	2.85	1
2	3.00	3.15	3.30	3.45	3.60	3.75	3.90	4.05	4.20	4.35	2
3	4.50	4.65	4.80	4.95	5.10	5.25	5.40	5.55	5.70	5.85	3
4	6.00	6.15	6.30	6.45	6.60	6.75	6.90	7.05	7.20	7.35	4
5	7.50	7.65	7.80	7.95	8.10	8.25	8.40	8.55	8.70	8.85	5
6	9.00	9.15	9.30	9.45	9.60	9.75	9.90	10.05	10.20	10.35	6
7	10.50	10.65	10.80	10.95	11.10	11.25	11.40	11.55	11.70	11.85	7
8	12.00	12.15	12.30	12.45	12.60	12.75	12.90	13.05	13.20	13.35	8
9	13.50	13.65	13.80	13.95	14.10	14.25	14.40	14.55	14.70	14.85	9
10	15.00	15.15	15.30	15.45	15.60	15.75	15.90	16.05	16.20	16.35	10
11	16.50	16.65	16.80	16.95	17.10	17.25	17.40	17.55	17.70	17.85	11
12	18.00	18.15	18.30	18.45	18.60	18.75	18.90	19.05	19.20	19.35	12
13	19.50	19.65	19.80	19.95	20.10	20.25	20.40	20.55	20.70	20.85	13
14	21.00	21.15	21.30	21.45	21.60	21.75	21.90	22.05	22.20	22.35	14
15	22.50	22.65	22.80	22.95	23.10	23.25	23.40	23.55	23.70	23.85	15
16	24.00	24.15	24.30	24.45	24.60	24.75	24.90	25.05	25.20	25.35	16
17	25.50	25.65	25.80	25.95	26.10	26.25	26.40	26.55	26.70	26.85	17
18	27.00	27.15	27.30	27.45	27.60	27.75	27.90	28.05	28.20	28.35	18
19	28.50	28.65	28.80	28.95	29.10	29.25	29.40	29.55	29.70	29.85	19
20	30.00	30.15	30.30	30.45	30.60	30.75	30.90	31.05	31.20	31.35	20
21	31.50	31.65	31.80	31.95	32.10	32.25	32.40	32.55	32.70	32.85	21
22	33.00	33.15	33.30	33.45	33.60	33.75	33.90	34.05	34.20	34.35	22
23	34.50	34.65	34.80	34.95	35.10	35.25	35.40	35.55	35.70	35.85	23
24	36.00	36.15	36.30	36.45	36.60	36.75	36.90	37.05	37.20	37.35	24
25	37.50	37.65	37.80	37.95	38.10	38.25	38.40	38.55	38.70	38.85	25
26	39.00	39.15	39.30	39.45	39.60	39.75	39.90	40.05	40.20	40.35	26
27	40.50	40.65	40.80	40.95	41.10	41.25	41.40	41.55	41.70	41.85	27
28	42.00	42.15	42.30	42.45	42.60	42.75	42.90	43.05	43.20	43.35	28
29	43.50	43.65	43.80	43.95	44.10	44.25	44.40	44.55	44.70	44.85	29
30	45.00	45.15	45.30	45.45	45.60	45.75	45.90	46.05	46.20	46.35	30
31	46.50	46.65	46.80	46.95	47.10	47.25	47.40	47.55	47.70	47.85	31
32	48.00	48.15	48.30	48.45	48.60	48.75	48.90	49.05	49.20	49.35	32
33	49.50	49.65	49.80	49.95	50.10	50.25	50.40	50.55	50.70	50.85	33
34	51.00	51.15	51.30	51.45	51.60	51.75	51.90	52.05	52.20	52.35	34
35	52.50	52.65	52.80	52.95	53.10	53.25	53.40	53.55	53.70	53.85	35
36	54.00	54.15	54.30	54.45	54.60	54.75	54.90	55.05	55.20	55.35	36
37	55.50	55.65	55.80	55.95	56.10	56.25	56.40	56.55	56.70	56.85	37
38	57.00	57.15	57.30	57.45	57.60	57.75	57.90	58.05	58.20	58.35	38
39	58.50	58.65	58.80	58.95	59.10	59.25	59.40	59.55	59.70	59.85	39
40	60.00	60.15	60.30	60.45	60.60	60.75	60.90	61.05	61.20	61.35	40
41	61.50	61.65	61.80	61.95	62.10	62.25	62.40	62.55	62.70	62.85	41
42	63.00	63.15	63.30	63.45	63.60	63.75	63.90	64.05	64.20	64.35	42
43	64.50	64.65	64.80	64.95	65.10	65.25	65.40	65.55	65.70	65.85	43
44	66.00	66.15	66.30	66.45	66.60	66.75	66.90	67.05	67.20	67.35	44
45	67.50	67.65	67.80	67.95	68.10	68.25	68.40	68.55	68.70	68.85	45
46	69.00	69.15	69.30	69.45	69.60	69.75	69.90	70.05	70.20	70.35	46
47	70.50	70.65	70.80	70.95	71.10	71.20	71.40	71.55	71.70	71.85	47
48	72.00	72.15	72.30	72.45	72.60	72.75	72.90	73.05	73.20	73.35	48
49	73.50	73.65	73.80	73.95	74.10	74.25	74.40	74.55	74.70	74.85	49
50	75.00	75.15	75.30	75.45	75.60	75.75	75.90	76.05	76.20	76.35	50

THE NATIONAL BLANK BOOK COMPANY  
 HOLYOKE MASSACHUSETTS  
 NEW YORK CHICAGO BOSTON SAN FRANCISCO