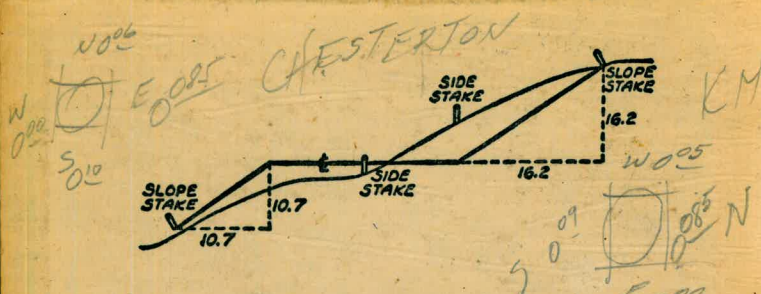


W 874

Please Return to
 City of San Diego Water Dept.
 Room 903 Civic Center



DISTANCES FROM SIDE STAKES FOR CROSS-SECTIONING
 SLOPE 1 TO 1. ROADWAY OF ANY WIDTH

	0	.1	.2	.3	.4	.5	.6	.7	.8	.9	
0	0.00	0.10	0.20	0.30	0.40	0.50	0.60	0.70	0.80	0.90	0
1	1.00	1.10	1.20	1.30	1.40	1.50	1.60	1.70	1.80	1.90	1
2	2.00	2.10	2.20	2.30	2.40	2.50	2.60	2.70	2.80	2.90	2
3	3.00	3.10	3.20	3.30	3.40	3.50	3.60	3.70	3.80	3.90	3
4	4.00	4.10	4.20	4.30	4.40	4.50	4.60	4.70	4.80	4.90	4
5	5.00	5.10	5.20	5.30	5.40	5.50	5.60	5.70	5.80	5.90	5
6	6.00	6.10	6.20	6.30	6.40	6.50	6.60	6.70	6.80	6.90	6
7	7.00	7.10	7.20	7.30	7.40	7.50	7.60	7.70	7.80	7.90	7
8	8.00	8.10	8.20	8.30	8.40	8.50	8.60	8.70	8.80	8.90	8
9	9.00	9.10	9.20	9.30	9.40	9.50	9.60	9.70	9.80	9.90	9
10	10.00	10.10	10.20	10.30	10.40	10.50	10.60	10.70	10.80	10.90	10
11	11.00	11.10	11.20	11.30	11.40	11.50	11.60	11.70	11.80	11.90	11
12	12.00	12.10	12.20	12.30	12.40	12.50	12.60	12.70	12.80	12.90	12
13	13.00	13.10	13.20	13.30	13.40	13.50	13.60	13.70	13.80	13.90	13
14	14.00	14.10	14.20	14.30	14.40	14.50	14.60	14.70	14.80	14.90	14
15	15.00	15.10	15.20	15.30	15.40	15.50	15.60	15.70	15.80	15.90	15
16	16.00	16.10	16.20	16.30	16.40	16.50	16.60	16.70	16.80	16.90	16
17	17.00	17.10	17.20	17.30	17.40	17.50	17.60	17.70	17.80	17.90	17
18	18.00	18.10	18.20	18.30	18.40	18.50	18.60	18.70	18.80	18.90	18
19	19.00	19.10	19.20	19.30	19.40	19.50	19.60	19.70	19.80	19.90	19
20	20.00	20.10	20.20	20.30	20.40	20.50	20.60	20.70	20.80	20.90	20
21	21.00	21.10	21.20	21.30	21.40	21.50	21.60	21.70	21.80	21.90	21
22	22.00	22.10	22.20	22.30	22.40	22.50	22.60	22.70	22.80	22.90	22
23	23.00	23.10	23.20	23.30	23.40	23.50	23.60	23.70	23.80	23.90	23
24	24.00	24.10	24.20	24.30	24.40	24.50	24.60	24.70	24.80	24.90	24
25	25.00	25.10	25.20	25.30	25.40	25.50	25.60	25.70	25.80	25.90	25
26	26.00	26.10	26.20	26.30	26.40	26.50	26.60	26.70	26.80	26.90	26
27	27.00	27.10	27.20	27.30	27.40	27.50	27.60	27.70	27.80	27.90	27
28	28.00	28.10	28.20	28.30	28.40	28.50	28.60	28.70	28.80	28.90	28
29	29.00	29.10	29.20	29.30	29.40	29.50	29.60	29.70	29.80	29.90	29
30	30.00	30.10	30.20	30.30	30.40	30.50	30.60	30.70	30.80	30.90	30
31	31.00	31.10	31.20	31.30	31.40	31.50	31.60	31.70	31.80	31.90	31
32	32.00	32.10	32.20	32.30	32.40	32.50	32.60	32.70	32.80	32.90	32
33	33.00	33.10	33.20	33.30	33.40	33.50	33.60	33.70	33.80	33.90	33
34	34.00	34.10	34.20	34.30	34.40	34.50	34.60	34.70	34.80	34.90	34
35	35.00	35.10	35.20	35.30	35.40	35.50	35.60	35.70	35.80	35.90	35
36	36.00	36.10	36.20	36.30	36.40	36.50	36.60	36.70	36.80	36.90	36
37	37.00	37.10	37.20	37.30	37.40	37.50	37.60	37.70	37.80	37.90	37
38	38.00	38.10	38.20	38.30	38.40	38.50	38.60	38.70	38.80	38.90	38
39	39.00	39.10	39.20	39.30	39.40	39.50	39.60	39.70	39.80	39.90	39
40	40.00	40.10	40.20	40.30	40.40	40.50	40.60	40.70	40.80	40.90	40
41	41.00	41.10	41.20	41.30	41.40	41.50	41.60	41.70	41.80	41.90	41
42	42.00	42.10	42.20	42.30	42.40	42.50	42.60	42.70	42.80	42.90	42
43	43.00	43.10	43.20	43.30	43.40	43.50	43.60	43.70	43.80	43.90	43
44	44.00	44.10	44.20	44.30	44.40	44.50	44.60	44.70	44.80	44.90	44
45	45.00	45.10	45.20	45.30	45.40	45.50	45.60	45.70	45.80	45.90	45
46	46.00	46.10	46.20	46.30	46.40	46.50	46.60	46.70	46.80	46.90	46
47	47.00	47.10	47.20	47.30	47.40	47.50	47.60	47.70	47.80	47.90	47
48	48.00	48.10	48.20	48.30	48.40	48.50	48.60	48.70	48.80	48.90	48
49	49.00	49.10	49.20	49.30	49.40	49.50	49.60	49.70	49.80	49.90	49
50	50.00	50.10	50.20	50.30	50.40	50.50	50.60	50.70	50.80	50.90	50

Distance of slope stake from side or shoulder stake for any width roadway, slope 1 to 1. If ground is not level, the cut or fill at side stake is located by the double entry method in left column and top row. The number in body of table in same row and column gives distance from side stake to slope stake. If ground is not level estimate the difference in elevation between the side stake and slope stake, lower target by this amount if cut, elevate if fill. Add this amount to cut or fill and find distance in table. Set up rod at this point, and line of sight should cut target. If it does not make the slight adjustment necessary.

$$\begin{array}{r} 27 + 84 \\ \underline{18} \end{array}$$

28 + 02 2 PT 4.25 from face curb

$$\begin{array}{r} 06 \\ 28 + 08 \text{ FACE OF CURB} \\ \underline{075} \end{array}$$

$$\begin{array}{r} (7\frac{1}{2} \text{ DE CURB}) 28 + 155 \text{ F4 TREE} \\ \underline{1665} \end{array} \quad 24.5$$

28 + 32.15 WYE End wye

$$\begin{array}{r} 6.75 \\ \underline{3.15} \\ 3.6 \end{array} \quad \begin{array}{l} \text{Top of } 8'' \text{ C1} \\ \text{Lower than} \\ \text{⑤ } 29 + 23.32 \end{array}$$

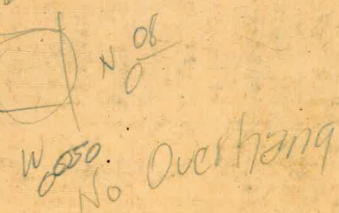
1,000,000

LW

No 02



No. overhang



PROFILED
 JAN 18 1965

BM. 479.710 ~~37.010~~
5.357 5682 ~~4427~~
HI. 485.067

111104

SOUTH 3.938 = 481.129

WEST. 3.916 = 481.157

+ 4.411

HI. 485.568

NORTH 4.427 = 481.141

IP — 4.574 = 480.794

+ 4.400

HI. 485.394

EAST 4.223 = 481.171

CK So. 4.262 = 481.332

CK BM. 5.682 479.712 = 710

TABLE XIII—CORRECTIONS FOR TANGENTS AND EXTERNALS

These corrections are to be added to the approximate values, found by dividing the tangent, or external, for a 1° curve (Table VIII) by the degree of curve, in order to obtain the true tangents, or externals. Intermediate values may be obtained by interpolation.

FOR TANGENTS ADD

Central Angle	DEGREE OF CURVE													
	5°	10°	15°	20°	25°	30°	35°	40°	45°	50°	55°	60°	65°	70°
10°	.03	.06	.09	.13	.16	.19	.22	.25	.28	.31	.34	.38	.42	.46
15°	.04	.10	.14	.19	.24	.29	.34	.39	.45	.51	.53	.58	.63	.68
20°	.06	.13	.19	.26	.32	.39	.45	.51	.58	.65	.72	.79	.84	.90
25°	.08	.16	.24	.33	.40	.49	.58	.67	.75	.83	.90	.99	1.06	1.14
30°	.10	.19	.29	.39	.49	.59	.69	.79	.89	.99	1.09	1.20	1.29	1.39
35°	.11	.22	.34	.47	.58	.69	.79	.89	.99	1.09	1.20	1.31	1.42	1.54
40°	.13	.26	.40	.53	.67	.80	.93	1.06	1.20	1.34	1.49	1.64	1.79	1.94
45°	.15	.30	.44	.60	.76	.91	1.06	1.21	1.37	1.52	1.70	1.87	2.04	2.21
50°	.17	.34	.51	.68	.85	1.02	1.19	1.36	1.54	1.72	1.91	2.10	2.29	2.48
55°	.19	.38	.57	.76	.95	1.14	1.32	1.52	1.72	1.92	2.14	2.35	2.56	2.77
60°	.21	.42	.63	.84	1.05	1.27	1.49	1.71	1.94	2.17	2.38	2.60	2.83	3.07
65°	.23	.46	.69	.93	1.16	1.40	1.64	1.88	2.13	2.38	2.63	2.88	3.13	3.39
70°	.25	.51	.76	1.02	1.28	1.54	1.80	2.06	2.33	2.60	2.88	3.16	3.44	3.72
75°	.27	.56	.83	1.12	1.40	1.69	1.98	2.27	2.57	2.87	3.16	3.47	3.78	4.09
80°	.30	.61	.91	1.22	1.53	1.84	2.15	2.46	2.78	3.10	3.44	3.78	4.12	4.46
85°	.33	.66	1.00	1.33	1.68	2.02	2.36	2.70	3.05	3.40	3.77	4.14	4.55	4.89
90°	.36	.72	1.09	1.45	1.83	2.20	2.57	2.94	3.32	3.70	4.10	4.50	4.91	5.32
95°	.39	.79	1.19	1.55	1.94	2.40	2.80	3.20	3.61	4.02	4.40	4.98	5.38	5.83
100°	.43	.86	1.30	1.74	2.18	2.62	3.06	3.50	3.95	4.40	4.88	5.37	5.85	6.34
110°	.51	1.03	1.56	2.08	2.61	3.14	3.67	4.21	4.76	5.31	5.86	6.43	7.01	7.60
120°	.62	1.25	1.93	2.52	3.16	3.81	4.45	5.11	5.77	6.44	7.12	7.80	8.50	9.22

FOR EXTERNALS ADD

Central Angle	DEGREE OF CURVE													
	5°	10°	15°	20°	25°	30°	35°	40°	45°	50°	55°	60°	65°	70°
10°	.001	.003	.004	.006	.007	.008	.009	.011	.012	.014	.015	.017	.018	.020
15°	.003	.007	.010	.014	.018	.023	.027	.029	.032	.035	.039	.043	.047	.051
20°	.006	.011	.017	.022	.028	.034	.038	.045	.051	.057	.063	.070	.076	.083
25°	.009	.018	.027	.036	.046	.056	.065	.074	.083	.093	.106	.120	.127	.135
30°	.013	.025	.038	.051	.065	.078	.090	.103	.116	.129	.149	.170	.179	.188
35°	.018	.035	.054	.072	.086	.109	.131	.153	.175	.197	.213	.230	.247	.264
40°	.023	.046	.070	.093	.117	.141	.172	.203	.234	.265	.277	.290	.315	.341
45°	.030	.060	.093	.119	.153	.184	.216	.254	.289	.325	.351	.378	.411	.445
50°	.037	.075	.116	.151	.189	.227	.266	.305	.345	.384	.425	.467	.508	.550
55°	.046	.093	.142	.188	.236	.283	.332	.381	.420	.479	.530	.582	.641	.700
60°	.056	.112	.168	.225	.283	.340	.398	.457	.516	.575	.636	.697	.774	.851
65°	.067	.135	.204	.273	.343	.412	.483	.554	.625	.697	.771	.845	.922	1.01
70°	.080	.159	.240	.321	.403	.485	.568	.652	.735	.819	.906	.994	1.08	1.17
75°	.095	.182	.266	.353	.440	.528	.617	.707	.797	.877	.971	1.07	1.18	1.29
80°	.110	.220	.332	.445	.558	.671	.787	.903	1.02	1.13	1.25	1.38	1.50	1.62
85°	.128	.259	.391	.524	.657	.790	.926	1.06	1.20	1.34	1.47	1.62	1.76	1.91
90°	.149	.299	.450	.603	.756	.910	1.07	1.22	1.38	1.54	1.70	1.87	2.03	2.20
95°	.174	.350	.522	.706	.885	1.06	1.25	1.43	1.62	1.80	1.99	2.18	2.38	2.58
100°	.200	.401	.604	.809	1.01	1.22	1.43	1.64	1.85	2.06	2.28	2.50	2.73	2.96
110°	.268	.536	.806	1.08	1.35	1.63	1.91	2.20	2.48	2.76	3.05	3.35	3.66	3.96
120°	.360	.721	1.08	1.45	1.82	2.19	2.57	2.95	3.33	3.72	4.11	4.50	4.91	5.32

STANDPIPE ELEVATIONS

INDEX

Page

CHESTERTON STANDPIPE, Elev of TANK FOUNDATION

6/26/53 Previous to filling

1. ✓

8/19/53 After filling ✓

1. ✓
1. ✓

LOMITA STANDPIPE, Elev. of TANK FOUNDATION

8/19/53 Previous to filling ✓

6. ✓

✓ Kerney Mesa Standpipe elev of
Tank foundation before filling

9-22-53

12 ✓

11/5/53 - TANK FULL ✓

13 ✓
13 ✓

INDEX (Cont'd)

Bayview Hills STANDPIPE ^{Elev. 9} FOOTING 19 ✓
 3/4/54 Previous to filling with water ✓
 alic

LA JOLLA VIEW STANDPIPE ✓
 25 ✓

CATALINA STANDPIPE (SOUTH) (OLD) 30 ✓
~~GONE~~

ALVARADO WASH WATER TANK ✓
 35 ✓

ENCANTO STANDPIPE ✓
 40 ✓
 alic

INDEX (Cont'd)

CATALINA STANDPIPE ✓
 45 ✓
 alic

REDWOOD VILLAGE STANDPIPE ✓
 50 ✓
 alic

see also FB 866 P 50
 Clairmont Standpipe ✓
 52 ✓
 alic

Jennings St.; Gage St to Albion ✓
 54-57 ✓
 alic

College Ranch Standpipe ✓
 69- ✓
 alic

CALLAN STANDPIPE ✓
 72 ✓
 alic

CHESTERTON STANDPIPE
 ELEV'S TAKEN ON TANK FOUNDATION
 No GAUGE
 Previous to Filling with Water

BM	0.225	452.045		451.820
NOR		6.373	445.672	
NE		6.357	445.688	
NW		6.356	445.689	
WEST	3.033	448.705	6.373	445.672
SW		3.020	445.685	
SOUTH		3.052	445.653	
SE	5.344	451.012	3.037	445.668
EAST		5.350	445.662	
NOR	6.544	452.214	5.342	445.670
CK BM		0.393	451.821	= 451.820

STANDPIPE FULL WATER

BM	0.258	452.078		451.820
NOR		6.416	445.662	
WEST	2.223	447.884	6.417	445.661
SOUTH		2.240	445.644	
SE	4.520	450.188	2.216	445.668
EAST		4.537	445.651	
NOR	6.846	452.510	4.524	445.664
CK BM		0.687	451.823	= 451.820

JUNE 26 1953
 BEATTY
 MARTEL
 ALEXANDER

Note: Copied from original NOTES
 F.B. 862-78

on Ftg of Elev Tank (wly leg)

AUG 19, 1953
 BEATTY
 MARTEL
 ALEXANDER

Reflects a lowering of 0.01

CHESTERTON STANDPIPE
 ELEV'S TAKEN ON TANK FOUNDATION
 No GAUGE
 Previous to Filling with Water

BM	0.225	452.045		451.820
NOR		6.373	445.672	
NE		6.357	445.688	
NW		6.356	445.689	
^{H.} WEST	3.033	448.705	6.373	445.672
SW		3.020	445.685	
SOUTH		3.052	445.653	
^{P.} SE	5.344	451.012	3.037	445.668
EAST		5.350	445.662	
^{P.} NOR	6.544	452.214	5.342	445.670
CK BM		0.393	451.821	= 451.820

STANDPIPE FULL WATER

BM	0.258	452.078		451.820
NOR		6.416	445.662	
^{P.} WEST	2.223	447.884	6.417	445.661
SOUTH		2.240	445.644	
^{P.}	4.520	450.188	2.216	445.668
EAST		4.537	445.651	
^{P.} NOR	6.846	452.510	4.524	445.664
CK BM		0.687	451.823	= 451.820

JUNE 26 1953
 BEATTY
 MARTELL
 ALEXANDER

1.

Note: Copied from ORIGINAL NOTES
 F.B. 862-78

on Ftg of Elev Tank (wly leg)

AUG 19, 1953
 BEATTY
 MARTELL
 ALEXANDER

Reflects a lowering of 0.01

CHESTERTON STAND PIPE
(Cont'd)

Mar. 22 1954, RAINY & WINDY

Beatty
Shorey
Martell
Alexander

2

BM	0.566	452.386	451.820		
NORTH \square		6.721	445.665	.662	+1.003
Π	4.548	450.234	6.700	445.686	
WEST \square		4.575	445.659	.661	-0.002
SOUTH \square	3.620	449.266	4.588	445.646	.642 +1.002
EAST \square		3.614	445.652	.651	+1.001
Π	6.609	452.285	3.590	445.676	
CK NORTH \square		6.622	445.663		
CK BM		0.463	451.822	= 451.820	

Sept. 22, 1954

Beatty & party

BM \square	0.930	452.750	451.820		
Nor. \square		7.083	445.667	.663	+0.002
Π	4.155	449.845	7.060	445.690	
WEST \square		4.183	445.662	.659	+0.003
SOUTH \square		4.199	445.646	.646	0.0
Π	4.050	449.770	4.125	445.720	
EAST \square		4.121	445.649	.652	-0.003
CK Nor	7.075	452.740	4.105	445.665	= 445.667
CK BM.		0.923	451.817	= 451.82	

Nov. 18, 1952

CHESTERTON STAND PIPE
(Cont'd.)

BM	0.467	452.287		451.820		
					prev	
NORTH Π			6.624	445.663	.667	-1.004
WEST Π	4.190	449.849	6.628	445.659	.662	-1.003
SOUTH Π	4.110	449.755	4.204	445.645	.646	-1.001
EAST Π	4.588	450.236	4.107	445.648	.647	-1.001
CK. NORTH Π	7.073	452.737	4.575	445.661		
CK. BM			0.917	451.817		= 451.820

BM.	0.909	452.729		451.820		
					prev	
NORTH Π	4.377	450.040	7.066	445.663	.663	
WEST Π	4.030	449.690	4.380	445.660	.659	
SOUTH Π	4.092	449.738	4.044	445.646	.645	
EAST Π	4.409	450.057	4.090	445.648	.648	
CK North	6.805	452.467	4.395	445.662		
CK BM.			0.646	451.821		= 451.820

April 22 1955 Windy
Beatty & party

CHESTERTON STANDPIPE
(CONT'D)

AUG. 29, 1955
SHOREY & PARTY

WARM & Windy
3:00 P.M.

4.

BM	0.605	452.425	451.820	prev.	ON F.T.G. ELEV. TANK
NORTH		6.758	445.663	.663	
WEST	4.030	449.686	6.769	445.656	.660
SOUTH	4.011	449.655	4.042	445.644	.646
EAST	9.222	454.866	4.011	445.644	.648
CK. NORTH		9.203	445.663		
CK. B.M.		3.047	451.819	= 451.820	

DEC. 19, 1955

	+	H.I.	-	ELEV.
BM	0.331	452.151		451.820
NORTH		6.488		445.663
WEST	1.608	447.266	6.493	445.658
SOUTH	2.974	448.618	1.622	445.644
EAST	4.628	450.286	2.970	445.648
CK North	6.405	452.066	6.416	451.789
			4.625	445.661
CK B.M.			0.247	451.819 = 451.820

DEC. 19, 1955
BEATTY
SMITH.

3:45 PM.

WINDY
APRIL 16 1959
SHOREY
KEMP
HILBERT

GAUGE

BM	0.284	452.104	451.820
WEST	6.444	445.660	
NORTH	6.440	445.664	
P	5.231	450.333	7.002 445.102
EAST	4.682	445.651	
SOUTH	4.685	445.648	
P	5.924	452.624	3.643 446.690
CK B.M.	0.801	451.823 = .820	

MAR 6 1957
Beatty-Smith

BM	0.344	452.164	451.820	
NORTH		6.497	445.667	
WEST	4.137	449.796	6.505	445.659
SOUTH	4.378	450.026	4.148	445.648
EAST	4.496	450.128	4.374	445.652
CK North	6.483	452.148	4.483	445.665
CK B.M.	0.327	451.821		

CK B.M.

CHESTERTON STANDPIPE
(CONT'D)

9/16/57
SHOREY
KEMP
SMITH

SLIGHTLY OVERCAST & BREEZY

5

TIME: 11:40 A.M.

ON FTG. OF WLY. LEG OF ELEV. TANK

BM	0.241	452.061	451.820		
NORTH		6.394	445.667	.667	- .000
WEST	2.664	448.329	6.396	445.665	.659 + .006
SOUTH	3.621	449.270	2.680	445.649	.648 + .001
EAST	9.370	455.021	3.619	445.651	.652 - .001

PREV.

(Elev. Tank
GAUGE 38')

Nov. 20, 1958
BEATTY
OBRIEN

CK. BM 3.200 451.821 = 451.820

BM 0.173 451.993 451.820

April 14, 1958 Beatty
KEHLER. (Ground saturated.)

BM 0.102 451.922 451.820

NORTH 6.324 445.669

NORTH 6.257 445.665

WEST 3.661 449.326 6.328 445.665

WEST 4.323 449.984 6.261 445.661

SOUTH 4.512 450.168 3.670 445.656

SOUTH 4.716 450.364 4.336 445.648

EAST 2.765 450.223 4.510 445.658

EAST 4.795 450.445 4.714 445.650

CK NORTH 6.418 452.087 4.754 445.669

CK Nor. 6.614 452.277 4.782 445.663 = .665

CK BM. 0.270 451.817 = .820

CK BM 0.458 451.819 = .820

DEC. 22 1958
BEATTY
OBRIEN (Elev. Tank 37.5)

BM 0.042 451.864 451.820

NORTH 6.195 445.669

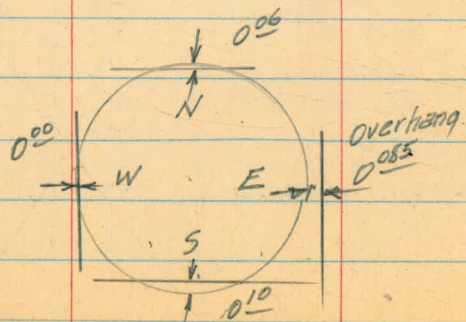
WEST 3.849 449.513 6.200 445.664

SOUTH 4.074 449.726 3.861 445.652

EAST 4.683 450.339 4.070 445.656

CK Nor. 6.157 451.825 4.671 445.668

CK BM. 0.006 451.819



LOMITA STAND PIPE
ELEV.S TAKEN ON TANK FOUNDATION

Aug 19, 1953
Beatty
Martel
Alexander

6

Previous to Filling with Water

BM	7.05	440.68		433.63	
IP	13.22	453.70	0.20	440.48	
IP	9.69	463.26	0.13	453.57	
SET TBM	10.309	465.959 465.989	7.58	455.68	455.65
SOUTH ■			6.033	459.956	459.926
WEST ■			6.038	459.951	459.921
IP NORTH ■	1.435	461.361 461.391	6.033	459.956	459.926
EAST ■			1.256	459.995	459.905 (at outlet)
IP CK SOUTH ■	4.100	464.026 464.056	14.35	459.956	459.926
CK TBM	6.55	462.203 462.23	8.373	455.653 455.683	= 455.68
IP	0.89	451.83 451.86	11.26	450.94 450.97	
IP	0.08	438.74 438.77	13.17	438.66 438.69	
CK BM	5.10	439.73	5.10	433.64 433.67	= 433.63 N.G!
IP	12.67	451.32	0.08	438.65	
IP	11.89	462.84	0.37	450.95	
CK TBM			7.19	455.65	Use this

1/4" I.P. 70'± Sly of Nor P.L. Sweetwater St
E on Wly P.L. Squires St.

THIS □ 3' Nor, end of west curb; CATES STREET West of TANK

LOMITA STANDPIPE
ELEV TANK FOUNDATION.
TANK FULL OF WATER
GAUGE 77.5

MAR. 8 1954
DEATY
SHOREY
MARTEL
ALEXANDER

7

TBM	8.285	463.935	455.65		CHIS \square on W. curb 185' Wly of TANK	
SOUTH \blacksquare		4.028	459.907	.926	diff. .019	
WEST \blacksquare		4.028	459.907	.921	.014	
NORTH \blacksquare	4.618	464.517	4.036	459.899	.926	.027
EAST \blacksquare		4.638	459.879	.925	.026	
\square	4.839	464.742	4.614	459.903		
CK SOUTH \blacksquare		4.834	459.908			
CK TBM.		9.091	455.651 = 455.65		Closure 0.001	

APRIL 1, 1954
Same Party

TBM	8.282	463.932	455.65		GAUGE 80.5 1:30 pm	
SOUTH \square		4.027	459.905		-0.002	
WEST \square		4.028	459.904		-0.003	
\square NORTH \square	4.766	464.660	4.038	459.894		-0.005
\square EAST \square	4.778	464.653	4.785	459.875		-0.004
CK SOUTH \square		4.747	459.906			
CK TBM.		8.997	455.656		Closure 0.000	

L O M I T A S T A N D P I P E

BM	8.073	463.723	455.65		
WEST □			3.821	459.902	prev. 904 -002
SOUTH □	4.629	464.531	3.821	459.902	905 -003
EAST □	4.706	464.576	4.661	459.870	875 -005
NORTH □	3.979	463.872	4.683	459.893	894 -001
CK West □			3.970	459.902 = 459.902	
CK BM			8.222	455.650	

BM.	6.349	461.999	455.65		
NORTH □			2.103	459.896	prev. 893
WEST □			2.089	459.910	904
SOUTH □	4.586	464.495	2.090	459.909	902
EAST □	4.656	464.533	4.618	459.877	870
CK North	2.364	462.261	4.636	459.897	
CK West			2.352	459.909	
CK South			2.352	459.909	
CK BM			6.610	455.651 = 455.65	

BM	8.237	463.887	455.65		
WEST □			3.987	459.900	910
SOUTH □			3.987	459.900	909
NORTH □	4.466	464.353	4.000	459.887	896
EAST □	4.504	464.368	4.489	459.864	877
CK SOUTH	3.982	463.880	4.470	459.898	
CK. BM			8.227	455.653 = 455.65	

Sept. 22, 1954
Beatty
Shorley
Marshall
Alexander

GAUGE 68.5 (94 = full)

this □ on W. curb CATES ST

Nov 18, 1954 - Beatty & party

GAUGE 79.0

APRIL 22, 1955 - BEATTY & PARTY

GAUGE 82.5

LOMITA STANDPIPE
(CONT'D)

AUG. 30, 1955 WARM
SHOREY & PARTY 11:30 P.M.

9

B.M.	8.702	464.552	455.650	PREV.	
TP SOUTH \square	4.557	464.459	4.650	459.902	.900 +.002
EAST \square	4.710	464.573	4.596	459.863	.864 -.001
NORTH \square	4.562	464.450	4.685	459.889	.887 +.001
WEST \square		4.547	459.903	.900	+ .003
CK. B.M.		8.798	455.652 = 455.650		

CHIS'L \square ON W. CURB CATES ST,

CH

BM.	8.214	464.064	455.650		
NORTH		4.170	459.894		
WEST		4.158	459.906		
SOUTH	4.706	464.613	4.157	459.907	
EAST	4.553	464.423	4.123	459.870	
CK NORTH	4.140	464.035	4.528	459.895	
CK. BM.		8.382	455.653 = 455.650		

DEC 19 1955 BEATTY SMITH

GAUGE 82

BM	6.689	462.333	455.650		
WEST		2.428	459.905		
SOUTH	4.457	464.362	2.428	459.905	
EAST	4.498	464.365	4.495	459.867	
NORTH	2.338	462.230	4.473	459.892	
CK. WEST		2.326	459.904		
CK. BM.		6.580	455.650 = 455.650		

2/9/56 SHOREY
MARTELL
SMITH

Cool & Windy
EARTHQUAKE 6:33 A.M. 2/9/56

GAUGE 83

LOMITA STANDPIPE

MAR. 7 1957 BEATTY SMITH

	8.587	464.237	255.650
BM			
NORTH	4.350	459.887	
WEST	4.338	459.899	
SOUTH	4.617	464.511	4.343 459.894
EAST	4.646	464.499	4.658 459.853
CK NORTH	4.650	464.535	4.614 459.885
CK BM	8.888	455.647	

GAUGE 76 KEMP SMITH

	8.609	464.259	455.650
BM			
WEST	4.362	459.897	
SOUTH	4.347	464.237	4.369 459.890
EAST	4.392	464.239	4.390 459.847
NORTH	4.375	464.251	4.363 459.876
CK WEST	4.352	459.899	
	8.603	455.648 = 455.650	

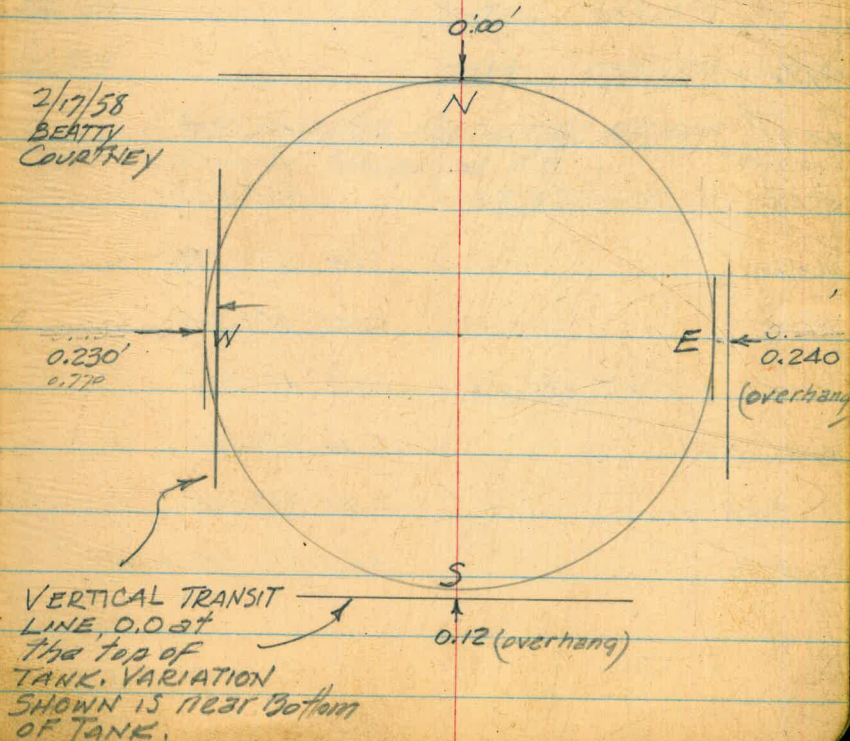
FEB. 17 1958
BEATTY
COURTNEY

GAGE 770

	5.588	461.238	455.650
BM			
WEST	1.337	459.901	
SOUTH	5.054	464.954	1.338 459.900
EAST	5.053	464.911	5.096 459.858
NORTH	4.883	464.770	5.024 459.887
CK WEST	1.603	461.509	4.866 459.904
CK BM	5.856	455.653 = 650	

17 SEP 1957
CLOUDY - CALM
8:45

2/17/58
BEATTY
COURTNEY



LOMITA STANDPIPE

Dec. 22 1958
BEATTY
O'BRIEN ✓

GAUGE 84°

BM 6.520 462.170 455.650
WEST 2.273 459.897
NORTH 2.297 459.873
SOUTH 4.847 464.738 2.279 459.891
EAST 4.811 464.658 4.891 459.847
CK NORTH 2.408 462.284 4.782 459.876 = .873
CK BM. 6.633 455.651 = .650

APR 8 1959

SHOREY
KEMP
HALBERT

GAUGE 72°

B.M. 9.261 464.911 455.650
NORTH 5.019 459.892
WEST 5.002 459.909
SOUTH 5.165 465.070 5.006 459.905
EAST 5.210 459.860
CK SOUTH 5.165 459.905
CK B.M. 9.418 455.652 = 650

⁰⁷⁰
9428 LOMITA STANDPIPE
₆₄₂

DEC. 2, 1959

WARM
GAUGE 62° 3:00 P.M.

B.M. 9.254 464.904 455.650
WEST 4.988 459.916
SOUTH 4.994 459.910
IP NORTH 5.182 465.074 5.012 459.892
EAST 5.211 459.863
IP 5.089 465.034 5.127 459.947
CK WEST 5.121 459.915
CK BM 9.384 455.652 = 455.650

(SEE NEW F.B. FOR LATER ELEV'S.)
(LOMITA STANDPIPE F.B.)

Kerney Mesa Standpipe
elevation of Footings before
filling

West
Varonfakis
Kemp

9/24/53

12

	4.931	435.211	430.28		BM Hub 242 50' West of Tank
West		4201	431.010		
South		4202	431.009		
	4.931	430.280	=	430.28	BM
	5.565	435.845	430.28		
North		4832	431.013		
East		4855	430.990		
	5.567	430.278	=	430.28	
	6.356	436.636	430.28		
	7.607	429.029			Set BM on Core Headwall of
	6.356	430.280	=	430.28	Road drain culvert 200' SE of Tank
					on north side of old Kerney Mesa Road

KEARNY MESA STAND PIPE
ELEVATION OF FOOTINGS.
TANK FULL OF WATER No GAUGE

BM.	7.192	436.221	429.029	
SOUTH ■		5.262	430.959 = 431.009	-0.050 diff.
TP EAST ■	6.156	437.106	5.271 430.950 = 430.990	-0.040 diff.
NORTH ■		6.137	430.969 = 431.013	-0.044 diff.
TP WEST ■	5.150	436.105	6.151 430.955 = 431.010	-0.055 diff.
CK SOUTH ■		5.147	430.958 = 430.959 (above)	OK.
CK BM.		7.077	429.028 = 429.029	OK.

Mar 12, 1954

BM.	3.494	432.784	429.290	
CK B.M.	6.031	435.095	3.720 429.064 = 429.029	
SOUTH ■		4.110	430.985	
EAST ■	6.703	437.678	4.120 430.975	
NORTH ■		6.687	430.991	
WEST ■	5.294	436.264	6.706 430.972	
CK SOUTH ■		5.286	430.980	
CK EAST ■		5.293	430.973	
CK BM (OSBORNE)		6.970	429.296	
CK B.M (WEST)		7.198	429.068	diff. 0.004

OUT

11/5/53 BEATTY SHOREY MARTELL WINDY! OLBXANDRE

Chris ■ on curb Hdwl 2nd St of Stand pipe (pg. 12)
BM on Orig. 242' HDW - Gone!

-0.050 diff.
-0.040 diff.
-0.044 diff.
-0.055 diff.
OK.
OK.

3/12/54

SPICE IN TELE. POLE #537151-H { By OSBORNE, City Engr. for Stand pipe, Water & Sewer Lines in this vicinity

Chris ■ on curb Hdwl							
BM (West)	6.031	435.060			4.110	429.029	
SOUTH ■						430.950	
EAST ■	6.703	437.643			4.120	430.940	
NORTH ■					6.687	430.956	
WEST ■	5.294	436.231			6.706	430.937	
CK SOUTH ■					5.286	430.945	
CK EAST ■					5.293	430.938	
CK B.M (WEST)					7.198	429.033	diff. 0.004

KEARNY MESA STANDPIPE

MAR. 22 1954, RAINY & WINDY! (A.M.)

14

SAME PARTY.

Earthquake 3/19/54 1:55am.

TBM.	6.086	435.115	5.855	429.029 ✓			
			4.170	430.945 ✓	.950		CITY Engr's BM.
SOUTH ■							- 0.005
EAST ■	6.610	437.543	4.182	430.933 ✓	.940		- 0.007
NORTH ■			6.590	430.953 ✓	.956		- 0.007
WEST ■	5.253	436.190	6.606	430.937 ✓	.937		0.000
CK SOUTH ■			5.247	430.903 ✓			
CK TBM.			7.166	429.024 = 429.029			= 0.005 closure

STANDPIPE EMRTY

MAY 7, 1954 SAME PARTY.

TBM	5.945	434.974		429.029			
SOUTH □			4.009	430.965	.945		
WEST			4.918	430.956	.937		
EAST	6.727	437.687	4.014	430.960	.940		
NORTH			6.713	430.974	.953		
CK WEST	5.632	436.596	6.723	430.964			
CK SOUTH			5.628	430.968			
CK EAST			5.641	430.955			
CK TBM.			7.573	429.030 = 429.029			
TBM	7.568	436.597		429.029			
SOUTH			5.628	430.969	.945		
WEST			5.632	430.965	.937		
EAST	6.705	437.662	5.640	430.957	.940		
NORTH			6.687	430.975	.953		
CK WEST	5.033	435.996	6.699	430.963			
CK SOUTH			5.028	430.968			
CK TBM.			6.964	429.032 = 429.029			

KEARNY MESA STANDPIPE
(Cont'd.)

TBM.	6.231	435.260	429.029	
SOUTH \square		4.309	430.951	.969
EAST \square	6.282	437.224	431.8	430.942 .957
NORTH \square		6.261	430.963	.975
WEST \square	5.222	436.167	6.279	430.945 .965
CK SOUTH \square		5.218	430.949	= 430.951
CK EAST \square		5.225	430.942	= 430.942
CK TBM		7.138	429.029	= 429.029

TBM.	7.033	436.062	429.029	prev
SOUTH \square		5.113	430.949	.951
EAST \square	5.689	436.627	5.124	430.938 .962
NORTH \square	5.410	436.359	5.678	430.949 .963
WEST \square		5.419	430.940	.965
CK				
CK TBM.		7.330	429.029	

Sept. 22 1954
Booth
Sperry
Martell
Alexander

15.

Full of Water?
New oil under tank

Chris & Core. Hadwell

-018

-015

-012

-020

Nov. 15 1954

Booth
Sperry
Martell
Alexander

Earthquake 11/17/54
2:30 am

KEARNY MESA STANDPIPE
(Cont'd.)

April 22, 1955 WINDY
BEATTY & PARTY

16.

BM	6.969	435.198 ✓	429.029	PREC	
SOUTH □		4.553	430.945 ✓	.949	
TD EAST □	5.544	436.481 ✓	4.561	430.937 ✓	.938
NORTH □		5.526	430.955 ✓	.949	
TD WEST □	5.061	436.003 ✓	5.539	430.942 ✓	.940
CK SOUTH		5.056	430.947 ✓		
CK B.M.		6.972	429.031 =	429.029	

KEARNY MESA STANDPIPE

Aug. 29, 1955 WARM & WINDY 2 P.M.
SHOREY & PARTY
Chick □ Culv. Adwell.

BM	7.739	436.768 ✓	429.029	PREC	
SOUTH □		5.833	430.935 ✓	.945	.010
EAST □	5.987	436.915 ✓	5.840	430.928 ✓	.937
NORTH □	4.841	435.785 ✓	5.971	430.944 ✓	.955
WEST □	5.208	436.138 ✓	4.855	430.930 ✓	.942
CK. SOUTH		5.202	430.936 ✓		.012
CK. B.M.		7.110	429.028 =	429.029	

KEARNY MESA STANDPIPE

12/19/55
3:00 PM

BEATTY
SMITH.

17.

BM	6.698	435.727 ✓	429.029
SOUTH		4.780	430.947 ✓
EAST	6.575	437.511 ✓	4.788 430.939 ✓
NORTH		6.557	430.957 ✓
WEST	5.262	436.204 ✓	6.572 430.942 ✓
CK SOUTH		5.258	430.946 ✓
CK BM		7.177	429.027 = 429.029 ✓

✕

BM	6.700	435.729 ✓	429.029
SOUTH		4.771	430.958 ✓
EAST	5.549	436.494 ✓	4.784 430.945 ✓
NORTH		5.531	430.963 ✓
WEST	5.102	436.054 ✓	5.542 430.952 ✓
CK SOUTH		5.100	430.954 ✓
CK BM		7.021	429.033 = 429.029 ✓

2/9/56

SHOREY
MARTELL
SMITH

EARTHQUAKE 6:33 A.M. - 2/9/56 10:45 A.M.

BREEZY & Cool

KEARNY MESA STANDPIPE

Sept. 13 1956
Beatty - O'Brien

NO GAUGE
COOL - OVERCAST

16 SEP 1957
9:15 KEMP-SMITH

BM	6.803	435.832	429.029
SOUTH		4.878	430.954
EAST	5.065	436.009	4.888 430.944
North	5.188	436.152	5.045 430.964
WEST	4.366	435.319	5.199 430.953
CK SOUTH		4.362	430.957
CK BM.		6.288	429.031

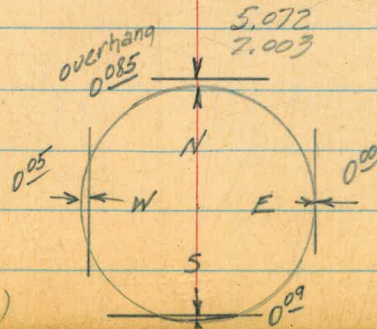
BM	6.924	435.953	429.029
SOUTH	5.575	436.528	5.000 430.753
EAST	5.529	436.468	5.589 430.939
North			5.509 430.959
WEST			5.521 430.947
CK SOUTH		5.160	436.107
CK SOUTH			5.155 430.952
CK BM			7.084 429.023

MAR. 6 1957
BEATTY
SMITH.

BM	6.440	435.469	429.029
SOUTH		4.518	430.951
EAST	5.045	435.986	4.528 430.941
NORTH	4.898	435.858	5.026 430.960
WEST	4.607	435.557	4.908 430.950
CK SOUTH		4.605	430.952
CK BM		6.525	429.032

(Ground Saturated) April 14 1958 BEATTY SMITH

BM	7.327	436.356	429.029
SOUTH			5.393 430.963
EAST	5.044	435.997	5.403 430.953
NORTH	5.205	436.177	5.025 430.972
WEST	5.078	436.038	5.217 430.960
CK SOUTH			5.072 430.966 = 430.963
CK BM			7.003 429.035 = 429.029



(Cont'd pg 27.)

BAYVIEW HILLS STANDPIPE
ELEVATIONS ON FOOTING
Previous to filling with Water

TBM	1.610	411.830	410.22
II	1.238	404.902	8.166 403.664
SOUTH ■ (AT OUTLET)	4.353	404.338	4.917 399.985
EAST ■	4.628	404.603	4.363 399.975
NORTH ■ (8' WLY GV)			4.639 399.964
WEST ■ (AT GAUGE)	2.869	402.831	4.641 399.962
CK So ■	2.552	402.530	2.853 399.978
CK E ■			2.558 399.972
SET TBM.	12.879	403.106	12.263 399.267
II	10.620	412.362	1.404 401.742
CK TBM.			2.145 410.217 = 410.22

MAR. 4, 1954

BEATTY
SHOREY
MARTELL
ALEXANDER

19.

HUB. RAD PT. 100' WLY of TBM (SUB-DIVIDERS)

SET.
1 1/2" I.P. 100' SLY of outlet

BAYVIEW HILLS STANDPIPE
 ELEVATION OF FOOTING
 FULL OF WATER
 GAUGE 67.8 (NOT PAINTED YET)

TBM	12.532	402.799	390.267		1 1/2" I.P.	
SOUTH ■		2.832	399.967	.985	diff. .018	
WEST ■	4.450	402.399	2.850	399.949	.962	" .013
NORTH ■		4.450	399.949	.964	" .015	
EAST ■	2.310	402.269	4.440	399.959	.975	" .016
CK SOUTH ■		2.303	399.966 = 399.967			
CK TBM.		12.003	390.266 = 390.267		Closure e.001	

Mar 8, 1952
 BEATTY
 SUREY
 MARTEL
 ALEXANDER

20

TBM	11.734	402.001	390.267		
SOUTH □		2.022	399.979	.985	.006
W	4.202	404.157	2.046	399.955	
EAST □		4.188	399.969	.975	.006
NORTH □		4.200	399.957	.964	.007
W	1.902	401.886	4.173	399.984	
WEST □		1.927	399.959	.962	.003
CK SOUTH □		1.909	399.977 = 399.979		
CK TBM		11.623	390.263 = 390.267		Closure .004

APRIL 1, 1954
 Same Party

STANDPIPE EMPTY!

Bayview Hills STAND PIPE
(Cont'd.)

Sept. 22, 1954

21.

TBM	11.598	401.865	390.267		1/2" IR	GAUGE	64.5	(69E = full)
				Prev. Full				
SOUTH □		1.900	399.965	.967				
WEST □		1.913	399.952	.949				
SET TBM	4.562	404.585	1.842	400.023		3W Cor. Val Chamber		
EAST □		4.622	399.963	.959				
NORTH □	4.401	404.353	4.633	399.952	.949			
CK WEST □	4.598	404.550	4.401	399.952				
CK TBM	1.591	401.615	4.526	400.024 = 400.023				
CK BM.		11.326	390.269 = 390.267					
TBM	4.130	404.157	400.023		Nov. 18, 1954, Beatty & party			
				prev.				
SOUTH □		4.190	399.967	.965		GAUGE	60.0	
EAST □	4.651	404.614	4.194	399.963	.963			
NORTH □		4.663	399.951	.952				
WEST □	4.512	404.463	4.663	399.951	.952			
CK SOUTH		4.097	399.966					
CK TBM		4.441	400.022 = 400.023					

BAYVIEW HILLS STANDPIPE
(Cont'd.)

April 22, 1955 WINDY!
Beatty & Party

22.

TBM	4.113	404.136	100.023	prev	chis. □ SW Cor Val Chamber
SOUTH □			4.170	399.966	.967
IP EAST □	4.992	404.450	4.174	399.962	.963
NORTH □			4.505	399.949	.952
IP WEST □	4.082	404.431	4.505	399.949	.952
CK SOUTH □			4.467	399.964 = 399.966	
CK TBM.			4.410	400.021 = 400.023	

GAUGE 63⁵

AUG 30, 1955, Warm & Windy
SHOREY & PARTY

TBM	4.172	404.195	400.023	prev	
SOUTH □			4.225	399.970	.966 +.004
EAST □	4.856	404.822	4.229	399.966	.962 +.004
NORTH □	4.677	404.629	4.870	399.952	.949 +.003
WEST □	4.568	404.520	4.677	399.952	.949 +.003
PK. SOUTH			4.552	399.968	
CK TBM.			4.496	400.024 = 400.023	

STAFF GAUGE 63⁰
11:45 A.M.

DEC 22 1958
BEATTY
O'BRIEN

GAUGE 55⁰

BM 4365	404.388	400.023
SOUTH	4.419	399.969
EAST 4.903	404.869	4.422 399.966
NORTH 4.723	404.678	4.914 399.955
WEST 4.726	404.681	4.723 399.955
CK SOUTH	4.711	399.970
CK BM	4.635	400.026 = 023

BAYVIEW HILLS
STANDPIPE

TBM	4.225	404.248 ✓	400.023
SOUTH		4.283	399.965 ✓
EAST	4.455	404.418 ✓	4.285 399.963 ✓
NORTH		4.463	399.955 ✓
WEST	4.456	404.408 ✓	4.466 399.952 ✓
CK SOUTH		4.442	399.966 ✓
		4.385	400.023 = 400.023 ✓

TBM	4.436	404.459 ✓	400.023
SOUTH		4.493	399.966 ✓
EAST	4.480	404.442 ✓	4.497 399.962 ✓
NORTH		4.492	399.950 ✓
WEST	4.362	404.311 ✓	4.493 399.949 ✓
CK SOUTH		4.346	399.965 ✓
CK TBM		4.290	400.021 = 400.023 ✓

12/19/55 BEATTY
SMITH

23

GAUGE 63⁵

2/9/56 SHOREY
MARTELL
SMITH

Cool & Windy

EARTHQUAKE 6:33 A.M. 2/9/56

GAUGE 58⁸

SHOREY
KEMP
HALBERT

APRIL 7, 1959 GAUGE 63³

TBM	4.941	404.969	400.023
SOUTH		4.998	399.966
WEST	4.962	404.912	5.014 399.950
NORTH		4.960	399.952
EAST	4.513	404.475	4.950 399.962
CK SOUTH		4.509	399.966
CK TBM		4.452	400.023 = .023

CONTINUED pg 33

Bayview Hills

MAR. 7 1957
BEATTY-SMITH

GAUGE 625

TBM	4.023	404.046 ✓	400.023
SOUTH	4.078	399.968 ✓	
EAST	4.360	404.323 ✓	4.083 399.963 ✓
NORTH	4.368	399.955 ✓	
WEST	4.405	404.361 ✓	4.367 399.956 ✓
CK SOUTH	4.388	399.973 ✓	
CK TBM	4.334	400.027 ✓	

TBM	4.190	404.213	400.023
SOUTH	4.250	399.963	
WEST	4.259	404.211	4.261 399.952
NORTH	4.258	399.953	
EAST	4.412	404.374	4.249 399.962
CK SOUTH	4.407	399.967	
CK TBM	4.354	400.020 = 400.023	

Bayview Hills

FEB. 20 1958 BEATTY, COURTNEY

GAGE 635

TBM.	4.252	404.275	400.023 (29.2)
SOUTH	4.306	399.969	
EAST	4.974	404.939	4.310 399.965
NORTH	4.944	404.900	4.983 399.956
WEST	4.749	404.703	4.946 399.954
CK SOUTH	4.734	399.969	
CK TBM	4.678	400.025	

16 SEP 1957

SHOREY
KEMP
SMITH

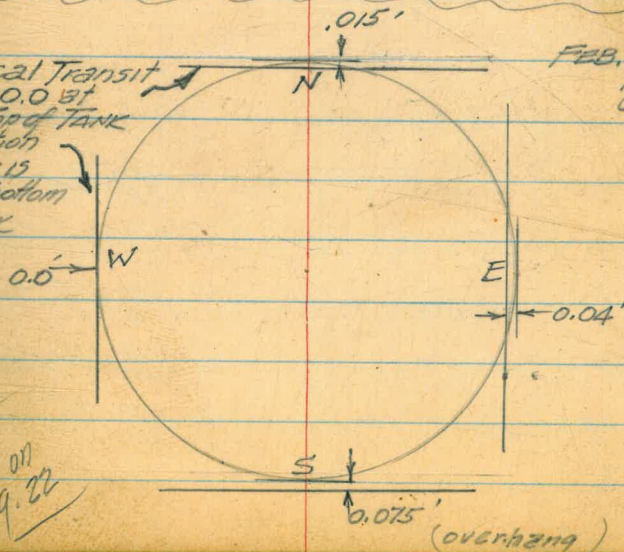
Cool - WINDY

10:00

GAUGE 59 E

Vertical Transit
Line 0.0 at
The Top of Tank
Variation
Shown is
near Bottom
of Tank

FEB. 20 1958
Beatty
Courtney



Cont'd on
pg. 22

(overhang)

LA JOLLA VIEW STANDPIPE
Elevations of Footing.
GAUGE 185

TBM	4.573	501.463	496.89	
CK TBM			0.709	500.754 = 500.76
SW			7.454	494.009 .01
TP	4.817	498.792	7.488	493.975
JE			4.798	493.994 .99
TP	4.948	498.955	4.785	494.007
NE			4.917	494.038 .04
P	7.540	501.621	4.874	494.081
NW			7.611	494.010 .01
CK TBM			0.865	500.756
CK TBM			4.730	496.891

TBM	2.155	502.915		500.760
CK.BM			6.030	496.885 = 496.890 PREV. .009
S.W. □			8.881	494.034
TP	4.744	498.742	8.917	493.998
S.E. □			4.718	494.024 .794
TP	4.834	498.926	4.650	494.092
N.E. □			4.834	494.092 .038
TP	4.532	498.988	4.970	494.456
N.W. □			4.950	494.038 .010
TP	9.147	503.988	4.147	494.841
CK.TBM			3.218	500.770 = 500.760

Mar. 26 1954
Bashy
Shorey
Martel
Alexander

25

SEE FIG. 756 PG. 39 FOR ORIGINALS

NAIL IN EUC. TREE (grown over)

Chis x in rim of M.H. Val. Cham.

Chis x in rim of M.H.

Nail in Euc. Tree

AUG. 31, 1955
SHOREY & PARTY

WINDY

8:30 A.M.

Chis x in rim of M.H. VAL. CHAM.
NAIL IN EUC. TREE

GAUGE 19²

+ .025

+ .030

+ .054

+ .028

3' LT. OF M.H.

LA JOLLA VIEW STANDPIPE

MAR. 6 1957
BEATTY
SMITH

GAUGE 195

TBM	1.243	502.003	✓	500.76	CHAS X IN NH 1117
NW		7.974	494.029	✓	
SW	4.354	498.391	7.966	494.037	✓
SE	4.918	498.957	4.352	494.039	✓
P	4.897	498.982	4.872	494.085	✓
NE		4.877	494.105	✓	
NW	8.923	502.956	4.949	498.033 = 498.029	✓
ck TBM		2.197	500.759 = 500.76	✓	

DEC. 19 1958
BEATTY ✓
OBRIEN

GAUGE 185

BM	1.214	501.974	500.760
SW	5.366	499.417	7.923 494.051
SE	5.068	499.140	5.345 494.072
P	5.114	499.248	5.006 494.134
NE		5.108	494.140
P	8.099	502.186	5.161 494.087
NW		8.138	494.048
ck BM		1422	500.764 = 500.760

JULY 10, 1959

SHOREY
O'BRIEN

10:00 A.M.
GAUGE 20⁰ FT.

BM	1.792	502.552	500.760
SW		8.502	494.050
TP	4.757	498.920	2.389 494.163
S.E.		4.847	494.073
TP	5.111	499.177	4.854 494.066
N.E.		5.032	494.145
TP	8.200	502.288	5.089 494.088
N.W.		8.240	494.048
		1.527	500.761 = 500.760

(SEE NEW F.B. FOR LATER ELEV'S
LA JOLLA VIEW STANDPIPE F.B.)

BEATTY O'BRIEN 11/20/58 KEARNY MESA STANDPIPE

BM.	6.498	435.527		429.029
SOUTH		4.562		430.965
EAST	5.281	436.224	4.584	430.943
NORTH	5.578	436.542	5.260	430.964
WEST	4.498	435.456	5.584	430.958
CK SOUTH		4.491		430.965 α!
CK BM.		6.432		429.024 = 429.029
DEC. 19 1958 BEATTY ✓ O'BRIEN				
BM	6.468	435.497		429.029
SOUTH		4.541		430.956
WEST	5.003	435.952	4.548	430.949
NORTH	5.418	436.385	4.989	430.963
EAST	5.055	436.006	5.434	430.951
CK BM		6.972		429.034 = 429.029

JULY 10, 1959

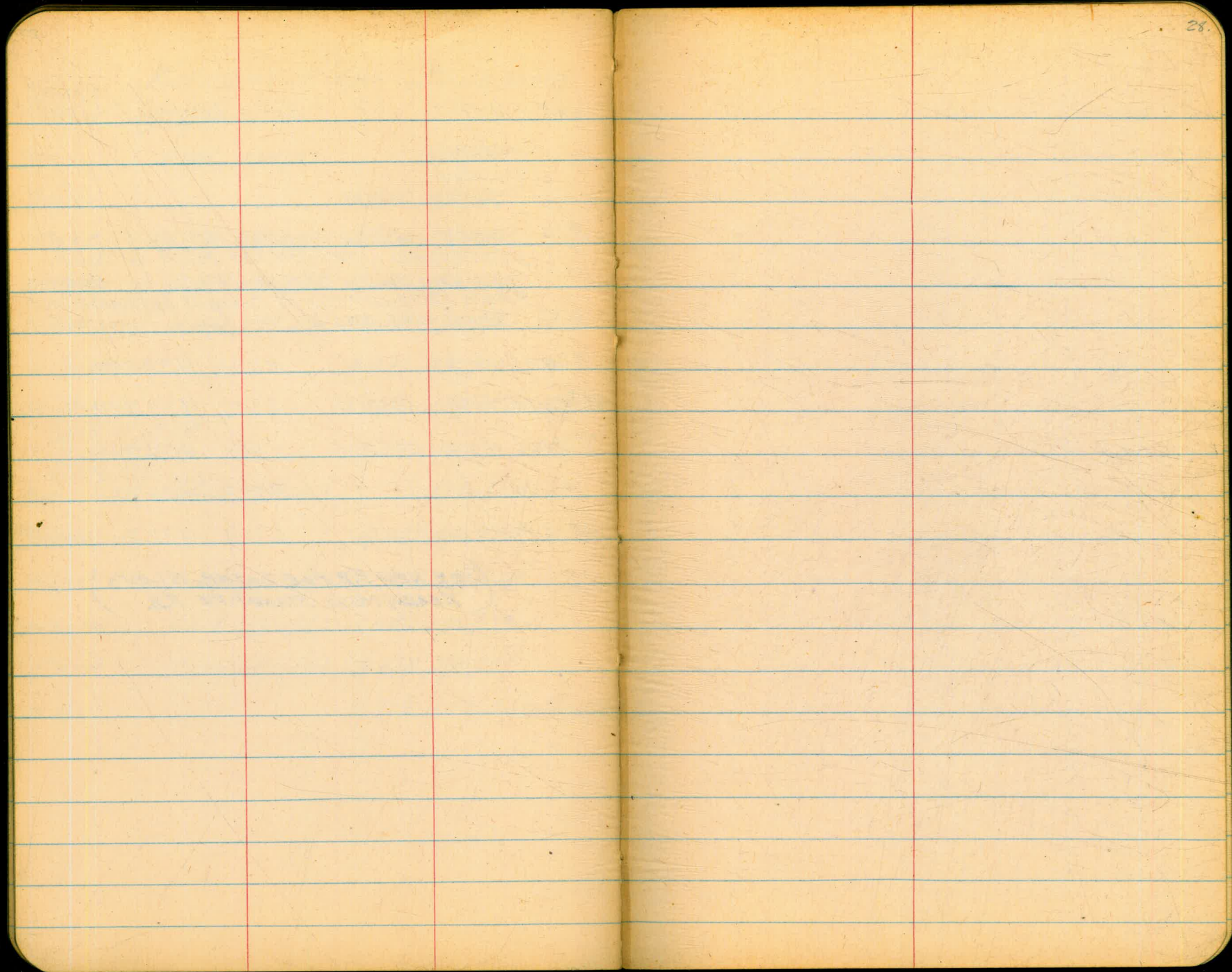
HOT & BREEZY

SHOREY
O'BRIEN

BM LISTED ON LEFT PAGE HAS BEEN DESTROYED - SET BRASS PLUG IN CONC. CHAMBER SWLY OF TANK - ELEV. ESTAB FROM USC & 65' MON. AT CONVAIR ASTRONAUTICS

BM	3.939	435.254		431.315
OWEST		4.332		430.922
TP SOUTH	5.190	436.117		4.327 430.927
TP EAST	4.989	435.905		5.201 430.916
NORTH		4.969		430.936
CK. BM		4.593		431.312 = 431.315

(SEE NEW F.B. FOR LATER ELEV'S.)
KEARNY MESA STANDPIPE F.B.



(SOUTH) CATALINA STANDPIPE (OLD)
ELEVATIONS OF FOOTING

Mar. 24, 1954 Cool & Breezy
Sherry
Mortell
Alexander.

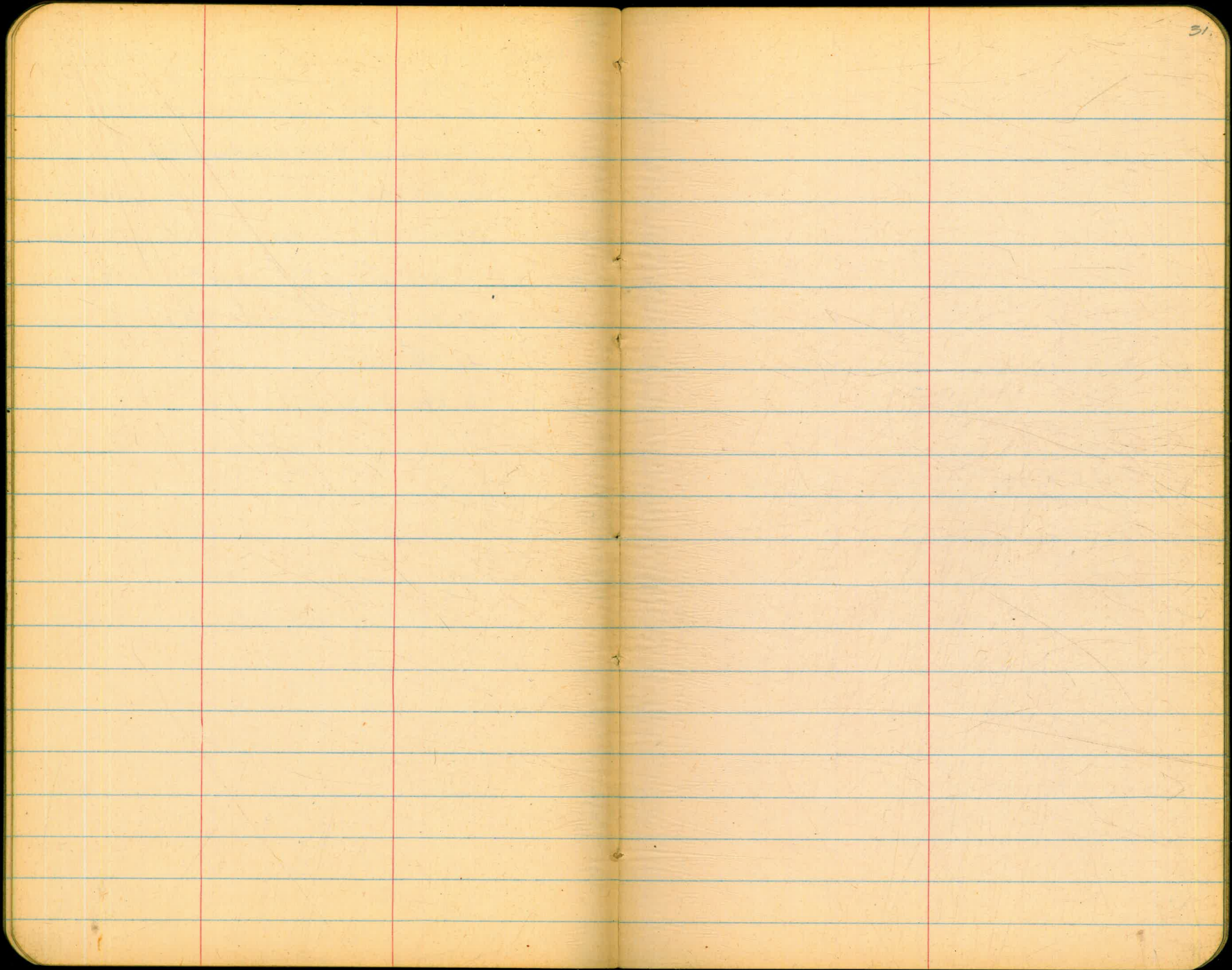
20.

BM.	8.579	391.739	383.16		
WEST ■			3.581	388.158	.16
SOUTH ■	2.115	390.369	3.485	388.254	.26
EAST ■			2.168	388.201	.21
NORTH ■	3.363	391.511	2.221	388.148	.16
CK WEST □			3.357	388.154	
CK BM			8.359	383.152	= 383.16

SEE F.O. 860 pg. 16 for Originals

Cond. Men. to Catalina & Military Res. Gate

~~GONE~~



SHOREY
O'BRIEN
RULLEN

BAYVIEW HILLS
STANDPIPE

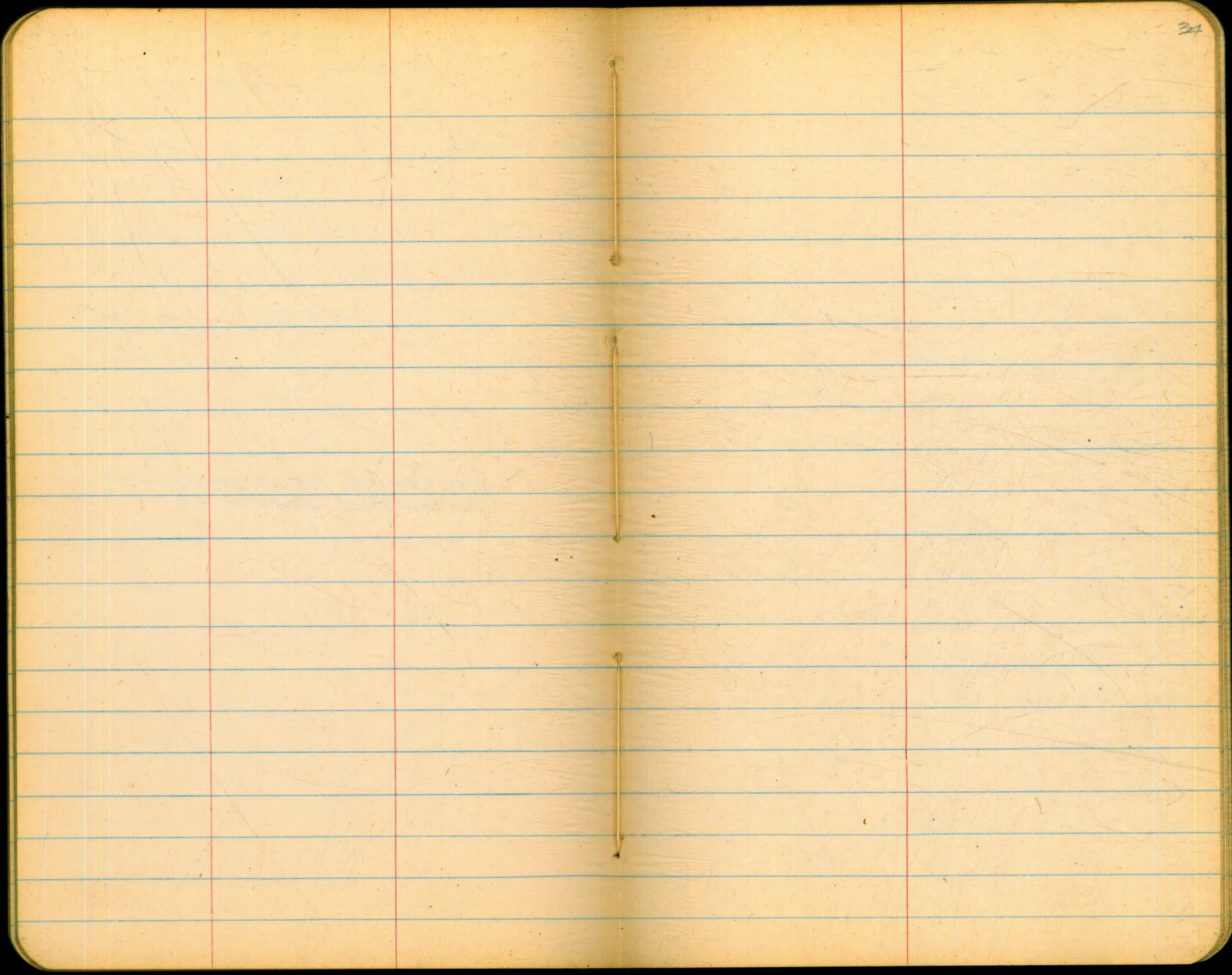
1/18/60

33

GAGE 63²

TBM	4.536	404.559		400.023
SOUTH			4.593	399.966
EAST	4.969	404.933	4.595	399.964
NORTH	4.888	404.842	4.979	399.954
WEST	4.827	404.780	4.889	399.953
CK South			4.810	399.970
CK BENCH			4.754	400.026 = 023

(SEE NEW F.B. FOR LATER ELEV'S
BAYVIEW HILLS STANDPIPE F.B.)



ALVARADO WASH WATER TANK
ELEVATION OF FOOTING

APRIL 1, 1954

BEATTY
SHOREY
MARTELL
ALEXANDER

35

See FB. 734 pgs. 11-31 for Originals

BM	4.797	541.187	536.390		ON DAM	
North □		4.540	536.641	.650 .640	orig 12" v +0.001	
West □	8.212	544.850	4.549	536.638	.650 .640	-0.002
South □		8.167	536.683	.690 .677		+0.006
East □	5.366	542.049	8.167	536.683	.685 .676	+0.007
CK Nor □		5.404	536.645 = 536.641			
CK BM		5.653	536.396 = 536.390			.006 closure

APR. 30, 1955

WARM 3:40 P.M.

SHOREY & PARTY

ON DAM

B.M.	5.630	542.020	536.390		ON DAM	
EAST □		5.352	536.668	.683		-0.015
NORTH □ TP	4.921	541.557	5.384	536.636	.671	-0.005
WEST □ TP	5.587	542.225	4.919	536.638	.638	-0.000
SOUTH □ TP	6.825	543.499	5.551	536.674	.683	-0.009
CK. EAST		6.827	536.672			
CK. B.M.		7.106	536.393 = 536.390			.003 closure

ALVARADO WASH WATER TANK

MAR. 8 1957
BEATTY-SMITH

BM	3.783	540.173 ✓		536.390
NORTH			3.537	536.636 ✓
WEST	4.716	541.353 ✓	3.536	536.637 ✓
SOUTH	6.378	543.049 ✓	4.682	536.671 ✓
EAST			6.378	536.671 ✓
CK BM			6.660	536.389 ✓

DEC. 22, 1958

BEATTY O'BRIEN ✓

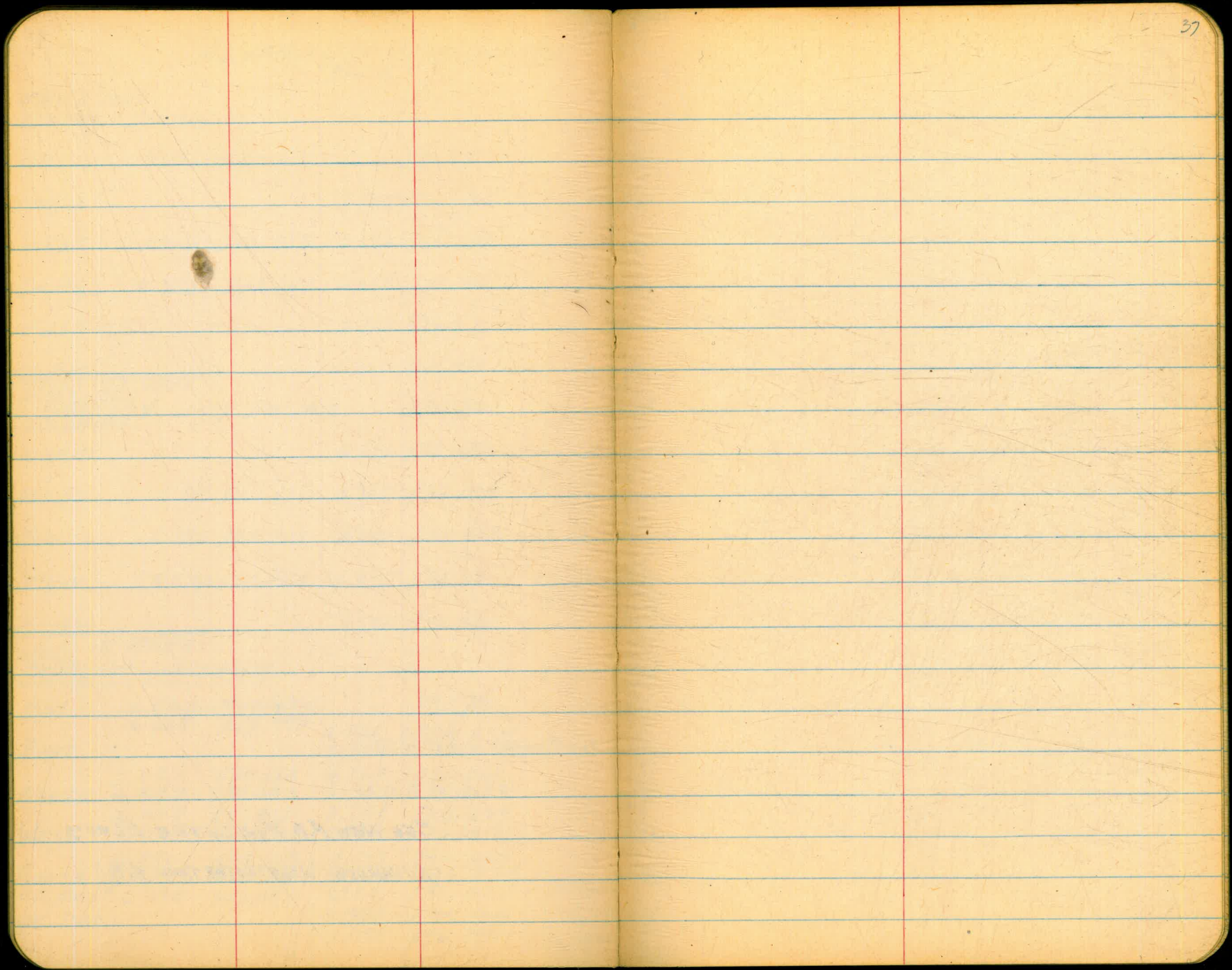
	4.573	540.963		536.390
NORTH			4.326	536.637
WEST	5.748	542.383	4.328	536.635
SOUTH	6.236	542.909	5.710	536.473
EAST	5.270	541.942	6.237	536.672
CK BM			5.551	536.391

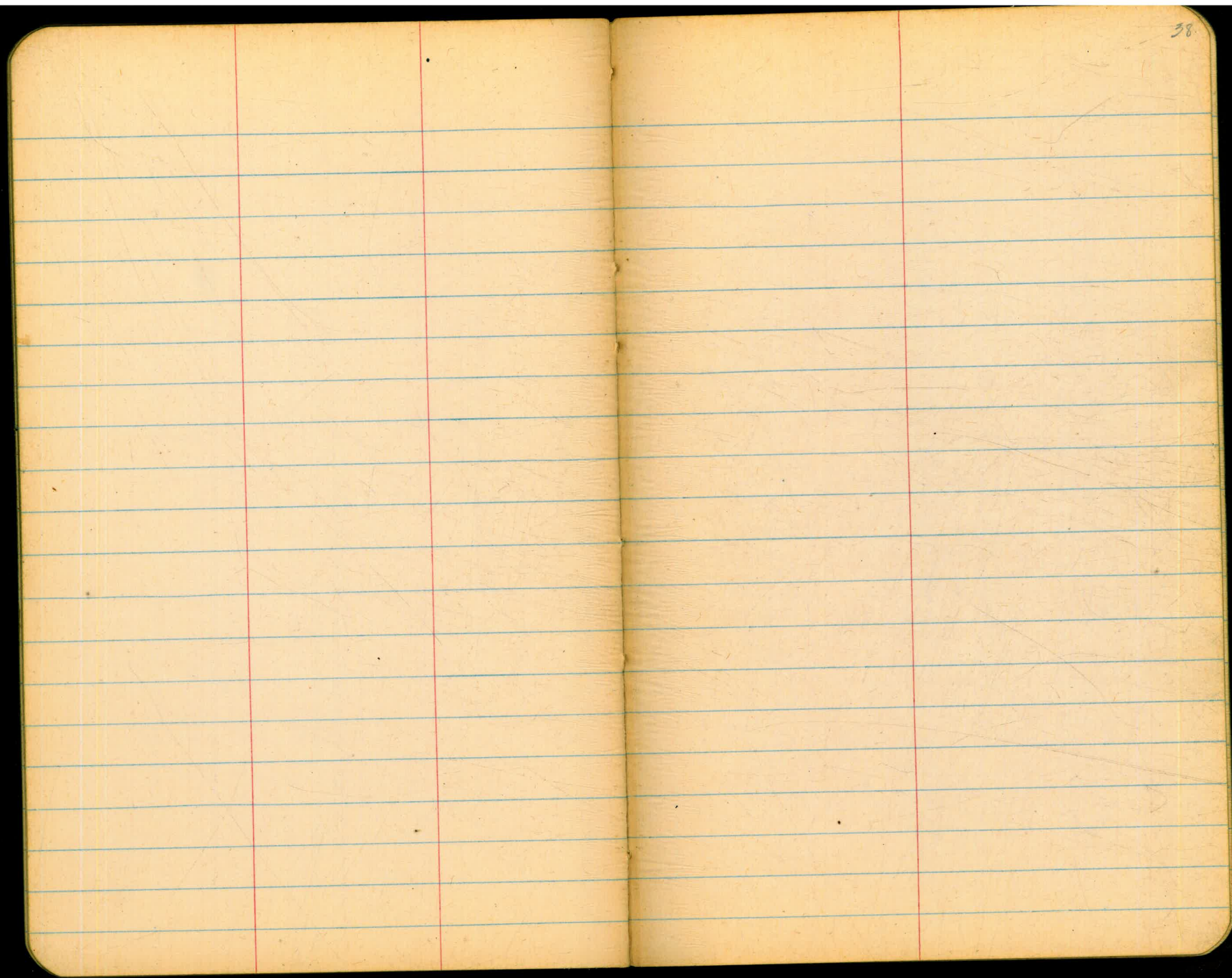
JULY 13, 1958 ✓
BEATTY-WILLIAMS-FROST

BM	6.593 6.605	542.983 542.995		536.390
EAST			6.331 6.319	536.664 536.664
NORTH	3.223 2.597	539.854 539.230	6.364 6.350	536.631 536.633
WEST	4.632 4.478	541.261 541.110	3.225 2.598	536.629 536.632
SOUTH	6.850 6.515	543.519 543.188	4.592 4.437	536.669 536.673
CK EAST	6.373	543.038	6.854	536.665 = 536.664.
CK BM.			6.781 6.648	536.407 = 536.390 536.390 = 536.390

water level ? (RCP)

SEE NEW F.B. FOR LATER ELEV'S
(ALVARADO WASH WATER TANK F.B.)





ENCANTO STANDPIPE
ELEVATIONS OF FOOTING
GAUGE 59.8 (1:00 pm)

BM	5.878	485.588		479.710	
SOUTH □			4.452	481.126	.145 .128
^P EAST □	3.913	485.086	4.215	481.173	.180 .126
NORTH □			3.945	481.141	.250 .123
^D WEST □	3.917	485.079	3.924	481.162	.170 .170
CK SOUTH □			3.923	481.136	
CK B.M.			5.366	479.713 = 479.710	

APRIL 1 1954
BRATTY
SHOREY
MARTELL
ALEXANDER

101

40.

SEE F.B. 703 pg. 47, 48, for Originals

CHD □ on NW Cor. Valve Chamber

137 mm
200 v

Closure 0.003

BM	5.539	485.249		479.710	
SOUTH □			4.118	481.131	.136
EAST ^{HTP} □	4.879	486.070	4.078	481.171	.173
NORTH ^{HTP} □	4.113	485.254	4.229	481.141	.141
WEST ^{HTP} □	4.171	485.353	4.092	481.162	.162
CK. SOUTH			4.222	481.131	
CK. B.M.			5.642	479.711 = 479.710	

AUG. 30, 1955
SHOREY & PARTY

WARM & Windy 2:00 P.M.

- .005

- .002

- .000

- .000

BM	5.980	485.690		479.71	
SOUTH			4.560	481.130	
EAST	4.220	485.390	4.520	481.170	
North	4.053	485.194	4.249	481.141	
WEST	3.856	485.022	4.028	481.166	
CK SOUTH			3.894	481.128	
CK B.M.			5.314	479.708 = 479.710	

10/31/56
BRATTY
O'Brien

GAUGE 63.0

ENCANTO STANDPIPE

MAR. 7 1957 ^{BEATTY} SMITH

GAUGE 62°

BM	5.834	485.544	✓	479.710
SOUTH	4.414	481.130	✓	
EAST	4.257	485.426	✓	4.375 481.169
NORTH	4.042	485.181	✓	4.287 481.139
WEST	4.022	481.159	✓	
CK BM	5.470	479.711	✓	

BM	5.464	485.174		479.710
SOUTH	4.044	481.130		
EAST	4.120	485.286		4.008 481.166
NORTH	3.794	484.929		4.151 481.135
WEST	3.955	485.114		3.770 481.159
CK SOUTH	3.985	481.129		
CK BM	5.464	479.710 = 479.710		

SO. ENCANTO STANDPIPE ⁴¹

FEB. 20 1958, Beatty, Courtney GAUGE 65

BM	5.627	485.337		479.710
SOUTH	4.211	481.126		
EAST	3.218	486.385	4.170	481.167
NORTH	4.450	485.586	5.249	481.136
WEST	4.053	485.209	4.430	481.156
CK SOUTH	4.083	481.126		
CK BM	5.500	479.709		

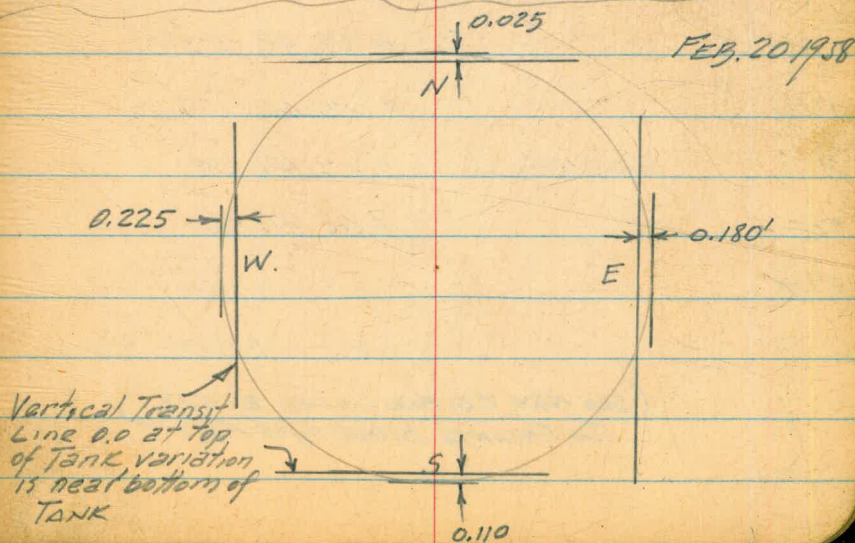
16 SEP 57

WARM-CALM

SHOREY T
KEMP
SMITH

11:00

GAUGE 52°



So. ENCANTO STANDPIPE

DEC. 22, 1958

BEATH
OBRIEN ✓

GAUGE 642

BM	6.020	485.730	479.710
SOUTH		4.602	481.128
EAST	4.523	485.691	4.562 481.168
NORTH	4.386	485.526	4.551 481.140
WEST	4.272	485.431	4.367 481.159
CK SOUTH		4.301	481.130 = .128
CK BM		5.718	479.713 = .710

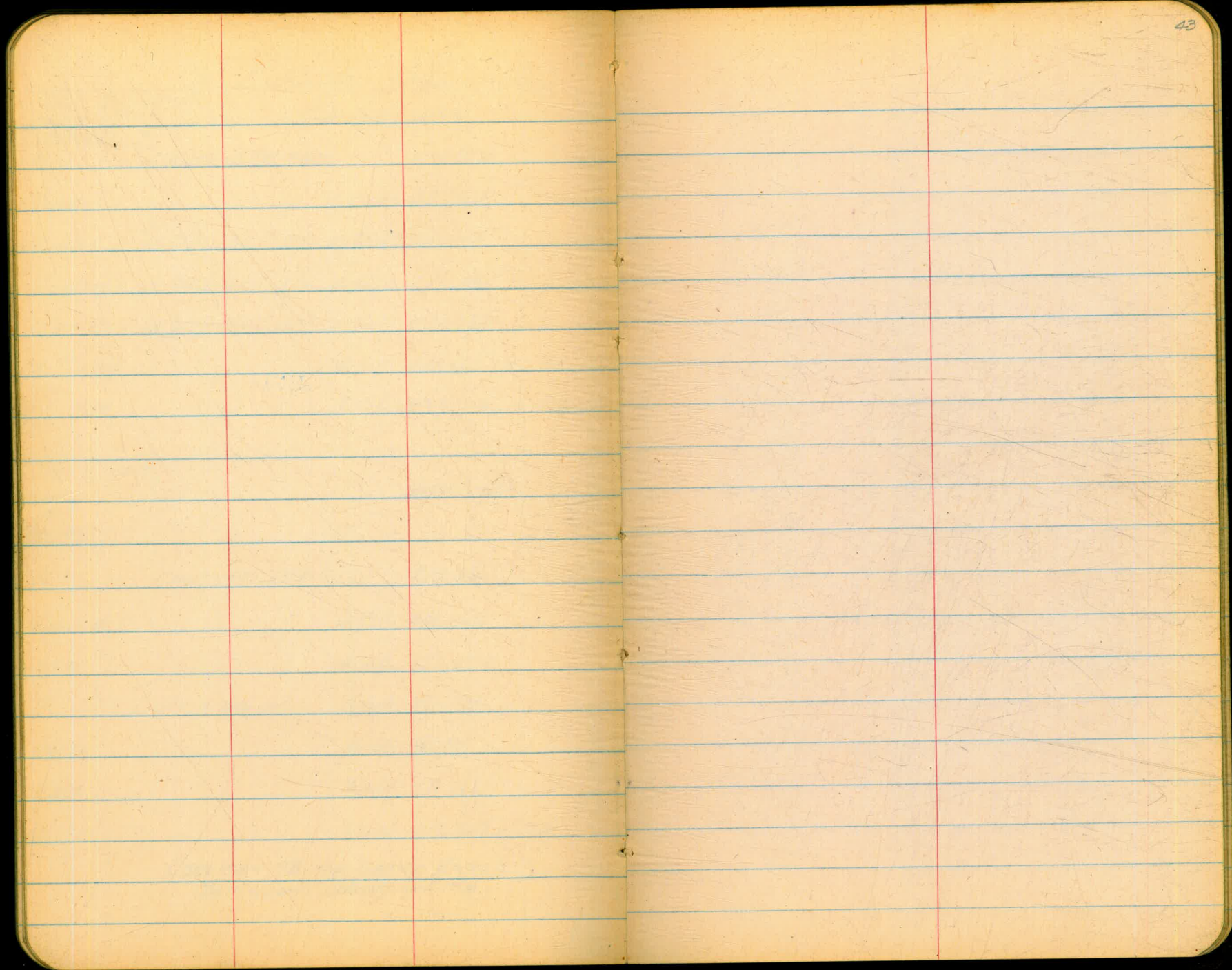
APR 8, 1959

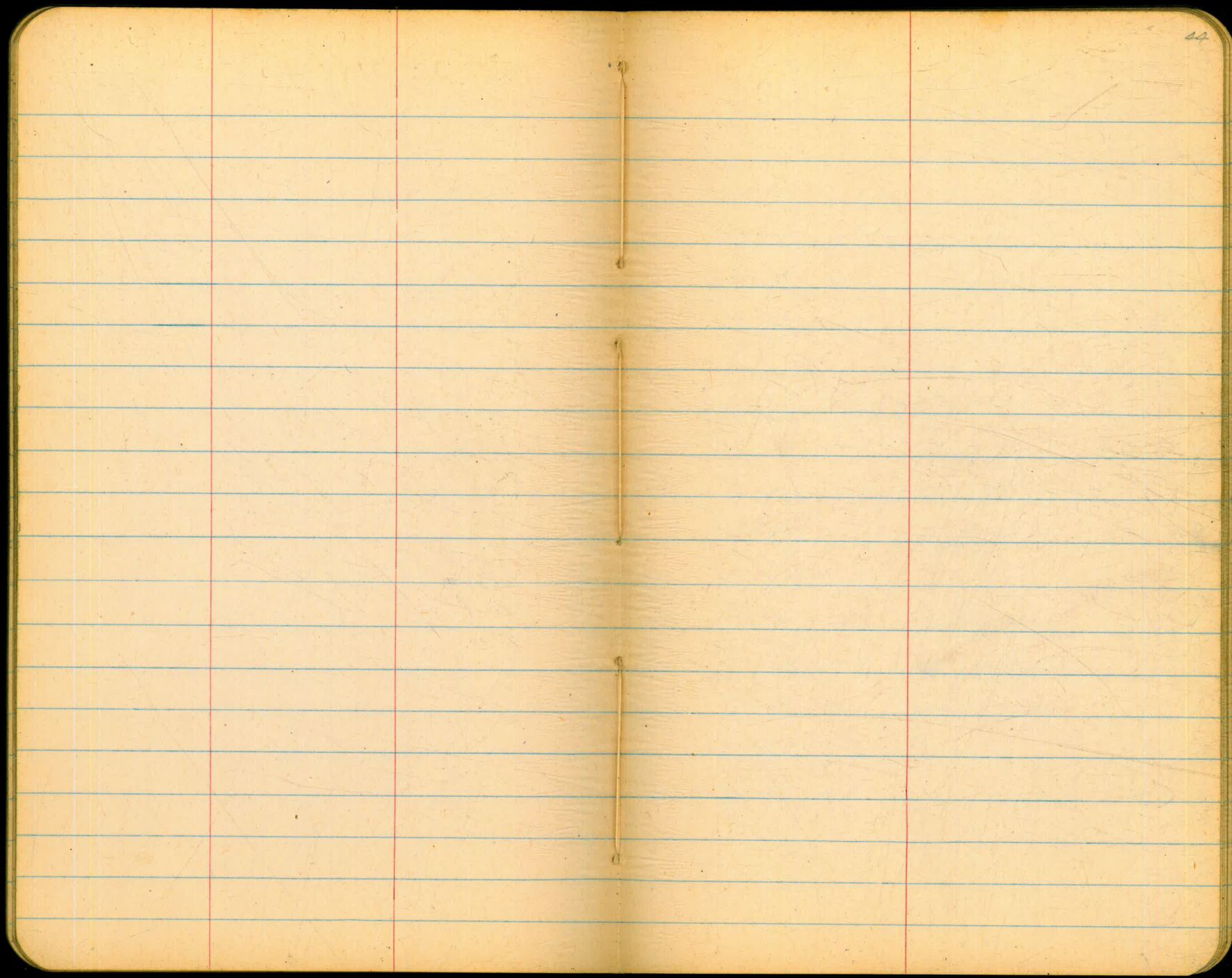
SHOREY
KEMP
HALBERT

GAUGE 622

B.M.	5.969	485.679	479.710
SOUTH		4.552	481.127
WEST		4.522	481.157
TP	5.763	486.135	5.307 480.372
NORTH		5.000	481.135
EAST		4.969	481.166
CK BM		6.428	479.707 = .710

(SEE NEW F.B. FOR LATER ELEV'S.)
(So. ENCANTO STANDPIPE F.B.)





CATALINA STAND PIPE
ELEVATION OF FOOTING

(MORNING AFTER FOUNDATION POURED)

BM	2.876	386.036	383.16
WEST		3.052	382.984
NORTH		3.061	382.975
EAST		3.050	382.986
SOUTH		3.053	382.983
		{ 3.022	383.014
C. TANK		{ 3.028	383.008
		{ 3.027	383.009
CK B.M.		2.876	383.16

STAND PIPE ERRECTED (BUT ROOF NOT ON)

BM	3.455	386.615	383.16	
WEST		3.645	382.970 .984	-.014
SOUTH	2.329	385.300	3.644 382.971 .983	-.012
EAST	2.411	385.385	2.326 382.974 .984	-.012
NORTH	2.987	385.946	2.426 382.959 .975	-.016
CK WEST		2.977	382.969	
CK B.M.		2.787	382.159 = 383.16	

April 30, 1954

BEATTY
SUDGEN
MARTEL
ALEXANDER

25.

Conc. Man. & Catalina Blvd & Military Res Gate.

June 10 1954 (windy!)

CATALINA STANDPIPE

(Cont'd)

(Tank Completed, Being Framed, But Empty)

BM	4.195	387.355	383.16		
WEST		4.381	382.974	.980	.970
SOUTH ID	4.211	387.186	4.380	382.925	.983 .971
EAST ID	3.586	386.565	4.207	382.979	.986 .976
NORTH ID	3.990	386.953	3.602	382.963	.975 .959
CK WEST ID	4.450	387.423	3.980	382.973	
CK South		4.449	382.974		
CK BM		4.764	383.159	383.16	

Catalina Standpipe

	2.602	385.762	383.16		
North	2.258	385.196	2.824	382.938	
East	4.912	387.856	2.252	382.944	
South	4.300	387.235	4.921	382.935	
West		4.300	382.935		
	4.011	386.753	4.493	382.742	
		3.606	383.147		

7/22/52 cont

46

Conc Mon & Catalina & Military Res Gate.

7/22/52

BM Page reading 70'

Catalina Stand pipe

Base reading 70'

West
Williams
Varonakis
Kullhofer

8/2/54

27

3129 386.289 383.16 979

.018

West 3.333 382.956 975

.018

South 2.954 385.911 3.333 382.957 979

.027

East 2.795 385.752 2.954 382.957 979

.015

North 2.814 382.938 969

4.944 385.133 5.563 380.189

1.970 383.163

= 383.160

BM 4.065 387.225 383.16

SEPT 22 1954

WEST □ 4.274 382.951 956

-005

BEATH
SILREY
MARTELL
ALEXANDER

SOUTH □ 3.766 386.723 4.268 382.957 957

.00

Gauge 70⁵ (75 1/2 = Full)

EAST □ 3.261 386.218 3.766 382.957 957

.00

NORTH □ 3.868 386.808 3.278 382.940 938

+002

CK WEST □ 3.856 382.952 = 382.951

SET TBM 3.644 387.000 3.452 383.356

CHIS □ NW Cor. Val Chamber

CK BM 3.839 383.161 = 383.16

CATALINA STANDPIPE
Elevation of Footing.

Oct 29, 1954
Beatty & Parry

48

	^{2.20} 3.657	386.817		383.16	
B.M.	^{15.9} 3.644	386.806			
			3.865	382.952	prev
WEST □			3.854	382.952	.951
	3.743	386.696	3.864	382.953	
SOUTH □	2.994	385.947	3.853	382.953	.951
	2.161	385.113	3.744	382.952	
EAST □	2.264	385.215	2.996	382.951	.951
			2.180	382.933	
NORTH □			2.283	382.932	.940
	3.720	387.073	1.760	383.353	
CK TBM.	3.514	386.866	1.863	383.352	383.356
			3.121	382.952	
CK WEST □			2.915	382.951	382.952
CK SOUTH □			3.215	382.951	382.953
CK B.M.			3.128	382.953	383.16
			3.708	383.158	
			3.714	383.159	

Cane Man & Catalina Blvd & Military Res Gate

GAUGE 68.5' 9:00 a.m.

chis □ NW Cor Val Chamber

	^{2.20} 4.350	387.510		383.160	
B.M.	^{15.9} 4.349	387.549			
			4.559	382.951	prev
WEST □			4.596	382.953	.952
	3.923	386.875	4.558	382.952	
SOUTH □	4.175	387.131	4.593	382.956	.952
	2.870	385.823	3.922	382.953	
EAST □	2.735	385.692	2.174	382.957	.952
			2.886	382.937	
NORTH □			2.753	382.939	.933
	4.188	387.539	2.472	383.351	
CK TBM	4.152	387.503	2.341	383.351	383.356
			4.590	382.949	.951
CK WEST □			4.557	382.946	.953
			4.380	383.159	
CK B.M.			4.350	383.153	383.16

Nov 12, 1954 1:30 pm (EARTHQUAKE at 4:30 am 11/12/50)
Windy!

GAUGE @ 68.2 - 69.2

chis □ NW Cor Val Chamber

NOTE: oil & water standing
on foundation, slightly
east of Nor.
(maybe from rain)

CATALINA STANDPIPE
(Cont'd)

April 18 1955 - Windy! 4:00 pm
BEATTY
SHOREY
MARTIN

29

TBM	4.573	387.929		383.356	
WEST □			4.978	382.951	PROV .951
TP SOUTH □	4.109	387.060	4.978	382.951	.952
TP EAST □	2.842	385.796	4.106	382.954	.953
NORTH □			2.861	382.935	.937
CK TBM			2.442	383.354	= 383.356

Chis X on NW Cor Val. Cham.

GAUGE 69.0

B.M.	4.349	387.502		383.160	PROV
WEST □			4.560	382.949	.951
TP SOUTH □	3.247	386.899	4.557	382.952	.951
TP EAST □	2.933	385.889	3.943	382.956	.954
TP NORTH □	3.248	386.788	2.949	382.940	.935
CK TBM	3.826	387.188	3.426	383.362	= 383.356
CK B.M.			4.029	383.159	= 383.160

April 30, 1955 - Windy
SHOREY & PARTY

Cont. Mon. & CATALINA BLVD.

STAFF GAUGE 66.6
9:00 A.M.

- .002

+ .001

+ .002

+ .005

Chis. X ON VAL. CHAM.

Cont'd pg. 62

REDWOOD VILLAGE
STAND PIPE
ELEVATION OF FOOTING
(TAKEN ON TOP OF 1" BRASS BOLTS.)

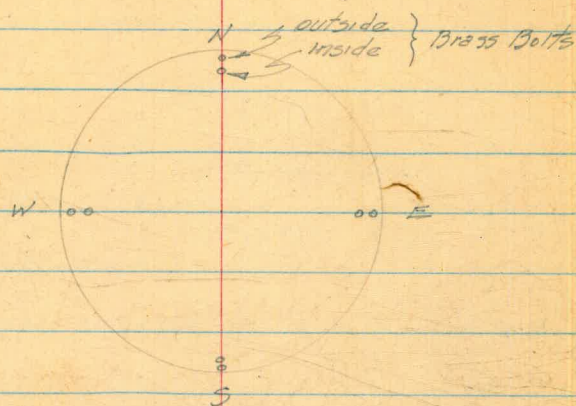
BM	1.449	469.339	467.89		
outside } EAST		5.144	464.195		
inside } EAST		5.144	464.195		
outside } NORTH		5.157	464.182	✓	
inside } NORTH		5.158	464.181		
outside } WEST		5.148	464.191		
inside } WEST		5.149	464.190		
outside } SOUTH		5.123	464.216		
inside } SOUTH		5.123	464.216		
CK outside EAST		5.144	464.195		
CK outside EAST		5.144	464.195		
CK BM	1.449	467.89			
BM	Rerun 1.430 1.57 1.690	469.324 469.580	467.89		
INSIDE } SOUTH		3.109	464.215		
OUTSIDE } SOUTH		3.364	464.216	.216	-001
INSIDE } EAST		3.130	464.194		
OUTSIDE } EAST		3.386	464.194	.195	-001
Rerun 1.57	3.740	467.934			
1.57	2.831	467.025			
INSIDE } NORTH		3.157	464.177		
OUTSIDE } NORTH		2.851	464.174	.182	-005
	3.727	467.904			
	3.718	467.872			
INSIDE } WEST		3.719	464.185		
OUTSIDE } WEST		3.708	464.184	.191	-006
	5.479	469.663			
CK SOUTH	5.387	469.572	5.361	464.211	
			5.456	464.207	= 464.215
CK BM	1.782	467.881	✓		
	1.685	467.887	= 467.89		

JUNE 22, 1954

BEATTY
SHARPE
MARSHALL
ALEXANDER

20

ROCK PT. Fly gate school fence

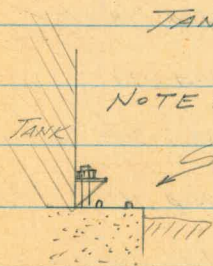


Sept. 22 1954

BEATTY
SHARPE
MARSHALL
ALEXANDER

TANK COMPLETED
BUT EMPTY!

NOTE: Orig. elevs taken on
both Brass Bolts; but
inside bolts are under
& of tank now



REDWOOD VILLAGE
STANDPIPE
Elevation of Footings

Oct. 29 1954
Beatty, Party

51

BM	1380	469.270	467.89	prev =	Rock Pt. By School Gate
outside So. a			5.070	464.200	.215
" EAST a	3.645	467.824	5.091	464.179	.194
" Nor a	3.606	467.766	3.664	464.160	.177
" West a	5.441	469.609	3.598	464.168	.185
CK So. a			5.410	464.199	= 464.200
CK BM			1.720	467.889	= 467.89

GAUGE 120'

Nov. 12, 1954 4:20 pm (EARTHQUAKE at 4:30 am 11/12/54)

BM	1.774	469.664	467.890	prev	
outside South a			5.466	464.198	.200
" EAST a	4.546	468.724	5.486	464.178	.179
" North a			4.563	464.161	.160
SET TBM	5.246	468.609	5.361	463.363	
CK Nor. a			4.448	464.161	.161
WEST a	5.322	469.491	4.440	464.169	.168
CK South			5.292	464.199	.198
CK BM			1.6	467.891	= 467.89

GAUGE 123'

NOTE: East side leaking oil!

THIS IS Ely Cor Val Chamber

Has been
doing this
for several
days

NOTE: WEST side leaking oil!

(Continued on page 56 THIS BOOK)

Clairmont Stand pipe

See FB 860 P 26 for previous sets

West
Williams
Val

55

8/13/54

2865 375.340

371.475

Spike in pipe 75' Newby Tank

North □

4.858 370.482

West □

4.857 370.483

5.786 376.269

4.857 370.483

South □

5.803 370.466

East □

5.799 370.470

3.541 375.165

4.645 371.624

3.683 371.482

BM

3.495 374.970

371.475

SEPT. 22 1954

WEST □

4.499 370.471

.483 -012

BEATTY
MOORE
MARTELL
ALEXANDER

SOUTH □

4.606 375.053

4.523 370.447

.466 -019

GAUGE 64⁵ (80 = Full)

EAST □

4.605 370.448

.470 -022

SET TBM

4.945 375.326

4.672 370.381

EAST COR. Valve Chamber

NORTH □

4.860 370.466

.482 -016

CK BM

3.779 375.201

3.854 371.472

= 371.475

CK TBM

4.820 370.381

= 370.381

CLAIRE MONT STANDPIPE
ELEV. of Footings
(Cont'd)

B.M.	225.56 Down 157.96 Ground	4.825 375.900 4.523 375.998	371.475	prev.
NORTH □		5.232 370.468 ✓ 5.526 370.472	.466	
EAST □		5.229 370.231 ✓ 5.545 370.453	.448	
TBM	4.734 375.116 4.734 375.122	5.518 370.382 ✓ 5.610 370.388	= 370.381	
SOUTH □		4.669 370.447 ✓ 4.644 370.453	.447	
WEST □		370.472 ✓ 4.644 370.478	.471	
CK B.M.		2.641 371.475 ✓ 371.481	= 371.475	
B.M.	3.893 375.368	371.475		
NORTH □		4.875 370.493 ✓	.468	
WEST □	4.376 374.869	4.875 370.493 ✓	.472	
SOUTH □	4.668 375.137	4.400 370.469 ✓	.427	
CK TBM		1.733 370.404 ✓	= 370.381	
EAST □	4.951 375.023	4.665 370.472 ✓	.451	
CK North □		4.937 370.491 ✓		
CK B.M.		2.950 371.473 ✓	= 371.475	

CONT'D ON PG. 59

Nov. 15, 1954

BERRY
SHREVE
HARTSELL
ALEXANDER

53

EARTHQUAKE 11/12/54 4:30 AM

Spike in power pole NWly Cor

Gauge 78°

NE Cor. Val. Chamber

April 27, 1955 windy
Berry & party

GAUGE 77°

reflects = movement of .025 downward of
either the spike in power pole
or the pole itself

Jennings St. Gage to Albion St
Profile & Proposed Water Line

	211.60	
1.92	213.52	
0+00	4.9	208.6
0+08		
0+17	5.4	208.1
0+33	6.7	207.8
0+33	0.60	
0+50	7.4	206.1
0+53		
0+60.4	5.5	208.0
0+87	0.7	213.4
	0.09	213.43
12.36	225.79	
1+00	11.4	214.4
1+15	6.4	219.4
1+25	6.6	224.2
	0.60	225.19
12.92	238.11	

West
Alexander
Holahan
Shorof

54

7-11-55

(See pg. 57)

S.E.H. Gage & Jennings

E/H of Gage St

E curb line

G.V. 17.5 Lk.

Sewer cross
Sewer M.H. 13' R.E. 9.6 to flow line

W curb line & Storm Drain cross \pm 202.0 top 30" pipe
(end of 4" A.C. paving)

P.P. 5' left

W/H of Gage St.

238.11

1445 5.8 232.3

1450 2.3 235.8

1453 0.0 238.1

0.81 237.30

13.18 250.48

1473 9.1 241.4

1486.33 2.5 248.0

1.73 248.75

12.14 260.89

1496 5.6 255.3

2406.58 2.6 258.3

2411 1.1 259.8

2417 0.9 260.0

0.52 260.37 = 260.38

Con. Mon. 5' ll. & a point 45° ll.

a point 45° ll.

back std. curb of Turnaround

T.M. on curb North side @ center Turnaround

REDWOOD VILLAGE
STAND PIPE
(Cont'd)
(CONTINUED FROM PAGE 51)

BM	1.816	469.706	467.890	prev	
SOUTH			5.508	464.198	.198
① EAST	3.922	468.099	5.529	464.177	.178
NORTH	3.921	468.099	3.941	464.158	.161
	3.922	468.060			
WEST	5.758	469.923	3.934	464.165	.169
	5.643	470.227	3.896	464.162	
CK SOUTH			5.738	464.189	464.193
CK BM			2.326	467.881	= 467.890
			2.072	467.891	

April 22 1955 VERY WINDY!
BEATTY & PARTY

Reck @ Car post School gate

Gauge 1245

Aug. 26, 1955 VERY WINDY!
SHOREY & PARTY

BM	1.530	469.420	467.890	prev	
SOUTH			5.222	464.178	.178
EAST	3.893	468.072	5.241	464.179	.177
NORTH	3.928	468.128	3.912	464.160	.158
WEST	5.682	469.848	3.962	464.166	.165
CK SOUTH			5.651	464.197	
CK BM			1.960	467.888	= 467.890

Gauge 120³

Tennings Cont

7-8-55

57

2400

Fill of Curb St

1486.33

A point 15'

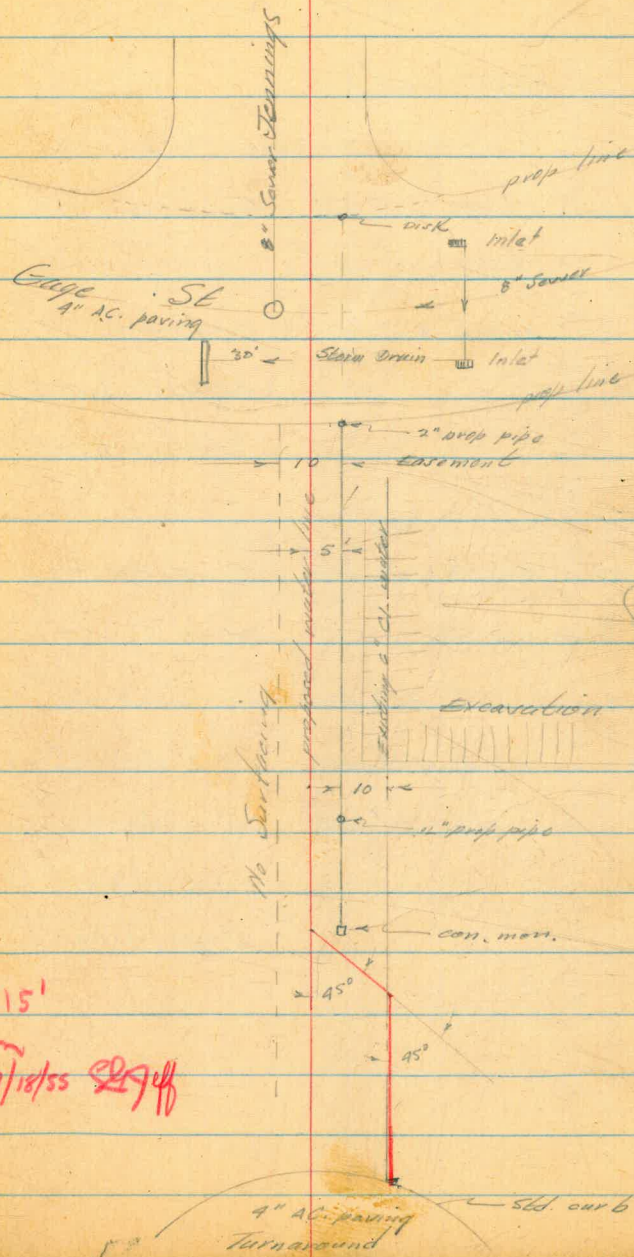
2406.58

A point

2417

end work

- B₁@ 45° & ε offset 15'
as shown this station
would be 2407.54 7/18/55 *SLG*



REDWOOD VILLAGE
STAND PIPE
(Cont'd. from pg. 56)

BM	1427	469.317	467.890
SOUTH		5.123	464.194
EAST	3.998	468.169	5.146 464.171
NORTH	3.850	468.002	1.017 464.152
WEST	6.408	470.567	3.843 464.159
OK SOUTH		6.377	464.190
OK TBM		2.680	467.887 = 467.890

BM	2.210	470.100	467.880
SOUTH		5.899	464.201
EAST	3.785	467.961	5.924 464.176
NORTH	3.864	468.022	3.803 464.158
WEST	6.212	470.373	3.861 464.161
OK. SOUTH		6.174	464.199
OK. BM		2.485	467.888

Cont'd on pg 66

12/19/53

BEATTY.
SMITH.

58

GAUGE 1190

SHOREY
MARTELL
SMITH
2/9/56
EARTHQUAKE 6:33 A.M. 2/9/56
11:45 P.M. Windy & Cool
GAUGE 123⁵

CLAIREMONT STANDPIPE
ELEV. OF FOOTINGS
(CONT'D)
CONT'D FROM Pg. 53

AUG. 29, 1955 Cool & Windy
SHOREY & PARTY

59

TBM	6.560	376.941	370.381	PREV.	N.E. COR. VALV. CHAMBER
EAST	6.488	370.453	472	-019	STAFF GAUGE 78 ⁵
NORTH	4.927	375.400	6.468 370.473	.473	(OIL SEEPING OUT)
WEST	4.474	374.947	4.927 370.473	.473	-020
SOUTH	4.497	370.450	.469	-019	
CK. T.B.M.	5.953	376.334	4.563 370.384 = 370.381		
CK. B.M.	4.820	371.444 = 371.475			SPIKE IN P.P. NWLY COR.

(X)

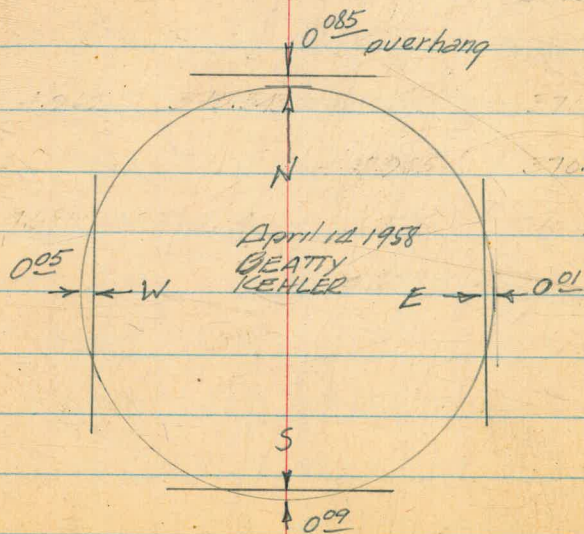
BM	4.070	375.545	371.475		
North	5.031	370.491			
WEST	4.434	371.925	5.051 370.491		
SOUTH	4.457	370.468			
CK TBM	5.903	376.310	4.518 370.407		
EAST	5.834	370.476			
CK. North	5.815	370.495			
CK BM	4.837	371.479 = 371.475			

(CONT'D ON NEXT PAGE)

12/19/55 BEATTY SMITH ✓
Spike in pow. pole NWly Cor.

GAUGE 78°

(4:15 PM Cold, Windy)



CLAIREMONT STAND PIPE
(CONT'D) FROM Pg. 59

BM	3.826	375.301	371.475
NORTH		4.304	370.477
WEST	4.329	374.822	4.808 370.493
SOUTH		4.422	370.470
CK TBM	5.307	375.714	4.485 370.407
EAST		5.241	370.473
CK NORTH		5.219	370.475
CK BM		4.240	371.474 = 371.475
MAR. 6 1957			
BEATTY SMITH			
BM	4.778	376.253	371.475
NORTH		5.755	370.498
EAST	4.307	374.786	5.774 370.479
SOUTH	4.603	375.080	4.309 370.477
WEST		4.580	370.500
CK BM		3.608	371.472
BM	4.573	376.048	371.475
NORTH		5.548	370.500
EAST	4.452	374.934	5.566 370.482
CK TBM		4.517	370.417 =
SOUTH	4.854	375.333	4.455 370.479
WEST	5.042	375.546	4.829 370.504
CK NORTH		5.042	370.504
CK BM		2.067	371.479 = 371.475

2/9/56
SHOBEY
MAETELL
SMITH

60

SYD SPIKE IN P.P. NWLY COR

(Not the 0 one on N)

EARTHQUAKE 6:33 A.M. 2/9/56

BEATTY

OBRYEN

DEC. 22 1958

GAUGE 770

GAUGE - 78^S

3:40 AM

QUIET & COOL

BM	4.780	376.255	371.475
NORTH		5.747	370.508
EAST		5.766	370.489
CK TBM	4.912	375.333	5.834 370.421
SOUTH		4.846	370.487
WEST		4.823	370.510
CK BM		3.857	371.476 = .475

April 14 1958

BEATTY
KELNER

78⁰
GAUGE

CLAIREMONT STANDPIPE
ELEV. OF FOOTINGS
(CONT'D) PG. 60

TBM 4.215 375.384
EAST 4.215 375.384
NORTH 1.021 370.164
WEST 2.200 374.181 370.571
SOUTH 4.352 370.541
CK. TBM
CK.

TBM 4.133 375.608 371.475
NORTH 5.108 370.500 .478
WEST 4.332 374.835 5.105 370.503 .500
SOUTH 4.356 370.479 .477
CK. TBM 5.019 375.439 4.415 370.420 = 370.381
EAST 4.952 370.487 .479
CK. TBM 3.962 371.477 = 371.475
BM 3.990 375.465 371.475
WEST. 4.956 370.509
SOUTH. 4.978 370.487
TBM. 6.155 376.572 5.048 370.417
EAST 6.086 370.486
NORTH 6.067 370.506
5.104 371.268 = 371.475

ERROR
OMIT

9/16/57
SHOREY
KEMP
SMITH

(OVERCAST & COOL)

61

TIME: 10:20 A.M.

N.E. COR. VALVE CHAMBER GAUGE - 77^E

□ SPIKE IN P.P. NWLY. COR.

CHISEL □ CONC. VAULT (SEE PG. 53)

□ SPIKE IN P.P.

NOV 20 1958
BEATTY
O'BRIEN

GAUGE 78^E

(CONT'D PG. 60) (CONT'D PG. 78)

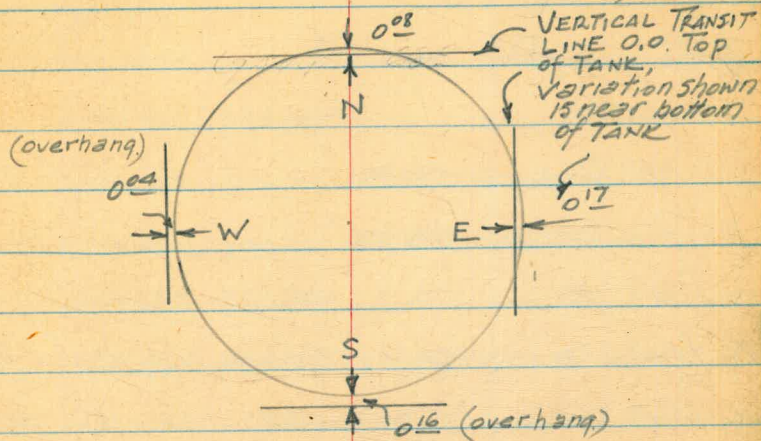
CATALINA STANDPIPE
Cont'd from pg. 49

GAUGE 68⁰

12/20/55 BEATTY
SMITH

62

BM	4.527	387.687	383.160	
CK TBM		4.328	383.359	= 382.756
WEST		4.732	382.955	
SOUTH	3.207	386.162	4.732	382.955
EAST	2.381	385.338	3.205	382.957
NORTH		2.394	382.944	
CK P	4.643	388.006	1.975	383.367 = 383.356
CK BM		.841	383.165	383.160



April 2 1958
BEATTY-HENKE

2/9/56 SHUBBY
MARTELL
SMITH

12:15 P.M. Windy & Cool
EARTHQUAKE 6:33 A.M. 2/9/56

GAUGE 62⁹

BM	4.878	388.038	383.160	
WEST		5.104	382.934	
SOUTH	3.807	386.765	5.100	382.938
EAST	2.099	385.037	3.827	382.938
NORTH	3.121	386.044	2.114	382.923
CK TBM	4.210	387.557	2.697	383.347
CK WEST		4.616	382.941	
CK BM		4.387	383.170	

BM	4.387	387.547	383.160	
WEST		4.616	382.931	
SOUTH	3.531	386.462	4.616	382.931
EAST	1.868	384.908	3.530	382.938
NORTH	2.967	385.882	1.884	382.918
		2.722	383.162	

CATALINA STANDPIPE
(Cont'd.)

GAUGE 670

BM	4.447	387.607	383.160	CONC MON
WEST		4.678	382.929	
SOUTH	4.006	386.940	4.673	382.934
EAST	2.597	385.531	4.006	382.934
North		2.614	382.917	
CK TBM	3.677	387.012	2.196	383.335 = ^{on NW} COR. VAL SHAPE
CK BM		3.854	383.158	= 383.160

GAUGE 665 FEB. 15, 1956 BEATTY SMITH
6.04 Earthquake 5:41 pm 2/14/56

BM	4.404	387.564	383.160	CONC MON
WEST		4.635	382.929	
TBM		4.226	383.338	^{on} CHAMP
SOUTH	3.470	386.404	4.630	382.934
EAST	2.768	385.702	3.470	382.934
NORTH		2.785	382.917	
TBM	4.334	387.671	2.365	383.337 = 383.338
CK WEST		4.742	382.929	
CK BM		4.510	383.161	= 383.160

FEB 14 1956 3:30 pm.
BEATTY SMITH 5th Earthquake 10:40 am.

67.

Sept. 13 1956
Beatty
O'Brien

GAUGE 580

Now
Painted
392.17 (?)

BM	5080	388.240	383.160	
CK TBM		4.876	383.364	
WEST		5.284	382.956	
SOUTH	4.232	387.192	5.280	382.960
EAST	2.302	385.262	4.232	382.960
North		2.315	382.947	
CK TBM		1.900	383.362	

MARCH, 6 1957
BEATTY SMITH

GAUGE 61.0

BM	4.551	387.711	383.160	
CK TBM		4.350	383.361	
WEST		4.760	382.951	
SOUTH	3.690	386.649	4.752	382.959
EAST	2.118	385.079	3.688	382.961
NORTH		2.133	382.946	
CK TBM		1.718	383.361	

CATALINA STANDPIPE
(CONT'D)

	4.958	387.918	282.160	
TBM	4.528	387.888	383.356	
WEST	4.938	382.946		
SOUTH	4.935	382.949		
BM	4.758	387.918	383.160	
WEST	4.985	382.933		
SOUTH	3.286	386.221	4.983	382.935
EAST	2.153	385.085	3.289	382.932
NORTH			2.170	382.915
	4.523	387.858	1.750	383.335
			4.703	383.755 = 383.160
April 2 1958	BEATTY HENKE (see pg. 62 for PLUMB)		GAUGE 695	
BM	2.690	387.850	383.160	
CK TBM		4.496	383.354 = 383.356	
WEST		4.906	382.944	
SOUTH	4.266	387.214	4.902	382.948
EAST	2.931	385.878	4.267	382.947
North	3.247	386.177	2.948	382.930
CK TBM	4.440	387.794	2.823	383.354 = 383.356
CK WEST		4.828	382.946	
CK BM		4.629	383.165 = 383.160	
(GROUND SATURATED)				

16 SEP 1957
WARM - WINDY
2:10 - GAUGE 67
KEMP
SMITH

Nov. 20 1958
BEATTY
OBRIEN

GAUGE 575

TBM	4.810	388.166		383.356
WEST			5.220	382.946
SOUTH	4.068	387.017	5.217	382.949
EAST	2.537	385.487	4.067	382.950
NOR			2.550	382.937
CK TBM			2.130	383.357 = 383.356
DEC. 22 1958 BEATTY ✓ OBRIEN				
TBM	4.672	388.028		383.356
WEST			5.080	382.928
SOUTH	3.942	386.894	5.076	382.952
EAST	3.088	386.040	3.942	382.952
NORTH			3.104	382.936
CK BM			2.687	383.353 = .356

(CONT'D) ON P. 65

JULY 10, 1959

9:00 A.M.

SHOREY
O'BRIENGAUGE 68⁰ FT.(SEE NEW F.B. FOR LATER ELEV'S.)
CATALINA STANDPIPE F.B.

TBM 4.379 387.735 383.356

WEST

SOUTH 4.503 387.454 4.784 382.951

EAST 3.387 386.335 4.506 382.948

NORTH 4.394 387.329 3.400 382.935

CK. WEST 4.380 382.949

CK. TBM 3.972 383.357 = 383.356

CATALINA STANDPIPE

DEC 1, 1959

10:00 AM

SHOREY
KEMP
O'BRIENGAUGE 59⁷ FT

TBM 4.832 388.188 383.356

WEST 5.238 382.950

SOUTH 4.068 387.022 5.234 382.954

EAST 3.170 386.126 4.066 382.956

NORTH 3.672 386.614 3.184 382.942

CK WEST 3.660 382.954 = 382.950

CK TBM 3.253 383.361 = 383.356

REDWOOD VILLAGE
STAND PIPE
cont'd from pg 58

2/15/56 3:00 pm Beauty-Smith Gauge 1205
Go Earthquake 5:21 pm 2/14/56

BM	1906	469.796	467.890
SOUTH		5.598	464.198
EAST	4.154	468.330	5.620 464.176
NORTH	4.025	468.182	4.173 464.157
WEST	6.064	470.228	4.018 464.164
CK South		6.031	464.197 = 464.198
CK BM		2.336	467.892 = 467.890

9/12/56 3:15 pm Gauge 120 @ start
Beauty 115 @ finish (7)
O'Brien

BM	2.213	470.103	467.890
SOUTH		5.893	464.210
CK TBM (pg 51)		6.727	463.376 = 463.369
EAST	4.374	468.565	5.912 464.191
NORTH	4.250	468.425	4.394 464.191
WEST	6.014	470.193	4.246 464.179
CK South		5.982	464.211
CK BM		2.303	467.890

MAR 7 1957
BEATTY
SMITH

Gauge 1235

BM	1.696	469.586	467.890
SOUTH		5.377	464.209
EAST		5.396	464.190
CK TBM	5.021	468.399	6.208 463.378
NORTH		4.228	464.171
WEST	6.113	470.290	4.222 464.177
CK South		6.080	464.210
CK BM		2.399	467.891

COOL-WINDY
3:45
GAUGE 114

16 SEP 1957
KEMP
SMITH

B.M.	1.725	469.685	467.890
SOUTH		5.476	464.209
WEST	4.337	468.575	5.507 464.178
NORTH	3.556	467.725	4.346 464.169
EAST	5.880	470.066	3.539 464.186
		2.180	467.886

REDWOOD VILLAGE STANDPIPE

RAINY
April 7, 1958 Beatty & Henke GAUGE 119°

TBM 5.230 468.597 463.363

EAST 5.717 469.889 4.425 464.172

SOUTH 5.111 469.303 5.697 464.192

WEST 4.867 469.027 5.143 464.160

NORTH 4.874 464.153

CK TBM 5.664 463.363 = 463.363

DEC. 22 1938

BEATTY O'BRIEN GAUGE 112°

BM 2129 470.019 467.890

SOUTH 5.810 464.209

EAST 5.829 464.190

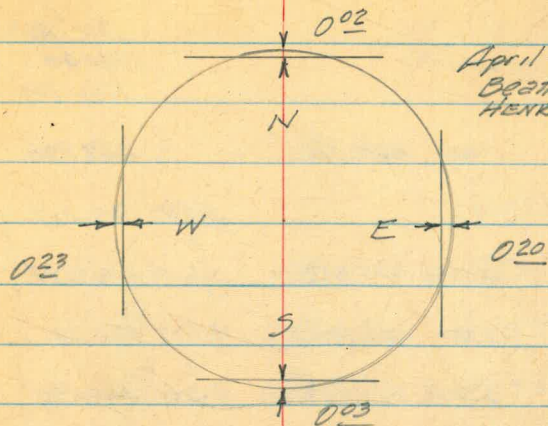
CK TBM 5.274 468.651 6.642 463.977 = .363
- .376

NORTH 4.481 464.170

WEST 5.842 470.018 4.475 464.176

CK NOR. 5.809 464.209

CK BM 2129 467.889



April 11 1958
Beatty
HENKE

WINDY
APRIL 16 1959

SHOREY
KEMP
HALBERT

GAUGE 114°

BM 2.030 467.920 467.890

EAST 5.729 464.191

SOUTH 5.710 464.210

TP 5.937 462.086 6.771 463.149

WEST 4.910 464.176

NORTH 4.913 464.173

TP 6.342 462.509 5.919 463.167

CK BM 1.619 467.890 = .890

REDWOOD VILLAGE STANDPIPE

SHOREY
KEMP
PULLEN

DEC 2, 1959
GAUGE 110'
1:00 PM

BM.	1.922	469.812	467.890
SOUTH		5.595	464.217
EAST	4.490	468.688	5.614 464.198
NORTH	4.309	468.490	4.507 464.181
WEST	5.798	469.988	4.300 464.190
CK SOUTH		5.763	464.225 = 464.225
CK BM		2.094	467.894 = 467.890

SHOREY
O'BRIEN

JAN. 22, 1960
GAUGE 123'
1:00 P.M.

BM	1.872	469.762	467.890
South		5.544	464.218
WEST	4.385	468.569	5.578 464.184
NORTH	4.156	468.334	4.391 464.178
EAST	6.094	470.293	4.135 464.199
CK South		6.075	464.218
CK BM.		2.399	467.894 = 890

REDWOOD VILLAGE
STANDPIPE

68.

SHOREY

4/19/60
GAUGE 117 1/2

BM.	2.178	470.068	467.890
South			5.851 464.217
EAST	4.054	470 252	5.870 464 198
WEST			
NORTH	4.046	470 226	4.072 464.180
WEST	6.286	470 466	4.035 464.191
CK. South			6.250 464.216
CK B.M.	.216 = .217		2.581 467.885
			.885 = .890

(SEE NEW F.B. FOR LATER ELEV'S.)
(REDWOOD VILLAGE STANDPIPE F.B.)

College Ranch Standpipe
Elev.s of Footing.

Sept. 11, 1956
Beatty - Paulson

(NOTE: TANK EMPTY)

	CITY Mon. S. side	6.46	628.55		622.09		
Z	CK BM #70 MURRAY BLVD 27' E Body LAKE (PARK)	5.00	627.97	6.18	622.37		
	P	9.46	634.11	3.32	624.65		
Z	CK BM #72 BP Nly Conc. Culv.	4.69	637.23	1.57	632.54 = ?		
A	P	11.75	647.86	1.12	636.11		
V	P	13.14	661.00	0.00	647.86		
C	P	9.24	661.08	9.16	651.84		
C	CK TBM	13.12	669.71	4.49	656.59 = 656.58 FD MKD on STK		
	P	13.18	682.38	0.51	669.20		
	P	13.20	695.45	0.13	682.25		
	P	12.86	703.86	4.45	691.00		
	P	12.57	715.22	1.21	702.65		
S					9/12/56 Beatty O'Brien		
V	P	13.05	727.47	0.80	714.42		
A	P	12.91	740.26	0.12	727.35		
E	P	3.20	743.21	0.25	740.01		
C	SET TBM # NE Cor. Val. Chamb.			2.23	740.98		

TBM	3.745	741.725		740.98
North #			3.803	740.922
WEST #	3.461	744.392	3.794	740.931
SOUTH #	4.342	745.270	3.464	740.928
EAST #	3.771	744.698	4.343	740.927
CK North #			3.777	740.921 = 922
CK TBM	1.37	742.35	3.716	740.982 = .980
P	0.40	729.44	13.31	729.04
P	0.43	716.51	13.36	716.08
P	6.07	709.77	12.81	703.70
P	0.00	696.58	13.19	696.58
P	0.27	684.34	12.51	684.07
P	0.08	671.12	13.30	671.04
P	3.30	661.63	12.79	658.33
CK TBM			5.06	656.57 = 656.58 (FD MKD on STK)

CK TBM,
2nd P NW Cor. Dry of
School SITE, 750' WLY
of Standpipe.

COLLEGE RANCH
STAND PIPE

(TANK HAS BEEN FULL) — GAUGE 235

TBM	3.420	744.140	740.980
NOR	3.492	740.908	740.982
WEST	4.032	744.955	3.477 740.923 740.921
SOUTH	3.863	744.788	4.030 740.925 740.922
EAST	3.623	744.559	3.872 740.916 740.927
CK NOR	3.650	740.909	
CK TBM	3.578	744.981	

MAR. 8 1957
BEATTY
SMITH

GAUGE 90°

BM	3.365	744.915	740.980
NORTH	3.445	740.900	
WEST	4.110	745.024	3.431 740.914
SOUTH	3.858	744.772	4.110 740.914
EAST	3.162	744.073	3.861 740.911
CK NORTH	3.171	740.902	
CK BM	3.091	740.982	

10/30/56
BEATTY
OBRIEN
2:00 pm.

70

GAUGE 77°

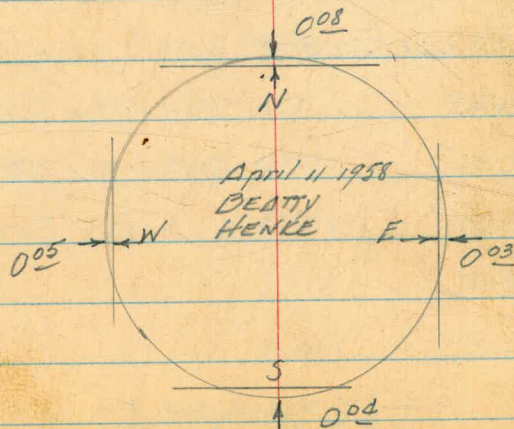
16 SEP 57

12:30 PM

KEMP
SMITH

COOL - WINDY

TBM	3.178	744.158	740.980
NORTH	3.258	740.900	
EAST	3.212	744.122	3.248 740.910
SOUTH	4.161	745.074	3.207 740.915
WEST	4.162	740.914	
CK BM	4.092	740.984 = 740.980	



COLLEGE RANCH STANDPIPE
Ground Saturated

Rainey!
April 7 1958

Beatty
Henke

Gauge 815

TBM	4.243	745.223	720.980
North		4.326	740.897
WEST	4.819	745.729	4.313 740.910
SOUTH	4.933	745.804	4.818 740.911
EAST	4.307	745.210	4.937 740.907
CK NORTH		4.316	740.898
		4.235	740.979 = 740.980

DEC. 22 1958
BEATTY
O'BRIEN

Gauge 725

BM	3.806	744.786	740.980
NORTH		3.888	740.898
WEST	4.498	745.409	3.875 740.911
SOUTH	4.230	745.143	4.496 740.913
EAST	4.044	744.953	4.234 740.909
CK NOR		4.053	740.900
CK BM		3.972	740.981 = .980

COLLEGE RANCH STANDPIPE 71

APR 8, 1959

Gauge 915

SHOREY
KEMP
HOLBERT

TBM	3.861	744.841	740.980
WEST		3.928	740.913
SOUTH		3.926	740.915
TP	5.158	744.808	5.191 739.650
EAST		3.902	740.906
NORTH		3.910	740.898
CK BM		3.826	740.982 = .980

SHOREY
O'BRIEN

JAN 22, 1960

Gauge 962
3 P.M.

TBM	4.000	744.980	740.980
NORTH		4.085	740.895
WEST	4.731	745.640	4.071 740.909
SOUTH	4.327	745.238	4.729 740.911
EAST	3.843	744.752	4.329 740.909
CK NORTH		3.851	740.901 = .895
CK BM.		3.767	740.975 = .980

(SEE NEW F.B. FOR LATER ELEV'S)
(COLLEGE RANCH STANDPIPE F.B.)

SHOREY
DERRICK
STATION
May 17 1957

CALLAN STANDPIPE
ELEV. S ON FOUNDATION
(NO STEEL OF S.P. ON FON. YET)

BP. NEW
COR. NAVY
A 57A

BM	2.223	436.983	134.76	
NORTH BP.		3.981	433.002	
EAST BP		3.988	432.995	
SOUTH BP		3.986	432.997	
WEST BP		3.989	432.994	
CK BM	2.262	437.022	2.222	434.761 = 434.760
NORTH BP.		4.021	433.001	
EAST BP		4.028	432.994	
SOUTH BP		4.024	432.998	
WEST BP.		4.027	432.995	
CK BM		2.262	434.760	

B.M.	4.174	438.934		434.760
SOUTH T.P.		5.930	433.004	
EAST T.P.	4.100	437.106	5.928	433.006
NORTH T.P.	3.908	436.921	4.093	433.013
WEST	3.075	436.086	3.910	433.011
CK.B.M.		1.326	434.760 =	434.760

KEMP
SMITH
2:30
CALLAN STANDPIPE
(CONT'D) No WATER
9-17-57
COOL, WINDY

STANDPIPE COMPLETE BUT NOT PAINTED

BM	2.246	437.006		434.760
SOUTH		4.001	433.005	
EAST	4.159	437.163	4.002	433.004
NORTH	3.604	436.62	4.155	433.008
WEST	3.463	436.480	3.595	433.017
CK BM		1.706		774
BM	2.163	436.923		434.760
SOUTH		3.916	433.007	+0.005
EAST	3.980	436.985	3.918	433.005 +0.011
NORTH	3.495	436.504	3.976	433.009 +0.008
WEST	3.280	436.292	3.492	433.012 +0.017

CK BM 1.530 434.762 = 434.760
WEST KELLHOFER
WILLIAMS 9/20/57
VERY WINDY

12/12/57 SHOREY
ELEV. AT TOP OF STRAIGHT SECTION
OF LADDER OF STANDPIPE 548.70
ELEV. AT TOP OF CIRCULAR GUARD
AROUND LADDER 554.74

CALLAN STAND PIPE
ELEV. 5 ON FOUNDATION
24' FT. WATER & Filling.

DEC. 19, 1958
Beatty, J
O'Brien.

SHOREY & party. 2:00 PM JAN 21 1958

GAUGE 110'

BM	3.195	437.955	434.76	BP on NE FTG. of Range Tower
SOUTH BP		4.956	432.999	orig. .997
EAST BP		4.958	432.997	orig. .995
TP	3.488	436.445	4.998	432.957
NORTH BP		3.438	433.007	orig. .002
WEST BP		3.444	433.001	orig. .994
TP	6.363	437.424	5.384	431.061
CK SOUTH BP		4.427	432.997	
CK BM		2.662	434.762 = 434.76	

BM	2.520	437.280		434.760
WEST		4.289		432.991
SOUTH	4.661	437.655	4.286	432.994
EAST	6.069	439.064	4.660	432.995
NORTH		6.067		432.997 ^{.004}
CK BM		4.303		434.761 = .760

(Copied From B-4)
1-22 W.H.B.

BEATTY - O'BRIEN Nov. 20 1958 GAUGE 106'

SHOREY KEMP - HALBERT Apr. 7, 1959 - GAUGE 116' 2:00 PM

BM	2886	437.646		434.76
SOUTH		4.655	432.991	
EAST	4.874	437.865	4.665	432.991
Nor.	4.292	437.285	4.872	432.993
WEST	4.111	437.099	4.297	432.988
CK SOUTH		4.106	432.993 = 432.991	
CK BM		2.334	434.765 = 434.760	

BM	3.025	437.785		434.760
SOUTH		4.800		432.985
EAST		4.799		432.986
TP	4.093	437.105	4.773	433.012
NORTH		4.117		432.988
WEST		4.123		432.982
TP	5.241	437.699	4.647	432.458
CK SOUTH		4.713		{ 432.986 = 432.985
CK BM		2.939		{ 434.760 = 434.760

CALLAN STANDPIPE
ELEV'S ON FOUNDATION (CONT'D)

SHOREY
KEMP T
O'BRIEN †

440.647
6.119
434.528

74

DEC 1, 1959

GAUGE 110⁵

TRIANGULATION STATION "HIWAY" - W. SIDE 101 HWY. E
ABOUT MIDWAY BETWEEN THE REAR U.S. NAVY RANGE TOWERS
CONC. MON. U.S.C. & G.S. DISK. - U.S.G.S. DATUM

BM

439.485

CK. BRASS PLUG IN CONC. FTG.
OF SOUTH RANGE TOWER

440.647

U.S.G.S. DATUM

- 6.119

434.528

CITY DATUM

BM. 2.829 437.589

434.760

ELEV. USED FOR CALLAN STANDPIPE (SAME POINT AS
ABOVE)

SOUTH

4.597 432.992

EAST 4.900 437.890 4.599 432.990

NORTH 3.923 436.920 4.893 432.997

WEST 4.389 437.383 3.926 432.994

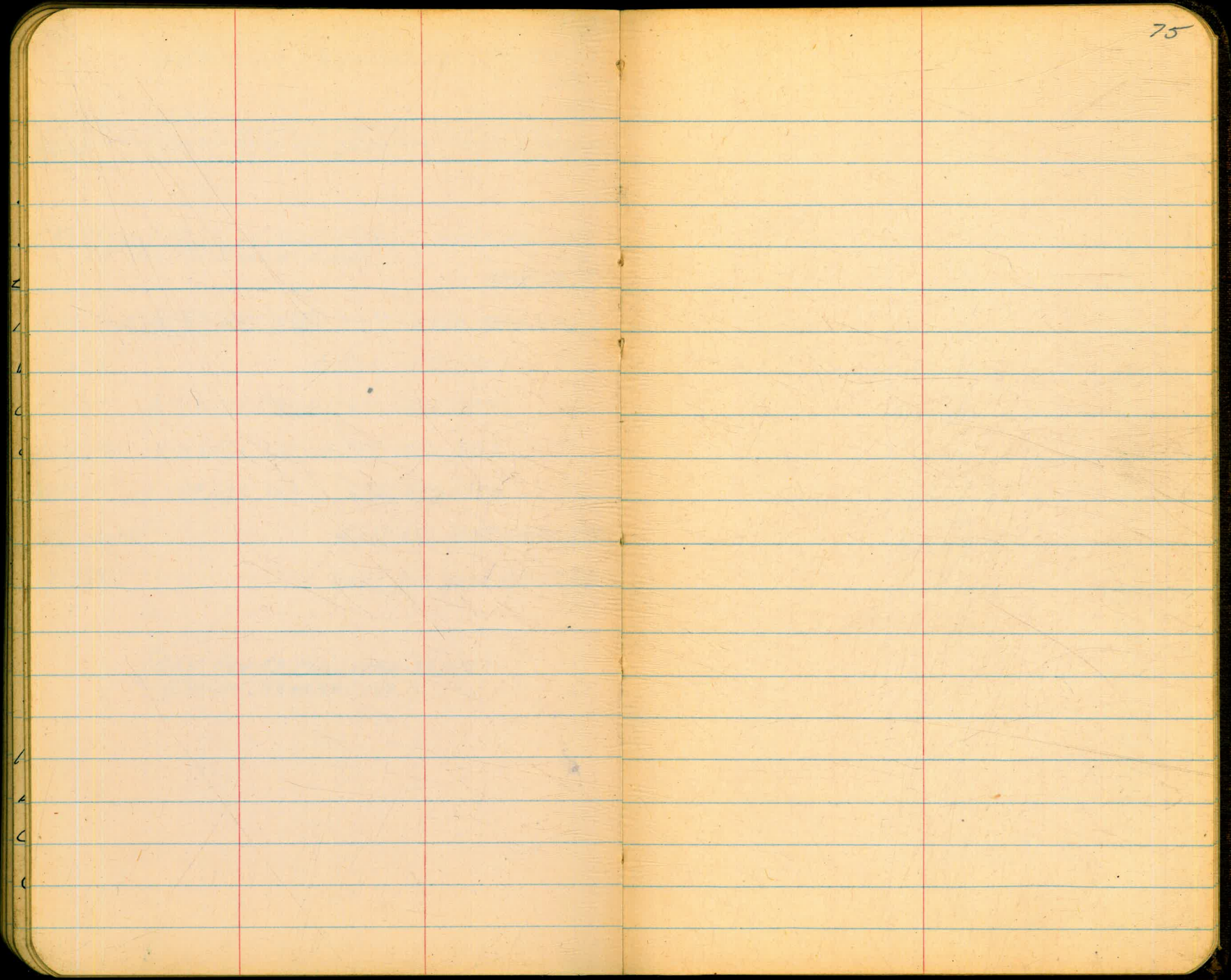
CK SOUTH

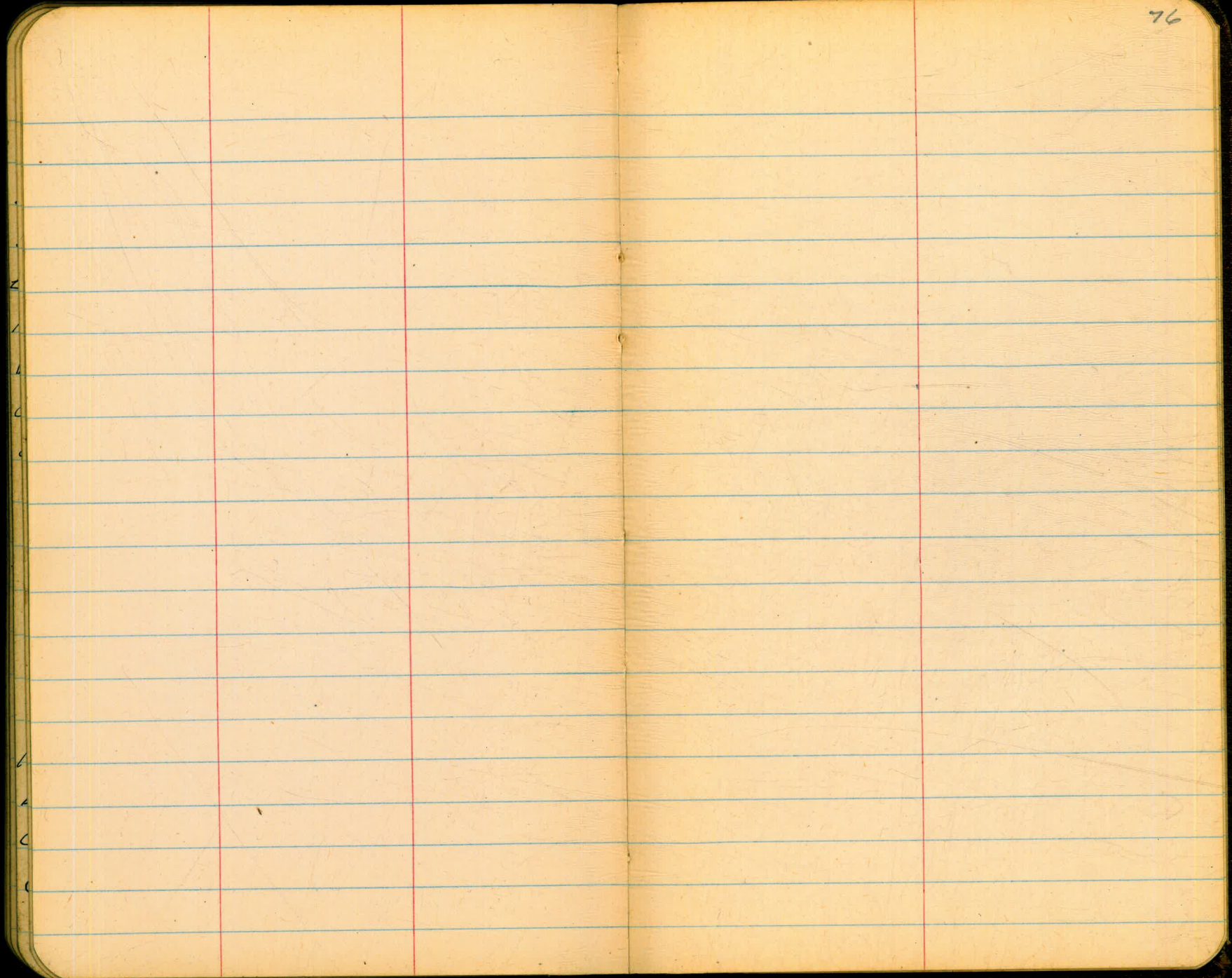
4.388 432.995 = 432.992

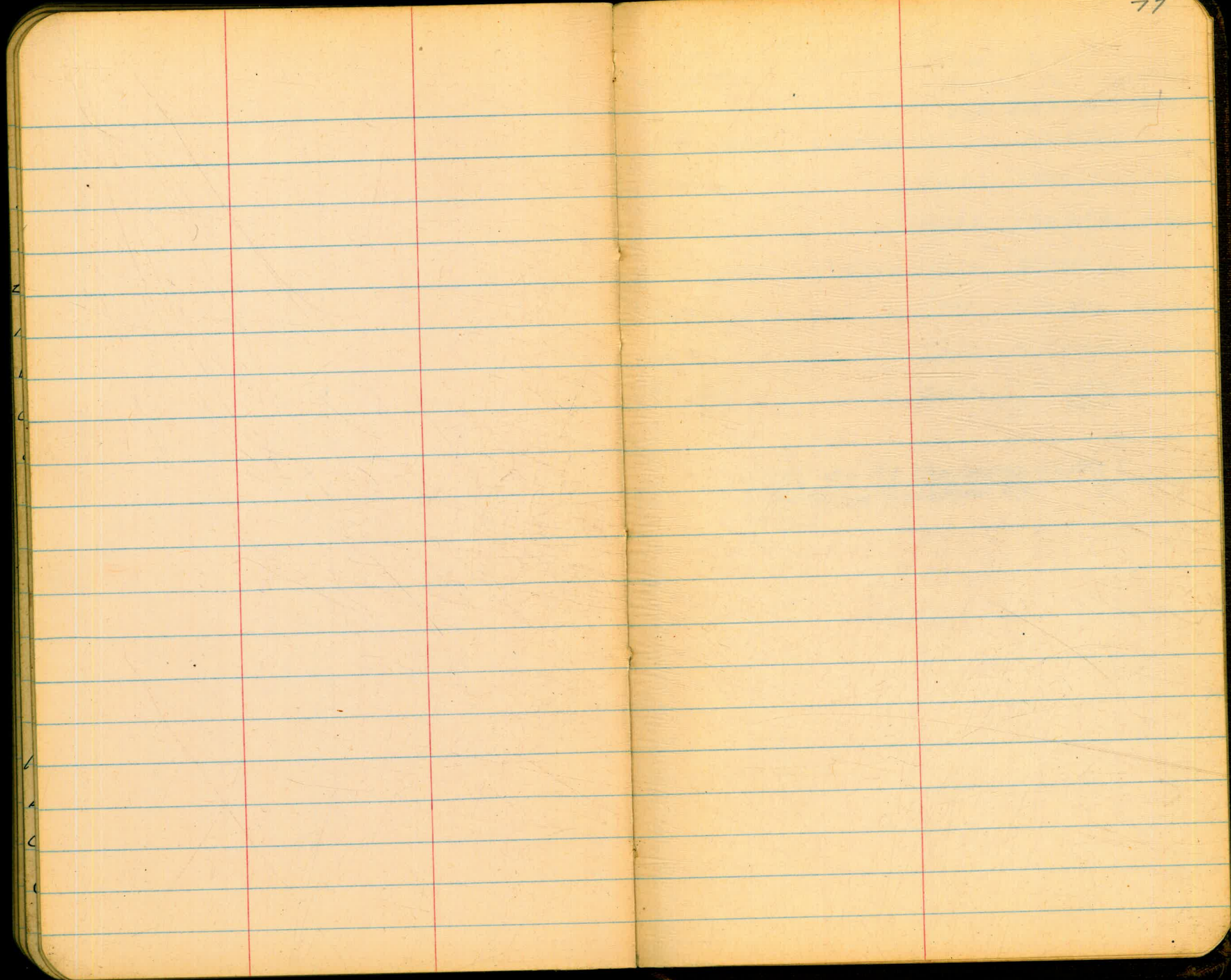
CK BM.

2.623 434.760 = 434.760

(SEE NEW F.B. FOR LATER ELEV'S)
(CALLAN STANDPIPE F.B.)







SHOREY CLAIREMONT STANDPIPE (78)
ELEV. OF FTG.
KEMP (CONT'D FROM Pg. 61)
HALBERT (GAUGE 76' 3:00PM)
4-7-59

ASPIRE IN P.P.N.W.LY. COR.

BM 5.009	376.484		371.475	
NORTH		5.972	370.512	+0.006
EAST		5.992	370.492	+0.006
TP 5.066	375.521	6.029	370.455	
SOUTH		5.031	370.490	+0.003
WEST		5.007	370.514	+0.005
CK. BM		4.043	{ 371.478 = 371.475	

(SEE NEW F.B. FOR LATER ELEV'S)
(CLAIREMONT STANDPIPE F.B.)

464.194
3.667

467.861
3.687

464.174
3.727

467.901
3.720

464.181
5.281

469.462
5.257

464.205
1.582

467.88

464.194 E
4.582

468.776
4.599

464.177 N
4.292

468.469
4.284

464.185 W
5.040

469.225
5.014

464.211 S
1.339

467.887 BM

0
1
2
3
4
5
6
7
8
9
10
11
12
13
14
15
16
17
18
19
20
21
22
23
24
25
26
27
28
29
30
31
32
33
34
35
36
37
38
39
40
41
42
43
44
45
46
47
48
49
50

Please Return to
 City of San Diego Water Dept.
 Room 903 Civic Center

6924

433.017
 3463

 480

4802 9.50
 5238
 5233
 4.068
 4.066
 3.170
 3.184
 3.449
 3.026
 3.672

382.942
 3.672

 386.614
 3.660

 382.954
 386.614
 3.253

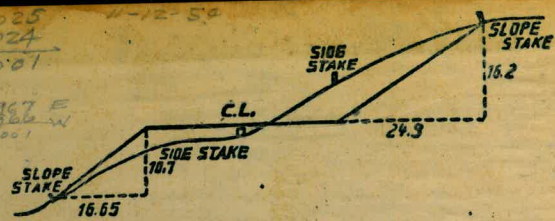
 383.361

371.475
 361

 375.11646
 370.477
 4.644
 370.447
 4.669
 387.022
 386.390
 3.026

 389.416
 375.898
 5.009
 370.449
 375.898
 3.432
 370.466

W. 2.025
 W. 2.024
 Diff. 2.001



DISTANCES FROM SIDE STAKES FOR CROSS-SECTIONING.
 SLOPE 1 1/2 TO 1. ROADWAY OF ANY WIDTH.

	0	.1	.2	.3	.4	.5	.6	.7	.8	.9	
0	0.00	0.15	0.30	0.45	0.60	0.75	0.90	1.05	1.20	1.35	0
1	1.50	1.65	1.80	1.95	2.10	2.25	2.40	2.55	2.70	2.85	1
2	3.00	3.15	3.30	3.45	3.60	3.75	3.90	4.05	4.20	4.35	2
3	4.50	4.65	4.80	4.95	5.10	5.25	5.40	5.55	5.70	5.85	3
4	6.00	6.15	6.30	6.45	6.60	6.75	6.90	7.05	7.20	7.35	4
5	7.50	7.65	7.80	7.95	8.10	8.25	8.40	8.55	8.70	8.85	5
6	9.00	9.15	9.30	9.45	9.60	9.75	9.90	10.05	10.20	10.35	6
7	10.50	10.65	10.80	10.95	11.10	11.25	11.40	11.55	11.70	11.85	7
8	12.00	12.15	12.30	12.45	12.60	12.75	12.90	13.05	13.20	13.35	8
9	13.50	13.65	13.80	13.95	14.10	14.25	14.40	14.55	14.70	14.85	9
10	15.00	15.15	15.30	15.45	15.60	15.75	15.90	16.05	16.20	16.35	10
11	16.50	16.65	16.80	16.95	17.10	17.25	17.40	17.55	17.70	17.85	11
12	18.00	18.15	18.30	18.45	18.60	18.75	18.90	19.05	19.20	19.35	12
13	19.50	19.65	19.80	19.95	20.10	20.25	20.40	20.55	20.70	20.85	13
14	21.00	21.15	21.30	21.45	21.60	21.75	21.90	22.05	22.20	22.35	14
15	22.50	22.65	22.80	22.95	23.10	23.25	23.40	23.55	23.70	23.85	15
16	24.00	24.15	24.30	24.45	24.60	24.75	24.90	25.05	25.20	25.35	16
17	25.50	25.65	25.80	25.95	26.10	26.25	26.40	26.55	26.70	26.85	17
18	27.00	27.15	27.30	27.45	27.60	27.75	27.90	28.05	28.20	28.35	18
19	28.50	28.65	28.80	28.95	29.10	29.25	29.40	29.55	29.70	29.85	19
20	30.00	30.15	30.30	30.45	30.60	30.75	30.90	31.05	31.20	31.35	20
21	31.50	31.65	31.80	31.95	32.10	32.25	32.40	32.55	32.70	32.85	21
22	33.00	33.15	33.30	33.45	33.60	33.75	33.90	34.05	34.20	34.35	22
23	34.50	34.65	34.80	34.95	35.10	35.25	35.40	35.55	35.70	35.85	23
24	36.00	36.15	36.30	36.45	36.60	36.75	36.90	37.05	37.20	37.35	24
25	37.50	37.65	37.80	37.95	38.10	38.25	38.40	38.55	38.70	38.85	25
26	39.00	39.15	39.30	39.45	39.60	39.75	39.90	40.05	40.20	40.35	26
27	40.50	40.65	40.80	40.95	41.10	41.25	41.40	41.55	41.70	41.85	27
28	42.00	42.15	42.30	42.45	42.60	42.75	42.90	43.05	43.20	43.35	28
29	43.50	43.65	43.80	43.95	44.10	44.25	44.40	44.55	44.70	44.85	29
30	45.00	45.15	45.30	45.45	45.60	45.75	45.90	46.05	46.20	46.35	30
31	46.50	46.65	46.80	46.95	47.10	47.25	47.40	47.55	47.70	47.85	31
32	48.00	48.15	48.30	48.45	48.60	48.75	48.90	49.05	49.20	49.35	32
33	49.50	49.65	49.80	49.95	50.10	50.25	50.40	50.55	50.70	50.85	33
34	51.00	51.15	51.30	51.45	51.60	51.75	51.90	52.05	52.20	52.35	34
35	52.50	52.65	52.80	52.95	53.10	53.25	53.40	53.55	53.70	53.85	35
36	54.00	54.15	54.30	54.45	54.60	54.75	54.90	55.05	55.20	55.35	36
37	55.50	55.65	55.80	55.95	56.10	56.25	56.40	56.55	56.70	56.85	37
38	57.00	57.15	57.30	57.45	57.60	57.75	57.90	58.05	58.20	58.35	38
39	58.50	58.65	58.80	58.95	59.10	59.25	59.40	59.55	59.70	59.85	39
40	60.00	60.15	60.30	60.45	60.60	60.75	60.90	61.05	61.20	61.35	40
41	61.50	61.65	61.80	61.95	62.10	62.25	62.40	62.55	62.70	62.85	41
42	63.00	63.15	63.30	63.45	63.60	63.75	63.90	64.05	64.20	64.35	42
43	64.50	64.65	64.80	64.95	65.10	65.25	65.40	65.55	65.70	65.85	43
44	66.00	66.15	66.30	66.45	66.60	66.75	66.90	67.05	67.20	67.35	44
45	67.50	67.65	67.80	67.95	68.10	68.25	68.40	68.55	68.70	68.85	45
46	69.00	69.15	69.30	69.45	69.60	69.75	69.90	70.05	70.20	70.35	46
47	70.50	70.65	70.80	70.95	71.10	71.25	71.40	71.55	71.70	71.85	47
48	72.00	72.15	72.30	72.45	72.60	72.75	72.90	73.05	73.20	73.35	48
49	73.50	73.65	73.80	73.95	74.10	74.25	74.40	74.55	74.70	74.85	49
50	75.00	75.15	75.30	75.45	75.60	75.75	75.90	76.05	76.20	76.35	50

THE NATIONAL BLANK BOOK COMPANY
 HOLYOKE MASSACHUSETTS
 NEW YORK CHICAGO BOSTON SAN FRANCISCO