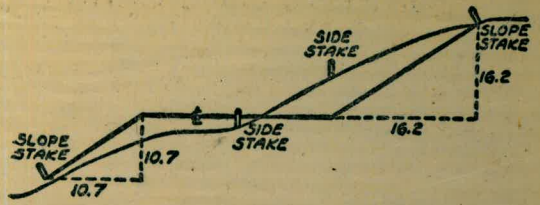


W

876

Please Return to
 City of San Diego Water Dept.
 Room 903 Civic Center



DISTANCES FROM SIDE STAKES FOR CROSS-SECTIONING
 SLOPE 1 TO 1. ROADWAY OF ANY WIDTH

	0	.1	.2	.3	.4	.5	.6	.7	.8	.9	
0	0.00	0.10	0.20	0.30	0.40	0.50	0.60	0.70	0.80	0.90	0
1	1.00	1.10	1.20	1.30	1.40	1.50	1.60	1.70	1.80	1.90	1
2	2.00	2.10	2.20	2.30	2.40	2.50	2.60	2.70	2.80	2.90	2
3	3.00	3.10	3.20	3.30	3.40	3.50	3.60	3.70	3.80	3.90	3
4	4.00	4.10	4.20	4.30	4.40	4.50	4.60	4.70	4.80	4.90	4
5	5.00	5.10	5.20	5.30	5.40	5.50	5.60	5.70	5.80	5.90	5
6	6.00	6.10	6.20	6.30	6.40	6.50	6.60	6.70	6.80	6.90	6
7	7.00	7.10	7.20	7.30	7.40	7.50	7.60	7.70	7.80	7.90	7
8	8.00	8.10	8.20	8.30	8.40	8.50	8.60	8.70	8.80	8.90	8
9	9.00	9.10	9.20	9.30	9.40	9.50	9.60	9.70	9.80	9.90	9
10	10.00	10.10	10.20	10.30	10.40	10.50	10.60	10.70	10.80	10.90	10
11	11.00	11.10	11.20	11.30	11.40	11.50	11.60	11.70	11.80	11.90	11
12	12.00	12.10	12.20	12.30	12.40	12.50	12.60	12.70	12.80	12.90	12
13	13.00	13.10	13.20	13.30	13.40	13.50	13.60	13.70	13.80	13.90	13
14	14.00	14.10	14.20	14.30	14.40	14.50	14.60	14.70	14.80	14.90	14
15	15.00	15.10	15.20	15.30	15.40	15.50	15.60	15.70	15.80	15.90	15
16	16.00	16.10	16.20	16.30	16.40	16.50	16.60	16.70	16.80	16.90	16
17	17.00	17.10	17.20	17.30	17.40	17.50	17.60	17.70	17.80	17.90	17
18	18.00	18.10	18.20	18.30	18.40	18.50	18.60	18.70	18.80	18.90	18
19	19.00	19.10	19.20	19.30	19.40	19.50	19.60	19.70	19.80	19.90	19
20	20.00	20.10	20.20	20.30	20.40	20.50	20.60	20.70	20.80	20.90	20
21	21.00	21.10	21.20	21.30	21.40	21.50	21.60	21.70	21.80	21.90	21
22	22.00	22.10	22.20	22.30	22.40	22.50	22.60	22.70	22.80	22.90	22
23	23.00	23.10	23.20	23.30	23.40	23.50	23.60	23.70	23.80	23.90	23
24	24.00	24.10	24.20	24.30	24.40	24.50	24.60	24.70	24.80	24.90	24
25	25.00	25.10	25.20	25.30	25.40	25.50	25.60	25.70	25.80	25.90	25
26	26.00	26.10	26.20	26.30	26.40	26.50	26.60	26.70	26.80	26.90	26
27	27.00	27.10	27.20	27.30	27.40	27.50	27.60	27.70	27.80	27.90	27
28	28.00	28.10	28.20	28.30	28.40	28.50	28.60	28.70	28.80	28.90	28
29	29.00	29.10	29.20	29.30	29.40	29.50	29.60	29.70	29.80	29.90	29
30	30.00	30.10	30.20	30.30	30.40	30.50	30.60	30.70	30.80	30.90	30
31	31.00	31.10	31.20	31.30	31.40	31.50	31.60	31.70	31.80	31.90	31
32	32.00	32.10	32.20	32.30	32.40	32.50	32.60	32.70	32.80	32.90	32
33	33.00	33.10	33.20	33.30	33.40	33.50	33.60	33.70	33.80	33.90	33
34	34.00	34.10	34.20	34.30	34.40	34.50	34.60	34.70	34.80	34.90	34
35	35.00	35.10	35.20	35.30	35.40	35.50	35.60	35.70	35.80	35.90	35
36	36.00	36.10	36.20	36.30	36.40	36.50	36.60	36.70	36.80	36.90	36
37	37.00	37.10	37.20	37.30	37.40	37.50	37.60	37.70	37.80	37.90	37
38	38.00	38.10	38.20	38.30	38.40	38.50	38.60	38.70	38.80	38.90	38
39	39.00	39.10	39.20	39.30	39.40	39.50	39.60	39.70	39.80	39.90	39
40	40.00	40.10	40.20	40.30	40.40	40.50	40.60	40.70	40.80	40.90	40
41	41.00	41.10	41.20	41.30	41.40	41.50	41.60	41.70	41.80	41.90	41
42	42.00	42.10	42.20	42.30	42.40	42.50	42.60	42.70	42.80	42.90	42
43	43.00	43.10	43.20	43.30	43.40	43.50	43.60	43.70	43.80	43.90	43
44	44.00	44.10	44.20	44.30	44.40	44.50	44.60	44.70	44.80	44.90	44
45	45.00	45.10	45.20	45.30	45.40	45.50	45.60	45.70	45.80	45.90	45
46	46.00	46.10	46.20	46.30	46.40	46.50	46.60	46.70	46.80	46.90	46
47	47.00	47.10	47.20	47.30	47.40	47.50	47.60	47.70	47.80	47.90	47
48	48.00	48.10	48.20	48.30	48.40	48.50	48.60	48.70	48.80	48.90	48
49	49.00	49.10	49.20	49.30	49.40	49.50	49.60	49.70	49.80	49.90	49
50	50.00	50.10	50.20	50.30	50.40	50.50	50.60	50.70	50.80	50.90	50

Distance of slope stake from side or shoulder stake for any width roadway, slope 1 to 1. If ground is nearly level, the cut or fill at side stake is located by the double entry method in left column and top row. The number in body of table in same row and column gives distance from side stake to slope stake. If ground is not level estimate the difference in elevation between the side stake and slope stake, lower target by this amount if cut, elevate if fill. Add this amount to cut or fill and find distance in table. Set up rod at this point, and line of sight should cut target. If it does not make the slight adjustment necessary.

TABLE XIII—CORRECTIONS FOR TANGENTS AND EXTERNALS

These corrections are to be added to the approximate values, found by dividing the tangent, or external, for a 1° curve (Table VIII) by the degree of curve, in order to obtain the true tangents, or externals. Intermediate values may be obtained by interpolation.

FOR TANGENTS ADD

Central Angle	DEGREE OF CURVE													
	5°	10°	15°	20°	25°	30°	35°	40°	45°	50°	55°	60°	65°	70°
10°	.03	.06	.09	.13	.16	.19	.22	.25	.28	.31	.34	.38	.42	.46
15°	.04	.10	.14	.19	.24	.29	.34	.39	.45	.51	.53	.58	.63	.68
20°	.06	.13	.19	.26	.32	.39	.45	.51	.58	.65	.72	.79	.84	.90
25°	.08	.16	.24	.33	.40	.49	.58	.67	.75	.83	.90	.99	1.06	1.14
30°	.10	.19	.29	.39	.49	.59	.69	.79	.89	.99	1.09	1.20	1.29	1.39
35°	.11	.22	.34	.47	.58	.69	.79	.81	.92	1.04	1.29	1.42	1.54	1.66
40°	.13	.26	.40	.53	.67	.80	.93	1.06	1.20	1.34	1.49	1.64	1.79	1.94
45°	.15	.30	.44	.60	.76	.91	1.06	1.21	1.37	1.52	1.70	1.87	2.04	2.21
50°	.17	.34	.51	.68	.85	1.02	1.19	1.36	1.54	1.72	1.91	2.10	2.29	2.48
55°	.19	.38	.57	.76	.95	1.14	1.32	1.52	1.72	1.92	2.14	2.35	2.56	2.77
60°	.21	.42	.63	.84	1.05	1.27	1.49	1.71	1.94	2.17	2.38	2.60	2.83	3.07
65°	.23	.46	.69	.93	1.16	1.40	1.64	1.88	2.13	2.38	2.63	2.88	3.13	3.39
70°	.25	.51	.76	1.02	1.28	1.54	1.80	2.06	2.33	2.60	2.88	3.16	3.44	3.72
75°	.27	.56	.83	1.12	1.40	1.69	1.98	2.27	2.57	2.87	3.16	3.47	3.78	4.09
80°	.30	.61	.91	1.22	1.53	1.84	2.15	2.46	2.78	3.10	3.44	3.78	4.12	4.46
85°	.33	.66	1.00	1.33	1.68	2.02	2.36	2.70	3.05	3.40	3.77	4.14	4.55	4.89
90°	.36	.72	1.09	1.45	1.83	2.20	2.57	2.94	3.32	3.70	4.10	4.50	4.91	5.32
95°	.39	.79	1.19	1.55	2.00	2.40	2.80	3.20	3.61	4.02	4.40	4.98	5.38	5.83
100°	.43	.86	1.30	1.74	2.18	2.62	3.06	3.50	3.95	4.40	4.88	5.37	5.85	6.34
110°	.51	1.03	1.56	2.08	2.61	3.14	3.67	4.21	4.76	5.31	5.86	6.43	7.01	7.60
120°	.62	1.25	1.93	2.52	3.16	3.81	4.45	5.11	5.77	6.44	7.12	7.80	8.50	9.22

FOR EXTERNALS ADD

Central Angle	DEGREE OF CURVE													
	5°	10°	15°	20°	25°	30°	35°	40°	45°	50°	55°	60°	65°	70°
10°	.001	.003	.004	.006	.007	.008	.009	.011	.012	.014	.015	.017	.018	.020
15°	.003	.007	.010	.014	.018	.023	.027	.029	.032	.035	.039	.043	.047	.051
20°	.006	.011	.017	.022	.028	.034	.038	.045	.051	.057	.063	.070	.076	.083
25°	.009	.018	.027	.036	.046	.056	.065	.074	.083	.093	.106	.120	.127	.135
30°	.013	.025	.038	.051	.065	.078	.090	.103	.118	.129	.149	.170	.179	.188
35°	.018	.035	.054	.072	.086	.109	.131	.153	.175	.197	.213	.230	.247	.264
40°	.023	.046	.070	.093	.117	.141	.172	.203	.234	.265	.277	.290	.315	.341
45°	.030	.060	.093	.119	.153	.184	.216	.254	.289	.325	.351	.378	.411	.445
50°	.037	.075	.116	.151	.189	.227	.266	.305	.345	.384	.425	.467	.508	.550
55°	.046	.093	.142	.188	.236	.283	.332	.381	.420	.479	.530	.582	.641	.700
60°	.056	.112	.168	.225	.283	.340	.398	.457	.516	.575	.636	.697	.774	.851
65°	.067	.135	.204	.273	.343	.412	.483	.554	.625	.697	.771	.845	.922	1.01
70°	.080	.159	.240	.321	.403	.485	.568	.652	.735	.819	.906	.994	1.08	1.17
75°	.095	.182	.266	.353	.440	.528	.617	.707	.797	.877	.977	1.07	1.18	1.29
80°	.110	.220	.332	.445	.558	.671	.787	.903	1.02	1.13	1.25	1.38	1.50	1.62
85°	.128	.259	.391	.524	.657	.790	.926	1.06	1.20	1.34	1.47	1.62	1.76	1.91
90°	.149	.299	.450	.603	.756	.910	1.07	1.22	1.38	1.54	1.70	1.87	2.03	2.20
95°	.174	.350	.522	.706	.885	1.06	1.25	1.43	1.62	1.80	1.99	2.18	2.38	2.58
100°	.200	.401	.604	.809	1.01	1.22	1.43	1.64	1.85	2.06	2.28	2.50	2.73	2.96
110°	.268	.536	.806	1.08	1.35	1.63	1.91	2.20	2.48	2.76	3.05	3.35	3.66	3.96
120°	.360	.721	1.08	1.45	1.82	2.19	2.57	2.95	3.33	3.72	4.11	4.50	4.91	5.32

INDEX

- Proposed Pl. 68th St. Jamaica to Madrone 1-3 ✓
- Proposed Pl. Benson & Putnam } Woodman to
N. Terminus 4-6 ✓
- " " Eleanor Dr. 65th to W. Terminus 7-10 ✓
- " " Edmunds St. 65th to W. Terminus 11-13 ✓
- " " Division St. } Woodman to
} Leghorn St. 14-16 ✓
} N of Thorn alicia
- Proposed Pl. Alley BIK 8 E of Chamouni 17-19 ✓
- Proposed Pl. Alley BIKs 7+2 N of Thorn 20-25 ✓
- " " Alley BIK 7 E of Highland
N of Quince 26-28 ✓
- Proposed Pl. Allys BIK 10+2 N of Redwood 29-33 ✓
- " " " BIK A N of Maple 34-36 ✓
alicia
- Alley BIK 7 N of Quince, E of Highland; 6 A.C. West 37-38 ✓
alicia
- GAGE DR. - CHARLES ST. TO 125th ALY, GAGE PL. 39-41
PRELIM.
to East Terminus. Prelim Group 269 alicia
- Roseland Drive Torrey Pines Rd 41-45
to East Term 5th for 8" AC
- Roseland Dr Torrey Pines Rd 46-47
Dorcas St at all
- Elev of Top of Water Mains 48-51 ✓
- Lillian St. Dorcas 150' Wly Top of 8" AC - 52 ✓

68th St
 Jamacha to Madrone
 Profile Proposed Water
 Ave
 7+18⁵⁰ S/W Madrone St.

Shorey
 Martel
 Alexander

9/21/53

①

6+93⁵⁰ = E Madrone St.
 Ave

6+68⁵⁰ = N/W Madrone St.
 Ave

E Madrone St.
 Gas Line

6+17 2" W.L. D.E. 3' Rt.

6+13 W.M. 12' Lt.

4+39 Gas Line

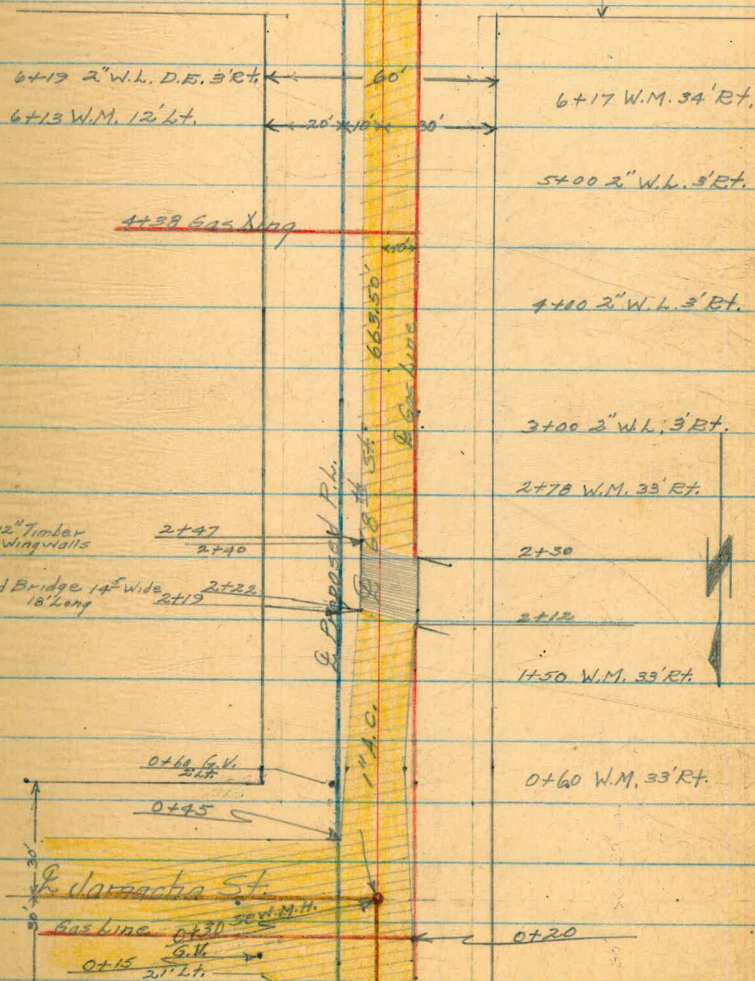
3" x 12" Timber
 wingwalls

Wood Bridge 14' wide
 18' Long

0+60 = S/W Jamacha St.
 Rd

0+30 = E Jamacha St.
 Rd

0+00 = N/W Jamacha St.
 Rd



Ed. 34. P. 22

68th St
 Rd
 Jamaica to Madrone St.
 Profile Proposed Water

Shorey
 Martell
 Alexander 9/21/53

(2)

Lt. L = 60th St Rt.

B.M.	0.00	248.31		248.31	S.W. Top Fire Hyd.	68 th	&	Imperial St.
0+00	- N/W Jamaica		2.2	239.1		$\frac{8.8}{30'}$		$\frac{9.3}{30'}$ $\frac{9.07}{30'}$
0+30			9.84	238.47	10' Rt. Sew.			16.84 Inv. E. Rim Sew. M.H.
0+50			9.9	238.4	M.H. E. Edge			$\frac{9.84}{30'}$
1+00			10.3	238.0		$\frac{9.1}{30'}$		$\frac{9.9}{30'}$
1+50			10.6	237.7		$\frac{11.2}{30'}$		$\frac{10.3}{30'}$
TP						$\frac{10.8}{30'}$		$\frac{10.7}{30'}$
2+17	7.05	246.40	8.96	239.35	Wing Wall Wood Bridge			
2+00			7.8	238.6		$\frac{2.2}{30'}$	$\frac{10.0}{9'}$	$\frac{7.4}{30'}$ $\frac{4.9}{18}$ $\frac{10.5}{23}$ $\frac{11.4}{30}$
2+17			7.1	239.3	Wing Wall Wood Br.			
2+17			11.6	234.8				
2+28			14.0	232.4	N. edge ditch			
2+32			14.2	232.2	S. " "			
2+44			11.4	235.0				
2+47			7.0	239.4	Wing Wall Wood Br.			
2+50			7.7	238.7		$\frac{13.8}{30'}$	$\frac{2.2}{6'}$	$\frac{6.1}{30'}$ $\frac{7.1}{30'}$
3+00			3.6	242.8		$\frac{5.6}{30'}$		$\frac{3.1}{30'}$ $\frac{2.8}{30'}$
TP	12.24	258.49	0.15	246.25				
3+15			13.0	245.5			$\frac{13.2}{9'}$	
3+25			10.2	248.3		$\frac{2.8}{9'}$	$\frac{14.3}{6'}$	$\frac{2.8}{30'}$ $\frac{14.3}{30'}$
3+50			2.6	255.9		$\frac{5.9}{30'}$	$\frac{2.6}{6'}$ $\frac{5.4}{5'}$ $\frac{5.0}{30'}$	$\frac{6.1}{11'}$ $\frac{+2.2}{22'}$ $\frac{+3.2}{30'}$
TP	13.21	271.67	0.03	258.46				

68th St
Cont'd.

4+00		271.67	6.1		265.6
TP	11.69	283.30	0.06	271.61	
4+50			12.7		270.6
5+00			6.5		276.8
TP	11.87	274.61	0.56	282.74	
5+50			12.3		282.3
6+00			5.7		288.9
TP	12.43	306.78	0.26	294.35	
6+50			11.3		295.5
7+00			5.1		301.7
7+06			1.6		305.2
7+23 ⁵⁰	- S/W Madrone		0.8		306.0
6+93 ⁵⁰	= E Madrone		5.87	300.21	
TP	1.01	294.68	13.11	293.67	
TP	1.27	283.08	12.87	281.81	
TP	1.31	271.34	13.05	270.03	
TP	1.01	259.47	12.88	258.46	
TP	0.52	246.79	13.20	246.27	
Ch. TBM.	11.64	250.16	8.27	238.52 = 238.47	
Ch. BM.			1.78	248.38 = 248.31	

Shorey
Martel
Alexander

9/21/53

(3)

Lt

G = E 68th St. Rt

	7.7	6.7	8.1	8.2	8.2	8.2	2.7
	30'	6'	5'	X		18'	30'
	13.2		10.9	11.5	8.9	8.6	8.1
	30'		X	12'	21'	21'	30'
	10.4	8.1	5.4	5.3	2.2		1.8
	30'	20'	X	16'	19'		30'
	15.8		10.8	10.3			7.6
	30'		X	14'			30'
	8.5		4.5	4.6	1.1		0.0
	30'		X	14'	22'		30'
	14.1		10.5	10.5			7.1
	30'		X	12'			30'
	8.1		4.6				4.7
	30'		X				30'
		3.2	2.6				2.3
		12'	X				30'
	3.2		10.8				4.2
	30'		X				30'

TBM Mon. E Madrone & 68th St.

sew. M.H. E 68th & Jamacha

Top Fire Hyd. S.W. Cor. 68th & Imperial

Benson & Ritchie
 Woodman to N. Terminus Ritchie
 & Profile Proposed Water

Shorey 7/29/53
 Martel
 Alexander

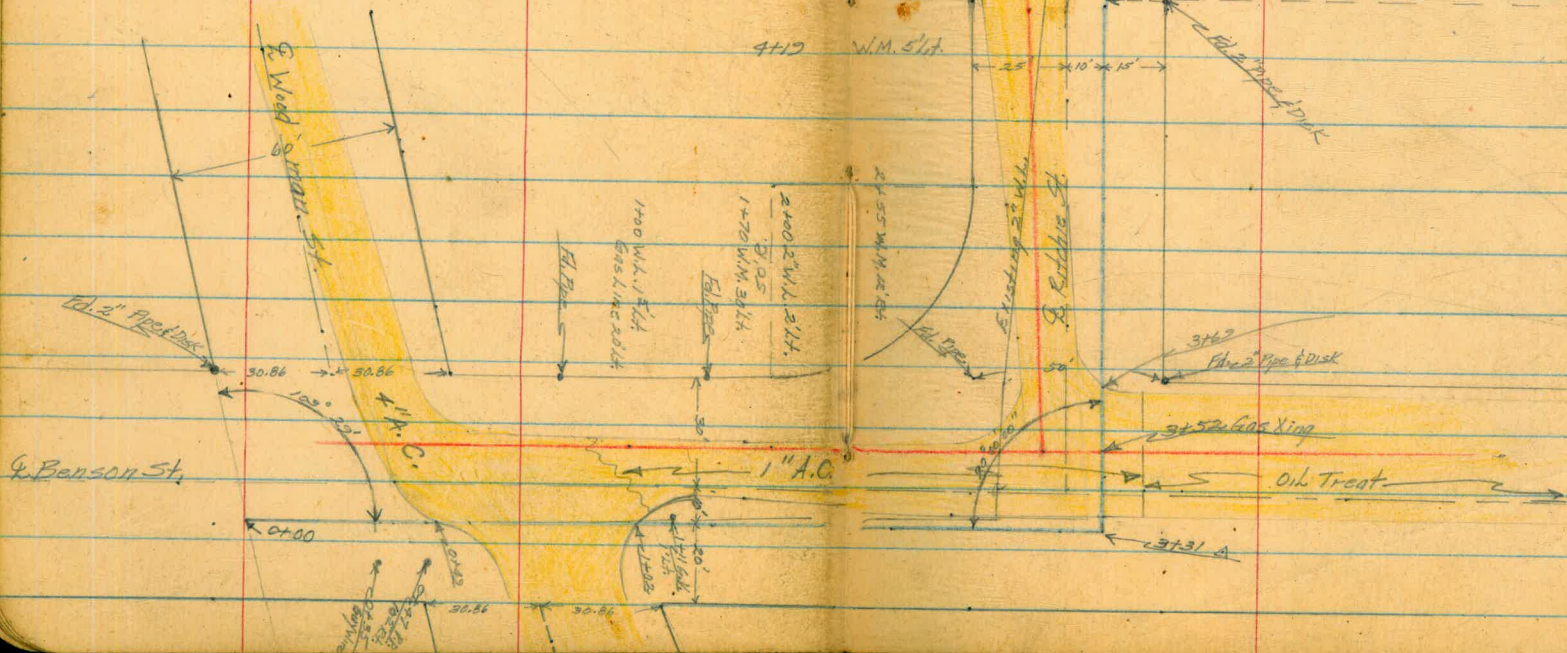
(4)

10+36.72 = N. Terminus Ritchie St.

4+51 = B. C.

3+31 = A Ritchie St.

0+00 = W/W Woodman St.



10+36.72 (3 W.M.) (1st off) 40' Lt.

9+50 Gas Xing
 W/W 22' Lt.

8+75 W.M. 13' Lt.
 7+74 W.M. 27' Lt.

7+17 W/W 22' Lt.
 Gas Main 24' Lt.

6+00 W/W 12' Lt.
 5+88 W.M. 28' Lt.
 5+10 W.M. 5' Lt.
 5+07 W.M. 36' Lt.
 4+58 W.M. 27' Lt.

4+12 W.M. 5' Lt.

Gas Line

Proposed P.W.

5+86 Gas Xing

4+51 B.C.

3+62 Fiber Pipe Disk

3+52 Gas Xing

Oil Treat

$\Delta = 43^{\circ} 31' 48''$
 P.L.R. = 768.90
 L = 585.79
 Def. P/L = 2.2355

Benson & Ritchie
 Woodman to N. Terminus Ritchie
 Profile Proposed Water Line

Shorey
 Martel
 Alexander

9/24/53

(3)

B.M.	121	370.33	389.12
TP	0.98	378.33	12.78 377.35
TP	1.24	366.60	12.77 365.36
0+00 = W/L Woodman St.			13.7 352.9
0+38			11.5
0+49			11.50 Edge Part 355.1
0+50			11.0 355.6 10.0 356.6
1+00			8.6 358.0
1+02			8.27 Edge Part 358.3
1+50			2.4 364.2
TP	12.40	378.40	0.60 366.00
2+00			8.6 369.8
2+50			1.9 376.5
TP	11.88	320.25	0.03 378.37
3+00			8.0 382.2
3+31 A			4.6 385.6
3+31 A			4.6 385.6
3+41			2.5 387.7
3+43			3.2 387.0

2" Pipe N.E. Cor. Benson & Ritchey St. F.B. 1687-36

L+ R = E. Benson R+

	12.2	12.4
	0	20'
	12.39	
	0	Edge Part.
	11.7	10.4
	0	20'
	8.1	8.0
	0	30'
	1.8	5.2
	0	20'
	1.0	
	0	A.C.Cb.
	7.0	7.0
	0	20'
	1.0	3.1
	0	20'
	6.0	3.7
	0	20'
		6.7
		20'
		3.6
		20'
		386.7

R = E. Ritchey

A.C. Berm

A.C. Part.

Ritchie & Benson
Woodman to N. Terminus Ritchie
B Profile Proposed Water

Shorey
Martel
Alexander

9/21/53

(6)

TP	10.84	390.25 400.72	0.37	389.88
4+00			9.2	391.5
4+51 B.C.			7.3	393.4
5+00			4.4	396.3
TP	6.16	405.58	1.30	379.42
5+50			9.2	396.4
5+80				
6+00			10.1	395.5
6+50			9.2	396.4
7+50			8.6	397.0
TP	10.53	408.17	7.94	377.64
8+00			10.4	397.8
8+50			12.5	395.7
8+86	1' Dia. Culvert 25' Long			
9+00			12.1	395.1
9+50			11.7	396.3
10+00			8.5	399.7
10+26 ²			6.3	401.9
TBM			8.84	399.33
TP	4.48	392.58	13.07	395.11
Ch. B.M.			10.43	389.15 = 389.12

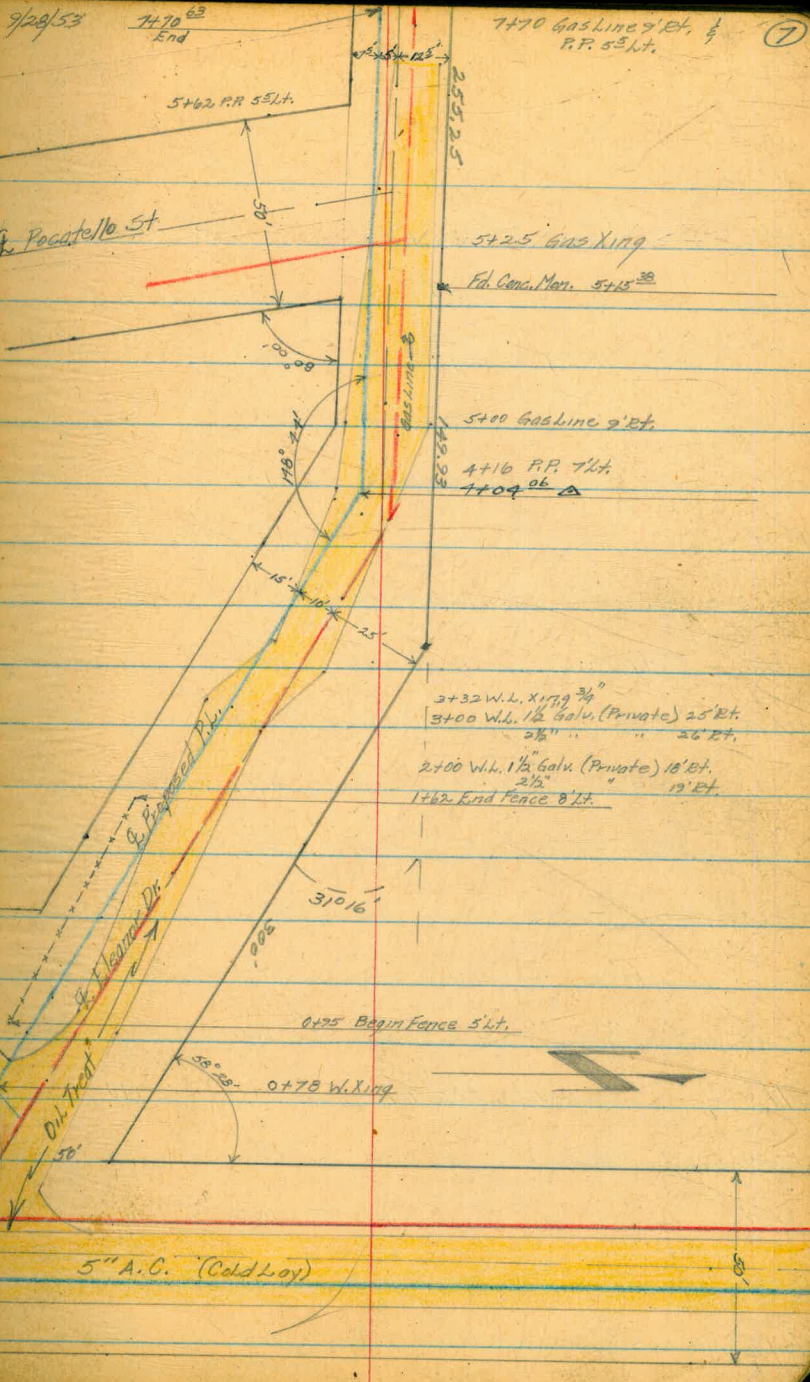
Lt.	386.9	388.4	394.5
12.8 2.5'	390.3	391.4	398.01
10.4 2.5'	391.6	394.1	398.01
9.1 2.5'	392.2	395.2	400.7
13.4 2.5'	393.5	395.6	401.4
12.1 2.5'	393.2	396.1	402.5
12.2 2.5'	394.2	396.3	403.5
11.2 2.5'	394.2	396.3	403.6
15.0 2.5'	394.5	397.3	404.5
16.9 2.5'	394.5	396.0	403.2
12.1 2.5'	394.1	395.2	402.6
15.0 2.5'	393.7	396.1	406.8
12.5 2.5'	395.7	397.9	405.5
8.8 2.5'	399.4	400.6	405.4

2" Pipe Nly. Side & N. Terminus Ritchie

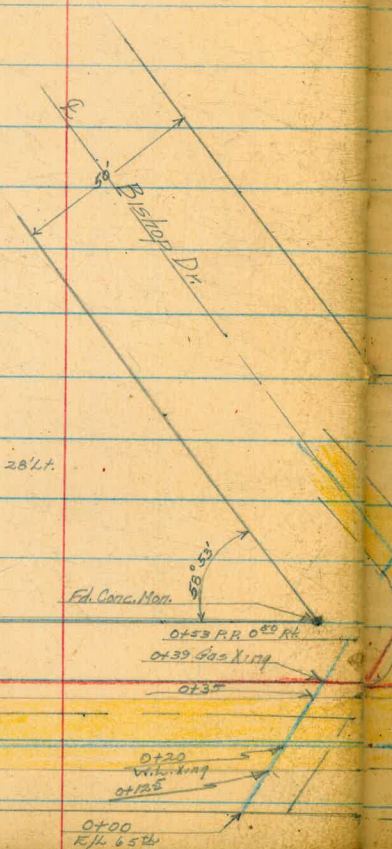
2" Pipe N. Cor Ritchie & Benson F.B. 1687-36

Eleanor Dr.
65th St. to W. Terminus
& Profile Proposed W.L.

Shorey
Martel
Alexander



PLANS NOT AS SURVEYED
Bob E. (12-7-53)



5.1
2.2 Eleanor Dr
2.7
65th to W. Terminus
L Profile Proposed W.L.

Shorey
Martel
Alexander

9/20/53

(8)

B.M.	0.42	388.12 350.47		387.63 350.00 assumed Elev.
TP	0.36	375.45 337.82	13.03	375.09 337.46
TP	13.04	386.01 348.38	2.48	372.97 335.37
TP	13.22	377.15 361.52	0.08	385.93 348.30
TP	12.83	411.52 373.89	046	378.69 341.06
TBM			1.47	410.05 372.42

N.E. Cor. Water Vault @ S.W. Cor. Sullivan & 65th St. E.B. 824-35

Let.

L = L Eleanor Dr. Rt.

0+00 = E/H 65 th	Parallel to 65 th	10.2	401.3
0+12 ⁵	Edge A.C.	" " "	13.0
0+35	" " "	" " "	11.6
0+41	Both Cutbank	" " "	8.7
0+50	Top of bank	" " "	3.3
0+58 ⁶⁶	W/L 65 th	" " "	3.7
0+72	Edge oil		3.0
0+86 ⁶	" "		1.2

Conc. Mem. S. Cor. Eleanor Drive & 65th

12.4 25'	8.2 C	6.3 25'
15.1 25'	11.8 C	9.4 25'
13.2 25'	10.0 C	7.8 25'
14.5 25'	8.0 C	7.0 25'
3.8 25'	6.4 C	7.3 2. Edge A.C.
14 18.9	4.2 C	9.7 25'

TP	12.95	424.07 386.44	0.40	411.12 373.49
1+00			12.2 5.9	411.9
1+50			10.2	413.9
2+00			6.7	417.4
2+50	Edge oil		2.2	421.9

8.2 25'	13.1 C	13.0 C	13.0 Edge A.C.	14.4 25'
5.5 25'	8.3 18'	7.7 16'	10.2 Edge oil	10.4 6'
3.3 25'	9.4 20'	6.7 16'	6.8 Edge oil	6.5 4'
13.2 25'	2.2 C	2.2 C	2.2 Edge A.C.	10.8 11.8
	2.2 18'	2.2 5'	2.2 5'	13.8 25'
	2.2 18'	2.2 5'	2.2 5'	8.7 25'

Eleanor Dr.
65th to W. Terminus
& Profile Proposed P.h.
424.07
386.74
423.67
386.04

Shorey
Martel
Alexander 7/28/53

(9)

TP	12.72	398.25 386.76	0.40	423.67 386.04
E 3+00			2.16	426.9
T 3+50			7.4	432.1
T 3+45	Begin cut for Drive Lt.			
TP	7.33	443.48 405.85	0.51	436.15 390.52
3+60	End cut for Drive Lt.			
T 3+80 ¹⁴			8.1	435.4
T 4+00			6.3	437.2
0 4+04 ⁰⁶	A 90° BK. Tangent			437.5
0 4+50	25' St. W.L. S'S. of Q			438.6
0 5+00			9.6	433.9
0 5+15 ³⁸	TBM No. 0.11	433.57 395.94	10.66	432.82 395.19
0 5+50			5.8	427.8
0 TBM	1.56	434.38 376.75		432.82 395.19
0 6+00	End of Oil			
0 TP	2.23	386.86 429.43	12.18	384.57 422.20
0 6+50			3.9	420.5
0 7+00			5.4	419.0
0 7+50			7.6	416.8
0 7+70 ⁶⁸	= End of Eleanor Dr.			415.9
0 TP	9.93	434.34 396.71	0.02	424.71 386.78
0 TP	6.50	440.01 402.38	0.83	433.51 395.88
0 TP	0.32	427.00 387.37	13.33	426.68 385.05

Lt

Q = Eleanor Rt.

1.1 25'	6.1 74'	9.3 91'	2.3 C	2.3 61'	9.5 18'	16.3 25'
0.8 25'	1.4 10'	4.4 Edge Oil	4.1 C	4.3 10'	9.5 13'	2.4 25'
			7.5 C	7.5 95'	12.5 21'	13.2 25'
2.1 25'	2.3 23'	6.1 16'	5.8 C	5.2 72'	6.7 12'	
2.2 25'	2.4 23'	5.9 17'	5.6 C	5.5 1' Edge Oil	5.0 7'	6.2 18'
		7.6 12'	4.2 Edge Oil	4.8 C	4.4 12'	Edge Oil
	8.6 12'	9.7 10'	9.1 C		8.5 12'	Edge Oil
Conc. Man. 17 ⁵ Rt.						
		5.8 12'	5.8 Edge Oil	5.7 C	5.3 12'	
Conc. Man. 17 ⁵ Rt.						
			12.0 12'	10.4 C	10.2 12'	
		3.5 12'	3.8 C	3.5 10'	0.1 12'	
		5.9 12'	5.4 C	5.2 9'	4.10 12'	
		8.3 12'	7.6 C	7.3 9'	2.2 12'	
		9.3 12'	8.5 C	8.5 9'	3.8 12'	

Eleanor Dr.

65th to W. Terminus

R Profile Proposed W.L.

427.00

582.37

TP 0.06 ~~276.65~~ 12.78 414.22
414.28 ~~376.59~~

Ch. TBM

9.25 410.03 410.05
~~372.40~~ = ~~372.42~~

TP 0.21 401.53 12.26 401.32
~~363.20~~ ~~363.62~~

TP 2.79 371.17 13.15 388.38
~~353.54~~ ~~350.74~~

387.63 387.63
3.54 ~~350.00~~ = 350.00

Shorey
Martel
Alexander

7/22/53

(10)

Conc. Man. S.W. Cor. Eleanor & 65th

N.E. Cor. Water Vault @ S.W. Cor. Sullivan & 65th

Edmonds St.
65th to W. Terminus
& Profile Proposed W.L.

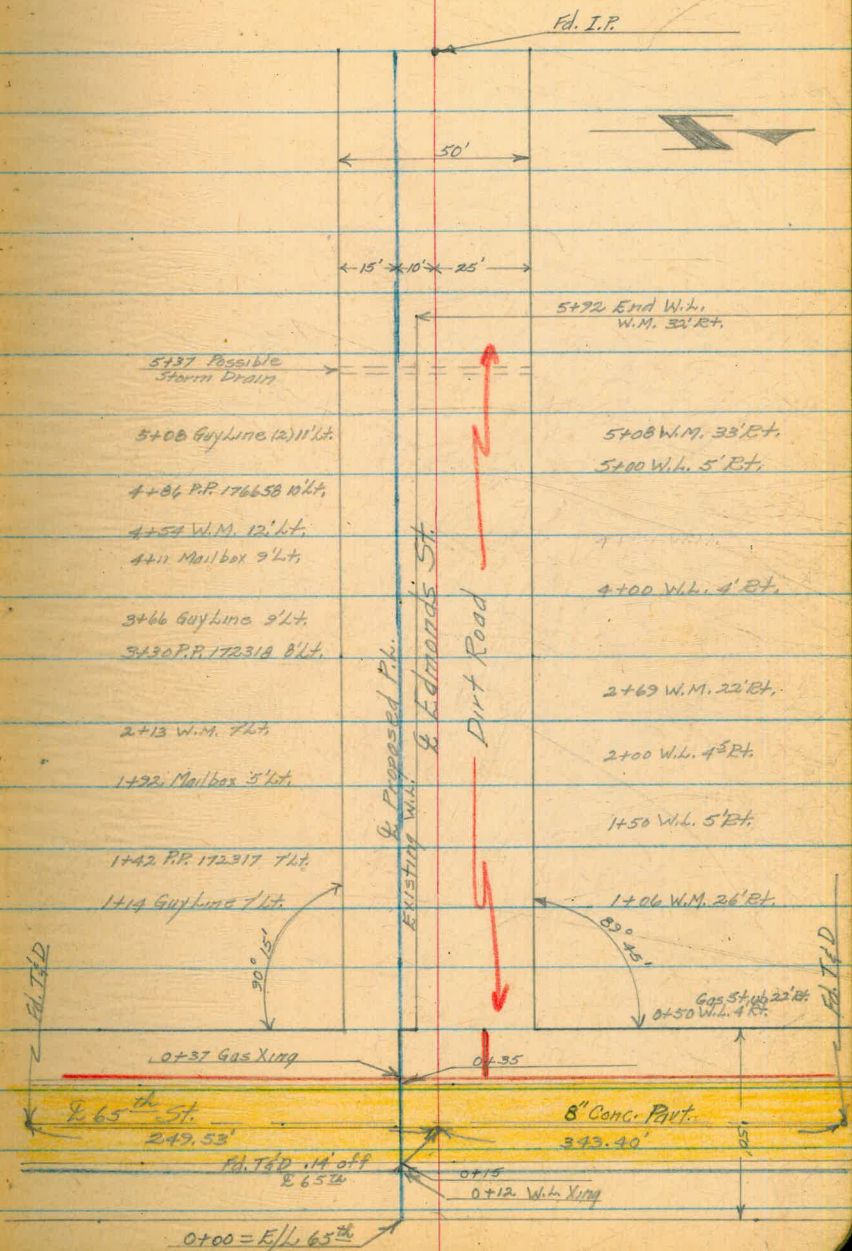
8+75⁰⁵ = W. Terminus Edmond St.

Shorey
Martel
Alexander

7/29/53

(11)

0+50 = W/L 65th St.
0+35 W. Edge Conc. Part.
0+15 E. Edge Conc. Part.
0+00 = E/L 65th St.



Edmonds St
65th to W. Terminus
& Profile Proposed W.L.

Shorey
Martel
Alexander

9/22/53

(12)

BM	0.26	411.01		410.05
TP	1.25	399.93	12.93	398.08
TP	1.07	388.37	12.05	387.28
	1.52	376.92	12.97	375.40
TBM	6.51	370.48	12.95	363.97
0+00			10.3	360.2
0+15	E. Edge Conc. Pavt.		10.28	360.2
0+35	W. " " "		9.99	360.8
0+50			2.9	361.1
1+00			4.8	365.7
1+50			1.4	369.1
TP	7.13	377.24	0.37	370.11

1+90 ⁵				
2+00			6.6	370.6
2+50			5.4	371.8
2+85				
3+00			5.5	371.7
3+50			6.3	370.9
4+00			8.1	369.1
4+27				

Conc. Marz. S.W. Cor. Eleanor & 65th - See Pg. 8

Q = Q Edmonds

Nail in P.P. 172316 S.W. Cor. Edmonds & 65th

Lt	Q	Rt
10.2 359.5	10.7 360.1	10.8 359.7
2.5	11.7	2.5
10.28 359.50	9.6 360.72	8.23 362.5
2.5	10.1	2.5
10.67 359.71	9.38 361.10	8.03 362.45
2.5	8.7	2.5
2.5 361.0	8.7 361.8	8.3 362.2
2.5	7.8	2.5
5.2 365.3	7.8 365.7	1.9 368.6
2.5	1.7	2.5
2.6 367.8	1.7 369.0	1.8 370.5
2.5	1.8	2.5
3.69.6	7.43	3.72.1
2.5	3' sidewalk	2.5
7.6 370.1	6.0 371.2	4.5 374.1
2.5	2.7	2.5
7.1 370.0	3.7 372.5	3.1 375.11
2.5	2.8	2.5
7.2 370.0	3.8 372.4	2.13 374.1
2.5	5.2	2.5
7.6 369.6	5.2 371.3	3.8 373.4
2.5	8.0	2.5
2.5 367.7	8.0 369.2	6.0 371.2
2.5	10.35	2.5
2.5	2.5' sidewalk	

Edmonds St.
65th to W. Terminus
L Profile Proposed W.L.
377.24

4+50		11.2	366.0	
TP	0.24	365.24	12.24	364.30
TBM	3.03	366.63	16.4	363.60
5+00		4.7	361.9	
5+50		8.1	358.5	
6+00		7.4	359.2	
6+50		5.2	361.4	
7+00		3.2	363.4	
7+50		2.1	364.2	
8+00		3.0	363.6	
8+50		7.5	359.1	
8+75 ⁰⁵	End Edmonds	10.3	356.3	
8+75 ⁰⁵	TBM	8.37	358.29	
TP	8.61	375.22	0.02	366.61
Ch. TBM	12.20	376.88	11.24	363.98 = 363.97
TP	12.42	387.00	0.30	376.58
TP	12.61	401.37	0.24	388.76
TP	2.83	410.97	0.23	401.14
Ch. BM		0.94	410.03	= 410.05

Shorey
Martel
Alexander
9/29/53

L = E Edmonds RT

	LT		RT
	11.8 25'	365.4	11.0 0
			366.2
			9.1 25'
			368.1
Nail in P.P. 176658 Approx. 4+88 2'ht.			
	5.3 25'	361.3	7.5 0
		355.0	362.1
	4.6 25'	357.0	7.3 0
		360.7	359.3
	9.6 25'	359.3	7.3 0
		361.4	359.3
	5.9 25'	360.7	5.70 16E 2E sidewalk
		362.9	3.6 25'
	3.7 25'	362.9	3.7 0
		363.7	363.5
	2.9 25'	363.7	3.1 0
		361.3	1.7 0
	5.3 25'	356.4	1.7 0
		353.5	364.9
	10.2 25'	353.5	1.7 0
		361.1	364.9
	13.1 25'	353.5	5.5 0
			361.1
			358.2
			0.7 25'
			366.2
			3.8 25'
			362.8

I.P. 10' Rt. (on E Edmonds)

Nail in P.P. 172316 S.W. Cor. Edmonds & 65th

Conc. Men. S.W. Cor. Eleanor & 65th St. - See Pg. 8

Division St.
 Woodman to Leghorn St.
 & Profile Proposed Water Line.

5+17⁵⁶ = W/L Leghorn St.

4+21⁶⁶ = & Leghorn St.

4+70⁰⁴ = E/L Leghorn St.

0+60⁰⁸ = W/L Woodman St.

0+30⁰⁴ = & Woodman St.

0+00 = E/L Woodman St.

Shorey
 Martell
 Alexander

10/1/53

(14)

5+17⁵⁶ Existing
 W.L. 1 1/2 ft.

Ed. Conc. Man.

4+50 Existing W.L.
 3/4 ft.

4+26 P.P. 567117 2 1/2 ft.

2+00 Existing
 W.L. 6 1/2 ft.

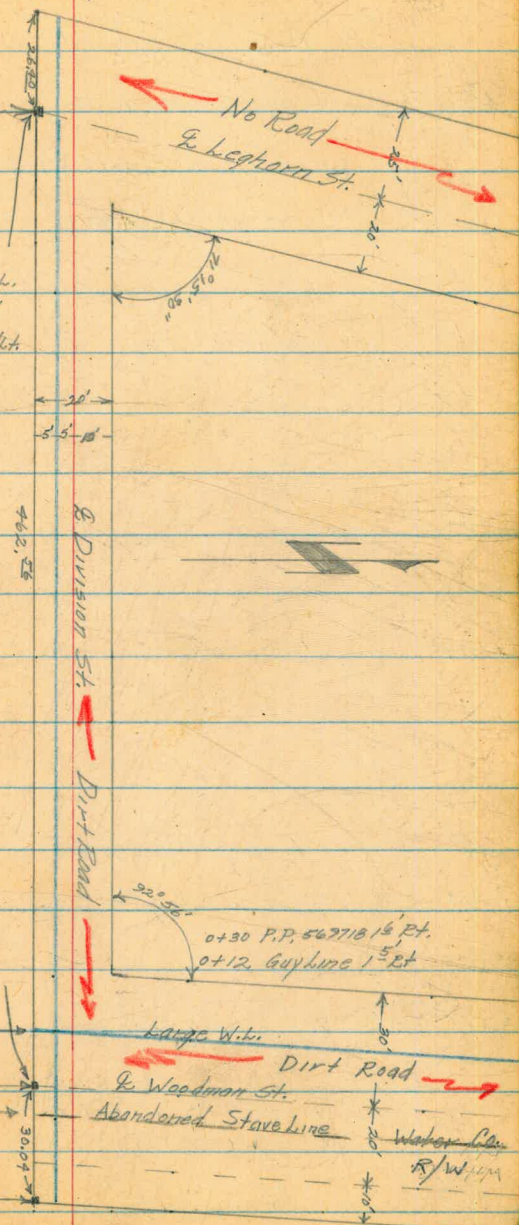
0+68 G.W. 2 1/2 ft.

0+45
 W.L. King
 0+30 W.M. 9/4 ft.

Ed. Conc. Man.

0+22

Ed. Conc. Man.



Division St.
Woodman to Leghorn
& Profile Proposed Water Line

Shorey
Martell
Alexander

10/1/53

(15)

B.S. H.L.

Lt

$Q_L = Q_{\text{Division}} R_L$

BM	0.08	364.49	367.41	
TP	1.15	352.80	12.84	351.65
TBM	0.09	339.86	13.03	339.77
0+00			1.3	1.0 = 338.86
0+50			3.0	3.0 = 336.86
1+00			5.2	6.0 = 333.86
1+50			7.6	8.0 = 331.86
2+00			11.5	11.5 = 328.36
2+50			15.0	14.6 = 325.26
3+00			13.2	12.6 = 327.26
3+50			9.8	8.7 = 331.16
4+00			9.4	9.1 = 330.76
4+50			10.8	10.5 = 329.36
TP	3.25	333.71	9.40	330.46
TBM			8.61	325.10
5+00			8.8	9.2 = 330.66
5+17 ⁵⁶			11.6	11.3 = 328.56
TP	12.01	343.52	2.20	331.51
Ch. TBM			3.72	339.80 = 339.77
TBM			5.71	337.81

N.E. Cor. Water Vault S.W. ^{Cor.} Woodman & Detroit FB-852

Set Nail in P.P. 567718H. 6.65' Rt. of Conc. Mer. } & Woodman & S. Line Division

1.5	1.0	3.8
2.9	3.0	2.7
5.2	6.0	5.2
7.6	8.0	8.8
11.5	11.5	11.7
14.9	14.6	14.0
15.2	12.6	11.8
14.4	8.7	8.1
10.6	9.1	9.2
11.3	10.5	10.5
3.1	2.2	2.8
12.1	11.3	12.20

Conc. Mer. & Leghorn & S/L Division St.

(Note: P.P. May be moved)
Nail in P.P. 567718H 6.65' Rt. Conc. Mer. } & Woodman & S/L Division

Conc. Mer. E/L Woodman & S/L Division St.

Division St.
Woodman to Leghorn St.
& Profile Proposed Water Line

Shorey
Martell
Alexander

10/1/53

(16)

	343.52			
TP	6.31	349.37	0.44	343.08
TP	12.26	361.50	0.15	349.21
TP	5.43	366.08	0.85	360.65
Ch. B.M.			1.61	364.47 = 364.41

N.E. Cor. Water Vault @ S.W. Cor. Woodman & Detroit - FB-852

Alley BIK #8
 E of Chamouné
 N of Thorn

6+87²⁵ (P) South prep line Myrtle St
 6+90²⁵ South " " "

0+80 P.O.T.

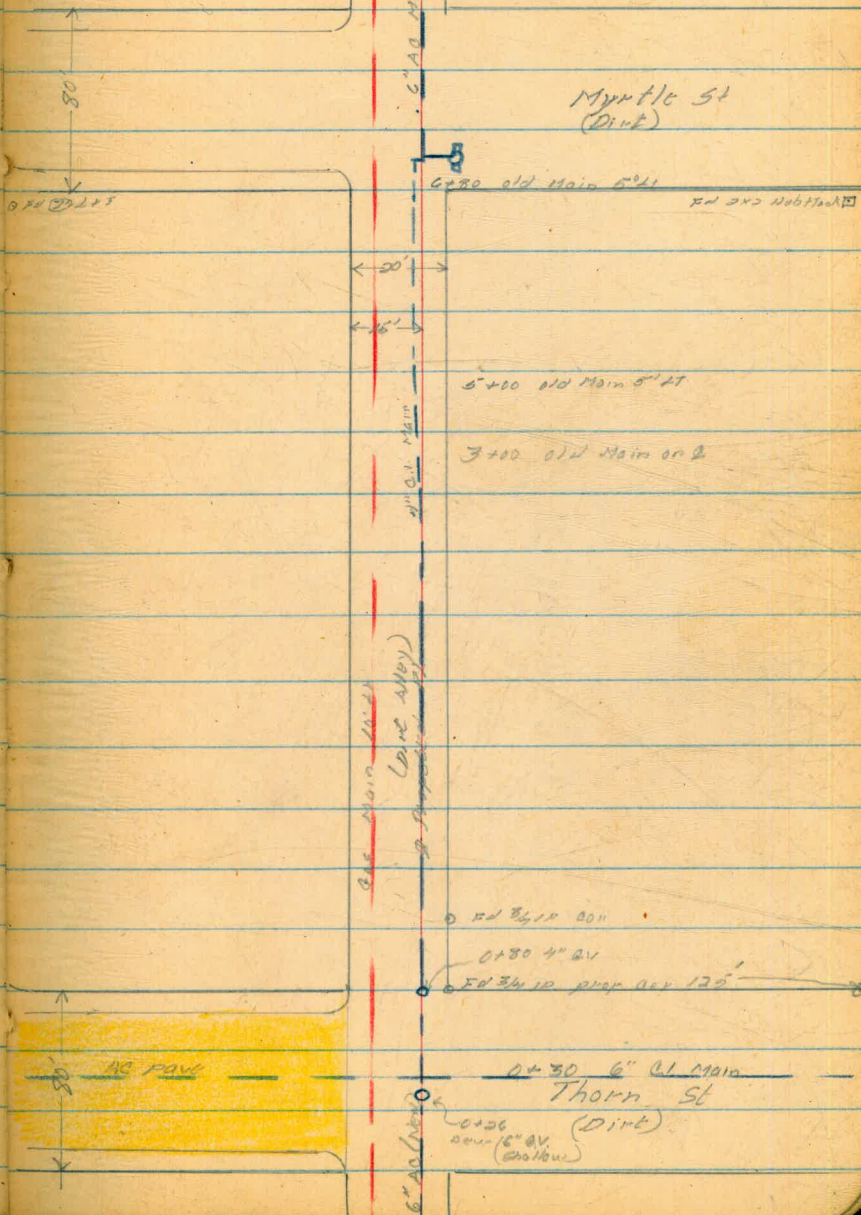
0+00 South prep line Thorn



West
 Williams
 Kemp

(17)

10-28-53



897 33542. 326.45

BM BP NW cor. 14th + Thorn

175 336.11 1.00 334.36

Turn on top FH SE cor. Champaign + Thorn

0+26 7.07 329.0

Top stem 6" GV

+50 6.8 329.3

Edge of road 6.4 15.21 329.7
5.1 329.2

1+00 5.1 331.0

4.6 15.21 331.5
5.1 331.0

+15 4.06 332.05

Begin cone gauge drive 15.21

129 3.94 332.17

End cone gauge drive 15.21

+50 4.6 331.5

3.6 15.21 332.5
5.0 331.1

2+00 4.8 331.3

4.1 15.21 332.0
5.2 330.9

+50 5.6 330.5

4.0 15.21 332.1
5.7 330.4

3+00 5.3 330.8

5.0 15.21 331.1
5.4 330.7

750 5.8 330.3

5.0 15.21 331.1
5.6 330.5

4+00 6.1 330.0

5.5 15.21 331.6
6.3 329.8

750 6.4 329.7

6.0 15.21 330.1
6.6 329.5

398 333.73 6.36 329.75

5+00 4.7 329.0

329.8
3.9 15.21 329.2

+50 5.4 328.3

4.5 15.21 328.8
5.5 329.2

+85 5.22 328.51

Begin cone drive 5' RI

495 5.0

End " " 5' RI

4+00 4.9 328.8

4.4 15.21 329.3
5.1 328.6

7.35
7.52
10.79

333.73

6+13		3.86	329.87
+29 ²		3.81	
+50		4.4	329.3
+80		4.1	329.6
6+90 ²²		8.35	325.4
5.28	335.36	3.65	330.08
5.73	335.59	5.50	329.86
		9.17	326.47 = 326.45

Begin cone drive 1521
and " " "

3.8	329.9
15.21	329.9
5.8	329.9
15.21	329.9
4.6	329.1
5.8	329.5
4.2	329.5
5.8	329.5

Top FH Top News AC drive
Turn south end of west object 1521 6+80

Alley 3 Blks 7+2
N of Thorn
E of 46th

7+00 P.O.T

4+74 29

P.O.T

2+79 58

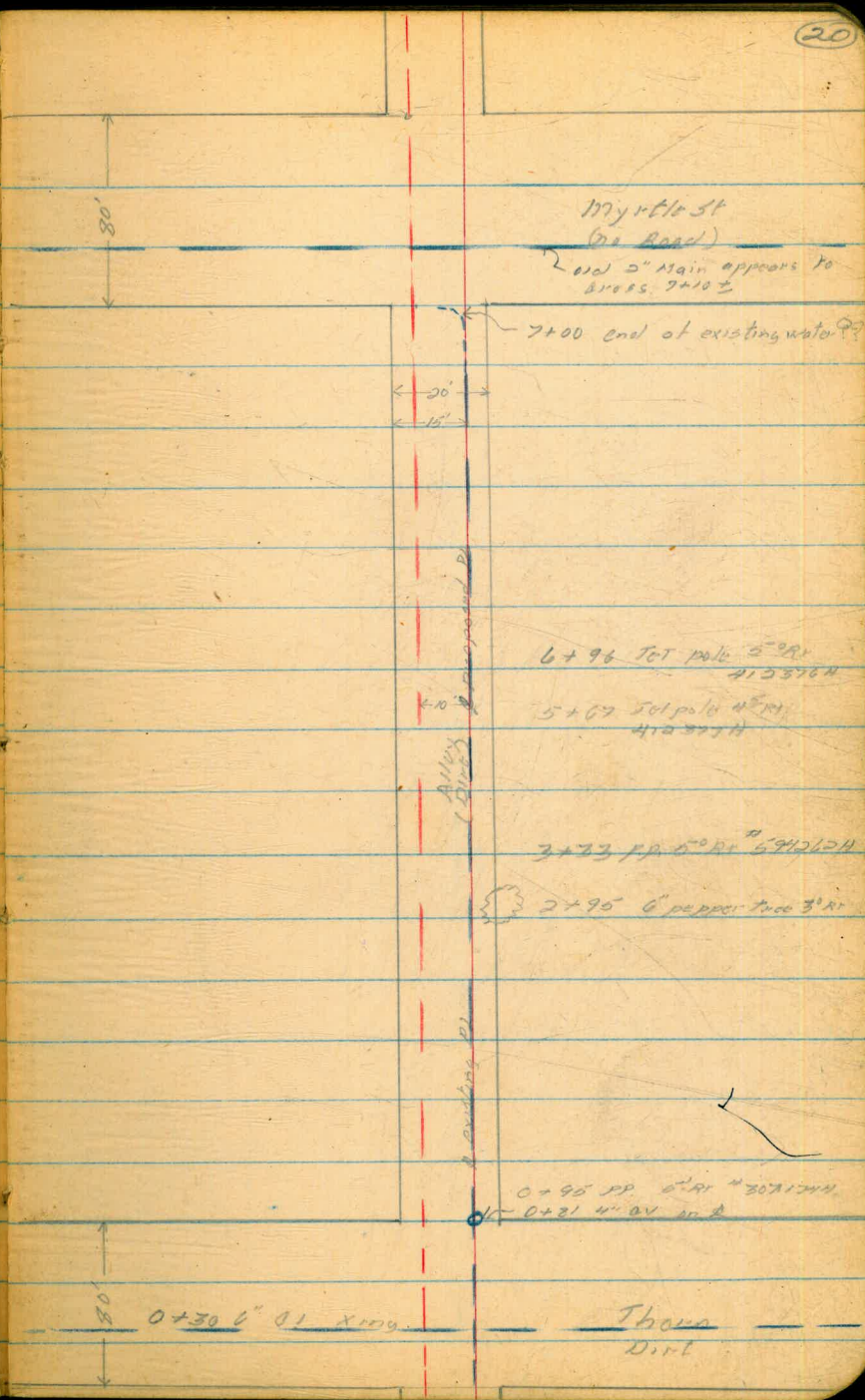
P.O.T

0+80

North prop line Thorn P.O.T

0+00

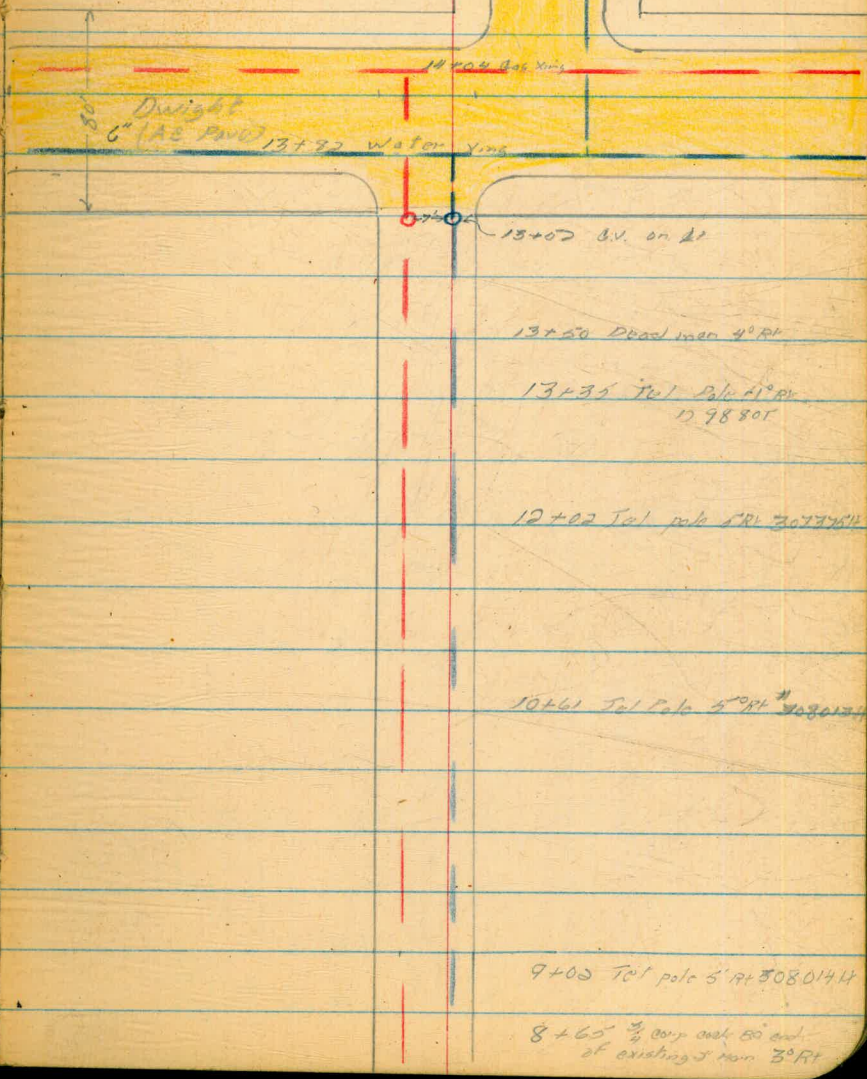
South prop line Thorn



North St

13+59

POT (7) South Prop Line Design



Dwight
6" (1.5") PVC 13+72 Water Line

14' 0" Bal. Xing

13+80 B.V. on Lt

13+80 Dead man 4° Rt

13+35 Tol. pole 41° Rt
12 98 801

12+82 Tol. pole 5° Rt 3077764

10+61 Tol. pole 5° Rt 4080174

9+05 Tol. pole 5° Rt 3080144

8+65 1/2 corr. over 50' and
of existing 5' over 3° Rt

Alleys Biks 720
N of Thorn
E of 46

	2.66	305.54	302.88
0+00		1.4	304.1
+50		3.0	301.9
+55		5.5	300.0
0+80		4.4	301.1
1+00		8.6	296.9
	2.55	301.13	11.96 293.58
+50		9.0	292.1
+90		10.0	291.1
2+00		8.9	292.2
	12.91	312.86	11.9 299.94
+50		6.3	306.5
3+00		1.3	311.5
	9.39	321.70	0.54 312.31
3+50		8.2	313.5
4+00		4.7	317.0
+50		2.3	319.4
5+00		3.3	318.4
+04		3.48	318.22

West
Williams
Kemp 12-29-53

TBM SE Cor Thorn + Maple Top of FH

	0.8	15.21	304.7	1.8	5.81	303.7
	2.3	15.21	303.2	3.5	5.81	302.0
	2.1	15.21	303.4	5.1	5.81	300.3
	2.9	15.21	302.6	10.0	5.81	295.5
	0.3	15.21	295.8	14.5	5.81	290.6
	6.6	15.21	294.5	8.9	7.4	293.7
	9.6	15.21	303.2	5.5	5.81	307.4
	1.9	15.21	310.9	1.2	5.81	311.7
	8.0	15.21	313.7	7.0	5.81	314.7
	5.1	15.21	316.6	4.3	5.81	317.4
	1.8	15.21	319.9	2.2	5.81	319.5
	1.9	15.21	319.8	3.5	5.81	318.2

South edge existing dirt road
North " " " " " "

Bottom of Creek

5' RT to edge of 25' Core with

No Flood

10-29-53

321.70

5+31	4.20	317.50	
+46	4.58	317.12	
+50	4.7	317.0	
+59	4.98	316.82	
+79	6.16	315.54	
+90	6.18	315.52	
6+00	6.3	315.4	
+50	7.9	313.8	
+70	8.8	312.9	
7+00	14.0	307.7	
0.29	311.08	10.91	310.79
0.75	298.91	12.92	299.16
7.52	293.55	10.88	286.03
+50	9.4	284.2	
9+00	14.4	279.2	
+46	12.1	281.5	
+50	8.7	284.9	
12.63	304.42	1.76	291.79
13.09	317.33	0.18	304.24

Begin cone driveway 50 RT
 End " " " " " "
 $\frac{3.6}{15.21} 318.11$ $\frac{4.7}{5.81} 317.0$
 Begin 3° cone walk 50 RT
 Begin cone slab garage floor 4' 2"
 End " " " " " "
 $\frac{6.2}{15.21} 315.5$ $\frac{6.3}{5.81} 315.4$
 $\frac{313.6}{15.21} 22$ $\frac{314.5}{5.81} 8.2$ 313.5
 $\frac{8.1}{15.21}$ $\frac{7.7}{5.81} 314.0$ $\frac{11.3}{5.81} 310.4$
 $\frac{8.7}{15.21} 313.0$ $\frac{10.4}{5.81} 311.3$ $\frac{15.2}{5.81} 304.7$ $\frac{15.2}{10.81} 306.5$
 end at Road

287.1
 $\frac{6.5}{15.21}$ 280.8
 108 281.1
 $\frac{10.8}{15.21}$ 281.7
 12.0 281.1
 $\frac{10.9}{15.21}$ 282.7
 10.8 282.8
 $\frac{10.8}{5.81}$ 280.2
 $\frac{13.4}{5.81}$ 282.0
 $\frac{11.6}{5.81}$ 285.9
 $\frac{7.7}{5.81}$ 282.0

317.38

9+00	12.1	305.2	
+50	4.9	312.4	
12.69	329.35	0.67	316.66
+88	9.1	320.3	
10+00	9.0	320.4	
+50	5.8	323.6	
11+00	3.0	326.4	
9.40	338.70	0.05	329.30
+40	9.70	328.94	
+54	9.56	329.14	
11+50	9.0	329.7	
12+00	7.1	331.3	
+50	5.7	333.0	
+60	5.15	333.55	
+69	5.09	333.66	
+96	3.86	334.84	
13+00	4.3	334.4	
+07	3.79	335.91	
+50	3.3	335.4	

14.9	302.4	14.4	305.9
10.21		5.81	
6.7	310.6	4.5	312.8
10.21		5.81	
9.3	320.1	9.3	319.6
10.21		5.81	320.3
9.0	320.4	9.1	320.3
10.21		5.81	
6.4	323.0	5.8	323.6
10.21		5.81	
3.6	325.8	2.9	326.9
10.21		5.81	
Begin core gauge slab 15' at			
End core " " " "			
9.6	329.1	8.8	329.9
10.21		5.81	
2.8	330.9	2.1	331.6
10.21		5.81	
5.8	332.9	5.0	333.2
10.21		5.81	
Begin core driveway 18' at			
End " " " "			
Begin core driveway 4' at			
4.4	334.3	3.9	334.8
10.21		5.81	
End core driveway 4' at			
3.1	335.6	2.8	335.9
10.21		5.81	

338.70

13+52		3.39	335.31
+74		4.04	334.66
14+00		2.61	336.09
+32		2.42	336.28
4.61	340.70	2.61	336.09
		8.11	332.59

edge AC pave Myrtle St
 better line
 North prop line Myrtle
 Turn on PK near 14+00

Alley BIK 7

E of Highland
N of Quince

Transit Line on Q Alley

West
Williams
Kemp

12-31-53

(26)

Quince
(no Road)



Existing 2" Main
30 ft of Transit line

20' →
← 20'

Alley (no Road)

3+31 Begin dog cabin
Storage shed 11' x 11'
50 ft



0+30 POT

Top of ground
(1+15" Gas line)

0+00 North prop line Redwood St

Redwood
(no Road)

Alley BIK 7
 E of ~~Champion~~ Highland
 N of Quinsig

Transit Line on Alley

	249	328.94		326.45
	0.28	320.23	8.99	319.95
	0.45	307.90	12.78	307.45
0+00			12.5	295.4
	0.24	295.57	12.57	295.33
+30			5.8	289.77
+50			12.1	283.47
	0.11	283.04	12.64	282.93
	5.54	275.68	12.90	270.14
1+00			11.1	264.58
+06			12.0	263.58
	11.90	287.09	0.49	275.19
+50			9.0	278.1
	12.65	299.00	0.74	286.35
2+00			10.2	288.8
+29			4.2	294.8
+50			3.4	295.6
3+00			5.8	293.2
3+13	Begin Fill		6.9	292.1

Wust
 Williams
 Kemp

BM. B.D. NW Cor 45th + Thorn

	13.4	12.9		296.8
	10.2	5.2		11.1
				10.8
	6.0	5.7		290.4
	10.2	5.2		5.2
				10.8
	12.9	10.7		10.2
	10.2	5.2		10.8
	4.5	265.0		264.8
	10.3	10.7		10.9
	10.2	5.2		10.8
	6.7	8.3		10.4
	10.2	5.2		10.8
	9.0	9.4		11.5
	10.2	5.2		10.8
	4.4	4.1		4.3
	10.2	5.2		10.8
	3.4	3.2		5.1
	10.2	5.2		10.8
	4.0	5.1		7.7
	10.2	5.2		10.8
	4.3	5.4		8.7
	10.2	5.2		10.8

Bottom of Creek

	299.00		
3+40		2.7	296.3
+50	end of fill	5.5	293.5
4+00		9.7	289.3
	0.31	287.21	11.60 287.40
+50		6.0	281.71
+83		7.9	279.81
5+00		12.0	275.7
	1.18	278.11	10.78 276.93
+50		4.3	273.8
6+00		9.7	268.4
+45		11.4	266.7
	12.88	290.84	0.15 277.96
	11.40	301.83	0.41 290.43
	10.57	308.76	3.58 298.25
	11.46	316.52	3.70 305.06
	12.09	328.59	0.02 316.50
		2.09	326.50 = 326.46

Top of fill	0.0	299.0	0.0	299.0
	10.11	297.0	5.21	291.8
	2.0	292.0	3.5	289.9
	10.11	292.0	5.21	287.6
	7.0	290.1	8.5	281.9
	10.11	284.9	5.21	278.6
	2.8	281.9	4.5	276.2
	10.11	279.8	5.8	271.9
	3.1	277.9	11.5	266.5
	7.9	277.9	9.8	264.1
	10.11	270.6	10.8	266.8
	0.1	270.0	3.3	266.7
	10.11	272.1	5.21	266.5
	6.0	269.5	7.5	266.8
	10.11	269.5	10.3	264.1

10M Top FH Quined +45

Alloys BIKs 10+2. Not Redwood
E of 41st

3+31 = PGT

0+73 PGT

0+00

North prop line Myrtle St



West
Williams
Kemp
Varonakis

7+60

80

7+30 Water Main

6+80

FD 3/4" prop bar

0+10

80

(29)

4-54

Cone Cutter
(cont'd)
Thorn St

5th Cone Cutter 6+75 End Cutter

6+75 Begin Cone Cutter

Proposed Pl. A Curb

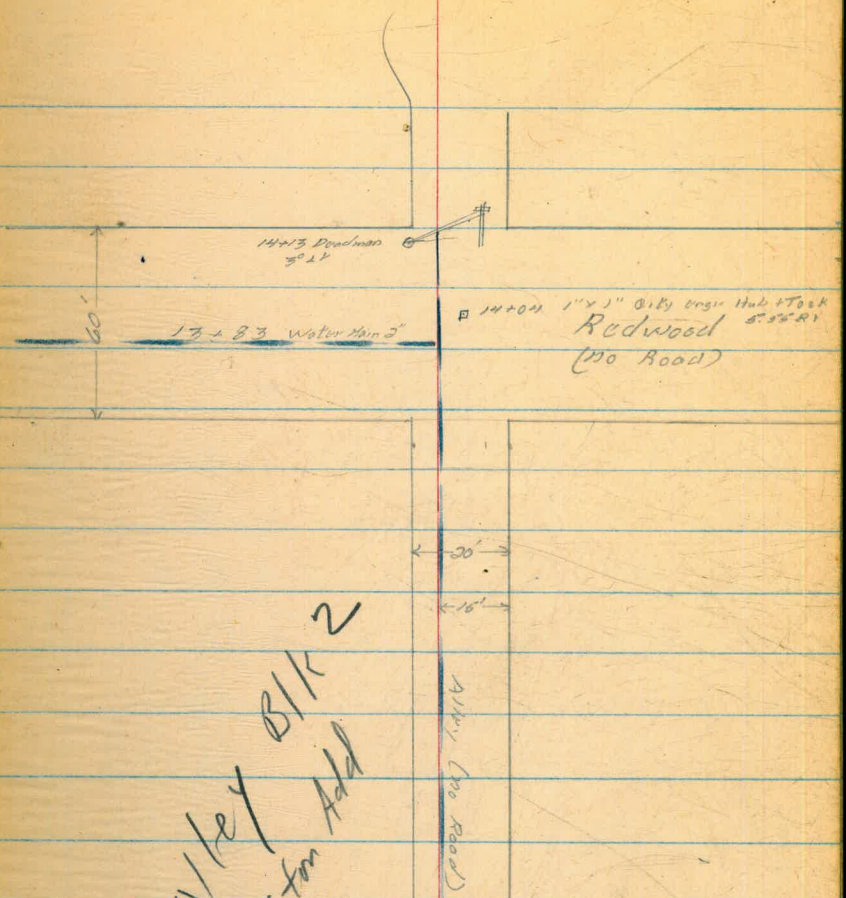
Prop. Main

4" AC pave

Myrtle St

0+25 Gas xing

14+20 ± South prop line Redwood



Alley Blk 2
Cliff for Add

8740

POT

Q Profile Alley's
 BIKs 10+2 N of Redwood
 E of 44th

050	323.09		322.59
1292	329.07	6.94	316.15
9.06	338.06	0.07	329.00
0+00 = 14+20		3.18	334.88
+13	14 07.	3.61	334.45
+50	13 70	3.47	334.6 334.59
+66	13 54	4.05	334.0
+80	13 40	3.9	334.16
1+00	13 20	6.5	331.6
+50	12 70	10.6	327.5
2+00	12 20	6.3	331.8
+50	11 70	5.0	333.1
3+00	11 20	4.7	333.4
+50	10 70	6.0	332.1
4+00	10 20	7.1	331.0
+50	9 70	2.0	329.1
5+00	9 20	12.2	325.9
0.34	325.56	12.34	326.22
+50	8 70	5.1	320.46

West
 Williams
 Kemp
 Varonakis

1-4-54

31

BM BP NW cor. Highland + Thorn

Gutter Line

Gutter Line

End A.D. pave

$\frac{8.3}{92}$

$\frac{6.1}{108}$

$\frac{4.3}{52}$

$\frac{7.4}{108}$

325.56

6+00	820	8.1	317.46
+50	770	8.8	316.8
+92	728	11.6	314.0
+99 [±]	720.5	11.67	313.9
7+00	720	11.7	313.9
7+16	674	12.7	312.9
+50	670		
	378	316.76	12.58
+60	660	3.7	313.1
8+00	628	2.8	314.0
+47	573	4.0	312.8
+50	570	6.5	310.3
+62	558	12.1	307.1
	0.67	304.79	12.64
			304.12
9+00	520	5.4	299.4
	0.39	292.63	12.55
			292.24
+50	470	2.5	290.1
10+00	420	6.6	286.0
+30	390	11.7	280.9
	2.38	282.38	12.63
			280.00

North edge Cone Batter
 South edge
 Batter line

Turn on @ nail

33	313.5	45	312.3
52L		15 RL	

27	314.1	28	314.0
52L		15 RL	

50	311.8	22	309.6
52L		15 RL	

11.6	305.2
52L	

13.2	303.0
15 RL	

4.3	300.5
52L	

8.6	296.2
15 RL	

0.7	291.9
52L	

286.9	284.2
57	8.4
8 RL	15 RL

5.2	287.4
52L	

10.8	281.8
15 RL	

10.7	281.9
52L	

15.6	277.0
15 RL	

		280.38		
10+50	370	5.7	276.7	
+67	353	10.5	271.9	
11+00	340	12.1	270.3	
+50	270	14.8	267.6	
12+00	270	9.6	272.8	
+50	170	4.1	278.3	
	10.88	297.49	0.78	281.60
13+00	120	9.2	283.3	
+50	70	3.1	289.4	
	8.90	298.86	2.52	289.96
14+00	20	7.5	291.4	
+20	00	7.1	291.76	
	3.40	298.67	3.59	295.27
	12.80	311.15	0.32	298.35
	12.10	323.00	0.25	310.90
			0.36	322.64 =

322.59

Creek bed

Creek bed

277.8
 46
 224
 10.2
 272.2
 524
 12.5
 169.9
 524
 15.3
 167.1
 2524
 171.4
 11.0
 5.5
 524
 176.9

11.1
 524
 43
 524
 281.4
 286.2

8.6
 524
 8.2
 5.26
 290.3
 290.7

Turn on 3" map pin & prop over 15' RI H+20

274.0
 8.4
 15' RI
 10.3
 15' RI
 9.3
 15' RI
 120
 11.9
 4.9
 15' RI
 12.3
 15' RI
 272.1
 273.1
 270.4
 10.5
 15' RI
 271.9
 273.5
 284.7

23
 15' RI
 0.0
 15' RI
 290.2
 292.5

4.8
 15' RI
 3.7
 15' RI
 295.2
 94.1
 Reduced
 + south prop down

Alley BIK A
 N of Maple
 E of Fairmont

West
 Williams
 Varon Fakis
 Kemp

34

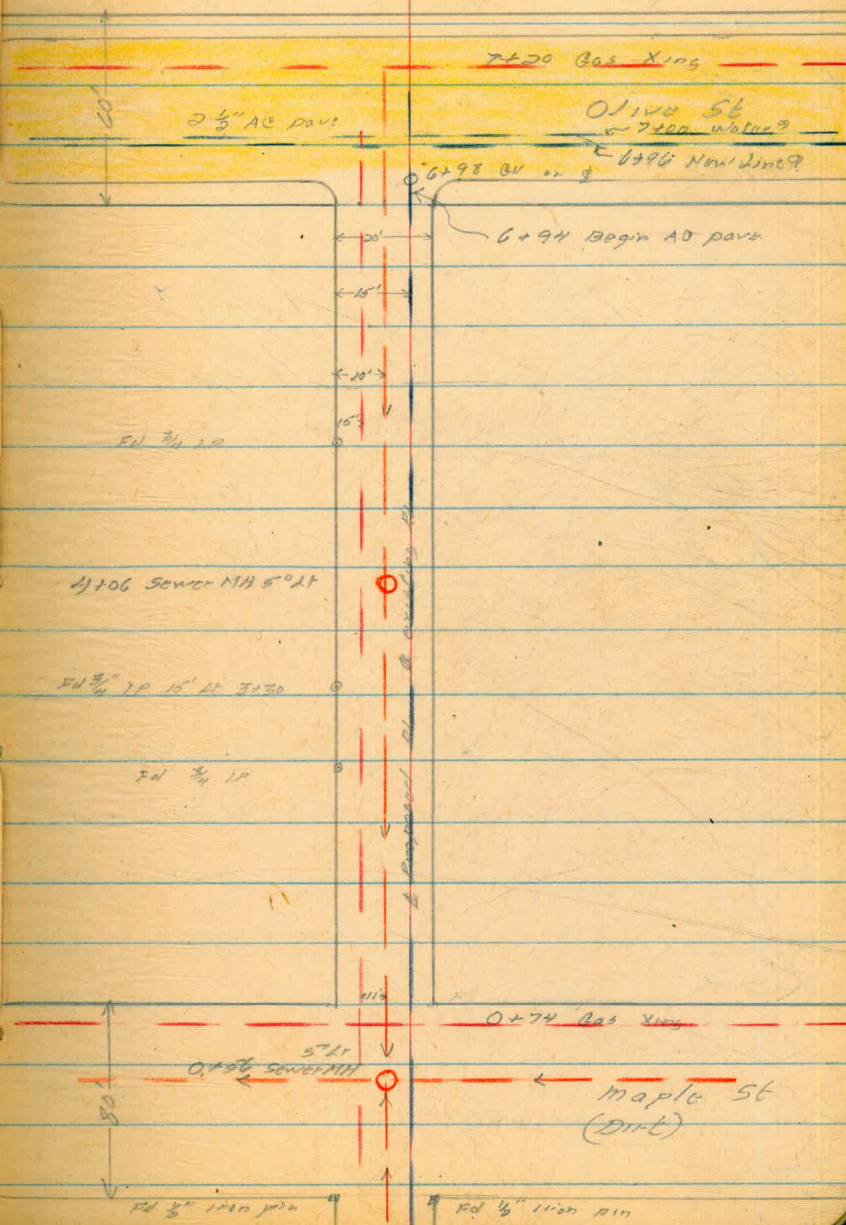
1-5-54

430
22'

3+30.23 PIT

0+00

South prop line Maple



Q Profile
 Alley BIK A
 N of Maple E of Fairmont

West π
 Williams
 Varonfakis
 Kemp \dagger

1/5/54

35

B.M.	10.91	291.39		280.48
0+00			4.79	286.60
+50			4.12	287.27
+56			4.14	287.25
1+00			3.25	288.14
+50			1.85	289.54
2+00			0.8	290.59
T.P.	7.59	298.91	0.07	291.32
2+50			7.4	291.5
3+00			6.9	292.0
+50			6.4	292.5
4+00			5.8	293.1
4+06			5.56	293.35
+50			5.2	293.7
5+00			5.0	293.9
+50			4.7	294.2
6+00			4.4	294.5
+50			3.9	295.0
6+94			3.15	295.76
7+00			2.95	295.96

BM BP NW Cor Fairmont + Maple

5' LT M.H. + 9.5 FLOW LINE

4' LEFT

W. RIM M.H. + 9.1 FLOW LINE

BEGIN A.C. 2"

§ PROFILE
 ALLEY BLK. A. (CONT.)

WEST T
 WILLIAMS
 VARON FAKIS
 KEMP †

1/5/54

36

	+	298.91	-	EL	
7+30			2.85	296.06	
7+31			2.55	296.36	
7+40			0.2	298.7	
T.P.	0.36	291.42	7.85	291.06	
CHECK To B.M.			10.99	280.43	280.48

GUTTER

TOP CURB

ALLEY BLK 7
Nor of Quince, E. of Highland
⑤ GRDS & STKS for 6" WATER

9/8/54

Beath
Shelley
Martell

37

TBM	0.18	298.43		298.25			
P	0.26	285.35	13.34	285.09		264.3	
0+10					13.4	272.0	271.3
0+16						267.1	
0+37.5			9.4	276.0	272.4	265.2	
0+75			5.8	279.6	276.1	266.0	
1+00			5.5	279.9	277.6	268.6	
P	11.71	292.51	4.55	280.80			
1+50			8.0	284.5	282.6	273.2	
2+00			2.0	290.5	290.6	281.8	
W	5.93	295.87	2.57	289.94		286.0	
2+50			3.7	292.2		286.8	
3+00			2.3	293.6		288.0	
3+50			0.8	295.1		289.8	
3+75			1.4	294.5		287.5	
4+00			5.4	290.5		285.6	
4+25			9.2	286.7		281.2	
W	0.44	283.21	13.10	282.77			
4+50			3.0	280.2		275.0	
4+75			11.2	272.0		266.8	
P	9.48	279.62	13.07	270.14			
4+87.5			11.0	268.6		262.2	
4+95			13.2	266.4		262.2	
5+05			13.2	266.4		262.2	
5+12.5			12.0	267.6		262.2	
5+25			8.6	271.0		268.4	
P	11.69	291.21	0.10	279.52			
5+57			11.9	279.3		275.5	
C.K. BM			2.03	287.18			

Top FH 15th & Quince (see pg 28)

To Bottom East 8" AC.

0+79	C70	270.4					
		15.0				72	
0+88	C72	273.7				6.1	N. 278.09
0+96	C101	278.6					
		6.3				2.4	W 289.94
		277.9					E. 290.13
		7.3				12.5	12.70
0+93	C74	282.6				7.5	4. 291.03
		9.9					277.43
0+97	C88	287.6					1.06
		1.9				10.5	278.49
		3.0 ±					12.7
		1.8 ±					
		0.6 ±					
		1.8 ±					
		3.0 ±					
		8.6 ±					
		2.0 ±					
		10.3 ±					
		10.8 ±					
		14.5 ±					
		8.5					
		11.1					

Replaced 9/10/54

Not Gro. 2.4

2+60 +25 ±

2+85 +22 ±

Ground disturbed by pioneer road.

ALLEY BLK 7

Cont'd

Water METERS

285.35

9/8/52
9/10/52

38

1+25 E.		15	283.9	281.9	276.0	C53	} Replaced 9/10/52
2+00 E.	292.51	2.0	290.5	290.1	285.5	C46	
3+23 E.	295.9	0.8	295.1		291.6	C35	
4+35 E.	"	9.7	286.2		289.3	F31	
4+60 E.	} No Existing METERS 283.21	34	279.8		288.4	F86	
4+75 E.		8.5	274.7		288.0	F133	

GAGE DR.
 CHARLES ST. TO 125' NLY
 GAGE PLACE
 PROPOSED 6" WATER.

8/18/55
 SHUREY
 MARTEL
 KEMP
 HOLMAN

39

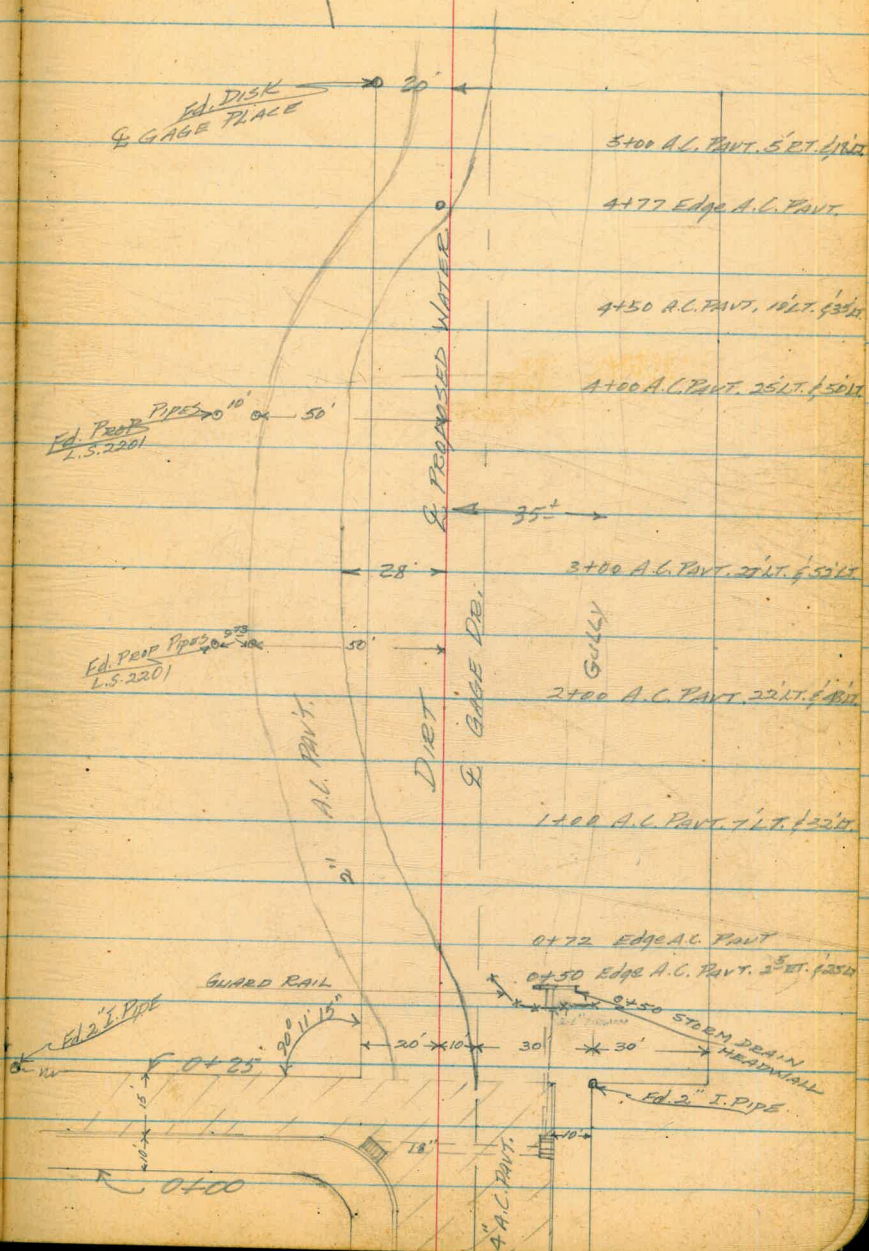
6+37⁵⁰ E. GAGE PLACE

4+88 G.V. 2 LT.

3+48⁶² Fd. 2 PROP. PIPES

2+78⁷⁰ Fd. 2 PROP. PIPES

0+00 = Nly Prop. line CHARLES



GAGE DR.
CONT'D

B.M.	0.13	294.60	294.47
TP	0.12	281.52	13.20 281.40
TP	1.74	272.96	10.30 271.22
SET TBM	0.20	262.80	10.36 262.60
TP	0.44	250.74	12.50 250.30
	0.30	238.25	12.79 237.95
SET TBM	7.05	235.80	11.50 226.75
0+00			10.52 225.28
0+02 ³			10.50 225.30
0+50			7.22 226.58
0+72			8.82 226.78
1+00			8.1 227.7
1+50			6.5 229.3
2+00			3.8 232.0
TP	11.67	247.02	0.45 235.35
2+50			11.0 236.0
3+00			7.5 239.5
3+50			4.5 242.5
4+00			2.0 245.0
TP	11.18	257.66	0.54 246.48
4+50			10.2 247.5
4+77			8.97 248.7

Reduced by A. Mathison P-19-55

8/18/55

40

GALV. SPIKE IN POLE DUPONT & SILVERGATE

Top E.H. S.E. COR. GAGE PL.

Top 2" I. PIPE GAGE & CHARLES ST.

ON A.C. PAVT.

LT.

RT.

15.48 F.L.
21

16.40 F.L.
28

ON A.C. PAVT

Edge A.C. PAVT.

Edge A.C. PAVT.

GAGE DR.
CONT'D

8/18/55

41

257.66

4+88

8.58 249.1

4+88

8.50 249.2

TOP 8" G.V. CAP. 2' LT.

-3⁵ TOP OF STEM

5+00

7.85 249.8

77

7.31 264.20

0.77 256.89

CK. TBM

10.12 272.73

1.59 262.61 = 262.60

CK. TBM

4.81 267.92 = 267.88

E. MON. DUPONT & GAGE

Roseland Drive
Torrey Pines Rd
To East Terminus

6+64.94 End Dedicated St
→ 3+97.76 City Eng Survey
FB # 2129

4+51.45
5+51.45 FC

$\Delta = 51^{\circ}02'40''$
Pipe R = 110' SEE TP 500K
L = 98.00' # 2128
Def per ft = 15.6261

3+53.45
4+53.45 BC

3+99.25 FC
2+99.25

$\Delta = 27^{\circ}22'26''$
Pipe Line R = 190'
L = 90.75'
Def per ft = 9.047'

2+08.50
2+08.50 BC

Torrey Pines Rd
6" AC PAVE

1+50

1/15/55
Sly prop line Torrey Pines Rd

0+00± Sly prop line Torrey Pines Rd

West
Williams
Varonfokrs
Kallhofer

41

11/9/55

1" 11.11" 10' PK

3+99.25 FC PK Nail 10' 21' 22' 23' ST

$\Delta = 27^{\circ}22'$
Pipe Line R = 190'

3+99.25 FC FC PK Nail 10' 21' 22' 23' ST
0+16.10 City Eng Survey FB 2128 Page 54

40' 30'

See Page 45
for alternative
 $\Delta = 51^{\circ}02'$
FC PK Nail
on 4' 10' 21'
2+62.45

1+49 16" Main Xing

Pl. G.L.
From Sta. 0+00
To Torrey
Pines Rd

Profile Roseland

11.77	66.46	54.69
9.98	76.14	0.30 66.16
6+56	4.00	72.14
7+27	3.31	72.83
1+50	3.90	72.24
170	4.45	71.69
2+00	2.87	73.27
8.10	83.73	0.57 75.63
1+50	6.4	77.3
7+50		
2+00	5.9	77.8
3+00	5.7	78.03
1+25		

BRNE BP Calle Du La Plata + Torrey Pines ^{RS}

N/4 edge AC pave Torrey Pines

Sly " " " " "

Butter Line

^{Begin}
1+70 Barricade 3' R
1+77 End " 1' R
1+83 3' Wet Mats 3' R
2+00 2 Wd Mats 20' H

3.6 / 10' L
2.6 / 10' R
on ϕ of 10' privet drive
way to Rt 5' A0

2+62 two trees 2' Rt 5' Dr
2+68 " " 3' Rt " "
2+71 " " 23' Rt " "

2+24 mail Box on ϕ
2+29 2' High privet
wooden fence on side of
AC driveway

2+49 sign post 2' Lt

7.5
8.3 AC Road
3' Lt edge

1.1
9' Rt edge AC drive ^{way}

2+87 7' Rt brace pole

6.2
3' Lt edge AC

5.8
3' Lt " "

2.6 / 4' Rt Top BK 9' R
0.5 / 8' Rt Top Slope

83.73

2+50			
2+50	5.1	78.33	
+75	4.8	78.9	

3+00			
4+00	3.8	79.9	

11.50	93.77	1.46	82.27
3+53.45			
4+53.45 BC	9.7	84.07	

3+75			
4+75	9.2	84.57	

4+00			
5+00	9.4	85.37	

+25	17.0	86.77	
-----	------	-------	--

4+51			
5+51 45 BC	6.7	87.07	

4+56			
5+56	6.46	87.31	

+90	4.52	89.25	
-----	------	-------	--

5+00			
6+00	4.06	89.71	

5.42	5.2	0.0
2' LT edge AC	2' RT	8' RT Top Slope
1.1 LT edge AC Road	4.6	0.0
	5' RT	9' RT Top Slope

3+99 6' RT PP P2337

3.9	0.7
2' LT edge AC Road	10' RT

4+25 6' RT to 4" Flowering Alasia Tree

Turn on PK Nail 10' 21

11.5	11.8	4.6
6' edge AC	4	8' RT Top Slope

9.9	3.5
6' LT edge AC pave	8' RT Top Slope

8.6	8.2	5.0
7' LT edge AC pave	3' RT Top of Slope	10' RT

7.8	5.6
6.5 LT edge AC	7' RT

5+27 PP 7' RT # PC 2343

6.7	4.9
4' LT edge AC SI	10' RT

Begin 1" AC private Drive to RT

End " " " " " "

5+92 Mail Box 3' RT

2.9
1 on edge AC Pave
10' RT

Roseland Dr Cont

93.77

5+20				
6+20		2.53	91.24	
+50		0.84	92.93	
+61 ⁹⁴		0.37	93.40	
T.P.	0.38	81.60	12.55	81.22
T.P.	0.26	69.42	12.44	69.16
T.P.	6.76	64.00	12.18	57.24
CHECK				
B.M.		9.29	54.71	= 54.69

Begin Oil Drive way to Rt

+0.2

10' RT

+1.0

10' RT

Proposed Meter Locations

4 2+40 RT

3+10 RT

5+57 RT

4+25 LT

LINES IN GROUND

2+08 3+08 18' LT

2+50 +50 16' LT

4+00 5+00 6' LT

5+00 6+00 17' LT

5+69 +64 6' RT

Roseland Dr Alternate
 Connection from a 90° From
 Torrey Pines Rd

	6.55	79.82	73.27
0+63			
1+63	0+83	9.75	70.07
1+64	0+84	9.77	70.05
1+60		10.1	69.7
1+84		9.5	70.3
1+05		8.3	71.5
1+10		6.5	73.3

2+00 @ see page 42

Sly edge AC pave Torrey Pines Rd

16" CI Pipe

1+27			
2+27		5.73	74.1
1+42		4.66	75.1
		6.55	78.27 = 73.27

1+08 #306813

2+08 T&T Rd @ 621

1+14
 2+14 WM 40 LT

Nly edge AC pave Roseland

Sly edge AC pave

1+50
 5+50 Δ $\frac{45^\circ \text{LT}}{51^\circ 06' \text{LT}}$

2+54
 1+84

ROSELAND DRIVE

TOLLEY Pines Rd to East Term

STKS for 8" AC

0.21	82.48	82.77	
0+84	12.3	70.2	
1+00	12.7	69.8	66.0
+25	8.5	74.0	68.1
1+40 WMSH	2.7	79.8	72.0
1+50	3.0	79.5	70.4
1+50	1.5	81.0	70.4
+55	+1.8	84.3	70.6
2+00	0.7	81.8	72.4
+08 ⁵⁰ BC	1.1	81.4	72.7
2+17 WMSH	0.4	82.1	76.1
+25	1.2	81.3	73.4
+50	1.4	81.1	74.4
+75	0.8	81.7	75.4
+99 ²⁵ EC	1.2	81.3	76.4
9.0A	91.31	0.21	82.27
3+21 WMSH	11.3	80.0	80.1
+50	4.7	86.6	78.6
+53 ⁴⁵ BC	4.2	87.1	78.7

West
Williams X
Paulson +

46

meters Set 6' RL +26' AL 912815L HOT
OF 2 pipeTP PH nail 10' LT 3+53¹⁵ BCC. To EXISTING
Begin workC3 ⁸C5 ⁹C7 ⁸C9 ¹C10 ⁶To FLANGE C9 ⁹ 90° Fork Forward Turn

To ELL. C13.7 (5) & FIRE Hyd

C9 ⁴C8 ²C6 ⁰C7 ⁹C6 ²C6 ³C4 ⁹F0 ¹C8 ⁰C8 ⁴

91.31

>					
3+75	3.4	87.9	79.5	C8	<u>4</u>
4+00	4.7	86.6	80.6	C6	<u>0</u>
+25	3.5	87.8	81.7	C6	<u>1</u>
+51 ²⁵ EC	3.5	87.8	83.0	C4	<u>8</u>
4+60 ⁵ WM sly	3.2	88.1	87.3	C0	<u>8</u>
5+00	1.1	90.2	85.1	C5	<u>1</u>

4.19 95.23 0.27 91.04

+30 2 Mts sly	3.2	92.0	90.8	C1	<u>2</u>
+50	2.0	93.2	87.4	C5	<u>8</u>
+60	1.5	93.7	88.0	C5	<u>7</u>

end of work

1296 82.27 = 82.27

ELEV TOP OF MAINS
DORCAS ST @ 011

Dorcias St

5.23	23.42	18.19
prop line Savannah Pl 90' South of South	8.32	15.10
	5.61	17.81
on South prop	6.51	16.91
Line Savannah Pl	3.6	19.8

Bertrude St

0.59	45.70	45.11
Btw Lots	8.97	36.73
36 + 37	4.7	41.0
13 ⁶ South of 130		

5.90	45.70	39.80
	0.59	45.11
	5.90	39.80

Lillian + Viola

11.63	89.50	77.87	
	1.41	88.09	
0.06	84.77	4.79	84.71

West
Williams
Paulson

48

9/28/56

Dorcias + Morena Blvd
this end of Ob ret NE Cor

Top of pipe
Top of Ground
Top of pipe
Ground

To

Top FH SE Cor Bertrude + Viola
Top of Pipe
Top of Ground

SW Man Cor Viola + Bertrude St

BP NE Cor Hilda + Dorcas

TP on Ob

Lillian St

94.77

54' SWly of Q of Lillian & Viola on Lillian	117.9	73.04		
	9.4	75.4	✓	
	2.87	78.42	9.22	75.55
45' SWly of Q of Lillian & Viola on Viola St	98.3	69.6		
	6.8	71.6	✓	
T.P.	12.09	90.15	0.36	78.06
T.P.	7.24	96.80	0.59	89.56
T.P.	5.50	89.80	12.50	84.30
CHECK B.M.		11.85	77.85 =	77.87
B.M.	11.85	89.72		77.87
T.P.	12.68	101.45	0.95	88.77
T.P.	12.77	113.83	0.39	101.06
T.P.	8.70	122.04	0.49	113.34
132' NWly of	8.54	113.50		
NE Cor Dorcas & Lillian	6.7	115.3		
See 3853 D Hole #2"	6.92	115.12		
	12.97	134.54	0.47	121.57
	10.52	144.43	0.63	133.91
65' SWly of PRC	8.27	136.16		
Everview 3856 D	6.65	138.78		

Top of pipe
Top of Ground

Top of pipe
Top of Ground

Dorcas + Everview

Top of Pipe Dorcas St

Top of Ground

Top of Pipe

213 South of NE prop
Cor of Lot 49 Silver Block
Top of Ground NTS (75' Ely @ 90°)

Top of pipe
Top of AC

144.43

35' Ely of PRC of Everview 3856 D	4.01	140.42	
	1.35	143.08	
0.28	140.95	3.76	140.67
0.33	128.16	13.12	127.83
0.21	115.09	13.29	114.88
0.46	102.74	12.81	102.28
0.57	90.20	13.11	89.63
	12.42	77.78	= 27.87

Gertrude + Lillian

3.72	43.52		39.80
12.77	56.27	0.02	43.50
6.39	62.55	0.11	56.16
9' North of lot	11.80	50.75	
Cor 6-7 3848 D Block C Bnd Hts	6.94	55.61	
on sly prop	7.34	55.21	
Line of Lillian 3848 D	3.86	58.69	

Top of pipe

Top of AC

TBM RH Nail PP # 2307

SW Mon Viola + Gertrude

Top of pipe

Top of Oil Pave

Top of pipe

Top of Oil pave

62.55

0.25 50.32 12.48 50.07

8.34 46.48 12.18 38.14

6.72 39.76 = 39.80

Everview + Knox St

1.33 185.16 183.83

32' North 827 176.89
of FC Everview

+ Knox 5.70 179.46

1.33 183.83 = 183.83

MONITOR Rd + Hilda Rd

60.5 N1/4 of
Hilda St 13.25 91.12 77.87

3859-D 11.29 101.79 0.62 90.50

3.06 98.73

0.69 101.10

1.19 91.10 11.88 89.91

13.24 77.86 = 77.87

West
Williams
Poulson

51

10/15/6

of Knox
BM Hub on BC Everview Rd North

Top of Pipe

Top of Ground

BM NE BP Hilda Rd + Dorcas

Top of pipe

Top AC pave

Lillian ST
Dorcas 150' wly
Top of 8" AC pipe
As Lowered

10/22/57
Beatty
O'Brien

52

BM	13.33	53.13		39.80
IP	13.28	66.15	0.26	52.87
IP	12.71	78.35	0.51	65.64
IP	12.70	90.73	0.32	78.03
1+50			10.36	80.37
1+25			8.62	82.11
1+00			6.00	84.73
0+75			3.10	87.63
0+50			0.72	90.01
IP	10.70	100.02	1.41	89.32
0+25			8.66	91.36
0+00			7.21	92.81
0+00 = Newly IP Dorcas				
ck IP			11.92	88.10 = 88.09
IP	0.89	87.67	13.24	86.78
IP	0.19	75.09	12.77	74.90
IP	0.10	61.85	13.34	61.75
IP	0.24	48.71	13.38	48.47
ck BM			8.89	39.82 = 39.80

Swly Conc Men 7' Viola & Gertrude

1036.79

451.00

585.79

~~16.10~~

16.10

2+78⁷⁰

L.S. 2201

PROP. PIPE 50' LT. & 59²³ LT.

3+48⁶⁸

50 LT. & 60 LT.

3+49¹³

20' LT. SPIKE

4+88 G.V.

6+37⁵⁰

& GAGE PLACE

1
2
3
4
5
6
7
8
9
0

Please Return to
 City of San Diego Water Dept.
 Room 903 Civic Center

Eleanor Dr.

343.52

339.77

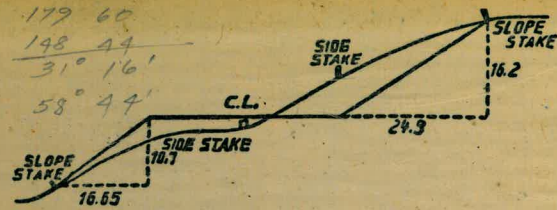
3.75

1.67

294.47

GALV. SPIKE IN P.

DUPONT & SILVER GATE



DISTANCES FROM SIDE STAKES FOR CROSS-SECTIONING.

SLOPE 1 1/2 TO 1. ROADWAY OF ANY WIDTH.

	0	.1	.2	.3	.4	.5	.6	.7	.8	.9	
0	0.00	0.15	0.30	0.45	0.60	0.75	0.90	1.05	1.20	1.35	0
1	1.50	1.65	1.80	1.95	2.10	2.25	2.40	2.55	2.70	2.85	1
2	3.00	3.15	3.30	3.45	3.60	3.75	3.90	4.05	4.20	4.35	2
3	4.50	4.65	4.80	4.95	5.10	5.25	5.40	5.55	5.70	5.85	3
4	6.00	6.15	6.30	6.45	6.60	6.75	6.90	7.05	7.20	7.35	4
5	7.50	7.65	7.80	7.95	8.10	8.25	8.40	8.55	8.70	8.85	5
6	9.00	9.15	9.30	9.45	9.60	9.75	9.90	10.05	10.20	10.35	6
7	10.50	10.65	10.80	10.95	11.10	11.25	11.40	11.55	11.70	11.85	7
8	12.00	12.15	12.30	12.45	12.60	12.75	12.90	13.05	13.20	13.35	8
9	13.50	13.65	13.80	13.95	14.10	14.25	14.40	14.55	14.70	14.85	9
10	15.00	15.15	15.30	15.45	15.60	15.75	15.90	16.05	16.20	16.35	10
11	16.50	16.65	16.80	16.95	17.10	17.25	17.40	17.55	17.70	17.85	11
12	18.00	18.15	18.30	18.45	18.60	18.75	18.90	19.05	19.20	19.35	12
13	19.50	19.65	19.80	19.95	20.10	20.25	20.40	20.55	20.70	20.85	13
14	21.00	21.15	21.30	21.45	21.60	21.75	21.90	22.05	22.20	22.35	14
15	22.50	22.65	22.80	22.95	23.10	23.25	23.40	23.55	23.70	23.85	15
16	24.00	24.15	24.30	24.45	24.60	24.75	24.90	25.05	25.20	25.35	16
17	25.50	25.65	25.80	25.95	26.10	26.25	26.40	26.55	26.70	26.85	17
18	27.00	27.15	27.30	27.45	27.60	27.75	27.90	28.05	28.20	28.35	18
19	28.50	28.65	28.80	28.95	29.10	29.25	29.40	29.55	29.70	29.85	19
20	30.00	30.15	30.30	30.45	30.60	30.75	30.90	31.05	31.20	31.35	20
21	31.50	31.65	31.80	31.95	32.10	32.25	32.40	32.55	32.70	32.85	21
22	33.00	33.15	33.30	33.45	33.60	33.75	33.90	34.05	34.20	34.35	22
23	34.50	34.65	34.80	34.95	35.10	35.25	35.40	35.55	35.70	35.85	23
24	36.00	36.15	36.30	36.45	36.60	36.75	36.90	37.05	37.20	37.35	24
25	37.50	37.65	37.80	37.95	38.10	38.25	38.40	38.55	38.70	38.85	25
26	39.00	39.15	39.30	39.45	39.60	39.75	39.90	40.05	40.20	40.35	26
27	40.50	40.65	40.80	40.95	41.10	41.25	41.40	41.55	41.70	41.85	27
28	42.00	42.15	42.30	42.45	42.60	42.75	42.90	43.05	43.20	43.35	28
29	43.50	43.65	43.80	43.95	44.10	44.25	44.40	44.55	44.70	44.85	29
30	45.00	45.15	45.30	45.45	45.60	45.75	45.90	46.05	46.20	46.35	30
31	46.50	46.65	46.80	46.95	47.10	47.25	47.40	47.55	47.70	47.85	31
32	48.00	48.15	48.30	48.45	48.60	48.75	48.90	49.05	49.20	49.35	32
33	49.50	49.65	49.80	49.95	50.10	50.25	50.40	50.55	50.70	50.85	33
34	51.00	51.15	51.30	51.45	51.60	51.75	51.90	52.05	52.20	52.35	34
35	52.50	52.65	52.80	52.95	53.10	53.25	53.40	53.55	53.70	53.85	35
36	54.00	54.15	54.30	54.45	54.60	54.75	54.90	55.05	55.20	55.35	36
37	55.50	55.65	55.80	55.95	56.10	56.25	56.40	56.55	56.70	56.85	37
38	57.00	57.15	57.30	57.45	57.60	57.75	57.90	58.05	58.20	58.35	38
39	58.50	58.65	58.80	58.95	59.10	59.25	59.40	59.55	59.70	59.85	39
40	60.00	60.15	60.30	60.45	60.60	60.75	60.90	61.05	61.20	61.35	40
41	61.50	61.65	61.80	61.95	62.10	62.25	62.40	62.55	62.70	62.85	41
42	63.00	63.15	63.30	63.45	63.60	63.75	63.90	64.05	64.20	64.35	42
43	64.50	64.65	64.80	64.95	65.10	65.25	65.40	65.55	65.70	65.85	43
44	66.00	66.15	66.30	66.45	66.60	66.75	66.90	67.05	67.20	67.35	44
45	67.50	67.65	67.80	67.95	68.10	68.25	68.40	68.55	68.70	68.85	45
46	69.00	69.15	69.30	69.45	69.60	69.75	69.90	70.05	70.20	70.35	46
47	70.50	70.65	70.80	70.95	71.10	71.20	71.40	71.55	71.70	71.85	47
48	72.00	72.15	72.30	72.45	72.60	72.75	72.90	73.05	73.20	73.35	48
49	73.50	73.65	73.80	73.95	74.10	74.25	74.40	74.55	74.70	74.85	49
50	75.00	75.15	75.30	75.45	75.60	75.75	75.90	76.05	76.20	76.35	50

THE NATIONAL BLANK BOOK COMPANY
 HOLYOKE MASSACHUSETTS
 NEW YORK CHICAGO BOSTON SAN FRANCISCO