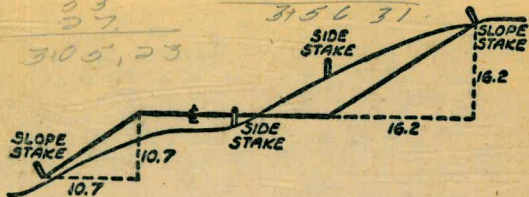


880



DISTANCES FROM SIDE STAKES FOR CROSS-SECTIONING
SLOPE 1 TO 1, ROADWAY OF ANY WIDTH

	0	.1	.2	.3	.4	.5	.6	.7	.8	.9	
0	0.00	0.10	0.20	0.30	0.40	0.50	0.60	0.70	0.80	0.90	0
1	1.00	1.10	1.20	1.30	1.40	1.50	1.60	1.70	1.80	1.90	1
2	2.00	2.10	2.20	2.30	2.40	2.50	2.60	2.70	2.80	2.90	2
3	3.00	3.10	3.20	3.30	3.40	3.50	3.60	3.70	3.80	3.90	3
4	4.00	4.10	4.20	4.30	4.40	4.50	4.60	4.70	4.80	4.90	4
5	5.00	5.10	5.20	5.30	5.40	5.50	5.60	5.70	5.80	5.90	5
6	6.00	6.10	6.20	6.30	6.40	6.50	6.60	6.70	6.80	6.90	6
7	7.00	7.10	7.20	7.30	7.40	7.50	7.60	7.70	7.80	7.90	7
8	8.00	8.10	8.20	8.30	8.40	8.50	8.60	8.70	8.80	8.90	8
9	9.00	9.10	9.20	9.30	9.40	9.50	9.60	9.70	9.80	9.90	9
10	10.00	10.10	10.20	10.30	10.40	10.50	10.60	10.70	10.80	10.90	10
11	11.00	11.10	11.20	11.30	11.40	11.50	11.60	11.70	11.80	11.90	11
12	12.00	12.10	12.20	12.30	12.40	12.50	12.60	12.70	12.80	12.90	12
13	13.00	13.10	13.20	13.30	13.40	13.50	13.60	13.70	13.80	13.90	13
14	14.00	14.10	14.20	14.30	14.40	14.50	14.60	14.70	14.80	14.90	14
15	15.00	15.10	15.20	15.30	15.40	15.50	15.60	15.70	15.80	15.90	15
16	16.00	16.10	16.20	16.30	16.40	16.50	16.60	16.70	16.80	16.90	16
17	17.00	17.10	17.20	17.30	17.40	17.50	17.60	17.70	17.80	17.90	17
18	18.00	18.10	18.20	18.30	18.40	18.50	18.60	18.70	18.80	18.90	18
19	19.00	19.10	19.20	19.30	19.40	19.50	19.60	19.70	19.80	19.90	19
20	20.00	20.10	20.20	20.30	20.40	20.50	20.60	20.70	20.80	20.90	20
21	21.00	21.10	21.20	21.30	21.40	21.50	21.60	21.70	21.80	21.90	21
22	22.00	22.10	22.20	22.30	22.40	22.50	22.60	22.70	22.80	22.90	22
23	23.00	23.10	23.20	23.30	23.40	23.50	23.60	23.70	23.80	23.90	23
24	24.00	24.10	24.20	24.30	24.40	24.50	24.60	24.70	24.80	24.90	24
25	25.00	25.10	25.20	25.30	25.40	25.50	25.60	25.70	25.80	25.90	25
26	26.00	26.10	26.20	26.30	26.40	26.50	26.60	26.70	26.80	26.90	26
27	27.00	27.10	27.20	27.30	27.40	27.50	27.60	27.70	27.80	27.90	27
28	28.00	28.10	28.20	28.30	28.40	28.50	28.60	28.70	28.80	28.90	28
29	29.00	29.10	29.20	29.30	29.40	29.50	29.60	29.70	29.80	29.90	29
30	30.00	30.10	30.20	30.30	30.40	30.50	30.60	30.70	30.80	30.90	30
31	31.00	31.10	31.20	31.30	31.40	31.50	31.60	31.70	31.80	31.90	31
32	32.00	32.10	32.20	32.30	32.40	32.50	32.60	32.70	32.80	32.90	32
33	33.00	33.10	33.20	33.30	33.40	33.50	33.60	33.70	33.80	33.90	33
34	34.00	34.10	34.20	34.30	34.40	34.50	34.60	34.70	34.80	34.90	34
35	35.00	35.10	35.20	35.30	35.40	35.50	35.60	35.70	35.80	35.90	35
36	36.00	36.10	36.20	36.30	36.40	36.50	36.60	36.70	36.80	36.90	36
37	37.00	37.10	37.20	37.30	37.40	37.50	37.60	37.70	37.80	37.90	37
38	38.00	38.10	38.20	38.30	38.40	38.50	38.60	38.70	38.80	38.90	38
39	39.00	39.10	39.20	39.30	39.40	39.50	39.60	39.70	39.80	39.90	39
40	40.00	40.10	40.20	40.30	40.40	40.50	40.60	40.70	40.80	40.90	40
41	41.00	41.10	41.20	41.30	41.40	41.50	41.60	41.70	41.80	41.90	41
42	42.00	42.10	42.20	42.30	42.40	42.50	42.60	42.70	42.80	42.90	42
43	43.00	43.10	43.20	43.30	43.40	43.50	43.60	43.70	43.80	43.90	43
44	44.00	44.10	44.20	44.30	44.40	44.50	44.60	44.70	44.80	44.90	44
45	45.00	45.10	45.20	45.30	45.40	45.50	45.60	45.70	45.80	45.90	45
46	46.00	46.10	46.20	46.30	46.40	46.50	46.60	46.70	46.80	46.90	46
47	47.00	47.10	47.20	47.30	47.40	47.50	47.60	47.70	47.80	47.90	47
48	48.00	48.10	48.20	48.30	48.40	48.50	48.60	48.70	48.80	48.90	48
49	49.00	49.10	49.20	49.30	49.40	49.50	49.60	49.70	49.80	49.90	49
50	50.00	50.10	50.20	50.30	50.40	50.50	50.60	50.70	50.80	50.90	50

Please Return to
City of San Diego Water Dept.
Room 903 Civic Center

Distance of slope stake from side or shoulder stake for any width roadway, slope 1 to 1. If ground is nearly level, the cut or fill at side stake is located by the double entry method in left column and top row. The number in body of table in same row and column gives distance from side stake to slope stake. If ground is not level estimate the difference in elevation between the side stake and slope stake, lower target by this amount if cut, elevate if fill. Add this amount to cut or fill and find distance in table. Set up rod at this point, and line of sight should cut target. If it does not make the slight adjustment necessary.

TABLE XIII—CORRECTIONS FOR TANGENTS AND EXTERNALS

These corrections are to be added to the approximate values, found by dividing the tangent, or external, for a 1° curve (Table VIII) by the degree of curve, in order to obtain the true tangents, or externals. Intermediate values may be obtained by interpolation.

FOR TANGENTS ADD

Central Angle	DEGREE OF CURVE													
	5°	10°	15°	20°	25°	30°	35°	40°	45°	50°	55°	60°	65°	70°
10°	.03	.06	.09	.13	.16	.19	.22	.25	.28	.31	.34	.38	.42	.46
15°	.04	.10	.14	.19	.24	.29	.34	.39	.45	.51	.53	.58	.63	.68
20°	.06	.13	.19	.26	.32	.39	.45	.51	.58	.65	.72	.79	.84	.90
25°	.08	.16	.24	.33	.40	.49	.58	.67	.75	.83	.90	.99	1.06	1.14
30°	.10	.19	.29	.39	.49	.59	.69	.79	.89	.99	1.09	1.20	1.29	1.39
35°	.11	.22	.34	.47	.58	.69	.79	.81	.92	1.04	1.29	1.42	1.54	1.66
40°	.13	.26	.40	.53	.67	.80	.93	1.06	1.20	1.34	1.49	1.64	1.79	1.94
45°	.15	.30	.44	.60	.76	.91	1.06	1.21	1.37	1.52	1.70	1.87	2.04	2.21
50°	.17	.34	.51	.68	.85	1.02	1.19	1.36	1.54	1.72	1.91	2.10	2.29	2.48
55°	.19	.38	.57	.76	.95	1.14	1.32	1.52	1.72	1.92	2.14	2.35	2.56	2.77
60°	.21	.42	.63	.84	1.05	1.27	1.49	1.71	1.94	2.17	2.38	2.60	2.83	3.07
65°	.23	.46	.69	.93	1.16	1.40	1.64	1.88	2.13	2.38	2.63	2.88	3.13	3.39
70°	.25	.51	.76	1.02	1.28	1.54	1.80	2.06	2.33	2.60	2.88	3.16	3.44	3.72
75°	.27	.56	.83	1.12	1.40	1.69	1.98	2.27	2.57	2.87	3.16	3.47	3.78	4.09
80°	.30	.61	.91	1.22	1.53	1.84	2.15	2.46	2.78	3.10	3.44	3.78	4.12	4.46
85°	.33	.66	1.00	1.33	1.68	2.02	2.36	2.70	3.05	3.40	3.77	4.14	4.55	4.89
90°	.36	.72	1.09	1.45	1.83	2.20	2.57	2.94	3.32	3.70	4.10	4.50	4.91	5.32
95°	.39	.79	1.19	1.55	2.00	2.40	2.80	3.20	3.61	4.02	4.40	4.98	5.38	5.83
100°	.43	.86	1.30	1.74	2.18	2.62	3.06	3.50	3.95	4.40	4.88	5.37	5.85	6.34
110°	.51	1.03	1.56	2.08	2.61	3.14	3.67	4.21	4.76	5.31	5.86	6.43	7.01	7.60
120°	.62	1.25	1.93	2.52	3.16	3.81	4.45	5.11	5.77	6.44	7.12	7.80	8.50	9.22

FOR EXTERNALS ADD

Central Angle	DEGREE OF CURVE													
	5°	10°	15°	20°	25°	30°	35°	40°	45°	50°	55°	60°	65°	70°
10°	.001	.003	.004	.006	.007	.008	.009	.011	.012	.014	.015	.017	.018	.020
15°	.003	.007	.010	.014	.018	.023	.027	.029	.032	.035	.039	.043	.047	.051
20°	.006	.011	.017	.022	.028	.034	.038	.045	.051	.057	.063	.070	.076	.083
25°	.009	.018	.027	.036	.046	.056	.065	.074	.083	.093	.106	.120	.127	.135
30°	.013	.025	.038	.051	.065	.078	.090	.103	.116	.129	.149	.170	.179	.188
35°	.018	.035	.054	.072	.086	.109	.131	.153	.175	.197	.213	.230	.247	.264
40°	.023	.046	.070	.093	.117	.141	.172	.203	.234	.265	.277	.290	.315	.341
45°	.030	.060	.093	.119	.153	.184	.216	.254	.289	.325	.351	.378	.411	.445
50°	.037	.075	.116	.151	.189	.227	.266	.305	.345	.384	.425	.467	.508	.550
55°	.046	.093	.142	.188	.236	.283	.332	.381	.420	.479	.530	.582	.641	.700
60°	.056	.112	.168	.225	.283	.340	.398	.457	.516	.575	.636	.697	.774	.851
65°	.067	.135	.204	.273	.343	.412	.483	.554	.625	.697	.771	.845	.922	1.01
70°	.080	.159	.240	.321	.403	.485	.568	.652	.735	.819	.906	.994	1.08	1.17
75°	.095	.182	.266	.353	.440	.528	.618	.707	.797	.887	.977	1.07	1.18	1.29
80°	.110	.220	.332	.445	.558	.671	.787	.903	1.02	1.13	1.25	1.38	1.50	1.62
85°	.128	.259	.391	.524	.657	.790	.926	1.06	1.20	1.34	1.47	1.62	1.76	1.91
90°	.149	.299	.450	.603	.756	.910	1.07	1.22	1.38	1.54	1.70	1.87	2.03	2.20
95°	.174	.350	.522	.706	.885	1.06	1.25	1.43	1.62	1.80	1.99	2.18	2.38	2.58
100°	.200	.401	.604	.809	1.01	1.22	1.43	1.64	1.85	2.06	2.28	2.50	2.73	2.96
110°	.268	.536	.806	1.08	1.35	1.63	1.91	2.20	2.48	2.76	3.05	3.35	3.66	3.96
120°	.360	.721	1.08	1.45	1.82	2.19	2.57	2.95	3.33	3.72	4.11	4.50	4.91	5.32

INDEX

Pages

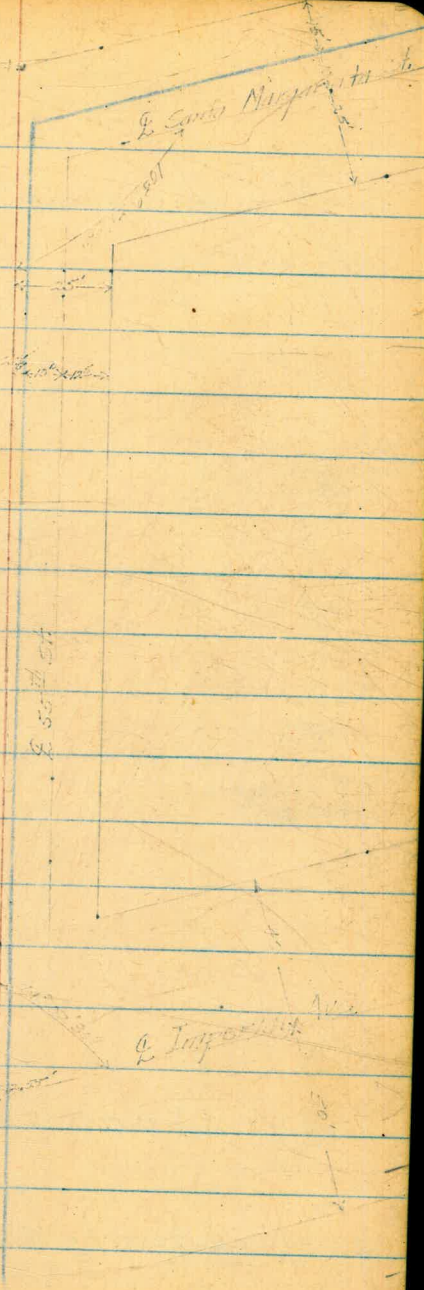
- Geneva Ave. - Hanover to Winstan 1-3 ✓
- 55th St. & Santa Margarita - Imperial to 53rd 4-10 ✓
alice
- Santa Margarita Revised Alignment 11-12 ✓
Proposed P1
- 28th St Cedar to Elm 13-16 ✓
Proposed P2
- Elm St Granada to 28th 17-19 ✓
- 44th St Olive to Maple 20-23 ✓
CON
- Lewis, Eagle to 200' East 24 ✓
- Titus St, Pringle to Keating 25-26 ✓
- Near St, Pringle to Keating 27-29 ✓
- Alley Bk. 3, So. Lewis, E Fourth St. 30-31-32 ✓
- Laurel St, Union to Curlew St 33-34-35 ✓
alice
- ROSEGRANS ST. - Whitman to Calhoun 37-42 ✓
- HORTON ST. - Laurel St. - Curlew St. 45-47 ✓
STKS For 8" D.C.
- 28th St Cedar to Date 48 ✓
alice
- LOCATION I.A.C. MAIN St. CLAIREMONT PARK 49 ✓
- Elevs of pipe South's UNION HEIGHTS RES. 50-52 ✓
30" & 36" C.I. PIPE
- WATER METERS FRANKLIN AVE, 35th to 40th 53 ✓
- " " NASSAU ST, 47th to 49th 54-55 ✓
- FORDHAM ST, MIDWAY to FRONTIER ST, MAIN 56-57 ✓
8" D.C.
- PENNSYLVANIA AVE, PARK BLVD. WLY. & PROFILE (PROLIM) 58-60 ✓
- SUNSET ST, JUAN ST. to WITHEBY ST, & PROFILE (PROLIM) 61-64 ✓
RD
- LOS ALTOS RD., ALTA VISTA to LOS ALTOS, & PROFILE 65-67 ✓
alice

INDEX

✓
E PROFILE
AMALFI ST., TORREY PINES RD. TO HILLSIDE DR. 68-72

✓
E PROFILE
TORREY PINES RD., HIDDEN VALLEY RD. TO 1600' E. 73-76
Alice

Map
6/21/11



Q.P.L. Profile Geneva Ave
Hanover St. 550' West

8/24/53
Shorey
Willidms
Varanakis

(2)

Sta.	+	Ht.	-	Elev
B.M.	2.11	250.98		248.87
0+00			2.1	248.9
0+50			3.1	247.9
1+00			3.85	247.1
1+50			5.4	245.6
2+00			8.9	242.1
TP	0.46	238.65	12.79	238.19
2+50			1.6	237.0
3+00			7.25	230.7
TP	0.63	226.42	12.86	225.79
3+50			2.3	224.1
4+00			10.0	216.4
TP	0.61	214.16	12.87	213.55
4+50			5.5	208.7
5+00			11.8	202.4
TP	1.02	202.62	12.56	201.60
5+43 ²¹			5.4	197.2
TBM			0.16	202.46
TBM	12.24	214.70		202.46

Conc Mon. S.W. Cor. Hanover & Geneva Ave.

Lt. Q

3.5 3.8
8'Cb 7.7 Gut

2.5 5.1
8'Cb 7.7 Gut

8.2 8.7
8'Cb 7.6 Gut

0.2 1.4
8'Cb 7.6 Gut

6.6 8.0
7.5'Cb 7.3 Gut

2.15 2.2
7.3 7.2 Driveway

9.3 10.2
7.5'Cb 7.3 Gut

4.3 5.5
7.7'Cb 7.6 Gut

Set Nail in Pole # 170917 5+07 9' Lt.
" " " " " " " "

G.P.L. Profile Geneva Ave.
Hanover St. 550' ± West

8/29/53
Shorey
Williams
Varonakis

(3)

Sta	+	H.I.	-	Elev.
		214.70		
TP	12.57	227.00	0.27	214.43
TP	12.67	239.58	0.07	226.91
TP	10.60	249.83	0.35	239.23
B.M.			0.94	248.89 = 248.87
TBM	0.38	202.84		202.46
5+50			6.3	196.5
TP				
6+00	0.34	190.15	13.03	189.81
6+50			6.7	183.5
TP	0.11	177.59	12.67	177.48
7+00			1.9	175.7
7+50			8.3	169.3
7+81 ²⁵			11.5	166.1
BM			11.61	165.98 = 165.97

Conc. Mon. S.W. Cor. Hanover & Geneva Ave.
Nail in Pole # 170917 5+09 9'lt.

W. Winston St.
Conc. Mon. S.W. Cor. Winston & Geneva Ave

Q.P.L. Profile Santa Margarita
55th St. to 53rd St.

E.C. = 19+86⁰⁶ End of work

P.C.C. = 18+05⁵⁵

B.C. = 16+67⁰⁸

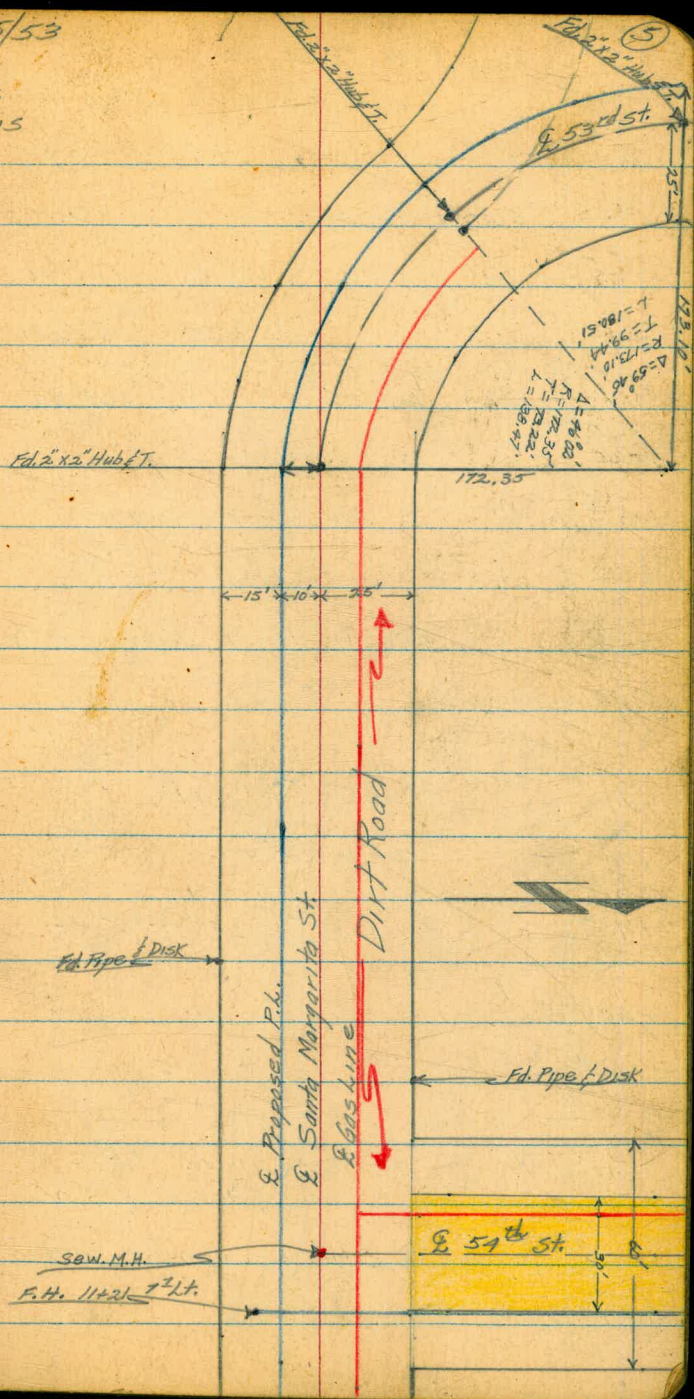
See Page 11
for new alignment

11+67²⁰ = W/L 54th St.

11+37²⁰ = Q 54th St.

11+07²⁰ = E/L 54th St.

8/25/53
Shorey
Williams
Varonakis



Q.P.L. Profile 55th St. &
Santa Margarita St.
Imperial Ave to 53rd St.

Shorey 8/25/53
Williams
Varonakis

(6)

Sta	+	H.L.	-	Elev								
B.M.	5.81	165.67		159.86						Chisel in Head wall S.E. Cor. Imperial & 54 th St.		
TP	7.61	169.07	9.21	161.46								
TBM			3.57	165.50						Nail in Guy Pole # 59075 H.		
TBM	3.84	169.34		165.50						Q = 10' East & South of Street		
0+00				163.69		Lt.				Rt.		
0+20		N. Edge Pav't Imperial Ave.		163.6	5.51 30'	5.4 10'	5.6 2.5'	5.65	6.1 10'	6.2 22.5'	6.05 50'	
0+42 ²⁵		S. Imperial Ave.		164.25	4.63 50'			5.74 163.6				
0+50				164.3				164.25		6.02 50'		
0+62		S. Edge Pav't Imperial Ave		164.5	4.21 10'		5.03 2.5'	5.04	5.16 10'		163.56	
1+00				163.4	4.04 50'			164.51			5.28 50'	
1+50				163.6				4.83				
1+94		F.P. 17' Rt. # 278944		164.1				163.4				
2+00				164.1				5.9 10'	5.9	6.2 10'	6.1 22.5'	6.15 30'
2+34		N. Edge Cong. Drive 22' Rt						5.9 10'	5.9	6.2 10'	6.1 22.5'	6.15 30'
2+41 ⁵		S. " " " "						5.8 2.5'	5.75	5.9 10'	5.8 22.5'	6.0 30'
2+45		Guy Pole # 569953H 15' Rt.						5.3 10'	5.2	5.5 10'	5.6 22.5'	5.6 30'
2+50				164.6				5.15 2.5'	5.2	5.5 10'	5.6 22.5'	5.6 30'
2+60		N. Edge Cong. Drive 23' Rt.						5.3 10'	5.2	5.5 10'	5.6 22.5'	5.6 30'
2+69 [±]		S. " " " "						5.2 10'	4.7	5.2 10'	5.2 22.5'	5.3 30'
3+00				165.1				4.7 10'	4.7	5.2 10'	5.2 22.5'	5.3 30'
3+40		N. Edge A.C. Drive 14 ⁵ Rt						164.6				
3+50				165.8				164.6				
3+59		S. Edge A.C. Drive 14 ⁵ Rt						164.6				
4+00				166.8				164.6				

E.P.L. Profile 55th St. & Santa Margarita
Imperial to 53rd St.

8/25/53

Shorey
Williams
Varanfakis

(7)

TP				Lt.	Rt.	Q = 10' East & South East.
TP	169.34	1.30	168.04			
TP	3.77	171.81				
4+50			167.6	168.0 3.8 10'	167.6 4.2 10'	168.1 3.7 10'
5+00			169.2	169.5 2.3 10'	169.2 2.4 10'	168.8 3.0 10'
5+15 ⁵⁰	X	Santa Margarita St.	169.6	2.0 15'	2.2	2.4 10'
5+70		Deadman 5' Lt.				3.1 35'
5+50		Deadman 5' Lt.	168.9	1.7 15'	2.9	3.2 10'
5+78		P.P. # P171185 6' Lt.				3.2 35'
5+99						
6+00			168.1	2.2 15'	3.75	3.8 10'
6+50			167.6	3.0 15'	4.2	4.3 10'
7+00			167.1			4.8 35'
7+22	P.P. # 573688	6' Lt.		3.3 15'	4.7	4.65 10'
7+50			166.5	3.25 15'	5.3	5.1 10'
8+00			166.2	4.5 15'	5.6	5.1 35'
8+37	P.P. # P170015	7' Lt.				6.0 35'
8+50			166.0	5.1 15'	5.8	5.35 10'
8+77	Begin Conc. Retaining Wall	16' Lt.				4.7 16' base
9+00			165.5	4.9 15'	6.3	4.05 16' top
9+37	End Conc. Retaining Wall	16' Lt.				6.3 16' base
9+40	Sidewalk 3'	28' Rt.	165.6			3.70 16' top
9+50			165.6	4.2 15'	6.2	6.10 28'
9+95	3' Sidewalk	31' Rt.				6.6 35'
10+00						6.8 31'
10+08	P.P. # 300367	7' Lt.	165.3	4.4 15'	6.5	6.7 10'
TP	3.85	169.03	6.63	165.18		7.0 35'

Q.P.L. Profile 55th St. & Santa Margarita
Imperial to 53rd St.

169.03

10+50		164.8				
11+00		164.3				
11+22	East Edge Conc. Pav't 54 th St. 35' Rt.					6.26 35'
11+37 ²⁰	Q. 54 th St. Sew. M.H. So. Edge 10' Rt.					5.79 35'
11+50	Sew. M.H. 10'	163.9				6.1 35'
11+52	West Edge Conc. Pav't. 54 th St. 35' Rt.					6.10 35'
11+75	3' Sidewalk 11.5 Lt.					
12+00		164.0				5.05 35'
12+50		163.9				6.0 35'
12+91	P.P. # 573686 6 th Lt.					
13+00		163.3				6.5 35'
13+50		162.4				7.3 35'
14+00		161.8				7.8 35'
14+01	P.P. # 77617 6' Lt.					
TP	3.61 164.81 7.83	161.20				
14+21	Deadman 6 th Lt.					
14+50		161.2				3.8 35'
15+00		160.7				4.3 35'
15+21	P.P. # 573685 6' Lt.					
15+50		160.4				5.0 35'
16+00		160.0				5.35 35'
16+41	P.P. # 374600 5 th Lt. 15' Lt. Deadman					
16+50		160.0				5.8 35'
16+63	Deadman 4 th Lt.					
16+67	B.C.	160.1				5.25 35'
17+00		159.9				5.8 35'
17+08	Sew. M.H. So. Edge 5 th Rt.					

Storey
Williams
Varonfakis

8/26/53

8

Lt.

Q = 10' East & South Q St.
Rt.

Top Elev. 168.04
F.L. Elev. 160.96

163.93

164.07
4.76
Sew. M.H. 10'

4.4
15'

5.1

5.3
10'

6.1
35'

3.93
11.5'

2.8
15'

4.3
12'

5.0

5.3
10'

5.05
35'

4.5
15'

5.1

5.3
10'

6.0
35'

5.1
15'

5.7

6.0
10'

6.5
35'

5.8
15'

6.65

6.7
10'

7.3
35'

6.4
15'

7.2

7.3
10'

7.8
35'

2.6
15'

3.65

3.6
10'

3.8
35'

3.3
15'

4.1

4.0
10'

4.3
35'

3.3
15'

4.4

4.5
10'

5.0
35'

3.3
15'

4.8

4.8
10'

5.35
35'

3.3
15'

4.8

5.0
10'

5.8
35'

3.6
15'

4.7

5.1
10'

5.25
35'

4.0
15'

4.7

5.2
10'

5.8
35'

Sew. M.H.

159.73
5.08
5.3'

Q.P.L. Profile 55th St. & Santa Margarita
Imperial to 53rd

8/26/53

Shorey
Williams
Varonakis Lt.
 $\frac{9.1}{15'}$

Q = 10' East & South Q St.
Rt.

17+50	#	164.81		159.7
17+70	P.P. 573684	9' Lt		
18+00				160.0
18+50				158.4
19+00				158.0
19+04	Sew. M.H. N. Edge	11' Lt.	Top Elev. 162.47	
19+50			F.H. Elev. 155.57	
TP	9.10	161.03	7.88	156.23
19+86 ⁰⁶	E.C.			157.53
TP	2.77	162.35	1.45	159.58
B.M.			2.51	159.84 =

New Notes see
Pg 12

5.1	$\frac{5.1}{10'}$	$\frac{6.3}{25'}$	$\frac{5.5}{28'}$	$\frac{5.8}{35'}$
4.8	$\frac{5.5}{10'}$	$\frac{6.6}{28'}$	$\frac{6.2}{35'}$	
6.4	$\frac{6.3}{11'}$		$\frac{7.1}{35'}$	
6.8	$\frac{7.25}{10'}$	$\frac{8.05}{24'}$	$\frac{7.3}{27'}$	$\frac{7.5}{35'}$
157.86				
6.75	$\frac{8.2}{3'}$	$\frac{8.2}{10'}$	$\frac{8.5}{30'}$	$\frac{7.8}{33'}$ $\frac{7.8}{35'}$
3.5	$\frac{5.9}{5'}$	$\frac{5.2}{10'}$	$\frac{5.3}{28'}$	$\frac{4.9}{29'}$ $\frac{4.9}{35'}$

159.86 Chisel D on Handwall S.E. Cor. Imperial & 54th St.

E.P.L. Profile 55th & Santa Margarita
Imperial to 53rd

0+00 6" Gate valve 16' Rt.
 +04² W.M. 8⁵ Rt.
 +33² W.L. Xing
 +65[±] Gas Xing
 +72⁵ W.M. 25' Lt.
 1+00 W.L. on E Gas line 8' Rt.
 3+00 W.L. 6³ Rt. Gas 17' Rt.
 3+65 } 4 W.M. 14' Rt.
 3+70 }
 4+50 W.L. 1' Lt.
 5+00 W.L. 3' Lt.
 5+15⁵⁰ x W.L. 4⁵ Lt.
 5+50 W.L. 1' Lt.
 7+00 W.L. on E
 7+78 W.M. 25' Rt.
 8+00 W.L. on E Gas 19' Rt.
 8+31 W.M. 26' Rt.
 8+69 W.M. 6' Lt.
 9+00 W.L. 1' Lt. Gas 19⁶ Rt.
 9+21 W.M. 7' Lt.
 9+33 Gas Xing
 9+40 " "

Shorey
Willidmis
Varan-fakis

8/26/53

(10)

9+53⁵ W.M. 22' Rt. 19+14 2 W.M. 20' Lt.
 9+64 W.M. 6[±] Lt. 19+17 W.M. 18' Lt.
 9+87 W.M. 23' Rt. 19+22 W.M. 15' Lt.
 10+00 W.L. 1' Lt. Gas 18' Rt.
 10+62 Gas Xing
 10+97 W.M. 6' Lt.
 11+21 F.H. 7³ Lt. & W. Xing on 59th
 11+30 Gas Xing
 11+35 W.M. 7' Lt.
 11+91 Gas Xing
 12+00 Gas 18' Rt.
 12+13 W.M. 6' Lt.
 12+39 " " "
 12+54 Gas Xing
 13+64 " "
 13+92 W.M. 25' Rt.
 14+00 W.M. 8' Lt. W.L. on E Gas 18' Rt.
 14+76 W.M. 25' Rt.
 15+37 " " 6' Lt.
 15+71 Gas Xing
 15+87 " "
 15+97 W.M. 6' Lt.
 16+00 W.L. on E Gas 17⁵ Rt.
 16+80 W.M. 5⁵ Lt.
 17+08 Sew. M.H. 5' Rt.
 17+50 W.L. on E
 18+50 3 W.M. 31' Lt.
 19+04 Sew. M.H. 11' Lt. 18+90⁵⁵ Intersection Sew. Whine

Santa Margarita St
53rd West

West
Williams
Kemp
Varonakis

11-10-53

(11)

20+50 end of work

$$\Delta = 22^{\circ} 02' 24''$$

$$R = 665.1'$$

$$L = 255.81$$

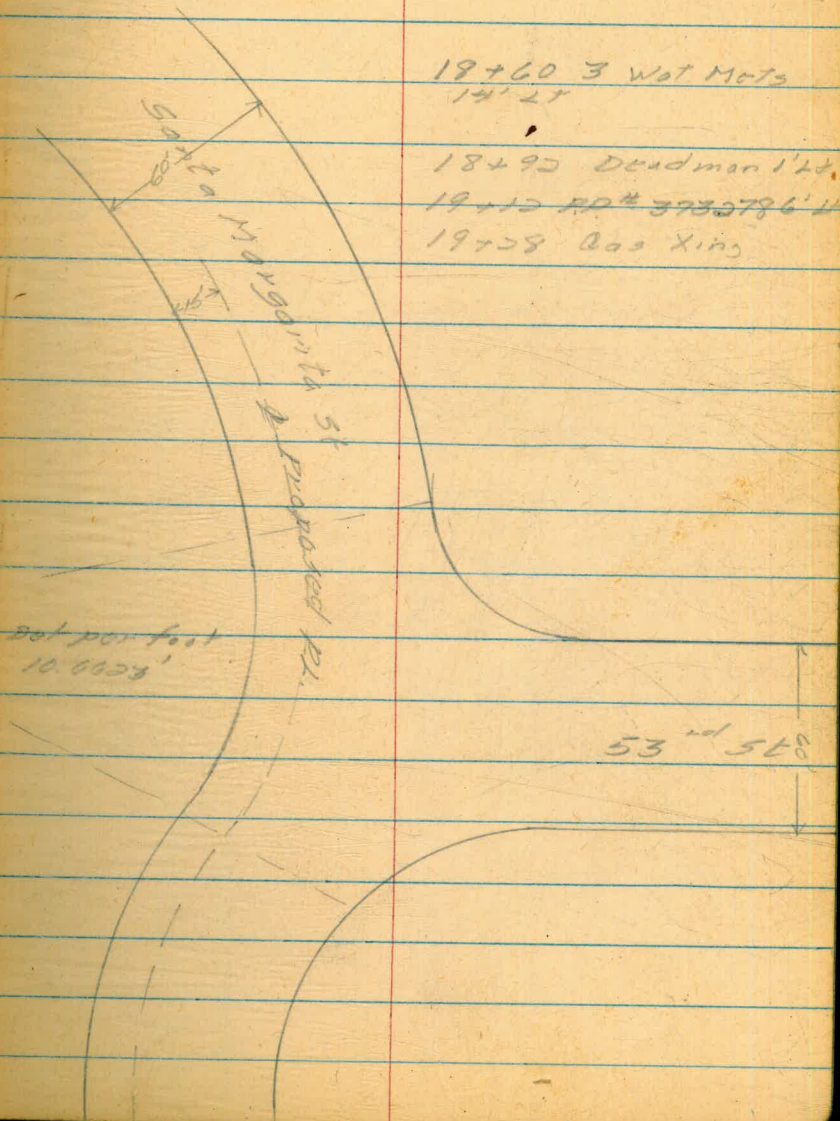
19+97.37 PSC

$$\Delta = 68^{\circ} 09' 30''$$

$$R = 161.21$$

$$L = 191.77$$

18+05⁵⁵ PRC



Q Profile Santa Margarita St

(12)

11.45 171.18 159.73

18+25 11.6 159.6

+50 11.5 159.7

+75 11.3 159.9

19+00 9.9 161.3

+25 8.3 162.9

+50 5.9 165.3

+75 3.5 167.9

19+97³⁰ 100 1.5 169.7

9.83 170.19 0.82 170.36

20+50 5.6 174.6

0.47 167.84 1282 167.37

5.14 162.43 10.53 157.29

2.54 159.89 = 159.86

10.8
15.21

13.41
35 RT

8.9
15.21

105 105
3 RT 35 RT

4.9
15.21

4.6
40 RT

4.0 0.6 1.3
15.21 6.521 6.21

0.3
45 RT

3.4
15.21

4.1 3.1
38 RT 40 RT

5+45

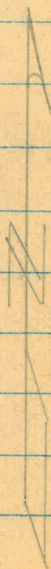
P.O.T

0+07

P.O.T

0+00

South prop line Cedar St



4+10 36 AS pave

3+38 SPAN N.H.
6' x 11'

Balboa Park

48' AS PAVE



5+05 1

(13)

5+05 Barroade

Date St 189.

5' 5" 101m C.P.

Gas and water appear
to be in same trench

5+00 07

Cedar St 189.

5+00 07

0+10 07 7' R.P.

0+00 SPAN N.H. 6' x 11'

7+85 84

~~90° 50' 30" Rt~~
20' off south prop line Elm

Elm St
(no road)

6400

POT

5+54 7' 11"
Cluster of 4 8" Elm
Trees

4+88 28th St (no road)
Proposed Pl

5+10 34"
Euc Tree 35' Lc



← 34' →

Profile Proposed P.1
28th St Cedar to Elm

	1.34	234.29		232.95
	0.94	222.32	12.91	221.38
	0.00	218.64	3.68	218.64
	7.99	221.52	5.41	213.23
	2.42	221.40	2.24	218.98
0+00			2.44	+ 9.0 To Flow
0+00			2.27	219.13
+50			1.98	219.4
1+00			2.52	118.9
+50			3.65	217.75
2+00			4.72	216.7
+39			5.37	216.0 +4.6 To Flow
+50			5.43	216.0
3+00			5.73	215.7
+50			5.87	215.5
4+00			5.78	215.6
+50			6.21	215.2
5+00			7.4	214.0
	2.81	214.71	10.10	211.30
+50			8.7	210.4
6+00			11.1	203.0
	1.63	203.26	12.48	201.63

West
Williams
Varanforkis
Kemp

(15)

1-7-64

RM SE 80 Granada + Grape

Top FH SE Cor Elm + Granada

5' RI Top east side of Elm MH 5.0 RI

Top west rim sewer MH 5.0 RI

end AC pave

6.0
30.11

9.7 10.3 11.8
16.81 20.21 24.91

15.7

0.3
30.11

7.5 10.3 15.1 17.0
17.81 20.21 25.21 28.41

3.5 37
30.11 28.11

17.2 17.3 19.6 Edge
13.81 21.91 27.81 Lot's

20326

6+23		4.8	198.5
+50		14.9	188.4
1.89	193.40	11.75	191.51
0.48	182.54	11.34	182.06

6+80		4.8	177.7
7+00		7.9	174.6
+04		10.8	171.7
7+11		8.6	173.9
+50		9.6	172.9
+75		8.5	174.0
7+85 ⁸⁴ Tcc		4.0	178.5

11.23 191.65 2.62 179.92

8+20 1.3 190.3

10.79 200.44 2.00 199.65

12.79 212.92 0.31 200.13

9.04 221.19 0.77 212.15

12.29 233.38 0.10 221.09

0.36 233.02 = 232.95

+4.6	0.3	8.8	10.6	13.2
30.25	12.11	10.81	20.81	34.41
8.9	18.7	19.0	22.0	26.4
30.25	20.11	11.81	21.81	34.01

30	5.8	9.0	14.2	21	27
30.25	1.81	22.81	13.81	28.81	34.81
7.1	2.6	1.4	9.4	4.3	
30.25	2.01	2.81	9.81	34.81	

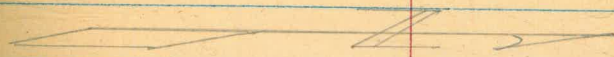
Bottom of Creek

10.5	9.5	7.2	6.7	4.2
30.25	19.11	20.81	20.81	34.81
4.5	7.5	7.5		
30.25	28.81	28.81		

+2.9	5.8
30.25	34.81

Turn on hook 10' 11" 8+10

Elm St Caranada to 28th



Balboa Park

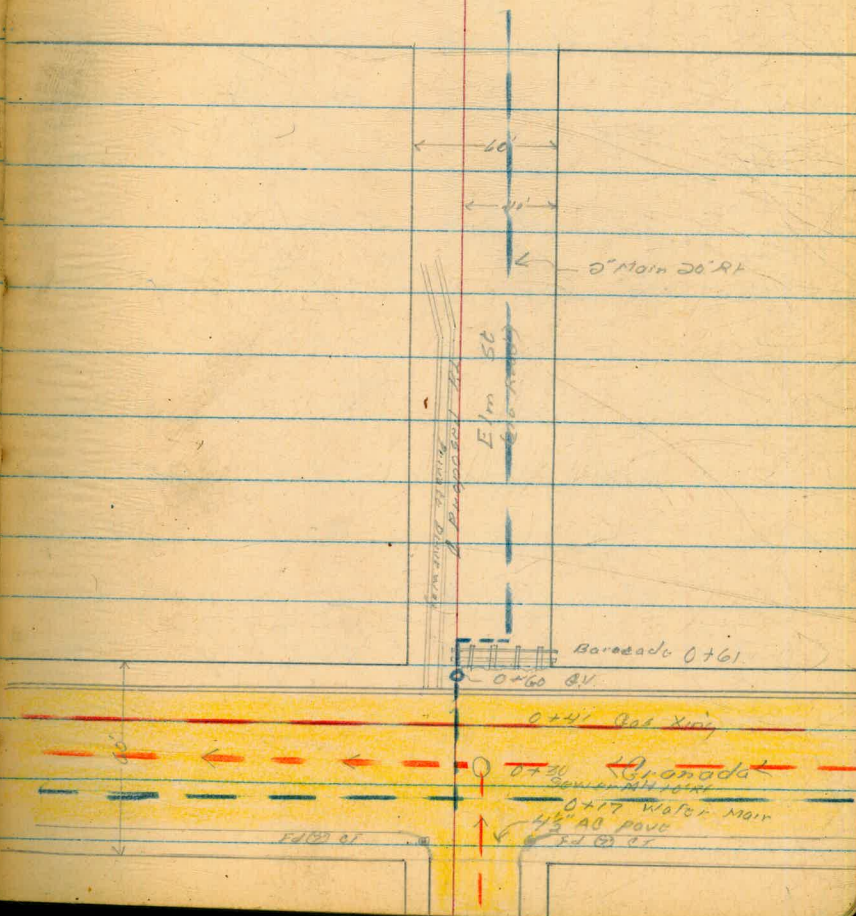
3+05³³ Elm = 7+85²⁴ 28th St
90° 05' 30" 1A

28th St
(no road) A Proposed Pl. 28th St 3+05³³

1+00 POT

0+00

East Prop Line Caranada St



Profile Proposed P.L.
Elm St Granada to 28th St

	0.99	219.63	218.64
0+00		3.15	216.48
0+30		3.41	+5.9 To Elms
+49 ³		4.27	215.36
+50		3.82	215.81
+52 ⁵		3.66	215.97
+57 ⁵		3.52	216.11
1+00		11.3	208.33
	0.10	206.81	206.71
+40		5.3	201.51
+79		12.5	194.31
	0.32	194.39	194.07
2+00		9.3	185.09
	0.11	181.90	181.79
+20		3.8	178.1
+50		5.8	176.1
+65		6.8	175.1

Reduced by J Gray
8-30-55

West
Kemp
Varonokis

18

1-11-54

Top FH S-E cor Elm & Granada See Page 10

East prop line Granada

Top Southern Sewer NH 10' RT

Gutter line

Top Ch

East edge Sidewalk

West "

8.87	8.88	10.48	10.77	15.5	20.7	25.8
20' LT	16' LT	10.5	4' LT	20' RT	30' RT	40' RT

lone walk ← edge driveway

2.10	2.09	5.05	5.1	9.5	13.9	14.9
20' LT	17' LT	10' LT	3' LT	10' RT	30' RT	40' RT

edge driveway
Top cone sidewalk

7.5	120	123.5	19.0	22.2
20' LT	11' LT	3' LT	20' RT	40' RT

edge cone driveway

+6.8	4.8	3.3	
20' LT	33' RL	40' RL	
+6.5	5.6	4.5	+0.4
20' LT	17' RT	19' RT	40' RT

Bottom of west flowing Creek

181.91

3700

5.1

176.8

7.8
20.20

8.5
7.24

+10.9
40.00

0

10.34

192.15

0.09

181.89

1
Bott
of
...

0

3400

6.6

185.55

18.1
20.20

11.0
9.25

+11
17.00

+6.1
40.00

260 198.55 = 189.65

Proposed P.L.
44th St Olive to Maple

7+10⁶⁵ 90° 00' 00" P.L.

3+50 POT

0+43 POT

0+00

North prop line Olive



FD 1/2 12 prop cor

20

1-12-57



Maple St



44th St

FD 1/2 12

60

FD 1/2 12

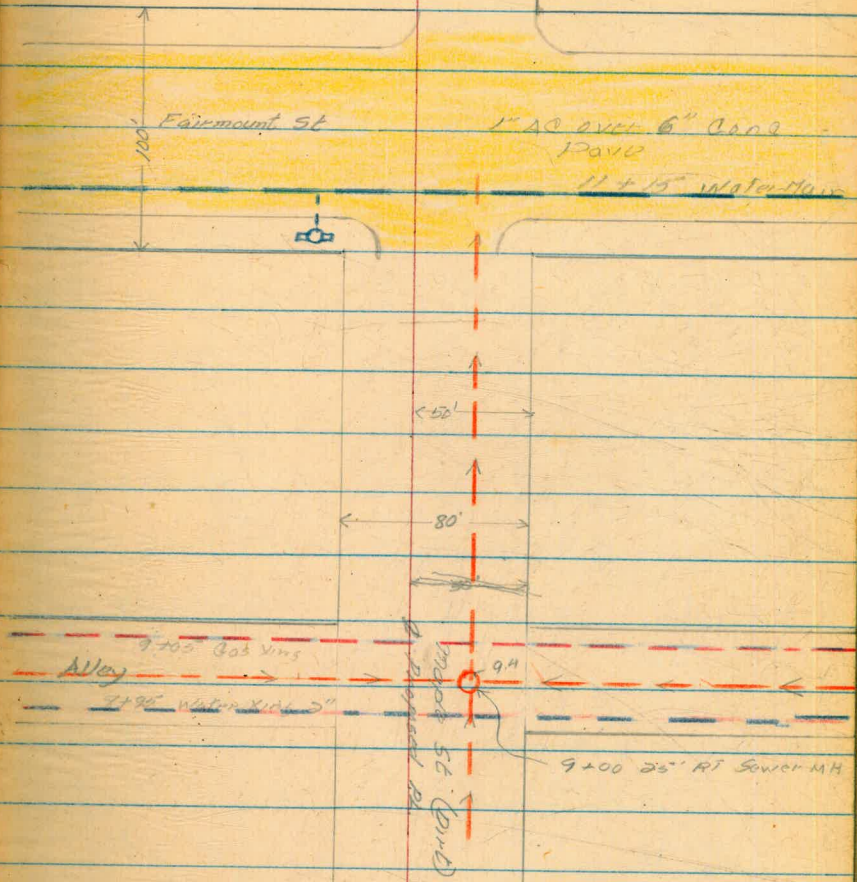
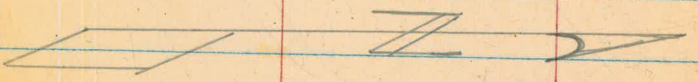
Olive

SD Unified School Dist

1-10-32

11+24.5

West prop line Fairmount



11.42 291.59 280.17
 7.12 298.34 037 291.22
 5.39 300.87 286 295.48

AM BR SW SW Fairmount + Maple

0+00 3.84 297.03
 +50 4.56 296.31
 1+00 5.7 295.17
 +50 7.3 293.57
 2+00 8.4 292.47
 +50 9.1 292.77

North prop line Olive

0.25 293.19 7.93 292.94

3+00 0.9 292.29
 +50 4.4 288.79
 4+00 10.0 283.19

0.49 287.41 11.27 281.92

+50 6.3 277.11
 5+00 7.7 274.71
 +50 7.9 274.51
 6+00 6.8 275.61
 +50 6.7 275.71

277.21

278.01

5.10
 10.21
 272.91 9.5
 10.21
 9.2 273.21
 10.21
 8.7 273.71
 10.21
 7.9 274.51
 10.21

4.4
 10.21
 6.0 276.41
 10.21
 5.8 276.61
 10.21
 5.7 276.71
 10.21
 5.0 277.41
 10.21

	292.41		
7+00		5.7	276.71
+10 ⁶⁵	288.61	5.46	276.95
+34		6.5	282.41
+50		5.4	283.21
8+00		1.3	287.31
	7.14	290.88	0.87
+50		3.1	287.78
9+00		4.6	286.28
9+00		3.91	286.97
+50		5.4	285.48
10+00		6.1	284.78
+50		8.0	282.88
10+94		11.74	279.12
11+00		12.0	278.88
+46		11.94	278.94
+46+		11.50	279.38
+50		11.3	279.58
+64		10.6	280.28
		10.71	280.17

274.71

7.7
10.25

278.01

1.4
10.25

281.91

6.7
10.25

282.11

6.5
10.25

25.87 Top water in sand 711

Edge Park

Outlet

Top of

Werb
Varonfalas
Holohan

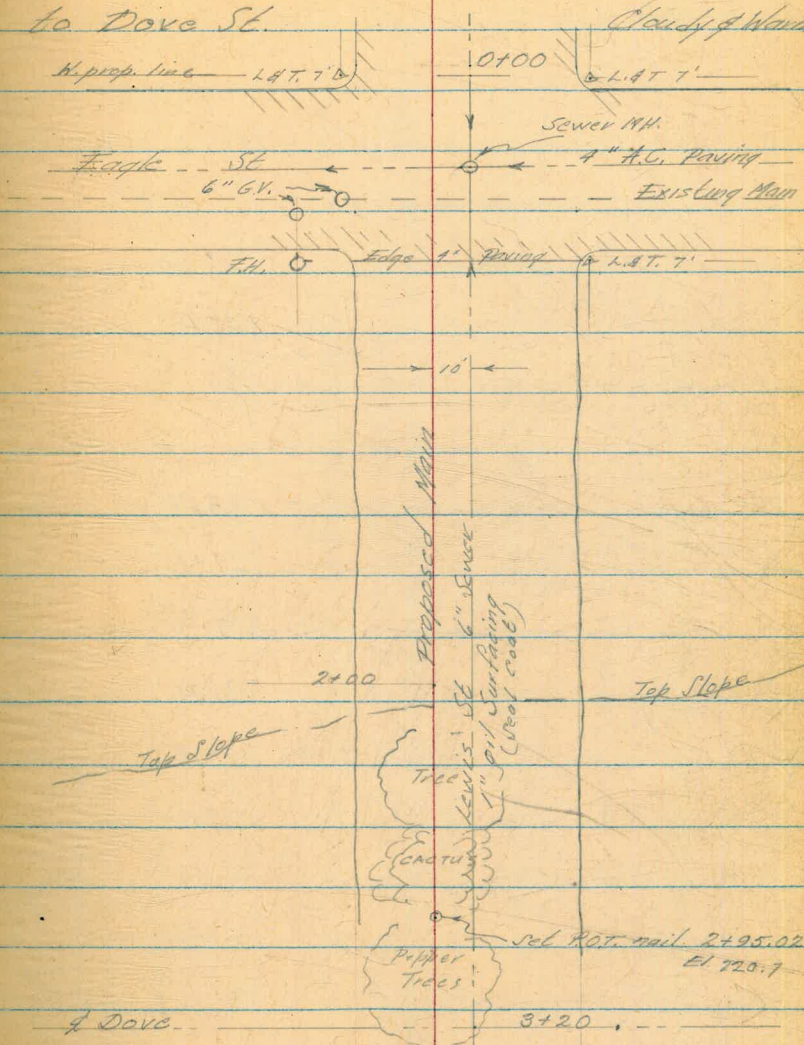
24

4-20-54

Cloudy & Warm

Profile of Lewis St Eagle St to Dove St

Sta	L	HL	Elev	Notes
	7.91	271.46	263.55	NW cor. to Section Eagle
0+00			268.7	W. curb
+14			268.6	Cutter
+39	Flow 17.0 Rim 3.3		254.5 268.2	Sewer
+50			267.7	E. curb
+66			267.1	Cutter
+73			266.8	
+80			266.7	E/L Edge
+80			266.7	edge of curb
1+00			264.3	
+35			260.6	
+71			257.4	
2+00			256.6	
	7.91		263.55	B.P.



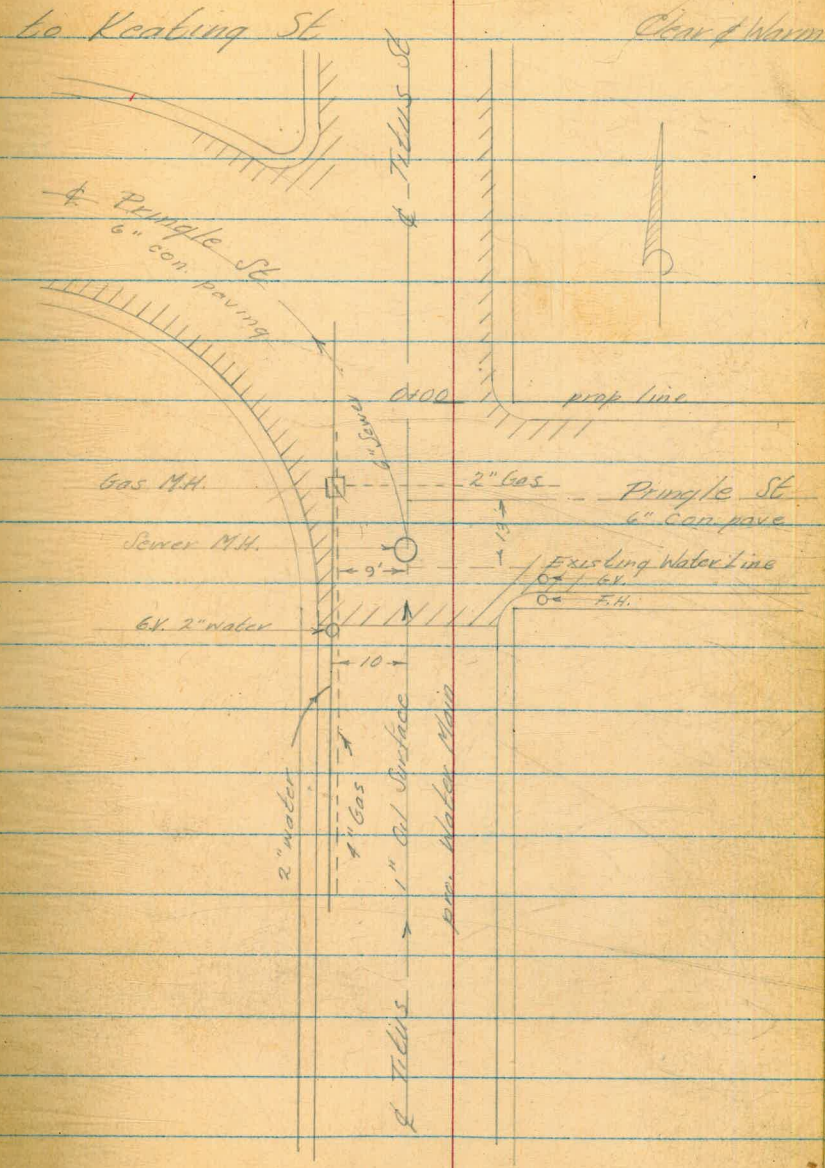
Slope to Pot.
Vert Δ 26° 39'
Slope Dist. 99.83
H. S. Rod 4.0

Set Pot. nail 2+95.02
El 720.7

Profile Titus St. Pringle St.

			7.76	195.18	7.76	137.42	7.76	SE. cor Titus & Pringle
0+00		8.1			8.1	137.08		West line Pringle No. Curb
+10		7.2			7.2	139.98		Pringle 4" Gas
+15			Top 16.9	9				
+26			Gr. 6.9					
			Fl. 17.9					
+26			Rim 7.0					Sewer M.H.
+41		6.2			6.2	138.99		No. Curb So. edge 6"
+51		6.1			6.1	139.08		con. paving
1+00		5.7			5.7	139.79		
+50		5.2			5.2	139.98		
3+00		5.8			5.8	139.38		No. Prop
+42.59		6.0			6.0	139.18		Keating No. Curb
+65		5.3			5.3	139.88		Keating Top con. rob.
+94		5.7			5.7	139.48		wall Bottom
+95		8.6			8.6	136.58		wall So. prop. Keating
+97.59								

Note: Due to error in bench
above profile is incorrect
see page 43-44



Profile Titus continued

145.18

7.49

137.49

T.B.M.

L.F.T.

N.W. Cor

Keating

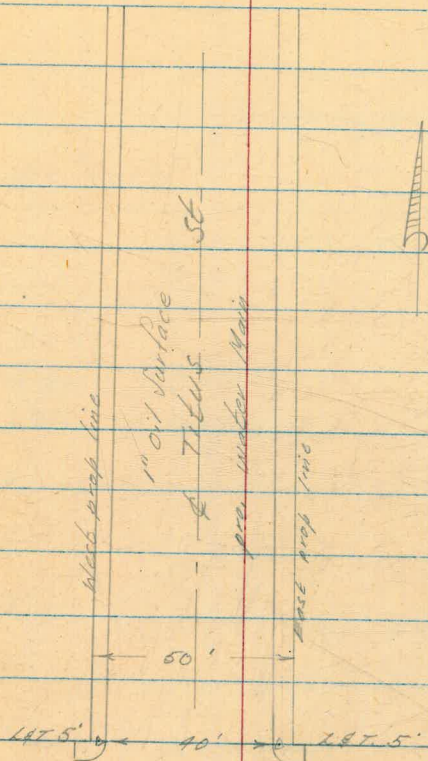
7.94 145.13

7.72

137.41

137.42

B.M.



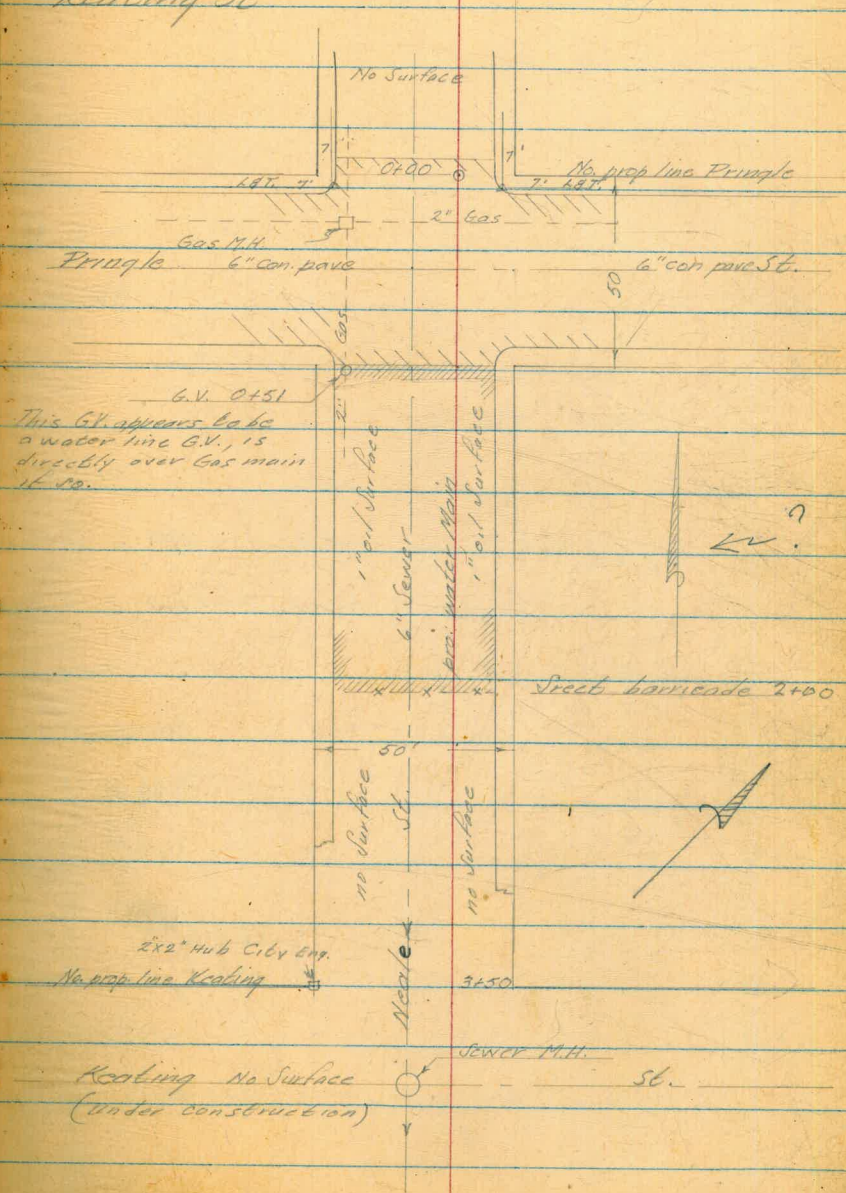
Keating
No Surfacing
(under const.)
Se. prop

St.
can retain wall
inc.

West
Vernon Falls
Holahan 27
9-23-54

Profile Neale St. Pringle St to Keating St

Station	Distance	Elevation	Notes
		237.39	S.W. 2 nd H. Pringle & lot
11+99	249.18		
T.P.	0.28	248.90	
	6.32	255.22	
0+00	1.1	254.1	
+10	1.5	253.7	No. gutter Pringle
+17	Top Pipe 3.4	251.8	
+17	Top Box 2.1	253.1	2" Gas
+25	1.2	254.0	Pringle So. gutter
+40	2.1	253.1	Pringle So. edge of pavement
+50	1.8	253.4	
1+00	6.4	248.8	
+50	4.1	244.1	
+67	12.5	242.7	
+70	13.0	242.2	POT
	13.05	242.17	
	0.39	242.56	
2+00	7.3	235.3	End IAC Barricade
+75	14.1	228.5	



Profile of Neale continued

	242.56		
		13.30	229.26
	0.91		230.17
2+50		7.9	222.3
+75		15.0	215.2
T.P.		12.90	217.27
	0.17		217.44
3+00		10.0	207.4
+11		13.3	204.1 ^{Top} Slope
T.P.		12.94	204.50
	0.0		204.50
3+12		3.6	200.9 ^{Top} Slope
+25		4.7	199.8
+30		5.3	199.2
+50		10.8	193.7 ^{No. priv} [▲] ^{Pringle}
+76	Flow. 17.58	12.38	186.2
	Rim		192.1 ^{Lower}
+80		11.9	192.6
		10.06	194.44

Keating

Set T.B.M. NW prop. corner Keating & Neale

Profile of Neal continued

		194.44
9.06	203.50	
	0.66	202.84
17.95	215.29	
	0.47	214.82
12.70	227.52	
	1.00	226.52
11.96	238.48	
	1.08	237.40
		237.39

Top of SW cor. Terrace

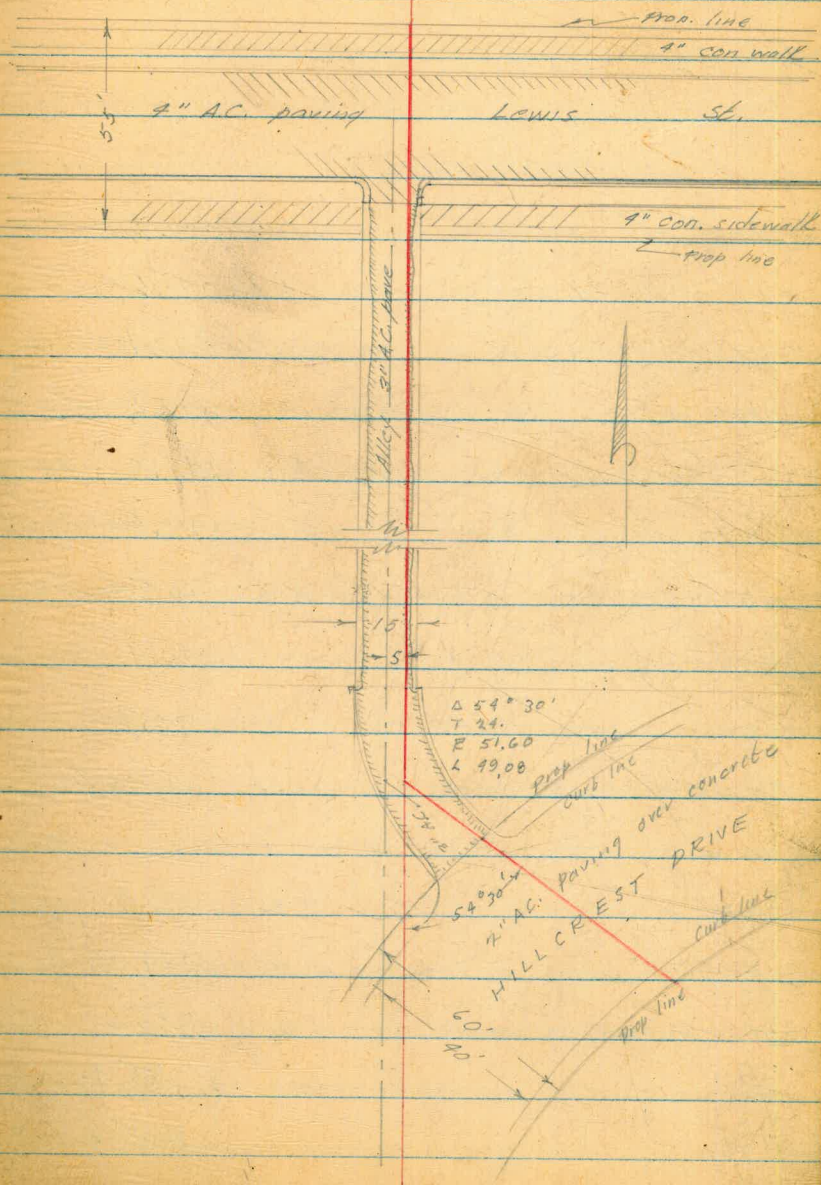
Profile of Water Alley B/K. 3

0+00	No. prop line of Lewis 2' back walk
+02	No. edge of sidewalk
+07	So. edge of sidewalk
+12	Now curb face of Lewis
+45	So. curb face of Lewis
+55	So. prop line of Lewis
2+95.03	P.C. of curve
3+19.12	P.L. of curve
3+44.11	E.C. curve

West
Varen Falls
Kemp
Holtman

30

5-4-54



Profile Alley B/K 3, So. Lewis,

		283.12	
	0.97	289.09 ↓	
0+00		4.8	279.3 ✓
+02		5.5	278.6 ✓
+07		5.0	279.1 ✓
+12		4.3	279.8 ✓
+12		4.9	279.2 ✓
+30		4.3	279.8 ✓
+45		4.3	279.8 ✓
+50		4.0	280.1 ✓
+55		3.8	280.3 ✓
T.P.		3.91	280.18 ✓
	9.45	289.63 ↓	
1+00		6.7	282.9 ✓
+50		5.4	284.2 ✓
2+00		4.6	285.0 ✓
+50		4.2	285.4 ✓
2+95.03		4.0	285.6 ✓

Went Palkis
Kemp
Halahan

31

5-4-54

East of Fourth

S.W. B.P. Fourth & Lewis

2' back sidewalk, No. prop. of Lewis
No. edge sidewalk
So. edge sidewalk
Top No. curb of Lewis
No. Gutter Lewis
& Lewis
So. Gutter Lewis
So. prop Lewis

B.C. of Alley

Profile Water Alley B/K 3 cont.

	289.69			
3+19.12		4.2	285.4 ✓	P.L. curve
T.P.		4.12	285.51 ✓	
	5.26		290.77 ✓	
3+49.11		5.6	285.2 ✓	E.C. West prop. line Hillcrest Dr.
3+59.11		5.9	284.9 ✓	West gutter & curb face
3+79.11		6.0	284.8 ✓	& Hillcrest Dr.
3+94.11		6.9	283.9 ✓	East gutter & curb face
3+95.11		6.2	284.6 ✓	Top curb (back)
4+05.11		6.2	284.6 ✓	East prop. line
		10.91	279.86 ✓	
	4.78		289.67 ✓	
		1.50	283.14 ✓	
			283.12 ✓	B.M.

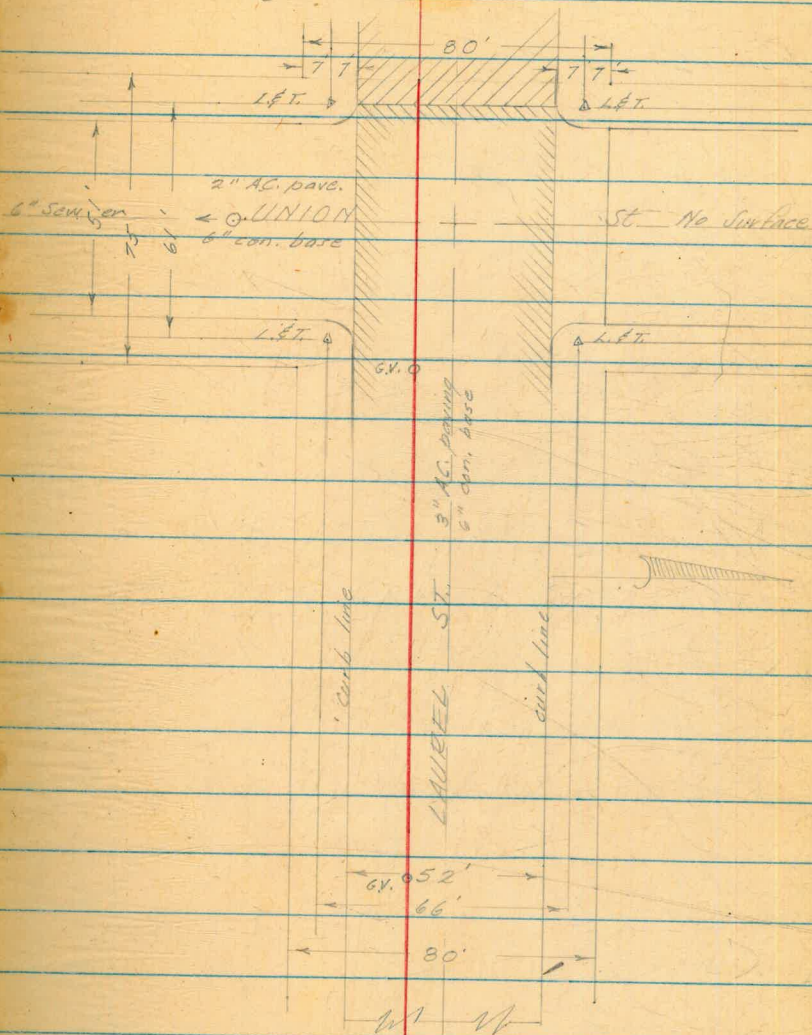
Werb
Varontakis
Kemp
Holdhan

33

5-6-54

Profile & Water Laurel St Union St to Curlew St.

01.00 W. prop line Union St.
+07 Grade break, end of AC. pave
+10 W. Curb line Union
+37.5 Sewer MH. 48' So. (6")
+60 E. prop line Union
+73 G.V. Existing water



21.75 G.V. Existing water line

Profile of Water Laurel continued

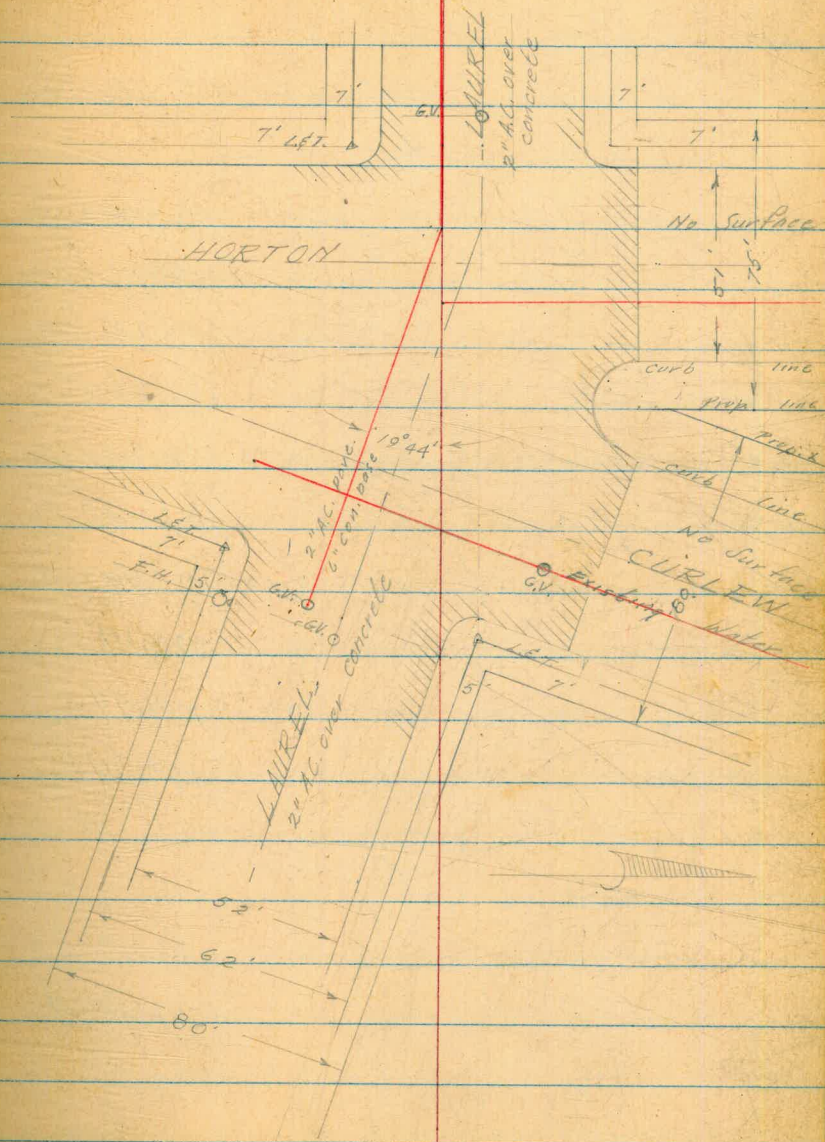
2+75 G.V. Existing water line
 +87 W. curb line Horton St

3+03.60 P.I. pro. water line

3+97 E. curb line Curlaw

4+11.60 G.V. Existing water

4+15.60 G.V. (Water) of Laurel



Profile of Water Laurel St., Union to Curlew

			129.21		SE. E.H. Union & Laurel
	6.73	130.94	✓		
0+00		11.6	119.34	✓	W. prop line Union
+07		11.0	119.94	✓	Grade break
+10		10.8	120.14	✓	W. curb
+37.5		9.9	121.04	✓	E. Union
+37.5		10.2	120.74	✓	Run Sewer M.H. 48' So 16.1' red to Plow line
+50		9.5	121.44	✓	
+63		9.0	121.94	✓	E. curb line
+63		8.8	122.14	✓	7' all prop & grade break
1+00		6.0	124.94	✓	
+50		0.3	130.64	✓	
T.P.		0.75	130.19	✓	
	12.44	142.63	✓		
2+00		6.4	136.23	✓	
+50		0.8	141.83	✓	
T.P.		1.67	140.26	✓	
	0.33	150.29	✓		

Profile of $\frac{1}{2}$ Water on Laurel Cont.

	150.79 ✓			
2+82	5.1	145.19 ✓	P.O.T. grade break	
+87	4.9	145.39 ✓	W. curb Horton St.	
3+00	4.3	145.99 ✓		
+03.60	4.2	146.09 ✓	P.I. water line	
+50	3.6	146.69 ✓		
+97	3.6	146.69 ✓	E. curb Curlew	
4+00	3.6	146.69 ✓		
4+11.60	3.5	146.79 ✓	GN. Existing line, F. prop line, sidewalk	
	4.21	146.08 ✓		
		146.07	B.M. S.F. cor Curlew & Laurel B.P.	

Profile & Water of Rosecranes Blvd

0+00 East prop. line Whitman St.

0+43 Top Slope

0+50 West prop. line Whitman

0+80 Top Slope

1+50 Power pole 6' So.

3+50 East prop. line Sunset St.

3+91 F.H. 26' So.

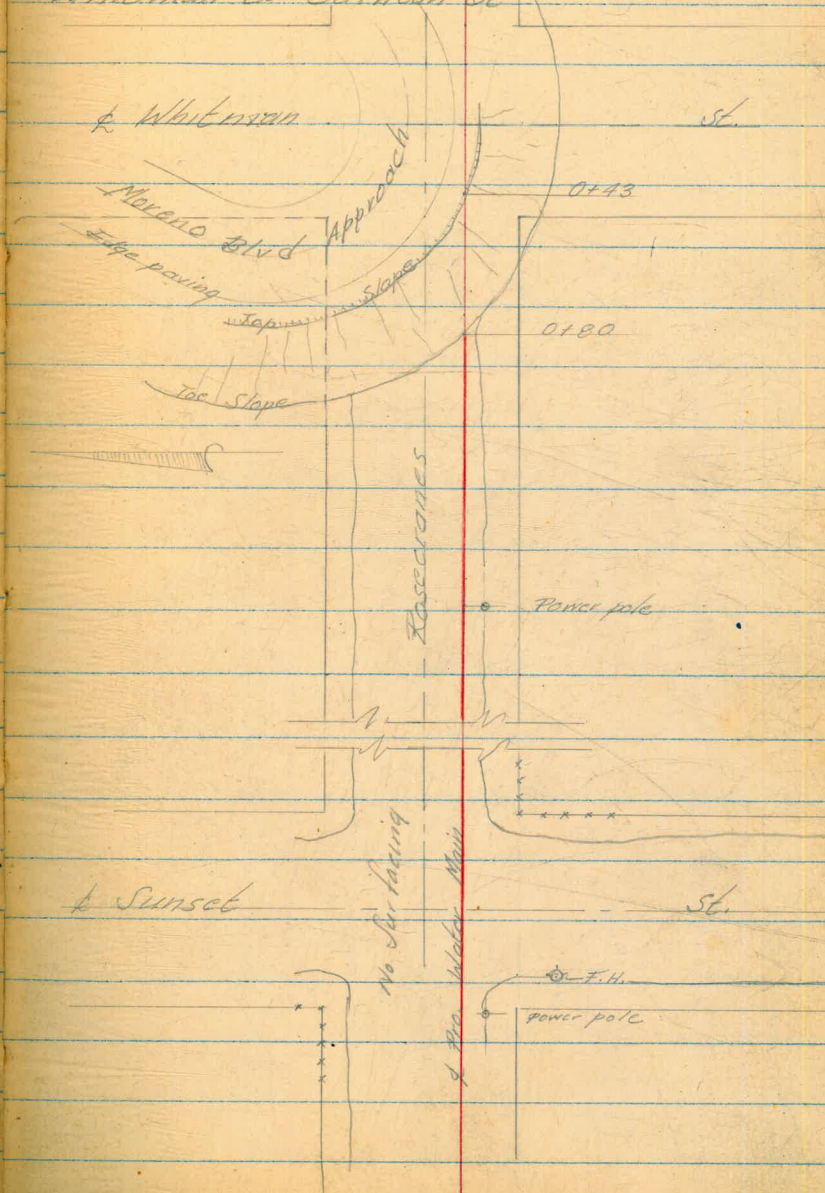
4+00 West prop. line Sunset St.

4+01 Power pole 6' So.

Went
Kemp
Varenfal's
Holahan 5-11-54

37

Whitman to Cathoun St



Profile Rosecranes Blvd.

Cont.

5+50

Power pole 6' So

7+00

East prop line Juan St

7+25

Sewer M.H. 10' No.

7+30

G.V.'s 3' So. & 6' No.

7+50

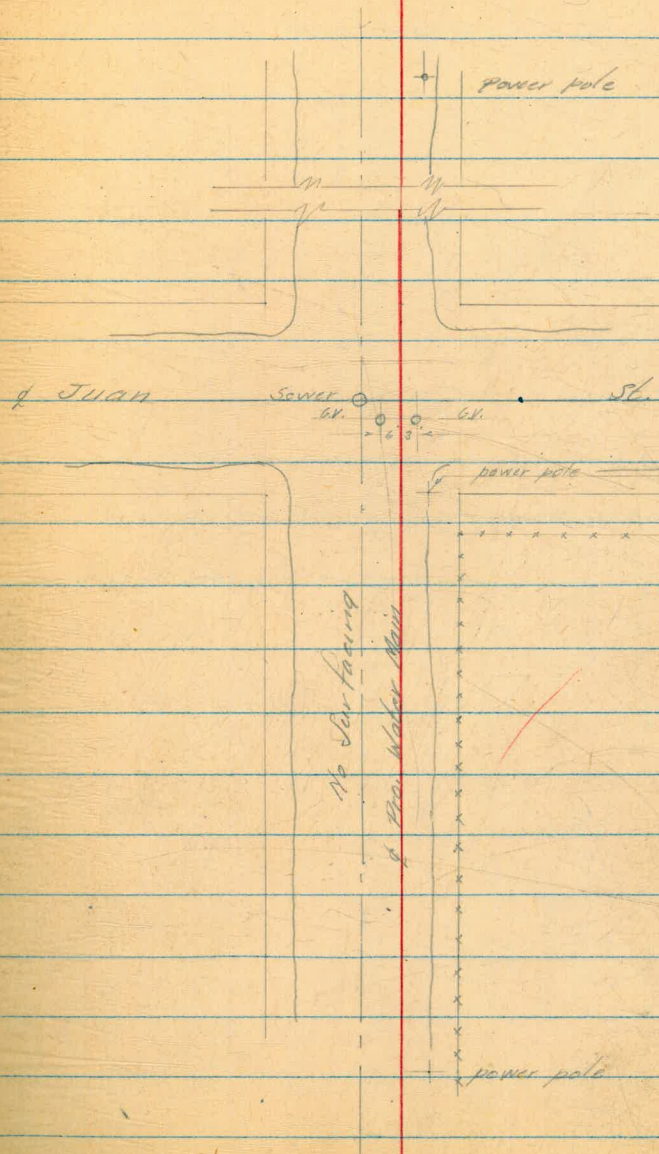
West prop line Juan St

7+60

Fence line State Highway

9+00

power pole 6' So



Profile of Rosecranes Blvd.

9100

power pole 6' se.

10+32

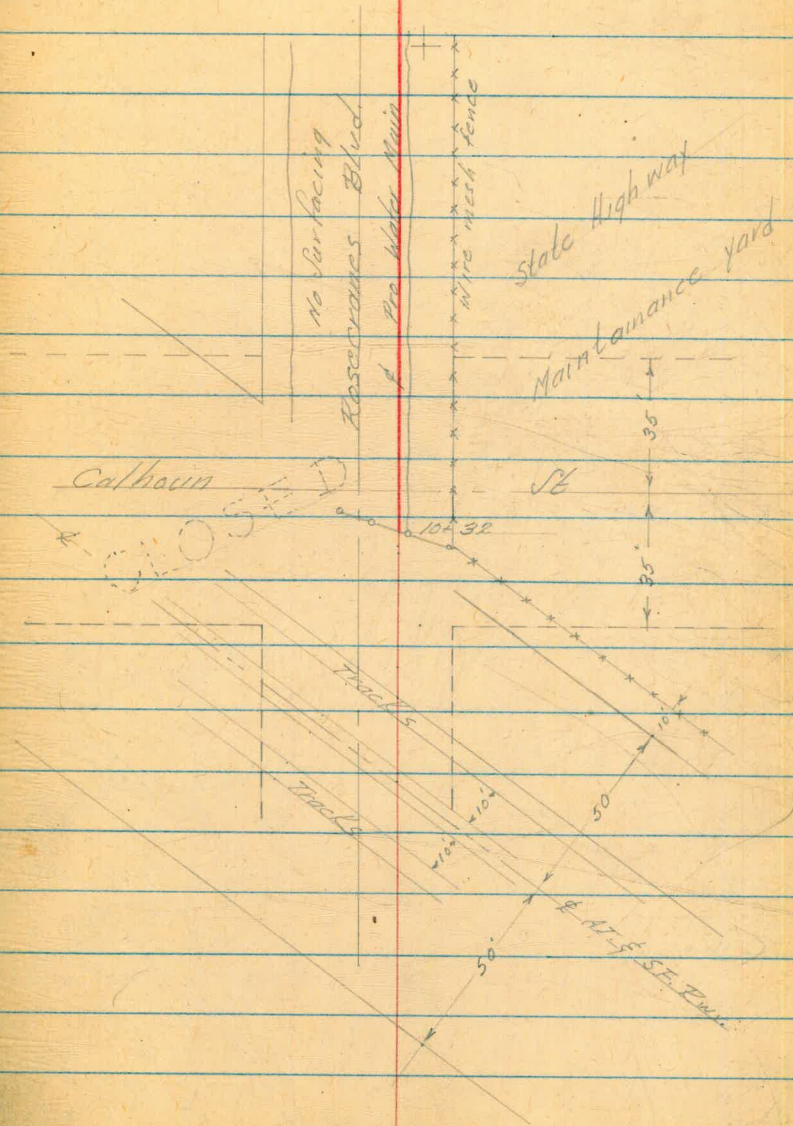
Wooden Barricade

10+38

Corner Wire mesh fence

10+68

Fast rail A.T. & S.F. Track



Profile & Proposed Water

Rosecranes, Whitman to Calhoun

		1.72	
	4.82 9.54		
T.P.		4.57	4.97 ✓
	5.37 10.34		
T.P.		4.13	6.21 ✓
	5.49 11.70 ✓		
	11.60 23.30 ✓		
0+00		3.5	19.8 ✓
+25		3.9	19.4 ✓
+40		2.1	21.2 ✓
+43		2.0	21.3 ✓
+55		5.4	17.9 ✓
+65		9.4	13.9 ✓
+80	11.70	4.1	7.6 ✓
1+00		4.9	6.8 ✓
+50		5.3	6.4 ✓
2+00		5.6	6.1 ✓
+50		6.0	5.7 ✓

S.E. B.P. Taylor & Juan St.

Hand level Mariana Blvd Approach
East prop. line Whitman produced

Top Slope
West prop. Whitman

Profile Rosecranes Cont.

11.70

3+00		6.2	5.5 ✓
+50		6.5	5.2 ✓
T.P.		6.19	5.51 ✓
	4.58	10.09 ✓	
3+61		5.0	5.09 ✓
+75		4.2	5.9 ✓
+89		4.7	5.4 ✓
4+00		4.7	5.4 ✓
+50		4.5	5.6 ✓
5+00		4.8	5.3 ✓
+50		5.2	4.9 ✓
6+00		5.2	4.9 ✓
+50		5.1	5.0 ✓
7+00		5.1	5.0 ✓
+10		4.9	5.2 ✓
+25		4.7	5.4 ✓
+25		4.72	5.37 ✓

East prop. Sunset St.

E. gutter Sunset St.

E. Sunset St.

W. gutter

E. prop. line Juan St.

E. gutter

E. Juan St.

Sewer M.H. 10' RT. 6.02 rod to #1.

Profile Rosecranes Camb.

10.09

7+40	4.9	5.2 ✓	W. gutter
+50	5.2	4.9 ✓	W. prop. line
+60	4.9	5.2 ✓	P.O.T.
8+00	4.8	5.3 ✓	
T.P.	4.58	5.51 ✓	

9.95 10.96 ✓

+50	5.3	5.2 ✓	
9+00	5.4	5.1 ✓	
+50	5.3	5.2 ✓	
+93	5.4	5.1 ✓	
10+00	5.2	5.3 ✓	
+32	5.0	5.5 ✓	Wire gate
+38	4.7	5.8 ✓	
+68	4.4	6.1 ✓	P.L. Easterly rail. E. of prop. water
	5.01	5.45 ✓	

4.07 9.52 ✓

4.80 4.72 ✓

B.M. = 4.72

6-9-54

Corrected Profile of Titus

Pringle to Kealing

			137.54
	0.48	138.02	
0+00		7.5	130.52
+10		6.6	131.42
+15		6.3	
+26		5.9	
+26		6.41	
+41		5.6	132.42
+51		5.5	132.52
1+00		5.1	132.92
T.P.		5.27	132.75
	9.96	137.71	
1+50		3.8	133.91
2+00		3.8	133.91
2+50		4.2	133.57
3+00		4.9	132.81
3+50		5.2	132.51
3+75		5.5	132.21

S.E. F.H. Pringle & Titus

No. 1 of Pringle

No curb line

Gas M.H. cut 3.0 to pipe

Sewer M.H. cut 10.2 to flow

" " " " rim elev.

So. curb line Pringle

So. edge of 6" con. paving

Hot street grade under construction

" " " " " "

Corrected Profile of Titus Cant.

	137.71			
4100	7.9	129.81	not finish gr., under construction	
T.P.	5.02	132.69		
5.34	138.03			
	0.99	137.54	S.E. F.H. Titus & Pringle.	

Profile Laurel St, Union Ave
to Curlew St Continued

146.07

6.24 152.31 ↓

0+00	6.6	145.7 ↓
+33	5.0	147.3 ↓
+80	4.6	147.7 ↓
1+00	4.3	148.0 ↓
+33	4.0	148.3 ↓
+50	4.1	148.2 ↓
2+00	4.6	147.7 ↓
1+33	5.2	147.1 ↓
+33	4.8	147.5 ↓
+33	4.4	147.9 ↓
+33	4.9	147.4 ↓
+33	5.4	146.9 ↓
+33	5.1	147.2 ↓
+33	5.1	147.2 ↓
+33	5.1	147.2 ↓

Went
Kemp
Holahan 7-6-54 45

S.E. of Laurel & Curlew

S/E of Laurel St

E of Laurel St

No. edge paving, Existing G.V.

Angle point

37' E of angle point, base of curb

" " " " " Top of curb

50' E of angle point

80' E of " " top curb

80' E of " " base of curb

96' " " " "

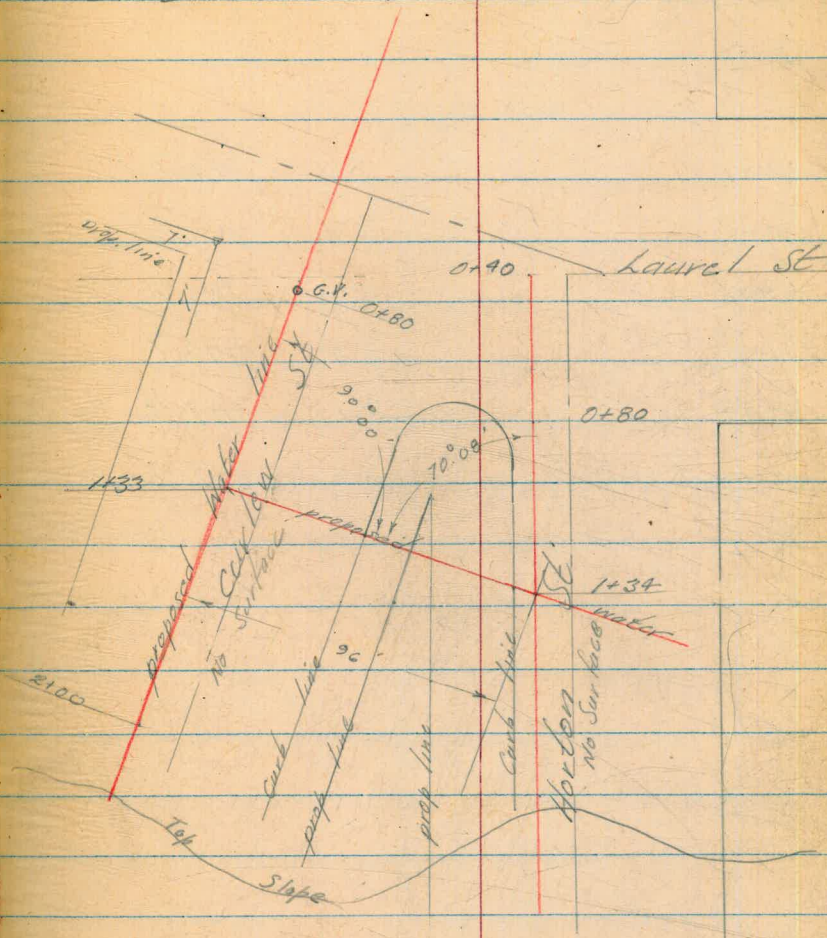
100' " " " "

130' " " " "

Laurel, Curlew & Horton

Cont.

For detail see page 34



Lawrd, Curlew & Herten

152.30

0440	5.6	146.7 ✓
+63	6.0	146.8 ✓
+80	5.7	146.6 ✓
1400	5.9	146.9 ✓
+34	5.1	147.2 ✓
+60	5.1	147.2 ✓

Cont.

Edge of paving

Angle point of water lines

28. ST.

8" AC. MAIN
TO DATE

CEDAR

WEST
WILLIAMS X
VARON FAKIS
KELLHOFER †

48

10/11/54

T.B.M.	274	221.70	218.96
0+30		2.4	219.3 215.4
+50		2.3	219.4 215.2
+75		2.5	219.2 215.2
1+00		2.9	218.8 214.8
+50		4.1	217.6 213.8
2+00		5.2	216.5 212.8
+50		5.9	215.8 212.2
3+00		6.2	215.5 211.8
+30		6.8	214.9 214.9
+50		6.6	215.1 211.6
4+00		6.5	215.2 211.4
+12		6.5	215.2 211.4
CHECK T.B.M.		5.65	216.05 = 216.03

TOP E. RIM SEWER M.H. SEE PAGE 15

C3⁹

BEGIN WORK

C4²C4⁰C4⁰C4⁸C3⁷C3⁶C3⁷C0⁰

W.M.E.

C3⁵C3⁸C3⁸

END WORK

PAGE 15

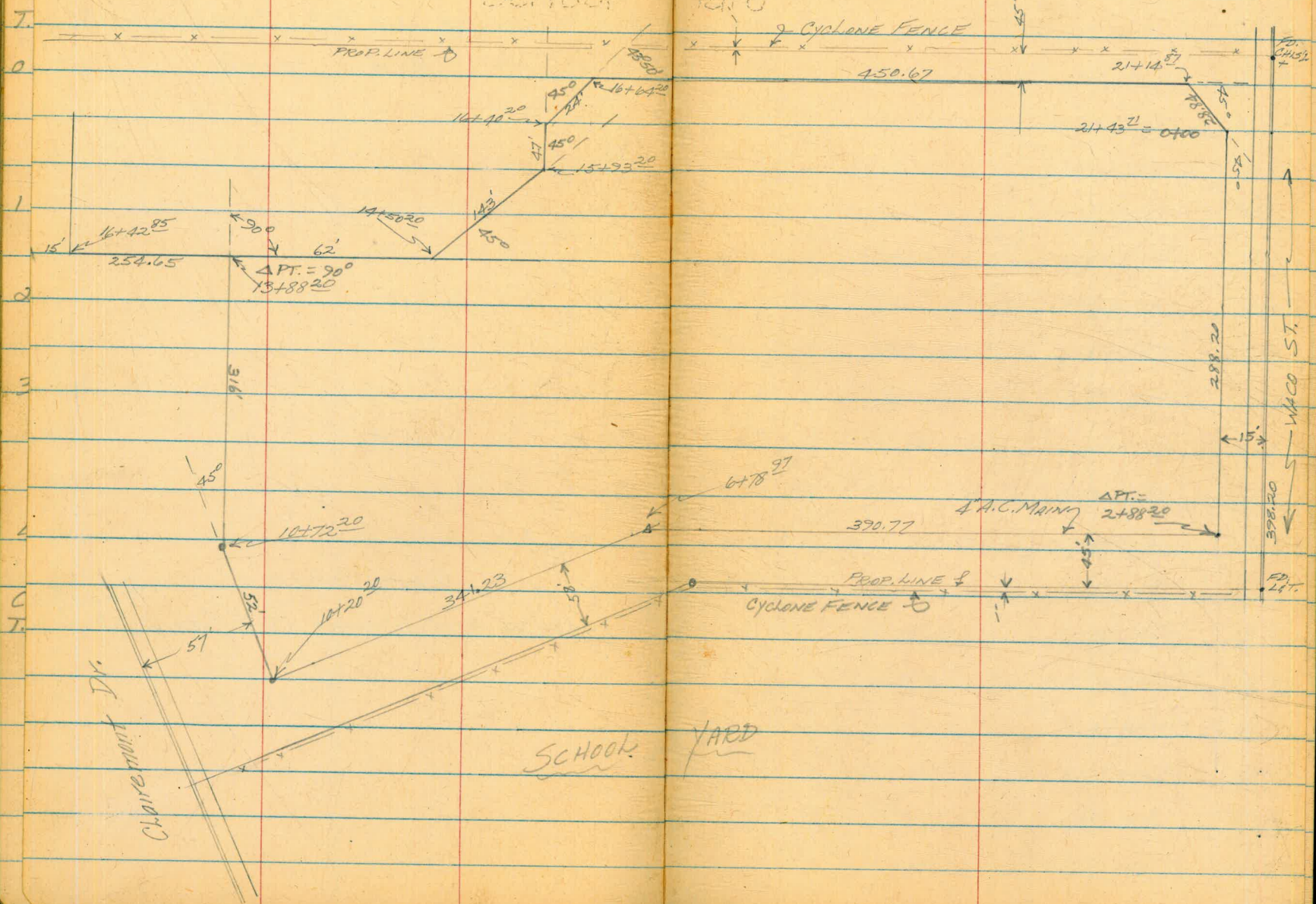
TOP W. RIM SEWER M.H. STA. 2439

LOCATION 4" A.C. MAIN FOR
SPRINKLING SYSTEM SO. CLAIREMONT PARK

9/14/56
SHOREY
SMITH
O'BRIEN

49

SCHOOL YARD



ELEV. TOP 30" & 36" C.I. PIPE
UNIV. HEIGHTS RESEVOIR LOCATION

B.M.				
	3.45	376.46		373.01
TP	1.29	<u>373.74</u>	4.01	372.45
0+66	} Top BELL		11.97	
0+66	} Top PIPE		11.25	
0+78	} Top BELL		10.81	
0+78	} Top PIPE		11.09	
0+90	} Top BELL		10.73	
0+90	} Top PIPE		11.01	
1+02	} Top BELL		10.43	
1+02	} Top PIPE		10.71	
1+14	} Top BELL		10.32	
1+14	} Top PIPE		10.60	
1+26	} Top BELL		10.43	
1+26	} Top PIPE		10.71	
1+38	} Top BELL		10.39	
1+38	} Top PIPE		10.67	
1+50	} Top BELL		10.54	
1+50	} Top PIPE		10.82	
1+62	} Top BELL		10.79	
1+62	} Top PIPE		11.06	

9/17/56
SHOREY
SMITH
GIBBEN
PAULSON
S.E.B.P. HOWARD & IDAHO ST.
373.74

1+74	} Top BELL		11.13	
1+74	} Top PIPE		11.37	
1+86	} Top BELL		11.58	
1+86	} Top PIPE		11.83	
1+98	} Top BELL		11.76	
1+98	} Top PIPE		12.01	
2+10	} Top BELL		11.92	
2+10	} Top PIPE		12.20	
2+34	} Top BELL		11.90	
2+34	} Top PIPE		12.26	
2+46	} Top BELL		11.70	
2+46	} Top PIPE		11.95	
2+58	} Top BELL		11.17	
2+58	} Top PIPE		11.42	
2+70	} Top BELL		10.46	
2+70	} Top PIPE		10.71	
2+82	} Top BELL		9.77	
2+82	} Top PIPE		10.04	

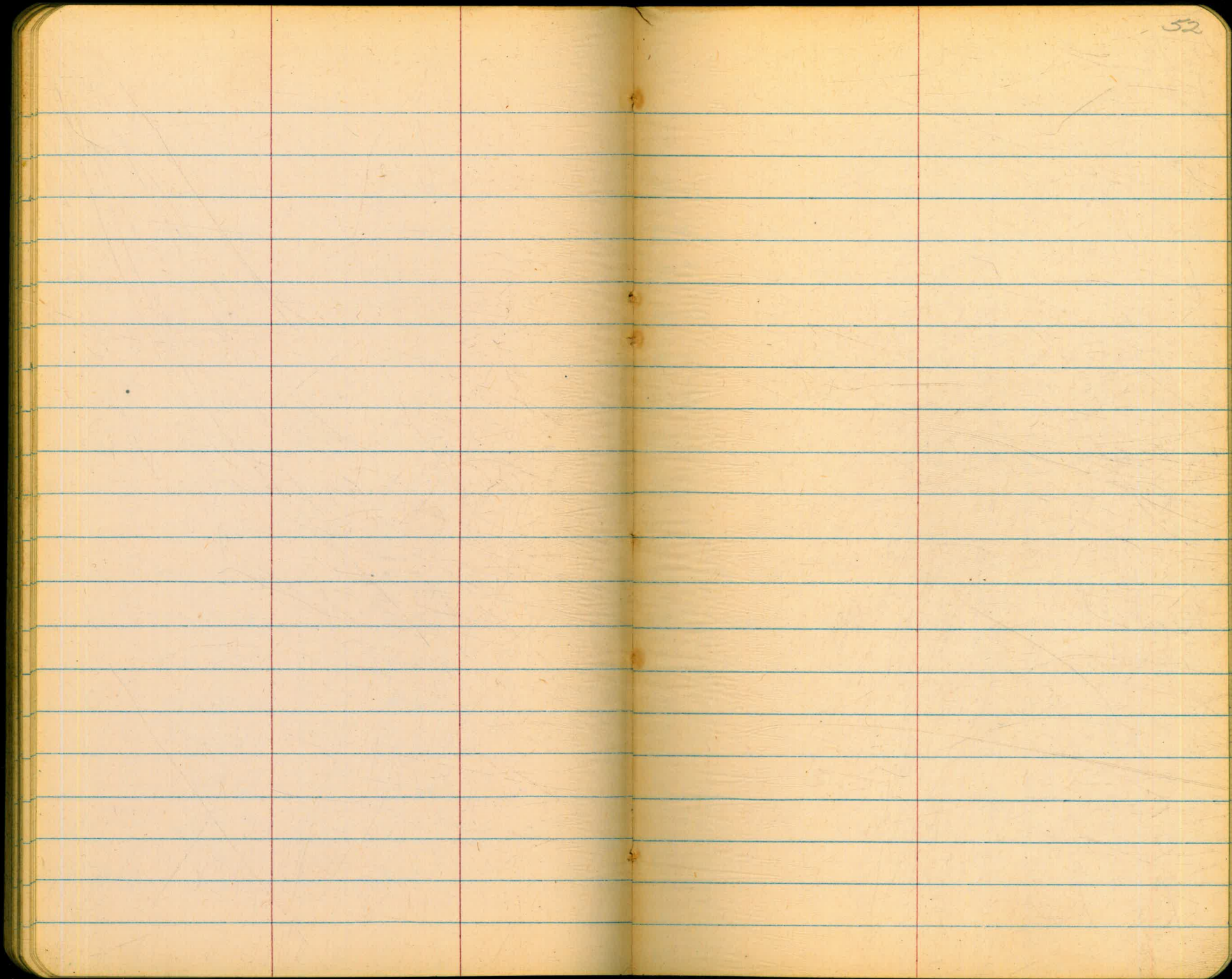
ELEV. TOP 30" & 36" C.I. PIPE
LINN. HEIGHTS RESERVOIR LOCATION

9/17/56
SHOPEY
SMITH
PAULSON
O'BRIEN

51

373.74

2+94	TOP BELL	9.17		
2+94	TOP PIPE	9.43		
3+06	TOP BELL	8.80		
3+06	TOP PIPE	9.05		
3+18	TOP BELL	8.58		
3+18	TOP PIPE	8.82		
3+30	TOP BELL	8.40		
3+30	TOP PIPE	8.65		
3+34	TOP BELL	8.31		
3+34	TOP PIPE	8.60		
3+46	TOP BELL	8.11		
3+46	TOP PIPE	8.36		
3+58	TOP BELL	7.90		
3+58	TOP PIPE	8.13		
3+63	TOP BELL	7.82		
3+63	TOP PIPE	8.14		
TP	3.96	376.40	1.30	372.94
OK. BM.		3.40	373.00 = 373.01	



WATER METERS
FRANKLIN AVE., 39th To 40th
0+00 = E/L 39th

9/11/56
SHOREY
SMITH
O'BRIEN

BM	9.45	110.76	101.31		
					N.W.B.P. CHURCH STEPS FRANKLIN & 39 th
					SET 2 VERT. RISER 16' RT. & LT. PROPOSED & IMPROVED ST.
0+05 F.H.		9.2	101.6	101.5	CO ¹ "3914"
1+23.5		4.1	106.7	105.9	CO ² "3915"
1+60.5		2.9	107.9	107.0	CO ² "3925"
1+72 N.		2.2	108.6	107.5	CI ¹ "3926"
2+31.5		1.9	108.9	107.8	CI ¹ "3935"
2+79.5		1.7	109.1	107.9	CI ² "3941"
3+07.5		1.3	109.5	108.4	CI ¹ "3945"
TP	4.94	114.38	1.32	109.44	
3+58.5		5.1	109.3	108.6	CO ² "3951"
4+18.5		6.2	108.2	107.1	CI ¹ "3963"
4+75.5		8.7	105.7	104.6	CI ¹ "3971"
5+96.5		14.4	100.0	99.0	CI ² "3987"
CK. B.M.		13.05	101.33 =	101.31	

WATER METERS
NOGAL ST., 47th TO 49th

BM	9.53	84.90	75.37
0+15 F.H. No. (5)		9.4	75.5
0+22 S.		10.3	74.6
0+59 N.		9.9	75.0
1+41 N.		9.9	75.0
1+95 N.		9.3	75.6
1+96 S.		8.4	76.5
2+90 N.		6.6	78.3
2+95 S.		4.9	80.0
3+34 S.		3.8	81.1
3+63 N.		3.6	81.3
3+96 S.		1.6	83.3
TP 12.87	96.95	0.82	84.08
4+20 N.		13.1	83.9
4+34 S.		12.2	84.8
4+85 N.		9.9	87.1
5+29 S.		6.7	90.3
5+58 N.		6.5	90.5
5+66 S.		5.2	91.8
5+98 N.		4.8	92.2
6+09 S.		2.6	94.4

7/18/50
SHOREY
KEMP
SMITH

54

LET E NOGAL & ELY (S) LINE 47th

F0 ⁵	TO FLANGE	
F0 ³		"4715"
F0 ²		"4712"
F0 ⁸		"4716"
F0 ⁸		"212" ESCHELA
C0 ⁰		"4744"
C0 ⁴		"4745" "4744"
C0 ⁹		"4755" "4745"
C0 ⁷		"4750" "4755"
C1 ⁰		"4761" "4750"
C0 ³		"4754" "4761"
C1 ⁰		"4769" "4754"
C0 ¹		"4760" "4769"
C1 ⁴		"4785" "4760"
C1 ³		"4774" "4785"
C1 ³		"4791" "4774"
C0 ²		"4786" "4791"
C0 ⁶		"4795" "4786"
C1 ¹		"4830" "4795"

NOGAL ST.
(CONT'D)

96.95

6+22 F.H. NOR. (5)	3.3	93.7	94.4
TP B.27	109.63	0.59	96.36
TP B.08	121.67	0.02	109.61
8+18 N.	10.9	110.8	108.7
8+77 N.	8.5	113.2	111.6
9+48 N.	5.5	116.2	114.1
10+02 N.	4.3	117.4	115.5
10+92 N.	2.9	118.8	117.4
11+44 F.H. NOR. (5)	2.5	119.2	119.3
TP. 10.09	131.72	0.06	121.63
12+63 N.	7.5	124.2	123.3

BM 3.69 128.03 = 128.08

9/18/56
SHOREY
KEMP
SMITH

55

FO² TO FLANGE

C₂¹ "4830"

C₁⁶ "4840"

C₂¹ "4850"

C₁⁹ "4860"

C₁⁴ "4870"

FO¹

C₀² "200" 49th ST.

CONC. MON. E. NOGAL & 49th

FORDHAM ST.
MIDWAY TO FRONTIER ST.
② STR'S & GRD. 8" A.C. MAIN

BM	4.21	11.02	6.81		
TP	5.06	6.04	10.04	0.98	
TP	5.49	6.94	4.59	1.45	
TP	5.14	7.40	4.68	2.26	
TP	5.42	8.27	4.55	2.85	
0+00	16x8" TAPP. SLEEVE & 8" G.V.	5.7	2.6	-1.4	C4 ⁰⁺
0+50		6.0	2.3	-1.7	C4 ⁰
1+00		5.9	2.4	-1.6	C4 ⁰
1+50		5.8	2.5	-1.5	C4 ⁰
2+00		5.7	2.6	-1.4	C4 ⁰
2+50		5.6	2.7	-1.3	C4 ⁰
3+00		5.5	2.8	-1.2	C4 ⁰
3+50		5.4	2.9	-1.1	C4 ⁰
4+00		5.3	3.0	-1.0	C4 ⁰
4+50		5.2	3.1	-0.9	C4 ⁰
5+00		5.2	3.1	-0.9	C4 ⁰
5+50		5.2	3.1	-0.9	C4 ⁰
6+00		5.0	3.3	-0.7	C4 ⁰
6+50		5.0	3.3	-0.7	C4 ⁰
7+00		4.9	3.4	-0.6	C4 ⁰
7+50 TP	4.72	8.08	4.91	3.36	-0.6
8+00		4.6	3.5	-0.5	C4 ⁰

9/19/56

SHOREY
KEMP
SMITH
O'BBIEN

56

B.P. IN N.W. Island, N.W. COR. MIDWAY & W. PT. LOMA BLVD.

CUT TO EXIST. 16" C.I.

FORDHAM ST.
(CONT'D)

9/13/56
SHIREY
KEMP
SMITH
O'BRIEN

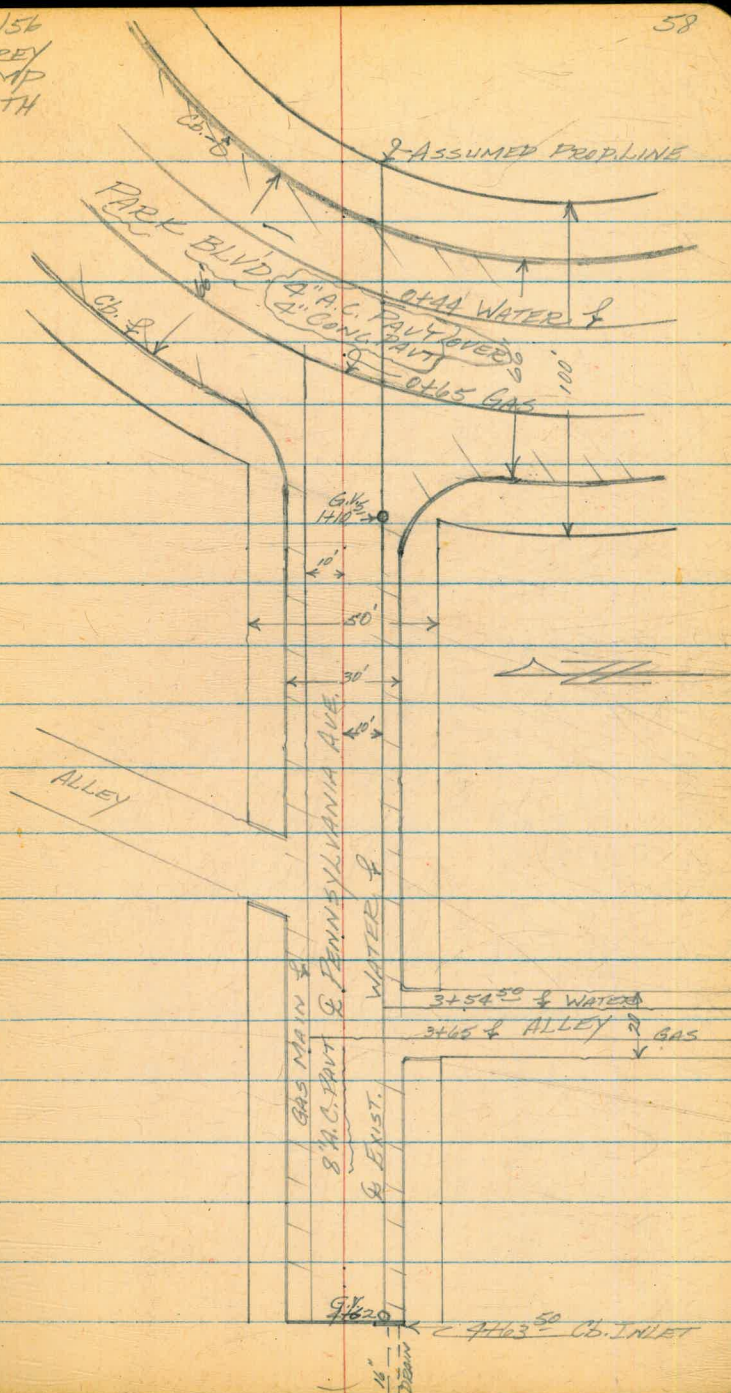
8.08

8+17 8" TEE	4.6	3.5	-0.5	CA ⁰	
8+50	4.6	3.5	-0.5	CA ⁰	
9+00	4.6	3.5	-0.5	CA ⁰	
9+50	4.5	3.6	-0.4	CA ⁰	
10+00	4.5	3.6	-0.4	CA ⁰	
10+12 F.H. TEE	4.5	3.6	-0.4	CA ⁰	SET F.H. 21' LT.
⑤	3.8	4.3		CA ²	CO ⁰
10+42.5 ¹ 3" B.O.	4.6	3.5	-0.5	CA ⁰	
TP 7.60	9.58	6.10	1.98		
TP 8.01	14.53	3.06	6.52		
TP 7.31	12.94	8.90	5.63		
TP 4.05	13.38	3.61	9.33		
CK. BM	6.59	6.79 = 6.81			

PENNSYLVANIA AVE.
PARK BLVD TO 460 WEST
& PROFILE PROPOSED MAIN

11/21/54
SHOREY
KEMP
SMITH

58



PENNSYLVANIA AVE.
PARK BLVD. TO 460 W.
& PROFILE PROPOSED MAIN

BM 2.77 303.61 300.84

0+00 2.7

0+17 Top CURB 3.15

0+17 GUTTER 3.80

0+50 3.17

0+95⁵ 5.50

1+00 5.5

1+10⁵ G.V. 5.4

1+50 5.9

2+00 6.7

2+50 7.2

TP 2.46 299.22 6.85 296.76

3+00 3.6

3+50 4.3

3+54⁵⁰ = 0+35 4.3

4+00 6.2

4+50 8.8

4+62 Top G.V. Cap 9.8

4+63⁵⁰ GUTTER 9.8

4+63⁵⁰ Top CURB 8.8

(OVER)

11/21/56
SHOREY
KEMP
SMITH.

59

Top S.E. F.H. PARK BLVD. & CYPRESS ST.

P.I. PRELIMINARY ALLEY BLK 248

PENNSYLVANIA AVE
(CONT'D)

299.22

TP 5.91 304.40 0.73 298.79

CK. BM 3.56 300.84 = 300.84

11/2/56
SHOREY
KEMP
SMITH

60

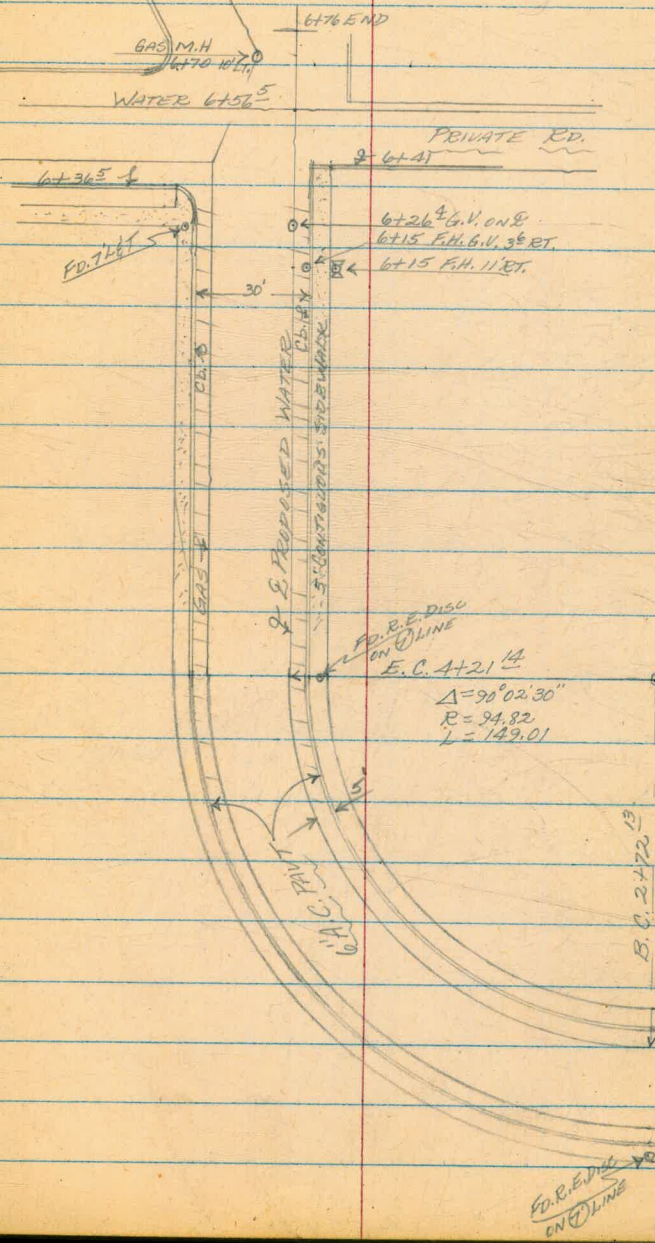
TOP S.E. COR. PARK BLVD. & CYPRESS ST.

SUNSET ROAD
 JUAN ST. TO WITHERBY
 & PROFILE PROPOSED MAIN

11/23/56
 SHOREY
 KEMP
 SMITH

62

6+76 END



E.C. 4+21.14

$\Delta = 90^{\circ} 02' 30''$
 $R = 94.82$
 $L = 149.01$

E.C. 4+21.14
 $\Delta = 90^{\circ} 02' 30''$
 $R = 94.82$
 $L = 149.01$

B.C. 2+72.13

P.O. R.E. DISC
 ON O.L.I.N.E

SUNSET RD.
(CONT'D)

red'cd
by
Rocky

11/23/56
SHOREY
KEMP
SMITH

63

BM	12.19	232.29		220.09
0+00			11.0	221.3
0+04	Top G.V. Cap		10.8	221.5
0+25	SEWER XING.		10.5	221.8
	NWLY RIM	{ 10.20 15.5		216.78
0+50	Δ PT. 18° 24' PT.		10.1	222.2
0+60	²⁷ SEW. XING			
0+97	Δ PT. 18° 24' 30" LT.		5.8	226.5
1+00			5.6	226.7
1+50			0.2	232.1
TP	12.32	244.45	0.15	232.13
2+00			6.8	237.7
2+24			4.4	240.1
2+44	SEW. XING		3.7	240.8
	Sly. RIM	{ 3.48 9.6		234.85'
2+50			3.5	241.0
2+72	¹³ B.C.		2.8	241.7
3+00			2.1	242.4
3+25			1.5	243.0
3+50			0.9	243.6
TP	13.24	257.08	0.61	243.84
3+75			12.9	244.2

S.W.B.P. SUNSET RD. & JUAN ST.

SEW. M.H. 0+25 5' PT.
SEWER

SEW. M.H. 2+44 10' LT.
SEWER

SUNSET RD.
(CONT'D)

Rec'd
by Rocky

11/23/56

SHOREY
KEMP
SMITH

64

257.08

4+00	11.9	245.2
4+21 ¹⁹ E.C.	10.8	246.3
4+50	9.0	248.1
5+00	5.1	252.0
5+50	0.8	256.3
TP 8.02	264.99	0.11 256.97
5+93	5.8	259.2
6+00	5.5	259.5
6+26 ^A Top G.V. CAP	4.6	260.4
6+50	3.9	261.1
6+76 END	3.5	261.5
OK.B.M.	4.02	260.97 = 261.02

N.E.B.P. SUNSET & WITHERBY

261.02

LOS ALTOS RD.
(CONT'D)

11/28/56
SHOREY
KEMP
SMITH

Reduced by
H. Wada
3/4/57

TBM	2.78	295.60		292.82
0+00			2.5	293.10
0+18 ¹³ P.C.C.			2.9	292.70
0+50			4.0	291.60
1+00			6.1	289.5
1+50			8.0	287.0
1+99 ⁰³ P.C.C.			9.7	285.9
2+50			11.1	284.5
3+00 TP	6.15	288.65	13.10	282.50
3+25			6.9	281.75
3+45			6.1	282.55
3+50			6.1	282.55
4+00			6.4	282.25
4+10 ⁰⁰ E.C.			5.7	282.95
4+50			6.6	282.05

SPIKE IN POLE NELY COR. LOS ALTOS & ALTAVISTA

LT

RT

7.0
10

x

4.6
10

6.7
10

x

4.5
10

7.0
10

x

6.5
4

5.0
10

LOS ALTOS ST.
(CONT'D)

288.65

4+75	6.0	282.65
5+00	5.4	283.25
5+15 ¹⁹ APT. & B.C.	4.6	284.05
5+50	4.5	284.15
6+00	3.3	285.35
6+31	3.0	285.65
6+50	3.4	285.25
7+00	3.74 14.54	284.91
7+00	2.7	285.95
7+50	2.7	285.95
7+81	5.0	283.65
8+00	5.2	283.45
8+15 ⁶⁷ E.C.	5.8	282.85
8+50 ⁸² END	7.1	281.55
9 CK. TP	9.68	278.97 = 279.06
9 TBM	2.71	285.94

11/28/56

SHOREY
KEMP
SMITH

LT

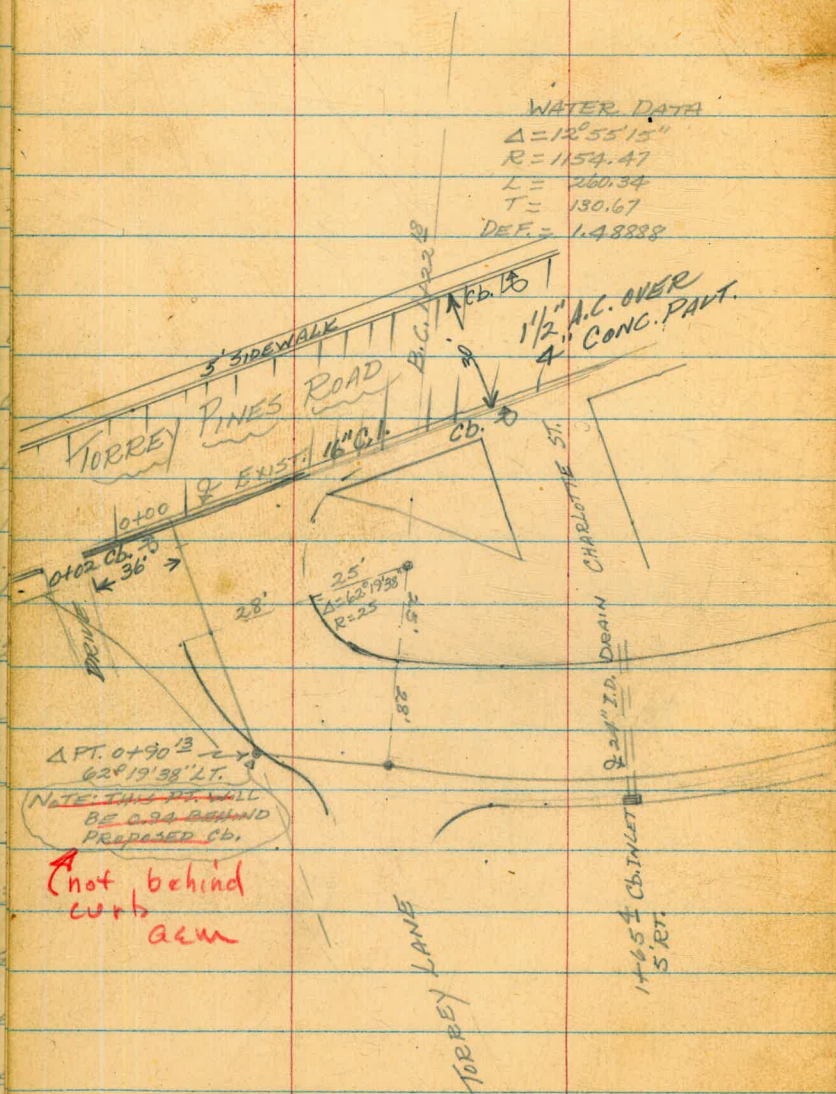
RT

67

6.3 10	*	5.8 4	5.8 10
5.3 10	*	4.3 6	5.4 9
5.0 10	*	4.6 7	4.9 8
2.9 10	*	3.4 4	4.1 5
3.4 10	*		4.2 10
3.4 10	*		3.7 10
SEW. M.H. 6+71		3' RT.	
1.0 10	*	3.9 4	4.1 10
0.0 10	*	1.4 1	4.7 4
1.3 10	*	1.6 8	4.9 2
2.7 10	*	5.3 4	5.7 10
6.0 10	*	6.7 7	6.3 10
	*		7.7 10
SET TBM 3/4" PIPE 8+15 ⁶⁷ E.C. 10' LT.			

AMALFI ST.
 & PROPOSED WATER MAIN
 TORREY PINES RD. TO HILLSIDE DR.

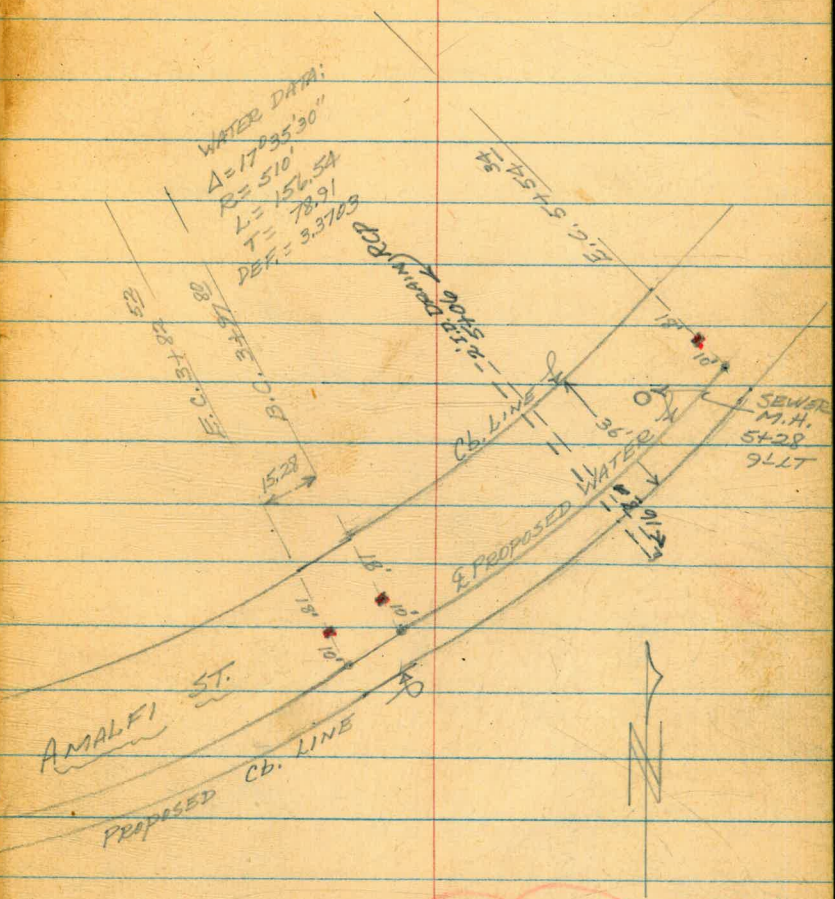
WATER DATA
 $\Delta = 12^{\circ}53'15''$
 $R = 1154.47$
 $L = 260.34$
 $T = 130.17$
 $DEF. = 1.48888$



NOTE: THIS PT. WILL
 BE 0.94 BEHIND
 PROPOSED CB.

Not behind
 curb
 acm

12/6/50
 SHOREY
 KEMP
 SMITH



WATER DATA:
 $\Delta = 17^{\circ}35'30''$
 $R = 510$
 $L = 156.54$
 $T = 78.91$
 $DEF. = 3.3703$

NOTE: ● REPRESENTS
 2X2 HUBS FD.
 ○ REPRESENTS PIS
 SET

ANALFI ST.
 & PROFILE PROPOSED MAIN
 (CONT'D)

12/15/56

70

SHOREY
 KEMP LT
 SMITH

RT

NAIL IN P.P. # 1650 NLY. SIDE TORREY PINES RD.

BM.	0.37	100.72	100.35					
TP	3.75	91.39	13.08	87.64				
0+00			4.58	86.81		4.97 10		4.20 10
0+02	TOP CURB		4.34	87.05				
0+32			3.2	88.19				
0+50			3.9	87.49		4.1 10		3.6 10
0+73			5.3	86.09				
0+90 ¹³	APT. 62° 19' 38" LT.		5.5	85.89		30° BK. TAN.		5.5 3.5
0+90 ¹³	APT. " " " "		5.5	85.89		30° FWD. TAN.		5.4 8
1+00			5.3	86.09		5.8 10		5.1 10
1+22 ¹⁸			5.8	85.59		6.6 10		5.1 10
1+48			7.8	83.59				
1+50			8.1	83.29		7.7 10		7.7 5
1+65 ^A	STEM DRAIN XING		8.2	83.19				16.99 14.4
2+00			7.8	83.59		7.4 10		7.9 8
2+35			6.7	84.69				7.0 10
2+50			5.0	86.39		5.7 10	5.7 5	2.9 10
TP	12.59	102.18	1.80	89.59				
3+00			12.6	89.58		12.5 10		2.4 3
3+50			6.6	95.58		8.5 10	8.7	4.0 3
								2.6 8
								1.3 15

Reduced by A. Mathison
 12-11-56
 CEIN

16.99
 14.4
 4.5" DRAIN

AMALFI ST.
 Q PROFILE PROPOSED MAIN
 (CONT'D)

102.18

12/5/56
 SHOREY
 KEMP
 SMITH
 LT

RT

71

3+82 ⁵³ E.C.		2.4	99.78		5.8 10	6.4 2.5	3.3 2	x	0.4 3	+1.5 10	
TP	13.03	114.70 [✓]	0.51	101.67 [✓]							
3+97 ⁸⁰ B.C.		13.1	101.6		17.0 10	17.8 3	14.1 2.5	x	9.8 3	8.6 10	
4+50		6.9	107.8		11.8 10	12.1 3	7.4 2	x	4.7 3	2.5 10	
4+62		6.2	108.5								
4+63		11.0	103.7		10.9 10			x	6.2 1	3.0 5	1.7 10
5+00		8.3	106.4			8.6				8.0 10	
5406 STORM DRAIN KING		7.9	106.8	104.95 ¹⁰ 2" I.D. DRAIN 5406					16 ⁸ RT.		
5428		6.5	108.2								
50. RIM, SEW, M.H.		6.61	108.09	5428 2" LT.							
CK. TBM		5.08	109.62 [✓] = 109.57	SPIKE IN P.P. P1757					5428	15' RT.	
5450		4.5	110.2		4.5 10			x	4.6 3	2.7 10	
5+54 ³⁴ E.C.		4.1	110.6		9.0 10			x	4.2 3	2.4 10	
5+ TP	12.39	124.99 [✓]	0.10	114.60 [✓]							
5492		11.7	115.29		11.6 10			x	4.2 10		
6+00		8.7	118.29		10.8 10	10.8 2		x	7.7 1	2.9 10	
6+03		7.1	119.89								
6+23		3.3	123.69								
6+50		2.6	124.39		6.7 10	6.8 6		x	1.3 3	+0.2 10	
6+54 ²⁰ B.C.		2.7	124.29		6.7 10	6.7 6		x	0.8 3	+0.7 10	

AMALFI ST.
(CONT'D)

12/5/56
SHOREY
KEMP
SMITH

LT

RT

72

126.99

7+00		4.4	122.59	5.6 10	5.4 4	*	0.9 7	0.0 10
7+50		5.2	121.79	4.9 10		*		1.4 10
7+76 ³⁰ E.C.		4.7	122.29	5.0 10		*	4.5 6	2.5 10
8+00		4.9	122.09	5.4 10		*	4.8 5	4.5 10
8+50		5.8	121.19	5.9 10		*		5.9 10
TP	2.55	123.01 ✓	6.53	120.46 ✓				
9+00		2.7	120.31	2.8 10		*		2.6 10
9+42		3.0	120.01					
9+50		3.6	119.41					
9+61		3.8	119.21					
9+65		3.4	119.61					
	So. R.I.M. SEW. M.H.	4.07	118.94					
								9+65 8' LT.
11+00		2.1	120.91					
CK TEM.		0.00	123.01 - 122.95					
								NAIL IN P.P. P1891 8+02. 11' RT.

122.95

TORREY PINES RD.
HIDDEN VALLEY RD. TO 1600' ELY.
& PROFILE PROPOSED MAIN

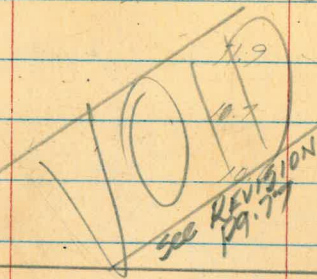
12/6/56
SHOREY
KEMP
SMITH

LT

RT

TOP F.H. ARDATH & HIDDEN VALLEY RD.

BM	684	74.31 58.97	67.47 52.07	ERROR 15.40
0+00		4.9		62.41
0+42 ⁶⁰	B.C.			63.61
0+50				63.71
1+00		9.3		65.01
1+50		7.9		66.41
2+00		6.5		67.81
2+50		5.0		69.31
3+00		3.5		70.81
3+50		2.0		72.31
TP 971		82.67 [✓] 47.27	72.36 [✓] 57.36	
4+00		9.3		73.37
4+03 ⁹²	E.C.	9.2		73.47



Reduced by A. Mathison
12-20-56 BEM

62.21				
12.10				11.9
10.7 PAVT				10
63.59				
10.72				10.7
11.3 PAVT				10
10.49				10.8
11.3 PAVT				10
63.82				
65.19				
9.12				9.6
11.3 PAVT				10
66.55				
7.76				7.5
11.3 PAVT				10
67.86				
6.45				7.0
10.6 PAVT				2 6.7
69.23				
5.08				5.0
9.7 PAVT				10
70.57				
3.74				3.4
9.2 PAVT				10
71.91				
2.40				1.9
8.1 PAVT				3 1.3 0.7
73.26				
9.41				9.2
6.4 PAVT				3 8.8 8.7
73.29				
9.38				9.1
6.4 PAVT				3 8.6 8.8

TORREY PINES RD.
(CONT'D)

82.67
~~77.27~~

12/6/56
SHOREY
KEMP
SMITH

75

LT

RT

4+50 8.2 74.47

74.46
8.21
5.8 PART

7.7

5+00 7.4 75.27

75.31
7.36
6 PART

7.5 6.5 5.4
4 5 10

5+50 6.4 76.27

76.37
6.30
6 PART

6.2 4.6 3.7
4 6 10

6+00 5.3 77.37

77.49
5.18
5.8 PART

5.1 0.5 0.2
4 9 10

6+50 4.2 78.47

78.55
4.12
6 PART

4.2 10.5
4 10

P 10.49

90.40 ✓
~~75.08~~

2.76

79.91 ✓
~~64.51~~

7+00 10.9 79.50

79.65
10.75
6.1 PART

10.9 6.7
4 10

7+50 9.7 80.90

80.96
9.44
6.3 PART

9.7 4.6
3 13

8+00 8.3 82.10

82.15
8.25
6.1 PART

8.4 2.7
6 13

8+50 7.0 83.40

83.50
6.90
6.8 PART

7.1 3.6
5 10

9+00 5.6 84.80

84.94
5.46
7 PART

5.6 0.8
6 10

TORREY PINES RD.
(CONT'D)

90.40
~~75.00~~

9+50		3.9		86.50
TP	11.36	93.37	2.97	87.43 ✓ 72.03
10+00		10.7		88.09
10+50		9.0		89.79
11+00		7.4		91.39
11+50		5.7		93.09
12+00		4.1		94.69
TP	10.01	92.44	0.99	97.80 ✓ 82.40
12+50		11.6		96.21
12+90	STORM DRAIN KING		10.2	97.61
	6 RT # 1 1/2 DIA. STORM DRAIN		13.25	94.56
	43 LT # " " " "		15.00	92.81
13+00		9.7		97.91
13+50		7.9		99.91
14+00		5.9		101.91
14+50		3.8		104.99 ✓
TP	8.46	98.05	2.82	89.59
15+00		7.3		106.15
15+50		5.2		108.25
16+00		3.0		110.45

(OVER)

12/6/56
SHOREY
KEMP
SMITH

LT

RT

76

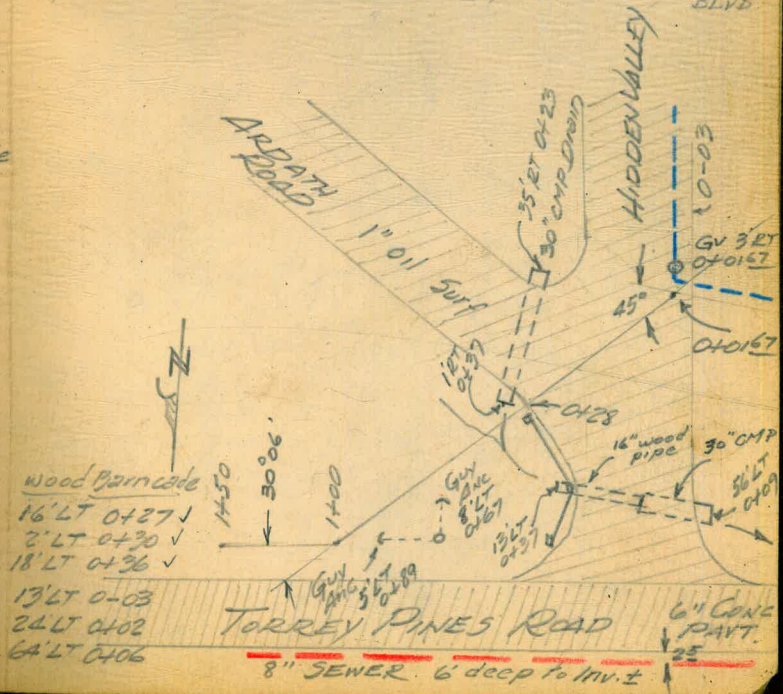
86.54				
3.86				3.8 0.7 +0.4 6 8 10
7.2 PAVT				
88.21				
10.58				10.7 5.0 5 10
7.3 PAVT				
89.88				
8.91				8.9 3.8 5 10
7.4 PAVT				
91.56				
7.23				7.4 4.5 3.5 4 7 10
7.3 PAVT				
93.22				
5.57				5.7 +0.8 3 10
7.8 PAVT				
94.89				
3.90				4.0 1.7 +1.2 4 6 10
8 PAVT				
NAIL IN P.P. 447314 H 12+83 J. RT.				
96.47				
1.32				11.6 9.9 8.1 3 4 10
8.1 PAVT				
STORM DRAIN 12+90				
98.15				
2.66				10.8 7.9 6 10
8.4 PAVT				
100.11				
7.10				7.9 6.2 6.0 4 5 10
8.5 PAVT				
102.10				
5.11				5.9 1.5 3 10
8.6 PAVT				
104.83				
3.48				3.8 0.0 4 10
8.7 PAVT				
106.39				
7.06				7.0 4.3 6 10
8.8 PAVT				
108.62				
4.83				5.8 3.5 2.8 0.8 3 5 8 10
9.0 PAVT				
110.71				
2.74				3.0 0.4 +2.8 3 5 10
9.4 PAVT				

				113.45 98.05			
9+5	CK.		6.06		107.39 91.99 = 107.39		
	TP	0.09		101.15 95.75	12.39	101.06 85.66	
10+00	TP	0.24		90.28 74.98	11.71	90.04 74.64	
	TP	0.80		80.69 65.29	10.39	79.89 64.49	
10+50	TP	2.85		73.24 57.84	10.30	70.39 54.99	
11+00	CK. BM	1.26		67.73 53.33	5.77	67.47 52.07 = 67.47	
11+50	TP	1.88		59.71 42.31	12.90	55.83 40.43	
12+00	TP	1.04		57.88 42.48	0.87	56.84 41.44	
	TBM		2.88			55.00 39.60 = 55.00	
12+45	BM. ELEV. WE USED ON F.H. AT ARDATH & TORREY PINES RD. IS IN ERROR 15.40.						
12+49	ADD 15.40 TO ALL H.I.S.						
	BM	2.54	70.01	5.47	67.27	TOP F.H.	
	0-03	Edge 1" Oil Surf	6.40	63.61	31 RT 0-15		
	0+01.57		6.15	63.86			
	0+28	Edge 1" Oil Surf	6.10	63.91			
	0+32		6.3	63.71			
13+00	0+36		9.0	61.01			
13+50	0+38	Bottom Dr. Ditch	9.4	60.61			
	0+49		6.8	63.21			
14+00	0+75		5.9	64.11			
	1+00		5.1	64.91			
14+50	CK. BM.		2.54	67.47			
	0+37	1 RT INV. 24" CMP.	9.15	60.86			
15+00	0+35	13' LT. INV. 16" Wood Pipe Drain	10.80	59.21			
15+50	0+09	56' LT INV. 30" CMP	12.85	57.16			
16+00							

PK. NAIL IN P.P. 61401 APPROX. 15+30 40' LT.

TOP F.H. (SEE PG. 74)

SPIKE IN P.P. IN PRIVATE RD. SLY. OF LA JOLLA SHORES BLVD.



3333 3334

68° 09' 30"
34° 04' 45"

3332

3342

866

1805.55
5.06

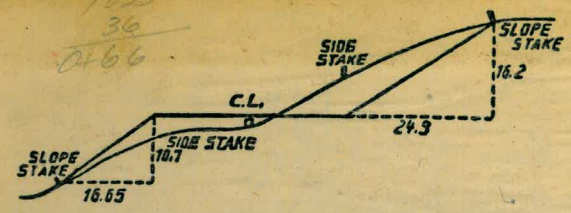
67.19
20.86
88.05

5.07
21
3.75

138.02
7.50
130.52

0.570
2
5.145
35
88.05
73

9 + 64.35
7 + 77.30
88.05



DISTANCES FROM SIDE STAKES FOR CROSS-SECTIONING.
SLOPE 1 1/2 TO 1. ROADWAY OF ANY WIDTH.

	0	.1	.2	.3	.4	.5	.6	.7	.8	.9	
0	0.00	0.15	0.30	0.45	0.60	0.75	0.90	1.05	1.20	1.35	0
1	1.50	1.65	1.80	1.95	2.10	2.25	2.40	2.55	2.70	2.85	1
2	3.00	3.15	3.30	3.45	3.60	3.75	3.90	4.05	4.20	4.35	2
3	4.50	4.65	4.80	4.95	5.10	5.25	5.40	5.55	5.70	5.85	3
4	6.00	6.15	6.30	6.45	6.60	6.75	6.90	7.05	7.20	7.35	4
5	7.50	7.65	7.80	7.95	8.10	8.25	8.40	8.55	8.70	8.85	5
6	9.00	9.15	9.30	9.45	9.60	9.75	9.90	10.05	10.20	10.35	6
7	10.50	10.65	10.80	10.95	11.10	11.25	11.40	11.55	11.70	11.85	7
8	12.00	12.15	12.30	12.45	12.60	12.75	12.90	13.05	13.20	13.35	8
9	13.50	13.65	13.80	13.95	14.10	14.25	14.40	14.55	14.70	14.85	9
10	15.00	15.15	15.30	15.45	15.60	15.75	15.90	16.05	16.20	16.35	10
11	16.50	16.65	16.80	16.95	17.10	17.25	17.40	17.55	17.70	17.85	11
12	18.00	18.15	18.30	18.45	18.60	18.75	18.90	19.05	19.20	19.35	12
13	19.50	19.65	19.80	19.95	20.10	20.25	20.40	20.55	20.70	20.85	13
14	21.00	21.15	21.30	21.45	21.60	21.75	21.90	22.05	22.20	22.35	14
15	22.50	22.65	22.80	22.95	23.10	23.25	23.40	23.55	23.70	23.85	15
16	24.00	24.15	24.30	24.45	24.60	24.75	24.90	25.05	25.20	25.35	16
17	25.50	25.65	25.80	25.95	26.10	26.25	26.40	26.55	26.70	26.85	17
18	27.00	27.15	27.30	27.45	27.60	27.75	27.90	28.05	28.20	28.35	18
19	28.50	28.65	28.80	28.95	29.10	29.25	29.40	29.55	29.70	29.85	19
20	30.00	30.15	30.30	30.45	30.60	30.75	30.90	31.05	31.20	31.35	20
21	31.50	31.65	31.80	31.95	32.10	32.25	32.40	32.55	32.70	32.85	21
22	33.00	33.15	33.30	33.45	33.60	33.75	33.90	34.05	34.20	34.35	22
23	34.50	34.65	34.80	34.95	35.10	35.25	35.40	35.55	35.70	35.85	23
24	36.00	36.15	36.30	36.45	36.60	36.75	36.90	37.05	37.20	37.35	24
25	37.50	37.65	37.80	37.95	38.10	38.25	38.40	38.55	38.70	38.85	25
26	39.00	39.15	39.30	39.45	39.60	39.75	39.90	40.05	40.20	40.35	26
27	40.50	40.65	40.80	40.95	41.10	41.25	41.40	41.55	41.70	41.85	27
28	42.00	42.15	42.30	42.45	42.60	42.75	42.90	43.05	43.20	43.35	28
29	43.50	43.65	43.80	43.95	44.10	44.25	44.40	44.55	44.70	44.85	29
30	45.00	45.15	45.30	45.45	45.60	45.75	45.90	46.05	46.20	46.35	30
31	46.50	46.65	46.80	46.95	47.10	47.25	47.40	47.55	47.70	47.85	31
32	48.00	48.15	48.30	48.45	48.60	48.75	48.90	49.05	49.20	49.35	32
33	49.50	49.65	49.80	49.95	50.10	50.25	50.40	50.55	50.70	50.85	33
34	51.00	51.15	51.30	51.45	51.60	51.75	51.90	52.05	52.20	52.35	34
35	52.50	52.65	52.80	52.95	53.10	53.25	53.40	53.55	53.70	53.85	35
36	54.00	54.15	54.30	54.45	54.60	54.75	54.90	55.05	55.20	55.35	36
37	55.50	55.65	55.80	55.95	56.10	56.25	56.40	56.55	56.70	56.85	37
38	57.00	57.15	57.30	57.45	57.60	57.75	57.90	58.05	58.20	58.35	38
39	58.50	58.65	58.80	58.95	59.10	59.25	59.40	59.55	59.70	59.85	39
40	60.00	60.15	60.30	60.45	60.60	60.75	60.90	61.05	61.20	61.35	40
41	61.50	61.65	61.80	61.95	62.10	62.25	62.40	62.55	62.70	62.85	41
42	63.00	63.15	63.30	63.45	63.60	63.75	63.90	64.05	64.20	64.35	42
43	64.50	64.65	64.80	64.95	65.10	65.25	65.40	65.55	65.70	65.85	43
44	66.00	66.15	66.30	66.45	66.60	66.75	66.90	67.05	67.20	67.35	44
45	67.50	67.65	67.80	67.95	68.10	68.25	68.40	68.55	68.70	68.85	45
46	69.00	69.15	69.30	69.45	69.60	69.75	69.90	70.05	70.20	70.35	46
47	70.50	70.65	70.80	70.95	71.10	71.25	71.40	71.55	71.70	71.85	47
48	72.00	72.15	72.30	72.45	72.60	72.75	72.90	73.05	73.20	73.35	48
49	73.50	73.65	73.80	73.95	74.10	74.25	74.40	74.55	74.70	74.85	49
50	75.00	75.15	75.30	75.45	75.60	75.75	75.90	76.05	76.20	76.35	50

THE NATIONAL BLANK BOOK COMPANY
HOLYOKE MASSACHUSETTS
NEW YORK CHICAGO BOSTON SAN FRANCISCO