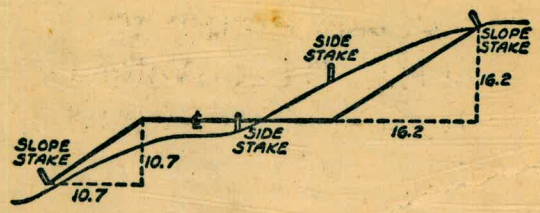


Please Return to
 City of San Diego Water Dept.
 Room 903 Civic Center



DISTANCES FROM SIDE STAKES FOR CROSS-SECTIONING
 SLOPE 1 TO 1. ROADWAY OF ANY WIDTH

	0	.1	.2	.3	.4	.5	.6	.7	.8	.9	
0	0.00	0.10	0.20	0.30	0.40	0.50	0.60	0.70	0.80	0.90	0
1	1.00	1.10	1.20	1.30	1.40	1.50	1.60	1.70	1.80	1.90	1
2	2.00	2.10	2.20	2.30	2.40	2.50	2.60	2.70	2.80	2.90	2
3	3.00	3.10	3.20	3.30	3.40	3.50	3.60	3.70	3.80	3.90	3
4	4.00	4.10	4.20	4.30	4.40	4.50	4.60	4.70	4.80	4.90	4
5	5.00	5.10	5.20	5.30	5.40	5.50	5.60	5.70	5.80	5.90	5
6	6.00	6.10	6.20	6.30	6.40	6.50	6.60	6.70	6.80	6.90	6
7	7.00	7.10	7.20	7.30	7.40	7.50	7.60	7.70	7.80	7.90	7
8	8.00	8.10	8.20	8.30	8.40	8.50	8.60	8.70	8.80	8.90	8
9	9.00	9.10	9.20	9.30	9.40	9.50	9.60	9.70	9.80	9.90	9
10	10.00	10.10	10.20	10.30	10.40	10.50	10.60	10.70	10.80	10.90	10
11	11.00	11.10	11.20	11.30	11.40	11.50	11.60	11.70	11.80	11.90	11
12	12.00	12.10	12.20	12.30	12.40	12.50	12.60	12.70	12.80	12.90	12
13	13.00	13.10	13.20	13.30	13.40	13.50	13.60	13.70	13.80	13.90	13
14	14.00	14.10	14.20	14.30	14.40	14.50	14.60	14.70	14.80	14.90	14
15	15.00	15.10	15.20	15.30	15.40	15.50	15.60	15.70	15.80	15.90	15
16	16.00	16.10	16.20	16.30	16.40	16.50	16.60	16.70	16.80	16.90	16
17	17.00	17.10	17.20	17.30	17.40	17.50	17.60	17.70	17.80	17.90	17
18	18.00	18.10	18.20	18.30	18.40	18.50	18.60	18.70	18.80	18.90	18
19	19.00	19.10	19.20	19.30	19.40	19.50	19.60	19.70	19.80	19.90	19
20	20.00	20.10	20.20	20.30	20.40	20.50	20.60	20.70	20.80	20.90	20
21	21.00	21.10	21.20	21.30	21.40	21.50	21.60	21.70	21.80	21.90	21
22	22.00	22.10	22.20	22.30	22.40	22.50	22.60	22.70	22.80	22.90	22
23	23.00	23.10	23.20	23.30	23.40	23.50	23.60	23.70	23.80	23.90	23
24	24.00	24.10	24.20	24.30	24.40	24.50	24.60	24.70	24.80	24.90	24
25	25.00	25.10	25.20	25.30	25.40	25.50	25.60	25.70	25.80	25.90	25
26	26.00	26.10	26.20	26.30	26.40	26.50	26.60	26.70	26.80	26.90	26
27	27.00	27.10	27.20	27.30	27.40	27.50	27.60	27.70	27.80	27.90	27
28	28.00	28.10	28.20	28.30	28.40	28.50	28.60	28.70	28.80	28.90	28
29	29.00	29.10	29.20	29.30	29.40	29.50	29.60	29.70	29.80	29.90	29
30	30.00	30.10	30.20	30.30	30.40	30.50	30.60	30.70	30.80	30.90	30
31	31.00	31.10	31.20	31.30	31.40	31.50	31.60	31.70	31.80	31.90	31
32	32.00	32.10	32.20	32.30	32.40	32.50	32.60	32.70	32.80	32.90	32
33	33.00	33.10	33.20	33.30	33.40	33.50	33.60	33.70	33.80	33.90	33
34	34.00	34.10	34.20	34.30	34.40	34.50	34.60	34.70	34.80	34.90	34
35	35.00	35.10	35.20	35.30	35.40	35.50	35.60	35.70	35.80	35.90	35
36	36.00	36.10	36.20	36.30	36.40	36.50	36.60	36.70	36.80	36.90	36
37	37.00	37.10	37.20	37.30	37.40	37.50	37.60	37.70	37.80	37.90	37
38	38.00	38.10	38.20	38.30	38.40	38.50	38.60	38.70	38.80	38.90	38
39	39.00	39.10	39.20	39.30	39.40	39.50	39.60	39.70	39.80	39.90	39
40	40.00	40.10	40.20	40.30	40.40	40.50	40.60	40.70	40.80	40.90	40
41	41.00	41.10	41.20	41.30	41.40	41.50	41.60	41.70	41.80	41.90	41
42	42.00	42.10	42.20	42.30	42.40	42.50	42.60	42.70	42.80	42.90	42
43	43.00	43.10	43.20	43.30	43.40	43.50	43.60	43.70	43.80	43.90	43
44	44.00	44.10	44.20	44.30	44.40	44.50	44.60	44.70	44.80	44.90	44
45	45.00	45.10	45.20	45.30	45.40	45.50	45.60	45.70	45.80	45.90	45
46	46.00	46.10	46.20	46.30	46.40	46.50	46.60	46.70	46.80	46.90	46
47	47.00	47.10	47.20	47.30	47.40	47.50	47.60	47.70	47.80	47.90	47
48	48.00	48.10	48.20	48.30	48.40	48.50	48.60	48.70	48.80	48.90	48
49	49.00	49.10	49.20	49.30	49.40	49.50	49.60	49.70	49.80	49.90	49
50	50.00	50.10	50.20	50.30	50.40	50.50	50.60	50.70	50.80	50.90	50

Distances of slope stake from side or shoulder stake for any width roadway, slope 1 to 1. If ground is nearly level, the cut or fill at side stake is located by the double entry method in left column and top row. The number in body of table in same row and column gives distance from side stake to slope stake. If ground is not level estimate the difference in elevation between the side stake and slope stake, lower target by this amount if cut, elevate if fill. Add this amount to cut or fill and find distance in table. Set up rod at this point, and line of sight should cut target. If it does not make the slight adjustment necessary.

336.50 322.91

345.91
 336.50
 682.41

36401.00
 6 8241
 29+1859

TABLE XIII—CORRECTIONS FOR TANGENTS AND EXTERNALS

These corrections are to be added to the approximate values, found by dividing the tangent, or external, for a 1° curve (Table VIII) by the degree of curve, in order to obtain the true tangents, or externals. Intermediate values may be obtained by interpolation.

FOR TANGENTS ADD

Central Angle	DEGREE OF CURVE													
	5°	10°	15°	20°	25°	30°	35°	40°	45°	50°	55°	60°	65°	70°
10°	.03	.06	.09	.13	.16	.19	.22	.25	.28	.31	.34	.38	.42	.46
15°	.04	.10	.14	.19	.24	.29	.34	.39	.45	.51	.53	.58	.63	.68
20°	.06	.13	.19	.26	.32	.39	.45	.51	.58	.65	.72	.79	.84	.90
25°	.08	.16	.24	.33	.40	.49	.58	.67	.75	.83	.90	.99	1.06	1.14
30°	.10	.19	.29	.39	.49	.59	.69	.79	.89	.99	1.09	1.20	1.29	1.39
35°	.11	.22	.34	.47	.58	.69	.79	.89	.99	1.09	1.20	1.29	1.39	1.49
40°	.13	.26	.40	.53	.67	.80	.93	1.06	1.20	1.34	1.49	1.64	1.79	1.94
45°	.15	.30	.44	.60	.76	.91	1.06	1.21	1.37	1.52	1.70	1.87	2.04	2.21
50°	.17	.34	.51	.68	.85	1.02	1.19	1.36	1.54	1.72	1.91	2.10	2.29	2.48
55°	.19	.38	.57	.76	.95	1.14	1.32	1.52	1.72	1.92	2.12	2.32	2.52	2.72
60°	.21	.42	.63	.84	1.05	1.27	1.49	1.71	1.94	2.17	2.38	2.60	2.83	3.07
65°	.23	.46	.69	.93	1.16	1.40	1.64	1.88	2.13	2.38	2.63	2.88	3.13	3.39
70°	.25	.51	.76	1.02	1.28	1.54	1.80	2.06	2.33	2.60	2.88	3.16	3.44	3.72
75°	.27	.56	.83	1.12	1.40	1.69	1.98	2.27	2.57	2.87	3.16	3.47	3.78	4.09
80°	.30	.61	.91	1.22	1.53	1.84	2.15	2.46	2.78	3.10	3.44	3.78	4.12	4.46
85°	.33	.66	1.00	1.33	1.68	2.02	2.36	2.70	3.05	3.40	3.77	4.14	4.55	4.89
90°	.36	.72	1.09	1.45	1.83	2.20	2.57	2.94	3.32	3.70	4.10	4.50	4.91	5.32
95°	.39	.79	1.19	1.55	2.00	2.40	2.80	3.20	3.61	4.02	4.40	4.98	5.38	5.83
100°	.43	.88	1.30	1.74	2.18	2.62	3.06	3.50	3.95	4.40	4.88	5.37	5.85	6.34
110°	.51	1.03	1.56	2.08	2.61	3.14	3.67	4.21	4.76	5.31	5.86	6.43	7.01	7.60
120°	.62	1.25	1.93	2.52	3.16	3.81	4.45	5.11	5.77	6.44	7.12	7.80	8.50	9.22

FOR EXTERNALS ADD

Central Angle	DEGREE OF CURVE													
	5°	10°	15°	20°	25°	30°	35°	40°	45°	50°	55°	60°	65°	70°
10°	.001	.003	.004	.006	.007	.008	.009	.011	.012	.014	.015	.017	.018	.020
15°	.003	.007	.010	.014	.018	.023	.027	.029	.032	.035	.039	.043	.047	.051
20°	.006	.011	.017	.022	.028	.034	.038	.045	.051	.057	.063	.070	.076	.083
25°	.009	.018	.027	.036	.046	.056	.065	.074	.083	.093	.106	.120	.127	.135
30°	.013	.025	.038	.051	.065	.078	.090	.103	.116	.129	.149	.170	.179	.188
35°	.018	.035	.054	.072	.086	.109	.131	.153	.175	.197	.213	.230	.247	.264
40°	.023	.046	.070	.093	.117	.141	.172	.203	.234	.265	.277	.290	.315	.341
45°	.030	.060	.093	.119	.153	.184	.216	.254	.289	.325	.351	.378	.411	.445
50°	.037	.075	.116	.151	.189	.227	.266	.305	.345	.384	.425	.467	.508	.550
55°	.046	.093	.142	.188	.236	.283	.332	.381	.420	.479	.530	.582	.641	.700
60°	.056	.112	.168	.225	.283	.340	.398	.457	.516	.575	.636	.697	.774	.851
65°	.067	.135	.204	.273	.343	.412	.483	.554	.625	.697	.771	.845	.922	1.01
70°	.080	.159	.240	.321	.403	.485	.568	.652	.735	.819	.906	.994	1.08	1.17
75°	.095	.182	.266	.353	.440	.528	.617	.707	.797	.877	.971	1.07	1.18	1.29
80°	.110	.220	.332	.445	.558	.671	.787	.903	1.02	1.13	1.25	1.38	1.50	1.62
85°	.128	.259	.391	.524	.657	.790	.926	1.06	1.20	1.34	1.47	1.62	1.76	1.91
90°	.149	.299	.450	.603	.756	.910	1.07	1.22	1.38	1.54	1.70	1.87	2.03	2.20
95°	.174	.350	.522	.706	.885	1.06	1.25	1.43	1.62	1.80	1.99	2.18	2.38	2.58
100°	.200	.401	.604	.809	1.01	1.22	1.43	1.64	1.85	2.06	2.28	2.50	2.73	2.96
110°	.268	.536	.806	1.08	1.35	1.63	1.91	2.20	2.48	2.76	3.05	3.35	3.66	3.96
120°	.360	.721	1.08	1.45	1.82	2.19	2.57	2.95	3.33	3.72	4.11	4.50	4.91	5.32

INDEX

28th St Grape to Fir St Pelim 1-2V
 Elm St Bancroft to 33rd " 3-5V
 Beech St - Felton to Gregory & 200' N on Gregory 6-7V
 Hemlock St 37th to 38th Pelim 9-11V
 Island St 36th to 35th Pelim 12-13V
 1st 33rd to Railroad Av 14-16V
 3rd Bancroft to 34th 17-20V
 Tagon St 32nd to 850' East 21-23V
 Cottonwood Rigel to Siva Pelim 24-26V
 3rd St 33rd St West to RR Av 27-28V
 Birch Rigel to Pluto 29-30V
 Noyes Chalcedony to Beryl 32-36V
 Beryl Noyes to Academy 36-41V
 Chalcedony - Academy to Noyes 42-46V
 STKS FOR 6" AC MAIN
 28th St Grape to Fir 31V
 Noyes St Chalcedony to Beryl 32-36V
 Beryl St Noyes to Academy 37-41V
 Chalcedony Academy to Noyes 42-46V
 STKS FOR 6" AC MAIN
 Birch St Rigel to Pluto 47-48V
 ELM ST, BANCROFT to 33rd ST'S for 8" AC 49V
 - OVER -

alice

INDEX (cont'd.)

FH 3RD KEARNY MESA INDUST. AREA ^{alice} 50 ✓
"G" ST, 28TH TO 26TH STS for 12" A.C. 51-53 ✓
BENSON AVE, WOODMAN TO 61ST Prelim. 54-62 ✓
alice

28th St
Grape to Fir St

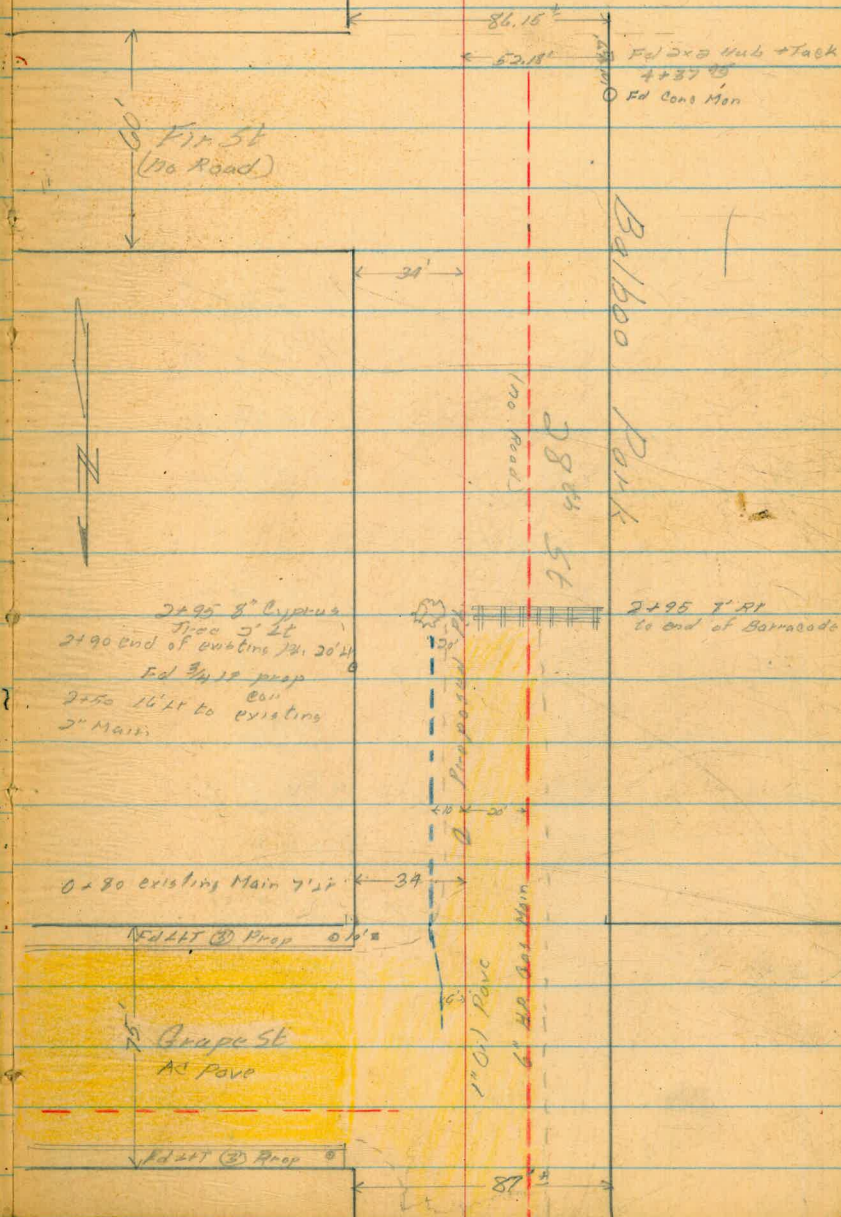
4+44⁹² South prop line Fir

3+08⁰² POT

0+07 POT

0+00 North prop line Grape

West
Varonakis
Kemp



Profile 28th St
 Grape to Fir

1-28-54

	1.28	234.23	232.95
0+00		5.33	228.9
+50		6.0	228.2
	0.70	228.18	6.45
			227.78
1+00		1.3	227.2
+50		2.5	226.0
2+00		4.0	224.5
+50		6.6	221.9
	1.29	218.44	11.33
			217.15
3+00		1.2	217.2
+15		3.7	214.7
+37		14.1	204.3
+50		13.1	205.3
+65		9.6	208.8
4+00		8.1	210.3
+44 ⁹⁵		8.4	210.0
	11.66	229.43	0.67
			217.77
	6.71	233.59	2.55
			226.88
		0.66	232.93 =

BP SE Cor grape + Granada		
North prop line Grape St		
	1.8	
	8.14	edge to pave
	3.0	" " "
	9.14	" " "
	4.3	" " "
	6.511	" " "
	6.1	
	3.21	6.3
		2.81 edge to pave
	1.4	
	10.14	0.0
		10.14
	3.4	
	10.14	41
		10.14
	14.8	
	10.14	120
		10.14
	15.4	
	10.14	130
		10.14
	125	
	10.14	7.2
		10.14
	10.8	
	10.14	5.8
		10.14
	120	
	10.14	4.6
		10.14
		South prop line Fir

232.95

Elm St Bancroft to 33rd

3

3+60⁰²

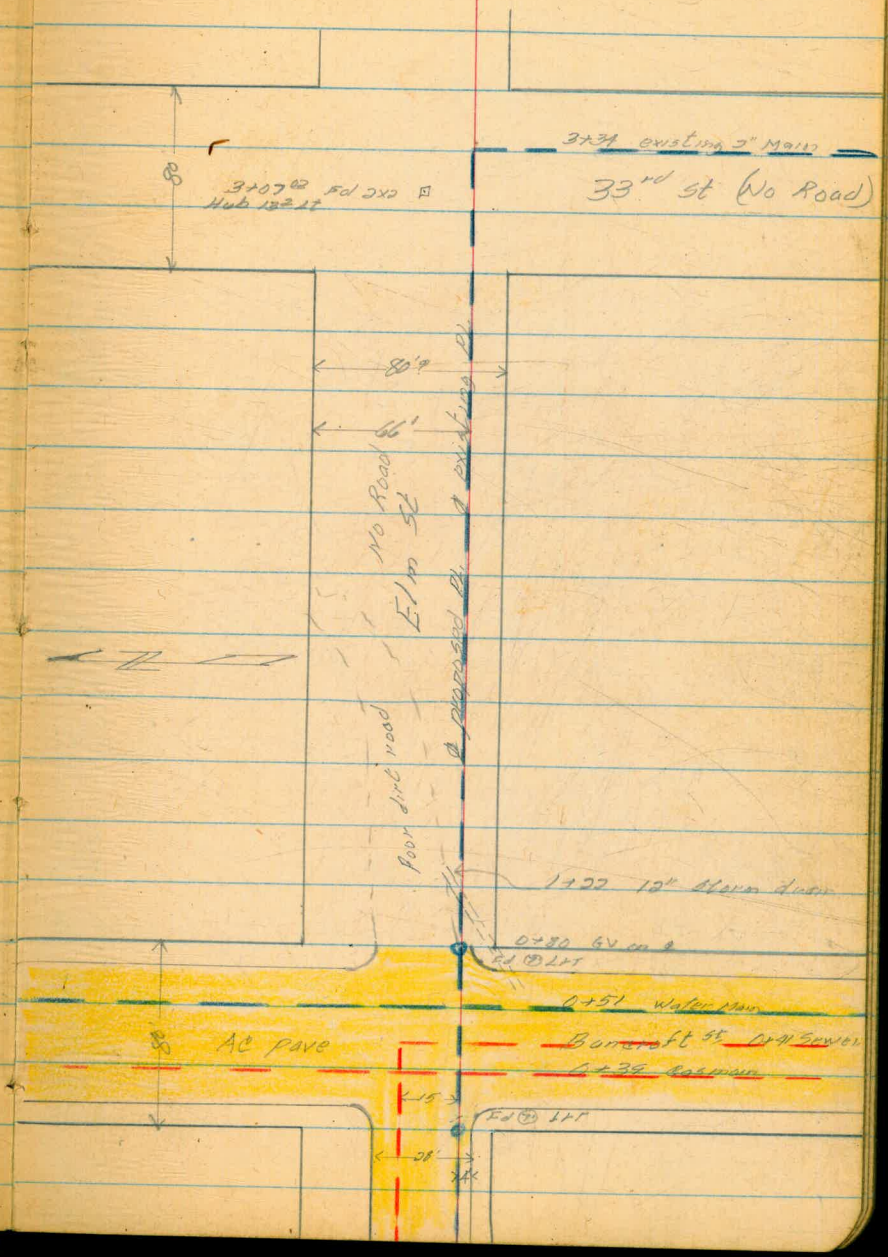
East prop line 33rd

1+50 POT

0+17 POT

0+00

West Prop Line Bancroft



Profile Elm St
Baneroff to 33rd

West
Varanaskie
Kemp

1-5-54

1

112 227.65 226.53

NW 8P Elm + Baneroff

0+00 2.70 225.0

+21 8.90 219.5

+50 3.0 224.7

+80 4.4 223.3

+85 5.2 222.5

1+00 5.3 222.4

+22 4.7 223.0

+50 7.8 219.9

0.53 215.10 13.08 214.57

+80 2.7 212.4

+87 6.0 209.1

2+00 8.0 207.1

0.40 202.81 12.69 202.41

+50 7.7 195.1

+69 10.9 192.4

+77 7.6 195.2

2+00 9.8 193.0

2.41 193.68 11.57 191.24

+31 2.7 191.0

West prop line Baneroff
75" RT. 12" storm Drain

edge of east prop line Baneroff

223.6 4.1 223.4 43
10.11 223.4 411 223.8 39 37 224.0
3RT 10RT
222.1 5.6 6.1 7.2 3.8 3.6 224.1
10.11 5.11 5.20 3RT 10RT
10.5
9.21 to end 12" of storm drain
213.8 13.9 218.2 9.5 6.9 6.3 221.4
10.11 9.11 4RT 10RT

207.7 7.1 5.3 3.3 211.8
10.11 6RT 10RT
207.1 8.0 9.6 6.6 208.5
10.11 10RT

198.7 4.1 6.3 7.1 4.8 198.0
10.11 6.11 7RT 10RT
193.5 9.3 11.5 9.5 7.6 195.2
10.11 5.26 3RT 10RT
193.3 9.5 7.6 11.5 191.3
7.11 4.11 5RT
190.8 12.0 10.1 9.8 13.1 189.7
10.11 6.11 3RT 10RT

190.2 3.5 5.6 188.1
10.11 10RT

193.68

3+40	8.2	185.5
+50	5.4	188.3
+60	5.0	188.7

186.0 $\frac{7.7}{10.20}$
 189.9 $\frac{38}{10.20}$
 188.9 $\frac{48}{10.20}$

$\frac{8.8}{10.20}$ 184.9
 $\frac{10.2}{10.20}$ 183.5
 $\frac{2.9}{10.20}$ 185.8

11.83 205.07 0.49 193.24
 12.29 216.94 0.42 209.65
 11.86 228.75 0.05 216.89
 222 226.53 = 226.53

Beech St.
E Profile Proposed W/L

5+79²⁰ = End of Line

3+29²⁰ = X Pt. 90° 47' Lt

2+79²⁰ = W/L Gregory St.

Note:

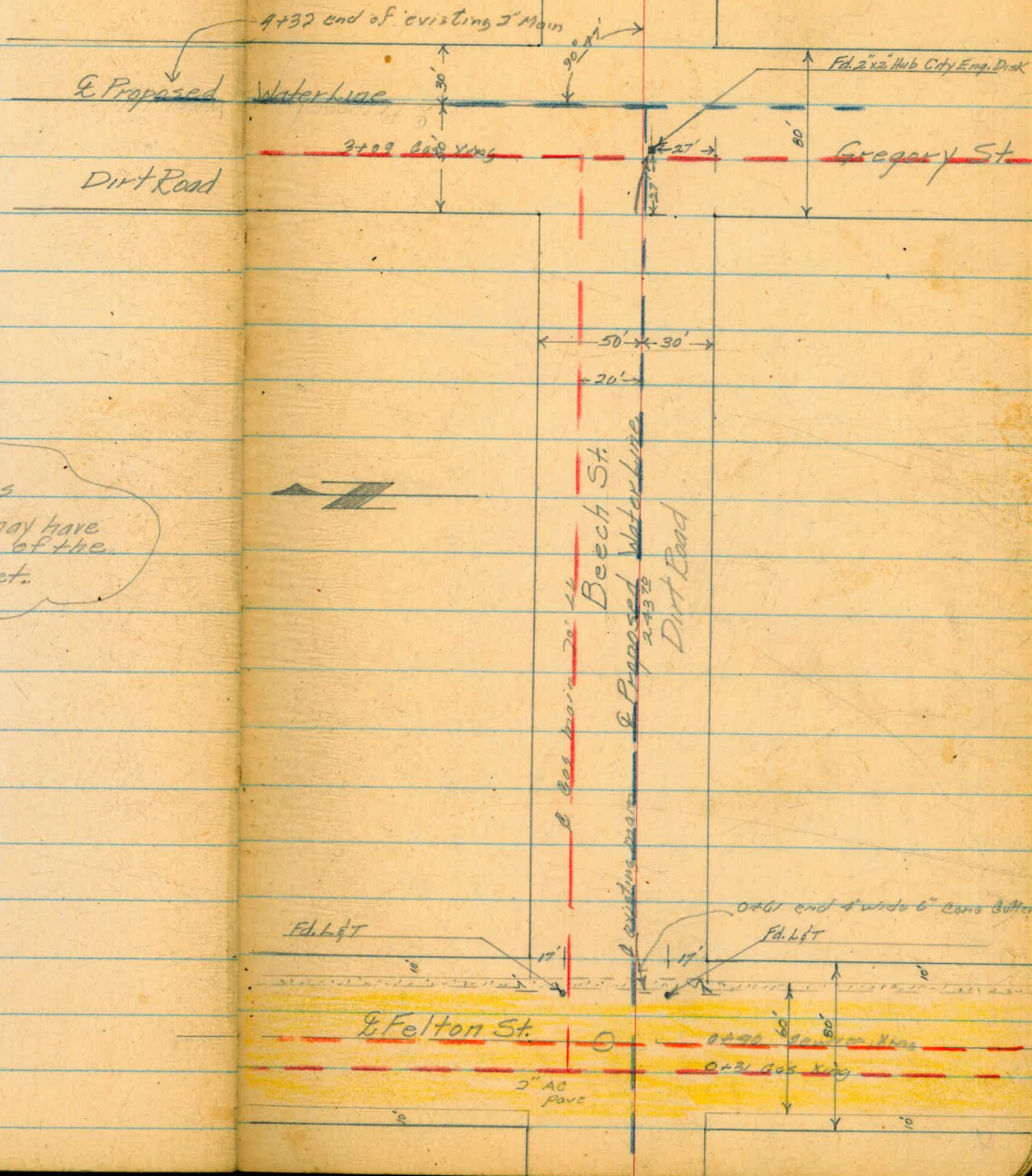
It appears Felton St. was originally an 80' street, but it may have a 10' closing on both sides of the street to make it a 60' street.

0+80 = E/W Felton St.

0+00 = W/L Felton St.

2-2-54

6



Beech St.
 & Profile Proposed W/L

B.M.	4.99	231.52		226.53
TP	9.38	240.26	0.64	230.88
TP	0.79	234.20	6.85	233.41
TP	1.25	222.52	12.93	221.27
TBM	5.06	218.99	7.59	213.93
0+00			2.8	216.19 + 5.0 to Flow
0+40			4.6	215.83
0+50			4.7	214.29
0+61			5.3	213.69
1+00			5.4	213.59
1+50			5.8	213.19
2+00			6.3	212.69
2+50			4.6	214.39
3+00			6.2	217.79
3+29 ²⁰ & 90° 47' Lt.			0.9	218.09
3+50			1.1	217.89
TP	2.47	218.94	2.53	216.47
4+00			4.0	214.94
4+50			8.2	210.74
TP	1.14	210.74	9.94	209.60

N.W.B.P. Bancroft & Elm St.

S.N.W.B.P. Felton & Beech Gene.

S.E. Mon. 33rd Date Gene.

S.E. Mon. 32nd Beech Gene.

7' Lt. S.E. Cor. Beech & Felton

W/L Felton St.

10' Lt. S. Edge Sew. M.H.

E. Edge Pavt.

Rock 3' W. of Tree on East Side Approx. 4+56-6 Rt.

Berch St Cont

210.74

5.00 64 204.34

+50 13.0 197.74

179.70 18.8 191.9

11.25 221.50 0.49 210.25

5.52 221.47 5.55 215.95

12.35 233.67 0.15 221.32

5.74 239.06 0.35 233.32

1.39 228.44 12.01 227.05

1.91 226.53

West
Varonfakis
Kemp

3-2-54

8

21 5.0
16.4 10.11

8.9
15.84

5.9
13.44

15.4
10.84

5.4 11.9 13.9
26.24 15.44 18.24

20.3
10.84

= 226.53

Hemlock St
37th to 38th

7+27 34 East prop line 38th

6+67 34 POT West prop line 38th

0+53 POT

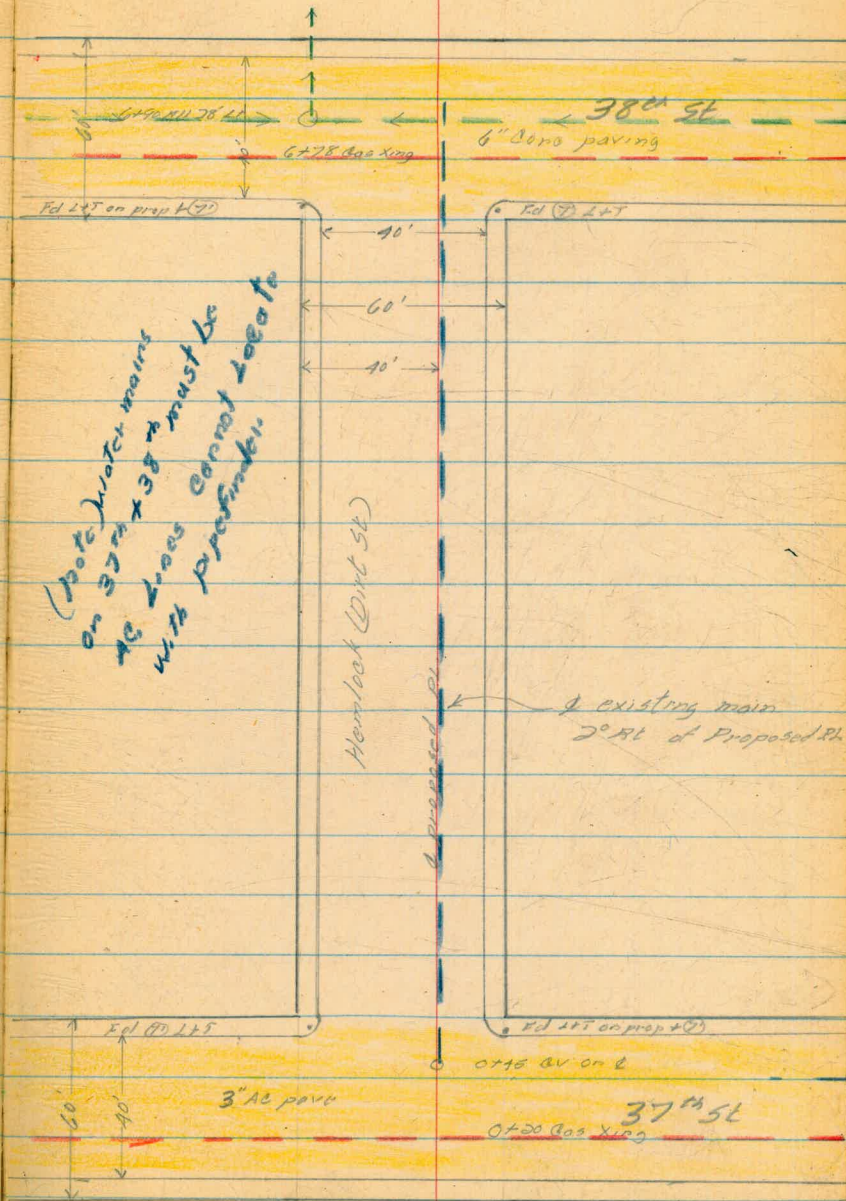
0+00

West line 37th

West
Williams
Varonakis
Kallhofer

4/1/54

9



Hemlock St

Q profile

	9.95	92.77	82.82
0+10		10.63	82.14
0+10 ²		11.14	81.63
+50		10.02	82.75
+61		9.64	83.13
1+00		8.4	84.37
+50		7.0	85.77
2+00		6.1	86.67
+50		5.5	87.27
3+00		5.2	87.57
+50		4.9	87.87
4+00		4.4	88.37
+50		3.9	88.87
5+00		3.5	89.27
+50		3.2	89.57
6+00		2.9	89.87
+50		2.6	90.17
+60 ²		2.31	90.43
5.63	95.59	2.81	89.96 = 89.90

Number 89.90

10

4/1/51

SEBP 37th + Hemlock

Top Ch

bottom of Ch

edge AC pave

edge cone paving

BP NW Cor 38th + Hemlock

95.59

82.66

+ 11.2 to floor line

6+90 5.52 90.7 78.87

38' LT M.H. Top So Rim

7+00 4.53 91.06

+09² 4.55 91.04

Bottom of Ob

+09² 3.96 91.63

Top Ob

4.11 90.72 8.98 86.61

7.15 83.57 =

83.66 Top M.H. - 55 Cor. 38" + Occur

Island St
36th to 35th

West
Williams
Kellhofer

12
4/2/54

5+70 +

Freeway RW

35th St

5+70

4+62 end 8' Fence

3+66 Begin 8' Wind
Gate Daley 80x8
yard



120'

Freeway RW

2+20 end of existing
3' Main

Island Blvd
Proposed

80'

80'

90° 56'

219'

36th St

Ed Case 1911
3' 11" 02224

0+39 Water Main Xing
3" AB pave

80'

0+00

East prop line 36th

Island St 30th to 35
 Profile

3.19 124.06 120.92

0+00 +1.9 125.46

+19 2.9 121.66

+42 2.49 121.57

+50 2.7 121.36

1+00 1.8 122.26

+50 3.1 120.96

2+00 4.9 119.16

+50 6.0 118.06

3+00 6.0 118.06

+50 6.5 117.56

4+00 7.7 116.36

+50 7.7 116.36

+62 7.8 116.26

+71 11.7 112.36

1.50 112.36 12.90 111.16

5+00 3.9 108.46

+50 9.2 103.16

+70 12.4 99.96

11.72 123.27 0.81 111.55

West
 Williams
 Kullbaker

13
 23

13

4/2/54

on same Man 27' North of south prep line
 of Island St. and on West line of same

East prep line 36th (on Dailey) spill pipe

edge oil

West edge oil

Φ

$\frac{3.6}{10.24}$ $\frac{2.0}{6.24}$

$\frac{4.0}{10.24}$ $\frac{3.4}{9.24}$

$\frac{5.3}{10.24}$

$\frac{2.3}{10.24}$

$\frac{11.8}{10.24}$ $\frac{10.5}{5.24}$

$\frac{6.7}{10.24}$

$\frac{13.8}{10.24}$ $\frac{13.6}{4.24}$

$\frac{8.8}{10.24}$ MIDWAY RW

2.33 = 120.99 = 120.92

L³² 33rd to

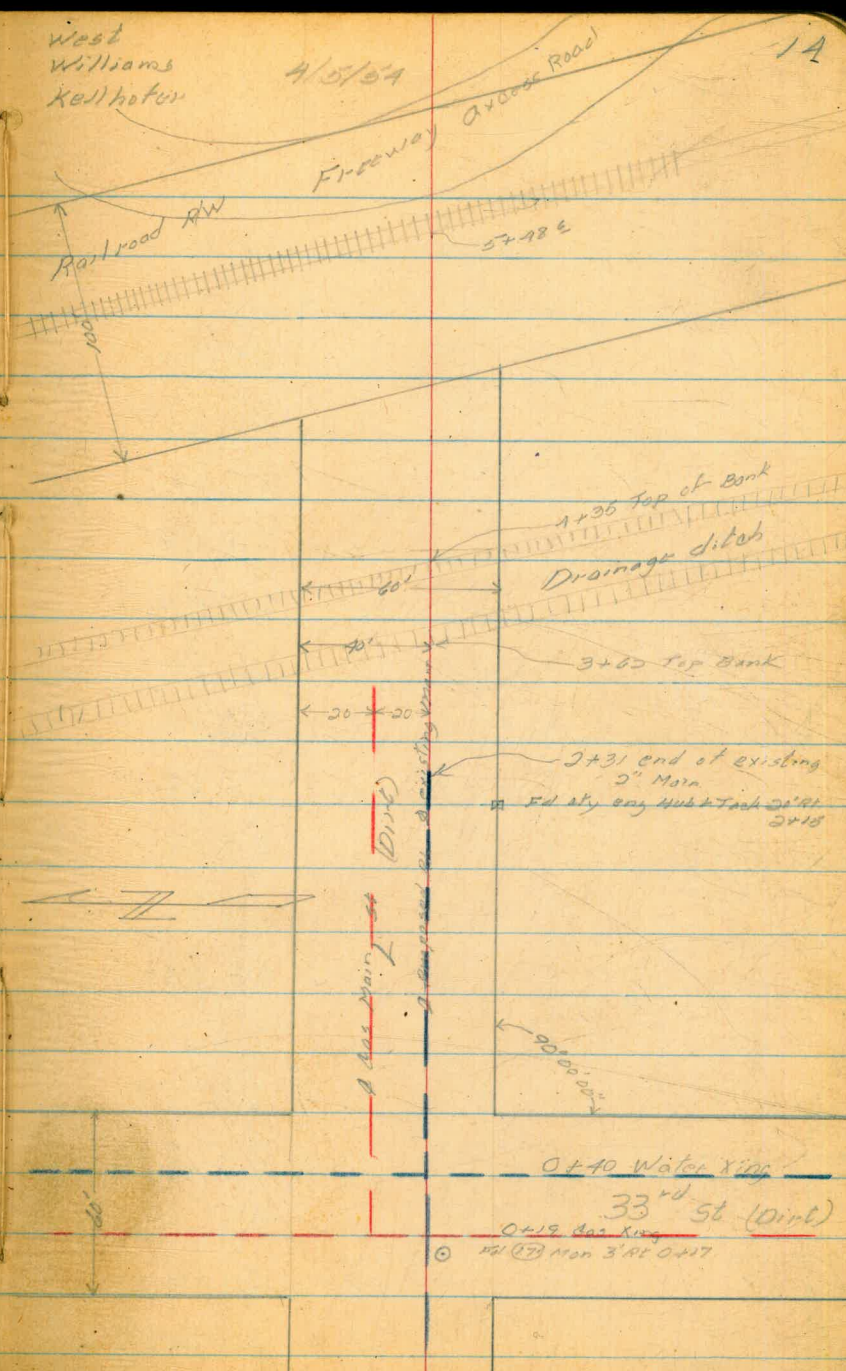
West
Williams
Kellhoter

4/5/54

1A

5+98 6

West railroad rail



0+17 P&T spike

0+00 West prop line 33rd

0+40 Water King
33rd St (Dirt)
0+19 Bas King
© 1954 Mon 3'11' 0+17'

L⁵⁶ profile

15

4/5/54

	4.06	31.08		27.02
	5.70	30.94	5.84	25.24
0+00			5.6	25.34
+50			5.3	25.64
1+00			5.2	25.74
+50			5.3	25.64
2+00			5.1	25.84
+50			4.6	26.34
+58			4.8	26.14
+78			8.8	22.14
3+00			8.9	22.04
+12			7.0	23.94
+30			6.9	24.04
+35			8.2	22.74
+47			7.4	23.54
+50			5.7	25.24
+62			5.6	25.34
+68			9.8	21.14
4+00			10.3	20.64

SE prop line Pl 33rd + Imperial

Turn on SW (D) near 33rd + I

West prop line 33rd

Top of drainage ditch bank

Bottom " " " "

10.0
1.9
8.1
3.7
4.4

30.94

4+22	10.8	20.14
+35	4.4	26.54
+38	6.9	24.04
5+00	6.5	24.44
+25	2.1	28.84
+48 ⁶	+4.7	35.64

Bottom of drainage ditch bank (west side)

Top " " " " " "

Top west railroad rail

4.29 30.08 5.13 25.79
 306 27.02 = 2702

"J" 56

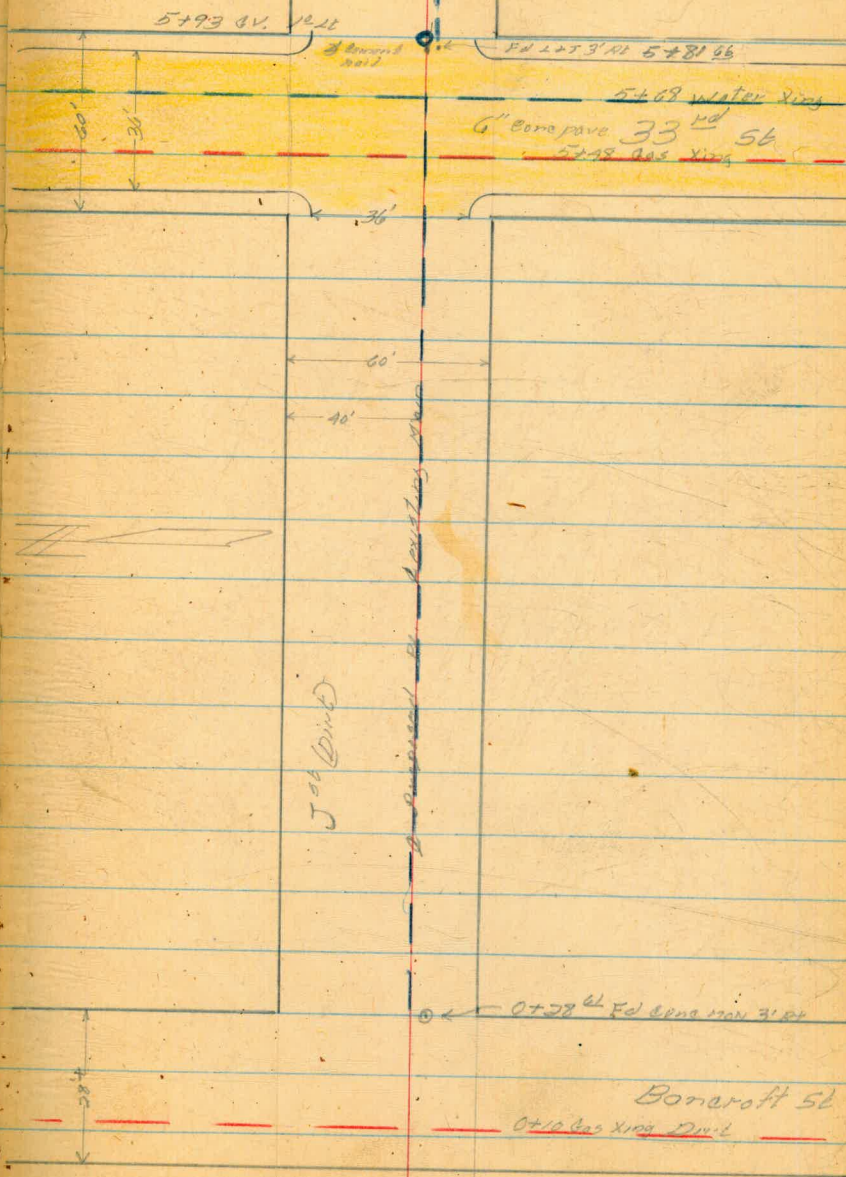
5+81.66 \rightarrow 5° 09' 00 RT
② east prop line 33rd

0+28 ^{el} POT East prop line Boncroft 56
0+00 West prop line Boncroft 56

West
Williams
Kallhofer

17

4/6/59



10+71 ²⁶ +9 East prop line 34th

9+91 ²⁶ x 4° 27' 00" Rt West prop line 34th

8+10 x 4° 27' 00" Lt

7+40 x 5° 04' 00" Lt

Transite water Main King 99

10+02 ²⁶ 400 x 100

34th

10+00 2" Main 5' BR

Fd 3" Main 3' RE 9+91 ²⁶

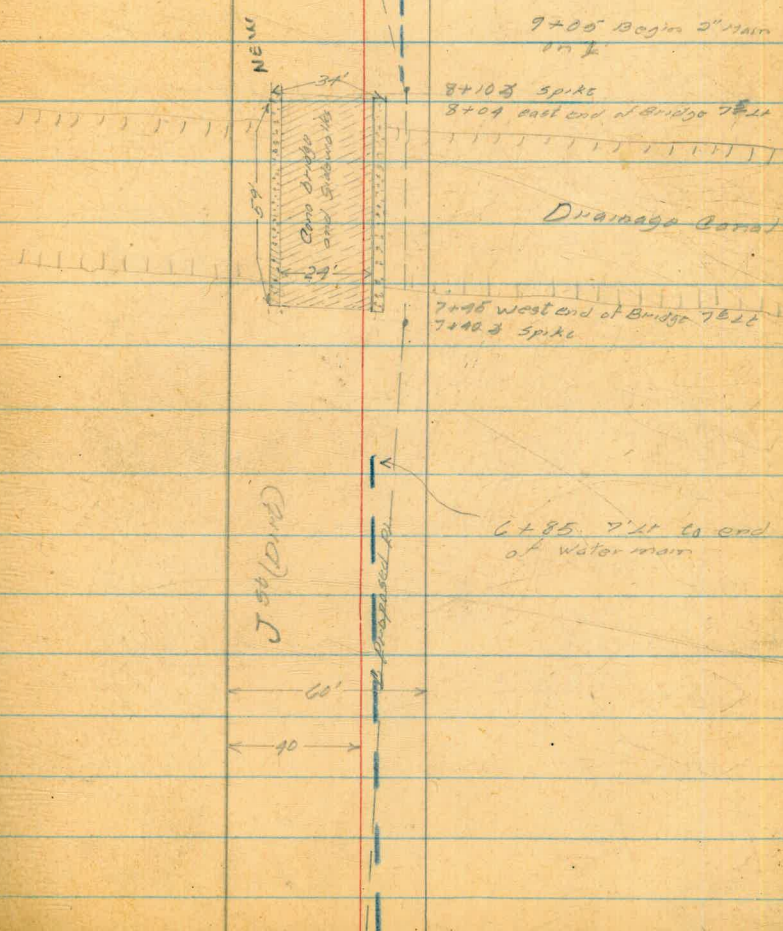
9+05 Begin 2" Main
on I

8+10 spike
8+09 east end of Bridge 7622

Drainage Canal

7+96 West end of Bridge 7622
7+98 spike

6+85 7' Lt to end
of water main



Q Profile "J"³⁴
Boncroft to 34⁵

	7.03	89.05	82.02
	0.31	76.55	12.81 76.24
	6.97	76.85	6.67 69.88
0+00		10.3	77.1
+14		6.7	76.18
	2.73	70.03	9.55 67.30
0+50		5.5	64.53
	1.22	58.67	12.59 57.45
1+00		7.3	51.37
+15		11.7	47.97
	1.59	47.99	12.27 44.40
1+50		6.1	41.89
2+00		10.5	37.99
+50		11.4	36.59
3+00		11.9	36.09
+50	2.59 0.59	38.11	12.47 35.52
4+00		3.5	34.61
+50		4.5	33.61
5+10		5.4	32.71

West
Williams
Kellhofer

150

19

4/6/54

BM (D) L+T 32⁺ Island

Q

West prop line Boncroft 54

6.8
10.4

20
10.4

Turn on edge Man 3.81 0+28.4

6.5
10.2

6.2
10.4

7.1
10.2

8.4
10.4

6.6
10.2

9.2
10.4

38.11

5+30		6.47	31.64
+50		6.66	31.45
+886		6.55	31.56
6+00		6.1	32.01
+50		6.1	32.01
7+00		5.6	32.51
+40 2		5.9	32.21
	3.50	38.20	3.41
+53		1.27	25.50
+96		1.20	26.20
8+10		4.0	34.20
+50		4.6	33.60
+60		6.1	32.10
9+00		6.6	31.60
+50		6.2	32.00
10+00		5.5	32.70
+21 ²⁶		4.3	33.90
	7.36	39.08	6.48 = 31.70
	3.86	38.14	4.80 34.28
		2.82	35.32 =

38.20
6.98
31.70

30'

Begin cone paving 33rd

end cone paving

4.2	7.2
10.24	10.24

Turn on SW cor bridge (curb edge)

12.4	12.4
7.1	7.1

Bottom of drainage canal flows south

11.8	12.0
7.1	7.0

Bottom canal and side

3.3	6.3	6.4
10.24	5.2	10.24

Top of canal bank

5.0	6.2
10.24	10.24

east prop line 34th

Turn on side med 3' or 9+81

35.33 NW BP 33rd + Island

Logan St 32nd to 850' East

West
Williams
Kellhofer

21

4/8/54

See Map # 1498

8+75 8' Cyclone Fence

8+15^E

8' Fence private property line

8+21 End of 2' main

30'

50'

30'

Logan St (Dirt)

Proposed 4' sidewalk

3+00

POI spike

Line obtained
from man on 35th

5' AC Pave

0+69.00

Existing FH

FW 1+7

0+53

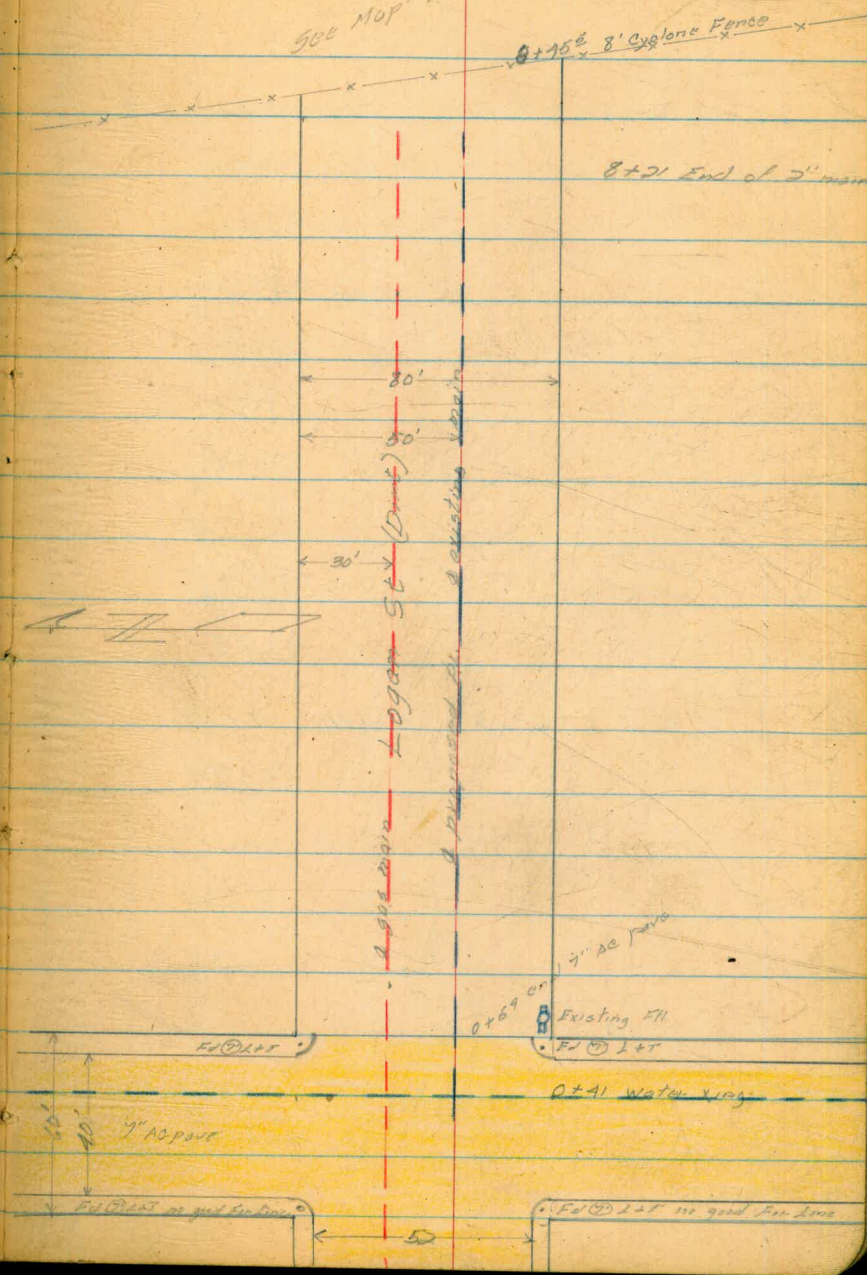
POI

0+41 Water Line

7" ASPHALT

0+00

West prop line 32nd



Logan St Q Profile

22

	275	53.82		51.07
0+00			297	50.85
+50			430	49.45
+59			422	49.60
1+00			27	51.12
+50			21	51.72
2+00			27	51.12
+50			36	50.20
3+00			66	47.22
+50			124	41.42
	0.16	41.17	1281	41.01
4+00			73	33.87
	0.05	28.57	1265	28.52
+50			14	27.17
5+00			8.0	20.57
	0.22	16.03	1276	15.81
+50			3.7	12.33
6+00			7.8	8.23
+50			9.8	6.23

BM NWBP 32nd + Logan StWest prop line 32nd

edge 20. pave

Logan St cont

23

16.03

7+00 10.1 5.93

+50 10.7 5.33

8+00 10.6 5.43

+45^e 11.4 4.63

9.06 14.09 11.00 05.03

259 11.55 = 11.64

BM SWBP 33rd + National

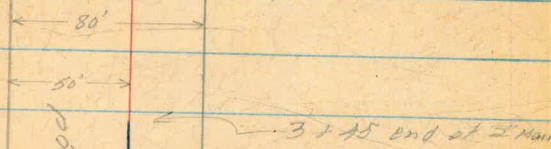
Cottonwood St
Rigel to Siva

West
Williams
Kellhofet

24
4/7/59

7+23⁰² East prop line Siva St

6+80⁴² POT



0+00 West prop line Rigel

Cottonwood
Q Profile

	5.10	11.38	6.28
	11.82	21.64	1.56 9.80
	1.84	17.28	6.20 15.44
0+00		1.32	14.08
+47		2.15	15.13
+50		2.0	15.28
+60		0.8	16.48
1+00		1.1	16.18
+50		4.6	13.68
+75		10.1	7.18
1+89		14.11	3.17
2+12		16.5	.78
+21		16.7	.58
+31		16.7	.58
+40		15.3	1.98
2+55		14.11	3.17
+56		13.4	3.88
+75		7.7	9.58
+84		5.6	11.68

25

BM on South Ch Main + West line Regel at base of

Top $\frac{3}{4}$ of prop bar S-E over Cottonwood + Regel

West prop line Regel St

east edge oil

elev given ss water level
west edge of water

east edge water

West
Williams
Rollholes

9/8/54

26

12.25

3+00 5.3 11.98

+20 6.3 10.98

+50 13.1 4.18

3.93 8.86 12.35 4.93

+64 6.7 2.16

4+00 5.8 3.06

+50 5.2 3.66

5+00 5.4 3.46

+50 4.7 4.16

6+00 5.5 3.36

+50 5.0 3.86

7+00 4.9 3.96

+23⁴² 4.9 3.96

3.58 7.21 5.23 2.63

5.71 11.30 1.62 5.59

5.01 6.29 = 6.28

Turn on Map 3' Pt. 6+80⁰²

"L" St 33rd to Railroad
RW

A+67 82

East line Railroad RW

West
Williams
Kellhofer

27
4/14/64

Railroad RW

A+22 end of existing
5" Main

60'

10'

Proposed 2" 56
Dirt

Set Cone Man 3' 6" 10
A+23

0+41 Gas Line

33rd Dirt

0+20 water line

0+43 POT

spike

0+00

East prop line 33rd

Q profile

2nd St 33rd West to R.R.W

West
Williams
Kellhofer

30

2.3

3.7

28

284 29.86 27.02

5.09 30.49 4.46 26.40

0+00 4.9 25.59

+50 5.1 25.39

1+00 5.3 25.19

+50 5.1 25.39

2+00 5.0 25.49

+50 5.0 25.49

3+00 5.1 25.39

+50 5.1 25.39

4+00 4.9 25.59

+50 4.2 29.29

+67 ⁸⁷ + 3.7 34.19

5.26 25.23 =

25.21 Turn on SW Man See page 15

SE prop line Pl 277 33rd + Imperial

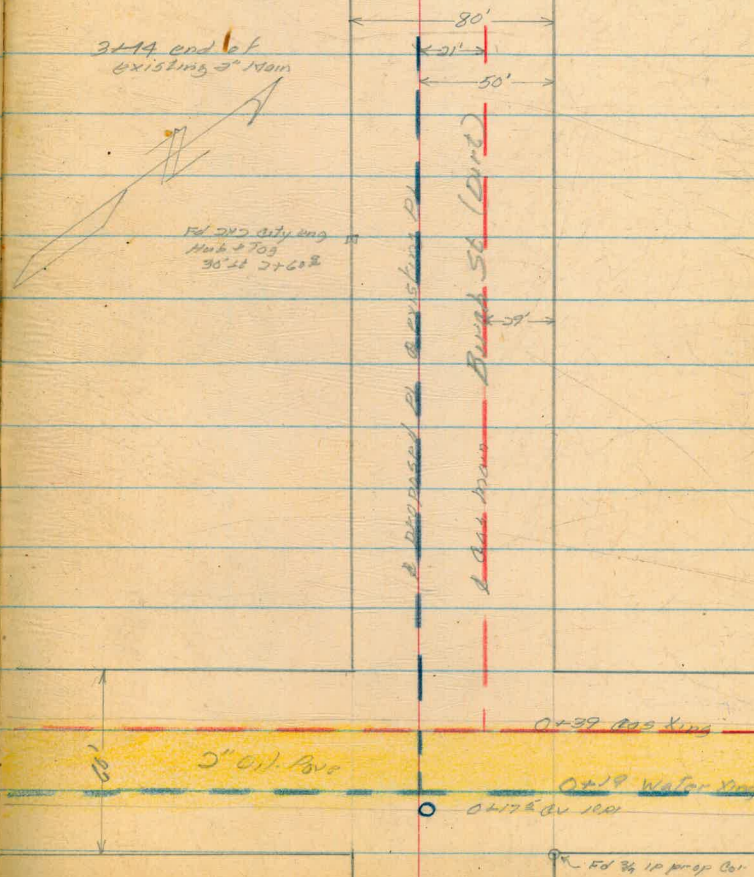
East prop line 33rd

Birch St Right to Pluto
Proposed Pl.

West
Williams
Kellhofer

29

L+30^c Freeway spoil line



2+60⁸³ 205

0+00

East prop line Right

BIRCH ST. RIGEL TO PLUTO

STA.	+	HI	-	E ₂
T.B.M.	9.34	29.78		15.44
0+00			7.8	16.98
+14			7.29	17.49
+43			6.38	18.40
+50			6.2	18.58
1+00			4.8	19.98
+50			4.7	20.08
2+00			5.2	19.58
+50			6.0	18.78
3+00			6.4	18.38
T.P.				
+50	0.37	18.33	6.82	17.96
4+00			2.5	15.83
+50			4.7	13.63
5+00			9.1	9.23
+50			11.9	6.43
6+00			11.7	6.63
730			12.6	5.73
T.P.	6.18	23.64	0.87	17.46
CHECK				
T.B.M.			8.20	15.44 = 15.44

WEST T
WILLIAMS
KELLHOFER †

30

4/15/54

WARM

(PAGE 25)

TOP $\frac{3}{4}$ I.P. PROP. CORN. S. E. COTTONWOOD + RIGEL

BEGIN A.C. PAVEMENT

END A.C. PAVEMENT

28th Grape to F.M.
 STKS for 6" AE Main
 + meters

WEST
 WILLIAMS
 VARONFAKIS
 KELLHOFER

31

10/11/54 CLOUDY

	0.39	233.34		232.95	
D+50			5.4	227.9	224.0
+80			6.1	227.2	222.8
+80			5.5	227.8	227.0
1+00			6.5	226.8	222.0
+50			7.7	225.6	220.0
1+99 WE			8.1	225.2	221.5
2+00			9.2	224.1	218.0
+49 WE			11.8	221.5	219.3
2+50			10.7	222.6	216.4
	4.47	229.76	13.05	220.29	
+89 WE			6.9	217.9	217.2
3+00			6.7	218.1	213.0
	8.85	233.39	0.22	221.54	
			0.44	232.95	232.95

BP SF Cor- Grape + Granada

03² Begin work

04² FH Tee

00⁸ (3) of FH

04²

05⁶

03²

06²

02²

07²

00²

05²

4.8 4.2
 1.9 1.9
 6.7

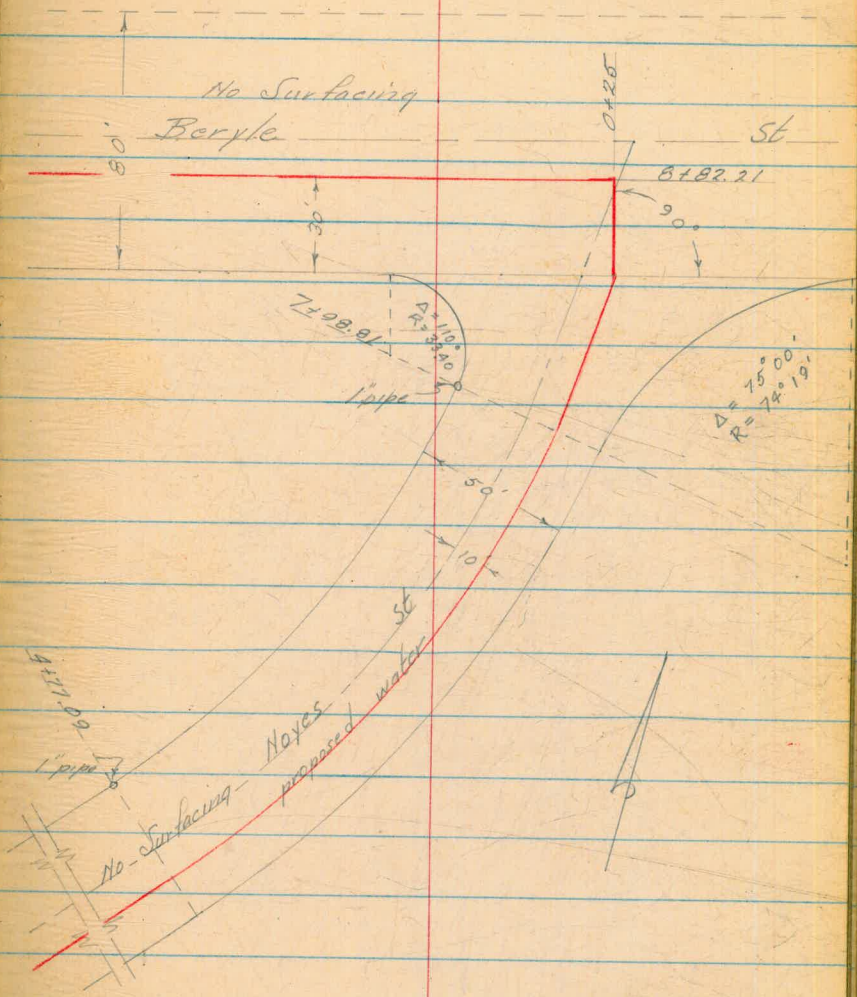
WERT
KEMP
VARON FALIS

32

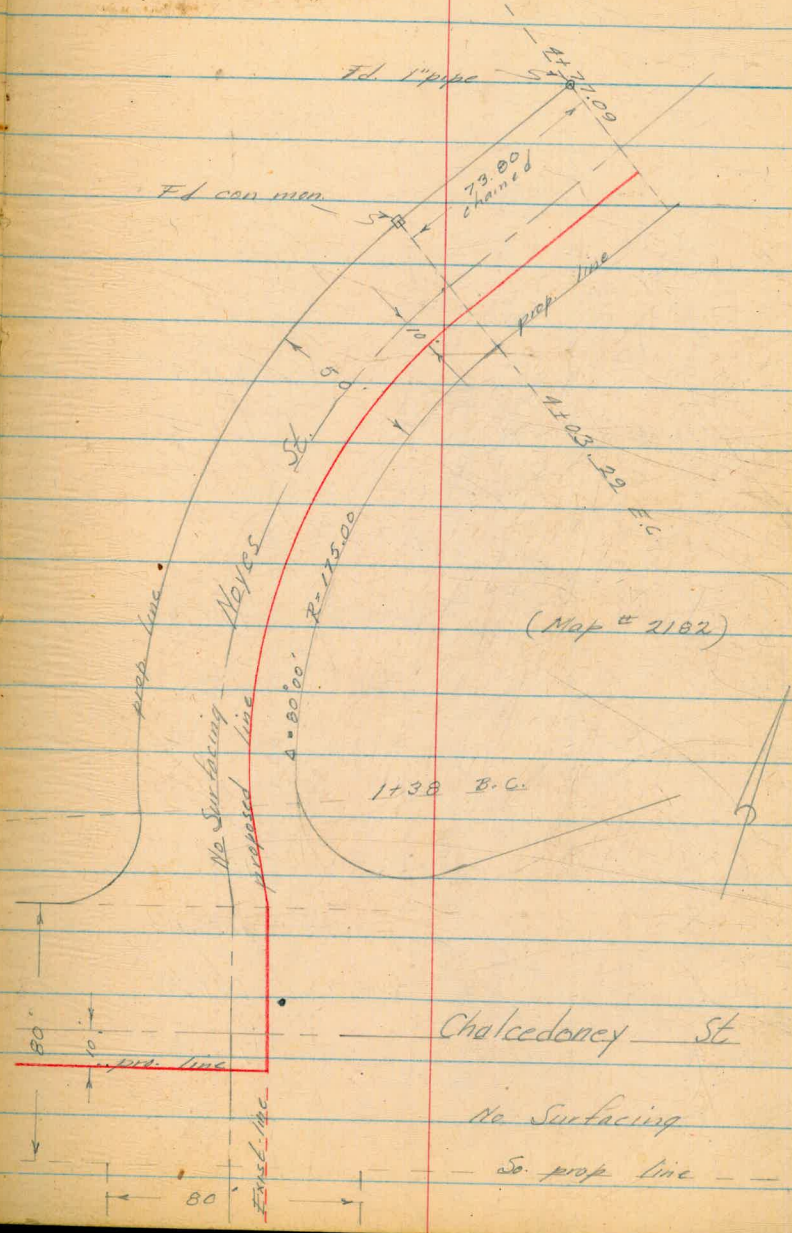
6-19-54

Profile & Water on Noyes St.
Chalcedoney St. to Beryle St.

9+32.21 No. prop line Beryl St.
8+52.21 So. prop line Beryl St.



Profile Noyes Cont.



0+80

No. prop line Chalcedony

0+00

So. prop line Chalcedony

Profile of Noyes St Cont.

		127.26	
10.39	137.65 [✓]		
		9.70	132.95 [✓]
5.38	138.33 [✓]		
		2.10	136.23 [✓]
9.45	145.68 [✓]		
		1.50	144.18 [✓]
11.84	156.02 [✓]		
0+00		10.4	145.62 [✓]
150		2.2	153.82 [✓]
T.P.		0.91	155.61 [✓]
	12.32	167.93 [✓]	
0+80		9.1	158.83 [✓]
1+00		7.3	160.63 [✓]
107		8.6	159.33 [✓]
1+38		5.9	162.03 [✓]
153.29		4.3	163.63 [✓]

S.W. corner (7') Chalcedony & Pendleton

So. prop line Chalcedony

No. prop line Chalcedony

Top of dirt bank

Bel " " "

B.C.

Profile of Noyes Cont.

	167.93'			
T.P.		0.72	167.21 ✓	
	11.93		179.14 ✓	
2+03.29		10.3	168.84 ✓	
+53.29		5.5	173.64 ✓	
3+03.29		1.7	177.44 ✓	
T.P.		0.36	178.78 ✓	
	10.42		189.20 ✓	
3+13		11.1	178.10 ✓	Bottom dirt bank
+15		9.7	179.50 ✓	Top " "
+53.29		7.4	181.80 ✓	
4+03.29		6.2	183.00 ✓	F.C.
+53		5.5	183.70 ✓	
4+77.09		9.9	184.30 ✓	B.C.
5+27.09		5.0	184.20 ✓	
+77.09		5.5	183.70 ✓	
6+27.09		6.8	182.40 ✓	

Profile of Meyer Cont.

	✓		
	189.20		
T.P.		6.78	182.42 ✓
	1.87		184.29 ✓
6+77.09		9.4	179.89 ✓
7+77.09		7.3	176.99 ✓
+77.09		9.8	174.49 ✓
7+98.81		10.6	173.69 ✓
T.P.		12.19	172.10 ✓
	6.10		178.20 ^A
B+52.21		7.2	171.00 ✓
B+82.21		7.8	170.40 ✓
+92.21		7.8	170.40 ✓
9+32.21		6.3	171.90 ✓
		3.18	175.02 ^A

E.C.

P.L. pro. water & gas prop of Beryl St.

P.L. pro. water lines B+82.21 = 0+25 on Beryl

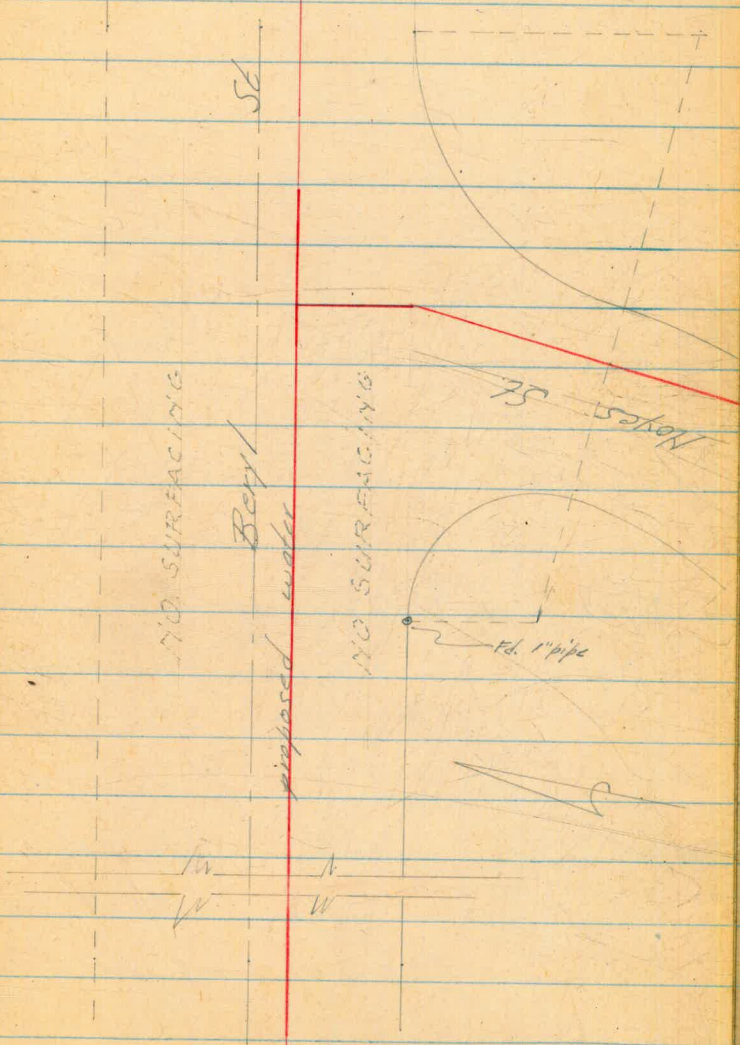
No. prop line Beryl St.

Set T.B.M. 1" pipe & Beryl

Profile & Water Beryl SE
 Noyes to Academy

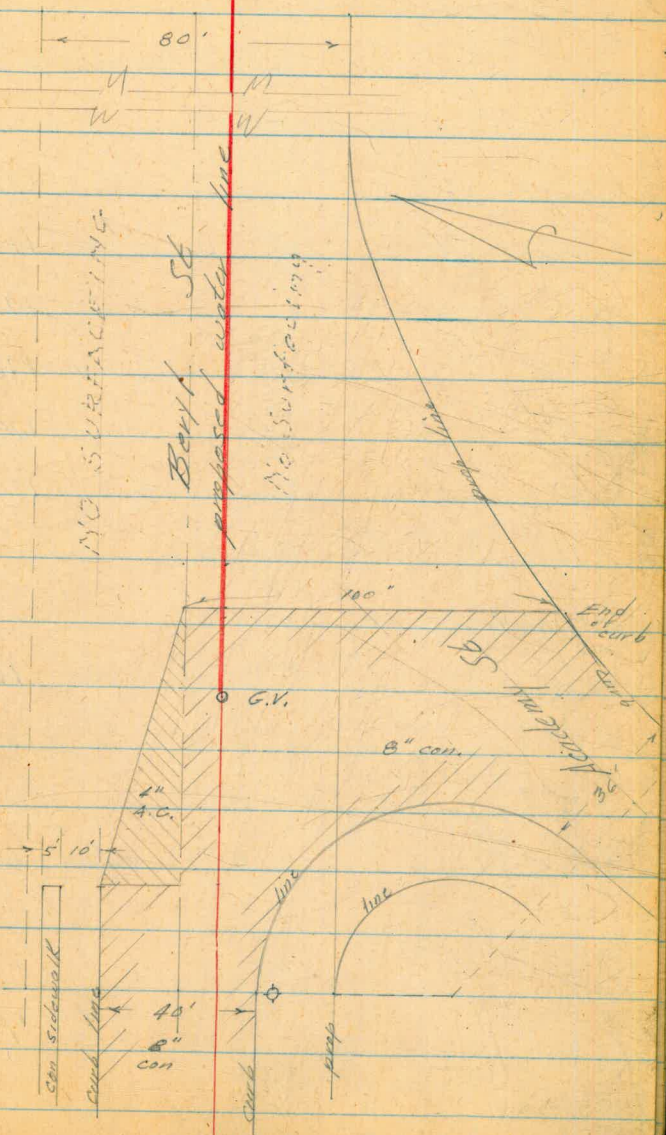
Wert
 Kemp
 Holahan
 June 21, 54

0+00 Approx E/L of Noyes
 +25 P.I. proposed water = 818221
 on Noyes water line



Profile of Beryl Cont

- 4+12 E. edge of 8" con. paving
- 4+35.50 G.V. Existing line on Beryl
- 4+85 End sidewalk & curb
- 5+12 F.H. & beqing of curb return



Profile Beryl St. Cont.

		175.02	
	2.48	177.47 ^W	
0+00	6.3	171.17 ^V	
+25	6.3	171.17 ^V	
+50	6.0	171.47 ^V	
1+00	3.9	173.57 ^V	
+50	2.6	174.87 ^V	
2+00	2.7	174.77 ^V	
+25	9.0	168.47 ^V	
T.P.	11.58	165.89 ^V	
	0.80	166.69 ^V	
2+50	2.6	164.09 ^V	
+75	8.4	158.29 ^V	

T.B.M. 1" pipe L Beryl St

Pl. water lines

0+25 = 8+02.21 at Noyes

R.L.

L.L.

4.2
2.22.4
1.54.0
5'4.0
16'12.4
1.510.8
5'7.0
4'7.2
1.55.1
10'3.2
3'1.9
5'0.8
10'1.0
17'10.4
10'9.1
6'6.8
9'5.1
13'5.1
20'

Profile at Beryl Cont

	166.69		
3400		12.6	154.09 ✓
		12.06	154.63 ✓✓
	0.13		154.76 ✓✓
+25		5.6	149.16 ✓
+50		9.2	145.56 ✓
T.P.		12.38	142.38 ✓✓
	5.93		148.31 ✓✓
3475		6.7	141.61 ✓
+80		6.7	141.61 ✓
+85		9.7	138.61 ✓
4100		11.1	137.21 ✓
+12		13.2	135.11 ✓
+35.50		14.5	133.81 ✓
T.P.		12.74	135.57 ✓
	8.94		144.51 ✓
T.P.		0.17	144.34 ✓
	11.02		155.36 ✓

	RL		LL
	$\frac{16.3}{18'}$	$\frac{13.9}{18'}$	$\frac{11.7}{13}$
			$\frac{9.9}{18}$
			$\frac{9.9}{25'}$
	$\frac{5.9}{10'}$	$\frac{5.8}{5'}$	$\frac{9.9}{10}$
			$\frac{4.3}{15'}$

Top dirt bank
 Bot. " "

Requiring 8" con paving
 G.V. Academy & Beryl
 T.B.M. 2" prop corn. R.R. 1391, E. end sidewalk
 & No. prop of Beryl (Sta 4485)

Profile of Beryl Cont

155.36 ^v

T.P.

0.16 155.20 ^v8.85 164.05 ^w1.75 162.30 ^w

NW. L & T. Lamont & Beryl El. 162.07

Profile of Proposed Water
Chalcedony St. Academy to Moyes

		111.97	
	12.70	124.67	"
0+00		13.8	110.87 ✓
+07		13.9	110.77 ✓
+07		13.9	110.77 ✓
+13		13.9	110.77 ✓
+25		13.8	110.87 ✓
+33		11.6	113.07 ✓
+50		3.2	121.47 ✓
T.P.		0.62	129.05 ✓✓
	11.64	135.69	"
T.P.		1.25	134.44 "
	12.46	146.90	✓
1+00		3.5	143.40 ✓
+05		1.8	145.10 ✓
T.P.		0.36	146.54 ✓✓
	10.87	157.91	"

West
Camp
Holston

42

G-22-54

T.B.M. Sewer M.H. Chalcedony 70' W of Academy

W/L of P. Academy

W curb line of Academy

G.V.

G.V.

& Chalcedony & Academy

Top Slope

Profile Chalcedony Cont

	157.41			
1450		8.5	148.91	✓
2400		6.0	151.41	✓
150		4.9	152.51	✓
2490.40		9.6	152.81	✓
T.P.		3.81	157.60	✓✓
	3.59	157.19		✓
3405		5.1	152.09	✓
410		6.3	150.89	✓
436		6.5	150.69	✓
440		8.7	152.49	✓
3440.40				End work
150		9.4	152.79	✓
T.P.		12.73	144.46	✓✓
	1.04	145.50		✓
		12.91	133.09	✓✓
	4.83	137.92		✓

W/L of Noyes St

Top Slope

Bottom Slope

Bottom Slope

Top Slope

Profile of Chalcedony

137.92 ✓

5.36 132.56 ✓✓

3.69 136.20 ✓

9.10 127.10 ✓⁵ ✓

S.W. con man Pendleton & Chalcedony 127.26

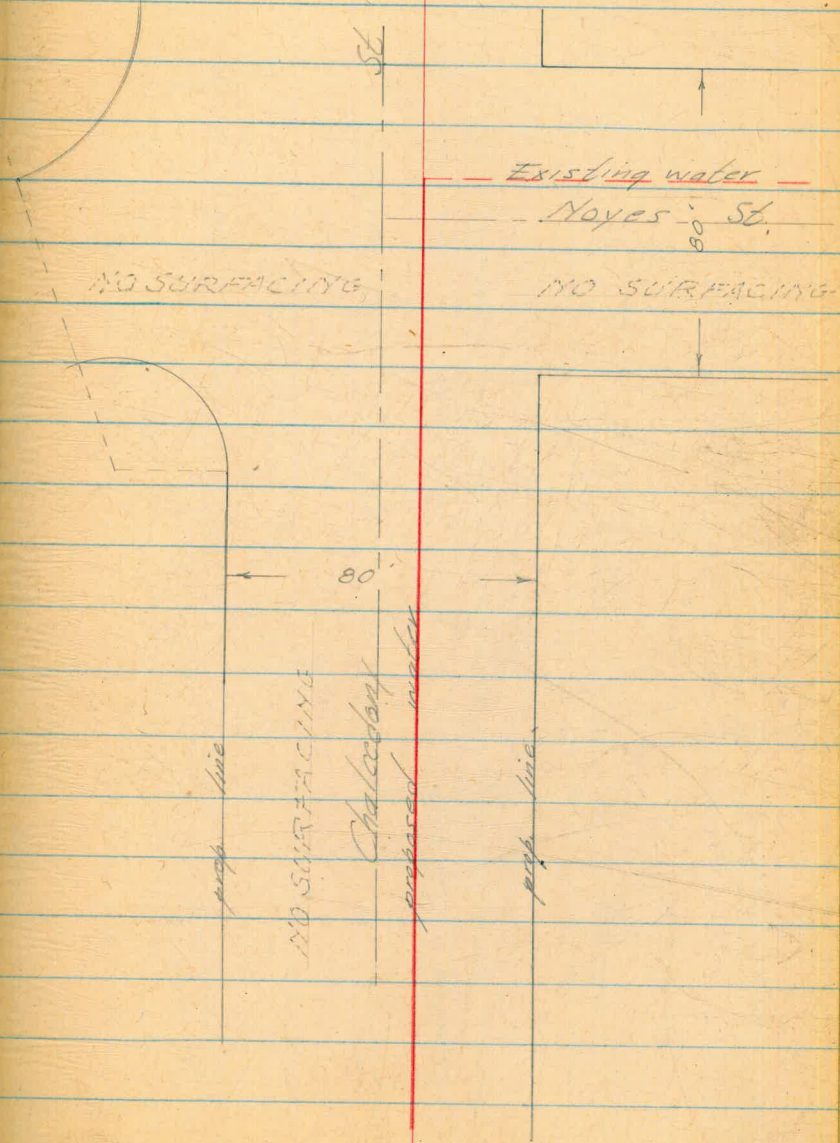
Profile of Chalcedony Cont

3490.40

End of proposed line

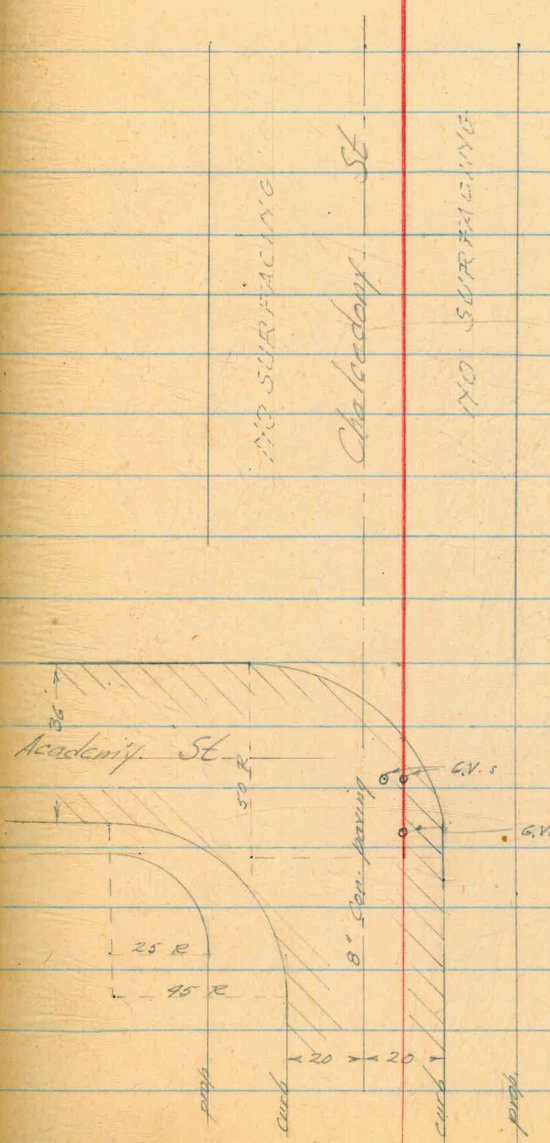
2490.40

W/L of Noyes St.



Profile Chalcedony Cont

- +93 E curb line
- +13 G.V. on line & 9' 16"
- +07 W curb line & G.V.
- 0+00 W/H of Academy



Bush St
Rigel to Pluto
S&Ks for 6" AC Main

	8.62	24.06	15.44
0+60			5.2 18.9 15.0
1+00			4.0 20.1 15.5
+15 ms			3.3 20.8 19.4
+48 mn			3.1 21.0 20.4
+50			4.0 20.1 16.2
+78 mn			3.2 20.9 20.3
2+00			4.6 19.5 15.6
+18 ms			4.8 19.3 19.3
+44 mn			3.7 20.4 19.3
+50			5.4 18.7 15.0
+93 ms			5.8 18.3 17.8
+97 mn			4.1 20.0 18.3
3+00			5.8 18.3 14.0
+34 ms			6.3 17.8 17.0
+41 mn			4.4 19.7 17.4
+50			6.5 17.6 12.9
+55 ms			6.9 17.2 16.5
+75			7.2 16.9 12.4

West
Williams T
Kullhofer &
Kemp

47

1/3/55

Cloudy
+ Rigel See P 30

TBM Top 3/4" IP prep cor SE Cottonwood

C3⁹ Begin work

C4⁶

C1⁴

C0⁶

C3⁹

C0⁶

C3⁹

C0⁶

C3⁹

C0⁹

C1¹

C3¹

C0⁵

C1¹

C4³

C0⁸

C2³

C4¹

C0¹

C4⁵

Birch St Cont

24.06

7+81 mN 6.3 17.8 16.3

4+00 8.4 15.7 11.4

+25 9.5 14.6 10.3

+30 mN 9.1 15.0 14.2

+50 10.7 13.9 8.6

6.35 17.39 13.02 11.01

5+00 7.6 9.8 5.3

+25 10.8 6.6 3.6

+50 10.9 6.5 3.0

+60 FH Tee 11.0 6.4 2.8

+60 (5) FH 10.9 6.5 7.8

7.00 24.09 0.35 17.01

8.63 15.11 =

WEST
WILLIAMS
KELLHOFER
KEMP

18

11/3/55

C1 ⁵

C4 ³

C4 ³

C0 ⁸

C4 ⁸

C4 ⁵

C3 ⁰

C3 ⁵

C3 ⁶

F1 ³

End of work

15.44

ELM ST.
 BANCROFT to 33rd
 ⑤
 SKS. & GRDS 8" A.C. MAIN

SHOBEY 2/17/55
 MARTEL
 KELLHOFFER

49

	2.95	229.48		226.53	N.W.B.P. ELM & BANCROFT ST	
0+85			5.5	224.0	219.7	C 1 ³
0+90 45° BEND			5.6	223.9	219.1	C 1 ⁸
1+12 ⁶³ 45° BEND			8.9	220.6	217.2	C 3 ³
1+50			11.5	218.0	214.0	C 4 ⁰
TP	2.09	218.63	12.94	216.54		
2+00			10.7	207.9	205.0	C 2 ²
TP	1.42	207.07	12.98	205.65		
2+25			3.2	203.9	199.6	C 4 ³
2+50			7.3	199.8	194.4	C 5 ¹
TP	2.25	197.06	12.26	194.81		
3+00			6.2	190.9	188.0	C 2 ²
3+36 ⁶⁰ END WORK 8"x6" CROSS			8.0	189.1	184.2	C 4 ³
			8.4	188.7 = 188.7		8 STA. 3+60 PRELIMINARY
WATER METER						
		207.07				
2+30 N			7.1	200.0	210.3	F 10 ³ SET AT TRIP

F.H. STAKED
 KEARNY MESA INDUSTRIAL
 AREA

11/19/56
 BEATTY
 PAULSON

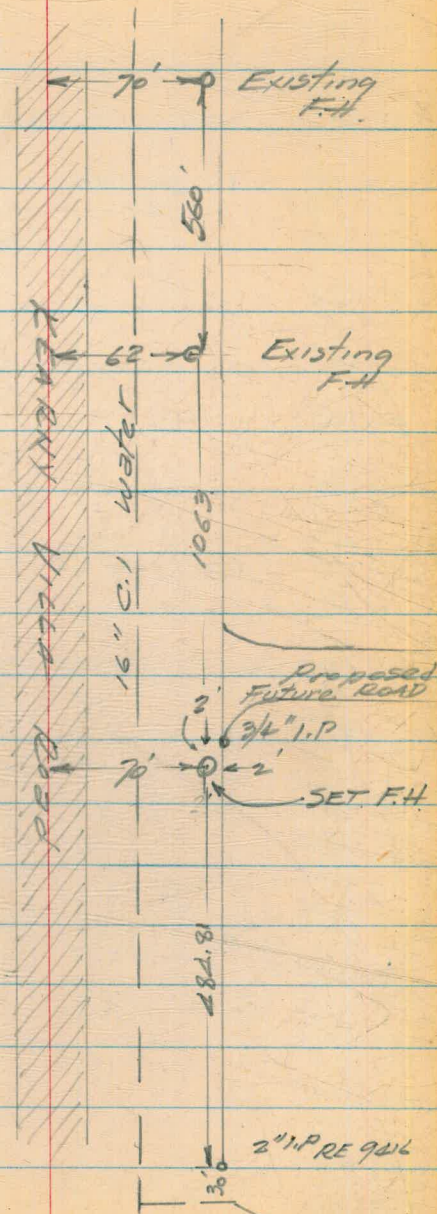
BM 4.06 419.70 415.64

(5) F.H. 5.45 414.25

2 KM ROAD 4.40 415.30 F10 to Flange

CK BM 4.06 415.64

RR SPIKE in pole



"G" ST - 28TH ST TO 26TH ST
12" A.C. WATER

11/21/56
BEATTY
PAULSON
O'BRIEN

51

	+FS	H.I	-BS	ELEV	GRADE	
BM	13.25	185.24		171.99		BP SW. COR 26 TH & G
13+80	End work		10.58	172.66	?	
13+78.5	GV.		10.39	172.85	?	Cut to Existing.
13+60			9.65	175.59	171.80	C38
13+30			7.2	178.0	173.70	C43
13+00			5.4	179.8	175.6	C42
12+75			4.5	180.7	176.0	C47
12+50			4.1	181.1	175.6	C55
12+00			5.6	179.6	171.6	C80
④	1.04	172.98	13.30	171.94		
11+50			8.7	164.3	159.4	C49
④ 11+37	0.15	160.54	12.59	160.39	156.2	C42
11+00			6.2	154.3	148.4	C59
④ 10+50	0.04	147.63	12.95	147.59		C75
10+25			2.3	145.3	137.8	C75
10+00			6.2	141.4	132.5	C89
④ 9+50	0.60	136.18	9.9	137.7	129.0	C87
④ 9+25			12.05	135.58		C42
④ 9+15	6.03	129.20	9.8	126.4	122.2	C42
9+00			13.01	123.17		C80
			8.2	121.0	113.0	C80
			8.3	120.9	113.0	C79
8+60			6.0	123.20	119.9	C33
④ 8+25	12.79	141.87	0.12	129.08		C42
			11.7	130.2	126.0	C42

"G" 3T. - 12" A.C.
(Cont.d.)

11/22/56

52

8+00	141.87		4.0	137.9	139.8	C19 C19	142.1 +0.2	
P	12.42	154.24	0.05	141.82				
H	11.47	165.44	0.27	153.97				
7+60			11.4	154.0	147.0	C70	11.01	11.04
7+60			10.9	154.5	148.2	C75	154.43	154.40
7+15 ²¹⁸	12x6 Cross		10.7	154.7	150.0	C42		
7+01			10.5	154.9	150.6	C43		
6+80			7.8	157.6	153.0 151.2	C46		
6+50			4.0	161.2	157.0 155.3	C44		
P	13.26	178.37	0.33	165.11	163.0			
6+00			10.5	167.9	162.1	C49		
5+50			5.1	173.3	168.9	C44		
5+00			3.3	175.1	170.6 171.3	C45		
4+50			5.0	173.4	169.0 169.8	C44		
4+00			10.2	168.2	163.8 164.7	C44		
H	0.40	165.75	13.02	165.35	155.5	C44		
3+50			5.9	159.9	156.0			
H	0.23	152.66	13.32	152.23				
3+00			1.2	151.5	147.4	C44		
2+50			9.5	143.2	138.8	C44		
H	0.02	139.99	12.69	139.97				
2+00			5.3	134.7	130.2	C45		
1+75			9.4	130.6	126.2	C44		

11/22/56

53

"G" ST. - 12" A.C.
(Cont'd.)

IP	1.05	139.99 127.98	13.06 3.2	126.93 124.8	120.3	C45
1+30						
0+80			6.3	121.7	117.2	C45
0+40			6.3	121.7	117.4 118.0	C43
0+20	Begin work	54	122.6	?		Cut to Existing
			6.34	121.64 = 121.66		Sly cor SW curb return
9+95	WM-5			136.0	131.7	C43
10+47	WM-5			145.9	141.2	C47
11+00	WM-5			152.9	152.5	C24

12/5/56

PM	11.98	183.97		171.99		
AIR Valve			w. 3.12	180.85		FOL
12+74.5	set stakes at 10' back of curb 26.5' from E. St.		3.03	180.94	181.0	C02

Reduced
by H. Watts
5-13-57

BENSON AVE
WOODMAN TO 61ST ST
Preliminary for Water Main
Group 207
(See also F.B. 747-27 & F.B. 905-62)

DEC. 3 1956 - Fair
BEATTY
PAULSON
OBRIEN

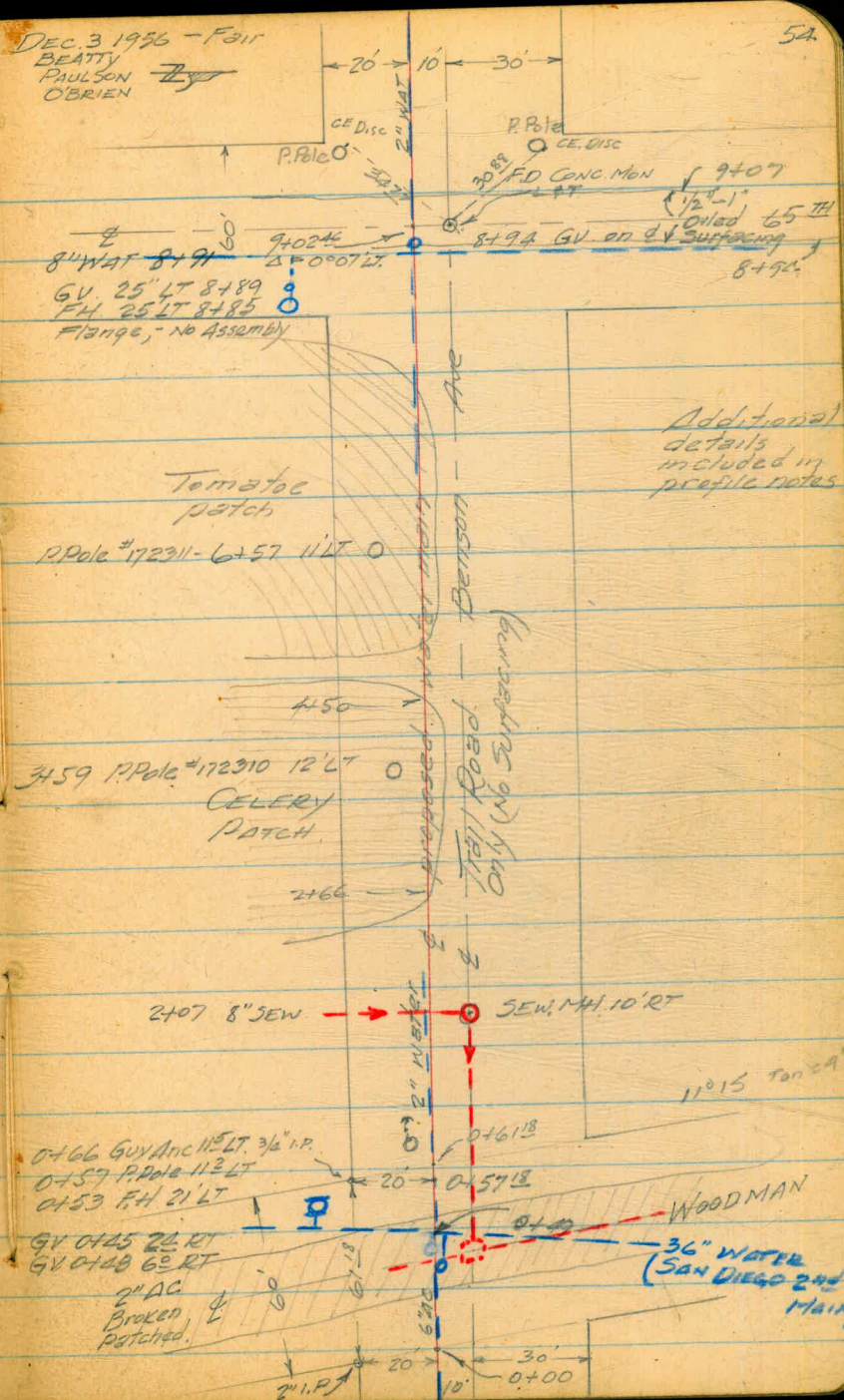
9+3246
27 46

9+0246 } 50' E 65TH ST. $\Delta = 0^{\circ}07' LT$
ST. GV. 8+912 on E

8+7246
77 46

Wly of 65TH

Ely of 65TH



0+6118 = Wly of WOODMAN

0+00 = Ely of Woodman

BENSON AVE
(Cont'd)

36+01 End of Line

29+16¹⁵ POT 3/4" I.P. 40' RT

12+60 P.O.T. 3/4" I.P. 198' LT

28

55

36+26 → 10' 2x2 Hub (RP 50)

36+025 3" water (Private)
36+01 Div. Line Lots 13¹⁴
RANCHO MISSION

61 ST
35+82 TEE End of Water?
35+782 GV 145' LT
35+7A WM 205' LT
35+735 FH 145' LT

31+855 4" water
(private) crosses

Graded but
Not Surfaced
Road

Tomatoe
patch

Trail road

Plowed Field

BENSON AVE

3/4" I.P. 29+16¹⁵

fence

No Road

proposed water

CELERY
patch

Gully

12+60 3/4" I.P. 198'

Plowed
field

65 74

ST.

BENSON AVE
WOODMAN TO 61ST ST
& PROFILE

BM	7.51	359.78		352.27
0+00			0.8	358.98
0+07			1.80	357.98
0+56 ⁵			4.40	355.38
1+00			6.3	353.48
1+50			5.7	354.08
2+00	4. W. 5/13/57		0.9	358.88
	Rim Sewer MH	0.41		359.37
		8.00		
	Inv. 8" VC Sew.	8.41		351.37
IP _{CSK}	11.66	371.36	0.08	359.70
2+50			5.4	369.96
3+00			2.0	369.36
IP	10.00	381.35	0.01	371.35
3+50			8.0	373.35
4+00			6.1	375.25
4+50			4.9	376.45
5+00			3.8	377.55
5+50			4.0	377.35
6+00			5.0	376.35

DEC. 6 1956
Booth
Paulson
O'Brien

56

Nail in Lead SW Cor. VAL CHAMBER OTAY 2nd MEET
F.B. 747-25 NEly Cor. Woodman & Benson

Ely edge A.C

Wly edge A.C

2+07 10' RT. Sewer M.H.

2+66 enter celery patch

4' RT edge celery patch

3+59 P.Pole 12' LT P172310

- 11' RT Celery patch, edge

end celery patch; edge 5' RT

4+71 Begin tomatoe patch, edge 8' RT

5+00 edge tomatoe patch 8' RT

edge of. " " 7' RT

" " " " 3' RT

BENSON AVE
 & Profile
 (Cont'd.)

12/6/56

57

381.35 ✓

6+50		6.2	375.15 ✓
7+00		8.5	372.85 ✓
7+50		10.6	370.75 ✓
8+00		13.2	368.15 ✓
① Deck	5.13	373.31	13.17 368.18 ✓
8+50		7.8	365.51 ✓
8+95	Edge oil surf	9.10	364.21 ✓
9+00		9.10	364.21 ✓
9+07		9.15	364.16 ✓
CK TBM	Nail in pole SW Cor Benson #6574	7.07	366.24 = 366.21 FB 747-27
9+35		10.8	362.51 ✓
9+39		10.9	362.41 ✓
9+50		10.0	362.31 ✓
10+00		7.8	365.51 ✓
10+50		5.1	368.21 ✓
11+00		3.8	369.51 ✓
11+50		3.8	369.51 ✓
12+00		4.3	369.01 ✓
12+50		4.6	368.71 ✓

6+57 11' LT P.Pole # P172311
 edge tomatoe patch on &

8+85 FH 25' LT No assembly, flange only
 8+85 end tomatoe patch 6' LT
 8+89 FH GV 25' LT (flange only)
 8+91 8" C.I. Wst. Crosses
 8+94 GV on &
 8+95 EH edge 1/2"-1" oiled surfacing
 9+07 Wst. " " " " " "
 #
 9+21 35' RT P.Pole & Tele 371266
 9+29E 13' LT P.Pole #, P 172312
 9+48 13' LT Guy Anc
 2" Wst. on &

2" Wst. on &, 3" Wst., & 1/4" riser & faucet ^{45° RT}
 11+50 " " 43 RT

BENSON AVE
 ± Profile
 (Cont'd.)

Station	Notes	Offset	Elevation
12+60		373.31	5.2 368.11
13+00	(3" wat 4' RT)	6.4	366.91
13+50	3" wat 4' RT	7.6	365.71
14+00		6.9	366.41
14+50	11" on faucet 2" wat on E 3" wat 1' RT 1 1/4 riser & faucet 1' RT 14+55	0.08 5.46	367.93 367.85
14+50		2.1	365.8
15+00	3" wat 2' RT	5.1	362.83
15+50	15+53 3" wat 4' RT Turns RT.	9.7	358.23
16+00	2" wat 24' RT	5.5	352.52
16+50	11" on faucet	0.32	345.36
16+50		0.9	344.46
17+00	2" wat on E 2" wat 7 1/2' RT	8.8	336.56

12/6/56

58

CROSS-SECTIONS FOR
 GRADE ESTABLISHMENT

Station	Left Side	Center	Right Side
12+60	54' E Elev. Cor 3.2 30	7' E C	9.5 30
13+00	4.5 30	8.4 E	11.3 30
13+50	4.4 30	9.7 E	13.2 30
14+00	4.0 30	9.8 E	13.8 30
14+50	+0.2 30	3.2 E	5.9 30
15+00	2.0 30	7.8 E	10.7 30
15+50	4.9 30	12.0 E	15.6 30
16+00	1.0 30	8.4 E	12.7 30
16+50	+5.1 30	3.4 E	10.0 30
17+00	4.7 30	10.1 E	16.8 30

BENSON AVE
 & PROFILE
 (Cont'd.)

12/6/56

59

CROSS-SECTIONS FOR
 GRADE ESTABLISHMENT

	345.36			
17+50	2" wat. 4 RT	12.9	332.46	
TP	0.48	333.81	12.03	333.33
18+00		5.0	328.81	
	18+34 3/4" riser & faucet end			
18+50		8.0	325.81	
	18+97 3LT 1 1/2" riser & faucet			
19+00		10.2	323.61	
19+50		13.3	320.51	
TP	0.01	321.20	12.62	321.19
	19+92 7LT 1" ris. & faucet			
20+00		4.5	316.70	
20+50		8.2	313.0	
21+00		11.6	309.60	
TP	2.61	311.32	12.49	308.71
21+50		4.4	306.92	
22+00		6.3	305.02	

SLY #	#	NLY #	
9.5 30	15.2 8	17.8 30	
0.4 30	7.3 8	9.8 30	
3.1 30	9.6 8	11.8 30	
6.9 30	11.5 8	14.3 30	
11.1 30	14.5 8	17.5 30	
2.9 30	5.4 8	7.2 30	
7.3 30	8.7 8	10.3 30	
9.5 30	12.0 8	12.2 24	14.0 30 in gully
2.6 30	4.6 8	4.4 19	5.5 27 gully 30
4.8 30	6.1 8	5.8 13	6.9 20 gully 5.8 30

BENSON AVE
& Profile
Cont'd

Station	Offset	Elevation	Profile
22+50	31.32	7.6	303.72
23+00	E of gully	9.3	302.02
23+50		11.0	300.32
24+00		13.0	298.32
IP	5.57	304.47	12.42 298.90
24+50		6.1	298.37
25+00		6.9	297.57
25+50		7.2	297.27
IP	3.92	301.28	7.11 297.36
26+00		4.4	296.88
26+50		6.0	295.28
27+00		5.8	295.48

12/6/36

60.

CROSS-SECTIONS FOR
GRADE ESTABLISHMENT.

Sty #	STREET	Nly #
74 30	71 6	78 6
8.0 30	8.0 11	6.4 30
72 30	86 4	49 30
121 30 Gully	100 4	71 30
121 30	12.1 7 Gully	112 6
8.0 30 Gully	7.9 12	53 6
8.9 30 gully	58 6	0.4 30
9.2 30	60 6	3.4 30
7.0 30	3.4 8	0.4 30
7.3 30	51 6	2.2 30
8.0 30	4.5 6	0.8 30

BENSON AVE
 E Profile
 (Cont'd)

Station	Offset	Elevation	Grade	Profile Elevation
27+50	5.9	295.38		301.28
28+00	6.8	294.48		
28+50	7.9	293.38		
29+00	8.4	292.88		
29+16.5	8.1	293.18		
IP 29+50	9.51	306.57	4.22	297.06
29+50	12.7	293.87		
30+00	9.2	297.37		
30+50	3.9	302.67		
IP 31+00	11.98	318.11	0.44	306.13
31+00	8.0	310.11		
IP 31+50	13.07	330.68	0.50	317.61
31+50	11.9	318.78		
31+85.5	Top 4" steel wat	7.06	323.62	
32+00	5.0	325.68		

12/6/56

61.

299.13
 1.94
 297.19

Sly # E Street Nly #

Station	Sly #	E Street	Nly #
27+50	8.3 30	4.6 8	0.9 30
28+00	9.3 30	5.5 8	1.7 30
28+50	10.1 30	6.8 8	3.5 30
29+00	10.2 30	7.3 8	4.4 30
29+16.5	9.9 30	7.2 8	4.2 30

29+35 begin tomatoe patch, end 15' LT
 " " edge 15' LT
 " " edge 13' LT
 30+60 end tomatoe patch
 3" wat 10' LT
 3" wat 8' LT
 3" wat 7 1/2' LT
 31+85.5 4" wat crossing
 3" wat 8' LT

BENSON AVE

12/6/56

62

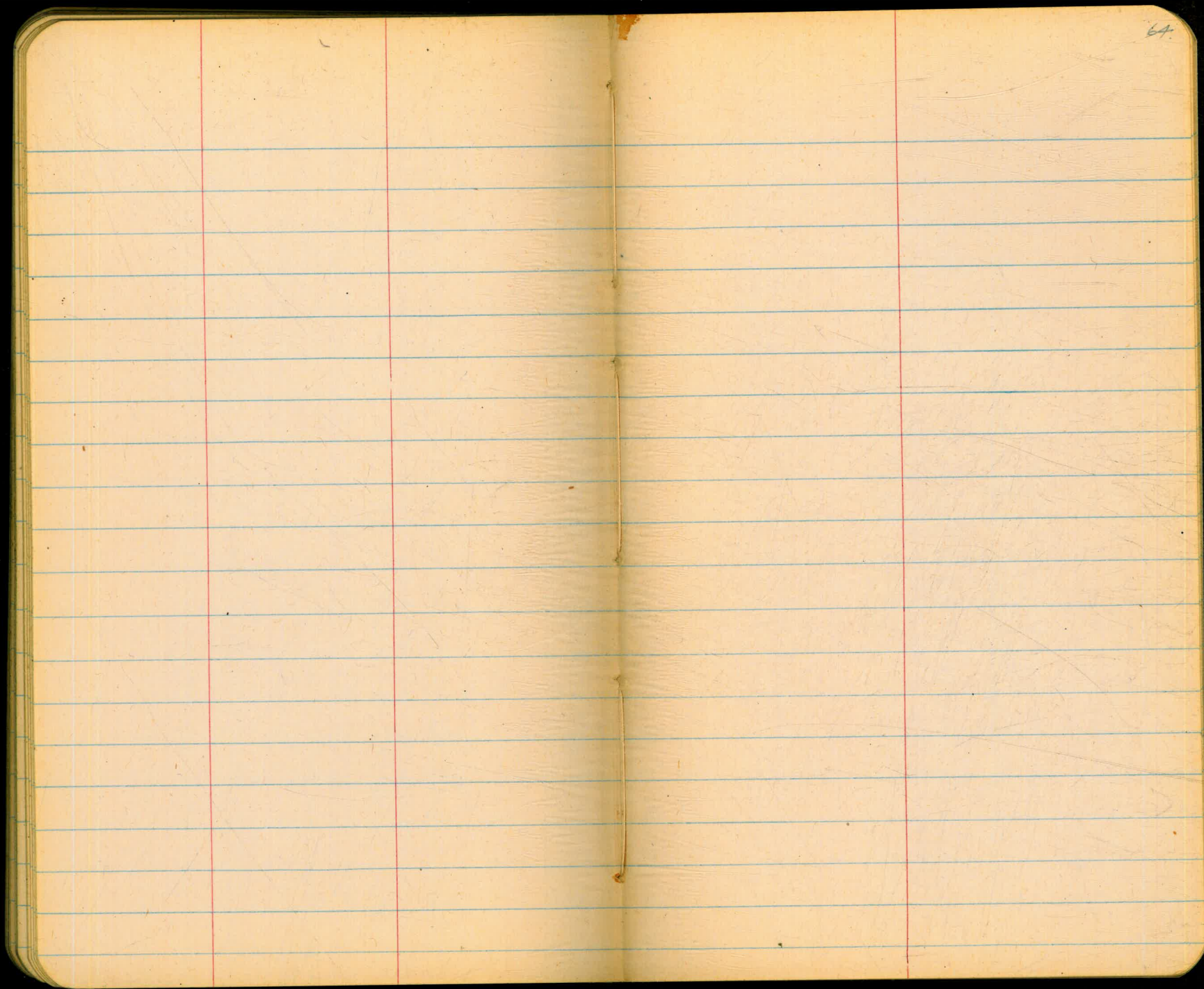
	330.68			
32+50		2.7	327.98	
33+00		3.3	327.38	
33+50		5.0	325.68	
34+00		7.2	323.48	
IP	3.42	327.56	6.54	324.14
34+50		5.1	322.46	
35+00		6.0	321.56	
35+50		6.6	320.96	
35+76	ELY line 61 st	5.9	321.66	
35+95	Toe of slope	5.5	322.06	
36+01	End line	+1.0	328.56	
IP	Top F.H.	1.42	326.48	2.50 325.06
IP		1.47	315.24	12.71 313.77
CK TBM		4.50	312.03	7.71 307.53 = 307.29 Not too good! 0.24
IP		0.00	299.14	12.89 299.14
IP		0.20	286.04	13.30 285.84
IP		13.13	299.11	0.06 285.98
				11.16 287.95 = 287.79 diff 0.16 Not much better!

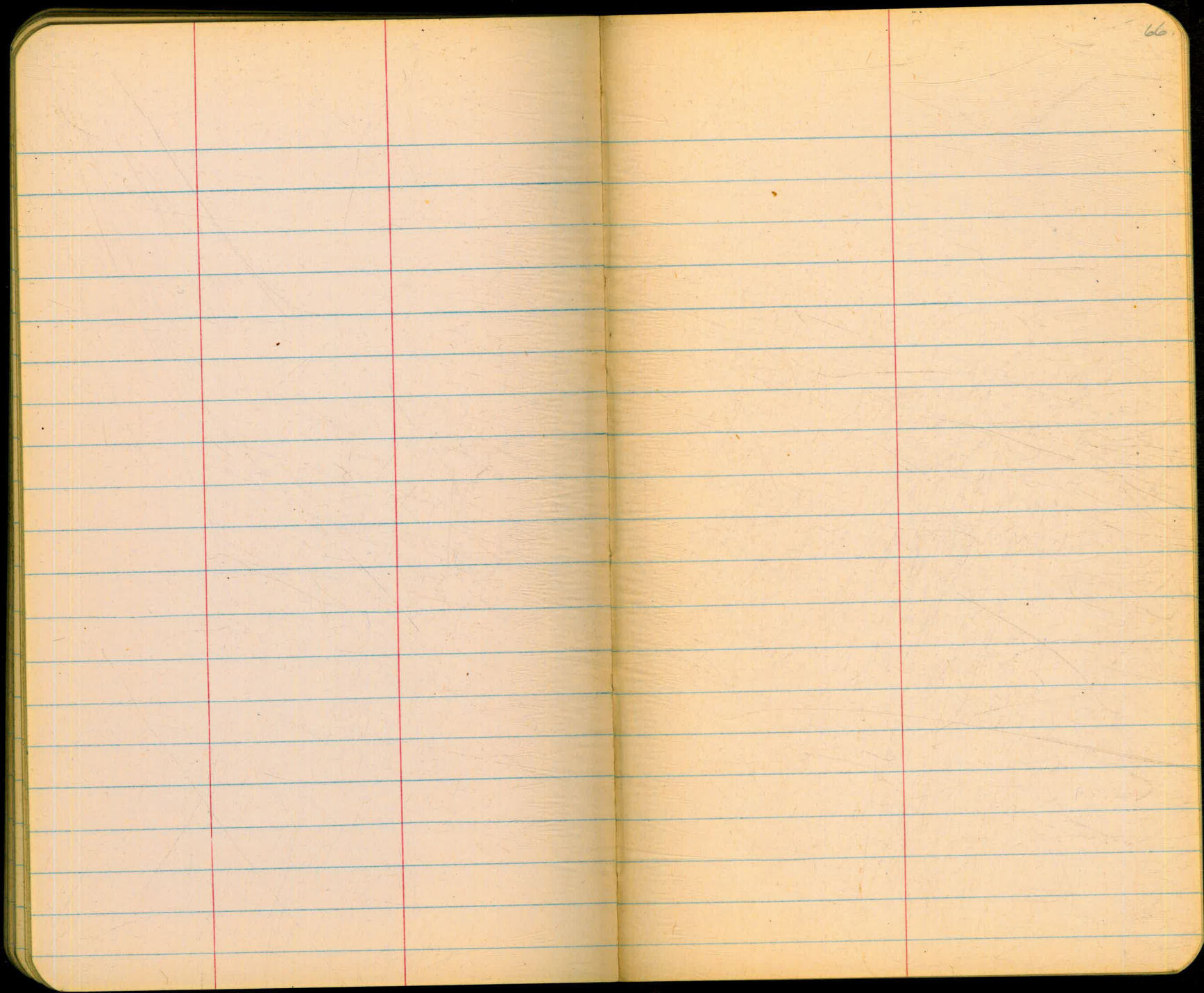
32+08	Guy Arc	12' LT	
32+32	P Pole	11' LT	#276921
	2" WAT	10' LT	
32+93	10' LT		1.9 edge of road
	4" WAT	turn 3 LT	
			2.1 edge of road
			3.6 edge of road
			3.7 edge of road
35+27	P Pole	17 ² LT	#276517
35+50	Guy Arc	17 ⁸ LT	

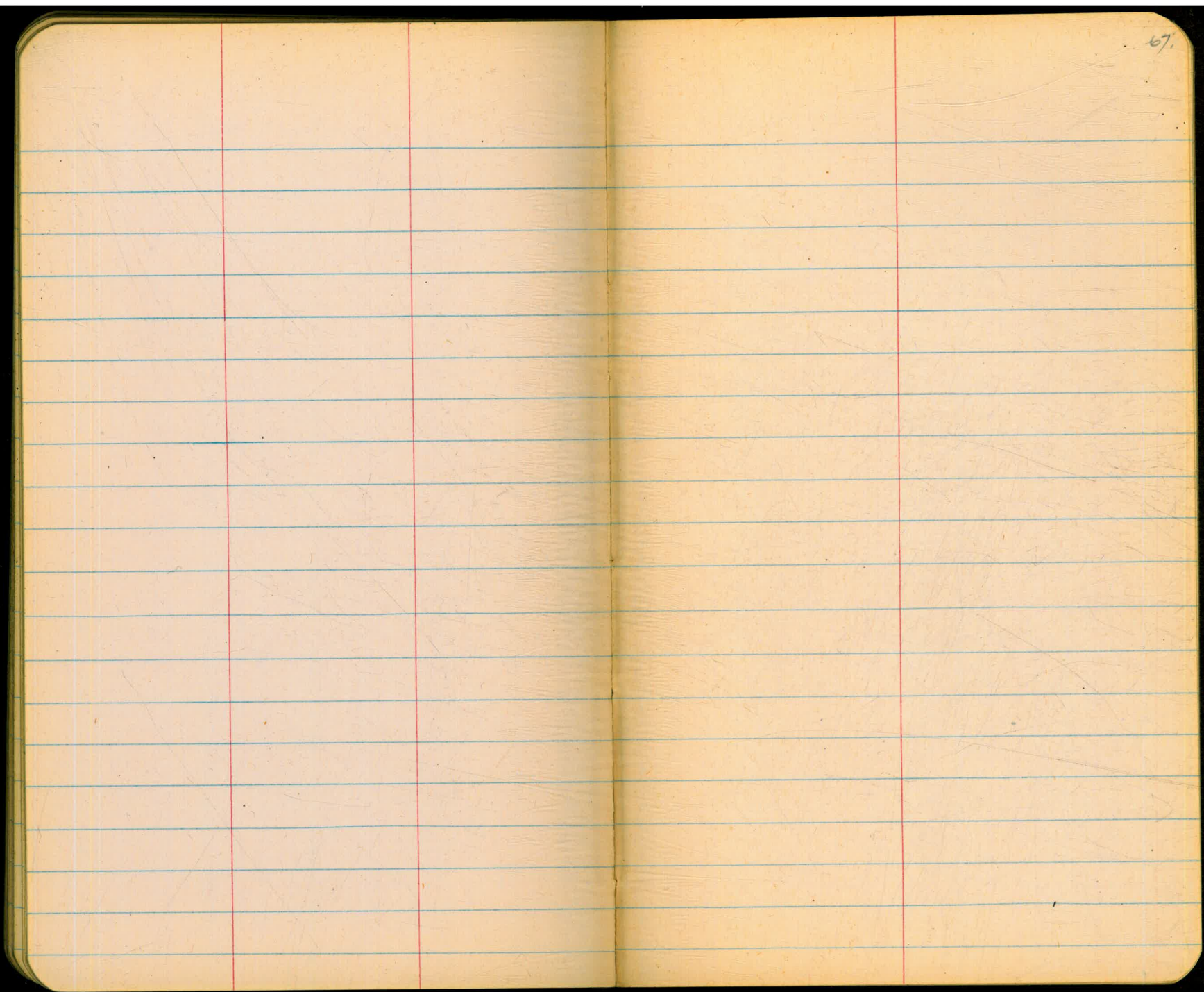
Top F.H. SE Cor BENSON AVE & 61st ST

Conc Man Benson Place F.B 905-63

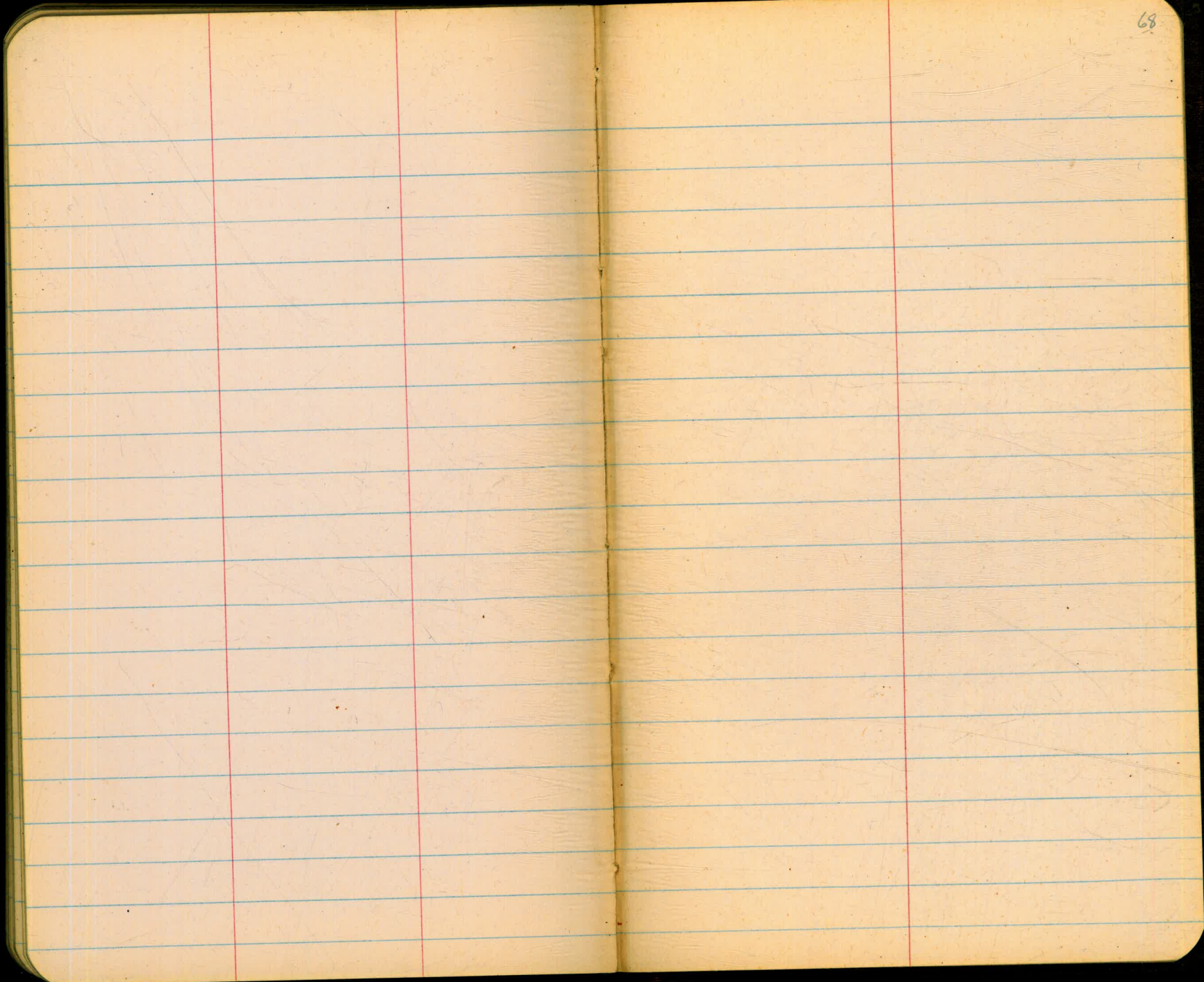
& 61st & Detroit

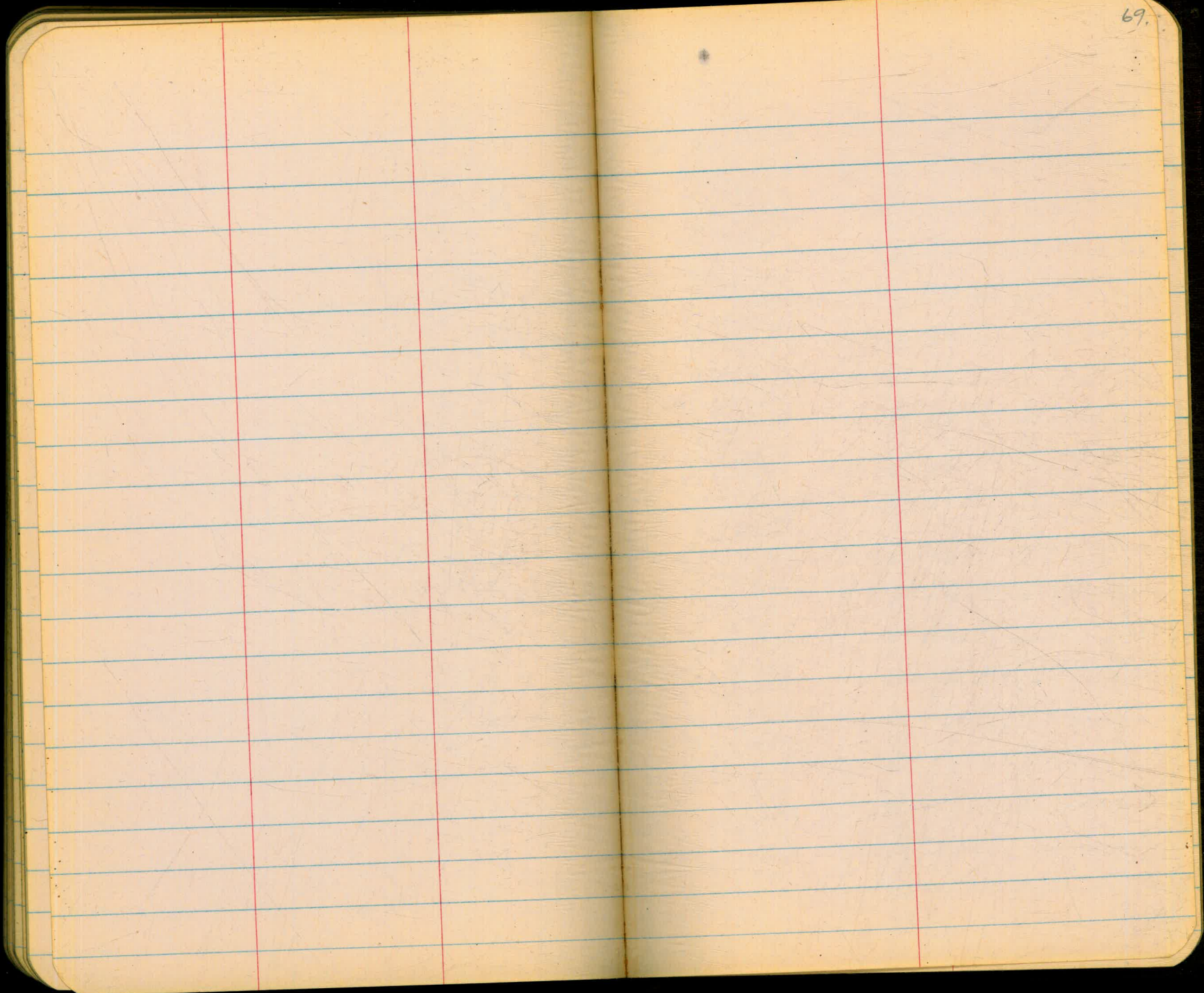


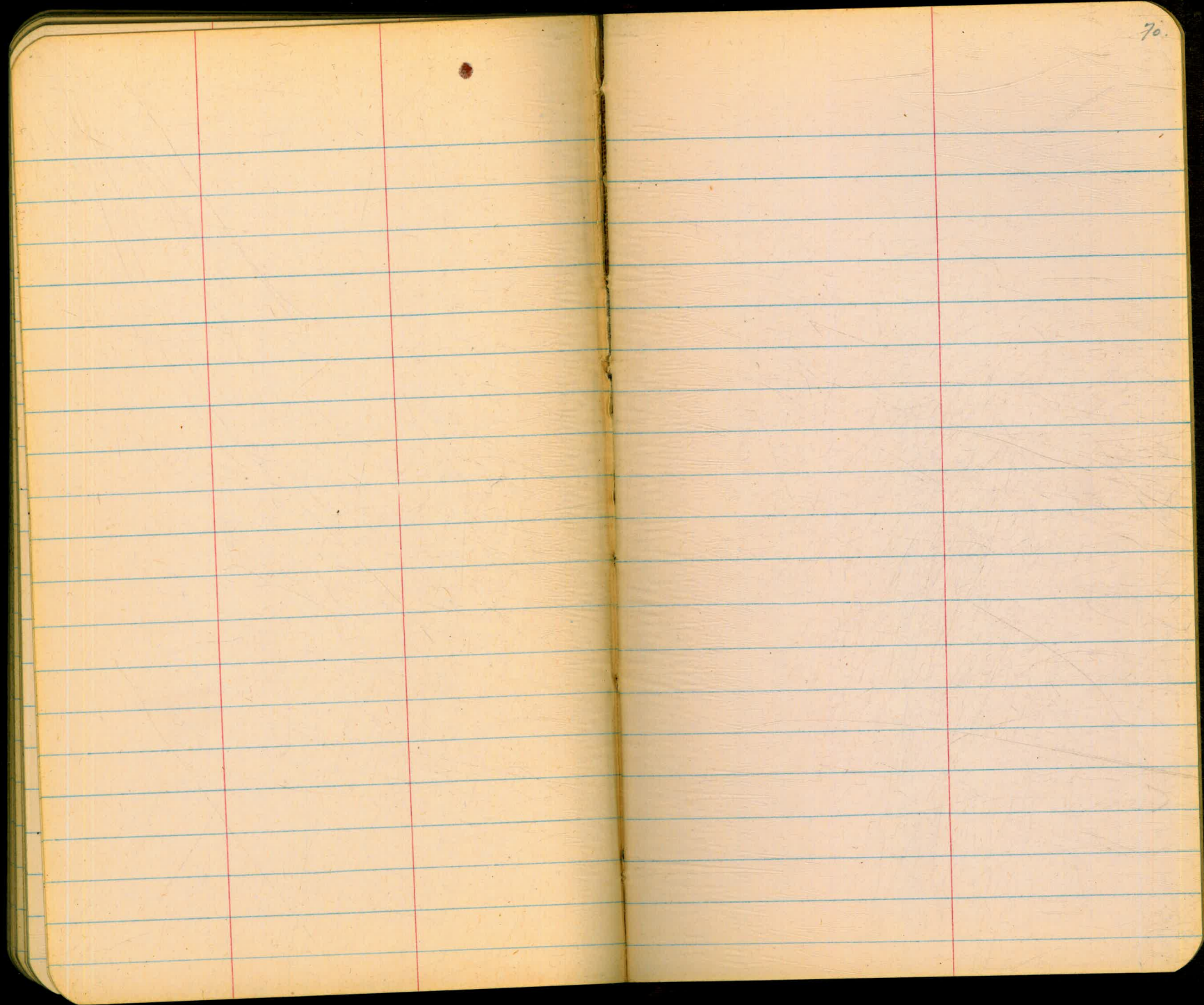


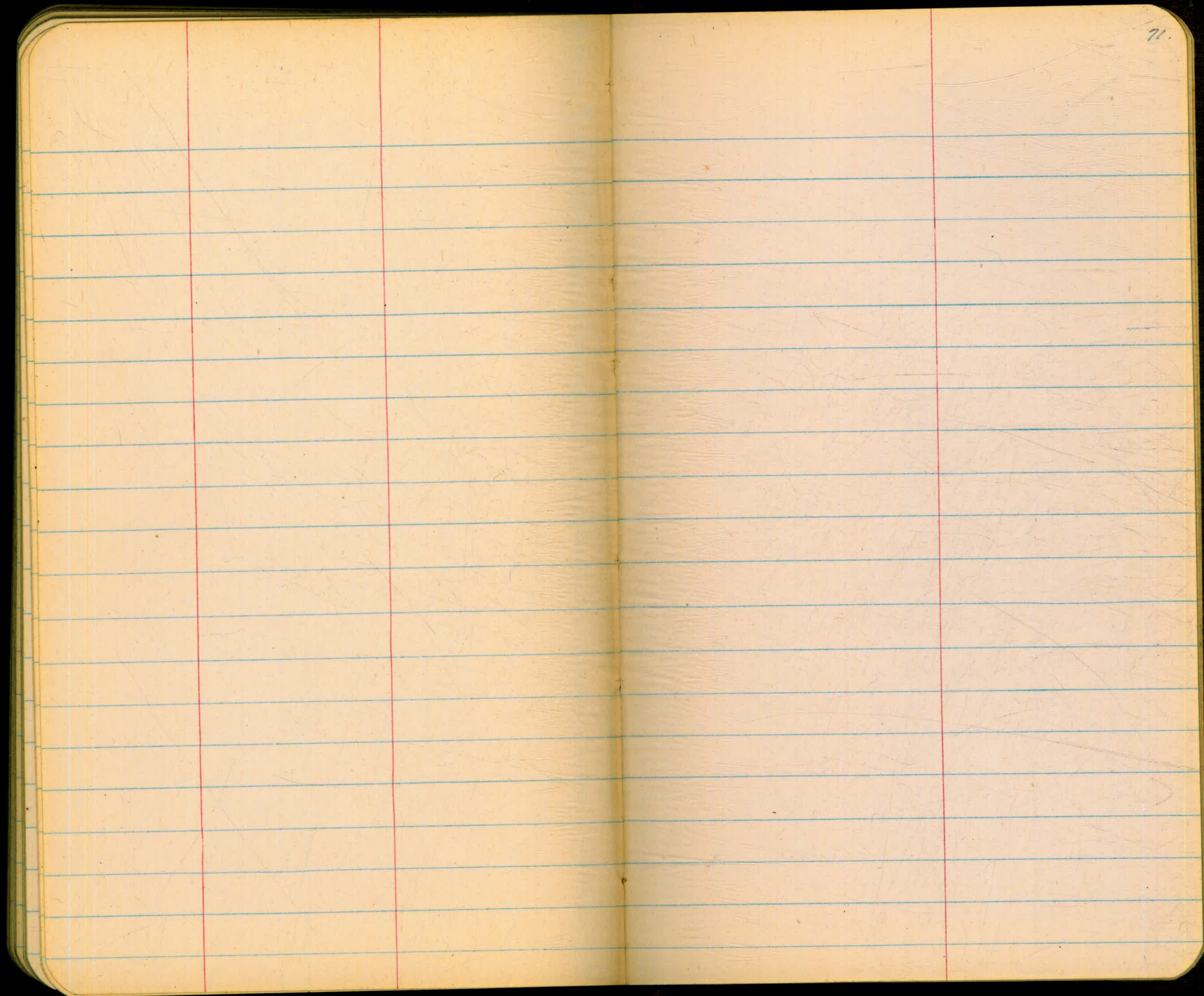


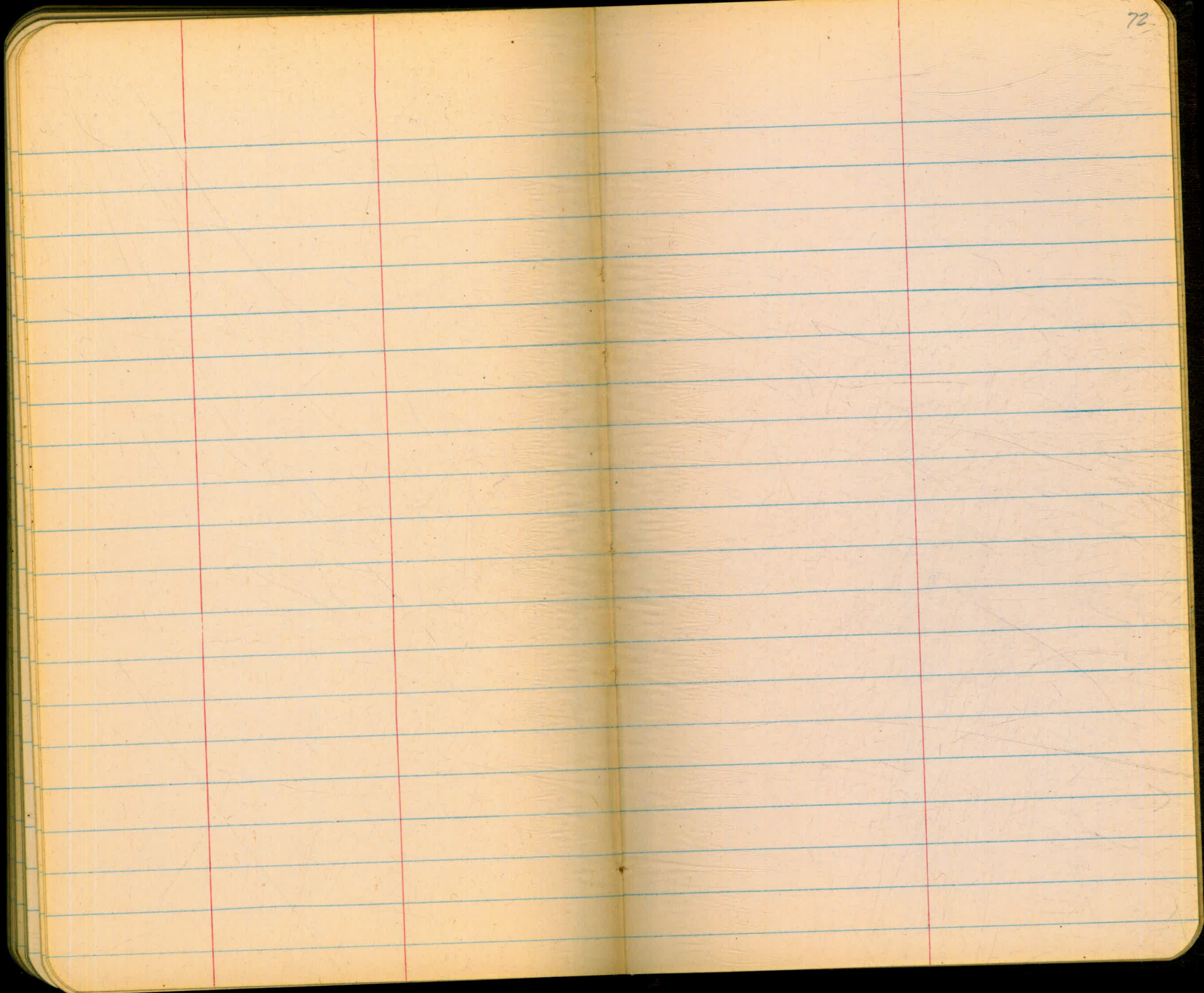
67.

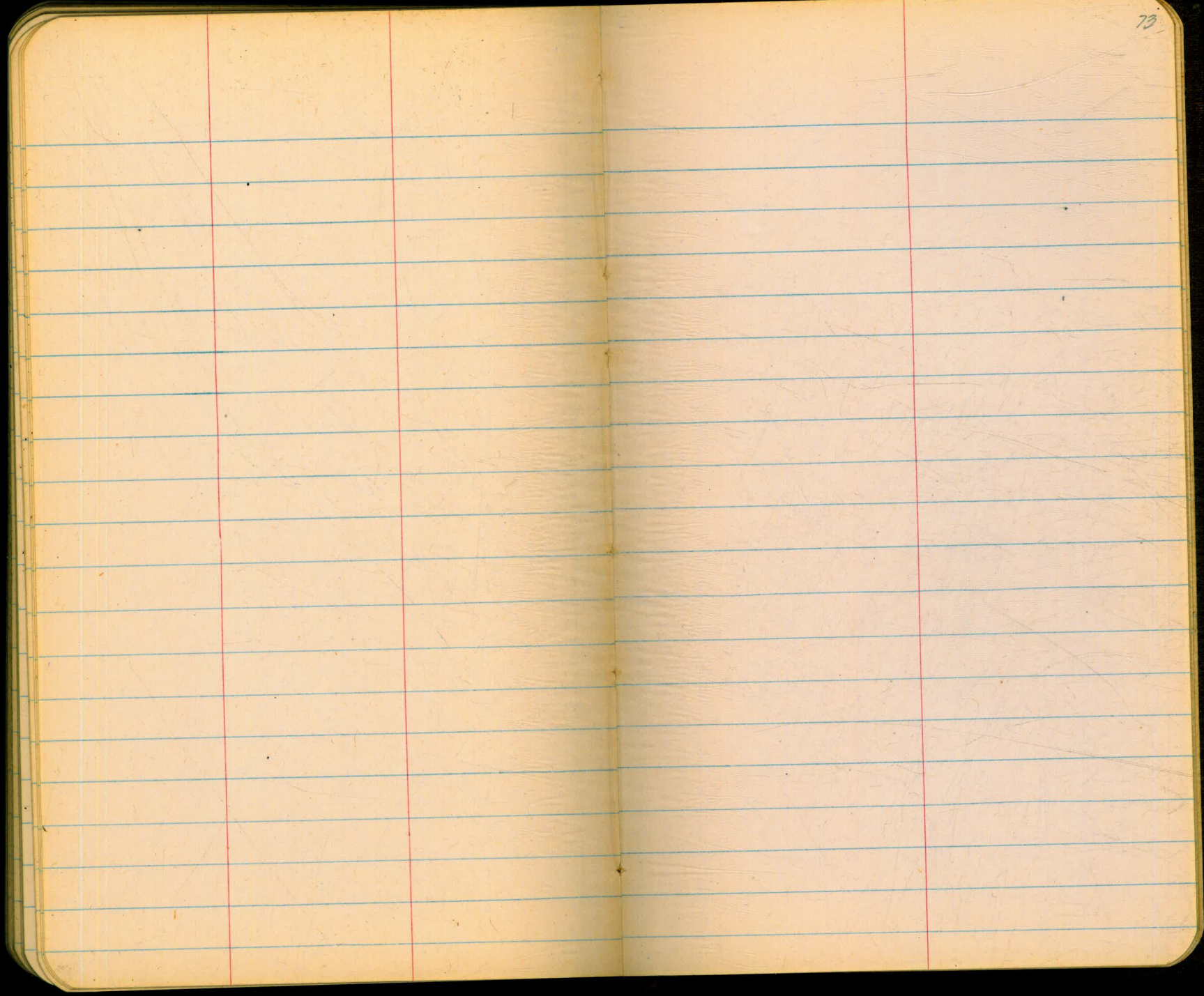


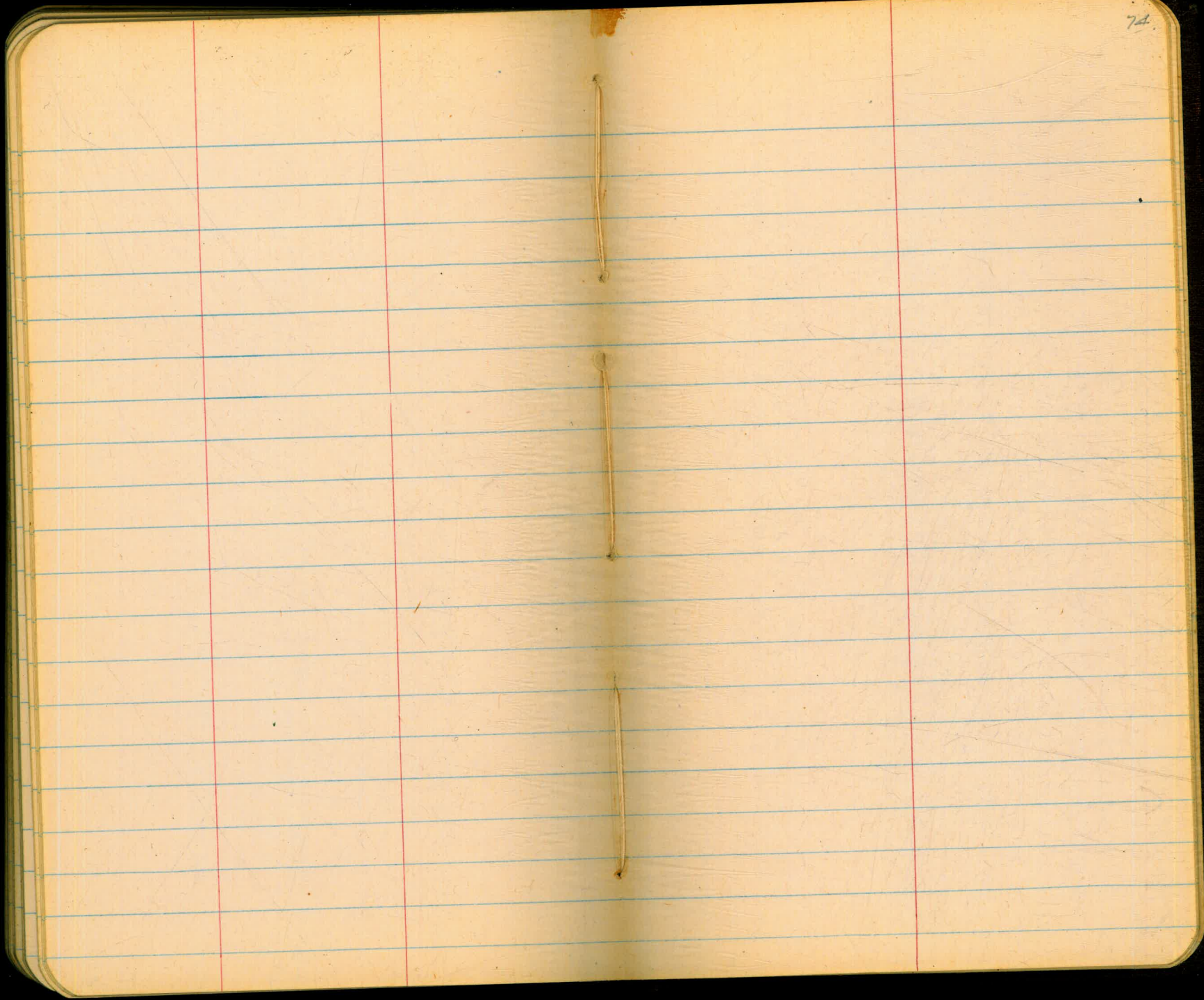


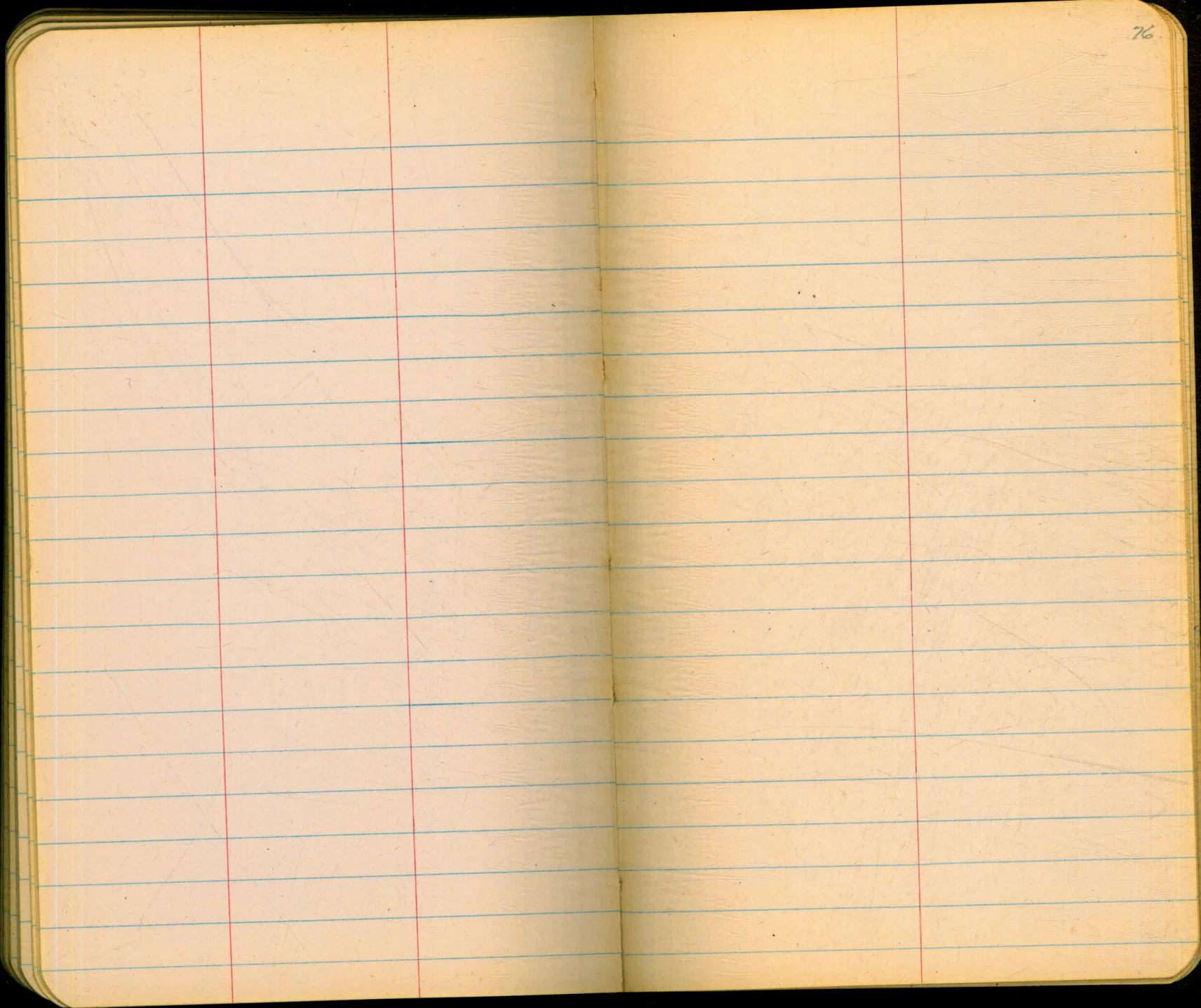


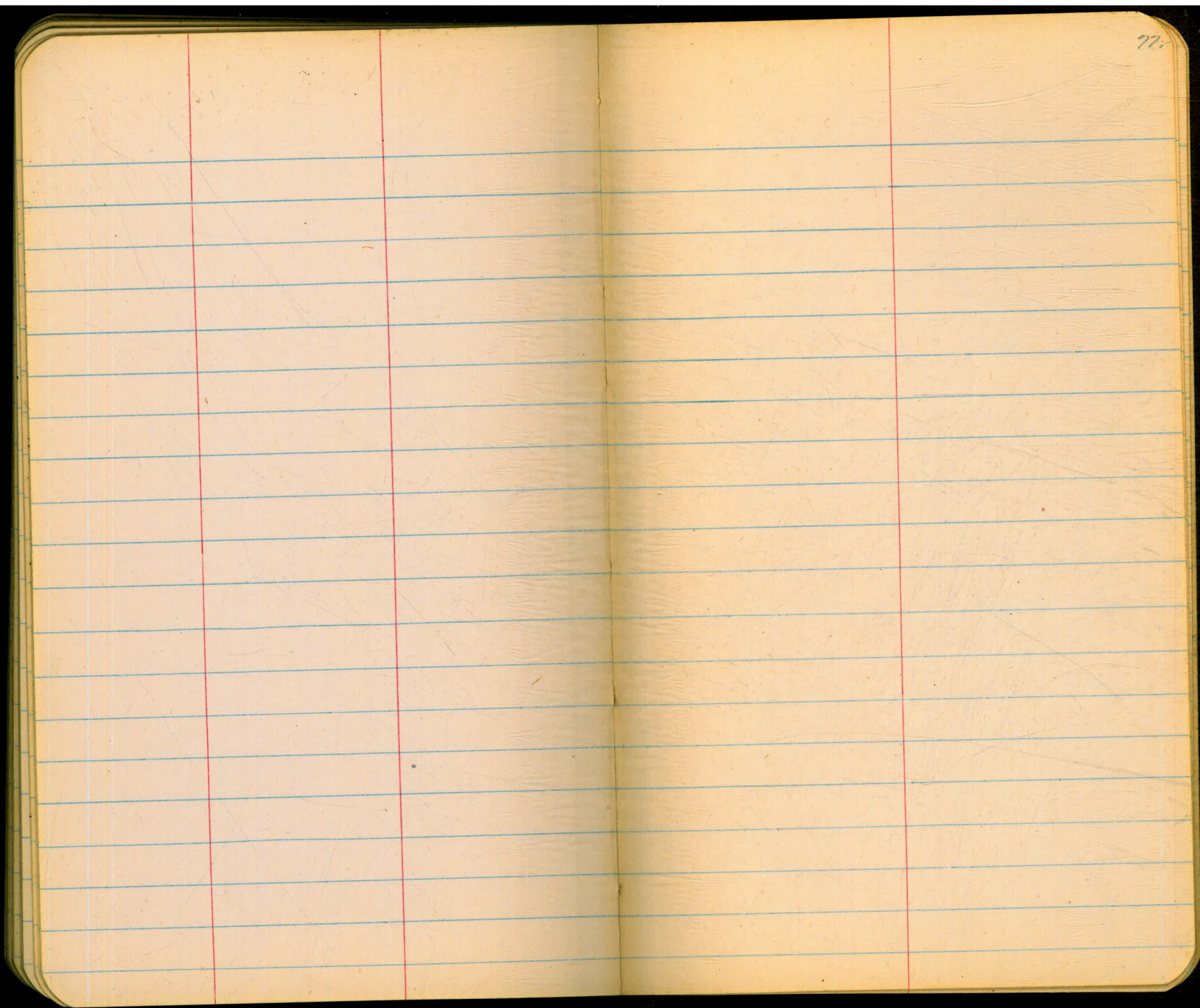


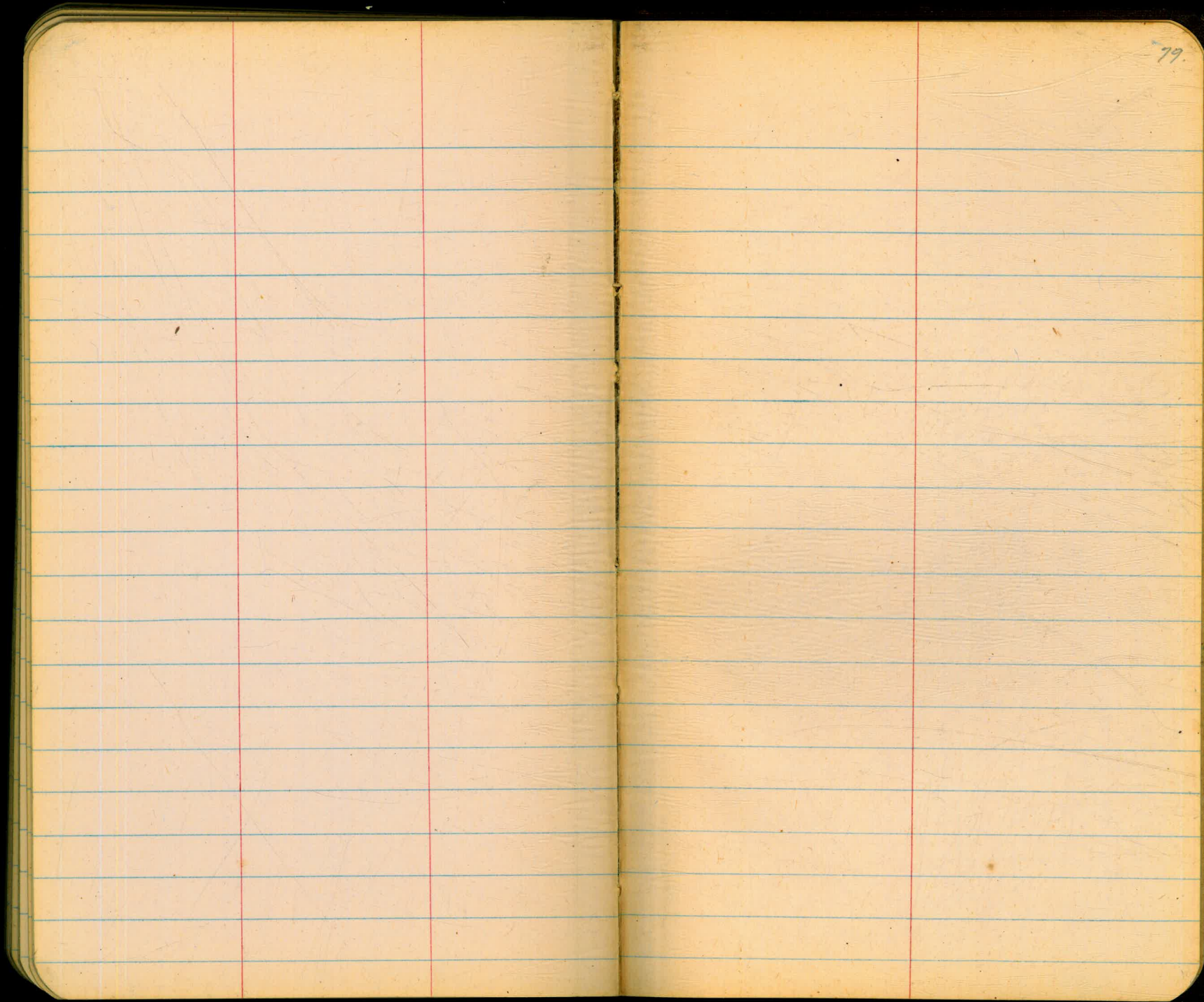






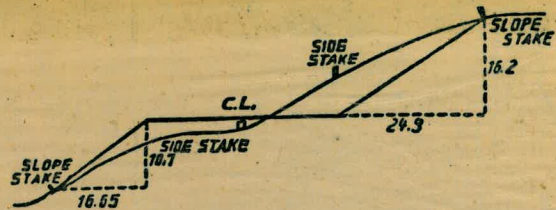






Please Return to
 City of San Diego Water Dept.
 Room 903 Civic Center

40
 30
 35.50
 76.50
 112.00
 75
 37
 41.5
 95
 96
 251
 75
 56
 31
 75
 65
 40



DISTANCES FROM SIDE STAKES FOR CROSS-SECTIONING.
 SLOPE 1 1/2 TO 1. ROADWAY OF ANY WIDTH.

	0	.1	.2	.3	.4	.5	.6	.7	.8	.9	
0	0.00	0.15	0.30	0.45	0.60	0.75	0.90	1.05	1.20	1.35	0
1	1.50	1.65	1.80	1.95	2.10	2.25	2.40	2.55	2.70	2.85	1
2	3.00	3.15	3.30	3.45	3.60	3.75	3.90	4.05	4.20	4.35	2
3	4.50	4.65	4.80	4.95	5.10	5.25	5.40	5.55	5.70	5.85	3
4	6.00	6.15	6.30	6.45	6.60	6.75	6.90	7.05	7.20	7.35	4
5	7.50	7.65	7.80	7.95	8.10	8.25	8.40	8.55	8.70	8.85	5
6	9.00	9.15	9.30	9.45	9.60	9.75	9.90	10.05	10.20	10.35	6
7	10.50	10.65	10.80	10.95	11.10	11.25	11.40	11.55	11.70	11.85	7
8	12.00	12.15	12.30	12.45	12.60	12.75	12.90	13.05	13.20	13.35	8
9	13.50	13.65	13.80	13.95	14.10	14.25	14.40	14.55	14.70	14.85	9
10	15.00	15.15	15.30	15.45	15.60	15.75	15.90	16.05	16.20	16.35	10
11	16.50	16.65	16.80	16.95	17.10	17.25	17.40	17.55	17.70	17.85	11
12	18.00	18.15	18.30	18.45	18.60	18.75	18.90	19.05	19.20	19.35	12
13	19.50	19.65	19.80	19.95	20.10	20.25	20.40	20.55	20.70	20.85	13
14	21.00	21.15	21.30	21.45	21.60	21.75	21.90	22.05	22.20	22.35	14
15	22.50	22.65	22.80	22.95	23.10	23.25	23.40	23.55	23.70	23.85	15
16	24.00	24.15	24.30	24.45	24.60	24.75	24.90	25.05	25.20	25.35	16
17	25.50	25.65	25.80	25.95	26.10	26.25	26.40	26.55	26.70	26.85	17
18	27.00	27.15	27.30	27.45	27.60	27.75	27.90	28.05	28.20	28.35	18
19	28.50	28.65	28.80	28.95	29.10	29.25	29.40	29.55	29.70	29.85	19
20	30.00	30.15	30.30	30.45	30.60	30.75	30.90	31.05	31.20	31.35	20
21	31.50	31.65	31.80	31.95	32.10	32.25	32.40	32.55	32.70	32.85	21
22	33.00	33.15	33.30	33.45	33.60	33.75	33.90	34.05	34.20	34.35	22
23	34.50	34.65	34.80	34.95	35.10	35.25	35.40	35.55	35.70	35.85	23
24	36.00	36.15	36.30	36.45	36.60	36.75	36.90	37.05	37.20	37.35	24
25	37.50	37.65	37.80	37.95	38.10	38.25	38.40	38.55	38.70	38.85	25
26	39.00	39.15	39.30	39.45	39.60	39.75	39.90	40.05	40.20	40.35	26
27	40.50	40.65	40.80	40.95	41.10	41.25	41.40	41.55	41.70	41.85	27
28	42.00	42.15	42.30	42.45	42.60	42.75	42.90	43.05	43.20	43.35	28
29	43.50	43.65	43.80	43.95	44.10	44.25	44.40	44.55	44.70	44.85	29
30	45.00	45.15	45.30	45.45	45.60	45.75	45.90	46.05	46.20	46.35	30
31	46.50	46.65	46.80	46.95	47.10	47.25	47.40	47.55	47.70	47.85	31
32	48.00	48.15	48.30	48.45	48.60	48.75	48.90	49.05	49.20	49.35	32
33	49.50	49.65	49.80	49.95	50.10	50.25	50.40	50.55	50.70	50.85	33
34	51.00	51.15	51.30	51.45	51.60	51.75	51.90	52.05	52.20	52.35	34
35	52.50	52.65	52.80	52.95	53.10	53.25	53.40	53.55	53.70	53.85	35
36	54.00	54.15	54.30	54.45	54.60	54.75	54.90	55.05	55.20	55.35	36
37	55.50	55.65	55.80	55.95	56.10	56.25	56.40	56.55	56.70	56.85	37
38	57.00	57.15	57.30	57.45	57.60	57.75	57.90	58.05	58.20	58.35	38
39	58.50	58.65	58.80	58.95	59.10	59.25	59.40	59.55	59.70	59.85	39
40	60.00	60.15	60.30	60.45	60.60	60.75	60.90	61.05	61.20	61.35	40
41	61.50	61.65	61.80	61.95	62.10	62.25	62.40	62.55	62.70	62.85	41
42	63.00	63.15	63.30	63.45	63.60	63.75	63.90	64.05	64.20	64.35	42
43	64.50	64.65	64.80	64.95	65.10	65.25	65.40	65.55	65.70	65.85	43
44	66.00	66.15	66.30	66.45	66.60	66.75	66.90	67.05	67.20	67.35	44
45	67.50	67.65	67.80	67.95	68.10	68.25	68.40	68.55	68.70	68.85	45
46	69.00	69.15	69.30	69.45	69.60	69.75	69.90	70.05	70.20	70.35	46
47	70.50	70.65	70.80	70.95	71.10	71.20	71.40	71.55	71.70	71.85	47
48	72.00	72.15	72.30	72.45	72.60	72.75	72.90	73.05	73.20	73.35	48
49	73.50	73.65	73.80	73.95	74.10	74.25	74.40	74.55	74.70	74.85	49
50	75.00	75.15	75.30	75.45	75.60	75.75	75.90	76.05	76.20	76.35	50

THE NATIONAL BLANK BOOK COMPANY
 HOLYOKE MASSACHUSETTS
 NEW YORK CHICAGO BOSTON SAN FRANCISCO